

**FINAL SCORE**



**Colorado St.**

**57**



**Boise St.**

**70**

**January 31, 2019 • Taco Bell Arena - Boise, Idaho**

**FINAL STATISTICS**

**Official Box Score**  
**Colorado St. vs Boise St.**  
**Game Totals -- Final Statistics**  
**January 31, 2019 at Taco Bell Arena - Boise, Idaho**

**Colorado St. 57**

No.	Player	S	Pts	FG	3FG	FT	OR	DR	TR	PF	A	TO	Blk	Stl	Min	+/-
21	Hamm, Myanne		0	0-3	0-2	0-0	0	4	4	1	0	1	0	3	29	-15
23	Colaivalu, Grace		8	2-7	0-2	4-7	1	0	1	4	1	7	0	0	29	-17
24	Mounsey, Mollie		9	3-11	2-7	1-1	1	3	4	3	1	2	0	0	39	-12
35	Devos, Lore		19	8-16	0-1	3-4	2	4	6	1	1	3	0	2	40	-13
44	Neubert, Tatum		13	2-4	0-0	9-11	2	2	4	1	1	0	1	1	27	-10
11	Svanholm, Lena		2	1-2	0-1	0-0	0	0	0	2	0	0	0	0	10	-2
22	Brocke, Lauren		6	2-5	2-4	0-0	0	1	1	2	1	1	1	3	23	5
34	Davis, Liah		0	0-1	0-0	0-0	0	1	1	0	0	0	0	0	3	-1
Team							2	2	4	0		0				
<b>TOTALS</b>			<b>57</b>	<b>18-49</b>	<b>4-17</b>	<b>17-23</b>	<b>8</b>	<b>17</b>	<b>25</b>	<b>14</b>	<b>5</b>	<b>14</b>	<b>2</b>	<b>9</b>	<b>199</b>	

*Shooting By Period*

Period	FG	FG%	3FG	3FG%	FT	FT%
1st Qtr	4-11	36%	0-4	00%	2-4	50%
2nd Qtr	3-12	25%	1-5	20%	6-7	86%
3rd Qtr	7-12	58%	2-3	67%	4-6	67%
4th Qtr	4-14	29%	1-5	20%	5-6	83%
1st Half	7-23	30%	1-9	11%	8-11	73%
2nd Half	11-26	42%	3-8	38%	9-12	75%
<b>Game</b>	<b>18-49</b>	<b>36.7%</b>	<b>4-17</b>	<b>23.5%</b>	<b>17-23</b>	<b>73.9%</b>

Last FG: 4th-01:25  
 Biggest Run: 6-0  
 Largest lead: By 2 at 1-09:11  
 Technical Fouls: None.

**Boise St. 70**

No.	Player	S	Pts	FG	3FG	FT	OR	DR	TR	PF	A	TO	Blk	Stl	Min	+/-
14	Hodgins, Braydey		8	2-4	2-4	2-2	0	5	5	2	3	1	0	1	27	7
21	Lupfer, Riley		22	7-15	6-14	2-2	1	5	6	3	3	2	0	0	35	12
23	Christopher, Jayde		0	0-5	0-2	0-0	2	2	4	2	7	3	0	0	23	10
33	Harrell, Joyce		6	3-7	0-0	0-0	0	4	4	2	0	2	0	0	18	5
42	Coleman, A'shanti		5	2-3	0-0	1-2	2	3	5	1	0	4	0	1	19	2
03	Galeron, Sofia		3	1-4	1-2	0-0	0	1	1	3	1	1	1	0	11	6
15	Amundsen, Tess		2	0-0	0-0	2-2	0	1	1	0	1	2	0	0	4	2
20	Hermida, Marta		0	0-2	0-2	0-0	1	2	3	1	3	0	0	0	19	12
22	Woerner, Ellie		5	1-1	1-1	2-4	2	1	3	1	1	1	0	0	14	-1
25	Bowers, Rachel		13	6-7	1-1	0-0	1	0	1	3	1	0	0	0	18	11
30	Loville, Jade		4	1-2	0-1	2-2	0	1	1	1	1	2	0	0	9	-1
31	Vanderschaaf, Marijke		2	1-1	0-0	0-1	0	0	0	1	0	0	0	0	2	0
Team							1	0	1	0		0				
<b>TOTALS</b>			<b>70</b>	<b>24-51</b>	<b>11-27</b>	<b>11-15</b>	<b>10</b>	<b>25</b>	<b>35</b>	<b>20</b>	<b>21</b>	<b>18</b>	<b>1</b>	<b>2</b>	<b>199</b>	

*Shooting By Period*

Period	FG	FG%	3FG	3FG%	FT	FT%
1st Qtr	7-16	44%	4-10	40%	0-0	0%
2nd Qtr	6-11	55%	2-4	50%	2-3	67%
3rd Qtr	9-14	64%	4-8	50%	4-6	67%
4th Qtr	2-10	20%	1-5	20%	5-6	83%
1st Half	13-27	48%	6-14	43%	2-3	67%
2nd Half	11-24	46%	5-13	38%	9-12	75%
<b>Game</b>	<b>24-51</b>	<b>47.1%</b>	<b>11-27</b>	<b>40.7%</b>	<b>11-15</b>	<b>73.3%</b>

Last FG: 4th-00:52  
 Biggest Run: 8-0  
 Largest lead: By 19 at 3-02:25  
 Technical Fouls: None.

*Game Notes:*

Officials: Benny Luna, Anita Ortega, Brian Woods  
 Attendance: 1181

Start Time: 2019-01-31 02:06:08  
 End Time: 2019-01-31 03:41:58  
 Game Duration: 95  
 Conference Game:

Score	1st	2nd	3rd	4th	TOT
CSU	10	13	20	14	57
BSU	18	16	26	10	70

CSU led for 1:44. BSU led for 37:18.  
 Game was tied for 0:49.  
 Times tied: 0      Lead Changes: 3

Points from	CSU	BSU
In the Paint	24	14
Off Turns	15	17
2nd Chance	6	4
Fast Break	4	15
Bench	8	29

**Official Box Score**  
**Colorado St. vs Boise St.**  
**First Half Statistics Only**  
**January 31, 2019 at Taco Bell Arena - Boise, Idaho**

**Colorado St. 23**

No.	Player	S	Pts	FG	3FG	FT	OR	DR	TR	PF	A	TO	Blk	Stl	Min	+/-
11	Svanholm, Lena		2	1-1	0-0	0-0	0	0	0	0	0	0	0	0	5	-2
21	Hamm, Myanne		0	0-3	0-2	0-0	0	4	4	0	0	1	0	2	16	-12
22	Brocke, Lauren		3	1-2	1-2	0-0	0	1	1	0	0	1	1	2	10	3
23	Colaivalu, Grace		1	0-3	0-2	1-2	0	0	0	2	1	4	0	0	15	-14
24	Mounsey, Mollie		0	0-5	0-3	0-0	1	2	3	2	1	2	0	0	19	-10
34	Davis, Liah		0	0-0	0-0	0-0	0	0	0	0	0	0	0	0	0	0
35	Devos, Lore		6	3-7	0-0	0-0	0	2	2	0	0	1	0	0	20	-11
44	Neubert, Tatum		11	2-2	0-0	7-9	2	1	3	0	1	0	0	0	15	-9
	Team		0	0-0	0-0	0-0	1	1	2	0	0	0	0	0	0	0
<b>TOTALS</b>			<b>23</b>	<b>7-23</b>	<b>1-9</b>	<b>8-11</b>	<b>4</b>	<b>11</b>	<b>15</b>	<b>4</b>	<b>3</b>	<b>9</b>	<b>1</b>	<b>4</b>	<b>100</b>	

*Shooting By Period*

Period	FG	FG%	3FG	3FG%	FT	FT%
1st Qtr	4-11	36%	0-4	00%	2-4	50%
2nd Qtr	3-12	25%	1-5	20%	6-7	86%
1st Half	7-23	30%	1-9	11%	8-11	73%
Game	18-49	36.7%	4-17	23.5%	17-23	73.9%

Last FG Half: CSU 2nd-00:25

**Boise St. 34**

No.	Player	S	Pts	FG	3FG	FT	OR	DR	TR	PF	A	TO	Blk	Stl	Min	+/-
14	Hodgins, Braydey		3	1-3	1-3	0-0	0	3	3	0	2	1	0	1	17	8
15	Amundsen, Tess		2	0-0	0-0	2-2	0	0	0	0	1	2	0	0	3	0
20	Hermida, Marta		0	0-0	0-0	0-0	0	2	2	1	1	0	0	0	7	6
21	Lupfer, Riley		9	3-7	3-7	0-0	0	2	2	0	3	0	0	0	16	11
22	Woerner, Ellie		3	1-1	1-1	0-0	0	1	1	0	0	0	0	0	7	-1
23	Christopher, Jayde		0	0-2	0-1	0-0	0	0	0	2	3	1	0	0	9	7
25	Bowers, Rachel		6	3-3	0-0	0-0	1	0	1	2	0	0	0	0	6	7
30	Loville, Jade		2	1-1	0-0	0-0	0	0	0	1	1	1	0	0	4	2
31	Vanderschaaf, Marijke		2	1-1	0-0	0-1	0	0	0	1	0	0	0	0	2	0
33	Harrell, Joyce		0	0-3	0-0	0-0	0	2	2	2	0	1	0	0	10	7
42	Coleman, A'shanti		4	2-3	0-0	0-0	1	1	2	1	0	0	0	1	11	4
03	Galeron, Sofia		3	1-3	1-2	0-0	0	1	1	0	0	1	0	0	8	4
	Team		0	0-0	0-0	0-0	0	0	0	0	0	0	0	0	0	0
<b>TOTALS</b>			<b>34</b>	<b>13-27</b>	<b>6-14</b>	<b>2-3</b>	<b>2</b>	<b>12</b>	<b>14</b>	<b>10</b>	<b>11</b>	<b>7</b>	<b>0</b>	<b>2</b>	<b>100</b>	

*Shooting By Period*

Period	FG	FG%	3FG	3FG%	FT	FT%
1st Qtr	7-16	44%	4-10	40%	0-0	0%
2nd Qtr	6-11	55%	2-4	50%	2-3	67%
1st Half	13-27	48%	6-14	43%	2-3	67%
Game	24-51	47.1%	11-27	40.7%	11-15	73.3%

Last FG Half: BSU 2nd-01:57

Game Notes:

Officials: Benny Luna, Anita Ortega, Brian Woods  
Attendance: 1181

Start Time: 2019-01-31 02:06:08  
End Time: 2019-01-31 03:41:58  
Game Duration: 95  
Conference Game:

Score	1st	2nd	3rd	4th	TOT
CSU	10	13	20	14	<b>57</b>
BSU	18	16	26	10	<b>70</b>

Points from (This Period)	CSU	BSU
In the Paint	10	6
Off Turns	5	11
2nd Chance	6	2
Fast Break	1	6
Bench	5	18

**Official Box Score**  
**Colorado St. vs Boise St.**  
**First Quarter Statistics Only**  
**January 31, 2019 at Taco Bell Arena - Boise, Idaho**

**Colorado St. 10**

No.	Player	S	Pts	FG	3FG	FT	OR	DR	TR	PF	A	TO	Blk	Stl	Min	+/-
21	Hamm, Myanne		0	0-3	0-2	0-0	0	4	4	0	0	1	0	0	9	-10
23	Colaivalu, Grace		1	0-1	0-1	1-2	0	0	0	0	1	2	0	0	10	-8
24	Mounsey, Mollie		0	0-2	0-1	0-0	1	0	1	0	1	1	0	0	10	-8
35	Devos, Lore		6	3-4	0-0	0-0	0	1	1	0	0	0	0	0	10	-8
44	Neubert, Tatum		3	1-1	0-0	1-2	0	0	0	0	0	0	0	0	6	-4
11	Svanholm, Lena		0	0-0	0-0	0-0	0	0	0	0	0	0	0	0	4	-4
22	Brocke, Lauren		0	0-0	0-0	0-0	0	0	0	0	0	0	1	0	1	2
34	Davis, Liah		0	0-0	0-0	0-0	0	0	0	0	0	0	0	0	0	0
	Team						1	1	2	0		0				
<b>TOTALS</b>			<b>10</b>	<b>4-11</b>	<b>0-4</b>	<b>2-4</b>	<b>2</b>	<b>6</b>	<b>8</b>	<b>0</b>	<b>2</b>	<b>4</b>	<b>1</b>	<b>0</b>	<b>50</b>	

*Shooting By Period*

Period	FG	FG%	3FG	3FG%	FT	FT%
1st Qtr	4-11	36%	0-4	00%	2-4	50%
2nd Qtr	3-12	25%	1-5	20%	6-7	86%
1st Half	4-11	36%	0-4	00%	2-4	50%
1st Half	7-23	30%	1-9	11%	8-11	73%
Game	18-49	36.7%	4-17	23.5%	17-23	73.9%

**Boise St. 18**

No.	Player	S	Pts	FG	3FG	FT	OR	DR	TR	PF	A	TO	Blk	Stl	Min	+/-
14	Hodgins, Braydey		3	1-2	1-2	0-0	0	1	1	0	1	0	0	1	10	8
21	Lupfer, Riley		6	2-5	2-5	0-0	0	2	2	0	2	0	0	0	9	10
23	Christopher, Jayde		0	0-1	0-1	0-0	0	0	0	1	2	0	0	0	6	4
33	Harrell, Joyce		0	0-2	0-0	0-0	0	1	1	0	0	1	0	0	4	0
42	Coleman, A'shanti		0	0-0	0-0	0-0	1	0	1	0	0	0	0	1	4	0
03	Galeron, Sofia		3	1-3	1-2	0-0	0	1	1	0	0	1	0	0	6	8
15	Amundsen, Tess		0	0-0	0-0	0-0	0	0	0	0	0	0	0	0	0	0
20	Hermida, Marta		0	0-0	0-0	0-0	0	1	1	1	1	0	0	0	4	4
22	Woerner, Ellie		0	0-0	0-0	0-0	0	0	0	0	0	0	0	0	1	-2
25	Bowers, Rachel		6	3-3	0-0	0-0	1	0	1	1	0	0	0	0	6	8
30	Loville, Jade		0	0-0	0-0	0-0	0	0	0	0	0	0	0	0	0	0
31	Vanderschaaf, Marijke		0	0-0	0-0	0-0	0	0	0	0	0	0	0	0	0	0
	Team						0	0	0	0		0				
<b>TOTALS</b>			<b>18</b>	<b>7-16</b>	<b>4-10</b>	<b>0-0</b>	<b>2</b>	<b>6</b>	<b>8</b>	<b>3</b>	<b>6</b>	<b>2</b>	<b>0</b>	<b>2</b>	<b>50</b>	

*Shooting By Period*

Period	FG	FG%	3FG	3FG%	FT	FT%
1st Qtr	7-16	44%	4-10	40%	0-0	0%
2nd Qtr	6-11	55%	2-4	50%	2-3	67%
1st Half	7-16	44%	4-10	40%	0-0	0%
1st Half	13-27	48%	6-14	43%	2-3	67%
Game	24-51	47.1%	11-27	40.7%	11-15	73.3%

*Game Notes:*

Officials: Benny Luna, Anita Ortega, Brian Woods  
Attendance: 1181

Start Time: 2019-01-31 02:06:08  
End Time: 2019-01-31 03:41:58  
Game Duration: 95  
Conference Game:

Score	1st	2nd	3rd	4th	TOT
CSU	10	13	20	14	<b>57</b>
BSU	18	16	26	10	<b>70</b>

Points from (This Period)	CSU	BSU
In the Paint	8	2
Off Turns	1	6
2nd Chance	0	2
Fast Break	1	3
Bench	0	9

**Official Play-By-Play**  
**Colorado St. vs Boise St.**  
**First Quarter**  
**January 31, 2019 at Taco Bell Arena - Boise, Idaho**

**Period 1**

**Starters:**

**Colorado St.:** 21 HAMM,MYANNE; 23 COLAIVALU,GRACE; 24 MOUNSEY,MOLLIE; 35 DEVOS,LORE; 44 NEUBERT,TATUM;

**Boise St.:** 14 HODGINS,BRAYDEY; 21 LUPFER,RILEY; 23 CHRISTOPHER,JAYDE; 33 HARRELL,JOYCE; 42 COLEMAN,A'SHANTI;

Time	VISITORS: Colorado St.	Score	Margin	HOME: Boise St.
09:35				MISSED LAYUP by HARRELL,JOYCE
09:35	REBOUND (DEF) by TEAM			
09:31	TURNOVER (LOSTBALL) by HAMM,MYANNE			
09:31				STEAL by HODGINS,BRAYDEY
09:24				MISSED 3PTR by LUPFER,RILEY
09:20	REBOUND (DEF) by DEVOS,LORE			
09:11	GOOD! JUMPER by DEVOS,LORE [PNT]	0-2	V 2	
08:50		3-2	H 1	GOOD! 3PTR by LUPFER,RILEY
08:50				ASSIST by CHRISTOPHER,JAYDE
08:30	GOOD! LAYUP by NEUBERT,TATUM [PNT]	3-4	V 1	
08:30	ASSIST by MOUNSEY,MOLLIE			
08:18				MISSED 3PTR by LUPFER,RILEY
08:14				REBOUND (OFF) by COLEMAN,A'SHANTI
08:08				MISSED LAYUP by HARRELL,JOYCE
08:04	REBOUND (DEF) by HAMM,MYANNE			
07:45	TURNOVER (BADPASS) by COLAIVALU,GRACE			
07:45				STEAL by COLEMAN,A'SHANTI
07:29				MISSED 3PTR by CHRISTOPHER,JAYDE
07:26	REBOUND (DEF) by HAMM,MYANNE			
07:14	MISSED LAYUP by DEVOS,LORE			
07:10				REBOUND (DEF) by HARRELL,JOYCE
07:07		6-4	H 2	GOOD! 3PTR by HODGINS,BRAYDEY [FB]
07:07				ASSIST by CHRISTOPHER,JAYDE
06:37	MISSED 3PTR by MOUNSEY,MOLLIE			
06:34				REBOUND (DEF) by LUPFER,RILEY
06:20				TURNOVER (BADPASS) by HARRELL,JOYCE
06:20				SUB OUT: HARRELL,JOYCE
06:20				SUB IN: GALERON,SOFIA
06:20				SUB OUT: COLEMAN,A'SHANTI
06:20				SUB IN: BOWERS,RACHEL
06:04				FOUL (PERSONAL) by BOWERS,RACHEL
06:04	GOOD! FT by NEUBERT,TATUM [FB]	6-5	H 1	
06:04	MISSED FT by NEUBERT,TATUM			
06:04	REBOUND (OFF) by TEAM			
05:40	MISSED JUMPER by MOUNSEY,MOLLIE			
05:35	REBOUND (OFF) by MOUNSEY,MOLLIE			
05:29	MISSED 3PTR by COLAIVALU,GRACE			
05:19				REBOUND (DEF) by HODGINS,BRAYDEY
05:16				TURNOVER (LOSTBALL) by GALERON,SOFIA
05:16	MISSED JUMPER by HAMM,MYANNE			
05:16		8-5	H 3	REBOUND (DEF) by LUPFER,RILEY
05:16				GOOD! JUMPER by BOWERS,RACHEL
05:16				ASSIST by LUPFER,RILEY
04:24				FOUL (PERSONAL) by CHRISTOPHER,JAYDE
04:24	MISSED FT by COLAIVALU,GRACE			
04:24	REBOUND (OFF) by TEAM			
04:24	GOOD! FT by COLAIVALU,GRACE	8-6	H 2	
04:06				MISSED 3PTR by GALERON,SOFIA
04:02				REBOUND (OFF) by BOWERS,RACHEL
04:01		10-6	H 4	GOOD! JUMPER by BOWERS,RACHEL
03:51	TURNOVER (TRAVEL) by COLAIVALU,GRACE			
03:39	SUB OUT: NEUBERT,TATUM			
03:39	SUB IN: SVANHOLM,LENA			
03:31				SUB OUT: CHRISTOPHER,JAYDE
03:31				SUB IN: HERMIDA,MARTA
03:25		13-6	H 7	GOOD! 3PTR by LUPFER,RILEY
03:25				ASSIST by HODGINS,BRAYDEY
03:22	TIMEOUT 30SEC			
03:11	TURNOVER (TRAVEL) by MOUNSEY,MOLLIE			
03:03		16-6	H 10	GOOD! 3PTR by GALERON,SOFIA
03:03				ASSIST by HERMIDA,MARTA
02:50	MISSED 3PTR by HAMM,MYANNE			
02:46				REBOUND (DEF) by HERMIDA,MARTA
02:24				MISSED JUMPER by GALERON,SOFIA
02:20	REBOUND (DEF) by HAMM,MYANNE			
01:59	MISSED 3PTR by HAMM,MYANNE			
01:55				REBOUND (DEF) by GALERON,SOFIA
01:37				MISSED 3PTR by LUPFER,RILEY
01:32	REBOUND (DEF) by HAMM,MYANNE			
01:21	GOOD! JUMPER by DEVOS,LORE [PNT]	16-8	H 8	
00:57		18-8	H 10	GOOD! LAYUP by BOWERS,RACHEL [PNT]
00:57				ASSIST by LUPFER,RILEY
00:42				FOUL (PERSONAL) by HERMIDA,MARTA
00:42				SUB OUT: GALERON,SOFIA
00:42				SUB IN: COLEMAN,A'SHANTI

Time	VISITORS: Colorado St.	Score	Margin	HOME: Boise St.
00:42				SUB OUT: LUPFER,RILEY
00:42				SUB IN: HARRELL,JOYCE
00:42				SUB OUT: BOWERS,RACHEL
00:42				SUB IN: WOERNER,ELLIE
00:42	SUB OUT: HAMM,MYANNE			
00:42	SUB IN: BROCKE,LAUREN			
00:30	GOOD! LAYUP by DEVOS,LORE	18-10	H 8	
00:30	ASSIST by COLAIVALU,GRACE			
00:02				MISSED 3PTR by HODGINS,BRAYDEY
00:02	BLOCK by BROCKE,LAUREN			
00:00	REBOUND (DEF) by TEAM			

**Colorado St. 10, Boise St. 18**

Points from (This Period)	CSU	BSU
In the Paint	8	2
Off Turns	1	6
2nd Chance	0	2
Fast Break	1	3
Bench	0	9

**Official Box Score**  
**Colorado St. vs Boise St.**  
**Second Quarter Statistics Only**  
**January 31, 2019 at Taco Bell Arena - Boise, Idaho**

**Colorado St. 13**

No.	Player	S	Pts	FG	3FG	FT	OR	DR	TR	PF	A	TO	Blk	Stl	Min	+/-
21	Hamm, Myanne		0	0-0	0-0	0-0	0	0	0	0	0	0	0	2	7	-2
23	Colaivalu, Grace		0	0-2	0-1	0-0	0	0	0	2	0	2	0	0	5	-6
24	Mounsey, Mollie		0	0-3	0-2	0-0	0	2	2	2	0	1	0	0	9	-2
35	Devos, Lore		0	0-3	0-0	0-0	0	1	1	0	0	1	0	0	10	-3
44	Neubert, Tatum		8	1-1	0-0	6-7	2	1	3	0	1	0	0	0	9	-5
11	Svanholm, Lena		2	1-1	0-0	0-0	0	0	0	0	0	0	0	0	1	2
22	Brocke, Lauren		3	1-2	1-2	0-0	0	1	1	0	0	1	0	2	9	1
34	Davis, Liah		0	0-0	0-0	0-0	0	0	0	0	0	0	0	0	0	0
	Team						0	0	0	0		0				
<b>TOTALS</b>			<b>13</b>	<b>3-12</b>	<b>1-5</b>	<b>6-7</b>	<b>2</b>	<b>5</b>	<b>7</b>	<b>4</b>	<b>1</b>	<b>5</b>	<b>0</b>	<b>4</b>	<b>50</b>	

*Shooting By Period*

Period	FG	FG%	3FG	3FG%	FT	FT%
3rd Qtr	7-12	58%	2-3	67%	4-6	67%
4th Qtr	4-14	29%	1-5	20%	5-6	83%
2nd Half	3-12	25%	1-5	20%	6-7	86%
2nd Half	11-26	42%	3-8	38%	9-12	75%
Game	18-49	36.7%	4-17	23.5%	17-23	73.9%

**Boise St. 16**

No.	Player	S	Pts	FG	3FG	FT	OR	DR	TR	PF	A	TO	Blk	Stl	Min	+/-
14	Hodgins, Braydey		0	0-1	0-1	0-0	0	2	2	0	1	1	0	0	7	0
21	Lupfer, Riley		3	1-2	1-2	0-0	0	0	0	0	1	0	0	0	7	1
23	Christopher, Jayde		0	0-1	0-0	0-0	0	0	0	1	1	1	0	0	3	3
33	Harrell, Joyce		0	0-1	0-0	0-0	0	1	1	2	0	0	0	0	6	7
42	Coleman, A'shanti		4	2-3	0-0	0-0	0	1	1	1	0	0	0	0	7	4
03	Galeron, Sofia		0	0-0	0-0	0-0	0	0	0	0	0	0	0	0	2	-4
15	Amundsen, Tess		2	0-0	0-0	2-2	0	0	0	0	1	2	0	0	3	0
20	Hermida, Marta		0	0-0	0-0	0-0	0	1	1	0	0	0	0	0	3	2
22	Woerner, Ellie		3	1-1	1-1	0-0	0	1	1	0	0	0	0	0	6	1
25	Bowers, Rachel		0	0-0	0-0	0-0	0	0	0	1	0	0	0	0	0	-1
30	Loville, Jade		2	1-1	0-0	0-0	0	0	0	1	1	1	0	0	4	2
31	Vanderschaaf, Marijke		2	1-1	0-0	0-1	0	0	0	1	0	0	0	0	2	0
	Team						0	0	0	0		0				
<b>TOTALS</b>			<b>16</b>	<b>6-11</b>	<b>2-4</b>	<b>2-3</b>	<b>0</b>	<b>6</b>	<b>6</b>	<b>7</b>	<b>5</b>	<b>5</b>	<b>0</b>	<b>0</b>	<b>50</b>	

*Shooting By Period*

Period	FG	FG%	3FG	3FG%	FT	FT%
3rd Qtr	9-14	64%	4-8	50%	4-6	67%
4th Qtr	2-10	20%	1-5	20%	5-6	83%
2nd Half	6-11	55%	2-4	50%	2-3	67%
2nd Half	11-24	46%	5-13	38%	9-12	75%
Game	24-51	47.1%	11-27	40.7%	11-15	73.3%

*Game Notes:*

Officials: Benny Luna, Anita Ortega, Brian Woods  
Attendance: 1181

Start Time: 2019-01-31 02:06:08  
End Time: 2019-01-31 03:41:58  
Game Duration: 95  
Conference Game:

Score	1st	2nd	3rd	4th	TOT
CSU	10	13	20	14	<b>57</b>
BSU	18	16	26	10	<b>70</b>

Points from (This Period)	CSU	BSU
In the Paint	2	4
Off Turns	4	5
2nd Chance	6	0
Fast Break	0	3
Bench	5	9

**Official Play-By-Play**  
**Colorado St. vs Boise St.**  
**Second Quarter**  
**January 31, 2019 at Taco Bell Arena - Boise, Idaho**

**Period 2**

**Starters:**

**Colorado St.:** 21 HAMM,MYANNE; 23 COLAIVALU,GRACE; 24 MOUNSEY,MOLLIE; 35 DEVOS,LORE; 44 NEUBERT,TATUM;

**Boise St.:** 14 HODGINS,BRAYDEY; 21 LUPFER,RILEY; 23 CHRISTOPHER,JAYDE; 33 HARRELL,JOYCE; 42 COLEMAN,A'SHANTI;

Time	VISITORS: Colorado St.	Score	Margin	HOME: Boise St.
09:46	MISSED 3PTR by MOUNSEY,MOLLIE			
09:42				REBOUND (DEF) by COLEMAN,A'SHANTI
09:31				MISSED JUMPER by HARRELL,JOYCE
09:20	REBOUND (DEF) by MOUNSEY,MOLLIE			
09:09	MISSED JUMPER by DEVOS,LORE			
09:02				REBOUND (DEF) by HODGINS,BRAYDEY
08:55		20-10	H 10	GOOD! JUMPER by COLEMAN,A'SHANTI
08:35	FOUL (OFF) by COLAIVALU,GRACE			
08:35	TURNOVER (OFFENSIVE) by COLAIVALU,GRACE			
08:35				SUB OUT: HODGINS,BRAYDEY
08:35				SUB IN: CHRISTOPHER,JAYDE
08:16				MISSED JUMPER by CHRISTOPHER,JAYDE
08:15	REBOUND (DEF) by TEAM			
08:15				FOUL (PERSONAL) by COLEMAN,A'SHANTI
07:55	MISSED 3PTR by COLAIVALU,GRACE			
07:50				REBOUND (DEF) by HARRELL,JOYCE
07:46				TURNOVER (BADPASS) by CHRISTOPHER,JAYDE
07:36	MISSED 3PTR by BROCKE,LAUREN			
07:31				REBOUND (DEF) by HERMIDA,MARTA
07:25				MISSED LAYUP by COLEMAN,A'SHANTI
07:20	REBOUND (DEF) by MOUNSEY,MOLLIE			
07:07				FOUL (PERSONAL) by HARRELL,JOYCE
07:07				SUB OUT: HERMIDA,MARTA
07:07				SUB IN: LUPFER,RILEY
07:07				SUB OUT: HARRELL,JOYCE
07:07				SUB IN: BOWERS,RACHEL
07:07				SUB OUT: COLEMAN,A'SHANTI
07:07				SUB IN: GALERON,SOFIA
06:51	MISSED JUMPER by COLAIVALU,GRACE			
06:48	REBOUND (OFF) by NEUBERT,TATUM			
06:48				FOUL (PERSONAL) by BOWERS,RACHEL
06:48	GOOD! FT by NEUBERT,TATUM	20-11	H 9	
06:48				SUB OUT: BOWERS,RACHEL
06:48				SUB IN: AMUNDSEN,TESS
06:48				SUB OUT: GALERON,SOFIA
06:48				SUB IN: VANDERSCHAAF,MARIJKE
06:48	SUB OUT: BROCKE,LAUREN			
06:48	SUB IN: HAMM,MYANNE			
06:48	GOOD! FT by NEUBERT,TATUM	20-12	H 8	
06:31		22-12	H 10	GOOD! LAYUP by VANDERSCHAAF,MARIJKE [PNT]
06:31				ASSIST by AMUNDSEN,TESS
06:31	FOUL (PERSONAL) by COLAIVALU,GRACE			
06:31				MISSED FT by VANDERSCHAAF,MARIJKE
06:31	REBOUND (DEF) by NEUBERT,TATUM			
06:19	MISSED JUMPER by DEVOS,LORE			
06:14				REBOUND (DEF) by WOERNER,ELLIE
06:13		25-12	H 13	GOOD! 3PTR by WOERNER,ELLIE [FB]
06:13				ASSIST by CHRISTOPHER,JAYDE
06:03				FOUL (PERSONAL) by CHRISTOPHER,JAYDE
06:03				SUB OUT: CHRISTOPHER,JAYDE
06:03				SUB IN: HODGINS,BRAYDEY
06:03	SUB OUT: COLAIVALU,GRACE			
06:03	SUB IN: BROCKE,LAUREN			
05:52	GOOD! 3PTR by BROCKE,LAUREN	25-15	H 10	
05:52	ASSIST by NEUBERT,TATUM			
05:15	FOUL (PERSONAL) by MOUNSEY,MOLLIE			
05:15		26-15	H 11	GOOD! FT by AMUNDSEN,TESS
05:15		27-15	H 12	GOOD! FT by AMUNDSEN,TESS
05:01	MISSED JUMPER by MOUNSEY,MOLLIE			
04:57				REBOUND (DEF) by HODGINS,BRAYDEY
04:40				TURNOVER (LOSTBALL) by AMUNDSEN,TESS
04:40	STEAL by BROCKE,LAUREN			
04:32	MISSED JUMPER by DEVOS,LORE			
04:32	REBOUND (OFF) by NEUBERT,TATUM			
04:32	GOOD! JUMPER by NEUBERT,TATUM [PNT]	27-17	H 10	
04:32				FOUL (PERSONAL) by VANDERSCHAAF,MARIJKE
04:32				
04:32	SUB OUT: MOUNSEY,MOLLIE			
04:32	SUB IN: COLAIVALU,GRACE			
04:32	GOOD! FT by NEUBERT,TATUM	27-18	H 9	
04:32				SUB OUT: VANDERSCHAAF,MARIJKE
04:32				SUB IN: HARRELL,JOYCE
04:19				TURNOVER (BADPASS) by AMUNDSEN,TESS
04:19	STEAL by HAMM,MYANNE			
04:01	TURNOVER (BADPASS) by COLAIVALU,GRACE			
04:01				SUB OUT: AMUNDSEN,TESS



Time	VISITORS: Colorado St.	Score	Margin	HOME: Boise St.
04:01				SUB IN: COLEMAN,A'SHANTI
04:01				SUB OUT: WOERNER,ELLIE
04:01				SUB IN: LOVILLE,JADE
03:56		29-18	H 11	GOOD! JUMPER by LOVILLE,JADE [PNT]
03:56				ASSIST by HODGINS,BRAYDEY
03:41	SUB OUT: COLAIVALU,GRACE			
03:41	SUB IN: MOUNSEY,MOLLIE			
03:41	TURNOVER (BADPASS) by BROCKE,LAUREN			
03:19		32-18	H 14	GOOD! 3PTR by LUPFER,RILEY
03:19				ASSIST by LOVILLE,JADE
02:48	TURNOVER (TRAVEL) by DEVOS,LORE			
02:37				TURNOVER (BADPASS) by LOVILLE,JADE
02:37	STEAL by BROCKE,LAUREN			
02:15	MISSED 3PTR by MOUNSEY,MOLLIE			
02:12	REBOUND (OFF) by TEAM			
02:12				FOUL (PERSONAL) by LOVILLE,JADE
02:12	MISSED FT by NEUBERT,TATUM			
02:12	REBOUND (OFF) by TEAM			
02:12	GOOD! FT by NEUBERT,TATUM	32-19	H 13	
01:57		34-19	H 15	GOOD! JUMPER by COLEMAN,A'SHANTI
01:57				ASSIST by LUPFER,RILEY
01:29				FOUL (PERSONAL) by HARRELL,JOYCE
01:29	GOOD! FT by NEUBERT,TATUM	34-20	H 14	
01:29				SUB OUT: HARRELL,JOYCE
01:29				SUB IN: GALERON,SOFIA
01:29	GOOD! FT by NEUBERT,TATUM	34-21	H 13	
01:29	SUB OUT: NEUBERT,TATUM			
01:29	SUB IN: SVANHOLM,LENA			
01:16				TURNOVER (BADPASS) by HODGINS,BRAYDEY
01:16	STEAL by HAMM,MYANNE			
01:05	FOUL (OFF) by MOUNSEY,MOLLIE			
01:05	TURNOVER (OFFENSIVE) by MOUNSEY,MOLLIE			
00:47				MISSED 3PTR by HODGINS,BRAYDEY
00:42	REBOUND (DEF) by BROCKE,LAUREN			
00:25	GOOD! JUMPER by SVANHOLM,LENA	34-23	H 11	
00:03				MISSED 3PTR by LUPFER,RILEY
00:00	REBOUND (DEF) by DEVOS,LORE			

### Colorado St. 23, Boise St. 34

Points from (This Period)	CSU	BSU
In the Paint	2	4
Off Turns	4	5
2nd Chance	6	0
Fast Break	0	3
Bench	5	9

**Official Box Score**  
**Colorado St. vs Boise St.**  
**Second Half Statistics Only**  
**January 31, 2019 at Taco Bell Arena - Boise, Idaho**

**Colorado St. 34**

No.	Player	S	Pts	FG	3FG	FT	OR	DR	TR	PF	A	TO	Blk	Stl	Min	+/-
11	Svanholm, Lena		0	0-1	0-1	0-0	0	0	0	2	0	0	0	0	4	0
21	Hamm, Myanne		0	0-0	0-0	0-0	0	0	0	1	0	0	0	1	12	-3
22	Brocke, Lauren		3	1-3	1-2	0-0	0	0	0	2	1	0	0	1	13	2
23	Colaivalu, Grace		7	2-4	0-0	3-5	1	0	1	2	0	3	0	0	13	-3
24	Mounsey, Mollie		9	3-6	2-4	1-1	0	1	1	1	0	0	0	0	20	-2
34	Davis, Liah		0	0-1	0-0	0-0	0	1	1	0	0	0	0	0	4	-1
35	Devos, Lore		13	5-9	0-1	3-4	2	2	4	1	1	2	0	2	20	-2
44	Neubert, Tatum		2	0-2	0-0	2-2	0	1	1	1	0	0	1	1	12	-1
	Team		0	0-0	0-0	0-0	1	1	2	0	0	0	0	0	0	
<b>TOTALS</b>			<b>34</b>	<b>11-26</b>	<b>3-8</b>	<b>9-12</b>	<b>4</b>	<b>6</b>	<b>10</b>	<b>10</b>	<b>2</b>	<b>5</b>	<b>1</b>	<b>5</b>	<b>99</b>	

*Shooting By Period*

Period	FG	FG%	3FG	3FG%	FT	FT%
3rd Qtr	7-12	58%	2-3	67%	4-6	67%
4th Qtr	4-14	29%	1-5	20%	5-6	83%
2nd Half	11-26	42%	3-8	38%	9-12	75%
Game	18-49	36.7%	4-17	23.5%	17-23	73.9%

*Last FG Half: CSU 4th-01:25*

**Boise St. 36**

No.	Player	S	Pts	FG	3FG	FT	OR	DR	TR	PF	A	TO	Blk	Stl	Min	+/-
14	Hodgins, Braydey		5	1-1	1-1	2-2	0	2	2	2	1	0	0	0	10	-1
15	Amundsen, Tess		0	0-0	0-0	0-0	0	1	1	0	0	0	0	0	1	2
20	Hermida, Marta		0	0-2	0-2	0-0	1	0	1	0	2	0	0	0	12	6
21	Lupfer, Riley		13	4-8	3-7	2-2	1	3	4	3	0	2	0	0	18	1
22	Woerner, Ellie		2	0-0	0-0	2-4	2	0	2	1	1	1	0	0	7	0
23	Christopher, Jayde		0	0-3	0-1	0-0	2	2	4	0	4	2	0	0	14	3
25	Bowers, Rachel		7	3-4	1-1	0-0	0	0	0	1	1	0	0	0	12	4
30	Loville, Jade		2	0-1	0-1	2-2	0	1	1	0	0	1	0	0	5	-3
31	Vanderschaaf, Marijke		0	0-0	0-0	0-0	0	0	0	0	0	0	0	0	0	0
33	Harrell, Joyce		6	3-4	0-0	0-0	0	2	2	0	0	1	0	0	8	-2
42	Coleman, A'shanti		1	0-0	0-0	1-2	1	2	3	0	0	4	0	0	8	-2
03	Galeron, Sofia		0	0-1	0-0	0-0	0	0	0	3	1	0	1	0	4	2
	Team		0	0-0	0-0	0-0	1	0	1	0	0	0	0	0	0	
<b>TOTALS</b>			<b>36</b>	<b>11-24</b>	<b>5-13</b>	<b>9-12</b>	<b>8</b>	<b>13</b>	<b>21</b>	<b>10</b>	<b>10</b>	<b>11</b>	<b>1</b>	<b>0</b>	<b>99</b>	

*Shooting By Period*

Period	FG	FG%	3FG	3FG%	FT	FT%
3rd Qtr	9-14	64%	4-8	50%	4-6	67%
4th Qtr	2-10	20%	1-5	20%	5-6	83%
2nd Half	11-24	46%	5-13	38%	9-12	75%
Game	24-51	47.1%	11-27	40.7%	11-15	73.3%

*Last FG Half: BSU 4th-00:52*

*Game Notes:*

Officials: Benny Luna, Anita Ortega, Brian Woods  
Attendance: 1181

Start Time: 2019-01-31 02:06:08  
End Time: 2019-01-31 03:41:58  
Game Duration: 95  
Conference Game;

Score	1st	2nd	3rd	4th	TOT
CSU	10	13	20	14	57
BSU	18	16	26	10	70

Points from (This Period)	CSU	BSU
In the Paint	14	8
Off Turns	10	6
2nd Chance	0	2
Fast Break	3	9
Bench	3	11

**Official Box Score**  
**Colorado St. vs Boise St.**  
**Third Quarter Statistics Only**  
**January 31, 2019 at Taco Bell Arena - Boise, Idaho**

**Colorado St. 34**

No.	Player	S	Pts	FG	3FG	FT	OR	DR	TR	PF	A	TO	Blk	Stl	Min	+/-
21	Hamm, Myanne		0	0-0	0-0	0-0	0	0	0	1	0	0	0	1	9	-4
23	Colaivalu, Grace		4	2-4	0-0	0-1	1	0	1	2	0	3	0	0	7	-6
24	Mounsey, Mollie		6	2-2	1-1	1-1	0	0	0	0	0	0	0	0	10	-6
35	Devos, Lore		5	2-5	0-1	1-2	1	1	2	0	1	1	0	0	10	-6
44	Neubert, Tatum		2	0-0	0-0	2-2	0	0	0	0	0	0	0	1	6	-5
11	Svanholm, Lena		0	0-0	0-0	0-0	0	0	0	1	0	0	0	0	2	-1
22	Brocke, Lauren		3	1-1	1-1	0-0	0	0	0	1	0	0	0	0	3	-2
34	Davis, Liah		0	0-0	0-0	0-0	0	1	1	0	0	0	0	0	2	0
	Team						0	0	0	0		0				
<b>TOTALS</b>			<b>20</b>	<b>7-12</b>	<b>2-3</b>	<b>4-6</b>	<b>2</b>	<b>2</b>	<b>4</b>	<b>5</b>	<b>1</b>	<b>4</b>	<b>0</b>	<b>2</b>	<b>50</b>	

*Shooting By Period*

Period	FG	FG%	3FG	3FG%	FT	FT%
2nd Half	0-0	0%	0-0	0%	0-0	0%
Game	18-49	36.7%	4-17	23.5%	17-23	73.9%

**Boise St. 36**

No.	Player	S	Pts	FG	3FG	FT	OR	DR	TR	PF	A	TO	Blk	Stl	Min	+/-
14	Hodgins, Braydey		3	1-1	1-1	0-0	0	0	0	0	0	0	0	0	5	-1
21	Lupfer, Riley		13	4-6	3-5	2-2	1	2	3	2	0	0	0	0	10	6
23	Christopher, Jayde		0	0-2	0-1	0-0	1	1	2	0	4	1	0	0	9	7
33	Harrell, Joyce		6	3-3	0-0	0-0	0	1	1	0	0	1	0	0	4	0
42	Coleman, A'shanti		0	0-0	0-0	0-0	0	0	0	0	0	2	0	0	4	0
03	Galeron, Sofia		0	0-0	0-0	0-0	0	0	0	1	1	0	1	0	2	5
15	Amundsen, Tess		0	0-0	0-0	0-0	0	0	0	0	0	0	0	0	0	0
20	Hermida, Marta		0	0-1	0-1	0-0	0	0	0	0	1	0	0	0	6	6
22	Woerner, Ellie		2	0-0	0-0	2-4	2	0	2	1	1	0	0	0	4	1
25	Bowers, Rachel		2	1-1	0-0	0-0	0	0	0	1	1	0	0	0	6	6
30	Loville, Jade		0	0-0	0-0	0-0	0	0	0	0	0	0	0	0	0	0
31	Vanderschaaf, Marijke		0	0-0	0-0	0-0	0	0	0	0	0	0	0	0	0	0
	Team						0	0	0	0		0				
<b>TOTALS</b>			<b>26</b>	<b>9-14</b>	<b>4-8</b>	<b>4-6</b>	<b>4</b>	<b>4</b>	<b>8</b>	<b>5</b>	<b>8</b>	<b>4</b>	<b>1</b>	<b>0</b>	<b>50</b>	

*Shooting By Period*

Period	FG	FG%	3FG	3FG%	FT	FT%
2nd Half	0-0	0%	0-0	0%	0-0	0%
Game	24-51	47.1%	11-27	40.7%	11-15	73.3%

Game Notes:

Officials: **Benny Luna, Anita Ortega, Brian Woods**  
Attendance: **1181**

Start Time: **2019-01-31 02:06:08**  
End Time: **2019-01-31 03:41:58**  
Game Duration: **95**  
Conference Game:

Score	1st	2nd	3rd	4th	TOT
CSU	10	13	20	14	<b>57</b>
BSU	18	16	26	10	<b>70</b>

Points from (This Period)	CSU	BSU
In the Paint	10	8
Off Turns	5	6
2nd Chance	0	2
Fast Break	0	6
Bench	3	4

**Official Play-By-Play**  
**Colorado St. vs Boise St.**  
**Third Quarter**  
**January 31, 2019 at Taco Bell Arena - Boise, Idaho**

**Period 3**

**Starters:**

**Colorado St.:** 21 HAMM,MYANNE; 23 COLAIVALU,GRACE; 24 MOUNSEY,MOLLIE; 35 DEVOS,LORE; 44 NEUBERT,TATUM;

**Boise St.:** 14 HODGINS,BRAYDEY; 21 LUPFER,RILEY; 23 CHRISTOPHER,JAYDE; 33 HARRELL,JOYCE; 42 COLEMAN,A'SHANTI;

Time	VISITORS: Colorado St.	Score	Margin	HOME: Boise St.
09:46				TURNOVER (BADPASS) by HARRELL,JOYCE
09:46	STEAL by HAMM,MYANNE			
09:32	MISSED JUMPER by DEVOS,LORE			
09:28				REBOUND (DEF) by LUPFER,RILEY
09:23				TURNOVER (LOSTBALL) by COLEMAN,A'SHANTI
09:23	STEAL by NEUBERT,TATUM			
09:03	GOOD! LAYUP by COLAIVALU,GRACE	34-25	H 9	
08:47		37-25	H 12	GOOD! 3PTR by HODGINS,BRAYDEY
08:47				ASSIST by CHRISTOPHER,JAYDE
08:32	TURNOVER (TRAVEL) by COLAIVALU,GRACE			
08:17		39-25	H 14	GOOD! JUMPER by HARRELL,JOYCE [PNT]
08:17				ASSIST by CHRISTOPHER,JAYDE
08:04	FOUL (OFF) by COLAIVALU,GRACE			
08:04	TURNOVER (OFFENSIVE) by COLAIVALU,GRACE			
07:52				TURNOVER (LOSTBALL) by COLEMAN,A'SHANTI
07:35	GOOD! 3PTR by MOUNSEY,MOLLIE	39-28	H 11	
07:09		41-28	H 13	GOOD! LAYUP by HARRELL,JOYCE
07:09				ASSIST by CHRISTOPHER,JAYDE
06:52	GOOD! LAYUP by DEVOS,LORE [PNT]	41-30	H 11	
06:37		43-30	H 13	GOOD! LAYUP by HARRELL,JOYCE [PNT]
06:37				ASSIST by CHRISTOPHER,JAYDE
06:17	GOOD! LAYUP by COLAIVALU,GRACE	43-32	H 11	
06:17				FOUL (PERSONAL) by LUPFER,RILEY
06:17				SUB OUT: HODGINS,BRAYDEY
06:17				SUB IN: HERMIDA,MARTA
06:17	MISSED FT by COLAIVALU,GRACE			
06:17				REBOUND (DEF) by HARRELL,JOYCE
06:02				TURNOVER (BADPASS) by CHRISTOPHER,JAYDE
06:02				SUB OUT: HARRELL,JOYCE
06:02				SUB IN: BOWERS,RACHEL
06:02				SUB OUT: COLEMAN,A'SHANTI
06:02				SUB IN: GALERON,SOFIA
05:52	MISSED LAYUP by COLAIVALU,GRACE			
05:52				BLOCK by GALERON,SOFIA
05:44	REBOUND (OFF) by COLAIVALU,GRACE			
05:43	MISSED 3PTR by DEVOS,LORE			
05:38				REBOUND (DEF) by CHRISTOPHER,JAYDE
05:34		46-32	H 14	GOOD! 3PTR by LUPFER,RILEY [FB]
05:34				ASSIST by GALERON,SOFIA
05:03	GOOD! FT by NEUBERT,TATUM	46-33	H 13	
05:03	GOOD! FT by NEUBERT,TATUM	46-34	H 12	
04:47		49-34	H 15	GOOD! 3PTR by LUPFER,RILEY
04:47				ASSIST by BOWERS,RACHEL
04:29	MISSED JUMPER by DEVOS,LORE			
04:24				REBOUND (DEF) by LUPFER,RILEY
04:21		52-34	H 18	GOOD! 3PTR by LUPFER,RILEY [FB]
04:05	GOOD! LAYUP by MOUNSEY,MOLLIE [PNT]	52-36	H 16	
04:05				FOUL (PERSONAL) by GALERON,SOFIA
04:05				
04:05				SUB OUT: GALERON,SOFIA
04:05				SUB IN: WOERNER,ELLIE
04:05	SUB OUT: NEUBERT,TATUM			
04:05	SUB IN: SVANHOLM,LENA			
04:05	GOOD! FT by MOUNSEY,MOLLIE	52-37	H 15	
03:38				MISSED JUMPER by CHRISTOPHER,JAYDE
03:33				REBOUND (OFF) by CHRISTOPHER,JAYDE
03:27				MISSED 3PTR by HERMIDA,MARTA
03:23				REBOUND (OFF) by LUPFER,RILEY
03:20				MISSED 3PTR by CHRISTOPHER,JAYDE
03:18	REBOUND (DEF) by DEVOS,LORE			
03:18				FOUL (PERSONAL) by LUPFER,RILEY
03:18	SUB OUT: HAMM,MYANNE			
03:18	SUB IN: BROCKE,LAUREN			
03:06	MISSED LAYUP by COLAIVALU,GRACE			
03:05	REBOUND (OFF) by DEVOS,LORE			
03:05	TURNOVER (TRAVEL) by DEVOS,LORE			
02:52	FOUL (PERSONAL) by SVANHOLM,LENA			
02:52		53-37	H 16	GOOD! FT by WOERNER,ELLIE
02:52		54-37	H 17	GOOD! FT by WOERNER,ELLIE
02:38	FOUL (OFF) by COLAIVALU,GRACE			
02:38	TURNOVER (OFFENSIVE) by COLAIVALU,GRACE			
02:38	SUB OUT: COLAIVALU,GRACE			
02:38	SUB IN: HAMM,MYANNE			
02:25		56-37	H 19	GOOD! JUMPER by BOWERS,RACHEL
02:25				ASSIST by HERMIDA,MARTA

Time	VISITORS: Colorado St.	Score	Margin	HOME: Boise St.
02:01	GOOD! 3PTR by BROCKE,LAUREN	56-40	H 16	
02:01	ASSIST by DEVOS,LORE			
01:38	FOUL (PERSONAL) by BROCKE,LAUREN			
01:38		57-40	H 17	GOOD! FT by LUPFER,RILEY
01:38	SUB OUT: SVANHOLM,LENA			
01:38	SUB IN: DAVIS,LIAH			
01:38		58-40	H 18	GOOD! FT by LUPFER,RILEY
01:19				FOUL (PERSONAL) by WOERNER,ELLIE
01:19	MISSED FT by DEVOS,LORE			
01:19	REBOUND (OFF) by TEAM			
01:19				SUB OUT: CHRISTOPHER,JAYDE
01:19				SUB IN: HODGINS,BRAYDEY
01:19	GOOD! FT by DEVOS,LORE	58-41	H 17	
01:04				MISSED 3PTR by LUPFER,RILEY
01:00				REBOUND (OFF) by WOERNER,ELLIE
01:00	FOUL (PERSONAL) by HAMM,MYANNE			
01:00				MISSED FT by WOERNER,ELLIE
01:00				REBOUND (OFF) by TEAM
01:00				MISSED FT by WOERNER,ELLIE
01:00	REBOUND (DEF) by DAVIS,LIAH			
00:37	GOOD! JUMPER by DEVOS,LORE [PNT]	58-43	H 15	
00:06				MISSED 3PTR by LUPFER,RILEY
00:03				REBOUND (OFF) by WOERNER,ELLIE
00:01		60-43	H 17	GOOD! JUMPER by LUPFER,RILEY
00:01				ASSIST by WOERNER,ELLIE

Colorado St. 43, Boise St. 60

Points from (This Period)	CSU	BSU
In the Paint	10	8
Off Turns	5	6
2nd Chance	0	2
Fast Break	0	6
Bench	3	4

**Official Box Score**  
**Colorado St. vs Boise St.**  
**Fourth Quarter Statistics Only**  
**January 31, 2019 at Taco Bell Arena - Boise, Idaho**

**Colorado St. 14**

No.	Player	S	Pts	FG	3FG	FT	OR	DR	TR	PF	A	TO	Blk	Stl	Min	+/-
21	Hamm, Myanne		0	0-0	0-0	0-0	0	0	0	0	0	0	0	0	3	1
23	Colaivalu, Grace		3	0-0	0-0	3-4	0	0	0	0	0	0	0	0	6	3
24	Mounsey, Mollie		3	1-4	1-3	0-0	0	1	1	1	0	0	0	0	10	4
35	Devos, Lore		8	3-4	0-0	2-2	1	1	2	1	0	1	0	2	10	4
44	Neubert, Tatum		0	0-2	0-0	0-0	0	1	1	1	0	0	1	0	6	4
11	Svanholm, Lena		0	0-1	0-1	0-0	0	0	0	1	0	0	0	0	2	1
22	Brocke, Lauren		0	0-2	0-1	0-0	0	0	0	1	1	0	0	1	10	4
34	Davis, Liah		0	0-1	0-0	0-0	0	0	0	0	0	0	0	0	2	-1
	Team						1	1	2	0		0				
<b>TOTALS</b>			<b>14</b>	<b>4-14</b>	<b>1-5</b>	<b>5-6</b>	<b>2</b>	<b>4</b>	<b>6</b>	<b>5</b>	<b>1</b>	<b>1</b>	<b>1</b>	<b>3</b>	<b>49</b>	

*Shooting By Period*

Period	FG	FG%	3FG	3FG%	FT	FT%
Game	18-49	36.7%	4-17	23.5%	17-23	73.9%

**Boise St. 10**

No.	Player	S	Pts	FG	3FG	FT	OR	DR	TR	PF	A	TO	Blk	Stl	Min	+/-
14	Hodgins, Braydey		2	0-0	0-0	2-2	0	2	2	2	1	0	0	0	5	0
21	Lupfer, Riley		0	0-2	0-2	0-0	0	1	1	1	0	2	0	0	8	-5
23	Christopher, Jayde		0	0-1	0-0	0-0	1	1	2	0	0	1	0	0	5	-4
33	Harrell, Joyce		0	0-1	0-0	0-0	0	1	1	0	0	0	0	0	4	-2
42	Coleman, A'shanti		1	0-0	0-0	1-2	1	2	3	0	0	2	0	0	4	-2
03	Galeron, Sofia		0	0-1	0-0	0-0	0	0	0	2	0	0	0	0	2	-3
15	Amundsen, Tess		0	0-0	0-0	0-0	0	1	1	0	0	0	0	0	1	2
20	Hermida, Marta		0	0-1	0-1	0-0	1	0	1	0	1	0	0	0	6	0
22	Woerner, Ellie		0	0-0	0-0	0-0	0	0	0	0	0	1	0	0	3	-1
25	Bowers, Rachel		5	2-3	1-1	0-0	0	0	0	0	0	0	0	0	6	-2
30	Loville, Jade		2	0-1	0-1	2-2	0	1	1	0	0	1	0	0	5	-3
31	Vanderschaaf, Marijke		0	0-0	0-0	0-0	0	0	0	0	0	0	0	0	0	0
	Team						1	0	1	0		0				
<b>TOTALS</b>			<b>10</b>	<b>2-10</b>	<b>1-5</b>	<b>5-6</b>	<b>4</b>	<b>9</b>	<b>13</b>	<b>5</b>	<b>2</b>	<b>7</b>	<b>0</b>	<b>0</b>	<b>49</b>	

*Shooting By Period*

Period	FG	FG%	3FG	3FG%	FT	FT%
Game	24-51	47.1%	11-27	40.7%	11-15	73.3%

Game Notes:

Officials: Benny Luna, Anita Ortega, Brian Woods  
Attendance: 1181

Start Time: 2019-01-31 02:06:08  
End Time: 2019-01-31 03:41:58  
Game Duration: 95  
Conference Game;

Score	1st	2nd	3rd	4th	TOT
CSU	10	13	20	14	<b>57</b>
BSU	18	16	26	10	<b>70</b>

Points from (This Period)	CSU	BSU
In the Paint	4	0
Off Turns	5	0
2nd Chance	0	0
Fast Break	3	3
Bench	0	7

**Official Play-By-Play**  
**Colorado St. vs Boise St.**  
**Fourth Quarter**  
**January 31, 2019 at Taco Bell Arena - Boise, Idaho**

**Period 4**

**Starters:**

**Colorado St.:** 21 HAMM,MYANNE; 23 COLAIVALU,GRACE; 24 MOUNSEY,MOLLIE; 35 DEVOS,LORE; 44 NEUBERT,TATUM;

**Boise St.:** 14 HODGINS,BRAYDEY; 21 LUPFER,RILEY; 23 CHRISTOPHER,JAYDE; 33 HARRELL,JOYCE; 42 COLEMAN,A'SHANTI;

Time	VISITORS: Colorado St.	Score	Margin	HOME: Boise St.
09:46				FOUL (PERSONAL) by HODGINS,BRAYDEY
09:40	MISSED JUMPER by DEVOS,LORE			
09:36				REBOUND (DEF) by HODGINS,BRAYDEY
09:16				MISSED JUMPER by BOWERS,RACHEL
09:16	BLOCK by NEUBERT,TATUM			
09:06	REBOUND (DEF) by NEUBERT,TATUM			
08:59	MISSED LAYUP by NEUBERT,TATUM			
08:55				REBOUND (DEF) by LUPFER,RILEY
08:49				TURNOVER (LOSTBALL) by LUPFER,RILEY
08:49	STEAL by BROCKE,LAUREN			
08:22	GOOD! 3PTR by MOUNSEY,MOLLIE	60-46	H 14	
08:03		62-46	H 16	GOOD! JUMPER by BOWERS,RACHEL
08:03				ASSIST by HERMIDA,MARTA
07:48	MISSED JUMPER by BROCKE,LAUREN			
07:48	REBOUND (OFF) by TEAM			
07:24				TURNOVER (LOSTBALL) by WOERNER,ELLIE
07:24	MISSED LAYUP by MOUNSEY,MOLLIE			
07:24				REBOUND (DEF) by COLEMAN,A'SHANTI
07:24				TURNOVER (BADPASS) by COLEMAN,A'SHANTI
07:18	FOUL (OFF) by DEVOS,LORE			
07:18	TURNOVER (OFFENSIVE) by DEVOS,LORE			
06:57				SUB OUT: HODGINS,BRAYDEY
06:57				SUB IN: CHRISTOPHER,JAYDE
06:57				SUB OUT: WOERNER,ELLIE
06:57				SUB IN: HARRELL,JOYCE
06:57				SUB OUT: BOWERS,RACHEL
06:57				SUB IN: COLEMAN,A'SHANTI
06:55				MISSED 3PTR by HERMIDA,MARTA
06:51				REBOUND (OFF) by COLEMAN,A'SHANTI
06:51				TURNOVER (OTHER) by COLEMAN,A'SHANTI
06:39	SUB OUT: HAMM,MYANNE			
06:39	SUB IN: COLAIVALU,GRACE			
06:39	SUB OUT: NEUBERT,TATUM			
06:39	SUB IN: SVANHOLM,LENA			
06:25	MISSED 3PTR by MOUNSEY,MOLLIE			
06:22				REBOUND (DEF) by COLEMAN,A'SHANTI
06:10				MISSED JUMPER by HARRELL,JOYCE
06:06				REBOUND (OFF) by HERMIDA,MARTA
06:05				MISSED 3PTR by LUPFER,RILEY
06:01	REBOUND (DEF) by DEVOS,LORE			
05:48	MISSED 3PTR by SVANHOLM,LENA			
05:43	REBOUND (OFF) by DEVOS,LORE			
05:41	MISSED 3PTR by MOUNSEY,MOLLIE			
05:37				REBOUND (DEF) by CHRISTOPHER,JAYDE
05:31	FOUL (PERSONAL) by SVANHOLM,LENA			
05:31				MISSED FT by COLEMAN,A'SHANTI
05:31				REBOUND (OFF) by TEAM
05:31				SUB OUT: HERMIDA,MARTA
05:31				SUB IN: LOVILLE,JADE
05:31		63-46	H 17	GOOD! FT by COLEMAN,A'SHANTI [FB]
05:06	GOOD! LAYUP by DEVOS,LORE [PNT]	63-48	H 15	
05:06	TIMEOUT 30SEC			
05:06				
04:37				MISSED JUMPER by CHRISTOPHER,JAYDE
04:35				REBOUND (OFF) by TEAM
04:35				
04:35	SUB OUT: SVANHOLM,LENA			
04:35	SUB IN: NEUBERT,TATUM			
04:14				MISSED 3PTR by LOVILLE,JADE
04:11	REBOUND (DEF) by TEAM			
04:02	GOOD! LAYUP by DEVOS,LORE [PNT]	63-50	H 13	
03:51				MISSED 3PTR by LUPFER,RILEY
03:47				REBOUND (OFF) by CHRISTOPHER,JAYDE
03:40				TURNOVER (BADPASS) by LUPFER,RILEY
03:40	STEAL by DEVOS,LORE			
03:33	MISSED 3PTR by BROCKE,LAUREN			
03:28				REBOUND (DEF) by HARRELL,JOYCE
03:22	FOUL (PERSONAL) by NEUBERT,TATUM			
03:22		64-50	H 14	GOOD! FT by LOVILLE,JADE [FB]
03:22				SUB OUT: COLEMAN,A'SHANTI
03:22				SUB IN: GALERON,SOFIA
03:22		65-50	H 15	GOOD! FT by LOVILLE,JADE [FB]
02:54				FOUL (PERSONAL) by LUPFER,RILEY
02:54	GOOD! FT by COLAIVALU,GRACE	65-51	H 14	
02:54				SUB OUT: HARRELL,JOYCE
02:54				SUB IN: BOWERS,RACHEL

Time	VISITORS: Colorado St.	Score	Margin	HOME: Boise St.
02:54	GOOD! FT by COLAIVALU,GRACE	65-52	H 13	
02:32				TURNOVER (BADPASS) by CHRISTOPHER,JAYDE
02:12	MISSED JUMPER by NEUBERT,TATUM			
02:08				REBOUND (DEF) by LOVILLE,JADE
01:49				MISSED JUMPER by GALERON,SOFIA
01:45	REBOUND (DEF) by MOUNSEY,MOLLIE			
01:40				FOUL (PERSONAL) by GALERON,SOFIA
01:40	GOOD! FT by DEVOS,LORE [FB]	65-53	H 12	
01:40				SUB OUT: CHRISTOPHER,JAYDE
01:40				SUB IN: HODGINS,BRAYDEY
01:40				SUB OUT: LUPFER,RILEY
01:40				SUB IN: HERMIDA,MARTA
01:40	SUB OUT: NEUBERT,TATUM			
01:40	SUB IN: DAVIS,LIAH			
01:40	GOOD! FT by DEVOS,LORE [FB]	65-54	H 11	
01:29				TURNOVER (BADPASS) by LOVILLE,JADE
01:29	STEAL by DEVOS,LORE			
01:27				FOUL (PERSONAL) by GALERON,SOFIA
01:27				SUB OUT: GALERON,SOFIA
01:27				SUB IN: AMUNDSEN,TESS
01:25	GOOD! JUMPER by DEVOS,LORE	65-56	H 9	
01:25	ASSIST by BROCKE,LAUREN			
01:25	TIMEOUT 30SEC			
01:20	FOUL (PERSONAL) by BROCKE,LAUREN			
00:52		68-56	H 12	GOOD! 3PTR by BOWERS,RACHEL
00:52				ASSIST by HODGINS,BRAYDEY
00:42	MISSED JUMPER by DAVIS,LIAH			
00:37				REBOUND (DEF) by HODGINS,BRAYDEY
00:14	FOUL (PERSONAL) by MOUNSEY,MOLLIE			
00:14		69-56	H 13	GOOD! FT by HODGINS,BRAYDEY
00:14		70-56	H 14	GOOD! FT by HODGINS,BRAYDEY
00:09				FOUL (PERSONAL) by HODGINS,BRAYDEY
00:09	GOOD! FT by COLAIVALU,GRACE [FB]	70-57	H 13	
00:09	MISSED FT by COLAIVALU,GRACE			
00:09				REBOUND (DEF) by AMUNDSEN,TESS

Colorado St. 57, Boise St. 70

Points from (This Period)	CSU	BSU
In the Paint	4	0
Off Turns	5	0
2nd Chance	0	0
Fast Break	3	3
Bench	0	7



**Official Scoring/Possession Reference Chart**  
**Colorado St. vs Boise St.**  
**Period 1**  
**January 31, 2019 at Taco Bell Arena - Boise, Idaho**

**Period 1**

**Starters:**

**Colorado St.:** 21 HAMM,MYANNE; 23 COLAIVALU,GRACE; 24 MOUNSEY,MOLLIE; 35 DEVOS,LORE; 44 NEUBERT,TATUM;

**Boise St.:** 14 HODGINS,BRAYDEY; 21 LUPFER,RILEY; 23 CHRISTOPHER,JAYDE; 33 HARRELL,JOYCE; 42 COLEMAN,A'SHANTI;

Time	VISITORS: Colorado St.	Score	Margin	HOME: Boise St.
09:11	GOOD! JUMPER by DEVOS,LORE [PNT]	0-2	V 2	
08:50		3-2	H 1	GOOD! 3PTR by LUPFER,RILEY
08:30	GOOD! LAYUP by NEUBERT,TATUM [PNT]	3-4	V 1	
07:07		6-4	H 2	GOOD! 3PTR by HODGINS,BRAYDEY [FB]
06:04	GOOD! FT by NEUBERT,TATUM [FB]	6-5	H 1	
05:16		8-5	H 3	GOOD! JUMPER by BOWERS,RACHEL
04:24	GOOD! FT by COLAIVALU,GRACE	8-6	H 2	
04:01		10-6	H 4	GOOD! JUMPER by BOWERS,RACHEL
03:25		13-6	H 7	GOOD! 3PTR by LUPFER,RILEY
03:03		16-6	H 10	GOOD! 3PTR by GALERON,SOFIA
01:21	GOOD! JUMPER by DEVOS,LORE [PNT]	16-8	H 8	
00:57		18-8	H 10	GOOD! LAYUP by BOWERS,RACHEL [PNT]
00:30	GOOD! LAYUP by DEVOS,LORE	18-10	H 8	

**Colorado St. 10, Boise St. 18**

**Official Scoring/Possession Reference Chart**  
**Colorado St. vs Boise St.**  
**Period 2**  
**January 31, 2019 at Taco Bell Arena - Boise, Idaho**

**Period 2**

**Starters:**

**Colorado St.:** 21 HAMM,MYANNE; 23 COLAIVALU,GRACE; 24 MOUNSEY,MOLLIE; 35 DEVOS,LORE; 44 NEUBERT,TATUM;

**Boise St.:** 14 HODGINS,BRAYDEY; 21 LUPFER,RILEY; 23 CHRISTOPHER,JAYDE; 33 HARRELL,JOYCE; 42 COLEMAN,A'SHANTI;

Time	VISITORS: Colorado St.	Score	Margin	HOME: Boise St.
08:55		20-10	H 10	GOOD! JUMPER by COLEMAN,A'SHANTI
06:48	GOOD! FT by NEUBERT,TATUM	20-11	H 9	
06:48	GOOD! FT by NEUBERT,TATUM	20-12	H 8	
06:31		22-12	H 10	GOOD! LAYUP by VANDERSCHAAF,MARIJKE [PNT]
06:13		25-12	H 13	GOOD! 3PTR by WOERNER,ELLIE [FB]
05:52	GOOD! 3PTR by BROCKE,LAUREN	25-15	H 10	
05:15		26-15	H 11	GOOD! FT by AMUNDSEN,TESS
05:15		27-15	H 12	GOOD! FT by AMUNDSEN,TESS
04:32	GOOD! JUMPER by NEUBERT,TATUM [PNT]	27-17	H 10	
04:32	GOOD! FT by NEUBERT,TATUM	27-18	H 9	
03:56		29-18	H 11	GOOD! JUMPER by LOVILLE,JADE [PNT]
03:19		32-18	H 14	GOOD! 3PTR by LUPFER,RILEY
02:12	GOOD! FT by NEUBERT,TATUM	32-19	H 13	
01:57		34-19	H 15	GOOD! JUMPER by COLEMAN,A'SHANTI
01:29	GOOD! FT by NEUBERT,TATUM	34-20	H 14	
01:29	GOOD! FT by NEUBERT,TATUM	34-21	H 13	
00:25	GOOD! JUMPER by SVANHOLM,LENA	34-23	H 11	

**Colorado St. 23, Boise St. 34**

**Official Scoring/Possession Reference Chart**  
**Colorado St. vs Boise St.**  
**Period 3**  
**January 31, 2019 at Taco Bell Arena - Boise, Idaho**

**Period 3**

**Starters:**

**Colorado St.:** 21 HAMM,MYANNE; 23 COLAIVALU,GRACE; 24 MOUNSEY,MOLLIE; 35 DEVOS,LORE; 44 NEUBERT,TATUM;

**Boise St.:** 14 HODGINS,BRAYDEY; 21 LUPFER,RILEY; 23 CHRISTOPHER,JAYDE; 33 HARRELL,JOYCE; 42 COLEMAN,A'SHANTI;

Time	VISITORS: Colorado St.	Score	Margin	HOME: Boise St.
09:03	GOOD! LAYUP by COLAIVALU,GRACE	34-25	H 9	
08:47		37-25	H 12	GOOD! 3PTR by HODGINS,BRAYDEY
08:17		39-25	H 14	GOOD! JUMPER by HARRELL,JOYCE [PNT]
07:35	GOOD! 3PTR by MOUNSEY,MOLLIE	39-28	H 11	
07:09		41-28	H 13	GOOD! LAYUP by HARRELL,JOYCE
06:52	GOOD! LAYUP by DEVOS,LORE [PNT]	41-30	H 11	
06:37		43-30	H 13	GOOD! LAYUP by HARRELL,JOYCE [PNT]
06:17	GOOD! LAYUP by COLAIVALU,GRACE	43-32	H 11	
05:34		46-32	H 14	GOOD! 3PTR by LUPFER,RILEY [FB]
05:03	GOOD! FT by NEUBERT,TATUM	46-33	H 13	
05:03	GOOD! FT by NEUBERT,TATUM	46-34	H 12	
04:47		49-34	H 15	GOOD! 3PTR by LUPFER,RILEY
04:21		52-34	H 18	GOOD! 3PTR by LUPFER,RILEY [FB]
04:05	GOOD! LAYUP by MOUNSEY,MOLLIE [PNT]	52-36	H 16	
04:05	GOOD! FT by MOUNSEY,MOLLIE	52-37	H 15	
02:52		53-37	H 16	GOOD! FT by WOERNER,ELLIE
02:52		54-37	H 17	GOOD! FT by WOERNER,ELLIE
02:25		56-37	H 19	GOOD! JUMPER by BOWERS,RACHEL
02:01	GOOD! 3PTR by BROCKE,LAUREN	56-40	H 16	
01:38		57-40	H 17	GOOD! FT by LUPFER,RILEY
01:38		58-40	H 18	GOOD! FT by LUPFER,RILEY
01:19	GOOD! FT by DEVOS,LORE	58-41	H 17	
00:37	GOOD! JUMPER by DEVOS,LORE [PNT]	58-43	H 15	
00:01		60-43	H 17	GOOD! JUMPER by LUPFER,RILEY

**Colorado St. 43, Boise St. 60**

**Official Scoring/Possession Reference Chart  
 Colorado St. vs Boise St.  
 Period 4  
 January 31, 2019 at Taco Bell Arena - Boise, Idaho**

**Period 4**

**Starters:**

**Colorado St.:** 21 HAMM,MYANNE; 23 COLAIVALU,GRACE; 24 MOUNSEY,MOLLIE; 35 DEVOS,LORE; 44 NEUBERT,TATUM;

**Boise St.:** 14 HODGINS,BRAYDEY; 21 LUPFER,RILEY; 23 CHRISTOPHER,JAYDE; 33 HARRELL,JOYCE; 42 COLEMAN,A'SHANTI;

Time	VISITORS: Colorado St.	Score	Margin	HOME: Boise St.
08:22	GOOD! 3PTR by MOUNSEY,MOLLIE	60-46	H 14	
08:03		62-46	H 16	GOOD! JUMPER by BOWERS,RACHEL
05:31		63-46	H 17	GOOD! FT by COLEMAN,A'SHANTI [FB]
05:06	GOOD! LAYUP by DEVOS,LORE [PNT]	63-48	H 15	
04:02	GOOD! LAYUP by DEVOS,LORE [PNT]	63-50	H 13	
03:22		64-50	H 14	GOOD! FT by LOVILLE,JADE [FB]
03:22		65-50	H 15	GOOD! FT by LOVILLE,JADE [FB]
02:54	GOOD! FT by COLAIVALU,GRACE	65-51	H 14	
02:54	GOOD! FT by COLAIVALU,GRACE	65-52	H 13	
01:40	GOOD! FT by DEVOS,LORE [FB]	65-53	H 12	
01:40	GOOD! FT by DEVOS,LORE [FB]	65-54	H 11	
01:25	GOOD! JUMPER by DEVOS,LORE	65-56	H 9	
00:52		68-56	H 12	GOOD! 3PTR by BOWERS,RACHEL
00:14		69-56	H 13	GOOD! FT by HODGINS,BRAYDEY
00:14		70-56	H 14	GOOD! FT by HODGINS,BRAYDEY
00:09	GOOD! FT by COLAIVALU,GRACE [FB]	70-57	H 13	

**Colorado St. 57, Boise St. 70**

**Official Substitutions Log**  
**Colorado St. vs Boise St.**  
**Period 1**  
**January 31, 2019 at Taco Bell Arena - Boise, Idaho**

<b>VISITORS: Colorado St.</b>	<b>Time</b>	<b>Score</b>	<b>HOME: Boise St.</b>
21 HAMM,MYANNE			14 HODGINS,BRAYDEY
23 COLAIVALU,GRACE			21 LUPFER,RILEY
24 MOUNSEY,MOLLIE			23 CHRISTOPHER,JAYDE
35 DEVOS,LORE			33 HARRELL,JOYCE
44 NEUBERT,TATUM			42 COLEMAN,A'SHANTI
	06:20	4-6	SUB OUT: HARRELL,JOYCE
	06:20		SUB IN: GALERON,SOFIA
	06:20		SUB OUT: COLEMAN,A'SHANTI
	06:20		SUB IN: BOWERS,RACHEL
SUB OUT: 44 NEUBERT,TATUM	03:39	6-10	
SUB IN: 11 SVANHOLM,LENA	03:39		
	03:31	6-10	SUB OUT: CHRISTOPHER,JAYDE
	03:31		SUB IN: HERMIDA,MARTA
	00:42	8-18	SUB OUT: GALERON,SOFIA
	00:42		SUB IN: COLEMAN,A'SHANTI
	00:42		SUB OUT: LUPFER,RILEY
	00:42		SUB IN: HARRELL,JOYCE
	00:42		SUB OUT: BOWERS,RACHEL
	00:42		SUB IN: WOERNER,ELLIE
SUB OUT: 21 HAMM,MYANNE	00:42		
SUB IN: 22 BROCKE,LAUREN	00:42		

**Colorado St. 10, Boise St. 18**

**Official Substitutions Log**  
**Colorado St. vs Boise St.**  
**Period 2**  
**January 31, 2019 at Taco Bell Arena - Boise, Idaho**

VISITORS: Colorado St.	Time	Score	HOME: Boise St.
21 HAMM,MYANNE			14 HODGINS,BRAYDEY
23 COLAIVALU,GRACE			21 LUPFER,RILEY
24 MOUNSEY ,MOLLIE			23 CHRISTOPHER,JAYDE
35 DEVOS,LORE			33 HARRELL,JOYCE
44 NEUBERT,TATUM			42 COLEMAN,A'SHANTI
	08:35	10-20	SUB OUT: HODGINS,BRAYDEY
	08:35		SUB IN: CHRISTOPHER,JAYDE
	07:07	10-20	SUB OUT: HERMIDA,MARTA
	07:07		SUB IN: LUPFER,RILEY
	07:07		SUB OUT: HARRELL,JOYCE
	07:07		SUB IN: BOWERS,RACHEL
	07:07		SUB OUT: COLEMAN,A'SHANTI
	07:07		SUB IN: GALERON,SOFIA
	06:48	11-20	SUB OUT: BOWERS,RACHEL
	06:48		SUB IN: AMUNDSEN,TESS
	06:48		SUB OUT: GALERON,SOFIA
	06:48		SUB IN: VANDERSCHAAF,MARIJKE
SUB OUT: 22 BROCKE,LAUREN	06:48		
SUB IN: 21 HAMM,MYANNE	06:48		
	06:03	12-25	SUB OUT: CHRISTOPHER,JAYDE
	06:03		SUB IN: HODGINS,BRAYDEY
SUB OUT: 23 COLAIVALU,GRACE	06:03		
SUB IN: 22 BROCKE,LAUREN	06:03		
SUB OUT: 24 MOUNSEY ,MOLLIE	04:32	17-27	
SUB IN: 23 COLAIVALU,GRACE	04:32		
	04:32		SUB OUT: VANDERSCHAAF,MARIJKE
	04:01	18-27	SUB IN: HARRELL,JOYCE
	04:01		SUB OUT: AMUNDSEN,TESS
	04:01		SUB IN: COLEMAN,A'SHANTI
	04:01		SUB OUT: WOERNER,ELLIE
	04:01		SUB IN: LOVILLE,JADE
SUB OUT: 23 COLAIVALU,GRACE	03:41	18-29	
SUB IN: 24 MOUNSEY ,MOLLIE	03:41		
	01:29	20-34	SUB OUT: HARRELL,JOYCE
	01:29		SUB IN: GALERON,SOFIA
SUB OUT: 44 NEUBERT,TATUM	01:29		
SUB IN: 11 SVANHOLM,LENA	01:29		

**Colorado St. 23, Boise St. 34**

**Official Substitutions Log**  
**Colorado St. vs Boise St.**  
**Period 3**  
**January 31, 2019 at Taco Bell Arena - Boise, Idaho**

VISITORS: Colorado St.	Time	Score	HOME: Boise St.
21 HAMM,MYANNE			14 HODGINS,BRAYDEY
23 COLAIVALU,GRACE			21 LUPFER,RILEY
24 MOUNSEY ,MOLLIE			23 CHRISTOPHER,JAYDE
35 DEVOS,LORE			33 HARRELL,JOYCE
44 NEUBERT,TATUM			42 COLEMAN,A'SHANTI
	06:17	32-43	SUB OUT: HODGINS,BRAYDEY
	06:17		SUB IN: HERMIDA,MARTA
	06:02	32-43	SUB OUT: HARRELL,JOYCE
	06:02		SUB IN: BOWERS,RACHEL
	06:02		SUB OUT: COLEMAN,A'SHANTI
	06:02		SUB IN: GALERON,SOFIA
	04:05	36-52	SUB OUT: GALERON,SOFIA
	04:05		SUB IN: WOERNER,ELLIE
SUB OUT: 44 NEUBERT,TATUM	04:05		
SUB IN: 11 SVANHOLM,LENA	04:05		
SUB OUT: 21 HAMM,MYANNE	03:18	37-52	
SUB IN: 22 BROCKE,LAUREN	03:18		
SUB OUT: 23 COLAIVALU,GRACE	02:38	37-54	
SUB IN: 21 HAMM,MYANNE	02:38		
SUB OUT: 11 SVANHOLM,LENA	01:38	40-57	
SUB IN: 34 DAVIS,LIAH	01:38		
	01:19	40-58	SUB OUT: CHRISTOPHER,JAYDE
	01:19		SUB IN: HODGINS,BRAYDEY

**Colorado St. 43, Boise St. 60**

**Official Substitutions Log**  
**Colorado St. vs Boise St.**  
**Period 4**  
**January 31, 2019 at Taco Bell Arena - Boise, Idaho**

VISITORS: Colorado St.	Time	Score	HOME: Boise St.
21 HAMM,MYANNE			14 HODGINS,BRAYDEY
23 COLAIVALU,GRACE			21 LUPFER,RILEY
24 MOUNSEY ,MOLLIE			23 CHRISTOPHER,JAYDE
35 DEVOS,LORE			33 HARRELL,JOYCE
44 NEUBERT,TATUM			42 COLEMAN,A'SHANTI
	06:57	46-62	SUB OUT: HODGINS,BRAYDEY
	06:57		SUB IN: CHRISTOPHER,JAYDE
	06:57		SUB OUT: WOERNER,ELLIE
	06:57		SUB IN: HARRELL,JOYCE
	06:57		SUB OUT: BOWERS,RACHEL
	06:57		SUB IN: COLEMAN,A'SHANTI
SUB OUT: 21 HAMM,MYANNE	06:39	46-62	
SUB IN: 23 COLAIVALU,GRACE	06:39		
SUB OUT: 44 NEUBERT,TATUM	06:39		
SUB IN: 11 SVANHOLM,LENA	06:39		
	05:31	46-62	SUB OUT: HERMIDA,MARTA
	05:31		SUB IN: LOVILLE,JADE
SUB OUT: 11 SVANHOLM,LENA	04:35	48-63	
SUB IN: 44 NEUBERT,TATUM	04:35		
	03:22	50-64	SUB OUT: COLEMAN,A'SHANTI
	03:22		SUB IN: GALERON,SOFIA
	02:54	51-65	SUB OUT: HARRELL,JOYCE
	02:54		SUB IN: BOWERS,RACHEL
	01:40	53-65	SUB OUT: CHRISTOPHER,JAYDE
	01:40		SUB IN: HODGINS,BRAYDEY
	01:40		SUB OUT: LUPFER,RILEY
	01:40		SUB IN: HERMIDA,MARTA
SUB OUT: 44 NEUBERT,TATUM	01:40		
SUB IN: 34 DAVIS,LIAH	01:40		
	01:27	54-65	SUB OUT: GALERON,SOFIA
	01:27		SUB IN: AMUNDSEN,TESS

**Colorado St. 57, Boise St. 70**



**Official Shot Chart**  
**Colorado St. vs Boise St.**  
**PERIOD 1 Shots**  
**January 31, 2019 at Taco Bell Arena - Boise, Idaho**

**Boise St.**

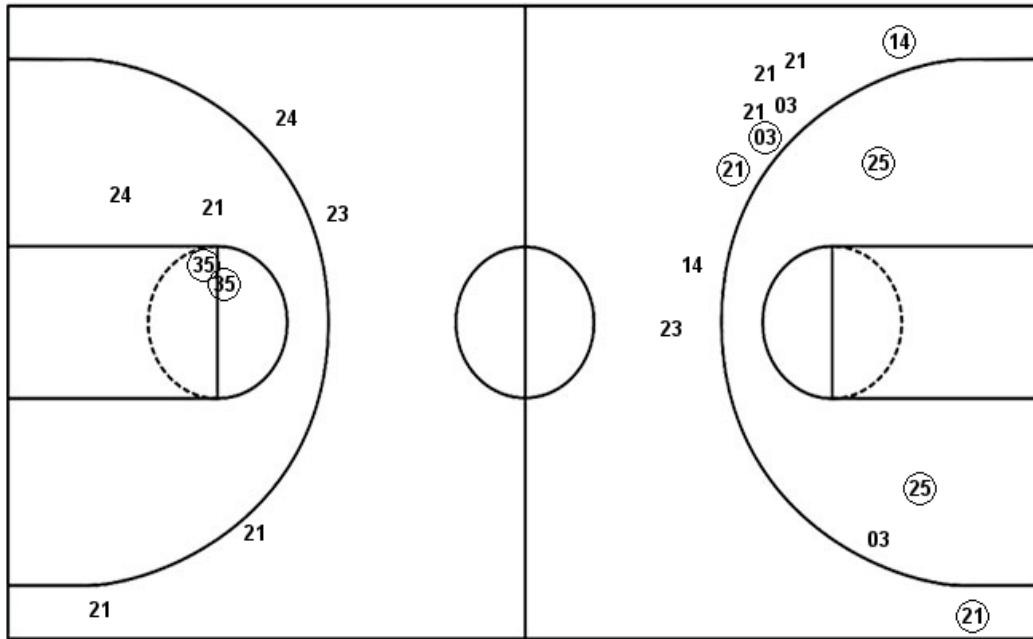
**Colorado St.**

Layups  
33 33 (25)

Layups  
(44) 35 (35)

Dunks

Dunks



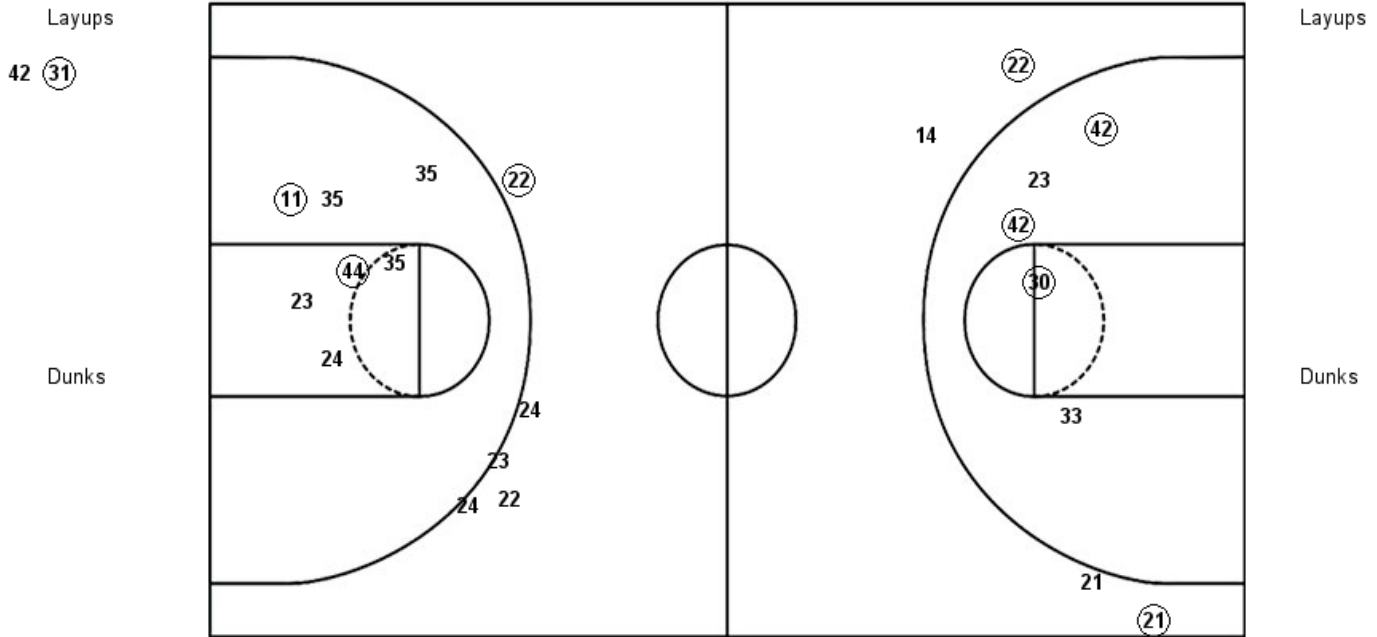
<b>BSU : Period 1</b>	<b>Made</b>	<b>Att</b>	<b>Pct</b>
Layups	1	3	33.3
Dunks	0	0	0
2PT Field Goals	3	6	50.0
3PT Field Goals	4	10	40.0
<b>Total Field Goals</b>	<b>7</b>	<b>16</b>	<b>43.8</b>

<b>CSU : Period 1</b>	<b>Made</b>	<b>Att</b>	<b>Pct</b>
Layups	2	3	66.7
Dunks	0	0	0
2PT Field Goals	4	7	57.1
3PT Field Goals	0	4	00.0
<b>Total Field Goals</b>	<b>4</b>	<b>11</b>	<b>36.4</b>

**Official Shot Chart**  
**Colorado St. vs Boise St.**  
**PERIOD 2 Shots**  
**January 31, 2019 at Taco Bell Arena - Boise, Idaho**

**Boise St.**

**Colorado St.**



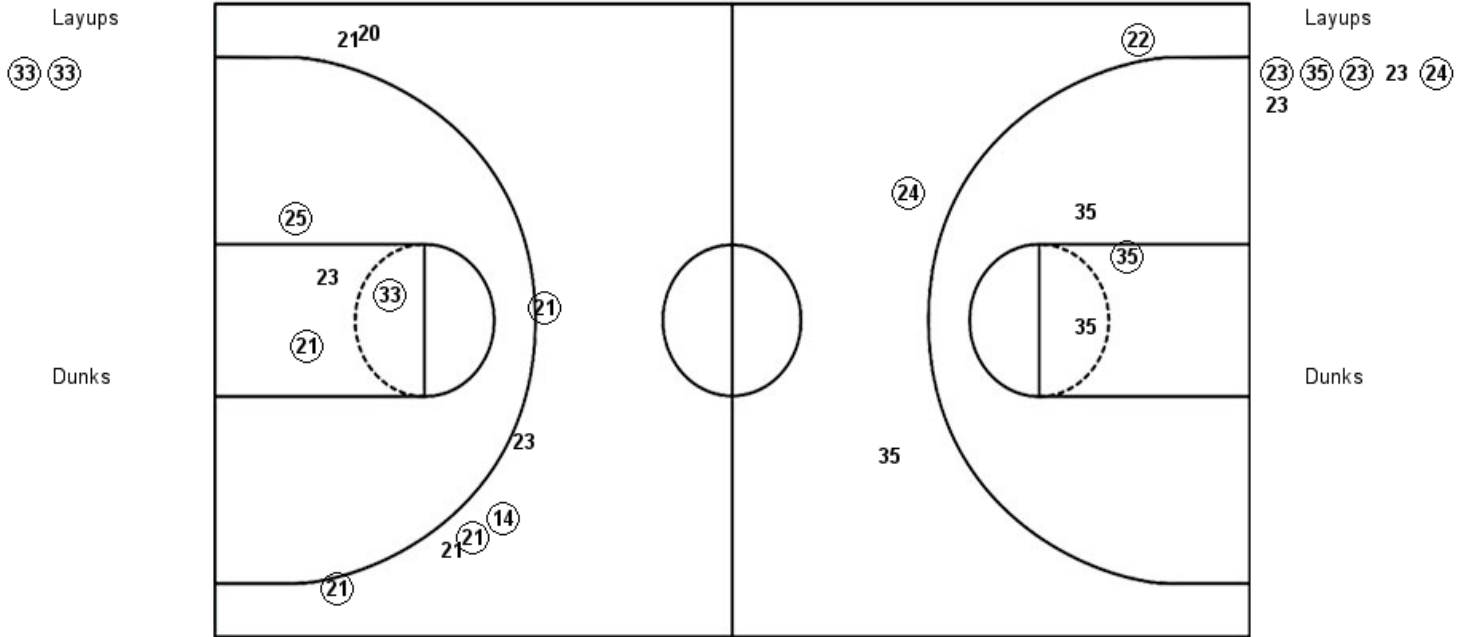
BSU : Period 2	Made	Att	Pct
Layups	1	2	50.0
Dunks	0	0	0
2PT Field Goals	4	7	57.1
3PT Field Goals	2	4	50.0
<b>Total Field Goals</b>	<b>6</b>	<b>11</b>	<b>54.5</b>

CSU : Period 2	Made	Att	Pct
Layups	0	0	0
Dunks	0	0	0
2PT Field Goals	2	7	28.6
3PT Field Goals	1	5	20.0
<b>Total Field Goals</b>	<b>3</b>	<b>12</b>	<b>25.0</b>

**Official Shot Chart**  
**Colorado St. vs Boise St.**  
**PERIOD 3 Shots**  
**January 31, 2019 at Taco Bell Arena - Boise, Idaho**

**Boise St.**

**Colorado St.**



<b>BSU : Period 3</b>	<b>Made</b>	<b>Att</b>	<b>Pct</b>
Layups	2	2	100.0
Dunks	0	0	0
2PT Field Goals	5	6	83.3
3PT Field Goals	4	8	50.0
<b>Total Field Goals</b>	<b>9</b>	<b>14</b>	<b>64.3</b>

<b>CSU : Period 3</b>	<b>Made</b>	<b>Att</b>	<b>Pct</b>
Layups	4	6	66.7
Dunks	0	0	0
2PT Field Goals	5	9	55.6
3PT Field Goals	2	3	66.7
<b>Total Field Goals</b>	<b>7</b>	<b>12</b>	<b>58.3</b>

**Official Shot Chart**  
**Colorado St. vs Boise St.**  
**PERIOD 4 Shots**  
**January 31, 2019 at Taco Bell Arena - Boise, Idaho**

**Boise St.**

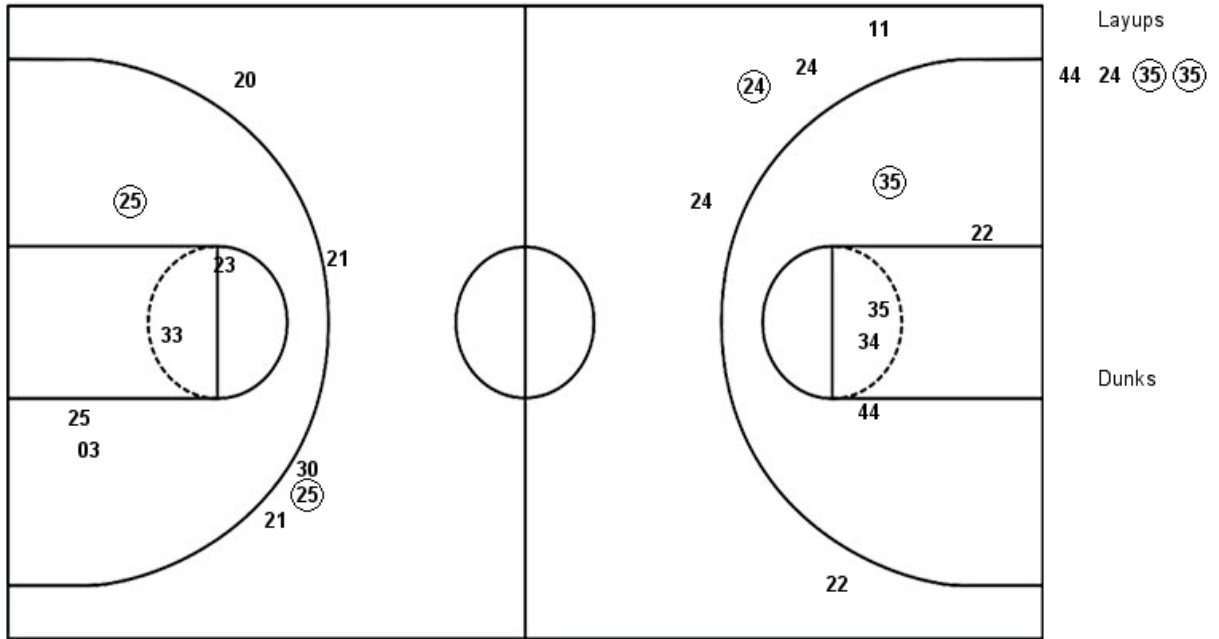
**Colorado St.**

Layups

Layups

Dunks

Dunks

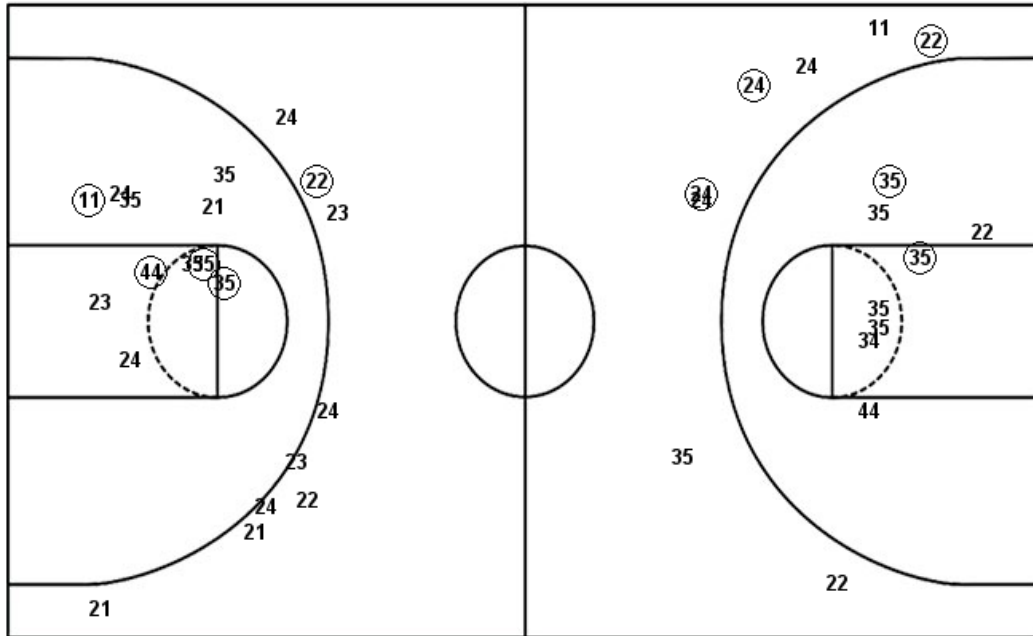


<b>BSU : Period 4</b>	<b>Made</b>	<b>Att</b>	<b>Pct</b>
Layups	0	0	0
Dunks	0	0	0
2PT Field Goals	1	5	20.0
3PT Field Goals	1	5	20.0
<b>Total Field Goals</b>	<b>2</b>	<b>10</b>	<b>20.0</b>

<b>CSU : Period 4</b>	<b>Made</b>	<b>Att</b>	<b>Pct</b>
Layups	2	4	50.0
Dunks	0	0	0
2PT Field Goals	3	9	33.3
3PT Field Goals	1	5	20.0
<b>Total Field Goals</b>	<b>4</b>	<b>14</b>	<b>28.6</b>

**Official Shot Chart**  
**Colorado St. vs Boise St.**  
**Colorado St. Team Shots**  
**January 31, 2019 at Taco Bell Arena - Boise, Idaho**

Layups



Layups

Dunks

Dunks

CSU : Period 1	Made	Att	Pct
Layups	2	3	66.7
Dunks	0	0	0
2PT Field Goals	4	7	57.1
3PT Field Goals	0	4	00.0
<b>Total Field Goals</b>	<b>4</b>	<b>11</b>	<b>36.4</b>

CSU : Period 3	Made	Att	Pct
Layups	4	6	66.7
Dunks	0	0	0
2PT Field Goals	5	9	55.6
3PT Field Goals	2	3	66.7
<b>Total Field Goals</b>	<b>7</b>	<b>12</b>	<b>58.3</b>

CSU : Period 2	Made	Att	Pct
Layups	0	0	0
Dunks	0	0	0
2PT Field Goals	2	7	28.6
3PT Field Goals	1	5	20.0
<b>Total Field Goals</b>	<b>3</b>	<b>12</b>	<b>25.0</b>

CSU : Period 4	Made	Att	Pct
Layups	2	4	50.0
Dunks	0	0	0
2PT Field Goals	3	9	33.3
3PT Field Goals	1	5	20.0
<b>Total Field Goals</b>	<b>4</b>	<b>14</b>	<b>28.6</b>

