

FINAL SCORE



Col. of Charleston

53



Drexel

76

January 26, 2019 • Daskalakis Athletic Center (Sam Cozen Court) -
Philadelphia

FINAL STATISTICS

Official Box Score
Col. of Charleston vs Drexel
Game Totals -- Final Statistics
January 26, 2019 at Daskalakis Athletic Center (Sam Cozen Court) - Philadelphia



Col. of Charleston 53

No.	Player	S	Pts	FG	3FG	FT	OR	DR	TR	PF	A	TO	Blk	Stl	Min	+/-
02	HUFF, DARIEN		12	3-7	2-4	4-4	1	2	3	0	3	1	0	1	38	-23
15	EADY, ARYNN		10	3-6	0-0	4-4	2	5	7	4	0	3	1	0	18	-14
20	SULLIVAN, BRI		0	0-2	0-0	0-0	1	0	1	1	0	2	0	0	13	-20
23	COLLINS, TYLER		4	2-7	0-3	0-0	2	1	3	3	3	4	0	1	28	-16
25	FORD, DEJA		11	5-18	0-8	1-1	4	1	5	4	4	3	0	0	36	-23
00	TAYLOR, MADISON		1	0-2	0-1	1-2	0	2	2	1	2	0	1	3	20	0
01	BLANDING, SHAI		2	1-1	0-0	0-0	0	0	0	0	0	1	0	0	5	-4
03	PERKINS, LATRICE		0	0-0	0-0	0-0	1	0	1	0	0	2	0	1	5	-3
05	DORSEY, CAILIN		0	0-2	0-2	0-0	1	0	1	1	1	0	0	0	11	-2
21	LARSON, BAILEIGH		1	0-1	0-0	1-2	2	2	4	1	0	1	0	0	7	-1
42	BROUGHTON, ERICKA		12	4-5	0-0	4-4	4	1	5	3	0	3	0	0	17	-9
	TEAM						0	1	1	0		0				
TOTALS			53	18-51	2-18	15-17	18	15	33	18	13	20	2	6	199	

Shooting By Period

Period	FG	FG%	3FG	3FG%	FT	FT%
1st Qtr	3-13	23%	0-3	00%	0-0	0%
2nd Qtr	2-10	20%	1-5	20%	5-6	83%
3rd Qtr	7-15	47%	1-6	17%	3-4	75%
4th Qtr	6-13	46%	0-4	00%	7-7	100%
1st Half	5-23	22%	1-8	13%	5-6	83%
2nd Half	13-28	46%	1-10	10%	10-11	91%
Game	18-51	35.3%	2-18	11.1%	15-17	88.2%

Last FG: 4th-02:31
 Biggest Run: 5-0
 Largest lead: By 0 at -
 Technical Fouls: None.

Drexel 76

No.	Player	S	Pts	FG	3FG	FT	OR	DR	TR	PF	A	TO	Blk	Stl	Min	+/-
01	WASHINGTON, KEISHANA		0	0-7	0-3	0-0	1	0	1	2	4	1	1	0	23	2
11	BROWN, AUBREE		14	5-10	2-5	2-4	1	2	3	2	4	3	0	0	26	25
12	NIHILL, HANNAH		10	4-4	2-2	0-2	0	1	1	0	8	1	0	1	26	23
23	GREENBERG, BAILEY		18	7-11	0-1	4-4	2	1	3	3	3	1	0	2	24	15
24	METZEL, NIKI		4	2-3	0-0	0-0	1	2	3	5	1	2	1	2	14	7
04	BACON, KAYLA		0	0-0	0-0	0-0	1	2	3	2	0	0	0	0	4	-4
10	MAESSCHALCK, ELINE		0	0-1	0-1	0-0	0	0	0	0	0	0	0	0	2	-5
20	CONNOLLY, KATE		2	1-1	0-0	0-1	0	1	1	0	1	0	0	0	10	5
22	HENDRIXSON, MAURA		15	5-7	5-6	0-0	0	1	1	2	1	0	1	0	29	24
30	LEONARD, MARIAH		9	2-5	0-0	5-6	3	0	3	1	0	3	0	2	23	7
34	KRACIKOVA, TEREZA		0	0-0	0-0	0-0	0	0	0	1	0	1	0	1	6	12
50	FERARIU, ANA		4	2-3	0-0	0-0	0	1	1	2	1	1	0	0	13	4
	TEAM						2	4	6	0		0				
TOTALS			76	28-52	9-18	11-17	11	15	26	20	23	13	3	8	199	

Shooting By Period

Period	FG	FG%	3FG	3FG%	FT	FT%
1st Qtr	6-15	40%	3-7	43%	2-2	100%
2nd Qtr	6-11	55%	4-8	50%	1-4	25%
3rd Qtr	9-12	75%	1-2	50%	4-6	67%
4th Qtr	7-14	50%	1-1	100%	4-5	80%
1st Half	12-26	46%	7-15	47%	3-6	50%
2nd Half	16-26	62%	2-3	67%	8-11	73%
Game	28-52	53.8%	9-18	50.0%	11-17	64.7%

Last FG: 4th-00:25
 Biggest Run: 17-0
 Largest lead: By 25 at 4-02:55
 Technical Fouls: None.

Game Notes:

Officials: **Carla Fountain, Natasha Camy, Karleena Tobin**
 Attendance: **633**

Start Time: **2019-01-26 00:05:01**
 End Time: **2019-01-26 01:51:41**
 Game Duration: **106**
 Conference Game;

Score	1st	2nd	3rd	4th	TOT
COC	6	10	18	19	53
DRX	17	17	23	19	76

COC led for 0:00. DRX led for 38:58.
 Game was tied for 0:46.
 Times tied: 0 Lead Changes: 0

Points from	COC	DRX
In the Paint	30	32
Off Turns	12	24
2nd Chance	11	12
Fast Break	5	8
Bench	16	30

Official Box Score
Col. of Charleston vs Drexel
First Half Statistics Only
January 26, 2019 at Daskalakis Athletic Center (Sam Cozen Court) - Philadelphia



Col. of Charleston 16

No.	Player	S	Pts	FG	3FG	FT	OR	DR	TR	PF	A	TO	Blk	Stl	Min	+/-
00	TAYLOR, MADISON		0	0-0	0-0	0-0	0	1	1	0	1	0	1	2	7	1
15	EADY, ARYNN		2	1-2	0-0	0-0	0	2	2	2	0	1	0	0	9	-13
20	SULLIVAN, BRI		0	0-2	0-0	0-0	1	0	1	1	0	2	0	0	12	-16
21	LARSON, BAILEIGH		1	0-1	0-0	1-2	2	2	4	1	0	1	0	0	7	-1
23	COLLINS, TYLER		2	1-6	0-3	0-0	1	0	1	1	1	4	0	1	17	-17
25	FORD, DEJA		2	1-7	0-2	0-0	3	0	3	1	0	2	0	0	19	-18
42	BROUGHTON, ERICKA		2	1-2	0-0	0-0	0	0	0	2	0	2	0	0	6	-5
01	BLANDING, SHAI		0	0-0	0-0	0-0	0	0	0	0	0	0	0	0	0	0
02	HUFF, DARIEN		7	1-3	1-3	4-4	1	2	3	0	1	1	0	0	20	-18
03	PERKINS, LATRICE		0	0-0	0-0	0-0	1	0	1	0	0	1	0	0	3	-3
05	DORSEY, CAILIN		0	0-0	0-0	0-0	0	0	0	0	0	0	0	0	0	0
	TEAM		0	0-0	0-0	0-0	0	1	1	0	0	0	0	0	0	0
TOTALS			16	5-23	1-8	5-6	9	8	17	8	3	14	1	3	100	

Shooting By Period

Period	FG	FG%	3FG	3FG%	FT	FT%
1st Qtr	3-13	23%	0-3	00%	0-0	0%
2nd Qtr	2-10	20%	1-5	20%	5-6	83%
1st Half	5-23	22%	1-8	13%	5-6	83%
Game	18-51	35.3%	2-18	11.1%	15-17	88.2%

Last FG Half: COC 2nd-09:02

Drexel 34

No.	Player	S	Pts	FG	3FG	FT	OR	DR	TR	PF	A	TO	Blk	Stl	Min	+/-
10	MAESSCHALCK, ELINE		0	0-1	0-1	0-0	0	0	0	0	0	0	0	0	1	-5
11	BROWN, AUBREE		10	4-7	2-4	0-0	1	1	2	0	2	1	0	0	15	17
12	NIHILL, HANNAH		3	1-1	1-1	0-2	0	1	1	0	6	0	0	0	15	15
20	CONNOLLY, KATE		0	0-0	0-0	0-0	0	1	1	0	1	0	0	0	5	7
22	HENDRIXSON, MAURA		12	4-5	4-5	0-0	0	1	1	2	0	0	0	0	14	16
23	GREENBERG, BAILEY		4	1-2	0-1	2-2	1	0	1	2	0	1	0	0	7	8
24	METZEL, NIKI		2	1-1	0-0	0-0	0	2	2	2	1	1	1	1	7	10
30	LEONARD, MARIAH		3	1-3	0-0	1-2	3	0	3	1	0	3	0	2	12	5
34	KRACIKOVA, TEREZA		0	0-0	0-0	0-0	0	0	0	0	0	1	0	1	5	12
50	FERARIU, ANA		0	0-1	0-0	0-0	0	0	0	2	0	1	0	0	5	3
01	WASHINGTON, KEISHANA		0	0-5	0-3	0-0	0	0	0	1	1	1	0	0	11	5
04	BACON, KAYLA		0	0-0	0-0	0-0	1	1	2	1	0	0	0	0	2	-3
	TEAM		0	0-0	0-0	0-0	1	2	3	0	0	0	0	0	0	0
TOTALS			34	12-26	7-15	3-6	7	9	16	11	11	9	1	4	100	

Shooting By Period

Period	FG	FG%	3FG	3FG%	FT	FT%
1st Qtr	6-15	40%	3-7	43%	2-2	100%
2nd Qtr	6-11	55%	4-8	50%	1-4	25%
1st Half	12-26	46%	7-15	47%	3-6	50%
Game	28-52	53.8%	9-18	50.0%	11-17	64.7%

Last FG Half: DRX 2nd-02:50

Game Notes:

Officials: **Carla Fountain, Natasha Camy, Karleena Tobin**
 Attendance: **633**

Start Time: **2019-01-26 00:05:01**
 End Time: **2019-01-26 01:51:41**
 Game Duration: **106**
 Conference Game;

Score	1st	2nd	3rd	4th	TOT
COC	6	10	18	19	53
DRX	17	17	23	19	76

Points from (This Period)	COC	DRX
In the Paint	8	6
Off Turns	8	18
2nd Chance	2	5
Fast Break	2	6
Bench	3	15

Official Box Score
Col. of Charleston vs Drexel
First Quarter Statistics Only
January 26, 2019 at Daskalakis Athletic Center (Sam Cozen Court) - Philadelphia



Col. of Charleston 6

No.	Player	S	Pts	FG	3FG	FT	OR	DR	TR	PF	A	TO	Blk	Stl	Min	+/-
02	HUFF, DARIEN		0	0-1	0-1	0-0	0	0	0	0	0	0	0	0	10	-11
15	EADY, ARYNN		2	1-2	0-0	0-0	0	2	2	1	0	0	0	0	7	-8
20	SULLIVAN, BRI		0	0-2	0-0	0-0	1	0	1	0	0	1	0	0	7	-10
23	COLLINS, TYLER		2	1-4	0-1	0-0	1	0	1	0	1	2	0	1	9	-11
25	FORD, DEJA		2	1-3	0-1	0-0	1	0	1	1	0	2	0	0	9	-11
00	TAYLOR, MADISON		0	0-0	0-0	0-0	0	0	0	0	0	0	1	0	1	0
01	BLANDING, SHAI		0	0-0	0-0	0-0	0	0	0	0	0	0	0	0	0	0
03	PERKINS, LATRICE		0	0-0	0-0	0-0	1	0	1	0	0	0	0	0	2	0
05	DORSEY, CAILIN		0	0-0	0-0	0-0	0	0	0	0	0	0	0	0	0	0
21	LARSON, BAILEIGH		0	0-0	0-0	0-0	0	0	0	0	0	0	0	0	2	0
42	BROUGHTON, ERICKA		0	0-1	0-0	0-0	0	0	0	1	0	0	0	0	3	-4
	TEAM						0	0	0	0		0				
	TOTALS		6	3-13	0-3	0-0	4	2	6	3	1	5	1	1	50	

Shooting By Period

Period	FG	FG%	3FG	3FG%	FT	FT%
1st Qtr	3-13	23%	0-3	00%	0-0	0%
2nd Qtr	2-10	20%	1-5	20%	5-6	83%
1st Half	3-13	23%	0-3	00%	0-0	0%
1st Half	5-23	22%	1-8	13%	5-6	83%
Game	18-51	35.3%	2-18	11.1%	15-17	88.2%

Drexel 17

No.	Player	S	Pts	FG	3FG	FT	OR	DR	TR	PF	A	TO	Blk	Stl	Min	+/-
01	WASHINGTON, KEISHANA		0	0-2	0-1	0-0	0	0	0	0	1	0	0	0	7	11
11	BROWN, AUBREE		5	2-4	1-2	0-0	1	0	1	0	1	0	0	0	6	6
12	NIHILL, HANNAH		0	0-0	0-0	0-0	0	1	1	0	2	0	0	0	6	5
23	GREENBERG, BAILEY		4	1-2	0-1	2-2	1	0	1	2	0	1	0	0	7	8
24	METZEL, NIKI		2	1-1	0-0	0-0	0	2	2	2	1	1	1	1	7	10
04	BACON, KAYLA		0	0-0	0-0	0-0	0	0	0	0	0	0	0	0	0	0
10	MAESSCHALCK, ELINE		0	0-1	0-1	0-0	0	0	0	0	0	0	0	0	0	0
20	CONNOLLY, KATE		0	0-0	0-0	0-0	0	0	0	0	0	0	0	0	0	0
22	HENDRIXSON, MAURA		6	2-2	2-2	0-0	0	1	1	0	0	0	0	0	7	6
30	LEONARD, MARIAH		0	0-2	0-0	0-0	3	0	3	0	0	2	0	2	5	4
34	KRACIKOVA, TEREZA		0	0-0	0-0	0-0	0	0	0	0	0	0	0	0	0	0
50	FERARIU, ANA		0	0-1	0-0	0-0	0	0	0	1	0	1	0	0	4	5
	TEAM						1	2	3	0		0				
	TOTALS		17	6-15	3-7	2-2	6	6	12	5	5	5	1	3	50	

Shooting By Period

Period	FG	FG%	3FG	3FG%	FT	FT%
1st Qtr	6-15	40%	3-7	43%	2-2	100%
2nd Qtr	6-11	55%	4-8	50%	1-4	25%
1st Half	6-15	40%	3-7	43%	2-2	100%
1st Half	12-26	46%	7-15	47%	3-6	50%
Game	28-52	53.8%	9-18	50.0%	11-17	64.7%

Game Notes:

Officials: **Carla Fountain, Natasha Camy, Karleena Tobin**
 Attendance: 633

Start Time: 2019-01-26 00:05:01
 End Time: 2019-01-26 01:51:41
 Game Duration: 106
 Conference Game;

Score	1st	2nd	3rd	4th	TOT
COC	6	10	18	19	53
DRX	17	17	23	19	76

Points from (This Period)	COC	DRX
In the Paint	6	2
Off Turns	4	4
2nd Chance	2	5
Fast Break	0	2
Bench	0	6

**Official Play-By-Play
Col. of Charleston vs Drexel
First Quarter**

January 26, 2019 at Daskalakis Athletic Center (Sam Cozen Court) - Philadelphia



Period 1

Starters:

Col. of Charleston: 15 EADY,ARYNN; 20 SULLIVAN,BRI; 23 COLLINS, TYLER; 25 FORD,DEJA; 2 HUFF,DARIEN;

Drexel: 11 BROWN,AUBREE; 12 NIHILL,HANNAH; 23 GREENBERG,BAILEY; 24 METZEL,NIKI; 1 WASHINGTON,KEISHANA;

Time	VISITORS: Col. of Charleston	Score	Margin	HOME: Drexel
09:45				MISSED 3PTR by WASHINGTON, KEISHANA
09:41	REBOUND (DEF) by EADY, ARYNN			
09:25	TURNOVER (BADPASS) by SULLIVAN, BRI			
09:25				STEAL by METZEL, NIKI
09:18		2-0	H 2	GOOD! LAYUP by BROWN, AUBREE [FB]
08:57	MISSED 3PTR by FORD, DEJA			
08:55				REBOUND (DEF) by TEAM
08:25		5-0	H 5	GOOD! 3PTR by BROWN, AUBREE
08:25				ASSIST by NIHILL, HANNAH
08:03	MISSED JUMPER by FORD, DEJA			
07:59	REBOUND (OFF) by SULLIVAN, BRI			
07:49				FOUL (PERSONAL) by GREENBERG, BAILEY
07:44	MISSED JUMPER by SULLIVAN, BRI			
07:40	REBOUND (OFF) by FORD, DEJA			
07:39	GOOD! LAYUP by FORD, DEJA	5-2	H 3	
07:18		7-2	H 5	GOOD! JUMPER by GREENBERG, BAILEY
07:18				ASSIST by NIHILL, HANNAH
07:10	FOUL (OFF) by FORD, DEJA			
07:10	TURNOVER (OFFENSIVE) by FORD, DEJA			
07:10				SUB OUT: WASHINGTON, KEISHANA
07:10				SUB IN: HENDRIXSON, MAURA
06:44				MISSED 3PTR by GREENBERG, BAILEY
06:40	REBOUND (DEF) by EADY, ARYNN			
06:33	MISSED LAYUP by EADY, ARYNN			
06:30				REBOUND (DEF) by METZEL, NIKI
06:21		9-2	H 7	GOOD! JUMPER by METZEL, NIKI
06:21				ASSIST by BROWN, AUBREE
06:01	MISSED 3PTR by COLLINS, TYLER			
05:58				REBOUND (DEF) by NIHILL, HANNAH
05:29				TURNOVER (TRAVEL) by GREENBERG, BAILEY
05:16				FOUL (PERSONAL) by METZEL, NIKI
05:16				SUB OUT: METZEL, NIKI
05:16				SUB IN: LEONARD, MARIAH
05:16	SUB OUT: SULLIVAN, BRI			
05:16	SUB IN: LARSON, BAILEIGH			
04:54	GOOD! LAYUP by EADY, ARYNN	9-4	H 5	
04:54	ASSIST by COLLINS, TYLER			
04:28				MISSED 3PTR by BROWN, AUBREE
04:24				REBOUND (OFF) by LEONARD, MARIAH
04:24				TURNOVER (TRAVEL) by LEONARD, MARIAH
04:24				
04:24				SUB OUT: NIHILL, HANNAH
04:24				SUB IN: WASHINGTON, KEISHANA
04:17	GOOD! LAYUP by COLLINS, TYLER	9-6	H 3	
03:56				MISSED JUMPER by LEONARD, MARIAH
03:53				REBOUND (OFF) by BROWN, AUBREE
03:52				MISSED LAYUP by BROWN, AUBREE
03:49				REBOUND (OFF) by LEONARD, MARIAH
03:48		12-6	H 6	GOOD! 3PTR by HENDRIXSON, MAURA
03:48				ASSIST by WASHINGTON, KEISHANA
03:36	TURNOVER (BADPASS) by COLLINS, TYLER			
03:36				SUB OUT: BROWN, AUBREE
03:36				SUB IN: FERARIU, ANA
03:22				MISSED LAYUP by LEONARD, MARIAH
03:19				REBOUND (OFF) by GREENBERG, BAILEY
03:19	FOUL (PERSONAL) by EADY, ARYNN			
03:19		13-6	H 7	GOOD! FT by GREENBERG, BAILEY
03:19	SUB OUT: LARSON, BAILEIGH			
03:19	SUB IN: BROUGHTON, ERICKA			
03:19		14-6	H 8	GOOD! FT by GREENBERG, BAILEY
02:55	MISSED 3PTR by HUFF, DARIEN			
02:55				REBOUND (DEF) by TEAM
02:41				TURNOVER (BADPASS) by LEONARD, MARIAH
02:41	STEAL by COLLINS, TYLER			
02:41				FOUL (PERSONAL) by GREENBERG, BAILEY
02:41	SUB OUT: EADY, ARYNN			
02:41	SUB IN: SULLIVAN, BRI			
02:41				SUB OUT: GREENBERG, BAILEY
02:41				SUB IN: METZEL, NIKI
02:11	MISSED LAYUP by BROUGHTON, ERICKA			

Time	VISITORS: Col. of Charleston	Score	Margin	HOME: Drexel
02:09				REBOUND (DEF) by METZEL, NIKI
01:59		17-6	H 11	GOOD! 3PTR by HENDRIXSON, MAURA
01:59				ASSIST by METZEL, NIKI
01:58	TIMEOUT 30SEC			
01:58	SUB OUT: FORD, DEJA			
01:58	SUB IN: PERKINS, LATRICE			
01:31	MISSED JUMPER by SULLIVAN, BRI			
01:28				REBOUND (DEF) by HENDRIXSON, MAURA
01:25				FOUL (OFF) by FERARIU, ANA
01:25				TURNOVER (OFFENSIVE) by FERARIU, ANA
01:10	MISSED JUMPER by COLLINS, TYLER			
01:10				BLOCK by METZEL, NIKI
01:01	REBOUND (OFF) by PERKINS, LATRICE			
00:55	MISSED JUMPER by COLLINS, TYLER			
00:50	REBOUND (OFF) by COLLINS, TYLER			
00:49	TURNOVER (LOSTBALL) by COLLINS, TYLER			
00:49				STEAL by LEONARD, MARIAH
00:49	FOUL (PERSONAL) by BROUGHTON, ERICKA			
00:49	SUB OUT: COLLINS, TYLER			
00:49	SUB IN: TAYLOR, MADISON			
00:28				FOUL (OFF) by METZEL, NIKI
00:28				TURNOVER (OFFENSIVE) by METZEL, NIKI
00:28	SUB OUT: PERKINS, LATRICE			
00:28	SUB IN: FORD, DEJA			
00:12	TURNOVER (BADPASS) by FORD, DEJA			
00:12				STEAL by LEONARD, MARIAH
00:08				MISSED LAYUP by WASHINGTON, KEISHANA
00:08	BLOCK by TAYLOR, MADISON			
00:08				REBOUND (OFF) by TEAM
00:08				SUB OUT: METZEL, NIKI
00:08				SUB IN: MAESSCHALCK, ELINE
00:06				MISSED JUMPER by FERARIU, ANA
00:00				REBOUND (OFF) by LEONARD, MARIAH
00:00				MISSED 3PTR by MAESSCHALCK, ELINE
00:00	REBOUND (DEF) by TEAM			

Col. of Charleston 6, Drexel 17

Points from (This Period)	COC	DRX
In the Paint	6	2
Off Turns	4	4
2nd Chance	2	5
Fast Break	0	2
Bench	0	6

Official Box Score
Col. of Charleston vs Drexel
Second Quarter Statistics Only
January 26, 2019 at Daskalakis Athletic Center (Sam Cozen Court) - Philadelphia



Col. of Charleston 10

No.	Player	S	Pts	FG	3FG	FT	OR	DR	TR	PF	A	TO	Blk	Stl	Min	+/-
02	HUFF, DARIEN		7	1-2	1-2	4-4	1	2	3	0	1	1	0	0	10	-7
15	EADY, ARYNN		0	0-0	0-0	0-0	0	0	0	1	0	1	0	0	2	-5
20	SULLIVAN, BRI		0	0-0	0-0	0-0	0	0	0	1	0	1	0	0	5	-6
23	COLLINS, TYLER		0	0-2	0-2	0-0	0	0	0	1	0	2	0	0	8	-6
25	FORD, DEJA		0	0-4	0-1	0-0	2	0	2	0	0	0	0	0	10	-7
00	TAYLOR, MADISON		0	0-0	0-0	0-0	0	1	1	0	1	0	0	2	6	1
01	BLANDING, SHAI		0	0-0	0-0	0-0	0	0	0	0	0	0	0	0	0	0
03	PERKINS, LATRICE		0	0-0	0-0	0-0	0	0	0	0	0	1	0	0	1	-3
05	DORSEY, CAILIN		0	0-0	0-0	0-0	0	0	0	0	0	0	0	0	0	0
21	LARSON, BAILEIGH		1	0-1	0-0	1-2	2	2	4	1	0	1	0	0	5	-1
42	BROUGHTON, ERICKA		2	1-1	0-0	0-0	0	0	0	1	0	2	0	0	3	-1
	TEAM						0	1	1	0		0				
TOTALS			10	2-10	1-5	5-6	5	6	11	5	2	9	0	2	50	

Shooting By Period

Period	FG	FG%	3FG	3FG%	FT	FT%
3rd Qtr	7-15	47%	1-6	17%	3-4	75%
4th Qtr	6-13	46%	0-4	00%	7-7	100%
2nd Half	2-10	20%	1-5	20%	5-6	83%
2nd Half	13-28	46%	1-10	10%	10-11	91%
Game	18-51	35.3%	2-18	11.1%	15-17	88.2%

Drexel 17

No.	Player	S	Pts	FG	3FG	FT	OR	DR	TR	PF	A	TO	Blk	Stl	Min	+/-
01	WASHINGTON, KEISHANA		0	0-3	0-2	0-0	0	0	0	1	0	1	0	0	4	-6
11	BROWN, AUBREE		5	2-3	1-2	0-0	0	1	1	0	1	1	0	0	9	11
12	NIHILL, HANNAH		3	1-1	1-1	0-2	0	0	0	0	4	0	0	0	9	10
23	GREENBERG, BAILEY		0	0-0	0-0	0-0	0	0	0	0	0	0	0	0	0	0
24	METZEL, NIKI		0	0-0	0-0	0-0	0	0	0	0	0	0	0	0	0	0
04	BACON, KAYLA		0	0-0	0-0	0-0	1	1	2	1	0	0	0	0	2	-3
10	MAESSCHALCK, ELINE		0	0-0	0-0	0-0	0	0	0	0	0	0	0	0	1	-5
20	CONNOLLY, KATE		0	0-0	0-0	0-0	0	1	1	0	1	0	0	0	5	7
22	HENDRIXSON, MAURA		6	2-3	2-3	0-0	0	0	0	2	0	0	0	0	7	10
30	LEONARD, MARIAH		3	1-1	0-0	1-2	0	0	0	1	0	1	0	0	7	1
34	KRACIKOVA, TEREZA		0	0-0	0-0	0-0	0	0	0	0	0	1	0	1	5	12
50	FERARIU, ANA		0	0-0	0-0	0-0	0	0	0	1	0	0	0	0	1	-2
	TEAM						0	0	0	0		0				
TOTALS			17	6-11	4-8	1-4	1	3	4	6	6	4	0	1	50	

Shooting By Period

Period	FG	FG%	3FG	3FG%	FT	FT%
3rd Qtr	9-12	75%	1-2	50%	4-6	67%
4th Qtr	7-14	50%	1-1	100%	4-5	80%
2nd Half	6-11	55%	4-8	50%	1-4	25%
2nd Half	16-26	62%	2-3	67%	8-11	73%
Game	28-52	53.8%	9-18	50.0%	11-17	64.7%

Game Notes:

Officials: **Carla Fountain, Natasha Camy, Karleena Tobin**
 Attendance: 633

Start Time: 2019-01-26 00:05:01
 End Time: 2019-01-26 01:51:41
 Game Duration: 106
 Conference Game;

Score	1st	2nd	3rd	4th	TOT
COC	6	10	18	19	53
DRX	17	17	23	19	76

Points from (This Period)	COC	DRX
In the Paint	2	4
Off Turns	4	14
2nd Chance	0	0
Fast Break	2	4
Bench	3	9

**Official Play-By-Play
Col. of Charleston vs Drexel
Second Quarter**

January 26, 2019 at Daskalakis Athletic Center (Sam Cozen Court) - Philadelphia



Period 2

Starters:

Col. of Charleston: 15 EADY, ARYNN; 20 SULLIVAN, BRI; 23 COLLINS, TYLER; 25 FORD, DEJA; 2 HUFF, DARIEN;

Drexel: 11 BROWN, AUBREE; 12 NIHILL, HANNAH; 23 GREENBERG, BAILEY; 24 METZEL, NIKI; 1 WASHINGTON, KEISHANA;

Time	VISITORS: Col. of Charleston	Score	Margin	HOME: Drexel
09:48	GOOD! 3PTR by HUFF, DARIEN	17-9	H 8	
09:48	ASSIST by TAYLOR, MADISON			
09:23				MISSED 3PTR by WASHINGTON, KEISHANA
09:19	REBOUND (DEF) by TAYLOR, MADISON			
09:19				FOUL (PERSONAL) by HENDRIXSON, MAURA
09:19				SUB OUT: MAESSCHALCK, ELINE
09:19				SUB IN: NIHILL, HANNAH
09:19				SUB OUT: WASHINGTON, KEISHANA
09:19				SUB IN: KRACIKOVA, TEREZA
09:02	GOOD! LAYUP by BROUGHTON, ERICKA	17-11	H 6	
09:02	ASSIST by HUFF, DARIEN			
08:33		20-11	H 9	GOOD! 3PTR by NIHILL, HANNAH
08:33				ASSIST by BROWN, AUBREE
08:15	TURNOVER (LOSTBALL) by BROUGHTON, ERICKA			
08:15				STEAL by KRACIKOVA, TEREZA
08:10		23-11	H 12	GOOD! 3PTR by BROWN, AUBREE [FB]
08:10				ASSIST by NIHILL, HANNAH
07:54	FOUL (OFF) by BROUGHTON, ERICKA			
07:54	TURNOVER (OFFENSIVE) by BROUGHTON, ERICKA			
07:54	SUB OUT: BROUGHTON, ERICKA			
07:54	SUB IN: EADY, ARYNN			
07:54	SUB OUT: TAYLOR, MADISON			
07:54	SUB IN: COLLINS, TYLER			
07:43		25-11	H 14	GOOD! LAYUP by LEONARD, MARIAH
07:43				ASSIST by NIHILL, HANNAH
07:28	MISSED LAYUP by FORD, DEJA			
07:24				REBOUND (DEF) by BROWN, AUBREE
07:02				MISSED 3PTR by HENDRIXSON, MAURA
06:58	REBOUND (DEF) by HUFF, DARIEN			
06:38				FOUL (PERSONAL) by LEONARD, MARIAH
06:38				SUB OUT: LEONARD, MARIAH
06:38				SUB IN: CONNOLLY, KATE
06:26	TURNOVER (BADPASS) by COLLINS, TYLER			
06:13		28-11	H 17	GOOD! 3PTR by HENDRIXSON, MAURA
06:13				ASSIST by CONNOLLY, KATE
05:55	FOUL (OFF) by EADY, ARYNN			
05:55	TURNOVER (OFFENSIVE) by EADY, ARYNN			
05:55	SUB OUT: EADY, ARYNN			
05:55	SUB IN: LARSON, BAILEIGH			
05:23				MISSED 3PTR by BROWN, AUBREE
05:20	REBOUND (DEF) by LARSON, BAILEIGH			
05:15	FOUL (OFF) by SULLIVAN, BRI			
05:15	TURNOVER (OFFENSIVE) by SULLIVAN, BRI			
05:15	SUB OUT: SULLIVAN, BRI			
05:15	SUB IN: PERKINS, LATRICE			
04:52				TURNOVER (TRAVEL) by KRACIKOVA, TEREZA
04:52				TIMEOUT 30SEC
04:43	TURNOVER (TRAVEL) by PERKINS, LATRICE			
04:17		31-11	H 20	GOOD! 3PTR by HENDRIXSON, MAURA
04:17				ASSIST by NIHILL, HANNAH
03:56	TURNOVER (BADPASS) by COLLINS, TYLER			
03:56				SUB OUT: KRACIKOVA, TEREZA
03:56				SUB IN: LEONARD, MARIAH
03:56	SUB OUT: PERKINS, LATRICE			
03:56	SUB IN: TAYLOR, MADISON			
03:33	FOUL (PERSONAL) by LARSON, BAILEIGH			
03:32		32-11	H 21	GOOD! FT by LEONARD, MARIAH [FB]
03:32				MISSED FT by LEONARD, MARIAH
03:31	REBOUND (DEF) by HUFF, DARIEN			
03:21				FOUL (PERSONAL) by HENDRIXSON, MAURA
03:21				SUB OUT: HENDRIXSON, MAURA
03:21				SUB IN: WASHINGTON, KEISHANA
03:21	MISSED 3PTR by FORD, DEJA			
03:17	REBOUND (OFF) by HUFF, DARIEN			
03:07	TURNOVER (BADPASS) by HUFF, DARIEN			
02:50		34-11	H 23	GOOD! LAYUP by BROWN, AUBREE
02:50				ASSIST by NIHILL, HANNAH
02:34	MISSED 3PTR by HUFF, DARIEN			
02:31	REBOUND (OFF) by LARSON, BAILEIGH			
02:30	MISSED LAYUP by LARSON, BAILEIGH			

Time	VISITORS: Col. of Charleston	Score	Margin	HOME: Drexel
02:27	REBOUND (OFF) by FORD, DEJA			
02:26	MISSED LAYUP by FORD, DEJA			
02:24	REBOUND (OFF) by FORD, DEJA			
02:23	MISSED LAYUP by FORD, DEJA			
02:21	REBOUND (OFF) by LARSON, BAILEIGH			
02:20	MISSED 3PTR by COLLINS, TYLER			
02:17				REBOUND (DEF) by CONNOLLY, KATE
02:12				SUB OUT: BROWN, AUBREE
02:12				SUB IN: FERARIU, ANA
02:08				TURNOVER (BADPASS) by LEONARD, MARIAH
02:08	STEAL by TAYLOR, MADISON			
02:05				FOUL (PERSONAL) by FERARIU, ANA
02:05	GOOD! FT by HUFF, DARIEN [FB]	34-12	H 22	
02:05	GOOD! FT by HUFF, DARIEN [FB]	34-13	H 21	
01:38	FOUL (PERSONAL) by COLLINS, TYLER			
01:38				MISSED FT by NIHILL, HANNAH
01:38				REBOUND (OFF) by TEAM
01:38				SUB OUT: CONNOLLY, KATE
01:38				SUB IN: BACON, KAYLA
01:38				SUB OUT: FERARIU, ANA
01:38				SUB IN: MAESSCHALCK, ELINE
01:38				MISSED FT by NIHILL, HANNAH
01:33	REBOUND (DEF) by LARSON, BAILEIGH			
01:24				FOUL (PERSONAL) by BACON, KAYLA
01:24	GOOD! FT by LARSON, BAILEIGH	34-14	H 20	
01:22	MISSED FT by LARSON, BAILEIGH			
01:20				REBOUND (DEF) by BACON, KAYLA
01:13				TURNOVER (BADPASS) by WASHINGTON, KEISHANA
01:13	STEAL by TAYLOR, MADISON			
01:01				FOUL (PERSONAL) by WASHINGTON, KEISHANA
01:01	GOOD! FT by HUFF, DARIEN	34-15	H 19	
01:01				SUB OUT: MAESSCHALCK, ELINE
01:01				SUB IN: BROWN, AUBREE
01:01	GOOD! FT by HUFF, DARIEN	34-16	H 18	
00:54				TURNOVER (BADPASS) by BROWN, AUBREE
00:35	TURNOVER (TRAVEL) by LARSON, BAILEIGH			
00:35	SUB OUT: LARSON, BAILEIGH			
00:35	SUB IN: BROUGHTON, ERICKA			
00:11				MISSED JUMPER by WASHINGTON, KEISHANA
00:07				REBOUND (OFF) by BACON, KAYLA
00:06				MISSED 3PTR by WASHINGTON, KEISHANA
00:04	REBOUND (DEF) by TEAM			
00:00	MISSED 3PTR by COLLINS, TYLER			
00:00				REBOUND (DEF) by TEAM

Col. of Charleston 16, Drexel 34

Points from (This Period)	COC	DRX
In the Paint	2	4
Off Turns	4	14
2nd Chance	0	0
Fast Break	2	4
Bench	3	9

Official Box Score
Col. of Charleston vs Drexel
Second Half Statistics Only
January 26, 2019 at Daskalakis Athletic Center (Sam Cozen Court) - Philadelphia



Col. of Charleston 37

No.	Player	S	Pts	FG	3FG	FT	OR	DR	TR	PF	A	TO	Blk	Stl	Min	+/-
00	TAYLOR, MADISON		1	0-2	0-1	1-2	0	1	1	1	1	0	0	1	13	-1
15	EADY, ARYNN		8	2-4	0-0	4-4	2	3	5	2	0	2	1	0	9	-1
20	SULLIVAN, BRI		0	0-0	0-0	0-0	0	0	0	0	0	0	0	0	1	-4
21	LARSON, BAILEIGH		0	0-0	0-0	0-0	0	0	0	0	0	0	0	0	0	0
23	COLLINS, TYLER		2	1-1	0-0	0-0	1	1	2	2	2	0	0	0	11	1
25	FORD, DEJA		9	4-11	0-6	1-1	1	1	2	3	4	1	0	0	18	-5
42	BROUGHTON, ERICKA		10	3-3	0-0	4-4	4	1	5	1	0	1	0	0	11	-4
01	BLANDING, SHAI		2	1-1	0-0	0-0	0	0	0	0	0	1	0	0	5	-4
02	HUFF, DARIEN		5	2-4	1-1	0-0	0	0	0	0	2	0	0	1	18	-5
03	PERKINS, LATRICE		0	0-0	0-0	0-0	0	0	0	0	0	1	0	1	2	0
05	DORSEY, CAILIN		0	0-2	0-2	0-0	1	0	1	1	1	0	0	0	11	-2
	TEAM		0	0-0	0-0	0-0	0	0	0	0	0	0	0	0	0	0
TOTALS			37	13-28	1-10	10-11	9	7	16	10	10	6	1	3	99	

Shooting By Period

Period	FG	FG%	3FG	3FG%	FT	FT%
3rd Qtr	7-15	47%	1-6	17%	3-4	75%
4th Qtr	6-13	46%	0-4	00%	7-7	100%
2nd Half	13-28	46%	1-10	10%	10-11	91%
Game	18-51	35.3%	2-18	11.1%	15-17	88.2%

Last FG Half: COC 4th-02:31

Drexel 42

No.	Player	S	Pts	FG	3FG	FT	OR	DR	TR	PF	A	TO	Blk	Stl	Min	+/-
10	MAESSCHALCK, ELINE		0	0-0	0-0	0-0	0	0	0	0	0	0	0	0	1	0
11	BROWN, AUBREE		4	1-3	0-1	2-4	0	1	1	2	2	2	0	0	11	8
12	NIHILL, HANNAH		7	3-3	1-1	0-0	0	0	0	0	2	1	0	1	11	8
20	CONNOLLY, KATE		2	1-1	0-0	0-1	0	0	0	0	0	0	0	0	5	-2
22	HENDRIXSON, MAURA		3	1-2	1-1	0-0	0	0	0	0	1	0	1	0	15	8
23	GREENBERG, BAILEY		14	6-9	0-0	2-2	1	1	2	1	3	0	0	2	17	7
24	METZEL, NIKI		2	1-2	0-0	0-0	1	0	1	3	0	1	0	1	6	-3
30	LEONARD, MARIAH		6	1-2	0-0	4-4	0	0	0	0	0	0	0	0	10	2
34	KRACIKOVA, TEREZA		0	0-0	0-0	0-0	0	0	0	1	0	0	0	0	0	0
50	FERARIU, ANA		4	2-2	0-0	0-0	0	1	1	0	1	0	0	0	9	1
01	WASHINGTON, KEISHANA		0	0-2	0-0	0-0	1	0	1	1	3	0	1	0	11	-3
04	BACON, KAYLA		0	0-0	0-0	0-0	0	1	1	1	0	0	0	0	3	-1
	TEAM		0	0-0	0-0	0-0	1	2	3	0	0	0	0	0	0	0
TOTALS			42	16-26	2-3	8-11	4	6	10	9	12	4	2	4	99	

Shooting By Period

Period	FG	FG%	3FG	3FG%	FT	FT%
3rd Qtr	9-12	75%	1-2	50%	4-6	67%
4th Qtr	7-14	50%	1-1	100%	4-5	80%
2nd Half	16-26	62%	2-3	67%	8-11	73%
Game	28-52	53.8%	9-18	50.0%	11-17	64.7%

Last FG Half: DRX 4th-00:25

Game Notes:

Officials: Carla Fountain, Natasha Camy, Karleena Tobin
 Attendance: 633

Start Time: 2019-01-26 00:05:01
 End Time: 2019-01-26 01:51:41
 Game Duration: 106
 Conference Game;

Score	1st	2nd	3rd	4th	TOT
COC	6	10	18	19	53
DRX	17	17	23	19	76

Points from (This Period)	COC	DRX
In the Paint	22	26
Off Turns	4	6
2nd Chance	9	7
Fast Break	3	2
Bench	13	15

Official Box Score
Col. of Charleston vs Drexel
Third Quarter Statistics Only
January 26, 2019 at Daskalakis Athletic Center (Sam Cozen Court) - Philadelphia



Col. of Charleston 37

No.	Player	S	Pts	FG	3FG	FT	OR	DR	TR	PF	A	TO	Blk	Stl	Min	+/-
02	HUFF, DARIEN		3	1-3	1-1	0-0	0	0	0	0	2	0	0	0	10	-5
15	EADY, ARYNN		2	1-2	0-0	0-0	0	1	1	2	0	1	0	0	3	-6
20	SULLIVAN, BRI		0	0-0	0-0	0-0	0	0	0	0	0	0	0	0	1	-4
23	COLLINS, TYLER		0	0-0	0-0	0-0	0	1	1	1	1	0	0	0	5	-2
25	FORD, DEJA		4	2-6	0-4	0-0	0	0	0	2	3	1	0	0	10	-5
00	TAYLOR, MADISON		1	0-0	0-0	1-2	0	0	0	0	0	0	0	1	4	-2
01	BLANDING, SHAI		0	0-0	0-0	0-0	0	0	0	0	0	0	0	0	1	-1
03	PERKINS, LATRICE		0	0-0	0-0	0-0	0	0	0	0	0	0	0	0	0	0
05	DORSEY, CAILIN		0	0-1	0-1	0-0	1	0	1	0	1	0	0	0	9	-1
21	LARSON, BAILEIGH		0	0-0	0-0	0-0	0	0	0	0	0	0	0	0	0	0
42	BROUGHTON, ERICKA		8	3-3	0-0	2-2	4	0	4	1	0	1	0	0	7	1
	TEAM						0	0	0	0		0				
TOTALS			18	7-15	1-6	3-4	5	2	7	6	7	3	0	1	50	

Shooting By Period

Period	FG	FG%	3FG	3FG%	FT	FT%
2nd Half	0-0	0%	0-0	0%	0-0	0%
Game	18-51	35.3%	2-18	11.1%	15-17	88.2%

Drexel 42

No.	Player	S	Pts	FG	3FG	FT	OR	DR	TR	PF	A	TO	Blk	Stl	Min	+/-
01	WASHINGTON, KEISHANA		0	0-0	0-0	0-0	0	0	0	0	2	0	0	0	4	-1
11	BROWN, AUBREE		2	0-1	0-1	2-4	0	0	0	1	1	2	0	0	6	6
12	NIHILL, HANNAH		2	1-1	0-0	0-0	0	0	0	0	0	0	0	0	6	6
23	GREENBERG, BAILEY		8	3-4	0-0	2-2	1	1	2	0	3	0	0	2	10	5
24	METZEL, NIKI		2	1-1	0-0	0-0	0	0	0	2	0	0	0	0	4	-1
04	BACON, KAYLA		0	0-0	0-0	0-0	0	0	0	0	0	0	0	0	0	0
10	MAESSCHALCK, ELINE		0	0-0	0-0	0-0	0	0	0	0	0	0	0	0	0	0
20	CONNOLLY, KATE		0	0-0	0-0	0-0	0	0	0	0	0	0	0	0	0	0
22	HENDRIXSON, MAURA		3	1-2	1-1	0-0	0	0	0	0	0	0	0	0	8	7
30	LEONARD, MARIAH		2	1-1	0-0	0-0	0	0	0	0	0	0	0	0	5	4
34	KRACIKOVA, TEREZA		0	0-0	0-0	0-0	0	0	0	1	0	0	0	0	0	0
50	FERARIU, ANA		4	2-2	0-0	0-0	0	0	0	0	1	0	0	0	7	-1
	TEAM						0	2	2	0		0				
TOTALS			23	9-12	1-2	4-6	1	3	4	4	7	2	0	2	50	

Shooting By Period

Period	FG	FG%	3FG	3FG%	FT	FT%
2nd Half	0-0	0%	0-0	0%	0-0	0%
Game	28-52	53.8%	9-18	50.0%	11-17	64.7%

Game Notes:

Officials: **Carla Fountain, Natasha Camy, Karleena Tobin**
 Attendance: **633**

Start Time: **2019-01-26 00:05:01**
 End Time: **2019-01-26 01:51:41**
 Game Duration: **106**
 Conference Game;

Score	1st	2nd	3rd	4th	TOT
COC	6	10	18	19	53
DRX	17	17	23	19	76

Points from (This Period)	COC	DRX
In the Paint	10	14
Off Turns	2	4
2nd Chance	4	2
Fast Break	1	0
Bench	9	9

**Official Play-By-Play
Col. of Charleston vs Drexel
Third Quarter**

January 26, 2019 at Daskalaskis Athletic Center (Sam Cozen Court) - Philadelphia



Period 3

Starters:

Col. of Charleston: 15 EADY, ARYNN; 20 SULLIVAN, BRI; 23 COLLINS, TYLER; 25 FORD, DEJA; 2 HUFF, DARIEN;

Drexel: 11 BROWN, AUBREE; 12 NIHILL, HANNAH; 23 GREENBERG, BAILEY; 24 METZEL, NIKI; 1 WASHINGTON, KEISHANA;

Time	VISITORS: Col. of Charleston	Score	Margin	HOME: Drexel
09:54		36-16	H 20	GOOD! LAYUP by GREENBERG, BAILEY
09:54				ASSIST by BROWN, AUBREE
09:36	FOUL (OFF) by EADY, ARYNN			
09:36	TURNOVER (OFFENSIVE) by EADY, ARYNN			
09:03		38-16	H 22	GOOD! JUMPER by LEONARD, MARIAH
09:03				ASSIST by GREENBERG, BAILEY
08:46	SUB OUT: SULLIVAN, BRI			
08:46	SUB IN: DORSEY, CAILIN			
08:32	MISSED 3PTR by FORD, DEJA			
08:30				REBOUND (DEF) by TEAM
08:12		41-16	H 25	GOOD! 3PTR by HENDRIXSON, MAURA
08:12				ASSIST by GREENBERG, BAILEY
07:54	MISSED JUMPER by EADY, ARYNN			
07:50	REBOUND (OFF) by DORSEY, CAILIN			
07:45	MISSED 3PTR by DORSEY, CAILIN			
07:42				REBOUND (DEF) by GREENBERG, BAILEY
07:34				MISSED 3PTR by BROWN, AUBREE
07:30	REBOUND (DEF) by EADY, ARYNN			
07:19	GOOD! JUMPER by EADY, ARYNN	41-18	H 23	
07:19	ASSIST by HUFF, DARIEN			
06:51	FOUL (PERSONAL) by EADY, ARYNN			
06:51		42-18	H 24	GOOD! FT by GREENBERG, BAILEY
06:51				SUB OUT: BROWN, AUBREE
06:51				SUB IN: WASHINGTON, KEISHANA
06:51				SUB OUT: NIHILL, HANNAH
06:51				SUB IN: METZEL, NIKI
06:51				SUB OUT: LEONARD, MARIAH
06:51				SUB IN: FERARIU, ANA
06:51	SUB OUT: EADY, ARYNN			
06:51	SUB IN: BROUGHTON, ERICKA			
06:51		43-18	H 25	GOOD! FT by GREENBERG, BAILEY
06:27	MISSED 3PTR by FORD, DEJA			
06:24	REBOUND (OFF) by BROUGHTON, ERICKA			
06:16	MISSED LAYUP by HUFF, DARIEN			
06:13	REBOUND (OFF) by BROUGHTON, ERICKA			
06:02	GOOD! LAYUP by FORD, DEJA	43-20	H 23	
06:02	ASSIST by DORSEY, CAILIN			
05:46	FOUL (PERSONAL) by COLLINS, TYLER			
05:44		45-20	H 25	GOOD! LAYUP by METZEL, NIKI
05:44				ASSIST by WASHINGTON, KEISHANA
05:30	GOOD! 3PTR by HUFF, DARIEN	45-23	H 22	
05:30	ASSIST by COLLINS, TYLER			
05:09				MISSED LAYUP by GREENBERG, BAILEY
05:06	REBOUND (DEF) by COLLINS, TYLER			
04:57	GOOD! JUMPER by FORD, DEJA	45-25	H 20	
04:57	ASSIST by HUFF, DARIEN			
04:36	FOUL (PERSONAL) by BROUGHTON, ERICKA			
04:36				
04:36	SUB OUT: COLLINS, TYLER			
04:36	SUB IN: TAYLOR, MADISON			
04:29		47-25	H 22	GOOD! LAYUP by FERARIU, ANA
04:18				FOUL (PERSONAL) by METZEL, NIKI
04:15	GOOD! JUMPER by BROUGHTON, ERICKA	47-27	H 20	
04:15	ASSIST by FORD, DEJA			
03:49				MISSED LAYUP by HENDRIXSON, MAURA
03:46				REBOUND (OFF) by GREENBERG, BAILEY
03:45		49-27	H 22	GOOD! LAYUP by GREENBERG, BAILEY
03:20	TURNOVER (BADPASS) by FORD, DEJA			
03:20				STEAL by GREENBERG, BAILEY
03:03		51-27	H 24	GOOD! LAYUP by FERARIU, ANA
03:03				ASSIST by WASHINGTON, KEISHANA
02:44	MISSED 3PTR by FORD, DEJA			
02:42	REBOUND (OFF) by BROUGHTON, ERICKA			
02:42				FOUL (PERSONAL) by METZEL, NIKI
02:42	GOOD! FT by BROUGHTON, ERICKA	51-28	H 23	
02:42				SUB OUT: WASHINGTON, KEISHANA
02:42				SUB IN: BROWN, AUBREE
02:42				SUB OUT: METZEL, NIKI
02:42				SUB IN: NIHILL, HANNAH
02:42				SUB OUT: HENDRIXSON, MAURA

Time	VISITORS: Col. of Charleston	Score	Margin	HOME: Drexel
02:42				SUB IN: LEONARD, MARIAH
02:42	SUB OUT: TAYLOR, MADISON			
02:42	SUB IN: BLANDING, SHAI			
02:42	GOOD! FT by BROUGHTON, ERICKA	51-29	H 22	
02:15				FOUL (OFF) by BROWN, AUBREE
02:15				TURNOVER (OFFENSIVE) by BROWN, AUBREE
02:15	SUB OUT: BLANDING, SHAI			
02:15	SUB IN: TAYLOR, MADISON			
01:59	GOOD! JUMPER by BROUGHTON, ERICKA [PNT]	51-31	H 20	
01:59	ASSIST by FORD, DEJA			
01:41	FOUL (PERSONAL) by FORD, DEJA			
01:41				MISSED FT by BROWN, AUBREE
01:41				REBOUND (OFF) by TEAM
01:41		52-31	H 21	GOOD! FT by BROWN, AUBREE
01:28	GOOD! LAYUP by BROUGHTON, ERICKA	52-33	H 19	
01:28	ASSIST by FORD, DEJA			
01:00		54-33	H 21	GOOD! LAYUP by NIHILL, HANNAH
01:00				ASSIST by GREENBERG, BAILEY
00:44	MISSED 3PTR by FORD, DEJA			
00:41	REBOUND (OFF) by BROUGHTON, ERICKA			
00:40	TURNOVER (BADPASS) by BROUGHTON, ERICKA			
00:40				STEAL by GREENBERG, BAILEY
00:33				TURNOVER (BADPASS) by BROWN, AUBREE
00:33	STEAL by TAYLOR, MADISON			
00:28	MISSED LAYUP by HUFF, DARIEN			
00:28				REBOUND (DEF) by TEAM
00:28	FOUL (PERSONAL) by FORD, DEJA			
00:28				MISSED FT by BROWN, AUBREE
00:28				REBOUND (OFF) by TEAM
00:28				SUB OUT: LEONARD, MARIAH
00:28				SUB IN: KRACIKOVA, TEREZA
00:28		55-33	H 22	GOOD! FT by BROWN, AUBREE
00:21				FOUL (PERSONAL) by KRACIKOVA, TEREZA
00:21	MISSED FT by TAYLOR, MADISON			
00:21	REBOUND (OFF) by TEAM			
00:21	GOOD! FT by TAYLOR, MADISON [FB]	55-34	H 21	
00:21	SUB OUT: TAYLOR, MADISON			
00:21	SUB IN: BLANDING, SHAI			
00:21				SUB OUT: KRACIKOVA, TEREZA
00:21				SUB IN: HENDRIXSON, MAURA
00:02		57-34	H 23	GOOD! JUMPER by GREENBERG, BAILEY [PNT]
00:02				ASSIST by FERARIU, ANA

Col. of Charleston 34, Drexel 57

Points from (This Period)	COC	DRX
In the Paint	10	14
Off Turns	2	4
2nd Chance	4	2
Fast Break	1	0
Bench	9	9

Official Box Score
Col. of Charleston vs Drexel
Fourth Quarter Statistics Only
January 26, 2019 at Daskalakis Athletic Center (Sam Cozen Court) - Philadelphia



Col. of Charleston 19

No.	Player	S	Pts	FG	3FG	FT	OR	DR	TR	PF	A	TO	Blk	Stl	Min	+/-
02	HUFF, DARIEN		2	1-1	0-0	0-0	0	0	0	0	0	0	0	1	8	0
15	EADY, ARYNN		6	1-2	0-0	4-4	2	2	4	0	0	1	1	0	6	5
20	SULLIVAN, BRI		0	0-0	0-0	0-0	0	0	0	0	0	0	0	0	0	0
23	COLLINS, TYLER		2	1-1	0-0	0-0	1	0	1	1	1	0	0	0	6	3
25	FORD, DEJA		5	2-5	0-2	1-1	1	1	2	1	1	0	0	0	8	0
00	TAYLOR, MADISON		0	0-2	0-1	0-0	0	1	1	1	1	0	0	0	9	1
01	BLANDING, SHAI		2	1-1	0-0	0-0	0	0	0	0	0	1	0	0	4	-3
03	PERKINS, LATRICE		0	0-0	0-0	0-0	0	0	0	0	0	1	0	1	2	0
05	DORSEY, CAILIN		0	0-1	0-1	0-0	0	0	0	1	0	0	0	0	2	-1
21	LARSON, BAILEIGH		0	0-0	0-0	0-0	0	0	0	0	0	0	0	0	0	0
42	BROUGHTON, ERICKA		2	0-0	0-0	2-2	0	1	1	0	0	0	0	0	4	-5
	TEAM						0	0	0	0		0				
TOTALS			19	6-13	0-4	7-7	4	5	9	4	3	3	1	2	49	

Shooting By Period

Period	FG	FG%	3FG	3FG%	FT	FT%
Game	18-51	35.3%	2-18	11.1%	15-17	88.2%

Drexel 19

No.	Player	S	Pts	FG	3FG	FT	OR	DR	TR	PF	A	TO	Blk	Stl	Min	+/-
01	WASHINGTON, KEISHANA		0	0-2	0-0	0-0	1	0	1	1	1	0	1	0	7	-2
11	BROWN, AUBREE		2	1-2	0-0	0-0	0	1	1	1	1	0	0	0	5	2
12	NIHILL, HANNAH		5	2-2	1-1	0-0	0	0	0	0	2	1	0	1	5	2
23	GREENBERG, BAILEY		6	3-5	0-0	0-0	0	0	0	1	0	0	0	0	7	2
24	METZEL, NIKI		0	0-1	0-0	0-0	1	0	1	1	0	1	0	1	2	-2
04	BACON, KAYLA		0	0-0	0-0	0-0	0	1	1	1	0	0	0	0	3	-1
10	MAESSCHALCK, ELINE		0	0-0	0-0	0-0	0	0	0	0	0	0	0	0	1	0
20	CONNOLLY, KATE		2	1-1	0-0	0-1	0	0	0	0	0	0	0	0	5	-2
22	HENDRIXSON, MAURA		0	0-0	0-0	0-0	0	0	0	0	1	0	1	0	7	1
30	LEONARD, MARIAH		4	0-1	0-0	4-4	0	0	0	0	0	0	0	0	5	-2
34	KRACIKOVA, TEREZA		0	0-0	0-0	0-0	0	0	0	0	0	0	0	0	0	0
50	FERARIU, ANA		0	0-0	0-0	0-0	0	1	1	0	0	0	0	0	2	2
	TEAM						1	0	1	0		0				
TOTALS			19	7-14	1-1	4-5	3	3	6	5	5	2	2	2	49	

Shooting By Period

Period	FG	FG%	3FG	3FG%	FT	FT%
Game	28-52	53.8%	9-18	50.0%	11-17	64.7%

Game Notes:

Officials: **Carla Fountain, Natasha Camy, Karleena Tobin**
 Attendance: 633

Start Time: 2019-01-26 00:05:01
 End Time: 2019-01-26 01:51:41
 Game Duration: 106
 Conference Game;

Score	1st	2nd	3rd	4th	TOT
COC	6	10	18	19	53
DRX	17	17	23	19	76

Points from (This Period)	COC	DRX
In the Paint	12	12
Off Turns	2	2
2nd Chance	5	5
Fast Break	2	2
Bench	4	6

**Official Play-By-Play
Col. of Charleston vs Drexel
Fourth Quarter**

January 26, 2019 at Daskalakis Athletic Center (Sam Cozen Court) - Philadelphia



Period 4

Starters:

Col. of Charleston: 15 EADY,ARYNN; 20 SULLIVAN,BRI; 23 COLLINS, TYLER; 25 FORD,DEJA; 2 HUFF,DARIEN;

Drexel: 11 BROWN,AUBREE; 12 NIHILL,HANNAH; 23 GREENBERG,BAILEY; 24 METZEL,NIKI; 1 WASHINGTON,KEISHANA;

Time	VISITORS: Col. of Charleston	Score	Margin	HOME: Drexel
09:40		59-34	H 25	GOOD! LAYUP by NIHILL, HANNAH
09:22				FOUL (PERSONAL) by BROWN, AUBREE
09:22	GOOD! FT by BROUGHTON, ERICKA	59-35	H 24	
09:22	SUB OUT: DORSEY, CAILIN			
09:22	SUB IN: TAYLOR, MADISON			
09:22	GOOD! FT by BROUGHTON, ERICKA	59-36	H 23	
08:54				MISSED LAYUP by GREENBERG, BAILEY
08:51	REBOUND (DEF) by FORD, DEJA			
08:45	GOOD! LAYUP by COLLINS, TYLER [FB]	59-38	H 21	
08:45	ASSIST by FORD, DEJA			
08:26		61-38	H 23	GOOD! LAYUP by BROWN, AUBREE
08:26				ASSIST by NIHILL, HANNAH
08:11	MISSED 3PTR by FORD, DEJA			
08:07				REBOUND (DEF) by FERARIU, ANA
07:47		63-38	H 25	GOOD! JUMPER by GREENBERG, BAILEY
07:47				ASSIST by HENDRIXSON, MAURA
07:43	TIMEOUT 30SEC			
07:43				SUB OUT: FERARIU, ANA
07:43				SUB IN: WASHINGTON, KEISHANA
07:43	SUB OUT: BROUGHTON, ERICKA			
07:43	SUB IN: EADY, ARYNN			
07:29	MISSED LAYUP by FORD, DEJA			
07:29				BLOCK by WASHINGTON, KEISHANA
07:29	REBOUND (OFF) by FORD, DEJA			
07:29	GOOD! LAYUP by FORD, DEJA	63-40	H 23	
07:29				FOUL (PERSONAL) by WASHINGTON, KEISHANA
07:29	GOOD! FT by FORD, DEJA	63-41	H 22	
07:29	SUB OUT: EADY, ARYNN			
07:29	SUB IN: BLANDING, SHAI			
07:29	SUB OUT: COLLINS, TYLER			
07:29	SUB IN: BROUGHTON, ERICKA			
07:17				MISSED LAYUP by GREENBERG, BAILEY
07:10	REBOUND (DEF) by BROUGHTON, ERICKA			
07:05	TURNOVER (LOSTBALL) by BLANDING, SHAI			
07:05				STEAL by NIHILL, HANNAH
07:00		65-41	H 24	GOOD! LAYUP by GREENBERG, BAILEY [FB]
07:00				ASSIST by NIHILL, HANNAH
06:39	GOOD! LAYUP by BLANDING, SHAI	65-43	H 22	
06:27				MISSED LAYUP by BROWN, AUBREE
06:24				REBOUND (OFF) by WASHINGTON, KEISHANA
06:01		68-43	H 25	GOOD! 3PTR by NIHILL, HANNAH
06:01				ASSIST by BROWN, AUBREE
05:38	MISSED 3PTR by FORD, DEJA			
05:34				REBOUND (DEF) by BROWN, AUBREE
05:34	SUB OUT: BLANDING, SHAI			
05:34	SUB IN: EADY, ARYNN			
05:34	SUB OUT: BROUGHTON, ERICKA			
05:34	SUB IN: COLLINS, TYLER			
05:11				TURNOVER (BADPASS) by NIHILL, HANNAH
05:11	STEAL by HUFF, DARIEN			
05:06	MISSED LAYUP by TAYLOR, MADISON			
05:06				BLOCK by HENDRIXSON, MAURA
05:01	REBOUND (OFF) by EADY, ARYNN			
04:59	MISSED 3PTR by TAYLOR, MADISON			
04:56	REBOUND (OFF) by EADY, ARYNN			
04:55	MISSED JUMPER by EADY, ARYNN			
04:52	REBOUND (OFF) by COLLINS, TYLER			
04:52				SUB OUT: BROWN, AUBREE
04:52				SUB IN: LEONARD, MARIAH
04:52				SUB OUT: NIHILL, HANNAH
04:52				SUB IN: CONNOLLY, KATE
04:43	GOOD! JUMPER by HUFF, DARIEN	68-45	H 23	
04:43	ASSIST by COLLINS, TYLER			
04:23	FOUL (PERSONAL) by FORD, DEJA			
04:23		69-45	H 24	GOOD! FT by LEONARD, MARIAH
04:23		70-45	H 25	GOOD! FT by LEONARD, MARIAH
04:12				FOUL (PERSONAL) by GREENBERG, BAILEY
04:12	GOOD! FT by EADY, ARYNN	70-46	H 24	
04:12	SUB OUT: COLLINS, TYLER			

Time	VISITORS: Col. of Charleston	Score	Margin	HOME: Drexel
04:12	SUB IN: BLANDING, SHAI			
04:12	GOOD! FT by EADY, ARYNN	70-47	H 23	
03:46				MISSED LAYUP by LEONARD, MARIAH
03:45				REBOUND (OFF) by TEAM
03:43		72-47	H 25	GOOD! JUMPER by GREENBERG, BAILEY [PNT]
03:43				ASSIST by WASHINGTON, KEISHANA
03:21	GOOD! LAYUP by FORD, DEJA	72-49	H 23	
03:21	ASSIST by TAYLOR, MADISON			
02:55	FOUL (PERSONAL) by TAYLOR, MADISON			
02:55		73-49	H 24	GOOD! FT by LEONARD, MARIAH
02:55				SUB OUT: HENDRIXSON, MAURA
02:55				SUB IN: BACON, KAYLA
02:55	SUB OUT: BLANDING, SHAI			
02:55	SUB IN: COLLINS, TYLER			
02:55		74-49	H 25	GOOD! FT by LEONARD, MARIAH
02:55				SUB OUT: GREENBERG, BAILEY
02:55				SUB IN: METZEL, NIKI
02:31	GOOD! LAYUP by EADY, ARYNN	74-51	H 23	
02:05				TIMEOUT 30SEC
02:02	FOUL (PERSONAL) by COLLINS, TYLER			
02:02	SUB OUT: HUFF, DARIEN			
02:02	SUB IN: DORSEY, CAILIN			
02:02	SUB OUT: FORD, DEJA			
02:02	SUB IN: PERKINS, LATRICE			
01:53				MISSED LAYUP by METZEL, NIKI
01:53	BLOCK by EADY, ARYNN			
01:49				REBOUND (OFF) by METZEL, NIKI
01:49				TURNOVER (BADPASS) by METZEL, NIKI
01:49	STEAL by PERKINS, LATRICE			
01:49				FOUL (PERSONAL) by BACON, KAYLA
01:41	TURNOVER (BADPASS) by EADY, ARYNN			
01:41				STEAL by METZEL, NIKI
01:21				MISSED JUMPER by WASHINGTON, KEISHANA
01:18	REBOUND (DEF) by EADY, ARYNN			
01:17	TURNOVER (TRAVEL) by PERKINS, LATRICE			
01:01				MISSED JUMPER by WASHINGTON, KEISHANA
00:56	REBOUND (DEF) by TAYLOR, MADISON			
00:48				FOUL (PERSONAL) by METZEL, NIKI
00:48				SUB OUT: METZEL, NIKI
00:48				SUB IN: MAESSCHALCK, ELINE
00:48	SUB OUT: COLLINS, TYLER			
00:48	SUB IN: BLANDING, SHAI			
00:48	GOOD! FT by EADY, ARYNN	74-52	H 22	
00:48	GOOD! FT by EADY, ARYNN	74-53	H 21	
00:25		76-53	H 23	GOOD! LAYUP by CONNOLLY, KATE
00:25	FOUL (PERSONAL) by DORSEY, CAILIN			
00:25				MISSED FT by CONNOLLY, KATE
00:23	REBOUND (DEF) by EADY, ARYNN			
00:20	MISSED 3PTR by DORSEY, CAILIN			
00:16				REBOUND (DEF) by BACON, KAYLA

Col. of Charleston 53, Drexel 76

Points from (This Period)	COC	DRX
In the Paint	12	12
Off Turns	2	2
2nd Chance	5	5
Fast Break	2	2
Bench	4	6

**Official Scoring/Possession Reference Chart
Col. of Charleston vs Drexel
Period 1**

January 26, 2019 at Daskalaskis Athletic Center (Sam Cozen Court) - Philadelphia



Period 1

Starters:

Col. of Charleston: 15 EADY, ARYNN; 20 SULLIVAN, BRI; 23 COLLINS, TYLER; 25 FORD, DEJA; 2 HUFF, DARIEN;

Drexel: 11 BROWN, AUBREE; 12 NIHILL, HANNAH; 23 GREENBERG, BAILEY; 24 METZEL, NIKI; 1 WASHINGTON, KEISHANA;

Time	VISITORS: Col. of Charleston	Score	Margin	HOME: Drexel
09:18		2-0	H 2	GOOD! LAYUP by BROWN, AUBREE [FB]
08:25		5-0	H 5	GOOD! 3PTR by BROWN, AUBREE
07:39	GOOD! LAYUP by FORD, DEJA	5-2	H 3	
07:18		7-2	H 5	GOOD! JUMPER by GREENBERG, BAILEY
06:21		9-2	H 7	GOOD! JUMPER by METZEL, NIKI
04:54	GOOD! LAYUP by EADY, ARYNN	9-4	H 5	
04:17	GOOD! LAYUP by COLLINS, TYLER	9-6	H 3	
03:48		12-6	H 6	GOOD! 3PTR by HENDRIXSON, MAURA
03:19		13-6	H 7	GOOD! FT by GREENBERG, BAILEY
03:19		14-6	H 8	GOOD! FT by GREENBERG, BAILEY
01:59		17-6	H 11	GOOD! 3PTR by HENDRIXSON, MAURA

Col. of Charleston 6, Drexel 17

**Official Scoring/Possession Reference Chart
Col. of Charleston vs Drexel
Period 2**

January 26, 2019 at Daskalaskis Athletic Center (Sam Cozen Court) - Philadelphia



Period 2

Starters:

Col. of Charleston: 15 EADY, ARYNN; 20 SULLIVAN, BRI; 23 COLLINS, TYLER; 25 FORD, DEJA; 2 HUFF, DARIEN;

Drexel: 11 BROWN, AUBREE; 12 NIHILL, HANNAH; 23 GREENBERG, BAILEY; 24 METZEL, NIKI; 1 WASHINGTON, KEISHANA;

Time	VISITORS: Col. of Charleston	Score	Margin	HOME: Drexel
09:48	GOOD! 3PTR by HUFF, DARIEN	17-9	H 8	
09:02	GOOD! LAYUP by BROUGHTON, ERICKA	17-11	H 6	
08:33		20-11	H 9	GOOD! 3PTR by NIHILL, HANNAH
08:10		23-11	H 12	GOOD! 3PTR by BROWN, AUBREE [FB]
07:43		25-11	H 14	GOOD! LAYUP by LEONARD, MARIAH
06:13		28-11	H 17	GOOD! 3PTR by HENDRIXSON, MAURA
04:17		31-11	H 20	GOOD! 3PTR by HENDRIXSON, MAURA
03:32		32-11	H 21	GOOD! FT by LEONARD, MARIAH [FB]
02:50		34-11	H 23	GOOD! LAYUP by BROWN, AUBREE
02:05	GOOD! FT by HUFF, DARIEN [FB]	34-12	H 22	
02:05	GOOD! FT by HUFF, DARIEN [FB]	34-13	H 21	
01:24	GOOD! FT by LARSON, BAILEIGH	34-14	H 20	
01:01	GOOD! FT by HUFF, DARIEN	34-15	H 19	
01:01	GOOD! FT by HUFF, DARIEN	34-16	H 18	

Col. of Charleston 16, Drexel 34

**Official Scoring/Possession Reference Chart
Col. of Charleston vs Drexel
Period 3**

January 26, 2019 at Daskalaskis Athletic Center (Sam Cozen Court) - Philadelphia



Period 3

Starters:

Col. of Charleston: 15 EADY,ARYNN; 20 SULLIVAN,BRI; 23 COLLINS, TYLER; 25 FORD,DEJA; 2 HUFF,DARIEN;

Drexel: 11 BROWN,AUBREE; 12 NIHILL,HANNAH; 23 GREENBERG,BAILEY; 24 METZEL,NIKI; 1 WASHINGTON,KEISHANA;

Time	VISITORS: Col. of Charleston	Score	Margin	HOME: Drexel
09:54		36-16	H 20	GOOD! LAYUP by GREENBERG, BAILEY
09:03		38-16	H 22	GOOD! JUMPER by LEONARD, MARIAH
08:12		41-16	H 25	GOOD! 3PTR by HENDRIXSON, MAURA
07:19	GOOD! JUMPER by EADY, ARYNN	41-18	H 23	
06:51		42-18	H 24	GOOD! FT by GREENBERG, BAILEY
06:51		43-18	H 25	GOOD! FT by GREENBERG, BAILEY
06:02	GOOD! LAYUP by FORD, DEJA	43-20	H 23	
05:44		45-20	H 25	GOOD! LAYUP by METZEL, NIKI
05:30	GOOD! 3PTR by HUFF, DARIEN	45-23	H 22	
04:57	GOOD! JUMPER by FORD, DEJA	45-25	H 20	
04:29		47-25	H 22	GOOD! LAYUP by FERARIU, ANA
04:15	GOOD! JUMPER by BROUGHTON, ERICKA	47-27	H 20	
03:45		49-27	H 22	GOOD! LAYUP by GREENBERG, BAILEY
03:03		51-27	H 24	GOOD! LAYUP by FERARIU, ANA
02:42	GOOD! FT by BROUGHTON, ERICKA	51-28	H 23	
02:42	GOOD! FT by BROUGHTON, ERICKA	51-29	H 22	
01:59	GOOD! JUMPER by BROUGHTON, ERICKA [PNT]	51-31	H 20	
01:41		52-31	H 21	GOOD! FT by BROWN, AUBREE
01:28	GOOD! LAYUP by BROUGHTON, ERICKA	52-33	H 19	
01:00		54-33	H 21	GOOD! LAYUP by NIHILL, HANNAH
00:28		55-33	H 22	GOOD! FT by BROWN, AUBREE
00:21	GOOD! FT by TAYLOR, MADISON [FB]	55-34	H 21	
00:02		57-34	H 23	GOOD! JUMPER by GREENBERG, BAILEY [PNT]

Col. of Charleston 34, Drexel 57

**Official Scoring/Possession Reference Chart
Col. of Charleston vs Drexel
Period 4**

January 26, 2019 at Daskalaskis Athletic Center (Sam Cozen Court) - Philadelphia



Period 4

Starters:

Col. of Charleston: 15 EADY, ARYNN; 20 SULLIVAN, BRI; 23 COLLINS, TYLER; 25 FORD, DEJA; 2 HUFF, DARIEN;

Drexel: 11 BROWN, AUBREE; 12 NIHILL, HANNAH; 23 GREENBERG, BAILEY; 24 METZEL, NIKI; 1 WASHINGTON, KEISHANA;

Time	VISITORS: Col. of Charleston	Score	Margin	HOME: Drexel
09:40		59-34	H 25	GOOD! LAYUP by NIHILL, HANNAH
09:22	GOOD! FT by BROUGHTON, ERICKA	59-35	H 24	
09:22	GOOD! FT by BROUGHTON, ERICKA	59-36	H 23	
08:45	GOOD! LAYUP by COLLINS, TYLER [FB]	59-38	H 21	
08:26		61-38	H 23	GOOD! LAYUP by BROWN, AUBREE
07:47		63-38	H 25	GOOD! JUMPER by GREENBERG, BAILEY
07:29	GOOD! LAYUP by FORD, DEJA	63-40	H 23	
07:29	GOOD! FT by FORD, DEJA	63-41	H 22	
07:00		65-41	H 24	GOOD! LAYUP by GREENBERG, BAILEY [FB]
06:39	GOOD! LAYUP by BLANDING, SHAI	65-43	H 22	
06:01		68-43	H 25	GOOD! 3PTR by NIHILL, HANNAH
04:43	GOOD! JUMPER by HUFF, DARIEN	68-45	H 23	
04:23		69-45	H 24	GOOD! FT by LEONARD, MARIAH
04:23		70-45	H 25	GOOD! FT by LEONARD, MARIAH
04:12	GOOD! FT by EADY, ARYNN	70-46	H 24	
04:12	GOOD! FT by EADY, ARYNN	70-47	H 23	
03:43		72-47	H 25	GOOD! JUMPER by GREENBERG, BAILEY [PNT]
03:21	GOOD! LAYUP by FORD, DEJA	72-49	H 23	
02:55		73-49	H 24	GOOD! FT by LEONARD, MARIAH
02:55		74-49	H 25	GOOD! FT by LEONARD, MARIAH
02:31	GOOD! LAYUP by EADY, ARYNN	74-51	H 23	
00:48	GOOD! FT by EADY, ARYNN	74-52	H 22	
00:48	GOOD! FT by EADY, ARYNN	74-53	H 21	
00:25		76-53	H 23	GOOD! LAYUP by CONNOLLY, KATE

Col. of Charleston 53, Drexel 76

**Official Substitutions Log
Col. of Charleston vs Drexel
Period 1**

January 26, 2019 at Daskalaskis Athletic Center (Sam Cozen Court) - Philadelphia



VISITORS: Col. of Charleston	Time	Score	HOME: Drexel
15 EADY,ARYNN			11 BROWN,AUBREE
20 SULLIVAN,BRI			12 NIHILL,HANNAH
23 COLLINS,TYLER			23 GREENBERG,BAILEY
25 FORD,DEJA			24 METZEL,NIKI
2 HUFF,DARIEN			1 WASHINGTON,KEISHANA
	07:10	2-7	SUB OUT: WASHINGTON,KEISHANA
	07:10		SUB IN: HENDRIXSON,MAURA
	05:16	2-9	SUB OUT: METZEL,NIKI
	05:16		SUB IN: LEONARD,MARIAH
SUB OUT: 20 SULLIVAN,BRI	05:16		
SUB IN: 21 LARSON,BAILEIGH	05:16		
	04:24	4-9	SUB OUT: NIHILL,HANNAH
	04:24		SUB IN: WASHINGTON,KEISHANA
	03:36	6-12	SUB OUT: BROWN,AUBREE
	03:36		SUB IN: FERARIU,ANA
SUB OUT: 21 LARSON,BAILEIGH	03:19	6-13	
SUB IN: 42 BROUGHTON,ERICKA	03:19		
SUB OUT: 15 EADY,ARYNN	02:41	6-14	
SUB IN: 20 SULLIVAN,BRI	02:41		
	02:41		SUB OUT: GREENBERG,BAILEY
	02:41		SUB IN: METZEL,NIKI
SUB OUT: 25 FORD,DEJA	01:58	6-17	
SUB IN: 3 PERKINS,LATRICE	01:58		
SUB OUT: 23 COLLINS,TYLER	00:49	6-17	
SUB IN: 00 TAYLOR,MADISON	00:49		
SUB OUT: 3 PERKINS,LATRICE	00:28	6-17	
SUB IN: 25 FORD,DEJA	00:28		
	00:08	6-17	SUB OUT: METZEL,NIKI
	00:08		SUB IN: MAESSCHALCK,ELINE

Col. of Charleston 6, Drexel 17

**Official Substitutions Log
Col. of Charleston vs Drexel
Period 2**

January 26, 2019 at Daskalakis Athletic Center (Sam Cozen Court) - Philadelphia



VISITORS: Col. of Charleston	Time	Score	HOME: Drexel
15 EADY,ARYNN			11 BROWN,AUBREE
20 SULLIVAN,BRI			12 NIHILL,HANNAH
23 COLLINS,TYLER			23 GREENBERG,BAILEY
25 FORD,DEJA			24 METZEL,NIKI
2 HUFF,DARIEN			1 WASHINGTON,KEISHANA
	09:19	9-17	SUB OUT: MAESSCHALCK,ELINE
	09:19		SUB IN: NIHILL,HANNAH
	09:19		SUB OUT: WASHINGTON,KEISHANA
	09:19		SUB IN: KRACIKOVA,TEREZA
SUB OUT: 42 BROUGHTON,ERICKA	07:54	11-23	
SUB IN: 15 EADY,ARYNN	07:54		
SUB OUT: 00 TAYLOR,MADISON	07:54		
SUB IN: 23 COLLINS,TYLER	07:54		
	06:38	11-25	SUB OUT: LEONARD,MARIAH
	06:38		SUB IN: CONNOLLY,KATE
SUB OUT: 15 EADY,ARYNN	05:55	11-28	
SUB IN: 21 LARSON,BAILEIGH	05:55		
SUB OUT: 20 SULLIVAN,BRI	05:15	11-28	
SUB IN: 3 PERKINS,LATRICE	05:15		
	03:56	11-31	SUB OUT: KRACIKOVA,TEREZA
	03:56		SUB IN: LEONARD,MARIAH
SUB OUT: 3 PERKINS,LATRICE	03:56		
SUB IN: 00 TAYLOR,MADISON	03:56		
	03:21	11-32	SUB OUT: HENDRIXSON,MAURA
	03:21		SUB IN: WASHINGTON,KEISHANA
	02:12	11-34	SUB OUT: BROWN,AUBREE
	02:12		SUB IN: FERARIU,ANA
	01:38	13-34	SUB OUT: CONNOLLY,KATE
	01:38		SUB IN: BACON,KAYLA
	01:38		SUB OUT: FERARIU,ANA
	01:38		SUB IN: MAESSCHALCK,ELINE
	01:01	15-34	SUB OUT: MAESSCHALCK,ELINE
	01:01		SUB IN: BROWN,AUBREE
SUB OUT: 21 LARSON,BAILEIGH	00:35	16-34	
SUB IN: 42 BROUGHTON,ERICKA	00:35		

Col. of Charleston 16, Drexel 34

**Official Substitutions Log
Col. of Charleston vs Drexel
Period 3**

January 26, 2019 at Daskalakis Athletic Center (Sam Cozen Court) - Philadelphia



VISITORS: Col. of Charleston	Time	Score	HOME: Drexel
15 EADY,ARYNN			11 BROWN,AUBREE
20 SULLIVAN,BRI			12 NIHILL,HANNAH
23 COLLINS, TYLER			23 GREENBERG,BAILEY
25 FORD,DEJA			24 METZEL,NIKI
2 HUFF,DARIEN			1 WASHINGTON,KEISHANA
SUB OUT: 20 SULLIVAN,BRI	08:46	16-38	
SUB IN: 5 DORSEY,CAILIN	08:46		
	06:51	18-42	SUB OUT: BROWN,AUBREE
	06:51		SUB IN: WASHINGTON,KEISHANA
	06:51		SUB OUT: NIHILL,HANNAH
	06:51		SUB IN: METZEL,NIKI
	06:51		SUB OUT: LEONARD,MARIAH
	06:51		SUB IN: FERARIU,ANA
SUB OUT: 15 EADY,ARYNN	06:51		
SUB IN: 42 BROUGHTON,ERICKA	06:51		
SUB OUT: 23 COLLINS, TYLER	04:36	25-45	
SUB IN: 00 TAYLOR,MADISON	04:36		
	02:42	28-51	SUB OUT: WASHINGTON,KEISHANA
	02:42		SUB IN: BROWN,AUBREE
	02:42		SUB OUT: METZEL,NIKI
	02:42		SUB IN: NIHILL,HANNAH
	02:42		SUB OUT: HENDRIXSON,MAURA
	02:42		SUB IN: LEONARD,MARIAH
SUB OUT: 00 TAYLOR,MADISON	02:42		
SUB IN: 1 BLANDING,SHAI	02:42		
SUB OUT: 1 BLANDING,SHAI	02:15	29-51	
SUB IN: 00 TAYLOR,MADISON	02:15		
	00:28	33-54	SUB OUT: LEONARD,MARIAH
	00:28		SUB IN: KRACIKOVA,TEREZA
SUB OUT: 00 TAYLOR,MADISON	00:21	34-55	
SUB IN: 1 BLANDING,SHAI	00:21		
	00:21		SUB OUT: KRACIKOVA,TEREZA
	00:21		SUB IN: HENDRIXSON,MAURA

Col. of Charleston 34, Drexel 57

**Official Substitutions Log
Col. of Charleston vs Drexel
Period 4**

January 26, 2019 at Daskalakis Athletic Center (Sam Cozen Court) - Philadelphia



VISITORS: Col. of Charleston	Time	Score	HOME: Drexel
15 EADY,ARYNN			11 BROWN,AUBREE
20 SULLIVAN,BRI			12 NIHILL,HANNAH
23 COLLINS, TYLER			23 GREENBERG,BAILEY
25 FORD,DEJA			24 METZEL,NIKI
2 HUFF,DARIEN			1 WASHINGTON,KEISHANA
SUB OUT: 5 DORSEY,CAILIN	09:22	35-59	
SUB IN: 00 TAYLOR,MADISON	09:22		
	07:43	38-63	SUB OUT: FERARIU,ANA
	07:43		SUB IN: WASHINGTON,KEISHANA
SUB OUT: 42 BROUGHTON,ERICKA	07:43		
SUB IN: 15 EADY,ARYNN	07:43		
SUB OUT: 15 EADY,ARYNN	07:29	41-63	
SUB IN: 1 BLANDING,SHAI	07:29		
SUB OUT: 23 COLLINS, TYLER	07:29		
SUB IN: 42 BROUGHTON,ERICKA	07:29		
SUB OUT: 1 BLANDING,SHAI	05:34	43-68	
SUB IN: 15 EADY,ARYNN	05:34		
SUB OUT: 42 BROUGHTON,ERICKA	05:34		
SUB IN: 23 COLLINS, TYLER	05:34		
	04:52	43-68	SUB OUT: BROWN,AUBREE
	04:52		SUB IN: LEONARD,MARIAH
	04:52		SUB OUT: NIHILL,HANNAH
	04:52		SUB IN: CONNOLLY,KATE
SUB OUT: 23 COLLINS, TYLER	04:12	46-70	
SUB IN: 1 BLANDING,SHAI	04:12		
	02:55	49-73	SUB OUT: HENDRIXSON,MAURA
	02:55		SUB IN: BACON,KAYLA
SUB OUT: 1 BLANDING,SHAI	02:55		
SUB IN: 23 COLLINS, TYLER	02:55		
	02:55		SUB OUT: GREENBERG,BAILEY
	02:55		SUB IN: METZEL,NIKI
SUB OUT: 2 HUFF,DARIEN	02:02	51-74	
SUB IN: 5 DORSEY,CAILIN	02:02		
SUB OUT: 25 FORD,DEJA	02:02		
SUB IN: 3 PERKINS,LATRICE	02:02		
	00:48	51-74	SUB OUT: METZEL,NIKI
	00:48		SUB IN: MAESSCHALCK,ELINE
SUB OUT: 23 COLLINS, TYLER	00:48		
SUB IN: 1 BLANDING,SHAI	00:48		

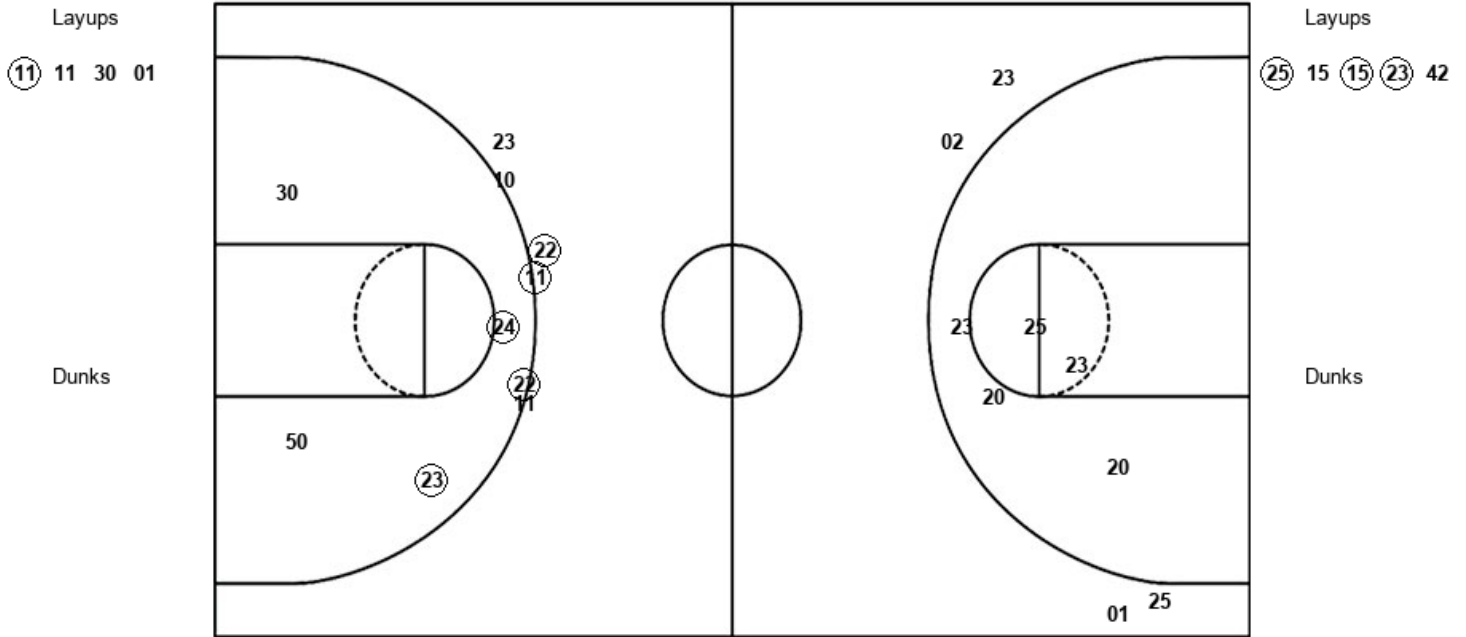
Col. of Charleston 53, Drexel 76

Official Shot Chart
Col. of Charleston vs Drexel
PERIOD 1 Shots
 January 26, 2019 at Daskalaskis Athletic Center (Sam Cozen Court) - Philadelphia



Drexel

Col. of Charleston



DRX : Period 1	Made	Att	Pct
Layups	1	4	25.0
Dunks	0	0	0
2PT Field Goals	3	8	37.5
3PT Field Goals	3	7	42.9
Total Field Goals	6	15	40.0

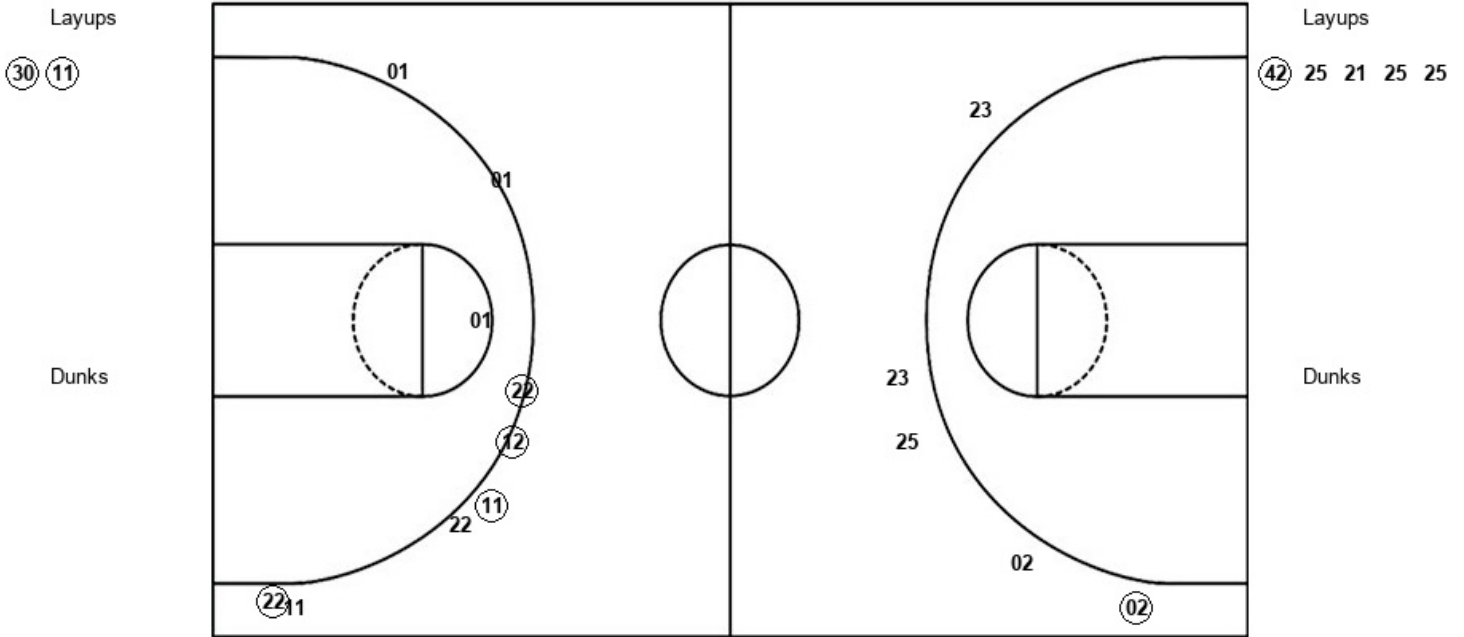
COC : Period 1	Made	Att	Pct
Layups	3	5	60.0
Dunks	0	0	0
2PT Field Goals	3	10	30.0
3PT Field Goals	0	3	00.0
Total Field Goals	3	13	23.1

Official Shot Chart
Col. of Charleston vs Drexel
PERIOD 2 Shots
 January 26, 2019 at Daskalaskis Athletic Center (Sam Cozen Court) - Philadelphia



Drexel

Col. of Charleston



DRX : Period 2	Made	Att	Pct
Layups	2	2	100.0
Dunks	0	0	0
2PT Field Goals	2	3	66.7
3PT Field Goals	4	8	50.0
Total Field Goals	6	11	54.5

COC : Period 2	Made	Att	Pct
Layups	1	5	20.0
Dunks	0	0	0
2PT Field Goals	1	5	20.0
3PT Field Goals	1	5	20.0
Total Field Goals	2	10	20.0

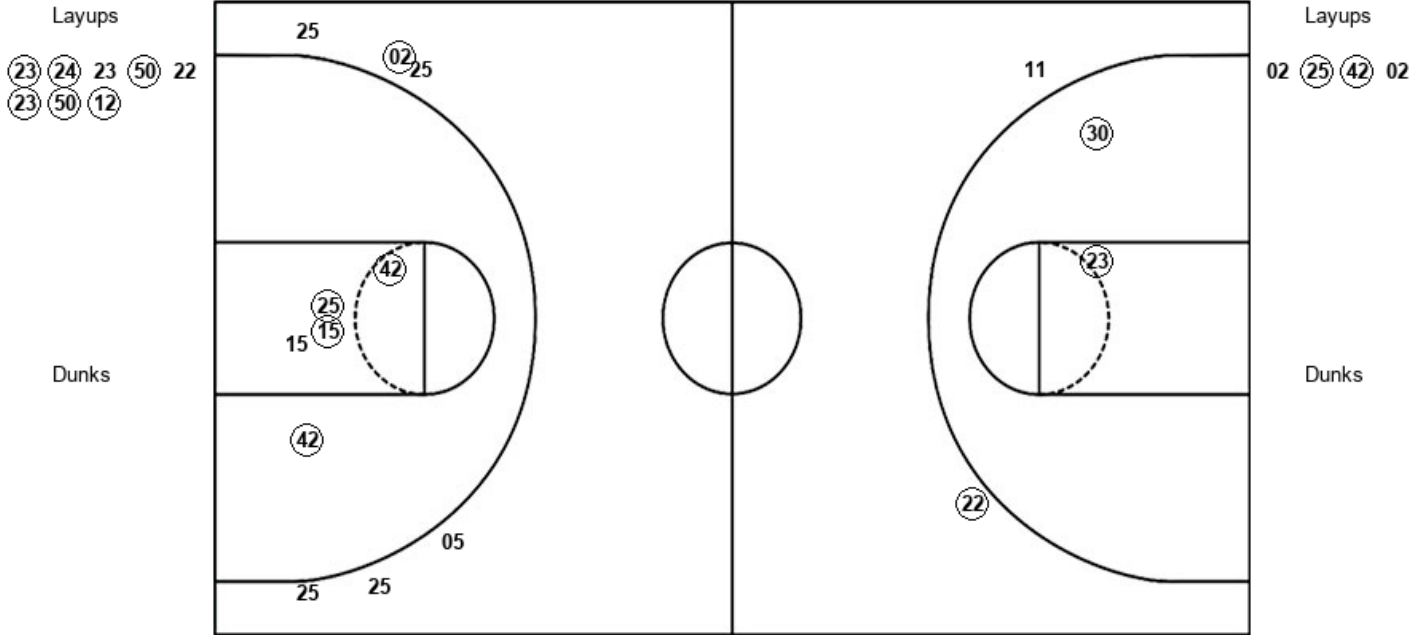
Official Shot Chart
Col. of Charleston vs Drexel
PERIOD 3 Shots

January 26, 2019 at Daskalaskis Athletic Center (Sam Cozen Court) - Philadelphia



Drexel

Col. of Charleston



DRX : Period 3	Made	Att	Pct
Layups	6	8	75.0
Dunks	0	0	0
2PT Field Goals	8	10	80.0
3PT Field Goals	1	2	50.0
Total Field Goals	9	12	75.0

COC : Period 3	Made	Att	Pct
Layups	2	4	50.0
Dunks	0	0	0
2PT Field Goals	6	9	66.7
3PT Field Goals	1	6	16.7
Total Field Goals	7	15	46.7

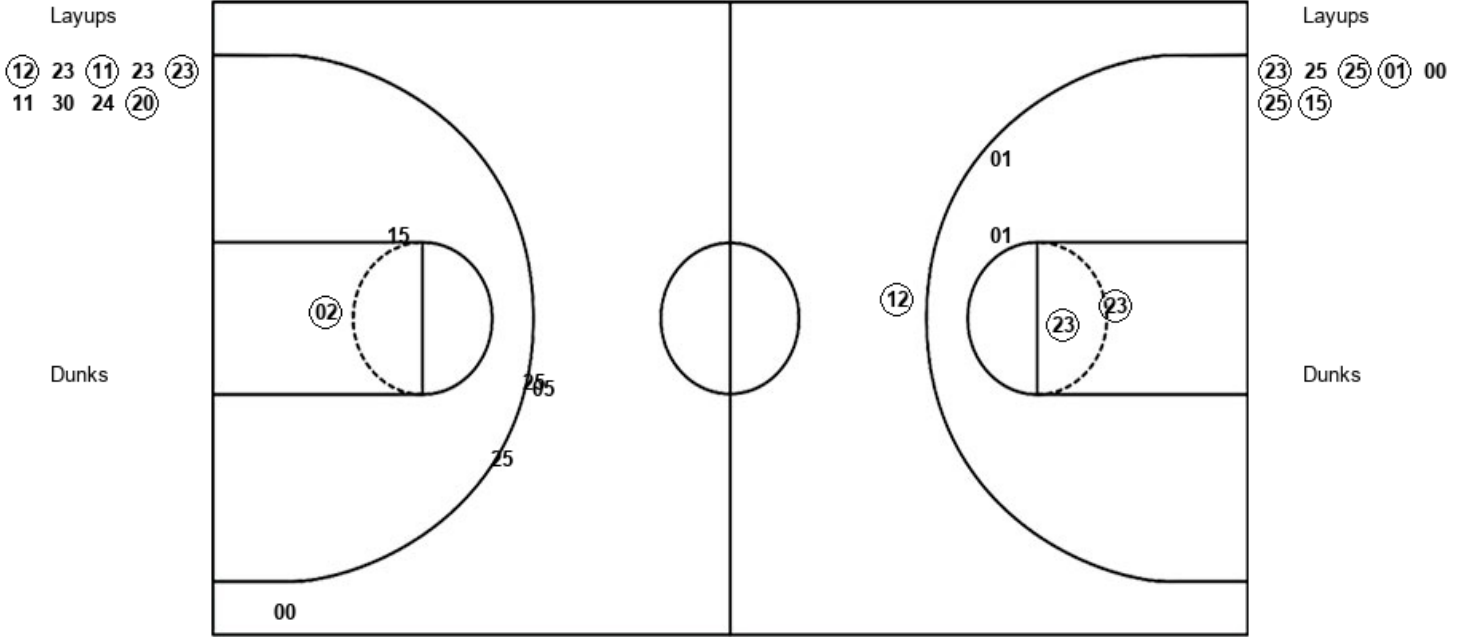
Official Shot Chart
 Col. of Charleston vs Drexel
 PERIOD 4 Shots

January 26, 2019 at Daskalaskis Athletic Center (Sam Cozen Court) - Philadelphia



Drexel

Col. of Charleston



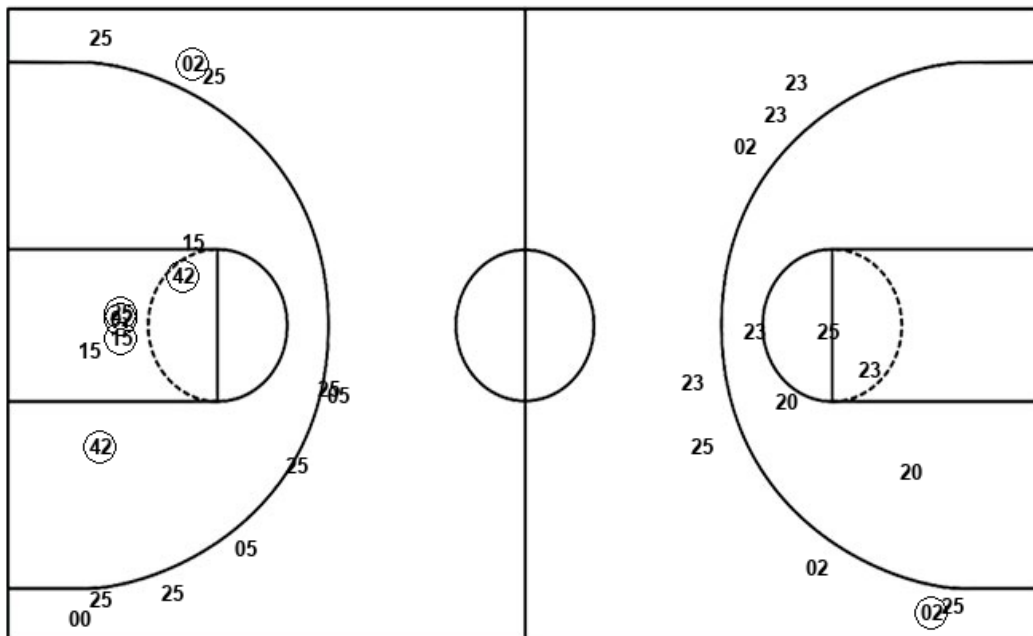
DRX : Period 4	Made	Att	Pct
Layups	4	9	44.4
Dunks	0	0	0
2PT Field Goals	6	13	46.2
3PT Field Goals	1	1	100.0
Total Field Goals	7	14	50.0

COC : Period 4	Made	Att	Pct
Layups	5	7	71.4
Dunks	0	0	0
2PT Field Goals	6	9	66.7
3PT Field Goals	0	4	00.0
Total Field Goals	6	13	46.2

Official Shot Chart
Col. of Charleston vs Drexel
Col. of Charleston Team Shots
 January 26, 2019 at Daskalakis Athletic Center (Sam Cozen Court) - Philadelphia



Layups



Layups

- (25) 15 (15) (23) 42
- (42) 25 21 25 25
- 02 (25) (42) 02 (23)
- 25 (25) (01) 00 (25)
- (15)

Dunks

Dunks

COC : Period 1	Made	Att	Pct
Layups	3	5	60.0
Dunks	0	0	0
2PT Field Goals	3	10	30.0
3PT Field Goals	0	3	00.0
Total Field Goals	3	13	23.1

COC : Period 2	Made	Att	Pct
Layups	1	5	20.0
Dunks	0	0	0
2PT Field Goals	1	5	20.0
3PT Field Goals	1	5	20.0
Total Field Goals	2	10	20.0

COC : Period 3	Made	Att	Pct
Layups	2	4	50.0
Dunks	0	0	0
2PT Field Goals	6	9	66.7
3PT Field Goals	1	6	16.7
Total Field Goals	7	15	46.7

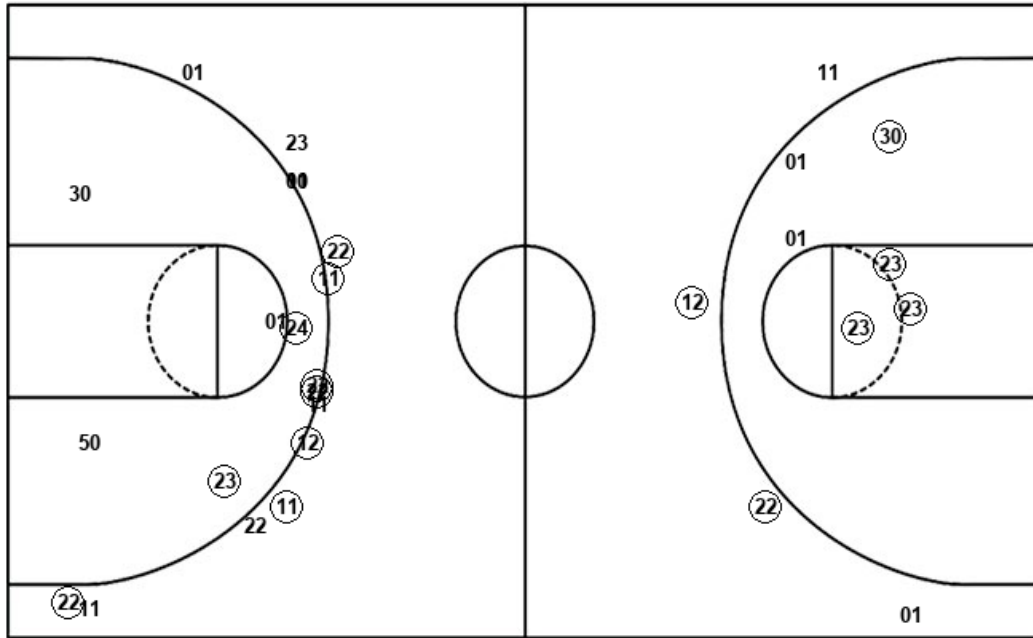
COC : Period 4	Made	Att	Pct
Layups	5	7	71.4
Dunks	0	0	0
2PT Field Goals	6	9	66.7
3PT Field Goals	0	4	00.0
Total Field Goals	6	13	46.2

Official Shot Chart
Col. of Charleston vs Drexel
Drexel Team Shots

January 26, 2019 at Daskalakis Athletic Center (Sam Cozen Court) - Philadelphia



Layups



Layups



Dunks

Dunks

DRX : Period 1	Made	Att	Pct
Layups	1	4	25.0
Dunks	0	0	0
2PT Field Goals	3	8	37.5
3PT Field Goals	3	7	42.9
Total Field Goals	6	15	40.0

DRX : Period 3	Made	Att	Pct
Layups	6	8	75.0
Dunks	0	0	0
2PT Field Goals	8	10	80.0
3PT Field Goals	1	2	50.0
Total Field Goals	9	12	75.0

DRX : Period 2	Made	Att	Pct
Layups	2	2	100.0
Dunks	0	0	0
2PT Field Goals	2	3	66.7
3PT Field Goals	4	8	50.0
Total Field Goals	6	11	54.5

DRX : Period 4	Made	Att	Pct
Layups	4	9	44.4
Dunks	0	0	0
2PT Field Goals	6	13	46.2
3PT Field Goals	1	1	100.0
Total Field Goals	7	14	50.0