

FINAL SCORE



UCLA

78



UIC

47

December 20, 2018 • Credit Union 1 Arena - Chicago, Ill.

FINAL STATISTICS

Official Box Score
UCLA vs UIC
Game Totals -- Final Statistics
December 20, 2018 at Credit Union 1 Arena - Chicago, Ill.

UCLA 78

No.	Player	S	Pts	FG	3FG	FT	OR	DR	TR	PF	A	TO	Blk	Stl	Min	+/-
4	Corsaro, Lindsey		5	2-8	0-2	1-2	3	3	6	2	5	3	0	2	29	31
11	Drummer, Lajahna		16	6-7	0-0	4-5	2	4	6	3	0	0	2	1	26	20
21	Onyenwere, Michaela		19	6-12	0-0	7-7	8	3	11	4	1	1	3	0	20	27
22	Burke, Kennedy		5	1-7	0-3	3-4	0	2	2	2	5	3	1	3	23	24
24	Dean, Japreece		9	4-12	1-6	0-0	1	2	3	2	4	5	1	3	27	35
0	Horvat, Chantel		4	1-3	0-1	2-2	3	3	6	0	1	0	0	0	10	7
1	Owens, Kayla		0	0-0	0-0	0-0	0	0	0	0	0	0	0	0	5	2
2	Smith, Ahlana		7	2-7	1-4	2-2	0	0	0	0	4	1	0	1	17	-1
3	Jefferson, Kiara		6	2-4	1-3	1-2	1	0	1	1	0	1	1	0	10	-7
25	Harris, Shayley		2	1-1	0-0	0-0	0	0	0	0	0	0	0	0	4	4
32	Baird, Chrissy		0	0-4	0-2	0-0	0	2	2	1	0	0	0	1	7	4
33	Miller, Lauryn		5	2-7	0-0	1-4	6	4	10	2	2	2	2	0	21	9
	Team						5	4	9	0		0				
TOTALS			78	27-72	3-21	21-28	29	27	56	17	22	16	10	11	200	

Shooting By Period

Period	FG	FG%	3FG	3FG%	FT	FT%
1st Qtr	8-15	53%	0-3	00%	5-6	83%
2nd Qtr	7-26	27%	2-8	25%	2-4	50%
3rd Qtr	5-14	36%	1-7	14%	8-10	80%
4th Qtr	7-17	41%	0-3	00%	6-8	75%
1st Half	8-15	53%	0-3	00%	5-6	83%
2nd Half	7-26	27%	2-8	25%	2-4	50%
3rd Half	5-14	36%	1-7	14%	8-10	80%
4th Half	7-17	41%	0-3	00%	6-8	75%
Game	27-72	37.5%	3-21	14.3%	21-28	75.0%

Deadball Rebounds:

Last FG: 4th-01:45

Biggest Run: 12-0

Largest lead: By 31 at 4-01:45

Technical Fouls: None.

UIC 47

No.	Player	S	Pts	FG	3FG	FT	OR	DR	TR	PF	A	TO	Blk	Stl	Min	+/-
2	Thompson, Kiarra		0	0-2	0-0	0-0	1	0	1	2	1	2	0	0	10	-14
3	Byrd, Brittany		21	8-18	2-7	3-4	5	2	7	4	1	5	0	0	40	-31
4	Gaines, Jasmine		0	0-3	0-0	0-0	0	0	0	0	1	1	0	1	19	-16
5	Toney, Taylor		4	1-5	0-2	2-2	0	3	3	5	1	4	0	3	22	-16
14	Nneji, Jada		4	2-5	0-0	0-0	2	1	3	5	1	2	2	0	14	-15
10	Tedford, Tia		3	0-7	0-3	3-4	0	1	1	2	0	2	0	1	10	1
13	Jones, Kienya		0	0-0	0-0	0-0	0	1	1	0	0	0	0	1	6	-7
20	Etheridge, Catera		0	0-0	0-0	0-0	0	0	0	0	0	1	0	0	3	-1
22	Lake, Abreanna		2	1-3	0-0	0-0	0	1	1	1	0	3	0	0	10	-9
23	Mccall, Tatum		6	2-6	2-6	0-0	0	0	0	1	4	1	1	0	30	-15
25	Nyauchi, Christelle		0	0-0	0-0	0-0	0	2	2	0	0	0	1	0	10	-7
32	Wilson, Kara		3	1-1	1-1	0-0	0	3	3	2	0	5	0	0	14	-13
35	Lamplay, Tylah		4	1-1	0-0	2-4	0	1	1	1	0	1	1	0	12	-12
	Team						3	4	7	0		0				
TOTALS			47	16-51	5-19	10-14	11	19	30	23	9	27	5	6	200	

Shooting By Period

Period	FG	FG%	3FG	3FG%	FT	FT%
1st Qtr	2-8	25%	1-5	20%	0-0	0%
2nd Qtr	3-9	33%	2-5	40%	2-4	50%
3rd Qtr	8-20	40%	1-3	33%	5-6	83%
4th Qtr	3-14	21%	1-6	17%	3-4	75%
1st Half	2-8	25%	1-5	20%	0-0	0%
2nd Half	3-9	33%	2-5	40%	2-4	50%
3rd Half	8-20	40%	1-3	33%	5-6	83%
4th Half	3-14	21%	1-6	17%	3-4	75%
Game	16-51	31.4%	5-19	26.3%	10-14	71.4%

Deadball Rebounds:

Last FG: 4th-03:18

Biggest Run: 8-0

Largest lead: By 0 at -

Technical Fouls: None.

Game Notes:	
Officials: Tim Daley, Jamie Broderick, Mark Berger	
Attendance: 640	
Start Time: 2018-12-20 00:00:59	End Time: 2018-12-20 01:57:28
Game Duration: 116	

Score by Period	1st	2nd	3rd	4th	TOT
UCL	21	18	19	20	78
UIC	5	10	22	10	47

UCL led for 39:46. UIC led for 0:00.
 Game was tied for 0:14.
 Times tied: 0 Lead Changes: 0

Points from	UCL	UIC
In the Paint	42	18
Off Turns	26	6
2nd Chance	14	15
Fast Break	15	5
Bench	24	18

Official Box Score
UCLA vs UIC
First Half Statistics Only
December 20, 2018 at Credit Union 1 Arena - Chicago, Ill.

UCLA 78

No.	Player	S	Pts	FG	3FG	FT	OR	DR	TR	PF	A	TO	Blk	Stl	Min	+/-
4	Corsaro, Lindsey		2	1-2	0-0	0-0	0	0	0	0	3	0	0	0	7	13
11	Drummer, Lajahna		8	3-3	0-0	2-3	1	2	3	1	0	0	0	0	8	14
21	Onyenwere, Michaela		7	2-3	0-0	3-3	1	2	3	0	0	1	0	0	7	17
22	Burke, Kennedy		0	0-1	0-1	0-0	0	0	0	1	2	2	0	1	6	12
24	Dean, Japreece		0	0-2	0-2	0-0	0	0	0	0	1	2	1	1	7	13
0	Horvat, Chantel		2	1-1	0-0	0-0	0	0	0	0	0	0	0	0	2	3
1	Owens, Kayla		0	0-0	0-0	0-0	0	0	0	0	0	0	0	0	2	1
2	Smith, Ahlana		0	0-1	0-0	0-0	0	0	0	0	1	0	0	1	4	3
3	Jefferson, Kiara		2	1-1	0-0	0-0	0	0	0	0	0	0	0	0	4	3
25	Harris, Shayley		0	0-0	0-0	0-0	0	0	0	0	0	0	0	0	0	0
32	Baird, Chrissy		0	0-0	0-0	0-0	0	0	0	0	0	0	0	0	2	-1
33	Miller, Lauryn		0	0-1	0-0	0-0	1	0	1	0	0	1	0	0	4	2
Team							1	1	2	0		0				
TOTALS			21	8-15	0-3	5-6	0	0	9	2	7	6	1	3	50	

Shooting By Period

Period	FG	FG%	3FG	3FG%	FT	FT%
1st Qtr	8-15	53%	0-3	00%	5-6	83%
2nd Qtr	7-26	27%	2-8	25%	2-4	50%
3rd Qtr	5-14	36%	1-7	14%	8-10	80%
4th Qtr	7-17	41%	0-3	00%	6-8	75%
1st Half	8-15	53%	0-3	00%	5-6	83%
2nd Half	7-26	27%	2-8	25%	2-4	50%
3rd Half	5-14	36%	1-7	14%	8-10	80%
4th Half	7-17	41%	0-3	00%	6-8	75%
Game	27-72	37.5%	3-21	14.3%	21-28	75.0%

Deadball Rebounds:

Last FG: 4th-01:45

Biggest Run: 12-0

Largest lead: By 31 at 4-01:45

Technical Fouls: None.

UIC 47

No.	Player	S	Pts	FG	3FG	FT	OR	DR	TR	PF	A	TO	Blk	Stl	Min	+/-
2	Thompson, Kiarra		0	0-0	0-0	0-0	0	0	0	1	0	0	0	0	4	-12
3	Byrd, Brittany		5	2-5	1-3	0-0	1	0	1	1	0	2	0	0	10	-16
4	Gaines, Jasmine		0	0-0	0-0	0-0	0	0	0	0	0	1	0	0	4	-10
5	Toney, Taylor		0	0-2	0-1	0-0	0	0	0	2	0	4	0	1	8	-16
14	Nneji, Jada		0	0-0	0-0	0-0	0	0	0	0	0	1	0	0	1	-4
10	Tedford, Tia		0	0-0	0-0	0-0	0	0	0	0	0	1	0	0	0	0
13	Jones, Kienya		0	0-0	0-0	0-0	0	0	0	0	0	0	0	0	3	-5
20	Etheridge, Catera		0	0-0	0-0	0-0	0	0	0	0	0	1	0	0	2	-1
22	Lake, Abreanna		0	0-0	0-0	0-0	0	0	0	1	0	1	0	0	5	-8
23	Mccall, Tatum		0	0-1	0-1	0-0	0	0	0	0	1	0	0	0	3	-1
25	Nyauchi, Christelle		0	0-0	0-0	0-0	0	1	1	0	0	0	0	0	3	-1
32	Wilson, Kara		0	0-0	0-0	0-0	0	1	1	1	0	1	0	0	1	0
35	Lamplay, Tyiah		0	0-0	0-0	0-0	0	0	0	0	0	0	0	0	4	-6
Team							0	2	2	0		0				
TOTALS			5	2-8	1-5	0-0	0	0	5	6	1	12	0	1	50	

Shooting By Period

Period	FG	FG%	3FG	3FG%	FT	FT%
1st Qtr	2-8	25%	1-5	20%	0-0	0%
2nd Qtr	3-9	33%	2-5	40%	2-4	50%
3rd Qtr	8-20	40%	1-3	33%	5-6	83%
4th Qtr	3-14	21%	1-6	17%	3-4	75%
1st Half	2-8	25%	1-5	20%	0-0	0%
2nd Half	3-9	33%	2-5	40%	2-4	50%
3rd Half	8-20	40%	1-3	33%	5-6	83%
4th Half	3-14	21%	1-6	17%	3-4	75%
Game	16-51	31.4%	5-19	26.3%	10-14	71.4%

Deadball Rebounds:

Last FG: 4th-03:18

Biggest Run: 8-0

Largest lead: By 0 at -

Technical Fouls: None.

Game Notes:	
Officials: Tim Daley, Jamie Broderick, Mark Berger	
Attendance: 640	
Start Time: 2018-12-20 00:00:59	End Time: 2018-12-20 01:57:28
Game Duration: 116	

Score by Period	1st	2nd	3rd	4th	TOT
UCL	21	18	19	20	78
UIC	5	10	22	10	47

This period only: UCL led for 39:45. UIC led for 39:00.

Game was tied for 0:14.

Points from (This Period)	UCL	UIC
In the Paint	14	2
Off Turns	14	0
2nd Chance	1	2
Fast Break	4	0
Bench	4	0

Official Play-By-Play
UCLA vs UIC
First Quarter
December 20, 2018 at Credit Union 1 Arena - Chicago, Ill.

Starters:

UCLA: 4 CORSARO,LINDSEY; 11 DRUMMER,LAJAHNA; 21 ONYENWERE,MICHAELA; 22 BURKE,KENNEDY; 24 DEAN,JAPREECE;
UIC: 2 THOMPSON,KIARRA; 3 BYRD,BRITTANY; 4 GAINES,JASMINE; 5 TONEY,TAYLOR; 14 NNEJI,JADA;

Period 1

Time	VISITORS: UCLA	Score	Margin	HOME: UIC
09:46	GOOD! JUMPER by ONYENWERE,MICHAELA	0-2	V 2	
09:46	ASSIST by CORSARO,LINDSEY			
09:29				TURNOVER (LOSTBALL) by NNEJI,JADA
09:15	GOOD! LAYUP by DRUMMER,LAJAHNA	0-4	V 4	
09:15	ASSIST by BURKE,KENNEDY			
08:59				TURNOVER (TRAVEL) by TONEY,TAYLOR
08:59				SUB OUT: NNEJI,JADA
08:59				SUB IN: JONES,KIENYA
08:39	GOOD! LAYUP by DRUMMER,LAJAHNA	0-6	V 6	
08:39	ASSIST by BURKE,KENNEDY			
08:39				FOUL (PERSONAL) by THOMPSON,KIARRA
08:39	GOOD! FT by DRUMMER,LAJAHNA	0-7	V 7	
08:27				MISSED 3PTR by BYRD,BRITTANY
08:25	REBOUND (DEF) by ONYENWERE,MICHAELA			
08:14	TURNOVER (OTHER) by DEAN,JAPREECE			
08:09				TURNOVER (DRIBBLING) by GAINES,JASMINE
08:09				SUB OUT: GAINES,JASMINE
08:09				SUB IN: LAKE,ABREANNA
07:59	GOOD! LAYUP by DRUMMER,LAJAHNA	0-9	V 9	
07:59	ASSIST by CORSARO,LINDSEY			
07:39				MISSED 3PTR by TONEY,TAYLOR
07:36	REBOUND (DEF) by ONYENWERE,MICHAELA			
07:32	TURNOVER (BADPASS) by DEAN,JAPREECE			
07:32				STEAL by TONEY,TAYLOR
07:24				TURNOVER (TRAVEL) by BYRD,BRITTANY
07:24				SUB OUT: JONES,KIENYA
07:24				SUB IN: LAMPLEY,TYLAH
07:24	SUB OUT: BURKE,KENNEDY			
07:24	SUB IN: HORVAT,CHANTEL			
07:15	GOOD! LAYUP by ONYENWERE,MICHAELA	0-11	V 11	
07:15				FOUL (PERSONAL) by TONEY,TAYLOR
07:15	GOOD! FT by ONYENWERE,MICHAELA	0-12	V 12	
07:15	SUB OUT: ONYENWERE,MICHAELA			
07:15	SUB IN: MILLER,LAURYN			
07:02				MISSED LAYUP by BYRD,BRITTANY
07:02	BLOCK by DEAN,JAPREECE			
06:59				REBOUND (OFF) by BYRD,BRITTANY
06:56		2-12	V 10	GOOD! LAYUP by BYRD,BRITTANY
06:54				FOUL (PERSONAL) by LAKE,ABREANNA
06:41	GOOD! LAYUP by HORVAT,CHANTEL	2-14	V 12	
06:41	ASSIST by CORSARO,LINDSEY			
06:21				MISSED LAYUP by TONEY,TAYLOR
06:18	REBOUND (DEF) by DRUMMER,LAJAHNA			
06:08	MISSED JUMPER by CORSARO,LINDSEY			
06:04	REBOUND (OFF) by MILLER,LAURYN			
05:58	MISSED LAYUP by MILLER,LAURYN			
05:56				REBOUND (DEF) by TEAM
05:56	FOUL (PERSONAL) by DRUMMER,LAJAHNA			
05:56	SUB OUT: DRUMMER,LAJAHNA			
05:56	SUB IN: ONYENWERE,MICHAELA			
05:41				TURNOVER (TRAVEL) by TONEY,TAYLOR
05:41				SUB OUT: THOMPSON,KIARRA
05:41				SUB IN: GAINES,JASMINE
05:41	SUB OUT: HORVAT,CHANTEL			
05:41	SUB IN: SMITH,AHLANA			
05:41	SUB OUT: CORSARO,LINDSEY			
05:41	SUB IN: JEFFERSON,KIARA			
05:41	SUB OUT: DEAN,JAPREECE			
05:41	SUB IN: BURKE,KENNEDY			
05:13	FOUL (OFF) by BURKE,KENNEDY			
05:13	TURNOVER (OFFENSIVE) by BURKE,KENNEDY			
05:00				TURNOVER (TRAVEL) by TONEY,TAYLOR
05:00				
04:38	TURNOVER (3SEC) by MILLER,LAURYN			
04:28				TURNOVER (BADPASS) by LAKE,ABREANNA
04:28	STEAL by SMITH,AHLANA			
04:23	GOOD! LAYUP by JEFFERSON,KIARA [FB]	2-16	V 14	
04:23	ASSIST by SMITH,AHLANA			
04:01				TURNOVER (BADPASS) by TONEY,TAYLOR
04:01	STEAL by BURKE,KENNEDY			
03:58	TURNOVER (TRAVEL) by BURKE,KENNEDY			
03:42				MISSED 3PTR by BYRD,BRITTANY
03:37	REBOUND (DEF) by TEAM			
03:37	SUB OUT: MILLER,LAURYN			
03:37	SUB IN: DRUMMER,LAJAHNA			
03:25	MISSED JUMPER by ONYENWERE,MICHAELA			

Time	VISITORS: UCLA	Score	Margin	HOME: UIC
03:23	REBOUND (OFF) by DRUMMER,LAJAHNA			
03:23				FOUL (PERSONAL) by BYRD,BRITTANY
03:23	GOOD! FT by DRUMMER,LAJAHNA	2-17	V 15	
03:23				SUB OUT: GAINES,JASMINE
03:23				SUB IN: NYAUCHI,CHRISTELLE
03:23				SUB OUT: LAKE,ABREANNA
03:23				SUB IN: MCCALL,TATUM
03:23				SUB OUT: LAMPLEY,TYLAH
03:23				SUB IN: WILSON,KARA
03:23	MISSED FT by DRUMMER,LAJAHNA			
03:23				REBOUND (DEF) by NYAUCHI,CHRISTELLE
03:02				TURNOVER (TRAVEL) by BYRD,BRITTANY
02:42	MISSED LAYUP by SMITH,AHLANA			
02:40				REBOUND (DEF) by WILSON,KARA
02:29				FOUL (OFF) by WILSON,KARA
02:29				TURNOVER (OFFENSIVE) by WILSON,KARA
02:29				SUB OUT: WILSON,KARA
02:29				SUB IN: ETHERIDGE,CATERA
02:18	MISSED 3PTR by BURKE,KENNEDY			
02:14	REBOUND (OFF) by ONYENWERE,MICHAELA			
02:11	TURNOVER (TRAVEL) by ONYENWERE,MICHAELA			
02:11	SUB OUT: SMITH,AHLANA			
02:11	SUB IN: DEAN,JAPREECE			
02:11	SUB OUT: JEFFERSON,KIARA			
02:11	SUB IN: CORSARO,LINDSEY			
02:11	SUB OUT: BURKE,KENNEDY			
02:11	SUB IN: OWENS,KAYLA			
01:55				MISSED 3PTR by MCCALL,TATUM
01:53	REBOUND (DEF) by DRUMMER,LAJAHNA			
01:48				FOUL (PERSONAL) by TONEY,TAYLOR
01:48	GOOD! FT by ONYENWERE,MICHAELA [FB]	2-18	V 16	
01:48				SUB OUT: TONEY,TAYLOR
01:48				SUB IN: JONES,KIENYA
01:48	GOOD! FT by ONYENWERE,MICHAELA [FB]	2-19	V 17	
01:39				TURNOVER (BADPASS) by ETHERIDGE,CATERA
01:39	SUB OUT: ONYENWERE,MICHAELA			
01:39	SUB IN: BAIRD,CHRISSY			
01:09	GOOD! JUMPER by CORSARO,LINDSEY [PNT]	2-21	V 19	
01:09	ASSIST by DEAN,JAPREECE			
00:44		5-21	V 16	GOOD! 3PTR by BYRD,BRITTANY
00:44				ASSIST by MCCALL,TATUM
00:10	MISSED 3PTR by DEAN,JAPREECE			
00:08				REBOUND (DEF) by TEAM
00:08				SUB OUT: ETHERIDGE,CATERA
00:08				SUB IN: TEDFORD,TIA
00:02				TURNOVER (LOSTBALL) by TEDFORD,TIA
00:02	STEAL by DEAN,JAPREECE			
00:02	MISSED 3PTR by DEAN,JAPREECE			
00:02	REBOUND (OFF) by TEAM			

UCLA 21, UIC 5

Points from (This Period)	UCL	UIC
In the Paint	14	2
Off Turns	14	0
2nd Chance	1	2
Fast Break	4	0
Bench	4	0

This period only:UCL led for 39:45. UIC led for 39:00.
Game was tied for 0:14.

Official Play-By-Play
UCLA vs UIC
Second Quarter
December 20, 2018 at Credit Union 1 Arena - Chicago, Ill.

Starters:

UCLA: 4 CORSARO,LINDSEY; 11 DRUMMER,LAJAHNA; 21 ONYENWERE,MICHAELA; 22 BURKE,KENNEDY; 24 DEAN,JAPREECE;
UIC: 2 THOMPSON,KIARRA; 3 BYRD,BRITTANY; 4 GAINES,JASMINE; 5 TONEY,TAYLOR; 14 NNEJI,JADA;

Period 2

Time	VISITORS: UCLA	Score	Margin	HOME: UIC
09:48	FOUL (PERSONAL) by CORSARO,LINDSEY			
09:48	SUB OUT: BAIRD,CHRISSEY			
09:48	SUB IN: HARRIS,SHAYLEY			
09:48	SUB OUT: OWENS,KAYLA			
09:48	SUB IN: HORVAT,CHANTEL			
09:47				TURNOVER (BADPASS) by TEDFORD,TIA
09:47	STEAL by CORSARO,LINDSEY			
09:44				FOUL (PERSONAL) by TEDFORD,TIA
09:32	MISSED JUMPER by HORVAT,CHANTEL			
09:28	REBOUND (OFF) by HORVAT,CHANTEL			
09:10	MISSED 3PTR by DEAN,JAPREECE			
09:08	REBOUND (OFF) by DEAN,JAPREECE			
09:00	TURNOVER (LOSTBALL) by DEAN,JAPREECE			
09:00				STEAL by JONES,KIENYA
08:56				MISSED LAYUP by TEDFORD,TIA
08:56	REBOUND (DEF) by TEAM			
08:38	MISSED JUMPER by CORSARO,LINDSEY			
08:35				REBOUND (DEF) by JONES,KIENYA
08:30				MISSED 3PTR by BYRD,BRITTANY
08:27	REBOUND (DEF) by HORVAT,CHANTEL			
08:17	MISSED 3PTR by HORVAT,CHANTEL			
08:15				REBOUND (DEF) by NYAUCHI,CHRISTELLE
08:05				MISSED 3PTR by MCCALL,TATUM
08:02	REBOUND (DEF) by HORVAT,CHANTEL			
07:55	GOOD! LAYUP by DRUMMER,LAJAHNA	5-23	V 18	
07:55	ASSIST by DEAN,JAPREECE			
07:35				MISSED 3PTR by TEDFORD,TIA
07:32	REBOUND (DEF) by DEAN,JAPREECE			
07:30	FOUL (OFF) by DEAN,JAPREECE			
07:30	TURNOVER (OFFENSIVE) by DEAN,JAPREECE			
07:30				SUB OUT: JONES,KIENYA
07:30				SUB IN: LAMPLEY,TYLAH
07:30	SUB OUT: DRUMMER,LAJAHNA			
07:30	SUB IN: MILLER,LAURYN			
07:30	SUB OUT: HARRIS,SHAYLEY			
07:30	SUB IN: ONYENWERE,MICHAELA			
07:09				TURNOVER (TRAVEL) by LAMPLEY,TYLAH
06:43	MISSED LAYUP by MILLER,LAURYN			
06:40	REBOUND (OFF) by ONYENWERE,MICHAELA			
06:40	MISSED LAYUP by ONYENWERE,MICHAELA			
06:37				REBOUND (DEF) by TEDFORD,TIA
06:34				MISSED JUMPER by TEDFORD,TIA
06:32	REBOUND (DEF) by TEAM			
06:32				SUB OUT: TEDFORD,TIA
06:32				SUB IN: THOMPSON,KIARRA
06:32				SUB OUT: NYAUCHI,CHRISTELLE
06:32				SUB IN: NNEJI,JADA
06:14	MISSED 3PTR by CORSARO,LINDSEY			
06:12	REBOUND (OFF) by HORVAT,CHANTEL			
06:10	MISSED JUMPER by DEAN,JAPREECE			
06:07	REBOUND (OFF) by ONYENWERE,MICHAELA			
06:07	GOOD! LAYUP by ONYENWERE,MICHAELA	5-25	V 20	
05:50				TURNOVER (TRAVEL) by BYRD,BRITTANY
05:38	SUB OUT: HORVAT,CHANTEL			
05:38	SUB IN: SMITH,AHLANA			
05:38	SUB OUT: CORSARO,LINDSEY			
05:38	SUB IN: JEFFERSON,KIARA			
05:38	SUB OUT: DEAN,JAPREECE			
05:38	SUB IN: BURKE,KENNEDY			
05:33	MISSED 3PTR by BURKE,KENNEDY			
05:32	REBOUND (OFF) by MILLER,LAURYN			
05:32				FOUL (PERSONAL) by THOMPSON,KIARRA
05:31	MISSED LAYUP by MILLER,LAURYN			
05:29	REBOUND (OFF) by ONYENWERE,MICHAELA			
05:18	MISSED LAYUP by ONYENWERE,MICHAELA			
05:18				BLOCK by LAMPLEY,TYLAH
05:14	REBOUND (OFF) by MILLER,LAURYN			
05:14				FOUL (PERSONAL) by MCCALL,TATUM
05:14				SUB OUT: THOMPSON,KIARRA
05:14				SUB IN: WILSON,KARA
05:06	MISSED 3PTR by JEFFERSON,KIARA			
05:04				REBOUND (DEF) by TEAM
04:56				TURNOVER (BADPASS) by WILSON,KARA
04:56				
04:43	MISSED LAYUP by MILLER,LAURYN			
04:42	REBOUND (OFF) by MILLER,LAURYN			

Time	VISITORS: UCLA	Score	Margin	HOME: UIC
04:42				FOUL (PERSONAL) by NNEJI,JADA
04:42	MISSED FT by MILLER,LAURYN			
04:42	REBOUND (OFF) by TEAM			
04:42	MISSED FT by MILLER,LAURYN			
04:42	REBOUND (OFF) by ONYENWERE,MICHAELA			
04:41	MISSED LAYUP by ONYENWERE,MICHAELA			
04:39				REBOUND (DEF) by NNEJI,JADA
04:38	FOUL (PERSONAL) by ONYENWERE,MICHAELA			
04:23	FOUL (PERSONAL) by MILLER,LAURYN			
04:18		8-25	V 17	GOOD! 3PTR by BYRD,BRITTANY
04:18				ASSIST by MCCALL,TATUM
04:05	GOOD! 3PTR by JEFFERSON,KIARA	8-28	V 20	
04:05	ASSIST by BURKE,KENNEDY			
03:46		10-28	V 18	GOOD! JUMPER by LAMPLEY,TYLAH
03:46				ASSIST by MCCALL,TATUM
03:32	MISSED JUMPER by SMITH,AHLANA			
03:30				REBOUND (DEF) by LAMPLEY,TYLAH
03:28	FOUL (PERSONAL) by MILLER,LAURYN			
03:28		11-28	V 17	GOOD! FT by LAMPLEY,TYLAH
03:28	SUB OUT: MILLER,LAURYN			
03:28	SUB IN: DRUMMER,LAJAHNA			
03:28				MISSED FT by LAMPLEY,TYLAH
03:28	REBOUND (DEF) by DRUMMER,LAJAHNA			
03:08	MISSED JUMPER by ONYENWERE,MICHAELA			
03:05				REBOUND (DEF) by WILSON,KARA
02:45		14-28	V 14	GOOD! 3PTR by WILSON,KARA
02:45				ASSIST by MCCALL,TATUM
02:27	MISSED 3PTR by JEFFERSON,KIARA			
02:21	REBOUND (OFF) by ONYENWERE,MICHAELA			
02:21	SUB OUT: JEFFERSON,KIARA			
02:21	SUB IN: DEAN,JAPREECE			
02:21	SUB OUT: SMITH,AHLANA			
02:21	SUB IN: CORSARO,LINDSEY			
02:16	MISSED JUMPER by BURKE,KENNEDY			
02:15	REBOUND (OFF) by TEAM			
02:05	GOOD! LAYUP by ONYENWERE,MICHAELA	14-30	V 16	
02:05	ASSIST by BURKE,KENNEDY			
01:51				TURNOVER (BADPASS) by WILSON,KARA
01:51	STEAL by CORSARO,LINDSEY			
01:44				FOUL (PERSONAL) by LAMPLEY,TYLAH
01:44	GOOD! FT by ONYENWERE,MICHAELA [FB]	14-31	V 17	
01:44	GOOD! FT by ONYENWERE,MICHAELA [FB]	14-32	V 18	
01:44	TIMEOUT 30SEC			
01:24				MISSED LAYUP by NNEJI,JADA
01:22	REBOUND (DEF) by ONYENWERE,MICHAELA			
01:18	GOOD! LAYUP by DEAN,JAPREECE [FB]	14-34	V 20	
01:18	ASSIST by ONYENWERE,MICHAELA			
01:06				TURNOVER (TRAVEL) by MCCALL,TATUM
00:55	GOOD! JUMPER by DEAN,JAPREECE	14-36	V 22	
00:39				TURNOVER (BADPASS) by WILSON,KARA
00:33	GOOD! 3PTR by DEAN,JAPREECE	14-39	V 25	
00:14	FOUL (PERSONAL) by ONYENWERE,MICHAELA			
00:14		15-39	V 24	GOOD! FT by LAMPLEY,TYLAH
00:14	SUB OUT: ONYENWERE,MICHAELA			
00:14	SUB IN: HORVAT,CHANTEL			
00:14				MISSED FT by LAMPLEY,TYLAH
00:14	REBOUND (DEF) by HORVAT,CHANTEL			
00:00	MISSED LAYUP by CORSARO,LINDSEY			
00:00				BLOCK by MCCALL,TATUM
00:00	REBOUND (OFF) by TEAM			

UCLA 39, UIC 15

Points from (This Period)	UCL	UIC
In the Paint	8	0
Off Turns	7	0
2nd Chance	4	0
Fast Break	4	0
Bench	3	7

This period only:UCL led for 39:45. UIC led for 39:00.
Game was tied for 0:14.

Official Box Score
UCLA vs UIC
Second Half Statistics Only
December 20, 2018 at Credit Union 1 Arena - Chicago, Ill.

UCLA 78

No.	Player	S	Pts	FG	3FG	FT	OR	DR	TR	PF	A	TO	Blk	Stl	Min	+/-
4	Corsaro, Lindsey		0	0-3	0-1	0-0	0	0	0	1	0	0	0	2	7	14
11	Drummer, Lajahna		2	1-1	0-0	0-0	0	1	1	0	0	0	0	0	6	9
21	Onyenwere, Michaela		6	2-6	0-0	2-2	5	1	6	2	1	0	0	0	7	6
22	Burke, Kennedy		0	0-2	0-1	0-0	0	0	0	0	2	0	0	0	6	4
24	Dean, Japreece		7	3-5	1-2	0-0	1	1	2	1	1	2	0	0	7	14
0	Horvat, Chantel		0	0-2	0-1	0-0	2	3	5	0	0	0	0	0	4	4
1	Owens, Kayla		0	0-0	0-0	0-0	0	0	0	0	0	0	0	0	0	0
2	Smith, Ahlana		0	0-1	0-0	0-0	0	0	0	0	0	0	0	0	3	-6
3	Jefferson, Kiara		3	1-3	1-3	0-0	0	0	0	0	0	0	0	0	3	-6
25	Harris, Shayley		0	0-0	0-0	0-0	0	0	0	0	0	0	0	0	2	2
32	Baird, Chrissy		0	0-0	0-0	0-0	0	0	0	0	0	0	0	0	0	0
33	Miller, Lauryn		0	0-3	0-0	0-2	3	0	3	2	0	0	0	0	4	-1
	Team						2	2	4	0		0				
TOTALS			18	7-26	2-8	2-4	0	0	21	6	4	2	0	2	50	

Shooting By Period

Period	FG	FG%	3FG	3FG%	FT	FT%
1st Qtr	8-15	53%	0-3	00%	5-6	83%
2nd Qtr	7-26	27%	2-8	25%	2-4	50%
3rd Qtr	5-14	36%	1-7	14%	8-10	80%
4th Qtr	7-17	41%	0-3	00%	6-8	75%
1st Half	8-15	53%	0-3	00%	5-6	83%
2nd Half	7-26	27%	2-8	25%	2-4	50%
3rd Half	5-14	36%	1-7	14%	8-10	80%
4th Half	7-17	41%	0-3	00%	6-8	75%
Game	27-72	37.5%	3-21	14.3%	21-28	75.0%

Deadball Rebounds:

Last FG: 4th-01:45

Biggest Run: 12-0

Largest lead: By 31 at 4-01:45

Technical Fouls: None.

UIC 47

No.	Player	S	Pts	FG	3FG	FT	OR	DR	TR	PF	A	TO	Blk	Stl	Min	+/-
2	Thompson, Kiarra		0	0-0	0-0	0-0	0	0	0	1	0	0	0	0	1	-2
3	Byrd, Brittany		3	1-2	1-2	0-0	0	0	0	0	0	1	0	0	10	-8
4	Gaines, Jasmine		0	0-0	0-0	0-0	0	0	0	0	0	0	0	0	0	0
5	Toney, Taylor		0	0-0	0-0	0-0	0	0	0	0	0	0	0	0	0	0
14	Nneji, Jada		0	0-1	0-0	0-0	0	1	1	1	0	0	0	0	7	-6
10	Tedford, Tia		0	0-3	0-1	0-0	0	1	1	1	0	1	0	0	3	-2
13	Jones, Kienya		0	0-0	0-0	0-0	0	1	1	0	0	0	0	1	3	-2
20	Etheridge, Catera		0	0-0	0-0	0-0	0	0	0	0	0	0	0	0	0	0
22	Lake, Abreanna		0	0-0	0-0	0-0	0	0	0	0	0	0	0	0	0	0
23	Mccall, Tatum		0	0-1	0-1	0-0	0	0	0	1	3	1	1	0	10	-8
25	Nyauchi, Christelle		0	0-0	0-0	0-0	0	1	1	0	0	0	0	0	3	-2
32	Wilson, Kara		3	1-1	1-1	0-0	0	1	1	0	0	3	0	0	5	-4
35	Lampley, Tylah		4	1-1	0-0	2-4	0	1	1	1	0	1	1	0	8	-6
	Team						0	1	1	0		0				
TOTALS			10	3-9	2-5	2-4	0	0	7	5	3	7	2	1	50	

Shooting By Period

Period	FG	FG%	3FG	3FG%	FT	FT%
1st Qtr	2-8	25%	1-5	20%	0-0	0%
2nd Qtr	3-9	33%	2-5	40%	2-4	50%
3rd Qtr	8-20	40%	1-3	33%	5-6	83%
4th Qtr	3-14	21%	1-6	17%	3-4	75%
1st Half	2-8	25%	1-5	20%	0-0	0%
2nd Half	3-9	33%	2-5	40%	2-4	50%
3rd Half	8-20	40%	1-3	33%	5-6	83%
4th Half	3-14	21%	1-6	17%	3-4	75%
Game	16-51	31.4%	5-19	26.3%	10-14	71.4%

Deadball Rebounds:

Last FG: 4th-03:18

Biggest Run: 8-0

Largest lead: By 0 at -

Technical Fouls: None.

Game Notes:	
Officials: Tim Daley, Jamie Broderick, Mark Berger	
Attendance: 640	
Start Time: 2018-12-20 00:00:59	End Time: 2018-12-20
01:57:28	
Game Duration: 116	

Score by Period	1st	2nd	3rd	4th	TOT
UCL	21	18	19	20	78
UIC	5	10	22	10	47

This period only: UCL led for 39:45. UIC led for 39:00.

Game was tied for 0:14.

Points from (This Period)	UCL	UIC
In the Paint	8	0
Off Turns	7	0
2nd Chance	4	0
Fast Break	4	0
Bench	3	7

Official Play-By-Play
UCLA vs UIC
Third Quarter
December 20, 2018 at Credit Union 1 Arena - Chicago, Ill.

Starters:

UCLA: 4 CORSARO,LINDSEY; 11 DRUMMER,LAJAHNA; 21 ONYENWERE,MICHAELA; 22 BURKE,KENNEDY; 24 DEAN,JAPREECE;
UIC: 2 THOMPSON,KIARRA; 3 BYRD,BRITTANY; 4 GAINES,JASMINE; 5 TONEY,TAYLOR; 14 NNEJI,JADA;

Period 3

Time	VISITORS: UCLA	Score	Margin	HOME: UIC
09:46		17-39	V 22	GOOD! LAYUP by BYRD,BRITTANY
09:46				ASSIST by NNEJI,JADA
09:36	GOOD! LAYUP by ONYENWERE,MICHAELA	17-41	V 24	
09:36	ASSIST by BURKE,KENNEDY			
09:22				MISSED LAYUP by LAKE,ABREANNA
09:22	BLOCK by ONYENWERE,MICHAELA			
09:22				REBOUND (OFF) by TEAM
09:04				TURNOVER (BADPASS) by LAKE,ABREANNA
09:04	STEAL by DEAN,JAPREECE			
08:55	MISSED 3PTR by DEAN,JAPREECE			
08:52	REBOUND (OFF) by CORSARO,LINDSEY			
08:52				FOUL (PERSONAL) by TONEY,TAYLOR
08:52	MISSED FT by CORSARO,LINDSEY			
08:52	REBOUND (OFF) by TEAM			
08:52	GOOD! FT by CORSARO,LINDSEY	17-42	V 25	
08:43	FOUL (PERSONAL) by DEAN,JAPREECE			
08:28				MISSED JUMPER by THOMPSON,KIARRA
08:28	BLOCK by ONYENWERE,MICHAELA			
08:24	REBOUND (DEF) by CORSARO,LINDSEY			
08:22	TURNOVER (LOSTBALL) by CORSARO,LINDSEY			
08:22				STEAL by TONEY,TAYLOR
08:22	FOUL (PERSONAL) by ONYENWERE,MICHAELA			
08:02				TURNOVER (BADPASS) by LAKE,ABREANNA
08:02	STEAL by BURKE,KENNEDY			
07:57	MISSED LAYUP by BURKE,KENNEDY			
07:57				BLOCK by NNEJI,JADA
07:53				REBOUND (DEF) by TONEY,TAYLOR
07:52	FOUL (PERSONAL) by ONYENWERE,MICHAELA			
07:52	SUB OUT: ONYENWERE,MICHAELA			
07:52	SUB IN: HORVAT,CHANTEL			
07:49				MISSED JUMPER by NNEJI,JADA
07:46				REBOUND (OFF) by THOMPSON,KIARRA
07:45		19-42	V 23	GOOD! JUMPER by LAKE,ABREANNA
07:45				ASSIST by THOMPSON,KIARRA
07:23	MISSED 3PTR by BURKE,KENNEDY			
07:20	REBOUND (OFF) by CORSARO,LINDSEY			
07:19	MISSED LAYUP by CORSARO,LINDSEY			
07:17	REBOUND (OFF) by HORVAT,CHANTEL			
07:16				FOUL (PERSONAL) by NNEJI,JADA
07:16	GOOD! FT by HORVAT,CHANTEL	19-43	V 24	
07:16	GOOD! FT by HORVAT,CHANTEL	19-44	V 25	
07:03				MISSED JUMPER by THOMPSON,KIARRA
07:01	REBOUND (DEF) by DRUMMER,LAJAHNA			
06:55				SUB OUT: THOMPSON,KIARRA
06:55				SUB IN: MCCALL,TATUM
06:53				FOUL (PERSONAL) by NNEJI,JADA
06:53	GOOD! FT by BURKE,KENNEDY	19-45	V 26	
06:53				SUB OUT: NNEJI,JADA
06:53				SUB IN: THOMPSON,KIARRA
06:53	GOOD! FT by BURKE,KENNEDY	19-46	V 27	
06:48				TURNOVER (BADPASS) by THOMPSON,KIARRA
06:48	STEAL by BURKE,KENNEDY			
06:43	FOUL (OFF) by BURKE,KENNEDY			
06:43	TURNOVER (OFFENSIVE) by BURKE,KENNEDY			
06:40		21-46	V 25	GOOD! LAYUP by TONEY,TAYLOR [FB]
06:40				ASSIST by BYRD,BRITTANY
06:23	GOOD! LAYUP by DRUMMER,LAJAHNA	21-48	V 27	
06:23	ASSIST by HORVAT,CHANTEL			
06:10				TURNOVER (LOSTBALL) by THOMPSON,KIARRA
06:10	STEAL by DRUMMER,LAJAHNA			
06:02	MISSED 3PTR by CORSARO,LINDSEY			
05:58				REBOUND (DEF) by BYRD,BRITTANY
05:53				TURNOVER (LOSTBALL) by BYRD,BRITTANY
05:53	STEAL by DEAN,JAPREECE			
05:48	MISSED LAYUP by BURKE,KENNEDY			
05:45				REBOUND (DEF) by LAKE,ABREANNA
05:34				MISSED JUMPER by LAKE,ABREANNA
05:32				REBOUND (OFF) by BYRD,BRITTANY
05:30				MISSED LAYUP by BYRD,BRITTANY
05:30	BLOCK by DRUMMER,LAJAHNA			
05:26	REBOUND (DEF) by CORSARO,LINDSEY			
05:18	MISSED 3PTR by DEAN,JAPREECE			
05:15				REBOUND (DEF) by BYRD,BRITTANY
05:09		23-48	V 25	GOOD! LAYUP by BYRD,BRITTANY
05:08	TIMEOUT 30SEC			
05:08				SUB OUT: THOMPSON,KIARRA

Time	VISITORS: UCLA	Score	Margin	HOME: UIC
05:08				SUB IN: GAINES,JASMINE
05:08				SUB OUT: LAKE,ABREANNA
05:08				SUB IN: ETHERIDGE,CATERA
04:53	GOOD! JUMPER by DEAN,JAPREECE	23-50	V 27	
04:53	ASSIST by CORSARO,LINDSEY			
04:32		25-50	V 25	GOOD! JUMPER by BYRD,BRITTANY [PNT]
04:25				
04:25				SUB OUT: ETHERIDGE,CATERA
04:25				SUB IN: TEDFORD,TIA
04:25	SUB OUT: BURKE,KENNEDY			
04:25	SUB IN: MILLER,LAURYN			
04:16	TURNOVER (3SEC) by MILLER,LAURYN			
04:05				MISSED JUMPER by GAINES,JASMINE
04:03				REBOUND (OFF) by TEAM
03:54	FOUL (PERSONAL) by CORSARO,LINDSEY			
03:54				MISSED FT by TEDFORD,TIA
03:54				REBOUND (OFF) by TEAM
03:54		26-50	V 24	GOOD! FT by TEDFORD,TIA
03:32				FOUL (PERSONAL) by TONEY,TAYLOR
03:32	GOOD! FT by DRUMMER,LAJAHNA	26-51	V 25	
03:32	SUB OUT: DEAN,JAPREECE			
03:32	SUB IN: SMITH,AHLANA			
03:32	SUB OUT: HORVAT,CHANTEL			
03:32	SUB IN: JEFFERSON,KIARA			
03:32	GOOD! FT by DRUMMER,LAJAHNA	26-52	V 26	
03:24	FOUL (PERSONAL) by DRUMMER,LAJAHNA			
03:24		27-52	V 25	GOOD! FT by TEDFORD,TIA
03:24		28-52	V 24	GOOD! FT by TEDFORD,TIA
03:19	TURNOVER (LOSTBALL) by JEFFERSON,KIARA			
03:19				STEAL by TEDFORD,TIA
03:14				MISSED LAYUP by TEDFORD,TIA
03:14	BLOCK by JEFFERSON,KIARA			
03:13	REBOUND (DEF) by TEAM			
02:59	GOOD! 3PTR by SMITH,AHLANA	28-55	V 27	
02:59	ASSIST by CORSARO,LINDSEY			
02:41				MISSED 3PTR by MCCALL,TATUM
02:38				REBOUND (OFF) by BYRD,BRITTANY
02:38		30-55	V 25	GOOD! LAYUP by BYRD,BRITTANY
02:27	MISSED 3PTR by SMITH,AHLANA			
02:23	REBOUND (OFF) by JEFFERSON,KIARA			
02:23				FOUL (PERSONAL) by TEDFORD,TIA
02:23	MISSED FT by JEFFERSON,KIARA			
02:23	REBOUND (OFF) by TEAM			
02:23	GOOD! FT by JEFFERSON,KIARA	30-56	V 26	
02:12				MISSED LAYUP by TONEY,TAYLOR
02:12	BLOCK by DRUMMER,LAJAHNA			
02:09	REBOUND (DEF) by MILLER,LAURYN			
02:07	TURNOVER (TRAVEL) by SMITH,AHLANA			
01:41				MISSED 3PTR by TEDFORD,TIA
01:39				REBOUND (OFF) by BYRD,BRITTANY
01:38	FOUL (PERSONAL) by JEFFERSON,KIARA			
01:38		31-56	V 25	GOOD! FT by BYRD,BRITTANY
01:38		32-56	V 24	GOOD! FT by BYRD,BRITTANY
01:11	GOOD! LAYUP by MILLER,LAURYN [PNT]	32-58	V 26	
01:11	ASSIST by SMITH,AHLANA			
00:47				MISSED JUMPER by TEDFORD,TIA
00:45				REBOUND (OFF) by BYRD,BRITTANY
00:44		34-58	V 24	GOOD! LAYUP by BYRD,BRITTANY
00:33	MISSED 3PTR by SMITH,AHLANA			
00:29				REBOUND (DEF) by TONEY,TAYLOR
00:24		37-58	V 21	GOOD! 3PTR by MCCALL,TATUM [FB]
00:24				ASSIST by TONEY,TAYLOR
00:02	TURNOVER (BADPASS) by CORSARO,LINDSEY			
00:02				STEAL by TONEY,TAYLOR

UCLA 58, UIC 37

Points from (This Period)	UCL	UIC
In the Paint	6	12
Off Turns	1	5
2nd Chance	3	9
Fast Break	0	5
Bench	8	8

**This period only:UCL led for 39:45. UIC led for 39:00.
Game was tied for 0:14.**

Official Play-By-Play
UCLA vs UIC
Fourth Quarter
December 20, 2018 at Credit Union 1 Arena - Chicago, Ill.

Starters:

UCLA: 4 CORSARO,LINDSEY; 11 DRUMMER,LAJAHNA; 21 ONYENWERE,MICHAELA; 22 BURKE,KENNEDY; 24 DEAN,JAPREECE;
UIC: 2 THOMPSON,KIARRA; 3 BYRD,BRITTANY; 4 GAINES,JASMINE; 5 TONEY,TAYLOR; 14 NNEJI,JADA;

Period 4

Time	VISITORS: UCLA	Score	Margin	HOME: UIC
09:50				TURNOVER (3SEC) by BYRD,BRITTANY
09:33				FOUL (PERSONAL) by WILSON,KARA
09:33				SUB OUT: WILSON,KARA
09:33				SUB IN: TEDFORD,TIA
09:08	MISSED JUMPER by MILLER,LAURYN			
09:06	REBOUND (OFF) by DRUMMER,LAJAHNA			
09:06				FOUL (PERSONAL) by BYRD,BRITTANY
08:43	MISSED JUMPER by DRUMMER,LAJAHNA			
08:41				REBOUND (DEF) by TONEY,TAYLOR
08:30		40-58	V 18	GOOD! 3PTR by MCCALL,TATUM
08:30				ASSIST by GAINES,JASMINE
08:09	MISSED 3PTR by SMITH,AHLANA			
08:05	REBOUND (OFF) by MILLER,LAURYN			
08:03	GOOD! LAYUP by DRUMMER,LAJAHNA	40-60	V 20	
08:03	ASSIST by MILLER,LAURYN			
07:48				MISSED 3PTR by TEDFORD,TIA
07:45	REBOUND (DEF) by MILLER,LAURYN			
07:42	GOOD! LAYUP by SMITH,AHLANA [FB]	40-62	V 22	
07:42	ASSIST by MILLER,LAURYN			
07:40				SUB OUT: TEDFORD,TIA
07:40				SUB IN: WILSON,KARA
07:40	SUB OUT: OWENS,KAYLA			
07:40	SUB IN: BURKE,KENNEDY			
07:25	FOUL (PERSONAL) by DRUMMER,LAJAHNA			
07:25		41-62	V 21	GOOD! FT by TONEY,TAYLOR
07:25	SUB OUT: DRUMMER,LAJAHNA			
07:25	SUB IN: ONYENWERE,MICHAELA			
07:25		42-62	V 20	GOOD! FT by TONEY,TAYLOR
07:09	GOOD! LAYUP by ONYENWERE,MICHAELA	42-64	V 22	
07:09	ASSIST by SMITH,AHLANA			
06:57				MISSED 3PTR by TONEY,TAYLOR
06:54	REBOUND (DEF) by DEAN,JAPREECE			
06:34	TURNOVER (LOSTBALL) by DEAN,JAPREECE			
06:34				STEAL by GAINES,JASMINE
06:24				MISSED JUMPER by BYRD,BRITTANY
06:22	REBOUND (DEF) by MILLER,LAURYN			
06:17	GOOD! LAYUP by BURKE,KENNEDY [FB]	42-66	V 24	
06:17	ASSIST by DEAN,JAPREECE			
05:57				MISSED JUMPER by GAINES,JASMINE
05:55	REBOUND (DEF) by BURKE,KENNEDY			
05:52				FOUL (PERSONAL) by TONEY,TAYLOR
05:52				SUB OUT: TONEY,TAYLOR
05:52				SUB IN: NNEJI,JADA
05:52	SUB OUT: DEAN,JAPREECE			
05:52	SUB IN: CORSARO,LINDSEY			
05:52	MISSED FT by MILLER,LAURYN			
05:52	REBOUND (OFF) by TEAM			
05:52	GOOD! FT by MILLER,LAURYN [FB]	42-67	V 25	
05:30				MISSED LAYUP by NNEJI,JADA
05:30	BLOCK by ONYENWERE,MICHAELA			
05:28				REBOUND (OFF) by TEAM
05:21				MISSED LAYUP by BYRD,BRITTANY
05:21	BLOCK by BURKE,KENNEDY			
05:17	REBOUND (DEF) by BURKE,KENNEDY			
05:14				FOUL (PERSONAL) by BYRD,BRITTANY
05:14	GOOD! FT by ONYENWERE,MICHAELA [FB]	42-68	V 26	
05:14	SUB OUT: MILLER,LAURYN			
05:14	SUB IN: BAIRD,CHRISSY			
05:14	GOOD! FT by ONYENWERE,MICHAELA [FB]	42-69	V 27	
04:52				MISSED 3PTR by BYRD,BRITTANY
04:50	REBOUND (DEF) by CORSARO,LINDSEY			
04:47	TURNOVER (BADPASS) by CORSARO,LINDSEY			
04:47				
04:31	FOUL (PERSONAL) by BAIRD,CHRISSY			
04:31		43-69	V 26	GOOD! FT by BYRD,BRITTANY
04:31				MISSED FT by BYRD,BRITTANY
04:31				REBOUND (OFF) by NNEJI,JADA
04:30		45-69	V 24	GOOD! JUMPER by NNEJI,JADA
03:55	MISSED JUMPER by BAIRD,CHRISSY			
03:53	REBOUND (OFF) by ONYENWERE,MICHAELA			
03:52	MISSED LAYUP by ONYENWERE,MICHAELA			
03:52				BLOCK by NNEJI,JADA
03:52	REBOUND (OFF) by ONYENWERE,MICHAELA			
03:52	SUB OUT: ONYENWERE,MICHAELA			
03:52	SUB IN: MILLER,LAURYN			
03:40	GOOD! LAYUP by CORSARO,LINDSEY	45-71	V 26	

Time	VISITORS: UCLA	Score	Margin	HOME: UIC
03:40	ASSIST by SMITH,AHLANA			
03:21				MISSED 3PTR by BYRD,BRITTANY
03:19				REBOUND (OFF) by NNEJI,JADA
03:18		47-71	V 24	GOOD! LAYUP by NNEJI,JADA
03:01				FOUL (PERSONAL) by NNEJI,JADA
03:01	GOOD! FT by BURKE,KENNEDY	47-72	V 25	
03:01	MISSED FT by BURKE,KENNEDY			
03:01				REBOUND (DEF) by WILSON,KARA
02:59				TURNOVER (LOSTBALL) by WILSON,KARA
02:59	STEAL by BAIRD,CHRISSY			
02:51				FOUL (PERSONAL) by BYRD,BRITTANY
02:51	GOOD! FT by SMITH,AHLANA	47-73	V 26	
02:51	GOOD! FT by SMITH,AHLANA	47-74	V 27	
02:51	SUB OUT: SMITH,AHLANA			
02:51	SUB IN: DEAN,JAPREECE			
02:43				FOUL (OFF) by NNEJI,JADA
02:43				TURNOVER (OFFENSIVE) by NNEJI,JADA
02:43				SUB OUT: NNEJI,JADA
02:43				SUB IN: NYAUCHI,CHRISTELLE
02:26	MISSED JUMPER by DEAN,JAPREECE			
02:23	REBOUND (OFF) by MILLER,LAURYN			
02:22	GOOD! LAYUP by MILLER,LAURYN	47-76	V 29	
02:09				MISSED 3PTR by MCCALL,TATUM
02:06	REBOUND (DEF) by BAIRD,CHRISSY			
02:04	TIMEOUT 30SEC			
02:04	SUB OUT: BURKE,KENNEDY			
02:04	SUB IN: HARRIS,SHAYLEY			
01:45	GOOD! LAYUP by HARRIS,SHAYLEY	47-78	V 31	
01:45	ASSIST by DEAN,JAPREECE			
01:16				MISSED JUMPER by GAINES,JASMINE
01:16	BLOCK by MILLER,LAURYN			
01:11	REBOUND (DEF) by MILLER,LAURYN			
00:55	MISSED 3PTR by BAIRD,CHRISSY			
00:52				REBOUND (DEF) by TEAM
00:23				MISSED JUMPER by BYRD,BRITTANY
00:23	BLOCK by MILLER,LAURYN			
00:18	REBOUND (DEF) by BAIRD,CHRISSY			
00:07	MISSED 3PTR by BAIRD,CHRISSY			
00:04	REBOUND (OFF) by CORSARO,LINDSEY			
00:01	MISSED LAYUP by DEAN,JAPREECE			
00:01				BLOCK by NYAUCHI,CHRISTELLE
00:01	REBOUND (OFF) by TEAM			
00:00	MISSED JUMPER by BAIRD,CHRISSY			
00:00	REBOUND (OFF) by TEAM			

UCLA 78, UIC 47

Points from (This Period)	UCL	UIC
In the Paint	14	4
Off Turns	4	1
2nd Chance	6	4
Fast Break	7	0
Bench	9	3

**This period only:UCL led for 39:45. UIC led for 39:00.
Game was tied for 0:14.**

**Official Scoring/Possession Reference Chart
UCLA vs UIC**

Period 1

December 20, 2018 at Credit Union 1 Arena - Chicago, Ill.

Starters:

UCLA: 4 CORSARO,LINDSEY; 11 DRUMMER,LAJAHNA; 21 ONYENWERE,MICHAELA; 22 BURKE,KENNEDY; 24 DEAN,JAPREECE;
UIC: 2 THOMPSON,KIARRA; 3 BYRD,BRITTANY; 4 GAINES,JASMINE; 5 TONEY,TAYLOR; 14 NNEJI,JADA;

Period 1

Time	VISITORS: UCLA	Score	Margin	HOME: UIC
09:46	GOOD! JUMPER by ONYENWERE,MICHAELA	0-2	V 2	
09:15	GOOD! LAYUP by DRUMMER,LAJAHNA	0-4	V 4	
08:39	GOOD! LAYUP by DRUMMER,LAJAHNA	0-6	V 6	
08:39	GOOD! FT by DRUMMER,LAJAHNA	0-7	V 7	
07:59	GOOD! LAYUP by DRUMMER,LAJAHNA	0-9	V 9	
07:15	GOOD! LAYUP by ONYENWERE,MICHAELA	0-11	V 11	
07:15	GOOD! FT by ONYENWERE,MICHAELA	0-12	V 12	
06:56		2-12	V 10	GOOD! LAYUP by BYRD,BRITTANY
06:41	GOOD! LAYUP by HORVAT,CHANTEL	2-14	V 12	
04:23	GOOD! LAYUP by JEFFERSON,KIARA [FB]	2-16	V 14	
03:23	GOOD! FT by DRUMMER,LAJAHNA	2-17	V 15	
01:48	GOOD! FT by ONYENWERE,MICHAELA [FB]	2-18	V 16	
01:48	GOOD! FT by ONYENWERE,MICHAELA [FB]	2-19	V 17	
01:09	GOOD! JUMPER by CORSARO,LINDSEY [PNT]	2-21	V 19	
00:44		5-21	V 16	GOOD! 3PTR by BYRD,BRITTANY

UCLA 21, UIC 5

**Official Scoring/Possession Reference Chart
UCLA vs UIC**

Period 2

December 20, 2018 at Credit Union 1 Arena - Chicago, Ill.

Starters:

UCLA: 4 CORSARO,LINDSEY; 11 DRUMMER,LAJAHNA; 21 ONYENWERE,MICHAELA; 22 BURKE,KENNEDY; 24 DEAN,JAPREECE;
UIC: 2 THOMPSON,KIARRA; 3 BYRD,BRITTANY; 4 GAINES,JASMINE; 5 TONEY,TAYLOR; 14 NNEJI,JADA;

Period 2

Time	VISITORS: UCLA	Score	Margin	HOME: UIC
07:55	GOOD! LAYUP by DRUMMER,LAJAHNA	5-23	V 18	
06:07	GOOD! LAYUP by ONYENWERE,MICHAELA	5-25	V 20	
04:18		8-25	V 17	GOOD! 3PTR by BYRD,BRITTANY
04:05	GOOD! 3PTR by JEFFERSON,KIARA	8-28	V 20	
03:46		10-28	V 18	GOOD! JUMPER by LAMPLEY,TYLAH
03:28		11-28	V 17	GOOD! FT by LAMPLEY,TYLAH
02:45		14-28	V 14	GOOD! 3PTR by WILSON,KARA
02:05	GOOD! LAYUP by ONYENWERE,MICHAELA	14-30	V 16	
01:44	GOOD! FT by ONYENWERE,MICHAELA [FB]	14-31	V 17	
01:44	GOOD! FT by ONYENWERE,MICHAELA [FB]	14-32	V 18	
01:18	GOOD! LAYUP by DEAN,JAPREECE [FB]	14-34	V 20	
00:55	GOOD! JUMPER by DEAN,JAPREECE	14-36	V 22	
00:33	GOOD! 3PTR by DEAN,JAPREECE	14-39	V 25	
00:14		15-39	V 24	GOOD! FT by LAMPLEY,TYLAH

UCLA 39, UIC 15

**Official Scoring/Possession Reference Chart
UCLA vs UIC**

Period 3

December 20, 2018 at Credit Union 1 Arena - Chicago, Ill.

Starters:

UCLA: 4 CORSARO,LINDSEY; 11 DRUMMER,LAJAHNA; 21 ONYENWERE,MICHAELA; 22 BURKE,KENNEDY; 24 DEAN,JAPREECE;
UIC: 2 THOMPSON,KIARRA; 3 BYRD,BRITTANY; 4 GAINES,JASMINE; 5 TONEY,TAYLOR; 14 NNEJI,JADA;

Period 3

Time	VISITORS: UCLA	Score	Margin	HOME: UIC
09:46		17-39	V 22	GOOD! LAYUP by BYRD,BRITTANY
09:36	GOOD! LAYUP by ONYENWERE,MICHAELA	17-41	V 24	
08:52	GOOD! FT by CORSARO,LINDSEY	17-42	V 25	
07:45		19-42	V 23	GOOD! JUMPER by LAKE,ABREANNA
07:16	GOOD! FT by HORVAT,CHANTEL	19-43	V 24	
07:16	GOOD! FT by HORVAT,CHANTEL	19-44	V 25	
06:53	GOOD! FT by BURKE,KENNEDY	19-45	V 26	
06:53	GOOD! FT by BURKE,KENNEDY	19-46	V 27	
06:40		21-46	V 25	GOOD! LAYUP by TONEY,TAYLOR [FB]
06:23	GOOD! LAYUP by DRUMMER,LAJAHNA	21-48	V 27	
05:09		23-48	V 25	GOOD! LAYUP by BYRD,BRITTANY
04:53	GOOD! JUMPER by DEAN,JAPREECE	23-50	V 27	
04:32		25-50	V 25	GOOD! JUMPER by BYRD,BRITTANY [PNT]
03:54		26-50	V 24	GOOD! FT by TEDFORD,TIA
03:32	GOOD! FT by DRUMMER,LAJAHNA	26-51	V 25	
03:32	GOOD! FT by DRUMMER,LAJAHNA	26-52	V 26	
03:24		27-52	V 25	GOOD! FT by TEDFORD,TIA
03:24		28-52	V 24	GOOD! FT by TEDFORD,TIA
02:59	GOOD! 3PTR by SMITH,AHLANA	28-55	V 27	
02:38		30-55	V 25	GOOD! LAYUP by BYRD,BRITTANY
02:23	GOOD! FT by JEFFERSON,KIARA	30-56	V 26	
01:38		31-56	V 25	GOOD! FT by BYRD,BRITTANY
01:38		32-56	V 24	GOOD! FT by BYRD,BRITTANY
01:11	GOOD! LAYUP by MILLER,LAURYN [PNT]	32-58	V 26	
00:44		34-58	V 24	GOOD! LAYUP by BYRD,BRITTANY
00:24		37-58	V 21	GOOD! 3PTR by MCCALL,TATUM [FB]

UCLA 58, UIC 37

**Official Scoring/Possession Reference Chart
UCLA vs UIC**

Period 4

December 20, 2018 at Credit Union 1 Arena - Chicago, Ill.

Starters:

UCLA: 4 CORSARO,LINDSEY; 11 DRUMMER,LAJAHNA; 21 ONYENWERE,MICHAELA; 22 BURKE,KENNEDY; 24 DEAN,JAPREECE;
UIC: 2 THOMPSON,KIARRA; 3 BYRD,BRITTANY; 4 GAINES,JASMINE; 5 TONEY,TAYLOR; 14 NNEJI,JADA;

Period 4

Time	VISITORS: UCLA	Score	Margin	HOME: UIC
08:30		40-58	V 18	GOOD! 3PTR by MCCALL,TATUM
08:03	GOOD! LAYUP by DRUMMER,LAJAHNA	40-60	V 20	
07:42	GOOD! LAYUP by SMITH,AHLANA [FB]	40-62	V 22	
07:25		41-62	V 21	GOOD! FT by TONEY,TAYLOR
07:25		42-62	V 20	GOOD! FT by TONEY,TAYLOR
07:09	GOOD! LAYUP by ONYENWERE,MICHAELA	42-64	V 22	
06:17	GOOD! LAYUP by BURKE,KENNEDY [FB]	42-66	V 24	
05:52	GOOD! FT by MILLER,LAURYN [FB]	42-67	V 25	
05:14	GOOD! FT by ONYENWERE,MICHAELA [FB]	42-68	V 26	
05:14	GOOD! FT by ONYENWERE,MICHAELA [FB]	42-69	V 27	
04:31		43-69	V 26	GOOD! FT by BYRD,BRITTANY
04:30		45-69	V 24	GOOD! JUMPER by NNEJI,JADA
03:40	GOOD! LAYUP by CORSARO,LINDSEY	45-71	V 26	
03:18		47-71	V 24	GOOD! LAYUP by NNEJI,JADA
03:01	GOOD! FT by BURKE,KENNEDY	47-72	V 25	
02:51	GOOD! FT by SMITH,AHLANA	47-73	V 26	
02:51	GOOD! FT by SMITH,AHLANA	47-74	V 27	
02:22	GOOD! LAYUP by MILLER,LAURYN	47-76	V 29	
01:45	GOOD! LAYUP by HARRIS,SHAYLEY	47-78	V 31	

UCLA 78, UIC 47

Official Substitutions Log
UCLA vs UIC
Period 1
December 20, 2018 at Credit Union 1 Arena - Chicago, Ill.

VISITORS: UCLA	Time	Score	HOME: UIC
4 CORSARO,LINDSEY			2 THOMPSON,KIARRA
11 DRUMMER,LAJAHNA			3 BYRD,BRITTANY
21 ONYENWERE,MICHAELA			4 GAINES,JASMINE
22 BURKE,KENNEDY			5 TONEY,TAYLOR
24 DEAN,JAPREECE			14 NNEJI,JADA
	08:59	4-0	SUB OUT: NNEJI,JADA
	08:59		SUB IN: JONES,KIENYA
	08:09	7-0	SUB OUT: GAINES,JASMINE
	08:09		SUB IN: LAKE,ABREANNA
	07:24	9-0	SUB OUT: JONES,KIENYA
	07:24		SUB IN: LAMPLEY,TYLAH
SUB OUT: 22 BURKE,KENNEDY	07:24		
SUB IN: 0 HORVAT,CHANTEL	07:24		
SUB OUT: 21 ONYENWERE,MICHAELA	07:15	12-0	
SUB IN: 33 MILLER,LAURYN	07:15		
SUB OUT: 11 DRUMMER,LAJAHNA	05:56	14-2	
SUB IN: 21 ONYENWERE,MICHAELA	05:56		
	05:41	14-2	SUB OUT: THOMPSON,KIARRA
	05:41		SUB IN: GAINES,JASMINE
SUB OUT: 0 HORVAT,CHANTEL	05:41		
SUB IN: 2 SMITH,AHLANA	05:41		
SUB OUT: 4 CORSARO,LINDSEY	05:41		
SUB IN: 3 JEFFERSON,KIARA	05:41		
SUB OUT: 24 DEAN,JAPREECE	05:41		
SUB IN: 22 BURKE,KENNEDY	05:41		
SUB OUT: 33 MILLER,LAURYN	03:37	16-2	
SUB IN: 11 DRUMMER,LAJAHNA	03:37		
	03:23	17-2	SUB OUT: GAINES,JASMINE
	03:23		SUB IN: NYAUCHI,CHRISTELLE
	03:23		SUB OUT: LAKE,ABREANNA
	03:23		SUB IN: MCCALL,TATUM
	03:23		SUB OUT: LAMPLEY,TYLAH
	03:23		SUB IN: WILSON,KARA
	02:29	17-2	SUB OUT: WILSON,KARA
	02:29		SUB IN: ETHERIDGE,CATERA
SUB OUT: 2 SMITH,AHLANA	02:11	17-2	
SUB IN: 24 DEAN,JAPREECE	02:11		
SUB OUT: 3 JEFFERSON,KIARA	02:11		
SUB IN: 4 CORSARO,LINDSEY	02:11		
SUB OUT: 22 BURKE,KENNEDY	02:11		
SUB IN: 1 OWENS,KAYLA	02:11		
	01:48	18-2	SUB OUT: TONEY,TAYLOR
	01:48		SUB IN: JONES,KIENYA
SUB OUT: 21 ONYENWERE,MICHAELA	01:39	19-2	
SUB IN: 32 BAIRD,CHRISSEY	01:39		
	00:08	21-5	SUB OUT: ETHERIDGE,CATERA
	00:08		SUB IN: TEDFORD,TIA

UCLA 21, UIC 5

Official Substitutions Log
UCLA vs UIC
Period 2
December 20, 2018 at Credit Union 1 Arena - Chicago, Ill.

VISITORS: UCLA	Time	Score	HOME: UIC
4 CORSARO,LINDSEY			2 THOMPSON,KIARRA
11 DRUMMER,LAJAHNA			3 BYRD,BRITTANY
21 ONYENWERE,MICHAELA			4 GAINES,JASMINE
22 BURKE,KENNEDY			5 TONEY,TAYLOR
24 DEAN,JAPREECE			14 NNEJI,JADA
SUB OUT: 32 BAIRD,CHRISY	09:48	-	
SUB IN: 25 HARRIS,SHAYLEY	09:48		
SUB OUT: 1 OWENS,KAYLA	09:48		
SUB IN: 0 HORVAT,CHANTEL	09:48		
	07:30	23-5	SUB OUT: JONES,KIENYA
	07:30		SUB IN: LAMPLEY,TYLAH
SUB OUT: 11 DRUMMER,LAJAHNA	07:30		
SUB IN: 33 MILLER,LAURYN	07:30		
SUB OUT: 25 HARRIS,SHAYLEY	07:30		
SUB IN: 21 ONYENWERE,MICHAELA	07:30		
	06:32	23-5	SUB OUT: TEDFORD,TIA
	06:32		SUB IN: THOMPSON,KIARRA
	06:32		SUB OUT: NYAUCHI,CHRISTELLE
	06:32		SUB IN: NNEJI,JADA
SUB OUT: 0 HORVAT,CHANTEL	05:38	25-5	
SUB IN: 2 SMITH,AHLANA	05:38		
SUB OUT: 4 CORSARO,LINDSEY	05:38		
SUB IN: 3 JEFFERSON,KIARA	05:38		
SUB OUT: 24 DEAN,JAPREECE	05:38		
SUB IN: 22 BURKE,KENNEDY	05:38		
	05:14	25-5	SUB OUT: THOMPSON,KIARRA
	05:14		SUB IN: WILSON,KARA
SUB OUT: 33 MILLER,LAURYN	03:28	28-11	
SUB IN: 11 DRUMMER,LAJAHNA	03:28		
SUB OUT: 3 JEFFERSON,KIARA	02:21	28-14	
SUB IN: 24 DEAN,JAPREECE	02:21		
SUB OUT: 2 SMITH,AHLANA	02:21		
SUB IN: 4 CORSARO,LINDSEY	02:21		
SUB OUT: 21 ONYENWERE,MICHAELA	00:14	39-15	
SUB IN: 0 HORVAT,CHANTEL	00:14		

UCLA 39, UIC 15

Official Substitutions Log
UCLA vs UIC
Period 3
December 20, 2018 at Credit Union 1 Arena - Chicago, Ill.

VISITORS: UCLA	Time	Score	HOME: UIC
4 CORSARO,LINDSEY			2 THOMPSON,KIARRA
11 DRUMMER,LAJAHNA			3 BYRD,BRITTANY
21 ONYENWERE,MICHAELA			4 GAINES,JASMINE
22 BURKE,KENNEDY			5 TONEY,TAYLOR
24 DEAN,JAPREECE			14 NNEJI,JADA
SUB OUT: 21 ONYENWERE,MICHAELA	07:52	42-17	
SUB IN: 0 HORVAT,CHANTEL	07:52		
	06:55	44-19	SUB OUT: THOMPSON,KIARRA
	06:55		SUB IN: MCCALL,TATUM
	06:53	45-19	SUB OUT: NNEJI,JADA
	06:53		SUB IN: THOMPSON,KIARRA
	05:08	48-23	SUB OUT: THOMPSON,KIARRA
	05:08		SUB IN: GAINES,JASMINE
	05:08		SUB OUT: LAKE,ABREANNA
	05:08		SUB IN: ETHERIDGE,CATERA
	04:25	50-25	SUB OUT: ETHERIDGE,CATERA
	04:25		SUB IN: TEDFORD,TIA
SUB OUT: 22 BURKE,KENNEDY	04:25		
SUB IN: 33 MILLER,LAURYN	04:25		
SUB OUT: 24 DEAN,JAPREECE	03:32	51-26	
SUB IN: 2 SMITH,AHLANA	03:32		
SUB OUT: 0 HORVAT,CHANTEL	03:32		
SUB IN: 3 JEFFERSON,KIARA	03:32		

UCLA 58, UIC 37

Official Substitutions Log
UCLA vs UIC
Period 4
December 20, 2018 at Credit Union 1 Arena - Chicago, Ill.

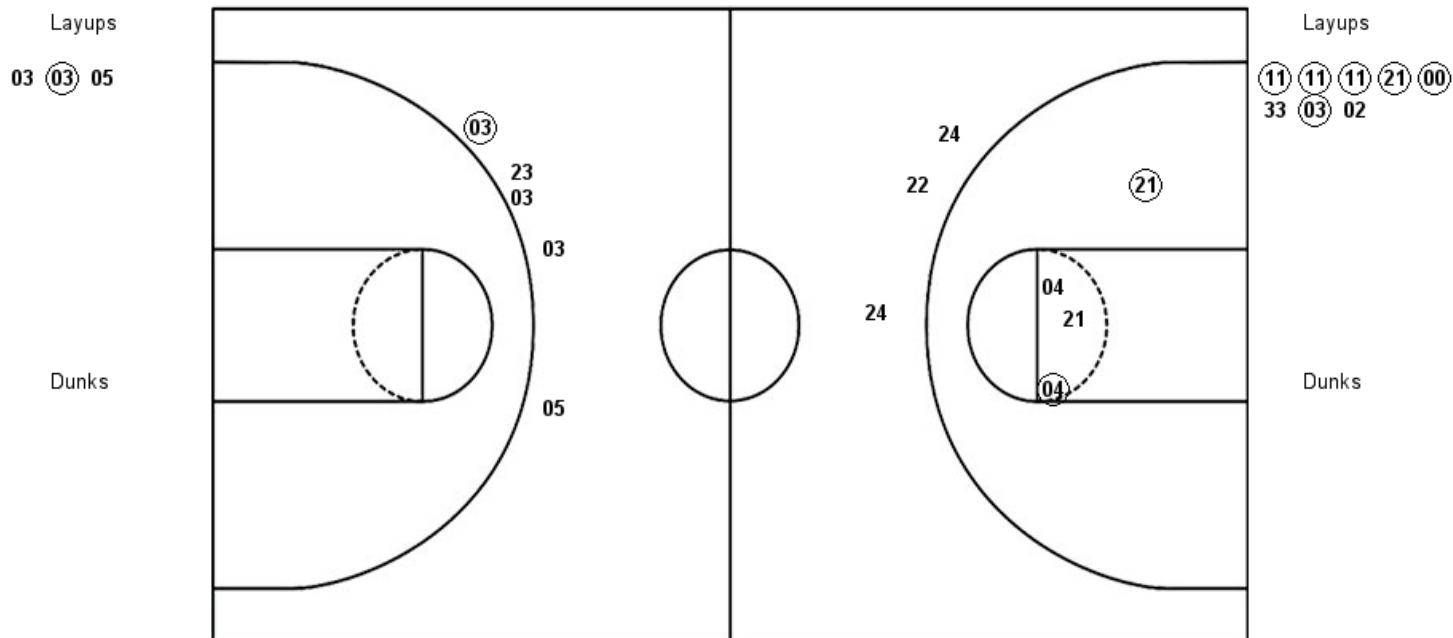
VISITORS: UCLA	Time	Score	HOME: UIC
4 CORSARO,LINDSEY			2 THOMPSON,KIARRA
11 DRUMMER,LAJAHNA			3 BYRD,BRITTANY
21 ONYENWERE,MICHAELA			4 GAINES,JASMINE
22 BURKE,KENNEDY			5 TONEY,TAYLOR
24 DEAN,JAPREECE			14 NNEJI,JADA
	09:33	-	SUB OUT: WILSON,KARA
	09:33		SUB IN: TEDFORD,TIA
	07:40	62-40	SUB OUT: TEDFORD,TIA
	07:40		SUB IN: WILSON,KARA
SUB OUT: 1 OWENS,KAYLA	07:40		
SUB IN: 22 BURKE,KENNEDY	07:40		
SUB OUT: 11 DRUMMER,LAJAHNA	07:25	62-41	
SUB IN: 21 ONYENWERE,MICHAELA	07:25		
	05:52	66-42	SUB OUT: TONEY,TAYLOR
	05:52		SUB IN: NNEJI,JADA
SUB OUT: 24 DEAN,JAPREECE	05:52		
SUB IN: 4 CORSARO,LINDSEY	05:52		
SUB OUT: 33 MILLER,LAURYN	05:14	68-42	
SUB IN: 32 BAIRD,CHRISSY	05:14		
SUB OUT: 21 ONYENWERE,MICHAELA	03:52	69-45	
SUB IN: 33 MILLER,LAURYN	03:52		
SUB OUT: 2 SMITH,AHLANA	02:51	74-47	
SUB IN: 24 DEAN,JAPREECE	02:51		
	02:43	74-47	SUB OUT: NNEJI,JADA
	02:43		SUB IN: NYAUCHI,CHRISTELLE
SUB OUT: 22 BURKE,KENNEDY	02:04	76-47	
SUB IN: 25 HARRIS,SHAYLEY	02:04		

UCLA 78, UIC 47

Official Shot Chart
UCLA vs UIC
PERIOD 1 Shots
December 20, 2018 at Credit Union 1 Arena - Chicago, Ill.

UIC

UCLA



UIC : Period 1	Made	Att	Pct
Layups	1	3	33.3
Dunks	0	0	0
2PT Field Goals	1	3	33.3
3PT Field Goals	1	5	20.0
Total Field Goals	2	8	25.0

UCL : Period 1	Made	Att	Pct
Layups	6	8	75.0
Dunks	0	0	0
2PT Field Goals	8	12	66.7
3PT Field Goals	0	3	00.0
Total Field Goals	8	15	53.3

Official Shot Chart
UCLA vs UIC
PERIOD 2 Shots
December 20, 2018 at Credit Union 1 Arena - Chicago, Ill.

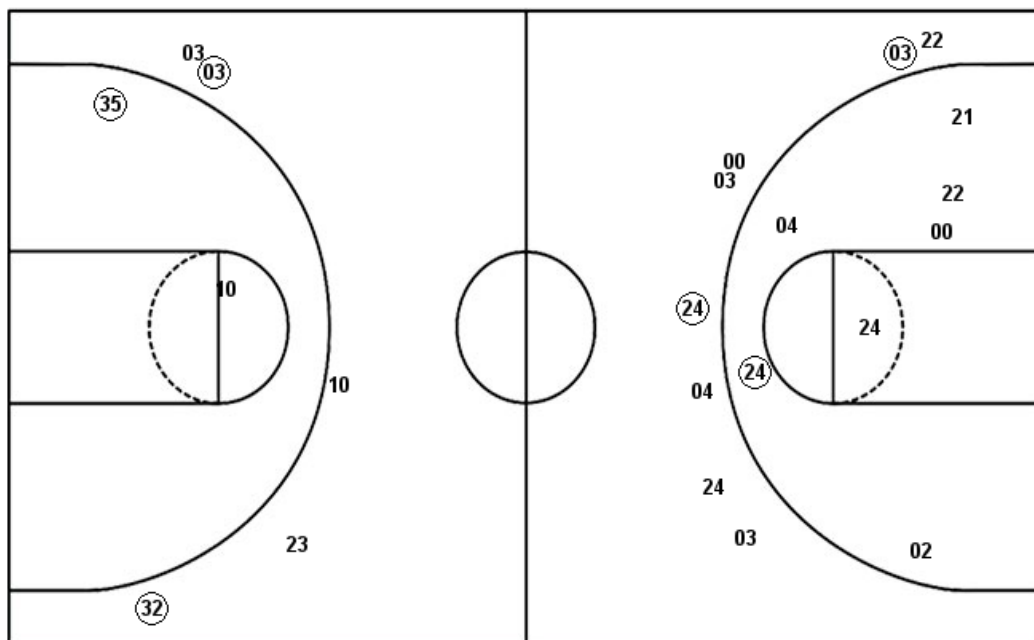
UIC

UCLA

Layups

10 14

Dunks



Layups

11 33 21 21 33

Dunks

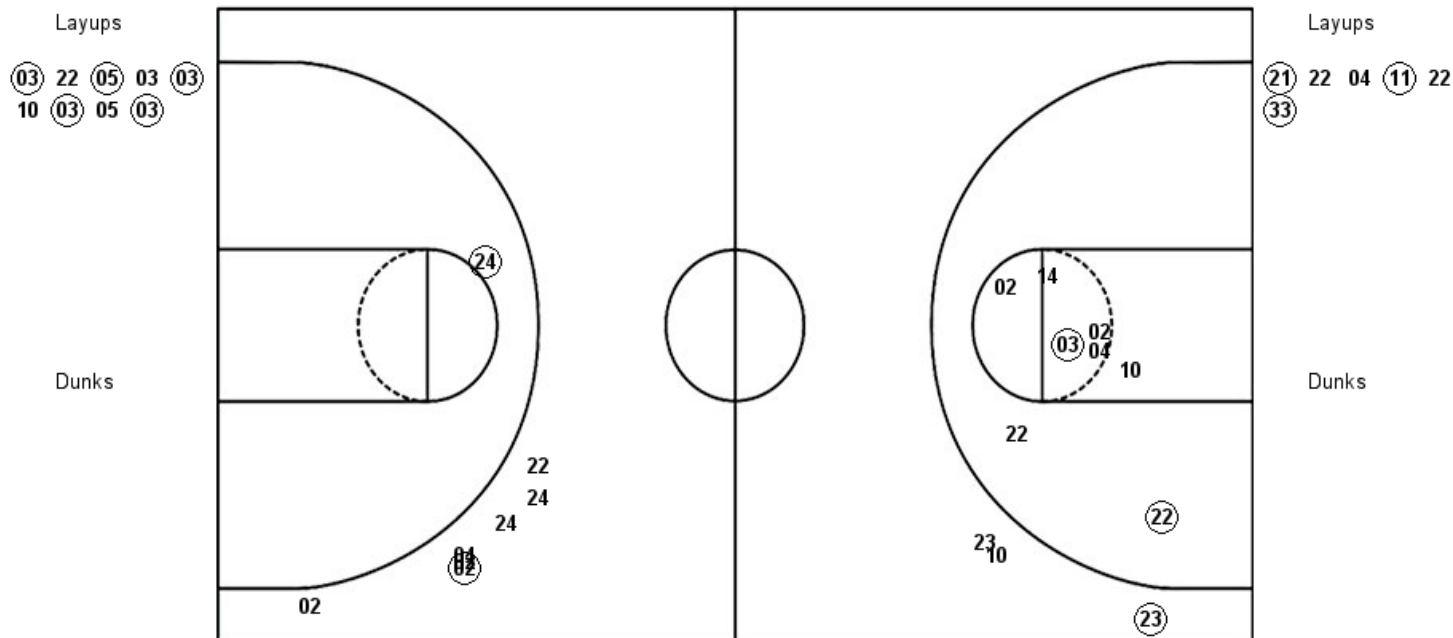
UIC : Period 2	Made	Att	Pct
Layups	0	2	00.0
Dunks	0	0	0
2PT Field Goals	1	4	25.0
3PT Field Goals	2	5	40.0
Total Field Goals	3	9	33.3

UCL : Period 2	Made	Att	Pct
Layups	4	11	36.4
Dunks	0	0	0
2PT Field Goals	5	18	27.8
3PT Field Goals	2	8	25.0
Total Field Goals	7	26	26.9

Official Shot Chart
UCLA vs UIC
PERIOD 3 Shots
December 20, 2018 at Credit Union 1 Arena - Chicago, Ill.

UIC

UCLA



UIC : Period 3	Made	Att	Pct
Layups	5	9	55.6
Dunks	0	0	0
2PT Field Goals	7	17	41.2
3PT Field Goals	1	3	33.3
Total Field Goals	8	20	40.0

UCL : Period 3	Made	Att	Pct
Layups	3	6	50.0
Dunks	0	0	0
2PT Field Goals	4	7	57.1
3PT Field Goals	1	7	14.3
Total Field Goals	5	14	35.7

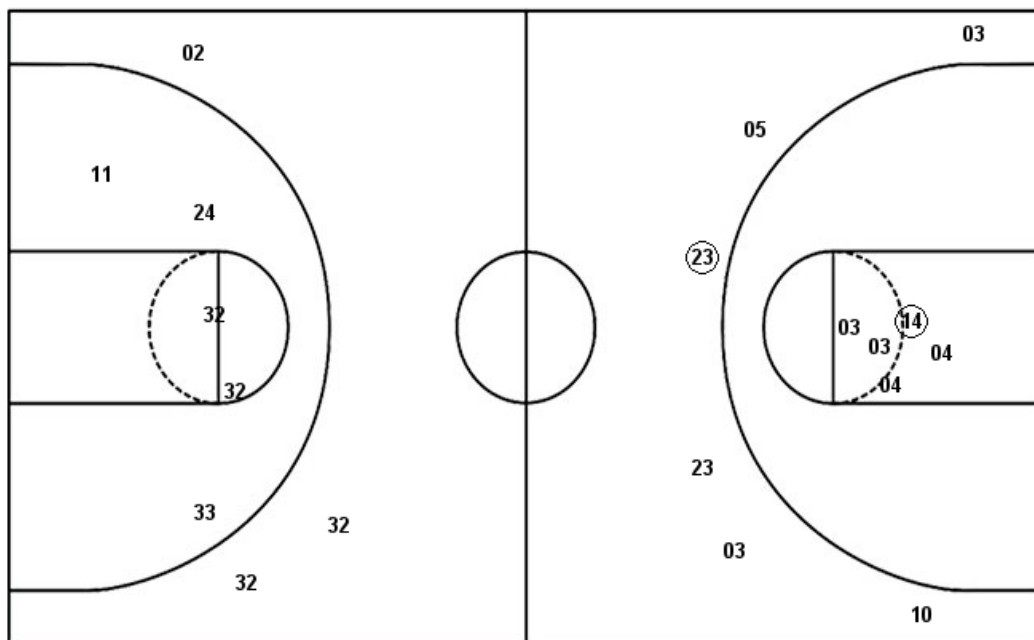
Official Shot Chart
UCLA vs UIC
PERIOD 4 Shots
December 20, 2018 at Credit Union 1 Arena - Chicago, Ill.

UIC

UCLA

Layups
 14 03 (14)

Dunks



Layups
 (11) (02) (21) (22) 21
 (04) (33) (25) 24

Dunks

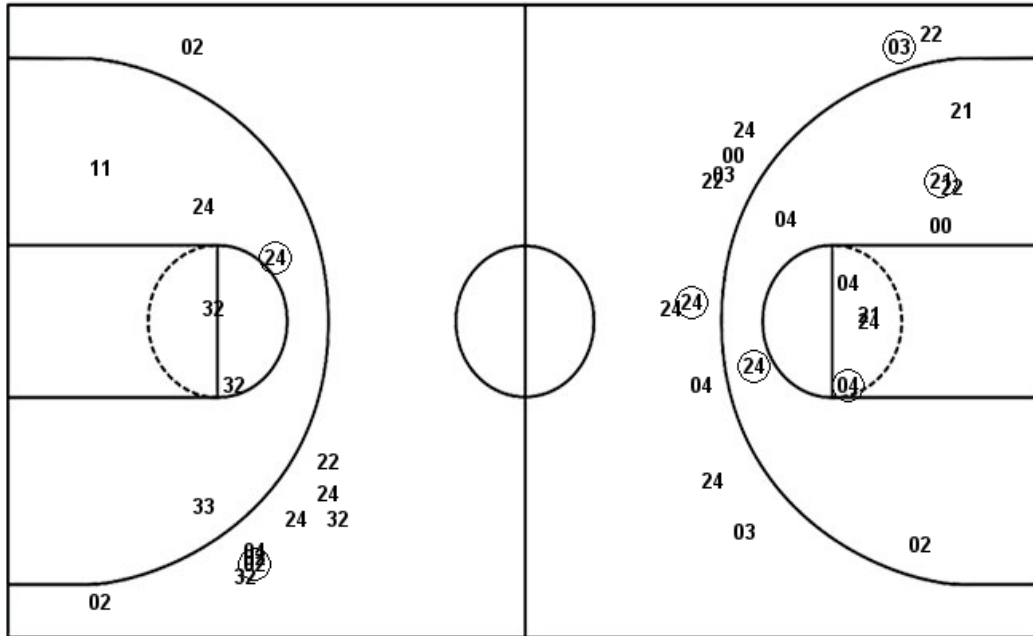
UIC : Period 4	Made	Att	Pct
Layups	1	3	33.3
Dunks	0	0	0
2PT Field Goals	2	8	25.0
3PT Field Goals	1	6	16.7
Total Field Goals	3	14	21.4

UCL : Period 4	Made	Att	Pct
Layups	7	9	77.8
Dunks	0	0	0
2PT Field Goals	7	14	50.0
3PT Field Goals	0	3	00.0
Total Field Goals	7	17	41.2

Official Shot Chart
UCLA vs UIC
UCLA Team Shots
December 20, 2018 at Credit Union 1 Arena - Chicago, Ill.

Layups

Dunks



Layups

Dunks

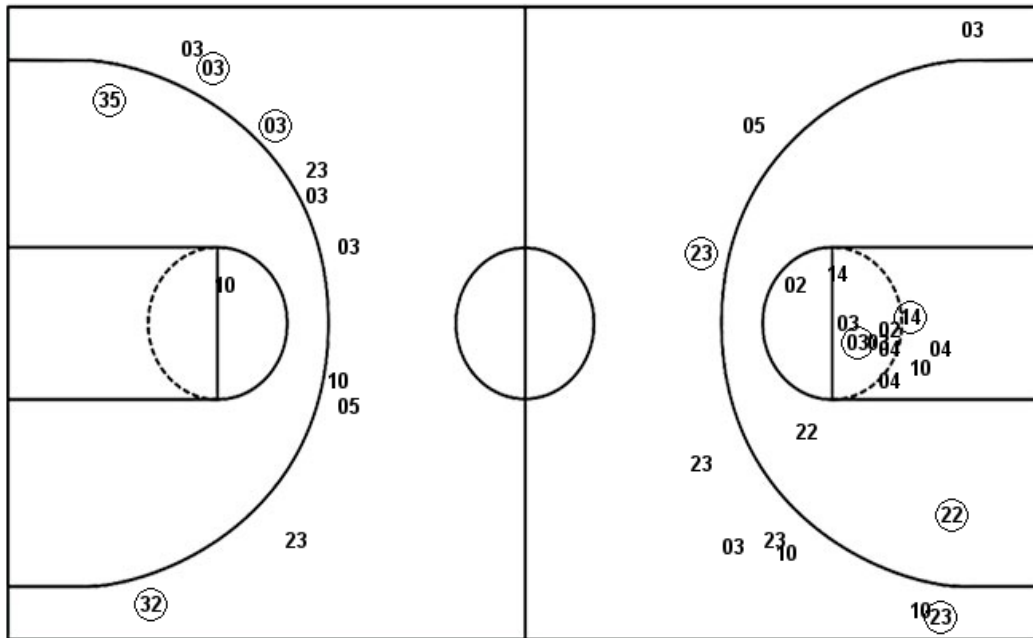
UCL : Period 1	Made	Att	Pct
Layups	6	8	75.0
Dunks	0	0	0
2PT Field Goals	8	12	66.7
3PT Field Goals	0	3	00.0
Total Field Goals	8	15	53.3
UCL : Period 3	Made	Att	Pct
Layups	3	6	50.0
Dunks	0	0	0
2PT Field Goals	4	7	57.1
3PT Field Goals	1	7	14.3
Total Field Goals	5	14	35.7

UCL : Period 2	Made	Att	Pct
Layups	4	11	36.4
Dunks	0	0	0
2PT Field Goals	5	18	27.8
3PT Field Goals	2	8	25.0
Total Field Goals	7	26	26.9
UCL : Period 4	Made	Att	Pct
Layups	7	9	77.8
Dunks	0	0	0
2PT Field Goals	7	14	50.0
3PT Field Goals	0	3	00.0
Total Field Goals	7	17	41.2

Official Shot Chart
UCLA vs UIC
UIC Team Shots
December 20, 2018 at Credit Union 1 Arena - Chicago, Ill.

Layups

Dunks



Layups

Dunks

UIC : Period 1	Made	Att	Pct
Layups	1	3	33.3
Dunks	0	0	0
2PT Field Goals	1	3	33.3
3PT Field Goals	1	5	20.0
Total Field Goals	2	8	25.0
UIC : Period 3	Made	Att	Pct
Layups	5	9	55.6
Dunks	0	0	0
2PT Field Goals	7	17	41.2
3PT Field Goals	1	3	33.3
Total Field Goals	8	20	40.0

UIC : Period 2	Made	Att	Pct
Layups	0	2	00.0
Dunks	0	0	0
2PT Field Goals	1	4	25.0
3PT Field Goals	2	5	40.0
Total Field Goals	3	9	33.3
UIC : Period 4	Made	Att	Pct
Layups	1	3	33.3
Dunks	0	0	0
2PT Field Goals	2	8	25.0
3PT Field Goals	1	6	16.7
Total Field Goals	3	14	21.4