

FINAL SCORE

Denver

64



New Mexico St.

66



**December 12, 2018 • Pan American Center (Lou Henson Court) -
Las Cruces, N.M.**

FINAL STATISTICS

Official Box Score
Denver vs New Mexico St.
Game Totals -- Final Statistics
December 12, 2018 at Pan American Center (Lou Henson Court) - Las Cruces, N.M.

Denver 64

No.	Player	S	Pts	FG	3FG	FT	OR	DR	TR	PF	A	TO	Blk	Stl	Min	+/-
3	Loven, Lauren		5	2-13	1-11	0-0	0	2	2	3	3	2	0	1	25	0
12	Gritt, Claire		11	3-9	1-2	4-4	3	2	5	1	5	2	0	1	33	-1
15	Smith, Courtney		12	6-8	0-0	0-0	3	10	13	2	1	2	0	1	28	-2
22	Romanowski, Samantha		8	4-12	0-4	0-0	0	1	1	4	1	5	2	0	34	-7
23	Nelson, Madison		15	5-15	1-2	4-6	2	7	9	3	2	4	0	2	32	-4
0	Curtin, Abi		0	0-0	0-0	0-0	0	0	0	2	0	0	0	0	6	6
1	White, Grace		2	1-5	0-0	0-0	2	3	5	1	0	2	1	0	14	-5
10	Simental, Haley		2	1-1	0-0	0-0	0	0	0	0	0	0	0	0	8	3
32	Malonga, Tsimba		9	4-8	0-2	1-2	0	2	2	0	2	1	0	1	17	0
33	Jeffcoat, Jasmine		0	0-0	0-0	0-0	0	1	1	1	0	0	0	0	4	0
	Team						0	0	0	0		0				
TOTALS			64	26-71	3-21	9-12	10	28	38	17	14	18	3	6	200	

Shooting By Period

Period	FG	FG%	3FG	3FG%	FT	FT%
1st Qtr	7-17	41%	1-7	14%	2-2	100%
2nd Qtr	5-14	36%	0-3	00%	5-8	63%
3rd Qtr	8-17	47%	2-7	29%	2-2	100%
4th Qtr	6-23	26%	0-4	00%	0-0	0%
1st Half	7-17	41%	1-7	14%	2-2	100%
2nd Half	5-14	36%	0-3	00%	5-8	63%
3rd Half	8-17	47%	2-7	29%	2-2	100%
4th Half	6-23	26%	0-4	00%	0-0	0%
Game	26-71	36.6%	3-21	14.3%	9-12	75.0%

Deadball Rebounds:

Last FG: 4th-00:43

Biggest Run: 6-0

Largest lead: By 10 at 4-09:09

Technical Fouls: None.

New Mexico St. 66

No.	Player	S	Pts	FG	3FG	FT	OR	DR	TR	PF	A	TO	Blk	Stl	Min	+/-
1	Echols, Rodrea		0	0-4	0-1	0-0	0	2	2	2	0	4	0	0	20	-5
2	Salas, Brooke		15	6-14	1-2	2-2	2	5	7	5	0	4	1	0	24	3
21	Mills, Monique		4	2-5	0-2	0-0	0	4	4	0	0	2	1	4	23	-14
24	Aderinto, Adenike		3	1-7	0-0	1-2	3	2	5	2	0	0	0	0	15	-13
30	Pack, Gia		6	2-11	0-2	2-2	2	7	9	2	1	4	0	0	27	-7
3	Mcdaniel, Stabresa		12	6-11	0-0	0-0	2	2	4	2	1	1	1	0	20	13
20	Mills, Dominique		11	2-10	0-1	7-12	5	6	11	0	1	2	1	0	25	12
22	Atkinson, Kalei		4	1-3	0-1	2-2	2	1	3	2	1	0	3	1	23	9
23	Prince, Aaliyah		11	5-8	0-1	1-2	1	3	4	2	0	1	0	3	23	12
	Team						0	0	0	0		0				
TOTALS			66	25-73	1-10	15-22	17	32	49	17	4	18	7	8	200	

Shooting By Period

Period	FG	FG%	3FG	3FG%	FT	FT%
1st Qtr	6-17	35%	0-2	00%	2-4	50%
2nd Qtr	6-19	32%	0-2	00%	1-2	50%
3rd Qtr	6-19	32%	1-4	25%	4-4	100%
4th Qtr	7-18	39%	0-2	00%	8-12	67%
1st Half	6-17	35%	0-2	00%	2-4	50%
2nd Half	6-19	32%	0-2	00%	1-2	50%
3rd Half	6-19	32%	1-4	25%	4-4	100%
4th Half	7-18	39%	0-2	00%	8-12	67%
Game	25-73	34.2%	1-10	10.0%	15-22	68.2%

Deadball Rebounds:

Last FG: 4th-00:49

Biggest Run: 7-0

Largest lead: By 2 at 4-00:06

Technical Fouls: None.

Game Notes: Officials: Rochelle Bennett, Saif Esho, Brenda Pantoja Start Time: 2018-12-12 01:07:22 End Time: 2018-12-12 02:59:25 Game Duration: 112
--

Score by Period	1st	2nd	3rd	4th	TOT
DU	17	15	20	12	64
NMS	14	13	17	22	66

DU led for 36:30. NMS led for 1:49.
 Game was tied for 1:41.
 Times tied: 10 Lead Changes: 9

Points from	DU	NMS
In the Paint	40	32
Off Turns	18	14
2nd Chance	6	12
Fast Break	20	15
Bench	13	38

Official Box Score
Denver vs New Mexico St.
First Half Statistics Only
December 12, 2018 at Pan American Center (Lou Henson Court) - Las Cruces, N.M.

Denver 64

No.	Player	S	Pts	FG	3FG	FT	OR	DR	TR	PF	A	TO	Blk	Stl	Min	+/-
3	Loven, Lauren		0	0-3	0-3	0-0	0	0	0	0	3	1	0	0	7	7
12	Gritt, Claire		7	2-3	1-2	2-2	1	0	1	0	1	2	0	0	9	4
15	Smith, Courtney		2	1-1	0-0	0-0	1	4	5	1	1	1	0	0	8	5
22	Romanowski, Samantha		2	1-1	0-0	0-0	0	0	0	1	0	1	0	0	8	3
23	Nelson, Madison		6	3-7	0-1	0-0	0	3	3	1	0	0	0	2	8	5
0	Curtin, Abi		0	0-0	0-0	0-0	0	0	0	0	0	0	0	0	0	0
1	White, Grace		0	0-0	0-0	0-0	1	1	2	1	0	2	0	0	3	-4
10	Simental, Haley		0	0-0	0-0	0-0	0	0	0	0	0	0	0	0	1	-1
32	Malonga, Tsimba		0	0-2	0-1	0-0	0	0	0	0	0	0	0	0	4	-2
33	Jeffcoat, Jasmine		0	0-0	0-0	0-0	0	0	0	0	0	0	0	0	2	-2
	Team						0	0	0	0		0				
TOTALS			17	7-17	1-7	2-2	0	0	11	4	5	7	0	2	50	

Shooting By Period

Period	FG	FG%	3FG	3FG%	FT	FT%
1st Qtr	7-17	41%	1-7	14%	2-2	100%
2nd Qtr	5-14	36%	0-3	0%	5-8	63%
3rd Qtr	8-17	47%	2-7	29%	2-2	100%
4th Qtr	6-23	26%	0-4	0%	0-0	0%
1st Half	7-17	41%	1-7	14%	2-2	100%
2nd Half	5-14	36%	0-3	0%	5-8	63%
3rd Half	8-17	47%	2-7	29%	2-2	100%
4th Half	6-23	26%	0-4	0%	0-0	0%
Game	26-71	36.6%	3-21	14.3%	9-12	75.0%

Deadball Rebounds:
Last FG: 4th-00:43
Biggest Run: 6-0
Largest lead: By 10 at 4-09:09
Technical Fouls: None.

New Mexico St. 66

No.	Player	S	Pts	FG	3FG	FT	OR	DR	TR	PF	A	TO	Blk	Stl	Min	+/-
1	Echols, Rodrea		0	0-1	0-0	0-0	0	0	0	2	0	3	0	0	8	-3
2	Salas, Brooke		2	1-2	0-0	0-0	1	0	1	2	0	2	0	0	5	-3
21	Mills, Monique		2	1-3	0-2	0-0	0	2	2	0	0	0	0	3	5	-5
24	Aderinto, Adenike		0	0-1	0-0	0-0	0	1	1	0	0	0	0	0	6	-5
30	Pack, Gia		0	0-4	0-0	0-0	1	1	2	0	0	0	0	0	6	-7
3	Mcdaniel, Stabresa		2	1-2	0-0	0-0	0	0	0	0	0	0	1	0	6	4
20	Mills, Dominique		2	1-2	0-0	0-2	2	1	3	0	0	0	0	0	5	2
22	Atkinson, Kalei		2	0-0	0-0	2-2	0	0	0	1	0	0	0	0	5	0
23	Prince, Aaliyah		4	2-2	0-0	0-0	0	1	1	0	0	1	0	1	5	2
	Team						0	0	0	0		0				
TOTALS			14	6-17	0-2	2-4	0	0	10	5	0	6	1	4	50	

Shooting By Period

Period	FG	FG%	3FG	3FG%	FT	FT%
1st Qtr	6-17	35%	0-2	0%	2-4	50%
2nd Qtr	6-19	32%	0-2	0%	1-2	50%
3rd Qtr	6-19	32%	1-4	25%	4-4	100%
4th Qtr	7-18	39%	0-2	0%	8-12	67%
1st Half	6-17	35%	0-2	0%	2-4	50%
2nd Half	6-19	32%	0-2	0%	1-2	50%
3rd Half	6-19	32%	1-4	25%	4-4	100%
4th Half	7-18	39%	0-2	0%	8-12	67%
Game	25-73	34.2%	1-10	10.0%	15-22	68.2%

Deadball Rebounds:
Last FG: 4th-00:49
Biggest Run: 7-0
Largest lead: By 2 at 4-00:06
Technical Fouls: None.

Game Notes:
Officials: Rochelle Bennett, Saif Esho, Brenda Pantoja
Start Time: 2018-12-12 01:07:22 **End Time: 2018-12-12 02:59:25**
Game Duration: 112

Score by Period	1st	2nd	3rd	4th	TOT
DU	17	15	20	12	64
NMS	14	13	17	22	66

This period only: DU led for 36:29. NMS led for 36:48.
Game was tied for 0:41.

Points from (This Period)	DU	NMS
In the Paint	12	8
Off Turns	6	4
2nd Chance	2	4
Fast Break	8	2
Bench	0	10

**Official Play-By-Play
Denver vs New Mexico St.
First Quarter**

December 12, 2018 at Pan American Center (Lou Henson Court) - Las Cruces, N.M.

Starters:

Denver: 22 ROMANOWSKI,SAMANTHA; 3 LOVEN,LAUREN; 12 GRITT,CLAIRE; 15 SMITH,COURTNEY; 23 NELSON,MADISON;

New Mexico St.: 1 ECHOLS,RODREA; 2 SALAS,BROOKE; 21 MILLS,MONIQUE; 24 ADERINTO,ADENIKE; 30 PACK,GIA;

Period 1

Time	VISITORS: Denver	Score	Margin	HOME: New Mexico St.
09:37	TURNOVER (LOSTBALL) by GRITT,CLAIRE			
09:37				STEAL by MILLS,MONIQUE
09:29				MISSED LAYUP by SALAS,BROOKE
09:22				REBOUND (OFF) by SALAS,BROOKE
09:17				MISSED JUMPER by PACK,GIA
09:14	REBOUND (DEF) by NELSON,MADISON			
09:07				FOUL (PERSONAL) by SALAS,BROOKE
09:07				FOUL (PERSONAL) by ECHOLS,RODREA
09:00	MISSED LAYUP by NELSON,MADISON			
08:57				REBOUND (DEF) by MILLS,MONIQUE
08:48				TURNOVER (LOSTBALL) by SALAS,BROOKE
08:42	GOOD! LAYUP by GRITT,CLAIRE [FB]	0-2	V 2	
08:42	ASSIST by LOVEN,LAUREN			
08:24				MISSED JUMPER by ADERINTO,ADENIKE
08:19	REBOUND (DEF) by SMITH,COURTNEY			
08:18	TURNOVER (LOSTBALL) by SMITH,COURTNEY			
08:18				STEAL by MILLS,MONIQUE
08:13		2-2	T	GOOD! LAYUP by MILLS,MONIQUE [FB]
08:07	GOOD! 3PTR by GRITT,CLAIRE	2-5	V 3	
08:07	ASSIST by LOVEN,LAUREN			
07:53				TURNOVER (TRAVEL) by ECHOLS,RODREA
07:44	FOUL (OFF) by ROMANOWSKI,SAMANTHA			
07:44	TURNOVER (OFFENSIVE) by ROMANOWSKI,SAMANTHA			
07:31				MISSED JUMPER by PACK,GIA
07:27	REBOUND (DEF) by SMITH,COURTNEY			
07:18	MISSED 3PTR by LOVEN,LAUREN			
07:14				REBOUND (DEF) by ADERINTO,ADENIKE
07:11				SUB OUT: SALAS,BROOKE
07:11				SUB IN: PRINCE,AALIYAH
07:11				SUB OUT: MILLS,MONIQUE
07:11				SUB IN: MILLS,DOMINIQUE
07:11				SUB OUT: ADERINTO,ADENIKE
07:11				SUB IN: MCDANIEL,STABRESA
07:11				SUB OUT: PACK,GIA
07:11				SUB IN: ATKINSON,KALEI
07:04		4-5	V 1	GOOD! LAYUP by PRINCE,AALIYAH
06:56	GOOD! LAYUP by SMITH,COURTNEY [FB]	4-7	V 3	
06:56	ASSIST by LOVEN,LAUREN			
06:44				SUB OUT: ECHOLS,RODREA
06:44				SUB IN: PACK,GIA
06:42	FOUL (PERSONAL) by NELSON,MADISON			
06:42				MISSED FT by MILLS,DOMINIQUE
06:42				REBOUND (OFF) by TEAM
06:42				MISSED FT by MILLS,DOMINIQUE
06:39	REBOUND (DEF) by SMITH,COURTNEY			
06:29	TURNOVER (BADPASS) by LOVEN,LAUREN			
06:29				STEAL by PRINCE,AALIYAH
06:23				MISSED JUMPER by PACK,GIA
06:20	REBOUND (DEF) by SMITH,COURTNEY			
06:16				FOUL (PERSONAL) by ATKINSON,KALEI
06:16	SUB OUT: LOVEN,LAUREN			
06:16	SUB IN: WHITE,GRACE			
06:16	SUB OUT: SMITH,COURTNEY			
06:16	SUB IN: MALONGA,TSIMBA			
06:16	SUB OUT: NELSON,MADISON			
06:16	SUB IN: JEFFCOAT,JASMINE			
06:14	GOOD! FT by GRITT,CLAIRE [FB]	4-8	V 4	
06:13	GOOD! FT by GRITT,CLAIRE [FB]	4-9	V 5	
06:05				SUB OUT: PACK,GIA
06:05				SUB IN: ECHOLS,RODREA
05:58				MISSED LAYUP by ECHOLS,RODREA
05:56				REBOUND (OFF) by MILLS,DOMINIQUE
05:53		6-9	V 3	GOOD! JUMPER by PRINCE,AALIYAH
05:38	GOOD! LAYUP by ROMANOWSKI,SAMANTHA [PNT]	6-11	V 5	
05:27		8-11	V 3	GOOD! JUMPER by MCDANIEL,STABRESA
05:12	MISSED 3PTR by MALONGA,TSIMBA			
05:08				REBOUND (DEF) by PRINCE,AALIYAH
04:54				MISSED LAYUP by MILLS,DOMINIQUE
04:50				REBOUND (OFF) by MILLS,DOMINIQUE
04:49		10-11	V 1	GOOD! LAYUP by MILLS,DOMINIQUE
04:30	FOUL (OFF) by WHITE,GRACE			
04:30	TURNOVER (OFFENSIVE) by WHITE,GRACE			
04:30				SUB OUT: ATKINSON,KALEI
04:30				SUB IN: SALAS,BROOKE
04:30	SUB OUT: WHITE,GRACE			
04:30	SUB IN: SMITH,COURTNEY			

Time	VISITORS: Denver	Score	Margin	HOME: New Mexico St.
04:30	SUB OUT: ROMANOWSKI,SAMANTHA			
04:30	SUB IN: NELSON,MADISON			
04:30	SUB OUT: JEFFCOAT,JASMINE			
04:30	SUB IN: LOVEN,LAUREN			
04:17				TURNOVER (BADPASS) by PRINCE,AALIYAH
04:17	STEAL by NELSON,MADISON			
03:55	MISSED 3PTR by GRITT,CLAIRE			
03:49	REBOUND (OFF) by GRITT,CLAIRE			
03:47	GOOD! LAYUP by NELSON,MADISON	10-13	V 3	
03:47	ASSIST by GRITT,CLAIRE			
03:32				TURNOVER (LOSTBALL) by SALAS,BROOKE
03:32	STEAL by NELSON,MADISON			
03:32				FOUL (PERSONAL) by SALAS,BROOKE
03:28	MISSED JUMPER by MALONGA,TSIMBA			
03:23				REBOUND (DEF) by MILLS,DOMINIQUE
03:14		12-13	V 1	GOOD! LAYUP by SALAS,BROOKE [PNT]
03:04	MISSED 3PTR by LOVEN,LAUREN			
03:00	REBOUND (OFF) by SMITH,COURTNEY			
02:51	MISSED LAYUP by NELSON,MADISON			
02:51				BLOCK by MCDANIEL,STABRESA
02:51				REBOUND (DEF) by TEAM
02:44				SUB OUT: SALAS,BROOKE
02:44				SUB IN: ATKINSON,KALEI
02:44				SUB OUT: MCDANIEL,STABRESA
02:44				SUB IN: ADERINTO,ADENIKE
02:44	SUB OUT: MALONGA,TSIMBA			
02:44	SUB IN: ROMANOWSKI,SAMANTHA			
02:37				FOUL (OFF) by ECHOLS,RODREA
02:37				TURNOVER (OFFENSIVE) by ECHOLS,RODREA
02:37				SUB OUT: MILLS,DOMINIQUE
02:37				SUB IN: PACK,GIA
02:37				SUB OUT: PRINCE,AALIYAH
02:37				SUB IN: MILLS,MONIQUE
02:27	MISSED 3PTR by LOVEN,LAUREN			
02:24				REBOUND (DEF) by PACK,GIA
02:19				MISSED 3PTR by MILLS,MONIQUE
02:15	REBOUND (DEF) by NELSON,MADISON			
01:47	GOOD! LAYUP by NELSON,MADISON [PNT]	12-15	V 3	
01:26				TURNOVER (LOSTBALL) by ECHOLS,RODREA
01:18	GOOD! LAYUP by NELSON,MADISON [FB]	12-17	V 5	
01:18	ASSIST by SMITH,COURTNEY			
01:17				TIMEOUT 30SEC
01:17				SUB OUT: ECHOLS,RODREA
01:17				SUB IN: MCDANIEL,STABRESA
01:08	SUB OUT: LOVEN,LAUREN			
01:08	SUB IN: WHITE,GRACE			
01:01				MISSED JUMPER by MCDANIEL,STABRESA
00:57	REBOUND (DEF) by WHITE,GRACE			
00:50	TURNOVER (BADPASS) by GRITT,CLAIRE			
00:50				STEAL by MILLS,MONIQUE
00:42	FOUL (PERSONAL) by SMITH,COURTNEY			
00:42		13-17	V 4	GOOD! FT by ATKINSON,KALEI
00:42	SUB OUT: GRITT,CLAIRE			
00:42	SUB IN: SIMENTAL,HALEY			
00:42		14-17	V 3	GOOD! FT by ATKINSON,KALEI
00:33	MISSED 3PTR by NELSON,MADISON			
00:29	REBOUND (OFF) by WHITE,GRACE			
00:29	TURNOVER (BADPASS) by WHITE,GRACE			
00:17				MISSED LAYUP by PACK,GIA
00:14	REBOUND (DEF) by NELSON,MADISON			
00:11	MISSED LAYUP by NELSON,MADISON			
00:07				REBOUND (DEF) by MILLS,MONIQUE
00:04				MISSED 3PTR by MILLS,MONIQUE
00:04				REBOUND (OFF) by PACK,GIA

Denver 17, New Mexico St. 14

Points from (This Period)	DU	NMS
In the Paint	12	8
Off Turns	6	4
2nd Chance	2	4
Fast Break	8	2
Bench	0	10

**This period only:DU led for 36:29. NMS led for 36:48.
Game was tied for 0:41.**

**Official Play-By-Play
Denver vs New Mexico St.
Second Quarter**

December 12, 2018 at Pan American Center (Lou Henson Court) - Las Cruces, N.M.

Starters:

Denver: 22 ROMANOWSKI,SAMANTHA; 3 LOVEN,LAUREN; 12 GRITT,CLAIRE; 15 SMITH,COURTNEY; 23 NELSON,MADISON;

New Mexico St.: 1 ECHOLS,RODREA; 2 SALAS,BROOKE; 21 MILLS,MONIQUE; 24 ADERINTO,ADENIKE; 30 PACK,GIA;

Period 2

Time	VISITORS: Denver	Score	Margin	HOME: New Mexico St.
09:50		16-17	V 1	GOOD! LAYUP by MCDANIEL,STABRESA [PNT]
09:28	MISSED 3PTR by LOVEN,LAUREN			
09:24				REBOUND (DEF) by MILLS,MONIQUE
09:20				MISSED LAYUP by ADERINTO,ADENIKE
09:20	BLOCK by ROMANOWSKI,SAMANTHA			
09:13				REBOUND (OFF) by MCDANIEL,STABRESA
09:12				MISSED LAYUP by MCDANIEL,STABRESA
09:10	REBOUND (DEF) by GRITT,CLAIRE			
09:08	MISSED LAYUP by GRITT,CLAIRE			
09:05				REBOUND (DEF) by PACK,GIA
08:41				MISSED JUMPER by MCDANIEL,STABRESA
08:37	REBOUND (DEF) by NELSON,MADISON			
08:29				SUB OUT: MCDANIEL,STABRESA
08:29				SUB IN: MILLS,DOMINIQUE
08:29				SUB OUT: ADERINTO,ADENIKE
08:29				SUB IN: PRINCE,AALIYAH
08:25	TURNOVER (LOSTBALL) by NELSON,MADISON			
08:19				MISSED LAYUP by MILLS,DOMINIQUE
08:17	REBOUND (DEF) by TEAM			
08:01	TURNOVER (BADPASS) by ROMANOWSKI,SAMANTHA			
08:01				STEAL by ATKINSON,KALEI
07:54		18-17	H 1	GOOD! JUMPER by MILLS,MONIQUE [FB]
07:38	GOOD! LAYUP by SMITH,COURTNEY	18-19	V 1	
07:21				MISSED JUMPER by PRINCE,AALIYAH
07:14	REBOUND (DEF) by NELSON,MADISON			
07:12	MISSED 3PTR by LOVEN,LAUREN			
07:09				REBOUND (DEF) by MILLS,DOMINIQUE
07:03				MISSED 3PTR by ATKINSON,KALEI
07:00	REBOUND (DEF) by SMITH,COURTNEY			
06:53				FOUL (PERSONAL) by ATKINSON,KALEI
06:53	GOOD! FT by NELSON,MADISON [FB]	18-20	V 2	
06:53	SUB OUT: GRITT,CLAIRE			
06:53	SUB IN: MALONGA,TSIMBA			
06:53	SUB OUT: LOVEN,LAUREN			
06:53	SUB IN: SIMENTAL,HALEY			
06:53	GOOD! FT by NELSON,MADISON [FB]	18-21	V 3	
06:53				SUB OUT: ATKINSON,KALEI
06:53				SUB IN: MCDANIEL,STABRESA
06:53	SUB OUT: NELSON,MADISON			
06:53	SUB IN: WHITE,GRACE			
06:32		20-21	V 1	GOOD! JUMPER by PRINCE,AALIYAH
06:25	GOOD! JUMPER by ROMANOWSKI,SAMANTHA	20-23	V 3	
06:06	FOUL (PERSONAL) by SMITH,COURTNEY			
06:06	SUB OUT: SMITH,COURTNEY			
06:06	SUB IN: NELSON,MADISON			
06:03				TURNOVER (BADPASS) by MILLS,DOMINIQUE
06:03	STEAL by MALONGA,TSIMBA			
05:58	TURNOVER (BADPASS) by MALONGA,TSIMBA			
05:40		22-23	V 1	GOOD! JUMPER by MCDANIEL,STABRESA
05:23	GOOD! LAYUP by MALONGA,TSIMBA	22-25	V 3	
05:04		24-25	V 1	GOOD! JUMPER by MCDANIEL,STABRESA
04:42	MISSED LAYUP by NELSON,MADISON			
04:38				REBOUND (DEF) by MCDANIEL,STABRESA
04:35		26-25	H 1	GOOD! LAYUP by PRINCE,AALIYAH [FB]
04:35				ASSIST by MCDANIEL,STABRESA
04:20				FOUL (PERSONAL) by PRINCE,AALIYAH
04:20				SUB OUT: MCDANIEL,STABRESA
04:20				SUB IN: ADERINTO,ADENIKE
04:20	SUB OUT: ROMANOWSKI,SAMANTHA			
04:20	SUB IN: GRITT,CLAIRE			
04:20	GOOD! FT by NELSON,MADISON	26-26	T	
04:20	GOOD! FT by NELSON,MADISON	26-27	V 1	
04:06				TURNOVER (BADPASS) by MILLS,MONIQUE
03:52				FOUL (PERSONAL) by ADERINTO,ADENIKE
03:52	MISSED FT by NELSON,MADISON			
03:52	REBOUND (OFF) by TEAM			
03:52				SUB OUT: ADERINTO,ADENIKE
03:52				SUB IN: MCDANIEL,STABRESA
03:52	MISSED FT by NELSON,MADISON			
03:47				REBOUND (DEF) by MCDANIEL,STABRESA
03:47	SUB OUT: NELSON,MADISON			
03:47	SUB IN: CURTIN,ABI			
03:39	FOUL (PERSONAL) by CURTIN,ABI			
03:33				MISSED LAYUP by MILLS,DOMINIQUE
03:29				REBOUND (OFF) by PRINCE,AALIYAH
03:27				MISSED 3PTR by PACK,GIA

Time	VISITORS: Denver	Score	Margin	HOME: New Mexico St.
03:25				REBOUND (OFF) by MILLS,DOMINIQUE
03:25				TURNOVER (LOSTBALL) by MILLS,DOMINIQUE
03:14	MISSED LAYUP by WHITE,GRACE			
03:14				BLOCK by MILLS,MONIQUE
03:08	REBOUND (OFF) by WHITE,GRACE			
03:07	MISSED LAYUP by WHITE,GRACE			
03:04				REBOUND (DEF) by PRINCE,AALIYAH
02:52				MISSED LAYUP by MCDANIEL,STABRESA
02:49	REBOUND (DEF) by MALONGA,TSIMBA			
02:42	MISSED JUMPER by GRITT,CLAIRE			
02:38				REBOUND (DEF) by PACK,GIA
02:32				TURNOVER (LOSTBALL) by MILLS,MONIQUE
02:26	GOOD! JUMPER by SIMENTAL,HALEY [FB]	26-29	V 3	
02:03				MISSED JUMPER by MILLS,DOMINIQUE
01:59				REBOUND (OFF) by PACK,GIA
01:59				MISSED LAYUP by PACK,GIA
01:59	REBOUND (DEF) by WHITE,GRACE			
01:59				FOUL (PERSONAL) by PACK,GIA
01:58	SUB OUT: WHITE,GRACE			
01:58	SUB IN: JEFFCOAT,JASMINE			
01:48				FOUL (PERSONAL) by PRINCE,AALIYAH
01:48	MISSED FT by MALONGA,TSIMBA			
01:48	REBOUND (OFF) by TEAM			
01:48	GOOD! FT by MALONGA,TSIMBA	26-30	V 4	
01:48	SUB OUT: SIMENTAL,HALEY			
01:48	SUB IN: ROMANOWSKI,SAMANTHA			
01:48				SUB OUT: PRINCE,AALIYAH
01:48				SUB IN: ADERINTO,ADENIKE
01:33	FOUL (PERSONAL) by JEFFCOAT,JASMINE			
01:33				MISSED FT by ADERINTO,ADENIKE
01:33				REBOUND (OFF) by TEAM
01:33		27-30	V 3	GOOD! FT by ADERINTO,ADENIKE
01:25	MISSED JUMPER by ROMANOWSKI,SAMANTHA			
01:20				REBOUND (DEF) by PACK,GIA
01:10				MISSED JUMPER by ADERINTO,ADENIKE
01:06	REBOUND (DEF) by GRITT,CLAIRE			
01:04	GOOD! LAYUP by MALONGA,TSIMBA [FB]	27-32	V 5	
01:04	ASSIST by GRITT,CLAIRE			
00:47				MISSED LAYUP by PACK,GIA
00:44	REBOUND (DEF) by JEFFCOAT,JASMINE			
00:41	TURNOVER (LOSTBALL) by ROMANOWSKI,SAMANTHA			
00:12				FOUL (OFF) by PACK,GIA
00:12				TURNOVER (OFFENSIVE) by PACK,GIA
00:12	SUB OUT: GRITT,CLAIRE			
00:12	SUB IN: LOVEN,LAUREN			
00:03	MISSED 3PTR by ROMANOWSKI,SAMANTHA			
00:02				REBOUND (DEF) by TEAM

Denver 32, New Mexico St. 27

Points from (This Period)	DU	NMS
In the Paint	6	4
Off Turns	2	4
2nd Chance	0	0
Fast Break	6	4
Bench	7	10

**This period only:DU led for 36:29. NMS led for 36:48.
Game was tied for 0:41.**

Official Box Score
Denver vs New Mexico St.
Second Half Statistics Only
December 12, 2018 at Pan American Center (Lou Henson Court) - Las Cruces, N.M.

Denver 64

No.	Player	S	Pts	FG	3FG	FT	OR	DR	TR	PF	A	TO	Blk	Stl	Min	+/-
3	Loven, Lauren		0	0-2	0-2	0-0	0	0	0	0	0	0	0	0	3	-1
12	Gritt, Claire		0	0-2	0-0	0-0	0	2	2	0	1	0	0	0	7	5
15	Smith, Courtney		2	1-1	0-0	0-0	0	1	1	1	0	0	0	0	4	0
22	Romanowski, Samantha		2	1-3	0-1	0-0	0	0	0	0	0	2	1	0	7	-3
23	Nelson, Madison		4	0-1	0-0	4-6	0	2	2	0	0	1	0	0	5	-2
0	Curtin, Abi		0	0-0	0-0	0-0	0	0	0	1	0	0	0	0	4	4
1	White, Grace		0	0-2	0-0	0-0	1	1	2	0	0	0	0	0	5	0
10	Simental, Haley		2	1-1	0-0	0-0	0	0	0	0	0	0	0	0	5	2
32	Malonga, Tsimba		5	2-2	0-0	1-2	0	1	1	0	0	1	0	1	7	3
33	Jeffcoat, Jasmine		0	0-0	0-0	0-0	0	1	1	1	0	0	0	0	2	2
	Team						0	0	0	0		0				
TOTALS			15	5-14	0-3	5-8	0	0	9	3	1	4	1	1	50	

Shooting By Period

Period	FG	FG%	3FG	3FG%	FT	FT%
1st Qtr	7-17	41%	1-7	14%	2-2	100%
2nd Qtr	5-14	36%	0-3	00%	5-8	63%
3rd Qtr	8-17	47%	2-7	29%	2-2	100%
4th Qtr	6-23	26%	0-4	00%	0-0	0%
1st Half	7-17	41%	1-7	14%	2-2	100%
2nd Half	5-14	36%	0-3	00%	5-8	63%
3rd Half	8-17	47%	2-7	29%	2-2	100%
4th Half	6-23	26%	0-4	00%	0-0	0%
Game	26-71	36.6%	3-21	14.3%	9-12	75.0%

Deadball Rebounds:
Last FG: 4th-00:43
Biggest Run: 6-0
Largest lead: By 10 at 4-09:09
Technical Fouls: None.

New Mexico St. 66

No.	Player	S	Pts	FG	3FG	FT	OR	DR	TR	PF	A	TO	Blk	Stl	Min	+/-
1	Echols, Rodrea		0	0-0	0-0	0-0	0	0	0	0	0	0	0	0	0	0
2	Salas, Brooke		0	0-0	0-0	0-0	0	0	0	0	0	0	0	0	0	0
21	Mills, Monique		2	1-1	0-0	0-0	0	1	1	0	0	2	1	0	10	-2
24	Aderinto, Adenike		1	0-2	0-0	1-2	0	0	0	1	0	0	0	0	4	-1
30	Pack, Gia		0	0-3	0-1	0-0	1	3	4	2	0	1	0	0	10	-2
3	Mcdaniel, Stabresa		6	3-6	0-0	0-0	1	2	3	0	1	0	0	0	8	2
20	Mills, Dominique		0	0-3	0-0	0-0	1	1	2	0	0	2	0	0	8	-4
22	Atkinson, Kalei		0	0-1	0-1	0-0	0	0	0	1	0	0	0	1	3	0
23	Prince, Aaliyah		4	2-3	0-0	0-0	1	1	2	2	0	0	0	0	7	-3
	Team						0	0	0	0		0				
TOTALS			13	6-19	0-2	1-2	0	0	12	6	1	5	1	1	50	

Shooting By Period

Period	FG	FG%	3FG	3FG%	FT	FT%
1st Qtr	6-17	35%	0-2	00%	2-4	50%
2nd Qtr	6-19	32%	0-2	00%	1-2	50%
3rd Qtr	6-19	32%	1-4	25%	4-4	100%
4th Qtr	7-18	39%	0-2	00%	8-12	67%
1st Half	6-17	35%	0-2	00%	2-4	50%
2nd Half	6-19	32%	0-2	00%	1-2	50%
3rd Half	6-19	32%	1-4	25%	4-4	100%
4th Half	7-18	39%	0-2	00%	8-12	67%
Game	25-73	34.2%	1-10	10.0%	15-22	68.2%

Deadball Rebounds:
Last FG: 4th-00:49
Biggest Run: 7-0
Largest lead: By 2 at 4-00:06
Technical Fouls: None.

Game Notes:
 Officials: Rochelle Bennett, Saif Esho, Brenda Pantoja
 Start Time: 2018-12-12 01:07:22 End Time: 2018-12-12 02:59:25
 Game Duration: 112

Score by Period	1st	2nd	3rd	4th	TOT
DU	17	15	20	12	64
NMS	14	13	17	22	66

This period only: DU led for 36:29. NMS led for 36:48.
Game was tied for 0:41.

Points from (This Period)	DU	NMS
In the Paint	6	4
Off Turns	2	4
2nd Chance	0	0
Fast Break	6	4
Bench	7	10

**Official Play-By-Play
Denver vs New Mexico St.
Third Quarter**

December 12, 2018 at Pan American Center (Lou Henson Court) - Las Cruces, N.M.

Starters:

Denver: 22 ROMANOWSKI,SAMANTHA; 3 LOVEN,LAUREN; 12 GRITT,CLAIRE; 15 SMITH,COURTNEY; 23 NELSON,MADISON;

New Mexico St.: 1 ECHOLS,RODREA; 2 SALAS,BROOKE; 21 MILLS,MONIQUE; 24 ADERINTO,ADENIKE; 30 PACK,GIA;

Period 3

Time	VISITORS: Denver	Score	Margin	HOME: New Mexico St.
09:50				MISSED JUMPER by SALAS,BROOKE
09:48	REBOUND (DEF) by TEAM			
09:36	GOOD! JUMPER by SMITH,COURTNEY [PNT]	27-34	V 7	
09:19				MISSED LAYUP by ADERINTO,ADENIKE
09:16	REBOUND (DEF) by SMITH,COURTNEY			
09:10				FOUL (PERSONAL) by ADERINTO,ADENIKE
09:10	GOOD! FT by GRITT,CLAIRE [FB]	27-35	V 8	
09:10	GOOD! FT by GRITT,CLAIRE [FB]	27-36	V 9	
08:56	FOUL (PERSONAL) by NELSON,MADISON			
08:56		28-36	V 8	GOOD! FT by SALAS,BROOKE
08:56		29-36	V 7	GOOD! FT by SALAS,BROOKE
08:56				SUB OUT: ADERINTO,ADENIKE
08:56				SUB IN: ATKINSON,KALEI
08:45	MISSED LAYUP by NELSON,MADISON			
08:42	REBOUND (OFF) by NELSON,MADISON			
08:41	MISSED LAYUP by NELSON,MADISON			
08:38				REBOUND (DEF) by ECHOLS,RODREA
08:30				MISSED LAYUP by ATKINSON,KALEI
08:27				REBOUND (OFF) by SALAS,BROOKE
08:24		31-36	V 5	GOOD! LAYUP by SALAS,BROOKE
08:09	TURNOVER (BADPASS) by NELSON,MADISON			
07:55				TURNOVER (BADPASS) by PACK,GIA
07:48	GOOD! LAYUP by GRITT,CLAIRE [FB]	31-38	V 7	
07:48	ASSIST by NELSON,MADISON			
07:33				MISSED 3PTR by PACK,GIA
07:29	REBOUND (DEF) by SMITH,COURTNEY			
07:23	MISSED 3PTR by LOVEN,LAUREN			
07:21				REBOUND (DEF) by PACK,GIA
07:05				TURNOVER (BADPASS) by ECHOLS,RODREA
07:05	STEAL by LOVEN,LAUREN			
06:54	MISSED LAYUP by NELSON,MADISON			
06:51				REBOUND (DEF) by MILLS,MONIQUE
06:46				MISSED JUMPER by MILLS,MONIQUE
06:41				REBOUND (OFF) by ATKINSON,KALEI
06:41	FOUL (PERSONAL) by LOVEN,LAUREN			
06:41				SUB OUT: ECHOLS,RODREA
06:41				SUB IN: MCDANIEL,STABRESA
06:41				SUB OUT: MILLS,MONIQUE
06:41				SUB IN: PRINCE,AALIYAH
06:24				SUB OUT: ATKINSON,KALEI
06:24				SUB IN: MILLS,DOMINIQUE
06:23				MISSED JUMPER by SALAS,BROOKE
06:17				REBOUND (OFF) by MILLS,DOMINIQUE
06:17				MISSED LAYUP by MILLS,DOMINIQUE
06:17				REBOUND (OFF) by MILLS,DOMINIQUE
06:16	FOUL (PERSONAL) by LOVEN,LAUREN			
06:16		32-38	V 6	GOOD! FT by MILLS,DOMINIQUE [FB]
06:16		33-38	V 5	GOOD! FT by MILLS,DOMINIQUE [FB]
06:00		36-38	V 2	GOOD! 3PTR by SALAS,BROOKE
06:00				ASSIST by PACK,GIA
05:52	TURNOVER (BADPASS) by ROMANOWSKI,SAMANTHA			
05:42		38-38	T	GOOD! JUMPER by PACK,GIA
05:27	GOOD! 3PTR by LOVEN,LAUREN	38-41	V 3	
05:27	ASSIST by GRITT,CLAIRE			
05:03				MISSED 3PTR by MILLS,DOMINIQUE
04:59	REBOUND (DEF) by LOVEN,LAUREN			
04:56	GOOD! LAYUP by LOVEN,LAUREN [FB]	38-43	V 5	
04:34		40-43	V 3	GOOD! JUMPER by SALAS,BROOKE [PNT]
04:21	MISSED 3PTR by LOVEN,LAUREN			
04:21				BLOCK by SALAS,BROOKE
04:16				REBOUND (DEF) by PRINCE,AALIYAH
04:15				TURNOVER (LOSTBALL) by SALAS,BROOKE
04:02	GOOD! JUMPER by ROMANOWSKI,SAMANTHA	40-45	V 5	
03:45				MISSED 3PTR by PRINCE,AALIYAH
03:41	REBOUND (DEF) by SMITH,COURTNEY			
03:28	MISSED 3PTR by LOVEN,LAUREN			
03:25	REBOUND (OFF) by SMITH,COURTNEY			
03:24	MISSED LAYUP by SMITH,COURTNEY			
03:21				REBOUND (DEF) by MILLS,DOMINIQUE
03:18				FOUL (OFF) by MCDANIEL,STABRESA
03:18				TURNOVER (OFFENSIVE) by MCDANIEL,STABRESA
03:18				SUB OUT: MCDANIEL,STABRESA
03:18				SUB IN: ECHOLS,RODREA
03:18				SUB OUT: MILLS,DOMINIQUE
03:18				SUB IN: MILLS,MONIQUE
03:18				SUB OUT: PRINCE,AALIYAH

Time	VISITORS: Denver	Score	Margin	HOME: New Mexico St.
03:18				SUB IN: ATKINSON,KALEI
03:18				SUB OUT: PACK,GIA
03:18				SUB IN: ADERINTO,ADENIKE
03:18	SUB OUT: LOVEN,LAUREN			
03:18	SUB IN: SIMENTAL,HALEY			
03:18	SUB OUT: GRITT,CLAIRE			
03:18	SUB IN: MALONGA,TSIMBA			
03:18	SUB OUT: SMITH,COURTNEY			
03:18	SUB IN: CURTIN,ABI			
02:55	GOOD! JUMPER by MALONGA,TSIMBA [PNT]	40-47	V 7	
02:37				MISSED JUMPER by SALAS,BROOKE
02:33	REBOUND (DEF) by MALONGA,TSIMBA			
02:08	MISSED 3PTR by ROMANOWSKI,SAMANTHA			
02:08				BLOCK by ATKINSON,KALEI
02:02				REBOUND (DEF) by ADERINTO,ADENIKE
01:53				MISSED JUMPER by ECHOLS,RODREA
01:49				REBOUND (OFF) by ADERINTO,ADENIKE
01:48		42-47	V 5	GOOD! LAYUP by ADERINTO,ADENIKE
01:40	GOOD! LAYUP by MALONGA,TSIMBA	42-49	V 7	
01:23	FOUL (PERSONAL) by CURTIN,ABI			
01:23	SUB OUT: SIMENTAL,HALEY			
01:23	SUB IN: WHITE,GRACE			
01:23	SUB OUT: CURTIN,ABI			
01:23	SUB IN: SMITH,COURTNEY			
01:18		44-49	V 5	GOOD! LAYUP by ATKINSON,KALEI
00:54				FOUL (PERSONAL) by SALAS,BROOKE
00:52	GOOD! 3PTR by NELSON,MADISON	44-52	V 8	
00:52	ASSIST by MALONGA,TSIMBA			
00:33				MISSED JUMPER by SALAS,BROOKE
00:29				REBOUND (OFF) by ADERINTO,ADENIKE
00:28				MISSED LAYUP by ADERINTO,ADENIKE
00:28	REBOUND (DEF) by TEAM			
00:05	MISSED 3PTR by MALONGA,TSIMBA			
00:04				REBOUND (DEF) by TEAM

Denver 52, New Mexico St. 44

Points from (This Period)	DU	NMS
In the Paint	10	8
Off Turns	6	2
2nd Chance	0	4
Fast Break	6	2
Bench	4	4

**This period only:DU led for 36:29. NMS led for 36:48.
Game was tied for 0:41.**

**Official Play-By-Play
Denver vs New Mexico St.
Fourth Quarter**

December 12, 2018 at Pan American Center (Lou Henson Court) - Las Cruces, N.M.

Starters:

Denver: 22 ROMANOWSKI,SAMANTHA; 3 LOVEN,LAUREN; 12 GRITT,CLAIRE; 15 SMITH,COURTNEY; 23 NELSON,MADISON;

New Mexico St.: 1 ECHOLS,RODREA; 2 SALAS,BROOKE; 21 MILLS,MONIQUE; 24 ADERINTO,ADENIKE; 30 PACK,GIA;

Period 4

Time	VISITORS: Denver	Score	Margin	HOME: New Mexico St.
09:49				SUB OUT: ATKINSON,KALEI
09:49				SUB IN: PACK,GIA
09:49	SUB OUT: WHITE,GRACE			
09:49	SUB IN: LOVEN,LAUREN			
09:49	SUB OUT: MALONGA,TSIMBA			
09:49	SUB IN: GRITT,CLAIRE			
09:49	TURNOVER (BADPASS) by NELSON,MADISON			
09:38				MISSED 3PTR by ECHOLS,RODREA
09:34				REBOUND (OFF) by ADERINTO,ADENIKE
09:32				MISSED LAYUP by ADERINTO,ADENIKE
09:29	REBOUND (DEF) by SMITH,COURTNEY			
09:27	TURNOVER (BADPASS) by SMITH,COURTNEY			
09:27				STEAL by MILLS,MONIQUE
09:18				TURNOVER (BADPASS) by PACK,GIA
09:18	STEAL by SMITH,COURTNEY			
09:09	GOOD! LAYUP by ROMANOWSKI,SAMANTHA [PNT]	44-54	V 10	
08:48				MISSED LAYUP by SALAS,BROOKE
08:46				REBOUND (OFF) by TEAM
08:46				SUB OUT: ECHOLS,RODREA
08:46				SUB IN: MILLS,DOMINIQUE
08:46				SUB OUT: MILLS,MONIQUE
08:46				SUB IN: ATKINSON,KALEI
08:46				SUB OUT: ADERINTO,ADENIKE
08:46				SUB IN: PRINCE,AALIYAH
08:46				SUB OUT: PACK,GIA
08:46				SUB IN: MCDANIEL,STABRESA
08:39				MISSED JUMPER by MILLS,DOMINIQUE
08:36				REBOUND (OFF) by MCDANIEL,STABRESA
08:35		46-54	V 8	GOOD! JUMPER by MCDANIEL,STABRESA [PNT]
08:26	TURNOVER (LOSTBALL) by ROMANOWSKI,SAMANTHA			
08:26				STEAL by PRINCE,AALIYAH
08:21		48-54	V 6	GOOD! LAYUP by PRINCE,AALIYAH [FB]
08:13	MISSED 3PTR by LOVEN,LAUREN			
08:09	REBOUND (OFF) by GRITT,CLAIRE			
08:08	MISSED JUMPER by GRITT,CLAIRE			
08:05				REBOUND (DEF) by SALAS,BROOKE
07:58		50-54	V 4	GOOD! JUMPER by MCDANIEL,STABRESA [PNT]
07:46	MISSED 3PTR by ROMANOWSKI,SAMANTHA			
07:43				REBOUND (DEF) by SALAS,BROOKE
07:37				MISSED JUMPER by MCDANIEL,STABRESA
07:32	REBOUND (DEF) by LOVEN,LAUREN			
07:30	TURNOVER (BADPASS) by LOVEN,LAUREN			
07:30	SUB OUT: SMITH,COURTNEY			
07:30	SUB IN: WHITE,GRACE			
07:18				MISSED JUMPER by MILLS,DOMINIQUE
07:18	BLOCK by WHITE,GRACE			
07:12	REBOUND (DEF) by WHITE,GRACE			
07:10	MISSED LAYUP by NELSON,MADISON			
07:08	REBOUND (OFF) by NELSON,MADISON			
07:08				FOUL (PERSONAL) by MCDANIEL,STABRESA
06:59	GOOD! LAYUP by WHITE,GRACE	50-56	V 6	
06:59	ASSIST by GRITT,CLAIRE			
06:34	FOUL (PERSONAL) by ROMANOWSKI,SAMANTHA			
06:34				MISSED FT by MILLS,DOMINIQUE
06:34				REBOUND (OFF) by TEAM
06:34				SUB OUT: MCDANIEL,STABRESA
06:34				SUB IN: ECHOLS,RODREA
06:34	SUB OUT: LOVEN,LAUREN			
06:34	SUB IN: MALONGA,TSIMBA			
06:34		51-56	V 5	GOOD! FT by MILLS,DOMINIQUE
06:17	MISSED JUMPER by ROMANOWSKI,SAMANTHA			
06:13				REBOUND (DEF) by SALAS,BROOKE
06:02				MISSED LAYUP by SALAS,BROOKE
06:02	BLOCK by ROMANOWSKI,SAMANTHA			
05:57				REBOUND (OFF) by ATKINSON,KALEI
05:54		53-56	V 3	GOOD! LAYUP by MILLS,DOMINIQUE
05:54				ASSIST by ATKINSON,KALEI
05:47	MISSED LAYUP by WHITE,GRACE			
05:43				REBOUND (DEF) by SALAS,BROOKE
05:40	FOUL (PERSONAL) by ROMANOWSKI,SAMANTHA			
05:40				MISSED FT by MILLS,DOMINIQUE
05:40				REBOUND (OFF) by TEAM
05:40		54-56	V 2	GOOD! FT by MILLS,DOMINIQUE [FB]
05:29	MISSED JUMPER by MALONGA,TSIMBA			
05:26				REBOUND (DEF) by SALAS,BROOKE
05:14	SUB OUT: NELSON,MADISON			

Time	VISITORS: Denver	Score	Margin	HOME: New Mexico St.
05:14	SUB IN: SMITH,COURTNEY			
05:02				MISSED 3PTR by SALAS,BROOKE
04:58	REBOUND (DEF) by ROMANOWSKI,SAMANTHA			
04:51	TIMEOUT 30SEC			
04:51	SUB OUT: ROMANOWSKI,SAMANTHA			
04:51	SUB IN: LOVEN,LAUREN			
04:39	GOOD! LAYUP by SMITH,COURTNEY [PNT]	54-58	V 4	
04:39	ASSIST by MALONGA,TSIMBA			
04:21				MISSED LAYUP by ECHOLS,RODREA
04:19	REBOUND (DEF) by SMITH,COURTNEY			
04:08	MISSED JUMPER by WHITE,GRACE			
04:05				REBOUND (DEF) by ECHOLS,RODREA
03:50		56-58	V 2	GOOD! JUMPER by SALAS,BROOKE [PNT]
03:30	MISSED 3PTR by LOVEN,LAUREN			
03:30				BLOCK by ATKINSON,KALEI
03:25				REBOUND (DEF) by MILLS,DOMINIQUE
03:10	FOUL (PERSONAL) by GRITT,CLAIRE			
03:10				
03:10				SUB OUT: ECHOLS,RODREA
03:10				SUB IN: PACK,GIA
03:10	SUB OUT: WHITE,GRACE			
03:10	SUB IN: ROMANOWSKI,SAMANTHA			
03:10	SUB OUT: MALONGA,TSIMBA			
03:10	SUB IN: NELSON,MADISON			
03:10				MISSED FT by PRINCE,AALIYAH
03:10				REBOUND (OFF) by TEAM
03:10		57-58	V 1	GOOD! FT by PRINCE,AALIYAH
03:01	MISSED JUMPER by ROMANOWSKI,SAMANTHA			
02:56	REBOUND (OFF) by SMITH,COURTNEY			
02:49	GOOD! LAYUP by NELSON,MADISON	57-60	V 3	
02:49	ASSIST by GRITT,CLAIRE			
02:36				MISSED LAYUP by PACK,GIA
02:33	REBOUND (DEF) by NELSON,MADISON			
02:31	TURNOVER (LOSTBALL) by NELSON,MADISON			
02:31				STEAL by PRINCE,AALIYAH
02:26		59-60	V 1	GOOD! JUMPER by PACK,GIA [FB]
02:13	MISSED LAYUP by LOVEN,LAUREN			
02:11				REBOUND (DEF) by PACK,GIA
02:04				MISSED LAYUP by PRINCE,AALIYAH
02:00	REBOUND (DEF) by NELSON,MADISON			
01:55	MISSED JUMPER by GRITT,CLAIRE			
01:55				REBOUND (DEF) by MILLS,DOMINIQUE
01:55				BLOCK by MILLS,DOMINIQUE
01:49	FOUL (PERSONAL) by LOVEN,LAUREN			
01:49		60-60	T	GOOD! FT by MILLS,DOMINIQUE [FB]
01:49		61-60	H 1	GOOD! FT by MILLS,DOMINIQUE [FB]
01:39	MISSED JUMPER by NELSON,MADISON			
01:39				BLOCK by ATKINSON,KALEI
01:32				REBOUND (DEF) by ATKINSON,KALEI
01:20				FOUL (OFF) by SALAS,BROOKE
01:20				TURNOVER (OFFENSIVE) by SALAS,BROOKE
01:05	GOOD! LAYUP by SMITH,COURTNEY	61-62	V 1	
01:05	ASSIST by ROMANOWSKI,SAMANTHA			
00:49		63-62	H 1	GOOD! JUMPER by SALAS,BROOKE [PNT]
00:49				ASSIST by MILLS,DOMINIQUE
00:47	TIMEOUT 30SEC			
00:43	GOOD! LAYUP by SMITH,COURTNEY [PNT]	63-64	V 1	
00:43	ASSIST by NELSON,MADISON			
00:34				TIMEOUT 30SEC
00:30	FOUL (PERSONAL) by ROMANOWSKI,SAMANTHA			
00:30		64-64	T	GOOD! FT by PACK,GIA
00:30		65-64	H 1	GOOD! FT by PACK,GIA
00:30	TIMEOUT 30SEC			
00:25				FOUL (PERSONAL) by SALAS,BROOKE
00:25				SUB OUT: SALAS,BROOKE
00:25				SUB IN: MCDANIEL,STABRESA
00:21	MISSED JUMPER by SMITH,COURTNEY			
00:20				REBOUND (DEF) by PACK,GIA
00:20	SUB OUT: LOVEN,LAUREN			
00:20	SUB IN: JEFFCOAT,JASMINE			
00:20	SUB OUT: SMITH,COURTNEY			
00:20	SUB IN: MALONGA,TSIMBA			
00:17				TURNOVER (LOSTBALL) by PACK,GIA
00:17	STEAL by GRITT,CLAIRE			
00:17	TIMEOUT TEAM			
00:17				SUB OUT: PRINCE,AALIYAH
00:17				SUB IN: ECHOLS,RODREA
00:17	SUB OUT: MALONGA,TSIMBA			
00:17	SUB IN: LOVEN,LAUREN			
00:17	SUB OUT: JEFFCOAT,JASMINE			
00:17	SUB IN: SMITH,COURTNEY			
00:11	MISSED JUMPER by ROMANOWSKI,SAMANTHA			
00:07	REBOUND (OFF) by GRITT,CLAIRE			
00:06	MISSED JUMPER by GRITT,CLAIRE			
00:06				REBOUND (DEF) by MILLS,DOMINIQUE
00:06	FOUL (PERSONAL) by NELSON,MADISON			
00:06				MISSED FT by MILLS,DOMINIQUE

Time	VISITORS: Denver	Score	Margin	HOME: New Mexico St.
00:06				REBOUND (OFF) by TEAM
00:06		66-64	H 2	GOOD! FT by MILLS,DOMINIQUE
00:03	MISSED 3PTR by ROMANOWSKI,SAMANTHA			
00:01				REBOUND (DEF) by TEAM

Denver 64, New Mexico St. 66

Points from (This Period)	DU	NMS
In the Paint	12	12
Off Turns	4	4
2nd Chance	4	4
Fast Break	0	7
Bench	2	14

This period only:DU led for 36:29. NMS led for 36:48.
Game was tied for 0:41.

**Official Scoring/Possession Reference Chart
Denver vs New Mexico St.**

Period 1

December 12, 2018 at Pan American Center (Lou Henson Court) - Las Cruces, N.M.

Starters:

Denver: 22 ROMANOWSKI,SAMANTHA; 3 LOVEN,LAUREN; 12 GRITT,CLAIRE; 15 SMITH,COURTNEY; 23 NELSON,MADISON;

New Mexico St.: 1 ECHOLS,RODREA; 2 SALAS,BROOKE; 21 MILLS,MONIQUE; 24 ADERINTO,ADENIKE; 30 PACK,GIA;

Period 1

Time	VISITORS: Denver	Score	Margin	HOME: New Mexico St.
08:42	GOOD! LAYUP by GRITT,CLAIRE [FB]	0-2	V 2	
08:13		2-2	T	GOOD! LAYUP by MILLS,MONIQUE [FB]
08:07	GOOD! 3PTR by GRITT,CLAIRE	2-5	V 3	
07:04		4-5	V 1	GOOD! LAYUP by PRINCE,AALIYAH
06:56	GOOD! LAYUP by SMITH,COURTNEY [FB]	4-7	V 3	
06:14	GOOD! FT by GRITT,CLAIRE [FB]	4-8	V 4	
06:13	GOOD! FT by GRITT,CLAIRE [FB]	4-9	V 5	
05:53		6-9	V 3	GOOD! JUMPER by PRINCE,AALIYAH
05:38	GOOD! LAYUP by ROMANOWSKI,SAMANTHA [PNT]	6-11	V 5	
05:27		8-11	V 3	GOOD! JUMPER by MCDANIEL,STABRESA
04:49		10-11	V 1	GOOD! LAYUP by MILLS,DOMINIQUE
03:47	GOOD! LAYUP by NELSON,MADISON	10-13	V 3	
03:14		12-13	V 1	GOOD! LAYUP by SALAS,BROOKE [PNT]
01:47	GOOD! LAYUP by NELSON,MADISON [PNT]	12-15	V 3	
01:18	GOOD! LAYUP by NELSON,MADISON [FB]	12-17	V 5	
00:42		13-17	V 4	GOOD! FT by ATKINSON,KALEI
00:42		14-17	V 3	GOOD! FT by ATKINSON,KALEI

Denver 17, New Mexico St. 14

**Official Scoring/Possession Reference Chart
Denver vs New Mexico St.**

Period 2

December 12, 2018 at Pan American Center (Lou Henson Court) - Las Cruces, N.M.

Starters:

Denver: 22 ROMANOWSKI,SAMANTHA; 3 LOVEN,LAUREN; 12 GRITT,CLAIRE; 15 SMITH,COURTNEY; 23 NELSON,MADISON;

New Mexico St.: 1 ECHOLS,RODREA; 2 SALAS,BROOKE; 21 MILLS,MONIQUE; 24 ADERINTO,ADENIKE; 30 PACK,GIA;

Period 2

Time	VISITORS: Denver	Score	Margin	HOME: New Mexico St.
09:50		16-17	V 1	GOOD! LAYUP by MCDANIEL,STABRESA [PNT]
07:54		18-17	H 1	GOOD! JUMPER by MILLS,MONIQUE [FB]
07:38	GOOD! LAYUP by SMITH,COURTNEY	18-19	V 1	
06:53	GOOD! FT by NELSON,MADISON [FB]	18-20	V 2	
06:53	GOOD! FT by NELSON,MADISON [FB]	18-21	V 3	
06:32		20-21	V 1	GOOD! JUMPER by PRINCE,AALIYAH
06:25	GOOD! JUMPER by ROMANOWSKI,SAMANTHA	20-23	V 3	
05:40		22-23	V 1	GOOD! JUMPER by MCDANIEL,STABRESA
05:23	GOOD! LAYUP by MALONGA,TSIMBA	22-25	V 3	
05:04		24-25	V 1	GOOD! JUMPER by MCDANIEL,STABRESA
04:35		26-25	H 1	GOOD! LAYUP by PRINCE,AALIYAH [FB]
04:20	GOOD! FT by NELSON,MADISON	26-26	T	
04:20	GOOD! FT by NELSON,MADISON	26-27	V 1	
02:26	GOOD! JUMPER by SIMENTAL,HALEY [FB]	26-29	V 3	
01:48	GOOD! FT by MALONGA,TSIMBA	26-30	V 4	
01:33		27-30	V 3	GOOD! FT by ADERINTO,ADENIKE
01:04	GOOD! LAYUP by MALONGA,TSIMBA [FB]	27-32	V 5	

Denver 32, New Mexico St. 27

**Official Scoring/Possession Reference Chart
Denver vs New Mexico St.**

Period 3
December 12, 2018 at Pan American Center (Lou Henson Court) - Las Cruces, N.M.

Starters:

Denver: 22 ROMANOWSKI,SAMANTHA; 3 LOVEN,LAUREN; 12 GRITT,CLAIRE; 15 SMITH,COURTNEY; 23 NELSON,MADISON;
 New Mexico St.: 1 ECHOLS,RODREA; 2 SALAS,BROOKE; 21 MILLS,MONIQUE; 24 ADERINTO,ADENIKE; 30 PACK,GIA;

Period 3

Time	VISITORS: Denver	Score	Margin	HOME: New Mexico St.
09:36	GOOD! JUMPER by SMITH,COURTNEY [PNT]	27-34	V 7	
09:10	GOOD! FT by GRITT,CLAIRE [FB]	27-35	V 8	
09:10	GOOD! FT by GRITT,CLAIRE [FB]	27-36	V 9	
08:56		28-36	V 8	GOOD! FT by SALAS,BROOKE
08:56		29-36	V 7	GOOD! FT by SALAS,BROOKE
08:24		31-36	V 5	GOOD! LAYUP by SALAS,BROOKE
07:48	GOOD! LAYUP by GRITT,CLAIRE [FB]	31-38	V 7	
06:16		32-38	V 6	GOOD! FT by MILLS,DOMINIQUE [FB]
06:16		33-38	V 5	GOOD! FT by MILLS,DOMINIQUE [FB]
06:00		36-38	V 2	GOOD! 3PTR by SALAS,BROOKE
05:42		38-38	T	GOOD! JUMPER by PACK,GIA
05:27	GOOD! 3PTR by LOVEN,LAUREN	38-41	V 3	
04:56	GOOD! LAYUP by LOVEN,LAUREN [FB]	38-43	V 5	
04:34		40-43	V 3	GOOD! JUMPER by SALAS,BROOKE [PNT]
04:02	GOOD! JUMPER by ROMANOWSKI,SAMANTHA	40-45	V 5	
02:55	GOOD! JUMPER by MALONGA,TSIMBA [PNT]	40-47	V 7	
01:48		42-47	V 5	GOOD! LAYUP by ADERINTO,ADENIKE
01:40	GOOD! LAYUP by MALONGA,TSIMBA	42-49	V 7	
01:18		44-49	V 5	GOOD! LAYUP by ATKINSON,KALEI
00:52	GOOD! 3PTR by NELSON,MADISON	44-52	V 8	

Denver 52, New Mexico St. 44

Official Scoring/Possession Reference Chart
Denver vs New Mexico St.

Period 4

December 12, 2018 at Pan American Center (Lou Henson Court) - Las Cruces, N.M.

Starters:

Denver: 22 ROMANOWSKI,SAMANTHA; 3 LOVEN,LAUREN; 12 GRITT,CLAIRE; 15 SMITH,COURTNEY; 23 NELSON,MADISON;
 New Mexico St.: 1 ECHOLS,RODREA; 2 SALAS,BROOKE; 21 MILLS,MONIQUE; 24 ADERINTO,ADENIKE; 30 PACK,GIA;

Period 4

Time	VISITORS: Denver	Score	Margin	HOME: New Mexico St.
09:09	GOOD! LAYUP by ROMANOWSKI,SAMANTHA [PNT]	44-54	V 10	
08:35		46-54	V 8	GOOD! JUMPER by MCDANIEL,STABRESA [PNT]
08:21		48-54	V 6	GOOD! LAYUP by PRINCE,AALIYAH [FB]
07:58		50-54	V 4	GOOD! JUMPER by MCDANIEL,STABRESA [PNT]
06:59	GOOD! LAYUP by WHITE,GRACE	50-56	V 6	
06:34		51-56	V 5	GOOD! FT by MILLS,DOMINIQUE
05:54		53-56	V 3	GOOD! LAYUP by MILLS,DOMINIQUE
05:40		54-56	V 2	GOOD! FT by MILLS,DOMINIQUE [FB]
04:39	GOOD! LAYUP by SMITH,COURTNEY [PNT]	54-58	V 4	
03:50		56-58	V 2	GOOD! JUMPER by SALAS,BROOKE [PNT]
03:10		57-58	V 1	GOOD! FT by PRINCE,AALIYAH
02:49	GOOD! LAYUP by NELSON,MADISON	57-60	V 3	
02:26		59-60	V 1	GOOD! JUMPER by PACK,GIA [FB]
01:49		60-60	T	GOOD! FT by MILLS,DOMINIQUE [FB]
01:49		61-60	H 1	GOOD! FT by MILLS,DOMINIQUE [FB]
01:05	GOOD! LAYUP by SMITH,COURTNEY	61-62	V 1	
00:49		63-62	H 1	GOOD! JUMPER by SALAS,BROOKE [PNT]
00:43	GOOD! LAYUP by SMITH,COURTNEY [PNT]	63-64	V 1	
00:30		64-64	T	GOOD! FT by PACK,GIA
00:30		65-64	H 1	GOOD! FT by PACK,GIA
00:06		66-64	H 2	GOOD! FT by MILLS,DOMINIQUE

Denver 64, New Mexico St. 66

**Official Substitutions Log
Denver vs New Mexico St.**

Period 1

December 12, 2018 at Pan American Center (Lou Henson Court) - Las Cruces, N.M.

VISITORS: Denver	Time	Score	HOME: New Mexico St.
22 ROMANOWSKI, SAMANTHA			1 ECHOLS, RODREA
3 LOVEN, LAUREN			2 SALAS, BROOKE
12 GRITT, CLAIRE			21 MILLS, MONIQUE
15 SMITH, COURTNEY			24 ADERINTO, ADENIKE
23 NELSON, MADISON			30 PACK, GIA
	07:11	5-2	SUB OUT: SALAS, BROOKE
	07:11		SUB IN: PRINCE, AALIYAH
	07:11		SUB OUT: MILLS, MONIQUE
	07:11		SUB IN: MILLS, DOMINIQUE
	07:11		SUB OUT: ADERINTO, ADENIKE
	07:11		SUB IN: MCDANIEL, STABRESA
	07:11		SUB OUT: PACK, GIA
	07:11		SUB IN: ATKINSON, KALEI
	06:44	7-4	SUB OUT: ECHOLS, RODREA
	06:44		SUB IN: PACK, GIA
SUB OUT: 3 LOVEN, LAUREN	06:16	7-4	
SUB IN: 1 WHITE, GRACE	06:16		
SUB OUT: 15 SMITH, COURTNEY	06:16		
SUB IN: 32 MALONGA, TSIMBA	06:16		
SUB OUT: 23 NELSON, MADISON	06:16		
SUB IN: 33 JEFFCOAT, JASMINE	06:16		
	06:05	9-4	SUB OUT: PACK, GIA
	06:05		SUB IN: ECHOLS, RODREA
	04:30	11-10	SUB OUT: ATKINSON, KALEI
	04:30		SUB IN: SALAS, BROOKE
SUB OUT: 1 WHITE, GRACE	04:30		
SUB IN: 15 SMITH, COURTNEY	04:30		
SUB OUT: 22 ROMANOWSKI, SAMANTHA	04:30		
SUB IN: 23 NELSON, MADISON	04:30		
SUB OUT: 33 JEFFCOAT, JASMINE	04:30		
SUB IN: 3 LOVEN, LAUREN	04:30		
	02:44	13-12	SUB OUT: SALAS, BROOKE
	02:44		SUB IN: ATKINSON, KALEI
	02:44		SUB OUT: MCDANIEL, STABRESA
	02:44		SUB IN: ADERINTO, ADENIKE
SUB OUT: 32 MALONGA, TSIMBA	02:44		
SUB IN: 22 ROMANOWSKI, SAMANTHA	02:44		
	02:37	13-12	SUB OUT: MILLS, DOMINIQUE
	02:37		SUB IN: PACK, GIA
	02:37		SUB OUT: PRINCE, AALIYAH
	02:37		SUB IN: MILLS, MONIQUE
	01:17	17-12	SUB OUT: ECHOLS, RODREA
	01:17		SUB IN: MCDANIEL, STABRESA
SUB OUT: 3 LOVEN, LAUREN	01:08	17-12	
SUB IN: 1 WHITE, GRACE	01:08		
SUB OUT: 12 GRITT, CLAIRE	00:42	17-13	
SUB IN: 10 SIMENTAL, HALEY	00:42		

Denver 17, New Mexico St. 14

**Official Substitutions Log
Denver vs New Mexico St.
Period 2**

December 12, 2018 at Pan American Center (Lou Henson Court) - Las Cruces, N.M.

VISITORS: Denver	Time	Score	HOME: New Mexico St.
22 ROMANOWSKI, SAMANTHA			1 ECHOLS, RODREA
3 LOVEN, LAUREN			2 SALAS, BROOKE
12 GRITT, CLAIRE			21 MILLS, MONIQUE
15 SMITH, COURTNEY			24 ADERINTO, ADENIKE
23 NELSON, MADISON			30 PACK, GIA
	08:29	17-16	SUB OUT: MCDANIEL, STABRESA
	08:29		SUB IN: MILLS, DOMINIQUE
	08:29		SUB OUT: ADERINTO, ADENIKE
	08:29		SUB IN: PRINCE, AALIYAH
SUB OUT: 12 GRITT, CLAIRE	06:53	20-18	
SUB IN: 32 MALONGA, TSIMBA	06:53		
SUB OUT: 3 LOVEN, LAUREN	06:53		
SUB IN: 10 SIMENTAL, HALEY	06:53		
	06:53		SUB OUT: ATKINSON, KALEI
	06:53		SUB IN: MCDANIEL, STABRESA
SUB OUT: 23 NELSON, MADISON	06:53		
SUB IN: 1 WHITE, GRACE	06:53		
SUB OUT: 15 SMITH, COURTNEY	06:06	23-20	
SUB IN: 23 NELSON, MADISON	06:06		
	04:20	25-26	SUB OUT: MCDANIEL, STABRESA
	04:20		SUB IN: ADERINTO, ADENIKE
SUB OUT: 22 ROMANOWSKI, SAMANTHA	04:20		
SUB IN: 12 GRITT, CLAIRE	04:20		
	03:52	27-26	SUB OUT: ADERINTO, ADENIKE
	03:52		SUB IN: MCDANIEL, STABRESA
SUB OUT: 23 NELSON, MADISON	03:47	27-26	
SUB IN: 0 CURTIN, ABI	03:47		
SUB OUT: 1 WHITE, GRACE	01:58	29-26	
SUB IN: 33 JEFFCOAT, JASMINE	01:58		
SUB OUT: 10 SIMENTAL, HALEY	01:48	30-26	
SUB IN: 22 ROMANOWSKI, SAMANTHA	01:48		
	01:48		SUB OUT: PRINCE, AALIYAH
	01:48		SUB IN: ADERINTO, ADENIKE
SUB OUT: 12 GRITT, CLAIRE	00:12	32-27	
SUB IN: 3 LOVEN, LAUREN	00:12		

Denver 32, New Mexico St. 27

**Official Substitutions Log
Denver vs New Mexico St.
Period 3**

December 12, 2018 at Pan American Center (Lou Henson Court) - Las Cruces, N.M.

VISITORS: Denver	Time	Score	HOME: New Mexico St.
22 ROMANOWSKI, SAMANTHA			1 ECHOLS, RODREA
3 LOVEN, LAUREN			2 SALAS, BROOKE
12 GRITT, CLAIRE			21 MILLS, MONIQUE
15 SMITH, COURTNEY			24 ADERINTO, ADENIKE
23 NELSON, MADISON			30 PACK, GIA
	08:56	36-29	SUB OUT: ADERINTO, ADENIKE
	08:56		SUB IN: ATKINSON, KALEI
	06:41	38-31	SUB OUT: ECHOLS, RODREA
	06:41		SUB IN: MCDANIEL, STABRESA
	06:41		SUB OUT: MILLS, MONIQUE
	06:41		SUB IN: PRINCE, AALIYAH
	06:24	38-31	SUB OUT: ATKINSON, KALEI
	06:24		SUB IN: MILLS, DOMINIQUE
	03:18	45-40	SUB OUT: MCDANIEL, STABRESA
	03:18		SUB IN: ECHOLS, RODREA
	03:18		SUB OUT: MILLS, DOMINIQUE
	03:18		SUB IN: MILLS, MONIQUE
	03:18		SUB OUT: PRINCE, AALIYAH
	03:18		SUB IN: ATKINSON, KALEI
	03:18		SUB OUT: PACK, GIA
	03:18		SUB IN: ADERINTO, ADENIKE
SUB OUT: 3 LOVEN, LAUREN	03:18		
SUB IN: 10 SIMENTAL, HALEY	03:18		
SUB OUT: 12 GRITT, CLAIRE	03:18		
SUB IN: 32 MALONGA, TSIMBA	03:18		
SUB OUT: 15 SMITH, COURTNEY	03:18		
SUB IN: 0 CURTIN, ABI	03:18		
SUB OUT: 10 SIMENTAL, HALEY	01:23	49-42	
SUB IN: 1 WHITE, GRACE	01:23		
SUB OUT: 0 CURTIN, ABI	01:23		
SUB IN: 15 SMITH, COURTNEY	01:23		

Denver 52, New Mexico St. 44

**Official Substitutions Log
Denver vs New Mexico St.
Period 4**

December 12, 2018 at Pan American Center (Lou Henson Court) - Las Cruces, N.M.

VISITORS: Denver	Time	Score	HOME: New Mexico St.
22 ROMANOWSKI, SAMANTHA			1 ECHOLS, RODREA
3 LOVEN, LAUREN			2 SALAS, BROOKE
12 GRITT, CLAIRE			21 MILLS, MONIQUE
15 SMITH, COURTNEY			24 ADERINTO, ADENIKE
23 NELSON, MADISON			30 PACK, GIA
	09:49	-	SUB OUT: ATKINSON, KALEI
	09:49		SUB IN: PACK, GIA
SUB OUT: 1 WHITE, GRACE	09:49		
SUB IN: 3 LOVEN, LAUREN	09:49		
SUB OUT: 32 MALONGA, TSIMBA	09:49		
SUB IN: 12 GRITT, CLAIRE	09:49		
	08:46	54-44	SUB OUT: ECHOLS, RODREA
	08:46		SUB IN: MILLS, DOMINIQUE
	08:46		SUB OUT: MILLS, MONIQUE
	08:46		SUB IN: ATKINSON, KALEI
	08:46		SUB OUT: ADERINTO, ADENIKE
	08:46		SUB IN: PRINCE, AALIYAH
	08:46		SUB OUT: PACK, GIA
	08:46		SUB IN: MCDANIEL, STABRESA
SUB OUT: 15 SMITH, COURTNEY	07:30	54-50	
SUB IN: 1 WHITE, GRACE	07:30		
	06:34	56-50	SUB OUT: MCDANIEL, STABRESA
	06:34		SUB IN: ECHOLS, RODREA
SUB OUT: 3 LOVEN, LAUREN	06:34		
SUB IN: 32 MALONGA, TSIMBA	06:34		
SUB OUT: 23 NELSON, MADISON	05:14	56-54	
SUB IN: 15 SMITH, COURTNEY	05:14		
SUB OUT: 22 ROMANOWSKI, SAMANTHA	04:51	56-54	
SUB IN: 3 LOVEN, LAUREN	04:51		
	03:10	58-56	SUB OUT: ECHOLS, RODREA
	03:10		SUB IN: PACK, GIA
SUB OUT: 1 WHITE, GRACE	03:10		
SUB IN: 22 ROMANOWSKI, SAMANTHA	03:10		
SUB OUT: 32 MALONGA, TSIMBA	03:10		
SUB IN: 23 NELSON, MADISON	03:10		
	00:25	64-65	SUB OUT: SALAS, BROOKE
	00:25		SUB IN: MCDANIEL, STABRESA
SUB OUT: 3 LOVEN, LAUREN	00:20	64-65	
SUB IN: 33 JEFFCOAT, JASMINE	00:20		
SUB OUT: 15 SMITH, COURTNEY	00:20		
SUB IN: 32 MALONGA, TSIMBA	00:20		
	00:17	64-65	SUB OUT: PRINCE, AALIYAH
	00:17		SUB IN: ECHOLS, RODREA
SUB OUT: 32 MALONGA, TSIMBA	00:17		
SUB IN: 3 LOVEN, LAUREN	00:17		
SUB OUT: 33 JEFFCOAT, JASMINE	00:17		
SUB IN: 15 SMITH, COURTNEY	00:17		

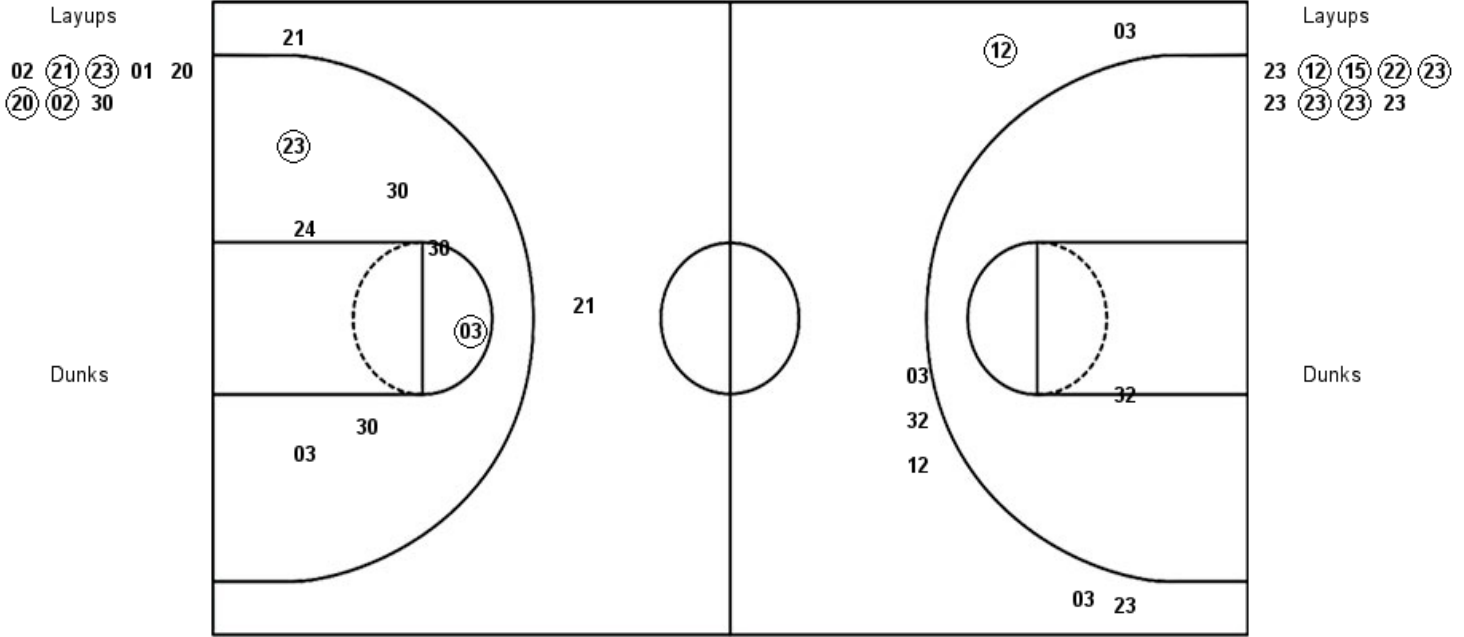
Denver 64, New Mexico St. 66

**Official Shot Chart
Denver vs New Mexico St.
PERIOD 1 Shots**

December 12, 2018 at Pan American Center (Lou Henson Court) - Las Cruces, N.M.

New Mexico St.

Denver



NMS : Period 1	Made	Att	Pct
Layups	4	8	50.0
Dunks	0	0	0
2PT Field Goals	6	15	40.0
3PT Field Goals	0	2	00.0
Total Field Goals	6	17	35.3

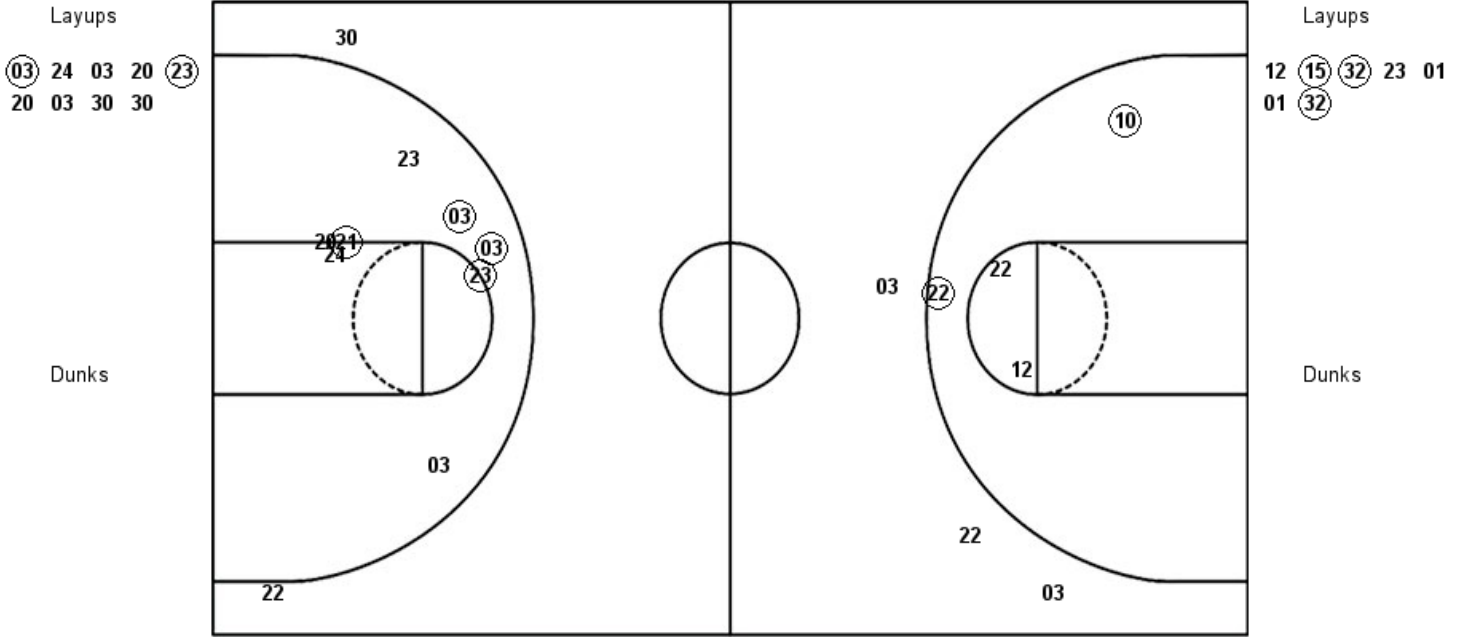
DU : Period 1	Made	Att	Pct
Layups	6	9	66.7
Dunks	0	0	0
2PT Field Goals	6	10	60.0
3PT Field Goals	1	7	14.3
Total Field Goals	7	17	41.2

**Official Shot Chart
Denver vs New Mexico St.
PERIOD 2 Shots**

December 12, 2018 at Pan American Center (Lou Henson Court) - Las Cruces, N.M.

New Mexico St.

Denver



NMS : Period 2	Made	Att	Pct
Layups	2	9	22.2
Dunks	0	0	0
2PT Field Goals	6	17	35.3
3PT Field Goals	0	2	00.0
Total Field Goals	6	19	31.6

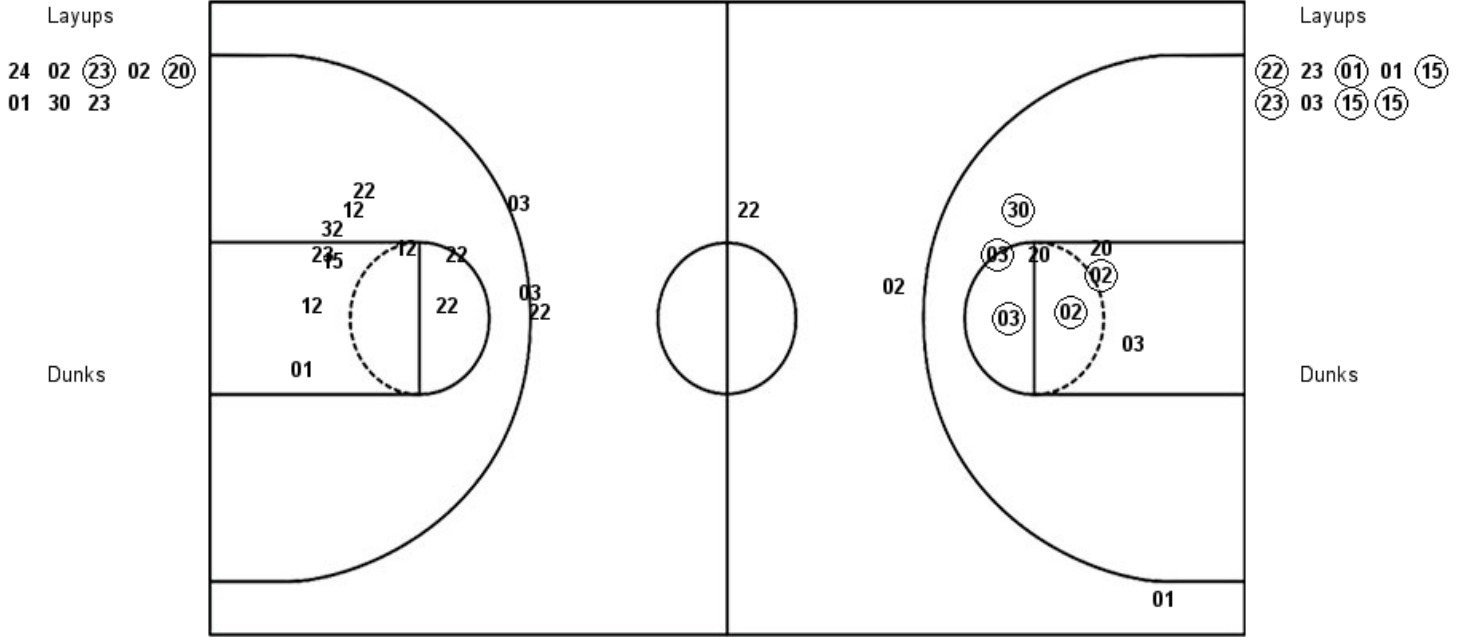
DU : Period 2	Made	Att	Pct
Layups	3	7	42.9
Dunks	0	0	0
2PT Field Goals	5	11	45.5
3PT Field Goals	0	3	00.0
Total Field Goals	5	14	35.7

**Official Shot Chart
Denver vs New Mexico St.
PERIOD 4 Shots**

December 12, 2018 at Pan American Center (Lou Henson Court) - Las Cruces, N.M.

New Mexico St.

Denver



NMS : Period 4	Made	Att	Pct
Layups	2	8	25.0
Dunks	0	0	0
2PT Field Goals	7	16	43.8
3PT Field Goals	0	2	00.0
Total Field Goals	7	18	38.9

DU : Period 4	Made	Att	Pct
Layups	6	9	66.7
Dunks	0	0	0
2PT Field Goals	6	19	31.6
3PT Field Goals	0	4	00.0
Total Field Goals	6	23	26.1

