

FINAL SCORE



Creighton

75



Seton Hall

82

January 11, 2019 • Walsh Gymnasium - South Orange, N.J.

FINAL STATISTICS

Official Box Score
Creighton vs Seton Hall
Game Totals -- Final Statistics
January 11, 2019 at Walsh Gymnasium - South Orange, N.J.



Creighton 75

No.	Player	S	Pts	FG	3FG	FT	OR	DR	TR	PF	A	TO	Blk	Stl	Min	+/-
01	OWENS, JADE		6	2-5	2-3	0-0	2	9	11	4	8	1	0	1	28	-3
04	CARDA, TEMI		17	6-17	2-6	3-4	1	3	4	2	3	2	0	0	35	-9
05	AGNEW, JAYLYN		26	10-21	5-12	1-2	1	1	2	0	1	1	0	0	36	1
12	GRIGLIONE, GRACEY		0	0-0	0-0	0-0	0	1	1	0	1	0	0	0	4	-7
45	FABER, AUDREY		14	5-11	4-7	0-0	1	5	6	2	3	1	1	0	40	-7
13	SAUNDERS, RACHAEL		5	2-2	1-1	0-0	1	2	3	1	1	1	0	1	9	3
14	ELGER, OLIVIA		0	0-4	0-4	0-0	0	2	2	2	1	1	0	0	19	-10
22	KISSINGER, BROOKE		0	0-1	0-1	0-0	0	0	0	1	0	0	0	0	4	3
23	TURNER, MORGAN		0	0-0	0-0	0-0	0	0	0	2	0	0	0	1	5	1
24	DWORAK, CHLOE		0	0-0	0-0	0-0	0	0	0	0	1	0	0	0	2	-1
33	BROTZKI, PAYTON		7	1-2	0-1	5-8	0	0	0	2	1	1	0	1	18	-6
	TEAM						0	1	1	0		3				
TOTALS			75	26-63	14-35	9-14	6	24	30	16	20	11	1	4	200	

Shooting By Period

Period	FG	FG%	3FG	3FG%	FT	FT%
1st Qtr	4-17	24%	2-11	18%	0-0	0%
2nd Qtr	7-16	44%	4-10	40%	0-0	0%
3rd Qtr	6-14	43%	4-8	50%	5-8	63%
4th Qtr	9-16	56%	4-6	67%	4-6	67%
1st Half	11-33	33%	6-21	29%	0-0	0%
2nd Half	15-30	50%	8-14	57%	9-14	64%
Game	26-63	41.3%	14-35	40.0%	9-14	64.3%

Last FG: 4th-00:14
 Biggest Run: 8-0
 Largest lead: By 0 at 4-05:13
 Technical Fouls: None.

Seton Hall 82

No.	Player	S	Pts	FG	3FG	FT	OR	DR	TR	PF	A	TO	Blk	Stl	Min	+/-
03	CARDACI, VICTORIA		2	1-6	0-4	0-0	0	3	3	1	1	0	0	0	26	6
04	HEALY, KAITY		6	2-4	2-3	0-0	0	1	1	0	2	0	0	0	33	4
21	JIMENEZ, NICOLE		17	7-15	1-7	2-2	1	7	8	3	5	3	0	3	34	11
24	SAMUELS, SHADEEN		32	13-23	4-9	2-3	3	8	11	2	3	3	1	0	39	7
34	PHILOXY, SELENA		4	2-4	0-0	0-1	4	6	10	3	2	4	1	0	25	-9
01	HILAIRE, KAELA		0	0-2	0-1	0-0	0	1	1	1	1	1	0	0	9	-8
05	BUTINA, INJA		21	8-11	0-2	5-6	0	4	4	3	4	2	0	1	26	14
25	ELMORE, DESIREE		0	0-1	0-0	0-0	1	0	1	2	0	1	0	0	8	10
	TEAM						1	3	4	0		0				
TOTALS			82	33-66	7-26	9-12	10	33	43	15	18	14	2	4	200	

Shooting By Period

Period	FG	FG%	3FG	3FG%	FT	FT%
1st Qtr	6-16	38%	2-7	29%	0-0	0%
2nd Qtr	10-18	56%	2-7	29%	2-2	100%
3rd Qtr	8-18	44%	1-6	17%	1-2	50%
4th Qtr	9-14	64%	2-6	33%	6-8	75%
1st Half	16-34	47%	4-14	29%	2-2	100%
2nd Half	17-32	53%	3-12	25%	7-10	70%
Game	33-66	50.0%	7-26	26.9%	9-12	75.0%

Last FG: 4th-01:53
 Biggest Run: 9-0
 Largest lead: By 15 at 3-08:24
 Technical Fouls: None.

Game Notes:

Officials: Bruce Morris, Maggie Tieman, Kevin Dillard
 Attendance: 1473

Start Time: 2019-01-11 16:06:01
 End Time: 2019-01-11 17:58:09
 Game Duration: 112
 Conference Game;

Score	1st	2nd	3rd	4th	TOT
CRE	10	18	21	26	75
SHU	14	24	18	26	82

CRE led for 0:00. SHU led for 39:34.
 Game was tied for 0:27.
 Times tied: 2 Lead Changes: 0

Points from	CRE	SHU
In the Paint	22	46
Off Turns	12	13
2nd Chance	4	8
Fast Break	8	20
Bench	12	21

Official Box Score
Creighton vs Seton Hall
First Half Statistics Only
January 11, 2019 at Walsh Gymnasium - South Orange, N.J.



Creighton 28

No.	Player	S	Pts	FG	3FG	FT	OR	DR	TR	PF	A	TO	Blk	Stl	Min	+/-
01	OWENS, JADE		6	2-5	2-3	0-0	1	4	5	0	3	0	0	0	14	-7
04	CARDA, TEMI		9	4-10	1-5	0-0	1	2	3	0	1	2	0	0	18	-10
05	AGNEW, JAYLYN		8	3-9	2-7	0-0	0	0	0	0	1	0	0	0	17	-2
12	GRIGLIONE, GRACEY		0	0-0	0-0	0-0	0	0	0	0	0	0	0	0	2	-6
13	SAUNDERS, RACHAEL		2	1-1	0-0	0-0	1	2	3	0	1	1	0	0	5	0
14	ELGER, OLIVIA		0	0-3	0-3	0-0	0	1	1	0	0	1	0	0	11	-10
22	KISSINGER, BROOKE		0	0-1	0-1	0-0	0	0	0	1	0	0	0	0	4	3
23	TURNER, MORGAN		0	0-0	0-0	0-0	0	0	0	2	0	0	0	1	4	1
24	DWORAK, CHLOE		0	0-0	0-0	0-0	0	0	0	0	1	0	0	0	2	-1
33	BROTZKI, PAYTON		0	0-0	0-0	0-0	0	0	0	0	0	0	0	0	3	-8
45	FABER, AUDREY		3	1-4	1-2	0-0	1	2	3	1	1	0	1	0	20	-10
	TEAM		0	0-0	0-0	0-0	0	1	1	0	0	2	0	0	0	
TOTALS			28	11-33	6-21	0-0	4	12	16	4	8	6	1	1	100	

Shooting By Period

Period	FG	FG%	3FG	3FG%	FT	FT%
1st Qtr	4-17	24%	2-11	18%	0-0	0%
2nd Qtr	7-16	44%	4-10	40%	0-0	0%
1st Half	11-33	33%	6-21	29%	0-0	0%
Game	26-63	41.3%	14-35	40.0%	9-14	64.3%

Last FG Half: CRE 2nd-00:29

Seton Hall 38

No.	Player	S	Pts	FG	3FG	FT	OR	DR	TR	PF	A	TO	Blk	Stl	Min	+/-
01	HILAIRE, KAELA		0	0-2	0-1	0-0	0	1	1	1	1	1	0	0	7	-7
03	CARDACI, VICTORIA		2	1-3	0-2	0-0	0	1	1	0	1	0	0	0	12	11
04	HEALY, KAITY		3	1-2	1-1	0-0	0	1	1	0	1	0	0	0	15	5
05	BUTINA, INJA		10	5-6	0-1	0-0	0	4	4	0	2	1	0	1	14	10
21	JIMENEZ, NICOLE		9	3-7	1-4	2-2	0	2	2	0	3	0	0	2	16	13
24	SAMUELS, SHADEEN		12	5-12	2-5	0-0	3	3	6	0	0	2	1	0	20	10
25	ELMORE, DESIREE		0	0-0	0-0	0-0	0	0	0	0	0	0	0	0	2	7
34	PHILOXY, SELENA		2	1-2	0-0	0-0	3	5	8	1	2	3	1	0	14	1
	TEAM		0	0-0	0-0	0-0	0	1	1	0	0	0	0	0	0	
TOTALS			38	16-34	4-14	2-2	6	18	24	2	10	7	2	3	100	

Shooting By Period

Period	FG	FG%	3FG	3FG%	FT	FT%
1st Qtr	6-16	38%	2-7	29%	0-0	0%
2nd Qtr	10-18	56%	2-7	29%	2-2	100%
1st Half	16-34	47%	4-14	29%	2-2	100%
Game	33-66	50.0%	7-26	26.9%	9-12	75.0%

Last FG Half: SHU 2nd-00:10

Game Notes:

Officials: **Bruce Morris, Maggie Tieman, Kevin Dillard**
Attendance: **1473**

Start Time: **2019-01-11 16:06:01**
End Time: **2019-01-11 17:58:09**
Game Duration: **112**
Conference Game;

Score	1st	2nd	3rd	4th	TOT
CRE	10	18	21	26	75
SHU	14	24	18	26	82

Points from (This Period)	CRE	SHU
In the Paint	8	20
Off Turns	5	8
2nd Chance	2	4
Fast Break	2	11
Bench	2	10

Official Box Score
Creighton vs Seton Hall
First Quarter Statistics Only
January 11, 2019 at Walsh Gymnasium - South Orange, N.J.



Creighton 10

No.	Player	S	Pts	FG	3FG	FT	OR	DR	TR	PF	A	TO	Blk	Stl	Min	+/-
01	OWENS, JADE		3	1-3	1-2	0-0	0	2	2	0	2	0	0	0	6	-2
04	CARDA, TEMI		5	2-6	1-3	0-0	1	1	2	0	0	0	0	0	8	-4
05	AGNEW, JAYLYN		2	1-4	0-3	0-0	0	0	0	0	1	0	0	0	8	-2
12	GRIGLIONE, GRACEY		0	0-0	0-0	0-0	0	0	0	0	0	0	0	0	2	-6
45	FABER, AUDREY		0	0-2	0-1	0-0	1	1	2	0	0	0	0	0	10	-4
13	SAUNDERS, RACHAEL		0	0-0	0-0	0-0	0	1	1	0	0	0	0	0	2	0
14	ELGER, OLIVIA		0	0-1	0-1	0-0	0	0	0	0	0	0	0	0	4	-4
22	KISSINGER, BROOKE		0	0-1	0-1	0-0	0	0	0	1	0	0	0	0	4	3
23	TURNER, MORGAN		0	0-0	0-0	0-0	0	0	0	2	0	0	0	1	4	1
24	DWORAK, CHLOE		0	0-0	0-0	0-0	0	0	0	0	0	0	0	0	0	0
33	BROTZKI, PAYTON		0	0-0	0-0	0-0	0	0	0	0	0	0	0	0	2	-2
	TEAM						0	1	1	0		1				
TOTALS			10	4-17	2-11	0-0	2	6	8	3	3	1	0	1	50	

Shooting By Period

Period	FG	FG%	3FG	3FG%	FT	FT%
1st Qtr	4-17	24%	2-11	18%	0-0	0%
2nd Qtr	7-16	44%	4-10	40%	0-0	0%
1st Half	4-17	24%	2-11	18%	0-0	0%
1st Half	11-33	33%	6-21	29%	0-0	0%
Game	26-63	41.3%	14-35	40.0%	9-14	64.3%

Seton Hall 14

No.	Player	S	Pts	FG	3FG	FT	OR	DR	TR	PF	A	TO	Blk	Stl	Min	+/-
03	CARDACI, VICTORIA		2	1-2	0-1	0-0	0	0	0	0	1	0	0	0	6	7
04	HEALY, KAITY		3	1-2	1-1	0-0	0	1	1	0	0	0	0	0	10	4
21	JIMENEZ, NICOLE		0	0-2	0-1	0-0	0	1	1	0	1	0	0	0	6	7
24	SAMUELS, SHADEEN		5	2-5	1-3	0-0	2	2	4	0	0	1	0	0	10	4
34	PHILOXY, SELENA		2	1-2	0-0	0-0	2	3	5	1	1	3	1	0	9	2
01	HILAIRE, KAELA		0	0-2	0-1	0-0	0	1	1	0	0	0	0	0	4	-3
05	BUTINA, INJA		2	1-1	0-0	0-0	0	2	2	0	0	1	0	0	5	-1
25	ELMORE, DESIREE		0	0-0	0-0	0-0	0	0	0	0	0	0	0	0	0	0
	TEAM						0	1	1	0		0				
TOTALS			14	6-16	2-7	0-0	4	11	15	1	3	5	1	0	50	

Shooting By Period

Period	FG	FG%	3FG	3FG%	FT	FT%
1st Qtr	6-16	38%	2-7	29%	0-0	0%
2nd Qtr	10-18	56%	2-7	29%	2-2	100%
1st Half	6-16	38%	2-7	29%	0-0	0%
1st Half	16-34	47%	4-14	29%	2-2	100%
Game	33-66	50.0%	7-26	26.9%	9-12	75.0%

Game Notes:

Officials: Bruce Morris, Maggie Tieman, Kevin Dillard
Attendance: 1473

Start Time: 2019-01-11 16:06:01

End Time: 2019-01-11 17:58:09

Game Duration: 112

Conference Game;

Score	1st	2nd	3rd	4th	TOT
CRE	10	18	21	26	75
SHU	14	24	18	26	82

Points from (This Period)	CRE	SHU
In the Paint	4	8
Off Turns	2	0
2nd Chance	0	4
Fast Break	0	0
Bench	0	2

**Official Play-By-Play
Creighton vs Seton Hall
First Quarter**

January 11, 2019 at Walsh Gymnasium - South Orange, N.J.



Period 1

Starters:

Creighton: 1 OWENS, JADE; 4 CARDA, TEMI; 5 AGNEW, JAYLYN; 12 GRIGLIONE, GRACEY; 45 FABER, AUDREY;

Seton Hall: 3 CARDACI, VICTORIA; 4 HEALY, KAITY; 21 JIMENEZ, NICOLE; 24 SAMUELS, SHADEEN; 34 PHILOXY, SELENA;

Time	VISITORS: Creighton	Score	Margin	HOME: Seton Hall
09:53		3-0	H 3	GOOD! 3PTR by SAMUELS, SHADEEN
09:53				ASSIST by JIMENEZ, NICOLE
09:30	MISSED 3PTR by AGNEW, JAYLYN			
09:20				REBOUND (DEF) by PHILOXY, SELENA
09:18		6-0	H 6	GOOD! 3PTR by HEALY, KAITY
09:18				ASSIST by CARDACI, VICTORIA
08:47	MISSED LAYUP by OWENS, JADE			
08:42				REBOUND (DEF) by JIMENEZ, NICOLE
08:38				MISSED JUMPER by HEALY, KAITY
08:33				REBOUND (OFF) by SAMUELS, SHADEEN
08:32				MISSED 3PTR by JIMENEZ, NICOLE
08:32	REBOUND (DEF) by OWENS, JADE			
08:30	SUB OUT: GRIGLIONE, GRACEY			
08:30	SUB IN: TURNER, MORGAN			
08:26	GOOD! 3PTR by CARDA, TEMI	6-3	H 3	
08:26	ASSIST by OWENS, JADE			
07:58				TURNOVER (LOSTBALL) by SAMUELS, SHADEEN
07:58	STEAL by TURNER, MORGAN			
07:45	MISSED 3PTR by OWENS, JADE			
07:39	REBOUND (OFF) by CARDA, TEMI			
07:39	MISSED LAYUP by CARDA, TEMI			
07:36				REBOUND (DEF) by TEAM
07:31				MISSED 3PTR by SAMUELS, SHADEEN
07:26	REBOUND (DEF) by TEAM			
07:14	MISSED JUMPER by FABER, AUDREY			
07:05				REBOUND (DEF) by PHILOXY, SELENA
07:02				MISSED 3PTR by CARDACI, VICTORIA
06:54				REBOUND (OFF) by PHILOXY, SELENA
06:54	FOUL (PERSONAL) by TURNER, MORGAN			
06:54	SUB OUT: OWENS, JADE			
06:54	SUB IN: ELGER, OLIVIA			
06:54	SUB OUT: AGNEW, JAYLYN			
06:54	SUB IN: BROTZKI, PAYTON			
06:54				TURNOVER (TRAVEL) by PHILOXY, SELENA
06:17	MISSED 3PTR by CARDA, TEMI			
06:13				REBOUND (DEF) by SAMUELS, SHADEEN
06:10	FOUL (PERSONAL) by TURNER, MORGAN			
06:04				TURNOVER (TRAVEL) by PHILOXY, SELENA
05:56	GOOD! LAYUP by CARDA, TEMI [PNT]	6-5	H 1	
05:32		8-5	H 3	GOOD! JUMPER by PHILOXY, SELENA [PNT]
05:15	MISSED 3PTR by CARDA, TEMI			
05:09				REBOUND (DEF) by PHILOXY, SELENA
05:04				MISSED LAYUP by JIMENEZ, NICOLE
05:00				REBOUND (OFF) by PHILOXY, SELENA
04:58		10-5	H 5	GOOD! LAYUP by CARDACI, VICTORIA
04:58				ASSIST by PHILOXY, SELENA
04:33				
04:33				SUB OUT: CARDACI, VICTORIA
04:33				SUB IN: HILAIRE, KAELEA
04:33				SUB OUT: JIMENEZ, NICOLE
04:33				SUB IN: BUTINA, INJA
04:33	SUB OUT: CARDA, TEMI			
04:33	SUB IN: SAUNDERS, RACHAEL			
04:33	SUB OUT: TURNER, MORGAN			
04:33	SUB IN: KISSINGER, BROOKE			
04:33	SUB OUT: BROTZKI, PAYTON			
04:33	SUB IN: AGNEW, JAYLYN			
04:28	MISSED 3PTR by ELGER, OLIVIA			
04:24	REBOUND (OFF) by FABER, AUDREY			
04:24	TURNOVER (SHOTCLOCK) by			
04:10				MISSED JUMPER by PHILOXY, SELENA
04:04	REBOUND (DEF) by FABER, AUDREY			
04:01	MISSED 3PTR by KISSINGER, BROOKE			
03:54				REBOUND (DEF) by SAMUELS, SHADEEN
03:42				MISSED 3PTR by SAMUELS, SHADEEN
03:37	REBOUND (DEF) by SAUNDERS, RACHAEL			
03:34	MISSED 3PTR by AGNEW, JAYLYN			
03:27				REBOUND (DEF) by BUTINA, INJA
03:19	SUB OUT: ELGER, OLIVIA			
03:19	SUB IN: OWENS, JADE			

Time	VISITORS: Creighton	Score	Margin	HOME: Seton Hall
03:19				FOUL (OFF) by PHILOXY, SELENA
03:19				TURNOVER (OFFENSIVE) by PHILOXY, SELENA
02:55	MISSED 3PTR by AGNEW, JAYLYN			
02:55				BLOCK by PHILOXY, SELENA
02:53				REBOUND (DEF) by HILAIRE, KAELA
02:48	FOUL (PERSONAL) by KISSINGER, BROOKE			
02:41	SUB OUT: SAUNDERS, RACHAEL			
02:41	SUB IN: CARDA, TEMI			
02:31				MISSED LAYUP by SAMUELS, SHADEEN
02:27				REBOUND (OFF) by SAMUELS, SHADEEN
02:25		12-5	H 7	GOOD! LAYUP by SAMUELS, SHADEEN
02:11	GOOD! LAYUP by AGNEW, JAYLYN	12-7	H 5	
02:11	ASSIST by OWENS, JADE			
01:56				MISSED 3PTR by HILAIRE, KAELA
01:51	REBOUND (DEF) by OWENS, JADE			
01:26	GOOD! 3PTR by OWENS, JADE	12-10	H 2	
01:26	ASSIST by AGNEW, JAYLYN			
01:05				MISSED LAYUP by HILAIRE, KAELA
01:01	REBOUND (DEF) by CARDA, TEMI			
00:55	MISSED LAYUP by CARDA, TEMI			
00:52				REBOUND (DEF) by HEALY, KAITY
00:46				TURNOVER (TRAVEL) by BUTINA, INJA
00:46				SUB OUT: HILAIRE, KAELA
00:46				SUB IN: JIMENEZ, NICOLE
00:46				SUB OUT: PHILOXY, SELENA
00:46				SUB IN: CARDACI, VICTORIA
00:46	SUB OUT: KISSINGER, BROOKE			
00:46	SUB IN: ELGER, OLIVIA			
00:40	MISSED 3PTR by FABER, AUDREY			
00:35				REBOUND (DEF) by BUTINA, INJA
00:13		14-10	H 4	GOOD! JUMPER by BUTINA, INJA [PNT]

Creighton 10, Seton Hall 14

Points from (This Period)	CRE	SHU
In the Paint	4	8
Off Turns	2	0
2nd Chance	0	4
Fast Break	0	0
Bench	0	2

Official Box Score
Creighton vs Seton Hall
Second Quarter Statistics Only
January 11, 2019 at Walsh Gymnasium - South Orange, N.J.



Creighton 18

No.	Player	S	Pts	FG	3FG	FT	OR	DR	TR	PF	A	TO	Blk	Stl	Min	+/-
01	OWENS, JADE		3	1-2	1-1	0-0	1	2	3	0	1	0	0	0	8	-5
04	CARDA, TEMI		4	2-4	0-2	0-0	0	1	1	0	1	2	0	0	10	-6
05	AGNEW, JAYLYN		6	2-5	2-4	0-0	0	0	0	0	0	0	0	0	9	0
12	GRIGLIONE, GRACEY		0	0-0	0-0	0-0	0	0	0	0	0	0	0	0	0	0
45	FABER, AUDREY		3	1-2	1-1	0-0	0	1	1	1	1	0	1	0	10	-6
13	SAUNDERS, RACHAEL		2	1-1	0-0	0-0	1	1	2	0	1	1	0	0	3	0
14	ELGER, OLIVIA		0	0-2	0-2	0-0	0	1	1	0	0	1	0	0	7	-6
22	KISSINGER, BROOKE		0	0-0	0-0	0-0	0	0	0	0	0	0	0	0	0	0
23	TURNER, MORGAN		0	0-0	0-0	0-0	0	0	0	0	0	0	0	0	0	0
24	DWORAK, CHLOE		0	0-0	0-0	0-0	0	0	0	0	1	0	0	0	2	-1
33	BROTZKI, PAYTON		0	0-0	0-0	0-0	0	0	0	0	0	0	0	0	1	-6
	TEAM						0	0	0	0		1				
TOTALS			18	7-16	4-10	0-0	2	6	8	1	5	5	1	0	50	

Shooting By Period

Period	FG	FG%	3FG	3FG%	FT	FT%
3rd Qtr	6-14	43%	4-8	50%	5-8	63%
4th Qtr	9-16	56%	4-6	67%	4-6	67%
2nd Half	7-16	44%	4-10	40%	0-0	0%
2nd Half	15-30	50%	8-14	57%	9-14	64%
Game	26-63	41.3%	14-35	40.0%	9-14	64.3%

Seton Hall 24

No.	Player	S	Pts	FG	3FG	FT	OR	DR	TR	PF	A	TO	Blk	Stl	Min	+/-
03	CARDACI, VICTORIA		0	0-1	0-1	0-0	0	1	1	0	0	0	0	0	6	4
04	HEALY, KAITY		0	0-0	0-0	0-0	0	0	0	0	1	0	0	0	5	1
21	JIMENEZ, NICOLE		9	3-5	1-3	2-2	0	1	1	0	2	0	0	2	10	6
24	SAMUELS, SHADEEN		7	3-7	1-2	0-0	1	1	2	0	0	1	1	0	10	6
34	PHILOXY, SELENA		0	0-0	0-0	0-0	1	2	3	0	1	0	0	0	5	-1
01	HILAIRE, KAELA		0	0-0	0-0	0-0	0	0	0	1	1	1	0	0	3	-4
05	BUTINA, INJA		8	4-5	0-1	0-0	0	2	2	0	2	0	0	1	9	11
25	ELMORE, DESIREE		0	0-0	0-0	0-0	0	0	0	0	0	0	0	0	2	7
	TEAM						0	0	0	0		0				
TOTALS			24	10-18	2-7	2-2	2	7	9	1	7	2	1	3	50	

Shooting By Period

Period	FG	FG%	3FG	3FG%	FT	FT%
3rd Qtr	8-18	44%	1-6	17%	1-2	50%
4th Qtr	9-14	64%	2-6	33%	6-8	75%
2nd Half	10-18	56%	2-7	29%	2-2	100%
2nd Half	17-32	53%	3-12	25%	7-10	70%
Game	33-66	50.0%	7-26	26.9%	9-12	75.0%

Game Notes:

Officials: Bruce Morris, Maggie Tieman, Kevin Dillard
Attendance: 1473

Start Time: 2019-01-11 16:06:01
End Time: 2019-01-11 17:58:09
Game Duration: 112
Conference Game;

Score	1st	2nd	3rd	4th	TOT
CRE	10	18	21	26	75
SHU	14	24	18	26	82

Points from (This Period)	CRE	SHU
In the Paint	4	12
Off Turns	3	8
2nd Chance	2	0
Fast Break	2	11
Bench	2	8

Official Play-By-Play
Creighton vs Seton Hall
Second Quarter
January 11, 2019 at Walsh Gymnasium - South Orange, N.J.



Period 2

Starters:

Creighton: 1 OWENS, JADE; 4 CARDA, TEMI; 5 AGNEW, JAYLYN; 12 GRIGLIONE, GRACEY; 45 FABER, AUDREY;
Seton Hall: 3 CARDACI, VICTORIA; 4 HEALY, KAITY; 21 JIMENEZ, NICOLE; 24 SAMUELS, SHADEEN; 34 PHILOXY, SELENA;

Time	VISITORS: Creighton	Score	Margin	HOME: Seton Hall
09:43		16-10	H 6	GOOD! LAYUP by BUTINA, INJA [PNT]
09:23	MISSED 3PTR by ELGER, OLIVIA			
09:18				REBOUND (DEF) by CARDACI, VICTORIA
09:14				MISSED 3PTR by JIMENEZ, NICOLE
09:10	REBOUND (DEF) by CARDA, TEMI			
08:49	MISSED 3PTR by CARDA, TEMI			
08:45				REBOUND (DEF) by SAMUELS, SHADEEN
08:41				MISSED LAYUP by SAMUELS, SHADEEN
08:38	REBOUND (DEF) by OWENS, JADE			
08:34	GOOD! LAYUP by CARDA, TEMI [FB/PNT]	16-12	H 4	
08:34	ASSIST by OWENS, JADE			
08:25				MISSED 3PTR by CARDACI, VICTORIA
08:21	REBOUND (DEF) by OWENS, JADE			
07:57	MISSED LAYUP by OWENS, JADE			
07:55	REBOUND (OFF) by OWENS, JADE			
07:55	TURNOVER (SHOTCLOCK) by			
07:50				SUB OUT: CARDACI, VICTORIA
07:50				SUB IN: PHILOXY, SELENA
07:50	SUB OUT: OWENS, JADE			
07:50	SUB IN: SAUNDERS, RACHAEL			
07:50	SUB OUT: AGNEW, JAYLYN			
07:50	SUB IN: BROTZKI, PAYTON			
07:50	SUB OUT: ELGER, OLIVIA			
07:50	SUB IN: DWORAK, CHLOE			
07:41		18-12	H 6	GOOD! JUMPER by SAMUELS, SHADEEN [PNT]
07:41				ASSIST by BUTINA, INJA
07:18	TURNOVER (BADPASS) by CARDA, TEMI			
07:18				STEAL by JIMENEZ, NICOLE
07:15	FOUL (PERSONAL) by FABER, AUDREY			
07:15		19-12	H 7	GOOD! FT by JIMENEZ, NICOLE [FB]
07:15		20-12	H 8	GOOD! FT by JIMENEZ, NICOLE [FB]
07:03	GOOD! 3PTR by FABER, AUDREY	20-15	H 5	
07:03	ASSIST by SAUNDERS, RACHAEL			
06:55		23-15	H 8	GOOD! 3PTR by JIMENEZ, NICOLE [FB]
06:55				ASSIST by HEALY, KAITY
06:43	TURNOVER (BADPASS) by SAUNDERS, RACHAEL			
06:43				STEAL by JIMENEZ, NICOLE
06:40		25-15	H 10	GOOD! LAYUP by JIMENEZ, NICOLE [FB]
06:40	TIMEOUT 30SEC			
06:40				SUB OUT: BUTINA, INJA
06:40				SUB IN: HILAIRE, KAELA
06:40	SUB OUT: BROTZKI, PAYTON			
06:40	SUB IN: AGNEW, JAYLYN			
06:33	GOOD! 3PTR by AGNEW, JAYLYN	25-18	H 7	
06:33	ASSIST by DWORAK, CHLOE			
06:15				MISSED 3PTR by SAMUELS, SHADEEN
06:10				REBOUND (OFF) by PHILOXY, SELENA
06:08				MISSED 3PTR by JIMENEZ, NICOLE
06:04	REBOUND (DEF) by SAUNDERS, RACHAEL			
05:49	MISSED 3PTR by AGNEW, JAYLYN			
05:44	REBOUND (OFF) by SAUNDERS, RACHAEL			
05:42	GOOD! LAYUP by SAUNDERS, RACHAEL	25-20	H 5	
05:32				MISSED LAYUP by SAMUELS, SHADEEN
05:27				REBOUND (OFF) by SAMUELS, SHADEEN
05:27				TURNOVER (BADPASS) by SAMUELS, SHADEEN
05:27				SUB OUT: HEALY, KAITY
05:27				SUB IN: BUTINA, INJA
05:27	SUB OUT: DWORAK, CHLOE			
05:27	SUB IN: OWENS, JADE			
05:09	GOOD! 3PTR by AGNEW, JAYLYN	25-23	H 2	
05:09	ASSIST by CARDA, TEMI			
04:56		27-23	H 4	GOOD! JUMPER by BUTINA, INJA
04:56				ASSIST by HILAIRE, KAELA
04:45	SUB OUT: SAUNDERS, RACHAEL			
04:45	SUB IN: ELGER, OLIVIA			
04:28	MISSED 3PTR by AGNEW, JAYLYN			
04:24				REBOUND (DEF) by PHILOXY, SELENA
04:20		29-23	H 6	GOOD! LAYUP by JIMENEZ, NICOLE [FB/PNT]
04:20				ASSIST by PHILOXY, SELENA
04:02	MISSED LAYUP by FABER, AUDREY			

Time	VISITORS: Creighton	Score	Margin	HOME: Seton Hall
04:02				BLOCK by SAMUELS, SHADEEN
03:56				REBOUND (DEF) by JIMENEZ, NICOLE
03:55				FOUL (OFF) by HILAIRE, KAELA
03:55				TURNOVER (OFFENSIVE) by HILAIRE, KAELA
03:55				SUB OUT: HILAIRE, KAELA
03:55				SUB IN: CARDACI, VICTORIA
03:28	MISSED 3PTR by ELGER, OLIVIA			
03:23				REBOUND (DEF) by PHILOXY, SELENA
03:16				MISSED LAYUP by SAMUELS, SHADEEN
03:16	BLOCK by FABER, AUDREY			
03:09	REBOUND (DEF) by FABER, AUDREY			
02:56	GOOD! 3PTR by OWENS, JADE	29-26	H 3	
02:56	ASSIST by FABER, AUDREY			
02:38				MISSED 3PTR by BUTINA, INJA
02:33	REBOUND (DEF) by ELGER, OLIVIA			
02:26	TURNOVER (TRAVEL) by CARDA, TEMI			
02:26				SUB OUT: PHILOXY, SELENA
02:26				SUB IN: ELMORE, DESIREE
02:10		31-26	H 5	GOOD! JUMPER by BUTINA, INJA
02:10				ASSIST by JIMENEZ, NICOLE
01:36	MISSED 3PTR by CARDA, TEMI			
01:31				REBOUND (DEF) by BUTINA, INJA
01:28		33-26	H 7	GOOD! LAYUP by SAMUELS, SHADEEN [FB]
01:28				ASSIST by BUTINA, INJA
00:54	MISSED JUMPER by AGNEW, JAYLYN			
00:50				REBOUND (DEF) by BUTINA, INJA
00:47		36-26	H 10	GOOD! 3PTR by SAMUELS, SHADEEN
00:47				ASSIST by JIMENEZ, NICOLE
00:29	GOOD! JUMPER by CARDA, TEMI	36-28	H 8	
00:10		38-28	H 10	GOOD! JUMPER by BUTINA, INJA [PNT]
00:00	TURNOVER (LOSTBALL) by ELGER, OLIVIA			
00:00				STEAL by BUTINA, INJA

Creighton 28, Seton Hall 38

Points from (This Period)	CRE	SHU
In the Paint	4	12
Off Turns	3	8
2nd Chance	2	0
Fast Break	2	11
Bench	2	8

Official Box Score
Creighton vs Seton Hall
Second Half Statistics Only
January 11, 2019 at Walsh Gymnasium - South Orange, N.J.



Creighton 47

No.	Player	S	Pts	FG	3FG	FT	OR	DR	TR	PF	A	TO	Blk	Stl	Min	+/-
01	OWENS, JADE		0	0-0	0-0	0-0	1	5	6	4	5	1	0	1	14	4
04	CARDA, TEMI		8	2-7	1-1	3-4	0	1	1	2	2	0	0	0	17	1
05	AGNEW, JAYLYN		18	7-12	3-5	1-2	1	1	2	0	0	1	0	0	20	3
12	GRIGLIONE, GRACEY		0	0-0	0-0	0-0	0	1	1	0	1	0	0	0	3	-1
13	SAUNDERS, RACHAEL		3	1-1	1-1	0-0	0	0	0	1	0	0	0	1	3	3
14	ELGER, OLIVIA		0	0-1	0-1	0-0	0	1	1	2	1	0	0	0	7	0
22	KISSINGER, BROOKE		0	0-0	0-0	0-0	0	0	0	0	0	0	0	0	0	0
23	TURNER, MORGAN		0	0-0	0-0	0-0	0	0	0	0	0	0	0	0	1	0
24	DWORAK, CHLOE		0	0-0	0-0	0-0	0	0	0	0	0	0	0	0	0	0
33	BROTZKI, PAYTON		7	1-2	0-1	5-8	0	0	0	2	1	1	0	1	15	2
45	FABER, AUDREY		11	4-7	3-5	0-0	0	3	3	1	2	1	0	0	20	3
	TEAM		0	0-0	0-0	0-0	0	0	0	0	0	1	0	0	0	0
TOTALS			47	15-30	8-14	9-14	2	12	14	12	12	5	0	3	100	

Shooting By Period

Period	FG	FG%	3FG	3FG%	FT	FT%
3rd Qtr	6-14	43%	4-8	50%	5-8	63%
4th Qtr	9-16	56%	4-6	67%	4-6	67%
2nd Half	15-30	50%	8-14	57%	9-14	64%
Game	26-63	41.3%	14-35	40.0%	9-14	64.3%

Last FG Half: CRE 4th-00:14

Seton Hall 44

No.	Player	S	Pts	FG	3FG	FT	OR	DR	TR	PF	A	TO	Blk	Stl	Min	+/-
01	HILAIRE, KAELA		0	0-0	0-0	0-0	0	0	0	0	0	0	0	0	2	-1
03	CARDACI, VICTORIA		0	0-3	0-2	0-0	0	2	2	1	0	0	0	0	14	-5
04	HEALY, KAITY		3	1-2	1-2	0-0	0	0	0	0	1	0	0	0	18	-1
05	BUTINA, INJA		11	3-5	0-1	5-6	0	0	0	3	2	1	0	0	12	4
21	JIMENEZ, NICOLE		8	4-8	0-3	0-0	1	5	6	3	2	3	0	1	18	-2
24	SAMUELS, SHADEEN		20	8-11	2-4	2-3	0	5	5	2	3	1	0	0	19	-3
25	ELMORE, DESIREE		0	0-1	0-0	0-0	1	0	1	2	0	1	0	0	6	3
34	PHILOXY, SELENA		2	1-2	0-0	0-1	1	1	2	2	0	1	0	0	11	-10
	TEAM		0	0-0	0-0	0-0	1	2	3	0	0	0	0	0	0	0
TOTALS			44	17-32	3-12	7-10	4	15	19	13	8	7	0	1	100	

Shooting By Period

Period	FG	FG%	3FG	3FG%	FT	FT%
3rd Qtr	8-18	44%	1-6	17%	1-2	50%
4th Qtr	9-14	64%	2-6	33%	6-8	75%
2nd Half	17-32	53%	3-12	25%	7-10	70%
Game	33-66	50.0%	7-26	26.9%	9-12	75.0%

Last FG Half: SHU 4th-01:53

Game Notes:

Officials: **Bruce Morris, Maggie Tieman, Kevin Dillard**
Attendance: **1473**

Start Time: **2019-01-11 16:06:01**
End Time: **2019-01-11 17:58:09**
Game Duration: **112**
Conference Game;

Score	1st	2nd	3rd	4th	TOT
CRE	10	18	21	26	75
SHU	14	24	18	26	82

Points from (This Period)	CRE	SHU
In the Paint	14	26
Off Turns	7	5
2nd Chance	2	4
Fast Break	6	9
Bench	10	11

Official Box Score
Creighton vs Seton Hall
Third Quarter Statistics Only
January 11, 2019 at Walsh Gymnasium - South Orange, N.J.



Creighton 47

No.	Player	S	Pts	FG	3FG	FT	OR	DR	TR	PF	A	TO	Blk	Stl	Min	+/-
01	OWENS, JADE		0	0-0	0-0	0-0	0	3	3	2	3	0	0	0	7	1
04	CARDA, TEMI		5	1-4	1-1	2-2	0	1	1	1	0	0	0	0	7	1
05	AGNEW, JAYLYN		6	2-4	1-2	1-2	0	1	1	0	0	1	0	0	10	3
12	GRIGLIONE, GRACEY		0	0-0	0-0	0-0	0	1	1	0	1	0	0	0	3	-1
45	FABER, AUDREY		5	2-4	1-3	0-0	0	2	2	0	0	0	0	0	10	3
13	SAUNDERS, RACHAEL		3	1-1	1-1	0-0	0	0	0	0	0	0	0	1	3	3
14	ELGER, OLIVIA		0	0-0	0-0	0-0	0	0	0	1	0	0	0	0	3	2
22	KISSINGER, BROOKE		0	0-0	0-0	0-0	0	0	0	0	0	0	0	0	0	0
23	TURNER, MORGAN		0	0-0	0-0	0-0	0	0	0	0	0	0	0	0	1	0
24	DWORAK, CHLOE		0	0-0	0-0	0-0	0	0	0	0	0	0	0	0	0	0
33	BROTZKI, PAYTON		2	0-1	0-1	2-4	0	0	0	0	1	0	0	0	6	3
	TEAM						0	0	0	0		1				
TOTALS			21	6-14	4-8	5-8	0	8	8	4	5	2	0	1	50	

Shooting By Period

Period	FG	FG%	3FG	3FG%	FT	FT%
2nd Half	0-0	0%	0-0	0%	0-0	0%
Game	26-63	41.3%	14-35	40.0%	9-14	64.3%

Seton Hall 44

No.	Player	S	Pts	FG	3FG	FT	OR	DR	TR	PF	A	TO	Blk	Stl	Min	+/-
03	CARDACI, VICTORIA		0	0-2	0-1	0-0	0	2	2	1	0	0	0	0	9	-3
04	HEALY, KAITY		0	0-0	0-0	0-0	0	0	0	0	1	0	0	0	8	-1
21	JIMENEZ, NICOLE		2	1-4	0-2	0-0	1	3	4	1	2	2	0	0	8	-2
24	SAMUELS, SHADEEN		12	5-7	1-3	1-1	0	2	2	0	0	0	0	0	9	-3
34	PHILOXY, SELENA		2	1-2	0-0	0-1	1	0	1	2	0	0	0	0	7	-2
01	HILAIRE, KAELA		0	0-0	0-0	0-0	0	0	0	0	0	0	0	0	2	-1
05	BUTINA, INJA		2	1-2	0-0	0-0	0	0	0	1	1	1	0	0	5	-2
25	ELMORE, DESIREE		0	0-1	0-0	0-0	0	0	0	2	0	1	0	0	2	-1
	TEAM						1	2	3	0		0				
TOTALS			18	8-18	1-6	1-2	3	9	12	7	4	4	0	0	50	

Shooting By Period

Period	FG	FG%	3FG	3FG%	FT	FT%
2nd Half	0-0	0%	0-0	0%	0-0	0%
Game	33-66	50.0%	7-26	26.9%	9-12	75.0%

Game Notes:

Officials: **Bruce Morris, Maggie Tieman, Kevin Dillard**
 Attendance: **1473**

Start Time: **2019-01-11 16:06:01**
 End Time: **2019-01-11 17:58:09**
 Game Duration: **112**
 Conference Game;

Score	1st	2nd	3rd	4th	TOT
CRE	10	18	21	26	75
SHU	14	24	18	26	82

Points from (This Period)	CRE	SHU
In the Paint	4	12
Off Turns	3	0
2nd Chance	0	2
Fast Break	0	4
Bench	5	2

Official Play-By-Play
Creighton vs Seton Hall
Third Quarter
January 11, 2019 at Walsh Gymnasium - South Orange, N.J.



Period 3

Starters:

Creighton: 1 OWENS, JADE; 4 CARDA, TEMI; 5 AGNEW, JAYLYN; 12 GRIGLIONE, GRACEY; 45 FABER, AUDREY;
Seton Hall: 3 CARDACI, VICTORIA; 4 HEALY, KAITY; 21 JIMENEZ, NICOLE; 24 SAMUELS, SHADEEN; 34 PHILOXY, SELENA;

Time	VISITORS: Creighton	Score	Margin	HOME: Seton Hall
09:44		41-28	H 13	GOOD! 3PTR by SAMUELS, SHADEEN
09:44				ASSIST by JIMENEZ, NICOLE
09:26	TURNOVER (TRAVEL) by AGNEW, JAYLYN			
09:13				TURNOVER (TRAVEL) by JIMENEZ, NICOLE
08:57	MISSED 3PTR by FABER, AUDREY			
08:52				REBOUND (DEF) by JIMENEZ, NICOLE
08:49				MISSED 3PTR by CARDACI, VICTORIA
08:44				REBOUND (OFF) by JIMENEZ, NICOLE
08:42				MISSED LAYUP by JIMENEZ, NICOLE
08:38	REBOUND (DEF) by FABER, AUDREY			
08:31	MISSED LAYUP by CARDA, TEMI			
08:27				REBOUND (DEF) by JIMENEZ, NICOLE
08:24		43-28	H 15	GOOD! LAYUP by SAMUELS, SHADEEN [FB]
08:24				ASSIST by JIMENEZ, NICOLE
08:07	GOOD! 3PTR by FABER, AUDREY	43-31	H 12	
08:07	ASSIST by GRIGLIONE, GRACEY			
08:00	FOUL (PERSONAL) by CARDA, TEMI			
07:48				MISSED 3PTR by SAMUELS, SHADEEN
07:43	REBOUND (DEF) by OWENS, JADE			
07:34	MISSED JUMPER by CARDA, TEMI			
07:29				REBOUND (DEF) by CARDACI, VICTORIA
07:27				MISSED 3PTR by SAMUELS, SHADEEN
07:21	REBOUND (DEF) by GRIGLIONE, GRACEY			
07:16	GOOD! 3PTR by AGNEW, JAYLYN	43-34	H 9	
07:16	ASSIST by OWENS, JADE			
07:02		45-34	H 11	GOOD! LAYUP by PHILOXY, SELENA
07:02	FOUL (PERSONAL) by OWENS, JADE			
07:02				MISSED FT by PHILOXY, SELENA
07:02	REBOUND (DEF) by FABER, AUDREY			
07:02				SUB OUT: CARDACI, VICTORIA
07:02				SUB IN: ELMORE, DESIREE
07:02				SUB OUT: SAMUELS, SHADEEN
07:02				SUB IN: BUTINA, INJA
07:02	SUB OUT: OWENS, JADE			
07:02	SUB IN: ELGER, OLIVIA			
07:02	SUB OUT: CARDA, TEMI			
07:02	SUB IN: TURNER, MORGAN			
07:02	SUB OUT: GRIGLIONE, GRACEY			
07:02	SUB IN: SAUNDERS, RACHAEL			
06:57				FOUL (PERSONAL) by ELMORE, DESIREE
06:37	MISSED 3PTR by FABER, AUDREY			
06:33				REBOUND (DEF) by JIMENEZ, NICOLE
06:27				MISSED JUMPER by ELMORE, DESIREE
06:26				REBOUND (OFF) by PHILOXY, SELENA
06:22	FOUL (PERSONAL) by ELGER, OLIVIA			
06:10				TURNOVER (LOSTBALL) by BUTINA, INJA
06:10	STEAL by SAUNDERS, RACHAEL			
05:53	MISSED 3PTR by AGNEW, JAYLYN			
05:51				REBOUND (DEF) by TEAM
05:51				SUB OUT: PHILOXY, SELENA
05:51				SUB IN: SAMUELS, SHADEEN
05:51	SUB OUT: TURNER, MORGAN			
05:51	SUB IN: BROTZKI, PAYTON			
05:38				TURNOVER (TRAVEL) by ELMORE, DESIREE
05:38				SUB OUT: HEALY, KAITY
05:38				SUB IN: CARDACI, VICTORIA
05:30				FOUL (PERSONAL) by ELMORE, DESIREE
05:30	MISSED FT by BROTZKI, PAYTON			
05:30	REBOUND (OFF) by TEAM			
05:30	GOOD! FT by BROTZKI, PAYTON	45-35	H 10	
05:13				TURNOVER (BADPASS) by JIMENEZ, NICOLE
04:58	GOOD! LAYUP by AGNEW, JAYLYN [PNT]	45-37	H 8	
04:58	ASSIST by BROTZKI, PAYTON			
04:50		47-37	H 10	GOOD! LAYUP by JIMENEZ, NICOLE [FB/PNT]
04:49				TIMEOUT 30SEC
04:49				SUB OUT: ELMORE, DESIREE
04:49				SUB IN: PHILOXY, SELENA
04:38				FOUL (PERSONAL) by PHILOXY, SELENA
04:38				
04:30	MISSED 3PTR by BROTZKI, PAYTON			

Time	VISITORS: Creighton	Score	Margin	HOME: Seton Hall
04:24				REBOUND (DEF) by SAMUELS, SHADEEN
04:19		49-37	H 12	GOOD! JUMPER by BUTINA, INJA
04:00	GOOD! 3PTR by SAUNDERS, RACHAEL	49-40	H 9	
04:00				FOUL (PERSONAL) by PHILOXY, SELENA
03:39	MISSED LAYUP by AGNEW, JAYLYN			
03:39				REBOUND (DEF) by TEAM
03:39				SUB OUT: PHILOXY, SELENA
03:39				SUB IN: HEALY, KAITY
03:39	SUB OUT: SAUNDERS, RACHAEL			
03:39	SUB IN: OWENS, JADE			
03:39	SUB OUT: ELGER, OLIVIA			
03:39	SUB IN: CARDA, TEMI			
03:16				MISSED 3PTR by JIMENEZ, NICOLE
03:16				REBOUND (OFF) by TEAM
03:09		51-40	H 11	GOOD! LAYUP by SAMUELS, SHADEEN
03:09				ASSIST by HEALY, KAITY
02:57				FOUL (PERSONAL) by JIMENEZ, NICOLE
02:57	GOOD! FT by BROTZKI, PAYTON	51-41	H 10	
02:57	MISSED FT by BROTZKI, PAYTON			
02:54				REBOUND (DEF) by SAMUELS, SHADEEN
02:50				MISSED JUMPER by BUTINA, INJA
02:41	REBOUND (DEF) by CARDA, TEMI			
02:33	GOOD! LAYUP by FABER, AUDREY [PNT]	51-43	H 8	
02:33	ASSIST by OWENS, JADE			
02:20				MISSED 3PTR by JIMENEZ, NICOLE
02:15	REBOUND (DEF) by OWENS, JADE			
02:15	TURNOVER (10SEC) by			
02:15				SUB OUT: JIMENEZ, NICOLE
02:15				SUB IN: HILAIRE, KAELA
02:06				MISSED LAYUP by CARDACI, VICTORIA
02:02	REBOUND (DEF) by OWENS, JADE			
01:53				FOUL (PERSONAL) by BUTINA, INJA
01:53	MISSED FT by AGNEW, JAYLYN			
01:53	REBOUND (OFF) by TEAM			
01:53	GOOD! FT by AGNEW, JAYLYN	51-44	H 7	
01:37		53-44	H 9	GOOD! LAYUP by SAMUELS, SHADEEN [PNT]
01:37				ASSIST by BUTINA, INJA
01:37	FOUL (PERSONAL) by OWENS, JADE			
01:37				SUB OUT: BUTINA, INJA
01:37				SUB IN: PHILOXY, SELENA
01:37		54-44	H 10	GOOD! FT by SAMUELS, SHADEEN
01:24	GOOD! 3PTR by CARDA, TEMI	54-47	H 7	
01:24	ASSIST by OWENS, JADE			
01:02				MISSED JUMPER by PHILOXY, SELENA
00:57	REBOUND (DEF) by AGNEW, JAYLYN			
00:42	MISSED LAYUP by CARDA, TEMI			
00:39				REBOUND (DEF) by CARDACI, VICTORIA
00:13		56-47	H 9	GOOD! JUMPER by SAMUELS, SHADEEN
00:04				FOUL (PERSONAL) by CARDACI, VICTORIA
00:04	GOOD! FT by CARDA, TEMI	56-48	H 8	
00:04	SUB OUT: BROTZKI, PAYTON			
00:04	SUB IN: SAUNDERS, RACHAEL			
00:04	GOOD! FT by CARDA, TEMI	56-49	H 7	
00:04				SUB OUT: PHILOXY, SELENA
00:04				SUB IN: BUTINA, INJA

Creighton 49, Seton Hall 56

Points from (This Period)	CRE	SHU
In the Paint	4	12
Off Turns	3	0
2nd Chance	0	2
Fast Break	0	4
Bench	5	2

Official Box Score
Creighton vs Seton Hall
Fourth Quarter Statistics Only
January 11, 2019 at Walsh Gymnasium - South Orange, N.J.



Creighton 26

No.	Player	S	Pts	FG	3FG	FT	OR	DR	TR	PF	A	TO	Blk	Stl	Min	+/-
01	OWENS, JADE		0	0-0	0-0	0-0	1	2	3	2	2	1	0	1	7	3
04	CARDA, TEMI		3	1-3	0-0	1-2	0	0	0	1	2	0	0	0	10	0
05	AGNEW, JAYLYN		12	5-8	2-3	0-0	1	0	1	0	0	0	0	0	10	0
12	GRIGLIONE, GRACEY		0	0-0	0-0	0-0	0	0	0	0	0	0	0	0	0	0
45	FABER, AUDREY		6	2-3	2-2	0-0	0	1	1	1	2	1	0	0	10	0
13	SAUNDERS, RACHAEL		0	0-0	0-0	0-0	0	0	0	1	0	0	0	0	0	0
14	ELGER, OLIVIA		0	0-1	0-1	0-0	0	1	1	1	1	0	0	0	4	-2
22	KISSINGER, BROOKE		0	0-0	0-0	0-0	0	0	0	0	0	0	0	0	0	0
23	TURNER, MORGAN		0	0-0	0-0	0-0	0	0	0	0	0	0	0	0	0	0
24	DWORAK, CHLOE		0	0-0	0-0	0-0	0	0	0	0	0	0	0	0	0	0
33	BROTZKI, PAYTON		5	1-1	0-0	3-4	0	0	0	2	0	1	0	1	9	-1
	TEAM						0	0	0	0		0				
TOTALS			26	9-16	4-6	4-6	2	4	6	8	7	3	0	2	50	

Shooting By Period

Period	FG	FG%	3FG	3FG%	FT	FT%
Game	26-63	41.3%	14-35	40.0%	9-14	64.3%

Seton Hall 26

No.	Player	S	Pts	FG	3FG	FT	OR	DR	TR	PF	A	TO	Blk	Stl	Min	+/-
03	CARDACI, VICTORIA		0	0-1	0-1	0-0	0	0	0	0	0	0	0	0	5	-2
04	HEALY, KAITY		3	1-2	1-2	0-0	0	0	0	0	0	0	0	0	10	0
21	JIMENEZ, NICOLE		6	3-4	0-1	0-0	0	2	2	2	0	1	0	1	10	0
24	SAMUELS, SHADEEN		8	3-4	1-1	1-2	0	3	3	2	3	1	0	0	10	0
34	PHILOXY, SELENA		0	0-0	0-0	0-0	0	1	1	0	0	1	0	0	4	-8
01	HILAIRE, KAELA		0	0-0	0-0	0-0	0	0	0	0	0	0	0	0	0	0
05	BUTINA, INJA		9	2-3	0-1	5-6	0	0	0	2	1	0	0	0	7	6
25	ELMORE, DESIREE		0	0-0	0-0	0-0	1	0	1	0	0	0	0	0	4	4
	TEAM						0	0	0	0		0				
TOTALS			26	9-14	2-6	6-8	1	6	7	6	4	3	0	1	50	

Shooting By Period

Period	FG	FG%	3FG	3FG%	FT	FT%
Game	33-66	50.0%	7-26	26.9%	9-12	75.0%

Game Notes:

Officials: Bruce Morris, Maggie Tieman, Kevin Dillard
 Attendance: 1473

Start Time: 2019-01-11 16:06:01
 End Time: 2019-01-11 17:58:09
 Game Duration: 112
 Conference Game;

Score	1st	2nd	3rd	4th	TOT
CRE	10	18	21	26	75
SHU	14	24	18	26	82

Points from (This Period)	CRE	SHU
In the Paint	10	14
Off Turns	4	5
2nd Chance	2	2
Fast Break	6	5
Bench	5	9

Official Play-By-Play
Creighton vs Seton Hall
Fourth Quarter
January 11, 2019 at Walsh Gymnasium - South Orange, N.J.



Period 4

Starters:

Creighton: 1 OWENS, JADE; 4 CARDA, TEMI; 5 AGNEW, JAYLYN; 12 GRIGLIONE, GRACEY; 45 FABER, AUDREY;
Seton Hall: 3 CARDACI, VICTORIA; 4 HEALY, KAITY; 21 JIMENEZ, NICOLE; 24 SAMUELS, SHADEEN; 34 PHILOXY, SELENA;

Time	VISITORS: Creighton	Score	Margin	HOME: Seton Hall
09:50		58-49	H 9	GOOD! LAYUP by SAMUELS, SHADEEN
09:38				FOUL (PERSONAL) by JIMENEZ, NICOLE
09:37	TURNOVER (OTHER) by FABER, AUDREY			
09:25				TURNOVER (TRAVEL) by SAMUELS, SHADEEN
09:10	GOOD! LAYUP by AGNEW, JAYLYN	58-51	H 7	
08:57		60-51	H 9	GOOD! JUMPER by JIMENEZ, NICOLE [PNT]
08:57				ASSIST by SAMUELS, SHADEEN
08:47	GOOD! LAYUP by BROTZKI, PAYTON [FB/PNT]	60-53	H 7	
08:47	ASSIST by ELGER, OLIVIA			
08:35		62-53	H 9	GOOD! JUMPER by JIMENEZ, NICOLE [PNT]
08:16	MISSED JUMPER by AGNEW, JAYLYN			
08:10	REBOUND (OFF) by AGNEW, JAYLYN			
08:08	GOOD! LAYUP by AGNEW, JAYLYN	62-55	H 7	
08:00		65-55	H 10	GOOD! 3PTR by HEALY, KAITY
08:00				ASSIST by SAMUELS, SHADEEN
07:39				FOUL (PERSONAL) by BUTINA, INJA
07:39				SUB OUT: BUTINA, INJA
07:39				SUB IN: PHILOXY, SELENA
07:32	MISSED 3PTR by ELGER, OLIVIA			
07:27				REBOUND (DEF) by SAMUELS, SHADEEN
07:21				MISSED LAYUP by SAMUELS, SHADEEN
07:20	REBOUND (DEF) by ELGER, OLIVIA			
07:20				FOUL (PERSONAL) by SAMUELS, SHADEEN
07:20	SUB OUT: ELGER, OLIVIA			
07:20	SUB IN: OWENS, JADE			
07:12	GOOD! 3PTR by FABER, AUDREY	65-58	H 7	
07:12	ASSIST by OWENS, JADE			
06:54				MISSED 3PTR by CARDACI, VICTORIA
06:48	REBOUND (DEF) by FABER, AUDREY			
06:46	GOOD! JUMPER by CARDA, TEMI [FB/PNT]	65-60	H 5	
06:46	ASSIST by FABER, AUDREY			
06:39				TIMEOUT 30SEC
06:23		67-60	H 7	GOOD! LAYUP by SAMUELS, SHADEEN
06:07	GOOD! LAYUP by AGNEW, JAYLYN	67-62	H 5	
06:07	ASSIST by FABER, AUDREY			
05:49				TURNOVER (LOSTBALL) by PHILOXY, SELENA
05:49	STEAL by BROTZKI, PAYTON			
05:23				FOUL (PERSONAL) by SAMUELS, SHADEEN
05:23	GOOD! FT by BROTZKI, PAYTON	67-63	H 4	
05:23				SUB OUT: CARDACI, VICTORIA
05:23				SUB IN: BUTINA, INJA
05:23				SUB OUT: PHILOXY, SELENA
05:23				SUB IN: ELMORE, DESIREE
05:23	GOOD! FT by BROTZKI, PAYTON	67-64	H 3	
05:19				MISSED 3PTR by BUTINA, INJA
05:16	REBOUND (DEF) by OWENS, JADE			
05:13	GOOD! 3PTR by AGNEW, JAYLYN	67-67	T	
05:13	ASSIST by OWENS, JADE			
04:56		69-67	H 2	GOOD! LAYUP by JIMENEZ, NICOLE [PNT]
04:36	MISSED LAYUP by AGNEW, JAYLYN			
04:33				REBOUND (DEF) by JIMENEZ, NICOLE
04:19				TURNOVER (LOSTBALL) by JIMENEZ, NICOLE
04:19	STEAL by OWENS, JADE			
03:51	TURNOVER (LOSTBALL) by OWENS, JADE			
03:51				STEAL by JIMENEZ, NICOLE
03:51	FOUL (PERSONAL) by BROTZKI, PAYTON			
03:39	FOUL (PERSONAL) by OWENS, JADE			
03:39				SUB OUT: BUTINA, INJA
03:39				SUB IN: CARDACI, VICTORIA
03:22	FOUL (PERSONAL) by FABER, AUDREY			
03:22				SUB OUT: CARDACI, VICTORIA
03:22				SUB IN: BUTINA, INJA
03:20				MISSED 3PTR by HEALY, KAITY
03:20				REBOUND (OFF) by ELMORE, DESIREE
03:17		71-67	H 4	GOOD! JUMPER by BUTINA, INJA [PNT]
03:17				ASSIST by SAMUELS, SHADEEN
03:01	MISSED 3PTR by AGNEW, JAYLYN			
02:57	REBOUND (OFF) by OWENS, JADE			
02:46	FOUL (OFF) by BROTZKI, PAYTON			
02:46	TURNOVER (OFFENSIVE) by BROTZKI, PAYTON			

Time	VISITORS: Creighton	Score	Margin	HOME: Seton Hall
02:30		74-67	H 7	GOOD! 3PTR by SAMUELS, SHADEEN
02:30				ASSIST by BUTINA, INJA
02:22	TIMEOUT 30SEC			
02:16	MISSED JUMPER by CARDA, TEMI			
02:12				REBOUND (DEF) by JIMENEZ, NICOLE
01:53		76-67	H 9	GOOD! LAYUP by BUTINA, INJA [PNT]
01:46				FOUL (PERSONAL) by JIMENEZ, NICOLE
01:46	GOOD! FT by BROTZKI, PAYTON [FB]	76-68	H 8	
01:46				SUB OUT: ELMORE, DESIREE
01:46				SUB IN: PHILOXY, SELENA
01:46	SUB OUT: OWENS, JADE			
01:46	SUB IN: SAUNDERS, RACHAEL			
01:46	MISSED FT by BROTZKI, PAYTON			
01:42				REBOUND (DEF) by SAMUELS, SHADEEN
01:20	FOUL (PERSONAL) by SAUNDERS, RACHAEL			
01:20				MISSED FT by BUTINA, INJA
01:20				REBOUND (OFF) by TEAM
01:20	SUB OUT: SAUNDERS, RACHAEL			
01:20	SUB IN: OWENS, JADE			
01:20	SUB OUT: BROTZKI, PAYTON			
01:20	SUB IN: ELGER, OLIVIA			
01:20		77-68	H 9	GOOD! FT by BUTINA, INJA
01:01	MISSED JUMPER by FABER, AUDREY			
00:56				REBOUND (DEF) by SAMUELS, SHADEEN
00:41				MISSED 3PTR by JIMENEZ, NICOLE
00:39	REBOUND (DEF) by OWENS, JADE			
00:39	TIMEOUT 30SEC			
00:31	GOOD! 3PTR by FABER, AUDREY	77-71	H 6	
00:31	ASSIST by CARDA, TEMI			
00:30	FOUL (PERSONAL) by CARDA, TEMI			
00:30		78-71	H 7	GOOD! FT by BUTINA, INJA [FB]
00:30		79-71	H 8	GOOD! FT by BUTINA, INJA [FB]
00:25				FOUL (PERSONAL) by BUTINA, INJA
00:25	MISSED FT by CARDA, TEMI			
00:25	REBOUND (OFF) by TEAM			
00:25	GOOD! FT by CARDA, TEMI [FB]	79-72	H 7	
00:25				SUB OUT: PHILOXY, SELENA
00:25				SUB IN: CARDACI, VICTORIA
00:19	FOUL (PERSONAL) by OWENS, JADE			
00:19		80-72	H 8	GOOD! FT by BUTINA, INJA [FB]
00:19				SUB OUT: CARDACI, VICTORIA
00:19				SUB IN: PHILOXY, SELENA
00:19		81-72	H 9	GOOD! FT by BUTINA, INJA [FB]
00:19	TIMEOUT TEAM			
00:14	GOOD! 3PTR by AGNEW, JAYLYN	81-75	H 6	
00:14	ASSIST by CARDA, TEMI			
00:07	FOUL (PERSONAL) by ELGER, OLIVIA			
00:07				MISSED FT by SAMUELS, SHADEEN
00:07				REBOUND (OFF) by TEAM
00:07		82-75	H 7	GOOD! FT by SAMUELS, SHADEEN [FB]
00:02	MISSED JUMPER by CARDA, TEMI			
00:00				REBOUND (DEF) by PHILOXY, SELENA

Creighton 75, Seton Hall 82

Points from (This Period)	CRE	SHU
In the Paint	10	14
Off Turns	4	5
2nd Chance	2	2
Fast Break	6	5
Bench	5	9

Official Scoring/Possession Reference Chart
Creighton vs Seton Hall
Period 1
January 11, 2019 at Walsh Gymnasium - South Orange, N.J.



Period 1

Starters:

Creighton: 1 OWENS, JADE; 4 CARDA, TEMI; 5 AGNEW, JAYLYN; 12 GRIGLIONE, GRACEY; 45 FABER, AUDREY;

Seton Hall: 3 CARDACI, VICTORIA; 4 HEALY, KAITY; 21 JIMENEZ, NICOLE; 24 SAMUELS, SHADEEN; 34 PHILOXY, SELENA;

Time	VISITORS: Creighton	Score	Margin	HOME: Seton Hall
09:53		3-0	H 3	GOOD! 3PTR by SAMUELS, SHADEEN
09:18		6-0	H 6	GOOD! 3PTR by HEALY, KAITY
08:26	GOOD! 3PTR by CARDA, TEMI	6-3	H 3	
05:56	GOOD! LAYUP by CARDA, TEMI [PNT]	6-5	H 1	
05:32		8-5	H 3	GOOD! JUMPER by PHILOXY, SELENA [PNT]
04:58		10-5	H 5	GOOD! LAYUP by CARDACI, VICTORIA
02:25		12-5	H 7	GOOD! LAYUP by SAMUELS, SHADEEN
02:11	GOOD! LAYUP by AGNEW, JAYLYN	12-7	H 5	
01:26	GOOD! 3PTR by OWENS, JADE	12-10	H 2	
00:13		14-10	H 4	GOOD! JUMPER by BUTINA, INJA [PNT]

Creighton 10, Seton Hall 14

Official Scoring/Possession Reference Chart
Creighton vs Seton Hall
Period 2
January 11, 2019 at Walsh Gymnasium - South Orange, N.J.



Period 2

Starters:

Creighton: 1 OWENS, JADE; 4 CARDA, TEMI; 5 AGNEW, JAYLYN; 12 GRIGLIONE, GRACEY; 45 FABER, AUDREY;

Seton Hall: 3 CARDACI, VICTORIA; 4 HEALY, KAITY; 21 JIMENEZ, NICOLE; 24 SAMUELS, SHADEEN; 34 PHILOXY, SELENA;

Time	VISITORS: Creighton	Score	Margin	HOME: Seton Hall
09:43		16-10	H 6	GOOD! LAYUP by BUTINA, INJA [PNT]
08:34	GOOD! LAYUP by CARDA, TEMI [FB/PNT]	16-12	H 4	
07:41		18-12	H 6	GOOD! JUMPER by SAMUELS, SHADEEN [PNT]
07:15		19-12	H 7	GOOD! FT by JIMENEZ, NICOLE [FB]
07:15		20-12	H 8	GOOD! FT by JIMENEZ, NICOLE [FB]
07:03	GOOD! 3PTR by FABER, AUDREY	20-15	H 5	
06:55		23-15	H 8	GOOD! 3PTR by JIMENEZ, NICOLE [FB]
06:40		25-15	H 10	GOOD! LAYUP by JIMENEZ, NICOLE [FB]
06:33	GOOD! 3PTR by AGNEW, JAYLYN	25-18	H 7	
05:42	GOOD! LAYUP by SAUNDERS, RACHAEL	25-20	H 5	
05:09	GOOD! 3PTR by AGNEW, JAYLYN	25-23	H 2	
04:56		27-23	H 4	GOOD! JUMPER by BUTINA, INJA
04:20		29-23	H 6	GOOD! LAYUP by JIMENEZ, NICOLE [FB/PNT]
02:56	GOOD! 3PTR by OWENS, JADE	29-26	H 3	
02:10		31-26	H 5	GOOD! JUMPER by BUTINA, INJA
01:28		33-26	H 7	GOOD! LAYUP by SAMUELS, SHADEEN [FB]
00:47		36-26	H 10	GOOD! 3PTR by SAMUELS, SHADEEN
00:29	GOOD! JUMPER by CARDA, TEMI	36-28	H 8	
00:10		38-28	H 10	GOOD! JUMPER by BUTINA, INJA [PNT]

Creighton 28, Seton Hall 38

Official Scoring/Possession Reference Chart
Creighton vs Seton Hall
Period 3
January 11, 2019 at Walsh Gymnasium - South Orange, N.J.



Period 3

Starters:

Creighton: 1 OWENS, JADE; 4 CARDA, TEMI; 5 AGNEW, JAYLYN; 12 GRIGLIONE, GRACEY; 45 FABER, AUDREY;

Seton Hall: 3 CARDACI, VICTORIA; 4 HEALY, KAITY; 21 JIMENEZ, NICOLE; 24 SAMUELS, SHADEEN; 34 PHILOXY, SELENA;

Time	VISITORS: Creighton	Score	Margin	HOME: Seton Hall
09:44		41-28	H 13	GOOD! 3PTR by SAMUELS, SHADEEN
08:24		43-28	H 15	GOOD! LAYUP by SAMUELS, SHADEEN [FB]
08:07	GOOD! 3PTR by FABER, AUDREY	43-31	H 12	
07:16	GOOD! 3PTR by AGNEW, JAYLYN	43-34	H 9	
07:02		45-34	H 11	GOOD! LAYUP by PHILOXY, SELENA
05:30	GOOD! FT by BROTZKI, PAYTON	45-35	H 10	
04:58	GOOD! LAYUP by AGNEW, JAYLYN [PNT]	45-37	H 8	
04:50		47-37	H 10	GOOD! LAYUP by JIMENEZ, NICOLE [FB/PNT]
04:19		49-37	H 12	GOOD! JUMPER by BUTINA, INJA
04:00	GOOD! 3PTR by SAUNDERS, RACHAEL	49-40	H 9	
03:09		51-40	H 11	GOOD! LAYUP by SAMUELS, SHADEEN
02:57	GOOD! FT by BROTZKI, PAYTON	51-41	H 10	
02:33	GOOD! LAYUP by FABER, AUDREY [PNT]	51-43	H 8	
01:53	GOOD! FT by AGNEW, JAYLYN	51-44	H 7	
01:37		53-44	H 9	GOOD! LAYUP by SAMUELS, SHADEEN [PNT]
01:37		54-44	H 10	GOOD! FT by SAMUELS, SHADEEN
01:24	GOOD! 3PTR by CARDA, TEMI	54-47	H 7	
00:13		56-47	H 9	GOOD! JUMPER by SAMUELS, SHADEEN
00:04	GOOD! FT by CARDA, TEMI	56-48	H 8	
00:04	GOOD! FT by CARDA, TEMI	56-49	H 7	

Creighton 49, Seton Hall 56

Official Scoring/Possession Reference Chart
Creighton vs Seton Hall
Period 4
January 11, 2019 at Walsh Gymnasium - South Orange, N.J.



Period 4

Starters:

Creighton: 1 OWENS, JADE; 4 CARDA, TEMI; 5 AGNEW, JAYLYN; 12 GRIGLIONE, GRACEY; 45 FABER, AUDREY;
Seton Hall: 3 CARDACI, VICTORIA; 4 HEALY, KAITY; 21 JIMENEZ, NICOLE; 24 SAMUELS, SHADEEN; 34 PHILOXY, SELENA;

Time	VISITORS: Creighton	Score	Margin	HOME: Seton Hall
09:50		58-49	H 9	GOOD! LAYUP by SAMUELS, SHADEEN
09:10	GOOD! LAYUP by AGNEW, JAYLYN	58-51	H 7	
08:57		60-51	H 9	GOOD! JUMPER by JIMENEZ, NICOLE [PNT]
08:47	GOOD! LAYUP by BROTZKI, PAYTON [FB/PNT]	60-53	H 7	
08:35		62-53	H 9	GOOD! JUMPER by JIMENEZ, NICOLE [PNT]
08:08	GOOD! LAYUP by AGNEW, JAYLYN	62-55	H 7	
08:00		65-55	H 10	GOOD! 3PTR by HEALY, KAITY
07:12	GOOD! 3PTR by FABER, AUDREY	65-58	H 7	
06:46	GOOD! JUMPER by CARDA, TEMI [FB/PNT]	65-60	H 5	
06:23		67-60	H 7	GOOD! LAYUP by SAMUELS, SHADEEN
06:07	GOOD! LAYUP by AGNEW, JAYLYN	67-62	H 5	
05:23	GOOD! FT by BROTZKI, PAYTON	67-63	H 4	
05:23	GOOD! FT by BROTZKI, PAYTON	67-64	H 3	
05:13	GOOD! 3PTR by AGNEW, JAYLYN	67-67	T	
04:56		69-67	H 2	GOOD! LAYUP by JIMENEZ, NICOLE [PNT]
03:17		71-67	H 4	GOOD! JUMPER by BUTINA, INJA [PNT]
02:30		74-67	H 7	GOOD! 3PTR by SAMUELS, SHADEEN
01:53		76-67	H 9	GOOD! LAYUP by BUTINA, INJA [PNT]
01:46	GOOD! FT by BROTZKI, PAYTON [FB]	76-68	H 8	
01:20		77-68	H 9	GOOD! FT by BUTINA, INJA
00:31	GOOD! 3PTR by FABER, AUDREY	77-71	H 6	
00:30		78-71	H 7	GOOD! FT by BUTINA, INJA [FB]
00:30		79-71	H 8	GOOD! FT by BUTINA, INJA [FB]
00:25	GOOD! FT by CARDA, TEMI [FB]	79-72	H 7	
00:19		80-72	H 8	GOOD! FT by BUTINA, INJA [FB]
00:19		81-72	H 9	GOOD! FT by BUTINA, INJA [FB]
00:14	GOOD! 3PTR by AGNEW, JAYLYN	81-75	H 6	
00:07		82-75	H 7	GOOD! FT by SAMUELS, SHADEEN [FB]

Creighton 75, Seton Hall 82

**Official Substitutions Log
Creighton vs Seton Hall
Period 1**

January 11, 2019 at Walsh Gymnasium - South Orange, N.J.



VISITORS: Creighton	Time	Score	HOME: Seton Hall
1 OWENS, JADE			3 CARDACI, VICTORIA
4 CARDA, TEMI			4 HEALY, KAITY
5 AGNEW, JAYLYN			21 JIMENEZ, NICOLE
12 GRIGLIONE, GRACEY			24 SAMUELS, SHADEEN
45 FABER, AUDREY			34 PHILOXY, SELENA
SUB OUT: 12 GRIGLIONE, GRACEY	08:30	0-6	
SUB IN: 23 TURNER, MORGAN	08:30		
SUB OUT: 1 OWENS, JADE	06:54	3-6	
SUB IN: 14 ELGER, OLIVIA	06:54		
SUB OUT: 5 AGNEW, JAYLYN	06:54		
SUB IN: 33 BROTZKI, PAYTON	06:54		
	04:33	5-10	SUB OUT: CARDACI, VICTORIA
	04:33		SUB IN: HILAIRE, KAELA
	04:33		SUB OUT: JIMENEZ, NICOLE
	04:33		SUB IN: BUTINA, INJA
SUB OUT: 4 CARDA, TEMI	04:33		
SUB IN: 13 SAUNDERS, RACHAEL	04:33		
SUB OUT: 23 TURNER, MORGAN	04:33		
SUB IN: 22 KISSINGER, BROOKE	04:33		
SUB OUT: 33 BROTZKI, PAYTON	04:33		
SUB IN: 5 AGNEW, JAYLYN	04:33		
SUB OUT: 14 ELGER, OLIVIA	03:19	5-10	
SUB IN: 1 OWENS, JADE	03:19		
SUB OUT: 13 SAUNDERS, RACHAEL	02:41	5-10	
SUB IN: 4 CARDA, TEMI	02:41		
	00:46	10-12	SUB OUT: HILAIRE, KAELA
	00:46		SUB IN: JIMENEZ, NICOLE
	00:46		SUB OUT: PHILOXY, SELENA
	00:46		SUB IN: CARDACI, VICTORIA
SUB OUT: 22 KISSINGER, BROOKE	00:46		
SUB IN: 14 ELGER, OLIVIA	00:46		

Creighton 10, Seton Hall 14

Official Substitutions Log
Creighton vs Seton Hall
Period 2
January 11, 2019 at Walsh Gymnasium - South Orange, N.J.



VISITORS: Creighton	Time	Score	HOME: Seton Hall
1 OWENS, JADE			3 CARDACI, VICTORIA
4 CARDA, TEMI			4 HEALY, KAITY
5 AGNEW, JAYLYN			21 JIMENEZ, NICOLE
12 GRIGLIONE, GRACEY			24 SAMUELS, SHADEEN
45 FABER, AUDREY			34 PHILOXY, SELENA
	07:50	12-16	SUB OUT: CARDACI, VICTORIA
	07:50		SUB IN: PHILOXY, SELENA
SUB OUT: 1 OWENS, JADE	07:50		
SUB IN: 13 SAUNDERS, RACHAEL	07:50		
SUB OUT: 5 AGNEW, JAYLYN	07:50		
SUB IN: 33 BROTZKI, PAYTON	07:50		
SUB OUT: 14 ELGER, OLIVIA	07:50		
SUB IN: 24 DWORAK, CHLOE	07:50		
	06:40	15-25	SUB OUT: BUTINA, INJA
	06:40		SUB IN: HILAIRE, KAELA
SUB OUT: 33 BROTZKI, PAYTON	06:40		
SUB IN: 5 AGNEW, JAYLYN	06:40		
	05:27	20-25	SUB OUT: HEALY, KAITY
	05:27		SUB IN: BUTINA, INJA
SUB OUT: 24 DWORAK, CHLOE	05:27		
SUB IN: 1 OWENS, JADE	05:27		
SUB OUT: 13 SAUNDERS, RACHAEL	04:45	23-27	
SUB IN: 14 ELGER, OLIVIA	04:45		
	03:55	23-29	SUB OUT: HILAIRE, KAELA
	03:55		SUB IN: CARDACI, VICTORIA
	02:26	26-29	SUB OUT: PHILOXY, SELENA
	02:26		SUB IN: ELMORE, DESIREE

Creighton 28, Seton Hall 38

**Official Substitutions Log
Creighton vs Seton Hall
Period 3**

January 11, 2019 at Walsh Gymnasium - South Orange, N.J.



VISITORS: Creighton	Time	Score	HOME: Seton Hall
1 OWENS, JADE			3 CARDACI, VICTORIA
4 CARDA, TEMI			4 HEALY, KAITY
5 AGNEW, JAYLYN			21 JIMENEZ, NICOLE
12 GRIGLIONE, GRACEY			24 SAMUELS, SHADEEN
45 FABER, AUDREY			34 PHILOXY, SELENA
	07:02	34-45	SUB OUT: CARDACI, VICTORIA
	07:02		SUB IN: ELMORE, DESIREE
	07:02		SUB OUT: SAMUELS, SHADEEN
	07:02		SUB IN: BUTINA, INJA
SUB OUT: 1 OWENS, JADE	07:02		
SUB IN: 14 ELGER, OLIVIA	07:02		
SUB OUT: 4 CARDA, TEMI	07:02		
SUB IN: 23 TURNER, MORGAN	07:02		
SUB OUT: 12 GRIGLIONE, GRACEY	07:02		
SUB IN: 13 SAUNDERS, RACHAEL	07:02		
	05:51	34-45	SUB OUT: PHILOXY, SELENA
	05:51		SUB IN: SAMUELS, SHADEEN
SUB OUT: 23 TURNER, MORGAN	05:51		
SUB IN: 33 BROTZKI, PAYTON	05:51		
	05:38	34-45	SUB OUT: HEALY, KAITY
	05:38		SUB IN: CARDACI, VICTORIA
	04:49	37-47	SUB OUT: ELMORE, DESIREE
	04:49		SUB IN: PHILOXY, SELENA
	03:39	40-49	SUB OUT: PHILOXY, SELENA
	03:39		SUB IN: HEALY, KAITY
SUB OUT: 13 SAUNDERS, RACHAEL	03:39		
SUB IN: 1 OWENS, JADE	03:39		
SUB OUT: 14 ELGER, OLIVIA	03:39		
SUB IN: 4 CARDA, TEMI	03:39		
	02:15	43-51	SUB OUT: JIMENEZ, NICOLE
	02:15		SUB IN: HILAIRE, KAELA
	01:37	44-53	SUB OUT: BUTINA, INJA
	01:37		SUB IN: PHILOXY, SELENA
SUB OUT: 33 BROTZKI, PAYTON	00:04	48-56	
SUB IN: 13 SAUNDERS, RACHAEL	00:04		
	00:04		SUB OUT: PHILOXY, SELENA
	00:04		SUB IN: BUTINA, INJA

Creighton 49, Seton Hall 56

**Official Substitutions Log
Creighton vs Seton Hall
Period 4**

January 11, 2019 at Walsh Gymnasium - South Orange, N.J.



VISITORS: Creighton	Time	Score	HOME: Seton Hall
1 OWENS, JADE			3 CARDACI, VICTORIA
4 CARDA, TEMI			4 HEALY, KAITY
5 AGNEW, JAYLYN			21 JIMENEZ, NICOLE
12 GRIGLIONE, GRACEY			24 SAMUELS, SHADEEN
45 FABER, AUDREY			34 PHILOXY, SELENA
	07:39	55-65	SUB OUT: BUTINA, INJA
	07:39		SUB IN: PHILOXY, SELENA
SUB OUT: 14 ELGER, OLIVIA	07:20	55-65	
SUB IN: 1 OWENS, JADE	07:20		
	05:23	63-67	SUB OUT: CARDACI, VICTORIA
	05:23		SUB IN: BUTINA, INJA
	05:23		SUB OUT: PHILOXY, SELENA
	05:23		SUB IN: ELMORE, DESIREE
	03:39	67-69	SUB OUT: BUTINA, INJA
	03:39		SUB IN: CARDACI, VICTORIA
	03:22	67-69	SUB OUT: CARDACI, VICTORIA
	03:22		SUB IN: BUTINA, INJA
	01:46	68-76	SUB OUT: ELMORE, DESIREE
	01:46		SUB IN: PHILOXY, SELENA
SUB OUT: 1 OWENS, JADE	01:46		
SUB IN: 13 SAUNDERS, RACHAEL	01:46		
SUB OUT: 13 SAUNDERS, RACHAEL	01:20	68-76	
SUB IN: 1 OWENS, JADE	01:20		
SUB OUT: 33 BROTZKI, PAYTON	01:20		
SUB IN: 14 ELGER, OLIVIA	01:20		
	00:25	72-79	SUB OUT: PHILOXY, SELENA
	00:25		SUB IN: CARDACI, VICTORIA
	00:19	72-80	SUB OUT: CARDACI, VICTORIA
	00:19		SUB IN: PHILOXY, SELENA

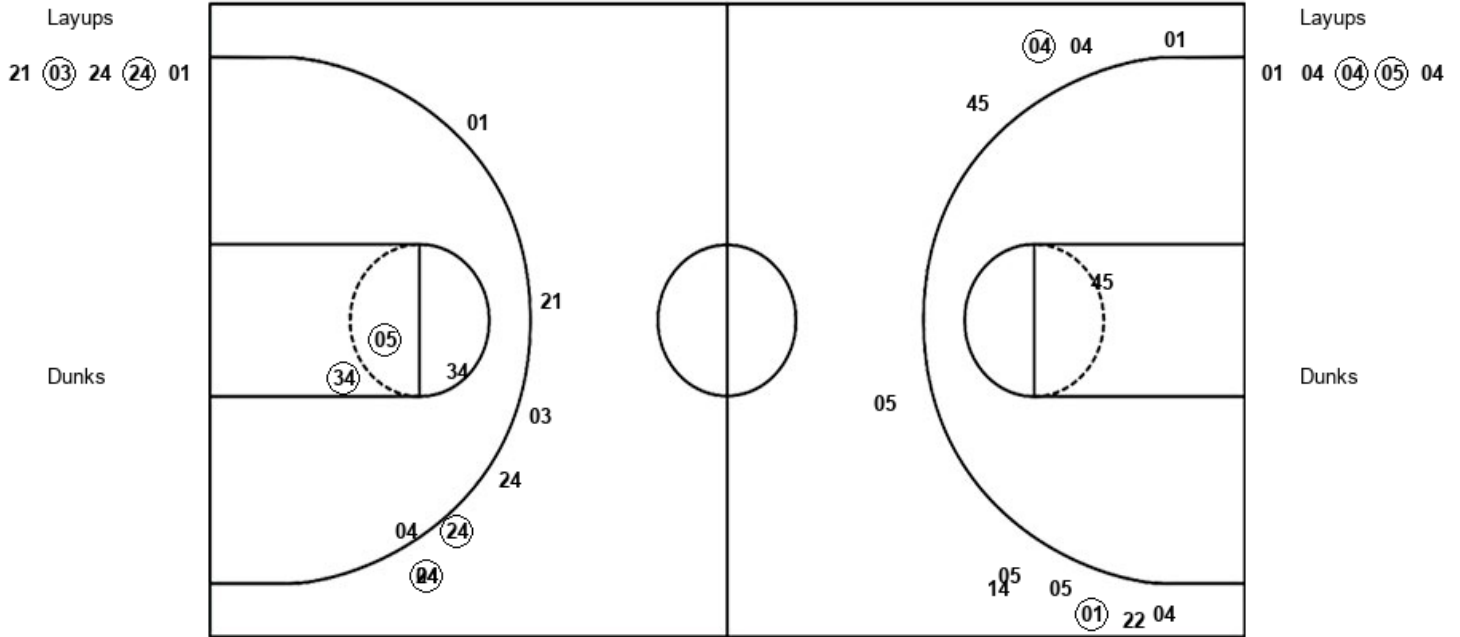
Creighton 75, Seton Hall 82

Official Shot Chart
Creighton vs Seton Hall
PERIOD 1 Shots
 January 11, 2019 at Walsh Gymnasium - South Orange, N.J.



Seton Hall

Creighton



SHU : Period 1	Made	Att	Pct
Layups	2	5	40.0
Dunks	0	0	0
2PT Field Goals	4	9	44.4
3PT Field Goals	2	7	28.6
Total Field Goals	6	16	37.5

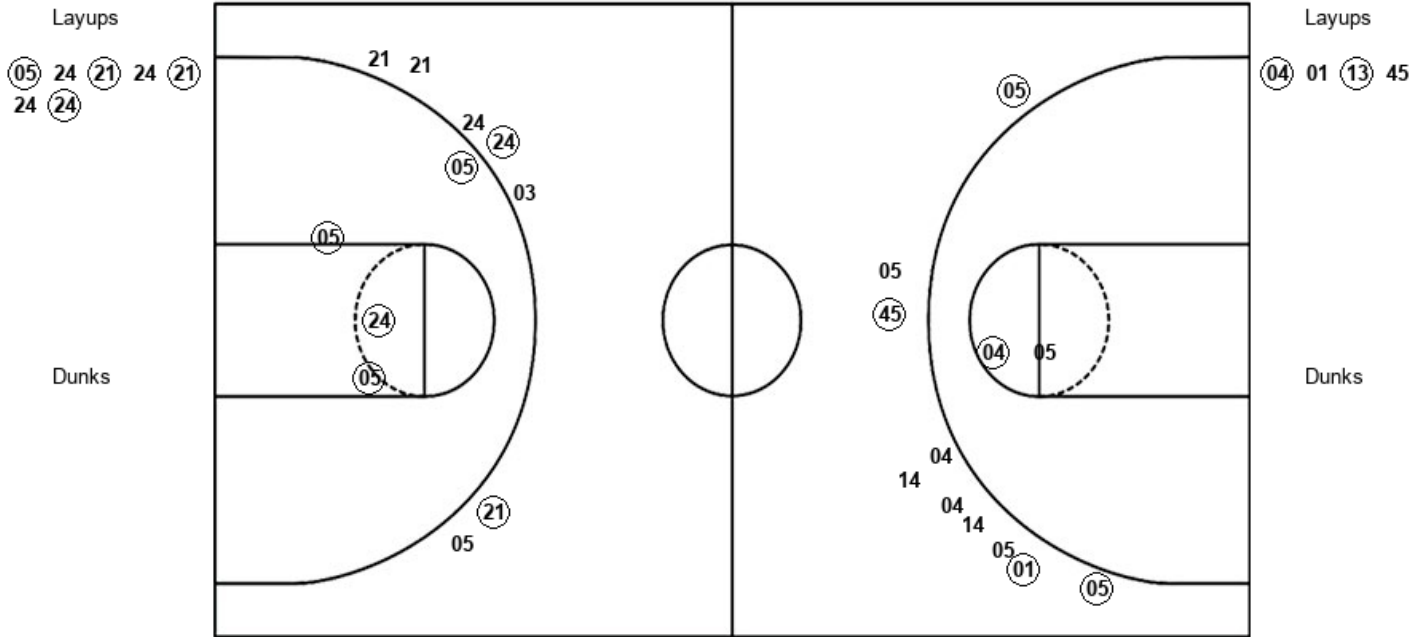
CRE : Period 1	Made	Att	Pct
Layups	2	5	40.0
Dunks	0	0	0
2PT Field Goals	2	6	33.3
3PT Field Goals	2	11	18.2
Total Field Goals	4	17	23.5

Official Shot Chart
Creighton vs Seton Hall
PERIOD 2 Shots
 January 11, 2019 at Walsh Gymnasium - South Orange, N.J.



Seton Hall

Creighton



SHU : Period 2	Made	Att	Pct
Layups	4	7	57.1
Dunks	0	0	0
2PT Field Goals	8	11	72.7
3PT Field Goals	2	7	28.6
Total Field Goals	10	18	55.6

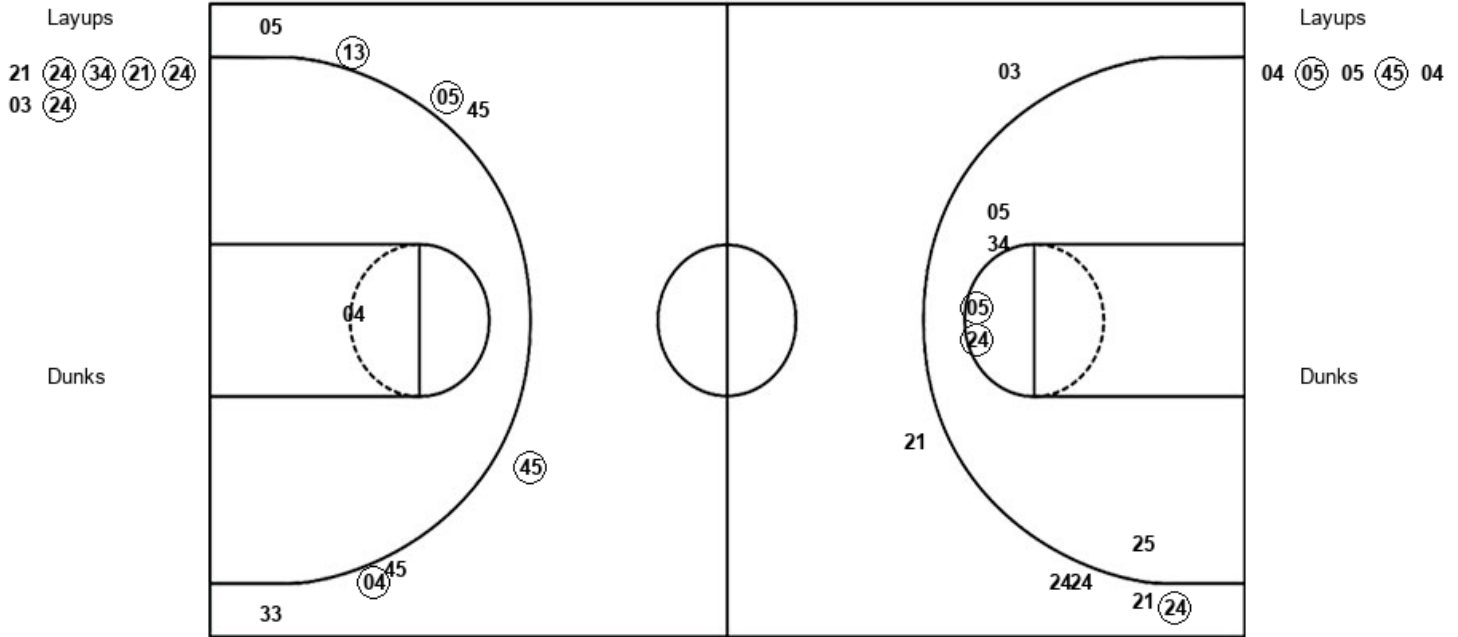
CRE : Period 2	Made	Att	Pct
Layups	2	4	50.0
Dunks	0	0	0
2PT Field Goals	3	6	50.0
3PT Field Goals	4	10	40.0
Total Field Goals	7	16	43.8

Official Shot Chart
Creighton vs Seton Hall
PERIOD 3 Shots
 January 11, 2019 at Walsh Gymnasium - South Orange, N.J.



Seton Hall

Creighton



SHU : Period 3	Made	Att	Pct
Layups	5	7	71.4
Dunks	0	0	0
2PT Field Goals	7	12	58.3
3PT Field Goals	1	6	16.7
Total Field Goals	8	18	44.4

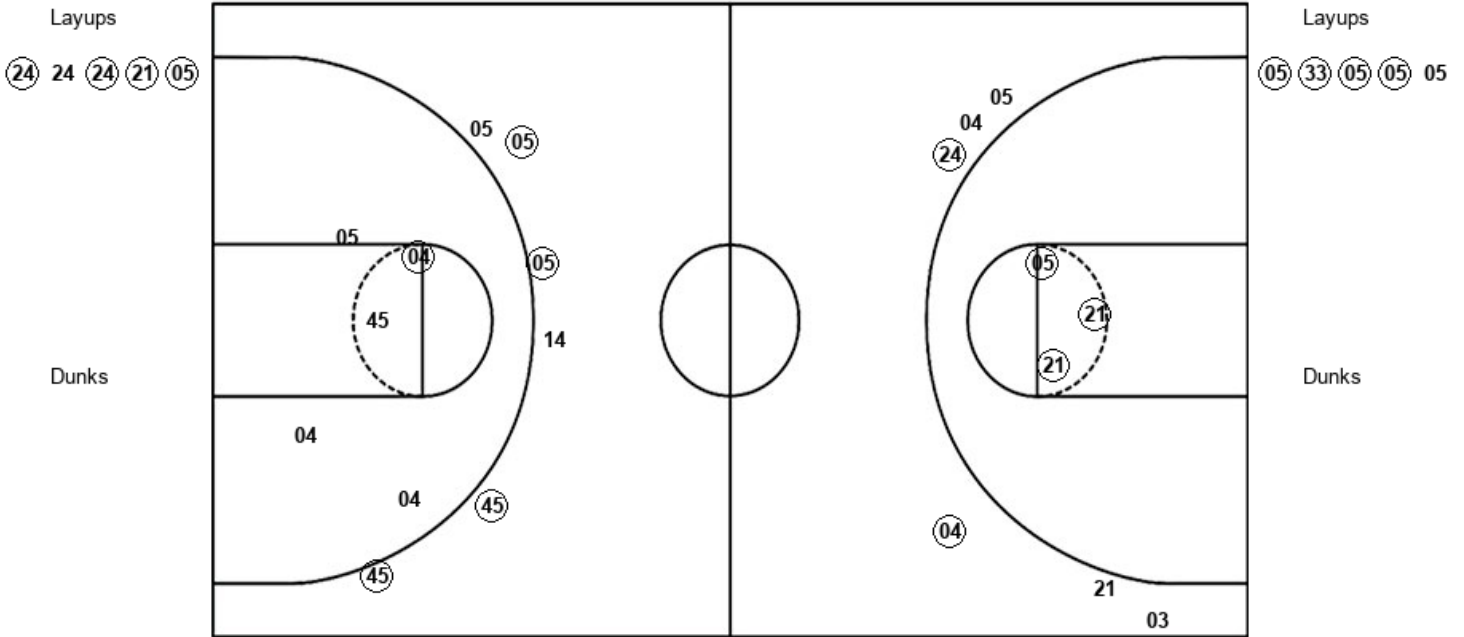
CRE : Period 3	Made	Att	Pct
Layups	2	5	40.0
Dunks	0	0	0
2PT Field Goals	2	6	33.3
3PT Field Goals	4	8	50.0
Total Field Goals	6	14	42.9

Official Shot Chart
Creighton vs Seton Hall
PERIOD 4 Shots
 January 11, 2019 at Walsh Gymnasium - South Orange, N.J.



Seton Hall

Creighton



SHU : Period 4	Made	Att	Pct
Layups	4	5	80.0
Dunks	0	0	0
2PT Field Goals	7	8	87.5
3PT Field Goals	2	6	33.3
Total Field Goals	9	14	64.3

CRE : Period 4	Made	Att	Pct
Layups	4	5	80.0
Dunks	0	0	0
2PT Field Goals	5	10	50.0
3PT Field Goals	4	6	66.7
Total Field Goals	9	16	56.3

