

FINAL SCORE



South Alabama

65



Arkansas State

66

January 11, 2019 • First National Bank Arena - Jonesboro, Ark.

FINAL STATISTICS

Official Box Score
South Alabama vs Arkansas State
Game Totals -- Final Statistics
January 11, 2019 at First National Bank Arena - Jonesboro, Ark.

South Alabama 65

No.	Player	S	Pts	FG	3FG	FT	OR	DR	TR	PF	A	TO	Blk	Stl	Min	+/-
00	Holden, Kory		6	2-13	2-7	0-0	1	2	3	2	1	1	0	2	25	4
12	Kelly, R.J.		3	1-4	1-2	0-0	2	3	5	5	2	0	0	5	35	4
14	Sikes, Rodrick		24	9-20	4-12	2-3	2	1	3	2	2	1	0	0	40	-1
33	Ajayi, Josh		15	5-7	1-1	4-5	1	6	7	4	3	6	2	1	36	-1
42	Mitchell, Trhae		12	6-11	0-0	0-1	3	4	7	3	1	0	2	1	24	2
01	Mcgee, Herb		2	1-3	0-2	0-0	0	1	1	2	0	1	0	0	13	-7
03	Morris, Kevin		3	1-1	0-0	1-3	0	0	0	1	0	0	0	0	4	0
25	Andrews, Jordan		0	0-3	0-2	0-1	1	0	1	2	0	1	0	0	14	-3
30	Dial, Abdul		0	0-0	0-0	0-0	0	0	0	0	0	0	0	0	1	1
50	Pettway, John		0	0-2	0-0	0-0	0	1	1	1	1	0	0	2	8	-4
	Team						1	0	1	0		0				
TOTALS			65	25-64	8-26	7-13	11	18	29	22	10	10	4	11	200	

Shooting By Period

Period	FG	FG%	3FG	3FG%	FT	FT%
1st Half	12-33	36%	5-15	33%	2-3	67%
2nd Half	13-31	42%	3-11	27%	5-10	50%
Game	25-64	39.1%	8-26	30.8%	7-13	53.8%

Last FG: 2nd-00:00
Biggest Run: 10-0
Largest lead: By 5 at 1-07:03
Technical Fouls: None.

Arkansas State 66

No.	Player	S	Pts	FG	3FG	FT	OR	DR	TR	PF	A	TO	Blk	Stl	Min	+/-
00	Cockfield, Ty		22	5-16	0-5	12-15	0	4	4	1	2	3	0	2	36	-1
02	Boudie, Salif		10	5-6	0-0	0-0	3	5	8	3	0	1	3	0	29	2
03	Brevard, Malik		2	1-3	0-0	0-0	2	6	8	2	1	2	0	1	26	-8
10	Gillard, Grantham		2	1-3	0-2	0-0	1	4	5	4	3	4	0	2	29	10
23	Eaton, Marquis		18	7-14	0-2	4-4	1	3	4	1	1	1	0	1	37	2
01	Wilson, Kobe		8	2-4	2-4	2-3	0	0	0	1	0	1	0	0	11	-1
04	Walley, Tristin		0	0-1	0-0	0-0	3	3	6	2	2	1	0	0	17	1
11	Matthews, J.J.		4	1-2	0-0	2-4	1	2	3	3	0	2	0	0	11	2
12	Kus, Canberk		0	0-0	0-0	0-0	0	2	2	0	0	0	0	0	4	-2
	Team						1	1	2	0		2				
TOTALS			66	22-49	2-13	20-26	12	30	42	17	9	17	3	6	200	

Shooting By Period

Period	FG	FG%	3FG	3FG%	FT	FT%
1st Half	12-24	50%	0-4	00%	9-13	69%
2nd Half	10-25	40%	2-9	22%	11-13	85%
Game	22-49	44.9%	2-13	15.4%	20-26	76.9%

Last FG: 2nd-03:27
Biggest Run: 9-0
Largest lead: By 10 at 2-07:28
Technical Fouls: None.

Game Notes:

Officials: Byron Jarrett,R.B. Clyburn,Steven Anderson
Attendance: 1374

Start Time: 2019-01-11 01:02:23
End Time: 2019-01-11 02:59:46
Game Duration: 117
Conference Game;

Score	1st	2nd	TOT
USA	31	34	65
ASU	33	33	66

USA led for 6:37. ASU led for 27:41.
Game was tied for 5:42.
Times tied: 18 Lead Changes: 16

Points from	USA	ASU
In the Paint	32	38
Off Turns	16	12
2nd Chance	15	11
Fast Break	7	9
Bench	5	12

Official Box Score
South Alabama vs Arkansas State
First Half Statistics Only
January 11, 2019 at First National Bank Arena - Jonesboro, Ark.

South Alabama 31

No.	Player	S	Pts	FG	3FG	FT	OR	DR	TR	PF	A	TO	Blk	Stl	Min	+/-
00	Holden, Kory		3	1-7	1-4	0-0	0	1	1	1	1	0	0	0	11	-1
12	Kelly, R.J.		3	1-3	1-1	0-0	2	3	5	2	2	0	0	2	16	1
14	Sikes, Rodrick		14	6-12	2-6	0-0	0	1	1	1	1	0	0	0	20	-2
33	Ajayi, Josh		6	2-3	1-1	1-2	1	3	4	1	1	2	2	1	17	-2
42	Mitchell, Trhae		0	0-1	0-0	0-0	1	0	1	2	0	0	0	0	4	1
01	Mcgee, Herb		2	1-2	0-1	0-0	0	0	0	1	0	1	0	0	10	-3
03	Morris, Kevin		3	1-1	0-0	1-1	0	0	0	1	0	0	0	0	3	0
25	Andrews, Jordan		0	0-2	0-2	0-0	1	0	1	1	0	1	0	0	10	-1
30	Dial, Abdul		0	0-0	0-0	0-0	0	0	0	0	0	0	0	0	1	1
50	Pettway, John		0	0-2	0-0	0-0	0	1	1	1	1	0	0	2	8	-4
	Team						0	0	0	0		0				
TOTALS			31	12-33	5-15	2-3	5	9	14	11	6	4	2	5	100	

Shooting By Period

Period	FG	FG%	3FG	3FG%	FT	FT%
1st Half	12-33	36%	5-15	33%	2-3	67%
Game	25-64	39.1%	8-26	30.8%	7-13	53.8%

Last FG Half: USA 2nd-00:00

Arkansas State 33

No.	Player	S	Pts	FG	3FG	FT	OR	DR	TR	PF	A	TO	Blk	Stl	Min	+/-
00	Cockfield, Ty		17	5-8	0-0	7-9	0	0	0	1	1	2	0	2	18	3
02	Boudie, Salif		4	2-2	0-0	0-0	1	2	3	0	0	0	3	0	14	5
03	Brevard, Malik		2	1-3	0-0	0-0	2	6	8	1	1	1	0	1	19	0
10	Gillard, Grantham		0	0-2	0-2	0-0	1	1	2	1	2	2	0	1	14	5
23	Eaton, Marquis		8	4-8	0-2	0-0	1	1	2	1	0	0	0	0	19	0
01	Wilson, Kobe		0	0-0	0-0	0-0	0	0	0	0	0	0	0	0	3	1
04	Walley, Tristin		0	0-0	0-0	0-0	0	0	0	1	0	1	0	0	3	1
11	Matthews, J.J.		2	0-1	0-0	2-4	1	2	3	1	0	1	0	0	6	-3
12	Kus, Canberk		0	0-0	0-0	0-0	0	2	2	0	0	0	0	0	4	-2
	Team						0	1	1	0		1				
TOTALS			33	12-24	0-4	9-13	6	15	21	6	4	8	3	4	100	

Shooting By Period

Period	FG	FG%	3FG	3FG%	FT	FT%
1st Half	12-24	50%	0-4	00%	9-13	69%
Game	22-49	44.9%	2-13	15.4%	20-26	76.9%

Last FG Half: ASU 2nd-03:27

Game Notes:

Officials: **Byron Jarrett,R.B. Ciyburn,Steven Anderson**
Attendance: **1374**

Start Time: **2019-01-11 01:02:23**
End Time: **2019-01-11 02:59:46**
Game Duration: **117**
Conference Game;

Score	1st	2nd	TOT
USA	31	34	65
ASU	33	33	66

Points from (This Period)	USA	ASU
In the Paint	12	22
Off Turns	5	8
2nd Chance	4	5
Fast Break	0	7
Bench	5	2

Official Play-By-Play
South Alabama vs Arkansas State
First Half

January 11, 2019 at First National Bank Arena - Jonesboro, Ark.

Period 1

Starters:

South Alabama: 0 HOLDEN,KORY; 12 KELLY,R.J.; 14 SIKES,RODRICK; 33 AJAYI,JOSH; 42 MITCHELL,TRHAE;

Arkansas State: 0 COCKFIELD,TY; 2 BOUDIE,SALIF; 3 BREVARD,MALIK; 10 GILLARD,GRANTHAM; 23 EATON,MARQUIS;

Time	VISITORS: South Alabama	Score	Margin	HOME: Arkansas State
19:43	MISSED LAYUP by MITCHELL,TRHAE			
19:40	REBOUND (OFF) by MITCHELL,TRHAE			
19:28	MISSED LAYUP by HOLDEN,KORY			
19:28				BLOCK by BOUDIE,SALIF
19:22				REBOUND (DEF) by GILLARD,GRANTHAM
19:04				MISSED LAYUP by COCKFIELD,TY
19:04	BLOCK by AJAYI,JOSH			
18:59	REBOUND (DEF) by HOLDEN,KORY			
18:45	MISSED 3PTR by SIKES,RODRICK			
18:38				REBOUND (DEF) by BREVARD,MALIK
18:31	FOUL (PERSONAL) by AJAYI,JOSH			
18:28		2-0	H 2	GOOD! LAYUP by BREVARD,MALIK [PNT]
18:28				ASSIST by GILLARD,GRANTHAM
18:12	MISSED LAYUP by KELLY,R.J.			
18:09	REBOUND (OFF) by KELLY,R.J.			
17:52	MISSED 3PTR by HOLDEN,KORY			
17:49				REBOUND (DEF) by BREVARD,MALIK
17:44				MISSED LAYUP by EATON,MARQUIS
17:44	BLOCK by AJAYI,JOSH			
17:41	REBOUND (DEF) by KELLY,R.J.			
17:37	GOOD! LAYUP by SIKES,RODRICK	2-2	T	
17:13	FOUL (PERSONAL) by MITCHELL,TRHAE			
17:00				MISSED 3PTR by GILLARD,GRANTHAM
16:57				REBOUND (OFF) by BREVARD,MALIK
16:55				MISSED 3PTR by EATON,MARQUIS
16:54				REBOUND (OFF) by GILLARD,GRANTHAM
16:54	FOUL (PERSONAL) by KELLY,R.J.			
16:51		4-2	H 2	GOOD! LAYUP by EATON,MARQUIS
16:51				ASSIST by GILLARD,GRANTHAM
16:45				FOUL (PERSONAL) by EATON,MARQUIS
16:27	MISSED LAYUP by HOLDEN,KORY			
16:27				BLOCK by BOUDIE,SALIF
16:21	REBOUND (OFF) by AJAYI,JOSH			
16:20	GOOD! LAYUP by AJAYI,JOSH	4-4	T	
16:12				MISSED 3PTR by GILLARD,GRANTHAM
16:09	REBOUND (DEF) by KELLY,R.J.			
16:03	GOOD! 3PTR by KELLY,R.J.	4-7	V 3	
16:03	ASSIST by HOLDEN,KORY			
15:50		6-7	V 1	GOOD! LAYUP by COCKFIELD,TY
15:50				ASSIST by BREVARD,MALIK
15:50	FOUL (PERSONAL) by MITCHELL,TRHAE			
15:50	SUB OUT: MITCHELL,TRHAE			
15:50	SUB IN: ANDREWS,JORDAN			
15:50		7-7	T	GOOD! FT by COCKFIELD,TY
15:41	MISSED LAYUP by HOLDEN,KORY			
15:36	REBOUND (OFF) by KELLY,R.J.			
15:20	GOOD! LAYUP by SIKES,RODRICK	7-9	V 2	
15:20	ASSIST by KELLY,R.J.			
14:51				MISSED JUMPER by BREVARD,MALIK
14:47	REBOUND (DEF) by SIKES,RODRICK			
14:43	SUB OUT: HOLDEN,KORY			
14:43	SUB IN: MCGEE,HERB			
14:37	MISSED 3PTR by SIKES,RODRICK			
14:33				REBOUND (DEF) by EATON,MARQUIS
14:20		9-9	T	GOOD! JUMPER by COCKFIELD,TY [PNT]
14:04	TURNOVER (BADPASS) by AJAYI,JOSH			
14:04				STEAL by GILLARD,GRANTHAM
13:58		11-9	H 2	GOOD! JUMPER by BOUDIE,SALIF [FB/PNT]
13:58				ASSIST by COCKFIELD,TY
13:30	MISSED 3PTR by ANDREWS,JORDAN			
13:26	REBOUND (OFF) by ANDREWS,JORDAN			
13:24	MISSED 3PTR by MCGEE,HERB			
13:22				REBOUND (DEF) by BOUDIE,SALIF
13:16				TURNOVER (BADPASS) by GILLARD,GRANTHAM
13:16	STEAL by KELLY,R.J.			
13:01	GOOD! LAYUP by SIKES,RODRICK [PNT]	11-11	T	
12:52		13-11	H 2	GOOD! JUMPER by EATON,MARQUIS
12:29	GOOD! LAYUP by MCGEE,HERB	13-13	T	
12:29	ASSIST by AJAYI,JOSH			
12:04	FOUL (PERSONAL) by ANDREWS,JORDAN			
12:04				SUB OUT: COCKFIELD,TY
12:04				SUB IN: WALLEY,TRISTIN
12:04				SUB OUT: EATON,MARQUIS
12:04				SUB IN: MATTHEWS,J.J.
12:04				SUB OUT: BOUDIE,SALIF

Time	VISITORS: South Alabama	Score	Margin	HOME: Arkansas State
12:04				SUB IN: WILSON,KOBE
12:04	SUB OUT: AJAYI,JOSH			
12:04	SUB IN: MORRIS,KEVIN			
12:04	SUB OUT: KELLY,R.J.			
12:04	SUB IN: PETTWAY,JOHN			
11:59				SUB OUT: GILLARD,GRANTHAM
11:59				SUB IN: EATON,MARQUIS
11:59	FOUL (PERSONAL) by MORRIS,KEVIN			
11:59				
11:59	SUB OUT: MORRIS,KEVIN			
11:59	SUB IN: AJAYI,JOSH			
11:59	SUB OUT: AJAYI,JOSH			
11:59	SUB IN: MORRIS,KEVIN			
11:59				MISSED FT by MATTHEWS,J.J.
11:59				REBOUND (OFF) by TEAM
11:59				MISSED FT by MATTHEWS,J.J.
11:59	REBOUND (DEF) by PETTWAY,JOHN			
11:42	TURNOVER (BADPASS) by ANDREWS,JORDAN			
11:42				STEAL by BREVARD,MALIK
11:22		15-13	H 2	GOOD! LAYUP by EATON,MARQUIS
10:58	GOOD! 3PTR by SIKES,RODRICK	15-16	V 1	
10:58	ASSIST by PETTWAY,JOHN			
10:44		17-16	H 1	GOOD! LAYUP by EATON,MARQUIS
10:22	GOOD! LAYUP by MORRIS,KEVIN	17-18	V 1	
10:22				FOUL (PERSONAL) by MATTHEWS,J.J.
10:22				SUB OUT: BREVARD,MALIK
10:22				SUB IN: KUS,CANBERK
10:22				SUB OUT: EATON,MARQUIS
10:22				SUB IN: COCKFIELD,TY
10:22	SUB OUT: ANDREWS,JORDAN			
10:22	SUB IN: KELLY,R.J.			
10:22	SUB OUT: PETTWAY,JOHN			
10:22	SUB IN: HOLDEN,KORY			
10:22	GOOD! FT by MORRIS,KEVIN	17-19	V 2	
09:57	FOUL (PERSONAL) by MCGEE,HERB			
09:57		18-19	V 1	GOOD! FT by MATTHEWS,J.J.
09:57		19-19	T	GOOD! FT by MATTHEWS,J.J.
09:36	MISSED LAYUP by KELLY,R.J.			
09:35				REBOUND (DEF) by KUS,CANBERK
09:28				TURNOVER (LOSTBALL) by WALLEY,TRISTIN
09:28	STEAL by KELLY,R.J.			
09:28				FOUL (PERSONAL) by WALLEY,TRISTIN
09:28	SUB OUT: MORRIS,KEVIN			
09:28	SUB IN: AJAYI,JOSH			
09:09				FOUL (PERSONAL) by COCKFIELD,TY
09:05	MISSED JUMPER by SIKES,RODRICK			
09:00				REBOUND (DEF) by KUS,CANBERK
08:58	FOUL (PERSONAL) by SIKES,RODRICK			
08:58		20-19	H 1	GOOD! FT by COCKFIELD,TY [FB]
08:58				SUB OUT: WALLEY,TRISTIN
08:58				SUB IN: BREVARD,MALIK
08:58				SUB OUT: WILSON,KOBE
08:58				SUB IN: EATON,MARQUIS
08:58	SUB OUT: MCGEE,HERB			
08:58	SUB IN: ANDREWS,JORDAN			
08:58				MISSED FT by COCKFIELD,TY
08:56	REBOUND (DEF) by AJAYI,JOSH			
08:39	MISSED LAYUP by SIKES,RODRICK			
08:36				REBOUND (DEF) by MATTHEWS,J.J.
08:31				TURNOVER (BADPASS) by MATTHEWS,J.J.
08:31	STEAL by AJAYI,JOSH			
08:16	MISSED 3PTR by ANDREWS,JORDAN			
08:13				REBOUND (DEF) by MATTHEWS,J.J.
07:54				MISSED LAYUP by BREVARD,MALIK
07:54	REBOUND (DEF) by AJAYI,JOSH			
07:43	GOOD! 3PTR by HOLDEN,KORY	20-22	V 2	
07:35				MISSED JUMPER by COCKFIELD,TY
07:33				REBOUND (OFF) by MATTHEWS,J.J.
07:31				MISSED JUMPER by MATTHEWS,J.J.
07:27	REBOUND (DEF) by KELLY,R.J.			
07:03	GOOD! 3PTR by SIKES,RODRICK	20-25	V 5	
07:03	ASSIST by KELLY,R.J.			
06:52		22-25	V 3	GOOD! LAYUP by COCKFIELD,TY
06:22	TURNOVER (LOSTBALL) by AJAYI,JOSH			
06:22				STEAL by COCKFIELD,TY
06:18	FOUL (PERSONAL) by KELLY,R.J.			
06:18				
06:18				SUB OUT: MATTHEWS,J.J.
06:18				SUB IN: BOUDIE,SALIF
06:18				SUB OUT: KUS,CANBERK
06:18				SUB IN: GILLARD,GRANTHAM
06:18	SUB OUT: KELLY,R.J.			
06:18	SUB IN: PETTWAY,JOHN			
06:18		23-25	V 2	GOOD! FT by COCKFIELD,TY [FB]
06:18		24-25	V 1	GOOD! FT by COCKFIELD,TY [FB]
05:50	MISSED 3PTR by HOLDEN,KORY			
05:49				REBOUND (DEF) by TEAM

Time	VISITORS: South Alabama	Score	Margin	HOME: Arkansas State
05:40				MISSED JUMPER by EATON,MARQUIS
05:36				REBOUND (OFF) by BOUDIE,SALIF
05:36		26-25	H 1	GOOD! LAYUP by BOUDIE,SALIF
05:08	MISSED 3PTR by HOLDEN,KORY			
05:04				REBOUND (DEF) by BREVARD,MALIK
05:03				TURNOVER (LOSTBALL) by BREVARD,MALIK
05:03	STEAL by PETTWAY,JOHN			
04:59	MISSED 3PTR by SIKES,RODRICK			
04:55				REBOUND (DEF) by BREVARD,MALIK
04:48				MISSED JUMPER by COCKFIELD,TY
04:45				REBOUND (OFF) by EATON,MARQUIS
04:25	FOUL (PERSONAL) by HOLDEN,KORY			
04:25		27-25	H 2	GOOD! FT by COCKFIELD,TY
04:25	SUB OUT: HOLDEN,KORY			
04:25	SUB IN: KELLY,R.J.			
04:25	SUB OUT: ANDREWS,JORDAN			
04:25	SUB IN: MCGEE,HERB			
04:25				MISSED FT by COCKFIELD,TY
04:23	REBOUND (DEF) by AJAYI,JOSH			
04:06	TURNOVER (LOSTBALL) by MCGEE,HERB			
04:06				STEAL by COCKFIELD,TY
04:02		29-25	H 4	GOOD! LAYUP by COCKFIELD,TY [FB]
04:01	TIMEOUT 30SEC			
04:01				
03:35	MISSED LAYUP by AJAYI,JOSH			
03:32				REBOUND (DEF) by BREVARD,MALIK
03:26				TURNOVER (BADPASS) by COCKFIELD,TY
02:58	GOOD! 3PTR by AJAYI,JOSH	29-28	H 1	
02:58	ASSIST by SIKES,RODRICK			
02:39				MISSED 3PTR by EATON,MARQUIS
02:37				REBOUND (OFF) by BREVARD,MALIK
02:35				FOUL (OFF) by GILLARD,GRANTHAM
02:35				TURNOVER (OFFENSIVE) by GILLARD,GRANTHAM
02:17	MISSED LAYUP by PETTWAY,JOHN			
02:17				BLOCK by BOUDIE,SALIF
02:13				REBOUND (DEF) by BREVARD,MALIK
01:59	FOUL (PERSONAL) by PETTWAY,JOHN			
01:59		30-28	H 2	GOOD! FT by COCKFIELD,TY
01:59		31-28	H 3	GOOD! FT by COCKFIELD,TY
01:34	GOOD! JUMPER by SIKES,RODRICK	31-30	H 1	
01:15				TURNOVER (LOSTBALL) by COCKFIELD,TY
01:15	STEAL by PETTWAY,JOHN			
01:02	MISSED LAYUP by PETTWAY,JOHN			
00:58				REBOUND (DEF) by BOUDIE,SALIF
00:55		33-30	H 3	GOOD! LAYUP by COCKFIELD,TY
00:30				FOUL (PERSONAL) by BREVARD,MALIK
00:30	MISSED FT by AJAYI,JOSH			
00:30	REBOUND (OFF) by TEAM			
00:30	SUB OUT: KELLY,R.J.			
00:30	SUB IN: DIAL,ABDUL			
00:30	GOOD! FT by AJAYI,JOSH	33-31	H 2	
00:24				TIMEOUT 30SEC
00:00				TURNOVER (LOSTBALL) by BOUDIE,SALIF
00:00	SUB OUT: DIAL,ABDUL			
00:00	SUB IN: KELLY,R.J.			
00:00	SUB OUT: PETTWAY,JOHN			
00:00	SUB IN: ANDREWS,JORDAN			
00:00	MISSED 3PTR by SIKES,RODRICK			
00:00				REBOUND (DEF) by TEAM

South Alabama 31, Arkansas State 33

Points from (This Period)	USA	ASU
In the Paint	12	22
Off Turns	5	8
2nd Chance	4	5
Fast Break	0	7
Bench	5	2

Official Box Score
South Alabama vs Arkansas State
Second Half Statistics Only
January 11, 2019 at First National Bank Arena - Jonesboro, Ark.

South Alabama 34

No.	Player	S	Pts	FG	3FG	FT	OR	DR	TR	PF	A	TO	Blk	Stl	Min	+/-
00	Holden, Kory		3	1-6	1-3	0-0	1	1	2	1	0	1	0	2	14	5
12	Kelly, R.J.		0	0-1	0-1	0-0	0	0	0	3	0	0	0	3	19	3
14	Sikes, Rodrick		10	3-8	2-6	2-3	2	0	2	1	1	1	0	0	20	1
33	Ajayi, Josh		9	3-4	0-0	3-3	0	3	3	3	2	4	0	0	18	1
42	Mitchell, Trhae		12	6-10	0-0	0-1	2	4	6	1	1	0	2	1	20	1
01	Mcgee, Herb		0	0-1	0-1	0-0	0	1	1	1	0	0	0	0	3	-4
03	Morris, Kevin		0	0-0	0-0	0-2	0	0	0	0	0	0	0	0	2	0
25	Andrews, Jordan		0	0-1	0-0	0-1	0	0	0	1	0	0	0	0	4	-2
30	Dial, Abdul		0	0-0	0-0	0-0	0	0	0	0	0	0	0	0	0	0
50	Pettway, John		0	0-0	0-0	0-0	0	0	0	0	0	0	0	0	0	0
	Team						1	0	1	0		0				
TOTALS			34	13-31	3-11	5-10	6	9	15	11	4	6	2	6	100	

Shooting By Period

Period	FG	FG%	3FG	3FG%	FT	FT%
2nd Half	13-31	42%	3-11	27%	5-10	50%
Game	25-64	39.1%	8-26	30.8%	7-13	53.8%

Last FG Half: USA -

Arkansas State 33

No.	Player	S	Pts	FG	3FG	FT	OR	DR	TR	PF	A	TO	Blk	Stl	Min	+/-
00	Cockfield, Ty		5	0-8	0-5	5-6	0	4	4	0	1	1	0	0	18	-4
02	Boudie, Salif		6	3-4	0-0	0-0	2	3	5	3	0	1	0	0	15	-3
03	Brevard, Malik		0	0-0	0-0	0-0	0	0	0	1	0	1	0	0	7	-8
10	Gillard, Grantham		2	1-1	0-0	0-0	0	3	3	3	1	2	0	1	15	5
23	Eaton, Marquis		10	3-6	0-0	4-4	0	2	2	0	1	1	0	1	18	2
01	Wilson, Kobe		8	2-4	2-4	2-3	0	0	0	1	0	1	0	0	8	-2
04	Walley, Tristin		0	0-1	0-0	0-0	3	3	6	1	2	0	0	0	14	0
11	Matthews, J.J.		2	1-1	0-0	0-0	0	0	0	2	0	1	0	0	5	5
12	Kus, Canberk		0	0-0	0-0	0-0	0	0	0	0	0	0	0	0	0	0
	Team						1	0	1	0		1				
TOTALS			33	10-25	2-9	11-13	6	15	21	11	5	9	0	2	100	

Shooting By Period

Period	FG	FG%	3FG	3FG%	FT	FT%
2nd Half	10-25	40%	2-9	22%	11-13	85%
Game	22-49	44.9%	2-13	15.4%	20-26	76.9%

Last FG Half: ASU -

Game Notes:

Officials: Byron Jarrett,R.B. Clyburn,Steven Anderson
Attendance: 1374

Start Time: 2019-01-11 01:02:23
End Time: 2019-01-11 02:59:46
Game Duration: 117
Conference Game;

Score	1st	2nd	TOT
USA	31	34	65
ASU	33	33	66

Points from (This Period)	USA	ASU
In the Paint	20	16
Off Turns	11	4
2nd Chance	11	6
Fast Break	7	2
Bench	0	10

Official Play-By-Play
South Alabama vs Arkansas State
Second Half

January 11, 2019 at First National Bank Arena - Jonesboro, Ark.

Period 2

Starters:

South Alabama: 0 HOLDEN,KORY; 12 KELLY,R.J.; 14 SIKES,RODRICK; 33 AJAYI,JOSH; 42 MITCHELL,TRHAE;

Arkansas State: 0 COCKFIELD,TY; 2 BOUDIE,SALIF; 3 BREVARD,MALIK; 10 GILLARD,GRANTHAM; 23 EATON,MARQUIS;

Time	VISITORS: South Alabama	Score	Margin	HOME: Arkansas State
19:34		35-31	H 4	GOOD! JUMPER by BOUDIE,SALIF [PNT]
19:34				ASSIST by GILLARD,GRANTHAM
19:12	GOOD! LAYUP by MITCHELL,TRHAE	35-33	H 2	
18:40				TURNOVER (TRAVEL) by BREVARD,MALIK
18:13	MISSED JUMPER by MITCHELL,TRHAE			
18:09	REBOUND (OFF) by SIKES,RODRICK			
18:09	GOOD! LAYUP by AJAYI,JOSH	35-35	T	
18:09	ASSIST by SIKES,RODRICK			
18:09				FOUL (PERSONAL) by BOUDIE,SALIF
18:09	GOOD! FT by AJAYI,JOSH	35-36	V 1	
18:05				TURNOVER (BADPASS) by COCKFIELD,TY
17:50	MISSED 3PTR by SIKES,RODRICK			
17:45				REBOUND (DEF) by COCKFIELD,TY
17:44		37-36	H 1	GOOD! LAYUP by EATON,MARQUIS [FB]
17:44				ASSIST by COCKFIELD,TY
17:23	MISSED LAYUP by MITCHELL,TRHAE			
17:19	REBOUND (OFF) by MITCHELL,TRHAE			
17:19	GOOD! LAYUP by MITCHELL,TRHAE	37-38	V 1	
17:11				TURNOVER (LOSTBALL) by BOUDIE,SALIF
17:11	STEAL by HOLDEN,KORY			
17:04	MISSED 3PTR by SIKES,RODRICK			
17:04	REBOUND (OFF) by TEAM			
17:04				FOUL (PERSONAL) by GILLARD,GRANTHAM
17:04				SUB OUT: COCKFIELD,TY
17:04				SUB IN: WILSON,KOBE
16:57	GOOD! LAYUP by MITCHELL,TRHAE	37-40	V 3	
16:57				FOUL (PERSONAL) by BOUDIE,SALIF
16:57				SUB OUT: BOUDIE,SALIF
16:57				SUB IN: MATTHEWS,J.J.
16:56	MISSED FT by MITCHELL,TRHAE			
16:54				REBOUND (DEF) by GILLARD,GRANTHAM
16:37		39-40	V 1	GOOD! LAYUP by EATON,MARQUIS
16:14	TURNOVER (BADPASS) by AJAYI,JOSH			
16:14				STEAL by GILLARD,GRANTHAM
15:58		42-40	H 2	GOOD! 3PTR by WILSON,KOBE
15:35	TURNOVER (LOSTBALL) by AJAYI,JOSH			
15:35				STEAL by EATON,MARQUIS
15:28				MISSED LAYUP by EATON,MARQUIS
15:24	REBOUND (DEF) by MITCHELL,TRHAE			
15:21	GOOD! 3PTR by SIKES,RODRICK [FB]	42-43	V 1	
15:21	ASSIST by MITCHELL,TRHAE			
14:57		45-43	H 2	GOOD! 3PTR by WILSON,KOBE
14:57				ASSIST by EATON,MARQUIS
14:56				TIMEOUT 30SEC
14:56				
14:44				SUB OUT: BREVARD,MALIK
14:44				SUB IN: COCKFIELD,TY
14:44				SUB OUT: GILLARD,GRANTHAM
14:44				SUB IN: WALLEY,TRISTIN
14:44	SUB OUT: KELLY,R.J.			
14:44	SUB IN: ANDREWS,JORDAN			
14:40	MISSED LAYUP by ANDREWS,JORDAN			
14:37				REBOUND (DEF) by WALLEY,TRISTIN
14:30		47-43	H 4	GOOD! LAYUP by MATTHEWS,J.J.
14:30				ASSIST by WALLEY,TRISTIN
14:11	MISSED 3PTR by HOLDEN,KORY			
14:08				REBOUND (DEF) by COCKFIELD,TY
14:08	FOUL (PERSONAL) by HOLDEN,KORY			
13:48				MISSED 3PTR by WILSON,KOBE
13:45	REBOUND (DEF) by AJAYI,JOSH			
13:40				FOUL (PERSONAL) by MATTHEWS,J.J.
13:40				
13:24	MISSED JUMPER by HOLDEN,KORY			
13:20	REBOUND (OFF) by HOLDEN,KORY			
13:20				FOUL (PERSONAL) by WALLEY,TRISTIN
13:20	SUB OUT: HOLDEN,KORY			
13:20	SUB IN: KELLY,R.J.			
13:07	TURNOVER (LOSTBALL) by AJAYI,JOSH			
13:07	SUB OUT: AJAYI,JOSH			
13:07	SUB IN: MORRIS,KEVIN			
12:49				TURNOVER (BADPASS) by MATTHEWS,J.J.
12:49	STEAL by MITCHELL,TRHAE			
12:44	MISSED LAYUP by SIKES,RODRICK			
12:41	REBOUND (OFF) by MITCHELL,TRHAE			
12:39	GOOD! LAYUP by MITCHELL,TRHAE	47-45	H 2	
12:20				TURNOVER (5SEC) by

Time	VISITORS: South Alabama	Score	Margin	HOME: Arkansas State
12:09				FOUL (PERSONAL) by MATTHEWS,J.J.
12:09	MISSED FT by MORRIS,KEVIN			
12:09	REBOUND (OFF) by TEAM			
12:09				SUB OUT: WILSON,KOBE
12:09				SUB IN: BOUDIE,SALIF
12:09				SUB OUT: MATTHEWS,J.J.
12:09				SUB IN: GILLARD,GRANTHAM
12:09	MISSED FT by MORRIS,KEVIN			
12:07				REBOUND (DEF) by BOUDIE,SALIF
11:49				MISSED 3PTR by COCKFIELD,TY
11:43				REBOUND (OFF) by BOUDIE,SALIF
11:43		49-45	H 4	GOOD! LAYUP by BOUDIE,SALIF
11:29				FOUL (PERSONAL) by GILLARD,GRANTHAM
11:29	SUB OUT: MORRIS,KEVIN			
11:29	SUB IN: AJAYI,JOSH			
11:29	MISSED FT by ANDREWS,JORDAN			
11:27				REBOUND (DEF) by BOUDIE,SALIF
11:07				MISSED 3PTR by COCKFIELD,TY
11:04	REBOUND (DEF) by AJAYI,JOSH			
10:59	FOUL (OFF) by AJAYI,JOSH			
10:59	TURNOVER (OFFENSIVE) by AJAYI,JOSH			
10:41				MISSED JUMPER by BOUDIE,SALIF
10:38	REBOUND (DEF) by AJAYI,JOSH			
10:30	MISSED JUMPER by MITCHELL,TRHAE			
10:28				REBOUND (DEF) by EATON,MARQUIS
10:22	FOUL (PERSONAL) by ANDREWS,JORDAN			
10:22	SUB OUT: ANDREWS,JORDAN			
10:22	SUB IN: MCGEE,HERB			
10:22	FOUL (PERSONAL) by MITCHELL,TRHAE			
10:09	FOUL (PERSONAL) by MCGEE,HERB			
10:09		50-45	H 5	GOOD! FT by EATON,MARQUIS
10:09		51-45	H 6	GOOD! FT by EATON,MARQUIS
09:41	MISSED 3PTR by MCGEE,HERB			
09:38				REBOUND (DEF) by WALLEY,TRISTIN
09:25				MISSED LAYUP by COCKFIELD,TY
09:25	BLOCK by MITCHELL,TRHAE			
09:20	REBOUND (DEF) by MCGEE,HERB			
09:19	MISSED 3PTR by SIKES,RODRICK			
09:16				REBOUND (DEF) by COCKFIELD,TY
08:49		53-45	H 8	GOOD! LAYUP by EATON,MARQUIS
08:23	GOOD! LAYUP by MITCHELL,TRHAE	53-47	H 6	
08:14		55-47	H 8	GOOD! DUNK by BOUDIE,SALIF
07:49	MISSED LAYUP by MITCHELL,TRHAE			
07:46				REBOUND (DEF) by BOUDIE,SALIF
07:28	FOUL (PERSONAL) by AJAYI,JOSH			
07:28				
07:28	SUB OUT: MCGEE,HERB			
07:28	SUB IN: HOLDEN,KORY			
07:28		56-47	H 9	GOOD! FT by EATON,MARQUIS
07:28		57-47	H 10	GOOD! FT by EATON,MARQUIS
07:28				SUB OUT: EATON,MARQUIS
07:28				SUB IN: WILSON,KOBE
07:00	GOOD! LAYUP by AJAYI,JOSH	57-49	H 8	
07:00				FOUL (PERSONAL) by BOUDIE,SALIF
07:00	GOOD! FT by AJAYI,JOSH	57-50	H 7	
06:39				MISSED JUMPER by COCKFIELD,TY
06:36	REBOUND (DEF) by MITCHELL,TRHAE			
06:24	MISSED JUMPER by HOLDEN,KORY			
06:21				REBOUND (DEF) by WALLEY,TRISTIN
06:06				MISSED 3PTR by WILSON,KOBE
06:03				REBOUND (OFF) by WALLEY,TRISTIN
06:03	FOUL (PERSONAL) by KELLY,R.J.			
06:03				MISSED FT by WILSON,KOBE
06:03				REBOUND (OFF) by TEAM
06:03		58-50	H 8	GOOD! FT by WILSON,KOBE
06:03				SUB OUT: BOUDIE,SALIF
06:03				SUB IN: BREVARD,MALIK
06:03		59-50	H 9	GOOD! FT by WILSON,KOBE
05:46	GOOD! LAYUP by AJAYI,JOSH	59-52	H 7	
05:46				FOUL (PERSONAL) by GILLARD,GRANTHAM
05:46				SUB OUT: WILSON,KOBE
05:46				SUB IN: EATON,MARQUIS
05:46				SUB OUT: WALLEY,TRISTIN
05:46				SUB IN: BOUDIE,SALIF
05:46	GOOD! FT by AJAYI,JOSH	59-53	H 6	
05:46				SUB OUT: GILLARD,GRANTHAM
05:46				SUB IN: WILSON,KOBE
05:18				TURNOVER (BADPASS) by WILSON,KOBE
05:18	STEAL by KELLY,R.J.			
05:13				FOUL (PERSONAL) by WILSON,KOBE
05:13	MISSED FT by SIKES,RODRICK			
05:13	REBOUND (OFF) by TEAM			
05:13				SUB OUT: WILSON,KOBE
05:13				SUB IN: WALLEY,TRISTIN
05:13	GOOD! FT by SIKES,RODRICK [FB]	59-54	H 5	
04:53				MISSED JUMPER by EATON,MARQUIS
04:50				REBOUND (OFF) by BOUDIE,SALIF

Time	VISITORS: South Alabama	Score	Margin	HOME: Arkansas State
04:35				MISSED 3PTR by COCKFIELD, TY
04:32	REBOUND (DEF) by MITCHELL, TRHAE			
04:13	GOOD! 3PTR by SIKES, RODRICK	59-57	H 2	
04:13	ASSIST by AJAYI, JOSH			
03:59				TURNOVER (BADPASS) by EATON, MARQUIS
03:59	STEAL by KELLY, R.J.			
03:55	GOOD! LAYUP by SIKES, RODRICK [FB]	59-59	T	
03:55				FOUL (PERSONAL) by BREVARD, MALIK
03:55				SUB OUT: BREVARD, MALIK
03:55				SUB IN: GILLARD, GRANTHAM
03:55	GOOD! FT by SIKES, RODRICK [FB]	59-60	V 1	
03:37				MISSED JUMPER by EATON, MARQUIS
03:33				REBOUND (OFF) by WALLEY, TRISTIN
03:33				MISSED LAYUP by WALLEY, TRISTIN
03:28				REBOUND (OFF) by WALLEY, TRISTIN
03:27		61-60	H 1	GOOD! LAYUP by GILLARD, GRANTHAM
03:27				ASSIST by WALLEY, TRISTIN
03:16	MISSED 3PTR by SIKES, RODRICK			
03:12				REBOUND (DEF) by COCKFIELD, TY
03:12	FOUL (PERSONAL) by AJAYI, JOSH			
03:12		62-60	H 2	GOOD! FT by COCKFIELD, TY
03:12		63-60	H 3	GOOD! FT by COCKFIELD, TY
02:51	MISSED LAYUP by HOLDEN, KORY			
02:48				REBOUND (DEF) by GILLARD, GRANTHAM
02:46				MISSED LAYUP by COCKFIELD, TY
02:46	BLOCK by MITCHELL, TRHAE			
02:46				REBOUND (OFF) by TEAM
02:46				SUB OUT: GILLARD, GRANTHAM
02:46				SUB IN: WILSON, KOBE
02:23				MISSED 3PTR by COCKFIELD, TY
02:19	REBOUND (DEF) by MITCHELL, TRHAE			
02:11	TIMEOUT TEAM			
02:11				SUB OUT: WILSON, KOBE
02:11				SUB IN: GILLARD, GRANTHAM
01:58	MISSED LAYUP by AJAYI, JOSH			
01:55				REBOUND (DEF) by GILLARD, GRANTHAM
01:53				TURNOVER (LOSTBALL) by GILLARD, GRANTHAM
01:53	STEAL by KELLY, R.J.			
01:35	MISSED 3PTR by HOLDEN, KORY			
01:22				REBOUND (DEF) by EATON, MARQUIS
01:09				TIMEOUT 30SEC
01:04				TURNOVER (BADPASS) by GILLARD, GRANTHAM
01:04	STEAL by HOLDEN, KORY			
01:00	TURNOVER (BADPASS) by HOLDEN, KORY			
00:32				MISSED 3PTR by COCKFIELD, TY
00:30	REBOUND (DEF) by HOLDEN, KORY			
00:27	TIMEOUT 30SEC			
00:16	FOUL (OFF) by SIKES, RODRICK			
00:16	TURNOVER (OFFENSIVE) by SIKES, RODRICK			
00:16				TIMEOUT TEAM
00:16				SUB OUT: BOUDIE, SALIF
00:16				SUB IN: WILSON, KOBE
00:16	SUB OUT: AJAYI, JOSH			
00:16	SUB IN: PETTWAY, JOHN			
00:12	FOUL (PERSONAL) by KELLY, R.J.			
00:12				MISSED FT by COCKFIELD, TY
00:12				REBOUND (OFF) by TEAM
00:12	SUB OUT: PETTWAY, JOHN			
00:12	SUB IN: AJAYI, JOSH			
00:12	TIMEOUT 30SEC			
00:12		64-60	H 4	GOOD! FT by COCKFIELD, TY
00:05	MISSED 3PTR by KELLY, R.J.			
00:05	REBOUND (OFF) by SIKES, RODRICK			
00:05	GOOD! LAYUP by MITCHELL, TRHAE	64-62	H 2	
00:03	FOUL (PERSONAL) by KELLY, R.J.			
00:03		65-62	H 3	GOOD! FT by COCKFIELD, TY
00:03		66-62	H 4	GOOD! FT by COCKFIELD, TY
00:00	GOOD! 3PTR by HOLDEN, KORY	66-65	H 1	
00:00	ASSIST by AJAYI, JOSH			

South Alabama 65, Arkansas State 66

Points from (This Period)	USA	ASU
In the Paint	20	16
Off Turns	11	4
2nd Chance	11	6
Fast Break	7	2
Bench	0	10

**Official Scoring/Possession Reference Chart
South Alabama vs Arkansas State**

Period 1

January 11, 2019 at First National Bank Arena - Jonesboro, Ark.

Period 1

Starters:

South Alabama: 0 HOLDEN,KORY; 12 KELLY,R.J.; 14 SIKES,RODRICK; 33 AJAYI,JOSH; 42 MITCHELL,TRHAE;

Arkansas State: 0 COCKFIELD,TY; 2 BOUDIE,SALIF; 3 BREVARD,MALIK; 10 GILLARD,GRANTHAM; 23 EATON,MARQUIS;

Time	VISITORS: South Alabama	Score	Margin	HOME: Arkansas State
18:28		2-0	H 2	GOOD! LAYUP by BREVARD,MALIK [PNT]
17:37	GOOD! LAYUP by SIKES,RODRICK	2-2	T	
16:51		4-2	H 2	GOOD! LAYUP by EATON,MARQUIS
16:20	GOOD! LAYUP by AJAYI,JOSH	4-4	T	
16:03	GOOD! 3PTR by KELLY,R.J.	4-7	V 3	
15:50		6-7	V 1	GOOD! LAYUP by COCKFIELD,TY
15:50		7-7	T	GOOD! FT by COCKFIELD,TY
15:20	GOOD! LAYUP by SIKES,RODRICK	7-9	V 2	
14:20		9-9	T	GOOD! JUMPER by COCKFIELD,TY [PNT]
13:58		11-9	H 2	GOOD! JUMPER by BOUDIE,SALIF [FB/PNT]
13:01	GOOD! LAYUP by SIKES,RODRICK [PNT]	11-11	T	
12:52		13-11	H 2	GOOD! JUMPER by EATON,MARQUIS
12:29	GOOD! LAYUP by MCGEE,HERB	13-13	T	
11:22		15-13	H 2	GOOD! LAYUP by EATON,MARQUIS
10:58	GOOD! 3PTR by SIKES,RODRICK	15-16	V 1	
10:44		17-16	H 1	GOOD! LAYUP by EATON,MARQUIS
10:22	GOOD! LAYUP by MORRIS,KEVIN	17-18	V 1	
10:22	GOOD! FT by MORRIS,KEVIN	17-19	V 2	
09:57		18-19	V 1	GOOD! FT by MATTHEWS,J.J.
09:57		19-19	T	GOOD! FT by MATTHEWS,J.J.
08:58		20-19	H 1	GOOD! FT by COCKFIELD,TY [FB]
07:43	GOOD! 3PTR by HOLDEN,KORY	20-22	V 2	
07:03	GOOD! 3PTR by SIKES,RODRICK	20-25	V 5	
06:52		22-25	V 3	GOOD! LAYUP by COCKFIELD,TY
06:18		23-25	V 2	GOOD! FT by COCKFIELD,TY [FB]
06:18		24-25	V 1	GOOD! FT by COCKFIELD,TY [FB]
05:36		26-25	H 1	GOOD! LAYUP by BOUDIE,SALIF
04:25		27-25	H 2	GOOD! FT by COCKFIELD,TY
04:02		29-25	H 4	GOOD! LAYUP by COCKFIELD,TY [FB]
02:58	GOOD! 3PTR by AJAYI,JOSH	29-28	H 1	
01:59		30-28	H 2	GOOD! FT by COCKFIELD,TY
01:59		31-28	H 3	GOOD! FT by COCKFIELD,TY
01:34	GOOD! JUMPER by SIKES,RODRICK	31-30	H 1	
00:55		33-30	H 3	GOOD! LAYUP by COCKFIELD,TY
00:30	GOOD! FT by AJAYI,JOSH	33-31	H 2	

South Alabama 31, Arkansas State 33

Official Scoring/Possession Reference Chart
South Alabama vs Arkansas State
Period 2
January 11, 2019 at First National Bank Arena - Jonesboro, Ark.

Period 2

Starters:

South Alabama: 0 HOLDEN,KORY; 12 KELLY,R.J.; 14 SIKES,RODRICK; 33 AJAYI,JOSH; 42 MITCHELL,TRHAE;

Arkansas State: 0 COCKFIELD,TY; 2 BOUDIE,SALIF; 3 BREVARD,MALIK; 10 GILLARD,GRANTHAM; 23 EATON,MARQUIS;

Time	VISITORS: South Alabama	Score	Margin	HOME: Arkansas State
19:34		35-31	H 4	GOOD! JUMPER by BOUDIE,SALIF [PNT]
19:12	GOOD! LAYUP by MITCHELL, TRHAE	35-33	H 2	
18:09	GOOD! LAYUP by AJAYI,JOSH	35-35	T	
18:09	GOOD! FT by AJAYI,JOSH	35-36	V 1	
17:44		37-36	H 1	GOOD! LAYUP by EATON,MARQUIS [FB]
17:19	GOOD! LAYUP by MITCHELL, TRHAE	37-38	V 1	
16:57	GOOD! LAYUP by MITCHELL, TRHAE	37-40	V 3	
16:37		39-40	V 1	GOOD! LAYUP by EATON,MARQUIS
15:58		42-40	H 2	GOOD! 3PTR by WILSON,KOBE
15:21	GOOD! 3PTR by SIKES,RODRICK [FB]	42-43	V 1	
14:57		45-43	H 2	GOOD! 3PTR by WILSON,KOBE
14:30		47-43	H 4	GOOD! LAYUP by MATTHEWS,J.J.
12:39	GOOD! LAYUP by MITCHELL, TRHAE	47-45	H 2	
11:43		49-45	H 4	GOOD! LAYUP by BOUDIE,SALIF
10:09		50-45	H 5	GOOD! FT by EATON,MARQUIS
10:09		51-45	H 6	GOOD! FT by EATON,MARQUIS
08:49		53-45	H 8	GOOD! LAYUP by EATON,MARQUIS
08:23	GOOD! LAYUP by MITCHELL, TRHAE	53-47	H 6	
08:14		55-47	H 8	GOOD! DUNK by BOUDIE,SALIF
07:28		56-47	H 9	GOOD! FT by EATON,MARQUIS
07:28		57-47	H 10	GOOD! FT by EATON,MARQUIS
07:00	GOOD! LAYUP by AJAYI,JOSH	57-49	H 8	
07:00	GOOD! FT by AJAYI,JOSH	57-50	H 7	
06:03		58-50	H 8	GOOD! FT by WILSON,KOBE
06:03		59-50	H 9	GOOD! FT by WILSON,KOBE
05:46	GOOD! LAYUP by AJAYI,JOSH	59-52	H 7	
05:46	GOOD! FT by AJAYI,JOSH	59-53	H 6	
05:13	GOOD! FT by SIKES,RODRICK [FB]	59-54	H 5	
04:13	GOOD! 3PTR by SIKES,RODRICK	59-57	H 2	
03:55	GOOD! LAYUP by SIKES,RODRICK [FB]	59-59	T	
03:55	GOOD! FT by SIKES,RODRICK [FB]	59-60	V 1	
03:27		61-60	H 1	GOOD! LAYUP by GILLARD,GRANTHAM
03:12		62-60	H 2	GOOD! FT by COCKFIELD,TY
03:12		63-60	H 3	GOOD! FT by COCKFIELD,TY
00:12		64-60	H 4	GOOD! FT by COCKFIELD,TY
00:05	GOOD! LAYUP by MITCHELL, TRHAE	64-62	H 2	
00:03		65-62	H 3	GOOD! FT by COCKFIELD,TY
00:03		66-62	H 4	GOOD! FT by COCKFIELD,TY
00:00	GOOD! 3PTR by HOLDEN,KORY	66-65	H 1	

South Alabama 65, Arkansas State 66

Official Substitutions Log
South Alabama vs Arkansas State
Period 1
January 11, 2019 at First National Bank Arena - Jonesboro, Ark.

VISITORS: South Alabama	Time	Score	HOME: Arkansas State
0 HOLDEN,KORY			0 COCKFIELD,TY
12 KELLY,R.J.			2 BOUDIE,SALIF
14 SIKES,RODRICK			3 BREVARD,MALIK
33 AJAYI,JOSH			10 GILLARD,GRANTHAM
42 MITCHELL,TRHAE			23 EATON,MARQUIS
SUB OUT: 42 MITCHELL,TRHAE	15:50	7-6	
SUB IN: 25 ANDREWS,JORDAN	15:50		
SUB OUT: 0 HOLDEN,KORY	14:43	9-7	
SUB IN: 1 MCGEE,HERB	14:43		
	12:04	13-13	SUB OUT: COCKFIELD,TY
	12:04		SUB IN: WALLEY,TRISTIN
	12:04		SUB OUT: EATON,MARQUIS
	12:04		SUB IN: MATTHEWS,J.J.
	12:04		SUB OUT: BOUDIE,SALIF
	12:04		SUB IN: WILSON,KOBE
SUB OUT: 33 AJAYI,JOSH	12:04		
SUB IN: 3 MORRIS,KEVIN	12:04		
SUB OUT: 12 KELLY,R.J.	12:04		
SUB IN: 50 PETTWAY,JOHN	12:04		
	11:59	13-13	SUB OUT: GILLARD,GRANTHAM
	11:59		SUB IN: EATON,MARQUIS
SUB OUT: 3 MORRIS,KEVIN	11:59		
SUB IN: 33 AJAYI,JOSH	11:59		
SUB OUT: 33 AJAYI,JOSH	11:59		
SUB IN: 3 MORRIS,KEVIN	11:59		
	10:22	18-17	SUB OUT: BREVARD,MALIK
	10:22		SUB IN: KUS,CANBERK
	10:22		SUB OUT: EATON,MARQUIS
	10:22		SUB IN: COCKFIELD,TY
SUB OUT: 25 ANDREWS,JORDAN	10:22		
SUB IN: 12 KELLY,R.J.	10:22		
SUB OUT: 50 PETTWAY,JOHN	10:22		
SUB IN: 0 HOLDEN,KORY	10:22		
SUB OUT: 3 MORRIS,KEVIN	09:28	19-19	
SUB IN: 33 AJAYI,JOSH	09:28		
	08:58	19-20	SUB OUT: WALLEY,TRISTIN
	08:58		SUB IN: BREVARD,MALIK
	08:58		SUB OUT: WILSON,KOBE
	08:58		SUB IN: EATON,MARQUIS
SUB OUT: 1 MCGEE,HERB	08:58		
SUB IN: 25 ANDREWS,JORDAN	08:58		
	06:18	25-22	SUB OUT: MATTHEWS,J.J.
	06:18		SUB IN: BOUDIE,SALIF
	06:18		SUB OUT: KUS,CANBERK
	06:18		SUB IN: GILLARD,GRANTHAM
SUB OUT: 12 KELLY,R.J.	06:18		
SUB IN: 50 PETTWAY,JOHN	06:18		
SUB OUT: 0 HOLDEN,KORY	04:25	25-27	
SUB IN: 12 KELLY,R.J.	04:25		
SUB OUT: 25 ANDREWS,JORDAN	04:25		
SUB IN: 1 MCGEE,HERB	04:25		
SUB OUT: 12 KELLY,R.J.	00:30	30-33	
SUB IN: 30 DIAL,ABDUL	00:30		
SUB OUT: 30 DIAL,ABDUL	00:00	31-33	
SUB IN: 12 KELLY,R.J.	00:00		
SUB OUT: 50 PETTWAY,JOHN	00:00		
SUB IN: 25 ANDREWS,JORDAN	00:00		

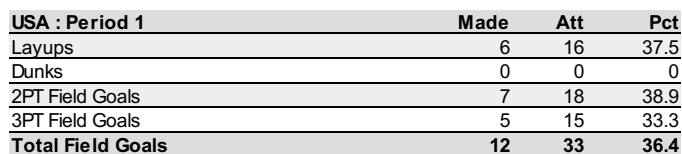
South Alabama 31, Arkansas State 33

Official Substitutions Log
South Alabama vs Arkansas State
Period 2
January 11, 2019 at First National Bank Arena - Jonesboro, Ark.

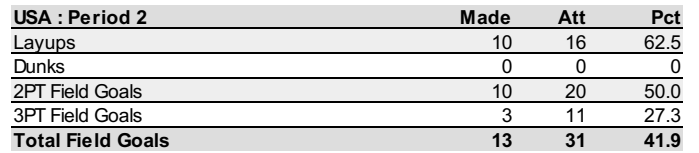
VISITORS: South Alabama	Time	Score	HOME: Arkansas State
0 HOLDEN,KORY			0 COCKFIELD,TY
12 KELLY,R.J.			2 BOUDIE,SALIF
14 SIKES,RODRICK			3 BREVARD,MALIK
33 AJAYI,JOSH			10 GILLARD,GRANTHAM
42 MITCHELL,TRHAE			23 EATON,MARQUIS
	17:04	38-37	SUB OUT: COCKFIELD,TY
	17:04		SUB IN: WILSON,KOBE
	16:57	40-37	SUB OUT: BOUDIE,SALIF
	16:57		SUB IN: MATTHEWS,J.J.
	14:44	43-45	SUB OUT: BREVARD,MALIK
	14:44		SUB IN: COCKFIELD,TY
	14:44		SUB OUT: GILLARD,GRANTHAM
	14:44		SUB IN: WALLEY,TRISTIN
SUB OUT: 12 KELLY,R.J.	14:44		
SUB IN: 25 ANDREWS,JORDAN	14:44		
SUB OUT: 0 HOLDEN,KORY	13:20	43-47	
SUB IN: 12 KELLY,R.J.	13:20		
SUB OUT: 33 AJAYI,JOSH	13:07	43-47	
SUB IN: 3 MORRIS,KEVIN	13:07		
	12:09	45-47	SUB OUT: WILSON,KOBE
	12:09		SUB IN: BOUDIE,SALIF
	12:09		SUB OUT: MATTHEWS,J.J.
	12:09		SUB IN: GILLARD,GRANTHAM
SUB OUT: 3 MORRIS,KEVIN	11:29	45-49	
SUB IN: 33 AJAYI,JOSH	11:29		
SUB OUT: 25 ANDREWS,JORDAN	10:22	45-49	
SUB IN: 1 MCGEE,HERB	10:22		
SUB OUT: 1 MCGEE,HERB	07:28	47-55	
SUB IN: 0 HOLDEN,KORY	07:28		
	07:28		SUB OUT: EATON,MARQUIS
	07:28		SUB IN: WILSON,KOBE
	06:03	50-58	SUB OUT: BOUDIE,SALIF
	06:03		SUB IN: BREVARD,MALIK
	05:46	52-59	SUB OUT: WILSON,KOBE
	05:46		SUB IN: EATON,MARQUIS
	05:46		SUB OUT: WALLEY,TRISTIN
	05:46		SUB IN: BOUDIE,SALIF
	05:46		SUB OUT: GILLARD,GRANTHAM
	05:46		SUB IN: WILSON,KOBE
	05:13	53-59	SUB OUT: WILSON,KOBE
	05:13		SUB IN: WALLEY,TRISTIN
	03:55	59-59	SUB OUT: BREVARD,MALIK
	03:55		SUB IN: GILLARD,GRANTHAM
	02:46	60-63	SUB OUT: GILLARD,GRANTHAM
	02:46		SUB IN: WILSON,KOBE
	02:11	60-63	SUB OUT: WILSON,KOBE
	02:11		SUB IN: GILLARD,GRANTHAM
	00:16	60-63	SUB OUT: BOUDIE,SALIF
	00:16		SUB IN: WILSON,KOBE
SUB OUT: 33 AJAYI,JOSH	00:16		
SUB IN: 50 PETTWAY,JOHN	00:16		
SUB OUT: 50 PETTWAY,JOHN	00:12	60-63	
SUB IN: 33 AJAYI,JOSH	00:12		

South Alabama 65, Arkansas State 66

South Alabama

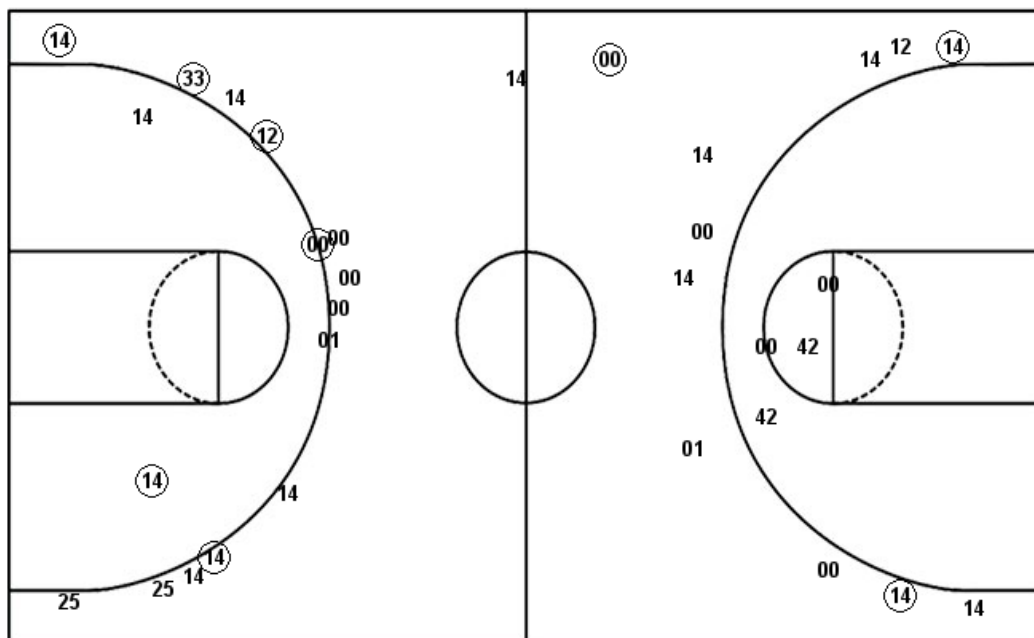


South Alabama



Official Shot Chart
South Alabama vs Arkansas State
 South Alabama Team Shots
 January 11, 2019 at First National Bank Arena - Jonesboro, Ark.

Layups



Layups

42 00 12 14 00
 33 00 14 14 01
 03 12 14 33 50
 50 42 33 42 42
 42 25 14 42 42
 42 33 33 14 00
 33 42

Dunks

Dunks

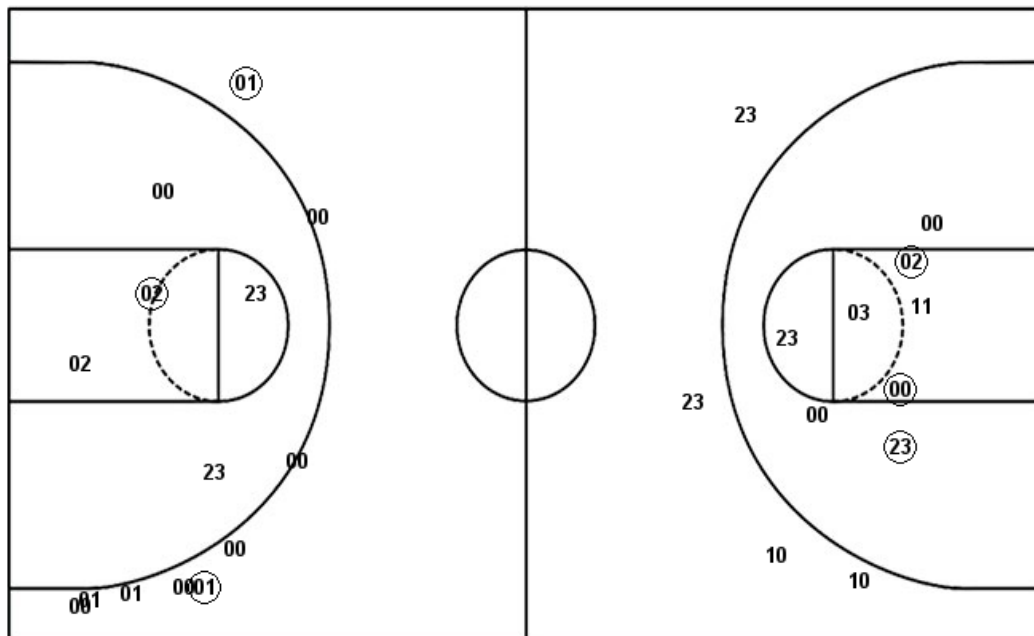
USA : Period 1	Made	Att	Pct
Layups	6	16	37.5
Dunks	0	0	0
2PT Field Goals	7	18	38.9
3PT Field Goals	5	15	33.3
Total Field Goals	12	33	36.4

USA : Period 2	Made	Att	Pct
Layups	10	16	62.5
Dunks	0	0	0
2PT Field Goals	10	20	50.0
3PT Field Goals	3	11	27.3
Total Field Goals	13	31	41.9

Official Shot Chart
South Alabama vs Arkansas State
Arkansas State Team Shots
January 11, 2019 at First National Bank Arena - Jonesboro, Ark.

Layups

Dunks



Layups

Dunks

00 03 23 23 00
23 23 03 00 02
00 00 23 23 23
11 02 00 23 04
10 00

02

ASU : Period 1	Made	Att	Pct
Layups	9	12	75.0
Dunks	0	0	0
2PT Field Goals	12	20	60.0
3PT Field Goals	0	4	00.0
Total Field Goals	12	24	50.0

ASU : Period 2	Made	Att	Pct
Layups	6	10	60.0
Dunks	1	1	100.0
2PT Field Goals	8	16	50.0
3PT Field Goals	2	9	22.2
Total Field Goals	10	25	40.0