

## FINAL SCORE

**SIUE**



**75**

**Murray St.**



**81**

February 09, 2019 • CFSB Center - Murray, Ky.

## FINAL STATISTICS

**Official Box Score**  
**SIUE vs Murray St.**  
**Game Totals -- Final Statistics**  
**February 09, 2019 at CFSB Center - Murray, Ky.**



**SIUE 75**

No.	Player	S	Pts	FG	3FG	FT	OR	DR	TR	PF	A	TO	Blk	Stl	Min	+/-
01	KING, CHRISTEN	12	6-12	0-0	0-2	3	2	5	4	3	2	0	0	3	34	-2
05	ALSTON, JAY'NEE	3	1-11	1-8	0-0	2	1	3	2	3	0	0	2	33	5	
14	JONES, MICAH	22	9-16	0-0	4-6	0	4	4	4	3	1	1	1	33	-3	
23	TROECKLER, ALLIE	7	2-9	0-0	3-3	1	2	3	0	1	2	1	1	26	-10	
34	BAUMAN, SYDNEY	6	3-6	0-0	0-0	4	6	10	4	3	1	4	0	21	0	
11	KEITH, MIKIA	2	1-4	0-3	0-0	1	0	1	1	0	1	0	0	16	-13	
12	KOEHLER, KAI	3	1-3	1-3	0-0	0	0	0	0	0	0	0	0	7	5	
21	AKUEN, ALEK	2	0-0	0-0	2-2	2	0	2	0	1	0	0	0	5	-4	
35	HALL, MIKALA	3	1-3	1-1	0-0	1	0	1	2	0	1	0	0	5	-5	
44	EVERIDGE, RIANA	15	5-10	2-4	3-4	2	2	4	4	0	1	2	1	20	-3	
TEAM							2	1	3	0						
<b>TOTALS</b>		<b>75</b>	<b>29-74</b>	<b>5-19</b>	<b>12-17</b>	<b>18</b>	<b>18</b>	<b>36</b>	<b>21</b>	<b>14</b>	<b>9</b>	<b>8</b>	<b>8</b>	<b>200</b>		

*Shooting By Period*

Period	FG	FG%	3FG	3FG%	FT	FT%
1st Qtr	6-18	33%	0-4	00%	0-0	0%
2nd Qtr	8-18	44%	2-5	40%	1-1	100%
3rd Qtr	7-18	39%	1-2	50%	7-11	64%
4th Qtr	8-20	40%	2-8	25%	4-5	80%
1st Half	14-36	39%	2-9	22%	1-1	100%
2nd Half	15-38	39%	3-10	30%	11-16	69%
<b>Game</b>	<b>29-74</b>	<b>39.2%</b>	<b>5-19</b>	<b>26.3%</b>	<b>12-17</b>	<b>70.6%</b>

*Last FG: 4th-00:29*  
*Biggest Run: 7-0*  
*Largest lead: By 2 at 1-07:57*  
*Technical Fouls: None.*

**Murray St. 81**

No.	Player	S	Pts	FG	3FG	FT	OR	DR	TR	PF	A	TO	Blk	Stl	Min	+/-
00	GRIFFITH-WALLACE, JANIKA	8	2-9	1-5	3-4	0	4	4	2	3	5	1	3	34	10	
05	TURLEY, MACEY	20	4-12	2-5	10-10	3	2	5	3	7	2	0	0	38	4	
14	ADEBAYO, EVELYN	27	7-15	3-6	10-14	3	13	16	4	3	3	0	1	40	6	
31	CRANE, BRIANNA	4	2-2	0-0	0-0	0	2	2	4	2	0	0	0	21	0	
32	BURPO, ALEXIS	0	0-1	0-1	0-0	0	2	2	0	1	0	0	0	16	-5	
01	BLACKBURN, RAEGAN	0	0-1	0-1	0-0	0	0	0	0	0	0	0	0	1	-2	
04	MAYES, LEX	15	5-7	5-7	0-0	2	2	4	1	1	2	0	0	27	12	
20	MACK, CEKEYA	7	3-3	0-0	1-4	1	1	2	3	1	2	2	0	19	6	
33	MANLEY, MICHAELA	0	0-1	0-1	0-0	0	0	0	1	0	1	0	0	5	-1	
TEAM							4	3	7	0						
<b>TOTALS</b>		<b>81</b>	<b>23-51</b>	<b>11-26</b>	<b>24-32</b>	<b>13</b>	<b>29</b>	<b>42</b>	<b>18</b>	<b>18</b>	<b>16</b>	<b>3</b>	<b>4</b>	<b>200</b>		

*Shooting By Period*

Period	FG	FG%	3FG	3FG%	FT	FT%
1st Qtr	5-12	42%	3-6	50%	8-8	100%
2nd Qtr	8-15	53%	4-8	50%	0-0	0%
3rd Qtr	4-11	36%	2-7	29%	7-10	70%
4th Qtr	6-13	46%	2-5	40%	9-14	64%
1st Half	13-27	48%	7-14	50%	8-8	100%
2nd Half	10-24	42%	4-12	33%	16-24	67%
<b>Game</b>	<b>23-51</b>	<b>45.1%</b>	<b>11-26</b>	<b>42.3%</b>	<b>24-32</b>	<b>75.0%</b>

*Last FG: 4th-02:17*  
*Biggest Run: 14-0*  
*Largest lead: By 13 at 1-02:06*  
*Technical Fouls: None.*

Game Notes:

Officials: Erica Bradley, Molly McFadden, Rob Fessler  
Attendance: 1651

Start Time: 2019-02-09 23:03:56  
End Time: 2019-02-10 01:12:03  
Game Duration: 128  
Conference Game;

Score	1st	2nd	3rd	4th	TOT
SIE	12	19	22	22	<b>75</b>
MUR	21	20	17	23	<b>81</b>

SIE led for 1:33. MUR led for 36:39.  
Game was tied for 1:47.  
Times tied: 2      Lead Changes: 6

Points from	SIE	MUR
In the Paint	44	16
Off Turns	20	10
2nd Chance	13	6
Fast Break	12	13
Bench	25	22

**Official Box Score**  
**SIUE vs Murray St.**  
**First Half Statistics Only**  
**February 09, 2019 at CFSB Center - Murray, Ky.**



**SIUE 31**

No.	Player	S	Pts	FG	3FG	FT	OR	DR	TR	PF	A	TO	Blk	Stl	Min	+/-
11	KEITH, MIKIA		0	0-2	0-2	0-0	0	0	0	1	0	1	0	0	7	-9
12	KOEHLER, KAI		3	1-3	1-3	0-0	0	0	0	0	0	0	0	0	7	5
21	AKUEN, ALEK		0	0-0	0-0	0-0	0	0	0	0	0	0	0	0	0	0
23	TROECKLER, ALLIE		0	0-4	0-0	0-0	1	1	2	0	0	1	0	1	9	-15
34	BAUMAN, SYDNEY		6	3-5	0-0	0-0	3	3	6	0	2	1	1	0	14	-12
35	HALL, MIKALA		3	1-2	1-1	0-0	1	0	1	1	0	1	0	0	5	-3
44	EVERIDGE, RIANA		4	2-5	0-1	0-0	1	2	3	2	0	0	2	0	8	-1
01	KING, CHRISTEN		2	1-3	0-0	0-0	0	0	0	1	2	1	0	0	16	-9
05	ALSTON, JAY'NEE		0	0-3	0-2	0-0	0	0	0	1	1	0	0	1	16	1
14	JONES, MICAH		13	6-9	0-0	1-1	0	4	4	1	3	0	0	0	17	-7
	TEAM		0	0-0	0-0	0-0	1	0	1	0	0	0	0	0	0	0
<b>TOTALS</b>			<b>31</b>	<b>14-36</b>	<b>2-9</b>	<b>1-1</b>	<b>7</b>	<b>10</b>	<b>17</b>	<b>7</b>	<b>8</b>	<b>5</b>	<b>3</b>	<b>2</b>	<b>100</b>	

*Shooting By Period*

Period	FG	FG%	3FG	3FG%	FT	FT%
1st Qtr	6-18	33%	0-4	00%	0-0	0%
2nd Qtr	8-18	44%	2-5	40%	1-1	100%
1st Half	14-36	39%	2-9	22%	1-1	100%
Game	29-74	39.2%	5-19	26.3%	12-17	70.6%

*Last FG Half: SIE 2nd-01:48*

**Murray St. 41**

No.	Player	S	Pts	FG	3FG	FT	OR	DR	TR	PF	A	TO	Blk	Stl	Min	+/-
00	GRIFFITH-WALLACE, JANIKA		5	1-6	1-3	2-2	0	2	2	1	1	2	1	1	15	14
01	BLACKBURN, RAEGAN		0	0-1	0-1	0-0	0	0	0	0	0	0	0	0	1	-2
04	MAYES, LEX		6	2-3	2-3	0-0	1	0	1	0	1	1	0	0	10	5
05	TURLEY, MACEY		14	4-7	2-4	4-4	1	1	2	1	4	1	0	0	18	7
14	ADEBAYO, EVELYN		12	4-7	2-2	2-2	0	8	8	0	2	1	0	1	20	10
20	MACK, CEKEYA		2	1-1	0-0	0-0	0	0	0	0	1	0	1	0	5	2
31	CRANE, BRIANNA		2	1-1	0-0	0-0	0	2	2	1	2	0	0	0	15	8
32	BURPO, ALEXIS		0	0-0	0-0	0-0	0	2	2	0	1	0	0	0	13	6
33	MANLEY, MICHAELA		0	0-1	0-1	0-0	0	0	0	1	0	1	0	0	3	0
	TEAM		0	0-0	0-0	0-0	2	0	2	0	0	0	0	0	0	0
<b>TOTALS</b>			<b>41</b>	<b>13-27</b>	<b>7-14</b>	<b>8-8</b>	<b>4</b>	<b>15</b>	<b>19</b>	<b>4</b>	<b>12</b>	<b>6</b>	<b>2</b>	<b>2</b>	<b>100</b>	

*Shooting By Period*

Period	FG	FG%	3FG	3FG%	FT	FT%
1st Qtr	5-12	42%	3-6	50%	8-8	100%
2nd Qtr	8-15	53%	4-8	50%	0-0	0%
1st Half	13-27	48%	7-14	50%	8-8	100%
Game	23-51	45.1%	11-26	42.3%	24-32	75.0%

*Last FG Half: MUR 2nd-01:28*

*Game Notes:*

Officials: Erica Bradley, Molly McFadden, Rob Fessler  
Attendance: 1651

Start Time: 2019-02-09 23:03:56  
End Time: 2019-02-10 01:12:03  
Game Duration: 128  
Conference Game;

Score	1st	2nd	3rd	4th	TOT
SIE	12	19	22	22	<b>75</b>
MUR	21	20	17	23	<b>81</b>

Points from (This Period)	SIE	MUR
In the Paint	22	6
Off Turns	4	10
2nd Chance	2	4
Fast Break	4	10
Bench	10	8

**Official Box Score**  
**SIUE vs Murray St.**  
**First Quarter Statistics Only**  
**February 09, 2019 at CFSB Center - Murray, Ky.**



**SIUE 12**

No.	Player	S	Pts	FG	3FG	FT	OR	DR	TR	PF	A	TO	Blk	Stl	Min	+/-
01	KING, CHRISTEN		2	1-2	0-0	0-0	0	0	0	1	1	1	0	0	8	-8
05	ALSTON, JAY'NEE		0	0-2	0-2	0-0	0	0	0	1	0	0	0	0	8	0
14	JONES, MICAH		6	3-5	0-0	0-0	0	1	1	1	1	0	0	0	9	-4
23	TROECKLER, ALLIE		0	0-4	0-0	0-0	1	1	2	0	0	1	0	0	7	-12
34	BAUMAN, SYDNEY		2	1-2	0-0	0-0	2	2	4	0	1	1	1	0	6	-11
11	KEITH, MIKIA		0	0-1	0-1	0-0	0	0	0	1	0	0	0	0	3	-7
12	KOEHLER, KAI		0	0-1	0-1	0-0	0	0	0	0	0	0	0	0	3	3
21	AKUEN, ALEK		0	0-0	0-0	0-0	0	0	0	0	0	0	0	0	0	0
35	HALL, MIKALA		0	0-0	0-0	0-0	0	0	0	1	0	0	0	0	1	-3
44	EVERIDGE, RIANA		2	1-1	0-0	0-0	0	0	0	2	0	0	1	0	5	-3
<b>TEAM</b>							1	0	1	0		0				
<b>TOTALS</b>			<b>12</b>	<b>6-18</b>	<b>0-4</b>	<b>0-0</b>	<b>4</b>	<b>4</b>	<b>8</b>	<b>7</b>	<b>3</b>	<b>3</b>	<b>2</b>	<b>0</b>	<b>50</b>	

*Shooting By Period*

Period	FG	FG%	3FG	3FG%	FT	FT%
1st Qtr	6-18	33%	0-4	00%	0-0	0%
2nd Qtr	8-18	44%	2-5	40%	1-1	100%
1st Half	6-18	33%	0-4	00%	0-0	0%
1st Half	14-36	39%	2-9	22%	1-1	100%
Game	29-74	39.2%	5-19	26.3%	12-17	70.6%

**Murray St. 21**

No.	Player	S	Pts	FG	3FG	FT	OR	DR	TR	PF	A	TO	Blk	Stl	Min	+/-
00	GRIFFITH-WALLACE, JANIKA		5	1-4	1-2	2-2	0	1	1	0	1	0	1	1	7	12
05	TURLEY, MACEY		11	3-4	1-2	4-4	1	0	1	1	2	0	0	0	10	9
14	ADEBAYO, EVELYN		5	1-3	1-1	2-2	0	5	5	0	1	1	0	0	10	9
31	CRANE, BRIANNA		0	0-0	0-0	0-0	0	2	2	0	0	0	0	0	8	3
32	BURPO, ALEXIS		0	0-0	0-0	0-0	0	0	0	0	1	0	0	0	8	3
01	BLACKBURN, RAEGAN		0	0-1	0-1	0-0	0	0	0	0	0	0	0	0	1	-2
04	MAYES, LEX		0	0-0	0-0	0-0	1	0	1	0	0	1	0	0	3	4
20	MACK, CEKEYA		0	0-0	0-0	0-0	0	0	0	0	0	0	0	0	2	6
33	MANLEY, MICHAELA		0	0-0	0-0	0-0	0	0	0	0	0	1	0	0	1	1
<b>TEAM</b>							1	0	1	0		0				
<b>TOTALS</b>			<b>21</b>	<b>5-12</b>	<b>3-6</b>	<b>8-8</b>	<b>3</b>	<b>8</b>	<b>11</b>	<b>1</b>	<b>5</b>	<b>3</b>	<b>1</b>	<b>1</b>	<b>50</b>	

*Shooting By Period*

Period	FG	FG%	3FG	3FG%	FT	FT%
1st Qtr	5-12	42%	3-6	50%	8-8	100%
2nd Qtr	8-15	53%	4-8	50%	0-0	0%
1st Half	5-12	42%	3-6	50%	8-8	100%
1st Half	13-27	48%	7-14	50%	8-8	100%
Game	23-51	45.1%	11-26	42.3%	24-32	75.0%

Game Notes:

Officials: Erica Bradley, Molly McFadden, Rob Fessler  
Attendance: 1651

Start Time: 2019-02-09 23:03:56  
End Time: 2019-02-10 01:12:03  
Game Duration: 128  
Conference Game;

Score	1st	2nd	3rd	4th	TOT
SIE	12	19	22	22	<b>75</b>
MUR	21	20	17	23	<b>81</b>

Points from (This Period)	SIE	MUR
In the Paint	10	2
Off Turns	2	5
2nd Chance	2	4
Fast Break	2	4
Bench	2	0

**Official By-By-Play**  
**SIUE vs Murray St.**  
**First Quarter**  
**February 09, 2019 at CFSB Center - Murray, Ky.**



**Period 1**

**Starters:**

**SIUE:** 23 TROECKLER, ALLIE; 34 BAUMAN, SYDNEY; 1 KING, CHRISTEN; 5 ALSTON, JAY'NEE; 14 JONES, MICAH;

**Murray St.:** 0 GRIFFITH-WALLACE, JANIKA; 5 TURLEY, MACEY; 14 ADEBAYO, EVELYN; 31 CRANE, BRIANNA; 32 BURPO, ALEXIS;

Time	VISITORS: SIUE	Score	Margin	HOME: Murray St.
09:51	MISSED LAYUP by TROECKLER, ALLIE			
09:51				BLOCK by GRIFFITH-WALLACE, JANIKA
09:51	REBOUND (OFF) by TEAM			
09:47	MISSED JUMPER by TROECKLER, ALLIE			
09:44				REBOUND (DEF) by CRANE, BRIANNA
09:36				MISSED 3PTR by TURLEY, MACEY
09:33	REBOUND (DEF) by BAUMAN, SYDNEY			
09:23	MISSED LAYUP by JONES, MICAH			
09:21				REBOUND (DEF) by ADEBAYO, EVELYN
09:03		2-0	H 2	GOOD! JUMPER by TURLEY, MACEY
09:03				ASSIST by ADEBAYO, EVELYN
08:42	MISSED LAYUP by BAUMAN, SYDNEY			
08:40	REBOUND (OFF) by BAUMAN, SYDNEY			
08:39	MISSED 3PTR by ALSTON, JAY'NEE			
08:35	REBOUND (OFF) by TROECKLER, ALLIE			
08:27	GOOD! LAYUP by JONES, MICAH	2-2	T	
08:27	ASSIST by BAUMAN, SYDNEY			
08:07				MISSED LAYUP by GRIFFITH-WALLACE, JANIKA
08:03	REBOUND (DEF) by TROECKLER, ALLIE			
07:57	GOOD! JUMPER by KING, CHRISTEN [FB]	2-4	V 2	
07:38		5-4	H 1	GOOD! 3PTR by GRIFFITH-WALLACE, JANIKA
07:38				ASSIST by TURLEY, MACEY
07:24	GOOD! LAYUP by BAUMAN, SYDNEY	5-6	V 1	
07:05				MISSED LAYUP by ADEBAYO, EVELYN
07:05	BLOCK by BAUMAN, SYDNEY			
07:02	REBOUND (DEF) by BAUMAN, SYDNEY			
07:02	TURNOVER (BADPASS) by KING, CHRISTEN			
06:48	FOUL (PERSONAL) by ALSTON, JAY'NEE			
06:30		8-6	H 2	GOOD! 3PTR by TURLEY, MACEY
06:30				ASSIST by BURPO, ALEXIS
06:09	SUB OUT: ALSTON, JAY'NEE			
06:09	SUB IN: KEITH, MIKIA			
06:09	SUB OUT: KING, CHRISTEN			
06:09	SUB IN: HALL, MIKALA			
06:07	MISSED LAYUP by JONES, MICAH			
06:03				REBOUND (DEF) by ADEBAYO, EVELYN
06:02	FOUL (PERSONAL) by JONES, MICAH			
05:43		11-6	H 5	GOOD! 3PTR by ADEBAYO, EVELYN
05:43				ASSIST by TURLEY, MACEY
05:23	MISSED JUMPER by TROECKLER, ALLIE			
05:19				REBOUND (DEF) by CRANE, BRIANNA
05:12	FOUL (PERSONAL) by HALL, MIKALA			
05:12	SUB OUT: HALL, MIKALA			
05:12	SUB IN: KING, CHRISTEN			
05:12		12-6	H 6	GOOD! FT by GRIFFITH-WALLACE, JANIKA [FB]
05:12				SUB OUT: CRANE, BRIANNA
05:12				SUB IN: MAYES, LEX
05:12				SUB OUT: BURPO, ALEXIS
05:12				SUB IN: MACK, CEKEYA
05:12	SUB OUT: JONES, MICAH			
05:12	SUB IN: EVERIDGE, RIANA			
05:12		13-6	H 7	GOOD! FT by GRIFFITH-WALLACE, JANIKA [FB]
04:59	MISSED 3PTR by KEITH, MIKIA			
04:53				REBOUND (DEF) by ADEBAYO, EVELYN
04:51				MISSED 3PTR by GRIFFITH-WALLACE, JANIKA
04:48				REBOUND (OFF) by MAYES, LEX
04:48	FOUL (PERSONAL) by KEITH, MIKIA			
04:48				
04:38	FOUL (PERSONAL) by KING, CHRISTEN			
04:38		14-6	H 8	GOOD! FT by TURLEY, MACEY
04:38		15-6	H 9	GOOD! FT by TURLEY, MACEY
04:21	TURNOVER (BADPASS) by TROECKLER, ALLIE			
04:21				STEAL by GRIFFITH-WALLACE, JANIKA
04:15		17-6	H 11	GOOD! LAYUP by TURLEY, MACEY [FB]
04:15				ASSIST by GRIFFITH-WALLACE, JANIKA
04:14	TIMEOUT 30SEC			
04:14	SUB OUT: KEITH, MIKIA			
04:14	SUB IN: JONES, MICAH			
04:14	SUB OUT: EVERIDGE, RIANA			
04:14	SUB IN: ALSTON, JAY'NEE			

Time	VISITORS: SIUE	Score	Margin	HOME: Murray St.
03:55	MISSED JUMPER by KING, CHRISTEN			
03:53	REBOUND (OFF) by BAUMAN, SYDNEY			
03:52	TURNOVER (BADPASS) by BAUMAN, SYDNEY			
03:52	SUB OUT: BAUMAN, SYDNEY			
03:52	SUB IN: EVERIDGE, RIANA			
03:39				TURNOVER (BADPASS) by ADEBAYO, EVELYN
03:22	MISSED JUMPER by TROECKLER, ALLIE			
03:19				REBOUND (DEF) by GRIFFITH-WALLACE, JANIKA
02:53				MISSED LAYUP by GRIFFITH-WALLACE, JANIKA
02:53	BLOCK by EVERIDGE, RIANA			
02:53				REBOUND (OFF) by TEAM
02:50				MISSED JUMPER by ADEBAYO, EVELYN
02:48				REBOUND (OFF) by TURLEY, MACEY
02:48	FOUL (PERSONAL) by EVERIDGE, RIANA			
02:48		18-6	H 12	GOOD! FT by TURLEY, MACEY
02:48				SUB OUT: GRIFFITH-WALLACE, JANIKA
02:48				SUB IN: CRANE, BRIANNA
02:48				SUB OUT: MAYES, LEX
02:48				SUB IN: BURPO, ALEXIS
02:48				SUB OUT: MACK, CEKEYA
02:48				SUB IN: MANLEY, MICHAELA
02:48	SUB OUT: TROECKLER, ALLIE			
02:48	SUB IN: KOEHLER, KAI			
02:48		19-6	H 13	GOOD! FT by TURLEY, MACEY
02:21	GOOD! JUMPER by JONES, MICAH	19-8	H 11	
02:21	ASSIST by KING, CHRISTEN			
02:06	FOUL (PERSONAL) by EVERIDGE, RIANA			
02:06		20-8	H 12	GOOD! FT by ADEBAYO, EVELYN
02:06		21-8	H 13	GOOD! FT by ADEBAYO, EVELYN
01:57				FOUL (PERSONAL) by TURLEY, MACEY
01:43	MISSED 3PTR by ALSTON, JAY'NEE			
01:37				REBOUND (DEF) by ADEBAYO, EVELYN
01:31				TURNOVER (TRAVEL) by MANLEY, MICHAELA
01:31				SUB OUT: MANLEY, MICHAELA
01:31				SUB IN: MAYES, LEX
01:07	GOOD! LAYUP by JONES, MICAH	21-10	H 11	
00:38				TURNOVER (TRAVEL) by MAYES, LEX
00:38				SUB OUT: MAYES, LEX
00:38				SUB IN: BLACKBURN, RAEGAN
00:38	SUB OUT: KING, CHRISTEN			
00:38	SUB IN: KEITH, MIKIA			
00:32	MISSED 3PTR by KOEHLER, KAI			
00:29				REBOUND (DEF) by ADEBAYO, EVELYN
00:22				MISSED 3PTR by BLACKBURN, RAEGAN
00:17	REBOUND (DEF) by JONES, MICAH			
00:05	GOOD! LAYUP by EVERIDGE, RIANA	21-12	H 9	
00:05	ASSIST by JONES, MICAH			

### SIUE 12, Murray St. 21

Points from (This Period)	SIE	MUR
In the Paint	10	2
Off Turns	2	5
2nd Chance	2	4
Fast Break	2	4
Bench	2	0

**Official Box Score**  
**SIUE vs Murray St.**  
**Second Quarter Statistics Only**  
**February 09, 2019 at CFSB Center - Murray, Ky.**



**SIUE 19**

No.	Player	S	Pts	FG	3FG	FT	OR	DR	TR	PF	A	TO	Blk	Stl	Min	+/-
01	KING, CHRISTEN		0	0-1	0-0	0-0	0	0	0	0	1	0	0	0	8	-1
05	ALSTON, JAY'NEE		0	0-1	0-0	0-0	0	0	0	0	1	0	0	1	8	1
14	JONES, MICAH		7	3-4	0-0	1-1	0	3	3	0	2	0	0	0	8	-3
23	TROECKLER, ALLIE		0	0-0	0-0	0-0	0	0	0	0	0	0	0	1	2	-3
34	BAUMAN, SYDNEY		4	2-3	0-0	0-0	1	1	2	0	1	0	0	0	8	-1
11	KEITH, MIKIA		0	0-1	0-1	0-0	0	0	0	0	0	1	0	0	4	-2
12	KOEHLER, KAI		3	1-2	1-2	0-0	0	0	0	0	0	0	0	0	4	2
21	AKUEN, ALEK		0	0-0	0-0	0-0	0	0	0	0	0	0	0	0	0	0
35	HALL, MIKALA		3	1-2	1-1	0-0	1	0	1	0	0	1	0	0	4	0
44	EVERIDGE, RIANA		2	1-4	0-1	0-0	1	2	3	0	0	0	1	0	3	2
	TEAM						0	0	0	0		0				
<b>TOTALS</b>			<b>19</b>	<b>8-18</b>	<b>2-5</b>	<b>1-1</b>	<b>3</b>	<b>6</b>	<b>9</b>	<b>0</b>	<b>5</b>	<b>2</b>	<b>1</b>	<b>2</b>	<b>50</b>	

*Shooting By Period*

Period	FG	FG%	3FG	3FG%	FT	FT%
3rd Qtr	7-18	39%	1-2	50%	7-11	64%
4th Qtr	8-20	40%	2-8	25%	4-5	80%
2nd Half	8-18	44%	2-5	40%	1-1	100%
2nd Half	15-38	39%	3-10	30%	11-16	69%
Game	29-74	39.2%	5-19	26.3%	12-17	70.6%

**Murray St. 20**

No.	Player	S	Pts	FG	3FG	FT	OR	DR	TR	PF	A	TO	Blk	Stl	Min	+/-
00	GRIFFITH-WALLACE, JANIKA		0	0-2	0-1	0-0	0	1	1	1	0	2	0	0	8	2
05	TURLEY, MACEY		3	1-3	1-2	0-0	0	1	1	0	2	1	0	0	8	-2
14	ADEBAYO, EVELYN		7	3-4	1-1	0-0	0	3	3	0	1	0	0	1	10	1
31	CRANE, BRIANNA		2	1-1	0-0	0-0	0	0	0	1	2	0	0	0	7	5
32	BURPO, ALEXIS		0	0-0	0-0	0-0	0	2	2	0	0	0	0	0	5	3
01	BLACKBURN, RAEGAN		0	0-0	0-0	0-0	0	0	0	0	0	0	0	0	0	0
04	MAYES, LEX		6	2-3	2-3	0-0	0	0	0	0	1	0	0	0	7	1
20	MACK, CEKEYA		2	1-1	0-0	0-0	0	0	0	0	1	0	1	0	3	-4
33	MANLEY, MICHAELA		0	0-1	0-1	0-0	0	0	0	1	0	0	0	0	2	-1
	TEAM						1	0	1	0		0				
<b>TOTALS</b>			<b>20</b>	<b>8-15</b>	<b>4-8</b>	<b>0-0</b>	<b>1</b>	<b>7</b>	<b>8</b>	<b>3</b>	<b>7</b>	<b>3</b>	<b>1</b>	<b>1</b>	<b>50</b>	

*Shooting By Period*

Period	FG	FG%	3FG	3FG%	FT	FT%
3rd Qtr	4-11	36%	2-7	29%	7-10	70%
4th Qtr	6-13	46%	2-5	40%	9-14	64%
2nd Half	8-15	53%	4-8	50%	0-0	0%
2nd Half	10-24	42%	4-12	33%	16-24	67%
Game	23-51	45.1%	11-26	42.3%	24-32	75.0%

Game Notes:

Officials: Erica Bradley, Molly McFadden, Rob Fessler  
Attendance: 1651

Start Time: 2019-02-09 23:03:56  
End Time: 2019-02-10 01:12:03  
Game Duration: 128  
Conference Game;

Score	1st	2nd	3rd	4th	TOT
SIE	12	19	22	22	<b>75</b>
MUR	21	20	17	23	<b>81</b>

Points from (This Period)	SIE	MUR
In the Paint	12	4
Off Turns	2	5
2nd Chance	0	0
Fast Break	2	6
Bench	8	8

**Official Play-By-Play**  
**SIUE vs Murray St.**  
**Second Quarter**  
**February 09, 2019 at CFSB Center - Murray, Ky.**



**Period 2**

**Starters:**

**SIUE:** 23 TROECKLER, ALLIE; 34 BAUMAN, SYDNEY; 1 KING, CHRISTEN; 5 ALSTON, JAY'NEE; 14 JONES, MICAH;

**Murray St.:** 0 GRIFFITH-WALLACE, JANIKA; 5 TURLEY, MACEY; 14 ADEBAYO, EVELYN; 31 CRANE, BRIANNA; 32 BURPO, ALEXIS;

Time	VISITORS: SIUE	Score	Margin	HOME: Murray St.
09:44	MISSED 3PTR by KOEHLER, KAI			
09:39				REBOUND (DEF) by ADEBAYO, EVELYN
09:33				MISSED 3PTR by TURLEY, MACEY
09:33	BLOCK by EVERIDGE, RIANA			
09:33				REBOUND (OFF) by TEAM
09:13				MISSED JUMPER by TURLEY, MACEY
09:09	REBOUND (DEF) by JONES, MICAH			
08:58	MISSED JUMPER by EVERIDGE, RIANA			
08:56				REBOUND (DEF) by GRIFFITH-WALLACE, JANIKA
08:50				MISSED 3PTR by GRIFFITH-WALLACE, JANIKA
08:46	REBOUND (DEF) by JONES, MICAH			
08:39	MISSED 3PTR by KEITH, MIKIA			
08:36				REBOUND (DEF) by BURPO, ALEXIS
08:13				MISSED JUMPER by GRIFFITH-WALLACE, JANIKA
08:13	REBOUND (DEF) by EVERIDGE, RIANA			
08:13				FOUL (PERSONAL) by GRIFFITH-WALLACE, JANIKA
08:13	SUB OUT: EVERIDGE, RIANA			
08:13	SUB IN: BAUMAN, SYDNEY			
08:13	SUB OUT: KEITH, MIKIA			
08:13	SUB IN: KING, CHRISTEN			
07:57	GOOD! LAYUP by JONES, MICAH	21-14	H 7	
07:32		23-14	H 9	GOOD! JUMPER by CRANE, BRIANNA
07:32				ASSIST by TURLEY, MACEY
07:19				FOUL (PERSONAL) by CRANE, BRIANNA
07:19				SUB OUT: CRANE, BRIANNA
07:19				SUB IN: MACK, CEKEYA
07:19				SUB OUT: BURPO, ALEXIS
07:19				SUB IN: MAYES, LEX
07:14	GOOD! JUMPER by JONES, MICAH [PNT]	23-16	H 7	
07:14	ASSIST by KING, CHRISTEN			
06:56		26-16	H 10	GOOD! 3PTR by TURLEY, MACEY
06:56				ASSIST by MACK, CEKEYA
06:30	GOOD! 3PTR by KOEHLER, KAI	26-19	H 7	
06:30	ASSIST by ALSTON, JAY'NEE			
06:10				TURNOVER (BADPASS) by GRIFFITH-WALLACE, JANIKA
06:10				SUB OUT: GRIFFITH-WALLACE, JANIKA
06:10				SUB IN: MANLEY, MICHAELA
06:10	SUB OUT: KOEHLER, KAI			
06:10	SUB IN: HALL, MIKALA			
06:10	SUB OUT: JONES, MICAH			
06:10	SUB IN: EVERIDGE, RIANA			
05:59	GOOD! LAYUP by BAUMAN, SYDNEY	26-21	H 5	
05:32		28-21	H 7	GOOD! LAYUP by MACK, CEKEYA
05:32				ASSIST by ADEBAYO, EVELYN
05:24	MISSED JUMPER by ALSTON, JAY'NEE			
05:24				BLOCK by MACK, CEKEYA
05:20	REBOUND (OFF) by EVERIDGE, RIANA			
05:19	MISSED 3PTR by EVERIDGE, RIANA			
05:16	REBOUND (OFF) by BAUMAN, SYDNEY			
05:11	MISSED LAYUP by EVERIDGE, RIANA			
05:07	REBOUND (OFF) by HALL, MIKALA			
05:06	MISSED LAYUP by HALL, MIKALA			
05:03				REBOUND (DEF) by TURLEY, MACEY
04:58				MISSED 3PTR by MANLEY, MICHAELA
04:54	REBOUND (DEF) by EVERIDGE, RIANA			
04:50	GOOD! JUMPER by EVERIDGE, RIANA [FB/PNT]	28-23	H 5	
04:37				TURNOVER (BADPASS) by TURLEY, MACEY
04:37	STEAL by ALSTON, JAY'NEE			
04:37				SUB OUT: MACK, CEKEYA
04:37				SUB IN: CRANE, BRIANNA
04:37	SUB OUT: ALSTON, JAY'NEE			
04:37	SUB IN: JONES, MICAH			
04:37	SUB OUT: EVERIDGE, RIANA			
04:37	SUB IN: KEITH, MIKIA			
04:15	MISSED JUMPER by KING, CHRISTEN			
04:12				REBOUND (DEF) by ADEBAYO, EVELYN
04:06		31-23	H 8	GOOD! 3PTR by MAYES, LEX [FB]
04:06				ASSIST by TURLEY, MACEY
03:45	GOOD! LAYUP by JONES, MICAH	31-25	H 6	



Time	VISITORS: SIUE	Score	Margin	HOME: Murray St.
03:45	ASSIST by BAUMAN, SYDNEY			
03:45				FOUL (PERSONAL) by MANLEY, MICHAELA
03:45				SUB OUT: MANLEY, MICHAELA
03:45				SUB IN: GRIFFITH-WALLACE, JANIKA
03:45	GOOD! FT by JONES, MICAH	31-26	H 5	
03:37				MISSED 3PTR by MAYES, LEX
03:34	REBOUND (DEF) by BAUMAN, SYDNEY			
03:30	TURNOVER (BADPASS) by HALL, MIKALA			
03:30				STEAL by ADEBAYO, EVELYN
03:22		34-26	H 8	GOOD! 3PTR by ADEBAYO, EVELYN [FB]
03:22				ASSIST by CRANE, BRIANNA
02:51	GOOD! 3PTR by HALL, MIKALA	34-29	H 5	
02:51	ASSIST by JONES, MICAH			
02:33		36-29	H 7	GOOD! JUMPER by ADEBAYO, EVELYN [PNT]
02:20	TURNOVER (BADPASS) by KEITH, MIKIA			
02:20				SUB OUT: TURLEY, MACEY
02:20				SUB IN: BURPO, ALEXIS
02:20	SUB OUT: KEITH, MIKIA			
02:20	SUB IN: ALSTON, JAY'NEE			
02:20	SUB OUT: HALL, MIKALA			
02:20	SUB IN: TROECKLER, ALLIE			
02:06		38-29	H 9	GOOD! JUMPER by ADEBAYO, EVELYN
02:06				ASSIST by MAYES, LEX
01:48	GOOD! LAYUP by BAUMAN, SYDNEY	38-31	H 7	
01:48	ASSIST by JONES, MICAH			
01:28		41-31	H 10	GOOD! 3PTR by MAYES, LEX
01:28				ASSIST by CRANE, BRIANNA
01:10	MISSED JUMPER by BAUMAN, SYDNEY			
01:08				REBOUND (DEF) by BURPO, ALEXIS
00:52				MISSED JUMPER by ADEBAYO, EVELYN
00:49	REBOUND (DEF) by JONES, MICAH			
00:33	MISSED LAYUP by JONES, MICAH			
00:31				REBOUND (DEF) by ADEBAYO, EVELYN
00:23				TURNOVER (LOSTBALL) by GRIFFITH-WALLACE, JANIKA
00:23	STEAL by TROECKLER, ALLIE			

### SIUE 31, Murray St. 41

Points from (This Period)	SIUE	MUR
In the Paint	12	4
Off Turns	2	5
2nd Chance	0	0
Fast Break	2	6
Bench	8	8

**Official Box Score**  
**SIUE vs Murray St.**  
**Second Half Statistics Only**  
**February 09, 2019 at CFSB Center - Murray, Ky.**



**SIUE 44**

No.	Player	S	Pts	FG	3FG	FT	OR	DR	TR	PF	A	TO	Blk	Stl	Min	+/-
11	KEITH, MIKIA		2	1-2	0-1	0-0	1	0	1	0	0	0	0	0	10	-4
12	KOEHLER, KAI		0	0-0	0-0	0-0	0	0	0	0	0	0	0	0	0	0
21	AKUEN, ALEK		2	0-0	0-0	2-2	2	0	2	0	1	0	0	0	5	-4
23	TROECKLER, ALLIE		7	2-5	0-0	3-3	0	1	1	0	1	1	1	0	16	5
34	BAUMAN, SYDNEY		0	0-1	0-0	0-0	1	3	4	4	1	0	3	0	7	12
35	HALL, MIKALA		0	0-1	0-0	0-0	0	0	0	1	0	0	0	0	0	-2
44	EVERIDGE, RIANA		11	3-5	2-3	3-4	1	0	1	2	0	1	0	1	12	-2
01	KING, CHRISTEN		10	5-9	0-0	0-2	3	2	5	3	1	1	0	3	17	7
05	ALSTON, JAY'NEE		3	1-8	1-6	0-0	2	1	3	1	2	0	0	1	17	4
14	JONES, MICAH		9	3-7	0-0	3-5	0	0	0	3	0	1	1	1	16	4
	TEAM		0	0-0	0-0	0-0	1	1	2	0	0	0	0	0	0	0
<b>TOTALS</b>			<b>44</b>	<b>15-38</b>	<b>3-10</b>	<b>11-16</b>	<b>11</b>	<b>8</b>	<b>19</b>	<b>14</b>	<b>6</b>	<b>4</b>	<b>5</b>	<b>6</b>	<b>100</b>	

*Shooting By Period*

Period	FG	FG%	3FG	3FG%	FT	FT%
3rd Qtr	7-18	39%	1-2	50%	7-11	64%
4th Qtr	8-20	40%	2-8	25%	4-5	80%
2nd Half	15-38	39%	3-10	30%	11-16	69%
Game	29-74	39.2%	5-19	26.3%	12-17	70.6%

*Last FG Half: SIE 4th-00:29*

**Murray St. 40**

No.	Player	S	Pts	FG	3FG	FT	OR	DR	TR	PF	A	TO	Blk	Stl	Min	+/-
00	GRIFFITH-WALLACE, JANIKA		3	1-3	0-2	1-2	0	2	2	1	2	3	0	2	19	-4
01	BLACKBURN, RAEGAN		0	0-0	0-0	0-0	0	0	0	0	0	0	0	0	0	0
04	MAYES, LEX		9	3-4	3-4	0-0	1	2	3	1	0	1	0	0	17	7
05	TURLEY, MACEY		6	0-5	0-1	6-6	2	1	3	2	3	1	0	0	20	-3
14	ADEBAYO, EVELYN		15	3-8	1-4	8-12	3	5	8	4	1	2	0	0	20	-4
20	MACK, CEKEYA		5	2-2	0-0	1-4	1	1	2	3	0	2	1	0	15	4
31	CRANE, BRIANNA		2	1-1	0-0	0-0	0	0	0	3	0	0	0	0	5	-8
32	BURPO, ALEXIS		0	0-1	0-1	0-0	0	0	0	0	0	0	0	0	3	-11
33	MANLEY, MICHAELA		0	0-0	0-0	0-0	0	0	0	0	0	0	0	0	1	-1
	TEAM		0	0-0	0-0	0-0	2	3	5	0	0	1	0	0	0	0
<b>TOTALS</b>			<b>40</b>	<b>10-24</b>	<b>4-12</b>	<b>16-24</b>	<b>9</b>	<b>14</b>	<b>23</b>	<b>14</b>	<b>6</b>	<b>10</b>	<b>1</b>	<b>2</b>	<b>100</b>	

*Shooting By Period*

Period	FG	FG%	3FG	3FG%	FT	FT%
3rd Qtr	4-11	36%	2-7	29%	7-10	70%
4th Qtr	6-13	46%	2-5	40%	9-14	64%
2nd Half	10-24	42%	4-12	33%	16-24	67%
Game	23-51	45.1%	11-26	42.3%	24-32	75.0%

*Last FG Half: MUR 4th-02:17*

*Game Notes:*

Officials: Erica Bradley, Molly McFadden, Rob Fessler  
 Attendance: 1651

Start Time: 2019-02-09 23:03:56  
 End Time: 2019-02-10 01:12:03  
 Game Duration: 128  
 Conference Game;

Score	1st	2nd	3rd	4th	TOT
SIE	12	19	22	22	<b>75</b>
MUR	21	20	17	23	<b>81</b>

Points from (This Period)	SIE	MUR
In the Paint	22	10
Off Turns	16	0
2nd Chance	11	2
Fast Break	8	3
Bench	15	14

**Official Box Score**  
**SIUE vs Murray St.**  
**Third Quarter Statistics Only**  
**February 09, 2019 at CFSB Center - Murray, Ky.**



**SIUE 44**

No.	Player	S	Pts	FG	3FG	FT	OR	DR	TR	PF	A	TO	Blk	Stl	Min	+/-
01	KING, CHRISTEN		6	3-5	0-0	0-2	1	1	2	1	0	0	0	2	7	8
05	ALSTON, JAY'NEE		3	1-4	1-2	0-0	2	0	2	0	0	0	0	0	7	5
14	JONES, MICAH		6	2-6	0-0	2-3	0	0	0	1	0	1	1	0	8	6
23	TROECKLER, ALLIE		2	0-2	0-0	2-2	0	0	0	0	1	0	0	0	10	5
34	BAUMAN, SYDNEY		0	0-0	0-0	0-0	0	3	3	3	1	0	1	0	5	9
11	KEITH, MIKIA		2	1-1	0-0	0-0	0	0	0	0	0	0	0	0	6	-3
12	KOEHLER, KAI		0	0-0	0-0	0-0	0	0	0	0	0	0	0	0	0	0
21	AKUEN, ALEK		2	0-0	0-0	2-2	2	0	2	0	1	0	0	0	5	-4
35	HALL, MIKALA		0	0-0	0-0	0-0	0	0	0	0	0	0	0	0	0	0
44	EVERIDGE, RIANA		1	0-0	0-0	1-2	0	0	0	1	0	1	0	1	2	-1
	TEAM						1	1	2	0		0				
<b>TOTALS</b>			<b>22</b>	<b>7-18</b>	<b>1-2</b>	<b>7-11</b>	<b>6</b>	<b>5</b>	<b>11</b>	<b>6</b>	<b>3</b>	<b>2</b>	<b>2</b>	<b>3</b>	<b>50</b>	

*Shooting By Period*

Period	FG	FG%	3FG	3FG%	FT	FT%
2nd Half	0-0	0%	0-0	0%	0-0	0%
Game	29-74	39.2%	5-19	26.3%	12-17	70.6%

**Murray St. 40**

No.	Player	S	Pts	FG	3FG	FT	OR	DR	TR	PF	A	TO	Blk	Stl	Min	+/-
00	GRIFFITH-WALLACE, JANIKA		1	0-1	0-1	1-2	0	0	0	0	2	2	0	1	9	-5
05	TURLEY, MACEY		2	0-3	0-1	2-2	1	1	2	1	2	1	0	0	10	-4
14	ADEBAYO, EVELYN		6	1-3	0-2	4-6	0	2	2	2	0	0	0	0	10	-5
31	CRANE, BRIANNA		2	1-1	0-0	0-0	0	0	0	2	0	0	0	0	5	-8
32	BURPO, ALEXIS		0	0-0	0-0	0-0	0	0	0	0	0	0	0	0	2	-8
01	BLACKBURN, RAEGAN		0	0-0	0-0	0-0	0	0	0	0	0	0	0	0	0	0
04	MAYES, LEX		6	2-3	2-3	0-0	0	2	2	1	0	0	0	0	8	3
20	MACK, CEKEYA		0	0-0	0-0	0-0	0	0	0	1	0	1	1	0	5	3
33	MANLEY, MICHAELA		0	0-0	0-0	0-0	0	0	0	0	0	0	0	0	1	-1
	TEAM						1	2	3	0		0				
<b>TOTALS</b>			<b>17</b>	<b>4-11</b>	<b>2-7</b>	<b>7-10</b>	<b>2</b>	<b>7</b>	<b>9</b>	<b>7</b>	<b>4</b>	<b>4</b>	<b>1</b>	<b>1</b>	<b>50</b>	

*Shooting By Period*

Period	FG	FG%	3FG	3FG%	FT	FT%
2nd Half	0-0	0%	0-0	0%	0-0	0%
Game	23-51	45.1%	11-26	42.3%	24-32	75.0%

*Game Notes:*

Officials: Erica Bradley, Molly McFadden, Rob Fessler  
 Attendance: 1651

Start Time: 2019-02-09 23:03:56  
 End Time: 2019-02-10 01:12:03  
 Game Duration: 128  
 Conference Game:

Score	1st	2nd	3rd	4th	TOT
SIE	12	19	22	22	<b>75</b>
MUR	21	20	17	23	<b>81</b>

Points from (This Period)	SIE	MUR
In the Paint	10	2
Off Turns	6	0
2nd Chance	6	0
Fast Break	6	0
Bench	5	6

**Official Play-By-Play**  
**SIUE vs Murray St.**  
**Third Quarter**  
**February 09, 2019 at CFSB Center - Murray, Ky.**



**Period 3**

**Starters:**

**SIUE:** 23 TROECKLER, ALLIE; 34 BAUMAN, SYDNEY; 1 KING, CHRISTEN; 5 ALSTON, JAY'NEE; 14 JONES, MICAH;

**Murray St.:** 0 GRIFFITH-WALLACE, JANIKA; 5 TURLEY, MACEY; 14 ADEBAYO, EVELYN; 31 CRANE, BRIANNA; 32 BURPO, ALEXIS;

Time	VISITORS: SIUE	Score	Margin	HOME: Murray St.
09:49	GOOD! 3PTR by ALSTON, JAY'NEE	41-34	H 7	
09:49	ASSIST by BAUMAN, SYDNEY			
09:30				MISSED LAYUP by TURLEY, MACEY
09:30	BLOCK by BAUMAN, SYDNEY			
09:30	REBOUND (DEF) by TEAM			
09:05	GOOD! JUMPER by JONES, MICAH [PNT]	41-36	H 5	
09:05	ASSIST by TROECKLER, ALLIE			
08:52				TURNOVER (BADPASS) by GRIFFITH-WALLACE, JANIKA
08:52	STEAL by KING, CHRISTEN			
08:46	GOOD! LAYUP by KING, CHRISTEN [FB]	41-38	H 3	
08:44				TIMEOUT TEAM
08:24				MISSED 3PTR by GRIFFITH-WALLACE, JANIKA
08:22				REBOUND (OFF) by TEAM
08:21				MISSED 3PTR by ADEBAYO, EVELYN
08:18	REBOUND (DEF) by KING, CHRISTEN			
08:13	MISSED JUMPER by ALSTON, JAY'NEE			
08:11	REBOUND (OFF) by ALSTON, JAY'NEE			
08:06	MISSED JUMPER by JONES, MICAH			
08:03				REBOUND (DEF) by TEAM
07:49	FOUL (PERSONAL) by BAUMAN, SYDNEY			
07:49				MISSED FT by ADEBAYO, EVELYN
07:49				REBOUND (OFF) by TEAM
07:49		42-38	H 4	GOOD! FT by ADEBAYO, EVELYN
07:38	GOOD! LAYUP by JONES, MICAH	42-40	H 2	
07:38				FOUL (PERSONAL) by CRANE, BRIANNA
07:38				SUB OUT: BURPO, ALEXIS
07:38				SUB IN: MAYES, LEX
07:38				SUB OUT: CRANE, BRIANNA
07:38				SUB IN: MACK, CEKEYA
07:38	MISSED FT by JONES, MICAH			
07:37				REBOUND (DEF) by MAYES, LEX
07:37	FOUL (PERSONAL) by BAUMAN, SYDNEY			
07:16				MISSED LAYUP by TURLEY, MACEY
07:14	REBOUND (DEF) by BAUMAN, SYDNEY			
07:05	MISSED JUMPER by JONES, MICAH			
07:05				BLOCK by MACK, CEKEYA
07:05	REBOUND (OFF) by TEAM			
07:03	MISSED JUMPER by TROECKLER, ALLIE			
06:59				REBOUND (DEF) by ADEBAYO, EVELYN
06:52				MISSED 3PTR by MAYES, LEX
06:49				REBOUND (OFF) by TURLEY, MACEY
06:47				MISSED 3PTR by ADEBAYO, EVELYN
06:43	REBOUND (DEF) by BAUMAN, SYDNEY			
06:26	TURNOVER (BADPASS) by JONES, MICAH			
06:26				STEAL by GRIFFITH-WALLACE, JANIKA
06:18				MISSED 3PTR by TURLEY, MACEY
06:18	BLOCK by JONES, MICAH			
06:14	REBOUND (DEF) by BAUMAN, SYDNEY			
06:14				FOUL (PERSONAL) by MACK, CEKEYA
06:14	SUB OUT: JONES, MICAH			
06:14	SUB IN: EVERIDGE, RIANA			
06:14	SUB OUT: BAUMAN, SYDNEY			
06:14	SUB IN: AKUEN, ALEK			
06:02				FOUL (PERSONAL) by MAYES, LEX
06:02	MISSED FT by KING, CHRISTEN			
06:02	REBOUND (OFF) by TEAM			
06:02	MISSED FT by KING, CHRISTEN			
06:02				REBOUND (DEF) by MAYES, LEX
05:54	FOUL (PERSONAL) by KING, CHRISTEN			
05:54				MISSED FT by GRIFFITH-WALLACE, JANIKA
05:54				REBOUND (OFF) by TEAM
05:54	SUB OUT: KING, CHRISTEN			
05:54	SUB IN: KEITH, MIKIA			
05:54		43-40	H 3	GOOD! FT by GRIFFITH-WALLACE, JANIKA
05:34				FOUL (PERSONAL) by TURLEY, MACEY
05:34	MISSED FT by EVERIDGE, RIANA			
05:34	REBOUND (OFF) by TEAM			
05:34	GOOD! FT by EVERIDGE, RIANA	43-41	H 2	
05:21	FOUL (PERSONAL) by EVERIDGE, RIANA			
05:21		44-41	H 3	GOOD! FT by ADEBAYO, EVELYN

Time	VISITORS: SIUE	Score	Margin	HOME: Murray St.
05:21		45-41	H 4	GOOD! FT by ADEBAYO, EVELYN
05:13	TURNOVER (3SEC) by EVERIDGE, RIANA			
04:51				TURNOVER (BADPASS) by MACK, CEKEYA
04:51	STEAL by EVERIDGE, RIANA			
04:46	MISSED 3PTR by ALSTON, JAY'NEE			
04:42	REBOUND (OFF) by ALSTON, JAY'NEE			
04:41	MISSED JUMPER by ALSTON, JAY'NEE			
04:38	REBOUND (OFF) by AKUEN, ALEK			
04:38				FOUL (PERSONAL) by ADEBAYO, EVELYN
04:38				
04:38	SUB OUT: EVERIDGE, RIANA			
04:38	SUB IN: JONES, MICAH			
04:38	GOOD! FT by AKUEN, ALEK	45-42	H 3	
04:38	GOOD! FT by AKUEN, ALEK	45-43	H 2	
04:13		47-43	H 4	GOOD! LAYUP by ADEBAYO, EVELYN
04:13				ASSIST by GRIFFITH-WALLACE, JANIKA
03:56	MISSED LAYUP by TROECKLER, ALLIE			
03:54	REBOUND (OFF) by AKUEN, ALEK			
03:52	GOOD! JUMPER by KEITH, MIKIA	47-45	H 2	
03:52	ASSIST by AKUEN, ALEK			
03:22		50-45	H 5	GOOD! 3PTR by MAYES, LEX
03:22				ASSIST by TURLEY, MACEY
03:00	MISSED JUMPER by JONES, MICAH			
02:58				REBOUND (DEF) by TEAM
02:58				SUB OUT: MACK, CEKEYA
02:58				SUB IN: CRANE, BRIANNA
02:58	SUB OUT: ALSTON, JAY'NEE			
02:58	SUB IN: KING, CHRISTEN			
02:46		53-45	H 8	GOOD! 3PTR by MAYES, LEX
02:46				ASSIST by GRIFFITH-WALLACE, JANIKA
02:33	MISSED LAYUP by JONES, MICAH			
02:28				REBOUND (DEF) by ADEBAYO, EVELYN
02:22				TIMEOUT 30SEC
02:21				TURNOVER (BADPASS) by GRIFFITH-WALLACE, JANIKA
02:21	STEAL by KING, CHRISTEN			
02:15	GOOD! LAYUP by KING, CHRISTEN [FB]	53-47	H 6	
02:02	FOUL (PERSONAL) by JONES, MICAH			
02:02		54-47	H 7	GOOD! FT by TURLEY, MACEY
02:02		55-47	H 8	GOOD! FT by TURLEY, MACEY
01:31	MISSED JUMPER by KING, CHRISTEN			
01:28	REBOUND (OFF) by KING, CHRISTEN			
01:26	GOOD! JUMPER by KING, CHRISTEN	55-49	H 6	
01:13				TURNOVER (TRAVEL) by TURLEY, MACEY
01:13				SUB OUT: GRIFFITH-WALLACE, JANIKA
01:13				SUB IN: MANLEY, MICHAELA
01:13	SUB OUT: AKUEN, ALEK			
01:13	SUB IN: BAUMAN, SYDNEY			
00:49	MISSED JUMPER by KING, CHRISTEN			
00:47				REBOUND (DEF) by TURLEY, MACEY
00:41		57-49	H 8	GOOD! JUMPER by CRANE, BRIANNA
00:41				ASSIST by TURLEY, MACEY
00:30				FOUL (PERSONAL) by CRANE, BRIANNA
00:30	GOOD! FT by JONES, MICAH	57-50	H 7	
00:30	GOOD! FT by JONES, MICAH	57-51	H 6	
00:30	SUB OUT: JONES, MICAH			
00:30	SUB IN: EVERIDGE, RIANA			
00:05	FOUL (PERSONAL) by BAUMAN, SYDNEY			
00:05				MISSED FT by ADEBAYO, EVELYN
00:05				REBOUND (OFF) by TEAM
00:05				SUB OUT: TURLEY, MACEY
00:05				SUB IN: GRIFFITH-WALLACE, JANIKA
00:05		58-51	H 7	GOOD! FT by ADEBAYO, EVELYN
00:00				FOUL (PERSONAL) by ADEBAYO, EVELYN
00:00	GOOD! FT by TROECKLER, ALLIE [FB]	58-52	H 6	
00:00	GOOD! FT by TROECKLER, ALLIE [FB]	58-53	H 5	

### SIUE 53, Murray St. 58

Points from (This Period)	SIUE	MUR
In the Paint	10	2
Off Turns	6	0
2nd Chance	6	0
Fast Break	6	0
Bench	5	6

**Official Box Score**  
**SIUE vs Murray St.**  
**Fourth Quarter Statistics Only**  
**February 09, 2019 at CFSB Center - Murray, Ky.**



**SIUE 22**

No.	Player	S	Pts	FG	3FG	FT	OR	DR	TR	PF	A	TO	Blk	Stl	Min	+/-
01	KING, CHRISTEN		4	2-4	0-0	0-0	2	1	3	2	1	1	0	1	10	-1
05	ALSTON, JAY'NEE		0	0-4	0-4	0-0	0	1	1	1	2	0	0	1	10	-1
14	JONES, MICAH		3	1-1	0-0	1-2	0	0	0	2	0	0	0	1	8	-2
23	TROECKLER, ALLIE		5	2-3	0-0	1-1	0	1	1	0	0	1	1	0	6	0
34	BAUMAN, SYDNEY		0	0-1	0-0	0-0	1	0	1	1	0	0	2	0	2	3
11	KEITH, MIKIA		0	0-1	0-1	0-0	1	0	1	0	0	0	0	0	4	-1
12	KOEHLER, KAI		0	0-0	0-0	0-0	0	0	0	0	0	0	0	0	0	0
21	AKUEN, ALEK		0	0-0	0-0	0-0	0	0	0	0	0	0	0	0	0	0
35	HALL, MIKALA		0	0-1	0-0	0-0	0	0	0	1	0	0	0	0	0	-2
44	EVERIDGE, RIANA		10	3-5	2-3	2-2	1	0	1	1	0	0	0	0	10	-1
	TEAM						0	0	0	0		0				
<b>TOTALS</b>			<b>22</b>	<b>8-20</b>	<b>2-8</b>	<b>4-5</b>	<b>5</b>	<b>3</b>	<b>8</b>	<b>8</b>	<b>3</b>	<b>2</b>	<b>3</b>	<b>3</b>	<b>50</b>	

*Shooting By Period*

Period	FG	FG%	3FG	3FG%	FT	FT%
Game	29-74	39.2%	5-19	26.3%	12-17	70.6%

**Murray St. 23**

No.	Player	S	Pts	FG	3FG	FT	OR	DR	TR	PF	A	TO	Blk	Stl	Min	+/-
00	GRIFFITH-WALLACE, JANIKA		2	1-2	0-1	0-0	0	2	2	1	0	1	0	1	10	1
05	TURLEY, MACEY		4	0-2	0-0	4-4	1	0	1	1	1	0	0	0	10	1
14	ADEBAYO, EVELYN		9	2-5	1-2	4-6	3	3	6	2	1	2	0	0	10	1
31	CRANE, BRIANNA		0	0-0	0-0	0-0	0	0	0	1	0	0	0	0	0	0
32	BURPO, ALEXIS		0	0-1	0-1	0-0	0	0	0	0	0	0	0	0	1	-3
01	BLACKBURN, RAEGAN		0	0-0	0-0	0-0	0	0	0	0	0	0	0	0	0	0
04	MAYES, LEX		3	1-1	1-1	0-0	1	0	1	0	0	1	0	0	9	4
20	MACK, CEKEYA		5	2-2	0-0	1-4	1	1	2	2	0	1	0	0	10	1
33	MANLEY, MICHAELA		0	0-0	0-0	0-0	0	0	0	0	0	0	0	0	0	0
	TEAM						1	1	2	0		1				
<b>TOTALS</b>			<b>23</b>	<b>6-13</b>	<b>2-5</b>	<b>9-14</b>	<b>7</b>	<b>7</b>	<b>14</b>	<b>7</b>	<b>2</b>	<b>6</b>	<b>0</b>	<b>1</b>	<b>50</b>	

*Shooting By Period*

Period	FG	FG%	3FG	3FG%	FT	FT%
Game	23-51	45.1%	11-26	42.3%	24-32	75.0%

Game Notes:

Officials: Erica Bradley, Molly McFadden, Rob Fessler  
Attendance: 1651

Start Time: 2019-02-09 23:03:56  
End Time: 2019-02-10 01:12:03  
Game Duration: 128  
Conference Game;

Score	1st	2nd	3rd	4th	TOT
SIE	12	19	22	22	<b>75</b>
MUR	21	20	17	23	<b>81</b>

Points from (This Period)	SIE	MUR
In the Paint	12	8
Off Turns	10	0
2nd Chance	5	2
Fast Break	2	3
Bench	10	8

**Official Play-By-Play**  
**SIUE vs Murray St.**  
**Fourth Quarter**  
**February 09, 2019 at CFSB Center - Murray, Ky.**



**Period 4**

**Starters:**

**SIUE:** 23 TROECKLER,ALLIE; 34 BAUMAN,SYDNEY; 1 KING,CHRISTEN; 5 ALSTON,JAY'NEE; 14 JONES,MICAH;

**Murray St.:** 0 GRIFFITH-WALLACE,JANIKA; 5 TURLEY,MACEY; 14 ADEBAYO,EVELYN; 31 CRANE,BRIANNA; 32 BURPO,ALEXIS;

Time	VISITORS: SIUE	Score	Margin	HOME: Murray St.
09:52	FOUL (PERSONAL) by KING, CHRISTEN			
09:52		59-53	H 6	GOOD! FT by TURLEY, MACEY
09:52		60-53	H 7	GOOD! FT by TURLEY, MACEY
09:37				FOUL (PERSONAL) by CRANE, BRIANNA
09:33	GOOD! LAYUP by TROECKLER, ALLIE	60-55	H 5	
09:33				FOUL (PERSONAL) by TURLEY, MACEY
09:33				SUB OUT: CRANE, BRIANNA
09:33				SUB IN: MACK, CEKEYA
09:33	GOOD! FT by TROECKLER, ALLIE	60-56	H 4	
09:19				MISSED 3PTR by BURPO, ALEXIS
09:16				REBOUND (OFF) by ADEBAYO, EVELYN
09:14				MISSED LAYUP by ADEBAYO, EVELYN
09:14	BLOCK by BAUMAN, SYDNEY			
09:10	REBOUND (DEF) by ALSTON, JAY'NEE			
09:07	GOOD! LAYUP by TROECKLER, ALLIE (FB)	60-58	H 2	
09:07	ASSIST by ALSTON, JAY'NEE			
08:47				MISSED JUMPER by ADEBAYO, EVELYN
08:47	BLOCK by BAUMAN, SYDNEY			
08:45				REBOUND (OFF) by MACK, CEKEYA
08:42	FOUL (PERSONAL) by BAUMAN, SYDNEY			
08:42				MISSED FT by MACK, CEKEYA
08:42				REBOUND (OFF) by TEAM
08:42				SUB OUT: BURPO, ALEXIS
08:42				SUB IN: MAYES, LEX
08:42	SUB OUT: BAUMAN, SYDNEY			
08:42	SUB IN: JONES, MICAH			
08:42				MISSED FT by MACK, CEKEYA
08:42	REBOUND (DEF) by TROECKLER, ALLIE			
08:35	MISSED 3PTR by ALSTON, JAY'NEE			
08:32	REBOUND (OFF) by KING, CHRISTEN			
08:31	GOOD! LAYUP by JONES, MICAH	60-60	T	
08:31	ASSIST by KING, CHRISTEN			
08:17				MISSED JUMPER by TURLEY, MACEY
08:12				REBOUND (OFF) by ADEBAYO, EVELYN
08:11		62-60	H 2	GOOD! LAYUP by ADEBAYO, EVELYN
07:56	MISSED JUMPER by TROECKLER, ALLIE			
07:53				REBOUND (DEF) by ADEBAYO, EVELYN
07:22				MISSED 3PTR by GRIFFITH-WALLACE, JANIKA
07:19				REBOUND (OFF) by TEAM
07:19				TURNOVER (SHOTCLOCK) by
06:59	MISSED JUMPER by KING, CHRISTEN			
06:57	REBOUND (OFF) by EVERIDGE, RIANA			
06:55	GOOD! 3PTR by EVERIDGE, RIANA	62-63	V 1	
06:35		64-63	H 1	GOOD! LAYUP by MACK, CEKEYA
06:07	MISSED 3PTR by ALSTON, JAY'NEE			
06:04	REBOUND (OFF) by KING, CHRISTEN			
06:01	TURNOVER (LOSTBALL) by TROECKLER, ALLIE			
06:01				STEAL by GRIFFITH-WALLACE, JANIKA
05:52				TURNOVER (LOSTBALL) by MACK, CEKEYA
05:52	STEAL by KING, CHRISTEN			
05:46	MISSED LAYUP by KING, CHRISTEN			
05:44				REBOUND (DEF) by GRIFFITH-WALLACE, JANIKA
05:44	FOUL (PERSONAL) by JONES, MICAH			
05:28		67-63	H 4	GOOD! 3PTR by MAYES, LEX
05:28				ASSIST by ADEBAYO, EVELYN
05:14	SUB OUT: JONES, MICAH			
05:14	SUB IN: KEITH, MIKIA			
05:14	SUB OUT: TROECKLER, ALLIE			
05:14	SUB IN: BAUMAN, SYDNEY			
05:12	MISSED JUMPER by EVERIDGE, RIANA			
05:10	REBOUND (OFF) by BAUMAN, SYDNEY			
05:05	MISSED LAYUP by BAUMAN, SYDNEY			
05:02				REBOUND (DEF) by GRIFFITH-WALLACE, JANIKA
04:48				FOUL (OFF) by GRIFFITH-WALLACE, JANIKA
04:48				TURNOVER (OFFENSIVE) by GRIFFITH-WALLACE, JANIKA
04:48				
04:48	SUB OUT: BAUMAN, SYDNEY			
04:48	SUB IN: JONES, MICAH			
04:21	GOOD! LAYUP by EVERIDGE, RIANA	67-65	H 2	
04:04		70-65	H 5	GOOD! 3PTR by ADEBAYO, EVELYN

Time	VISITORS: SIUE	Score	Margin	HOME: Murray St.
03:54				FOUL (PERSONAL) by MACK, CEKEYA
03:52	GOOD! JUMPER by KING, CHRISTEN [PNT]	70-67	H 3	
03:34		72-67	H 5	GOOD! JUMPER by GRIFFITH-WALLACE, JANIKA [PNT]
03:21				FOUL (PERSONAL) by MACK, CEKEYA
03:21	MISSED FT by JONES, MICAH			
03:21	REBOUND (OFF) by TEAM			
03:21	GOOD! FT by JONES, MICAH	72-68	H 4	
03:07	FOUL (PERSONAL) by EVERIDGE, RIANA			
03:07		73-68	H 5	GOOD! FT by MACK, CEKEYA
03:07				MISSED FT by MACK, CEKEYA
03:07				REBOUND (OFF) by ADEBAYO, EVELYN
02:47				FOUL (OFF) by ADEBAYO, EVELYN
02:47				TURNOVER (OFFENSIVE) by ADEBAYO, EVELYN
02:32	GOOD! JUMPER by KING, CHRISTEN [PNT]	73-70	H 3	
02:30	TIMEOUT 30SEC			
02:30	SUB OUT: KEITH, MIKIA			
02:30	SUB IN: TROECKLER, ALLIE			
02:17		75-70	H 5	GOOD! LAYUP by MACK, CEKEYA
02:17				ASSIST by TURLEY, MACEY
02:05				FOUL (PERSONAL) by ADEBAYO, EVELYN
02:05	GOOD! FT by EVERIDGE, RIANA	75-71	H 4	
02:05	GOOD! FT by EVERIDGE, RIANA	75-72	H 3	
01:48				MISSED JUMPER by TURLEY, MACEY
01:48	BLOCK by TROECKLER, ALLIE			
01:47				REBOUND (OFF) by TURLEY, MACEY
01:45				MISSED 3PTR by ADEBAYO, EVELYN
01:43				REBOUND (OFF) by MAYES, LEX
01:41				TURNOVER (LOSTBALL) by MAYES, LEX
01:41	STEAL by ALSTON, JAY'NEE			
01:30	MISSED 3PTR by ALSTON, JAY'NEE			
01:26				REBOUND (DEF) by ADEBAYO, EVELYN
01:00	FOUL (PERSONAL) by ALSTON, JAY'NEE			
01:00		76-72	H 4	GOOD! FT by ADEBAYO, EVELYN
01:00	SUB OUT: TROECKLER, ALLIE			
01:00	SUB IN: KEITH, MIKIA			
01:00		77-72	H 5	GOOD! FT by ADEBAYO, EVELYN
00:49	MISSED 3PTR by EVERIDGE, RIANA			
00:46	REBOUND (OFF) by KEITH, MIKIA			
00:44	TURNOVER (TRAVEL) by KING, CHRISTEN			
00:44	SUB OUT: KEITH, MIKIA			
00:44	SUB IN: TROECKLER, ALLIE			
00:44				TIMEOUT 30SEC
00:35				TIMEOUT 30SEC
00:32				TURNOVER (LOSTBALL) by ADEBAYO, EVELYN
00:32	STEAL by JONES, MICAH			
00:32	SUB OUT: TROECKLER, ALLIE			
00:32	SUB IN: KEITH, MIKIA			
00:32	TIMEOUT 30SEC			
00:29	GOOD! 3PTR by EVERIDGE, RIANA	77-75	H 2	
00:29	ASSIST by ALSTON, JAY'NEE			
00:26	FOUL (PERSONAL) by KING, CHRISTEN			
00:26		78-75	H 3	GOOD! FT by TURLEY, MACEY [FB]
00:26		79-75	H 4	GOOD! FT by TURLEY, MACEY [FB]
00:26	TIMEOUT TEAM			
00:23	MISSED 3PTR by KEITH, MIKIA			
00:20				REBOUND (DEF) by ADEBAYO, EVELYN
00:19	FOUL (PERSONAL) by JONES, MICAH			
00:19				MISSED FT by ADEBAYO, EVELYN
00:19				REBOUND (OFF) by TEAM
00:19	SUB OUT: JONES, MICAH			
00:19	SUB IN: HALL, MIKALA			
00:19		80-75	H 5	GOOD! FT by ADEBAYO, EVELYN
00:12	MISSED 3PTR by ALSTON, JAY'NEE			
00:10				REBOUND (DEF) by TEAM
00:08	FOUL (PERSONAL) by HALL, MIKALA			
00:08		81-75	H 6	GOOD! FT by ADEBAYO, EVELYN [FB]
00:08				MISSED FT by ADEBAYO, EVELYN
00:08	REBOUND (DEF) by KING, CHRISTEN			
00:04	MISSED JUMPER by HALL, MIKALA			
00:01				REBOUND (DEF) by MACK, CEKEYA

### SIUE 75, Murray St. 81

Points from (This Period)	SIUE	MUR
In the Paint	12	8
Off Turns	10	0
2nd Chance	5	2
Fast Break	2	3
Bench	10	8





**Official Scoring/Possession Reference Chart**  
**SIUE vs Murray St.**  
**Period 1**  
**February 09, 2019 at CFSB Center - Murray, Ky.**



**Period 1**

**Starters:**

**SIUE:** 23 TROECKLER,ALLIE; 34 BAUMAN,SYDNEY; 1 KING,CHRISTEN; 5 ALSTON,JAY'NEE; 14 JONES,MICAH;

**Murray St.:** 0 GRIFFITH-WALLACE,JANIKA; 5 TURLEY,MACEY; 14 ADEBAYO,EVELYN; 31 CRANE,BRIANNA; 32 BURPO,ALEXIS;

Time	VISITORS: SIUE	Score	Margin	HOME: Murray St.
09:03		2-0	H 2	GOOD! JUMPER by TURLEY, MACEY
08:27	GOOD! LAYUP by JONES, MICAH	2-2	T	
07:57	GOOD! JUMPER by KING, CHRISTEN [FB]	2-4	V 2	
07:38		5-4	H 1	GOOD! 3PTR by GRIFFITH-WALLACE, JANIKA
07:24	GOOD! LAYUP by BAUMAN, SYDNEY	5-6	V 1	
06:30		8-6	H 2	GOOD! 3PTR by TURLEY, MACEY
05:43		11-6	H 5	GOOD! 3PTR by ADEBAYO, EVELYN
05:12		12-6	H 6	GOOD! FT by GRIFFITH-WALLACE, JANIKA [FB]
05:12		13-6	H 7	GOOD! FT by GRIFFITH-WALLACE, JANIKA [FB]
04:38		14-6	H 8	GOOD! FT by TURLEY, MACEY
04:38		15-6	H 9	GOOD! FT by TURLEY, MACEY
04:15		17-6	H 11	GOOD! LAYUP by TURLEY, MACEY [FB]
02:48		18-6	H 12	GOOD! FT by TURLEY, MACEY
02:48		19-6	H 13	GOOD! FT by TURLEY, MACEY
02:21	GOOD! JUMPER by JONES, MICAH	19-8	H 11	
02:06		20-8	H 12	GOOD! FT by ADEBAYO, EVELYN
02:06		21-8	H 13	GOOD! FT by ADEBAYO, EVELYN
01:07	GOOD! LAYUP by JONES, MICAH	21-10	H 11	
00:05	GOOD! LAYUP by EVERIDGE, RIANA	21-12	H 9	

**SIUE 12, Murray St. 21**

**Official Scoring/Possession Reference Chart**  
**SIUE vs Murray St.**  
**Period 2**  
**February 09, 2019 at CFSB Center - Murray, Ky.**



**Period 2**

**Starters:**

**SIUE:** 23 TROECKLER,ALLIE; 34 BAUMAN,SYDNEY; 1 KING,CHRISTEN; 5 ALSTON,JAY'NEE; 14 JONES,MICAH;

**Murray St.:** 0 GRIFFITH-WALLACE,JANIKA; 5 TURLEY,MACEY; 14 ADEBAYO,EVELYN; 31 CRANE,BRIANNA; 32 BURPO,ALEXIS;

Time	VISITORS: SIUE	Score	Margin	HOME: Murray St.
07:57	GOOD! LAYUP by JONES, MICAH	21-14	H 7	
07:32		23-14	H 9	GOOD! JUMPER by CRANE, BRIANNA
07:14	GOOD! JUMPER by JONES, MICAH [PNT]	23-16	H 7	
06:56		26-16	H 10	GOOD! 3PTR by TURLEY, MACEY
06:30	GOOD! 3PTR by KOEHLER, KAI	26-19	H 7	
05:59	GOOD! LAYUP by BAUMAN, SYDNEY	26-21	H 5	
05:32		28-21	H 7	GOOD! LAYUP by MACK, CEKEYA
04:50	GOOD! JUMPER by EVERIDGE, RIANA [FB/PNT]	28-23	H 5	
04:06		31-23	H 8	GOOD! 3PTR by MAYES, LEX [FB]
03:45	GOOD! LAYUP by JONES, MICAH	31-25	H 6	
03:45	GOOD! FT by JONES, MICAH	31-26	H 5	
03:22		34-26	H 8	GOOD! 3PTR by ADEBAYO, EVELYN [FB]
02:51	GOOD! 3PTR by HALL, MIKALA	34-29	H 5	
02:33		36-29	H 7	GOOD! JUMPER by ADEBAYO, EVELYN [PNT]
02:06		38-29	H 9	GOOD! JUMPER by ADEBAYO, EVELYN
01:48	GOOD! LAYUP by BAUMAN, SYDNEY	38-31	H 7	
01:28		41-31	H 10	GOOD! 3PTR by MAYES, LEX

**SIUE 31, Murray St. 41**

**Official Scoring/Possession Reference Chart**  
**SIUE vs Murray St.**  
**Period 3**  
**February 09, 2019 at CFSB Center - Murray, Ky.**



**Period 3**

**Starters:**

**SIUE:** 23 TROECKLER,ALLIE; 34 BAUMAN,SYDNEY; 1 KING,CHRISTEN; 5 ALSTON,JAY'NEE; 14 JONES,MICAH;

**Murray St.:** 0 GRIFFITH-WALLACE,JANIKA; 5 TURLEY,MACEY; 14 ADEBAYO,EVELYN; 31 CRANE,BRIANNA; 32 BURPO,ALEXIS;

Time	VISITORS: SIUE	Score	Margin	HOME: Murray St.
09:49	GOOD! 3PTR by ALSTON, JAY'NEE	41-34	H 7	
09:05	GOOD! JUMPER by JONES, MICAH [PNT]	41-36	H 5	
08:46	GOOD! LAYUP by KING, CHRISTEN [FB]	41-38	H 3	
07:49		42-38	H 4	GOOD! FT by ADEBAYO, EVELYN
07:38	GOOD! LAYUP by JONES, MICAH	42-40	H 2	
05:54		43-40	H 3	GOOD! FT by GRIFFITH-WALLACE, JANIKA
05:34	GOOD! FT by EVERIDGE, RIANA	43-41	H 2	
05:21		44-41	H 3	GOOD! FT by ADEBAYO, EVELYN
05:21		45-41	H 4	GOOD! FT by ADEBAYO, EVELYN
04:38	GOOD! FT by AKUEN, ALEK	45-42	H 3	
04:38	GOOD! FT by AKUEN, ALEK	45-43	H 2	
04:13		47-43	H 4	GOOD! LAYUP by ADEBAYO, EVELYN
03:52	GOOD! JUMPER by KEITH, MIKIA	47-45	H 2	
03:22		50-45	H 5	GOOD! 3PTR by MAYES, LEX
02:46		53-45	H 8	GOOD! 3PTR by MAYES, LEX
02:15	GOOD! LAYUP by KING, CHRISTEN [FB]	53-47	H 6	
02:02		54-47	H 7	GOOD! FT by TURLEY, MACEY
02:02		55-47	H 8	GOOD! FT by TURLEY, MACEY
01:26	GOOD! JUMPER by KING, CHRISTEN	55-49	H 6	
00:41		57-49	H 8	GOOD! JUMPER by CRANE, BRIANNA
00:30	GOOD! FT by JONES, MICAH	57-50	H 7	
00:30	GOOD! FT by JONES, MICAH	57-51	H 6	
00:05		58-51	H 7	GOOD! FT by ADEBAYO, EVELYN
00:00	GOOD! FT by TROECKLER, ALLIE [FB]	58-52	H 6	
00:00	GOOD! FT by TROECKLER, ALLIE [FB]	58-53	H 5	

**SIUE 53, Murray St. 58**

**Official Scoring/Possession Reference Chart**  
**SIUE vs Murray St.**  
**Period 4**  
**February 09, 2019 at CFSB Center - Murray, Ky.**



**Period 4**

**Starters:**

**SIUE:** 23 TROECKLER,ALLIE; 34 BAUMAN,SYDNEY; 1 KING,CHRISTEN; 5 ALSTON,JAY'NEE; 14 JONES,MICAH;

**Murray St.:** 0 GRIFFITH-WALLACE,JANIKA; 5 TURLEY,MACEY; 14 ADEBAYO,EVELYN; 31 CRANE,BRIANNA; 32 BURPO,ALEXIS;

Time	VISITORS: SIUE	Score	Margin	HOME: Murray St.
09:52		59-53	H 6	GOOD! FT by TURLEY, MACEY
09:52		60-53	H 7	GOOD! FT by TURLEY, MACEY
09:33	GOOD! LAYUP by TROECKLER, ALLIE	60-55	H 5	
09:33	GOOD! FT by TROECKLER, ALLIE	60-56	H 4	
09:07	GOOD! LAYUP by TROECKLER, ALLIE [FB]	60-58	H 2	
08:31	GOOD! LAYUP by JONES, MICAH	60-60	T	
08:11		62-60	H 2	GOOD! LAYUP by ADEBAYO, EVELYN
06:55	GOOD! 3PTR by EVERIDGE, RIANA	62-63	V 1	
06:35		64-63	H 1	GOOD! LAYUP by MACK, CEKEYA
05:28		67-63	H 4	GOOD! 3PTR by MAYES, LEX
04:21	GOOD! LAYUP by EVERIDGE, RIANA	67-65	H 2	
04:04		70-65	H 5	GOOD! 3PTR by ADEBAYO, EVELYN
03:52	GOOD! JUMPER by KING, CHRISTEN [PNT]	70-67	H 3	
03:34		72-67	H 5	GOOD! JUMPER by GRIFFITH-WALLACE, JANIKA [PNT]
03:21	GOOD! FT by JONES, MICAH	72-68	H 4	
03:07		73-68	H 5	GOOD! FT by MACK, CEKEYA
02:32	GOOD! JUMPER by KING, CHRISTEN [PNT]	73-70	H 3	
02:17		75-70	H 5	GOOD! LAYUP by MACK, CEKEYA
02:05	GOOD! FT by EVERIDGE, RIANA	75-71	H 4	
02:05	GOOD! FT by EVERIDGE, RIANA	75-72	H 3	
01:00		76-72	H 4	GOOD! FT by ADEBAYO, EVELYN
01:00		77-72	H 5	GOOD! FT by ADEBAYO, EVELYN
00:29	GOOD! 3PTR by EVERIDGE, RIANA	77-75	H 2	
00:26		78-75	H 3	GOOD! FT by TURLEY, MACEY [FB]
00:26		79-75	H 4	GOOD! FT by TURLEY, MACEY [FB]
00:19		80-75	H 5	GOOD! FT by ADEBAYO, EVELYN
00:08		81-75	H 6	GOOD! FT by ADEBAYO, EVELYN [FB]

**SIUE 75, Murray St. 81**

**Official Substitutions Log**  
**SIUE vs Murray St.**  
**Period 1**  
**February 09, 2019 at CFSB Center - Murray, Ky.**



<b>VISITORS: SIUE</b>	<b>Time</b>	<b>Score</b>	<b>HOME: Murray St.</b>
23 TROECKLER, ALLIE			0 GRIFFITH-WALLACE, JANIKA
34 BAUMAN, SYDNEY			5 TURLEY, MACEY
1 KING, CHRISTEN			14 ADEBAYO, EVELYN
5 ALSTON, JAY'NEE			31 CRANE, BRIANNA
14 JONES, MICAH			32 BURPO, ALEXIS
SUB OUT: 5 ALSTON, JAY'NEE	06:09	6-8	
SUB IN: 11 KEITH, MIKIA	06:09		
SUB OUT: 1 KING, CHRISTEN	06:09		
SUB IN: 35 HALL, MIKALA	06:09		
SUB OUT: 35 HALL, MIKALA	05:12	6-11	
SUB IN: 1 KING, CHRISTEN	05:12		
	05:12		SUB OUT: CRANE, BRIANNA
	05:12		SUB IN: MAYES, LEX
	05:12		SUB OUT: BURPO, ALEXIS
	05:12		SUB IN: MACK, CEKEYA
SUB OUT: 14 JONES, MICAH	05:12		
SUB IN: 44 EVERIDGE, RIANA	05:12		
SUB OUT: 11 KEITH, MIKIA	04:14	6-17	
SUB IN: 14 JONES, MICAH	04:14		
SUB OUT: 44 EVERIDGE, RIANA	04:14		
SUB IN: 5 ALSTON, JAY'NEE	04:14		
SUB OUT: 34 BAUMAN, SYDNEY	03:52	6-17	
SUB IN: 44 EVERIDGE, RIANA	03:52		
	02:48	6-18	SUB OUT: GRIFFITH-WALLACE, JANIKA
	02:48		SUB IN: CRANE, BRIANNA
	02:48		SUB OUT: MAYES, LEX
	02:48		SUB IN: BURPO, ALEXIS
	02:48		SUB OUT: MACK, CEKEYA
	02:48		SUB IN: MANLEY, MICHAELA
SUB OUT: 23 TROECKLER, ALLIE	02:48		
SUB IN: 12 KOEHLER, KAI	02:48		
	01:31	8-21	SUB OUT: MANLEY, MICHAELA
	01:31		SUB IN: MAYES, LEX
	00:38	10-21	SUB OUT: MAYES, LEX
	00:38		SUB IN: BLACKBURN, RAEGAN
SUB OUT: 1 KING, CHRISTEN	00:38		
SUB IN: 11 KEITH, MIKIA	00:38		

**SIUE 12, Murray St. 21**

**Official Substitutions Log**  
**SIUE vs Murray St.**  
**Period 2**  
**February 09, 2019 at CFSB Center - Murray, Ky.**



VISITORS: SIUE	Time	Score	HOME: Murray St.
23 TROECKLER,ALLIE			0 GRIFFITH-WALLACE, JANIKA
34 BAUMAN, SYDNEY			5 TURLEY, MACEY
1 KING, CHRISTEN			14 ADEBAYO, EVELYN
5 ALSTON, JAY'NEE			31 CRANE, BRIANNA
14 JONES, MICAH			32 BURPO, ALEXIS
SUB OUT: 44 EVERIDGE, RIANA	08:13	-	
SUB IN: 34 BAUMAN, SYDNEY	08:13		
SUB OUT: 11 KEITH, MIKIA	08:13		
SUB IN: 1 KING, CHRISTEN	08:13		
	07:19	14-23	SUB OUT: CRANE, BRIANNA
	07:19		SUB IN: MACK, CEKEYA
	07:19		SUB OUT: BURPO, ALEXIS
	07:19		SUB IN: MAYES, LEX
	06:10	19-26	SUB OUT: GRIFFITH-WALLACE, JANIKA
	06:10		SUB IN: MANLEY, MICHAELA
SUB OUT: 12 KOEHLER, KAI	06:10		
SUB IN: 35 HALL, MIKALA	06:10		
SUB OUT: 14 JONES, MICAH	06:10		
SUB IN: 44 EVERIDGE, RIANA	06:10		
	04:37	23-28	SUB OUT: MACK, CEKEYA
	04:37		SUB IN: CRANE, BRIANNA
SUB OUT: 5 ALSTON, JAY'NEE	04:37		
SUB IN: 14 JONES, MICAH	04:37		
SUB OUT: 44 EVERIDGE, RIANA	04:37		
SUB IN: 11 KEITH, MIKIA	04:37		
	03:45	25-31	SUB OUT: MANLEY, MICHAELA
	03:45		SUB IN: GRIFFITH-WALLACE, JANIKA
	02:20	29-36	SUB OUT: TURLEY, MACEY
	02:20		SUB IN: BURPO, ALEXIS
SUB OUT: 11 KEITH, MIKIA	02:20		
SUB IN: 5 ALSTON, JAY'NEE	02:20		
SUB OUT: 35 HALL, MIKALA	02:20		
SUB IN: 23 TROECKLER, ALLIE	02:20		

**SIUE 31, Murray St. 41**

**Official Substitutions Log**  
**SIUE vs Murray St.**  
**Period 3**  
**February 09, 2019 at CFSB Center - Murray, Ky.**



VISITORS: SIUE	Time	Score	HOME: Murray St.
23 TROECKLER, ALLIE			0 GRIFFITH-WALLACE, JANIKA
34 BAUMAN, SYDNEY			5 TURLEY, MACEY
1 KING, CHRISTEN			14 ADEBAYO, EVELYN
5 ALSTON, JAY'NEE			31 CRANE, BRIANNA
14 JONES, MICAH			32 BURPO, ALEXIS
	07:38	40-42	SUB OUT: BURPO, ALEXIS
	07:38		SUB IN: MAYES, LEX
	07:38		SUB OUT: CRANE, BRIANNA
	07:38		SUB IN: MACK, CEKEYA
SUB OUT: 14 JONES, MICAH	06:14	40-42	
SUB IN: 44 EVERIDGE, RIANA	06:14		
SUB OUT: 34 BAUMAN, SYDNEY	06:14		
SUB IN: 21 AKUEN, ALEK	06:14		
SUB OUT: 1 KING, CHRISTEN	05:54	40-42	
SUB IN: 11 KEITH, MIKIA	05:54		
SUB OUT: 44 EVERIDGE, RIANA	04:38	41-45	
SUB IN: 14 JONES, MICAH	04:38		
	02:58	45-50	SUB OUT: MACK, CEKEYA
	02:58		SUB IN: CRANE, BRIANNA
SUB OUT: 5 ALSTON, JAY'NEE	02:58		
SUB IN: 1 KING, CHRISTEN	02:58		
	01:13	49-55	SUB OUT: GRIFFITH-WALLACE, JANIKA
	01:13		SUB IN: MANLEY, MICHAELA
SUB OUT: 21 AKUEN, ALEK	01:13		
SUB IN: 34 BAUMAN, SYDNEY	01:13		
SUB OUT: 14 JONES, MICAH	00:30	51-57	
SUB IN: 44 EVERIDGE, RIANA	00:30		
	00:05	51-57	SUB OUT: TURLEY, MACEY
	00:05		SUB IN: GRIFFITH-WALLACE, JANIKA

**SIUE 53, Murray St. 58**



**Official Substitutions Log**  
**SIUE vs Murray St.**  
**Period 4**  
**February 09, 2019 at CFSB Center - Murray, Ky.**



<b>VISITORS: SIUE</b>	<b>Time</b>	<b>Score</b>	<b>HOME: Murray St.</b>
23 TROECKLER,ALLIE			0 GRIFFITH-WALLACE, JANIKA
34 BAUMAN, SYDNEY			5 TURLEY, MACEY
1 KING, CHRISTEN			14 ADEBAYO, EVELYN
5 ALSTON, JAY'NEE			31 CRANE, BRIANNA
14 JONES, MICAH			32 BURPO, ALEXIS
	09:33	55-60	SUB OUT: CRANE, BRIANNA
	09:33		SUB IN: MACK, CEKEYA
	08:42	58-60	SUB OUT: BURPO, ALEXIS
	08:42		SUB IN: MAYES, LEX
SUB OUT: 34 BAUMAN, SYDNEY	08:42		
SUB IN: 14 JONES, MICAH	08:42		
SUB OUT: 14 JONES, MICAH	05:14	63-67	
SUB IN: 11 KEITH, MIKIA	05:14		
SUB OUT: 23 TROECKLER, ALLIE	05:14		
SUB IN: 34 BAUMAN, SYDNEY	05:14		
SUB OUT: 34 BAUMAN, SYDNEY	04:48	63-67	
SUB IN: 14 JONES, MICAH	04:48		
SUB OUT: 11 KEITH, MIKIA	02:30	70-73	
SUB IN: 23 TROECKLER, ALLIE	02:30		
SUB OUT: 23 TROECKLER, ALLIE	01:00	72-76	
SUB IN: 11 KEITH, MIKIA	01:00		
SUB OUT: 11 KEITH, MIKIA	00:44	72-77	
SUB IN: 23 TROECKLER, ALLIE	00:44		
SUB OUT: 23 TROECKLER, ALLIE	00:32	72-77	
SUB IN: 11 KEITH, MIKIA	00:32		
SUB OUT: 14 JONES, MICAH	00:19	75-79	
SUB IN: 35 HALL, MIKALA	00:19		

**SIUE 75, Murray St. 81**

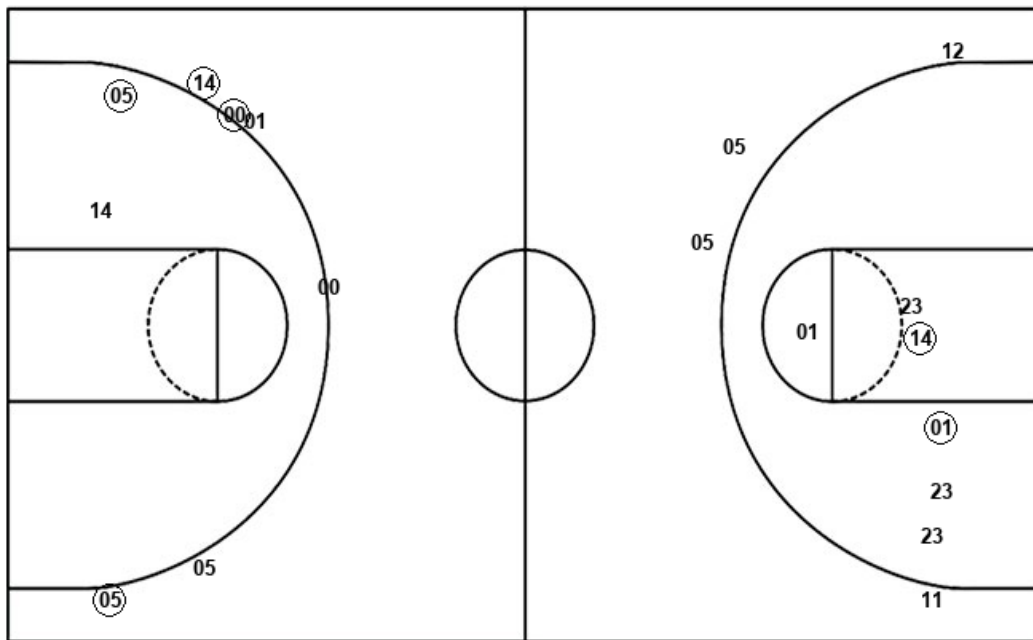
**Official Shot Chart**  
**SIUE vs Murray St.**  
**PERIOD 1 Shots**  
 February 09, 2019 at CFSB Center - Murray, Ky.



**Murray St.**

**SIUE**

Layups  
00 14 (05) 00



Layups  
23 14 34 (14) (34)  
14 (14) (44)

Dunks

Dunks

MUR : Period 1	Made	Att	Pct
Layups	1	4	25.0
Dunks	0	0	0
2PT Field Goals	2	6	33.3
3PT Field Goals	3	6	50.0
<b>Total Field Goals</b>	<b>5</b>	<b>12</b>	<b>41.7</b>

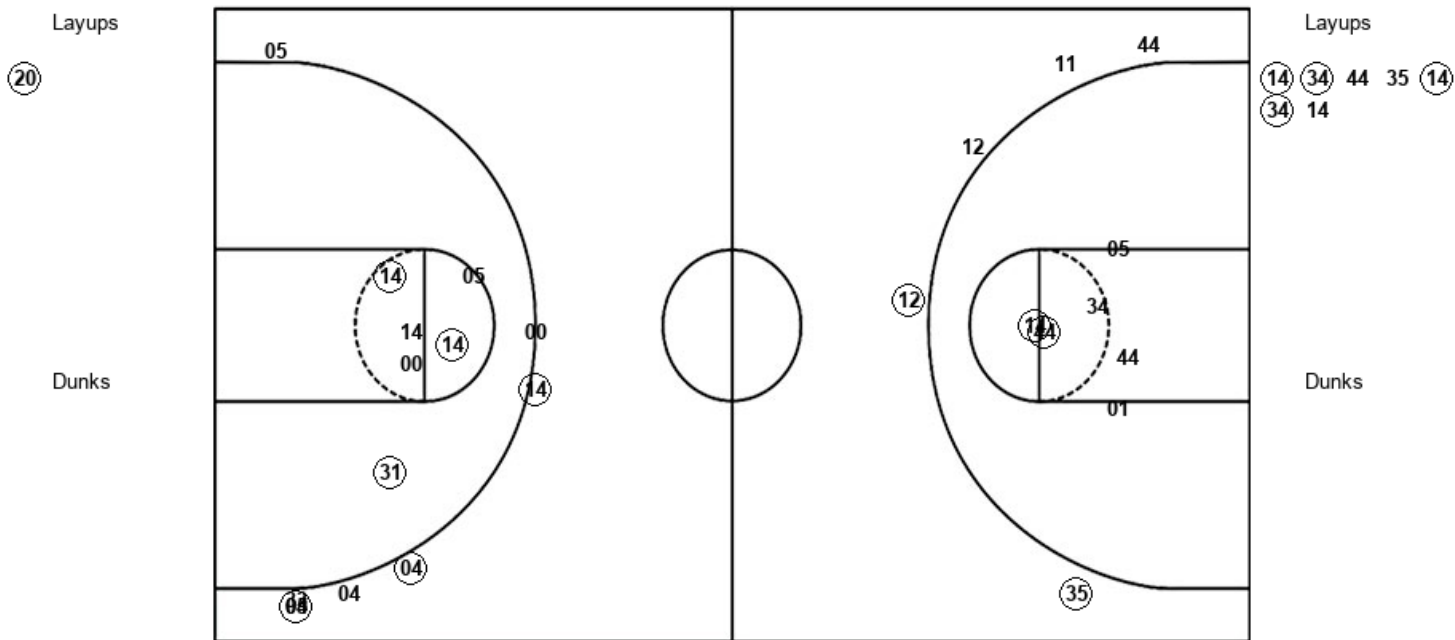
SIE : Period 1	Made	Att	Pct
Layups	4	8	50.0
Dunks	0	0	0
2PT Field Goals	6	14	42.9
3PT Field Goals	0	4	00.0
<b>Total Field Goals</b>	<b>6</b>	<b>18</b>	<b>33.3</b>

**Official Shot Chart**  
**SIUE vs Murray St.**  
**PERIOD 2 Shots**  
 February 09, 2019 at CFSB Center - Murray, Ky.



**Murray St.**

**SIUE**



<b>MUR : Period 2</b>	<b>Made</b>	<b>Att</b>	<b>Pct</b>
Layups	1	1	100.0
Dunks	0	0	0
2PT Field Goals	4	7	57.1
3PT Field Goals	4	8	50.0
<b>Total Field Goals</b>	<b>8</b>	<b>15</b>	<b>53.3</b>

<b>SIE : Period 2</b>	<b>Made</b>	<b>Att</b>	<b>Pct</b>
Layups	4	7	57.1
Dunks	0	0	0
2PT Field Goals	6	13	46.2
3PT Field Goals	2	5	40.0
<b>Total Field Goals</b>	<b>8</b>	<b>18</b>	<b>44.4</b>

**Official Shot Chart**  
**SIUE vs Murray St.**  
**PERIOD 3 Shots**  
 February 09, 2019 at CFSB Center - Murray, Ky.



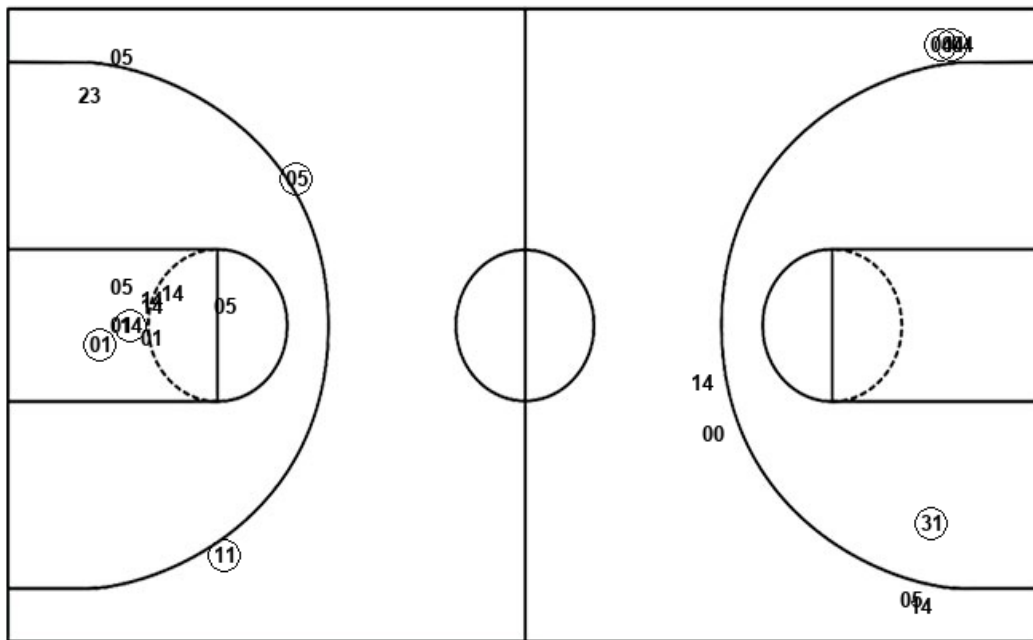
**Murray St.**

**SIUE**

Layups

05 05 (14)

Dunks



Layups

(01) (14) 23 14 (01)

Dunks

<b>MUR : Period 3</b>	<b>Made</b>	<b>Att</b>	<b>Pct</b>
Layups	1	3	33.3
Dunks	0	0	0
2PT Field Goals	2	4	50.0
3PT Field Goals	2	7	28.6
<b>Total Field Goals</b>	<b>4</b>	<b>11</b>	<b>36.4</b>

<b>SIE : Period 3</b>	<b>Made</b>	<b>Att</b>	<b>Pct</b>
Layups	3	5	60.0
Dunks	0	0	0
2PT Field Goals	6	16	37.5
3PT Field Goals	1	2	50.0
<b>Total Field Goals</b>	<b>7</b>	<b>18</b>	<b>38.9</b>

**Official Shot Chart**  
**SIUE vs Murray St.**  
**PERIOD 4 Shots**  
 February 09, 2019 at CFSB Center - Murray, Ky.

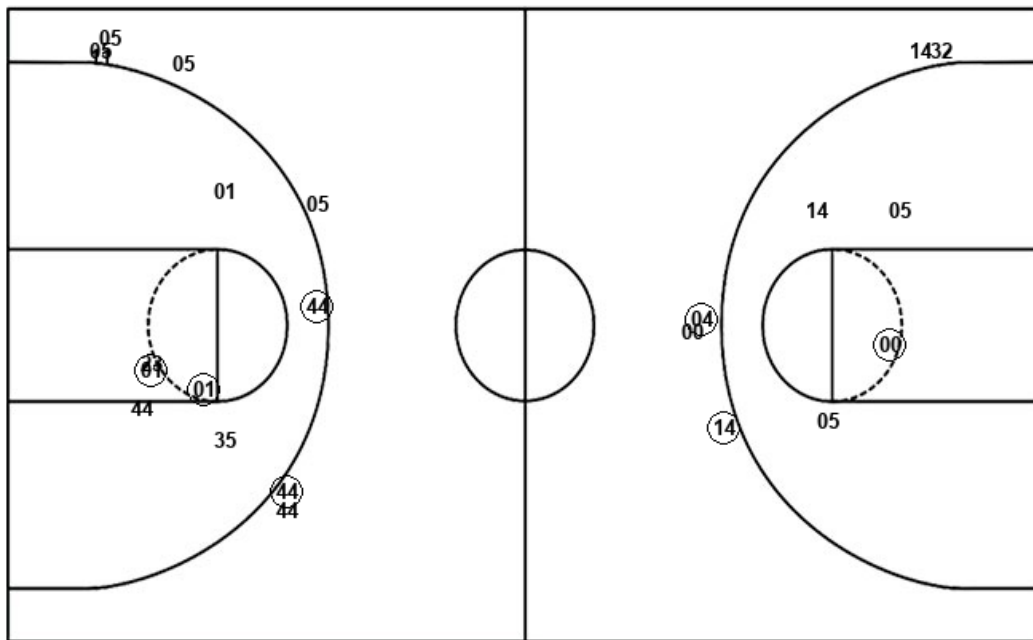


**Murray St.**

**SIUE**

Layups  
 14 (14) (20) (20)

Dunks



Layups

(23) (23) (14) 01 34  
 (44)

Dunks

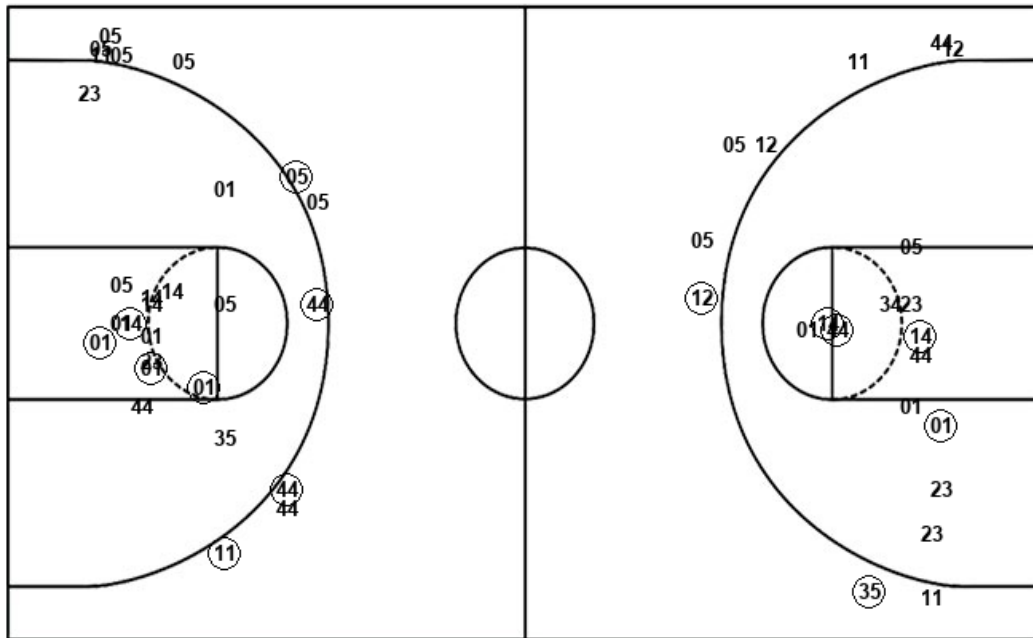
<b>MUR : Period 4</b>	<b>Made</b>	<b>Att</b>	<b>Pct</b>
Layups	3	4	75.0
Dunks	0	0	0
2PT Field Goals	4	8	50.0
3PT Field Goals	2	5	40.0
<b>Total Field Goals</b>	<b>6</b>	<b>13</b>	<b>46.2</b>

<b>SIE : Period 4</b>	<b>Made</b>	<b>Att</b>	<b>Pct</b>
Layups	4	6	66.7
Dunks	0	0	0
2PT Field Goals	6	12	50.0
3PT Field Goals	2	8	25.0
<b>Total Field Goals</b>	<b>8</b>	<b>20</b>	<b>40.0</b>

**Official Shot Chart**  
**SIUE vs Murray St.**  
**SIUE Team Shots**  
 February 09, 2019 at CFSB Center - Murray, Ky.



Layups



Layups

23 14 34 (14) (34)  
 14 (14) (44) (14) (34)  
 44 35 (14) (34) 14  
 (01) (14) 23 14 (01)  
 (23) (23) (14) 01 34  
 (44)

Dunks

Dunks

SIUE : Period 1	Made	Att	Pct
Layups	4	8	50.0
Dunks	0	0	0
2PT Field Goals	6	14	42.9
3PT Field Goals	0	4	00.0
<b>Total Field Goals</b>	<b>6</b>	<b>18</b>	<b>33.3</b>

SIUE : Period 3	Made	Att	Pct
Layups	3	5	60.0
Dunks	0	0	0
2PT Field Goals	6	16	37.5
3PT Field Goals	1	2	50.0
<b>Total Field Goals</b>	<b>7</b>	<b>18</b>	<b>38.9</b>

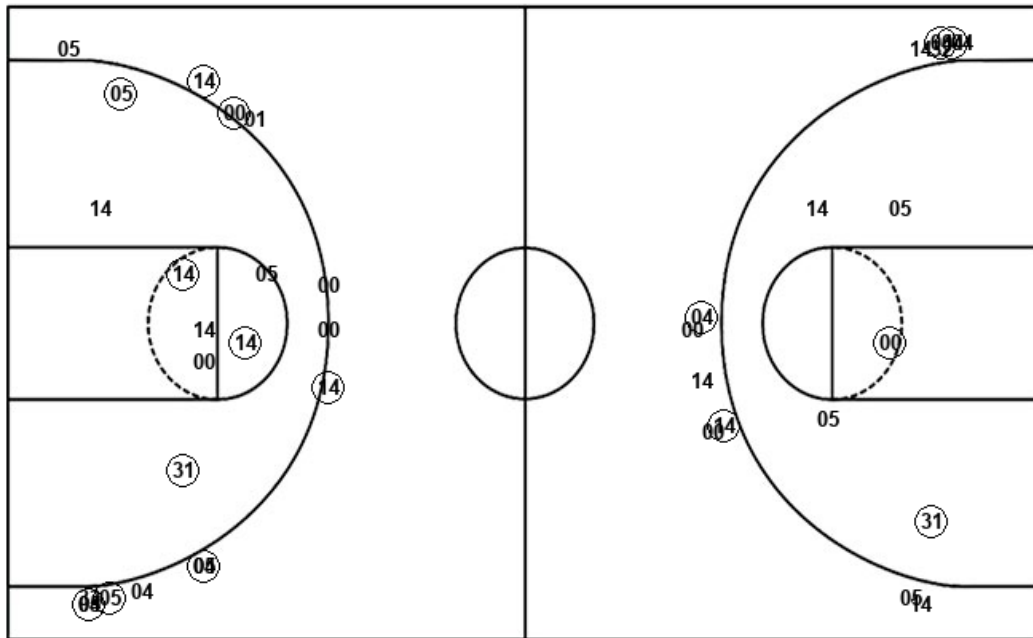
SIUE : Period 2	Made	Att	Pct
Layups	4	7	57.1
Dunks	0	0	0
2PT Field Goals	6	13	46.2
3PT Field Goals	2	5	40.0
<b>Total Field Goals</b>	<b>8</b>	<b>18</b>	<b>44.4</b>

SIUE : Period 4	Made	Att	Pct
Layups	4	6	66.7
Dunks	0	0	0
2PT Field Goals	6	12	50.0
3PT Field Goals	2	8	25.0
<b>Total Field Goals</b>	<b>8</b>	<b>20</b>	<b>40.0</b>

**Official Shot Chart**  
**SIUE vs Murray St.**  
**Murray St. Team Shots**  
 February 09, 2019 at CFSB Center - Murray, Ky.



Layups



Layups

00 14 (05) 00 (20)  
 05 05 (14) 14 (14)  
 (20) (20)

Dunks

Dunks

MUR : Period 1	Made	Att	Pct
Layups	1	4	25.0
Dunks	0	0	0
2PT Field Goals	2	6	33.3
3PT Field Goals	3	6	50.0
<b>Total Field Goals</b>	<b>5</b>	<b>12</b>	<b>41.7</b>

MUR : Period 3	Made	Att	Pct
Layups	1	3	33.3
Dunks	0	0	0
2PT Field Goals	2	4	50.0
3PT Field Goals	2	7	28.6
<b>Total Field Goals</b>	<b>4</b>	<b>11</b>	<b>36.4</b>

MUR : Period 2	Made	Att	Pct
Layups	1	1	100.0
Dunks	0	0	0
2PT Field Goals	4	7	57.1
3PT Field Goals	4	8	50.0
<b>Total Field Goals</b>	<b>8</b>	<b>15</b>	<b>53.3</b>

MUR : Period 4	Made	Att	Pct
Layups	3	4	75.0
Dunks	0	0	0
2PT Field Goals	4	8	50.0
3PT Field Goals	2	5	40.0
<b>Total Field Goals</b>	<b>6</b>	<b>13</b>	<b>46.2</b>