

FINAL SCORE



Tulsa

49



Wichita St.

71

**March 05, 2019 • Charles Koch Arena (Devlin Court) - Wichita,
Kan.**

FINAL STATISTICS

Official Box Score
Tulsa vs Wichita St.
Game Totals -- Final Statistics
March 05, 2019 at Charles Koch Arena (Devlin Court) - Wichita, Kan.

Tulsa 49

No.	Player	S	Pts	FG	3FG	FT	OR	DR	TR	PF	A	TO	Blk	Stl	Min	+/-
10	Gaulden, Alexis		8	3-9	2-6	0-0	0	1	1	2	2	4	0	3	27	-12
21	Lescay, Rebecca		7	3-9	0-1	1-2	0	2	2	2	5	3	0	2	34	-21
22	Brady, Morgan		5	2-5	1-4	0-0	0	1	1	3	1	0	0	0	18	-10
32	Lewis, Desiree		1	0-1	0-0	1-4	1	4	5	1	0	0	0	0	28	-9
33	Polk, Crystal		20	9-12	0-0	2-4	1	7	8	2	0	0	0	1	29	-14
00	Elliott, Kendrian		3	1-4	0-0	1-2	2	2	4	2	0	0	1	0	13	-14
04	Richards, Addison		0	0-5	0-3	0-0	1	0	1	1	0	2	0	0	13	-14
05	Butler, Jasmine		0	0-0	0-0	0-0	0	1	1	0	0	0	0	0	3	-6
15	Rodriguez, Kk		2	1-8	0-5	0-2	1	0	1	1	0	1	0	2	12	-3
20	Hrafnkelsdottir, Elin		0	0-0	0-0	0-0	1	0	1	1	1	0	0	0	7	-1
23	Moutry, Kayla		3	1-3	0-1	1-2	0	3	3	3	4	2	0	0	15	-6
	Team						1	0	1	0		0				
TOTALS			49	20-56	3-20	6-16	8	21	29	18	13	12	1	8	198	

Shooting By Period

Period	FG	FG%	3FG	3FG%	FT	FT%
1st Qtr	7-15	47%	0-4	00%	1-2	50%
2nd Qtr	6-17	35%	0-4	00%	0-0	0%
3rd Qtr	4-12	33%	1-3	33%	0-2	00%
4th Qtr	3-12	25%	2-9	22%	5-12	42%
1st Half	13-32	41%	0-8	00%	1-2	50%
2nd Half	7-24	29%	3-12	25%	5-14	36%
Game	20-56	35.7%	3-20	15.0%	6-16	37.5%

Last FG: 4th-03:36
Biggest Run: 6-0
Largest lead: By 6 at 1-05:43
Technical Fouls: None.

Wichita St. 71

No.	Player	S	Pts	FG	3FG	FT	OR	DR	TR	PF	A	TO	Blk	Stl	Min	+/-
11	Lozada-Cabbage, Sabrina		13	5-11	2-6	1-2	3	3	6	3	1	3	3	2	34	19
12	Bremaud, Carla		11	4-10	2-7	1-4	0	6	6	1	1	1	0	0	31	10
13	Prince, Raven		1	0-2	0-0	1-4	2	0	2	1	0	1	1	1	20	8
23	Bastin, Seraphine		19	7-13	1-3	4-5	1	3	4	3	3	1	0	1	33	25
30	Ambrosio, Cesaria		6	2-5	1-2	1-2	1	3	4	1	2	0	0	1	33	12
05	Reid, Ashley		2	1-1	0-0	0-0	0	2	2	1	0	3	0	1	7	6
21	Brewer, Maya		9	3-5	2-3	1-2	1	2	3	3	1	1	0	0	14	13
22	Faye, Alyssia		0	0-0	0-0	0-0	0	0	0	0	0	1	0	0	3	0
24	Colbert, Trajata		6	3-4	0-0	0-1	1	3	4	3	0	0	1	0	12	10
34	Smith, Shyia		0	0-0	0-0	0-0	0	1	1	0	0	1	1	0	3	3
42	Henderson, Asia		4	1-5	0-0	2-2	0	2	2	0	0	0	0	0	7	4
	Team						1	0	1	0		0				
TOTALS			71	26-56	8-21	11-22	10	25	35	16	8	12	6	6	198	

Shooting By Period

Period	FG	FG%	3FG	3FG%	FT	FT%
1st Qtr	7-17	41%	1-6	17%	0-0	0%
2nd Qtr	7-16	44%	2-5	40%	2-4	50%
3rd Qtr	7-13	54%	4-6	67%	2-6	33%
4th Qtr	5-10	50%	1-4	25%	7-12	58%
1st Half	14-33	42%	3-11	27%	2-4	50%
2nd Half	12-23	52%	5-10	50%	9-18	50%
Game	26-56	46.4%	8-21	38.1%	11-22	50.0%

Last FG: 4th-03:55
Biggest Run: 10-0
Largest lead: By 23 at 4-00:35
Technical Fouls: None.

Game Notes:

Officials: Bryan Enterline, Norma Jones, Pualani Spurlock
Attendance: 1552

Start Time: 2019-03-05 00:35:24
End Time: 2019-03-05 02:21:18
Game Duration: 105
Conference Game;

Score	1st	2nd	3rd	4th	TOT
TLS	15	12	9	13	49
WSU	15	18	20	18	71

TLS led for 8:54. WSU led for 30:03.
Game was tied for 0:41.
Times tied: 1 Lead Changes: 3

Points from	TLS	WSU
In the Paint	24	26
Off Turns	7	14
2nd Chance	9	12
Fast Break	6	5
Bench	8	21

Official Box Score
Tulsa vs Wichita St.
First Half Statistics Only
March 05, 2019 at Charles Koch Arena (Devlin Court) - Wichita, Kan.

Tulsa 27

No.	Player	S	Pts	FG	3FG	FT	OR	DR	TR	PF	A	TO	Blk	Stl	Min	+/-
00	Elliott, Kendrian		0	0-2	0-0	0-0	1	1	2	1	0	0	1	0	4	-6
10	Gaulden, Alexis		2	1-6	0-3	0-0	0	1	1	2	2	3	0	2	15	-4
15	Rodriguez, Kk		2	1-3	0-2	0-0	0	0	0	0	0	0	0	0	6	-3
20	Hrafnkelsdottir, Elin		0	0-0	0-0	0-0	0	0	0	0	0	0	0	0	0	0
21	Lescay, Rebecca		6	3-6	0-1	0-0	0	2	2	0	2	2	0	2	20	-6
22	Brady, Morgan		2	1-3	0-2	0-0	0	0	0	2	1	0	0	0	7	2
23	Moutry, Kayla		2	1-1	0-0	0-0	0	0	0	1	2	0	0	0	5	3
32	Lewis, Desiree		1	0-1	0-0	1-2	1	2	3	0	0	0	0	0	17	0
33	Polk, Crystal		12	6-8	0-0	0-0	0	5	5	0	0	0	0	1	16	0
04	Richards, Addison		0	0-2	0-0	0-0	1	0	1	0	0	1	0	0	7	-10
05	Butler, Jasmine		0	0-0	0-0	0-0	0	1	1	0	0	0	0	0	3	-6
	Team		0	0-0	0-0	0-0	1	0	1	0	0	0	0	0	0	
TOTALS			27	13-32	0-8	1-2	4	12	16	6	7	6	1	5	100	

Shooting By Period

Period	FG	FG%	3FG	3FG%	FT	FT%
1st Qtr	7-15	47%	0-4	00%	1-2	50%
2nd Qtr	6-17	35%	0-4	00%	0-0	0%
1st Half	13-32	41%	0-8	00%	1-2	50%
Game	20-56	35.7%	3-20	15.0%	6-16	37.5%

Last FG Half: TLS 2nd-01:11

Wichita St. 33

No.	Player	S	Pts	FG	3FG	FT	OR	DR	TR	PF	A	TO	Blk	Stl	Min	+/-
05	Reid, Ashley		2	1-1	0-0	0-0	0	0	0	1	0	2	0	1	5	4
11	Lozada-Cabbage, Sabrina		7	3-6	1-3	0-0	2	3	5	1	0	2	2	2	17	6
12	Bremaud, Carla		5	2-6	1-5	0-2	0	1	1	0	0	0	0	0	15	-2
13	Prince, Raven		0	0-1	0-0	0-0	1	0	1	0	0	1	0	1	10	-2
21	Brewer, Maya		5	2-4	1-2	0-0	0	1	1	1	1	1	0	0	7	3
22	Faye, Alyssia		0	0-0	0-0	0-0	0	0	0	0	0	1	0	0	3	0
23	Bastin, Seraphine		8	3-6	0-1	2-2	1	1	2	1	1	0	0	0	16	11
24	Colbert, Trajata		4	2-3	0-0	0-0	0	1	1	0	0	0	1	0	5	4
30	Ambrosio, Cesaria		2	1-2	0-0	0-0	1	2	3	0	1	0	0	1	17	2
34	Smith, Shyia		0	0-0	0-0	0-0	0	0	0	0	0	0	0	0	0	0
42	Henderson, Asia		0	0-4	0-0	0-0	0	1	1	0	0	0	0	0	5	4
	Team		0	0-0	0-0	0-0	1	0	1	0	0	0	0	0	0	
TOTALS			33	14-33	3-11	2-4	6	10	16	4	3	7	3	5	100	

Shooting By Period

Period	FG	FG%	3FG	3FG%	FT	FT%
1st Qtr	7-17	41%	1-6	17%	0-0	0%
2nd Qtr	7-16	44%	2-5	40%	2-4	50%
1st Half	14-33	42%	3-11	27%	2-4	50%
Game	26-56	46.4%	8-21	38.1%	11-22	50.0%

Last FG Half: WSU 2nd-00:46

Game Notes:

Officials: Bryan Enterline, Norma Jones, Pualani Spurlock
Attendance: 1552

Start Time: 2019-03-05 00:35:24

End Time: 2019-03-05 02:21:18

Game Duration: 105

Conference Game;

Score	1st	2nd	3rd	4th	TOT
TLS	15	12	9	13	49
WSU	15	18	20	18	71

Points from (This Period)	TLS	WSU
In the Paint	18	18
Off Turns	6	6
2nd Chance	3	8
Fast Break	6	4
Bench	4	11

Official Box Score
Tulsa vs Wichita St.
First Quarter Statistics Only
March 05, 2019 at Charles Koch Arena (Devlin Court) - Wichita, Kan.

Tulsa 15

No.	Player	S	Pts	FG	3FG	FT	OR	DR	TR	PF	A	TO	Blk	Stl	Min	+/-
10	Gaulden, Alexis		2	1-4	0-2	0-0	0	0	0	0	2	1	0	1	10	0
21	Lescay, Rebecca		2	1-3	0-0	0-0	0	0	0	0	1	1	0	0	10	0
22	Brady, Morgan		2	1-1	0-0	0-0	0	0	0	2	1	0	0	0	2	4
32	Lewis, Desiree		1	0-0	0-0	1-2	1	2	3	0	0	0	0	0	10	0
33	Polk, Crystal		6	3-4	0-0	0-0	0	3	3	0	0	0	0	0	10	-1
00	Elliott, Kendrian		0	0-0	0-0	0-0	0	0	0	0	0	0	0	0	0	1
04	Richards, Addison		0	0-0	0-0	0-0	0	0	0	0	0	0	0	0	2	-1
05	Butler, Jasmine		0	0-0	0-0	0-0	0	0	0	0	0	0	0	0	0	0
15	Rodriguez, Kk		2	1-3	0-2	0-0	0	0	0	0	0	0	0	0	6	-3
20	Hrafnkelsdottir, Elin		0	0-0	0-0	0-0	0	0	0	0	0	0	0	0	0	0
23	Moutry, Kayla		0	0-0	0-0	0-0	0	0	0	0	0	0	0	0	0	0
	Team						0	0	0	0		0				
TOTALS			15	7-15	0-4	1-2	1	5	6	2	4	2	0	1	50	

Shooting By Period

Period	FG	FG%	3FG	3FG%	FT	FT%
1st Qtr	7-15	47%	0-4	00%	1-2	50%
2nd Qtr	6-17	35%	0-4	00%	0-0	0%
1st Half	7-15	47%	0-4	00%	1-2	50%
1st Half	13-32	41%	0-8	00%	1-2	50%
Game	20-56	35.7%	3-20	15.0%	6-16	37.5%

Wichita St. 15

No.	Player	S	Pts	FG	3FG	FT	OR	DR	TR	PF	A	TO	Blk	Stl	Min	+/-
11	Lozada-Cabbage, Sabrina		2	1-4	0-2	0-0	1	1	2	1	0	1	0	0	10	0
12	Bremaud, Carla		5	2-4	1-3	0-0	0	1	1	0	0	0	0	0	10	0
13	Prince, Raven		0	0-1	0-0	0-0	1	0	1	0	0	1	0	1	8	-1
23	Bastin, Seraphine		6	3-5	0-1	0-0	1	0	1	0	0	0	0	0	10	0
30	Ambrosio, Cesaria		0	0-1	0-0	0-0	0	1	1	0	0	0	0	0	8	-1
05	Reid, Ashley		2	1-1	0-0	0-0	0	0	0	1	0	1	0	1	2	1
21	Brewer, Maya		0	0-0	0-0	0-0	0	0	0	0	0	0	0	0	0	0
22	Faye, Alyssia		0	0-0	0-0	0-0	0	0	0	0	0	0	0	0	0	0
24	Colbert, Trajata		0	0-0	0-0	0-0	0	0	0	0	0	0	0	0	0	0
34	Smith, Shyia		0	0-0	0-0	0-0	0	0	0	0	0	0	0	0	0	0
42	Henderson, Asia		0	0-1	0-0	0-0	0	1	1	0	0	0	0	0	2	1
	Team						0	0	0	0		0				
TOTALS			15	7-17	1-6	0-0	3	4	7	2	0	3	0	2	50	

Shooting By Period

Period	FG	FG%	3FG	3FG%	FT	FT%
1st Qtr	7-17	41%	1-6	17%	0-0	0%
2nd Qtr	7-16	44%	2-5	40%	2-4	50%
1st Half	7-17	41%	1-6	17%	0-0	0%
1st Half	14-33	42%	3-11	27%	2-4	50%
Game	26-56	46.4%	8-21	38.1%	11-22	50.0%

Game Notes:

Officials: Bryan Enterline, Norma Jones, Pualani Spurlock
Attendance: 1552

Start Time: 2019-03-05 00:35:24
End Time: 2019-03-05 02:21:18
Game Duration: 105
Conference Game;

Score	1st	2nd	3rd	4th	TOT
TLS	15	12	9	13	49
WSU	15	18	20	18	71

Points from (This Period)	TLS	WSU
In the Paint	8	10
Off Turns	2	2
2nd Chance	1	4
Fast Break	0	0
Bench	2	2

**Official Play-By-Play
Tulsa vs Wichita St.
First Quarter**

March 05, 2019 at Charles Koch Arena (Devlin Court) - Wichita, Kan.

Period 1

Starters:

Tulsa: 10 GAULDEN,ALEXIS; 21 LESCAY,REBECCA; 22 BRADY,MORGAN; 32 LEWIS,DESIREE; 33 POLK,CRYSTAL;

Wichita St.: 11 LOZADA-CABBAGE,SABRINA; 12 BREMAUD,CARLA; 13 PRINCE,RAVEN; 23 BASTIN,SERAPHINE; 30 AMBROSIO,CESARIA;

Time	VISITORS: Tulsa	Score	Margin	HOME: Wichita St.
09:37	GOOD! LAYUP by POLK,CRYSTAL	0-2	V 2	
09:37	ASSIST by LESCAY,REBECCA			
09:25				MISSED 3PTR by LOZADA-CABBAGE,SABRINA
09:22	REBOUND (DEF) by POLK,CRYSTAL			
09:09	GOOD! LAYUP by POLK,CRYSTAL	0-4	V 4	
09:09	ASSIST by BRADY,MORGAN			
08:58	FOUL (PERSONAL) by BRADY,MORGAN			
08:53				MISSED LAYUP by PRINCE,RAVEN
08:45				REBOUND (OFF) by BASTIN,SERAPHINE
08:45				MISSED LAYUP by BASTIN,SERAPHINE
08:45				REBOUND (OFF) by PRINCE,RAVEN
08:37		2-4	V 2	GOOD! JUMPER by BASTIN,SERAPHINE [PNT]
08:16	GOOD! JUMPER by BRADY,MORGAN	2-6	V 4	
08:16	ASSIST by GAULDEN,ALEXIS			
08:04	FOUL (PERSONAL) by BRADY,MORGAN			
08:04	SUB OUT: BRADY,MORGAN			
08:04	SUB IN: RODRIGUEZ,KK			
07:54		4-6	V 2	GOOD! LAYUP by BREMAUD,CARLA
07:26	GOOD! JUMPER by RODRIGUEZ,KK	4-8	V 4	
07:08				TURNOVER (TRAVEL) by PRINCE,RAVEN
06:59	MISSED 3PTR by GAULDEN,ALEXIS			
06:58				REBOUND (DEF) by TEAM
06:33				MISSED 3PTR by BREMAUD,CARLA
06:28				REBOUND (OFF) by LOZADA-CABBAGE,SABRINA
06:28		6-8	V 2	GOOD! LAYUP by LOZADA-CABBAGE,SABRINA
06:19	GOOD! LAYUP by GAULDEN,ALEXIS	6-10	V 4	
06:00				FOUL (OFF) by LOZADA-CABBAGE,SABRINA
06:00				TURNOVER (OFFENSIVE) by LOZADA-CABBAGE,SABRINA
05:43	GOOD! LAYUP by LESCAY,REBECCA	6-12	V 6	
05:26		9-12	V 3	GOOD! 3PTR by BREMAUD,CARLA
05:05	MISSED 3PTR by RODRIGUEZ,KK			
05:03				REBOUND (DEF) by TEAM
04:40		11-12	V 1	GOOD! LAYUP by BASTIN,SERAPHINE
04:22	TURNOVER (BADPASS) by LESCAY,REBECCA			
04:22				STEAL by PRINCE,RAVEN
03:54				MISSED LAYUP by AMBROSIO,CESARIA
03:51	REBOUND (DEF) by POLK,CRYSTAL			
03:44	MISSED JUMPER by GAULDEN,ALEXIS			
03:41				REBOUND (DEF) by LOZADA-CABBAGE,SABRINA
03:29		13-12	H 1	GOOD! LAYUP by BASTIN,SERAPHINE
03:15	GOOD! JUMPER by POLK,CRYSTAL	13-14	V 1	
03:15	ASSIST by GAULDEN,ALEXIS			
02:44				MISSED 3PTR by BREMAUD,CARLA
02:41	REBOUND (DEF) by POLK,CRYSTAL			
02:34	MISSED JUMPER by POLK,CRYSTAL			
02:30				REBOUND (DEF) by BREMAUD,CARLA
02:18				MISSED JUMPER by LOZADA-CABBAGE,SABRINA
02:14	REBOUND (DEF) by LEWIS,DESIREE			
02:05	MISSED 3PTR by RODRIGUEZ,KK			
02:01				REBOUND (DEF) by AMBROSIO,CESARIA
01:46				MISSED 3PTR by LOZADA-CABBAGE,SABRINA
01:43	REBOUND (DEF) by TEAM			
01:43				
01:43				SUB OUT: AMBROSIO,CESARIA
01:43				SUB IN: REID,ASHLEY
01:43				SUB OUT: PRINCE,RAVEN
01:43				SUB IN: HENDERSON,ASIA
01:43	SUB OUT: RODRIGUEZ,KK			
01:43	SUB IN: RICHARDS,ADDISON			
01:35	MISSED 3PTR by GAULDEN,ALEXIS			
01:32				REBOUND (DEF) by TEAM
01:19				MISSED LAYUP by HENDERSON,ASIA
01:15	REBOUND (DEF) by LEWIS,DESIREE			
01:04	MISSED JUMPER by LESCAY,REBECCA			
00:59				REBOUND (DEF) by HENDERSON,ASIA
00:53				TURNOVER (LOSTBALL) by REID,ASHLEY
00:53	STEAL by GAULDEN,ALEXIS			
00:46	TURNOVER (BADPASS) by GAULDEN,ALEXIS			
00:46				STEAL by REID,ASHLEY
00:29		15-14	H 1	GOOD! JUMPER by REID,ASHLEY
00:07	MISSED JUMPER by LESCAY,REBECCA			
00:06	REBOUND (OFF) by LEWIS,DESIREE			
00:06				FOUL (PERSONAL) by REID,ASHLEY
00:06	MISSED FT by LEWIS,DESIREE			
00:06	REBOUND (OFF) by TEAM			
00:06	SUB OUT: POLK,CRYSTAL			

Time	VISITORS: Tulsa	Score	Margin	HOME: Wichita St.
00:06	SUB IN: ELLIOTT,KENDRIAN			
00:06	GOOD! FT by LEWIS,DESIREE	15-15	T	
00:02				MISSED 3PTR by BASTIN,SERAPHINE
00:02				REBOUND (OFF) by TEAM

Tulsa 15, Wichita St. 15

Points from (This Period)	TLS	WSU
In the Paint	8	10
Off Turns	2	2
2nd Chance	1	4
Fast Break	0	0
Bench	2	2

Official Box Score
Tulsa vs Wichita St.
Second Quarter Statistics Only
March 05, 2019 at Charles Koch Arena (Devlin Court) - Wichita, Kan.

Tulsa 12

No.	Player	S	Pts	FG	3FG	FT	OR	DR	TR	PF	A	TO	Blk	Stl	Min	+/-
10	Gaulden, Alexis		0	0-2	0-1	0-0	0	1	1	2	0	2	0	1	5	-4
21	Lescay, Rebecca		4	2-3	0-1	0-0	0	2	2	0	1	1	0	2	10	-6
22	Brady, Morgan		0	0-2	0-2	0-0	0	0	0	0	0	0	0	0	5	-2
32	Lewis, Desiree		0	0-1	0-0	0-0	0	0	0	0	0	0	0	0	7	0
33	Polk, Crystal		6	3-4	0-0	0-0	0	2	2	0	0	0	0	1	6	1
00	Elliott, Kendrian		0	0-2	0-0	0-0	1	1	2	1	0	0	1	0	4	-7
04	Richards, Addison		0	0-2	0-0	0-0	1	0	1	0	0	1	0	0	5	-9
05	Butler, Jasmine		0	0-0	0-0	0-0	0	1	1	0	0	0	0	0	3	-6
15	Rodriguez, Kk		0	0-0	0-0	0-0	0	0	0	0	0	0	0	0	0	0
20	Hrafnkelsdottir, Elin		0	0-0	0-0	0-0	0	0	0	0	0	0	0	0	0	0
23	Moutry, Kayla		2	1-1	0-0	0-0	0	0	0	1	2	0	0	0	5	3
	Team						1	0	1	0		0				
TOTALS			12	6-17	0-4	0-0	3	7	10	4	3	4	1	4	50	

Shooting By Period

Period	FG	FG%	3FG	3FG%	FT	FT%
3rd Qtr	4-12	33%	1-3	33%	0-2	00%
4th Qtr	3-12	25%	2-9	22%	5-12	42%
2nd Half	6-17	35%	0-4	00%	0-0	0%
2nd Half	7-24	29%	3-12	25%	5-14	36%
Game	20-56	35.7%	3-20	15.0%	6-16	37.5%

Wichita St. 18

No.	Player	S	Pts	FG	3FG	FT	OR	DR	TR	PF	A	TO	Blk	Stl	Min	+/-
11	Lozada-Cabbage, Sabrina		5	2-2	1-1	0-0	1	2	3	0	0	1	2	2	7	6
12	Bremaud, Carla		0	0-2	0-2	0-2	0	0	0	0	0	0	0	0	5	-2
13	Prince, Raven		0	0-0	0-0	0-0	0	0	0	0	0	0	0	0	2	-1
23	Bastin, Seraphine		2	0-1	0-0	2-2	0	1	1	1	1	0	0	0	6	11
30	Ambrosio, Cesaria		2	1-1	0-0	0-0	1	1	2	0	1	0	0	1	9	3
05	Reid, Ashley		0	0-0	0-0	0-0	0	0	0	0	0	1	0	0	3	3
21	Brewer, Maya		5	2-4	1-2	0-0	0	1	1	1	1	1	0	0	7	3
22	Faye, Alyssia		0	0-0	0-0	0-0	0	0	0	0	0	1	0	0	3	0
24	Colbert, Trajata		4	2-3	0-0	0-0	0	1	1	0	0	0	1	0	5	4
34	Smith, Shyia		0	0-0	0-0	0-0	0	0	0	0	0	0	0	0	0	0
42	Henderson, Asia		0	0-3	0-0	0-0	0	0	0	0	0	0	0	0	3	3
	Team						1	0	1	0		0				
TOTALS			18	7-16	2-5	2-4	3	6	9	2	3	4	3	3	50	

Shooting By Period

Period	FG	FG%	3FG	3FG%	FT	FT%
3rd Qtr	7-13	54%	4-6	67%	2-6	33%
4th Qtr	5-10	50%	1-4	25%	7-12	58%
2nd Half	7-16	44%	2-5	40%	2-4	50%
2nd Half	12-23	52%	5-10	50%	9-18	50%
Game	26-56	46.4%	8-21	38.1%	11-22	50.0%

Game Notes:

Officials: **Bryan Enterline, Norma Jones, Pualani Spurlock**
Attendance: **1552**

Start Time: **2019-03-05 00:35:24**
End Time: **2019-03-05 02:21:18**
Game Duration: **105**
Conference Game;

Score	1st	2nd	3rd	4th	TOT
TLS	15	12	9	13	49
WSU	15	18	20	18	71

Points from (This Period)	TLS	WSU
In the Paint	10	8
Off Turns	4	4
2nd Chance	2	4
Fast Break	6	4
Bench	2	9

**Official Play-By-Play
Tulsa vs Wichita St.
Second Quarter**

March 05, 2019 at Charles Koch Arena (Devlin Court) - Wichita, Kan.

Period 2

Starters:

Tulsa: 10 GAULDEN,ALEXIS; 21 LESCAY,REBECCA; 22 BRADY,MORGAN; 32 LEWIS,DESIREE; 33 POLK,CRYSTAL;

Wichita St.: 11 LOZADA-CABBAGE,SABRINA; 12 BREMAUD,CARLA; 13 PRINCE,RAVEN; 23 BASTIN,SERAPHINE; 30 AMBROSIO,CESARIA;

Time	VISITORS: Tulsa	Score	Margin	HOME: Wichita St.
09:48		18-15	H 3	GOOD! 3PTR by LOZADA-CABBAGE,SABRINA
09:48				ASSIST by BASTIN,SERAPHINE
09:28	MISSED LAYUP by LEWIS,DESIREE			
09:28				BLOCK by LOZADA-CABBAGE,SABRINA
09:22				REBOUND (DEF) by LOZADA-CABBAGE,SABRINA
09:19				MISSED 3PTR by BREMAUD,CARLA
09:14	REBOUND (DEF) by ELLIOTT,KENDRIAN			
08:51				SUB OUT: BREMAUD,CARLA
08:51				SUB IN: AMBROSIO,CESARIA
08:46	MISSED 3PTR by BRADY,MORGAN			
08:45				REBOUND (DEF) by TEAM
08:29				TURNOVER (BADPASS) by REID,ASHLEY
08:29	STEAL by LESCAY,REBECCA			
08:23	GOOD! LAYUP by LESCAY,REBECCA [FB]	18-17	H 1	
08:03				MISSED LAYUP by HENDERSON,ASIA
07:57				REBOUND (OFF) by LOZADA-CABBAGE,SABRINA
07:57		20-17	H 3	GOOD! LAYUP by LOZADA-CABBAGE,SABRINA
07:37	TURNOVER (BADPASS) by RICHARDS,ADDISON			
07:37				STEAL by LOZADA-CABBAGE,SABRINA
07:35				TURNOVER (BADPASS) by LOZADA-CABBAGE,SABRINA
07:35	STEAL by LESCAY,REBECCA			
07:35				FOUL (PERSONAL) by BASTIN,SERAPHINE
07:35	SUB OUT: LEWIS,DESIREE			
07:35	SUB IN: BUTLER,JASMINE			
07:35	SUB OUT: BRADY,MORGAN			
07:35	SUB IN: GAULDEN,ALEXIS			
07:23	MISSED JUMPER by ELLIOTT,KENDRIAN			
07:18				REBOUND (DEF) by AMBROSIO,CESARIA
07:09				MISSED JUMPER by HENDERSON,ASIA
07:09	BLOCK by ELLIOTT,KENDRIAN			
07:05				REBOUND (OFF) by AMBROSIO,CESARIA
07:05	FOUL (PERSONAL) by ELLIOTT,KENDRIAN			
07:05				SUB OUT: REID,ASHLEY
07:05				SUB IN: BREWER,MAYA
06:58				MISSED JUMPER by HENDERSON,ASIA
06:50				REBOUND (OFF) by TEAM
06:50				SUB OUT: HENDERSON,ASIA
06:50				SUB IN: COLBERT,TRAJATA
06:34		22-17	H 5	GOOD! JUMPER by BREWER,MAYA
06:22	MISSED JUMPER by RICHARDS,ADDISON			
06:19	REBOUND (OFF) by ELLIOTT,KENDRIAN			
06:16	MISSED JUMPER by ELLIOTT,KENDRIAN			
06:12				REBOUND (DEF) by BASTIN,SERAPHINE
06:08				MISSED JUMPER by BASTIN,SERAPHINE
06:05	REBOUND (DEF) by BUTLER,JASMINE			
05:57	TURNOVER (LOSTBALL) by GAULDEN,ALEXIS			
05:57				STEAL by LOZADA-CABBAGE,SABRINA
05:52		24-17	H 7	GOOD! LAYUP by AMBROSIO,CESARIA [FB]
05:49	TIMEOUT 30SEC			
05:49				SUB OUT: LOZADA-CABBAGE,SABRINA
05:49				SUB IN: FAYE,ALYSSIA
05:49	SUB OUT: ELLIOTT,KENDRIAN			
05:49	SUB IN: POLK,CRYSTAL			
05:25	MISSED 3PTR by LESCAY,REBECCA			
05:19	REBOUND (OFF) by RICHARDS,ADDISON			
05:19	MISSED LAYUP by RICHARDS,ADDISON			
05:18				REBOUND (DEF) by COLBERT,TRAJATA
05:06		26-17	H 9	GOOD! LAYUP by COLBERT,TRAJATA
04:57	TURNOVER (LOSTBALL) by LESCAY,REBECCA			
04:57				STEAL by AMBROSIO,CESARIA
04:54	SUB OUT: RICHARDS,ADDISON			
04:54	SUB IN: MOUTRY,KAYLA			
04:54	SUB OUT: BUTLER,JASMINE			
04:54	SUB IN: LEWIS,DESIREE			
04:54	FOUL (PERSONAL) by GAULDEN,ALEXIS			
04:54		27-17	H 10	GOOD! FT by BASTIN,SERAPHINE [FB]
04:54		28-17	H 11	GOOD! FT by BASTIN,SERAPHINE [FB]
04:40	MISSED 3PTR by GAULDEN,ALEXIS			
04:36				REBOUND (DEF) by TEAM
04:17				MISSED JUMPER by COLBERT,TRAJATA
04:13	REBOUND (DEF) by POLK,CRYSTAL			
04:06	MISSED JUMPER by GAULDEN,ALEXIS			
04:06				BLOCK by COLBERT,TRAJATA
04:06	REBOUND (OFF) by TEAM			
04:06				SUB OUT: BASTIN,SERAPHINE
04:06				SUB IN: BREMAUD,CARLA

Time	VISITORS: Tulsa	Score	Margin	HOME: Wichita St.
04:01	GOOD! LAYUP by POLK,CRYSTAL	28-19	H 9	
03:47				MISSED 3PTR by BREWER,MAYA
03:42	REBOUND (DEF) by GAULDEN,ALEXIS			
03:38	GOOD! LAYUP by MOUTRY,KAYLA [FB]	28-21	H 7	
03:38	ASSIST by LESCAY,REBECCA			
03:15		30-21	H 9	GOOD! LAYUP by COLBERT,TRAJATA
03:15				ASSIST by BREWER,MAYA
03:05	GOOD! JUMPER by POLK,CRYSTAL	30-23	H 7	
03:05	ASSIST by MOUTRY,KAYLA			
02:45	FOUL (PERSONAL) by MOUTRY,KAYLA			
02:43				TURNOVER (LOSTBALL) by FAYE,ALYSSIA
02:43	STEAL by GAULDEN,ALEXIS			
02:34	TURNOVER (LOSTBALL) by GAULDEN,ALEXIS			
02:34				SUB OUT: FAYE,ALYSSIA
02:34				SUB IN: LOZADA-CABBAGE,SABRINA
02:20	FOUL (PERSONAL) by GAULDEN,ALEXIS			
02:20				MISSED FT by BREMAUD,CARLA
02:20				REBOUND (OFF) by TEAM
02:20	SUB OUT: GAULDEN,ALEXIS			
02:20	SUB IN: BRADY,MORGAN			
02:20				SUB OUT: COLBERT,TRAJATA
02:20				SUB IN: PRINCE,RAVEN
02:20				MISSED FT by BREMAUD,CARLA
02:18	REBOUND (DEF) by LESCAY,REBECCA			
02:11	MISSED JUMPER by POLK,CRYSTAL			
02:11				BLOCK by LOZADA-CABBAGE,SABRINA
02:06				REBOUND (DEF) by BREWER,MAYA
01:58				TURNOVER (BADPASS) by BREWER,MAYA
01:58	STEAL by POLK,CRYSTAL			
01:56				FOUL (PERSONAL) by BREWER,MAYA
01:47	GOOD! LAYUP by POLK,CRYSTAL	30-25	H 5	
01:47	ASSIST by MOUTRY,KAYLA			
01:17				MISSED LAYUP by BREWER,MAYA
01:12	REBOUND (DEF) by LESCAY,REBECCA			
01:11	GOOD! LAYUP by LESCAY,REBECCA [FB]	30-27	H 3	
00:46		33-27	H 6	GOOD! 3PTR by BREWER,MAYA
00:46				ASSIST by AMBROSIO,CESARIA
00:30	MISSED 3PTR by BRADY,MORGAN			
00:25				REBOUND (DEF) by LOZADA-CABBAGE,SABRINA
00:07				MISSED 3PTR by BREMAUD,CARLA
00:05	REBOUND (DEF) by POLK,CRYSTAL			

Tulsa 27, Wichita St. 33

Points from (This Period)	TLS	WSU
In the Paint	10	8
Off Turns	4	4
2nd Chance	2	4
Fast Break	6	4
Bench	2	9

Official Box Score
Tulsa vs Wichita St.
Second Half Statistics Only
March 05, 2019 at Charles Koch Arena (Devlin Court) - Wichita, Kan.

Tulsa 22

No.	Player	S	Pts	FG	3FG	FT	OR	DR	TR	PF	A	TO	Blk	Stl	Min	+/-
00	Elliott, Kendrian		3	1-2	0-0	1-2	1	1	2	1	0	0	0	0	9	-8
10	Gaulden, Alexis		6	2-3	2-3	0-0	0	0	0	0	0	1	0	1	11	-8
15	Rodriguez, Kk		0	0-5	0-3	0-2	1	0	1	1	0	1	0	2	6	0
20	Hrafnkelsdottir, Elin		0	0-0	0-0	0-0	1	0	1	1	1	0	0	0	7	-1
21	Lescay, Rebecca		1	0-3	0-0	1-2	0	0	0	2	3	1	0	0	14	-15
22	Brady, Morgan		3	1-2	1-2	0-0	0	1	1	1	0	0	0	0	12	-12
23	Moutry, Kayla		1	0-2	0-1	1-2	0	3	3	2	2	2	0	0	11	-9
32	Lewis, Desiree		0	0-0	0-0	0-2	0	2	2	1	0	0	0	0	10	-9
33	Polk, Crystal		8	3-4	0-0	2-4	1	2	3	2	0	0	0	0	13	-14
04	Richards, Addison		0	0-3	0-3	0-0	0	0	0	1	0	1	0	0	7	-4
05	Butler, Jasmine		0	0-0	0-0	0-0	0	0	0	0	0	0	0	0	0	0
	Team		0	0-0	0-0	0-0	0	0	0	0	0	0	0	0	0	0
TOTALS			22	7-24	3-12	5-14	4	9	13	12	6	6	0	3	98	

Shooting By Period

Period	FG	FG%	3FG	3FG%	FT	FT%
3rd Qtr	4-12	33%	1-3	33%	0-2	00%
4th Qtr	3-12	25%	2-9	22%	5-12	42%
2nd Half	7-24	29%	3-12	25%	5-14	36%
Game	20-56	35.7%	3-20	15.0%	6-16	37.5%

Last FG Half: TLS 4th-03:36

Wichita St. 38

No.	Player	S	Pts	FG	3FG	FT	OR	DR	TR	PF	A	TO	Blk	Stl	Min	+/-
05	Reid, Ashley		0	0-0	0-0	0-0	0	2	2	0	0	1	0	0	2	2
11	Lozada-Cabbage, Sabrina		6	2-5	1-3	1-2	1	0	1	2	1	1	1	0	17	13
12	Bremaud, Carla		6	2-4	1-2	1-2	0	5	5	1	1	1	0	0	16	12
13	Prince, Raven		1	0-1	0-0	1-4	1	0	1	1	0	0	1	0	10	10
21	Brewer, Maya		4	1-1	1-1	1-2	1	1	2	2	0	0	0	0	8	10
22	Faye, Alyssia		0	0-0	0-0	0-0	0	0	0	0	0	0	0	0	0	0
23	Bastin, Seraphine		11	4-7	1-2	2-3	0	2	2	2	2	1	0	1	17	14
24	Colbert, Trajata		2	1-1	0-0	0-1	1	2	3	3	0	0	0	0	8	6
30	Ambrosio, Cesaria		4	1-3	1-2	1-2	0	1	1	1	1	0	0	0	16	10
34	Smith, Shyia		0	0-0	0-0	0-0	0	1	1	0	0	1	1	0	2	3
42	Henderson, Asia		4	1-1	0-0	2-2	0	1	1	0	0	0	0	0	2	0
	Team		0	0-0	0-0	0-0	0	0	0	0	0	0	0	0	0	0
TOTALS			38	12-23	5-10	9-18	4	15	19	12	5	5	3	1	98	

Shooting By Period

Period	FG	FG%	3FG	3FG%	FT	FT%
3rd Qtr	7-13	54%	4-6	67%	2-6	33%
4th Qtr	5-10	50%	1-4	25%	7-12	58%
2nd Half	12-23	52%	5-10	50%	9-18	50%
Game	26-56	46.4%	8-21	38.1%	11-22	50.0%

Last FG Half: WSU 4th-03:55

Game Notes:

Officials: **Bryan Enterline,Norma Jones,Pualani Spurlock**
Attendance: **1552**

Start Time: **2019-03-05 00:35:24**
End Time: **2019-03-05 02:21:18**
Game Duration: **105**
Conference Game;

Score	1st	2nd	3rd	4th	TOT
TLS	15	12	9	13	49
WSU	15	18	20	18	71

Points from (This Period)	TLS	WSU
In the Paint	6	8
Off Turns	1	8
2nd Chance	6	4
Fast Break	0	1
Bench	4	10

Official Box Score
Tulsa vs Wichita St.
Third Quarter Statistics Only
March 05, 2019 at Charles Koch Arena (Devlin Court) - Wichita, Kan.

Tulsa 22

No.	Player	S	Pts	FG	3FG	FT	OR	DR	TR	PF	A	TO	Blk	Stl	Min	+/-
10	Gaulden, Alexis		0	0-0	0-0	0-0	0	0	0	0	0	0	0	0	4	-5
21	Lescay, Rebecca		0	0-3	0-0	0-0	0	0	0	2	2	1	0	0	10	-11
22	Brady, Morgan		3	1-2	1-2	0-0	0	0	0	0	0	0	0	0	8	-7
32	Lewis, Desiree		0	0-0	0-0	0-2	0	2	2	1	0	0	0	0	7	-5
33	Polk, Crystal		6	3-4	0-0	0-0	1	1	2	0	0	0	0	0	9	-10
00	Elliott, Kendrian		0	0-1	0-0	0-0	0	0	0	0	0	0	0	0	3	-7
04	Richards, Addison		0	0-1	0-1	0-0	0	0	0	1	0	1	0	0	4	-2
05	Butler, Jasmine		0	0-0	0-0	0-0	0	0	0	0	0	0	0	0	0	0
15	Rodriguez, Kk		0	0-0	0-0	0-0	0	0	0	0	0	0	0	0	0	0
20	Hrafnkelsdottir, Elin		0	0-0	0-0	0-0	0	0	0	0	0	0	0	0	0	0
23	Moutry, Kayla		0	0-1	0-0	0-0	0	1	1	0	1	1	0	0	5	-8
	Team						0	0	0	0		0				
TOTALS			9	4-12	1-3	0-2	1	4	5	4	3	3	0	0	50	

Shooting By Period

Period	FG	FG%	3FG	3FG%	FT	FT%
2nd Half	0-0	0%	0-0	0%	0-0	0%
Game	20-56	35.7%	3-20	15.0%	6-16	37.5%

Wichita St. 38

No.	Player	S	Pts	FG	3FG	FT	OR	DR	TR	PF	A	TO	Blk	Stl	Min	+/-
11	Lozada-Cabbage, Sabrina		5	2-4	1-2	0-0	1	0	1	0	0	0	1	0	8	10
12	Bremaud, Carla		2	1-1	0-0	0-0	0	2	2	0	1	0	0	0	6	7
13	Prince, Raven		1	0-1	0-0	1-4	1	0	1	1	0	0	1	0	10	10
23	Bastin, Seraphine		5	2-3	1-1	0-0	0	1	1	0	2	0	0	0	8	10
30	Ambrosio, Cesaria		3	1-3	1-2	0-0	0	1	1	1	1	0	0	0	10	11
05	Reid, Ashley		0	0-0	0-0	0-0	0	2	2	0	0	1	0	0	2	1
21	Brewer, Maya		4	1-1	1-1	1-2	1	1	2	1	0	0	0	0	4	4
22	Faye, Alyssia		0	0-0	0-0	0-0	0	0	0	0	0	0	0	0	0	0
24	Colbert, Trajata		0	0-0	0-0	0-0	0	1	1	0	0	0	0	0	2	1
34	Smith, Shyia		0	0-0	0-0	0-0	0	0	0	0	0	0	1	0	0	1
42	Henderson, Asia		0	0-0	0-0	0-0	0	0	0	0	0	0	0	0	0	0
	Team						0	0	0	0		0				
TOTALS			20	7-13	4-6	2-6	3	8	11	3	4	1	3	0	50	

Shooting By Period

Period	FG	FG%	3FG	3FG%	FT	FT%
2nd Half	0-0	0%	0-0	0%	0-0	0%
Game	26-56	46.4%	8-21	38.1%	11-22	50.0%

Game Notes:

Officials: Bryan Enterline, Norma Jones, Pualani Spurlock
Attendance: 1552

Start Time: 2019-03-05 00:35:24
End Time: 2019-03-05 02:21:18
Game Duration: 105
Conference Game;

Score	1st	2nd	3rd	4th	TOT
TLS	15	12	9	13	49
WSU	15	18	20	18	71

Points from (This Period)	TLS	WSU
In the Paint	4	2
Off Turns	0	6
2nd Chance	2	2
Fast Break	0	0
Bench	0	4

Official Play-By-Play Tulsa vs Wichita St.

Third Quarter

March 05, 2019 at Charles Koch Arena (Devlin Court) - Wichita, Kan.

Period 3

Starters:

Tulsa: 10 GAULDEN,ALEXIS; 21 LESCAY,REBECCA; 22 BRADY,MORGAN; 32 LEWIS,DESIREE; 33 POLK,CRYSTAL;

Wichita St.: 11 LOZADA-CABBAGE,SABRINA; 12 BREMAUD,CARLA; 13 PRINCE,RAVEN; 23 BASTIN,SERAPHINE; 30 AMBROSIO,CESARIA;

Time	VISITORS: Tulsa	Score	Margin	HOME: Wichita St.
09:50	MISSED JUMPER by LESCAY,REBECCA			
09:46				REBOUND (DEF) by BASTIN,SERAPHINE
09:39				MISSED JUMPER by BASTIN,SERAPHINE
09:35	REBOUND (DEF) by MOUTRY,KAYLA			
09:17	MISSED LAYUP by ELLIOTT,KENDRIAN			
09:17				BLOCK by PRINCE,RAVEN
09:12				REBOUND (DEF) by AMBROSIO,CESARIA
08:49		36-27	H 9	GOOD! 3PTR by BASTIN,SERAPHINE
08:49				ASSIST by AMBROSIO,CESARIA
08:16				FOUL (PERSONAL) by AMBROSIO,CESARIA
07:56	MISSED JUMPER by LESCAY,REBECCA			
07:52				REBOUND (DEF) by BREMAUD,CARLA
07:38		39-27	H 12	GOOD! 3PTR by LOZADA-CABBAGE,SABRINA
07:38				ASSIST by BASTIN,SERAPHINE
07:28	TIMEOUT 30SEC			
07:28	SUB OUT: ELLIOTT,KENDRIAN			
07:28	SUB IN: LEWIS,DESIREE			
07:03	GOOD! 3PTR by BRADY,MORGAN	39-30	H 9	
07:03	ASSIST by MOUTRY,KAYLA			
06:43		41-30	H 11	GOOD! JUMPER by BREMAUD,CARLA
06:27	TURNOVER (LOSTBALL) by MOUTRY,KAYLA			
06:04		44-30	H 14	GOOD! 3PTR by AMBROSIO,CESARIA
06:04				ASSIST by BREMAUD,CARLA
05:45	MISSED LAYUP by MOUTRY,KAYLA			
05:45				BLOCK by LOZADA-CABBAGE,SABRINA
05:40				REBOUND (DEF) by BREMAUD,CARLA
05:29				MISSED JUMPER by LOZADA-CABBAGE,SABRINA
05:25	REBOUND (DEF) by POLK,CRYSTAL			
05:21	TURNOVER (BADPASS) by LESCAY,REBECCA			
05:21	SUB OUT: MOUTRY,KAYLA			
05:21	SUB IN: RICHARDS,ADDISON			
05:00				MISSED 3PTR by LOZADA-CABBAGE,SABRINA
04:57	REBOUND (DEF) by LEWIS,DESIREE			
04:37	GOOD! LAYUP by POLK,CRYSTAL	44-32	H 12	
04:37	ASSIST by LESCAY,REBECCA			
04:16	FOUL (PERSONAL) by LEWIS,DESIREE			
04:16				
04:16	SUB OUT: BRADY,MORGAN			
04:16	SUB IN: GAULDEN,ALEXIS			
04:16				MISSED FT by PRINCE,RAVEN
04:16				REBOUND (OFF) by TEAM
04:16		45-32	H 13	GOOD! FT by PRINCE,RAVEN
04:04	GOOD! JUMPER by POLK,CRYSTAL [PNT]	45-34	H 11	
04:04	ASSIST by LESCAY,REBECCA			
03:48		47-34	H 13	GOOD! JUMPER by BASTIN,SERAPHINE
03:33	MISSED 3PTR by RICHARDS,ADDISON			
03:33	REBOUND (OFF) by POLK,CRYSTAL			
03:33				FOUL (PERSONAL) by PRINCE,RAVEN
03:33				SUB OUT: BREMAUD,CARLA
03:33				SUB IN: BREWER,MAYA
03:29	GOOD! JUMPER by POLK,CRYSTAL	47-36	H 11	
03:07				MISSED 3PTR by AMBROSIO,CESARIA
03:00				REBOUND (OFF) by BREWER,MAYA
03:00	FOUL (PERSONAL) by RICHARDS,ADDISON			
02:52				MISSED JUMPER by AMBROSIO,CESARIA
02:44				REBOUND (OFF) by PRINCE,RAVEN
02:44				MISSED LAYUP by PRINCE,RAVEN
02:42				REBOUND (OFF) by LOZADA-CABBAGE,SABRINA
02:42		49-36	H 13	GOOD! LAYUP by LOZADA-CABBAGE,SABRINA
02:41	TURNOVER (LOSTBALL) by RICHARDS,ADDISON			
02:15		52-36	H 16	GOOD! 3PTR by BREWER,MAYA
02:15				ASSIST by BASTIN,SERAPHINE
02:04	TIMEOUT 30SEC			
02:04				SUB OUT: LOZADA-CABBAGE,SABRINA
02:04				SUB IN: COLBERT,TRAJATA
01:49				FOUL (PERSONAL) by BREWER,MAYA
01:49	MISSED FT by LEWIS,DESIREE			
01:49	REBOUND (OFF) by TEAM			
01:49				SUB OUT: BASTIN,SERAPHINE
01:49				SUB IN: REID,ASHLEY
01:49	SUB OUT: RICHARDS,ADDISON			
01:49	SUB IN: BRADY,MORGAN			
01:49	MISSED FT by LEWIS,DESIREE			
01:48				REBOUND (DEF) by COLBERT,TRAJATA
01:39				TURNOVER (TRAVEL) by REID,ASHLEY
01:24	MISSED JUMPER by POLK,CRYSTAL			

Time	VISITORS: Tulsa	Score	Margin	HOME: Wichita St.
01:20				REBOUND (DEF) by BREWER,MAYA
01:03	FOUL (PERSONAL) by LESCAY,REBECCA			
01:03				MISSED FT by PRINCE,RAVEN
01:03				REBOUND (OFF) by TEAM
01:03				MISSED FT by PRINCE,RAVEN
01:02	REBOUND (DEF) by LEWIS,DESIREE			
00:47	MISSED 3PTR by BRADY,MORGAN			
00:42				REBOUND (DEF) by REID,ASHLEY
00:31	SUB OUT: POLK,CRYSTAL			
00:31	SUB IN: ELLIOTT,KENDRIAN			
00:28	FOUL (PERSONAL) by LESCAY,REBECCA			
00:28				MISSED FT by BREWER,MAYA
00:28				REBOUND (OFF) by TEAM
00:28				SUB OUT: PRINCE,RAVEN
00:28				SUB IN: SMITH,SHYIA
00:28		53-36	H 17	GOOD! FT by BREWER,MAYA
00:06	MISSED JUMPER by LESCAY,REBECCA			
00:06				BLOCK by SMITH,SHYIA
00:01				REBOUND (DEF) by REID,ASHLEY

Tulsa 36, Wichita St. 53

Points from (This Period)	TLS	WSU
In the Paint	4	2
Off Turns	0	6
2nd Chance	2	2
Fast Break	0	0
Bench	0	4

Official Box Score
Tulsa vs Wichita St.
Fourth Quarter Statistics Only
March 05, 2019 at Charles Koch Arena (Devlin Court) - Wichita, Kan.

Tulsa 13

No.	Player	S	Pts	FG	3FG	FT	OR	DR	TR	PF	A	TO	Blk	Stl	Min	+/-
10	Gaulden, Alexis		6	2-3	2-3	0-0	0	0	0	0	0	1	0	1	7	-3
21	Lescay, Rebecca		1	0-0	0-0	1-2	0	0	0	0	1	0	0	0	4	-4
22	Brady, Morgan		0	0-0	0-0	0-0	0	1	1	1	0	0	0	0	4	-5
32	Lewis, Desiree		0	0-0	0-0	0-0	0	0	0	0	0	0	0	0	3	-4
33	Polk, Crystal		2	0-0	0-0	2-4	0	1	1	2	0	0	0	0	4	-4
00	Elliott, Kendrian		3	1-1	0-0	1-2	1	1	2	1	0	0	0	0	6	-1
04	Richards, Addison		0	0-2	0-2	0-0	0	0	0	0	0	0	0	0	3	-2
05	Butler, Jasmine		0	0-0	0-0	0-0	0	0	0	0	0	0	0	0	0	0
15	Rodriguez, Kk		0	0-5	0-3	0-2	1	0	1	1	0	1	0	2	6	0
20	Hrafnkelsdottir, Elin		0	0-0	0-0	0-0	1	0	1	1	1	0	0	0	7	-1
23	Moutry, Kayla		1	0-1	0-1	1-2	0	2	2	2	1	1	0	0	6	-1
	Team						0	0	0	0		0				
TOTALS			13	3-12	2-9	5-12	3	5	8	8	3	3	0	3	48	

Shooting By Period

Period	FG	FG%	3FG	3FG%	FT	FT%
Game	20-56	35.7%	3-20	15.0%	6-16	37.5%

Wichita St. 18

No.	Player	S	Pts	FG	3FG	FT	OR	DR	TR	PF	A	TO	Blk	Stl	Min	+/-
11	Lozada-Cabbage, Sabrina		1	0-1	0-1	1-2	0	0	0	2	1	1	0	0	9	3
12	Bremaud, Carla		4	1-3	1-2	1-2	0	3	3	1	0	1	0	0	10	5
13	Prince, Raven		0	0-0	0-0	0-0	0	0	0	0	0	0	0	0	0	0
23	Bastin, Seraphine		6	2-4	0-1	2-3	0	1	1	2	0	1	0	1	9	4
30	Ambrosio, Cesaria		1	0-0	0-0	1-2	0	0	0	0	0	0	0	0	6	-1
05	Reid, Ashley		0	0-0	0-0	0-0	0	0	0	0	0	0	0	0	0	1
21	Brewer, Maya		0	0-0	0-0	0-0	0	0	0	1	0	0	0	0	4	6
22	Faye, Alyssia		0	0-0	0-0	0-0	0	0	0	0	0	0	0	0	0	0
24	Colbert, Trajata		2	1-1	0-0	0-1	1	1	2	3	0	0	0	0	6	5
34	Smith, Shyia		0	0-0	0-0	0-0	0	1	1	0	0	1	0	0	2	2
42	Henderson, Asia		4	1-1	0-0	2-2	0	1	1	0	0	0	0	0	2	0
	Team						0	0	0	0		0				
TOTALS			18	5-10	1-4	7-12	1	7	8	9	1	4	0	1	48	

Shooting By Period

Period	FG	FG%	3FG	3FG%	FT	FT%
Game	26-56	46.4%	8-21	38.1%	11-22	50.0%

Game Notes:

Officials: **Bryan Enterline,Norma Jones,Pualani Spurlock**
Attendance: **1552**

Start Time: **2019-03-05 00:35:24**
End Time: **2019-03-05 02:21:18**
Game Duration: **105**
Conference Game;

Score	1st	2nd	3rd	4th	TOT
TLS	15	12	9	13	49
WSU	15	18	20	18	71

Points from (This Period)	TLS	WSU
In the Paint	2	6
Off Turns	1	2
2nd Chance	4	2
Fast Break	0	1
Bench	4	6

**Official Play-By-Play
Tulsa vs Wichita St.
Fourth Quarter**

March 05, 2019 at Charles Koch Arena (Devlin Court) - Wichita, Kan.

Period 4

Starters:

Tulsa: 10 GAULDEN,ALEXIS; 21 LESCAY,REBECCA; 22 BRADY,MORGAN; 32 LEWIS,DESIREE; 33 POLK,CRYSTAL;

Wichita St.: 11 LOZADA-CABBAGE,SABRINA; 12 BREMAUD,CARLA; 13 PRINCE,RAVEN; 23 BASTIN,SERAPHINE; 30 AMBROSIO,CESARIA;

Time	VISITORS: Tulsa	Score	Margin	HOME: Wichita St.
09:39	GOOD! 3PTR by GAULDEN,ALEXIS	53-39	H 14	
09:39	ASSIST by LESCAY,REBECCA			
09:06				MISSED 3PTR by LOZADA-CABBAGE,SABRINA
09:02	REBOUND (DEF) by POLK,CRYSTAL			
08:59				FOUL (PERSONAL) by BREMAUD,CARLA
08:53				FOUL (PERSONAL) by COLBERT,TRAJATA
08:53	MISSED FT by LESCAY,REBECCA			
08:53	REBOUND (OFF) by TEAM			
08:53	GOOD! FT by LESCAY,REBECCA	53-40	H 13	
08:37				MISSED JUMPER by BASTIN,SERAPHINE
08:35				REBOUND (OFF) by COLBERT,TRAJATA
08:35		55-40	H 15	GOOD! LAYUP by COLBERT,TRAJATA
08:35	FOUL (PERSONAL) by POLK,CRYSTAL			
08:35				MISSED FT by COLBERT,TRAJATA
08:35				REBOUND (OFF) by TEAM
08:16		57-40	H 17	GOOD! LAYUP by BASTIN,SERAPHINE
08:16	FOUL (PERSONAL) by BRADY,MORGAN			
08:16		58-40	H 18	GOOD! FT by BASTIN,SERAPHINE
08:07	TURNOVER (BADPASS) by GAULDEN,ALEXIS			
08:07				STEAL by BASTIN,SERAPHINE
08:02				MISSED LAYUP by BREMAUD,CARLA
08:02	REBOUND (DEF) by BRADY,MORGAN			
08:02				FOUL (PERSONAL) by COLBERT,TRAJATA
07:50	MISSED 3PTR by GAULDEN,ALEXIS			
07:45				REBOUND (DEF) by BASTIN,SERAPHINE
07:24		61-40	H 21	GOOD! 3PTR by BREMAUD,CARLA
07:24				ASSIST by LOZADA-CABBAGE,SABRINA
07:08				FOUL (PERSONAL) by COLBERT,TRAJATA
07:08	MISSED FT by POLK,CRYSTAL			
07:08	REBOUND (OFF) by TEAM			
07:08				SUB OUT: COLBERT,TRAJATA
07:08				SUB IN: HENDERSON,ASIA
07:08				SUB OUT: BREWER,MAYA
07:08				SUB IN: AMBROSIO,CESARIA
07:08	SUB OUT: LEWIS,DESIREE			
07:08	SUB IN: HRAFNKELSDOTTIR,ELIN			
07:08	GOOD! FT by POLK,CRYSTAL	61-41	H 20	
06:57	FOUL (PERSONAL) by POLK,CRYSTAL			
06:34		63-41	H 22	GOOD! LAYUP by HENDERSON,ASIA
06:23				FOUL (PERSONAL) by BASTIN,SERAPHINE
06:23	MISSED FT by POLK,CRYSTAL			
06:23	REBOUND (OFF) by TEAM			
06:23	SUB OUT: BRADY,MORGAN			
06:23	SUB IN: RODRIGUEZ,KK			
06:23	GOOD! FT by POLK,CRYSTAL	63-42	H 21	
05:56	FOUL (PERSONAL) by RODRIGUEZ,KK			
05:56				MISSED FT by BASTIN,SERAPHINE
05:56				REBOUND (OFF) by TEAM
05:56	SUB OUT: POLK,CRYSTAL			
05:56	SUB IN: MOUTRY,KAYLA			
05:56	SUB OUT: LESCAY,REBECCA			
05:56	SUB IN: ELLIOTT,KENDRIAN			
05:56		64-42	H 22	GOOD! FT by BASTIN,SERAPHINE
05:44				FOUL (PERSONAL) by LOZADA-CABBAGE,SABRINA
05:44	MISSED FT by RODRIGUEZ,KK			
05:44	REBOUND (OFF) by TEAM			
05:44	MISSED FT by RODRIGUEZ,KK			
05:42	REBOUND (OFF) by RODRIGUEZ,KK			
05:36	MISSED 3PTR by MOUTRY,KAYLA			
05:33	REBOUND (OFF) by HRAFNKELSDOTTIR,ELIN			
05:29	GOOD! 3PTR by GAULDEN,ALEXIS	64-45	H 19	
05:29	ASSIST by HRAFNKELSDOTTIR,ELIN			
05:28	TIMEOUT 30SEC			
05:28				SUB OUT: HENDERSON,ASIA
05:28				SUB IN: COLBERT,TRAJATA
05:06	FOUL (PERSONAL) by MOUTRY,KAYLA			
05:06				MISSED FT by AMBROSIO,CESARIA
05:06				REBOUND (OFF) by TEAM
05:06		65-45	H 20	GOOD! FT by AMBROSIO,CESARIA
04:44	MISSED JUMPER by RODRIGUEZ,KK			
04:40				REBOUND (DEF) by BREMAUD,CARLA
04:19				TURNOVER (BADPASS) by LOZADA-CABBAGE,SABRINA
04:19	STEAL by RODRIGUEZ,KK			
04:15	TURNOVER (BADPASS) by RODRIGUEZ,KK			
03:55		67-45	H 22	GOOD! JUMPER by BASTIN,SERAPHINE
03:36	GOOD! LAYUP by ELLIOTT,KENDRIAN	67-47	H 20	

Time	VISITORS: Tulsa	Score	Margin	HOME: Wichita St.
03:36	ASSIST by MOUTRY,KAYLA			
03:10				TURNOVER (BADPASS) by BREMAUD,CARLA
03:10	STEAL by GAULDEN,ALEXIS			
03:02	MISSED 3PTR by RODRIGUEZ,KK			
02:58				REBOUND (DEF) by COLBERT,TRAJATA
02:56				FOUL (OFF) by BASTIN,SERAPHINE
02:56				TURNOVER (OFFENSIVE) by BASTIN,SERAPHINE
02:56	SUB OUT: GAULDEN,ALEXIS			
02:56	SUB IN: RICHARDS,ADDISON			
02:33				FOUL (PERSONAL) by LOZADA-CABBAGE,SABRINA
02:33	MISSED FT by MOUTRY,KAYLA			
02:33	REBOUND (OFF) by TEAM			
02:33				SUB OUT: COLBERT,TRAJATA
02:33				SUB IN: SMITH,SHYIA
02:33	GOOD! FT by MOUTRY,KAYLA	67-48	H 19	
02:15				MISSED 3PTR by BASTIN,SERAPHINE
02:11	REBOUND (DEF) by MOUTRY,KAYLA			
02:11	TURNOVER (BADPASS) by MOUTRY,KAYLA			
02:08				TURNOVER (BADPASS) by SMITH,SHYIA
02:08	STEAL by RODRIGUEZ,KK			
01:58	MISSED LAYUP by RODRIGUEZ,KK			
01:54				REBOUND (DEF) by BREMAUD,CARLA
01:46				MISSED 3PTR by BREMAUD,CARLA
01:43	REBOUND (DEF) by ELLIOTT,KENDRIAN			
01:31	MISSED 3PTR by RICHARDS,ADDISON			
01:28				REBOUND (DEF) by SMITH,SHYIA
01:11	FOUL (PERSONAL) by HRAFNKELSDOTTIR,ELIN			
01:11		68-48	H 20	GOOD! FT by LOZADA-CABBAGE,SABRINA
01:11				SUB OUT: AMBROSIO,CESARIA
01:11				SUB IN: BREWER,MAYA
01:11				MISSED FT by LOZADA-CABBAGE,SABRINA
01:07	REBOUND (DEF) by TEAM			
01:07				SUB OUT: LOZADA-CABBAGE,SABRINA
01:07				SUB IN: HENDERSON,ASIA
00:49	MISSED 3PTR by RODRIGUEZ,KK			
00:45				REBOUND (DEF) by BREMAUD,CARLA
00:45	FOUL (PERSONAL) by MOUTRY,KAYLA			
00:45		69-48	H 21	GOOD! FT by BREMAUD,CARLA [FB]
00:45				SUB OUT: BASTIN,SERAPHINE
00:45				SUB IN: REID,ASHLEY
00:45				MISSED FT by BREMAUD,CARLA
00:44	REBOUND (DEF) by MOUTRY,KAYLA			
00:38	MISSED 3PTR by RODRIGUEZ,KK			
00:35				REBOUND (DEF) by HENDERSON,ASIA
00:35	FOUL (PERSONAL) by ELLIOTT,KENDRIAN			
00:35		70-48	H 22	GOOD! FT by HENDERSON,ASIA
00:35		71-48	H 23	GOOD! FT by HENDERSON,ASIA
00:22	MISSED 3PTR by RICHARDS,ADDISON			
00:22	REBOUND (OFF) by ELLIOTT,KENDRIAN			
00:22				FOUL (PERSONAL) by BREWER,MAYA
00:22	MISSED FT by ELLIOTT,KENDRIAN			
00:22	REBOUND (OFF) by TEAM			
00:22	GOOD! FT by ELLIOTT,KENDRIAN	71-49	H 22	

Tulsa 49, Wichita St. 71

Points from (This Period)	TLS	WSU
In the Paint	2	6
Off Turns	1	2
2nd Chance	4	2
Fast Break	0	1
Bench	4	6

**Official Scoring/Possession Reference Chart
Tulsa vs Wichita St.**

Period 1

March 05, 2019 at Charles Koch Arena (Devlin Court) - Wichita, Kan.

Period 1

Starters:

Tulsa: 10 GAULDEN,ALEXIS; 21 LESCAY,REBECCA; 22 BRADY,MORGAN; 32 LEWIS,DESIREE; 33 POLK,CRYSTAL;

Wichita St.: 11 LOZADA-CABBAGE,SABRINA; 12 BREMAUD,CARLA; 13 PRINCE,RAVEN; 23 BASTIN,SERAPHINE; 30 AMBROSIO,CESARIA;

Time	VISITORS: Tulsa	Score	Margin	HOME: Wichita St.
09:37	GOOD! LAYUP by POLK,CRYSTAL	0-2	V 2	
09:09	GOOD! LAYUP by POLK,CRYSTAL	0-4	V 4	
08:37		2-4	V 2	GOOD! JUMPER by BASTIN,SERAPHINE [PNT]
08:16	GOOD! JUMPER by BRADY,MORGAN	2-6	V 4	
07:54		4-6	V 2	GOOD! LAYUP by BREMAUD,CARLA
07:26	GOOD! JUMPER by RODRIGUEZ,KK	4-8	V 4	
06:28		6-8	V 2	GOOD! LAYUP by LOZADA-CABBAGE,SABRINA
06:19	GOOD! LAYUP by GAULDEN,ALEXIS	6-10	V 4	
05:43	GOOD! LAYUP by LESCAY,REBECCA	6-12	V 6	
05:26		9-12	V 3	GOOD! 3PTR by BREMAUD,CARLA
04:40		11-12	V 1	GOOD! LAYUP by BASTIN,SERAPHINE
03:29		13-12	H 1	GOOD! LAYUP by BASTIN,SERAPHINE
03:15	GOOD! JUMPER by POLK,CRYSTAL	13-14	V 1	
00:29		15-14	H 1	GOOD! JUMPER by REID,ASHLEY
00:06	GOOD! FT by LEWIS,DESIREE	15-15	T	

Tulsa 15, Wichita St. 15

**Official Scoring/Possession Reference Chart
Tulsa vs Wichita St.**

Period 2

March 05, 2019 at Charles Koch Arena (Devlin Court) - Wichita, Kan.

Period 2

Starters:

Tulsa: 10 GAULDEN,ALEXIS; 21 LESCAY,REBECCA; 22 BRADY,MORGAN; 32 LEWIS,DESIREE; 33 POLK,CRYSTAL;

Wichita St.: 11 LOZADA-CABBAGE,SABRINA; 12 BREMAUD,CARLA; 13 PRINCE,RAVEN; 23 BASTIN,SERAPHINE; 30 AMBROSIO,CESARIA;

Time	VISITORS: Tulsa	Score	Margin	HOME: Wichita St.
09:48		18-15	H 3	GOOD! 3PTR by LOZADA-CABBAGE,SABRINA
08:23	GOOD! LAYUP by LESCAY,REBECCA [FB]	18-17	H 1	
07:57		20-17	H 3	GOOD! LAYUP by LOZADA-CABBAGE,SABRINA
06:34		22-17	H 5	GOOD! JUMPER by BREWER,MAYA
05:52		24-17	H 7	GOOD! LAYUP by AMBROSIO,CESARIA [FB]
05:06		26-17	H 9	GOOD! LAYUP by COLBERT,TRAJATA
04:54		27-17	H 10	GOOD! FT by BASTIN,SERAPHINE [FB]
04:54		28-17	H 11	GOOD! FT by BASTIN,SERAPHINE [FB]
04:01	GOOD! LAYUP by POLK,CRYSTAL	28-19	H 9	
03:38	GOOD! LAYUP by MOUTRY,KAYLA [FB]	28-21	H 7	
03:15		30-21	H 9	GOOD! LAYUP by COLBERT,TRAJATA
03:05	GOOD! JUMPER by POLK,CRYSTAL	30-23	H 7	
01:47	GOOD! LAYUP by POLK,CRYSTAL	30-25	H 5	
01:11	GOOD! LAYUP by LESCAY,REBECCA [FB]	30-27	H 3	
00:46		33-27	H 6	GOOD! 3PTR by BREWER,MAYA

Tulsa 27, Wichita St. 33

**Official Scoring/Possession Reference Chart
Tulsa vs Wichita St.**

Period 3

March 05, 2019 at Charles Koch Arena (Devlin Court) - Wichita, Kan.

Period 3

Starters:

Tulsa: 10 GAULDEN,ALEXIS; 21 LESCAY,REBECCA; 22 BRADY,MORGAN; 32 LEWIS,DESIREE; 33 POLK,CRYSTAL;

Wichita St.: 11 LOZADA-CABBAGE,SABRINA; 12 BREMAUD,CARLA; 13 PRINCE,RAVEN; 23 BASTIN,SERAPHINE; 30 AMBROSIO,CESARIA;

Time	VISITORS: Tulsa	Score	Margin	HOME: Wichita St.
08:49		36-27	H 9	GOOD! 3PTR by BASTIN,SERAPHINE
07:38		39-27	H 12	GOOD! 3PTR by LOZADA-CABBAGE,SABRINA
07:03	GOOD! 3PTR by BRADY,MORGAN	39-30	H 9	
06:43		41-30	H 11	GOOD! JUMPER by BREMAUD,CARLA
06:04		44-30	H 14	GOOD! 3PTR by AMBROSIO,CESARIA
04:37	GOOD! LAYUP by POLK,CRYSTAL	44-32	H 12	
04:16		45-32	H 13	GOOD! FT by PRINCE,RAVEN
04:04	GOOD! JUMPER by POLK,CRYSTAL [PNT]	45-34	H 11	
03:48		47-34	H 13	GOOD! JUMPER by BASTIN,SERAPHINE
03:29	GOOD! JUMPER by POLK,CRYSTAL	47-36	H 11	
02:42		49-36	H 13	GOOD! LAYUP by LOZADA-CABBAGE,SABRINA
02:15		52-36	H 16	GOOD! 3PTR by BREWER,MAYA
00:28		53-36	H 17	GOOD! FT by BREWER,MAYA

Tulsa 36, Wichita St. 53

**Official Scoring/Possession Reference Chart
Tulsa vs Wichita St.**

Period 4

March 05, 2019 at Charles Koch Arena (Devlin Court) - Wichita, Kan.

Period 4

Starters:

Tulsa: 10 GAULDEN,ALEXIS; 21 LESCAY,REBECCA; 22 BRADY,MORGAN; 32 LEWIS,DESIREE; 33 POLK,CRYSTAL;

Wichita St.: 11 LOZADA-CABBAGE,SABRINA; 12 BREMAUD,CARLA; 13 PRINCE,RAVEN; 23 BASTIN,SERAPHINE; 30 AMBROSIO,CESARIA;

Time	VISITORS: Tulsa	Score	Margin	HOME: Wichita St.
09:39	GOOD! 3PTR by GAULDEN,ALEXIS	53-39	H 14	
08:53	GOOD! FT by LESCAY,REBECCA	53-40	H 13	
08:35		55-40	H 15	GOOD! LAYUP by COLBERT,TRAJATA
08:16		57-40	H 17	GOOD! LAYUP by BASTIN,SERAPHINE
08:16		58-40	H 18	GOOD! FT by BASTIN,SERAPHINE
07:24		61-40	H 21	GOOD! 3PTR by BREMAUD,CARLA
07:08	GOOD! FT by POLK,CRYSTAL	61-41	H 20	
06:34		63-41	H 22	GOOD! LAYUP by HENDERSON,ASIA
06:23	GOOD! FT by POLK,CRYSTAL	63-42	H 21	
05:56		64-42	H 22	GOOD! FT by BASTIN,SERAPHINE
05:29	GOOD! 3PTR by GAULDEN,ALEXIS	64-45	H 19	
05:06		65-45	H 20	GOOD! FT by AMBROSIO,CESARIA
03:55		67-45	H 22	GOOD! JUMPER by BASTIN,SERAPHINE
03:36	GOOD! LAYUP by ELLIOTT,KENDRIAN	67-47	H 20	
02:33	GOOD! FT by MOUTRY,KAYLA	67-48	H 19	
01:11		68-48	H 20	GOOD! FT by LOZADA-CABBAGE,SABRINA
00:45		69-48	H 21	GOOD! FT by BREMAUD,CARLA [FB]
00:35		70-48	H 22	GOOD! FT by HENDERSON,ASIA
00:35		71-48	H 23	GOOD! FT by HENDERSON,ASIA
00:22	GOOD! FT by ELLIOTT,KENDRIAN	71-49	H 22	

Tulsa 49, Wichita St. 71

Official Substitutions Log
Tulsa vs Wichita St.
Period 1
March 05, 2019 at Charles Koch Arena (Devlin Court) - Wichita, Kan.

VISITORS: Tulsa	Time	Score	HOME: Wichita St.
10 GAULDEN,ALEXIS			11 LOZADA-CABBAGE,SABRINA
21 LESCAY,REBECCA			12 BREMAUD,CARLA
22 BRADY,MORGAN			13 PRINCE,RAVEN
32 LEWIS,DESIREE			23 BASTIN,SERAPHINE
33 POLK,CRYSTAL			30 AMBROSIO,CESARIA
SUB OUT: 22 BRADY,MORGAN	08:04	6-2	
SUB IN: 15 RODRIGUEZ,KK	08:04		
	01:43	14-13	SUB OUT: AMBROSIO,CESARIA
	01:43		SUB IN: REID,ASHLEY
	01:43		SUB OUT: PRINCE,RAVEN
	01:43		SUB IN: HENDERSON,ASIA
SUB OUT: 15 RODRIGUEZ,KK	01:43		
SUB IN: 4 RICHARDS,ADDISON	01:43		
SUB OUT: 33 POLK,CRYSTAL	00:06	14-15	
SUB IN: 00 ELLIOTT,KENDRIAN	00:06		

Tulsa 15, Wichita St. 15

Official Substitutions Log
Tulsa vs Wichita St.
Period 2
March 05, 2019 at Charles Koch Arena (Devlin Court) - Wichita, Kan.

VISITORS: Tulsa	Time	Score	HOME: Wichita St.
10 GAULDEN,ALEXIS			11 LOZADA-CABBAGE,SABRINA
21 LESCAY,REBECCA			12 BREMAUD,CARLA
22 BRADY,MORGAN			13 PRINCE,RAVEN
32 LEWIS,DESIREE			23 BASTIN,SERAPHINE
33 POLK,CRYSTAL			30 AMBROSIO,CESARIA
	08:51	15-18	SUB OUT: BREMAUD,CARLA
	08:51		SUB IN: AMBROSIO,CESARIA
SUB OUT: 32 LEWIS,DESIREE	07:35	17-20	
SUB IN: 5 BUTLER,JASMINE	07:35		
SUB OUT: 22 BRADY,MORGAN	07:35		
SUB IN: 10 GAULDEN,ALEXIS	07:35		
	07:05	17-20	SUB OUT: REID,ASHLEY
	07:05		SUB IN: BREWER,MAYA
	06:50	17-20	SUB OUT: HENDERSON,ASIA
	06:50		SUB IN: COLBERT,TRAJATA
	05:49	17-24	SUB OUT: LOZADA-CABBAGE,SABRINA
	05:49		SUB IN: FAYE,ALYSSIA
SUB OUT: 00 ELLIOTT,KENDRIAN	05:49		
SUB IN: 33 POLK,CRYSTAL	05:49		
SUB OUT: 4 RICHARDS,ADDISON	04:54	17-26	
SUB IN: 23 MOUTRY,KAYLA	04:54		
SUB OUT: 5 BUTLER,JASMINE	04:54		
SUB IN: 32 LEWIS,DESIREE	04:54		
	04:06	17-28	SUB OUT: BASTIN,SERAPHINE
	04:06		SUB IN: BREMAUD,CARLA
	02:34	23-30	SUB OUT: FAYE,ALYSSIA
	02:34		SUB IN: LOZADA-CABBAGE,SABRINA
SUB OUT: 10 GAULDEN,ALEXIS	02:20	23-30	
SUB IN: 22 BRADY,MORGAN	02:20		
	02:20		SUB OUT: COLBERT,TRAJATA
	02:20		SUB IN: PRINCE,RAVEN

Tulsa 27, Wichita St. 33

Official Substitutions Log
Tulsa vs Wichita St.
Period 3
March 05, 2019 at Charles Koch Arena (Devlin Court) - Wichita, Kan.

VISITORS: Tulsa	Time	Score	HOME: Wichita St.
10 GAULDEN,ALEXIS			11 LOZADA-CABBAGE,SABRINA
21 LESCAY,REBECCA			12 BREMAUD,CARLA
22 BRADY,MORGAN			13 PRINCE,RAVEN
32 LEWIS,DESIREE			23 BASTIN,SERAPHINE
33 POLK,CRYSTAL			30 AMBROSIO,CESARIA
SUB OUT: 00 ELLIOTT,KENDRIAN	07:28	27-39	
SUB IN: 32 LEWIS,DESIREE	07:28		
SUB OUT: 23 MOUTRY,KAYLA	05:21	30-44	
SUB IN: 4 RICHARDS,ADDISON	05:21		
SUB OUT: 22 BRADY,MORGAN	04:16	32-44	
SUB IN: 10 GAULDEN,ALEXIS	04:16		
	03:33	34-47	SUB OUT: BREMAUD,CARLA
	03:33		SUB IN: BREWER,MAYA
	02:04	36-52	SUB OUT: LOZADA-CABBAGE,SABRINA
	02:04		SUB IN: COLBERT,TRAJATA
	01:49	36-52	SUB OUT: BASTIN,SERAPHINE
	01:49		SUB IN: REID,ASHLEY
SUB OUT: 4 RICHARDS,ADDISON	01:49		
SUB IN: 22 BRADY,MORGAN	01:49		
SUB OUT: 33 POLK,CRYSTAL	00:31	36-52	
SUB IN: 00 ELLIOTT,KENDRIAN	00:31		
	00:28	36-52	SUB OUT: PRINCE,RAVEN
	00:28		SUB IN: SMITH,SHYIA

Tulsa 36, Wichita St. 53

Official Substitutions Log
Tulsa vs Wichita St.
Period 4
March 05, 2019 at Charles Koch Arena (Devlin Court) - Wichita, Kan.

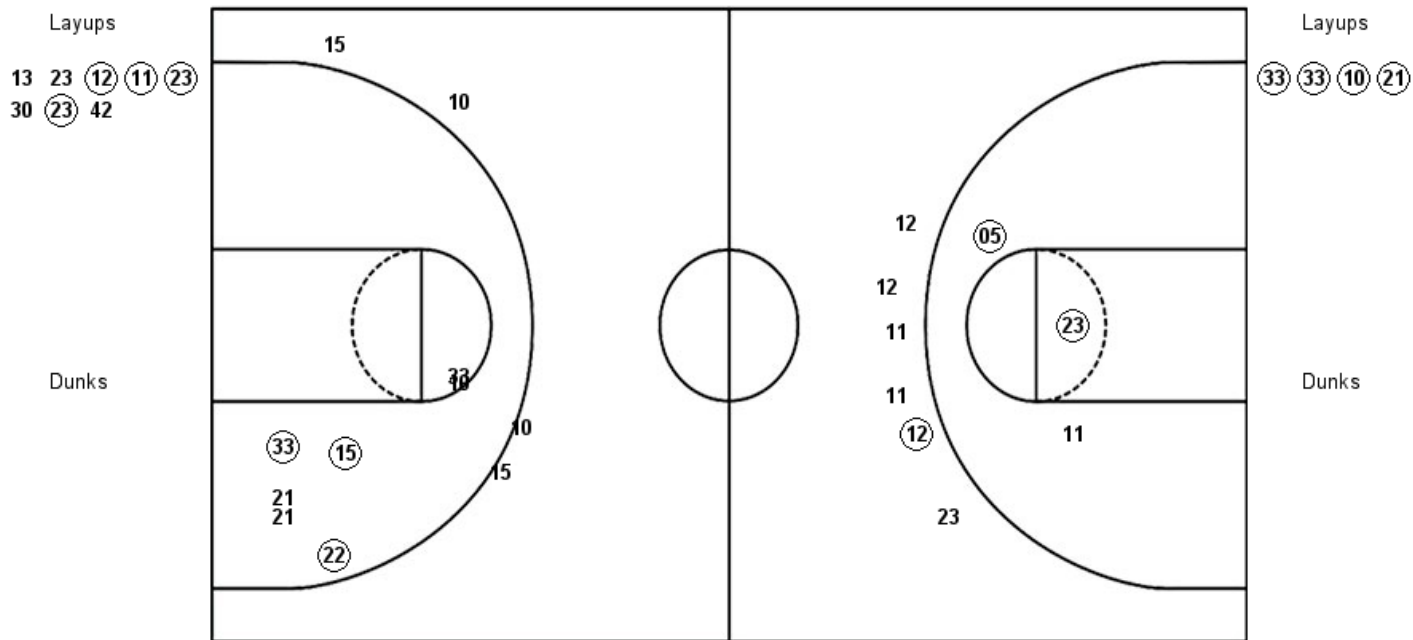
VISITORS: Tulsa	Time	Score	HOME: Wichita St.
10 GAULDEN,ALEXIS			11 LOZADA-CABBAGE,SABRINA
21 LESCAY,REBECCA			12 BREMAUD,CARLA
22 BRADY,MORGAN			13 PRINCE,RAVEN
32 LEWIS,DESIREE			23 BASTIN,SERAPHINE
33 POLK,CRYSTAL			30 AMBROSIO,CESARIA
	07:08	40-61	SUB OUT: COLBERT,TRAJATA
	07:08		SUB IN: HENDERSON,ASIA
	07:08		SUB OUT: BREWER,MAYA
	07:08		SUB IN: AMBROSIO,CESARIA
SUB OUT: 32 LEWIS,DESIREE	07:08		
SUB IN: 20 HRAFNKELSDOTTIR,ELIN	07:08		
SUB OUT: 22 BRADY,MORGAN	06:23	41-63	
SUB IN: 15 RODRIGUEZ,KK	06:23		
SUB OUT: 33 POLK,CRYSTAL	05:56	42-63	
SUB IN: 23 MOUTRY,KAYLA	05:56		
SUB OUT: 21 LESCAY,REBECCA	05:56		
SUB IN: 00 ELLIOTT,KENDRIAN	05:56		
	05:28	45-64	SUB OUT: HENDERSON,ASIA
	05:28		SUB IN: COLBERT,TRAJATA
SUB OUT: 10 GAULDEN,ALEXIS	02:56	47-67	
SUB IN: 4 RICHARDS,ADDISON	02:56		
	02:33	47-67	SUB OUT: COLBERT,TRAJATA
	02:33		SUB IN: SMITH,SHYIA
	01:11	48-68	SUB OUT: AMBROSIO,CESARIA
	01:11		SUB IN: BREWER,MAYA
	01:07	48-68	SUB OUT: LOZADA-CABBAGE,SABRINA
	01:07		SUB IN: HENDERSON,ASIA
	00:45	48-69	SUB OUT: BASTIN,SERAPHINE
	00:45		SUB IN: REID,ASHLEY

Tulsa 49, Wichita St. 71

Official Shot Chart
Tulsa vs Wichita St.
PERIOD 1 Shots
March 05, 2019 at Charles Koch Arena (Devlin Court) - Wichita, Kan.

Wichita St.

Tulsa



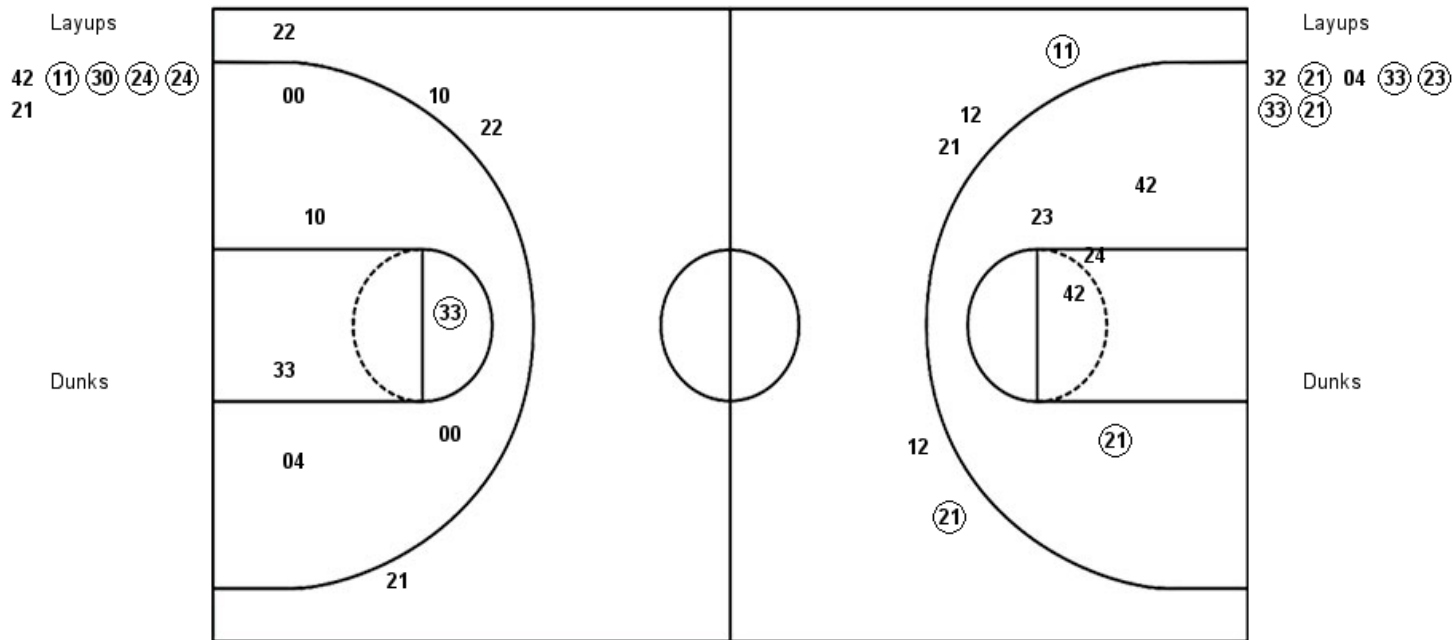
WSU : Period 1	Made	Att	Pct
Layups	4	8	50.0
Dunks	0	0	0
2PT Field Goals	6	11	54.5
3PT Field Goals	1	6	16.7
Total Field Goals	7	17	41.2

TLS : Period 1	Made	Att	Pct
Layups	4	4	100.0
Dunks	0	0	0
2PT Field Goals	7	11	63.6
3PT Field Goals	0	4	00.0
Total Field Goals	7	15	46.7

Official Shot Chart
Tulsa vs Wichita St.
PERIOD 2 Shots
March 05, 2019 at Charles Koch Arena (Devlin Court) - Wichita, Kan.

Wichita St.

Tulsa



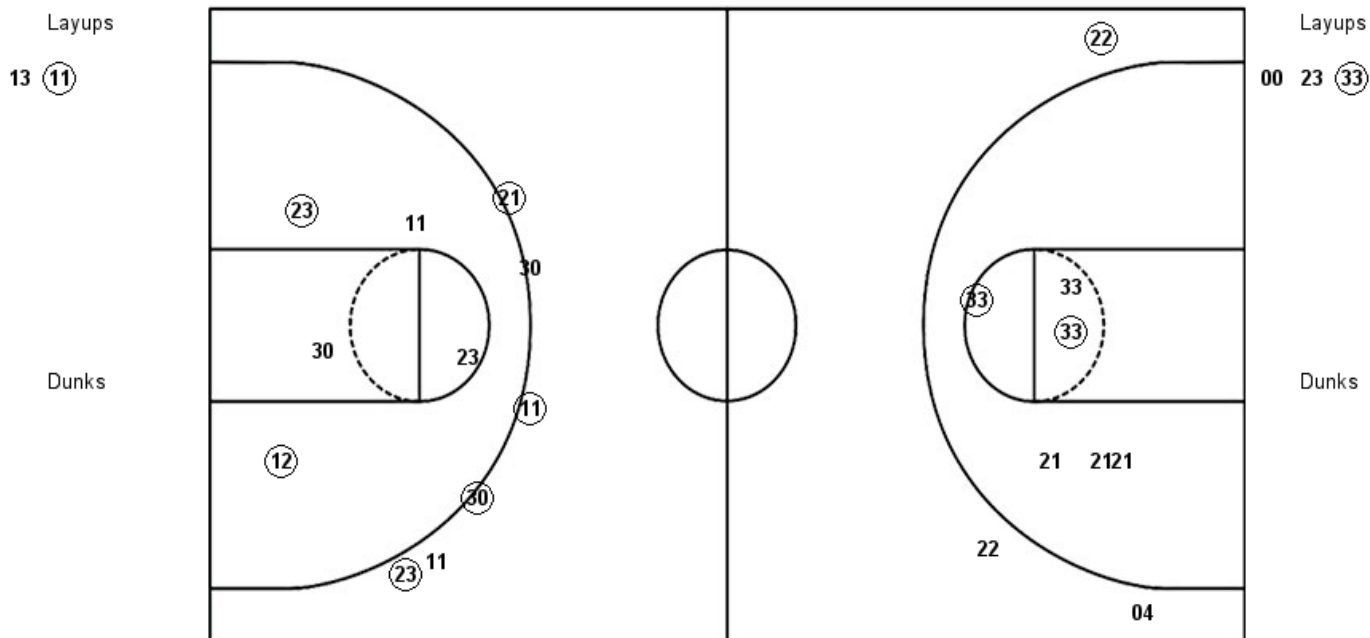
WSU : Period 2	Made	Att	Pct
Layups	4	6	66.7
Dunks	0	0	0
2PT Field Goals	5	11	45.5
3PT Field Goals	2	5	40.0
Total Field Goals	7	16	43.8

TLS : Period 2	Made	Att	Pct
Layups	5	7	71.4
Dunks	0	0	0
2PT Field Goals	6	13	46.2
3PT Field Goals	0	4	00.0
Total Field Goals	6	17	35.3

Official Shot Chart
Tulsa vs Wichita St.
PERIOD 3 Shots
March 05, 2019 at Charles Koch Arena (Devlin Court) - Wichita, Kan.

Wichita St.

Tulsa



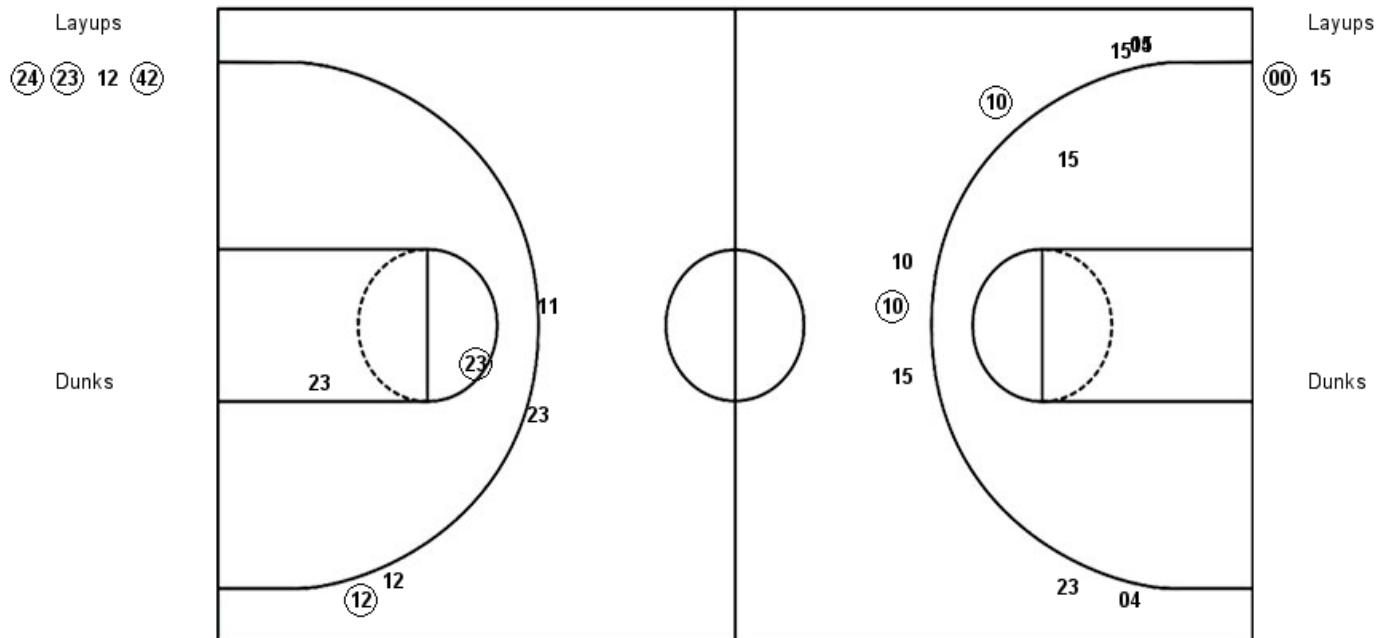
WSU : Period 3	Made	Att	Pct
Layups	1	2	50.0
Dunks	0	0	0
2PT Field Goals	3	7	42.9
3PT Field Goals	4	6	66.7
Total Field Goals	7	13	53.8

TLS : Period 3	Made	Att	Pct
Layups	1	3	33.3
Dunks	0	0	0
2PT Field Goals	3	9	33.3
3PT Field Goals	1	3	33.3
Total Field Goals	4	12	33.3

Official Shot Chart
Tulsa vs Wichita St.
PERIOD 4 Shots
March 05, 2019 at Charles Koch Arena (Devlin Court) - Wichita, Kan.

Wichita St.

Tulsa



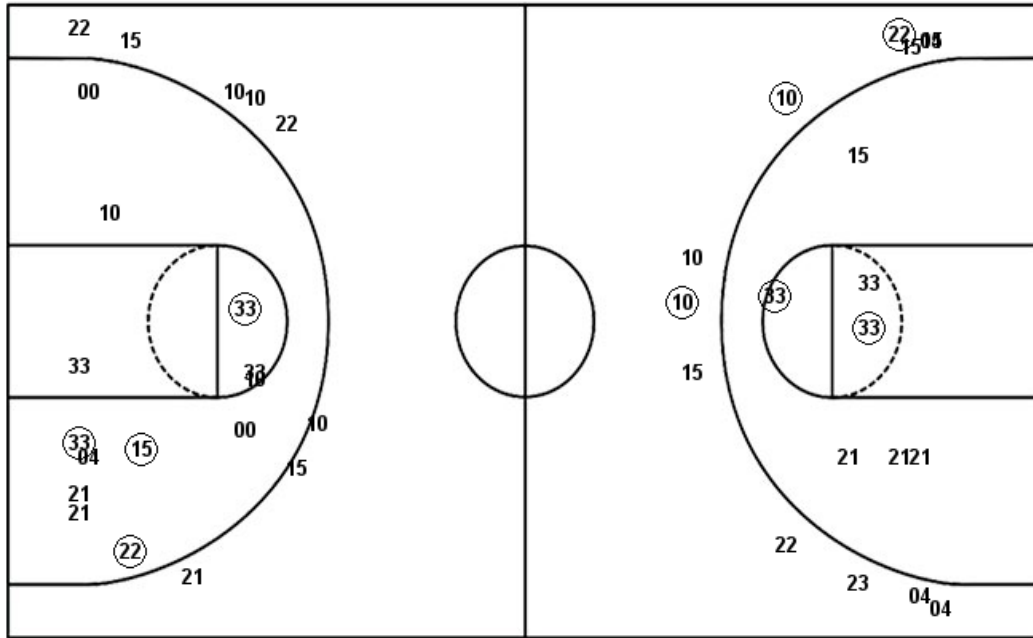
WSU : Period 4	Made	Att	Pct
Layups	3	4	75.0
Dunks	0	0	0
2PT Field Goals	4	6	66.7
3PT Field Goals	1	4	25.0
Total Field Goals	5	10	50.0

TLS : Period 4	Made	Att	Pct
Layups	1	2	50.0
Dunks	0	0	0
2PT Field Goals	1	3	33.3
3PT Field Goals	2	9	22.2
Total Field Goals	3	12	25.0

Official Shot Chart
Tulsa vs Wichita St.
Tulsa Team Shots
March 05, 2019 at Charles Koch Arena (Devlin Court) - Wichita, Kan.

Layups

Dunks



Layups

Dunks

33 33 10 21 32
 21 04 33 23 33
 21 00 23 33 00
 15

TLS : Period 1	Made	Att	Pct
Layups	4	4	100.0
Dunks	0	0	0
2PT Field Goals	7	11	63.6
3PT Field Goals	0	4	00.0
Total Field Goals	7	15	46.7

TLS : Period 3	Made	Att	Pct
Layups	1	3	33.3
Dunks	0	0	0
2PT Field Goals	3	9	33.3
3PT Field Goals	1	3	33.3
Total Field Goals	4	12	33.3

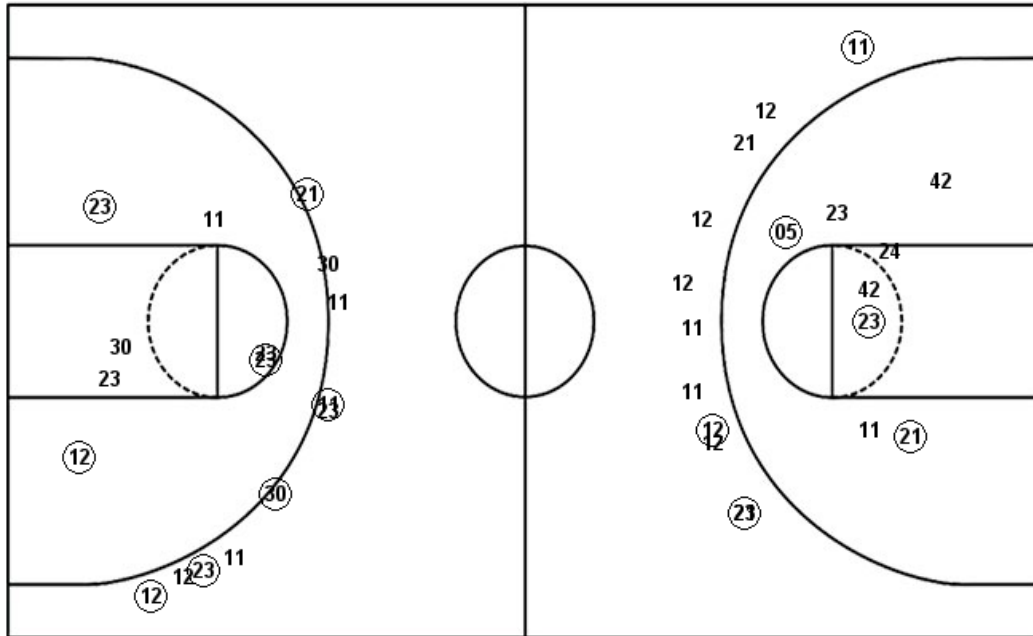
TLS : Period 2	Made	Att	Pct
Layups	5	7	71.4
Dunks	0	0	0
2PT Field Goals	6	13	46.2
3PT Field Goals	0	4	00.0
Total Field Goals	6	17	35.3

TLS : Period 4	Made	Att	Pct
Layups	1	2	50.0
Dunks	0	0	0
2PT Field Goals	1	3	33.3
3PT Field Goals	2	9	22.2
Total Field Goals	3	12	25.0

Official Shot Chart
Tulsa vs Wichita St.
Wichita St. Team Shots
March 05, 2019 at Charles Koch Arena (Devlin Court) - Wichita, Kan.

Layups

Dunks



Layups

Dunks

13 23 12 11 23
 30 23 42 42 11
 30 24 24 21 13
 11 24 23 12 42

WSU : Period 1	Made	Att	Pct
Layups	4	8	50.0
Dunks	0	0	0
2PT Field Goals	6	11	54.5
3PT Field Goals	1	6	16.7
Total Field Goals	7	17	41.2

WSU : Period 3	Made	Att	Pct
Layups	1	2	50.0
Dunks	0	0	0
2PT Field Goals	3	7	42.9
3PT Field Goals	4	6	66.7
Total Field Goals	7	13	53.8

WSU : Period 2	Made	Att	Pct
Layups	4	6	66.7
Dunks	0	0	0
2PT Field Goals	5	11	45.5
3PT Field Goals	2	5	40.0
Total Field Goals	7	16	43.8

WSU : Period 4	Made	Att	Pct
Layups	3	4	75.0
Dunks	0	0	0
2PT Field Goals	4	6	66.7
3PT Field Goals	1	4	25.0
Total Field Goals	5	10	50.0