

FINAL SCORE

SMU



42

Wichita St.



53

February 17, 2019 • Charles Koch Arena (Devlin Court) - Wichita,
Kan.

FINAL STATISTICS

Official Box Score
SMU vs Wichita St.
Game Totals -- Final Statistics
February 17, 2019 at Charles Koch Arena (Devlin Court) - Wichita, Kan.

SMU 42

No.	Player	S	Pts	FG	3FG	FT	OR	DR	TR	PF	A	TO	Blk	Stl	Min	+/-
02	Whitfield, Ariana		5	2-6	1-3	0-0	1	1	2	2	1	2	0	2	15	-11
10	Froling, Alicia		4	1-6	0-0	2-5	7	4	11	1	0	3	1	0	17	-16
14	Bayliss, Paige		3	1-2	0-0	1-2	0	3	3	1	0	2	0	0	21	4
22	Olson, Marie		1	0-10	0-6	1-2	1	2	3	4	0	6	0	1	28	-7
32	White, Kayla		14	5-11	4-7	0-2	1	3	4	2	1	6	0	1	26	0
01	Ellis, Makenzie		6	1-3	0-1	4-4	1	5	6	5	1	3	0	1	30	-8
23	Tollie, Brishonne		4	0-6	0-5	4-4	4	3	7	5	0	5	1	0	18	4
24	White, Jaquia		3	1-3	0-1	1-2	2	3	5	1	4	2	0	3	33	-7
33	Cash, Johnasia		2	1-7	0-2	0-0	1	2	3	2	0	0	1	2	13	-14
	Team						0	1	1	0		0				
TOTALS			42	12-54	5-25	13-21	18	27	45	23	7	29	3	10	200	

Shooting By Period

Period	FG	FG%	3FG	3FG%	FT	FT%
1st Qtr	2-15	13%	2-8	25%	1-2	50%
2nd Qtr	3-16	19%	1-6	17%	4-6	67%
3rd Qtr	3-9	33%	0-3	00%	3-4	75%
4th Qtr	4-14	29%	2-8	25%	5-9	56%
1st Half	5-31	16%	3-14	21%	5-8	63%
2nd Half	7-23	30%	2-11	18%	8-13	62%
Game	12-54	22.2%	5-25	20.0%	13-21	61.9%

Last FG: 4th-00:39
 Biggest Run: 5-0
 Largest lead: By 1 at 1-09:33
 Technical Fouls: None.

Wichita St. 53

No.	Player	S	Pts	FG	3FG	FT	OR	DR	TR	PF	A	TO	Blk	Stl	Min	+/-
11	Lozada-Cabbage, Sabrina		12	5-10	2-4	0-2	0	1	1	4	1	1	0	0	28	7
12	Bremaud, Carla		11	4-9	3-8	0-0	0	0	0	3	0	2	0	4	22	-5
22	Faye, Alyssia		0	0-1	0-0	0-0	2	1	3	1	1	3	0	0	13	4
23	Bastin, Seraphine		10	1-5	0-1	8-10	1	6	7	1	9	3	0	2	37	8
30	Ambrosio, Cesaria		5	2-3	1-1	0-0	0	4	4	4	2	3	1	5	25	10
05	Reid, Ashley		3	1-5	1-5	0-0	0	2	2	2	1	0	0	0	18	4
10	Smith, Shyia		4	1-1	0-0	2-4	0	3	3	0	1	0	0	2	12	1
13	Prince, Raven		0	0-2	0-0	0-0	1	1	2	1	0	2	0	0	16	1
15	Hampton, Jaida		6	1-8	1-3	3-3	0	1	1	2	0	5	0	2	22	16
40	Colbert, Trajata		2	0-2	0-0	2-2	1	0	1	1	0	2	0	1	6	9
	Team						0	1	1	0		0				
TOTALS			53	15-46	8-22	15-21	5	20	25	19	15	21	1	16	200	

Shooting By Period

Period	FG	FG%	3FG	3FG%	FT	FT%
1st Qtr	7-12	58%	4-8	50%	5-6	83%
2nd Qtr	4-10	40%	3-5	60%	3-5	60%
3rd Qtr	2-15	13%	1-6	17%	0-0	0%
4th Qtr	2-9	22%	0-3	00%	7-10	70%
1st Half	11-22	50%	7-13	54%	8-11	73%
2nd Half	4-24	17%	1-9	11%	7-10	70%
Game	15-46	32.6%	8-22	36.4%	15-21	71.4%

Last FG: 4th-05:11
 Biggest Run: 12-0
 Largest lead: By 19 at 4-04:32
 Technical Fouls: None.

Game Notes:

Officials: Chaney Muench, Isaac D. Johnson, Chris Saucedo
 Attendance: 1922

Start Time: 2019-02-17 20:06:12
 End Time: 2019-02-17 22:09:41
 Game Duration: 123
 Conference Game:

Score	1st	2nd	3rd	4th	TOT
SMU	7	11	9	15	42
WSU	23	14	5	11	53

SMU led for 1:15. WSU led for 37:47.
 Game was tied for 0:58.
 Times tied: 1 Lead Changes: 2

Points from	SMU	WSU
In the Paint	12	10
Off Turns	5	17
2nd Chance	7	2
Fast Break	9	9
Bench	15	15

Official Box Score
SMU vs Wichita St.
First Half Statistics Only
February 17, 2019 at Charles Koch Arena (Devlin Court) - Wichita, Kan.

SMU 18

No.	Player	S	Pts	FG	3FG	FT	OR	DR	TR	PF	A	TO	Blk	Stl	Min	+/-
10	Froling, Alicia		2	0-5	0-0	2-4	6	3	9	0	0	2	0	0	13	-16
14	Bayliss, Paige		0	0-0	0-0	0-0	0	0	0	0	0	0	0	0	3	-3
22	Olson, Marie		0	0-5	0-2	0-0	0	0	0	1	0	2	0	0	12	-13
23	Tollie, Brishonne		0	0-3	0-3	0-0	0	1	1	2	0	0	0	0	7	-3
24	White, Jaquia		1	0-1	0-1	1-2	2	0	2	0	1	0	0	2	14	-13
32	White, Kayla		6	2-4	2-3	0-0	0	1	1	2	1	3	0	0	12	-9
33	Cash, Johnasia		2	1-7	0-2	0-0	1	2	3	2	0	0	1	2	13	-14
01	Ellis, Makenzie		2	0-0	0-0	2-2	0	2	2	1	0	1	0	0	13	-11
02	Whitfield, Ariana		5	2-6	1-3	0-0	0	1	1	2	1	2	0	2	13	-13
	Team		0	0-0	0-0	0-0	0	1	1	0	0	0	0	0	0	0
TOTALS			18	5-31	3-14	5-8	9	11	20	10	3	10	1	6	100	

Shooting By Period

Period	FG	FG%	3FG	3FG%	FT	FT%
1st Qtr	2-15	13%	2-8	25%	1-2	50%
2nd Qtr	3-16	19%	1-6	17%	4-6	67%
1st Half	5-31	16%	3-14	21%	5-8	63%
Game	12-54	22.2%	5-25	20.0%	13-21	61.9%

Last FG Half: SMU 2nd-00:21

Wichita St. 37

No.	Player	S	Pts	FG	3FG	FT	OR	DR	TR	PF	A	TO	Blk	Stl	Min	+/-
05	Reid, Ashley		3	1-3	1-3	0-0	0	1	1	0	1	0	0	0	9	2
11	Lozada-Cabbage, Sabrina		12	5-7	2-3	0-0	0	0	0	1	1	1	0	0	17	16
12	Bremaud, Carla		6	2-3	2-3	0-0	0	0	0	2	0	1	0	0	4	4
13	Prince, Raven		0	0-0	0-0	0-0	0	1	1	1	0	0	0	0	5	0
15	Hampton, Jaida		6	1-4	1-2	3-3	0	1	1	0	0	4	0	2	16	15
22	Faye, Alyssia		0	0-0	0-0	0-0	0	1	1	0	1	0	0	0	8	8
23	Bastin, Seraphine		5	1-2	0-1	3-4	1	2	3	1	7	2	0	2	19	18
40	Colbert, Trajata		2	0-2	0-0	2-2	1	0	1	0	0	1	0	1	5	9
30	Ambrosio, Cesaria		3	1-1	1-1	0-0	0	3	3	1	1	1	1	1	13	18
10	Smith, Shyia		0	0-0	0-0	0-2	0	1	1	0	0	0	0	0	5	5
	Team		0	0-0	0-0	0-0	0	1	1	0	0	0	0	0	0	0
TOTALS			37	11-22	7-13	8-11	2	11	13	6	11	10	1	6	100	

Shooting By Period

Period	FG	FG%	3FG	3FG%	FT	FT%
1st Qtr	7-12	58%	4-8	50%	5-6	83%
2nd Qtr	4-10	40%	3-5	60%	3-5	60%
1st Half	11-22	50%	7-13	54%	8-11	73%
Game	15-46	32.6%	8-22	36.4%	15-21	71.4%

Last FG Half: WSU 2nd-01:31

Game Notes:

Officials: Chaney Muench, Isaac D. Johnson, Chris Saucedo
Attendance: 1922

Start Time: 2019-02-17 20:06:12
End Time: 2019-02-17 22:09:41
Game Duration: 123
Conference Game;

Score	1st	2nd	3rd	4th	TOT
SMU	7	11	9	15	42
WSU	23	14	5	11	53

Points from (This Period)	SMU	WSU
In the Paint	4	6
Off Turns	1	9
2nd Chance	3	2
Fast Break	1	2
Bench	5	11

Official Box Score
SMU vs Wichita St.
First Quarter Statistics Only
February 17, 2019 at Charles Koch Arena (Devlin Court) - Wichita, Kan.

SMU 7

No.	Player	S	Pts	FG	3FG	FT	OR	DR	TR	PF	A	TO	Blk	Stl	Min	+/-
02	Whitfield, Ariana		3	1-4	1-2	0-0	0	1	1	1	1	1	0	0	7	-8
10	Froling, Alicia		1	0-2	0-0	1-2	2	1	3	0	0	0	0	0	9	-14
14	Bayliss, Paige		0	0-0	0-0	0-0	0	0	0	0	0	0	0	0	3	-3
22	Olson, Marie		0	0-3	0-2	0-0	0	0	0	0	0	2	0	0	8	-11
32	White, Kayla		3	1-2	1-2	0-0	0	0	0	1	1	3	0	0	8	-11
01	Ellis, Makenzie		0	0-0	0-0	0-0	0	0	0	0	0	1	0	0	3	-8
23	Tollie, Brishonne		0	0-0	0-0	0-0	0	0	0	0	0	0	0	0	1	-2
24	White, Jaquia		0	0-0	0-0	0-0	1	0	1	0	0	0	0	1	4	-10
33	Cash, Johnasia		0	0-4	0-2	0-0	0	1	1	2	0	0	0	2	7	-13
	Team						0	1	1	0		0				
TOTALS			7	2-15	2-8	1-2	3	4	7	4	2	7	0	3	50	

Shooting By Period

Period	FG	FG%	3FG	3FG%	FT	FT%
1st Qtr	2-15	13%	2-8	25%	1-2	50%
2nd Qtr	3-16	19%	1-6	17%	4-6	67%
1st Half	2-15	13%	2-8	25%	1-2	50%
1st Half	5-31	16%	3-14	21%	5-8	63%
Game	12-54	22.2%	5-25	20.0%	13-21	61.9%

Wichita St. 23

No.	Player	S	Pts	FG	3FG	FT	OR	DR	TR	PF	A	TO	Blk	Stl	Min	+/-
11	Lozada-Cabbage, Sabrina		4	2-3	0-1	0-0	0	0	0	0	1	0	0	0	9	14
12	Bremaud, Carla		6	2-3	2-3	0-0	0	0	0	2	0	1	0	0	4	4
22	Faye, Alyssia		0	0-0	0-0	0-0	0	1	1	0	1	0	0	0	7	8
23	Bastin, Seraphine		5	1-1	0-0	3-4	1	2	3	0	4	1	0	1	9	14
30	Ambrosio, Cesaria		3	1-1	1-1	0-0	0	3	3	0	1	1	1	0	10	16
05	Reid, Ashley		0	0-1	0-1	0-0	0	0	0	0	0	0	0	0	1	2
10	Smith, Shyia		0	0-0	0-0	0-0	0	0	0	0	0	0	0	0	0	0
13	Prince, Raven		0	0-0	0-0	0-0	0	0	0	0	0	0	0	0	1	2
15	Hampton, Jaida		3	1-3	1-2	0-0	0	0	0	0	0	2	0	2	6	12
40	Colbert, Trajata		2	0-0	0-0	2-2	1	0	1	0	0	1	0	1	3	8
	Team						0	0	0	0		0				
TOTALS			23	7-12	4-8	5-6	2	6	8	2	7	6	1	4	50	

Shooting By Period

Period	FG	FG%	3FG	3FG%	FT	FT%
1st Qtr	7-12	58%	4-8	50%	5-6	83%
2nd Qtr	4-10	40%	3-5	60%	3-5	60%
1st Half	7-12	58%	4-8	50%	5-6	83%
1st Half	11-22	50%	7-13	54%	8-11	73%
Game	15-46	32.6%	8-22	36.4%	15-21	71.4%

Game Notes:

Officials: Chaney Muench, Isaac D. Johnson, Chris Saucedo
Attendance: 1922

Start Time: 2019-02-17 20:06:12
End Time: 2019-02-17 22:09:41
Game Duration: 123
Conference Game:

Score	1st	2nd	3rd	4th	TOT
SMU	7	11	9	15	42
WSU	23	14	5	11	53

Points from (This Period)	SMU	WSU
In the Paint	0	4
Off Turns	0	6
2nd Chance	1	2
Fast Break	0	2
Bench	0	5

**Official Play-By-Play
SMU vs Wichita St.
First Quarter**

February 17, 2019 at Charles Koch Arena (Devlin Court) - Wichita, Kan.

Period 1

Starters:

SMU: 10 FROLING,ALICIA; 14 BAYLISS,PAIGE; 22 OLSON,MARIE; 32 WHITE,KAYLA; 2 WHITFIELD,ARIANA;

Wichita St.: 11 LOZADA-CABBAGE,SABRINA; 12 BREMAUD,CARLA; 22 FAYE,ALYSSIA; 23 BASTIN,SERAPHINE; 30 AMBROSIO,CESARIA;

Time	VISITORS: SMU	Score	Margin	HOME: Wichita St.
09:46		2-0	H 2	GOOD! JUMPER by BASTIN,SERAPHINE
09:46				ASSIST by LOZADA-CABBAGE,SABRINA
09:33	GOOD! 3PTR by WHITE,KAYLA	2-3	V 1	
09:33	ASSIST by WHITFIELD,ARIANA			
09:13				MISSED 3PTR by BREMAUD,CARLA
09:10	REBOUND (DEF) by TEAM			
08:52	MISSED JUMPER by OLSON,MARIE			
08:49				REBOUND (DEF) by BASTIN,SERAPHINE
08:46				TURNOVER (BADPASS) by BASTIN,SERAPHINE
08:21	MISSED 3PTR by WHITFIELD,ARIANA			
08:18				REBOUND (DEF) by BASTIN,SERAPHINE
08:18	FOUL (PERSONAL) by WHITE,KAYLA			
08:18		3-3	T	GOOD! FT by BASTIN,SERAPHINE
08:18				MISSED FT by BASTIN,SERAPHINE
08:16	REBOUND (DEF) by FROLING,ALICIA			
07:51	MISSED JUMPER by WHITFIELD,ARIANA			
07:51				BLOCK by AMBROSIO,CESARIA
07:45				REBOUND (DEF) by FAYE,ALYSSIA
07:34		6-3	H 3	GOOD! 3PTR by BREMAUD,CARLA
07:34				ASSIST by AMBROSIO,CESARIA
07:23	MISSED 3PTR by OLSON,MARIE			
07:17	REBOUND (OFF) by FROLING,ALICIA			
07:17	MISSED LAYUP by FROLING,ALICIA			
07:17	REBOUND (OFF) by FROLING,ALICIA			
07:17				FOUL (PERSONAL) by BREMAUD,CARLA
07:17	MISSED FT by FROLING,ALICIA			
07:17	REBOUND (OFF) by TEAM			
07:17	SUB OUT: BAYLISS,PAIGE			
07:17	SUB IN: CASH,JOHNASIA			
07:17	GOOD! FT by FROLING,ALICIA	6-4	H 2	
07:09				TURNOVER (BADPASS) by AMBROSIO,CESARIA
06:55	MISSED 3PTR by WHITE,KAYLA			
06:50				REBOUND (DEF) by AMBROSIO,CESARIA
06:44				MISSED 3PTR by LOZADA-CABBAGE,SABRINA
06:44				REBOUND (OFF) by BASTIN,SERAPHINE
06:44	FOUL (PERSONAL) by WHITFIELD,ARIANA			
06:44		7-4	H 3	GOOD! FT by BASTIN,SERAPHINE [FB]
06:44		8-4	H 4	GOOD! FT by BASTIN,SERAPHINE [FB]
06:26	MISSED JUMPER by CASH,JOHNASIA			
06:25				REBOUND (DEF) by TEAM
06:11		11-4	H 7	GOOD! 3PTR by BREMAUD,CARLA
06:11				ASSIST by BASTIN,SERAPHINE
05:59	GOOD! 3PTR by WHITFIELD,ARIANA	11-7	H 4	
05:59	ASSIST by WHITE,KAYLA			
05:40				FOUL (OFF) by BREMAUD,CARLA
05:40				TURNOVER (OFFENSIVE) by BREMAUD,CARLA
05:40				SUB OUT: BREMAUD,CARLA
05:40				SUB IN: HAMPTON,JAIDA
05:22	MISSED 3PTR by CASH,JOHNASIA			
05:18				REBOUND (DEF) by AMBROSIO,CESARIA
05:00		13-7	H 6	GOOD! LAYUP by LOZADA-CABBAGE,SABRINA
05:00				ASSIST by FAYE,ALYSSIA
04:53	TURNOVER (LOSTBALL) by WHITE,KAYLA			
04:53				STEAL by BASTIN,SERAPHINE
04:37				MISSED 3PTR by HAMPTON,JAIDA
04:33	REBOUND (DEF) by WHITFIELD,ARIANA			
04:27	MISSED JUMPER by FROLING,ALICIA			
04:25	REBOUND (OFF) by TEAM			
04:25				
04:25	SUB OUT: WHITE,KAYLA			
04:25	SUB IN: WHITE,JAQUIA			
04:24	TURNOVER (OTHER) by WHITFIELD,ARIANA			
04:10				TURNOVER (BADPASS) by HAMPTON,JAIDA
04:10	STEAL by CASH,JOHNASIA			
03:47	MISSED JUMPER by WHITFIELD,ARIANA			
03:47				REBOUND (DEF) by TEAM
03:30		15-7	H 8	GOOD! JUMPER by LOZADA-CABBAGE,SABRINA [PNT]
03:30				ASSIST by BASTIN,SERAPHINE
03:08	MISSED 3PTR by OLSON,MARIE			
03:05	REBOUND (OFF) by WHITE,JAQUIA			
03:01	TURNOVER (TRAVEL) by OLSON,MARIE			
03:01				SUB OUT: FAYE,ALYSSIA
03:01				SUB IN: COLBERT,TRAJATA
03:01	SUB OUT: WHITFIELD,ARIANA			
03:01	SUB IN: ELLIS,MAKENZIE			
02:46				MISSED JUMPER by HAMPTON,JAIDA

Time	VISITORS: SMU	Score	Margin	HOME: Wichita St.
02:44				REBOUND (OFF) by COLBERT,TRAJATA
02:44				TURNOVER (LOSTBALL) by COLBERT,TRAJATA
02:44	STEAL by CASH,JOHNASIA			
02:33	TURNOVER (LOSTBALL) by ELLIS,MAKENZIE			
02:33				STEAL by COLBERT,TRAJATA
02:24		18-7	H 11	GOOD! 3PTR by HAMPTON,JAIDA
02:24				ASSIST by BASTIN,SERAPHINE
02:17	TURNOVER (LOSTBALL) by OLSON,MARIE			
02:17	TIMEOUT 30SEC			
02:17	SUB OUT: OLSON,MARIE			
02:17	SUB IN: WHITE,KAYLA			
02:06		21-7	H 14	GOOD! 3PTR by AMBROSIO,CESARIA
02:06				ASSIST by BASTIN,SERAPHINE
01:50	TURNOVER (BADPASS) by WHITE,KAYLA			
01:50				STEAL by HAMPTON,JAIDA
01:45				TURNOVER (LOSTBALL) by HAMPTON,JAIDA
01:45	STEAL by WHITE,JAQUIA			
01:25	TURNOVER (BADPASS) by WHITE,KAYLA			
01:25				STEAL by HAMPTON,JAIDA
01:25				SUB OUT: LOZADA-CABBAGE,SABRINA
01:25				SUB IN: PRINCE,RAVEN
01:11	SUB OUT: FROLING,ALICIA			
01:11	SUB IN: TOLLIE,BRISHONNE			
01:11				SUB OUT: BASTIN,SERAPHINE
01:11				SUB IN: REID,ASHLEY
00:51				MISSED 3PTR by REID,ASHLEY
00:47	REBOUND (DEF) by CASH,JOHNASIA			
00:30	MISSED JUMPER by CASH,JOHNASIA			
00:28				REBOUND (DEF) by AMBROSIO,CESARIA
00:28	FOUL (PERSONAL) by CASH,JOHNASIA			
00:06	FOUL (PERSONAL) by CASH,JOHNASIA			
00:06		22-7	H 15	GOOD! FT by COLBERT,TRAJATA
00:06		23-7	H 16	GOOD! FT by COLBERT,TRAJATA
00:00	MISSED 3PTR by CASH,JOHNASIA			
00:00	REBOUND (OFF) by TEAM			

SMU 7, Wichita St. 23

Points from (This Period)	SMU	WSU
In the Paint	0	4
Off Turns	0	6
2nd Chance	1	2
Fast Break	0	2
Bench	0	5

Official Box Score
SMU vs Wichita St.
Second Quarter Statistics Only
February 17, 2019 at Charles Koch Arena (Devlin Court) - Wichita, Kan.

SMU 11

No.	Player	S	Pts	FG	3FG	FT	OR	DR	TR	PF	A	TO	Blk	Stl	Min	+/-
02	Whitfield, Ariana		2	1-2	0-1	0-0	0	0	0	1	0	1	0	2	6	-5
10	Froling, Alicia		1	0-3	0-0	1-2	4	2	6	0	0	2	0	0	4	-2
14	Bayliss, Paige		0	0-0	0-0	0-0	0	0	0	0	0	0	0	0	0	0
22	Olson, Marie		0	0-2	0-0	0-0	0	0	0	1	0	0	0	0	4	-2
32	White, Kayla		3	1-2	1-1	0-0	0	1	1	1	0	0	0	0	4	2
01	Ellis, Makenzie		2	0-0	0-0	2-2	0	2	2	1	0	0	0	0	10	-3
23	Tollie, Brishonne		0	0-3	0-3	0-0	0	1	1	2	0	0	0	0	6	-1
24	White, Jaquia		1	0-1	0-1	1-2	1	0	1	0	1	0	0	1	10	-3
33	Cash, Johnasia		2	1-3	0-0	0-0	1	1	2	0	0	0	1	0	6	-1
	Team						0	0	0	0		0				
TOTALS			11	3-16	1-6	4-6	6	7	13	6	1	3	1	3	50	

Shooting By Period

Period	FG	FG%	3FG	3FG%	FT	FT%
3rd Qtr	3-9	33%	0-3	00%	3-4	75%
4th Qtr	4-14	29%	2-8	25%	5-9	56%
2nd Half	3-16	19%	1-6	17%	4-6	67%
2nd Half	7-23	30%	2-11	18%	8-13	62%
Game	12-54	22.2%	5-25	20.0%	13-21	61.9%

Wichita St. 14

No.	Player	S	Pts	FG	3FG	FT	OR	DR	TR	PF	A	TO	Blk	Stl	Min	+/-
11	Lozada-Cabbage, Sabrina		8	3-4	2-2	0-0	0	0	0	1	0	1	0	0	8	2
12	Bremaud, Carla		0	0-0	0-0	0-0	0	0	0	0	0	0	0	0	0	0
22	Faye, Alyssia		0	0-0	0-0	0-0	0	0	0	0	0	0	0	0	1	0
23	Bastin, Seraphine		0	0-1	0-1	0-0	0	0	0	1	3	1	0	1	10	4
30	Ambrosio, Cesaria		0	0-0	0-0	0-0	0	0	0	1	0	0	0	1	3	2
05	Reid, Ashley		3	1-2	1-2	0-0	0	1	1	0	1	0	0	0	8	0
10	Smith, Shyia		0	0-0	0-0	0-2	0	1	1	0	0	0	0	0	5	5
13	Prince, Raven		0	0-0	0-0	0-0	0	1	1	1	0	0	0	0	4	-2
15	Hampton, Jaida		3	0-1	0-0	3-3	0	1	1	0	0	2	0	0	10	3
40	Colbert, Trajata		0	0-2	0-0	0-0	0	0	0	0	0	0	0	0	2	1
	Team						0	1	1	0		0				
TOTALS			14	4-10	3-5	3-5	0	5	5	4	4	4	0	2	50	

Shooting By Period

Period	FG	FG%	3FG	3FG%	FT	FT%
3rd Qtr	2-15	13%	1-6	17%	0-0	0%
4th Qtr	2-9	22%	0-3	00%	7-10	70%
2nd Half	4-10	40%	3-5	60%	3-5	60%
2nd Half	4-24	17%	1-9	11%	7-10	70%
Game	15-46	32.6%	8-22	36.4%	15-21	71.4%

Game Notes:

Officials: Chaney Muench, Isaac D. Johnson, Chris Saucedo
Attendance: 1922

Start Time: 2019-02-17 20:06:12
End Time: 2019-02-17 22:09:41
Game Duration: 123
Conference Game:

Score	1st	2nd	3rd	4th	TOT
SMU	7	11	9	15	42
WSU	23	14	5	11	53

Points from (This Period)	SMU	WSU
In the Paint	4	2
Off Turns	1	3
2nd Chance	2	0
Fast Break	1	0
Bench	5	6

**Official Play-By-Play
SMU vs Wichita St.
Second Quarter**

February 17, 2019 at Charles Koch Arena (Devlin Court) - Wichita, Kan.

Period 2

Starters:

SMU: 10 FROLING,ALICIA; 14 BAYLISS,PAIGE; 22 OLSON,MARIE; 32 WHITE,KAYLA; 2 WHITFIELD,ARIANA;

Wichita St.: 11 LOZADA-CABBAGE,SABRINA; 12 BREMAUD,CARLA; 22 FAYE,ALYSSIA; 23 BASTIN,SERAPHINE; 30 AMBROSIO,CESARIA;

Time	VISITORS: SMU	Score	Margin	HOME: Wichita St.
09:42				FOUL (PERSONAL) by PRINCE,RAVEN
09:42	GOOD! FT by ELLIS,MAKENZIE	23-8	H 15	
09:42				SUB OUT: AMBROSIO,CESARIA
09:42				SUB IN: BASTIN,SERAPHINE
09:42	GOOD! FT by ELLIS,MAKENZIE	23-9	H 14	
09:31				MISSED JUMPER by COLBERT,TRAJATA
09:28	REBOUND (DEF) by WHITE,KAYLA			
09:24	MISSED JUMPER by WHITE,KAYLA			
09:21				REBOUND (DEF) by PRINCE,RAVEN
09:02				MISSED LAYUP by COLBERT,TRAJATA
09:02	BLOCK by CASH,JOHNASIA			
08:57	REBOUND (DEF) by TOLLIE,BRISHONNE			
08:53	MISSED 3PTR by TOLLIE,BRISHONNE			
08:50				REBOUND (DEF) by HAMPTON,JAIDA
08:41		26-9	H 17	GOOD! 3PTR by REID,ASHLEY
08:41				ASSIST by BASTIN,SERAPHINE
08:22	MISSED 3PTR by WHITE,JAQUIA			
08:20	REBOUND (OFF) by TEAM			
08:20				SUB OUT: COLBERT,TRAJATA
08:20				SUB IN: LOZADA-CABBAGE,SABRINA
07:56	MISSED LAYUP by CASH,JOHNASIA			
07:51	REBOUND (OFF) by CASH,JOHNASIA			
07:51	GOOD! LAYUP by CASH,JOHNASIA	26-11	H 15	
07:30	FOUL (PERSONAL) by ELLIS,MAKENZIE			
07:27		28-11	H 17	GOOD! JUMPER by LOZADA-CABBAGE,SABRINA [PNT]
07:27				ASSIST by REID,ASHLEY
07:10	GOOD! 3PTR by WHITE,KAYLA	28-14	H 14	
07:10	ASSIST by WHITE,JAQUIA			
06:50	FOUL (PERSONAL) by WHITE,KAYLA			
06:26				MISSED 3PTR by REID,ASHLEY
06:26	REBOUND (DEF) by CASH,JOHNASIA			
06:26	FOUL (PERSONAL) by TOLLIE,BRISHONNE			
06:24	SUB OUT: WHITE,KAYLA			
06:24	SUB IN: WHITFIELD,ARIANA			
06:08				MISSED JUMPER by HAMPTON,JAIDA
06:04	REBOUND (DEF) by ELLIS,MAKENZIE			
05:47	MISSED JUMPER by CASH,JOHNASIA			
05:44				REBOUND (DEF) by REID,ASHLEY
05:39				TURNOVER (TRAVEL) by HAMPTON,JAIDA
05:39				SUB OUT: PRINCE,RAVEN
05:39				SUB IN: SMITH,SHYIA
05:26	MISSED 3PTR by TOLLIE,BRISHONNE			
05:23	REBOUND (OFF) by WHITE,JAQUIA			
05:19	MISSED 3PTR by TOLLIE,BRISHONNE			
05:17				REBOUND (DEF) by TEAM
04:48		31-14	H 17	GOOD! 3PTR by LOZADA-CABBAGE,SABRINA
04:48				ASSIST by BASTIN,SERAPHINE
04:31	MISSED 3PTR by WHITFIELD,ARIANA			
04:28				REBOUND (DEF) by TEAM
04:28	FOUL (PERSONAL) by TOLLIE,BRISHONNE			
04:28	SUB OUT: CASH,JOHNASIA			
04:28	SUB IN: FROLING,ALICIA			
04:28	SUB OUT: TOLLIE,BRISHONNE			
04:28	SUB IN: OLSON,MARIE			
04:16				TURNOVER (BADPASS) by LOZADA-CABBAGE,SABRINA
04:16	STEAL by WHITFIELD,ARIANA			
04:12				FOUL (PERSONAL) by BASTIN,SERAPHINE
04:12	MISSED FT by WHITE,JAQUIA			
04:12	REBOUND (OFF) by TEAM			
04:12	GOOD! FT by WHITE,JAQUIA [FB]	31-15	H 16	
03:40				TURNOVER (LOSTBALL) by HAMPTON,JAIDA
03:40	STEAL by WHITFIELD,ARIANA			
03:14	TURNOVER (OTHER) by WHITFIELD,ARIANA			
02:56				MISSED 3PTR by BASTIN,SERAPHINE
02:53	REBOUND (DEF) by ELLIS,MAKENZIE			
02:39	MISSED LAYUP by OLSON,MARIE			
02:33	REBOUND (OFF) by FROLING,ALICIA			
02:33	MISSED LAYUP by FROLING,ALICIA			
02:31	REBOUND (OFF) by FROLING,ALICIA			
02:31	MISSED LAYUP by FROLING,ALICIA			
02:29	REBOUND (OFF) by FROLING,ALICIA			
02:29	MISSED LAYUP by FROLING,ALICIA			
02:27	REBOUND (OFF) by FROLING,ALICIA			
02:25	MISSED JUMPER by OLSON,MARIE			
02:20				REBOUND (DEF) by SMITH,SHYIA

Time	VISITORS: SMU	Score	Margin	HOME: Wichita St.
02:20	FOUL (PERSONAL) by OLSON, MARIE			
02:20				MISSED FT by SMITH, SHYIA
02:20				REBOUND (OFF) by TEAM
02:20				MISSED FT by SMITH, SHYIA
02:20	REBOUND (DEF) by FROLING, ALICIA			
02:20				SUB OUT: REID, ASHLEY
02:20				SUB IN: AMBROSIO, CESARIA
02:20	TURNOVER (BADPASS) by FROLING, ALICIA			
02:20				STEAL by AMBROSIO, CESARIA
02:20				TURNOVER (BADPASS) by BASTIN, SERAPHINE
02:20	STEAL by WHITE, JAQUIA			
02:06				FOUL (PERSONAL) by LOZADA-CABBAGE, SABRINA
01:59	TURNOVER (LOSTBALL) by FROLING, ALICIA			
01:59				STEAL by BASTIN, SERAPHINE
01:31		34-15	H 19	GOOD! 3PTR by LOZADA-CABBAGE, SABRINA
01:31				ASSIST by BASTIN, SERAPHINE
00:56				FOUL (PERSONAL) by AMBROSIO, CESARIA
00:56	MISSED FT by FROLING, ALICIA			
00:56	REBOUND (OFF) by TEAM			
00:56				SUB OUT: SMITH, SHYIA
00:56				SUB IN: FAYE, ALYSSIA
00:56	GOOD! FT by FROLING, ALICIA	34-16	H 18	
00:33				MISSED LAYUP by LOZADA-CABBAGE, SABRINA
00:30	REBOUND (DEF) by FROLING, ALICIA			
00:21	GOOD! JUMPER by WHITFIELD, ARIANA [PNT]	34-18	H 16	
00:00	FOUL (PERSONAL) by WHITFIELD, ARIANA			
00:00		35-18	H 17	GOOD! FT by HAMPTON, JAIDA
00:00		36-18	H 18	GOOD! FT by HAMPTON, JAIDA
00:00		37-18	H 19	GOOD! FT by HAMPTON, JAIDA

SMU 18, Wichita St. 37

Points from (This Period)	SMU	WSU
In the Paint	4	2
Off Turns	1	3
2nd Chance	2	0
Fast Break	1	0
Bench	5	6

Official Box Score
SMU vs Wichita St.
Second Half Statistics Only
February 17, 2019 at Charles Koch Arena (Devlin Court) - Wichita, Kan.

SMU 24

No.	Player	S	Pts	FG	3FG	FT	OR	DR	TR	PF	A	TO	Blk	Stl	Min	+/-
10	Froling, Alicia		2	1-1	0-0	0-1	1	1	2	1	0	1	1	0	3	0
14	Bayliss, Paige		3	1-2	0-0	1-2	0	3	3	1	0	2	0	0	18	7
22	Olson, Marie		1	0-5	0-4	1-2	1	2	3	3	0	4	0	1	15	6
23	Tollie, Brishonne		4	0-3	0-2	4-4	4	2	6	3	0	5	1	0	11	7
24	White, Jaquia		2	1-2	0-0	0-0	0	3	3	1	3	2	0	1	18	6
32	White, Kayla		8	3-7	2-4	0-2	1	2	3	0	0	3	0	1	14	9
33	Cash, Johnasia		0	0-0	0-0	0-0	0	0	0	0	0	0	0	0	0	0
01	Ellis, Makenzie		4	1-3	0-1	2-2	1	3	4	4	1	2	0	1	17	3
02	Whitfield, Ariana		0	0-0	0-0	0-0	1	0	1	0	0	0	0	0	2	2
	Team		0	0-0	0-0	0-0	0	0	0	0	0	0	0	0	0	0
TOTALS			24	7-23	2-11	8-13	9	16	25	13	4	19	2	4	100	

Shooting By Period

Period	FG	FG%	3FG	3FG%	FT	FT%
3rd Qtr	3-9	33%	0-3	00%	3-4	75%
4th Qtr	4-14	29%	2-8	25%	5-9	56%
2nd Half	7-23	30%	2-11	18%	8-13	62%
Game	12-54	22.2%	5-25	20.0%	13-21	61.9%

Last FG Half: SMU 4th-00:39

Wichita St. 16

No.	Player	S	Pts	FG	3FG	FT	OR	DR	TR	PF	A	TO	Blk	Stl	Min	+/-
05	Reid, Ashley		0	0-2	0-2	0-0	0	1	1	2	0	0	0	0	9	2
11	Lozada-Cabbage, Sabrina		0	0-3	0-1	0-2	0	1	1	3	0	0	0	0	11	-9
12	Bremaud, Carla		5	2-6	1-5	0-0	0	0	0	1	0	1	0	4	18	-9
13	Prince, Raven		0	0-2	0-0	0-0	1	0	1	0	0	2	0	0	10	1
15	Hampton, Jaida		0	0-4	0-1	0-0	0	0	0	2	0	1	0	0	7	1
22	Faye, Alyssia		0	0-1	0-0	0-0	2	0	2	1	0	3	0	0	5	-4
23	Bastin, Seraphine		5	0-3	0-0	5-6	0	4	4	0	2	1	0	0	19	-10
40	Colbert, Trajata		0	0-0	0-0	0-0	0	0	0	1	0	1	0	0	1	0
30	Ambrosio, Cesaria		2	1-2	0-0	0-0	0	1	1	3	1	2	0	4	12	-8
10	Smith, Shyia		4	1-1	0-0	2-2	0	2	2	0	1	0	0	2	7	-4
	Team		0	0-0	0-0	0-0	0	0	0	0	0	0	0	0	0	0
TOTALS			16	4-24	1-9	7-10	3	9	12	13	4	11	0	10	100	

Shooting By Period

Period	FG	FG%	3FG	3FG%	FT	FT%
3rd Qtr	2-15	13%	1-6	17%	0-0	0%
4th Qtr	2-9	22%	0-3	00%	7-10	70%
2nd Half	4-24	17%	1-9	11%	7-10	70%
Game	15-46	32.6%	8-22	36.4%	15-21	71.4%

Last FG Half: WSU 4th-05:11

Game Notes:

Officials: Chaney Muench, Isaac D. Johnson, Chris Saucedo
Attendance: 1922

Start Time: 2019-02-17 20:06:12

End Time: 2019-02-17 22:09:41

Game Duration: 123

Conference Game;

Score	1st	2nd	3rd	4th	TOT
SMU	7	11	9	15	42
WSU	23	14	5	11	53

Points from (This Period)	SMU	WSU
In the Paint	8	4
Off Turns	4	8
2nd Chance	4	0
Fast Break	8	7
Bench	10	4

Official Box Score
SMU vs Wichita St.
Third Quarter Statistics Only
February 17, 2019 at Charles Koch Arena (Devlin Court) - Wichita, Kan.

SMU 24

No.	Player	S	Pts	FG	3FG	FT	OR	DR	TR	PF	A	TO	Blk	Stl	Min	+/-
02	Whitfield, Ariana		0	0-0	0-0	0-0	0	0	0	0	0	0	0	0	0	0
10	Froling, Alicia		0	0-0	0-0	0-0	0	0	0	0	0	0	0	0	0	0
14	Bayliss, Paige		3	1-2	0-0	1-2	0	2	2	1	0	1	0	0	10	4
22	Olson, Marie		0	0-0	0-0	0-0	1	0	1	1	0	3	0	1	6	2
32	White, Kayla		0	0-0	0-0	0-0	0	2	2	0	0	3	0	1	6	4
01	Ellis, Makenzie		2	1-2	0-1	0-0	0	2	2	1	1	0	0	1	10	4
23	Tollie, Brishonne		2	0-3	0-2	2-2	2	2	4	2	0	3	0	0	7	2
24	White, Jaquia		2	1-2	0-0	0-0	0	2	2	1	1	0	0	0	10	4
33	Cash, Johnasia		0	0-0	0-0	0-0	0	0	0	0	0	0	0	0	0	0
	Team						0	0	0	0		0				
TOTALS			9	3-9	0-3	3-4	3	10	13	6	2	10	0	3	50	

Shooting By Period

Period	FG	FG%	3FG	3FG%	FT	FT%
2nd Half	0-0	0%	0-0	0%	0-0	0%
Game	12-54	22.2%	5-25	20.0%	13-21	61.9%

Wichita St. 16

No.	Player	S	Pts	FG	3FG	FT	OR	DR	TR	PF	A	TO	Blk	Stl	Min	+/-
11	Lozada-Cabbage, Sabrina		0	0-3	0-1	0-0	0	1	1	1	0	0	0	0	7	-4
12	Bremaud, Carla		3	1-4	1-4	0-0	0	0	0	0	0	0	0	2	10	-4
22	Faye, Alyssia		0	0-1	0-0	0-0	2	0	2	1	0	3	0	0	5	-4
23	Bastin, Seraphine		0	0-1	0-0	0-0	0	1	1	0	1	0	0	0	9	-6
30	Ambrosio, Cesaria		2	1-2	0-0	0-0	0	1	1	2	1	1	0	3	9	-3
05	Reid, Ashley		0	0-0	0-0	0-0	0	0	0	0	0	0	0	0	2	1
10	Smith, Shyia		0	0-0	0-0	0-0	0	0	0	0	0	0	0	0	0	0
13	Prince, Raven		0	0-1	0-0	0-0	1	0	1	0	0	1	0	0	3	0
15	Hampton, Jaida		0	0-3	0-1	0-0	0	0	0	1	0	0	0	0	5	0
40	Colbert, Trajata		0	0-0	0-0	0-0	0	0	0	0	0	0	0	0	0	0
	Team						0	0	0	0		0				
TOTALS			5	2-15	1-6	0-0	3	3	6	5	2	5	0	5	50	

Shooting By Period

Period	FG	FG%	3FG	3FG%	FT	FT%
2nd Half	0-0	0%	0-0	0%	0-0	0%
Game	15-46	32.6%	8-22	36.4%	15-21	71.4%

Game Notes:

Officials: Chaney Muench, Isaac D. Johnson, Chris Saucedo
Attendance: 1922

Start Time: 2019-02-17 20:06:12
End Time: 2019-02-17 22:09:41
Game Duration: 123
Conference Game;

Score	1st	2nd	3rd	4th	TOT
SMU	7	11	9	15	42
WSU	23	14	5	11	53

Points from (This Period)	SMU	WSU
In the Paint	4	2
Off Turns	4	3
2nd Chance	2	0
Fast Break	1	2
Bench	6	0

**Official Play-By-Play
SMU vs Wichita St.
Third Quarter**

February 17, 2019 at Charles Koch Arena (Devlin Court) - Wichita, Kan.

Period 3

Starters:

SMU: 10 FROLING,ALICIA; 14 BAYLISS,PAIGE; 22 OLSON,MARIE; 32 WHITE,KAYLA; 2 WHITFIELD,ARIANA;

Wichita St.: 11 LOZADA-CABBAGE,SABRINA; 12 BREMAUD,CARLA; 22 FAYE,ALYSSIA; 23 BASTIN,SERAPHINE; 30 AMBROSIO,CESARIA;

Time	VISITORS: SMU	Score	Margin	HOME: Wichita St.
09:41	TURNOVER (LOSTBALL) by WHITE,KAYLA			
09:41				STEAL by AMBROSIO,CESARIA
09:34				MISSED JUMPER by FAYE,ALYSSIA
09:30	REBOUND (DEF) by WHITE,JAQUIA			
09:26	GOOD! LAYUP by WHITE,JAQUIA	37-20	H 17	
09:05				TURNOVER (BADPASS) by FAYE,ALYSSIA
09:05	STEAL by OLSON,MARIE			
09:03	TURNOVER (TRAVEL) by OLSON,MARIE			
08:50				MISSED JUMPER by AMBROSIO,CESARIA
08:47	REBOUND (DEF) by WHITE,JAQUIA			
08:40	MISSED JUMPER by WHITE,JAQUIA			
08:37	REBOUND (OFF) by OLSON,MARIE			
08:37	TURNOVER (LOSTBALL) by OLSON,MARIE			
08:37				STEAL by BREMAUD,CARLA
08:16				MISSED 3PTR by BREMAUD,CARLA
08:10	REBOUND (DEF) by WHITE,KAYLA			
08:09	TURNOVER (LOSTBALL) by WHITE,KAYLA			
08:09				STEAL by AMBROSIO,CESARIA
07:44				MISSED 3PTR by LOZADA-CABBAGE,SABRINA
07:41	REBOUND (DEF) by ELLIS,MAKENZIE			
07:35	TURNOVER (LOSTBALL) by WHITE,KAYLA			
07:35				STEAL by AMBROSIO,CESARIA
07:29				FOUL (OFF) by FAYE,ALYSSIA
07:29				TURNOVER (OFFENSIVE) by FAYE,ALYSSIA
07:29	SUB OUT: WHITE,KAYLA			
07:29	SUB IN: TOLLIE,BRISHONNE			
07:08	FOUL (OFF) by OLSON,MARIE			
07:08	TURNOVER (OFFENSIVE) by OLSON,MARIE			
06:38				MISSED JUMPER by BASTIN,SERAPHINE
06:34	REBOUND (DEF) by ELLIS,MAKENZIE			
06:32				FOUL (PERSONAL) by LOZADA-CABBAGE,SABRINA
06:28				FOUL (PERSONAL) by AMBROSIO,CESARIA
06:21	MISSED LAYUP by TOLLIE,BRISHONNE			
06:19				REBOUND (DEF) by AMBROSIO,CESARIA
06:19	FOUL (PERSONAL) by ELLIS,MAKENZIE			
06:19				TURNOVER (OTHER) by FAYE,ALYSSIA
06:06	GOOD! LAYUP by BAYLISS,PAIGE	37-22	H 15	
06:06	ASSIST by ELLIS,MAKENZIE			
05:38				MISSED 3PTR by BREMAUD,CARLA
05:35				REBOUND (OFF) by FAYE,ALYSSIA
05:20				MISSED 3PTR by BREMAUD,CARLA
05:17				REBOUND (OFF) by FAYE,ALYSSIA
05:01				MISSED LAYUP by LOZADA-CABBAGE,SABRINA
04:57	REBOUND (DEF) by BAYLISS,PAIGE			
04:43	MISSED 3PTR by TOLLIE,BRISHONNE			
04:40	REBOUND (OFF) by TOLLIE,BRISHONNE			
04:40	FOUL (OFF) by TOLLIE,BRISHONNE			
04:40	TURNOVER (OFFENSIVE) by TOLLIE,BRISHONNE			
04:40				SUB OUT: FAYE,ALYSSIA
04:40				SUB IN: HAMPTON,JAIDA
04:21				MISSED LAYUP by LOZADA-CABBAGE,SABRINA
04:18	REBOUND (DEF) by TOLLIE,BRISHONNE			
03:50	MISSED 3PTR by ELLIS,MAKENZIE			
03:47				REBOUND (DEF) by LOZADA-CABBAGE,SABRINA
03:41		39-22	H 17	GOOD! LAYUP by AMBROSIO,CESARIA [FB]
03:41				ASSIST by BASTIN,SERAPHINE
03:39	SUB OUT: OLSON,MARIE			
03:39	SUB IN: WHITE,KAYLA			
03:21	GOOD! JUMPER by ELLIS,MAKENZIE	39-24	H 15	
03:21	ASSIST by WHITE,JAQUIA			
03:07				MISSED JUMPER by HAMPTON,JAIDA
03:04	REBOUND (DEF) by WHITE,KAYLA			
02:56	MISSED 3PTR by TOLLIE,BRISHONNE			
02:52				REBOUND (DEF) by BASTIN,SERAPHINE
02:51				SUB OUT: LOZADA-CABBAGE,SABRINA
02:51				SUB IN: PRINCE,RAVEN
02:38				MISSED 3PTR by HAMPTON,JAIDA
02:34	REBOUND (DEF) by TOLLIE,BRISHONNE			
02:14	TURNOVER (BADPASS) by TOLLIE,BRISHONNE			
02:14				STEAL by BREMAUD,CARLA
02:02				TURNOVER (LOSTBALL) by PRINCE,RAVEN
02:02	STEAL by ELLIS,MAKENZIE			
01:54	MISSED JUMPER by BAYLISS,PAIGE			
01:52	REBOUND (OFF) by TOLLIE,BRISHONNE			
01:52				FOUL (PERSONAL) by AMBROSIO,CESARIA

Time	VISITORS: SMU	Score	Margin	HOME: Wichita St.
01:52	GOOD! FT by TOLLIE,BRISHONNE	39-25	H 14	
01:52				SUB OUT: AMBROSIO,CESARIA
01:52				SUB IN: REID,ASHLEY
01:52	GOOD! FT by TOLLIE,BRISHONNE	39-26	H 13	
01:45	FOUL (PERSONAL) by WHITE,JAQUIA			
01:20				MISSED LAYUP by PRINCE,RAVEN
01:17	REBOUND (DEF) by BAYLISS,PAIGE			
01:12				FOUL (PERSONAL) by HAMPTON,JAIDA
01:12	MISSED FT by BAYLISS,PAIGE			
01:12	REBOUND (OFF) by TEAM			
01:12				SUB OUT: BASTIN,SERAPHINE
01:12				SUB IN: AMBROSIO,CESARIA
01:12	GOOD! FT by BAYLISS,PAIGE [FB]	39-27	H 12	
01:04				TURNOVER (BADPASS) by AMBROSIO,CESARIA
01:04	STEAL by WHITE,KAYLA			
01:04	TIMEOUT 30SEC			
00:58	FOUL (OFF) by BAYLISS,PAIGE			
00:58	TURNOVER (OFFENSIVE) by BAYLISS,PAIGE			
00:29		42-27	H 15	
00:29				GOOD! 3PTR by BREMAUD,CARLA
00:20	FOUL (OFF) by TOLLIE,BRISHONNE			ASSIST by AMBROSIO,CESARIA
00:20	TURNOVER (OFFENSIVE) by TOLLIE,BRISHONNE			
00:05				MISSED JUMPER by HAMPTON,JAIDA
00:05				REBOUND (OFF) by PRINCE,RAVEN

SMU 27, Wichita St. 42

Points from (This Period)	SMU	WSU
In the Paint	4	2
Off Turns	4	3
2nd Chance	2	0
Fast Break	1	2
Bench	6	0

Official Box Score
SMU vs Wichita St.
Fourth Quarter Statistics Only
February 17, 2019 at Charles Koch Arena (Devlin Court) - Wichita, Kan.

SMU 15

No.	Player	S	Pts	FG	3FG	FT	OR	DR	TR	PF	A	TO	Blk	Stl	Min	+/-
02	Whitfield, Ariana		0	0-0	0-0	0-0	1	0	1	0	0	0	0	0	2	2
10	Froling, Alicia		2	1-1	0-0	0-1	1	1	2	1	0	1	1	0	3	0
14	Bayliss, Paige		0	0-0	0-0	0-0	0	1	1	0	0	1	0	0	8	3
22	Olson, Marie		1	0-5	0-4	1-2	0	2	2	2	0	1	0	0	9	4
32	White, Kayla		8	3-7	2-4	0-2	1	0	1	0	0	0	0	0	8	5
01	Ellis, Makenzie		2	0-1	0-0	2-2	1	1	2	3	0	2	0	0	7	-1
23	Tollie, Brishonne		2	0-0	0-0	2-2	2	0	2	1	0	2	1	0	4	5
24	White, Jaquia		0	0-0	0-0	0-0	0	1	1	0	2	2	0	1	8	2
33	Cash, Johnasia		0	0-0	0-0	0-0	0	0	0	0	0	0	0	0	0	0
	Team						0	0	0	0		0				
TOTALS			15	4-14	2-8	5-9	6	6	12	7	2	9	2	1	50	

Shooting By Period

Period	FG	FG%	3FG	3FG%	FT	FT%
Game	12-54	22.2%	5-25	20.0%	13-21	61.9%

Wichita St. 11

No.	Player	S	Pts	FG	3FG	FT	OR	DR	TR	PF	A	TO	Blk	Stl	Min	+/-
11	Lozada-Cabbage, Sabrina		0	0-0	0-0	0-2	0	0	0	2	0	0	0	0	4	-5
12	Bremaud, Carla		2	1-2	0-1	0-0	0	0	0	1	0	1	0	2	8	-5
22	Faye, Alyssia		0	0-0	0-0	0-0	0	0	0	0	0	0	0	0	0	0
23	Bastin, Seraphine		5	0-2	0-0	5-6	0	3	3	0	1	1	0	0	10	-4
30	Ambrosio, Cesaria		0	0-0	0-0	0-0	0	0	0	1	0	1	0	1	3	-5
05	Reid, Ashley		0	0-2	0-2	0-0	0	1	1	2	0	0	0	0	7	1
10	Smith, Shyia		4	1-1	0-0	2-2	0	2	2	0	1	0	0	2	7	-4
13	Prince, Raven		0	0-1	0-0	0-0	0	0	0	0	0	1	0	0	7	1
15	Hampton, Jaida		0	0-1	0-0	0-0	0	0	0	1	0	1	0	0	2	1
40	Colbert, Trajata		0	0-0	0-0	0-0	0	0	0	1	0	1	0	0	1	0
	Team						0	0	0	0		0				
TOTALS			11	2-9	0-3	7-10	0	6	6	8	2	6	0	5	50	

Shooting By Period

Period	FG	FG%	3FG	3FG%	FT	FT%
Game	15-46	32.6%	8-22	36.4%	15-21	71.4%

Game Notes:

Officials: Chaney Muench, Isaac D. Johnson, Chris Saucedo
 Attendance: 1922

Start Time: 2019-02-17 20:06:12

End Time: 2019-02-17 22:09:41

Game Duration: 123

Conference Game:

Score	1st	2nd	3rd	4th	TOT
SMU	7	11	9	15	42
WSU	23	14	5	11	53

Points from (This Period)	SMU	WSU
In the Paint	4	2
Off Turns	0	5
2nd Chance	2	0
Fast Break	7	5
Bench	4	4

**Official Play-By-Play
SMU vs Wichita St.
Fourth Quarter**

February 17, 2019 at Charles Koch Arena (Devlin Court) - Wichita, Kan.

Period 4

Starters:

SMU: 10 FROLING,ALICIA; 14 BAYLISS,PAIGE; 22 OLSON,MARIE; 32 WHITE,KAYLA; 2 WHITFIELD,ARIANA;

Wichita St.: 11 LOZADA-CABBAGE,SABRINA; 12 BREMAUD,CARLA; 22 FAYE,ALYSSIA; 23 BASTIN,SERAPHINE; 30 AMBROSIO,CESARIA;

Time	VISITORS: SMU	Score	Margin	HOME: Wichita St.
09:34	MISSED JUMPER by ELLIS,MAKENZIE			
09:32	REBOUND (OFF) by TEAM			
09:25				FOUL (PERSONAL) by LOZADA-CABBAGE,SABRINA
09:25	SUB OUT: ELLIS,MAKENZIE			
09:25	SUB IN: OLSON,MARIE			
09:12	MISSED 3PTR by WHITE,KAYLA			
09:09	REBOUND (OFF) by TOLLIE,BRISHONNE			
09:06	TURNOVER (TRAVEL) by TOLLIE,BRISHONNE			
08:50				MISSED 3PTR by REID,ASHLEY
08:48	REBOUND (DEF) by TEAM			
08:29	MISSED JUMPER by WHITE,KAYLA			
08:27	REBOUND (OFF) by TOLLIE,BRISHONNE			
08:27				FOUL (PERSONAL) by LOZADA-CABBAGE,SABRINA
08:27				SUB OUT: LOZADA-CABBAGE,SABRINA
08:27				SUB IN: COLBERT,TRAJATA
08:18	TURNOVER (BADPASS) by TOLLIE,BRISHONNE			
08:18				STEAL by BREMAUD,CARLA
07:59	SUB OUT: TOLLIE,BRISHONNE			
07:59	SUB IN: ELLIS,MAKENZIE			
07:50				TURNOVER (TRAVEL) by BASTIN,SERAPHINE
07:34	MISSED 3PTR by OLSON,MARIE			
07:33				REBOUND (DEF) by BASTIN,SERAPHINE
07:33	FOUL (PERSONAL) by OLSON,MARIE			
07:33				SUB OUT: BREMAUD,CARLA
07:33				SUB IN: HAMPTON,JAIDA
07:33	SUB OUT: WHITE,JAQUIA			
07:33	SUB IN: WHITFIELD,ARIANA			
07:15				FOUL (OFF) by COLBERT,TRAJATA
07:15				TURNOVER (OFFENSIVE) by COLBERT,TRAJATA
06:59				SUB OUT: COLBERT,TRAJATA
06:59				SUB IN: SMITH,SHYIA
06:59	TURNOVER (BADPASS) by OLSON,MARIE			
06:46				MISSED JUMPER by HAMPTON,JAIDA
06:43	REBOUND (DEF) by ELLIS,MAKENZIE			
06:40	GOOD! LAYUP by WHITE,KAYLA [FB]	42-29	H 13	
06:24				TURNOVER (DRIBBLING) by HAMPTON,JAIDA
06:15	MISSED 3PTR by OLSON,MARIE			
06:11	REBOUND (OFF) by WHITFIELD,ARIANA			
05:57	TURNOVER (BADPASS) by ELLIS,MAKENZIE			
05:57	SUB OUT: WHITFIELD,ARIANA			
05:57	SUB IN: WHITE,JAQUIA			
05:46		44-29	H 15	GOOD! LAYUP by SMITH,SHYIA
05:46				ASSIST by BASTIN,SERAPHINE
05:39				FOUL (PERSONAL) by REID,ASHLEY
05:39	MISSED FT by WHITE,KAYLA			
05:39	REBOUND (OFF) by TEAM			
05:39	MISSED FT by WHITE,KAYLA			
05:39	REBOUND (OFF) by WHITE,KAYLA			
05:37	MISSED JUMPER by WHITE,KAYLA			
05:33				REBOUND (DEF) by BASTIN,SERAPHINE
05:32	FOUL (PERSONAL) by ELLIS,MAKENZIE			
05:32		45-29	H 16	GOOD! FT by BASTIN,SERAPHINE [FB]
05:32	SUB OUT: WHITE,KAYLA			
05:32	SUB IN: FROLING,ALICIA			
05:32		46-29	H 17	GOOD! FT by BASTIN,SERAPHINE [FB]
05:26	MISSED 3PTR by OLSON,MARIE			
05:25	REBOUND (OFF) by ELLIS,MAKENZIE			
05:25				FOUL (PERSONAL) by HAMPTON,JAIDA
05:25	GOOD! FT by ELLIS,MAKENZIE [FB]	46-30	H 16	
05:25				SUB OUT: HAMPTON,JAIDA
05:25				SUB IN: BREMAUD,CARLA
05:25	GOOD! FT by ELLIS,MAKENZIE [FB]	46-31	H 15	
05:11		48-31	H 17	GOOD! JUMPER by BREMAUD,CARLA
05:11				ASSIST by SMITH,SHYIA
04:53	TURNOVER (BADPASS) by FROLING,ALICIA			
04:53				STEAL by SMITH,SHYIA
04:53				
04:32	FOUL (PERSONAL) by FROLING,ALICIA			
04:32		49-31	H 18	GOOD! FT by SMITH,SHYIA
04:32		50-31	H 19	GOOD! FT by SMITH,SHYIA
04:17	MISSED 3PTR by OLSON,MARIE			
04:13				REBOUND (DEF) by REID,ASHLEY
04:01				MISSED 3PTR by REID,ASHLEY
03:58	REBOUND (DEF) by WHITE,JAQUIA			
03:56	GOOD! LAYUP by FROLING,ALICIA [FB]	50-33	H 17	
03:56				FOUL (PERSONAL) by BREMAUD,CARLA

Time	VISITORS: SMU	Score	Margin	HOME: Wichita St.
03:56	SUB OUT: BAYLISS,PAIGE			
03:56	SUB IN: WHITE,KAYLA			
03:56	MISSED FT by FROLING,ALICIA			
03:55	REBOUND (OFF) by FROLING,ALICIA			
03:44	MISSED 3PTR by WHITE,KAYLA			
03:41				REBOUND (DEF) by SMITH,SHYIA
03:28				MISSED JUMPER by PRINCE,RAVEN
03:28	BLOCK by FROLING,ALICIA			
03:28				REBOUND (OFF) by TEAM
03:22				MISSED 3PTR by BREMAUD,CARLA
03:19	REBOUND (DEF) by FROLING,ALICIA			
03:14				FOUL (PERSONAL) by REID,ASHLEY
03:14	GOOD! FT by OLSON,MARIE [FB]	50-34	H 16	
03:14				SUB OUT: REID,ASHLEY
03:14				SUB IN: AMBROSIO,CESARIA
03:14	MISSED FT by OLSON,MARIE			
03:13				REBOUND (DEF) by SMITH,SHYIA
02:49				TURNOVER (TRAVEL) by PRINCE,RAVEN
02:49				SUB OUT: PRINCE,RAVEN
02:49				SUB IN: LOZADA-CABBAGE,SABRINA
02:32	TURNOVER (BADPASS) by WHITE,JAQUIA			
02:32				STEAL by SMITH,SHYIA
02:32	FOUL (PERSONAL) by ELLIS,MAKENZIE			
02:21				TURNOVER (BADPASS) by AMBROSIO,CESARIA
02:21	SUB OUT: FROLING,ALICIA			
02:21	SUB IN: TOLLIE,BRISHONNE			
02:12	TURNOVER (BADPASS) by ELLIS,MAKENZIE			
02:12				STEAL by BREMAUD,CARLA
02:07				TURNOVER (BADPASS) by BREMAUD,CARLA
02:07	STEAL by WHITE,JAQUIA			
02:01	MISSED LAY UP by OLSON,MARIE			
01:58				REBOUND (DEF) by BASTIN,SERAPHINE
01:53	FOUL (PERSONAL) by ELLIS,MAKENZIE			
01:53	SUB OUT: ELLIS,MAKENZIE			
01:53	SUB IN: BAYLISS,PAIGE			
01:53		51-34	H 17	GOOD! FT by BASTIN,SERAPHINE [FB]
01:53		52-34	H 18	GOOD! FT by BASTIN,SERAPHINE [FB]
01:45				FOUL (PERSONAL) by AMBROSIO,CESARIA
01:45	GOOD! FT by TOLLIE,BRISHONNE	52-35	H 17	
01:45	GOOD! FT by TOLLIE,BRISHONNE	52-36	H 16	
01:37				MISSED LAYUP by BASTIN,SERAPHINE
01:37	BLOCK by TOLLIE,BRISHONNE			
01:31	REBOUND (DEF) by BAYLISS,PAIGE			
01:28	GOOD! 3PTR by WHITE,KAYLA	52-39	H 13	
01:28	ASSIST by WHITE,JAQUIA			
01:27				TIMEOUT 30SEC
01:04				MISSED JUMPER by BASTIN,SERAPHINE
01:01	REBOUND (DEF) by OLSON,MARIE			
00:58	TURNOVER (BADPASS) by WHITE,JAQUIA			
00:58				STEAL by AMBROSIO,CESARIA
00:54	FOUL (PERSONAL) by OLSON,MARIE			
00:54				MISSED FT by BASTIN,SERAPHINE
00:54				REBOUND (OFF) by TEAM
00:54		53-39	H 14	GOOD! FT by BASTIN,SERAPHINE [FB]
00:39	GOOD! 3PTR by WHITE,KAYLA	53-42	H 11	
00:39	ASSIST by WHITE,JAQUIA			
00:17	FOUL (PERSONAL) by TOLLIE,BRISHONNE			
00:17				SUB OUT: BASTIN,SERAPHINE
00:17				SUB IN: REID,ASHLEY
00:17	SUB OUT: TOLLIE,BRISHONNE			
00:17	SUB IN: FROLING,ALICIA			
00:17				MISSED FT by LOZADA-CABBAGE,SABRINA
00:17				REBOUND (OFF) by TEAM
00:17				MISSED FT by LOZADA-CABBAGE,SABRINA
00:16	REBOUND (DEF) by OLSON,MARIE			
00:10	TURNOVER (TRAVEL) by BAYLISS,PAIGE			

SMU 42, Wichita St. 53

Points from (This Period)	SMU	WSU
In the Paint	4	2
Off Turns	0	5
2nd Chance	2	0
Fast Break	7	5
Bench	4	4

**Official Scoring/Possession Reference Chart
SMU vs Wichita St.**

Period 1

February 17, 2019 at Charles Koch Arena (Devlin Court) - Wichita, Kan.

Period 1

Starters:

SMU: 10 FROLING, ALICIA; 14 BAYLISS, PAIGE; 22 OLSON, MARIE; 32 WHITE, KAYLA; 2 WHITFIELD, ARIANA;

Wichita St.: 11 LOZADA-CABBAGE, SABRINA; 12 BREMAUD, CARLA; 22 FAYE, ALYSSIA; 23 BASTIN, SERAPHINE; 30 AMBROSIO, CESARIA;

Time	VISITORS: SMU	Score	Margin	HOME: Wichita St.
09:46		2-0	H 2	GOOD! JUMPER by BASTIN, SERAPHINE
09:33	GOOD! 3PTR by WHITE, KAYLA	2-3	V 1	
08:18		3-3	T	GOOD! FT by BASTIN, SERAPHINE
07:34		6-3	H 3	GOOD! 3PTR by BREMAUD, CARLA
07:17	GOOD! FT by FROLING, ALICIA	6-4	H 2	
06:44		7-4	H 3	GOOD! FT by BASTIN, SERAPHINE [FB]
06:44		8-4	H 4	GOOD! FT by BASTIN, SERAPHINE [FB]
06:11		11-4	H 7	GOOD! 3PTR by BREMAUD, CARLA
05:59	GOOD! 3PTR by WHITFIELD, ARIANA	11-7	H 4	
05:00		13-7	H 6	GOOD! LAYUP by LOZADA-CABBAGE, SABRINA
03:30		15-7	H 8	GOOD! JUMPER by LOZADA-CABBAGE, SABRINA [PNT]
02:24		18-7	H 11	GOOD! 3PTR by HAMPTON, JAIDA
02:06		21-7	H 14	GOOD! 3PTR by AMBROSIO, CESARIA
00:06		22-7	H 15	GOOD! FT by COLBERT, TRAJATA
00:06		23-7	H 16	GOOD! FT by COLBERT, TRAJATA

SMU 7, Wichita St. 23

**Official Scoring/Possession Reference Chart
SMU vs Wichita St.**

Period 2

February 17, 2019 at Charles Koch Arena (Devlin Court) - Wichita, Kan.

Period 2

Starters:

SMU: 10 FROLING, ALICIA; 14 BAYLISS, PAIGE; 22 OLSON, MARIE; 32 WHITE, KAYLA; 2 WHITFIELD, ARIANA;

Wichita St.: 11 LOZADA-CABBAGE, SABRINA; 12 BREMAUD, CARLA; 22 FAYE, ALYSSIA; 23 BASTIN, SERAPHINE; 30 AMBROSIO, CESARIA;

Time	VISITORS: SMU	Score	Margin	HOME: Wichita St.
09:42	GOOD! FT by ELLIS, MAKENZIE	23-8	H 15	
09:42	GOOD! FT by ELLIS, MAKENZIE	23-9	H 14	
08:41		26-9	H 17	GOOD! 3PTR by REID, ASHLEY
07:51	GOOD! LAYUP by CASH, JOHNASIA	26-11	H 15	
07:27		28-11	H 17	GOOD! JUMPER by LOZADA-CABBAGE, SABRINA [PNT]
07:10	GOOD! 3PTR by WHITE, KAYLA	28-14	H 14	
04:48		31-14	H 17	GOOD! 3PTR by LOZADA-CABBAGE, SABRINA
04:12	GOOD! FT by WHITE, JAQUIA [FB]	31-15	H 16	
01:31		34-15	H 19	GOOD! 3PTR by LOZADA-CABBAGE, SABRINA
00:56	GOOD! FT by FROLING, ALICIA	34-16	H 18	
00:21	GOOD! JUMPER by WHITFIELD, ARIANA [PNT]	34-18	H 16	
00:00		35-18	H 17	GOOD! FT by HAMPTON, JAIDA
00:00		36-18	H 18	GOOD! FT by HAMPTON, JAIDA
00:00		37-18	H 19	GOOD! FT by HAMPTON, JAIDA

SMU 18, Wichita St. 37

**Official Scoring/Possession Reference Chart
SMU vs Wichita St.**

Period 3

February 17, 2019 at Charles Koch Arena (Devlin Court) - Wichita, Kan.

Period 3

Starters:

SMU: 10 FROLING, ALICIA; 14 BAYLISS, PAIGE; 22 OLSON, MARIE; 32 WHITE, KAYLA; 2 WHITFIELD, ARIANA;

Wichita St.: 11 LOZADA-CABBAGE, SABRINA; 12 BREMAUD, CARLA; 22 FAYE, ALYSSIA; 23 BASTIN, SERAPHINE; 30 AMBROSIO, CESARIA;

Time	VISITORS: SMU	Score	Margin	HOME: Wichita St.
09:26	GOOD! LAYUP by WHITE, JAQUIA	37-20	H 17	
06:06	GOOD! LAYUP by BAYLISS, PAIGE	37-22	H 15	
03:41		39-22	H 17	GOOD! LAYUP by AMBROSIO, CESARIA [FB]
03:21	GOOD! JUMPER by ELLIS, MAKENZIE	39-24	H 15	
01:52	GOOD! FT by TOLLIE, BRISHONNE	39-25	H 14	
01:52	GOOD! FT by TOLLIE, BRISHONNE	39-26	H 13	
01:12	GOOD! FT by BAYLISS, PAIGE [FB]	39-27	H 12	
00:29		42-27	H 15	GOOD! 3PTR by BREMAUD, CARLA

SMU 27, Wichita St. 42

**Official Scoring/Possession Reference Chart
SMU vs Wichita St.**

Period 4

February 17, 2019 at Charles Koch Arena (Devlin Court) - Wichita, Kan.

Period 4

Starters:

SMU: 10 FROLING,ALICIA; 14 BAYLISS,PAIGE; 22 OLSON,MARIE; 32 WHITE,KAYLA; 2 WHITFIELD,ARIANA;

Wichita St.: 11 LOZADA-CABBAGE,SABRINA; 12 BREMAUD,CARLA; 22 FAYE,ALYSSIA; 23 BASTIN,SERAPHINE; 30 AMBROSIO,CESARIA;

Time	VISITORS: SMU	Score	Margin	HOME: Wichita St.
06:40	GOOD! LAYUP by WHITE,KAYLA [FB]	42-29	H 13	
05:46		44-29	H 15	GOOD! LAYUP by SMITH,SHYIA
05:32		45-29	H 16	GOOD! FT by BASTIN,SERAPHINE [FB]
05:32		46-29	H 17	GOOD! FT by BASTIN,SERAPHINE [FB]
05:25	GOOD! FT by ELLIS,MAKENZIE [FB]	46-30	H 16	
05:25	GOOD! FT by ELLIS,MAKENZIE [FB]	46-31	H 15	
05:11		48-31	H 17	GOOD! JUMPER by BREMAUD,CARLA
04:32		49-31	H 18	GOOD! FT by SMITH,SHYIA
04:32		50-31	H 19	GOOD! FT by SMITH,SHYIA
03:56	GOOD! LAYUP by FROLING,ALICIA [FB]	50-33	H 17	
03:14	GOOD! FT by OLSON,MARIE [FB]	50-34	H 16	
01:53		51-34	H 17	GOOD! FT by BASTIN,SERAPHINE [FB]
01:53		52-34	H 18	GOOD! FT by BASTIN,SERAPHINE [FB]
01:45	GOOD! FT by TOLLIE,BRISHONNE	52-35	H 17	
01:45	GOOD! FT by TOLLIE,BRISHONNE	52-36	H 16	
01:28	GOOD! 3PTR by WHITE,KAYLA	52-39	H 13	
00:54		53-39	H 14	GOOD! FT by BASTIN,SERAPHINE [FB]
00:39	GOOD! 3PTR by WHITE,KAYLA	53-42	H 11	

SMU 42, Wichita St. 53

Official Substitutions Log
SMU vs Wichita St.
Period 1
February 17, 2019 at Charles Koch Arena (Devlin Court) - Wichita, Kan.

VISITORS: SMU	Time	Score	HOME: Wichita St.
10 FROLING, ALICIA			11 LOZADA-CABBAGE, SABRINA
14 BAYLISS, PAIGE			12 BREMAUD, CARLA
22 OLSON, MARIE			22 FAYE, ALYSSIA
32 WHITE, KAYLA			23 BASTIN, SERAPHINE
2 WHITFIELD, ARIANA			30 AMBROSIO, CESARIA
SUB OUT: 14 BAYLISS, PAIGE	07:17	3-6	
SUB IN: 33 CASH, JOHNASIA	07:17		
	05:40	7-11	SUB OUT: BREMAUD, CARLA
	05:40		SUB IN: HAMPTON, JAIDA
SUB OUT: 32 WHITE, KAYLA	04:25	7-13	
SUB IN: 24 WHITE, JAQUIA	04:25		
	03:01	7-15	SUB OUT: FAYE, ALYSSIA
	03:01		SUB IN: COLBERT, TRAJATA
SUB OUT: 2 WHITFIELD, ARIANA	03:01		
SUB IN: 1 ELLIS, MAKENZIE	03:01		
SUB OUT: 22 OLSON, MARIE	02:17	7-18	
SUB IN: 32 WHITE, KAYLA	02:17		
	01:25	7-21	SUB OUT: LOZADA-CABBAGE, SABRINA
	01:25		SUB IN: PRINCE, RAVEN
SUB OUT: 10 FROLING, ALICIA	01:11	7-21	
SUB IN: 23 TOLLIE, BRISHONNE	01:11		
	01:11		SUB OUT: BASTIN, SERAPHINE
	01:11		SUB IN: REID, ASHLEY

SMU 7, Wichita St. 23

Official Substitutions Log
SMU vs Wichita St.
Period 2
February 17, 2019 at Charles Koch Arena (Devlin Court) - Wichita, Kan.

VISITORS: SMU	Time	Score	HOME: Wichita St.
10 FROLING, ALICIA			11 LOZADA-CABBAGE, SABRINA
14 BAYLISS, PAIGE			12 BREMAUD, CARLA
22 OLSON, MARIE			22 FAYE, ALYSSIA
32 WHITE, KAYLA			23 BASTIN, SERAPHINE
2 WHITFIELD, ARIANA			30 AMBROSIO, CESARIA
	09:42	8-23	SUB OUT: AMBROSIO, CESARIA
	09:42		SUB IN: BASTIN, SERAPHINE
	08:20	9-26	SUB OUT: COLBERT, TRAJATA
	08:20		SUB IN: LOZADA-CABBAGE, SABRINA
SUB OUT: 32 WHITE, KAYLA	06:24	14-28	
SUB IN: 2 WHITFIELD, ARIANA	06:24		
	05:39	14-28	SUB OUT: PRINCE, RAVEN
	05:39		SUB IN: SMITH, SHYIA
SUB OUT: 33 CASH, JOHNASIA	04:28	14-31	
SUB IN: 10 FROLING, ALICIA	04:28		
SUB OUT: 23 TOLLIE, BRISHONNE	04:28		
SUB IN: 22 OLSON, MARIE	04:28		
	02:20	15-31	SUB OUT: REID, ASHLEY
	02:20		SUB IN: AMBROSIO, CESARIA
	00:56	15-34	SUB OUT: SMITH, SHYIA
	00:56		SUB IN: FAYE, ALYSSIA

SMU 18, Wichita St. 37

Official Substitutions Log
SMU vs Wichita St.
Period 3
February 17, 2019 at Charles Koch Arena (Devlin Court) - Wichita, Kan.

VISITORS: SMU	Time	Score	HOME: Wichita St.
10 FROLING, ALICIA			11 LOZADA-CABBAGE, SABRINA
14 BAYLISS, PAIGE			12 BREMAUD, CARLA
22 OLSON, MARIE			22 FAYE, ALYSSIA
32 WHITE, KAYLA			23 BASTIN, SERAPHINE
2 WHITFIELD, ARIANA			30 AMBROSIO, CESARIA
SUB OUT: 32 WHITE, KAYLA	07:29	20-37	
SUB IN: 23 TOLLIE, BRISHONNE	07:29		
	04:40	22-37	SUB OUT: FAYE, ALYSSIA
	04:40		SUB IN: HAMPTON, JAIDA
SUB OUT: 22 OLSON, MARIE	03:39	22-39	
SUB IN: 32 WHITE, KAYLA	03:39		
	02:51	24-39	SUB OUT: LOZADA-CABBAGE, SABRINA
	02:51		SUB IN: PRINCE, RAVEN
	01:52	25-39	SUB OUT: AMBROSIO, CESARIA
	01:52		SUB IN: REID, ASHLEY
	01:12	26-39	SUB OUT: BASTIN, SERAPHINE
	01:12		SUB IN: AMBROSIO, CESARIA

SMU 27, Wichita St. 42

Official Substitutions Log
SMU vs Wichita St.
Period 4
February 17, 2019 at Charles Koch Arena (Devlin Court) - Wichita, Kan.

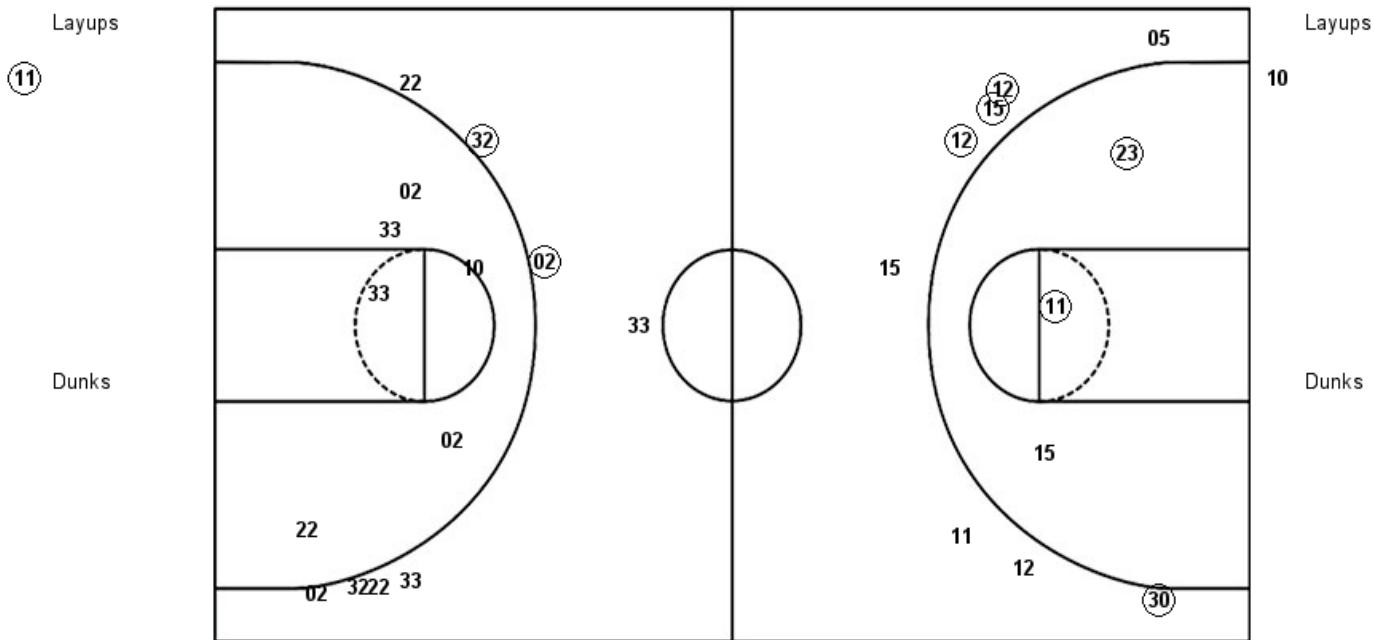
VISITORS: SMU	Time	Score	HOME: Wichita St.
10 FROLING, ALICIA			11 LOZADA-CABBAGE, SABRINA
14 BAYLISS, PAIGE			12 BREMAUD, CARLA
22 OLSON, MARIE			22 FAYE, ALYSSIA
32 WHITE, KAYLA			23 BASTIN, SERAPHINE
2 WHITFIELD, ARIANA			30 AMBROSIO, CESARIA
SUB OUT: 1 ELLIS, MAKENZIE	09:25	-	
SUB IN: 22 OLSON, MARIE	09:25		
	08:27	-	SUB OUT: LOZADA-CABBAGE, SABRINA
	08:27		SUB IN: COLBERT, TRAJATA
SUB OUT: 23 TOLLIE, BRISHONNE	07:59	-	
SUB IN: 1 ELLIS, MAKENZIE	07:59		
	07:33	-	SUB OUT: BREMAUD, CARLA
	07:33		SUB IN: HAMPTON, JAIDA
SUB OUT: 24 WHITE, JAQUIA	07:33		
SUB IN: 2 WHITFIELD, ARIANA	07:33		
	06:59	-	SUB OUT: COLBERT, TRAJATA
	06:59		SUB IN: SMITH, SHYIA
SUB OUT: 2 WHITFIELD, ARIANA	05:57	29-42	
SUB IN: 24 WHITE, JAQUIA	05:57		
SUB OUT: 32 WHITE, KAYLA	05:32	29-45	
SUB IN: 10 FROLING, ALICIA	05:32		
	05:25	30-46	SUB OUT: HAMPTON, JAIDA
	05:25		SUB IN: BREMAUD, CARLA
SUB OUT: 14 BAYLISS, PAIGE	03:56	33-50	
SUB IN: 32 WHITE, KAYLA	03:56		
	03:14	34-50	SUB OUT: REID, ASHLEY
	03:14		SUB IN: AMBROSIO, CESARIA
	02:49	34-50	SUB OUT: PRINCE, RAVEN
	02:49		SUB IN: LOZADA-CABBAGE, SABRINA
SUB OUT: 10 FROLING, ALICIA	02:21	34-50	
SUB IN: 23 TOLLIE, BRISHONNE	02:21		
SUB OUT: 1 ELLIS, MAKENZIE	01:53	34-50	
SUB IN: 14 BAYLISS, PAIGE	01:53		
	00:17	42-53	SUB OUT: BASTIN, SERAPHINE
	00:17		SUB IN: REID, ASHLEY
SUB OUT: 23 TOLLIE, BRISHONNE	00:17		
SUB IN: 10 FROLING, ALICIA	00:17		

SMU 42, Wichita St. 53

Official Shot Chart
SMU vs Wichita St.
PERIOD 1 Shots
 February 17, 2019 at Charles Koch Arena (Devlin Court) - Wichita, Kan.

Wichita St.

SMU



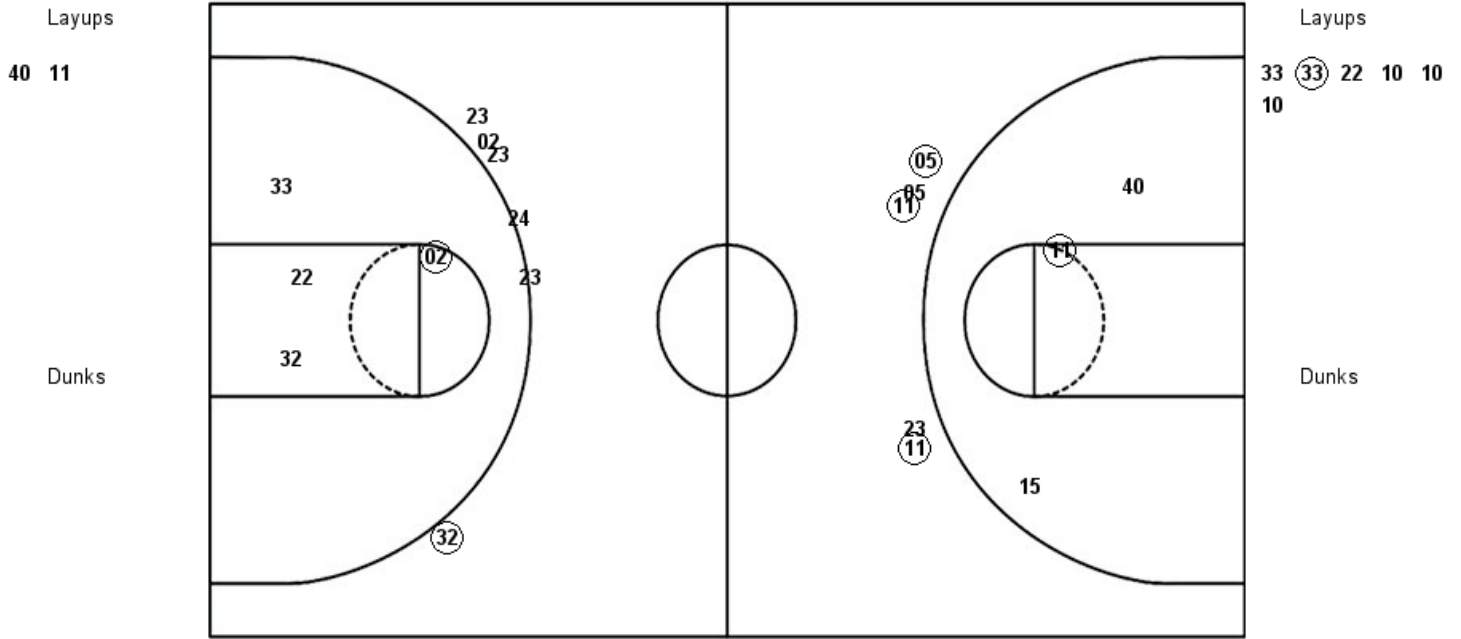
WSU : Period 1	Made	Att	Pct
Layups	1	1	100.0
Dunks	0	0	0
2PT Field Goals	3	4	75.0
3PT Field Goals	4	8	50.0
Total Field Goals	7	12	58.3

SMU : Period 1	Made	Att	Pct
Layups	0	1	00.0
Dunks	0	0	0
2PT Field Goals	0	7	00.0
3PT Field Goals	2	8	25.0
Total Field Goals	2	15	13.3

Official Shot Chart
SMU vs Wichita St.
PERIOD 2 Shots
 February 17, 2019 at Charles Koch Arena (Devlin Court) - Wichita, Kan.

Wichita St.

SMU



WSU : Period 2	Made	Att	Pct
Layups	0	2	00.0
Dunks	0	0	0
2PT Field Goals	1	5	20.0
3PT Field Goals	3	5	60.0
Total Field Goals	4	10	40.0

SMU : Period 2	Made	Att	Pct
Layups	1	6	16.7
Dunks	0	0	0
2PT Field Goals	2	10	20.0
3PT Field Goals	1	6	16.7
Total Field Goals	3	16	18.8

Official Shot Chart
 SMU vs Wichita St.
 PERIOD 3 Shots

February 17, 2019 at Charles Koch Arena (Devlin Court) - Wichita, Kan.

Wichita St.

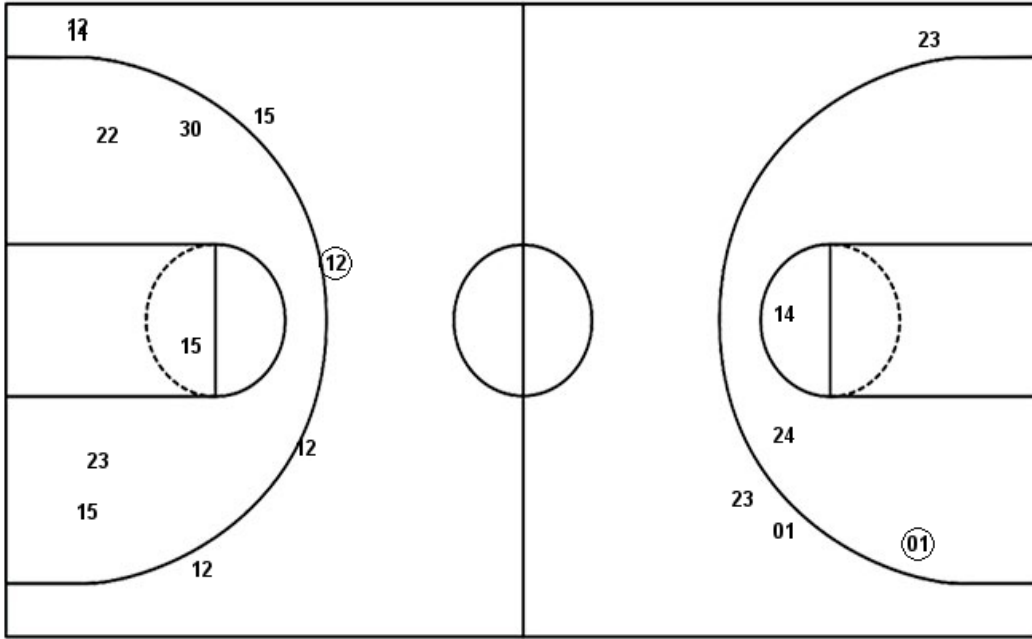
SMU

Layups
 11 11 (30) 13

Layups
 (24) 23 (14)

Dunks

Dunks



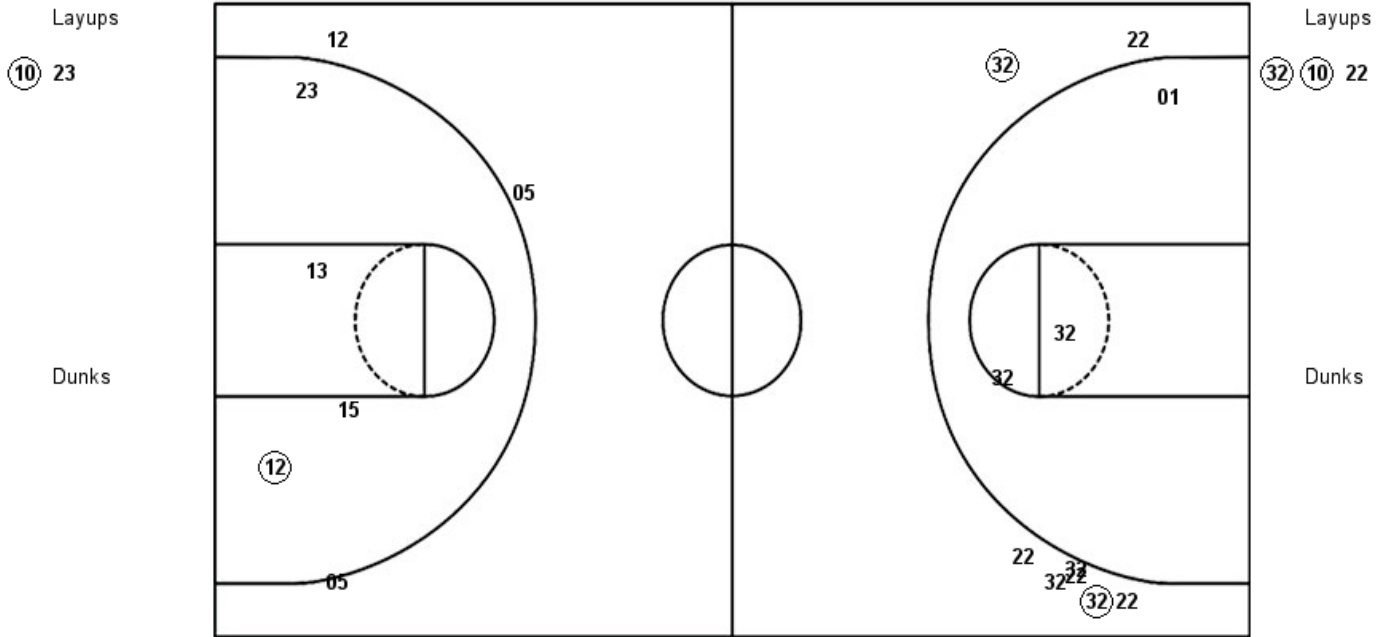
WSU : Period 3	Made	Att	Pct
Layups	1	4	25.0
Dunks	0	0	0
2PT Field Goals	1	9	11.1
3PT Field Goals	1	6	16.7
Total Field Goals	2	15	13.3

SMU : Period 3	Made	Att	Pct
Layups	2	3	66.7
Dunks	0	0	0
2PT Field Goals	3	6	50.0
3PT Field Goals	0	3	00.0
Total Field Goals	3	9	33.3

Official Shot Chart
SMU vs Wichita St.
PERIOD 4 Shots
 February 17, 2019 at Charles Koch Arena (Devlin Court) - Wichita, Kan.

Wichita St.

SMU

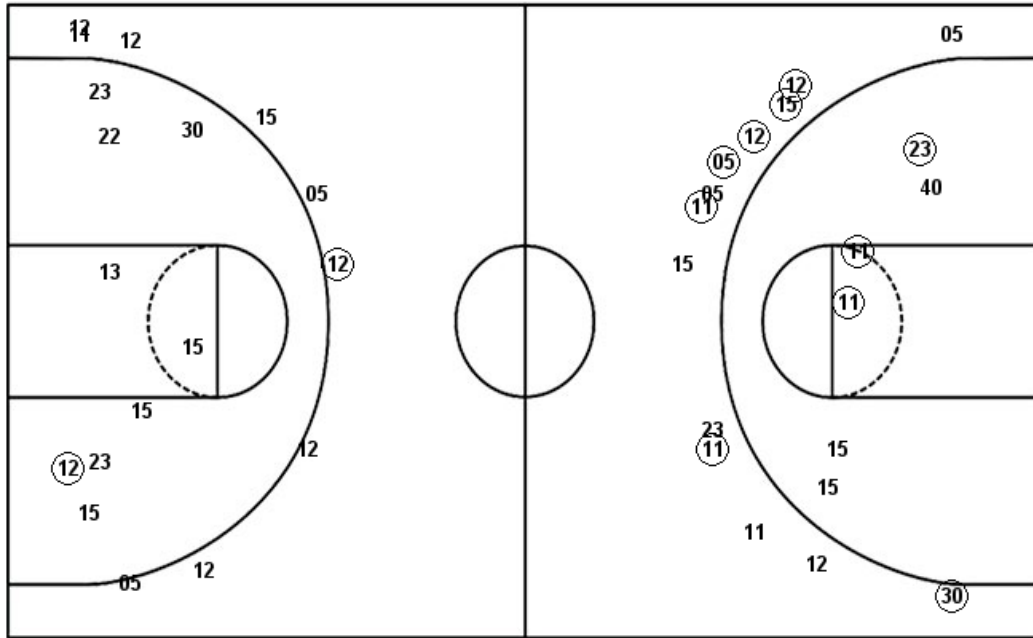


WSU : Period 4	Made	Att	Pct
Layups	1	2	50.0
Dunks	0	0	0
2PT Field Goals	2	6	33.3
3PT Field Goals	0	3	00.0
Total Field Goals	2	9	22.2

SMU : Period 4	Made	Att	Pct
Layups	2	3	66.7
Dunks	0	0	0
2PT Field Goals	2	6	33.3
3PT Field Goals	2	8	25.0
Total Field Goals	4	14	28.6

Official Shot Chart
SMU vs Wichita St.
Wichita St. Team Shots
February 17, 2019 at Charles Koch Arena (Devlin Court) - Wichita, Kan.

Layups



Layups

Dunks

Dunks

WSU : Period 1	Made	Att	Pct
Layups	1	1	100.0
Dunks	0	0	0
2PT Field Goals	3	4	75.0
3PT Field Goals	4	8	50.0
Total Field Goals	7	12	58.3

WSU : Period 3	Made	Att	Pct
Layups	1	4	25.0
Dunks	0	0	0
2PT Field Goals	1	9	11.1
3PT Field Goals	1	6	16.7
Total Field Goals	2	15	13.3

WSU : Period 2	Made	Att	Pct
Layups	0	2	00.0
Dunks	0	0	0
2PT Field Goals	1	5	20.0
3PT Field Goals	3	5	60.0
Total Field Goals	4	10	40.0

WSU : Period 4	Made	Att	Pct
Layups	1	2	50.0
Dunks	0	0	0
2PT Field Goals	2	6	33.3
3PT Field Goals	0	3	00.0
Total Field Goals	2	9	22.2