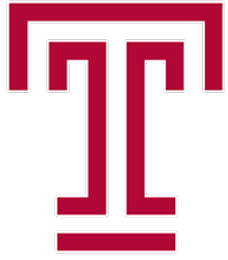


## FINAL SCORE



**Temple**

**65**



**Wichita St.**

**40**

February 03, 2019 • Charles Koch Arena (Devlin Court) - Wichita, Kan.

## FINAL STATISTICS

**Official Box Score**  
**Temple vs Wichita St.**  
**Game Totals -- Final Statistics**  
**February 03, 2019 at Charles Koch Arena (Devlin Court) - Wichita, Kan.**

**Temple 65**

No.	Player	S	Pts	FG	3FG	FT	OR	DR	TR	PF	A	TO	Blk	Stl	Min	+/-
00	Butts, Alliya		14	6-20	2-10	0-0	0	5	5	1	5	3	0	0	37	23
05	Mackins, Marissa		6	2-7	2-6	0-0	1	4	5	1	1	2	0	0	33	20
12	Mayo, Emani		2	1-5	0-3	0-0	1	4	5	0	1	0	0	0	32	29
24	Taylor, Shantay		8	4-5	0-0	0-0	6	4	10	2	0	2	2	0	26	29
25	Davis, Mia		30	10-22	3-5	7-10	5	8	13	1	2	2	0	1	39	27
01	Niang, Lena		3	1-4	1-3	0-0	1	0	1	0	1	0	0	0	16	-2
02	Perry, Breanna		2	1-1	0-0	0-4	2	2	4	2	0	0	1	0	17	-1
Team							2	0	2	0		1				
<b>TOTALS</b>			<b>65</b>	<b>25-64</b>	<b>8-27</b>	<b>7-14</b>	<b>18</b>	<b>27</b>	<b>45</b>	<b>7</b>	<b>10</b>	<b>10</b>	<b>3</b>	<b>1</b>	<b>200</b>	

*Shooting By Period*

Period	FG	FG%	3FG	3FG%	FT	FT%
1st Qtr	10-18	56%	2-8	25%	1-3	33%
2nd Qtr	4-14	29%	3-6	50%	0-4	00%
3rd Qtr	4-17	24%	1-9	11%	2-2	100%
4th Qtr	7-15	47%	2-4	50%	4-5	80%
1st Half	14-32	44%	5-14	36%	1-7	14%
2nd Half	11-32	34%	3-13	23%	6-7	86%
<b>Game</b>	<b>25-64</b>	<b>39.1%</b>	<b>8-27</b>	<b>29.6%</b>	<b>7-14</b>	<b>50.0%</b>

*Last FG: 4th-01:33*  
*Biggest Run: 14-0*  
*Largest lead: By 25 at 4-01:33*  
*Technical Fouls: None.*

**Wichita St. 40**

No.	Player	S	Pts	FG	3FG	FT	OR	DR	TR	PF	A	TO	Blk	Stl	Min	+/-
05	Reid, Ashley		4	2-9	0-4	0-0	1	0	1	0	3	2	0	2	23	-6
11	Lozada-Cabbage, Sabrina		2	1-3	0-1	0-0	0	1	1	4	3	2	0	0	19	-5
12	Bremaud, Carla		12	5-7	2-4	0-0	0	4	4	3	0	1	0	1	34	-19
23	Bastin, Seraphine		11	5-12	0-1	1-2	3	4	7	2	2	1	0	2	32	-16
34	Smith, Shyia		3	1-5	1-5	0-0	0	1	1	2	0	2	1	0	13	-1
13	Prince, Raven		4	2-7	0-0	0-0	5	4	9	2	0	2	1	1	25	-17
15	Hampton, Jaida		2	0-5	0-3	2-4	1	0	1	0	1	2	0	0	22	-30
22	Faye, Alyssia		0	0-5	0-1	0-0	0	0	0	1	0	0	0	0	12	-8
30	Ambrosio, Cesaria		1	0-1	0-1	1-2	1	1	2	0	0	0	0	1	12	-8
42	Henderson, Asia		1	0-3	0-0	1-2	1	5	6	1	0	0	0	0	9	-15
Team							1	3	4	0		0				
<b>TOTALS</b>			<b>40</b>	<b>16-57</b>	<b>3-20</b>	<b>5-10</b>	<b>13</b>	<b>23</b>	<b>36</b>	<b>15</b>	<b>9</b>	<b>12</b>	<b>2</b>	<b>7</b>	<b>200</b>	

*Shooting By Period*

Period	FG	FG%	3FG	3FG%	FT	FT%
1st Qtr	7-19	37%	1-4	25%	2-4	50%
2nd Qtr	5-13	38%	2-6	33%	1-2	50%
3rd Qtr	4-14	29%	0-5	00%	1-2	50%
4th Qtr	0-11	00%	0-5	00%	1-2	50%
1st Half	12-32	38%	3-10	30%	3-6	50%
2nd Half	4-25	16%	0-10	00%	2-4	50%
<b>Game</b>	<b>16-57</b>	<b>28.1%</b>	<b>3-20</b>	<b>15.0%</b>	<b>5-10</b>	<b>50.0%</b>

*Last FG: -*  
*Biggest Run: 8-0*  
*Largest lead: By 5 at 1-06:45*  
*Technical Fouls: None.*

Game Notes:

Officials: Bryan Enterline, Karen Preato, Michelle Kramer  
 Attendance: 1878

Start Time: 2019-02-03 00:35:00  
 End Time: 2019-02-03 02:15:58  
 Game Duration: 100  
 Conference Game;

Score	1st	2nd	3rd	4th	TOT
TEM	23	11	11	20	<b>65</b>
WSU	17	13	9	1	<b>40</b>

TEM led for 33:56. WSU led for 5:15.  
 Game was tied for 0:44.  
 Times tied: 1      Lead Changes: 2

Points from	TEM	WSU
In the Paint	28	22
Off Turns	12	7
2nd Chance	16	4
Fast Break	4	2
Bench	5	8

**Official Box Score**  
**Temple vs Wichita St.**  
**First Half Statistics Only**  
**February 03, 2019 at Charles Koch Arena (Devlin Court) - Wichita, Kan.**

**Temple 34**

No.	Player	S	Pts	FG	3FG	FT	OR	DR	TR	PF	A	TO	Blk	Stl	Min	+/-
00	Butts, Alliya		7	3-7	1-5	0-0	0	3	3	1	4	3	0	0	18	2
01	Niang, Lena		3	1-4	1-3	0-0	1	0	1	0	1	0	0	0	12	-2
02	Perry, Breanna		2	1-1	0-0	0-4	2	2	4	1	0	0	1	0	14	3
05	Mackins, Marissa		3	1-3	1-3	0-0	0	3	3	0	1	0	0	0	15	-1
12	Mayo, Emani		2	1-3	0-1	0-0	0	2	2	0	0	0	0	0	13	8
24	Taylor, Shantay		8	4-5	0-0	0-0	5	0	5	2	0	1	1	0	8	6
25	Davis, Mia		9	3-9	2-2	1-3	0	2	2	1	2	1	0	0	20	4
	Team		0	0-0	0-0	0-0	1	0	1	0	0	0	0	0	0	
	<b>TOTALS</b>		<b>34</b>	<b>14-32</b>	<b>5-14</b>	<b>1-7</b>	<b>9</b>	<b>12</b>	<b>21</b>	<b>5</b>	<b>8</b>	<b>5</b>	<b>2</b>	<b>0</b>	<b>100</b>	

*Shooting By Period*

Period	FG	FG%	3FG	3FG%	FT	FT%
1st Qtr	10-18	56%	2-8	25%	1-3	33%
2nd Qtr	4-14	29%	3-6	50%	0-4	00%
1st Half	14-32	44%	5-14	36%	1-7	14%
Game	25-64	39.1%	8-27	29.6%	7-14	50.0%

*Last FG Half: TEM 2nd-01:30*

**Wichita St. 30**

No.	Player	S	Pts	FG	3FG	FT	OR	DR	TR	PF	A	TO	Blk	Stl	Min	+/-
05	Reid, Ashley		4	2-6	0-2	0-0	1	0	1	0	2	1	0	2	13	0
11	Lozada-Cabbage, Sabrina		2	1-2	0-0	0-0	0	0	0	2	3	0	0	0	4	2
12	Bremaud, Carla		8	3-3	2-2	0-0	0	3	3	2	0	1	0	0	15	-2
13	Prince, Raven		0	0-4	0-0	0-0	3	2	5	0	0	1	1	0	10	-1
15	Hampton, Jaida		2	0-3	0-1	2-4	1	0	1	0	1	0	0	0	12	-9
22	Faye, Alyssia		0	0-3	0-0	0-0	0	0	0	1	0	0	0	0	9	-2
23	Bastin, Seraphine		10	5-6	0-0	0-0	1	1	2	1	1	0	0	1	16	-3
30	Ambrosio, Cesaria		0	0-1	0-1	0-0	0	0	0	0	0	0	0	1	5	-2
34	Smith, Shyia		3	1-4	1-4	0-0	0	1	1	2	0	1	0	0	11	-2
42	Henderson, Asia		1	0-0	0-0	1-2	1	3	4	0	0	0	0	0	4	-1
	Team		0	0-0	0-0	0-0	0	2	2	0	0	0	0	0	0	
	<b>TOTALS</b>		<b>30</b>	<b>12-32</b>	<b>3-10</b>	<b>3-6</b>	<b>7</b>	<b>12</b>	<b>19</b>	<b>8</b>	<b>7</b>	<b>4</b>	<b>1</b>	<b>4</b>	<b>100</b>	

*Shooting By Period*

Period	FG	FG%	3FG	3FG%	FT	FT%
1st Qtr	7-19	37%	1-4	25%	2-4	50%
2nd Qtr	5-13	38%	2-6	33%	1-2	50%
1st Half	12-32	38%	3-10	30%	3-6	50%
Game	16-57	28.1%	3-20	15.0%	5-10	50.0%

*Last FG Half: WSU 2nd-01:06*

*Game Notes:*

Officials: Bryan Enterline, Karen Preato, Michelle Kramer  
 Attendance: 1878

Start Time: 2019-02-03 00:35:00  
 End Time: 2019-02-03 02:15:58  
 Game Duration: 100  
 Conference Game:

Score	1st	2nd	3rd	4th	TOT
TEM	23	11	11	20	<b>65</b>
WSU	17	13	9	1	<b>40</b>

Points from (This Period)	TEM	WSU
In the Paint	14	14
Off Turns	2	4
2nd Chance	5	1
Fast Break	0	2
Bench	5	3

**Official Box Score**  
**Temple vs Wichita St.**  
**First Quarter Statistics Only**  
**February 03, 2019 at Charles Koch Arena (Devlin Court) - Wichita, Kan.**

**Temple 23**

No.	Player	S	Pts	FG	3FG	FT	OR	DR	TR	PF	A	TO	Blk	Stl	Min	+/-
00	Butts, Alliya		7	3-6	1-4	0-0	0	1	1	1	2	1	0	0	10	6
05	Mackins, Marissa		0	0-2	0-2	0-0	0	2	2	0	0	0	0	0	6	1
12	Mayo, Emani		2	1-3	0-1	0-0	0	1	1	0	0	0	0	0	10	6
24	Taylor, Shantay		8	4-5	0-0	0-0	5	0	5	2	0	1	1	0	8	6
25	Davis, Mia		6	2-2	1-1	1-3	0	2	2	1	2	0	0	0	10	6
01	Niang, Lena		0	0-0	0-0	0-0	0	0	0	0	1	0	0	0	2	0
02	Perry, Breanna		0	0-0	0-0	0-0	0	1	1	0	0	0	0	0	4	5
	Team						0	0	0	0		0				
<b>TOTALS</b>			<b>23</b>	<b>10-18</b>	<b>2-8</b>	<b>1-3</b>	<b>5</b>	<b>7</b>	<b>12</b>	<b>4</b>	<b>5</b>	<b>2</b>	<b>1</b>	<b>0</b>	<b>50</b>	

*Shooting By Period*

Period	FG	FG%	3FG	3FG%	FT	FT%
1st Qtr	10-18	56%	2-8	25%	1-3	33%
2nd Qtr	4-14	29%	3-6	50%	0-4	00%
1st Half	10-18	56%	2-8	25%	1-3	33%
1st Half	14-32	44%	5-14	36%	1-7	14%
Game	25-64	39.1%	8-27	29.6%	7-14	50.0%

**Wichita St. 17**

No.	Player	S	Pts	FG	3FG	FT	OR	DR	TR	PF	A	TO	Blk	Stl	Min	+/-
05	Reid, Ashley		2	1-1	0-0	0-0	0	0	0	0	2	0	0	0	6	2
11	Lozada-Cabbage, Sabrina		2	1-2	0-0	0-0	0	0	0	2	3	0	0	0	4	2
12	Bremaud, Carla		2	1-1	0-0	0-0	0	1	1	1	0	0	0	0	8	-5
23	Bastin, Seraphine		6	3-4	0-0	0-0	1	0	1	0	0	0	0	1	8	-6
34	Smith, Shyia		3	1-4	1-4	0-0	0	0	0	0	0	0	0	0	6	-1
13	Prince, Raven		0	0-4	0-0	0-0	3	0	3	0	0	0	1	0	5	-8
15	Hampton, Jaida		1	0-1	0-0	1-2	1	0	1	0	0	0	0	0	5	-8
22	Faye, Alyssia		0	0-2	0-0	0-0	0	0	0	0	0	0	0	0	4	-5
30	Ambrosio, Cesaria		0	0-0	0-0	0-0	0	0	0	0	0	0	0	0	2	-1
42	Henderson, Asia		1	0-0	0-0	1-2	0	2	2	0	0	0	0	0	2	0
	Team						0	1	1	0		0				
<b>TOTALS</b>			<b>17</b>	<b>7-19</b>	<b>1-4</b>	<b>2-4</b>	<b>5</b>	<b>4</b>	<b>9</b>	<b>3</b>	<b>5</b>	<b>0</b>	<b>1</b>	<b>1</b>	<b>50</b>	

*Shooting By Period*

Period	FG	FG%	3FG	3FG%	FT	FT%
1st Qtr	7-19	37%	1-4	25%	2-4	50%
2nd Qtr	5-13	38%	2-6	33%	1-2	50%
1st Half	7-19	37%	1-4	25%	2-4	50%
1st Half	12-32	38%	3-10	30%	3-6	50%
Game	16-57	28.1%	3-20	15.0%	5-10	50.0%

Game Notes:

Officials: Bryan Enterline, Karen Preato, Michelle Kramer  
Attendance: 1878

Start Time: 2019-02-03 00:35:00  
End Time: 2019-02-03 02:15:58  
Game Duration: 100  
Conference Game;

Score	1st	2nd	3rd	4th	TOT
TEM	23	11	11	20	<b>65</b>
WSU	17	13	9	1	<b>40</b>

Points from (This Period)	TEM	WSU
In the Paint	12	10
Off Turns	0	2
2nd Chance	3	1
Fast Break	0	2
Bench	0	2

**Official Play-By-Play  
Temple vs Wichita St.  
First Quarter**

**February 03, 2019 at Charles Koch Arena (Devlin Court) - Wichita, Kan.**

**Period 1**

**Starters:**

**Temple:** 0 BUTTS,ALLIYA; 5 MACKINS,MARISSA; 12 MAYO,EMANI; 24 TAYLOR,SHANTAY; 25 DAVIS,MIA;

**Wichita St.:** 5 REID,ASHLEY; 11 LOZADA-CABBAGE,SABRINA; 12 BREMAUD,CARLA; 23 BASTIN,SERAPHINE; 34 SMITH,SHYIA;

Time	VISITORS: Temple	Score	Margin	HOME: Wichita St.
09:43				MISSED JUMPER by LOZADA-CABBAGE,SABRINA
09:39	REBOUND (DEF) by MACKINS,MARISSA			
09:32	GOOD! LAYUP by TAYLOR,SHANTAY	0-2	V 2	
09:32	ASSIST by DAVIS,MIA			
09:08		3-2	H 1	GOOD! 3PTR by SMITH,SHYIA
09:08				ASSIST by LOZADA-CABBAGE,SABRINA
08:56	TURNOVER (BADPASS) by BUTTS,ALLIYA			
08:56				STEAL by BASTIN,SERAPHINE
08:49		5-2	H 3	GOOD! LAYUP by BASTIN,SERAPHINE [FB]
08:49				ASSIST by REID,ASHLEY
08:36	MISSED 3PTR by MAYO,EMANI			
08:34				REBOUND (DEF) by TEAM
08:21		7-2	H 5	GOOD! LAYUP by LOZADA-CABBAGE,SABRINA
08:21				ASSIST by REID,ASHLEY
08:07	GOOD! LAYUP by BUTTS,ALLIYA	7-4	H 3	
07:50		9-4	H 5	GOOD! LAYUP by BASTIN,SERAPHINE
07:50				ASSIST by LOZADA-CABBAGE,SABRINA
07:38				FOUL (PERSONAL) by LOZADA-CABBAGE,SABRINA
07:32	GOOD! JUMPER by DAVIS,MIA	9-6	H 3	
07:32	ASSIST by BUTTS,ALLIYA			
07:14		11-6	H 5	GOOD! LAYUP by BREMAUD,CARLA
06:59	GOOD! LAYUP by TAYLOR,SHANTAY	11-8	H 3	
06:59	ASSIST by DAVIS,MIA			
06:45		13-8	H 5	GOOD! LAYUP by BASTIN,SERAPHINE
06:45				ASSIST by LOZADA-CABBAGE,SABRINA
06:28	GOOD! 3PTR by DAVIS,MIA	13-11	H 2	
06:28				FOUL (PERSONAL) by LOZADA-CABBAGE,SABRINA
06:28				SUB OUT: LOZADA-CABBAGE,SABRINA
06:28				SUB IN: PRINCE,RAVEN
06:28	MISSED FT by DAVIS,MIA			
06:28	REBOUND (OFF) by TAYLOR,SHANTAY			
06:26	MISSED LAYUP by TAYLOR,SHANTAY			
06:26				BLOCK by PRINCE,RAVEN
06:26	REBOUND (OFF) by TAYLOR,SHANTAY			
06:21	TURNOVER (3SEC) by TAYLOR,SHANTAY			
06:02				MISSED 3PTR by SMITH,SHYIA
05:58				REBOUND (OFF) by BASTIN,SERAPHINE
05:52				MISSED LAYUP by PRINCE,RAVEN
05:48	REBOUND (DEF) by MAYO,EMANI			
05:45	MISSED 3PTR by MACKINS,MARISSA			
05:42	REBOUND (OFF) by TAYLOR,SHANTAY			
05:36	MISSED 3PTR by MACKINS,MARISSA			
05:32	REBOUND (OFF) by TAYLOR,SHANTAY			
05:29				FOUL (PERSONAL) by BREMAUD,CARLA
05:29	MISSED FT by DAVIS,MIA			
05:29	REBOUND (OFF) by TEAM			
05:29				SUB OUT: REID,ASHLEY
05:29				SUB IN: HAMPTON,JAIDA
05:29	GOOD! FT by DAVIS,MIA	13-12	H 1	
05:13	FOUL (PERSONAL) by DAVIS,MIA			
05:01				MISSED 3PTR by SMITH,SHYIA
04:56	REBOUND (DEF) by DAVIS,MIA			
04:33	MISSED 3PTR by BUTTS,ALLIYA			
04:28				REBOUND (DEF) by BREMAUD,CARLA
04:11				MISSED LAYUP by BASTIN,SERAPHINE
04:08				REBOUND (OFF) by PRINCE,RAVEN
04:07				MISSED LAYUP by PRINCE,RAVEN
04:00				REBOUND (OFF) by PRINCE,RAVEN
04:00				MISSED LAYUP by PRINCE,RAVEN
04:00	REBOUND (DEF) by MACKINS,MARISSA			
03:59	MISSED 3PTR by BUTTS,ALLIYA			
03:53	REBOUND (OFF) by TAYLOR,SHANTAY			
03:53	GOOD! LAYUP by TAYLOR,SHANTAY	13-14	V 1	
03:39				MISSED 3PTR by SMITH,SHYIA
03:35				REBOUND (OFF) by PRINCE,RAVEN
03:35				MISSED LAYUP by PRINCE,RAVEN
03:34				REBOUND (OFF) by HAMPTON,JAIDA
03:33	FOUL (PERSONAL) by TAYLOR,SHANTAY			
03:33				MISSED FT by HAMPTON,JAIDA
03:33				REBOUND (OFF) by TEAM
03:33				SUB OUT: SMITH,SHYIA
03:33				SUB IN: FAYE,ALYSSIA
03:33	SUB OUT: MACKINS,MARISSA			
03:33	SUB IN: PERRY,BREANNA			
03:33		14-14	T	GOOD! FT by HAMPTON,JAIDA

Time	VISITORS: Temple	Score	Margin	HOME: Wichita St.
03:17	GOOD! LAYUP by TAYLOR,SHANTAY	14-16	V 2	
03:17	ASSIST by BUTTS,ALLIYA			
03:01				MISSED JUMPER by FAYE,ALYSSIA
02:58	REBOUND (DEF) by PERRY,BREANNA			
02:31	GOOD! JUMPER by MAYO,EMANI	14-18	V 4	
02:15				MISSED JUMPER by HAMPTON,JAIDA
02:15	BLOCK by TAYLOR,SHANTAY			
02:10	REBOUND (DEF) by DAVIS,MIA			
01:58	GOOD! LAYUP by BUTTS,ALLIYA	14-20	V 6	
01:43	FOUL (PERSONAL) by BUTTS,ALLIYA			
01:43				SUB OUT: PRINCE,RAVEN
01:43				SUB IN: HENDERSON,ASIA
01:43				SUB OUT: BASTIN,SERAPHINE
01:43				SUB IN: REID,ASHLEY
01:32	FOUL (PERSONAL) by TAYLOR,SHANTAY			
01:32				MISSED FT by HENDERSON,ASIA
01:32				REBOUND (OFF) by TEAM
01:32	SUB OUT: TAYLOR,SHANTAY			
01:32	SUB IN: NIANG,LENA			
01:32		15-20	V 5	GOOD! FT by HENDERSON,ASIA
01:32				SUB OUT: BREMAUD,CARLA
01:32				SUB IN: AMBROSIO,CESARIA
01:17	GOOD! 3PTR by BUTTS,ALLIYA	15-23	V 8	
01:17	ASSIST by NIANG,LENA			
00:59				MISSED JUMPER by FAYE,ALYSSIA
00:54	REBOUND (DEF) by BUTTS,ALLIYA			
00:49	MISSED LAYUP by MAYO,EMANI			
00:42				REBOUND (DEF) by HENDERSON,ASIA
00:21		17-23	V 6	GOOD! JUMPER by REID,ASHLEY
00:04	MISSED 3PTR by BUTTS,ALLIYA			
00:00				REBOUND (DEF) by HENDERSON,ASIA

### Temple 23, Wichita St. 17

Points from (This Period)	TEM	WSU
In the Paint	12	10
Off Turns	0	2
2nd Chance	3	1
Fast Break	0	2
Bench	0	2

**Official Box Score**  
**Temple vs Wichita St.**  
**Second Quarter Statistics Only**  
**February 03, 2019 at Charles Koch Arena (Devlin Court) - Wichita, Kan.**

**Temple 11**

No.	Player	S	Pts	FG	3FG	FT	OR	DR	TR	PF	A	TO	Blk	Stl	Min	+/-
00	Butts, Alliya		0	0-1	0-1	0-0	0	2	2	0	2	2	0	0	8	-4
05	Mackins, Marissa		3	1-1	1-1	0-0	0	1	1	0	1	0	0	0	9	-2
12	Mayo, Emani		0	0-0	0-0	0-0	0	1	1	0	0	0	0	0	3	2
24	Taylor, Shantay		0	0-0	0-0	0-0	0	0	0	0	0	0	0	0	0	0
25	Davis, Mia		3	1-7	1-1	0-0	0	0	0	0	0	1	0	0	10	-2
01	Niang, Lena		3	1-4	1-3	0-0	1	0	1	0	0	0	0	0	10	-2
02	Perry, Breanna		2	1-1	0-0	0-4	2	1	3	1	0	0	1	0	10	-2
	Team						1	0	1	0		0				
<b>TOTALS</b>			<b>11</b>	<b>4-14</b>	<b>3-6</b>	<b>0-4</b>	<b>4</b>	<b>5</b>	<b>9</b>	<b>1</b>	<b>3</b>	<b>3</b>	<b>1</b>	<b>0</b>	<b>50</b>	

*Shooting By Period*

Period	FG	FG%	3FG	3FG%	FT	FT%
3rd Qtr	4-17	24%	1-9	11%	2-2	100%
4th Qtr	7-15	47%	2-4	50%	4-5	80%
2nd Half	4-14	29%	3-6	50%	0-4	00%
2nd Half	11-32	34%	3-13	23%	6-7	86%
Game	25-64	39.1%	8-27	29.6%	7-14	50.0%

**Wichita St. 13**

No.	Player	S	Pts	FG	3FG	FT	OR	DR	TR	PF	A	TO	Blk	Stl	Min	+/-
05	Reid, Ashley		2	1-5	0-2	0-0	1	0	1	0	0	1	0	2	7	-2
11	Lozada-Cabbage, Sabrina		0	0-0	0-0	0-0	0	0	0	0	0	0	0	0	0	0
12	Bremaud, Carla		6	2-2	2-2	0-0	0	2	2	1	0	1	0	0	7	3
23	Bastin, Seraphine		4	2-2	0-0	0-0	0	1	1	1	1	0	0	0	8	3
34	Smith, Shyia		0	0-0	0-0	0-0	0	1	1	2	0	1	0	0	5	-1
13	Prince, Raven		0	0-0	0-0	0-0	0	2	2	0	0	1	0	0	5	7
15	Hampton, Jaida		1	0-2	0-1	1-2	0	0	0	0	1	0	0	0	7	-1
22	Faye, Alyssia		0	0-1	0-0	0-0	0	0	0	1	0	0	0	0	5	3
30	Ambrosio, Cesaria		0	0-1	0-1	0-0	0	0	0	0	0	0	0	1	3	-1
42	Henderson, Asia		0	0-0	0-0	0-0	1	1	2	0	0	0	0	0	2	-1
	Team						0	1	1	0		0				
<b>TOTALS</b>			<b>13</b>	<b>5-13</b>	<b>2-6</b>	<b>1-2</b>	<b>2</b>	<b>8</b>	<b>10</b>	<b>5</b>	<b>2</b>	<b>4</b>	<b>0</b>	<b>3</b>	<b>50</b>	

*Shooting By Period*

Period	FG	FG%	3FG	3FG%	FT	FT%
3rd Qtr	4-14	29%	0-5	00%	1-2	50%
4th Qtr	0-11	00%	0-5	00%	1-2	50%
2nd Half	5-13	38%	2-6	33%	1-2	50%
2nd Half	4-25	16%	0-10	00%	2-4	50%
Game	16-57	28.1%	3-20	15.0%	5-10	50.0%

Game Notes:

Officials: Bryan Enterline, Karen Preato, Michelle Kramer  
Attendance: 1878

Start Time: 2019-02-03 00:35:00  
End Time: 2019-02-03 02:15:58  
Game Duration: 100  
Conference Game:

Score	1st	2nd	3rd	4th	TOT
TEM	23	11	11	20	<b>65</b>
WSU	17	13	9	1	<b>40</b>

Points from (This Period)	TEM	WSU
In the Paint	2	4
Off Turns	2	2
2nd Chance	2	0
Fast Break	0	0
Bench	5	1

**Official Play-By-Play  
Temple vs Wichita St.  
Second Quarter**

**February 03, 2019 at Charles Koch Arena (Devlin Court) - Wichita, Kan.**

**Period 2**

**Starters:**

**Temple:** 0 BUTTS,ALLIYA; 5 MACKINS,MARISSA; 12 MAYO,EMANI; 24 TAYLOR,SHANTAY; 25 DAVIS,MIA;

**Wichita St.:** 5 REID,ASHLEY; 11 LOZADA-CABBAGE,SABRINA; 12 BREMAUD,CARLA; 23 BASTIN,SERAPHINE; 34 SMITH,SHYIA;

Time	VISITORS: Temple	Score	Margin	HOME: Wichita St.
09:37				MISSED JUMPER by HAMPTON,JAIDA
09:32				REBOUND (OFF) by HENDERSON,ASIA
09:22				MISSED 3PTR by AMBROSIO,CESARIA
09:18	REBOUND (DEF) by BUTTS,ALLIYA			
09:03	MISSED JUMPER by NIANG,LENA			
09:00	REBOUND (OFF) by NIANG,LENA			
08:51	MISSED JUMPER by DAVIS,MIA			
08:46				REBOUND (DEF) by HENDERSON,ASIA
08:28				MISSED JUMPER by FAYE,ALYSSIA
08:22	REBOUND (DEF) by BUTTS,ALLIYA			
08:21	TURNOVER (LOSTBALL) by BUTTS,ALLIYA			
08:21				STEAL by REID,ASHLEY
08:14		19-23	V 4	GOOD! JUMPER by REID,ASHLEY
08:14				ASSIST by HAMPTON,JAIDA
07:58	GOOD! 3PTR by MACKINS,MARISSA	19-26	V 7	
07:58	ASSIST by BUTTS,ALLIYA			
07:35				MISSED 3PTR by REID,ASHLEY
07:34	REBOUND (DEF) by TEAM			
07:34				SUB OUT: FAYE,ALYSSIA
07:34				SUB IN: SMITH,SHYIA
07:34				SUB OUT: AMBROSIO,CESARIA
07:34				SUB IN: BREMAUD,CARLA
07:34				SUB OUT: HENDERSON,ASIA
07:34				SUB IN: BASTIN,SERAPHINE
07:34	SUB OUT: BUTTS,ALLIYA			
07:34	SUB IN: MAYO,EMANI			
07:26	GOOD! 3PTR by DAVIS,MIA	19-29	V 10	
07:26	ASSIST by MACKINS,MARISSA			
07:00				MISSED 3PTR by REID,ASHLEY
07:00	REBOUND (DEF) by MACKINS,MARISSA			
07:00				FOUL (PERSONAL) by BASTIN,SERAPHINE
06:46	MISSED LAYUP by DAVIS,MIA			
06:43				REBOUND (DEF) by BREMAUD,CARLA
06:15	FOUL (PERSONAL) by PERRY,BREANNA			
06:15				MISSED FT by HAMPTON,JAIDA
06:15				REBOUND (OFF) by TEAM
06:15		20-29	V 9	GOOD! FT by HAMPTON,JAIDA
05:57	MISSED JUMPER by DAVIS,MIA			
05:55				REBOUND (DEF) by TEAM
05:55	SUB OUT: MAYO,EMANI			
05:55	SUB IN: BUTTS,ALLIYA			
05:40				TURNOVER (TRAVEL) by BREMAUD,CARLA
05:25	MISSED 3PTR by NIANG,LENA			
05:20	REBOUND (OFF) by PERRY,BREANNA			
05:20	GOOD! LAYUP by PERRY,BREANNA	20-31	V 11	
05:16				TIMEOUT 30SEC
05:16				SUB OUT: HAMPTON,JAIDA
05:16				SUB IN: PRINCE,RAVEN
05:10				TURNOVER (DRIBBLING) by REID,ASHLEY
04:53	MISSED LAYUP by DAVIS,MIA			
04:49				REBOUND (DEF) by SMITH,SHYIA
04:41				TURNOVER (3SEC) by PRINCE,RAVEN
04:28	MISSED 3PTR by BUTTS,ALLIYA			
04:25				REBOUND (DEF) by PRINCE,RAVEN
04:11		23-31	V 8	GOOD! 3PTR by BREMAUD,CARLA
03:45	MISSED JUMPER by DAVIS,MIA			
03:41				REBOUND (DEF) by PRINCE,RAVEN
03:37				MISSED LAYUP by REID,ASHLEY
03:33	REBOUND (DEF) by PERRY,BREANNA			
03:17	TURNOVER (LOSTBALL) by BUTTS,ALLIYA			
03:17				STEAL by REID,ASHLEY
03:11				MISSED LAYUP by REID,ASHLEY
03:11	BLOCK by PERRY,BREANNA			
03:05				REBOUND (OFF) by REID,ASHLEY
02:58				FOUL (OFF) by SMITH,SHYIA
02:58				TURNOVER (OFFENSIVE) by SMITH,SHYIA
02:58	TIMEOUT 30SEC			
02:46	MISSED JUMPER by DAVIS,MIA			
02:45	REBOUND (OFF) by PERRY,BREANNA			
02:45				FOUL (PERSONAL) by SMITH,SHYIA
02:45	MISSED FT by PERRY,BREANNA			
02:45	REBOUND (OFF) by TEAM			
02:45				SUB OUT: REID,ASHLEY
02:45				SUB IN: HAMPTON,JAIDA
02:45				SUB OUT: SMITH,SHYIA
02:45				SUB IN: FAYE,ALYSSIA



Time	VISITORS: Temple	Score	Margin	HOME: Wichita St.
02:45	MISSED FT by PERRY,BREANNA			
02:45				REBOUND (DEF) by BASTIN,SERAPHINE
02:32		26-31	V 5	GOOD! 3PTR by BREMAUD,CARLA
02:32				ASSIST by BASTIN,SERAPHINE
02:09	MISSED 3PTR by NIANG,LENA			
02:06				REBOUND (DEF) by BREMAUD,CARLA
01:52		28-31	V 3	GOOD! LAYUP by BASTIN,SERAPHINE
01:30	GOOD! 3PTR by NIANG,LENA	28-34	V 6	
01:30	ASSIST by BUTTS,ALLIYA			
01:06		30-34	V 4	GOOD! LAYUP by BASTIN,SERAPHINE
00:55				FOUL (PERSONAL) by BREMAUD,CARLA
00:55				SUB OUT: BREMAUD,CARLA
00:55				SUB IN: AMBROSIO,CESARIA
00:55	SUB OUT: MACKINS,MARISSA			
00:55	SUB IN: MAYO,EMANI			
00:47				FOUL (PERSONAL) by FAYE,ALYSSIA
00:47	MISSED FT by PERRY,BREANNA			
00:47	REBOUND (OFF) by TEAM			
00:47	MISSED FT by PERRY,BREANNA			
00:47	REBOUND (OFF) by TEAM			
00:30	TURNOVER (BADPASS) by DAVIS,MIA			
00:30				STEAL by AMBROSIO,CESARIA
00:00				MISSED 3PTR by HAMPTON,JAIDA
00:00	REBOUND (DEF) by MAYO,EMANI			

### Temple 34, Wichita St. 30

Points from (This Period)	TEM	WSU
In the Paint	2	4
Off Turns	2	2
2nd Chance	2	0
Fast Break	0	0
Bench	5	1

**Official Box Score**  
**Temple vs Wichita St.**  
**Second Half Statistics Only**  
**February 03, 2019 at Charles Koch Arena (Devlin Court) - Wichita, Kan.**

**Temple 31**

No.	Player	S	Pts	FG	3FG	FT	OR	DR	TR	PF	A	TO	Blk	Stl	Min	+/-
00	Butts, Alliya		7	3-13	1-5	0-0	0	2	2	0	1	0	0	0	18	21
01	Niang, Lena		0	0-0	0-0	0-0	0	0	0	0	0	0	0	0	4	0
02	Perry, Breanna		0	0-0	0-0	0-0	0	0	0	1	0	0	0	0	4	-4
05	Mackins, Marissa		3	1-4	1-3	0-0	1	1	2	1	0	2	0	0	17	21
12	Mayo, Emani		0	0-2	0-2	0-0	1	2	3	0	1	0	0	0	20	21
24	Taylor, Shantay		0	0-0	0-0	0-0	1	4	5	0	0	1	1	0	17	23
25	Davis, Mia		21	7-13	1-3	6-7	5	6	11	0	0	1	0	1	19	23
	Team		0	0-0	0-0	0-0	1	0	1	0	0	1	0	0	0	0
<b>TOTALS</b>			<b>31</b>	<b>11-32</b>	<b>3-13</b>	<b>6-7</b>	<b>9</b>	<b>15</b>	<b>24</b>	<b>2</b>	<b>2</b>	<b>5</b>	<b>1</b>	<b>1</b>	<b>100</b>	

*Shooting By Period*

Period	FG	FG%	3FG	3FG%	FT	FT%
3rd Qtr	4-17	24%	1-9	11%	2-2	100%
4th Qtr	7-15	47%	2-4	50%	4-5	80%
2nd Half	11-32	34%	3-13	23%	6-7	86%
Game	25-64	39.1%	8-27	29.6%	7-14	50.0%

*Last FG Half: TEM 4th-01:33*

**Wichita St. 10**

No.	Player	S	Pts	FG	3FG	FT	OR	DR	TR	PF	A	TO	Blk	Stl	Min	+/-
05	Reid, Ashley		0	0-3	0-2	0-0	0	0	0	0	1	1	0	0	9	-6
11	Lozada-Cabbage, Sabrina		0	0-1	0-1	0-0	0	1	1	2	0	2	0	0	15	-7
12	Bremaud, Carla		4	2-4	0-2	0-0	0	1	1	1	0	0	0	1	19	-17
13	Prince, Raven		4	2-3	0-0	0-0	2	2	4	2	0	1	0	1	15	-16
15	Hampton, Jaida		0	0-2	0-2	0-0	0	0	0	0	0	2	0	0	8	-21
22	Faye, Alyssia		0	0-2	0-1	0-0	0	0	0	0	0	0	0	0	3	-6
23	Bastin, Seraphine		1	0-6	0-1	1-2	2	3	5	1	1	1	0	1	17	-13
30	Ambrosio, Cesaria		1	0-0	0-0	1-2	1	1	2	0	0	0	0	0	7	-6
34	Smith, Shyia		0	0-1	0-1	0-0	0	0	0	0	0	1	1	0	2	1
42	Henderson, Asia		0	0-3	0-0	0-0	0	2	2	1	0	0	0	0	5	-14
	Team		0	0-0	0-0	0-0	1	1	2	0	0	0	0	0	0	0
<b>TOTALS</b>			<b>10</b>	<b>4-25</b>	<b>0-10</b>	<b>2-4</b>	<b>6</b>	<b>11</b>	<b>17</b>	<b>7</b>	<b>2</b>	<b>8</b>	<b>1</b>	<b>3</b>	<b>100</b>	

*Shooting By Period*

Period	FG	FG%	3FG	3FG%	FT	FT%
3rd Qtr	4-14	29%	0-5	00%	1-2	50%
4th Qtr	0-11	00%	0-5	00%	1-2	50%
2nd Half	4-25	16%	0-10	00%	2-4	50%
Game	16-57	28.1%	3-20	15.0%	5-10	50.0%

*Last FG Half: WSU -*

Game Notes:

Officials: Bryan Enterline, Karen Preato, Michelle Kramer  
Attendance: 1878

Start Time: 2019-02-03 00:35:00  
End Time: 2019-02-03 02:15:58  
Game Duration: 100  
Conference Game;

Score	1st	2nd	3rd	4th	TOT
TEM	23	11	11	20	<b>65</b>
WSU	17	13	9	1	<b>40</b>

Points from (This Period)	TEM	WSU
In the Paint	14	8
Off Turns	10	3
2nd Chance	11	3
Fast Break	4	0
Bench	0	5

**Official Box Score**  
**Temple vs Wichita St.**  
**Third Quarter Statistics Only**  
**February 03, 2019 at Charles Koch Arena (Devlin Court) - Wichita, Kan.**

**Temple 31**

No.	Player	S	Pts	FG	3FG	FT	OR	DR	TR	PF	A	TO	Blk	Stl	Min	+/-
00	Butts, Alliya		5	2-8	1-4	0-0	0	0	0	0	0	0	0	0	8	2
05	Mackins, Marissa		0	0-3	0-2	0-0	1	1	2	0	0	2	0	0	7	2
12	Mayo, Emani		0	0-2	0-2	0-0	1	1	2	0	0	0	0	0	10	2
24	Taylor, Shantay		0	0-0	0-0	0-0	0	1	1	0	0	0	1	0	7	4
25	Davis, Mia		6	2-4	0-1	2-2	2	2	4	0	0	0	0	0	9	4
01	Niang, Lena		0	0-0	0-0	0-0	0	0	0	0	0	0	0	0	4	0
02	Perry, Breanna		0	0-0	0-0	0-0	0	0	0	1	0	0	0	0	4	-4
	Team						1	0	1	0		0				
<b>TOTALS</b>			<b>11</b>	<b>4-17</b>	<b>1-9</b>	<b>2-2</b>	<b>5</b>	<b>5</b>	<b>10</b>	<b>1</b>	<b>0</b>	<b>2</b>	<b>1</b>	<b>0</b>	<b>50</b>	

*Shooting By Period*

Period	FG	FG%	3FG	3FG%	FT	FT%
2nd Half	0-0	0%	0-0	0%	0-0	0%
Game	25-64	39.1%	8-27	29.6%	7-14	50.0%

**Wichita St. 10**

No.	Player	S	Pts	FG	3FG	FT	OR	DR	TR	PF	A	TO	Blk	Stl	Min	+/-
05	Reid, Ashley		0	0-1	0-1	0-0	0	0	0	0	1	0	0	0	7	-2
11	Lozada-Cabbage, Sabrina		0	0-1	0-1	0-0	0	1	1	1	0	1	0	0	10	-2
12	Bremaud, Carla		4	2-4	0-2	0-0	0	1	1	0	0	0	0	1	9	2
23	Bastin, Seraphine		1	0-4	0-0	1-2	2	2	4	1	1	0	0	0	9	2
34	Smith, Shyia		0	0-0	0-0	0-0	0	0	0	0	0	0	0	0	0	0
13	Prince, Raven		4	2-3	0-0	0-0	2	1	3	1	0	1	0	1	10	-2
15	Hampton, Jaida		0	0-1	0-1	0-0	0	0	0	0	0	1	0	0	1	-4
22	Faye, Alyssia		0	0-0	0-0	0-0	0	0	0	0	0	0	0	0	0	0
30	Ambrosio, Cesaria		0	0-0	0-0	0-0	0	1	1	0	0	0	0	0	4	-4
42	Henderson, Asia		0	0-0	0-0	0-0	0	0	0	0	0	0	0	0	0	0
	Team						1	1	2	0		0				
<b>TOTALS</b>			<b>9</b>	<b>4-14</b>	<b>0-5</b>	<b>1-2</b>	<b>5</b>	<b>7</b>	<b>12</b>	<b>3</b>	<b>2</b>	<b>3</b>	<b>0</b>	<b>2</b>	<b>50</b>	

*Shooting By Period*

Period	FG	FG%	3FG	3FG%	FT	FT%
2nd Half	0-0	0%	0-0	0%	0-0	0%
Game	16-57	28.1%	3-20	15.0%	5-10	50.0%

Game Notes:

Officials: Bryan Enterline, Karen Preato, Michelle Kramer  
Attendance: 1878

Start Time: 2019-02-03 00:35:00  
End Time: 2019-02-03 02:15:58  
Game Duration: 100  
Conference Game:

Score	1st	2nd	3rd	4th	TOT
TEM	23	11	11	20	<b>65</b>
WSU	17	13	9	1	<b>40</b>

Points from (This Period)	TEM	WSU
In the Paint	6	8
Off Turns	2	2
2nd Chance	7	2
Fast Break	2	0
Bench	0	4

**Official Play-By-Play  
Temple vs Wichita St.  
Third Quarter**

**February 03, 2019 at Charles Koch Arena (Devlin Court) - Wichita, Kan.**

**Period 3**

**Starters:**

**Temple:** 0 BUTTS,ALLIYA; 5 MACKINS,MARISSA; 12 MAYO,EMANI; 24 TAYLOR,SHANTAY; 25 DAVIS,MIA;

**Wichita St.:** 5 REID,ASHLEY; 11 LOZADA-CABBAGE,SABRINA; 12 BREMAUD,CARLA; 23 BASTIN,SERAPHINE; 34 SMITH,SHYIA;

Time	VISITORS: Temple	Score	Margin	HOME: Wichita St.
09:47	MISSED 3PTR by MACKINS,MARISSA			
09:40	REBOUND (OFF) by DAVIS,MIA			
09:40	GOOD! LAYUP by DAVIS,MIA	30-36	V 6	
09:19				FOUL (OFF) by LOZADA-CABBAGE,SABRINA
09:19				TURNOVER (OFFENSIVE) by LOZADA-CABBAGE,SABRINA
09:05	TURNOVER (LOSTBALL) by MACKINS,MARISSA			
09:05				STEAL by BREMAUD,CARLA
08:39				TURNOVER (TRAVEL) by PRINCE,RAVEN
08:31	MISSED 3PTR by DAVIS,MIA			
08:26	REBOUND (OFF) by MACKINS,MARISSA			
08:25	TURNOVER (BADPASS) by MACKINS,MARISSA			
08:25				STEAL by PRINCE,RAVEN
08:06		32-36	V 4	GOOD! LAYUP by PRINCE,RAVEN
08:06				ASSIST by BASTIN,SERAPHINE
07:51	GOOD! LAYUP by DAVIS,MIA	32-38	V 6	
07:31		34-38	V 4	GOOD! JUMPER by BREMAUD,CARLA [PNT]
07:31				ASSIST by REID,ASHLEY
07:17	MISSED LAYUP by BUTTS,ALLIYA			
07:13				REBOUND (DEF) by BREMAUD,CARLA
06:57				MISSED JUMPER by BASTIN,SERAPHINE
06:52				REBOUND (OFF) by BASTIN,SERAPHINE
06:52				MISSED LAYUP by BASTIN,SERAPHINE
06:52	REBOUND (DEF) by DAVIS,MIA			
06:52	SUB OUT: TAYLOR,SHANTAY			
06:52	SUB IN: PERRY,BREANNA			
06:52				FOUL (PERSONAL) by BASTIN,SERAPHINE
06:46	MISSED JUMPER by BUTTS,ALLIYA			
06:41				REBOUND (DEF) by BASTIN,SERAPHINE
06:39				MISSED 3PTR by BREMAUD,CARLA
06:36				REBOUND (OFF) by PRINCE,RAVEN
06:20				MISSED 3PTR by REID,ASHLEY
06:15				REBOUND (OFF) by PRINCE,RAVEN
06:15		36-38	V 2	GOOD! LAYUP by PRINCE,RAVEN
05:53	MISSED 3PTR by BUTTS,ALLIYA			
05:50	REBOUND (OFF) by TEAM			
05:50				
05:50	SUB OUT: BUTTS,ALLIYA			
05:50	SUB IN: NIANG,LENA			
05:42	MISSED LAYUP by MACKINS,MARISSA			
05:41				REBOUND (DEF) by TEAM
05:15				MISSED 3PTR by LOZADA-CABBAGE,SABRINA
05:12	REBOUND (DEF) by MACKINS,MARISSA			
05:05	MISSED 3PTR by MAYO,EMANI			
05:00	REBOUND (OFF) by MAYO,EMANI			
04:44	MISSED 3PTR by MAYO,EMANI			
04:38				REBOUND (DEF) by PRINCE,RAVEN
04:17	FOUL (PERSONAL) by PERRY,BREANNA			
04:17				
04:17				SUB OUT: REID,ASHLEY
04:17				SUB IN: AMBROSIO,CESARIA
04:17	SUB OUT: MACKINS,MARISSA			
04:17	SUB IN: TAYLOR,SHANTAY			
04:17	SUB OUT: PERRY,BREANNA			
04:17	SUB IN: BUTTS,ALLIYA			
04:17				MISSED FT by BASTIN,SERAPHINE
04:17				REBOUND (OFF) by TEAM
04:17		37-38	V 1	GOOD! FT by BASTIN,SERAPHINE
03:54	MISSED 3PTR by BUTTS,ALLIYA			
03:51				REBOUND (DEF) by BASTIN,SERAPHINE
03:46				MISSED 3PTR by BREMAUD,CARLA
03:42	REBOUND (DEF) by DAVIS,MIA			
03:25	MISSED LAYUP by DAVIS,MIA			
03:25	REBOUND (OFF) by TEAM			
03:08	GOOD! 3PTR by BUTTS,ALLIYA	37-41	V 4	
02:41				MISSED JUMPER by BASTIN,SERAPHINE
02:38				REBOUND (OFF) by BASTIN,SERAPHINE
02:34				MISSED LAYUP by BASTIN,SERAPHINE
02:34	BLOCK by TAYLOR,SHANTAY			
02:34				REBOUND (OFF) by TEAM
02:34	SUB OUT: DAVIS,MIA			
02:34	SUB IN: PERRY,BREANNA			
02:24				MISSED JUMPER by PRINCE,RAVEN
02:21	REBOUND (DEF) by TAYLOR,SHANTAY			
02:00	MISSED 3PTR by BUTTS,ALLIYA			
01:55				REBOUND (DEF) by AMBROSIO,CESARIA
01:47		39-41	V 2	GOOD! LAYUP by BREMAUD,CARLA

Time	VISITORS: Temple	Score	Margin	HOME: Wichita St.
01:21				SUB OUT: BREMAUD, CARLA
01:21				SUB IN: HAMPTON, JAIDA
01:21				SUB OUT: BASTIN, SERAPHINE
01:21				SUB IN: REID, ASHLEY
01:21	SUB OUT: NIANG, LENA			
01:21	SUB IN: DAVIS, MIA			
01:21	SUB OUT: PERRY, BREANNA			
01:21	SUB IN: MACKINS, MARISSA			
01:17	MISSED JUMPER by BUTTS, ALLIYA			
01:16	REBOUND (OFF) by DAVIS, MIA			
01:16				FOUL (PERSONAL) by PRINCE, RAVEN
01:16	GOOD! FT by DAVIS, MIA	39-42	V 3	
01:16	GOOD! FT by DAVIS, MIA	39-43	V 4	
00:51				MISSED 3PTR by HAMPTON, JAIDA
00:49	REBOUND (DEF) by MAYO, EMANI			
00:39	MISSED 3PTR by MACKINS, MARISSA			
00:34				REBOUND (DEF) by LOZADA-CABBAGE, SABRINA
00:11				TURNOVER (DRIBBLING) by HAMPTON, JAIDA
00:05	GOOD! LAYUP by BUTTS, ALLIYA [FB]	39-45	V 6	

### Temple 45, Wichita St. 39

Points from (This Period)	TEM	WSU
In the Paint	6	8
Off Turns	2	2
2nd Chance	7	2
Fast Break	2	0
Bench	0	4

**Official Box Score**  
**Temple vs Wichita St.**  
**Fourth Quarter Statistics Only**  
**February 03, 2019 at Charles Koch Arena (Devlin Court) - Wichita, Kan.**

**Temple 20**

No.	Player	S	Pts	FG	3FG	FT	OR	DR	TR	PF	A	TO	Blk	Stl	Min	+/-
00	Butts, Alliya		2	1-5	0-1	0-0	0	2	2	0	1	0	0	0	10	19
05	Mackins, Marissa		3	1-1	1-1	0-0	0	0	0	1	0	0	0	0	10	19
12	Mayo, Emani		0	0-0	0-0	0-0	0	1	1	0	1	0	0	0	10	19
24	Taylor, Shantay		0	0-0	0-0	0-0	1	3	4	0	0	1	0	0	10	19
25	Davis, Mia		15	5-9	1-2	4-5	3	4	7	0	0	1	0	1	10	19
01	Niang, Lena		0	0-0	0-0	0-0	0	0	0	0	0	0	0	0	0	0
02	Perry, Breanna		0	0-0	0-0	0-0	0	0	0	0	0	0	0	0	0	0
	Team						0	0	0	0		1				
<b>TOTALS</b>			<b>20</b>	<b>7-15</b>	<b>2-4</b>	<b>4-5</b>	<b>4</b>	<b>10</b>	<b>14</b>	<b>1</b>	<b>2</b>	<b>3</b>	<b>0</b>	<b>1</b>	<b>50</b>	

*Shooting By Period*

Period	FG	FG%	3FG	3FG%	FT	FT%
Game	25-64	39.1%	8-27	29.6%	7-14	50.0%

**Wichita St. 1**

No.	Player	S	Pts	FG	3FG	FT	OR	DR	TR	PF	A	TO	Blk	Stl	Min	+/-
05	Reid, Ashley		0	0-2	0-1	0-0	0	0	0	0	0	1	0	0	2	-4
11	Lozada-Cabbage, Sabrina		0	0-0	0-0	0-0	0	0	0	1	0	1	0	0	5	-5
12	Bremaud, Carla		0	0-0	0-0	0-0	0	0	0	1	0	0	0	0	10	-19
23	Bastin, Seraphine		0	0-2	0-1	0-0	0	1	1	0	0	1	0	1	8	-15
34	Smith, Shyia		0	0-1	0-1	0-0	0	0	0	0	0	1	1	0	2	1
13	Prince, Raven		0	0-0	0-0	0-0	0	1	1	1	0	0	0	0	5	-14
15	Hampton, Jaida		0	0-1	0-1	0-0	0	0	0	0	0	1	0	0	7	-17
22	Faye, Alyssia		0	0-2	0-1	0-0	0	0	0	0	0	0	0	0	3	-6
30	Ambrosio, Cesaria		1	0-0	0-0	1-2	1	0	1	0	0	0	0	0	3	-2
42	Henderson, Asia		0	0-3	0-0	0-0	0	2	2	1	0	0	0	0	5	-14
	Team						0	0	0	0		0				
<b>TOTALS</b>			<b>1</b>	<b>0-11</b>	<b>0-5</b>	<b>1-2</b>	<b>1</b>	<b>4</b>	<b>5</b>	<b>4</b>	<b>0</b>	<b>5</b>	<b>1</b>	<b>1</b>	<b>50</b>	

*Shooting By Period*

Period	FG	FG%	3FG	3FG%	FT	FT%
Game	16-57	28.1%	3-20	15.0%	5-10	50.0%

Game Notes:

Officials: Bryan Enterline, Karen Preato, Michelle Kramer  
Attendance: 1878

Start Time: 2019-02-03 00:35:00  
End Time: 2019-02-03 02:15:58  
Game Duration: 100  
Conference Game;

Score	1st	2nd	3rd	4th	TOT
TEM	23	11	11	20	<b>65</b>
WSU	17	13	9	1	<b>40</b>

Points from (This Period)	TEM	WSU
In the Paint	8	0
Off Turns	8	1
2nd Chance	4	1
Fast Break	2	0
Bench	0	1

**Official Play-By-Play  
Temple vs Wichita St.  
Fourth Quarter**

**February 03, 2019 at Charles Koch Arena (Devlin Court) - Wichita, Kan.**

**Period 4**

**Starters:**

**Temple:** 0 BUTTS,ALLIYA; 5 MACKINS,MARISSA; 12 MAYO,EMANI; 24 TAYLOR,SHANTAY; 25 DAVIS,MIA;

**Wichita St.:** 5 REID,ASHLEY; 11 LOZADA-CABBAGE,SABRINA; 12 BREMAUD,CARLA; 23 BASTIN,SERAPHINE; 34 SMITH,SHYIA;

Time	VISITORS: Temple	Score	Margin	HOME: Wichita St.
09:44				MISSED 3PTR by FAYE,ALYSSIA
09:39	REBOUND (DEF) by DAVIS,MIA			
09:18	MISSED JUMPER by BUTTS,ALLIYA			
09:16				REBOUND (DEF) by TEAM
08:55				MISSED JUMPER by FAYE,ALYSSIA
08:51	REBOUND (DEF) by DAVIS,MIA			
08:42	GOOD! LAYUP by DAVIS,MIA	39-47	V 8	
08:29				TURNOVER (BADPASS) by BASTIN,SERAPHINE
08:29	STEAL by DAVIS,MIA			
08:15	TURNOVER (LOSTBALL) by DAVIS,MIA			
08:15				STEAL by BASTIN,SERAPHINE
08:06				MISSED 3PTR by HAMPTON,JAIDA
08:01	REBOUND (DEF) by MAYO,EMANI			
07:44				FOUL (PERSONAL) by BREMAUD,CARLA
07:44	GOOD! FT by DAVIS,MIA	39-48	V 9	
07:44				SUB OUT: LOZADA-CABBAGE,SABRINA
07:44				SUB IN: HENDERSON,ASIA
07:44	GOOD! FT by DAVIS,MIA	39-49	V 10	
07:22				MISSED JUMPER by HENDERSON,ASIA
07:19	REBOUND (DEF) by DAVIS,MIA			
07:06	MISSED JUMPER by DAVIS,MIA			
07:02				REBOUND (DEF) by HENDERSON,ASIA
06:51				MISSED LAYUP by BASTIN,SERAPHINE
06:48	REBOUND (DEF) by DAVIS,MIA			
06:45	GOOD! LAYUP by DAVIS,MIA [FB]	39-51	V 12	
06:38				TIMEOUT 30SEC
06:38				SUB OUT: HAMPTON,JAIDA
06:38				SUB IN: AMBROSIO,CESARIA
06:38				SUB OUT: FAYE,ALYSSIA
06:38				SUB IN: SMITH,SHYIA
06:38				SUB OUT: HENDERSON,ASIA
06:38				SUB IN: LOZADA-CABBAGE,SABRINA
06:27				TURNOVER (LOSTBALL) by SMITH,SHYIA
06:00	TURNOVER (TRAVEL) by TAYLOR,SHANTAY			
05:40				MISSED 3PTR by SMITH,SHYIA
05:38				REBOUND (OFF) by AMBROSIO,CESARIA
05:38	FOUL (PERSONAL) by MACKINS,MARISSA			
05:38				MISSED FT by AMBROSIO,CESARIA
05:38				REBOUND (OFF) by TEAM
05:38		40-51	V 11	GOOD! FT by AMBROSIO,CESARIA
05:29	TIMEOUT 30SEC			
05:14	MISSED 3PTR by DAVIS,MIA			
05:10	REBOUND (OFF) by TAYLOR,SHANTAY			
04:57	MISSED JUMPER by BUTTS,ALLIYA			
04:53	REBOUND (OFF) by DAVIS,MIA			
04:52	MISSED LAYUP by DAVIS,MIA			
04:52				BLOCK by SMITH,SHYIA
04:48				REBOUND (DEF) by BASTIN,SERAPHINE
04:48				FOUL (OFF) by LOZADA-CABBAGE,SABRINA
04:48				TURNOVER (OFFENSIVE) by LOZADA-CABBAGE,SABRINA
04:48				SUB OUT: SMITH,SHYIA
04:48				SUB IN: PRINCE,RAVEN
04:42	GOOD! 3PTR by MACKINS,MARISSA	40-54	V 14	
04:42	ASSIST by MAYO,EMANI			
04:20				MISSED 3PTR by BASTIN,SERAPHINE
04:16	REBOUND (DEF) by TAYLOR,SHANTAY			
03:54				SUB OUT: LOZADA-CABBAGE,SABRINA
03:54				SUB IN: HENDERSON,ASIA
03:54				SUB OUT: AMBROSIO,CESARIA
03:54				SUB IN: HAMPTON,JAIDA
03:51	MISSED JUMPER by DAVIS,MIA			
03:50	REBOUND (OFF) by DAVIS,MIA			
03:50	GOOD! LAYUP by DAVIS,MIA	40-56	V 16	
03:50				FOUL (PERSONAL) by HENDERSON,ASIA
03:50	MISSED FT by DAVIS,MIA			
03:49				REBOUND (DEF) by HENDERSON,ASIA
03:37				TURNOVER (LOSTBALL) by HAMPTON,JAIDA
03:25	GOOD! JUMPER by BUTTS,ALLIYA	40-58	V 18	
03:09				MISSED JUMPER by HENDERSON,ASIA
03:04	REBOUND (DEF) by BUTTS,ALLIYA			
02:54	MISSED LAYUP by BUTTS,ALLIYA			
02:47	REBOUND (OFF) by DAVIS,MIA			
02:47	GOOD! LAYUP by DAVIS,MIA	40-60	V 20	
02:42				MISSED JUMPER by HENDERSON,ASIA
02:37	REBOUND (DEF) by TAYLOR,SHANTAY			
02:15				FOUL (PERSONAL) by PRINCE,RAVEN

Time	VISITORS: Temple	Score	Margin	HOME: Wichita St.
02:15	GOOD! FT by DAVIS,MIA	40-61	V 21	
02:15				SUB OUT: BASTIN,SERAPHINE
02:15				SUB IN: REID,ASHLEY
02:15	GOOD! FT by DAVIS,MIA	40-62	V 22	
01:58				TURNOVER (BADPASS) by REID,ASHLEY
01:33	GOOD! 3PTR by DAVIS,MIA	40-65	V 25	
01:33	ASSIST by BUTTS,ALLIYA			
01:16				MISSED LAYUP by REID,ASHLEY
01:12	REBOUND (DEF) by BUTTS,ALLIYA			
00:49	MISSED 3PTR by BUTTS,ALLIYA			
00:45				REBOUND (DEF) by PRINCE,RAVEN
00:37				MISSED 3PTR by REID,ASHLEY
00:31	REBOUND (DEF) by TAYLOR,SHANTAY			
00:05	TURNOVER (SHOTCLOCK) by			

**Temple 65, Wichita St. 40**

Points from (This Period)	TEM	WSU
In the Paint	8	0
Off Turns	8	1
2nd Chance	4	1
Fast Break	2	0
Bench	0	1



**Official Scoring/Possession Reference Chart  
Temple vs Wichita St.**

**Period 1**

**February 03, 2019 at Charles Koch Arena (Devlin Court) - Wichita, Kan.**

**Period 1**

**Starters:**

**Temple:** 0 BUTTS,ALLIYA; 5 MACKINS,MARISSA; 12 MAYO,EMANI; 24 TAYLOR,SHANTAY; 25 DAVIS,MIA;

**Wichita St.:** 5 REID,ASHLEY; 11 LOZADA-CABBAGE,SABRINA; 12 BREMAUD,CARLA; 23 BASTIN,SERAPHINE; 34 SMITH,SHYIA;

Time	VISITORS: Temple	Score	Margin	HOME: Wichita St.
09:32	GOOD! LAYUP by TAYLOR,SHANTAY	0-2	V 2	
09:08		3-2	H 1	GOOD! 3PTR by SMITH,SHYIA
08:49		5-2	H 3	GOOD! LAYUP by BASTIN,SERAPHINE [FB]
08:21		7-2	H 5	GOOD! LAYUP by LOZADA-CABBAGE,SABRINA
08:07	GOOD! LAYUP by BUTTS,ALLIYA	7-4	H 3	
07:50		9-4	H 5	GOOD! LAYUP by BASTIN,SERAPHINE
07:32	GOOD! JUMPER by DAVIS,MIA	9-6	H 3	
07:14		11-6	H 5	GOOD! LAYUP by BREMAUD,CARLA
06:59	GOOD! LAYUP by TAYLOR,SHANTAY	11-8	H 3	
06:45		13-8	H 5	GOOD! LAYUP by BASTIN,SERAPHINE
06:28	GOOD! 3PTR by DAVIS,MIA	13-11	H 2	
05:29	GOOD! FT by DAVIS,MIA	13-12	H 1	
03:53	GOOD! LAYUP by TAYLOR,SHANTAY	13-14	V 1	
03:33		14-14	T	GOOD! FT by HAMPTON,JAIDA
03:17	GOOD! LAYUP by TAYLOR,SHANTAY	14-16	V 2	
02:31	GOOD! JUMPER by MAYO,EMANI	14-18	V 4	
01:58	GOOD! LAYUP by BUTTS,ALLIYA	14-20	V 6	
01:32		15-20	V 5	GOOD! FT by HENDERSON,ASIA
01:17	GOOD! 3PTR by BUTTS,ALLIYA	15-23	V 8	
00:21		17-23	V 6	GOOD! JUMPER by REID,ASHLEY

**Temple 23, Wichita St. 17**

**Official Scoring/Possession Reference Chart**  
**Temple vs Wichita St.**  
**Period 2**  
**February 03, 2019 at Charles Koch Arena (Devlin Court) - Wichita, Kan.**

**Period 2**

**Starters:**

**Temple:** 0 BUTTS, ALLIYA; 5 MACKINS, MARISSA; 12 MAYO, EMANI; 24 TAYLOR, SHANTAY; 25 DAVIS, MIA;

**Wichita St.:** 5 REID, ASHLEY; 11 LOZADA-CABBAGE, SABRINA; 12 BREMAUD, CARLA; 23 BASTIN, SERAPHINE; 34 SMITH, SHYIA;

Time	VISITORS: Temple	Score	Margin	HOME: Wichita St.
08:14		19-23	V 4	GOOD! JUMPER by REID, ASHLEY
07:58	GOOD! 3PTR by MACKINS, MARISSA	19-26	V 7	
07:26	GOOD! 3PTR by DAVIS, MIA	19-29	V 10	
06:15		20-29	V 9	GOOD! FT by HAMPTON, JAIDA
05:20	GOOD! LAYUP by PERRY, BREANNA	20-31	V 11	
04:11		23-31	V 8	GOOD! 3PTR by BREMAUD, CARLA
02:32		26-31	V 5	GOOD! 3PTR by BREMAUD, CARLA
01:52		28-31	V 3	GOOD! LAYUP by BASTIN, SERAPHINE
01:30	GOOD! 3PTR by NIANG, LENA	28-34	V 6	
01:06		30-34	V 4	GOOD! LAYUP by BASTIN, SERAPHINE

**Temple 34, Wichita St. 30**

**Official Scoring/Possession Reference Chart**  
**Temple vs Wichita St.**  
**Period 3**  
**February 03, 2019 at Charles Koch Arena (Devlin Court) - Wichita, Kan.**

**Period 3**

**Starters:**

**Temple:** 0 BUTTS, ALLIYA; 5 MACKINS, MARISSA; 12 MAYO, EMANI; 24 TAYLOR, SHANTAY; 25 DAVIS, MIA;

**Wichita St.:** 5 REID, ASHLEY; 11 LOZADA-CABBAGE, SABRINA; 12 BREMAUD, CARLA; 23 BASTIN, SERAPHINE; 34 SMITH, SHYIA;

Time	VISITORS: Temple	Score	Margin	HOME: Wichita St.
09:40	GOOD! LAYUP by DAVIS, MIA	30-36	V 6	
08:06		32-36	V 4	GOOD! LAYUP by PRINCE, RAVEN
07:51	GOOD! LAYUP by DAVIS, MIA	32-38	V 6	
07:31		34-38	V 4	GOOD! JUMPER by BREMAUD, CARLA [PNT]
06:15		36-38	V 2	GOOD! LAYUP by PRINCE, RAVEN
04:17		37-38	V 1	GOOD! FT by BASTIN, SERAPHINE
03:08	GOOD! 3PTR by BUTTS, ALLIYA	37-41	V 4	
01:47		39-41	V 2	GOOD! LAYUP by BREMAUD, CARLA
01:16	GOOD! FT by DAVIS, MIA	39-42	V 3	
01:16	GOOD! FT by DAVIS, MIA	39-43	V 4	
00:05	GOOD! LAYUP by BUTTS, ALLIYA [FB]	39-45	V 6	

**Temple 45, Wichita St. 39**

**Official Scoring/Possession Reference Chart**  
**Temple vs Wichita St.**  
**Period 4**  
**February 03, 2019 at Charles Koch Arena (Devlin Court) - Wichita, Kan.**

**Period 4**

**Starters:**

**Temple:** 0 BUTTS,ALLIYA; 5 MACKINS,MARISSA; 12 MAYO,EMANI; 24 TAYLOR,SHANTAY; 25 DAVIS,MIA;

**Wichita St.:** 5 REID,ASHLEY; 11 LOZADA-CABBAGE,SABRINA; 12 BREMAUD,CARLA; 23 BASTIN,SERAPHINE; 34 SMITH,SHYIA;

Time	VISITORS: Temple	Score	Margin	HOME: Wichita St.
08:42	GOOD! LAYUP by DAVIS,MIA	39-47	V 8	
07:44	GOOD! FT by DAVIS,MIA	39-48	V 9	
07:44	GOOD! FT by DAVIS,MIA	39-49	V 10	
06:45	GOOD! LAYUP by DAVIS,MIA [FB]	39-51	V 12	
05:38		40-51	V 11	GOOD! FT by AMBROSIO,CESARIA
04:42	GOOD! 3PTR by MACKINS,MARISSA	40-54	V 14	
03:50	GOOD! LAYUP by DAVIS,MIA	40-56	V 16	
03:25	GOOD! JUMPER by BUTTS,ALLIYA	40-58	V 18	
02:47	GOOD! LAYUP by DAVIS,MIA	40-60	V 20	
02:15	GOOD! FT by DAVIS,MIA	40-61	V 21	
02:15	GOOD! FT by DAVIS,MIA	40-62	V 22	
01:33	GOOD! 3PTR by DAVIS,MIA	40-65	V 25	

**Temple 65, Wichita St. 40**

**Official Substitutions Log**  
**Temple vs Wichita St.**  
**Period 1**  
**February 03, 2019 at Charles Koch Arena (Devlin Court) - Wichita, Kan.**

VISITORS: Temple	Time	Score	HOME: Wichita St.
0 BUTTS, ALLIYA			5 REID, ASHLEY
5 MACKINS, MARISSA			11 LOZADA-CABBAGE, SABRINA
12 MAYO, EMANI			12 BREMAUD, CARLA
24 TAYLOR, SHANTAY			23 BASTIN, SERAPHINE
25 DAVIS, MIA			34 SMITH, SHYIA
	06:28	11-13	SUB OUT: LOZADA-CABBAGE, SABRINA
	06:28		SUB IN: PRINCE, RAVEN
	05:29	11-13	SUB OUT: REID, ASHLEY
	05:29		SUB IN: HAMPTON, JAIDA
	03:33	14-13	SUB OUT: SMITH, SHYIA
	03:33		SUB IN: FAYE, ALYSSIA
SUB OUT: 5 MACKINS, MARISSA	03:33		
SUB IN: 2 PERRY, BREANNA	03:33		
	01:43	20-14	SUB OUT: PRINCE, RAVEN
	01:43		SUB IN: HENDERSON, ASIA
	01:43		SUB OUT: BASTIN, SERAPHINE
	01:43		SUB IN: REID, ASHLEY
SUB OUT: 24 TAYLOR, SHANTAY	01:32	20-14	
SUB IN: 1 NIANG, LENA	01:32		
	01:32		SUB OUT: BREMAUD, CARLA
	01:32		SUB IN: AMBROSIO, CESARIA

**Temple 23, Wichita St. 17**

**Official Substitutions Log**  
**Temple vs Wichita St.**  
**Period 2**  
**February 03, 2019 at Charles Koch Arena (Devlin Court) - Wichita, Kan.**

<b>VISITORS: Temple</b>	<b>Time</b>	<b>Score</b>	<b>HOME: Wichita St.</b>
0 BUTTS,ALLIYA			5 REID,ASHLEY
5 MACKINS,MARISSA			11 LOZADA-CABBAGE,SABRINA
12 MAYO,EMANI			12 BREMAUD,CARLA
24 TAYLOR,SHANTAY			23 BASTIN,SERAPHINE
25 DAVIS,MIA			34 SMITH,SHYIA
	07:34	26-19	SUB OUT: FAYE,ALYSSIA
	07:34		SUB IN: SMITH,SHYIA
	07:34		SUB OUT: AMBROSIO,CESARIA
	07:34		SUB IN: BREMAUD,CARLA
	07:34		SUB OUT: HENDERSON,ASIA
	07:34		SUB IN: BASTIN,SERAPHINE
SUB OUT: 0 BUTTS,ALLIYA	07:34		
SUB IN: 12 MAYO,EMANI	07:34		
SUB OUT: 12 MAYO,EMANI	05:55	29-20	
SUB IN: 0 BUTTS,ALLIYA	05:55		
	05:16	31-20	SUB OUT: HAMPTON,JAIDA
	05:16		SUB IN: PRINCE,RAVEN
	02:45	31-23	SUB OUT: REID,ASHLEY
	02:45		SUB IN: HAMPTON,JAIDA
	02:45		SUB OUT: SMITH,SHYIA
	02:45		SUB IN: FAYE,ALYSSIA
	00:55	34-30	SUB OUT: BREMAUD,CARLA
	00:55		SUB IN: AMBROSIO,CESARIA
SUB OUT: 5 MACKINS,MARISSA	00:55		
SUB IN: 12 MAYO,EMANI	00:55		

**Temple 34, Wichita St. 30**

**Official Substitutions Log**  
**Temple vs Wichita St.**  
**Period 3**  
**February 03, 2019 at Charles Koch Arena (Devlin Court) - Wichita, Kan.**

VISITORS: Temple	Time	Score	HOME: Wichita St.
0 BUTTS,ALLIYA			5 REID,ASHLEY
5 MACKINS,MARISSA			11 LOZADA-CABBAGE,SABRINA
12 MAYO,EMANI			12 BREMAUD,CARLA
24 TAYLOR,SHANTAY			23 BASTIN,SERAPHINE
25 DAVIS,MIA			34 SMITH,SHYIA
SUB OUT: 24 TAYLOR,SHANTAY	06:52	38-34	
SUB IN: 2 PERRY,BREANNA	06:52		
SUB OUT: 0 BUTTS,ALLIYA	05:50	38-36	
SUB IN: 1 NIANG,LENA	05:50		
	04:17	38-36	
	04:17		SUB OUT: REID,ASHLEY
	04:17		SUB IN: AMBROSIO,CESARIA
SUB OUT: 5 MACKINS,MARISSA	04:17		
SUB IN: 24 TAYLOR,SHANTAY	04:17		
SUB OUT: 2 PERRY,BREANNA	04:17		
SUB IN: 0 BUTTS,ALLIYA	04:17		
SUB OUT: 25 DAVIS,MIA	02:34	41-37	
SUB IN: 2 PERRY,BREANNA	02:34		
	01:21	41-39	
	01:21		SUB OUT: BREMAUD,CARLA
	01:21		SUB IN: HAMPTON,JAIDA
	01:21		SUB OUT: BASTIN,SERAPHINE
	01:21		SUB IN: REID,ASHLEY
SUB OUT: 1 NIANG,LENA	01:21		
SUB IN: 25 DAVIS,MIA	01:21		
SUB OUT: 2 PERRY,BREANNA	01:21		
SUB IN: 5 MACKINS,MARISSA	01:21		

**Temple 45, Wichita St. 39**

**Official Substitutions Log**  
**Temple vs Wichita St.**  
**Period 4**  
**February 03, 2019 at Charles Koch Arena (Devlin Court) - Wichita, Kan.**

VISITORS: Temple	Time	Score	HOME: Wichita St.
0 BUTTS, ALLIYA			5 REID, ASHLEY
5 MACKINS, MARISSA			11 LOZADA-CABBAGE, SABRINA
12 MAYO, EMANI			12 BREMAUD, CARLA
24 TAYLOR, SHANTAY			23 BASTIN, SERAPHINE
25 DAVIS, MIA			34 SMITH, SHYIA
	07:44	48-39	SUB OUT: LOZADA-CABBAGE, SABRINA
	07:44		SUB IN: HENDERSON, ASIA
	06:38	51-39	SUB OUT: HAMPTON, JAIDA
	06:38		SUB IN: AMBROSIO, CESARIA
	06:38		SUB OUT: FAYE, ALYSSIA
	06:38		SUB IN: SMITH, SHYIA
	06:38		SUB OUT: HENDERSON, ASIA
	06:38		SUB IN: LOZADA-CABBAGE, SABRINA
	04:48	51-40	SUB OUT: SMITH, SHYIA
	04:48		SUB IN: PRINCE, RAVEN
	03:54	54-40	SUB OUT: LOZADA-CABBAGE, SABRINA
	03:54		SUB IN: HENDERSON, ASIA
	03:54		SUB OUT: AMBROSIO, CESARIA
	03:54		SUB IN: HAMPTON, JAIDA
	02:15	61-40	SUB OUT: BASTIN, SERAPHINE
	02:15		SUB IN: REID, ASHLEY

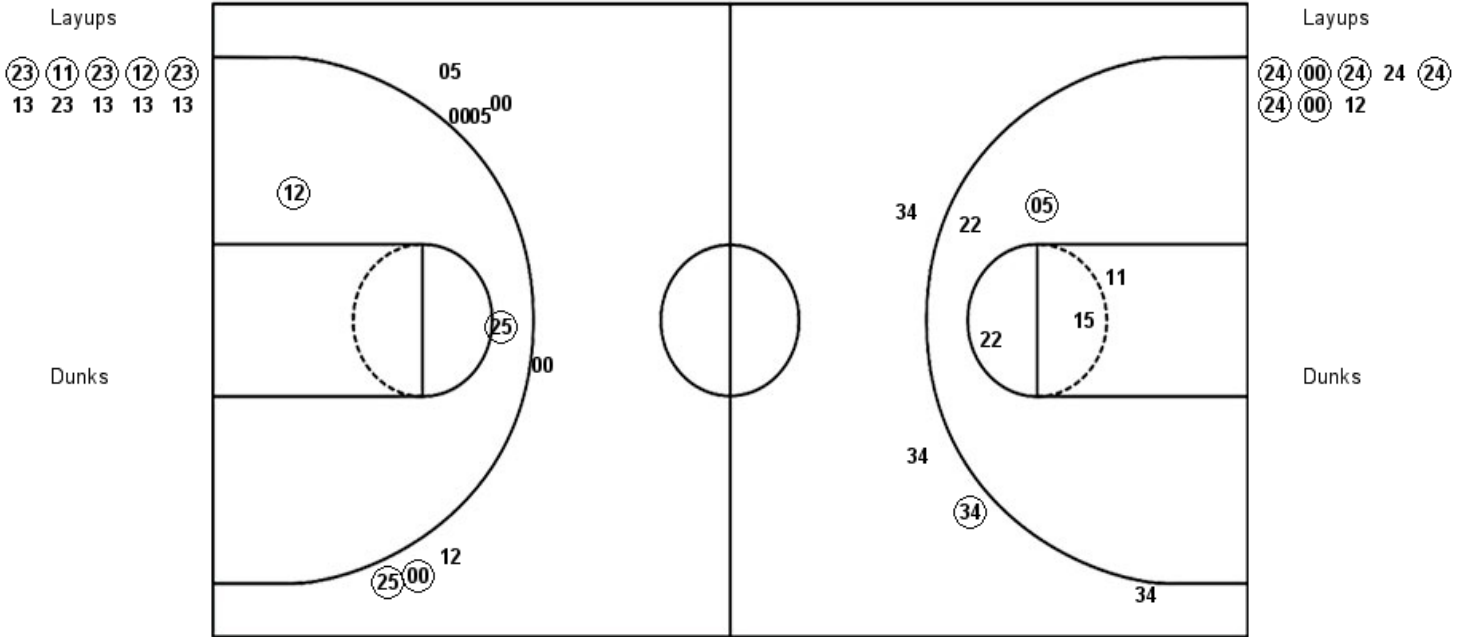
**Temple 65, Wichita St. 40**



**Official Shot Chart**  
**Temple vs Wichita St.**  
**PERIOD 1 Shots**  
 February 03, 2019 at Charles Koch Arena (Devlin Court) - Wichita, Kan.

**Wichita St.**

**Temple**



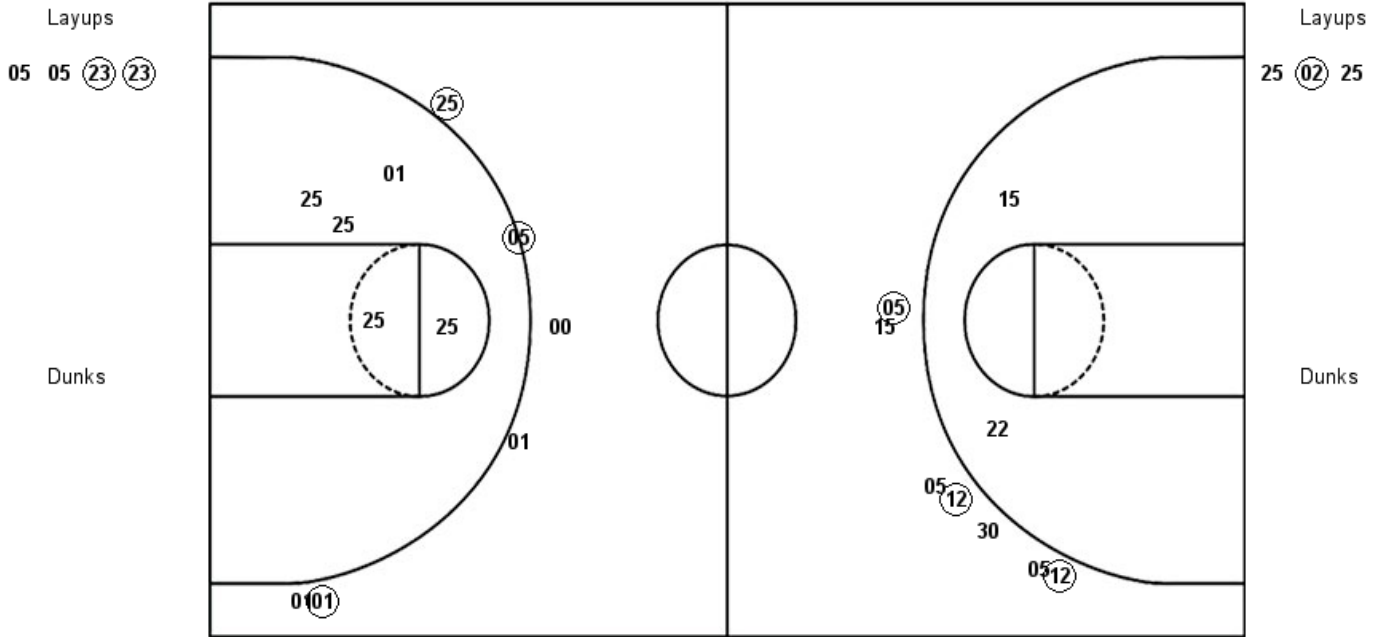
WSU : Period 1	Made	Att	Pct
Layups	5	10	50.0
Dunks	0	0	0
2PT Field Goals	6	15	40.0
3PT Field Goals	1	4	25.0
<b>Total Field Goals</b>	<b>7</b>	<b>19</b>	<b>36.8</b>

TEM : Period 1	Made	Att	Pct
Layups	6	8	75.0
Dunks	0	0	0
2PT Field Goals	8	10	80.0
3PT Field Goals	2	8	25.0
<b>Total Field Goals</b>	<b>10</b>	<b>18</b>	<b>55.6</b>

**Official Shot Chart**  
**Temple vs Wichita St.**  
**PERIOD 2 Shots**  
 February 03, 2019 at Charles Koch Arena (Devlin Court) - Wichita, Kan.

**Wichita St.**

**Temple**



<b>WSU : Period 2</b>	<b>Made</b>	<b>Att</b>	<b>Pct</b>
Layups	2	4	50.0
Dunks	0	0	0
2PT Field Goals	3	7	42.9
3PT Field Goals	2	6	33.3
<b>Total Field Goals</b>	<b>5</b>	<b>13</b>	<b>38.5</b>

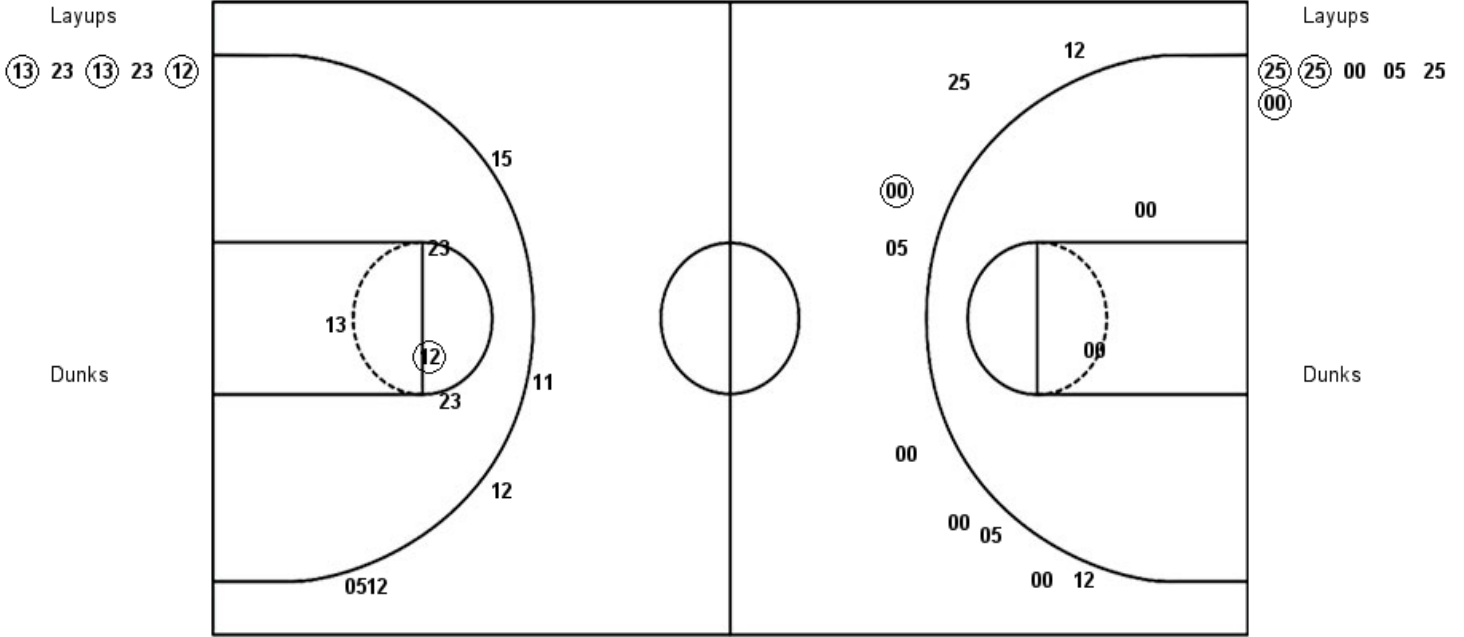
<b>TEM : Period 2</b>	<b>Made</b>	<b>Att</b>	<b>Pct</b>
Layups	1	3	33.3
Dunks	0	0	0
2PT Field Goals	1	8	12.5
3PT Field Goals	3	6	50.0
<b>Total Field Goals</b>	<b>4</b>	<b>14</b>	<b>28.6</b>

**Official Shot Chart  
Temple vs Wichita St.  
PERIOD 3 Shots**

February 03, 2019 at Charles Koch Arena (Devlin Court) - Wichita, Kan.

**Wichita St.**

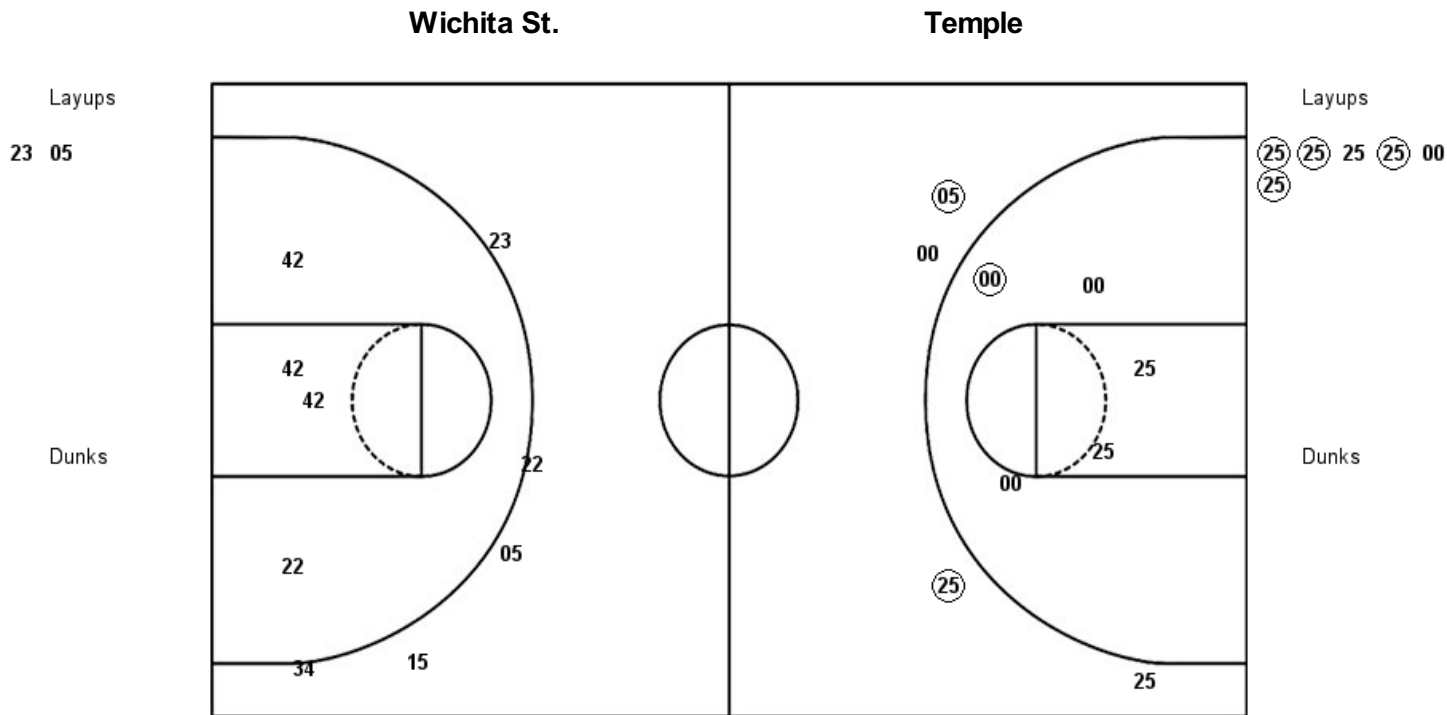
**Temple**



WSU : Period 3	Made	Att	Pct
Layups	3	5	60.0
Dunks	0	0	0
2PT Field Goals	4	9	44.4
3PT Field Goals	0	5	00.0
<b>Total Field Goals</b>	<b>4</b>	<b>14</b>	<b>28.6</b>

TEM : Period 3	Made	Att	Pct
Layups	3	6	50.0
Dunks	0	0	0
2PT Field Goals	3	8	37.5
3PT Field Goals	1	9	11.1
<b>Total Field Goals</b>	<b>4</b>	<b>17</b>	<b>23.5</b>

**Official Shot Chart**  
**Temple vs Wichita St.**  
**PERIOD 4 Shots**  
 February 03, 2019 at Charles Koch Arena (Devlin Court) - Wichita, Kan.

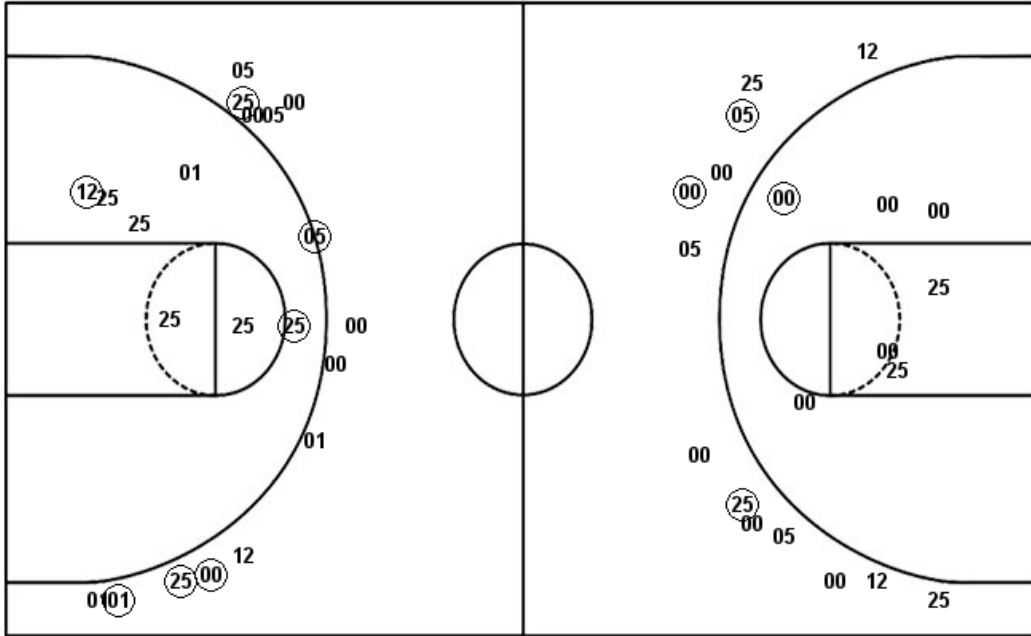


WSU : Period 4	Made	Att	Pct
Layups	0	2	00.0
Dunks	0	0	0
2PT Field Goals	0	6	00.0
3PT Field Goals	0	5	00.0
<b>Total Field Goals</b>	<b>0</b>	<b>11</b>	<b>00.0</b>

TEM : Period 4	Made	Att	Pct
Layups	4	6	66.7
Dunks	0	0	0
2PT Field Goals	5	11	45.5
3PT Field Goals	2	4	50.0
<b>Total Field Goals</b>	<b>7</b>	<b>15</b>	<b>46.7</b>

**Official Shot Chart**  
**Temple vs Wichita St.**  
**Temple Team Shots**  
**February 03, 2019 at Charles Koch Arena (Devlin Court) - Wichita, Kan.**

Layups



Layups



Dunks

Dunks

TEM : Period 1	Made	Att	Pct
Layups	6	8	75.0
Dunks	0	0	0
2PT Field Goals	8	10	80.0
3PT Field Goals	2	8	25.0
<b>Total Field Goals</b>	<b>10</b>	<b>18</b>	<b>55.6</b>

TEM : Period 2	Made	Att	Pct
Layups	1	3	33.3
Dunks	0	0	0
2PT Field Goals	1	8	12.5
3PT Field Goals	3	6	50.0
<b>Total Field Goals</b>	<b>4</b>	<b>14</b>	<b>28.6</b>

TEM : Period 3	Made	Att	Pct
Layups	3	6	50.0
Dunks	0	0	0
2PT Field Goals	3	8	37.5
3PT Field Goals	1	9	11.1
<b>Total Field Goals</b>	<b>4</b>	<b>17</b>	<b>23.5</b>

TEM : Period 4	Made	Att	Pct
Layups	4	6	66.7
Dunks	0	0	0
2PT Field Goals	5	11	45.5
3PT Field Goals	2	4	50.0
<b>Total Field Goals</b>	<b>7</b>	<b>15</b>	<b>46.7</b>

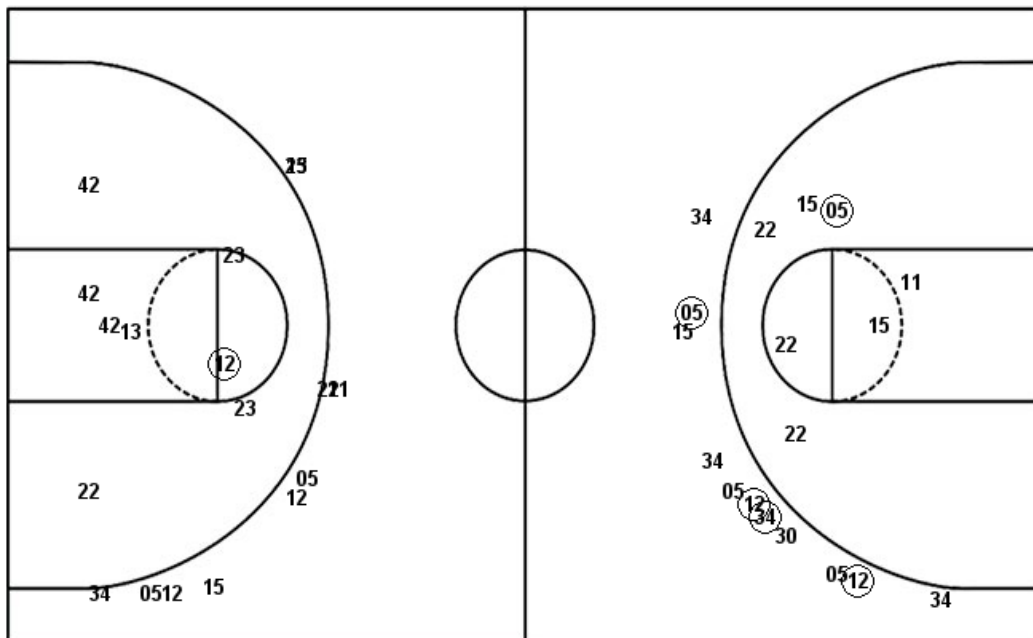
**Official Shot Chart**  
**Temple vs Wichita St.**  
**Wichita St. Team Shots**  
 February 03, 2019 at Charles Koch Arena (Devlin Court) - Wichita, Kan.

Layups

Layups

Dunks

Dunks



WSU : Period 1	Made	Att	Pct
Layups	5	10	50.0
Dunks	0	0	0
2PT Field Goals	6	15	40.0
3PT Field Goals	1	4	25.0
<b>Total Field Goals</b>	<b>7</b>	<b>19</b>	<b>36.8</b>

WSU : Period 2	Made	Att	Pct
Layups	2	4	50.0
Dunks	0	0	0
2PT Field Goals	3	7	42.9
3PT Field Goals	2	6	33.3
<b>Total Field Goals</b>	<b>5</b>	<b>13</b>	<b>38.5</b>

WSU : Period 3	Made	Att	Pct
Layups	3	5	60.0
Dunks	0	0	0
2PT Field Goals	4	9	44.4
3PT Field Goals	0	5	00.0
<b>Total Field Goals</b>	<b>4</b>	<b>14</b>	<b>28.6</b>

WSU : Period 4	Made	Att	Pct
Layups	0	2	00.0
Dunks	0	0	0
2PT Field Goals	0	6	00.0
3PT Field Goals	0	5	00.0
<b>Total Field Goals</b>	<b>0</b>	<b>11</b>	<b>00.0</b>