

FINAL SCORE



East Carolina

47



Wichita St.

57

January 30, 2019 • Charles Koch Arena (Devlin Court) - Wichita,
Kan.

FINAL STATISTICS

Official Box Score
East Carolina vs Wichita St.
Game Totals -- Final Statistics
January 30, 2019 at Charles Koch Arena (Devlin Court) - Wichita, Kan.

East Carolina 47

No.	Player	S	Pts	FG	3FG	FT	OR	DR	TR	PF	A	TO	Blk	Stl	Min	+/-
01	Frazier, Alex		6	2-13	0-1	2-2	3	1	4	3	3	3	0	5	39	-8
02	Monk, Lashonda		17	6-16	3-10	2-4	0	5	5	3	2	3	0	2	36	-10
11	Johnson, Raven		11	3-14	0-3	5-6	0	5	5	0	1	3	0	1	40	-9
20	Corbin, Desiree		7	2-3	0-0	3-3	3	4	7	4	0	0	0	0	25	6
21	Greene, Salita		2	1-5	0-0	0-0	2	3	5	3	0	1	0	1	20	-19
00	Gee, Justice		0	0-4	0-1	0-0	3	1	4	5	1	0	0	1	16	4
04	Hope, Necole		4	2-7	0-3	0-0	3	0	3	1	0	2	1	2	24	-14
	Team						1	1	2	0		0				
TOTALS			47	16-62	3-18	12-15	15	20	35	19	7	12	1	12	200	

Shooting By Period

Period	FG	FG%	3FG	3FG%	FT	FT%
1st Qtr	5-15	33%	0-3	00%	2-2	100%
2nd Qtr	3-16	19%	1-4	25%	0-0	0%
3rd Qtr	6-14	43%	2-4	50%	6-9	67%
4th Qtr	2-17	12%	0-7	00%	4-4	100%
1st Half	8-31	26%	1-7	14%	2-2	100%
2nd Half	8-31	26%	2-11	18%	10-13	77%
Game	16-62	25.8%	3-18	16.7%	12-15	80.0%

Last FG: 4th-04:35
Biggest Run: 9-0
Largest lead: By 3 at 3-07:41
Technical Fouls: None.

Wichita St. 57

No.	Player	S	Pts	FG	3FG	FT	OR	DR	TR	PF	A	TO	Blk	Stl	Min	+/-
05	Reid, Ashley		2	1-2	0-1	0-0	0	4	4	2	1	2	0	0	26	9
11	Lozada-Cabbage, Sabrina		11	4-11	1-4	2-2	3	6	9	3	3	2	0	2	30	6
12	Bremaud, Carla		7	3-7	1-4	0-0	0	3	3	4	0	2	0	0	22	-3
23	Bastin, Seraphine		5	2-3	0-0	1-2	0	10	10	1	2	5	0	0	32	16
34	Smith, Shyia		2	1-2	0-0	0-0	0	1	1	0	0	0	0	1	15	1
13	Prince, Raven		2	0-3	0-0	2-2	0	1	1	2	0	1	2	1	9	-4
15	Hampton, Jaida		12	4-6	0-2	4-4	1	3	4	4	2	3	0	1	23	8
21	Brewer, Maya		2	0-0	0-0	2-2	0	0	0	0	0	0	0	0	1	-1
22	Faye, Alyssia		9	4-8	0-1	1-3	0	1	1	1	1	1	1	0	20	15
30	Ambrosio, Cesaria		1	0-2	0-0	1-2	2	0	2	2	1	2	0	1	15	1
42	Henderson, Asia		4	1-1	0-0	2-2	0	1	1	2	0	0	2	0	7	2
	Team						1	2	3	0		3				
TOTALS			57	20-45	2-12	15-19	7	32	39	21	10	21	5	6	200	

Shooting By Period

Period	FG	FG%	3FG	3FG%	FT	FT%
1st Qtr	4-12	33%	0-2	00%	5-6	83%
2nd Qtr	5-10	50%	0-2	00%	2-4	50%
3rd Qtr	4-9	44%	1-3	33%	4-4	100%
4th Qtr	7-14	50%	1-5	20%	4-5	80%
1st Half	9-22	41%	0-4	00%	7-10	70%
2nd Half	11-23	48%	2-8	25%	8-9	89%
Game	20-45	44.4%	2-12	16.7%	15-19	78.9%

Last FG: 4th-01:04
Biggest Run: 13-0
Largest lead: By 13 at 4-04:52
Technical Fouls: None.

Game Notes:

Officials: Kathleen Lynch, Tiara Cruse, John Capolino
Attendance: 1267

Start Time: 2019-01-30 00:34:18
End Time: 2019-01-30 02:34:31
Game Duration: 120
Conference Game;

Score	1st	2nd	3rd	4th	TOT
ECU	12	7	20	8	47
WSU	13	12	13	19	57

ECU led for 3:35. WSU led for 29:37.
Game was tied for 6:44.
Times tied: 7 Lead Changes: 8

Points from	ECU	WSU
In the Paint	12	26
Off Turns	18	16
2nd Chance	8	6
Fast Break	4	6
Bench	4	30

Official Box Score
East Carolina vs Wichita St.
First Half Statistics Only
January 30, 2019 at Charles Koch Arena (Devlin Court) - Wichita, Kan.

East Carolina 19

No.	Player	S	Pts	FG	3FG	FT	OR	DR	TR	PF	A	TO	Blk	Stl	Min	+/-
00	Gee, Justice		0	0-3	0-1	0-0	1	0	1	3	1	0	0	1	9	1
01	Frazier, Alex		4	1-5	0-0	2-2	2	0	2	1	0	2	0	4	19	-4
02	Monk, Lashonda		5	2-4	1-2	0-0	0	3	3	2	2	3	0	0	16	-6
11	Johnson, Raven		4	2-10	0-2	0-0	0	4	4	0	1	1	0	0	20	-5
20	Corbin, Desiree		2	1-1	0-0	0-0	0	1	1	2	0	0	0	0	13	1
21	Greene, Salita		0	0-2	0-0	0-0	0	3	3	1	0	0	0	0	13	-10
04	Hope, Necole		4	2-6	0-2	0-0	2	0	2	1	0	2	1	0	10	-7
	Team		0	0-0	0-0	0-0	0	1	1	0	0	0	0	0	0	
	TOTALS		19	8-31	1-7	2-2	5	12	17	10	4	8	1	5	100	

Shooting By Period

Period	FG	FG%	3FG	3FG%	FT	FT%
1st Qtr	5-15	33%	0-3	00%	2-2	100%
2nd Qtr	3-16	19%	1-4	25%	0-0	0%
1st Half	8-31	26%	1-7	14%	2-2	100%
Game	16-62	25.8%	3-18	16.7%	12-15	80.0%

Last FG Half: ECU 2nd-01:41

Wichita St. 25

No.	Player	S	Pts	FG	3FG	FT	OR	DR	TR	PF	A	TO	Blk	Stl	Min	+/-
05	Reid, Ashley		0	0-1	0-1	0-0	0	0	0	0	1	2	0	0	12	-1
11	Lozada-Cabbage, Sabrina		2	1-3	0-1	0-0	0	4	4	1	1	0	0	2	10	2
12	Bremaud, Carla		4	2-5	0-2	0-0	0	3	3	1	0	2	0	0	15	1
13	Prince, Raven		2	0-2	0-0	2-2	0	1	1	2	0	0	2	1	7	2
15	Hampton, Jaida		4	1-1	0-0	2-2	0	2	2	2	1	0	0	1	4	6
21	Brewer, Maya		2	0-0	0-0	2-2	0	0	0	0	0	0	0	0	1	-1
22	Faye, Alyssia		4	2-3	0-0	0-2	0	0	0	0	1	0	1	0	10	4
23	Bastin, Seraphine		4	2-3	0-0	0-0	0	5	5	0	0	5	0	0	15	9
30	Ambrosio, Cesaria		1	0-2	0-0	1-2	2	0	2	1	1	1	0	1	13	4
34	Smith, Shyia		2	1-2	0-0	0-0	0	1	1	0	0	0	0	1	13	4
42	Henderson, Asia		0	0-0	0-0	0-0	0	0	0	0	0	0	0	0	0	0
	Team		0	0-0	0-0	0-0	1	2	3	0	0	1	0	0	0	
	TOTALS		25	9-22	0-4	7-10	3	18	21	7	5	11	3	6	100	

Shooting By Period

Period	FG	FG%	3FG	3FG%	FT	FT%
1st Qtr	4-12	33%	0-2	00%	5-6	83%
2nd Qtr	5-10	50%	0-2	00%	2-4	50%
1st Half	9-22	41%	0-4	00%	7-10	70%
Game	20-45	44.4%	2-12	16.7%	15-19	78.9%

Last FG Half: WSU 2nd-01:09

Game Notes:

Officials: Kathleen Lynch, Tiara Cruse, John Capolino
Attendance: 1267

Start Time: 2019-01-30 00:34:18
End Time: 2019-01-30 02:34:31
Game Duration: 120
Conference Game;

Score	1st	2nd	3rd	4th	TOT
ECU	12	7	20	8	47
WSU	13	12	13	19	57

Points from (This Period)	ECU	WSU
In the Paint	8	16
Off Turns	5	9
2nd Chance	2	4
Fast Break	0	4
Bench	4	13

Official Box Score
East Carolina vs Wichita St.
First Quarter Statistics Only
January 30, 2019 at Charles Koch Arena (Devlin Court) - Wichita, Kan.

East Carolina 12

No.	Player	S	Pts	FG	3FG	FT	OR	DR	TR	PF	A	TO	Blk	Stl	Min	+/-
01	Frazier, Alex		2	0-2	0-0	2-2	2	0	2	1	0	1	0	3	9	1
02	Monk, Lashonda		2	1-2	0-1	0-0	0	2	2	1	2	3	0	0	8	-3
11	Johnson, Raven		4	2-7	0-0	0-0	0	3	3	0	1	0	0	0	10	0
20	Corbin, Desiree		2	1-1	0-0	0-0	0	1	1	0	0	0	0	0	8	1
21	Greene, Salita		0	0-0	0-0	0-0	0	1	1	1	0	0	0	0	7	-4
00	Gee, Justice		0	0-1	0-1	0-0	0	0	0	2	0	0	0	0	4	1
04	Hope, Necole		2	1-2	0-1	0-0	0	0	0	1	0	1	0	0	4	-1
	Team						0	1	1	0		0				
TOTALS			12	5-15	0-3	2-2	2	8	10	6	3	5	0	3	50	

Shooting By Period

Period	FG	FG%	3FG	3FG%	FT	FT%
1st Qtr	5-15	33%	0-3	00%	2-2	100%
2nd Qtr	3-16	19%	1-4	25%	0-0	0%
1st Half	5-15	33%	0-3	00%	2-2	100%
1st Half	8-31	26%	1-7	14%	2-2	100%
Game	16-62	25.8%	3-18	16.7%	12-15	80.0%

Wichita St. 13

No.	Player	S	Pts	FG	3FG	FT	OR	DR	TR	PF	A	TO	Blk	Stl	Min	+/-
05	Reid, Ashley		0	0-0	0-0	0-0	0	0	0	0	1	2	0	0	7	0
11	Lozada-Cabbage, Sabrina		0	0-2	0-1	0-0	0	1	1	1	1	0	0	1	7	0
12	Bremaud, Carla		2	1-3	0-1	0-0	0	2	2	0	0	0	0	0	7	0
23	Bastin, Seraphine		2	1-2	0-0	0-0	0	3	3	0	0	2	0	0	8	3
34	Smith, Shyia		2	1-2	0-0	0-0	0	0	0	0	0	0	0	1	5	2
13	Prince, Raven		2	0-1	0-0	2-2	0	1	1	1	0	0	0	1	5	-1
15	Hampton, Jaida		2	1-1	0-0	0-0	0	1	1	2	0	0	0	1	2	2
21	Brewer, Maya		2	0-0	0-0	2-2	0	0	0	0	0	0	0	0	1	-1
22	Faye, Alyssia		0	0-1	0-0	0-0	0	0	0	0	0	0	0	0	3	1
30	Ambrosio, Cesaria		1	0-0	0-0	1-2	0	0	0	1	0	1	0	0	5	-1
42	Henderson, Asia		0	0-0	0-0	0-0	0	0	0	0	0	0	0	0	0	0
	Team						1	0	1	0		0				
TOTALS			13	4-12	0-2	5-6	1	8	9	5	2	5	0	4	50	

Shooting By Period

Period	FG	FG%	3FG	3FG%	FT	FT%
1st Qtr	4-12	33%	0-2	00%	5-6	83%
2nd Qtr	5-10	50%	0-2	00%	2-4	50%
1st Half	4-12	33%	0-2	00%	5-6	83%
1st Half	9-22	41%	0-4	00%	7-10	70%
Game	20-45	44.4%	2-12	16.7%	15-19	78.9%

Game Notes:

Officials: Kathleen Lynch, Tiara Cruse, John Capolino
Attendance: 1267

Start Time: 2019-01-30 00:34:18
End Time: 2019-01-30 02:34:31
Game Duration: 120
Conference Game;

Score	1st	2nd	3rd	4th	TOT
ECU	12	7	20	8	47
WSU	13	12	13	19	57

Points from (This Period)	ECU	WSU
In the Paint	6	8
Off Turns	2	7
2nd Chance	2	2
Fast Break	0	2
Bench	2	7

**Official Play-By-Play
East Carolina vs Wichita St.
First Quarter**

January 30, 2019 at Charles Koch Arena (Devlin Court) - Wichita, Kan.

Period 1

Starters:

East Carolina: 1 FRAZIER,ALEX; 2 MONK,LASHONDA; 11 JOHNSON,RAVEN; 20 CORBIN,DESIREE; 21 GREENE,SALITA;

Wichita St.: 5 REID,ASHLEY; 11 LOZADA-CABBAGE,SABRINA; 12 BREMAUD,CARLA; 23 BASTIN,SERAPHINE; 34 SMITH,SHYIA;

Time	VISITORS: East Carolina	Score	Margin	HOME: Wichita St.
09:34		2-0	H 2	GOOD! JUMPER by BASTIN,SERAPHINE [PNT]
09:12	TURNOVER (LOSTBALL) by MONK,LASHONDA			
09:12				STEAL by LOZADA-CABBAGE,SABRINA
09:12	FOUL (PERSONAL) by GREENE,SALITA			
08:56		4-0	H 4	GOOD! LAYUP by SMITH,SHYIA
08:56				ASSIST by REID,ASHLEY
08:24	GOOD! LAYUP by CORBIN,DESIREE	4-2	H 2	
08:24	ASSIST by JOHNSON,RAVEN			
08:02				MISSED LAYUP by BASTIN,SERAPHINE
07:57	REBOUND (DEF) by JOHNSON,RAVEN			
07:55	MISSED JUMPER by JOHNSON,RAVEN			
07:50				REBOUND (DEF) by BASTIN,SERAPHINE
07:48				TURNOVER (TRAVEL) by REID,ASHLEY
07:31	MISSED JUMPER by JOHNSON,RAVEN			
07:28				REBOUND (DEF) by BREMAUD,CARLA
07:23				MISSED 3PTR by LOZADA-CABBAGE,SABRINA
07:18	REBOUND (DEF) by GREENE,SALITA			
07:12	GOOD! LAYUP by MONK,LASHONDA	4-4	T	
06:46				TURNOVER (LOSTBALL) by BASTIN,SERAPHINE
06:46	STEAL by FRAZIER,ALEX			
06:41	MISSED JUMPER by FRAZIER,ALEX			
06:38				REBOUND (DEF) by BASTIN,SERAPHINE
06:18	FOUL (PERSONAL) by MONK,LASHONDA			
06:18	SUB OUT: FRAZIER,ALEX			
06:18	SUB IN: GEE,JUSTICE			
06:15				MISSED LAYUP by LOZADA-CABBAGE,SABRINA
06:12	REBOUND (DEF) by CORBIN,DESIREE			
06:08	TURNOVER (LOSTBALL) by MONK,LASHONDA			
06:08				STEAL by SMITH,SHYIA
06:02				MISSED LAYUP by SMITH,SHYIA
05:58	REBOUND (DEF) by MONK,LASHONDA			
05:48	MISSED 3PTR by MONK,LASHONDA			
05:44				REBOUND (DEF) by BREMAUD,CARLA
05:40				MISSED JUMPER by BREMAUD,CARLA
05:36	REBOUND (DEF) by MONK,LASHONDA			
05:19	MISSED 3PTR by GEE,JUSTICE			
05:15				REBOUND (DEF) by BASTIN,SERAPHINE
05:08		6-4	H 2	GOOD! LAYUP by BREMAUD,CARLA
05:08				ASSIST by LOZADA-CABBAGE,SABRINA
04:56				
04:56				SUB OUT: SMITH,SHYIA
04:56				SUB IN: AMBROSIO,CESARIA
04:56				SUB OUT: REID,ASHLEY
04:56				SUB IN: PRINCE,RAVEN
04:56	SUB OUT: GREENE,SALITA			
04:56	SUB IN: HOPE,NECOLE			
04:56	SUB OUT: MONK,LASHONDA			
04:56	SUB IN: FRAZIER,ALEX			
04:43	GOOD! JUMPER by JOHNSON,RAVEN	6-6	T	
04:07				TURNOVER (LOSTBALL) by BASTIN,SERAPHINE
04:07	STEAL by FRAZIER,ALEX			
04:05				FOUL (PERSONAL) by PRINCE,RAVEN
03:50	MISSED 3PTR by HOPE,NECOLE			
03:45	REBOUND (OFF) by FRAZIER,ALEX			
03:44	MISSED JUMPER by FRAZIER,ALEX			
03:41				REBOUND (DEF) by LOZADA-CABBAGE,SABRINA
03:32	FOUL (PERSONAL) by GEE,JUSTICE			
03:32	SUB OUT: CORBIN,DESIREE			
03:32	SUB IN: GREENE,SALITA			
03:17				MISSED 3PTR by BREMAUD,CARLA
03:17	REBOUND (DEF) by TEAM			
03:17				FOUL (PERSONAL) by LOZADA-CABBAGE,SABRINA
03:17	SUB OUT: GEE,JUSTICE			
03:17	SUB IN: MONK,LASHONDA			
03:02	TURNOVER (TRAVEL) by FRAZIER,ALEX			
03:02				SUB OUT: BREMAUD,CARLA
03:02				SUB IN: HAMPTON,JAIDA
03:02				SUB OUT: LOZADA-CABBAGE,SABRINA
03:02				SUB IN: FAYE,ALYSSIA
02:47	FOUL (PERSONAL) by HOPE,NECOLE			
02:47		7-6	H 1	GOOD! FT by AMBROSIO,CESARIA
02:47				MISSED FT by AMBROSIO,CESARIA
02:45	REBOUND (DEF) by JOHNSON,RAVEN			
02:34	MISSED JUMPER by JOHNSON,RAVEN			
02:30				REBOUND (DEF) by PRINCE,RAVEN
02:11		9-6	H 3	GOOD! JUMPER by HAMPTON,JAIDA [PNT]

Time	VISITORS: East Carolina	Score	Margin	HOME: Wichita St.
02:04				FOUL (PERSONAL) by AMBROSIO,CESARIA
02:04				SUB OUT: BASTIN,SERAPHINE
02:04				SUB IN: REID,ASHLEY
02:04				FOUL (PERSONAL) by HAMPTON,JAIDA
01:59	MISSED LAYUP by JOHNSON,RAVEN			
01:55				REBOUND (DEF) by HAMPTON,JAIDA
01:49				MISSED JUMPER by FAYE,ALYSSIA
01:39	REBOUND (DEF) by JOHNSON,RAVEN			
01:39	SUB OUT: HOPE,NECOLE			
01:39	SUB IN: GEE,JUSTICE			
01:26	MISSED JUMPER by JOHNSON,RAVEN			
01:24	REBOUND (OFF) by FRAZIER,ALEX			
01:24				FOUL (PERSONAL) by HAMPTON,JAIDA
01:24	GOOD! FT by FRAZIER,ALEX	9-7	H 2	
01:24	SUB OUT: GREENE,SALITA			
01:24	SUB IN: CORBIN,DESIREE			
01:24	GOOD! FT by FRAZIER,ALEX	9-8	H 1	
01:23				TURNOVER (LOSTBALL) by AMBROSIO,CESARIA
01:23	STEAL by FRAZIER,ALEX			
01:13	TURNOVER (BADPASS) by MONK,LASHONDA			
01:13				STEAL by HAMPTON,JAIDA
01:00	SUB OUT: JOHNSON,RAVEN			
01:00	SUB IN: HOPE,NECOLE			
00:56	FOUL (PERSONAL) by GEE,JUSTICE			
00:56		10-8	H 2	GOOD! FT by PRINCE,RAVEN
00:56				SUB OUT: HAMPTON,JAIDA
00:56				SUB IN: BREWER,MAYA
00:56	SUB OUT: GEE,JUSTICE			
00:56	SUB IN: JOHNSON,RAVEN			
00:56		11-8	H 3	GOOD! FT by PRINCE,RAVEN
00:45	TURNOVER (BADPASS) by HOPE,NECOLE			
00:45				STEAL by PRINCE,RAVEN
00:40				MISSED LAYUP by PRINCE,RAVEN
00:40				REBOUND (OFF) by TEAM
00:38	FOUL (PERSONAL) by FRAZIER,ALEX			
00:38		12-8	H 4	GOOD! FT by BREWER,MAYA [FB]
00:38		13-8	H 5	GOOD! FT by BREWER,MAYA [FB]
00:30	GOOD! LAYUP by JOHNSON,RAVEN	13-10	H 3	
00:30	ASSIST by MONK,LASHONDA			
00:16				TURNOVER (LOSTBALL) by REID,ASHLEY
00:02	GOOD! JUMPER by HOPE,NECOLE	13-12	H 1	
00:02	ASSIST by MONK,LASHONDA			

East Carolina 12, Wichita St. 13

Points from (This Period)	ECU	WSU
In the Paint	6	8
Off Turns	2	7
2nd Chance	2	2
Fast Break	0	2
Bench	2	7

Official Box Score
East Carolina vs Wichita St.
Second Quarter Statistics Only
January 30, 2019 at Charles Koch Arena (Devlin Court) - Wichita, Kan.

East Carolina 7

No.	Player	S	Pts	FG	3FG	FT	OR	DR	TR	PF	A	TO	Blk	Stl	Min	+/-
01	Frazier, Alex		2	1-3	0-0	0-0	0	0	0	0	0	1	0	1	10	-5
02	Monk, Lashonda		3	1-2	1-1	0-0	0	1	1	1	0	0	0	0	8	-3
11	Johnson, Raven		0	0-3	0-2	0-0	0	1	1	0	0	1	0	0	10	-5
20	Corbin, Desiree		0	0-0	0-0	0-0	0	0	0	2	0	0	0	0	5	0
21	Greene, Salita		0	0-2	0-0	0-0	0	2	2	0	0	0	0	0	6	-6
00	Gee, Justice		0	0-2	0-0	0-0	1	0	1	1	1	0	0	1	5	0
04	Hope, Necole		2	1-4	0-1	0-0	2	0	2	0	0	1	1	0	6	-6
	Team						0	0	0	0		0				
TOTALS			7	3-16	1-4	0-0	3	4	7	4	1	3	1	2	50	

Shooting By Period

Period	FG	FG%	3FG	3FG%	FT	FT%
3rd Qtr	6-14	43%	2-4	50%	6-9	67%
4th Qtr	2-17	12%	0-7	00%	4-4	100%
2nd Half	3-16	19%	1-4	25%	0-0	0%
2nd Half	8-31	26%	2-11	18%	10-13	77%
Game	16-62	25.8%	3-18	16.7%	12-15	80.0%

Wichita St. 12

No.	Player	S	Pts	FG	3FG	FT	OR	DR	TR	PF	A	TO	Blk	Stl	Min	+/-
05	Reid, Ashley		0	0-1	0-1	0-0	0	0	0	0	0	0	0	0	5	-1
11	Lozada-Cabbage, Sabrina		2	1-1	0-0	0-0	0	3	3	0	0	0	0	1	3	2
12	Bremaud, Carla		2	1-2	0-1	0-0	0	1	1	1	0	2	0	0	8	1
23	Bastin, Seraphine		2	1-1	0-0	0-0	0	2	2	0	0	3	0	0	7	6
34	Smith, Shyia		0	0-0	0-0	0-0	0	1	1	0	0	0	0	0	8	2
13	Prince, Raven		0	0-1	0-0	0-0	0	0	0	1	0	0	2	0	2	3
15	Hampton, Jaida		2	0-0	0-0	2-2	0	1	1	0	1	0	0	0	2	4
21	Brewer, Maya		0	0-0	0-0	0-0	0	0	0	0	0	0	0	0	0	0
22	Faye, Alyssia		4	2-2	0-0	0-2	0	0	0	0	1	0	1	0	7	3
30	Ambrosio, Cesaria		0	0-2	0-0	0-0	2	0	2	0	1	0	0	1	8	5
42	Henderson, Asia		0	0-0	0-0	0-0	0	0	0	0	0	0	0	0	0	0
	Team						0	2	2	0		1				
TOTALS			12	5-10	0-2	2-4	2	10	12	2	3	6	3	2	50	

Shooting By Period

Period	FG	FG%	3FG	3FG%	FT	FT%
3rd Qtr	4-9	44%	1-3	33%	4-4	100%
4th Qtr	7-14	50%	1-5	20%	4-5	80%
2nd Half	5-10	50%	0-2	00%	2-4	50%
2nd Half	11-23	48%	2-8	25%	8-9	89%
Game	20-45	44.4%	2-12	16.7%	15-19	78.9%

Game Notes:

Officials: Kathleen Lynch, Tiara Cruse, John Capolino
Attendance: 1267

Start Time: 2019-01-30 00:34:18
End Time: 2019-01-30 02:34:31
Game Duration: 120
Conference Game;

Score	1st	2nd	3rd	4th	TOT
ECU	12	7	20	8	47
WSU	13	12	13	19	57

Points from (This Period)	ECU	WSU
In the Paint	2	8
Off Turns	3	2
2nd Chance	0	2
Fast Break	0	2
Bench	2	6

**Official Play-By-Play
East Carolina vs Wichita St.
Second Quarter**

January 30, 2019 at Charles Koch Arena (Devlin Court) - Wichita, Kan.

Period 2

Starters:

East Carolina: 1 FRAZIER,ALEX; 2 MONK,LASHONDA; 11 JOHNSON,RAVEN; 20 CORBIN,DESIREE; 21 GREENE,SALITA;
Wichita St.: 5 REID,ASHLEY; 11 LOZADA-CABBAGE,SABRINA; 12 BREMAUD,CARLA; 23 BASTIN,SERAPHINE; 34 SMITH,SHYIA;

Time	VISITORS: East Carolina	Score	Margin	HOME: Wichita St.
09:45				TURNOVER (TRAVEL) by BASTIN,SERAPHINE
09:25	MISSED 3PTR by JOHNSON,RAVEN			
09:20				REBOUND (DEF) by LOZADA-CABBAGE,SABRINA
08:51				TURNOVER (SHOTCLOCK) by
08:51	SUB OUT: CORBIN,DESIREE			
08:51	SUB IN: GREENE,SALITA			
08:20	TURNOVER (BADPASS) by FRAZIER,ALEX			
08:20				STEAL by LOZADA-CABBAGE,SABRINA
08:04				TURNOVER (TRAVEL) by BASTIN,SERAPHINE
07:41	MISSED JUMPER by FRAZIER,ALEX			
07:37				REBOUND (DEF) by LOZADA-CABBAGE,SABRINA
07:34				SUB OUT: BASTIN,SERAPHINE
07:34				SUB IN: AMBROSIO,CESARIA
07:24		15-12	H 3	GOOD! LAYUP by LOZADA-CABBAGE,SABRINA
07:06	MISSED JUMPER by GREENE,SALITA			
07:01				REBOUND (DEF) by LOZADA-CABBAGE,SABRINA
06:44				MISSED 3PTR by REID,ASHLEY
06:41	REBOUND (DEF) by JOHNSON,RAVEN			
06:39	MISSED JUMPER by JOHNSON,RAVEN			
06:37				REBOUND (DEF) by TEAM
06:37				SUB OUT: LOZADA-CABBAGE,SABRINA
06:37				SUB IN: FAYE,ALYSSIA
06:37	SUB OUT: HOPE,NECOLE			
06:37	SUB IN: GEE,JUSTICE			
06:13				MISSED 3PTR by BREMAUD,CARLA
06:10	REBOUND (DEF) by GREENE,SALITA			
06:04				FOUL (PERSONAL) by BREMAUD,CARLA
05:57	MISSED LAYUP by GREENE,SALITA			
05:53				REBOUND (DEF) by BREMAUD,CARLA
05:39				TURNOVER (TRAVEL) by BREMAUD,CARLA
05:39	SUB OUT: GREENE,SALITA			
05:39	SUB IN: CORBIN,DESIREE			
05:25	GOOD! 3PTR by MONK,LASHONDA	15-15	T	
05:25	ASSIST by GEE,JUSTICE			
04:57				MISSED LAYUP by AMBROSIO,CESARIA
04:57				REBOUND (OFF) by AMBROSIO,CESARIA
04:57	FOUL (PERSONAL) by CORBIN,DESIREE			
04:57				SUB OUT: REID,ASHLEY
04:57				SUB IN: BASTIN,SERAPHINE
04:47		17-15	H 2	GOOD! LAYUP by FAYE,ALYSSIA
04:47				ASSIST by AMBROSIO,CESARIA
04:30	MISSED LAYUP by GEE,JUSTICE			
04:26	REBOUND (OFF) by GEE,JUSTICE			
04:23	MISSED LAYUP by MONK,LASHONDA			
04:23				BLOCK by FAYE,ALYSSIA
04:08				REBOUND (DEF) by SMITH,SHYIA
04:04				TURNOVER (BADPASS) by BREMAUD,CARLA
04:04	STEAL by FRAZIER,ALEX			
03:56	MISSED JUMPER by GEE,JUSTICE			
03:53				REBOUND (DEF) by BASTIN,SERAPHINE
03:41		19-15	H 4	GOOD! LAYUP by BREMAUD,CARLA
03:41				ASSIST by FAYE,ALYSSIA
03:21	GOOD! JUMPER by FRAZIER,ALEX	19-17	H 2	
02:52	FOUL (PERSONAL) by MONK,LASHONDA			
02:52				SUB OUT: BREMAUD,CARLA
02:52				SUB IN: HAMPTON,JAIDA
02:52				SUB OUT: SMITH,SHYIA
02:52				SUB IN: PRINCE,RAVEN
02:52	SUB OUT: GEE,JUSTICE			
02:52	SUB IN: HOPE,NECOLE			
02:52	SUB OUT: CORBIN,DESIREE			
02:52	SUB IN: GREENE,SALITA			
02:48				MISSED JUMPER by PRINCE,RAVEN
02:48	BLOCK by HOPE,NECOLE			
02:42				REBOUND (OFF) by AMBROSIO,CESARIA
02:41				MISSED LAYUP by AMBROSIO,CESARIA
02:38	REBOUND (DEF) by MONK,LASHONDA			
02:36	MISSED 3PTR by HOPE,NECOLE			
02:33				REBOUND (DEF) by HAMPTON,JAIDA
02:10		21-17	H 4	GOOD! JUMPER by FAYE,ALYSSIA
02:10				ASSIST by HAMPTON,JAIDA
01:57	TURNOVER (TRAVEL) by JOHNSON,RAVEN			
01:57	SUB OUT: GREENE,SALITA			
01:57	SUB IN: CORBIN,DESIREE			
01:52	FOUL (PERSONAL) by CORBIN,DESIREE			

Time	VISITORS: East Carolina	Score	Margin	HOME: Wichita St.
01:52				MISSED FT by FAYE,ALYSSIA
01:52				REBOUND (OFF) by TEAM
01:52	SUB OUT: CORBIN,DESIREE			
01:52	SUB IN: GREENE,SALITA			
01:52	SUB OUT: MONK,LASHONDA			
01:52	SUB IN: GEE,JUSTICE			
01:52				MISSED FT by FAYE,ALYSSIA
01:50	REBOUND (DEF) by GREENE,SALITA			
01:41	GOOD! LAYUP by HOPE,NECOLE	21-19	H 2	
01:09		23-19	H 4	GOOD! JUMPER by BASTIN,SERAPHINE [PNT]
00:49	MISSED JUMPER by HOPE,NECOLE			
00:49				BLOCK by PRINCE,RAVEN
00:41	REBOUND (OFF) by HOPE,NECOLE			
00:41	MISSED JUMPER by HOPE,NECOLE			
00:41				BLOCK by PRINCE,RAVEN
00:41				REBOUND (DEF) by BASTIN,SERAPHINE
00:41				TURNOVER (BADPASS) by BASTIN,SERAPHINE
00:41	STEAL by GEE,JUSTICE			
00:41				FOUL (PERSONAL) by PRINCE,RAVEN
00:39	TURNOVER (BADPASS) by HOPE,NECOLE			
00:39				STEAL by AMBROSIO,CESARIA
00:33	FOUL (PERSONAL) by GEE,JUSTICE			
00:33		24-19	H 5	GOOD! FT by HAMPTON,JAIDA [FB]
00:33				SUB OUT: PRINCE,RAVEN
00:33				SUB IN: SMITH,SHYIA
00:33	SUB OUT: GEE,JUSTICE			
00:33	SUB IN: CORBIN,DESIREE			
00:33		25-19	H 6	GOOD! FT by HAMPTON,JAIDA [FB]
00:33				SUB OUT: HAMPTON,JAIDA
00:33				SUB IN: BREMAUD,CARLA
00:16	MISSED 3PTR by JOHNSON,RAVEN			
00:13	REBOUND (OFF) by HOPE,NECOLE			
00:05	MISSED JUMPER by FRAZIER,ALEX			
00:05				REBOUND (DEF) by TEAM

East Carolina 19, Wichita St. 25

Points from (This Period)	ECU	WSU
In the Paint	2	8
Off Turns	3	2
2nd Chance	0	2
Fast Break	0	2
Bench	2	6

Official Box Score
East Carolina vs Wichita St.
Second Half Statistics Only
January 30, 2019 at Charles Koch Arena (Devlin Court) - Wichita, Kan.

East Carolina 28

No.	Player	S	Pts	FG	3FG	FT	OR	DR	TR	PF	A	TO	Blk	Stl	Min	+/-
00	Gee, Justice		0	0-1	0-0	0-0	2	1	3	2	0	0	0	0	7	3
01	Frazier, Alex		2	1-8	0-1	0-0	1	1	2	2	3	1	0	1	20	-4
02	Monk, Lashonda		12	4-12	2-8	2-4	0	2	2	1	0	0	0	2	20	-4
11	Johnson, Raven		7	1-4	0-1	5-6	0	1	1	0	0	2	0	1	20	-4
20	Corbin, Desiree		5	1-2	0-0	3-3	3	3	6	2	0	0	0	0	13	5
21	Greene, Salita		2	1-3	0-0	0-0	2	0	2	2	0	1	0	1	7	-9
04	Hope, Necole		0	0-1	0-1	0-0	1	0	1	0	0	0	0	2	13	-7
	Team		0	0-0	0-0	0-0	1	0	1	0	0	0	0	0	0	0
TOTALS			28	8-31	2-11	10-13	10	8	18	9	3	4	0	7	100	

Shooting By Period

Period	FG	FG%	3FG	3FG%	FT	FT%
3rd Qtr	6-14	43%	2-4	50%	6-9	67%
4th Qtr	2-17	12%	0-7	00%	4-4	100%
2nd Half	8-31	26%	2-11	18%	10-13	77%
Game	16-62	25.8%	3-18	16.7%	12-15	80.0%

Last FG Half: ECU 4th-04:35

Wichita St. 32

No.	Player	S	Pts	FG	3FG	FT	OR	DR	TR	PF	A	TO	Blk	Stl	Min	+/-
05	Reid, Ashley		2	1-1	0-0	0-0	0	4	4	2	0	0	0	0	13	10
11	Lozada-Cabbage, Sabrina		9	3-8	1-3	2-2	3	2	5	2	2	2	0	0	20	4
12	Bremaud, Carla		3	1-2	1-2	0-0	0	0	0	3	0	0	0	0	8	-4
13	Prince, Raven		0	0-1	0-0	0-0	0	0	0	0	0	1	0	0	2	-6
15	Hampton, Jaida		8	3-5	0-2	2-2	1	1	2	2	1	3	0	0	19	2
21	Brewer, Maya		0	0-0	0-0	0-0	0	0	0	0	0	0	0	0	0	0
22	Faye, Alyssia		5	2-5	0-1	1-1	0	1	1	1	0	1	0	0	10	11
23	Bastin, Seraphine		1	0-0	0-0	1-2	0	5	5	1	2	0	0	0	17	7
30	Ambrosio, Cesaria		0	0-0	0-0	0-0	0	0	0	1	0	1	0	0	3	-3
34	Smith, Shyia		0	0-0	0-0	0-0	0	0	0	0	0	0	0	0	2	-3
42	Henderson, Asia		4	1-1	0-0	2-2	0	1	1	2	0	0	2	0	7	2
	Team		0	0-0	0-0	0-0	0	0	0	0	0	2	0	0	0	0
TOTALS			32	11-23	2-8	8-9	4	14	18	14	5	10	2	0	100	

Shooting By Period

Period	FG	FG%	3FG	3FG%	FT	FT%
3rd Qtr	4-9	44%	1-3	33%	4-4	100%
4th Qtr	7-14	50%	1-5	20%	4-5	80%
2nd Half	11-23	48%	2-8	25%	8-9	89%
Game	20-45	44.4%	2-12	16.7%	15-19	78.9%

Last FG Half: WSU 4th-01:04

Game Notes:

Officials: Kathleen Lynch, Tiara Cruse, John Capolino
Attendance: 1267

Start Time: 2019-01-30 00:34:18
End Time: 2019-01-30 02:34:31
Game Duration: 120
Conference Game;

Score	1st	2nd	3rd	4th	TOT
ECU	12	7	20	8	47
WSU	13	12	13	19	57

Points from (This Period)	ECU	WSU
In the Paint	4	10
Off Turns	13	7
2nd Chance	6	2
Fast Break	4	2
Bench	0	17

Official Box Score
East Carolina vs Wichita St.
Third Quarter Statistics Only
January 30, 2019 at Charles Koch Arena (Devlin Court) - Wichita, Kan.

East Carolina 28

No.	Player	S	Pts	FG	3FG	FT	OR	DR	TR	PF	A	TO	Blk	Stl	Min	+/-
01	Frazier, Alex		0	0-4	0-0	0-0	1	0	1	0	3	1	0	1	10	7
02	Monk, Lashonda		12	4-7	2-4	2-4	0	2	2	0	0	0	0	1	10	7
11	Johnson, Raven		5	1-1	0-0	3-4	0	1	1	0	0	0	0	0	10	7
20	Corbin, Desiree		3	1-1	0-0	1-1	2	1	3	2	0	0	0	0	6	9
21	Greene, Salita		0	0-0	0-0	0-0	1	0	1	1	0	0	0	1	4	-2
00	Gee, Justice		0	0-1	0-0	0-0	0	0	0	1	0	0	0	0	3	3
04	Hope, Necole		0	0-0	0-0	0-0	0	0	0	0	0	0	0	1	7	4
	Team						0	0	0	0		0				
TOTALS			20	6-14	2-4	6-9	4	4	8	4	3	1	0	4	50	

Shooting By Period

Period	FG	FG%	3FG	3FG%	FT	FT%
2nd Half	0-0	0%	0-0	0%	0-0	0%
Game	16-62	25.8%	3-18	16.7%	12-15	80.0%

Wichita St. 32

No.	Player	S	Pts	FG	3FG	FT	OR	DR	TR	PF	A	TO	Blk	Stl	Min	+/-
05	Reid, Ashley		2	1-1	0-0	0-0	0	2	2	0	0	0	0	0	3	-1
11	Lozada-Cabbage, Sabrina		2	0-3	0-1	2-2	1	1	2	1	1	2	0	0	10	-7
12	Bremaud, Carla		3	1-2	1-2	0-0	0	0	0	3	0	0	0	0	8	-4
23	Bastin, Seraphine		0	0-0	0-0	0-0	0	1	1	0	2	0	0	0	7	-4
34	Smith, Shyia		0	0-0	0-0	0-0	0	0	0	0	0	0	0	0	2	-3
13	Prince, Raven		0	0-1	0-0	0-0	0	0	0	0	0	1	0	0	2	-6
15	Hampton, Jaida		2	1-1	0-0	0-0	0	0	0	1	0	0	0	0	9	-9
21	Brewer, Maya		0	0-0	0-0	0-0	0	0	0	0	0	0	0	0	0	0
22	Faye, Alyssia		0	0-0	0-0	0-0	0	0	0	0	0	0	0	0	0	0
30	Ambrosio, Cesaria		0	0-0	0-0	0-0	0	0	0	1	0	1	0	0	3	-3
42	Henderson, Asia		4	1-1	0-0	2-2	0	1	1	2	0	0	2	0	7	2
	Team						0	0	0	0		2				
TOTALS			13	4-9	1-3	4-4	1	5	6	8	3	6	2	0	50	

Shooting By Period

Period	FG	FG%	3FG	3FG%	FT	FT%
2nd Half	0-0	0%	0-0	0%	0-0	0%
Game	20-45	44.4%	2-12	16.7%	15-19	78.9%

Game Notes:

Officials: Kathleen Lynch, Tiara Cruse, John Capolino
Attendance: 1267

Start Time: 2019-01-30 00:34:18
End Time: 2019-01-30 02:34:31
Game Duration: 120
Conference Game;

Score	1st	2nd	3rd	4th	TOT
ECU	12	7	20	8	47
WSU	13	12	13	19	57

Points from (This Period)	ECU	WSU
In the Paint	2	4
Off Turns	11	0
2nd Chance	6	0
Fast Break	2	0
Bench	0	6

Official Play-By-Play
East Carolina vs Wichita St.
Third Quarter
January 30, 2019 at Charles Koch Arena (Devlin Court) - Wichita, Kan.

Period 3

Starters:

East Carolina: 1 FRAZIER,ALEX; 2 MONK,LASHONDA; 11 JOHNSON,RAVEN; 20 CORBIN,DESIREE; 21 GREENE,SALITA;
Wichita St.: 5 REID,ASHLEY; 11 LOZADA-CABBAGE,SABRINA; 12 BREMAUD,CARLA; 23 BASTIN,SERAPHINE; 34 SMITH,SHYIA;

Time	VISITORS: East Carolina	Score	Margin	HOME: Wichita St.
09:53				TURNOVER (BADPASS) by PRINCE,RAVEN
09:53	STEAL by HOPE,NECOLE			
09:45	GOOD! JUMPER by MONK,LASHONDA	25-21	H 4	
09:45	ASSIST by FRAZIER,ALEX			
09:24				MISSED JUMPER by LOZADA-CABBAGE,SABRINA
09:21	REBOUND (DEF) by JOHNSON,RAVEN			
09:10	GOOD! JUMPER by JOHNSON,RAVEN	25-23	H 2	
08:48				MISSED LAYUP by PRINCE,RAVEN
08:44				REBOUND (OFF) by LOZADA-CABBAGE,SABRINA
08:40				MISSED 3PTR by LOZADA-CABBAGE,SABRINA
08:36	REBOUND (DEF) by CORBIN,DESIREE			
08:28	GOOD! JUMPER by MONK,LASHONDA	25-25	T	
08:25				TIMEOUT 30SEC
08:25				SUB OUT: PRINCE,RAVEN
08:25				SUB IN: SMITH,SHYIA
07:51				TURNOVER (SHOTCLOCK) by
07:41	GOOD! 3PTR by MONK,LASHONDA	25-28	V 3	
07:41	ASSIST by FRAZIER,ALEX			
07:13				MISSED LAYUP by LOZADA-CABBAGE,SABRINA
07:10	REBOUND (DEF) by MONK,LASHONDA			
07:05	MISSED JUMPER by FRAZIER,ALEX			
07:03	REBOUND (OFF) by CORBIN,DESIREE			
06:59				FOUL (PERSONAL) by BREMAUD,CARLA
06:41	MISSED JUMPER by MONK,LASHONDA			
06:39				REBOUND (DEF) by TEAM
06:39				SUB OUT: SMITH,SHYIA
06:39				SUB IN: HENDERSON,ASIA
06:39	SUB OUT: CORBIN,DESIREE			
06:39	SUB IN: GREENE,SALITA			
06:21		27-28	V 1	GOOD! JUMPER by HAMPTON,JAIDA
06:03				FOUL (PERSONAL) by HENDERSON,ASIA
06:03	GOOD! FT by JOHNSON,RAVEN	27-29	V 2	
06:03	MISSED FT by JOHNSON,RAVEN			
06:01				REBOUND (DEF) by LOZADA-CABBAGE,SABRINA
05:53		30-29	H 1	GOOD! 3PTR by BREMAUD,CARLA
05:53				ASSIST by BASTIN,SERAPHINE
05:25	MISSED 3PTR by MONK,LASHONDA			
05:22				REBOUND (DEF) by BASTIN,SERAPHINE
05:02	FOUL (PERSONAL) by GREENE,SALITA			
05:02		31-29	H 2	GOOD! FT by HENDERSON,ASIA
05:02	SUB OUT: GREENE,SALITA			
05:02	SUB IN: CORBIN,DESIREE			
05:02		32-29	H 3	GOOD! FT by HENDERSON,ASIA
04:43	TURNOVER (TRAVEL) by FRAZIER,ALEX			
04:43				
04:12				TURNOVER (SHOTCLOCK) by
03:49	MISSED JUMPER by FRAZIER,ALEX			
03:47	REBOUND (OFF) by CORBIN,DESIREE			
03:47	GOOD! LAYUP by CORBIN,DESIREE	32-31	H 1	
03:47				FOUL (PERSONAL) by HENDERSON,ASIA
03:47	GOOD! FT by CORBIN,DESIREE	32-32	T	
03:36	FOUL (PERSONAL) by CORBIN,DESIREE			
03:34				MISSED 3PTR by BREMAUD,CARLA
03:29	REBOUND (DEF) by MONK,LASHONDA			
03:25				FOUL (PERSONAL) by BREMAUD,CARLA
03:25				FOUL (PERSONAL) by HAMPTON,JAIDA
03:25	MISSED FT by MONK,LASHONDA			
03:25	REBOUND (OFF) by TEAM			
03:25				SUB OUT: HAMPTON,JAIDA
03:25				SUB IN: REID,ASHLEY
03:25	GOOD! FT by MONK,LASHONDA [FB]	32-33	V 1	
03:02		34-33	H 1	GOOD! JUMPER by REID,ASHLEY [PNT]
03:02				ASSIST by BASTIN,SERAPHINE
02:51	MISSED LAYUP by FRAZIER,ALEX			
02:51				BLOCK by HENDERSON,ASIA
02:46				REBOUND (DEF) by REID,ASHLEY
02:46	FOUL (PERSONAL) by CORBIN,DESIREE			
02:46		35-33	H 2	GOOD! FT by LOZADA-CABBAGE,SABRINA
02:46				SUB OUT: BASTIN,SERAPHINE
02:46				SUB IN: AMBROSIO,CESARIA
02:46	SUB OUT: CORBIN,DESIREE			
02:46	SUB IN: GREENE,SALITA			
02:46	SUB OUT: HOPE,NECOLE			
02:46	SUB IN: GEE,JUSTICE			
02:46		36-33	H 3	GOOD! FT by LOZADA-CABBAGE,SABRINA
02:31	MISSED LAYUP by GEE,JUSTICE			

Time	VISITORS: East Carolina	Score	Margin	HOME: Wichita St.
02:31				BLOCK by HENDERSON,ASIA
02:27				REBOUND (DEF) by REID,ASHLEY
02:15				TURNOVER (BADPASS) by LOZADA-CABBAGE,SABRINA
02:15	STEAL by MONK,LASHONDA			
02:13				FOUL (PERSONAL) by BREMAUD,CARLA
02:13	GOOD! FT by MONK,LASHONDA [FB]	36-34	H 2	
02:13				SUB OUT: BREMAUD,CARLA
02:13				SUB IN: HAMPTON,JAIDA
02:13	MISSED FT by MONK,LASHONDA			
02:12	REBOUND (OFF) by FRAZIER,ALEX			
01:48	GOOD! 3PTR by MONK,LASHONDA	36-37	V 1	
01:48	ASSIST by FRAZIER,ALEX			
01:18		38-37	H 1	GOOD! LAYUP by HENDERSON,ASIA
01:18				ASSIST by LOZADA-CABBAGE,SABRINA
01:02	MISSED JUMPER by FRAZIER,ALEX			
00:58	REBOUND (OFF) by GREENE,SALITA			
00:44	MISSED 3PTR by MONK,LASHONDA			
00:40				REBOUND (DEF) by HENDERSON,ASIA
00:35				TURNOVER (BADPASS) by LOZADA-CABBAGE,SABRINA
00:35	STEAL by FRAZIER,ALEX			
00:35				FOUL (PERSONAL) by AMBROSIO,CESARIA
00:14				FOUL (PERSONAL) by LOZADA-CABBAGE,SABRINA
00:14	GOOD! FT by JOHNSON,RAVEN	38-38	T	
00:14	GOOD! FT by JOHNSON,RAVEN	38-39	V 1	
00:10	FOUL (PERSONAL) by GEE,JUSTICE			
00:10	SUB OUT: GEE,JUSTICE			
00:10	SUB IN: HOPE,NECOLE			
00:02				TURNOVER (BADPASS) by AMBROSIO,CESARIA
00:02	STEAL by GREENE,SALITA			

East Carolina 39, Wichita St. 38

Points from (This Period)	ECU	WSU
In the Paint	2	4
Off Turns	11	0
2nd Chance	6	0
Fast Break	2	0
Bench	0	6

Official Box Score
East Carolina vs Wichita St.
Fourth Quarter Statistics Only
January 30, 2019 at Charles Koch Arena (Devlin Court) - Wichita, Kan.

East Carolina 8

No.	Player	S	Pts	FG	3FG	FT	OR	DR	TR	PF	A	TO	Blk	Stl	Min	+/-
01	Frazier, Alex		2	1-4	0-1	0-0	0	1	1	2	0	0	0	0	10	-11
02	Monk, Lashonda		0	0-5	0-4	0-0	0	0	0	1	0	0	0	1	10	-11
11	Johnson, Raven		2	0-3	0-1	2-2	0	0	0	0	0	2	0	1	10	-11
20	Corbin, Desiree		2	0-1	0-0	2-2	1	2	3	0	0	0	0	0	7	-4
21	Greene, Salita		2	1-3	0-0	0-0	1	0	1	1	0	1	0	0	3	-7
00	Gee, Justice		0	0-0	0-0	0-0	2	1	3	1	0	0	0	0	4	0
04	Hope, Necole		0	0-1	0-1	0-0	1	0	1	0	0	0	0	1	6	-11
	Team						1	0	1	0		0				
TOTALS			8	2-17	0-7	4-4	6	4	10	5	0	3	0	3	50	

Shooting By Period

Period	FG	FG%	3FG	3FG%	FT	FT%
Game	16-62	25.8%	3-18	16.7%	12-15	80.0%

Wichita St. 19

No.	Player	S	Pts	FG	3FG	FT	OR	DR	TR	PF	A	TO	Blk	Stl	Min	+/-
05	Reid, Ashley		0	0-0	0-0	0-0	0	2	2	2	0	0	0	0	10	11
11	Lozada-Cabbage, Sabrina		7	3-5	1-2	0-0	2	1	3	1	1	0	0	0	10	11
12	Bremaud, Carla		0	0-0	0-0	0-0	0	0	0	0	0	0	0	0	0	0
23	Bastin, Seraphine		1	0-0	0-0	1-2	0	4	4	1	0	0	0	0	10	11
34	Smith, Shyia		0	0-0	0-0	0-0	0	0	0	0	0	0	0	0	0	0
13	Prince, Raven		0	0-0	0-0	0-0	0	0	0	0	0	0	0	0	0	0
15	Hampton, Jaida		6	2-4	0-2	2-2	1	1	2	1	1	3	0	0	10	11
21	Brewer, Maya		0	0-0	0-0	0-0	0	0	0	0	0	0	0	0	0	0
22	Faye, Alyssia		5	2-5	0-1	1-1	0	1	1	1	0	1	0	0	10	11
30	Ambrosio, Cesaria		0	0-0	0-0	0-0	0	0	0	0	0	0	0	0	0	0
42	Henderson, Asia		0	0-0	0-0	0-0	0	0	0	0	0	0	0	0	0	0
	Team						0	0	0	0		0				
TOTALS			19	7-14	1-5	4-5	3	9	12	6	2	4	0	0	50	

Shooting By Period

Period	FG	FG%	3FG	3FG%	FT	FT%
Game	20-45	44.4%	2-12	16.7%	15-19	78.9%

Game Notes:

Officials: Kathleen Lynch, Tiara Cruse, John Capolino
Attendance: 1267

Start Time: 2019-01-30 00:34:18
End Time: 2019-01-30 02:34:31
Game Duration: 120
Conference Game:

Score	1st	2nd	3rd	4th	TOT
ECU	12	7	20	8	47
WSU	13	12	13	19	57

Points from (This Period)	ECU	WSU
In the Paint	2	6
Off Turns	2	7
2nd Chance	0	2
Fast Break	2	2
Bench	0	11

Official Play-By-Play
East Carolina vs Wichita St.
Fourth Quarter
January 30, 2019 at Charles Koch Arena (Devlin Court) - Wichita, Kan.

Period 4

Starters:

East Carolina: 1 FRAZIER,ALEX; 2 MONK,LASHONDA; 11 JOHNSON,RAVEN; 20 CORBIN,DESIREE; 21 GREENE,SALITA;
Wichita St.: 5 REID,ASHLEY; 11 LOZADA-CABBAGE,SABRINA; 12 BREMAUD,CARLA; 23 BASTIN,SERAPHINE; 34 SMITH,SHYIA;

Time	VISITORS: East Carolina	Score	Margin	HOME: Wichita St.
09:49				TURNOVER (BADPASS) by HAMPTON,JAIDA
09:49	STEAL by HOPE,NECOLE			
09:39	MISSED LAYUP by JOHNSON,RAVEN			
09:32	REBOUND (OFF) by GREENE,SALITA			
09:32	MISSED LAYUP by GREENE,SALITA			
09:31				REBOUND (DEF) by FAYE,ALYSSIA
09:21		41-39	H 2	GOOD! 3PTR by LOZADA-CABBAGE,SABRINA
09:21				ASSIST by HAMPTON,JAIDA
09:00	GOOD! LAYUP by GREENE,SALITA	41-41	T	
08:40				MISSED 3PTR by HAMPTON,JAIDA
08:35				REBOUND (OFF) by LOZADA-CABBAGE,SABRINA
08:35				MISSED LAYUP by LOZADA-CABBAGE,SABRINA
08:32				REBOUND (OFF) by LOZADA-CABBAGE,SABRINA
08:32		43-41	H 2	GOOD! LAYUP by LOZADA-CABBAGE,SABRINA
08:24				FOUL (PERSONAL) by LOZADA-CABBAGE,SABRINA
08:21	MISSED LAYUP by GREENE,SALITA			
08:20	REBOUND (OFF) by TEAM			
08:20				FOUL (PERSONAL) by HAMPTON,JAIDA
08:17	TURNOVER (TRAVEL) by GREENE,SALITA			
08:05		45-41	H 4	GOOD! LAYUP by FAYE,ALYSSIA
08:05				ASSIST by LOZADA-CABBAGE,SABRINA
07:42	TURNOVER (OTHER) by JOHNSON,RAVEN			
07:18		47-41	H 6	GOOD! JUMPER by FAYE,ALYSSIA [PNT]
07:18	FOUL (PERSONAL) by GREENE,SALITA			
07:18	SUB OUT: GREENE,SALITA			
07:18	SUB IN: CORBIN,DESIREE			
07:18		48-41	H 7	GOOD! FT by FAYE,ALYSSIA
07:07	MISSED 3PTR by HOPE,NECOLE			
07:02				REBOUND (DEF) by BASTIN,SERAPHINE
06:40		50-41	H 9	GOOD! JUMPER by HAMPTON,JAIDA
06:21				FOUL (PERSONAL) by REID,ASHLEY
06:12	MISSED JUMPER by FRAZIER,ALEX			
06:09	REBOUND (OFF) by HOPE,NECOLE			
06:09				FOUL (PERSONAL) by FAYE,ALYSSIA
06:02	MISSED LAYUP by JOHNSON,RAVEN			
05:56	REBOUND (OFF) by CORBIN,DESIREE			
05:56	MISSED LAYUP by CORBIN,DESIREE			
05:55				REBOUND (DEF) by REID,ASHLEY
05:43		52-41	H 11	GOOD! JUMPER by HAMPTON,JAIDA
05:28	TIMEOUT 30SEC			
05:20	MISSED 3PTR by MONK,LASHONDA			
05:17				REBOUND (DEF) by BASTIN,SERAPHINE
04:52	FOUL (PERSONAL) by MONK,LASHONDA			
04:52		53-41	H 12	GOOD! FT by HAMPTON,JAIDA [FB]
04:52		54-41	H 13	GOOD! FT by HAMPTON,JAIDA [FB]
04:35	GOOD! JUMPER by FRAZIER,ALEX	54-43	H 11	
04:24				TURNOVER (LOSTBALL) by FAYE,ALYSSIA
04:24	STEAL by JOHNSON,RAVEN			
04:21				FOUL (PERSONAL) by REID,ASHLEY
04:21	GOOD! FT by JOHNSON,RAVEN [FB]	54-44	H 10	
04:21	GOOD! FT by JOHNSON,RAVEN [FB]	54-45	H 9	
04:21	SUB OUT: HOPE,NECOLE			
04:21	SUB IN: GEE,JUSTICE			
03:55				MISSED 3PTR by LOZADA-CABBAGE,SABRINA
03:51				REBOUND (OFF) by HAMPTON,JAIDA
03:46				MISSED 3PTR by HAMPTON,JAIDA
03:43	REBOUND (DEF) by GEE,JUSTICE			
03:35	MISSED 3PTR by MONK,LASHONDA			
03:31	REBOUND (OFF) by GEE,JUSTICE			
03:29	MISSED 3PTR by JOHNSON,RAVEN			
03:26				REBOUND (DEF) by BASTIN,SERAPHINE
03:18				MISSED JUMPER by FAYE,ALYSSIA
03:15	REBOUND (DEF) by FRAZIER,ALEX			
03:12	FOUL (PERSONAL) by FRAZIER,ALEX			
03:10				TURNOVER (LOSTBALL) by HAMPTON,JAIDA
03:10	STEAL by MONK,LASHONDA			
03:04	MISSED LAYUP by MONK,LASHONDA			
03:01				REBOUND (DEF) by LOZADA-CABBAGE,SABRINA
02:38				MISSED JUMPER by FAYE,ALYSSIA
02:34	REBOUND (DEF) by CORBIN,DESIREE			
02:13	MISSED 3PTR by MONK,LASHONDA			
02:09				REBOUND (DEF) by HAMPTON,JAIDA
01:48				TURNOVER (TRAVEL) by HAMPTON,JAIDA
01:33	MISSED 3PTR by FRAZIER,ALEX			
01:30	REBOUND (OFF) by GEE,JUSTICE			
01:24	TURNOVER (TRAVEL) by JOHNSON,RAVEN			

Time	VISITORS: East Carolina	Score	Margin	HOME: Wichita St.
01:04		56-45	H 11	GOOD! JUMPER by LOZADA-CABBAGE,SABRINA
00:54	TIMEOUT TEAM			
00:43	MISSED JUMPER by FRAZIER,ALEX			
00:41				REBOUND (DEF) by REID,ASHLEY
00:41				TIMEOUT 30SEC
00:41	FOUL (PERSONAL) by FRAZIER,ALEX			
00:28				MISSED 3PTR by FAYE,ALYSSIA
00:25	REBOUND (DEF) by CORBIN,DESIREE			
00:25				FOUL (PERSONAL) by BASTIN,SERAPHINE
00:25	GOOD! FT by CORBIN,DESIREE	56-46	H 10	
00:25	GOOD! FT by CORBIN,DESIREE	56-47	H 9	
00:25	SUB OUT: CORBIN,DESIREE			
00:25	SUB IN: HOPE,NECOLE			
00:25				TIMEOUT 30SEC
00:11	FOUL (PERSONAL) by GEE,JUSTICE			
00:11	SUB OUT: GEE,JUSTICE			
00:11	SUB IN: CORBIN,DESIREE			
00:11				MISSED FT by BASTIN,SERAPHINE
00:11				REBOUND (OFF) by TEAM
00:11		57-47	H 10	GOOD! FT by BASTIN,SERAPHINE
00:11	TIMEOUT 30SEC			
00:07	MISSED 3PTR by MONK,LASHONDA			
00:05				REBOUND (DEF) by BASTIN,SERAPHINE

East Carolina 47, Wichita St. 57

Points from (This Period)	ECU	WSU
In the Paint	2	6
Off Turns	2	7
2nd Chance	0	2
Fast Break	2	2
Bench	0	11

**Official Scoring/Possession Reference Chart
East Carolina vs Wichita St.**

Period 1

January 30, 2019 at Charles Koch Arena (Devlin Court) - Wichita, Kan.

Period 1

Starters:

East Carolina: 1 FRAZIER, ALEX; 2 MONK, LASHONDA; 11 JOHNSON, RAVEN; 20 CORBIN, DESIREE; 21 GREENE, SALITA;

Wichita St.: 5 REID, ASHLEY; 11 LOZADA-CABBAGE, SABRINA; 12 BREMAUD, CARLA; 23 BASTIN, SERAPHINE; 34 SMITH, SHYIA;

Time	VISITORS: East Carolina	Score	Margin	HOME: Wichita St.
09:34		2-0	H 2	GOOD! JUMPER by BASTIN, SERAPHINE [PNT]
08:56		4-0	H 4	GOOD! LAYUP by SMITH, SHYIA
08:24	GOOD! LAYUP by CORBIN, DESIREE	4-2	H 2	
07:12	GOOD! LAYUP by MONK, LASHONDA	4-4	T	
05:08		6-4	H 2	GOOD! LAYUP by BREMAUD, CARLA
04:43	GOOD! JUMPER by JOHNSON, RAVEN	6-6	T	
02:47		7-6	H 1	GOOD! FT by AMBROSIO, CESARIA
02:11		9-6	H 3	GOOD! JUMPER by HAMPTON, JAIDA [PNT]
01:24	GOOD! FT by FRAZIER, ALEX	9-7	H 2	
01:24	GOOD! FT by FRAZIER, ALEX	9-8	H 1	
00:56		10-8	H 2	GOOD! FT by PRINCE, RAVEN
00:56		11-8	H 3	GOOD! FT by PRINCE, RAVEN
00:38		12-8	H 4	GOOD! FT by BREWER, MAYA [FB]
00:38		13-8	H 5	GOOD! FT by BREWER, MAYA [FB]
00:30	GOOD! LAYUP by JOHNSON, RAVEN	13-10	H 3	
00:02	GOOD! JUMPER by HOPE, NECOLE	13-12	H 1	

East Carolina 12, Wichita St. 13

Official Scoring/Possession Reference Chart
East Carolina vs Wichita St.
Period 2
January 30, 2019 at Charles Koch Arena (Devlin Court) - Wichita, Kan.

Period 2

Starters:

East Carolina: 1 FRAZIER,ALEX; 2 MONK,LASHONDA; 11 JOHNSON,RAVEN; 20 CORBIN,DESIREE; 21 GREENE,SALITA;
Wichita St.: 5 REID,ASHLEY; 11 LOZADA-CABBAGE,SABRINA; 12 BREMAUD,CARLA; 23 BASTIN,SERAPHINE; 34 SMITH,SHYIA;

Time	VISITORS: East Carolina	Score	Margin	HOME: Wichita St.
07:24		15-12	H 3	GOOD! LAYUP by LOZADA-CABBAGE,SABRINA
05:25	GOOD! 3PTR by MONK,LASHONDA	15-15	T	
04:47		17-15	H 2	GOOD! LAYUP by FAYE,ALYSSIA
03:41		19-15	H 4	GOOD! LAYUP by BREMAUD,CARLA
03:21	GOOD! JUMPER by FRAZIER,ALEX	19-17	H 2	
02:10		21-17	H 4	GOOD! JUMPER by FAYE,ALYSSIA
01:41	GOOD! LAYUP by HOPE,NECOLE	21-19	H 2	
01:09		23-19	H 4	GOOD! JUMPER by BASTIN,SERAPHINE [PNT]
00:33		24-19	H 5	GOOD! FT by HAMPTON,JAIDA [FB]
00:33		25-19	H 6	GOOD! FT by HAMPTON,JAIDA [FB]

East Carolina 19, Wichita St. 25

**Official Scoring/Possession Reference Chart
East Carolina vs Wichita St.**

Period 3

January 30, 2019 at Charles Koch Arena (Devlin Court) - Wichita, Kan.

Period 3

Starters:

East Carolina: 1 FRAZIER, ALEX; 2 MONK, LASHONDA; 11 JOHNSON, RAVEN; 20 CORBIN, DESIREE; 21 GREENE, SALITA;

Wichita St.: 5 REID, ASHLEY; 11 LOZADA-CABBAGE, SABRINA; 12 BREMAUD, CARLA; 23 BASTIN, SERAPHINE; 34 SMITH, SHYIA;

Time	VISITORS: East Carolina	Score	Margin	HOME: Wichita St.
09:45	GOOD! JUMPER by MONK, LASHONDA	25-21	H 4	
09:10	GOOD! JUMPER by JOHNSON, RAVEN	25-23	H 2	
08:28	GOOD! JUMPER by MONK, LASHONDA	25-25	T	
07:41	GOOD! 3PTR by MONK, LASHONDA	25-28	V 3	
06:21		27-28	V 1	GOOD! JUMPER by HAMPTON, JAIDA
06:03	GOOD! FT by JOHNSON, RAVEN	27-29	V 2	
05:53		30-29	H 1	GOOD! 3PTR by BREMAUD, CARLA
05:02		31-29	H 2	GOOD! FT by HENDERSON, ASIA
05:02		32-29	H 3	GOOD! FT by HENDERSON, ASIA
03:47	GOOD! LAYUP by CORBIN, DESIREE	32-31	H 1	
03:47	GOOD! FT by CORBIN, DESIREE	32-32	T	
03:25	GOOD! FT by MONK, LASHONDA [FB]	32-33	V 1	
03:02		34-33	H 1	GOOD! JUMPER by REID, ASHLEY [PNT]
02:46		35-33	H 2	GOOD! FT by LOZADA-CABBAGE, SABRINA
02:46		36-33	H 3	GOOD! FT by LOZADA-CABBAGE, SABRINA
02:13	GOOD! FT by MONK, LASHONDA [FB]	36-34	H 2	
01:48	GOOD! 3PTR by MONK, LASHONDA	36-37	V 1	
01:18		38-37	H 1	GOOD! LAYUP by HENDERSON, ASIA
00:14	GOOD! FT by JOHNSON, RAVEN	38-38	T	
00:14	GOOD! FT by JOHNSON, RAVEN	38-39	V 1	

East Carolina 39, Wichita St. 38

**Official Scoring/Possession Reference Chart
East Carolina vs Wichita St.**

Period 4

January 30, 2019 at Charles Koch Arena (Devlin Court) - Wichita, Kan.

Period 4

Starters:

East Carolina: 1 FRAZIER,ALEX; 2 MONK,LASHONDA; 11 JOHNSON,RAVEN; 20 CORBIN,DESIREE; 21 GREENE,SALITA;

Wichita St.: 5 REID,ASHLEY; 11 LOZADA-CABBAGE,SABRINA; 12 BREMAUD,CARLA; 23 BASTIN,SERAPHINE; 34 SMITH,SHYIA;

Time	VISITORS: East Carolina	Score	Margin	HOME: Wichita St.
09:21		41-39	H 2	GOOD! 3PTR by LOZADA-CABBAGE,SABRINA
09:00	GOOD! LAYUP by GREENE,SALITA	41-41	T	
08:32		43-41	H 2	GOOD! LAYUP by LOZADA-CABBAGE,SABRINA
08:05		45-41	H 4	GOOD! LAYUP by FAYE,ALYSSIA
07:18		47-41	H 6	GOOD! JUMPER by FAYE,ALYSSIA [PNT]
07:18		48-41	H 7	GOOD! FT by FAYE,ALYSSIA
06:40		50-41	H 9	GOOD! JUMPER by HAMPTON,JAIDA
05:43		52-41	H 11	GOOD! JUMPER by HAMPTON,JAIDA
04:52		53-41	H 12	GOOD! FT by HAMPTON,JAIDA [FB]
04:52		54-41	H 13	GOOD! FT by HAMPTON,JAIDA [FB]
04:35	GOOD! JUMPER by FRAZIER,ALEX	54-43	H 11	
04:21	GOOD! FT by JOHNSON,RAVEN [FB]	54-44	H 10	
04:21	GOOD! FT by JOHNSON,RAVEN [FB]	54-45	H 9	
01:04		56-45	H 11	GOOD! JUMPER by LOZADA-CABBAGE,SABRINA
00:25	GOOD! FT by CORBIN,DESIREE	56-46	H 10	
00:25	GOOD! FT by CORBIN,DESIREE	56-47	H 9	
00:11		57-47	H 10	GOOD! FT by BASTIN,SERAPHINE

East Carolina 47, Wichita St. 57

**Official Substitutions Log
East Carolina vs Wichita St.**

Period 1

January 30, 2019 at Charles Koch Arena (Devlin Court) - Wichita, Kan.

VISITORS: East Carolina	Time	Score	HOME: Wichita St.
1 FRAZIER,ALEX			5 REID,ASHLEY
2 MONK,LASHONDA			11 LOZADA-CABBAGE,SABRINA
11 JOHNSON,RAVEN			12 BREMAUD,CARLA
20 CORBIN,DESIREE			23 BASTIN,SERAPHINE
21 GREENE,SALITA			34 SMITH,SHYIA
SUB OUT: 1 FRAZIER,ALEX	06:18	4-4	
SUB IN: 0 GEE,JUSTICE	06:18		
	04:56	4-6	SUB OUT: SMITH,SHYIA
	04:56		SUB IN: AMBROSIO,CESARIA
	04:56		SUB OUT: REID,ASHLEY
	04:56		SUB IN: PRINCE,RAVEN
SUB OUT: 21 GREENE,SALITA	04:56		
SUB IN: 4 HOPE,NECOLE	04:56		
SUB OUT: 2 MONK,LASHONDA	04:56		
SUB IN: 1 FRAZIER,ALEX	04:56		
SUB OUT: 20 CORBIN,DESIREE	03:32	6-6	
SUB IN: 21 GREENE,SALITA	03:32		
SUB OUT: 0 GEE,JUSTICE	03:17	6-6	
SUB IN: 2 MONK,LASHONDA	03:17		
	03:02	6-6	SUB OUT: BREMAUD,CARLA
	03:02		SUB IN: HAMPTON,JAIDA
	03:02		SUB OUT: LOZADA-CABBAGE,SABRINA
	03:02		SUB IN: FAYE,ALYSSIA
	02:04	6-9	SUB OUT: BASTIN,SERAPHINE
	02:04		SUB IN: REID,ASHLEY
SUB OUT: 4 HOPE,NECOLE	01:39	6-9	
SUB IN: 0 GEE,JUSTICE	01:39		
SUB OUT: 21 GREENE,SALITA	01:24	7-9	
SUB IN: 20 CORBIN,DESIREE	01:24		
SUB OUT: 11 JOHNSON,RAVEN	01:00	8-9	
SUB IN: 4 HOPE,NECOLE	01:00		
	00:56	8-10	SUB OUT: HAMPTON,JAIDA
	00:56		SUB IN: BREWER,MAYA
SUB OUT: 0 GEE,JUSTICE	00:56		
SUB IN: 11 JOHNSON,RAVEN	00:56		

East Carolina 12, Wichita St. 13

**Official Substitutions Log
East Carolina vs Wichita St.
Period 2**

January 30, 2019 at Charles Koch Arena (Devlin Court) - Wichita, Kan.

VISITORS: East Carolina	Time	Score	HOME: Wichita St.
1 FRAZIER,ALEX			5 REID,ASHLEY
2 MONK,LASHONDA			11 LOZADA-CABBAGE,SABRINA
11 JOHNSON,RAVEN			12 BREMAUD,CARLA
20 CORBIN,DESIREE			23 BASTIN,SERAPHINE
21 GREENE,SALITA			34 SMITH,SHYIA
SUB OUT: 20 CORBIN,DESIREE	08:51	-	
SUB IN: 21 GREENE,SALITA	08:51		
	07:34	-	SUB OUT: BASTIN,SERAPHINE
	07:34		SUB IN: AMBROSIO,CESARIA
	06:37	12-15	SUB OUT: LOZADA-CABBAGE,SABRINA
	06:37		SUB IN: FAYE,ALYSSIA
SUB OUT: 4 HOPE,NECOLE	06:37		
SUB IN: 0 GEE,JUSTICE	06:37		
SUB OUT: 21 GREENE,SALITA	05:39	12-15	
SUB IN: 20 CORBIN,DESIREE	05:39		
	04:57	15-15	SUB OUT: REID,ASHLEY
	04:57		SUB IN: BASTIN,SERAPHINE
	02:52	17-19	SUB OUT: BREMAUD,CARLA
	02:52		SUB IN: HAMPTON,JAIDA
	02:52		SUB OUT: SMITH,SHYIA
	02:52		SUB IN: PRINCE,RAVEN
SUB OUT: 0 GEE,JUSTICE	02:52		
SUB IN: 4 HOPE,NECOLE	02:52		
SUB OUT: 20 CORBIN,DESIREE	02:52		
SUB IN: 21 GREENE,SALITA	02:52		
SUB OUT: 21 GREENE,SALITA	01:57	17-21	
SUB IN: 20 CORBIN,DESIREE	01:57		
SUB OUT: 20 CORBIN,DESIREE	01:52	17-21	
SUB IN: 21 GREENE,SALITA	01:52		
SUB OUT: 2 MONK,LASHONDA	01:52		
SUB IN: 0 GEE,JUSTICE	01:52		
	00:33	19-24	SUB OUT: PRINCE,RAVEN
	00:33		SUB IN: SMITH,SHYIA
SUB OUT: 0 GEE,JUSTICE	00:33		
SUB IN: 20 CORBIN,DESIREE	00:33		
	00:33		SUB OUT: HAMPTON,JAIDA
	00:33		SUB IN: BREMAUD,CARLA

East Carolina 19, Wichita St. 25

**Official Substitutions Log
East Carolina vs Wichita St.
Period 3**

January 30, 2019 at Charles Koch Arena (Devlin Court) - Wichita, Kan.

VISITORS: East Carolina	Time	Score	HOME: Wichita St.
1 FRAZIER,ALEX			5 REID,ASHLEY
2 MONK,LASHONDA			11 LOZADA-CABBAGE,SABRINA
11 JOHNSON,RAVEN			12 BREMAUD,CARLA
20 CORBIN,DESIREE			23 BASTIN,SERAPHINE
21 GREENE,SALITA			34 SMITH,SHYIA
	08:25	25-25	SUB OUT: PRINCE,RAVEN
	08:25		SUB IN: SMITH,SHYIA
	06:39	28-25	SUB OUT: SMITH,SHYIA
	06:39		SUB IN: HENDERSON,ASIA
SUB OUT: 20 CORBIN,DESIREE	06:39		
SUB IN: 21 GREENE,SALITA	06:39		
SUB OUT: 21 GREENE,SALITA	05:02	29-31	
SUB IN: 20 CORBIN,DESIREE	05:02		
	03:25	32-32	SUB OUT: HAMPTON,JAIDA
	03:25		SUB IN: REID,ASHLEY
	02:46	33-35	SUB OUT: BASTIN,SERAPHINE
	02:46		SUB IN: AMBROSIO,CESARIA
SUB OUT: 20 CORBIN,DESIREE	02:46		
SUB IN: 21 GREENE,SALITA	02:46		
SUB OUT: 4 HOPE,NECOLE	02:46		
SUB IN: 0 GEE,JUSTICE	02:46		
	02:13	34-36	SUB OUT: BREMAUD,CARLA
	02:13		SUB IN: HAMPTON,JAIDA
SUB OUT: 0 GEE,JUSTICE	00:10	39-38	
SUB IN: 4 HOPE,NECOLE	00:10		

East Carolina 39, Wichita St. 38

**Official Substitutions Log
East Carolina vs Wichita St.
Period 4**

January 30, 2019 at Charles Koch Arena (Devlin Court) - Wichita, Kan.

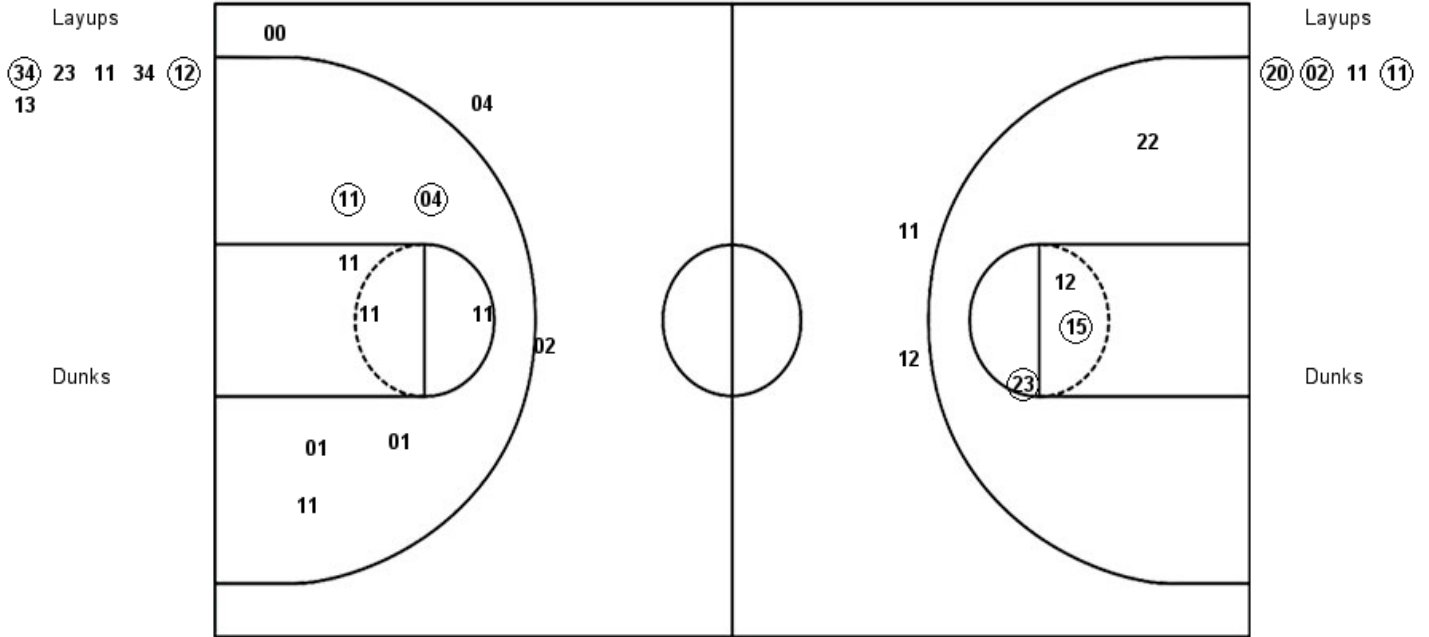
VISITORS: East Carolina	Time	Score	HOME: Wichita St.
1 FRAZIER,ALEX			5 REID,ASHLEY
2 MONK,LASHONDA			11 LOZADA-CABBAGE,SABRINA
11 JOHNSON,RAVEN			12 BREMAUD,CARLA
20 CORBIN,DESIREE			23 BASTIN,SERAPHINE
21 GREENE,SALITA			34 SMITH,SHYIA
SUB OUT: 21 GREENE,SALITA	07:18	41-47	
SUB IN: 20 CORBIN,DESIREE	07:18		
SUB OUT: 4 HOPE,NECOLE	04:21	45-54	
SUB IN: 0 GEE,JUSTICE	04:21		
SUB OUT: 20 CORBIN,DESIREE	00:25	47-56	
SUB IN: 4 HOPE,NECOLE	00:25		
SUB OUT: 0 GEE,JUSTICE	00:11	47-56	
SUB IN: 20 CORBIN,DESIREE	00:11		

East Carolina 47, Wichita St. 57

Official Shot Chart
East Carolina vs Wichita St.
PERIOD 1 Shots
 January 30, 2019 at Charles Koch Arena (Devlin Court) - Wichita, Kan.

Wichita St.

East Carolina



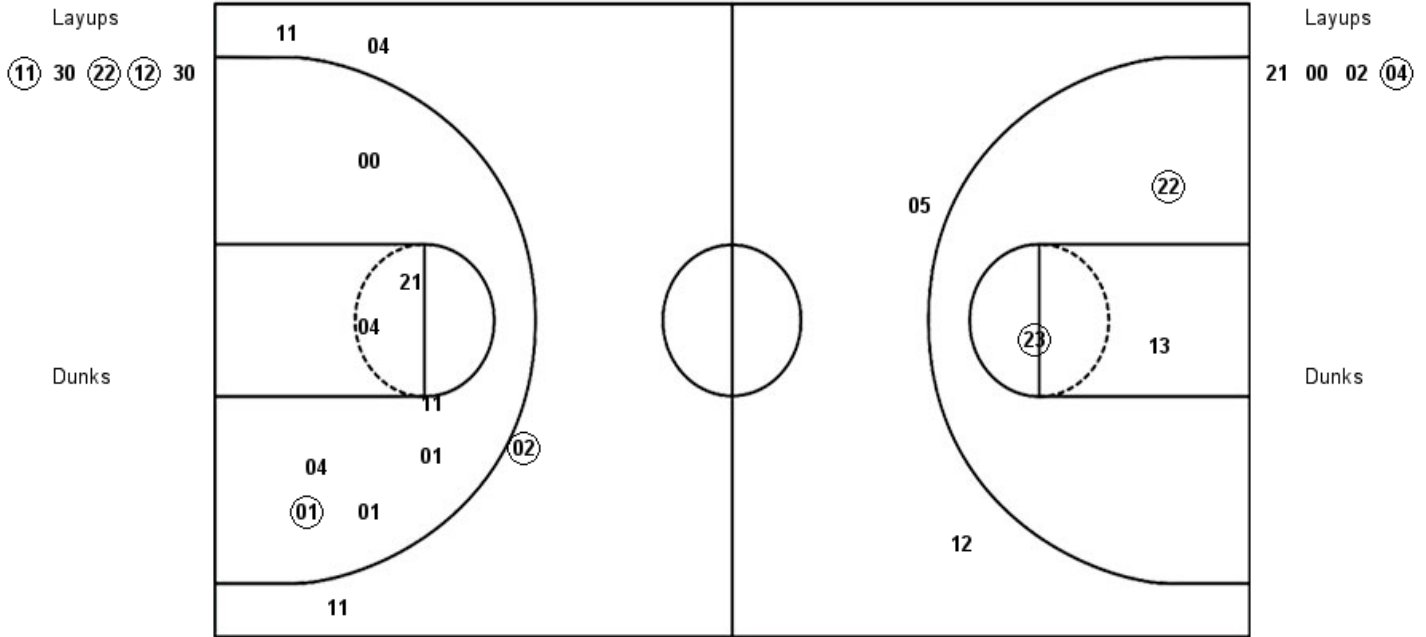
WSU : Period 1	Made	Att	Pct
Layups	2	6	33.3
Dunks	0	0	0
2PT Field Goals	4	10	40.0
3PT Field Goals	0	2	00.0
Total Field Goals	4	12	33.3

ECU : Period 1	Made	Att	Pct
Layups	3	4	75.0
Dunks	0	0	0
2PT Field Goals	5	12	41.7
3PT Field Goals	0	3	00.0
Total Field Goals	5	15	33.3

Official Shot Chart
East Carolina vs Wichita St.
PERIOD 2 Shots
 January 30, 2019 at Charles Koch Arena (Devlin Court) - Wichita, Kan.

Wichita St.

East Carolina



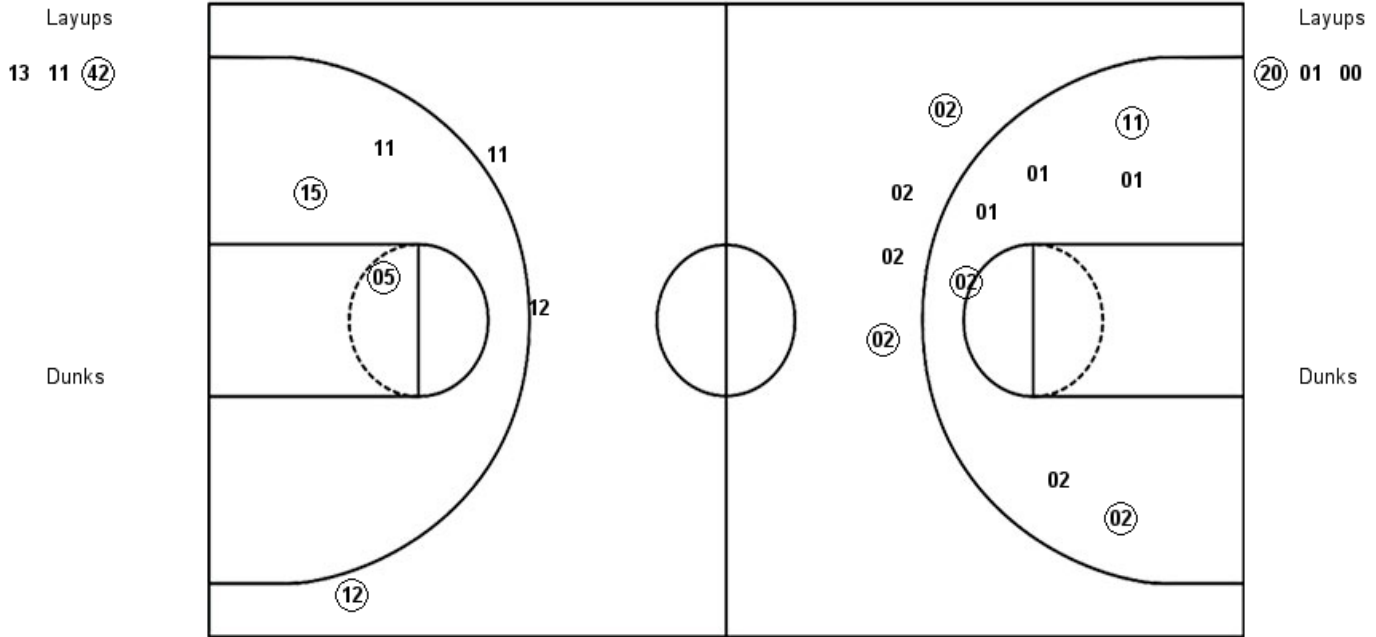
WSU : Period 2	Made	Att	Pct
Layups	3	5	60.0
Dunks	0	0	0
2PT Field Goals	5	8	62.5
3PT Field Goals	0	2	00.0
Total Field Goals	5	10	50.0

ECU : Period 2	Made	Att	Pct
Layups	1	4	25.0
Dunks	0	0	0
2PT Field Goals	2	12	16.7
3PT Field Goals	1	4	25.0
Total Field Goals	3	16	18.8

Official Shot Chart
East Carolina vs Wichita St.
PERIOD 3 Shots
 January 30, 2019 at Charles Koch Arena (Devlin Court) - Wichita, Kan.

Wichita St.

East Carolina



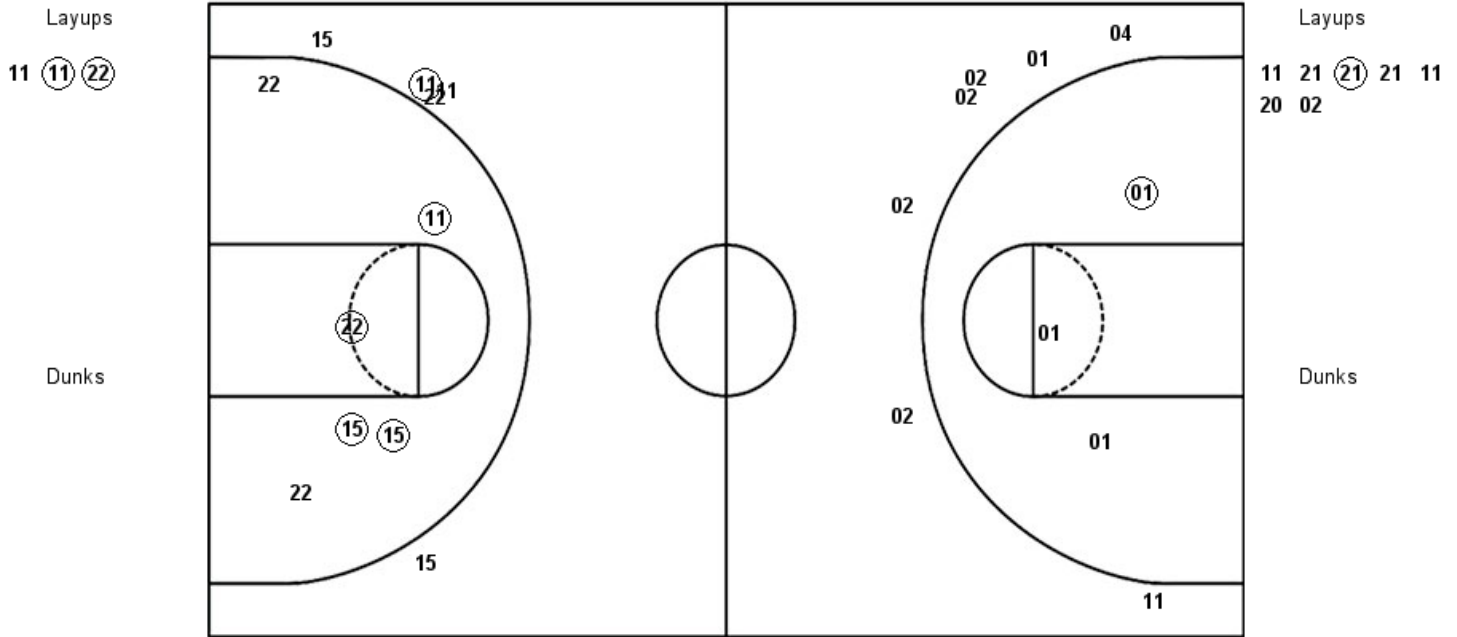
WSU : Period 3	Made	Att	Pct
Layups	1	3	33.3
Dunks	0	0	0
2PT Field Goals	3	6	50.0
3PT Field Goals	1	3	33.3
Total Field Goals	4	9	44.4

ECU : Period 3	Made	Att	Pct
Layups	1	3	33.3
Dunks	0	0	0
2PT Field Goals	4	10	40.0
3PT Field Goals	2	4	50.0
Total Field Goals	6	14	42.9

Official Shot Chart
East Carolina vs Wichita St.
PERIOD 4 Shots
 January 30, 2019 at Charles Koch Arena (Devlin Court) - Wichita, Kan.

Wichita St.

East Carolina

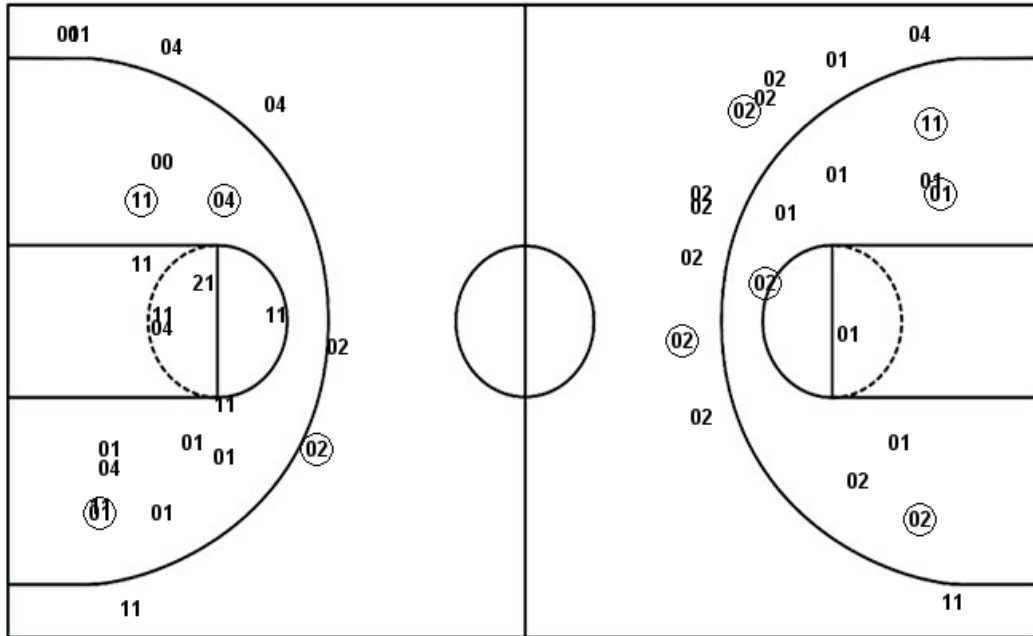


WSU : Period 4	Made	Att	Pct
Layups	2	3	66.7
Dunks	0	0	0
2PT Field Goals	6	9	66.7
3PT Field Goals	1	5	20.0
Total Field Goals	7	14	50.0

ECU : Period 4	Made	Att	Pct
Layups	1	7	14.3
Dunks	0	0	0
2PT Field Goals	2	10	20.0
3PT Field Goals	0	7	00.0
Total Field Goals	2	17	11.8

Official Shot Chart
East Carolina vs Wichita St.
East Carolina Team Shots
 January 30, 2019 at Charles Koch Arena (Devlin Court) - Wichita, Kan.

Layups



Layups

20 02 11 11 21
 00 02 04 20 01
 00 11 21 21 21
 11 20 02

Dunks

Dunks

ECU : Period 1	Made	Att	Pct
Layups	3	4	75.0
Dunks	0	0	0
2PT Field Goals	5	12	41.7
3PT Field Goals	0	3	00.0
Total Field Goals	5	15	33.3

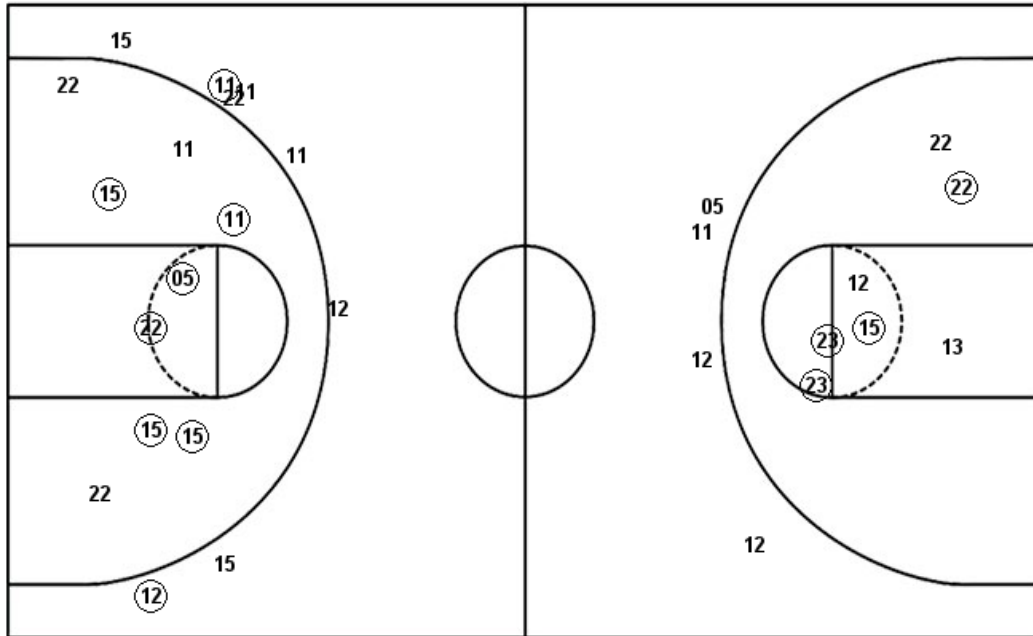
ECU : Period 3	Made	Att	Pct
Layups	1	3	33.3
Dunks	0	0	0
2PT Field Goals	4	10	40.0
3PT Field Goals	2	4	50.0
Total Field Goals	6	14	42.9

ECU : Period 2	Made	Att	Pct
Layups	1	4	25.0
Dunks	0	0	0
2PT Field Goals	2	12	16.7
3PT Field Goals	1	4	25.0
Total Field Goals	3	16	18.8

ECU : Period 4	Made	Att	Pct
Layups	1	7	14.3
Dunks	0	0	0
2PT Field Goals	2	10	20.0
3PT Field Goals	0	7	00.0
Total Field Goals	2	17	11.8

Official Shot Chart
East Carolina vs Wichita St.
Wichita St. Team Shots
 January 30, 2019 at Charles Koch Arena (Devlin Court) - Wichita, Kan.

Layups



Layups

Dunks

Dunks

WSU : Period 1	Made	Att	Pct
Layups	2	6	33.3
Dunks	0	0	0
2PT Field Goals	4	10	40.0
3PT Field Goals	0	2	00.0
Total Field Goals	4	12	33.3

WSU : Period 3	Made	Att	Pct
Layups	1	3	33.3
Dunks	0	0	0
2PT Field Goals	3	6	50.0
3PT Field Goals	1	3	33.3
Total Field Goals	4	9	44.4

WSU : Period 2	Made	Att	Pct
Layups	3	5	60.0
Dunks	0	0	0
2PT Field Goals	5	8	62.5
3PT Field Goals	0	2	00.0
Total Field Goals	5	10	50.0

WSU : Period 4	Made	Att	Pct
Layups	2	3	66.7
Dunks	0	0	0
2PT Field Goals	6	9	66.7
3PT Field Goals	1	5	20.0
Total Field Goals	7	14	50.0