

FINAL SCORE



Houston

66



Wichita St.

58

January 20, 2019 • Charles Koch Arena (Devlin Court) - Wichita, Kan.

FINAL STATISTICS

Official Box Score
Houston vs Wichita St.
Game Totals -- Final Statistics
January 20, 2019 at Charles Koch Arena (Devlin Court) - Wichita, Kan.

Houston 66

No.	Player	S	Pts	FG	3FG	FT	OR	DR	TR	PF	A	TO	Blk	Stl	Min	+/-
00	Harris, Angela		23	5-12	5-11	8-9	0	4	4	4	5	1	0	3	30	10
02	Barnes, Octavia		13	5-13	3-9	0-0	1	6	7	3	0	6	1	1	32	4
03	Branch, Dorian		6	2-8	2-7	0-0	1	1	2	2	5	1	0	1	24	-4
23	Hawkins, Serithia		8	4-7	0-1	0-1	5	7	12	3	4	2	2	3	39	10
30	Hill, Tatyana		2	1-5	0-0	0-2	0	4	4	2	0	2	1	1	22	1
05	Gladney, Dymond		0	0-1	0-1	0-0	0	0	0	1	1	4	0	0	10	-2
12	Okoene, Alyssa		2	1-2	0-0	0-0	1	1	2	3	0	4	3	0	13	7
33	Blackshell-Fair, Julia		12	5-7	0-0	2-2	3	1	4	2	2	1	0	2	30	14
	Team						2	0	2	0		0				
TOTALS			66	23-55	10-29	10-14	13	24	37	20	17	21	7	11	199	

Shooting By Period

Period	FG	FG%	3FG	3FG%	FT	FT%
1st Qtr	5-15	33%	2-10	20%	0-0	0%
2nd Qtr	6-12	50%	3-7	43%	0-0	0%
3rd Qtr	8-17	47%	4-7	57%	0-0	0%
4th Qtr	4-11	36%	1-5	20%	10-14	71%
1st Half	11-27	41%	5-17	29%	0-0	0%
2nd Half	12-28	43%	5-12	42%	10-14	71%
Game	23-55	41.8%	10-29	34.5%	10-14	71.4%

Last FG: 4th-04:32
 Biggest Run: 7-0
 Largest lead: By 13 at 3-01:48
 Technical Fouls: None.

Wichita St. 58

No.	Player	S	Pts	FG	3FG	FT	OR	DR	TR	PF	A	TO	Blk	Stl	Min	+/-
11	Lozada-Cabbage, Sabrina		18	6-11	3-5	3-4	1	3	4	1	2	2	0	0	30	-6
12	Bremaud, Carla		17	7-15	3-7	0-0	0	2	2	3	1	5	0	4	34	-5
15	Hampton, Jaida		2	0-5	0-3	2-2	1	2	3	0	3	2	0	0	23	-8
23	Bastin, Seraphine		5	2-5	0-0	1-1	3	3	6	5	3	3	0	0	24	-2
34	Smith, Shyia		4	2-3	0-1	0-0	0	4	4	1	1	0	0	3	22	-3
05	Reid, Ashley		0	0-4	0-0	0-2	0	2	2	2	4	2	0	2	20	-7
13	Prince, Raven		9	3-4	0-0	3-6	0	2	2	4	0	0	0	2	18	-4
21	Brewer, Maya		0	0-0	0-0	0-0	0	0	0	0	0	0	0	0	2	2
22	Faye, Alyssia		0	0-0	0-0	0-2	0	1	1	0	1	1	0	0	9	-1
30	Ambrosio, Cesaria		0	0-2	0-0	0-0	0	0	0	0	0	5	0	1	12	-9
42	Henderson, Asia		3	1-2	0-0	1-1	2	0	2	0	0	0	1	0	5	3
	Team						2	1	3	0		1				
TOTALS			58	21-51	6-16	10-18	9	20	29	16	15	21	1	12	199	

Shooting By Period

Period	FG	FG%	3FG	3FG%	FT	FT%
1st Qtr	4-14	29%	1-4	25%	1-3	33%
2nd Qtr	4-11	36%	0-2	00%	2-5	40%
3rd Qtr	8-12	67%	3-5	60%	0-2	00%
4th Qtr	5-14	36%	2-5	40%	7-8	88%
1st Half	8-25	32%	1-6	17%	3-8	38%
2nd Half	13-26	50%	5-10	50%	7-10	70%
Game	21-51	41.2%	6-16	37.5%	10-18	55.6%

Last FG: 4th-01:20
 Biggest Run: 8-0
 Largest lead: By 5 at 1-07:28
 Technical Fouls: None.

Game Notes:

Officials: Ron Ledington, Geraldine Smith, Brandon

Enterline

Attendance: 1457

Start Time: 2019-01-20 19:01:41

End Time: 2019-01-20 20:55:43

Game Duration: 114

Conference Game;

Score	1st	2nd	3rd	4th	TOT
HOU	12	15	20	19	66
WSU	10	10	19	19	58

HOU led for 32:20. WSU led for 5:27.
 Game was tied for 1:59.
 Times tied: 6 Lead Changes: 3

Points from	HOU	WSU
In the Paint	18	26
Off Turns	21	13
2nd Chance	10	11
Fast Break	13	3
Bench	14	12

Official Box Score
Houston vs Wichita St.
First Half Statistics Only
January 20, 2019 at Charles Koch Arena (Devlin Court) - Wichita, Kan.

Houston 27

No.	Player	S	Pts	FG	3FG	FT	OR	DR	TR	PF	A	TO	Blk	Stl	Min	+/-
00	Harris, Angela		6	2-4	2-4	0-0	0	1	1	2	2	1	0	1	12	6
12	Okoene, Alyssa		2	1-2	0-0	0-0	1	0	1	2	0	2	3	0	8	9
23	Hawkins, Serithia		0	0-2	0-1	0-0	2	5	7	1	3	2	2	2	19	9
30	Hill, Tatyana		0	0-2	0-0	0-0	0	4	4	0	0	2	0	0	12	-2
33	Blackshell-Fair, Julia		6	3-3	0-0	0-0	0	1	1	1	0	0	0	1	15	15
02	Barnes, Octavia		10	4-9	2-7	0-0	0	4	4	0	0	2	1	1	17	1
03	Branch, Dorian		3	1-4	1-4	0-0	0	0	0	2	2	1	0	1	9	-4
05	Gladney, Dymond		0	0-1	0-1	0-0	0	0	0	0	1	3	0	0	8	1
	Team		0	0-0	0-0	0-0	1	0	1	0	0	0	0	0	0	
TOTALS			27	11-27	5-17	0-0	4	15	19	8	8	13	6	6	100	

Shooting By Period

Period	FG	FG%	3FG	3FG%	FT	FT%
1st Qtr	5-15	33%	2-10	20%	0-0	0%
2nd Qtr	6-12	50%	3-7	43%	0-0	0%
1st Half	11-27	41%	5-17	29%	0-0	0%
Game	23-55	41.8%	10-29	34.5%	10-14	71.4%

Last FG Half: HOU 2nd-04:23

Wichita St. 20

No.	Player	S	Pts	FG	3FG	FT	OR	DR	TR	PF	A	TO	Blk	Stl	Min	+/-
05	Reid, Ashley		0	0-2	0-0	0-2	0	1	1	1	1	1	0	1	11	-3
11	Lozada-Cabbage, Sabrina		11	4-7	1-2	2-3	1	1	2	1	1	1	0	0	15	-3
12	Bremaud, Carla		2	1-3	0-1	0-0	0	0	0	1	0	3	0	2	15	-3
13	Prince, Raven		5	2-3	0-0	1-3	0	1	1	0	0	0	0	0	7	-6
15	Hampton, Jaida		0	0-4	0-2	0-0	1	1	2	0	0	0	0	0	11	-6
21	Brewer, Maya		0	0-0	0-0	0-0	0	0	0	0	0	0	0	0	2	2
22	Faye, Alyssia		0	0-0	0-0	0-0	0	1	1	0	0	1	0	0	4	-6
23	Bastin, Seraphine		2	1-3	0-0	0-0	2	3	5	2	2	1	0	0	11	-1
30	Ambrosio, Cesaria		0	0-2	0-0	0-0	0	0	0	0	0	4	0	1	10	-10
34	Smith, Shyia		0	0-1	0-1	0-0	0	3	3	1	1	0	0	2	14	1
42	Henderson, Asia		0	0-0	0-0	0-0	0	0	0	0	0	0	0	0	0	0
	Team		0	0-0	0-0	0-0	0	1	1	0	0	1	0	0	0	
TOTALS			20	8-25	1-6	3-8	4	12	16	6	5	12	0	6	100	

Shooting By Period

Period	FG	FG%	3FG	3FG%	FT	FT%
1st Qtr	4-14	29%	1-4	25%	1-3	33%
2nd Qtr	4-11	36%	0-2	00%	2-5	40%
1st Half	8-25	32%	1-6	17%	3-8	38%
Game	21-51	41.2%	6-16	37.5%	10-18	55.6%

Last FG Half: WSU 2nd-03:59

Game Notes:

Officials: Ron Ledington, Geraldine Smith, Brandon

Enterline

Attendance: 1457

Start Time: 2019-01-20 19:01:41

End Time: 2019-01-20 20:55:43

Game Duration: 114

Conference Game;

Score	1st	2nd	3rd	4th	TOT
HOU	12	15	20	19	66
WSU	10	10	19	19	58

Points from (This Period)	HOU	WSU
In the Paint	6	12
Off Turns	10	3
2nd Chance	2	4
Fast Break	7	0
Bench	8	5

Official Box Score
Houston vs Wichita St.
First Quarter Statistics Only
January 20, 2019 at Charles Koch Arena (Devlin Court) - Wichita, Kan.

Houston 12

No.	Player	S	Pts	FG	3FG	FT	OR	DR	TR	PF	A	TO	Blk	Stl	Min	+/-
00	Harris, Angela		0	0-1	0-1	0-0	0	1	1	0	1	0	0	1	7	2
02	Barnes, Octavia		8	3-6	2-5	0-0	0	0	0	0	0	1	1	1	10	2
03	Branch, Dorian		0	0-2	0-2	0-0	0	0	0	2	1	1	0	0	5	-8
23	Hawkins, Serithia		0	0-1	0-1	0-0	1	3	4	0	2	1	2	0	10	2
30	Hill, Tatyana		0	0-2	0-0	0-0	0	3	3	0	0	1	0	0	9	-1
05	Gladney, Dymond		0	0-1	0-1	0-0	0	0	0	0	0	0	0	0	3	0
12	Okoene, Alyssa		0	0-0	0-0	0-0	0	0	0	0	0	0	0	0	1	3
33	Blackshell-Fair, Julia		4	2-2	0-0	0-0	0	0	0	0	0	0	0	1	5	10
	Team						1	0	1	0		0				
TOTALS			12	5-15	2-10	0-0	2	7	9	2	4	4	3	3	50	

Shooting By Period

Period	FG	FG%	3FG	3FG%	FT	FT%
1st Qtr	5-15	33%	2-10	20%	0-0	0%
2nd Qtr	6-12	50%	3-7	43%	0-0	0%
1st Half	5-15	33%	2-10	20%	0-0	0%
1st Half	11-27	41%	5-17	29%	0-0	0%
Game	23-55	41.8%	10-29	34.5%	10-14	71.4%

Wichita St. 10

No.	Player	S	Pts	FG	3FG	FT	OR	DR	TR	PF	A	TO	Blk	Stl	Min	+/-
11	Lozada-Cabbage, Sabrina		3	1-3	1-2	0-0	0	1	1	0	0	0	0	0	7	-2
12	Bremaud, Carla		2	1-2	0-1	0-0	0	0	0	0	0	1	0	1	7	-2
15	Hampton, Jaida		0	0-2	0-1	0-0	1	1	2	0	0	0	0	0	7	-2
23	Bastin, Seraphine		2	1-3	0-0	0-0	2	2	4	0	2	1	0	0	7	5
34	Smith, Shya		0	0-0	0-0	0-0	0	1	1	0	1	0	0	1	8	0
05	Reid, Ashley		0	0-0	0-0	0-0	0	1	1	1	0	0	0	0	3	0
13	Prince, Raven		3	1-2	0-0	1-3	0	1	1	0	0	0	0	0	3	0
21	Brewer, Maya		0	0-0	0-0	0-0	0	0	0	0	0	0	0	0	0	0
22	Faye, Alyssia		0	0-0	0-0	0-0	0	0	0	0	0	0	0	0	2	-2
30	Ambrosio, Cesaria		0	0-2	0-0	0-0	0	0	0	0	0	3	0	0	6	-7
42	Henderson, Asia		0	0-0	0-0	0-0	0	0	0	0	0	0	0	0	0	0
	Team						0	1	1	0		0				
TOTALS			10	4-14	1-4	1-3	3	8	11	1	3	5	0	2	50	

Shooting By Period

Period	FG	FG%	3FG	3FG%	FT	FT%
1st Qtr	4-14	29%	1-4	25%	1-3	33%
2nd Qtr	4-11	36%	0-2	00%	2-5	40%
1st Half	4-14	29%	1-4	25%	1-3	33%
1st Half	8-25	32%	1-6	17%	3-8	38%
Game	21-51	41.2%	6-16	37.5%	10-18	55.6%

Game Notes:

Officials: Ron Ledington, Geraldine Smith, Brandon

Enterline

Attendance: 1457

Start Time: 2019-01-20 19:01:41

End Time: 2019-01-20 20:55:43

Game Duration: 114

Conference Game:

Score	1st	2nd	3rd	4th	TOT
HOU	12	15	20	19	66
WSU	10	10	19	19	58

Points from (This Period)	HOU	WSU
In the Paint	4	4
Off Turns	4	2
2nd Chance	0	2
Fast Break	4	0
Bench	4	3

Official Play-By-Play
Houston vs Wichita St.
First Quarter
January 20, 2019 at Charles Koch Arena (Devlin Court) - Wichita, Kan.

Period 1

Starters:

Houston: 0 HARRIS, ANGELA; 23 HAWKINS, SERITHIA; 30 HILL, TATYANA; 2 BARNES, OCTAVIA; 3 BRANCH, DORIAN;

Wichita St.: 11 LOZADA-CABBAGE, SABRINA; 12 BREMAUD, CARLA; 15 HAMPTON, JAIDA; 23 BASTIN, SERAPHINE; 34 SMITH, SHYIA;

Time	VISITORS: Houston	Score	Margin	HOME: Wichita St.
09:38	TURNOVER (TRAVEL) by HILL, TATYANA			
09:19				MISSED LAYUP by BASTIN, SERAPHINE
09:10				REBOUND (OFF) by HAMPTON, JAIDA
09:10				MISSED LAYUP by HAMPTON, JAIDA
09:09				REBOUND (OFF) by BASTIN, SERAPHINE
08:57		2-0	H 2	GOOD! JUMPER by BREMAUD, CARLA
08:57				ASSIST by BASTIN, SERAPHINE
08:31	GOOD! JUMPER by BARNES, OCTAVIA	2-2	T	
08:31	ASSIST by BRANCH, DORIAN			
07:55		5-2	H 3	GOOD! 3PTR by LOZADA-CABBAGE, SABRINA
07:55				ASSIST by BASTIN, SERAPHINE
07:39	MISSED 3PTR by BRANCH, DORIAN			
07:34				REBOUND (DEF) by SMITH, SHYIA
07:28		7-2	H 5	GOOD! JUMPER by BASTIN, SERAPHINE [PNT]
07:08	TURNOVER (BADPASS) by BRANCH, DORIAN			
07:08				STEAL by BREMAUD, CARLA
06:51				MISSED 3PTR by BREMAUD, CARLA
06:49	REBOUND (DEF) by HAWKINS, SERITHIA			
06:35	MISSED 3PTR by HARRIS, ANGELA			
06:31				REBOUND (DEF) by BASTIN, SERAPHINE
06:08				TURNOVER (LOSTBALL) by BASTIN, SERAPHINE
06:08				SUB OUT: BASTIN, SERAPHINE
06:08				SUB IN: AMBROSIO, CESARIA
06:08	SUB OUT: BRANCH, DORIAN			
06:08	SUB IN: BLACKSHELL-FAIR, JULIA			
06:03	MISSED 3PTR by BARNES, OCTAVIA			
06:00				REBOUND (DEF) by HAMPTON, JAIDA
05:43				TURNOVER (BADPASS) by AMBROSIO, CESARIA
05:24	TURNOVER (LOSTBALL) by HAWKINS, SERITHIA			
05:24				STEAL by SMITH, SHYIA
05:03				MISSED 3PTR by LOZADA-CABBAGE, SABRINA
05:01	REBOUND (DEF) by HILL, TATYANA			
05:01				
04:42	GOOD! 3PTR by BARNES, OCTAVIA	7-5	H 2	
04:42	ASSIST by HAWKINS, SERITHIA			
04:15				MISSED 3PTR by HAMPTON, JAIDA
04:11	REBOUND (DEF) by HARRIS, ANGELA			
04:07	MISSED 3PTR by HAWKINS, SERITHIA			
04:04				REBOUND (DEF) by LOZADA-CABBAGE, SABRINA
04:01				TURNOVER (LOSTBALL) by AMBROSIO, CESARIA
04:01	STEAL by BLACKSHELL-FAIR, JULIA			
03:56	GOOD! LAYUP by BLACKSHELL-FAIR, JULIA [FB]	7-7	T	
03:41				TURNOVER (LOSTBALL) by BREMAUD, CARLA
03:41	STEAL by HARRIS, ANGELA			
03:36	GOOD! LAYUP by BLACKSHELL-FAIR, JULIA [FB]	7-9	V 2	
03:36	ASSIST by HARRIS, ANGELA			
03:10				MISSED LAYUP by LOZADA-CABBAGE, SABRINA
03:10	BLOCK by HAWKINS, SERITHIA			
03:02	REBOUND (DEF) by HILL, TATYANA			
03:00	MISSED 3PTR by BARNES, OCTAVIA			
02:58				REBOUND (DEF) by TEAM
02:58				SUB OUT: LOZADA-CABBAGE, SABRINA
02:58				SUB IN: PRINCE, RAVEN
02:58				SUB OUT: BREMAUD, CARLA
02:58				SUB IN: BASTIN, SERAPHINE
02:58				SUB OUT: HAMPTON, JAIDA
02:58				SUB IN: REID, ASHLEY
02:58	SUB OUT: BLACKSHELL-FAIR, JULIA			
02:58	SUB IN: BRANCH, DORIAN			
02:50				MISSED LAYUP by PRINCE, RAVEN
02:46	REBOUND (DEF) by HILL, TATYANA			
02:37	MISSED 3PTR by BARNES, OCTAVIA			
02:32	REBOUND (OFF) by TEAM			
02:32	SUB OUT: HARRIS, ANGELA			
02:32	SUB IN: GLADNEY, DYMOND			
02:28				FOUL (PERSONAL) by REID, ASHLEY
02:26	MISSED LAYUP by HILL, TATYANA			
02:22	REBOUND (OFF) by HAWKINS, SERITHIA			
02:07	MISSED JUMPER by HILL, TATYANA			
02:03				REBOUND (DEF) by PRINCE, RAVEN
01:53		9-9	T	GOOD! LAYUP by PRINCE, RAVEN
01:53				ASSIST by SMITH, SHYIA
01:53	FOUL (PERSONAL) by BRANCH, DORIAN			
01:53				SUB OUT: SMITH, SHYIA
01:53				SUB IN: FAYE, ALYSSIA
01:53		10-9	H 1	GOOD! FT by PRINCE, RAVEN

Time	VISITORS: Houston	Score	Margin	HOME: Wichita St.
01:36	MISSED 3PTR by BRANCH,DORIAN			
01:32				REBOUND (DEF) by BASTIN,SERAPHINE
01:28	FOUL (PERSONAL) by BRANCH,DORIAN			
01:28				MISSED FT by PRINCE,RAVEN
01:28				REBOUND (OFF) by TEAM
01:28	SUB OUT: BRANCH,DORIAN			
01:28	SUB IN: BLACKSHELL-FAIR,JULIA			
01:28	SUB OUT: HILL,TATYANA			
01:28	SUB IN: OKOENE,ALYSSA			
01:28				MISSED FT by PRINCE,RAVEN
01:28	REBOUND (DEF) by HAWKINS,SERITHIA			
01:19	MISSED 3PTR by GLADNEY,DYMOND			
01:15				REBOUND (DEF) by REID,ASHLEY
01:12				MISSED LAYUP by AMBROSIO,CESARIA
01:12	BLOCK by BARNES,OCTAVIA			
01:04				REBOUND (OFF) by BASTIN,SERAPHINE
01:03				MISSED JUMPER by BASTIN,SERAPHINE
01:03	BLOCK by HAWKINS,SERITHIA			
00:56	REBOUND (DEF) by HAWKINS,SERITHIA			
00:51	GOOD! 3PTR by BARNES,OCTAVIA	10-12	V 2	
00:51	ASSIST by HAWKINS,SERITHIA			
00:25				TURNOVER (BADPASS) by AMBROSIO,CESARIA
00:25	STEAL by BARNES,OCTAVIA			
00:19	TURNOVER (BADPASS) by BARNES,OCTAVIA			
00:00				MISSED LAYUP by AMBROSIO,CESARIA
00:00				REBOUND (OFF) by TEAM

Houston 12, Wichita St. 10

Points from (This Period)	HOU	WSU
In the Paint	4	4
Off Turns	4	2
2nd Chance	0	2
Fast Break	4	0
Bench	4	3

Official Box Score
Houston vs Wichita St.
Second Quarter Statistics Only
January 20, 2019 at Charles Koch Arena (Devlin Court) - Wichita, Kan.

Houston 15

No.	Player	S	Pts	FG	3FG	FT	OR	DR	TR	PF	A	TO	Blk	Stl	Min	+/-
00	Harris, Angela		6	2-3	2-3	0-0	0	0	0	2	1	1	0	0	5	4
02	Barnes, Octavia		2	1-3	0-2	0-0	0	4	4	0	0	1	0	0	7	-1
03	Branch, Dorian		3	1-2	1-2	0-0	0	0	0	0	1	0	0	1	4	4
23	Hawkins, Serithia		0	0-1	0-0	0-0	1	2	3	1	1	1	0	2	9	7
30	Hill, Tatyana		0	0-0	0-0	0-0	0	1	1	0	0	1	0	0	3	-1
05	Gladney, Dymond		0	0-0	0-0	0-0	0	0	0	0	1	3	0	0	5	1
12	Okoene, Alyssa		2	1-2	0-0	0-0	1	0	1	2	0	2	3	0	7	6
33	Blackshell-Fair, Julia		2	1-1	0-0	0-0	0	1	1	1	0	0	0	0	10	5
	Team						0	0	0	0		0				
TOTALS			15	6-12	3-7	0-0	2	8	10	6	4	9	3	3	50	

Shooting By Period

Period	FG	FG%	3FG	3FG%	FT	FT%
3rd Qtr	8-17	47%	4-7	57%	0-0	0%
4th Qtr	4-11	36%	1-5	20%	10-14	71%
2nd Half	6-12	50%	3-7	43%	0-0	0%
2nd Half	12-28	43%	5-12	42%	10-14	71%
Game	23-55	41.8%	10-29	34.5%	10-14	71.4%

Wichita St. 10

No.	Player	S	Pts	FG	3FG	FT	OR	DR	TR	PF	A	TO	Blk	Stl	Min	+/-
11	Lozada-Cabbage, Sabrina		8	3-4	0-0	2-3	1	0	1	1	1	1	0	0	8	-1
12	Bremaud, Carla		0	0-1	0-0	0-0	0	0	0	1	0	2	0	1	8	-1
15	Hampton, Jaida		0	0-2	0-1	0-0	0	0	0	0	0	0	0	0	4	-4
23	Bastin, Seraphine		0	0-0	0-0	0-0	0	1	1	2	0	0	0	0	4	-6
34	Smith, Shyia		0	0-1	0-1	0-0	0	2	2	1	0	0	0	1	6	1
05	Reid, Ashley		0	0-2	0-0	0-2	0	0	0	0	1	1	0	1	8	-3
13	Prince, Raven		2	1-1	0-0	0-0	0	0	0	0	0	0	0	0	4	-6
21	Brewer, Maya		0	0-0	0-0	0-0	0	0	0	0	0	0	0	0	2	2
22	Faye, Alyssia		0	0-0	0-0	0-0	0	1	1	0	0	1	0	0	2	-4
30	Ambrosio, Cesaria		0	0-0	0-0	0-0	0	0	0	0	0	1	0	1	4	-3
42	Henderson, Asia		0	0-0	0-0	0-0	0	0	0	0	0	0	0	0	0	0
	Team						0	0	0	0		1				
TOTALS			10	4-11	0-2	2-5	1	4	5	5	2	7	0	4	50	

Shooting By Period

Period	FG	FG%	3FG	3FG%	FT	FT%
3rd Qtr	8-12	67%	3-5	60%	0-2	00%
4th Qtr	5-14	36%	2-5	40%	7-8	88%
2nd Half	4-11	36%	0-2	00%	2-5	40%
2nd Half	13-26	50%	5-10	50%	7-10	70%
Game	21-51	41.2%	6-16	37.5%	10-18	55.6%

Game Notes:

Officials: Ron Ledington, Geraldine Smith, Brandon

Enterline

Attendance: 1457

Start Time: 2019-01-20 19:01:41

End Time: 2019-01-20 20:55:43

Game Duration: 114

Conference Game:

Score	1st	2nd	3rd	4th	TOT
HOU	12	15	20	19	66
WSU	10	10	19	19	58

Points from (This Period)	HOU	WSU
In the Paint	2	8
Off Turns	6	1
2nd Chance	2	2
Fast Break	3	0
Bench	4	2

Official Play-By-Play
Houston vs Wichita St.
Second Quarter
January 20, 2019 at Charles Koch Arena (Devlin Court) - Wichita, Kan.

Period 2

Starters:

Houston: 0 HARRIS, ANGELA; 23 HAWKINS, SERITHIA; 30 HILL, TATYANA; 2 BARNES, OCTAVIA; 3 BRANCH, DORIAN;

Wichita St.: 11 LOZADA-CABBAGE, SABRINA; 12 BREMAUD, CARLA; 15 HAMPTON, JAIDA; 23 BASTIN, SERAPHINE; 34 SMITH, SHYIA;

Time	VISITORS: Houston	Score	Margin	HOME: Wichita St.
09:47	GOOD! JUMPER by BARNES, OCTAVIA	10-14	V 4	
09:47	ASSIST by GLADNEY, DYMOND			
09:25				TURNOVER (BADPASS) by AMBROSIO, CESARIA
09:25	STEAL by HAWKINS, SERITHIA			
09:20	MISSED LAYUP by HAWKINS, SERITHIA			
09:17				REBOUND (DEF) by FAYE, ALYSSIA
09:10				MISSED LAYUP by REID, ASHLEY
09:10	BLOCK by OKOENE, ALYSSA			
09:06	REBOUND (DEF) by BARNES, OCTAVIA			
08:40	GOOD! JUMPER by BLACKSHELL-FAIR, JULIA	10-16	V 6	
08:07				TURNOVER (LOSTBALL) by FAYE, ALYSSIA
08:07	STEAL by HAWKINS, SERITHIA			
08:04				FOUL (PERSONAL) by BASTIN, SERAPHINE
08:04				SUB OUT: REID, ASHLEY
08:04				SUB IN: HAMPTON, JAIDA
08:04				SUB OUT: FAYE, ALYSSIA
08:04				SUB IN: LOZADA-CABBAGE, SABRINA
08:04				SUB OUT: AMBROSIO, CESARIA
08:04				SUB IN: BREMAUD, CARLA
08:04	SUB OUT: GLADNEY, DYMOND			
08:04	SUB IN: BRANCH, DORIAN			
08:04	SUB OUT: HAWKINS, SERITHIA			
08:04	SUB IN: HARRIS, ANGELA			
07:48				FOUL (PERSONAL) by LOZADA-CABBAGE, SABRINA
07:47	MISSED JUMPER by OKOENE, ALYSSA			
07:43				REBOUND (DEF) by BASTIN, SERAPHINE
07:32		12-16	V 4	GOOD! LAYUP by PRINCE, RAVEN
07:32				ASSIST by LOZADA-CABBAGE, SABRINA
07:21				FOUL (PERSONAL) by BASTIN, SERAPHINE
07:17	TURNOVER (TRAVEL) by BARNES, OCTAVIA			
07:17	SUB OUT: BARNES, OCTAVIA			
07:17	SUB IN: HAWKINS, SERITHIA			
07:16				TURNOVER (BADPASS) by LOZADA-CABBAGE, SABRINA
07:16	STEAL by BRANCH, DORIAN			
07:06	GOOD! 3PTR by BRANCH, DORIAN	12-19	V 7	
07:06	ASSIST by HARRIS, ANGELA			
06:53				TIMEOUT 30SEC
06:40				MISSED JUMPER by HAMPTON, JAIDA
06:40				REBOUND (OFF) by LOZADA-CABBAGE, SABRINA
06:40	BLOCK by OKOENE, ALYSSA			
06:35		14-19	V 5	GOOD! JUMPER by LOZADA-CABBAGE, SABRINA [PNT]
06:26	TURNOVER (BADPASS) by HARRIS, ANGELA			
06:26				STEAL by BREMAUD, CARLA
06:21				TURNOVER (BADPASS) by BREMAUD, CARLA
06:08	GOOD! 3PTR by HARRIS, ANGELA	14-22	V 8	
06:08	ASSIST by BRANCH, DORIAN			
05:42	FOUL (PERSONAL) by HARRIS, ANGELA			
05:42				SUB OUT: BASTIN, SERAPHINE
05:42				SUB IN: REID, ASHLEY
05:42				SUB OUT: PRINCE, RAVEN
05:42				SUB IN: SMITH, SHYIA
05:22		16-22	V 6	GOOD! LAYUP by LOZADA-CABBAGE, SABRINA
05:22	FOUL (PERSONAL) by OKOENE, ALYSSA			
05:11		17-22	V 5	GOOD! FT by LOZADA-CABBAGE, SABRINA
05:11	MISSED 3PTR by HARRIS, ANGELA			
05:08	REBOUND (OFF) by HAWKINS, SERITHIA			
05:06	MISSED 3PTR by BRANCH, DORIAN			
04:59	REBOUND (OFF) by OKOENE, ALYSSA			
04:59	GOOD! LAYUP by OKOENE, ALYSSA	17-24	V 7	
04:30				MISSED 3PTR by HAMPTON, JAIDA
04:27	REBOUND (DEF) by HAWKINS, SERITHIA			
04:23	GOOD! 3PTR by HARRIS, ANGELA [FB]	17-27	V 10	
04:23	ASSIST by HAWKINS, SERITHIA			
04:02	FOUL (PERSONAL) by HARRIS, ANGELA			
04:02				SUB OUT: HAMPTON, JAIDA
04:02				SUB IN: BREWER, MAYA
04:02	SUB OUT: HARRIS, ANGELA			
04:02	SUB IN: BARNES, OCTAVIA			
04:02	SUB OUT: BRANCH, DORIAN			
04:02	SUB IN: GLADNEY, DYMOND			
03:59		19-27	V 8	GOOD! LAYUP by LOZADA-CABBAGE, SABRINA
03:59				ASSIST by REID, ASHLEY
03:49				FOUL (PERSONAL) by SMITH, SHYIA
03:40	TURNOVER (3SEC) by OKOENE, ALYSSA			
03:26				MISSED 3PTR by SMITH, SHYIA
03:22	REBOUND (DEF) by BLACKSHELL-FAIR, JULIA			

Time	VISITORS: Houston	Score	Margin	HOME: Wichita St.
03:14	TURNOVER (BADPASS) by GLADNEY,DYMOND			
03:14				STEAL by REID,ASHLEY
03:06				MISSED LAYUP by BREMAUD,CARLA
03:06	BLOCK by OKOENE,ALYSSA			
03:02	REBOUND (DEF) by BARNES,OCTAVIA			
02:59	FOUL (OFF) by OKOENE,ALYSSA			
02:59	TURNOVER (OFFENSIVE) by OKOENE,ALYSSA			
02:59	SUB OUT: OKOENE,ALYSSA			
02:59	SUB IN: HILL,TATYANA			
02:46				TURNOVER (5SEC) by
02:30	TURNOVER (LOSTBALL) by HILL,TATYANA			
02:30				STEAL by SMITH,SHYIA
02:25				SUB OUT: BREWER,MAYA
02:25				SUB IN: AMBROSIO,CESARIA
02:17	FOUL (PERSONAL) by HAWKINS,SERITHIA			
02:17		20-27	V 7	GOOD! FT by LOZADA-CABBAGE,SABRINA
02:17				MISSED FT by LOZADA-CABBAGE,SABRINA
02:16	REBOUND (DEF) by HILL,TATYANA			
02:03	TURNOVER (OTHER) by GLADNEY,DYMOND			
01:37				FOUL (OFF) by BREMAUD,CARLA
01:37				TURNOVER (OFFENSIVE) by BREMAUD,CARLA
01:26	MISSED 3PTR by BARNES,OCTAVIA			
01:23				REBOUND (DEF) by SMITH,SHYIA
01:20				TURNOVER (BADPASS) by REID,ASHLEY
01:04	TURNOVER (BADPASS) by HAWKINS,SERITHIA			
01:04				STEAL by AMBROSIO,CESARIA
01:01	FOUL (PERSONAL) by BLACKSHELL-FAIR,JULIA			
01:01				MISSED FT by REID,ASHLEY
01:01				REBOUND (OFF) by TEAM
01:01				MISSED FT by REID,ASHLEY
00:59	REBOUND (DEF) by HAWKINS,SERITHIA			
00:55	TURNOVER (BADPASS) by GLADNEY,DYMOND			
00:55	SUB OUT: GLADNEY,DYMOND			
00:55	SUB IN: HARRIS,ANGELA			
00:36				MISSED JUMPER by LOZADA-CABBAGE,SABRINA
00:33	REBOUND (DEF) by BARNES,OCTAVIA			
00:08	MISSED 3PTR by BARNES,OCTAVIA			
00:05				REBOUND (DEF) by SMITH,SHYIA
00:00				MISSED JUMPER by REID,ASHLEY
00:00	REBOUND (DEF) by BARNES,OCTAVIA			

Houston 27, Wichita St. 20

Points from (This Period)	HOU	WSU
In the Paint	2	8
Off Turns	6	1
2nd Chance	2	2
Fast Break	3	0
Bench	4	2

Official Box Score
Houston vs Wichita St.
Second Half Statistics Only
January 20, 2019 at Charles Koch Arena (Devlin Court) - Wichita, Kan.

Houston 39

No.	Player	S	Pts	FG	3FG	FT	OR	DR	TR	PF	A	TO	Blk	Stl	Min	+/-
00	Harris, Angela		17	3-8	3-7	8-9	0	3	3	2	3	0	0	2	18	4
12	Okoene, Alyssa		0	0-0	0-0	0-0	0	1	1	1	0	2	0	0	4	-2
23	Hawkins, Serithia		8	4-5	0-0	0-1	3	2	5	2	1	0	0	1	20	1
30	Hill, Tatyana		2	1-3	0-0	0-2	0	0	0	2	0	0	1	1	10	3
33	Blackshell-Fair, Julia		6	2-4	0-0	2-2	3	0	3	1	2	1	0	1	16	-1
02	Barnes, Octavia		3	1-4	1-2	0-0	1	2	3	3	0	4	0	0	15	3
03	Branch, Dorian		3	1-4	1-3	0-0	1	1	2	0	3	0	0	0	15	0
05	Gladney, Dymond		0	0-0	0-0	0-0	0	0	0	1	0	1	0	0	2	-3
	Team		0	0-0	0-0	0-0	1	0	1	0	0	0	0	0	0	
TOTALS			39	12-28	5-12	10-14	9	9	18	12	9	8	1	5	99	

Shooting By Period

Period	FG	FG%	3FG	3FG%	FT	FT%
3rd Qtr	8-17	47%	4-7	57%	0-0	0%
4th Qtr	4-11	36%	1-5	20%	10-14	71%
2nd Half	12-28	43%	5-12	42%	10-14	71%
Game	23-55	41.8%	10-29	34.5%	10-14	71.4%

Last FG Half: HOU 4th-04:32

Wichita St. 38

No.	Player	S	Pts	FG	3FG	FT	OR	DR	TR	PF	A	TO	Blk	Stl	Min	+/-
05	Reid, Ashley		0	0-2	0-0	0-0	0	1	1	1	3	1	0	1	9	-4
11	Lozada-Cabbage, Sabrina		7	2-4	2-3	1-1	0	2	2	0	1	1	0	0	16	-3
12	Bremaud, Carla		15	6-12	3-6	0-0	0	2	2	2	1	2	0	2	19	-2
13	Prince, Raven		4	1-1	0-0	2-3	0	1	1	4	0	0	0	2	11	2
15	Hampton, Jaida		2	0-1	0-1	2-2	0	1	1	0	3	2	0	0	12	-2
21	Brewer, Maya		0	0-0	0-0	0-0	0	0	0	0	0	0	0	0	0	0
22	Faye, Alyssia		0	0-0	0-0	0-2	0	0	0	0	1	0	0	0	5	5
23	Bastin, Seraphine		3	1-2	0-0	1-1	1	0	1	3	1	2	0	0	13	-1
30	Ambrosio, Cesaria		0	0-0	0-0	0-0	0	0	0	0	0	1	0	0	1	1
34	Smith, Shyia		4	2-2	0-0	0-0	0	1	1	0	0	0	0	1	8	-4
42	Henderson, Asia		3	1-2	0-0	1-1	2	0	2	0	0	0	1	0	5	3
	Team		0	0-0	0-0	0-0	2	0	2	0	0	0	0	0	0	
TOTALS			38	13-26	5-10	7-10	5	8	13	10	10	9	1	6	99	

Shooting By Period

Period	FG	FG%	3FG	3FG%	FT	FT%
3rd Qtr	8-12	67%	3-5	60%	0-2	00%
4th Qtr	5-14	36%	2-5	40%	7-8	88%
2nd Half	13-26	50%	5-10	50%	7-10	70%
Game	21-51	41.2%	6-16	37.5%	10-18	55.6%

Last FG Half: WSU 4th-01:20

Game Notes:

Officials: Ron Ledington, Geraldine Smith, Brandon

Enterline

Attendance: 1457

Start Time: 2019-01-20 19:01:41

End Time: 2019-01-20 20:55:43

Game Duration: 114

Conference Game;

Score	1st	2nd	3rd	4th	TOT
HOU	12	15	20	19	66
WSU	10	10	19	19	58

Points from (This Period)	HOU	WSU
In the Paint	12	14
Off Turns	11	10
2nd Chance	8	7
Fast Break	6	3
Bench	6	7

Official Box Score
Houston vs Wichita St.
Third Quarter Statistics Only
January 20, 2019 at Charles Koch Arena (Devlin Court) - Wichita, Kan.

Houston 39

No.	Player	S	Pts	FG	3FG	FT	OR	DR	TR	PF	A	TO	Blk	Stl	Min	+/-
00	Harris, Angela		9	3-5	3-4	0-0	0	0	0	0	1	0	0	0	8	4
02	Barnes, Octavia		0	0-3	0-1	0-0	0	2	2	1	0	1	0	0	7	1
03	Branch, Dorian		3	1-2	1-2	0-0	0	1	1	0	3	0	0	0	10	1
23	Hawkins, Serithia		4	2-2	0-0	0-0	1	1	2	1	1	0	0	1	10	1
30	Hill, Tatyana		2	1-2	0-0	0-0	0	0	0	1	0	0	0	1	4	2
05	Gladney, Dymond		0	0-0	0-0	0-0	0	0	0	1	0	1	0	0	2	-3
12	Okoene, Alyssa		0	0-0	0-0	0-0	0	1	1	0	0	1	0	0	3	0
33	Blackshell-Fair, Julia		2	1-3	0-0	0-0	1	0	1	1	2	1	0	1	6	-1
	Team						1	0	1	0		0				
TOTALS			20	8-17	4-7	0-0	3	5	8	5	7	4	0	3	50	

Shooting By Period

Period	FG	FG%	3FG	3FG%	FT	FT%
2nd Half	0-0	0%	0-0	0%	0-0	0%
Game	23-55	41.8%	10-29	34.5%	10-14	71.4%

Wichita St. 38

No.	Player	S	Pts	FG	3FG	FT	OR	DR	TR	PF	A	TO	Blk	Stl	Min	+/-
11	Lozada-Cabbage, Sabrina		3	1-1	1-1	0-0	0	1	1	0	1	1	0	0	9	-1
12	Bremaud, Carla		12	5-7	2-3	0-0	0	2	2	0	1	0	0	0	10	-1
15	Hampton, Jaida		0	0-1	0-1	0-0	0	1	1	0	2	1	0	0	8	-4
23	Bastin, Seraphine		0	0-1	0-0	0-0	0	0	0	1	1	2	0	0	7	-1
34	Smith, Shyia		4	2-2	0-0	0-0	0	1	1	0	0	0	0	1	8	-4
05	Reid, Ashley		0	0-0	0-0	0-0	0	0	0	0	0	0	0	0	3	0
13	Prince, Raven		0	0-0	0-0	0-0	0	0	0	0	0	0	0	2	3	0
21	Brewer, Maya		0	0-0	0-0	0-0	0	0	0	0	0	0	0	0	0	0
22	Faye, Alyssia		0	0-0	0-0	0-2	0	0	0	0	1	0	0	0	2	3
30	Ambrosio, Cesaria		0	0-0	0-0	0-0	0	0	0	0	0	0	0	0	0	0
42	Henderson, Asia		0	0-0	0-0	0-0	0	0	0	0	0	0	0	0	0	3
	Team						0	0	0	0		0				
TOTALS			19	8-12	3-5	0-2	0	5	5	1	6	4	0	3	50	

Shooting By Period

Period	FG	FG%	3FG	3FG%	FT	FT%
2nd Half	0-0	0%	0-0	0%	0-0	0%
Game	21-51	41.2%	6-16	37.5%	10-18	55.6%

Game Notes:

Officials: Ron Ledington, Geraldine Smith, Brandon Enterline
 Attendance: 1457

Start Time: 2019-01-20 19:01:41
 End Time: 2019-01-20 20:55:43
 Game Duration: 114
 Conference Game:

Score	1st	2nd	3rd	4th	TOT
HOU	12	15	20	19	66
WSU	10	10	19	19	58

Points from (This Period)	HOU	WSU
In the Paint	6	8
Off Turns	5	5
2nd Chance	3	0
Fast Break	2	0
Bench	2	0

Official Play-By-Play
Houston vs Wichita St.
Third Quarter
January 20, 2019 at Charles Koch Arena (Devlin Court) - Wichita, Kan.

Period 3

Starters:

Houston: 0 HARRIS, ANGELA; 23 HAWKINS, SERITHIA; 30 HILL, TATYANA; 2 BARNES, OCTAVIA; 3 BRANCH, DORIAN;

Wichita St.: 11 LOZADA-CABBAGE, SABRINA; 12 BREMAUD, CARLA; 15 HAMPTON, JAIDA; 23 BASTIN, SERAPHINE; 34 SMITH, SHYIA;

Time	VISITORS: Houston	Score	Margin	HOME: Wichita St.
09:46	GOOD! 3PTR by HARRIS, ANGELA	20-30	V 10	
09:46	ASSIST by BRANCH, DORIAN			
09:28	FOUL (PERSONAL) by HILL, TATYANA			
09:26		23-30	V 7	GOOD! 3PTR by BREMAUD, CARLA
09:26				ASSIST by BASTIN, SERAPHINE
09:10	GOOD! LAYUP by HILL, TATYANA	23-32	V 9	
09:10	ASSIST by HAWKINS, SERITHIA			
08:50				MISSED LAYUP by BASTIN, SERAPHINE
08:45	REBOUND (DEF) by BARNES, OCTAVIA			
08:33	MISSED 3PTR by BARNES, OCTAVIA			
08:29	REBOUND (OFF) by TEAM			
08:15	GOOD! 3PTR by BRANCH, DORIAN	23-35	V 12	
08:15	ASSIST by HARRIS, ANGELA			
07:58				TURNOVER (BADPASS) by LOZADA-CABBAGE, SABRINA
07:58	STEAL by HILL, TATYANA			
07:58				FOUL (PERSONAL) by BASTIN, SERAPHINE
07:38	TURNOVER (BADPASS) by BARNES, OCTAVIA			
07:14				MISSED LAYUP by BREMAUD, CARLA
07:10	REBOUND (DEF) by BARNES, OCTAVIA			
07:02	MISSED 3PTR by HARRIS, ANGELA			
06:59				REBOUND (DEF) by SMITH, SHYIA
06:49		26-35	V 9	GOOD! 3PTR by LOZADA-CABBAGE, SABRINA
06:49				ASSIST by BREMAUD, CARLA
06:29	MISSED LAYUP by HILL, TATYANA			
06:25	REBOUND (OFF) by HAWKINS, SERITHIA			
06:23	MISSED 3PTR by BRANCH, DORIAN			
06:21				REBOUND (DEF) by LOZADA-CABBAGE, SABRINA
06:21	FOUL (PERSONAL) by HAWKINS, SERITHIA			
06:05				TURNOVER (LOSTBALL) by BASTIN, SERAPHINE
05:50	GOOD! JUMPER by HAWKINS, SERITHIA	26-37	V 11	
05:36		28-37	V 9	GOOD! LAYUP by BREMAUD, CARLA
05:36				ASSIST by LOZADA-CABBAGE, SABRINA
05:36				TIMEOUT 30SEC
05:36	SUB OUT: HILL, TATYANA			
05:36	SUB IN: BLACKSHELL-FAIR, JULIA			
05:27	MISSED JUMPER by BARNES, OCTAVIA			
05:20	REBOUND (OFF) by BLACKSHELL-FAIR, JULIA			
05:20	MISSED LAYUP by BLACKSHELL-FAIR, JULIA			
05:20				REBOUND (DEF) by BREMAUD, CARLA
05:02				TURNOVER (LOSTBALL) by BASTIN, SERAPHINE
05:02	STEAL by HAWKINS, SERITHIA			
04:57	MISSED LAYUP by HARRIS, ANGELA			
04:53				REBOUND (DEF) by HAMPTON, JAIDA
04:52				
04:45		30-37	V 7	GOOD! JUMPER by SMITH, SHYIA [PNT]
04:45				ASSIST by HAMPTON, JAIDA
04:16	GOOD! 3PTR by HARRIS, ANGELA	30-40	V 10	
04:16	ASSIST by BLACKSHELL-FAIR, JULIA			
03:53				MISSED 3PTR by HAMPTON, JAIDA
03:50	REBOUND (DEF) by HAWKINS, SERITHIA			
03:46	MISSED LAYUP by BARNES, OCTAVIA			
03:43				REBOUND (DEF) by BREMAUD, CARLA
03:24		32-40	V 8	GOOD! LAYUP by SMITH, SHYIA
03:24				ASSIST by HAMPTON, JAIDA
03:07	TURNOVER (BADPASS) by BLACKSHELL-FAIR, JULIA			
03:07				STEAL by SMITH, SHYIA
03:06	FOUL (PERSONAL) by BARNES, OCTAVIA			
03:06				SUB OUT: BASTIN, SERAPHINE
03:06				SUB IN: PRINCE, RAVEN
03:06				SUB OUT: LOZADA-CABBAGE, SABRINA
03:06				SUB IN: REID, ASHLEY
03:06	SUB OUT: BARNES, OCTAVIA			
03:06	SUB IN: OKOENE, ALYSSA			
02:57				TURNOVER (BADPASS) by HAMPTON, JAIDA
02:57	STEAL by BLACKSHELL-FAIR, JULIA			
02:49	GOOD! 3PTR by HARRIS, ANGELA	32-43	V 11	
02:49	ASSIST by BLACKSHELL-FAIR, JULIA			
02:28		34-43	V 9	GOOD! JUMPER by BREMAUD, CARLA
02:19	GOOD! LAYUP by HAWKINS, SERITHIA	34-45	V 11	
02:19	ASSIST by BRANCH, DORIAN			
02:08				TIMEOUT 30SEC
02:08				SUB OUT: HAMPTON, JAIDA
02:08				SUB IN: LOZADA-CABBAGE, SABRINA
02:08				SUB OUT: SMITH, SHYIA
02:08				SUB IN: FAYE, ALYSSA
02:03	SUB OUT: HARRIS, ANGELA			

Time	VISITORS: Houston	Score	Margin	HOME: Wichita St.
02:03	SUB IN: GLADNEY,DYMOND			
02:03	FOUL (PERSONAL) by BLACKSHELL-FAIR,JULIA			
01:55				MISSED 3PTR by BREMAUD,CARLA
01:51	REBOUND (DEF) by BRANCH,DORIAN			
01:48	GOOD! LAYUP by BLACKSHELL-FAIR,JULIA [FB]	34-47	V 13	
01:48	ASSIST by BRANCH,DORIAN			
01:19	FOUL (PERSONAL) by GLADNEY,DYMOND			
01:19				MISSED FT by FAYE,ALYSSIA
01:19				REBOUND (OFF) by TEAM
01:19				MISSED FT by FAYE,ALYSSIA
01:18	REBOUND (DEF) by OKOENE,ALYSSA			
00:56	TURNOVER (BADPASS) by GLADNEY,DYMOND			
00:56				STEAL by PRINCE,RAVEN
00:44		36-47	V 11	GOOD! LAYUP by BREMAUD,CARLA
00:29	TURNOVER (BADPASS) by OKOENE,ALYSSA			
00:29				STEAL by PRINCE,RAVEN
00:27				SUB OUT: LOZADA-CABBAGE,SABRINA
00:27				SUB IN: HENDERSON,ASIA
00:10		39-47	V 8	GOOD! 3PTR by BREMAUD,CARLA
00:10				ASSIST by FAYE,ALYSSIA
00:00	MISSED JUMPER by BLACKSHELL-FAIR,JULIA			
00:00				REBOUND (DEF) by TEAM

Houston 47, Wichita St. 39

Points from (This Period)	HOU	WSU
In the Paint	6	8
Off Turns	5	5
2nd Chance	3	0
Fast Break	2	0
Bench	2	0

Official Box Score
Houston vs Wichita St.
Fourth Quarter Statistics Only
January 20, 2019 at Charles Koch Arena (Devlin Court) - Wichita, Kan.

Houston 19

No.	Player	S	Pts	FG	3FG	FT	OR	DR	TR	PF	A	TO	Blk	Stl	Min	+/-
00	Harris, Angela		8	0-3	0-3	8-9	0	3	3	2	2	0	0	2	10	0
02	Barnes, Octavia		3	1-1	1-1	0-0	1	0	1	2	0	3	0	0	8	2
03	Branch, Dorian		0	0-2	0-1	0-0	1	0	1	0	0	0	0	0	5	-1
23	Hawkins, Serithia		4	2-3	0-0	0-1	2	1	3	1	0	0	0	0	10	0
30	Hill, Tatyana		0	0-1	0-0	0-2	0	0	0	1	0	0	1	0	6	1
05	Gladney, Dymond		0	0-0	0-0	0-0	0	0	0	0	0	0	0	0	0	0
12	Okoene, Alyssa		0	0-0	0-0	0-0	0	0	0	1	0	1	0	0	1	-2
33	Blackshell-Fair, Julia		4	1-1	0-0	2-2	2	0	2	0	0	0	0	0	10	0
	Team						0	0	0	0		0				
TOTALS			19	4-11	1-5	10-14	6	4	10	7	2	4	1	2	49	

Shooting By Period

Period	FG	FG%	3FG	3FG%	FT	FT%
Game	23-55	41.8%	10-29	34.5%	10-14	71.4%

Wichita St. 19

No.	Player	S	Pts	FG	3FG	FT	OR	DR	TR	PF	A	TO	Blk	Stl	Min	+/-
11	Lozada-Cabbage, Sabrina		4	1-3	1-2	1-1	0	1	1	0	0	0	0	0	7	-2
12	Bremaud, Carla		3	1-5	1-3	0-0	0	0	0	2	0	2	0	2	9	-1
15	Hampton, Jaida		2	0-0	0-0	2-2	0	0	0	0	1	1	0	0	4	2
23	Bastin, Seraphine		3	1-1	0-0	1-1	1	0	1	2	0	0	0	0	6	0
34	Smith, Shyia		0	0-0	0-0	0-0	0	0	0	0	0	0	0	0	0	0
05	Reid, Ashley		0	0-2	0-0	0-0	0	1	1	1	3	1	0	1	6	-4
13	Prince, Raven		4	1-1	0-0	2-3	0	1	1	4	0	0	0	0	8	2
21	Brewer, Maya		0	0-0	0-0	0-0	0	0	0	0	0	0	0	0	0	0
22	Faye, Alyssia		0	0-0	0-0	0-0	0	0	0	0	0	0	0	0	3	2
30	Ambrosio, Cesaria		0	0-0	0-0	0-0	0	0	0	0	0	1	0	0	1	1
42	Henderson, Asia		3	1-2	0-0	1-1	2	0	2	0	0	0	1	0	5	0
	Team						2	0	2	0		0				
TOTALS			19	5-14	2-5	7-8	5	3	8	9	4	5	1	3	49	

Shooting By Period

Period	FG	FG%	3FG	3FG%	FT	FT%
Game	21-51	41.2%	6-16	37.5%	10-18	55.6%

Game Notes:

Officials: Ron Ledington, Geraldine Smith, Brandon

Enterline

Attendance: 1457

Start Time: 2019-01-20 19:01:41

End Time: 2019-01-20 20:55:43

Game Duration: 114

Conference Game;

Score	1st	2nd	3rd	4th	TOT
HOU	12	15	20	19	66
WSU	10	10	19	19	58

Points from (This Period)	HOU	WSU
In the Paint	6	6
Off Turns	6	5
2nd Chance	5	7
Fast Break	4	3
Bench	4	7

Official Play-By-Play
Houston vs Wichita St.
Fourth Quarter
January 20, 2019 at Charles Koch Arena (Devlin Court) - Wichita, Kan.

Period 4

Starters:

Houston: 0 HARRIS, ANGELA; 23 HAWKINS, SERITHIA; 30 HILL, TATYANA; 2 BARNES, OCTAVIA; 3 BRANCH, DORIAN;

Wichita St.: 11 LOZADA-CABBAGE, SABRINA; 12 BREMAUD, CARLA; 15 HAMPTON, JAIDA; 23 BASTIN, SERAPHINE; 34 SMITH, SHYIA;

Time	VISITORS: Houston	Score	Margin	HOME: Wichita St.
09:39	TURNOVER (BADPASS) by OKOENE,ALYSSA			
09:39				STEAL by BREMAUD,CARLA
09:21				MISSED JUMPER by BREMAUD,CARLA
09:18	REBOUND (DEF) by HAWKINS,SERITHIA			
09:07	MISSED JUMPER by HAWKINS,SERITHIA			
09:02				REBOUND (DEF) by REID,ASHLEY
09:00				MISSED LAYUP by REID,ASHLEY
08:59				REBOUND (OFF) by TEAM
08:59				SUB OUT: BREMAUD,CARLA
08:52		41-47	V 6	SUB IN: AMBROSIO,CESARIA
08:52				GOOD! LAYUP by HENDERSON,ASIA
08:52				ASSIST by REID,ASHLEY
08:52	FOUL (PERSONAL) by OKOENE,ALYSSA			
08:52	SUB OUT: OKOENE,ALYSSA			
08:52	SUB IN: HILL,TATYANA			
08:52		42-47	V 5	GOOD! FT by HENDERSON,ASIA
08:22	MISSED 3PTR by HARRIS,ANGELA			
08:18	REBOUND (OFF) by BRANCH,DORIAN			
08:18	MISSED JUMPER by BRANCH,DORIAN			
08:18	REBOUND (OFF) by HAWKINS,SERITHIA			
08:15				FOUL (PERSONAL) by PRINCE,RAVEN
08:15	MISSED FT by HARRIS,ANGELA			
08:15	REBOUND (OFF) by TEAM			
08:15	GOOD! FT by HARRIS,ANGELA	42-48	V 6	
08:15	SUB OUT: BRANCH,DORIAN			
08:15	SUB IN: BARNES,OCTAVIA			
08:15	GOOD! FT by HARRIS,ANGELA	42-49	V 7	
07:56				TURNOVER (BADPASS) by AMBROSIO,CESARIA
07:56	STEAL by HARRIS,ANGELA			
07:54				FOUL (PERSONAL) by REID,ASHLEY
07:54				SUB OUT: AMBROSIO,CESARIA
07:54				SUB IN: BREMAUD,CARLA
07:49	GOOD! JUMPER by HAWKINS,SERITHIA [PNT]	42-51	V 9	
07:25		45-51	V 6	GOOD! 3PTR by BREMAUD,CARLA
07:25				ASSIST by REID,ASHLEY
06:58				FOUL (PERSONAL) by PRINCE,RAVEN
06:58	MISSED FT by HILL,TATYANA			
06:58	REBOUND (OFF) by TEAM			
06:58				SUB OUT: PRINCE,RAVEN
06:58				SUB IN: LOZADA-CABBAGE,SABRINA
06:58				SUB OUT: FAYE,ALYSSIA
06:58				SUB IN: BASTIN,SERAPHINE
06:58	MISSED FT by HILL,TATYANA			
06:56	REBOUND (OFF) by BLACKSHELL-FAIR,JULIA			
06:37	TURNOVER (BADPASS) by BARNES,OCTAVIA			
06:24				TURNOVER (BADPASS) by REID,ASHLEY
06:24	STEAL by HARRIS,ANGELA			
06:18	GOOD! LAYUP by BLACKSHELL-FAIR,JULIA [FB]	45-53	V 8	
06:18	ASSIST by HARRIS,ANGELA			
06:02				MISSED 3PTR by LOZADA-CABBAGE,SABRINA
05:58				REBOUND (OFF) by HENDERSON,ASIA
05:56	FOUL (PERSONAL) by HILL,TATYANA			
05:53				MISSED JUMPER by REID,ASHLEY
05:47				REBOUND (OFF) by HENDERSON,ASIA
05:47				MISSED LAYUP by HENDERSON,ASIA
05:47	BLOCK by HILL,TATYANA			
05:45	REBOUND (DEF) by HARRIS,ANGELA			
05:42	GOOD! LAYUP by HAWKINS,SERITHIA	45-55	V 10	
05:42				FOUL (PERSONAL) by BREMAUD,CARLA
05:42	MISSED FT by HAWKINS,SERITHIA			
05:40	REBOUND (OFF) by BLACKSHELL-FAIR,JULIA			
05:21	MISSED JUMPER by HILL,TATYANA			
05:21				BLOCK by HENDERSON,ASIA
05:16	REBOUND (OFF) by BARNES,OCTAVIA			
05:14	TURNOVER (BADPASS) by BARNES,OCTAVIA			
05:14				STEAL by REID,ASHLEY
05:12		47-55	V 8	GOOD! LAYUP by BASTIN,SERAPHINE [FB]
05:12				ASSIST by REID,ASHLEY
05:12	FOUL (PERSONAL) by HARRIS,ANGELA			
05:12				SUB OUT: HENDERSON,ASIA
05:12				SUB IN: PRINCE,RAVEN
05:12		48-55	V 7	GOOD! FT by BASTIN,SERAPHINE [FB]
04:46	MISSED 3PTR by HARRIS,ANGELA			
04:43	REBOUND (OFF) by HAWKINS,SERITHIA			
04:32	GOOD! 3PTR by BARNES,OCTAVIA	48-58	V 10	
04:32	ASSIST by HARRIS,ANGELA			

Time	VISITORS: Houston	Score	Margin	HOME: Wichita St.
04:17				FOUL (OFF) by BREMAUD,CARLA
04:17				TURNOVER (OFFENSIVE) by BREMAUD,CARLA
04:17				
04:17				SUB OUT: REID,ASHLEY
04:17				SUB IN: HAMPTON,JAIDA
03:47	MISSED 3PTR by HARRIS,ANGELA			
03:43				REBOUND (DEF) by LOZADA-CABBAGE,SABRINA
03:28				MISSED LAYUP by BREMAUD,CARLA
03:26	REBOUND (DEF) by TEAM			
03:07		51-58	V 7	GOOD! 3PTR by LOZADA-CABBAGE,SABRINA
03:07	FOUL (PERSONAL) by HAWKINS,SERITHIA			
03:07	SUB OUT: HILL,TATYANA			
03:07	SUB IN: BRANCH,DORIAN			
03:07		52-58	V 6	GOOD! FT by LOZADA-CABBAGE,SABRINA
02:39	MISSED 3PTR by BRANCH,DORIAN			
02:34				REBOUND (DEF) by PRINCE,RAVEN
02:13				MISSED JUMPER by LOZADA-CABBAGE,SABRINA
02:11	REBOUND (DEF) by HARRIS,ANGELA			
02:11				FOUL (PERSONAL) by PRINCE,RAVEN
02:11	GOOD! FT by HARRIS,ANGELA	52-59	V 7	
02:11	GOOD! FT by HARRIS,ANGELA	52-60	V 8	
01:56				TURNOVER (TRAVEL) by BREMAUD,CARLA
01:46	TURNOVER (LOSTBALL) by BARNES,OCTAVIA			
01:46				STEAL by BREMAUD,CARLA
01:26				MISSED 3PTR by BREMAUD,CARLA
01:23				REBOUND (OFF) by BASTIN,SERAPHINE
01:20		54-60	V 6	GOOD! LAYUP by PRINCE,RAVEN
01:20				ASSIST by HAMPTON,JAIDA
01:20	FOUL (PERSONAL) by BARNES,OCTAVIA			
01:20				MISSED FT by PRINCE,RAVEN
01:18	REBOUND (DEF) by HARRIS,ANGELA			
01:06				FOUL (PERSONAL) by BASTIN,SERAPHINE
01:06	GOOD! FT by HARRIS,ANGELA	54-61	V 7	
01:06	GOOD! FT by HARRIS,ANGELA	54-62	V 8	
00:47	FOUL (PERSONAL) by BARNES,OCTAVIA			
00:47		55-62	V 7	GOOD! FT by PRINCE,RAVEN
00:47		56-62	V 6	GOOD! FT by PRINCE,RAVEN
00:36				FOUL (PERSONAL) by BASTIN,SERAPHINE
00:36				SUB OUT: BASTIN,SERAPHINE
00:36				SUB IN: REID,ASHLEY
00:36	GOOD! FT by HARRIS,ANGELA	56-63	V 7	
00:36	GOOD! FT by HARRIS,ANGELA	56-64	V 8	
00:24				TURNOVER (OTHER) by HAMPTON,JAIDA
00:22				FOUL (PERSONAL) by PRINCE,RAVEN
00:22	GOOD! FT by BLACKSHELL-FAIR,JULIA [FB]	56-65	V 9	
00:22	GOOD! FT by BLACKSHELL-FAIR,JULIA [FB]	56-66	V 10	
00:14				MISSED 3PTR by BREMAUD,CARLA
00:14				REBOUND (OFF) by TEAM
00:14	FOUL (PERSONAL) by HARRIS,ANGELA			
00:14		57-66	V 9	GOOD! FT by HAMPTON,JAIDA
00:14		58-66	V 8	GOOD! FT by HAMPTON,JAIDA

Houston 66, Wichita St. 58

Points from (This Period)	HOU	WSU
In the Paint	6	6
Off Turns	6	5
2nd Chance	5	7
Fast Break	4	3
Bench	4	7

**Official Scoring/Possession Reference Chart
Houston vs Wichita St.**

Period 1

January 20, 2019 at Charles Koch Arena (Devlin Court) - Wichita, Kan.

Period 1

Starters:

Houston: 0 HARRIS, ANGELA; 23 HAWKINS, SERITHIA; 30 HILL, TATYANA; 2 BARNES, OCTAVIA; 3 BRANCH, DORIAN;

Wichita St.: 11 LOZADA-CABBAGE, SABRINA; 12 BREMAUD, CARLA; 15 HAMPTON, JAIDA; 23 BASTIN, SERAPHINE; 34 SMITH, SHYIA;

Time	VISITORS: Houston	Score	Margin	HOME: Wichita St.
08:57		2-0	H 2	GOOD! JUMPER by BREMAUD, CARLA
08:31	GOOD! JUMPER by BARNES, OCTAVIA	2-2	T	
07:55		5-2	H 3	GOOD! 3PTR by LOZADA-CABBAGE, SABRINA
07:28		7-2	H 5	GOOD! JUMPER by BASTIN, SERAPHINE [PNT]
04:42	GOOD! 3PTR by BARNES, OCTAVIA	7-5	H 2	
03:56	GOOD! LAYUP by BLACKSHELL-FAIR, JULIA [FB]	7-7	T	
03:36	GOOD! LAYUP by BLACKSHELL-FAIR, JULIA [FB]	7-9	V 2	
01:53		9-9	T	GOOD! LAYUP by PRINCE, RAVEN
01:53		10-9	H 1	GOOD! FT by PRINCE, RAVEN
00:51	GOOD! 3PTR by BARNES, OCTAVIA	10-12	V 2	

Houston 12, Wichita St. 10

Official Scoring/Possession Reference Chart
Houston vs Wichita St.
Period 2
January 20, 2019 at Charles Koch Arena (Devlin Court) - Wichita, Kan.

Period 2

Starters:

Houston: 0 HARRIS, ANGELA; 23 HAWKINS, SERITHIA; 30 HILL, TATYANA; 2 BARNES, OCTAVIA; 3 BRANCH, DORIAN;

Wichita St.: 11 LOZADA-CABBAGE, SABRINA; 12 BREMAUD, CARLA; 15 HAMPTON, JAIDA; 23 BASTIN, SERAPHINE; 34 SMITH, SHYIA;

Time	VISITORS: Houston	Score	Margin	HOME: Wichita St.
09:47	GOOD! JUMPER by BARNES, OCTAVIA	10-14	V 4	
08:40	GOOD! JUMPER by BLACKSHELL-FAIR, JULIA	10-16	V 6	
07:32		12-16	V 4	GOOD! LAYUP by PRINCE, RAVEN
07:06	GOOD! 3PTR by BRANCH, DORIAN	12-19	V 7	
06:35		14-19	V 5	GOOD! JUMPER by LOZADA-CABBAGE, SABRINA [PNT]
06:08	GOOD! 3PTR by HARRIS, ANGELA	14-22	V 8	
05:22		16-22	V 6	GOOD! LAYUP by LOZADA-CABBAGE, SABRINA
05:22		17-22	V 5	GOOD! FT by LOZADA-CABBAGE, SABRINA
04:59	GOOD! LAYUP by OKOENE, ALYSSA	17-24	V 7	
04:23	GOOD! 3PTR by HARRIS, ANGELA [FB]	17-27	V 10	
03:59		19-27	V 8	GOOD! LAYUP by LOZADA-CABBAGE, SABRINA
02:17		20-27	V 7	GOOD! FT by LOZADA-CABBAGE, SABRINA

Houston 27, Wichita St. 20

Official Scoring/Possession Reference Chart
Houston vs Wichita St.
Period 3
January 20, 2019 at Charles Koch Arena (Devlin Court) - Wichita, Kan.

Period 3

Starters:

Houston: 0 HARRIS, ANGELA; 23 HAWKINS, SERITHIA; 30 HILL, TATYANA; 2 BARNES, OCTAVIA; 3 BRANCH, DORIAN;

Wichita St.: 11 LOZADA-CABBAGE, SABRINA; 12 BREMAUD, CARLA; 15 HAMPTON, JAIDA; 23 BASTIN, SERAPHINE; 34 SMITH, SHYIA;

Time	VISITORS: Houston	Score	Margin	HOME: Wichita St.
09:46	GOOD! 3PTR by HARRIS, ANGELA	20-30	V 10	
09:26		23-30	V 7	GOOD! 3PTR by BREMAUD, CARLA
09:10	GOOD! LAYUP by HILL, TATYANA	23-32	V 9	
08:15	GOOD! 3PTR by BRANCH, DORIAN	23-35	V 12	
06:49		26-35	V 9	GOOD! 3PTR by LOZADA-CABBAGE, SABRINA
05:50	GOOD! JUMPER by HAWKINS, SERITHIA	26-37	V 11	
05:36		28-37	V 9	GOOD! LAYUP by BREMAUD, CARLA
04:45		30-37	V 7	GOOD! JUMPER by SMITH, SHYIA [PNT]
04:16	GOOD! 3PTR by HARRIS, ANGELA	30-40	V 10	
03:24		32-40	V 8	GOOD! LAYUP by SMITH, SHYIA
02:49	GOOD! 3PTR by HARRIS, ANGELA	32-43	V 11	
02:28		34-43	V 9	GOOD! JUMPER by BREMAUD, CARLA
02:19	GOOD! LAYUP by HAWKINS, SERITHIA	34-45	V 11	
01:48	GOOD! LAYUP by BLACKSHELL-FAIR, JULIA [FB]	34-47	V 13	
00:44		36-47	V 11	GOOD! LAYUP by BREMAUD, CARLA
00:10		39-47	V 8	GOOD! 3PTR by BREMAUD, CARLA

Houston 47, Wichita St. 39

**Official Scoring/Possession Reference Chart
Houston vs Wichita St.**

Period 4

January 20, 2019 at Charles Koch Arena (Devlin Court) - Wichita, Kan.

Period 4

Starters:

Houston: 0 HARRIS, ANGELA; 23 HAWKINS, SERITHIA; 30 HILL, TATYANA; 2 BARNES, OCTAVIA; 3 BRANCH, DORIAN;

Wichita St.: 11 LOZADA-CABBAGE, SABRINA; 12 BREMAUD, CARLA; 15 HAMPTON, JAIDA; 23 BASTIN, SERAPHINE; 34 SMITH, SHYIA;

Time	VISITORS: Houston	Score	Margin	HOME: Wichita St.
08:52		41-47	V 6	GOOD! LAYUP by HENDERSON, ASIA
08:52		42-47	V 5	GOOD! FT by HENDERSON, ASIA
08:15	GOOD! FT by HARRIS, ANGELA	42-48	V 6	
08:15	GOOD! FT by HARRIS, ANGELA	42-49	V 7	
07:49	GOOD! JUMPER by HAWKINS, SERITHIA [PNT]	42-51	V 9	
07:25		45-51	V 6	GOOD! 3PTR by BREMAUD, CARLA
06:18	GOOD! LAYUP by BLACKSHELL-FAIR, JULIA [FB]	45-53	V 8	
05:42	GOOD! LAYUP by HAWKINS, SERITHIA	45-55	V 10	
05:12		47-55	V 8	GOOD! LAYUP by BASTIN, SERAPHINE [FB]
05:12		48-55	V 7	GOOD! FT by BASTIN, SERAPHINE [FB]
04:32	GOOD! 3PTR by BARNES, OCTAVIA	48-58	V 10	
03:07		51-58	V 7	GOOD! 3PTR by LOZADA-CABBAGE, SABRINA
03:07		52-58	V 6	GOOD! FT by LOZADA-CABBAGE, SABRINA
02:11	GOOD! FT by HARRIS, ANGELA	52-59	V 7	
02:11	GOOD! FT by HARRIS, ANGELA	52-60	V 8	
01:20		54-60	V 6	GOOD! LAYUP by PRINCE, RAVEN
01:06	GOOD! FT by HARRIS, ANGELA	54-61	V 7	
01:06	GOOD! FT by HARRIS, ANGELA	54-62	V 8	
00:47		55-62	V 7	GOOD! FT by PRINCE, RAVEN
00:47		56-62	V 6	GOOD! FT by PRINCE, RAVEN
00:36	GOOD! FT by HARRIS, ANGELA	56-63	V 7	
00:36	GOOD! FT by HARRIS, ANGELA	56-64	V 8	
00:22	GOOD! FT by BLACKSHELL-FAIR, JULIA [FB]	56-65	V 9	
00:22	GOOD! FT by BLACKSHELL-FAIR, JULIA [FB]	56-66	V 10	
00:14		57-66	V 9	GOOD! FT by HAMPTON, JAIDA
00:14		58-66	V 8	GOOD! FT by HAMPTON, JAIDA

Houston 66, Wichita St. 58

Official Substitutions Log
Houston vs Wichita St.
Period 1
January 20, 2019 at Charles Koch Arena (Devlin Court) - Wichita, Kan.

VISITORS: Houston	Time	Score	HOME: Wichita St.
0 HARRIS, ANGELA			11 LOZADA-CABBAGE, SABRINA
23 HAWKINS, SERITHIA			12 BREMAUD, CARLA
30 HILL, TATYANA			15 HAMPTON, JAIDA
2 BARNES, OCTAVIA			23 BASTIN, SERAPHINE
3 BRANCH, DORIAN			34 SMITH, SHYIA
	06:08	2-7	SUB OUT: BASTIN, SERAPHINE
	06:08		SUB IN: AMBROSIO, CESARIA
SUB OUT: 3 BRANCH, DORIAN	06:08		
SUB IN: 33 BLACKSHELL-FAIR, JULIA	06:08		
	02:58	9-7	SUB OUT: LOZADA-CABBAGE, SABRINA
	02:58		SUB IN: PRINCE, RAVEN
	02:58		SUB OUT: BREMAUD, CARLA
	02:58		SUB IN: BASTIN, SERAPHINE
	02:58		SUB OUT: HAMPTON, JAIDA
	02:58		SUB IN: REID, ASHLEY
SUB OUT: 33 BLACKSHELL-FAIR, JULIA	02:58		
SUB IN: 3 BRANCH, DORIAN	02:58		
SUB OUT: 0 HARRIS, ANGELA	02:32	9-7	
SUB IN: 5 GLADNEY, DYMOND	02:32		
	01:53	9-9	SUB OUT: SMITH, SHYIA
	01:53		SUB IN: FAYE, ALYSSIA
SUB OUT: 3 BRANCH, DORIAN	01:28	9-10	
SUB IN: 33 BLACKSHELL-FAIR, JULIA	01:28		
SUB OUT: 30 HILL, TATYANA	01:28		
SUB IN: 12 OKOENE, ALYSSA	01:28		

Houston 12, Wichita St. 10

Official Substitutions Log
Houston vs Wichita St.
Period 2
January 20, 2019 at Charles Koch Arena (Devlin Court) - Wichita, Kan.

VISITORS: Houston	Time	Score	HOME: Wichita St.
0 HARRIS, ANGELA			11 LOZADA-CABBAGE, SABRINA
23 HAWKINS, SERITHIA			12 BREMAUD, CARLA
30 HILL, TATYANA			15 HAMPTON, JAIDA
2 BARNES, OCTAVIA			23 BASTIN, SERAPHINE
3 BRANCH, DORIAN			34 SMITH, SHYIA
	08:04	16-10	SUB OUT: REID, ASHLEY
	08:04		SUB IN: HAMPTON, JAIDA
	08:04		SUB OUT: FAYE, ALYSSIA
	08:04		SUB IN: LOZADA-CABBAGE, SABRINA
	08:04		SUB OUT: AMBROSIO, CESARIA
	08:04		SUB IN: BREMAUD, CARLA
SUB OUT: 5 GLADNEY, DYMOND	08:04		
SUB IN: 3 BRANCH, DORIAN	08:04		
SUB OUT: 23 HAWKINS, SERITHIA	08:04		
SUB IN: 0 HARRIS, ANGELA	08:04		
SUB OUT: 2 BARNES, OCTAVIA	07:17	16-12	
SUB IN: 23 HAWKINS, SERITHIA	07:17		
	05:42	22-14	SUB OUT: BASTIN, SERAPHINE
	05:42		SUB IN: REID, ASHLEY
	05:42		SUB OUT: PRINCE, RAVEN
	05:42		SUB IN: SMITH, SHYIA
	04:02	27-17	SUB OUT: HAMPTON, JAIDA
	04:02		SUB IN: BREWER, MAYA
SUB OUT: 0 HARRIS, ANGELA	04:02		
SUB IN: 2 BARNES, OCTAVIA	04:02		
SUB OUT: 3 BRANCH, DORIAN	04:02		
SUB IN: 5 GLADNEY, DYMOND	04:02		
SUB OUT: 12 OKOENE, ALYSSA	02:59	27-19	
SUB IN: 30 HILL, TATYANA	02:59		
	02:25	27-19	SUB OUT: BREWER, MAYA
	02:25		SUB IN: AMBROSIO, CESARIA
SUB OUT: 5 GLADNEY, DYMOND	00:55	27-20	
SUB IN: 0 HARRIS, ANGELA	00:55		

Houston 27, Wichita St. 20

Official Substitutions Log
Houston vs Wichita St.
Period 3
January 20, 2019 at Charles Koch Arena (Devlin Court) - Wichita, Kan.

VISITORS: Houston	Time	Score	HOME: Wichita St.
0 HARRIS, ANGELA			11 LOZADA-CABBAGE, SABRINA
23 HAWKINS, SERITHIA			12 BREMAUD, CARLA
30 HILL, TATYANA			15 HAMPTON, JAIDA
2 BARNES, OCTAVIA			23 BASTIN, SERAPHINE
3 BRANCH, DORIAN			34 SMITH, SHYIA
SUB OUT: 30 HILL, TATYANA	05:36	37-28	
SUB IN: 33 BLACKSHELL-FAIR, JULIA	05:36		
	03:06	40-32	SUB OUT: BASTIN, SERAPHINE
	03:06		SUB IN: PRINCE, RAVEN
	03:06		SUB OUT: LOZADA-CABBAGE, SABRINA
	03:06		SUB IN: REID, ASHLEY
SUB OUT: 2 BARNES, OCTAVIA	03:06		
SUB IN: 12 OKOENE, ALYSSA	03:06		
	02:08	45-34	SUB OUT: HAMPTON, JAIDA
	02:08		SUB IN: LOZADA-CABBAGE, SABRINA
	02:08		SUB OUT: SMITH, SHYIA
	02:08		SUB IN: FAYE, ALYSSIA
SUB OUT: 0 HARRIS, ANGELA	02:03	45-34	
SUB IN: 5 GLADNEY, DYMOND	02:03		
	00:27	47-36	SUB OUT: LOZADA-CABBAGE, SABRINA
	00:27		SUB IN: HENDERSON, ASIA

Houston 47, Wichita St. 39

Official Substitutions Log
Houston vs Wichita St.
Period 4
January 20, 2019 at Charles Koch Arena (Devlin Court) - Wichita, Kan.

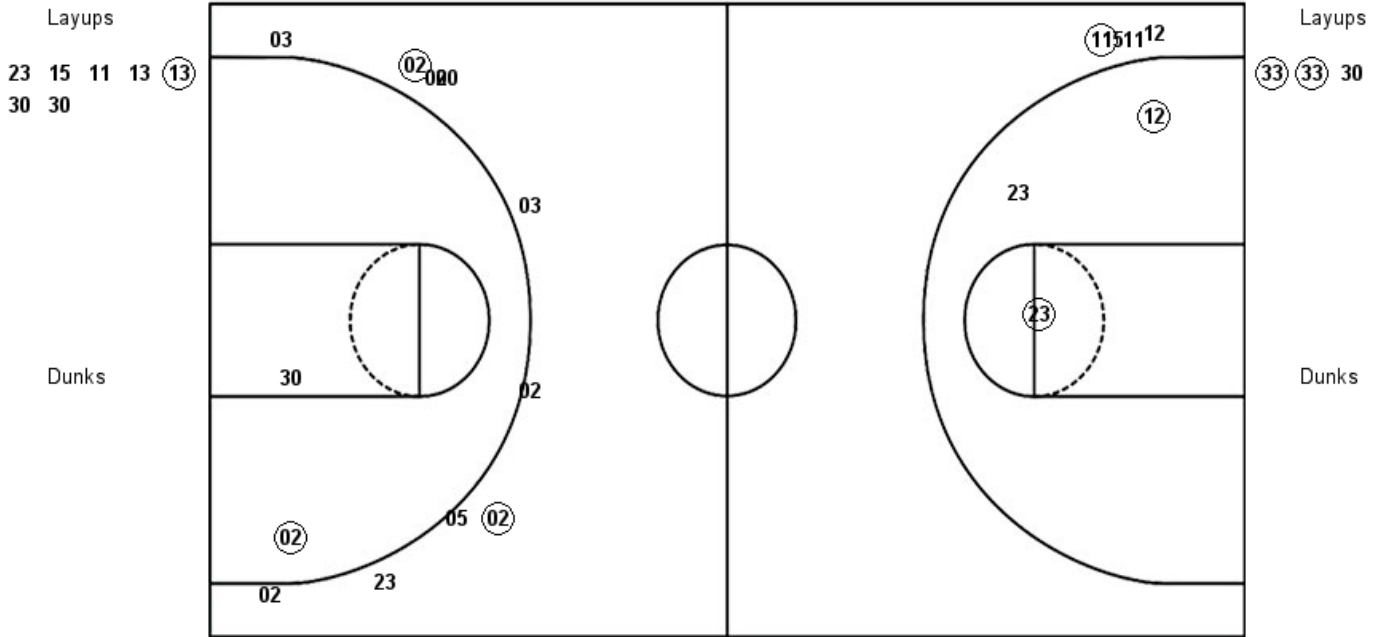
VISITORS: Houston	Time	Score	HOME: Wichita St.
0 HARRIS, ANGELA			11 LOZADA-CABBAGE, SABRINA
23 HAWKINS, SERITHIA			12 BREMAUD, CARLA
30 HILL, TATYANA			15 HAMPTON, JAIDA
2 BARNES, OCTAVIA			23 BASTIN, SERAPHINE
3 BRANCH, DORIAN			34 SMITH, SHYIA
	08:59	-	SUB OUT: BREMAUD, CARLA
	08:59		SUB IN: AMBROSIO, CESARIA
SUB OUT: 12 OKOENE, ALYSSA	08:52	47-41	
SUB IN: 30 HILL, TATYANA	08:52		
SUB OUT: 3 BRANCH, DORIAN	08:15	48-42	
SUB IN: 2 BARNES, OCTAVIA	08:15		
	07:54	49-42	SUB OUT: AMBROSIO, CESARIA
	07:54		SUB IN: BREMAUD, CARLA
	06:58	51-45	SUB OUT: PRINCE, RAVEN
	06:58		SUB IN: LOZADA-CABBAGE, SABRINA
	06:58		SUB OUT: FAYE, ALYSSIA
	06:58		SUB IN: BASTIN, SERAPHINE
	05:12	55-47	SUB OUT: HENDERSON, ASIA
	05:12		SUB IN: PRINCE, RAVEN
	04:17	58-48	SUB OUT: REID, ASHLEY
	04:17		SUB IN: HAMPTON, JAIDA
SUB OUT: 30 HILL, TATYANA	03:07	58-51	
SUB IN: 3 BRANCH, DORIAN	03:07		
	00:36	62-56	SUB OUT: BASTIN, SERAPHINE
	00:36		SUB IN: REID, ASHLEY

Houston 66, Wichita St. 58

Official Shot Chart
Houston vs Wichita St.
PERIOD 1 Shots
 January 20, 2019 at Charles Koch Arena (Devlin Court) - Wichita, Kan.

Wichita St.

Houston



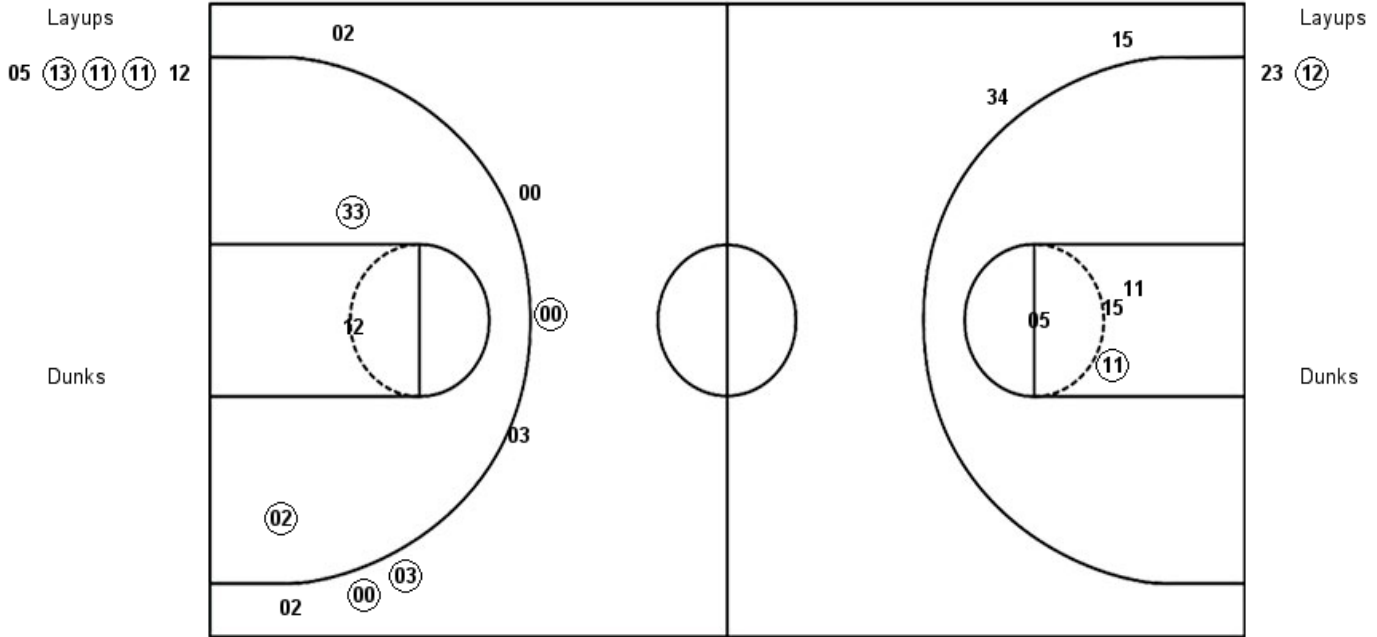
WSU : Period 1	Made	Att	Pct
Layups	1	7	14.3
Dunks	0	0	0
2PT Field Goals	3	10	30.0
3PT Field Goals	1	4	25.0
Total Field Goals	4	14	28.6

HOU : Period 1	Made	Att	Pct
Layups	2	3	66.7
Dunks	0	0	0
2PT Field Goals	3	5	60.0
3PT Field Goals	2	10	20.0
Total Field Goals	5	15	33.3

Official Shot Chart
Houston vs Wichita St.
PERIOD 2 Shots
 January 20, 2019 at Charles Koch Arena (Devlin Court) - Wichita, Kan.

Wichita St.

Houston



WSU : Period 2	Made	Att	Pct
Layups	3	5	60.0
Dunks	0	0	0
2PT Field Goals	4	9	44.4
3PT Field Goals	0	2	00.0
Total Field Goals	4	11	36.4

HOU : Period 2	Made	Att	Pct
Layups	1	2	50.0
Dunks	0	0	0
2PT Field Goals	3	5	60.0
3PT Field Goals	3	7	42.9
Total Field Goals	6	12	50.0

Official Shot Chart
Houston vs Wichita St.
PERIOD 3 Shots
 January 20, 2019 at Charles Koch Arena (Devlin Court) - Wichita, Kan.

Wichita St.

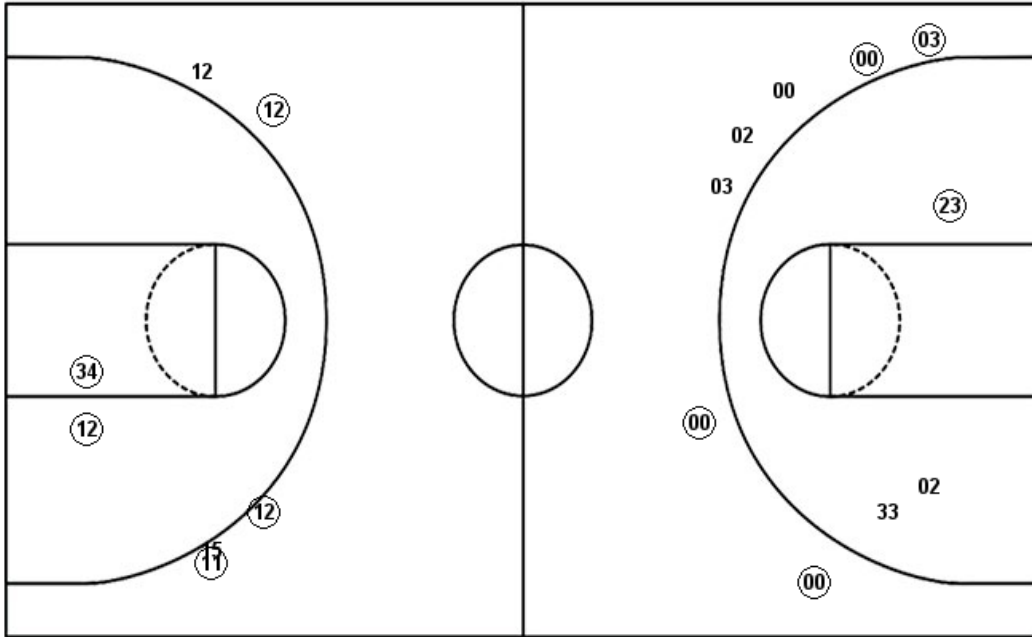
Houston

Layups
 23 12 (12) (34) (12)

Layups
 (30) 30 33 00 02
 (23) (33)

Dunks
 (34)
 (12)
 (12)
 (11)

Dunks
 (00)
 (00)
 02
 33



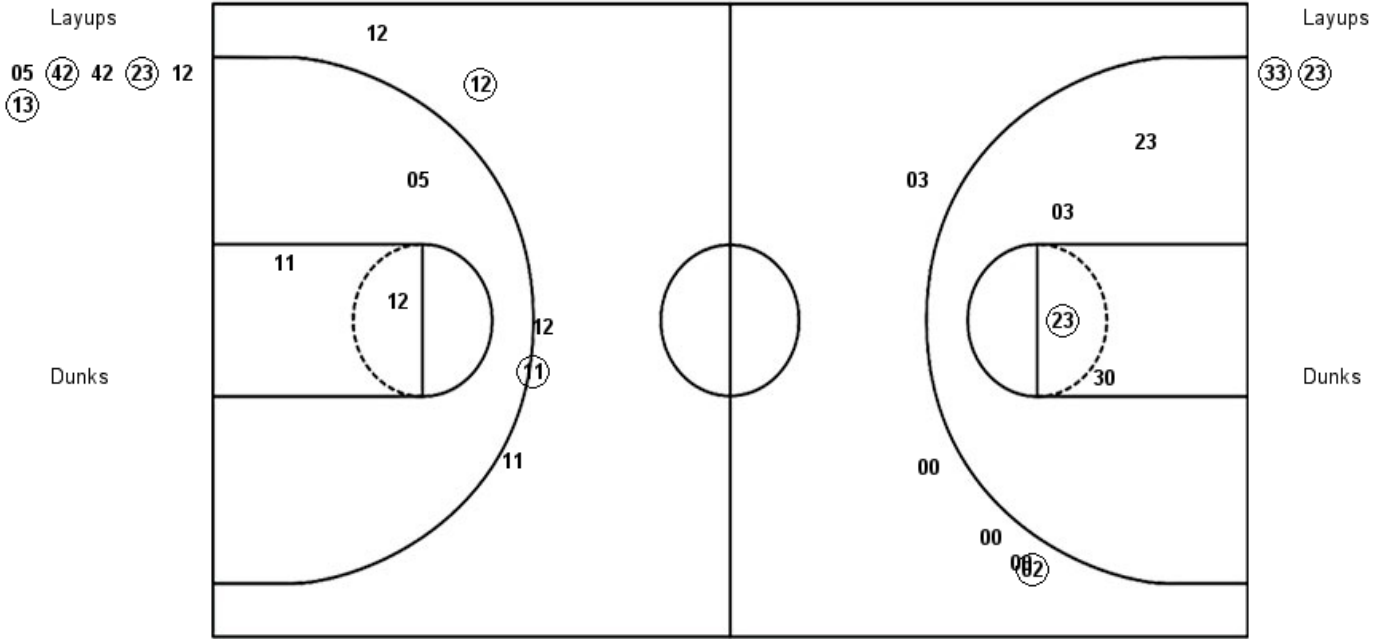
WSU : Period 3	Made	Att	Pct
Layups	3	5	60.0
Dunks	0	0	0
2PT Field Goals	5	7	71.4
3PT Field Goals	3	5	60.0
Total Field Goals	8	12	66.7

HOU : Period 3	Made	Att	Pct
Layups	3	7	42.9
Dunks	0	0	0
2PT Field Goals	4	10	40.0
3PT Field Goals	4	7	57.1
Total Field Goals	8	17	47.1

Official Shot Chart
Houston vs Wichita St.
PERIOD 4 Shots
 January 20, 2019 at Charles Koch Arena (Devlin Court) - Wichita, Kan.

Wichita St.

Houston

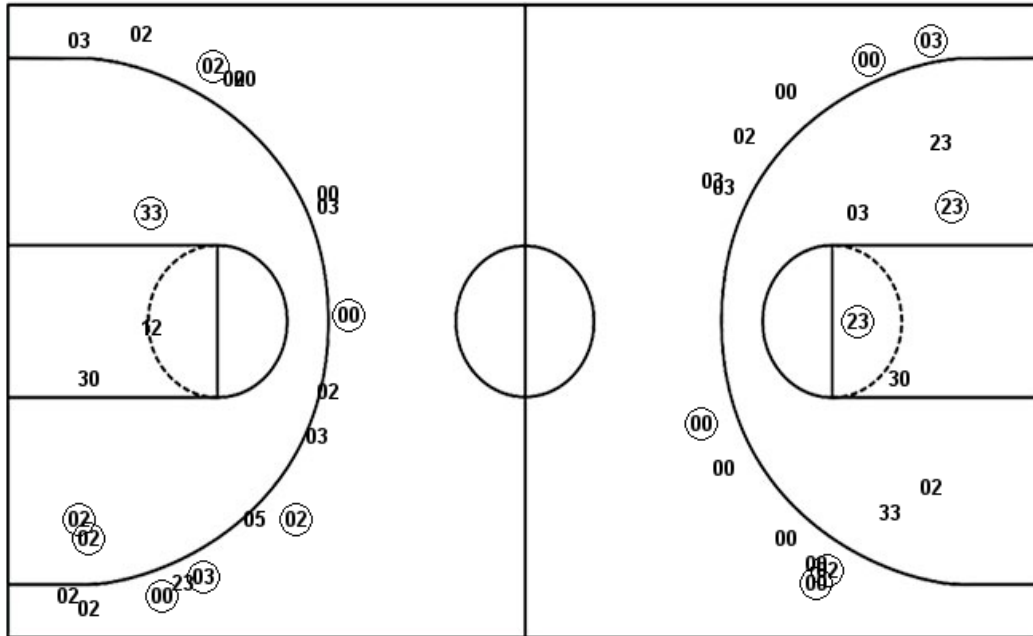


WSU : Period 4	Made	Att	Pct
Layups	3	6	50.0
Dunks	0	0	0
2PT Field Goals	3	9	33.3
3PT Field Goals	2	5	40.0
Total Field Goals	5	14	35.7

HOU : Period 4	Made	Att	Pct
Layups	2	2	100.0
Dunks	0	0	0
2PT Field Goals	3	6	50.0
3PT Field Goals	1	5	20.0
Total Field Goals	4	11	36.4

Official Shot Chart
Houston vs Wichita St.
Houston Team Shots
 January 20, 2019 at Charles Koch Arena (Devlin Court) - Wichita, Kan.

Layups



Layups

Dunks

Dunks

HOU : Period 1	Made	Att	Pct
Layups	2	3	66.7
Dunks	0	0	0
2PT Field Goals	3	5	60.0
3PT Field Goals	2	10	20.0
Total Field Goals	5	15	33.3

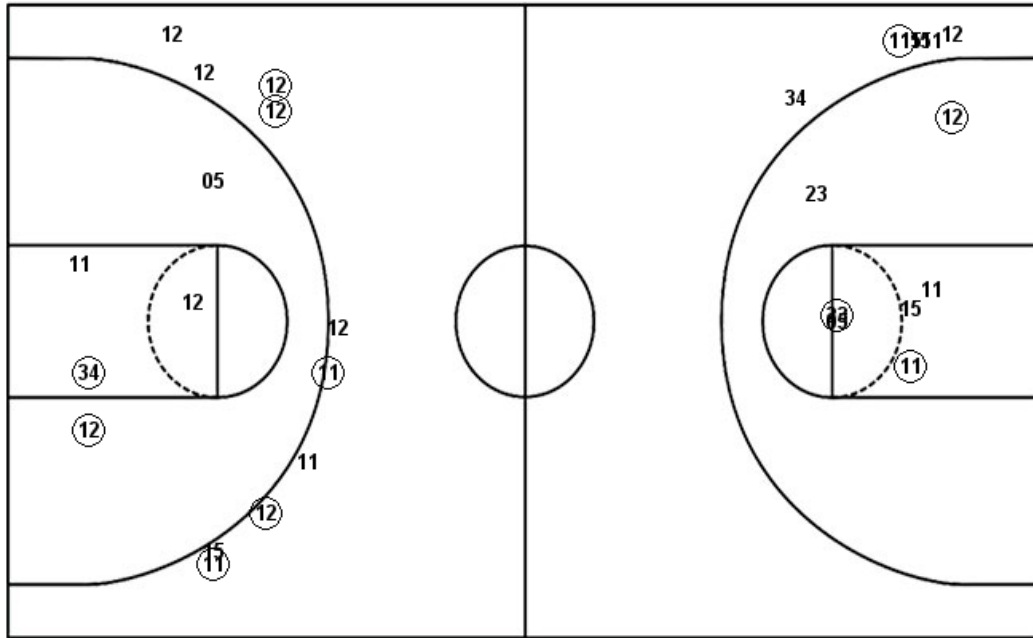
HOU : Period 3	Made	Att	Pct
Layups	3	7	42.9
Dunks	0	0	0
2PT Field Goals	4	10	40.0
3PT Field Goals	4	7	57.1
Total Field Goals	8	17	47.1

HOU : Period 2	Made	Att	Pct
Layups	1	2	50.0
Dunks	0	0	0
2PT Field Goals	3	5	60.0
3PT Field Goals	3	7	42.9
Total Field Goals	6	12	50.0

HOU : Period 4	Made	Att	Pct
Layups	2	2	100.0
Dunks	0	0	0
2PT Field Goals	3	6	50.0
3PT Field Goals	1	5	20.0
Total Field Goals	4	11	36.4

Official Shot Chart
Houston vs Wichita St.
Wichita St. Team Shots
 January 20, 2019 at Charles Koch Arena (Devlin Court) - Wichita, Kan.

Layups



Layups



Dunks

Dunks

WSU : Period 1	Made	Att	Pct
Layups	1	7	14.3
Dunks	0	0	0
2PT Field Goals	3	10	30.0
3PT Field Goals	1	4	25.0
Total Field Goals	4	14	28.6

WSU : Period 2	Made	Att	Pct
Layups	3	5	60.0
Dunks	0	0	0
2PT Field Goals	4	9	44.4
3PT Field Goals	0	2	00.0
Total Field Goals	4	11	36.4

WSU : Period 3	Made	Att	Pct
Layups	3	5	60.0
Dunks	0	0	0
2PT Field Goals	5	7	71.4
3PT Field Goals	3	5	60.0
Total Field Goals	8	12	66.7

WSU : Period 4	Made	Att	Pct
Layups	3	6	50.0
Dunks	0	0	0
2PT Field Goals	3	9	33.3
3PT Field Goals	2	5	40.0
Total Field Goals	5	14	35.7