

FINAL SCORE



Memphis

71



Wichita St.

50

January 12, 2019 • Charles Koch Arena (Devlin Court) - Wichita,
Kan.

FINAL STATISTICS

Official Box Score
Memphis vs Wichita St.
Game Totals -- Final Statistics
January 12, 2019 at Charles Koch Arena (Devlin Court) - Wichita, Kan.

Memphis 71

No.	Player	S	Pts	FG	3FG	FT	OR	DR	TR	PF	A	TO	Blk	Stl	Min	+/-
03	Herndon, Gazmyne		8	3-7	0-0	2-2	1	5	6	0	8	2	1	1	27	15
15	Barnes, Taylor		3	1-7	0-3	1-2	0	3	3	4	3	3	0	4	29	10
22	Coomber, Kiana		3	1-4	1-4	0-0	0	0	0	2	0	0	0	2	10	0
23	Shutes, Jamirah		10	4-10	0-2	2-5	1	3	4	2	2	4	0	4	32	10
33	Davis, Alana		26	8-16	0-0	10-11	3	2	5	2	0	5	1	0	31	16
00	Stinson, Jada		11	4-8	3-5	0-0	0	0	0	0	3	4	0	0	23	18
11	White, Malainna		2	1-2	0-1	0-0	0	0	0	1	0	2	0	0	8	10
25	Porter, Brianna		4	1-3	0-0	2-4	2	3	5	2	0	1	1	0	13	6
35	James, Jasmine		4	2-4	0-0	0-0	1	7	8	4	2	1	2	0	25	20
	Team						5	4	9	0		1				
TOTALS			71	25-61	4-15	17-24	13	27	40	17	18	23	5	11	199	

Shooting By Period

Period	FG	FG%	3FG	3FG%	FT	FT%
1st Qtr	5-16	31%	1-4	25%	4-6	67%
2nd Qtr	8-18	44%	2-4	50%	2-4	50%
3rd Qtr	4-15	27%	0-6	00%	6-7	86%
4th Qtr	8-12	67%	1-1	100%	5-7	71%
1st Half	13-34	38%	3-8	38%	6-10	60%
2nd Half	12-27	44%	1-7	14%	11-14	79%
Game	25-61	41.0%	4-15	26.7%	17-24	70.8%

Last FG: 4th-00:07
 Biggest Run: 8-0
 Largest lead: By 21 at 4-00:07
 Technical Fouls: None.

Wichita St. 50

No.	Player	S	Pts	FG	3FG	FT	OR	DR	TR	PF	A	TO	Blk	Stl	Min	+/-
11	Lozada-Cabbage, Sabrina		8	4-7	0-2	0-0	1	5	6	5	1	0	1	0	15	7
12	Bremaud, Carla		8	2-12	1-10	3-4	2	1	3	2	4	6	2	2	30	-15
13	Prince, Raven		9	4-7	0-0	1-3	3	0	3	3	0	0	0	2	20	-6
15	Hampton, Jaida		10	4-16	1-8	1-2	2	3	5	1	1	5	0	1	26	-17
23	Bastin, Seraphine		6	1-4	0-1	4-4	3	7	10	0	1	3	0	3	30	-11
00	Peacock, Jada		0	0-2	0-2	0-0	0	0	0	0	0	0	0	0	4	1
05	Reid, Ashley		2	0-5	0-3	2-2	1	0	1	2	2	3	0	0	19	-12
21	Brewer, Maya		2	1-2	0-1	0-0	0	0	0	2	0	3	0	1	4	-2
22	Faye, Alyssia		0	0-1	0-0	0-0	0	5	5	1	0	2	0	3	13	-14
30	Ambrosio, Cesaria		0	0-0	0-0	0-0	1	0	1	0	0	2	0	0	20	-20
34	Smith, Shyia		0	0-1	0-0	0-0	0	0	0	0	0	1	0	0	9	-6
42	Henderson, Asia		5	1-3	0-0	3-4	2	2	4	1	0	0	1	1	9	-10
	Team						1	1	2	0		0				
TOTALS			50	17-60	2-27	14-19	16	24	40	17	9	25	4	13	199	

Shooting By Period

Period	FG	FG%	3FG	3FG%	FT	FT%
1st Qtr	4-18	22%	0-7	00%	1-3	33%
2nd Qtr	2-10	20%	1-7	14%	6-6	100%
3rd Qtr	4-14	29%	0-5	00%	3-4	75%
4th Qtr	7-18	39%	1-8	13%	4-6	67%
1st Half	6-28	21%	1-14	07%	7-9	78%
2nd Half	11-32	34%	1-13	08%	7-10	70%
Game	17-60	28.3%	2-27	07.4%	14-19	73.7%

Last FG: 4th-00:33
 Biggest Run: 6-0
 Largest lead: By 4 at 1-07:50
 Technical Fouls: None.

Game Notes:

Officials: Kevin Pethel, Fatou Cissoko-Stephens, Shannon

Feck

Attendance: 1380

Start Time: 2019-01-12 20:04:35

End Time: 2019-01-12 22:00:41

Game Duration: 116

Conference Game:

Score	1st	2nd	3rd	4th	TOT
MEM	15	20	14	22	71
WSU	9	11	11	19	50

MEM led for 33:30. WSU led for 4:38.

Game was tied for 1:45.

Times tied: 4 Lead Changes: 1

Points from	MEM	WSU
In the Paint	36	24
Off Turns	23	17
2nd Chance	11	16
Fast Break	14	10
Bench	21	9

Official Box Score
Memphis vs Wichita St.
First Half Statistics Only
January 12, 2019 at Charles Koch Arena (Devlin Court) - Wichita, Kan.

Memphis 35

No.	Player	S	Pts	FG	3FG	FT	OR	DR	TR	PF	A	TO	Blk	Stl	Min	+/-
00	Stinson, Jada		8	3-5	2-3	0-0	0	0	0	0	1	0	0	0	8	11
03	Herndon, Gazmyne		6	3-5	0-0	0-0	0	4	4	0	5	0	1	1	16	12
11	White, Malainna		0	0-1	0-1	0-0	0	0	0	1	0	1	0	0	5	7
15	Barnes, Taylor		0	0-4	0-1	0-0	0	2	2	1	1	0	0	1	14	5
22	Coomber, Kiana		3	1-2	1-2	0-0	0	0	0	1	0	0	0	0	4	0
23	Shutes, Jamirah		0	0-3	0-1	0-2	0	1	1	0	2	2	0	2	17	10
25	Porter, Brianna		3	1-2	0-0	1-2	0	3	3	1	0	1	1	0	9	6
33	Davis, Alana		11	3-9	0-0	5-6	2	2	4	0	0	2	0	0	16	10
35	James, Jasmine		4	2-3	0-0	0-0	1	2	3	1	1	0	0	0	11	14
	Team		0	0-0	0-0	0-0	2	1	3	0	0	0	0	0	0	0
TOTALS			35	13-34	3-8	6-10	5	15	20	5	10	6	2	4	100	

Shooting By Period

Period	FG	FG%	3FG	3FG%	FT	FT%
1st Qtr	5-16	31%	1-4	25%	4-6	67%
2nd Qtr	8-18	44%	2-4	50%	2-4	50%
1st Half	13-34	38%	3-8	38%	6-10	60%
Game	25-61	41.0%	4-15	26.7%	17-24	70.8%

Last FG Half: MEM 2nd-02:19

Wichita St. 20

No.	Player	S	Pts	FG	3FG	FT	OR	DR	TR	PF	A	TO	Blk	Stl	Min	+/-
00	Peacock, Jada		0	0-0	0-0	0-0	0	0	0	0	0	0	0	0	0	0
05	Reid, Ashley		2	0-1	0-1	2-2	1	0	1	0	2	1	0	0	7	-9
11	Lozada-Cabbage, Sabrina		2	1-3	0-1	0-0	0	3	3	2	0	0	1	0	6	1
12	Bremaud, Carla		7	2-8	1-7	2-2	2	1	3	1	1	2	2	1	16	-8
13	Prince, Raven		2	1-2	0-0	0-1	1	0	1	2	0	0	0	0	5	1
15	Hampton, Jaida		2	1-8	0-5	0-0	0	1	1	0	1	1	0	0	13	-6
21	Brewer, Maya		2	1-1	0-0	0-0	0	0	0	2	0	3	0	0	3	-2
22	Faye, Alyssia		0	0-1	0-0	0-0	0	4	4	0	0	2	0	1	8	-11
23	Bastin, Seraphine		2	0-1	0-0	2-2	2	4	6	0	0	2	0	0	15	-13
30	Ambrosio, Cesaria		0	0-0	0-0	0-0	1	0	1	0	0	1	0	0	11	-12
34	Smith, Shyia		0	0-1	0-0	0-0	0	0	0	0	0	1	0	0	9	-6
42	Henderson, Asia		1	0-2	0-0	1-2	0	2	2	1	0	0	1	1	7	-10
	Team		0	0-0	0-0	0-0	0	0	0	0	0	0	0	0	0	0
TOTALS			20	6-28	1-14	7-9	7	15	22	8	4	13	4	3	100	

Shooting By Period

Period	FG	FG%	3FG	3FG%	FT	FT%
1st Qtr	4-18	22%	0-7	00%	1-3	33%
2nd Qtr	2-10	20%	1-7	14%	6-6	100%
1st Half	6-28	21%	1-14	07%	7-9	78%
Game	17-60	28.3%	2-27	07.4%	14-19	73.7%

Last FG Half: WSU 2nd-01:26

Game Notes:

Officials: Kevin Pethtel, Fatou Cissoko-Stephens, Shannon Feck
 Attendance: 1380

Start Time: 2019-01-12 20:04:35
 End Time: 2019-01-12 22:00:41
 Game Duration: 116
 Conference Game;

Score	1st	2nd	3rd	4th	TOT
MEM	15	20	14	22	71
WSU	9	11	11	19	50

Points from (This Period)	MEM	WSU
In the Paint	18	8
Off Turns	12	2
2nd Chance	2	4
Fast Break	6	3
Bench	15	5

Official Box Score
Memphis vs Wichita St.
First Quarter Statistics Only
January 12, 2019 at Charles Koch Arena (Devlin Court) - Wichita, Kan.

Memphis 15

No.	Player	S	Pts	FG	3FG	FT	OR	DR	TR	PF	A	TO	Blk	Stl	Min	+/-
03	Herndon, Gazmyne		2	1-3	0-0	0-0	0	3	3	0	1	0	1	1	10	6
15	Barnes, Taylor		0	0-1	0-1	0-0	0	0	0	1	0	0	0	0	6	-1
22	Coomber, Kiana		0	0-0	0-0	0-0	0	0	0	1	0	0	0	0	1	-2
23	Shutes, Jamirah		0	0-1	0-1	0-0	0	1	1	0	2	1	0	1	10	6
33	Davis, Alana		3	0-5	0-0	3-4	1	1	2	0	0	2	0	0	9	3
00	Stinson, Jada		5	2-3	1-2	0-0	0	0	0	0	1	0	0	0	4	7
11	White, Malainna		0	0-0	0-0	0-0	0	0	0	0	0	0	0	0	0	0
25	Porter, Brianna		3	1-1	0-0	1-2	0	3	3	0	0	0	1	0	6	4
35	James, Jasmine		2	1-2	0-0	0-0	1	0	1	0	0	0	0	0	4	7
	Team						1	1	2	0		0				
TOTALS			15	5-16	1-4	4-6	3	9	12	2	4	3	2	2	50	

Shooting By Period

Period	FG	FG%	3FG	3FG%	FT	FT%
1st Qtr	5-16	31%	1-4	25%	4-6	67%
2nd Qtr	8-18	44%	2-4	50%	2-4	50%
1st Half	5-16	31%	1-4	25%	4-6	67%
1st Half	13-34	38%	3-8	38%	6-10	60%
Game	25-61	41.0%	4-15	26.7%	17-24	70.8%

Wichita St. 9

No.	Player	S	Pts	FG	3FG	FT	OR	DR	TR	PF	A	TO	Blk	Stl	Min	+/-
11	Lozada-Cabbage, Sabrina		2	1-3	0-1	0-0	0	3	3	1	0	0	1	0	6	2
12	Bremaud, Carla		2	1-3	0-2	0-0	1	0	1	0	1	1	0	0	6	1
13	Prince, Raven		2	1-2	0-0	0-1	1	0	1	2	0	0	0	0	5	1
15	Hampton, Jaida		2	1-5	0-3	0-0	0	0	0	0	0	0	0	0	6	1
23	Bastin, Seraphine		0	0-1	0-0	0-0	1	1	2	0	0	0	0	0	8	-6
00	Peacock, Jada		0	0-0	0-0	0-0	0	0	0	0	0	0	0	0	0	0
05	Reid, Ashley		0	0-1	0-1	0-0	1	0	1	0	1	1	0	0	4	-7
21	Brewer, Maya		0	0-0	0-0	0-0	0	0	0	0	0	0	0	0	0	0
22	Faye, Alyssia		0	0-1	0-0	0-0	0	3	3	0	0	1	0	1	5	-7
30	Ambrosio, Cesaria		0	0-0	0-0	0-0	1	0	1	0	0	1	0	0	4	-7
34	Smith, Shyia		0	0-0	0-0	0-0	0	0	0	0	0	1	0	0	2	0
42	Henderson, Asia		1	0-2	0-0	1-2	0	1	1	1	0	0	1	0	4	-8
	Team						0	0	0	0		0				
TOTALS			9	4-18	0-7	1-3	5	8	13	4	2	5	2	1	50	

Shooting By Period

Period	FG	FG%	3FG	3FG%	FT	FT%
1st Qtr	4-18	22%	0-7	00%	1-3	33%
2nd Qtr	2-10	20%	1-7	14%	6-6	100%
1st Half	4-18	22%	0-7	00%	1-3	33%
1st Half	6-28	21%	1-14	07%	7-9	78%
Game	17-60	28.3%	2-27	07.4%	14-19	73.7%

Game Notes:

Officials: Kevin Pethel, Fatou Cissoko-Stephens, Shannon Feck

Attendance: 1380

Start Time: 2019-01-12 20:04:35

End Time: 2019-01-12 22:00:41

Game Duration: 116

Conference Game:

Score	1st	2nd	3rd	4th	TOT
MEM	15	20	14	22	71
WSU	9	11	11	19	50

Points from (This Period)	MEM	WSU
In the Paint	8	6
Off Turns	5	0
2nd Chance	2	2
Fast Break	4	3
Bench	10	1

**Official Play-By-Play
Memphis vs Wichita St.
First Quarter**

January 12, 2019 at Charles Koch Arena (Devlin Court) - Wichita, Kan.

Period 1

Starters:

Memphis: 3 HERNDON,GAZMYNE; 15 BARNES,TAYLOR; 22 COOMBER,KIANA; 23 SHUTES,JAMIRAH; 33 DAVIS,ALANA;

Wichita St.: 11 LOZADA-CABBAGE,SABRINA; 12 BREMAUD,CARLA; 13 PRINCE,RAVEN; 15 HAMPTON,JAIDA; 23 BASTIN,SERAPHINE;

Time	VISITORS: Memphis	Score	Margin	HOME: Wichita St.
09:44				MISSED LAYUP by BASTIN,SERAPHINE
09:41	REBOUND (DEF) by HERNDON,GAZMYNE			
09:23	MISSED 3PTR by BARNES,TAYLOR			
09:19				REBOUND (DEF) by LOZADA-CABBAGE,SABRINA
09:14				MISSED LAYUP by PRINCE,RAVEN
09:12				REBOUND (OFF) by PRINCE,RAVEN
09:12		2-0	H 2	GOOD! LAYUP by PRINCE,RAVEN
09:12	FOUL (PERSONAL) by COOMBER,KIANA			
09:12	SUB OUT: COOMBER,KIANA			
09:12	SUB IN: PORTER,BRIANNA			
09:12				MISSED FT by PRINCE,RAVEN
09:11	REBOUND (DEF) by PORTER,BRIANNA			
08:49	MISSED 3PTR by SHUTES,JAMIRAH			
08:46				REBOUND (DEF) by BASTIN,SERAPHINE
08:36				MISSED 3PTR by HAMPTON,JAIDA
08:33				REBOUND (OFF) by BASTIN,SERAPHINE
08:23				MISSED 3PTR by BREMAUD,CARLA
08:18	REBOUND (DEF) by PORTER,BRIANNA			
07:58	MISSED JUMPER by DAVIS,ALANA			
07:58				BLOCK by LOZADA-CABBAGE,SABRINA
07:53				REBOUND (DEF) by LOZADA-CABBAGE,SABRINA
07:50		4-0	H 4	GOOD! LAYUP by HAMPTON,JAIDA [FB]
07:50				ASSIST by BREMAUD,CARLA
07:31	TURNOVER (OTHER) by DAVIS,ALANA			
07:18				MISSED 3PTR by HAMPTON,JAIDA
07:16	REBOUND (DEF) by PORTER,BRIANNA			
07:06	GOOD! LAYUP by PORTER,BRIANNA	4-2	H 2	
07:06	ASSIST by SHUTES,JAMIRAH			
06:44				MISSED 3PTR by BREMAUD,CARLA
06:44	BLOCK by PORTER,BRIANNA			
06:41	REBOUND (DEF) by DAVIS,ALANA			
06:41	TURNOVER (LOSTBALL) by DAVIS,ALANA			
06:29				MISSED JUMPER by HAMPTON,JAIDA
06:26	REBOUND (DEF) by TEAM			
06:26				FOUL (PERSONAL) by LOZADA-CABBAGE,SABRINA
06:16				FOUL (PERSONAL) by PRINCE,RAVEN
06:16	MISSED FT by PORTER,BRIANNA			
06:16	REBOUND (OFF) by TEAM			
06:16				SUB OUT: LOZADA-CABBAGE,SABRINA
06:16				SUB IN: HENDERSON,ASIA
06:16	GOOD! FT by PORTER,BRIANNA	4-3	H 1	
05:50				MISSED 3PTR by HAMPTON,JAIDA
05:48	REBOUND (DEF) by TEAM			
05:37				FOUL (PERSONAL) by HENDERSON,ASIA
05:37	MISSED FT by DAVIS,ALANA			
05:37	REBOUND (OFF) by TEAM			
05:37	GOOD! FT by DAVIS,ALANA	4-4	T	
05:17		6-4	H 2	GOOD! JUMPER by BREMAUD,CARLA
05:05				FOUL (PERSONAL) by PRINCE,RAVEN
05:05	GOOD! FT by DAVIS,ALANA	6-5	H 1	
05:05				SUB OUT: PRINCE,RAVEN
05:05				SUB IN: FAYE,ALYSSIA
05:05	GOOD! FT by DAVIS,ALANA	6-6	T	
04:44				MISSED JUMPER by HENDERSON,ASIA
04:44	BLOCK by HERNDON,GAZMYNE			
04:34				REBOUND (OFF) by BREMAUD,CARLA
04:33				TURNOVER (LOSTBALL) by BREMAUD,CARLA
04:28	MISSED LAYUP by HERNDON,GAZMYNE			
04:28				REBOUND (DEF) by HENDERSON,ASIA
04:28	FOUL (PERSONAL) by BARNES,TAYLOR			
04:28				
04:28	SUB OUT: BARNES,TAYLOR			
04:28	SUB IN: STINSON,JADA			
04:28				MISSED FT by HENDERSON,ASIA
04:28				REBOUND (OFF) by TEAM
04:28		7-6	H 1	GOOD! FT by HENDERSON,ASIA [FB]
04:16	MISSED LAYUP by DAVIS,ALANA			
04:16				BLOCK by HENDERSON,ASIA
04:15	REBOUND (OFF) by TEAM			
04:15				SUB OUT: HAMPTON,JAIDA
04:15				SUB IN: REID,ASHLEY
04:15				SUB OUT: BREMAUD,CARLA
04:15				SUB IN: AMBROSIO,CESARIA
04:15	SUB OUT: DAVIS,ALANA			
04:15	SUB IN: JAMES,JASMINE			
04:03	TURNOVER (LOSTBALL) by SHUTES,JAMIRAH			

Time	VISITORS: Memphis	Score	Margin	HOME: Wichita St.
04:03				STEAL by FAYE,ALYSSIA
03:58				TURNOVER (TRAVEL) by REID,ASHLEY
03:37	GOOD! 3PTR by STINSON,JADA	7-9	V 2	
03:37	ASSIST by HERNDON,GAZMYNE			
03:07				MISSED 3PTR by REID,ASHLEY
03:01				REBOUND (OFF) by AMBROSIO,CESARIA
03:01	SUB OUT: PORTER,BRIANNA			
03:01	SUB IN: DAVIS,ALANA			
02:58				MISSED JUMPER by HENDERSON,ASIA
02:53	REBOUND (DEF) by HERNDON,GAZMYNE			
02:50	MISSED 3PTR by STINSON,JADA			
02:47	REBOUND (OFF) by JAMES,JASMINE			
02:46	GOOD! LAYUP by JAMES,JASMINE	7-11	V 4	
02:32				MISSED JUMPER by FAYE,ALYSSIA
02:27	REBOUND (DEF) by SHUTES,JAMIRAH			
02:22	MISSED LAYUP by JAMES,JASMINE			
02:17				REBOUND (DEF) by FAYE,ALYSSIA
02:00				TURNOVER (BADPASS) by FAYE,ALYSSIA
02:00	STEAL by SHUTES,JAMIRAH			
01:54	GOOD! LAYUP by HERNDON,GAZMYNE [FB]	7-13	V 6	
01:54	ASSIST by STINSON,JADA			
01:51				TIMEOUT 30SEC
01:51				SUB OUT: BASTIN,SERAPHINE
01:51				SUB IN: LOZADA-CABBAGE,SABRINA
01:51				SUB OUT: HENDERSON,ASIA
01:51				SUB IN: SMITH,SHYIA
01:37		9-13	V 4	GOOD! LAYUP by LOZADA-CABBAGE,SABRINA
01:37				ASSIST by REID,ASHLEY
01:22	MISSED JUMPER by DAVIS,ALANA			
01:16	REBOUND (OFF) by DAVIS,ALANA			
01:16	MISSED LAYUP by DAVIS,ALANA			
01:15				REBOUND (DEF) by LOZADA-CABBAGE,SABRINA
01:11				TURNOVER (BADPASS) by AMBROSIO,CESARIA
00:58	MISSED JUMPER by HERNDON,GAZMYNE			
00:54				REBOUND (DEF) by FAYE,ALYSSIA
00:51				MISSED 3PTR by LOZADA-CABBAGE,SABRINA
00:47				REBOUND (OFF) by REID,ASHLEY
00:40				MISSED JUMPER by LOZADA-CABBAGE,SABRINA
00:37	REBOUND (DEF) by HERNDON,GAZMYNE			
00:33	GOOD! LAYUP by STINSON,JADA [FB]	9-15	V 6	
00:33	ASSIST by SHUTES,JAMIRAH			
00:16				TURNOVER (LOSTBALL) by SMITH,SHYIA
00:16	STEAL by HERNDON,GAZMYNE			
00:03	MISSED LAYUP by DAVIS,ALANA			
00:00				REBOUND (DEF) by FAYE,ALYSSIA

Memphis 15, Wichita St. 9

Points from (This Period)	MEM	WSU
In the Paint	8	6
Off Turns	5	0
2nd Chance	2	2
Fast Break	4	3
Bench	10	1

Official Box Score
Memphis vs Wichita St.
Second Quarter Statistics Only
January 12, 2019 at Charles Koch Arena (Devlin Court) - Wichita, Kan.

Memphis 20

No.	Player	S	Pts	FG	3FG	FT	OR	DR	TR	PF	A	TO	Blk	Stl	Min	+/-
03	Herndon, Gazmyne		4	2-2	0-0	0-0	0	1	1	0	4	0	0	0	6	6
15	Barnes, Taylor		0	0-3	0-0	0-0	0	2	2	0	1	0	0	1	8	6
22	Coomber, Kiana		3	1-2	1-2	0-0	0	0	0	0	0	0	0	0	3	2
23	Shutes, Jamirah		0	0-2	0-0	0-2	0	0	0	0	0	1	0	1	7	4
33	Davis, Alana		8	3-4	0-0	2-2	1	1	2	0	0	0	0	0	7	7
00	Stinson, Jada		3	1-2	1-1	0-0	0	0	0	0	0	0	0	0	4	4
11	White, Malainna		0	0-1	0-1	0-0	0	0	0	1	0	1	0	0	5	7
25	Porter, Brianna		0	0-1	0-0	0-0	0	0	0	1	0	1	0	0	3	2
35	James, Jasmine		2	1-1	0-0	0-0	0	2	2	1	1	0	0	0	7	7
	Team						1	0	1	0		0				
TOTALS			20	8-18	2-4	2-4	2	6	8	3	6	3	0	2	50	

Shooting By Period

Period	FG	FG%	3FG	3FG%	FT	FT%
3rd Qtr	4-15	27%	0-6	00%	6-7	86%
4th Qtr	8-12	67%	1-1	100%	5-7	71%
2nd Half	8-18	44%	2-4	50%	2-4	50%
2nd Half	12-27	44%	1-7	14%	11-14	79%
Game	25-61	41.0%	4-15	26.7%	17-24	70.8%

Wichita St. 11

No.	Player	S	Pts	FG	3FG	FT	OR	DR	TR	PF	A	TO	Blk	Stl	Min	+/-
11	Lozada-Cabbage, Sabrina		0	0-0	0-0	0-0	0	0	0	1	0	0	0	0	0	-1
12	Bremaud, Carla		5	1-5	1-5	2-2	1	1	2	1	0	1	2	1	10	-9
13	Prince, Raven		0	0-0	0-0	0-0	0	0	0	0	0	0	0	0	0	0
15	Hampton, Jaida		0	0-3	0-2	0-0	0	1	1	0	1	1	0	0	7	-7
23	Bastin, Seraphine		2	0-0	0-0	2-2	1	3	4	0	0	2	0	0	7	-7
00	Peacock, Jada		0	0-0	0-0	0-0	0	0	0	0	0	0	0	0	0	0
05	Reid, Ashley		2	0-0	0-0	2-2	0	0	0	0	1	0	0	0	3	-2
21	Brewer, Maya		2	1-1	0-0	0-0	0	0	0	2	0	3	0	0	3	-2
22	Faye, Alyssia		0	0-0	0-0	0-0	0	1	1	0	0	1	0	0	3	-4
30	Ambrosio, Cesaria		0	0-0	0-0	0-0	0	0	0	0	0	0	0	0	7	-5
34	Smith, Shyia		0	0-1	0-0	0-0	0	0	0	0	0	0	0	0	7	-6
42	Henderson, Asia		0	0-0	0-0	0-0	0	1	1	0	0	0	0	1	3	-2
	Team						0	0	0	0		0				
TOTALS			11	2-10	1-7	6-6	2	7	9	4	2	8	2	2	50	

Shooting By Period

Period	FG	FG%	3FG	3FG%	FT	FT%
3rd Qtr	4-14	29%	0-5	00%	3-4	75%
4th Qtr	7-18	39%	1-8	13%	4-6	67%
2nd Half	2-10	20%	1-7	14%	6-6	100%
2nd Half	11-32	34%	1-13	08%	7-10	70%
Game	17-60	28.3%	2-27	07.4%	14-19	73.7%

Game Notes:

Officials: Kevin Pethel, Fatou Cissoko-Stephens, Shannon Feck

Attendance: 1380

Start Time: 2019-01-12 20:04:35

End Time: 2019-01-12 22:00:41

Game Duration: 116

Conference Game:

Score	1st	2nd	3rd	4th	TOT
MEM	15	20	14	22	71
WSU	9	11	11	19	50

Points from (This Period)	MEM	WSU
In the Paint	10	2
Off Turns	7	2
2nd Chance	0	2
Fast Break	2	0
Bench	5	4

Official Play-By-Play
Memphis vs Wichita St.
Second Quarter
January 12, 2019 at Charles Koch Arena (Devlin Court) - Wichita, Kan.

Period 2

Starters:

Memphis: 3 HERNDON,GAZMYNE; 15 BARNES,TAYLOR; 22 COOMBER,KIANA; 23 SHUTES,JAMIRAH; 33 DAVIS,ALANA;

Wichita St.: 11 LOZADA-CABBAGE,SABRINA; 12 BREMAUD,CARLA; 13 PRINCE,RAVEN; 15 HAMPTON,JAIDA; 23 BASTIN,SERAPHINE;

Time	VISITORS: Memphis	Score	Margin	HOME: Wichita St.
09:51				FOUL (PERSONAL) by LOZADA-CABBAGE,SABRINA
09:51	GOOD! FT by DAVIS,ALANA	9-16	V 7	
09:51				SUB OUT: LOZADA-CABBAGE,SABRINA
09:51				SUB IN: SMITH,SHYIA
09:51	GOOD! FT by DAVIS,ALANA	9-17	V 8	
09:23				TURNOVER (BADPASS) by FAYE,ALYSSIA
09:07	MISSED JUMPER by BARNES,TAYLOR			
09:03				REBOUND (DEF) by HAMPTON,JAIDA
09:00				TURNOVER (BADPASS) by HAMPTON,JAIDA
09:00	STEAL by BARNES,TAYLOR			
08:54	MISSED LAYUP by STINSON,JADA			
08:51	REBOUND (OFF) by DAVIS,ALANA			
08:49	MISSED LAYUP by DAVIS,ALANA			
08:39				REBOUND (DEF) by BASTIN,SERAPHINE
08:39				MISSED 3PTR by BREMAUD,CARLA
08:39				REBOUND (OFF) by BASTIN,SERAPHINE
08:39	FOUL (PERSONAL) by WHITE,MALAINNA			
08:39	SUB OUT: STINSON,JADA			
08:39	SUB IN: SHUTES,JAMIRAH			
08:39		10-17	V 7	GOOD! FT by BASTIN,SERAPHINE
08:39		11-17	V 6	GOOD! FT by BASTIN,SERAPHINE
08:14				FOUL (PERSONAL) by BREMAUD,CARLA
08:14	MISSED FT by SHUTES,JAMIRAH			
08:14	REBOUND (OFF) by TEAM			
08:14	MISSED FT by SHUTES,JAMIRAH			
08:12				REBOUND (DEF) by FAYE,ALYSSIA
08:01				MISSED 3PTR by BREMAUD,CARLA
07:58	REBOUND (DEF) by JAMES,JASMINE			
07:53	GOOD! LAYUP by DAVIS,ALANA [FB]	11-19	V 8	
07:53	ASSIST by BARNES,TAYLOR			
07:38				TURNOVER (BADPASS) by BASTIN,SERAPHINE
07:38	STEAL by SHUTES,JAMIRAH			
07:31	MISSED LAYUP by SHUTES,JAMIRAH			
07:31				BLOCK by BREMAUD,CARLA
07:26				REBOUND (DEF) by BASTIN,SERAPHINE
07:23				TURNOVER (LOSTBALL) by BASTIN,SERAPHINE
07:14	GOOD! LAYUP by DAVIS,ALANA	11-21	V 10	
07:14	ASSIST by JAMES,JASMINE			
06:55				TURNOVER (TRAVEL) by BREMAUD,CARLA
06:55				SUB OUT: FAYE,ALYSSIA
06:55				SUB IN: AMBROSIO,CESARIA
06:55	SUB OUT: WHITE,MALAINNA			
06:55	SUB IN: HERNDON,GAZMYNE			
06:43	GOOD! LAYUP by HERNDON,GAZMYNE	11-23	V 12	
06:23	FOUL (PERSONAL) by JAMES,JASMINE			
06:23		12-23	V 11	GOOD! FT by BREMAUD,CARLA
06:23		13-23	V 10	GOOD! FT by BREMAUD,CARLA
06:07	MISSED LAYUP by SHUTES,JAMIRAH			
06:04				REBOUND (DEF) by BASTIN,SERAPHINE
05:52				MISSED 3PTR by BREMAUD,CARLA
05:47	REBOUND (DEF) by JAMES,JASMINE			
05:43	TURNOVER (TRAVEL) by SHUTES,JAMIRAH			
05:25				MISSED JUMPER by HAMPTON,JAIDA
05:21	REBOUND (DEF) by BARNES,TAYLOR			
05:15	GOOD! LAYUP by DAVIS,ALANA	13-25	V 12	
05:15	ASSIST by HERNDON,GAZMYNE			
04:56				MISSED LAYUP by SMITH,SHYIA
04:53	REBOUND (DEF) by HERNDON,GAZMYNE			
04:48	GOOD! LAYUP by HERNDON,GAZMYNE	13-27	V 14	
04:31		16-27	V 11	GOOD! 3PTR by BREMAUD,CARLA
04:31				ASSIST by HAMPTON,JAIDA
04:10	GOOD! JUMPER by JAMES,JASMINE	16-29	V 13	
04:10	ASSIST by HERNDON,GAZMYNE			
03:50				MISSED 3PTR by HAMPTON,JAIDA
03:46				REBOUND (OFF) by BREMAUD,CARLA
03:42				MISSED 3PTR by BREMAUD,CARLA
03:38	REBOUND (DEF) by BARNES,TAYLOR			
03:33	MISSED JUMPER by BARNES,TAYLOR			
03:30				REBOUND (DEF) by BREMAUD,CARLA
03:25				MISSED 3PTR by HAMPTON,JAIDA
03:19	REBOUND (DEF) by DAVIS,ALANA			
03:00				SUB OUT: HAMPTON,JAIDA
03:00				SUB IN: HENDERSON,ASIA
03:00				SUB OUT: BASTIN,SERAPHINE
03:00				SUB IN: BREWER,MAYA

Time	VISITORS: Memphis	Score	Margin	HOME: Wichita St.
03:00				SUB OUT: SMITH,SHYIA
03:00				SUB IN: REID,ASHLEY
03:00	SUB OUT: BARNES,TAYLOR			
03:00	SUB IN: WHITE,MALAINNA			
03:00	SUB OUT: SHUTES,JAMIRAH			
03:00	SUB IN: PORTER,BRIANNA			
03:00	SUB OUT: DAVIS,ALANA			
03:00	SUB IN: COOMBER,KIANA			
03:00	SUB OUT: JAMES,JASMINE			
03:00	SUB IN: STINSON,JADA			
02:58	GOOD! 3PTR by STINSON,JADA	16-32	V 16	
02:58	ASSIST by HERNDON,GAZMYNE			
02:41				TURNOVER (TRAVEL) by BREWER,MAYA
02:19	GOOD! 3PTR by COOMBER,KIANA	16-35	V 19	
02:19	ASSIST by HERNDON,GAZMYNE			
02:02				TURNOVER (BADPASS) by BREWER,MAYA
01:38	MISSED 3PTR by WHITE,MALAINNA			
01:34				REBOUND (DEF) by HENDERSON,ASIA
01:26		18-35	V 17	GOOD! LAYUP by BREWER,MAYA
01:26				ASSIST by REID,ASHLEY
01:07	TURNOVER (BADPASS) by WHITE,MALAINNA			
01:07				STEAL by HENDERSON,ASIA
00:56	FOUL (PERSONAL) by PORTER,BRIANNA			
00:56		19-35	V 16	GOOD! FT by REID,ASHLEY
00:56	SUB OUT: WHITE,MALAINNA			
00:56	SUB IN: BARNES,TAYLOR			
00:56	SUB OUT: HERNDON,GAZMYNE			
00:56	SUB IN: SHUTES,JAMIRAH			
00:56		20-35	V 15	GOOD! FT by REID,ASHLEY
00:46	MISSED LAYUP by PORTER,BRIANNA			
00:46				BLOCK by BREMAUD,CARLA
00:44	REBOUND (OFF) by TEAM			
00:34				FOUL (PERSONAL) by BREWER,MAYA
00:26	MISSED JUMPER by BARNES,TAYLOR			
00:25	REBOUND (OFF) by TEAM			
00:25	TURNOVER (LOSTBALL) by PORTER,BRIANNA			
00:25				STEAL by BREMAUD,CARLA
00:11				FOUL (OFF) by BREWER,MAYA
00:11				TURNOVER (OFFENSIVE) by BREWER,MAYA
00:03	MISSED 3PTR by COOMBER,KIANA			
00:02				REBOUND (DEF) by TEAM

Memphis 35, Wichita St. 20

Points from (This Period)	MEM	WSU
In the Paint	10	2
Off Turns	7	2
2nd Chance	0	2
Fast Break	2	0
Bench	5	4

Official Box Score
Memphis vs Wichita St.
Second Half Statistics Only
January 12, 2019 at Charles Koch Arena (Devlin Court) - Wichita, Kan.

Memphis 36

No.	Player	S	Pts	FG	3FG	FT	OR	DR	TR	PF	A	TO	Blk	Stl	Min	+/-
00	Stinson, Jada		3	1-3	1-2	0-0	0	0	0	0	2	4	0	0	15	7
03	Hemdon, Gazmyne		2	0-2	0-0	2-2	1	1	2	0	3	2	0	0	11	3
11	White, Malainna		2	1-1	0-0	0-0	0	0	0	0	0	1	0	0	3	3
15	Barnes, Taylor		3	1-3	0-2	1-2	0	1	1	3	2	3	0	3	15	5
22	Coomber, Kiana		0	0-2	0-2	0-0	0	0	0	1	0	0	0	2	6	0
23	Shutes, Jamirah		10	4-7	0-1	2-3	1	2	3	2	0	2	0	2	16	0
25	Porter, Brianna		1	0-1	0-0	1-2	2	0	2	1	0	0	0	0	4	0
33	Davis, Alana		15	5-7	0-0	5-5	1	0	1	2	0	3	1	0	16	6
35	James, Jasmine		0	0-1	0-0	0-0	0	5	5	3	1	1	2	0	14	6
	Team		0	0-0	0-0	0-0	3	3	6	0	0	1	0	0	0	0
TOTALS			36	12-27	1-7	11-14	8	12	20	12	8	17	3	7	99	

Shooting By Period

Period	FG	FG%	3FG	3FG%	FT	FT%
3rd Qtr	4-15	27%	0-6	00%	6-7	86%
4th Qtr	8-12	67%	1-1	100%	5-7	71%
2nd Half	12-27	44%	1-7	14%	11-14	79%
Game	25-61	41.0%	4-15	26.7%	17-24	70.8%

Last FG Half: MEM 4th-00:07

Wichita St. 30

No.	Player	S	Pts	FG	3FG	FT	OR	DR	TR	PF	A	TO	Blk	Stl	Min	+/-
00	Peacock, Jada		0	0-2	0-2	0-0	0	0	0	0	0	0	0	0	4	1
05	Reid, Ashley		0	0-4	0-2	0-0	0	0	0	2	0	2	0	0	12	-3
11	Lozada-Cabbage, Sabrina		6	3-4	0-1	0-0	1	2	3	3	1	0	0	0	10	6
12	Bremaud, Carla		1	0-4	0-3	1-2	0	0	0	1	3	4	0	1	15	-7
13	Prince, Raven		7	3-5	0-0	1-2	2	0	2	1	0	0	0	2	16	-7
15	Hampton, Jaida		8	3-8	1-3	1-2	2	2	4	1	0	4	0	1	13	-11
21	Brewer, Maya		0	0-1	0-1	0-0	0	0	0	0	0	0	0	1	1	0
22	Faye, Alyssia		0	0-0	0-0	0-0	0	1	1	1	0	0	0	2	5	-3
23	Bastin, Seraphine		4	1-3	0-1	2-2	1	3	4	0	1	1	0	3	15	2
30	Ambrosio, Cesaria		0	0-0	0-0	0-0	0	0	0	0	0	1	0	0	8	-8
34	Smith, Shyia		0	0-0	0-0	0-0	0	0	0	0	0	0	0	0	0	0
42	Henderson, Asia		4	1-1	0-0	2-2	2	0	2	0	0	0	0	0	1	0
	Team		0	0-0	0-0	0-0	1	1	2	0	0	0	0	0	0	0
TOTALS			30	11-32	1-13	7-10	9	9	18	9	5	12	0	10	99	

Shooting By Period

Period	FG	FG%	3FG	3FG%	FT	FT%
3rd Qtr	4-14	29%	0-5	00%	3-4	75%
4th Qtr	7-18	39%	1-8	13%	4-6	67%
2nd Half	11-32	34%	1-13	08%	7-10	70%
Game	17-60	28.3%	2-27	07.4%	14-19	73.7%

Last FG Half: WSU 4th-00:33

Game Notes:

Officials: Kevin Pethel, Fatou Cissoko-Stephens, Shannon

Feck

Attendance: 1380

Start Time: 2019-01-12 20:04:35

End Time: 2019-01-12 22:00:41

Game Duration: 116

Conference Game;

Score	1st	2nd	3rd	4th	TOT
MEM	15	20	14	22	71
WSU	9	11	11	19	50

Points from (This Period)	MEM	WSU
In the Paint	18	16
Off Turns	11	15
2nd Chance	9	12
Fast Break	8	7
Bench	6	4

Official Box Score
Memphis vs Wichita St.
Third Quarter Statistics Only
January 12, 2019 at Charles Koch Arena (Devlin Court) - Wichita, Kan.

Memphis 36

No.	Player	S	Pts	FG	3FG	FT	OR	DR	TR	PF	A	TO	Blk	Stl	Min	+/-
03	Herndon, Gazmyne		2	0-0	0-0	2-2	1	0	1	0	0	1	0	0	6	-1
15	Barnes, Taylor		0	0-2	0-2	0-0	0	1	1	2	1	2	0	2	6	7
22	Coomber, Kiana		0	0-2	0-2	0-0	0	0	0	1	0	0	0	2	6	0
23	Shutes, Jamirah		5	2-4	0-1	1-1	1	2	3	2	0	2	0	2	9	-2
33	Davis, Alana		4	1-2	0-0	2-2	1	0	1	0	0	2	0	0	6	3
00	Stinson, Jada		0	0-2	0-1	0-0	0	0	0	0	0	2	0	0	8	0
11	White, Malainna		2	1-1	0-0	0-0	0	0	0	0	0	0	0	0	1	5
25	Porter, Brianna		1	0-1	0-0	1-2	2	0	2	1	0	0	0	0	4	0
35	James, Jasmine		0	0-1	0-0	0-0	0	2	2	1	0	0	1	0	4	3
	Team						1	2	3	0		0				
TOTALS			14	4-15	0-6	6-7	6	7	13	7	1	9	1	6	50	

Shooting By Period

Period	FG	FG%	3FG	3FG%	FT	FT%
2nd Half	0-0	0%	0-0	0%	0-0	0%
Game	25-61	41.0%	4-15	26.7%	17-24	70.8%

Wichita St. 30

No.	Player	S	Pts	FG	3FG	FT	OR	DR	TR	PF	A	TO	Blk	Stl	Min	+/-
11	Lozada-Cabbage, Sabrina		4	2-3	0-1	0-0	0	1	1	2	1	0	0	0	5	0
12	Bremaud, Carla		0	0-0	0-0	0-0	0	0	0	0	1	3	0	0	6	-4
13	Prince, Raven		3	1-3	0-0	1-2	2	0	2	0	0	0	0	1	10	-3
15	Hampton, Jaida		0	0-0	0-0	0-0	0	1	1	0	0	4	0	0	3	-8
23	Bastin, Seraphine		4	1-3	0-1	2-2	1	2	3	0	0	0	0	1	8	0
00	Peacock, Jada		0	0-2	0-2	0-0	0	0	0	0	0	0	0	0	4	1
05	Reid, Ashley		0	0-3	0-1	0-0	0	0	0	1	0	1	0	0	9	2
21	Brewer, Maya		0	0-0	0-0	0-0	0	0	0	0	0	0	0	0	0	0
22	Faye, Alyssia		0	0-0	0-0	0-0	0	1	1	1	0	0	0	2	5	-3
30	Ambrosio, Cesaria		0	0-0	0-0	0-0	0	0	0	0	0	0	0	0	0	0
34	Smith, Shyia		0	0-0	0-0	0-0	0	0	0	0	0	0	0	0	0	0
42	Henderson, Asia		0	0-0	0-0	0-0	0	0	0	0	0	0	0	0	0	0
	Team						1	0	1	0		0				
TOTALS			11	4-14	0-5	3-4	4	5	9	4	2	8	0	4	50	

Shooting By Period

Period	FG	FG%	3FG	3FG%	FT	FT%
2nd Half	0-0	0%	0-0	0%	0-0	0%
Game	17-60	28.3%	2-27	07.4%	14-19	73.7%

Game Notes:

Officials: Kevin Pethtel, Fatou Cissoko-Stephens, Shannon Feck
Attendance: 1380

Start Time: 2019-01-12 20:04:35
End Time: 2019-01-12 22:00:41
Game Duration: 116
Conference Game:

Score	1st	2nd	3rd	4th	TOT
MEM	15	20	14	22	71
WSU	9	11	11	19	50

Points from (This Period)	MEM	WSU
In the Paint	6	6
Off Turns	5	6
2nd Chance	7	5
Fast Break	2	2
Bench	3	0

**Official Play-By-Play
Memphis vs Wichita St.
Third Quarter**

January 12, 2019 at Charles Koch Arena (Devlin Court) - Wichita, Kan.

Period 3

Starters:

Memphis: 3 HERNDON,GAZMYNE; 15 BARNES,TAYLOR; 22 COOMBER,KIANA; 23 SHUTES,JAMIRAH; 33 DAVIS,ALANA;

Wichita St.: 11 LOZADA-CABBAGE,SABRINA; 12 BREMAUD,CARLA; 13 PRINCE,RAVEN; 15 HAMPTON,JAIDA; 23 BASTIN,SERAPHINE;

Time	VISITORS: Memphis	Score	Margin	HOME: Wichita St.
09:40	MISSED 3PTR by BARNES,TAYLOR			
09:35				REBOUND (DEF) by LOZADA-CABBAGE,SABRINA
09:28				TURNOVER (BADPASS) by BREMAUD,CARLA
09:28	STEAL by COOMBER,KIANA			
09:23	TURNOVER (BADPASS) by HERNDON,GAZMYNE			
09:13				TURNOVER (BADPASS) by BREMAUD,CARLA
09:13	STEAL by COOMBER,KIANA			
09:06	FOUL (OFF) by BARNES,TAYLOR			
09:06	TURNOVER (OFFENSIVE) by BARNES,TAYLOR			
08:59		22-35	V 13	GOOD! LAYUP by LOZADA-CABBAGE,SABRINA
08:59				ASSIST by BREMAUD,CARLA
08:39	MISSED 3PTR by COOMBER,KIANA			
08:35				REBOUND (DEF) by HAMPTON,JAIDA
08:32				TURNOVER (LOSTBALL) by HAMPTON,JAIDA
08:32	STEAL by SHUTES,JAMIRAH			
08:30	GOOD! LAYUP by SHUTES,JAMIRAH	22-37	V 15	
08:30				FOUL (PERSONAL) by REID,ASHLEY
08:30	GOOD! FT by SHUTES,JAMIRAH	22-38	V 16	
08:18				TURNOVER (TRAVEL) by HAMPTON,JAIDA
08:05	MISSED 3PTR by SHUTES,JAMIRAH			
08:03	REBOUND (OFF) by DAVIS,ALANA			
08:03				FOUL (PERSONAL) by LOZADA-CABBAGE,SABRINA
08:03	GOOD! FT by DAVIS,ALANA	22-39	V 17	
08:03	GOOD! FT by DAVIS,ALANA	22-40	V 18	
07:52				TURNOVER (LOSTBALL) by HAMPTON,JAIDA
07:52	STEAL by BARNES,TAYLOR			
07:52				SUB OUT: HAMPTON,JAIDA
07:52				SUB IN: BASTIN,SERAPHINE
07:39	MISSED 3PTR by BARNES,TAYLOR			
07:36				REBOUND (DEF) by BASTIN,SERAPHINE
07:36	FOUL (PERSONAL) by BARNES,TAYLOR			
07:36	SUB OUT: BARNES,TAYLOR			
07:36	SUB IN: STINSON,JADA			
07:22		24-40	V 16	GOOD! JUMPER by BASTIN,SERAPHINE
07:22				ASSIST by LOZADA-CABBAGE,SABRINA
06:54	TURNOVER (TRAVEL) by DAVIS,ALANA			
06:44				TURNOVER (BADPASS) by REID,ASHLEY
06:44	STEAL by SHUTES,JAMIRAH			
06:41	FOUL (OFF) by SHUTES,JAMIRAH			
06:41	TURNOVER (OFFENSIVE) by SHUTES,JAMIRAH			
06:32				TURNOVER (LOSTBALL) by BREMAUD,CARLA
06:17	TURNOVER (BADPASS) by DAVIS,ALANA			
06:17				STEAL by PRINCE,RAVEN
06:11				MISSED LAYUP by REID,ASHLEY
06:08				REBOUND (OFF) by PRINCE,RAVEN
06:00		26-40	V 14	GOOD! LAYUP by LOZADA-CABBAGE,SABRINA
05:50	MISSED LAYUP by DAVIS,ALANA			
05:46				REBOUND (DEF) by BASTIN,SERAPHINE
05:41				MISSED 3PTR by LOZADA-CABBAGE,SABRINA
05:38	REBOUND (DEF) by SHUTES,JAMIRAH			
05:33	MISSED LAYUP by SHUTES,JAMIRAH			
05:33	REBOUND (OFF) by TEAM			
05:33				SUB OUT: BREMAUD,CARLA
05:33				SUB IN: PEACOCK,JADA
05:33	SUB OUT: DAVIS,ALANA			
05:33	SUB IN: PORTER,BRIANNA			
05:30	MISSED 3PTR by STINSON,JADA			
05:26	REBOUND (OFF) by HERNDON,GAZMYNE			
05:02				FOUL (PERSONAL) by LOZADA-CABBAGE,SABRINA
05:02	GOOD! FT by HERNDON,GAZMYNE	26-41	V 15	
05:02				SUB OUT: LOZADA-CABBAGE,SABRINA
05:02				SUB IN: FAYE,ALYSSIA
05:02	GOOD! FT by HERNDON,GAZMYNE	26-42	V 16	
04:59				MISSED LAYUP by BASTIN,SERAPHINE
04:54	REBOUND (DEF) by TEAM			
04:49				
04:27	MISSED 3PTR by COOMBER,KIANA			
04:25				REBOUND (DEF) by FAYE,ALYSSIA
04:25	FOUL (PERSONAL) by PORTER,BRIANNA			
04:08				MISSED 3PTR by PEACOCK,JADA
04:06				REBOUND (OFF) by TEAM
04:06	FOUL (PERSONAL) by COOMBER,KIANA			
04:06		27-42	V 15	GOOD! FT by PRINCE,RAVEN
04:06	SUB OUT: COOMBER,KIANA			
04:06	SUB IN: JAMES,JASMINE			
04:06				MISSED FT by PRINCE,RAVEN

Time	VISITORS: Memphis	Score	Margin	HOME: Wichita St.
04:05	REBOUND (DEF) by SHUTES,JAMIRAH			
03:58	TURNOVER (BADPASS) by STINSON,JADA			
03:58				STEAL by FAYE,ALYSSIA
03:51	FOUL (PERSONAL) by JAMES,JASMINE			
03:51		28-42	V 14	GOOD! FT by BASTIN,SERAPHINE [FB]
03:51	SUB OUT: HERNDON,GAZMYNE			
03:51	SUB IN: BARNES,TAYLOR			
03:51		29-42	V 13	GOOD! FT by BASTIN,SERAPHINE [FB]
03:48	FOUL (OFF) by SHUTES,JAMIRAH			
03:48	TURNOVER (OFFENSIVE) by SHUTES,JAMIRAH			
03:14				MISSED LAYUP by PRINCE,RAVEN
03:12	REBOUND (DEF) by TEAM			
02:55	MISSED LAYUP by STINSON,JADA			
02:48	REBOUND (OFF) by SHUTES,JAMIRAH			
02:48	GOOD! LAYUP by SHUTES,JAMIRAH	29-44	V 15	
02:32				MISSED 3PTR by REID,ASHLEY
02:28				REBOUND (OFF) by BASTIN,SERAPHINE
02:13				MISSED 3PTR by PEACOCK,JADA
02:09				REBOUND (OFF) by PRINCE,RAVEN
02:07		31-44	V 13	GOOD! JUMPER by PRINCE,RAVEN
01:59	TURNOVER (BADPASS) by STINSON,JADA			
01:59				STEAL by FAYE,ALYSSIA
01:52				MISSED LAYUP by REID,ASHLEY
01:49	REBOUND (DEF) by JAMES,JASMINE			
01:22	MISSED JUMPER by JAMES,JASMINE			
01:17	REBOUND (OFF) by PORTER,BRIANNA			
01:17	MISSED LAYUP by PORTER,BRIANNA			
01:17	REBOUND (OFF) by PORTER,BRIANNA			
01:17				FOUL (PERSONAL) by FAYE,ALYSSIA
01:17	MISSED FT by PORTER,BRIANNA			
01:17	REBOUND (OFF) by TEAM			
01:17				SUB OUT: PEACOCK,JADA
01:17				SUB IN: BREMAUD,CARLA
01:17				SUB OUT: REID,ASHLEY
01:17				SUB IN: HAMPTON,JAIDA
01:17	SUB OUT: SHUTES,JAMIRAH			
01:17	SUB IN: WHITE,MALAINNA			
01:17	GOOD! FT by PORTER,BRIANNA	31-45	V 14	
01:17	SUB OUT: PORTER,BRIANNA			
01:17	SUB IN: DAVIS,ALANA			
01:01				MISSED 3PTR by BASTIN,SERAPHINE
00:57	REBOUND (DEF) by BARNES,TAYLOR			
00:39	GOOD! JUMPER by WHITE,MALAINNA	31-47	V 16	
00:16				TURNOVER (LOSTBALL) by HAMPTON,JAIDA
00:16	STEAL by BARNES,TAYLOR			
00:12	TURNOVER (BADPASS) by BARNES,TAYLOR			
00:12				STEAL by BASTIN,SERAPHINE
00:07				MISSED LAYUP by PRINCE,RAVEN
00:07	BLOCK by JAMES,JASMINE			
00:03	REBOUND (DEF) by JAMES,JASMINE			
00:00	GOOD! LAYUP by DAVIS,ALANA [FB]	31-49	V 18	
00:00	ASSIST by BARNES,TAYLOR			

Memphis 49, Wichita St. 31

Points from (This Period)	MEM	WSU
In the Paint	6	6
Off Turns	5	6
2nd Chance	7	5
Fast Break	2	2
Bench	3	0

Official Box Score
Memphis vs Wichita St.
Fourth Quarter Statistics Only
January 12, 2019 at Charles Koch Arena (Devlin Court) - Wichita, Kan.

Memphis 22

No.	Player	S	Pts	FG	3FG	FT	OR	DR	TR	PF	A	TO	Blk	Stl	Min	+/-
03	Herndon, Gazmyne		0	0-2	0-0	0-0	0	1	1	0	3	1	0	0	5	4
15	Barnes, Taylor		3	1-1	0-0	1-2	0	0	0	1	1	1	0	1	9	-2
22	Coomber, Kiana		0	0-0	0-0	0-0	0	0	0	0	0	0	0	0	0	0
23	Shutes, Jamirah		5	2-3	0-0	1-2	0	0	0	0	0	0	0	0	7	2
33	Davis, Alana		11	4-5	0-0	3-3	0	0	0	2	0	1	1	1	10	3
00	Stinson, Jada		3	1-1	1-1	0-0	0	0	0	0	2	2	0	0	7	7
11	White, Malainna		0	0-0	0-0	0-0	0	0	0	0	0	1	0	0	2	-2
25	Porter, Brianna		0	0-0	0-0	0-0	0	0	0	0	0	0	0	0	0	0
35	James, Jasmine		0	0-0	0-0	0-0	0	3	3	2	1	1	1	0	10	3
	Team						2	1	3	0		1				
TOTALS			22	8-12	1-1	5-7	2	5	7	5	7	8	2	1	49	

Shooting By Period

Period	FG	FG%	3FG	3FG%	FT	FT%
Game	25-61	41.0%	4-15	26.7%	17-24	70.8%

Wichita St. 19

No.	Player	S	Pts	FG	3FG	FT	OR	DR	TR	PF	A	TO	Blk	Stl	Min	+/-
11	Lozada-Cabbage, Sabrina		2	1-1	0-0	0-0	1	1	2	1	0	0	0	0	5	6
12	Bremaud, Carla		1	0-4	0-3	1-2	0	0	0	1	2	1	0	1	9	-3
13	Prince, Raven		4	2-2	0-0	0-0	0	0	0	1	0	0	0	1	6	-4
15	Hampton, Jaida		8	3-8	1-3	1-2	2	1	3	1	0	0	0	1	10	-3
23	Bastin, Seraphine		0	0-0	0-0	0-0	0	1	1	0	1	1	0	2	7	2
00	Peacock, Jada		0	0-0	0-0	0-0	0	0	0	0	0	0	0	0	0	0
05	Reid, Ashley		0	0-1	0-1	0-0	0	0	0	1	0	1	0	0	3	-5
21	Brewer, Maya		0	0-1	0-1	0-0	0	0	0	0	0	0	0	1	1	0
22	Faye, Alyssia		0	0-0	0-0	0-0	0	0	0	0	0	0	0	0	0	0
30	Ambrosio, Cesaria		0	0-0	0-0	0-0	0	0	0	0	0	1	0	0	8	-8
34	Smith, Shyia		0	0-0	0-0	0-0	0	0	0	0	0	0	0	0	0	0
42	Henderson, Asia		4	1-1	0-0	2-2	2	0	2	0	0	0	0	0	1	0
	Team						0	1	1	0		0				
TOTALS			19	7-18	1-8	4-6	5	4	9	5	3	4	0	6	49	

Shooting By Period

Period	FG	FG%	3FG	3FG%	FT	FT%
Game	17-60	28.3%	2-27	07.4%	14-19	73.7%

Game Notes:

Officials: Kevin Pethtel, Fatou Cissoko-Stephens, Shannon Feck
 Attendance: 1380

Start Time: 2019-01-12 20:04:35
 End Time: 2019-01-12 22:00:41
 Game Duration: 116
 Conference Game;

Score	1st	2nd	3rd	4th	TOT
MEM	15	20	14	22	71
WSU	9	11	11	19	50

Points from (This Period)	MEM	WSU
In the Paint	12	10
Off Turns	6	9
2nd Chance	2	7
Fast Break	6	5
Bench	3	4

Official Play-By-Play
Memphis vs Wichita St.
Fourth Quarter
January 12, 2019 at Charles Koch Arena (Devlin Court) - Wichita, Kan.

Period 4

Starters:

Memphis: 3 HERNDON,GAZMYNE; 15 BARNES,TAYLOR; 22 COOMBER,KIANA; 23 SHUTES,JAMIRAH; 33 DAVIS,ALANA;

Wichita St.: 11 LOZADA-CABBAGE,SABRINA; 12 BREMAUD,CARLA; 13 PRINCE,RAVEN; 15 HAMPTON,JAIDA; 23 BASTIN,SERAPHINE;

Time	VISITORS: Memphis	Score	Margin	HOME: Wichita St.
09:53	TURNOVER (LOSTBALL) by BARNES,TAYLOR			
09:53				STEAL by BREMAUD,CARLA
09:48		33-49	V 16	GOOD! LAYUP by PRINCE,RAVEN [FB]
09:48				ASSIST by BREMAUD,CARLA
09:38				FOUL (PERSONAL) by PRINCE,RAVEN
09:28	TURNOVER (LOSTBALL) by WHITE,MALAINNA			
09:28				STEAL by BASTIN,SERAPHINE
09:14				MISSED LAYUP by BREMAUD,CARLA
09:14	BLOCK by JAMES,JASMINE			
09:10	REBOUND (DEF) by JAMES,JASMINE			
09:09				FOUL (PERSONAL) by HAMPTON,JAIDA
09:09	GOOD! FT by SHUTES,JAMIRAH [FB]	33-50	V 17	
09:09	MISSED FT by SHUTES,JAMIRAH			
09:09				REBOUND (DEF) by TEAM
08:54		35-50	V 15	GOOD! JUMPER by HAMPTON,JAIDA [PNT]
08:36	TURNOVER (BADPASS) by DAVIS,ALANA			
08:36				STEAL by BASTIN,SERAPHINE
08:30		37-50	V 13	GOOD! LAYUP by PRINCE,RAVEN [FB]
08:30				ASSIST by BASTIN,SERAPHINE
08:27	TIMEOUT 30SEC			
08:27				SUB OUT: PRINCE,RAVEN
08:27				SUB IN: AMBROSIO,CESARIA
08:27	SUB OUT: WHITE,MALAINNA			
08:27	SUB IN: HERNDON,GAZMYNE			
08:05	MISSED LAYUP by HERNDON,GAZMYNE			
08:04	REBOUND (OFF) by TEAM			
07:57	MISSED LAYUP by DAVIS,ALANA			
07:54				REBOUND (DEF) by BASTIN,SERAPHINE
07:51				TURNOVER (BADPASS) by BASTIN,SERAPHINE
07:32	GOOD! LAYUP by DAVIS,ALANA	37-52	V 15	
07:32	ASSIST by HERNDON,GAZMYNE			
07:32				FOUL (PERSONAL) by BREMAUD,CARLA
07:32	GOOD! FT by DAVIS,ALANA	37-53	V 16	
07:11				MISSED 3PTR by BREMAUD,CARLA
07:06				REBOUND (OFF) by LOZADA-CABBAGE,SABRINA
07:06		39-53	V 14	GOOD! LAYUP by LOZADA-CABBAGE,SABRINA
06:53	MISSED JUMPER by SHUTES,JAMIRAH			
06:49				REBOUND (DEF) by LOZADA-CABBAGE,SABRINA
06:47	FOUL (PERSONAL) by JAMES,JASMINE			
06:47				MISSED FT by BREMAUD,CARLA
06:47				REBOUND (OFF) by TEAM
06:47	SUB OUT: SHUTES,JAMIRAH			
06:47	SUB IN: STINSON,JADA			
06:47		40-53	V 13	GOOD! FT by BREMAUD,CARLA [FB]
06:33	TURNOVER (BADPASS) by HERNDON,GAZMYNE			
06:18		43-53	V 10	GOOD! 3PTR by HAMPTON,JAIDA
06:18				ASSIST by BREMAUD,CARLA
06:08	TIMEOUT 30SEC			
05:44	TURNOVER (SHOTCLOCK) by			
05:25				MISSED 3PTR by HAMPTON,JAIDA
05:22	REBOUND (DEF) by JAMES,JASMINE			
05:18	MISSED LAYUP by HERNDON,GAZMYNE			
05:18	REBOUND (OFF) by TEAM			
05:18				FOUL (PERSONAL) by LOZADA-CABBAGE,SABRINA
05:18				SUB OUT: LOZADA-CABBAGE,SABRINA
05:18				SUB IN: PRINCE,RAVEN
05:18	GOOD! FT by DAVIS,ALANA [FB]	43-54	V 11	
05:18	GOOD! FT by DAVIS,ALANA [FB]	43-55	V 12	
05:00		45-55	V 10	GOOD! JUMPER by HAMPTON,JAIDA
04:41	GOOD! JUMPER by BARNES,TAYLOR	45-57	V 12	
04:21				TURNOVER (TRAVEL) by BREMAUD,CARLA
04:21	SUB OUT: HERNDON,GAZMYNE			
04:21	SUB IN: SHUTES,JAMIRAH			
04:08	GOOD! JUMPER by DAVIS,ALANA	45-59	V 14	
04:08	ASSIST by BARNES,TAYLOR			
03:55				MISSED 3PTR by BREMAUD,CARLA
03:52	REBOUND (DEF) by TEAM			
03:52				TIMEOUT 30SEC
03:34	GOOD! LAYUP by DAVIS,ALANA	45-61	V 16	
03:34	ASSIST by JAMES,JASMINE			
03:05				MISSED 3PTR by BREMAUD,CARLA
03:02	REBOUND (DEF) by JAMES,JASMINE			
02:52	TURNOVER (BADPASS) by STINSON,JADA			
02:52				STEAL by PRINCE,RAVEN
02:50	FOUL (PERSONAL) by BARNES,TAYLOR			
02:50				SUB OUT: BASTIN,SERAPHINE

Time	VISITORS: Memphis	Score	Margin	HOME: Wichita St.
02:50				SUB IN: REID,ASHLEY
02:50	SUB OUT: BARNES,TAYLOR			
02:50	SUB IN: HERNDON,GAZMYNE			
02:35				MISSED JUMPER by HAMPTON,JAIDA
02:31	REBOUND (DEF) by HERNDON,GAZMYNE			
02:26	GOOD! LAYUP by SHUTES,JAMIRAH [FB]	45-63	V 18	
02:26	ASSIST by HERNDON,GAZMYNE			
02:15				MISSED 3PTR by REID,ASHLEY
02:15	BLOCK by DAVIS,ALANA			
02:10				REBOUND (OFF) by HAMPTON,JAIDA
02:08				MISSED JUMPER by HAMPTON,JAIDA
02:07				REBOUND (OFF) by HAMPTON,JAIDA
02:07	FOUL (PERSONAL) by DAVIS,ALANA			
02:07				MISSED FT by HAMPTON,JAIDA
02:07				REBOUND (OFF) by TEAM
02:07	SUB OUT: HERNDON,GAZMYNE			
02:07	SUB IN: BARNES,TAYLOR			
02:07		46-63	V 17	GOOD! FT by HAMPTON,JAIDA
01:58	GOOD! LAYUP by DAVIS,ALANA	46-65	V 19	
01:58	ASSIST by STINSON,JADA			
01:46				TURNOVER (BADPASS) by AMBROSIO,CESARIA
01:46	STEAL by BARNES,TAYLOR			
01:37	GOOD! LAYUP by SHUTES,JAMIRAH	46-67	V 21	
01:37	ASSIST by STINSON,JADA			
01:20				TURNOVER (OTHER) by REID,ASHLEY
01:20				SUB OUT: BREMAUD,CARLA
01:20				SUB IN: BREWER,MAYA
01:20				SUB OUT: PRINCE,RAVEN
01:20				SUB IN: HENDERSON,ASIA
01:14	TURNOVER (BADPASS) by STINSON,JADA			
01:14				STEAL by BREWER,MAYA
01:14	FOUL (PERSONAL) by DAVIS,ALANA			
00:50				MISSED 3PTR by BREWER,MAYA
00:49				REBOUND (OFF) by HENDERSON,ASIA
00:49	FOUL (PERSONAL) by JAMES,JASMINE			
00:49		47-67	V 20	GOOD! FT by HENDERSON,ASIA
00:49		48-67	V 19	GOOD! FT by HENDERSON,ASIA
00:48				FOUL (PERSONAL) by REID,ASHLEY
00:48	GOOD! FT by BARNES,TAYLOR [FB]	48-68	V 20	
00:48	MISSED FT by BARNES,TAYLOR			
00:48				REBOUND (DEF) by HAMPTON,JAIDA
00:38				MISSED 3PTR by HAMPTON,JAIDA
00:33				REBOUND (OFF) by HENDERSON,ASIA
00:33		50-68	V 18	GOOD! LAYUP by HENDERSON,ASIA
00:30	TIMEOUT 30SEC			
00:30	SUB OUT: BARNES,TAYLOR			
00:30	SUB IN: WHITE,MALAINNA			
00:30	SUB OUT: SHUTES,JAMIRAH			
00:30	SUB IN: HERNDON,GAZMYNE			
00:19	TURNOVER (BADPASS) by JAMES,JASMINE			
00:19				STEAL by HAMPTON,JAIDA
00:13				MISSED LAYUP by HAMPTON,JAIDA
00:12	REBOUND (DEF) by TEAM			
00:07	GOOD! 3PTR by STINSON,JADA	50-71	V 21	
00:07	ASSIST by HERNDON,GAZMYNE			

Memphis 71, Wichita St. 50

Points from (This Period)	MEM	WSU
In the Paint	12	10
Off Turns	6	9
2nd Chance	2	7
Fast Break	6	5
Bench	3	4

Official Scoring/Possession Reference Chart
Memphis vs Wichita St.
Period 1
January 12, 2019 at Charles Koch Arena (Devlin Court) - Wichita, Kan.

Period 1

Starters:

Memphis: 3 HERNDON,GAZMYNE; 15 BARNES,TAYLOR; 22 COOMBER,KIANA; 23 SHUTES,JAMIRAH; 33 DAVIS,ALANA;

Wichita St.: 11 LOZADA-CABBAGE,SABRINA; 12 BREMAUD,CARLA; 13 PRINCE,RAVEN; 15 HAMPTON,JAIDA; 23 BASTIN,SERAPHINE;

Time	VISITORS: Memphis	Score	Margin	HOME: Wichita St.
09:12		2-0	H 2	GOOD! LAYUP by PRINCE,RAVEN
07:50		4-0	H 4	GOOD! LAYUP by HAMPTON,JAIDA [FB]
07:06	GOOD! LAYUP by PORTER,BRIANNA	4-2	H 2	
06:16	GOOD! FT by PORTER,BRIANNA	4-3	H 1	
05:37	GOOD! FT by DAVIS,ALANA	4-4	T	
05:17		6-4	H 2	GOOD! JUMPER by BREMAUD,CARLA
05:05	GOOD! FT by DAVIS,ALANA	6-5	H 1	
05:05	GOOD! FT by DAVIS,ALANA	6-6	T	
04:28		7-6	H 1	GOOD! FT by HENDERSON,ASIA [FB]
03:37	GOOD! 3PTR by STINSON,JADA	7-9	V 2	
02:46	GOOD! LAYUP by JAMES,JASMINE	7-11	V 4	
01:54	GOOD! LAYUP by HERNDON,GAZMYNE [FB]	7-13	V 6	
01:37		9-13	V 4	GOOD! LAYUP by LOZADA-CABBAGE,SABRINA
00:33	GOOD! LAYUP by STINSON,JADA [FB]	9-15	V 6	

Memphis 15, Wichita St. 9

Official Scoring/Possession Reference Chart
Memphis vs Wichita St.
Period 2
January 12, 2019 at Charles Koch Arena (Devlin Court) - Wichita, Kan.

Period 2

Starters:

Memphis: 3 HERNDON,GAZMYNE; 15 BARNES,TAYLOR; 22 COOMBER,KIANA; 23 SHUTES,JAMIRAH; 33 DAVIS,ALANA;

Wichita St.: 11 LOZADA-CABBAGE,SABRINA; 12 BREMAUD,CARLA; 13 PRINCE,RAVEN; 15 HAMPTON,JAIDA; 23 BASTIN,SERAPHINE;

Time	VISITORS: Memphis	Score	Margin	HOME: Wichita St.
09:51	GOOD! FT by DAVIS,ALANA	9-16	V 7	
09:51	GOOD! FT by DAVIS,ALANA	9-17	V 8	
08:39		10-17	V 7	GOOD! FT by BASTIN,SERAPHINE
08:39		11-17	V 6	GOOD! FT by BASTIN,SERAPHINE
07:53	GOOD! LAYUP by DAVIS,ALANA [FB]	11-19	V 8	
07:14	GOOD! LAYUP by DAVIS,ALANA	11-21	V 10	
06:43	GOOD! LAYUP by HERNDON,GAZMYNE	11-23	V 12	
06:23		12-23	V 11	GOOD! FT by BREMAUD,CARLA
06:23		13-23	V 10	GOOD! FT by BREMAUD,CARLA
05:15	GOOD! LAYUP by DAVIS,ALANA	13-25	V 12	
04:48	GOOD! LAYUP by HERNDON,GAZMYNE	13-27	V 14	
04:31		16-27	V 11	GOOD! 3PTR by BREMAUD,CARLA
04:10	GOOD! JUMPER by JAMES,JASMINE	16-29	V 13	
02:58	GOOD! 3PTR by STINSON,JADA	16-32	V 16	
02:19	GOOD! 3PTR by COOMBER,KIANA	16-35	V 19	
01:26		18-35	V 17	GOOD! LAYUP by BREWER,MAYA
00:56		19-35	V 16	GOOD! FT by REID,ASHLEY
00:56		20-35	V 15	GOOD! FT by REID,ASHLEY

Memphis 35, Wichita St. 20

Official Scoring/Possession Reference Chart
Memphis vs Wichita St.
Period 3
January 12, 2019 at Charles Koch Arena (Devlin Court) - Wichita, Kan.

Period 3

Starters:

Memphis: 3 HERNDON,GAZMYNE; 15 BARNES,TAYLOR; 22 COOMBER,KIANA; 23 SHUTES,JAMIRAH; 33 DAVIS,ALANA;

Wichita St.: 11 LOZADA-CABBAGE,SABRINA; 12 BREMAUD,CARLA; 13 PRINCE,RAVEN; 15 HAMPTON,JAIDA; 23 BASTIN,SERAPHINE;

Time	VISITORS: Memphis	Score	Margin	HOME: Wichita St.
08:59		22-35	V 13	GOOD! LAYUP by LOZADA-CABBAGE,SABRINA
08:30	GOOD! LAYUP by SHUTES,JAMIRAH	22-37	V 15	
08:30	GOOD! FT by SHUTES,JAMIRAH	22-38	V 16	
08:03	GOOD! FT by DAVIS,ALANA	22-39	V 17	
08:03	GOOD! FT by DAVIS,ALANA	22-40	V 18	
07:22		24-40	V 16	GOOD! JUMPER by BASTIN,SERAPHINE
06:00		26-40	V 14	GOOD! LAYUP by LOZADA-CABBAGE,SABRINA
05:02	GOOD! FT by HERNDON,GAZMYNE	26-41	V 15	
05:02	GOOD! FT by HERNDON,GAZMYNE	26-42	V 16	
04:06		27-42	V 15	GOOD! FT by PRINCE,RAVEN
03:51		28-42	V 14	GOOD! FT by BASTIN,SERAPHINE [FB]
03:51		29-42	V 13	GOOD! FT by BASTIN,SERAPHINE [FB]
02:48	GOOD! LAYUP by SHUTES,JAMIRAH	29-44	V 15	
02:07		31-44	V 13	GOOD! JUMPER by PRINCE,RAVEN
01:17	GOOD! FT by PORTER,BRIANNA	31-45	V 14	
00:39	GOOD! JUMPER by WHITE,MALAINNA	31-47	V 16	
00:00	GOOD! LAYUP by DAVIS,ALANA [FB]	31-49	V 18	

Memphis 49, Wichita St. 31

**Official Scoring/Possession Reference Chart
Memphis vs Wichita St.**

Period 4

January 12, 2019 at Charles Koch Arena (Devlin Court) - Wichita, Kan.

Period 4

Starters:

Memphis: 3 HERNDON,GAZMYNE; 15 BARNES,TAYLOR; 22 COOMBER,KIANA; 23 SHUTES,JAMIRAH; 33 DAVIS,ALANA;

Wichita St.: 11 LOZADA-CABBAGE,SABRINA; 12 BREMAUD,CARLA; 13 PRINCE,RAVEN; 15 HAMPTON,JAIDA; 23 BASTIN,SERAPHINE;

Time	VISITORS: Memphis	Score	Margin	HOME: Wichita St.
09:48		33-49	V 16	GOOD! LAYUP by PRINCE,RAVEN [FB]
09:09	GOOD! FT by SHUTES,JAMIRAH [FB]	33-50	V 17	
08:54		35-50	V 15	GOOD! JUMPER by HAMPTON,JAIDA [PNT]
08:30		37-50	V 13	GOOD! LAYUP by PRINCE,RAVEN [FB]
07:32	GOOD! LAYUP by DAVIS,ALANA	37-52	V 15	
07:32	GOOD! FT by DAVIS,ALANA	37-53	V 16	
07:06		39-53	V 14	GOOD! LAYUP by LOZADA-CABBAGE,SABRINA
06:47		40-53	V 13	GOOD! FT by BREMAUD,CARLA [FB]
06:18		43-53	V 10	GOOD! 3PTR by HAMPTON,JAIDA
05:18	GOOD! FT by DAVIS,ALANA [FB]	43-54	V 11	
05:18	GOOD! FT by DAVIS,ALANA [FB]	43-55	V 12	
05:00		45-55	V 10	GOOD! JUMPER by HAMPTON,JAIDA
04:41	GOOD! JUMPER by BARNES,TAYLOR	45-57	V 12	
04:08	GOOD! JUMPER by DAVIS,ALANA	45-59	V 14	
03:34	GOOD! LAYUP by DAVIS,ALANA	45-61	V 16	
02:26	GOOD! LAYUP by SHUTES,JAMIRAH [FB]	45-63	V 18	
02:07		46-63	V 17	GOOD! FT by HAMPTON,JAIDA
01:58	GOOD! LAYUP by DAVIS,ALANA	46-65	V 19	
01:37	GOOD! LAYUP by SHUTES,JAMIRAH	46-67	V 21	
00:49		47-67	V 20	GOOD! FT by HENDERSON,ASIA
00:49		48-67	V 19	GOOD! FT by HENDERSON,ASIA
00:48	GOOD! FT by BARNES,TAYLOR [FB]	48-68	V 20	
00:33		50-68	V 18	GOOD! LAYUP by HENDERSON,ASIA
00:07	GOOD! 3PTR by STINSON,JADA	50-71	V 21	

Memphis 71, Wichita St. 50

Official Substitutions Log
Memphis vs Wichita St.
Period 1
January 12, 2019 at Charles Koch Arena (Devlin Court) - Wichita, Kan.

VISITORS: Memphis	Time	Score	HOME: Wichita St.
3 HERNDON,GAZMYNE			11 LOZADA-CABBAGE,SABRINA
15 BARNES,TAYLOR			12 BREMAUD,CARLA
22 COOMBER,KIANA			13 PRINCE,RAVEN
23 SHUTES,JAMIRAH			15 HAMPTON,JAIDA
33 DAVIS,ALANA			23 BASTIN,SERAPHINE
SUB OUT: 22 COOMBER,KIANA	09:12	0-2	
SUB IN: 25 PORTER,BRIANNA	09:12		
	06:16	2-4	SUB OUT: LOZADA-CABBAGE,SABRINA
	06:16		SUB IN: HENDERSON,ASIA
	05:05	5-6	SUB OUT: PRINCE,RAVEN
	05:05		SUB IN: FAYE,ALYSSIA
SUB OUT: 15 BARNES,TAYLOR	04:28	6-6	
SUB IN: 0 STINSON,JADA	04:28		
	04:15	6-7	SUB OUT: HAMPTON,JAIDA
	04:15		SUB IN: REID,ASHLEY
	04:15		SUB OUT: BREMAUD,CARLA
	04:15		SUB IN: AMBROSIO,CESARIA
SUB OUT: 33 DAVIS,ALANA	04:15		
SUB IN: 35 JAMES,JASMINE	04:15		
SUB OUT: 25 PORTER,BRIANNA	03:01	9-7	
SUB IN: 33 DAVIS,ALANA	03:01		
	01:51	13-7	SUB OUT: BASTIN,SERAPHINE
	01:51		SUB IN: LOZADA-CABBAGE,SABRINA
	01:51		SUB OUT: HENDERSON,ASIA
	01:51		SUB IN: SMITH,SHYIA

Memphis 15, Wichita St. 9

Official Substitutions Log
Memphis vs Wichita St.
Period 2
January 12, 2019 at Charles Koch Arena (Devlin Court) - Wichita, Kan.

VISITORS: Memphis	Time	Score	HOME: Wichita St.
3 HERNDON,GAZMYNE			11 LOZADA-CABBAGE,SABRINA
15 BARNES,TAYLOR			12 BREMAUD,CARLA
22 COOMBER,KIANA			13 PRINCE,RAVEN
23 SHUTES,JAMIRAH			15 HAMPTON,JAIDA
33 DAVIS,ALANA			23 BASTIN,SERAPHINE
	09:51	16-9	SUB OUT: LOZADA-CABBAGE,SABRINA
	09:51		SUB IN: SMITH,SHYIA
SUB OUT: 0 STINSON,JADA	08:39	17-9	
SUB IN: 23 SHUTES,JAMIRAH	08:39		
	06:55	21-11	SUB OUT: FAYE,ALYSSIA
	06:55		SUB IN: AMBROSIO,CESARIA
SUB OUT: 11 WHITE,MALAINNA	06:55		
SUB IN: 3 HERNDON,GAZMYNE	06:55		
	03:00	29-16	SUB OUT: HAMPTON,JAIDA
	03:00		SUB IN: HENDERSON,ASIA
	03:00		SUB OUT: BASTIN,SERAPHINE
	03:00		SUB IN: BREWER,MAYA
	03:00		SUB OUT: SMITH,SHYIA
	03:00		SUB IN: REID,ASHLEY
SUB OUT: 15 BARNES,TAYLOR	03:00		
SUB IN: 11 WHITE,MALAINNA	03:00		
SUB OUT: 23 SHUTES,JAMIRAH	03:00		
SUB IN: 25 PORTER,BRIANNA	03:00		
SUB OUT: 33 DAVIS,ALANA	03:00		
SUB IN: 22 COOMBER,KIANA	03:00		
SUB OUT: 35 JAMES,JASMINE	03:00		
SUB IN: 0 STINSON,JADA	03:00		
SUB OUT: 11 WHITE,MALAINNA	00:56	35-19	
SUB IN: 15 BARNES,TAYLOR	00:56		
SUB OUT: 3 HERNDON,GAZMYNE	00:56		
SUB IN: 23 SHUTES,JAMIRAH	00:56		

Memphis 35, Wichita St. 20

Official Substitutions Log
Memphis vs Wichita St.
Period 3
January 12, 2019 at Charles Koch Arena (Devlin Court) - Wichita, Kan.

VISITORS: Memphis	Time	Score	HOME: Wichita St.
3 HERNDON,GAZMYNE			11 LOZADA-CABBAGE,SABRINA
15 BARNES,TAYLOR			12 BREMAUD,CARLA
22 COOMBER,KIANA			13 PRINCE,RAVEN
23 SHUTES,JAMIRAH			15 HAMPTON,JAIDA
33 DAVIS,ALANA			23 BASTIN,SERAPHINE
	07:52	40-22	SUB OUT: HAMPTON,JAIDA
	07:52		SUB IN: BASTIN,SERAPHINE
SUB OUT: 15 BARNES,TAYLOR	07:36	40-22	
SUB IN: 0 STINSON,JADA	07:36		
	05:33	40-26	SUB OUT: BREMAUD,CARLA
	05:33		SUB IN: PEACOCK,JADA
SUB OUT: 33 DAVIS,ALANA	05:33		
SUB IN: 25 PORTER,BRIANNA	05:33		
	05:02	41-26	SUB OUT: LOZADA-CABBAGE,SABRINA
	05:02		SUB IN: FAYE,ALYSSIA
SUB OUT: 22 COOMBER,KIANA	04:06	42-27	
SUB IN: 35 JAMES,JASMINE	04:06		
SUB OUT: 3 HERNDON,GAZMYNE	03:51	42-28	
SUB IN: 15 BARNES,TAYLOR	03:51		
	01:17	44-31	SUB OUT: PEACOCK,JADA
	01:17		SUB IN: BREMAUD,CARLA
	01:17		SUB OUT: REID,ASHLEY
	01:17		SUB IN: HAMPTON,JAIDA
SUB OUT: 23 SHUTES,JAMIRAH	01:17		
SUB IN: 11 WHITE,MALAINNA	01:17		
SUB OUT: 25 PORTER,BRIANNA	01:17		
SUB IN: 33 DAVIS,ALANA	01:17		

Memphis 49, Wichita St. 31

Official Substitutions Log
Memphis vs Wichita St.
Period 4
January 12, 2019 at Charles Koch Arena (Devlin Court) - Wichita, Kan.

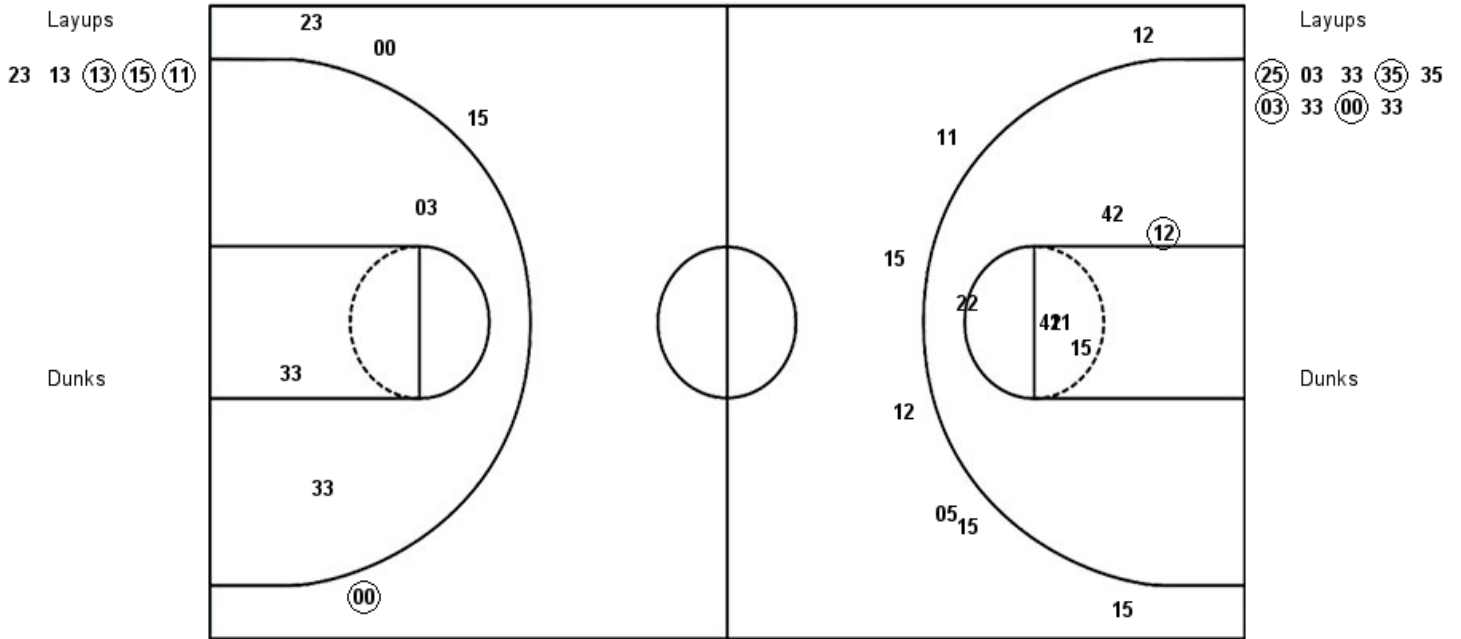
VISITORS: Memphis	Time	Score	HOME: Wichita St.
3 HERNDON,GAZMYNE			11 LOZADA-CABBAGE,SABRINA
15 BARNES,TAYLOR			12 BREMAUD,CARLA
22 COOMBER,KIANA			13 PRINCE,RAVEN
23 SHUTES,JAMIRAH			15 HAMPTON,JAIDA
33 DAVIS,ALANA			23 BASTIN,SERAPHINE
	08:27	50-37	SUB OUT: PRINCE,RAVEN
	08:27		SUB IN: AMBROSIO,CESARIA
SUB OUT: 11 WHITE,MALAINNA	08:27		
SUB IN: 3 HERNDON,GAZMYNE	08:27		
SUB OUT: 23 SHUTES,JAMIRAH	06:47	53-39	
SUB IN: 0 STINSON,JADA	06:47		
	05:18	53-43	SUB OUT: LOZADA-CABBAGE,SABRINA
	05:18		SUB IN: PRINCE,RAVEN
SUB OUT: 3 HERNDON,GAZMYNE	04:21	57-45	
SUB IN: 23 SHUTES,JAMIRAH	04:21		
	02:50	61-45	SUB OUT: BASTIN,SERAPHINE
	02:50		SUB IN: REID,ASHLEY
SUB OUT: 15 BARNES,TAYLOR	02:50		
SUB IN: 3 HERNDON,GAZMYNE	02:50		
SUB OUT: 3 HERNDON,GAZMYNE	02:07	63-45	
SUB IN: 15 BARNES,TAYLOR	02:07		
	01:20	67-46	SUB OUT: BREMAUD,CARLA
	01:20		SUB IN: BREWER,MAYA
	01:20		SUB OUT: PRINCE,RAVEN
	01:20		SUB IN: HENDERSON,ASIA
SUB OUT: 15 BARNES,TAYLOR	00:30	68-50	
SUB IN: 11 WHITE,MALAINNA	00:30		
SUB OUT: 23 SHUTES,JAMIRAH	00:30		
SUB IN: 3 HERNDON,GAZMYNE	00:30		

Memphis 71, Wichita St. 50

Official Shot Chart
Memphis vs Wichita St.
PERIOD 1 Shots
 January 12, 2019 at Charles Koch Arena (Devlin Court) - Wichita, Kan.

Wichita St.

Memphis



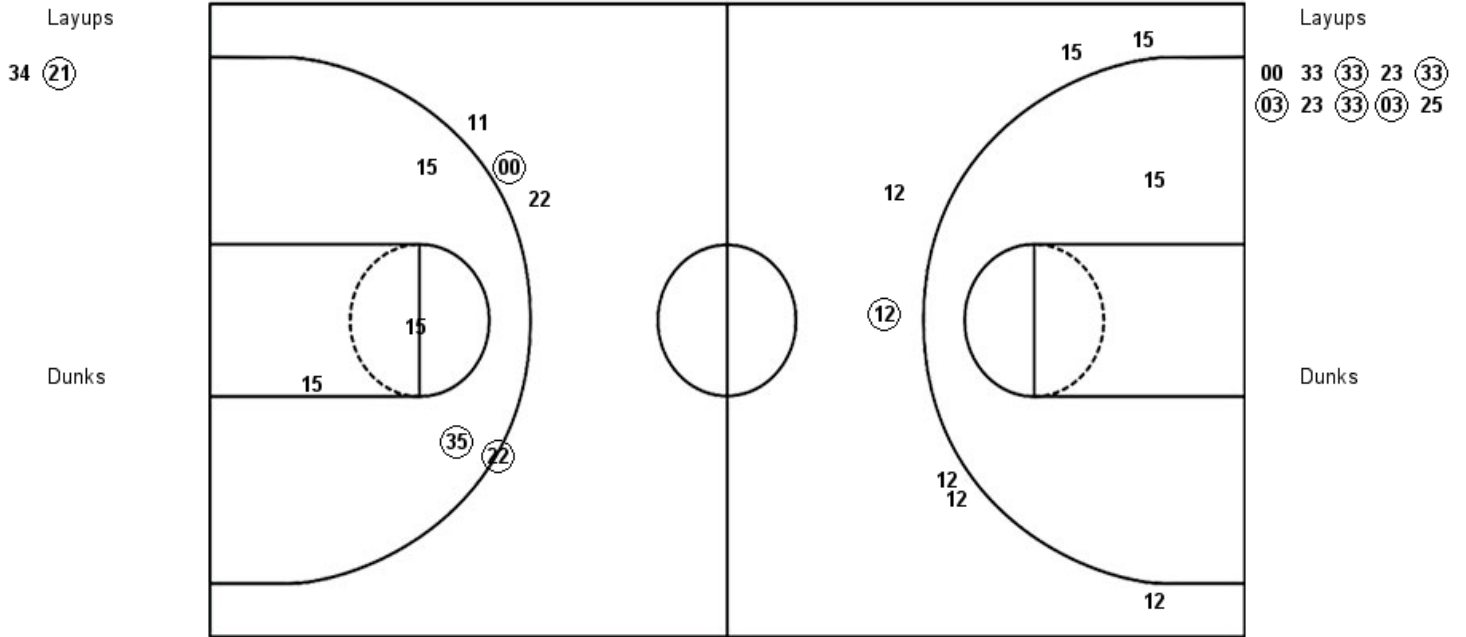
WSU : Period 1	Made	Att	Pct
Layups	3	5	60.0
Dunks	0	0	0
2PT Field Goals	4	11	36.4
3PT Field Goals	0	7	00.0
Total Field Goals	4	18	22.2

MEM : Period 1	Made	Att	Pct
Layups	4	9	44.4
Dunks	0	0	0
2PT Field Goals	4	12	33.3
3PT Field Goals	1	4	25.0
Total Field Goals	5	16	31.3

Official Shot Chart
Memphis vs Wichita St.
PERIOD 2 Shots
 January 12, 2019 at Charles Koch Arena (Devlin Court) - Wichita, Kan.

Wichita St.

Memphis



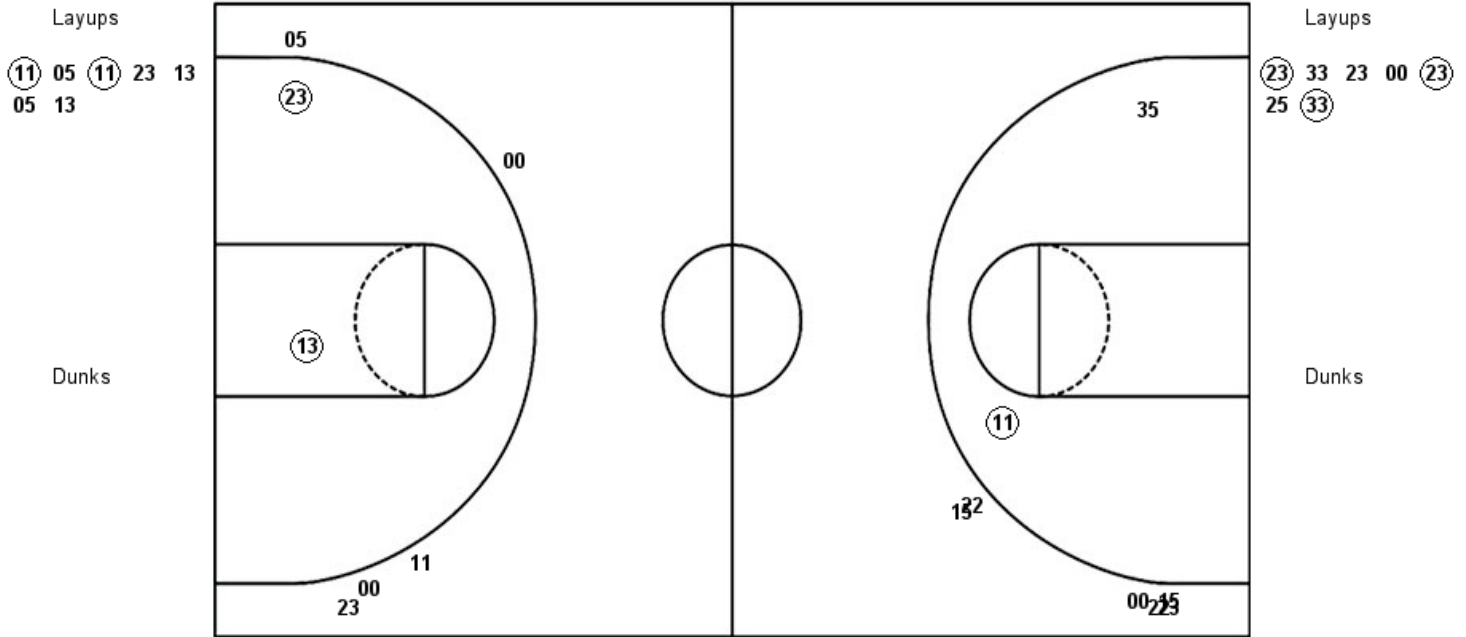
WSU : Period 2	Made	Att	Pct
Layups	1	2	50.0
Dunks	0	0	0
2PT Field Goals	1	3	33.3
3PT Field Goals	1	7	14.3
Total Field Goals	2	10	20.0

MEM : Period 2	Made	Att	Pct
Layups	5	10	50.0
Dunks	0	0	0
2PT Field Goals	6	14	42.9
3PT Field Goals	2	4	50.0
Total Field Goals	8	18	44.4

Official Shot Chart
Memphis vs Wichita St.
PERIOD 3 Shots
 January 12, 2019 at Charles Koch Arena (Devlin Court) - Wichita, Kan.

Wichita St.

Memphis



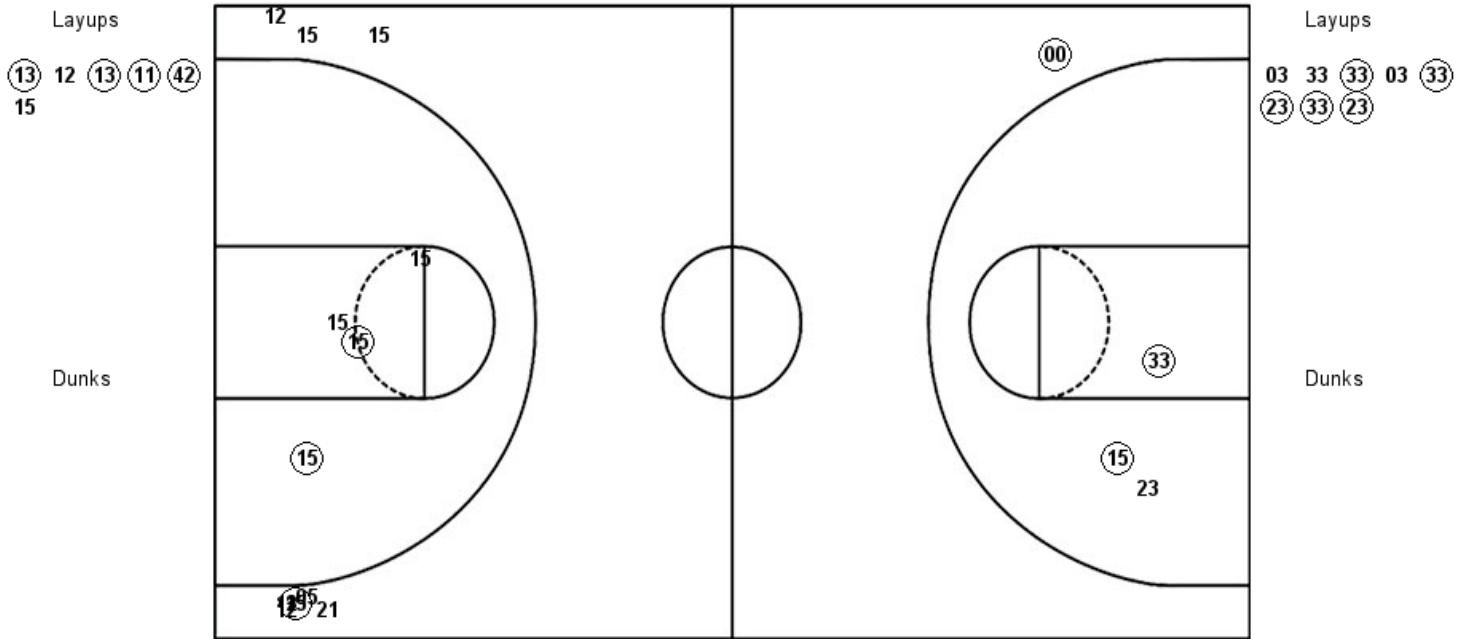
WSU : Period 3	Made	Att	Pct
Layups	2	7	28.6
Dunks	0	0	0
2PT Field Goals	4	9	44.4
3PT Field Goals	0	5	00.0
Total Field Goals	4	14	28.6

MEM : Period 3	Made	Att	Pct
Layups	3	7	42.9
Dunks	0	0	0
2PT Field Goals	4	9	44.4
3PT Field Goals	0	6	00.0
Total Field Goals	4	15	26.7

Official Shot Chart
Memphis vs Wichita St.
PERIOD 4 Shots
 January 12, 2019 at Charles Koch Arena (Devlin Court) - Wichita, Kan.

Wichita St.

Memphis

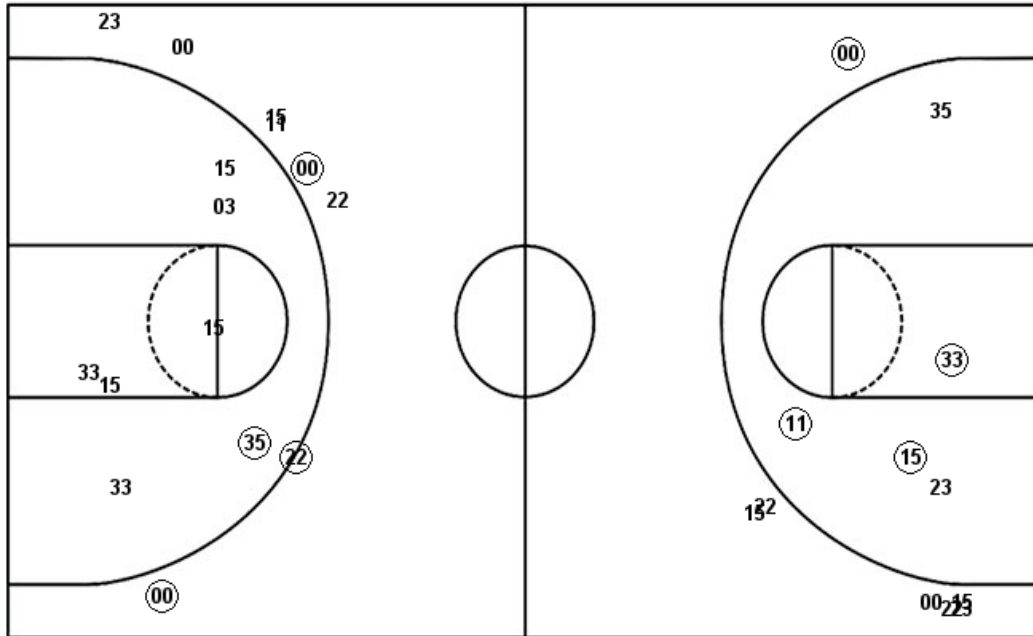


WSU : Period 4	Made	Att	Pct
Layups	4	6	66.7
Dunks	0	0	0
2PT Field Goals	6	10	60.0
3PT Field Goals	1	8	12.5
Total Field Goals	7	18	38.9

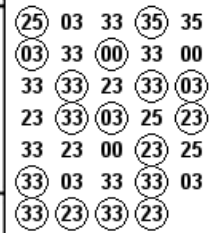
MEM : Period 4	Made	Att	Pct
Layups	5	8	62.5
Dunks	0	0	0
2PT Field Goals	7	11	63.6
3PT Field Goals	1	1	100.0
Total Field Goals	8	12	66.7

Official Shot Chart
Memphis vs Wichita St.
Memphis Team Shots
 January 12, 2019 at Charles Koch Arena (Devlin Court) - Wichita, Kan.

Layups



Layups



Dunks

Dunks

MEM : Period 1	Made	Att	Pct
Layups	4	9	44.4
Dunks	0	0	0
2PT Field Goals	4	12	33.3
3PT Field Goals	1	4	25.0
Total Field Goals	5	16	31.3

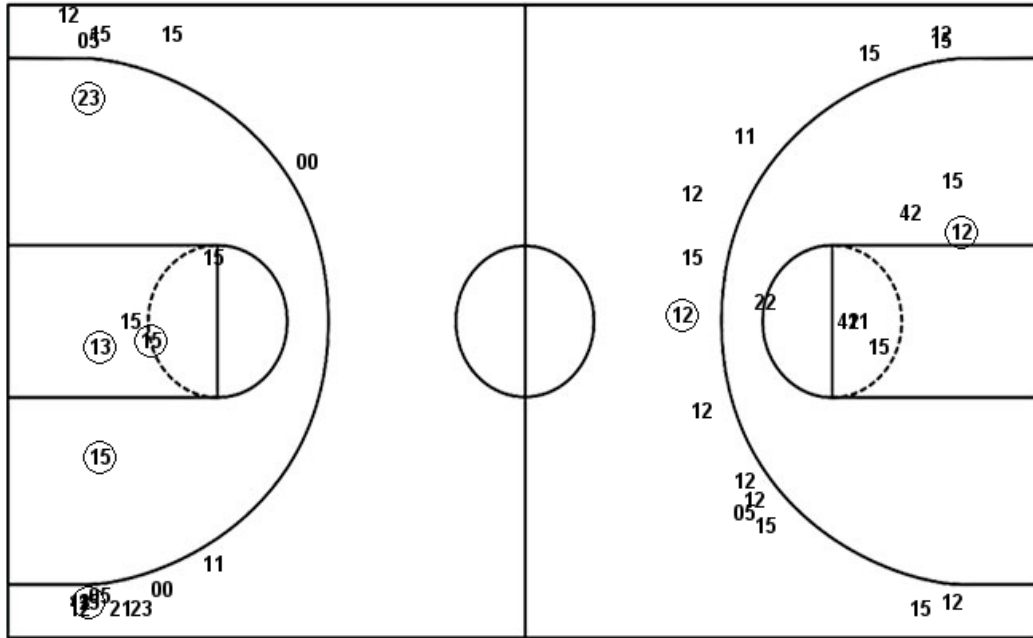
MEM : Period 3	Made	Att	Pct
Layups	3	7	42.9
Dunks	0	0	0
2PT Field Goals	4	9	44.4
3PT Field Goals	0	6	00.0
Total Field Goals	4	15	26.7

MEM : Period 2	Made	Att	Pct
Layups	5	10	50.0
Dunks	0	0	0
2PT Field Goals	6	14	42.9
3PT Field Goals	2	4	50.0
Total Field Goals	8	18	44.4

MEM : Period 4	Made	Att	Pct
Layups	5	8	62.5
Dunks	0	0	0
2PT Field Goals	7	11	63.6
3PT Field Goals	1	1	100.0
Total Field Goals	8	12	66.7

Official Shot Chart
Memphis vs Wichita St.
Wichita St. Team Shots
 January 12, 2019 at Charles Koch Arena (Devlin Court) - Wichita, Kan.

Layups



Layups

- 23 13 (13) (15) (11)
- 34 (21) (11) 05 (11)
- 23 13 05 13 (13)
- 12 (13) (11) (42) 15

Dunks

Dunks

WSU : Period 1	Made	Att	Pct
Layups	3	5	60.0
Dunks	0	0	0
2PT Field Goals	4	11	36.4
3PT Field Goals	0	7	00.0
Total Field Goals	4	18	22.2

WSU : Period 3	Made	Att	Pct
Layups	2	7	28.6
Dunks	0	0	0
2PT Field Goals	4	9	44.4
3PT Field Goals	0	5	00.0
Total Field Goals	4	14	28.6

WSU : Period 2	Made	Att	Pct
Layups	1	2	50.0
Dunks	0	0	0
2PT Field Goals	1	3	33.3
3PT Field Goals	1	7	14.3
Total Field Goals	2	10	20.0

WSU : Period 4	Made	Att	Pct
Layups	4	6	66.7
Dunks	0	0	0
2PT Field Goals	6	10	60.0
3PT Field Goals	1	8	12.5
Total Field Goals	7	18	38.9