

FINAL SCORE



Grambling

61



Wichita St.

70

December 11, 2018 • Charles Koch Arena (Devlin Court) - Wichita, Kan.

FINAL STATISTICS

Official Box Score
Grambling vs Wichita St.
Game Totals -- Final Statistics
December 11, 2018 at Charles Koch Arena (Devlin Court) - Wichita, Kan.

Grambling 61

No.	Player	S	Pts	FG	3FG	FT	OR	DR	TR	PF	A	TO	Blk	Stl	Min	+/-
1	Forte, Jasmine		11	5-7	0-0	1-3	4	4	8	3	0	4	2	0	25	-2
2	Hill, Shakyla		20	7-18	0-5	6-7	0	8	8	4	9	5	0	4	40	-9
12	Coleman, Justice		8	4-5	0-0	0-0	1	6	7	2	0	3	0	2	29	-2
13	Boyd, Jazmine		16	5-11	5-10	1-1	0	2	2	2	2	4	0	1	35	-3
23	Yancy, Mylashia		2	1-4	0-0	0-0	0	0	0	1	2	1	0	0	15	-10
3	Parsons, Takerra		0	0-0	0-0	0-0	0	1	1	1	0	0	0	0	11	-7
11	Williams, Ariel		0	0-2	0-1	0-0	0	0	0	0	0	3	1	1	13	-8
20	Washington, Kendriana		2	1-2	0-0	0-1	0	1	1	4	0	3	1	1	12	5
21	London, Camryn		0	0-2	0-2	0-0	0	0	0	0	1	0	0	0	7	-2
25	Connally-Banks, Madison		2	1-1	0-0	0-0	1	0	1	1	0	3	0	1	13	-7
	Team						4	0	4	0		0				
TOTALS			61	24-52	5-18	8-12	10	22	32	18	14	26	4	10	198	

Shooting By Period

Period	FG	FG%	3FG	3FG%	FT	FT%
1st Qtr	6-12	50%	3-6	50%	1-1	100%
2nd Qtr	6-11	55%	1-5	20%	2-5	40%
3rd Qtr	5-12	42%	0-3	00%	5-5	100%
4th Qtr	7-17	41%	1-4	25%	0-1	00%
1st Half	6-12	50%	3-6	50%	1-1	100%
2nd Half	6-11	55%	1-5	20%	2-5	40%
3rd Half	5-12	42%	0-3	00%	5-5	100%
4th Half	7-17	41%	1-4	25%	0-1	00%
Game	24-52	46.2%	5-18	27.8%	8-12	66.7%

Deadball Rebounds:

Last FG: 4th-00:40
 Biggest Run: 7-0
 Largest lead: By 3 at 1-03:05
 Technical Fouls: #13 BOYD (Double) @ 2nd - 00:12; #2 HILL (Double) @ 4th - 02:55;

Wichita St. 70

No.	Player	S	Pts	FG	3FG	FT	OR	DR	TR	PF	A	TO	Blk	Stl	Min	+/-
11	Lozada-Cabbage, Sabrina		6	2-5	0-2	2-2	1	1	2	0	1	1	2	0	10	2
12	Bremaud, Carla		14	6-13	2-4	0-2	2	4	6	1	0	1	1	1	33	8
13	Prince, Raven		10	2-3	0-0	6-6	2	1	3	4	0	3	0	1	23	-2
22	Faye, Alyssia		3	1-5	0-2	1-2	0	0	0	1	0	1	0	0	14	-3
23	Bastin, Seraphine		3	1-7	1-1	0-0	2	0	2	2	6	4	0	2	33	7
0	Peacock, Jada		0	0-1	0-1	0-0	0	0	0	0	0	0	0	0	1	-4
1	Lair, Dawnyel		0	0-2	0-0	0-0	0	1	1	1	0	2	0	1	9	-1
15	Hampton, Jaida		14	5-10	1-3	3-3	2	3	5	2	1	4	0	1	27	17
30	Ambrosio, Cesaria		5	1-3	0-0	3-4	1	3	4	2	4	2	0	4	25	8
34	Smith, Shyia		15	3-6	0-0	9-11	2	6	8	3	1	1	1	1	23	13
	Team						3	1	4	0		0				
TOTALS			70	21-55	4-13	24-30	15	20	35	16	13	19	4	11	198	

Shooting By Period

Period	FG	FG%	3FG	3FG%	FT	FT%
1st Qtr	8-15	53%	1-3	33%	2-2	100%
2nd Qtr	4-16	25%	0-3	00%	4-4	100%
3rd Qtr	5-13	38%	1-4	25%	11-15	73%
4th Qtr	4-11	36%	2-3	67%	7-9	78%
1st Half	8-15	53%	1-3	33%	2-2	100%
2nd Half	4-16	25%	0-3	00%	4-4	100%
3rd Half	5-13	38%	1-4	25%	11-15	73%
4th Half	4-11	36%	2-3	67%	7-9	78%
Game	21-55	38.2%	4-13	30.8%	24-30	80.0%

Deadball Rebounds:

Last FG: 4th-06:17
 Biggest Run: 11-0
 Largest lead: By 15 at 4-08:27
 Technical Fouls: #13 PRINCE (Double) @ 2nd - 00:12; #30 AMBROSIO (Double) @ 4th - 02:55;

Game Notes: Officials: Bryan Enterline, Linda Miles, Brian Garland Attendance: 7356 Start Time: 2018-12-11 18:05:03 End Time: 2018-12-11 20:06:28 Game Duration: 121
--

Score by Period	1st	2nd	3rd	4th	TOT
GSU	16	15	15	15	61
WSU	19	12	22	17	70

GSU led for 4:28. WSU led for 30:45.
 Game was tied for 4:26.
 Times tied: 16 Lead Changes: 6

Points from	GSU	WSU
In the Paint	32	26
Off Turns	13	22
2nd Chance	9	18
Fast Break	9	13
Bench	4	34

Official Box Score
Grambling vs Wichita St.
First Half Statistics Only
December 11, 2018 at Charles Koch Arena (Devlin Court) - Wichita, Kan.

Grambling 61

No.	Player	S	Pts	FG	3FG	FT	OR	DR	TR	PF	A	TO	Blk	Stl	Min	+/-
1	Forte, Jasmine		0	0-0	0-0	0-0	0	0	0	1	0	0	0	0	4	0
2	Hill, Shakyla		4	2-5	0-1	0-0	0	0	0	0	3	1	0	0	10	-3
12	Coleman, Justice		2	1-1	0-0	0-0	0	1	1	0	0	0	0	0	6	2
13	Boyd, Jazmine		10	3-4	3-4	1-1	0	2	2	0	0	1	0	0	9	-1
23	Yancy, Mylashia		0	0-1	0-0	0-0	0	0	0	0	1	1	0	0	4	0
3	Parsons, Takerra		0	0-0	0-0	0-0	0	0	0	0	0	0	0	0	4	-5
11	Williams, Ariel		0	0-0	0-0	0-0	0	0	0	0	0	0	0	0	1	-2
20	Washington, Kendriana		0	0-0	0-0	0-0	0	1	1	1	0	1	0	0	5	-1
21	London, Camryn		0	0-1	0-1	0-0	0	0	0	0	0	0	0	0	1	-2
25	Connally-Banks, Madison		0	0-0	0-0	0-0	1	0	1	0	0	2	0	0	6	-3
	Team						2	0	2	0		0				
TOTALS			16	6-12	3-6	1-1	0	0	7	2	4	6	0	0	50	

Shooting By Period

Period	FG	FG%	3FG	3FG%	FT	FT%
1st Qtr	6-12	50%	3-6	50%	1-1	100%
2nd Qtr	6-11	55%	1-5	20%	2-5	40%
3rd Qtr	5-12	42%	0-3	00%	5-5	100%
4th Qtr	7-17	41%	1-4	25%	0-1	00%
1st Half	6-12	50%	3-6	50%	1-1	100%
2nd Half	6-11	55%	1-5	20%	2-5	40%
3rd Half	5-12	42%	0-3	00%	5-5	100%
4th Half	7-17	41%	1-4	25%	0-1	00%
Game	24-52	46.2%	5-18	27.8%	8-12	66.7%

Deadball Rebounds:

Last FG: 4th-00:40
Biggest Run: 7-0
Largest lead: By 3 at 1-03:05
Technical Fouls: #13 BOYD (Double) @ 2nd - 00:12; #2 HILL (Double) @ 4th - 02:55;

Wichita St. 70

No.	Player	S	Pts	FG	3FG	FT	OR	DR	TR	PF	A	TO	Blk	Stl	Min	+/-
11	Lozada-Cabbage, Sabrina		2	1-1	0-0	0-0	0	0	0	0	1	1	2	0	7	0
12	Bremaud, Carla		4	2-5	0-1	0-0	1	1	2	0	0	0	0	0	9	1
13	Prince, Raven		6	2-2	0-0	2-2	1	0	1	1	0	0	0	0	8	1
22	Faye, Alyssia		0	0-1	0-1	0-0	0	0	0	0	0	0	0	0	6	0
23	Bastin, Seraphine		3	1-3	1-1	0-0	0	0	0	1	3	0	0	0	8	-1
0	Peacock, Jada		0	0-0	0-0	0-0	0	0	0	0	0	0	0	0	0	0
1	Lair, Dawnyel		0	0-0	0-0	0-0	0	0	0	0	0	0	0	0	0	0
15	Hampton, Jaida		0	0-0	0-0	0-0	0	1	1	1	0	0	0	0	2	4
30	Ambrosio, Cesaria		2	1-1	0-0	0-0	0	0	0	0	1	0	0	2	5	5
34	Smith, Shyia		2	1-2	0-0	0-0	0	0	0	1	0	1	0	0	5	5
	Team						1	1	2	0		0				
TOTALS			19	8-15	1-3	2-2	0	0	6	4	5	2	2	2	50	

Shooting By Period

Period	FG	FG%	3FG	3FG%	FT	FT%
1st Qtr	8-15	53%	1-3	33%	2-2	100%
2nd Qtr	4-16	25%	0-3	00%	4-4	100%
3rd Qtr	5-13	38%	1-4	25%	11-15	73%
4th Qtr	4-11	36%	2-3	67%	7-9	78%
1st Half	8-15	53%	1-3	33%	2-2	100%
2nd Half	4-16	25%	0-3	00%	4-4	100%
3rd Half	5-13	38%	1-4	25%	11-15	73%
4th Half	4-11	36%	2-3	67%	7-9	78%
Game	21-55	38.2%	4-13	30.8%	24-30	80.0%

Deadball Rebounds:

Last FG: 4th-06:17
Biggest Run: 11-0
Largest lead: By 15 at 4-08:27
Technical Fouls: #13 PRINCE (Double) @ 2nd - 00:12; #30 AMBROSIO (Double) @ 4th - 02:55;

Game Notes:
Officials: Bryan Enterline, Linda Miles, Brian Garland
Attendance: 7356
Start Time: 2018-12-11 18:05:03 **End Time: 2018-12-11 20:06:28**
Game Duration: 121

Score by Period	1st	2nd	3rd	4th	TOT
GSU	16	15	15	15	61
WSU	19	12	22	17	70

This period only: GSU led for 4:28. WSU led for 4:44.
Game was tied for 0:26.

Points from (This Period)	GSU	WSU
In the Paint	4	10
Off Turns	2	9
2nd Chance	2	6
Fast Break	0	4
Bench	0	4

Official Play-By-Play
Grambling vs Wichita St.
First Quarter
December 11, 2018 at Charles Koch Arena (Devlin Court) - Wichita, Kan.

Starters:

Grambling: 23 YANCY,MYLASHIA; 12 COLEMAN,JUSTICE; 13 BOYD,JAZMINE; 1 FORTE,JASMINE ; 2 HILL,SHAKYLA;

Wichita St.: 11 LOZADA-CABBAGE,SABRINA; 12 BREMAUD,CARLA; 13 PRINCE,RAVEN; 22 FAYE,ALYSSIA; 23 BASTIN,SERAPHINE;

Period 1

Time	VISITORS: Grambling	Score	Margin	HOME: Wichita St.
09:43				MISSED 3PTR by FAYE,ALYSSIA
09:35				REBOUND (OFF) by PRINCE,RAVEN
09:35		2-0	H 2	GOOD! LAYUP by PRINCE,RAVEN
09:18	GOOD! JUMPER by HILL,SHAKYLA [PNT]	2-2	T	
09:05				MISSED JUMPER by BREMAUD,CARLA
09:01				REBOUND (OFF) by TEAM
08:55		4-2	H 2	GOOD! JUMPER by LOZADA-CABBAGE,SABRINA
08:55				ASSIST by BASTIN,SERAPHINE
08:22	GOOD! 3PTR by BOYD,JAZMINE	4-5	V 1	
08:22	ASSIST by HILL,SHAKYLA			
08:20				FOUL (PERSONAL) by PRINCE,RAVEN
08:20	GOOD! FT by BOYD,JAZMINE	4-6	V 2	
08:16	FOUL (PERSONAL) by FORTE,JASMINE			
08:16		5-6	V 1	GOOD! FT by PRINCE,RAVEN [FB]
08:16		6-6	T	GOOD! FT by PRINCE,RAVEN [FB]
08:01	MISSED JUMPER by YANCY,MYLASHIA			
08:01				BLOCK by LOZADA-CABBAGE,SABRINA
07:59	REBOUND (OFF) by TEAM			
07:50	TURNOVER (TRAVEL) by YANCY,MYLASHIA			
07:50	TIMEOUT 30SEC			
07:34				TURNOVER (LOSTBALL) by LOZADA-CABBAGE,SABRINA
07:14	GOOD! JUMPER by COLEMAN,JUSTICE	6-8	V 2	
07:14	ASSIST by YANCY,MYLASHIA			
06:48		8-8	T	GOOD! JUMPER by BREMAUD,CARLA
06:40	GOOD! 3PTR by BOYD,JAZMINE	8-11	V 3	
06:40	ASSIST by HILL,SHAKYLA			
06:13				MISSED JUMPER by BREMAUD,CARLA
06:07	REBOUND (DEF) by BOYD,JAZMINE			
06:07	TURNOVER (TRAVEL) by BOYD,JAZMINE			
05:57		11-11	T	GOOD! 3PTR by BASTIN,SERAPHINE
05:57				ASSIST by LOZADA-CABBAGE,SABRINA
05:33	MISSED LAYUP by HILL,SHAKYLA			
05:33				BLOCK by LOZADA-CABBAGE,SABRINA
05:33	REBOUND (OFF) by TEAM			
05:33	SUB OUT: FORTE,JASMINE			
05:33	SUB IN: CONNALLY-BANKS,MADISON			
05:33	SUB OUT: YANCY,MYLASHIA			
05:33	SUB IN: WASHINGTON,KENDRIANA			
05:30	GOOD! LAYUP by HILL,SHAKYLA	11-13	V 2	
05:17				MISSED 3PTR by BREMAUD,CARLA
05:14	REBOUND (DEF) by WASHINGTON,KENDRIANA			
05:07	FOUL (OFF) by WASHINGTON,KENDRIANA			
05:07	TURNOVER (OFFENSIVE) by WASHINGTON,KENDRIANA			
04:57				MISSED LAYUP by BASTIN,SERAPHINE
04:53	REBOUND (DEF) by COLEMAN,JUSTICE			
04:32	TURNOVER (BADPASS) by HILL,SHAKYLA			
04:32				SUB OUT: FAYE,ALYSSIA
04:32				SUB IN: AMBROSIO,CESARIA
04:32				SUB OUT: LOZADA-CABBAGE,SABRINA
04:32				SUB IN: SMITH,SHYIA
04:24	SUB OUT: COLEMAN,JUSTICE			
04:24	SUB IN: PARSONS,TAKERRA			
03:58		13-13	T	GOOD! LAYUP by PRINCE,RAVEN
03:58				ASSIST by BASTIN,SERAPHINE
03:25	MISSED 3PTR by HILL,SHAKYLA			
03:21				REBOUND (DEF) by BREMAUD,CARLA
03:19				MISSED LAYUP by BASTIN,SERAPHINE
03:18	REBOUND (DEF) by BOYD,JAZMINE			
03:18				FOUL (PERSONAL) by BASTIN,SERAPHINE
03:05	GOOD! 3PTR by BOYD,JAZMINE	13-16	V 3	
03:05	ASSIST by HILL,SHAKYLA			
02:43				MISSED JUMPER by SMITH,SHYIA
02:40				REBOUND (OFF) by BREMAUD,CARLA
02:34		15-16	V 1	GOOD! LAYUP by SMITH,SHYIA
02:34				ASSIST by BASTIN,SERAPHINE
02:14	TURNOVER (LOSTBALL) by CONNALLY-BANKS,MADISON			
02:14				STEAL by AMBROSIO,CESARIA
02:14				SUB OUT: BASTIN,SERAPHINE
02:14				SUB IN: HAMPTON,JAIDA
01:59		17-16	H 1	GOOD! LAYUP by BREMAUD,CARLA
01:59				ASSIST by AMBROSIO,CESARIA
01:39				SUB OUT: PRINCE,RAVEN
01:39				SUB IN: LOZADA-CABBAGE,SABRINA
01:30	MISSED JUMPER by HILL,SHAKYLA			
01:24	REBOUND (OFF) by CONNALLY-BANKS,MADISON			
01:23				FOUL (PERSONAL) by HAMPTON,JAIDA

Time	VISITORS: Grambling	Score	Margin	HOME: Wichita St.
00:57	MISSED 3PTR by BOYD,JAZMINE			
00:53				REBOUND (DEF) by HAMPTON,JAIDA
00:47				FOUL (OFF) by SMITH,SHYIA
00:47				TURNOVER (OFFENSIVE) by SMITH,SHYIA
00:47				SUB OUT: BREMAUD,CARLA
00:47				SUB IN: FAYE,ALYSSIA
00:47	SUB OUT: WASHINGTON,KENDRIANA			
00:47	SUB IN: LONDON,CAMRYN			
00:47	SUB OUT: BOYD,JAZMINE			
00:47	SUB IN: WILLIAMS,ARIEL			
00:34	TURNOVER (BADPASS) by CONNALLY-BANKS,MADISON			
00:34				STEAL by AMBROSIO,CESARIA
00:30		19-16	H 3	GOOD! LAY UP by AMBROSIO,CESARIA [FB]
00:00	MISSED 3PTR by LONDON,CAMRYN			
00:00				REBOUND (DEF) by TEAM

Grambling 16, Wichita St. 19

Points from (This Period)	GSU	WSU
In the Paint	4	10
Off Turns	2	9
2nd Chance	2	6
Fast Break	0	4
Bench	0	4

**This period only:GSU led for 4:28. WSU led for 4:44.
Game was tied for 0:26.**

**Official Play-By-Play
Grambling vs Wichita St.
Second Quarter**

December 11, 2018 at Charles Koch Arena (Devlin Court) - Wichita, Kan.

Starters:

Grambling: 23 YANCY,MYLASHIA; 12 COLEMAN,JUSTICE; 13 BOYD,JAZMINE; 1 FORTE,JASMINE ; 2 HILL,SHAKYLA;

Wichita St.: 11 LOZADA-CABBAGE,SABRINA; 12 BREMAUD,CARLA; 13 PRINCE,RAVEN; 22 FAYE,ALYSSIA; 23 BASTIN,SERAPHINE;

Period 2

Time	VISITORS: Grambling	Score	Margin	HOME: Wichita St.
09:41				MISSED 3PTR by LOZADA-CABBAGE,SABRINA
09:38	REBOUND (DEF) by HILL,SHAKYLA			
09:30	MISSED 3PTR by LONDON,CAMRYN			
09:28	REBOUND (OFF) by FORTE,JASMINE			
09:28				FOUL (PERSONAL) by SMITH,SHYIA
09:28	MISSED FT by FORTE,JASMINE			
09:28	REBOUND (OFF) by TEAM			
09:28				SUB OUT: SMITH,SHYIA
09:28				SUB IN: PRINCE,RAVEN
09:28	GOOD! FT by FORTE,JASMINE	19-17	H 2	
09:04				TURNOVER (LOSTBALL) by FAYE,ALYSSIA
09:04	STEAL by HILL,SHAKYLA			
09:01				FOUL (PERSONAL) by FAYE,ALYSSIA
09:01	MISSED FT by HILL,SHAKYLA			
09:01	REBOUND (OFF) by TEAM			
09:01	GOOD! FT by HILL,SHAKYLA [FB]	19-18	H 1	
08:40	FOUL (PERSONAL) by PARSONS,TAKERRA			
08:40		20-18	H 2	GOOD! FT by PRINCE,RAVEN
08:40				SUB OUT: FAYE,ALYSSIA
08:40				SUB IN: BASTIN,SERAPHINE
08:40		21-18	H 3	GOOD! FT by PRINCE,RAVEN
08:13	TURNOVER (BADPASS) by HILL,SHAKYLA			
08:13				STEAL by HAMPTON,JAIDA
08:09				MISSED LAYUP by BASTIN,SERAPHINE
08:09	BLOCK by WILLIAMS,ARIEL			
08:09				REBOUND (OFF) by TEAM
08:09	SUB OUT: LONDON,CAMRYN			
08:09	SUB IN: BOYD,JAZMINE			
08:09	SUB OUT: PARSONS,TAKERRA			
08:09	SUB IN: COLEMAN,JUSTICE			
08:09		23-18	H 5	GOOD! LAYUP by LOZADA-CABBAGE,SABRINA
08:09				ASSIST by BASTIN,SERAPHINE
07:48	GOOD! LAYUP by FORTE,JASMINE	23-20	H 3	
07:48	ASSIST by HILL,SHAKYLA			
07:36				MISSED 3PTR by LOZADA-CABBAGE,SABRINA
07:34	REBOUND (DEF) by HILL,SHAKYLA			
07:30	MISSED LAYUP by HILL,SHAKYLA			
07:26				REBOUND (DEF) by LOZADA-CABBAGE,SABRINA
07:11				MISSED JUMPER by HAMPTON,JAIDA
07:06				REBOUND (OFF) by LOZADA-CABBAGE,SABRINA
07:06				MISSED LAYUP by LOZADA-CABBAGE,SABRINA
07:05	REBOUND (DEF) by HILL,SHAKYLA			
06:58	TURNOVER (LOSTBALL) by COLEMAN,JUSTICE			
06:58				STEAL by BASTIN,SERAPHINE
06:49	FOUL (PERSONAL) by HILL,SHAKYLA			
06:49	TIMEOUT 30SEC			
06:49		24-20	H 4	GOOD! FT by LOZADA-CABBAGE,SABRINA
06:49		25-20	H 5	GOOD! FT by LOZADA-CABBAGE,SABRINA
06:49				SUB OUT: LOZADA-CABBAGE,SABRINA
06:49				SUB IN: FAYE,ALYSSIA
06:49				SUB OUT: HAMPTON,JAIDA
06:49				SUB IN: LAIR,DAWNYEL
06:42	MISSED 3PTR by HILL,SHAKYLA			
06:40	REBOUND (OFF) by FORTE,JASMINE			
06:40				FOUL (PERSONAL) by LAIR,DAWNYEL
06:34	TURNOVER (BADPASS) by HILL,SHAKYLA			
06:34				STEAL by LAIR,DAWNYEL
06:18				MISSED JUMPER by FAYE,ALYSSIA
06:12	REBOUND (DEF) by HILL,SHAKYLA			
06:11	TURNOVER (TRAVEL) by BOYD,JAZMINE			
05:45				MISSED JUMPER by BREMAUD,CARLA
05:45	BLOCK by FORTE,JASMINE			
05:41				REBOUND (OFF) by TEAM
05:36				TURNOVER (LOSTBALL) by LAIR,DAWNYEL
05:36	STEAL by HILL,SHAKYLA			
05:31	GOOD! LAYUP by HILL,SHAKYLA [FB]	25-22	H 3	
05:08		27-22	H 5	GOOD! JUMPER by BREMAUD,CARLA
05:08				ASSIST by BASTIN,SERAPHINE
04:53	TURNOVER (BADPASS) by WILLIAMS,ARIEL			
04:53				STEAL by BREMAUD,CARLA
04:46				MISSED JUMPER by BASTIN,SERAPHINE
04:43	REBOUND (DEF) by FORTE,JASMINE			
04:29	TURNOVER (TRAVEL) by HILL,SHAKYLA			
04:29	SUB OUT: WILLIAMS,ARIEL			
04:29	SUB IN: LONDON,CAMRYN			
04:10				MISSED JUMPER by FAYE,ALYSSIA

Time	VISITORS: Grambling	Score	Margin	HOME: Wichita St.
04:06	REBOUND (DEF) by FORTE,JASMINE			
04:02	GOOD! 3PTR by BOYD,JAZMINE	29-25	H 2	
04:02	ASSIST by HILL,SHAKYLA			
03:46				MISSED LAYUP by LAIR,DAWNYEL
03:42	REBOUND (DEF) by COLEMAN,JUSTICE			
03:40	TURNOVER (BADPASS) by COLEMAN,JUSTICE			
03:40				SUB OUT: AMBROSIO,CESARIA
03:40				SUB IN: BREMAUD,CARLA
03:40				SUB OUT: FAYE,ALYSSIA
03:40				SUB IN: HAMPTON,JAIDA
03:31				MISSED JUMPER by BREMAUD,CARLA
03:28	REBOUND (DEF) by COLEMAN,JUSTICE			
03:20	MISSED 3PTR by BOYD,JAZMINE			
03:17				REBOUND (DEF) by LAIR,DAWNYEL
03:13		29-25	H 4	GOOD! LAYUP by HAMPTON,JAIDA [FB]
03:13				ASSIST by BASTIN,SERAPHINE
02:56	GOOD! LAYUP by FORTE,JASMINE	29-27	H 2	
02:56	ASSIST by LONDON,CAMRYN			
02:36				TURNOVER (TRAVEL) by HAMPTON,JAIDA
02:36				SUB OUT: LAIR,DAWNYEL
02:36				SUB IN: AMBROSIO,CESARIA
02:16	TURNOVER (LOSTBALL) by FORTE,JASMINE			
02:16				STEAL by PRINCE,RAVEN
02:11		31-27	H 4	GOOD! LAYUP by BREMAUD,CARLA [FB]
01:41	MISSED 3PTR by HILL,SHAKYLA			
01:36	REBOUND (OFF) by COLEMAN,JUSTICE			
01:36				FOUL (PERSONAL) by PRINCE,RAVEN
01:20				SUB OUT: HAMPTON,JAIDA
01:20				SUB IN: PEACOCK,JADA
01:09	TURNOVER (LOSTBALL) by BOYD,JAZMINE			
00:59				TURNOVER (LOSTBALL) by PRINCE,RAVEN
00:59	SUB OUT: LONDON,CAMRYN			
00:59	SUB IN: WASHINGTON,KENDRIANA			
00:37	GOOD! LAYUP by FORTE,JASMINE	31-29	H 2	
00:37	ASSIST by HILL,SHAKYLA			
00:16				TURNOVER (LOSTBALL) by AMBROSIO,CESARIA
00:16	STEAL by WASHINGTON,KENDRIANA			
00:12	GOOD! LAYUP by WASHINGTON,KENDRIANA [FB]	31-31	T	
00:12				FOUL (PERSONAL) by AMBROSIO,CESARIA
00:12				FOUL (TECH) by PRINCE,RAVEN
00:12	FOUL (TECH) by BOYD,JAZMINE			
00:12	MISSED FT by WASHINGTON,KENDRIANA			
00:12				REBOUND (DEF) by AMBROSIO,CESARIA
00:12				SUB OUT: PRINCE,RAVEN
00:12				SUB IN: FAYE,ALYSSIA
00:03				MISSED 3PTR by PEACOCK,JADA
00:00				REBOUND (OFF) by TEAM

Grambling 31, Wichita St. 31

Points from (This Period)	GSU	WSU
In the Paint	10	6
Off Turns	7	6
2nd Chance	1	2
Fast Break	5	4
Bench	2	2

**This period only:GSU led for 4:28. WSU led for 4:44.
Game was tied for 0:26.**

Official Box Score
Grambling vs Wichita St.
Second Half Statistics Only
December 11, 2018 at Charles Koch Arena (Devlin Court) - Wichita, Kan.

Grambling 61

No.	Player	S	Pts	FG	3FG	FT	OR	DR	TR	PF	A	TO	Blk	Stl	Min	+/-
1	Forte, Jasmine		7	3-3	0-0	1-2	2	2	4	0	0	1	1	0	10	3
2	Hill, Shakyla		3	1-4	0-2	1-2	0	4	4	1	3	3	0	2	10	3
12	Coleman, Justice		0	0-0	0-0	0-0	1	2	3	0	0	2	0	0	8	3
13	Boyd, Jazmine		3	1-2	1-2	0-0	0	0	0	1	0	2	0	0	8	3
23	Yancy, Mylashia		0	0-0	0-0	0-0	0	0	0	0	0	0	0	0	0	0
3	Parsons, Takerra		0	0-0	0-0	0-0	0	0	0	1	0	0	0	0	2	0
11	Williams, Ariel		0	0-0	0-0	0-0	0	0	0	0	0	1	1	0	6	-2
20	Washington, Kendriana		2	1-1	0-0	0-1	0	0	0	0	0	0	0	1	1	4
21	London, Camryn		0	0-1	0-1	0-0	0	0	0	0	1	0	0	0	5	1
25	Connally-Banks, Madison		0	0-0	0-0	0-0	0	0	0	0	0	0	0	0	0	0
	Team						0	0	0	0		0				
TOTALS			15	6-11	1-5	2-5	0	0	11	3	4	9	2	3	50	

Shooting By Period

Period	FG	FG%	3FG	3FG%	FT	FT%
1st Qtr	6-12	50%	3-6	50%	1-1	100%
2nd Qtr	6-11	55%	1-5	20%	2-5	40%
3rd Qtr	5-12	42%	0-3	00%	5-5	100%
4th Qtr	7-17	41%	1-4	25%	0-1	00%
1st Half	6-12	50%	3-6	50%	1-1	100%
2nd Half	6-11	55%	1-5	20%	2-5	40%
3rd Half	5-12	42%	0-3	00%	5-5	100%
4th Half	7-17	41%	1-4	25%	0-1	00%
Game	24-52	46.2%	5-18	27.8%	8-12	66.7%

Deadball Rebounds:

Last FG: 4th-00:40
 Biggest Run: 7-0
 Largest lead: By 3 at 1-03:05
 Technical Fouls: #13 BOYD (Double) @ 2nd - 00:12; #2 HILL (Double) @ 4th - 02:55;

Wichita St. 70

No.	Player	S	Pts	FG	3FG	FT	OR	DR	TR	PF	A	TO	Blk	Stl	Min	+/-
11	Lozada-Cabbage, Sabrina		4	1-4	0-2	2-2	1	1	2	0	0	0	0	0	3	2
12	Bremaud, Carla		4	2-4	0-0	0-0	0	0	0	0	0	0	0	1	4	-2
13	Prince, Raven		2	0-0	0-0	2-2	0	0	0	2	0	1	0	1	9	-3
22	Faye, Alyssia		0	0-2	0-0	0-0	0	0	0	1	0	1	0	0	5	-4
23	Bastin, Seraphine		0	0-2	0-0	0-0	0	0	0	0	3	0	0	1	9	-2
0	Peacock, Jada		0	0-1	0-1	0-0	0	0	0	0	0	0	0	0	1	-4
1	Lair, Dawnyel		0	0-1	0-0	0-0	0	1	1	1	0	1	0	1	4	-3
15	Hampton, Jaida		2	1-2	0-0	0-0	0	0	0	0	0	1	0	1	6	4
30	Ambrosio, Cesaria		0	0-0	0-0	0-0	0	1	1	1	0	1	0	0	9	-3
34	Smith, Shyia		0	0-0	0-0	0-0	0	0	0	1	0	0	0	0	1	0
	Team						2	0	2	0		0				
TOTALS			12	4-16	0-3	4-4	0	0	6	6	3	5	0	5	50	

Shooting By Period

Period	FG	FG%	3FG	3FG%	FT	FT%
1st Qtr	8-15	53%	1-3	33%	2-2	100%
2nd Qtr	4-16	25%	0-3	00%	4-4	100%
3rd Qtr	5-13	38%	1-4	25%	11-15	73%
4th Qtr	4-11	36%	2-3	67%	7-9	78%
1st Half	8-15	53%	1-3	33%	2-2	100%
2nd Half	4-16	25%	0-3	00%	4-4	100%
3rd Half	5-13	38%	1-4	25%	11-15	73%
4th Half	4-11	36%	2-3	67%	7-9	78%
Game	21-55	38.2%	4-13	30.8%	24-30	80.0%

Deadball Rebounds:

Last FG: 4th-06:17
 Biggest Run: 11-0
 Largest lead: By 15 at 4-08:27
 Technical Fouls: #13 PRINCE (Double) @ 2nd - 00:12; #30 AMBROSIO (Double) @ 4th - 02:55;

Game Notes:
 Officials: Bryan Enterline, Linda Miles, Brian Garland
 Attendance: 7356
 Start Time: 2018-12-11 18:05:03 End Time: 2018-12-11 20:06:28
 Game Duration: 121

Score by Period	1st	2nd	3rd	4th	TOT
GSU	16	15	15	15	61
WSU	19	12	22	17	70

This period only: GSU led for 4:28. WSU led for 4:44.
Game was tied for 0:26.

Points from (This Period)	GSU	WSU
In the Paint	10	6
Off Turns	7	6
2nd Chance	1	2
Fast Break	5	4
Bench	2	2

**Official Play-By-Play
Grambling vs Wichita St.
Third Quarter**

December 11, 2018 at Charles Koch Arena (Devlin Court) - Wichita, Kan.

Starters:

Grambling: 23 YANCY,MYLASHIA; 12 COLEMAN,JUSTICE; 13 BOYD,JAZMINE; 1 FORTE,JASMINE ; 2 HILL,SHAKYLA;

Wichita St.: 11 LOZADA-CABBAGE,SABRINA; 12 BREMAUD,CARLA; 13 PRINCE,RAVEN; 22 FAYE,ALYSSIA; 23 BASTIN,SERAPHINE;

Period 3

Time	VISITORS: Grambling	Score	Margin	HOME: Wichita St.
09:46				MISSED JUMPER by HAMPTON,JAIDA
09:43	REBOUND (DEF) by HILL,SHAKYLA			
09:40				FOUL (PERSONAL) by PRINCE,RAVEN
09:40	GOOD! FT by HILL,SHAKYLA [FB]	31-32	V 1	
09:40				SUB OUT: PRINCE,RAVEN
09:40				SUB IN: SMITH,SHYIA
09:40	GOOD! FT by HILL,SHAKYLA [FB]	31-33	V 2	
09:25	FOUL (PERSONAL) by FORTE,JASMINE			
09:25		32-33	V 1	GOOD! FT by SMITH,SHYIA
09:25		33-33	T	GOOD! FT by SMITH,SHYIA
09:14	TURNOVER (BADPASS) by FORTE,JASMINE			
08:56	FOUL (PERSONAL) by BOYD,JAZMINE			
08:56				MISSED FT by FAYE,ALYSSIA
08:56				REBOUND (OFF) by TEAM
08:56		34-33	H 1	GOOD! FT by FAYE,ALYSSIA
08:43	TURNOVER (BADPASS) by COLEMAN,JUSTICE			
08:43				STEAL by SMITH,SHYIA
08:37				MISSED LAYUP by BASTIN,SERAPHINE
08:33				REBOUND (OFF) by BREMAUD,CARLA
08:31				MISSED 3PTR by FAYE,ALYSSIA
08:28	REBOUND (DEF) by HILL,SHAKYLA			
08:21	GOOD! JUMPER by HILL,SHAKYLA	34-35	V 1	
08:01	FOUL (PERSONAL) by YANCY,MYLASHIA			
08:01		35-35	T	GOOD! FT by SMITH,SHYIA
08:01		36-35	H 1	GOOD! FT by SMITH,SHYIA
07:52	TURNOVER (TRAVEL) by FORTE,JASMINE			
07:28		38-35	H 3	GOOD! JUMPER by FAYE,ALYSSIA [PNT]
07:05	GOOD! JUMPER by FORTE,JASMINE [PNT]	38-37	H 1	
07:05	ASSIST by YANCY,MYLASHIA			
06:48				TURNOVER (TRAVEL) by HAMPTON,JAIDA
06:48	SUB OUT: YANCY,MYLASHIA			
06:48	SUB IN: WASHINGTON,KENDRIANA			
06:48	SUB OUT: COLEMAN,JUSTICE			
06:48	SUB IN: PARSONS,TAKERRA			
06:38				SUB OUT: FAYE,ALYSSIA
06:38				SUB IN: LAIR,DAWNYEL
06:35	MISSED LAYUP by FORTE,JASMINE			
06:32				REBOUND (DEF) by BREMAUD,CARLA
06:25				MISSED JUMPER by SMITH,SHYIA
06:22				REBOUND (OFF) by SMITH,SHYIA
06:22	FOUL (PERSONAL) by FORTE,JASMINE			
06:22		39-37	H 2	GOOD! FT by SMITH,SHYIA
06:22	SUB OUT: FORTE,JASMINE			
06:22	SUB IN: CONNALLY-BANKS,MADISON			
06:22		40-37	H 3	GOOD! FT by SMITH,SHYIA
05:59	MISSED LAYUP by HILL,SHAKYLA			
05:58	REBOUND (OFF) by TEAM			
05:45				FOUL (PERSONAL) by SMITH,SHYIA
05:45	GOOD! FT by HILL,SHAKYLA	40-38	H 2	
05:45	GOOD! FT by HILL,SHAKYLA	40-39	H 1	
05:19		42-39	H 3	GOOD! LAYUP by HAMPTON,JAIDA
05:19				ASSIST by SMITH,SHYIA
05:13	TURNOVER (TRAVEL) by WASHINGTON,KENDRIANA			
04:56	FOUL (PERSONAL) by WASHINGTON,KENDRIANA			
04:56				
04:56	SUB OUT: WASHINGTON,KENDRIANA			
04:56	SUB IN: WILLIAMS,ARIEL			
04:56		43-39	H 4	GOOD! FT by HAMPTON,JAIDA
04:56		44-39	H 5	GOOD! FT by HAMPTON,JAIDA
04:56		45-39	H 6	GOOD! FT by HAMPTON,JAIDA
04:46	GOOD! LAYUP by CONNALLY-BANKS,MADISON	45-41	H 4	
04:46	ASSIST by HILL,SHAKYLA			
04:25				MISSED 3PTR by BREMAUD,CARLA
04:22				REBOUND (OFF) by HAMPTON,JAIDA
04:20		47-41	H 6	GOOD! JUMPER by HAMPTON,JAIDA [PNT]
03:54	GOOD! LAYUP by HILL,SHAKYLA	47-43	H 4	
03:54				FOUL (PERSONAL) by BREMAUD,CARLA
03:54	GOOD! FT by HILL,SHAKYLA	47-44	H 3	
03:44				TURNOVER (TRAVEL) by BASTIN,SERAPHINE
03:26	TURNOVER (BADPASS) by CONNALLY-BANKS,MADISON			
03:26				STEAL by BASTIN,SERAPHINE
03:21				TURNOVER (BADPASS) by LAIR,DAWNYEL
03:11	TURNOVER (BADPASS) by WILLIAMS,ARIEL			
02:57				TURNOVER (LOSTBALL) by HAMPTON,JAIDA
02:57	STEAL by CONNALLY-BANKS,MADISON			
02:38	MISSED 3PTR by BOYD,JAZMINE			

Time	VISITORS: Grambling	Score	Margin	HOME: Wichita St.
02:33				REBOUND (DEF) by BREMAUD,CARLA
02:31				MISSED LAYUP by LAIR,DAWNYEL
02:28				REBOUND (OFF) by BASTIN,SERAPHINE
02:24				MISSED 3PTR by HAMPTON,JAIDA
02:21	REBOUND (DEF) by PARSONS,TAKERRA			
02:13	MISSED LAYUP by BOYD,JAZMINE			
02:10				REBOUND (DEF) by SMITH,SHYIA
02:06				TURNOVER (BADPASS) by HAMPTON,JAIDA
02:06	STEAL by WILLIAMS,ARIEL			
02:02	TURNOVER (DRIBBLING) by WILLIAMS,ARIEL			
02:02				SUB OUT: LAIR,DAWNYEL
02:02				SUB IN: AMBROSIO,CESARIA
02:02	SUB OUT: PARSONS,TAKERRA			
02:02	SUB IN: COLEMAN,JUSTICE			
02:02	SUB OUT: BOYD,JAZMINE			
02:02	SUB IN: YANCY,MYLASHIA			
01:49	FOUL (PERSONAL) by CONNALLY-BANKS,MADISON			
01:49		48-44	H 4	GOOD! FT by SMITH,SHYIA
01:49				MISSED FT by SMITH,SHYIA
01:49	REBOUND (DEF) by HILL,SHAKYLA			
01:29	MISSED 3PTR by HILL,SHAKYLA			
01:26				REBOUND (DEF) by BREMAUD,CARLA
01:26	FOUL (PERSONAL) by COLEMAN,JUSTICE			
01:26				MISSED FT by BREMAUD,CARLA
01:26				REBOUND (OFF) by TEAM
01:26				MISSED FT by BREMAUD,CARLA
01:25	REBOUND (DEF) by COLEMAN,JUSTICE			
01:12	MISSED JUMPER by YANCY,MYLASHIA			
01:09				REBOUND (DEF) by SMITH,SHYIA
01:02				MISSED JUMPER by BASTIN,SERAPHINE
00:55				REBOUND (OFF) by HAMPTON,JAIDA
00:55		50-44	H 6	GOOD! LAYUP by HAMPTON,JAIDA
00:42	GOOD! JUMPER by COLEMAN,JUSTICE	50-46	H 4	
00:19		53-46	H 7	GOOD! 3PTR by BREMAUD,CARLA
00:19				ASSIST by HAMPTON,JAIDA
00:04	MISSED 3PTR by WILLIAMS,ARIEL			
00:02				REBOUND (DEF) by AMBROSIO,CESARIA

Grambling 46, Wichita St. 53

Points from (This Period)	GSU	WSU
In the Paint	6	8
Off Turns	0	7
2nd Chance	2	6
Fast Break	2	0
Bench	2	16

This period only:GSU led for 4:28. WSU led for 4:44.
Game was tied for 0:26.

**Official Play-By-Play
Grambling vs Wichita St.
Fourth Quarter**

December 11, 2018 at Charles Koch Arena (Devlin Court) - Wichita, Kan.

Starters:

Grambling: 23 YANCY,MYLASHIA; 12 COLEMAN,JUSTICE; 13 BOYD,JAZMINE; 1 FORTE,JASMINE ; 2 HILL,SHAKYLA;

Wichita St.: 11 LOZADA-CABBAGE,SABRINA; 12 BREMAUD,CARLA; 13 PRINCE,RAVEN; 22 FAYE,ALYSSIA; 23 BASTIN,SERAPHINE;

Period 4

Time	VISITORS: Grambling	Score	Margin	HOME: Wichita St.
09:49		55-46	H 9	GOOD! JUMPER by SMITH,SHYIA
09:49				ASSIST by AMBROSIO,CESARIA
09:22	MISSED LAYUP by HILL,SHAKYLA			
09:18				REBOUND (DEF) by SMITH,SHYIA
09:04		58-46	H 12	GOOD! 3PTR by BREMAUD,CARLA
09:04				ASSIST by AMBROSIO,CESARIA
08:43	MISSED LAYUP by COLEMAN,JUSTICE			
08:40				REBOUND (DEF) by SMITH,SHYIA
08:27		61-46	H 15	GOOD! 3PTR by HAMPTON,JAIDA
08:27				ASSIST by AMBROSIO,CESARIA
08:18	TIMEOUT 30SEC			
08:01	GOOD! 3PTR by BOYD,JAZMINE	61-49	H 12	
08:01	ASSIST by HILL,SHAKYLA			
07:44				TURNOVER (BADPASS) by BASTIN,SERAPHINE
07:44	STEAL by HILL,SHAKYLA			
07:42				FOUL (PERSONAL) by BASTIN,SERAPHINE
07:42	SUB OUT: YANCY,MYLASHIA			
07:42	SUB IN: WASHINGTON,KENDRIANA			
07:32	TURNOVER (BADPASS) by BOYD,JAZMINE			
07:32				STEAL by AMBROSIO,CESARIA
07:28				TURNOVER (LOSTBALL) by BASTIN,SERAPHINE
07:28	STEAL by COLEMAN,JUSTICE			
07:22	GOOD! LAYUP by COLEMAN,JUSTICE	61-51	H 10	
06:54				TURNOVER (BADPASS) by BASTIN,SERAPHINE
06:54	STEAL by COLEMAN,JUSTICE			
06:48	MISSED LAYUP by WASHINGTON,KENDRIANA			
06:48				BLOCK by BREMAUD,CARLA
06:48	REBOUND (OFF) by TEAM			
06:48				
06:40	GOOD! LAYUP by HILL,SHAKYLA	61-53	H 8	
06:40	ASSIST by BOYD,JAZMINE			
06:17				MISSED LAYUP by SMITH,SHYIA
06:17	BLOCK by WASHINGTON,KENDRIANA			
06:17				REBOUND (OFF) by SMITH,SHYIA
06:17		63-53	H 10	GOOD! LAYUP by SMITH,SHYIA
06:17	FOUL (PERSONAL) by WASHINGTON,KENDRIANA			
06:17				MISSED FT by SMITH,SHYIA
06:16	REBOUND (DEF) by FORTE,JASMINE			
05:55	MISSED 3PTR by BOYD,JAZMINE			
05:51	REBOUND (OFF) by FORTE,JASMINE			
05:50	MISSED LAYUP by FORTE,JASMINE			
05:50	REBOUND (OFF) by FORTE,JASMINE			
05:50	GOOD! LAYUP by FORTE,JASMINE	63-55	H 8	
05:50				FOUL (PERSONAL) by HAMPTON,JAIDA
05:50	MISSED FT by FORTE,JASMINE			
05:48				REBOUND (DEF) by SMITH,SHYIA
05:37				MISSED 3PTR by HAMPTON,JAIDA
05:34	REBOUND (DEF) by COLEMAN,JUSTICE			
05:31				SUB OUT: SMITH,SHYIA
05:31				SUB IN: PRINCE,RAVEN
05:20	TURNOVER (BADPASS) by WASHINGTON,KENDRIANA			
05:20				STEAL by AMBROSIO,CESARIA
05:16				MISSED LAYUP by AMBROSIO,CESARIA
05:12				REBOUND (OFF) by AMBROSIO,CESARIA
05:11				MISSED LAYUP by AMBROSIO,CESARIA
05:08				REBOUND (OFF) by BASTIN,SERAPHINE
04:53				TURNOVER (TRAVEL) by PRINCE,RAVEN
04:53	SUB OUT: WASHINGTON,KENDRIANA			
04:53	SUB IN: YANCY,MYLASHIA			
04:40	MISSED JUMPER by YANCY,MYLASHIA			
04:37				REBOUND (DEF) by AMBROSIO,CESARIA
04:32				MISSED JUMPER by HAMPTON,JAIDA
04:30				REBOUND (OFF) by PRINCE,RAVEN
04:30	FOUL (PERSONAL) by HILL,SHAKYLA			
04:30		64-55	H 9	GOOD! FT by PRINCE,RAVEN [FB]
04:30		65-55	H 10	GOOD! FT by PRINCE,RAVEN [FB]
04:20	TURNOVER (LOSTBALL) by FORTE,JASMINE			
03:56				MISSED JUMPER by PRINCE,RAVEN
03:56	BLOCK by FORTE,JASMINE			
03:52	REBOUND (DEF) by FORTE,JASMINE			
03:48	TURNOVER (TRAVEL) by HILL,SHAKYLA			
03:48				SUB OUT: BASTIN,SERAPHINE
03:48				SUB IN: SMITH,SHYIA
03:27				TURNOVER (LOSTBALL) by BREMAUD,CARLA
03:27	STEAL by BOYD,JAZMINE			
03:19	MISSED 3PTR by BOYD,JAZMINE			

Time	VISITORS: Grambling	Score	Margin	HOME: Wichita St.
03:16				REBOUND (DEF) by HAMPTON,JAIDA
02:55				TURNOVER (LOSTBALL) by AMBROSIO,CESARIA
02:55	STEAL by HILL,SHAKYLA			
02:55	FOUL (TECH) by HILL,SHAKYLA			
02:55				FOUL (TECH) by AMBROSIO,CESARIA
02:55	SUB OUT: FORTE,JASMINE			
02:55	SUB IN: CONNALLY-BANKS,MADISON			
02:45	GOOD! LAYUP by YANCY,MYLASHIA [PNT]	65-57	H 8	
02:45	ASSIST by BOYD,JAZMINE			
02:20				TURNOVER (DRIBBLING) by PRINCE,RAVEN
02:20	SUB OUT: YANCY,MYLASHIA			
02:20	SUB IN: WILLIAMS,ARIEL			
02:05	MISSED 3PTR by HILL,SHAKYLA			
02:01				REBOUND (DEF) by HAMPTON,JAIDA
01:47	FOUL (PERSONAL) by HILL,SHAKYLA			
01:47		66-57	H 9	GOOD! FT by SMITH,SHYIA
01:47	SUB OUT: CONNALLY-BANKS,MADISON			
01:47	SUB IN: WASHINGTON,KENDRIANA			
01:47		67-57	H 10	GOOD! FT by SMITH,SHYIA
01:27	MISSED LAYUP by WILLIAMS,ARIEL			
01:27				BLOCK by SMITH,SHYIA
01:15				REBOUND (DEF) by SMITH,SHYIA
01:02				MISSED JUMPER by BREMAUD,CARLA
00:58	REBOUND (DEF) by HILL,SHAKYLA			
00:56	GOOD! LAYUP by HILL,SHAKYLA [FB]	67-59	H 8	
00:56	TIMEOUT TEAM			
00:56				TIMEOUT 30SEC
00:56	SUB OUT: WILLIAMS,ARIEL			
00:56	SUB IN: LONDON,CAMRYN			
00:51	FOUL (PERSONAL) by COLEMAN,JUSTICE			
00:51		68-59	H 9	GOOD! FT by AMBROSIO,CESARIA [FB]
00:51		69-59	H 10	GOOD! FT by AMBROSIO,CESARIA [FB]
00:40	GOOD! LAYUP by COLEMAN,JUSTICE	69-61	H 8	
00:40	ASSIST by HILL,SHAKYLA			
00:36	FOUL (PERSONAL) by WASHINGTON,KENDRIANA			
00:36		70-61	H 9	GOOD! FT by AMBROSIO,CESARIA [FB]
00:36				MISSED FT by AMBROSIO,CESARIA
00:34	REBOUND (DEF) by COLEMAN,JUSTICE			
00:28	MISSED LAYUP by HILL,SHAKYLA			
00:25				REBOUND (DEF) by PRINCE,RAVEN

Grambling 61, Wichita St. 70

Points from (This Period)	GSU	WSU
In the Paint	12	2
Off Turns	4	0
2nd Chance	4	4
Fast Break	2	5
Bench	0	12

**This period only:GSU led for 4:28. WSU led for 4:44.
Game was tied for 0:26.**

**Official Scoring/Possession Reference Chart
Grambling vs Wichita St.**

Period 1

December 11, 2018 at Charles Koch Arena (Devlin Court) - Wichita, Kan.

Starters:

Grambling: 23 YANCY,MYLASHIA; 12 COLEMAN,JUSTICE; 13 BOYD,JAZMINE; 1 FORTE,JASMINE ; 2 HILL,SHAKYLA;

Wichita St.: 11 LOZADA-CABBAGE,SABRINA; 12 BREMAUD,CARLA; 13 PRINCE,RAVEN; 22 FAYE,ALYSSIA; 23 BASTIN,SERAPHINE;

Period 1

Time	VISITORS: Grambling	Score	Margin	HOME: Wichita St.
09:35		2-0	H 2	GOOD! LAYUP by PRINCE,RAVEN
09:18	GOOD! JUMPER by HILL,SHAKYLA [PNT]	2-2	T	
08:55		4-2	H 2	GOOD! JUMPER by LOZADA-CABBAGE,SABRINA
08:22	GOOD! 3PTR by BOYD,JAZMINE	4-5	V 1	
08:20	GOOD! FT by BOYD,JAZMINE	4-6	V 2	
08:16		5-6	V 1	GOOD! FT by PRINCE,RAVEN [FB]
08:16		6-6	T	GOOD! FT by PRINCE,RAVEN [FB]
07:14	GOOD! JUMPER by COLEMAN,JUSTICE	6-8	V 2	
06:48		8-8	T	GOOD! JUMPER by BREMAUD,CARLA
06:40	GOOD! 3PTR by BOYD,JAZMINE	8-11	V 3	
05:57		11-11	T	GOOD! 3PTR by BASTIN,SERAPHINE
05:30	GOOD! LAYUP by HILL,SHAKYLA	11-13	V 2	
03:58		13-13	T	GOOD! LAYUP by PRINCE,RAVEN
03:05	GOOD! 3PTR by BOYD,JAZMINE	13-16	V 3	
02:34		15-16	V 1	GOOD! LAYUP by SMITH,SHYIA
01:59		17-16	H 1	GOOD! LAYUP by BREMAUD,CARLA
00:30		19-16	H 3	GOOD! LAYUP by AMBROSIO,CESARIA [FB]

Grambling 16, Wichita St. 19

**Official Scoring/Possession Reference Chart
Grambling vs Wichita St.**

Period 2

December 11, 2018 at Charles Koch Arena (Devlin Court) - Wichita, Kan.

Starters:

Grambling: 23 YANCY,MYLASHIA; 12 COLEMAN,JUSTICE; 13 BOYD,JAZMINE; 1 FORTE,JASMINE ; 2 HILL,SHAKYLA;

Wichita St.: 11 LOZADA-CABBAGE,SABRINA; 12 BREMAUD,CARLA; 13 PRINCE,RAVEN; 22 FAYE,ALYSSIA; 23 BASTIN,SERAPHINE;

Period 2

Time	VISITORS: Grambling	Score	Margin	HOME: Wichita St.
09:28	GOOD! FT by FORTE,JASMINE	19-17	H 2	
09:01	GOOD! FT by HILL,SHAKYLA [FB]	19-18	H 1	
08:40		20-18	H 2	GOOD! FT by PRINCE,RAVEN
08:40		21-18	H 3	GOOD! FT by PRINCE,RAVEN
08:09		23-18	H 5	GOOD! LAYUP by LOZADA-CABBAGE,SABRINA
07:48	GOOD! LAYUP by FORTE,JASMINE	23-20	H 3	
06:49		24-20	H 4	GOOD! FT by LOZADA-CABBAGE,SABRINA
06:49		25-20	H 5	GOOD! FT by LOZADA-CABBAGE,SABRINA
05:31	GOOD! LAYUP by HILL,SHAKYLA [FB]	25-22	H 3	
05:08		27-22	H 5	GOOD! JUMPER by BREMAUD,CARLA
04:02	GOOD! 3PTR by BOYD,JAZMINE	27-25	H 2	
03:13		29-25	H 4	GOOD! LAYUP by HAMPTON,JAIDA [FB]
02:56	GOOD! LAYUP by FORTE,JASMINE	29-27	H 2	
02:11		31-27	H 4	GOOD! LAYUP by BREMAUD,CARLA [FB]
00:37	GOOD! LAYUP by FORTE,JASMINE	31-29	H 2	
00:12	GOOD! LAYUP by WASHINGTON,KENDRIANA [FB]	31-31	T	

Grambling 31, Wichita St. 31

**Official Scoring/Possession Reference Chart
Grambling vs Wichita St.**

Period 3

December 11, 2018 at Charles Koch Arena (Devlin Court) - Wichita, Kan.

Starters:

Grambling: 23 YANCY,MYLASHIA; 12 COLEMAN,JUSTICE; 13 BOYD,JAZMINE; 1 FORTE,JASMINE ; 2 HILL,SHAKYLA;
Wichita St.: 11 LOZADA-CABBAGE,SABRINA; 12 BREMAUD,CARLA; 13 PRINCE,RAVEN; 22 FAYE,ALYSSIA; 23 BASTIN,SERAPHINE;

Period 3

Time	VISITORS: Grambling	Score	Margin	HOME: Wichita St.
09:40	GOOD! FT by HILL,SHAKYLA [FB]	31-32	V 1	
09:40	GOOD! FT by HILL,SHAKYLA [FB]	31-33	V 2	
09:25		32-33	V 1	GOOD! FT by SMITH,SHYIA
09:25		33-33	T	GOOD! FT by SMITH,SHYIA
08:56		34-33	H 1	GOOD! FT by FAYE,ALYSSIA
08:21	GOOD! JUMPER by HILL,SHAKYLA	34-35	V 1	
08:01		35-35	T	GOOD! FT by SMITH,SHYIA
08:01		36-35	H 1	GOOD! FT by SMITH,SHYIA
07:28		38-35	H 3	GOOD! JUMPER by FAYE,ALYSSIA [PNT]
07:05	GOOD! JUMPER by FORTE,JASMINE [PNT]	38-37	H 1	
06:22		39-37	H 2	GOOD! FT by SMITH,SHYIA
06:22		40-37	H 3	GOOD! FT by SMITH,SHYIA
05:45	GOOD! FT by HILL,SHAKYLA	40-38	H 2	
05:45	GOOD! FT by HILL,SHAKYLA	40-39	H 1	
05:19		42-39	H 3	GOOD! LAY UP by HAMPTON,JAIDA
04:56		43-39	H 4	GOOD! FT by HAMPTON,JAIDA
04:56		44-39	H 5	GOOD! FT by HAMPTON,JAIDA
04:56		45-39	H 6	GOOD! FT by HAMPTON,JAIDA
04:46	GOOD! LAY UP by CONNALLY-BANKS,MADISON	45-41	H 4	
04:20		47-41	H 6	GOOD! JUMPER by HAMPTON,JAIDA [PNT]
03:54	GOOD! LAY UP by HILL,SHAKYLA	47-43	H 4	
03:54	GOOD! FT by HILL,SHAKYLA	47-44	H 3	
01:49		48-44	H 4	GOOD! FT by SMITH,SHYIA
00:55		50-44	H 6	GOOD! LAY UP by HAMPTON,JAIDA
00:42	GOOD! JUMPER by COLEMAN,JUSTICE	50-46	H 4	
00:19		53-46	H 7	GOOD! 3PTR by BREMAUD,CARLA

Grambling 46, Wichita St. 53

**Official Scoring/Possession Reference Chart
 Grambling vs Wichita St.
 Period 4**

December 11, 2018 at Charles Koch Arena (Devlin Court) - Wichita, Kan.

Starters:

Grambling: 23 YANCY,MYLASHIA; 12 COLEMAN,JUSTICE; 13 BOYD,JAZMINE; 1 FORTE,JASMINE ; 2 HILL,SHAKYLA;
Wichita St.: 11 LOZADA-CABBAGE,SABRINA; 12 BREMAUD,CARLA; 13 PRINCE,RAVEN; 22 FAYE,ALYSSIA; 23 BASTIN,SERAPHINE;

Period 4

Time	VISITORS: Grambling	Score	Margin	HOME: Wichita St.
09:49		55-46	H 9	GOOD! JUMPER by SMITH,SHYIA
09:04		58-46	H 12	GOOD! 3PTR by BREMAUD,CARLA
08:27		61-46	H 15	GOOD! 3PTR by HAMPTON,JAIDA
08:01	GOOD! 3PTR by BOYD,JAZMINE	61-49	H 12	
07:22	GOOD! LAY UP by COLEMAN,JUSTICE	61-51	H 10	
06:40	GOOD! LAY UP by HILL,SHAKYLA	61-53	H 8	
06:17		63-53	H 10	GOOD! LAY UP by SMITH,SHYIA
05:50	GOOD! LAY UP by FORTE,JASMINE	63-55	H 8	
04:30		64-55	H 9	GOOD! FT by PRINCE,RAVEN [FB]
04:30		65-55	H 10	GOOD! FT by PRINCE,RAVEN [FB]
02:45	GOOD! LAY UP by YANCY,MYLASHIA [PNT]	65-57	H 8	
01:47		66-57	H 9	GOOD! FT by SMITH,SHYIA
01:47		67-57	H 10	GOOD! FT by SMITH,SHYIA
00:56	GOOD! LAY UP by HILL,SHAKYLA [FB]	67-59	H 8	
00:51		68-59	H 9	GOOD! FT by AMBROSIO,CESARIA [FB]
00:51		69-59	H 10	GOOD! FT by AMBROSIO,CESARIA [FB]
00:40	GOOD! LAY UP by COLEMAN,JUSTICE	69-61	H 8	

Time	VISITORS: Grambling	Score	Margin	HOME: Wichita St.
00:36		70-61	H 9	GOOD! FT by AMBROSIO,CESARIA [FB]

Grambling 61, Wichita St. 70

**Official Substitutions Log
Grambling vs Wichita St.
Period 1**

December 11, 2018 at Charles Koch Arena (Devlin Court) - Wichita, Kan.

VISITORS: Grambling	Time	Score	HOME: Wichita St.
23 YANCY,MYLASHIA			11 LOZADA-CABBAGE,SABRINA
12 COLEMAN,JUSTICE			12 BREMAUD,CARLA
13 BOYD,JAZMINE			13 PRINCE,RAVEN
1 FORTE,JASMINE			22 FAYE,ALYSSIA
2 HILL,SHAKYLA			23 BASTIN,SERAPHINE
SUB OUT: 1 FORTE,JASMINE	05:33	11-11	
SUB IN: 25 CONNALLY-BANKS,MADISON	05:33		
SUB OUT: 23 YANCY,MYLASHIA	05:33		
SUB IN: 20 WASHINGTON,KENDRIANA	05:33		
	04:32	13-11	SUB OUT: FAYE,ALYSSIA
	04:32		SUB IN: AMBROSIO,CESARIA
	04:32		SUB OUT: LOZADA-CABBAGE,SABRINA
	04:32		SUB IN: SMITH,SHYIA
SUB OUT: 12 COLEMAN,JUSTICE	04:24	13-11	
SUB IN: 3 PARSONS,TAKERRA	04:24		
	02:14	16-15	SUB OUT: BASTIN,SERAPHINE
	02:14		SUB IN: HAMPTON,JAIDA
	01:39	16-17	SUB OUT: PRINCE,RAVEN
	01:39		SUB IN: LOZADA-CABBAGE,SABRINA
	00:47	16-17	SUB OUT: BREMAUD,CARLA
	00:47		SUB IN: FAYE,ALYSSIA
SUB OUT: 20 WASHINGTON,KENDRIANA	00:47		
SUB IN: 21 LONDON,CAMRYN	00:47		
SUB OUT: 13 BOYD,JAZMINE	00:47		
SUB IN: 11 WILLIAMS,ARIEL	00:47		

Grambling 16, Wichita St. 19

**Official Substitutions Log
Grambling vs Wichita St.
Period 2**

December 11, 2018 at Charles Koch Arena (Devlin Court) - Wichita, Kan.

VISITORS: Grambling	Time	Score	HOME: Wichita St.
23 YANCY,MYLASHIA			11 LOZADA-CABBAGE,SABRINA
12 COLEMAN,JUSTICE			12 BREMAUD,CARLA
13 BOYD,JAZMINE			13 PRINCE,RAVEN
1 FORTE,JASMINE			22 FAYE,ALYSSIA
2 HILL,SHAKYLA			23 BASTIN,SERAPHINE
	09:28	-	SUB OUT: SMITH,SHYIA
	09:28		SUB IN: PRINCE,RAVEN
	08:40	18-20	SUB OUT: FAYE,ALYSSIA
	08:40		SUB IN: BASTIN,SERAPHINE
SUB OUT: 21 LONDON,CAMRYN	08:09	18-21	
SUB IN: 13 BOYD,JAZMINE	08:09		
SUB OUT: 3 PARSONS,TAKERRA	08:09		
SUB IN: 12 COLEMAN,JUSTICE	08:09		
	06:49	20-25	SUB OUT: LOZADA-CABBAGE,SABRINA
	06:49		SUB IN: FAYE,ALYSSIA
	06:49		SUB OUT: HAMPTON,JAIDA
	06:49		SUB IN: LAIR,DAWNYEL
SUB OUT: 11 WILLIAMS,ARIEL	04:29	22-27	
SUB IN: 21 LONDON,CAMRYN	04:29		
	03:40	25-27	SUB OUT: AMBROSIO,CESARIA
	03:40		SUB IN: BREMAUD,CARLA
	03:40		SUB OUT: FAYE,ALYSSIA
	03:40		SUB IN: HAMPTON,JAIDA
	02:36	27-29	SUB OUT: LAIR,DAWNYEL
	02:36		SUB IN: AMBROSIO,CESARIA
	01:20	27-31	SUB OUT: HAMPTON,JAIDA
	01:20		SUB IN: PEACOCK,JADA
SUB OUT: 21 LONDON,CAMRYN	00:59	27-31	
SUB IN: 20 WASHINGTON,KENDRIANA	00:59		
	00:12	31-31	SUB OUT: PRINCE,RAVEN
	00:12		SUB IN: FAYE,ALYSSIA

Grambling 31, Wichita St. 31

**Official Substitutions Log
Grambling vs Wichita St.
Period 3**

December 11, 2018 at Charles Koch Arena (Devlin Court) - Wichita, Kan.

VISITORS: Grambling	Time	Score	HOME: Wichita St.
23 YANCY,MYLASHIA			11 LOZADA-CABBAGE,SABRINA
12 COLEMAN,JUSTICE			12 BREMAUD,CARLA
13 BOYD,JAZMINE			13 PRINCE,RAVEN
1 FORTE,JASMINE			22 FAYE,ALYSSIA
2 HILL,SHAKYLA			23 BASTIN,SERAPHINE
	09:40	32-31	SUB OUT: PRINCE,RAVEN
	09:40		SUB IN: SMITH,SHYIA
SUB OUT: 23 YANCY,MYLASHIA	06:48	37-38	
SUB IN: 20 WASHINGTON,KENDRIANA	06:48		
SUB OUT: 12 COLEMAN,JUSTICE	06:48		
SUB IN: 3 PARSONS,TAKERRA	06:48		
	06:38	37-38	SUB OUT: FAYE,ALYSSIA
	06:38		SUB IN: LAIR,DAWNYEL
SUB OUT: 1 FORTE,JASMINE	06:22	37-39	
SUB IN: 25 CONNALLY-BANKS,MADISON	06:22		
SUB OUT: 20 WASHINGTON,KENDRIANA	04:56	39-42	
SUB IN: 11 WILLIAMS,ARIEL	04:56		
	02:02	44-47	SUB OUT: LAIR,DAWNYEL
	02:02		SUB IN: AMBROSIO,CESARIA
SUB OUT: 3 PARSONS,TAKERRA	02:02		
SUB IN: 12 COLEMAN,JUSTICE	02:02		
SUB OUT: 13 BOYD,JAZMINE	02:02		
SUB IN: 23 YANCY,MYLASHIA	02:02		

Grambling 46, Wichita St. 53

**Official Substitutions Log
Grambling vs Wichita St.
Period 4**

December 11, 2018 at Charles Koch Arena (Devlin Court) - Wichita, Kan.

VISITORS: Grambling	Time	Score	HOME: Wichita St.
23 YANCY,MYLASHIA			11 LOZADA-CABBAGE,SABRINA
12 COLEMAN,JUSTICE			12 BREMAUD,CARLA
13 BOYD,JAZMINE			13 PRINCE,RAVEN
1 FORTE,JASMINE			22 FAYE,ALYSSIA
2 HILL,SHAKYLA			23 BASTIN,SERAPHINE
SUB OUT: 23 YANCY,MYLASHIA	07:42	49-61	
SUB IN: 20 WASHINGTON,KENDRIANA	07:42		
	05:31	55-63	SUB OUT: SMITH,SHYIA
	05:31		SUB IN: PRINCE,RAVEN
SUB OUT: 20 WASHINGTON,KENDRIANA	04:53	55-63	
SUB IN: 23 YANCY,MYLASHIA	04:53		
	03:48	55-65	SUB OUT: BASTIN,SERAPHINE
	03:48		SUB IN: SMITH,SHYIA
SUB OUT: 1 FORTE,JASMINE	02:55	55-65	
SUB IN: 25 CONNALLY-BANKS,MADISON	02:55		
SUB OUT: 23 YANCY,MYLASHIA	02:20	57-65	
SUB IN: 11 WILLIAMS,ARIEL	02:20		
SUB OUT: 25 CONNALLY-BANKS,MADISON	01:47	57-66	
SUB IN: 20 WASHINGTON,KENDRIANA	01:47		
SUB OUT: 11 WILLIAMS,ARIEL	00:56	59-67	
SUB IN: 21 LONDON,CAMRYN	00:56		

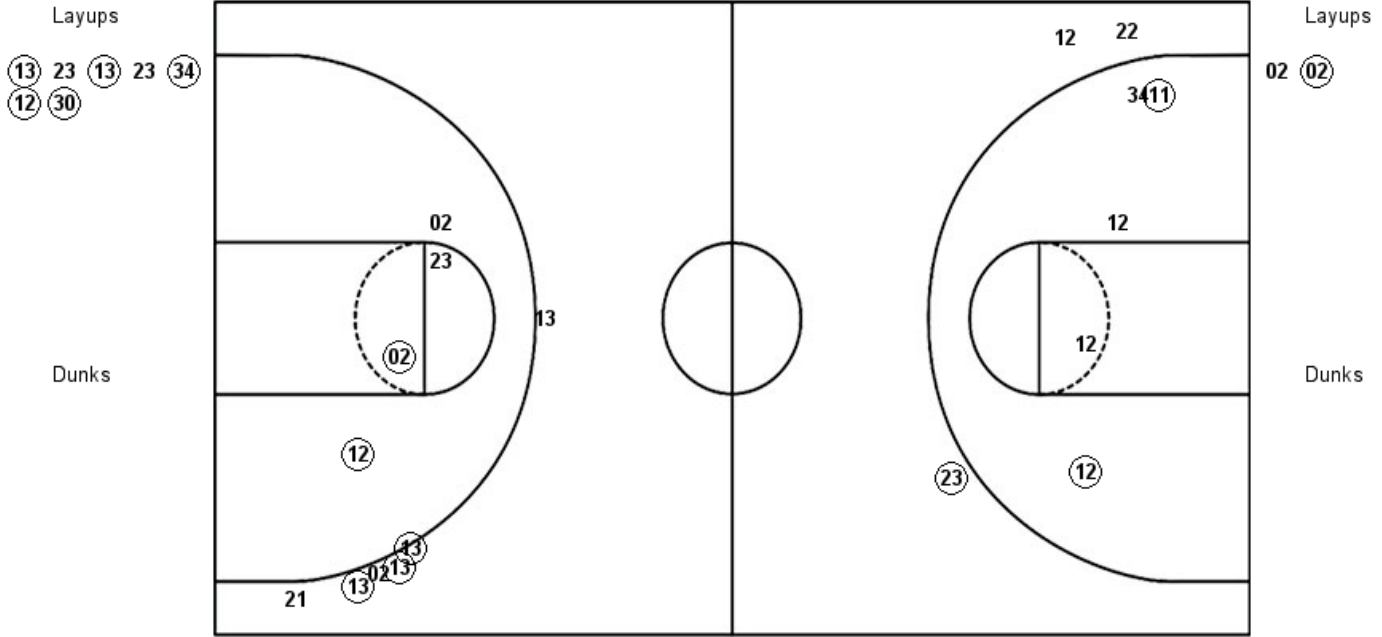
Grambling 61, Wichita St. 70

**Official Shot Chart
 Grambling vs Wichita St.
 PERIOD 1 Shots**

December 11, 2018 at Charles Koch Arena (Devlin Court) - Wichita, Kan.

Wichita St.

Grambling



WSU : Period 1	Made	Att	Pct
Layups	5	7	71.4
Dunks	0	0	0
2PT Field Goals	7	12	58.3
3PT Field Goals	1	3	33.3
Total Field Goals	8	15	53.3

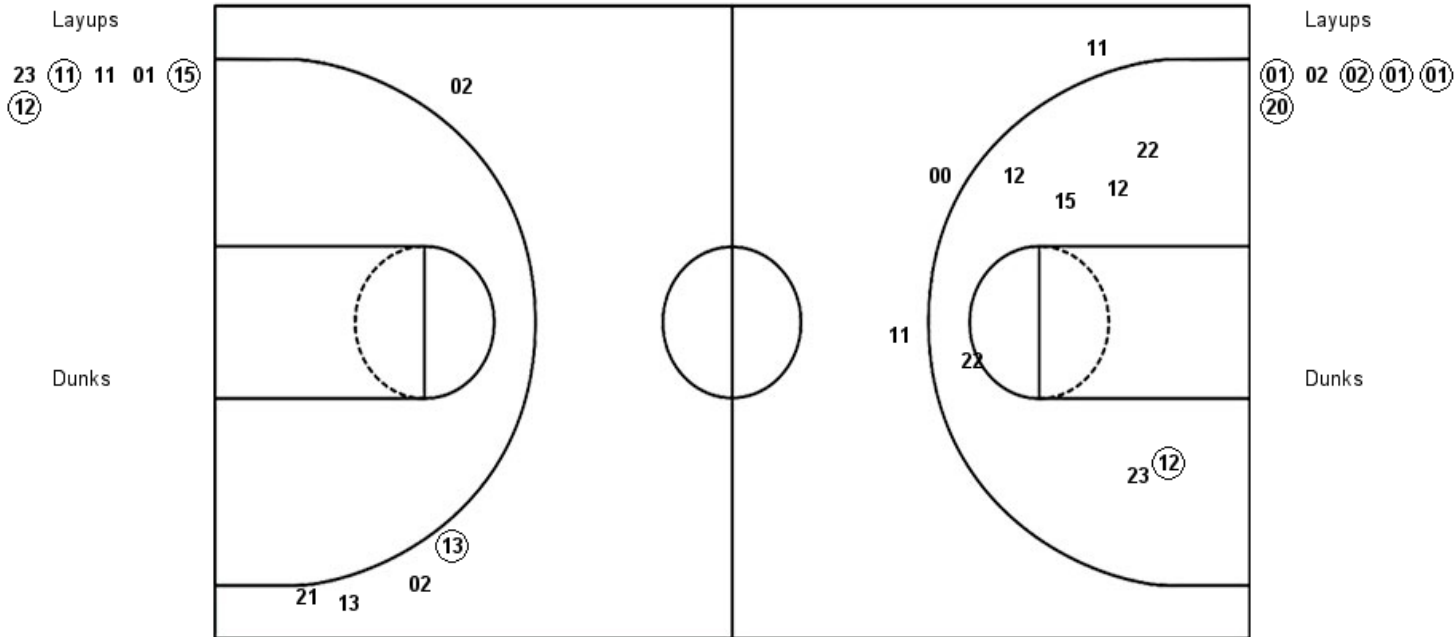
GSU : Period 1	Made	Att	Pct
Layups	1	2	50.0
Dunks	0	0	0
2PT Field Goals	3	6	50.0
3PT Field Goals	3	6	50.0
Total Field Goals	6	12	50.0

**Official Shot Chart
Grambling vs Wichita St.
PERIOD 2 Shots**

December 11, 2018 at Charles Koch Arena (Devlin Court) - Wichita, Kan.

Wichita St.

Grambling



WSU : Period 2	Made	Att	Pct
Layups	3	6	50.0
Dunks	0	0	0
2PT Field Goals	4	13	30.8
3PT Field Goals	0	3	00.0
Total Field Goals	4	16	25.0

GSU : Period 2	Made	Att	Pct
Layups	5	6	83.3
Dunks	0	0	0
2PT Field Goals	5	6	83.3
3PT Field Goals	1	5	20.0
Total Field Goals	6	11	54.5

**Official Shot Chart
 Grambling vs Wichita St.
 PERIOD 3 Shots**

December 11, 2018 at Charles Koch Arena (Devlin Court) - Wichita, Kan.

Wichita St.

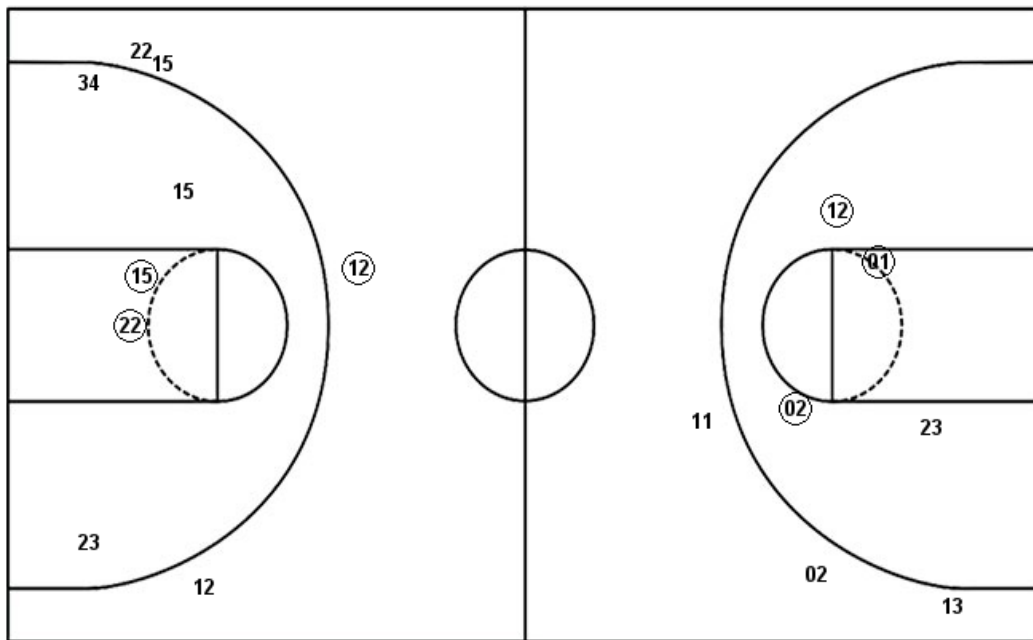
Grambling

Layups
 23 (15) 01 (15)

Layups
 01 02 (25) (02) 13

Dunks

Dunks



WSU : Period 3	Made	Att	Pct
Layups	2	4	50.0
Dunks	0	0	0
2PT Field Goals	4	9	44.4
3PT Field Goals	1	4	25.0
Total Field Goals	5	13	38.5

GSU : Period 3	Made	Att	Pct
Layups	2	5	40.0
Dunks	0	0	0
2PT Field Goals	5	9	55.6
3PT Field Goals	0	3	00.0
Total Field Goals	5	12	41.7

**Official Shot Chart
Grambling vs Wichita St.
PERIOD 4 Shots**

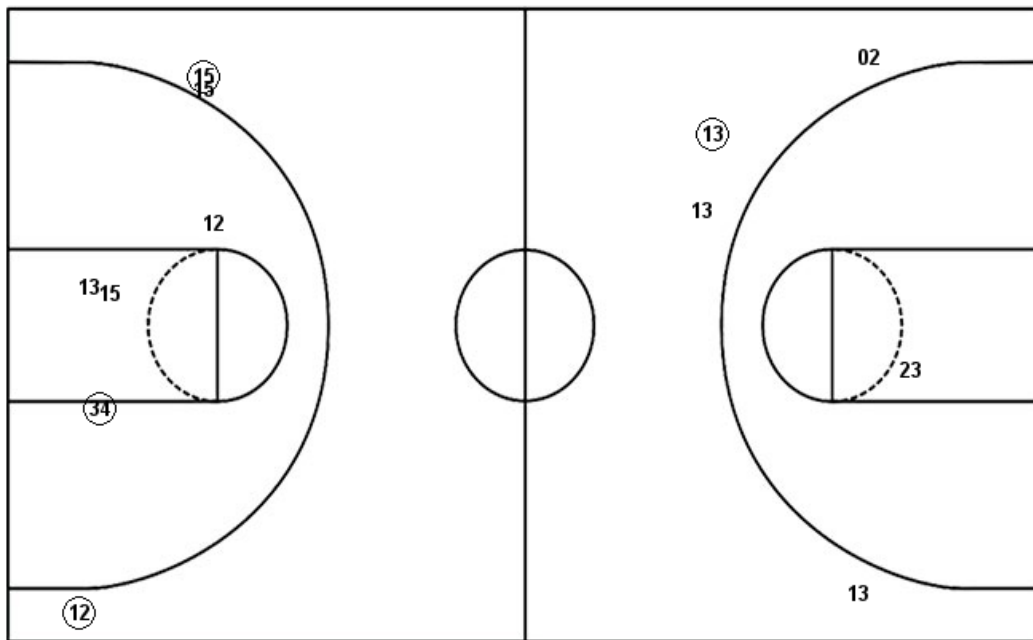
December 11, 2018 at Charles Koch Arena (Devlin Court) - Wichita, Kan.

Wichita St.

Grambling

Layups
34 (34) 30 30

Dunks



Layups

02 12 (12) 20 (02)
01 (01) (23) 11 (02)
(12) 02

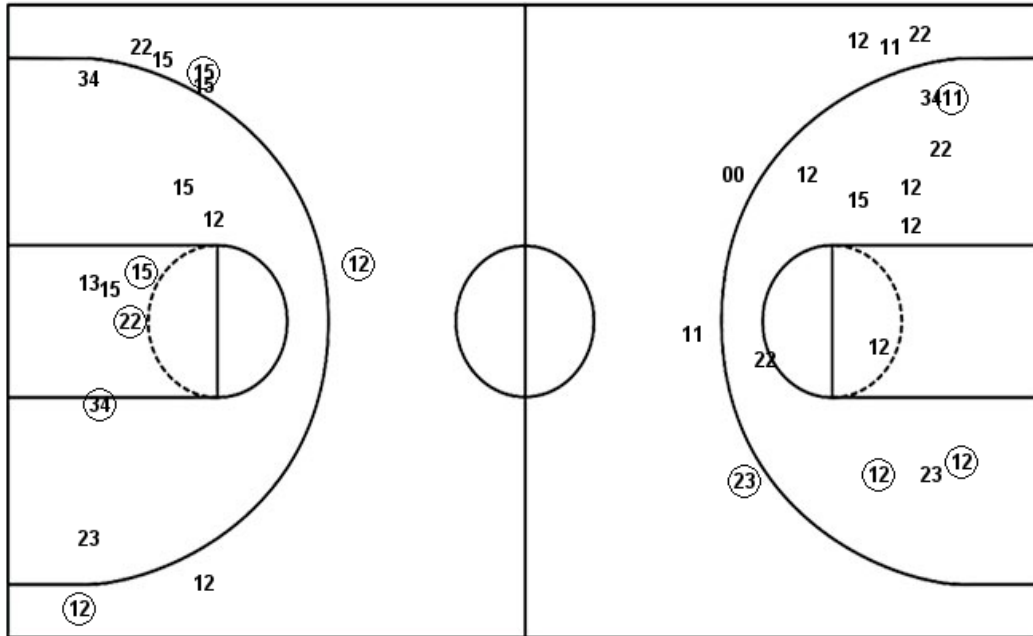
Dunks

WSU : Period 4	Made	Att	Pct
Layups	1	4	25.0
Dunks	0	0	0
2PT Field Goals	2	8	25.0
3PT Field Goals	2	3	66.7
Total Field Goals	4	11	36.4

GSU : Period 4	Made	Att	Pct
Layups	6	12	50.0
Dunks	0	0	0
2PT Field Goals	6	13	46.2
3PT Field Goals	1	4	25.0
Total Field Goals	7	17	41.2

Official Shot Chart
Grambling vs Wichita St.
Wichita St. Team Shots
 December 11, 2018 at Charles Koch Arena (Devlin Court) - Wichita, Kan.

Layups



Layups



Dunks

Dunks

WSU : Period 1	Made	Att	Pct
Layups	5	7	71.4
Dunks	0	0	0
2PT Field Goals	7	12	58.3
3PT Field Goals	1	3	33.3
Total Field Goals	8	15	53.3
WSU : Period 3	Made	Att	Pct
Layups	2	4	50.0
Dunks	0	0	0
2PT Field Goals	4	9	44.4
3PT Field Goals	1	4	25.0
Total Field Goals	5	13	38.5

WSU : Period 2	Made	Att	Pct
Layups	3	6	50.0
Dunks	0	0	0
2PT Field Goals	4	13	30.8
3PT Field Goals	0	3	00.0
Total Field Goals	4	16	25.0
WSU : Period 4	Made	Att	Pct
Layups	1	4	25.0
Dunks	0	0	0
2PT Field Goals	2	8	25.0
3PT Field Goals	2	3	66.7
Total Field Goals	4	11	36.4