

FINAL SCORE



Creighton

83



Wichita St.

71

December 08, 2018 • Charles Koch Arena (Devlin Court) - Wichita, Kan.

FINAL STATISTICS

Official Box Score
Creighton vs Wichita St.
Game Totals -- Final Statistics
December 08, 2018 at Charles Koch Arena (Devlin Court) - Wichita, Kan.

Creighton 83

No.	Player	S	Pts	FG	3FG	FT	OR	DR	TR	PF	A	TO	Blk	Stl	Min	+/-
2	Rembao, Tatum		9	3-8	1-5	2-2	1	0	1	4	2	1	0	0	26	8
5	Agnew, Jaylyn		22	8-14	6-12	0-0	1	4	5	4	7	0	1	2	38	15
12	Griglione, Gracey		0	0-1	0-0	0-0	2	2	4	2	0	2	1	1	11	-3
22	Kissinger, Brooke		5	2-5	1-3	0-0	0	2	2	0	0	1	0	0	9	1
45	Faber, Audrey		14	5-12	3-7	1-2	2	4	6	1	6	2	2	0	39	10
4	Carda, Temi		16	5-8	3-6	3-4	1	2	3	2	2	0	0	0	26	10
13	Saunders, Rachael		3	1-2	1-1	0-0	0	0	0	1	0	1	0	0	8	0
21	Elger, Olivia		3	1-4	1-4	0-0	1	2	3	2	1	3	0	0	23	19
23	Turner, Morgan		2	1-3	0-0	0-0	1	2	3	2	1	0	0	0	6	-5
24	Dworak, Chloe		0	0-1	0-0	0-0	0	0	0	0	1	0	0	0	4	-2
33	Brotzki, Payton		9	3-4	2-3	1-1	0	1	1	1	1	1	0	0	9	7
	Team						0	1	1	0		2				
TOTALS			83	29-62	18-41	7-9	9	20	29	19	21	13	4	3	198	

Shooting By Period

Period	FG	FG%	3FG	3FG%	FT	FT%
1st Qtr	7-21	33%	6-15	40%	0-0	0%
2nd Qtr	9-14	64%	5-8	63%	1-1	100%
3rd Qtr	5-13	38%	2-8	25%	1-2	50%
4th Qtr	8-14	57%	5-10	50%	5-6	83%
1st Half	7-21	33%	6-15	40%	0-0	0%
2nd Half	9-14	64%	5-8	63%	1-1	100%
3rd Half	5-13	38%	2-8	25%	1-2	50%
4th Half	8-14	57%	5-10	50%	5-6	83%
Game	29-62	46.8%	18-41	43.9%	7-9	77.8%

Deadball Rebounds:
Last FG: 4th-01:41
Biggest Run: 9-0
Largest lead: By 17 at 2-01:32
Technical Fouls: None.

Wichita St. 71

No.	Player	S	Pts	FG	3FG	FT	OR	DR	TR	PF	A	TO	Blk	Stl	Min	+/-
11	Lozada-Cabbage, Sabrina		11	5-12	0-2	1-2	1	5	6	4	1	1	0	1	24	-11
12	Bremaud, Carla		11	5-12	0-4	1-2	0	3	3	1	2	2	0	2	36	-9
13	Prince, Raven		5	1-7	0-0	3-7	2	2	4	3	0	2	0	1	27	-3
22	Faye, Alyssia		15	6-8	3-4	0-0	3	6	9	1	2	1	1	0	27	-8
23	Bastin, Seraphine		5	2-5	1-2	0-0	1	2	3	2	5	3	0	3	32	-11
24	Colbert, Trajata		2	1-3	0-0	0-0	1	1	2	1	0	1	0	0	5	-4
30	Ambrosio, Cesaria		5	2-3	1-1	0-2	1	0	1	0	3	1	1	0	21	-1
34	Smith, Shyia		17	7-10	1-2	2-3	1	2	3	4	2	0	0	1	26	-13
	Team						1	1	2	0		2				
TOTALS			71	29-60	6-15	7-16	11	22	33	16	15	13	2	8	198	

Shooting By Period

Period	FG	FG%	3FG	3FG%	FT	FT%
1st Qtr	3-13	23%	1-4	25%	3-6	50%
2nd Qtr	9-16	56%	2-4	50%	3-5	60%
3rd Qtr	11-20	55%	2-5	40%	0-1	0%
4th Qtr	6-11	55%	1-2	50%	1-4	25%
1st Half	3-13	23%	1-4	25%	3-6	50%
2nd Half	9-16	56%	2-4	50%	3-5	60%
3rd Half	11-20	55%	2-5	40%	0-1	0%
4th Half	6-11	55%	1-2	50%	1-4	25%
Game	29-60	48.3%	6-15	40.0%	7-16	43.8%

Deadball Rebounds:
Last FG: 4th-00:20
Biggest Run: 10-0
Largest lead: By 3 at 1-08:28
Technical Fouls: None.

Game Notes:
Officials: Denise Brooks, Jeffrey Smith, Ed Sidlasky
Attendance: 1702
Start Time: 2018-12-08 20:05:04 **End Time: 2018-12-08 21:52:50**
Game Duration: 107

Score by Period	1st	2nd	3rd	4th	TOT
CUW	20	24	13	26	83
WSU	10	23	24	14	71

CUW led for 33:03. WSU led for 2:26.
Game was tied for 4:12.
Times tied: 8 **Lead Changes: 3**

Points from	CUW	WSU
In the Paint	20	28
Off Turns	13	13
2nd Chance	11	6
Fast Break	5	14
Bench	33	24

Official Box Score
Creighton vs Wichita St.
First Half Statistics Only
December 08, 2018 at Charles Koch Arena (Devlin Court) - Wichita, Kan.

Creighton 83

No.	Player	S	Pts	FG	3FG	FT	OR	DR	TR	PF	A	TO	Blk	Stl	Min	+/-
2	Rembao, Tatum		2	1-3	0-2	0-0	0	0	0	1	1	0	0	0	4	3
5	Agnew, Jaylyn		6	2-3	2-3	0-0	0	1	1	1	1	0	0	1	10	10
12	Griglione, Gracey		0	0-1	0-0	0-0	1	1	2	1	0	1	0	0	4	3
22	Kissinger, Brooke		3	1-3	1-2	0-0	0	1	1	0	0	0	0	0	4	3
45	Faber, Audrey		0	0-0	0-0	0-0	2	1	3	0	2	0	1	0	9	8
4	Carda, Temi		0	0-3	0-3	0-0	0	0	0	1	0	0	0	0	5	5
13	Saunders, Rachael		3	1-1	1-1	0-0	0	0	0	0	0	0	0	0	1	2
21	Elger, Olivia		3	1-2	1-2	0-0	0	1	1	0	0	1	0	0	5	5
23	Turner, Morgan		0	0-2	0-0	0-0	1	1	2	2	0	0	0	0	3	-1
24	Dworak, Chloe		0	0-1	0-0	0-0	0	0	0	0	1	0	0	0	1	2
33	Brotzki, Payton		3	1-2	1-2	0-0	0	1	1	0	0	0	0	0	4	10
	Team						0	0	0	0		0				
TOTALS			20	7-21	6-15	0-0	0	0	11	6	5	2	1	1	50	

Shooting By Period

Period	FG	FG%	3FG	3FG%	FT	FT%
1st Qtr	7-21	33%	6-15	40%	0-0	0%
2nd Qtr	9-14	64%	5-8	63%	1-1	100%
3rd Qtr	5-13	38%	2-8	25%	1-2	50%
4th Qtr	8-14	57%	5-10	50%	5-6	83%
1st Half	7-21	33%	6-15	40%	0-0	0%
2nd Half	9-14	64%	5-8	63%	1-1	100%
3rd Half	5-13	38%	2-8	25%	1-2	50%
4th Half	8-14	57%	5-10	50%	5-6	83%
Game	29-62	46.8%	18-41	43.9%	7-9	77.8%

Deadball Rebounds:

Last FG: 4th-01:41
 Biggest Run: 9-0
 Largest lead: By 17 at 2-01:32
 Technical Fouls: None.

Wichita St. 71

No.	Player	S	Pts	FG	3FG	FT	OR	DR	TR	PF	A	TO	Blk	Stl	Min	+/-
11	Lozada-Cabbage, Sabrina		1	0-2	0-0	1-2	1	3	4	1	0	1	0	0	7	-2
12	Bremaud, Carla		3	1-3	0-1	1-1	0	1	1	0	0	1	0	0	9	-7
13	Prince, Raven		3	1-3	0-0	1-3	2	2	4	0	0	1	0	0	10	-10
22	Faye, Alyssia		0	0-1	0-1	0-0	0	1	1	0	1	0	0	0	6	-4
23	Bastin, Seraphine		3	1-2	1-2	0-0	0	1	1	0	1	1	0	1	9	-8
24	Colbert, Trajata		0	0-1	0-0	0-0	0	1	1	0	0	1	0	0	3	-8
30	Ambrosio, Cesaria		0	0-0	0-0	0-0	0	0	0	0	0	0	0	0	1	-2
34	Smith, Shyia		0	0-1	0-0	0-0	0	0	0	0	0	0	0	0	5	-9
	Team						0	0	0	0		1				
TOTALS			10	3-13	1-4	3-6	0	0	12	1	2	6	0	1	50	

Shooting By Period

Period	FG	FG%	3FG	3FG%	FT	FT%
1st Qtr	3-13	23%	1-4	25%	3-6	50%
2nd Qtr	9-16	56%	2-4	50%	3-5	60%
3rd Qtr	11-20	55%	2-5	40%	0-1	0%
4th Qtr	6-11	55%	1-2	50%	1-4	25%
1st Half	3-13	23%	1-4	25%	3-6	50%
2nd Half	9-16	56%	2-4	50%	3-5	60%
3rd Half	11-20	55%	2-5	40%	0-1	0%
4th Half	6-11	55%	1-2	50%	1-4	25%
Game	29-60	48.3%	6-15	40.0%	7-16	43.8%

Deadball Rebounds:

Last FG: 4th-00:20
 Biggest Run: 10-0
 Largest lead: By 3 at 1-08:28
 Technical Fouls: None.

Game Notes:
 Officials: Denise Brooks, Jeffrey Smith, Ed Sidlasky
 Attendance: 1702
 Start Time: 2018-12-08 20:05:04 End Time: 2018-12-08 21:52:50
 Game Duration: 107

Score by Period	1st	2nd	3rd	4th	TOT
CUW	20	24	13	26	83
WSU	10	23	24	14	71

This period only: CUW led for 33:03. WSU led for 33:25.
Game was tied for 0:12.

Points from (This Period)	CUW	WSU
In the Paint	2	4
Off Turns	3	1
2nd Chance	5	0
Fast Break	0	4
Bench	9	0

**Official Play-By-Play
Creighton vs Wichita St.
First Quarter**

December 08, 2018 at Charles Koch Arena (Devlin Court) - Wichita, Kan.

Starters:

Creighton: 2 REMBAO,TATUM; 5 AGNEW,JAYLYN; 12 GRIGLIONE,GRACEY; 22 KISSINGER,BROOKE; 45 FABER,AUDREY;

Wichita St.: 11 LOZADA-CABBAGE,SABRINA; 12 BREMAUD,CARLA; 13 PRINCE,RAVEN; 22 FAYE,ALYSSIA; 23 BASTIN,SERAPHINE;

Period 1

Time	VISITORS: Creighton	Score	Margin	HOME: Wichita St.
09:51	MISSED 3PTR by AGNEW,JAYLYN			
09:48				REBOUND (DEF) by LOZADA-CABBAGE,SABRINA
09:32		3-0	H 3	GOOD! 3PTR by BASTIN,SERAPHINE
09:32				ASSIST by FAYE,ALYSSIA
09:08	MISSED 3PTR by REMBAO,TATUM			
09:05	REBOUND (OFF) by TEAM			
09:03	MISSED JUMPER by GRIGLIONE,GRACEY			
08:59	REBOUND (OFF) by FABER,AUDREY			
08:40	GOOD! LAYUP by REMBAO,TATUM	3-2	H 1	
08:28		5-2	H 3	GOOD! LAYUP by PRINCE,RAVEN
08:28				ASSIST by BASTIN,SERAPHINE
08:28	FOUL (PERSONAL) by REMBAO,TATUM			
08:28				MISSED FT by PRINCE,RAVEN
08:28	REBOUND (DEF) by GRIGLIONE,GRACEY			
08:15	GOOD! 3PTR by KISSINGER,BROOKE	5-5	T	
08:15	ASSIST by REMBAO,TATUM			
07:58				TURNOVER (TRAVEL) by BREMAUD,CARLA
07:41	MISSED JUMPER by KISSINGER,BROOKE			
07:36				REBOUND (DEF) by FAYE,ALYSSIA
07:30				TURNOVER (TRAVEL) by BASTIN,SERAPHINE
07:13	MISSED 3PTR by KISSINGER,BROOKE			
07:09	REBOUND (OFF) by GRIGLIONE,GRACEY			
07:07	MISSED 3PTR by REMBAO,TATUM			
07:04				REBOUND (DEF) by LOZADA-CABBAGE,SABRINA
06:45				MISSED LAYUP by PRINCE,RAVEN
06:44	REBOUND (DEF) by TEAM			
06:31	GOOD! 3PTR by AGNEW,JAYLYN	5-8	V 3	
06:31	ASSIST by FABER,AUDREY			
06:13				MISSED 3PTR by FAYE,ALYSSIA
06:07	REBOUND (DEF) by KISSINGER,BROOKE			
06:01	FOUL (OFF) by GRIGLIONE,GRACEY			
06:01	TURNOVER (OFFENSIVE) by GRIGLIONE,GRACEY			
06:01	SUB OUT: REMBAO,TATUM			
06:01	SUB IN: CARDA,TEMI			
06:01	SUB OUT: GRIGLIONE,GRACEY			
06:01	SUB IN: TURNER,MORGAN			
06:01	SUB OUT: KISSINGER,BROOKE			
06:01	SUB IN: ELGER,OLIVIA			
05:55				FOUL (OFF) by LOZADA-CABBAGE,SABRINA
05:55				TURNOVER (OFFENSIVE) by LOZADA-CABBAGE,SABRINA
05:23	MISSED 3PTR by CARDA,TEMI			
05:20				REBOUND (DEF) by BASTIN,SERAPHINE
05:15		7-8	V 1	GOOD! LAYUP by BREMAUD,CARLA [FB]
05:15	FOUL (PERSONAL) by CARDA,TEMI			
05:15				SUB OUT: FAYE,ALYSSIA
05:15				SUB IN: SMITH,SHYIA
05:15		8-8	T	GOOD! FT by BREMAUD,CARLA [FB]
04:54	MISSED 3PTR by CARDA,TEMI			
04:51				REBOUND (DEF) by LOZADA-CABBAGE,SABRINA
04:44				MISSED 3PTR by BREMAUD,CARLA
04:41				REBOUND (OFF) by PRINCE,RAVEN
04:27				MISSED JUMPER by SMITH,SHYIA
04:22				REBOUND (OFF) by PRINCE,RAVEN
04:08	FOUL (PERSONAL) by TURNER,MORGAN			
04:08				
04:08	SUB OUT: TURNER,MORGAN			
04:08	SUB IN: BROTZKI,PAYTON			
04:05				MISSED LAYUP by LOZADA-CABBAGE,SABRINA
03:54				REBOUND (OFF) by LOZADA-CABBAGE,SABRINA
03:54				MISSED LAYUP by LOZADA-CABBAGE,SABRINA
03:53	REBOUND (DEF) by BROTZKI,PAYTON			
03:48	GOOD! 3PTR by ELGER,OLIVIA	8-11	V 3	
03:35				MISSED 3PTR by BASTIN,SERAPHINE
03:31	REBOUND (DEF) by ELGER,OLIVIA			
03:30	TURNOVER (LOSTBALL) by ELGER,OLIVIA			
03:30				STEAL by BASTIN,SERAPHINE
03:27	FOUL (PERSONAL) by AGNEW,JAYLYN			
03:27				MISSED FT by LOZADA-CABBAGE,SABRINA
03:27				REBOUND (OFF) by TEAM
03:27		9-11	V 2	GOOD! FT by LOZADA-CABBAGE,SABRINA [FB]
03:27				SUB OUT: LOZADA-CABBAGE,SABRINA
03:27				SUB IN: COLBERT,TRAJATA
03:04	MISSED 3PTR by BROTZKI,PAYTON			
03:01	REBOUND (OFF) by FABER,AUDREY			
02:57	GOOD! 3PTR by AGNEW,JAYLYN	9-14	V 5	
02:57	ASSIST by FABER,AUDREY			

Time	VISITORS: Creighton	Score	Margin	HOME: Wichita St.
02:42				MISSED LAYUP by PRINCE,RAVEN
02:42	BLOCK by FABER,AUDREY			
02:36	REBOUND (DEF) by FABER,AUDREY			
02:31	MISSED 3PTR by ELGER,OLIVIA			
02:28				REBOUND (DEF) by BREMAUD,CARLA
02:24				MISSED LAYUP by BREMAUD,CARLA
02:20	REBOUND (DEF) by AGNEW,JAYLYN			
02:14	MISSED 3PTR by CARDA,TEMI			
02:11				REBOUND (DEF) by COLBERT,TRAJATA
01:54				TURNOVER (LOSTBALL) by COLBERT,TRAJATA
01:54	STEAL by AGNEW,JAYLYN			
01:40	GOOD! 3PTR by BROTZKI,PAYTON	9-17	V 8	
01:40	ASSIST by AGNEW,JAYLYN			
01:28				TURNOVER (OTHER) by PRINCE,RAVEN
01:27				SUB OUT: BASTIN,SERAPHINE
01:27				SUB IN: AMBROSIO,CESARIA
01:27	SUB OUT: CARDA,TEMI			
01:27	SUB IN: DWORAK,CHLOE			
01:27	SUB OUT: ELGER,OLIVIA			
01:27	SUB IN: SAUNDERS,RACHAEL			
01:27	SUB OUT: FABER,AUDREY			
01:27	SUB IN: TURNER,MORGAN			
01:27	MISSED LAYUP by TURNER,MORGAN			
01:27	REBOUND (OFF) by TURNER,MORGAN			
01:27	MISSED LAYUP by TURNER,MORGAN			
01:27				REBOUND (DEF) by PRINCE,RAVEN
01:16	FOUL (PERSONAL) by TURNER,MORGAN			
01:16		10-17	V 7	GOOD! FT by PRINCE,RAVEN
01:16				SUB OUT: BREMAUD,CARLA
01:16				SUB IN: FAYE,ALYSSIA
01:16				MISSED FT by PRINCE,RAVEN
01:16	REBOUND (DEF) by TURNER,MORGAN			
00:51	GOOD! 3PTR by SAUNDERS,RACHAEL	10-20	V 10	
00:51	ASSIST by DWORAK,CHLOE			
00:28				MISSED JUMPER by COLBERT,TRAJATA
00:26				REBOUND (OFF) by TEAM
00:26				TURNOVER (5SEC) by
00:26	SUB OUT: TURNER,MORGAN			
00:26	SUB IN: FABER,AUDREY			
00:00	MISSED JUMPER by DWORAK,CHLOE			
00:00				REBOUND (DEF) by PRINCE,RAVEN

Creighton 20, Wichita St. 10

Points from (This Period)	CUW	WSU
In the Paint	2	4
Off Turns	3	1
2nd Chance	5	0
Fast Break	0	4
Bench	9	0

This period only:CUW led for 33:03. WSU led for 33:25.
Game was tied for 0:12.

**Official Play-By-Play
Creighton vs Wichita St.
Second Quarter**

December 08, 2018 at Charles Koch Arena (Devlin Court) - Wichita, Kan.

Starters:

Creighton: 2 REMBAO,TATUM; 5 AGNEW,JAYLYN; 12 GRIGLIONE,GRACEY; 22 KISSINGER,BROOKE; 45 FABER,AUDREY;

Wichita St.: 11 LOZADA-CABBAGE,SABRINA; 12 BREMAUD,CARLA; 13 PRINCE,RAVEN; 22 FAYE,ALYSSIA; 23 BASTIN,SERAPHINE;

Period 2

Time	VISITORS: Creighton	Score	Margin	HOME: Wichita St.
09:42		12-20	V 8	GOOD! JUMPER by AMBROSIO,CESARIA
09:31				FOUL (PERSONAL) by COLBERT,TRAJATA
09:28	MISSED 3PTR by FABER,AUDREY			
09:25				REBOUND (DEF) by TEAM
09:18				MISSED LAYUP by COLBERT,TRAJATA
09:15				REBOUND (OFF) by FAYE,ALYSSIA
09:13				TURNOVER (LOSTBALL) by BREMAUD,CARLA
09:13	STEAL by GRIGLIONE,GRACEY			
09:13				SUB OUT: AMBROSIO,CESARIA
09:13				SUB IN: BASTIN,SERAPHINE
09:13				SUB OUT: COLBERT,TRAJATA
09:13				SUB IN: LOZADA-CABBAGE,SABRINA
08:45	MISSED JUMPER by FABER,AUDREY			
08:41				REBOUND (DEF) by FAYE,ALYSSIA
08:20	FOUL (PERSONAL) by SAUNDERS,RACHAEL			
08:20				MISSED FT by PRINCE,RAVEN
08:20				REBOUND (OFF) by TEAM
08:20	SUB OUT: DWORAK,CHLOE			
08:20	SUB IN: AGNEW,JAYLYN			
08:20	SUB OUT: GRIGLIONE,GRACEY			
08:20	SUB IN: ELGER,OLIVIA			
08:20				MISSED FT by PRINCE,RAVEN
08:20	REBOUND (DEF) by AGNEW,JAYLYN			
07:59	MISSED 3PTR by FABER,AUDREY			
07:56	REBOUND (OFF) by TEAM			
07:37	TURNOVER (BADPASS) by ELGER,OLIVIA			
07:37				STEAL by BREMAUD,CARLA
07:31		14-20	V 6	GOOD! JUMPER by BREMAUD,CARLA [FB]
07:16	GOOD! 3PTR by FABER,AUDREY	14-23	V 9	
07:16	ASSIST by AGNEW,JAYLYN			
07:03				MISSED 3PTR by LOZADA-CABBAGE,SABRINA
06:59	REBOUND (DEF) by ELGER,OLIVIA			
06:50	GOOD! 3PTR by AGNEW,JAYLYN	14-26	V 12	
06:50	ASSIST by FABER,AUDREY			
06:49				TIMEOUT 30SEC
06:49				SUB OUT: PRINCE,RAVEN
06:49				SUB IN: AMBROSIO,CESARIA
06:49				SUB OUT: FAYE,ALYSSIA
06:49				SUB IN: SMITH,SHYIA
06:49	SUB OUT: REMBAO,TATUM			
06:49	SUB IN: CARDA,TEMI			
06:49	SUB OUT: SAUNDERS,RACHAEL			
06:49	SUB IN: KISSINGER,BROOKE			
06:38				MISSED LAYUP by LOZADA-CABBAGE,SABRINA
06:35	REBOUND (DEF) by CARDA,TEMI			
06:23	GOOD! 3PTR by FABER,AUDREY	14-29	V 15	
05:58				MISSED 3PTR by BREMAUD,CARLA
05:53	REBOUND (DEF) by FABER,AUDREY			
05:48	MISSED 3PTR by KISSINGER,BROOKE			
05:45				REBOUND (DEF) by LOZADA-CABBAGE,SABRINA
05:31		16-29	V 13	GOOD! LAYUP by SMITH,SHYIA [PNT]
05:31	FOUL (PERSONAL) by CARDA,TEMI			
05:31		17-29	V 12	GOOD! FT by SMITH,SHYIA
05:13	TURNOVER (BADPASS) by ELGER,OLIVIA			
05:13				STEAL by BASTIN,SERAPHINE
05:09				FOUL (OFF) by BASTIN,SERAPHINE
05:09				TURNOVER (OFFENSIVE) by BASTIN,SERAPHINE
05:09	SUB OUT: ELGER,OLIVIA			
05:09	SUB IN: REMBAO,TATUM			
04:57	GOOD! JUMPER by KISSINGER,BROOKE	17-31	V 14	
04:39		19-31	V 12	GOOD! LAYUP by LOZADA-CABBAGE,SABRINA
04:39				ASSIST by SMITH,SHYIA
04:26	GOOD! 3PTR by FABER,AUDREY	19-34	V 15	
04:26	ASSIST by REMBAO,TATUM			
04:04		22-34	V 12	GOOD! 3PTR by SMITH,SHYIA
04:04				ASSIST by AMBROSIO,CESARIA
03:38	SUB OUT: CARDA,TEMI			
03:38	SUB IN: BROTZKI,PAYTON			
03:33	GOOD! LAYUP by BROTZKI,PAYTON	22-36	V 14	
03:33	ASSIST by AGNEW,JAYLYN			
03:33				FOUL (PERSONAL) by BASTIN,SERAPHINE
03:33				SUB OUT: BASTIN,SERAPHINE
03:33				SUB IN: FAYE,ALYSSIA
03:33	SUB OUT: KISSINGER,BROOKE			
03:33	SUB IN: SAUNDERS,RACHAEL			
03:33	GOOD! FT by BROTZKI,PAYTON	22-37	V 15	

Time	VISITORS: Creighton	Score	Margin	HOME: Wichita St.
03:33	FOUL (PERSONAL) by REMBAO,TATUM			
03:26	FOUL (PERSONAL) by AGNEW,JAYLYN			
03:26				SUB OUT: LOZADA-CABBAGE,SABRINA
03:26				SUB IN: PRINCE,RAVEN
03:18		25-37	V 12	GOOD! 3PTR by AMBROSIO,CESARIA
03:18				ASSIST by FAYE,ALYSSIA
03:03	GOOD! LAYUP by AGNEW,JAYLYN	25-39	V 14	
03:03	ASSIST by BROTZKI,PAYTON			
02:44				MISSED JUMPER by PRINCE,RAVEN
02:41	REBOUND (DEF) by TEAM			
02:41	SUB OUT: REMBAO,TATUM			
02:41	SUB IN: ELGER,OLIVIA			
02:26	GOOD! LAYUP by FABER,AUDREY	25-41	V 16	
02:26	ASSIST by AGNEW,JAYLYN			
02:07	FOUL (PERSONAL) by FABER,AUDREY			
02:07		26-41	V 15	GOOD! FT by PRINCE,RAVEN
02:07		27-41	V 14	GOOD! FT by PRINCE,RAVEN
01:58	FOUL (OFF) by BROTZKI,PAYTON			
01:58	TURNOVER (OFFENSIVE) by BROTZKI,PAYTON			
01:43				MISSED LAYUP by PRINCE,RAVEN
01:43	BLOCK by FABER,AUDREY			
01:37	REBOUND (DEF) by FABER,AUDREY			
01:32	GOOD! 3PTR by BROTZKI,PAYTON	27-44	V 17	
01:32	ASSIST by FABER,AUDREY			
01:11		29-44	V 15	GOOD! JUMPER by SMITH,SHYIA
01:03	TURNOVER (LOSTBALL) by FABER,AUDREY			
01:03				STEAL by SMITH,SHYIA
00:57		31-44	V 13	GOOD! LAYUP by SMITH,SHYIA [FB]
00:47				FOUL (PERSONAL) by PRINCE,RAVEN
00:47				SUB OUT: SMITH,SHYIA
00:47				SUB IN: COLBERT,TRAJATA
00:47	SUB OUT: BROTZKI,PAYTON			
00:47	SUB IN: DWORAK,CHLOE			
00:38	MISSED LAYUP by SAUNDERS,RACHAEL			
00:38				BLOCK by FAYE,ALYSSIA
00:34				REBOUND (DEF) by FAYE,ALYSSIA
00:23				MISSED LAYUP by PRINCE,RAVEN
00:17				REBOUND (OFF) by COLBERT,TRAJATA
00:17		33-44	V 11	GOOD! LAYUP by COLBERT,TRAJATA
00:01	TURNOVER (BADPASS) by SAUNDERS,RACHAEL			

Creighton 44, Wichita St. 33

Points from (This Period)	CUW	WSU
In the Paint	6	8
Off Turns	2	4
2nd Chance	0	2
Fast Break	0	4
Bench	6	17

This period only:CUW led for 33:03. WSU led for 33:25.
Game was tied for 0:12.

Official Box Score
Creighton vs Wichita St.
Second Half Statistics Only
December 08, 2018 at Charles Koch Arena (Devlin Court) - Wichita, Kan.

Creighton 83

No.	Player	S	Pts	FG	3FG	FT	OR	DR	TR	PF	A	TO	Blk	Stl	Min	+/-
2	Rembao, Tatum		0	0-0	0-0	0-0	0	0	0	1	1	0	0	0	6	4
5	Agnew, Jaylyn		5	2-2	1-1	0-0	0	1	1	1	3	0	0	0	8	3
12	Griglione, Gracey		0	0-0	0-0	0-0	0	0	0	0	0	0	0	1	2	-2
22	Kissinger, Brooke		2	1-2	0-1	0-0	0	0	0	0	0	0	0	0	3	2
45	Faber, Audrey		11	4-7	3-5	0-0	0	2	2	1	2	1	1	0	10	1
4	Carda, Temi		0	0-0	0-0	0-0	0	1	1	1	0	0	0	0	3	0
13	Saunders, Rachael		0	0-1	0-0	0-0	0	0	0	1	0	1	0	0	7	-1
21	Elger, Olivia		0	0-0	0-0	0-0	0	1	1	0	0	2	0	0	6	1
23	Turner, Morgan		0	0-0	0-0	0-0	0	0	0	0	0	0	0	0	0	0
24	Dworak, Chloe		0	0-0	0-0	0-0	0	0	0	0	0	0	0	0	2	-4
33	Brotzki, Payton		6	2-2	1-1	1-1	0	0	0	1	1	1	0	0	3	1
	Team						0	0	0	0		0				
TOTALS			24	9-14	5-8	1-1	0	0	5	6	7	5	1	1	50	

Shooting By Period

Period	FG	FG%	3FG	3FG%	FT	FT%
1st Qtr	7-21	33%	6-15	40%	0-0	0%
2nd Qtr	9-14	64%	5-8	63%	1-1	100%
3rd Qtr	5-13	38%	2-8	25%	1-2	50%
4th Qtr	8-14	57%	5-10	50%	5-6	83%
1st Half	7-21	33%	6-15	40%	0-0	0%
2nd Half	9-14	64%	5-8	63%	1-1	100%
3rd Half	5-13	38%	2-8	25%	1-2	50%
4th Half	8-14	57%	5-10	50%	5-6	83%
Game	29-62	46.8%	18-41	43.9%	7-9	77.8%

Deadball Rebounds:
Last FG: 4th-01:41
Biggest Run: 9-0
Largest lead: By 17 at 2-01:32
Technical Fouls: None.

Wichita St. 71

No.	Player	S	Pts	FG	3FG	FT	OR	DR	TR	PF	A	TO	Blk	Stl	Min	+/-
11	Lozada-Cabbage, Sabrina		2	1-3	0-1	0-0	0	1	1	0	0	0	0	0	6	-7
12	Bremaud, Carla		2	1-2	0-1	0-0	0	0	0	0	0	1	0	1	10	-1
13	Prince, Raven		2	0-3	0-0	2-4	0	0	0	1	0	0	0	0	7	2
22	Faye, Alyssia		0	0-0	0-0	0-0	1	2	3	0	1	0	1	0	7	1
23	Bastin, Seraphine		0	0-0	0-0	0-0	0	0	0	2	0	1	0	1	6	-6
24	Colbert, Trajata		2	1-2	0-0	0-0	1	0	1	1	0	0	0	0	2	4
30	Ambrosio, Cesaria		5	2-2	1-1	0-0	0	0	0	0	1	0	0	0	8	3
34	Smith, Shyia		10	4-4	1-1	1-1	0	0	0	0	1	0	0	1	6	-1
	Team						0	1	1	0		0				
TOTALS			23	9-16	2-4	3-5	0	0	6	4	3	2	1	3	50	

Shooting By Period

Period	FG	FG%	3FG	3FG%	FT	FT%
1st Qtr	3-13	23%	1-4	25%	3-6	50%
2nd Qtr	9-16	56%	2-4	50%	3-5	60%
3rd Qtr	11-20	55%	2-5	40%	0-1	00%
4th Qtr	6-11	55%	1-2	50%	1-4	25%
1st Half	3-13	23%	1-4	25%	3-6	50%
2nd Half	9-16	56%	2-4	50%	3-5	60%
3rd Half	11-20	55%	2-5	40%	0-1	00%
4th Half	6-11	55%	1-2	50%	1-4	25%
Game	29-60	48.3%	6-15	40.0%	7-16	43.8%

Deadball Rebounds:
Last FG: 4th-00:20
Biggest Run: 10-0
Largest lead: By 3 at 1-08:28
Technical Fouls: None.

Game Notes:
 Officials: Denise Brooks, Jeffrey Smith, Ed Sidlasky
 Attendance: 1702
 Start Time: 2018-12-08 20:05:04 End Time: 2018-12-08 21:52:50
 Game Duration: 107

Score by Period	1st	2nd	3rd	4th	TOT
CUW	20	24	13	26	83
WSU	10	23	24	14	71

This period only: CUW led for 33:03. WSU led for 33:25.
Game was tied for 0:12.

Points from (This Period)	CUW	WSU
In the Paint	6	8
Off Turns	2	4
2nd Chance	0	2
Fast Break	0	4
Bench	6	17

Official Play-By-Play
Creighton vs Wichita St.
Third Quarter
December 08, 2018 at Charles Koch Arena (Devlin Court) - Wichita, Kan.

Starters:

Creighton: 2 REMBAO,TATUM; 5 AGNEW,JAYLYN; 12 GRIGLIONE,GRACEY; 22 KISSINGER,BROOKE; 45 FABER,AUDREY;

Wichita St.: 11 LOZADA-CABBAGE,SABRINA; 12 BREMAUD,CARLA; 13 PRINCE,RAVEN; 22 FAYE,ALYSSIA; 23 BASTIN,SERAPHINE;

Period 3

Time	VISITORS: Creighton	Score	Margin	HOME: Wichita St.
09:48				MISSED LAYUP by PRINCE,RAVEN
09:48	BLOCK by GRIGLIONE,GRACEY			
09:41	REBOUND (DEF) by KISSINGER,BROOKE			
09:30	MISSED LAYUP by REMBAO,TATUM			
09:30				BLOCK by AMBROSIO,CESARIA
09:23				REBOUND (DEF) by BREMAUD,CARLA
09:14				MISSED LAYUP by BASTIN,SERAPHINE
09:14	BLOCK by AGNEW,JAYLYN			
09:07				REBOUND (OFF) by AMBROSIO,CESARIA
09:06				MISSED 3PTR by LOZADA-CABBAGE,SABRINA
09:02	REBOUND (DEF) by AGNEW,JAYLYN			
08:55	TURNOVER (LOSTBALL) by FABER,AUDREY			
08:55				STEAL by PRINCE,RAVEN
08:47		35-44	V 9	GOOD! LAYUP by LOZADA-CABBAGE,SABRINA [FB]
08:47				ASSIST by BREMAUD,CARLA
08:34	TURNOVER (BADPASS) by KISSINGER,BROOKE			
08:34				STEAL by BREMAUD,CARLA
08:28		37-44	V 7	GOOD! LAYUP by LOZADA-CABBAGE,SABRINA [FB]
08:28				ASSIST by BREMAUD,CARLA
08:15	TURNOVER (10SEC) by			
08:15	SUB OUT: KISSINGER,BROOKE			
08:15	SUB IN: CARDA,TEMI			
08:15	SUB OUT: REMBAO,TATUM			
08:15	SUB IN: ELGER,OLIVIA			
08:03				MISSED JUMPER by LOZADA-CABBAGE,SABRINA
08:03	REBOUND (DEF) by GRIGLIONE,GRACEY			
08:03				FOUL (PERSONAL) by PRINCE,RAVEN
07:45				FOUL (PERSONAL) by PRINCE,RAVEN
07:45				SUB OUT: PRINCE,RAVEN
07:45				SUB IN: SMITH,SHYIA
07:40	GOOD! 3PTR by AGNEW,JAYLYN	37-47	V 10	
07:40	ASSIST by ELGER,OLIVIA			
07:11				MISSED JUMPER by LOZADA-CABBAGE,SABRINA
07:04				REBOUND (OFF) by SMITH,SHYIA
07:04		39-47	V 8	GOOD! LAYUP by SMITH,SHYIA
06:57	TURNOVER (10SEC) by			
06:47	FOUL (PERSONAL) by GRIGLIONE,GRACEY			
06:41				MISSED LAYUP by SMITH,SHYIA
06:38	REBOUND (DEF) by AGNEW,JAYLYN			
06:17	GOOD! 3PTR by CARDA,TEMI	39-50	V 11	
06:17	ASSIST by AGNEW,JAYLYN			
05:53		41-50	V 9	GOOD! LAYUP by SMITH,SHYIA
05:53				ASSIST by LOZADA-CABBAGE,SABRINA
05:38	MISSED 3PTR by AGNEW,JAYLYN			
05:35				REBOUND (DEF) by SMITH,SHYIA
05:22				MISSED 3PTR by SMITH,SHYIA
05:19	REBOUND (DEF) by CARDA,TEMI			
05:13	MISSED 3PTR by ELGER,OLIVIA			
05:09	REBOUND (OFF) by AGNEW,JAYLYN			
05:07	MISSED 3PTR by FABER,AUDREY			
05:03	REBOUND (OFF) by GRIGLIONE,GRACEY			
05:02	TURNOVER (LOSTBALL) by GRIGLIONE,GRACEY			
05:02				STEAL by LOZADA-CABBAGE,SABRINA
04:56		43-50	V 7	GOOD! JUMPER by BREMAUD,CARLA [FB]
04:56	FOUL (PERSONAL) by ELGER,OLIVIA			
04:56				SUB OUT: LOZADA-CABBAGE,SABRINA
04:56				SUB IN: FAYE,ALYSSIA
04:56				SUB OUT: AMBROSIO,CESARIA
04:56				SUB IN: PRINCE,RAVEN
04:56	SUB OUT: GRIGLIONE,GRACEY			
04:56	SUB IN: TURNER,MORGAN			
04:56	SUB OUT: ELGER,OLIVIA			
04:56	SUB IN: REMBAO,TATUM			
04:56				MISSED FT by BREMAUD,CARLA
04:56	REBOUND (DEF) by TURNER,MORGAN			
04:30	MISSED 3PTR by FABER,AUDREY			
04:27				REBOUND (DEF) by BASTIN,SERAPHINE
04:14	FOUL (PERSONAL) by AGNEW,JAYLYN			
04:09		46-50	V 4	GOOD! 3PTR by FAYE,ALYSSIA
04:09				ASSIST by SMITH,SHYIA
03:58				FOUL (PERSONAL) by FAYE,ALYSSIA
03:48	MISSED 3PTR by AGNEW,JAYLYN			
03:45				REBOUND (DEF) by SMITH,SHYIA
03:28		48-50	V 2	GOOD! LAYUP by BREMAUD,CARLA
03:12	GOOD! LAYUP by CARDA,TEMI	48-52	V 4	

Time	VISITORS: Creighton	Score	Margin	HOME: Wichita St.
02:53		50-52	V 2	GOOD! JUMPER by FAYE,ALYSSIA
02:41	GOOD! LAYUP by TURNER,MORGAN	50-54	V 4	
02:41	ASSIST by CARDA,TEMI			
02:22		53-54	V 1	GOOD! 3PTR by FAYE,ALYSSIA
02:22				ASSIST by BASTIN,SERAPHINE
02:09	GOOD! LAYUP by FABER,AUDREY	53-56	V 3	
02:09	ASSIST by TURNER,MORGAN			
02:09	TIMEOUT 30SEC			
02:09	SUB OUT: TURNER,MORGAN			
02:09	SUB IN: BROTZKI,PAYTON			
01:51		55-56	V 1	GOOD! JUMPER by FAYE,ALYSSIA
01:51				ASSIST by BASTIN,SERAPHINE
01:41	MISSED 3PTR by AGNEW,JAYLYN			
01:37	REBOUND (OFF) by REMBAO,TATUM			
01:36	TURNOVER (LOSTBALL) by REMBAO,TATUM			
01:36				STEAL by BASTIN,SERAPHINE
01:29				MISSED 3PTR by BREMAUD,CARLA
01:26				REBOUND (OFF) by FAYE,ALYSSIA
01:11		57-56	H 1	GOOD! JUMPER by BASTIN,SERAPHINE [PNT]
00:40	MISSED LAYUP by FABER,AUDREY			
00:37				REBOUND (DEF) by FAYE,ALYSSIA
00:37	FOUL (PERSONAL) by REMBAO,TATUM			
00:37				SUB OUT: BASTIN,SERAPHINE
00:37				SUB IN: AMBROSIO,CESARIA
00:32				TURNOVER (OTHER) by AMBROSIO,CESARIA
00:02				FOUL (PERSONAL) by SMITH,SHYIA
00:02	GOOD! FT by FABER,AUDREY	57-57	T	
00:02	SUB OUT: BROTZKI,PAYTON			
00:02	SUB IN: SAUNDERS,RACHAEL			
00:02	MISSED FT by FABER,AUDREY			
00:02				REBOUND (DEF) by BREMAUD,CARLA
00:00				MISSED JUMPER by BREMAUD,CARLA
00:00				REBOUND (OFF) by TEAM

Creighton 57, Wichita St. 57

Points from (This Period)	CUW	WSU
In the Paint	6	12
Off Turns	1	8
2nd Chance	0	4
Fast Break	0	6
Bench	7	4

This period only:CUW led for 33:03. WSU led for 33:25.
Game was tied for 0:12.

Official Play-By-Play
Creighton vs Wichita St.
Fourth Quarter
December 08, 2018 at Charles Koch Arena (Devlin Court) - Wichita, Kan.

Starters:

Creighton: 2 REMBAO,TATUM; 5 AGNEW,JAYLYN; 12 GRIGLIONE,GRACEY; 22 KISSINGER,BROOKE; 45 FABER,AUDREY;

Wichita St.: 11 LOZADA-CABBAGE,SABRINA; 12 BREMAUD,CARLA; 13 PRINCE,RAVEN; 22 FAYE,ALYSSIA; 23 BASTIN,SERAPHINE;

Period 4

Time	VISITORS: Creighton	Score	Margin	HOME: Wichita St.
09:49	GOOD! LAYUP by AGNEW,JAYLYN	57-59	V 2	
09:49	ASSIST by FABER,AUDREY			
09:33		59-59	T	GOOD! LAYUP by LOZADA-CABBAGE,SABRINA
09:33				ASSIST by AMBROSIO,CESARIA
09:20	MISSED LAYUP by FABER,AUDREY			
09:17	REBOUND (OFF) by CARDA,TEMI			
09:14	GOOD! 3PTR by REMBAO,TATUM	59-62	V 3	
09:14	ASSIST by AGNEW,JAYLYN			
08:54	FOUL (PERSONAL) by AGNEW,JAYLYN			
08:54				SUB OUT: BREMAUD,CARLA
08:54				SUB IN: BASTIN,SERAPHINE
08:51				TURNOVER (BADPASS) by BASTIN,SERAPHINE
08:51	STEAL by AGNEW,JAYLYN			
08:23	MISSED 3PTR by REMBAO,TATUM			
08:17				REBOUND (DEF) by FAYE,ALYSSIA
08:04	FOUL (PERSONAL) by ELGER,OLIVIA			
08:04				MISSED FT by SMITH,SHYIA
08:04				REBOUND (OFF) by TEAM
08:04		60-62	V 2	GOOD! FT by SMITH,SHYIA
07:53				FOUL (PERSONAL) by SMITH,SHYIA
07:46	GOOD! 3PTR by CARDA,TEMI	60-65	V 5	
07:25		62-65	V 3	GOOD! JUMPER by LOZADA-CABBAGE,SABRINA
07:25				ASSIST by BASTIN,SERAPHINE
07:14	MISSED 3PTR by AGNEW,JAYLYN			
07:11				REBOUND (DEF) by FAYE,ALYSSIA
07:06	FOUL (PERSONAL) by REMBAO,TATUM			
07:06				MISSED FT by AMBROSIO,CESARIA
07:06				REBOUND (OFF) by TEAM
07:06				MISSED FT by AMBROSIO,CESARIA
07:06	REBOUND (DEF) by FABER,AUDREY			
06:50	GOOD! LAYUP by REMBAO,TATUM	62-67	V 5	
06:36		64-67	V 3	GOOD! JUMPER by FAYE,ALYSSIA
06:36				ASSIST by BASTIN,SERAPHINE
06:21				FOUL (PERSONAL) by LOZADA-CABBAGE,SABRINA
06:21				SUB OUT: SMITH,SHYIA
06:21				SUB IN: BREMAUD,CARLA
06:07	GOOD! 3PTR by AGNEW,JAYLYN	64-70	V 6	
06:07	ASSIST by FABER,AUDREY			
05:46				MISSED LAYUP by AMBROSIO,CESARIA
05:43				REBOUND (OFF) by FAYE,ALYSSIA
05:39				MISSED LAYUP by BASTIN,SERAPHINE
05:36				REBOUND (OFF) by BASTIN,SERAPHINE
05:34				TURNOVER (SHOTCLOCK) by
05:34				TIMEOUT 30SEC
05:03	GOOD! JUMPER by CARDA,TEMI [PNT]	64-72	V 8	
04:51		67-72	V 5	GOOD! 3PTR by FAYE,ALYSSIA
04:51				ASSIST by AMBROSIO,CESARIA
04:22	MISSED 3PTR by ELGER,OLIVIA			
04:21	REBOUND (OFF) by TEAM			
04:21				FOUL (PERSONAL) by BREMAUD,CARLA
03:55	MISSED 3PTR by REMBAO,TATUM			
03:51				REBOUND (DEF) by LOZADA-CABBAGE,SABRINA
03:39				TURNOVER (OTHER) by FAYE,ALYSSIA
03:31	TIMEOUT 30SEC			
03:31				SUB OUT: AMBROSIO,CESARIA
03:31				SUB IN: SMITH,SHYIA
03:27				FOUL (PERSONAL) by LOZADA-CABBAGE,SABRINA
03:16				FOUL (PERSONAL) by LOZADA-CABBAGE,SABRINA
03:16	GOOD! FT by CARDA,TEMI	67-73	V 6	
03:16				SUB OUT: LOZADA-CABBAGE,SABRINA
03:16				SUB IN: PRINCE,RAVEN
03:16	GOOD! FT by CARDA,TEMI	67-74	V 7	
03:05				MISSED 3PTR by BREMAUD,CARLA
03:03	REBOUND (DEF) by TEAM			
02:55	GOOD! 3PTR by AGNEW,JAYLYN [FB]	67-77	V 10	
02:55	ASSIST by CARDA,TEMI			
02:36				TURNOVER (TRAVEL) by PRINCE,RAVEN
02:05	MISSED 3PTR by AGNEW,JAYLYN			
02:02	REBOUND (OFF) by ELGER,OLIVIA			
01:41	GOOD! 3PTR by CARDA,TEMI	67-80	V 13	
01:41	ASSIST by AGNEW,JAYLYN			
01:14				MISSED LAYUP by BREMAUD,CARLA
01:13				REBOUND (OFF) by TEAM
01:10				MISSED JUMPER by FAYE,ALYSSIA
01:08	REBOUND (DEF) by TEAM			
00:42				FOUL (PERSONAL) by SMITH,SHYIA

Time	VISITORS: Creighton	Score	Margin	HOME: Wichita St.
00:42	MISSED FT by CARDA,TEMI			
00:42	REBOUND (OFF) by TEAM			
00:42	GOOD! FT by CARDA,TEMI	67-81	V 14	
00:34		69-81	V 12	GOOD! LAYUP by BREMAUD,CARLA
00:29				FOUL (PERSONAL) by SMITH,SHYIA
00:29	GOOD! FT by REMBAO,TATUM [FB]	69-82	V 13	
00:29	SUB OUT: ELGER,OLIVIA			
00:29	SUB IN: SAUNDERS,RACHAEL			
00:29	SUB OUT: AGNEW,JAYLYN			
00:29	SUB IN: BROTZKI,PAYTON			
00:29	GOOD! FT by REMBAO,TATUM [FB]	69-83	V 14	
00:20		71-83	V 12	GOOD! JUMPER by SMITH,SHYIA

Creighton 83, Wichita St. 71

Points from (This Period)	CUW	WSU
In the Paint	6	4
Off Turns	7	0
2nd Chance	6	0
Fast Break	5	0
Bench	11	3

**This period only:CUW led for 33:03. WSU led for 33:25.
Game was tied for 0:12.**

**Official Scoring/Possession Reference Chart
Creighton vs Wichita St.**

Period 1

December 08, 2018 at Charles Koch Arena (Devlin Court) - Wichita, Kan.

Starters:

Creighton: 2 REMBAO,TATUM; 5 AGNEW,JAYLYN; 12 GRIGLIONE,GRACEY; 22 KISSINGER,BROOKE; 45 FABER,AUDREY;

Wichita St.: 11 LOZADA-CABBAGE,SABRINA; 12 BREMAUD,CARLA; 13 PRINCE,RAVEN; 22 FAYE,ALYSSIA; 23 BASTIN,SERAPHINE;

Period 1

Time	VISITORS: Creighton	Score	Margin	HOME: Wichita St.
09:32		3-0	H 3	GOOD! 3PTR by BASTIN,SERAPHINE
08:40	GOOD! LAYUP by REMBAO,TATUM	3-2	H 1	
08:28		5-2	H 3	GOOD! LAYUP by PRINCE,RAVEN
08:15	GOOD! 3PTR by KISSINGER,BROOKE	5-5	T	
06:31	GOOD! 3PTR by AGNEW,JAYLYN	5-8	V 3	
05:15		7-8	V 1	GOOD! LAYUP by BREMAUD,CARLA [FB]
05:15		8-8	T	GOOD! FT by BREMAUD,CARLA [FB]
03:48	GOOD! 3PTR by ELGER,OLIVIA	8-11	V 3	
03:27		9-11	V 2	GOOD! FT by LOZADA-CABBAGE,SABRINA [FB]
02:57	GOOD! 3PTR by AGNEW,JAYLYN	9-14	V 5	
01:40	GOOD! 3PTR by BROTZKI,PAYTON	9-17	V 8	
01:16		10-17	V 7	GOOD! FT by PRINCE,RAVEN
00:51	GOOD! 3PTR by SAUNDERS,RACHAEL	10-20	V 10	

Creighton 20, Wichita St. 10

**Official Scoring/Possession Reference Chart
Creighton vs Wichita St.**

Period 2

December 08, 2018 at Charles Koch Arena (Devlin Court) - Wichita, Kan.

Starters:

Creighton: 2 REMBAO,TATUM; 5 AGNEW,JAYLYN; 12 GRIGLIONE,GRACEY; 22 KISSINGER,BROOKE; 45 FABER,AUDREY;

Wichita St.: 11 LOZADA-CABBAGE,SABRINA; 12 BREMAUD,CARLA; 13 PRINCE,RAVEN; 22 FAYE,ALYSSIA; 23 BASTIN,SERAPHINE;

Period 2

Time	VISITORS: Creighton	Score	Margin	HOME: Wichita St.
09:42		12-20	V 8	GOOD! JUMPER by AMBROSIO,CESARIA
07:31		14-20	V 6	GOOD! JUMPER by BREMAUD,CARLA [FB]
07:16	GOOD! 3PTR by FABER,AUDREY	14-23	V 9	
06:50	GOOD! 3PTR by AGNEW,JAYLYN	14-26	V 12	
06:23	GOOD! 3PTR by FABER,AUDREY	14-29	V 15	
05:31		16-29	V 13	GOOD! LAYUP by SMITH,SHYIA [PNT]
05:31		17-29	V 12	GOOD! FT by SMITH,SHYIA
04:57	GOOD! JUMPER by KISSINGER,BROOKE	17-31	V 14	
04:39		19-31	V 12	GOOD! LAYUP by LOZADA-CABBAGE,SABRINA
04:26	GOOD! 3PTR by FABER,AUDREY	19-34	V 15	
04:04		22-34	V 12	GOOD! 3PTR by SMITH,SHYIA
03:33	GOOD! LAYUP by BROTZKI,PAYTON	22-36	V 14	
03:33	GOOD! FT by BROTZKI,PAYTON	22-37	V 15	
03:18		25-37	V 12	GOOD! 3PTR by AMBROSIO,CESARIA
03:03	GOOD! LAYUP by AGNEW,JAYLYN	25-39	V 14	
02:26	GOOD! LAYUP by FABER,AUDREY	25-41	V 16	
02:07		26-41	V 15	GOOD! FT by PRINCE,RAVEN
02:07		27-41	V 14	GOOD! FT by PRINCE,RAVEN
01:32	GOOD! 3PTR by BROTZKI,PAYTON	27-44	V 17	
01:11		29-44	V 15	GOOD! JUMPER by SMITH,SHYIA
00:57		31-44	V 13	GOOD! LAYUP by SMITH,SHYIA [FB]
00:17		33-44	V 11	GOOD! LAYUP by COLBERT,TRAJATA

Creighton 44, Wichita St. 33

Creighton vs Wichita St.

Period 3

December 08, 2018 at Charles Koch Arena (Devlin Court) - Wichita, Kan.

Starters:

Creighton: 2 REMBAO,TATUM; 5 AGNEW,JAYLYN; 12 GRIGLIONE,GRACEY; 22 KISSINGER,BROOKE; 45 FABER,AUDREY;
Wichita St.: 11 LOZADA-CABBAGE,SABRINA; 12 BREMAUD,CARLA; 13 PRINCE,RAVEN; 22 FAYE,ALYSSIA; 23 BASTIN,SERAPHINE;

Period 3

Time	VISITORS: Creighton	Score	Margin	HOME: Wichita St.
08:47		35-44	V 9	GOOD! LAYUP by LOZADA-CABBAGE,SABRINA [FB]
08:28		37-44	V 7	GOOD! LAYUP by LOZADA-CABBAGE,SABRINA [FB]
07:40	GOOD! 3PTR by AGNEW,JAYLYN	37-47	V 10	
07:04		39-47	V 8	GOOD! LAYUP by SMITH,SHYIA
06:17	GOOD! 3PTR by CARDA,TEMI	39-50	V 11	
05:53		41-50	V 9	GOOD! LAYUP by SMITH,SHYIA
04:56		43-50	V 7	GOOD! JUMPER by BREMAUD,CARLA [FB]
04:09		46-50	V 4	GOOD! 3PTR by FAYE,ALYSSIA
03:28		48-50	V 2	GOOD! LAYUP by BREMAUD,CARLA
03:12	GOOD! LAYUP by CARDA,TEMI	48-52	V 4	
02:53		50-52	V 2	GOOD! JUMPER by FAYE,ALYSSIA
02:41	GOOD! LAYUP by TURNER,MORGAN	50-54	V 4	
02:22		53-54	V 1	GOOD! 3PTR by FAYE,ALYSSIA
02:09	GOOD! LAYUP by FABER,AUDREY	53-56	V 3	
01:51		55-56	V 1	GOOD! JUMPER by FAYE,ALYSSIA
01:11		57-56	H 1	GOOD! JUMPER by BASTIN,SERAPHINE [PNT]
00:02	GOOD! FT by FABER,AUDREY	57-57	T	

Creighton 57, Wichita St. 57

Official Scoring/Possession Reference Chart Creighton vs Wichita St.

Period 4

December 08, 2018 at Charles Koch Arena (Devlin Court) - Wichita, Kan.

Starters:

Creighton: 2 REMBAO,TATUM; 5 AGNEW,JAYLYN; 12 GRIGLIONE,GRACEY; 22 KISSINGER,BROOKE; 45 FABER,AUDREY;
Wichita St.: 11 LOZADA-CABBAGE,SABRINA; 12 BREMAUD,CARLA; 13 PRINCE,RAVEN; 22 FAYE,ALYSSIA; 23 BASTIN,SERAPHINE;

Period 4

Time	VISITORS: Creighton	Score	Margin	HOME: Wichita St.
09:49	GOOD! LAYUP by AGNEW,JAYLYN	57-59	V 2	
09:33		59-59	T	GOOD! LAYUP by LOZADA-CABBAGE,SABRINA
09:14	GOOD! 3PTR by REMBAO,TATUM	59-62	V 3	
08:04		60-62	V 2	GOOD! FT by SMITH,SHYIA
07:46	GOOD! 3PTR by CARDA,TEMI	60-65	V 5	
07:25		62-65	V 3	GOOD! JUMPER by LOZADA-CABBAGE,SABRINA
06:50	GOOD! LAYUP by REMBAO,TATUM	62-67	V 5	
06:36		64-67	V 3	GOOD! JUMPER by FAYE,ALYSSIA
06:07	GOOD! 3PTR by AGNEW,JAYLYN	64-70	V 6	
05:03	GOOD! JUMPER by CARDA,TEMI [PNT]	64-72	V 8	
04:51		67-72	V 5	GOOD! 3PTR by FAYE,ALYSSIA
03:16	GOOD! FT by CARDA,TEMI	67-73	V 6	
03:16	GOOD! FT by CARDA,TEMI	67-74	V 7	
02:55	GOOD! 3PTR by AGNEW,JAYLYN [FB]	67-77	V 10	
01:41	GOOD! 3PTR by CARDA,TEMI	67-80	V 13	
00:42	GOOD! FT by CARDA,TEMI	67-81	V 14	
00:34		69-81	V 12	GOOD! LAYUP by BREMAUD,CARLA
00:29	GOOD! FT by REMBAO,TATUM [FB]	69-82	V 13	
00:29	GOOD! FT by REMBAO,TATUM [FB]	69-83	V 14	
00:20		71-83	V 12	GOOD! JUMPER by SMITH,SHYIA

Creighton 83, Wichita St. 71

**Official Substitutions Log
Creighton vs Wichita St.
Period 1**

December 08, 2018 at Charles Koch Arena (Devlin Court) - Wichita, Kan.

VISITORS: Creighton	Time	Score	HOME: Wichita St.
2 REMBAO, TATUM			11 LOZADA-CABBAGE, SABRINA
5 AGNEW, JAYLYN			12 BREMAUD, CARLA
12 GRIGLIONE, GRACEY			13 PRINCE, RAVEN
22 KISSINGER, BROOKE			22 FAYE, ALYSSIA
45 FABER, AUDREY			23 BASTIN, SERAPHINE
SUB OUT: 2 REMBAO, TATUM	06:01	8-5	
SUB IN: 4 CARDA, TEMI	06:01		
SUB OUT: 12 GRIGLIONE, GRACEY	06:01		
SUB IN: 23 TURNER, MORGAN	06:01		
SUB OUT: 22 KISSINGER, BROOKE	06:01		
SUB IN: 21 ELGER, OLIVIA	06:01		
	05:15	8-7	SUB OUT: FAYE, ALYSSIA
	05:15		SUB IN: SMITH, SHYIA
SUB OUT: 23 TURNER, MORGAN	04:08	8-8	
SUB IN: 33 BROTZKI, PAYTON	04:08		
	03:27	11-9	SUB OUT: LOZADA-CABBAGE, SABRINA
	03:27		SUB IN: COLBERT, TRAJATA
	01:27	17-9	SUB OUT: BASTIN, SERAPHINE
	01:27		SUB IN: AMBROSIO, CESARIA
SUB OUT: 4 CARDA, TEMI	01:27		
SUB IN: 24 DWORAK, CHLOE	01:27		
SUB OUT: 21 ELGER, OLIVIA	01:27		
SUB IN: 13 SAUNDERS, RACHAEL	01:27		
SUB OUT: 45 FABER, AUDREY	01:27		
SUB IN: 23 TURNER, MORGAN	01:27		
	01:16	17-10	SUB OUT: BREMAUD, CARLA
	01:16		SUB IN: FAYE, ALYSSIA
SUB OUT: 23 TURNER, MORGAN	00:26	20-10	
SUB IN: 45 FABER, AUDREY	00:26		

Creighton 20, Wichita St. 10

**Official Substitutions Log
Creighton vs Wichita St.
Period 2**

December 08, 2018 at Charles Koch Arena (Devlin Court) - Wichita, Kan.

VISITORS: Creighton	Time	Score	HOME: Wichita St.
2 REMBAO, TATUM			11 LOZADA-CABBAGE, SABRINA
5 AGNEW, JAYLYN			12 BREMAUD, CARLA
12 GRIGLIONE, GRACEY			13 PRINCE, RAVEN
22 KISSINGER, BROOKE			22 FAYE, ALYSSIA
45 FABER, AUDREY			23 BASTIN, SERAPHINE
	09:13	20-12	SUB OUT: AMBROSIO, CESARIA
	09:13		SUB IN: BASTIN, SERAPHINE
	09:13		SUB OUT: COLBERT, TRAJATA
	09:13		SUB IN: LOZADA-CABBAGE, SABRINA
SUB OUT: 24 DWORAK, CHLOE	08:20	20-12	
SUB IN: 5 AGNEW, JAYLYN	08:20		
SUB OUT: 12 GRIGLIONE, GRACEY	08:20		
SUB IN: 21 ELGER, OLIVIA	08:20		
	06:49	26-14	SUB OUT: PRINCE, RAVEN
	06:49		SUB IN: AMBROSIO, CESARIA
	06:49		SUB OUT: FAYE, ALYSSIA
	06:49		SUB IN: SMITH, SHYIA
SUB OUT: 2 REMBAO, TATUM	06:49		
SUB IN: 4 CARDA, TEMI	06:49		
SUB OUT: 13 SAUNDERS, RACHAEL	06:49		
SUB IN: 22 KISSINGER, BROOKE	06:49		
SUB OUT: 21 ELGER, OLIVIA	05:09	29-17	
SUB IN: 2 REMBAO, TATUM	05:09		
SUB OUT: 4 CARDA, TEMI	03:38	34-22	
SUB IN: 33 BROTZKI, PAYTON	03:38		
	03:33	36-22	SUB OUT: BASTIN, SERAPHINE
	03:33		SUB IN: FAYE, ALYSSIA
SUB OUT: 22 KISSINGER, BROOKE	03:33		
SUB IN: 13 SAUNDERS, RACHAEL	03:33		
	03:26	37-22	SUB OUT: LOZADA-CABBAGE, SABRINA
	03:26		SUB IN: PRINCE, RAVEN
SUB OUT: 2 REMBAO, TATUM	02:41	39-25	
SUB IN: 21 ELGER, OLIVIA	02:41		
	00:47	44-31	SUB OUT: SMITH, SHYIA
	00:47		SUB IN: COLBERT, TRAJATA
SUB OUT: 33 BROTZKI, PAYTON	00:47		
SUB IN: 24 DWORAK, CHLOE	00:47		

Creighton 44, Wichita St. 33

**Official Substitutions Log
Creighton vs Wichita St.
Period 3**

December 08, 2018 at Charles Koch Arena (Devlin Court) - Wichita, Kan.

VISITORS: Creighton	Time	Score	HOME: Wichita St.
2 REMBAO, TATUM			11 LOZADA-CABBAGE, SABRINA
5 AGNEW, JAYLYN			12 BREMAUD, CARLA
12 GRIGLIONE, GRACEY			13 PRINCE, RAVEN
22 KISSINGER, BROOKE			22 FAYE, ALYSSIA
45 FABER, AUDREY			23 BASTIN, SERAPHINE
SUB OUT: 22 KISSINGER, BROOKE	08:15	44-37	
SUB IN: 4 CARDA, TEMI	08:15		
SUB OUT: 2 REMBAO, TATUM	08:15		
SUB IN: 21 ELGER, OLIVIA	08:15		
	07:45	44-37	SUB OUT: PRINCE, RAVEN
	07:45		SUB IN: SMITH, SHYIA
	04:56	50-43	SUB OUT: LOZADA-CABBAGE, SABRINA
	04:56		SUB IN: FAYE, ALYSSIA
	04:56		SUB OUT: AMBROSIO, CESARIA
	04:56		SUB IN: PRINCE, RAVEN
SUB OUT: 12 GRIGLIONE, GRACEY	04:56		
SUB IN: 23 TURNER, MORGAN	04:56		
SUB OUT: 21 ELGER, OLIVIA	04:56		
SUB IN: 2 REMBAO, TATUM	04:56		
SUB OUT: 23 TURNER, MORGAN	02:09	56-53	
SUB IN: 33 BROTZKI, PAYTON	02:09		
	00:37	56-57	SUB OUT: BASTIN, SERAPHINE
	00:37		SUB IN: AMBROSIO, CESARIA
SUB OUT: 33 BROTZKI, PAYTON	00:02	57-57	
SUB IN: 13 SAUNDERS, RACHAEL	00:02		

Creighton 57, Wichita St. 57

**Official Substitutions Log
Creighton vs Wichita St.
Period 4**

December 08, 2018 at Charles Koch Arena (Devlin Court) - Wichita, Kan.

VISITORS: Creighton	Time	Score	HOME: Wichita St.
2 REMBAO, TATUM			11 LOZADA-CABBAGE, SABRINA
5 AGNEW, JAYLYN			12 BREMAUD, CARLA
12 GRIGLIONE, GRACEY			13 PRINCE, RAVEN
22 KISSINGER, BROOKE			22 FAYE, ALYSSIA
45 FABER, AUDREY			23 BASTIN, SERAPHINE
	08:54	62-59	SUB OUT: BREMAUD, CARLA
	08:54		SUB IN: BASTIN, SERAPHINE
	06:21	67-64	SUB OUT: SMITH, SHYIA
	06:21		SUB IN: BREMAUD, CARLA
	03:31	72-67	SUB OUT: AMBROSIO, CESARIA
	03:31		SUB IN: SMITH, SHYIA
	03:16	73-67	SUB OUT: LOZADA-CABBAGE, SABRINA
	03:16		SUB IN: PRINCE, RAVEN
SUB OUT: 21 ELGER, OLIVIA	00:29	82-69	
SUB IN: 13 SAUNDERS, RACHAEL	00:29		
SUB OUT: 5 AGNEW, JAYLYN	00:29		
SUB IN: 33 BROTZKI, PAYTON	00:29		

Creighton 83, Wichita St. 71

Official Shot Chart
Creighton vs Wichita St.
PERIOD 1 Shots

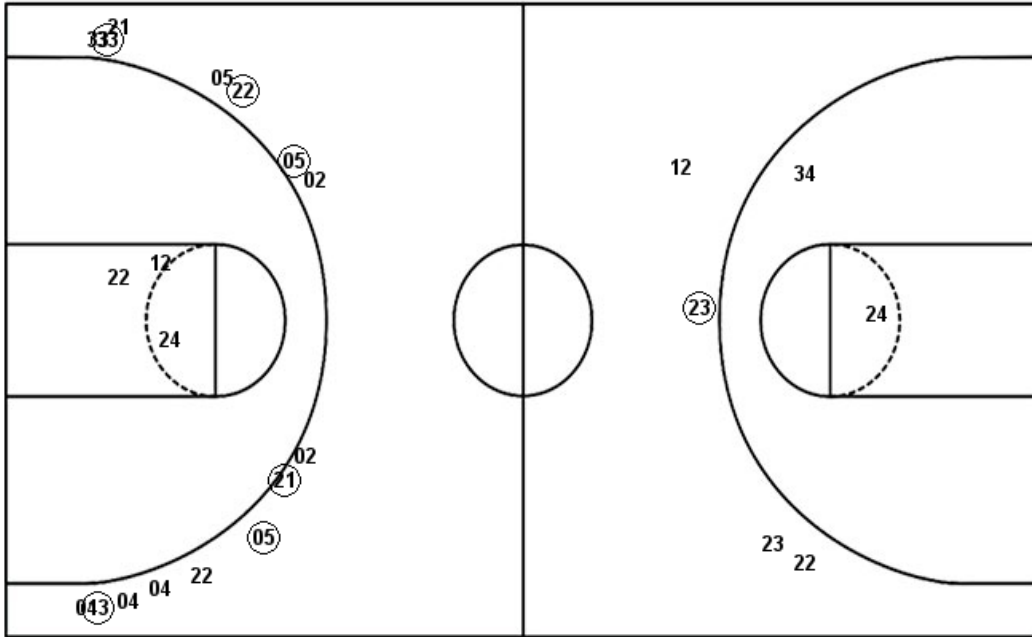
December 08, 2018 at Charles Koch Arena (Devlin Court) - Wichita, Kan.

Wichita St.

Creighton

Layups
 (13) 13 (12) 11 11
 13 12

Layups
 (02) 23 23



Dunks

Dunks

WSU : Period 1	Made	Att	Pct
Layups	2	7	28.6
Dunks	0	0	0
2PT Field Goals	2	9	22.2
3PT Field Goals	1	4	25.0
Total Field Goals	3	13	23.1

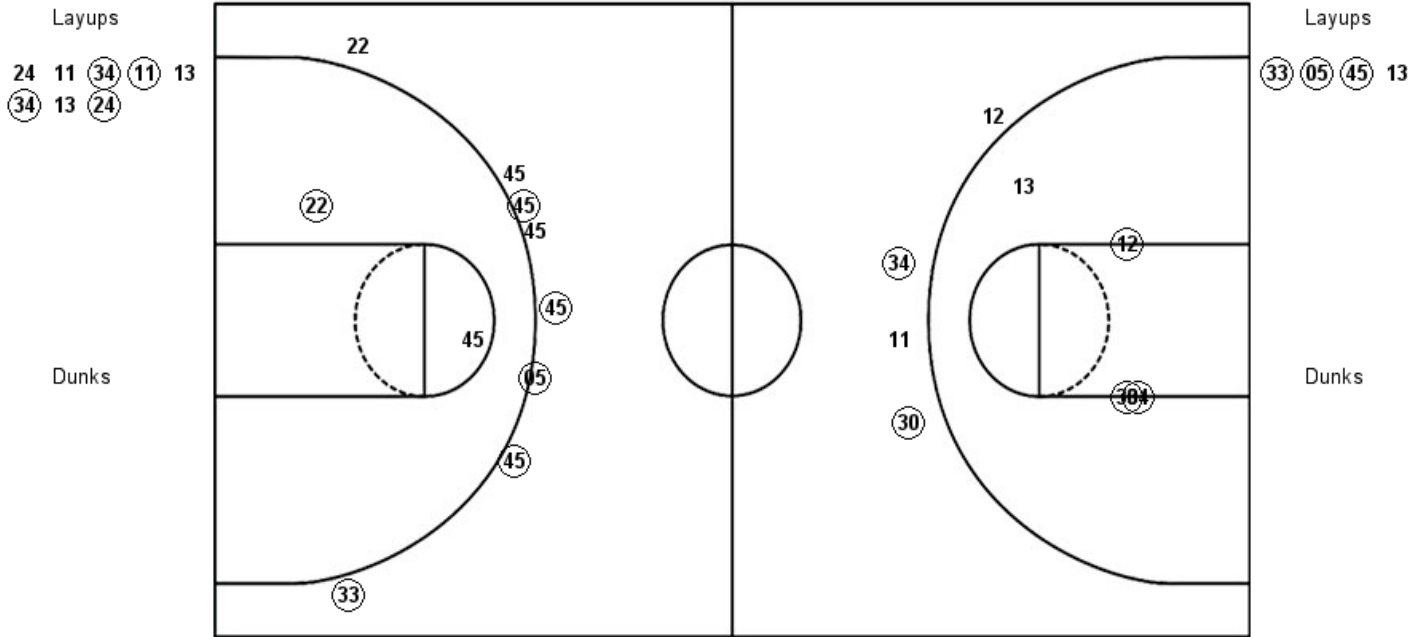
CUW : Period 1	Made	Att	Pct
Layups	1	3	33.3
Dunks	0	0	0
2PT Field Goals	1	6	16.7
3PT Field Goals	6	15	40.0
Total Field Goals	7	21	33.3

**Official Shot Chart
Creighton vs Wichita St.
PERIOD 2 Shots**

December 08, 2018 at Charles Koch Arena (Devlin Court) - Wichita, Kan.

Wichita St.

Creighton



WSU : Period 2	Made	Att	Pct
Layups	4	8	50.0
Dunks	0	0	0
2PT Field Goals	7	12	58.3
3PT Field Goals	2	4	50.0
Total Field Goals	9	16	56.3

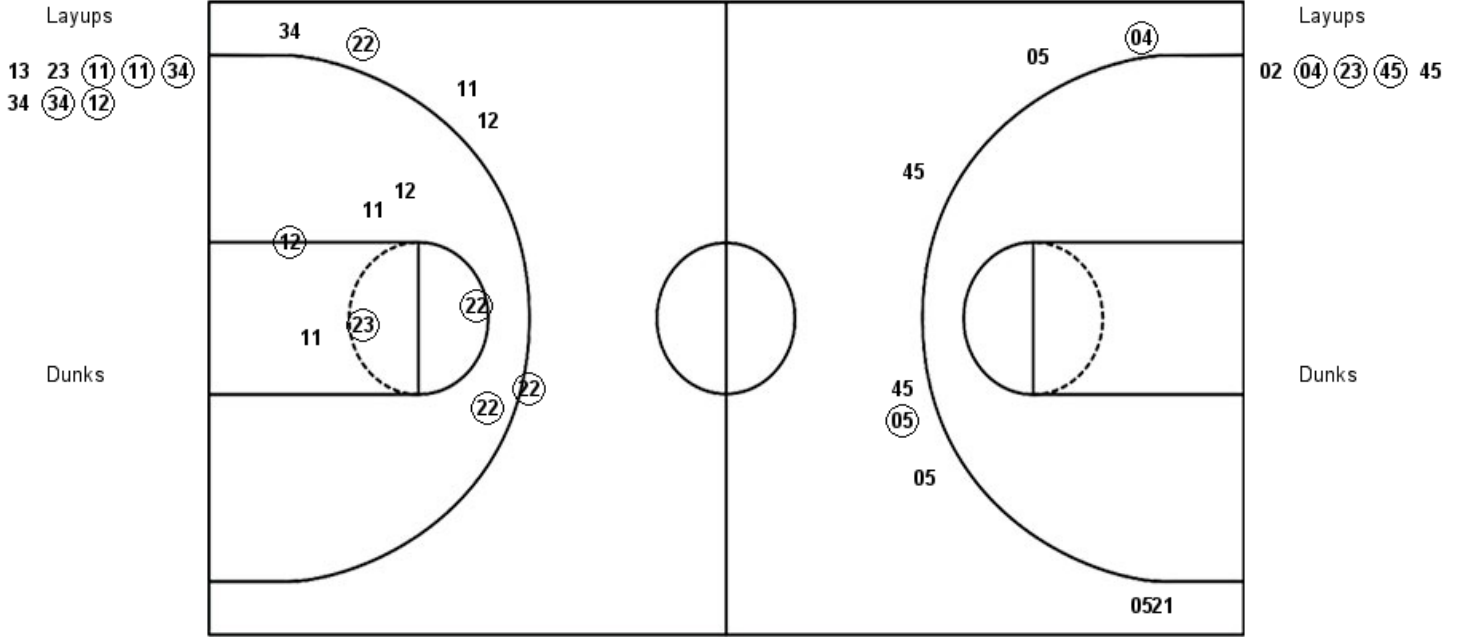
CUW : Period 2	Made	Att	Pct
Layups	3	4	75.0
Dunks	0	0	0
2PT Field Goals	4	6	66.7
3PT Field Goals	5	8	62.5
Total Field Goals	9	14	64.3

**Official Shot Chart
Creighton vs Wichita St.
PERIOD 3 Shots**

December 08, 2018 at Charles Koch Arena (Devlin Court) - Wichita, Kan.

Wichita St.

Creighton



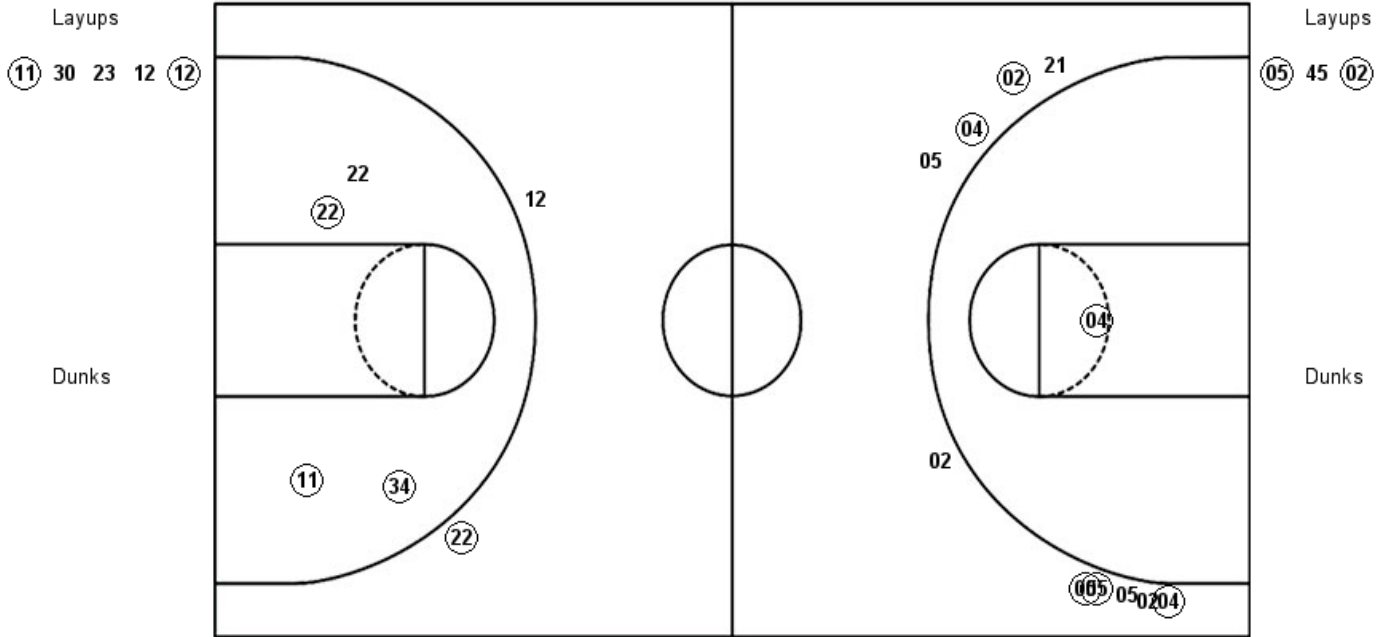
WSU : Period 3	Made	Att	Pct
Layups	5	8	62.5
Dunks	0	0	0
2PT Field Goals	9	15	60.0
3PT Field Goals	2	5	40.0
Total Field Goals	11	20	55.0

CUW : Period 3	Made	Att	Pct
Layups	3	5	60.0
Dunks	0	0	0
2PT Field Goals	3	5	60.0
3PT Field Goals	2	8	25.0
Total Field Goals	5	13	38.5

Official Shot Chart
Creighton vs Wichita St.
PERIOD 4 Shots
 December 08, 2018 at Charles Koch Arena (Devlin Court) - Wichita, Kan.

Wichita St.

Creighton



WSU : Period 4	Made	Att	Pct
Layups	2	5	40.0
Dunks	0	0	0
2PT Field Goals	5	9	55.6
3PT Field Goals	1	2	50.0
Total Field Goals	6	11	54.5

CUW : Period 4	Made	Att	Pct
Layups	2	3	66.7
Dunks	0	0	0
2PT Field Goals	3	4	75.0
3PT Field Goals	5	10	50.0
Total Field Goals	8	14	57.1

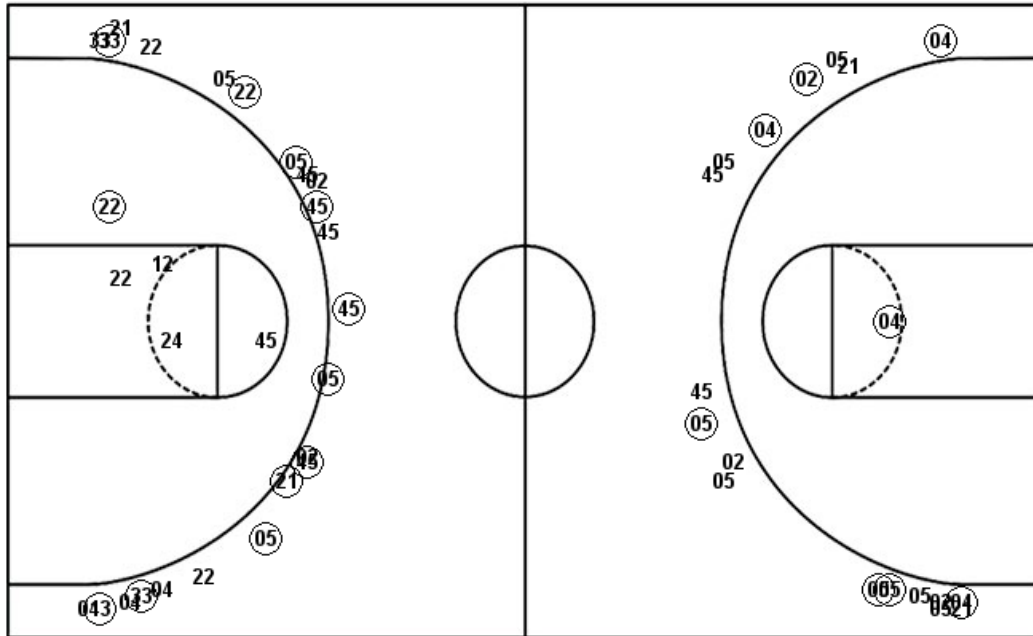
Official Shot Chart
Creighton vs Wichita St.
Creighton Team Shots
 December 08, 2018 at Charles Koch Arena (Devlin Court) - Wichita, Kan.

Layups

Layups

Dunks

Dunks

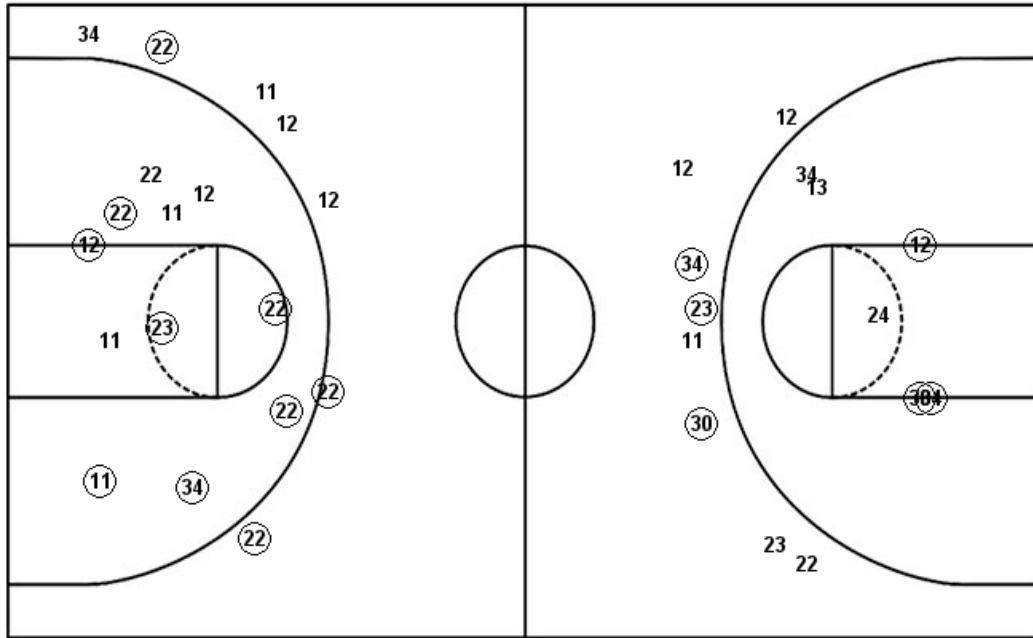


CUW : Period 1	Made	Att	Pct
Layups	1	3	33.3
Dunks	0	0	0
2PT Field Goals	1	6	16.7
3PT Field Goals	6	15	40.0
Total Field Goals	7	21	33.3
CUW : Period 3	Made	Att	Pct
Layups	3	5	60.0
Dunks	0	0	0
2PT Field Goals	3	5	60.0
3PT Field Goals	2	8	25.0
Total Field Goals	5	13	38.5

CUW : Period 2	Made	Att	Pct
Layups	3	4	75.0
Dunks	0	0	0
2PT Field Goals	4	6	66.7
3PT Field Goals	5	8	62.5
Total Field Goals	9	14	64.3
CUW : Period 4	Made	Att	Pct
Layups	2	3	66.7
Dunks	0	0	0
2PT Field Goals	3	4	75.0
3PT Field Goals	5	10	50.0
Total Field Goals	8	14	57.1

Official Shot Chart
Creighton vs Wichita St.
Wichita St. Team Shots
 December 08, 2018 at Charles Koch Arena (Devlin Court) - Wichita, Kan.

Layups



Layups

13 13 12 11 11
 13 12 24 11 34
 11 13 34 13 24
 13 23 11 11 34
 34 34 12 11 30
 23 12 12

Dunks

Dunks

WSU : Period 1	Made	Att	Pct
Layups	2	7	28.6
Dunks	0	0	0
2PT Field Goals	2	9	22.2
3PT Field Goals	1	4	25.0
Total Field Goals	3	13	23.1
WSU : Period 3	Made	Att	Pct
Layups	5	8	62.5
Dunks	0	0	0
2PT Field Goals	9	15	60.0
3PT Field Goals	2	5	40.0
Total Field Goals	11	20	55.0

WSU : Period 2	Made	Att	Pct
Layups	4	8	50.0
Dunks	0	0	0
2PT Field Goals	7	12	58.3
3PT Field Goals	2	4	50.0
Total Field Goals	9	16	56.3
WSU : Period 4	Made	Att	Pct
Layups	2	5	40.0
Dunks	0	0	0
2PT Field Goals	5	9	55.6
3PT Field Goals	1	2	50.0
Total Field Goals	6	11	54.5