

## FINAL SCORE



**Tennessee Tech**

**55**



**Wichita St.**

**45**

December 02, 2018 • Charles Koch Arena (Devlin Court) - Wichita, Kan.

## FINAL STATISTICS

**Official Box Score**  
**Tennessee Tech vs Wichita St.**  
**Game Totals -- Final Statistics**  
**December 02, 2018 at Charles Koch Arena (Devlin Court) - Wichita, Kan.**

**Tennessee Tech 55**

| No.           | Player              | S | Pts       | FG           | 3FG         | FT           | OR        | DR        | TR        | PF        | A         | TO        | Blk      | Stl       | Min        | +/- |
|---------------|---------------------|---|-----------|--------------|-------------|--------------|-----------|-----------|-----------|-----------|-----------|-----------|----------|-----------|------------|-----|
| 0             | Harris, Akia        |   | 3         | 1-5          | 1-4         | 0-0          | 2         | 1         | 3         | 1         | 5         | 7         | 0        | 3         | 28         | 6   |
| 2             | Brock, Jordan       |   | 5         | 1-4          | 1-3         | 2-4          | 0         | 0         | 0         | 1         | 3         | 4         | 0        | 1         | 30         | 7   |
| 11            | Alexander, Kentoria |   | 5         | 2-8          | 1-4         | 0-0          | 5         | 4         | 9         | 2         | 3         | 4         | 0        | 3         | 35         | 13  |
| 14            | Buckner, Abby       |   | 6         | 2-8          | 2-8         | 0-0          | 0         | 0         | 0         | 3         | 0         | 1         | 0        | 2         | 20         | -1  |
| 44            | Cantrell, Lacy      |   | 7         | 2-3          | 0-0         | 3-4          | 1         | 3         | 4         | 0         | 0         | 0         | 0        | 2         | 15         | 1   |
| 10            | Lamb, Taylor        |   | 17        | 7-7          | 0-0         | 3-5          | 2         | 3         | 5         | 3         | 1         | 3         | 0        | 2         | 28         | 7   |
| 15            | Wilkinson, Anacia   |   | 2         | 1-7          | 0-1         | 0-0          | 4         | 4         | 8         | 3         | 0         | 2         | 1        | 0         | 12         | -2  |
| 20            | Brady, Keshia       |   | 6         | 2-10         | 0-5         | 2-2          | 3         | 2         | 5         | 1         | 0         | 3         | 0        | 0         | 19         | 9   |
| 33            | Coleman, Mackenzie  |   | 4         | 1-2          | 0-0         | 2-3          | 1         | 0         | 1         | 2         | 0         | 2         | 2        | 0         | 13         | 10  |
|               | Team                |   |           |              |             |              | 1         | 2         | 3         | 0         |           | 1         |          |           |            |     |
| <b>TOTALS</b> |                     |   | <b>55</b> | <b>19-54</b> | <b>5-25</b> | <b>12-18</b> | <b>19</b> | <b>19</b> | <b>38</b> | <b>16</b> | <b>12</b> | <b>27</b> | <b>3</b> | <b>13</b> | <b>200</b> |     |

*Shooting By Period*

| Period      | FG           | FG%          | 3FG         | 3FG%         | FT           | FT%          |
|-------------|--------------|--------------|-------------|--------------|--------------|--------------|
| 1st Qtr     | 5-18         | 28%          | 0-3         | 00%          | 4-7          | 57%          |
| 2nd Qtr     | 4-13         | 31%          | 1-8         | 13%          | 4-5          | 80%          |
| 3rd Qtr     | 5-15         | 33%          | 1-9         | 11%          | 2-2          | 100%         |
| 4th Qtr     | 5-8          | 63%          | 3-5         | 60%          | 2-4          | 50%          |
| 1st Half    | 5-18         | 28%          | 0-3         | 00%          | 4-7          | 57%          |
| 2nd Half    | 4-13         | 31%          | 1-8         | 13%          | 4-5          | 80%          |
| 3rd Half    | 5-15         | 33%          | 1-9         | 11%          | 2-2          | 100%         |
| 4th Half    | 5-8          | 63%          | 3-5         | 60%          | 2-4          | 50%          |
| <b>Game</b> | <b>19-54</b> | <b>35.2%</b> | <b>5-25</b> | <b>20.0%</b> | <b>12-18</b> | <b>66.7%</b> |

*Deadball Rebounds:*

Last FG: 4th-01:02  
 Biggest Run: 8-0  
 Largest lead: By 17 at 4-06:00  
 Technical Fouls: None.

**Wichita St. 45**

| No.           | Player                  | S | Pts       | FG           | 3FG         | FT          | OR        | DR        | TR        | PF        | A        | TO        | Blk      | Stl       | Min        | +/- |
|---------------|-------------------------|---|-----------|--------------|-------------|-------------|-----------|-----------|-----------|-----------|----------|-----------|----------|-----------|------------|-----|
| 11            | Lozada-Cabbage, Sabrina |   | 6         | 3-9          | 0-1         | 0-0         | 4         | 7         | 11        | 2         | 2        | 1         | 1        | 2         | 29         | -11 |
| 12            | Bremaud, Carla          |   | 5         | 2-6          | 1-4         | 0-0         | 1         | 0         | 1         | 0         | 0        | 4         | 0        | 0         | 19         | -8  |
| 13            | Prince, Raven           |   | 2         | 0-2          | 0-0         | 2-4         | 2         | 1         | 3         | 3         | 0        | 0         | 0        | 0         | 18         | 5   |
| 15            | Hampton, Jaida          |   | 10        | 3-9          | 1-4         | 3-4         | 0         | 1         | 1         | 2         | 0        | 2         | 0        | 1         | 23         | 3   |
| 23            | Bastin, Seraphine       |   | 4         | 2-6          | 0-1         | 0-0         | 2         | 2         | 4         | 2         | 2        | 6         | 0        | 4         | 35         | -8  |
| 0             | Peacock, Jada           |   | 2         | 1-2          | 0-0         | 0-0         | 0         | 0         | 0         | 0         | 0        | 2         | 0        | 0         | 5          | 0   |
| 1             | Lair, Dawnyel           |   | 2         | 1-2          | 0-0         | 0-1         | 2         | 0         | 2         | 2         | 1        | 5         | 0        | 2         | 17         | -8  |
| 5             | Reid, Ashley            |   | 2         | 0-1          | 0-0         | 2-2         | 0         | 1         | 1         | 2         | 1        | 2         | 0        | 0         | 10         | -8  |
| 21            | Brewer, Maya            |   | 4         | 1-5          | 1-2         | 1-2         | 0         | 0         | 0         | 3         | 1        | 2         | 0        | 1         | 13         | -5  |
| 22            | Faye, Alyssia           |   | 2         | 1-2          | 0-0         | 0-0         | 1         | 1         | 2         | 0         | 0        | 1         | 0        | 0         | 10         | -8  |
| 24            | Colbert, Trajata        |   | 0         | 0-0          | 0-0         | 0-0         | 0         | 0         | 0         | 0         | 0        | 0         | 0        | 0         | 2          | -1  |
| 34            | Smith, Shyia            |   | 2         | 1-1          | 0-0         | 0-0         | 0         | 0         | 0         | 1         | 0        | 0         | 0        | 1         | 5          | -2  |
| 42            | Henderson, Asia         |   | 4         | 2-6          | 0-0         | 0-0         | 1         | 2         | 3         | 1         | 0        | 0         | 0        | 1         | 12         | 1   |
|               | Team                    |   |           |              |             |             | 2         | 1         | 3         | 0         |          | 1         |          |           |            |     |
| <b>TOTALS</b> |                         |   | <b>45</b> | <b>17-51</b> | <b>3-12</b> | <b>8-13</b> | <b>15</b> | <b>16</b> | <b>31</b> | <b>18</b> | <b>7</b> | <b>26</b> | <b>1</b> | <b>12</b> | <b>200</b> |     |

*Shooting By Period*

| Period      | FG           | FG%          | 3FG         | 3FG%         | FT          | FT%          |
|-------------|--------------|--------------|-------------|--------------|-------------|--------------|
| 1st Qtr     | 4-16         | 25%          | 2-3         | 67%          | 2-4         | 50%          |
| 2nd Qtr     | 4-10         | 40%          | 1-3         | 33%          | 0-0         | 0%           |
| 3rd Qtr     | 1-9          | 11%          | 0-4         | 00%          | 4-6         | 67%          |
| 4th Qtr     | 8-16         | 50%          | 0-2         | 00%          | 2-3         | 67%          |
| 1st Half    | 4-16         | 25%          | 2-3         | 67%          | 2-4         | 50%          |
| 2nd Half    | 4-10         | 40%          | 1-3         | 33%          | 0-0         | 0%           |
| 3rd Half    | 1-9          | 11%          | 0-4         | 00%          | 4-6         | 67%          |
| 4th Half    | 8-16         | 50%          | 0-2         | 00%          | 2-3         | 67%          |
| <b>Game</b> | <b>17-51</b> | <b>33.3%</b> | <b>3-12</b> | <b>25.0%</b> | <b>8-13</b> | <b>61.5%</b> |

*Deadball Rebounds:*

Last FG: 4th-00:08  
 Biggest Run: 12-0  
 Largest lead: By 3 at 1-02:59  
 Technical Fouls: None.

|   |                               |
|---|-------------------------------|
| <b>Game Notes:</b>                                      |                               |
| Officials: Ron Ledington, Jules Gallien, Jennifer White |                               |
| Attendance: 1403  |                               |
| Start Time: 2018-12-02 20:05:02                         | End Time: 2018-12-02 21:58:20 |
| Game Duration: 113                                      |                               |

| Score by Period | 1st | 2nd | 3rd | 4th | TOT       |
|-----------------|-----|-----|-----|-----|-----------|
| TTU             | 14  | 13  | 13  | 15  | <b>55</b> |
| WSU             | 12  | 9   | 6   | 18  | <b>45</b> |

TTU led for 30:12. WSU led for 5:05.  
 Game was tied for 4:44.  
 Times tied: 6      Lead Changes: 2

| Points from  | TTU | WSU |
|--------------|-----|-----|
| In the Paint | 20  | 24  |
| Off Turns    | 20  | 20  |
| 2nd Chance   | 13  | 13  |
| Fast Break   | 3   | 5   |
| Bench        | 29  | 18  |

**Official Box Score**  
**Tennessee Tech vs Wichita St.**  
**First Half Statistics Only**  
**December 02, 2018 at Charles Koch Arena (Devlin Court) - Wichita, Kan.**

**Tennessee Tech 55**

| No.           | Player              | S | Pts       | FG          | 3FG        | FT         | OR       | DR       | TR        | PF       | A        | TO       | Blk      | Stl      | Min       | +/- |
|---------------|---------------------|---|-----------|-------------|------------|------------|----------|----------|-----------|----------|----------|----------|----------|----------|-----------|-----|
| 0             | Harris, Akia        |   | 0         | 0-1         | 0-0        | 0-0        | 0        | 0        | 0         | 0        | 1        | 0        | 0        | 0        | 8         | -3  |
| 2             | Brock, Jordan       |   | 1         | 0-2         | 0-1        | 1-2        | 0        | 0        | 0         | 1        | 2        | 2        | 0        | 0        | 8         | 0   |
| 11            | Alexander, Kentoria |   | 0         | 0-3         | 0-0        | 0-0        | 2        | 0        | 2         | 0        | 0        | 0        | 0        | 2        | 8         | 4   |
| 14            | Buckner, Abby       |   | 0         | 0-1         | 0-1        | 0-0        | 0        | 0        | 0         | 2        | 0        | 1        | 0        | 1        | 4         | -3  |
| 44            | Cantrell, Lacy      |   | 7         | 2-3         | 0-0        | 3-4        | 1        | 0        | 1         | 0        | 0        | 0        | 0        | 1        | 6         | 2   |
| 10            | Lamb, Taylor        |   | 6         | 3-3         | 0-0        | 0-1        | 0        | 2        | 2         | 0        | 0        | 0        | 0        | 0        | 5         | 4   |
| 15            | Wilkinson, Anacia   |   | 0         | 0-4         | 0-1        | 0-0        | 3        | 0        | 3         | 2        | 0        | 0        | 0        | 0        | 2         | 1   |
| 20            | Brady, Keshia       |   | 0         | 0-1         | 0-0        | 0-0        | 1        | 1        | 2         | 0        | 0        | 0        | 0        | 0        | 6         | 5   |
| 33            | Coleman, Mackenzie  |   | 0         | 0-0         | 0-0        | 0-0        | 0        | 0        | 0         | 0        | 0        | 0        | 0        | 0        | 3         | 0   |
|               | Team                |   |           |             |            |            | 0        | 1        | 1         | 0        |          | 0        |          |          |           |     |
| <b>TOTALS</b> |                     |   | <b>14</b> | <b>5-18</b> | <b>0-3</b> | <b>4-7</b> | <b>0</b> | <b>0</b> | <b>11</b> | <b>5</b> | <b>3</b> | <b>3</b> | <b>0</b> | <b>4</b> | <b>50</b> |     |

*Shooting By Period*

| Period      | FG           | FG%          | 3FG         | 3FG%         | FT           | FT%          |
|-------------|--------------|--------------|-------------|--------------|--------------|--------------|
| 1st Qtr     | 5-18         | 28%          | 0-3         | 00%          | 4-7          | 57%          |
| 2nd Qtr     | 4-13         | 31%          | 1-8         | 13%          | 4-5          | 80%          |
| 3rd Qtr     | 5-15         | 33%          | 1-9         | 11%          | 2-2          | 100%         |
| 4th Qtr     | 5-8          | 63%          | 3-5         | 60%          | 2-4          | 50%          |
| 1st Half    | 5-18         | 28%          | 0-3         | 00%          | 4-7          | 57%          |
| 2nd Half    | 4-13         | 31%          | 1-8         | 13%          | 4-5          | 80%          |
| 3rd Half    | 5-15         | 33%          | 1-9         | 11%          | 2-2          | 100%         |
| 4th Half    | 5-8          | 63%          | 3-5         | 60%          | 2-4          | 50%          |
| <b>Game</b> | <b>19-54</b> | <b>35.2%</b> | <b>5-25</b> | <b>20.0%</b> | <b>12-18</b> | <b>66.7%</b> |

*Deadball Rebounds:*  
*Last FG: 4th-01:02*  
*Biggest Run: 8-0*  
*Largest lead: By 17 at 4-06:00*  
*Technical Fouls: None.*

**Wichita St. 45**

| No.           | Player                  | S | Pts       | FG          | 3FG        | FT         | OR       | DR       | TR        | PF       | A        | TO       | Blk      | Stl      | Min       | +/- |
|---------------|-------------------------|---|-----------|-------------|------------|------------|----------|----------|-----------|----------|----------|----------|----------|----------|-----------|-----|
| 11            | Lozada-Cabbage, Sabrina |   | 0         | 0-4         | 0-0        | 0-0        | 3        | 4        | 7         | 1        | 2        | 1        | 0        | 0        | 9         | -1  |
| 12            | Bremaud, Carla          |   | 3         | 1-2         | 1-1        | 0-0        | 1        | 0        | 1         | 0        | 0        | 2        | 0        | 0        | 6         | 2   |
| 13            | Prince, Raven           |   | 0         | 0-2         | 0-0        | 0-2        | 2        | 0        | 2         | 2        | 0        | 0        | 0        | 0        | 5         | 1   |
| 15            | Hampton, Jaida          |   | 3         | 1-1         | 1-1        | 0-0        | 0        | 0        | 0         | 0        | 0        | 0        | 0        | 0        | 7         | 3   |
| 23            | Bastin, Seraphine       |   | 0         | 0-2         | 0-1        | 0-0        | 1        | 1        | 2         | 0        | 0        | 2        | 0        | 1        | 9         | -1  |
| 0             | Peacock, Jada           |   | 0         | 0-0         | 0-0        | 0-0        | 0        | 0        | 0         | 0        | 0        | 0        | 0        | 0        | 1         | 1   |
| 1             | Lair, Dawnyel           |   | 0         | 0-0         | 0-0        | 0-0        | 1        | 0        | 1         | 0        | 0        | 0        | 0        | 0        | 3         | -5  |
| 5             | Reid, Ashley            |   | 2         | 0-1         | 0-0        | 2-2        | 0        | 1        | 1         | 2        | 0        | 2        | 0        | 0        | 4         | -6  |
| 21            | Brewer, Maya            |   | 0         | 0-0         | 0-0        | 0-0        | 0        | 0        | 0         | 0        | 0        | 0        | 0        | 0        | 0         | 0   |
| 22            | Faye, Alyssia           |   | 0         | 0-0         | 0-0        | 0-0        | 0        | 0        | 0         | 0        | 0        | 0        | 0        | 0        | 0         | 0   |
| 24            | Colbert, Trajata        |   | 0         | 0-0         | 0-0        | 0-0        | 0        | 0        | 0         | 0        | 0        | 0        | 0        | 0        | 0         | 0   |
| 34            | Smith, Shyia            |   | 2         | 1-1         | 0-0        | 0-0        | 0        | 0        | 0         | 0        | 0        | 0        | 0        | 0        | 1         | -1  |
| 42            | Henderson, Asia         |   | 2         | 1-3         | 0-0        | 0-0        | 1        | 2        | 3         | 1        | 0        | 0        | 0        | 0        | 5         | -3  |
|               | Team                    |   |           |             |            |            | 0        | 0        | 0         | 0        |          | 0        |          |          |           |     |
| <b>TOTALS</b> |                         |   | <b>12</b> | <b>4-16</b> | <b>2-3</b> | <b>2-4</b> | <b>0</b> | <b>0</b> | <b>17</b> | <b>6</b> | <b>2</b> | <b>7</b> | <b>0</b> | <b>1</b> | <b>50</b> |     |

*Shooting By Period*

| Period      | FG           | FG%          | 3FG         | 3FG%         | FT          | FT%          |
|-------------|--------------|--------------|-------------|--------------|-------------|--------------|
| 1st Qtr     | 4-16         | 25%          | 2-3         | 67%          | 2-4         | 50%          |
| 2nd Qtr     | 4-10         | 40%          | 1-3         | 33%          | 0-0         | 0%           |
| 3rd Qtr     | 1-9          | 11%          | 0-4         | 00%          | 4-6         | 67%          |
| 4th Qtr     | 8-16         | 50%          | 0-2         | 00%          | 2-3         | 67%          |
| 1st Half    | 4-16         | 25%          | 2-3         | 67%          | 2-4         | 50%          |
| 2nd Half    | 4-10         | 40%          | 1-3         | 33%          | 0-0         | 0%           |
| 3rd Half    | 1-9          | 11%          | 0-4         | 00%          | 4-6         | 67%          |
| 4th Half    | 8-16         | 50%          | 0-2         | 00%          | 2-3         | 67%          |
| <b>Game</b> | <b>17-51</b> | <b>33.3%</b> | <b>3-12</b> | <b>25.0%</b> | <b>8-13</b> | <b>61.5%</b> |

*Deadball Rebounds:*  
*Last FG: 4th-00:08*  
*Biggest Run: 12-0*  
*Largest lead: By 3 at 1-02:59*  
*Technical Fouls: None.*

**Game Notes:**  
 Officials: Ron Ledington, Jules Gallien, Jennifer White  
 Attendance: 1403  
 Start Time: 2018-12-02 20:05:02      End Time: 2018-12-02 21:58:20  
 Game Duration: 113

| Score by Period | 1st | 2nd | 3rd | 4th | TOT       |
|-----------------|-----|-----|-----|-----|-----------|
| TTU             | 14  | 13  | 13  | 15  | <b>55</b> |
| WSU             | 12  | 9   | 6   | 18  | <b>45</b> |

**This period only: TTU led for 30:11. WSU led for 30:05.**  
**Game was tied for 0:44.**

| Points from (This Period) | TTU | WSU |
|---------------------------|-----|-----|
| In the Paint              | 10  | 4   |
| Off Turns                 | 4   | 0   |
| 2nd Chance                | 0   | 5   |
| Fast Break                | 1   | 2   |
| Bench                     | 6   | 6   |

**Official Play-By-Play**  
**Tennessee Tech vs Wichita St.**  
**First Quarter**  
**December 02, 2018 at Charles Koch Arena (Devlin Court) - Wichita, Kan.**

**Starters:**

**Tennessee Tech:** 0 HARRIS,AKIA; 2 BROCK,JORDAN; 11 ALEXANDER,KENTORIA; 14 BUCKNER,ABBY; 44 CANTRELL,LACY;

**Wichita St.:** 11 LOZADA-CABBAGE,SABRINA; 12 BREMAUD,CARLA; 13 PRINCE,RAVEN; 15 HAMPTON,JAIDA; 23 BASTIN,SERAPHINE;

**Period 1**

| Time  | VISITORS: Tennessee Tech             | Score | Margin | HOME: Wichita St.                            |
|-------|--------------------------------------|-------|--------|--|
| 09:43 |                                      |       |        | MISSED LAYUP by LOZADA-CABBAGE,SABRINA       |
| 09:40 |                                      |       |        | REBOUND (OFF) by PRINCE,RAVEN                |
| 09:38 |                                      |       |        | MISSED LAYUP by PRINCE,RAVEN                 |
| 09:34 |                                      |       |        | REBOUND (OFF) by BASTIN,SERAPHINE            |
| 09:27 |                                      |       |        | TURNOVER (BADPASS) by BREMAUD,CARLA          |
| 09:08 | MISSED 3PTR by BUCKNER,ABBY          |       |        |  |
| 09:04 |                                      |       |        | REBOUND (DEF) by BASTIN,SERAPHINE            |
| 08:53 |                                      |       |        | TURNOVER (BADPASS) by BASTIN,SERAPHINE       |
| 08:46 | MISSED LAYUP by CANTRELL,LACY        |       |        |  |
| 08:46 | REBOUND (OFF) by CANTRELL,LACY       |       |        |  |
| 08:41 | MISSED LAYUP by HARRIS,AKIA          |       |        |  |
| 08:38 |                                      |       |        | REBOUND (DEF) by LOZADA-CABBAGE,SABRINA      |
| 08:33 |                                      |       |        | TURNOVER (BADPASS) by BASTIN,SERAPHINE       |
| 08:05 | GOOD! LAYUP by CANTRELL,LACY         | 0-2   | V 2    |  |
| 08:05 | ASSIST by BROCK,JORDAN               |       |        |  |
| 08:05 |                                      |       |        | FOUL (PERSONAL) by PRINCE,RAVEN              |
| 08:05 | GOOD! FT by CANTRELL,LACY            | 0-3   | V 3    |  |
| 07:44 |                                      |       |        | MISSED LAYUP by LOZADA-CABBAGE,SABRINA       |
| 07:41 |                                      |       |        | REBOUND (OFF) by PRINCE,RAVEN                |
| 07:40 |                                      |       |        | MISSED JUMPER by PRINCE,RAVEN                |
| 07:37 |                                      |       |        | REBOUND (OFF) by LOZADA-CABBAGE,SABRINA      |
| 07:37 |                                      |       |        | MISSED LAYUP by LOZADA-CABBAGE,SABRINA       |
| 07:37 |                                      |       |        | REBOUND (OFF) by LOZADA-CABBAGE,SABRINA      |
| 07:37 | FOUL (PERSONAL) by BUCKNER,ABBY      |       |        |  |
| 07:34 |                                      |       |        | MISSED LAYUP by LOZADA-CABBAGE,SABRINA       |
| 07:30 |                                      |       |        | REBOUND (OFF) by LOZADA-CABBAGE,SABRINA      |
| 07:06 |                                      | 3-3   | T      | GOOD! 3PTR by BREMAUD,CARLA                  |
| 07:06 |                                      |       |        | ASSIST by LOZADA-CABBAGE,SABRINA             |
| 06:45 | MISSED LAYUP by BROCK,JORDAN         |       |        |  |
| 06:41 |                                      |       |        | REBOUND (DEF) by LOZADA-CABBAGE,SABRINA      |
| 06:32 |                                      |       |        | TURNOVER (BADPASS) by BREMAUD,CARLA          |
| 06:32 | STEAL by BUCKNER,ABBY                |       |        |  |
| 06:19 | MISSED JUMPER by ALEXANDER,KENTORIA  |       |        |  |
| 06:16 | REBOUND (OFF) by ALEXANDER,KENTORIA  |       |        |  |
| 06:14 | MISSED 3PTR by BROCK,JORDAN          |       |        |  |
| 06:11 |                                      |       |        | REBOUND (DEF) by LOZADA-CABBAGE,SABRINA      |
| 05:57 |                                      | 6-3   | H 3    | GOOD! 3PTR by HAMPTON,JAIDA                  |
| 05:57 |                                      |       |        | ASSIST by LOZADA-CABBAGE,SABRINA             |
| 05:32 | FOUL (OFF) by BUCKNER,ABBY           |       |        |  |
| 05:32 | TURNOVER (OFFENSIVE) by BUCKNER,ABBY |       |        |  |
| 05:32 | SUB OUT: BROCK,JORDAN                |       |        |  |
| 05:32 | SUB IN: WILKINSON,ANACIA             |       |        |  |
| 05:32 | SUB OUT: BUCKNER,ABBY                |       |        |  |
| 05:32 | SUB IN: BRADY,KESHA                  |       |        |  |
| 05:32 | SUB OUT: CANTRELL,LACY               |       |        |  |
| 05:32 | SUB IN: LAMB,TAYLOR                  |       |        |  |
| 05:18 |                                      |       |        | MISSED LAYUP by BREMAUD,CARLA                |
| 05:15 |                                      |       |        | REBOUND (OFF) by BREMAUD,CARLA               |
| 05:08 | FOUL (PERSONAL) by WILKINSON,ANACIA  |       |        |  |
| 05:08 |                                      |       |        | MISSED FT by PRINCE,RAVEN                    |
| 05:08 |                                      |       |        | REBOUND (OFF) by TEAM                        |
| 05:08 |                                      |       |        | SUB OUT: BREMAUD,CARLA                       |
| 05:08 |                                      |       |        | SUB IN: REID,ASHLEY                          |
| 05:08 |                                      |       |        | MISSED FT by PRINCE,RAVEN                    |
| 05:08 | REBOUND (DEF) by BRADY,KESHA         |       |        |  |
| 04:52 | GOOD! LAYUP by LAMB,TAYLOR           | 6-5   | H 1    |  |
| 04:52 |                                      |       |        | FOUL (PERSONAL) by PRINCE,RAVEN              |
| 04:52 |                                      |       |        |  |
| 04:52 |                                      |       |        | SUB OUT: PRINCE,RAVEN                        |
| 04:52 |                                      |       |        | SUB IN: HENDERSON,ASIA                       |
| 04:52 | MISSED FT by LAMB,TAYLOR             |       |        |  |
| 04:52 |                                      |       |        | REBOUND (DEF) by HENDERSON,ASIA              |
| 04:40 |                                      |       |        | TURNOVER (BADPASS) by LOZADA-CABBAGE,SABRINA |
| 04:40 | STEAL by ALEXANDER,KENTORIA          |       |        |  |
| 04:34 | MISSED LAYUP by ALEXANDER,KENTORIA   |       |        |  |
| 04:27 | REBOUND (OFF) by WILKINSON,ANACIA    |       |        |  |
| 04:27 | MISSED LAYUP by WILKINSON,ANACIA     |       |        |  |
| 04:25 | REBOUND (OFF) by WILKINSON,ANACIA    |       |        |  |
| 04:25 | MISSED LAYUP by WILKINSON,ANACIA     |       |        |  |
| 04:22 | REBOUND (OFF) by WILKINSON,ANACIA    |       |        |  |
| 04:21 | MISSED 3PTR by WILKINSON,ANACIA      |       |        |  |
| 04:16 | REBOUND (OFF) by ALEXANDER,KENTORIA  |       |        |  |
| 04:09 | MISSED LAYUP by ALEXANDER,KENTORIA   |       |        |  |
| 04:05 |                                      |       |        | REBOUND (DEF) by LOZADA-CABBAGE,SABRINA      |
| 04:02 |                                      |       |        | TURNOVER (BADPASS) by REID,ASHLEY            |
| 04:02 | STEAL by ALEXANDER,KENTORIA          |       |        |  |

| Time  | VISITORS: Tennessee Tech             | Score | Margin | HOME: Wichita St.                         |
|-------|--------------------------------------|-------|--------|---|
| 03:54 |                                      |       |        | FOUL (PERSONAL) by REID,ASHLEY            |
| 03:54 | SUB OUT: ALEXANDER,KENTORIA          |       |        |   |
| 03:54 | SUB IN: BROCK,JORDAN                 |       |        |   |
| 03:51 | MISSED JUMPER by WILKINSON,ANACIA    |       |        |   |
| 03:47 | REBOUND (OFF) by BRADY,KESHA         |       |        |   |
| 03:46 | MISSED LAYUP by BRADY,KESHA          |       |        |   |
| 03:43 |                                      |       |        | REBOUND (DEF) by REID,ASHLEY              |
| 03:39 | FOUL (PERSONAL) by WILKINSON,ANACIA  |       |        |   |
| 03:39 |                                      | 7-5   | H 2    | GOOD! FT by REID,ASHLEY [FB]              |
| 03:39 | SUB OUT: WILKINSON,ANACIA            |       |        |   |
| 03:39 | SUB IN: COLEMAN,MACKENZIE            |       |        |   |
| 03:39 |                                      | 8-5   | H 3    | GOOD! FT by REID,ASHLEY [FB]              |
| 03:20 | GOOD! LAYUP by LAMB,TAYLOR           | 8-7   | H 1    |   |
| 03:20 | ASSIST by HARRIS,AKIA                |       |        |   |
| 03:03 |                                      |       |        | MISSED JUMPER by BASTIN,SERAPHINE         |
| 03:00 |                                      |       |        | REBOUND (OFF) by HENDERSON,ASIA           |
| 02:59 |                                      | 10-7  | H 3    | GOOD! LAYUP by HENDERSON,ASIA             |
| 02:32 | FOUL (OFF) by BROCK,JORDAN           |       |        |   |
| 02:32 | TURNOVER (OFFENSIVE) by BROCK,JORDAN |       |        |   |
| 02:32 |                                      |       |        | SUB OUT: HAMPTON,JAIDA                    |
| 02:32 |                                      |       |        | SUB IN: LAIR,DAWNYEL                      |
| 02:06 |                                      |       |        | MISSED JUMPER by HENDERSON,ASIA           |
| 02:03 |                                      |       |        | REBOUND (OFF) by LAIR,DAWNYEL             |
| 01:57 |                                      |       |        | MISSED 3PTR by BASTIN,SERAPHINE           |
| 01:52 | REBOUND (DEF) by LAMB,TAYLOR         |       |        |   |
| 01:46 | TURNOVER (BADPASS) by BROCK,JORDAN   |       |        |   |
| 01:46 |                                      |       |        | STEAL by BASTIN,SERAPHINE                 |
| 01:39 |                                      |       |        | MISSED LAYUP by REID,ASHLEY               |
| 01:38 | REBOUND (DEF) by TEAM                |       |        |   |
| 01:38 | SUB OUT: COLEMAN,MACKENZIE           |       |        |   |
| 01:38 | SUB IN: ALEXANDER,KENTORIA           |       |        |   |
| 01:38 | SUB OUT: HARRIS,AKIA                 |       |        |   |
| 01:38 | SUB IN: CANTRELL,LACY                |       |        |   |
| 01:26 | GOOD! LAYUP by LAMB,TAYLOR           | 10-9  | H 1    |   |
| 01:26 | ASSIST by BROCK,JORDAN               |       |        |   |
| 01:07 |                                      |       |        | MISSED JUMPER by HENDERSON,ASIA           |
| 01:02 | REBOUND (DEF) by LAMB,TAYLOR         |       |        |   |
| 00:52 | GOOD! LAYUP by CANTRELL,LACY         | 10-11 | V 1    |   |
| 00:52 |                                      |       |        | FOUL (PERSONAL) by LOZADA-CABBAGE,SABRINA |
| 00:52 |                                      |       |        | SUB OUT: LOZADA-CABBAGE,SABRINA           |
| 00:52 |                                      |       |        | SUB IN: SMITH,SHYIA                       |
| 00:52 |                                      |       |        | SUB OUT: BASTIN,SERAPHINE                 |
| 00:52 |                                      |       |        | SUB IN: BREMAUD,CARLA                     |
| 00:52 | SUB OUT: LAMB,TAYLOR                 |       |        |   |
| 00:52 | SUB IN: COLEMAN,MACKENZIE            |       |        |   |
| 00:52 | GOOD! FT by CANTRELL,LACY            | 10-12 | V 2    |   |
| 00:43 |                                      |       |        | TURNOVER (LOSTBALL) by REID,ASHLEY        |
| 00:43 | STEAL by CANTRELL,LACY               |       |        |   |
| 00:38 |                                      |       |        | FOUL (PERSONAL) by REID,ASHLEY            |
| 00:38 | GOOD! FT by BROCK,JORDAN [FB]        | 10-13 | V 3    |   |
| 00:38 |                                      |       |        | SUB OUT: REID,ASHLEY                      |
| 00:38 |                                      |       |        | SUB IN: PEACOCK,JADA                      |
| 00:38 | MISSED FT by BROCK,JORDAN            |       |        |   |
| 00:38 |                                      |       |        | REBOUND (DEF) by HENDERSON,ASIA           |
| 00:24 |                                      | 12-13 | V 1    | GOOD! LAYUP by SMITH,SHYIA                |
| 00:09 |                                      |       |        | FOUL (PERSONAL) by HENDERSON,ASIA         |
| 00:09 | MISSED FT by CANTRELL,LACY           |       |        |   |
| 00:09 | REBOUND (OFF) by TEAM                |       |        |   |
| 00:09 | GOOD! FT by CANTRELL,LACY            | 12-14 | V 2    |   |

### Tennessee Tech 14, Wichita St. 12

| Points from (This Period) | TTU | WSU |
|---------------------------|-----|-----|
| In the Paint              | 10  | 4   |
| Off Turns                 | 4   | 0   |
| 2nd Chance                | 0   | 5   |
| Fast Break                | 1   | 2   |
| Bench                     | 6   | 6   |

**This period only:TTU led for 30:11. WSU led for 30:05.  
Game was tied for 0:44.**

**Official Play-By-Play**  
**Tennessee Tech vs Wichita St.**  
**Second Quarter**  
**December 02, 2018 at Charles Koch Arena (Devlin Court) - Wichita, Kan.**

**Starters:**

**Tennessee Tech:** 0 HARRIS,AKIA; 2 BROCK,JORDAN; 11 ALEXANDER,KENTORIA; 14 BUCKNER,ABBY; 44 CANTRELL,LACY;

**Wichita St.:** 11 LOZADA-CABBAGE,SABRINA; 12 BREMAUD,CARLA; 13 PRINCE,RAVEN; 15 HAMPTON,JAIDA; 23 BASTIN,SERAPHINE;

**Period 2**

| Time  | VISITORS: Tennessee Tech                 | Score | Margin | HOME: Wichita St.                        |
|-------|--|-------|--------|--|
| 09:53 |  |       |        | TURNOVER (BADPASS) by BASTIN,SERAPHINE   |
| 09:53 | STEAL by CANTRELL,LACY                   |       |        |  |
| 09:33 | MISSED JUMPER by BRADY,KESHA             |       |        |  |
| 09:30 | REBOUND (OFF) by COLEMAN,MACKENZIE       |       |        |  |
| 09:28 | TURNOVER (LOSTBALL) by COLEMAN,MACKENZIE |       |        |  |
| 09:28 |  |       |        | STEAL by SMITH,SHYIA                     |
| 09:17 |  |       |        | FOUL (OFF) by BASTIN,SERAPHINE           |
| 09:17 |  |       |        | TURNOVER (OFFENSIVE) by BASTIN,SERAPHINE |
| 08:56 | TURNOVER (BADPASS) by BRADY,KESHA        |       |        |  |
| 08:29 |  |       |        | MISSED JUMPER by PEACOCK,JADA            |
| 08:29 | BLOCK by COLEMAN,MACKENZIE               |       |        |  |
| 08:22 | REBOUND (DEF) by CANTRELL,LACY           |       |        |  |
| 08:05 | MISSED 3PTR by BRADY,KESHA               |       |        |  |
| 08:01 |  |       |        | REBOUND (DEF) by TEAM                    |
| 08:01 | SUB OUT: BRADY,KESHA                     |       |        |  |
| 08:01 | SUB IN: HARRIS,AKIA                      |       |        |  |
| 08:01 | SUB OUT: COLEMAN,MACKENZIE               |       |        |  |
| 08:01 | SUB IN: LAMB,TAYLOR                      |       |        |  |
| 07:51 |  |       |        | TURNOVER (TRAVEL) by PEACOCK,JADA        |
| 07:35 | TURNOVER (TRAVEL) by LAMB,TAYLOR         |       |        |  |
| 07:22 |  |       |        | MISSED JUMPER by BREWER,MAYA             |
| 07:21 |  |       |        | REBOUND (OFF) by TEAM                    |
| 07:06 |  | 14-14 | T      | GOOD! JUMPER by PEACOCK,JADA [PNT]       |
| 06:42 | MISSED 3PTR by HARRIS,AKIA               |       |        |  |
| 06:39 | REBOUND (OFF) by TEAM                    |       |        |  |
| 06:34 | MISSED 3PTR by ALEXANDER,KENTORIA        |       |        |  |
| 06:30 | REBOUND (OFF) by HARRIS,AKIA             |       |        |  |
| 06:25 | MISSED 3PTR by ALEXANDER,KENTORIA        |       |        |  |
| 06:22 | REBOUND (OFF) by LAMB,TAYLOR             |       |        |  |
| 06:22 |  |       |        | FOUL (PERSONAL) by SMITH,SHYIA           |
| 06:22 | GOOD! FT by LAMB,TAYLOR                  | 14-15 | V 1    |  |
| 06:22 |  |       |        | SUB OUT: BREWER,MAYA                     |
| 06:22 |  |       |        | SUB IN: BREMAUD,CARLA                    |
| 06:22 |  |       |        | SUB OUT: SMITH,SHYIA                     |
| 06:22 |  |       |        | SUB IN: FAYE,ALYSSIA                     |
| 06:22 | GOOD! FT by LAMB,TAYLOR                  | 14-16 | V 2    |  |
| 06:03 |  |       |        | MISSED JUMPER by LOZADA-CABBAGE,SABRINA  |
| 05:59 |  |       |        | REBOUND (OFF) by FAYE,ALYSSIA            |
| 05:59 |  |       |        | TURNOVER (TRAVEL) by PEACOCK,JADA        |
| 05:59 |  |       |        | SUB OUT: PEACOCK,JADA                    |
| 05:59 |  |       |        | SUB IN: BREWER,MAYA                      |
| 05:40 | FOUL (OFF) by HARRIS,AKIA                |       |        |  |
| 05:40 | TURNOVER (OFFENSIVE) by HARRIS,AKIA      |       |        |  |
| 05:25 |  | 16-16 | T      | GOOD! JUMPER by FAYE,ALYSSIA             |
| 05:25 |  |       |        | ASSIST by BREWER,MAYA                    |
| 05:08 | TURNOVER (BADPASS) by LAMB,TAYLOR        |       |        |  |
| 05:08 |  |       |        | STEAL by LOZADA-CABBAGE,SABRINA          |
| 04:51 |  |       |        | MISSED 3PTR by BREWER,MAYA               |
| 04:49 | REBOUND (DEF) by TEAM                    |       |        |  |
| 04:49 | SUB OUT: CANTRELL,LACY                   |       |        |  |
| 04:49 | SUB IN: COLEMAN,MACKENZIE                |       |        |  |
| 04:37 |  |       |        | FOUL (PERSONAL) by BREWER,MAYA           |
| 04:37 | GOOD! FT by COLEMAN,MACKENZIE            | 16-17 | V 1    |  |
| 04:37 | GOOD! FT by COLEMAN,MACKENZIE            | 16-18 | V 2    |  |
| 04:37 | MISSED FT by COLEMAN,MACKENZIE           |       |        |  |
| 04:37 |  |       |        | REBOUND (DEF) by LOZADA-CABBAGE,SABRINA  |
| 04:21 |  |       |        | TURNOVER (BADPASS) by BREWER,MAYA        |
| 04:21 | STEAL by HARRIS,AKIA                     |       |        |  |
| 04:16 | GOOD! LAYUP by LAMB,TAYLOR [FB]          | 16-20 | V 4    |  |
| 04:16 | ASSIST by HARRIS,AKIA                    |       |        |  |
| 04:02 |  |       |        | MISSED JUMPER by BASTIN,SERAPHINE        |
| 03:58 | REBOUND (DEF) by ALEXANDER,KENTORIA      |       |        |  |
| 03:39 | GOOD! 3PTR by HARRIS,AKIA                | 16-23 | V 7    |  |
| 03:39 | ASSIST by BROCK,JORDAN                   |       |        |  |
| 03:14 |  | 19-23 | V 4    | GOOD! 3PTR by BREWER,MAYA                |
| 03:14 |  |       |        | ASSIST by BASTIN,SERAPHINE               |
| 02:55 | MISSED LAYUP by COLEMAN,MACKENZIE        |       |        |  |
| 02:51 |  |       |        | REBOUND (DEF) by FAYE,ALYSSIA            |
| 02:40 |  | 21-23 | V 2    | GOOD! LAYUP by LOZADA-CABBAGE,SABRINA    |
| 02:19 | GOOD! JUMPER by LAMB,TAYLOR              | 21-25 | V 4    |  |
| 02:19 | ASSIST by ALEXANDER,KENTORIA             |       |        |  |
| 02:04 |  |       |        | TURNOVER (LOSTBALL) by FAYE,ALYSSIA      |
| 02:04 | STEAL by LAMB,TAYLOR                     |       |        |  |
| 01:41 | MISSED 3PTR by HARRIS,AKIA               |       |        |  |
| 01:40 |  |       |        | REBOUND (DEF) by TEAM                    |

| Time  | VISITORS: Tennessee Tech                   | Score | Margin | HOME: Wichita St.                  |
|-------|--|-------|--------|------------------------------------|
| 01:40 |  |       |        | SUB OUT: BREWER,MAYA               |
| 01:40 |  |       |        | SUB IN: LAIR,DAWNYEL               |
| 01:40 | SUB OUT: BROCK,JORDAN                      |       |        |                                    |
| 01:40 | SUB IN: BRADY,KESHA                        |       |        |                                    |
| 01:25 |  |       |        | MISSED 3PTR by BREMAUD,CARLA       |
| 01:22 | REBOUND (DEF) by ALEXANDER,KENTORIA        |       |        |                                    |
| 00:58 | FOUL (OFF) by ALEXANDER,KENTORIA           |       |        |                                    |
| 00:58 | TURNOVER (OFFENSIVE) by ALEXANDER,KENTORIA |       |        |                                    |
| 00:58 |  |       |        | SUB OUT: LOZADA-CABBAGE,SABRINA    |
| 00:58 |  |       |        | SUB IN: SMITH,SHYIA                |
| 00:40 |  |       |        | TURNOVER (TRAVEL) by BREMAUD,CARLA |
| 00:27 | MISSED 3PTR by BRADY,KESHA                 |       |        |                                    |
| 00:24 | REBOUND (OFF) by ALEXANDER,KENTORIA        |       |        |                                    |
| 00:07 | MISSED 3PTR by BRADY,KESHA                 |       |        |                                    |
| 00:04 | REBOUND (OFF) by TEAM                      |       |        |                                    |
| 00:04 | SUB OUT: LAMB,TAYLOR                       |       |        |                                    |
| 00:04 | SUB IN: WILKINSON,ANACIA                   |       |        |                                    |
| 00:02 | GOOD! LAYUP by WILKINSON,ANACIA            | 21-27 | V 6    |                                    |
| 00:02 | ASSIST by HARRIS,AKIA                      |       |        |                                    |

**Tennessee Tech 27, Wichita St. 21**

| Points from (This Period) | TTU | WSU |
|---------------------------|-----|-----|
| In the Paint              | 4   | 4   |
| Off Turns                 | 4   | 4   |
| 2nd Chance                | 4   | 2   |
| Fast Break                | 2   | 0   |
| Bench                     | 10  | 7   |

**This period only:TTU led for 30:11. WSU led for 30:05.  
Game was tied for 0:44.**

**Official Box Score**  
**Tennessee Tech vs Wichita St.**  
**Second Half Statistics Only**  
**December 02, 2018 at Charles Koch Arena (Devlin Court) - Wichita, Kan.**

**Tennessee Tech 55**

| No.           | Player              | S | Pts       | FG          | 3FG        | FT         | OR       | DR       | TR       | PF       | A        | TO       | Blk      | Stl      | Min       | +/- |
|---------------|---------------------|---|-----------|-------------|------------|------------|----------|----------|----------|----------|----------|----------|----------|----------|-----------|-----|
| 0             | Harris, Akia        |   | 3         | 1-3         | 1-3        | 0-0        | 1        | 0        | 1        | 1        | 2        | 1        | 0        | 1        | 8         | 4   |
| 2             | Brock, Jordan       |   | 0         | 0-0         | 0-0        | 0-0        | 0        | 0        | 0        | 0        | 1        | 0        | 0        | 0        | 8         | 2   |
| 11            | Alexander, Kentoria |   | 0         | 0-2         | 0-2        | 0-0        | 1        | 2        | 3        | 1        | 1        | 1        | 0        | 0        | 10        | 4   |
| 14            | Buckner, Abby       |   | 0         | 0-0         | 0-0        | 0-0        | 0        | 0        | 0        | 0        | 0        | 0        | 0        | 0        | 0         | 0   |
| 44            | Cantrell, Lacy      |   | 0         | 0-0         | 0-0        | 0-0        | 0        | 1        | 1        | 0        | 0        | 0        | 0        | 1        | 5         | -2  |
| 10            | Lamb, Taylor        |   | 6         | 2-2         | 0-0        | 2-2        | 1        | 0        | 1        | 0        | 0        | 2        | 0        | 1        | 8         | 2   |
| 15            | Wilkinson, Anacia   |   | 2         | 1-1         | 0-0        | 0-0        | 0        | 0        | 0        | 0        | 0        | 0        | 0        | 0        | 0         | 2   |
| 20            | Brady, Kesha        |   | 0         | 0-4         | 0-3        | 0-0        | 0        | 0        | 0        | 0        | 0        | 1        | 0        | 0        | 4         | 2   |
| 33            | Coleman, Mackenzie  |   | 2         | 0-1         | 0-0        | 2-3        | 1        | 0        | 1        | 0        | 0        | 1        | 1        | 0        | 7         | 6   |
|               | Team                |   |           |             |            |            | 0        | 0        | 0        | 0        |          | 0        |          |          |           |     |
| <b>TOTALS</b> |                     |   | <b>13</b> | <b>4-13</b> | <b>1-8</b> | <b>4-5</b> | <b>0</b> | <b>0</b> | <b>7</b> | <b>2</b> | <b>4</b> | <b>6</b> | <b>1</b> | <b>3</b> | <b>50</b> |     |

*Shooting By Period*

| Period      | FG           | FG%          | 3FG         | 3FG%         | FT           | FT%          |
|-------------|--------------|--------------|-------------|--------------|--------------|--------------|
| 1st Qtr     | 5-18         | 28%          | 0-3         | 00%          | 4-7          | 57%          |
| 2nd Qtr     | 4-13         | 31%          | 1-8         | 13%          | 4-5          | 80%          |
| 3rd Qtr     | 5-15         | 33%          | 1-9         | 11%          | 2-2          | 100%         |
| 4th Qtr     | 5-8          | 63%          | 3-5         | 60%          | 2-4          | 50%          |
| 1st Half    | 5-18         | 28%          | 0-3         | 00%          | 4-7          | 57%          |
| 2nd Half    | 4-13         | 31%          | 1-8         | 13%          | 4-5          | 80%          |
| 3rd Half    | 5-15         | 33%          | 1-9         | 11%          | 2-2          | 100%         |
| 4th Half    | 5-8          | 63%          | 3-5         | 60%          | 2-4          | 50%          |
| <b>Game</b> | <b>19-54</b> | <b>35.2%</b> | <b>5-25</b> | <b>20.0%</b> | <b>12-18</b> | <b>66.7%</b> |

*Deadball Rebounds:*  
*Last FG: 4th-01:02*  
*Biggest Run: 8-0*  
*Largest lead: By 17 at 4-06:00*  
*Technical Fouls: None.*

**Wichita St. 45**

| No.           | Player                  | S | Pts      | FG          | 3FG        | FT         | OR       | DR       | TR       | PF       | A        | TO       | Blk      | Stl      | Min       | +/- |
|---------------|-------------------------|---|----------|-------------|------------|------------|----------|----------|----------|----------|----------|----------|----------|----------|-----------|-----|
| 11            | Lozada-Cabbage, Sabrina |   | 2        | 1-2         | 0-0        | 0-0        | 0        | 1        | 1        | 0        | 0        | 0        | 0        | 1        | 9         | -2  |
| 12            | Bremaud, Carla          |   | 0        | 0-1         | 0-1        | 0-0        | 0        | 0        | 0        | 0        | 0        | 1        | 0        | 0        | 6         | -5  |
| 13            | Prince, Raven           |   | 0        | 0-0         | 0-0        | 0-0        | 0        | 0        | 0        | 0        | 0        | 0        | 0        | 0        | 0         | 0   |
| 15            | Hampton, Jaida          |   | 0        | 0-0         | 0-0        | 0-0        | 0        | 0        | 0        | 0        | 0        | 0        | 0        | 0        | 0         | 0   |
| 23            | Bastin, Seraphine       |   | 0        | 0-1         | 0-0        | 0-0        | 0        | 0        | 0        | 1        | 1        | 2        | 0        | 0        | 10        | -4  |
| 0             | Peacock, Jada           |   | 2        | 1-2         | 0-0        | 0-0        | 0        | 0        | 0        | 0        | 0        | 2        | 0        | 0        | 4         | 0   |
| 1             | Lair, Dawnyel           |   | 0        | 0-0         | 0-0        | 0-0        | 0        | 0        | 0        | 0        | 0        | 0        | 0        | 0        | 2         | -2  |
| 5             | Reid, Ashley            |   | 0        | 0-0         | 0-0        | 0-0        | 0        | 0        | 0        | 0        | 0        | 0        | 0        | 0        | 0         | 0   |
| 21            | Brewer, Maya            |   | 3        | 1-3         | 1-2        | 0-0        | 0        | 0        | 0        | 1        | 1        | 1        | 0        | 0        | 8         | -1  |
| 22            | Faye, Alyssia           |   | 2        | 1-1         | 0-0        | 0-0        | 1        | 1        | 2        | 0        | 0        | 1        | 0        | 0        | 6         | -5  |
| 24            | Colbert, Trajata        |   | 0        | 0-0         | 0-0        | 0-0        | 0        | 0        | 0        | 0        | 0        | 0        | 0        | 0        | 0         | 0   |
| 34            | Smith, Shyia            |   | 0        | 0-0         | 0-0        | 0-0        | 0        | 0        | 0        | 1        | 0        | 0        | 0        | 1        | 5         | -1  |
| 42            | Henderson, Asia         |   | 0        | 0-0         | 0-0        | 0-0        | 0        | 0        | 0        | 0        | 0        | 0        | 0        | 0        | 0         | 0   |
|               | Team                    |   |          |             |            |            | 1        | 1        | 2        | 0        |          | 0        |          |          |           |     |
| <b>TOTALS</b> |                         |   | <b>9</b> | <b>4-10</b> | <b>1-3</b> | <b>0-0</b> | <b>0</b> | <b>0</b> | <b>5</b> | <b>3</b> | <b>2</b> | <b>7</b> | <b>0</b> | <b>2</b> | <b>50</b> |     |

*Shooting By Period*

| Period      | FG           | FG%          | 3FG         | 3FG%         | FT          | FT%          |
|-------------|--------------|--------------|-------------|--------------|-------------|--------------|
| 1st Qtr     | 4-16         | 25%          | 2-3         | 67%          | 2-4         | 50%          |
| 2nd Qtr     | 4-10         | 40%          | 1-3         | 33%          | 0-0         | 0%           |
| 3rd Qtr     | 1-9          | 11%          | 0-4         | 00%          | 4-6         | 67%          |
| 4th Qtr     | 8-16         | 50%          | 0-2         | 00%          | 2-3         | 67%          |
| 1st Half    | 4-16         | 25%          | 2-3         | 67%          | 2-4         | 50%          |
| 2nd Half    | 4-10         | 40%          | 1-3         | 33%          | 0-0         | 0%           |
| 3rd Half    | 1-9          | 11%          | 0-4         | 00%          | 4-6         | 67%          |
| 4th Half    | 8-16         | 50%          | 0-2         | 00%          | 2-3         | 67%          |
| <b>Game</b> | <b>17-51</b> | <b>33.3%</b> | <b>3-12</b> | <b>25.0%</b> | <b>8-13</b> | <b>61.5%</b> |

*Deadball Rebounds:*  
*Last FG: 4th-00:08*  
*Biggest Run: 12-0*  
*Largest lead: By 3 at 1-02:59*  
*Technical Fouls: None.*

Game Notes:  
 Officials: Ron Ledington, Jules Gallien, Jennifer White  
 Attendance: 1403  
 Start Time: 2018-12-02 20:05:02      End Time: 2018-12-02 21:58:20  
 Game Duration: 113

| Score by Period | 1st | 2nd | 3rd | 4th | TOT       |
|-----------------|-----|-----|-----|-----|-----------|
| TTU             | 14  | 13  | 13  | 15  | <b>55</b> |
| WSU             | 12  | 9   | 6   | 18  | <b>45</b> |

**This period only: TTU led for 30:11. WSU led for 30:05.**  
**Game was tied for 0:44.**

| Points from (This Period) | TTU | WSU |
|---------------------------|-----|-----|
| In the Paint              | 4   | 4   |
| Off Turns                 | 4   | 4   |
| 2nd Chance                | 4   | 2   |
| Fast Break                | 2   | 0   |
| Bench                     | 10  | 7   |



**Official Play-By-Play**  
**Tennessee Tech vs Wichita St.**  
**Third Quarter**  
**December 02, 2018 at Charles Koch Arena (Devlin Court) - Wichita, Kan.**

**Starters:**

**Tennessee Tech:** 0 HARRIS,AKIA; 2 BROCK,JORDAN; 11 ALEXANDER,KENTORIA; 14 BUCKNER,ABBY; 44 CANTRELL,LACY;

**Wichita St.:** 11 LOZADA-CABBAGE,SABRINA; 12 BREMAUD,CARLA; 13 PRINCE,RAVEN; 15 HAMPTON,JAIDA; 23 BASTIN,SERAPHINE;

**Period 3**

| Time  | VISITORS: Tennessee Tech                 | Score | Margin | HOME: Wichita St.                       |
|-------|--|-------|--------|---|
| 09:48 | TURNOVER (BADPASS) by ALEXANDER,KENTORIA |       |        |   |
| 09:48 |  |       |        | STEAL by BASTIN,SERAPHINE               |
| 09:33 |  | 23-27 | V 4    | GOOD! JUMPER by BREMAUD,CARLA           |
| 09:21 | TURNOVER (10SEC) by                      |       |        |   |
| 09:21 | TIMEOUT 30SEC                            |       |        |   |
| 09:10 |  |       |        | TURNOVER (LOSTBALL) by HAMPTON,JAIDA    |
| 09:10 | STEAL by ALEXANDER,KENTORIA              |       |        |   |
| 09:02 | MISSED 3PTR by HARRIS,AKIA               |       |        |   |
| 08:57 | REBOUND (OFF) by ALEXANDER,KENTORIA      |       |        |   |
| 08:49 | GOOD! 3PTR by BUCKNER,ABBY               | 23-30 | V 7    |   |
| 08:49 | ASSIST by HARRIS,AKIA                    |       |        |   |
| 08:30 |  |       |        | TURNOVER (LOSTBALL) by BREMAUD,CARLA    |
| 08:30 | STEAL by HARRIS,AKIA                     |       |        |   |
| 08:13 | MISSED 3PTR by BUCKNER,ABBY              |       |        |   |
| 08:09 |  |       |        | REBOUND (DEF) by BASTIN,SERAPHINE       |
| 07:44 |  |       |        | MISSED 3PTR by LOZADA-CABBAGE,SABRINA   |
| 07:40 | REBOUND (DEF) by CANTRELL,LACY           |       |        |   |
| 07:30 | MISSED 3PTR by BUCKNER,ABBY              |       |        |   |
| 07:25 | REBOUND (OFF) by HARRIS,AKIA             |       |        |   |
| 07:25 | TURNOVER (BADPASS) by HARRIS,AKIA        |       |        |   |
| 07:25 |  |       |        | SUB OUT: HAMPTON,JAIDA                  |
| 07:25 |  |       |        | SUB IN: BREWER,MAYA                     |
| 07:06 |  |       |        | MISSED JUMPER by BASTIN,SERAPHINE       |
| 07:02 | REBOUND (DEF) by HARRIS,AKIA             |       |        |   |
| 06:58 | TURNOVER (TRAVEL) by HARRIS,AKIA         |       |        |   |
| 06:58 |  |       |        | TURNOVER (LOSTBALL) by BASTIN,SERAPHINE |
| 06:48 | MISSED 3PTR by BUCKNER,ABBY              |       |        |   |
| 06:43 |  |       |        | REBOUND (DEF) by PRINCE,RAVEN           |
| 06:34 |  |       |        | MISSED JUMPER by BREWER,MAYA            |
| 06:30 | REBOUND (DEF) by CANTRELL,LACY           |       |        |   |
| 06:20 | TURNOVER (BADPASS) by ALEXANDER,KENTORIA |       |        |   |
| 06:03 |  |       |        | MISSED 3PTR by BREMAUD,CARLA            |
| 06:01 | REBOUND (DEF) by TEAM                    |       |        |   |
| 06:01 | SUB OUT: CANTRELL,LACY                   |       |        |   |
| 06:01 | SUB IN: LAMB,TAYLOR                      |       |        |   |
| 05:53 | TURNOVER (LOSTBALL) by BROCK,JORDAN      |       |        |   |
| 05:53 |  |       |        | STEAL by LOZADA-CABBAGE,SABRINA         |
| 05:53 |  |       |        | SUB OUT: PRINCE,RAVEN                   |
| 05:53 |  |       |        | SUB IN: LAIR,DAWNYEL                    |
| 05:53 | SUB OUT: ALEXANDER,KENTORIA              |       |        |   |
| 05:53 | SUB IN: BRADY,KESHA                      |       |        |   |
| 05:44 | FOUL (PERSONAL) by LAMB,TAYLOR           |       |        |   |
| 05:44 |  |       |        | MISSED FT by BREWER,MAYA                |
| 05:44 |  |       |        | REBOUND (OFF) by TEAM                   |
| 05:44 |  | 24-30 | V 6    | GOOD! FT by BREWER,MAYA                 |
| 05:24 |  |       |        | FOUL (PERSONAL) by BASTIN,SERAPHINE     |
| 05:24 | SUB OUT: ALEXANDER,KENTORIA              |       |        |   |
| 05:24 | SUB IN: BRADY,KESHA                      |       |        |   |
| 05:24 | GOOD! FT by BRADY,KESHA                  | 24-31 | V 7    |   |
| 05:24 | GOOD! FT by BRADY,KESHA                  | 24-32 | V 8    |   |
| 05:20 |  |       |        | TURNOVER (LOSTBALL) by LAIR,DAWNYEL     |
| 05:20 | STEAL by BUCKNER,ABBY                    |       |        |   |
| 05:17 | TURNOVER (BADPASS) by HARRIS,AKIA        |       |        |   |
| 05:17 |  |       |        | STEAL by BREWER,MAYA                    |
| 05:15 |  |       |        | FOUL (OFF) by BREWER,MAYA               |
| 05:15 |  |       |        | TURNOVER (OFFENSIVE) by BREWER,MAYA     |
| 05:10 |  |       |        |   |
| 05:10 | SUB OUT: HARRIS,AKIA                     |       |        |   |
| 05:10 | SUB IN: ALEXANDER,KENTORIA               |       |        |   |
| 05:00 |  |       |        | FOUL (PERSONAL) by BREWER,MAYA          |
| 05:00 | SUB OUT: BROCK,JORDAN                    |       |        |   |
| 05:00 | SUB IN: WILKINSON,ANACIA                 |       |        |   |
| 04:51 | MISSED LAYUP by WILKINSON,ANACIA         |       |        |   |
| 04:51 |  |       |        | BLOCK by LOZADA-CABBAGE,SABRINA         |
| 04:46 | REBOUND (OFF) by WILKINSON,ANACIA        |       |        |   |
| 04:45 | MISSED LAYUP by WILKINSON,ANACIA         |       |        |   |
| 04:41 |  |       |        | REBOUND (DEF) by LOZADA-CABBAGE,SABRINA |
| 04:37 |  |       |        | MISSED 3PTR by BREMAUD,CARLA            |
| 04:29 | REBOUND (DEF) by TEAM                    |       |        |   |
| 04:00 | GOOD! JUMPER by LAMB,TAYLOR              | 24-34 | V 10   |   |
| 04:00 | ASSIST by ALEXANDER,KENTORIA             |       |        |   |
| 03:48 |  |       |        | MISSED JUMPER by BREWER,MAYA            |
| 03:44 | REBOUND (DEF) by WILKINSON,ANACIA        |       |        |   |
| 03:21 | MISSED 3PTR by ALEXANDER,KENTORIA        |       |        |   |
| 03:18 | REBOUND (OFF) by BRADY,KESHA             |       |        |   |
| 03:16 | GOOD! JUMPER by BRADY,KESHA              | 24-36 | V 12   |   |

| Time  | VISITORS: Tennessee Tech               | Score | Margin | HOME: Wichita St.               |
|-------|--|-------|--------|---------------------------------|
| 03:00 |  |       |        | TIMEOUT 30SEC                   |
| 03:00 |  |       |        | SUB OUT: LAIR,DAWNYEL           |
| 03:00 |  |       |        | SUB IN: REID,ASHLEY             |
| 03:00 |  |       |        | SUB OUT: LOZADA-CABBAGE,SABRINA |
| 03:00 |  |       |        | SUB IN: PEACOCK,JADA            |
| 03:00 |  |       |        | SUB OUT: BREMAUD,CARLA          |
| 03:00 |  |       |        | SUB IN: HAMPTON,JAIDA           |
| 03:00 |  |       |        | SUB OUT: BREWER,MAYA            |
| 03:00 |  |       |        | SUB IN: PRINCE,RAVEN            |
| 03:00 |  |       |        | SUB OUT: BASTIN,SERAPHINE       |
| 03:00 |  |       |        | SUB IN: HENDERSON,ASIA          |
| 02:43 |  |       |        | MISSED JUMPER by HAMPTON,JAIDA  |
| 02:40 | REBOUND (DEF) by ALEXANDER,KENTORIA    |       |        |                                 |
| 02:34 | MISSED 3PTR by BUCKNER,ABBY            |       |        |                                 |
| 02:30 | REBOUND (OFF) by BRADY,KESHA           |       |        |                                 |
| 02:29 | GOOD! LAYUP by BRADY,KESHA             | 24-38 | V 14   |                                 |
| 02:11 | FOUL (PERSONAL) by BRADY,KESHA         |       |        |                                 |
| 02:11 |  | 25-38 | V 13   | GOOD! FT by PRINCE,RAVEN        |
| 02:11 |  |       |        | SUB OUT: PEACOCK,JADA           |
| 02:11 |  |       |        | SUB IN: BREMAUD,CARLA           |
| 02:11 |  |       |        | SUB OUT: REID,ASHLEY            |
| 02:11 |  |       |        | SUB IN: BREWER,MAYA             |
| 02:11 |  |       |        | SUB OUT: HAMPTON,JAIDA          |
| 02:11 |  |       |        | SUB IN: LAIR,DAWNYEL            |
| 02:11 |  |       |        | SUB OUT: HENDERSON,ASIA         |
| 02:11 |  |       |        | SUB IN: BASTIN,SERAPHINE        |
| 02:11 |  | 26-38 | V 12   | GOOD! FT by PRINCE,RAVEN        |
| 02:11 |  |       |        | SUB OUT: PRINCE,RAVEN           |
| 02:11 |  |       |        | SUB IN: LOZADA-CABBAGE,SABRINA  |
| 01:54 | MISSED 3PTR by BUCKNER,ABBY            |       |        |                                 |
| 01:50 | REBOUND (OFF) by LAMB,TAYLOR           |       |        |                                 |
| 01:49 | TURNOVER (LOSTBALL) by LAMB,TAYLOR     |       |        |                                 |
| 01:49 |  |       |        | SUB OUT: LAIR,DAWNYEL           |
| 01:49 |  |       |        | SUB IN: REID,ASHLEY             |
| 01:49 |  |       |        | SUB OUT: LOZADA-CABBAGE,SABRINA |
| 01:49 |  |       |        | SUB IN: FAYE,ALYSSIA            |
| 01:49 |  |       |        | SUB OUT: BREMAUD,CARLA          |
| 01:49 |  |       |        | SUB IN: COLBERT,TRAJATA         |
| 01:49 |  |       |        | SUB OUT: BREWER,MAYA            |
| 01:49 |  |       |        | SUB IN: HAMPTON,JAIDA           |
| 01:18 |  |       |        | TURNOVER (SHOTCLOCK) by         |
| 01:03 | MISSED 3PTR by BRADY,KESHA             |       |        |                                 |
| 00:55 |  |       |        | REBOUND (DEF) by HAMPTON,JAIDA  |
| 00:52 | FOUL (PERSONAL) by LAMB,TAYLOR         |       |        |                                 |
| 00:52 |  | 27-38 | V 11   | GOOD! FT by HAMPTON,JAIDA [FB]  |
| 00:52 | SUB OUT: LAMB,TAYLOR                   |       |        |                                 |
| 00:52 | SUB IN: COLEMAN,MACKENZIE              |       |        |                                 |
| 00:52 | SUB OUT: BUCKNER,ABBY                  |       |        |                                 |
| 00:52 | SUB IN: BROCK,JORDAN                   |       |        |                                 |
| 00:52 |  |       |        | MISSED FT by HAMPTON,JAIDA      |
| 00:52 | REBOUND (DEF) by WILKINSON,ANACIA      |       |        |                                 |
| 00:40 | GOOD! LAYUP by COLEMAN,MACKENZIE       | 27-40 | V 13   |                                 |
| 00:40 | ASSIST by ALEXANDER,KENTORIA           |       |        |                                 |
| 00:25 | FOUL (PERSONAL) by COLEMAN,MACKENZIE   |       |        |                                 |
| 00:25 | SUB OUT: ALEXANDER,KENTORIA            |       |        |                                 |
| 00:25 | SUB IN: HARRIS,AKIA                    |       |        |                                 |
| 00:21 |  |       |        | MISSED 3PTR by HAMPTON,JAIDA    |
| 00:17 | REBOUND (DEF) by WILKINSON,ANACIA      |       |        |                                 |
| 00:05 | TURNOVER (TRAVEL) by COLEMAN,MACKENZIE |       |        |                                 |
| 00:05 | SUB OUT: BROCK,JORDAN                  |       |        |                                 |
| 00:05 | SUB IN: ALEXANDER,KENTORIA             |       |        |                                 |
| 00:05 | SUB OUT: COLEMAN,MACKENZIE             |       |        |                                 |
| 00:05 | SUB IN: BUCKNER,ABBY                   |       |        |                                 |

### Tennessee Tech 40, Wichita St. 27

| Points from (This Period) | TTU | WSU |
|---------------------------|-----|-----|
| In the Paint              | 4   | 2   |
| Off Turns                 | 3   | 3   |
| 2nd Chance                | 7   | 0   |
| Fast Break                | 0   | 1   |
| Bench                     | 10  | 1   |

**This period only: TTU led for 30:11. WSU led for 30:05.  
Game was tied for 0:44.**

**Official Play-By-Play**  
**Tennessee Tech vs Wichita St.**  
**Fourth Quarter**  
**December 02, 2018 at Charles Koch Arena (Devlin Court) - Wichita, Kan.**

**Starters:**

**Tennessee Tech:** 0 HARRIS,AKIA; 2 BROCK,JORDAN; 11 ALEXANDER,KENTORIA; 14 BUCKNER,ABBY; 44 CANTRELL,LACY;  
**Wichita St.:** 11 LOZADA-CABBAGE,SABRINA; 12 BREMAUD,CARLA; 13 PRINCE,RAVEN; 15 HAMPTON,JAIDA; 23 BASTIN,SERAPHINE;

**Period 4**

| Time  | VISITORS: Tennessee Tech                | Score | Margin | HOME: Wichita St.                         |
|-------|---|-------|--------|---|
| 09:47 |   |       |        | TURNOVER (BADPASS) by LAIR,DAWNYEL        |
| 09:28 | GOOD! 3PTR by ALEXANDER,KENTORIA        | 27-43 | V 16   |   |
| 09:28 | ASSIST by LAMB,TAYLOR                   |       |        |   |
| 09:10 |   |       |        | MISSED JUMPER by FAYE,ALYSSIA             |
| 09:01 |   |       |        | REBOUND (OFF) by LOZADA-CABBAGE,SABRINA   |
| 09:01 |   | 29-43 | V 14   | GOOD! LAYUP by LOZADA-CABBAGE,SABRINA     |
| 08:49 |   |       |        | FOUL (PERSONAL) by LOZADA-CABBAGE,SABRINA |
| 08:49 | GOOD! FT by LAMB,TAYLOR                 | 29-44 | V 15   |   |
| 08:49 | SUB OUT: ALEXANDER,KENTORIA             |       |        |   |
| 08:49 | SUB IN: BROCK,JORDAN                    |       |        |   |
| 08:49 | MISSED FT by LAMB,TAYLOR                |       |        |   |
| 08:49 |   |       |        | REBOUND (DEF) by LOZADA-CABBAGE,SABRINA   |
| 08:35 |   |       |        | MISSED 3PTR by HAMPTON,JAIDA              |
| 08:31 | REBOUND (DEF) by BRADY,KESHA            |       |        |   |
| 08:12 | MISSED JUMPER by BRADY,KESHA            |       |        |   |
| 08:12 | REBOUND (OFF) by TEAM                   |       |        |   |
| 08:12 |   |       |        | SUB OUT: FAYE,ALYSSIA                     |
| 08:12 |   |       |        | SUB IN: PRINCE,RAVEN                      |
| 08:06 | TURNOVER (BADPASS) by HARRIS,AKIA       |       |        |   |
| 07:41 |   | 31-44 | V 13   | GOOD! LAYUP by LOZADA-CABBAGE,SABRINA     |
| 07:41 |   |       |        | ASSIST by REID,ASHLEY                     |
| 07:29 | SUB OUT: WILKINSON,ANACIA               |       |        |   |
| 07:29 | SUB IN: COLEMAN,MACKENZIE               |       |        |   |
| 07:20 | MISSED 3PTR by BRADY,KESHA              |       |        |   |
| 07:17 |   |       |        | REBOUND (DEF) by TEAM                     |
| 07:09 |   |       |        | TURNOVER (LOSTBALL) by LAIR,DAWNYEL       |
| 07:09 | STEAL by LAMB,TAYLOR                    |       |        |   |
| 06:59 |   |       |        | FOUL (PERSONAL) by LAIR,DAWNYEL           |
| 06:59 |   |       |        | SUB OUT: REID,ASHLEY                      |
| 06:59 |   |       |        | SUB IN: BASTIN,SERAPHINE                  |
| 06:59 | SUB OUT: HARRIS,AKIA                    |       |        |   |
| 06:59 | SUB IN: ALEXANDER,KENTORIA              |       |        |   |
| 06:59 | SUB OUT: BRADY,KESHA                    |       |        |   |
| 06:59 | SUB IN: BUCKNER,ABBY                    |       |        |   |
| 06:55 | MISSED 3PTR by BROCK,JORDAN             |       |        |   |
| 06:48 | REBOUND (OFF) by ALEXANDER,KENTORIA     |       |        |   |
| 06:48 | GOOD! LAYUP by ALEXANDER,KENTORIA       | 31-46 | V 15   |   |
| 06:30 | FOUL (PERSONAL) by LAMB,TAYLOR          |       |        |   |
| 06:30 |   |       |        | SUB OUT: LOZADA-CABBAGE,SABRINA           |
| 06:30 |   |       |        | SUB IN: HENDERSON,ASIA                    |
| 06:26 |   |       |        | MISSED JUMPER by HAMPTON,JAIDA            |
| 06:23 | REBOUND (DEF) by ALEXANDER,KENTORIA     |       |        |   |
| 06:00 | GOOD! JUMPER by LAMB,TAYLOR             | 31-48 | V 17   |   |
| 05:41 |   |       |        | MISSED LAYUP by HENDERSON,ASIA            |
| 05:37 |   |       |        | REBOUND (OFF) by LAIR,DAWNYEL             |
| 05:34 |   |       |        | MISSED LAYUP by LAIR,DAWNYEL              |
| 05:34 | BLOCK by COLEMAN,MACKENZIE              |       |        |   |
| 05:24 |   |       |        | REBOUND (OFF) by BASTIN,SERAPHINE         |
| 05:18 | FOUL (PERSONAL) by COLEMAN,MACKENZIE    |       |        |   |
| 05:18 | SUB OUT: BROCK,JORDAN                   |       |        |   |
| 05:18 | SUB IN: BRADY,KESHA                     |       |        |   |
| 05:11 |   |       |        | MISSED LAYUP by HENDERSON,ASIA            |
| 05:09 |   |       |        | REBOUND (OFF) by TEAM                     |
| 04:59 |   | 33-48 | V 15   | GOOD! JUMPER by HAMPTON,JAIDA             |
| 04:59 |   |       |        | ASSIST by BASTIN,SERAPHINE                |
| 04:42 | TURNOVER (BADPASS) by BRADY,KESHA       |       |        |   |
| 04:42 |   |       |        | STEAL by LAIR,DAWNYEL                     |
| 04:42 | FOUL (PERSONAL) by BUCKNER,ABBY         |       |        |   |
| 04:42 |   |       |        |   |
| 04:42 | SUB OUT: COLEMAN,MACKENZIE              |       |        |   |
| 04:42 | SUB IN: WILKINSON,ANACIA                |       |        |   |
| 04:42 | SUB OUT: BUCKNER,ABBY                   |       |        |   |
| 04:42 | SUB IN: HARRIS,AKIA                     |       |        |   |
| 04:29 | SUB OUT: BRADY,KESHA                    |       |        |   |
| 04:29 | SUB IN: BUCKNER,ABBY                    |       |        |   |
| 04:29 |   |       |        | MISSED LAYUP by HAMPTON,JAIDA             |
| 04:29 | BLOCK by WILKINSON,ANACIA               |       |        |   |
| 04:29 |   |       |        | REBOUND (OFF) by TEAM                     |
| 04:20 | FOUL (PERSONAL) by WILKINSON,ANACIA     |       |        |   |
| 04:20 |   | 34-48 | V 14   | GOOD! FT by HAMPTON,JAIDA                 |
| 04:20 |   | 35-48 | V 13   | GOOD! FT by HAMPTON,JAIDA                 |
| 04:20 | TURNOVER (TRAVEL) by ALEXANDER,KENTORIA |       |        |   |
| 04:20 | SUB OUT: HARRIS,AKIA                    |       |        |   |
| 04:20 | SUB IN: BROCK,JORDAN                    |       |        |   |
| 04:18 |   |       |        | TURNOVER (BADPASS) by BASTIN,SERAPHINE    |
| 04:18 | STEAL by BROCK,JORDAN                   |       |        |   |

| Time  | VISITORS: Tennessee Tech                | Score | Margin | HOME: Wichita St.                         |
|-------|---|-------|--------|---|
| 04:13 |   |       |        | FOUL (PERSONAL) by LAIR,DAWNYEL           |
| 03:56 | TURNOVER (BADPASS) by BROCK,JORDAN      |       |        |   |
| 03:56 |   |       |        | STEAL by LAIR,DAWNYEL                     |
| 03:49 |   | 37-48 | V 11   | GOOD! LAYUP by LAIR,DAWNYEL [PNT]         |
| 03:49 | FOUL (PERSONAL) by ALEXANDER,KENTORIA   |       |        |   |
| 03:49 |   |       |        | MISSED FT by LAIR,DAWNYEL                 |
| 03:49 | REBOUND (DEF) by WILKINSON,ANACIA       |       |        |   |
| 03:49 | TURNOVER (LOSTBALL) by WILKINSON,ANACIA |       |        |   |
| 03:49 |   |       |        | STEAL by HAMPTON,JAIDA                    |
| 03:49 |   | 39-48 | V 9    | GOOD! LAYUP by HAMPTON,JAIDA              |
| 03:18 | TURNOVER (BADPASS) by HARRIS,AKIA       |       |        |   |
| 03:18 |   |       |        | STEAL by BASTIN,SERAPHINE                 |
| 03:11 |   | 41-48 | V 7    | GOOD! JUMPER by BASTIN,SERAPHINE [FB/PNT] |
| 03:05 | TURNOVER (LOSTBALL) by BRADY,KESHA      |       |        |   |
| 03:05 |   |       |        | STEAL by BASTIN,SERAPHINE                 |
| 02:53 |   | 43-48 | V 5    | GOOD! LAYUP by BASTIN,SERAPHINE           |
| 02:53 | TIMEOUT 30SEC                           |       |        |   |
| 02:53 | SUB OUT: BUCKNER,ABBY                   |       |        |   |
| 02:53 | SUB IN: HARRIS,AKIA                     |       |        |   |
| 02:42 | TURNOVER (BADPASS) by WILKINSON,ANACIA  |       |        |   |
| 02:42 |   |       |        | STEAL by HENDERSON,ASIA                   |
| 02:29 |   |       |        | MISSED 3PTR by HAMPTON,JAIDA              |
| 02:25 | REBOUND (DEF) by LAMB,TAYLOR            |       |        |   |
| 02:25 | SUB OUT: WILKINSON,ANACIA               |       |        |   |
| 02:25 | SUB IN: BUCKNER,ABBY                    |       |        |   |
| 02:09 |   |       |        | FOUL (PERSONAL) by PRINCE,RAVEN           |
| 01:58 | GOOD! 3PTR by BUCKNER,ABBY              | 43-51 | V 8    |   |
| 01:58 | ASSIST by HARRIS,AKIA                   |       |        |   |
| 01:54 |   |       |        | FOUL (OFF) by HAMPTON,JAIDA               |
| 01:54 |   |       |        | TURNOVER (OFFENSIVE) by HAMPTON,JAIDA     |
| 01:26 |   |       |        | FOUL (PERSONAL) by HAMPTON,JAIDA          |
| 01:26 | MISSED FT by BROCK,JORDAN               |       |        |   |
| 01:26 | REBOUND (OFF) by TEAM                   |       |        |   |
| 01:26 | GOOD! FT by BROCK,JORDAN                | 43-52 | V 9    |   |
| 01:19 |   |       |        | TURNOVER (LOSTBALL) by LAIR,DAWNYEL       |
| 01:19 | STEAL by HARRIS,AKIA                    |       |        |   |
| 01:02 | GOOD! 3PTR by BROCK,JORDAN              | 43-55 | V 12   |   |
| 00:46 |   |       |        | TURNOVER (BADPASS) by LAIR,DAWNYEL        |
| 00:23 | TURNOVER (TRAVEL) by HARRIS,AKIA        |       |        |   |
| 00:14 |   |       |        | TIMEOUT 30SEC                             |
| 00:14 | SUB OUT: BROCK,JORDAN                   |       |        |   |
| 00:14 | SUB IN: BRADY,KESHA                     |       |        |   |
| 00:08 |   | 45-55 | V 10   | GOOD! LAYUP by HENDERSON,ASIA             |
| 00:08 |   |       |        | ASSIST by LAIR,DAWNYEL                    |

### Tennessee Tech 55, Wichita St. 45

| Points from (This Period) | TTU | WSU |
|---------------------------|-----|-----|
| In the Paint              | 2   | 14  |
| Off Turns                 | 9   | 13  |
| 2nd Chance                | 2   | 6   |
| Fast Break                | 0   | 2   |
| Bench                     | 3   | 4   |

**This period only:TTU led for 30:11. WSU led for 30:05.  
Game was tied for 0:44.**

**Official Scoring/Possession Reference Chart  
Tennessee Tech vs Wichita St.**

**Period 1**

**December 02, 2018 at Charles Koch Arena (Devlin Court) - Wichita, Kan.**

**Starters:**

**Tennessee Tech:** 0 HARRIS,AKIA; 2 BROCK,JORDAN; 11 ALEXANDER,KENTORIA; 14 BUCKNER,ABBY; 44 CANTRELL,LACY;

**Wichita St.:** 11 LOZADA-CABBAGE,SABRINA; 12 BREMAUD,CARLA; 13 PRINCE,RAVEN; 15 HAMPTON,JAIDA; 23 BASTIN,SERAPHINE;

**Period 1**

| Time  | VISITORS: Tennessee Tech      | Score | Margin | HOME: Wichita St.             |
|-------|-------------------------------|-------|--------|-------------------------------|
| 08:05 | GOOD! LAYUP by CANTRELL,LACY  | 0-2   | V 2    |                               |
| 08:05 | GOOD! FT by CANTRELL,LACY     | 0-3   | V 3    |                               |
| 07:06 |                               | 3-3   | T      | GOOD! 3PTR by BREMAUD,CARLA   |
| 05:57 |                               | 6-3   | H 3    | GOOD! 3PTR by HAMPTON,JAIDA   |
| 04:52 | GOOD! LAYUP by LAMB,TAYLOR    | 6-5   | H 1    |                               |
| 03:39 |                               | 7-5   | H 2    | GOOD! FT by REID,ASHLEY [FB]  |
| 03:39 |                               | 8-5   | H 3    | GOOD! FT by REID,ASHLEY [FB]  |
| 03:20 | GOOD! LAYUP by LAMB,TAYLOR    | 8-7   | H 1    |                               |
| 02:59 |                               | 10-7  | H 3    | GOOD! LAYUP by HENDERSON,ASIA |
| 01:26 | GOOD! LAYUP by LAMB,TAYLOR    | 10-9  | H 1    |                               |
| 00:52 | GOOD! LAYUP by CANTRELL,LACY  | 10-11 | V 1    |                               |
| 00:52 | GOOD! FT by CANTRELL,LACY     | 10-12 | V 2    |                               |
| 00:38 | GOOD! FT by BROCK,JORDAN [FB] | 10-13 | V 3    |                               |
| 00:24 |                               | 12-13 | V 1    | GOOD! LAYUP by SMITH,SHYIA    |
| 00:09 | GOOD! FT by CANTRELL,LACY     | 12-14 | V 2    |                               |

**Tennessee Tech 14, Wichita St. 12**

**Official Scoring/Possession Reference Chart  
Tennessee Tech vs Wichita St.**

**Period 2**

**December 02, 2018 at Charles Koch Arena (Devlin Court) - Wichita, Kan.**

**Starters:**

**Tennessee Tech:** 0 HARRIS,AKIA; 2 BROCK,JORDAN; 11 ALEXANDER,KENTORIA; 14 BUCKNER,ABBY; 44 CANTRELL,LACY;

**Wichita St.:** 11 LOZADA-CABBAGE,SABRINA; 12 BREMAUD,CARLA; 13 PRINCE,RAVEN; 15 HAMPTON,JAIDA; 23 BASTIN,SERAPHINE;

**Period 2**

| Time  | VISITORS: Tennessee Tech        | Score | Margin | HOME: Wichita St.                     |
|-------|---------------------------------|-------|--------|---------------------------------------|
| 07:06 |                                 | 14-14 | T      | GOOD! JUMPER by PEACOCK,JADA [PNT]    |
| 06:22 | GOOD! FT by LAMB,TAYLOR         | 14-15 | V 1    |                                       |
| 06:22 | GOOD! FT by LAMB,TAYLOR         | 14-16 | V 2    |                                       |
| 05:25 |                                 | 16-16 | T      | GOOD! JUMPER by FAYE,ALYSSIA          |
| 04:37 | GOOD! FT by COLEMAN,MACKENZIE   | 16-17 | V 1    |                                       |
| 04:37 | GOOD! FT by COLEMAN,MACKENZIE   | 16-18 | V 2    |                                       |
| 04:16 | GOOD! LAYUP by LAMB,TAYLOR [FB] | 16-20 | V 4    |                                       |
| 03:39 | GOOD! 3PTR by HARRIS,AKIA       | 16-23 | V 7    |                                       |
| 03:14 |                                 | 19-23 | V 4    | GOOD! 3PTR by BREWER,MAYA             |
| 02:40 |                                 | 21-23 | V 2    | GOOD! LAYUP by LOZADA-CABBAGE,SABRINA |
| 02:19 | GOOD! JUMPER by LAMB,TAYLOR     | 21-25 | V 4    |                                       |
| 00:02 | GOOD! LAYUP by WILKINSON,ANACIA | 21-27 | V 6    |                                       |

**Tennessee Tech 27, Wichita St. 21**

**Official Scoring/Possession Reference Chart  
Tennessee Tech vs Wichita St.**

**Period 3**

**December 02, 2018 at Charles Koch Arena (Devlin Court) - Wichita, Kan.**

**Starters:**

**Tennessee Tech:** 0 HARRIS,AKIA; 2 BROCK,JORDAN; 11 ALEXANDER,KENTORIA; 14 BUCKNER,ABBY; 44 CANTRELL,LACY;

**Wichita St.:** 11 LOZADA-CABBAGE,SABRINA; 12 BREMAUD,CARLA; 13 PRINCE,RAVEN; 15 HAMPTON,JAIDA; 23 BASTIN,SERAPHINE;

**Period 3**

| Time  | VISITORS: Tennessee Tech | Score | Margin | HOME: Wichita St.             |
|-------|--------------------------|-------|--------|-------------------------------|
| 09:33 |                          | 23-27 | V 4    | GOOD! JUMPER by BREMAUD,CARLA |

| Time  | VISITORS: Tennessee Tech         | Score | Margin | HOME: Wichita St.              |
|-------|----------------------------------|-------|--------|--------------------------------|
| 08:49 | GOOD! 3PTR by BUCKNER,ABBY       | 23-30 | V 7    |                                |
| 05:44 |                                  | 24-30 | V 6    | GOOD! FT by BREWER,MAYA        |
| 05:24 | GOOD! FT by BRADY,KESHA          | 24-31 | V 7    |                                |
| 05:24 | GOOD! FT by BRADY,KESHA          | 24-32 | V 8    |                                |
| 04:00 | GOOD! JUMPER by LAMB,TAYLOR      | 24-34 | V 10   |                                |
| 03:16 | GOOD! JUMPER by BRADY,KESHA      | 24-36 | V 12   |                                |
| 02:29 | GOOD! LAYUP by BRADY,KESHA       | 24-38 | V 14   |                                |
| 02:11 |                                  | 25-38 | V 13   | GOOD! FT by PRINCE,RAVEN       |
| 02:11 |                                  | 26-38 | V 12   | GOOD! FT by PRINCE,RAVEN       |
| 00:52 |                                  | 27-38 | V 11   | GOOD! FT by HAMPTON,JAIDA [FB] |
| 00:40 | GOOD! LAYUP by COLEMAN,MACKENZIE | 27-40 | V 13   |                                |

**Tennessee Tech 40, Wichita St. 27**

**Official Scoring/Possession Reference Chart  
Tennessee Tech vs Wichita St.  
Period 4**

**December 02, 2018 at Charles Koch Arena (Devlin Court) - Wichita, Kan.**

**Starters:**

**Tennessee Tech:** 0 HARRIS,AKIA; 2 BROCK,JORDAN; 11 ALEXANDER,KENTORIA; 14 BUCKNER,ABBY; 44 CANTRELL,LACY;  
**Wichita St.:** 11 LOZADA-CABBAGE,SABRINA; 12 BREMAUD,CARLA; 13 PRINCE,RAVEN; 15 HAMPTON,JAIDA; 23 BASTIN,SERAPHINE;

**Period 4**

| Time  | VISITORS: Tennessee Tech          | Score | Margin | HOME: Wichita St.                         |
|-------|-----------------------------------|-------|--------|---|
| 09:28 | GOOD! 3PTR by ALEXANDER,KENTORIA  | 27-43 | V 16   |   |
| 09:01 |                                   | 29-43 | V 14   | GOOD! LAYUP by LOZADA-CABBAGE,SABRINA     |
| 08:49 | GOOD! FT by LAMB,TAYLOR           | 29-44 | V 15   |   |
| 07:41 |                                   | 31-44 | V 13   | GOOD! LAYUP by LOZADA-CABBAGE,SABRINA     |
| 06:48 | GOOD! LAYUP by ALEXANDER,KENTORIA | 31-46 | V 15   |   |
| 06:00 | GOOD! JUMPER by LAMB,TAYLOR       | 31-48 | V 17   |   |
| 04:59 |                                   | 33-48 | V 15   | GOOD! JUMPER by HAMPTON,JAIDA             |
| 04:20 |                                   | 34-48 | V 14   | GOOD! FT by HAMPTON,JAIDA                 |
| 04:20 |                                   | 35-48 | V 13   | GOOD! FT by HAMPTON,JAIDA                 |
| 03:49 |                                   | 37-48 | V 11   | GOOD! LAYUP by LAIR,DAWNYEL [PNT]         |
| 03:49 |                                   | 39-48 | V 9    | GOOD! LAYUP by HAMPTON,JAIDA              |
| 03:11 |                                   | 41-48 | V 7    | GOOD! JUMPER by BASTIN,SERAPHINE [FB/PNT] |
| 02:53 |                                   | 43-48 | V 5    | GOOD! LAYUP by BASTIN,SERAPHINE           |
| 01:58 | GOOD! 3PTR by BUCKNER,ABBY        | 43-51 | V 8    |   |
| 01:26 | GOOD! FT by BROCK,JORDAN          | 43-52 | V 9    |   |
| 01:02 | GOOD! 3PTR by BROCK,JORDAN        | 43-55 | V 12   |   |
| 00:08 |                                   | 45-55 | V 10   | GOOD! LAYUP by HENDERSON,ASIA             |

**Tennessee Tech 55, Wichita St. 45**

**Official Substitutions Log  
Tennessee Tech vs Wichita St.  
Period 1**

**December 02, 2018 at Charles Koch Arena (Devlin Court) - Wichita, Kan.**

| VISITORS: Tennessee Tech    | Time  | Score | HOME: Wichita St.         |
|-----------------------------|-------|-------|---------------------------|
| 0 HARRIS,AKIA               |       |       | 11 LOZADA-CABBAGE,SABRINA |
| 2 BROCK,JORDAN              |       |       | 12 BREMAUD,CARLA          |
| 11 ALEXANDER,KENTORIA       |       |       | 13 PRINCE,RAVEN           |
| 14 BUCKNER,ABBY             |       |       | 15 HAMPTON,JAIDA          |
| 44 CANTRELL,LACY            |       |       | 23 BASTIN,SERAPHINE       |
| SUB OUT: 2 BROCK,JORDAN     | 05:32 | 3-6   |                           |
| SUB IN: 15 WILKINSON,ANACIA | 05:32 |       |                           |
| SUB OUT: 14 BUCKNER,ABBY    | 05:32 |       |                           |
| SUB IN: 20 BRADY,KESHA      | 05:32 |       |                           |
| SUB OUT: 44 CANTRELL,LACY   | 05:32 |       |                           |
| SUB IN: 10 LAMB,TAYLOR      | 05:32 |       |                           |
|                             | 05:08 | 3-6   | SUB OUT: BREMAUD,CARLA    |
|                             | 05:08 |       | SUB IN: REID,ASHLEY       |
|                             | 04:52 | 5-6   | SUB OUT: PRINCE,RAVEN     |
|                             | 04:52 |       | SUB IN: HENDERSON,ASIA    |

| <b>VISITORS: Tennessee Tech</b> | <b>Time</b> | <b>Score</b> | <b>HOME: Wichita St.</b>        |
|---------------------------------|-------------|--------------|---------------------------------|
| SUB OUT: 11 ALEXANDER,KENTORIA  | 03:54       | 5-6          |                                 |
| SUB IN: 2 BROCK,JORDAN          | 03:54       |              |                                 |
| SUB OUT: 15 WILKINSON,ANACIA    | 03:39       | 5-7          |                                 |
| SUB IN: 33 COLEMAN,MACKENZIE    | 03:39       |              |                                 |
|                                 | 02:32       | 7-10         | SUB OUT: HAMPTON,JAIDA          |
|                                 | 02:32       |              | SUB IN: LAIR,DAWNYEL            |
| SUB OUT: 33 COLEMAN,MACKENZIE   | 01:38       | 7-10         |                                 |
| SUB IN: 11 ALEXANDER,KENTORIA   | 01:38       |              |                                 |
| SUB OUT: 0 HARRIS,AKIA          | 01:38       |              |                                 |
| SUB IN: 44 CANTRELL,LACY        | 01:38       |              |                                 |
|                                 | 00:52       | 11-10        | SUB OUT: LOZADA-CABBAGE,SABRINA |
|                                 | 00:52       |              | SUB IN: SMITH,SHYIA             |
|                                 | 00:52       |              | SUB OUT: BASTIN,SERAPHINE       |
|                                 | 00:52       |              | SUB IN: BREMAUD,CARLA           |
| SUB OUT: 10 LAMB,TAYLOR         | 00:52       |              |                                 |
| SUB IN: 33 COLEMAN,MACKENZIE    | 00:52       |              |                                 |
|                                 | 00:38       | 13-10        | SUB OUT: REID,ASHLEY            |
|                                 | 00:38       |              | SUB IN: PEACOCK,JADA            |

**Tennessee Tech 14, Wichita St. 12**

**Official Substitutions Log**  
**Tennessee Tech vs Wichita St.**  
**Period 2**  
**December 02, 2018 at Charles Koch Arena (Devlin Court) - Wichita, Kan.**

| VISITORS: Tennessee Tech      | Time  | Score | HOME: Wichita St.               |
|-------------------------------|-------|-------|---------------------------------|
| 0 HARRIS,AKIA                 |       |       | 11 LOZADA-CABBAGE,SABRINA       |
| 2 BROCK,JORDAN                |       |       | 12 BREMAUD,CARLA                |
| 11 ALEXANDER,KENTORIA         |       |       | 13 PRINCE,RAVEN                 |
| 14 BUCKNER,ABBY               |       |       | 15 HAMPTON,JAIDA                |
| 44 CANTRELL,LACY              |       |       | 23 BASTIN,SERAPHINE             |
| SUB OUT: 20 BRADY,KESHA       | 08:01 | -     |                                 |
| SUB IN: 0 HARRIS,AKIA         | 08:01 |       |                                 |
| SUB OUT: 33 COLEMAN,MACKENZIE | 08:01 |       |                                 |
| SUB IN: 10 LAMB,TAYLOR        | 08:01 |       |                                 |
|                               | 06:22 | 15-14 | SUB OUT: BREWER,MAYA            |
|                               | 06:22 |       | SUB IN: BREMAUD,CARLA           |
|                               | 06:22 |       | SUB OUT: SMITH,SHYIA            |
|                               | 06:22 |       | SUB IN: FAYE,ALYSSIA            |
|                               | 05:59 | 16-14 | SUB OUT: PEACOCK,JADA           |
|                               | 05:59 |       | SUB IN: BREWER,MAYA             |
| SUB OUT: 44 CANTRELL,LACY     | 04:49 | 16-16 |                                 |
| SUB IN: 33 COLEMAN,MACKENZIE  | 04:49 |       |                                 |
|                               | 01:40 | 25-21 | SUB OUT: BREWER,MAYA            |
|                               | 01:40 |       | SUB IN: LAIR,DAWNYEL            |
| SUB OUT: 2 BROCK,JORDAN       | 01:40 |       |                                 |
| SUB IN: 20 BRADY,KESHA        | 01:40 |       |                                 |
|                               | 00:58 | 25-21 | SUB OUT: LOZADA-CABBAGE,SABRINA |
|                               | 00:58 |       | SUB IN: SMITH,SHYIA             |
| SUB OUT: 10 LAMB,TAYLOR       | 00:04 | 25-21 |                                 |
| SUB IN: 15 WILKINSON,ANACIA   | 00:04 |       |                                 |

**Tennessee Tech 27, Wichita St. 21**

**Official Substitutions Log**  
**Tennessee Tech vs Wichita St.**  
**Period 3**  
**December 02, 2018 at Charles Koch Arena (Devlin Court) - Wichita, Kan.**

| VISITORS: Tennessee Tech       | Time  | Score | HOME: Wichita St.               |
|--------------------------------|-------|-------|---------------------------------|
| 0 HARRIS,AKIA                  |       |       | 11 LOZADA-CABBAGE,SABRINA       |
| 2 BROCK,JORDAN                 |       |       | 12 BREMAUD,CARLA                |
| 11 ALEXANDER,KENTORIA          |       |       | 13 PRINCE,RAVEN                 |
| 14 BUCKNER,ABBY                |       |       | 15 HAMPTON,JAIDA                |
| 44 CANTRELL,LACY               |       |       | 23 BASTIN,SERAPHINE             |
|                                | 07:25 | 30-23 | SUB OUT: HAMPTON,JAIDA          |
|                                | 07:25 |       | SUB IN: BREWER,MAYA             |
| SUB OUT: 44 CANTRELL,LACY      | 06:01 | 30-23 |                                 |
| SUB IN: 10 LAMB,TAYLOR         | 06:01 |       |                                 |
|                                | 05:53 | 30-23 | SUB OUT: PRINCE,RAVEN           |
|                                | 05:53 |       | SUB IN: LAIR,DAWNYEL            |
| SUB OUT: 11 ALEXANDER,KENTORIA | 05:53 |       |                                 |
| SUB IN: 20 BRADY,KESHA         | 05:53 |       |                                 |
| SUB OUT: 11 ALEXANDER,KENTORIA | 05:24 | 30-24 |                                 |
| SUB IN: 20 BRADY,KESHA         | 05:24 |       |                                 |
| SUB OUT: 0 HARRIS,AKIA         | 05:10 | 32-24 |                                 |
| SUB IN: 11 ALEXANDER,KENTORIA  | 05:10 |       |                                 |
| SUB OUT: 2 BROCK,JORDAN        | 05:00 | 32-24 |                                 |
| SUB IN: 15 WILKINSON,ANACIA    | 05:00 |       |                                 |
|                                | 03:00 | 36-24 | SUB OUT: LAIR,DAWNYEL           |
|                                | 03:00 |       | SUB IN: REID,ASHLEY             |
|                                | 03:00 |       | SUB OUT: LOZADA-CABBAGE,SABRINA |
|                                | 03:00 |       | SUB IN: PEACOCK,JADA            |
|                                | 03:00 |       | SUB OUT: BREMAUD,CARLA          |
|                                | 03:00 |       | SUB IN: HAMPTON,JAIDA           |
|                                | 03:00 |       | SUB OUT: BREWER,MAYA            |
|                                | 03:00 |       | SUB IN: PRINCE,RAVEN            |
|                                | 03:00 |       | SUB OUT: BASTIN,SERAPHINE       |
|                                | 03:00 |       | SUB IN: HENDERSON,ASIA          |
|                                | 02:11 | 38-25 | SUB OUT: PEACOCK,JADA           |
|                                | 02:11 |       | SUB IN: BREMAUD,CARLA           |
|                                | 02:11 |       | SUB OUT: REID,ASHLEY            |
|                                | 02:11 |       | SUB IN: BREWER,MAYA             |
|                                | 02:11 |       | SUB OUT: HAMPTON,JAIDA          |
|                                | 02:11 |       | SUB IN: LAIR,DAWNYEL            |
|                                | 02:11 |       | SUB OUT: HENDERSON,ASIA         |
|                                | 02:11 |       | SUB IN: BASTIN,SERAPHINE        |
|                                | 02:11 |       | SUB OUT: PRINCE,RAVEN           |
|                                | 02:11 |       | SUB IN: LOZADA-CABBAGE,SABRINA  |
|                                | 01:49 | 38-26 | SUB OUT: LAIR,DAWNYEL           |
|                                | 01:49 |       | SUB IN: REID,ASHLEY             |
|                                | 01:49 |       | SUB OUT: LOZADA-CABBAGE,SABRINA |
|                                | 01:49 |       | SUB IN: FAYE,ALYSSIA            |
|                                | 01:49 |       | SUB OUT: BREMAUD,CARLA          |
|                                | 01:49 |       | SUB IN: COLBERT,TRAJATA         |



| VISITORS: Tennessee Tech       | Time  | Score | HOME: Wichita St.     |
|--------------------------------|-------|-------|-----------------------|
|                                | 01:49 |       | SUB OUT: BREWER,MAYA  |
|                                | 01:49 |       | SUB IN: HAMPTON,JAIDA |
| SUB OUT: 10 LAMB,TAYLOR        | 00:52 | 38-27 |                       |
| SUB IN: 33 COLEMAN,MACKENZIE   | 00:52 |       |                       |
| SUB OUT: 14 BUCKNER,ABBY       | 00:52 |       |                       |
| SUB IN: 2 BROCK,JORDAN         | 00:52 |       |                       |
| SUB OUT: 11 ALEXANDER,KENTORIA | 00:25 | 40-27 |                       |
| SUB IN: 0 HARRIS,AKIA          | 00:25 |       |                       |
| SUB OUT: 2 BROCK,JORDAN        | 00:05 | 40-27 |                       |
| SUB IN: 11 ALEXANDER,KENTORIA  | 00:05 |       |                       |
| SUB OUT: 33 COLEMAN,MACKENZIE  | 00:05 |       |                       |
| SUB IN: 14 BUCKNER,ABBY        | 00:05 |       |                       |

**Tennessee Tech 40, Wichita St. 27**

**Official Substitutions Log  
Tennessee Tech vs Wichita St.  
Period 4**

**December 02, 2018 at Charles Koch Arena (Devlin Court) - Wichita, Kan.**

| <b>VISITORS: Tennessee Tech</b> | <b>Time</b> | <b>Score</b> | <b>HOME: Wichita St.</b>         |
|---------------------------------|-------------|--------------|----------------------------------|
| 0 HARRIS, AKIA                  |             |              | 11 LOZADA-CABBAGE, SABRINA       |
| 2 BROCK, JORDAN                 |             |              | 12 BREMAUD, CARLA                |
| 11 ALEXANDER, KENTORIA          |             |              | 13 PRINCE, RAVEN                 |
| 14 BUCKNER, ABBY                |             |              | 15 HAMPTON, JAIDA                |
| 44 CANTRELL, LACY               |             |              | 23 BASTIN, SERAPHINE             |
| SUB OUT: 11 ALEXANDER, KENTORIA | 08:49       | 44-29        |                                  |
| SUB IN: 2 BROCK, JORDAN         | 08:49       |              |                                  |
|                                 | 08:12       | 44-29        | SUB OUT: FAYE, ALYSSIA           |
|                                 | 08:12       |              | SUB IN: PRINCE, RAVEN            |
| SUB OUT: 15 WILKINSON, ANACIA   | 07:29       | 44-31        |                                  |
| SUB IN: 33 COLEMAN, MACKENZIE   | 07:29       |              |                                  |
|                                 | 06:59       | 44-31        | SUB OUT: REID, ASHLEY            |
|                                 | 06:59       |              | SUB IN: BASTIN, SERAPHINE        |
| SUB OUT: 0 HARRIS, AKIA         | 06:59       |              |                                  |
| SUB IN: 11 ALEXANDER, KENTORIA  | 06:59       |              |                                  |
| SUB OUT: 20 BRADY, KESHA        | 06:59       |              |                                  |
| SUB IN: 14 BUCKNER, ABBY        | 06:59       |              |                                  |
|                                 | 06:30       | 46-31        | SUB OUT: LOZADA-CABBAGE, SABRINA |
|                                 | 06:30       |              | SUB IN: HENDERSON, ASIA          |
| SUB OUT: 2 BROCK, JORDAN        | 05:18       | 48-31        |                                  |
| SUB IN: 20 BRADY, KESHA         | 05:18       |              |                                  |
| SUB OUT: 33 COLEMAN, MACKENZIE  | 04:42       | 48-33        |                                  |
| SUB IN: 15 WILKINSON, ANACIA    | 04:42       |              |                                  |
| SUB OUT: 14 BUCKNER, ABBY       | 04:42       |              |                                  |
| SUB IN: 0 HARRIS, AKIA          | 04:42       |              |                                  |
| SUB OUT: 20 BRADY, KESHA        | 04:29       | 48-33        |                                  |
| SUB IN: 14 BUCKNER, ABBY        | 04:29       |              |                                  |
| SUB OUT: 0 HARRIS, AKIA         | 04:20       | 48-35        |                                  |
| SUB IN: 2 BROCK, JORDAN         | 04:20       |              |                                  |
| SUB OUT: 14 BUCKNER, ABBY       | 02:53       | 48-43        |                                  |
| SUB IN: 0 HARRIS, AKIA          | 02:53       |              |                                  |
| SUB OUT: 15 WILKINSON, ANACIA   | 02:25       | 48-43        |                                  |
| SUB IN: 14 BUCKNER, ABBY        | 02:25       |              |                                  |
| SUB OUT: 2 BROCK, JORDAN        | 00:14       | 55-43        |                                  |
| SUB IN: 20 BRADY, KESHA         | 00:14       |              |                                  |

**Tennessee Tech 55, Wichita St. 45**

**Official Shot Chart**  
**Tennessee Tech vs Wichita St.**  
**PERIOD 1 Shots**  
 December 02, 2018 at Charles Koch Arena (Devlin Court) - Wichita, Kan.

**Wichita St.**

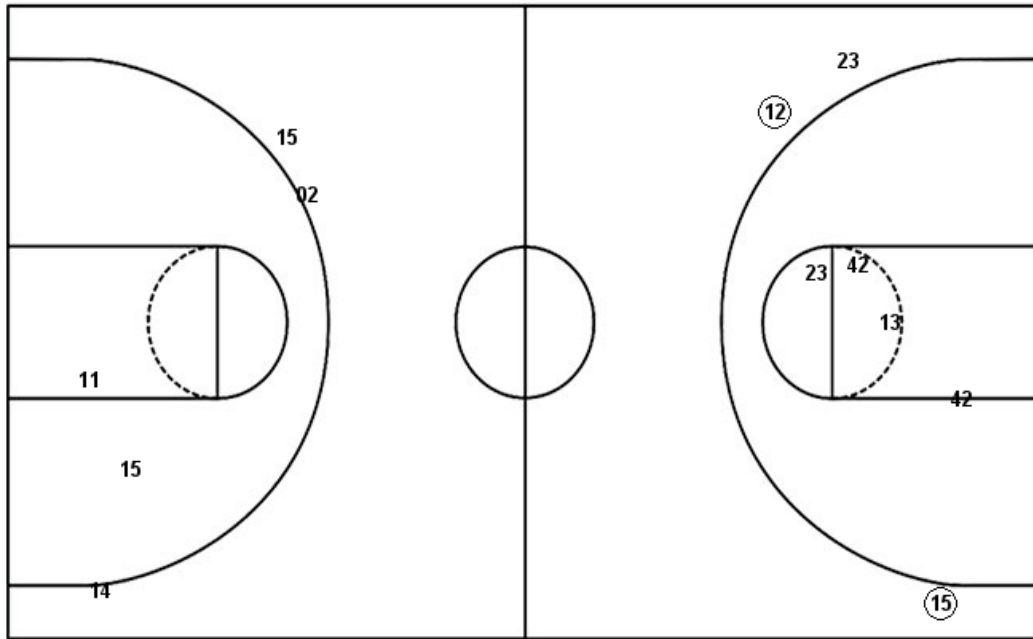
**Tennessee Tech**

Layups  
 11 13 11 11 11  
 12 (42) 05 (34)

Layups  
 44 00 (44) 02 (10)  
 11 15 15 11 20  
 (10) (10) (44)

Dunks

Dunks



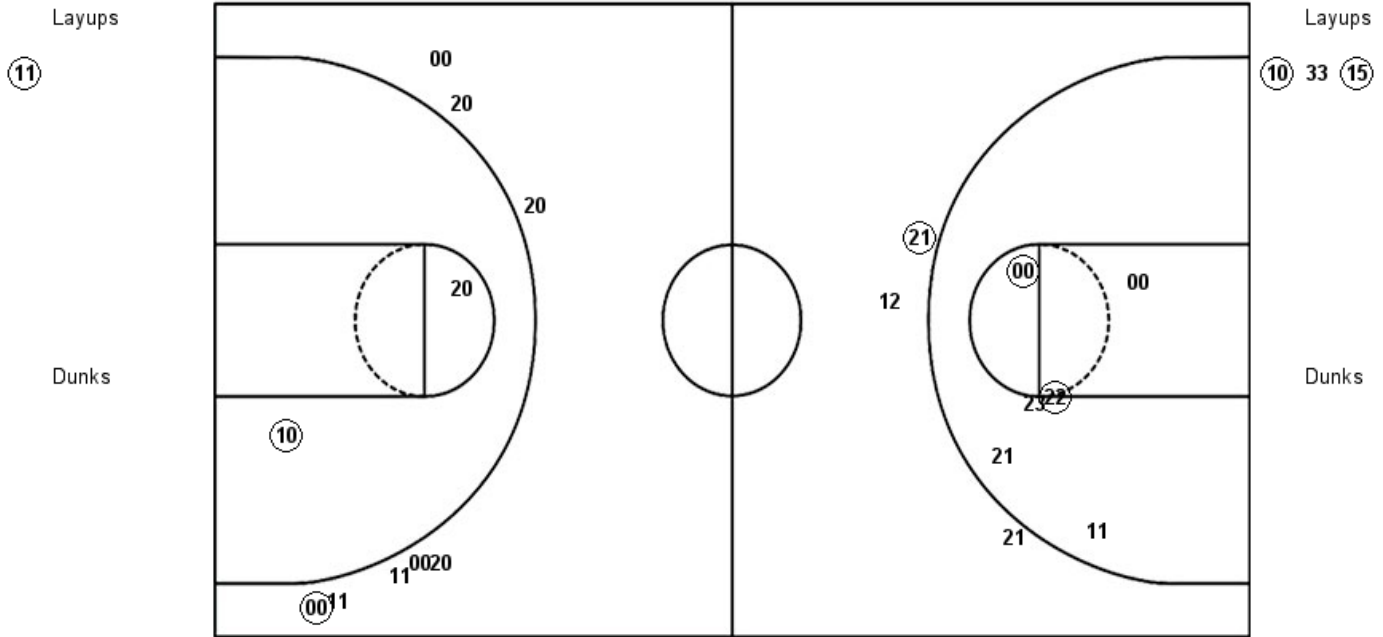
| WSU : Period 1           | Made     | Att       | Pct         |
|--------------------------|----------|-----------|-------------|
| Layups                   | 2        | 9         | 22.2        |
| Dunks                    | 0        | 0         | 0           |
| 2PT Field Goals          | 2        | 13        | 15.4        |
| 3PT Field Goals          | 2        | 3         | 66.7        |
| <b>Total Field Goals</b> | <b>4</b> | <b>16</b> | <b>25.0</b> |

| TTU : Period 1           | Made     | Att       | Pct         |
|--------------------------|----------|-----------|-------------|
| Layups                   | 5        | 13        | 38.5        |
| Dunks                    | 0        | 0         | 0           |
| 2PT Field Goals          | 5        | 15        | 33.3        |
| 3PT Field Goals          | 0        | 3         | 00.0        |
| <b>Total Field Goals</b> | <b>5</b> | <b>18</b> | <b>27.8</b> |

**Official Shot Chart**  
**Tennessee Tech vs Wichita St.**  
**PERIOD 2 Shots**  
 December 02, 2018 at Charles Koch Arena (Devlin Court) - Wichita, Kan.

**Wichita St.**

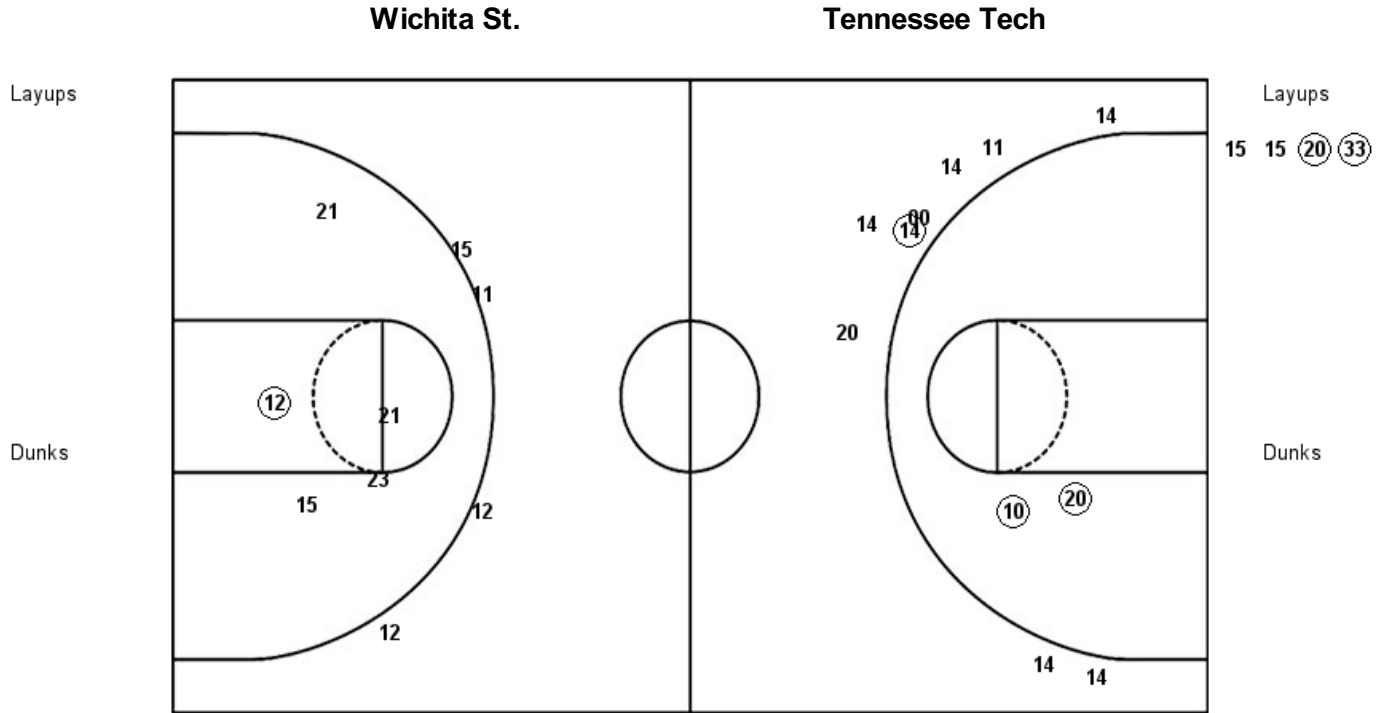
**Tennessee Tech**



| <b>WSU : Period 2</b>    | <b>Made</b> | <b>Att</b> | <b>Pct</b>  |
|--------------------------|-------------|------------|-------------|
| Layups                   | 1           | 1          | 100.0       |
| Dunks                    | 0           | 0          | 0           |
| 2PT Field Goals          | 3           | 7          | 42.9        |
| 3PT Field Goals          | 1           | 3          | 33.3        |
| <b>Total Field Goals</b> | <b>4</b>    | <b>10</b>  | <b>40.0</b> |

| <b>TTU : Period 2</b>    | <b>Made</b> | <b>Att</b> | <b>Pct</b>  |
|--------------------------|-------------|------------|-------------|
| Layups                   | 2           | 3          | 66.7        |
| Dunks                    | 0           | 0          | 0           |
| 2PT Field Goals          | 3           | 5          | 60.0        |
| 3PT Field Goals          | 1           | 8          | 12.5        |
| <b>Total Field Goals</b> | <b>4</b>    | <b>13</b>  | <b>30.8</b> |

**Official Shot Chart**  
**Tennessee Tech vs Wichita St.**  
**PERIOD 3 Shots**  
 December 02, 2018 at Charles Koch Arena (Devlin Court) - Wichita, Kan.



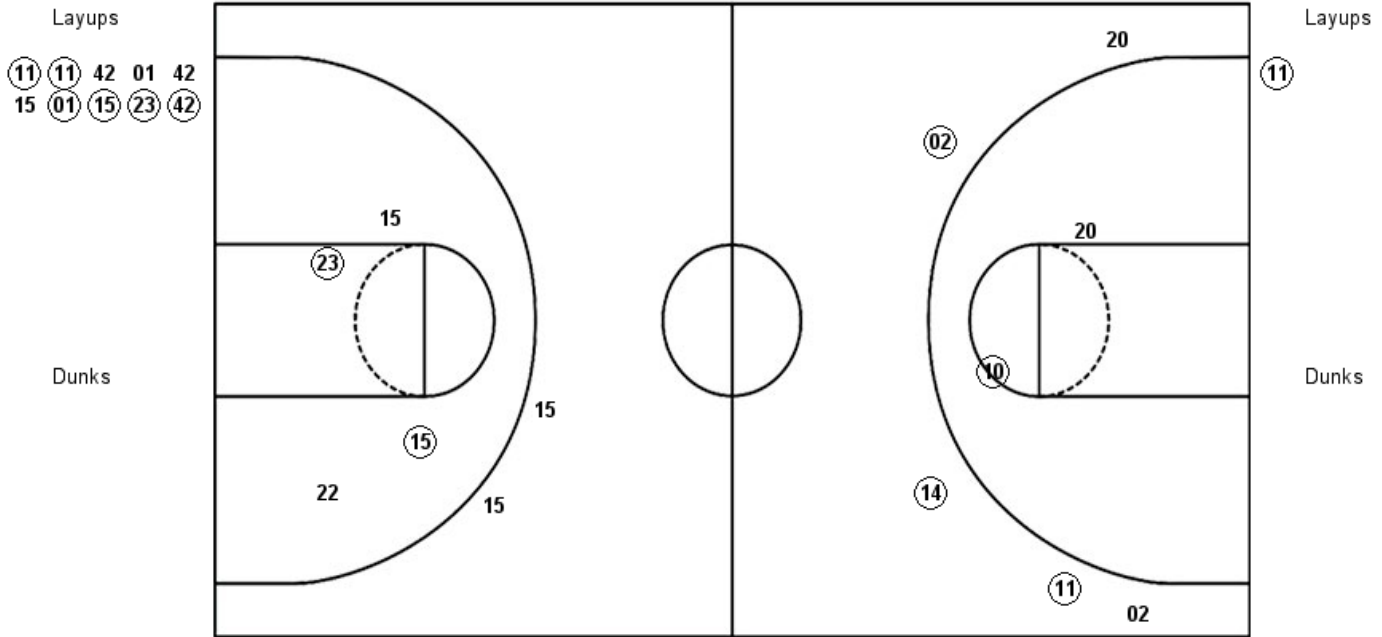
| WSU : Period 3           | Made     | Att      | Pct         |
|--------------------------|----------|----------|-------------|
| Layups                   | 0        | 0        | 0           |
| Dunks                    | 0        | 0        | 0           |
| 2PT Field Goals          | 1        | 5        | 20.0        |
| 3PT Field Goals          | 0        | 4        | 00.0        |
| <b>Total Field Goals</b> | <b>1</b> | <b>9</b> | <b>11.1</b> |

| TTU : Period 3           | Made     | Att       | Pct         |
|--------------------------|----------|-----------|-------------|
| Layups                   | 2        | 4         | 50.0        |
| Dunks                    | 0        | 0         | 0           |
| 2PT Field Goals          | 4        | 6         | 66.7        |
| 3PT Field Goals          | 1        | 9         | 11.1        |
| <b>Total Field Goals</b> | <b>5</b> | <b>15</b> | <b>33.3</b> |

**Official Shot Chart**  
**Tennessee Tech vs Wichita St.**  
**PERIOD 4 Shots**  
 December 02, 2018 at Charles Koch Arena (Devlin Court) - Wichita, Kan.

**Wichita St.**

**Tennessee Tech**

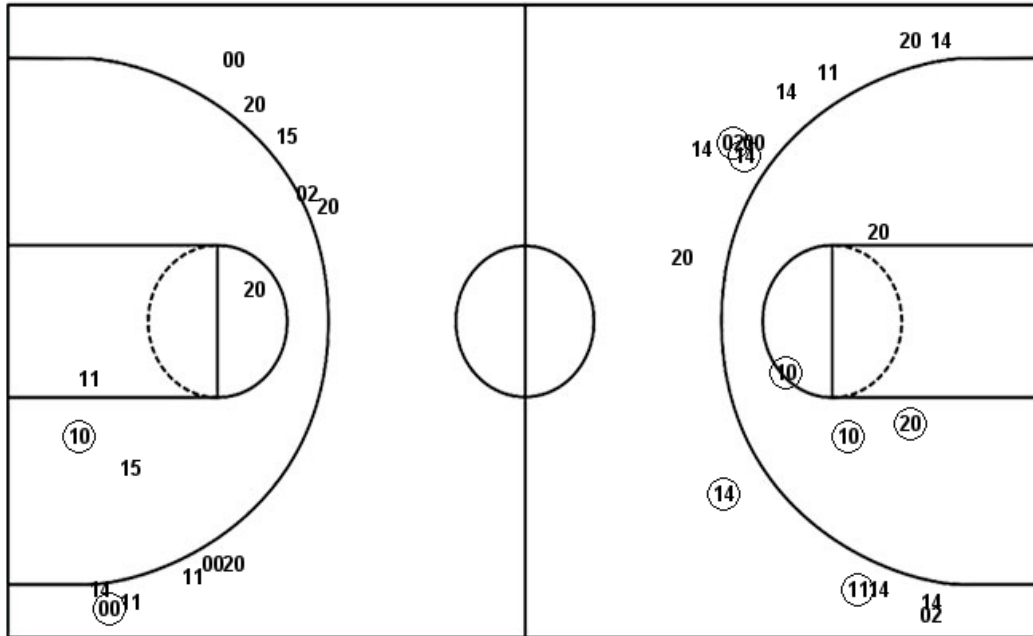


| <b>WSU : Period 4</b>    | <b>Made</b> | <b>Att</b> | <b>Pct</b>  |
|--------------------------|-------------|------------|-------------|
| Layups                   | 6           | 10         | 60.0        |
| Dunks                    | 0           | 0          | 0           |
| 2PT Field Goals          | 8           | 14         | 57.1        |
| 3PT Field Goals          | 0           | 2          | 00.0        |
| <b>Total Field Goals</b> | <b>8</b>    | <b>16</b>  | <b>50.0</b> |

| <b>TTU : Period 4</b>    | <b>Made</b> | <b>Att</b> | <b>Pct</b>  |
|--------------------------|-------------|------------|-------------|
| Layups                   | 1           | 1          | 100.0       |
| Dunks                    | 0           | 0          | 0           |
| 2PT Field Goals          | 2           | 3          | 66.7        |
| 3PT Field Goals          | 3           | 5          | 60.0        |
| <b>Total Field Goals</b> | <b>5</b>    | <b>8</b>   | <b>62.5</b> |

**Official Shot Chart**  
**Tennessee Tech vs Wichita St.**  
**Tennessee Tech Team Shots**  
**December 02, 2018 at Charles Koch Arena (Devlin Court) - Wichita, Kan.**

Layups



Layups

|      |      |      |      |      |
|------|------|------|------|------|
| 44   | 00   | (44) | 02   | (10) |
| 11   | 15   | 15   | 11   | 20   |
| (10) | (10) | (44) | (10) | 33   |
| (15) | 15   | 15   | (20) | (33) |
| (11) |      |      |      |      |

Dunks

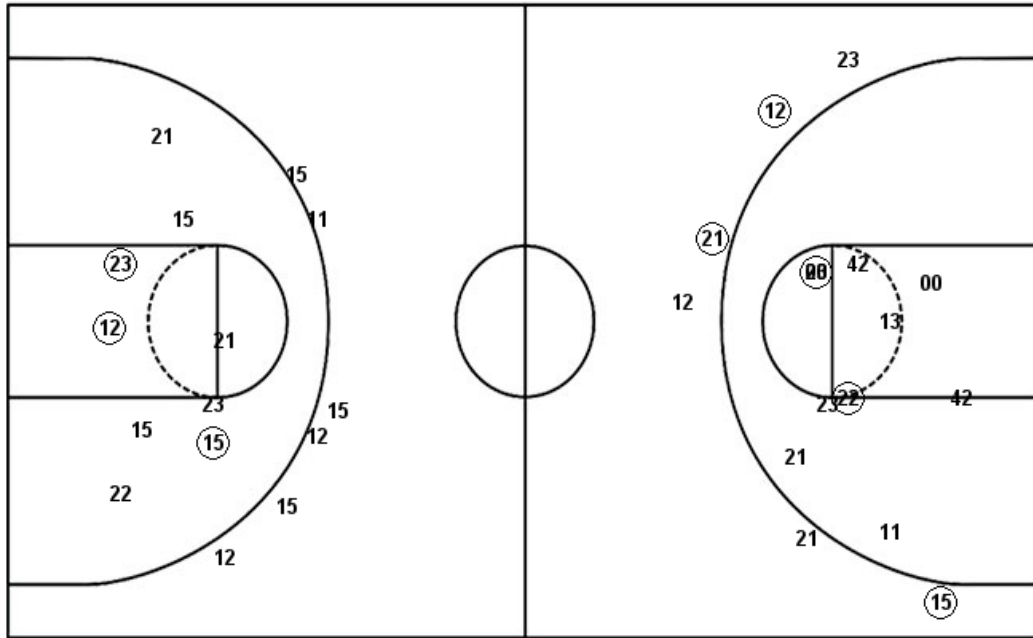
Dunks

| TTU : Period 1           | Made     | Att       | Pct         |
|--------------------------|----------|-----------|-------------|
| Layups                   | 5        | 13        | 38.5        |
| Dunks                    | 0        | 0         | 0           |
| 2PT Field Goals          | 5        | 15        | 33.3        |
| 3PT Field Goals          | 0        | 3         | 00.0        |
| <b>Total Field Goals</b> | <b>5</b> | <b>18</b> | <b>27.8</b> |
| TTU : Period 3           | Made     | Att       | Pct         |
| Layups                   | 2        | 4         | 50.0        |
| Dunks                    | 0        | 0         | 0           |
| 2PT Field Goals          | 4        | 6         | 66.7        |
| 3PT Field Goals          | 1        | 9         | 11.1        |
| <b>Total Field Goals</b> | <b>5</b> | <b>15</b> | <b>33.3</b> |

| TTU : Period 2           | Made     | Att       | Pct         |
|--------------------------|----------|-----------|-------------|
| Layups                   | 2        | 3         | 66.7        |
| Dunks                    | 0        | 0         | 0           |
| 2PT Field Goals          | 3        | 5         | 60.0        |
| 3PT Field Goals          | 1        | 8         | 12.5        |
| <b>Total Field Goals</b> | <b>4</b> | <b>13</b> | <b>30.8</b> |
| TTU : Period 4           | Made     | Att       | Pct         |
| Layups                   | 1        | 1         | 100.0       |
| Dunks                    | 0        | 0         | 0           |
| 2PT Field Goals          | 2        | 3         | 66.7        |
| 3PT Field Goals          | 3        | 5         | 60.0        |
| <b>Total Field Goals</b> | <b>5</b> | <b>8</b>  | <b>62.5</b> |

**Official Shot Chart**  
**Tennessee Tech vs Wichita St.**  
**Wichita St. Team Shots**  
**December 02, 2018 at Charles Koch Arena (Devlin Court) - Wichita, Kan.**

Layups



Layups



Dunks

Dunks

| WSU : Period 1           | Made     | Att       | Pct         |
|--------------------------|----------|-----------|-------------|
| Layups                   | 2        | 9         | 22.2        |
| Dunks                    | 0        | 0         | 0           |
| 2PT Field Goals          | 2        | 13        | 15.4        |
| 3PT Field Goals          | 2        | 3         | 66.7        |
| <b>Total Field Goals</b> | <b>4</b> | <b>16</b> | <b>25.0</b> |
| WSU : Period 3           | Made     | Att       | Pct         |
| Layups                   | 0        | 0         | 0           |
| Dunks                    | 0        | 0         | 0           |
| 2PT Field Goals          | 1        | 5         | 20.0        |
| 3PT Field Goals          | 0        | 4         | 00.0        |
| <b>Total Field Goals</b> | <b>1</b> | <b>9</b>  | <b>11.1</b> |

| WSU : Period 2           | Made     | Att       | Pct         |
|--------------------------|----------|-----------|-------------|
| Layups                   | 1        | 1         | 100.0       |
| Dunks                    | 0        | 0         | 0           |
| 2PT Field Goals          | 3        | 7         | 42.9        |
| 3PT Field Goals          | 1        | 3         | 33.3        |
| <b>Total Field Goals</b> | <b>4</b> | <b>10</b> | <b>40.0</b> |
| WSU : Period 4           | Made     | Att       | Pct         |
| Layups                   | 6        | 10        | 60.0        |
| Dunks                    | 0        | 0         | 0           |
| 2PT Field Goals          | 8        | 14        | 57.1        |
| 3PT Field Goals          | 0        | 2         | 00.0        |
| <b>Total Field Goals</b> | <b>8</b> | <b>16</b> | <b>50.0</b> |