

FINAL SCORE

Oklahoma St.

60



Wichita St.

47



November 28, 2018 • Charles Koch Arena (Devlin Court) - Wichita, Kan.

FINAL STATISTICS

Official Box Score
Oklahoma St. vs Wichita St.
Game Totals -- Final Statistics
November 28, 2018 at Charles Koch Arena (Devlin Court) - Wichita, Kan.

Oklahoma St. 60

No.	Player	S	Pts	FG	3FG	FT	OR	DR	TR	PF	A	TO	Blk	Stl	Min	+/-
12	Gray, Vivian		7	2-13	0-2	3-4	3	3	6	3	0	0	0	2	33	8
14	Miller, Braxtin		30	10-19	3-7	7-8	1	2	3	2	3	2	0	3	38	18
15	Gnanou, Mariam		0	0-1	0-0	0-0	1	3	4	3	1	4	1	0	12	-3
20	Jones, Latashia		0	0-4	0-2	0-0	7	8	15	2	3	4	0	1	36	10
23	Hobbs, Jaden		9	3-11	3-9	0-0	0	1	1	0	1	2	0	1	33	5
1	De Lapp, Cassidy		4	2-4	0-0	0-0	2	2	4	1	0	0	1	0	16	8
10	Gerlich, Bryn		2	1-1	0-0	0-0	0	2	2	1	0	0	0	1	7	3
21	Asberry, Ja'mee		6	2-5	2-4	0-0	0	1	1	1	0	2	0	1	13	12
24	Wheeler, Karli		0	0-0	0-0	0-0	0	0	0	0	0	0	0	0	3	-3
25	Winchester, Abbie		2	1-1	0-0	0-0	3	0	3	0	0	1	0	0	8	7
30	Castro, Maria		0	0-0	0-0	0-0	0	1	1	0	0	0	1	0	1	0
	Team						3	0	3	0		3				
TOTALS			60	21-59	8-24	10-12	20	23	43	13	8	18	3	9	200	

Shooting By Period

Period	FG	FG%	3FG	3FG%	FT	FT%
1st Qtr	4-15	27%	1-6	17%	0-0	0%
2nd Qtr	8-20	40%	2-8	25%	2-2	100%
3rd Qtr	5-14	36%	3-6	50%	5-6	83%
4th Qtr	4-10	40%	2-4	50%	3-4	75%
1st Half	4-15	27%	1-6	17%	0-0	0%
2nd Half	8-20	40%	2-8	25%	2-2	100%
3rd Half	5-14	36%	3-6	50%	5-6	83%
4th Half	4-10	40%	2-4	50%	3-4	75%
Game	21-59	35.6%	8-24	33.3%	10-12	83.3%

Deadball Rebounds:
Last FG: 4th-00:40
Biggest Run: 6-0
Largest lead: By 15 at 4-00:40
Technical Fouls: None.

Wichita St. 47

No.	Player	S	Pts	FG	3FG	FT	OR	DR	TR	PF	A	TO	Blk	Stl	Min	+/-
11	Lozada-Cabbage, Sabrina		6	3-9	0-1	0-0	1	1	2	4	0	3	1	2	22	-8
12	Bremaud, Carla		6	2-5	2-5	0-2	0	0	0	2	0	2	0	1	32	-12
13	Prince, Raven		4	2-5	0-0	0-0	1	3	4	2	0	2	1	0	23	-11
15	Hampton, Jaida		8	3-5	1-1	1-2	1	1	2	1	3	1	0	1	26	-14
23	Bastin, Seraphine		6	3-9	0-1	0-0	1	1	2	1	3	3	1	1	35	-14
0	Peacock, Jada		0	0-1	0-1	0-0	0	0	0	0	1	0	0	0	9	5
1	Lair, Dawnyel		15	6-11	0-1	3-9	2	4	6	2	2	0	1	3	27	-2
21	Brewer, Maya		0	0-0	0-0	0-0	0	0	0	1	0	3	0	0	4	-4
22	Faye, Alyssia		0	0-2	0-0	0-0	1	1	2	0	0	1	0	0	6	2
24	Colbert, Trajata		0	0-0	0-0	0-0	0	1	1	0	0	1	0	0	3	-5
34	Smith, Shyia		2	1-3	0-0	0-0	0	3	3	0	0	1	0	0	11	-2
42	Henderson, Asia		0	0-2	0-0	0-0	0	0	0	1	0	0	0	0	2	0
	Team						2	0	2	0		0				
TOTALS			47	20-52	3-10	4-13	9	15	24	14	9	17	4	8	200	

Shooting By Period

Period	FG	FG%	3FG	3FG%	FT	FT%
1st Qtr	3-15	20%	1-3	33%	0-2	00%
2nd Qtr	6-11	55%	2-3	67%	2-2	100%
3rd Qtr	5-12	42%	0-1	00%	1-2	50%
4th Qtr	6-14	43%	0-3	00%	1-7	14%
1st Half	3-15	20%	1-3	33%	0-2	00%
2nd Half	6-11	55%	2-3	67%	2-2	100%
3rd Half	5-12	42%	0-1	00%	1-2	50%
4th Half	6-14	43%	0-3	00%	1-7	14%
Game	20-52	38.5%	3-10	30.0%	4-13	30.8%

Deadball Rebounds:
Last FG: 4th-00:19
Biggest Run: 9-0
Largest lead: By 3 at 2-07:45
Technical Fouls: None.

Game Notes:
 Officials: Bryan Brunette, Cameron Inouye, Maj Forsberg
 Attendance: 1818
 Start Time: 2018-11-28 00:35:10 End Time: 2018-11-28 02:25:05
 Game Duration: 109

Score by Period	1st	2nd	3rd	4th	TOT
OSU	9	20	18	13	60
WSU	7	16	11	13	47

OSU led for 34:18. WSU led for 3:39.
 Game was tied for 2:04.
 Times tied: 2 Lead Changes: 3

Points from	OSU	WSU
In the Paint	18	20
Off Turns	17	15
2nd Chance	15	10
Fast Break	4	7
Bench	14	17

Official Box Score
Oklahoma St. vs Wichita St.
First Half Statistics Only
November 28, 2018 at Charles Koch Arena (Devlin Court) - Wichita, Kan.

Oklahoma St. 60

No.	Player	S	Pts	FG	3FG	FT	OR	DR	TR	PF	A	TO	Blk	Stl	Min	+/-
12	Gray, Vivian		0	0-3	0-1	0-0	1	1	2	0	0	0	0	0	8	2
14	Miller, Braxtin		7	3-4	1-2	0-0	0	0	0	0	0	2	0	1	9	5
15	Gnanou, Mariam		0	0-1	0-0	0-0	0	2	2	2	1	2	0	0	5	2
20	Jones, Latashia		0	0-1	0-1	0-0	1	2	3	0	0	0	0	0	9	2
23	Hobbs, Jaden		0	0-2	0-1	0-0	0	1	1	0	1	0	0	1	8	2
1	De Lapp, Kassidy		2	1-2	0-0	0-0	1	0	1	0	0	0	0	0	5	0
10	Gerlich, Bryn		0	0-0	0-0	0-0	0	0	0	0	0	0	0	0	0	0
21	Asberry, Ja'mee		0	0-2	0-1	0-0	0	1	1	0	0	0	0	0	2	0
24	Wheeler, Karli		0	0-0	0-0	0-0	0	0	0	0	0	0	0	0	3	-3
25	Winchester, Abbie		0	0-0	0-0	0-0	0	0	0	0	0	0	0	0	0	0
30	Castro, Maria		0	0-0	0-0	0-0	0	1	1	0	0	0	1	0	1	0
	Team						0	0	0	0		1				
TOTALS			9	4-15	1-6	0-0	0	0	11	2	2	5	1	2	50	

Shooting By Period

Period	FG	FG%	3FG	3FG%	FT	FT%
1st Qtr	4-15	27%	1-6	17%	0-0	0%
2nd Qtr	8-20	40%	2-8	25%	2-2	100%
3rd Qtr	5-14	36%	3-6	50%	5-6	83%
4th Qtr	4-10	40%	2-4	50%	3-4	75%
1st Half	4-15	27%	1-6	17%	0-0	0%
2nd Half	8-20	40%	2-8	25%	2-2	100%
3rd Half	5-14	36%	3-6	50%	5-6	83%
4th Half	4-10	40%	2-4	50%	3-4	75%
Game	21-59	35.6%	8-24	33.3%	10-12	83.3%

Deadball Rebounds:
Last FG: 4th-00:40
Biggest Run: 6-0
Largest lead: By 15 at 4-00:40
Technical Fouls: None.

Wichita St. 47

No.	Player	S	Pts	FG	3FG	FT	OR	DR	TR	PF	A	TO	Blk	Stl	Min	+/-
11	Lozada-Cabbage, Sabrina		0	0-4	0-1	0-0	0	1	1	1	0	2	0	1	9	-2
12	Bremaud, Carla		3	1-1	1-1	0-0	0	0	0	0	0	1	0	0	9	-2
13	Prince, Raven		0	0-1	0-0	0-0	0	1	1	0	0	1	0	0	5	-5
15	Hampton, Jaida		2	1-1	0-0	0-0	0	1	1	1	0	0	0	0	6	-5
23	Bastin, Seraphine		2	1-2	0-0	0-0	0	1	1	0	1	1	0	1	9	-2
0	Peacock, Jada		0	0-0	0-0	0-0	0	0	0	0	0	0	0	0	1	0
1	Lair, Dawnyel		0	0-2	0-1	0-2	0	2	2	0	0	0	0	0	5	3
21	Brewer, Maya		0	0-0	0-0	0-0	0	0	0	0	0	0	0	0	0	0
22	Faye, Alyssia		0	0-2	0-0	0-0	1	0	1	0	0	0	0	0	1	0
24	Colbert, Trajata		0	0-0	0-0	0-0	0	0	0	0	0	0	0	0	0	0
34	Smith, Shyia		0	0-2	0-0	0-0	0	2	2	0	0	0	0	0	5	3
42	Henderson, Asia		0	0-0	0-0	0-0	0	0	0	0	0	0	0	0	0	0
	Team						2	0	2	0		0				
TOTALS			7	3-15	1-3	0-2	0	0	11	2	1	5	0	2	50	

Shooting By Period

Period	FG	FG%	3FG	3FG%	FT	FT%
1st Qtr	3-15	20%	1-3	33%	0-2	0%
2nd Qtr	6-11	55%	2-3	67%	2-2	100%
3rd Qtr	5-12	42%	0-1	0%	1-2	50%
4th Qtr	6-14	43%	0-3	0%	1-7	14%
1st Half	3-15	20%	1-3	33%	0-2	0%
2nd Half	6-11	55%	2-3	67%	2-2	100%
3rd Half	5-12	42%	0-1	0%	1-2	50%
4th Half	6-14	43%	0-3	0%	1-7	14%
Game	20-52	38.5%	3-10	30.0%	4-13	30.8%

Deadball Rebounds:
Last FG: 4th-00:19
Biggest Run: 9-0
Largest lead: By 3 at 2-07:45
Technical Fouls: None.

Game Notes:
Officials: Bryan Brunette, Cameron Inouye, Maj Forsberg
Attendance: 1818
Start Time: 2018-11-28 00:35:10 **End Time: 2018-11-28 02:25:05**
Game Duration: 109

Score by Period	1st	2nd	3rd	4th	TOT
OSU	9	20	18	13	60
WSU	7	16	11	13	47

This period only: OSU led for 34:17. WSU led for 34:39.
Game was tied for 0:04.

Points from (This Period)	OSU	WSU
In the Paint	2	2
Off Turns	6	4
2nd Chance	2	0
Fast Break	3	0
Bench	2	0

**Official Play-By-Play
Oklahoma St. vs Wichita St.
First Quarter**

November 28, 2018 at Charles Koch Arena (Devlin Court) - Wichita, Kan.

Starters:

Oklahoma St.: 12 GRAY,VIVIAN; 14 MILLER,BRAXTIN; 15 GNANOU,MARIAM; 20 JONES,LATASHIA; 23 HOBBS,JADEN;

Wichita St.: 11 LOZADA-CABBAGE,SABRINA; 12 BREMAUD,CARLA; 13 PRINCE,RAVEN; 15 HAMPTON,JAIDA; 23 BASTIN,SERAPHINE;

Period 1

Time	VISITORS: Oklahoma St.	Score	Margin	HOME: Wichita St.
09:34	MISSED 3PTR by JONES,LATASHIA			
09:30	REBOUND (OFF) by GRAY,VIVIAN			
09:29	MISSED LAYUP by GRAY,VIVIAN			
09:25				REBOUND (DEF) by LOZADA-CABBAGE,SABRINA
09:09				MISSED JUMPER by LOZADA-CABBAGE,SABRINA
09:05	REBOUND (DEF) by HOBBS,JADEN			
09:03	TURNOVER (TRAVEL) by GNANOU,MARIAM			
08:51		2-0	H 2	GOOD! JUMPER by HAMPTON,JAIDA
08:28	MISSED 3PTR by HOBBS,JADEN			
08:25				REBOUND (DEF) by HAMPTON,JAIDA
08:16				FOUL (OFF) by LOZADA-CABBAGE,SABRINA
08:16				TURNOVER (OFFENSIVE) by LOZADA-CABBAGE,SABRINA
07:56	GOOD! JUMPER by MILLER,BRAXTIN	2-2	T	
07:56	ASSIST by GNANOU,MARIAM			
07:33				TURNOVER (TRAVEL) by PRINCE,RAVEN
07:21	GOOD! JUMPER by MILLER,BRAXTIN	2-4	V 2	
07:00				MISSED LAYUP by PRINCE,RAVEN
07:00				REBOUND (OFF) by TEAM
06:50				MISSED 3PTR by LOZADA-CABBAGE,SABRINA
06:47	REBOUND (DEF) by JONES,LATASHIA			
06:35	MISSED JUMPER by GNANOU,MARIAM			
06:32				REBOUND (DEF) by PRINCE,RAVEN
06:15				MISSED JUMPER by BASTIN,SERAPHINE
06:14				REBOUND (OFF) by TEAM
06:14	SUB OUT: GNANOU,MARIAM			
06:14	SUB IN: DE LAPP,KASSIDY			
06:10				TURNOVER (LOSTBALL) by LOZADA-CABBAGE,SABRINA
06:10	STEAL by HOBBS,JADEN			
06:04	MISSED 3PTR by GRAY,VIVIAN			
06:00	REBOUND (OFF) by DE LAPP,KASSIDY			
05:59	GOOD! LAYUP by DE LAPP,KASSIDY	2-6	V 4	
05:38				TURNOVER (BADPASS) by BREMAUD,CARLA
05:38	STEAL by MILLER,BRAXTIN			
05:31	TURNOVER (LOSTBALL) by MILLER,BRAXTIN			
05:31				STEAL by BASTIN,SERAPHINE
05:18		4-6	V 2	GOOD! JUMPER by BASTIN,SERAPHINE [PNT]
05:10	GOOD! 3PTR by MILLER,BRAXTIN [FB]	4-9	V 5	
05:10	ASSIST by HOBBS,JADEN			
04:55				MISSED JUMPER by LOZADA-CABBAGE,SABRINA
04:52	REBOUND (DEF) by JONES,LATASHIA			
04:43				FOUL (PERSONAL) by HAMPTON,JAIDA
04:43				SUB OUT: HAMPTON,JAIDA
04:43				SUB IN: LAIR,DAWNYEL
04:43				SUB OUT: PRINCE,RAVEN
04:43				SUB IN: SMITH,SHYIA
04:43	SUB OUT: MILLER,BRAXTIN			
04:43	SUB IN: WHEELER,KARLI			
04:39	MISSED JUMPER by GRAY,VIVIAN			
04:34				REBOUND (DEF) by BASTIN,SERAPHINE
04:14		7-9	V 2	GOOD! 3PTR by BREMAUD,CARLA
04:14				ASSIST by BASTIN,SERAPHINE
03:40	TURNOVER (SHOTCLOCK) by			
03:40	SUB OUT: GRAY,VIVIAN			
03:40	SUB IN: MILLER,BRAXTIN			
03:40	SUB OUT: HOBBS,JADEN			
03:40	SUB IN: ASBERRY,JA'MEE			
03:29				TURNOVER (TRAVEL) by BASTIN,SERAPHINE
03:04	MISSED 3PTR by ASBERRY,JA'MEE			
03:00	REBOUND (OFF) by JONES,LATASHIA			
02:50	MISSED JUMPER by ASBERRY,JA'MEE			
02:46				REBOUND (DEF) by LAIR,DAWNYEL
02:43				MISSED LAYUP by LAIR,DAWNYEL
02:40	REBOUND (DEF) by ASBERRY,JA'MEE			
02:35	MISSED JUMPER by DE LAPP,KASSIDY			
02:31				REBOUND (DEF) by SMITH,SHYIA
02:09				MISSED LAYUP by SMITH,SHYIA
02:08				REBOUND (OFF) by TEAM
02:08	SUB OUT: DE LAPP,KASSIDY			
02:08	SUB IN: HOBBS,JADEN			
02:08	SUB OUT: ASBERRY,JA'MEE			
02:08	SUB IN: GNANOU,MARIAM			
02:08	SUB OUT: WHEELER,KARLI			
02:08	SUB IN: GRAY,VIVIAN			
02:00				MISSED JUMPER by SMITH,SHYIA
01:56	REBOUND (DEF) by GNANOU,MARIAM			

Time	VISITORS: Oklahoma St.	Score	Margin	HOME: Wichita St.
01:38	TURNOVER (BADPASS) by MILLER,BRAXTIN			
01:38				STEAL by LOZADA-CABBAGE,SABRINA
01:27				MISSED JUMPER by LOZADA-CABBAGE,SABRINA
01:23	REBOUND (DEF) by GRAY,VIVIAN			
01:14	FOUL (OFF) by GNANOU,MARIAM			
01:14	TURNOVER (OFFENSIVE) by GNANOU,MARIAM			
01:14				SUB OUT: BASTIN,SERAPHINE
01:14				SUB IN: PEACOCK,JADA
01:14				SUB OUT: LOZADA-CABBAGE,SABRINA
01:14				SUB IN: FAYE,ALYSSIA
01:14	SUB OUT: JONES,LATASHIA			
01:14	SUB IN: CASTRO,MARIA			
00:57				MISSED LAYUP by FAYE,ALYSSIA
00:57	BLOCK by CASTRO,MARIA			
00:51				REBOUND (OFF) by FAYE,ALYSSIA
00:50				MISSED LAYUP by FAYE,ALYSSIA
00:41	REBOUND (DEF) by GNANOU,MARIAM			
00:38	MISSED JUMPER by HOBBS,JADEN			
00:35				REBOUND (DEF) by LAIR,DAWNYEL
00:33	FOUL (PERSONAL) by GNANOU,MARIAM			
00:33				MISSED FT by LAIR,DAWNYEL
00:33				REBOUND (OFF) by TEAM
00:33				SUB OUT: BREMAUD,CARLA
00:33				SUB IN: HAMPTON,JAIDA
00:33	SUB OUT: GNANOU,MARIAM			
00:33	SUB IN: DE LAPP,KASSIDY			
00:33				MISSED FT by LAIR,DAWNYEL
00:31	REBOUND (DEF) by CASTRO,MARIA			
00:04	MISSED 3PTR by MILLER,BRAXTIN			
00:01				REBOUND (DEF) by SMITH,SHYIA
00:00				MISSED 3PTR by LAIR,DAWNYEL
00:00				REBOUND (OFF) by TEAM

Oklahoma St. 9, Wichita St. 7

Points from (This Period)	OSU	WSU
In the Paint	2	2
Off Turns	6	4
2nd Chance	2	0
Fast Break	3	0
Bench	2	0

This period only: OSU led for 34:17. WSU led for 34:39.
Game was tied for 0:04.

**Official Play-By-Play
Oklahoma St. vs Wichita St.
Second Quarter**

November 28, 2018 at Charles Koch Arena (Devlin Court) - Wichita, Kan.

Starters:

Oklahoma St.: 12 GRAY,VIVIAN; 14 MILLER,BRAXTIN; 15 GNANOU,MARIAM; 20 JONES,LATASHIA; 23 HOBBS,JADEN;

Wichita St.: 11 LOZADA-CABBAGE,SABRINA; 12 BREMAUD,CARLA; 13 PRINCE,RAVEN; 15 HAMPTON,JAIDA; 23 BASTIN,SERAPHINE;

Period 2

Time	VISITORS: Oklahoma St.	Score	Margin	HOME: Wichita St.
09:39				TURNOVER (LOSTBALL) by SMITH,SHYIA
09:39	STEAL by MILLER,BRAXTIN			
09:26	MISSED LAYUP by MILLER,BRAXTIN			
09:22				REBOUND (DEF) by FAYE,ALYSSIA
09:17		10-9	H 1	GOOD! 3PTR by HAMPTON,JAIDA
09:17				ASSIST by LAIR,DAWNYEL
08:55	MISSED 3PTR by HOBBS,JADEN			
08:51				REBOUND (DEF) by SMITH,SHYIA
08:38				MISSED 3PTR by PEACOCK,JADA
08:35	REBOUND (DEF) by JONES,LATASHIA			
08:10	MISSED 3PTR by MILLER,BRAXTIN			
08:06	REBOUND (OFF) by GRAY,VIVIAN			
08:05	MISSED JUMPER by GRAY,VIVIAN			
08:02	REBOUND (OFF) by JONES,LATASHIA			
07:50	TURNOVER (BADPASS) by HOBBS,JADEN			
07:50				STEAL by HAMPTON,JAIDA
07:45		12-9	H 3	GOOD! LAYUP by LAIR,DAWNYEL [FB]
07:45				ASSIST by HAMPTON,JAIDA
07:23	MISSED 3PTR by JONES,LATASHIA			
07:14	REBOUND (OFF) by MILLER,BRAXTIN			
07:14	GOOD! LAYUP by MILLER,BRAXTIN	12-11	H 1	
06:48				MISSED LAYUP by LAIR,DAWNYEL
06:44	REBOUND (DEF) by DE LAPP,KASSIDY			
06:40	MISSED 3PTR by MILLER,BRAXTIN			
06:33	REBOUND (OFF) by DE LAPP,KASSIDY			
06:33	GOOD! LAYUP by DE LAPP,KASSIDY	12-13	V 1	
06:11				TURNOVER (3SEC) by FAYE,ALYSSIA
06:11				SUB OUT: PEACOCK,JADA
06:11				SUB IN: BREMAUD,CARLA
06:11				SUB OUT: LAIR,DAWNYEL
06:11				SUB IN: PRINCE,RAVEN
06:11				SUB OUT: FAYE,ALYSSIA
06:11				SUB IN: LOZADA-CABBAGE,SABRINA
06:11				SUB OUT: SMITH,SHYIA
06:11				SUB IN: BASTIN,SERAPHINE
05:55				FOUL (PERSONAL) by PRINCE,RAVEN
05:55	GOOD! FT by MILLER,BRAXTIN	12-14	V 2	
05:55	GOOD! FT by MILLER,BRAXTIN	12-15	V 3	
05:41		14-15	V 1	GOOD! JUMPER by LOZADA-CABBAGE,SABRINA
05:41				ASSIST by BASTIN,SERAPHINE
05:24	MISSED LAYUP by DE LAPP,KASSIDY			
05:22	REBOUND (OFF) by JONES,LATASHIA			
05:22				FOUL (PERSONAL) by LOZADA-CABBAGE,SABRINA
05:22				SUB OUT: LOZADA-CABBAGE,SABRINA
05:22				SUB IN: COLBERT,TRAJATA
05:22	SUB OUT: DE LAPP,KASSIDY			
05:22	SUB IN: WINCHESTER,ABBIE			
05:10	MISSED JUMPER by GRAY,VIVIAN			
05:09				REBOUND (DEF) by PRINCE,RAVEN
05:09				TURNOVER (LOSTBALL) by PRINCE,RAVEN
04:54	GOOD! 3PTR by MILLER,BRAXTIN	14-18	V 4	
04:41				MISSED JUMPER by BASTIN,SERAPHINE
04:38	REBOUND (DEF) by JONES,LATASHIA			
04:17	GOOD! JUMPER by MILLER,BRAXTIN [PNT]	14-20	V 6	
03:56		17-20	V 3	GOOD! 3PTR by BREMAUD,CARLA
03:37	GOOD! 3PTR by HOBBS,JADEN	17-23	V 6	
03:10				TURNOVER (BADPASS) by BREMAUD,CARLA
03:10	STEAL by GRAY,VIVIAN			
02:45	MISSED JUMPER by MILLER,BRAXTIN			
02:42				REBOUND (DEF) by COLBERT,TRAJATA
02:21				TURNOVER (3SEC) by COLBERT,TRAJATA
02:21				SUB OUT: COLBERT,TRAJATA
02:21				SUB IN: LAIR,DAWNYEL
02:15	TURNOVER (BADPASS) by JONES,LATASHIA			
02:02				MISSED JUMPER by BASTIN,SERAPHINE
01:58	REBOUND (DEF) by JONES,LATASHIA			
01:56	MISSED 3PTR by GRAY,VIVIAN			
01:52	REBOUND (OFF) by WINCHESTER,ABBIE			
01:51	MISSED 3PTR by MILLER,BRAXTIN			
01:44	REBOUND (OFF) by WINCHESTER,ABBIE			
01:44	GOOD! LAYUP by WINCHESTER,ABBIE	17-25	V 8	
01:30	FOUL (PERSONAL) by GRAY,VIVIAN			
01:30		18-25	V 7	GOOD! FT by LAIR,DAWNYEL
01:30		19-25	V 6	GOOD! FT by LAIR,DAWNYEL
01:08	GOOD! LAYUP by GRAY,VIVIAN	19-27	V 8	

Time	VISITORS: Oklahoma St.	Score	Margin	HOME: Wichita St.
01:08	ASSIST by MILLER,BRAXTIN			
00:49				MISSED LAYUP by LAIR,DAWNYEL
00:43				REBOUND (OFF) by LAIR,DAWNYEL
00:43		21-27	V 6	GOOD! LAYUP by LAIR,DAWNYEL
00:32	MISSED LAYUP by GRAY,VIVIAN			
00:32				BLOCK by PRINCE,RAVEN
00:26				REBOUND (DEF) by PRINCE,RAVEN
00:21		23-27	V 4	GOOD! JUMPER by LAIR,DAWNYEL [FB]
00:21				ASSIST by BASTIN,SERAPHINE
00:03	GOOD! JUMPER by MILLER,BRAXTIN [PNT]	23-29	V 6	

Oklahoma St. 29, Wichita St. 23

Points from (This Period)	OSU	WSU
In the Paint	12	4
Off Turns	4	2
2nd Chance	6	2
Fast Break	0	4
Bench	4	8

This period only:OSU led for 34:17. WSU led for 34:39.
Game was tied for 0:04.

Official Box Score
Oklahoma St. vs Wichita St.
Second Half Statistics Only
November 28, 2018 at Charles Koch Arena (Devlin Court) - Wichita, Kan.

Oklahoma St. 60

No.	Player	S	Pts	FG	3FG	FT	OR	DR	TR	PF	A	TO	Blk	Stl	Min	+/-
12	Gray, Vivian		2	1-5	0-1	0-0	1	0	1	1	0	0	0	1	10	4
14	Miller, Braxtin		11	4-9	1-4	2-2	1	0	1	0	1	0	0	1	10	4
15	Gnanou, Mariam		0	0-0	0-0	0-0	0	0	0	0	0	0	0	0	0	0
20	Jones, Latashia		0	0-1	0-1	0-0	2	3	5	0	0	1	0	0	10	4
23	Hobbs, Jaden		3	1-2	1-2	0-0	0	0	0	0	0	1	0	0	10	4
1	De Lapp, Kassidy		2	1-2	0-0	0-0	1	1	2	0	0	0	0	0	5	-1
10	Gerlich, Bryn		0	0-0	0-0	0-0	0	0	0	0	0	0	0	0	0	0
21	Asberry, Ja'mee		0	0-0	0-0	0-0	0	0	0	0	0	0	0	0	0	0
24	Wheeler, Karli		0	0-0	0-0	0-0	0	0	0	0	0	0	0	0	0	0
25	Winchester, Abbie		2	1-1	0-0	0-0	2	0	2	0	0	0	0	0	5	5
30	Castro, Maria		0	0-0	0-0	0-0	0	0	0	0	0	0	0	0	0	0
	Team						0	0	0	0		0				
TOTALS			20	8-20	2-8	2-2	0	0	11	1	1	2	0	2	50	

Shooting By Period

Period	FG	FG%	3FG	3FG%	FT	FT%
1st Qtr	4-15	27%	1-6	17%	0-0	0%
2nd Qtr	8-20	40%	2-8	25%	2-2	100%
3rd Qtr	5-14	36%	3-6	50%	5-6	83%
4th Qtr	4-10	40%	2-4	50%	3-4	75%
1st Half	4-15	27%	1-6	17%	0-0	0%
2nd Half	8-20	40%	2-8	25%	2-2	100%
3rd Half	5-14	36%	3-6	50%	5-6	83%
4th Half	4-10	40%	2-4	50%	3-4	75%
Game	21-59	35.6%	8-24	33.3%	10-12	83.3%

Deadball Rebounds:
Last FG: 4th-00:40
Biggest Run: 6-0
Largest lead: By 15 at 4-00:40
Technical Fouls: None.

Wichita St. 47

No.	Player	S	Pts	FG	3FG	FT	OR	DR	TR	PF	A	TO	Blk	Stl	Min	+/-
11	Lozada-Cabbage, Sabrina		2	1-1	0-0	0-0	0	0	0	1	0	0	0	0	1	0
12	Bremaud, Carla		3	1-1	1-1	0-0	0	0	0	0	0	1	0	0	6	-5
13	Prince, Raven		0	0-0	0-0	0-0	0	2	2	1	0	1	1	0	6	-5
15	Hampton, Jaida		3	1-1	1-1	0-0	0	0	0	0	1	0	0	1	10	-4
23	Bastin, Seraphine		0	0-2	0-0	0-0	0	0	0	0	2	0	0	0	6	-5
0	Peacock, Jada		0	0-1	0-1	0-0	0	0	0	0	0	0	0	0	4	1
1	Lair, Dawnyel		8	3-5	0-0	2-2	1	0	1	0	1	0	0	0	6	1
21	Brewer, Maya		0	0-0	0-0	0-0	0	0	0	0	0	0	0	0	0	0
22	Faye, Alyssia		0	0-0	0-0	0-0	0	1	1	0	0	1	0	0	4	1
24	Colbert, Trajata		0	0-0	0-0	0-0	0	1	1	0	0	1	0	0	3	-5
34	Smith, Shyia		0	0-0	0-0	0-0	0	1	1	0	0	1	0	0	4	1
42	Henderson, Asia		0	0-0	0-0	0-0	0	0	0	0	0	0	0	0	0	0
	Team						0	0	0	0		0				
TOTALS			16	6-11	2-3	2-2	0	0	6	2	4	5	1	1	50	

Shooting By Period

Period	FG	FG%	3FG	3FG%	FT	FT%
1st Qtr	3-15	20%	1-3	33%	0-2	00%
2nd Qtr	6-11	55%	2-3	67%	2-2	100%
3rd Qtr	5-12	42%	0-1	00%	1-2	50%
4th Qtr	6-14	43%	0-3	00%	1-7	14%
1st Half	3-15	20%	1-3	33%	0-2	00%
2nd Half	6-11	55%	2-3	67%	2-2	100%
3rd Half	5-12	42%	0-1	00%	1-2	50%
4th Half	6-14	43%	0-3	00%	1-7	14%
Game	20-52	38.5%	3-10	30.0%	4-13	30.8%

Deadball Rebounds:
Last FG: 4th-00:19
Biggest Run: 9-0
Largest lead: By 3 at 2-07:45
Technical Fouls: None.

Game Notes:
 Officials: Bryan Brunette, Cameron Inouye, Maj Forsberg
 Attendance: 1818
 Start Time: 2018-11-28 00:35:10 End Time: 2018-11-28 02:25:05
 Game Duration: 109

Score by Period	1st	2nd	3rd	4th	TOT
OSU	9	20	18	13	60
WSU	7	16	11	13	47

This period only: OSU led for 34:17. WSU led for 34:39.
 Game was tied for 0:04.

Points from (This Period)	OSU	WSU
In the Paint	12	4
Off Turns	4	2
2nd Chance	6	2
Fast Break	0	4
Bench	4	8

Official Play-By-Play
Oklahoma St. vs Wichita St.
Third Quarter
November 28, 2018 at Charles Koch Arena (Devlin Court) - Wichita, Kan.

Starters:

Oklahoma St.: 12 GRAY,VIVIAN; 14 MILLER,BRAXTIN; 15 GNANOU,MARIAM; 20 JONES,LATASHIA; 23 HOBBS,JADEN;
Wichita St.: 11 LOZADA-CABBAGE,SABRINA; 12 BREMAUD,CARLA; 13 PRINCE,RAVEN; 15 HAMPTON,JAIDA; 23 BASTIN,SERAPHINE;

Period 3

Time	VISITORS: Oklahoma St.	Score	Margin	HOME: Wichita St.
09:48	MISSED 3PTR by HOBBS,JADEN			
09:41	REBOUND (OFF) by GRAY,VIVIAN			
09:41	GOOD! LAYUP by GRAY,VIVIAN	23-31	V 8	
09:25		25-31	V 6	
09:09				GOOD! JUMPER by HAMPTON,JAIDA
09:09	GOOD! FT by GRAY,VIVIAN	25-32	V 7	FOUL (PERSONAL) by BREMAUD,CARLA
09:09	MISSED FT by GRAY,VIVIAN			
09:09	REBOUND (OFF) by JONES,LATASHIA			
08:59	MISSED LAYUP by JONES,LATASHIA			
08:55	REBOUND (OFF) by JONES,LATASHIA			
08:52	TURNOVER (BADPASS) by JONES,LATASHIA			
08:52				SUB OUT: PRINCE,RAVEN
08:52				SUB IN: HENDERSON,ASIA
08:35				MISSED JUMPER by HENDERSON,ASIA
08:31				REBOUND (OFF) by LOZADA-CABBAGE,SABRINA
08:31	STEAL by MILLER,BRAXTIN			TURNOVER (BADPASS) by LOZADA-CABBAGE,SABRINA
08:04	MISSED JUMPER by HOBBS,JADEN			
08:00	REBOUND (OFF) by TEAM			
08:00	TURNOVER (SHOTCLOCK) by			
07:36				MISSED JUMPER by HENDERSON,ASIA
07:36	BLOCK by GNANOU,MARIAM			
07:36	REBOUND (DEF) by GNANOU,MARIAM			
07:36				FOUL (PERSONAL) by HENDERSON,ASIA
07:09	GOOD! JUMPER by MILLER,BRAXTIN	25-34	V 9	
06:51		27-34	V 7	GOOD! JUMPER by BASTIN,SERAPHINE
06:33	MISSED 3PTR by HOBBS,JADEN			
06:31	REBOUND (OFF) by GNANOU,MARIAM			
06:31	TURNOVER (LOSTBALL) by GNANOU,MARIAM			
06:31				STEAL by LOZADA-CABBAGE,SABRINA
06:31				SUB OUT: HENDERSON,ASIA
06:31				SUB IN: LAIR,DAWNYEL
06:10	FOUL (PERSONAL) by JONES,LATASHIA			
06:05				MISSED JUMPER by LOZADA-CABBAGE,SABRINA
06:02	REBOUND (DEF) by GRAY,VIVIAN			
05:59	MISSED 3PTR by HOBBS,JADEN			
05:56				REBOUND (DEF) by TEAM
05:32				MISSED JUMPER by HAMPTON,JAIDA
05:29				REBOUND (OFF) by HAMPTON,JAIDA
05:25		29-34	V 5	GOOD! LAYUP by LOZADA-CABBAGE,SABRINA
05:25				ASSIST by HAMPTON,JAIDA
05:17				FOUL (PERSONAL) by LOZADA-CABBAGE,SABRINA
05:17				SUB OUT: LOZADA-CABBAGE,SABRINA
05:17				SUB IN: SMITH,SHYIA
05:17	SUB OUT: HOBBS,JADEN			
05:17	SUB IN: ASBERRY,JA'MEE			
05:17	SUB OUT: GNANOU,MARIAM			
05:17	SUB IN: DE LAPP,KASSIDY			
05:12	MISSED JUMPER by MILLER,BRAXTIN			
05:12				BLOCK by LAIR,DAWNYEL
05:04	REBOUND (OFF) by JONES,LATASHIA			
04:58	GOOD! 3PTR by MILLER,BRAXTIN	29-37	V 8	
04:58	ASSIST by JONES,LATASHIA			
04:47		31-37	V 6	GOOD! JUMPER by SMITH,SHYIA [PNT]
04:47				ASSIST by LAIR,DAWNYEL
04:45				TIMEOUT 30SEC
04:39	GOOD! 3PTR by ASBERRY,JA'MEE	31-40	V 9	
04:39	ASSIST by JONES,LATASHIA			
04:21				
04:06				MISSED 3PTR by BREMAUD,CARLA
04:03	REBOUND (DEF) by GRAY,VIVIAN			
03:53				FOUL (PERSONAL) by BASTIN,SERAPHINE
03:53	MISSED JUMPER by GRAY,VIVIAN			
03:47				REBOUND (DEF) by TEAM
03:47				SUB OUT: BREMAUD,CARLA
03:47				SUB IN: BREWER,MAYA
03:28	FOUL (PERSONAL) by GRAY,VIVIAN			
03:23				MISSED JUMPER by HAMPTON,JAIDA
03:22				REBOUND (OFF) by BASTIN,SERAPHINE
03:22	FOUL (PERSONAL) by ASBERRY,JA'MEE			
03:17				MISSED LAYUP by LAIR,DAWNYEL
03:13				REBOUND (OFF) by TEAM
03:02				TURNOVER (BADPASS) by BASTIN,SERAPHINE
03:02	STEAL by JONES,LATASHIA			
02:55	GOOD! 3PTR by ASBERRY,JA'MEE	31-43	V 12	
02:55	ASSIST by MILLER,BRAXTIN			

Time	VISITORS: Oklahoma St.	Score	Margin	HOME: Wichita St.
02:31	FOUL (PERSONAL) by DE LAPP,KASSIDY			
02:31		32-43	V 11	GOOD! FT by HAMPTON,JAIDA
02:31				SUB OUT: SMITH,SHYIA
02:31				SUB IN: LOZADA-CABBAGE,SABRINA
02:31	SUB OUT: DE LAPP,KASSIDY			
02:31	SUB IN: WINCHESTER,ABBIE			
02:31				MISSED FT by HAMPTON,JAIDA
02:30	REBOUND (DEF) by JONES,LATASHIA			
02:24	MISSED LAYUP by GRAY,VIVIAN			
02:19	REBOUND (OFF) by WINCHESTER,ABBIE			
02:03	TURNOVER (LOSTBALL) by JONES,LATASHIA			
02:02				SUB OUT: HAMPTON,JAIDA
02:02				SUB IN: BREMAUD,CARLA
01:52				TURNOVER (BADPASS) by BASTIN,SERAPHINE
01:52	STEAL by ASBERRY,JA'MEE			
01:32	TURNOVER (LOSTBALL) by WINCHESTER,ABBIE			
01:32				STEAL by BREMAUD,CARLA
01:26				TURNOVER (LOSTBALL) by BREWER,MAYA
01:26	STEAL by GRAY,VIVIAN			
01:26				FOUL (PERSONAL) by BREWER,MAYA
01:26	GOOD! FT by GRAY,VIVIAN	32-44	V 12	
01:26	GOOD! FT by GRAY,VIVIAN	32-45	V 13	
01:26	SUB OUT: GRAY,VIVIAN			
01:26	SUB IN: GERLICH,BRYN			
01:17				TURNOVER (LOSTBALL) by BREWER,MAYA
01:04				FOUL (PERSONAL) by LOZADA-CABBAGE,SABRINA
01:04	GOOD! FT by MILLER,BRAXTIN	32-46	V 14	
01:04				SUB OUT: LOZADA-CABBAGE,SABRINA
01:04				SUB IN: FAYE,ALYSSIA
01:04	GOOD! FT by MILLER,BRAXTIN	32-47	V 15	
01:04	SUB OUT: MILLER,BRAXTIN			
01:04	SUB IN: GRAY,VIVIAN			
00:37				TURNOVER (TRAVEL) by BREWER,MAYA
00:12	TURNOVER (LOSTBALL) by ASBERRY,JA'MEE			
00:12				STEAL by LAIR,DAWNYEL
00:07		34-47	V 13	GOOD! LAYUP by LAIR,DAWNYEL [FB]
00:00	MISSED JUMPER by JONES,LATASHIA			
00:00	REBOUND (OFF) by TEAM			

Oklahoma St. 47, Wichita St. 34

Points from (This Period)	OSU	WSU
In the Paint	2	6
Off Turns	5	2
2nd Chance	5	2
Fast Break	0	2
Bench	6	4

This period only: OSU led for 34:17. WSU led for 34:39.
Game was tied for 0:04.

Official Play-By-Play
Oklahoma St. vs Wichita St.
Fourth Quarter
November 28, 2018 at Charles Koch Arena (Devlin Court) - Wichita, Kan.

Starters:

Oklahoma St.: 12 GRAY,VIVIAN; 14 MILLER,BRAXTIN; 15 GNANOU,MARIAM; 20 JONES,LATASHIA; 23 HOBBS,JADEN;

Wichita St.: 11 LOZADA-CABBAGE,SABRINA; 12 BREMAUD,CARLA; 13 PRINCE,RAVEN; 15 HAMPTON,JAIDA; 23 BASTIN,SERAPHINE;

Period 4

Time	VISITORS: Oklahoma St.	Score	Margin	HOME: Wichita St.
09:36	MISSED JUMPER by GRAY,VIVIAN			
09:34				REBOUND (DEF) by TEAM
09:25		36-47	V 11	GOOD! JUMPER by BASTIN,SERAPHINE
09:25				ASSIST by PEACOCK,JADA
09:04				FOUL (PERSONAL) by LAIR,DAWNYEL
08:51	TURNOVER (3SEC) by GNANOU,MARIAM			
08:46				MISSED LAYUP by BASTIN,SERAPHINE
08:44				REBOUND (OFF) by PRINCE,RAVEN
08:44	FOUL (PERSONAL) by GNANOU,MARIAM			
08:34		38-47	V 9	GOOD! LAYUP by PRINCE,RAVEN
08:11	SUB OUT: GNANOU,MARIAM			
08:11	SUB IN: DE LAPP,KASSIDY			
08:09	TURNOVER (BADPASS) by HOBBS,JADEN			
08:09				STEAL by LAIR,DAWNYEL
08:05	FOUL (PERSONAL) by MILLER,BRAXTIN			
08:05		39-47	V 8	GOOD! FT by LAIR,DAWNYEL [FB]
08:05				MISSED FT by LAIR,DAWNYEL
08:03	REBOUND (DEF) by DE LAPP,KASSIDY			
07:46	FOUL (OFF) by JONES,LATASHIA			
07:46	TURNOVER (OFFENSIVE) by JONES,LATASHIA			
07:46	TIMEOUT 30SEC			
07:27				MISSED LAYUP by PRINCE,RAVEN
07:27	BLOCK by DE LAPP,KASSIDY			
07:27				REBOUND (OFF) by TEAM
07:22		41-47	V 6	GOOD! LAYUP by LAIR,DAWNYEL [PNT]
07:22	FOUL (PERSONAL) by GRAY,VIVIAN			
07:22				MISSED FT by LAIR,DAWNYEL
07:22	REBOUND (DEF) by JONES,LATASHIA			
06:55	GOOD! 3PTR by HOBBS,JADEN	41-50	V 9	
06:55	ASSIST by JONES,LATASHIA			
06:38				MISSED LAYUP by PRINCE,RAVEN
06:35	REBOUND (DEF) by JONES,LATASHIA			
06:32	MISSED JUMPER by MILLER,BRAXTIN			
06:30	REBOUND (OFF) by TEAM			
06:30				SUB OUT: PEACOCK,JADA
06:30				SUB IN: LOZADA-CABBAGE,SABRINA
06:30	SUB OUT: JONES,LATASHIA			
06:30	SUB IN: ASBERRY,JA'MEE			
06:13	MISSED LAYUP by GRAY,VIVIAN			
06:13				BLOCK by LOZADA-CABBAGE,SABRINA
06:11				REBOUND (DEF) by LAIR,DAWNYEL
06:11	FOUL (PERSONAL) by MILLER,BRAXTIN			
06:11				MISSED FT by LAIR,DAWNYEL
06:11				REBOUND (OFF) by TEAM
06:11				MISSED FT by LAIR,DAWNYEL
06:10	REBOUND (DEF) by MILLER,BRAXTIN			
05:59	GOOD! 3PTR by HOBBS,JADEN	41-53	V 12	
05:59	ASSIST by MILLER,BRAXTIN			
05:41				MISSED JUMPER by LOZADA-CABBAGE,SABRINA
05:38				REBOUND (OFF) by TEAM
05:17		43-53	V 10	GOOD! LAYUP by PRINCE,RAVEN
05:04				FOUL (PERSONAL) by BREMAUD,CARLA
05:04	SUB OUT: GRAY,VIVIAN			
05:04	SUB IN: GERLICH,BRYN			
04:57	MISSED 3PTR by ASBERRY,JA'MEE			
04:54				REBOUND (DEF) by LAIR,DAWNYEL
04:41				MISSED 3PTR by BREMAUD,CARLA
04:37	REBOUND (DEF) by GERLICH,BRYN			
04:26				FOUL (PERSONAL) by PRINCE,RAVEN
04:26	GOOD! FT by MILLER,BRAXTIN	43-54	V 11	
04:26	GOOD! FT by MILLER,BRAXTIN	43-55	V 12	
04:18	FOUL (PERSONAL) by GERLICH,BRYN			
04:18				MISSED FT by BREMAUD,CARLA
04:18				REBOUND (OFF) by TEAM
04:18				MISSED FT by BREMAUD,CARLA
04:18	REBOUND (DEF) by GERLICH,BRYN			
04:11	TURNOVER (BADPASS) by ASBERRY,JA'MEE			
04:11				STEAL by LAIR,DAWNYEL
04:11	SUB OUT: DE LAPP,KASSIDY			
04:11	SUB IN: JONES,LATASHIA			
04:02		45-55	V 10	GOOD! LAYUP by LAIR,DAWNYEL
03:37	MISSED JUMPER by MILLER,BRAXTIN			
03:34	REBOUND (OFF) by JONES,LATASHIA			
03:14	GOOD! JUMPER by GERLICH,BRYN [PNT]	45-57	V 12	
02:51				MISSED 3PTR by BREMAUD,CARLA
02:48				REBOUND (OFF) by LAIR,DAWNYEL

Time	VISITORS: Oklahoma St.	Score	Margin	HOME: Wichita St.
02:44				MISSED LAYUP by BASTIN,SERAPHINE
02:41	REBOUND (DEF) by MILLER,BRAXTIN			
02:14				FOUL (PERSONAL) by LAIR,DAWNYEL
02:14	MISSED FT by MILLER,BRAXTIN			
02:14	REBOUND (OFF) by TEAM			
02:14	GOOD! FT by MILLER,BRAXTIN [FB]	45-58	V 13	
02:14				SUB OUT: BREMAUD,CARLA
02:14				SUB IN: HAMPTON,JAIDA
02:02				MISSED 3PTR by BASTIN,SERAPHINE
02:00	REBOUND (DEF) by TEAM			
01:26	MISSED 3PTR by HOBBS,JADEN			
01:26				BLOCK by BASTIN,SERAPHINE
01:21	REBOUND (OFF) by TEAM			
01:21	TURNOVER (SHOTCLOCK) by			
01:03				TURNOVER (LOSTBALL) by HAMPTON,JAIDA
01:03	STEAL by GERLICH,BRYN			
00:40	GOOD! JUMPER by MILLER,BRAXTIN	45-60	V 15	
00:19		47-60	V 13	GOOD! JUMPER by LOZADA-CABBAGE,SABRINA
00:19				ASSIST by HAMPTON,JAIDA

Oklahoma St. 60, Wichita St. 47

Points from (This Period)	OSU	WSU
In the Paint	2	8
Off Turns	2	7
2nd Chance	2	6
Fast Break	1	1
Bench	2	5

This period only: OSU led for 34:17. WSU led for 34:39.
Game was tied for 0:04.

**Official Scoring/Possession Reference Chart
Oklahoma St. vs Wichita St.**

Period 1

November 28, 2018 at Charles Koch Arena (Devlin Court) - Wichita, Kan.

Starters:

Oklahoma St.: 12 GRAY,VIVIAN; 14 MILLER,BRAXTIN; 15 GNANOU,MARIAM; 20 JONES,LATASHIA; 23 HOBBS,JADEN;

Wichita St.: 11 LOZADA-CABBAGE,SABRINA; 12 BREMAUD,CARLA; 13 PRINCE,RAVEN; 15 HAMPTON,JAIDA; 23 BASTIN,SERAPHINE;

Period 1

Time	VISITORS: Oklahoma St.	Score	Margin	HOME: Wichita St.
08:51		2-0	H 2	GOOD! JUMPER by HAMPTON,JAIDA
07:56	GOOD! JUMPER by MILLER,BRAXTIN	2-2	T	
07:21	GOOD! JUMPER by MILLER,BRAXTIN	2-4	V 2	
05:59	GOOD! LAYUP by DE LAPP,KASSIDY	2-6	V 4	
05:18		4-6	V 2	GOOD! JUMPER by BASTIN,SERAPHINE [PNT]
05:10	GOOD! 3PTR by MILLER,BRAXTIN [FB]	4-9	V 5	
04:14		7-9	V 2	GOOD! 3PTR by BREMAUD,CARLA

Oklahoma St. 9, Wichita St. 7

**Official Scoring/Possession Reference Chart
Oklahoma St. vs Wichita St.**

Period 2

November 28, 2018 at Charles Koch Arena (Devlin Court) - Wichita, Kan.

Starters:

Oklahoma St.: 12 GRAY,VIVIAN; 14 MILLER,BRAXTIN; 15 GNANOU,MARIAM; 20 JONES,LATASHIA; 23 HOBBS,JADEN;

Wichita St.: 11 LOZADA-CABBAGE,SABRINA; 12 BREMAUD,CARLA; 13 PRINCE,RAVEN; 15 HAMPTON,JAIDA; 23 BASTIN,SERAPHINE;

Period 2

Time	VISITORS: Oklahoma St.	Score	Margin	HOME: Wichita St.
09:17		10-9	H 1	GOOD! 3PTR by HAMPTON,JAIDA
07:45		12-9	H 3	GOOD! LAYUP by LAIR,DAWNYEL [FB]
07:14	GOOD! LAYUP by MILLER,BRAXTIN	12-11	H 1	
06:33	GOOD! LAYUP by DE LAPP,KASSIDY	12-13	V 1	
05:55	GOOD! FT by MILLER,BRAXTIN	12-14	V 2	
05:55	GOOD! FT by MILLER,BRAXTIN	12-15	V 3	
05:41		14-15	V 1	GOOD! JUMPER by LOZADA-CABBAGE,SABRINA
04:54	GOOD! 3PTR by MILLER,BRAXTIN	14-18	V 4	
04:17	GOOD! JUMPER by MILLER,BRAXTIN [PNT]	14-20	V 6	
03:56		17-20	V 3	GOOD! 3PTR by BREMAUD,CARLA
03:37	GOOD! 3PTR by HOBBS,JADEN	17-23	V 6	
01:44	GOOD! LAYUP by WINCHESTER,ABBIE	17-25	V 8	
01:30		18-25	V 7	GOOD! FT by LAIR,DAWNYEL
01:30		19-25	V 6	GOOD! FT by LAIR,DAWNYEL
01:08	GOOD! LAYUP by GRAY,VIVIAN	19-27	V 8	
00:43		21-27	V 6	GOOD! LAYUP by LAIR,DAWNYEL
00:21		23-27	V 4	GOOD! JUMPER by LAIR,DAWNYEL [FB]
00:03	GOOD! JUMPER by MILLER,BRAXTIN [PNT]	23-29	V 6	

Oklahoma St. 29, Wichita St. 23

**Official Scoring/Possession Reference Chart
Oklahoma St. vs Wichita St.**

Period 3

November 28, 2018 at Charles Koch Arena (Devlin Court) - Wichita, Kan.

Starters:

Oklahoma St.: 12 GRAY,VIVIAN; 14 MILLER,BRAXTIN; 15 GNANOU,MARIAM; 20 JONES,LATASHIA; 23 HOBBS,JADEN;

Wichita St.: 11 LOZADA-CABBAGE,SABRINA; 12 BREMAUD,CARLA; 13 PRINCE,RAVEN; 15 HAMPTON,JAIDA; 23 BASTIN,SERAPHINE;

Period 3

Time	VISITORS: Oklahoma St.	Score	Margin	HOME: Wichita St.
09:41	GOOD! LAYUP by GRAY,VIVIAN	23-31	V 8	
09:25		25-31	V 6	GOOD! JUMPER by HAMPTON,JAIDA
09:09	GOOD! FT by GRAY,VIVIAN	25-32	V 7	

Time	VISITORS: Oklahoma St.	Score	Margin	HOME: Wichita St.
07:09	GOOD! JUMPER by MILLER,BRAXTIN	25-34	V 9	
06:51		27-34	V 7	GOOD! JUMPER by BASTIN,SERAPHINE
05:25		29-34	V 5	GOOD! LAYUP by LOZADA-CABBAGE,SABRINA
04:58	GOOD! 3PTR by MILLER,BRAXTIN	29-37	V 8	
04:47		31-37	V 6	GOOD! JUMPER by SMITH,SHYIA [PNT]
04:39	GOOD! 3PTR by ASBERRY,JA'MEE	31-40	V 9	
02:55	GOOD! 3PTR by ASBERRY,JA'MEE	31-43	V 12	
02:31		32-43	V 11	GOOD! FT by HAMPTON,JAIDA
01:26	GOOD! FT by GRAY,VIVIAN	32-44	V 12	
01:26	GOOD! FT by GRAY,VIVIAN	32-45	V 13	
01:04	GOOD! FT by MILLER,BRAXTIN	32-46	V 14	
01:04	GOOD! FT by MILLER,BRAXTIN	32-47	V 15	
00:07		34-47	V 13	GOOD! LAYUP by LAIR,DAWNYEL [FB]

Oklahoma St. 47, Wichita St. 34

Official Scoring/Possession Reference Chart
Oklahoma St. vs Wichita St.

Period 4

November 28, 2018 at Charles Koch Arena (Devlin Court) - Wichita, Kan.

Starters:

Oklahoma St.: 12 GRAY,VIVIAN; 14 MILLER,BRAXTIN; 15 GNANOU,MARIAM; 20 JONES,LATASHIA; 23 HOBBS,JADEN;

Wichita St.: 11 LOZADA-CABBAGE,SABRINA; 12 BREMAUD,CARLA; 13 PRINCE,RAVEN; 15 HAMPTON,JAIDA; 23 BASTIN,SERAPHINE;

Period 4

Time	VISITORS: Oklahoma St.	Score	Margin	HOME: Wichita St.
09:25		36-47	V 11	GOOD! JUMPER by BASTIN,SERAPHINE
08:34		38-47	V 9	GOOD! LAYUP by PRINCE,RAVEN
08:05		39-47	V 8	GOOD! FT by LAIR,DAWNYEL [FB]
07:22		41-47	V 6	GOOD! LAYUP by LAIR,DAWNYEL [PNT]
06:55	GOOD! 3PTR by HOBBS,JADEN	41-50	V 9	
05:59	GOOD! 3PTR by HOBBS,JADEN	41-53	V 12	
05:17		43-53	V 10	GOOD! LAYUP by PRINCE,RAVEN
04:26	GOOD! FT by MILLER,BRAXTIN	43-54	V 11	
04:26	GOOD! FT by MILLER,BRAXTIN	43-55	V 12	
04:02		45-55	V 10	GOOD! LAYUP by LAIR,DAWNYEL
03:14	GOOD! JUMPER by GERLICH,BRYN [PNT]	45-57	V 12	
02:14	GOOD! FT by MILLER,BRAXTIN [FB]	45-58	V 13	
00:40	GOOD! JUMPER by MILLER,BRAXTIN	45-60	V 15	
00:19		47-60	V 13	GOOD! JUMPER by LOZADA-CABBAGE,SABRINA

Oklahoma St. 60, Wichita St. 47

Official Substitutions Log
Oklahoma St. vs Wichita St.

Period 1

November 28, 2018 at Charles Koch Arena (Devlin Court) - Wichita, Kan.

VISITORS: Oklahoma St.	Time	Score	HOME: Wichita St.
12 GRAY,VIVIAN			11 LOZADA-CABBAGE,SABRINA
14 MILLER,BRAXTIN			12 BREMAUD,CARLA
15 GNANOU,MARIAM			13 PRINCE,RAVEN
20 JONES,LATASHIA			15 HAMPTON,JAIDA
23 HOBBS,JADEN			23 BASTIN,SERAPHINE
SUB OUT: 15 GNANOU,MARIAM	06:14	4-2	
SUB IN: 1 DE LAPP,KASSIDY	06:14		
	04:43	9-4	SUB OUT: HAMPTON,JAIDA
	04:43		SUB IN: LAIR,DAWNYEL
	04:43		SUB OUT: PRINCE,RAVEN
	04:43		SUB IN: SMITH,SHYIA
SUB OUT: 14 MILLER,BRAXTIN	04:43		
SUB IN: 24 WHEELER,KARLI	04:43		
SUB OUT: 12 GRAY,VIVIAN	03:40	9-7	
SUB IN: 14 MILLER,BRAXTIN	03:40		
SUB OUT: 23 HOBBS,JADEN	03:40		
SUB IN: 21 ASBERRY,JA'MEE	03:40		

VISITORS: Oklahoma St.	Time	Score	HOME: Wichita St.
SUB OUT: 1 DE LAPP,KASSIDY	02:08	9-7	
SUB IN: 23 HOBBS,JADEN	02:08		
SUB OUT: 21 ASBERRY,JA'MEE	02:08		
SUB IN: 15 GNANOU,MARIAM	02:08		
SUB OUT: 24 WHEELER,KARLI	02:08		
SUB IN: 12 GRAY,VIVIAN	02:08		
	01:14	9-7	SUB OUT: BASTIN,SERAPHINE
	01:14		SUB IN: PEACOCK,JADA
	01:14		SUB OUT: LOZADA-CABBAGE,SABRINA
	01:14		SUB IN: FAYE,ALYSSIA
SUB OUT: 20 JONES,LATASHIA	01:14		
SUB IN: 30 CASTRO,MARIA	01:14		
	00:33	9-7	SUB OUT: BREMAUD,CARLA
	00:33		SUB IN: HAMPTON,JAIDA
SUB OUT: 15 GNANOU,MARIAM	00:33		
SUB IN: 1 DE LAPP,KASSIDY	00:33		

Oklahoma St. 9, Wichita St. 7

**Official Substitutions Log
Oklahoma St. vs Wichita St.
Period 2**

November 28, 2018 at Charles Koch Arena (Devlin Court) - Wichita, Kan.

VISITORS: Oklahoma St.	Time	Score	HOME: Wichita St.
12 GRAY, VIVIAN			11 LOZADA-CABBAGE, SABRINA
14 MILLER, BRAXTIN			12 BREMAUD, CARLA
15 GNANOU, MARIAM			13 PRINCE, RAVEN
20 JONES, LATASHIA			15 HAMPTON, JAIDA
23 HOBBS, JADEN			23 BASTIN, SERAPHINE
	06:11	13-12	SUB OUT: PEACOCK, JADA
	06:11		SUB IN: BREMAUD, CARLA
	06:11		SUB OUT: LAIR, DAWNYEL
	06:11		SUB IN: PRINCE, RAVEN
	06:11		SUB OUT: FAYE, ALYSSIA
	06:11		SUB IN: LOZADA-CABBAGE, SABRINA
	06:11		SUB OUT: SMITH, SHYIA
	06:11		SUB IN: BASTIN, SERAPHINE
	05:22	15-14	SUB OUT: LOZADA-CABBAGE, SABRINA
	05:22		SUB IN: COLBERT, TRAJATA
SUB OUT: 1 DE LAPP, KASSIDY	05:22		
SUB IN: 25 WINCHESTER, ABBIE	05:22		
	02:21	23-17	SUB OUT: COLBERT, TRAJATA
	02:21		SUB IN: LAIR, DAWNYEL

Oklahoma St. 29, Wichita St. 23

**Official Substitutions Log
Oklahoma St. vs Wichita St.
Period 3**

November 28, 2018 at Charles Koch Arena (Devlin Court) - Wichita, Kan.

VISITORS: Oklahoma St.	Time	Score	HOME: Wichita St.
12 GRAY, VIVIAN			11 LOZADA-CABBAGE, SABRINA
14 MILLER, BRAXTIN			12 BREMAUD, CARLA
15 GNANOU, MARIAM			13 PRINCE, RAVEN
20 JONES, LATASHIA			15 HAMPTON, JAIDA
23 HOBBS, JADEN			23 BASTIN, SERAPHINE
	08:52	32-25	SUB OUT: PRINCE, RAVEN
	08:52		SUB IN: HENDERSON, ASIA
	06:31	34-27	SUB OUT: HENDERSON, ASIA
	06:31		SUB IN: LAIR, DAWNYEL
	05:17	34-29	SUB OUT: LOZADA-CABBAGE, SABRINA
	05:17		SUB IN: SMITH, SHYIA
SUB OUT: 23 HOBBS, JADEN	05:17		
SUB IN: 21 ASBERRY, JA'MEE	05:17		
SUB OUT: 15 GNANOU, MARIAM	05:17		
SUB IN: 1 DE LAPP, KASSIDY	05:17		
	03:47	40-31	SUB OUT: BREMAUD, CARLA
	03:47		SUB IN: BREWER, MAYA
	02:31	43-32	SUB OUT: SMITH, SHYIA
	02:31		SUB IN: LOZADA-CABBAGE, SABRINA
SUB OUT: 1 DE LAPP, KASSIDY	02:31		
SUB IN: 25 WINCHESTER, ABBIE	02:31		
	02:02	43-32	SUB OUT: HAMPTON, JAIDA
	02:02		SUB IN: BREMAUD, CARLA
SUB OUT: 12 GRAY, VIVIAN	01:26	45-32	
SUB IN: 10 GERLICH, BRYN	01:26		
	01:04	46-32	SUB OUT: LOZADA-CABBAGE, SABRINA
	01:04		SUB IN: FAYE, ALYSSIA
SUB OUT: 14 MILLER, BRAXTIN	01:04		
SUB IN: 12 GRAY, VIVIAN	01:04		

Oklahoma St. 47, Wichita St. 34

**Official Substitutions Log
Oklahoma St. vs Wichita St.
Period 4**

November 28, 2018 at Charles Koch Arena (Devlin Court) - Wichita, Kan.

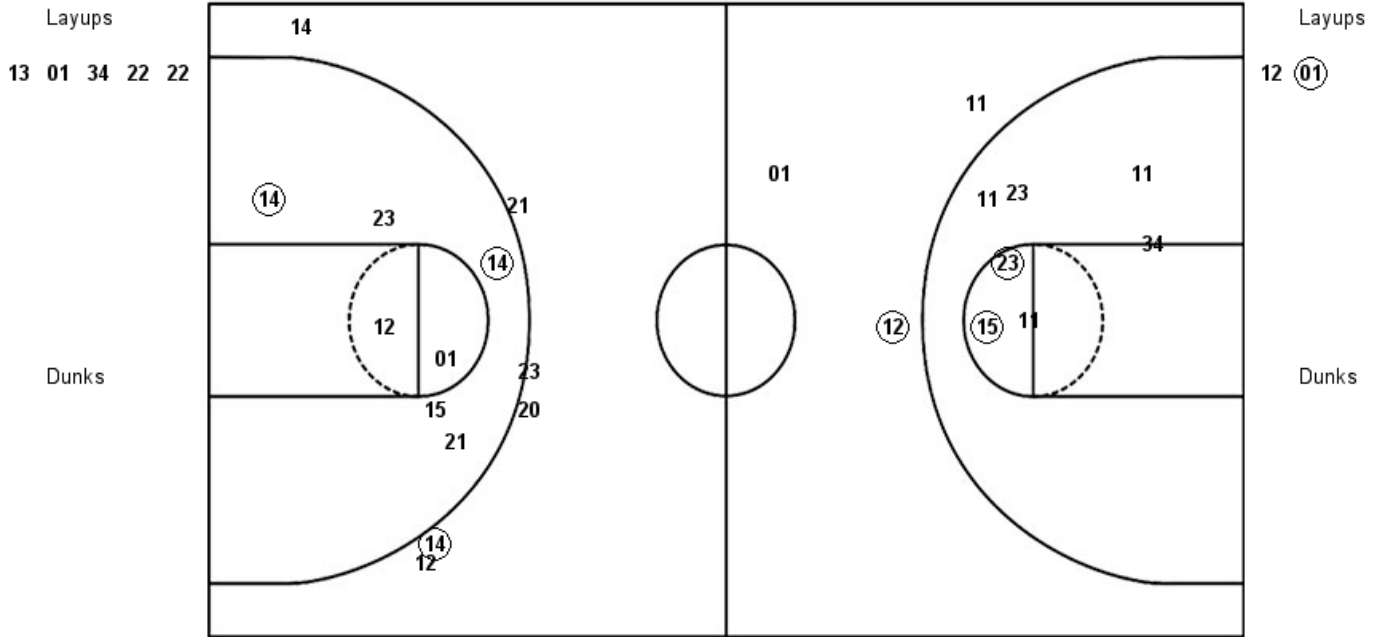
VISITORS: Oklahoma St.	Time	Score	HOME: Wichita St.
12 GRAY, VIVIAN			11 LOZADA-CABBAGE, SABRINA
14 MILLER, BRAXTIN			12 BREMAUD, CARLA
15 GNANOU, MARIAM			13 PRINCE, RAVEN
20 JONES, LATASHIA			15 HAMPTON, JAIDA
23 HOBBS, JADEN			23 BASTIN, SERAPHINE
SUB OUT: 15 GNANOU, MARIAM	08:11	47-38	
SUB IN: 1 DE LAPP, KASSIDY	08:11		
	06:30	50-41	SUB OUT: PEACOCK, JADA
	06:30		SUB IN: LOZADA-CABBAGE, SABRINA
SUB OUT: 20 JONES, LATASHIA	06:30		
SUB IN: 21 ASBERRY, JA'MEE	06:30		
SUB OUT: 12 GRAY, VIVIAN	05:04	53-43	
SUB IN: 10 GERLICH, BRYN	05:04		
SUB OUT: 1 DE LAPP, KASSIDY	04:11	55-43	
SUB IN: 20 JONES, LATASHIA	04:11		
	02:14	58-45	SUB OUT: BREMAUD, CARLA
	02:14		SUB IN: HAMPTON, JAIDA

Oklahoma St. 60, Wichita St. 47

Official Shot Chart
Oklahoma St. vs Wichita St.
PERIOD 1 Shots
 November 28, 2018 at Charles Koch Arena (Devlin Court) - Wichita, Kan.

Wichita St.

Oklahoma St.



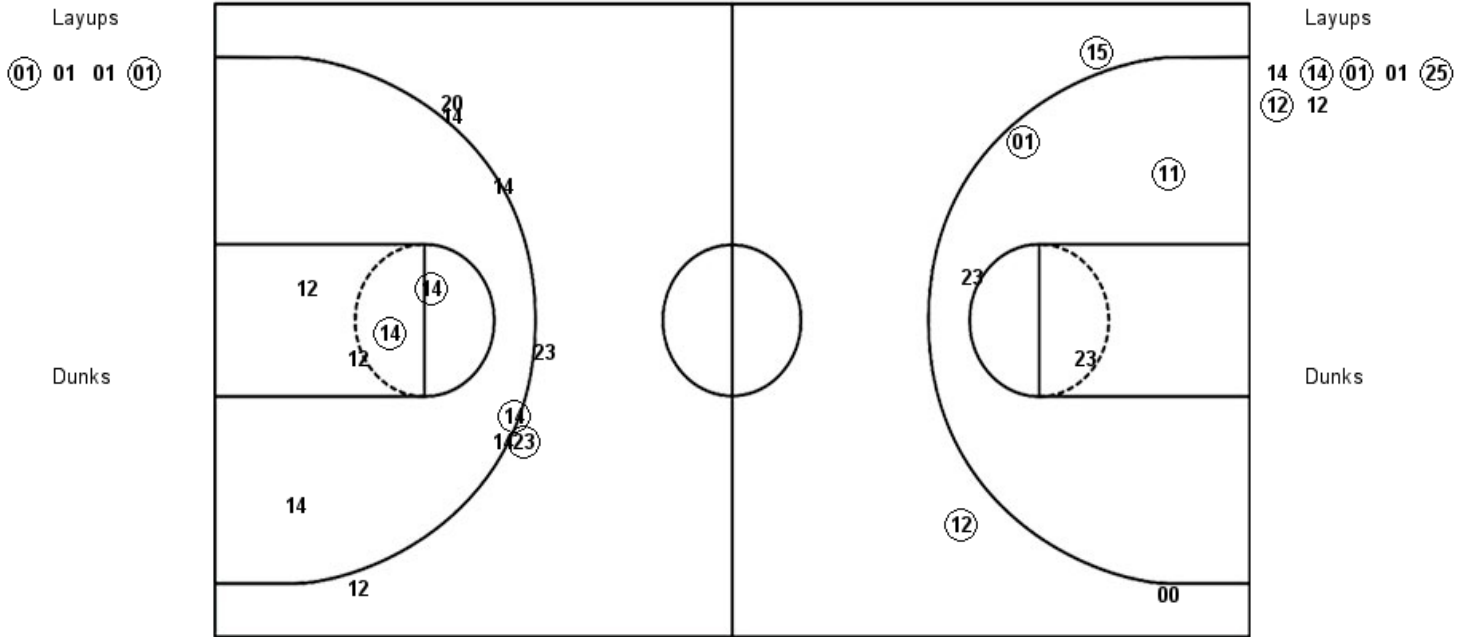
WSU : Period 1	Made	Att	Pct
Layups	0	5	00.0
Dunks	0	0	0
2PT Field Goals	2	12	16.7
3PT Field Goals	1	3	33.3
Total Field Goals	3	15	20.0

OSU : Period 1	Made	Att	Pct
Layups	1	2	50.0
Dunks	0	0	0
2PT Field Goals	3	9	33.3
3PT Field Goals	1	6	16.7
Total Field Goals	4	15	26.7

Official Shot Chart
Oklahoma St. vs Wichita St.
PERIOD 2 Shots
 November 28, 2018 at Charles Koch Arena (Devlin Court) - Wichita, Kan.

Wichita St.

Oklahoma St.



WSU : Period 2	Made	Att	Pct
Layups	2	4	50.0
Dunks	0	0	0
2PT Field Goals	4	8	50.0
3PT Field Goals	2	3	66.7
Total Field Goals	6	11	54.5

OSU : Period 2	Made	Att	Pct
Layups	4	7	57.1
Dunks	0	0	0
2PT Field Goals	6	12	50.0
3PT Field Goals	2	8	25.0
Total Field Goals	8	20	40.0

Official Shot Chart
Oklahoma St. vs Wichita St.
PERIOD 3 Shots
 November 28, 2018 at Charles Koch Arena (Devlin Court) - Wichita, Kan.

Wichita St.

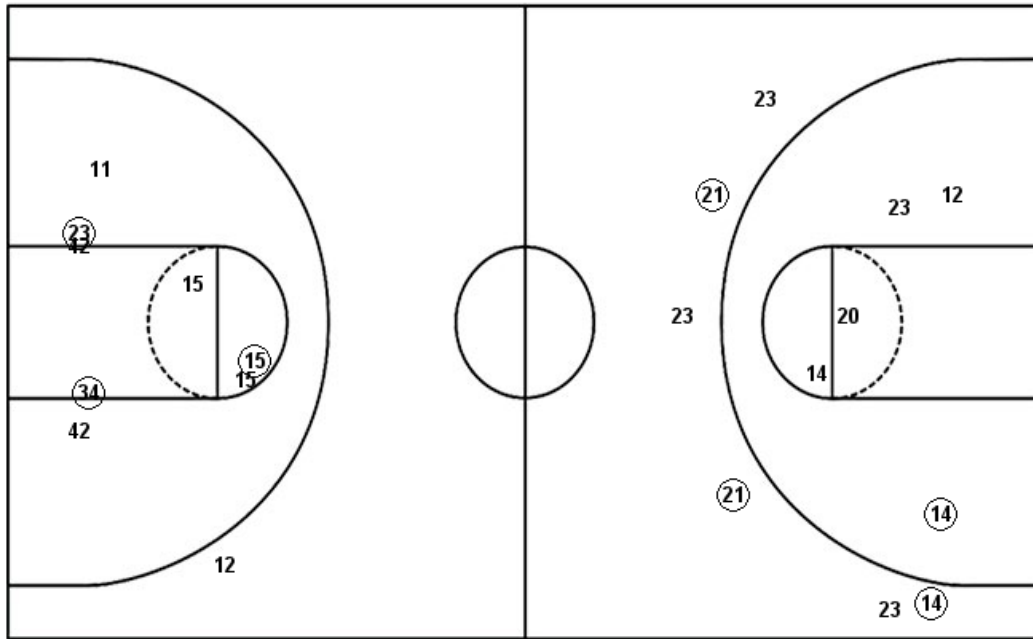
Oklahoma St.

Layups
 (11) 01 (01)

Layups
 (12) 20 12

Dunks

Dunks



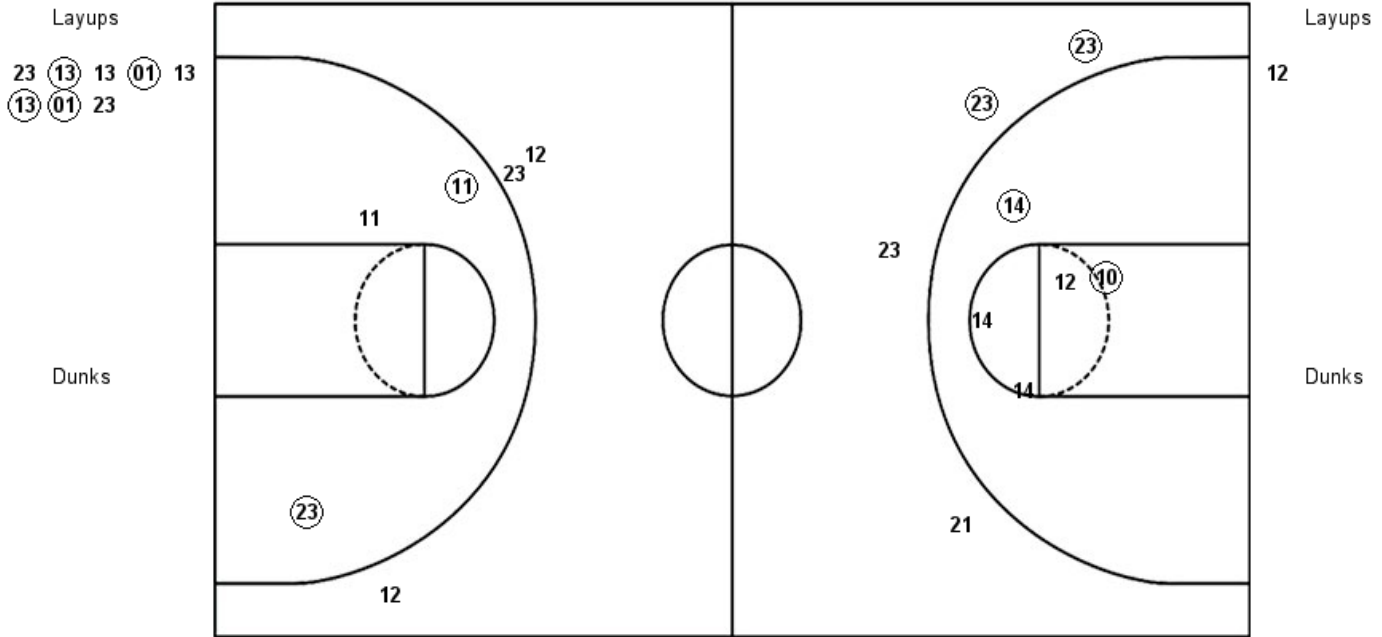
WSU : Period 3	Made	Att	Pct
Layups	2	3	66.7
Dunks	0	0	0
2PT Field Goals	5	11	45.5
3PT Field Goals	0	1	00.0
Total Field Goals	5	12	41.7

OSU : Period 3	Made	Att	Pct
Layups	1	3	33.3
Dunks	0	0	0
2PT Field Goals	2	8	25.0
3PT Field Goals	3	6	50.0
Total Field Goals	5	14	35.7

Official Shot Chart
Oklahoma St. vs Wichita St.
PERIOD 4 Shots
 November 28, 2018 at Charles Koch Arena (Devlin Court) - Wichita, Kan.

Wichita St.

Oklahoma St.



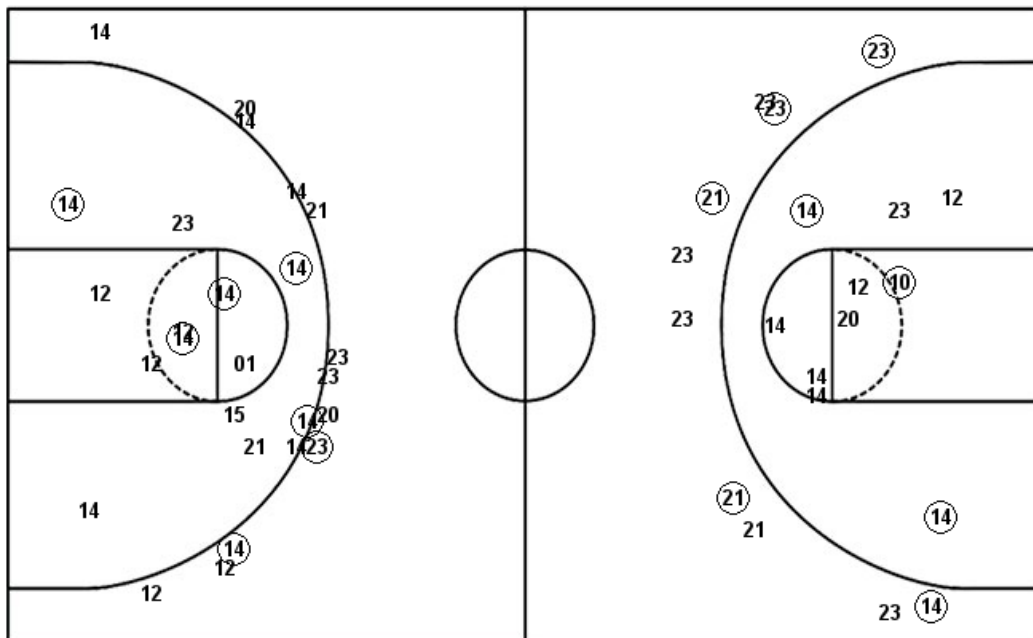
WSU : Period 4	Made	Att	Pct
Layups	4	8	50.0
Dunks	0	0	0
2PT Field Goals	6	11	54.5
3PT Field Goals	0	3	00.0
Total Field Goals	6	14	42.9

OSU : Period 4	Made	Att	Pct
Layups	0	1	00.0
Dunks	0	0	0
2PT Field Goals	2	6	33.3
3PT Field Goals	2	4	50.0
Total Field Goals	4	10	40.0

Official Shot Chart
Oklahoma St. vs Wichita St.

Oklahoma St. Team Shots
November 28, 2018 at Charles Koch Arena (Devlin Court) - Wichita, Kan.

Layups



Layups

12 (01) 14 (14) (01)
01 (25) (12) 12 (12)
20 12 12

Dunks

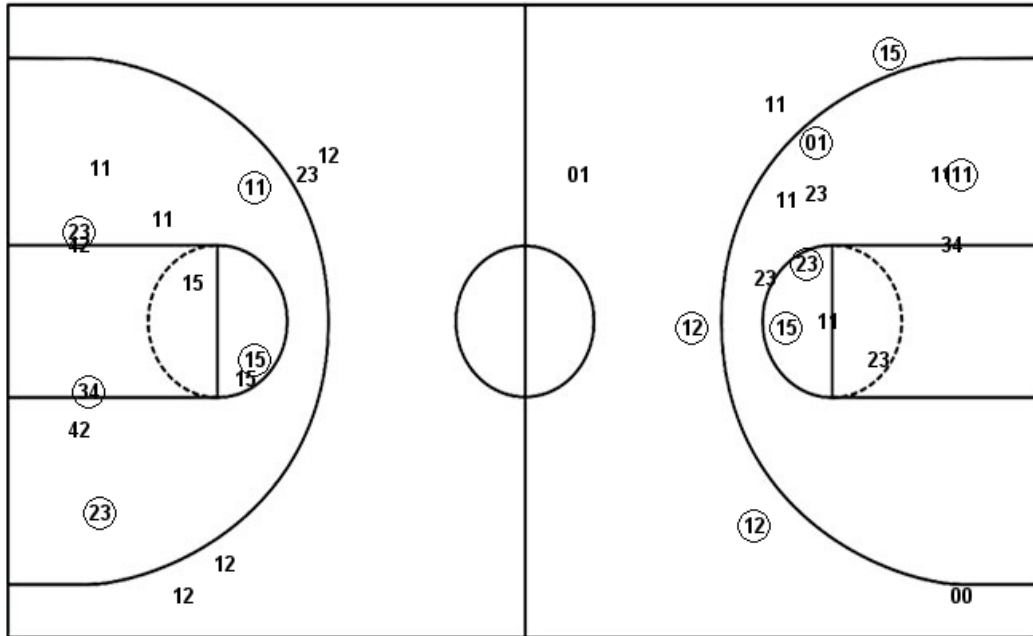
Dunks

OSU : Period 1	Made	Att	Pct
Layups	1	2	50.0
Dunks	0	0	0
2PT Field Goals	3	9	33.3
3PT Field Goals	1	6	16.7
Total Field Goals	4	15	26.7
OSU : Period 3	Made	Att	Pct
Layups	1	3	33.3
Dunks	0	0	0
2PT Field Goals	2	8	25.0
3PT Field Goals	3	6	50.0
Total Field Goals	5	14	35.7

OSU : Period 2	Made	Att	Pct
Layups	4	7	57.1
Dunks	0	0	0
2PT Field Goals	6	12	50.0
3PT Field Goals	2	8	25.0
Total Field Goals	8	20	40.0
OSU : Period 4	Made	Att	Pct
Layups	0	1	00.0
Dunks	0	0	0
2PT Field Goals	2	6	33.3
3PT Field Goals	2	4	50.0
Total Field Goals	4	10	40.0

Official Shot Chart
Oklahoma St. vs Wichita St.
Wichita St. Team Shots
November 28, 2018 at Charles Koch Arena (Devlin Court) - Wichita, Kan.

Layups



Layups

13	01	34	22	22
01	01	01	01	11
01	01	23	13	13
01	13	13	01	23

Dunks

Dunks

WSU : Period 1	Made	Att	Pct
Layups	0	5	00.0
Dunks	0	0	0
2PT Field Goals	2	12	16.7
3PT Field Goals	1	3	33.3
Total Field Goals	3	15	20.0
WSU : Period 3	Made	Att	Pct
Layups	2	3	66.7
Dunks	0	0	0
2PT Field Goals	5	11	45.5
3PT Field Goals	0	1	00.0
Total Field Goals	5	12	41.7

WSU : Period 2	Made	Att	Pct
Layups	2	4	50.0
Dunks	0	0	0
2PT Field Goals	4	8	50.0
3PT Field Goals	2	3	66.7
Total Field Goals	6	11	54.5
WSU : Period 4	Made	Att	Pct
Layups	4	8	50.0
Dunks	0	0	0
2PT Field Goals	6	11	54.5
3PT Field Goals	0	3	00.0
Total Field Goals	6	14	42.9