

## FINAL SCORE



**Louisiana Tech**

**56**



**Wichita St.**

**70**

November 25, 2018 • Charles Koch Arena (Devlin Court) - Wichita, Kan.

## FINAL STATISTICS

**Official Box Score**  
**Louisiana Tech vs Wichita St.**  
**Game Totals -- Final Statistics**  
**November 25, 2018 at Charles Koch Arena (Devlin Court) - Wichita, Kan.**

**Louisiana Tech 56**

No.	Player	S	Pts	FG	3FG	FT	OR	DR	TR	PF	A	TO	Blk	Stl	Min	+/-
3	Lang, Kierra		0	0-4	0-4	0-0	0	0	0	1	4	0	0	0	23	-3
4	Anthony, Kierra		13	6-17	0-4	1-2	2	1	3	2	1	5	0	1	31	-21
22	Bright, Grayson		11	3-8	1-2	4-6	2	9	11	1	2	4	0	1	34	-10
23	Cleaver, Reauna		0	0-0	0-0	0-0	1	0	1	1	0	0	0	0	6	-4
24	Stahly, Taylor		14	5-13	3-10	1-1	2	1	3	1	0	0	0	2	34	-3
1	Guinto, Raizel		7	3-9	0-3	1-4	0	2	2	0	2	3	1	0	26	-11
2	Walker, Keiunna		3	1-2	0-1	1-2	0	0	0	1	0	0	0	1	5	-1
10	Dixon, Amber		0	0-0	0-0	0-0	0	1	1	0	0	1	0	0	2	-3
25	Mcdonald, Nikki		4	1-1	0-0	2-2	1	2	3	1	0	0	0	0	12	-5
32	Whitney, Zhanae		4	2-3	0-0	0-0	0	2	2	3	0	1	0	0	26	-13
34	Alexander, Deandra'a		0	0-0	0-0	0-0	0	0	0	0	0	0	0	0	2	4
	Team						3	2	5	0		1				
<b>TOTALS</b>			<b>56</b>	<b>21-57</b>	<b>4-24</b>	<b>10-17</b>	<b>11</b>	<b>20</b>	<b>31</b>	<b>11</b>	<b>9</b>	<b>15</b>	<b>1</b>	<b>5</b>	<b>200</b>	

*Shooting By Period*

Period	FG	FG%	3FG	3FG%	FT	FT%
1st Qtr	6-18	33%	3-11	27%	0-2	00%
2nd Qtr	5-12	42%	0-4	00%	3-3	100%
3rd Qtr	6-14	43%	1-6	17%	5-8	63%
4th Qtr	4-13	31%	0-3	00%	2-4	50%
1st Half	6-18	33%	3-11	27%	0-2	00%
2nd Half	5-12	42%	0-4	00%	3-3	100%
3rd Half	6-14	43%	1-6	17%	5-8	63%
4th Half	4-13	31%	0-3	00%	2-4	50%
<b>Game</b>	<b>21-57</b>	<b>36.8%</b>	<b>4-24</b>	<b>16.7%</b>	<b>10-17</b>	<b>58.8%</b>

*Deadball Rebounds:*  
*Last FG: 4th-03:01*  
*Biggest Run: 7-0*  
*Largest lead: By 0 at -*  
*Technical Fouls: None.*

**Wichita St. 70**

No.	Player	S	Pts	FG	3FG	FT	OR	DR	TR	PF	A	TO	Blk	Stl	Min	+/-
11	Lozada-Cabbage, Sabrina		16	8-12	0-3	0-0	2	14	16	4	5	2	1	2	36	19
12	Bremaud, Carla		11	4-12	3-9	0-0	0	0	0	1	1	2	0	0	33	13
13	Prince, Raven		14	7-9	0-0	0-2	3	3	6	3	0	3	0	0	28	8
15	Hampton, Jaida		2	1-3	0-1	0-0	1	2	3	1	0	1	0	0	20	-6
23	Bastin, Seraphine		8	4-9	0-0	0-1	1	2	3	4	3	5	0	2	29	16
0	Peacock, Jada		5	2-3	1-2	0-0	0	1	1	1	0	0	0	0	12	2
1	Lair, Dawnyel		12	5-8	0-0	2-2	1	2	3	3	1	1	1	5	20	15
5	Reid, Ashley		0	0-2	0-1	0-0	0	0	0	0	1	0	0	0	6	2
22	Faye, Alyssia		2	1-1	0-0	0-0	2	0	2	0	0	0	0	0	6	-3
24	Colbert, Trajata		0	0-1	0-0	0-0	0	1	1	0	0	1	0	1	3	-2
34	Smith, Shyia		0	0-3	0-1	0-0	0	0	0	1	0	1	0	0	7	6
	Team						2	4	6	0		1				
<b>TOTALS</b>			<b>70</b>	<b>32-63</b>	<b>4-17</b>	<b>2-5</b>	<b>12</b>	<b>29</b>	<b>41</b>	<b>18</b>	<b>11</b>	<b>17</b>	<b>2</b>	<b>10</b>	<b>200</b>	

*Shooting By Period*

Period	FG	FG%	3FG	3FG%	FT	FT%
1st Qtr	10-17	59%	2-6	33%	0-1	00%
2nd Qtr	8-18	44%	1-3	33%	2-2	100%
3rd Qtr	5-13	38%	0-5	00%	0-2	00%
4th Qtr	9-15	60%	1-3	33%	0-0	0%
1st Half	10-17	59%	2-6	33%	0-1	00%
2nd Half	8-18	44%	1-3	33%	2-2	100%
3rd Half	5-13	38%	0-5	00%	0-2	00%
4th Half	9-15	60%	1-3	33%	0-0	0%
<b>Game</b>	<b>32-63</b>	<b>50.8%</b>	<b>4-17</b>	<b>23.5%</b>	<b>2-5</b>	<b>40.0%</b>

*Deadball Rebounds:*  
*Last FG: 4th-00:51*  
*Biggest Run: 6-0*  
*Largest lead: By 18 at 2-01:50*  
*Technical Fouls: None.*

**Game Notes:**  
**Officials: Andrew Bills, Rebecca Taylor, Daniel Drake**  
**Attendance: 1638**  
**Start Time: 2018-11-25 00:34:56**      **End Time: 2018-11-25 02:23:57**  
**Game Duration: 109**

Score by Period	1st	2nd	3rd	4th	TOT
LTU	15	13	18	10	<b>56</b>
WSU	22	19	10	19	<b>70</b>

**LTU led for 0:00. WSU led for 38:58.**  
**Game was tied for 1:00.**  
**Times tied: 0**      **Lead Changes: 0**

Points from	LTU	WSU
In the Paint	30	50
Off Turns	17	14
2nd Chance	13	12
Fast Break	2	8
Bench	18	19

**Official Box Score**  
**Louisiana Tech vs Wichita St.**  
**First Half Statistics Only**  
**November 25, 2018 at Charles Koch Arena (Devlin Court) - Wichita, Kan.**

**Louisiana Tech 56**

No.	Player	S	Pts	FG	3FG	FT	OR	DR	TR	PF	A	TO	Blk	Stl	Min	+/-
3	Lang, Kierra		0	0-2	0-2	0-0	0	0	0	0	3	0	0	0	6	-4
4	Anthony, Kierra		2	1-5	0-2	0-0	0	0	0	0	1	0	0	0	10	-7
22	Bright, Grayson		3	1-2	1-1	0-2	0	3	3	0	0	0	0	0	6	-4
23	Cleaver, Reauna		0	0-0	0-0	0-0	1	0	1	1	0	0	0	0	6	-4
24	Stahly, Taylor		6	2-4	2-4	0-0	0	0	0	1	0	0	0	1	10	-7
1	Guinto, Raizel		2	1-4	0-2	0-0	0	1	1	0	0	1	0	0	4	-3
2	Walker, Keiunna		0	0-0	0-0	0-0	0	0	0	0	0	0	0	0	0	0
10	Dixon, Amber		0	0-0	0-0	0-0	0	0	0	0	0	0	0	0	0	0
25	Mcdonald, Nikki		2	1-1	0-0	0-0	1	1	2	0	0	0	0	0	4	-3
32	Whitney, Zhanae		0	0-0	0-0	0-0	0	0	0	0	0	0	0	0	4	-3
34	Alexander, Deandra'a		0	0-0	0-0	0-0	0	0	0	0	0	0	0	0	0	0
	Team						1	1	2	0		0				
<b>TOTALS</b>			<b>15</b>	<b>6-18</b>	<b>3-11</b>	<b>0-2</b>	<b>0</b>	<b>0</b>	<b>9</b>	<b>2</b>	<b>4</b>	<b>1</b>	<b>0</b>	<b>1</b>	<b>50</b>	

*Shooting By Period*

Period	FG	FG%	3FG	3FG%	FT	FT%
1st Qtr	6-18	33%	3-11	27%	0-2	00%
2nd Qtr	5-12	42%	0-4	00%	3-3	100%
3rd Qtr	6-14	43%	1-6	17%	5-8	63%
4th Qtr	4-13	31%	0-3	00%	2-4	50%
1st Half	6-18	33%	3-11	27%	0-2	00%
2nd Half	5-12	42%	0-4	00%	3-3	100%
3rd Half	6-14	43%	1-6	17%	5-8	63%
4th Half	4-13	31%	0-3	00%	2-4	50%
<b>Game</b>	<b>21-57</b>	<b>36.8%</b>	<b>4-24</b>	<b>16.7%</b>	<b>10-17</b>	<b>58.8%</b>

*Deadball Rebounds:*  
*Last FG: 4th-03:01*  
*Biggest Run: 7-0*  
*Largest lead: By 0 at -*  
*Technical Fouls: None.*

**Wichita St. 70**

No.	Player	S	Pts	FG	3FG	FT	OR	DR	TR	PF	A	TO	Blk	Stl	Min	+/-
11	Lozada-Cabbage, Sabrina		6	3-3	0-0	0-0	1	3	4	1	2	0	0	0	9	7
12	Bremaud, Carla		3	1-3	1-3	0-0	0	0	0	0	0	0	0	0	10	7
13	Prince, Raven		4	2-3	0-0	0-0	0	2	2	2	0	0	0	0	9	7
15	Hampton, Jaida		2	1-2	0-1	0-0	1	1	2	0	0	1	0	0	7	2
23	Bastin, Seraphine		4	2-4	0-0	0-1	0	1	1	0	3	1	0	0	9	7
0	Peacock, Jada		3	1-1	1-1	0-0	0	0	0	0	0	0	0	0	3	5
1	Lair, Dawnyel		0	0-0	0-0	0-0	0	0	0	0	0	0	0	0	0	0
5	Reid, Ashley		0	0-1	0-1	0-0	0	0	0	0	0	0	0	0	1	0
22	Faye, Alyssia		0	0-0	0-0	0-0	0	0	0	0	0	0	0	0	1	0
24	Colbert, Trajata		0	0-0	0-0	0-0	0	1	1	0	0	0	0	0	1	0
34	Smith, Shyia		0	0-0	0-0	0-0	0	0	0	0	0	0	0	0	0	0
	Team						0	2	2	0		0				
<b>TOTALS</b>			<b>22</b>	<b>10-17</b>	<b>2-6</b>	<b>0-1</b>	<b>0</b>	<b>0</b>	<b>12</b>	<b>3</b>	<b>5</b>	<b>2</b>	<b>0</b>	<b>0</b>	<b>50</b>	

*Shooting By Period*

Period	FG	FG%	3FG	3FG%	FT	FT%
1st Qtr	10-17	59%	2-6	33%	0-1	00%
2nd Qtr	8-18	44%	1-3	33%	2-2	100%
3rd Qtr	5-13	38%	0-5	00%	0-2	00%
4th Qtr	9-15	60%	1-3	33%	0-0	0%
1st Half	10-17	59%	2-6	33%	0-1	00%
2nd Half	8-18	44%	1-3	33%	2-2	100%
3rd Half	5-13	38%	0-5	00%	0-2	00%
4th Half	9-15	60%	1-3	33%	0-0	0%
<b>Game</b>	<b>32-63</b>	<b>50.8%</b>	<b>4-17</b>	<b>23.5%</b>	<b>2-5</b>	<b>40.0%</b>

*Deadball Rebounds:*  
*Last FG: 4th-00:51*  
*Biggest Run: 6-0*  
*Largest lead: By 18 at 2-01:50*  
*Technical Fouls: None.*

<b>Game Notes:</b> Officials: <b>Andrew Bills, Rebecca Taylor, Daniel Drake</b> Attendance: <b>1638</b>  Start Time: <b>2018-11-25 00:34:56</b> End Time: <b>2018-11-25 02:23:57</b> Game Duration: <b>109</b>
---

Score by Period	1st	2nd	3rd	4th	TOT
LTU	15	13	18	10	<b>56</b>
WSU	22	19	10	19	<b>70</b>

**This period only: LTU led for 0:00. WSU led for 0:57.**  
**Game was tied for 0:00.**

Points from (This Period)	LTU	WSU
In the Paint	6	14
Off Turns	2	2
2nd Chance	5	4
Fast Break	2	2
Bench	4	3

**Official Play-By-Play  
Louisiana Tech vs Wichita St.  
First Quarter**

**November 25, 2018 at Charles Koch Arena (Devlin Court) - Wichita, Kan.**

**Starters:**

**Louisiana Tech:** 22 BRIGHT,GRAYSON; 23 CLEAVER,REAUNA; 24 STAHLY,TAYLOR; 3 LANG,KIERRA; 4 ANTHONY,KIERRA;

**Wichita St.:** 11 LOZADA-CABBAGE,SABRINA; 12 BREMAUD,CARLA; 13 PRINCE,RAVEN; 15 HAMPTON,JAIDA; 23 BASTIN,SERAPHINE;

**Period 1**

Time	VISITORS: Louisiana Tech	Score	Margin	HOME: Wichita St.
09:42				MISSED JUMPER by BASTIN,SERAPHINE
09:38	REBOUND (DEF) by BRIGHT,GRAYSON			
09:15	MISSED JUMPER by BRIGHT,GRAYSON			
09:09				REBOUND (DEF) by TEAM
09:08	FOUL (PERSONAL) by CLEAVER,REAUNA			
09:04				MISSED 3PTR by BREMAUD,CARLA
09:01				REBOUND (OFF) by HAMPTON,JAIDA
09:00		2-0	H 2	GOOD! JUMPER by HAMPTON,JAIDA [PNT]
08:48	MISSED 3PTR by LANG,KIERRA			
08:44				REBOUND (DEF) by LOZADA-CABBAGE,SABRINA
08:35		4-0	H 4	GOOD! LAYUP by PRINCE,RAVEN
08:35				ASSIST by BASTIN,SERAPHINE
08:21	MISSED 3PTR by ANTHONY,KIERRA			
08:17				REBOUND (DEF) by BASTIN,SERAPHINE
08:06		6-0	H 6	GOOD! JUMPER by BASTIN,SERAPHINE [PNT]
07:46	GOOD! 3PTR by STAHLY,TAYLOR	6-3	H 3	
07:46	ASSIST by LANG,KIERRA			
07:28				MISSED LAYUP by PRINCE,RAVEN
07:23	REBOUND (DEF) by BRIGHT,GRAYSON			
07:20	GOOD! LAYUP by ANTHONY,KIERRA [FB]	6-5	H 1	
06:56		8-5	H 3	GOOD! LAYUP by LOZADA-CABBAGE,SABRINA
06:38	MISSED 3PTR by STAHLY,TAYLOR			
06:34				REBOUND (DEF) by HAMPTON,JAIDA
06:21		10-5	H 5	GOOD! JUMPER by LOZADA-CABBAGE,SABRINA
06:21				ASSIST by BASTIN,SERAPHINE
06:03	MISSED JUMPER by ANTHONY,KIERRA			
05:59	REBOUND (OFF) by CLEAVER,REAUNA			
05:57	GOOD! 3PTR by STAHLY,TAYLOR	10-8	H 2	
05:57	ASSIST by LANG,KIERRA			
05:36		13-8	H 5	GOOD! 3PTR by BREMAUD,CARLA
05:36				ASSIST by BASTIN,SERAPHINE
05:15	GOOD! 3PTR by BRIGHT,GRAYSON	13-11	H 2	
05:15	ASSIST by LANG,KIERRA			
04:53				MISSED 3PTR by BREMAUD,CARLA
04:46				REBOUND (OFF) by LOZADA-CABBAGE,SABRINA
04:46		15-11	H 4	GOOD! LAYUP by LOZADA-CABBAGE,SABRINA
04:22	MISSED 3PTR by LANG,KIERRA			
04:18				REBOUND (DEF) by PRINCE,RAVEN
03:59				MISSED JUMPER by BASTIN,SERAPHINE
03:56	REBOUND (DEF) by BRIGHT,GRAYSON			
03:51				FOUL (PERSONAL) by PRINCE,RAVEN
03:51				
03:51	SUB OUT: LANG,KIERRA			
03:51	SUB IN: WHITNEY,ZHANA			
03:51	SUB OUT: CLEAVER,REAUNA			
03:51	SUB IN: GUINTO,RAIZEL			
03:51	MISSED FT by BRIGHT,GRAYSON			
03:51	REBOUND (OFF) by TEAM			
03:51	MISSED FT by BRIGHT,GRAYSON			
03:51				REBOUND (DEF) by PRINCE,RAVEN
03:49				TURNOVER (TRAVEL) by BASTIN,SERAPHINE
03:37	SUB OUT: BRIGHT,GRAYSON			
03:37	SUB IN: MCDONALD,NIKKI			
03:36	GOOD! LAYUP by GUINTO,RAIZEL	15-13	H 2	
03:36	ASSIST by ANTHONY,KIERRA			
03:36				TURNOVER (BADPASS) by HAMPTON,JAIDA
03:36	STEAL by STAHLY,TAYLOR			
03:36	MISSED 3PTR by GUINTO,RAIZEL			
03:36				REBOUND (DEF) by LOZADA-CABBAGE,SABRINA
03:36				MISSED 3PTR by HAMPTON,JAIDA
03:36	REBOUND (DEF) by GUINTO,RAIZEL			
03:31				FOUL (PERSONAL) by LOZADA-CABBAGE,SABRINA
03:22				SUB OUT: HAMPTON,JAIDA
03:22				SUB IN: PEACOCK,JADA
03:04	TURNOVER (BADPASS) by GUINTO,RAIZEL			
02:33		17-13	H 4	GOOD! LAYUP by PRINCE,RAVEN
02:33				ASSIST by LOZADA-CABBAGE,SABRINA
02:17	MISSED 3PTR by GUINTO,RAIZEL			
02:13	REBOUND (OFF) by MCDONALD,NIKKI			
02:12	GOOD! JUMPER by MCDONALD,NIKKI [PNT]	17-15	H 2	
01:53		20-15	H 5	GOOD! 3PTR by PEACOCK,JADA
01:53				ASSIST by LOZADA-CABBAGE,SABRINA
01:38	MISSED LAYUP by GUINTO,RAIZEL			
01:34				REBOUND (DEF) by LOZADA-CABBAGE,SABRINA
01:29		22-15	H 7	GOOD! LAYUP by BASTIN,SERAPHINE [FB/PNT]
01:29	FOUL (PERSONAL) by STAHLY,TAYLOR			

Time	VISITORS: Louisiana Tech	Score	Margin	HOME: Wichita St.
01:29				SUB OUT: LOZADA-CABBAGE,SABRINA
01:29				SUB IN: FAYE,ALYSSIA
01:29				MISSED FT by BASTIN,SERAPHINE
01:25	REBOUND (DEF) by MCDONALD,NIKKI			
01:25				FOUL (PERSONAL) by PRINCE,RAVEN
01:25				SUB OUT: PRINCE,RAVEN
01:25				SUB IN: COLBERT,TRAJATA
01:25				SUB OUT: BASTIN,SERAPHINE
01:25				SUB IN: REID,ASHLEY
01:17	MISSED LAYUP by ANTHONY,KIERRA			
01:13				REBOUND (DEF) by COLBERT,TRAJATA
00:59				MISSED 3PTR by REID,ASHLEY
00:49	REBOUND (DEF) by TEAM			
00:28	MISSED 3PTR by STAHLY,TAYLOR			
00:26	REBOUND (OFF) by TEAM			
00:04	MISSED 3PTR by ANTHONY,KIERRA			
00:01				REBOUND (DEF) by TEAM

**Louisiana Tech 15, Wichita St. 22**

Points from (This Period)	LTU	WSU
In the Paint	6	14
Off Turns	2	2
2nd Chance	5	4
Fast Break	2	2
Bench	4	3

**This period only:LTU led for 0:00. WSU led for 0:57.  
Game was tied for 0:00.**

**Official Play-By-Play**  
**Louisiana Tech vs Wichita St.**  
**Second Quarter**  
**November 25, 2018 at Charles Koch Arena (Devlin Court) - Wichita, Kan.**

**Starters:**

**Louisiana Tech:** 22 BRIGHT,GRAYSON; 23 CLEAVER,REAUNA; 24 STAHLY,TAYLOR; 3 LANG,KIERRA; 4 ANTHONY,KIERRA;

**Wichita St.:** 11 LOZADA-CABBAGE,SABRINA; 12 BREMAUD,CARLA; 13 PRINCE,RAVEN; 15 HAMPTON,JAIDA; 23 BASTIN,SERAPHINE;

**Period 2**

Time	VISITORS: Louisiana Tech	Score	Margin	HOME: Wichita St.
09:35	TURNOVER (LOSTBALL) by WHITNEY,ZHANAE			
09:35				STEAL by COLBERT,TRAJATA
09:20				MISSED LAYUP by COLBERT,TRAJATA
09:19				REBOUND (OFF) by FAYE,ALYSSIA
09:19	FOUL (PERSONAL) by WHITNEY,ZHANAE			
09:13				TURNOVER (LOSTBALL) by COLBERT,TRAJATA
08:55	GOOD! LAYUP by WHITNEY,ZHANAE	22-17	H 5	
08:55	ASSIST by GUINTO,RAIZEL			
08:38				TURNOVER (BADPASS) by BASTIN,SERAPHINE
08:38				SUB OUT: COLBERT,TRAJATA
08:38				SUB IN: LOZADA-CABBAGE,SABRINA
08:38	SUB OUT: STAHLY,TAYLOR			
08:38	SUB IN: ANTHONY,KIERRA			
08:18	MISSED 3PTR by BRIGHT,GRAYSON			
08:14	REBOUND (OFF) by ANTHONY,KIERRA			
08:08	MISSED 3PTR by LANG,KIERRA			
08:04				REBOUND (DEF) by LOZADA-CABBAGE,SABRINA
07:59		24-17	H 7	GOOD! LAYUP by FAYE,ALYSSIA [FB]
07:59				ASSIST by REID,ASHLEY
07:40	MISSED 3PTR by ANTHONY,KIERRA			
07:36				REBOUND (DEF) by LOZADA-CABBAGE,SABRINA
07:25				MISSED 3PTR by PEACOCK,JADA
07:22	REBOUND (DEF) by GUINTO,RAIZEL			
07:18	MISSED LAYUP by GUINTO,RAIZEL			
07:15				REBOUND (DEF) by LOZADA-CABBAGE,SABRINA
07:08				MISSED JUMPER by LOZADA-CABBAGE,SABRINA
07:05	REBOUND (DEF) by BRIGHT,GRAYSON			
07:04				SUB OUT: PEACOCK,JADA
07:04				SUB IN: LAIR,DAWNYEL
07:04	SUB OUT: WHITNEY,ZHANAE			
07:04	SUB IN: MCDONALD,NIKKI			
07:04				SUB OUT: FAYE,ALYSSIA
07:04				SUB IN: SMITH,SHYIA
07:04	TURNOVER (5SEC) by			
06:54		26-17	H 9	GOOD! JUMPER by BASTIN,SERAPHINE [PNT]
06:40	TURNOVER (BADPASS) by GUINTO,RAIZEL			
06:40				STEAL by LAIR,DAWNYEL
06:35		28-17	H 11	GOOD! LAYUP by LAIR,DAWNYEL [FB]
06:35	TIMEOUT 30SEC			
06:35	SUB OUT: LANG,KIERRA			
06:35	SUB IN: DIXON,AMBER			
06:25				FOUL (PERSONAL) by LAIR,DAWNYEL
06:25	GOOD! FT by BRIGHT,GRAYSON	28-18	H 10	
06:25	GOOD! FT by BRIGHT,GRAYSON	28-19	H 9	
06:06		30-19	H 11	GOOD! JUMPER by LOZADA-CABBAGE,SABRINA
05:52				FOUL (PERSONAL) by SMITH,SHYIA
05:52				SUB OUT: REID,ASHLEY
05:52				SUB IN: BREMAUD,CARLA
05:52	SUB OUT: MCDONALD,NIKKI			
05:52	SUB IN: WHITNEY,ZHANAE			
05:44	MISSED LAYUP by BRIGHT,GRAYSON			
05:41				REBOUND (DEF) by LOZADA-CABBAGE,SABRINA
05:26		33-19	H 14	GOOD! 3PTR by BREMAUD,CARLA
05:18	TURNOVER (BADPASS) by DIXON,AMBER			
05:18				STEAL by LAIR,DAWNYEL
05:13				MISSED LAYUP by SMITH,SHYIA
05:06				REBOUND (OFF) by LAIR,DAWNYEL
05:06				MISSED LAYUP by LAIR,DAWNYEL
05:05	REBOUND (DEF) by BRIGHT,GRAYSON			
05:05	TURNOVER (BADPASS) by BRIGHT,GRAYSON			
05:05				MISSED 3PTR by SMITH,SHYIA
05:05	REBOUND (DEF) by DIXON,AMBER			
05:05	SUB OUT: DIXON,AMBER			
05:05	SUB IN: LANG,KIERRA			
04:58	GOOD! LAYUP by ANTHONY,KIERRA	33-21	H 12	
04:44		35-21	H 14	GOOD! LAYUP by LOZADA-CABBAGE,SABRINA
04:44				ASSIST by BREMAUD,CARLA
04:33	TURNOVER (BADPASS) by BRIGHT,GRAYSON			
04:33				STEAL by LAIR,DAWNYEL
04:29		37-21	H 16	GOOD! LAYUP by LAIR,DAWNYEL [FB]
04:03	TURNOVER (LOSTBALL) by BRIGHT,GRAYSON			
04:03				STEAL by BASTIN,SERAPHINE
03:52		39-21	H 18	GOOD! LAYUP by BASTIN,SERAPHINE
03:52				ASSIST by LAIR,DAWNYEL
03:36	GOOD! JUMPER by ANTHONY,KIERRA	39-23	H 16	
03:16	SUB OUT: GUINTO,RAIZEL			

Time	VISITORS: Louisiana Tech	Score	Margin	HOME: Wichita St.
03:16	SUB IN: STAHLY,TAYLOR			
03:09				MISSED JUMPER by BASTIN,SERAPHINE
03:04	REBOUND (DEF) by BRIGHT,GRAYSON			
02:54	MISSED 3PTR by STAHLY,TAYLOR			
02:49				REBOUND (DEF) by LAIR,DAWNYEL
02:20				TURNOVER (TRAVEL) by SMITH,SHYIA
02:06	FOUL (PERSONAL) by LANG,KIERRA			
01:50	FOUL (PERSONAL) by WHITNEY,ZHANAE			
01:50		40-23	H 17	GOOD! FT by LAIR,DAWNYEL
01:50	SUB OUT: WHITNEY,ZHANAE			
01:50	SUB IN: ALEXANDER,DEANDRE'A			
01:50		41-23	H 18	GOOD! FT by LAIR,DAWNYEL
01:43	TURNOVER (BADPASS) by BRIGHT,GRAYSON			
01:43				STEAL by LAIR,DAWNYEL
01:29				MISSED LAYUP by LAIR,DAWNYEL
01:28	REBOUND (DEF) by TEAM			
01:03	GOOD! JUMPER by STAHLY,TAYLOR	41-25	H 16	
01:03				FOUL (PERSONAL) by BREMAUD,CARLA
01:03				SUB OUT: LAIR,DAWNYEL
01:03				SUB IN: HAMPTON,JAIDA
01:03				SUB OUT: LOZADA-CABBAGE,SABRINA
01:03				SUB IN: FAYE,ALYSSIA
01:03	GOOD! FT by STAHLY,TAYLOR	41-26	H 15	
01:03	SUB OUT: ANTHONY,KIERRA			
01:03	SUB IN: GUINTO,RAIZEL			
00:52				TURNOVER (BADPASS) by BREMAUD,CARLA
00:52	STEAL by BRIGHT,GRAYSON			
00:34	MISSED LAYUP by GUINTO,RAIZEL			
00:34	REBOUND (OFF) by TEAM			
00:34				FOUL (PERSONAL) by HAMPTON,JAIDA
00:34				SUB OUT: BASTIN,SERAPHINE
00:34				SUB IN: REID,ASHLEY
00:26	GOOD! JUMPER by STAHLY,TAYLOR [PNT]	41-28	H 13	
00:26	ASSIST by LANG,KIERRA			
00:12				MISSED LAYUP by SMITH,SHYIA
00:09				REBOUND (OFF) by FAYE,ALYSSIA
00:05				MISSED JUMPER by REID,ASHLEY
00:01	REBOUND (DEF) by BRIGHT,GRAYSON			

### Louisiana Tech 28, Wichita St. 41

Points from (This Period)	LTU	WSU
In the Paint	6	12
Off Turns	4	8
2nd Chance	2	0
Fast Break	0	6
Bench	2	8

**This period only:**LTU led for 0:00. WSU led for 0:57.  
Game was tied for 0:00.

**Official Box Score**  
**Louisiana Tech vs Wichita St.**  
**Second Half Statistics Only**  
**November 25, 2018 at Charles Koch Arena (Devlin Court) - Wichita, Kan.**

**Louisiana Tech 56**

No.	Player	S	Pts	FG	3FG	FT	OR	DR	TR	PF	A	TO	Blk	Stl	Min	+/-
3	Lang, Kierra		0	0-1	0-1	0-0	0	0	0	1	1	0	0	0	9	-3
4	Anthony, Kierra		4	2-3	0-1	0-0	1	0	1	0	0	0	0	0	8	-10
22	Bright, Grayson		2	0-2	0-1	2-2	0	4	4	0	0	4	0	1	10	-6
23	Cleaver, Reauna		0	0-0	0-0	0-0	0	0	0	0	0	0	0	0	0	0
24	Stahly, Taylor		5	2-3	0-1	1-1	0	0	0	0	0	0	0	0	5	5
1	Guinto, Raizel		0	0-2	0-0	0-0	0	1	1	0	1	1	0	0	8	-7
2	Walker, Keiunna		0	0-0	0-0	0-0	0	0	0	0	0	0	0	0	0	0
10	Dixon, Amber		0	0-0	0-0	0-0	0	1	1	0	0	1	0	0	2	-3
25	Mcdonald, Nikki		0	0-0	0-0	0-0	0	0	0	0	0	0	0	0	1	-4
32	Whitney, Zhanae		2	1-1	0-0	0-0	0	0	0	2	0	1	0	0	7	-6
34	Alexander, Deandra'a		0	0-0	0-0	0-0	0	0	0	0	0	0	0	0	2	4
Team							1	1	2	0		1				
<b>TOTALS</b>			<b>13</b>	<b>5-12</b>	<b>0-4</b>	<b>3-3</b>	<b>0</b>	<b>0</b>	<b>9</b>	<b>3</b>	<b>2</b>	<b>8</b>	<b>0</b>	<b>1</b>	<b>50</b>	

*Shooting By Period*

Period	FG	FG%	3FG	3FG%	FT	FT%
1st Qtr	6-18	33%	3-11	27%	0-2	00%
2nd Qtr	5-12	42%	0-4	00%	3-3	100%
3rd Qtr	6-14	43%	1-6	17%	5-8	63%
4th Qtr	4-13	31%	0-3	00%	2-4	50%
1st Half	6-18	33%	3-11	27%	0-2	00%
2nd Half	5-12	42%	0-4	00%	3-3	100%
3rd Half	6-14	43%	1-6	17%	5-8	63%
4th Half	4-13	31%	0-3	00%	2-4	50%
<b>Game</b>	<b>21-57</b>	<b>36.8%</b>	<b>4-24</b>	<b>16.7%</b>	<b>10-17</b>	<b>58.8%</b>

*Deadball Rebounds:*  
*Last FG: 4th-03:01*  
*Biggest Run: 7-0*  
*Largest lead: By 0 at -*  
*Technical Fouls: None.*

**Wichita St. 70**

No.	Player	S	Pts	FG	3FG	FT	OR	DR	TR	PF	A	TO	Blk	Stl	Min	+/-
11	Lozada-Cabbage, Sabrina		4	2-3	0-0	0-0	0	4	4	0	0	0	0	0	8	11
12	Bremaud, Carla		3	1-1	1-1	0-0	0	0	0	1	1	1	0	0	6	2
13	Prince, Raven		0	0-0	0-0	0-0	0	0	0	0	0	0	0	0	0	0
15	Hampton, Jaida		0	0-0	0-0	0-0	0	0	0	1	0	0	0	0	1	-3
23	Bastin, Seraphine		4	2-3	0-0	0-0	0	0	0	0	0	1	0	1	9	8
0	Peacock, Jada		0	0-1	0-1	0-0	0	0	0	0	0	0	0	0	3	0
1	Lair, Dawnyel		6	2-4	0-0	2-2	1	1	2	1	1	0	0	4	6	9
5	Reid, Ashley		0	0-1	0-0	0-0	0	0	0	0	1	0	0	0	5	2
22	Faye, Alyssia		2	1-1	0-0	0-0	2	0	2	0	0	0	0	0	4	-3
24	Colbert, Trajata		0	0-1	0-0	0-0	0	0	0	0	0	1	0	1	1	-2
34	Smith, Shyia		0	0-3	0-1	0-0	0	0	0	1	0	1	0	0	7	6
Team							0	0	0	0		0				
<b>TOTALS</b>			<b>19</b>	<b>8-18</b>	<b>1-3</b>	<b>2-2</b>	<b>0</b>	<b>0</b>	<b>8</b>	<b>4</b>	<b>3</b>	<b>4</b>	<b>0</b>	<b>6</b>	<b>50</b>	

*Shooting By Period*

Period	FG	FG%	3FG	3FG%	FT	FT%
1st Qtr	10-17	59%	2-6	33%	0-1	00%
2nd Qtr	8-18	44%	1-3	33%	2-2	100%
3rd Qtr	5-13	38%	0-5	00%	0-2	00%
4th Qtr	9-15	60%	1-3	33%	0-0	0%
1st Half	10-17	59%	2-6	33%	0-1	00%
2nd Half	8-18	44%	1-3	33%	2-2	100%
3rd Half	5-13	38%	0-5	00%	0-2	00%
4th Half	9-15	60%	1-3	33%	0-0	0%
<b>Game</b>	<b>32-63</b>	<b>50.8%</b>	<b>4-17</b>	<b>23.5%</b>	<b>2-5</b>	<b>40.0%</b>

*Deadball Rebounds:*  
*Last FG: 4th-00:51*  
*Biggest Run: 6-0*  
*Largest lead: By 18 at 2-01:50*  
*Technical Fouls: None.*

Game Notes:  
 Officials: Andrew Bills, Rebecca Taylor, Daniel Drake  
 Attendance: 1638  
 Start Time: 2018-11-25 00:34:56      End Time: 2018-11-25 02:23:57  
 Game Duration: 109

Score by Period	1st	2nd	3rd	4th	TOT
LTU	15	13	18	10	<b>56</b>
WSU	22	19	10	19	<b>70</b>

**This period only: LTU led for 0:00. WSU led for 0:57.**  
**Game was tied for 0:00.**

Points from (This Period)	LTU	WSU
In the Paint	6	12
Off Turns	4	8
2nd Chance	2	0
Fast Break	0	6
Bench	2	8



**Official Play-By-Play**  
**Louisiana Tech vs Wichita St.**  
**Third Quarter**

**November 25, 2018 at Charles Koch Arena (Devlin Court) - Wichita, Kan.**

**Starters:**

**Louisiana Tech:** 22 BRIGHT,GRAYSON; 23 CLEAVER,REAUNA; 24 STAHLY,TAYLOR; 3 LANG,KIERRA; 4 ANTHONY,KIERRA;

**Wichita St.:** 11 LOZADA-CABBAGE,SABRINA; 12 BREMAUD,CARLA; 13 PRINCE,RAVEN; 15 HAMPTON,JAIDA; 23 BASTIN,SERAPHINE;

**Period 3**

Time	VISITORS: Louisiana Tech	Score	Margin	HOME: Wichita St.
09:53	GOOD! LAYUP by ANTHONY,KIERRA	41-30	H 11	
09:53				SUB OUT: REID,ASHLEY
09:53				SUB IN: LOZADA-CABBAGE,SABRINA
09:53				SUB OUT: FAYE,ALYSSIA
09:53				SUB IN: PRINCE,RAVEN
09:53				SUB OUT: SMITH,SHYIA
09:53				SUB IN: BASTIN,SERAPHINE
09:53	SUB OUT: GUINTO,RAIZEL			
09:53	SUB IN: WHITNEY,ZHANAE			
09:53	SUB OUT: ALEXANDER,DEANDRE'A			
09:53	SUB IN: ANTHONY,KIERRA			
09:41				MISSED 3PTR by BREMAUD,CARLA
09:38	REBOUND (DEF) by BRIGHT,GRAYSON			
09:29	MISSED 3PTR by STAHLY,TAYLOR			
09:24				REBOUND (DEF) by LOZADA-CABBAGE,SABRINA
09:20				MISSED LAYUP by BREMAUD,CARLA
09:15	REBOUND (DEF) by ANTHONY,KIERRA			
09:11	MISSED 3PTR by STAHLY,TAYLOR			
09:07	REBOUND (OFF) by STAHLY,TAYLOR			
09:04	TURNOVER (BADPASS) by ANTHONY,KIERRA			
09:04				STEAL by LOZADA-CABBAGE,SABRINA
08:45		43-30	H 13	GOOD! LAYUP by PRINCE,RAVEN
08:17	TURNOVER (TRAVEL) by ANTHONY,KIERRA			
08:05				MISSED JUMPER by HAMPTON,JAIDA
08:01	REBOUND (DEF) by STAHLY,TAYLOR			
07:45	MISSED 3PTR by ANTHONY,KIERRA			
07:40				REBOUND (DEF) by PRINCE,RAVEN
07:28	FOUL (PERSONAL) by BRIGHT,GRAYSON			
07:28				MISSED FT by PRINCE,RAVEN
07:28				REBOUND (OFF) by TEAM
07:28				MISSED FT by PRINCE,RAVEN
07:28	REBOUND (DEF) by BRIGHT,GRAYSON			
07:28	GOOD! LAYUP by BRIGHT,GRAYSON	43-32	H 11	
07:28				MISSED 3PTR by LOZADA-CABBAGE,SABRINA
07:28	SUB OUT: ANTHONY,KIERRA			
07:28	SUB IN: GUINTO,RAIZEL			
07:22				REBOUND (OFF) by TEAM
06:53				FOUL (OFF) by LOZADA-CABBAGE,SABRINA
06:53				TURNOVER (OFFENSIVE) by LOZADA-CABBAGE,SABRINA
06:34	GOOD! 3PTR by STAHLY,TAYLOR	43-35	H 8	
06:34	ASSIST by BRIGHT,GRAYSON			
06:16				TURNOVER (LOSTBALL) by PRINCE,RAVEN
06:16	STEAL by STAHLY,TAYLOR			
06:03				FOUL (PERSONAL) by BASTIN,SERAPHINE
06:03	GOOD! FT by GUINTO,RAIZEL	43-36	H 7	
06:03	MISSED FT by GUINTO,RAIZEL			
06:03				REBOUND (DEF) by BASTIN,SERAPHINE
05:51				MISSED 3PTR by BREMAUD,CARLA
05:45				REBOUND (OFF) by PRINCE,RAVEN
05:45		45-36	H 9	GOOD! LAYUP by PRINCE,RAVEN
05:35	GOOD! LAYUP by WHITNEY,ZHANAE	45-38	H 7	
05:35	ASSIST by GUINTO,RAIZEL			
05:19		47-38	H 9	GOOD! JUMPER by BREMAUD,CARLA
05:09	SUB OUT: LANG,KIERRA			
05:09	SUB IN: MCDONALD,NIKKI			
05:09	SUB OUT: BRIGHT,GRAYSON			
05:09	SUB IN: WALKER,KEIUNNA			
05:03	TURNOVER (LOSTBALL) by GUINTO,RAIZEL			
05:03				STEAL by BASTIN,SERAPHINE
05:03				
04:54				TURNOVER (BADPASS) by BREMAUD,CARLA
04:54	STEAL by WALKER,KEIUNNA			
04:41				FOUL (PERSONAL) by BASTIN,SERAPHINE
04:41	MISSED FT by WALKER,KEIUNNA			
04:41	REBOUND (OFF) by TEAM			
04:41	GOOD! FT by WALKER,KEIUNNA	47-39	H 8	
04:30				TURNOVER (BADPASS) by BASTIN,SERAPHINE
04:30	FOUL (PERSONAL) by WHITNEY,ZHANAE			
04:30				SUB OUT: BREMAUD,CARLA
04:30				SUB IN: LAIR,DAWNYEL
04:30	SUB OUT: WHITNEY,ZHANAE			
04:30	SUB IN: BRIGHT,GRAYSON			
04:20				MISSED LAYUP by LAIR,DAWNYEL
04:12				REBOUND (OFF) by PRINCE,RAVEN
04:12		49-39	H 10	GOOD! LAYUP by PRINCE,RAVEN
03:53	MISSED LAYUP by STAHLY,TAYLOR			

Time	VISITORS: Louisiana Tech	Score	Margin	HOME: Wichita St.
03:53				BLOCK by LAIR,DAWNYEL
03:53	REBOUND (OFF) by TEAM			
03:44	GOOD! LAYUP by WALKER,KEIUNNA	49-41	H 8	
03:44	ASSIST by BRIGHT,GRAYSON			
03:36				TURNOVER (BADPASS) by BASTIN,SERAPHINE
03:36	SUB OUT: STAHLY,TAYLOR			
03:36	SUB IN: ANTHONY,KIERRA			
03:18				FOUL (PERSONAL) by BASTIN,SERAPHINE
02:57	MISSED 3PTR by WALKER,KEIUNNA			
02:50				REBOUND (DEF) by LOZADA-CABBAGE,SABRINA
02:37				TURNOVER (TRAVEL) by PRINCE,RAVEN
02:37	SUB OUT: WALKER,KEIUNNA			
02:37	SUB IN: STAHLY,TAYLOR			
02:17	MISSED LAYUP by BRIGHT,GRAYSON			
02:14				REBOUND (DEF) by LOZADA-CABBAGE,SABRINA
01:57				FOUL (OFF) by BASTIN,SERAPHINE
01:57				TURNOVER (OFFENSIVE) by BASTIN,SERAPHINE
01:57				SUB OUT: BASTIN,SERAPHINE
01:57				SUB IN: PEACOCK,JADA
01:48	GOOD! LAYUP by GUINTO,RAIZEL	49-43	H 6	
01:34				FOUL (OFF) by LAIR,DAWNYEL
01:34				TURNOVER (OFFENSIVE) by LAIR,DAWNYEL
01:24	MISSED JUMPER by ANTHONY,KIERRA			
01:21	REBOUND (OFF) by BRIGHT,GRAYSON			
01:19				FOUL (PERSONAL) by LOZADA-CABBAGE,SABRINA
01:19	GOOD! FT by MCDONALD,NIKKI	49-44	H 5	
01:19				SUB OUT: HAMPTON,JAIDA
01:19				SUB IN: BREMAUD,CARLA
01:19	GOOD! FT by MCDONALD,NIKKI	49-45	H 4	
01:02		51-45	H 6	GOOD! LAYUP by PRINCE,RAVEN
00:50				FOUL (PERSONAL) by LAIR,DAWNYEL
00:50	GOOD! FT by ANTHONY,KIERRA	51-46	H 5	
00:50	MISSED FT by ANTHONY,KIERRA			
00:50				REBOUND (DEF) by TEAM
00:34				MISSED 3PTR by BREMAUD,CARLA
00:31	REBOUND (DEF) by MCDONALD,NIKKI			
00:26	MISSED 3PTR by STAHLY,TAYLOR			
00:21				REBOUND (DEF) by LAIR,DAWNYEL
00:08	FOUL (PERSONAL) by MCDONALD,NIKKI			
00:01				MISSED 3PTR by LOZADA-CABBAGE,SABRINA
00:00				REBOUND (OFF) by TEAM

### Louisiana Tech 46, Wichita St. 51

Points from (This Period)	LTU	WSU
In the Paint	10	8
Off Turns	8	2
2nd Chance	4	4
Fast Break	0	0
Bench	10	0

**This period only:LTU led for 0:00. WSU led for 0:57.  
Game was tied for 0:00.**

**Official Play-By-Play**  
**Louisiana Tech vs Wichita St.**  
**Fourth Quarter**

**November 25, 2018 at Charles Koch Arena (Devlin Court) - Wichita, Kan.**

**Starters:**

**Louisiana Tech:** 22 BRIGHT,GRAYSON; 23 CLEAVER,REAUNA; 24 STAHLY,TAYLOR; 3 LANG,KIERRA; 4 ANTHONY,KIERRA;

**Wichita St.:** 11 LOZADA-CABBAGE,SABRINA; 12 BREMAUD,CARLA; 13 PRINCE,RAVEN; 15 HAMPTON,JAIDA; 23 BASTIN,SERAPHINE;

**Period 4**

Time	VISITORS: Louisiana Tech	Score	Margin	HOME: Wichita St.
09:46	GOOD! LAYUP by ANTHONY,KIERRA [PNT]	51-48	H 3	
09:12		53-48	H 5	GOOD! LAYUP by LOZADA-CABBAGE,SABRINA
08:59	MISSED 3PTR by LANG,KIERRA			
08:55	REBOUND (OFF) by ANTHONY,KIERRA			
08:42	MISSED LAYUP by ANTHONY,KIERRA			
08:39	REBOUND (OFF) by STAHLY,TAYLOR			
08:35	MISSED 3PTR by STAHLY,TAYLOR			
08:31				REBOUND (DEF) by PEACOCK,JADA
08:16		55-48	H 7	GOOD! LAYUP by PEACOCK,JADA
08:16				ASSIST by LOZADA-CABBAGE,SABRINA
07:58				FOUL (PERSONAL) by PEACOCK,JADA
07:58	SUB OUT: MCDONALD,NIKKI			
07:58	SUB IN: BRIGHT,GRAYSON			
07:52	FOUL (OFF) by ANTHONY,KIERRA			
07:52	TURNOVER (OFFENSIVE) by ANTHONY,KIERRA			
07:36				TURNOVER (TRAVEL) by PRINCE,RAVEN
07:21	GOOD! LAYUP by ANTHONY,KIERRA	55-50	H 5	
06:42				MISSED JUMPER by BREMAUD,CARLA
06:39	REBOUND (DEF) by WHITNEY,ZHANA			
06:32	TURNOVER (LOSTBALL) by ANTHONY,KIERRA			
06:32				STEAL by LOZADA-CABBAGE,SABRINA
06:32	FOUL (PERSONAL) by ANTHONY,KIERRA			
06:32				SUB OUT: PEACOCK,JADA
06:32				SUB IN: HAMPTON,JAIDA
06:32	SUB OUT: LANG,KIERRA			
06:32	SUB IN: WALKER,KEIUNNA			
06:32	SUB OUT: ANTHONY,KIERRA			
06:32	SUB IN: GUINTO,RAIZEL			
06:08		57-50	H 7	GOOD! LAYUP by PRINCE,RAVEN
06:08				ASSIST by LOZADA-CABBAGE,SABRINA
05:45	MISSED LAYUP by WHITNEY,ZHANA			
05:45				BLOCK by LOZADA-CABBAGE,SABRINA
05:41				REBOUND (DEF) by HAMPTON,JAIDA
05:41	FOUL (PERSONAL) by WALKER,KEIUNNA			
05:33				MISSED 3PTR by BREMAUD,CARLA
05:29				REBOUND (OFF) by PRINCE,RAVEN
05:11				MISSED LAYUP by PRINCE,RAVEN
05:08	REBOUND (DEF) by WHITNEY,ZHANA			
05:04	GOOD! LAYUP by GUINTO,RAIZEL	57-52	H 5	
04:47				
04:47	SUB OUT: WALKER,KEIUNNA			
04:47	SUB IN: ANTHONY,KIERRA			
04:42		59-52	H 7	GOOD! LAYUP by LAIR,DAWNYEL
04:27	MISSED LAYUP by ANTHONY,KIERRA			
04:23				REBOUND (DEF) by LOZADA-CABBAGE,SABRINA
04:22				TURNOVER (LOSTBALL) by LOZADA-CABBAGE,SABRINA
04:22	STEAL by ANTHONY,KIERRA			
04:16	MISSED LAYUP by ANTHONY,KIERRA			
04:13	REBOUND (OFF) by BRIGHT,GRAYSON			
04:13				FOUL (PERSONAL) by LOZADA-CABBAGE,SABRINA
04:13	GOOD! FT by BRIGHT,GRAYSON	59-53	H 6	
04:13	GOOD! FT by BRIGHT,GRAYSON	59-54	H 5	
04:13	SUB OUT: ANTHONY,KIERRA			
04:13	SUB IN: WALKER,KEIUNNA			
03:45		61-54	H 7	GOOD! LAYUP by LOZADA-CABBAGE,SABRINA
03:33				FOUL (PERSONAL) by PRINCE,RAVEN
03:33	MISSED FT by GUINTO,RAIZEL			
03:33	REBOUND (OFF) by TEAM			
03:33	MISSED FT by GUINTO,RAIZEL			
03:33				REBOUND (DEF) by TEAM
03:33	SUB OUT: WALKER,KEIUNNA			
03:33	SUB IN: ANTHONY,KIERRA			
03:18		64-54	H 10	GOOD! 3PTR by BREMAUD,CARLA
03:18				ASSIST by LOZADA-CABBAGE,SABRINA
03:01	GOOD! LAYUP by BRIGHT,GRAYSON	64-56	H 8	
03:01	TIMEOUT 30SEC			
03:01				SUB OUT: HAMPTON,JAIDA
03:01				SUB IN: BASTIN,SERAPHINE
02:33		66-56	H 10	GOOD! LAYUP by LAIR,DAWNYEL
02:16	MISSED LAYUP by BRIGHT,GRAYSON			
02:13				REBOUND (DEF) by LOZADA-CABBAGE,SABRINA
01:51				MISSED JUMPER by BASTIN,SERAPHINE
01:46				REBOUND (OFF) by LOZADA-CABBAGE,SABRINA
01:45		68-56	H 12	GOOD! LAYUP by LOZADA-CABBAGE,SABRINA
01:39	MISSED LAYUP by ANTHONY,KIERRA			
01:36				REBOUND (DEF) by LOZADA-CABBAGE,SABRINA

Time	VISITORS: Louisiana Tech	Score	Margin	HOME: Wichita St.
01:19				MISSED 3PTR by LOZADA-CABBAGE,SABRINA
01:15				REBOUND (OFF) by BASTIN,SERAPHINE
00:51		70-56	H 14	GOOD! JUMPER by LAIR,DAWNYEL [PNT]
00:38	TURNOVER (LOSTBALL) by ANTHONY,KIERRA			
00:38				STEAL by LAIR,DAWNYEL
00:14				SUB OUT: LAIR,DAWNYEL
00:14				SUB IN: PEACOCK,JADA
00:14	SUB OUT: ANTHONY,KIERRA			
00:14	SUB IN: WALKER,KEIUNNA			
00:14	SUB OUT: WHITNEY,ZHANAE			
00:14	SUB IN: MCDONALD,NIKKI			
00:10				MISSED JUMPER by BASTIN,SERAPHINE
00:10	BLOCK by GUINTO,RAIZEL			
00:09				REBOUND (OFF) by TEAM
00:09				TURNOVER (SHOTCLOCK) by
00:02	MISSED 3PTR by GUINTO,RAIZEL			
00:02				REBOUND (DEF) by LOZADA-CABBAGE,SABRINA

**Louisiana Tech 56, Wichita St. 70**

Points from (This Period)	LTU	WSU
In the Paint	8	16
Off Turns	3	2
2nd Chance	2	4
Fast Break	0	0
Bench	2	8

**This period only:LTU led for 0:00. WSU led for 0:57.  
Game was tied for 0:00.**

**Official Scoring/Possession Reference Chart  
Louisiana Tech vs Wichita St.**

**Period 1**

**November 25, 2018 at Charles Koch Arena (Devlin Court) - Wichita, Kan.**

**Starters:**

**Louisiana Tech:** 22 BRIGHT,GRAYSON; 23 CLEAVER,REAUNA; 24 STAHLY,TAYLOR; 3 LANG,KIERRA; 4 ANTHONY,KIERRA;

**Wichita St.:** 11 LOZADA-CABBAGE,SABRINA; 12 BREMAUD,CARLA; 13 PRINCE,RAVEN; 15 HAMPTON,JAIDA; 23 BASTIN,SERAPHINE;

**Period 1**

Time	VISITORS: Louisiana Tech	Score	Margin	HOME: Wichita St.
09:00		2-0	H 2	GOOD! JUMPER by HAMPTON,JAIDA [PNT]
08:35		4-0	H 4	GOOD! LAYUP by PRINCE,RAVEN
08:06		6-0	H 6	GOOD! JUMPER by BASTIN,SERAPHINE [PNT]
07:46	GOOD! 3PTR by STAHLY,TAYLOR	6-3	H 3	
07:20	GOOD! LAYUP by ANTHONY,KIERRA [FB]	6-5	H 1	
06:56		8-5	H 3	GOOD! LAYUP by LOZADA-CABBAGE,SABRINA
06:21		10-5	H 5	GOOD! JUMPER by LOZADA-CABBAGE,SABRINA
05:57	GOOD! 3PTR by STAHLY,TAYLOR	10-8	H 2	
05:36		13-8	H 5	GOOD! 3PTR by BREMAUD,CARLA
05:15	GOOD! 3PTR by BRIGHT,GRAYSON	13-11	H 2	
04:46		15-11	H 4	GOOD! LAYUP by LOZADA-CABBAGE,SABRINA
03:36	GOOD! LAYUP by GUINTO,RAIZEL	15-13	H 2	
02:33		17-13	H 4	GOOD! LAYUP by PRINCE,RAVEN
02:12	GOOD! JUMPER by MCDONALD,NIKKI [PNT]	17-15	H 2	
01:53		20-15	H 5	GOOD! 3PTR by PEACOCK,JADA
01:29		22-15	H 7	GOOD! LAYUP by BASTIN,SERAPHINE [FB/PNT]

**Louisiana Tech 15, Wichita St. 22**

**Official Scoring/Possession Reference Chart  
Louisiana Tech vs Wichita St.**

**Period 2**

**November 25, 2018 at Charles Koch Arena (Devlin Court) - Wichita, Kan.**

**Starters:**

**Louisiana Tech:** 22 BRIGHT,GRAYSON; 23 CLEAVER,REAUNA; 24 STAHLY,TAYLOR; 3 LANG,KIERRA; 4 ANTHONY,KIERRA;

**Wichita St.:** 11 LOZADA-CABBAGE,SABRINA; 12 BREMAUD,CARLA; 13 PRINCE,RAVEN; 15 HAMPTON,JAIDA; 23 BASTIN,SERAPHINE;

**Period 2**

Time	VISITORS: Louisiana Tech	Score	Margin	HOME: Wichita St.
08:55	GOOD! LAYUP by WHITNEY,ZHANA E	22-17	H 5	
07:59		24-17	H 7	GOOD! LAYUP by FAYE,ALYSSIA [FB]
06:54		26-17	H 9	GOOD! JUMPER by BASTIN,SERAPHINE [PNT]
06:35		28-17	H 11	GOOD! LAYUP by LAIR,DAWNYEL [FB]
06:25	GOOD! FT by BRIGHT,GRAYSON	28-18	H 10	
06:25	GOOD! FT by BRIGHT,GRAYSON	28-19	H 9	
06:06		30-19	H 11	GOOD! JUMPER by LOZADA-CABBAGE,SABRINA
05:26		33-19	H 14	GOOD! 3PTR by BREMAUD,CARLA
04:58	GOOD! LAYUP by ANTHONY,KIERRA	33-21	H 12	
04:44		35-21	H 14	GOOD! LAYUP by LOZADA-CABBAGE,SABRINA
04:29		37-21	H 16	GOOD! LAYUP by LAIR,DAWNYEL [FB]
03:52		39-21	H 18	GOOD! LAYUP by BASTIN,SERAPHINE
03:36	GOOD! JUMPER by ANTHONY,KIERRA	39-23	H 16	
01:50		40-23	H 17	GOOD! FT by LAIR,DAWNYEL
01:50		41-23	H 18	GOOD! FT by LAIR,DAWNYEL
01:03	GOOD! JUMPER by STAHLY,TAYLOR	41-25	H 16	
01:03	GOOD! FT by STAHLY,TAYLOR	41-26	H 15	
00:26	GOOD! JUMPER by STAHLY,TAYLOR [PNT]	41-28	H 13	

**Louisiana Tech 28, Wichita St. 41**

**Official Scoring/Possession Reference Chart  
Louisiana Tech vs Wichita St.**

**Period 3**  
**November 25, 2018 at Charles Koch Arena (Devlin Court) - Wichita, Kan.**

**Starters:**

**Louisiana Tech:** 22 BRIGHT,GRAYSON; 23 CLEAVER,REAUNA; 24 STAHLY,TAYLOR; 3 LANG,KIERRA; 4 ANTHONY,KIERRA;  
**Wichita St.:** 11 LOZADA-CABBAGE,SABRINA; 12 BREMAUD,CARLA; 13 PRINCE,RAVEN; 15 HAMPTON,JAIDA; 23 BASTIN,SERAPHINE;

**Period 3**

Time	VISITORS: Louisiana Tech	Score	Margin	HOME: Wichita St.
09:53	GOOD! LAYUP by ANTHONY,KIERRA	41-30	H 11	
08:45		43-30	H 13	GOOD! LAYUP by PRINCE,RAVEN
07:28	GOOD! LAYUP by BRIGHT,GRAYSON	43-32	H 11	
06:34	GOOD! 3PTR by STAHLY,TAYLOR	43-35	H 8	
06:03	GOOD! FT by GUINTO,RAIZEL	43-36	H 7	
05:45		45-36	H 9	GOOD! LAYUP by PRINCE,RAVEN
05:35	GOOD! LAYUP by WHITNEY,ZHANAE	45-38	H 7	
05:19		47-38	H 9	GOOD! JUMPER by BREMAUD,CARLA
04:41	GOOD! FT by WALKER,KEUNNA	47-39	H 8	
04:12		49-39	H 10	GOOD! LAYUP by PRINCE,RAVEN
03:44	GOOD! LAYUP by WALKER,KEUNNA	49-41	H 8	
01:48	GOOD! LAYUP by GUINTO,RAIZEL	49-43	H 6	
01:19	GOOD! FT by MCDONALD,NIKKI	49-44	H 5	
01:19	GOOD! FT by MCDONALD,NIKKI	49-45	H 4	
01:02		51-45	H 6	GOOD! LAYUP by PRINCE,RAVEN
00:50	GOOD! FT by ANTHONY,KIERRA	51-46	H 5	

**Louisiana Tech 46, Wichita St. 51**

**Official Scoring/Possession Reference Chart**  
**Louisiana Tech vs Wichita St.**

**Period 4**

**November 25, 2018 at Charles Koch Arena (Devlin Court) - Wichita, Kan.**

**Starters:**

**Louisiana Tech:** 22 BRIGHT,GRAYSON; 23 CLEAVER,REAUNA; 24 STAHLY,TAYLOR; 3 LANG,KIERRA; 4 ANTHONY,KIERRA;  
**Wichita St.:** 11 LOZADA-CABBAGE,SABRINA; 12 BREMAUD,CARLA; 13 PRINCE,RAVEN; 15 HAMPTON,JAIDA; 23 BASTIN,SERAPHINE;

**Period 4**

Time	VISITORS: Louisiana Tech	Score	Margin	HOME: Wichita St.
09:46	GOOD! LAYUP by ANTHONY,KIERRA [PNT]	51-48	H 3	
09:12		53-48	H 5	GOOD! LAYUP by LOZADA-CABBAGE,SABRINA
08:16		55-48	H 7	GOOD! LAYUP by PEACOCK,JAIDA
07:21	GOOD! LAYUP by ANTHONY,KIERRA	55-50	H 5	
06:08		57-50	H 7	GOOD! LAYUP by PRINCE,RAVEN
05:04	GOOD! LAYUP by GUINTO,RAIZEL	57-52	H 5	
04:42		59-52	H 7	GOOD! LAYUP by LAIR,DAWNYEL
04:13	GOOD! FT by BRIGHT,GRAYSON	59-53	H 6	
04:13	GOOD! FT by BRIGHT,GRAYSON	59-54	H 5	
03:45		61-54	H 7	GOOD! LAYUP by LOZADA-CABBAGE,SABRINA
03:18		64-54	H 10	GOOD! 3PTR by BREMAUD,CARLA
03:01	GOOD! LAYUP by BRIGHT,GRAYSON	64-56	H 8	
02:33		66-56	H 10	GOOD! LAYUP by LAIR,DAWNYEL
01:45		68-56	H 12	GOOD! LAYUP by LOZADA-CABBAGE,SABRINA
00:51		70-56	H 14	GOOD! JUMPER by LAIR,DAWNYEL [PNT]

**Louisiana Tech 56, Wichita St. 70**

**Official Substitutions Log**  
**Louisiana Tech vs Wichita St.**

**Period 1**

**November 25, 2018 at Charles Koch Arena (Devlin Court) - Wichita, Kan.**

VISITORS: Louisiana Tech	Time	Score	HOME: Wichita St.
22 BRIGHT,GRAYSON			11 LOZADA-CABBAGE,SABRINA
23 CLEAVER,REAUNA			12 BREMAUD,CARLA
24 STAHLY,TAYLOR			13 PRINCE,RAVEN
3 LANG,KIERRA			15 HAMPTON,JAIDA

VISITORS: Louisiana Tech	Time	Score	HOME: Wichita St.
4 ANTHONY, KIERRA			23 BASTIN, SERAPHINE
SUB OUT: 3 LANG, KIERRA	03:51	11-15	
SUB IN: 32 WHITNEY, ZHANAE	03:51		
SUB OUT: 23 CLEAVER, REAUNA	03:51		
SUB IN: 1 GUINTO, RAIZEL	03:51		
SUB OUT: 22 BRIGHT, GRAYSON	03:37	11-15	
SUB IN: 25 MCDONALD, NIKKI	03:37		
	03:22	13-15	SUB OUT: HAMPTON, JAIDA
	03:22		SUB IN: PEACOCK, JADA
	01:29	15-22	SUB OUT: LOZADA-CABBAGE, SABRINA
	01:29		SUB IN: FAYE, ALYSSIA
	01:25	15-22	SUB OUT: PRINCE, RAVEN
	01:25		SUB IN: COLBERT, TRAJATA
	01:25		SUB OUT: BASTIN, SERAPHINE
	01:25		SUB IN: REID, ASHLEY

Louisiana Tech 15, Wichita St. 22

**Official Substitutions Log  
Louisiana Tech vs Wichita St.  
Period 2**

**November 25, 2018 at Charles Koch Arena (Devlin Court) - Wichita, Kan.**

<b>VISITORS: Louisiana Tech</b>	<b>Time</b>	<b>Score</b>	<b>HOME: Wichita St.</b>
22 BRIGHT,GRAYSON			11 LOZADA-CABBAGE,SABRINA
23 CLEAVER,REAUNA			12 BREMAUD,CARLA
24 STAHLY,TAYLOR			13 PRINCE,RAVEN
3 LANG,KIERRA			15 HAMPTON,JAIDA
4 ANTHONY,KIERRA			23 BASTIN,SERAPHINE
	08:38	17-22	SUB OUT: COLBERT,TRAJATA
	08:38		SUB IN: LOZADA-CABBAGE,SABRINA
SUB OUT: 24 STAHLY,TAYLOR	08:38		
SUB IN: 4 ANTHONY,KIERRA	08:38		
	07:04	17-24	SUB OUT: PEACOCK,JADA
	07:04		SUB IN: LAIR,DAWNYEL
SUB OUT: 32 WHITNEY,ZHANAE	07:04		
SUB IN: 25 MCDONALD,NIKKI	07:04		
	07:04		SUB OUT: FAYE,ALYSSIA
	07:04		SUB IN: SMITH,SHYIA
SUB OUT: 3 LANG,KIERRA	06:35	17-28	
SUB IN: 10 DIXON,AMBER	06:35		
	05:52	19-30	SUB OUT: REID,ASHLEY
	05:52		SUB IN: BREMAUD,CARLA
SUB OUT: 25 MCDONALD,NIKKI	05:52		
SUB IN: 32 WHITNEY,ZHANAE	05:52		
SUB OUT: 10 DIXON,AMBER	05:05	19-33	
SUB IN: 3 LANG,KIERRA	05:05		
SUB OUT: 1 GUINTO,RAIZEL	03:16	23-39	
SUB IN: 24 STAHLY,TAYLOR	03:16		
SUB OUT: 32 WHITNEY,ZHANAE	01:50	23-40	
SUB IN: 34 ALEXANDER,DEANDRE'A	01:50		
	01:03	25-41	SUB OUT: LAIR,DAWNYEL
	01:03		SUB IN: HAMPTON,JAIDA
	01:03		SUB OUT: LOZADA-CABBAGE,SABRINA
	01:03		SUB IN: FAYE,ALYSSIA
SUB OUT: 4 ANTHONY,KIERRA	01:03		
SUB IN: 1 GUINTO,RAIZEL	01:03		
	00:34	26-41	SUB OUT: BASTIN,SERAPHINE
	00:34		SUB IN: REID,ASHLEY

**Louisiana Tech 28, Wichita St. 41**

**Official Substitutions Log  
Louisiana Tech vs Wichita St.  
Period 3**

**November 25, 2018 at Charles Koch Arena (Devlin Court) - Wichita, Kan.**

<b>VISITORS: Louisiana Tech</b>	<b>Time</b>	<b>Score</b>	<b>HOME: Wichita St.</b>
22 BRIGHT,GRAYSON			11 LOZADA-CABBAGE,SABRINA
23 CLEAVER,REAUNA			12 BREMAUD,CARLA
24 STAHLY,TAYLOR			13 PRINCE,RAVEN
3 LANG,KIERRA			15 HAMPTON,JAIDA
4 ANTHONY,KIERRA			23 BASTIN,SERAPHINE
	09:53	30-41	SUB OUT: REID,ASHLEY
	09:53		SUB IN: LOZADA-CABBAGE,SABRINA
	09:53		SUB OUT: FAYE,ALYSSIA
	09:53		SUB IN: PRINCE,RAVEN
	09:53		SUB OUT: SMITH,SHYIA
	09:53		SUB IN: BASTIN,SERAPHINE
SUB OUT: 1 GUINTO,RAIZEL	09:53		
SUB IN: 32 WHITNEY,ZHANAE	09:53		
SUB OUT: 34 ALEXANDER,DEANDRE'A	09:53		
SUB IN: 4 ANTHONY,KIERRA	09:53		
SUB OUT: 4 ANTHONY,KIERRA	07:28	32-43	
SUB IN: 1 GUINTO,RAIZEL	07:28		
SUB OUT: 3 LANG,KIERRA	05:09	38-47	
SUB IN: 25 MCDONALD,NIKKI	05:09		
SUB OUT: 22 BRIGHT,GRAYSON	05:09		
SUB IN: 2 WALKER,KEIUNNA	05:09		
	04:30	39-47	SUB OUT: BREMAUD,CARLA
	04:30		SUB IN: LAIR,DAWNYEL
SUB OUT: 32 WHITNEY,ZHANAE	04:30		
SUB IN: 22 BRIGHT,GRAYSON	04:30		
SUB OUT: 24 STAHLY,TAYLOR	03:36	41-49	
SUB IN: 4 ANTHONY,KIERRA	03:36		
SUB OUT: 2 WALKER,KEIUNNA	02:37	41-49	
SUB IN: 24 STAHLY,TAYLOR	02:37		
	01:57	41-49	SUB OUT: BASTIN,SERAPHINE
	01:57		SUB IN: PEACOCK,JADA
	01:19	44-49	SUB OUT: HAMPTON,JAIDA
	01:19		SUB IN: BREMAUD,CARLA

**Louisiana Tech 46, Wichita St. 51**





**Official Substitutions Log  
Louisiana Tech vs Wichita St.  
Period 4**

**November 25, 2018 at Charles Koch Arena (Devlin Court) - Wichita, Kan.**

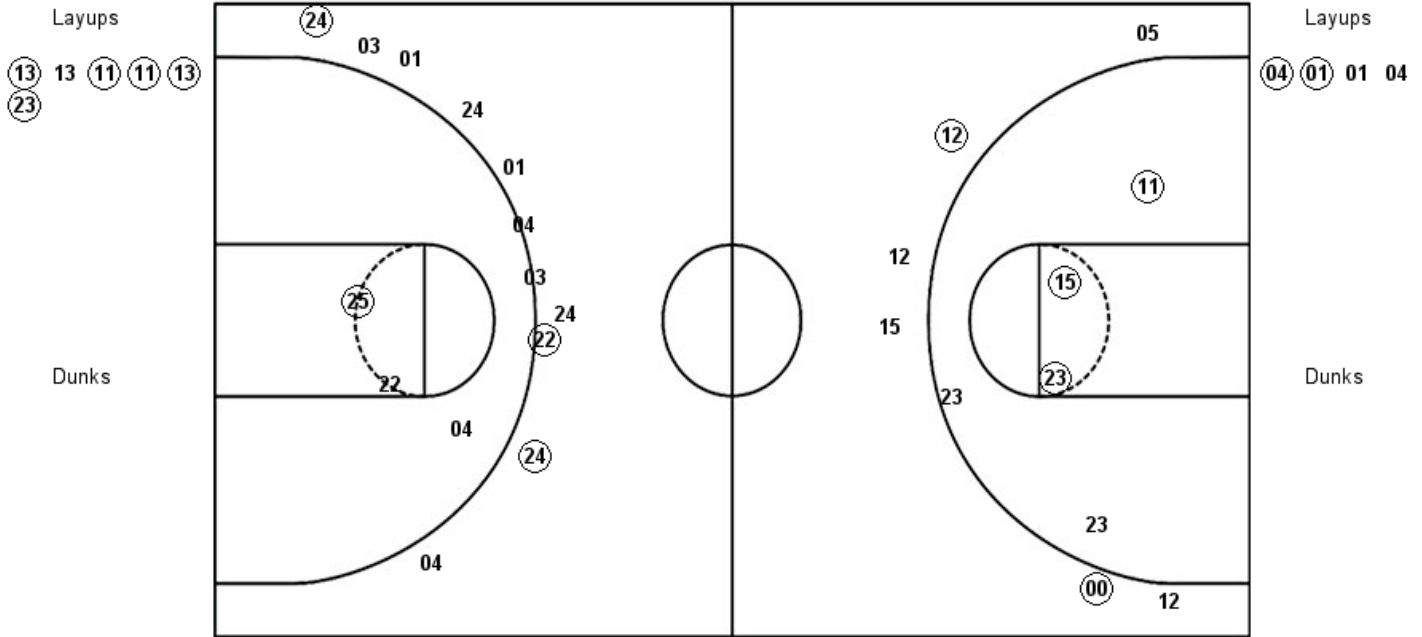
<b>VISITORS: Louisiana Tech</b>	<b>Time</b>	<b>Score</b>	<b>HOME: Wichita St.</b>
22 BRIGHT,GRAYSON			11 LOZADA-CABBAGE,SABRINA
23 CLEAVER,REAUNA			12 BREMAUD,CARLA
24 STAHLY,TAYLOR			13 PRINCE,RAVEN
3 LANG,KIERRA			15 HAMPTON,JAIDA
4 ANTHONY,KIERRA			23 BASTIN,SERAPHINE
SUB OUT: 25 MCDONALD,NIKKI	07:58	48-55	
SUB IN: 22 BRIGHT,GRAYSON	07:58		
	06:32	50-55	SUB OUT: PEACOCK,JADA
	06:32		SUB IN: HAMPTON,JAIDA
SUB OUT: 3 LANG,KIERRA	06:32		
SUB IN: 2 WALKER,KEIUNNA	06:32		
SUB OUT: 4 ANTHONY,KIERRA	06:32		
SUB IN: 1 GUINTO,RAIZEL	06:32		
SUB OUT: 2 WALKER,KEIUNNA	04:47	52-57	
SUB IN: 4 ANTHONY,KIERRA	04:47		
SUB OUT: 4 ANTHONY,KIERRA	04:13	54-59	
SUB IN: 2 WALKER,KEIUNNA	04:13		
SUB OUT: 2 WALKER,KEIUNNA	03:33	54-61	
SUB IN: 4 ANTHONY,KIERRA	03:33		
	03:01	56-64	SUB OUT: HAMPTON,JAIDA
	03:01		SUB IN: BASTIN,SERAPHINE
	00:14	56-70	SUB OUT: LAIR,DAWNYEL
	00:14		SUB IN: PEACOCK,JADA
SUB OUT: 4 ANTHONY,KIERRA	00:14		
SUB IN: 2 WALKER,KEIUNNA	00:14		
SUB OUT: 32 WHITNEY,ZHANAE	00:14		
SUB IN: 25 MCDONALD,NIKKI	00:14		

**Louisiana Tech 56, Wichita St. 70**

**Official Shot Chart**  
**Louisiana Tech vs Wichita St.**  
**PERIOD 1 Shots**  
 November 25, 2018 at Charles Koch Arena (Devlin Court) - Wichita, Kan.

**Wichita St.**

**Louisiana Tech**



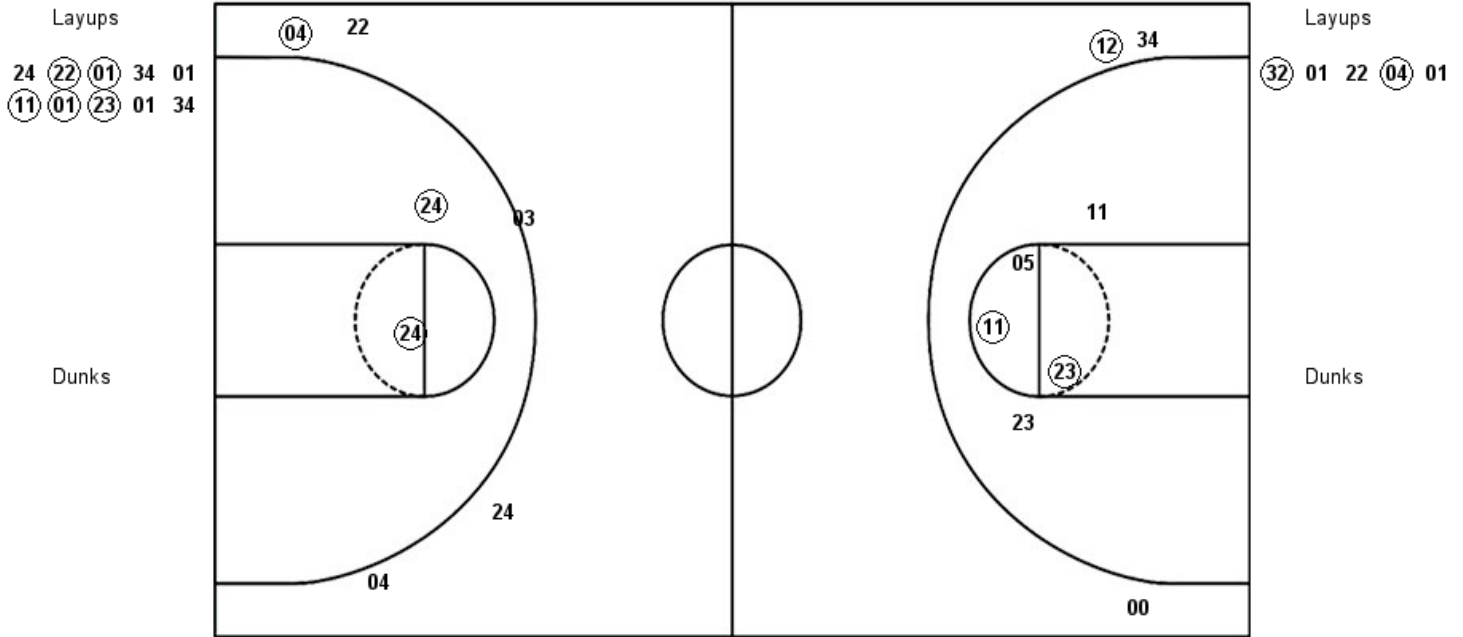
WSU : Period 1	Made	Att	Pct
Layups	5	6	83.3
Dunks	0	0	0
2PT Field Goals	8	11	72.7
3PT Field Goals	2	6	33.3
<b>Total Field Goals</b>	<b>10</b>	<b>17</b>	<b>58.8</b>

LTU : Period 1	Made	Att	Pct
Layups	2	4	50.0
Dunks	0	0	0
2PT Field Goals	3	7	42.9
3PT Field Goals	3	11	27.3
<b>Total Field Goals</b>	<b>6</b>	<b>18</b>	<b>33.3</b>

**Official Shot Chart**  
**Louisiana Tech vs Wichita St.**  
**PERIOD 2 Shots**  
 November 25, 2018 at Charles Koch Arena (Devlin Court) - Wichita, Kan.

**Wichita St.**

**Louisiana Tech**



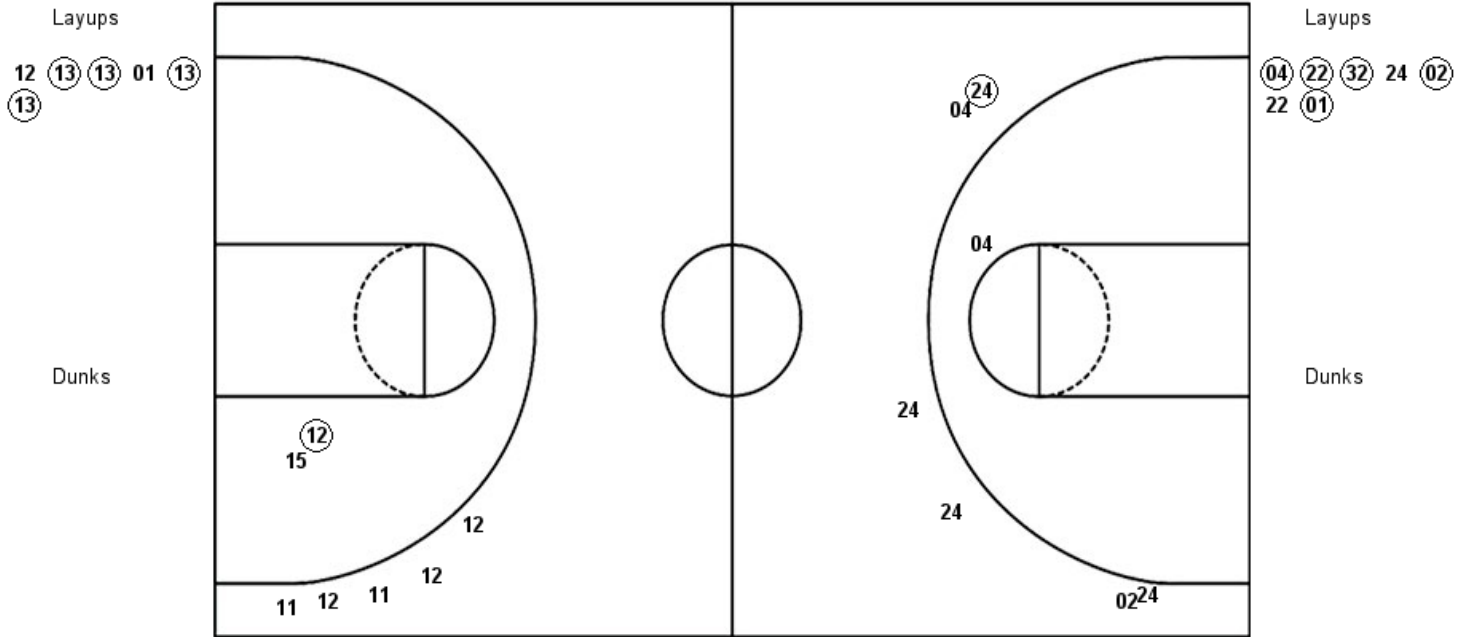
WSU : Period 2	Made	Att	Pct
Layups	5	10	50.0
Dunks	0	0	0
2PT Field Goals	7	15	46.7
3PT Field Goals	1	3	33.3
<b>Total Field Goals</b>	<b>8</b>	<b>18</b>	<b>44.4</b>

LTU : Period 2	Made	Att	Pct
Layups	2	5	40.0
Dunks	0	0	0
2PT Field Goals	5	8	62.5
3PT Field Goals	0	4	00.0
<b>Total Field Goals</b>	<b>5</b>	<b>12</b>	<b>41.7</b>

**Official Shot Chart**  
**Louisiana Tech vs Wichita St.**  
**PERIOD 3 Shots**  
 November 25, 2018 at Charles Koch Arena (Devlin Court) - Wichita, Kan.

**Wichita St.**

**Louisiana Tech**



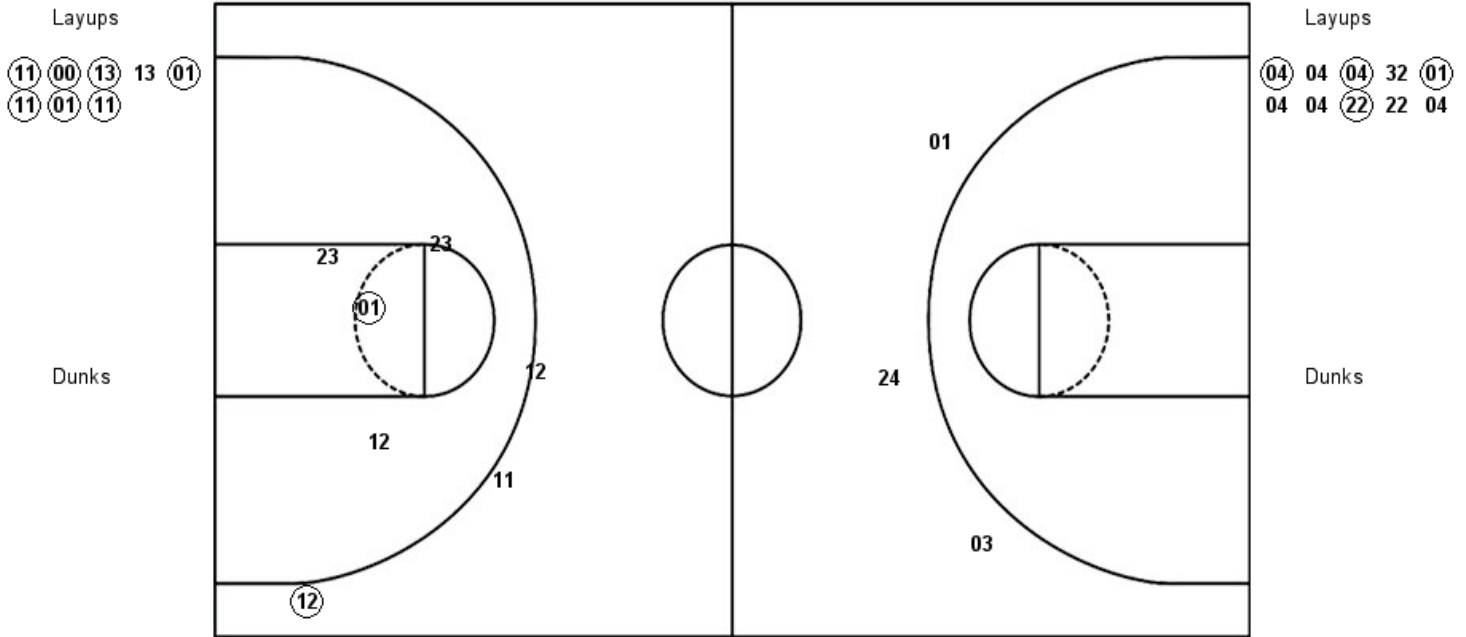
<b>WSU : Period 3</b>	<b>Made</b>	<b>Att</b>	<b>Pct</b>
Layups	4	6	66.7
Dunks	0	0	0
2PT Field Goals	5	8	62.5
3PT Field Goals	0	5	00.0
<b>Total Field Goals</b>	<b>5</b>	<b>13</b>	<b>38.5</b>

<b>LTU : Period 3</b>	<b>Made</b>	<b>Att</b>	<b>Pct</b>
Layups	5	7	71.4
Dunks	0	0	0
2PT Field Goals	5	8	62.5
3PT Field Goals	1	6	16.7
<b>Total Field Goals</b>	<b>6</b>	<b>14</b>	<b>42.9</b>

**Official Shot Chart**  
**Louisiana Tech vs Wichita St.**  
**PERIOD 4 Shots**  
 November 25, 2018 at Charles Koch Arena (Devlin Court) - Wichita, Kan.

**Wichita St.**

**Louisiana Tech**

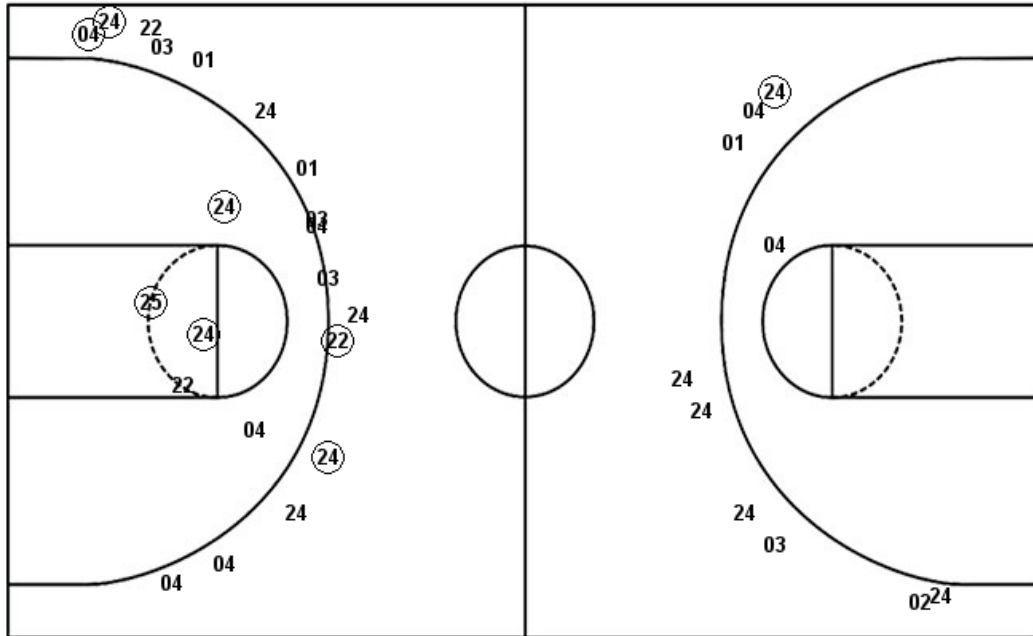


<b>WSU : Period 4</b>	<b>Made</b>	<b>Att</b>	<b>Pct</b>
Layups	7	8	87.5
Dunks	0	0	0
2PT Field Goals	8	12	66.7
3PT Field Goals	1	3	33.3
<b>Total Field Goals</b>	<b>9</b>	<b>15</b>	<b>60.0</b>

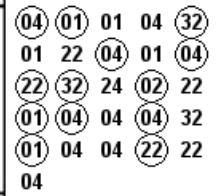
<b>LTU : Period 4</b>	<b>Made</b>	<b>Att</b>	<b>Pct</b>
Layups	4	10	40.0
Dunks	0	0	0
2PT Field Goals	4	10	40.0
3PT Field Goals	0	3	00.0
<b>Total Field Goals</b>	<b>4</b>	<b>13</b>	<b>30.8</b>

**Official Shot Chart**  
**Louisiana Tech vs Wichita St.**  
 Louisiana Tech Team Shots  
 November 25, 2018 at Charles Koch Arena (Devlin Court) - Wichita, Kan.

Layups



Layups



Dunks

Dunks

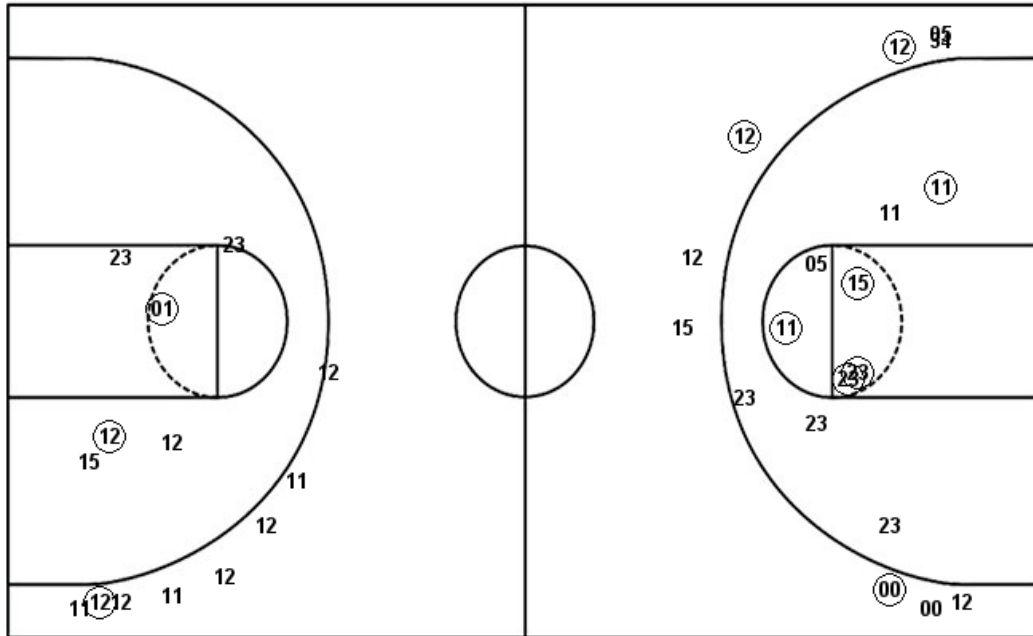
LTU : Period 1	Made	Att	Pct
Layups	2	4	50.0
Dunks	0	0	0
2PT Field Goals	3	7	42.9
3PT Field Goals	3	11	27.3
<b>Total Field Goals</b>	<b>6</b>	<b>18</b>	<b>33.3</b>
LTU : Period 3	Made	Att	Pct
Layups	5	7	71.4
Dunks	0	0	0
2PT Field Goals	5	8	62.5
3PT Field Goals	1	6	16.7
<b>Total Field Goals</b>	<b>6</b>	<b>14</b>	<b>42.9</b>

LTU : Period 2	Made	Att	Pct
Layups	2	5	40.0
Dunks	0	0	0
2PT Field Goals	5	8	62.5
3PT Field Goals	0	4	00.0
<b>Total Field Goals</b>	<b>5</b>	<b>12</b>	<b>41.7</b>
LTU : Period 4	Made	Att	Pct
Layups	4	10	40.0
Dunks	0	0	0
2PT Field Goals	4	10	40.0
3PT Field Goals	0	3	00.0
<b>Total Field Goals</b>	<b>4</b>	<b>13</b>	<b>30.8</b>

**Official Shot Chart**  
**Louisiana Tech vs Wichita St.**  
**Wichita St. Team Shots**  
 November 25, 2018 at Charles Koch Arena (Devlin Court) - Wichita, Kan.

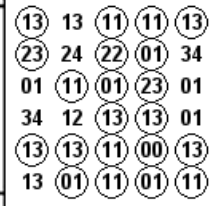
Layups

Dunks



Layups

Dunks



WSU : Period 1	Made	Att	Pct
Layups	5	6	83.3
Dunks	0	0	0
2PT Field Goals	8	11	72.7
3PT Field Goals	2	6	33.3
<b>Total Field Goals</b>	<b>10</b>	<b>17</b>	<b>58.8</b>
WSU : Period 3	Made	Att	Pct
Layups	4	6	66.7
Dunks	0	0	0
2PT Field Goals	5	8	62.5
3PT Field Goals	0	5	00.0
<b>Total Field Goals</b>	<b>5</b>	<b>13</b>	<b>38.5</b>

WSU : Period 2	Made	Att	Pct
Layups	5	10	50.0
Dunks	0	0	0
2PT Field Goals	7	15	46.7
3PT Field Goals	1	3	33.3
<b>Total Field Goals</b>	<b>8</b>	<b>18</b>	<b>44.4</b>
WSU : Period 4	Made	Att	Pct
Layups	7	8	87.5
Dunks	0	0	0
2PT Field Goals	8	12	66.7
3PT Field Goals	1	3	33.3
<b>Total Field Goals</b>	<b>9</b>	<b>15</b>	<b>60.0</b>