

## FINAL SCORE



**Towson**

**82**



**William & Mary**

**75**

February 23, 2019 • Kaplan Arena (Kaplan Arena) - Williamsburg, Va.

## FINAL STATISTICS

**Official Box Score**  
**Towson vs William & Mary**  
**Game Totals -- Final Statistics**  
**February 23, 2019 at Kaplan Arena (Kaplan Arena) - Williamsburg, Va.**



**Towson 82**

No.	Player	S	Pts	FG	3FG	FT	OR	DR	TR	PF	A	TO	Blk	Stl	Min	+/-
01	MAYO, NUKIYA		17	3-9	2-4	9-10	3	2	5	3	1	0	3	1	39	8
11	MURRAY, QIERRA		10	2-4	0-0	6-7	0	4	4	3	6	4	0	1	30	3
21	JETER, KIONNA		20	6-14	4-12	4-4	0	1	1	3	0	1	0	1	34	8
25	LEE, MAIA		0	0-0	0-0	0-0	0	0	0	2	0	0	1	0	6	-11
32	HOLDER, RYAN		9	4-8	0-0	1-4	6	1	7	1	0	2	0	1	28	4
00	DURJAN, DANIELLE		10	2-3	2-3	4-4	0	1	1	1	3	2	0	0	20	16
03	FLYNN, AISLINN		2	1-3	0-0	0-0	1	0	1	0	0	3	0	1	11	5
04	HOLMES, JALYNN		2	0-3	0-3	2-2	0	1	1	0	0	0	0	0	8	-8
10	CAMP, JANEEN		12	6-11	0-0	0-0	4	4	8	3	2	3	3	0	24	10
	TEAM						4	4	8	0		0				
<b>TOTALS</b>			<b>82</b>	<b>24-55</b>	<b>8-22</b>	<b>26-31</b>	<b>18</b>	<b>18</b>	<b>36</b>	<b>16</b>	<b>12</b>	<b>15</b>	<b>7</b>	<b>5</b>	<b>200</b>	

*Shooting By Period*

Period	FG	FG%	3FG	3FG%	FT	FT%
1st Qtr	5-15	33%	1-6	17%	3-3	100%
2nd Qtr	6-18	33%	3-7	43%	6-8	75%
3rd Qtr	8-14	57%	3-6	50%	0-0	0%
4th Qtr	5-8	63%	1-3	33%	17-20	85%
1st Half	11-33	33%	4-13	31%	9-11	82%
2nd Half	13-22	59%	4-9	44%	17-20	85%
<b>Game</b>	<b>24-55</b>	<b>43.6%</b>	<b>8-22</b>	<b>36.4%</b>	<b>26-31</b>	<b>83.9%</b>

*Last FG: 4th-01:17*  
*Biggest Run: 14-0*  
*Largest lead: By 7 at 4-00:05*  
*Technical Fouls: None.*

**William & Mary 75**

No.	Player	S	Pts	FG	3FG	FT	OR	DR	TR	PF	A	TO	Blk	Stl	Min	+/-
02	BOGGS, BIANCA		18	5-12	1-2	7-9	0	3	3	5	8	4	1	3	33	6
10	HODGSON, EVA		6	2-7	2-6	0-0	1	3	4	2	3	3	0	1	36	-7
11	POLLARD, NYLA		6	2-2	0-0	2-2	0	4	4	0	4	0	0	2	28	-6
25	ROGERS, GABBY		17	8-9	0-0	1-1	2	3	5	4	1	2	0	0	31	0
30	REYNOLDS, VICTORIA		15	5-10	4-6	1-2	0	0	0	5	3	5	0	1	39	-3
05	JONES, MISHA		0	0-0	0-0	0-0	0	0	0	0	0	0	0	0	4	-10
12	BIRDSONG, HARPER		7	2-7	1-5	2-3	1	0	1	1	0	1	0	1	14	-4
15	KRAUSE, EMMA		6	2-5	1-3	1-1	1	0	1	1	0	0	0	0	11	-6
21	EICHNER, BAILEY		0	0-0	0-0	0-0	0	0	0	0	1	0	0	0	3	-5
	TEAM						4	2	6	0		1				
<b>TOTALS</b>			<b>75</b>	<b>26-52</b>	<b>9-22</b>	<b>14-18</b>	<b>9</b>	<b>15</b>	<b>24</b>	<b>18</b>	<b>20</b>	<b>16</b>	<b>1</b>	<b>8</b>	<b>200</b>	

*Shooting By Period*

Period	FG	FG%	3FG	3FG%	FT	FT%
1st Qtr	7-14	50%	3-7	43%	4-6	67%
2nd Qtr	5-10	50%	1-3	33%	3-3	100%
3rd Qtr	8-16	50%	4-8	50%	3-3	100%
4th Qtr	6-12	50%	1-4	25%	4-6	67%
1st Half	12-24	50%	4-10	40%	7-9	78%
2nd Half	14-28	50%	5-12	42%	7-9	78%
<b>Game</b>	<b>26-52</b>	<b>50.0%</b>	<b>9-22</b>	<b>40.9%</b>	<b>14-18</b>	<b>77.8%</b>

*Last FG: 4th-00:12*  
*Biggest Run: 9-0*  
*Largest lead: By 14 at 2-05:55*  
*Technical Fouls: #25 ROGERS @ 4th - 00:12;*

Game Notes:

Officials: Jennifer Rezac, Daryl Humphrey, Nykesha Thompson  
Attendance: 727

Start Time: 2019-02-23 00:06:41  
End Time: 2019-02-23 02:12:52  
Game Duration: 126  
Conference Game;

Score	1st	2nd	3rd	4th	TOT
TOW	14	21	19	28	<b>82</b>
CWM	21	14	23	17	<b>75</b>

TOW led for 2:27. CWM led for 34:12.  
Game was tied for 3:22.  
Times tied: 5      Lead Changes: 3

Points from	TOW	CWM
In the Paint	30	28
Off Turns	16	16
2nd Chance	24	6
Fast Break	15	6
Bench	26	13

**Official Box Score**  
**Towson vs William & Mary**  
**First Half Statistics Only**  
**February 23, 2019 at Kaplan Arena (Kaplan Arena) - Williamsburg, Va.**



**Towson 35**

No.	Player	S	Pts	FG	3FG	FT	OR	DR	TR	PF	A	TO	Blk	Stl	Min	+/-
00	DURJAN, DANIELLE		0	0-1	0-1	0-0	0	0	0	1	0	1	0	0	4	-2
10	CAMP, JANEEN		4	2-5	0-0	0-0	2	2	4	2	0	3	3	0	8	-4
11	MURRAY, QIERRA		4	1-2	0-0	2-3	0	2	2	2	5	3	0	0	19	-1
21	JETER, KIONNA		6	2-6	2-6	0-0	0	1	1	0	0	1	0	0	17	3
25	LEE, MAIA		0	0-0	0-0	0-0	0	0	0	2	0	0	1	0	6	-11
32	HOLDER, RYAN		5	2-6	0-0	1-2	5	1	6	1	0	1	0	0	12	8
01	MAYO, NUKIYA		12	3-7	2-3	4-4	3	1	4	0	0	0	1	0	19	1
03	FLYNN, AISLINN		2	1-3	0-0	0-0	1	0	1	0	0	0	0	1	7	14
04	HOLMES, JALYNN		2	0-3	0-3	2-2	0	1	1	0	0	0	0	0	8	-8
	TEAM		0	0-0	0-0	0-0	2	1	3	0	0	0	0	0	0	0
<b>TOTALS</b>			<b>35</b>	<b>11-33</b>	<b>4-13</b>	<b>9-11</b>	<b>13</b>	<b>9</b>	<b>22</b>	<b>8</b>	<b>5</b>	<b>9</b>	<b>5</b>	<b>1</b>	<b>100</b>	

*Shooting By Period*

Period	FG	FG%	3FG	3FG%	FT	FT%
1st Qtr	5-15	33%	1-6	17%	3-3	100%
2nd Qtr	6-18	33%	3-7	43%	6-8	75%
1st Half	11-33	33%	4-13	31%	9-11	82%
Game	24-55	43.6%	8-22	36.4%	26-31	83.9%

*Last FG Half: TOW 2nd-00:32*

**William & Mary 35**

No.	Player	S	Pts	FG	3FG	FT	OR	DR	TR	PF	A	TO	Blk	Stl	Min	+/-
02	BOGGS, BIANCA		6	1-4	0-1	4-6	0	1	1	2	2	3	0	1	13	11
05	JONES, MISHA		0	0-0	0-0	0-0	0	0	0	0	0	0	0	0	4	-8
10	HODGSON, EVA		3	1-3	1-2	0-0	1	3	4	1	2	1	0	0	17	0
11	POLLARD, NYLA		2	0-0	0-0	2-2	0	2	2	0	4	0	0	2	15	4
12	BIRDSONG, HARPER		2	1-3	0-1	0-0	1	0	1	0	0	1	0	1	6	-1
15	KRAUSE, EMMA		6	2-5	1-3	1-1	1	0	1	1	0	0	0	0	8	-4
21	EICHNER, BAILEY		0	0-0	0-0	0-0	0	0	0	0	1	0	0	0	3	-5
25	ROGERS, GABBY		8	4-4	0-0	0-0	0	2	2	2	0	1	0	0	14	3
30	REYNOLDS, VICTORIA		8	3-5	2-3	0-0	0	0	0	0	0	3	0	0	20	0
	TEAM		0	0-0	0-0	0-0	1	2	3	0	0	0	0	0	0	0
<b>TOTALS</b>			<b>35</b>	<b>12-24</b>	<b>4-10</b>	<b>7-9</b>	<b>4</b>	<b>10</b>	<b>14</b>	<b>6</b>	<b>9</b>	<b>9</b>	<b>0</b>	<b>4</b>	<b>100</b>	

*Shooting By Period*

Period	FG	FG%	3FG	3FG%	FT	FT%
1st Qtr	7-14	50%	3-7	43%	4-6	67%
2nd Qtr	5-10	50%	1-3	33%	3-3	100%
1st Half	12-24	50%	4-10	40%	7-9	78%
Game	26-52	50.0%	9-22	40.9%	14-18	77.8%

*Last FG Half: CWM 2nd-00:52*

**Game Notes:**

Officials: Jennifer Rezac, Daryl Humphrey, Nykesha Thompson  
 Attendance: 727

Start Time: 2019-02-23 00:06:41  
 End Time: 2019-02-23 02:12:52  
 Game Duration: 126  
 Conference Game;

Score	1st	2nd	3rd	4th	TOT
TOW	14	21	19	28	<b>82</b>
CWM	21	14	23	17	<b>75</b>

Points from (This Period)	TOW	CWM
In the Paint	12	12
Off Turns	8	12
2nd Chance	15	3
Fast Break	6	2
Bench	8	8

**Official Box Score**  
**Towson vs William & Mary**  
**First Quarter Statistics Only**  
**February 23, 2019 at Kaplan Arena (Kaplan Arena) - Williamsburg, Va.**



**Towson 14**

No.	Player	S	Pts	FG	3FG	FT	OR	DR	TR	PF	A	TO	Blk	Stl	Min	+/-
01	MAYO, NUKIYA		5	1-2	1-1	2-2	1	0	1	0	0	0	1	0	10	-7
11	MURRAY, QIERRA		3	1-2	0-0	1-1	0	1	1	0	2	2	0	0	10	-7
21	JETER, KIONNA		0	0-2	0-2	0-0	0	0	0	0	0	0	0	0	7	-4
25	LEE, MAIA		0	0-0	0-0	0-0	0	0	0	1	0	0	0	0	3	-5
32	HOLDER, RYAN		2	1-3	0-0	0-0	2	1	3	1	0	1	0	0	5	-4
00	DURJAN, DANIELLE		0	0-1	0-1	0-0	0	0	0	1	0	1	0	0	3	-3
03	FLYNN, AISLINN		0	0-0	0-0	0-0	0	0	0	0	0	0	0	0	0	1
04	HOLMES, JALYNN		0	0-2	0-2	0-0	0	0	0	0	0	0	0	0	5	-3
10	CAMP, JANEEN		4	2-3	0-0	0-0	2	2	4	1	0	3	2	0	7	-3
	TEAM						0	0	0	0		0				
<b>TOTALS</b>			<b>14</b>	<b>5-15</b>	<b>1-6</b>	<b>3-3</b>	<b>5</b>	<b>4</b>	<b>9</b>	<b>4</b>	<b>2</b>	<b>7</b>	<b>3</b>	<b>0</b>	<b>50</b>	

*Shooting By Period*

Period	FG	FG%	3FG	3FG%	FT	FT%
1st Qtr	5-15	33%	1-6	17%	3-3	100%
2nd Qtr	6-18	33%	3-7	43%	6-8	75%
1st Half	5-15	33%	1-6	17%	3-3	100%
1st Half	11-33	33%	4-13	31%	9-11	82%
Game	24-55	43.6%	8-22	36.4%	26-31	83.9%

**William & Mary 21**

No.	Player	S	Pts	FG	3FG	FT	OR	DR	TR	PF	A	TO	Blk	Stl	Min	+/-
02	BOGGS, BIANCA		4	1-3	0-1	2-4	0	1	1	1	2	3	0	1	10	7
10	HODGSON, EVA		3	1-1	1-1	0-0	1	1	2	1	0	0	0	0	7	5
11	POLLARD, NYLA		2	0-0	0-0	2-2	0	1	1	0	3	0	0	1	8	8
25	ROGERS, GABBY		4	2-2	0-0	0-0	0	1	1	0	0	0	0	0	6	7
30	REYNOLDS, VICTORIA		5	2-4	1-2	0-0	0	0	0	0	0	1	0	0	10	7
05	JONES, MISHA		0	0-0	0-0	0-0	0	0	0	0	0	0	0	0	2	-1
12	BIRDSONG, HARPER		0	0-0	0-0	0-0	1	0	1	0	0	0	0	1	3	2
15	KRAUSE, EMMA		3	1-4	1-3	0-0	1	0	1	0	0	0	0	0	4	0
21	EICHNER, BAILEY		0	0-0	0-0	0-0	0	0	0	0	0	0	0	0	0	0
	TEAM						1	1	2	0		0				
<b>TOTALS</b>			<b>21</b>	<b>7-14</b>	<b>3-7</b>	<b>4-6</b>	<b>4</b>	<b>5</b>	<b>9</b>	<b>2</b>	<b>5</b>	<b>4</b>	<b>0</b>	<b>3</b>	<b>50</b>	

*Shooting By Period*

Period	FG	FG%	3FG	3FG%	FT	FT%
1st Qtr	7-14	50%	3-7	43%	4-6	67%
2nd Qtr	5-10	50%	1-3	33%	3-3	100%
1st Half	7-14	50%	3-7	43%	4-6	67%
1st Half	12-24	50%	4-10	40%	7-9	78%
Game	26-52	50.0%	9-22	40.9%	14-18	77.8%

Game Notes:

Officials: Jennifer Rezac, Daryl Humphrey, Nykesha Thompson  
 Attendance: 727

Start Time: 2019-02-23 00:06:41  
 End Time: 2019-02-23 02:12:52  
 Game Duration: 126  
 Conference Game;

Score	1st	2nd	3rd	4th	TOT
TOW	14	21	19	28	<b>82</b>
CWM	21	14	23	17	<b>75</b>

Points from (This Period)	TOW	CWM
In the Paint	8	6
Off Turns	2	10
2nd Chance	4	3
Fast Break	5	2
Bench	4	3

**Official Play-By-Play  
Towson vs William & Mary  
First Quarter**

**February 23, 2019 at Kaplan Arena (Kaplan Arena) - Williamsburg, Va.**



**Period 1**

**Starters:**

**Towson:** 11 MURRAY, QIERRA; 21 JETER, KIONNA; 25 LEE, MAIA; 32 HOLDER, RYAN; 1 MAYO, NUKIYA;

**William & Mary:** 2 BOGGS, BIANCA; 10 HODGSON, EVA; 11 POLLARD, NYLA; 25 ROGERS, GABBY; 30 REYNOLDS, VICTORIA;

Time	VISITORS: Towson	Score	Margin	HOME: William & Mary
09:27	MISSED JUMPER by HOLDER, RYAN			
09:22	REBOUND (OFF) by MAYO, NUKIYA			
09:19	MISSED 3PTR by JETER, KIONNA			
09:11				REBOUND (DEF) by BOGGS, BIANCA
08:52		2-0	H 2	GOOD! LAYUP by BOGGS, BIANCA
08:46	TURNOVER (BADPASS) by MURRAY, QIERRA			
08:31		4-0	H 4	GOOD! JUMPER by REYNOLDS, VICTORIA [PNT]
08:06	MISSED LAYUP by MURRAY, QIERRA			
07:58	REBOUND (OFF) by HOLDER, RYAN			
07:57	GOOD! LAYUP by HOLDER, RYAN	4-2	H 2	
07:57	FOUL (PERSONAL) by LEE, MAIA			
07:57		5-2	H 3	GOOD! FT by POLLARD, NYLA
07:57		6-2	H 4	GOOD! FT by POLLARD, NYLA
07:26	MISSED 3PTR by JETER, KIONNA			
07:20	REBOUND (OFF) by HOLDER, RYAN			
07:18	MISSED JUMPER by HOLDER, RYAN			
07:13				REBOUND (DEF) by HODGSON, EVA
07:08		8-2	H 6	GOOD! LAYUP by ROGERS, GABBY [FB]
07:08				ASSIST by POLLARD, NYLA
07:08	TIMEOUT 30SEC			
07:08	SUB OUT: LEE, MAIA			
07:08	SUB IN: CAMP, JANEEN			
06:58	TURNOVER (TRAVEL) by CAMP, JANEEN			
06:39				MISSED JUMPER by REYNOLDS, VICTORIA
06:39	BLOCK by CAMP, JANEEN			
06:32				REBOUND (OFF) by HODGSON, EVA
06:29				MISSED JUMPER by BOGGS, BIANCA
06:29	BLOCK by MAYO, NUKIYA			
06:19	REBOUND (DEF) by MURRAY, QIERRA			
06:13	GOOD! 3PTR by MAYO, NUKIYA	8-5	H 3	
06:13	ASSIST by MURRAY, QIERRA			
05:57		10-5	H 5	GOOD! JUMPER by ROGERS, GABBY
05:57				ASSIST by POLLARD, NYLA
05:25	MISSED LAYUP by CAMP, JANEEN			
05:24				REBOUND (DEF) by ROGERS, GABBY
05:24	FOUL (PERSONAL) by CAMP, JANEEN			
05:08				MISSED 3PTR by BOGGS, BIANCA
05:03	REBOUND (DEF) by HOLDER, RYAN			
05:03	TURNOVER (LOSTBALL) by HOLDER, RYAN			
05:03				STEAL by BOGGS, BIANCA
05:03	FOUL (PERSONAL) by HOLDER, RYAN			
05:03		11-5	H 6	GOOD! FT by BOGGS, BIANCA
05:03	SUB OUT: HOLDER, RYAN			
05:03	SUB IN: HOLMES, JALYNN			
05:03		12-5	H 7	GOOD! FT by BOGGS, BIANCA
04:38	MISSED JUMPER by MAYO, NUKIYA			
04:35				REBOUND (DEF) by POLLARD, NYLA
04:21				TURNOVER (BADPASS) by BOGGS, BIANCA
04:21				SUB OUT: ROGERS, GABBY
04:21				SUB IN: KRAUSE, EMMA
04:10	TURNOVER (BADPASS) by MURRAY, QIERRA			
04:10				STEAL by POLLARD, NYLA
04:01		15-5	H 10	GOOD! 3PTR by HODGSON, EVA
04:01				ASSIST by POLLARD, NYLA
03:49	GOOD! LAYUP by CAMP, JANEEN	15-7	H 8	
03:49	ASSIST by MURRAY, QIERRA			
03:35				MISSED 3PTR by KRAUSE, EMMA
03:31	REBOUND (DEF) by CAMP, JANEEN			
03:28	GOOD! LAYUP by MURRAY, QIERRA [FB]	15-9	H 6	
03:28				FOUL (PERSONAL) by HODGSON, EVA
03:28	SUB OUT: JETER, KIONNA			
03:28	SUB IN: DURJAN, DANIELLE			
03:28	GOOD! FT by MURRAY, QIERRA [FB]	15-10	H 5	
03:14				TURNOVER (TRAVEL) by BOGGS, BIANCA
03:14				SUB OUT: HODGSON, EVA
03:14				SUB IN: BIRDSONG, HARPER
03:00	TURNOVER (LOSTBALL) by CAMP, JANEEN			
03:00				STEAL by BIRDSONG, HARPER
02:41				MISSED 3PTR by REYNOLDS, VICTORIA
02:37				REBOUND (OFF) by BIRDSONG, HARPER

Time	VISITORS: Towson	Score	Margin	HOME: William & Mary
02:13				MISSED 3PTR by KRAUSE, EMMA
02:09				REBOUND (OFF) by KRAUSE, EMMA
02:06		18-10	H 8	GOOD! 3PTR by REYNOLDS, VICTORIA
02:06				ASSIST by BOGGS, BIANCA
01:43	MISSED 3PTR by DURJAN, DANIELLE			
01:39	REBOUND (OFF) by CAMP, JANEEN			
01:38	TURNOVER (BADPASS) by CAMP, JANEEN			
01:38				SUB OUT: POLLARD, NYLA
01:38				SUB IN: JONES, MISHA
01:25				MISSED LAYUP by KRAUSE, EMMA
01:25	BLOCK by CAMP, JANEEN			
01:25				REBOUND (OFF) by TEAM
01:20	FOUL (PERSONAL) by DURJAN, DANIELLE			
01:20				MISSED FT by BOGGS, BIANCA
01:20				REBOUND (OFF) by TEAM
01:20				MISSED FT by BOGGS, BIANCA
01:18	REBOUND (DEF) by CAMP, JANEEN			
01:14	TURNOVER (BADPASS) by DURJAN, DANIELLE			
00:51				TURNOVER (BADPASS) by REYNOLDS, VICTORIA
00:41	MISSED 3PTR by HOLMES, JALYNN			
00:39				REBOUND (DEF) by TEAM
00:26		21-10	H 11	GOOD! 3PTR by KRAUSE, EMMA
00:26				ASSIST by BOGGS, BIANCA
00:11	MISSED 3PTR by HOLMES, JALYNN			
00:06	REBOUND (OFF) by CAMP, JANEEN			
00:06	GOOD! LAYUP by CAMP, JANEEN	21-12	H 9	
00:06				TURNOVER (LOSTBALL) by BOGGS, BIANCA
00:06	SUB OUT: DURJAN, DANIELLE			
00:06	SUB IN: HOLDER, RYAN			
00:06	SUB OUT: HOLMES, JALYNN			
00:06	SUB IN: JETER, KIONNA			
00:06	SUB OUT: CAMP, JANEEN			
00:06	SUB IN: LEE, MAIA			
00:04				FOUL (PERSONAL) by BOGGS, BIANCA
00:04	GOOD! FT by MAYO, NUKIYA [FB]	21-13	H 8	
00:04	SUB OUT: LEE, MAIA			
00:04	SUB IN: FLYNN, AISLINN			
00:04	GOOD! FT by MAYO, NUKIYA [FB]	21-14	H 7	

### Towson 14, William & Mary 21

Points from (This Period)	TOW	CWM
In the Paint	8	6
Off Turns	2	10
2nd Chance	4	3
Fast Break	5	2
Bench	4	3

**Official Box Score**  
**Towson vs William & Mary**  
**Second Quarter Statistics Only**  
**February 23, 2019 at Kaplan Arena (Kaplan Arena) - Williamsburg, Va.**



**Towson 21**

No.	Player	S	Pts	FG	3FG	FT	OR	DR	TR	PF	A	TO	Blk	Stl	Min	+/-
01	MAYO, NUKIYA		7	2-5	1-2	2-2	2	1	3	0	0	0	0	0	9	8
11	MURRAY, QIERRA		1	0-0	0-0	1-2	0	1	1	2	3	1	0	0	9	6
21	JETER, KIONNA		6	2-4	2-4	0-0	0	1	1	0	0	1	0	0	10	7
25	LEE, MAIA		0	0-0	0-0	0-0	0	0	0	1	0	0	1	0	3	-6
32	HOLDER, RYAN		3	1-3	0-0	1-2	3	0	3	0	0	0	0	0	7	12
00	DURJAN, DANIELLE		0	0-0	0-0	0-0	0	0	0	0	0	0	0	0	1	1
03	FLYNN, AISLINN		2	1-3	0-0	0-0	1	0	1	0	0	0	0	1	7	13
04	HOLMES, JALYNN		2	0-1	0-1	2-2	0	1	1	0	0	0	0	0	3	-5
10	CAMP, JANEEN		0	0-2	0-0	0-0	0	0	0	1	0	0	1	0	1	-1
	TEAM						2	1	3	0		0				
<b>TOTALS</b>			<b>21</b>	<b>6-18</b>	<b>3-7</b>	<b>6-8</b>	<b>8</b>	<b>5</b>	<b>13</b>	<b>4</b>	<b>3</b>	<b>2</b>	<b>2</b>	<b>1</b>	<b>50</b>	

*Shooting By Period*

Period	FG	FG%	3FG	3FG%	FT	FT%
3rd Qtr	8-14	57%	3-6	50%	0-0	0%
4th Qtr	5-8	63%	1-3	33%	17-20	85%
2nd Half	6-18	33%	3-7	43%	6-8	75%
2nd Half	13-22	59%	4-9	44%	17-20	85%
Game	24-55	43.6%	8-22	36.4%	26-31	83.9%

**William & Mary 14**

No.	Player	S	Pts	FG	3FG	FT	OR	DR	TR	PF	A	TO	Blk	Stl	Min	+/-
02	BOGGS, BIANCA		2	0-1	0-0	2-2	0	0	0	1	0	0	0	0	3	4
10	HODGSON, EVA		0	0-2	0-1	0-0	0	2	2	0	2	1	0	0	10	-5
11	POLLARD, NYLA		0	0-0	0-0	0-0	0	1	1	0	1	0	0	1	7	-4
25	ROGERS, GABBY		4	2-2	0-0	0-0	0	1	1	2	0	1	0	0	8	-4
30	REYNOLDS, VICTORIA		3	1-1	1-1	0-0	0	0	0	0	0	2	0	0	10	-7
05	JONES, MISHA		0	0-0	0-0	0-0	0	0	0	0	0	0	0	0	2	-7
12	BIRDSONG, HARPER		2	1-3	0-1	0-0	0	0	0	0	0	1	0	0	3	-3
15	KRAUSE, EMMA		3	1-1	0-0	1-1	0	0	0	1	0	0	0	0	4	-4
21	EICHNER, BAILEY		0	0-0	0-0	0-0	0	0	0	0	1	0	0	0	3	-5
	TEAM						0	1	1	0		0				
<b>TOTALS</b>			<b>14</b>	<b>5-10</b>	<b>1-3</b>	<b>3-3</b>	<b>0</b>	<b>5</b>	<b>5</b>	<b>4</b>	<b>4</b>	<b>5</b>	<b>0</b>	<b>1</b>	<b>50</b>	

*Shooting By Period*

Period	FG	FG%	3FG	3FG%	FT	FT%
3rd Qtr	8-16	50%	4-8	50%	3-3	100%
4th Qtr	6-12	50%	1-4	25%	4-6	67%
2nd Half	5-10	50%	1-3	33%	3-3	100%
2nd Half	14-28	50%	5-12	42%	7-9	78%
Game	26-52	50.0%	9-22	40.9%	14-18	77.8%

Game Notes:

Officials: Jennifer Rezac, Daryl Humphrey, Nykesha Thompson  
Attendance: 727

Start Time: 2019-02-23 00:06:41  
End Time: 2019-02-23 02:12:52  
Game Duration: 126  
Conference Game;

Score	1st	2nd	3rd	4th	TOT
TOW	14	21	19	28	<b>82</b>
CWM	21	14	23	17	<b>75</b>

Points from (This Period)	TOW	CWM
In the Paint	4	6
Off Turns	6	2
2nd Chance	11	0
Fast Break	1	0
Bench	4	5

**Official Play-By-Play  
Towson vs William & Mary  
Second Quarter**



**February 23, 2019 at Kaplan Arena (Kaplan Arena) - Williamsburg, Va.**

**Period 2**

**Starters:**

**Towson:** 11 MURRAY, QIERRA; 21 JETER, KIONNA; 25 LEE, MAIA; 32 HOLDER, RYAN; 1 MAYO, NUKIYA;

**William & Mary:** 2 BOGGS, BIANCA; 10 HODGSON, EVA; 11 POLLARD, NYLA; 25 ROGERS, GABBY; 30 REYNOLDS, VICTORIA;

Time	VISITORS: Towson	Score	Margin	HOME: William & Mary
09:46	MISSED LAYUP by MAYO, NUKIYA			
09:45	REBOUND (OFF) by HOLDER, RYAN			
09:45				FOUL (PERSONAL) by KRAUSE, EMMA
09:45	SUB OUT: HOLDER, RYAN			
09:45	SUB IN: HOLMES, JALYNN			
09:45	GOOD! FT by HOLMES, JALYNN	21-15	H 6	
09:45	SUB OUT: FLYNN, AISLINN			
09:45	SUB IN: CAMP, JANEEN			
09:45	GOOD! FT by HOLMES, JALYNN	21-16	H 5	
09:22				MISSED JUMPER by BIRDSONG, HARPER
09:22	BLOCK by CAMP, JANEEN			
09:14	REBOUND (DEF) by JETER, KIONNA			
09:12	MISSED LAYUP by CAMP, JANEEN			
09:06				REBOUND (DEF) by HODGSON, EVA
09:02		23-16	H 7	GOOD! JUMPER by ROGERS, GABBY
09:02				ASSIST by HODGSON, EVA
08:42	MISSED LAYUP by CAMP, JANEEN			
08:42				REBOUND (DEF) by ROGERS, GABBY
08:42	FOUL (PERSONAL) by CAMP, JANEEN			
08:42				SUB OUT: BIRDSONG, HARPER
08:42				SUB IN: BOGGS, BIANCA
08:42				SUB OUT: KRAUSE, EMMA
08:42				SUB IN: POLLARD, NYLA
08:42	SUB OUT: CAMP, JANEEN			
08:42	SUB IN: LEE, MAIA			
08:40		25-16	H 9	GOOD! LAYUP by ROGERS, GABBY
08:40				ASSIST by HODGSON, EVA
08:22	MISSED 3PTR by HOLMES, JALYNN			
08:18				REBOUND (DEF) by HODGSON, EVA
08:14				MISSED LAYUP by BOGGS, BIANCA
08:09	REBOUND (DEF) by HOLMES, JALYNN			
08:01	MISSED 3PTR by MAYO, NUKIYA			
07:57				REBOUND (DEF) by POLLARD, NYLA
07:49		28-16	H 12	GOOD! 3PTR by REYNOLDS, VICTORIA
07:49				ASSIST by POLLARD, NYLA
07:19	MISSED JUMPER by MAYO, NUKIYA			
07:18				REBOUND (DEF) by TEAM
06:50				MISSED LAYUP by HODGSON, EVA
06:50	BLOCK by LEE, MAIA			
06:49	REBOUND (DEF) by TEAM			
06:48	SUB OUT: MAYO, NUKIYA			
06:48	SUB IN: FLYNN, AISLINN			
06:33	TURNOVER (BADPASS) by JETER, KIONNA			
06:26	FOUL (PERSONAL) by MURRAY, QIERRA			
06:26	SUB OUT: HOLMES, JALYNN			
06:26	SUB IN: HOLDER, RYAN			
05:55	FOUL (PERSONAL) by LEE, MAIA			
05:55		29-16	H 13	GOOD! FT by BOGGS, BIANCA
05:55				SUB OUT: HODGSON, EVA
05:55				SUB IN: JONES, MISHA
05:55	SUB OUT: LEE, MAIA			
05:55	SUB IN: MAYO, NUKIYA			
05:55		30-16	H 14	GOOD! FT by BOGGS, BIANCA
05:41	GOOD! 3PTR by JETER, KIONNA	30-19	H 11	
05:41	ASSIST by MURRAY, QIERRA			
05:32				TURNOVER (BADPASS) by REYNOLDS, VICTORIA
05:25				FOUL (PERSONAL) by BOGGS, BIANCA
05:25	MISSED FT by MURRAY, QIERRA			
05:25	REBOUND (OFF) by TEAM			
05:25				SUB OUT: BOGGS, BIANCA
05:25				SUB IN: HODGSON, EVA
05:25	GOOD! FT by MURRAY, QIERRA [FB]	30-20	H 10	
05:18				TURNOVER (TRAVEL) by HODGSON, EVA
04:57	MISSED 3PTR by JETER, KIONNA			
04:53	REBOUND (OFF) by HOLDER, RYAN			
04:51	GOOD! LAYUP by HOLDER, RYAN	30-22	H 8	
04:41				TURNOVER (LOSTBALL) by REYNOLDS, VICTORIA
04:41	STEAL by FLYNN, AISLINN			
04:32	TURNOVER (LOSTBALL) by MURRAY, QIERRA			
04:32				STEAL by POLLARD, NYLA



Time	VISITORS: Towson	Score	Margin	HOME: William & Mary
04:24				MISSED 3PTR by HODGSON, EVA
04:23	REBOUND (DEF) by MURRAY, QIERRA			
04:23				
04:00	MISSED LAYUP by HOLDER, RYAN			
03:53	REBOUND (OFF) by HOLDER, RYAN			
03:52	MISSED LAYUP by HOLDER, RYAN			
03:45	REBOUND (OFF) by MAYO, NUKIYA			
03:43	GOOD! LAYUP by MAYO, NUKIYA	30-24	H 6	
03:32				TURNOVER (TRAVEL) by ROGERS, GABBY
03:32				SUB OUT: JONES, MISHA
03:32				SUB IN: KRAUSE, EMMA
03:11	MISSED 3PTR by JETER, KIONNA			
03:09	REBOUND (OFF) by FLYNN, AISLINN			
03:09	MISSED LAYUP by FLYNN, AISLINN			
03:09	REBOUND (OFF) by TEAM			
02:47	MISSED JUMPER by FLYNN, AISLINN			
02:42	REBOUND (OFF) by MAYO, NUKIYA			
02:32				FOUL (PERSONAL) by ROGERS, GABBY
02:32	GOOD! FT by MAYO, NUKIYA	30-25	H 5	
02:32				SUB OUT: KRAUSE, EMMA
02:32				SUB IN: BIRDSONG, HARPER
02:32				SUB OUT: POLLARD, NYLA
02:32				SUB IN: EICHNER, BAILEY
02:32	GOOD! FT by MAYO, NUKIYA	30-26	H 4	
02:23				TURNOVER (TRAVEL) by BIRDSONG, HARPER
02:10				FOUL (PERSONAL) by ROGERS, GABBY
02:10	GOOD! FT by HOLDER, RYAN	30-27	H 3	
02:10				SUB OUT: ROGERS, GABBY
02:10				SUB IN: KRAUSE, EMMA
02:10	MISSED FT by HOLDER, RYAN			
02:08	REBOUND (OFF) by TEAM			
01:44	GOOD! 3PTR by MAYO, NUKIYA	30-30	T	
01:44	ASSIST by MURRAY, QIERRA			
01:21		32-30	H 2	GOOD! LAYUP by BIRDSONG, HARPER
01:21				ASSIST by EICHNER, BAILEY
01:11	GOOD! 3PTR by JETER, KIONNA	32-33	V 1	
01:11	ASSIST by MURRAY, QIERRA			
00:52		34-33	H 1	GOOD! LAYUP by KRAUSE, EMMA
00:52	FOUL (PERSONAL) by MURRAY, QIERRA			
00:52	SUB OUT: MURRAY, QIERRA			
00:52	SUB IN: DURJAN, DANIELLE			
00:52		35-33	H 2	GOOD! FT by KRAUSE, EMMA
00:52				SUB OUT: BIRDSONG, HARPER
00:52				SUB IN: POLLARD, NYLA
00:32	GOOD! JUMPER by FLYNN, AISLINN	35-35	T	
00:29				SUB OUT: POLLARD, NYLA
00:29				SUB IN: BIRDSONG, HARPER
00:01				MISSED 3PTR by BIRDSONG, HARPER
00:00	REBOUND (DEF) by MAYO, NUKIYA			

### Towson 35, William & Mary 35

Points from (This Period)	TOW	CWM
In the Paint	4	6
Off Turns	6	2
2nd Chance	11	0
Fast Break	1	0
Bench	4	5

**Official Box Score**  
**Towson vs William & Mary**  
**Second Half Statistics Only**  
**February 23, 2019 at Kaplan Arena (Kaplan Arena) - Williamsburg, Va.**



**Towson 47**

No.	Player	S	Pts	FG	3FG	FT	OR	DR	TR	PF	A	TO	Blk	Stl	Min	+/-
00	DURJAN, DANIELLE		10	2-2	2-2	4-4	0	1	1	0	3	1	0	0	16	18
10	CAMP, JANEEN		8	4-6	0-0	0-0	2	2	4	1	2	0	0	0	17	14
11	MURRAY, QIERRA		6	1-2	0-0	4-4	0	2	2	1	1	1	0	1	12	4
21	JETER, KIONNA		14	4-8	2-6	4-4	0	0	0	3	0	0	0	1	17	5
25	LEE, MAIA		0	0-0	0-0	0-0	0	0	0	0	0	0	0	0	0	0
32	HOLDER, RYAN		4	2-2	0-0	0-2	1	0	1	0	0	1	0	1	16	-4
01	MAYO, NUKIYA		5	0-2	0-1	5-6	0	1	1	3	1	0	2	1	20	7
03	FLYNN, AISLINN		0	0-0	0-0	0-0	0	0	0	0	0	3	0	0	4	-9
04	HOLMES, JALYNN		0	0-0	0-0	0-0	0	0	0	0	0	0	0	0	0	0
	TEAM		0	0-0	0-0	0-0	2	3	5	0	0	0	0	0	0	0
<b>TOTALS</b>			<b>47</b>	<b>13-22</b>	<b>4-9</b>	<b>17-20</b>	<b>5</b>	<b>9</b>	<b>14</b>	<b>8</b>	<b>7</b>	<b>6</b>	<b>2</b>	<b>4</b>	<b>100</b>	

*Shooting By Period*

Period	FG	FG%	3FG	3FG%	FT	FT%
3rd Qtr	8-14	57%	3-6	50%	0-0	0%
4th Qtr	5-8	63%	1-3	33%	17-20	85%
2nd Half	13-22	59%	4-9	44%	17-20	85%
Game	24-55	43.6%	8-22	36.4%	26-31	83.9%

Last FG Half: TOW 4th-01:17

**William & Mary 40**

No.	Player	S	Pts	FG	3FG	FT	OR	DR	TR	PF	A	TO	Blk	Stl	Min	+/-
02	BOGGS, BIANCA		12	4-8	1-1	3-3	0	2	2	3	6	1	1	2	20	-5
05	JONES, MISHA		0	0-0	0-0	0-0	0	0	0	0	0	0	0	0	0	-2
10	HODGSON, EVA		3	1-4	1-4	0-0	0	0	0	1	1	2	0	1	20	-7
11	POLLARD, NYLA		4	2-2	0-0	0-0	0	2	2	0	0	0	0	0	13	-10
12	BIRDSONG, HARPER		5	1-4	1-4	2-3	0	0	0	1	0	0	0	0	7	-3
15	KRAUSE, EMMA		0	0-0	0-0	0-0	0	0	0	0	0	0	0	0	3	-2
21	EICHNER, BAILEY		0	0-0	0-0	0-0	0	0	0	0	0	0	0	0	0	0
25	ROGERS, GABBY		9	4-5	0-0	1-1	2	1	3	2	1	1	0	0	18	-3
30	REYNOLDS, VICTORIA		7	2-5	2-3	1-2	0	0	0	5	3	2	0	1	19	-3
	TEAM		0	0-0	0-0	0-0	3	0	3	0	0	1	0	0	0	0
<b>TOTALS</b>			<b>40</b>	<b>14-28</b>	<b>5-12</b>	<b>7-9</b>	<b>5</b>	<b>5</b>	<b>10</b>	<b>12</b>	<b>11</b>	<b>7</b>	<b>1</b>	<b>4</b>	<b>100</b>	

*Shooting By Period*

Period	FG	FG%	3FG	3FG%	FT	FT%
3rd Qtr	8-16	50%	4-8	50%	3-3	100%
4th Qtr	6-12	50%	1-4	25%	4-6	67%
2nd Half	14-28	50%	5-12	42%	7-9	78%
Game	26-52	50.0%	9-22	40.9%	14-18	77.8%

Last FG Half: CWM 4th-00:12

*Game Notes:*

Officials: Jennifer Rezac, Daryl Humphrey, Nykesha Thompson  
 Attendance: 727

Start Time: 2019-02-23 00:06:41  
 End Time: 2019-02-23 02:12:52  
 Game Duration: 126  
 Conference Game;

Score	1st	2nd	3rd	4th	TOT
TOW	14	21	19	28	<b>82</b>
CWM	21	14	23	17	<b>75</b>

Points from (This Period)	TOW	CWM
In the Paint	18	16
Off Turns	8	4
2nd Chance	9	3
Fast Break	9	4
Bench	18	5

**Official Box Score**  
**Towson vs William & Mary**  
**Third Quarter Statistics Only**  
**February 23, 2019 at Kaplan Arena (Kaplan Arena) - Williamsburg, Va.**



**Towson 47**

No.	Player	S	Pts	FG	3FG	FT	OR	DR	TR	PF	A	TO	Blk	Stl	Min	+/-
01	MAYO, NUKIYA		0	0-1	0-1	0-0	0	0	0	1	1	0	1	1	10	-4
11	MURRAY, QIERRA		0	0-1	0-0	0-0	0	0	0	1	1	1	0	0	4	-9
21	JETER, KIONNA		8	3-5	2-4	0-0	0	0	0	2	0	0	0	1	10	-4
25	LEE, MAIA		0	0-0	0-0	0-0	0	0	0	0	0	0	0	0	0	0
32	HOLDER, RYAN		4	2-2	0-0	0-0	1	0	1	0	0	0	0	1	10	-4
00	DURJAN, DANIELLE		3	1-1	1-1	0-0	0	1	1	0	1	1	0	0	7	5
03	FLYNN, AISLINN		0	0-0	0-0	0-0	0	0	0	0	0	3	0	0	4	-9
04	HOLMES, JALYNN		0	0-0	0-0	0-0	0	0	0	0	0	0	0	0	0	0
10	CAMP, JANEEN		4	2-4	0-0	0-0	1	2	3	0	1	0	0	0	7	5
	TEAM						1	2	3	0		0				
<b>TOTALS</b>			<b>19</b>	<b>8-14</b>	<b>3-6</b>	<b>0-0</b>	<b>3</b>	<b>5</b>	<b>8</b>	<b>4</b>	<b>4</b>	<b>5</b>	<b>1</b>	<b>3</b>	<b>50</b>	

*Shooting By Period*

Period	FG	FG%	3FG	3FG%	FT	FT%
2nd Half	0-0	0%	0-0	0%	0-0	0%
Game	24-55	43.6%	8-22	36.4%	26-31	83.9%

**William & Mary 40**

No.	Player	S	Pts	FG	3FG	FT	OR	DR	TR	PF	A	TO	Blk	Stl	Min	+/-
02	BOGGS, BIANCA		5	1-4	0-0	3-3	0	1	1	0	4	0	1	2	10	4
10	HODGSON, EVA		3	1-4	1-4	0-0	0	0	0	0	1	2	0	1	10	4
11	POLLARD, NYLA		2	1-1	0-0	0-0	0	1	1	0	0	0	0	0	6	5
25	ROGERS, GABBY		4	2-2	0-0	0-0	2	1	3	0	1	0	0	0	8	6
30	REYNOLDS, VICTORIA		6	2-3	2-2	0-0	0	0	0	1	1	1	0	0	10	4
05	JONES, MISHA		0	0-0	0-0	0-0	0	0	0	0	0	0	0	0	0	0
12	BIRDSONG, HARPER		3	1-2	1-2	0-0	0	0	0	0	0	0	0	0	4	-1
15	KRAUSE, EMMA		0	0-0	0-0	0-0	0	0	0	0	0	0	0	0	2	-2
21	EICHNER, BAILEY		0	0-0	0-0	0-0	0	0	0	0	0	0	0	0	0	0
	TEAM						1	0	1	0		0				
<b>TOTALS</b>			<b>23</b>	<b>8-16</b>	<b>4-8</b>	<b>3-3</b>	<b>3</b>	<b>3</b>	<b>6</b>	<b>1</b>	<b>7</b>	<b>3</b>	<b>1</b>	<b>3</b>	<b>50</b>	

*Shooting By Period*

Period	FG	FG%	3FG	3FG%	FT	FT%
2nd Half	0-0	0%	0-0	0%	0-0	0%
Game	26-52	50.0%	9-22	40.9%	14-18	77.8%

*Game Notes:*

Officials: Jennifer Rezac, Daryl Humphrey, Nykesha Thompson  
 Attendance: 727

Start Time: 2019-02-23 00:06:41  
 End Time: 2019-02-23 02:12:52  
 Game Duration: 126  
 Conference Game;

Score	1st	2nd	3rd	4th	TOT
TOW	14	21	19	28	<b>82</b>
CWM	21	14	23	17	<b>75</b>

Points from (This Period)	TOW	CWM
In the Paint	10	8
Off Turns	2	4
2nd Chance	7	3
Fast Break	2	4
Bench	7	3

**Official Play-By-Play**  
**Towson vs William & Mary**  
**Third Quarter**  
**February 23, 2019 at Kaplan Arena (Kaplan Arena) - Williamsburg, Va.**



**Period 3**

**Starters:**

**Towson:** 11 MURRAY, QIERRA; 21 JETER, KIONNA; 25 LEE, MAIA; 32 HOLDER, RYAN; 1 MAYO, NUKIYA;

**William & Mary:** 2 BOGGS, BIANCA; 10 HODGSON, EVA; 11 POLLARD, NYLA; 25 ROGERS, GABBY; 30 REYNOLDS, VICTORIA;

Time	VISITORS: Towson	Score	Margin	HOME: William & Mary
09:43				MISSED JUMPER by BOGGS, BIANCA
09:39				REBOUND (OFF) by ROGERS, GABBY
09:35		38-35	H 3	GOOD! 3PTR by REYNOLDS, VICTORIA
09:35				ASSIST by BOGGS, BIANCA
09:21	TURNOVER (LOSTBALL) by FLYNN, AISLINN			
09:21				STEAL by BOGGS, BIANCA
09:14		40-35	H 5	GOOD! LAYUP by POLLARD, NYLA [FB]
09:14				ASSIST by HODGSON, EVA
08:57	TURNOVER (BADPASS) by FLYNN, AISLINN			
08:57				STEAL by HODGSON, EVA
08:50		42-35	H 7	GOOD! LAYUP by BOGGS, BIANCA [FB]
08:29	GOOD! 3PTR by JETER, KIONNA	42-38	H 4	
08:29	ASSIST by MURRAY, QIERRA			
08:10		45-38	H 7	GOOD! 3PTR by HODGSON, EVA
08:10				ASSIST by ROGERS, GABBY
07:50	MISSED JUMPER by MURRAY, QIERRA			
07:46				REBOUND (DEF) by POLLARD, NYLA
07:34		47-38	H 9	GOOD! LAYUP by ROGERS, GABBY
07:34				ASSIST by REYNOLDS, VICTORIA
07:16	MISSED 3PTR by JETER, KIONNA			
07:13				REBOUND (DEF) by BOGGS, BIANCA
07:06				TURNOVER (BADPASS) by REYNOLDS, VICTORIA
07:06	STEAL by HOLDER, RYAN			
06:47	TURNOVER (BADPASS) by FLYNN, AISLINN			
06:47				STEAL by BOGGS, BIANCA
06:34				TURNOVER (BADPASS) by HODGSON, EVA
06:34	STEAL by MAYO, NUKIYA			
06:30	FOUL (OFF) by MURRAY, QIERRA			
06:30	TURNOVER (OFFENSIVE) by MURRAY, QIERRA			
06:30				SUB OUT: ROGERS, GABBY
06:30				SUB IN: KRAUSE, EMMA
06:30	SUB OUT: MURRAY, QIERRA			
06:30	SUB IN: DURJAN, DANIELLE			
06:30	SUB OUT: FLYNN, AISLINN			
06:30	SUB IN: CAMP, JANEEN			
06:08				MISSED JUMPER by REYNOLDS, VICTORIA
06:03	REBOUND (DEF) by CAMP, JANEEN			
05:39	GOOD! 3PTR by JETER, KIONNA	47-41	H 6	
05:39	ASSIST by MAYO, NUKIYA			
05:31				MISSED LAYUP by BOGGS, BIANCA
05:31	BLOCK by MAYO, NUKIYA			
05:31				REBOUND (OFF) by TEAM
05:29				TURNOVER (BADPASS) by HODGSON, EVA
05:29	STEAL by JETER, KIONNA			
05:23	GOOD! LAYUP by JETER, KIONNA [FB]	47-43	H 4	
05:09		50-43	H 7	GOOD! 3PTR by REYNOLDS, VICTORIA
05:09				ASSIST by BOGGS, BIANCA
04:50	MISSED 3PTR by MAYO, NUKIYA			
04:50				BLOCK by BOGGS, BIANCA
04:50	REBOUND (OFF) by TEAM			
04:50				SUB OUT: KRAUSE, EMMA
04:50				SUB IN: ROGERS, GABBY
04:41	GOOD! 3PTR by DURJAN, DANIELLE	50-46	H 4	
04:41	ASSIST by CAMP, JANEEN			
04:27	FOUL (PERSONAL) by JETER, KIONNA			
04:27		51-46	H 5	GOOD! FT by BOGGS, BIANCA
04:27		52-46	H 6	GOOD! FT by BOGGS, BIANCA
04:27		53-46	H 7	GOOD! FT by BOGGS, BIANCA
04:10	MISSED 3PTR by JETER, KIONNA			
04:06	REBOUND (OFF) by CAMP, JANEEN			
04:05	GOOD! LAYUP by CAMP, JANEEN	53-48	H 5	
03:57				MISSED 3PTR by HODGSON, EVA
03:54	REBOUND (DEF) by TEAM			
03:54				SUB OUT: POLLARD, NYLA
03:54				SUB IN: BIRDSONG, HARPER
03:44				FOUL (PERSONAL) by REYNOLDS, VICTORIA
03:29	MISSED LAYUP by CAMP, JANEEN			
03:22	REBOUND (OFF) by HOLDER, RYAN			
03:21	GOOD! LAYUP by HOLDER, RYAN	53-50	H 3	

Time	VISITORS: Towson	Score	Margin	HOME: William & Mary
03:01		56-50	H 6	GOOD! 3PTR by BIRDSONG, HARPER
03:01				ASSIST by BOGGS, BIANCA
02:43	GOOD! LAYUP by CAMP, JANEEN	56-52	H 4	
02:43	ASSIST by DURJAN, DANIELLE			
02:31	FOUL (PERSONAL) by MAYO, NUKIYA			
02:24				MISSED 3PTR by BIRDSONG, HARPER
02:20				REBOUND (OFF) by ROGERS, GABBY
02:11	FOUL (PERSONAL) by JETER, KIONNA			
01:58				MISSED 3PTR by HODGSON, EVA
01:53	REBOUND (DEF) by DURJAN, DANIELLE			
01:52	TURNOVER (BADPASS) by DURJAN, DANIELLE			
01:34				MISSED LAYUP by BOGGS, BIANCA
01:29	REBOUND (DEF) by CAMP, JANEEN			
01:03	MISSED JUMPER by CAMP, JANEEN			
00:58				REBOUND (DEF) by ROGERS, GABBY
00:43		58-52	H 6	GOOD! JUMPER by ROGERS, GABBY [PNT]
00:43				ASSIST by BOGGS, BIANCA
00:18	GOOD! LAYUP by HOLDER, RYAN	58-54	H 4	
00:00				MISSED 3PTR by HODGSON, EVA
00:00	REBOUND (DEF) by TEAM			

**Towson 54, William & Mary 58**

Points from (This Period)	TOW	CWM
In the Paint	10	8
Off Turns	2	4
2nd Chance	7	3
Fast Break	2	4
Bench	7	3

**Official Box Score**  
**Towson vs William & Mary**  
**Fourth Quarter Statistics Only**  
**February 23, 2019 at Kaplan Arena (Kaplan Arena) - Williamsburg, Va.**



**Towson 28**

No.	Player	S	Pts	FG	3FG	FT	OR	DR	TR	PF	A	TO	Blk	Stl	Min	+/-
01	MAYO, NUKIYA		5	0-1	0-0	5-6	0	1	1	2	0	0	1	0	10	11
11	MURRAY, QIERRA		6	1-1	0-0	4-4	0	2	2	0	0	0	0	1	8	13
21	JETER, KIONNA		6	1-3	0-2	4-4	0	0	0	1	0	0	0	0	7	9
25	LEE, MAIA		0	0-0	0-0	0-0	0	0	0	0	0	0	0	0	0	0
32	HOLDER, RYAN		0	0-0	0-0	0-2	0	0	0	0	0	1	0	0	6	0
00	DURJAN, DANIELLE		7	1-1	1-1	4-4	0	0	0	0	2	0	0	0	9	13
03	FLYNN, AISLINN		0	0-0	0-0	0-0	0	0	0	0	0	0	0	0	0	0
04	HOLMES, JALYNN		0	0-0	0-0	0-0	0	0	0	0	0	0	0	0	0	0
10	CAMP, JANEEN		4	2-2	0-0	0-0	1	0	1	1	1	0	0	0	10	9
	TEAM						1	1	2	0		0				
<b>TOTALS</b>			<b>28</b>	<b>5-8</b>	<b>1-3</b>	<b>17-20</b>	<b>2</b>	<b>4</b>	<b>6</b>	<b>4</b>	<b>3</b>	<b>1</b>	<b>1</b>	<b>1</b>	<b>50</b>	

*Shooting By Period*

Period	FG	FG%	3FG	3FG%	FT	FT%
Game	24-55	43.6%	8-22	36.4%	26-31	83.9%

**William & Mary 17**

No.	Player	S	Pts	FG	3FG	FT	OR	DR	TR	PF	A	TO	Blk	Stl	Min	+/-
02	BOGGS, BIANCA		7	3-4	1-1	0-0	0	1	1	3	2	1	0	0	10	-9
10	HODGSON, EVA		0	0-0	0-0	0-0	0	0	0	1	0	0	0	0	10	-11
11	POLLARD, NYLA		2	1-1	0-0	0-0	0	1	1	0	0	0	0	0	7	-15
25	ROGERS, GABBY		5	2-3	0-0	1-1	0	0	0	2	0	1	0	0	10	-9
30	REYNOLDS, VICTORIA		1	0-2	0-1	1-2	0	0	0	4	2	1	0	1	9	-7
05	JONES, MISHA		0	0-0	0-0	0-0	0	0	0	0	0	0	0	0	0	-2
12	BIRDSONG, HARPER		2	0-2	0-2	2-3	0	0	0	1	0	0	0	0	3	-2
15	KRAUSE, EMMA		0	0-0	0-0	0-0	0	0	0	0	0	0	0	0	1	0
21	EICHNER, BAILEY		0	0-0	0-0	0-0	0	0	0	0	0	0	0	0	0	0
	TEAM						2	0	2	0		1				
<b>TOTALS</b>			<b>17</b>	<b>6-12</b>	<b>1-4</b>	<b>4-6</b>	<b>2</b>	<b>2</b>	<b>4</b>	<b>11</b>	<b>4</b>	<b>4</b>	<b>0</b>	<b>1</b>	<b>50</b>	

*Shooting By Period*

Period	FG	FG%	3FG	3FG%	FT	FT%
Game	26-52	50.0%	9-22	40.9%	14-18	77.8%

Game Notes:

Officials: Jennifer Rezac, Daryl Humphrey, Nykesha Thompson  
 Attendance: 727

Start Time: 2019-02-23 00:06:41  
 End Time: 2019-02-23 02:12:52  
 Game Duration: 126  
 Conference Game;

Score	1st	2nd	3rd	4th	TOT
TOW	14	21	19	28	<b>82</b>
CWM	21	14	23	17	<b>75</b>

Points from (This Period)	TOW	CWM
In the Paint	8	8
Off Turns	6	0
2nd Chance	2	0
Fast Break	7	0
Bench	11	2

**Official Play-By-Play  
Towson vs William & Mary  
Fourth Quarter**



**February 23, 2019 at Kaplan Arena (Kaplan Arena) - Williamsburg, Va.**

**Period 4**

**Starters:**

**Towson:** 11 MURRAY, QIERRA; 21 JETER, KIONNA; 25 LEE, MAIA; 32 HOLDER, RYAN; 1 MAYO, NUKIYA;

**William & Mary:** 2 BOGGS, BIANCA; 10 HODGSON, EVA; 11 POLLARD, NYLA; 25 ROGERS, GABBY; 30 REYNOLDS, VICTORIA;

Time	VISITORS: Towson	Score	Margin	HOME: William & Mary
09:46	TURNOVER (BADPASS) by HOLDER, RYAN			
09:46				STEAL by REYNOLDS, VICTORIA
09:14				TURNOVER (SHOTCLOCK) by
08:54	GOOD! LAYUP by CAMP, JANEEN	58-56	H 2	
08:54	ASSIST by DURJAN, DANIELLE			
08:32		60-56	H 4	GOOD! JUMPER by POLLARD, NYLA
08:32				ASSIST by REYNOLDS, VICTORIA
08:26				FOUL (PERSONAL) by REYNOLDS, VICTORIA
08:26	MISSED FT by MAYO, NUKIYA			
08:26	REBOUND (OFF) by TEAM			
08:26	GOOD! FT by MAYO, NUKIYA [FB]	60-57	H 3	
08:14				TURNOVER (LOSTBALL) by BOGGS, BIANCA
08:14	STEAL by MURRAY, QIERRA			
08:01	MISSED JUMPER by MAYO, NUKIYA			
07:59				REBOUND (DEF) by POLLARD, NYLA
07:45				TURNOVER (TRAVEL) by ROGERS, GABBY
07:25				FOUL (PERSONAL) by REYNOLDS, VICTORIA
07:25	GOOD! FT by DURJAN, DANIELLE	60-58	H 2	
07:25				SUB OUT: POLLARD, NYLA
07:25				SUB IN: BIRDSONG, HARPER
07:25	SUB OUT: MURRAY, QIERRA			
07:25	SUB IN: JETER, KIONNA			
07:25	GOOD! FT by DURJAN, DANIELLE	60-59	H 1	
07:09		62-59	H 3	GOOD! JUMPER by ROGERS, GABBY [PNT]
07:09				ASSIST by BOGGS, BIANCA
06:45				FOUL (PERSONAL) by HODGSON, EVA
06:45	MISSED FT by HOLDER, RYAN			
06:45	REBOUND (OFF) by TEAM			
06:45	MISSED FT by HOLDER, RYAN			
06:41	REBOUND (OFF) by CAMP, JANEEN			
06:41				SUB OUT: BIRDSONG, HARPER
06:41				SUB IN: POLLARD, NYLA
06:33	GOOD! 3PTR by DURJAN, DANIELLE	62-62	T	
06:33	ASSIST by CAMP, JANEEN			
06:18		65-62	H 3	GOOD! 3PTR by BOGGS, BIANCA
06:18				ASSIST by REYNOLDS, VICTORIA
06:16				TIMEOUT 30SEC
06:16				
05:44	MISSED 3PTR by JETER, KIONNA			
05:42	REBOUND (OFF) by TEAM			
05:23				FOUL (PERSONAL) by ROGERS, GABBY
05:23	GOOD! FT by DURJAN, DANIELLE	65-63	H 2	
05:23				SUB OUT: POLLARD, NYLA
05:23				SUB IN: BIRDSONG, HARPER
05:23	GOOD! FT by DURJAN, DANIELLE	65-64	H 1	
04:58		67-64	H 3	GOOD! LAYUP by ROGERS, GABBY
04:58				ASSIST by BOGGS, BIANCA
04:58	FOUL (PERSONAL) by CAMP, JANEEN			
04:58				
04:58				SUB OUT: BIRDSONG, HARPER
04:58				SUB IN: POLLARD, NYLA
04:58		68-64	H 4	GOOD! FT by ROGERS, GABBY
04:58	SUB OUT: HOLDER, RYAN			
04:58	SUB IN: MURRAY, QIERRA			
04:27	GOOD! LAYUP by CAMP, JANEEN	68-66	H 2	
04:27	ASSIST by DURJAN, DANIELLE			
04:00				MISSED JUMPER by ROGERS, GABBY
04:00	REBOUND (DEF) by MAYO, NUKIYA			
04:00				FOUL (PERSONAL) by REYNOLDS, VICTORIA
04:00	GOOD! FT by MAYO, NUKIYA	68-67	H 1	
04:00				SUB OUT: POLLARD, NYLA
04:00				SUB IN: BIRDSONG, HARPER
04:00	GOOD! FT by MAYO, NUKIYA	68-68	T	
03:43	FOUL (PERSONAL) by MAYO, NUKIYA			
03:43		69-68	H 1	GOOD! FT by BIRDSONG, HARPER
03:43				MISSED FT by BIRDSONG, HARPER
03:43				REBOUND (OFF) by TEAM
03:43		70-68	H 2	GOOD! FT by BIRDSONG, HARPER
03:43				SUB OUT: BIRDSONG, HARPER
03:43				SUB IN: POLLARD, NYLA

Time	VISITORS: Towson	Score	Margin	HOME: William & Mary
03:27	MISSED 3PTR by JETER, KIONNA			
03:23				REBOUND (DEF) by BOGGS, BIANCA
02:57				MISSED LAYUP by REYNOLDS, VICTORIA
02:57	BLOCK by MAYO, NUKIYA			
02:49	REBOUND (DEF) by MURRAY, QIERRA			
02:29	GOOD! JUMPER by MURRAY, QIERRA [PNT]	70-70	T	
02:10				MISSED JUMPER by BOGGS, BIANCA
02:08	REBOUND (DEF) by MURRAY, QIERRA			
02:08				FOUL (PERSONAL) by BOGGS, BIANCA
02:08	GOOD! FT by MURRAY, QIERRA	70-71	V 1	
02:08				SUB OUT: POLLARD, NYLA
02:08				SUB IN: BIRDSONG, HARPER
02:08	GOOD! FT by MURRAY, QIERRA	70-72	V 2	
01:57	FOUL (PERSONAL) by JETER, KIONNA			
01:32	FOUL (PERSONAL) by MAYO, NUKIYA			
01:32				MISSED FT by REYNOLDS, VICTORIA
01:32				REBOUND (OFF) by TEAM
01:32				SUB OUT: BIRDSONG, HARPER
01:32				SUB IN: POLLARD, NYLA
01:32		71-72	V 1	GOOD! FT by REYNOLDS, VICTORIA
01:17	GOOD! LAYUP by JETER, KIONNA	71-74	V 3	
01:01				TIMEOUT 30SEC
01:01				SUB OUT: ROGERS, GABBY
01:01				SUB IN: KRAUSE, EMMA
01:01				SUB OUT: POLLARD, NYLA
01:01				SUB IN: BIRDSONG, HARPER
00:49				MISSED 3PTR by REYNOLDS, VICTORIA
00:49				REBOUND (OFF) by TEAM
00:49	TIMEOUT 30SEC			
00:49				SUB OUT: KRAUSE, EMMA
00:49				SUB IN: ROGERS, GABBY
00:49	SUB OUT: DURJAN, DANIELLE			
00:49	SUB IN: HOLDER, RYAN			
00:42				MISSED 3PTR by BIRDSONG, HARPER
00:42				REBOUND (OFF) by TEAM
00:40				FOUL (OFF) by REYNOLDS, VICTORIA
00:40				TURNOVER (OFFENSIVE) by REYNOLDS, VICTORIA
00:40				SUB OUT: REYNOLDS, VICTORIA
00:40				SUB IN: POLLARD, NYLA
00:40	SUB OUT: HOLDER, RYAN			
00:40	SUB IN: DURJAN, DANIELLE			
00:38				FOUL (PERSONAL) by BOGGS, BIANCA
00:38	GOOD! FT by MAYO, NUKIYA [FB]	71-75	V 4	
00:38	GOOD! FT by MAYO, NUKIYA [FB]	71-76	V 5	
00:38				TIMEOUT 30SEC
00:38				SUB OUT: POLLARD, NYLA
00:38				SUB IN: KRAUSE, EMMA
00:38	SUB OUT: DURJAN, DANIELLE			
00:38	SUB IN: HOLDER, RYAN			
00:29		73-76	V 3	GOOD! LAYUP by BOGGS, BIANCA
00:24				FOUL (PERSONAL) by BIRDSONG, HARPER
00:24	GOOD! FT by JETER, KIONNA [FB]	73-77	V 4	
00:24	GOOD! FT by JETER, KIONNA [FB]	73-78	V 5	
00:24				TIMEOUT TEAM
00:12		75-78	V 3	GOOD! LAYUP by BOGGS, BIANCA
00:12	TIMEOUT 30SEC			
00:12	SUB OUT: HOLDER, RYAN			
00:12	SUB IN: DURJAN, DANIELLE			
00:12				SUB OUT: KRAUSE, EMMA
00:12				SUB IN: POLLARD, NYLA
00:12				FOUL (TECH) by ROGERS, GABBY
00:12	GOOD! FT by JETER, KIONNA	75-79	V 4	
00:12	GOOD! FT by JETER, KIONNA	75-80	V 5	
00:12				SUB OUT: ROGERS, GABBY
00:12				SUB IN: KRAUSE, EMMA
00:12	SUB OUT: CAMP, JANEEN			
00:12	SUB IN: HOLDER, RYAN			
00:05				FOUL (PERSONAL) by BOGGS, BIANCA
00:05				SUB OUT: BOGGS, BIANCA
00:05				SUB IN: JONES, MISHA
00:05	GOOD! FT by MURRAY, QIERRA [FB]	75-81	V 6	
00:05	GOOD! FT by MURRAY, QIERRA [FB]	75-82	V 7	
00:00				MISSED 3PTR by BIRDSONG, HARPER
00:00	REBOUND (DEF) by TEAM			

Towson 82, William & Mary 75



<b>Points from (This Period)</b>	<b>TOW</b>	<b>CWM</b>
In the Paint	8	8
Off Turns	6	0
2nd Chance	2	0
Fast Break	7	0
Bench	11	2

**Official Scoring/Possession Reference Chart  
Towson vs William & Mary**

**Period 1**

**February 23, 2019 at Kaplan Arena (Kaplan Arena) - Williamsburg, Va.**



**Period 1**

**Starters:**

**Towson:** 11 MURRAY, QIERRA; 21 JETER, KIONNA; 25 LEE, MAIA; 32 HOLDER, RYAN; 1 MAYO, NUKIYA;

**William & Mary:** 2 BOGGS, BIANCA; 10 HODGSON, EVA; 11 POLLARD, NYLA; 25 ROGERS, GABBY; 30 REYNOLDS, VICTORIA;

Time	VISITORS: Towson	Score	Margin	HOME: William & Mary
08:52		2-0	H 2	GOOD! LAYUP by BOGGS, BIANCA
08:31		4-0	H 4	GOOD! JUMPER by REYNOLDS, VICTORIA [PNT]
07:57	GOOD! LAYUP by HOLDER, RYAN	4-2	H 2	
07:57		5-2	H 3	GOOD! FT by POLLARD, NYLA
07:57		6-2	H 4	GOOD! FT by POLLARD, NYLA
07:08		8-2	H 6	GOOD! LAYUP by ROGERS, GABBY [FB]
06:13	GOOD! 3PTR by MAYO, NUKIYA	8-5	H 3	
05:57		10-5	H 5	GOOD! JUMPER by ROGERS, GABBY
05:03		11-5	H 6	GOOD! FT by BOGGS, BIANCA
05:03		12-5	H 7	GOOD! FT by BOGGS, BIANCA
04:01		15-5	H 10	GOOD! 3PTR by HODGSON, EVA
03:49	GOOD! LAYUP by CAMP, JANEEN	15-7	H 8	
03:28	GOOD! LAYUP by MURRAY, QIERRA [FB]	15-9	H 6	
03:28	GOOD! FT by MURRAY, QIERRA [FB]	15-10	H 5	
02:06		18-10	H 8	GOOD! 3PTR by REYNOLDS, VICTORIA
00:26		21-10	H 11	GOOD! 3PTR by KRAUSE, EMMA
00:06	GOOD! LAYUP by CAMP, JANEEN	21-12	H 9	
00:04	GOOD! FT by MAYO, NUKIYA [FB]	21-13	H 8	
00:04	GOOD! FT by MAYO, NUKIYA [FB]	21-14	H 7	

**Towson 14, William & Mary 21**

**Official Scoring/Possession Reference Chart**  
**Towson vs William & Mary**  
**Period 2**  
**February 23, 2019 at Kaplan Arena (Kaplan Arena) - Williamsburg, Va.**



**Period 2**

**Starters:**

**Towson:** 11 MURRAY, QIERRA; 21 JETER, KIONNA; 25 LEE, MAIA; 32 HOLDER, RYAN; 1 MAYO, NUKIYA;

**William & Mary:** 2 BOGGS, BIANCA; 10 HODGSON, EVA; 11 POLLARD, NYLA; 25 ROGERS, GABBY; 30 REYNOLDS, VICTORIA;

Time	VISITORS: Towson	Score	Margin	HOME: William & Mary
09:45	GOOD! FT by HOLMES, JALYNN	21-15	H 6	
09:45	GOOD! FT by HOLMES, JALYNN	21-16	H 5	
09:02		23-16	H 7	GOOD! JUMPER by ROGERS, GABBY
08:40		25-16	H 9	GOOD! LAYUP by ROGERS, GABBY
07:49		28-16	H 12	GOOD! 3PTR by REYNOLDS, VICTORIA
05:55		29-16	H 13	GOOD! FT by BOGGS, BIANCA
05:55		30-16	H 14	GOOD! FT by BOGGS, BIANCA
05:41	GOOD! 3PTR by JETER, KIONNA	30-19	H 11	
05:25	GOOD! FT by MURRAY, QIERRA [FB]	30-20	H 10	
04:51	GOOD! LAYUP by HOLDER, RYAN	30-22	H 8	
03:43	GOOD! LAYUP by MAYO, NUKIYA	30-24	H 6	
02:32	GOOD! FT by MAYO, NUKIYA	30-25	H 5	
02:32	GOOD! FT by MAYO, NUKIYA	30-26	H 4	
02:10	GOOD! FT by HOLDER, RYAN	30-27	H 3	
01:44	GOOD! 3PTR by MAYO, NUKIYA	30-30	T	
01:21		32-30	H 2	GOOD! LAYUP by BIRDSONG, HARPER
01:11	GOOD! 3PTR by JETER, KIONNA	32-33	V 1	
00:52		34-33	H 1	GOOD! LAYUP by KRAUSE, EMMA
00:52		35-33	H 2	GOOD! FT by KRAUSE, EMMA
00:32	GOOD! JUMPER by FLYNN, AISLINN	35-35	T	

**Towson 35, William & Mary 35**

**Official Scoring/Possession Reference Chart**  
**Towson vs William & Mary**  
**Period 3**  
**February 23, 2019 at Kaplan Arena (Kaplan Arena) - Williamsburg, Va.**



**Period 3**

**Starters:**

**Towson:** 11 MURRAY, QIERRA; 21 JETER, KIONNA; 25 LEE, MAIA; 32 HOLDER, RYAN; 1 MAYO, NUKIYA;

**William & Mary:** 2 BOGGS, BIANCA; 10 HODGSON, EVA; 11 POLLARD, NYLA; 25 ROGERS, GABBY; 30 REYNOLDS, VICTORIA;

Time	VISITORS: Towson	Score	Margin	HOME: William & Mary
09:35		38-35	H 3	GOOD! 3PTR by REYNOLDS, VICTORIA
09:14		40-35	H 5	GOOD! LAYUP by POLLARD, NYLA [FB]
08:50		42-35	H 7	GOOD! LAYUP by BOGGS, BIANCA [FB]
08:29	GOOD! 3PTR by JETER, KIONNA	42-38	H 4	
08:10		45-38	H 7	GOOD! 3PTR by HODGSON, EVA
07:34		47-38	H 9	GOOD! LAYUP by ROGERS, GABBY
05:39	GOOD! 3PTR by JETER, KIONNA	47-41	H 6	
05:23	GOOD! LAYUP by JETER, KIONNA [FB]	47-43	H 4	
05:09		50-43	H 7	GOOD! 3PTR by REYNOLDS, VICTORIA
04:41	GOOD! 3PTR by DURJAN, DANIELLE	50-46	H 4	
04:27		51-46	H 5	GOOD! FT by BOGGS, BIANCA
04:27		52-46	H 6	GOOD! FT by BOGGS, BIANCA
04:27		53-46	H 7	GOOD! FT by BOGGS, BIANCA
04:05	GOOD! LAYUP by CAMP, JANEEN	53-48	H 5	
03:21	GOOD! LAYUP by HOLDER, RYAN	53-50	H 3	
03:01		56-50	H 6	GOOD! 3PTR by BIRDSONG, HARPER
02:43	GOOD! LAYUP by CAMP, JANEEN	56-52	H 4	
00:43		58-52	H 6	GOOD! JUMPER by ROGERS, GABBY [PNT]
00:18	GOOD! LAYUP by HOLDER, RYAN	58-54	H 4	

**Towson 54, William & Mary 58**

**Official Scoring/Possession Reference Chart  
Towson vs William & Mary  
Period 4**



**February 23, 2019 at Kaplan Arena (Kaplan Arena) - Williamsburg, Va.**

**Period 4**

**Starters:**

**Towson:** 11 MURRAY, QIERRA; 21 JETER, KIONNA; 25 LEE, MAIA; 32 HOLDER, RYAN; 1 MAYO, NUKIYA;

**William & Mary:** 2 BOGGS, BIANCA; 10 HODGSON, EVA; 11 POLLARD, NYLA; 25 ROGERS, GABBY; 30 REYNOLDS, VICTORIA;

Time	VISITORS: Towson	Score	Margin	HOME: William & Mary
08:54	GOOD! LAYUP by CAMP, JANEEN	58-56	H 2	
08:32		60-56	H 4	GOOD! JUMPER by POLLARD, NYLA
08:26	GOOD! FT by MAYO, NUKIYA [FB]	60-57	H 3	
07:25	GOOD! FT by DURJAN, DANIELLE	60-58	H 2	
07:25	GOOD! FT by DURJAN, DANIELLE	60-59	H 1	
07:09		62-59	H 3	GOOD! JUMPER by ROGERS, GABBY [PNT]
06:33	GOOD! 3PTR by DURJAN, DANIELLE	62-62	T	
06:18		65-62	H 3	GOOD! 3PTR by BOGGS, BIANCA
05:23	GOOD! FT by DURJAN, DANIELLE	65-63	H 2	
05:23	GOOD! FT by DURJAN, DANIELLE	65-64	H 1	
04:58		67-64	H 3	GOOD! LAYUP by ROGERS, GABBY
04:58		68-64	H 4	GOOD! FT by ROGERS, GABBY
04:27	GOOD! LAYUP by CAMP, JANEEN	68-66	H 2	
04:00	GOOD! FT by MAYO, NUKIYA	68-67	H 1	
04:00	GOOD! FT by MAYO, NUKIYA	68-68	T	
03:43		69-68	H 1	GOOD! FT by BIRDSONG, HARPER
03:43		70-68	H 2	GOOD! FT by BIRDSONG, HARPER
02:29	GOOD! JUMPER by MURRAY, QIERRA [PNT]	70-70	T	
02:08	GOOD! FT by MURRAY, QIERRA	70-71	V 1	
02:08	GOOD! FT by MURRAY, QIERRA	70-72	V 2	
01:32		71-72	V 1	GOOD! FT by REYNOLDS, VICTORIA
01:17	GOOD! LAYUP by JETER, KIONNA	71-74	V 3	
00:38	GOOD! FT by MAYO, NUKIYA [FB]	71-75	V 4	
00:38	GOOD! FT by MAYO, NUKIYA [FB]	71-76	V 5	
00:29		73-76	V 3	GOOD! LAYUP by BOGGS, BIANCA
00:24	GOOD! FT by JETER, KIONNA [FB]	73-77	V 4	
00:24	GOOD! FT by JETER, KIONNA [FB]	73-78	V 5	
00:12		75-78	V 3	GOOD! LAYUP by BOGGS, BIANCA
00:12	GOOD! FT by JETER, KIONNA	75-79	V 4	
00:12	GOOD! FT by JETER, KIONNA	75-80	V 5	
00:05	GOOD! FT by MURRAY, QIERRA [FB]	75-81	V 6	
00:05	GOOD! FT by MURRAY, QIERRA [FB]	75-82	V 7	

**Towson 82, William & Mary 75**

**Official Substitutions Log  
Towson vs William & Mary  
Period 1**

**February 23, 2019 at Kaplan Arena (Kaplan Arena) - Williamsburg, Va.**



<b>VISITORS: Towson</b>	<b>Time</b>	<b>Score</b>	<b>HOME: William &amp; Mary</b>
11 MURRAY, QIERRA			2 BOGGS, BIANCA
21 JETER, KIONNA			10 HODGSON, EVA
25 LEE, MAIA			11 POLLARD, NYLA
32 HOLDER, RYAN			25 ROGERS, GABBY
1 MAYO, NUKIYA			30 REYNOLDS, VICTORIA
SUB OUT: 25 LEE, MAIA	07:08	2-8	
SUB IN: 10 CAMP, JANEEN	07:08		
SUB OUT: 32 HOLDER, RYAN	05:03	5-11	
SUB IN: 4 HOLMES, JALYNN	05:03		
	04:21	5-12	SUB OUT: ROGERS, GABBY
	04:21		SUB IN: KRAUSE, EMMA
SUB OUT: 21 JETER, KIONNA	03:28	9-15	
SUB IN: 0 DURJAN, DANIELLE	03:28		
	03:14	10-15	SUB OUT: HODGSON, EVA
	03:14		SUB IN: BIRDSONG, HARPER
	01:38	10-18	SUB OUT: POLLARD, NYLA
	01:38		SUB IN: JONES, MISHA
SUB OUT: 0 DURJAN, DANIELLE	00:06	12-21	
SUB IN: 32 HOLDER, RYAN	00:06		
SUB OUT: 4 HOLMES, JALYNN	00:06		
SUB IN: 21 JETER, KIONNA	00:06		
SUB OUT: 10 CAMP, JANEEN	00:06		
SUB IN: 25 LEE, MAIA	00:06		
SUB OUT: 25 LEE, MAIA	00:04	13-21	
SUB IN: 3 FLYNN, AISLINN	00:04		

**Towson 14, William & Mary 21**

**Official Substitutions Log  
Towson vs William & Mary  
Period 2**

**February 23, 2019 at Kaplan Arena (Kaplan Arena) - Williamsburg, Va.**



<b>VISITORS: Towson</b>	<b>Time</b>	<b>Score</b>	<b>HOME: William &amp; Mary</b>
11 MURRAY, QIERRA			2 BOGGS, BIANCA
21 JETER, KIONNA			10 HODGSON, EVA
25 LEE, MAIA			11 POLLARD, NYLA
32 HOLDER, RYAN			25 ROGERS, GABBY
1 MAYO, NUKIYA			30 REYNOLDS, VICTORIA
SUB OUT: 32 HOLDER, RYAN	09:45	-	
SUB IN: 4 HOLMES, JALYNN	09:45		
SUB OUT: 3 FLYNN, AISLINN	09:45		
SUB IN: 10 CAMP, JANEEN	09:45		
	08:42	16-23	SUB OUT: BIRDSONG, HARPER
	08:42		SUB IN: BOGGS, BIANCA
	08:42		SUB OUT: KRAUSE, EMMA
	08:42		SUB IN: POLLARD, NYLA
SUB OUT: 10 CAMP, JANEEN	08:42		
SUB IN: 25 LEE, MAIA	08:42		
SUB OUT: 1 MAYO, NUKIYA	06:48	16-28	
SUB IN: 3 FLYNN, AISLINN	06:48		
SUB OUT: 4 HOLMES, JALYNN	06:26	16-28	
SUB IN: 32 HOLDER, RYAN	06:26		
	05:55	16-29	SUB OUT: HODGSON, EVA
	05:55		SUB IN: JONES, MISHA
SUB OUT: 25 LEE, MAIA	05:55		
SUB IN: 1 MAYO, NUKIYA	05:55		
	05:25	19-30	SUB OUT: BOGGS, BIANCA
	05:25		SUB IN: HODGSON, EVA
	03:32	24-30	SUB OUT: JONES, MISHA
	03:32		SUB IN: KRAUSE, EMMA
	02:32	25-30	SUB OUT: KRAUSE, EMMA
	02:32		SUB IN: BIRDSONG, HARPER
	02:32		SUB OUT: POLLARD, NYLA
	02:32		SUB IN: EICHNER, BAILEY
	02:10	27-30	SUB OUT: ROGERS, GABBY
	02:10		SUB IN: KRAUSE, EMMA
SUB OUT: 11 MURRAY, QIERRA	00:52	33-34	
SUB IN: 0 DURJAN, DANIELLE	00:52		
	00:52		SUB OUT: BIRDSONG, HARPER
	00:52		SUB IN: POLLARD, NYLA
	00:29	35-35	SUB OUT: POLLARD, NYLA
	00:29		SUB IN: BIRDSONG, HARPER

**Towson 35, William & Mary 35**

**Official Substitutions Log**  
**Towson vs William & Mary**  
**Period 3**  
**February 23, 2019 at Kaplan Arena (Kaplan Arena) - Williamsburg, Va.**



VISITORS: Towson	Time	Score	HOME: William & Mary
11 MURRAY, QIERRA			2 BOGGS, BIANCA
21 JETER, KIONNA			10 HODGSON, EVA
25 LEE, MAIA			11 POLLARD, NYLA
32 HOLDER, RYAN			25 ROGERS, GABBY
1 MAYO, NUKIYA			30 REYNOLDS, VICTORIA
	06:30	38-47	SUB OUT: ROGERS, GABBY
	06:30		SUB IN: KRAUSE, EMMA
SUB OUT: 11 MURRAY, QIERRA	06:30		
SUB IN: 0 DURJAN, DANIELLE	06:30		
SUB OUT: 3 FLYNN, AISLINN	06:30		
SUB IN: 10 CAMP, JANEEN	06:30		
	04:50	43-50	SUB OUT: KRAUSE, EMMA
	04:50		SUB IN: ROGERS, GABBY
	03:54	48-53	SUB OUT: POLLARD, NYLA
	03:54		SUB IN: BIRDSONG, HARPER

**Towson 54, William & Mary 58**



**Official Substitutions Log  
Towson vs William & Mary  
Period 4**

**February 23, 2019 at Kaplan Arena (Kaplan Arena) - Williamsburg, Va.**



<b>VISITORS: Towson</b>	<b>Time</b>	<b>Score</b>	<b>HOME: William &amp; Mary</b>
11 MURRAY,QIERRA			2 BOGGS,BIANCA
21 JETER,KIONNA			10 HODGSON,EVA
25 LEE,MAIA			11 POLLARD,NYLA
32 HOLDER,RYAN			25 ROGERS,GABBY
1 MAYO,NUKIYA			30 REYNOLDS,VICTORIA
	07:25	58-60	SUB OUT: POLLARD,NYLA
	07:25		SUB IN: BIRDSONG,HARPER
SUB OUT: 11 MURRAY,QIERRA	07:25		
SUB IN: 21 JETER,KIONNA	07:25		
	06:41	59-62	SUB OUT: BIRDSONG,HARPER
	06:41		SUB IN: POLLARD,NYLA
	05:23	63-65	SUB OUT: POLLARD,NYLA
	05:23		SUB IN: BIRDSONG,HARPER
	04:58	64-67	SUB OUT: BIRDSONG,HARPER
	04:58		SUB IN: POLLARD,NYLA
SUB OUT: 32 HOLDER,RYAN	04:58		
SUB IN: 11 MURRAY,QIERRA	04:58		
	04:00	67-68	SUB OUT: POLLARD,NYLA
	04:00		SUB IN: BIRDSONG,HARPER
	03:43	68-70	SUB OUT: BIRDSONG,HARPER
	03:43		SUB IN: POLLARD,NYLA
	02:08	71-70	SUB OUT: POLLARD,NYLA
	02:08		SUB IN: BIRDSONG,HARPER
	01:32	72-70	SUB OUT: BIRDSONG,HARPER
	01:32		SUB IN: POLLARD,NYLA
	01:01	74-71	SUB OUT: ROGERS,GABBY
	01:01		SUB IN: KRAUSE,EMMA
	01:01		SUB OUT: POLLARD,NYLA
	01:01		SUB IN: BIRDSONG,HARPER
	00:49	74-71	SUB OUT: KRAUSE,EMMA
	00:49		SUB IN: ROGERS,GABBY
SUB OUT: 0 DURJAN,DANIELLE	00:49		
SUB IN: 32 HOLDER,RYAN	00:49		
	00:40	74-71	SUB OUT: REYNOLDS,VICTORIA
	00:40		SUB IN: POLLARD,NYLA
SUB OUT: 32 HOLDER,RYAN	00:40		
SUB IN: 0 DURJAN,DANIELLE	00:40		
	00:38	76-71	SUB OUT: POLLARD,NYLA
	00:38		SUB IN: KRAUSE,EMMA
SUB OUT: 0 DURJAN,DANIELLE	00:38		
SUB IN: 32 HOLDER,RYAN	00:38		
SUB OUT: 32 HOLDER,RYAN	00:12	78-75	
SUB IN: 0 DURJAN,DANIELLE	00:12		
	00:12		SUB OUT: KRAUSE,EMMA
	00:12		SUB IN: POLLARD,NYLA
	00:12		SUB OUT: ROGERS,GABBY
	00:12		SUB IN: KRAUSE,EMMA
SUB OUT: 10 CAMP,JANEEN	00:12		
SUB IN: 32 HOLDER,RYAN	00:12		
	00:05	80-75	SUB OUT: BOGGS,BIANCA
	00:05		SUB IN: JONES,MISHA

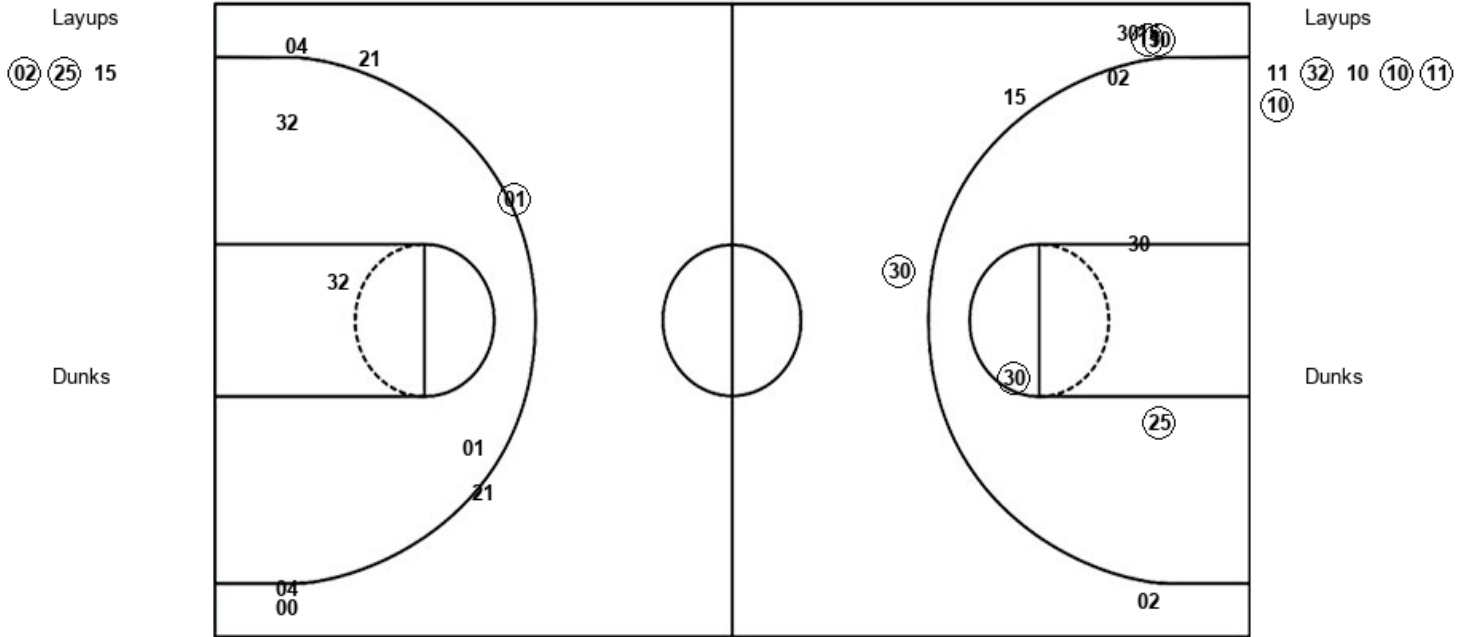
**Towson 82, William & Mary 75**

**Official Shot Chart**  
**Towson vs William & Mary**  
**PERIOD 1 Shots**  
 February 23, 2019 at Kaplan Arena (Kaplan Arena) - Williamsburg, Va.



**William & Mary**

**Towson**



<b>CWM : Period 1</b>	<b>Made</b>	<b>Att</b>	<b>Pct</b>
Layups	2	3	66.7
Dunks	0	0	0
2PT Field Goals	4	7	57.1
3PT Field Goals	3	7	42.9
<b>Total Field Goals</b>	<b>7</b>	<b>14</b>	<b>50.0</b>

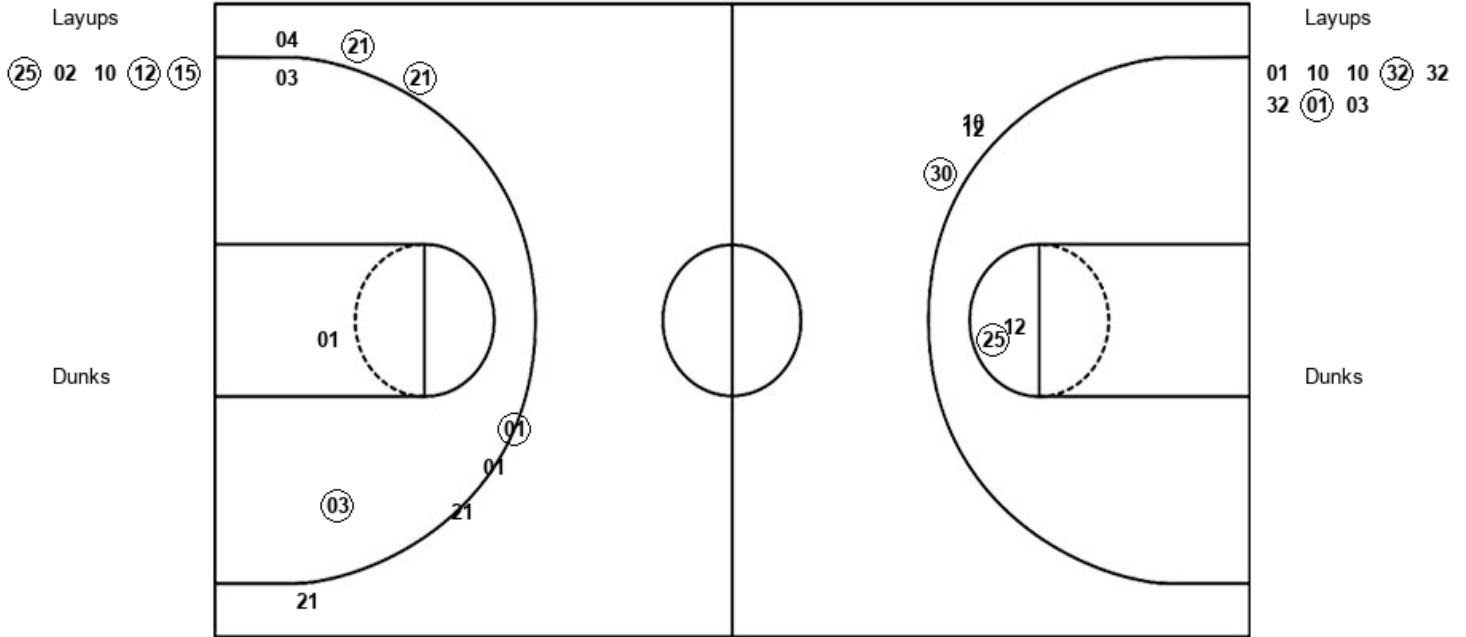
<b>TOW : Period 1</b>	<b>Made</b>	<b>Att</b>	<b>Pct</b>
Layups	4	6	66.7
Dunks	0	0	0
2PT Field Goals	4	9	44.4
3PT Field Goals	1	6	16.7
<b>Total Field Goals</b>	<b>5</b>	<b>15</b>	<b>33.3</b>

**Official Shot Chart**  
**Towson vs William & Mary**  
**PERIOD 2 Shots**  
 February 23, 2019 at Kaplan Arena (Kaplan Arena) - Williamsburg, Va.



**William & Mary**

**Towson**



<b>CWM : Period 2</b>	<b>Made</b>	<b>Att</b>	<b>Pct</b>
Layups	3	5	60.0
Dunks	0	0	0
2PT Field Goals	4	7	57.1
3PT Field Goals	1	3	33.3
<b>Total Field Goals</b>	<b>5</b>	<b>10</b>	<b>50.0</b>

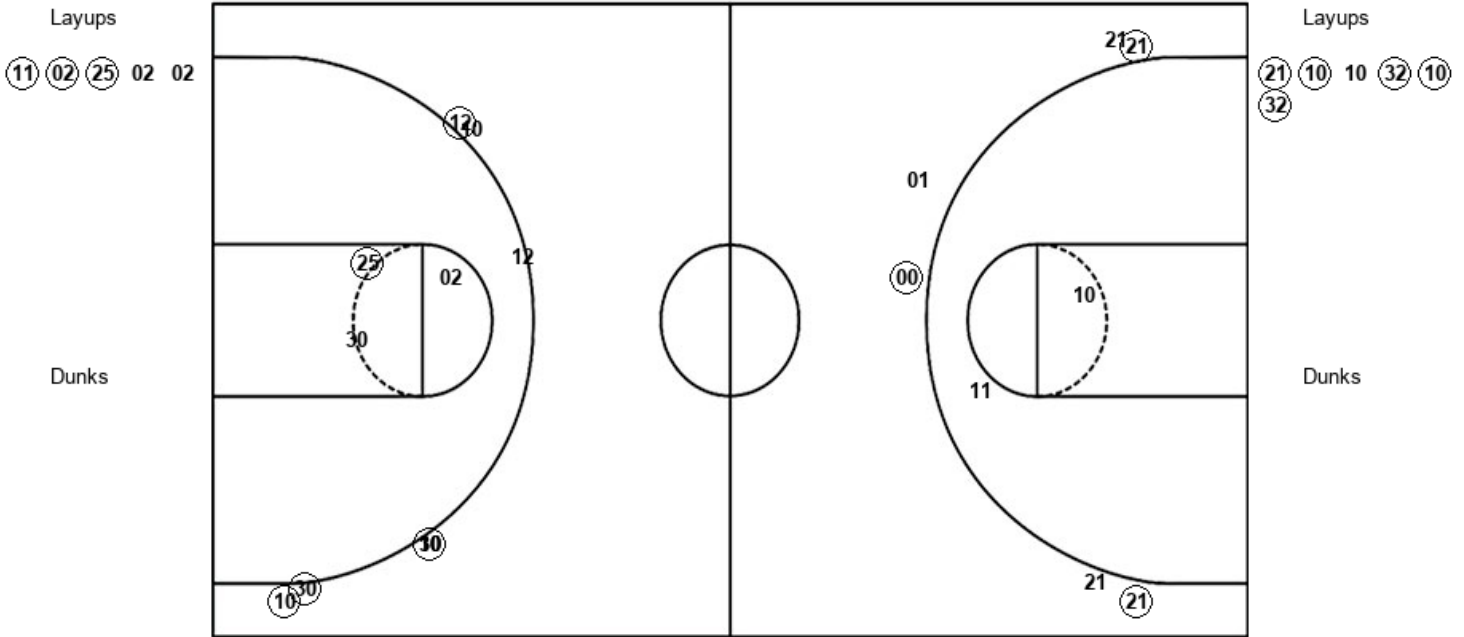
<b>TOW : Period 2</b>	<b>Made</b>	<b>Att</b>	<b>Pct</b>
Layups	2	8	25.0
Dunks	0	0	0
2PT Field Goals	3	11	27.3
3PT Field Goals	3	7	42.9
<b>Total Field Goals</b>	<b>6</b>	<b>18</b>	<b>33.3</b>

Official Shot Chart  
**Towson vs William & Mary**  
 PERIOD 3 Shots  
 February 23, 2019 at Kaplan Arena (Kaplan Arena) - Williamsburg, Va.



**William & Mary**

**Towson**



<b>CWM : Period 3</b>	<b>Made</b>	<b>Att</b>	<b>Pct</b>
Layups	3	5	60.0
Dunks	0	0	0
2PT Field Goals	4	8	50.0
3PT Field Goals	4	8	50.0
<b>Total Field Goals</b>	<b>8</b>	<b>16</b>	<b>50.0</b>

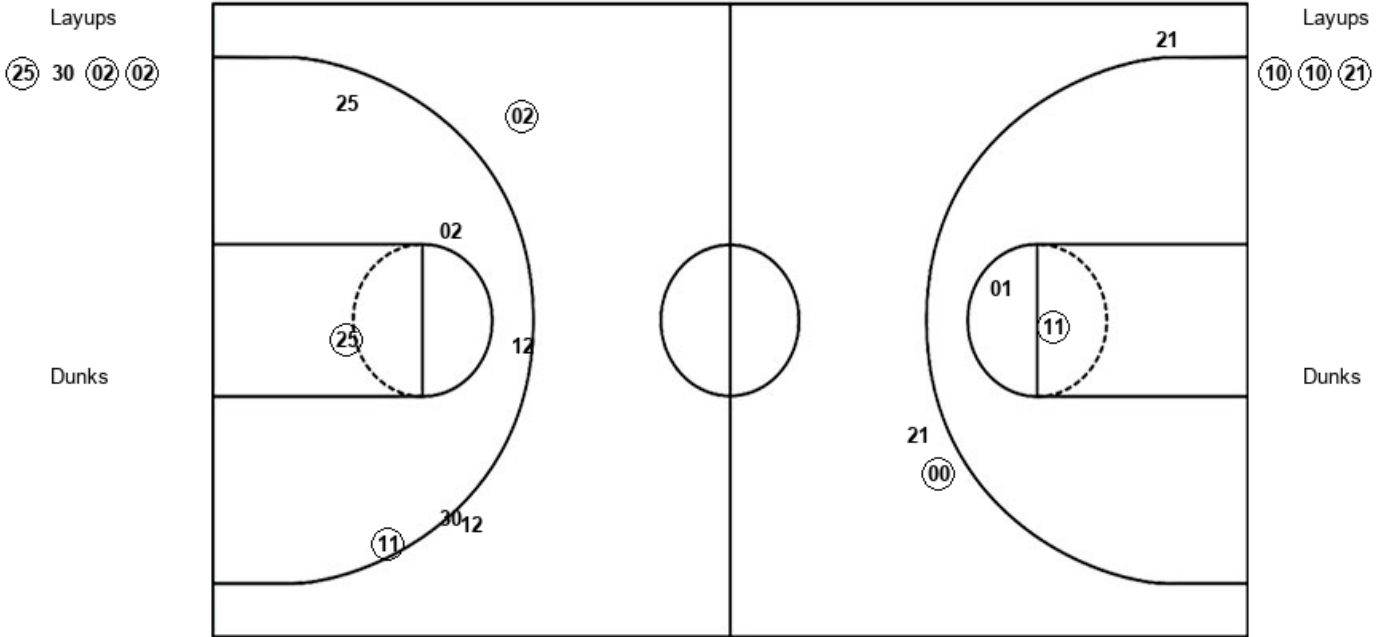
<b>TOW : Period 3</b>	<b>Made</b>	<b>Att</b>	<b>Pct</b>
Layups	5	6	83.3
Dunks	0	0	0
2PT Field Goals	5	8	62.5
3PT Field Goals	3	6	50.0
<b>Total Field Goals</b>	<b>8</b>	<b>14</b>	<b>57.1</b>

**Official Shot Chart**  
**Towson vs William & Mary**  
**PERIOD 4 Shots**  
 February 23, 2019 at Kaplan Arena (Kaplan Arena) - Williamsburg, Va.



**William & Mary**

**Towson**



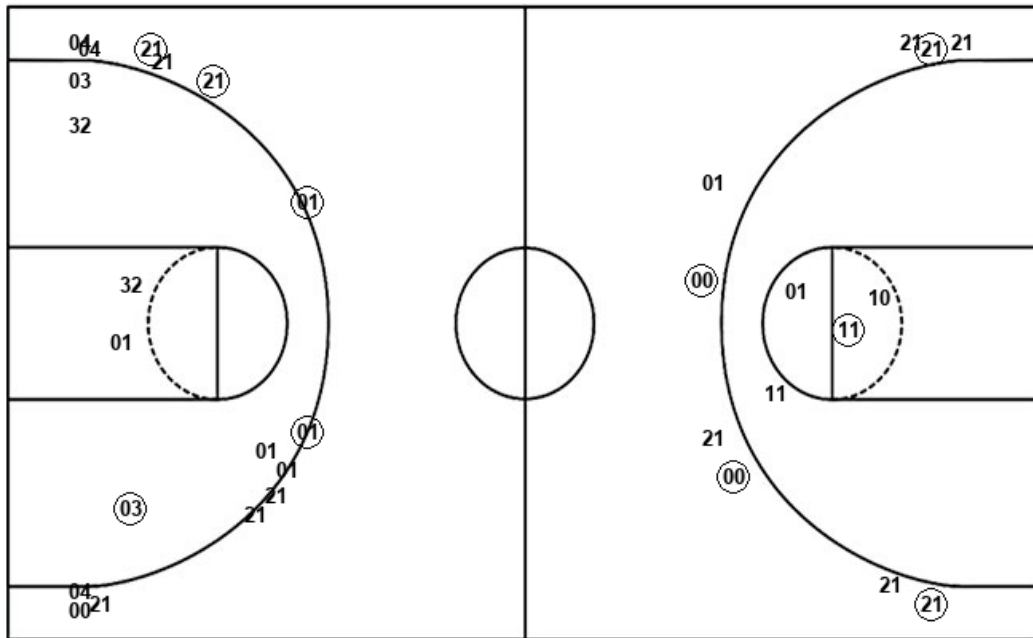
<b>CWM : Period 4</b>	<b>Made</b>	<b>Att</b>	<b>Pct</b>
Layups	3	4	75.0
Dunks	0	0	0
2PT Field Goals	5	8	62.5
3PT Field Goals	1	4	25.0
<b>Total Field Goals</b>	<b>6</b>	<b>12</b>	<b>50.0</b>

<b>TOW : Period 4</b>	<b>Made</b>	<b>Att</b>	<b>Pct</b>
Layups	3	3	100.0
Dunks	0	0	0
2PT Field Goals	4	5	80.0
3PT Field Goals	1	3	33.3
<b>Total Field Goals</b>	<b>5</b>	<b>8</b>	<b>62.5</b>

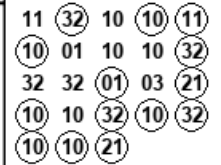
**Official Shot Chart**  
**Towson vs William & Mary**  
**Towson Team Shots**  
 February 23, 2019 at Kaplan Arena (Kaplan Arena) - Williamsburg, Va.



Layups



Layups



Dunks

Dunks

TOW : Period 1	Made	Att	Pct
Layups	4	6	66.7
Dunks	0	0	0
2PT Field Goals	4	9	44.4
3PT Field Goals	1	6	16.7
<b>Total Field Goals</b>	<b>5</b>	<b>15</b>	<b>33.3</b>

TOW : Period 3	Made	Att	Pct
Layups	5	6	83.3
Dunks	0	0	0
2PT Field Goals	5	8	62.5
3PT Field Goals	3	6	50.0
<b>Total Field Goals</b>	<b>8</b>	<b>14</b>	<b>57.1</b>

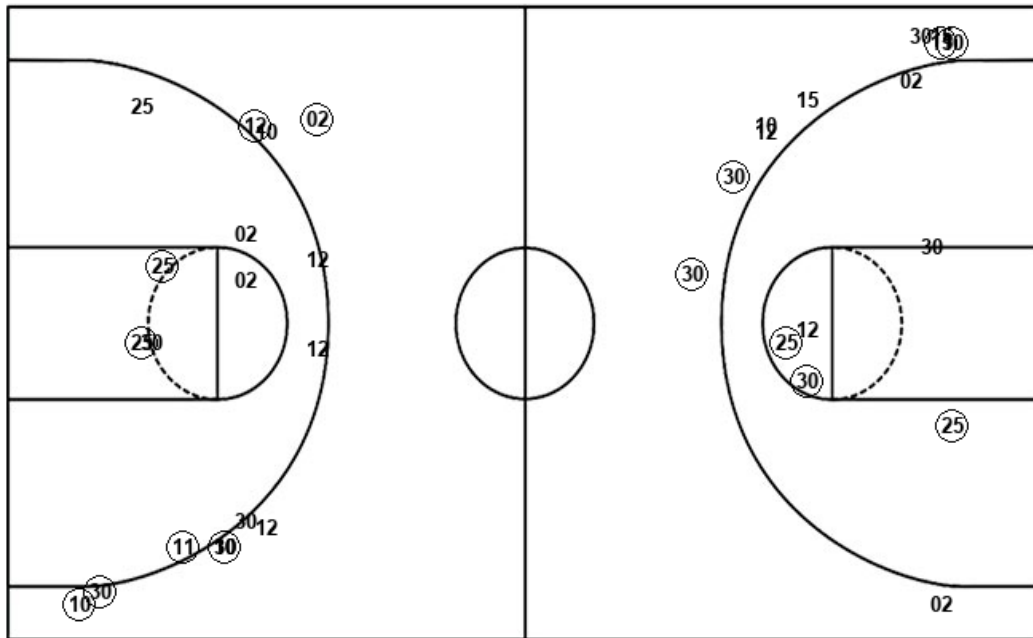
TOW : Period 2	Made	Att	Pct
Layups	2	8	25.0
Dunks	0	0	0
2PT Field Goals	3	11	27.3
3PT Field Goals	3	7	42.9
<b>Total Field Goals</b>	<b>6</b>	<b>18</b>	<b>33.3</b>

TOW : Period 4	Made	Att	Pct
Layups	3	3	100.0
Dunks	0	0	0
2PT Field Goals	4	5	80.0
3PT Field Goals	1	3	33.3
<b>Total Field Goals</b>	<b>5</b>	<b>8</b>	<b>62.5</b>

**Official Shot Chart**  
**Towson vs William & Mary**  
**William & Mary Team Shots**  
 February 23, 2019 at Kaplan Arena (Kaplan Arena) - Williamsburg, Va.



Layups



Layups



Dunks

Dunks

CWM : Period 1	Made	Att	Pct
Layups	2	3	66.7
Dunks	0	0	0
2PT Field Goals	4	7	57.1
3PT Field Goals	3	7	42.9
<b>Total Field Goals</b>	<b>7</b>	<b>14</b>	<b>50.0</b>

CWM : Period 3	Made	Att	Pct
Layups	3	5	60.0
Dunks	0	0	0
2PT Field Goals	4	8	50.0
3PT Field Goals	4	8	50.0
<b>Total Field Goals</b>	<b>8</b>	<b>16</b>	<b>50.0</b>

CWM : Period 2	Made	Att	Pct
Layups	3	5	60.0
Dunks	0	0	0
2PT Field Goals	4	7	57.1
3PT Field Goals	1	3	33.3
<b>Total Field Goals</b>	<b>5</b>	<b>10</b>	<b>50.0</b>

CWM : Period 4	Made	Att	Pct
Layups	3	4	75.0
Dunks	0	0	0
2PT Field Goals	5	8	62.5
3PT Field Goals	1	4	25.0
<b>Total Field Goals</b>	<b>6</b>	<b>12</b>	<b>50.0</b>