

FINAL SCORE



Delaware

70



William & Mary

59

February 02, 2019 • Kaplan Arena (Kaplan Arena) - Williamsburg, Va.

FINAL STATISTICS

Official Box Score
Delaware vs William & Mary
Game Totals -- Final Statistics
February 02, 2019 at Kaplan Arena (Kaplan Arena) - Williamsburg, Va.

Delaware 70

No.	Player	S	Pts	FG	3FG	FT	OR	DR	TR	PF	A	TO	Blk	Stl	Min	+/-
02	Gonzales, Abby		16	6-9	4-6	0-0	0	1	1	2	1	2	0	1	33	14
12	Oleary, Lizzie		10	4-5	0-0	2-4	5	2	7	1	2	1	1	1	16	12
22	Defreese, Samone		8	4-10	0-0	0-1	2	3	5	4	5	3	0	0	28	8
23	Kargo, Bailey		2	1-5	0-2	0-0	0	0	0	0	1	1	0	0	13	-9
25	Lawrence, Rebecca		7	3-7	1-1	0-0	1	3	4	1	0	0	2	0	17	1
04	Mcbride, Paris		6	3-7	0-1	0-0	0	3	3	3	5	3	0	3	28	17
05	Nicholas, Makeda		8	2-6	0-0	4-5	1	4	5	0	0	2	2	0	19	4
20	Dickey, Jasmine		9	2-5	0-0	5-6	3	7	10	4	0	2	1	1	27	5
35	Lewis, Alison		4	2-4	0-1	0-0	1	2	3	4	1	3	0	1	16	3
	Team						0	2	2	0		0				
TOTALS			70	27-58	5-11	11-16	13	27	40	19	15	17	6	7	198	

Shooting By Period

Period	FG	FG%	3FG	3FG%	FT	FT%
1st Qtr	9-17	53%	3-6	50%	2-3	67%
2nd Qtr	4-13	31%	0-1	00%	4-6	67%
3rd Qtr	8-15	53%	0-0	0%	3-4	75%
4th Qtr	6-13	46%	2-4	50%	2-3	67%
1st Half	13-30	43%	3-7	43%	6-9	67%
2nd Half	14-28	50%	2-4	50%	5-7	71%
Game	27-58	46.6%	5-11	45.5%	11-16	68.8%

Last FG: 4th-01:40
Biggest Run: 10-0
Largest lead: By 13 at 4-01:40
Technical Fouls: None.

William & Mary 59

No.	Player	S	Pts	FG	3FG	FT	OR	DR	TR	PF	A	TO	Blk	Stl	Min	+/-
02	Boggs, Bianca		11	2-9	1-2	6-8	2	6	8	4	5	6	1	1	37	-13
10	Hodgson, Eva		11	3-7	1-1	4-4	1	0	1	2	4	1	1	0	37	-8
11	Pollard, Nyla		3	1-6	1-2	0-0	1	0	1	0	4	1	0	2	21	0
25	Rogers, Gabby		2	1-5	0-0	0-0	1	1	2	4	0	0	0	1	12	0
30	Reynolds, Victoria		14	6-11	1-2	1-2	1	5	6	2	3	2	2	3	38	-7
05	Jones, Misha		3	1-2	1-2	0-0	0	2	2	3	0	3	0	0	20	-8
12	Birdsong, Harper		12	5-11	0-4	2-2	0	1	1	0	1	1	0	1	23	-12
15	Krause, Emma		3	1-2	1-2	0-0	0	2	2	2	0	1	1	0	9	-7
	Team						1	2	3	0		1				
TOTALS			59	20-53	6-15	13-16	7	19	26	17	17	16	5	8	198	

Shooting By Period

Period	FG	FG%	3FG	3FG%	FT	FT%
1st Qtr	7-12	58%	2-4	50%	2-2	100%
2nd Qtr	4-15	27%	2-4	50%	2-4	50%
3rd Qtr	6-14	43%	1-2	50%	3-4	75%
4th Qtr	3-12	25%	1-5	20%	6-6	100%
1st Half	11-27	41%	4-8	50%	4-6	67%
2nd Half	9-26	35%	2-7	29%	9-10	90%
Game	20-53	37.7%	6-15	40.0%	13-16	81.3%

Last FG: 4th-02:50
Biggest Run: 7-0
Largest lead: By 0 at -
Technical Fouls: None.

Game Notes:

Officials: Thomas Danaher,Norma Jones,Fatou Cissoko-
Stephens
Attendance: 634

Start Time: 2019-02-02 00:07:02
End Time: 2019-02-02 01:51:53
Game Duration: 104
Conference Game;

Score	1st	2nd	3rd	4th	TOT
DEL	23	12	19	16	70
W&M	18	12	16	13	59

DEL led for 38:31. W&M led for 0:00.
Game was tied for 1:03.
Times tied: 0 Lead Changes: 0

Points from	DEL	W&M
In the Paint	32	20
Off Turns	22	16
2nd Chance	10	2
Fast Break	8	19
Bench	27	18

Official Box Score
Delaware vs William & Mary
First Half Statistics Only
February 02, 2019 at Kaplan Arena (Kaplan Arena) - Williamsburg, Va.

Delaware 35

No.	Player	S	Pts	FG	3FG	FT	OR	DR	TR	PF	A	TO	Blk	Stl	Min	+/-
12	Oleary, Lizzie		6	2-2	0-0	2-4	2	1	3	0	0	1	1	1	8	9
20	Dickey, Jasmine		3	0-2	0-0	3-4	2	4	6	2	0	2	0	0	10	-3
22	Defreese, Samone		4	2-5	0-0	0-0	1	2	3	1	4	1	0	0	17	7
23	Kargo, Bailey		2	1-4	0-2	0-0	0	0	0	0	1	0	0	0	9	-3
25	Lawrence, Rebecca		7	3-4	1-1	0-0	1	3	4	0	0	0	1	0	13	5
35	Lewis, Alison		0	0-2	0-1	0-0	0	2	2	2	1	0	0	1	8	-3
02	Gonzales, Abby		10	4-5	2-2	0-0	0	0	0	2	1	1	0	0	15	7
04	Mcbride, Paris		0	0-3	0-1	0-0	0	0	0	0	2	1	0	2	11	7
05	Nicholas, Makeda		3	1-3	0-0	1-1	0	2	2	0	0	2	0	0	10	-1
	Team		0	0-0	0-0	0-0	0	1	1	0	0	0	0	0	0	
TOTALS			35	13-30	3-7	6-9	6	15	21	7	9	8	2	4	100	

Shooting By Period

Period	FG	FG%	3FG	3FG%	FT	FT%
1st Qtr	9-17	53%	3-6	50%	2-3	67%
2nd Qtr	4-13	31%	0-1	00%	4-6	67%
1st Half	13-30	43%	3-7	43%	6-9	67%
Game	27-58	46.6%	5-11	45.5%	11-16	68.8%

Last FG Half: DEL 2nd-00:21

William & Mary 30

No.	Player	S	Pts	FG	3FG	FT	OR	DR	TR	PF	A	TO	Blk	Stl	Min	+/-
02	Boggs, Bianca		7	2-4	1-1	2-4	0	3	3	1	2	2	1	1	20	-5
05	Jones, Misha		3	1-1	1-1	0-0	0	2	2	2	0	1	0	0	10	3
10	Hodgson, Eva		4	1-4	0-0	2-2	0	0	0	1	3	1	1	0	18	-2
11	Pollard, Nyla		3	1-3	1-2	0-0	0	0	0	0	2	1	0	0	11	0
12	Birdsong, Harper		4	2-6	0-3	0-0	0	0	0	0	0	1	0	0	11	-8
15	Krause, Emma		0	0-0	0-0	0-0	0	0	0	1	0	1	1	0	3	-7
25	Rogers, Gabby		2	1-3	0-0	0-0	1	1	2	2	0	0	0	0	6	-1
30	Reynolds, Victoria		7	3-6	1-1	0-0	1	4	5	1	3	1	1	1	20	-5
	Team		0	0-0	0-0	0-0	0	1	1	0	0	0	0	0	0	
TOTALS			30	11-27	4-8	4-6	2	11	13	8	10	8	4	2	100	

Shooting By Period

Period	FG	FG%	3FG	3FG%	FT	FT%
1st Qtr	7-12	58%	2-4	50%	2-2	100%
2nd Qtr	4-15	27%	2-4	50%	2-4	50%
1st Half	11-27	41%	4-8	50%	4-6	67%
Game	20-53	37.7%	6-15	40.0%	13-16	81.3%

Last FG Half: W&M 2nd-03:18

Game Notes:

Officials: Thomas Danaher, Norma Jones, Fatou Cissoko-Stephens
Attendance: 634

Start Time: 2019-02-02 00:07:02
End Time: 2019-02-02 01:51:53
Game Duration: 104
Conference Game;

Score	1st	2nd	3rd	4th	TOT
DEL	23	12	19	16	70
W&M	18	12	16	13	59

Points from (This Period)	DEL	W&M
In the Paint	14	12
Off Turns	12	11
2nd Chance	6	0
Fast Break	4	11
Bench	6	7

Official Box Score
Delaware vs William & Mary
First Quarter Statistics Only
February 02, 2019 at Kaplan Arena (Kaplan Arena) - Williamsburg, Va.

Delaware 23

No.	Player	S	Pts	FG	3FG	FT	OR	DR	TR	PF	A	TO	Blk	Stl	Min	+/-
02	Gonzales, Abby		8	3-3	2-2	0-0	0	0	0	1	1	0	0	0	9	7
12	Oleary, Lizzie		3	1-1	0-0	1-2	1	1	2	0	0	0	1	0	5	7
22	Defreese, Samone		4	2-4	0-0	0-0	0	1	1	0	3	1	0	0	8	7
23	Kargo, Bailey		2	1-4	0-2	0-0	0	0	0	0	0	0	0	0	6	-1
25	Lawrence, Rebecca		3	1-1	1-1	0-0	0	0	0	0	0	0	0	0	5	7
04	Mcbride, Paris		0	0-1	0-1	0-0	0	0	0	0	1	0	0	2	5	4
05	Nicholas, Makeda		3	1-2	0-0	1-1	0	0	0	0	0	0	0	0	5	-2
20	Dickey, Jasmine		0	0-1	0-0	0-0	0	1	1	1	0	1	0	0	5	-2
35	Lewis, Alison		0	0-0	0-0	0-0	0	1	1	0	0	0	0	1	2	-2
	Team						0	0	0	0		0				
TOTALS			23	9-17	3-6	2-3	1	4	5	2	5	2	1	3	50	

Shooting By Period

Period	FG	FG%	3FG	3FG%	FT	FT%
1st Qtr	9-17	53%	3-6	50%	2-3	67%
2nd Qtr	4-13	31%	0-1	00%	4-6	67%
1st Half	9-17	53%	3-6	50%	2-3	67%
1st Half	13-30	43%	3-7	43%	6-9	67%
Game	27-58	46.6%	5-11	45.5%	11-16	68.8%

William & Mary 18

No.	Player	S	Pts	FG	3FG	FT	OR	DR	TR	PF	A	TO	Blk	Stl	Min	+/-
02	Boggs, Bianca		5	2-2	1-1	0-0	0	2	2	0	1	2	0	1	10	-5
10	Hodgson, Eva		4	1-2	0-0	2-2	0	0	0	0	2	0	0	0	8	-2
11	Pollard, Nyla		0	0-0	0-0	0-0	0	0	0	0	1	1	0	0	5	-2
25	Rogers, Gabby		0	0-1	0-0	0-0	0	0	0	1	0	0	0	0	2	-3
30	Reynolds, Victoria		2	1-2	0-0	0-0	1	2	3	0	2	1	1	0	10	-5
05	Jones, Misha		3	1-1	1-1	0-0	0	2	2	1	0	0	0	0	5	2
12	Birdsong, Harper		4	2-4	0-2	0-0	0	0	0	0	0	1	0	0	7	-6
15	Krause, Emma		0	0-0	0-0	0-0	0	0	0	1	0	1	1	0	2	-4
	Team						0	1	1	0		0				
TOTALS			18	7-12	2-4	2-2	1	7	8	3	6	6	2	1	50	

Shooting By Period

Period	FG	FG%	3FG	3FG%	FT	FT%
1st Qtr	7-12	58%	2-4	50%	2-2	100%
2nd Qtr	4-15	27%	2-4	50%	2-4	50%
1st Half	7-12	58%	2-4	50%	2-2	100%
1st Half	11-27	41%	4-8	50%	4-6	67%
Game	20-53	37.7%	6-15	40.0%	13-16	81.3%

Game Notes:

Officials: Thomas Danaher, Norma Jones, Fatou Cissoko-Stephens
Attendance: 634

Start Time: 2019-02-02 00:07:02
End Time: 2019-02-02 01:51:53
Game Duration: 104
Conference Game;

Score	1st	2nd	3rd	4th	TOT
DEL	23	12	19	16	70
W&M	18	12	16	13	59

Points from (This Period)	DEL	W&M
In the Paint	12	8
Off Turns	12	2
2nd Chance	1	0
Fast Break	4	9
Bench	3	7

**Official Play-By-Play
Delaware vs William & Mary
First Quarter**

February 02, 2019 at Kaplan Arena (Kaplan Arena) - Williamsburg, Va.

Period 1

Starters:

Delaware: 12 OLEARY, LIZZIE; 22 DEFREESE, SAMONE; 23 KARGO, BAILEY; 25 LAWRENCE, REBECCA; 2 GONZALES, ABBY;

William & Mary: 2 BOGGS, BIANCA; 10 HODGSON, EVA; 11 POLLARD, NYLA; 25 ROGERS, GABBY; 30 REYNOLDS, VICTORIA;

Time	VISITORS: Delaware	Score	Margin	HOME: William & Mary
09:34	MISSED 3PTR by KARGO, BAILEY			
09:33				REBOUND (DEF) by TEAM
09:28				FOUL (PERSONAL) by ROGERS, GABBY
09:18	MISSED JUMPER by KARGO, BAILEY			
09:15				REBOUND (DEF) by REYNOLDS, VICTORIA
09:12				TURNOVER (OTHER) by POLLARD, NYLA
08:57	GOOD! 3PTR by GONZALES, ABBY	0-3	V 3	
08:57	ASSIST by DEFREESE, SAMONE			
08:39				MISSED JUMPER by ROGERS, GABBY
08:36	REBOUND (DEF) by DEFREESE, SAMONE			
08:24	GOOD! 3PTR by LAWRENCE, REBECCA	0-6	V 6	
08:24	ASSIST by DEFREESE, SAMONE			
08:04		2-6	V 4	GOOD! JUMPER by REYNOLDS, VICTORIA [PNT]
08:04				ASSIST by BOGGS, BIANCA
07:51	MISSED JUMPER by DEFREESE, SAMONE			
07:48				REBOUND (DEF) by REYNOLDS, VICTORIA
07:42	FOUL (PERSONAL) by GONZALES, ABBY			
07:42		3-6	V 3	GOOD! FT by HODGSON, EVA [FB]
07:42				SUB OUT: ROGERS, GABBY
07:42				SUB IN: KRAUSE, EMMA
07:42	SUB OUT: KARGO, BAILEY			
07:42	SUB IN: MCBRIDE, PARIS			
07:42		4-6	V 2	GOOD! FT by HODGSON, EVA [FB]
07:31	MISSED LAYUP by DEFREESE, SAMONE			
07:31				BLOCK by KRAUSE, EMMA
07:31	REBOUND (OFF) by OLEARY, LIZZIE			
07:31				FOUL (PERSONAL) by KRAUSE, EMMA
07:31	MISSED FT by OLEARY, LIZZIE			
07:31	REBOUND (OFF) by TEAM			
07:31				SUB OUT: POLLARD, NYLA
07:31				SUB IN: BIRDSONG, HARPER
07:31	GOOD! FT by OLEARY, LIZZIE	4-7	V 3	
07:13				TURNOVER (BADPASS) by BOGGS, BIANCA
07:13	STEAL by MCBRIDE, PARIS			
07:02	GOOD! LAYUP by DEFREESE, SAMONE [PNT]	4-9	V 5	
06:43		6-9	V 3	GOOD! LAYUP by HODGSON, EVA
06:43				ASSIST by REYNOLDS, VICTORIA
06:30	GOOD! LAYUP by OLEARY, LIZZIE	6-11	V 5	
06:30	ASSIST by DEFREESE, SAMONE			
06:05				TURNOVER (LOSTBALL) by BOGGS, BIANCA
06:05	STEAL by MCBRIDE, PARIS			
05:58	GOOD! LAYUP by DEFREESE, SAMONE [FB]	6-13	V 7	
05:37				MISSED LAYUP by REYNOLDS, VICTORIA
05:37	BLOCK by OLEARY, LIZZIE			
05:32	REBOUND (DEF) by OLEARY, LIZZIE			
05:20	TURNOVER (BADPASS) by DEFREESE, SAMONE			
05:20				STEAL by BOGGS, BIANCA
05:13				TURNOVER (LOSTBALL) by KRAUSE, EMMA
05:13				SUB OUT: KRAUSE, EMMA
05:13				SUB IN: JONES, MISHA
05:13	SUB OUT: OLEARY, LIZZIE			
05:13	SUB IN: NICHOLAS, MAKEDA			
05:13	SUB OUT: LAWRENCE, REBECCA			
05:13	SUB IN: DICKEY, JASMINE			
04:40	GOOD! 3PTR by GONZALES, ABBY	6-16	V 10	
04:40	ASSIST by MCBRIDE, PARIS			
04:22				MISSED LAYUP by HODGSON, EVA
04:18	REBOUND (DEF) by DICKEY, JASMINE			
04:14	GOOD! LAYUP by GONZALES, ABBY [PNT]	6-18	V 12	
03:51		9-18	V 9	GOOD! 3PTR by BOGGS, BIANCA
03:51				ASSIST by HODGSON, EVA
03:34	MISSED LAYUP by NICHOLAS, MAKEDA			
03:34				REBOUND (DEF) by JONES, MISHA
03:34	FOUL (PERSONAL) by DICKEY, JASMINE			
03:34				
03:34	SUB OUT: GONZALES, ABBY			
03:34	SUB IN: KARGO, BAILEY			
03:24		11-18	V 7	GOOD! JUMPER by BIRDSONG, HARPER [FB]
03:24				ASSIST by REYNOLDS, VICTORIA
02:57	MISSED 3PTR by MCBRIDE, PARIS			
02:54				REBOUND (DEF) by BOGGS, BIANCA
02:47		13-18	V 5	GOOD! LAYUP by BOGGS, BIANCA [FB]
02:33				SUB OUT: HODGSON, EVA
02:33				SUB IN: POLLARD, NYLA
02:26	GOOD! JUMPER by NICHOLAS, MAKEDA [PNT]	13-20	V 7	
02:26				FOUL (PERSONAL) by JONES, MISHA

Time	VISITORS: Delaware	Score	Margin	HOME: William & Mary
02:26	SUB OUT: MCBRIDE,PARIS			
02:26	SUB IN: GONZALES,ABBY			
02:26	SUB OUT: DEFREESE,SAMONE			
02:26	SUB IN: LEWIS,ALISON			
02:26	GOOD! FT by NICHOLAS,MAKEDA	13-21	V 8	
02:09				MISSED 3PTR by BIRDSONG,HARPER
02:03	REBOUND (DEF) by LEWIS,ALISON			
01:52	TURNOVER (TRAVEL) by DICKEY,JASMINE			
01:25		15-21	V 6	GOOD! JUMPER by BIRDSONG,HARPER [PNT]
01:25				ASSIST by POLLARD,NYLA
01:12	MISSED LAYUP by DICKEY,JASMINE			
01:09				REBOUND (DEF) by BOGGS,BIANCA
01:04				TURNOVER (LOSTBALL) by BIRDSONG,HARPER
01:04	STEAL by LEWIS,ALISON			
00:52	GOOD! JUMPER by KARGO,BAILEY [FB/PNT]	15-23	V 8	
00:52	ASSIST by GONZALES,ABBY			
00:36				MISSED 3PTR by BIRDSONG,HARPER
00:32				REBOUND (OFF) by REYNOLDS,VICTORIA
00:21				TURNOVER (TRAVEL) by REYNOLDS,VICTORIA
00:21				SUB OUT: BIRDSONG,HARPER
00:21				SUB IN: HODGSON,EVA
00:08	MISSED 3PTR by KARGO,BAILEY			
00:08				BLOCK by REYNOLDS,VICTORIA
00:03				REBOUND (DEF) by JONES,MISHA
00:02		18-23	V 5	GOOD! 3PTR by JONES,MISHA [FB]
00:02				ASSIST by HODGSON,EVA

Delaware 23, William & Mary 18

Points from (This Period)	DEL	W&M
In the Paint	12	8
Off Turns	12	2
2nd Chance	1	0
Fast Break	4	9
Bench	3	7

Official Box Score
Delaware vs William & Mary
Second Quarter Statistics Only
February 02, 2019 at Kaplan Arena (Kaplan Arena) - Williamsburg, Va.

Delaware 12

No.	Player	S	Pts	FG	3FG	FT	OR	DR	TR	PF	A	TO	Blk	Stl	Min	+/-
02	Gonzales, Abby		2	1-2	0-0	0-0	0	0	0	1	0	1	0	0	6	0
12	Oleary, Lizzie		3	1-1	0-0	1-2	1	0	1	0	0	1	0	1	3	2
22	Defreese, Samone		0	0-1	0-0	0-0	1	1	2	1	1	0	0	0	9	0
23	Kargo, Bailey		0	0-0	0-0	0-0	0	0	0	0	1	0	0	0	3	-2
25	Lawrence, Rebecca		4	2-3	0-0	0-0	1	3	4	0	0	0	1	0	8	-2
04	Mcbride, Paris		0	0-2	0-0	0-0	0	0	0	0	1	1	0	0	6	3
05	Nicholas, Makeda		0	0-1	0-0	0-0	0	2	2	0	0	2	0	0	5	1
20	Dickey, Jasmine		3	0-1	0-0	3-4	2	3	5	1	0	1	0	0	5	-1
35	Lewis, Alison		0	0-2	0-1	0-0	0	1	1	2	1	0	0	0	6	-1
	Team						0	1	1	0		0				
TOTALS			12	4-13	0-1	4-6	5	11	16	5	4	6	1	1	50	

Shooting By Period

Period	FG	FG%	3FG	3FG%	FT	FT%
3rd Qtr	8-15	53%	0-0	0%	3-4	75%
4th Qtr	6-13	46%	2-4	50%	2-3	67%
2nd Half	4-13	31%	0-1	00%	4-6	67%
2nd Half	14-28	50%	2-4	50%	5-7	71%
Game	27-58	46.6%	5-11	45.5%	11-16	68.8%

William & Mary 12

No.	Player	S	Pts	FG	3FG	FT	OR	DR	TR	PF	A	TO	Blk	Stl	Min	+/-
02	Boggs, Bianca		2	0-2	0-0	2-4	0	1	1	1	1	0	1	0	10	0
10	Hodgson, Eva		0	0-2	0-0	0-0	0	0	0	1	1	1	1	0	10	0
11	Pollard, Nyla		3	1-3	1-2	0-0	0	0	0	0	1	0	0	0	6	2
25	Rogers, Gabby		2	1-2	0-0	0-0	1	1	2	1	0	0	0	0	4	2
30	Reynolds, Victoria		5	2-4	1-1	0-0	0	2	2	1	1	0	0	1	10	0
05	Jones, Misha		0	0-0	0-0	0-0	0	0	0	1	0	1	0	0	5	1
12	Birdsong, Harper		0	0-2	0-1	0-0	0	0	0	0	0	0	0	0	4	-2
15	Krause, Emma		0	0-0	0-0	0-0	0	0	0	0	0	0	0	0	1	-3
	Team						0	0	0	0		0				
TOTALS			12	4-15	2-4	2-4	1	4	5	5	4	2	2	1	50	

Shooting By Period

Period	FG	FG%	3FG	3FG%	FT	FT%
3rd Qtr	6-14	43%	1-2	50%	3-4	75%
4th Qtr	3-12	25%	1-5	20%	6-6	100%
2nd Half	4-15	27%	2-4	50%	2-4	50%
2nd Half	9-26	35%	2-7	29%	9-10	90%
Game	20-53	37.7%	6-15	40.0%	13-16	81.3%

Game Notes:

Officials: Thomas Danaher, Norma Jones, Fatou Cissoko-Stephens
Attendance: 634

Start Time: 2019-02-02 00:07:02
End Time: 2019-02-02 01:51:53
Game Duration: 104
Conference Game;

Score	1st	2nd	3rd	4th	TOT
DEL	23	12	19	16	70
W&M	18	12	16	13	59

Points from (This Period)	DEL	W&M
In the Paint	2	4
Off Turns	0	9
2nd Chance	5	0
Fast Break	0	2
Bench	3	0

**Official Play-By-Play
Delaware vs William & Mary
Second Quarter**

February 02, 2019 at Kaplan Arena (Kaplan Arena) - Williamsburg, Va.

Period 2

Starters:

Delaware: 12 OLEARY,LIZZIE; 22 DEFREESE,SAMONE; 23 KARGO,BAILEY; 25 LAWRENCE,REBECCA; 2 GONZALES,ABBY;
William & Mary: 2 BOGGS,BIANCA; 10 HODGSON,EVA; 11 POLLARD,NYLA; 25 ROGERS,GABBY; 30 REYNOLDS,VICTORIA;

Time	VISITORS: Delaware	Score	Margin	HOME: William & Mary
09:46				TURNOVER (LOSTBALL) by JONES,MISHA
09:46	STEAL by OLEARY,LIZZIE			
09:34	TURNOVER (LOSTBALL) by OLEARY,LIZZIE			
09:34				STEAL by REYNOLDS,VICTORIA
09:15				MISSED LAYUP by HODGSON,EVA
09:15	BLOCK by LAWRENCE,REBECCA			
09:11	REBOUND (DEF) by LAWRENCE,REBECCA			
08:52	MISSED 3PTR by LEWIS,ALISON			
08:48				REBOUND (DEF) by BOGGS,BIANCA
08:45				MISSED LAYUP by BOGGS,BIANCA
08:45	REBOUND (DEF) by TEAM			
08:45	SUB OUT: KARGO,BAILEY			
08:45	SUB IN: DEFREESE,SAMONE			
08:45	SUB OUT: OLEARY,LIZZIE			
08:45	SUB IN: NICHOLAS,MAKEDA			
08:35	MISSED JUMPER by NICHOLAS,MAKEDA			
08:31				REBOUND (DEF) by REYNOLDS,VICTORIA
08:22				TURNOVER (TRAVEL) by HODGSON,EVA
08:22				SUB OUT: JONES,MISHA
08:22				SUB IN: ROGERS,GABBY
08:08	MISSED JUMPER by LEWIS,ALISON			
08:04				REBOUND (DEF) by REYNOLDS,VICTORIA
08:00		20-23	V 3	GOOD! LAYUP by ROGERS,GABBY [FB]
08:00				ASSIST by BOGGS,BIANCA
07:45	MISSED LAYUP by LAWRENCE,REBECCA			
07:42				REBOUND (DEF) by ROGERS,GABBY
07:26	FOUL (PERSONAL) by LEWIS,ALISON			
07:26				MISSED FT by BOGGS,BIANCA
07:26				REBOUND (OFF) by TEAM
07:26		21-23	V 2	GOOD! FT by BOGGS,BIANCA
07:13	GOOD! JUMPER by LAWRENCE,REBECCA	21-25	V 4	
07:13	ASSIST by LEWIS,ALISON			
06:45				MISSED 3PTR by POLLARD,NYLA
06:41				REBOUND (OFF) by ROGERS,GABBY
06:40				MISSED LAYUP by ROGERS,GABBY
06:37	REBOUND (DEF) by LAWRENCE,REBECCA			
06:31	TURNOVER (TRAVEL) by NICHOLAS,MAKEDA			
06:31	SUB OUT: NICHOLAS,MAKEDA			
06:31	SUB IN: DICKEY,JASMINE			
06:15		24-25	V 1	GOOD! 3PTR by POLLARD,NYLA
06:15				ASSIST by REYNOLDS,VICTORIA
05:55	MISSED JUMPER by DEFREESE,SAMONE			
05:55				BLOCK by BOGGS,BIANCA
05:54	REBOUND (OFF) by DICKEY,JASMINE			
05:54				FOUL (PERSONAL) by REYNOLDS,VICTORIA
05:54	GOOD! FT by DICKEY,JASMINE	24-26	V 2	
05:54	SUB OUT: LEWIS,ALISON			
05:54	SUB IN: MCBRIDE,PARIS			
05:54	GOOD! FT by DICKEY,JASMINE	24-27	V 3	
05:36				MISSED LAYUP by POLLARD,NYLA
05:32	REBOUND (DEF) by DICKEY,JASMINE			
05:27	MISSED JUMPER by GONZALES,ABBY			
05:25	REBOUND (OFF) by LAWRENCE,REBECCA			
05:11	GOOD! JUMPER by GONZALES,ABBY	24-29	V 5	
05:11	ASSIST by DEFREESE,SAMONE			
04:55				MISSED JUMPER by BOGGS,BIANCA
04:52	REBOUND (DEF) by DEFREESE,SAMONE			
04:48	TURNOVER (BADPASS) by MCBRIDE,PARIS			
04:48				
04:48	SUB OUT: GONZALES,ABBY			
04:48	SUB IN: KARGO,BAILEY			
04:28		26-29	V 3	GOOD! LAYUP by REYNOLDS,VICTORIA
04:28				ASSIST by POLLARD,NYLA
04:17				FOUL (PERSONAL) by ROGERS,GABBY
04:17	MISSED FT by DICKEY,JASMINE			
04:17	REBOUND (OFF) by TEAM			
04:17				SUB OUT: ROGERS,GABBY
04:17				SUB IN: JONES,MISHA
04:17				SUB OUT: POLLARD,NYLA
04:17				SUB IN: BIRDSONG,HARPER
04:17	GOOD! FT by DICKEY,JASMINE	26-30	V 4	
03:51				MISSED LAYUP by REYNOLDS,VICTORIA
03:47	REBOUND (DEF) by LAWRENCE,REBECCA			
03:43	TURNOVER (TRAVEL) by DICKEY,JASMINE			
03:18		29-30	V 1	GOOD! 3PTR by REYNOLDS,VICTORIA
03:18				ASSIST by HODGSON,EVA

Time	VISITORS: Delaware	Score	Margin	HOME: William & Mary
03:02	GOOD! JUMPER by LAWRENCE,REBECCA (PNT)	29-32	V 3	
03:02	ASSIST by KARGO,BAILEY			
02:37				MISSED JUMPER by BIRDSONG,HARPER
02:36	REBOUND (DEF) by DICKEY,JASMINE			
02:36				FOUL (PERSONAL) by HODGSON,EVA
02:36	SUB OUT: KARGO,BAILEY			
02:36	SUB IN: GONZALES,ABBY			
02:25	FOUL (OFF) by GONZALES,ABBY			
02:25	TURNOVER (OFFENSIVE) by GONZALES,ABBY			
02:25	SUB OUT: LAWRENCE,REBECCA			
02:25	SUB IN: NICHOLAS,MAKEDA			
02:11	FOUL (PERSONAL) by DEFREESE,SAMONE			
02:11	SUB OUT: GONZALES,ABBY			
02:11	SUB IN: LEWIS,ALISON			
02:07				MISSED JUMPER by HODGSON,EVA
02:04	REBOUND (DEF) by DICKEY,JASMINE			
02:00	MISSED JUMPER by DICKEY,JASMINE			
01:56	REBOUND (OFF) by DEFREESE,SAMONE			
01:51	MISSED JUMPER by MCBRIDE,PARIS			
01:51	REBOUND (OFF) by DICKEY,JASMINE			
01:51				FOUL (PERSONAL) by BOGGS,BIANCA
01:36	TURNOVER (TRAVEL) by NICHOLAS,MAKEDA			
01:19	FOUL (PERSONAL) by DICKEY,JASMINE			
01:19	SUB OUT: DICKEY,JASMINE			
01:19	SUB IN: OLEARY,LIZZIE			
01:08	FOUL (PERSONAL) by LEWIS,ALISON			
01:08		30-32	V 2	GOOD! FT by BOGGS,BIANCA
01:08				MISSED FT by BOGGS,BIANCA
01:05	REBOUND (DEF) by NICHOLAS,MAKEDA			
00:54	MISSED LAYUP by MCBRIDE,PARIS			
00:54				BLOCK by HODGSON,EVA
00:54	REBOUND (OFF) by OLEARY,LIZZIE			
00:54				FOUL (PERSONAL) by JONES,MISHA
00:54	MISSED FT by OLEARY,LIZZIE			
00:54	REBOUND (OFF) by TEAM			
00:54				SUB OUT: JONES,MISHA
00:54				SUB IN: KRAUSE,EMMA
00:54	GOOD! FT by OLEARY,LIZZIE	30-33	V 3	
00:32				MISSED 3PTR by BIRDSONG,HARPER
00:28	REBOUND (DEF) by LEWIS,ALISON			
00:21	GOOD! JUMPER by OLEARY,LIZZIE	30-35	V 5	
00:21	ASSIST by MCBRIDE,PARIS			
00:00				MISSED JUMPER by REYNOLDS,VICTORIA
00:00	REBOUND (DEF) by NICHOLAS,MAKEDA			

Delaware 35, William & Mary 30

Points from (This Period)	DEL	W&M
In the Paint	2	4
Off Turns	0	9
2nd Chance	5	0
Fast Break	0	2
Bench	3	0

Official Box Score
Delaware vs William & Mary
Second Half Statistics Only
February 02, 2019 at Kaplan Arena (Kaplan Arena) - Williamsburg, Va.

Delaware 35

No.	Player	S	Pts	FG	3FG	FT	OR	DR	TR	PF	A	TO	Blk	Stl	Min	+/-
12	Oleary, Lizzie		4	2-3	0-0	0-0	3	1	4	1	2	0	0	0	9	3
20	Dickey, Jasmine		6	2-3	0-0	2-2	1	3	4	2	0	0	1	1	17	8
22	Defreese, Samone		4	2-5	0-0	0-1	1	1	2	3	1	2	0	0	12	1
23	Kargo, Bailey		0	0-1	0-0	0-0	0	0	0	0	0	1	0	0	4	-6
25	Lawrence, Rebecca		0	0-3	0-0	0-0	0	0	0	1	0	0	1	0	5	-4
35	Lewis, Alison		4	2-2	0-0	0-0	1	0	1	2	0	3	0	0	8	6
02	Gonzales, Abby		6	2-4	2-4	0-0	0	1	1	0	0	1	0	1	19	7
04	Mcbride, Paris		6	3-4	0-0	0-0	0	3	3	3	3	2	0	1	17	10
05	Nicholas, Makeda		5	1-3	0-0	3-4	1	2	3	0	0	0	2	0	9	5
	Team		0	0-0	0-0	0-0	0	1	1	0	0	0	0	0	0	
TOTALS			35	14-28	2-4	5-7	7	12	19	12	6	9	4	3	98	

Shooting By Period

Period	FG	FG%	3FG	3FG%	FT	FT%
3rd Qtr	8-15	53%	0-0	0%	3-4	75%
4th Qtr	6-13	46%	2-4	50%	2-3	67%
2nd Half	14-28	50%	2-4	50%	5-7	71%
Game	27-58	46.6%	5-11	45.5%	11-16	68.8%

Last FG Half: DEL 4th-01:40

William & Mary 29

No.	Player	S	Pts	FG	3FG	FT	OR	DR	TR	PF	A	TO	Blk	Stl	Min	+/-
02	Boggs, Bianca		4	0-5	0-1	4-4	2	3	5	3	3	4	0	0	18	-8
05	Jones, Misha		0	0-1	0-1	0-0	0	0	0	1	0	2	0	0	10	-11
10	Hodgson, Eva		7	2-3	1-1	2-2	1	0	1	1	1	0	0	0	20	-6
11	Pollard, Nyla		0	0-3	0-0	0-0	1	0	1	0	2	0	0	2	10	0
12	Birdsong, Harper		8	3-5	0-1	2-2	0	1	1	0	1	0	0	1	11	-4
15	Krause, Emma		3	1-2	1-2	0-0	0	2	2	1	0	0	0	0	5	0
25	Rogers, Gabby		0	0-2	0-0	0-0	0	0	0	2	0	0	0	1	5	1
30	Reynolds, Victoria		7	3-5	0-1	1-2	0	1	1	1	0	1	1	2	19	-2
	Team		0	0-0	0-0	0-0	1	1	2	0	0	1	0	0	0	
TOTALS			29	9-26	2-7	9-10	5	8	13	9	7	8	1	6	98	

Shooting By Period

Period	FG	FG%	3FG	3FG%	FT	FT%
3rd Qtr	6-14	43%	1-2	50%	3-4	75%
4th Qtr	3-12	25%	1-5	20%	6-6	100%
2nd Half	9-26	35%	2-7	29%	9-10	90%
Game	20-53	37.7%	6-15	40.0%	13-16	81.3%

Last FG Half: W&M 4th-02:50

Game Notes:

Officials: **Thomas Danaher**,**Norma Jones**,**Fatou Cissoko-Stephens**
Attendance: **634**

Start Time: **2019-02-02 00:07:02**
End Time: **2019-02-02 01:51:53**
Game Duration: **104**
Conference Game:

Score	1st	2nd	3rd	4th	TOT
DEL	23	12	19	16	70
W&M	18	12	16	13	59

Points from (This Period)	DEL	W&M
In the Paint	18	8
Off Turns	10	5
2nd Chance	4	2
Fast Break	4	8
Bench	21	11

Official Box Score
Delaware vs William & Mary
Third Quarter Statistics Only
February 02, 2019 at Kaplan Arena (Kaplan Arena) - Williamsburg, Va.

Delaware 35

No.	Player	S	Pts	FG	3FG	FT	OR	DR	TR	PF	A	TO	Blk	Stl	Min	+/-
02	Gonzales, Abby		0	0-0	0-0	0-0	0	1	1	0	0	1	0	1	9	4
12	Oleary, Lizzie		4	2-3	0-0	0-0	3	0	3	0	0	0	0	0	3	-2
22	Defreese, Samone		2	1-3	0-0	0-0	1	0	1	2	1	2	0	0	5	-2
23	Kargo, Bailey		0	0-1	0-0	0-0	0	0	0	0	0	1	0	0	4	-6
25	Lawrence, Rebecca		0	0-3	0-0	0-0	0	0	0	1	0	0	1	0	5	-4
04	Mcbride, Paris		4	2-2	0-0	0-0	0	1	1	1	1	1	0	1	7	7
05	Nicholas, Makeda		5	1-1	0-0	3-4	0	2	2	0	0	0	1	0	6	7
20	Dickey, Jasmine		0	0-0	0-0	0-0	0	1	1	0	0	0	1	1	7	5
35	Lewis, Alison		4	2-2	0-0	0-0	0	0	0	2	0	1	0	0	5	6
	Team						0	0	0	0		0				
TOTALS			19	8-15	0-0	3-4	4	5	9	6	2	6	3	3	50	

Shooting By Period

Period	FG	FG%	3FG	3FG%	FT	FT%
2nd Half	0-0	0%	0-0	0%	0-0	0%
Game	27-58	46.6%	5-11	45.5%	11-16	68.8%

William & Mary 29

No.	Player	S	Pts	FG	3FG	FT	OR	DR	TR	PF	A	TO	Blk	Stl	Min	+/-
02	Boggs, Bianca		0	0-2	0-0	0-0	0	2	2	2	2	3	0	0	8	-5
10	Hodgson, Eva		5	2-2	1-1	0-0	1	0	1	0	0	0	0	0	10	-3
11	Pollard, Nyla		0	0-2	0-0	0-0	1	0	1	0	2	0	0	1	8	0
25	Rogers, Gabby		0	0-2	0-0	0-0	0	0	0	2	0	0	0	1	5	1
30	Reynolds, Victoria		5	2-3	0-0	1-2	0	0	0	1	0	1	1	1	9	1
05	Jones, Misha		0	0-1	0-1	0-0	0	0	0	0	0	2	0	0	5	-8
12	Birdsong, Harper		6	2-2	0-0	2-2	0	0	0	0	1	0	0	0	4	-1
15	Krause, Emma		0	0-0	0-0	0-0	0	0	0	0	0	0	0	0	0	0
	Team						1	1	2	0		1				
TOTALS			16	6-14	1-2	3-4	3	3	6	5	5	7	1	3	50	

Shooting By Period

Period	FG	FG%	3FG	3FG%	FT	FT%
2nd Half	0-0	0%	0-0	0%	0-0	0%
Game	20-53	37.7%	6-15	40.0%	13-16	81.3%

Game Notes:

Officials: Thomas Danaher,Norma Jones,Fatou Cissoko-
Stephens
Attendance: 634

Start Time: 2019-02-02 00:07:02
End Time: 2019-02-02 01:51:53
Game Duration: 104
Conference Game;

Score	1st	2nd	3rd	4th	TOT
DEL	23	12	19	16	70
W&M	18	12	16	13	59

Points from (This Period)	DEL	W&M
In the Paint	12	8
Off Turns	7	5
2nd Chance	4	2
Fast Break	2	6
Bench	13	6

**Official Play-By-Play
Delaware vs William & Mary
Third Quarter**

February 02, 2019 at Kaplan Arena (Kaplan Arena) - Williamsburg, Va.

Period 3

Starters:

Delaware: 12 OLEARY, LIZZIE; 22 DEFREESE, SAMONE; 23 KARGO, BAILEY; 25 LAWRENCE, REBECCA; 2 GONZALES, ABBY;
William & Mary: 2 BOGGS, BIANCA; 10 HODGSON, EVA; 11 POLLARD, NYLA; 25 ROGERS, GABBY; 30 REYNOLDS, VICTORIA;

Time	VISITORS: Delaware	Score	Margin	HOME: William & Mary
09:42	FOUL (PERSONAL) by DEFREESE, SAMONE			
09:42				MISSED FT by REYNOLDS, VICTORIA
09:42				REBOUND (OFF) by TEAM
09:42		31-35	V 4	GOOD! FT by REYNOLDS, VICTORIA
09:23	MISSED JUMPER by LAWRENCE, REBECCA			
09:18	REBOUND (OFF) by DEFREESE, SAMONE			
09:18	MISSED LAYUP by DEFREESE, SAMONE			
09:10	REBOUND (OFF) by OLEARY, LIZZIE			
09:10	GOOD! LAYUP by OLEARY, LIZZIE	31-37	V 6	
08:54				TURNOVER (LOSTBALL) by BOGGS, BIANCA
08:54	STEAL by GONZALES, ABBY			
08:44	MISSED JUMPER by KARGO, BAILEY			
08:39				REBOUND (DEF) by BOGGS, BIANCA
08:37		34-37	V 3	GOOD! 3PTR by HODGSON, EVA [FB]
08:37				ASSIST by BOGGS, BIANCA
08:06				SUB OUT: ROGERS, GABBY
08:06				SUB IN: JONES, MISHA
08:03	MISSED JUMPER by LAWRENCE, REBECCA			
08:00				REBOUND (DEF) by BOGGS, BIANCA
07:52		36-37	V 1	GOOD! LAYUP by REYNOLDS, VICTORIA
07:52				ASSIST by BOGGS, BIANCA
07:27	MISSED LAYUP by OLEARY, LIZZIE			
07:27				BLOCK by REYNOLDS, VICTORIA
07:26	REBOUND (OFF) by OLEARY, LIZZIE			
07:26	SUB OUT: KARGO, BAILEY			
07:26	SUB IN: MCBRIDE, PARIS			
07:22	GOOD! LAYUP by OLEARY, LIZZIE	36-39	V 3	
07:22	ASSIST by DEFREESE, SAMONE			
07:10				MISSED LAYUP by BOGGS, BIANCA
07:10	BLOCK by LAWRENCE, REBECCA			
07:03	REBOUND (DEF) by GONZALES, ABBY			
07:02	MISSED LAYUP by DEFREESE, SAMONE			
07:02	REBOUND (OFF) by OLEARY, LIZZIE			
07:02				FOUL (PERSONAL) by REYNOLDS, VICTORIA
07:02	SUB OUT: OLEARY, LIZZIE			
07:02	SUB IN: DICKEY, JASMINE			
06:52	FOUL (OFF) by DEFREESE, SAMONE			
06:52	TURNOVER (OFFENSIVE) by DEFREESE, SAMONE			
06:40				TURNOVER (BADPASS) by REYNOLDS, VICTORIA
06:40	STEAL by DICKEY, JASMINE			
06:34	MISSED JUMPER by LAWRENCE, REBECCA			
06:32				REBOUND (DEF) by TEAM
06:32	SUB OUT: DEFREESE, SAMONE			
06:32	SUB IN: LEWIS, ALISON			
06:14				MISSED LAYUP by POLLARD, NYLA
06:11				REBOUND (OFF) by POLLARD, NYLA
06:09		38-39	V 1	GOOD! LAYUP by REYNOLDS, VICTORIA [PNT]
06:09				ASSIST by POLLARD, NYLA
05:58	TURNOVER (LOSTBALL) by MCBRIDE, PARIS			
05:58				STEAL by REYNOLDS, VICTORIA
05:52				MISSED LAYUP by BOGGS, BIANCA
05:50				REBOUND (OFF) by HODGSON, EVA
05:30	FOUL (PERSONAL) by LAWRENCE, REBECCA			
05:30	SUB OUT: LAWRENCE, REBECCA			
05:30	SUB IN: NICHOLAS, MAKEDA			
05:25	FOUL (PERSONAL) by LEWIS, ALISON			
05:11				MISSED 3PTR by JONES, MISHA
05:08	REBOUND (DEF) by NICHOLAS, MAKEDA			
04:50	GOOD! JUMPER by LEWIS, ALISON	38-41	V 3	
04:41				TURNOVER (TRAVEL) by JONES, MISHA
04:41				
04:31	GOOD! LAYUP by NICHOLAS, MAKEDA	38-43	V 5	
04:12				TURNOVER (BADPASS) by BOGGS, BIANCA
04:12	STEAL by MCBRIDE, PARIS			
04:06	GOOD! JUMPER by MCBRIDE, PARIS [FB]	38-45	V 7	
03:58				FOUL (OFF) by BOGGS, BIANCA
03:58				TURNOVER (OFFENSIVE) by BOGGS, BIANCA
03:58				SUB OUT: REYNOLDS, VICTORIA
03:58				SUB IN: BIRDSONG, HARPER
03:58				SUB OUT: POLLARD, NYLA
03:58				SUB IN: ROGERS, GABBY
03:48				FOUL (PERSONAL) by ROGERS, GABBY
03:48	GOOD! FT by NICHOLAS, MAKEDA	38-46	V 8	
03:48	GOOD! FT by NICHOLAS, MAKEDA	38-47	V 9	
03:28				MISSED JUMPER by ROGERS, GABBY
03:28	BLOCK by NICHOLAS, MAKEDA			

Time	VISITORS: Delaware	Score	Margin	HOME: William & Mary
03:23	REBOUND (DEF) by NICHOLAS,MAKEDA			
03:06				FOUL (PERSONAL) by BOGGS,BIANCA
03:01	GOOD! JUMPER by LEWIS,ALISON [PNT]	38-49	V 11	
02:39				TURNOVER (BADPASS) by JONES,MISHA
02:39				SUB OUT: JONES,MISHA
02:39				SUB IN: REYNOLDS,VICTORIA
02:30	TURNOVER (BADPASS) by GONZALES,ABBY			
02:30				SUB OUT: BOGGS,BIANCA
02:30				SUB IN: POLLARD,NYLA
02:26		40-49	V 9	GOOD! JUMPER by HODGSON,EVA
02:26				ASSIST by BIRDSONG,HARPER
02:11	GOOD! JUMPER by MCBRIDE,PARIS [PNT]	40-51	V 11	
02:00				MISSED LAYUP by POLLARD,NYLA
01:57	REBOUND (DEF) by DICKEY,JASMINE			
01:48	TURNOVER (BADPASS) by LEWIS,ALISON			
01:48				STEAL by POLLARD,NYLA
01:44		42-51	V 9	GOOD! LAYUP by BIRDSONG,HARPER [FB]
01:44				ASSIST by POLLARD,NYLA
01:44	FOUL (PERSONAL) by LEWIS,ALISON			
01:44	SUB OUT: GONZALES,ABBY			
01:44	SUB IN: KARGO,BAILEY			
01:44	SUB OUT: LEWIS,ALISON			
01:44	SUB IN: DEFREESE,SAMONE			
01:44		43-51	V 8	GOOD! FT by BIRDSONG,HARPER [FB]
01:25	TURNOVER (BADPASS) by KARGO,BAILEY			
01:25				STEAL by ROGERS,GABBY
01:15				MISSED JUMPER by ROGERS,GABBY
01:12	REBOUND (DEF) by MCBRIDE,PARIS			
01:03	TURNOVER (BADPASS) by DEFREESE,SAMONE			
00:32				MISSED JUMPER by REYNOLDS,VICTORIA
00:32	BLOCK by DICKEY,JASMINE			
00:32				REBOUND (OFF) by TEAM
00:32				TURNOVER (SHOTCLOCK) by
00:22				FOUL (PERSONAL) by ROGERS,GABBY
00:22	MISSED FT by NICHOLAS,MAKEDA			
00:22	REBOUND (OFF) by TEAM			
00:22				SUB OUT: ROGERS,GABBY
00:22				SUB IN: KRAUSE,EMMA
00:22				SUB OUT: POLLARD,NYLA
00:22				SUB IN: BOGGS,BIANCA
00:22	SUB OUT: DEFREESE,SAMONE			
00:22	SUB IN: GONZALES,ABBY			
00:22	GOOD! FT by NICHOLAS,MAKEDA	43-52	V 9	
00:08		45-52	V 7	GOOD! JUMPER by BIRDSONG,HARPER [PNT]
00:08	FOUL (PERSONAL) by MCBRIDE,PARIS			
00:08				SUB OUT: BOGGS,BIANCA
00:08				SUB IN: POLLARD,NYLA
00:08	SUB OUT: KARGO,BAILEY			
00:08	SUB IN: DEFREESE,SAMONE			
00:08		46-52	V 6	GOOD! FT by BIRDSONG,HARPER
00:00	GOOD! LAYUP by DEFREESE,SAMONE	46-54	V 8	
00:00	ASSIST by MCBRIDE,PARIS			

Delaware 54, William & Mary 46

Points from (This Period)	DEL	W&M
In the Paint	12	8
Off Turns	7	5
2nd Chance	4	2
Fast Break	2	6
Bench	13	6

Official Box Score
Delaware vs William & Mary
Fourth Quarter Statistics Only
February 02, 2019 at Kaplan Arena (Kaplan Arena) - Williamsburg, Va.

Delaware 16

No.	Player	S	Pts	FG	3FG	FT	OR	DR	TR	PF	A	TO	Blk	Stl	Min	+/-
02	Gonzales, Abby		6	2-4	2-4	0-0	0	0	0	0	0	0	0	0	10	3
12	Oleary, Lizzie		0	0-0	0-0	0-0	0	1	1	1	2	0	0	0	6	5
22	Defreese, Samone		2	1-2	0-0	0-1	0	1	1	1	0	0	0	0	7	3
23	Kargo, Bailey		0	0-0	0-0	0-0	0	0	0	0	0	0	0	0	0	0
25	Lawrence, Rebecca		0	0-0	0-0	0-0	0	0	0	0	0	0	0	0	0	0
04	Mcbride, Paris		2	1-2	0-0	0-0	0	2	2	2	2	1	0	0	10	3
05	Nicholas, Makeda		0	0-2	0-0	0-0	1	0	1	0	0	0	1	0	3	-2
20	Dickey, Jasmine		6	2-3	0-0	2-2	1	2	3	2	0	0	0	0	10	3
35	Lewis, Alison		0	0-0	0-0	0-0	1	0	1	0	0	2	0	0	3	0
	Team						0	1	1	0		0				
TOTALS			16	6-13	2-4	2-3	3	7	10	6	4	3	1	0	48	

Shooting By Period

Period	FG	FG%	3FG	3FG%	FT	FT%
Game	27-58	46.6%	5-11	45.5%	11-16	68.8%

William & Mary 13

No.	Player	S	Pts	FG	3FG	FT	OR	DR	TR	PF	A	TO	Blk	Stl	Min	+/-
02	Boggs, Bianca		4	0-3	0-1	4-4	2	1	3	1	1	1	0	0	10	-3
10	Hodgson, Eva		2	0-1	0-0	2-2	0	0	0	1	1	0	0	0	10	-3
11	Pollard, Nyla		0	0-1	0-0	0-0	0	0	0	0	0	0	0	1	2	0
25	Rogers, Gabby		0	0-0	0-0	0-0	0	0	0	0	0	0	0	0	0	0
30	Reynolds, Victoria		2	1-2	0-1	0-0	0	1	1	0	0	0	0	1	10	-3
05	Jones, Misha		0	0-0	0-0	0-0	0	0	0	1	0	0	0	0	5	-3
12	Birdsong, Harper		2	1-3	0-1	0-0	0	1	1	0	0	0	0	1	7	-3
15	Krause, Emma		3	1-2	1-2	0-0	0	2	2	1	0	0	0	0	5	0
	Team						0	0	0	0		0				
TOTALS			13	3-12	1-5	6-6	2	5	7	4	2	1	0	3	48	

Shooting By Period

Period	FG	FG%	3FG	3FG%	FT	FT%
Game	20-53	37.7%	6-15	40.0%	13-16	81.3%

Game Notes:

Officials: **Thomas Danaher**, Norma Jones, Fatou Cissoko-

Stephens

Attendance: **634**

Start Time: **2019-02-02 00:07:02**

End Time: **2019-02-02 01:51:53**

Game Duration: **104**

Conference Game;

Score	1st	2nd	3rd	4th	TOT
DEL	23	12	19	16	70
W&M	18	12	16	13	59

Points from (This Period)	DEL	W&M
In the Paint	6	0
Off Turns	3	0
2nd Chance	0	0
Fast Break	2	2
Bench	8	5

**Official Play-By-Play
Delaware vs William & Mary
Fourth Quarter**

February 02, 2019 at Kaplan Arena (Kaplan Arena) - Williamsburg, Va.

Period 4

Starters:

Delaware: 12 OLEARY, LIZZIE; 22 DEFREESE, SAMONE; 23 KARGO, BAILEY; 25 LAWRENCE, REBECCA; 2 GONZALES, ABBY;
William & Mary: 2 BOGGS, BIANCA; 10 HODGSON, EVA; 11 POLLARD, NYLA; 25 ROGERS, GABBY; 30 REYNOLDS, VICTORIA;

Time	VISITORS: Delaware	Score	Margin	HOME: William & Mary
09:36	MISSED JUMPER by NICHOLAS, MAKEDA			
09:34	REBOUND (OFF) by DICKEY, JASMINE			
09:34				FOUL (PERSONAL) by HODGSON, EVA
09:28	MISSED 3PTR by GONZALES, ABBY			
09:24				REBOUND (DEF) by KRAUSE, EMMA
09:05				MISSED LAYUP by POLLARD, NYLA
09:01	REBOUND (DEF) by MCBRIDE, PARIS			
09:00	GOOD! LAYUP by DEFREESE, SAMONE [FB]	46-56	V 10	
09:00	ASSIST by MCBRIDE, PARIS			
09:00				FOUL (PERSONAL) by KRAUSE, EMMA
09:00				SUB OUT: POLLARD, NYLA
09:00				SUB IN: JONES, MISHA
09:00				SUB OUT: KRAUSE, EMMA
09:00				SUB IN: BIRDSONG, HARPER
09:00	MISSED FT by DEFREESE, SAMONE			
08:59				REBOUND (DEF) by BIRDSONG, HARPER
08:54	FOUL (PERSONAL) by DEFREESE, SAMONE			
08:54		47-56	V 9	GOOD! FT by BOGGS, BIANCA [FB]
08:54	SUB OUT: DEFREESE, SAMONE			
08:54	SUB IN: LEWIS, ALISON			
08:54		48-56	V 8	GOOD! FT by BOGGS, BIANCA [FB]
08:22	MISSED LAYUP by DICKEY, JASMINE			
08:17	REBOUND (OFF) by LEWIS, ALISON			
08:16	TURNOVER (BADPASS) by LEWIS, ALISON			
08:16				STEAL by BIRDSONG, HARPER
08:12				MISSED JUMPER by HODGSON, EVA
08:08	REBOUND (DEF) by DICKEY, JASMINE			
07:58	MISSED JUMPER by NICHOLAS, MAKEDA			
07:53				REBOUND (DEF) by REYNOLDS, VICTORIA
07:44				MISSED JUMPER by BOGGS, BIANCA
07:44	BLOCK by NICHOLAS, MAKEDA			
07:44	REBOUND (DEF) by MCBRIDE, PARIS			
07:44	TIMEOUT 30SEC			
07:44	SUB OUT: NICHOLAS, MAKEDA			
07:44	SUB IN: OLEARY, LIZZIE			
07:19	TURNOVER (BADPASS) by LEWIS, ALISON			
07:19				STEAL by REYNOLDS, VICTORIA
07:08				MISSED 3PTR by BIRDSONG, HARPER
07:05				REBOUND (OFF) by BOGGS, BIANCA
06:57				TURNOVER (LOSTBALL) by BOGGS, BIANCA
06:41	GOOD! 3PTR by GONZALES, ABBY	48-59	V 11	
06:41	ASSIST by OLEARY, LIZZIE			
06:12		50-59	V 9	GOOD! JUMPER by REYNOLDS, VICTORIA
06:12				ASSIST by BOGGS, BIANCA
06:12				TIMEOUT 30SEC
06:12	SUB OUT: LEWIS, ALISON			
06:12	SUB IN: DEFREESE, SAMONE			
05:48	MISSED 3PTR by GONZALES, ABBY			
05:45				REBOUND (DEF) by BOGGS, BIANCA
05:39	FOUL (PERSONAL) by DICKEY, JASMINE			
05:29				MISSED JUMPER by BIRDSONG, HARPER
05:26	REBOUND (DEF) by DEFREESE, SAMONE			
05:08				FOUL (PERSONAL) by JONES, MISHA
05:08	GOOD! FT by DICKEY, JASMINE	50-60	V 10	
05:08	GOOD! FT by DICKEY, JASMINE	50-61	V 11	
04:51				MISSED LAYUP by BOGGS, BIANCA
04:48	REBOUND (DEF) by OLEARY, LIZZIE			
04:34	GOOD! LAYUP by DICKEY, JASMINE	50-63	V 13	
04:34	ASSIST by OLEARY, LIZZIE			
04:27	FOUL (PERSONAL) by MCBRIDE, PARIS			
04:27				SUB OUT: JONES, MISHA
04:27				SUB IN: KRAUSE, EMMA
04:27	FOUL (PERSONAL) by OLEARY, LIZZIE			
04:25	FOUL (PERSONAL) by MCBRIDE, PARIS			
04:25		51-63	V 12	GOOD! FT by HODGSON, EVA
04:25				SUB OUT: BIRDSONG, HARPER
04:25				SUB IN: POLLARD, NYLA
04:25		52-63	V 11	GOOD! FT by HODGSON, EVA
03:56	MISSED LAYUP by MCBRIDE, PARIS			
03:55				REBOUND (DEF) by KRAUSE, EMMA
03:55				SUB OUT: POLLARD, NYLA
03:55				SUB IN: BIRDSONG, HARPER
03:33		55-63	V 8	GOOD! 3PTR by KRAUSE, EMMA
03:33				ASSIST by HODGSON, EVA
03:09				FOUL (PERSONAL) by BOGGS, BIANCA
03:03	GOOD! LAYUP by MCBRIDE, PARIS	55-65	V 10	

Time	VISITORS: Delaware	Score	Margin	HOME: William & Mary
02:50		57-65	V 8	GOOD! JUMPER by BIRDSONG,HARPER
02:24	GOOD! 3PTR by GONZALES,ABBY	57-68	V 11	
02:24	ASSIST by MCBRIDE,PARIS			
02:09				MISSED 3PTR by KRAUSE,EMMA
02:05				REBOUND (OFF) by BOGGS,BIANCA
02:03				MISSED 3PTR by REYNOLDS,VICTORIA
01:59	REBOUND (DEF) by DICKEY,JASMINE			
01:40	GOOD! JUMPER by DICKEY,JASMINE	57-70	V 13	
01:39				TIMEOUT 30SEC
01:39	SUB OUT: OLEARY,LIZZIE			
01:39	SUB IN: NICHOLAS,MAKEDA			
01:23	FOUL (PERSONAL) by DICKEY,JASMINE			
01:23		58-70	V 12	GOOD! FT by BOGGS,BIANCA
01:23				SUB OUT: BIRDSONG,HARPER
01:23				SUB IN: POLLARD,NYLA
01:23		59-70	V 11	GOOD! FT by BOGGS,BIANCA
00:59	MISSED JUMPER by DEFREESE,SAMONE			
00:54	REBOUND (OFF) by NICHOLAS,MAKEDA			
00:38	TURNOVER (BADPASS) by MCBRIDE,PARIS			
00:38				STEAL by POLLARD,NYLA
00:28				MISSED 3PTR by BOGGS,BIANCA
00:26	REBOUND (DEF) by TEAM			
00:26				SUB OUT: BOGGS,BIANCA
00:26				SUB IN: BIRDSONG,HARPER

Delaware 70, William & Mary 59

Points from (This Period)	DEL	W&M
In the Paint	6	0
Off Turns	3	0
2nd Chance	0	0
Fast Break	2	2
Bench	8	5

**Official Scoring/Possession Reference Chart
Delaware vs William & Mary**

Period 1

February 02, 2019 at Kaplan Arena (Kaplan Arena) - Williamsburg, Va.

Period 1

Starters:

Delaware: 12 OLEARY, LIZZIE; 22 DEFRESE, SAMONE; 23 KARGO, BAILEY; 25 LAWRENCE, REBECCA; 2 GONZALES, ABBY;

William & Mary: 2 BOGGS, BIANCA; 10 HODGSON, EVA; 11 POLLARD, NYLA; 25 ROGERS, GABBY; 30 REYNOLDS, VICTORIA;

Time	VISITORS: Delaware	Score	Margin	HOME: William & Mary
08:57	GOOD! 3PTR by GONZALES, ABBY	0-3	V 3	
08:24	GOOD! 3PTR by LAWRENCE, REBECCA	0-6	V 6	
08:04		2-6	V 4	GOOD! JUMPER by REYNOLDS, VICTORIA [PNT]
07:42		3-6	V 3	GOOD! FT by HODGSON, EVA [FB]
07:42		4-6	V 2	GOOD! FT by HODGSON, EVA [FB]
07:31	GOOD! FT by OLEARY, LIZZIE	4-7	V 3	
07:02	GOOD! LAYUP by DEFRESE, SAMONE [PNT]	4-9	V 5	
06:43		6-9	V 3	GOOD! LAYUP by HODGSON, EVA
06:30	GOOD! LAYUP by OLEARY, LIZZIE	6-11	V 5	
05:58	GOOD! LAYUP by DEFRESE, SAMONE [FB]	6-13	V 7	
04:40	GOOD! 3PTR by GONZALES, ABBY	6-16	V 10	
04:14	GOOD! LAYUP by GONZALES, ABBY [PNT]	6-18	V 12	
03:51		9-18	V 9	GOOD! 3PTR by BOGGS, BIANCA
03:24		11-18	V 7	GOOD! JUMPER by BIRDSONG, HARPER [FB]
02:47		13-18	V 5	GOOD! LAYUP by BOGGS, BIANCA [FB]
02:26	GOOD! JUMPER by NICHOLAS, MAKEDA [PNT]	13-20	V 7	
02:26	GOOD! FT by NICHOLAS, MAKEDA	13-21	V 8	
01:25		15-21	V 6	GOOD! JUMPER by BIRDSONG, HARPER [PNT]
00:52	GOOD! JUMPER by KARGO, BAILEY [FB/PNT]	15-23	V 8	
00:02		18-23	V 5	GOOD! 3PTR by JONES, MISHA [FB]

Delaware 23, William & Mary 18

**Official Scoring/Possession Reference Chart
Delaware vs William & Mary**

Period 2

February 02, 2019 at Kaplan Arena (Kaplan Arena) - Williamsburg, Va.

Period 2

Starters:

Delaware: 12 OLEARY,LIZZIE; 22 DEFREESE,SAMONE; 23 KARGO,BAILEY; 25 LAWRENCE,REBECCA; 2 GONZALES,ABBY;

William & Mary: 2 BOGGS,BIANCA; 10 HODGSON,EVA; 11 POLLARD,NYLA; 25 ROGERS,GABBY; 30 REYNOLDS,VICTORIA;

Time	VISITORS: Delaware	Score	Margin	HOME: William & Mary
08:00		20-23	V 3	GOOD! LAYUP by ROGERS,GABBY [FB]
07:26		21-23	V 2	GOOD! FT by BOGGS,BIANCA
07:13	GOOD! JUMPER by LAWRENCE,REBECCA	21-25	V 4	
06:15		24-25	V 1	GOOD! 3PTR by POLLARD,NYLA
05:54	GOOD! FT by DICKEY,JASMINE	24-26	V 2	
05:54	GOOD! FT by DICKEY,JASMINE	24-27	V 3	
05:11	GOOD! JUMPER by GONZALES,ABBY	24-29	V 5	
04:28		26-29	V 3	GOOD! LAYUP by REYNOLDS,VICTORIA
04:17	GOOD! FT by DICKEY,JASMINE	26-30	V 4	
03:18		29-30	V 1	GOOD! 3PTR by REYNOLDS,VICTORIA
03:02	GOOD! JUMPER by LAWRENCE,REBECCA [PNT]	29-32	V 3	
01:08		30-32	V 2	GOOD! FT by BOGGS,BIANCA
00:54	GOOD! FT by OLEARY,LIZZIE	30-33	V 3	
00:21	GOOD! JUMPER by OLEARY,LIZZIE	30-35	V 5	

Delaware 35, William & Mary 30

**Official Scoring/Possession Reference Chart
Delaware vs William & Mary**

Period 3

February 02, 2019 at Kaplan Arena (Kaplan Arena) - Williamsburg, Va.

Period 3

Starters:

Delaware: 12 OLEARY,LIZZIE; 22 DEFREESE,SAMONE; 23 KARGO,BAILEY; 25 LAWRENCE,REBECCA; 2 GONZALES,ABBY;

William & Mary: 2 BOGGS,BIANCA; 10 HODGSON,EVA; 11 POLLARD,NYLA; 25 ROGERS,GABBY; 30 REYNOLDS,VICTORIA;

Time	VISITORS: Delaware	Score	Margin	HOME: William & Mary
09:42		31-35	V 4	GOOD! FT by REYNOLDS,VICTORIA
09:10	GOOD! LAYUP by OLEARY,LIZZIE	31-37	V 6	
08:37		34-37	V 3	GOOD! 3PTR by HODGSON,EVA [FB]
07:52		36-37	V 1	GOOD! LAYUP by REYNOLDS,VICTORIA
07:22	GOOD! LAYUP by OLEARY,LIZZIE	36-39	V 3	
06:09		38-39	V 1	GOOD! LAYUP by REYNOLDS,VICTORIA [PNT]
04:50	GOOD! JUMPER by LEWIS,ALISON	38-41	V 3	
04:31	GOOD! LAYUP by NICHOLAS,MAKEDA	38-43	V 5	
04:06	GOOD! JUMPER by MCBRIDE,PARIS [FB]	38-45	V 7	
03:48	GOOD! FT by NICHOLAS,MAKEDA	38-46	V 8	
03:48	GOOD! FT by NICHOLAS,MAKEDA	38-47	V 9	
03:01	GOOD! JUMPER by LEWIS,ALISON [PNT]	38-49	V 11	
02:26		40-49	V 9	GOOD! JUMPER by HODGSON,EVA
02:11	GOOD! JUMPER by MCBRIDE,PARIS [PNT]	40-51	V 11	
01:44		42-51	V 9	GOOD! LAYUP by BIRDSONG,HARPER [FB]
01:44		43-51	V 8	GOOD! FT by BIRDSONG,HARPER [FB]
00:22	GOOD! FT by NICHOLAS,MAKEDA	43-52	V 9	
00:08		45-52	V 7	GOOD! JUMPER by BIRDSONG,HARPER [PNT]
00:08		46-52	V 6	GOOD! FT by BIRDSONG,HARPER
00:00	GOOD! LAYUP by DEFREESE,SAMONE	46-54	V 8	

Delaware 54, William & Mary 46

**Official Scoring/Possession Reference Chart
Delaware vs William & Mary**

Period 4

February 02, 2019 at Kaplan Arena (Kaplan Arena) - Williamsburg, Va.

Period 4

Starters:

Delaware: 12 OLEARY, LIZZIE; 22 DEFREESE, SAMONE; 23 KARGO, BAILEY; 25 LAWRENCE, REBECCA; 2 GONZALES, ABBY;

William & Mary: 2 BOGGS, BIANCA; 10 HODGSON, EVA; 11 POLLARD, NYLA; 25 ROGERS, GABBY; 30 REYNOLDS, VICTORIA;

Time	VISITORS: Delaware	Score	Margin	HOME: William & Mary
09:00	GOOD! LAYUP by DEFREESE, SAMONE [FB]	46-56	V 10	
08:54		47-56	V 9	GOOD! FT by BOGGS, BIANCA [FB]
08:54		48-56	V 8	GOOD! FT by BOGGS, BIANCA [FB]
06:41	GOOD! 3PTR by GONZALES, ABBY	48-59	V 11	
06:12		50-59	V 9	GOOD! JUMPER by REYNOLDS, VICTORIA
05:08	GOOD! FT by DICKEY, JASMINE	50-60	V 10	
05:08	GOOD! FT by DICKEY, JASMINE	50-61	V 11	
04:34	GOOD! LAYUP by DICKEY, JASMINE	50-63	V 13	
04:25		51-63	V 12	GOOD! FT by HODGSON, EVA
04:25		52-63	V 11	GOOD! FT by HODGSON, EVA
03:33		55-63	V 8	GOOD! 3PTR by KRAUSE, EMMA
03:03	GOOD! LAYUP by MCBRIDE, PARIS	55-65	V 10	
02:50		57-65	V 8	GOOD! JUMPER by BIRDSOON, HARPER
02:24	GOOD! 3PTR by GONZALES, ABBY	57-68	V 11	
01:40	GOOD! JUMPER by DICKEY, JASMINE	57-70	V 13	
01:23		58-70	V 12	GOOD! FT by BOGGS, BIANCA
01:23		59-70	V 11	GOOD! FT by BOGGS, BIANCA

Delaware 70, William & Mary 59

**Official Substitutions Log
Delaware vs William & Mary
Period 1**

February 02, 2019 at Kaplan Arena (Kaplan Arena) - Williamsburg, Va.

VISITORS: Delaware	Time	Score	HOME: William & Mary
12 OLEARY, LIZZIE			2 BOGGS, BIANCA
22 DEFREESE, SAMONE			10 HODGSON, EVA
23 KARGO, BAILEY			11 POLLARD, NYLA
25 LAWRENCE, REBECCA			25 ROGERS, GABBY
2 GONZALES, ABBY			30 REYNOLDS, VICTORIA
	07:42	6-3	SUB OUT: ROGERS, GABBY
	07:42		SUB IN: KRAUSE, EMMA
SUB OUT: 23 KARGO, BAILEY	07:42		
SUB IN: 4 MCBRIDE, PARIS	07:42		
	07:31	6-4	SUB OUT: POLLARD, NYLA
	07:31		SUB IN: BIRDSONG, HARPER
	05:13	13-6	SUB OUT: KRAUSE, EMMA
	05:13		SUB IN: JONES, MISHA
SUB OUT: 12 OLEARY, LIZZIE	05:13		
SUB IN: 5 NICHOLAS, MAKEDA	05:13		
SUB OUT: 25 LAWRENCE, REBECCA	05:13		
SUB IN: 20 DICKEY, JASMINE	05:13		
SUB OUT: 2 GONZALES, ABBY	03:34	18-9	
SUB IN: 23 KARGO, BAILEY	03:34		
	02:33	18-13	SUB OUT: HODGSON, EVA
	02:33		SUB IN: POLLARD, NYLA
SUB OUT: 4 MCBRIDE, PARIS	02:26	20-13	
SUB IN: 2 GONZALES, ABBY	02:26		
SUB OUT: 22 DEFREESE, SAMONE	02:26		
SUB IN: 35 LEWIS, ALISON	02:26		
	00:21	23-15	SUB OUT: BIRDSONG, HARPER
	00:21		SUB IN: HODGSON, EVA

Delaware 23, William & Mary 18

**Official Substitutions Log
Delaware vs William & Mary
Period 2**

February 02, 2019 at Kaplan Arena (Kaplan Arena) - Williamsburg, Va.

VISITORS: Delaware	Time	Score	HOME: William & Mary
12 OLEARY, LIZZIE			2 BOGGS, BIANCA
22 DEFREESE, SAMONE			10 HODGSON, EVA
23 KARGO, BAILEY			11 POLLARD, NYLA
25 LAWRENCE, REBECCA			25 ROGERS, GABBY
2 GONZALES, ABBY			30 REYNOLDS, VICTORIA
SUB OUT: 23 KARGO, BAILEY	08:45	-	
SUB IN: 22 DEFREESE, SAMONE	08:45		
SUB OUT: 12 OLEARY, LIZZIE	08:45		
SUB IN: 5 NICHOLAS, MAKEDA	08:45		
	08:22	-	
	08:22		SUB OUT: JONES, MISHA
	06:31	25-21	SUB IN: ROGERS, GABBY
SUB OUT: 5 NICHOLAS, MAKEDA	06:31		
SUB IN: 20 DICKEY, JASMINE	05:54	26-24	
SUB OUT: 35 LEWIS, ALISON	05:54		
SUB IN: 4 MCBRIDE, PARIS	04:48	29-24	
SUB OUT: 2 GONZALES, ABBY	04:48		
SUB IN: 23 KARGO, BAILEY	04:17	29-26	
	04:17		SUB OUT: ROGERS, GABBY
	04:17		SUB IN: JONES, MISHA
	04:17		SUB OUT: POLLARD, NYLA
	04:17		SUB IN: BIRDSONG, HARPER
SUB OUT: 23 KARGO, BAILEY	02:36	32-29	
SUB IN: 2 GONZALES, ABBY	02:25	32-29	
SUB OUT: 25 LAWRENCE, REBECCA	02:11	32-29	
SUB IN: 5 NICHOLAS, MAKEDA	02:11		
SUB OUT: 2 GONZALES, ABBY	01:19	32-29	
SUB IN: 35 LEWIS, ALISON	01:19		
SUB OUT: 20 DICKEY, JASMINE	00:54	32-30	
SUB IN: 12 OLEARY, LIZZIE	00:54		SUB OUT: JONES, MISHA
			SUB IN: KRAUSE, EMMA

Delaware 35, William & Mary 30

**Official Substitutions Log
Delaware vs William & Mary
Period 3**

February 02, 2019 at Kaplan Arena (Kaplan Arena) - Williamsburg, Va.

VISITORS: Delaware	Time	Score	HOME: William & Mary
12 OLEARY, LIZZIE			2 BOGGS, BIANCA
22 DEFREESE, SAMONE			10 HODGSON, EVA
23 KARGO, BAILEY			11 POLLARD, NYLA
25 LAWRENCE, REBECCA			25 ROGERS, GABBY
2 GONZALES, ABBY			30 REYNOLDS, VICTORIA
	08:06	37-34	SUB OUT: ROGERS, GABBY
	08:06		SUB IN: JONES, MISHA
SUB OUT: 23 KARGO, BAILEY	07:26	37-36	
SUB IN: 4 MCBRIDE, PARIS	07:26		
SUB OUT: 12 OLEARY, LIZZIE	07:02	39-36	
SUB IN: 20 DICKEY, JASMINE	07:02		
SUB OUT: 22 DEFREESE, SAMONE	06:32	39-36	
SUB IN: 35 LEWIS, ALISON	06:32		
SUB OUT: 25 LAWRENCE, REBECCA	05:30	39-38	
SUB IN: 5 NICHOLAS, MAKEDA	05:30		
	03:58	45-38	SUB OUT: REYNOLDS, VICTORIA
	03:58		SUB IN: BIRDSONG, HARPER
	03:58		SUB OUT: POLLARD, NYLA
	03:58		SUB IN: ROGERS, GABBY
	02:39	49-38	SUB OUT: JONES, MISHA
	02:39		SUB IN: REYNOLDS, VICTORIA
	02:30	49-38	SUB OUT: BOGGS, BIANCA
	02:30		SUB IN: POLLARD, NYLA
SUB OUT: 2 GONZALES, ABBY	01:44	51-42	
SUB IN: 23 KARGO, BAILEY	01:44		
SUB OUT: 35 LEWIS, ALISON	01:44		
SUB IN: 22 DEFREESE, SAMONE	01:44		
	00:22	51-43	SUB OUT: ROGERS, GABBY
	00:22		SUB IN: KRAUSE, EMMA
	00:22		SUB OUT: POLLARD, NYLA
	00:22		SUB IN: BOGGS, BIANCA
SUB OUT: 22 DEFREESE, SAMONE	00:22		
SUB IN: 2 GONZALES, ABBY	00:22		
	00:08	52-45	SUB OUT: BOGGS, BIANCA
	00:08		SUB IN: POLLARD, NYLA
SUB OUT: 23 KARGO, BAILEY	00:08		
SUB IN: 22 DEFREESE, SAMONE	00:08		

Delaware 54, William & Mary 46

**Official Substitutions Log
Delaware vs William & Mary
Period 4**

February 02, 2019 at Kaplan Arena (Kaplan Arena) - Williamsburg, Va.

VISITORS: Delaware	Time	Score	HOME: William & Mary
12 OLEARY, LIZZIE			2 BOGGS, BIANCA
22 DEFREESE, SAMONE			10 HODGSON, EVA
23 KARGO, BAILEY			11 POLLARD, NYLA
25 LAWRENCE, REBECCA			25 ROGERS, GABBY
2 GONZALES, ABBY			30 REYNOLDS, VICTORIA
	09:00	56-46	SUB OUT: POLLARD, NYLA
	09:00		SUB IN: JONES, MISHA
	09:00		SUB OUT: KRAUSE, EMMA
	09:00		SUB IN: BIRDSONG, HARPER
SUB OUT: 22 DEFREESE, SAMONE	08:54	56-47	
SUB IN: 35 LEWIS, ALISON	08:54		
SUB OUT: 5 NICHOLAS, MAKEDA	07:44	56-48	
SUB IN: 12 OLEARY, LIZZIE	07:44		
SUB OUT: 35 LEWIS, ALISON	06:12	59-50	
SUB IN: 22 DEFREESE, SAMONE	06:12		
	04:27	63-50	SUB OUT: JONES, MISHA
	04:27		SUB IN: KRAUSE, EMMA
	04:25	63-51	SUB OUT: BIRDSONG, HARPER
	04:25		SUB IN: POLLARD, NYLA
	03:55	63-52	SUB OUT: POLLARD, NYLA
	03:55		SUB IN: BIRDSONG, HARPER
SUB OUT: 12 OLEARY, LIZZIE	01:39	70-57	
SUB IN: 5 NICHOLAS, MAKEDA	01:39		
	01:23	70-58	SUB OUT: BIRDSONG, HARPER
	01:23		SUB IN: POLLARD, NYLA
	00:26	70-59	SUB OUT: BOGGS, BIANCA
	00:26		SUB IN: BIRDSONG, HARPER

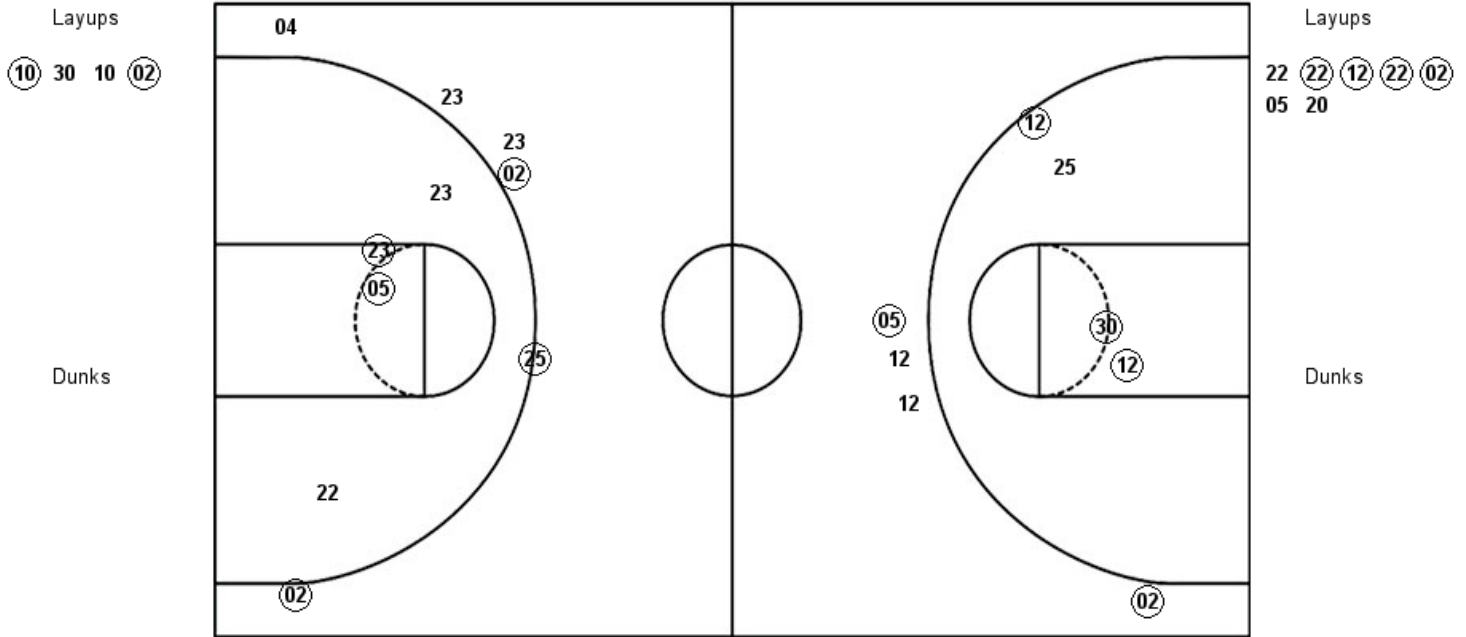
Delaware 70, William & Mary 59

Official Shot Chart
 Delaware vs William & Mary
 PERIOD 1 Shots

February 02, 2019 at Kaplan Arena (Kaplan Arena) - Williamsburg, Va.

William & Mary

Delaware



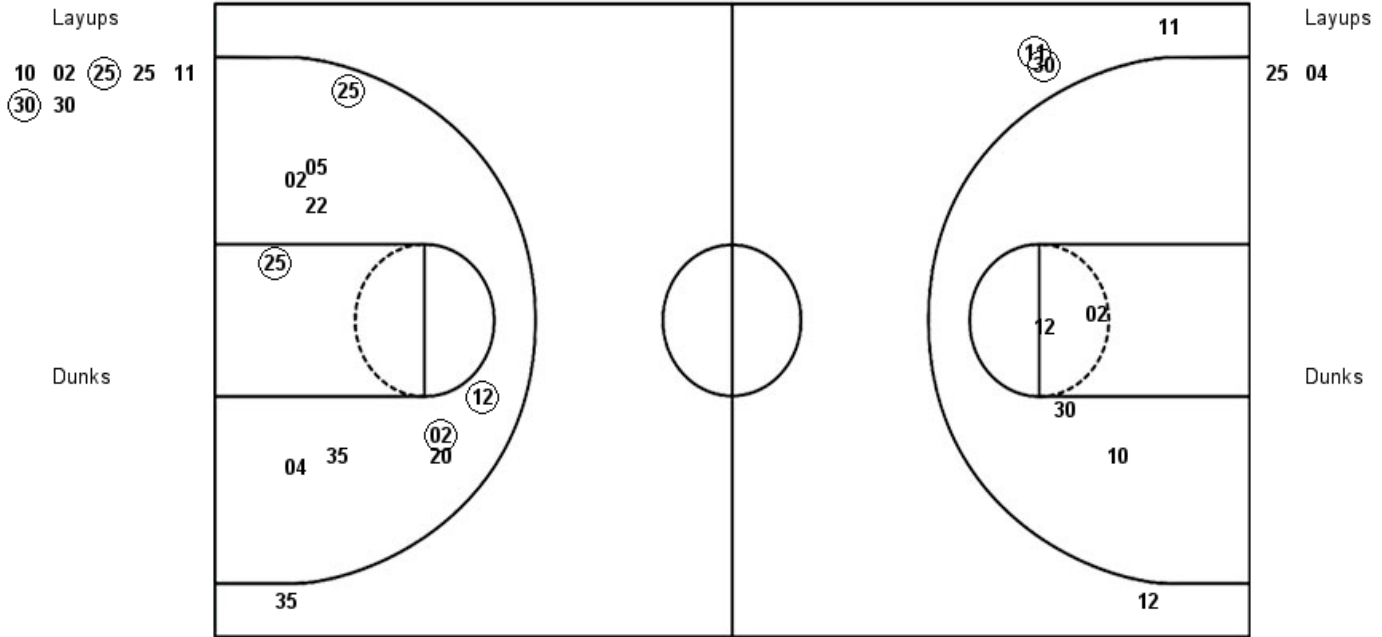
W&M : Period 1	Made	Att	Pct
Layups	2	4	50.0
Dunks	0	0	0
2PT Field Goals	5	8	62.5
3PT Field Goals	2	4	50.0
Total Field Goals	7	12	58.3

DEL : Period 1	Made	Att	Pct
Layups	4	7	57.1
Dunks	0	0	0
2PT Field Goals	6	11	54.5
3PT Field Goals	3	6	50.0
Total Field Goals	9	17	52.9

Official Shot Chart
Delaware vs William & Mary
PERIOD 2 Shots
February 02, 2019 at Kaplan Arena (Kaplan Arena) - Williamsburg, Va.

William & Mary

Delaware



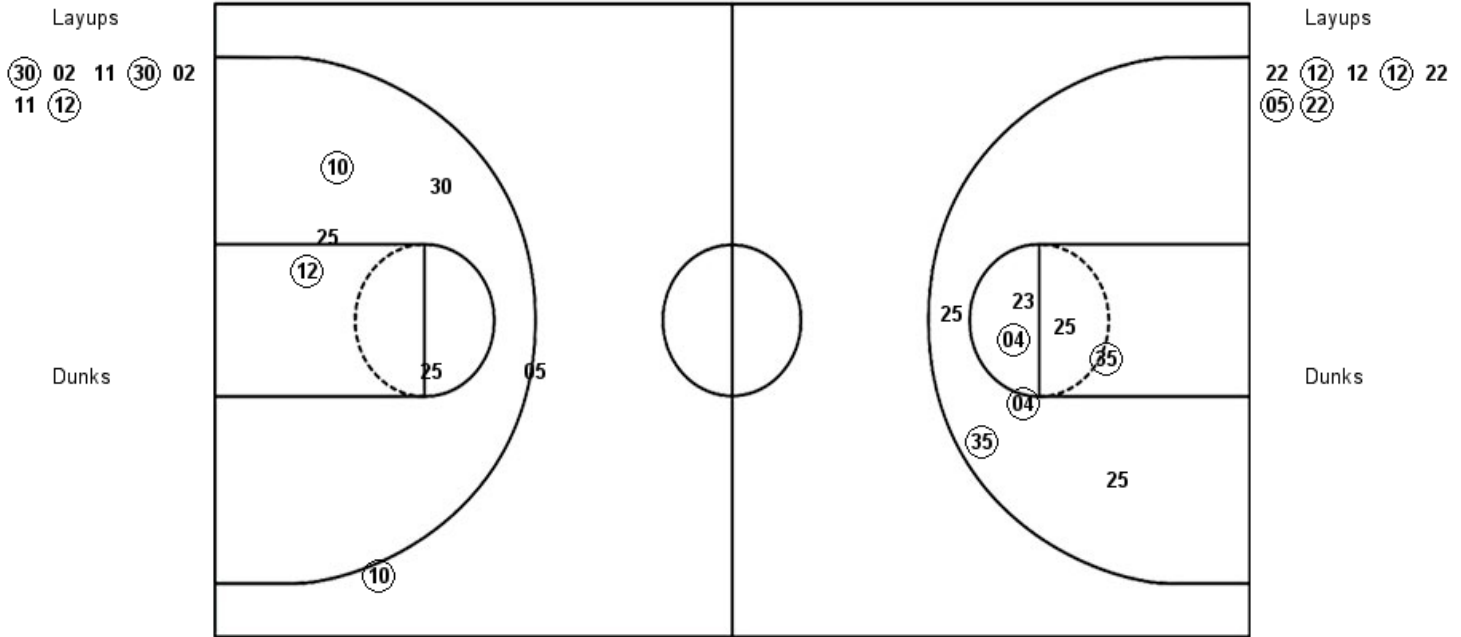
W&M : Period 2	Made	Att	Pct
Layups	2	7	28.6
Dunks	0	0	0
2PT Field Goals	2	11	18.2
3PT Field Goals	2	4	50.0
Total Field Goals	4	15	26.7

DEL : Period 2	Made	Att	Pct
Layups	0	2	00.0
Dunks	0	0	0
2PT Field Goals	4	12	33.3
3PT Field Goals	0	1	00.0
Total Field Goals	4	13	30.8

Official Shot Chart
Delaware vs William & Mary
PERIOD 3 Shots
February 02, 2019 at Kaplan Arena (Kaplan Arena) - Williamsburg, Va.

William & Mary

Delaware



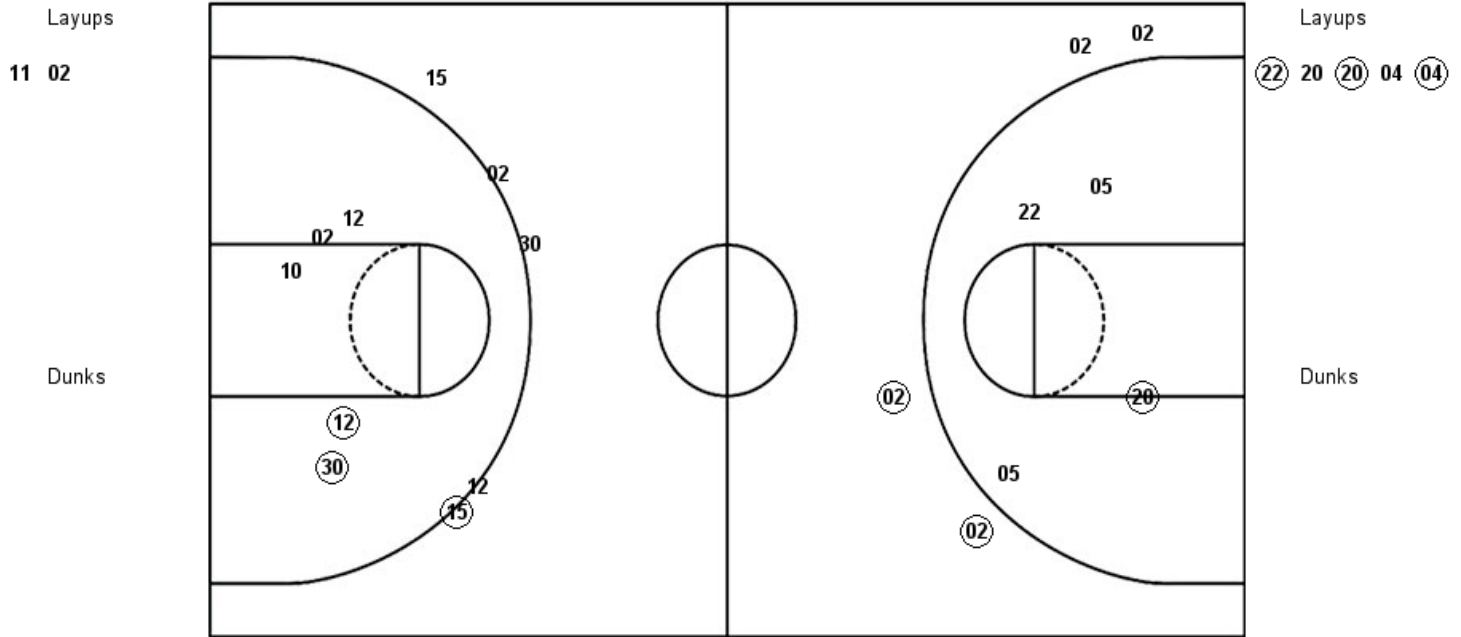
W&M : Period 3	Made	Att	Pct
Layups	3	7	42.9
Dunks	0	0	0
2PT Field Goals	5	12	41.7
3PT Field Goals	1	2	50.0
Total Field Goals	6	14	42.9

DEL : Period 3	Made	Att	Pct
Layups	4	7	57.1
Dunks	0	0	0
2PT Field Goals	8	15	53.3
3PT Field Goals	0	0	0
Total Field Goals	8	15	53.3

Official Shot Chart
Delaware vs William & Mary
PERIOD 4 Shots
February 02, 2019 at Kaplan Arena (Kaplan Arena) - Williamsburg, Va.

William & Mary

Delaware



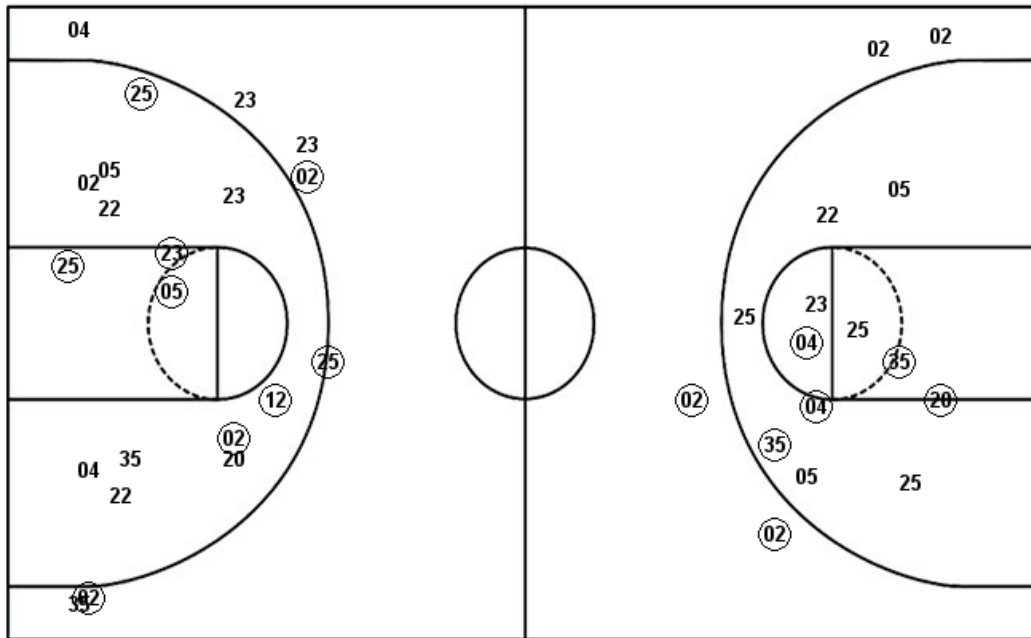
W&M : Period 4	Made	Att	Pct
Layups	0	2	00.0
Dunks	0	0	0
2PT Field Goals	2	7	28.6
3PT Field Goals	1	5	20.0
Total Field Goals	3	12	25.0

DEL : Period 4	Made	Att	Pct
Layups	3	5	60.0
Dunks	0	0	0
2PT Field Goals	4	9	44.4
3PT Field Goals	2	4	50.0
Total Field Goals	6	13	46.2

Official Shot Chart
Delaware vs William & Mary
Delaware Team Shots
February 02, 2019 at Kaplan Arena (Kaplan Arena) - Williamsburg, Va.

Layups

Dunks



Layups

Dunks

22 (22) (12) (22) (02)
 05 20 25 04 22
 (12) 12 (12) 22 (05)
 (22) (22) 20 (20) 04
 (04)

DEL : Period 1	Made	Att	Pct
Layups	4	7	57.1
Dunks	0	0	0
2PT Field Goals	6	11	54.5
3PT Field Goals	3	6	50.0
Total Field Goals	9	17	52.9

DEL : Period 3	Made	Att	Pct
Layups	4	7	57.1
Dunks	0	0	0
2PT Field Goals	8	15	53.3
3PT Field Goals	0	0	0
Total Field Goals	8	15	53.3

DEL : Period 2	Made	Att	Pct
Layups	0	2	00.0
Dunks	0	0	0
2PT Field Goals	4	12	33.3
3PT Field Goals	0	1	00.0
Total Field Goals	4	13	30.8

DEL : Period 4	Made	Att	Pct
Layups	3	5	60.0
Dunks	0	0	0
2PT Field Goals	4	9	44.4
3PT Field Goals	2	4	50.0
Total Field Goals	6	13	46.2

W&M : Period 4	Made	Att	Pct
Layups	0	2	00.0
Dunks	0	0	0
2PT Field Goals	2	7	28.6
3PT Field Goals	1	5	20.0
Total Field Goals	3	12	25.0