

## FINAL SCORE



**Elon**

**60**



**William & Mary**

**65**

January 20, 2019 • Kaplan Arena (Kaplan Arena) - Williamsburg, Va.

## FINAL STATISTICS

**Official Box Score**  
**Elon vs William & Mary**  
**Game Totals -- Final Statistics**  
**January 20, 2019 at Kaplan Arena (Kaplan Arena) - Williamsburg, Va.**

**Elon 60**

No.	Player	S	Pts	FG	3FG	FT	OR	DR	TR	PF	A	TO	Blk	Stl	Min	+/-
00	Perpignan, Brie		9	4-8	0-2	1-1	1	5	6	5	0	2	0	1	31	-5
01	Munford, Saadia		9	4-10	0-2	1-1	5	1	6	1	2	3	1	3	30	-2
02	Liles, Kayla		8	4-10	0-2	0-0	3	2	5	2	0	1	0	1	23	-12
22	Mercer, Lexi		2	0-7	0-5	2-4	1	3	4	4	4	2	0	1	34	-3
42	Maupin, Emily		11	5-9	0-0	1-4	4	1	5	2	3	2	2	0	31	0
04	Tasman, Duru		0	0-0	0-0	0-0	0	0	0	1	0	1	0	0	1	-5
13	Powell, Jaylin		13	3-8	1-4	6-7	2	9	11	2	0	2	0	0	28	1
21	Colon, Ariel		8	4-7	0-1	0-0	1	1	2	2	2	1	0	0	16	0
52	Ryan, Micaela		0	0-0	0-0	0-0	0	0	0	1	0	0	0	0	5	1
	Team						2	1	3	0		0				
<b>TOTALS</b>			<b>60</b>	<b>24-59</b>	<b>1-16</b>	<b>11-17</b>	<b>19</b>	<b>23</b>	<b>42</b>	<b>20</b>	<b>11</b>	<b>14</b>	<b>3</b>	<b>6</b>	<b>200</b>	

*Shooting By Period*

Period	FG	FG%	3FG	3FG%	FT	FT%
1st Qtr	6-12	50%	0-3	00%	0-2	00%
2nd Qtr	6-18	33%	1-4	25%	6-7	86%
3rd Qtr	9-21	43%	0-6	00%	2-2	100%
4th Qtr	3-8	38%	0-3	00%	3-6	50%
1st Half	12-30	40%	1-7	14%	6-9	67%
2nd Half	12-29	41%	0-9	00%	5-8	63%
<b>Game</b>	<b>24-59</b>	<b>40.7%</b>	<b>1-16</b>	<b>06.3%</b>	<b>11-17</b>	<b>64.7%</b>

Last FG: 4th-02:08  
 Biggest Run: 9-0  
 Largest lead: By 5 at 3-01:04  
 Technical Fouls: None.

**William & Mary 65**

No.	Player	S	Pts	FG	3FG	FT	OR	DR	TR	PF	A	TO	Blk	Stl	Min	+/-
02	Boggs, Bianca		13	4-8	1-2	4-6	1	2	3	5	3	1	0	0	27	10
10	Hodgson, Eva		4	2-7	0-2	0-0	2	2	4	0	6	2	0	2	37	0
11	Pollard, Nyla		2	1-6	0-3	0-0	0	1	1	0	2	3	1	0	33	6
25	Rogers, Gabby		5	2-3	0-0	1-1	1	3	4	3	0	1	2	0	23	-2
30	Reynolds, Victoria		11	3-6	0-1	5-8	1	5	6	2	3	0	1	2	37	1
05	Jones, Misha		8	2-3	2-2	2-2	0	2	2	2	2	0	1	0	15	11
12	Birdsong, Harper		13	5-11	3-6	0-0	1	2	3	2	2	3	1	0	17	-1
15	Krause, Emma		9	3-6	3-5	0-0	0	0	0	1	0	0	1	0	10	1
21	Eichner, Bailey		0	0-0	0-0	0-0	0	0	0	1	0	1	0	0	1	-1
	Team						2	1	3	0		0				
<b>TOTALS</b>			<b>65</b>	<b>22-50</b>	<b>9-21</b>	<b>12-17</b>	<b>8</b>	<b>18</b>	<b>26</b>	<b>16</b>	<b>18</b>	<b>11</b>	<b>7</b>	<b>4</b>	<b>200</b>	

*Shooting By Period*

Period	FG	FG%	3FG	3FG%	FT	FT%
1st Qtr	6-14	43%	3-6	50%	3-4	75%
2nd Qtr	6-9	67%	3-4	75%	3-4	75%
3rd Qtr	5-16	31%	2-6	33%	2-3	67%
4th Qtr	5-11	45%	1-5	20%	4-6	67%
1st Half	12-23	52%	6-10	60%	6-8	75%
2nd Half	10-27	37%	3-11	27%	6-9	67%
<b>Game</b>	<b>22-50</b>	<b>44.0%</b>	<b>9-21</b>	<b>42.9%</b>	<b>12-17</b>	<b>70.6%</b>

Last FG: 4th-06:11  
 Biggest Run: 8-0  
 Largest lead: By 13 at 2-06:07  
 Technical Fouls: None.

Game Notes:

Officials: Warren Harding, Jr., Kris Denson, Karleena Tobin  
 Attendance: 904

Start Time: 2019-01-20 19:06:06  
 End Time: 2019-01-20 21:00:01  
 Game Duration: 113  
 Conference Game;

Score	1st	2nd	3rd	4th	TOT
EUP	12	19	20	9	<b>60</b>
W&M	18	18	14	15	<b>65</b>

EUP led for 7:46. W&M led for 30:17.  
 Game was tied for 1:57.  
 Times tied: 4      Lead Changes: 7

Points from	EUP	W&M
In the Paint	44	16
Off Turns	8	19
2nd Chance	8	1
Fast Break	2	18
Bench	21	30

**Official Box Score**  
**Elon vs William & Mary**  
**First Half Statistics Only**  
**January 20, 2019 at Kaplan Arena (Kaplan Arena) - Williamsburg, Va.**

**Elon 31**

No.	Player	S	Pts	FG	3FG	FT	OR	DR	TR	PF	A	TO	Blk	Stl	Min	+/-
00	Perpignan, Brie		6	3-3	0-0	0-0	0	3	3	2	0	2	0	0	14	-6
13	Powell, Jaylin		8	1-3	1-2	5-6	2	2	4	0	0	1	0	0	13	-3
21	Colon, Ariel		2	1-2	0-0	0-0	0	0	0	1	0	0	0	0	8	-4
22	Mercer, Lexi		0	0-3	0-2	0-0	0	3	3	1	1	0	0	0	17	-2
42	Maupin, Emily		2	1-4	0-0	0-2	3	1	4	1	2	2	0	0	15	-6
52	Ryan, Micaela		0	0-0	0-0	0-0	0	0	0	1	0	0	0	0	3	-2
01	Munford, Saadia		7	3-7	0-2	1-1	0	0	0	0	1	1	1	3	16	2
02	Liles, Kayla		6	3-8	0-1	0-0	3	1	4	2	0	0	0	1	15	1
04	Tasman, Duru		0	0-0	0-0	0-0	0	0	0	1	0	1	0	0	1	-5
	Team		0	0-0	0-0	0-0	0	1	1	0	0	0	0	0	0	0
<b>TOTALS</b>			<b>31</b>	<b>12-30</b>	<b>1-7</b>	<b>6-9</b>	<b>8</b>	<b>11</b>	<b>19</b>	<b>9</b>	<b>4</b>	<b>7</b>	<b>1</b>	<b>4</b>	<b>100</b>	

*Shooting By Period*

Period	FG	FG%	3FG	3FG%	FT	FT%
1st Qtr	6-12	50%	0-3	00%	0-2	00%
2nd Qtr	6-18	33%	1-4	25%	6-7	86%
1st Half	12-30	40%	1-7	14%	6-9	67%
Game	24-59	40.7%	1-16	06.3%	11-17	64.7%

*Last FG Half: EUP 2nd-00:37*

**William & Mary 36**

No.	Player	S	Pts	FG	3FG	FT	OR	DR	TR	PF	A	TO	Blk	Stl	Min	+/-
02	Boggs, Bianca		7	2-4	1-1	2-2	0	2	2	2	3	1	0	0	13	13
05	Jones, Misha		3	1-2	1-1	0-0	0	0	0	2	1	0	1	0	7	2
10	Hodgson, Eva		2	1-5	0-1	0-0	0	0	0	0	4	2	0	1	17	0
11	Pollard, Nyla		2	1-2	0-1	0-0	0	1	1	0	1	1	1	0	17	2
12	Birdsong, Harper		8	3-4	2-3	0-0	0	2	2	2	1	2	1	0	10	2
15	Krause, Emma		6	2-3	2-3	0-0	0	0	0	0	0	0	1	0	6	2
21	Eichner, Bailey		0	0-0	0-0	0-0	0	0	0	1	0	1	0	0	1	-1
25	Rogers, Gabby		2	1-2	0-0	0-0	0	3	3	2	0	1	1	0	13	4
30	Reynolds, Victoria		6	1-1	0-0	4-6	0	3	3	1	1	0	1	1	17	1
	Team		0	0-0	0-0	0-0	1	0	1	0	0	0	0	0	0	0
<b>TOTALS</b>			<b>36</b>	<b>12-23</b>	<b>6-10</b>	<b>6-8</b>	<b>1</b>	<b>11</b>	<b>12</b>	<b>10</b>	<b>11</b>	<b>8</b>	<b>6</b>	<b>2</b>	<b>100</b>	

*Shooting By Period*

Period	FG	FG%	3FG	3FG%	FT	FT%
1st Qtr	6-14	43%	3-6	50%	3-4	75%
2nd Qtr	6-9	67%	3-4	75%	3-4	75%
1st Half	12-23	52%	6-10	60%	6-8	75%
Game	22-50	44.0%	9-21	42.9%	12-17	70.6%

*Last FG Half: W&M 2nd-00:56*

Game Notes:

Officials: Warren Harding, Jr., Kris Denson, Karleena Tobin  
Attendance: 904

Start Time: 2019-01-20 19:06:06  
End Time: 2019-01-20 21:00:01  
Game Duration: 113  
Conference Game:

Score	1st	2nd	3rd	4th	TOT
EUP	12	19	20	9	<b>60</b>
W&M	18	18	14	15	<b>65</b>

Points from (This Period)	EUP	W&M
In the Paint	20	8
Off Turns	4	8
2nd Chance	3	0
Fast Break	2	14
Bench	10	17

**Official Box Score**  
**Elon vs William & Mary**  
**First Quarter Statistics Only**  
**January 20, 2019 at Kaplan Arena (Kaplan Arena) - Williamsburg, Va.**

**Elon 12**

No.	Player	S	Pts	FG	3FG	FT	OR	DR	TR	PF	A	TO	Blk	Stl	Min	+/-
00	Perpignan, Brie		6	3-3	0-0	0-0	0	3	3	0	0	2	0	0	9	-5
01	Munford, Saadia		0	0-3	0-2	0-0	0	0	0	0	0	1	1	1	8	-3
02	Liles, Kayla		2	1-1	0-0	0-0	1	1	2	0	0	0	0	0	7	0
22	Mercer, Lexi		0	0-1	0-1	0-0	0	1	1	1	0	0	0	0	7	-3
42	Maupin, Emily		2	1-2	0-0	0-2	2	1	3	1	1	2	0	0	9	-1
04	Tasman, Duru		0	0-0	0-0	0-0	0	0	0	1	0	1	0	0	1	-5
13	Powell, Jaylin		0	0-1	0-0	0-0	0	0	0	0	0	1	0	0	6	-9
21	Colon, Ariel		2	1-1	0-0	0-0	0	0	0	1	0	0	0	0	3	-6
52	Ryan, Micaela		0	0-0	0-0	0-0	0	0	0	0	0	0	0	0	1	2
	Team						0	1	1	0		0				
<b>TOTALS</b>			<b>12</b>	<b>6-12</b>	<b>0-3</b>	<b>0-2</b>	<b>3</b>	<b>7</b>	<b>10</b>	<b>4</b>	<b>1</b>	<b>7</b>	<b>1</b>	<b>1</b>	<b>50</b>	

*Shooting By Period*

Period	FG	FG%	3FG	3FG%	FT	FT%
1st Qtr	6-12	50%	0-3	00%	0-2	00%
2nd Qtr	6-18	33%	1-4	25%	6-7	86%
1st Half	6-12	50%	0-3	00%	0-2	00%
1st Half	12-30	40%	1-7	14%	6-9	67%
Game	24-59	40.7%	1-16	06.3%	11-17	64.7%

**William & Mary 18**

No.	Player	S	Pts	FG	3FG	FT	OR	DR	TR	PF	A	TO	Blk	Stl	Min	+/-
02	Boggs, Bianca		7	2-3	1-1	2-2	0	0	0	1	2	1	0	0	9	8
10	Hodgson, Eva		2	1-4	0-1	0-0	0	0	0	0	2	0	0	1	10	6
11	Pollard, Nyla		0	0-1	0-1	0-0	0	0	0	0	0	1	0	0	7	3
25	Rogers, Gabby		0	0-1	0-0	0-0	0	1	1	0	0	0	1	0	7	5
30	Reynolds, Victoria		3	1-1	0-0	1-2	0	2	2	1	1	0	0	1	7	2
05	Jones, Misha		3	1-2	1-1	0-0	0	0	0	0	0	0	1	0	3	4
12	Birdsong, Harper		3	1-1	1-1	0-0	0	1	1	0	0	0	1	0	4	1
15	Krause, Emma		0	0-1	0-1	0-0	0	0	0	0	0	0	0	0	3	1
21	Eichner, Bailey		0	0-0	0-0	0-0	0	0	0	0	0	0	0	0	0	0
	Team						1	0	1	0		0				
<b>TOTALS</b>			<b>18</b>	<b>6-14</b>	<b>3-6</b>	<b>3-4</b>	<b>1</b>	<b>4</b>	<b>5</b>	<b>2</b>	<b>5</b>	<b>2</b>	<b>3</b>	<b>2</b>	<b>50</b>	

*Shooting By Period*

Period	FG	FG%	3FG	3FG%	FT	FT%
1st Qtr	6-14	43%	3-6	50%	3-4	75%
2nd Qtr	6-9	67%	3-4	75%	3-4	75%
1st Half	6-14	43%	3-6	50%	3-4	75%
1st Half	12-23	52%	6-10	60%	6-8	75%
Game	22-50	44.0%	9-21	42.9%	12-17	70.6%

Game Notes:

Officials: Warren Harding, Jr., Kris Denson, Karleena Tobin  
Attendance: 904

Start Time: 2019-01-20 19:06:06  
End Time: 2019-01-20 21:00:01  
Game Duration: 113  
Conference Game;

Score	1st	2nd	3rd	4th	TOT
EUP	12	19	20	9	<b>60</b>
W&M	18	18	14	15	<b>65</b>

Points from (This Period)	EUP	W&M
In the Paint	12	6
Off Turns	0	8
2nd Chance	0	0
Fast Break	0	12
Bench	2	6

**Official Play-By-Play**  
**Elon vs William & Mary**  
**First Quarter**  
**January 20, 2019 at Kaplan Arena (Kaplan Arena) - Williamsburg, Va.**

**Period 1**

**Starters:**

**Elon:** 0 PERPIGNAN,BRIE; 22 MERCER,LEXI; 42 MAUPIN,EMILY; 1 MUNFORD,SAADIA; 2 LILES,KAYLA;  
**William & Mary:** 2 BOGGS,BIANCA; 10 HODGSON,EVA; 11 POLLARD,NYLA; 25 ROGERS,GABBY; 30 REYNOLDS,VICTORIA;

Time	VISITORS: <b>Elon</b>	Score	Margin	HOME: <b>William &amp; Mary</b>
09:44				TURNOVER (BADPASS) by POLLARD,NYLA
09:33	TURNOVER (3SEC) by MAUPIN,EMILY			
09:05				MISSED JUMPER by ROGERS,GABBY
09:04	REBOUND (DEF) by TEAM			
08:48	GOOD! JUMPER by MAUPIN,EMILY [PNT]	0-2	V 2	
08:24				MISSED LAYUP by HODGSON,EVA
08:24	BLOCK by MUNFORD,SAADIA			
08:23				REBOUND (OFF) by TEAM
08:08				MISSED JUMPER by BOGGS,BIANCA
08:05	REBOUND (DEF) by LILES,KAYLA			
07:38	TURNOVER (BADPASS) by MUNFORD,SAADIA			
07:38				STEAL by HODGSON,EVA
07:30		3-2	H 1	GOOD! 3PTR by BOGGS,BIANCA [FB]
07:30				ASSIST by REYNOLDS,VICTORIA
07:06	GOOD! LAYUP by PERPIGNAN,BRIE	3-4	V 1	
06:58				MISSED 3PTR by POLLARD,NYLA
06:54	REBOUND (DEF) by PERPIGNAN,BRIE			
06:39	MISSED 3PTR by MUNFORD,SAADIA			
06:34	REBOUND (OFF) by LILES,KAYLA			
06:33				FOUL (PERSONAL) by REYNOLDS,VICTORIA
06:33	SUB OUT: MAUPIN,EMILY			
06:33	SUB IN: TASMAN,DURU			
06:33	SUB OUT: MUNFORD,SAADIA			
06:33	SUB IN: COLON,ARIEL			
06:33	SUB OUT: LILES,KAYLA			
06:33	SUB IN: POWELL,JAYLIN			
06:23	TURNOVER (BADPASS) by PERPIGNAN,BRIE			
06:23				STEAL by REYNOLDS,VICTORIA
06:19	FOUL (PERSONAL) by MERCER,LEXI			
06:19				MISSED FT by REYNOLDS,VICTORIA
06:19				REBOUND (OFF) by TEAM
06:19		4-4	T	GOOD! FT by REYNOLDS,VICTORIA [FB]
06:06	MISSED 3PTR by MERCER,LEXI			
06:01				REBOUND (DEF) by REYNOLDS,VICTORIA
05:59	FOUL (PERSONAL) by COLON,ARIEL			
05:59		5-4	H 1	GOOD! FT by BOGGS,BIANCA [FB]
05:59				SUB OUT: REYNOLDS,VICTORIA
05:59				SUB IN: JONES,MISHA
05:59		6-4	H 2	GOOD! FT by BOGGS,BIANCA [FB]
05:49	TURNOVER (TRAVEL) by POWELL,JAYLIN			
05:36		8-4	H 4	GOOD! LAYUP by HODGSON,EVA
05:36				ASSIST by BOGGS,BIANCA
05:19	FOUL (OFF) by TASMAN,DURU			
05:19	TURNOVER (OFFENSIVE) by TASMAN,DURU			
05:19	SUB OUT: PERPIGNAN,BRIE			
05:19	SUB IN: MAUPIN,EMILY			
05:19	SUB OUT: TASMAN,DURU			
05:19	SUB IN: MUNFORD,SAADIA			
05:00				
04:46				MISSED 3PTR by HODGSON,EVA
04:42	REBOUND (DEF) by MERCER,LEXI			
04:36	MISSED LAYUP by MUNFORD,SAADIA			
04:36				BLOCK by ROGERS,GABBY
04:31				REBOUND (DEF) by ROGERS,GABBY
04:27		11-4	H 7	GOOD! 3PTR by JONES,MISHA [FB]
04:27				ASSIST by HODGSON,EVA
04:05	GOOD! LAYUP by COLON,ARIEL	11-6	H 5	
03:51				TURNOVER (LOSTBALL) by BOGGS,BIANCA
03:51	STEAL by MUNFORD,SAADIA			
03:51	SUB OUT: COLON,ARIEL			
03:51	SUB IN: PERPIGNAN,BRIE			
03:38	FOUL (OFF) by MAUPIN,EMILY			
03:38	TURNOVER (OFFENSIVE) by MAUPIN,EMILY			
03:38				SUB OUT: POLLARD,NYLA
03:38				SUB IN: BIRDSONG,HARPER
03:38	SUB OUT: MERCER,LEXI			
03:38	SUB IN: LILES,KAYLA			
03:25		13-6	H 7	GOOD! LAYUP by BOGGS,BIANCA
03:07	GOOD! LAYUP by LILES,KAYLA	13-8	H 5	
03:07	ASSIST by MAUPIN,EMILY			
02:48				MISSED JUMPER by JONES,MISHA
02:43	REBOUND (DEF) by PERPIGNAN,BRIE			
02:34	MISSED LAYUP by POWELL,JAYLIN			
02:34				BLOCK by JONES,MISHA
02:34	MISSED LAYUP by MAUPIN,EMILY			
02:34	REBOUND (OFF) by MAUPIN,EMILY			

Time	VISITORS: Elon	Score	Margin	HOME: William & Mary
02:34				BLOCK by BIRDSONG,HARPER
02:34	REBOUND (OFF) by MAUPIN,EMILY			
02:34				FOUL (PERSONAL) by BOGGS,BIANCA
02:34	MISSED FT by MAUPIN,EMILY			
02:34	REBOUND (OFF) by TEAM			
02:34				SUB OUT: JONES,MISHA
02:34				SUB IN: REYNOLDS,VICTORIA
02:34				SUB OUT: ROGERS,GABBY
02:34				SUB IN: KRAUSE,EMMA
02:34	MISSED FT by MAUPIN,EMILY			
02:32				REBOUND (DEF) by REYNOLDS,VICTORIA
02:26		16-8	H 8	GOOD! 3PTR by BIRDSONG,HARPER [FB]
02:26				ASSIST by BOGGS,BIANCA
02:12	MISSED 3PTR by MUNFORD,SAADIA			
02:09				REBOUND (DEF) by BIRDSONG,HARPER
01:54		18-8	H 10	GOOD! JUMPER by REYNOLDS,VICTORIA
01:54				ASSIST by HODGSON,EVA
01:31	GOOD! JUMPER by PERPIGNAN,BRIE [PNT]	18-10	H 8	
01:13				MISSED 3PTR by KRAUSE,EMMA
01:10	REBOUND (DEF) by PERPIGNAN,BRIE			
00:54	TURNOVER (BADPASS) by PERPIGNAN,BRIE			
00:54	SUB OUT: POWELL,JAYLIN			
00:54	SUB IN: MERCER,LEXI			
00:54	SUB OUT: MUNFORD,SAADIA			
00:54	SUB IN: RYAN,MICAEALA			
00:54				SUB OUT: BOGGS,BIANCA
00:54				SUB IN: POLLARD,NYLA
00:29				MISSED JUMPER by HODGSON,EVA
00:25	REBOUND (DEF) by MAUPIN,EMILY			
00:13	GOOD! LAYUP by PERPIGNAN,BRIE	18-12	H 6	

### Elon 12, William & Mary 18

Points from (This Period)	EUP	W&M
In the Paint	12	6
Off Turns	0	8
2nd Chance	0	0
Fast Break	0	12
Bench	2	6

**Official Box Score**  
**Elon vs William & Mary**  
**Second Quarter Statistics Only**  
**January 20, 2019 at Kaplan Arena (Kaplan Arena) - Williamsburg, Va.**

**Elon 19**

No.	Player	S	Pts	FG	3FG	FT	OR	DR	TR	PF	A	TO	Blk	Stl	Min	+/-
00	Perpignan, Brie		0	0-0	0-0	0-0	0	0	0	2	0	0	0	0	5	-1
01	Munford, Saadia		7	3-4	0-0	1-1	0	0	0	0	1	0	0	2	8	5
02	Liles, Kayla		4	2-7	0-1	0-0	2	0	2	2	0	0	0	1	8	1
22	Mercer, Lexi		0	0-2	0-1	0-0	0	2	2	0	1	0	0	0	10	1
42	Maupin, Emily		0	0-2	0-0	0-0	1	0	1	0	1	0	0	0	6	-5
04	Tasman, Duru		0	0-0	0-0	0-0	0	0	0	0	0	0	0	0	0	0
13	Powell, Jaylin		8	1-2	1-2	5-6	2	2	4	0	0	0	0	0	7	6
21	Colon, Ariel		0	0-1	0-0	0-0	0	0	0	0	0	0	0	0	5	2
52	Ryan, Micaela		0	0-0	0-0	0-0	0	0	0	1	0	0	0	0	2	-4
	Team						0	0	0	0		0				
<b>TOTALS</b>			<b>19</b>	<b>6-18</b>	<b>1-4</b>	<b>6-7</b>	<b>5</b>	<b>4</b>	<b>9</b>	<b>5</b>	<b>3</b>	<b>0</b>	<b>0</b>	<b>3</b>	<b>50</b>	

*Shooting By Period*

Period	FG	FG%	3FG	3FG%	FT	FT%
3rd Qtr	9-21	43%	0-6	00%	2-2	100%
4th Qtr	3-8	38%	0-3	00%	3-6	50%
2nd Half	6-18	33%	1-4	25%	6-7	86%
2nd Half	12-29	41%	0-9	00%	5-8	63%
Game	24-59	40.7%	1-16	06.3%	11-17	64.7%

**William & Mary 18**

No.	Player	S	Pts	FG	3FG	FT	OR	DR	TR	PF	A	TO	Blk	Stl	Min	+/-
02	Boggs, Bianca		0	0-1	0-0	0-0	0	2	2	1	1	0	0	0	4	5
10	Hodgson, Eva		0	0-1	0-0	0-0	0	0	0	0	2	2	0	0	7	-6
11	Pollard, Nyla		2	1-1	0-0	0-0	0	1	1	0	1	0	1	0	10	-1
25	Rogers, Gabby		2	1-1	0-0	0-0	0	2	2	2	0	1	0	0	6	-1
30	Reynolds, Victoria		3	0-0	0-0	3-4	0	1	1	0	0	0	1	0	10	-1
05	Jones, Misha		0	0-0	0-0	0-0	0	0	0	2	1	0	0	0	4	-2
12	Birdsong, Harper		5	2-3	1-2	0-0	0	1	1	2	1	2	0	0	6	1
15	Krause, Emma		6	2-2	2-2	0-0	0	0	0	0	0	0	1	0	3	1
21	Eichner, Bailey		0	0-0	0-0	0-0	0	0	0	1	0	1	0	0	1	-1
	Team						0	0	0	0		0				
<b>TOTALS</b>			<b>18</b>	<b>6-9</b>	<b>3-4</b>	<b>3-4</b>	<b>0</b>	<b>7</b>	<b>7</b>	<b>8</b>	<b>6</b>	<b>6</b>	<b>3</b>	<b>0</b>	<b>50</b>	

*Shooting By Period*

Period	FG	FG%	3FG	3FG%	FT	FT%
3rd Qtr	5-16	31%	2-6	33%	2-3	67%
4th Qtr	5-11	45%	1-5	20%	4-6	67%
2nd Half	6-9	67%	3-4	75%	3-4	75%
2nd Half	10-27	37%	3-11	27%	6-9	67%
Game	22-50	44.0%	9-21	42.9%	12-17	70.6%

Game Notes:

Officials: Warren Harding, Jr., Kris Denson, Karleena Tobin  
Attendance: 904

Start Time: 2019-01-20 19:06:06  
End Time: 2019-01-20 21:00:01  
Game Duration: 113  
Conference Game;

Score	1st	2nd	3rd	4th	TOT
EUP	12	19	20	9	<b>60</b>
W&M	18	18	14	15	<b>65</b>

Points from (This Period)	EUP	W&M
In the Paint	8	2
Off Turns	4	0
2nd Chance	3	0
Fast Break	2	2
Bench	8	11

**Official Play-By-Play**  
**Elon vs William & Mary**  
**Second Quarter**  
**January 20, 2019 at Kaplan Arena (Kaplan Arena) - Williamsburg, Va.**

**Period 2**

**Starters:**

**Elon:** 0 PERPIGNAN,BRIE; 22 MERCER,LEXI; 42 MAUPIN,EMILY; 1 MUNFORD,SAADIA; 2 LILES,KAYLA;  
**William & Mary:** 2 BOGGS,BIANCA; 10 HODGSON,EVA; 11 POLLARD,NYLA; 25 ROGERS,GABBY; 30 REYNOLDS,VICTORIA;

Time	VISITORS: Elon	Score	Margin	HOME: William & Mary
09:45				MISSED JUMPER by BOGGS,BIANCA
09:41	REBOUND (DEF) by MERCER,LEXI			
09:22	MISSED LAYUP by LILES,KAYLA			
09:19				REBOUND (DEF) by ROGERS,GABBY
09:06	FOUL (PERSONAL) by RYAN,MICHAELA			
09:00				TURNOVER (DRIBBLING) by BIRDSONG,HARPER
08:43	MISSED LAYUP by MAUPIN,EMILY			
08:37				REBOUND (DEF) by ROGERS,GABBY
08:31		20-12	H 8	GOOD! JUMPER by POLLARD,NYLA
08:31				ASSIST by BIRDSONG,HARPER
08:11	MISSED JUMPER by MAUPIN,EMILY			
08:06				REBOUND (DEF) by BOGGS,BIANCA
08:03		22-12	H 10	GOOD! JUMPER by BIRDSONG,HARPER [FB]
08:03				ASSIST by BOGGS,BIANCA
08:02	TIMEOUT 30SEC			
08:02	SUB OUT: RYAN,MICHAELA			
08:02	SUB IN: MUNFORD,SAADIA			
07:53	GOOD! JUMPER by LILES,KAYLA	22-14	H 8	
07:53	ASSIST by MUNFORD,SAADIA			
07:30				TURNOVER (BADPASS) by BIRDSONG,HARPER
07:30	STEAL by MUNFORD,SAADIA			
07:24				FOUL (PERSONAL) by BIRDSONG,HARPER
07:22	MISSED 3PTR by MERCER,LEXI			
07:17				REBOUND (DEF) by BOGGS,BIANCA
07:11		25-14	H 11	GOOD! 3PTR by BIRDSONG,HARPER
07:11				ASSIST by POLLARD,NYLA
06:39	MISSED LAYUP by MERCER,LEXI			
06:39				BLOCK by POLLARD,NYLA
06:34				REBOUND (DEF) by BIRDSONG,HARPER
06:34	FOUL (PERSONAL) by PERPIGNAN,BRIE			
06:34				SUB OUT: BOGGS,BIANCA
06:34				SUB IN: HODGSON,EVA
06:34	SUB OUT: MAUPIN,EMILY			
06:34	SUB IN: POWELL,JAYLIN			
06:07		27-14	H 13	GOOD! JUMPER by ROGERS,GABBY [PNT]
06:07				ASSIST by HODGSON,EVA
05:50	GOOD! LAYUP by MUNFORD,SAADIA	27-16	H 11	
05:50				FOUL (PERSONAL) by ROGERS,GABBY
05:50	GOOD! FT by MUNFORD,SAADIA	27-17	H 10	
05:34				MISSED 3PTR by BIRDSONG,HARPER
05:29	REBOUND (DEF) by MERCER,LEXI			
05:20	GOOD! LAYUP by MUNFORD,SAADIA	27-19	H 8	
05:09				TURNOVER (BADPASS) by HODGSON,EVA
05:09	STEAL by LILES,KAYLA			
05:04	GOOD! LAYUP by LILES,KAYLA [FB]	27-21	H 6	
04:43	FOUL (PERSONAL) by PERPIGNAN,BRIE			
04:43		28-21	H 7	GOOD! FT by REYNOLDS,VICTORIA
04:43				SUB OUT: POLLARD,NYLA
04:43				SUB IN: BOGGS,BIANCA
04:43				SUB OUT: ROGERS,GABBY
04:43				SUB IN: EICHNER,BAILEY
04:43	SUB OUT: PERPIGNAN,BRIE			
04:43	SUB IN: COLON,ARIEL			
04:43				MISSED FT by REYNOLDS,VICTORIA
04:41	REBOUND (DEF) by POWELL,JAYLIN			
04:36				FOUL (PERSONAL) by BOGGS,BIANCA
04:36				SUB OUT: BOGGS,BIANCA
04:36				SUB IN: POLLARD,NYLA
04:14	MISSED LAYUP by LILES,KAYLA			
04:14				BLOCK by REYNOLDS,VICTORIA
04:11	REBOUND (OFF) by LILES,KAYLA			
04:11	MISSED LAYUP by LILES,KAYLA			
04:11	REBOUND (OFF) by POWELL,JAYLIN			
04:11				FOUL (PERSONAL) by BIRDSONG,HARPER
04:02				FOUL (PERSONAL) by EICHNER,BAILEY
04:02	MISSED FT by POWELL,JAYLIN			
04:02	REBOUND (OFF) by TEAM			
04:02				SUB OUT: BIRDSONG,HARPER
04:02				SUB IN: JONES,MISHA
04:02	GOOD! FT by POWELL,JAYLIN	28-22	H 6	
03:53				TURNOVER (TRAVEL) by EICHNER,BAILEY
03:35	MISSED 3PTR by POWELL,JAYLIN			
03:29	REBOUND (OFF) by LILES,KAYLA			
03:29	MISSED LAYUP by LILES,KAYLA			
03:29				REBOUND (DEF) by POLLARD,NYLA
03:29	FOUL (PERSONAL) by LILES,KAYLA			



Time	VISITORS: Elon	Score	Margin	HOME: William & Mary
03:29				SUB OUT: EICHNER, BAILEY
03:29				SUB IN: ROGERS, GABBY
03:18				TURNOVER (LOSTBALL) by HODGSON, EVA
03:18	STEAL by MUNFORD, SAADIA			
03:05				FOUL (PERSONAL) by JONES, MISHA
03:05	GOOD! FT by POWELL, JAYLIN	28-23	H 5	
03:05	GOOD! FT by POWELL, JAYLIN	28-24	H 4	
02:49				FOUL (OFF) by ROGERS, GABBY
02:49				TURNOVER (OFFENSIVE) by ROGERS, GABBY
02:49				SUB OUT: ROGERS, GABBY
02:49				SUB IN: KRAUSE, EMMA
02:28	MISSED 3PTR by LILES, KAYLA			
02:23				REBOUND (DEF) by REYNOLDS, VICTORIA
02:14	FOUL (PERSONAL) by LILES, KAYLA			
02:14		29-24	H 5	GOOD! FT by REYNOLDS, VICTORIA
02:14	SUB OUT: LILES, KAYLA			
02:14	SUB IN: MAUPIN, EMILY			
02:14		30-24	H 6	GOOD! FT by REYNOLDS, VICTORIA
01:51	MISSED LAYUP by MUNFORD, SAADIA			
01:51	REBOUND (OFF) by POWELL, JAYLIN			
01:51				FOUL (PERSONAL) by JONES, MISHA
01:51	GOOD! FT by POWELL, JAYLIN	30-25	H 5	
01:51	GOOD! FT by POWELL, JAYLIN	30-26	H 4	
01:33		33-26	H 7	GOOD! 3PTR by KRAUSE, EMMA
01:33				ASSIST by HODGSON, EVA
01:10	GOOD! LAYUP by MUNFORD, SAADIA	33-28	H 5	
01:10	ASSIST by MAUPIN, EMILY			
00:56		36-28	H 8	GOOD! 3PTR by KRAUSE, EMMA
00:56				ASSIST by JONES, MISHA
00:37	GOOD! 3PTR by POWELL, JAYLIN	36-31	H 5	
00:37	ASSIST by MERCER, LEXI			
00:09				MISSED LAYUP by HODGSON, EVA
00:06	REBOUND (DEF) by POWELL, JAYLIN			
00:00	MISSED LAYUP by COLON, ARIEL			
00:00				BLOCK by KRAUSE, EMMA
00:00	REBOUND (OFF) by MAUPIN, EMILY			

### Elon 31, William & Mary 36

Points from (This Period)	EUP	W&M
In the Paint	8	2
Off Turns	4	0
2nd Chance	3	0
Fast Break	2	2
Bench	8	11

**Official Box Score**  
**Elon vs William & Mary**  
**Second Half Statistics Only**  
**January 20, 2019 at Kaplan Arena (Kaplan Arena) - Williamsburg, Va.**

**Elon 29**

No.	Player	S	Pts	FG	3FG	FT	OR	DR	TR	PF	A	TO	Blk	Stl	Min	+/-
00	Perpignan, Brie		3	1-5	0-2	1-1	1	2	3	3	0	0	0	1	17	1
13	Powell, Jaylin		5	2-5	0-2	1-1	0	7	7	2	0	1	0	0	16	4
21	Colon, Ariel		6	3-5	0-1	0-0	1	1	2	1	2	1	0	0	9	4
22	Mercer, Lexi		2	0-4	0-3	2-4	1	0	1	3	3	2	0	1	17	-1
42	Maupin, Emily		9	4-5	0-0	1-2	1	0	1	1	1	0	2	0	16	6
52	Ryan, Micaela		0	0-0	0-0	0-0	0	0	0	0	0	0	0	0	2	3
01	Munford, Saadia		2	1-3	0-0	0-0	5	1	6	1	1	2	0	0	14	-4
02	Liles, Kayla		2	1-2	0-1	0-0	0	1	1	0	0	1	0	0	9	-13
04	Tasman, Duru		0	0-0	0-0	0-0	0	0	0	0	0	0	0	0	0	0
	Team		0	0-0	0-0	0-0	2	0	2	0	0	0	0	0	0	0
<b>TOTALS</b>			<b>29</b>	<b>12-29</b>	<b>0-9</b>	<b>5-8</b>	<b>11</b>	<b>12</b>	<b>23</b>	<b>11</b>	<b>7</b>	<b>7</b>	<b>2</b>	<b>2</b>	<b>100</b>	

*Shooting By Period*

Period	FG	FG%	3FG	3FG%	FT	FT%
3rd Qtr	9-21	43%	0-6	00%	2-2	100%
4th Qtr	3-8	38%	0-3	00%	3-6	50%
2nd Half	12-29	41%	0-9	00%	5-8	63%
Game	24-59	40.7%	1-16	06.3%	11-17	64.7%

*Last FG Half: EUP 4th-02:08*

**William & Mary 29**

No.	Player	S	Pts	FG	3FG	FT	OR	DR	TR	PF	A	TO	Blk	Stl	Min	+/-
02	Boggs, Bianca		6	2-4	0-1	2-4	1	0	1	3	0	0	0	0	15	-3
05	Jones, Misha		5	1-1	1-1	2-2	0	2	2	0	1	0	0	0	8	9
10	Hodgson, Eva		2	1-2	0-1	0-0	2	2	4	0	2	0	0	1	20	0
11	Pollard, Nyla		0	0-4	0-2	0-0	0	0	0	0	1	2	0	0	17	4
12	Birdsong, Harper		5	2-7	1-3	0-0	1	0	1	0	1	1	0	0	7	-3
15	Krause, Emma		3	1-3	1-2	0-0	0	0	0	1	0	0	0	0	5	-1
21	Eichner, Bailey		0	0-0	0-0	0-0	0	0	0	0	0	0	0	0	0	0
25	Rogers, Gabby		3	1-1	0-0	1-1	1	0	1	1	0	0	1	0	10	-6
30	Reynolds, Victoria		5	2-5	0-1	1-2	1	2	3	1	2	0	0	1	20	0
	Team		0	0-0	0-0	0-0	1	1	2	0	0	0	0	0	0	0
<b>TOTALS</b>			<b>29</b>	<b>10-27</b>	<b>3-11</b>	<b>6-9</b>	<b>7</b>	<b>7</b>	<b>14</b>	<b>6</b>	<b>7</b>	<b>3</b>	<b>1</b>	<b>2</b>	<b>100</b>	

*Shooting By Period*

Period	FG	FG%	3FG	3FG%	FT	FT%
3rd Qtr	5-16	31%	2-6	33%	2-3	67%
4th Qtr	5-11	45%	1-5	20%	4-6	67%
2nd Half	10-27	37%	3-11	27%	6-9	67%
Game	22-50	44.0%	9-21	42.9%	12-17	70.6%

*Last FG Half: W&M 4th-06:11*

Game Notes:

Officials: Warren Harding, Jr., Kris Denson, Karleena Tobin  
 Attendance: 904

Start Time: 2019-01-20 19:06:06  
 End Time: 2019-01-20 21:00:01  
 Game Duration: 113  
 Conference Game;

Score	1st	2nd	3rd	4th	TOT
EUP	12	19	20	9	<b>60</b>
W&M	18	18	14	15	<b>65</b>

Points from (This Period)	EUP	W&M
In the Paint	24	8
Off Turns	4	11
2nd Chance	5	1
Fast Break	0	4
Bench	11	13

**Official Box Score**  
**Elon vs William & Mary**  
**Third Quarter Statistics Only**  
**January 20, 2019 at Kaplan Arena (Kaplan Arena) - Williamsburg, Va.**

**Elon 29**

No.	Player	S	Pts	FG	3FG	FT	OR	DR	TR	PF	A	TO	Blk	Stl	Min	+/-
00	Perpignan, Brie		3	1-4	0-1	1-1	1	1	2	0	0	0	0	1	9	3
01	Munford, Saadia		2	1-3	0-0	0-0	3	0	3	1	0	0	0	0	4	2
02	Liles, Kayla		2	1-2	0-1	0-0	0	1	1	0	0	0	0	0	5	-5
22	Mercer, Lexi		0	0-2	0-2	0-0	0	0	0	1	1	1	0	0	8	4
42	Maupin, Emily		4	2-3	0-0	0-0	1	0	1	1	1	0	2	0	8	10
04	Tasman, Duru		0	0-0	0-0	0-0	0	0	0	0	0	0	0	0	0	0
13	Powell, Jaylin		3	1-2	0-1	1-1	0	4	4	1	0	1	0	0	7	7
21	Colon, Ariel		6	3-5	0-1	0-0	1	1	2	0	2	0	0	0	7	6
52	Ryan, Micaela		0	0-0	0-0	0-0	0	0	0	0	0	0	0	0	2	3
	Team						2	0	2	0		0				
<b>TOTALS</b>			<b>20</b>	<b>9-21</b>	<b>0-6</b>	<b>2-2</b>	<b>8</b>	<b>7</b>	<b>15</b>	<b>4</b>	<b>4</b>	<b>2</b>	<b>2</b>	<b>1</b>	<b>50</b>	

*Shooting By Period*

Period	FG	FG%	3FG	3FG%	FT	FT%
2nd Half	0-0	0%	0-0	0%	0-0	0%
Game	24-59	40.7%	1-16	06.3%	11-17	64.7%

**William & Mary 29**

No.	Player	S	Pts	FG	3FG	FT	OR	DR	TR	PF	A	TO	Blk	Stl	Min	+/-
02	Boggs, Bianca		3	1-3	0-1	1-2	0	0	0	0	0	0	0	0	10	-6
10	Hodgson, Eva		2	1-1	0-0	0-0	2	2	4	0	2	0	0	1	10	-6
11	Pollard, Nyla		0	0-3	0-1	0-0	0	0	0	0	1	1	0	0	8	-2
25	Rogers, Gabby		3	1-1	0-0	1-1	0	0	0	1	0	0	1	0	5	-6
30	Reynolds, Victoria		0	0-1	0-0	0-0	1	1	2	0	2	0	0	0	10	-6
05	Jones, Misha		0	0-0	0-0	0-0	0	0	0	0	0	0	0	0	1	1
12	Birdsong, Harper		3	1-4	1-2	0-0	1	0	1	0	0	0	0	0	2	-4
15	Krause, Emma		3	1-3	1-2	0-0	0	0	0	1	0	0	0	0	5	-1
21	Eichner, Bailey		0	0-0	0-0	0-0	0	0	0	0	0	0	0	0	0	0
	Team						0	1	1	0		0				
<b>TOTALS</b>			<b>14</b>	<b>5-16</b>	<b>2-6</b>	<b>2-3</b>	<b>4</b>	<b>4</b>	<b>8</b>	<b>2</b>	<b>5</b>	<b>1</b>	<b>1</b>	<b>1</b>	<b>50</b>	

*Shooting By Period*

Period	FG	FG%	3FG	3FG%	FT	FT%
2nd Half	0-0	0%	0-0	0%	0-0	0%
Game	22-50	44.0%	9-21	42.9%	12-17	70.6%

Game Notes:

Officials: Warren Harding, Jr., Kris Denson, Karleena Tobin  
Attendance: 904

Start Time: 2019-01-20 19:06:06  
End Time: 2019-01-20 21:00:01  
Game Duration: 113  
Conference Game;

Score	1st	2nd	3rd	4th	TOT
EUP	12	19	20	9	<b>60</b>
W&M	18	18	14	15	<b>65</b>

Points from (This Period)	EUP	W&M
In the Paint	18	4
Off Turns	2	4
2nd Chance	4	0
Fast Break	0	3
Bench	9	6

**Official Play-By-Play**  
**Elon vs William & Mary**  
**Third Quarter**  
**January 20, 2019 at Kaplan Arena (Kaplan Arena) - Williamsburg, Va.**

**Period 3**

**Starters:**

**Elon:** 0 PERPIGNAN,BRIE; 22 MERCER,LEXI; 42 MAUPIN,EMILY; 1 MUNFORD,SAADIA; 2 LILES,KAYLA;  
**William & Mary:** 2 BOGGS,BIANCA; 10 HODGSON,EVA; 11 POLLARD,NYLA; 25 ROGERS,GABBY; 30 REYNOLDS,VICTORIA;

Time	VISITORS: Elon	Score	Margin	HOME: William & Mary
09:44	TURNOVER (BADPASS) by MERCER,LEXI			
09:44				STEAL by HODGSON,EVA
09:40		38-31	H 7	GOOD! LAYUP by ROGERS,GABBY [FB]
09:40				ASSIST by HODGSON,EVA
09:40	FOUL (PERSONAL) by MUNFORD,SAADIA			
09:40		39-31	H 8	GOOD! FT by ROGERS,GABBY [FB]
09:28	MISSED 3PTR by MERCER,LEXI			
09:26				REBOUND (DEF) by HODGSON,EVA
09:00				TURNOVER (LOSTBALL) by POLLARD,NYLA
09:00	STEAL by PERPIGNAN,BRIE			
08:29	MISSED 3PTR by MERCER,LEXI			
08:27	REBOUND (OFF) by TEAM			
08:19	MISSED JUMPER by PERPIGNAN,BRIE			
08:15	REBOUND (OFF) by MUNFORD,SAADIA			
08:14	GOOD! JUMPER by MUNFORD,SAADIA	39-33	H 6	
07:51				MISSED 3PTR by POLLARD,NYLA
07:44	REBOUND (DEF) by LILES,KAYLA			
07:32	MISSED 3PTR by LILES,KAYLA			
07:29	REBOUND (OFF) by MUNFORD,SAADIA			
07:13	MISSED 3PTR by PERPIGNAN,BRIE			
07:09	REBOUND (OFF) by MUNFORD,SAADIA			
07:09	MISSED LAYUP by MUNFORD,SAADIA			
07:09	REBOUND (OFF) by TEAM			
07:09	SUB OUT: LILES,KAYLA			
07:09	SUB IN: POWELL,JAYLIN			
07:09	SUB OUT: PERPIGNAN,BRIE			
07:09	SUB IN: COLON,ARIEL			
06:53	MISSED LAYUP by MAUPIN,EMILY			
06:53				BLOCK by ROGERS,GABBY
06:46	GOOD! LAYUP by MAUPIN,EMILY	39-35	H 4	
06:46	REBOUND (OFF) by MAUPIN,EMILY			
06:43				MISSED LAYUP by POLLARD,NYLA
06:42	REBOUND (DEF) by POWELL,JAYLIN			
06:32	GOOD! LAYUP by POWELL,JAYLIN	39-37	H 2	
06:32	ASSIST by COLON,ARIEL			
06:32				FOUL (PERSONAL) by ROGERS,GABBY
06:32				SUB OUT: POLLARD,NYLA
06:32				SUB IN: BIRDSONG,HARPER
06:32	SUB OUT: MUNFORD,SAADIA			
06:32	SUB IN: PERPIGNAN,BRIE			
06:32	GOOD! FT by POWELL,JAYLIN	39-38	H 1	
06:10				MISSED LAYUP by BOGGS,BIANCA
06:07				REBOUND (OFF) by HODGSON,EVA
06:04				MISSED 3PTR by BIRDSONG,HARPER
06:01	REBOUND (DEF) by POWELL,JAYLIN			
05:40	GOOD! LAYUP by COLON,ARIEL	39-40	V 1	
05:40	ASSIST by MAUPIN,EMILY			
05:31				MISSED LAYUP by BIRDSONG,HARPER
05:31	BLOCK by MAUPIN,EMILY			
05:23				REBOUND (OFF) by BIRDSONG,HARPER
05:23				MISSED LAYUP by BIRDSONG,HARPER
05:23	REBOUND (DEF) by POWELL,JAYLIN			
05:19	MISSED 3PTR by POWELL,JAYLIN			
05:15	REBOUND (OFF) by PERPIGNAN,BRIE			
05:13	MISSED LAYUP by PERPIGNAN,BRIE			
05:09				REBOUND (DEF) by HODGSON,EVA
05:08				SUB OUT: ROGERS,GABBY
05:08				SUB IN: KRAUSE,EMMA
05:02		42-40	H 2	GOOD! 3PTR by BIRDSONG,HARPER
05:02				ASSIST by HODGSON,EVA
04:38	MISSED JUMPER by COLON,ARIEL			
04:30	REBOUND (OFF) by COLON,ARIEL			
04:30	GOOD! LAYUP by COLON,ARIEL	42-42	T	
04:21				MISSED JUMPER by REYNOLDS,VICTORIA
04:17	REBOUND (DEF) by COLON,ARIEL			
04:06	GOOD! LAYUP by PERPIGNAN,BRIE	42-44	V 2	
04:06				FOUL (PERSONAL) by KRAUSE,EMMA
04:06				
04:06				SUB OUT: BIRDSONG,HARPER
04:06				SUB IN: POLLARD,NYLA
04:06	SUB OUT: COLON,ARIEL			
04:06	SUB IN: RYAN,MICAELA			
04:06	GOOD! FT by PERPIGNAN,BRIE	42-45	V 3	
03:51	FOUL (PERSONAL) by MAUPIN,EMILY			
03:51	SUB OUT: MERCER,LEXI			
03:51	SUB IN: COLON,ARIEL			

Time	VISITORS: Elon	Score	Margin	HOME: William & Mary
03:44		44-45	V 1	GOOD! JUMPER by HODGSON,EVA
03:44				ASSIST by REYNOLDS,VICTORIA
03:25	GOOD! LAYUP by COLON,ARIEL	44-47	V 3	
03:04				MISSED JUMPER by POLLARD,NYLA
03:01				REBOUND (OFF) by HODGSON,EVA
02:59	FOUL (PERSONAL) by POWELL,JAYLIN			
02:53				MISSED 3PTR by KRAUSE,EMMA
02:53	BLOCK by MAUPIN,EMILY			
02:51	REBOUND (DEF) by PERPIGNAN,BRIE			
02:30	GOOD! LAYUP by MAUPIN,EMILY	44-49	V 5	
02:30	ASSIST by COLON,ARIEL			
02:06				MISSED LAYUP by KRAUSE,EMMA
02:03				REBOUND (OFF) by REYNOLDS,VICTORIA
02:01				MISSED 3PTR by BOGGS,BIANCA
01:58	REBOUND (DEF) by POWELL,JAYLIN			
01:42	MISSED 3PTR by COLON,ARIEL			
01:42				REBOUND (DEF) by TEAM
01:42	SUB OUT: MAUPIN,EMILY			
01:42	SUB IN: LILES,KAYLA			
01:42	SUB OUT: RYAN,MICHAELA			
01:42	SUB IN: MERCER,LEXI			
01:22		46-49	V 3	GOOD! LAYUP by BOGGS,BIANCA
01:22				ASSIST by REYNOLDS,VICTORIA
01:04	GOOD! LAYUP by LILES,KAYLA	46-51	V 5	
01:04	ASSIST by MERCER,LEXI			
00:49		49-51	V 2	GOOD! 3PTR by KRAUSE,EMMA
00:49				ASSIST by POLLARD,NYLA
00:31	TURNOVER (LOSTBALL) by POWELL,JAYLIN			
00:31				SUB OUT: KRAUSE,EMMA
00:31				SUB IN: JONES,MISHA
00:31	SUB OUT: PERPIGNAN,BRIE			
00:31	SUB IN: MUNFORD,SAADIA			
00:17	FOUL (PERSONAL) by MERCER,LEXI			
00:17				MISSED FT by BOGGS,BIANCA
00:17				REBOUND (OFF) by TEAM
00:17		50-51	V 1	GOOD! FT by BOGGS,BIANCA
00:02	MISSED JUMPER by MUNFORD,SAADIA			
00:02				REBOUND (DEF) by REYNOLDS,VICTORIA

### Elon 51, William & Mary 50

Points from (This Period)	EUP	W&M
In the Paint	18	4
Off Turns	2	4
2nd Chance	4	0
Fast Break	0	3
Bench	9	6

**Official Box Score**  
**Elon vs William & Mary**  
**Fourth Quarter Statistics Only**  
**January 20, 2019 at Kaplan Arena (Kaplan Arena) - Williamsburg, Va.**

**Elon 9**

No.	Player	S	Pts	FG	3FG	FT	OR	DR	TR	PF	A	TO	Blk	Stl	Min	+/-
00	Perpignan, Brie		0	0-1	0-1	0-0	0	1	1	3	0	0	0	0	8	-2
01	Munford, Saadia		0	0-0	0-0	0-0	2	1	3	0	1	2	0	0	10	-6
02	Liles, Kayla		0	0-0	0-0	0-0	0	0	0	0	0	1	0	0	4	-8
22	Mercer, Lexi		2	0-2	0-1	2-4	1	0	1	2	2	1	0	1	9	-5
42	Maupin, Emily		5	2-2	0-0	1-2	0	0	0	0	0	0	0	0	8	-4
04	Tasman, Duru		0	0-0	0-0	0-0	0	0	0	0	0	0	0	0	0	0
13	Powell, Jaylin		2	1-3	0-1	0-0	0	3	3	1	0	0	0	0	9	-3
21	Colon, Ariel		0	0-0	0-0	0-0	0	0	0	1	0	1	0	0	2	-2
52	Ryan, Micaela		0	0-0	0-0	0-0	0	0	0	0	0	0	0	0	0	0
	Team						0	0	0	0		0				
<b>TOTALS</b>			<b>9</b>	<b>3-8</b>	<b>0-3</b>	<b>3-6</b>	<b>3</b>	<b>5</b>	<b>8</b>	<b>7</b>	<b>3</b>	<b>5</b>	<b>0</b>	<b>1</b>	<b>50</b>	

*Shooting By Period*

Period	FG	FG%	3FG	3FG%	FT	FT%
Game	24-59	40.7%	1-16	06.3%	11-17	64.7%

**William & Mary 15**

No.	Player	S	Pts	FG	3FG	FT	OR	DR	TR	PF	A	TO	Blk	Stl	Min	+/-
02	Boggs, Bianca		3	1-1	0-0	1-2	1	0	1	3	0	0	0	0	5	3
10	Hodgson, Eva		0	0-1	0-1	0-0	0	0	0	0	0	0	0	0	10	6
11	Pollard, Nyla		0	0-1	0-1	0-0	0	0	0	0	0	1	0	0	9	6
25	Rogers, Gabby		0	0-0	0-0	0-0	1	0	1	0	0	0	0	0	5	0
30	Reynolds, Victoria		5	2-4	0-1	1-2	0	1	1	1	0	0	0	1	10	6
05	Jones, Misha		5	1-1	1-1	2-2	0	2	2	0	1	0	0	0	7	8
12	Birdsong, Harper		2	1-3	0-1	0-0	0	0	0	0	1	1	0	0	5	1
15	Krause, Emma		0	0-0	0-0	0-0	0	0	0	0	0	0	0	0	0	0
21	Eichner, Bailey		0	0-0	0-0	0-0	0	0	0	0	0	0	0	0	0	0
	Team						1	0	1	0		0				
<b>TOTALS</b>			<b>15</b>	<b>5-11</b>	<b>1-5</b>	<b>4-6</b>	<b>3</b>	<b>3</b>	<b>6</b>	<b>4</b>	<b>2</b>	<b>2</b>	<b>0</b>	<b>1</b>	<b>50</b>	

*Shooting By Period*

Period	FG	FG%	3FG	3FG%	FT	FT%
Game	22-50	44.0%	9-21	42.9%	12-17	70.6%

Game Notes:

Officials: Warren Harding, Jr., Kris Denson, Karleena Tobin  
Attendance: 904

Start Time: 2019-01-20 19:06:06  
End Time: 2019-01-20 21:00:01  
Game Duration: 113  
Conference Game;

Score	1st	2nd	3rd	4th	TOT
EUP	12	19	20	9	<b>60</b>
W&M	18	18	14	15	<b>65</b>

Points from (This Period)	EUP	W&M
In the Paint	6	4
Off Turns	2	7
2nd Chance	1	1
Fast Break	0	1
Bench	2	7

**Official Play-By-Play**  
**Elon vs William & Mary**  
**Fourth Quarter**  
**January 20, 2019 at Kaplan Arena (Kaplan Arena) - Williamsburg, Va.**

**Period 4**

**Starters:**

**Elon:** 0 PERPIGNAN,BRIE; 22 MERCER,LEXI; 42 MAUPIN,EMILY; 1 MUNFORD,SAADIA; 2 LILES,KAYLA;

**William & Mary:** 2 BOGGS,BIANCA; 10 HODGSON,EVA; 11 POLLARD,NYLA; 25 ROGERS,GABBY; 30 REYNOLDS,VICTORIA;

Time	VISITORS: <b>Elon</b>	Score	Margin	HOME: <b>William &amp; Mary</b>
09:34				TURNOVER (BADPASS) by POLLARD,NYLA
09:34	STEAL by MERCER,LEXI			
09:34				FOUL (PERSONAL) by BOGGS,BIANCA
09:20	FOUL (OFF) by COLON,ARIEL			
09:20	TURNOVER (OFFENSIVE) by COLON,ARIEL			
09:03		52-51	H 1	GOOD! LAYUP by BOGGS,BIANCA
08:46	TURNOVER (BADPASS) by MUNFORD,SAADIA			
08:25	FOUL (PERSONAL) by POWELL,JAYLIN			
08:21	SUB OUT: COLON,ARIEL			
08:21	SUB IN: MAUPIN,EMILY			
08:21	SUB OUT: POWELL,JAYLIN			
08:21	SUB IN: PERPIGNAN,BRIE			
08:13		54-51	H 3	GOOD! JUMPER by REYNOLDS,VICTORIA
08:13				ASSIST by JONES,MISHA
07:57				FOUL (PERSONAL) by BOGGS,BIANCA
07:57	MISSED FT by MERCER,LEXI			
07:57	REBOUND (OFF) by TEAM			
07:57				SUB OUT: BOGGS,BIANCA
07:57				SUB IN: BIRDSONG,HARPER
07:57	GOOD! FT by MERCER,LEXI	54-52	H 2	
07:29		56-52	H 4	GOOD! JUMPER by BIRDSONG,HARPER
07:19	TURNOVER (BADPASS) by LILES,KAYLA			
07:01	FOUL (PERSONAL) by MERCER,LEXI			
07:01	SUB OUT: LILES,KAYLA			
07:01	SUB IN: POWELL,JAYLIN			
06:54		58-52	H 6	GOOD! JUMPER by REYNOLDS,VICTORIA [PNT]
06:35	GOOD! LAYUP by MAUPIN,EMILY	58-54	H 4	
06:35	ASSIST by MUNFORD,SAADIA			
06:11		61-54	H 7	GOOD! 3PTR by JONES,MISHA
06:11				ASSIST by BIRDSONG,HARPER
06:06	TIMEOUT 30SEC			
05:47	MISSED LAYUP by POWELL,JAYLIN			
05:43				REBOUND (DEF) by JONES,MISHA
05:26				TURNOVER (TRAVEL) by BIRDSONG,HARPER
05:12	GOOD! LAYUP by MAUPIN,EMILY	61-56	H 5	
05:12	ASSIST by MERCER,LEXI			
04:56				TIMEOUT 30SEC
04:56				SUB OUT: POLLARD,NYLA
04:56				SUB IN: ROGERS,GABBY
04:50				MISSED 3PTR by BIRDSONG,HARPER
04:46	REBOUND (DEF) by POWELL,JAYLIN			
04:20				FOUL (PERSONAL) by REYNOLDS,VICTORIA
04:20	GOOD! FT by MAUPIN,EMILY	61-57	H 4	
04:20	MISSED FT by MAUPIN,EMILY			
04:18	REBOUND (OFF) by MUNFORD,SAADIA			
04:08	FOUL (OFF) by MERCER,LEXI			
04:08	TURNOVER (OFFENSIVE) by MERCER,LEXI			
03:53				MISSED JUMPER by REYNOLDS,VICTORIA
03:48	REBOUND (DEF) by POWELL,JAYLIN			
03:36	TURNOVER (BADPASS) by MUNFORD,SAADIA			
03:36				STEAL by REYNOLDS,VICTORIA
03:34	FOUL (PERSONAL) by PERPIGNAN,BRIE			
03:34		62-57	H 5	GOOD! FT by REYNOLDS,VICTORIA [FB]
03:34	SUB OUT: MERCER,LEXI			
03:34	SUB IN: LILES,KAYLA			
03:33				MISSED FT by REYNOLDS,VICTORIA
03:33				REBOUND (OFF) by TEAM
03:33				SUB OUT: BIRDSONG,HARPER
03:33				SUB IN: BOGGS,BIANCA
03:33				SUB OUT: JONES,MISHA
03:33				SUB IN: POLLARD,NYLA
03:13				MISSED 3PTR by REYNOLDS,VICTORIA
03:07				REBOUND (OFF) by ROGERS,GABBY
02:40				MISSED 3PTR by POLLARD,NYLA
02:39				REBOUND (OFF) by BOGGS,BIANCA
02:39	FOUL (PERSONAL) by PERPIGNAN,BRIE			
02:39		63-57	H 6	GOOD! FT by BOGGS,BIANCA
02:39	SUB OUT: LILES,KAYLA			
02:39	SUB IN: MERCER,LEXI			
02:39				MISSED FT by BOGGS,BIANCA
02:36	REBOUND (DEF) by MUNFORD,SAADIA			
02:08	GOOD! LAYUP by POWELL,JAYLIN	63-59	H 4	
02:08	ASSIST by MERCER,LEXI			
01:37				MISSED 3PTR by HODGSON,EVA
01:32	REBOUND (DEF) by PERPIGNAN,BRIE			
01:17	TIMEOUT TEAM			

Time	VISITORS: Elon	Score	Margin	HOME: William & Mary
01:06	MISSED JUMPER by MERCER,LEXI			
01:05	REBOUND (OFF) by MERCER,LEXI			
01:05				FOUL (PERSONAL) by BOGGS,BIANCA
01:05				SUB OUT: BOGGS,BIANCA
01:05				SUB IN: BIRDSONG,HARPER
01:05	MISSED FT by MERCER,LEXI			
01:05	REBOUND (OFF) by TEAM			
01:05	GOOD! FT by MERCER,LEXI	63-60	H 3	
00:49				MISSED JUMPER by BIRDSONG,HARPER
00:44	REBOUND (DEF) by POWELL,JAYLIN			
00:33	TIMEOUT 30SEC			
00:33				SUB OUT: BIRDSONG,HARPER
00:33				SUB IN: JONES,MISHA
00:18	MISSED 3PTR by PERPIGNAN,BRIE			
00:13	REBOUND (OFF) by MUNFORD,SAADIA			
00:11	MISSED 3PTR by POWELL,JAYLIN			
00:07				REBOUND (DEF) by JONES,MISHA
00:07	FOUL (PERSONAL) by PERPIGNAN,BRIE			
00:07	SUB OUT: PERPIGNAN,BRIE			
00:07	SUB IN: LILES,KAYLA			
00:07		64-60	H 4	GOOD! FT by JONES,MISHA
00:07				TIMEOUT 30SEC
00:07		65-60	H 5	GOOD! FT by JONES,MISHA
00:01	MISSED 3PTR by MERCER,LEXI			
00:01				REBOUND (DEF) by REYNOLDS,VICTORIA

### Elon 60, William & Mary 65

Points from (This Period)	EUP	W&M
In the Paint	6	4
Off Turns	2	7
2nd Chance	1	1
Fast Break	0	1
Bench	2	7



**Official Scoring/Possession Reference Chart**  
**Elon vs William & Mary**  
**Period 1**  
**January 20, 2019 at Kaplan Arena (Kaplan Arena) - Williamsburg, Va.**

**Period 1**

**Starters:**

**Elon:** 0 PERPIGNAN,BRIE; 22 MERCER,LEXI; 42 MAUPIN,EMILY; 1 MUNFORD,SAADIA; 2 LILES,KAYLA;

**William & Mary:** 2 BOGGS,BIANCA; 10 HODGSON,EVA; 11 POLLARD,NYLA; 25 ROGERS,GABBY; 30 REYNOLDS,VICTORIA;

Time	VISITORS: Elon	Score	Margin	HOME: William & Mary
08:48	GOOD! JUMPER by MAUPIN,EMILY [PNT]	0-2	V 2	
07:30		3-2	H 1	GOOD! 3PTR by BOGGS,BIANCA [FB]
07:06	GOOD! LAYUP by PERPIGNAN,BRIE	3-4	V 1	
06:19		4-4	T	GOOD! FT by REYNOLDS,VICTORIA [FB]
05:59		5-4	H 1	GOOD! FT by BOGGS,BIANCA [FB]
05:59		6-4	H 2	GOOD! FT by BOGGS,BIANCA [FB]
05:36		8-4	H 4	GOOD! LAYUP by HODGSON,EVA
04:27		11-4	H 7	GOOD! 3PTR by JONES,MISHA [FB]
04:05	GOOD! LAYUP by COLON,ARIEL	11-6	H 5	
03:25		13-6	H 7	GOOD! LAYUP by BOGGS,BIANCA
03:07	GOOD! LAYUP by LILES,KAYLA	13-8	H 5	
02:26		16-8	H 8	GOOD! 3PTR by BIRDSONG,HARPER [FB]
01:54		18-8	H 10	GOOD! JUMPER by REYNOLDS,VICTORIA
01:31	GOOD! JUMPER by PERPIGNAN,BRIE [PNT]	18-10	H 8	
00:13	GOOD! LAYUP by PERPIGNAN,BRIE	18-12	H 6	

**Elon 12, William & Mary 18**

**Official Scoring/Possession Reference Chart**  
**Elon vs William & Mary**  
**Period 2**  
**January 20, 2019 at Kaplan Arena (Kaplan Arena) - Williamsburg, Va.**

**Period 2**

**Starters:**

**Elon:** 0 PERPIGNAN, BRIE; 22 MERCER, LEXI; 42 MAUPIN, EMILY; 1 MUNFORD, SAADIA; 2 LILES, KAYLA;

**William & Mary:** 2 BOGGS, BIANCA; 10 HODGSON, EVA; 11 POLLARD, NYLA; 25 ROGERS, GABBY; 30 REYNOLDS, VICTORIA;

Time	VISITORS: Elon	Score	Margin	HOME: William & Mary
08:31		20-12	H 8	GOOD! JUMPER by POLLARD, NYLA
08:03		22-12	H 10	GOOD! JUMPER by BIRDSONG, HARPER [FB]
07:53	GOOD! JUMPER by LILES, KAYLA	22-14	H 8	
07:11		25-14	H 11	GOOD! 3PTR by BIRDSONG, HARPER
06:07		27-14	H 13	GOOD! JUMPER by ROGERS, GABBY [PNT]
05:50	GOOD! LAYUP by MUNFORD, SAADIA	27-16	H 11	
05:50	GOOD! FT by MUNFORD, SAADIA	27-17	H 10	
05:20	GOOD! LAYUP by MUNFORD, SAADIA	27-19	H 8	
05:04	GOOD! LAYUP by LILES, KAYLA [FB]	27-21	H 6	
04:43		28-21	H 7	GOOD! FT by REYNOLDS, VICTORIA
04:02	GOOD! FT by POWELL, JAYLIN	28-22	H 6	
03:05	GOOD! FT by POWELL, JAYLIN	28-23	H 5	
03:05	GOOD! FT by POWELL, JAYLIN	28-24	H 4	
02:14		29-24	H 5	GOOD! FT by REYNOLDS, VICTORIA
02:14		30-24	H 6	GOOD! FT by REYNOLDS, VICTORIA
01:51	GOOD! FT by POWELL, JAYLIN	30-25	H 5	
01:51	GOOD! FT by POWELL, JAYLIN	30-26	H 4	
01:33		33-26	H 7	GOOD! 3PTR by KRAUSE, EMMA
01:10	GOOD! LAYUP by MUNFORD, SAADIA	33-28	H 5	
00:56		36-28	H 8	GOOD! 3PTR by KRAUSE, EMMA
00:37	GOOD! 3PTR by POWELL, JAYLIN	36-31	H 5	

**Elon 31, William & Mary 36**

**Official Scoring/Possession Reference Chart**  
**Elon vs William & Mary**  
**Period 3**  
**January 20, 2019 at Kaplan Arena (Kaplan Arena) - Williamsburg, Va.**

**Period 3**

**Starters:**

**Elon:** 0 PERPIGNAN,BRIE; 22 MERCER,LEXI; 42 MAUPIN,EMILY; 1 MUNFORD,SAADIA; 2 LILES,KAYLA;

**William & Mary:** 2 BOGGS,BIANCA; 10 HODGSON,EVA; 11 POLLARD,NYLA; 25 ROGERS,GABBY; 30 REYNOLDS,VICTORIA;

Time	VISITORS: Elon	Score	Margin	HOME: William & Mary
09:40		38-31	H 7	GOOD! LAYUP by ROGERS,GABBY [FB]
09:40		39-31	H 8	GOOD! FT by ROGERS,GABBY [FB]
08:14	GOOD! JUMPER by MUNFORD,SAADIA	39-33	H 6	
06:46	GOOD! LAYUP by MAUPIN,EMILY	39-35	H 4	
06:32	GOOD! LAYUP by POWELL,JAYLIN	39-37	H 2	
06:32	GOOD! FT by POWELL,JAYLIN	39-38	H 1	
05:40	GOOD! LAYUP by COLON,ARIEL	39-40	V 1	
05:02		42-40	H 2	GOOD! 3PTR by BIRDSONG,HARPER
04:30	GOOD! LAYUP by COLON,ARIEL	42-42	T	
04:06	GOOD! LAYUP by PERPIGNAN,BRIE	42-44	V 2	
04:06	GOOD! FT by PERPIGNAN,BRIE	42-45	V 3	
03:44		44-45	V 1	GOOD! JUMPER by HODGSON,EVA
03:25	GOOD! LAYUP by COLON,ARIEL	44-47	V 3	
02:30	GOOD! LAYUP by MAUPIN,EMILY	44-49	V 5	
01:22		46-49	V 3	GOOD! LAYUP by BOGGS,BIANCA
01:04	GOOD! LAYUP by LILES,KAYLA	46-51	V 5	
00:49		49-51	V 2	GOOD! 3PTR by KRAUSE,EMMA
00:17		50-51	V 1	GOOD! FT by BOGGS,BIANCA

**Elon 51, William & Mary 50**

**Official Scoring/Possession Reference Chart**  
**Elon vs William & Mary**  
**Period 4**  
**January 20, 2019 at Kaplan Arena (Kaplan Arena) - Williamsburg, Va.**

**Period 4**

**Starters:**

**Elon:** 0 PERPIGNAN, BRIE; 22 MERCER, LEXI; 42 MAUPIN, EMILY; 1 MUNFORD, SAADIA; 2 LILES, KAYLA;

**William & Mary:** 2 BOGGS, BIANCA; 10 HODGSON, EVA; 11 POLLARD, NYLA; 25 ROGERS, GABBY; 30 REYNOLDS, VICTORIA;

Time	VISITORS: Elon	Score	Margin	HOME: William & Mary
09:03		52-51	H 1	GOOD! LAYUP by BOGGS, BIANCA
08:13		54-51	H 3	GOOD! JUMPER by REYNOLDS, VICTORIA
07:57	GOOD! FT by MERCER, LEXI	54-52	H 2	
07:29		56-52	H 4	GOOD! JUMPER by BIRDSONG, HARPER
06:54		58-52	H 6	GOOD! JUMPER by REYNOLDS, VICTORIA [PNT]
06:35	GOOD! LAYUP by MAUPIN, EMILY	58-54	H 4	
06:11		61-54	H 7	GOOD! 3PTR by JONES, MISHA
05:12	GOOD! LAYUP by MAUPIN, EMILY	61-56	H 5	
04:20	GOOD! FT by MAUPIN, EMILY	61-57	H 4	
03:34		62-57	H 5	GOOD! FT by REYNOLDS, VICTORIA [FB]
02:39		63-57	H 6	GOOD! FT by BOGGS, BIANCA
02:08	GOOD! LAYUP by POWELL, JAYLIN	63-59	H 4	
01:05	GOOD! FT by MERCER, LEXI	63-60	H 3	
00:07		64-60	H 4	GOOD! FT by JONES, MISHA
00:07		65-60	H 5	GOOD! FT by JONES, MISHA

**Elon 60, William & Mary 65**

**Official Substitutions Log**  
**Elon vs William & Mary**  
**Period 1**  
**January 20, 2019 at Kaplan Arena (Kaplan Arena) - Williamsburg, Va.**

VISITORS: <b>Elon</b>	Time	Score	HOME: <b>William &amp; Mary</b>
0 PERPIGNAN, BRIE			2 BOGGS, BIANCA
22 MERCER, LEXI			10 HODGSON, EVA
42 MAUPIN, EMILY			11 POLLARD, NYLA
1 MUNFORD, SAADIA			25 ROGERS, GABBY
2 LILES, KAYLA			30 REYNOLDS, VICTORIA
SUB OUT: 42 MAUPIN, EMILY	06:33	4-3	
SUB IN: 4 TASMAN, DURU	06:33		
SUB OUT: 1 MUNFORD, SAADIA	06:33		
SUB IN: 21 COLON, ARIEL	06:33		
SUB OUT: 2 LILES, KAYLA	06:33		
SUB IN: 13 POWELL, JAYLIN	06:33		
	05:59	4-5	SUB OUT: REYNOLDS, VICTORIA
	05:59		SUB IN: JONES, MISHA
SUB OUT: 0 PERPIGNAN, BRIE	05:19	4-8	
SUB IN: 42 MAUPIN, EMILY	05:19		
SUB OUT: 4 TASMAN, DURU	05:19		
SUB IN: 1 MUNFORD, SAADIA	05:19		
SUB OUT: 21 COLON, ARIEL	03:51	6-11	
SUB IN: 0 PERPIGNAN, BRIE	03:51		
	03:38	6-11	SUB OUT: POLLARD, NYLA
	03:38		SUB IN: BIRDSONG, HARPER
SUB OUT: 22 MERCER, LEXI	03:38		
SUB IN: 2 LILES, KAYLA	03:38		
	02:34	8-13	SUB OUT: JONES, MISHA
	02:34		SUB IN: REYNOLDS, VICTORIA
	02:34		SUB OUT: ROGERS, GABBY
	02:34		SUB IN: KRAUSE, EMMA
SUB OUT: 13 POWELL, JAYLIN	00:54	10-18	
SUB IN: 22 MERCER, LEXI	00:54		
SUB OUT: 1 MUNFORD, SAADIA	00:54		
SUB IN: 52 RYAN, MICAELA	00:54		
	00:54		SUB OUT: BOGGS, BIANCA
	00:54		SUB IN: POLLARD, NYLA

**Elon 12, William & Mary 18**

**Official Substitutions Log**  
**Elon vs William & Mary**  
**Period 2**  
**January 20, 2019 at Kaplan Arena (Kaplan Arena) - Williamsburg, Va.**

VISITORS: <b>Elon</b>	Time	Score	HOME: <b>William &amp; Mary</b>
0 PERPIGNAN, BRIE			2 BOGGS, BIANCA
22 MERCER, LEXI			10 HODGSON, EVA
42 MAUPIN, EMILY			11 POLLARD, NYLA
1 MUNFORD, SAADIA			25 ROGERS, GABBY
2 LILES, KAYLA			30 REYNOLDS, VICTORIA
SUB OUT: 52 RYAN, MICAELA	08:02	12-22	
SUB IN: 1 MUNFORD, SAADIA	08:02		
	06:34	14-25	SUB OUT: BOGGS, BIANCA
	06:34		SUB IN: HODGSON, EVA
SUB OUT: 42 MAUPIN, EMILY	06:34		
SUB IN: 13 POWELL, JAYLIN	06:34		
	04:43	21-28	SUB OUT: POLLARD, NYLA
	04:43		SUB IN: BOGGS, BIANCA
	04:43		SUB OUT: ROGERS, GABBY
	04:43		SUB IN: EICHNER, BAILEY
SUB OUT: 0 PERPIGNAN, BRIE	04:43		
SUB IN: 21 COLON, ARIEL	04:43		
	04:36	21-28	SUB OUT: BOGGS, BIANCA
	04:36		SUB IN: POLLARD, NYLA
	04:02	21-28	SUB OUT: BIRDSONG, HARPER
	04:02		SUB IN: JONES, MISHA
	03:29	22-28	SUB OUT: EICHNER, BAILEY
	03:29		SUB IN: ROGERS, GABBY
	02:49	24-28	SUB OUT: ROGERS, GABBY
	02:49		SUB IN: KRAUSE, EMMA
SUB OUT: 2 LILES, KAYLA	02:14	24-29	
SUB IN: 42 MAUPIN, EMILY	02:14		

**Elon 31, William & Mary 36**

**Official Substitutions Log**  
**Elon vs William & Mary**  
**Period 3**  
**January 20, 2019 at Kaplan Arena (Kaplan Arena) - Williamsburg, Va.**

VISITORS: <b>Elon</b>	Time	Score	HOME: <b>William &amp; Mary</b>
0 PERPIGNAN, BRIE			2 BOGGS, BIANCA
22 MERCER, LEXI			10 HODGSON, EVA
42 MAUPIN, EMILY			11 POLLARD, NYLA
1 MUNFORD, SAADIA			25 ROGERS, GABBY
2 LILES, KAYLA			30 REYNOLDS, VICTORIA
SUB OUT: 2 LILES, KAYLA	07:09	33-39	
SUB IN: 13 POWELL, JAYLIN	07:09		
SUB OUT: 0 PERPIGNAN, BRIE	07:09		
SUB IN: 21 COLON, ARIEL	07:09		
	06:32	37-39	SUB OUT: POLLARD, NYLA
	06:32		SUB IN: BIRDSONG, HARPER
SUB OUT: 1 MUNFORD, SAADIA	06:32		
SUB IN: 0 PERPIGNAN, BRIE	06:32		
	05:08	40-39	SUB OUT: ROGERS, GABBY
	05:08		SUB IN: KRAUSE, EMMA
	04:06	44-42	SUB OUT: BIRDSONG, HARPER
	04:06		SUB IN: POLLARD, NYLA
SUB OUT: 21 COLON, ARIEL	04:06		
SUB IN: 52 RYAN, MICAELA	04:06		
SUB OUT: 22 MERCER, LEXI	03:51	45-42	
SUB IN: 21 COLON, ARIEL	03:51		
SUB OUT: 42 MAUPIN, EMILY	01:42	49-44	
SUB IN: 2 LILES, KAYLA	01:42		
SUB OUT: 52 RYAN, MICAELA	01:42		
SUB IN: 22 MERCER, LEXI	01:42		
	00:31	51-49	SUB OUT: KRAUSE, EMMA
	00:31		SUB IN: JONES, MISHA
SUB OUT: 0 PERPIGNAN, BRIE	00:31		
SUB IN: 1 MUNFORD, SAADIA	00:31		

**Elon 51, William & Mary 50**

**Official Substitutions Log**  
**Elon vs William & Mary**  
**Period 4**  
**January 20, 2019 at Kaplan Arena (Kaplan Arena) - Williamsburg, Va.**

VISITORS: <b>Elon</b>	Time	Score	HOME: <b>William &amp; Mary</b>
0 PERPIGNAN, BRIE			2 BOGGS, BIANCA
22 MERCER, LEXI			10 HODGSON, EVA
42 MAUPIN, EMILY			11 POLLARD, NYLA
1 MUNFORD, SAADIA			25 ROGERS, GABBY
2 LILES, KAYLA			30 REYNOLDS, VICTORIA
SUB OUT: 21 COLON, ARIEL	08:21	51-52	
SUB IN: 42 MAUPIN, EMILY	08:21		
SUB OUT: 13 POWELL, JAYLIN	08:21		
SUB IN: 0 PERPIGNAN, BRIE	08:21		
	07:57	51-54	SUB OUT: BOGGS, BIANCA
	07:57		SUB IN: BIRDSONG, HARPER
SUB OUT: 2 LILES, KAYLA	07:01	52-56	
SUB IN: 13 POWELL, JAYLIN	07:01		
	04:56	56-61	SUB OUT: POLLARD, NYLA
	04:56		SUB IN: ROGERS, GABBY
SUB OUT: 22 MERCER, LEXI	03:34	57-62	
SUB IN: 2 LILES, KAYLA	03:34		
	03:33	57-62	SUB OUT: BIRDSONG, HARPER
	03:33		SUB IN: BOGGS, BIANCA
	03:33		SUB OUT: JONES, MISHA
	03:33		SUB IN: POLLARD, NYLA
SUB OUT: 2 LILES, KAYLA	02:39	57-63	
SUB IN: 22 MERCER, LEXI	02:39		
	01:05	59-63	SUB OUT: BOGGS, BIANCA
	01:05		SUB IN: BIRDSONG, HARPER
	00:33	60-63	SUB OUT: BIRDSONG, HARPER
	00:33		SUB IN: JONES, MISHA
SUB OUT: 0 PERPIGNAN, BRIE	00:07	60-63	
SUB IN: 2 LILES, KAYLA	00:07		

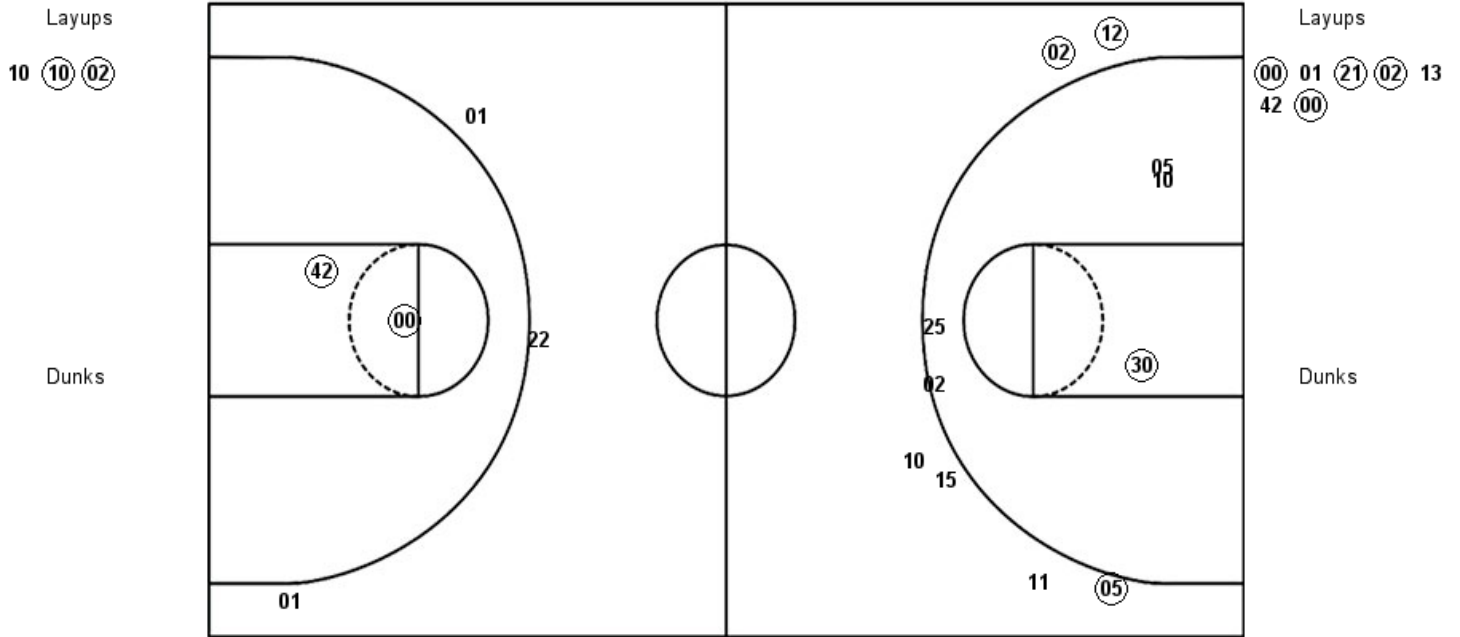
**Elon 60, William & Mary 65**



**Official Shot Chart**  
**Elon vs William & Mary**  
**PERIOD 1 Shots**  
 January 20, 2019 at Kaplan Arena (Kaplan Arena) - Williamsburg, Va.

**William & Mary**

**Elon**



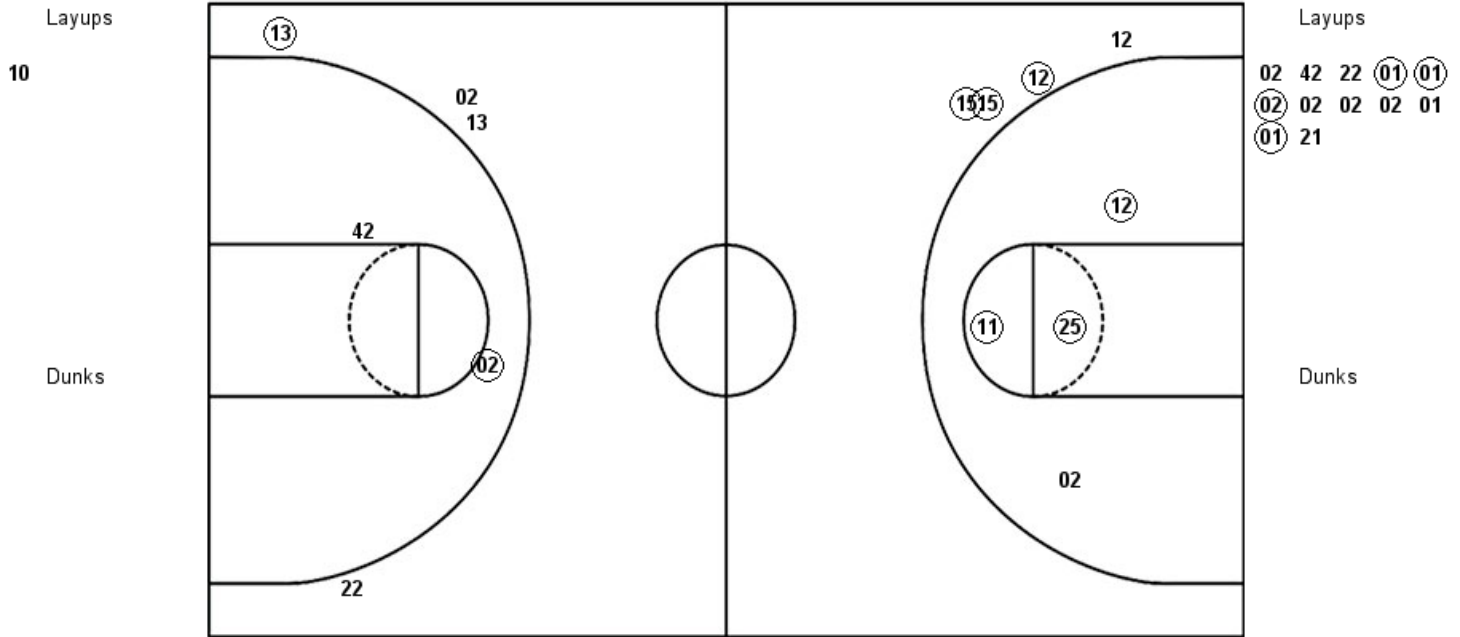
<b>W&amp;M : Period 1</b>	<b>Made</b>	<b>Att</b>	<b>Pct</b>
Layups	2	3	66.7
Dunks	0	0	0
2PT Field Goals	3	8	37.5
3PT Field Goals	3	6	50.0
<b>Total Field Goals</b>	<b>6</b>	<b>14</b>	<b>42.9</b>

<b>EUP : Period 1</b>	<b>Made</b>	<b>Att</b>	<b>Pct</b>
Layups	4	7	57.1
Dunks	0	0	0
2PT Field Goals	6	9	66.7
3PT Field Goals	0	3	00.0
<b>Total Field Goals</b>	<b>6</b>	<b>12</b>	<b>50.0</b>

**Official Shot Chart**  
**Elon vs William & Mary**  
**PERIOD 2 Shots**  
 January 20, 2019 at Kaplan Arena (Kaplan Arena) - Williamsburg, Va.

**William & Mary**

**Elon**



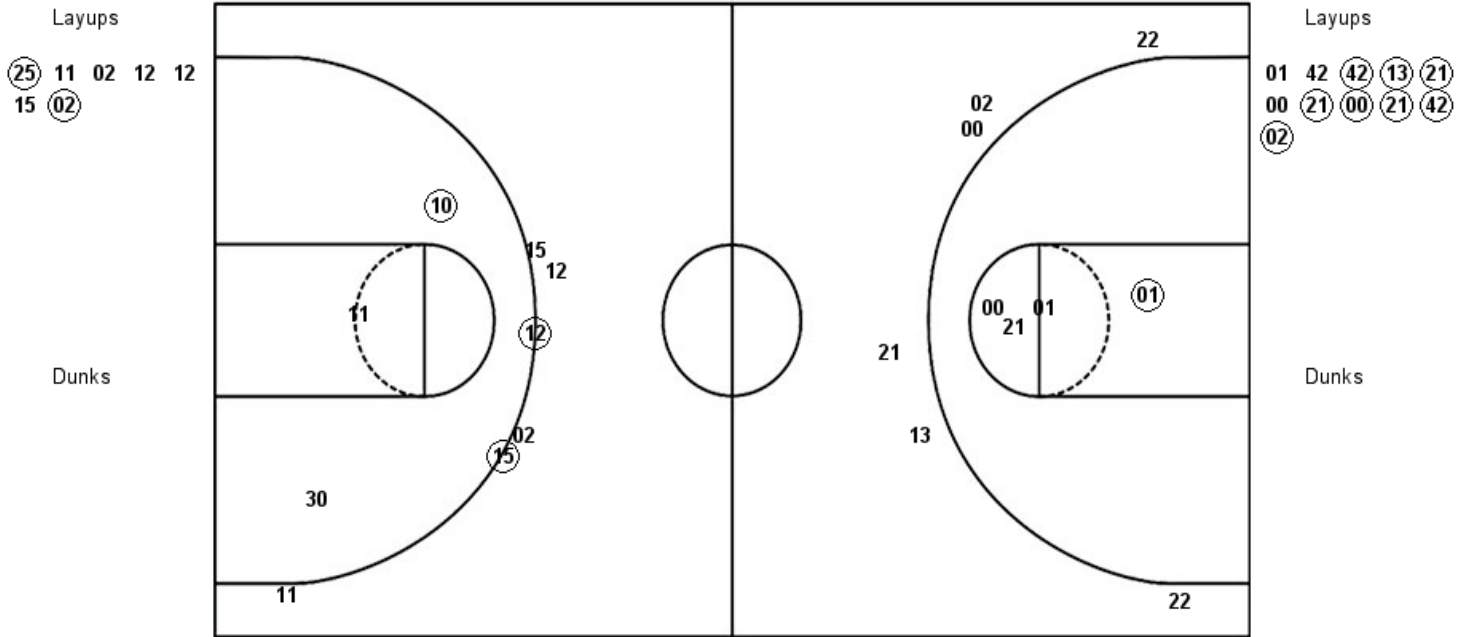
<b>W&amp;M : Period 2</b>	<b>Made</b>	<b>Att</b>	<b>Pct</b>
Layups	0	1	00.0
Dunks	0	0	0
2PT Field Goals	3	5	60.0
3PT Field Goals	3	4	75.0
<b>Total Field Goals</b>	<b>6</b>	<b>9</b>	<b>66.7</b>

<b>EJP : Period 2</b>	<b>Made</b>	<b>Att</b>	<b>Pct</b>
Layups	4	12	33.3
Dunks	0	0	0
2PT Field Goals	5	14	35.7
3PT Field Goals	1	4	25.0
<b>Total Field Goals</b>	<b>6</b>	<b>18</b>	<b>33.3</b>

**Official Shot Chart**  
**Elon vs William & Mary**  
**PERIOD 3 Shots**  
 January 20, 2019 at Kaplan Arena (Kaplan Arena) - Williamsburg, Va.

**William & Mary**

**Elon**



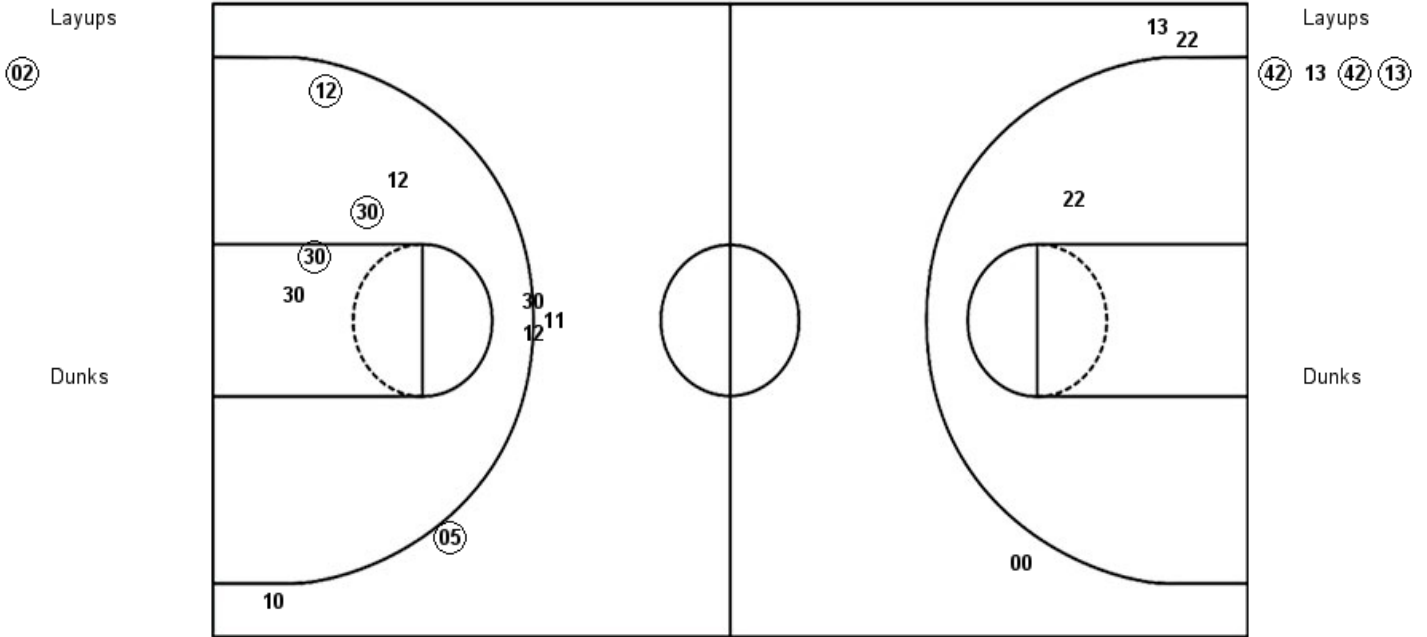
<b>W&amp;M : Period 3</b>	<b>Made</b>	<b>Att</b>	<b>Pct</b>
Layups	2	7	28.6
Dunks	0	0	0
2PT Field Goals	3	10	30.0
3PT Field Goals	2	6	33.3
<b>Total Field Goals</b>	<b>5</b>	<b>16</b>	<b>31.3</b>

<b>EUP : Period 3</b>	<b>Made</b>	<b>Att</b>	<b>Pct</b>
Layups	8	11	72.7
Dunks	0	0	0
2PT Field Goals	9	15	60.0
3PT Field Goals	0	6	00.0
<b>Total Field Goals</b>	<b>9</b>	<b>21</b>	<b>42.9</b>

**Official Shot Chart**  
**Elon vs William & Mary**  
**PERIOD 4 Shots**  
 January 20, 2019 at Kaplan Arena (Kaplan Arena) - Williamsburg, Va.

**William & Mary**

**Elon**

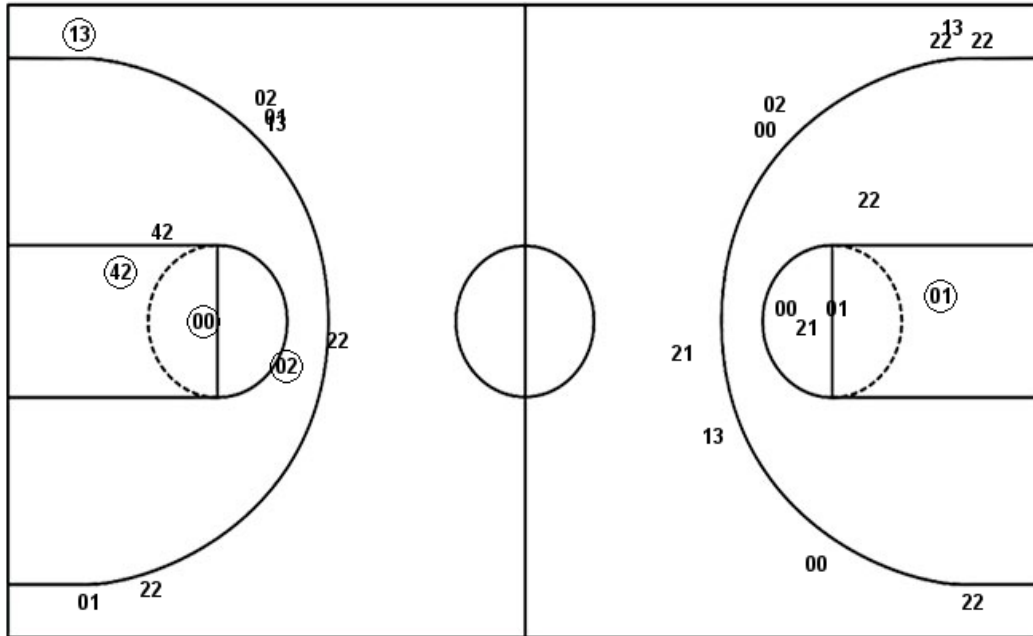


<b>W&amp;M : Period 4</b>	<b>Made</b>	<b>Att</b>	<b>Pct</b>
Layups	1	1	100.0
Dunks	0	0	0
2PT Field Goals	4	6	66.7
3PT Field Goals	1	5	20.0
<b>Total Field Goals</b>	<b>5</b>	<b>11</b>	<b>45.5</b>

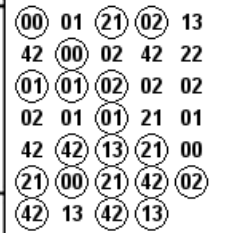
<b>EJP : Period 4</b>	<b>Made</b>	<b>Att</b>	<b>Pct</b>
Layups	3	4	75.0
Dunks	0	0	0
2PT Field Goals	3	5	60.0
3PT Field Goals	0	3	00.0
<b>Total Field Goals</b>	<b>3</b>	<b>8</b>	<b>37.5</b>

**Official Shot Chart**  
**Elon vs William & Mary**  
**Elon Team Shots**  
**January 20, 2019 at Kaplan Arena (Kaplan Arena) - Williamsburg, Va.**

Layups



Layups



Dunks

EUP : Period 1	Made	Att	Pct
Layups	4	7	57.1
Dunks	0	0	0
2PT Field Goals	6	9	66.7
3PT Field Goals	0	3	00.0
<b>Total Field Goals</b>	<b>6</b>	<b>12</b>	<b>50.0</b>

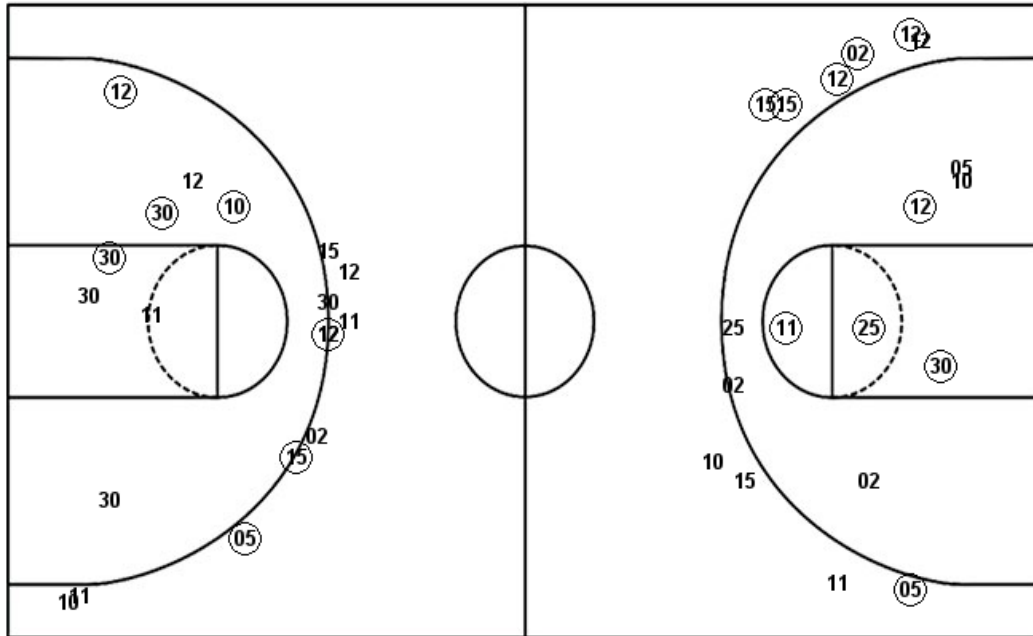
EUP : Period 3	Made	Att	Pct
Layups	8	11	72.7
Dunks	0	0	0
2PT Field Goals	9	15	60.0
3PT Field Goals	0	6	00.0
<b>Total Field Goals</b>	<b>9</b>	<b>21</b>	<b>42.9</b>

EUP : Period 2	Made	Att	Pct
Layups	4	12	33.3
Dunks	0	0	0
2PT Field Goals	5	14	35.7
3PT Field Goals	1	4	25.0
<b>Total Field Goals</b>	<b>6</b>	<b>18</b>	<b>33.3</b>

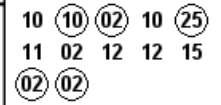
EUP : Period 4	Made	Att	Pct
Layups	3	4	75.0
Dunks	0	0	0
2PT Field Goals	3	5	60.0
3PT Field Goals	0	3	00.0
<b>Total Field Goals</b>	<b>3</b>	<b>8</b>	<b>37.5</b>

**Official Shot Chart**  
**Elon vs William & Mary**  
**William & Mary Team Shots**  
**January 20, 2019 at Kaplan Arena (Kaplan Arena) - Williamsburg, Va.**

Layups



Layups



Dunks

Dunks

W&M : Period 1	Made	Att	Pct
Layups	2	3	66.7
Dunks	0	0	0
2PT Field Goals	3	8	37.5
3PT Field Goals	3	6	50.0
<b>Total Field Goals</b>	<b>6</b>	<b>14</b>	<b>42.9</b>

W&M : Period 2	Made	Att	Pct
Layups	0	1	00.0
Dunks	0	0	0
2PT Field Goals	3	5	60.0
3PT Field Goals	3	4	75.0
<b>Total Field Goals</b>	<b>6</b>	<b>9</b>	<b>66.7</b>

W&M : Period 3	Made	Att	Pct
Layups	2	7	28.6
Dunks	0	0	0
2PT Field Goals	3	10	30.0
3PT Field Goals	2	6	33.3
<b>Total Field Goals</b>	<b>5</b>	<b>16</b>	<b>31.3</b>

W&M : Period 4	Made	Att	Pct
Layups	1	1	100.0
Dunks	0	0	0
2PT Field Goals	4	6	66.7
3PT Field Goals	1	5	20.0
<b>Total Field Goals</b>	<b>5</b>	<b>11</b>	<b>45.5</b>