

FINAL SCORE



Col. of Charleston

66



William & Mary

54

January 13, 2019 • Kaplan Arena (Kaplan Arena) - Williamsburg, Va.

FINAL STATISTICS

Official Box Score
Col. of Charleston vs William & Mary
Game Totals -- Final Statistics
January 13, 2019 at Kaplan Arena (Kaplan Arena) - Williamsburg, Va.

Col. of Charleston 66

No.	Player	S	Pts	FG	3FG	FT	OR	DR	TR	PF	A	TO	Blk	Stl	Min	+/-
02	Huff, Darien		11	4-15	2-9	1-2	0	6	6	2	2	2	1	3	37	9
15	Eady, Arynn		4	2-7	0-0	0-0	2	1	3	2	1	4	0	0	16	1
20	Sullivan, Bri		2	1-3	0-0	0-0	2	8	10	3	0	2	1	0	22	14
23	Collins, Tyler		4	1-7	0-2	2-2	1	0	1	2	2	1	0	1	21	1
25	Ford, Deja		10	4-11	1-4	1-2	2	2	4	2	0	1	0	1	20	11
00	Taylor, Madison		12	3-4	1-1	5-5	0	1	1	1	3	1	0	1	20	10
03	Perkins, Latrice		2	1-2	0-0	0-0	1	2	3	2	5	4	0	8	24	7
05	Dorsey, Cailin		0	0-0	0-0	0-0	0	1	1	0	0	0	0	0	3	2
21	Larson, Baileigh		16	8-12	0-0	0-1	3	4	7	2	0	0	1	1	17	16
24	Maddox, Lexi		2	1-1	0-0	0-0	0	0	0	0	0	1	0	0	3	-9
42	Broughton, Ericka		3	1-1	0-0	1-1	0	5	5	2	0	1	0	0	17	-2
	Team						3	2	5	0		1				
TOTALS			66	26-63	4-16	10-13	14	32	46	18	13	18	3	15	198	

Shooting By Period

Period	FG	FG%	3FG	3FG%	FT	FT%
1st Qtr	8-17	47%	2-5	40%	2-2	100%
2nd Qtr	5-11	45%	1-3	33%	0-0	0%
3rd Qtr	6-19	32%	0-4	00%	3-4	75%
4th Qtr	7-16	44%	1-4	25%	5-7	71%
1st Half	13-28	46%	3-8	38%	2-2	100%
2nd Half	13-35	37%	1-8	13%	8-11	73%
Game	26-63	41.3%	4-16	25.0%	10-13	76.9%

Last FG: 4th-02:11
 Biggest Run: 10-0
 Largest lead: By 12 at 4-00:31
 Technical Fouls: None.

William & Mary 54

No.	Player	S	Pts	FG	3FG	FT	OR	DR	TR	PF	A	TO	Blk	Stl	Min	+/-
02	Boggs, Bianca		18	6-16	4-8	2-8	1	7	8	5	4	5	0	2	39	-10
10	Hodgson, Eva		2	1-4	0-1	0-0	1	0	1	2	1	5	1	0	16	-16
11	Pollard, Nyla		9	4-9	0-3	1-2	1	1	2	2	4	0	1	1	37	-13
15	Krause, Emma		0	0-1	0-0	0-0	0	0	0	0	0	0	1	0	7	5
30	Reynolds, Victoria		8	3-8	2-2	0-0	1	9	10	3	7	4	1	4	36	-8
05	Jones, Misha		6	2-5	2-4	0-0	0	2	2	3	2	1	0	0	19	-8
12	Birdsong, Harper		8	3-11	2-5	0-0	4	1	5	2	0	2	0	0	23	2
25	Rogers, Gabby		3	1-5	0-0	1-2	2	3	5	1	1	1	1	2	21	-12
	Team						1	1	2	0		0				
TOTALS			54	20-59	10-23	4-12	11	24	35	18	19	18	5	9	198	

Shooting By Period

Period	FG	FG%	3FG	3FG%	FT	FT%
1st Qtr	4-16	25%	1-7	14%	2-7	29%
2nd Qtr	7-16	44%	3-6	50%	1-1	100%
3rd Qtr	4-15	27%	2-2	100%	1-4	25%
4th Qtr	5-12	42%	4-8	50%	0-0	0%
1st Half	11-32	34%	4-13	31%	3-8	38%
2nd Half	9-27	33%	6-10	60%	1-4	25%
Game	20-59	33.9%	10-23	43.5%	4-12	33.3%

Last FG: 4th-01:55
 Biggest Run: 9-0
 Largest lead: By 0 at 4-06:24
 Technical Fouls: None.

Game Notes:

Officials: Ken Kelly, Hillary Harwell, Timothy Greene
 Attendance: 582

Start Time: 2019-01-13 19:06:26
 End Time: 2019-01-13 20:54:52
 Game Duration: 108
 Conference Game:

Score	1st	2nd	3rd	4th	TOT
COC	20	11	15	20	66
W&M	11	18	11	14	54

COC led for 35:52. W&M led for 0:00.
 Game was tied for 3:49.
 Times tied: 6 Lead Changes: 0

Points from	COC	W&M
In the Paint	44	18
Off Turns	20	10
2nd Chance	15	5
Fast Break	14	14
Bench	35	17

Official Box Score
Col. of Charleston vs William & Mary
First Half Statistics Only
January 13, 2019 at Kaplan Arena (Kaplan Arena) - Williamsburg, Va.

Col. of Charleston 31

No.	Player	S	Pts	FG	3FG	FT	OR	DR	TR	PF	A	TO	Blk	Stl	Min	+/-
00	Taylor, Madison		8	3-4	1-1	1-1	0	0	0	1	2	1	0	0	16	-2
02	Huff, Darien		8	3-11	2-7	0-0	0	3	3	1	1	2	1	1	19	-2
03	Perkins, Latrice		2	1-1	0-0	0-0	0	1	1	1	5	2	0	5	15	0
05	Dorsey, Cailin		0	0-0	0-0	0-0	0	1	1	0	0	0	0	0	2	2
15	Eady, Aryn		0	0-1	0-0	0-0	0	1	1	2	1	4	0	0	8	3
20	Sullivan, Bri		2	1-2	0-0	0-0	0	3	3	2	0	0	0	0	7	5
21	Larson, Baileigh		4	2-5	0-0	0-0	0	3	3	2	0	0	1	0	10	8
23	Collins, Tyler		0	0-1	0-0	0-0	0	0	0	2	0	0	0	0	4	4
24	Maddox, Lexi		2	1-1	0-0	0-0	0	0	0	0	0	1	0	0	3	-9
25	Ford, Deja		2	1-1	0-0	0-0	0	1	1	2	0	0	0	0	4	4
42	Broughton, Ericka		3	1-1	0-0	1-1	0	3	3	0	0	1	0	0	12	-3
	Team		0	0-0	0-0	0-0	2	2	4	0	0	0	0	0	0	
TOTALS			31	13-28	3-8	2-2	2	18	20	13	9	11	2	6	100	

Shooting By Period

Period	FG	FG%	3FG	3FG%	FT	FT%
1st Qtr	8-17	47%	2-5	40%	2-2	100%
2nd Qtr	5-11	45%	1-3	33%	0-0	0%
1st Half	13-28	46%	3-8	38%	2-2	100%
Game	26-63	41.3%	4-16	25.0%	10-13	76.9%

Last FG Half: COC 2nd-00:28

William & Mary 29

No.	Player	S	Pts	FG	3FG	FT	OR	DR	TR	PF	A	TO	Blk	Stl	Min	+/-
02	Boggs, Bianca		12	4-9	2-4	2-6	1	3	4	1	2	2	0	2	20	-2
05	Jones, Misha		0	0-1	0-1	0-0	0	2	2	0	1	0	0	0	7	-6
10	Hodgson, Eva		2	1-2	0-1	0-0	1	0	1	2	0	2	1	0	7	-5
11	Pollard, Nyla		3	1-3	0-2	1-2	1	1	2	1	2	0	1	0	19	-2
12	Birdsong, Harper		5	2-8	1-4	0-0	2	1	3	1	0	1	0	0	14	3
15	Krause, Emma		0	0-1	0-0	0-0	0	0	0	0	0	0	1	0	7	5
25	Rogers, Gabby		2	1-3	0-0	0-0	0	2	2	0	0	0	0	0	10	-5
30	Reynolds, Victoria		5	2-5	1-1	0-0	0	3	3	1	5	2	1	3	16	2
	Team		0	0-0	0-0	0-0	1	0	1	0	0	0	0	0	0	
TOTALS			29	11-32	4-13	3-8	6	12	18	6	10	7	4	5	100	

Shooting By Period

Period	FG	FG%	3FG	3FG%	FT	FT%
1st Qtr	4-16	25%	1-7	14%	2-7	29%
2nd Qtr	7-16	44%	3-6	50%	1-1	100%
1st Half	11-32	34%	4-13	31%	3-8	38%
Game	20-59	33.9%	10-23	43.5%	4-12	33.3%

Last FG Half: W&M 2nd-01:16

Game Notes:

Officials: Ken Kelly, Hillary Harwell, Timothy Greene
Attendance: 582

Start Time: 2019-01-13 19:06:26
End Time: 2019-01-13 20:54:52
Game Duration: 108
Conference Game:

Score	1st	2nd	3rd	4th	TOT
COC	20	11	15	20	66
W&M	11	18	11	14	54

Points from (This Period)	COC	W&M
In the Paint	20	12
Off Turns	7	9
2nd Chance	2	4
Fast Break	12	7
Bench	19	7

Official Box Score
Col. of Charleston vs William & Mary
First Quarter Statistics Only
January 13, 2019 at Kaplan Arena (Kaplan Arena) - Williamsburg, Va.

Col. of Charleston 20

No.	Player	S	Pts	FG	3FG	FT	OR	DR	TR	PF	A	TO	Blk	Stl	Min	+/-
02	Huff, Darien		3	1-6	1-4	0-0	0	2	2	1	1	1	1	1	9	5
15	Eady, Aryn		0	0-1	0-0	0-0	0	1	1	1	1	3	0	0	6	1
20	Sullivan, Bri		2	1-2	0-0	0-0	0	3	3	2	0	0	0	0	7	5
23	Collins, Tyler		0	0-1	0-0	0-0	0	0	0	2	0	0	0	0	2	2
25	Ford, Deja		2	1-1	0-0	0-0	0	1	1	2	0	0	0	0	2	2
00	Taylor, Madison		6	2-2	1-1	1-1	0	0	0	1	1	1	0	0	8	7
03	Perkins, Latrice		2	1-1	0-0	0-0	0	0	0	0	2	0	0	3	8	7
05	Dorsey, Cailin		0	0-0	0-0	0-0	0	1	1	0	0	0	0	0	1	4
21	Larson, Baileigh		2	1-2	0-0	0-0	0	2	2	0	0	0	0	0	5	8
24	Maddox, Lexi		0	0-0	0-0	0-0	0	0	0	0	0	0	0	0	0	0
42	Broughton, Ericka		3	1-1	0-0	1-1	0	0	0	0	0	0	0	0	2	4
	Team						1	1	2	0		0				
TOTALS			20	8-17	2-5	2-2	1	11	12	9	5	5	1	4	50	

Shooting By Period

Period	FG	FG%	3FG	3FG%	FT	FT%
1st Qtr	8-17	47%	2-5	40%	2-2	100%
2nd Qtr	5-11	45%	1-3	33%	0-0	0%
1st Half	8-17	47%	2-5	40%	2-2	100%
1st Half	13-28	46%	3-8	38%	2-2	100%
Game	26-63	41.3%	4-16	25.0%	10-13	76.9%

William & Mary 11

No.	Player	S	Pts	FG	3FG	FT	OR	DR	TR	PF	A	TO	Blk	Stl	Min	+/-
02	Boggs, Bianca		6	2-4	1-2	1-5	1	2	3	1	1	2	0	1	10	-9
10	Hodgson, Eva		2	1-2	0-1	0-0	1	0	1	2	0	2	1	0	7	-5
11	Pollard, Nyla		1	0-2	0-2	1-2	1	1	2	0	0	0	1	0	9	-9
15	Krause, Emma		0	0-1	0-0	0-0	0	0	0	0	0	0	0	0	2	-2
30	Reynolds, Victoria		0	0-2	0-0	0-0	0	2	2	1	2	1	0	0	6	-5
05	Jones, Misha		0	0-1	0-1	0-0	0	2	2	0	1	0	0	0	4	-4
12	Birdsong, Harper		0	0-2	0-1	0-0	1	0	1	1	0	0	0	0	4	-4
25	Rogers, Gabby		2	1-2	0-0	0-0	0	1	1	0	0	0	0	0	8	-7
	Team						0	0	0	0		0				
TOTALS			11	4-16	1-7	2-7	4	8	12	5	4	5	2	1	50	

Shooting By Period

Period	FG	FG%	3FG	3FG%	FT	FT%
1st Qtr	4-16	25%	1-7	14%	2-7	29%
2nd Qtr	7-16	44%	3-6	50%	1-1	100%
1st Half	4-16	25%	1-7	14%	2-7	29%
1st Half	11-32	34%	4-13	31%	3-8	38%
Game	20-59	33.9%	10-23	43.5%	4-12	33.3%

Game Notes:

Officials: Ken Kelly, Hillary Harwell, Timothy Greene
Attendance: 582

Start Time: 2019-01-13 19:06:26
End Time: 2019-01-13 20:54:52
Game Duration: 108
Conference Game;

Score	1st	2nd	3rd	4th	TOT
COC	20	11	15	20	66
W&M	11	18	11	14	54

Points from (This Period)	COC	W&M
In the Paint	12	6
Off Turns	5	1
2nd Chance	0	4
Fast Break	8	2
Bench	13	2

Official Play-By-Play
Col. of Charleston vs William & Mary
First Quarter
January 13, 2019 at Kaplan Arena (Kaplan Arena) - Williamsburg, Va.

Period 1

Starters:

Col. of Charleston: 2 HUFF,DARIEN; 15 EADY,ARYNN; 20 SULLIVAN,BRI; 23 COLLINS,TYLER; 25 FORD,DEJA;
William & Mary: 2 BOGGS,BIANCA; 10 HODGSON,EVA; 11 POLLARD,NYLA; 15 KRAUSE,EMMA ; 30 REYNOLDS,VICTORIA;

Time	VISITORS: Col. of Charleston	Score	Margin	HOME: William & Mary
09:42	GOOD! LAYUP by SULLIVAN,BRI	0-2	V 2	
09:42	ASSIST by EADY,ARYNN			
09:23				MISSED LAYUP by KRAUSE,EMMA
09:19	REBOUND (DEF) by FORD,DEJA			
09:13	GOOD! LAYUP by FORD,DEJA	0-4	V 4	
09:00	FOUL (PERSONAL) by FORD,DEJA			
08:48				MISSED JUMPER by REYNOLDS,VICTORIA
08:45				REBOUND (OFF) by POLLARD,NYLA
08:38		2-4	V 2	GOOD! LAYUP by HODGSON,EVA
08:38				ASSIST by REYNOLDS,VICTORIA
08:23	MISSED 3PTR by HUFF,DARIEN			
08:19				REBOUND (DEF) by REYNOLDS,VICTORIA
08:14	FOUL (PERSONAL) by COLLINS,TYLER			
08:12	FOUL (PERSONAL) by FORD,DEJA			
08:12				MISSED FT by BOGGS,BIANCA
08:12				REBOUND (OFF) by TEAM
08:12	SUB OUT: FORD,DEJA			
08:12	SUB IN: PERKINS,LATRICE			
08:12				MISSED FT by BOGGS,BIANCA
08:10	REBOUND (DEF) by SULLIVAN,BRI			
07:53	MISSED JUMPER by SULLIVAN,BRI			
07:50				REBOUND (DEF) by BOGGS,BIANCA
07:44				TURNOVER (LOSTBALL) by REYNOLDS,VICTORIA
07:44	STEAL by PERKINS,LATRICE			
07:38	MISSED LAYUP by COLLINS,TYLER			
07:37				REBOUND (DEF) by REYNOLDS,VICTORIA
07:37	FOUL (PERSONAL) by COLLINS,TYLER			
07:37				SUB OUT: KRAUSE,EMMA
07:37				SUB IN: ROGERS,GABBY
07:37	SUB OUT: COLLINS,TYLER			
07:37	SUB IN: TAYLOR,MADISON			
07:26	FOUL (PERSONAL) by HUFF,DARIEN			
07:26				MISSED FT by BOGGS,BIANCA
07:26				REBOUND (OFF) by TEAM
07:26		3-4	V 1	GOOD! FT by BOGGS,BIANCA
07:20	TURNOVER (BADPASS) by EADY,ARYNN			
07:20	TIMEOUT 30SEC			
07:11				TURNOVER (BADPASS) by HODGSON,EVA
07:11	STEAL by PERKINS,LATRICE			
07:08				FOUL (PERSONAL) by HODGSON,EVA
07:08				SUB OUT: HODGSON,EVA
07:08				SUB IN: BIRDSONG,HARPER
07:05				FOUL (PERSONAL) by REYNOLDS,VICTORIA
06:56	FOUL (OFF) by EADY,ARYNN			
06:56	TURNOVER (OFFENSIVE) by EADY,ARYNN			
06:52				TURNOVER (BADPASS) by BOGGS,BIANCA
06:49	GOOD! 3PTR by HUFF,DARIEN	3-7	V 4	
06:49	ASSIST by PERKINS,LATRICE			
06:35		6-7	V 1	GOOD! 3PTR by BOGGS,BIANCA
06:35				ASSIST by REYNOLDS,VICTORIA
06:24	FOUL (OFF) by TAYLOR,MADISON			
06:24	TURNOVER (OFFENSIVE) by TAYLOR,MADISON			
06:16				MISSED JUMPER by BIRDSONG,HARPER
06:13	REBOUND (DEF) by EADY,ARYNN			
06:04	MISSED 3PTR by HUFF,DARIEN			
06:00				REBOUND (DEF) by POLLARD,NYLA
05:43				MISSED LAYUP by REYNOLDS,VICTORIA
05:40	REBOUND (DEF) by SULLIVAN,BRI			
05:23	MISSED LAYUP by EADY,ARYNN			
05:22	REBOUND (OFF) by TEAM			
05:22				SUB OUT: REYNOLDS,VICTORIA
05:22				SUB IN: JONES,MISHA
05:22	SUB OUT: SULLIVAN,BRI			
05:22	SUB IN: LARSON,BAILEIGH			
05:15	MISSED LAYUP by LARSON,BAILEIGH			
05:12				REBOUND (DEF) by BOGGS,BIANCA
05:04				SUB OUT: BIRDSONG,HARPER
05:04				SUB IN: HODGSON,EVA
04:44				MISSED 3PTR by POLLARD,NYLA
04:40	REBOUND (DEF) by TEAM			
04:28	TURNOVER (LOSTBALL) by EADY,ARYNN			
04:28	SUB OUT: EADY,ARYNN			
04:28	SUB IN: SULLIVAN,BRI			
04:21				MISSED LAYUP by BOGGS,BIANCA
04:17	REBOUND (DEF) by HUFF,DARIEN			
04:13	GOOD! 3PTR by TAYLOR,MADISON [FB]	6-10	V 4	

Time	VISITORS: Col. of Charleston	Score	Margin	HOME William & Mary
04:13	ASSIST by HUFF,DARIEN			
03:41				MISSED 3PTR by HODGSON,EVA
03:38				REBOUND (OFF) by BOGGS,BIANCA
03:18				MISSED 3PTR by JONES,MISHA
03:18	BLOCK by HUFF,DARIEN			
03:16	REBOUND (DEF) by LARSON,BAILEIGH			
03:16				FOUL (PERSONAL) by BOGGS,BIANCA
03:05	GOOD! LAYUP by LARSON,BAILEIGH	6-12	V 6	
03:05	ASSIST by TAYLOR,MADISON			
02:51				TURNOVER (BADPASS) by BOGGS,BIANCA
02:51	STEAL by PERKINS,LATRICE			
02:46	GOOD! LAYUP by PERKINS,LATRICE [FB]	6-14	V 8	
02:27				MISSED 3PTR by BOGGS,BIANCA
02:24	REBOUND (DEF) by HUFF,DARIEN			
02:23	TURNOVER (BADPASS) by HUFF,DARIEN			
02:23				STEAL by BOGGS,BIANCA
02:21	FOUL (PERSONAL) by SULLIVAN,BRI			
02:21		7-14	V 7	GOOD! FT by POLLARD,NYLA
02:21				MISSED FT by POLLARD,NYLA
02:20	REBOUND (DEF) by SULLIVAN,BRI			
02:06	MISSED JUMPER by HUFF,DARIEN			
02:02				REBOUND (DEF) by JONES,MISHA
01:59				TURNOVER (BADPASS) by HODGSON,EVA
01:59	STEAL by HUFF,DARIEN			
01:52	MISSED JUMPER by HUFF,DARIEN			
01:52				BLOCK by POLLARD,NYLA
01:46				REBOUND (DEF) by JONES,MISHA
01:45				MISSED LAYUP by ROGERS,GABBY
01:45				REBOUND (OFF) by HODGSON,EVA
01:45		9-14	V 5	GOOD! LAYUP by BOGGS,BIANCA [FB]
01:45				ASSIST by JONES,MISHA
01:45	FOUL (PERSONAL) by SULLIVAN,BRI			
01:45				SUB OUT: JONES,MISHA
01:45				SUB IN: REYNOLDS,VICTORIA
01:45				SUB OUT: POLLARD,NYLA
01:45				SUB IN: BIRDSONG,HARPER
01:45	SUB OUT: SULLIVAN,BRI			
01:45	SUB IN: BROUGHTON,ERICKA			
01:45				MISSED FT by BOGGS,BIANCA
01:44	REBOUND (DEF) by LARSON,BAILEIGH			
01:27	MISSED 3PTR by HUFF,DARIEN			
01:27				BLOCK by HODGSON,EVA
01:25				REBOUND (DEF) by ROGERS,GABBY
01:25	SUB OUT: HUFF,DARIEN			
01:25	SUB IN: DORSEY,CAILIN			
01:07		11-14	V 3	GOOD! JUMPER by ROGERS,GABBY
01:07				ASSIST by BOGGS,BIANCA
00:58	GOOD! LAYUP by BROUGHTON,ERICKA	11-16	V 5	
00:58	ASSIST by PERKINS,LATRICE			
00:58				FOUL (PERSONAL) by HODGSON,EVA
00:58				SUB OUT: HODGSON,EVA
00:58				SUB IN: POLLARD,NYLA
00:58	GOOD! FT by BROUGHTON,ERICKA	11-17	V 6	
00:38				MISSED 3PTR by BIRDSONG,HARPER
00:33	REBOUND (DEF) by DORSEY,CAILIN			
00:30	GOOD! LAYUP by TAYLOR,MADISON [FB]	11-19	V 8	
00:30				FOUL (PERSONAL) by BIRDSONG,HARPER
00:30	GOOD! FT by TAYLOR,MADISON [FB]	11-20	V 9	
00:03				MISSED 3PTR by POLLARD,NYLA
00:03				REBOUND (OFF) by BIRDSONG,HARPER

Col. of Charleston 20, William & Mary 11

Points from (This Period)	COC	W&M
In the Paint	12	6
Off Turns	5	1
2nd Chance	0	4
Fast Break	8	2
Bench	13	2

Official Box Score
Col. of Charleston vs William & Mary
Second Quarter Statistics Only
January 13, 2019 at Kaplan Arena (Kaplan Arena) - Williamsburg, Va.

Col. of Charleston 11

No.	Player	S	Pts	FG	3FG	FT	OR	DR	TR	PF	A	TO	Blk	Stl	Min	+/-
02	Huff, Darien		5	2-5	1-3	0-0	0	1	1	0	0	1	0	0	10	-7
15	Eady, Aryn		0	0-0	0-0	0-0	0	0	0	1	0	1	0	0	2	2
20	Sullivan, Bri		0	0-0	0-0	0-0	0	0	0	0	0	0	0	0	0	0
23	Collins, Tyler		0	0-0	0-0	0-0	0	0	0	0	0	0	0	0	2	2
25	Ford, Deja		0	0-0	0-0	0-0	0	0	0	0	0	0	0	0	2	2
00	Taylor, Madison		2	1-2	0-0	0-0	0	0	0	0	1	0	0	0	8	-9
03	Perkins, Latrice		0	0-0	0-0	0-0	0	1	1	1	3	2	0	2	7	-7
05	Dorsey, Cailin		0	0-0	0-0	0-0	0	0	0	0	0	0	0	0	1	-2
21	Larson, Baileigh		2	1-3	0-0	0-0	0	1	1	2	0	0	1	0	5	0
24	Maddox, Lexi		2	1-1	0-0	0-0	0	0	0	0	0	1	0	0	3	-9
42	Broughton, Ericka		0	0-0	0-0	0-0	0	3	3	0	0	1	0	0	10	-7
	Team						1	1	2	0		0				
TOTALS			11	5-11	1-3	0-0	1	7	8	4	4	6	1	2	50	

Shooting By Period

Period	FG	FG%	3FG	3FG%	FT	FT%
3rd Qtr	6-19	32%	0-4	00%	3-4	75%
4th Qtr	7-16	44%	1-4	25%	5-7	71%
2nd Half	5-11	45%	1-3	33%	0-0	0%
2nd Half	13-35	37%	1-8	13%	8-11	73%
Game	26-63	41.3%	4-16	25.0%	10-13	76.9%

William & Mary 18

No.	Player	S	Pts	FG	3FG	FT	OR	DR	TR	PF	A	TO	Blk	Stl	Min	+/-
02	Boggs, Bianca		6	2-5	1-2	1-1	0	1	1	0	1	0	0	1	10	7
10	Hodgson, Eva		0	0-0	0-0	0-0	0	0	0	0	0	0	0	0	0	0
11	Pollard, Nyla		2	1-1	0-0	0-0	0	0	0	1	2	0	0	0	10	7
15	Krause, Emma		0	0-0	0-0	0-0	0	0	0	0	0	0	1	0	5	7
30	Reynolds, Victoria		5	2-3	1-1	0-0	0	1	1	0	3	1	1	3	10	7
05	Jones, Misha		0	0-0	0-0	0-0	0	0	0	0	0	0	0	0	3	-2
12	Birdsong, Harper		5	2-6	1-3	0-0	1	1	2	0	0	1	0	0	10	7
25	Rogers, Gabby		0	0-1	0-0	0-0	0	1	1	0	0	0	0	0	2	2
	Team						1	0	1	0		0				
TOTALS			18	7-16	3-6	1-1	2	4	6	1	6	2	2	4	50	

Shooting By Period

Period	FG	FG%	3FG	3FG%	FT	FT%
3rd Qtr	4-15	27%	2-2	100%	1-4	25%
4th Qtr	5-12	42%	4-8	50%	0-0	0%
2nd Half	7-16	44%	3-6	50%	1-1	100%
2nd Half	9-27	33%	6-10	60%	1-4	25%
Game	20-59	33.9%	10-23	43.5%	4-12	33.3%

Game Notes:

Officials: Ken Kelly, Hillary Harwell, Timothy Greene
Attendance: 582

Start Time: 2019-01-13 19:06:26
End Time: 2019-01-13 20:54:52
Game Duration: 108
Conference Game;

Score	1st	2nd	3rd	4th	TOT
COC	20	11	15	20	66
W&M	11	18	11	14	54

Points from (This Period)	COC	W&M
In the Paint	8	6
Off Turns	2	8
2nd Chance	2	0
Fast Break	4	5
Bench	6	5

Official Play-By-Play
Col. of Charleston vs William & Mary
Second Quarter
January 13, 2019 at Kaplan Arena (Kaplan Arena) - Williamsburg, Va.

Period 2

Starters:

Col. of Charleston: 2 HUFF,DARIEN; 15 EADY,ARYNN; 20 SULLIVAN,BRI; 23 COLLINS,TYLER; 25 FORD,DEJA;
William & Mary: 2 BOGGS,BIANCA; 10 HODGSON,EVA; 11 POLLARD,NYLA; 15 KRAUSE,EMMA ; 30 REYNOLDS,VICTORIA;

Time	VISITORS: Col. of Charleston	Score	Margin	HOME: William & Mary
09:47	TURNOVER (BADPASS) by HUFF,DARIEN			
09:47				STEAL by REYNOLDS,VICTORIA
09:40				MISSED JUMPER by ROGERS,GABBY
09:38	REBOUND (DEF) by LARSON,BAILEIGH			
09:17	MISSED JUMPER by LARSON,BAILEIGH			
09:14				REBOUND (DEF) by ROGERS,GABBY
09:07		13-20	V 7	GOOD! LAYUP by BOGGS,BIANCA [FB]
09:07	FOUL (PERSONAL) by LARSON,BAILEIGH			
09:07	SUB OUT: LARSON,BAILEIGH			
09:07	SUB IN: EADY,ARYNN			
09:07		14-20	V 6	GOOD! FT by BOGGS,BIANCA [FB]
08:41	GOOD! 3PTR by HUFF,DARIEN	14-23	V 9	
08:41	ASSIST by TAYLOR,MADISON			
08:27		16-23	V 7	GOOD! JUMPER by REYNOLDS,VICTORIA [PNT]
08:27				ASSIST by BOGGS,BIANCA
08:03	MISSED 3PTR by HUFF,DARIEN			
08:02				REBOUND (DEF) by BOGGS,BIANCA
08:02	FOUL (PERSONAL) by PERKINS,LATRICE			
08:02				SUB OUT: ROGERS,GABBY
08:02				SUB IN: KRAUSE,EMMA
07:52				TURNOVER (BADPASS) by REYNOLDS,VICTORIA
07:52	STEAL by PERKINS,LATRICE			
07:47	GOOD! LAYUP by HUFF,DARIEN [FB]	16-25	V 9	
07:47	ASSIST by PERKINS,LATRICE			
07:30	SUB OUT: PERKINS,LATRICE			
07:30	SUB IN: DORSEY,CAILIN			
07:13				MISSED JUMPER by BIRDSONG,HARPER
07:09	REBOUND (DEF) by BROUGHTON,ERICKA			
07:02	FOUL (OFF) by EADY,ARYNN			
07:02	TURNOVER (OFFENSIVE) by EADY,ARYNN			
07:02	SUB OUT: EADY,ARYNN			
07:02	SUB IN: MADDOX,LEXI			
06:45		18-25	V 7	GOOD! JUMPER by BIRDSONG,HARPER
06:45				ASSIST by REYNOLDS,VICTORIA
06:31	MISSED LAYUP by TAYLOR,MADISON			
06:31				BLOCK by REYNOLDS,VICTORIA
06:31	REBOUND (OFF) by TEAM			
06:16				FOUL (PERSONAL) by POLLARD,NYLA
06:16	SUB OUT: DORSEY,CAILIN			
06:16	SUB IN: PERKINS,LATRICE			
05:59	GOOD! LAYUP by MADDOX,LEXI	18-27	V 9	
05:59	ASSIST by PERKINS,LATRICE			
05:39		21-27	V 6	GOOD! 3PTR by BIRDSONG,HARPER
05:39				ASSIST by POLLARD,NYLA
05:21	TURNOVER (BADPASS) by PERKINS,LATRICE			
05:21				STEAL by BOGGS,BIANCA
05:10		24-27	V 3	GOOD! 3PTR by BOGGS,BIANCA
05:10				ASSIST by REYNOLDS,VICTORIA
04:40	TURNOVER (BADPASS) by MADDOX,LEXI			
04:40				STEAL by REYNOLDS,VICTORIA
04:31		27-27	T	GOOD! 3PTR by REYNOLDS,VICTORIA
04:31				ASSIST by POLLARD,NYLA
04:29	TIMEOUT 30SEC			
04:27	SUB OUT: TAYLOR,MADISON			
04:27	SUB IN: FORD,DEJA			
04:27	SUB OUT: PERKINS,LATRICE			
04:27	SUB IN: LARSON,BAILEIGH			
04:27	SUB OUT: MADDOX,LEXI			
04:27	SUB IN: COLLINS,TYLER			
03:59	MISSED LAYUP by HUFF,DARIEN			
03:59				BLOCK by KRAUSE,EMMA
03:54				REBOUND (DEF) by TEAM
03:27				MISSED 3PTR by BIRDSONG,HARPER
03:25	REBOUND (DEF) by TEAM			
03:25				SUB OUT: KRAUSE,EMMA
03:25				SUB IN: ROGERS,GABBY
03:25				SUB OUT: ROGERS,GABBY
03:25				SUB IN: JONES,MISHA
03:15	MISSED 3PTR by HUFF,DARIEN			
03:11				REBOUND (DEF) by BIRDSONG,HARPER
03:08				MISSED LAYUP by BIRDSONG,HARPER
03:04	REBOUND (DEF) by HUFF,DARIEN			
02:47	GOOD! LAYUP by LARSON,BAILEIGH	27-29	V 2	
02:41				MISSED 3PTR by BOGGS,BIANCA
02:38				REBOUND (OFF) by BIRDSONG,HARPER
02:17				MISSED LAYUP by REYNOLDS,VICTORIA

Time	VISITORS: Col. of Charleston	Score	Margin	HOME: William & Mary
02:17	BLOCK by LARSON,BAILEIGH			
02:17				REBOUND (OFF) by TEAM
02:17	SUB OUT: COLLINS,TYLER			
02:17	SUB IN: TAYLOR,MADISON			
02:17	SUB OUT: FORD,DEJA			
02:17	SUB IN: PERKINS,LATRICE			
02:06	FOUL (PERSONAL) by LARSON,BAILEIGH			
02:01				MISSED 3PTR by BIRDSONG,HARPER
01:57	REBOUND (DEF) by PERKINS,LATRICE			
01:44	TURNOVER (BADPASS) by BROUGHTON,ERICKA			
01:44				STEAL by REYNOLDS,VICTORIA
01:39				MISSED JUMPER by BOGGS,BIANCA
01:35	REBOUND (DEF) by BROUGHTON,ERICKA			
01:25	MISSED JUMPER by LARSON,BAILEIGH			
01:21				REBOUND (DEF) by REYNOLDS,VICTORIA
01:16		29-29	T	GOOD! LAYUP by POLLARD,NYLA [FB]
01:16				ASSIST by REYNOLDS,VICTORIA
00:48	TURNOVER (BADPASS) by PERKINS,LATRICE			
00:37				MISSED LAYUP by BOGGS,BIANCA
00:32	REBOUND (DEF) by BROUGHTON,ERICKA			
00:28	GOOD! LAYUP by TAYLOR,MADISON [FB]	29-31	V 2	
00:28	ASSIST by PERKINS,LATRICE			
00:02				TURNOVER (BADPASS) by BIRDSONG,HARPER
00:02	STEAL by PERKINS,LATRICE			

Col. of Charleston 31, William & Mary 29

Points from (This Period)	COC	W&M
In the Paint	8	6
Off Turns	2	8
2nd Chance	2	0
Fast Break	4	5
Bench	6	5

Official Box Score
Col. of Charleston vs William & Mary
Second Half Statistics Only
January 13, 2019 at Kaplan Arena (Kaplan Arena) - Williamsburg, Va.

Col. of Charleston 35

No.	Player	S	Pts	FG	3FG	FT	OR	DR	TR	PF	A	TO	Blk	Stl	Min	+/-
00	Taylor, Madison		4	0-0	0-0	4-4	0	1	1	0	1	0	0	1	5	12
02	Huff, Darien		3	1-4	0-2	1-2	0	3	3	1	1	0	0	2	19	11
03	Perkins, Latrice		0	0-1	0-0	0-0	1	1	2	1	0	2	0	3	9	7
05	Dorsey, Cailin		0	0-0	0-0	0-0	0	0	0	0	0	0	0	0	0	0
15	Eady, Aryn		4	2-6	0-0	0-0	2	0	2	0	0	0	0	0	8	-2
20	Sullivan, Bri		0	0-1	0-0	0-0	2	5	7	1	0	2	1	0	14	9
21	Larson, Baileigh		12	6-7	0-0	0-1	3	1	4	0	0	0	0	1	6	8
23	Collins, Tyler		4	1-6	0-2	2-2	1	0	1	0	2	1	0	1	16	-3
24	Maddox, Lexi		0	0-0	0-0	0-0	0	0	0	0	0	0	0	0	0	0
25	Ford, Deja		8	3-10	1-4	1-2	2	1	3	0	0	1	0	1	16	7
42	Broughton, Ericka		0	0-0	0-0	0-0	0	2	2	2	0	0	0	0	6	1
	Team		0	0-0	0-0	0-0	1	0	1	0	0	1	0	0	0	0
TOTALS			35	13-35	1-8	8-11	12	14	26	5	4	7	1	9	98	

Shooting By Period

Period	FG	FG%	3FG	3FG%	FT	FT%
3rd Qtr	6-19	32%	0-4	00%	3-4	75%
4th Qtr	7-16	44%	1-4	25%	5-7	71%
2nd Half	13-35	37%	1-8	13%	8-11	73%
Game	26-63	41.3%	4-16	25.0%	10-13	76.9%

Last FG Half: COC 4th-02:11

William & Mary 25

No.	Player	S	Pts	FG	3FG	FT	OR	DR	TR	PF	A	TO	Blk	Stl	Min	+/-
02	Boggs, Bianca		6	2-7	2-4	0-2	0	4	4	4	2	3	0	0	19	-8
05	Jones, Misha		6	2-4	2-3	0-0	0	0	0	3	1	1	0	0	12	-2
10	Hodgson, Eva		0	0-2	0-0	0-0	0	0	0	0	1	3	0	0	9	-11
11	Pollard, Nyla		6	3-6	0-1	0-0	0	0	0	1	2	0	0	1	18	-11
12	Birdsong, Harper		3	1-3	1-1	0-0	2	0	2	1	0	1	0	0	9	-1
15	Krause, Emma		0	0-0	0-0	0-0	0	0	0	0	0	0	0	0	0	0
25	Rogers, Gabby		1	0-2	0-0	1-2	2	1	3	1	1	1	1	2	11	-7
30	Reynolds, Victoria		3	1-3	1-1	0-0	1	6	7	2	2	2	0	1	20	-10
	Team		0	0-0	0-0	0-0	0	1	1	0	0	0	0	0	0	0
TOTALS			25	9-27	6-10	1-4	5	12	17	12	9	11	1	4	98	

Shooting By Period

Period	FG	FG%	3FG	3FG%	FT	FT%
3rd Qtr	4-15	27%	2-2	100%	1-4	25%
4th Qtr	5-12	42%	4-8	50%	0-0	0%
2nd Half	9-27	33%	6-10	60%	1-4	25%
Game	20-59	33.9%	10-23	43.5%	4-12	33.3%

Last FG Half: W&M 4th-01:55

Game Notes:

Officials: Ken Kelly, Hillary Harwell, Timothy Greene
Attendance: 582

Start Time: 2019-01-13 19:06:26
End Time: 2019-01-13 20:54:52
Game Duration: 108
Conference Game;

Score	1st	2nd	3rd	4th	TOT
COC	20	11	15	20	66
W&M	11	18	11	14	54

Points from (This Period)	COC	W&M
In the Paint	24	6
Off Turns	13	1
2nd Chance	13	1
Fast Break	2	7
Bench	16	10

Official Box Score
Col. of Charleston vs William & Mary
Third Quarter Statistics Only
January 13, 2019 at Kaplan Arena (Kaplan Arena) - Williamsburg, Va.

Col. of Charleston 35

No.	Player	S	Pts	FG	3FG	FT	OR	DR	TR	PF	A	TO	Blk	Stl	Min	+/-
02	Huff, Darien		1	0-1	0-1	1-2	0	2	2	0	0	0	0	1	9	5
15	Eady, Aryn		2	1-2	0-0	0-0	2	0	2	0	0	0	0	0	4	4
20	Sullivan, Bri		0	0-1	0-0	0-0	2	5	7	0	0	2	0	0	6	5
23	Collins, Tyler		4	1-6	0-2	2-2	1	0	1	0	1	0	0	0	10	4
25	Ford, Deja		4	2-5	0-1	0-0	0	0	0	0	0	1	0	0	8	3
00	Taylor, Madison		0	0-0	0-0	0-0	0	0	0	0	0	0	0	0	1	-1
03	Perkins, Latrice		0	0-1	0-0	0-0	1	1	2	0	0	0	0	1	6	0
05	Dorsey, Cailin		0	0-0	0-0	0-0	0	0	0	0	0	0	0	0	0	0
21	Larson, Baileigh		4	2-3	0-0	0-0	1	0	1	0	0	0	0	1	2	1
24	Maddox, Lexi		0	0-0	0-0	0-0	0	0	0	0	0	0	0	0	0	0
42	Broughton, Ericka		0	0-0	0-0	0-0	0	1	1	2	0	0	0	0	4	-1
	Team						1	0	1	0		1				
TOTALS			15	6-19	0-4	3-4	8	9	17	2	1	4	0	3	50	

Shooting By Period

Period	FG	FG%	3FG	3FG%	FT	FT%
2nd Half	0-0	0%	0-0	0%	0-0	0%
Game	26-63	41.3%	4-16	25.0%	10-13	76.9%

William & Mary 25

No.	Player	S	Pts	FG	3FG	FT	OR	DR	TR	PF	A	TO	Blk	Stl	Min	+/-
02	Boggs, Bianca		3	1-4	1-1	0-2	0	2	2	1	1	0	0	0	10	-4
10	Hodgson, Eva		0	0-2	0-0	0-0	0	0	0	0	1	2	0	0	6	-5
11	Pollard, Nyla		4	2-4	0-0	0-0	0	0	0	1	0	0	0	1	9	-5
15	Krause, Emma		0	0-0	0-0	0-0	0	0	0	0	0	0	0	0	0	0
30	Reynolds, Victoria		0	0-1	0-0	0-0	1	2	3	0	1	0	0	1	10	-4
05	Jones, Misha		0	0-0	0-0	0-0	0	0	0	1	0	0	0	0	4	1
12	Birdsong, Harper		3	1-2	1-1	0-0	0	0	0	1	0	0	0	0	2	1
25	Rogers, Gabby		1	0-2	0-0	1-2	2	1	3	1	1	1	1	1	9	-4
	Team						0	1	1	0		0				
TOTALS			11	4-15	2-2	1-4	3	6	9	5	4	3	1	3	50	

Shooting By Period

Period	FG	FG%	3FG	3FG%	FT	FT%
2nd Half	0-0	0%	0-0	0%	0-0	0%
Game	20-59	33.9%	10-23	43.5%	4-12	33.3%

Game Notes:

Officials: Ken Kelly, Hillary Harwell, Timothy Greene
Attendance: 582

Start Time: 2019-01-13 19:06:26
End Time: 2019-01-13 20:54:52
Game Duration: 108
Conference Game:

Score	1st	2nd	3rd	4th	TOT
COC	20	11	15	20	66
W&M	11	18	11	14	54

Points from (This Period)	COC	W&M
In the Paint	12	4
Off Turns	2	1
2nd Chance	7	1
Fast Break	0	2
Bench	4	4

Official Play-By-Play
Col. of Charleston vs William & Mary
Third Quarter
January 13, 2019 at Kaplan Arena (Kaplan Arena) - Williamsburg, Va.

Period 3

Starters:

Col. of Charleston: 2 HUFF,DARIEN; 15 EADY,ARYNN; 20 SULLIVAN,BRI; 23 COLLINS,TYLER; 25 FORD,DEJA;
William & Mary: 2 BOGGS,BIANCA; 10 HODGSON,EVA; 11 POLLARD,NYLA; 15 KRAUSE,EMMA ; 30 REYNOLDS,VICTORIA;

Time	VISITORS: Col. of Charleston	Score	Margin	HOME: William & Mary
09:41				MISSED LAYUP by BOGGS,BIANCA
09:38	REBOUND (DEF) by SULLIVAN,BRI			
09:31	MISSED 3PTR by HUFF,DARIEN			
09:28	REBOUND (OFF) by SULLIVAN,BRI			
09:18	GOOD! JUMPER by COLLINS,TYLER [PNT]	29-33	V 4	
09:02				MISSED LAYUP by POLLARD,NYLA
08:58	REBOUND (DEF) by SULLIVAN,BRI			
08:43	TURNOVER (BADPASS) by SULLIVAN,BRI			
08:38				STEAL by REYNOLDS,VICTORIA
08:35	REBOUND (DEF) by HUFF,DARIEN			MISSED LAYUP by HODGSON,EVA
08:28	TURNOVER (BADPASS) by FORD,DEJA			
08:28				STEAL by ROGERS,GABBY
07:59				MISSED LAYUP by REYNOLDS,VICTORIA
07:55	REBOUND (DEF) by SULLIVAN,BRI			
07:51	MISSED LAYUP by COLLINS,TYLER			
07:51				BLOCK by ROGERS,GABBY
07:49	REBOUND (OFF) by EADY,ARYNN			
07:49	GOOD! LAYUP by EADY,ARYNN	29-35	V 6	
07:25				TURNOVER (BADPASS) by HODGSON,EVA
07:25	STEAL by HUFF,DARIEN			
07:07	TURNOVER (BADPASS) by SULLIVAN,BRI			
07:07				STEAL by POLLARD,NYLA
07:02				MISSED LAYUP by POLLARD,NYLA
06:59				REBOUND (OFF) by REYNOLDS,VICTORIA
06:39				MISSED LAYUP by ROGERS,GABBY
06:36	REBOUND (DEF) by SULLIVAN,BRI			
06:33	MISSED JUMPER by FORD,DEJA			
06:29	REBOUND (OFF) by COLLINS,TYLER			
06:08	MISSED LAYUP by FORD,DEJA			
06:05	REBOUND (OFF) by EADY,ARYNN			
06:04	MISSED LAYUP by EADY,ARYNN			
06:01				REBOUND (DEF) by REYNOLDS,VICTORIA
05:57				MISSED JUMPER by BOGGS,BIANCA
05:56	REBOUND (DEF) by SULLIVAN,BRI			
05:56				FOUL (PERSONAL) by POLLARD,NYLA
05:56	SUB OUT: EADY,ARYNN			
05:56	SUB IN: LARSON,BAILEIGH			
05:56	SUB OUT: FORD,DEJA			
05:56	SUB IN: PERKINS,LATRICE			
05:47	GOOD! LAYUP by LARSON,BAILEIGH	29-37	V 8	
05:47	ASSIST by COLLINS,TYLER			
05:35		32-37	V 5	GOOD! 3PTR by BOGGS,BIANCA
05:35				ASSIST by HODGSON,EVA
05:09	MISSED LAYUP by LARSON,BAILEIGH			
05:06	REBOUND (OFF) by SULLIVAN,BRI			
04:50	MISSED JUMPER by SULLIVAN,BRI			
04:47	REBOUND (OFF) by LARSON,BAILEIGH			
04:45	GOOD! JUMPER by LARSON,BAILEIGH [PNT]	32-39	V 7	
04:35				MISSED LAYUP by HODGSON,EVA
04:32	REBOUND (DEF) by HUFF,DARIEN			
04:28	MISSED 3PTR by COLLINS,TYLER			
04:25				REBOUND (DEF) by BOGGS,BIANCA
04:14				TURNOVER (BADPASS) by HODGSON,EVA
04:14	STEAL by LARSON,BAILEIGH			
03:52	MISSED LAYUP by COLLINS,TYLER			
03:48				REBOUND (DEF) by ROGERS,GABBY
03:46				TURNOVER (LOSTBALL) by ROGERS,GABBY
03:46	STEAL by PERKINS,LATRICE			
03:43				FOUL (PERSONAL) by ROGERS,GABBY
03:43				
03:43				SUB OUT: HODGSON,EVA
03:43				SUB IN: JONES,MISHA
03:43	SUB OUT: SULLIVAN,BRI			
03:43	SUB IN: BROUGHTON,ERICKA			
03:43	SUB OUT: LARSON,BAILEIGH			
03:43	SUB IN: FORD,DEJA			
03:36	GOOD! LAYUP by FORD,DEJA	32-41	V 9	
03:11		34-41	V 7	GOOD! LAYUP by POLLARD,NYLA
03:11				ASSIST by ROGERS,GABBY
02:46	MISSED JUMPER by PERKINS,LATRICE			
02:42				REBOUND (DEF) by BOGGS,BIANCA
02:38				MISSED LAYUP by BOGGS,BIANCA
02:35	REBOUND (DEF) by PERKINS,LATRICE			
02:18	MISSED 3PTR by FORD,DEJA			
02:17	REBOUND (OFF) by PERKINS,LATRICE			

Time	VISITORS: Col. of Charleston	Score	Margin	HOME: William & Mary
02:17				FOUL (PERSONAL) by JONES,MISHA
02:17				SUB OUT: POLLARD,NYLA
02:17				SUB IN: BIRDSONG,HARPER
02:15				FOUL (PERSONAL) by BOGGS,BIANCA
02:15	GOOD! FT by HUFF,DARIEN	34-42	V 8	
02:15	MISSED FT by HUFF,DARIEN			
02:13	REBOUND (OFF) by TEAM			
02:11	SUB OUT: HUFF,DARIEN			
02:11	SUB IN: TAYLOR,MADISON			
02:10	TURNOVER (OTHER) by			
02:01				MISSED JUMPER by BIRDSONG,HARPER
01:58				REBOUND (OFF) by ROGERS,GABBY
01:56				MISSED LAYUP by ROGERS,GABBY
01:56				REBOUND (OFF) by ROGERS,GABBY
01:56	FOUL (PERSONAL) by BROUGHTON,ERICKA			
01:56				MISSED FT by ROGERS,GABBY
01:56				REBOUND (OFF) by TEAM
01:56		35-42	V 7	GOOD! FT by ROGERS,GABBY
01:26	GOOD! JUMPER by FORD,DEJA [PNT]	35-44	V 9	
01:09		38-44	V 6	GOOD! 3PTR by BIRDSONG,HARPER
01:09				ASSIST by BOGGS,BIANCA
00:58				FOUL (PERSONAL) by BIRDSONG,HARPER
00:58				SUB OUT: ROGERS,GABBY
00:58				SUB IN: POLLARD,NYLA
00:58	GOOD! FT by COLLINS,TYLER	38-45	V 7	
00:58	SUB OUT: TAYLOR,MADISON			
00:58	SUB IN: HUFF,DARIEN			
00:58	GOOD! FT by COLLINS,TYLER	38-46	V 8	
00:45	FOUL (PERSONAL) by BROUGHTON,ERICKA			
00:45				MISSED FT by BOGGS,BIANCA
00:45				REBOUND (OFF) by TEAM
00:45				MISSED FT by BOGGS,BIANCA
00:43	REBOUND (DEF) by BROUGHTON,ERICKA			
00:20	MISSED JUMPER by COLLINS,TYLER			
00:17				REBOUND (DEF) by REYNOLDS,VICTORIA
00:12		40-46	V 6	GOOD! LAYUP by POLLARD,NYLA [FB]
00:12				ASSIST by REYNOLDS,VICTORIA
00:01	MISSED 3PTR by COLLINS,TYLER			
00:01				REBOUND (DEF) by TEAM

Col. of Charleston 46, William & Mary 40

Points from (This Period)	COC	W&M
In the Paint	12	4
Off Turns	2	1
2nd Chance	7	1
Fast Break	0	2
Bench	4	4

Official Box Score
Col. of Charleston vs William & Mary
Fourth Quarter Statistics Only
January 13, 2019 at Kaplan Arena (Kaplan Arena) - Williamsburg, Va.

Col. of Charleston 20

No.	Player	S	Pts	FG	3FG	FT	OR	DR	TR	PF	A	TO	Blk	Stl	Min	+/-
02	Huff, Darien		2	1-3	0-1	0-0	0	1	1	1	1	0	0	1	10	6
15	Eady, Aryn		2	1-4	0-0	0-0	0	0	0	0	0	0	0	0	4	-6
20	Sullivan, Bri		0	0-0	0-0	0-0	0	0	0	1	0	0	1	0	8	4
23	Collins, Tyler		0	0-0	0-0	0-0	0	0	0	0	1	1	0	1	6	-7
25	Ford, Deja		4	1-5	1-3	1-2	2	1	3	0	0	0	0	1	8	4
00	Taylor, Madison		4	0-0	0-0	4-4	0	1	1	0	1	0	0	1	4	13
03	Perkins, Latrice		0	0-0	0-0	0-0	0	0	0	1	0	2	0	2	3	7
05	Dorsey, Cailin		0	0-0	0-0	0-0	0	0	0	0	0	0	0	0	0	0
21	Larson, Baileigh		8	4-4	0-0	0-1	2	1	3	0	0	0	0	0	4	7
24	Maddox, Lexi		0	0-0	0-0	0-0	0	0	0	0	0	0	0	0	0	0
42	Broughton, Ericka		0	0-0	0-0	0-0	0	1	1	0	0	0	0	0	2	2
	Team						0	0	0	0		0				
TOTALS			20	7-16	1-4	5-7	4	5	9	3	3	3	1	6	48	

Shooting By Period

Period	FG	FG%	3FG	3FG%	FT	FT%
Game	26-63	41.3%	4-16	25.0%	10-13	76.9%

William & Mary 14

No.	Player	S	Pts	FG	3FG	FT	OR	DR	TR	PF	A	TO	Blk	Stl	Min	+/-
02	Boggs, Bianca		3	1-3	1-3	0-0	0	2	2	3	1	3	0	0	9	-4
10	Hodgson, Eva		0	0-0	0-0	0-0	0	0	0	0	0	1	0	0	3	-6
11	Pollard, Nyla		2	1-2	0-1	0-0	0	0	0	0	2	0	0	0	9	-6
15	Krause, Emma		0	0-0	0-0	0-0	0	0	0	0	0	0	0	0	0	0
30	Reynolds, Victoria		3	1-2	1-1	0-0	0	4	4	2	1	2	0	0	10	-6
05	Jones, Misha		6	2-4	2-3	0-0	0	0	0	2	1	1	0	0	8	-3
12	Birdsong, Harper		0	0-1	0-0	0-0	2	0	2	0	0	1	0	0	7	-2
25	Rogers, Gabby		0	0-0	0-0	0-0	0	0	0	0	0	0	0	1	2	-3
	Team						0	0	0	0		0				
TOTALS			14	5-12	4-8	0-0	2	6	8	7	5	8	0	1	48	

Shooting By Period

Period	FG	FG%	3FG	3FG%	FT	FT%
Game	20-59	33.9%	10-23	43.5%	4-12	33.3%

Game Notes:

Officials: Ken Kelly, Hillary Harwell, Timothy Greene
 Attendance: 582

Start Time: 2019-01-13 19:06:26
 End Time: 2019-01-13 20:54:52
 Game Duration: 108
 Conference Game;

Score	1st	2nd	3rd	4th	TOT
COC	20	11	15	20	66
W&M	11	18	11	14	54

Points from (This Period)	COC	W&M
In the Paint	12	2
Off Turns	11	0
2nd Chance	6	0
Fast Break	2	5
Bench	12	6

Official Play-By-Play
Col. of Charleston vs William & Mary
Fourth Quarter
January 13, 2019 at Kaplan Arena (Kaplan Arena) - Williamsburg, Va.

Period 4

Starters:

Col. of Charleston: 2 HUFF,DARIEN; 15 EADY,ARYNN; 20 SULLIVAN,BRI; 23 COLLINS,TYLER; 25 FORD,DEJA;
William & Mary: 2 BOGGS,BIANCA; 10 HODGSON,EVA; 11 POLLARD,NYLA; 15 KRAUSE,EMMA ; 30 REYNOLDS,VICTORIA;

Time	VISITORS: Col. of Charleston	Score	Margin	HOME: William & Mary
09:37	MISSED LAYUP by EADY,ARYNN			
09:34				REBOUND (DEF) by BOGGS,BIANCA
09:14				MISSED LAYUP by JONES,MISHA
09:13	REBOUND (DEF) by FORD,DEJA			
09:13				FOUL (PERSONAL) by JONES,MISHA
08:56	MISSED 3PTR by FORD,DEJA			
08:55				REBOUND (DEF) by REYNOLDS,VICTORIA
08:55	FOUL (PERSONAL) by SULLIVAN,BRI			
08:31		43-46	V 3	GOOD! 3PTR by JONES,MISHA
08:31				ASSIST by REYNOLDS,VICTORIA
08:01	GOOD! LAYUP by EADY,ARYNN	43-48	V 5	
07:44		46-48	V 2	GOOD! 3PTR by JONES,MISHA
07:44				ASSIST by POLLARD,NYLA
07:41	TIMEOUT 30SEC			
07:41				SUB OUT: BIRDSONG,HARPER
07:41				SUB IN: HODGSON,EVA
07:17	MISSED 3PTR by HUFF,DARIEN			
07:14	REBOUND (OFF) by FORD,DEJA			
07:08	GOOD! 3PTR by FORD,DEJA	46-51	V 5	
07:08	ASSIST by COLLINS,TYLER			
06:53				TURNOVER (BADPASS) by REYNOLDS,VICTORIA
06:53	STEAL by FORD,DEJA			
06:48	MISSED LAYUP by FORD,DEJA			
06:44				REBOUND (DEF) by BOGGS,BIANCA
06:42		48-51	V 3	GOOD! LAYUP by POLLARD,NYLA [FB]
06:42				ASSIST by BOGGS,BIANCA
06:31	MISSED LAYUP by EADY,ARYNN			
06:27				REBOUND (DEF) by REYNOLDS,VICTORIA
06:24		51-51	T	GOOD! 3PTR by BOGGS,BIANCA [FB]
06:24				ASSIST by POLLARD,NYLA
05:56	MISSED LAYUP by EADY,ARYNN			
05:53				REBOUND (DEF) by REYNOLDS,VICTORIA
05:51				FOUL (OFF) by BOGGS,BIANCA
05:51				TURNOVER (OFFENSIVE) by BOGGS,BIANCA
05:51	SUB OUT: COLLINS,TYLER			
05:51	SUB IN: TAYLOR,MADISON			
05:51	SUB OUT: EADY,ARYNN			
05:51	SUB IN: LARSON,BAILEIGH			
05:36	MISSED JUMPER by HUFF,DARIEN			
05:30	REBOUND (OFF) by LARSON,BAILEIGH			
05:30	GOOD! LAYUP by LARSON,BAILEIGH	51-53	V 2	
05:22				TURNOVER (BADPASS) by HODGSON,EVA
05:22	STEAL by HUFF,DARIEN			
05:17	GOOD! LAYUP by HUFF,DARIEN [FB]	51-55	V 4	
05:04				MISSED JUMPER by REYNOLDS,VICTORIA
05:04	BLOCK by SULLIVAN,BRI			
04:57	REBOUND (DEF) by LARSON,BAILEIGH			
04:46	MISSED LAYUP by FORD,DEJA			
04:45	GOOD! LAYUP by LARSON,BAILEIGH	51-57	V 6	
04:45	REBOUND (OFF) by LARSON,BAILEIGH			
04:45				FOUL (PERSONAL) by JONES,MISHA
04:45				SUB OUT: JONES,MISHA
04:45				SUB IN: BIRDSONG,HARPER
04:45				SUB OUT: HODGSON,EVA
04:45				SUB IN: ROGERS,GABBY
04:45	SUB OUT: SULLIVAN,BRI			
04:45	SUB IN: PERKINS,LATRICE			
04:45	SUB OUT: FORD,DEJA			
04:45	SUB IN: BROUGHTON,ERICKA			
04:45	MISSED FT by LARSON,BAILEIGH			
04:44				REBOUND (DEF) by REYNOLDS,VICTORIA
04:18				MISSED 3PTR by BOGGS,BIANCA
04:15	REBOUND (DEF) by BROUGHTON,ERICKA			
03:57	FOUL (OFF) by PERKINS,LATRICE			
03:57	TURNOVER (OFFENSIVE) by PERKINS,LATRICE			
03:57				SUB OUT: ROGERS,GABBY
03:57				SUB IN: JONES,MISHA
03:57	SUB OUT: PERKINS,LATRICE			
03:57	SUB IN: COLLINS,TYLER			
03:57	SUB OUT: TAYLOR,MADISON			
03:57	SUB IN: FORD,DEJA			
03:43				TURNOVER (BADPASS) by BOGGS,BIANCA
03:43	STEAL by COLLINS,TYLER			
03:25	GOOD! LAYUP by LARSON,BAILEIGH	51-59	V 8	
03:25	ASSIST by HUFF,DARIEN			

Time	VISITORS: Col. of Charleston	Score	Margin	HOME: William & Mary
03:12				MISSED 3PTR by POLLARD,NYLA
03:09				REBOUND (OFF) by BIRDSONG,HARPER
03:05				MISSED 3PTR by JONES,MISHA
03:03				REBOUND (OFF) by BIRDSONG,HARPER
03:03	FOUL (PERSONAL) by HUFF,DARIEN			
03:03	SUB OUT: COLLINS, TYLER			
03:03	SUB IN: TAYLOR,MADISON			
03:03	SUB OUT: FORD,DEJA			
03:03	SUB IN: PERKINS,LATRICE			
03:03	SUB OUT: BROUGHTON,ERICKA			
03:03	SUB IN: SULLIVAN,BRI			
02:49				MISSED 3PTR by BOGGS,BIANCA
02:46	REBOUND (DEF) by HUFF,DARIEN			
02:35	TURNOVER (BADPASS) by PERKINS,LATRICE			
02:29				TURNOVER (LOSTBALL) by BOGGS,BIANCA
02:29	STEAL by TAYLOR,MADISON			
02:11	GOOD! LAYUP by LARSON,BAILEIGH [PNT]	51-61	V 10	
02:11	ASSIST by TAYLOR,MADISON			
02:11				TIMEOUT 30SEC
02:11	SUB OUT: TAYLOR,MADISON			
02:11	SUB IN: FORD,DEJA			
02:11	SUB OUT: PERKINS,LATRICE			
02:11	SUB IN: COLLINS, TYLER			
01:55		54-61	V 7	GOOD! 3PTR by REYNOLDS,VICTORIA
01:55				ASSIST by JONES,MISHA
01:49				FOUL (PERSONAL) by BOGGS,BIANCA
01:49				SUB OUT: JONES,MISHA
01:49				SUB IN: ROGERS,GABBY
01:36	TURNOVER (LOSTBALL) by COLLINS, TYLER			
01:36				STEAL by ROGERS,GABBY
01:36	SUB OUT: COLLINS, TYLER			
01:36	SUB IN: TAYLOR,MADISON			
01:36	SUB OUT: LARSON,BAILEIGH			
01:36	SUB IN: PERKINS,LATRICE			
01:36				SUB OUT: ROGERS,GABBY
01:36				SUB IN: JONES,MISHA
01:32				TURNOVER (BADPASS) by BIRDSONG,HARPER
01:32	STEAL by PERKINS,LATRICE			
01:30				FOUL (PERSONAL) by REYNOLDS,VICTORIA
01:30	GOOD! FT by TAYLOR,MADISON	54-62	V 8	
01:30	GOOD! FT by TAYLOR,MADISON	54-63	V 9	
01:12				TURNOVER (BADPASS) by REYNOLDS,VICTORIA
01:12				SUB OUT: JONES,MISHA
01:12				SUB IN: ROGERS,GABBY
01:12	SUB OUT: TAYLOR,MADISON			
01:12	SUB IN: COLLINS, TYLER			
00:45	MISSED 3PTR by FORD,DEJA			
00:42	REBOUND (OFF) by FORD,DEJA			
00:42				FOUL (PERSONAL) by REYNOLDS,VICTORIA
00:42	MISSED FT by FORD,DEJA			
00:42	REBOUND (OFF) by TEAM			
00:42	SUB OUT: COLLINS, TYLER			
00:42	SUB IN: TAYLOR,MADISON			
00:42	GOOD! FT by FORD,DEJA	54-64	V 10	
00:42				TIMEOUT 30SEC
00:35				MISSED JUMPER by BIRDSONG,HARPER
00:32	REBOUND (DEF) by TAYLOR,MADISON			
00:31				FOUL (PERSONAL) by BOGGS,BIANCA
00:31				SUB OUT: BOGGS,BIANCA
00:31				SUB IN: HODGSON,EVA
00:31	GOOD! FT by TAYLOR,MADISON	54-65	V 11	
00:31	GOOD! FT by TAYLOR,MADISON	54-66	V 12	
00:31				TIMEOUT 30SEC
00:31				SUB OUT: POLLARD,NYLA
00:31				SUB IN: JONES,MISHA
00:25				TURNOVER (LOSTBALL) by JONES,MISHA
00:25	STEAL by PERKINS,LATRICE			

Col. of Charleston 66, William & Mary 54

Points from (This Period)	COC	W&M
In the Paint	12	2
Off Turns	11	0
2nd Chance	6	0
Fast Break	2	5
Bench	12	6

Official Scoring/Possession Reference Chart
Col. of Charleston vs William & Mary
Period 1
January 13, 2019 at Kaplan Arena (Kaplan Arena) - Williamsburg, Va.

Period 1

Starters:

Col. of Charleston: 2 HUFF,DARIEN; 15 EADY,ARYNN; 20 SULLIVAN,BRI; 23 COLLINS,TYLER; 25 FORD,DEJA;
William & Mary: 2 BOGGS,BIANCA; 10 HODGSON,EVA; 11 POLLARD,NYLA; 15 KRAUSE,EMMA ; 30 REYNOLDS,VICTORIA;

Time	VISITORS: Col. of Charleston	Score	Margin	HOME: William & Mary
09:42	GOOD! LAYUP by SULLIVAN,BRI	0-2	V 2	
09:13	GOOD! LAYUP by FORD,DEJA	0-4	V 4	
08:38		2-4	V 2	GOOD! LAYUP by HODGSON,EVA
07:26		3-4	V 1	GOOD! FT by BOGGS,BIANCA
06:49	GOOD! 3PTR by HUFF,DARIEN	3-7	V 4	
06:35		6-7	V 1	GOOD! 3PTR by BOGGS,BIANCA
04:13	GOOD! 3PTR by TAYLOR,MADISON [FB]	6-10	V 4	
03:05	GOOD! LAYUP by LARSON,BAILEIGH	6-12	V 6	
02:46	GOOD! LAYUP by PERKINS,LATRICE [FB]	6-14	V 8	
02:21		7-14	V 7	GOOD! FT by POLLARD,NYLA
01:45		9-14	V 5	GOOD! LAYUP by BOGGS,BIANCA [FB]
01:07		11-14	V 3	GOOD! JUMPER by ROGERS,GABBY
00:58	GOOD! LAYUP by BROUGHTON,ERICKA	11-16	V 5	
00:58	GOOD! FT by BROUGHTON,ERICKA	11-17	V 6	
00:30	GOOD! LAYUP by TAYLOR,MADISON [FB]	11-19	V 8	
00:30	GOOD! FT by TAYLOR,MADISON [FB]	11-20	V 9	

Col. of Charleston 20, William & Mary 11

Official Scoring/Possession Reference Chart
Col. of Charleston vs William & Mary
Period 2
January 13, 2019 at Kaplan Arena (Kaplan Arena) - Williamsburg, Va.

Period 2

Starters:

Col. of Charleston: 2 HUFF,DARIEN; 15 EADY,ARYNN; 20 SULLIVAN,BRI; 23 COLLINS,TYLER; 25 FORD,DEJA;
William & Mary: 2 BOGGS,BIANCA; 10 HODGSON,EVA; 11 POLLARD,NYLA; 15 KRAUSE,EMMA ; 30 REYNOLDS,VICTORIA;

Time	VISITORS: Col. of Charleston	Score	Margin	HOME: William & Mary
09:07		13-20	V 7	GOOD! LAYUP by BOGGS,BIANCA [FB]
09:07		14-20	V 6	GOOD! FT by BOGGS,BIANCA [FB]
08:41	GOOD! 3PTR by HUFF,DARIEN	14-23	V 9	
08:27		16-23	V 7	GOOD! JUMPER by REYNOLDS,VICTORIA [PNT]
07:47	GOOD! LAYUP by HUFF,DARIEN [FB]	16-25	V 9	
06:45		18-25	V 7	GOOD! JUMPER by BIRDSONG,HARPER
05:59	GOOD! LAYUP by MADDOX,LEXI	18-27	V 9	
05:39		21-27	V 6	GOOD! 3PTR by BIRDSONG,HARPER
05:10		24-27	V 3	GOOD! 3PTR by BOGGS,BIANCA
04:31		27-27	T	GOOD! 3PTR by REYNOLDS,VICTORIA
02:47	GOOD! LAYUP by LARSON,BAILEIGH	27-29	V 2	
01:16		29-29	T	GOOD! LAYUP by POLLARD,NYLA [FB]
00:28	GOOD! LAYUP by TAYLOR,MADISON [FB]	29-31	V 2	

Col. of Charleston 31, William & Mary 29

Official Scoring/Possession Reference Chart
Col. of Charleston vs William & Mary
Period 3
January 13, 2019 at Kaplan Arena (Kaplan Arena) - Williamsburg, Va.

Period 3

Starters:

Col. of Charleston: 2 HUFF,DARIEN; 15 EADY,ARYNN; 20 SULLIVAN,BRI; 23 COLLINS,TYLER; 25 FORD,DEJA;
William & Mary: 2 BOGGS,BIANCA; 10 HODGSON,EVA; 11 POLLARD,NYLA; 15 KRAUSE,EMMA ; 30 REYNOLDS,VICTORIA;

Time	VISITORS: Col. of Charleston	Score	Margin	HOME: William & Mary
09:18	GOOD! JUMPER by COLLINS, TYLER [PNT]	29-33	V 4	
07:49	GOOD! LAYUP by EADY,ARYNN	29-35	V 6	
05:47	GOOD! LAYUP by LARSON,BAILEIGH	29-37	V 8	
05:35		32-37	V 5	GOOD! 3PTR by BOGGS,BIANCA
04:45	GOOD! JUMPER by LARSON,BAILEIGH [PNT]	32-39	V 7	
03:36	GOOD! LAYUP by FORD,DEJA	32-41	V 9	
03:11		34-41	V 7	GOOD! LAYUP by POLLARD,NYLA
02:15	GOOD! FT by HUFF,DARIEN	34-42	V 8	
01:56		35-42	V 7	GOOD! FT by ROGERS,GABBY
01:26	GOOD! JUMPER by FORD,DEJA [PNT]	35-44	V 9	
01:09		38-44	V 6	GOOD! 3PTR by BIRDSONG,HARPER
00:58	GOOD! FT by COLLINS, TYLER	38-45	V 7	
00:58	GOOD! FT by COLLINS, TYLER	38-46	V 8	
00:12		40-46	V 6	GOOD! LAYUP by POLLARD,NYLA [FB]

Col. of Charleston 46, William & Mary 40

Official Scoring/Possession Reference Chart
Col. of Charleston vs William & Mary
Period 4
January 13, 2019 at Kaplan Arena (Kaplan Arena) - Williamsburg, Va.

Period 4

Starters:

Col. of Charleston: 2 HUFF,DARIEN; 15 EADY,ARYNN; 20 SULLIVAN,BRI; 23 COLLINS,TYLER; 25 FORD,DEJA;
William & Mary: 2 BOGGS,BIANCA; 10 HODGSON,EVA; 11 POLLARD,NYLA; 15 KRAUSE,EMMA ; 30 REYNOLDS,VICTORIA;

Time	VISITORS: Col. of Charleston	Score	Margin	HOME: William & Mary
08:31		43-46	V 3	GOOD! 3PTR by JONES,MISHA
08:01	GOOD! LAYUP by EADY,ARYNN	43-48	V 5	
07:44		46-48	V 2	GOOD! 3PTR by JONES,MISHA
07:08	GOOD! 3PTR by FORD,DEJA	46-51	V 5	
06:42		48-51	V 3	GOOD! LAYUP by POLLARD,NYLA [FB]
06:24		51-51	T	GOOD! 3PTR by BOGGS,BIANCA [FB]
05:30	GOOD! LAYUP by LARSON,BAILEIGH	51-53	V 2	
05:17	GOOD! LAYUP by HUFF,DARIEN [FB]	51-55	V 4	
04:45	GOOD! LAYUP by LARSON,BAILEIGH	51-57	V 6	
03:25	GOOD! LAYUP by LARSON,BAILEIGH	51-59	V 8	
02:11	GOOD! LAYUP by LARSON,BAILEIGH [PNT]	51-61	V 10	
01:55		54-61	V 7	GOOD! 3PTR by REYNOLDS,VICTORIA
01:30	GOOD! FT by TAYLOR,MADISON	54-62	V 8	
01:30	GOOD! FT by TAYLOR,MADISON	54-63	V 9	
00:42	GOOD! FT by FORD,DEJA	54-64	V 10	
00:31	GOOD! FT by TAYLOR,MADISON	54-65	V 11	
00:31	GOOD! FT by TAYLOR,MADISON	54-66	V 12	

Col. of Charleston 66, William & Mary 54

Official Substitutions Log
Col. of Charleston vs William & Mary
Period 1
January 13, 2019 at Kaplan Arena (Kaplan Arena) - Williamsburg, Va.

VISITORS: Col. of Charleston	Time	Score	HOME: William & Mary
2 HUFF,DARIEN			2 BOGGS,BIANCA
15 EADY,ARYNN			10 HODGSON,EVA
20 SULLIVAN,BRI			11 POLLARD,NYLA
23 COLLINS,TYLER			15 KRAUSE,EMMA
25 FORD,DEJA			30 REYNOLDS,VICTORIA
SUB OUT: 25 FORD,DEJA	08:12	4-2	
SUB IN: 3 PERKINS,LATRICE	08:12		
	07:37	4-2	SUB OUT: KRAUSE,EMMA
	07:37		SUB IN: ROGERS,GABBY
SUB OUT: 23 COLLINS,TYLER	07:37		
SUB IN: 0 TAYLOR,MADISON	07:37		
	07:08	4-3	SUB OUT: HODGSON,EVA
	07:08		SUB IN: BIRDSONG,HARPER
	05:22	7-6	SUB OUT: REYNOLDS,VICTORIA
	05:22		SUB IN: JONES,MISHA
SUB OUT: 20 SULLIVAN,BRI	05:22		
SUB IN: 21 LARSON,BAILEIGH	05:22		
	05:04	7-6	SUB OUT: BIRDSONG,HARPER
	05:04		SUB IN: HODGSON,EVA
SUB OUT: 15 EADY,ARYNN	04:28	7-6	
SUB IN: 20 SULLIVAN,BRI	04:28		
	01:45	14-9	SUB OUT: JONES,MISHA
	01:45		SUB IN: REYNOLDS,VICTORIA
	01:45		SUB OUT: POLLARD,NYLA
	01:45		SUB IN: BIRDSONG,HARPER
SUB OUT: 20 SULLIVAN,BRI	01:45		
SUB IN: 42 BROUGHTON,ERICKA	01:45		
SUB OUT: 2 HUFF,DARIEN	01:25	14-9	
SUB IN: 5 DORSEY,CAILIN	01:25		
	00:58	16-11	SUB OUT: HODGSON,EVA
	00:58		SUB IN: POLLARD,NYLA

Col. of Charleston 20, William & Mary 11

Official Substitutions Log
Col. of Charleston vs William & Mary
Period 2
January 13, 2019 at Kaplan Arena (Kaplan Arena) - Williamsburg, Va.

VISITORS: Col. of Charleston	Time	Score	HOME: William & Mary
2 HUFF, DARIEN			2 BOGGS, BIANCA
15 EADY, ARYNN			10 HODGSON, EVA
20 SULLIVAN, BRI			11 POLLARD, NYLA
23 COLLINS, TYLER			15 KRAUSE, EMMA
25 FORD, DEJA			30 REYNOLDS, VICTORIA
SUB OUT: 21 LARSON, BAILEIGH	09:07	20-13	
SUB IN: 15 EADY, ARYNN	09:07		
	08:02	23-16	SUB OUT: ROGERS, GABBY
	08:02		SUB IN: KRAUSE, EMMA
SUB OUT: 3 PERKINS, LATRICE	07:30	25-16	
SUB IN: 5 DORSEY, CAILIN	07:30		
SUB OUT: 15 EADY, ARYNN	07:02	25-16	
SUB IN: 24 MADDOX, LEXI	07:02		
SUB OUT: 5 DORSEY, CAILIN	06:16	25-18	
SUB IN: 3 PERKINS, LATRICE	06:16		
SUB OUT: 0 TAYLOR, MADISON	04:27	27-27	
SUB IN: 25 FORD, DEJA	04:27		
SUB OUT: 3 PERKINS, LATRICE	04:27		
SUB IN: 21 LARSON, BAILEIGH	04:27		
SUB OUT: 24 MADDOX, LEXI	04:27		
SUB IN: 23 COLLINS, TYLER	04:27		
	03:25	27-27	SUB OUT: KRAUSE, EMMA
	03:25		SUB IN: ROGERS, GABBY
	03:25		SUB OUT: ROGERS, GABBY
	03:25		SUB IN: JONES, MISHA
SUB OUT: 23 COLLINS, TYLER	02:17	29-27	
SUB IN: 0 TAYLOR, MADISON	02:17		
SUB OUT: 25 FORD, DEJA	02:17		
SUB IN: 3 PERKINS, LATRICE	02:17		

Col. of Charleston 31, William & Mary 29

Official Substitutions Log
Col. of Charleston vs William & Mary
Period 3
January 13, 2019 at Kaplan Arena (Kaplan Arena) - Williamsburg, Va.

VISITORS: Col. of Charleston	Time	Score	HOME: William & Mary
2 HUFF, DARIEN			2 BOGGS, BIANCA
15 EADY, ARYNN			10 HODGSON, EVA
20 SULLIVAN, BRI			11 POLLARD, NYLA
23 COLLINS, TYLER			15 KRAUSE, EMMA
25 FORD, DEJA			30 REYNOLDS, VICTORIA
SUB OUT: 15 EADY, ARYNN	05:56	35-29	
SUB IN: 21 LARSON, BAILEIGH	05:56		
SUB OUT: 25 FORD, DEJA	05:56		
SUB IN: 3 PERKINS, LATRICE	05:56		
	03:43	39-32	SUB OUT: HODGSON, EVA
	03:43		SUB IN: JONES, MISHA
SUB OUT: 20 SULLIVAN, BRI	03:43		
SUB IN: 42 BROUGHTON, ERICKA	03:43		
SUB OUT: 21 LARSON, BAILEIGH	03:43		
SUB IN: 25 FORD, DEJA	03:43		
	02:17	41-34	SUB OUT: POLLARD, NYLA
	02:17		SUB IN: BIRDSONG, HARPER
SUB OUT: 2 HUFF, DARIEN	02:11	42-34	
SUB IN: 0 TAYLOR, MADISON	02:11		
	00:58	44-38	SUB OUT: ROGERS, GABBY
	00:58		SUB IN: POLLARD, NYLA
SUB OUT: 0 TAYLOR, MADISON	00:58		
SUB IN: 2 HUFF, DARIEN	00:58		

Col. of Charleston 46, William & Mary 40

Official Substitutions Log
Col. of Charleston vs William & Mary
Period 4
January 13, 2019 at Kaplan Arena (Kaplan Arena) - Williamsburg, Va.

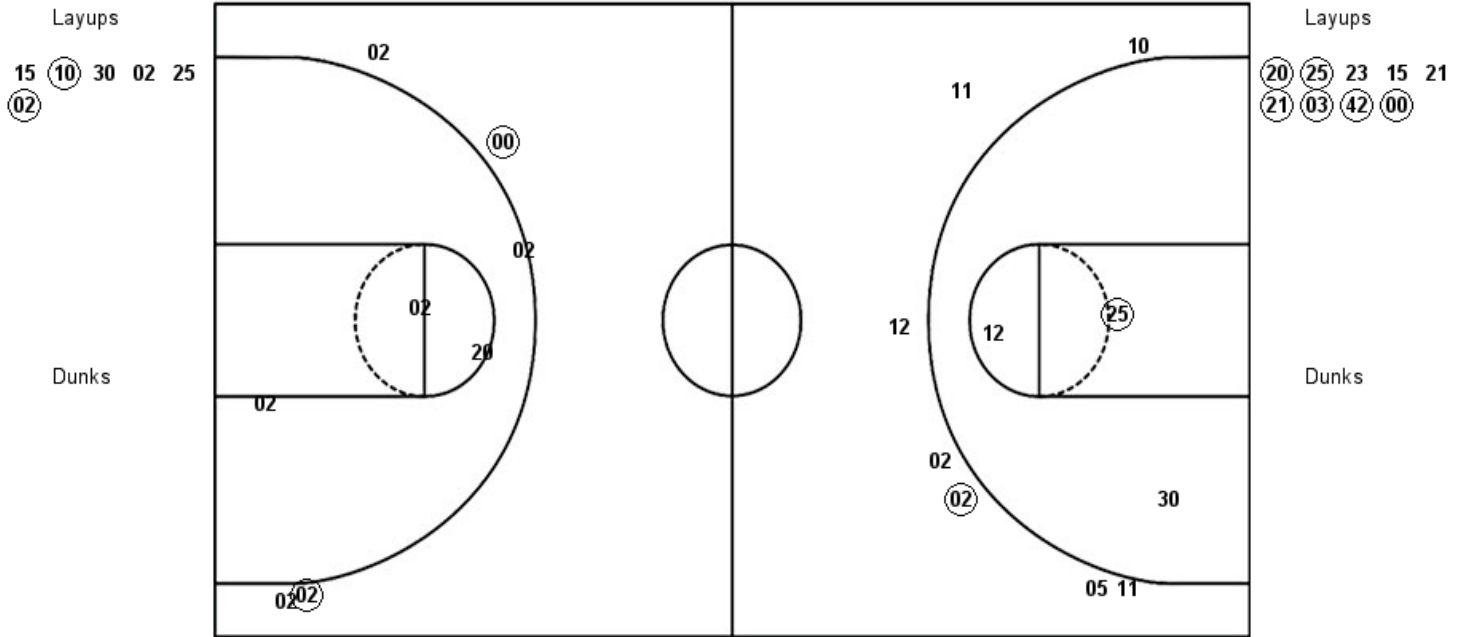
VISITORS: Col. of Charleston	Time	Score	HOME: William & Mary
2 HUFF,DARIEN			2 BOGGS,BIANCA
15 EADY,ARYNN			10 HODGSON,EVA
20 SULLIVAN,BRI			11 POLLARD,NYLA
23 COLLINS, TYLER			15 KRAUSE,EMMA
25 FORD,DEJA			30 REYNOLDS,VICTORIA
	07:41	48-46	SUB OUT: BIRDSONG,HARPER
	07:41		SUB IN: HODGSON,EVA
SUB OUT: 23 COLLINS, TYLER	05:51	51-51	
SUB IN: 0 TAYLOR,MADISON	05:51		
SUB OUT: 15 EADY,ARYNN	05:51		
SUB IN: 21 LARSON,BAILEIGH	05:51		
	04:45	57-51	SUB OUT: JONES,MISHA
	04:45		SUB IN: BIRDSONG,HARPER
	04:45		SUB OUT: HODGSON,EVA
	04:45		SUB IN: ROGERS,GABBY
SUB OUT: 20 SULLIVAN,BRI	04:45		
SUB IN: 3 PERKINS,LATRICE	04:45		
SUB OUT: 25 FORD,DEJA	04:45		
SUB IN: 42 BROUGHTON,ERICKA	04:45		
	03:57	57-51	SUB OUT: ROGERS,GABBY
	03:57		SUB IN: JONES,MISHA
SUB OUT: 3 PERKINS,LATRICE	03:57		
SUB IN: 23 COLLINS, TYLER	03:57		
SUB OUT: 0 TAYLOR,MADISON	03:57		
SUB IN: 25 FORD,DEJA	03:57		
SUB OUT: 23 COLLINS, TYLER	03:03	59-51	
SUB IN: 0 TAYLOR,MADISON	03:03		
SUB OUT: 25 FORD,DEJA	03:03		
SUB IN: 3 PERKINS,LATRICE	03:03		
SUB OUT: 42 BROUGHTON,ERICKA	03:03		
SUB IN: 20 SULLIVAN,BRI	03:03		
SUB OUT: 0 TAYLOR,MADISON	02:11	61-51	
SUB IN: 25 FORD,DEJA	02:11		
SUB OUT: 3 PERKINS,LATRICE	02:11		
SUB IN: 23 COLLINS, TYLER	02:11		
	01:49	61-54	SUB OUT: JONES,MISHA
	01:49		SUB IN: ROGERS,GABBY
SUB OUT: 23 COLLINS, TYLER	01:36	61-54	
SUB IN: 0 TAYLOR,MADISON	01:36		
SUB OUT: 21 LARSON,BAILEIGH	01:36		
SUB IN: 3 PERKINS,LATRICE	01:36		
	01:36		SUB OUT: ROGERS,GABBY
	01:36		SUB IN: JONES,MISHA
	01:12	63-54	SUB OUT: JONES,MISHA
	01:12		SUB IN: ROGERS,GABBY
SUB OUT: 0 TAYLOR,MADISON	01:12		
SUB IN: 23 COLLINS, TYLER	01:12		
SUB OUT: 23 COLLINS, TYLER	00:42	63-54	
SUB IN: 0 TAYLOR,MADISON	00:42		
	00:31	64-54	SUB OUT: BOGGS,BIANCA
	00:31		SUB IN: HODGSON,EVA
	00:31		SUB OUT: POLLARD,NYLA
	00:31		SUB IN: JONES,MISHA

Col. of Charleston 66, William & Mary 54

Official Shot Chart
Col. of Charleston vs William & Mary
 PERIOD 1 Shots
 January 13, 2019 at Kaplan Arena (Kaplan Arena) - Williamsburg, Va.

William & Mary

Col. of Charleston



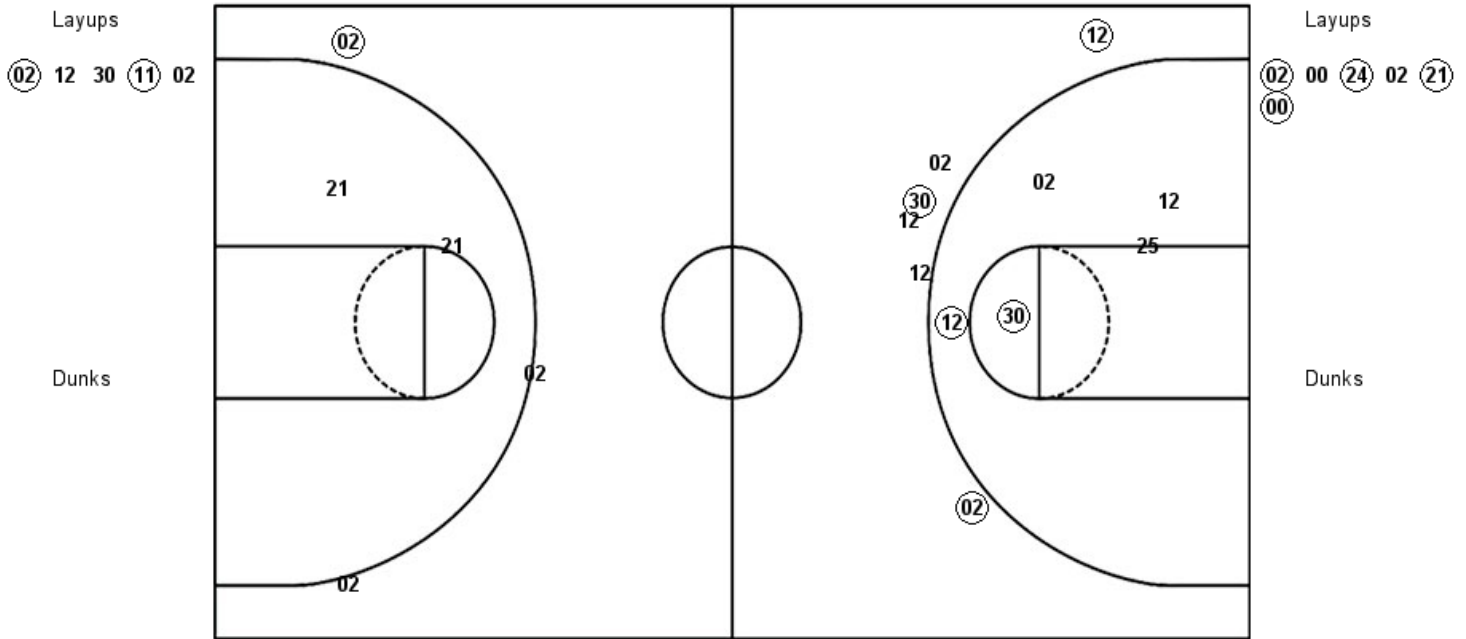
W&M : Period 1	Made	Att	Pct
Layups	2	6	33.3
Dunks	0	0	0
2PT Field Goals	3	9	33.3
3PT Field Goals	1	7	14.3
Total Field Goals	4	16	25.0

COC : Period 1	Made	Att	Pct
Layups	6	9	66.7
Dunks	0	0	0
2PT Field Goals	6	12	50.0
3PT Field Goals	2	5	40.0
Total Field Goals	8	17	47.1

Official Shot Chart
Col. of Charleston vs William & Mary
PERIOD 2 Shots
 January 13, 2019 at Kaplan Arena (Kaplan Arena) - Williamsburg, Va.

William & Mary

Col. of Charleston



W&M : Period 2	Made	Att	Pct
Layups	2	5	40.0
Dunks	0	0	0
2PT Field Goals	4	10	40.0
3PT Field Goals	3	6	50.0
Total Field Goals	7	16	43.8

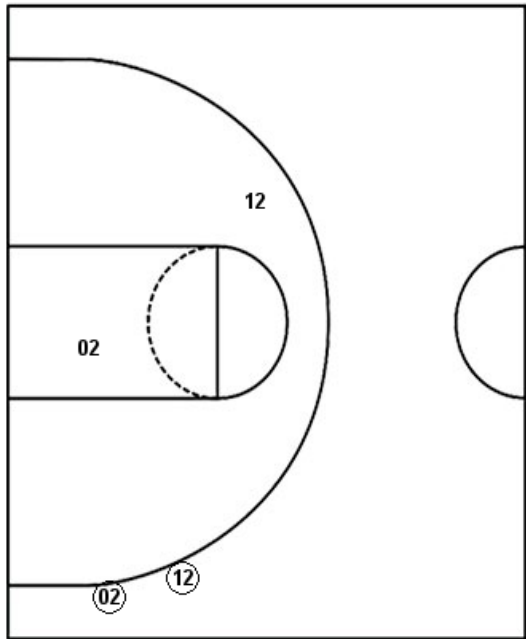
COC : Period 2	Made	Att	Pct
Layups	4	6	66.7
Dunks	0	0	0
2PT Field Goals	4	8	50.0
3PT Field Goals	1	3	33.3
Total Field Goals	5	11	45.5

Official Shot Chart
Col. of Charleston vs William & Mary
PERIOD 3 Shots
 January 13, 2019 at Kaplan Arena (Kaplan Arena) - Williamsburg, Va.

William & Mary

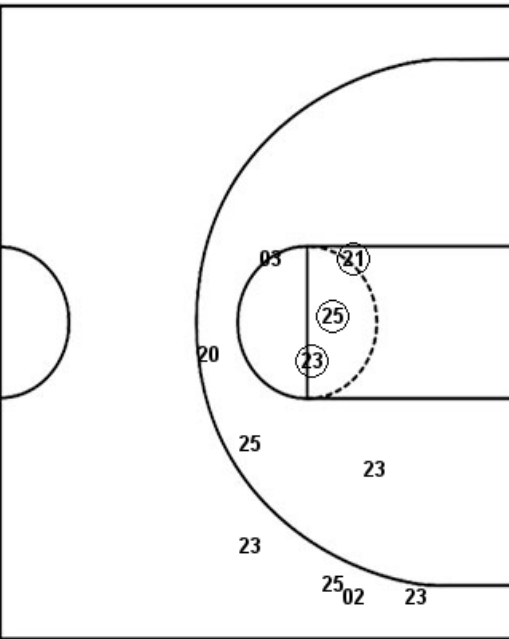
Col. of Charleston

Layups
 02 11 10 30 11
 25 10 (11) 02 25
 (11)



Dunks

Layups
 23 (15) 25 15 (21)
 21 23 (25)



Dunks

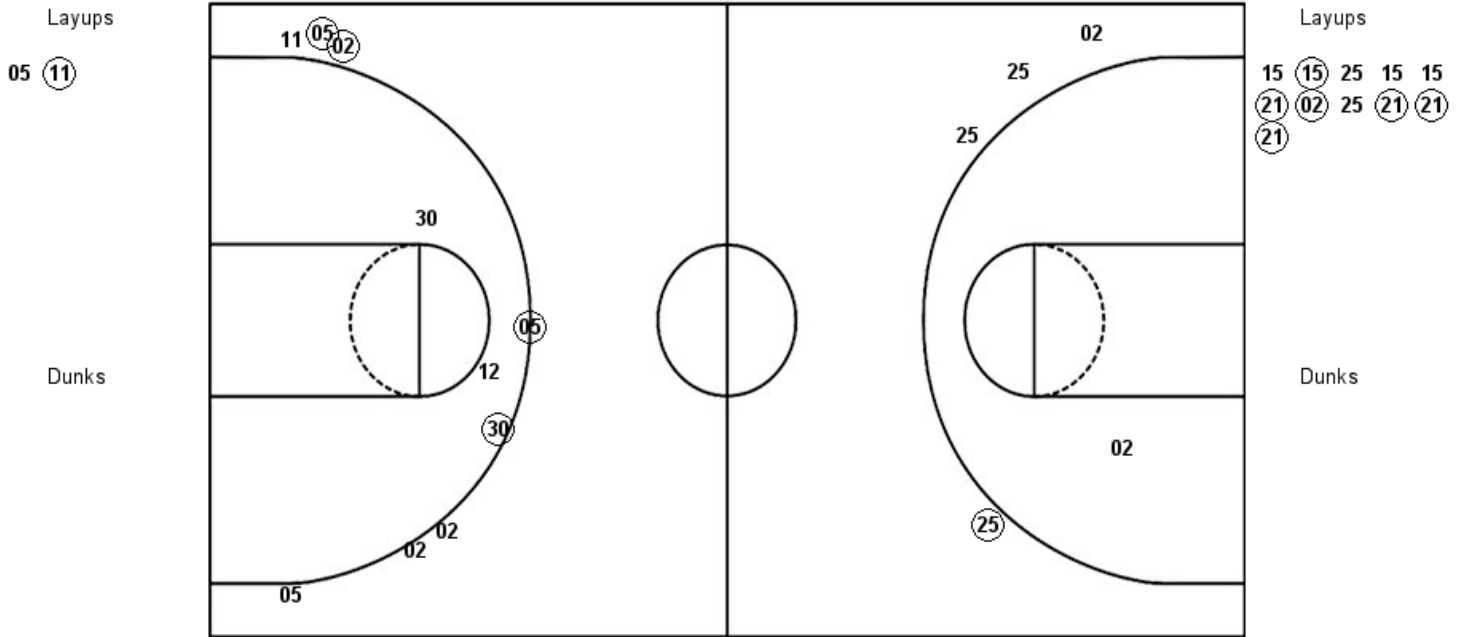
W&M : Period 3	Made	Att	Pct
Layups	2	11	18.2
Dunks	0	0	0
2PT Field Goals	2	13	15.4
3PT Field Goals	2	2	100.0
Total Field Goals	4	15	26.7

COC : Period 3	Made	Att	Pct
Layups	3	8	37.5
Dunks	0	0	0
2PT Field Goals	6	15	40.0
3PT Field Goals	0	4	00.0
Total Field Goals	6	19	31.6

Official Shot Chart
Col. of Charleston vs William & Mary
PERIOD 4 Shots
 January 13, 2019 at Kaplan Arena (Kaplan Arena) - Williamsburg, Va.

William & Mary

Col. of Charleston

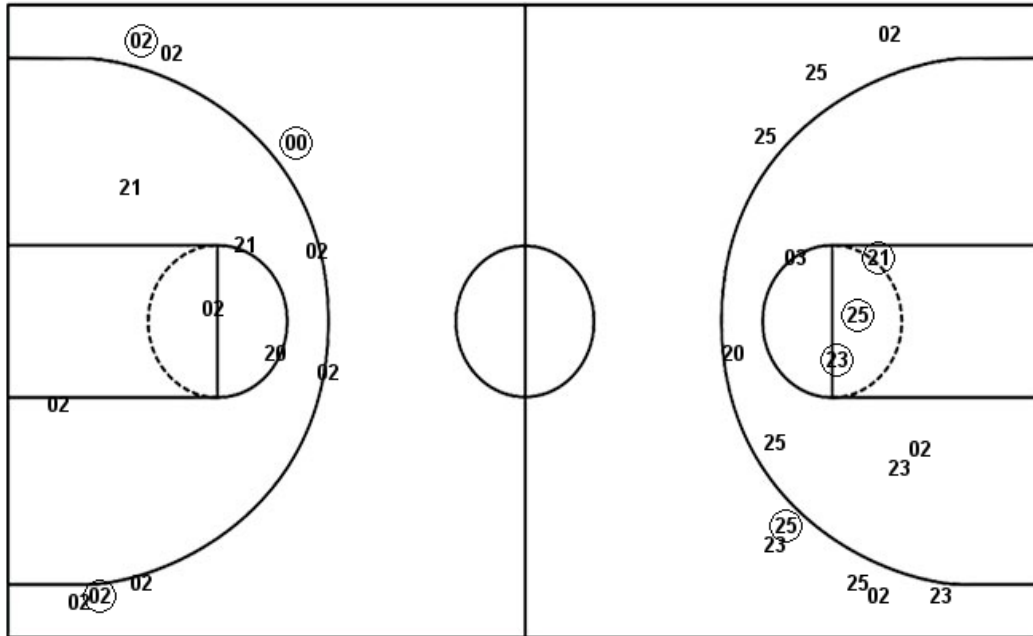


W&M : Period 4	Made	Att	Pct
Layups	1	2	50.0
Dunks	0	0	0
2PT Field Goals	1	4	25.0
3PT Field Goals	4	8	50.0
Total Field Goals	5	12	41.7

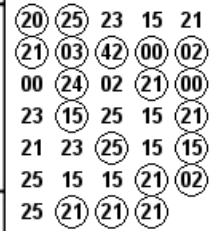
COC : Period 4	Made	Att	Pct
Layups	6	11	54.5
Dunks	0	0	0
2PT Field Goals	6	12	50.0
3PT Field Goals	1	4	25.0
Total Field Goals	7	16	43.8

Official Shot Chart
Col. of Charleston vs William & Mary
Col. of Charleston Team Shots
January 13, 2019 at Kaplan Arena (Kaplan Arena) - Williamsburg, Va.

Layups



Layups



Dunks

Dunks

COC : Period 1	Made	Att	Pct
Layups	6	9	66.7
Dunks	0	0	0
2PT Field Goals	6	12	50.0
3PT Field Goals	2	5	40.0
Total Field Goals	8	17	47.1

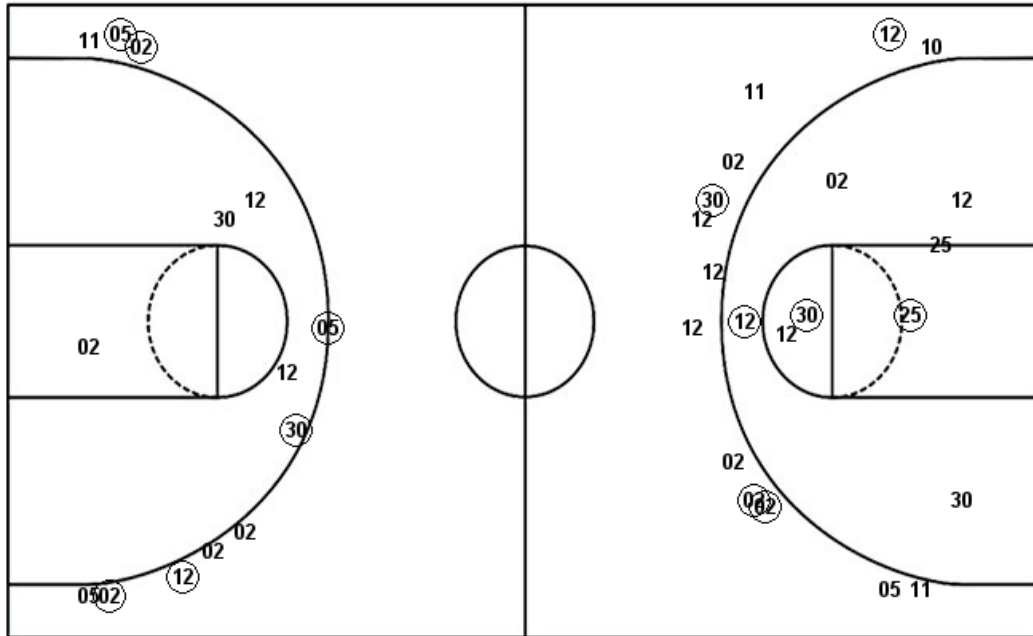
COC : Period 3	Made	Att	Pct
Layups	3	8	37.5
Dunks	0	0	0
2PT Field Goals	6	15	40.0
3PT Field Goals	0	4	00.0
Total Field Goals	6	19	31.6

COC : Period 2	Made	Att	Pct
Layups	4	6	66.7
Dunks	0	0	0
2PT Field Goals	4	8	50.0
3PT Field Goals	1	3	33.3
Total Field Goals	5	11	45.5

COC : Period 4	Made	Att	Pct
Layups	6	11	54.5
Dunks	0	0	0
2PT Field Goals	6	12	50.0
3PT Field Goals	1	4	25.0
Total Field Goals	7	16	43.8

Official Shot Chart
Col. of Charleston vs William & Mary
William & Mary Team Shots
January 13, 2019 at Kaplan Arena (Kaplan Arena) - Williamsburg, Va.

Layups



Layups

15 10 30 02 25
 02 02 12 30 11
 02 02 11 10 30
 11 25 10 11 02
 25 11 05 11

Dunks

Dunks

W&M : Period 1	Made	Att	Pct
Layups	2	6	33.3
Dunks	0	0	0
2PT Field Goals	3	9	33.3
3PT Field Goals	1	7	14.3
Total Field Goals	4	16	25.0

W&M : Period 2	Made	Att	Pct
Layups	2	5	40.0
Dunks	0	0	0
2PT Field Goals	4	10	40.0
3PT Field Goals	3	6	50.0
Total Field Goals	7	16	43.8

W&M : Period 3	Made	Att	Pct
Layups	2	11	18.2
Dunks	0	0	0
2PT Field Goals	2	13	15.4
3PT Field Goals	2	2	100.0
Total Field Goals	4	15	26.7

W&M : Period 4	Made	Att	Pct
Layups	1	2	50.0
Dunks	0	0	0
2PT Field Goals	1	4	25.0
3PT Field Goals	4	8	50.0
Total Field Goals	5	12	41.7