

FINAL SCORE



UNCW

64



William & Mary

70

January 12, 2019 • Kaplan Arena (Kaplan Arena) - Williamsburg, Va.

FINAL STATISTICS

Official Box Score
UNCW vs William & Mary
Game Totals -- Final Statistics
January 12, 2019 at Kaplan Arena (Kaplan Arena) - Williamsburg, Va.

UNCW 64

No.	Player	S	Pts	FG	3FG	FT	OR	DR	TR	PF	A	TO	Blk	Stl	Min	+/-
04	Parker, Shrita		20	4-15	0-2	12-13	1	6	7	2	3	4	0	2	40	-3
05	Smith, Gigi		4	1-9	1-2	1-4	2	4	6	2	0	3	0	2	28	-1
10	Vason, Ahyiona		3	1-2	0-0	1-4	1	0	1	2	1	3	1	0	25	-4
13	Suggs, Lacey		17	7-15	1-5	2-3	5	2	7	4	1	4	0	3	37	9
24	Bell, Chinyere		14	5-6	0-0	4-4	1	4	5	4	1	2	0	0	22	-4
00	Jeune, Ashli		0	0-0	0-0	0-0	0	2	2	2	0	2	0	0	5	-4
01	Powell, Paige		6	2-3	0-0	2-4	2	6	8	0	0	0	0	0	14	-9
14	Tate, Timber		0	0-5	0-4	0-0	1	1	2	4	0	1	0	1	19	-8
22	Thybulle, Zhaneia		0	0-0	0-0	0-0	0	0	0	0	0	0	0	0	1	5
32	Obusek, Carol-Anne		0	0-0	0-0	0-0	0	0	0	0	0	0	0	0	1	-7
33	Sacco, Grace		0	0-0	0-0	0-0	0	0	0	2	1	1	0	0	8	-4
	Team						4	1	5	0		1				
TOTALS			64	20-55	2-13	22-32	17	26	43	22	7	21	1	8	200	

Shooting By Period

Period	FG	FG%	3FG	3FG%	FT	FT%
1st Qtr	5-11	45%	2-3	67%	0-0	0%
2nd Qtr	5-10	50%	0-3	00%	7-9	78%
3rd Qtr	6-17	35%	0-3	00%	4-9	44%
4th Qtr	4-17	24%	0-4	00%	11-14	79%
1st Half	10-21	48%	2-6	33%	7-9	78%
2nd Half	10-34	29%	0-7	00%	15-23	65%
Game	20-55	36.4%	2-13	15.4%	22-32	68.8%

Last FG: 4th-00:48
 Biggest Run: 9-0
 Largest lead: By 10 at 1-06:36
 Technical Fouls: None.

William & Mary 70

No.	Player	S	Pts	FG	3FG	FT	OR	DR	TR	PF	A	TO	Blk	Stl	Min	+/-
02	Boggs, Bianca		25	8-16	2-5	7-9	1	5	6	2	2	2	2	2	36	8
10	Hodgson, Eva		6	2-6	2-5	0-0	0	0	0	4	1	2	2	1	27	-11
11	Pollard, Nyla		9	2-4	2-3	3-4	5	2	7	2	6	3	0	0	35	10
15	Krause, Emma		0	0-4	0-4	0-0	0	0	0	2	0	0	0	0	12	0
30	Reynolds, Victoria		17	6-9	1-2	4-5	1	6	7	2	0	4	2	1	31	-10
05	Jones, Misha		9	3-5	3-5	0-0	0	2	2	4	3	3	0	1	24	19
12	Birdsong, Harper		4	0-10	0-5	4-4	0	2	2	3	1	0	2	1	21	7
21	Eichner, Bailey		0	0-0	0-0	0-0	0	0	0	1	0	0	0	0	3	-3
25	Rogers, Gabby		0	0-1	0-0	0-0	1	2	3	4	0	2	1	1	11	10
	Team						2	4	6	0		1				
TOTALS			70	21-55	10-29	18-22	10	23	33	24	13	17	9	7	200	

Shooting By Period

Period	FG	FG%	3FG	3FG%	FT	FT%
1st Qtr	5-13	38%	3-8	38%	6-6	100%
2nd Qtr	3-16	19%	1-9	11%	6-7	86%
3rd Qtr	6-13	46%	4-6	67%	4-7	57%
4th Qtr	7-13	54%	2-6	33%	2-2	100%
1st Half	8-29	28%	4-17	24%	12-13	92%
2nd Half	13-26	50%	6-12	50%	6-9	67%
Game	21-55	38.2%	10-29	34.5%	18-22	81.8%

Last FG: 4th-02:53
 Biggest Run: 17-0
 Largest lead: By 13 at 4-02:53
 Technical Fouls: None.

Game Notes:

Officials: Kathleen Lynch, Jeffrey Smith, Natasha Camy
 Attendance: 657

Start Time: 2019-01-12 00:04:22
 End Time: 2019-01-12 02:08:37
 Game Duration: 124
 Conference Game;

Score	1st	2nd	3rd	4th	TOT
NCW	12	17	16	19	64
W&M	19	13	20	18	70

NCW led for 7:22. W&M led for 31:18.
 Game was tied for 1:19.
 Times tied: 4 Lead Changes: 1

Points from	NCW	W&M
In the Paint	36	20
Off Turns	19	23
2nd Chance	17	5
Fast Break	19	12
Bench	6	13

Official Box Score
UNCW vs William & Mary
First Half Statistics Only
January 12, 2019 at Kaplan Arena (Kaplan Arena) - Williamsburg, Va.

UNCW 29

No.	Player	S	Pts	FG	3FG	FT	OR	DR	TR	PF	A	TO	Blk	Stl	Min	+/-
00	Jeune, Ashli		0	0-0	0-0	0-0	0	2	2	2	0	2	0	0	4	-3
01	Powell, Paige		1	0-0	0-0	1-2	0	3	3	0	0	0	0	0	8	-5
04	Parker, Shrita		6	2-5	0-0	2-3	0	4	4	2	1	4	0	1	20	0
05	Smith, Gigi		3	1-4	1-2	0-0	0	1	1	2	0	2	0	1	8	2
10	Vason, Ahyiona		2	1-2	0-0	0-0	0	0	0	1	1	2	0	0	17	-4
13	Suggs, Lacey		11	4-7	1-3	2-2	1	2	3	1	1	1	0	0	19	4
14	Tate, Timber		0	0-1	0-1	0-0	0	0	0	1	0	1	0	0	8	-6
22	Thybulle, Zhaneia		0	0-0	0-0	0-0	0	0	0	0	0	0	0	0	0	0
24	Bell, Chinyere		6	2-2	0-0	2-2	0	4	4	2	1	1	0	0	12	2
32	Obusek, Carol-Anne		0	0-0	0-0	0-0	0	0	0	0	0	0	0	0	1	-7
33	Sacco, Grace		0	0-0	0-0	0-0	0	0	0	1	0	1	0	0	3	2
	Team		0	0-0	0-0	0-0	2	1	3	0	0	1	0	0	0	0
TOTALS			29	10-21	2-6	7-9	3	17	20	12	4	15	0	2	100	

Shooting By Period

Period	FG	FG%	3FG	3FG%	FT	FT%
1st Qtr	5-11	45%	2-3	67%	0-0	0%
2nd Qtr	5-10	50%	0-3	00%	7-9	78%
1st Half	10-21	48%	2-6	33%	7-9	78%
Game	20-55	36.4%	2-13	15.4%	22-32	68.8%

Last FG Half: NCW 2nd-03:19

William & Mary 32

No.	Player	S	Pts	FG	3FG	FT	OR	DR	TR	PF	A	TO	Blk	Stl	Min	+/-
02	Boggs, Bianca		14	4-9	0-3	6-7	1	3	4	1	1	1	1	2	19	3
05	Jones, Misha		6	2-3	2-3	0-0	0	0	0	0	0	1	0	1	8	16
10	Hodgson, Eva		3	1-2	1-2	0-0	0	0	0	1	0	2	1	1	9	-11
11	Pollard, Nyla		5	1-2	1-1	2-2	2	1	3	1	3	0	0	0	18	9
12	Birdsong, Harper		2	0-6	0-3	2-2	0	1	1	1	1	0	2	1	13	8
15	Krause, Emma		0	0-4	0-4	0-0	0	0	0	1	0	0	0	0	7	-4
21	Eichner, Bailey		0	0-0	0-0	0-0	0	0	0	1	0	0	0	0	3	-3
25	Rogers, Gabby		0	0-1	0-0	0-0	1	2	3	2	0	1	0	1	10	10
30	Reynolds, Victoria		2	0-2	0-1	2-2	0	1	1	0	0	1	0	1	12	-13
	Team		0	0-0	0-0	0-0	1	1	2	0	0	1	0	0	0	0
TOTALS			32	8-29	4-17	12-13	5	9	14	8	5	7	4	7	100	

Shooting By Period

Period	FG	FG%	3FG	3FG%	FT	FT%
1st Qtr	5-13	38%	3-8	38%	6-6	100%
2nd Qtr	3-16	19%	1-9	11%	6-7	86%
1st Half	8-29	28%	4-17	24%	12-13	92%
Game	21-55	38.2%	10-29	34.5%	18-22	81.8%

Last FG Half: W&M 2nd-05:11

Game Notes:

Officials: Kathleen Lynch, Jeffrey Smith, Natasha Camy
 Attendance: 657

Start Time: 2019-01-12 00:04:22
 End Time: 2019-01-12 02:08:37
 Game Duration: 124
 Conference Game;

Score	1st	2nd	3rd	4th	TOT
NCW	12	17	16	19	64
W&M	19	13	20	18	70

Points from (This Period)	NCW	W&M
In the Paint	16	6
Off Turns	8	17
2nd Chance	4	0
Fast Break	10	10
Bench	1	8

Official Box Score
UNCW vs William & Mary
First Quarter Statistics Only
January 12, 2019 at Kaplan Arena (Kaplan Arena) - Williamsburg, Va.

UNCW 12

No.	Player	S	Pts	FG	3FG	FT	OR	DR	TR	PF	A	TO	Blk	Stl	Min	+/-
04	Parker, Shrita		0	0-2	0-0	0-0	0	0	0	1	0	0	0	0	10	-4
05	Smith, Gigi		3	1-4	1-2	0-0	0	1	1	2	0	2	0	1	8	2
10	Vason, Ahyiona		2	1-1	0-0	0-0	0	0	0	1	1	1	0	0	10	-6
13	Suggs, Lacey		5	2-3	1-1	0-0	0	1	1	0	1	0	0	0	9	0
24	Bell, Chinyere		2	1-1	0-0	0-0	0	3	3	1	1	1	0	0	7	-1
00	Jeune, Ashli		0	0-0	0-0	0-0	0	0	0	0	0	2	0	0	0	-4
01	Powell, Paige		0	0-0	0-0	0-0	0	1	1	0	0	0	0	0	3	-6
14	Tate, Timber		0	0-0	0-0	0-0	0	0	0	0	0	0	0	0	2	-9
22	Thybulle, Zhaneia		0	0-0	0-0	0-0	0	0	0	0	0	0	0	0	0	0
32	Obusek, Carol-Anne		0	0-0	0-0	0-0	0	0	0	0	0	0	0	0	1	-7
33	Sacco, Grace		0	0-0	0-0	0-0	0	0	0	0	0	0	0	0	0	0
	Team						1	0	1	0		1				
TOTALS			12	5-11	2-3	0-0	1	6	7	5	3	7	0	1	50	

Shooting By Period

Period	FG	FG%	3FG	3FG%	FT	FT%
1st Qtr	5-11	45%	2-3	67%	0-0	0%
2nd Qtr	5-10	50%	0-3	00%	7-9	78%
1st Half	5-11	45%	2-3	67%	0-0	0%
1st Half	10-21	48%	2-6	33%	7-9	78%
Game	20-55	36.4%	2-13	15.4%	22-32	68.8%

William & Mary 19

No.	Player	S	Pts	FG	3FG	FT	OR	DR	TR	PF	A	TO	Blk	Stl	Min	+/-
02	Boggs, Bianca		8	2-3	0-1	4-4	0	0	0	0	1	1	1	1	9	7
10	Hodgson, Eva		0	0-0	0-0	0-0	0	0	0	0	0	1	0	0	3	-8
11	Pollard, Nyla		5	1-1	1-1	2-2	0	1	1	0	1	0	0	0	10	7
15	Krause, Emma		0	0-1	0-1	0-0	0	0	0	0	0	0	0	0	3	-8
30	Reynolds, Victoria		0	0-1	0-1	0-0	0	0	0	0	0	0	0	0	4	-10
05	Jones, Misha		6	2-3	2-3	0-0	0	0	0	0	0	0	0	1	6	17
12	Birdsong, Harper		0	0-3	0-1	0-0	0	1	1	1	1	0	2	0	7	15
21	Eichner, Bailey		0	0-0	0-0	0-0	0	0	0	0	0	0	0	0	0	0
25	Rogers, Gabby		0	0-1	0-0	0-0	1	2	3	0	0	0	0	0	7	15
	Team						1	1	2	0		0				
TOTALS			19	5-13	3-8	6-6	2	5	7	1	3	2	3	2	50	

Shooting By Period

Period	FG	FG%	3FG	3FG%	FT	FT%
1st Qtr	5-13	38%	3-8	38%	6-6	100%
2nd Qtr	3-16	19%	1-9	11%	6-7	86%
1st Half	5-13	38%	3-8	38%	6-6	100%
1st Half	8-29	28%	4-17	24%	12-13	92%
Game	21-55	38.2%	10-29	34.5%	18-22	81.8%

Game Notes:

Officials: Kathleen Lynch, Jeffrey Smith, Natasha Camy
Attendance: 657

Start Time: 2019-01-12 00:04:22
End Time: 2019-01-12 02:08:37
Game Duration: 124
Conference Game:

Score	1st	2nd	3rd	4th	TOT
NCW	12	17	16	19	64
W&M	19	13	20	18	70

Points from (This Period)	NCW	W&M
In the Paint	6	2
Off Turns	5	10
2nd Chance	2	0
Fast Break	2	5
Bench	0	6

**Official Play-By-Play
UNCW vs William & Mary
First Quarter**

January 12, 2019 at Kaplan Arena (Kaplan Arena) - Williamsburg, Va.

Period 1

Starters:

UNCW: 4 PARKER,SHRITA; 5 SMITH,GIGI; 10 VASON,AHYIONA; 13 SUGGS,LACEY; 24 BELL,CHINYERE;

William & Mary: 2 BOGGS,BIANCA; 10 HODGSON,EVA; 11 POLLARD,NYLA; 15 KRAUSE,EMMA ; 30 REYNOLDS,VICTORIA;

Time	VISITORS: UNCW	Score	Margin	HOME: William & Mary
09:41	TURNOVER (TRAVEL) by BELL,CHINYERE			
09:27				MISSED 3PTR by KRAUSE,EMMA
09:23	REBOUND (DEF) by BELL,CHINYERE			
09:05	GOOD! JUMPER by SUGGS,LACEY [PNT]	0-2	V 2	
08:53				MISSED 3PTR by REYNOLDS,VICTORIA
08:48	REBOUND (DEF) by BELL,CHINYERE			
08:43	GOOD! LAYUP by VASON,AHYIONA [FB]	0-4	V 4	
08:27				TURNOVER (BADPASS) by HODGSON,EVA
08:27	STEAL by SMITH,GIGI			
08:22	MISSED LAYUP by SMITH,GIGI			
08:22				BLOCK by BOGGS,BIANCA
08:22	REBOUND (OFF) by TEAM			
08:18	GOOD! JUMPER by BELL,CHINYERE	0-6	V 6	
08:18	ASSIST by SUGGS,LACEY			
07:53				TURNOVER (TRAVEL) by BOGGS,BIANCA
07:37	GOOD! 3PTR by SMITH,GIGI	0-9	V 9	
07:37	ASSIST by BELL,CHINYERE			
07:19	FOUL (PERSONAL) by PARKER,SHRITA			
07:19		1-9	V 8	GOOD! FT by POLLARD,NYLA
07:19				SUB OUT: HODGSON,EVA
07:19				SUB IN: ROGERS,GABBY
07:19				SUB OUT: KRAUSE,EMMA
07:19				SUB IN: BIRDSONG,HARPER
07:19		2-9	V 7	GOOD! FT by POLLARD,NYLA
07:06	FOUL (OFF) by SMITH,GIGI			
07:06	TURNOVER (OFFENSIVE) by SMITH,GIGI			
06:49				MISSED JUMPER by BIRDSONG,HARPER
06:46				REBOUND (OFF) by ROGERS,GABBY
06:44				MISSED 3PTR by BIRDSONG,HARPER
06:39	REBOUND (DEF) by BELL,CHINYERE			
06:36	GOOD! 3PTR by SUGGS,LACEY	2-12	V 10	
06:36	ASSIST by VASON,AHYIONA			
06:18				MISSED JUMPER by ROGERS,GABBY
06:16				REBOUND (OFF) by TEAM
06:16				SUB OUT: REYNOLDS,VICTORIA
06:16				SUB IN: JONES,MISHA
06:06				MISSED 3PTR by BOGGS,BIANCA
06:03	REBOUND (DEF) by SMITH,GIGI			
05:38	MISSED LAYUP by SUGGS,LACEY			
05:38				BLOCK by BIRDSONG,HARPER
05:34				REBOUND (DEF) by ROGERS,GABBY
05:30		5-12	V 7	GOOD! 3PTR by POLLARD,NYLA [FB]
05:30				ASSIST by BOGGS,BIANCA
05:11	MISSED 3PTR by SMITH,GIGI			
05:08				REBOUND (DEF) by POLLARD,NYLA
04:46				MISSED JUMPER by BIRDSONG,HARPER
04:42	REBOUND (DEF) by SUGGS,LACEY			
04:38	SUB OUT: BELL,CHINYERE			
04:38	SUB IN: POWELL,PAIGE			
04:38				
04:29	MISSED JUMPER by PARKER,SHRITA			
04:27				REBOUND (DEF) by TEAM
04:07		7-12	V 5	GOOD! LAYUP by BOGGS,BIANCA
03:38				FOUL (PERSONAL) by BIRDSONG,HARPER
03:34	TURNOVER (BADPASS) by SMITH,GIGI			
03:34				STEAL by JONES,MISHA
03:22		9-12	V 3	GOOD! JUMPER by BOGGS,BIANCA
02:53	MISSED JUMPER by SMITH,GIGI			
02:49				REBOUND (DEF) by BIRDSONG,HARPER
02:46				MISSED 3PTR by JONES,MISHA
02:43	REBOUND (DEF) by POWELL,PAIGE			
02:14	MISSED LAYUP by PARKER,SHRITA			
02:14				BLOCK by BIRDSONG,HARPER
02:09				REBOUND (DEF) by ROGERS,GABBY
02:05	FOUL (PERSONAL) by SMITH,GIGI			
02:05		10-12	V 2	GOOD! FT by BOGGS,BIANCA [FB]
02:05	SUB OUT: SMITH,GIGI			
02:05	SUB IN: TATE,TIMBER			
02:05	SUB OUT: VASON,AHYIONA			
02:05	SUB IN: OBUSEK,CAROL-ANNE			
02:05	SUB OUT: SUGGS,LACEY			
02:05	SUB IN: JEUNE,ASHLI			
02:05		11-12	V 1	GOOD! FT by BOGGS,BIANCA [FB]
01:55	TURNOVER (TRAVEL) by JEUNE,ASHLI			
01:55	SUB OUT: POWELL,PAIGE			
01:55	SUB IN: BELL,CHINYERE			

Time	VISITORS: UNCW	Score	Margin	HOME: William & Mary
01:55	SUB OUT: PARKER,SHRITA			
01:55	SUB IN: VASON,AHYIONA			
01:44		14-12	H 2	GOOD! 3PTR by JONES,MISHA
01:44				ASSIST by BIRDSONG,HARPER
01:39	TURNOVER (TRAVEL) by JEUNE,ASHLI			
01:39	SUB OUT: JEUNE,ASHLI			
01:39	SUB IN: PARKER,SHRITA			
01:27		17-12	H 5	GOOD! 3PTR by JONES,MISHA
01:27				ASSIST by POLLARD,NYLA
01:14	TURNOVER (LOSTBALL) by VASON,AHYIONA			
01:14				STEAL by BOGGS,BIANCA
01:11	FOUL (PERSONAL) by VASON,AHYIONA			
01:11	SUB OUT: OBUSEK,CAROL-ANNE			
01:11	SUB IN: SUGGS,LACEY			
00:48	FOUL (PERSONAL) by BELL,CHINYERE			
00:48		18-12	H 6	GOOD! FT by BOGGS,BIANCA
00:48		19-12	H 7	GOOD! FT by BOGGS,BIANCA
00:48				SUB OUT: BOGGS,BIANCA
00:48				SUB IN: HODGSON,EVA
00:16	TURNOVER (SHOTCLOCK) by			
00:16	SUB OUT: VASON,AHYIONA			
00:16	SUB IN: SACCO,GRACE			

UNCW 12, William & Mary 19

Points from (This Period)	NCW	W&M
In the Paint	6	2
Off Turns	5	10
2nd Chance	2	0
Fast Break	2	5
Bench	0	6

Official Box Score
UNCW vs William & Mary
Second Quarter Statistics Only
January 12, 2019 at Kaplan Arena (Kaplan Arena) - Williamsburg, Va.

UNCW 17

No.	Player	S	Pts	FG	3FG	FT	OR	DR	TR	PF	A	TO	Blk	Stl	Min	+/-
04	Parker, Shrita		6	2-3	0-0	2-3	0	4	4	1	1	4	0	1	10	4
05	Smith, Gigi		0	0-0	0-0	0-0	0	0	0	0	0	0	0	0	0	0
10	Vason, Ahyiona		0	0-1	0-0	0-0	0	0	0	0	0	1	0	0	7	2
13	Suggs, Lacey		6	2-4	0-2	2-2	1	1	2	1	0	1	0	0	10	4
24	Bell, Chinyere		4	1-1	0-0	2-2	0	1	1	1	0	0	0	0	5	3
00	Jeune, Ashli		0	0-0	0-0	0-0	0	2	2	2	0	0	0	0	4	1
01	Powell, Paige		1	0-0	0-0	1-2	0	2	2	0	0	0	0	0	5	1
14	Tate, Timber		0	0-1	0-1	0-0	0	0	0	1	0	1	0	0	6	3
22	Thybulle, Zhaneia		0	0-0	0-0	0-0	0	0	0	0	0	0	0	0	0	0
32	Obusek, Carol-Anne		0	0-0	0-0	0-0	0	0	0	0	0	0	0	0	0	0
33	Sacco, Grace		0	0-0	0-0	0-0	0	0	0	1	0	1	0	0	3	2
	Team						1	1	2	0		0				
TOTALS			17	5-10	0-3	7-9	2	11	13	7	1	8	0	1	50	

Shooting By Period

Period	FG	FG%	3FG	3FG%	FT	FT%
3rd Qtr	6-17	35%	0-3	00%	4-9	44%
4th Qtr	4-17	24%	0-4	00%	11-14	79%
2nd Half	5-10	50%	0-3	00%	7-9	78%
2nd Half	10-34	29%	0-7	00%	15-23	65%
Game	20-55	36.4%	2-13	15.4%	22-32	68.8%

William & Mary 13

No.	Player	S	Pts	FG	3FG	FT	OR	DR	TR	PF	A	TO	Blk	Stl	Min	+/-
02	Boggs, Bianca		6	2-6	0-2	2-3	1	3	4	1	0	0	0	1	10	-4
10	Hodgson, Eva		3	1-2	1-2	0-0	0	0	0	1	0	1	1	1	6	-3
11	Pollard, Nyla		0	0-1	0-0	0-0	2	0	2	1	2	0	0	0	8	2
15	Krause, Emma		0	0-3	0-3	0-0	0	0	0	1	0	0	0	0	4	4
30	Reynolds, Victoria		2	0-1	0-0	2-2	0	1	1	0	0	1	0	1	8	-3
05	Jones, Misha		0	0-0	0-0	0-0	0	0	0	0	0	1	0	0	2	-1
12	Birdsong, Harper		2	0-3	0-2	2-2	0	0	0	0	0	0	0	1	6	-7
21	Eichner, Bailey		0	0-0	0-0	0-0	0	0	0	1	0	0	0	0	3	-3
25	Rogers, Gabby		0	0-0	0-0	0-0	0	0	0	2	0	1	0	1	3	-5
	Team						0	0	0	0		1				
TOTALS			13	3-16	1-9	6-7	3	4	7	7	2	5	1	5	50	

Shooting By Period

Period	FG	FG%	3FG	3FG%	FT	FT%
3rd Qtr	6-13	46%	4-6	67%	4-7	57%
4th Qtr	7-13	54%	2-6	33%	2-2	100%
2nd Half	3-16	19%	1-9	11%	6-7	86%
2nd Half	13-26	50%	6-12	50%	6-9	67%
Game	21-55	38.2%	10-29	34.5%	18-22	81.8%

Game Notes:

Officials: Kathleen Lynch, Jeffrey Smith, Natasha Camy
Attendance: 657

Start Time: 2019-01-12 00:04:22
End Time: 2019-01-12 02:08:37
Game Duration: 124
Conference Game:

Score	1st	2nd	3rd	4th	TOT
NCW	12	17	16	19	64
W&M	19	13	20	18	70

Points from (This Period)	NCW	W&M
In the Paint	10	4
Off Turns	3	7
2nd Chance	2	0
Fast Break	8	5
Bench	1	2

Official Play-By-Play
UNCW vs William & Mary
Second Quarter
January 12, 2019 at Kaplan Arena (Kaplan Arena) - Williamsburg, Va.

Period 2

Starters:

UNCW: 4 PARKER,SHRITA; 5 SMITH,GIGI; 10 VASON,AHYIONA; 13 SUGGS,LACEY; 24 BELL,CHINYERE;

William & Mary: 2 BOGGS,BIANCA; 10 HODGSON,EVA; 11 POLLARD,NYLA; 15 KRAUSE,EMMA ; 30 REYNOLDS,VICTORIA;

Time	VISITORS: UNCW	Score	Margin	HOME: William & Mary
09:45				MISSED JUMPER by BIRDSONG,HARPER
09:40	REBOUND (DEF) by PARKER,SHRITA			
09:25	GOOD! LAYUP by BELL,CHINYERE	19-14	H 5	
09:13				TURNOVER (TRAVEL) by JONES,MISHA
09:13				SUB OUT: JONES,MISHA
09:13				SUB IN: REYNOLDS,VICTORIA
09:03	TURNOVER (BADPASS) by SUGGS,LACEY			
09:03				STEAL by ROGERS,GABBY
08:53		21-14	H 7	GOOD! JUMPER by BOGGS,BIANCA [PNT]
08:37				FOUL (PERSONAL) by ROGERS,GABBY
08:37	GOOD! FT by SUGGS,LACEY	21-15	H 6	
08:37	GOOD! FT by SUGGS,LACEY	21-16	H 5	
08:21				TURNOVER (BADPASS) by ROGERS,GABBY
08:21	STEAL by PARKER,SHRITA			
08:18	GOOD! LAYUP by PARKER,SHRITA [FB]	21-18	H 3	
08:18				FOUL (PERSONAL) by BOGGS,BIANCA
08:17	MISSED FT by PARKER,SHRITA			
08:15				REBOUND (DEF) by BOGGS,BIANCA
08:09				MISSED 3PTR by BIRDSONG,HARPER
08:04	REBOUND (DEF) by SUGGS,LACEY			
07:51	GOOD! LAYUP by PARKER,SHRITA	21-20	H 1	
07:45	FOUL (PERSONAL) by SUGGS,LACEY			
07:45				SUB OUT: BIRDSONG,HARPER
07:45				SUB IN: KRAUSE,EMMA
07:45				SUB OUT: ROGERS,GABBY
07:45				SUB IN: POLLARD,NYLA
07:36		24-20	H 4	GOOD! 3PTR by HODGSON,EVA
07:36				ASSIST by POLLARD,NYLA
07:24	TURNOVER (BADPASS) by SACCO,GRACE			
07:24				STEAL by REYNOLDS,VICTORIA
07:22	FOUL (PERSONAL) by SACCO,GRACE			
07:22		25-20	H 5	GOOD! FT by REYNOLDS,VICTORIA [FB]
07:22	SUB OUT: SACCO,GRACE			
07:22	SUB IN: VASON,AHYIONA			
07:22		26-20	H 6	GOOD! FT by REYNOLDS,VICTORIA [FB]
07:11				FOUL (PERSONAL) by KRAUSE,EMMA
07:11	GOOD! FT by BELL,CHINYERE [FB]	26-21	H 5	
07:11	GOOD! FT by BELL,CHINYERE [FB]	26-22	H 4	
07:00	FOUL (PERSONAL) by TATE,TIMBER			
06:51				MISSED 3PTR by KRAUSE,EMMA
06:47	REBOUND (DEF) by PARKER,SHRITA			
06:44				FOUL (PERSONAL) by POLLARD,NYLA
06:39	TURNOVER (BADPASS) by TATE,TIMBER			
06:39				STEAL by HODGSON,EVA
06:35				FOUL (OFF) by HODGSON,EVA
06:35				TURNOVER (OFFENSIVE) by HODGSON,EVA
06:09	MISSED 3PTR by TATE,TIMBER			
06:06				REBOUND (DEF) by BOGGS,BIANCA
05:57				MISSED 3PTR by BOGGS,BIANCA
05:54				REBOUND (OFF) by BOGGS,BIANCA
05:44				MISSED 3PTR by KRAUSE,EMMA
05:41	REBOUND (DEF) by BELL,CHINYERE			
05:35	MISSED 3PTR by SUGGS,LACEY			
05:32				REBOUND (DEF) by BOGGS,BIANCA
05:25				MISSED LAYUP by BOGGS,BIANCA
05:21	REBOUND (DEF) by PARKER,SHRITA			
05:20	GOOD! LAYUP by SUGGS,LACEY [FB]	26-24	H 2	
05:20	ASSIST by PARKER,SHRITA			
05:11		28-24	H 4	GOOD! LAYUP by BOGGS,BIANCA [FB]
05:11				ASSIST by POLLARD,NYLA
05:11	FOUL (PERSONAL) by BELL,CHINYERE			
05:11				SUB OUT: KRAUSE,EMMA
05:11				SUB IN: ROGERS,GABBY
05:11	SUB OUT: BELL,CHINYERE			
05:11	SUB IN: JEUNE,ASHLI			
05:11	SUB OUT: TATE,TIMBER			
05:11	SUB IN: POWELL,PAIGE			
05:11		29-24	H 5	GOOD! FT by BOGGS,BIANCA [FB]
04:45	TURNOVER (TRAVEL) by PARKER,SHRITA			
04:35	FOUL (PERSONAL) by JEUNE,ASHLI			
04:35		30-24	H 6	GOOD! FT by BOGGS,BIANCA
04:35				MISSED FT by BOGGS,BIANCA
04:31	REBOUND (DEF) by JEUNE,ASHLI			
04:26				FOUL (PERSONAL) by ROGERS,GABBY
04:26	GOOD! FT by PARKER,SHRITA [FB]	30-25	H 5	
04:26				SUB OUT: ROGERS,GABBY

Time	VISITORS: UNCW	Score	Margin	HOME: William & Mary
04:26				SUB IN: EICHNER,BAILEY
04:26	GOOD! FT by PARKER,SHRITA [FB]	30-26	H 4	
04:12				MISSED JUMPER by REYNOLDS,VICTORIA
04:08	REBOUND (DEF) by POWELL,PAIGE			
04:06	MISSED LAYUP by VASON,AHYIONA			
04:06				BLOCK by HODGSON,EVA
04:06	REBOUND (OFF) by TEAM			
03:50	MISSED 3PTR by SUGGS,LACEY			
03:46				REBOUND (DEF) by REYNOLDS,VICTORIA
03:42				MISSED 3PTR by HODGSON,EVA
03:38				REBOUND (OFF) by POLLARD,NYLA
03:37				MISSED LAYUP by POLLARD,NYLA
03:36	REBOUND (DEF) by TEAM			
03:36				SUB OUT: HODGSON,EVA
03:36				SUB IN: BIRDSONG,HARPER
03:24	MISSED JUMPER by PARKER,SHRITA			
03:21	REBOUND (OFF) by SUGGS,LACEY			
03:19	GOOD! LAYUP by SUGGS,LACEY	30-28	H 2	
03:00				TURNOVER (3SEC) by REYNOLDS,VICTORIA
02:52	TURNOVER (BADPASS) by PARKER,SHRITA			
02:52				STEAL by BIRDSONG,HARPER
02:44				MISSED 3PTR by BOGGS,BIANCA
02:40	REBOUND (DEF) by JEUNE,ASHLI			
02:40	TIMEOUT 30SEC			
02:32	FOUL (OFF) by PARKER,SHRITA			
02:32	TURNOVER (OFFENSIVE) by PARKER,SHRITA			
02:01				TURNOVER (SHOTCLOCK) by
01:34				FOUL (PERSONAL) by EICHNER,BAILEY
01:34	MISSED FT by POWELL,PAIGE			
01:34	REBOUND (OFF) by TEAM			
01:34				SUB OUT: REYNOLDS,VICTORIA
01:34				SUB IN: JONES,MISHA
01:34				SUB OUT: EICHNER,BAILEY
01:34				SUB IN: KRAUSE,EMMA
01:34	GOOD! FT by POWELL,PAIGE	30-29	H 1	
01:22				MISSED 3PTR by BIRDSONG,HARPER
01:18				REBOUND (OFF) by POLLARD,NYLA
01:15				MISSED 3PTR by KRAUSE,EMMA
01:11	REBOUND (DEF) by POWELL,PAIGE			
01:06	TURNOVER (OTHER) by VASON,AHYIONA			
00:49	FOUL (PERSONAL) by JEUNE,ASHLI			
00:49		31-29	H 2	GOOD! FT by BIRDSONG,HARPER
00:49		32-29	H 3	GOOD! FT by BIRDSONG,HARPER
00:49	SUB OUT: JEUNE,ASHLI			
00:49	SUB IN: TATE,TIMBER			
00:28	TURNOVER (BADPASS) by PARKER,SHRITA			
00:28				STEAL by BOGGS,BIANCA
00:04				MISSED JUMPER by BOGGS,BIANCA
00:00	REBOUND (DEF) by PARKER,SHRITA			

UNCW 29, William & Mary 32

Points from (This Period)	NCW	W&M
In the Paint	10	4
Off Turns	3	7
2nd Chance	2	0
Fast Break	8	5
Bench	1	2

Official Box Score
UNCW vs William & Mary
Second Half Statistics Only
January 12, 2019 at Kaplan Arena (Kaplan Arena) - Williamsburg, Va.

UNCW 35

No.	Player	S	Pts	FG	3FG	FT	OR	DR	TR	PF	A	TO	Blk	Stl	Min	+/-
00	Jeune, Ashli		0	0-0	0-0	0-0	0	0	0	0	0	0	0	0	0	-1
01	Powell, Paige		5	2-3	0-0	1-2	2	3	5	0	0	0	0	0	6	-4
04	Parker, Shrita		14	2-10	0-2	10-10	1	2	3	0	2	0	0	1	20	-3
05	Smith, Gigi		1	0-5	0-0	1-4	2	3	5	0	0	1	0	1	20	-3
10	Vason, Ahyiona		1	0-0	0-0	1-4	1	0	1	1	0	1	1	0	8	0
13	Suggs, Lacey		6	3-8	0-2	0-1	4	0	4	3	0	3	0	3	18	5
14	Tate, Timber		0	0-4	0-3	0-0	1	1	2	3	0	0	0	1	11	-2
22	Thybulle, Zhaneia		0	0-0	0-0	0-0	0	0	0	0	0	0	0	0	1	5
24	Bell, Chinyere		8	3-4	0-0	2-2	1	0	1	2	0	1	0	0	11	-6
32	Obusek, Carol-Anne		0	0-0	0-0	0-0	0	0	0	0	0	0	0	0	0	0
33	Sacco, Grace		0	0-0	0-0	0-0	0	0	0	1	1	0	0	0	5	-6
	Team		0	0-0	0-0	0-0	2	0	2	0	0	0	0	0	0	0
TOTALS			35	10-34	0-7	15-23	14	9	23	10	3	6	1	6	100	

Shooting By Period

Period	FG	FG%	3FG	3FG%	FT	FT%
3rd Qtr	6-17	35%	0-3	00%	4-9	44%
4th Qtr	4-17	24%	0-4	00%	11-14	79%
2nd Half	10-34	29%	0-7	00%	15-23	65%
Game	20-55	36.4%	2-13	15.4%	22-32	68.8%

Last FG Half: NCW 4th-00:48

William & Mary 38

No.	Player	S	Pts	FG	3FG	FT	OR	DR	TR	PF	A	TO	Blk	Stl	Min	+/-
02	Boggs, Bianca		11	4-7	2-2	1-2	0	2	2	1	1	1	1	0	17	5
05	Jones, Misha		3	1-2	1-2	0-0	0	2	2	4	3	2	0	0	15	3
10	Hodgson, Eva		3	1-4	1-3	0-0	0	0	0	3	1	0	1	0	17	0
11	Pollard, Nyla		4	1-2	1-2	1-2	3	1	4	1	3	3	0	0	18	1
12	Birdsong, Harper		2	0-4	0-2	2-2	0	1	1	2	0	0	0	0	8	-1
15	Krause, Emma		0	0-0	0-0	0-0	0	0	0	1	0	0	0	0	5	4
21	Eichner, Bailey		0	0-0	0-0	0-0	0	0	0	0	0	0	0	0	0	0
25	Rogers, Gabby		0	0-0	0-0	0-0	0	0	0	2	0	1	1	0	1	0
30	Reynolds, Victoria		15	6-7	1-1	2-3	1	5	6	2	0	3	2	0	19	3
	Team		0	0-0	0-0	0-0	1	3	4	0	0	0	0	0	0	0
TOTALS			38	13-26	6-12	6-9	5	14	19	16	8	10	5	0	100	

Shooting By Period

Period	FG	FG%	3FG	3FG%	FT	FT%
3rd Qtr	6-13	46%	4-6	67%	4-7	57%
4th Qtr	7-13	54%	2-6	33%	2-2	100%
2nd Half	13-26	50%	6-12	50%	6-9	67%
Game	21-55	38.2%	10-29	34.5%	18-22	81.8%

Last FG Half: W&M 4th-02:53

Game Notes:

Officials: Kathleen Lynch, Jeffrey Smith, Natasha Camy
Attendance: 657

Start Time: 2019-01-12 00:04:22
End Time: 2019-01-12 02:08:37
Game Duration: 124
Conference Game:

Score	1st	2nd	3rd	4th	TOT
NCW	12	17	16	19	64
W&M	19	13	20	18	70

Points from (This Period)	NCW	W&M
In the Paint	20	14
Off Turns	11	6
2nd Chance	13	5
Fast Break	9	2
Bench	5	5

Official Box Score
UNCW vs William & Mary
Third Quarter Statistics Only
January 12, 2019 at Kaplan Arena (Kaplan Arena) - Williamsburg, Va.

UNCW 35

No.	Player	S	Pts	FG	3FG	FT	OR	DR	TR	PF	A	TO	Blk	Stl	Min	+/-
04	Parker, Shrita		2	0-4	0-2	2-2	0	1	1	0	1	0	0	0	10	-4
05	Smith, Gigi		0	0-4	0-0	0-0	1	2	3	0	0	1	0	1	10	-4
10	Vason, Ahyiona		1	0-0	0-0	1-4	1	0	1	0	0	0	1	0	5	2
13	Suggs, Lacey		6	3-5	0-1	0-1	3	0	3	2	0	2	0	1	9	-1
24	Bell, Chinyere		6	3-3	0-0	0-0	0	0	0	2	0	1	0	0	8	-3
00	Jeune, Ashli		0	0-0	0-0	0-0	0	0	0	0	0	0	0	0	0	0
01	Powell, Paige		1	0-1	0-0	1-2	0	2	2	0	0	0	0	0	2	-1
14	Tate, Timber		0	0-0	0-0	0-0	0	0	0	0	0	0	0	0	1	-3
22	Thybulle, Zhaneia		0	0-0	0-0	0-0	0	0	0	0	0	0	0	0	0	0
32	Obusek, Carol-Anne		0	0-0	0-0	0-0	0	0	0	0	0	0	0	0	0	0
33	Sacco, Grace		0	0-0	0-0	0-0	0	0	0	1	1	0	0	0	5	-6
	Team						2	0	2	0		0				
TOTALS			16	6-17	0-3	4-9	7	5	12	5	2	4	1	2	50	

Shooting By Period

Period	FG	FG%	3FG	3FG%	FT	FT%
2nd Half	0-0	0%	0-0	0%	0-0	0%
Game	20-55	36.4%	2-13	15.4%	22-32	68.8%

William & Mary 38

No.	Player	S	Pts	FG	3FG	FT	OR	DR	TR	PF	A	TO	Blk	Stl	Min	+/-
02	Boggs, Bianca		7	2-4	2-2	1-2	0	1	1	0	1	0	1	0	10	4
10	Hodgson, Eva		0	0-1	0-0	0-0	0	0	0	1	0	0	1	0	7	1
11	Pollard, Nyla		1	0-1	0-1	1-2	1	1	2	0	1	1	0	0	8	2
15	Krause, Emma		0	0-0	0-0	0-0	0	0	0	1	0	0	0	0	3	1
30	Reynolds, Victoria		9	3-4	1-1	2-3	1	1	2	1	0	2	2	0	9	4
05	Jones, Misha		3	1-2	1-2	0-0	0	0	0	1	2	0	0	0	8	6
12	Birdsong, Harper		0	0-1	0-0	0-0	0	1	1	2	0	0	0	0	4	2
21	Eichner, Bailey		0	0-0	0-0	0-0	0	0	0	0	0	0	0	0	0	0
25	Rogers, Gabby		0	0-0	0-0	0-0	0	0	0	1	0	1	1	0	1	0
	Team						1	2	3	0		0				
TOTALS			20	6-13	4-6	4-7	3	6	9	7	4	4	5	0	50	

Shooting By Period

Period	FG	FG%	3FG	3FG%	FT	FT%
2nd Half	0-0	0%	0-0	0%	0-0	0%
Game	21-55	38.2%	10-29	34.5%	18-22	81.8%

Game Notes:

Officials: Kathleen Lynch, Jeffrey Smith, Natasha Camy
 Attendance: 657

Start Time: 2019-01-12 00:04:22
 End Time: 2019-01-12 02:08:37
 Game Duration: 124
 Conference Game;

Score	1st	2nd	3rd	4th	TOT
NCW	12	17	16	19	64
W&M	19	13	20	18	70

Points from (This Period)

	NCW	W&M
In the Paint	12	4
Off Turns	4	4
2nd Chance	5	3
Fast Break	1	0
Bench	1	3

Official Play-By-Play
UNCW vs William & Mary
Third Quarter
January 12, 2019 at Kaplan Arena (Kaplan Arena) - Williamsburg, Va.

Period 3

Starters:

UNCW: 4 PARKER, SHRITA; 5 SMITH, GIGI; 10 VASON, AHYIONA; 13 SUGGS, LACEY; 24 BELL, CHINYERE;

William & Mary: 2 BOGGS, BIANCA; 10 HODGSON, EVA; 11 POLLARD, NYLA; 15 KRAUSE, EMMA ; 30 REYNOLDS, VICTORIA;

Time	VISITORS: UNCW	Score	Margin	HOME: William & Mary
09:45	TURNOVER (BADPASS) by SUGGS,LACEY			
09:32				TURNOVER (BADPASS) by REYNOLDS,VICTORIA
09:19				FOUL (PERSONAL) by KRAUSE,EMMA
09:13	GOOD! LAYUP by SUGGS,LACEY	32-31	H 1	
08:56				TURNOVER (LOSTBALL) by POLLARD,NYLA
08:56	STEAL by SMITH,GIGI			
08:36	MISSED 3PTR by PARKER,SHRITA			
08:32	REBOUND (OFF) by SMITH,GIGI			
08:29				FOUL (PERSONAL) by HODGSON,EVA
08:29	MISSED FT by VASON,AHYIONA			
08:29	REBOUND (OFF) by TEAM			
08:29	MISSED FT by VASON,AHYIONA			
08:27	REBOUND (OFF) by SUGGS,LACEY			
08:26	TURNOVER (OTHER) by SUGGS,LACEY			
08:26				SUB OUT: KRAUSE,EMMA
08:26				SUB IN: JONES,MISHA
08:26				SUB OUT: REYNOLDS,VICTORIA
08:26				SUB IN: ROGERS,GABBY
08:09				FOUL (OFF) by ROGERS,GABBY
08:09				TURNOVER (OFFENSIVE) by ROGERS,GABBY
07:42	MISSED JUMPER by SMITH,GIGI			
07:42				BLOCK by ROGERS,GABBY
07:42	REBOUND (OFF) by TEAM			
07:42				SUB OUT: ROGERS,GABBY
07:42				SUB IN: REYNOLDS,VICTORIA
07:42	SUB OUT: VASON,AHYIONA			
07:42	SUB IN: SACCO,GRACE			
07:38	MISSED 3PTR by SUGGS,LACEY			
07:37				REBOUND (DEF) by TEAM
07:18		35-31	H 4	GOOD! 3PTR by REYNOLDS,VICTORIA
07:18				ASSIST by JONES,MISHA
06:52	GOOD! LAYUP by BELL,CHINYERE	35-33	H 2	
06:40				TURNOVER (LOSTBALL) by REYNOLDS,VICTORIA
06:40	STEAL by SUGGS,LACEY			
06:22	GOOD! LAYUP by BELL,CHINYERE	35-35	T	
06:22	ASSIST by PARKER,SHRITA			
06:04				MISSED LAYUP by REYNOLDS,VICTORIA
06:04				REBOUND (OFF) by REYNOLDS,VICTORIA
06:04		37-35	H 2	GOOD! LAYUP by REYNOLDS,VICTORIA
06:04	FOUL (PERSONAL) by SUGGS,LACEY			
06:04				MISSED FT by REYNOLDS,VICTORIA
06:03	REBOUND (DEF) by SMITH,GIGI			
05:54	MISSED LAYUP by SMITH,GIGI			
05:50				REBOUND (DEF) by BOGGS,BIANCA
05:45				MISSED 3PTR by POLLARD,NYLA
05:42	REBOUND (DEF) by PARKER,SHRITA			
05:38	MISSED LAYUP by PARKER,SHRITA			
05:38				BLOCK by HODGSON,EVA
05:30	REBOUND (OFF) by SUGGS,LACEY			
05:30	GOOD! LAYUP by SUGGS,LACEY	37-37	T	
05:24		39-37	H 2	GOOD! LAYUP by REYNOLDS,VICTORIA
05:00	TURNOVER (TRAVEL) by BELL,CHINYERE			
05:00				SUB OUT: HODGSON,EVA
05:00				SUB IN: BIRDSONG,HARPER
05:00	SUB OUT: SUGGS,LACEY			
05:00	SUB IN: TATE,TIMBER			
04:41		42-37	H 5	GOOD! 3PTR by BOGGS,BIANCA
04:41				ASSIST by POLLARD,NYLA
04:12	GOOD! LAYUP by BELL,CHINYERE	42-39	H 3	
04:12	ASSIST by SACCO,GRACE			
04:01				MISSED 3PTR by JONES,MISHA
03:58				REBOUND (OFF) by POLLARD,NYLA
03:58	FOUL (PERSONAL) by SACCO,GRACE			
03:58				
03:58	SUB OUT: TATE,TIMBER			
03:58	SUB IN: SUGGS,LACEY			
03:58				MISSED FT by POLLARD,NYLA
03:58				REBOUND (OFF) by TEAM
03:58		43-39	H 4	GOOD! FT by POLLARD,NYLA
03:40	MISSED LAYUP by SUGGS,LACEY			
03:40				BLOCK by REYNOLDS,VICTORIA
03:40	REBOUND (OFF) by TEAM			
03:32	MISSED JUMPER by PARKER,SHRITA			
03:29				REBOUND (DEF) by POLLARD,NYLA
03:22		46-39	H 7	GOOD! 3PTR by JONES,MISHA
03:22				ASSIST by BOGGS,BIANCA

Time	VISITORS: UNCW	Score	Margin	HOME: William & Mary
02:50	SUB OUT: SACCO,GRACE			
02:50	SUB IN: VASON,AHYIONA			
02:46	MISSED LAYUP by SMITH,GIGI			
02:46				BLOCK by BOGGS,BIANCA
02:46	REBOUND (OFF) by SUGGS,LACEY			
02:46	GOOD! LAYUP by SUGGS,LACEY	46-41	H 5	
02:46				FOUL (PERSONAL) by REYNOLDS,VICTORIA
02:46	MISSED FT by SUGGS,LACEY			
02:45				REBOUND (DEF) by REYNOLDS,VICTORIA
02:29	FOUL (PERSONAL) by BELL,CHINYERE			
02:29				SUB OUT: POLLARD,NYLA
02:29				SUB IN: HODGSON,EVA
02:27	FOUL (PERSONAL) by BELL,CHINYERE			
02:27		47-41	H 6	GOOD! FT by REYNOLDS,VICTORIA
02:27	SUB OUT: BELL,CHINYERE			
02:27	SUB IN: POWELL,PAIGE			
02:27		48-41	H 7	GOOD! FT by REYNOLDS,VICTORIA
02:03	MISSED JUMPER by SMITH,GIGI			
02:03				BLOCK by REYNOLDS,VICTORIA
02:02	REBOUND (OFF) by VASON,AHYIONA			
02:02				FOUL (PERSONAL) by JONES,MISHA
02:02	MISSED FT by VASON,AHYIONA			
02:02	REBOUND (OFF) by TEAM			
02:02	GOOD! FT by VASON,AHYIONA	48-42	H 6	
01:45				MISSED JUMPER by BIRDSONG,HARPER
01:40	REBOUND (DEF) by SMITH,GIGI			
01:38				FOUL (PERSONAL) by BIRDSONG,HARPER
01:38	MISSED FT by POWELL,PAIGE			
01:38	REBOUND (OFF) by TEAM			
01:38	GOOD! FT by POWELL,PAIGE [FB]	48-43	H 5	
01:24				MISSED LAYUP by BOGGS,BIANCA
01:20	REBOUND (DEF) by POWELL,PAIGE			
01:18	MISSED 3PTR by PARKER,SHRITA			
01:12				REBOUND (DEF) by BIRDSONG,HARPER
01:09				MISSED LAYUP by HODGSON,EVA
01:09	BLOCK by VASON,AHYIONA			
01:09				REBOUND (OFF) by TEAM
01:04				MISSED JUMPER by BOGGS,BIANCA
00:59	REBOUND (DEF) by POWELL,PAIGE			
00:56				FOUL (PERSONAL) by BIRDSONG,HARPER
00:56	GOOD! FT by PARKER,SHRITA	48-44	H 4	
00:56				SUB OUT: BIRDSONG,HARPER
00:56				SUB IN: KRAUSE,EMMA
00:56	GOOD! FT by PARKER,SHRITA	48-45	H 3	
00:33		51-45	H 6	GOOD! 3PTR by BOGGS,BIANCA
00:33				ASSIST by JONES,MISHA
00:24	TURNOVER (TRAVEL) by SMITH,GIGI			
00:14	FOUL (PERSONAL) by SUGGS,LACEY			
00:14				MISSED FT by BOGGS,BIANCA
00:14				REBOUND (OFF) by TEAM
00:14	SUB OUT: SUGGS,LACEY			
00:14	SUB IN: TATE,TIMBER			
00:14		52-45	H 7	GOOD! FT by BOGGS,BIANCA
00:14				SUB OUT: BOGGS,BIANCA
00:14				SUB IN: POLLARD,NYLA
00:00	MISSED JUMPER by POWELL,PAIGE			
00:00				REBOUND (DEF) by TEAM

UNCW 45, William & Mary 52

Points from (This Period)	NCW	W&M
In the Paint	12	4
Off Turns	4	4
2nd Chance	5	3
Fast Break	1	0
Bench	1	3

Official Box Score
UNCW vs William & Mary
Fourth Quarter Statistics Only
January 12, 2019 at Kaplan Arena (Kaplan Arena) - Williamsburg, Va.

UNCW 19

No.	Player	S	Pts	FG	3FG	FT	OR	DR	TR	PF	A	TO	Blk	Stl	Min	+/-
04	Parker, Shrita		12	2-6	0-0	8-8	1	1	2	0	1	0	0	1	10	1
05	Smith, Gigi		1	0-1	0-0	1-4	1	1	2	0	0	0	0	0	10	1
10	Vason, Ahyiona		0	0-0	0-0	0-0	0	0	0	1	0	1	0	0	3	-2
13	Suggs, Lacey		0	0-3	0-1	0-0	1	0	1	1	0	1	0	2	9	6
24	Bell, Chinyere		2	0-1	0-0	2-2	1	0	1	0	0	0	0	0	3	-3
00	Jeune, Ashli		0	0-0	0-0	0-0	0	0	0	0	0	0	0	0	0	-1
01	Powell, Paige		4	2-2	0-0	0-0	2	1	3	0	0	0	0	0	4	-3
14	Tate, Timber		0	0-4	0-3	0-0	1	1	2	3	0	0	0	1	10	1
22	Thybulle, Zhaneia		0	0-0	0-0	0-0	0	0	0	0	0	0	0	0	1	5
32	Obusek, Carol-Anne		0	0-0	0-0	0-0	0	0	0	0	0	0	0	0	0	0
33	Sacco, Grace		0	0-0	0-0	0-0	0	0	0	0	0	0	0	0	0	0
	Team						0	0	0	0		0				
TOTALS			19	4-17	0-4	11-14	7	4	11	5	1	2	0	4	50	

Shooting By Period

Period	FG	FG%	3FG	3FG%	FT	FT%
Game	20-55	36.4%	2-13	15.4%	22-32	68.8%

William & Mary 18

No.	Player	S	Pts	FG	3FG	FT	OR	DR	TR	PF	A	TO	Blk	Stl	Min	+/-
02	Boggs, Bianca		4	2-3	0-0	0-0	0	1	1	1	0	1	0	0	7	1
10	Hodgson, Eva		3	1-3	1-3	0-0	0	0	0	2	1	0	0	0	10	-1
11	Pollard, Nyla		3	1-1	1-1	0-0	2	0	2	1	2	2	0	0	10	-1
15	Krause, Emma		0	0-0	0-0	0-0	0	0	0	0	0	0	0	0	2	3
30	Reynolds, Victoria		6	3-3	0-0	0-0	0	4	4	1	0	1	0	0	10	-1
05	Jones, Misha		0	0-0	0-0	0-0	0	2	2	3	1	2	0	0	7	-3
12	Birdsong, Harper		2	0-3	0-2	2-2	0	0	0	0	0	0	0	0	4	-3
21	Eichner, Bailey		0	0-0	0-0	0-0	0	0	0	0	0	0	0	0	0	0
25	Rogers, Gabby		0	0-0	0-0	0-0	0	0	0	1	0	0	0	0	0	0
	Team						0	1	1	0		0				
TOTALS			18	7-13	2-6	2-2	2	8	10	9	4	6	0	0	50	

Shooting By Period

Period	FG	FG%	3FG	3FG%	FT	FT%
Game	21-55	38.2%	10-29	34.5%	18-22	81.8%

Game Notes:

Officials: Kathleen Lynch, Jeffrey Smith, Natasha Camy
Attendance: 657

Start Time: 2019-01-12 00:04:22
End Time: 2019-01-12 02:08:37
Game Duration: 124
Conference Game;

Score	1st	2nd	3rd	4th	TOT
NCW	12	17	16	19	64
W&M	19	13	20	18	70

Points from (This Period)	NCW	W&M
In the Paint	8	10
Off Turns	7	2
2nd Chance	8	2
Fast Break	8	2
Bench	4	2

Official Play-By-Play
UNCW vs William & Mary
Fourth Quarter
January 12, 2019 at Kaplan Arena (Kaplan Arena) - Williamsburg, Va.

Period 4

Starters:

UNCW: 4 PARKER,SHRITA; 5 SMITH,GIGI; 10 VASON,AHYIONA; 13 SUGGS,LACEY; 24 BELL,CHINYERE;
William & Mary: 2 BOGGS,BIANCA; 10 HODGSON,EVA; 11 POLLARD,NYLA; 15 KRAUSE,EMMA ; 30 REYNOLDS,VICTORIA;

Time	VISITORS: UNCW	Score	Margin	HOME: William & Mary
09:35		55-45	H 10	GOOD! 3PTR by HODGSON,EVA
09:35				ASSIST by POLLARD,NYLA
09:22	TURNOVER (LOSTBALL) by VASON,AHYIONA			
09:08		57-45	H 12	GOOD! LAYUP by BOGGS,BIANCA
09:03	TIMEOUT 30SEC			
09:03				SUB OUT: BOGGS,BIANCA
09:03				SUB IN: BIRDSONG,HARPER
09:03	SUB OUT: VASON,AHYIONA			
09:03	SUB IN: SUGGS,LACEY			
08:50	MISSED JUMPER by SMITH,GIGI			
08:48	REBOUND (OFF) by POWELL,PAIGE			
08:44	GOOD! LAYUP by POWELL,PAIGE	57-47	H 10	
08:44	ASSIST by PARKER,SHRITA			
08:37				MISSED LAYUP by BIRDSONG,HARPER
08:33	REBOUND (DEF) by POWELL,PAIGE			
08:19	TURNOVER (TRAVEL) by SUGGS,LACEY			
07:52				MISSED 3PTR by HODGSON,EVA
07:48	REBOUND (DEF) by SMITH,GIGI			
07:44				SUB OUT: KRAUSE,EMMA
07:44				SUB IN: ROGERS,GABBY
07:44				FOUL (PERSONAL) by ROGERS,GABBY
07:44				SUB OUT: ROGERS,GABBY
07:44				SUB IN: JONES,MISHA
07:25	MISSED 3PTR by TATE,TIMBER			
07:22	REBOUND (OFF) by POWELL,PAIGE			
07:21	GOOD! LAYUP by POWELL,PAIGE	57-49	H 8	
06:55				MISSED 3PTR by BIRDSONG,HARPER
06:51				REBOUND (OFF) by POLLARD,NYLA
06:35				MISSED 3PTR by BIRDSONG,HARPER
06:31				REBOUND (OFF) by POLLARD,NYLA
06:17		59-49	H 10	GOOD! JUMPER by REYNOLDS,VICTORIA
06:17				ASSIST by JONES,MISHA
05:56	MISSED 3PTR by TATE,TIMBER			
05:54				REBOUND (DEF) by TEAM
05:54				SUB OUT: BIRDSONG,HARPER
05:54				SUB IN: BOGGS,BIANCA
05:54	SUB OUT: POWELL,PAIGE			
05:54	SUB IN: BELL,CHINYERE			
05:31				MISSED 3PTR by HODGSON,EVA
05:27	REBOUND (DEF) by PARKER,SHRITA			
05:26				FOUL (PERSONAL) by HODGSON,EVA
05:26	GOOD! FT by PARKER,SHRITA [FB]	59-50	H 9	
05:26	GOOD! FT by PARKER,SHRITA [FB]	59-51	H 8	
05:03		61-51	H 10	GOOD! LAYUP by BOGGS,BIANCA
04:47	MISSED 3PTR by SUGGS,LACEY			
04:43	REBOUND (OFF) by TATE,TIMBER			
04:42	MISSED LAYUP by TATE,TIMBER			
04:38				REBOUND (DEF) by JONES,MISHA
04:30		63-51	H 12	GOOD! LAYUP by REYNOLDS,VICTORIA
04:30				ASSIST by HODGSON,EVA
04:09	MISSED LAYUP by BELL,CHINYERE			
04:07	REBOUND (OFF) by BELL,CHINYERE			
04:07				FOUL (PERSONAL) by JONES,MISHA
04:07				
04:07	GOOD! FT by BELL,CHINYERE	63-52	H 11	
04:07	GOOD! FT by BELL,CHINYERE	63-53	H 10	
03:34		66-53	H 13	GOOD! 3PTR by POLLARD,NYLA
03:13	MISSED JUMPER by SUGGS,LACEY			
03:11	REBOUND (OFF) by SMITH,GIGI			
03:11				FOUL (PERSONAL) by JONES,MISHA
03:11	MISSED FT by SMITH,GIGI			
03:11	REBOUND (OFF) by TEAM			
03:11	SUB OUT: BELL,CHINYERE			
03:11	SUB IN: VASON,AHYIONA			
03:11	MISSED FT by SMITH,GIGI			
03:08	REBOUND (OFF) by PARKER,SHRITA			
03:05	GOOD! LAYUP by PARKER,SHRITA	66-55	H 11	
02:53		68-55	H 13	GOOD! LAYUP by REYNOLDS,VICTORIA [FB]
02:53				ASSIST by POLLARD,NYLA
02:53				TIMEOUT 30SEC
02:35	MISSED JUMPER by PARKER,SHRITA			
02:30				REBOUND (DEF) by REYNOLDS,VICTORIA
02:24				FOUL (OFF) by BOGGS,BIANCA
02:24				TURNOVER (OFFENSIVE) by BOGGS,BIANCA
02:11				FOUL (PERSONAL) by JONES,MISHA
02:11	GOOD! FT by SMITH,GIGI	68-56	H 12	

Time	VISITORS: UNCW	Score	Margin	HOME: William & Mary
02:11	MISSED FT by SMITH,GIGI			
02:09	REBOUND (OFF) by SUGGS,LACEY			
02:07	MISSED JUMPER by SUGGS,LACEY			
02:03				REBOUND (DEF) by JONES,MISHA
01:38				MISSED LAYUP by BOGGS,BIANCA
01:34	REBOUND (DEF) by TATE,TIMBER			
01:24				FOUL (PERSONAL) by POLLARD,NYLA
01:24	GOOD! FT by PARKER,SHRITA	68-57	H 11	
01:24	GOOD! FT by PARKER,SHRITA	68-58	H 10	
01:24	TIMEOUT 30SEC			
00:55	FOUL (PERSONAL) by VASON,AHYIONA			
00:54				TIMEOUT 30SEC
00:54	SUB OUT: VASON,AHYIONA			
00:54	SUB IN: THYBULLE,ZHANEIA			
00:51				TURNOVER (LOSTBALL) by JONES,MISHA
00:51	STEAL by SUGGS,LACEY			
00:48	GOOD! LAYUP by PARKER,SHRITA [FB]	68-60	H 8	
00:48				FOUL (PERSONAL) by REYNOLDS,VICTORIA
00:48	GOOD! FT by PARKER,SHRITA [FB]	68-61	H 7	
00:48				TIMEOUT 30SEC
00:45				TURNOVER (BADPASS) by JONES,MISHA
00:45	STEAL by PARKER,SHRITA			
00:41	MISSED JUMPER by PARKER,SHRITA			
00:41				REBOUND (DEF) by BOGGS,BIANCA
00:41				SUB OUT: JONES,MISHA
00:41				SUB IN: BIRDSONG,HARPER
00:38				TURNOVER (BADPASS) by REYNOLDS,VICTORIA
00:38	STEAL by SUGGS,LACEY			
00:32	MISSED JUMPER by PARKER,SHRITA			
00:31				REBOUND (DEF) by REYNOLDS,VICTORIA
00:31	FOUL (PERSONAL) by SUGGS,LACEY			
00:31				TIMEOUT TEAM
00:29				TURNOVER (BADPASS) by POLLARD,NYLA
00:20	MISSED LAYUP by PARKER,SHRITA			
00:17				REBOUND (DEF) by REYNOLDS,VICTORIA
00:11	FOUL (PERSONAL) by TATE,TIMBER			
00:10	FOUL (PERSONAL) by TATE,TIMBER			
00:07				TURNOVER (BADPASS) by POLLARD,NYLA
00:07	STEAL by TATE,TIMBER			
00:04				FOUL (PERSONAL) by HODGSON,EVA
00:04	GOOD! FT by PARKER,SHRITA [FB]	68-62	H 6	
00:04	GOOD! FT by PARKER,SHRITA [FB]	68-63	H 5	
00:04	SUB OUT: THYBULLE,ZHANEIA			
00:04	SUB IN: JEUNE,ASHLI			
00:04	GOOD! FT by PARKER,SHRITA [FB]	68-64	H 4	
00:04	FOUL (PERSONAL) by TATE,TIMBER			
00:04		69-64	H 5	GOOD! FT by BIRDSONG,HARPER
00:04		70-64	H 6	GOOD! FT by BIRDSONG,HARPER
00:04	TIMEOUT TEAM			
00:02	MISSED 3PTR by TATE,TIMBER			
00:02				REBOUND (DEF) by REYNOLDS,VICTORIA

UNCW 64, William & Mary 70

Points from (This Period)	NCW	W&M
In the Paint	8	10
Off Turns	7	2
2nd Chance	8	2
Fast Break	8	2
Bench	4	2

Official Scoring/Possession Reference Chart
UNCW vs William & Mary
Period 1
January 12, 2019 at Kaplan Arena (Kaplan Arena) - Williamsburg, Va.

Period 1

Starters:

UNCW: 4 PARKER, SHRITA; 5 SMITH, GIGI; 10 VASON, AHYIONA; 13 SUGGS, LACEY; 24 BELL, CHINYERE;

William & Mary: 2 BOGGS, BIANCA; 10 HODGSON, EVA; 11 POLLARD, NYLA; 15 KRAUSE, EMMA ; 30 REYNOLDS, VICTORIA;

Time	VISITORS: UNCW	Score	Margin	HOME: William & Mary
09:05	GOOD! JUMPER by SUGGS, LACEY [PNT]	0-2	V 2	
08:43	GOOD! LAYUP by VASON, AHYIONA [FB]	0-4	V 4	
08:18	GOOD! JUMPER by BELL, CHINYERE	0-6	V 6	
07:37	GOOD! 3PTR by SMITH, GIGI	0-9	V 9	
07:19		1-9	V 8	GOOD! FT by POLLARD, NYLA
07:19		2-9	V 7	GOOD! FT by POLLARD, NYLA
06:36	GOOD! 3PTR by SUGGS, LACEY	2-12	V 10	
05:30		5-12	V 7	GOOD! 3PTR by POLLARD, NYLA [FB]
04:07		7-12	V 5	GOOD! LAYUP by BOGGS, BIANCA
03:22		9-12	V 3	GOOD! JUMPER by BOGGS, BIANCA
02:05		10-12	V 2	GOOD! FT by BOGGS, BIANCA [FB]
02:05		11-12	V 1	GOOD! FT by BOGGS, BIANCA [FB]
01:44		14-12	H 2	GOOD! 3PTR by JONES, MISHA
01:27		17-12	H 5	GOOD! 3PTR by JONES, MISHA
00:48		18-12	H 6	GOOD! FT by BOGGS, BIANCA
00:48		19-12	H 7	GOOD! FT by BOGGS, BIANCA

UNCW 12, William & Mary 19

Official Scoring/Possession Reference Chart
UNCW vs William & Mary
Period 2
January 12, 2019 at Kaplan Arena (Kaplan Arena) - Williamsburg, Va.

Period 2

Starters:

UNCW: 4 PARKER, SHRITA; 5 SMITH, GIGI; 10 VASON, AHYIONA; 13 SUGGS, LACEY; 24 BELL, CHINYERE;

William & Mary: 2 BOGGS, BIANCA; 10 HODGSON, EVA; 11 POLLARD, NYLA; 15 KRAUSE, EMMA ; 30 REYNOLDS, VICTORIA;

Time	VISITORS: UNCW	Score	Margin	HOME: William & Mary
09:25	GOOD! LAYUP by BELL, CHINYERE	19-14	H 5	
08:53		21-14	H 7	GOOD! JUMPER by BOGGS, BIANCA [PNT]
08:37	GOOD! FT by SUGGS, LACEY	21-15	H 6	
08:37	GOOD! FT by SUGGS, LACEY	21-16	H 5	
08:18	GOOD! LAYUP by PARKER, SHRITA [FB]	21-18	H 3	
07:51	GOOD! LAYUP by PARKER, SHRITA	21-20	H 1	
07:36		24-20	H 4	GOOD! 3PTR by HODGSON, EVA
07:22		25-20	H 5	GOOD! FT by REYNOLDS, VICTORIA [FB]
07:22		26-20	H 6	GOOD! FT by REYNOLDS, VICTORIA [FB]
07:11	GOOD! FT by BELL, CHINYERE [FB]	26-21	H 5	
07:11	GOOD! FT by BELL, CHINYERE [FB]	26-22	H 4	
05:20	GOOD! LAYUP by SUGGS, LACEY [FB]	26-24	H 2	
05:11		28-24	H 4	GOOD! LAYUP by BOGGS, BIANCA [FB]
05:11		29-24	H 5	GOOD! FT by BOGGS, BIANCA [FB]
04:35		30-24	H 6	GOOD! FT by BOGGS, BIANCA
04:26	GOOD! FT by PARKER, SHRITA [FB]	30-25	H 5	
04:26	GOOD! FT by PARKER, SHRITA [FB]	30-26	H 4	
03:19	GOOD! LAYUP by SUGGS, LACEY	30-28	H 2	
01:34	GOOD! FT by POWELL, PAIGE	30-29	H 1	
00:49		31-29	H 2	GOOD! FT by BIRDSONG, HARPER
00:49		32-29	H 3	GOOD! FT by BIRDSONG, HARPER

UNCW 29, William & Mary 32

Official Scoring/Possession Reference Chart
UNCW vs William & Mary
Period 3
January 12, 2019 at Kaplan Arena (Kaplan Arena) - Williamsburg, Va.

Period 3

Starters:

UNCW: 4 PARKER, SHRITA; 5 SMITH, GIGI; 10 VASON, AHYIONA; 13 SUGGS, LACEY; 24 BELL, CHINYERE;

William & Mary: 2 BOGGS, BIANCA; 10 HODGSON, EVA; 11 POLLARD, NYLA; 15 KRAUSE, EMMA ; 30 REYNOLDS, VICTORIA;

Time	VISITORS: UNCW	Score	Margin	HOME: William & Mary
09:13	GOOD! LAYUP by SUGGS, LACEY	32-31	H 1	
07:18		35-31	H 4	GOOD! 3PTR by REYNOLDS, VICTORIA
06:52	GOOD! LAYUP by BELL, CHINYERE	35-33	H 2	
06:22	GOOD! LAYUP by BELL, CHINYERE	35-35	T	
06:04		37-35	H 2	GOOD! LAYUP by REYNOLDS, VICTORIA
05:30	GOOD! LAYUP by SUGGS, LACEY	37-37	T	
05:24		39-37	H 2	GOOD! LAYUP by REYNOLDS, VICTORIA
04:41		42-37	H 5	GOOD! 3PTR by BOGGS, BIANCA
04:12	GOOD! LAYUP by BELL, CHINYERE	42-39	H 3	
03:58		43-39	H 4	GOOD! FT by POLLARD, NYLA
03:22		46-39	H 7	GOOD! 3PTR by JONES, MISHA
02:46	GOOD! LAYUP by SUGGS, LACEY	46-41	H 5	
02:27		47-41	H 6	GOOD! FT by REYNOLDS, VICTORIA
02:27		48-41	H 7	GOOD! FT by REYNOLDS, VICTORIA
02:02	GOOD! FT by VASON, AHYIONA	48-42	H 6	
01:38	GOOD! FT by POWELL, PAIGE [FB]	48-43	H 5	
00:56	GOOD! FT by PARKER, SHRITA	48-44	H 4	
00:56	GOOD! FT by PARKER, SHRITA	48-45	H 3	
00:33		51-45	H 6	GOOD! 3PTR by BOGGS, BIANCA
00:14		52-45	H 7	GOOD! FT by BOGGS, BIANCA

UNCW 45, William & Mary 52

Official Scoring/Possession Reference Chart
UNCW vs William & Mary
Period 4
January 12, 2019 at Kaplan Arena (Kaplan Arena) - Williamsburg, Va.

Period 4

Starters:

UNCW: 4 PARKER, SHRITA; 5 SMITH, GIGI; 10 VASON, AHYIONA; 13 SUGGS, LACEY; 24 BELL, CHINYERE;

William & Mary: 2 BOGGS, BIANCA; 10 HODGSON, EVA; 11 POLLARD, NYLA; 15 KRAUSE, EMMA ; 30 REYNOLDS, VICTORIA;

Time	VISITORS: UNCW	Score	Margin	HOME: William & Mary
09:35		55-45	H 10	GOOD! 3PTR by HODGSON,EVA
09:08		57-45	H 12	GOOD! LAYUP by BOGGS,BIANCA
08:44	GOOD! LAYUP by POWELL,PAIGE	57-47	H 10	
07:21	GOOD! LAYUP by POWELL,PAIGE	57-49	H 8	
06:17		59-49	H 10	GOOD! JUMPER by REYNOLDS,VICTORIA
05:26	GOOD! FT by PARKER,SHRITA [FB]	59-50	H 9	
05:26	GOOD! FT by PARKER,SHRITA [FB]	59-51	H 8	
05:03		61-51	H 10	GOOD! LAYUP by BOGGS,BIANCA
04:30		63-51	H 12	GOOD! LAYUP by REYNOLDS,VICTORIA
04:07	GOOD! FT by BELL,CHINYERE	63-52	H 11	
04:07	GOOD! FT by BELL,CHINYERE	63-53	H 10	
03:34		66-53	H 13	GOOD! 3PTR by POLLARD,NYLA
03:05	GOOD! LAYUP by PARKER,SHRITA	66-55	H 11	
02:53		68-55	H 13	GOOD! LAYUP by REYNOLDS,VICTORIA [FB]
02:11	GOOD! FT by SMITH,GIGI	68-56	H 12	
01:24	GOOD! FT by PARKER,SHRITA	68-57	H 11	
01:24	GOOD! FT by PARKER,SHRITA	68-58	H 10	
00:48	GOOD! LAYUP by PARKER,SHRITA [FB]	68-60	H 8	
00:48	GOOD! FT by PARKER,SHRITA [FB]	68-61	H 7	
00:04	GOOD! FT by PARKER,SHRITA [FB]	68-62	H 6	
00:04	GOOD! FT by PARKER,SHRITA [FB]	68-63	H 5	
00:04	GOOD! FT by PARKER,SHRITA [FB]	68-64	H 4	
00:04		69-64	H 5	GOOD! FT by BIRDSONG,HARPER
00:04		70-64	H 6	GOOD! FT by BIRDSONG,HARPER

UNCW 64, William & Mary 70

Official Substitutions Log
UNCW vs William & Mary
Period 1
January 12, 2019 at Kaplan Arena (Kaplan Arena) - Williamsburg, Va.

VISITORS: UNCW	Time	Score	HOME: William & Mary
4 PARKER, SHRITA			2 BOGGS, BIANCA
5 SMITH, GIGI			10 HODGSON, EVA
10 VASON, AHYIONA			11 POLLARD, NYLA
13 SUGGS, LACEY			15 KRAUSE, EMMA
24 BELL, CHINYERE			30 REYNOLDS, VICTORIA
	07:19	9-1	SUB OUT: HODGSON, EVA
	07:19		SUB IN: ROGERS, GABBY
	07:19		SUB OUT: KRAUSE, EMMA
	07:19		SUB IN: BIRDSONG, HARPER
	06:16	12-2	SUB OUT: REYNOLDS, VICTORIA
	06:16		SUB IN: JONES, MISHA
SUB OUT: 24 BELL, CHINYERE	04:38	12-5	
SUB IN: 1 POWELL, PAIGE	04:38		
SUB OUT: 5 SMITH, GIGI	02:05	12-10	
SUB IN: 14 TATE, TIMBER	02:05		
SUB OUT: 10 VASON, AHYIONA	02:05		
SUB IN: 32 OBUSEK, CAROL-ANNE	02:05		
SUB OUT: 13 SUGGS, LACEY	02:05		
SUB IN: 0 JEUNE, ASHLI	02:05		
SUB OUT: 1 POWELL, PAIGE	01:55	12-11	
SUB IN: 24 BELL, CHINYERE	01:55		
SUB OUT: 4 PARKER, SHRITA	01:55		
SUB IN: 10 VASON, AHYIONA	01:55		
SUB OUT: 0 JEUNE, ASHLI	01:39	12-14	
SUB IN: 4 PARKER, SHRITA	01:39		
SUB OUT: 32 OBUSEK, CAROL-ANNE	01:11	12-17	
SUB IN: 13 SUGGS, LACEY	01:11		
	00:48	12-19	SUB OUT: BOGGS, BIANCA
	00:48		SUB IN: HODGSON, EVA
SUB OUT: 10 VASON, AHYIONA	00:16	12-19	
SUB IN: 33 SACCO, GRACE	00:16		

UNCW 12, William & Mary 19

Official Substitutions Log
UNCW vs William & Mary
Period 2
January 12, 2019 at Kaplan Arena (Kaplan Arena) - Williamsburg, Va.

VISITORS: UNCW	Time	Score	HOME: William & Mary
4 PARKER, SHRITA			2 BOGGS, BIANCA
5 SMITH, GIGI			10 HODGSON, EVA
10 VASON, AHYIONA			11 POLLARD, NYLA
13 SUGGS, LACEY			15 KRAUSE, EMMA
24 BELL, CHINYERE			30 REYNOLDS, VICTORIA
	09:13	14-19	SUB OUT: JONES, MISHA
	09:13		SUB IN: REYNOLDS, VICTORIA
	07:45	20-21	SUB OUT: BIRDSONG, HARPER
	07:45		SUB IN: KRAUSE, EMMA
	07:45		SUB OUT: ROGERS, GABBY
	07:45		SUB IN: POLLARD, NYLA
SUB OUT: 33 SACCO, GRACE	07:22	20-25	
SUB IN: 10 VASON, AHYIONA	07:22		
	05:11	24-28	SUB OUT: KRAUSE, EMMA
	05:11		SUB IN: ROGERS, GABBY
SUB OUT: 24 BELL, CHINYERE	05:11		
SUB IN: 0 JEUNE, ASHLI	05:11		
SUB OUT: 14 TATE, TIMBER	05:11		
SUB IN: 1 POWELL, PAIGE	05:11		
	04:26	25-30	SUB OUT: ROGERS, GABBY
	04:26		SUB IN: EICHNER, BAILEY
	03:36	26-30	SUB OUT: HODGSON, EVA
	03:36		SUB IN: BIRDSONG, HARPER
	01:34	28-30	SUB OUT: REYNOLDS, VICTORIA
	01:34		SUB IN: JONES, MISHA
	01:34		SUB OUT: EICHNER, BAILEY
	01:34		SUB IN: KRAUSE, EMMA
SUB OUT: 0 JEUNE, ASHLI	00:49	29-32	
SUB IN: 14 TATE, TIMBER	00:49		

UNCW 29, William & Mary 32

Official Substitutions Log
UNCW vs William & Mary
Period 3
January 12, 2019 at Kaplan Arena (Kaplan Arena) - Williamsburg, Va.

VISITORS: UNCW	Time	Score	HOME: William & Mary
4 PARKER, SHRITA			2 BOGGS, BIANCA
5 SMITH, GIGI			10 HODGSON, EVA
10 VASON, AHYIONA			11 POLLARD, NYLA
13 SUGGS, LACEY			15 KRAUSE, EMMA
24 BELL, CHINYERE			30 REYNOLDS, VICTORIA
	08:26	31-32	SUB OUT: KRAUSE, EMMA
	08:26		SUB IN: JONES, MISHA
	08:26		SUB OUT: REYNOLDS, VICTORIA
	08:26		SUB IN: ROGERS, GABBY
	07:42	31-32	SUB OUT: ROGERS, GABBY
	07:42		SUB IN: REYNOLDS, VICTORIA
SUB OUT: 10 VASON, AHYIONA	07:42		
SUB IN: 33 SACCO, GRACE	07:42		
	05:00	37-39	SUB OUT: HODGSON, EVA
	05:00		SUB IN: BIRDSONG, HARPER
SUB OUT: 13 SUGGS, LACEY	05:00		
SUB IN: 14 TATE, TIMBER	05:00		
SUB OUT: 14 TATE, TIMBER	03:58	39-42	
SUB IN: 13 SUGGS, LACEY	03:58		
SUB OUT: 33 SACCO, GRACE	02:50	39-46	
SUB IN: 10 VASON, AHYIONA	02:50		
	02:29	41-46	SUB OUT: POLLARD, NYLA
	02:29		SUB IN: HODGSON, EVA
SUB OUT: 24 BELL, CHINYERE	02:27	41-47	
SUB IN: 1 POWELL, PAIGE	02:27		
	00:56	44-48	SUB OUT: BIRDSONG, HARPER
	00:56		SUB IN: KRAUSE, EMMA
SUB OUT: 13 SUGGS, LACEY	00:14	45-51	
SUB IN: 14 TATE, TIMBER	00:14		
	00:14		SUB OUT: BOGGS, BIANCA
	00:14		SUB IN: POLLARD, NYLA

UNCW 45, William & Mary 52

Official Substitutions Log
UNCW vs William & Mary
Period 4
January 12, 2019 at Kaplan Arena (Kaplan Arena) - Williamsburg, Va.

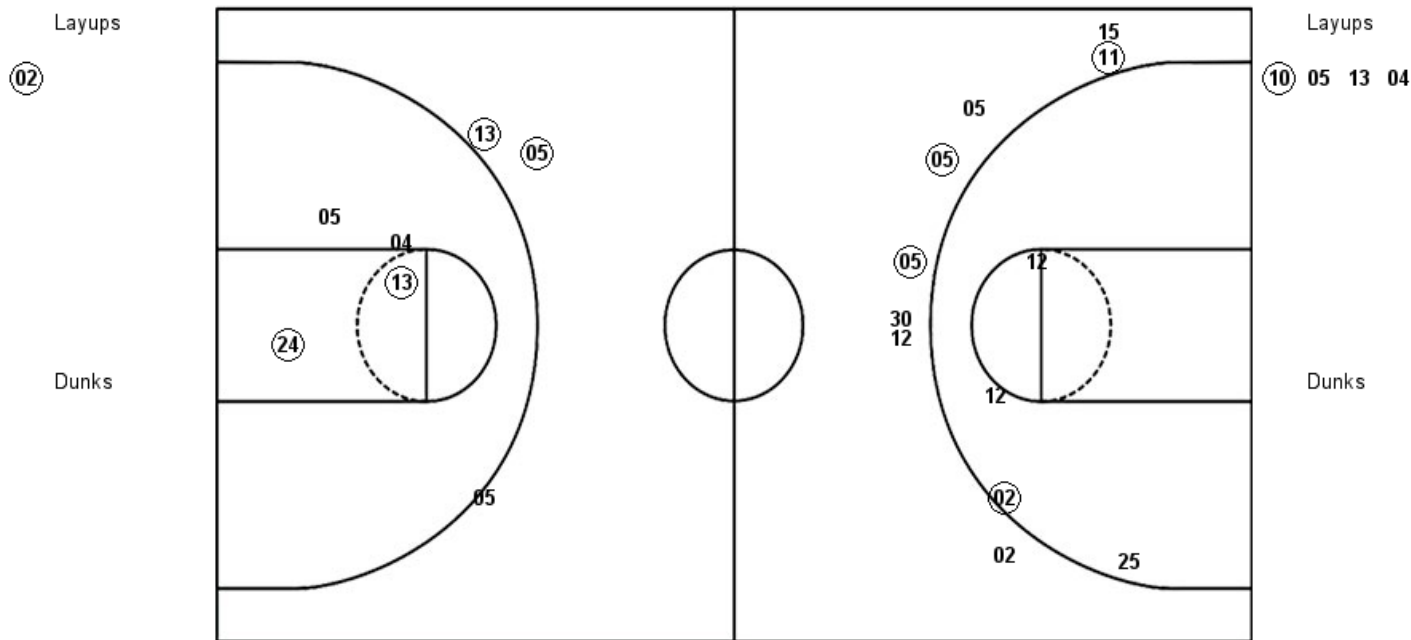
VISITORS: UNCW	Time	Score	HOME: William & Mary
4 PARKER, SHRITA			2 BOGGS, BIANCA
5 SMITH, GIGI			10 HODGSON, EVA
10 VASON, AHYIONA			11 POLLARD, NYLA
13 SUGGS, LACEY			15 KRAUSE, EMMA
24 BELL, CHINYERE			30 REYNOLDS, VICTORIA
	09:03	45-57	SUB OUT: BOGGS, BIANCA
	09:03		SUB IN: BIRDSONG, HARPER
SUB OUT: 10 VASON, AHYIONA	09:03		
SUB IN: 13 SUGGS, LACEY	09:03		
	07:44	47-57	SUB OUT: KRAUSE, EMMA
	07:44		SUB IN: ROGERS, GABBY
	07:44		SUB OUT: ROGERS, GABBY
	07:44		SUB IN: JONES, MISHA
	05:54	49-59	SUB OUT: BIRDSONG, HARPER
	05:54		SUB IN: BOGGS, BIANCA
SUB OUT: 1 POWELL, PAIGE	05:54		
SUB IN: 24 BELL, CHINYERE	05:54		
SUB OUT: 24 BELL, CHINYERE	03:11	53-66	
SUB IN: 10 VASON, AHYIONA	03:11		
SUB OUT: 10 VASON, AHYIONA	00:54	58-68	
SUB IN: 22 THYBULLE, ZHANEIA	00:54		
	00:41	61-68	SUB OUT: JONES, MISHA
	00:41		SUB IN: BIRDSONG, HARPER
SUB OUT: 22 THYBULLE, ZHANEIA	00:04	63-68	
SUB IN: 0 JEUNE, ASHLI	00:04		

UNCW 64, William & Mary 70

Official Shot Chart
UNCW vs William & Mary
PERIOD 1 Shots
 January 12, 2019 at Kaplan Arena (Kaplan Arena) - Williamsburg, Va.

William & Mary

UNCW



W&M : Period 1	Made	Att	Pct
Layups	1	1	100.0
Dunks	0	0	0
2PT Field Goals	2	5	40.0
3PT Field Goals	3	8	37.5
Total Field Goals	5	13	38.5

NCW : Period 1	Made	Att	Pct
Layups	1	4	25.0
Dunks	0	0	0
2PT Field Goals	3	8	37.5
3PT Field Goals	2	3	66.7
Total Field Goals	5	11	45.5

Official Shot Chart
UNCW vs William & Mary
PERIOD 2 Shots
 January 12, 2019 at Kaplan Arena (Kaplan Arena) - Williamsburg, Va.

William & Mary

UNCW

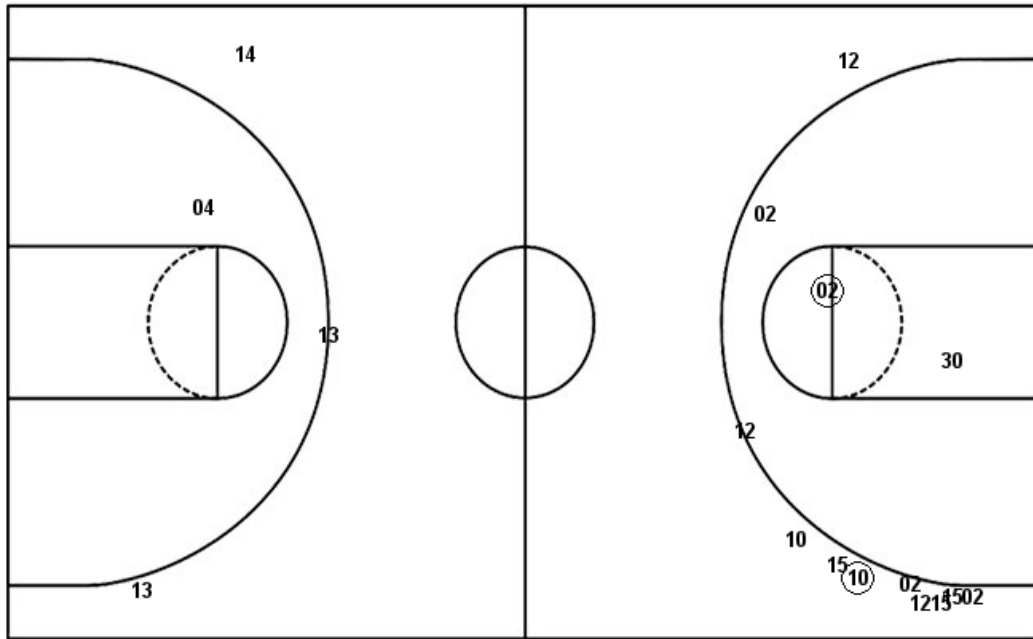
Layups
 02 (02) 11

Layups

(24) (04) (04) (13) 10
 (13)

Dunks

Dunks



W&M : Period 2	Made	Att	Pct
Layups	1	3	33.3
Dunks	0	0	0
2PT Field Goals	2	7	28.6
3PT Field Goals	1	9	11.1
Total Field Goals	3	16	18.8

NCW : Period 2	Made	Att	Pct
Layups	5	6	83.3
Dunks	0	0	0
2PT Field Goals	5	7	71.4
3PT Field Goals	0	3	00.0
Total Field Goals	5	10	50.0

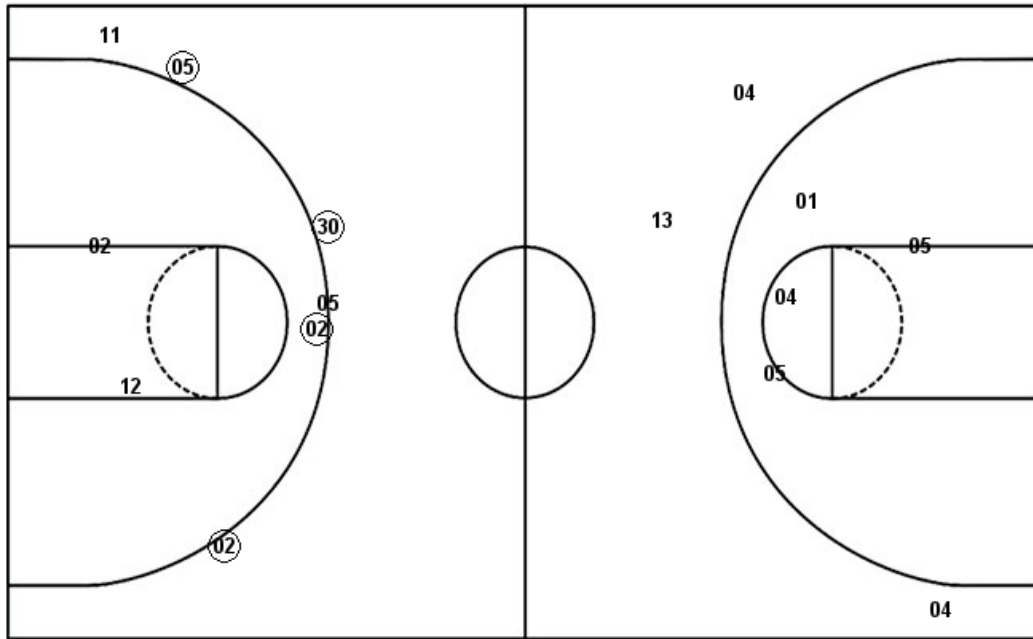
Official Shot Chart
UNCW vs William & Mary
PERIOD 3 Shots
 January 12, 2019 at Kaplan Arena (Kaplan Arena) - Williamsburg, Va.

William & Mary

UNCW

Layups
 30 (30) (30) 02 10

Layups



(13) (24) (24) 05 04
 (13) (24) 13 05 (13)

Dunks

Dunks

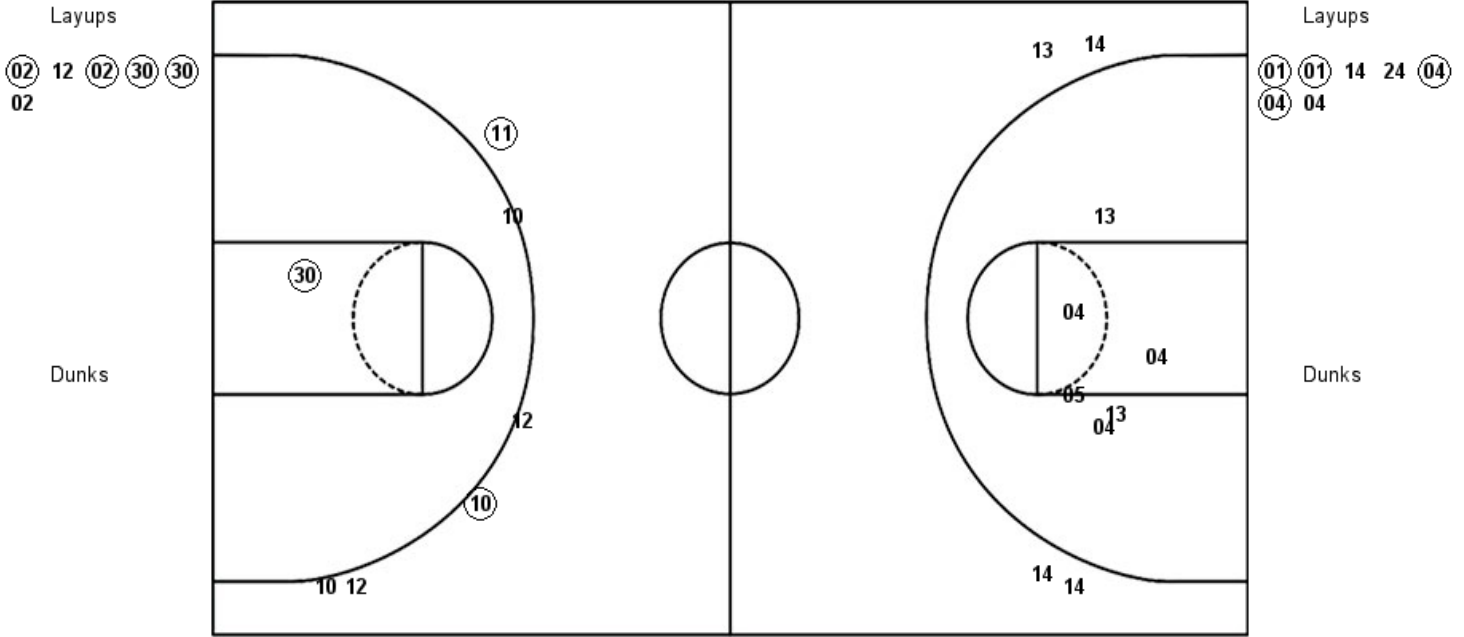
W&M : Period 3	Made	Att	Pct
Layups	2	5	40.0
Dunks	0	0	0
2PT Field Goals	2	7	28.6
3PT Field Goals	4	6	66.7
Total Field Goals	6	13	46.2

NCW : Period 3	Made	Att	Pct
Layups	6	10	60.0
Dunks	0	0	0
2PT Field Goals	6	14	42.9
3PT Field Goals	0	3	00.0
Total Field Goals	6	17	35.3

Official Shot Chart
UNCW vs William & Mary
PERIOD 4 Shots
 January 12, 2019 at Kaplan Arena (Kaplan Arena) - Williamsburg, Va.

William & Mary

UNCW

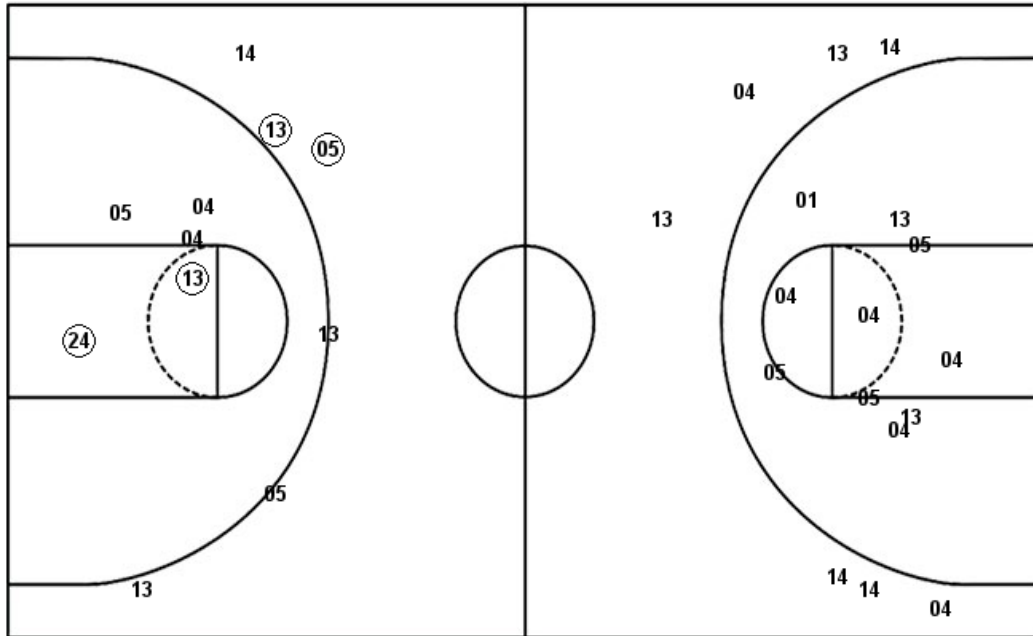


W&M : Period 4	Made	Att	Pct
Layups	4	6	66.7
Dunks	0	0	0
2PT Field Goals	5	7	71.4
3PT Field Goals	2	6	33.3
Total Field Goals	7	13	53.8

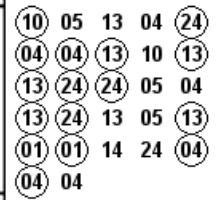
NCW : Period 4	Made	Att	Pct
Layups	4	7	57.1
Dunks	0	0	0
2PT Field Goals	4	13	30.8
3PT Field Goals	0	4	00.0
Total Field Goals	4	17	23.5

Official Shot Chart
UNCW vs William & Mary
UNCW Team Shots
January 12, 2019 at Kaplan Arena (Kaplan Arena) - Williamsburg, Va.

Layups



Layups



Dunks

Dunks

NCW : Period 1	Made	Att	Pct
Layups	1	4	25.0
Dunks	0	0	0
2PT Field Goals	3	8	37.5
3PT Field Goals	2	3	66.7
Total Field Goals	5	11	45.5

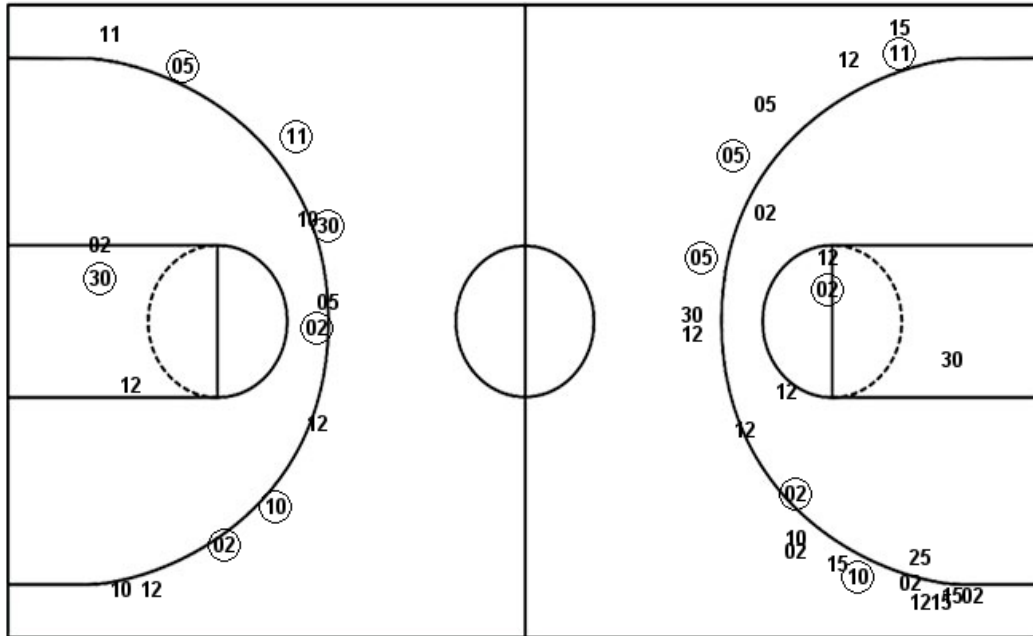
NCW : Period 3	Made	Att	Pct
Layups	6	10	60.0
Dunks	0	0	0
2PT Field Goals	6	14	42.9
3PT Field Goals	0	3	00.0
Total Field Goals	6	17	35.3

NCW : Period 2	Made	Att	Pct
Layups	5	6	83.3
Dunks	0	0	0
2PT Field Goals	5	7	71.4
3PT Field Goals	0	3	00.0
Total Field Goals	5	10	50.0

NCW : Period 4	Made	Att	Pct
Layups	4	7	57.1
Dunks	0	0	0
2PT Field Goals	4	13	30.8
3PT Field Goals	0	4	00.0
Total Field Goals	4	17	23.5

Official Shot Chart
UNCW vs William & Mary
William & Mary Team Shots
January 12, 2019 at Kaplan Arena (Kaplan Arena) - Williamsburg, Va.

Layups



Layups

02 02 02 11 30
 30 30 02 10 02
 12 02 30 30 02

Dunks

Dunks

W&M : Period 1	Made	Att	Pct
Layups	1	1	100.0
Dunks	0	0	0
2PT Field Goals	2	5	40.0
3PT Field Goals	3	8	37.5
Total Field Goals	5	13	38.5

W&M : Period 2	Made	Att	Pct
Layups	1	3	33.3
Dunks	0	0	0
2PT Field Goals	2	7	28.6
3PT Field Goals	1	9	11.1
Total Field Goals	3	16	18.8

W&M : Period 3	Made	Att	Pct
Layups	2	5	40.0
Dunks	0	0	0
2PT Field Goals	2	7	28.6
3PT Field Goals	4	6	66.7
Total Field Goals	6	13	46.2

W&M : Period 4	Made	Att	Pct
Layups	4	6	66.7
Dunks	0	0	0
2PT Field Goals	5	7	71.4
3PT Field Goals	2	6	33.3
Total Field Goals	7	13	53.8