

## FINAL SCORE



**East Carolina**

**43**



**William & Mary**

**63**

**November 28, 2018 • Kaplan Arena (Kaplan Arena) - Williamsburg, Va.**

## FINAL STATISTICS

**Official Box Score**  
**East Carolina vs William & Mary**  
**Game Totals -- Final Statistics**  
**November 28, 2018 at Kaplan Arena (Kaplan Arena) - Williamsburg, Va.**

**East Carolina 43**

No.	Player	S	Pts	FG	3FG	FT	OR	DR	TR	PF	A	TO	Blk	Stl	Min	+/-
0	Gee, Justice		6	1-3	0-1	4-4	1	2	3	2	1	3	1	0	25	-10
2	Monk, Lashonda	*	6	3-16	0-2	0-0	1	2	3	2	0	2	0	8	30	-21
11	Johnson, Raven		10	4-20	0-5	2-5	3	11	14	3	2	2	1	2	39	-17
20	Corbin, Desiree	*	2	1-2	0-0	0-4	0	1	1	0	0	0	0	1	16	-3
21	Greene, Salita	*	0	0-3	0-0	0-2	2	1	3	2	0	1	0	2	12	-11
1	Frazier, Alex		5	2-7	0-0	1-1	2	1	3	2	0	0	0	0	24	-6
22	Hicks, Tamia		4	2-4	0-0	0-0	1	0	1	0	0	1	0	0	14	-2
24	Lewis, Jade		8	3-10	2-8	0-0	0	0	0	4	1	2	1	2	29	-12
33	Chambers, Tiara		0	0-0	0-0	0-0	0	0	0	1	0	0	0	0	2	-5
44	Campbell, Destiny		2	1-3	0-0	0-0	0	0	0	3	1	1	0	0	10	-13
	Team						0	1	1	0		0				
<b>TOTALS</b>			<b>43</b>	<b>17-68</b>	<b>2-16</b>	<b>7-16</b>	<b>10</b>	<b>19</b>	<b>29</b>	<b>19</b>	<b>5</b>	<b>12</b>	<b>3</b>	<b>15</b>	<b>200</b>	

*Shooting By Period*

Period	FG	FG%	3FG	3FG%	FT	FT%
1st Qtr	7-20	35%	0-2	00%	1-1	100%
2nd Qtr	4-16	25%	1-4	25%	1-5	20%
3rd Qtr	3-17	18%	0-5	00%	5-8	63%
4th Qtr	3-15	20%	1-5	20%	0-2	00%
1st Half	7-20	35%	0-2	00%	1-1	100%
2nd Half	4-16	25%	1-4	25%	1-5	20%
3rd Half	3-17	18%	0-5	00%	5-8	63%
4th Half	3-15	20%	1-5	20%	0-2	00%
<b>Game</b>	<b>17-68</b>	<b>25.0%</b>	<b>2-16</b>	<b>12.5%</b>	<b>7-16</b>	<b>43.8%</b>

*Deadball Rebounds:*

*Last FG: 4th-03:27*

*Biggest Run: 10-0*

*Largest lead: By 4 at 1-08:21*

*Technical Fouls: None.*

**William & Mary 63**

No.	Player	S	Pts	FG	3FG	FT	OR	DR	TR	PF	A	TO	Blk	Stl	Min	+/-
2	Boggs, Bianca		9	4-11	0-3	1-2	1	10	11	1	5	6	1	1	37	17
10	Hodgson, Eva		13	4-4	2-2	3-4	0	1	1	2	0	2	0	1	26	23
11	Pollard, Nyla		10	2-9	0-3	6-8	2	10	12	1	2	4	1	0	35	16
25	Rogers, Gabby		0	0-1	0-0	0-0	1	1	2	3	0	3	0	1	15	6
30	Reynolds, Victoria		15	4-6	1-1	6-6	2	13	15	1	4	6	2	1	35	25
5	Jones, Misha		0	0-3	0-3	0-0	1	1	2	1	0	0	0	0	9	-1
12	Birdsong, Harper		10	3-9	1-3	3-3	1	0	1	3	1	3	1	1	19	5
15	Krause, Emma		6	2-6	2-4	0-0	2	2	4	1	2	0	0	0	15	8
20	Smith, Chandler		0	0-0	0-0	0-0	0	3	3	0	0	2	0	0	8	1
	Team						1	6	7	0		0				
<b>TOTALS</b>			<b>63</b>	<b>19-49</b>	<b>6-19</b>	<b>19-23</b>	<b>11</b>	<b>47</b>	<b>58</b>	<b>13</b>	<b>14</b>	<b>26</b>	<b>5</b>	<b>5</b>	<b>200</b>	

*Shooting By Period*

Period	FG	FG%	3FG	3FG%	FT	FT%
1st Qtr	9-11	82%	1-1	100%	5-5	100%
2nd Qtr	3-16	19%	2-10	20%	0-0	0%
3rd Qtr	5-14	36%	3-8	38%	4-4	100%
4th Qtr	2-8	25%	0-0	0%	10-14	71%
1st Half	9-11	82%	1-1	100%	5-5	100%
2nd Half	3-16	19%	2-10	20%	0-0	0%
3rd Half	5-14	36%	3-8	38%	4-4	100%
4th Half	2-8	25%	0-0	0%	10-14	71%
<b>Game</b>	<b>19-49</b>	<b>38.8%</b>	<b>6-19</b>	<b>31.6%</b>	<b>19-23</b>	<b>82.6%</b>

*Deadball Rebounds:*

*Last FG: 4th-03:01*

*Biggest Run: 8-0*

*Largest lead: By 20 at 4-00:30*

*Technical Fouls: None.*

<b>Game Notes:</b>	
Officials: <b>Karen Preato, Mark Resch, Kevin Dillard</b>	
Attendance: <b>574</b>	
Start Time: <b>2018-11-28 00:06:18</b>	End Time: <b>2018-11-28 02:02:18</b>
Game Duration: <b>116</b>	

Score by Period	1st	2nd	3rd	4th	TOT
ECU	15	10	11	7	<b>43</b>
W&M	24	8	17	14	<b>63</b>

ECU led for 2:05. W&M led for 35:54.

Game was tied for 2:03.

Times tied: 2      Lead Changes: 1

Points from	ECU	W&M
In the Paint	28	18
Off Turns	14	5
2nd Chance	13	7
Fast Break	9	18
Bench	19	16

**Official Box Score**  
**East Carolina vs William & Mary**  
**First Half Statistics Only**  
**November 28, 2018 at Kaplan Arena (Kaplan Arena) - Williamsburg, Va.**

**East Carolina 43**

No.	Player	S	Pts	FG	3FG	FT	OR	DR	TR	PF	A	TO	Blk	Stl	Min	+/-
0	Gee, Justice		0	0-1	0-0	0-0	0	0	0	0	0	1	0	0	5	-3
2	Monk, Lashonda	*	4	2-5	0-0	0-0	0	0	0	1	0	0	0	1	6	-5
11	Johnson, Raven		4	2-5	0-1	0-0	1	1	2	0	0	0	0	0	9	-6
20	Corbin, Desiree	*	0	0-1	0-0	0-0	0	0	0	0	0	0	0	1	5	-2
21	Greene, Salita	*	0	0-2	0-0	0-0	2	1	3	0	0	0	0	1	6	-5
1	Frazier, Alex		3	1-3	0-0	1-1	1	0	1	1	0	0	0	0	5	-7
22	Hicks, Tamia		2	1-1	0-0	0-0	0	0	0	0	0	1	0	0	4	-4
24	Lewis, Jade		0	0-1	0-1	0-0	0	0	0	0	1	0	0	0	5	-7
33	Chambers, Tiara		0	0-0	0-0	0-0	0	0	0	0	0	0	0	0	0	0
44	Campbell, Destiny		2	1-1	0-0	0-0	0	0	0	2	1	0	0	0	5	-6
	Team						0	0	0	0		0				
<b>TOTALS</b>			<b>15</b>	<b>7-20</b>	<b>0-2</b>	<b>1-1</b>	<b>0</b>	<b>0</b>	<b>6</b>	<b>4</b>	<b>2</b>	<b>2</b>	<b>0</b>	<b>3</b>	<b>50</b>	

*Shooting By Period*

Period	FG	FG%	3FG	3FG%	FT	FT%
1st Qtr	7-20	35%	0-2	00%	1-1	100%
2nd Qtr	4-16	25%	1-4	25%	1-5	20%
3rd Qtr	3-17	18%	0-5	00%	5-8	63%
4th Qtr	3-15	20%	1-5	20%	0-2	00%
1st Half	7-20	35%	0-2	00%	1-1	100%
2nd Half	4-16	25%	1-4	25%	1-5	20%
3rd Half	3-17	18%	0-5	00%	5-8	63%
4th Half	3-15	20%	1-5	20%	0-2	00%
<b>Game</b>	<b>17-68</b>	<b>25.0%</b>	<b>2-16</b>	<b>12.5%</b>	<b>7-16</b>	<b>43.8%</b>

*Deadball Rebounds:*  
*Last FG: 4th-03:27*  
*Biggest Run: 10-0*  
*Largest lead: By 4 at 1-08:21*  
*Technical Fouls: None.*

**William & Mary 63**

No.	Player	S	Pts	FG	3FG	FT	OR	DR	TR	PF	A	TO	Blk	Stl	Min	+/-
2	Boggs, Bianca		6	3-4	0-0	0-0	0	1	1	0	3	0	0	0	10	6
10	Hodgson, Eva		2	1-1	0-0	0-0	0	0	0	0	0	1	0	0	6	5
11	Pollard, Nyla		2	1-1	0-0	0-0	0	0	0	0	1	1	0	0	10	9
25	Rogers, Gabby		0	0-0	0-0	0-0	0	0	0	1	0	0	0	0	3	0
30	Reynolds, Victoria		9	3-3	1-1	2-2	0	4	4	0	2	2	1	1	10	9
5	Jones, Misha		0	0-0	0-0	0-0	0	0	0	0	0	0	0	0	0	0
12	Birdsong, Harper		5	1-2	0-0	3-3	0	0	0	1	0	0	0	0	5	7
15	Krause, Emma		0	0-0	0-0	0-0	0	1	1	0	0	0	0	0	3	8
20	Smith, Chandler		0	0-0	0-0	0-0	0	2	2	0	0	0	0	0	4	1
	Team						0	1	1	0		0				
<b>TOTALS</b>			<b>24</b>	<b>9-11</b>	<b>1-1</b>	<b>5-5</b>	<b>0</b>	<b>0</b>	<b>9</b>	<b>2</b>	<b>6</b>	<b>4</b>	<b>1</b>	<b>1</b>	<b>50</b>	

*Shooting By Period*

Period	FG	FG%	3FG	3FG%	FT	FT%
1st Qtr	9-11	82%	1-1	100%	5-5	100%
2nd Qtr	3-16	19%	2-10	20%	0-0	0%
3rd Qtr	5-14	36%	3-8	38%	4-4	100%
4th Qtr	2-8	25%	0-0	0%	10-14	71%
1st Half	9-11	82%	1-1	100%	5-5	100%
2nd Half	3-16	19%	2-10	20%	0-0	0%
3rd Half	5-14	36%	3-8	38%	4-4	100%
4th Half	2-8	25%	0-0	0%	10-14	71%
<b>Game</b>	<b>19-49</b>	<b>38.8%</b>	<b>6-19</b>	<b>31.6%</b>	<b>19-23</b>	<b>82.6%</b>

*Deadball Rebounds:*  
*Last FG: 4th-03:01*  
*Biggest Run: 8-0*  
*Largest lead: By 20 at 4-00:30*  
*Technical Fouls: None.*

<b>Game Notes:</b>	
Officials: Karen Preato, Mark Resch, Kevin Dillard	
Attendance: 574	
Start Time: 2018-11-28 00:06:18	End Time: 2018-11-28 02:02:18
Game Duration: 116	

Score by Period	1st	2nd	3rd	4th	TOT
ECU	15	10	11	7	43
W&M	24	8	17	14	63

**This period only: ECU led for 2:04. W&M led for 2:53.**  
**Game was tied for 0:03.**

Points from (This Period)	ECU	W&M
In the Paint	12	12
Off Turns	2	1
2nd Chance	5	0
Fast Break	0	10
Bench	7	5

**Official Play-By-Play  
East Carolina vs William & Mary  
First Quarter**

**November 28, 2018 at Kaplan Arena (Kaplan Arena) - Williamsburg, Va.**

**Starters:**

**East Carolina:** 0 GEE,JUSTICE; 2 MONK,LASHONDA; 11 JOHNSON,RAVEN; 20 CORBIN,DESIREE; 21 GREENE,SALITA;

**William & Mary:** 2 BOGGS,BIANCA; 10 HODGSON,EVA; 11 POLLARD,NYLA; 25 ROGERS,GABBY; 30 REYNOLDS,VICTORIA;

**Period 1**

Time	VISITORS: East Carolina	Score	Margin	HOME: William & Mary
09:37	MISSED JUMPER by MONK,LASHONDA			
09:33				REBOUND (DEF) by BOGGS,BIANCA
09:19				MISSED LAYUP by BOGGS,BIANCA
09:15	REBOUND (DEF) by GREENE,SALITA			
09:08	GOOD! LAYUP by JOHNSON,RAVEN	0-2	V 2	
08:57				TURNOVER (BADPASS) by POLLARD,NYLA
08:57	STEAL by CORBIN,DESIREE			
08:46	MISSED JUMPER by MONK,LASHONDA			
08:43	REBOUND (OFF) by GREENE,SALITA			
08:29				FOUL (PERSONAL) by ROGERS,GABBY
08:21	GOOD! JUMPER by MONK,LASHONDA [PNT]	0-4	V 4	
08:03				TURNOVER (LOSTBALL) by REYNOLDS,VICTORIA
08:03	STEAL by GREENE,SALITA			
07:56	MISSED JUMPER by GEE,JUSTICE			
07:52				REBOUND (DEF) by REYNOLDS,VICTORIA
07:48		2-4	V 2	GOOD! LAYUP by BOGGS,BIANCA [FB]
07:48				ASSIST by REYNOLDS,VICTORIA
07:20	MISSED JUMPER by GREENE,SALITA			
07:20				BLOCK by REYNOLDS,VICTORIA
07:11	REBOUND (OFF) by GREENE,SALITA			
07:09	MISSED LAYUP by GREENE,SALITA			
07:05				REBOUND (DEF) by REYNOLDS,VICTORIA
07:04		4-4	T	GOOD! LAYUP by REYNOLDS,VICTORIA [FB]
06:57	TURNOVER (LOSTBALL) by GEE,JUSTICE			
06:57				SUB OUT: ROGERS,GABBY
06:57				SUB IN: SMITH,CHANDLER
06:50				TURNOVER (BADPASS) by REYNOLDS,VICTORIA
06:36	MISSED LAYUP by JOHNSON,RAVEN			
06:35				REBOUND (DEF) by SMITH,CHANDLER
06:14				TURNOVER (LOSTBALL) by HODGSON,EVA
06:14	STEAL by MONK,LASHONDA			
06:03	MISSED 3PTR by JOHNSON,RAVEN			
05:59				REBOUND (DEF) by REYNOLDS,VICTORIA
05:55		6-4	H 2	GOOD! JUMPER by HODGSON,EVA [FB]
05:55				ASSIST by REYNOLDS,VICTORIA
05:32	MISSED JUMPER by CORBIN,DESIREE			
05:29				REBOUND (DEF) by SMITH,CHANDLER
05:19		8-4	H 4	GOOD! LAYUP by BOGGS,BIANCA
05:05	GOOD! JUMPER by MONK,LASHONDA	8-6	H 2	
04:58	FOUL (PERSONAL) by MONK,LASHONDA			
04:58				
04:58				SUB OUT: HODGSON,EVA
04:58				SUB IN: BIRDSONG,HARPER
04:58	SUB OUT: GEE,JUSTICE			
04:58	SUB IN: CAMPBELL,DESTINY			
04:58	SUB OUT: MONK,LASHONDA			
04:58	SUB IN: LEWIS,JADE			
04:58	SUB OUT: CORBIN,DESIREE			
04:58	SUB IN: HICKS,TAMIA			
04:58	SUB OUT: GREENE,SALITA			
04:58	SUB IN: FRAZIER,ALEX			
04:53	FOUL (PERSONAL) by CAMPBELL,DESTINY			
04:53		9-6	H 3	GOOD! FT by REYNOLDS,VICTORIA
04:53		10-6	H 4	GOOD! FT by REYNOLDS,VICTORIA
04:30	GOOD! JUMPER by CAMPBELL,DESTINY [PNT]	10-8	H 2	
04:30	ASSIST by LEWIS,JADE			
04:00		12-8	H 4	GOOD! LAYUP by BOGGS,BIANCA [PNT]
03:44	GOOD! LAYUP by JOHNSON,RAVEN	12-10	H 2	
03:36		14-10	H 4	GOOD! LAYUP by POLLARD,NYLA [FB]
03:36				ASSIST by BOGGS,BIANCA
03:08	MISSED LAYUP by FRAZIER,ALEX			
03:07	REBOUND (OFF) by FRAZIER,ALEX			
03:07	GOOD! LAYUP by FRAZIER,ALEX	14-12	H 2	
03:07				FOUL (PERSONAL) by BIRDSONG,HARPER
03:07	GOOD! FT by FRAZIER,ALEX	14-13	H 1	
02:45	FOUL (PERSONAL) by FRAZIER,ALEX			
02:45				SUB OUT: SMITH,CHANDLER
02:45				SUB IN: KRAUSE,EMMA
02:38				MISSED JUMPER by BIRDSONG,HARPER
02:34	REBOUND (DEF) by JOHNSON,RAVEN			
02:31	MISSED 3PTR by LEWIS,JADE			
02:27				REBOUND (DEF) by REYNOLDS,VICTORIA
02:18		17-13	H 4	GOOD! 3PTR by REYNOLDS,VICTORIA
02:18				ASSIST by BOGGS,BIANCA
01:57	MISSED JUMPER by FRAZIER,ALEX			
01:50	REBOUND (OFF) by JOHNSON,RAVEN			

Time	VISITORS: East Carolina	Score	Margin	HOME: William & Mary
01:50	MISSED LAY UP by JOHNSON,RAVEN			
01:49				REBOUND (DEF) by KRAUSE,EMMA
01:44		19-13	H 6	GOOD! JUMPER by REYNOLDS,VICTORIA [FB/PNT]
01:44				ASSIST by BOGGS,BIANCA
01:09	GOOD! JUMPER by HICKS,TAMIA [PNT]	19-15	H 4	
01:09	ASSIST by CAMPBELL,DESTINY			
00:50		21-15	H 6	GOOD! JUMPER by BIRDSONG,HARPER
00:50				ASSIST by POLLARD,NYLA
00:31	TURNOVER (LOSTBALL) by HICKS,TAMIA			
00:31				STEAL by REYNOLDS,VICTORIA
00:31				SUB OUT: BIRDSONG,HARPER
00:31				SUB IN: HODGSON,EVA
00:31	SUB OUT: JOHNSON,RAVEN			
00:31	SUB IN: GREENE,SALITA			
00:31	SUB OUT: HICKS,TAMIA			
00:31	SUB IN: MONK,LASHONDA			
00:10	FOUL (PERSONAL) by CAMPBELL,DESTINY			
00:10				SUB OUT: BOGGS,BIANCA
00:10				SUB IN: BIRDSONG,HARPER
00:10		22-15	H 7	GOOD! FT by BIRDSONG,HARPER
00:10		23-15	H 8	GOOD! FT by BIRDSONG,HARPER
00:10	SUB OUT: CAMPBELL,DESTINY			
00:10	SUB IN: GEE,JUSTICE			
00:10		24-15	H 9	GOOD! FT by BIRDSONG,HARPER
00:05	MISSED JUMPER by MONK,LASHONDA			
00:05				REBOUND (DEF) by TEAM

East Carolina 15, William & Mary 24

Points from (This Period)	ECU	W&M
In the Paint	12	12
Off Turns	2	1
2nd Chance	5	0
Fast Break	0	10
Bench	7	5

This period only:ECU led for 2:04. W&M led for 2:53.  
Game was tied for 0:03.

**Official Play-By-Play  
East Carolina vs William & Mary  
Second Quarter**

**November 28, 2018 at Kaplan Arena (Kaplan Arena) - Williamsburg, Va.**

**Starters:**

**East Carolina:** 0 GEE,JUSTICE; 2 MONK,LASHONDA; 11 JOHNSON,RAVEN; 20 CORBIN,DESIREE; 21 GREENE,SALITA;

**William & Mary:** 2 BOGGS,BIANCA; 10 HODGSON,EVA; 11 POLLARD,NYLA; 25 ROGERS,GABBY; 30 REYNOLDS,VICTORIA;

**Period 2**

Time	VISITORS: East Carolina	Score	Margin	HOME: William & Mary
09:34	TURNOVER (BADPASS) by MONK,LASHONDA			
09:34				STEAL by HODGSON,EVA
09:13				MISSED JUMPER by POLLARD,NYLA
09:12	REBOUND (DEF) by FRAZIER,ALEX			
09:12				FOUL (PERSONAL) by POLLARD,NYLA
09:04				SUB OUT: POLLARD,NYLA
09:04				SUB IN: BOGGS,BIANCA
09:04				SUB OUT: REYNOLDS,VICTORIA
09:04				SUB IN: JONES,MISHA
09:04	SUB OUT: LEWIS,JADE			
09:04	SUB IN: JOHNSON,RAVEN			
08:58	MISSED LAYUP by JOHNSON,RAVEN			
08:54				REBOUND (DEF) by KRAUSE,EMMA
08:49				MISSED 3PTR by KRAUSE,EMMA
08:44	REBOUND (DEF) by JOHNSON,RAVEN			
08:38				FOUL (PERSONAL) by JONES,MISHA
08:38	MISSED FT by GREENE,SALITA			
08:38	REBOUND (OFF) by TEAM			
08:38	MISSED FT by GREENE,SALITA			
08:35				REBOUND (DEF) by BOGGS,BIANCA
08:24				MISSED 3PTR by JONES,MISHA
08:21				REBOUND (OFF) by BOGGS,BIANCA
08:19				TURNOVER (LOSTBALL) by BOGGS,BIANCA
08:19	STEAL by GREENE,SALITA			
08:11	MISSED JUMPER by GREENE,SALITA			
08:08				REBOUND (DEF) by HODGSON,EVA
08:03	FOUL (PERSONAL) by GREENE,SALITA			
08:03				SUB OUT: KRAUSE,EMMA
08:03				SUB IN: ROGERS,GABBY
08:02				MISSED 3PTR by BOGGS,BIANCA
07:56				REBOUND (OFF) by ROGERS,GABBY
07:49				MISSED 3PTR by JONES,MISHA
07:46				REBOUND (OFF) by TEAM
07:46	SUB OUT: GEE,JUSTICE			
07:46	SUB IN: HICKS,TAMIA			
07:40				MISSED 3PTR by BIRDSONG,HARPER
07:35	REBOUND (DEF) by JOHNSON,RAVEN			
07:33				SUB OUT: BIRDSONG,HARPER
07:33				SUB IN: REYNOLDS,VICTORIA
07:19	FOUL (OFF) by GREENE,SALITA			
07:19	TURNOVER (OFFENSIVE) by GREENE,SALITA			
07:19	SUB OUT: GREENE,SALITA			
07:19	SUB IN: LEWIS,JADE			
06:55				TURNOVER (BADPASS) by ROGERS,GABBY
06:55	STEAL by MONK,LASHONDA			
06:50				FOUL (PERSONAL) by ROGERS,GABBY
06:50	GOOD! FT by JOHNSON,RAVEN [FB]	24-16	H 8	
06:50	MISSED FT by JOHNSON,RAVEN			
06:49				REBOUND (DEF) by REYNOLDS,VICTORIA
06:49				TURNOVER (LOSTBALL) by REYNOLDS,VICTORIA
06:49	STEAL by MONK,LASHONDA			
06:48				SUB OUT: ROGERS,GABBY
06:48				SUB IN: SMITH,CHANDLER
06:48				SUB OUT: HODGSON,EVA
06:48				SUB IN: POLLARD,NYLA
06:43	MISSED JUMPER by MONK,LASHONDA			
06:40				REBOUND (DEF) by BOGGS,BIANCA
06:40				TURNOVER (LOSTBALL) by BOGGS,BIANCA
06:40	STEAL by MONK,LASHONDA			
06:35	MISSED LAYUP by FRAZIER,ALEX			
06:32				REBOUND (DEF) by POLLARD,NYLA
06:27				MISSED 3PTR by POLLARD,NYLA
06:24	REBOUND (DEF) by JOHNSON,RAVEN			
06:08	MISSED LAYUP by HICKS,TAMIA			
06:04				REBOUND (DEF) by SMITH,CHANDLER
05:51				TURNOVER (TRAVEL) by SMITH,CHANDLER
05:51	SUB OUT: FRAZIER,ALEX			
05:51	SUB IN: CORBIN,DESIREE			
05:51	SUB OUT: HICKS,TAMIA			
05:51	SUB IN: GEE,JUSTICE			
05:44	MISSED 3PTR by MONK,LASHONDA			
05:41				REBOUND (DEF) by JONES,MISHA
05:37	FOUL (PERSONAL) by GEE,JUSTICE			
05:27				MISSED 3PTR by POLLARD,NYLA
05:22	REBOUND (DEF) by JOHNSON,RAVEN			
05:11	MISSED 3PTR by JOHNSON,RAVEN			

Time	VISITORS: East Carolina	Score	Margin	HOME: William & Mary
05:09				REBOUND (DEF) by POLLARD,NYLA
05:09	FOUL (PERSONAL) by GEE,JUSTICE			
05:09				SUB OUT: JONES,MISHA
05:09				SUB IN: BIRDSONG,HARPER
05:09	SUB OUT: GEE,JUSTICE			
05:09	SUB IN: FRAZIER,ALEX			
04:56				TURNOVER (BADPASS) by POLLARD,NYLA
04:56	STEAL by LEWIS,JADE			
04:51	GOOD! LAYUP by LEWIS,JADE [FB]	24-18	H 6	
04:40				MISSED JUMPER by BIRDSONG,HARPER
04:40	BLOCK by LEWIS,JADE			
04:33				REBOUND (OFF) by POLLARD,NYLA
04:30		27-18	H 9	GOOD! 3PTR by BIRDSONG,HARPER
04:30				ASSIST by REYNOLDS,VICTORIA
04:08	GOOD! 3PTR by LEWIS,JADE	27-21	H 6	
04:08	ASSIST by JOHNSON,RAVEN			
03:54				TURNOVER (BADPASS) by REYNOLDS,VICTORIA
03:54	STEAL by JOHNSON,RAVEN			
03:49	MISSED LAYUP by MONK,LASHONDA			
03:49	REBOUND (OFF) by MONK,LASHONDA			
03:46				
03:46	TURNOVER (LOSTBALL) by MONK,LASHONDA			
03:46				STEAL by BIRDSONG,HARPER
03:23		29-21	H 8	GOOD! JUMPER by BIRDSONG,HARPER
02:53	MISSED JUMPER by MONK,LASHONDA			
02:53				BLOCK by POLLARD,NYLA
02:47				REBOUND (DEF) by REYNOLDS,VICTORIA
02:40				TURNOVER (LOSTBALL) by SMITH,CHANDLER
02:40				SUB OUT: SMITH,CHANDLER
02:40				SUB IN: KRAUSE,EMMA
02:20	MISSED JUMPER by JOHNSON,RAVEN			
02:16				REBOUND (DEF) by POLLARD,NYLA
02:07		32-21	H 11	GOOD! 3PTR by KRAUSE,EMMA
02:07				ASSIST by POLLARD,NYLA
01:48	MISSED 3PTR by LEWIS,JADE			
01:44				REBOUND (DEF) by BOGGS,BIANCA
01:26				TURNOVER (DRIBBLING) by POLLARD,NYLA
01:09	GOOD! LAYUP by CORBIN,DESIREE	32-23	H 9	
01:02				MISSED JUMPER by POLLARD,NYLA
00:56				MISSED LAYUP by KRAUSE,EMMA
00:56				REBOUND (OFF) by KRAUSE,EMMA
00:55	REBOUND (DEF) by CORBIN,DESIREE			
00:47	MISSED JUMPER by FRAZIER,ALEX			
00:43				REBOUND (DEF) by POLLARD,NYLA
00:21				MISSED JUMPER by REYNOLDS,VICTORIA
00:21	BLOCK by JOHNSON,RAVEN			
00:17	REBOUND (DEF) by JOHNSON,RAVEN			
00:17	GOOD! LAYUP by JOHNSON,RAVEN [FB]	32-25	H 7	
00:17				FOUL (PERSONAL) by BIRDSONG,HARPER
00:17	MISSED FT by JOHNSON,RAVEN			
00:14				REBOUND (DEF) by REYNOLDS,VICTORIA
00:03				MISSED 3PTR by BOGGS,BIANCA
00:02				REBOUND (OFF) by BIRDSONG,HARPER

### East Carolina 25, William & Mary 32

Points from (This Period)	ECU	W&M
In the Paint	6	0
Off Turns	5	2
2nd Chance	0	3
Fast Break	5	0
Bench	5	8

This period only:ECU led for 2:04. W&M led for 2:53.  
Game was tied for 0:03.

**Official Box Score**  
**East Carolina vs William & Mary**  
**Second Half Statistics Only**  
**November 28, 2018 at Kaplan Arena (Kaplan Arena) - Williamsburg, Va.**

**East Carolina 43**

No.	Player	S	Pts	FG	3FG	FT	OR	DR	TR	PF	A	TO	Blk	Stl	Min	+/-
0	Gee, Justice		0	0-0	0-0	0-0	0	0	0	2	0	0	0	0	3	0
2	Monk, Lashonda	*	0	0-4	0-1	0-0	1	0	1	0	0	2	0	3	10	2
11	Johnson, Raven		3	1-4	0-1	1-3	0	5	5	0	1	0	1	1	9	2
20	Corbin, Desiree	*	2	1-1	0-0	0-0	0	1	1	0	0	0	0	0	6	1
21	Greene, Salita	*	0	0-1	0-0	0-2	0	0	0	2	0	1	0	1	3	0
1	Frazier, Alex		0	0-2	0-0	0-0	0	1	1	0	0	0	0	0	9	2
22	Hicks, Tamia		0	0-1	0-0	0-0	0	0	0	0	0	0	0	0	2	1
24	Lewis, Jade		5	2-3	1-2	0-0	0	0	0	0	0	0	1	1	8	2
33	Chambers, Tiara		0	0-0	0-0	0-0	0	0	0	0	0	0	0	0	0	0
44	Campbell, Destiny		0	0-0	0-0	0-0	0	0	0	0	0	0	0	0	0	0
	Team						0	0	0	0		0				
<b>TOTALS</b>			<b>10</b>	<b>4-16</b>	<b>1-4</b>	<b>1-5</b>	<b>0</b>	<b>0</b>	<b>8</b>	<b>4</b>	<b>1</b>	<b>3</b>	<b>2</b>	<b>6</b>	<b>50</b>	

*Shooting By Period*

Period	FG	FG%	3FG	3FG%	FT	FT%
1st Qtr	7-20	35%	0-2	00%	1-1	100%
2nd Qtr	4-16	25%	1-4	25%	1-5	20%
3rd Qtr	3-17	18%	0-5	00%	5-8	63%
4th Qtr	3-15	20%	1-5	20%	0-2	00%
1st Half	7-20	35%	0-2	00%	1-1	100%
2nd Half	4-16	25%	1-4	25%	1-5	20%
3rd Half	3-17	18%	0-5	00%	5-8	63%
4th Half	3-15	20%	1-5	20%	0-2	00%
<b>Game</b>	<b>17-68</b>	<b>25.0%</b>	<b>2-16</b>	<b>12.5%</b>	<b>7-16</b>	<b>43.8%</b>

*Deadball Rebounds:*

*Last FG: 4th-03:27*

*Biggest Run: 10-0*

*Largest lead: By 4 at 1-08:21*

*Technical Fouls: None.*

**William & Mary 63**

No.	Player	S	Pts	FG	3FG	FT	OR	DR	TR	PF	A	TO	Blk	Stl	Min	+/-
2	Boggs, Bianca		0	0-2	0-2	0-0	1	3	4	0	0	2	0	0	9	-2
10	Hodgson, Eva		0	0-0	0-0	0-0	0	1	1	0	0	0	0	1	3	-1
11	Pollard, Nyla		0	0-4	0-2	0-0	1	4	5	1	1	2	1	0	8	-1
25	Rogers, Gabby		0	0-0	0-0	0-0	1	0	1	1	0	1	0	0	1	-1
30	Reynolds, Victoria		0	0-1	0-0	0-0	0	3	3	0	1	2	0	0	8	-2
5	Jones, Misha		0	0-2	0-2	0-0	0	1	1	1	0	0	0	0	4	-1
12	Birdsong, Harper		5	2-4	1-2	0-0	1	0	1	1	0	0	0	1	8	-1
15	Krause, Emma		3	1-3	1-2	0-0	1	1	2	0	0	0	0	0	5	-1
20	Smith, Chandler		0	0-0	0-0	0-0	0	1	1	0	0	2	0	0	4	0
	Team						1	0	1	0		0				
<b>TOTALS</b>			<b>8</b>	<b>3-16</b>	<b>2-10</b>	<b>0-0</b>	<b>0</b>	<b>0</b>	<b>20</b>	<b>4</b>	<b>2</b>	<b>9</b>	<b>1</b>	<b>2</b>	<b>50</b>	

*Shooting By Period*

Period	FG	FG%	3FG	3FG%	FT	FT%
1st Qtr	9-11	82%	1-1	100%	5-5	100%
2nd Qtr	3-16	19%	2-10	20%	0-0	0%
3rd Qtr	5-14	36%	3-8	38%	4-4	100%
4th Qtr	2-8	25%	0-0	0%	10-14	71%
1st Half	9-11	82%	1-1	100%	5-5	100%
2nd Half	3-16	19%	2-10	20%	0-0	0%
3rd Half	5-14	36%	3-8	38%	4-4	100%
4th Half	2-8	25%	0-0	0%	10-14	71%
<b>Game</b>	<b>19-49</b>	<b>38.8%</b>	<b>6-19</b>	<b>31.6%</b>	<b>19-23</b>	<b>82.6%</b>

*Deadball Rebounds:*

*Last FG: 4th-03:01*

*Biggest Run: 8-0*

*Largest lead: By 20 at 4-00:30*

*Technical Fouls: None.*

<b>Game Notes:</b>	
Officials: Karen Preato, Mark Resch, Kevin Dillard	
Attendance: 574	
Start Time: 2018-11-28 00:06:18	End Time: 2018-11-28 02:02:18
Game Duration: 116	

Score by Period	1st	2nd	3rd	4th	TOT
ECU	15	10	11	7	<b>43</b>
W&M	24	8	17	14	<b>63</b>

**This period only: ECU led for 2:04. W&M led for 2:53.**

**Game was tied for 0:03.**

Points from (This Period)	ECU	W&M
In the Paint	6	0
Off Turns	5	2
2nd Chance	0	3
Fast Break	5	0
Bench	5	8



**Official Play-By-Play**  
**East Carolina vs William & Mary**  
**Third Quarter**  
**November 28, 2018 at Kaplan Arena (Kaplan Arena) - Williamsburg, Va.**

**Starters:**

**East Carolina:** 0 GEE,JUSTICE; 2 MONK,LASHONDA; 11 JOHNSON,RAVEN; 20 CORBIN,DESIREE; 21 GREENE,SALITA;  
**William & Mary:** 2 BOGGS,BIANCA; 10 HODGSON,EVA; 11 POLLARD,NYLA; 25 ROGERS,GABBY; 30 REYNOLDS,VICTORIA;

**Period 3**

Time	VISITORS: East Carolina	Score	Margin	HOME: William & Mary
09:52	MISSED JUMPER by CAMPBELL,DESTINY			
09:47				REBOUND (DEF) by REYNOLDS,VICTORIA
09:40				TURNOVER (3SEC) by ROGERS,GABBY
09:27	TURNOVER (TRAVEL) by CAMPBELL,DESTINY			
09:20		34-25	H 9	GOOD! LAYUP by HODGSON,EVA [FB]
09:12	TURNOVER (LOSTBALL) by LEWIS,JADE			
08:50				TURNOVER (LOSTBALL) by ROGERS,GABBY
08:50	STEAL by MONK,LASHONDA			
08:46				FOUL (PERSONAL) by HODGSON,EVA
08:42	MISSED JUMPER by JOHNSON,RAVEN			
08:39				REBOUND (DEF) by POLLARD,NYLA
08:25				MISSED 3PTR by POLLARD,NYLA
08:21				REBOUND (OFF) by REYNOLDS,VICTORIA
08:21	FOUL (PERSONAL) by CAMPBELL,DESTINY			
08:21		35-25	H 10	GOOD! FT by REYNOLDS,VICTORIA
08:21	SUB OUT: CAMPBELL,DESTINY			
08:21	SUB IN: CORBIN,DESIREE			
08:21		36-25	H 11	GOOD! FT by REYNOLDS,VICTORIA
08:06	MISSED JUMPER by MONK,LASHONDA			
08:01				REBOUND (DEF) by REYNOLDS,VICTORIA
07:55		39-25	H 14	GOOD! 3PTR by HODGSON,EVA [FB]
07:55				ASSIST by BOGGS,BIANCA
07:34	MISSED 3PTR by LEWIS,JADE			
07:32				REBOUND (DEF) by REYNOLDS,VICTORIA
07:29				TURNOVER (BADPASS) by REYNOLDS,VICTORIA
07:29	SUB OUT: LEWIS,JADE			
07:29	SUB IN: FRAZIER,ALEX			
07:20				FOUL (PERSONAL) by BOGGS,BIANCA
07:08				FOUL (PERSONAL) by ROGERS,GABBY
07:08	GOOD! FT by JOHNSON,RAVEN	39-26	H 13	
07:08				SUB OUT: ROGERS,GABBY
07:08				SUB IN: KRAUSE,EMMA
07:08	MISSED FT by JOHNSON,RAVEN			
07:06	REBOUND (OFF) by JOHNSON,RAVEN			
07:03	MISSED JUMPER by JOHNSON,RAVEN			
07:03				BLOCK by BOGGS,BIANCA
07:02				REBOUND (DEF) by TEAM
06:54				MISSED JUMPER by POLLARD,NYLA
06:53	REBOUND (DEF) by TEAM			
06:41				FOUL (PERSONAL) by KRAUSE,EMMA
06:41	MISSED FT by CORBIN,DESIREE			
06:41	REBOUND (OFF) by TEAM			
06:41				SUB OUT: POLLARD,NYLA
06:41				SUB IN: BIRDSONG,HARPER
06:41	SUB OUT: GREENE,SALITA			
06:41	SUB IN: GEE,JUSTICE			
06:40	MISSED FT by CORBIN,DESIREE			
06:38				REBOUND (DEF) by BOGGS,BIANCA
06:27				TURNOVER (LOSTBALL) by BIRDSONG,HARPER
06:27	STEAL by MONK,LASHONDA			
06:22	MISSED 3PTR by MONK,LASHONDA			
06:19				REBOUND (DEF) by TEAM
06:11				MISSED JUMPER by BIRDSONG,HARPER
06:07				REBOUND (OFF) by REYNOLDS,VICTORIA
05:56	FOUL (PERSONAL) by FRAZIER,ALEX			
05:56		40-26	H 14	GOOD! FT by REYNOLDS,VICTORIA
05:56	SUB OUT: CORBIN,DESIREE			
05:56	SUB IN: HICKS,TAMIA			
05:56		41-26	H 15	GOOD! FT by REYNOLDS,VICTORIA
05:38	MISSED JUMPER by MONK,LASHONDA			
05:34				REBOUND (DEF) by BOGGS,BIANCA
05:29		44-26	H 18	GOOD! 3PTR by KRAUSE,EMMA [FB]
05:29				ASSIST by BIRDSONG,HARPER
05:22	TIMEOUT 30SEC			
05:22	SUB OUT: MONK,LASHONDA			
05:22	SUB IN: LEWIS,JADE			
05:09	TURNOVER (TRAVEL) by GEE,JUSTICE			
04:46				SUB OUT: BOGGS,BIANCA
04:46				SUB IN: POLLARD,NYLA
04:46				TURNOVER (BADPASS) by POLLARD,NYLA
04:46				
04:32	MISSED LAYUP by HICKS,TAMIA			
04:32	REBOUND (OFF) by GEE,JUSTICE			
04:32				FOUL (PERSONAL) by REYNOLDS,VICTORIA
04:32	GOOD! FT by GEE,JUSTICE	44-27	H 17	
04:32				SUB OUT: HODGSON,EVA

Time	VISITORS: East Carolina	Score	Margin	HOME: William & Mary
04:32				SUB IN: BOGGS, BIANCA
04:32				SUB OUT: REYNOLDS, VICTORIA
04:32				SUB IN: JONES, MISHA
04:32	GOOD! FT by GEE, JUSTICE	44-28	H 16	
04:27				TURNOVER (BADPASS) by BOGGS, BIANCA
04:14	MISSED 3PTR by LEWIS, JADE			
04:10				REBOUND (DEF) by BOGGS, BIANCA
04:03				TURNOVER (BADPASS) by BOGGS, BIANCA
04:03	STEAL by JOHNSON, RAVEN			
03:55	MISSED 3PTR by JOHNSON, RAVEN			
03:51	REBOUND (OFF) by FRAZIER, ALEX			
03:38	GOOD! LAYUP by FRAZIER, ALEX [PNT]	44-30	H 14	
03:30	FOUL (PERSONAL) by LEWIS, JADE			
03:20				MISSED 3PTR by BOGGS, BIANCA
03:16				REBOUND (OFF) by JONES, MISHA
03:14				MISSED JUMPER by POLLARD, NYLA
03:11				REBOUND (OFF) by KRAUSE, EMMA
03:09				MISSED LAYUP by KRAUSE, EMMA
03:05	REBOUND (DEF) by JOHNSON, RAVEN			
03:03	MISSED LAYUP by JOHNSON, RAVEN			
02:59	REBOUND (OFF) by HICKS, TAMIA			
02:53	GOOD! JUMPER by HICKS, TAMIA	44-32	H 12	
02:29				TURNOVER (BADPASS) by BIRDSONG, HARPER
02:29	STEAL by LEWIS, JADE			
02:23	MISSED JUMPER by LEWIS, JADE			
02:17				REBOUND (DEF) by BOGGS, BIANCA
02:13				MISSED 3PTR by BIRDSONG, HARPER
02:09				REBOUND (OFF) by POLLARD, NYLA
01:55				MISSED 3PTR by JONES, MISHA
01:50	REBOUND (DEF) by JOHNSON, RAVEN			
01:33	MISSED 3PTR by LEWIS, JADE			
01:32	REBOUND (OFF) by JOHNSON, RAVEN			
01:32				FOUL (PERSONAL) by BIRDSONG, HARPER
01:32	GOOD! FT by GEE, JUSTICE	44-33	H 11	
01:32				SUB OUT: BIRDSONG, HARPER
01:32				SUB IN: REYNOLDS, VICTORIA
01:32				SUB OUT: JONES, MISHA
01:32				SUB IN: HODGSON, EVA
01:32	GOOD! FT by GEE, JUSTICE	44-34	H 10	
01:18				MISSED 3PTR by KRAUSE, EMMA
01:14	REBOUND (DEF) by JOHNSON, RAVEN			
01:11	GOOD! LAYUP by GEE, JUSTICE [FB]	44-36	H 8	
01:11	ASSIST by JOHNSON, RAVEN			
00:54		46-36	H 10	GOOD! JUMPER by POLLARD, NYLA
00:54				ASSIST by KRAUSE, EMMA
00:33	MISSED LAYUP by JOHNSON, RAVEN			
00:29				REBOUND (DEF) by POLLARD, NYLA
00:04		49-36	H 13	GOOD! 3PTR by HODGSON, EVA
00:04				ASSIST by KRAUSE, EMMA

### East Carolina 36, William & Mary 49

Points from (This Period)	ECU	W&M
In the Paint	6	2
Off Turns	4	2
2nd Chance	8	4
Fast Break	2	8
Bench	4	3

This period only: ECU led for 2:04. W&M led for 2:53.  
Game was tied for 0:03.

**Official Play-By-Play**  
**East Carolina vs William & Mary**  
**Fourth Quarter**  
**November 28, 2018 at Kaplan Arena (Kaplan Arena) - Williamsburg, Va.**

**Starters:**

**East Carolina:** 0 GEE,JUSTICE; 2 MONK,LASHONDA; 11 JOHNSON,RAVEN; 20 CORBIN,DESIREE; 21 GREENE,SALITA;  
**William & Mary:** 2 BOGGS,BIANCA; 10 HODGSON,EVA; 11 POLLARD,NYLA; 25 ROGERS,GABBY; 30 REYNOLDS,VICTORIA;

**Period 4**

Time	VISITORS: East Carolina	Score	Margin	HOME: William & Mary
09:51				TURNOVER (TRAVEL) by REYNOLDS,VICTORIA
09:51	SUB OUT: HICKS,TAMIA			
09:51	SUB IN: MONK,LASHONDA			
09:51	SUB OUT: LEWIS,JADE			
09:51	SUB IN: CAMPBELL,DESTINY			
09:46				SUB OUT: KRAUSE,EMMA
09:46				SUB IN: ROGERS,GABBY
09:40	TURNOVER (LOSTBALL) by JOHNSON,RAVEN			
09:40				STEAL by ROGERS,GABBY
09:33				MISSED LAYUP by BOGGS,BIANCA
09:33	BLOCK by GEE,JUSTICE			
09:26	REBOUND (DEF) by GEE,JUSTICE			
09:03	MISSED JUMPER by CAMPBELL,DESTINY			
08:59				REBOUND (DEF) by REYNOLDS,VICTORIA
08:53	FOUL (PERSONAL) by JOHNSON,RAVEN			
08:53				MISSED FT by POLLARD,NYLA
08:53				REBOUND (OFF) by TEAM
08:53		50-36	H 14	GOOD! FT by POLLARD,NYLA
08:31	MISSED JUMPER by MONK,LASHONDA			
08:30				REBOUND (DEF) by TEAM
08:11				MISSED JUMPER by REYNOLDS,VICTORIA
08:07	REBOUND (DEF) by MONK,LASHONDA			
08:02	MISSED JUMPER by FRAZIER,ALEX			
08:00				REBOUND (DEF) by REYNOLDS,VICTORIA
07:48	FOUL (PERSONAL) by JOHNSON,RAVEN			
07:48		51-36	H 15	GOOD! FT by POLLARD,NYLA
07:48	SUB OUT: FRAZIER,ALEX			
07:48	SUB IN: LEWIS,JADE			
07:48		52-36	H 16	GOOD! FT by POLLARD,NYLA
07:39	GOOD! JUMPER by JOHNSON,RAVEN [PNT]	52-38	H 14	
07:11	FOUL (PERSONAL) by LEWIS,JADE			
07:11				MISSED FT by BOGGS,BIANCA
07:11				REBOUND (OFF) by TEAM
07:11		53-38	H 15	GOOD! FT by BOGGS,BIANCA
06:50	MISSED 3PTR by JOHNSON,RAVEN			
06:47				REBOUND (DEF) by POLLARD,NYLA
06:18		55-38	H 17	GOOD! JUMPER by REYNOLDS,VICTORIA [PNT]
06:18				ASSIST by BOGGS,BIANCA
06:02	MISSED JUMPER by JOHNSON,RAVEN			
06:01				REBOUND (DEF) by TEAM
06:01	SUB OUT: CAMPBELL,DESTINY			
06:01	SUB IN: CORBIN,DESIREE			
05:42				TURNOVER (BADPASS) by BOGGS,BIANCA
05:42	STEAL by MONK,LASHONDA			
05:37	TURNOVER (LOSTBALL) by GEE,JUSTICE			
05:37				SUB OUT: POLLARD,NYLA
05:37				SUB IN: BIRDSONG,HARPER
05:21				MISSED JUMPER by ROGERS,GABBY
05:18	REBOUND (DEF) by JOHNSON,RAVEN			
05:15	TURNOVER (BADPASS) by JOHNSON,RAVEN			
05:15				STEAL by BOGGS,BIANCA
05:10				MISSED LAYUP by BOGGS,BIANCA
05:07	REBOUND (DEF) by JOHNSON,RAVEN			
05:06				FOUL (PERSONAL) by HODGSON,EVA
05:06	MISSED FT by CORBIN,DESIREE			
05:06	REBOUND (OFF) by TEAM			
05:06				SUB OUT: BOGGS,BIANCA
05:06				SUB IN: POLLARD,NYLA
05:06	MISSED FT by CORBIN,DESIREE			
05:05				REBOUND (DEF) by ROGERS,GABBY
04:48				
04:41				MISSED LAYUP by BIRDSONG,HARPER
04:38	REBOUND (DEF) by MONK,LASHONDA			
04:34	GOOD! LAYUP by MONK,LASHONDA [FB]	55-40	H 15	
04:29				TURNOVER (TRAVEL) by BIRDSONG,HARPER
04:29				SUB OUT: BIRDSONG,HARPER
04:29				SUB IN: BOGGS,BIANCA
04:15	MISSED 3PTR by JOHNSON,RAVEN			
04:11				REBOUND (DEF) by POLLARD,NYLA
03:57	FOUL (PERSONAL) by LEWIS,JADE			
03:35				TURNOVER (LOSTBALL) by BOGGS,BIANCA
03:35	TIMEOUT 30SEC			
03:35	SUB OUT: CORBIN,DESIREE			
03:35	SUB IN: HICKS,TAMIA			
03:27	GOOD! 3PTR by LEWIS,JADE	55-43	H 12	
03:27	ASSIST by GEE,JUSTICE			

Time	VISITORS: East Carolina	Score	Margin	HOME: William & Mary
03:01		57-43	H 14	GOOD! JUMPER by BOGGS,BIANCA
03:01				ASSIST by REYNOLDS,VICTORIA
02:46	MISSED 3PTR by LEWIS,JADE			
02:42				REBOUND (DEF) by POLLARD,NYLA
02:18				MISSED LAYUP by BOGGS,BIANCA
02:15	REBOUND (DEF) by GEE,JUSTICE			
02:09	MISSED JUMPER by MONK,LASHONDA			
02:06				REBOUND (DEF) by BOGGS,BIANCA
01:57	FOUL (PERSONAL) by MONK,LASHONDA			
01:57				MISSED FT by HODGSON,EVA
01:57				REBOUND (OFF) by TEAM
01:57				SUB OUT: ROGERS,GABBY
01:57				SUB IN: JONES,MISHA
01:57		58-43	H 15	GOOD! FT by HODGSON,EVA
01:57				TIMEOUT 30SEC
01:57	SUB OUT: HICKS,TAMIA			
01:57	SUB IN: CHAMBERS,TIARA			
01:47	MISSED 3PTR by GEE,JUSTICE			
01:43				REBOUND (DEF) by BOGGS,BIANCA
01:16	FOUL (PERSONAL) by CHAMBERS,TIARA			
01:16		59-43	H 16	GOOD! FT by HODGSON,EVA
01:16		60-43	H 17	GOOD! FT by HODGSON,EVA
00:59	MISSED JUMPER by JOHNSON,RAVEN			
00:55				REBOUND (DEF) by REYNOLDS,VICTORIA
00:42	FOUL (PERSONAL) by LEWIS,JADE			
00:42				MISSED FT by POLLARD,NYLA
00:42				REBOUND (OFF) by TEAM
00:42				SUB OUT: BOGGS,BIANCA
00:42				SUB IN: BIRDSONG,HARPER
00:42		61-43	H 18	GOOD! FT by POLLARD,NYLA
00:31	MISSED JUMPER by JOHNSON,RAVEN			
00:31				BLOCK by REYNOLDS,VICTORIA
00:30				REBOUND (DEF) by POLLARD,NYLA
00:30	FOUL (PERSONAL) by JOHNSON,RAVEN			
00:30		62-43	H 19	GOOD! FT by POLLARD,NYLA
00:30				SUB OUT: REYNOLDS,VICTORIA
00:30				SUB IN: KRAUSE,EMMA
00:30		63-43	H 20	GOOD! FT by POLLARD,NYLA
00:20	TURNOVER (BADPASS) by LEWIS,JADE			
00:07				TURNOVER (LOSTBALL) by HODGSON,EVA
00:07	STEAL by MONK,LASHONDA			
00:01	MISSED JUMPER by MONK,LASHONDA			
00:01				BLOCK by BIRDSONG,HARPER
00:01				REBOUND (DEF) by TEAM

East Carolina 43, William & Mary 63

Points from (This Period)	ECU	W&M
In the Paint	4	4
Off Turns	3	0
2nd Chance	0	0
Fast Break	2	0
Bench	3	0

This period only:ECU led for 2:04. W&M led for 2:53.  
Game was tied for 0:03.

**Official Scoring/Possession Reference Chart  
East Carolina vs William & Mary**

**Period 1**

**November 28, 2018 at Kaplan Arena (Kaplan Arena) - Williamsburg, Va.**

**Starters:**

**East Carolina:** 0 GEE,JUSTICE; 2 MONK,LASHONDA; 11 JOHNSON,RAVEN; 20 CORBIN,DESIREE; 21 GREENE,SALITA;  
**William & Mary:** 2 BOGGS,BIANCA; 10 HODGSON,EVA; 11 POLLARD,NYLA; 25 ROGERS,GABBY; 30 REYNOLDS,VICTORIA;

**Period 1**

Time	VISITORS: East Carolina	Score	Margin	HOME: William & Mary
09:08	GOOD! LAYUP by JOHNSON,RAVEN	0-2	V 2	
08:21	GOOD! JUMPER by MONK,LASHONDA [PNT]	0-4	V 4	
07:48		2-4	V 2	GOOD! LAYUP by BOGGS,BIANCA [FB]
07:04		4-4	T	GOOD! LAYUP by REYNOLDS,VICTORIA [FB]
05:55		6-4	H 2	GOOD! JUMPER by HODGSON,EVA [FB]
05:19		8-4	H 4	GOOD! LAYUP by BOGGS,BIANCA
05:05	GOOD! JUMPER by MONK,LASHONDA	8-6	H 2	
04:53		9-6	H 3	GOOD! FT by REYNOLDS,VICTORIA
04:53		10-6	H 4	GOOD! FT by REYNOLDS,VICTORIA
04:30	GOOD! JUMPER by CAMPBELL,DESTINY [PNT]	10-8	H 2	
04:00		12-8	H 4	GOOD! LAYUP by BOGGS,BIANCA [PNT]
03:44	GOOD! LAYUP by JOHNSON,RAVEN	12-10	H 2	
03:36		14-10	H 4	GOOD! LAYUP by POLLARD,NYLA [FB]
03:07	GOOD! LAYUP by FRAZIER,ALEX	14-12	H 2	
03:07	GOOD! FT by FRAZIER,ALEX	14-13	H 1	
02:18		17-13	H 4	GOOD! 3PTR by REYNOLDS,VICTORIA
01:44		19-13	H 6	GOOD! JUMPER by REYNOLDS,VICTORIA [FB/PNT]
01:09	GOOD! JUMPER by HICKS,TAMIA [PNT]	19-15	H 4	
00:50		21-15	H 6	GOOD! JUMPER by BIRDSONG,HARPER
00:10		22-15	H 7	GOOD! FT by BIRDSONG,HARPER
00:10		23-15	H 8	GOOD! FT by BIRDSONG,HARPER
00:10		24-15	H 9	GOOD! FT by BIRDSONG,HARPER

**East Carolina 15, William & Mary 24**

**Official Scoring/Possession Reference Chart  
East Carolina vs William & Mary**

**Period 2**

**November 28, 2018 at Kaplan Arena (Kaplan Arena) - Williamsburg, Va.**

**Starters:**

**East Carolina:** 0 GEE,JUSTICE; 2 MONK,LASHONDA; 11 JOHNSON,RAVEN; 20 CORBIN,DESIREE; 21 GREENE,SALITA;  
**William & Mary:** 2 BOGGS,BIANCA; 10 HODGSON,EVA; 11 POLLARD,NYLA; 25 ROGERS,GABBY; 30 REYNOLDS,VICTORIA;

**Period 2**

Time	VISITORS: East Carolina	Score	Margin	HOME: William & Mary
06:50	GOOD! FT by JOHNSON,RAVEN [FB]	24-16	H 8	
04:51	GOOD! LAYUP by LEWIS,JADE [FB]	24-18	H 6	
04:30		27-18	H 9	GOOD! 3PTR by BIRDSONG,HARPER
04:08	GOOD! 3PTR by LEWIS,JADE	27-21	H 6	
03:23		29-21	H 8	GOOD! JUMPER by BIRDSONG,HARPER
02:07		32-21	H 11	GOOD! 3PTR by KRAUSE,EMMA
01:09	GOOD! LAYUP by CORBIN,DESIREE	32-23	H 9	
00:17	GOOD! LAYUP by JOHNSON,RAVEN [FB]	32-25	H 7	

**East Carolina 25, William & Mary 32**

**Official Scoring/Possession Reference Chart  
East Carolina vs William & Mary**

**Period 3**

**November 28, 2018 at Kaplan Arena (Kaplan Arena) - Williamsburg, Va.**

**Starters:**

**East Carolina:** 0 GEE,JUSTICE; 2 MONK,LASHONDA; 11 JOHNSON,RAVEN; 20 CORBIN,DESIREE; 21 GREENE,SALITA;  
**William & Mary:** 2 BOGGS,BIANCA; 10 HODGSON,EVA; 11 POLLARD,NYLA; 25 ROGERS,GABBY; 30 REYNOLDS,VICTORIA;

**Period 3**

Time	VISITORS: East Carolina	Score	Margin	HOME: William & Mary
09:20		34-25	H 9	GOOD! LAYUP by HODGSON,EVA [FB]
08:21		35-25	H 10	GOOD! FT by REYNOLDS,VICTORIA
08:21		36-25	H 11	GOOD! FT by REYNOLDS,VICTORIA
07:55		39-25	H 14	GOOD! 3PTR by HODGSON,EVA [FB]
07:08	GOOD! FT by JOHNSON,RAVEN	39-26	H 13	
05:56		40-26	H 14	GOOD! FT by REYNOLDS,VICTORIA
05:56		41-26	H 15	GOOD! FT by REYNOLDS,VICTORIA
05:29		44-26	H 18	GOOD! 3PTR by KRAUSE,EMMA [FB]
04:32	GOOD! FT by GEE,JUSTICE	44-27	H 17	
04:32	GOOD! FT by GEE,JUSTICE	44-28	H 16	
03:38	GOOD! LAYUP by FRAZIER,ALEX [PNT]	44-30	H 14	
02:53	GOOD! JUMPER by HICKS,TAMIA	44-32	H 12	
01:32	GOOD! FT by GEE,JUSTICE	44-33	H 11	
01:32	GOOD! FT by GEE,JUSTICE	44-34	H 10	
01:11	GOOD! LAYUP by GEE,JUSTICE [FB]	44-36	H 8	
00:54		46-36	H 10	GOOD! JUMPER by POLLARD,NYLA
00:04		49-36	H 13	GOOD! 3PTR by HODGSON,EVA

**East Carolina 36, William & Mary 49**

**Official Scoring/Possession Reference Chart  
East Carolina vs William & Mary  
Period 4**

**November 28, 2018 at Kaplan Arena (Kaplan Arena) - Williamsburg, Va.**

**Starters:**

**East Carolina:** 0 GEE,JUSTICE; 2 MONK,LASHONDA; 11 JOHNSON,RAVEN; 20 CORBIN,DESIREE; 21 GREENE,SALITA;  
**William & Mary:** 2 BOGGS,BIANCA; 10 HODGSON,EVA; 11 POLLARD,NYLA; 25 ROGERS,GABBY; 30 REYNOLDS,VICTORIA;

**Period 4**

Time	VISITORS: East Carolina	Score	Margin	HOME: William & Mary
08:53		50-36	H 14	GOOD! FT by POLLARD,NYLA
07:48		51-36	H 15	GOOD! FT by POLLARD,NYLA
07:48		52-36	H 16	GOOD! FT by POLLARD,NYLA
07:39	GOOD! JUMPER by JOHNSON,RAVEN [PNT]	52-38	H 14	
07:11		53-38	H 15	GOOD! FT by BOGGS,BIANCA
06:18		55-38	H 17	GOOD! JUMPER by REYNOLDS,VICTORIA [PNT]
04:34	GOOD! LAYUP by MONK,LASHONDA [FB]	55-40	H 15	
03:27	GOOD! 3PTR by LEWIS,JADE	55-43	H 12	
03:01		57-43	H 14	GOOD! JUMPER by BOGGS,BIANCA
01:57		58-43	H 15	GOOD! FT by HODGSON,EVA
01:16		59-43	H 16	GOOD! FT by HODGSON,EVA
01:16		60-43	H 17	GOOD! FT by HODGSON,EVA
00:42		61-43	H 18	GOOD! FT by POLLARD,NYLA
00:30		62-43	H 19	GOOD! FT by POLLARD,NYLA
00:30		63-43	H 20	GOOD! FT by POLLARD,NYLA

**East Carolina 43, William & Mary 63**

**Official Substitutions Log  
East Carolina vs William & Mary  
Period 1**

**November 28, 2018 at Kaplan Arena (Kaplan Arena) - Williamsburg, Va.**

VISITORS: East Carolina	Time	Score	HOME: William & Mary
0 GEE,JUSTICE			2 BOGGS,BIANCA
2 MONK,LASHONDA			10 HODGSON,EVA
11 JOHNSON,RAVEN			11 POLLARD,NYLA
20 CORBIN,DESIREE			25 ROGERS,GABBY
21 GREENE,SALITA			30 REYNOLDS,VICTORIA
	06:57	4-4	SUB OUT: ROGERS,GABBY
	06:57		SUB IN: SMITH,CHANDLER
	04:58	6-8	SUB OUT: HODGSON,EVA

VISITORS: East Carolina	Time	Score	HOME: William & Mary
	04:58		SUB IN: BIRDSONG,HARPER
SUB OUT: 0 GEE,JUSTICE	04:58		
SUB IN: 44 CAMPBELL,DESTINY	04:58		
SUB OUT: 2 MONK,LASHONDA	04:58		
SUB IN: 24 LEWIS,JADE	04:58		
SUB OUT: 20 CORBIN,DESIREE	04:58		
SUB IN: 22 HICKS,TAMIA	04:58		
SUB OUT: 21 GREENE,SALITA	04:58		
SUB IN: 1 FRAZIER,ALEX	04:58		
	02:45	13-14	SUB OUT: SMITH,CHANDLER
	02:45		SUB IN: KRAUSE,EMMA
	00:31	15-21	SUB OUT: BIRDSONG,HARPER
	00:31		SUB IN: HODGSON,EVA
SUB OUT: 11 JOHNSON,RAVEN	00:31		
SUB IN: 21 GREENE,SALITA	00:31		
SUB OUT: 22 HICKS,TAMIA	00:31		
SUB IN: 2 MONK,LASHONDA	00:31		
	00:10	15-21	SUB OUT: BOGGS,BIANCA
	00:10		SUB IN: BIRDSONG,HARPER
SUB OUT: 44 CAMPBELL,DESTINY	00:10		
SUB IN: 0 GEE,JUSTICE	00:10		

East Carolina 15, William & Mary 24

**Official Substitutions Log**  
**East Carolina vs William & Mary**  
**Period 2**  
**November 28, 2018 at Kaplan Arena (Kaplan Arena) - Williamsburg, Va.**

VISITORS: East Carolina	Time	Score	HOME: William & Mary
0 GEE, JUSTICE			2 BOGGS, BIANCA
2 MONK, LASHONDA			10 HODGSON, EVA
11 JOHNSON, RAVEN			11 POLLARD, NYLA
20 CORBIN, DESIREE			25 ROGERS, GABBY
21 GREENE, SALITA			30 REYNOLDS, VICTORIA
	09:04	-	SUB OUT: POLLARD, NYLA
	09:04		SUB IN: BOGGS, BIANCA
	09:04		SUB OUT: REYNOLDS, VICTORIA
	09:04		SUB IN: JONES, MISHA
SUB OUT: 24 LEWIS, JADE	09:04		
SUB IN: 11 JOHNSON, RAVEN	09:04		
	08:03	-	SUB OUT: KRAUSE, EMMA
	08:03		SUB IN: ROGERS, GABBY
SUB OUT: 0 GEE, JUSTICE	07:46	-	
SUB IN: 22 HICKS, TAMIA	07:46		
	07:33	-	SUB OUT: BIRDSONG, HARPER
	07:33		SUB IN: REYNOLDS, VICTORIA
SUB OUT: 21 GREENE, SALITA	07:19	-	
SUB IN: 24 LEWIS, JADE	07:19		
	06:48	16-24	SUB OUT: ROGERS, GABBY
	06:48		SUB IN: SMITH, CHANDLER
	06:48		SUB OUT: HODGSON, EVA
	06:48		SUB IN: POLLARD, NYLA
SUB OUT: 1 FRAZIER, ALEX	05:51	16-24	
SUB IN: 20 CORBIN, DESIREE	05:51		
SUB OUT: 22 HICKS, TAMIA	05:51		
SUB IN: 0 GEE, JUSTICE	05:51		
	05:09	16-24	SUB OUT: JONES, MISHA
	05:09		SUB IN: BIRDSONG, HARPER
SUB OUT: 0 GEE, JUSTICE	05:09		
SUB IN: 1 FRAZIER, ALEX	05:09		
	02:40	21-29	SUB OUT: SMITH, CHANDLER
	02:40		SUB IN: KRAUSE, EMMA

**East Carolina 25, William & Mary 32**

**Official Substitutions Log**  
**East Carolina vs William & Mary**  
**Period 3**  
**November 28, 2018 at Kaplan Arena (Kaplan Arena) - Williamsburg, Va.**

VISITORS: East Carolina	Time	Score	HOME: William & Mary
0 GEE, JUSTICE			2 BOGGS, BIANCA
2 MONK, LASHONDA			10 HODGSON, EVA
11 JOHNSON, RAVEN			11 POLLARD, NYLA
20 CORBIN, DESIREE			25 ROGERS, GABBY
21 GREENE, SALITA			30 REYNOLDS, VICTORIA
SUB OUT: 44 CAMPBELL, DESTINY	08:21	25-35	
SUB IN: 20 CORBIN, DESIREE	08:21		
SUB OUT: 24 LEWIS, JADE	07:29	25-39	
SUB IN: 1 FRAZIER, ALEX	07:29		
	07:08	26-39	SUB OUT: ROGERS, GABBY
	07:08		SUB IN: KRAUSE, EMMA
	06:41	26-39	SUB OUT: POLLARD, NYLA
	06:41		SUB IN: BIRDSONG, HARPER
SUB OUT: 21 GREENE, SALITA	06:41		
SUB IN: 0 GEE, JUSTICE	06:41		
SUB OUT: 20 CORBIN, DESIREE	05:56	26-40	
SUB IN: 22 HICKS, TAMIA	05:56		
SUB OUT: 2 MONK, LASHONDA	05:22	26-44	
SUB IN: 24 LEWIS, JADE	05:22		
	04:46	26-44	SUB OUT: BOGGS, BIANCA
	04:46		SUB IN: POLLARD, NYLA
	04:32	27-44	SUB OUT: HODGSON, EVA
	04:32		SUB IN: BOGGS, BIANCA
	04:32		SUB OUT: REYNOLDS, VICTORIA
	04:32		SUB IN: JONES, MISHA
	01:32	33-44	SUB OUT: BIRDSONG, HARPER
	01:32		SUB IN: REYNOLDS, VICTORIA
	01:32		SUB OUT: JONES, MISHA
	01:32		SUB IN: HODGSON, EVA

**East Carolina 36, William & Mary 49**



**Official Substitutions Log  
East Carolina vs William & Mary  
Period 4**

**November 28, 2018 at Kaplan Arena (Kaplan Arena) - Williamsburg, Va.**

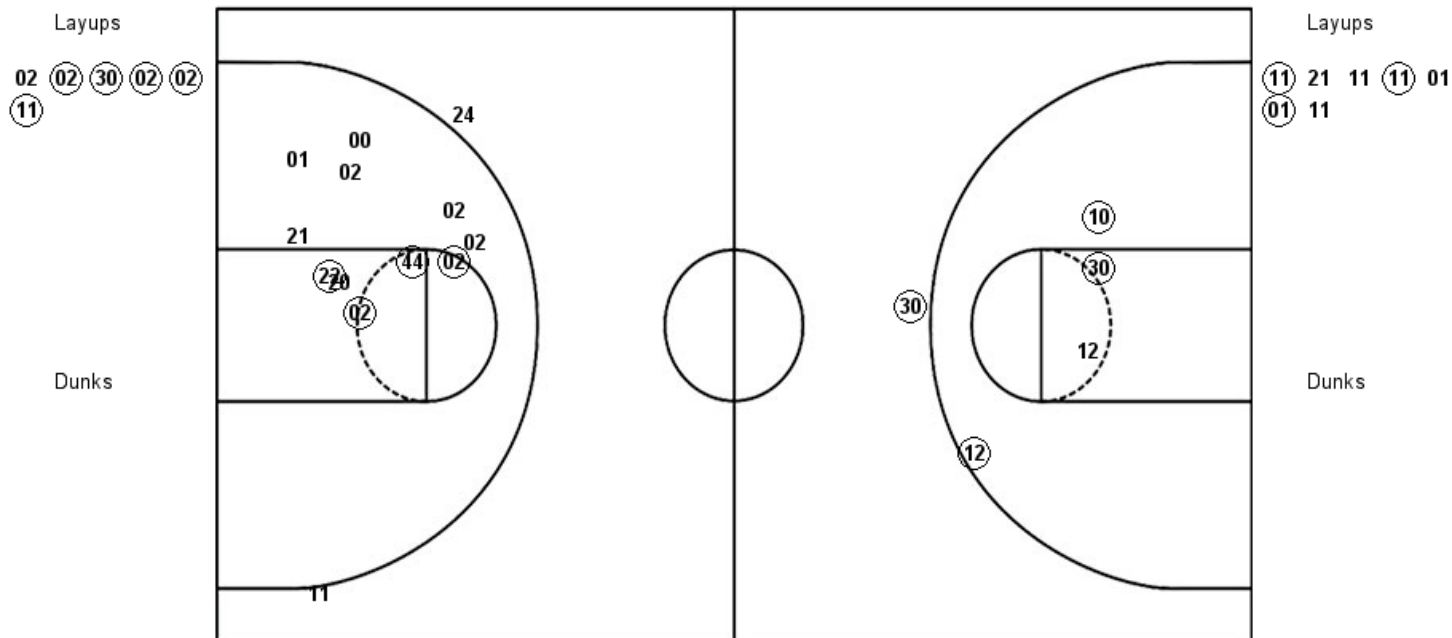
<b>VISITORS: East Carolina</b>	<b>Time</b>	<b>Score</b>	<b>HOME: William &amp; Mary</b>
0 GEE, JUSTICE			2 BOGGS, BIANCA
2 MONK, LASHONDA			10 HODGSON, EVA
11 JOHNSON, RAVEN			11 POLLARD, NYLA
20 CORBIN, DESIREE			25 ROGERS, GABBY
21 GREENE, SALITA			30 REYNOLDS, VICTORIA
SUB OUT: 22 HICKS, TAMIA	09:51	-	
SUB IN: 2 MONK, LASHONDA	09:51		
SUB OUT: 24 LEWIS, JADE	09:51		
SUB IN: 44 CAMPBELL, DESTINY	09:51		
	09:46	-	SUB OUT: KRAUSE, EMMA
	09:46		SUB IN: ROGERS, GABBY
SUB OUT: 1 FRAZIER, ALEX	07:48	36-51	
SUB IN: 24 LEWIS, JADE	07:48		
SUB OUT: 44 CAMPBELL, DESTINY	06:01	38-55	
SUB IN: 20 CORBIN, DESIREE	06:01		
	05:37	38-55	SUB OUT: POLLARD, NYLA
	05:37		SUB IN: BIRDSONG, HARPER
	05:06	38-55	SUB OUT: BOGGS, BIANCA
	05:06		SUB IN: POLLARD, NYLA
	04:29	40-55	SUB OUT: BIRDSONG, HARPER
	04:29		SUB IN: BOGGS, BIANCA
SUB OUT: 20 CORBIN, DESIREE	03:35	40-55	
SUB IN: 22 HICKS, TAMIA	03:35		
	01:57	43-57	SUB OUT: ROGERS, GABBY
	01:57		SUB IN: JONES, MISHA
SUB OUT: 22 HICKS, TAMIA	01:57		
SUB IN: 33 CHAMBERS, TIARA	01:57		
	00:42	43-60	SUB OUT: BOGGS, BIANCA
	00:42		SUB IN: BIRDSONG, HARPER
	00:30	43-62	SUB OUT: REYNOLDS, VICTORIA
	00:30		SUB IN: KRAUSE, EMMA

**East Carolina 43, William & Mary 63**

Official Shot Chart  
**East Carolina vs William & Mary**  
 PERIOD 1 Shots  
 November 28, 2018 at Kaplan Arena (Kaplan Arena) - Williamsburg, Va.

**William & Mary**

**East Carolina**



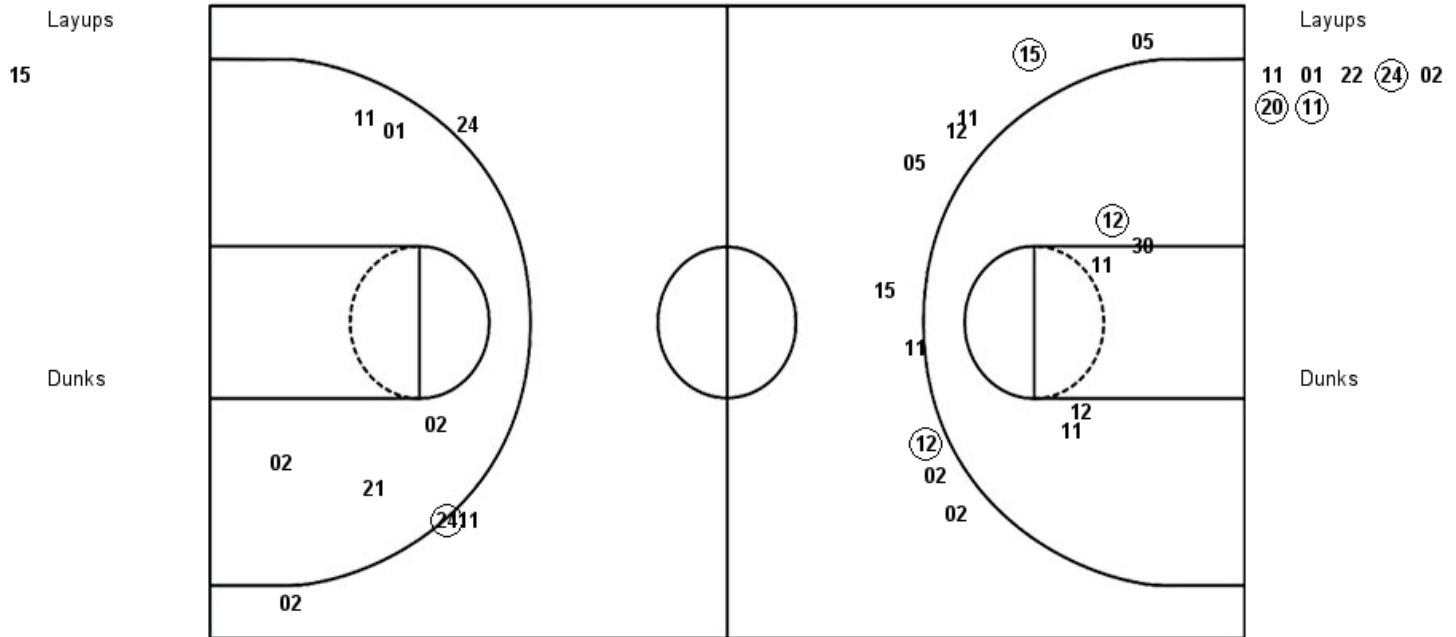
W&M : Period 1	Made	Att	Pct
Layups	5	6	83.3
Dunks	0	0	0
2PT Field Goals	8	10	80.0
3PT Field Goals	1	1	100.0
<b>Total Field Goals</b>	<b>9</b>	<b>11</b>	<b>81.8</b>

ECU : Period 1	Made	Att	Pct
Layups	3	7	42.9
Dunks	0	0	0
2PT Field Goals	7	18	38.9
3PT Field Goals	0	2	00.0
<b>Total Field Goals</b>	<b>7</b>	<b>20</b>	<b>35.0</b>

**Official Shot Chart**  
**East Carolina vs William & Mary**  
**PERIOD 2 Shots**  
**November 28, 2018 at Kaplan Arena (Kaplan Arena) - Williamsburg, Va.**

**William & Mary**

**East Carolina**



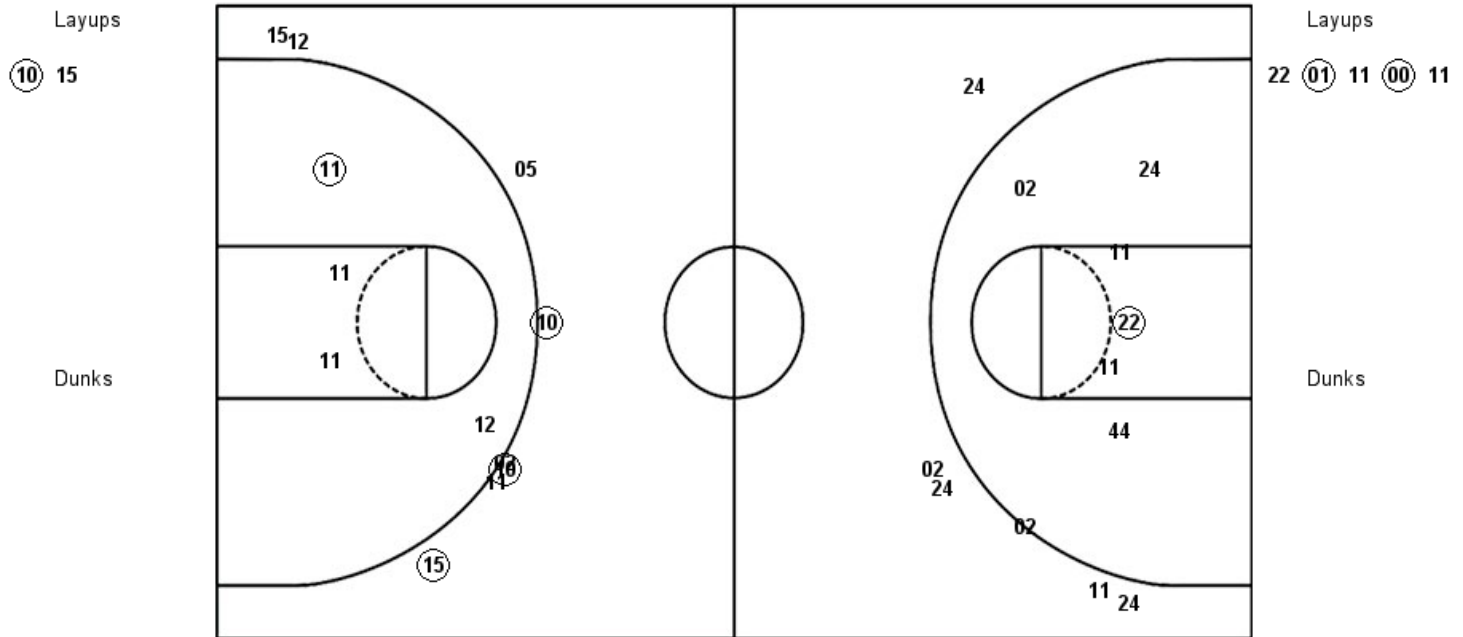
<b>W&amp;M : Period 2</b>	<b>Made</b>	<b>Att</b>	<b>Pct</b>
Layups	0	1	00.0
Dunks	0	0	0
2PT Field Goals	1	6	16.7
3PT Field Goals	2	10	20.0
<b>Total Field Goals</b>	<b>3</b>	<b>16</b>	<b>18.8</b>

<b>ECU : Period 2</b>	<b>Made</b>	<b>Att</b>	<b>Pct</b>
Layups	3	7	42.9
Dunks	0	0	0
2PT Field Goals	3	12	25.0
3PT Field Goals	1	4	25.0
<b>Total Field Goals</b>	<b>4</b>	<b>16</b>	<b>25.0</b>

Official Shot Chart  
**East Carolina vs William & Mary**  
 PERIOD 3 Shots  
 November 28, 2018 at Kaplan Arena (Kaplan Arena) - Williamsburg, Va.

**William & Mary**

**East Carolina**



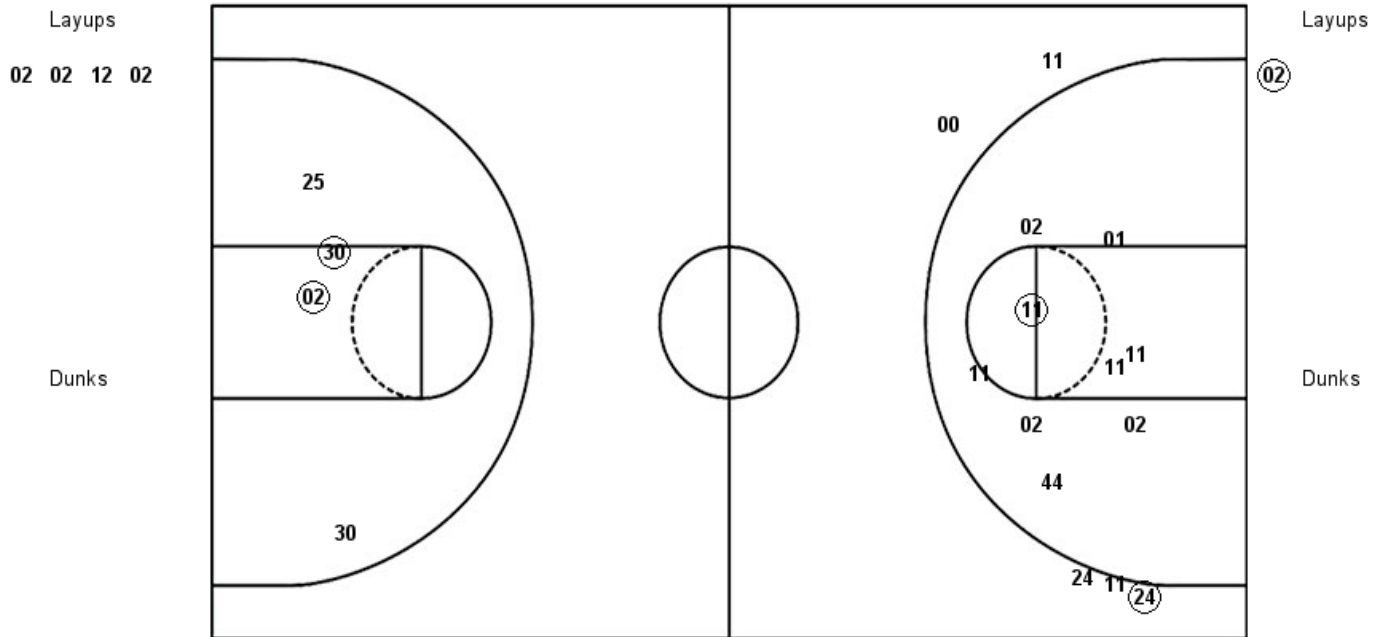
W&M : Period 3	Made	Att	Pct
Layups	1	2	50.0
Dunks	0	0	0
2PT Field Goals	2	6	33.3
3PT Field Goals	3	8	37.5
<b>Total Field Goals</b>	<b>5</b>	<b>14</b>	<b>35.7</b>

ECU : Period 3	Made	Att	Pct
Layups	2	5	40.0
Dunks	0	0	0
2PT Field Goals	3	12	25.0
3PT Field Goals	0	5	00.0
<b>Total Field Goals</b>	<b>3</b>	<b>17</b>	<b>17.6</b>

**Official Shot Chart**  
**East Carolina vs William & Mary**  
**PERIOD 4 Shots**  
**November 28, 2018 at Kaplan Arena (Kaplan Arena) - Williamsburg, Va.**

**William & Mary**

**East Carolina**



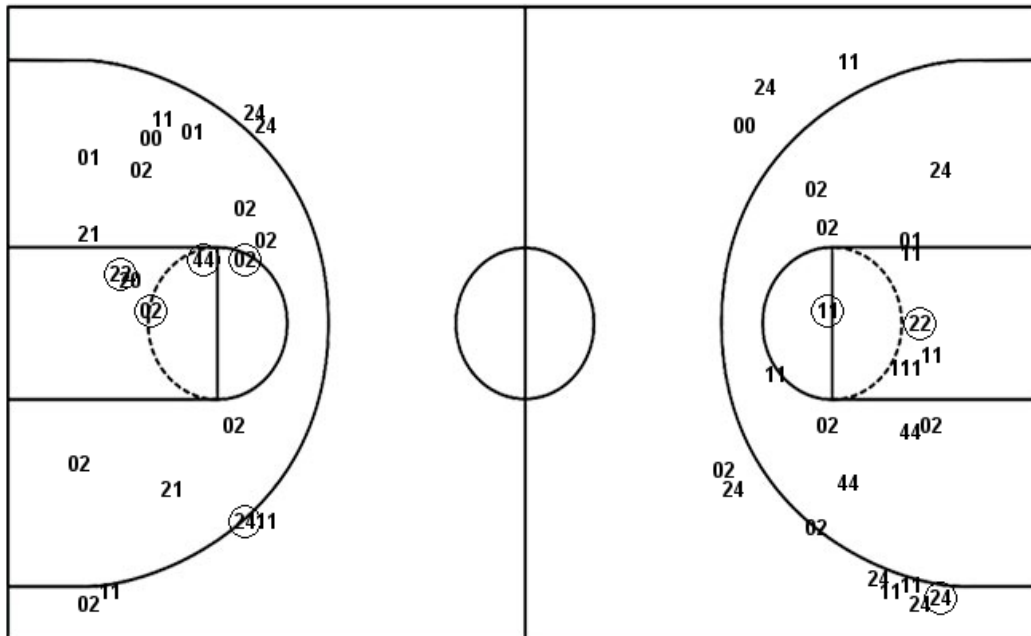
W&M : Period 4	Made	Att	Pct
Layups	0	4	00.0
Dunks	0	0	0
2PT Field Goals	2	8	25.0
3PT Field Goals	0	0	0
<b>Total Field Goals</b>	<b>2</b>	<b>8</b>	<b>25.0</b>

ECU : Period 4	Made	Att	Pct
Layups	1	1	100.0
Dunks	0	0	0
2PT Field Goals	2	10	20.0
3PT Field Goals	1	5	20.0
<b>Total Field Goals</b>	<b>3</b>	<b>15</b>	<b>20.0</b>

**Official Shot Chart**  
**East Carolina vs William & Mary**  
**East Carolina Team Shots**  
**November 28, 2018 at Kaplan Arena (Kaplan Arena) - Williamsburg, Va.**

Layups

Dunks



Layups

Dunks

(11) 21 11 (11) 01  
 (01) 11 11 01 22  
 (24) 02 (20) (11) 22  
 (01) 11 (00) 11 (02)

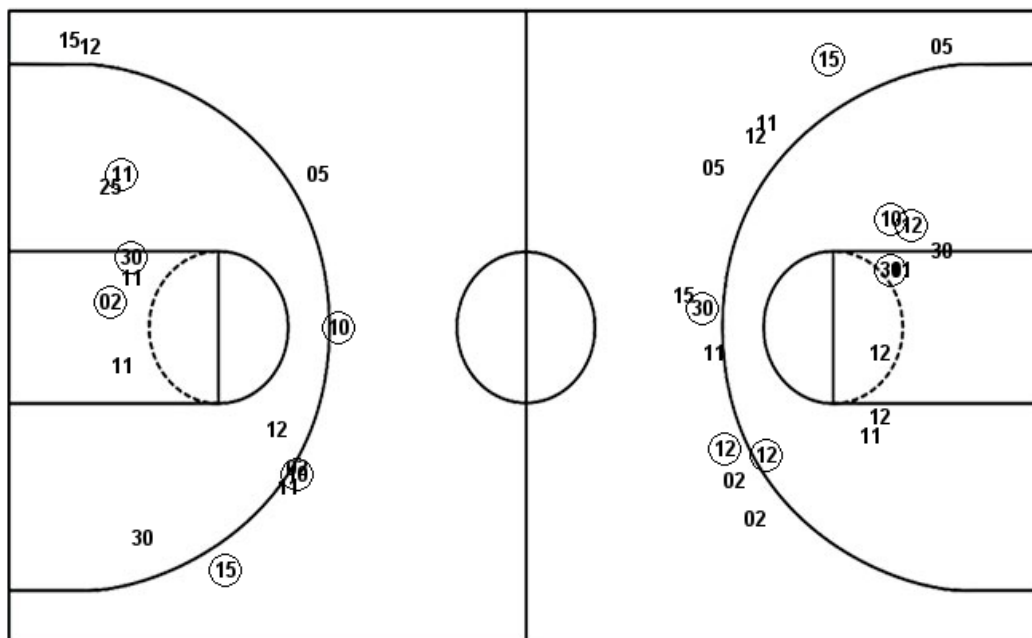
ECU : Period 1	Made	Att	Pct
Layups	3	7	42.9
Dunks	0	0	0
2PT Field Goals	7	18	38.9
3PT Field Goals	0	2	00.0
<b>Total Field Goals</b>	<b>7</b>	<b>20</b>	<b>35.0</b>
ECU : Period 3	Made	Att	Pct
Layups	2	5	40.0
Dunks	0	0	0
2PT Field Goals	3	12	25.0
3PT Field Goals	0	5	00.0
<b>Total Field Goals</b>	<b>3</b>	<b>17</b>	<b>17.6</b>

ECU : Period 2	Made	Att	Pct
Layups	3	7	42.9
Dunks	0	0	0
2PT Field Goals	3	12	25.0
3PT Field Goals	1	4	25.0
<b>Total Field Goals</b>	<b>4</b>	<b>16</b>	<b>25.0</b>
ECU : Period 4	Made	Att	Pct
Layups	1	1	100.0
Dunks	0	0	0
2PT Field Goals	2	10	20.0
3PT Field Goals	1	5	20.0
<b>Total Field Goals</b>	<b>3</b>	<b>15</b>	<b>20.0</b>

**Official Shot Chart**  
**East Carolina vs William & Mary**  
**William & Mary Team Shots**  
**November 28, 2018 at Kaplan Arena (Kaplan Arena) - Williamsburg, Va.**

Layups

Dunks



Layups

Dunks

W&M : Period 1	Made	Att	Pct
Layups	5	6	83.3
Dunks	0	0	0
2PT Field Goals	8	10	80.0
3PT Field Goals	1	1	100.0
<b>Total Field Goals</b>	<b>9</b>	<b>11</b>	<b>81.8</b>
W&M : Period 3	Made	Att	Pct
Layups	1	2	50.0
Dunks	0	0	0
2PT Field Goals	2	6	33.3
3PT Field Goals	3	8	37.5
<b>Total Field Goals</b>	<b>5</b>	<b>14</b>	<b>35.7</b>

W&M : Period 2	Made	Att	Pct
Layups	0	1	00.0
Dunks	0	0	0
2PT Field Goals	1	6	16.7
3PT Field Goals	2	10	20.0
<b>Total Field Goals</b>	<b>3</b>	<b>16</b>	<b>18.8</b>
W&M : Period 4	Made	Att	Pct
Layups	0	4	00.0
Dunks	0	0	0
2PT Field Goals	2	8	25.0
3PT Field Goals	0	0	0
<b>Total Field Goals</b>	<b>2</b>	<b>8</b>	<b>25.0</b>