

FINAL SCORE



Delaware

78



Hofstra

59

**January 18, 2019 • David S. Mack Sports and Exhibition Complex -
Hempstead, N.Y.**

FINAL STATISTICS

Official Box Score
Delaware vs Hofstra
Game Totals -- Final Statistics
January 18, 2019 at David S. Mack Sports and Exhibition Complex - Hempstead, N.Y.

Delaware 78

No.	Player	S	Pts	FG	3FG	FT	OR	DR	TR	PF	A	TO	Blk	Stl	Min	+/-
02	Gonzales, Abby		7	2-7	1-4	2-2	0	1	1	1	2	1	0	4	26	23
05	Nicholas, Makeda		12	4-9	0-0	4-6	2	6	8	3	4	1	0	1	29	15
20	Dickey, Jasmine		11	4-10	0-0	3-5	6	5	11	2	2	2	1	0	23	19
23	Kargo, Bailey		9	4-6	1-1	0-0	0	1	1	1	3	1	0	0	22	8
25	Lawrence, Rebecca		6	3-5	0-1	0-0	0	2	2	4	0	0	1	0	24	12
04	Mcbride, Paris		2	0-3	0-1	2-2	0	1	1	2	4	2	0	1	20	-2
12	Oleary, Lizzie		4	2-4	0-0	0-0	3	2	5	4	0	3	0	0	15	4
22	Defreese, Samone		19	8-12	0-0	3-3	3	5	8	2	1	1	0	0	23	5
35	Lewis, Alison		8	3-6	1-2	1-2	3	1	4	0	2	0	0	3	18	11
	Team						0	0	0	0		2				
TOTALS			78	30-62	3-9	15-20	17	24	41	19	18	13	2	9	200	

Shooting By Period

Period	FG	FG%	3FG	3FG%	FT	FT%
1st Qtr	8-14	57%	1-4	25%	0-0	0%
2nd Qtr	6-16	38%	0-1	00%	9-12	75%
3rd Qtr	7-17	41%	0-1	00%	2-3	67%
4th Qtr	9-15	60%	2-3	67%	4-5	80%
1st Half	14-30	47%	1-5	20%	9-12	75%
2nd Half	16-32	50%	2-4	50%	6-8	75%
Game	30-62	48.4%	3-9	33.3%	15-20	75.0%

Last FG: 4th-01:08
Biggest Run: 11-0
Largest lead: By 19 at 4-00:41
Technical Fouls: None.

Hofstra 59

No.	Player	S	Pts	FG	3FG	FT	OR	DR	TR	PF	A	TO	Blk	Stl	Min	+/-
02	Brown, Jakayla		2	1-3	0-0	0-0	0	1	1	1	0	2	0	0	19	-14
10	Hernandez Gil, Ana		12	4-10	4-9	0-0	0	1	1	0	0	2	0	0	24	-17
11	Hines, Jaylen		3	0-1	0-0	3-4	2	1	3	3	1	1	0	1	21	-11
34	Brozoski, Boogie		11	4-13	3-7	0-0	1	4	5	0	5	3	0	1	36	-13
53	Kalin, Marianne		6	2-5	0-0	2-4	1	4	5	3	2	2	0	0	17	-12
00	Reynolds, Caria		7	2-4	0-0	3-4	1	3	4	4	0	2	0	0	14	-4
01	Davis, E'lexus		7	2-4	0-1	3-4	1	0	1	4	2	2	0	0	17	-3
05	Krupenko, Petja		5	1-4	1-4	2-2	0	0	0	0	0	4	0	1	17	-10
21	Croskey, Mikiyah		1	0-1	0-0	1-2	1	0	1	3	0	0	1	0	10	-5
23	Valcourt, Vanerlie		2	1-2	0-0	0-0	0	0	0	2	1	0	0	1	11	3
54	Karsten, Sandra		3	1-2	1-1	0-0	1	2	3	1	1	1	0	0	13	-9
	Team						2	2	4	0		0				
TOTALS			59	18-49	9-22	14-20	10	18	28	21	12	19	1	4	200	

Shooting By Period

Period	FG	FG%	3FG	3FG%	FT	FT%
1st Qtr	3-11	27%	1-5	20%	2-4	50%
2nd Qtr	5-13	38%	2-6	33%	6-8	75%
3rd Qtr	3-13	23%	2-6	33%	2-4	50%
4th Qtr	7-12	58%	4-5	80%	4-4	100%
1st Half	8-24	33%	3-11	27%	8-12	67%
2nd Half	10-25	40%	6-11	55%	6-8	75%
Game	18-49	36.7%	9-22	40.9%	14-20	70.0%

Last FG: 4th-03:13
Biggest Run: 5-0
Largest lead: By 0 at -
Technical Fouls: None.

Game Notes:

Officials: **Kathleen Lynch, Kevin Dillard, Nic Cappel**
Attendance: **2393**

Start Time: **2019-01-18 16:37:37**
End Time: **2019-01-18 18:29:34**
Game Duration: **111**
Conference Game:

Score	1st	2nd	3rd	4th	TOT
DEL	17	21	16	24	78
HOF	9	18	10	22	59

DEL led for 39:44. HOF led for 0:00.
Game was tied for 0:14.
Times tied: 0 Lead Changes: 0

Points from	DEL	HOF
In the Paint	32	8
Off Turns	18	7
2nd Chance	13	10
Fast Break	2	0
Bench	33	25

Official Box Score
Delaware vs Hofstra
First Half Statistics Only
January 18, 2019 at David S. Mack Sports and Exhibition Complex - Hempstead, N.Y.

Delaware 38

No.	Player	S	Pts	FG	3FG	FT	OR	DR	TR	PF	A	TO	Blk	Stl	Min	+/-
02	Gonzales, Abby		3	1-3	1-2	0-0	0	1	1	1	2	0	0	2	10	14
04	Mcbride, Paris		2	0-2	0-1	2-2	0	0	0	1	1	0	0	0	10	-3
05	Nicholas, Makeda		6	2-5	0-0	2-4	1	4	5	1	2	1	0	1	17	10
12	Oleary, Lizzie		4	2-3	0-0	0-0	3	1	4	3	0	2	0	0	11	3
20	Dickey, Jasmine		6	2-5	0-0	2-2	1	2	3	2	0	1	0	0	10	13
22	Defreese, Samone		4	1-3	0-0	2-2	1	0	1	1	0	1	0	0	10	-2
23	Kargo, Bailey		4	2-2	0-0	0-0	0	1	1	1	0	1	0	0	11	2
25	Lawrence, Rebecca		4	2-3	0-1	0-0	0	2	2	2	0	0	0	0	12	9
35	Lewis, Alison		5	2-4	0-1	1-2	3	1	4	0	2	0	0	2	9	9
	Team		0	0-0	0-0	0-0	0	0	0	0	0	1	0	0	0	
TOTALS			38	14-30	1-5	9-12	9	12	21	12	7	7	0	5	100	

Shooting By Period

Period	FG	FG%	3FG	3FG%	FT	FT%
1st Qtr	8-14	57%	1-4	25%	0-0	0%
2nd Qtr	6-16	38%	0-1	00%	9-12	75%
1st Half	14-30	47%	1-5	20%	9-12	75%
Game	30-62	48.4%	3-9	33.3%	15-20	75.0%

Last FG Half: DEL 2nd-01:17

Hofstra 27

No.	Player	S	Pts	FG	3FG	FT	OR	DR	TR	PF	A	TO	Blk	Stl	Min	+/-
00	Reynolds, Caria		5	1-1	0-0	3-4	1	2	3	1	0	1	0	0	8	1
01	Davis, E'lexus		5	1-3	0-1	3-4	0	0	0	1	1	0	0	0	8	-4
02	Brown, Jakayla		2	1-3	0-0	0-0	0	1	1	1	0	0	0	0	13	-8
05	Krupenko, Petja		3	1-3	1-3	0-0	0	0	0	0	0	4	0	1	10	-4
10	Hernandez Gil, Ana		0	0-2	0-2	0-0	0	0	0	0	0	2	0	0	7	-11
11	Hines, Jaylen		1	0-0	0-0	1-2	1	1	2	2	1	0	0	1	12	-10
21	Croskey, Mikiyah		1	0-1	0-0	1-2	1	0	1	3	0	0	0	0	8	-3
23	Valcourt, Vanerlie		0	0-1	0-0	0-0	0	0	0	1	0	0	0	1	3	4
34	Brozski, Boogie		5	2-6	1-4	0-0	0	2	2	0	1	1	0	0	19	-10
53	Kalin, Marianne		2	1-2	0-0	0-0	1	0	1	2	0	1	0	0	4	-4
54	Karsten, Sandra		3	1-2	1-1	0-0	1	1	2	0	1	1	0	0	8	-6
	Team		0	0-0	0-0	0-0	1	1	2	0	0	0	0	0	0	
TOTALS			27	8-24	3-11	8-12	6	8	14	11	4	10	0	3	100	

Shooting By Period

Period	FG	FG%	3FG	3FG%	FT	FT%
1st Qtr	3-11	27%	1-5	20%	2-4	50%
2nd Qtr	5-13	38%	2-6	33%	6-8	75%
1st Half	8-24	33%	3-11	27%	8-12	67%
Game	18-49	36.7%	9-22	40.9%	14-20	70.0%

Last FG Half: HOF 2nd-00:54

Game Notes:

Officials: Kathleen Lynch, Kevin Dillard, Nic Cappel
Attendance: 2393

Start Time: 2019-01-18 16:37:37
End Time: 2019-01-18 18:29:34
Game Duration: 111
Conference Game;

Score	1st	2nd	3rd	4th	TOT
DEL	17	21	16	24	78
HOF	9	18	10	22	59

Points from (This Period)	DEL	HOF
In the Paint	6	4
Off Turns	7	7
2nd Chance	8	5
Fast Break	2	0
Bench	15	17

Official Box Score
Delaware vs Hofstra
First Quarter Statistics Only
January 18, 2019 at David S. Mack Sports and Exhibition Complex - Hempstead, N.Y.

Delaware 17

No.	Player	S	Pts	FG	3FG	FT	OR	DR	TR	PF	A	TO	Blk	Stl	Min	+/-
02	Gonzales, Abby		3	1-3	1-2	0-0	0	1	1	1	0	0	0	1	7	9
05	Nicholas, Makeda		4	2-3	0-0	0-0	1	3	4	0	2	0	0	1	8	7
20	Dickey, Jasmine		4	2-2	0-0	0-0	0	1	1	1	0	1	0	0	7	8
23	Kargo, Bailey		4	2-2	0-0	0-0	0	0	0	1	0	0	0	0	7	3
25	Lawrence, Rebecca		2	1-2	0-1	0-0	0	1	1	1	0	0	0	0	7	5
04	Mcbride, Paris		0	0-1	0-0	0-0	0	0	0	0	0	0	0	0	3	-1
12	Oleary, Lizzie		0	0-0	0-0	0-0	1	0	1	1	0	1	0	0	5	4
22	Defreese, Samone		0	0-0	0-0	0-0	0	0	0	1	0	1	0	0	3	0
35	Lewis, Alison		0	0-1	0-1	0-0	0	0	0	0	1	0	0	1	3	5
	Team						0	0	0	0		0				
TOTALS			17	8-14	1-4	0-0	2	6	8	6	3	3	0	3	50	

Shooting By Period

Period	FG	FG%	3FG	3FG%	FT	FT%
1st Qtr	8-14	57%	1-4	25%	0-0	0%
2nd Qtr	6-16	38%	0-1	00%	9-12	75%
1st Half	8-14	57%	1-4	25%	0-0	0%
1st Half	14-30	47%	1-5	20%	9-12	75%
Game	30-62	48.4%	3-9	33.3%	15-20	75.0%

Hofstra 9

No.	Player	S	Pts	FG	3FG	FT	OR	DR	TR	PF	A	TO	Blk	Stl	Min	+/-
02	Brown, Jakayla		2	1-2	0-0	0-0	0	1	1	0	0	0	0	0	8	-3
10	Hernandez Gil, Ana		0	0-1	0-1	0-0	0	0	0	0	0	2	0	0	5	-9
11	Hines, Jaylen		1	0-0	0-0	1-2	1	0	1	1	1	0	0	1	10	-8
34	Brozowski, Boogie		0	0-3	0-2	0-0	0	2	2	0	1	0	0	0	10	-8
53	Kalin, Marianne		2	1-2	0-0	0-0	1	0	1	2	0	1	0	0	4	-4
00	Reynolds, Caria		0	0-0	0-0	0-0	0	0	0	0	0	0	0	0	0	0
01	Davis, E'lexus		0	0-0	0-0	0-0	0	0	0	0	0	0	0	0	0	0
05	Krupenko, Petja		3	1-2	1-2	0-0	0	0	0	0	0	2	0	1	7	-4
21	Croskey, Mikiyah		1	0-1	0-0	1-2	1	0	1	1	0	0	0	0	5	-1
23	Valcourt, Vanerlie		0	0-0	0-0	0-0	0	0	0	0	0	0	0	0	0	0
54	Karsten, Sandra		0	0-0	0-0	0-0	0	0	0	0	0	0	0	0	1	-3
	Team						0	1	1	0		0				
TOTALS			9	3-11	1-5	2-4	3	4	7	4	2	5	0	2	50	

Shooting By Period

Period	FG	FG%	3FG	3FG%	FT	FT%
1st Qtr	3-11	27%	1-5	20%	2-4	50%
2nd Qtr	5-13	38%	2-6	33%	6-8	75%
1st Half	3-11	27%	1-5	20%	2-4	50%
1st Half	8-24	33%	3-11	27%	8-12	67%
Game	18-49	36.7%	9-22	40.9%	14-20	70.0%

Game Notes:

Officials: Kathleen Lynch, Kevin Dillard, Nic Cappel
Attendance: 2393

Start Time: 2019-01-18 16:37:37
End Time: 2019-01-18 18:29:34
Game Duration: 111
Conference Game:

Score	1st	2nd	3rd	4th	TOT
DEL	17	21	16	24	78
HOF	9	18	10	22	59

Points from (This Period)	DEL	HOF
In the Paint	2	2
Off Turns	5	2
2nd Chance	2	2
Fast Break	0	0
Bench	0	4

**Official Play-By-Play
Delaware vs Hofstra
First Quarter**

January 18, 2019 at David S. Mack Sports and Exhibition Complex - Hempstead, N.Y.

Period 1

Starters:

Delaware: 2 GONZALES, ABBY; 5 NICHOLAS, MAKEDA; 20 DICKEY, JASMINE; 23 KARGO, BAILEY; 25 LAWRENCE, REBECCA;

Hofstra: 2 BROWN, JAKAYLA; 10 HERNANDEZ GIL, ANA; 11 HINES, JAYLEN; 34 BROZOSKI, BOOGIE; 53 KALIN, MARIANNE;

Time	VISITORS: Delaware	Score	Margin	HOME: Hofstra
09:46	GOOD! JUMPER by KARGO, BAILEY	0-2	V 2	
09:22				MISSED 3PTR by HERNANDEZ GIL, ANA
09:17	REBOUND (DEF) by NICHOLAS, MAKEDA			
09:05	MISSED JUMPER by NICHOLAS, MAKEDA			
09:01				REBOUND (DEF) by BROWN, JAKAYLA
08:56	FOUL (PERSONAL) by KARGO, BAILEY			
08:49				MISSED JUMPER by KALIN, MARIANNE
08:45	REBOUND (DEF) by GONZALES, ABBY			
08:39	GOOD! JUMPER by DICKEY, JASMINE	0-4	V 4	
08:39	ASSIST by NICHOLAS, MAKEDA			
08:13				MISSED LAYUP by BROWN, JAKAYLA
08:10	REBOUND (DEF) by DICKEY, JASMINE			
07:58	MISSED JUMPER by GONZALES, ABBY			
07:54				REBOUND (DEF) by BROZOSKI, BOOGIE
07:31	FOUL (PERSONAL) by GONZALES, ABBY			
07:20				TURNOVER (BADPASS) by HERNANDEZ GIL, ANA
07:20	STEAL by GONZALES, ABBY			
07:13	TURNOVER (3SEC) by DICKEY, JASMINE			
07:13				SUB OUT: HERNANDEZ GIL, ANA
07:13				SUB IN: KRUPENKO, PETJA
07:02				MISSED 3PTR by BROZOSKI, BOOGIE
06:57				REBOUND (OFF) by KALIN, MARIANNE
06:56		2-4	V 2	GOOD! LAYUP by KALIN, MARIANNE [PNT]
06:46	MISSED 3PTR by GONZALES, ABBY			
06:42				REBOUND (DEF) by BROZOSKI, BOOGIE
06:42	SUB OUT: GONZALES, ABBY			
06:42	SUB IN: OLEARY, LIZZIE			
06:42	SUB OUT: NICHOLAS, MAKEDA			
06:42	SUB IN: MCBRIDE, PARIS			
06:26				MISSED JUMPER by BROZOSKI, BOOGIE
06:22	REBOUND (DEF) by LAWRENCE, REBECCA			
06:16	MISSED 3PTR by LAWRENCE, REBECCA			
06:14	REBOUND (OFF) by OLEARY, LIZZIE			
06:14				FOUL (PERSONAL) by KALIN, MARIANNE
06:10	GOOD! JUMPER by DICKEY, JASMINE	2-6	V 4	
05:59				FOUL (OFF) by KALIN, MARIANNE
05:59				TURNOVER (OFFENSIVE) by KALIN, MARIANNE
05:59				SUB OUT: KALIN, MARIANNE
05:59				SUB IN: CROSKEY, MIKIYAH
05:48	GOOD! JUMPER by KARGO, BAILEY	2-8	V 6	
05:27		5-8	V 3	GOOD! 3PTR by KRUPENKO, PETJA
05:27				ASSIST by BROZOSKI, BOOGIE
05:05	TURNOVER (BADPASS) by OLEARY, LIZZIE			
05:05				STEAL by HINES, JAYLEN
04:54	FOUL (PERSONAL) by DICKEY, JASMINE			
04:53				
04:53	SUB OUT: LAWRENCE, REBECCA			
04:53	SUB IN: DEFREESE, SAMONE			
04:53	SUB OUT: DICKEY, JASMINE			
04:53	SUB IN: NICHOLAS, MAKEDA			
04:49	FOUL (PERSONAL) by DEFREESE, SAMONE			
04:43				MISSED 3PTR by BROZOSKI, BOOGIE
04:39				REBOUND (OFF) by HINES, JAYLEN
04:29				TURNOVER (DRIBBLING) by KRUPENKO, PETJA
04:08	MISSED JUMPER by MCBRIDE, PARIS			
04:06				REBOUND (DEF) by TEAM
03:46		7-8	V 1	GOOD! JUMPER by BROWN, JAKAYLA
03:46				ASSIST by HINES, JAYLEN
03:22				FOUL (PERSONAL) by CROSKEY, MIKIYAH
03:17	SUB OUT: MCBRIDE, PARIS			
03:17	SUB IN: GONZALES, ABBY			
03:00	GOOD! JUMPER by NICHOLAS, MAKEDA	7-10	V 3	
02:49	FOUL (PERSONAL) by OLEARY, LIZZIE			
02:49				MISSED FT by CROSKEY, MIKIYAH
02:49				REBOUND (OFF) by TEAM
02:49	SUB OUT: KARGO, BAILEY			
02:49	SUB IN: LAWRENCE, REBECCA			
02:49	SUB OUT: OLEARY, LIZZIE			
02:49	SUB IN: LEWIS, ALISON			
02:49		8-10	V 2	GOOD! FT by CROSKEY, MIKIYAH
02:34	TURNOVER (BADPASS) by DEFREESE, SAMONE			
02:34				STEAL by KRUPENKO, PETJA
02:22				MISSED LAYUP by CROSKEY, MIKIYAH
02:19	REBOUND (DEF) by NICHOLAS, MAKEDA			
02:06	GOOD! JUMPER by NICHOLAS, MAKEDA [PNT]	8-12	V 4	
01:49	FOUL (PERSONAL) by LAWRENCE, REBECCA			

Time	VISITORS: Delaware	Score	Margin	HOME: Hofstra
01:49		9-12	V 3	GOOD! FT by HINES,JAYLEN
01:49				SUB OUT: BROWN,JAKAYLA
01:49				SUB IN: HERNANDEZ GIL,ANA
01:49	SUB OUT: DEFREESE,SAMONE			
01:49	SUB IN: DICKEY,JASMINE			
01:49				MISSED FT by HINES,JAYLEN
01:45	REBOUND (DEF) by NICHOLAS,MAKEDA			
01:28	GOOD! JUMPER by LAWRENCE,REBECCA	9-14	V 5	
01:28	ASSIST by NICHOLAS,MAKEDA			
01:09				MISSED 3PTR by KRUPENKO,PETJA
01:05				REBOUND (OFF) by CROSKEY,MIKIYAH
01:03				TURNOVER (BADPASS) by HERNANDEZ GIL,ANA
01:03	STEAL by NICHOLAS,MAKEDA			
00:56				FOUL (PERSONAL) by HINES,JAYLEN
00:56				SUB OUT: CROSKEY,MIKIYAH
00:56				SUB IN: KARSTEN,SANDRA
00:56	SUB OUT: LAWRENCE,REBECCA			
00:56	SUB IN: OLEARY,LIZZIE			
00:52	GOOD! 3PTR by GONZALES,ABBY	9-17	V 8	
00:52	ASSIST by LEWIS,ALISON			
00:23				TURNOVER (LOSTBALL) by KRUPENKO,PETJA
00:23	STEAL by LEWIS,ALISON			
00:11	MISSED 3PTR by LEWIS,ALISON			
00:06	REBOUND (OFF) by NICHOLAS,MAKEDA			

Delaware 17, Hofstra 9

Points from (This Period)	DEL	HOF
In the Paint	2	2
Off Turns	5	2
2nd Chance	2	2
Fast Break	0	0
Bench	0	4

Official Box Score
Delaware vs Hofstra
Second Quarter Statistics Only
January 18, 2019 at David S. Mack Sports and Exhibition Complex - Hempstead, N.Y.

Delaware 21

No.	Player	S	Pts	FG	3FG	FT	OR	DR	TR	PF	A	TO	Blk	Stl	Min	+/-
02	Gonzales, Abby		0	0-0	0-0	0-0	0	0	0	0	2	0	0	1	3	5
05	Nicholas, Makeda		2	0-2	0-0	2-4	0	1	1	1	0	1	0	0	9	3
20	Dickey, Jasmine		2	0-3	0-0	2-2	1	1	2	1	0	0	0	0	3	5
23	Kargo, Bailey		0	0-0	0-0	0-0	0	1	1	0	0	1	0	0	4	-1
25	Lawrence, Rebecca		2	1-1	0-0	0-0	0	1	1	1	0	0	0	0	5	4
04	Mcbride, Paris		2	0-1	0-1	2-2	0	0	0	1	1	0	0	0	7	-2
12	Oleary, Lizzie		4	2-3	0-0	0-0	2	1	3	2	0	1	0	0	6	-1
22	Defreese, Samone		4	1-3	0-0	2-2	1	0	1	0	0	0	0	0	7	-2
35	Lewis, Alison		5	2-3	0-0	1-2	3	1	4	0	1	0	0	1	6	4
	Team						0	0	0	0		1				
TOTALS			21	6-16	0-1	9-12	7	6	13	6	4	4	0	2	50	

Shooting By Period

Period	FG	FG%	3FG	3FG%	FT	FT%
3rd Qtr	7-17	41%	0-1	00%	2-3	67%
4th Qtr	9-15	60%	2-3	67%	4-5	80%
2nd Half	6-16	38%	0-1	00%	9-12	75%
2nd Half	16-32	50%	2-4	50%	6-8	75%
Game	30-62	48.4%	3-9	33.3%	15-20	75.0%

Hofstra 18

No.	Player	S	Pts	FG	3FG	FT	OR	DR	TR	PF	A	TO	Blk	Stl	Min	+/-
02	Brown, Jakayla		0	0-1	0-0	0-0	0	0	0	1	0	0	0	0	5	-5
10	Hernandez Gil, Ana		0	0-1	0-1	0-0	0	0	0	0	0	0	0	0	2	-2
11	Hines, Jaylen		0	0-0	0-0	0-0	0	1	1	1	0	0	0	0	2	-2
34	Brozoski, Boogie		5	2-3	1-2	0-0	0	0	0	0	0	1	0	0	9	-2
53	Kalin, Marianne		0	0-0	0-0	0-0	0	0	0	0	0	0	0	0	0	0
00	Reynolds, Caria		5	1-1	0-0	3-4	1	2	3	1	0	1	0	0	8	1
01	Davis, E'lexus		5	1-3	0-1	3-4	0	0	0	1	1	0	0	0	8	-4
05	Krupenko, Petja		0	0-1	0-1	0-0	0	0	0	0	0	2	0	0	3	0
21	Croskey, Mikiyah		0	0-0	0-0	0-0	0	0	0	2	0	0	0	0	3	-2
23	Valcourt, Vanerlie		0	0-1	0-0	0-0	0	0	0	1	0	0	0	1	3	4
54	Karsten, Sandra		3	1-2	1-1	0-0	1	1	2	0	1	1	0	0	7	-3
	Team						1	0	1	0		0				
TOTALS			18	5-13	2-6	6-8	3	4	7	7	2	5	0	1	50	

Shooting By Period

Period	FG	FG%	3FG	3FG%	FT	FT%
3rd Qtr	3-13	23%	2-6	33%	2-4	50%
4th Qtr	7-12	58%	4-5	80%	4-4	100%
2nd Half	5-13	38%	2-6	33%	6-8	75%
2nd Half	10-25	40%	6-11	55%	6-8	75%
Game	18-49	36.7%	9-22	40.9%	14-20	70.0%

Game Notes:

Officials: Kathleen Lynch, Kevin Dillard, Nic Cappel
Attendance: 2393

Start Time: 2019-01-18 16:37:37
End Time: 2019-01-18 18:29:34
Game Duration: 111
Conference Game:

Score	1st	2nd	3rd	4th	TOT
DEL	17	21	16	24	78
HOF	9	18	10	22	59

Points from (This Period)	DEL	HOF
In the Paint	4	2
Off Turns	2	5
2nd Chance	6	3
Fast Break	2	0
Bench	15	13

**Official Play-By-Play
Delaware vs Hofstra
Second Quarter**

January 18, 2019 at David S. Mack Sports and Exhibition Complex - Hempstead, N.Y.

Period 2

Starters:

Delaware: 2 GONZALES, ABBY; 5 NICHOLAS, MAKEDA; 20 DICKEY, JASMINE; 23 KARGO, BAILEY; 25 LAWRENCE, REBECCA;

Hofstra: 2 BROWN, JAKAYLA; 10 HERNANDEZ GIL, ANA; 11 HINES, JAYLEN; 34 BROZOSKI, BOOGIE; 53 KALIN, MARIANNE;

Time	VISITORS: Delaware	Score	Margin	HOME: Hofstra
09:42				SUB OUT: KRUPENKO, PETJA
09:42				SUB IN: DAVIS, E'LEXUS
09:35				TURNOVER (BADPASS) by BROZOSKI, BOOGIE
09:35	STEAL by GONZALES, ABBY			
09:26	MISSED JUMPER by DICKEY, JASMINE			
09:22	REBOUND (OFF) by OLEARY, LIZZIE			
09:21	MISSED JUMPER by OLEARY, LIZZIE			
09:18	REBOUND (OFF) by DICKEY, JASMINE			
09:17	MISSED JUMPER by DICKEY, JASMINE			
09:14				REBOUND (DEF) by HINES, JAYLEN
09:03				MISSED 3PTR by HERNANDEZ GIL, ANA
08:58				REBOUND (OFF) by TEAM
08:52				MISSED JUMPER by KARSTEN, SANDRA
08:50	REBOUND (DEF) by DICKEY, JASMINE			
08:42	GOOD! JUMPER by LEWIS, ALISON	9-19	V 10	
08:42	ASSIST by GONZALES, ABBY			
08:29				MISSED 3PTR by DAVIS, E'LEXUS
08:27	REBOUND (DEF) by LEWIS, ALISON			
08:27				FOUL (PERSONAL) by HINES, JAYLEN
08:27				SUB OUT: HERNANDEZ GIL, ANA
08:27				SUB IN: BROWN, JAKAYLA
08:27	SUB OUT: OLEARY, LIZZIE			
08:27	SUB IN: LAWRENCE, REBECCA			
08:14				SUB OUT: HINES, JAYLEN
08:14				SUB IN: CROSKEY, MIKIYAH
08:06				FOUL (PERSONAL) by CROSKEY, MIKIYAH
08:06	GOOD! FT by DICKEY, JASMINE	9-20	V 11	
08:06	GOOD! FT by DICKEY, JASMINE	9-21	V 12	
07:56				TURNOVER (LOSTBALL) by KARSTEN, SANDRA
07:56	STEAL by LEWIS, ALISON			
07:50				SUB OUT: KARSTEN, SANDRA
07:50				SUB IN: REYNOLDS, CARIA
07:42	MISSED JUMPER by DICKEY, JASMINE			
07:36	REBOUND (OFF) by LEWIS, ALISON			
07:35	GOOD! JUMPER by LEWIS, ALISON	9-23	V 14	
07:17		11-23	V 12	GOOD! JUMPER by REYNOLDS, CARIA
07:07	GOOD! JUMPER by LAWRENCE, REBECCA	11-25	V 14	
07:07	ASSIST by GONZALES, ABBY			
06:57	FOUL (PERSONAL) by DICKEY, JASMINE			
06:57		12-25	V 13	GOOD! FT by DAVIS, E'LEXUS
06:57				MISSED FT by DAVIS, E'LEXUS
06:57	REBOUND (DEF) by LAWRENCE, REBECCA			
06:49	SUB OUT: GONZALES, ABBY			
06:49	SUB IN: MCBRIDE, PARIS			
06:49	SUB OUT: DICKEY, JASMINE			
06:49	SUB IN: DEFREESE, SAMONE			
06:31				FOUL (PERSONAL) by BROWN, JAKAYLA
06:31	GOOD! FT by DEFREESE, SAMONE	12-26	V 14	
06:31	GOOD! FT by DEFREESE, SAMONE	12-27	V 15	
06:31	FOUL (PERSONAL) by MCBRIDE, PARIS			
06:30		14-27	V 13	GOOD! JUMPER by BROZOSKI, BOOGIE
05:55				TIMEOUT 30SEC
05:55	SUB OUT: LEWIS, ALISON			
05:55	SUB IN: KARGO, BAILEY			
05:50	TURNOVER (OTHER) by			
05:44		16-27	V 11	GOOD! JUMPER by DAVIS, E'LEXUS [PNT]
05:29	MISSED JUMPER by NICHOLAS, MAKEDA			
05:26	REBOUND (OFF) by DEFREESE, SAMONE			
05:08				FOUL (PERSONAL) by CROSKEY, MIKIYAH
05:08	MISSED FT by NICHOLAS, MAKEDA			
05:08	REBOUND (OFF) by TEAM			
05:08	GOOD! FT by NICHOLAS, MAKEDA	16-28	V 12	
04:55				MISSED JUMPER by BROWN, JAKAYLA
04:51	REBOUND (DEF) by KARGO, BAILEY			
04:48				FOUL (PERSONAL) by DAVIS, E'LEXUS
04:48				SUB OUT: CROSKEY, MIKIYAH
04:48				SUB IN: KARSTEN, SANDRA
04:48				SUB OUT: BROZOSKI, BOOGIE
04:48				SUB IN: KRUPENKO, PETJA
04:48	GOOD! FT by MCBRIDE, PARIS	16-29	V 13	
04:48	GOOD! FT by MCBRIDE, PARIS	16-30	V 14	
04:30				MISSED JUMPER by DAVIS, E'LEXUS
04:28				REBOUND (OFF) by REYNOLDS, CARIA
04:28	FOUL (PERSONAL) by NICHOLAS, MAKEDA			
04:28				MISSED FT by REYNOLDS, CARIA
04:28				REBOUND (OFF) by TEAM

Time	VISITORS: Delaware	Score	Margin	HOME: Hofstra
04:28	SUB OUT: NICHOLAS,MAKEDA			
04:28	SUB IN: OLEARY,LIZZIE			
04:28		17-30	V 13	GOOD! FT by REYNOLDS,CARIA
04:13	GOOD! JUMPER by OLEARY,LIZZIE	17-32	V 15	
04:13	ASSIST by MCBRIDE,PARIS			
03:58				MISSED 3PTR by KRUPENKO,PETJA
03:53				REBOUND (OFF) by KARSTEN,SANDRA
03:42	FOUL (PERSONAL) by LAWRENCE,REBECCA			
03:42		18-32	V 14	GOOD! FT by DAVIS,E'LEXUS
03:42	SUB OUT: LAWRENCE,REBECCA			
03:42	SUB IN: NICHOLAS,MAKEDA			
03:42		19-32	V 13	GOOD! FT by DAVIS,E'LEXUS
03:42				SUB OUT: DAVIS,E'LEXUS
03:42				SUB IN: BROZOSKI,BOOGIE
03:28	MISSED JUMPER by DEFREESE,SAMONE			
03:25	REBOUND (OFF) by OLEARY,LIZZIE			
03:24	GOOD! LAYUP by OLEARY,LIZZIE [PNT]	19-34	V 15	
03:13				TURNOVER (TRAVEL) by KRUPENKO,PETJA
03:13				SUB OUT: BROWN,JAKAYLA
03:13				SUB IN: VALCOURT,VANERLIE
03:02	TURNOVER (BADPASS) by NICHOLAS,MAKEDA			
02:47		22-34	V 12	GOOD! 3PTR by BROZOSKI,BOOGIE
02:47				ASSIST by KARSTEN,SANDRA
02:33	FOUL (OFF) by OLEARY,LIZZIE			
02:33	TURNOVER (OFFENSIVE) by OLEARY,LIZZIE			
02:27				TURNOVER (TRAVEL) by KRUPENKO,PETJA
02:27				SUB OUT: KRUPENKO,PETJA
02:27				SUB IN: DAVIS,E'LEXUS
02:12	TURNOVER (BADPASS) by KARGO,BAILEY			
02:12				STEAL by VALCOURT,VANERLIE
02:03				TURNOVER (TRAVEL) by REYNOLDS,CARIA
02:03	SUB OUT: KARGO,BAILEY			
02:03	SUB IN: LEWIS,ALISON			
01:52	MISSED 3PTR by MCBRIDE,PARIS			
01:47				REBOUND (DEF) by REYNOLDS,CARIA
01:32				MISSED JUMPER by VALCOURT,VANERLIE
01:32	REBOUND (DEF) by NICHOLAS,MAKEDA			
01:32				FOUL (PERSONAL) by REYNOLDS,CARIA
01:32	GOOD! FT by NICHOLAS,MAKEDA	22-35	V 13	
01:32	MISSED FT by NICHOLAS,MAKEDA			
01:30				REBOUND (DEF) by KARSTEN,SANDRA
01:24				MISSED 3PTR by BROZOSKI,BOOGIE
01:20	REBOUND (DEF) by OLEARY,LIZZIE			
01:17	GOOD! LAYUP by DEFREESE,SAMONE [FB]	22-37	V 15	
01:17	ASSIST by LEWIS,ALISON			
00:54		25-37	V 12	GOOD! 3PTR by KARSTEN,SANDRA
00:54				ASSIST by DAVIS,E'LEXUS
00:35	MISSED JUMPER by DEFREESE,SAMONE			
00:31	REBOUND (OFF) by LEWIS,ALISON			
00:20	MISSED JUMPER by NICHOLAS,MAKEDA			
00:17				REBOUND (DEF) by REYNOLDS,CARIA
00:17	FOUL (PERSONAL) by OLEARY,LIZZIE			
00:17		26-37	V 11	GOOD! FT by REYNOLDS,CARIA
00:17	SUB OUT: OLEARY,LIZZIE			
00:17	SUB IN: LAWRENCE,REBECCA			
00:17		27-37	V 10	GOOD! FT by REYNOLDS,CARIA
00:04	MISSED JUMPER by LEWIS,ALISON			
00:03	REBOUND (OFF) by LEWIS,ALISON			
00:03				FOUL (PERSONAL) by VALCOURT,VANERLIE
00:03	MISSED FT by LEWIS,ALISON			
00:03	REBOUND (OFF) by TEAM			
00:03	GOOD! FT by LEWIS,ALISON	27-38	V 11	

Delaware 38, Hofstra 27

Points from (This Period)	DEL	HOF
In the Paint	4	2
Off Turns	2	5
2nd Chance	6	3
Fast Break	2	0
Bench	15	13

Official Box Score
Delaware vs Hofstra
Second Half Statistics Only
January 18, 2019 at David S. Mack Sports and Exhibition Complex - Hempstead, N.Y.

Delaware 40

No.	Player	S	Pts	FG	3FG	FT	OR	DR	TR	PF	A	TO	Blk	Stl	Min	+/-
02	Gonzales, Abby		4	1-4	0-2	2-2	0	0	0	0	0	1	0	2	17	9
04	Mcbride, Paris		0	0-1	0-0	0-0	0	1	1	1	3	2	0	1	10	1
05	Nicholas, Makeda		6	2-4	0-0	2-2	1	2	3	2	2	0	0	0	12	5
12	Oleary, Lizzie		0	0-1	0-0	0-0	0	1	1	1	0	1	0	0	4	1
20	Dickey, Jasmine		5	2-5	0-0	1-3	5	3	8	0	2	1	1	0	13	6
22	Defreese, Samone		15	7-9	0-0	1-1	2	5	7	1	1	0	0	0	14	7
23	Kargo, Bailey		5	2-4	1-1	0-0	0	0	0	0	3	0	0	0	11	6
25	Lawrence, Rebecca		2	1-2	0-0	0-0	0	0	0	2	0	0	1	0	12	3
35	Lewis, Alison		3	1-2	1-1	0-0	0	0	0	0	0	0	0	1	9	2
	Team		0	0-0	0-0	0-0	0	0	0	0	0	1	0	0	0	
TOTALS			40	16-32	2-4	6-8	8	12	20	7	11	6	2	4	100	

Shooting By Period

Period	FG	FG%	3FG	3FG%	FT	FT%
3rd Qtr	7-17	41%	0-1	00%	2-3	67%
4th Qtr	9-15	60%	2-3	67%	4-5	80%
2nd Half	16-32	50%	2-4	50%	6-8	75%
Game	30-62	48.4%	3-9	33.3%	15-20	75.0%

Last FG Half: DEL 4th-01:08

Hofstra 32

No.	Player	S	Pts	FG	3FG	FT	OR	DR	TR	PF	A	TO	Blk	Stl	Min	+/-
00	Reynolds, Caria		2	1-3	0-0	0-0	0	1	1	3	0	1	0	0	6	-5
01	Davis, E'lexus		2	1-1	0-0	0-0	1	0	1	3	1	2	0	0	9	1
02	Brown, Jakayla		0	0-0	0-0	0-0	0	0	0	0	0	2	0	0	6	-6
05	Krupenko, Petja		2	0-1	0-1	2-2	0	0	0	0	0	0	0	0	7	-6
10	Hernandez Gil, Ana		12	4-8	4-7	0-0	0	1	1	0	0	0	0	0	18	-6
11	Hines, Jaylen		2	0-1	0-0	2-2	1	0	1	1	0	1	0	0	9	-1
21	Croskey, Mikiyah		0	0-0	0-0	0-0	0	0	0	0	0	0	1	0	2	-2
23	Valcourt, Vanerlie		2	1-1	0-0	0-0	0	0	0	1	1	0	0	0	7	-1
34	Brozoski, Boogie		6	2-7	2-3	0-0	1	2	3	0	4	2	0	1	17	-3
53	Kalin, Marianne		4	1-3	0-0	2-4	0	4	4	1	2	1	0	0	14	-8
54	Karsten, Sandra		0	0-0	0-0	0-0	0	1	1	1	0	0	0	0	6	-3
	Team		0	0-0	0-0	0-0	1	1	2	0	0	0	0	0	0	
TOTALS			32	10-25	6-11	6-8	4	10	14	10	8	9	1	1	100	

Shooting By Period

Period	FG	FG%	3FG	3FG%	FT	FT%
3rd Qtr	3-13	23%	2-6	33%	2-4	50%
4th Qtr	7-12	58%	4-5	80%	4-4	100%
2nd Half	10-25	40%	6-11	55%	6-8	75%
Game	18-49	36.7%	9-22	40.9%	14-20	70.0%

Last FG Half: HOF 4th-03:13

Game Notes:

Officials: Kathleen Lynch, Kevin Dillard, Nic Cappel
Attendance: 2393

Start Time: 2019-01-18 16:37:37
End Time: 2019-01-18 18:29:34
Game Duration: 111
Conference Game:

Score	1st	2nd	3rd	4th	TOT
DEL	17	21	16	24	78
HOF	9	18	10	22	59

Points from (This Period)	DEL	HOF
In the Paint	26	4
Off Turns	11	0
2nd Chance	5	5
Fast Break	0	0
Bench	18	8

Official Box Score
Delaware vs Hofstra
Third Quarter Statistics Only
January 18, 2019 at David S. Mack Sports and Exhibition Complex - Hempstead, N.Y.

Delaware 40

No.	Player	S	Pts	FG	3FG	FT	OR	DR	TR	PF	A	TO	Blk	Stl	Min	+/-
02	Gonzales, Abby		2	1-2	0-1	0-0	0	0	0	0	0	0	0	1	9	6
05	Nicholas, Makeda		4	2-3	0-0	0-0	1	2	3	2	1	0	0	0	8	5
20	Dickey, Jasmine		3	1-4	0-0	1-2	3	1	4	0	0	0	0	0	7	1
23	Kargo, Bailey		0	0-1	0-0	0-0	0	0	0	0	1	0	0	0	4	1
25	Lawrence, Rebecca		0	0-0	0-0	0-0	0	0	0	1	0	0	1	0	2	1
04	Mcbride, Paris		0	0-1	0-0	0-0	0	1	1	1	2	1	0	0	5	5
12	Oleary, Lizzie		0	0-1	0-0	0-0	0	1	1	1	0	1	0	0	4	1
22	Defreese, Samone		7	3-4	0-0	1-1	1	4	5	0	0	0	0	0	6	5
35	Lewis, Alison		0	0-1	0-0	0-0	0	0	0	0	0	0	0	1	6	5
	Team						0	0	0	0		0				
TOTALS			16	7-17	0-1	2-3	5	9	14	5	4	2	1	2	50	

Shooting By Period

Period	FG	FG%	3FG	3FG%	FT	FT%
2nd Half	0-0	0%	0-0	0%	0-0	0%
Game	30-62	48.4%	3-9	33.3%	15-20	75.0%

Hofstra 32

No.	Player	S	Pts	FG	3FG	FT	OR	DR	TR	PF	A	TO	Blk	Stl	Min	+/-
02	Brown, Jakayla		0	0-0	0-0	0-0	0	0	0	0	0	0	0	0	2	-2
10	Hernandez Gil, Ana		3	1-4	1-3	0-0	0	0	0	0	0	0	0	0	9	-5
11	Hines, Jaylen		0	0-0	0-0	0-0	0	0	0	0	0	1	0	0	5	-4
34	Brozowski, Boogie		3	1-6	1-2	0-0	1	1	2	0	2	1	0	1	10	-6
53	Kalin, Marianne		4	1-2	0-0	2-4	0	4	4	1	1	0	0	0	10	-5
00	Reynolds, Caria		0	0-0	0-0	0-0	0	0	0	0	0	0	0	0	0	0
01	Davis, E'lexus		0	0-0	0-0	0-0	0	0	0	2	0	1	0	0	5	-2
05	Krupenko, Petja		0	0-1	0-1	0-0	0	0	0	0	0	0	0	0	5	-4
21	Croskey, Mikiyah		0	0-0	0-0	0-0	0	0	0	0	0	0	0	0	0	0
23	Valcourt, Vanerlie		0	0-0	0-0	0-0	0	0	0	0	0	0	0	0	0	0
54	Karsten, Sandra		0	0-0	0-0	0-0	0	1	1	1	0	0	0	0	5	-2
	Team						1	0	1	0		0				
TOTALS			10	3-13	2-6	2-4	2	6	8	4	3	3	0	1	50	

Shooting By Period

Period	FG	FG%	3FG	3FG%	FT	FT%
2nd Half	0-0	0%	0-0	0%	0-0	0%
Game	18-49	36.7%	9-22	40.9%	14-20	70.0%

Game Notes:

Officials: Kathleen Lynch, Kevin Dillard, Nic Cappel
Attendance: 2393

Start Time: 2019-01-18 16:37:37

End Time: 2019-01-18 18:29:34

Game Duration: 111

Conference Game;

Score	1st	2nd	3rd	4th	TOT
DEL	17	21	16	24	78
HOF	9	18	10	22	59

Points from (This Period)	DEL	HOF
In the Paint	14	2
Off Turns	2	0
2nd Chance	3	0
Fast Break	0	0
Bench	7	0

**Official Play-By-Play
Delaware vs Hofstra
Third Quarter**

January 18, 2019 at David S. Mack Sports and Exhibition Complex - Hempstead, N.Y.

Period 3

Starters:

Delaware: 2 GONZALES, ABBY; 5 NICHOLAS, MAKEDA; 20 DICKEY, JASMINE; 23 KARGO, BAILEY; 25 LAWRENCE, REBECCA;

Hofstra: 2 BROWN, JAKAYLA; 10 HERNANDEZ GIL, ANA; 11 HINES, JAYLEN; 34 BROZOSKI, BOOGIE; 53 KALIN, MARIANNE;

Time	VISITORS: Delaware	Score	Margin	HOME: Hofstra
09:29				MISSED JUMPER by BROZOSKI, BOOGIE
09:25	REBOUND (DEF) by NICHOLAS, MAKEDA			
08:59	MISSED JUMPER by KARGO, BAILEY			
08:55	REBOUND (OFF) by DICKEY, JASMINE			
08:55	MISSED JUMPER by DICKEY, JASMINE			
08:55	REBOUND (OFF) by DICKEY, JASMINE			
08:55				FOUL (PERSONAL) by KALIN, MARIANNE
08:55	GOOD! FT by DICKEY, JASMINE	27-39	V 12	
08:55				SUB OUT: BROWN, JAKAYLA
08:55				SUB IN: HERNANDEZ GIL, ANA
08:55	MISSED FT by DICKEY, JASMINE			
08:54				REBOUND (DEF) by KALIN, MARIANNE
08:54	FOUL (PERSONAL) by NICHOLAS, MAKEDA			
08:45	FOUL (PERSONAL) by LAWRENCE, REBECCA			
08:45		28-39	V 11	GOOD! FT by KALIN, MARIANNE
08:45	SUB OUT: LAWRENCE, REBECCA			
08:45	SUB IN: OLEARY, LIZZIE			
08:45		29-39	V 10	GOOD! FT by KALIN, MARIANNE
08:26	TURNOVER (BADPASS) by OLEARY, LIZZIE			
07:58				TURNOVER (TRAVEL) by HINES, JAYLEN
07:34	MISSED JUMPER by NICHOLAS, MAKEDA			
07:30	REBOUND (OFF) by DICKEY, JASMINE			
07:29	MISSED JUMPER by DICKEY, JASMINE			
07:26				REBOUND (DEF) by BROZOSKI, BOOGIE
07:04				TURNOVER (BADPASS) by DAVIS, E'LEXUS
07:04	STEAL by GONZALES, ABBY			
07:04				FOUL (PERSONAL) by DAVIS, E'LEXUS
06:53	GOOD! LAYUP by GONZALES, ABBY [PNT]	29-41	V 12	
06:53	ASSIST by KARGO, BAILEY			
06:35				MISSED 3PTR by HERNANDEZ GIL, ANA
06:30	REBOUND (DEF) by OLEARY, LIZZIE			
06:25	MISSED 3PTR by GONZALES, ABBY			
06:20				REBOUND (DEF) by KALIN, MARIANNE
06:15				MISSED JUMPER by BROZOSKI, BOOGIE
06:10	REBOUND (DEF) by DICKEY, JASMINE			
05:56				FOUL (PERSONAL) by DAVIS, E'LEXUS
05:56				SUB OUT: DAVIS, E'LEXUS
05:56				SUB IN: KRUPENKO, PETJA
05:56	SUB OUT: KARGO, BAILEY			
05:56	SUB IN: DEFREES, SAMONE			
05:56	SUB OUT: OLEARY, LIZZIE			
05:56	SUB IN: LEWIS, ALISON			
05:43	GOOD! JUMPER by DICKEY, JASMINE [PNT]	29-43	V 14	
05:15				SUB OUT: HINES, JAYLEN
05:15				SUB IN: KARSTEN, SANDRA
05:08		31-43	V 12	GOOD! JUMPER by KALIN, MARIANNE [PNT]
05:08				ASSIST by BROZOSKI, BOOGIE
04:48	MISSED LAYUP by LEWIS, ALISON			
04:48				REBOUND (DEF) by KALIN, MARIANNE
04:48	FOUL (PERSONAL) by NICHOLAS, MAKEDA			
04:48				
04:48	SUB OUT: GONZALES, ABBY			
04:48	SUB IN: MCBRIDE, PARIS			
04:48	SUB OUT: NICHOLAS, MAKEDA			
04:48	SUB IN: OLEARY, LIZZIE			
04:35				MISSED JUMPER by KALIN, MARIANNE
04:34				REBOUND (OFF) by TEAM
04:28				MISSED JUMPER by BROZOSKI, BOOGIE
04:23	REBOUND (DEF) by DEFREES, SAMONE			
04:11	MISSED JUMPER by OLEARY, LIZZIE			
04:08	REBOUND (OFF) by DEFREES, SAMONE			
03:58	MISSED LAYUP by MCBRIDE, PARIS			
03:54				REBOUND (DEF) by KALIN, MARIANNE
03:45				MISSED 3PTR by KRUPENKO, PETJA
03:39	REBOUND (DEF) by MCBRIDE, PARIS			
03:24	MISSED JUMPER by DICKEY, JASMINE			
03:21				REBOUND (DEF) by KARSTEN, SANDRA
03:19				MISSED JUMPER by HERNANDEZ GIL, ANA
03:18				REBOUND (OFF) by BROZOSKI, BOOGIE
03:18	FOUL (PERSONAL) by MCBRIDE, PARIS			
03:18	SUB OUT: DICKEY, JASMINE			
03:18	SUB IN: GONZALES, ABBY			
03:10	FOUL (PERSONAL) by OLEARY, LIZZIE			
03:10				MISSED FT by KALIN, MARIANNE
03:10				REBOUND (OFF) by TEAM
03:10	SUB OUT: OLEARY, LIZZIE			

Time	VISITORS: Delaware	Score	Margin	HOME: Hofstra
03:10	SUB IN: NICHOLAS,MAKEDA			
03:10				MISSED FT by KALIN,MARIANNE
03:08	REBOUND (DEF) by DEFREESE,SAMONE			
02:49	GOOD! LAYUP by DEFREESE,SAMONE [PNT]	31-45	V 14	
02:49	ASSIST by MCBRIDE,PARIS			
02:43		34-45	V 11	GOOD! 3PTR by HERNANDEZ GIL,ANA
02:43				ASSIST by BROZOSKI,BOOGIE
02:10	GOOD! LAYUP by NICHOLAS,MAKEDA [PNT]	34-47	V 13	
02:10	ASSIST by MCBRIDE,PARIS			
01:49		37-47	V 10	GOOD! 3PTR by BROZOSKI,BOOGIE
01:49				ASSIST by KALIN,MARIANNE
01:26	GOOD! JUMPER by DEFREESE,SAMONE [PNT]	37-49	V 12	
01:11				MISSED JUMPER by BROZOSKI,BOOGIE
01:08	REBOUND (DEF) by DEFREESE,SAMONE			
01:04	MISSED JUMPER by DEFREESE,SAMONE			
00:59	REBOUND (OFF) by NICHOLAS,MAKEDA			
00:59	GOOD! LAYUP by NICHOLAS,MAKEDA	37-51	V 14	
00:43				MISSED 3PTR by HERNANDEZ GIL,ANA
00:39	REBOUND (DEF) by NICHOLAS,MAKEDA			
00:28	GOOD! LAYUP by DEFREESE,SAMONE	37-53	V 16	
00:28	ASSIST by NICHOLAS,MAKEDA			
00:28				FOUL (PERSONAL) by KARSTEN,SANDRA
00:28				SUB OUT: KRUPENKO,PETJA
00:28				SUB IN: DAVIS,E'LEXUS
00:28				SUB OUT: KALIN,MARIANNE
00:28				SUB IN: BROWN,JAKAYLA
00:28				SUB OUT: KARSTEN,SANDRA
00:28				SUB IN: HINES,JAYLEN
00:28	SUB OUT: NICHOLAS,MAKEDA			
00:28	SUB IN: LAWRENCE,REBECCA			
00:28	GOOD! FT by DEFREESE,SAMONE	37-54	V 17	
00:13				MISSED 3PTR by BROZOSKI,BOOGIE
00:13	REBOUND (DEF) by DEFREESE,SAMONE			
00:13	BLOCK by LAWRENCE,REBECCA			
00:02	TURNOVER (LOSTBALL) by MCBRIDE,PARIS			
00:02				STEAL by BROZOSKI,BOOGIE
00:00				TURNOVER (LOSTBALL) by BROZOSKI,BOOGIE
00:00	STEAL by LEWIS,ALISON			

Delaware 54, Hofstra 37

Points from (This Period)	DEL	HOF
In the Paint	14	2
Off Turns	2	0
2nd Chance	3	0
Fast Break	0	0
Bench	7	0

Official Box Score
Delaware vs Hofstra
Fourth Quarter Statistics Only
January 18, 2019 at David S. Mack Sports and Exhibition Complex - Hempstead, N.Y.

Delaware 24

No.	Player	S	Pts	FG	3FG	FT	OR	DR	TR	PF	A	TO	Blk	Stl	Min	+/-
02	Gonzales, Abby		2	0-2	0-1	2-2	0	0	0	0	0	1	0	1	8	3
05	Nicholas, Makeda		2	0-1	0-0	2-2	0	0	0	0	1	0	0	0	4	0
20	Dickey, Jasmine		2	1-1	0-0	0-1	2	2	4	0	2	1	1	0	6	5
23	Kargo, Bailey		5	2-3	1-1	0-0	0	0	0	0	2	0	0	0	7	5
25	Lawrence, Rebecca		2	1-2	0-0	0-0	0	0	0	1	0	0	0	0	10	2
04	Mcbride, Paris		0	0-0	0-0	0-0	0	0	0	0	1	1	0	1	5	-4
12	Oleary, Lizzie		0	0-0	0-0	0-0	0	0	0	0	0	0	0	0	0	0
22	Defreese, Samone		8	4-5	0-0	0-0	1	1	2	1	1	0	0	0	8	2
35	Lewis, Alison		3	1-1	1-1	0-0	0	0	0	0	0	0	0	0	3	-3
	Team						0	0	0	0		1				
TOTALS			24	9-15	2-3	4-5	3	3	6	2	7	4	1	2	50	

Shooting By Period

Period	FG	FG%	3FG	3FG%	FT	FT%
Game	30-62	48.4%	3-9	33.3%	15-20	75.0%

Hofstra 22

No.	Player	S	Pts	FG	3FG	FT	OR	DR	TR	PF	A	TO	Blk	Stl	Min	+/-
02	Brown, Jakayla		0	0-0	0-0	0-0	0	0	0	0	0	2	0	0	4	-4
10	Hernandez Gil, Ana		9	3-4	3-4	0-0	0	1	1	0	0	0	0	0	9	-1
11	Hines, Jaylen		2	0-1	0-0	2-2	1	0	1	1	0	0	0	0	4	3
34	Brozowski, Boogie		3	1-1	1-1	0-0	0	1	1	0	2	1	0	0	7	3
53	Kalin, Marianne		0	0-1	0-0	0-0	0	0	0	0	1	1	0	0	4	-3
00	Reynolds, Caria		2	1-3	0-0	0-0	0	1	1	3	0	1	0	0	6	-5
01	Davis, E'lexus		2	1-1	0-0	0-0	1	0	1	1	1	1	0	0	4	3
05	Krupenko, Petja		2	0-0	0-0	2-2	0	0	0	0	0	0	0	0	2	-2
21	Croskey, Mikiyah		0	0-0	0-0	0-0	0	0	0	0	0	0	1	0	2	-2
23	Valcourt, Vanerlie		2	1-1	0-0	0-0	0	0	0	1	1	0	0	0	7	-1
54	Karsten, Sandra		0	0-0	0-0	0-0	0	0	0	0	0	0	0	0	1	-1
	Team						0	1	1	0		0				
TOTALS			22	7-12	4-5	4-4	2	4	6	6	5	6	1	0	50	

Shooting By Period

Period	FG	FG%	3FG	3FG%	FT	FT%
Game	18-49	36.7%	9-22	40.9%	14-20	70.0%

Game Notes:

Officials: **Kathleen Lynch, Kevin Dillard, Nic Cappel**
Attendance: **2393**

Start Time: **2019-01-18 16:37:37**
End Time: **2019-01-18 18:29:34**
Game Duration: **111**
Conference Game;

Score	1st	2nd	3rd	4th	TOT
DEL	17	21	16	24	78
HOF	9	18	10	22	59

Points from (This Period)	DEL	HOF
In the Paint	12	2
Off Turns	9	0
2nd Chance	2	5
Fast Break	0	0
Bench	11	8

**Official Play-By-Play
Delaware vs Hofstra
Fourth Quarter**

January 18, 2019 at David S. Mack Sports and Exhibition Complex - Hempstead, N.Y.

Period 4

Starters:

Delaware: 2 GONZALES, ABBY; 5 NICHOLAS, MAKEDA; 20 DICKEY, JASMINE; 23 KARGO, BAILEY; 25 LAWRENCE, REBECCA;

Hofstra: 2 BROWN, JAKAYLA; 10 HERNANDEZ GIL, ANA; 11 HINES, JAYLEN; 34 BROZOSKI, BOOGIE; 53 KALIN, MARIANNE;

Time	VISITORS: Delaware	Score	Margin	HOME: Hofstra
09:47		40-54	V 14	GOOD! 3PTR by HERNANDEZ GIL,ANA
09:47				ASSIST by DAVIS,E'LEXUS
09:41				SUB OUT: BROZOSKI,BOOGIE
09:41				SUB IN: VALCOURT,VANERLIE
09:41	TURNOVER (TRAVEL) by GONZALES,ABBY			
09:22				TURNOVER (BADPASS) by DAVIS,E'LEXUS
09:22	STEAL by GONZALES,ABBY			
09:22				FOUL (PERSONAL) by HINES,JAYLEN
09:14	TURNOVER (BADPASS) by MCBRIDE,PARIS			
09:05				TURNOVER (BADPASS) by BROWN,JAKAYLA
08:51	GOOD! 3PTR by LEWIS,ALISON	40-57	V 17	
08:51	ASSIST by MCBRIDE,PARIS			
08:38				TURNOVER (BADPASS) by BROWN,JAKAYLA
08:38	STEAL by MCBRIDE,PARIS			
08:37				FOUL (PERSONAL) by DAVIS,E'LEXUS
08:37				SUB OUT: BROWN,JAKAYLA
08:37				SUB IN: BROZOSKI,BOOGIE
08:26	GOOD! LAYUP by LAWRENCE,REBECCA [PNT]	40-59	V 19	
08:26	ASSIST by DEFREESE,SAMONE			
08:15				MISSED 3PTR by HERNANDEZ GIL,ANA
08:11				REBOUND (OFF) by DAVIS,E'LEXUS
08:00	FOUL (PERSONAL) by DEFREESE,SAMONE			
08:00		41-59	V 18	GOOD! FT by HINES,JAYLEN
08:00		42-59	V 17	GOOD! FT by HINES,JAYLEN
07:52	MISSED JUMPER by LAWRENCE,REBECCA			
07:47				REBOUND (DEF) by HERNANDEZ GIL,ANA
07:42		45-59	V 14	GOOD! 3PTR by BROZOSKI,BOOGIE
07:42				ASSIST by VALCOURT,VANERLIE
07:11				FOUL (PERSONAL) by VALCOURT,VANERLIE
07:11	SUB OUT: MCBRIDE,PARIS			
07:11	SUB IN: NICHOLAS,MAKEDA			
07:11	SUB OUT: LEWIS,ALISON			
07:11	SUB IN: KARGO,BAILEY			
07:04	GOOD! 3PTR by KARGO,BAILEY	45-62	V 17	
07:04	ASSIST by NICHOLAS,MAKEDA			
06:50				MISSED LAYUP by HINES,JAYLEN
06:47				REBOUND (OFF) by HINES,JAYLEN
06:45		48-62	V 14	GOOD! 3PTR by HERNANDEZ GIL,ANA
06:21	GOOD! LAYUP by DEFREESE,SAMONE [PNT]	48-64	V 16	
06:11		50-64	V 14	GOOD! LAYUP by DAVIS,E'LEXUS
05:46	MISSED 3PTR by GONZALES,ABBY			
05:43				REBOUND (DEF) by TEAM
05:43				SUB OUT: DAVIS,E'LEXUS
05:43				SUB IN: REYNOLDS,CARIA
05:43	SUB OUT: DEFREESE,SAMONE			
05:43	SUB IN: DICKEY,JASMINE			
05:43	TIMEOUT 30SEC			
05:43				SUB OUT: HINES,JAYLEN
05:43				SUB IN: KALIN,MARIANNE
05:43	SUB OUT: GONZALES,ABBY			
05:43	SUB IN: MCBRIDE,PARIS			
05:18		52-64	V 12	GOOD! JUMPER by REYNOLDS,CARIA
05:18				ASSIST by BROZOSKI,BOOGIE
04:48	MISSED JUMPER by NICHOLAS,MAKEDA			
04:44				REBOUND (DEF) by BROZOSKI,BOOGIE
04:33				TURNOVER (OTHER) by KALIN,MARIANNE
04:32				
04:05	GOOD! JUMPER by KARGO,BAILEY	52-66	V 14	
04:05	ASSIST by DICKEY,JASMINE			
03:39		54-66	V 12	GOOD! JUMPER by VALCOURT,VANERLIE
03:39				ASSIST by KALIN,MARIANNE
03:23				FOUL (PERSONAL) by REYNOLDS,CARIA
03:23	GOOD! FT by NICHOLAS,MAKEDA	54-67	V 13	
03:23	SUB OUT: MCBRIDE,PARIS			
03:23	SUB IN: GONZALES,ABBY			
03:23	GOOD! FT by NICHOLAS,MAKEDA	54-68	V 14	
03:23	SUB OUT: NICHOLAS,MAKEDA			
03:23	SUB IN: DEFREESE,SAMONE			
03:13		57-68	V 11	GOOD! 3PTR by HERNANDEZ GIL,ANA
03:13				ASSIST by BROZOSKI,BOOGIE
02:49	GOOD! LAYUP by DEFREESE,SAMONE [PNT]	57-70	V 13	
02:49	ASSIST by KARGO,BAILEY			
02:32				MISSED JUMPER by KALIN,MARIANNE
02:28	REBOUND (DEF) by DEFREESE,SAMONE			
02:23	MISSED JUMPER by KARGO,BAILEY			
02:21	REBOUND (OFF) by DICKEY,JASMINE			

Time	VISITORS: Delaware	Score	Margin	HOME: Hofstra
02:21	GOOD! LAYUP by DICKEY,JASMINE [PNT]	57-72	V 15	
02:21				FOUL (PERSONAL) by REYNOLDS,CARIA
02:21				SUB OUT: VALCOURT,VANERLIE
02:21				SUB IN: BROWN,JAKAYLA
02:21	MISSED FT by DICKEY,JASMINE			
02:18				REBOUND (DEF) by REYNOLDS,CARIA
02:11				TURNOVER (LOSTBALL) by BROZOSKI,BOOGIE
02:02	GOOD! LAYUP by DEFREESE,SAMONE [PNT]	57-74	V 17	
02:02	ASSIST by DICKEY,JASMINE			
01:49				TURNOVER (TRAVEL) by REYNOLDS,CARIA
01:49				SUB OUT: KALIN,MIANNE
01:49				SUB IN: CROSKEY,MIKIYAH
01:49				SUB OUT: BROZOSKI,BOOGIE
01:49				SUB IN: KRUPENKO,PETJA
01:38	MISSED JUMPER by DEFREESE,SAMONE			
01:38				BLOCK by CROSKEY,MIKIYAH
01:36	REBOUND (OFF) by DICKEY,JASMINE			
01:35	TURNOVER (3SEC) by DICKEY,JASMINE			
01:25				MISSED JUMPER by REYNOLDS,CARIA
01:25	BLOCK by DICKEY,JASMINE			
01:21	REBOUND (DEF) by DICKEY,JASMINE			
01:08	GOOD! LAYUP by DEFREESE,SAMONE [PNT]	57-76	V 19	
01:08	ASSIST by KARGO,BAILEY			
00:46	FOUL (PERSONAL) by LAWRENCE,REBECCA			
00:46		58-76	V 18	GOOD! FT by KRUPENKO,PETJA
00:46				SUB OUT: HERNANDEZ GIL,ANA
00:46				SUB IN: KARSTEN,SANDRA
00:46		59-76	V 17	GOOD! FT by KRUPENKO,PETJA
00:41				FOUL (PERSONAL) by REYNOLDS,CARIA
00:41	GOOD! FT by GONZALES,ABBY	59-77	V 18	
00:41	GOOD! FT by GONZALES,ABBY	59-78	V 19	
00:34				MISSED JUMPER by REYNOLDS,CARIA
00:30	REBOUND (DEF) by DICKEY,JASMINE			
00:03	MISSED JUMPER by GONZALES,ABBY			
00:02	REBOUND (OFF) by DEFREESE,SAMONE			
00:02	TURNOVER (SHOTCLOCK) by			

Delaware 78, Hofstra 59

Points from (This Period)	DEL	HOF
In the Paint	12	2
Off Turns	9	0
2nd Chance	2	5
Fast Break	0	0
Bench	11	8

**Official Scoring/Possession Reference Chart
Delaware vs Hofstra**

Period 1

January 18, 2019 at David S. Mack Sports and Exhibition Complex - Hempstead, N.Y.

Period 1

Starters:

Delaware: 2 GONZALES, ABBY; 5 NICHOLAS, MAKEDA; 20 DICKEY, JASMINE; 23 KARGO, BAILEY; 25 LAWRENCE, REBECCA;

Hofstra: 2 BROWN, JAKAYLA; 10 HERNANDEZ GIL, ANA; 11 HINES, JAYLEN; 34 BROZOSKI, BOOGIE; 53 KALIN, MARIANNE;

Time	VISITORS: Delaware	Score	Margin	HOME: Hofstra
09:46	GOOD! JUMPER by KARGO, BAILEY	0-2	V 2	
08:39	GOOD! JUMPER by DICKEY, JASMINE	0-4	V 4	
06:56		2-4	V 2	GOOD! LAYUP by KALIN, MARIANNE [PNT]
06:10	GOOD! JUMPER by DICKEY, JASMINE	2-6	V 4	
05:48	GOOD! JUMPER by KARGO, BAILEY	2-8	V 6	
05:27		5-8	V 3	GOOD! 3PTR by KRUPENKO, PETJA
03:46		7-8	V 1	GOOD! JUMPER by BROWN, JAKAYLA
03:00	GOOD! JUMPER by NICHOLAS, MAKEDA	7-10	V 3	
02:49		8-10	V 2	GOOD! FT by CROSKEY, MIKIYAH
02:06	GOOD! JUMPER by NICHOLAS, MAKEDA [PNT]	8-12	V 4	
01:49		9-12	V 3	GOOD! FT by HINES, JAYLEN
01:28	GOOD! JUMPER by LAWRENCE, REBECCA	9-14	V 5	
00:52	GOOD! 3PTR by GONZALES, ABBY	9-17	V 8	

Delaware 17, Hofstra 9

**Official Scoring/Possession Reference Chart
Delaware vs Hofstra**

Period 2

January 18, 2019 at David S. Mack Sports and Exhibition Complex - Hempstead, N.Y.

Period 2

Starters:

Delaware: 2 GONZALES, ABBY; 5 NICHOLAS, MAKEDA; 20 DICKEY, JASMINE; 23 KARGO, BAILEY; 25 LAWRENCE, REBECCA;
Hofstra: 2 BROWN, JAKAYLA; 10 HERNANDEZ GIL, ANA; 11 HINES, JAYLEN; 34 BROZOSKI, BOOGIE; 53 KALIN, MARIANNE;

Time	VISITORS: Delaware	Score	Margin	HOME: Hofstra
08:42	GOOD! JUMPER by LEWIS, ALISON	9-19	V 10	
08:06	GOOD! FT by DICKEY, JASMINE	9-20	V 11	
08:06	GOOD! FT by DICKEY, JASMINE	9-21	V 12	
07:35	GOOD! JUMPER by LEWIS, ALISON	9-23	V 14	
07:17		11-23	V 12	GOOD! JUMPER by REYNOLDS, CARIA
07:07	GOOD! JUMPER by LAWRENCE, REBECCA	11-25	V 14	
06:57		12-25	V 13	GOOD! FT by DAVIS, ELEXUS
06:31	GOOD! FT by DEFREESE, SAMONE	12-26	V 14	
06:31	GOOD! FT by DEFREESE, SAMONE	12-27	V 15	
06:30		14-27	V 13	GOOD! JUMPER by BROZOSKI, BOOGIE
05:44		16-27	V 11	GOOD! JUMPER by DAVIS, ELEXUS [PNT]
05:08	GOOD! FT by NICHOLAS, MAKEDA	16-28	V 12	
04:48	GOOD! FT by MCBRIDE, PARIS	16-29	V 13	
04:48	GOOD! FT by MCBRIDE, PARIS	16-30	V 14	
04:28		17-30	V 13	GOOD! FT by REYNOLDS, CARIA
04:13	GOOD! JUMPER by OLEARY, LIZZIE	17-32	V 15	
03:42		18-32	V 14	GOOD! FT by DAVIS, ELEXUS
03:42		19-32	V 13	GOOD! FT by DAVIS, ELEXUS
03:24	GOOD! LAYUP by OLEARY, LIZZIE [PNT]	19-34	V 15	
02:47		22-34	V 12	GOOD! 3PTR by BROZOSKI, BOOGIE
01:32	GOOD! FT by NICHOLAS, MAKEDA	22-35	V 13	
01:17	GOOD! LAYUP by DEFREESE, SAMONE [FB]	22-37	V 15	
00:54		25-37	V 12	GOOD! 3PTR by KARSTEN, SANDRA
00:17		26-37	V 11	GOOD! FT by REYNOLDS, CARIA
00:17		27-37	V 10	GOOD! FT by REYNOLDS, CARIA
00:03	GOOD! FT by LEWIS, ALISON	27-38	V 11	

Delaware 38, Hofstra 27

**Official Scoring/Possession Reference Chart
Delaware vs Hofstra**

Period 3

January 18, 2019 at David S. Mack Sports and Exhibition Complex - Hempstead, N.Y.

Period 3

Starters:

Delaware: 2 GONZALES, ABBY; 5 NICHOLAS, MAKEDA; 20 DICKEY, JASMINE; 23 KARGO, BAILEY; 25 LAWRENCE, REBECCA;

Hofstra: 2 BROWN, JAKAYLA; 10 HERNANDEZ GIL, ANA; 11 HINES, JAYLEN; 34 BROZOSKI, BOOGIE; 53 KALIN, MARIANNE;

Time	VISITORS: Delaware	Score	Margin	HOME: Hofstra
08:55	GOOD! FT by DICKEY, JASMINE	27-39	V 12	
08:45		28-39	V 11	GOOD! FT by KALIN, MARIANNE
08:45		29-39	V 10	GOOD! FT by KALIN, MARIANNE
06:53	GOOD! LAYUP by GONZALES, ABBY [PNT]	29-41	V 12	
05:43	GOOD! JUMPER by DICKEY, JASMINE [PNT]	29-43	V 14	
05:08		31-43	V 12	GOOD! JUMPER by KALIN, MARIANNE [PNT]
02:49	GOOD! LAYUP by DEFREESE, SAMONE [PNT]	31-45	V 14	
02:43		34-45	V 11	GOOD! 3PTR by HERNANDEZ GIL, ANA
02:10	GOOD! LAYUP by NICHOLAS, MAKEDA [PNT]	34-47	V 13	
01:49		37-47	V 10	GOOD! 3PTR by BROZOSKI, BOOGIE
01:26	GOOD! JUMPER by DEFREESE, SAMONE [PNT]	37-49	V 12	
00:59	GOOD! LAYUP by NICHOLAS, MAKEDA	37-51	V 14	
00:28	GOOD! LAYUP by DEFREESE, SAMONE	37-53	V 16	
00:28	GOOD! FT by DEFREESE, SAMONE	37-54	V 17	

Delaware 54, Hofstra 37

**Official Scoring/Possession Reference Chart
Delaware vs Hofstra**

Period 4

January 18, 2019 at David S. Mack Sports and Exhibition Complex - Hempstead, N.Y.

Period 4

Starters:

Delaware: 2 GONZALES, ABBY; 5 NICHOLAS, MAKEDA; 20 DICKEY, JASMINE; 23 KARGO, BAILEY; 25 LAWRENCE, REBECCA;

Hofstra: 2 BROWN, JAKAYLA; 10 HERNANDEZ GIL, ANA; 11 HINES, JAYLEN; 34 BROZOSKI, BOOGIE; 53 KALIN, MARIANNE;

Time	VISITORS: Delaware	Score	Margin	HOME: Hofstra
09:47		40-54	V 14	GOOD! 3PTR by HERNANDEZ GIL, ANA
08:51	GOOD! 3PTR by LEWIS, ALISON	40-57	V 17	
08:26	GOOD! LAYUP by LAWRENCE, REBECCA [PNT]	40-59	V 19	
08:00		41-59	V 18	GOOD! FT by HINES, JAYLEN
08:00		42-59	V 17	GOOD! FT by HINES, JAYLEN
07:42		45-59	V 14	GOOD! 3PTR by BROZOSKI, BOOGIE
07:04	GOOD! 3PTR by KARGO, BAILEY	45-62	V 17	
06:45		48-62	V 14	GOOD! 3PTR by HERNANDEZ GIL, ANA
06:21	GOOD! LAYUP by DEFREESE, SAMONE [PNT]	48-64	V 16	
06:11		50-64	V 14	GOOD! LAYUP by DAVIS, ELEXUS
05:18		52-64	V 12	GOOD! JUMPER by REYNOLDS, CARIA
04:05	GOOD! JUMPER by KARGO, BAILEY	52-66	V 14	
03:39		54-66	V 12	GOOD! JUMPER by VALCOURT, VANERLIE
03:23	GOOD! FT by NICHOLAS, MAKEDA	54-67	V 13	
03:23	GOOD! FT by NICHOLAS, MAKEDA	54-68	V 14	
03:13		57-68	V 11	GOOD! 3PTR by HERNANDEZ GIL, ANA
02:49	GOOD! LAYUP by DEFREESE, SAMONE [PNT]	57-70	V 13	
02:21	GOOD! LAYUP by DICKEY, JASMINE [PNT]	57-72	V 15	
02:02	GOOD! LAYUP by DEFREESE, SAMONE [PNT]	57-74	V 17	
01:08	GOOD! LAYUP by DEFREESE, SAMONE [PNT]	57-76	V 19	
00:46		58-76	V 18	GOOD! FT by KRUPENKO, PETJA
00:46		59-76	V 17	GOOD! FT by KRUPENKO, PETJA
00:41	GOOD! FT by GONZALES, ABBY	59-77	V 18	
00:41	GOOD! FT by GONZALES, ABBY	59-78	V 19	

Delaware 78, Hofstra 59

**Official Substitutions Log
Delaware vs Hofstra
Period 1**

January 18, 2019 at David S. Mack Sports and Exhibition Complex - Hempstead, N.Y.

VISITORS: Delaware	Time	Score	HOME: Hofstra
2 GONZALES, ABBY			2 BROWN, JAKAYLA
5 NICHOLAS, MAKEDA			10 HERNANDEZ GIL, ANA
20 DICKEY, JASMINE			11 HINES, JAYLEN
23 KARGO, BAILEY			34 BROZOSKI, BOOGIE
25 LAWRENCE, REBECCA			53 KALIN, MARIANNE
	07:13	4-0	SUB OUT: HERNANDEZ GIL, ANA
	07:13		SUB IN: KRUPENKO, PETJA
SUB OUT: 2 GONZALES, ABBY	06:42	4-2	
SUB IN: 12 OLEARY, LIZZIE	06:42		
SUB OUT: 5 NICHOLAS, MAKEDA	06:42		
SUB IN: 4 MCBRIDE, PARIS	06:42		
	05:59	6-2	SUB OUT: KALIN, MARIANNE
	05:59		SUB IN: CROSKEY, MIKIYAH
SUB OUT: 25 LAWRENCE, REBECCA	04:53	8-5	
SUB IN: 22 DEFREESE, SAMONE	04:53		
SUB OUT: 20 DICKEY, JASMINE	04:53		
SUB IN: 5 NICHOLAS, MAKEDA	04:53		
SUB OUT: 4 MCBRIDE, PARIS	03:17	8-7	
SUB IN: 2 GONZALES, ABBY	03:17		
SUB OUT: 23 KARGO, BAILEY	02:49	10-7	
SUB IN: 25 LAWRENCE, REBECCA	02:49		
SUB OUT: 12 OLEARY, LIZZIE	02:49		
SUB IN: 35 LEWIS, ALISON	02:49		
	01:49	12-9	SUB OUT: BROWN, JAKAYLA
	01:49		SUB IN: HERNANDEZ GIL, ANA
SUB OUT: 22 DEFREESE, SAMONE	01:49		
SUB IN: 20 DICKEY, JASMINE	01:49		
	00:56	14-9	SUB OUT: CROSKEY, MIKIYAH
	00:56		SUB IN: KARSTEN, SANDRA
SUB OUT: 25 LAWRENCE, REBECCA	00:56		
SUB IN: 12 OLEARY, LIZZIE	00:56		

Delaware 17, Hofstra 9

**Official Substitutions Log
Delaware vs Hofstra
Period 2**

January 18, 2019 at David S. Mack Sports and Exhibition Complex - Hempstead, N.Y.

VISITORS: Delaware	Time	Score	HOME: Hofstra
2 GONZALES, ABBY			2 BROWN, JAKAYLA
5 NICHOLAS, MAKEDA			10 HERNANDEZ GIL, ANA
20 DICKEY, JASMINE			11 HINES, JAYLEN
23 KARGO, BAILEY			34 BROZOSKI, BOOGIE
25 LAWRENCE, REBECCA			53 KALIN, MARIANNE
	09:42	-	SUB OUT: KRUPENKO, PETJA
	09:42		SUB IN: DAVIS, E'LEXUS
	08:27	19-9	SUB OUT: HERNANDEZ GIL, ANA
	08:27		SUB IN: BROWN, JAKAYLA
SUB OUT: 12 OLEARY, LIZZIE	08:27		
SUB IN: 25 LAWRENCE, REBECCA	08:27		
	08:14	19-9	SUB OUT: HINES, JAYLEN
	08:14		SUB IN: CROSKEY, MIKIYAH
	07:50	21-9	SUB OUT: KARSTEN, SANDRA
	07:50		SUB IN: REYNOLDS, CARIA
SUB OUT: 2 GONZALES, ABBY	06:49	25-12	
SUB IN: 4 MCBRIDE, PARIS	06:49		
SUB OUT: 20 DICKEY, JASMINE	06:49		
SUB IN: 22 DEFRESE, SAMONE	06:49		
SUB OUT: 35 LEWIS, ALISON	05:55	27-14	
SUB IN: 23 KARGO, BAILEY	05:55		
	04:48	28-16	SUB OUT: CROSKEY, MIKIYAH
	04:48		SUB IN: KARSTEN, SANDRA
	04:48		SUB OUT: BROZOSKI, BOOGIE
	04:48		SUB IN: KRUPENKO, PETJA
SUB OUT: 5 NICHOLAS, MAKEDA	04:28	30-16	
SUB IN: 12 OLEARY, LIZZIE	04:28		
SUB OUT: 25 LAWRENCE, REBECCA	03:42	32-18	
SUB IN: 5 NICHOLAS, MAKEDA	03:42		
	03:42		SUB OUT: DAVIS, E'LEXUS
	03:42		SUB IN: BROZOSKI, BOOGIE
	03:13	34-19	SUB OUT: BROWN, JAKAYLA
	03:13		SUB IN: VALCOURT, VANERLIE
	02:27	34-22	SUB OUT: KRUPENKO, PETJA
	02:27		SUB IN: DAVIS, E'LEXUS
SUB OUT: 23 KARGO, BAILEY	02:03	34-22	
SUB IN: 35 LEWIS, ALISON	02:03		
SUB OUT: 12 OLEARY, LIZZIE	00:17	37-26	
SUB IN: 25 LAWRENCE, REBECCA	00:17		

Delaware 38, Hofstra 27

**Official Substitutions Log
Delaware vs Hofstra
Period 3**

January 18, 2019 at David S. Mack Sports and Exhibition Complex - Hempstead, N.Y.

VISITORS: Delaware	Time	Score	HOME: Hofstra
2 GONZALES, ABBY			2 BROWN, JAKAYLA
5 NICHOLAS, MAKEDA			10 HERNANDEZ GIL, ANA
20 DICKEY, JASMINE			11 HINES, JAYLEN
23 KARGO, BAILEY			34 BROZOSKI, BOOGIE
25 LAWRENCE, REBECCA			53 KALIN, MARIANNE
	08:55	39-27	SUB OUT: BROWN, JAKAYLA
	08:55		SUB IN: HERNANDEZ GIL, ANA
SUB OUT: 25 LAWRENCE, REBECCA	08:45	39-28	
SUB IN: 12 OLEARY, LIZZIE	08:45		
	05:56	41-29	SUB OUT: DAVIS, E'LEXUS
	05:56		SUB IN: KRUPENKO, PETJA
SUB OUT: 23 KARGO, BAILEY	05:56		
SUB IN: 22 DEFREESE, SAMONE	05:56		
SUB OUT: 12 OLEARY, LIZZIE	05:56		
SUB IN: 35 LEWIS, ALISON	05:56		
	05:15	43-29	SUB OUT: HINES, JAYLEN
	05:15		SUB IN: KARSTEN, SANDRA
SUB OUT: 2 GONZALES, ABBY	04:48	43-31	
SUB IN: 4 MCBRIDE, PARIS	04:48		
SUB OUT: 5 NICHOLAS, MAKEDA	04:48		
SUB IN: 12 OLEARY, LIZZIE	04:48		
SUB OUT: 20 DICKEY, JASMINE	03:18	43-31	
SUB IN: 2 GONZALES, ABBY	03:18		
SUB OUT: 12 OLEARY, LIZZIE	03:10	43-31	
SUB IN: 5 NICHOLAS, MAKEDA	03:10		
	00:28	53-37	SUB OUT: KRUPENKO, PETJA
	00:28		SUB IN: DAVIS, E'LEXUS
	00:28		SUB OUT: KALIN, MARIANNE
	00:28		SUB IN: BROWN, JAKAYLA
	00:28		SUB OUT: KARSTEN, SANDRA
	00:28		SUB IN: HINES, JAYLEN
SUB OUT: 5 NICHOLAS, MAKEDA	00:28		
SUB IN: 25 LAWRENCE, REBECCA	00:28		

Delaware 54, Hofstra 37

**Official Substitutions Log
Delaware vs Hofstra
Period 4**

January 18, 2019 at David S. Mack Sports and Exhibition Complex - Hempstead, N.Y.

VISITORS: Delaware	Time	Score	HOME: Hofstra
2 GONZALES, ABBY			2 BROWN, JAKAYLA
5 NICHOLAS, MAKEDA			10 HERNANDEZ GIL, ANA
20 DICKEY, JASMINE			11 HINES, JAYLEN
23 KARGO, BAILEY			34 BROZOSKI, BOOGIE
25 LAWRENCE, REBECCA			53 KALIN, MARIANNE
	09:41	54-40	SUB OUT: BROZOSKI, BOOGIE
	09:41		SUB IN: VALCOURT, VANERLIE
	08:37	57-40	SUB OUT: BROWN, JAKAYLA
	08:37		SUB IN: BROZOSKI, BOOGIE
SUB OUT: 4 MCBRIDE, PARIS	07:11	59-45	
SUB IN: 5 NICHOLAS, MAKEDA	07:11		
SUB OUT: 35 LEWIS, ALISON	07:11		
SUB IN: 23 KARGO, BAILEY	07:11		
	05:43	64-50	SUB OUT: DAVIS, E'LEXUS
	05:43		SUB IN: REYNOLDS, CARIA
SUB OUT: 22 DEFREESE, SAMONE	05:43		
SUB IN: 20 DICKEY, JASMINE	05:43		
	05:43		SUB OUT: HINES, JAYLEN
	05:43		SUB IN: KALIN, MARIANNE
SUB OUT: 2 GONZALES, ABBY	05:43		
SUB IN: 4 MCBRIDE, PARIS	05:43		
SUB OUT: 4 MCBRIDE, PARIS	03:23	67-54	
SUB IN: 2 GONZALES, ABBY	03:23		
SUB OUT: 5 NICHOLAS, MAKEDA	03:23		
SUB IN: 22 DEFREESE, SAMONE	03:23		
	02:21	72-57	SUB OUT: VALCOURT, VANERLIE
	02:21		SUB IN: BROWN, JAKAYLA
	01:49	74-57	SUB OUT: KALIN, MARIANNE
	01:49		SUB IN: CROSKEY, MIKIYAH
	01:49		SUB OUT: BROZOSKI, BOOGIE
	01:49		SUB IN: KRUPENKO, PETJA
	00:46	76-58	SUB OUT: HERNANDEZ GIL, ANA
	00:46		SUB IN: KARSTEN, SANDRA

Delaware 78, Hofstra 59

Official Shot Chart
Delaware vs Hofstra
 PERIOD 1 Shots

January 18, 2019 at David S. Mack Sports and Exhibition Complex - Hempstead, N.Y.

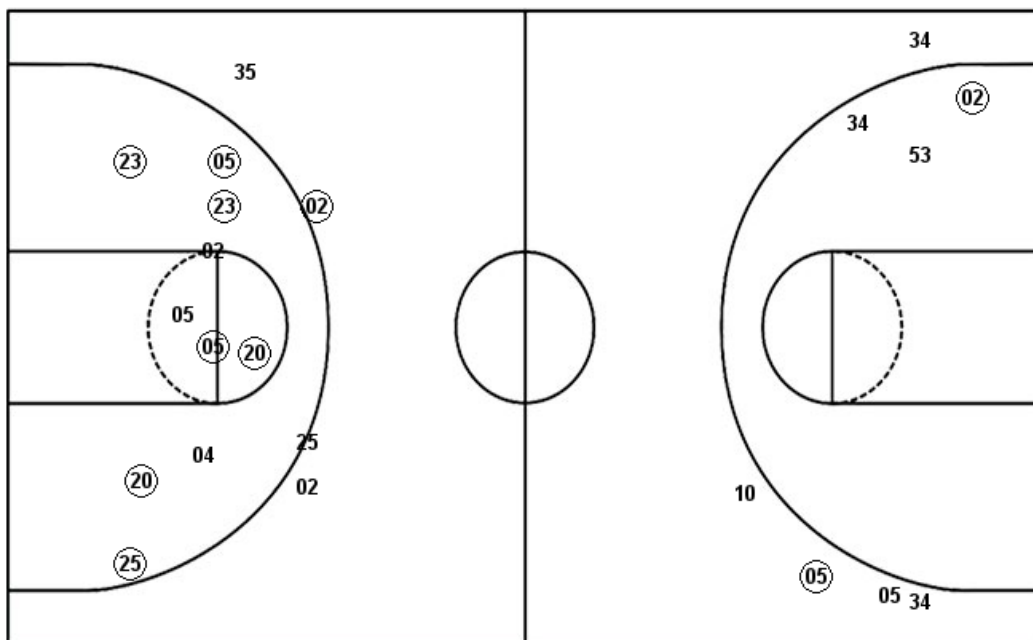
Hofstra

Delaware

Layups

02 (53) 21

Dunks



Layups

Dunks

HOF : Period 1	Made	Att	Pct
Layups	1	3	33.3
Dunks	0	0	0
2PT Field Goals	2	6	33.3
3PT Field Goals	1	5	20.0
Total Field Goals	3	11	27.3

DEL : Period 1	Made	Att	Pct
Layups	0	0	0
Dunks	0	0	0
2PT Field Goals	7	10	70.0
3PT Field Goals	1	4	25.0
Total Field Goals	8	14	57.1

**Official Shot Chart
Delaware vs Hofstra
PERIOD 2 Shots**

January 18, 2019 at David S. Mack Sports and Exhibition Complex - Hempstead, N.Y.

Hofstra

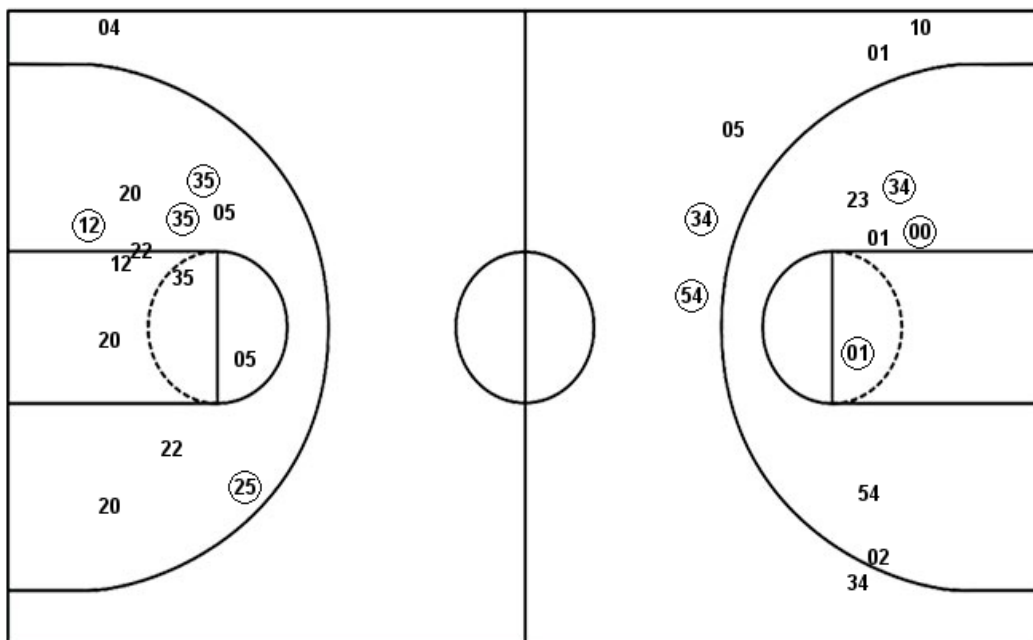
Delaware

Layups

Layups

Dunks

Dunks



HOF : Period 2	Made	Att	Pct
Layups	0	0	0
Dunks	0	0	0
2PT Field Goals	3	7	42.9
3PT Field Goals	2	6	33.3
Total Field Goals	5	13	38.5

DEL : Period 2	Made	Att	Pct
Layups	2	2	100.0
Dunks	0	0	0
2PT Field Goals	6	15	40.0
3PT Field Goals	0	1	00.0
Total Field Goals	6	16	37.5

Official Shot Chart
Delaware vs Hofstra
 PERIOD 3 Shots

January 18, 2019 at David S. Mack Sports and Exhibition Complex - Hempstead, N.Y.

Hofstra

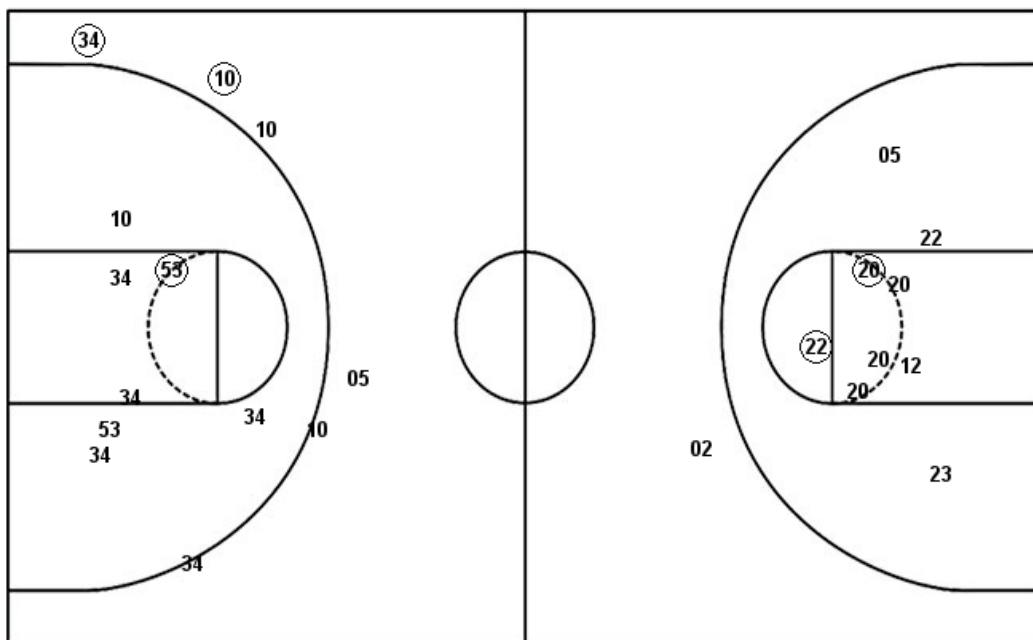
Delaware

Layups

Layups

Dunks

Dunks



HOF : Period 3	Made	Att	Pct
Layups	0	0	0
Dunks	0	0	0
2PT Field Goals	1	7	14.3
3PT Field Goals	2	6	33.3
Total Field Goals	3	13	23.1

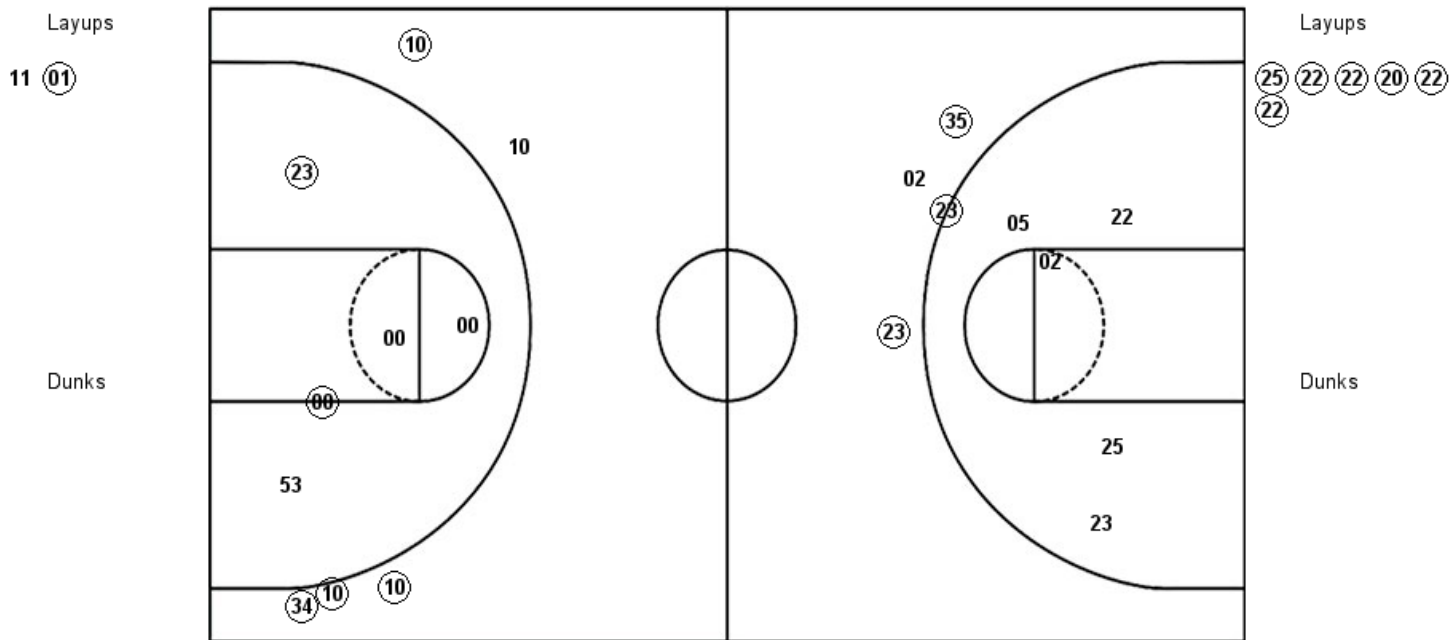
DEL : Period 3	Made	Att	Pct
Layups	5	7	71.4
Dunks	0	0	0
2PT Field Goals	7	16	43.8
3PT Field Goals	0	1	00.0
Total Field Goals	7	17	41.2

Official Shot Chart
Delaware vs Hofstra
 PERIOD 4 Shots

January 18, 2019 at David S. Mack Sports and Exhibition Complex - Hempstead, N.Y.

Hofstra

Delaware



HOF : Period 4	Made	Att	Pct
Layups	1	2	50.0
Dunks	0	0	0
2PT Field Goals	3	7	42.9
3PT Field Goals	4	5	80.0
Total Field Goals	7	12	58.3

DEL : Period 4	Made	Att	Pct
Layups	6	6	100.0
Dunks	0	0	0
2PT Field Goals	7	12	58.3
3PT Field Goals	2	3	66.7
Total Field Goals	9	15	60.0

DEL : Period 4	Made	Att	Pct
Layups	6	6	100.0
Dunks	0	0	0
2PT Field Goals	7	12	58.3
3PT Field Goals	2	3	66.7
Total Field Goals	9	15	60.0

January 18, 2019 at David S. Mack Sports and Exhibition Complex - Hempstead, N.Y.



Dunks

HOF : Period 4	Made	Att	Pct
Layups	1	2	50.0
Dunks	0	0	0
2PT Field Goals	3	7	42.9
3PT Field Goals	4	5	80.0
Total Field Goals	7	12	58.3