

FINAL SCORE**William & Mary****87****Hofstra****93****February 09, 2019 • David S. Mack Sports and Exhibition Complex****FINAL STATISTICS**

Official Box Score
William & Mary vs Hofstra
Game Totals -- Final Statistics
February 09, 2019 at David S. Mack Sports and Exhibition Complex

William & Mary 87

| No. | Player | S | Pts | FG | 3FG | FT | OR | DR | TR | PF | A | TO | Blk | Stl | Min | +/- |
|---------------|----------------|---|-----------|--------------|-------------|--------------|----------|-----------|-----------|-----------|-----------|-----------|----------|----------|------------|-----|
| 02 | Milon, Matt | G | 9 | 3-5 | 3-5 | 0-0 | 0 | 3 | 3 | 2 | 1 | 1 | 0 | 0 | 28 | -4 |
| 12 | Loewe, Luke | G | 6 | 3-6 | 0-2 | 0-2 | 0 | 0 | 0 | 4 | 3 | 2 | 0 | 2 | 33 | -1 |
| 13 | Knight, Nathan | F | 39 | 16-24 | 0-0 | 7-10 | 6 | 8 | 14 | 3 | 4 | 3 | 0 | 0 | 36 | -4 |
| 15 | Audige, Chase | G | 6 | 3-10 | 0-2 | 0-1 | 1 | 4 | 5 | 5 | 5 | 3 | 0 | 2 | 33 | -5 |
| 23 | Pierce, Justin | F | 13 | 5-11 | 0-2 | 3-5 | 1 | 8 | 9 | 4 | 8 | 5 | 1 | 0 | 37 | -10 |
| 11 | Owens, L.J. | G | 5 | 2-2 | 1-1 | 0-0 | 0 | 0 | 0 | 2 | 1 | 0 | 0 | 0 | 19 | -3 |
| 22 | Rowley, Paul | F | 9 | 4-4 | 1-1 | 0-0 | 1 | 1 | 2 | 2 | 2 | 1 | 0 | 0 | 14 | -3 |
| Team | | | | | | | 0 | 0 | 0 | 0 | | 1 | | | | |
| TOTALS | | | 87 | 36-62 | 5-13 | 10-18 | 9 | 24 | 33 | 22 | 24 | 16 | 1 | 4 | 200 | |

Shooting By Period

| Period | FG | FG% | 3FG | 3FG% | FT | FT% |
|-------------|--------------|--------------|-------------|--------------|--------------|--------------|
| 1st Half | 19-33 | 58% | 2-6 | 33% | 4-7 | 57% |
| 2nd Half | 17-29 | 59% | 3-7 | 43% | 6-11 | 55% |
| Game | 36-62 | 58.1% | 5-13 | 38.5% | 10-18 | 55.6% |

*Last FG: 2nd-00:05
Largest lead: By 10 at
Technical Fouls: None.*

Hofstra 93

| No. | Player | S | Pts | FG | 3FG | FT | OR | DR | TR | PF | A | TO | Blk | Stl | Min | +/- |
|---------------|------------------------|---|-----------|--------------|-------------|--------------|----------|-----------|-----------|-----------|-----------|----------|----------|----------|------------|-----|
| 00 | Coburn, Tareq | G | 0 | 0-1 | 0-1 | 0-0 | 0 | 2 | 2 | 3 | 0 | 0 | 0 | 0 | 14 | 5 |
| 03 | Wright-Foreman, Justin | G | 48 | 16-24 | 7-12 | 9-11 | 0 | 0 | 0 | 3 | 0 | 1 | 0 | 0 | 32 | 6 |
| 04 | Buie, Desure | G | 16 | 5-13 | 1-4 | 5-6 | 0 | 0 | 0 | 2 | 6 | 3 | 0 | 3 | 40 | 6 |
| 05 | Pemberton, Eli | G | 12 | 2-6 | 0-1 | 8-8 | 0 | 2 | 2 | 3 | 5 | 2 | 0 | 0 | 38 | 2 |
| 23 | Taylor, Jacquil | F | 11 | 5-6 | 0-0 | 1-2 | 3 | 12 | 15 | 4 | 0 | 1 | 1 | 1 | 30 | 0 |
| 15 | Trueheart, Stafford | F | 2 | 1-2 | 0-1 | 0-0 | 1 | 2 | 3 | 0 | 0 | 0 | 1 | 1 | 10 | 4 |
| 20 | Ray, Jalen | G | 4 | 0-4 | 0-3 | 4-6 | 2 | 4 | 6 | 1 | 0 | 1 | 0 | 0 | 26 | 1 |
| 30 | Dwyer, Dan | F | 0 | 0-0 | 0-0 | 0-0 | 1 | 0 | 1 | 2 | 0 | 0 | 0 | 0 | 10 | 6 |
| Team | | | | | | | 0 | 0 | 0 | 0 | | 0 | | | | |
| TOTALS | | | 93 | 29-56 | 8-22 | 27-33 | 7 | 22 | 29 | 18 | 11 | 8 | 2 | 5 | 200 | |

Shooting By Period

| Period | FG | FG% | 3FG | 3FG% | FT | FT% |
|-------------|--------------|--------------|-------------|--------------|--------------|--------------|
| 1st Half | 14-31 | 45% | 1-8 | 13% | 11-14 | 79% |
| 2nd Half | 15-25 | 60% | 7-14 | 50% | 16-19 | 84% |
| Game | 29-56 | 51.8% | 8-22 | 36.4% | 27-33 | 81.8% |

*Last FG: 2nd-01:14
Largest lead: By 8 at
Technical Fouls: None.*

Game Notes:

Officials: **Guy Pagano, John Gwynn, Anthony Burris**
Attendance:

Start Time: **09:00 PM**
Conference Game;

| Score | 1st | 2nd | TOT |
|-------|-----|-----|-----------|
| W&M | 44 | 43 | 87 |
| HOF | 40 | 53 | 93 |

W&M led for 26:49. HOF led for 9:54.
Game was tied for 0:0.
Times tied: 0 Lead Changes: 0

| Points from | W&M | HOF |
|--------------|-----|-----|
| In the Paint | 50 | 30 |
| Off Turns | 10 | 22 |
| 2nd Chance | 8 | 8 |
| Fast Break | 9 | 3 |
| Bench | 14 | 6 |

Official Box Score
William & Mary vs Hofstra
First Half Statistics Only
February 09, 2019 at David S. Mack Sports and Exhibition Complex

William & Mary 44

| No. | Player | S | Pts | FG | 3FG | FT | OR | DR | TR | PF | A | TO | Blk | Stl | Min |
|---------------|----------------|---|-----------|--------------|------------|------------|----------|-----------|-----------|-----------|-----------|----------|----------|----------|------------|
| 02 | Milon, Matt | G | 6 | 2-2 | 2-2 | 0-0 | 0 | 1 | 1 | 2 | 0 | 1 | 0 | 0 | 13 |
| 12 | Loewe, Luke | G | 2 | 1-2 | 0-1 | 0-2 | 0 | 0 | 0 | 1 | 1 | 1 | 0 | 2 | 15 |
| 13 | Knight, Nathan | F | 16 | 6-10 | 0-0 | 4-4 | 3 | 4 | 7 | 1 | 3 | 2 | 0 | 0 | 18 |
| 15 | Audige, Chase | G | 4 | 2-8 | 0-2 | 0-0 | 1 | 3 | 4 | 3 | 2 | 1 | 0 | 1 | 16 |
| 23 | Pierce, Justin | F | 8 | 4-7 | 0-1 | 0-1 | 0 | 5 | 5 | 0 | 4 | 3 | 1 | 0 | 18 |
| 11 | Owens, L.J. | G | 2 | 1-1 | 0-0 | 0-0 | 0 | 0 | 0 | 2 | 0 | 0 | 0 | 0 | 12 |
| 22 | Rowley, Paul | F | 6 | 3-3 | 0-0 | 0-0 | 0 | 0 | 0 | 2 | 1 | 0 | 0 | 0 | 7 |
| Team | | | | 0-0 | | | 0 | 0 | 0 | 0 | | 0 | | | |
| TOTALS | | | 44 | 19-33 | 2-6 | 4-7 | 4 | 13 | 17 | 11 | 11 | 8 | 1 | 3 | 100 |

Shooting By Period

| Period | FG | FG% | 3FG | 3FG% | FT | FT% |
|----------|-------|-------|------|-------|-------|-------|
| 1st Half | 19-33 | 58% | 2-6 | 33% | 4-7 | 57% |
| Game | 36-62 | 58.1% | 5-13 | 38.5% | 10-18 | 55.6% |

Last FG Half: W&M 2nd-00:05

Hofstra 40

| No. | Player | S | Pts | FG | 3FG | FT | OR | DR | TR | PF | A | TO | Blk | Stl | Min |
|---------------|------------------------|---|-----------|--------------|------------|--------------|----------|-----------|-----------|----------|----------|----------|----------|----------|------------|
| 00 | Coburn, Tareq | G | 0 | 0-1 | 0-1 | 0-0 | 0 | 1 | 1 | 2 | 0 | 0 | 0 | 0 | 5 |
| 03 | Wright-Foreman, Justin | G | 11 | 5-7 | 1-2 | 0-0 | 0 | 0 | 0 | 2 | 0 | 0 | 0 | 0 | 12 |
| 04 | Buie, Desure | G | 7 | 2-8 | 0-2 | 3-4 | 0 | 0 | 0 | 1 | 2 | 3 | 0 | 2 | 20 |
| 05 | Pemberton, Eli | G | 10 | 2-5 | 0-0 | 6-6 | 0 | 0 | 0 | 1 | 2 | 1 | 0 | 0 | 18 |
| 23 | Taylor, Jacquil | F | 9 | 4-5 | 0-0 | 1-2 | 3 | 7 | 10 | 1 | 0 | 1 | 0 | 0 | 17 |
| 15 | Trueheart, Stafford | F | 2 | 1-2 | 0-1 | 0-0 | 1 | 2 | 3 | 0 | 0 | 0 | 1 | 1 | 10 |
| 20 | Ray, Jalen | G | 1 | 0-3 | 0-2 | 1-2 | 1 | 2 | 3 | 1 | 0 | 1 | 0 | 0 | 15 |
| 30 | Dwyer, Dan | F | 0 | 0-0 | 0-0 | 0-0 | 0 | 0 | 0 | 1 | 0 | 0 | 0 | 0 | 3 |
| Team | | | | 0-0 | | | 0 | 0 | 0 | 0 | | 0 | | | |
| TOTALS | | | 40 | 14-31 | 1-8 | 11-14 | 5 | 12 | 17 | 9 | 4 | 6 | 1 | 3 | 100 |

Shooting By Period

| Period | FG | FG% | 3FG | 3FG% | FT | FT% |
|----------|-------|-------|------|-------|-------|-------|
| 1st Half | 14-31 | 45% | 1-8 | 13% | 11-14 | 79% |
| Game | 29-56 | 51.8% | 8-22 | 36.4% | 27-33 | 81.8% |

Last FG Half: HOF 2nd-01:14

Game Notes:

Officials: **Guy Pagano, John Gwynn, Anthony Burris**
Attendance:

Start Time: **09:00 PM**
Conference Game;

| Score | 1st | 2nd | TOT |
|-------|-----|-----|-----------|
| W&M | 44 | 43 | 87 |
| HOF | 40 | 53 | 93 |

| Points from (This Period) | W&M | HOF |
|---------------------------|-----|-----|
| In the Paint | 28 | 20 |
| Off Turns | 6 | 11 |
| 2nd Chance | 2 | 5 |
| Fast Break | 5 | 3 |
| Bench | 8 | 3 |

**Official Play-By-Play
William & Mary vs Hofstra
First Half**

February 09, 2019 at David S. Mack Sports and Exhibition Complex

Period 1

Starters:

William & Mary: 2 MILON,MATT (G); 12 LOEWE,LUKE (G); 13 KNIGHT,NATHAN (F); 15 AUDIGE,CHASE (G); 23 PIERCE,JUSTIN (F);

Hofstra: 0 COBURN,TAREQ (G); 3 WRIGHT-FOREMAN,JUSTIN (G); 4 BUIE,DESURE (G); 5 PEMBERTON,ELI (G); 23 TAYLOR,JACQUIL (F);

| Time | VISITORS: William & Mary | Score | Margin | HOME: Hofstra |
|-------|------------------------------------|-------|--------|--|
| 19:41 | MISSED 3PTR by AUDIGE,CHASE | | | |
| 19:36 | | | | REBOUND (DEF) by COBURN,TAREQ |
| 19:17 | | | | TURNOVER by TAYLOR,JACQUIL [PNT] |
| 18:54 | GOOD! LAYUP by PIERCE,JUSTIN [PNT] | 0-2 | V 2 | |
| 18:54 | ASSIST by KNIGHT,NATHAN | | | |
| 18:40 | FOUL by AUDIGE,CHASE | | | |
| 18:40 | | 1-2 | V 1 | GOOD! FT by PEMBERTON,ELI |
| 18:40 | | 2-2 | T | GOOD! FT by PEMBERTON,ELI |
| 18:22 | TURNOVER by LOEWE,LUKE | | | |
| 18:08 | | 4-2 | H 2 | GOOD! JUMPER by WRIGHT-FOREMAN,JUSTIN |
| 17:39 | MISSED LAYUP by KNIGHT,NATHAN | | | |
| 17:37 | | | | REBOUND (DEF) by TAYLOR,JACQUIL |
| 17:33 | FOUL by MILON,MATT | | | |
| 17:27 | | | | MISSED JUMPER by WRIGHT-FOREMAN,JUSTIN [PNT] |
| 17:22 | REBOUND (DEF) by PIERCE,JUSTIN | | | |
| 17:19 | | | | FOUL by COBURN,TAREQ [PNT] |
| 17:00 | MISSED 3PTR by PIERCE,JUSTIN | | | |
| 16:55 | | | | REBOUND (DEF) by TAYLOR,JACQUIL |
| 16:44 | | | | MISSED JUMPER by PEMBERTON,ELI |
| 16:41 | | | | REBOUND (OFF) by TAYLOR,JACQUIL |
| 16:40 | | | | MISSED LAYUP by TAYLOR,JACQUIL |
| 16:36 | REBOUND (DEF) by PIERCE,JUSTIN | | | |
| 16:35 | GOOD! DUNK by KNIGHT,NATHAN [PNT] | 4-4 | T | |
| 16:35 | ASSIST by PIERCE,JUSTIN | | | |
| 16:22 | | | | MISSED JUMPER by BUIE,DESURE |
| 16:20 | REBOUND (DEF) by PIERCE,JUSTIN | | | |
| 16:20 | | | | FOUL by COBURN,TAREQ |
| 16:20 | | | | SUB OUT: COBURN,TAREQ |
| 16:20 | | | | SUB IN: RAY,JALEN |
| 16:04 | MISSED LAYUP by AUDIGE,CHASE [PNT] | | | |
| 16:01 | REBOUND (OFF) by KNIGHT,NATHAN | | | |
| 16:00 | GOOD! LAYUP by KNIGHT,NATHAN [PNT] | 4-6 | V 2 | |
| 15:44 | | | | MISSED 3PTR by WRIGHT-FOREMAN,JUSTIN |
| 15:40 | REBOUND (DEF) by PIERCE,JUSTIN | | | |
| 15:33 | TURNOVER by PIERCE,JUSTIN | | | |
| 15:33 | TIMEOUT MEDIA | | | |
| 15:33 | SUB OUT: LOEWE,LUKE | | | |
| 15:33 | SUB IN: OWENS,L.J. | | | |
| 15:33 | SUB OUT: MILON,MATT | | | |
| 15:33 | SUB IN: ROWLEY,PAUL | | | |
| 15:22 | | | | |
| 15:18 | | | | MISSED 3PTR by BUIE,DESURE |
| 15:17 | | 6-6 | T | REBOUND (OFF) by TAYLOR,JACQUIL |
| 15:17 | | | | GOOD! by TAYLOR,JACQUIL [PNT] |
| 15:10 | TURNOVER by PIERCE,JUSTIN | | | |
| 15:10 | | | | STEAL by BUIE,DESURE |
| 15:09 | | 8-6 | H 2 | GOOD! LAYUP by BUIE,DESURE [FB/PNT] |
| 15:08 | FOUL by OWENS,L.J. [PNT] | | | |
| 15:08 | | 9-6 | H 3 | GOOD! FT by BUIE,DESURE [FB] |
| 14:53 | GOOD! JUMPER by OWENS,L.J. | 9-8 | H 1 | |
| 14:38 | FOUL by ROWLEY,PAUL [PNT] | | | |
| 14:38 | | 10-8 | H 2 | GOOD! FT by PEMBERTON,ELI |
| 14:38 | | 11-8 | H 3 | GOOD! FT by PEMBERTON,ELI |
| 14:22 | GOOD! DUNK by AUDIGE,CHASE | 11-10 | H 1 | |
| 14:22 | ASSIST by KNIGHT,NATHAN | | | |
| 14:03 | | | | TURNOVER by RAY,JALEN |
| 14:03 | STEAL by AUDIGE,CHASE | | | |
| 13:58 | GOOD! DUNK by AUDIGE,CHASE [FB] | 11-12 | V 1 | |
| 13:45 | | | | MISSED 3PTR by RAY,JALEN |
| 13:40 | REBOUND (DEF) by AUDIGE,CHASE | | | |
| 13:39 | TURNOVER by AUDIGE,CHASE | | | |
| 13:39 | | | | SUB OUT: TAYLOR,JACQUIL |
| 13:39 | | | | SUB IN: DWYER,DAN |
| 13:39 | SUB OUT: PIERCE,JUSTIN | | | |
| 13:39 | SUB IN: LOEWE,LUKE | | | |
| 13:26 | | | | MISSED 3PTR by BUIE,DESURE |
| 13:21 | REBOUND (DEF) by AUDIGE,CHASE | | | |
| 13:12 | GOOD! LAYUP by KNIGHT,NATHAN | 11-14 | V 3 | |
| 13:12 | ASSIST by AUDIGE,CHASE | | | |
| 13:12 | | | | FOUL by WRIGHT-FOREMAN,JUSTIN |
| 13:12 | GOOD! FT by KNIGHT,NATHAN | 11-15 | V 4 | |
| 12:55 | | 13-15 | V 2 | GOOD! LAYUP by WRIGHT-FOREMAN,JUSTIN |
| 12:43 | GOOD! LAYUP by KNIGHT,NATHAN [PNT] | 13-17 | V 4 | |
| 12:43 | | | | FOUL by DWYER,DAN [PNT] |
| 12:43 | GOOD! FT by KNIGHT,NATHAN | 13-18 | V 5 | |
| 12:43 | SUB OUT: KNIGHT,NATHAN | | | |
| 12:43 | SUB IN: PIERCE,JUSTIN | | | |

| Time | VISITORS: William & Mary | Score | Margin | HOME: Hofstra |
|-------|------------------------------------|-------|--------|---|
| 12:30 | | | | MISSED LAYUP by BUIE,DESURE [PNT] |
| 12:30 | BLOCK by PIERCE,JUSTIN | | | |
| 12:25 | REBOUND (DEF) by AUDIGE,CHASE | | | |
| 12:14 | GOOD! JUMPER by ROWLEY,PAUL | 13-20 | V 7 | |
| 11:56 | | 15-20 | V 5 | GOOD! LAYUP by WRIGHT-FOREMAN,JUSTIN |
| 11:37 | GOOD! LAYUP by PIERCE,JUSTIN | 15-22 | V 7 | |
| 11:37 | ASSIST by ROWLEY,PAUL | | | |
| 11:13 | | | | TURNOVER by BUIE,DESURE |
| 11:13 | STEAL by LOEWE,LUKE | | | |
| 11:08 | | | | FOUL by WRIGHT-FOREMAN,JUSTIN [PNT] |
| 11:08 | TIMEOUT MEDIA | | | |
| 11:08 | | | | SUB OUT: DWYER,DAN |
| 11:08 | | | | SUB IN: TAYLOR,JACQUIL |
| 11:08 | | | | SUB OUT: WRIGHT-FOREMAN,JUSTIN |
| 11:08 | | | | SUB IN: TRUEHEART,STAFFORD |
| 11:08 | SUB OUT: ROWLEY,PAUL | | | |
| 11:08 | SUB IN: KNIGHT,NATHAN | | | |
| 11:08 | MISSED FT by LOEWE,LUKE | | | |
| 11:08 | REBOUND (DEADB) by TEAM | | | |
| 11:08 | MISSED FT by LOEWE,LUKE | | | |
| 11:05 | | | | REBOUND (DEF) by TAYLOR,JACQUIL |
| 10:53 | | | | TURNOVER by BUIE,DESURE [PNT] |
| 10:53 | STEAL by LOEWE,LUKE | | | |
| 10:49 | GOOD! LAYUP by PIERCE,JUSTIN [PNT] | 15-24 | V 9 | |
| 10:49 | ASSIST by LOEWE,LUKE | | | |
| 10:49 | | | | FOUL by RAY,JALEN [PNT] |
| 10:49 | MISSED FT by PIERCE,JUSTIN | | | |
| 10:47 | | | | REBOUND (DEF) by TAYLOR,JACQUIL |
| 10:23 | | 17-24 | V 7 | GOOD! JUMPER by TAYLOR,JACQUIL |
| 10:23 | | | | ASSIST by BUIE,DESURE |
| 10:05 | MISSED JUMPER by PIERCE,JUSTIN | | | |
| 09:58 | REBOUND (OFF) by KNIGHT,NATHAN | | | |
| 09:58 | MISSED LAYUP by KNIGHT,NATHAN | | | |
| 09:49 | REBOUND (OFF) by KNIGHT,NATHAN | | | |
| 09:49 | MISSED LAYUP by KNIGHT,NATHAN | | | |
| 09:46 | | | | REBOUND (DEF) by RAY,JALEN |
| 09:45 | | | | MISSED JUMPER by BUIE,DESURE [PNT] |
| 09:40 | | | | REBOUND (OFF) by TRUEHEART,STAFFORD |
| 09:40 | | 19-24 | V 5 | GOOD! LAYUP by TRUEHEART,STAFFORD [PNT] |
| 09:38 | SUB OUT: LOEWE,LUKE | | | |
| 09:38 | SUB IN: ROWLEY,PAUL | | | |
| 09:38 | SUB OUT: AUDIGE,CHASE | | | |
| 09:38 | SUB IN: MILON,MATT | | | |
| 09:15 | GOOD! by KNIGHT,NATHAN [PNT] | 19-26 | V 7 | |
| 09:15 | | | | FOUL by TAYLOR,JACQUIL [PNT] |
| 09:15 | GOOD! FT by KNIGHT,NATHAN | 19-27 | V 8 | |
| 08:52 | | 21-27 | V 6 | GOOD! LAYUP by PEMBERTON,ELI |
| 08:35 | TURNOVER by MILON,MATT | | | |
| 08:35 | | | | STEAL by TRUEHEART,STAFFORD |
| 08:34 | FOUL by MILON,MATT | | | |
| 08:34 | SUB OUT: OWENS,L.J. | | | |
| 08:34 | SUB IN: AUDIGE,CHASE | | | |
| 08:22 | | 23-27 | V 4 | GOOD! LAYUP by PEMBERTON,ELI |
| 07:54 | GOOD! JUMPER by ROWLEY,PAUL | 23-29 | V 6 | |
| 07:47 | | 25-29 | V 4 | GOOD! LAYUP by BUIE,DESURE [PNT] |
| 07:46 | SUB OUT: MILON,MATT | | | |
| 07:46 | SUB IN: OWENS,L.J. | | | |
| 07:46 | FOUL by OWENS,L.J. | | | |
| 07:46 | TIMEOUT MEDIA | | | |
| 07:46 | SUB OUT: PIERCE,JUSTIN | | | |
| 07:46 | SUB IN: LOEWE,LUKE | | | |
| 07:46 | | 26-29 | V 3 | GOOD! FT by BUIE,DESURE |
| 07:23 | GOOD! LAYUP by ROWLEY,PAUL [PNT] | 26-31 | V 5 | |
| 06:53 | FOUL by ROWLEY,PAUL [PNT] | | | |
| 06:53 | | | | MISSED FT by RAY,JALEN |
| 06:53 | | | | REBOUND (DEADB) by TEAM |
| 06:53 | SUB OUT: ROWLEY,PAUL | | | |
| 06:53 | SUB IN: PIERCE,JUSTIN | | | |
| 06:53 | | 27-31 | V 4 | GOOD! FT by RAY,JALEN |
| 06:53 | SUB OUT: OWENS,L.J. | | | |
| 06:53 | SUB IN: MILON,MATT | | | |
| 06:33 | MISSED LAYUP by AUDIGE,CHASE [PNT] | | | |
| 06:33 | | | | BLOCK by TRUEHEART,STAFFORD |
| 06:28 | REBOUND (OFF) by AUDIGE,CHASE | | | |
| 06:25 | MISSED 3PTR by LOEWE,LUKE | | | |
| 06:21 | | | | REBOUND (DEF) by TAYLOR,JACQUIL |
| 06:09 | | | | MISSED JUMPER by PEMBERTON,ELI |
| 06:05 | REBOUND (DEF) by MILON,MATT | | | |
| 05:53 | GOOD! JUMPER by LOEWE,LUKE [PNT] | 27-33 | V 6 | |
| 05:53 | ASSIST by PIERCE,JUSTIN | | | |
| 05:38 | FOUL by LOEWE,LUKE | | | |
| 05:38 | | | | MISSED FT by BUIE,DESURE |
| 05:38 | | | | REBOUND (DEADB) by TEAM |
| 05:38 | | | | SUB OUT: PEMBERTON,ELI |
| 05:38 | | | | SUB IN: WRIGHT-FOREMAN,JUSTIN |
| 05:38 | | 28-33 | V 5 | GOOD! FT by BUIE,DESURE |
| 05:20 | MISSED LAYUP by AUDIGE,CHASE | | | |

| Time | VISITORS: William & Mary | Score | Margin | HOME: Hofstra |
|-------|---------------------------------------|-------|--------|--------------------------------------|
| 05:16 | | | | REBOUND (DEF) by RAY,JALEN |
| 05:12 | | | | MISSED LAYUP by RAY,JALEN |
| 05:11 | | | | REBOUND (OFF) by TAYLOR,JACQUIL |
| 05:11 | FOUL by AUDIGE,CHASE [PNT] | | | |
| 05:11 | | 29-33 | V 4 | GOOD! FT by TAYLOR,JACQUIL |
| 05:10 | | | | MISSED FT by TAYLOR,JACQUIL |
| 05:08 | REBOUND (DEF) by KNIGHT,NATHAN | | | |
| 04:54 | GOOD! 3PTR by MILON,MATT | 29-36 | V 7 | |
| 04:54 | ASSIST by KNIGHT,NATHAN | | | |
| 04:37 | | | | MISSED 3PTR by RAY,JALEN |
| 04:34 | REBOUND (DEF) by KNIGHT,NATHAN | | | |
| 04:18 | FOUL by KNIGHT,NATHAN | | | |
| 04:18 | TURNOVER by KNIGHT,NATHAN | | | |
| 04:18 | | | | SUB OUT: RAY,JALEN |
| 04:18 | | | | SUB IN: COBURN,TAREQ |
| 04:04 | | 31-36 | V 5 | GOOD! LAYUP by WRIGHT-FOREMAN,JUSTIN |
| 03:50 | MISSED LAYUP by AUDIGE,CHASE | | | |
| 03:46 | | | | REBOUND (DEF) by TAYLOR,JACQUIL |
| 03:44 | | 34-36 | V 2 | GOOD! 3PTR by WRIGHT-FOREMAN,JUSTIN |
| 03:44 | | | | ASSIST by BUIE,DESURE |
| 03:38 | TIMEOUT 30SEC | | | |
| 03:38 | | | | SUB OUT: COBURN,TAREQ |
| 03:38 | | | | SUB IN: PEMBERTON,ELI |
| 03:38 | | | | SUB OUT: WRIGHT-FOREMAN,JUSTIN |
| 03:38 | | | | SUB IN: RAY,JALEN |
| 03:38 | SUB OUT: LOEWE,LUKE | | | |
| 03:38 | SUB IN: OWENS,L.J. | | | |
| 03:22 | GOOD! JUMPER by PIERCE,JUSTIN [PNT] | 34-38 | V 4 | |
| 03:22 | ASSIST by AUDIGE,CHASE | | | |
| 03:02 | | | | MISSED 3PTR by TRUEHEART,STAFFORD |
| 02:57 | | | | REBOUND (OFF) by RAY,JALEN |
| 02:50 | | | | MISSED LAYUP by BUIE,DESURE |
| 02:47 | REBOUND (DEF) by KNIGHT,NATHAN | | | |
| 02:44 | MISSED 3PTR by AUDIGE,CHASE | | | |
| 02:38 | | | | REBOUND (DEF) by TRUEHEART,STAFFORD |
| 02:36 | FOUL by AUDIGE,CHASE | | | |
| 02:36 | | 35-38 | V 3 | GOOD! FT by PEMBERTON,ELI |
| 02:36 | SUB OUT: AUDIGE,CHASE | | | |
| 02:36 | SUB IN: LOEWE,LUKE | | | |
| 02:36 | | 36-38 | V 2 | GOOD! FT by PEMBERTON,ELI |
| 02:11 | MISSED JUMPER by PIERCE,JUSTIN | | | |
| 02:06 | | | | REBOUND (DEF) by TRUEHEART,STAFFORD |
| 02:02 | | | | FOUL by PEMBERTON,ELI |
| 02:02 | | | | TURNOVER by PEMBERTON,ELI |
| 01:51 | TURNOVER by KNIGHT,NATHAN | | | |
| 01:51 | | | | SUB OUT: RAY,JALEN |
| 01:51 | | | | SUB IN: WRIGHT-FOREMAN,JUSTIN |
| 01:51 | | | | SUB OUT: TRUEHEART,STAFFORD |
| 01:51 | | | | SUB IN: COBURN,TAREQ |
| 01:38 | | | | MISSED JUMPER by PEMBERTON,ELI |
| 01:34 | REBOUND (DEF) by KNIGHT,NATHAN | | | |
| 01:11 | MISSED JUMPER by KNIGHT,NATHAN | | | |
| 01:07 | | | | REBOUND (DEF) by TAYLOR,JACQUIL |
| 01:05 | | | | MISSED 3PTR by COBURN,TAREQ |
| 01:00 | REBOUND (DEF) by PIERCE,JUSTIN | | | |
| 00:57 | GOOD! LAYUP by KNIGHT,NATHAN [FB/PNT] | 36-40 | V 4 | |
| 00:57 | ASSIST by PIERCE,JUSTIN | | | |
| 00:57 | | | | FOUL by BUIE,DESURE [PNT] |
| 00:57 | GOOD! FT by KNIGHT,NATHAN [FB] | 36-41 | V 5 | |
| 00:43 | | 38-41 | V 3 | GOOD! LAYUP by TAYLOR,JACQUIL |
| 00:43 | | | | ASSIST by PEMBERTON,ELI |
| 00:42 | | | | TIMEOUT 30SEC |
| 00:42 | | | | SUB OUT: COBURN,TAREQ |
| 00:42 | | | | SUB IN: RAY,JALEN |
| 00:42 | | | | SUB OUT: WRIGHT-FOREMAN,JUSTIN |
| 00:42 | | | | SUB IN: TRUEHEART,STAFFORD |
| 00:25 | GOOD! 3PTR by MILON,MATT | 38-44 | V 6 | |
| 00:25 | ASSIST by PIERCE,JUSTIN | | | |
| 00:06 | | 40-44 | V 4 | GOOD! JUMPER by TAYLOR,JACQUIL |
| 00:06 | | | | ASSIST by PEMBERTON,ELI |
| 00:01 | TURNOVER by PIERCE,JUSTIN | | | |
| 00:01 | | | | STEAL by BUIE,DESURE |
| 00:00 | | | | TURNOVER by BUIE,DESURE |

William & Mary 44, Hofstra 40

| Points from (This Period) | W&M | HOF |
|---------------------------|-----|-----|
| In the Paint | 28 | 20 |
| Off Turns | 6 | 11 |
| 2nd Chance | 2 | 5 |
| Fast Break | 5 | 3 |
| Bench | 8 | 3 |

Official Box Score
William & Mary vs Hofstra
Second Half Statistics Only
February 09, 2019 at David S. Mack Sports and Exhibition Complex

William & Mary 43

| No. | Player | S | Pts | FG | 3FG | FT | OR | DR | TR | PF | A | TO | Blk | Stl | Min |
|---------------|----------------|---|-----------|--------------|------------|-------------|----------|-----------|-----------|-----------|-----------|----------|----------|----------|------------|
| 02 | Milon, Matt | G | 3 | 1-3 | 1-3 | 0-0 | 0 | 2 | 2 | 0 | 1 | 0 | 0 | 0 | 15 |
| 12 | Loewe, Luke | G | 4 | 2-4 | 0-1 | 0-0 | 0 | 0 | 0 | 3 | 2 | 1 | 0 | 0 | 18 |
| 13 | Knight, Nathan | F | 23 | 10-14 | 0-0 | 3-6 | 3 | 4 | 7 | 2 | 1 | 1 | 0 | 0 | 18 |
| 15 | Audige, Chase | G | 2 | 1-2 | 0-0 | 0-1 | 0 | 1 | 1 | 2 | 3 | 2 | 0 | 1 | 16 |
| 23 | Pierce, Justin | F | 5 | 1-4 | 0-1 | 3-4 | 1 | 3 | 4 | 4 | 4 | 2 | 0 | 0 | 19 |
| 11 | Owens, L.J. | G | 3 | 1-1 | 1-1 | 0-0 | 0 | 0 | 0 | 0 | 1 | 0 | 0 | 0 | 7 |
| 22 | Rowley, Paul | F | 3 | 1-1 | 1-1 | 0-0 | 1 | 1 | 2 | 0 | 1 | 1 | 0 | 0 | 7 |
| | Team | | | 0-0 | | | 0 | 0 | 0 | 0 | | 1 | | | |
| TOTALS | | | 43 | 17-29 | 3-7 | 6-11 | 5 | 11 | 16 | 11 | 13 | 8 | 0 | 1 | 100 |

Shooting By Period

| Period | FG | FG% | 3FG | 3FG% | FT | FT% |
|----------|-------|-------|------|-------|-------|-------|
| 2nd Half | 17-29 | 59% | 3-7 | 43% | 6-11 | 55% |
| Game | 36-62 | 58.1% | 5-13 | 38.5% | 10-18 | 55.6% |

Last FG Half: W&M -

Hofstra 53

| No. | Player | S | Pts | FG | 3FG | FT | OR | DR | TR | PF | A | TO | Blk | Stl | Min |
|---------------|------------------------|---|-----------|--------------|-------------|--------------|----------|-----------|-----------|----------|----------|----------|----------|----------|------------|
| 00 | Coburn, Tareq | G | 0 | 0-0 | 0-0 | 0-0 | 0 | 1 | 1 | 1 | 0 | 0 | 0 | 0 | 8 |
| 03 | Wright-Foreman, Justin | G | 37 | 11-17 | 6-10 | 9-11 | 0 | 0 | 0 | 1 | 0 | 1 | 0 | 0 | 20 |
| 04 | Buie, Desure | G | 9 | 3-5 | 1-2 | 2-2 | 0 | 0 | 0 | 1 | 4 | 0 | 0 | 1 | 20 |
| 05 | Pemberton, Eli | G | 2 | 0-1 | 0-1 | 2-2 | 0 | 2 | 2 | 2 | 3 | 1 | 0 | 0 | 20 |
| 23 | Taylor, Jacquil | F | 2 | 1-1 | 0-0 | 0-0 | 0 | 5 | 5 | 3 | 0 | 0 | 1 | 1 | 13 |
| 15 | Trueheart, Stafford | F | 0 | 0-0 | 0-0 | 0-0 | 0 | 0 | 0 | 0 | 0 | 0 | 0 | 0 | 0 |
| 20 | Ray, Jalen | G | 3 | 0-1 | 0-1 | 3-4 | 1 | 2 | 3 | 0 | 0 | 0 | 0 | 0 | 12 |
| 30 | Dwyer, Dan | F | 0 | 0-0 | 0-0 | 0-0 | 1 | 0 | 1 | 1 | 0 | 0 | 0 | 0 | 7 |
| | Team | | | 0-0 | | | 0 | 0 | 0 | 0 | | 0 | | | |
| TOTALS | | | 53 | 15-25 | 7-14 | 16-19 | 2 | 10 | 12 | 9 | 7 | 2 | 1 | 2 | 100 |

Shooting By Period

| Period | FG | FG% | 3FG | 3FG% | FT | FT% |
|----------|-------|-------|------|-------|-------|-------|
| 2nd Half | 15-25 | 60% | 7-14 | 50% | 16-19 | 84% |
| Game | 29-56 | 51.8% | 8-22 | 36.4% | 27-33 | 81.8% |

Last FG Half: HOF -

Game Notes:

Officials: **Guy Pagano, John Gwynn, Anthony Burris**
Attendance:

Start Time: **09:00 PM**
Conference Game;

| Score | 1st | 2nd | TOT |
|-------|-----|-----|-----------|
| W&M | 44 | 43 | 87 |
| HOF | 40 | 53 | 93 |

| Points from (This Period) | W&M | HOF |
|---------------------------|-----|-----|
| In the Paint | 22 | 10 |
| Off Turns | 4 | 11 |
| 2nd Chance | 6 | 3 |
| Fast Break | 4 | 0 |
| Bench | 6 | 3 |

**Official Play-By-Play
William & Mary vs Hofstra
Second Half**

February 09, 2019 at David S. Mack Sports and Exhibition Complex

Period 2

Starters:

William & Mary: 2 MILON,MATT (G); 12 LOEWE,LUKE (G); 13 KNIGHT,NATHAN (F); 15 AUDIGE,CHASE (G); 23 PIERCE,JUSTIN (F);

Hofstra: 0 COBURN,TAREQ (G); 3 WRIGHT-FOREMAN,JUSTIN (G); 4 BUIE,DESURE (G); 5 PEMBERTON,ELI (G); 23 TAYLOR,JACQUIL (F);

| Time | VISITORS: William & Mary | Score | Margin | HOME: Hofstra |
|-------|---------------------------------------|-------|--------|--|
| 20:00 | | | | SUB OUT: TRUEHEART,STAFFORD |
| 20:00 | | | | SUB IN: COBURN,TAREQ |
| 20:00 | | | | SUB OUT: RAY,JALEN |
| 20:00 | | | | SUB IN: WRIGHT-FOREMAN,JUSTIN |
| 20:00 | SUB OUT: OWENS,L.J. | | | |
| 20:00 | SUB IN: AUDIGE,CHASE | | | |
| 19:42 | TURNOVER by KNIGHT,NATHAN [PNT] | | | |
| 19:42 | | | | STEAL by TAYLOR,JACQUIL |
| 19:22 | | | | MISSED JUMPER by WRIGHT-FOREMAN,JUSTIN [PNT] |
| 19:17 | REBOUND (DEF) by AUDIGE,CHASE | | | |
| 19:17 | TURNOVER by AUDIGE,CHASE | | | |
| 19:17 | | | | STEAL by BUIE,DESURE |
| 19:12 | | | | MISSED LAYUP by BUIE,DESURE [PNT] |
| 19:09 | REBOUND (DEF) by PIERCE,JUSTIN | | | |
| 19:05 | GOOD! 3PTR by MILON,MATT | 40-47 | V 7 | |
| 19:05 | ASSIST by PIERCE,JUSTIN | | | |
| 18:34 | | | | TURNOVER by PEMBERTON,ELI |
| 18:34 | STEAL by AUDIGE,CHASE | | | |
| 18:28 | GOOD! DUNK by PIERCE,JUSTIN [PNT] | 40-49 | V 9 | |
| 18:28 | | | | TIMEOUT 30SEC |
| 18:17 | | 43-49 | V 6 | GOOD! 3PTR by WRIGHT-FOREMAN,JUSTIN |
| 18:17 | | | | ASSIST by BUIE,DESURE |
| 17:56 | GOOD! LAYUP by KNIGHT,NATHAN | 43-51 | V 8 | |
| 17:56 | ASSIST by PIERCE,JUSTIN | | | |
| 17:56 | | | | FOUL by COBURN,TAREQ |
| 17:56 | MISSED FT by KNIGHT,NATHAN | | | |
| 17:54 | | | | REBOUND (DEF) by TAYLOR,JACQUIL |
| 17:30 | | | | MISSED 3PTR by PEMBERTON,ELI |
| 17:24 | REBOUND (DEF) by MILON,MATT | | | |
| 17:20 | GOOD! LAYUP by KNIGHT,NATHAN [FB/PNT] | 43-53 | V 10 | |
| 17:20 | ASSIST by LOEWE,LUKE | | | |
| 17:07 | | 46-53 | V 7 | GOOD! 3PTR by WRIGHT-FOREMAN,JUSTIN |
| 17:07 | | | | ASSIST by BUIE,DESURE |
| 16:51 | GOOD! LAYUP by KNIGHT,NATHAN | 46-55 | V 9 | |
| 16:51 | ASSIST by LOEWE,LUKE | | | |
| 16:51 | | | | FOUL by TAYLOR,JACQUIL |
| 16:51 | GOOD! FT by KNIGHT,NATHAN | 46-56 | V 10 | |
| 16:40 | FOUL by KNIGHT,NATHAN [PNT] | | | |
| 16:40 | | 47-56 | V 9 | GOOD! FT by PEMBERTON,ELI |
| 16:40 | | 48-56 | V 8 | GOOD! FT by PEMBERTON,ELI |
| 16:26 | MISSED LAYUP by PIERCE,JUSTIN | | | |
| 16:26 | | | | BLOCK by TAYLOR,JACQUIL |
| 16:20 | | | | REBOUND (DEF) by TAYLOR,JACQUIL |
| 16:15 | | 50-56 | V 6 | GOOD! by TAYLOR,JACQUIL [PNT] |
| 16:15 | | | | ASSIST by PEMBERTON,ELI |
| 15:44 | MISSED JUMPER by KNIGHT,NATHAN [PNT] | | | |
| 15:40 | REBOUND (OFF) by PIERCE,JUSTIN | | | |
| 15:25 | GOOD! JUMPER by KNIGHT,NATHAN [PNT] | 50-58 | V 8 | |
| 15:25 | ASSIST by AUDIGE,CHASE | | | |
| 15:09 | | | | MISSED 3PTR by WRIGHT-FOREMAN,JUSTIN |
| 15:04 | REBOUND (DEF) by PIERCE,JUSTIN | | | |
| 14:51 | GOOD! JUMPER by KNIGHT,NATHAN | 50-60 | V 10 | |
| 14:51 | ASSIST by MILON,MATT | | | |
| 14:24 | | 53-60 | V 7 | GOOD! 3PTR by WRIGHT-FOREMAN,JUSTIN |
| 13:57 | TURNOVER by AUDIGE,CHASE | | | |
| 13:56 | TIMEOUT MEDIA | | | |
| 13:56 | | | | SUB OUT: TAYLOR,JACQUIL |
| 13:56 | | | | SUB IN: DWYER,DAN |
| 13:56 | SUB OUT: LOEWE,LUKE | | | |
| 13:56 | SUB IN: OWENS,L.J. | | | |
| 13:56 | SUB OUT: KNIGHT,NATHAN | | | |
| 13:56 | SUB IN: ROWLEY,PAUL | | | |
| 13:33 | FOUL by PIERCE,JUSTIN | | | |
| 13:33 | | 54-60 | V 6 | GOOD! FT by WRIGHT-FOREMAN,JUSTIN |
| 13:33 | | 55-60 | V 5 | GOOD! FT by WRIGHT-FOREMAN,JUSTIN |
| 13:13 | GOOD! 3PTR by OWENS,L.J. | 55-63 | V 8 | |
| 13:13 | ASSIST by ROWLEY,PAUL | | | |
| 12:47 | | 57-63 | V 6 | GOOD! JUMPER by WRIGHT-FOREMAN,JUSTIN [PNT] |
| 12:33 | MISSED JUMPER by PIERCE,JUSTIN | | | |
| 12:28 | | | | REBOUND (DEF) by COBURN,TAREQ |
| 12:21 | | | | MISSED 3PTR by WRIGHT-FOREMAN,JUSTIN |
| 12:17 | REBOUND (DEF) by PIERCE,JUSTIN | | | |
| 12:11 | MISSED 3PTR by MILON,MATT | | | |
| 12:06 | | | | REBOUND (DEF) by PEMBERTON,ELI |
| 12:01 | | 60-63 | V 3 | GOOD! 3PTR by BUIE,DESURE |
| 12:01 | | | | ASSIST by PEMBERTON,ELI |

| Time | VISITORS: William & Mary | Score | Margin | HOME: Hofstra |
|-------|----------------------------------|-------|--------|---|
| 11:45 | TIMEOUT 30SEC | | | |
| 11:45 | | | | SUB OUT: DWYER,DAN |
| 11:45 | | | | SUB IN: TAYLOR,JACQUIL |
| 11:45 | | | | SUB OUT: COBURN,TAREQ |
| 11:45 | | | | SUB IN: RAY,JALEN |
| 11:45 | SUB OUT: PIERCE,JUSTIN | | | |
| 11:45 | SUB IN: KNIGHT,NATHAN | | | |
| 11:45 | SUB OUT: MILON,MATT | | | |
| 11:45 | SUB IN: LOEWE,LUKE | | | |
| 11:37 | MISSED LAYUP by LOEWE,LUKE [PNT] | | | |
| 11:36 | REBOUND (OFF) by KNIGHT,NATHAN | | | |
| 11:35 | | | | FOUL by BUIE,DESURE [PNT] |
| 11:26 | MISSED JUMPER by AUDIGE,CHASE | | | |
| 11:22 | | | | REBOUND (DEF) by RAY,JALEN |
| 11:20 | | | | MISSED 3PTR by BUIE,DESURE |
| 11:14 | REBOUND (DEF) by ROWLEY,PAUL | | | |
| 10:47 | MISSED JUMPER by KNIGHT,NATHAN | | | |
| 10:43 | REBOUND (OFF) by ROWLEY,PAUL | | | |
| 10:42 | | | | FOUL by TAYLOR,JACQUIL [PNT] |
| 10:42 | MISSED FT by KNIGHT,NATHAN | | | |
| 10:42 | REBOUND (DEADB) by TEAM | | | |
| 10:42 | SUB OUT: AUDIGE,CHASE | | | |
| 10:42 | SUB IN: PIERCE,JUSTIN | | | |
| 10:42 | GOOD! FT by KNIGHT,NATHAN | 60-64 | V 4 | |
| 10:26 | | 62-64 | V 2 | GOOD! JUMPER by WRIGHT-FOREMAN,JUSTIN [PNT] |
| 10:26 | FOUL by LOEWE,LUKE [PNT] | | | |
| 10:25 | | | | MISSED FT by WRIGHT-FOREMAN,JUSTIN |
| 10:23 | REBOUND (DEF) by KNIGHT,NATHAN | | | |
| 10:06 | MISSED by KNIGHT,NATHAN [PNT] | | | |
| 10:05 | REBOUND (OFF) by KNIGHT,NATHAN | | | |
| 10:03 | GOOD! LAYUP by KNIGHT,NATHAN | 62-66 | V 4 | |
| 10:03 | | | | FOUL by TAYLOR,JACQUIL |
| 10:03 | | | | SUB OUT: TAYLOR,JACQUIL |
| 10:03 | | | | SUB IN: DWYER,DAN |
| 10:03 | GOOD! FT by KNIGHT,NATHAN | 62-67 | V 5 | |
| 09:51 | | | | MISSED 3PTR by RAY,JALEN |
| 09:48 | | | | REBOUND (OFF) by RAY,JALEN |
| 09:47 | FOUL by KNIGHT,NATHAN [PNT] | | | |
| 09:47 | | 63-67 | V 4 | GOOD! FT by RAY,JALEN |
| 09:46 | | | | MISSED FT by RAY,JALEN |
| 09:44 | REBOUND (DEF) by KNIGHT,NATHAN | | | |
| 09:29 | TURNOVER by PIERCE,JUSTIN [PNT] | | | |
| 09:11 | | 66-67 | V 1 | GOOD! 3PTR by WRIGHT-FOREMAN,JUSTIN |
| 09:11 | | | | ASSIST by BUIE,DESURE |
| 08:47 | | | | FOUL by DWYER,DAN [PNT] |
| 08:47 | GOOD! FT by PIERCE,JUSTIN | 66-68 | V 2 | |
| 08:47 | MISSED FT by PIERCE,JUSTIN | | | |
| 08:44 | REBOUND (OFF) by KNIGHT,NATHAN | | | |
| 08:37 | MISSED by KNIGHT,NATHAN [PNT] | | | |
| 08:34 | | | | REBOUND (DEF) by RAY,JALEN |
| 08:27 | | 68-68 | T | GOOD! JUMPER by WRIGHT-FOREMAN,JUSTIN |
| 08:09 | GOOD! 3PTR by ROWLEY,PAUL | 68-71 | V 3 | |
| 08:09 | ASSIST by OWENS,L.J. | | | |
| 07:48 | | 71-71 | T | GOOD! 3PTR by WRIGHT-FOREMAN,JUSTIN |
| 07:26 | TURNOVER by ROWLEY,PAUL | | | |
| 07:26 | TIMEOUT MEDIA | | | |
| 07:26 | SUB OUT: PIERCE,JUSTIN | | | |
| 07:26 | SUB IN: AUDIGE,CHASE | | | |
| 07:10 | FOUL by AUDIGE,CHASE | | | |
| 07:10 | | 72-71 | H 1 | GOOD! FT by WRIGHT-FOREMAN,JUSTIN |
| 07:10 | SUB OUT: ROWLEY,PAUL | | | |
| 07:10 | SUB IN: MILON,MATT | | | |
| 07:10 | SUB OUT: OWENS,L.J. | | | |
| 07:10 | SUB IN: PIERCE,JUSTIN | | | |
| 07:10 | | 73-71 | H 2 | GOOD! FT by WRIGHT-FOREMAN,JUSTIN |
| 06:39 | MISSED 3PTR by PIERCE,JUSTIN | | | |
| 06:38 | REBOUND (DEADB) by TEAM | | | |
| 06:38 | TURNOVER by TEAM [PNT] | | | |
| 06:16 | | 75-71 | H 4 | GOOD! JUMPER by BUIE,DESURE [PNT] |
| 05:58 | GOOD! DUNK by KNIGHT,NATHAN | 75-73 | H 2 | |
| 05:58 | ASSIST by PIERCE,JUSTIN | | | |
| 05:36 | | | | MISSED 3PTR by WRIGHT-FOREMAN,JUSTIN |
| 05:33 | | | | REBOUND (OFF) by DWYER,DAN |
| 05:33 | FOUL by PIERCE,JUSTIN [PNT] | | | |
| 05:26 | | 77-73 | H 4 | GOOD! JUMPER by WRIGHT-FOREMAN,JUSTIN |
| 05:26 | | | | ASSIST by BUIE,DESURE |
| 05:07 | GOOD! JUMPER by LOEWE,LUKE | 77-75 | H 2 | |
| 05:07 | ASSIST by AUDIGE,CHASE | | | |
| 04:49 | | 79-75 | H 4 | GOOD! JUMPER by BUIE,DESURE |
| 04:48 | | | | TIMEOUT 30SEC |
| 04:48 | | | | SUB OUT: DWYER,DAN |
| 04:48 | | | | SUB IN: TAYLOR,JACQUIL |
| 04:21 | GOOD! LAYUP by LOEWE,LUKE [PNT] | 79-77 | H 2 | |
| 04:11 | FOUL by LOEWE,LUKE | | | |
| 04:11 | | 80-77 | H 3 | GOOD! FT by WRIGHT-FOREMAN,JUSTIN |
| 04:11 | | 81-77 | H 4 | GOOD! FT by WRIGHT-FOREMAN,JUSTIN |
| 03:59 | | | | FOUL by WRIGHT-FOREMAN,JUSTIN |

| Time | VISITORS: William & Mary | Score | Margin | HOME: Hofstra |
|-------|--------------------------------------|-------|--------|---|
| 03:59 | TIMEOUT MEDIA | | | |
| 03:59 | GOOD! FT by PIERCE,JUSTIN | 81-78 | H 3 | |
| 03:59 | GOOD! FT by PIERCE,JUSTIN | 81-79 | H 2 | |
| 03:44 | FOUL by PIERCE,JUSTIN [PNT] | | | |
| 03:44 | | 82-79 | H 3 | GOOD! FT by WRIGHT-FOREMAN,JUSTIN |
| 03:44 | | | | MISSED FT by WRIGHT-FOREMAN,JUSTIN |
| 03:41 | REBOUND (DEF) by KNIGHT,NATHAN | | | |
| 03:25 | GOOD! LAYUP by KNIGHT,NATHAN [PNT] | 82-81 | H 1 | |
| 03:25 | ASSIST by AUDIGE,CHASE | | | |
| 03:25 | | | | FOUL by PEMBERTON,ELI [PNT] |
| 03:25 | MISSED FT by KNIGHT,NATHAN | | | |
| 03:23 | | | | REBOUND (DEF) by TAYLOR,JACQUIL |
| 03:07 | | | | MISSED 3PTR by WRIGHT-FOREMAN,JUSTIN |
| 03:02 | REBOUND (DEF) by MILON,MATT | | | |
| 02:42 | TURNOVER by PIERCE,JUSTIN | | | |
| 02:33 | FOUL by LOEWE,LUKE [PNT] | | | |
| 02:33 | | 83-81 | H 2 | GOOD! FT by WRIGHT-FOREMAN,JUSTIN |
| 02:33 | | 84-81 | H 3 | GOOD! FT by WRIGHT-FOREMAN,JUSTIN |
| 02:14 | | | | FOUL by PEMBERTON,ELI [PNT] |
| 02:14 | MISSED FT by AUDIGE,CHASE | | | |
| 02:13 | | | | REBOUND (DEF) by PEMBERTON,ELI |
| 01:59 | | 86-81 | H 5 | GOOD! JUMPER by WRIGHT-FOREMAN,JUSTIN |
| 01:58 | | | | TIMEOUT TEAM |
| 01:42 | GOOD! DUNK by KNIGHT,NATHAN [PNT] | 86-83 | H 3 | |
| 01:42 | ASSIST by PIERCE,JUSTIN | | | |
| 01:40 | TIMEOUT 30SEC | | | |
| 01:14 | | 89-83 | H 6 | GOOD! 3PTR by WRIGHT-FOREMAN,JUSTIN |
| 01:14 | | | | ASSIST by PEMBERTON,ELI |
| 01:00 | MISSED 3PTR by MILON,MATT | | | |
| 00:55 | | | | REBOUND (DEF) by TAYLOR,JACQUIL |
| 00:50 | | | | TURNOVER by WRIGHT-FOREMAN,JUSTIN |
| 00:36 | GOOD! LAYUP by AUDIGE,CHASE [PNT] | 89-85 | H 4 | |
| 00:36 | ASSIST by KNIGHT,NATHAN | | | |
| 00:36 | TIMEOUT TEAM | | | |
| 00:36 | SUB OUT: MILON,MATT | | | |
| 00:36 | SUB IN: OWENS,L.J. | | | |
| 00:34 | FOUL by PIERCE,JUSTIN | | | |
| 00:34 | | 90-85 | H 5 | GOOD! FT by BUIE,DESURE |
| 00:34 | SUB OUT: OWENS,L.J. | | | |
| 00:34 | SUB IN: MILON,MATT | | | |
| 00:34 | | 91-85 | H 6 | GOOD! FT by BUIE,DESURE |
| 00:28 | MISSED 3PTR by LOEWE,LUKE | | | |
| 00:24 | | | | REBOUND (DEF) by TAYLOR,JACQUIL |
| 00:24 | FOUL by AUDIGE,CHASE | | | |
| 00:24 | SUB OUT: AUDIGE,CHASE | | | |
| 00:24 | SUB IN: OWENS,L.J. | | | |
| 00:24 | | 92-85 | H 7 | GOOD! FT by RAY,JALEN |
| 00:24 | | 93-85 | H 8 | GOOD! FT by RAY,JALEN |
| 00:19 | TURNOVER by LOEWE,LUKE | | | |
| 00:08 | | | | MISSED LAYUP by WRIGHT-FOREMAN,JUSTIN [PNT] |
| 00:06 | REBOUND (DEF) by KNIGHT,NATHAN | | | |
| 00:05 | GOOD! DUNK by KNIGHT,NATHAN [FB/PNT] | 93-87 | H 6 | |

William & Mary 87, Hofstra 93

| Points from (This Period) | W&M | HOF |
|---------------------------|-----|-----|
| In the Paint | 22 | 10 |
| Off Turns | 4 | 11 |
| 2nd Chance | 6 | 3 |
| Fast Break | 4 | 0 |
| Bench | 6 | 3 |

Official Scoring/Possession Reference Chart
William & Mary vs Hofstra
Period 1
February 09, 2019 at David S. Mack Sports and Exhibition Complex

Period 1

Starters:

William & Mary: 2 MILON,MATT (G); 12 LOEWE,LUKE (G); 13 KNIGHT,NATHAN (F); 15 AUDIGE,CHASE (G); 23 PIERCE,JUSTIN (F);

Hofstra: 0 COBURN,TAREQ (G); 3 WRIGHT-FOREMAN,JUSTIN (G); 4 BUIE,DESURE (G); 5 PEMBERTON,ELI (G); 23 TAYLOR,JACQUIL (F);

| Time | VISITORS: William & Mary | Score | Margin | HOME: Hofstra |
|-------|---------------------------------------|-------|--------|---|
| 18:54 | GOOD! LAYUP by PIERCE,JUSTIN [PNT] | 0-2 | V 2 | |
| 18:40 | | 1-2 | V 1 | GOOD! FT by PEMBERTON,ELI |
| 18:40 | | 2-2 | T | GOOD! FT by PEMBERTON,ELI |
| 18:08 | | 4-2 | H 2 | GOOD! JUMPER by WRIGHT-FOREMAN,JUSTIN |
| 16:35 | GOOD! DUNK by KNIGHT,NATHAN [PNT] | 4-4 | T | |
| 16:00 | GOOD! LAYUP by KNIGHT,NATHAN [PNT] | 4-6 | V 2 | |
| 15:17 | | 6-6 | T | GOOD! by TAYLOR,JACQUIL [PNT] |
| 15:09 | | 8-6 | H 2 | GOOD! LAYUP by BUIE,DESURE [FB/PNT] |
| 15:08 | | 9-6 | H 3 | GOOD! FT by BUIE,DESURE [FB] |
| 14:53 | GOOD! JUMPER by OWENS,L.J. | 9-8 | H 1 | |
| 14:38 | | 10-8 | H 2 | GOOD! FT by PEMBERTON,ELI |
| 14:38 | | 11-8 | H 3 | GOOD! FT by PEMBERTON,ELI |
| 14:22 | GOOD! DUNK by AUDIGE,CHASE | 11-10 | H 1 | |
| 13:58 | GOOD! DUNK by AUDIGE,CHASE [FB] | 11-12 | V 1 | |
| 13:12 | GOOD! LAYUP by KNIGHT,NATHAN | 11-14 | V 3 | |
| 13:12 | GOOD! FT by KNIGHT,NATHAN | 11-15 | V 4 | |
| 12:55 | | 13-15 | V 2 | GOOD! LAYUP by WRIGHT-FOREMAN,JUSTIN |
| 12:43 | GOOD! LAYUP by KNIGHT,NATHAN [PNT] | 13-17 | V 4 | |
| 12:43 | GOOD! FT by KNIGHT,NATHAN | 13-18 | V 5 | |
| 12:14 | GOOD! JUMPER by ROWLEY,PAUL | 13-20 | V 7 | |
| 11:56 | | 15-20 | V 5 | GOOD! LAYUP by WRIGHT-FOREMAN,JUSTIN |
| 11:37 | GOOD! LAYUP by PIERCE,JUSTIN | 15-22 | V 7 | |
| 10:49 | GOOD! LAYUP by PIERCE,JUSTIN [PNT] | 15-24 | V 9 | |
| 10:23 | | 17-24 | V 7 | GOOD! JUMPER by TAYLOR,JACQUIL |
| 09:40 | | 19-24 | V 5 | GOOD! LAYUP by TRUEHEART,STAFFORD [PNT] |
| 09:15 | GOOD! by KNIGHT,NATHAN [PNT] | 19-26 | V 7 | |
| 09:15 | GOOD! FT by KNIGHT,NATHAN | 19-27 | V 8 | |
| 08:52 | | 21-27 | V 6 | GOOD! LAYUP by PEMBERTON,ELI |
| 08:22 | | 23-27 | V 4 | GOOD! LAYUP by PEMBERTON,ELI |
| 07:54 | GOOD! JUMPER by ROWLEY,PAUL | 23-29 | V 6 | |
| 07:47 | | 25-29 | V 4 | GOOD! LAYUP by BUIE,DESURE [PNT] |
| 07:46 | | 26-29 | V 3 | GOOD! FT by BUIE,DESURE |
| 07:23 | GOOD! LAYUP by ROWLEY,PAUL [PNT] | 26-31 | V 5 | |
| 06:53 | | 27-31 | V 4 | GOOD! FT by RAY,JALEN |
| 05:53 | GOOD! JUMPER by LOEWE,LUKE [PNT] | 27-33 | V 6 | |
| 05:38 | | 28-33 | V 5 | GOOD! FT by BUIE,DESURE |
| 05:11 | | 29-33 | V 4 | GOOD! FT by TAYLOR,JACQUIL |
| 04:54 | GOOD! 3PTR by MILON,MATT | 29-36 | V 7 | |
| 04:04 | | 31-36 | V 5 | GOOD! LAYUP by WRIGHT-FOREMAN,JUSTIN |
| 03:44 | | 34-36 | V 2 | GOOD! 3PTR by WRIGHT-FOREMAN,JUSTIN |
| 03:22 | GOOD! JUMPER by PIERCE,JUSTIN [PNT] | 34-38 | V 4 | |
| 02:36 | | 35-38 | V 3 | GOOD! FT by PEMBERTON,ELI |
| 02:36 | | 36-38 | V 2 | GOOD! FT by PEMBERTON,ELI |
| 00:57 | GOOD! LAYUP by KNIGHT,NATHAN [FB/PNT] | 36-40 | V 4 | |
| 00:57 | GOOD! FT by KNIGHT,NATHAN [FB] | 36-41 | V 5 | |
| 00:43 | | 38-41 | V 3 | GOOD! LAYUP by TAYLOR,JACQUIL |
| 00:25 | GOOD! 3PTR by MILON,MATT | 38-44 | V 6 | |
| 00:06 | | 40-44 | V 4 | GOOD! JUMPER by TAYLOR,JACQUIL |

William & Mary 44, Hofstra 40

Official Scoring/Possession Reference Chart
William & Mary vs Hofstra
Period 2
February 09, 2019 at David S. Mack Sports and Exhibition Complex

Period 2

Starters:

William & Mary: 2 MILON,MATT (G); 12 LOEWE,LUKE (G); 13 KNIGHT,NATHAN (F); 15 AUDIGE,CHASE (G); 23 PIERCE,JUSTIN (F);

Hofstra: 0 COBURN,TAREQ (G); 3 WRIGHT-FOREMAN,JUSTIN (G); 4 BUIE,DESURE (G); 5 PEMBERTON,ELI (G); 23 TAYLOR,JACQUIL (F);

| Time | VISITORS: William & Mary | Score | Margin | HOME: Hofstra |
|-------|---------------------------------------|-------|--------|---|
| 19:05 | GOOD! 3PTR by MILON,MATT | 40-47 | V 7 | |
| 18:28 | GOOD! DUNK by PIERCE,JUSTIN [PNT] | 40-49 | V 9 | |
| 18:17 | | 43-49 | V 6 | GOOD! 3PTR by WRIGHT-FOREMAN,JUSTIN |
| 17:56 | GOOD! LAYUP by KNIGHT,NATHAN | 43-51 | V 8 | |
| 17:20 | GOOD! LAYUP by KNIGHT,NATHAN [FB/PNT] | 43-53 | V 10 | |
| 17:07 | | 46-53 | V 7 | GOOD! 3PTR by WRIGHT-FOREMAN,JUSTIN |
| 16:51 | GOOD! LAYUP by KNIGHT,NATHAN | 46-55 | V 9 | |
| 16:51 | GOOD! FT by KNIGHT,NATHAN | 46-56 | V 10 | |
| 16:40 | | 47-56 | V 9 | GOOD! FT by PEMBERTON,ELI |
| 16:40 | | 48-56 | V 8 | GOOD! FT by PEMBERTON,ELI |
| 16:15 | | 50-56 | V 6 | GOOD! by TAYLOR,JACQUIL [PNT] |
| 15:25 | GOOD! JUMPER by KNIGHT,NATHAN [PNT] | 50-58 | V 8 | |
| 14:51 | GOOD! JUMPER by KNIGHT,NATHAN | 50-60 | V 10 | |
| 14:24 | | 53-60 | V 7 | GOOD! 3PTR by WRIGHT-FOREMAN,JUSTIN |
| 13:33 | | 54-60 | V 6 | GOOD! FT by WRIGHT-FOREMAN,JUSTIN |
| 13:33 | | 55-60 | V 5 | GOOD! FT by WRIGHT-FOREMAN,JUSTIN |
| 13:13 | GOOD! 3PTR by OWENS,L.J. | 55-63 | V 8 | |
| 12:47 | | 57-63 | V 6 | GOOD! JUMPER by WRIGHT-FOREMAN,JUSTIN [PNT] |
| 12:01 | | 60-63 | V 3 | GOOD! 3PTR by BUIE,DESURE |
| 10:42 | GOOD! FT by KNIGHT,NATHAN | 60-64 | V 4 | |
| 10:26 | | 62-64 | V 2 | GOOD! JUMPER by WRIGHT-FOREMAN,JUSTIN [PNT] |
| 10:03 | GOOD! LAYUP by KNIGHT,NATHAN | 62-66 | V 4 | |
| 10:03 | GOOD! FT by KNIGHT,NATHAN | 62-67 | V 5 | |
| 09:47 | | 63-67 | V 4 | GOOD! FT by RAY,JALEN |
| 09:11 | | 66-67 | V 1 | GOOD! 3PTR by WRIGHT-FOREMAN,JUSTIN |
| 08:47 | GOOD! FT by PIERCE,JUSTIN | 66-68 | V 2 | |
| 08:27 | | 68-68 | T | GOOD! JUMPER by WRIGHT-FOREMAN,JUSTIN |
| 08:09 | GOOD! 3PTR by ROWLEY,PAUL | 68-71 | V 3 | |
| 07:48 | | 71-71 | T | GOOD! 3PTR by WRIGHT-FOREMAN,JUSTIN |
| 07:10 | | 72-71 | H 1 | GOOD! FT by WRIGHT-FOREMAN,JUSTIN |
| 07:10 | | 73-71 | H 2 | GOOD! FT by WRIGHT-FOREMAN,JUSTIN |
| 06:16 | | 75-71 | H 4 | GOOD! JUMPER by BUIE,DESURE [PNT] |
| 05:58 | GOOD! DUNK by KNIGHT,NATHAN | 75-73 | H 2 | |
| 05:26 | | 77-73 | H 4 | GOOD! JUMPER by WRIGHT-FOREMAN,JUSTIN |
| 05:07 | GOOD! JUMPER by LOEWE,LUKE | 77-75 | H 2 | |
| 04:49 | | 79-75 | H 4 | GOOD! JUMPER by BUIE,DESURE |
| 04:21 | GOOD! LAYUP by LOEWE,LUKE [PNT] | 79-77 | H 2 | |
| 04:11 | | 80-77 | H 3 | GOOD! FT by WRIGHT-FOREMAN,JUSTIN |
| 04:11 | | 81-77 | H 4 | GOOD! FT by WRIGHT-FOREMAN,JUSTIN |
| 03:59 | GOOD! FT by PIERCE,JUSTIN | 81-78 | H 3 | |
| 03:59 | GOOD! FT by PIERCE,JUSTIN | 81-79 | H 2 | |
| 03:44 | | 82-79 | H 3 | GOOD! FT by WRIGHT-FOREMAN,JUSTIN |
| 03:25 | GOOD! LAYUP by KNIGHT,NATHAN [PNT] | 82-81 | H 1 | |
| 02:33 | | 83-81 | H 2 | GOOD! FT by WRIGHT-FOREMAN,JUSTIN |
| 02:33 | | 84-81 | H 3 | GOOD! FT by WRIGHT-FOREMAN,JUSTIN |
| 01:59 | | 86-81 | H 5 | GOOD! JUMPER by WRIGHT-FOREMAN,JUSTIN |
| 01:42 | GOOD! DUNK by KNIGHT,NATHAN [PNT] | 86-83 | H 3 | |
| 01:14 | | 89-83 | H 6 | GOOD! 3PTR by WRIGHT-FOREMAN,JUSTIN |
| 00:36 | GOOD! LAYUP by AUDIGE,CHASE [PNT] | 89-85 | H 4 | |
| 00:34 | | 90-85 | H 5 | GOOD! FT by BUIE,DESURE |
| 00:34 | | 91-85 | H 6 | GOOD! FT by BUIE,DESURE |
| 00:24 | | 92-85 | H 7 | GOOD! FT by RAY,JALEN |

| Time | VISITORS: William & Mary | Score | Margin | HOME: Hofstra |
|-------|--------------------------------------|-------|--------|-----------------------|
| 00:24 | | 93-85 | H 8 | GOOD! FT by RAY,JALEN |
| 00:05 | GOOD! DUNK by KNIGHT,NATHAN [FB/PNT] | 93-87 | H 6 | |

William & Mary 87, Hofstra 93

Official Substitutions Log
William & Mary vs Hofstra
Period 1
February 09, 2019 at David S. Mack Sports and Exhibition Complex

| VISITORS: William & Mary | Time | Score | HOME: Hofstra |
|---------------------------|-------|-------|--------------------------------|
| 2 MILON,MATT | | | 0 COBURN,TAREQ |
| 12 LOEWE,LUKE | | | 3 WRIGHT-FOREMAN,JUSTIN |
| 13 KNIGHT,NATHAN | | | 4 BUIE,DESURE |
| 15 AUDIGE,CHASE | | | 5 PEMBERTON,ELI |
| 23 PIERCE,JUSTIN | | | 23 TAYLOR,JACQUIL |
| | 16:20 | 4-4 | SUB OUT: COBURN,TAREQ |
| | 16:20 | | SUB IN: RAY,JALEN |
| SUB OUT: 12 LOEWE,LUKE | 15:33 | 6-4 | |
| SUB IN: 11 OWENS,L.J. | 15:33 | | |
| SUB OUT: 2 MILON,MATT | 15:33 | | |
| SUB IN: 22 ROWLEY,PAUL | 15:33 | | |
| | 13:39 | 12-11 | SUB OUT: TAYLOR,JACQUIL |
| | 13:39 | | SUB IN: DWYER,DAN |
| SUB OUT: 23 PIERCE,JUSTIN | 13:39 | | |
| SUB IN: 12 LOEWE,LUKE | 13:39 | | |
| SUB OUT: 13 KNIGHT,NATHAN | 12:43 | 18-13 | |
| SUB IN: 23 PIERCE,JUSTIN | 12:43 | | |
| | 11:08 | 22-15 | SUB OUT: DWYER,DAN |
| | 11:08 | | SUB IN: TAYLOR,JACQUIL |
| | 11:08 | | SUB OUT: WRIGHT-FOREMAN,JUSTIN |
| | 11:08 | | SUB IN: TRUEHEART,STAFFORD |
| SUB OUT: 22 ROWLEY,PAUL | 11:08 | | |
| SUB IN: 13 KNIGHT,NATHAN | 11:08 | | |
| SUB OUT: 12 LOEWE,LUKE | 09:38 | 24-19 | |
| SUB IN: 22 ROWLEY,PAUL | 09:38 | | |
| SUB OUT: 15 AUDIGE,CHASE | 09:38 | | |
| SUB IN: 2 MILON,MATT | 09:38 | | |
| SUB OUT: 11 OWENS,L.J. | 08:34 | 27-21 | |
| SUB IN: 15 AUDIGE,CHASE | 08:34 | | |
| SUB OUT: 2 MILON,MATT | 07:46 | 29-25 | |
| SUB IN: 11 OWENS,L.J. | 07:46 | | |
| SUB OUT: 23 PIERCE,JUSTIN | 07:46 | | |
| SUB IN: 12 LOEWE,LUKE | 07:46 | | |
| SUB OUT: 22 ROWLEY,PAUL | 06:53 | 31-26 | |
| SUB IN: 23 PIERCE,JUSTIN | 06:53 | | |
| SUB OUT: 11 OWENS,L.J. | 06:53 | | |
| SUB IN: 2 MILON,MATT | 06:53 | | |
| | 05:38 | 33-27 | SUB OUT: PEMBERTON,ELI |
| | 05:38 | | SUB IN: WRIGHT-FOREMAN,JUSTIN |
| | 04:18 | 36-29 | SUB OUT: RAY,JALEN |
| | 04:18 | | SUB IN: COBURN,TAREQ |
| | 03:38 | 36-34 | SUB OUT: COBURN,TAREQ |
| | 03:38 | | SUB IN: PEMBERTON,ELI |
| | 03:38 | | SUB OUT: WRIGHT-FOREMAN,JUSTIN |
| | 03:38 | | SUB IN: RAY,JALEN |
| SUB OUT: 12 LOEWE,LUKE | 03:38 | | |
| SUB IN: 11 OWENS,L.J. | 03:38 | | |
| SUB OUT: 15 AUDIGE,CHASE | 02:36 | 38-35 | |
| SUB IN: 12 LOEWE,LUKE | 02:36 | | |
| | 01:51 | 38-36 | SUB OUT: RAY,JALEN |
| | 01:51 | | SUB IN: WRIGHT-FOREMAN,JUSTIN |
| | 01:51 | | SUB OUT: TRUEHEART,STAFFORD |
| | 01:51 | | SUB IN: COBURN,TAREQ |
| | 00:42 | 41-38 | SUB OUT: COBURN,TAREQ |
| | 00:42 | | SUB IN: RAY,JALEN |
| | 00:42 | | SUB OUT: WRIGHT-FOREMAN,JUSTIN |
| | 00:42 | | SUB IN: TRUEHEART,STAFFORD |

William & Mary 44, Hofstra 40

Official Substitutions Log
William & Mary vs Hofstra
Period 2
February 09, 2019 at David S. Mack Sports and Exhibition Complex

| VISITORS: William & Mary | Time | Score | HOME: Hofstra |
|---------------------------|-------|-------|-------------------------------|
| 2 MILON,MATT | | | 0 COBURN,TAREQ |
| 12 LOEWE,LUKE | | | 3 WRIGHT-FOREMAN,JUSTIN |
| 13 KNIGHT,NATHAN | | | 4 BUIE,DESURE |
| 15 AUDIGE,CHASE | | | 5 PEMBERTON,ELI |
| 23 PIERCE,JUSTIN | | | 23 TAYLOR,JACQUIL |
| | 20:00 | - | SUB OUT: TRUEHEART,STAFFORD |
| | 20:00 | | SUB IN: COBURN,TAREQ |
| | 20:00 | | SUB OUT: RAY,JALEN |
| | 20:00 | | SUB IN: WRIGHT-FOREMAN,JUSTIN |
| SUB OUT: 11 OWENS,L.J. | 20:00 | | |
| SUB IN: 15 AUDIGE,CHASE | 20:00 | | |
| | 13:56 | 60-53 | SUB OUT: TAYLOR,JACQUIL |
| | 13:56 | | SUB IN: DWYER,DAN |
| SUB OUT: 12 LOEWE,LUKE | 13:56 | | |
| SUB IN: 11 OWENS,L.J. | 13:56 | | |
| SUB OUT: 13 KNIGHT,NATHAN | 13:56 | | |
| SUB IN: 22 ROWLEY,PAUL | 13:56 | | |
| | 11:45 | 63-60 | SUB OUT: DWYER,DAN |
| | 11:45 | | SUB IN: TAYLOR,JACQUIL |
| | 11:45 | | SUB OUT: COBURN,TAREQ |
| | 11:45 | | SUB IN: RAY,JALEN |
| SUB OUT: 23 PIERCE,JUSTIN | 11:45 | | |
| SUB IN: 13 KNIGHT,NATHAN | 11:45 | | |
| SUB OUT: 2 MILON,MATT | 11:45 | | |
| SUB IN: 12 LOEWE,LUKE | 11:45 | | |
| SUB OUT: 15 AUDIGE,CHASE | 10:42 | 63-60 | |
| SUB IN: 23 PIERCE,JUSTIN | 10:42 | | |
| | 10:03 | 66-62 | SUB OUT: TAYLOR,JACQUIL |
| | 10:03 | | SUB IN: DWYER,DAN |
| SUB OUT: 23 PIERCE,JUSTIN | 07:26 | 71-71 | |
| SUB IN: 15 AUDIGE,CHASE | 07:26 | | |
| SUB OUT: 22 ROWLEY,PAUL | 07:10 | 71-72 | |
| SUB IN: 2 MILON,MATT | 07:10 | | |
| SUB OUT: 11 OWENS,L.J. | 07:10 | | |
| SUB IN: 23 PIERCE,JUSTIN | 07:10 | | |
| | 04:48 | 75-79 | SUB OUT: DWYER,DAN |
| | 04:48 | | SUB IN: TAYLOR,JACQUIL |
| SUB OUT: 2 MILON,MATT | 00:36 | 85-89 | |
| SUB IN: 11 OWENS,L.J. | 00:36 | | |
| SUB OUT: 11 OWENS,L.J. | 00:34 | 85-90 | |
| SUB IN: 2 MILON,MATT | 00:34 | | |
| SUB OUT: 15 AUDIGE,CHASE | 00:24 | 85-91 | |
| SUB IN: 11 OWENS,L.J. | 00:24 | | |

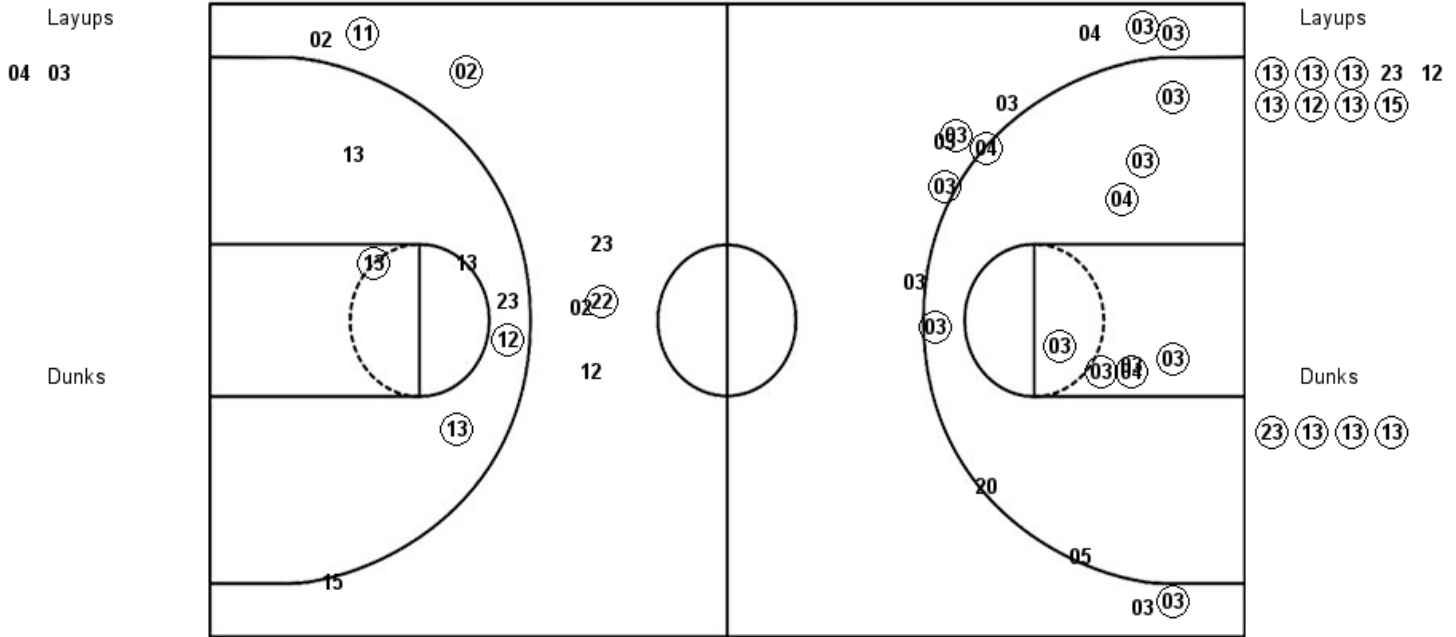
William & Mary 87, Hofstra 93

William & Mary

Official Shot Chart
William & Mary vs Hofstra
 PERIOD 2 Shots
 February 09, 2019 at David S. Mack Sports and Exhibition Complex

Hofstra

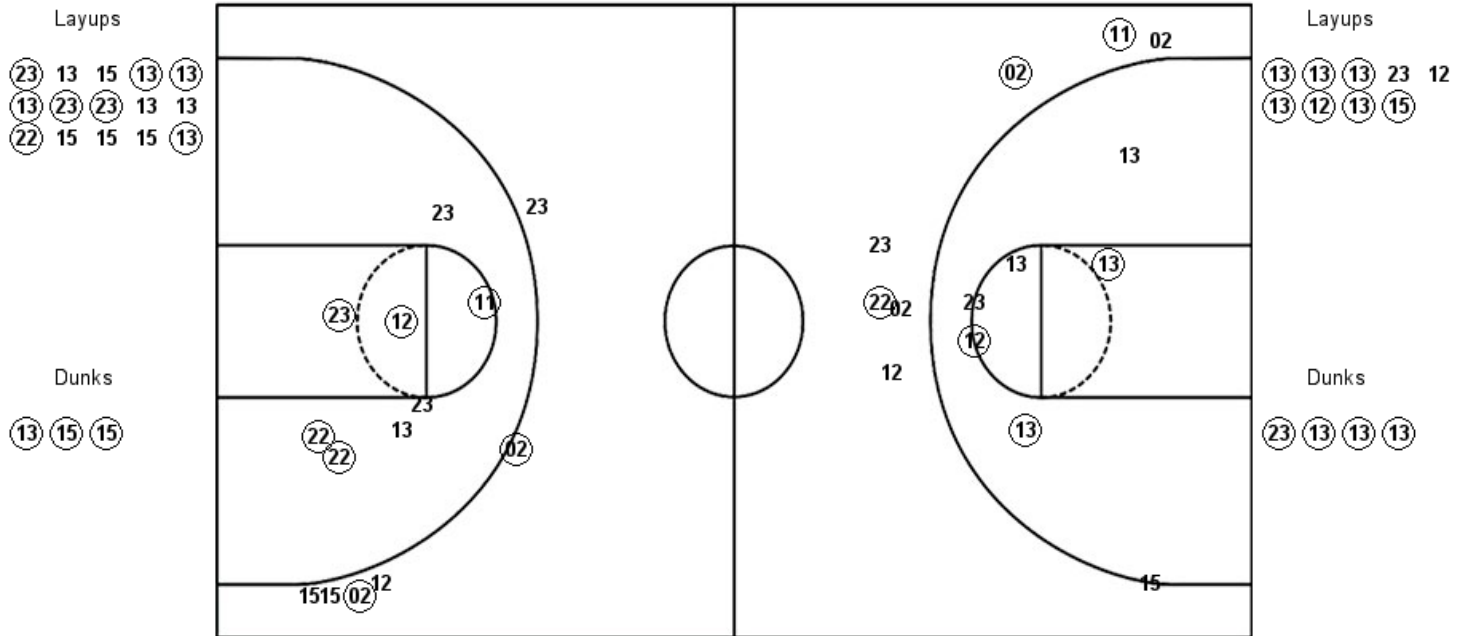
William & Mary



| HOF : Period 2 | Made | Att | Pct |
|--------------------------|-----------|-----------|-------------|
| Layups | 0 | 2 | 00.0 |
| Dunks | 0 | 0 | 0 |
| 2PT Field Goals | 8 | 11 | 72.7 |
| 3PT Field Goals | 7 | 14 | 50.0 |
| Total Field Goals | 15 | 25 | 60.0 |

| W&M : Period 2 | Made | Att | Pct |
|--------------------------|-----------|-----------|-------------|
| Layups | 7 | 9 | 77.8 |
| Dunks | 4 | 4 | 100.0 |
| 2PT Field Goals | 14 | 22 | 63.6 |
| 3PT Field Goals | 3 | 7 | 42.9 |
| Total Field Goals | 17 | 29 | 58.6 |

Official Shot Chart
William & Mary vs Hofstra
 William & Mary Team Shots
 February 09, 2019 at David S. Mack Sports and Exhibition Complex



| W&M : Period 1 | Made | Att | Pct |
|--------------------------|-----------|-----------|-------------|
| Layups | 8 | 15 | 53.3 |
| Dunks | 3 | 3 | 100.0 |
| 2PT Field Goals | 17 | 27 | 63.0 |
| 3PT Field Goals | 2 | 6 | 33.3 |
| Total Field Goals | 19 | 33 | 57.6 |

| W&M : Period 2 | Made | Att | Pct |
|--------------------------|-----------|-----------|-------------|
| Layups | 7 | 9 | 77.8 |
| Dunks | 4 | 4 | 100.0 |
| 2PT Field Goals | 14 | 22 | 63.6 |
| 3PT Field Goals | 3 | 7 | 42.9 |
| Total Field Goals | 17 | 29 | 58.6 |

| HOF : Period 2 | Made | Att | Pct |
|--------------------------|-----------|-----------|-------------|
| Layups | 0 | 2 | 00.0 |
| Dunks | 0 | 0 | 0 |
| 2PT Field Goals | 8 | 11 | 72.7 |
| 3PT Field Goals | 7 | 14 | 50.0 |
| Total Field Goals | 15 | 25 | 60.0 |