

FINAL SCORE

Mt. St. Mary's

61



Hofstra

79



**November 10, 2018 • David S. Mack Sports and Exhibition Complex -
Hempstead, New York**

FINAL STATISTICS

Official Box Score
Mt. St. Mary's vs Hofstra
Game Totals -- Final Statistics
November 10, 2018 at David S. Mack Sports and Exhibition Complex - Hempstead, New York



Mt. St. Mary's 61

No.	Player	S	Pts	FG	3FG	FT	OR	DR	TR	PF	A	TO	Blk	Stl	Min	+/-
00	MORSE, VADO		7	2-10	2-6	1-2	0	2	2	5	0	1	0	0	25	-27
01	GIBBS, JALEN		21	7-13	3-5	4-8	1	7	8	2	2	5	0	3	26	-1
22	OPOKU, NANA		12	5-7	2-4	0-0	0	3	3	0	1	1	1	0	38	-19
35	SCOTT, K.J.		14	7-13	0-4	0-3	0	9	9	2	3	2	0	1	33	-21
42	JEFFERSON, MALIK		2	1-4	0-0	0-0	1	4	5	5	0	1	1	0	19	3
10	POULSEN, MARTIN		0	0-1	0-0	0-0	0	0	0	1	0	0	0	0	6	5
13	HABWE, OMAR		1	0-3	0-2	1-2	1	4	5	2	0	1	0	1	23	-16
15	CHONG QUI, DAMIAN		4	1-5	1-3	1-2	0	0	0	1	2	0	0	0	27	-6
	TEAM						0	0	0	0		1				
TOTALS			61	23-56	8-24	7-17	3	29	32	18	8	12	2	5	196	

Shooting By Period

Period	FG	FG%	3FG	3FG%	FT	FT%
1st Half	11-28	39%	4-12	33%	2-4	50%
2nd Half	12-28	43%	4-12	33%	5-13	38%
Game	23-56	41.1%	8-24	33.3%	7-17	41.2%

Last FG: 2nd-01:05
 Biggest Run: 12-0
 Largest lead: By 15 at 1-12:24
 Technical Fouls: None.

Hofstra 79

No.	Player	S	Pts	FG	3FG	FT	OR	DR	TR	PF	A	TO	Blk	Stl	Min	+/-
03	WRIGHT-FOREMAN, JUSTIN		20	8-20	2-7	2-4	0	7	7	2	5	2	1	1	37	16
04	BUIE, DESURE		18	6-9	2-2	4-4	0	2	2	1	5	2	0	1	29	13
05	PEMBERTON, ELI		18	6-10	3-6	3-5	0	6	6	2	2	1	0	0	30	15
15	TRUEHEART, STAFFORD		7	3-9	1-4	0-1	2	5	7	3	1	0	0	0	22	12
23	TAYLOR, JACQUIL		6	2-3	0-0	2-2	3	7	10	2	1	0	1	1	21	15
00	COBURN, TAREQ		2	1-2	0-1	0-0	0	2	2	0	0	1	0	0	9	-6
02	WORMLEY, KENNY		2	1-2	0-0	0-0	0	0	0	0	0	1	0	1	9	-3
14	SCHUTTE, KEVIN		0	0-0	0-0	0-0	0	0	0	0	0	0	0	0	1	2
20	RAY, JALEN		3	1-7	1-3	0-0	0	1	1	2	0	1	0	2	24	23
24	KLEMENTOWICZ, CONNOR		0	0-0	0-0	0-0	0	0	0	0	0	0	0	0	1	2
30	DWYER, DAN		3	1-2	0-0	1-2	2	4	6	4	1	0	2	0	18	1
	TEAM						0	0	0	0		0				
TOTALS			79	29-64	9-23	12-18	7	34	41	16	15	8	4	6	200	

Shooting By Period

Period	FG	FG%	3FG	3FG%	FT	FT%
1st Half	11-30	37%	4-14	29%	5-8	63%
2nd Half	18-34	53%	5-9	56%	7-10	70%
Game	29-64	45.3%	9-23	39.1%	12-18	66.7%

Last FG: 2nd-00:26
 Biggest Run: 10-0
 Largest lead: By 20 at 2-06:48
 Technical Fouls: None.

Game Notes:

Officials: Tim Kelly, Louie Andrakakos, Patrick Harwood
 Attendance: 4645

Start Time: 2018-11-10 00:52:20
 End Time: 2018-11-10 02:40:46
 Game Duration: 108

Score	1st	2nd	TOT
MSM	28	33	61
HOF	31	48	79

MSM led for 16:59. HOF led for 20:01.
 Game was tied for 3:01.
 Times tied: 2 Lead Changes: 1

Points from	MSM	HOF
In the Paint	28	26
Off Turns	11	17
2nd Chance	1	12
Fast Break	7	7
Bench	5	10

Official Box Score
Mt. St. Mary's vs Hofstra
First Half Statistics Only
November 10, 2018 at David S. Mack Sports and Exhibition Complex - Hempstead, New York



Mt. St. Mary's 28

No.	Player	S	Pts	FG	3FG	FT	OR	DR	TR	PF	A	TO	Blk	Stl	Min	+/-
00	MORSE, VADO		0	0-3	0-1	0-0	0	0	0	2	0	1	0	0	13	-9
01	GIBBS, JALEN		16	6-9	3-4	1-2	1	4	5	1	0	3	0	0	7	6
22	OPOKU, NANA		0	0-2	0-2	0-0	0	1	1	0	1	0	0	0	18	-4
35	SCOTT, K.J.		8	4-6	0-1	0-0	0	6	6	0	2	1	0	1	18	-2
42	JEFFERSON, MALIK		0	0-3	0-0	0-0	1	2	3	2	0	0	0	0	13	7
10	POULSEN, MARTIN		0	0-0	0-0	0-0	0	0	0	0	0	0	0	0	0	0
13	HABWE, OMAR		1	0-2	0-2	1-2	1	1	2	2	0	0	0	0	12	-3
15	CHONG QUI, DAMIAN		3	1-3	1-2	0-0	0	0	0	0	0	0	0	0	15	-2
	TEAM						0	0	0	0		1				
TOTALS			28	11-28	4-12	2-4	0	0	17	7	3	6	0	1	96	

Shooting By Period

Period	FG	FG%	3FG	3FG%	FT	FT%
1st Half	11-28	39%	4-12	33%	2-4	50%
Game	23-56	41.1%	8-24	33.3%	7-17	41.2%

Last FG Half: MSM 2nd-01:05

Hofstra 31

No.	Player	S	Pts	FG	3FG	FT	OR	DR	TR	PF	A	TO	Blk	Stl	Min	+/-
03	WRIGHT-FOREMAN, JUSTIN		8	3-10	1-5	1-2	0	2	2	1	3	1	0	0	19	2
04	BUIE, DESURE		5	2-4	1-1	0-0	0	2	2	1	0	2	0	1	12	-4
05	PEMBERTON, ELI		3	1-4	0-2	1-2	0	1	1	1	0	1	0	0	13	-6
15	TRUEHEART, STAFFORD		3	1-3	1-3	0-0	1	3	4	1	0	0	0	0	14	3
23	TAYLOR, JACQUIL		2	0-0	0-0	2-2	2	4	6	1	1	0	1	0	12	-2
00	COBURN, TAREQ		2	1-2	0-1	0-0	0	0	0	0	0	0	0	0	6	0
02	WORMLEY, KENNY		2	1-1	0-0	0-0	0	0	0	0	0	0	0	0	6	4
14	SCHUTTE, KEVIN		0	0-0	0-0	0-0	0	0	0	0	0	0	0	0	0	0
20	RAY, JALEN		3	1-5	1-2	0-0	0	0	0	0	0	0	0	2	10	13
24	KLEMENTOWICZ, CONNOR		0	0-0	0-0	0-0	0	0	0	0	0	0	0	0	0	0
30	DWYER, DAN		3	1-1	0-0	1-2	2	3	5	2	0	0	2	0	8	5
	TEAM						0	0	0	0		0				
TOTALS			31	11-30	4-14	5-8	0	0	20	7	4	4	3	3	100	

Shooting By Period

Period	FG	FG%	3FG	3FG%	FT	FT%
1st Half	11-30	37%	4-14	29%	5-8	63%
Game	29-64	45.3%	9-23	39.1%	12-18	66.7%

Last FG Half: HOF 2nd-00:26

Game Notes:

Officials: Tim Kelly, Louie Andrakakos, Patrick Harwood
Attendance: 4645

Start Time: 2018-11-10 00:52:20
End Time: 2018-11-10 02:40:46
Game Duration: 108

Score	1st	2nd	TOT
MSM	28	33	61
HOF	31	48	79

Points from (This Period)	MSM	HOF
In the Paint	12	10
Off Turns	7	6
2nd Chance	1	7
Fast Break	2	3
Bench	4	10

Official Play-By-Play
Mt. St. Mary's vs Hofstra
First Half

November 10, 2018 at David S. Mack Sports and Exhibition Complex - Hempstead, New York



Period 1

Starters:

Mt. St. Mary's: 00 MORSE,VADO; 22 OPOKU,NANA; 35 SCOTT,K.J.; 42 JEFFERSON,MALIK; 1 GIBBS,JALEN;

Hofstra: 3 WRIGHT-FOREMAN,JUSTIN; 4 BUIE,DESURE; 5 PEMBERTON,ELI; 15 TRUEHEART,STAFFORD; 23 TAYLOR,JACQUIL;

Time	VISITORS: Mt. St. Mary's	Score	Margin	HOME: Hofstra
19:27				MISSED 3PTR by WRIGHT-FOREMAN, JUSTIN
19:26	REBOUND (DEF) by TEAM			
19:08	MISSED JUMPER by JEFFERSON, MALIK			
19:04				
18:45				REBOUND (DEF) by BUIE, DESURE
18:41	REBOUND (DEF) by GIBBS, JALEN			MISSED LAYUP by WRIGHT-FOREMAN, JUSTIN
18:32	MISSED 3PTR by MORSE, VADO			
18:26				REBOUND (DEF) by TRUEHEART, STAFFORD
18:23				MISSED 3PTR by WRIGHT-FOREMAN, JUSTIN
18:18				REBOUND (OFF) by TAYLOR, JACQUIL
17:58				TURNOVER (LOSTBALL) by PEMBERTON, ELI
17:53	GOOD! JUMPER by SCOTT, K.J. [PNT]	0-2	V 2	
17:44	FOUL (PERSONAL) by MORSE, VADO			
17:44	SUB OUT: MORSE, VADO			
17:44	SUB IN: CHONG QUI, DAMIAN			
17:42	FOUL (PERSONAL) by GIBBS, JALEN			
17:29				MISSED 3PTR by WRIGHT-FOREMAN, JUSTIN
17:26	REBOUND (DEF) by SCOTT, K.J.			
17:24				FOUL (PERSONAL) by WRIGHT-FOREMAN, JUSTIN
17:14	GOOD! 3PTR by GIBBS, JALEN	0-5	V 5	
17:00				MISSED JUMPER by BUIE, DESURE
16:59	REBOUND (DEF) by OPOKU, NANA			
16:58				FOUL (PERSONAL) by TRUEHEART, STAFFORD
16:58	SUB OUT: GIBBS, JALEN			
16:58	SUB IN: HABWE, OMAR			
16:37	MISSED JUMPER by SCOTT, K.J.			
16:32	REBOUND (OFF) by JEFFERSON, MALIK			
16:21	MISSED 3PTR by OPOKU, NANA			
16:16				REBOUND (DEF) by BUIE, DESURE
16:15				TURNOVER (BADPASS) by BUIE, DESURE
15:49	GOOD! LAYUP by SCOTT, K.J. [PNT]	0-7	V 7	
15:30				MISSED 3PTR by TRUEHEART, STAFFORD
15:25	REBOUND (DEF) by SCOTT, K.J.			
15:20	GOOD! JUMPER by SCOTT, K.J.	0-9	V 9	
15:04				MISSED 3PTR by PEMBERTON, ELI
15:00	REBOUND (DEF) by SCOTT, K.J.			
14:58	GOOD! 3PTR by CHONG QUI, DAMIAN	0-12	V 12	
14:58	ASSIST by SCOTT, K.J.			
14:58				TIMEOUT 30SEC
14:58				SUB OUT: WRIGHT-FOREMAN, JUSTIN
14:58				SUB IN: RAY, JALEN
14:58				SUB OUT: TRUEHEART, STAFFORD
14:58				SUB IN: DWYER, DAN
14:58				SUB OUT: TAYLOR, JACQUIL
14:58				SUB IN: COBURN, TAREQ
14:58	SUB OUT: OPOKU, NANA			
14:58	SUB IN: GIBBS, JALEN			
14:42				MISSED JUMPER by RAY, JALEN
14:37	REBOUND (DEF) by JEFFERSON, MALIK			
14:18	MISSED JUMPER by GIBBS, JALEN			
14:13				REBOUND (DEF) by DWYER, DAN
14:07				MISSED JUMPER by PEMBERTON, ELI
14:06				REBOUND (OFF) by DWYER, DAN
14:06	FOUL (PERSONAL) by HABWE, OMAR			
14:06		1-12	V 11	GOOD! FT by DWYER, DAN
14:06				SUB OUT: BUIE, DESURE
14:06				SUB IN: WRIGHT-FOREMAN, JUSTIN
14:06				MISSED FT by DWYER, DAN
14:04	REBOUND (DEF) by HABWE, OMAR			
13:51	MISSED 3PTR by HABWE, OMAR			
13:46				REBOUND (DEF) by PEMBERTON, ELI
13:42				MISSED 3PTR by COBURN, TAREQ
13:37	REBOUND (DEF) by GIBBS, JALEN			
13:13	MISSED LAYUP by JEFFERSON, MALIK			
13:13				BLOCK by DWYER, DAN
13:07				REBOUND (DEF) by DWYER, DAN
13:05				MISSED JUMPER by RAY, JALEN
12:59	REBOUND (DEF) by SCOTT, K.J.			
12:57	GOOD! LAYUP by GIBBS, JALEN [FB/PNT]	1-14	V 13	
12:57	ASSIST by SCOTT, K.J.			

Time	VISITORS: Mt. St. Mary's	Score	Margin	HOME: Hofstra
12:44				MISSED JUMPER by WRIGHT-FOREMAN, JUSTIN
12:43	REBOUND (DEF) by SCOTT, K.J.			
12:42				FOUL (PERSONAL) by DWYER, DAN
12:42				SUB OUT: PEMBERTON, ELI
12:42				SUB IN: WORMLEY, KENNY
12:42	SUB OUT: SCOTT, K.J.			
12:42	SUB IN: OPOKU, NANA			
12:42	SUB OUT: HABWE, OMAR			
12:42	SUB IN: MORSE, VADO			
12:24	GOOD! LAYUP by GIBBS, JALEN [PNT]	1-16	V 15	
12:02		3-16	V 13	GOOD! JUMPER by COBURN, TAREQ [PNT]
11:37	TURNOVER (BADPASS) by GIBBS, JALEN			
11:37				STEAL by RAY, JALEN
11:26	SUB OUT: GIBBS, JALEN			
11:26	SUB IN: HABWE, OMAR			
11:26	FOUL (PERSONAL) by HABWE, OMAR			
11:26				
11:26				MISSED FT by WRIGHT-FOREMAN, JUSTIN
11:26				REBOUND (OFF) by TEAM
11:26		4-16	V 12	GOOD! FT by WRIGHT-FOREMAN, JUSTIN
11:07	MISSED 3PTR by HABWE, OMAR			
11:01				REBOUND (DEF) by WRIGHT-FOREMAN, JUSTIN
11:01	SUB OUT: MORSE, VADO			
11:01	SUB IN: SCOTT, K.J.			
11:01	SUB OUT: JEFFERSON, MALIK			
11:01	SUB IN: GIBBS, JALEN			
11:00				TURNOVER (LOSTBALL) by WRIGHT-FOREMAN, JUSTIN
11:00	STEAL by SCOTT, K.J.			
10:45	SUB OUT: GIBBS, JALEN			
10:45	SUB IN: MORSE, VADO			
10:39	TURNOVER (LOSTBALL) by MORSE, VADO			
10:39				STEAL by RAY, JALEN
10:39	FOUL (PERSONAL) by MORSE, VADO			
10:20				SUB OUT: WORMLEY, KENNY
10:20				SUB IN: PEMBERTON, ELI
10:08				MISSED 3PTR by PEMBERTON, ELI
10:03	REBOUND (DEF) by SCOTT, K.J.			
09:59	GOOD! LAYUP by SCOTT, K.J. [PNT]	4-18	V 14	
09:47		6-18	V 12	GOOD! LAYUP by DWYER, DAN [PNT]
09:47				ASSIST by WRIGHT-FOREMAN, JUSTIN
09:25	TURNOVER (TRAVEL) by SCOTT, K.J.			
09:25				SUB OUT: COBURN, TAREQ
09:25				SUB IN: TRUEHEART, STAFFORD
09:12				MISSED JUMPER by WRIGHT-FOREMAN, JUSTIN
09:09				REBOUND (OFF) by TRUEHEART, STAFFORD
09:03		8-18	V 10	GOOD! JUMPER by WRIGHT-FOREMAN, JUSTIN
08:38	TURNOVER (BADPASS) by GIBBS, JALEN			
08:38	SUB OUT: HABWE, OMAR			
08:38	SUB IN: JEFFERSON, MALIK			
08:32				MISSED 3PTR by RAY, JALEN
08:25	REBOUND (DEF) by JEFFERSON, MALIK			
08:12	GOOD! LAYUP by GIBBS, JALEN	8-20	V 12	
07:54				MISSED JUMPER by RAY, JALEN
07:49				REBOUND (OFF) by DWYER, DAN
07:46		10-20	V 10	GOOD! LAYUP by PEMBERTON, ELI [PNT]
07:31	MISSED LAYUP by JEFFERSON, MALIK			
07:31				BLOCK by DWYER, DAN
07:26				REBOUND (DEF) by DWYER, DAN
07:23		13-20	V 7	GOOD! 3PTR by WRIGHT-FOREMAN, JUSTIN
07:22	TIMEOUT 30SEC			
07:09				FOUL (PERSONAL) by DWYER, DAN
07:09				SUB OUT: DWYER, DAN
07:09				SUB IN: TAYLOR, JACQUIL
06:56	MISSED 3PTR by CHONG QUI, DAMIAN			
06:52				REBOUND (DEF) by TAYLOR, JACQUIL
06:35	FOUL (PERSONAL) by JEFFERSON, MALIK			
06:35		14-20	V 6	GOOD! FT by PEMBERTON, ELI
06:34				MISSED FT by PEMBERTON, ELI
06:32	REBOUND (DEF) by GIBBS, JALEN			
06:11	MISSED 3PTR by SCOTT, K.J.			
06:10				REBOUND (DEF) by TRUEHEART, STAFFORD
06:10	FOUL (PERSONAL) by JEFFERSON, MALIK			
06:10		15-20	V 5	GOOD! FT by TAYLOR, JACQUIL
06:10		16-20	V 4	GOOD! FT by TAYLOR, JACQUIL
06:05				SUB OUT: RAY, JALEN
06:05				SUB IN: BUIE, DESURE
06:04	TURNOVER (LOSTBALL) by GIBBS, JALEN			
06:04				STEAL by BUIE, DESURE
05:50				TURNOVER (DRIBBLING) by BUIE, DESURE
05:24	GOOD! 3PTR by GIBBS, JALEN	16-23	V 7	

Time	VISITORS: Mt. St. Mary's	Score	Margin	HOME: Hofstra
05:06				MISSED 3PTR by TRUEHEART, STAFFORD
05:01				REBOUND (OFF) by TAYLOR, JACQUIL
04:54		18-23	V 5	GOOD! LAYUP by BUIE, DESURE [PNT]
04:28				FOUL (PERSONAL) by PEMBERTON, ELI
04:27				SUB OUT: PEMBERTON, ELI
04:27				SUB IN: WORMLEY, KENNY
04:27	SUB OUT: CHONG QUI, DAMIAN			
04:27	SUB IN: HABWE, OMAR			
04:27	SUB OUT: JEFFERSON, MALIK			
04:27	SUB IN: MORSE, VADO			
04:20	GOOD! 3PTR by GIBBS, JALEN	18-26	V 8	
04:20	ASSIST by OPOKU, NANA			
04:01				MISSED JUMPER by BUIE, DESURE
03:59	REBOUND (DEF) by TEAM			
03:59				
03:43	MISSED JUMPER by MORSE, VADO			
03:38				REBOUND (DEF) by TAYLOR, JACQUIL
03:36				MISSED 3PTR by WRIGHT-FOREMAN, JUSTIN
03:32	REBOUND (DEF) by GIBBS, JALEN			
03:32				FOUL (PERSONAL) by BUIE, DESURE
03:32	GOOD! FT by GIBBS, JALEN	18-27	V 9	
03:32	MISSED FT by GIBBS, JALEN			
03:32	REBOUND (OFF) by GIBBS, JALEN			
03:14	MISSED 3PTR by GIBBS, JALEN			
03:10				REBOUND (DEF) by TAYLOR, JACQUIL
02:48		20-27	V 7	GOOD! JUMPER by WORMLEY, KENNY
02:27	MISSED JUMPER by MORSE, VADO			
02:23				REBOUND (DEF) by TAYLOR, JACQUIL
02:16		23-27	V 4	GOOD! 3PTR by TRUEHEART, STAFFORD
02:16				ASSIST by WRIGHT-FOREMAN, JUSTIN
01:52	MISSED JUMPER by GIBBS, JALEN			
01:49				REBOUND (DEF) by TRUEHEART, STAFFORD
01:44		25-27	V 2	GOOD! LAYUP by WRIGHT-FOREMAN, JUSTIN
01:35	TIMEOUT 30SEC			
01:35				SUB OUT: WRIGHT-FOREMAN, JUSTIN
01:35				SUB IN: RAY, JALEN
01:35	SUB OUT: MORSE, VADO			
01:35	SUB IN: CHONG QUI, DAMIAN			
01:13	MISSED 3PTR by OPOKU, NANA			
01:10	REBOUND (OFF) by HABWE, OMAR			
01:09				FOUL (PERSONAL) by TAYLOR, JACQUIL
01:09	MISSED FT by HABWE, OMAR			
01:09	REBOUND (OFF) by TEAM			
01:09				SUB OUT: WORMLEY, KENNY
01:09				SUB IN: WRIGHT-FOREMAN, JUSTIN
01:09	GOOD! FT by HABWE, OMAR	25-28	V 3	
00:54		28-28	T	GOOD! 3PTR by BUIE, DESURE
00:54				ASSIST by TAYLOR, JACQUIL
00:25	TURNOVER (OTHER) by			
00:17		31-28	H 3	GOOD! 3PTR by RAY, JALEN [FB]
00:17				ASSIST by WRIGHT-FOREMAN, JUSTIN
00:00	MISSED LAYUP by CHONG QUI, DAMIAN			
00:00				BLOCK by TAYLOR, JACQUIL
00:00				REBOUND (DEF) by WRIGHT-FOREMAN, JUSTIN

Mt. St. Mary's 28, Hofstra 31

Points from (This Period)	MSM	HOF
In the Paint	12	10
Off Turns	7	6
2nd Chance	1	7
Fast Break	2	3
Bench	4	10

Official Box Score
Mt. St. Mary's vs Hofstra
Second Half Statistics Only
November 10, 2018 at David S. Mack Sports and Exhibition Complex - Hempstead, New York



Mt. St. Mary's 33

No.	Player	S	Pts	FG	3FG	FT	OR	DR	TR	PF	A	TO	Blk	Stl	Min	+/-
00	MORSE, VADO		7	2-7	2-5	1-2	0	2	2	3	0	0	0	0	11	-18
01	GIBBS, JALEN		5	1-4	0-1	3-6	0	3	3	1	2	2	0	3	19	-7
22	OPOKU, NANA		12	5-5	2-2	0-0	0	2	2	0	0	1	1	0	20	-15
35	SCOTT, K.J.		6	3-7	0-3	0-3	0	3	3	2	1	1	0	0	15	-19
42	JEFFERSON, MALIK		2	1-1	0-0	0-0	0	2	2	3	0	1	1	0	6	-4
10	POULSEN, MARTIN		0	0-1	0-0	0-0	0	0	0	1	0	0	0	0	6	5
13	HABWE, OMAR		0	0-1	0-0	0-0	0	3	3	0	0	1	0	1	11	-13
15	CHONG QUI, DAMIAN		1	0-2	0-1	1-2	0	0	0	1	2	0	0	0	12	-4
	TEAM						0	0	0	0		0				
TOTALS			33	12-28	4-12	5-13	0	0	15	11	5	6	2	4	100	

Shooting By Period

Period	FG	FG%	3FG	3FG%	FT	FT%
2nd Half	12-28	43%	4-12	33%	5-13	38%
Game	23-56	41.1%	8-24	33.3%	7-17	41.2%

Last FG Half: MSM -

Hofstra 48

No.	Player	S	Pts	FG	3FG	FT	OR	DR	TR	PF	A	TO	Blk	Stl	Min	+/-
03	WRIGHT-FOREMAN, JUSTIN		12	5-10	1-2	1-2	0	5	5	1	2	1	1	1	18	14
04	BUIE, DESURE		13	4-5	1-1	4-4	0	0	0	0	5	0	0	0	17	17
05	PEMBERTON, ELI		15	5-6	3-4	2-3	0	5	5	1	2	0	0	0	17	21
15	TRUEHEART, STAFFORD		4	2-6	0-1	0-1	1	2	3	2	1	0	0	0	7	9
23	TAYLOR, JACQUIL		4	2-3	0-0	0-0	1	3	4	1	0	0	0	1	9	17
00	COBURN, TAREQ		0	0-0	0-0	0-0	0	2	2	0	0	1	0	0	3	-6
02	WORMLEY, KENNY		0	0-1	0-0	0-0	0	0	0	0	0	1	0	1	4	-7
14	SCHUTTE, KEVIN		0	0-0	0-0	0-0	0	0	0	0	0	0	0	0	1	2
20	RAY, JALEN		0	0-2	0-1	0-0	0	1	1	2	0	1	0	0	14	10
24	KLEMENTOWICZ, CONNOR		0	0-0	0-0	0-0	0	0	0	0	0	0	0	0	1	2
30	DWYER, DAN		0	0-1	0-0	0-0	0	1	1	2	1	0	0	0	11	-4
	TEAM						0	0	0	0		0				
TOTALS			48	18-34	5-9	7-10	0	0	21	9	11	4	1	3	100	

Shooting By Period

Period	FG	FG%	3FG	3FG%	FT	FT%
2nd Half	18-34	53%	5-9	56%	7-10	70%
Game	29-64	45.3%	9-23	39.1%	12-18	66.7%

Last FG Half: HOF -

Game Notes:

Officials: Tim Kelly, Louie Andrakakos, Patrick Harwood
Attendance: 4645

Start Time: 2018-11-10 00:52:20
End Time: 2018-11-10 02:40:46
Game Duration: 108

Score	1st	2nd	TOT
MSM	28	33	61
HOF	31	48	79

Points from (This Period)	MSM	HOF
In the Paint	16	16
Off Turns	4	11
2nd Chance	0	5
Fast Break	5	4
Bench	1	0

Official Play-By-Play
Mt. St. Mary's vs Hofstra
Second Half

November 10, 2018 at David S. Mack Sports and Exhibition Complex - Hempstead, New York



Period 2

Starters:

Mt. St. Mary's: 00 MORSE,VADO; 22 OPOKU,NANA; 35 SCOTT,K.J.; 42 JEFFERSON,MALIK; 1 GIBBS,JALEN;

Hofstra: 3 WRIGHT-FOREMAN,JUSTIN; 4 BUIE,DESURE; 5 PEMBERTON,ELI; 15 TRUEHEART,STAFFORD; 23 TAYLOR,JACQUIL;

Time	VISITORS: Mt. St. Mary's	Score	Margin	HOME: Hofstra
19:44		33-28	H 5	GOOD! JUMPER by WRIGHT-FOREMAN, JUSTIN
19:23	MISSED 3PTR by MORSE, VADO			
19:18				REBOUND (DEF) by TRUEHEART, STAFFORD
19:13		35-28	H 7	GOOD! JUMPER by TRUEHEART, STAFFORD
19:13				ASSIST by BUIE, DESURE
18:49	MISSED JUMPER by MORSE, VADO			
18:42				REBOUND (DEF) by WRIGHT-FOREMAN, JUSTIN
18:41				MISSED LAYUP by TAYLOR, JACQUIL
18:41	BLOCK by JEFFERSON, MALIK			
18:35	REBOUND (DEF) by JEFFERSON, MALIK			
18:29	GOOD! 3PTR by MORSE, VADO	35-31	H 4	
18:29	ASSIST by GIBBS, JALEN			
18:06				MISSED 3PTR by PEMBERTON, ELI
18:01				REBOUND (OFF) by TRUEHEART, STAFFORD
18:00				MISSED LAYUP by TRUEHEART, STAFFORD
18:00	BLOCK by OPOKU, NANA			
17:51	REBOUND (DEF) by OPOKU, NANA			
17:50	MISSED LAYUP by GIBBS, JALEN			
17:50				REBOUND (DEF) by TRUEHEART, STAFFORD
17:50				SUB OUT: TAYLOR, JACQUIL
17:50				SUB IN: DWYER, DAN
17:46		38-31	H 7	GOOD! 3PTR by PEMBERTON, ELI
17:46				ASSIST by TRUEHEART, STAFFORD
17:18	MISSED 3PTR by SCOTT, K.J.			
17:13				REBOUND (DEF) by WRIGHT-FOREMAN, JUSTIN
17:07				MISSED LAYUP by TRUEHEART, STAFFORD
17:03	REBOUND (DEF) by SCOTT, K.J.			
17:01	GOOD! LAYUP by SCOTT, K.J. [FB]	38-33	H 5	
17:01				FOUL (PERSONAL) by DWYER, DAN
17:01	SUB OUT: MORSE, VADO			
17:01	SUB IN: CHONG QUI, DAMIAN			
17:00	MISSED FT by SCOTT, K.J.			
16:58				REBOUND (DEF) by PEMBERTON, ELI
16:56		40-33	H 7	GOOD! LAYUP by WRIGHT-FOREMAN, JUSTIN [FB]
16:56				ASSIST by PEMBERTON, ELI
16:29	GOOD! JUMPER by SCOTT, K.J. [PNT]	40-35	H 5	
16:12				MISSED JUMPER by TRUEHEART, STAFFORD
16:07	REBOUND (DEF) by SCOTT, K.J.			
16:03	MISSED JUMPER by SCOTT, K.J.			
15:59				REBOUND (DEF) by DWYER, DAN
15:56		42-35	H 7	GOOD! JUMPER by PEMBERTON, ELI
15:56	FOUL (PERSONAL) by JEFFERSON, MALIK			
15:56				
15:56	SUB OUT: SCOTT, K.J.			
15:56	SUB IN: HABWE, OMAR			
15:56	SUB OUT: JEFFERSON, MALIK			
15:56	SUB IN: POULSEN, MARTIN			
15:56		43-35	H 8	GOOD! FT by PEMBERTON, ELI
15:35				SUB OUT: BUIE, DESURE
15:35				SUB IN: RAY, JALEN
15:27	MISSED JUMPER by GIBBS, JALEN			
15:27				REBOUND (DEF) by TEAM
15:13		46-35	H 11	GOOD! 3PTR by WRIGHT-FOREMAN, JUSTIN
14:59	MISSED JUMPER by CHONG QUI, DAMIAN			
14:59				BLOCK by WRIGHT-FOREMAN, JUSTIN
14:57				REBOUND (DEF) by TEAM
14:41				MISSED JUMPER by RAY, JALEN
14:41	REBOUND (DEF) by HABWE, OMAR			
14:41				FOUL (PERSONAL) by TRUEHEART, STAFFORD
14:41				SUB OUT: TRUEHEART, STAFFORD
14:41				SUB IN: COBURN, TAREQ
14:41				SUB OUT: PEMBERTON, ELI
14:41				SUB IN: WORMLEY, KENNY
14:22	GOOD! 3PTR by OPOKU, NANA	46-38	H 8	
14:22	ASSIST by CHONG QUI, DAMIAN			
14:02				TURNOVER (LOSTBALL) by RAY, JALEN
14:02	STEAL by GIBBS, JALEN			
13:55	MISSED JUMPER by POULSEN, MARTIN			
13:47				REBOUND (DEF) by COBURN, TAREQ
13:45				TURNOVER (LOSTBALL) by COBURN, TAREQ

Time	VISITORS: Mt. St. Mary's	Score	Margin	HOME: Hofstra
13:45	STEAL by GIBBS, JALEN			
13:27	GOOD! LAYUP by OPOKU, NANA [PNT]	46-40	H 6	
13:13				TURNOVER (BADPASS) by WORMLEY, KENNY
13:13	STEAL by GIBBS, JALEN			
13:11	GOOD! LAYUP by GIBBS, JALEN [FB/PNT]	46-42	H 4	
13:11				FOUL (PERSONAL) by RAY, JALEN
13:11				TIMEOUT 30SEC
13:11				SUB OUT: COBURN, TAREQ
13:11				SUB IN: TAYLOR, JACQUIL
13:11				SUB OUT: WORMLEY, KENNY
13:11				SUB IN: BUIE, DESURE
13:11				SUB OUT: DWYER, DAN
13:11				SUB IN: PEMBERTON, ELI
13:11	SUB OUT: POULSEN, MARTIN			
13:11	SUB IN: SCOTT, K.J.			
13:11	SUB OUT: CHONG QUI, DAMIAN			
13:11	SUB IN: MORSE, VADO			
13:10	MISSED FT by GIBBS, JALEN			
13:07				REBOUND (DEF) by PEMBERTON, ELI
12:59				MISSED DUNK by WRIGHT-FOREMAN, JUSTIN
12:54	REBOUND (DEF) by GIBBS, JALEN			
12:52				FOUL (PERSONAL) by TAYLOR, JACQUIL
12:52	GOOD! FT by MORSE, VADO [FB]	46-43	H 3	
12:52	MISSED FT by MORSE, VADO			
12:52				REBOUND (DEF) by TAYLOR, JACQUIL
12:41		48-43	H 5	GOOD! LAYUP by BUIE, DESURE [PNT]
12:24	MISSED LAYUP by MORSE, VADO			
12:20				REBOUND (DEF) by PEMBERTON, ELI
12:16		50-43	H 7	GOOD! JUMPER by WRIGHT-FOREMAN, JUSTIN [PNT]
12:16				ASSIST by PEMBERTON, ELI
11:53	GOOD! JUMPER by SCOTT, K.J. [PNT]	50-45	H 5	
11:36		53-45	H 8	GOOD! 3PTR by PEMBERTON, ELI
11:36				ASSIST by BUIE, DESURE
11:16	TURNOVER (BADPASS) by HABWE, OMAR			
11:16				STEAL by TAYLOR, JACQUIL
11:08		55-45	H 10	GOOD! JUMPER by WRIGHT-FOREMAN, JUSTIN
11:08				
10:46	TURNOVER (LOSTBALL) by GIBBS, JALEN			
10:46				STEAL by WRIGHT-FOREMAN, JUSTIN
10:41		57-45	H 12	GOOD! LAYUP by PEMBERTON, ELI [FB/PNT]
10:41				ASSIST by WRIGHT-FOREMAN, JUSTIN
10:29	GOOD! 3PTR by MORSE, VADO	57-48	H 9	
09:57		59-48	H 11	GOOD! DUNK by TAYLOR, JACQUIL
09:57				ASSIST by BUIE, DESURE
09:38	FOUL (OFF) by SCOTT, K.J.			
09:38	TURNOVER (OFFENSIVE) by SCOTT, K.J.			
09:28	FOUL (PERSONAL) by SCOTT, K.J.			
09:28	SUB OUT: GIBBS, JALEN			
09:28	SUB IN: CHONG QUI, DAMIAN			
09:24	FOUL (PERSONAL) by CHONG QUI, DAMIAN			
09:18		61-48	H 13	GOOD! DUNK by TAYLOR, JACQUIL
09:18				ASSIST by BUIE, DESURE
09:10	SUB OUT: OPOKU, NANA			
09:10	SUB IN: JEFFERSON, MALIK			
09:10	FOUL (OFF) by JEFFERSON, MALIK			
09:10	TURNOVER (OFFENSIVE) by JEFFERSON, MALIK			
09:03	SUB OUT: JEFFERSON, MALIK			
09:03	SUB IN: OPOKU, NANA			
09:01				MISSED LAYUP by WRIGHT-FOREMAN, JUSTIN
08:57				REBOUND (OFF) by TAYLOR, JACQUIL
08:55		64-48	H 16	GOOD! 3PTR by PEMBERTON, ELI
08:55				ASSIST by BUIE, DESURE
08:38	MISSED 3PTR by SCOTT, K.J.			
08:34				REBOUND (DEF) by TAYLOR, JACQUIL
08:18		67-48	H 19	GOOD! 3PTR by BUIE, DESURE
08:18				ASSIST by WRIGHT-FOREMAN, JUSTIN
08:13	TIMEOUT 30SEC			
08:13	SUB OUT: SCOTT, K.J.			
08:13	SUB IN: GIBBS, JALEN			
08:01	MISSED 3PTR by MORSE, VADO			
07:56				REBOUND (DEF) by TAYLOR, JACQUIL
07:51				MISSED JUMPER by WRIGHT-FOREMAN, JUSTIN
07:45	REBOUND (DEF) by MORSE, VADO			
07:41				FOUL (PERSONAL) by WRIGHT-FOREMAN, JUSTIN
07:41	SUB OUT: HABWE, OMAR			
07:41	SUB IN: POULSEN, MARTIN			
07:26				FOUL (PERSONAL) by PEMBERTON, ELI
07:26	GOOD! FT by CHONG QUI, DAMIAN	67-49	H 18	
07:25	MISSED FT by CHONG QUI, DAMIAN			
07:22				REBOUND (DEF) by PEMBERTON, ELI

Time	VISITORS: Mt. St. Mary's	Score	Margin	HOME: Hofstra
07:05				MISSED 3PTR by RAY, JALEN
07:02	REBOUND (DEF) by GIBBS, JALEN			
06:58	MISSED 3PTR by CHONG QUI, DAMIAN			
06:56				REBOUND (DEF) by PEMBERTON, ELI
06:55	FOUL (PERSONAL) by POULSEN, MARTIN			
06:48	FOUL (PERSONAL) by MORSE, VADO			
06:48		68-49	H 19	GOOD! FT by BUIE, DESURE
06:48		69-49	H 20	GOOD! FT by BUIE, DESURE
06:48				SUB OUT: TAYLOR, JACQUIL
06:48				SUB IN: DWYER, DAN
06:32	MISSED 3PTR by GIBBS, JALEN			
06:27				REBOUND (DEF) by WRIGHT-FOREMAN, JUSTIN
06:14				MISSED JUMPER by BUIE, DESURE
06:10	REBOUND (DEF) by MORSE, VADO			
06:02	GOOD! LAYUP by OPOKU, NANA [PNT]	69-51	H 18	
05:35				MISSED LAYUP by DWYER, DAN
05:34	REBOUND (DEF) by OPOKU, NANA			
05:34	SUB OUT: MORSE, VADO			
05:34	SUB IN: SCOTT, K.J.			
05:16				FOUL (PERSONAL) by RAY, JALEN
05:16	MISSED FT by GIBBS, JALEN			
05:16	REBOUND (OFF) by TEAM			
05:16	GOOD! FT by GIBBS, JALEN	69-52	H 17	
05:16	SUB OUT: POULSEN, MARTIN			
05:16	SUB IN: HABWE, OMAR			
05:03		71-52	H 19	GOOD! LAYUP by BUIE, DESURE
05:03				ASSIST by DWYER, DAN
04:39	GOOD! 3PTR by OPOKU, NANA	71-55	H 16	
04:39	ASSIST by GIBBS, JALEN			
04:23				MISSED 3PTR by WRIGHT-FOREMAN, JUSTIN
04:18	REBOUND (DEF) by HABWE, OMAR			
04:15	MISSED 3PTR by SCOTT, K.J.			
04:10				REBOUND (DEF) by WRIGHT-FOREMAN, JUSTIN
03:58				MISSED JUMPER by WRIGHT-FOREMAN, JUSTIN
03:54				REBOUND (OFF) by TEAM
03:54				
03:54	SUB OUT: CHONG QUI, DAMIAN			
03:54	SUB IN: MORSE, VADO			
03:54	FOUL (PERSONAL) by MORSE, VADO			
03:54		72-55	H 17	GOOD! FT by BUIE, DESURE
03:54		73-55	H 18	GOOD! FT by BUIE, DESURE
03:28	MISSED 3PTR by MORSE, VADO			
03:25				REBOUND (DEF) by RAY, JALEN
03:04	FOUL (PERSONAL) by MORSE, VADO			
03:04	SUB OUT: MORSE, VADO			
03:04	SUB IN: CHONG QUI, DAMIAN			
03:04		74-55	H 19	GOOD! FT by PEMBERTON, ELI
03:02				MISSED FT by PEMBERTON, ELI
03:00	REBOUND (DEF) by HABWE, OMAR			
02:43	GOOD! DUNK by OPOKU, NANA	74-57	H 17	
02:43	ASSIST by SCOTT, K.J.			
02:24				TURNOVER (BADPASS) by WRIGHT-FOREMAN, JUSTIN
02:24	STEAL by HABWE, OMAR			
02:18	MISSED JUMPER by HABWE, OMAR			
02:14				REBOUND (DEF) by WRIGHT-FOREMAN, JUSTIN
02:05	FOUL (PERSONAL) by GIBBS, JALEN			
02:05		75-57	H 18	GOOD! FT by WRIGHT-FOREMAN, JUSTIN
02:05				SUB OUT: RAY, JALEN
02:05				SUB IN: WORMLEY, KENNY
02:05	SUB OUT: HABWE, OMAR			
02:05	SUB IN: JEFFERSON, MALIK			
02:05				MISSED FT by WRIGHT-FOREMAN, JUSTIN
02:01	REBOUND (DEF) by JEFFERSON, MALIK			
01:54	TURNOVER (LOSTBALL) by GIBBS, JALEN			
01:54				STEAL by WORMLEY, KENNY
01:48				MISSED LAYUP by WORMLEY, KENNY
01:46	REBOUND (DEF) by SCOTT, K.J.			
01:44				FOUL (PERSONAL) by DWYER, DAN
01:44	MISSED FT by GIBBS, JALEN			
01:44	REBOUND (OFF) by TEAM			
01:44	GOOD! FT by GIBBS, JALEN	75-58	H 17	
01:44				SUB OUT: PEMBERTON, ELI
01:44				SUB IN: TRUEHEART, STAFFORD
01:44				SUB OUT: WRIGHT-FOREMAN, JUSTIN
01:44				SUB IN: COBURN, TAREQ
01:44	GOOD! FT by GIBBS, JALEN	75-59	H 16	
01:20		77-59	H 18	GOOD! JUMPER by BUIE, DESURE
01:05	GOOD! LAYUP by JEFFERSON, MALIK [PNT]	77-61	H 16	
01:05	ASSIST by CHONG QUI, DAMIAN			
00:51				MISSED 3PTR by TRUEHEART, STAFFORD

Time	VISITORS: Mt. St. Mary's	Score	Margin	HOME: Hofstra
00:50	REBOUND (DEF) by TEAM			
00:50				SUB OUT: DWYER, DAN
00:50				SUB IN: SCHUTTE, KEVIN
00:42	TURNOVER (TRAVEL) by OPOKU, NANA			
00:42				SUB OUT: BUIE, DESURE
00:42				SUB IN: KLEMENTOWICZ, CONNOR
00:26		79-61	H 18	GOOD! DUNK by TRUEHEART, STAFFORD
00:26	FOUL (PERSONAL) by JEFFERSON, MALIK			
00:26	SUB OUT: JEFFERSON, MALIK			
00:26	SUB IN: POULSEN, MARTIN			
00:26				MISSED FT by TRUEHEART, STAFFORD
00:23	REBOUND (DEF) by GIBBS, JALEN			
00:20				FOUL (PERSONAL) by TRUEHEART, STAFFORD
00:20	MISSED FT by SCOTT, K.J.			
00:20	REBOUND (OFF) by TEAM			
00:19	MISSED FT by SCOTT, K.J.			
00:17				REBOUND (DEF) by COBURN, TAREQ

Mt. St. Mary's 61, Hofstra 79

Points from (This Period)	MSM	HOF
In the Paint	16	16
Off Turns	4	11
2nd Chance	0	5
Fast Break	5	4
Bench	1	0

Official Scoring/Possession Reference Chart
Mt. St. Mary's vs Hofstra
Period 1

November 10, 2018 at David S. Mack Sports and Exhibition Complex - Hempstead, New York



Period 1

Starters:

Mt. St. Mary's: 00 MORSE,VADO; 22 OPOKU,NANA; 35 SCOTT,K.J.; 42 JEFFERSON,MALIK; 1 GIBBS,JALEN;

Hofstra: 3 WRIGHT-FOREMAN,JUSTIN; 4 BUIE,DESURE; 5 PEMBERTON,ELI; 15 TRUEHEART,STAFFORD; 23 TAYLOR,JACQUIL;

Time	VISITORS: Mt. St. Mary's	Score	Margin	HOME: Hofstra
17:53	GOOD! JUMPER by SCOTT, K.J. [PNT]	0-2	V 2	
17:14	GOOD! 3PTR by GIBBS, JALEN	0-5	V 5	
15:49	GOOD! LAYUP by SCOTT, K.J. [PNT]	0-7	V 7	
15:20	GOOD! JUMPER by SCOTT, K.J.	0-9	V 9	
14:58	GOOD! 3PTR by CHONG QUI, DAMIAN	0-12	V 12	
14:06		1-12	V 11	GOOD! FT by DWYER, DAN
12:57	GOOD! LAYUP by GIBBS, JALEN [FB/PNT]	1-14	V 13	
12:24	GOOD! LAYUP by GIBBS, JALEN [PNT]	1-16	V 15	
12:02		3-16	V 13	GOOD! JUMPER by COBURN, TAREQ [PNT]
11:26		4-16	V 12	GOOD! FT by WRIGHT-FOREMAN, JUSTIN
09:59	GOOD! LAYUP by SCOTT, K.J. [PNT]	4-18	V 14	
09:47		6-18	V 12	GOOD! LAYUP by DWYER, DAN [PNT]
09:03		8-18	V 10	GOOD! JUMPER by WRIGHT-FOREMAN, JUSTIN
08:12	GOOD! LAYUP by GIBBS, JALEN	8-20	V 12	
07:46		10-20	V 10	GOOD! LAYUP by PEMBERTON, ELI [PNT]
07:23		13-20	V 7	GOOD! 3PTR by WRIGHT-FOREMAN, JUSTIN
06:35		14-20	V 6	GOOD! FT by PEMBERTON, ELI
06:10		15-20	V 5	GOOD! FT by TAYLOR, JACQUIL
06:10		16-20	V 4	GOOD! FT by TAYLOR, JACQUIL
05:24	GOOD! 3PTR by GIBBS, JALEN	16-23	V 7	
04:54		18-23	V 5	GOOD! LAYUP by BUIE, DESURE [PNT]
04:20	GOOD! 3PTR by GIBBS, JALEN	18-26	V 8	
03:32	GOOD! FT by GIBBS, JALEN	18-27	V 9	
02:48		20-27	V 7	GOOD! JUMPER by WORMLEY, KENNY
02:16		23-27	V 4	GOOD! 3PTR by TRUEHEART, STAFFORD
01:44		25-27	V 2	GOOD! LAYUP by WRIGHT-FOREMAN, JUSTIN
01:09	GOOD! FT by HABWE, OMAR	25-28	V 3	
00:54		28-28	T	GOOD! 3PTR by BUIE, DESURE
00:17		31-28	H 3	GOOD! 3PTR by RAY, JALEN [FB]

Mt. St. Mary's 28, Hofstra 31

Official Scoring/Possession Reference Chart
Mt. St. Mary's vs Hofstra
Period 2

November 10, 2018 at David S. Mack Sports and Exhibition Complex - Hempstead, New York



Period 2

Starters:

Mt. St. Mary's: 00 MORSE,VADO; 22 OPOKU,NANA; 35 SCOTT,K.J.; 42 JEFFERSON,MALIK; 1 GIBBS,JALEN;

Hofstra: 3 WRIGHT-FOREMAN,JUSTIN; 4 BUIE,DESURE; 5 PEMBERTON,ELI; 15 TRUEHEART,STAFFORD; 23 TAYLOR,JACQUIL;

Time	VISITORS: Mt. St. Mary's	Score	Margin	HOME: Hofstra
19:44		33-28	H 5	GOOD! JUMPER by WRIGHT-FOREMAN, JUSTIN
19:13		35-28	H 7	GOOD! JUMPER by TRUEHEART, STAFFORD
18:29	GOOD! 3PTR by MORSE, VADO	35-31	H 4	
17:46		38-31	H 7	GOOD! 3PTR by PEMBERTON, ELI
17:01	GOOD! LAYUP by SCOTT, K.J. [FB]	38-33	H 5	
16:56		40-33	H 7	GOOD! LAYUP by WRIGHT-FOREMAN, JUSTIN [FB]
16:29	GOOD! JUMPER by SCOTT, K.J. [PNT]	40-35	H 5	
15:56		42-35	H 7	GOOD! JUMPER by PEMBERTON, ELI
15:56		43-35	H 8	GOOD! FT by PEMBERTON, ELI
15:13		46-35	H 11	GOOD! 3PTR by WRIGHT-FOREMAN, JUSTIN
14:22	GOOD! 3PTR by OPOKU, NANA	46-38	H 8	
13:27	GOOD! LAYUP by OPOKU, NANA [PNT]	46-40	H 6	
13:11	GOOD! LAYUP by GIBBS, JALEN [FB/PNT]	46-42	H 4	
12:52	GOOD! FT by MORSE, VADO [FB]	46-43	H 3	
12:41		48-43	H 5	GOOD! LAYUP by BUIE, DESURE [PNT]
12:16		50-43	H 7	GOOD! JUMPER by WRIGHT-FOREMAN, JUSTIN [PNT]
11:53	GOOD! JUMPER by SCOTT, K.J. [PNT]	50-45	H 5	
11:36		53-45	H 8	GOOD! 3PTR by PEMBERTON, ELI
11:08		55-45	H 10	GOOD! JUMPER by WRIGHT-FOREMAN, JUSTIN
10:41		57-45	H 12	GOOD! LAYUP by PEMBERTON, ELI [FB/PNT]
10:29	GOOD! 3PTR by MORSE, VADO	57-48	H 9	
09:57		59-48	H 11	GOOD! DUNK by TAYLOR, JACQUIL
09:18		61-48	H 13	GOOD! DUNK by TAYLOR, JACQUIL
08:55		64-48	H 16	GOOD! 3PTR by PEMBERTON, ELI
08:18		67-48	H 19	GOOD! 3PTR by BUIE, DESURE
07:26	GOOD! FT by CHONG QUI, DAMIAN	67-49	H 18	
06:48		68-49	H 19	GOOD! FT by BUIE, DESURE
06:48		69-49	H 20	GOOD! FT by BUIE, DESURE
06:02	GOOD! LAYUP by OPOKU, NANA [PNT]	69-51	H 18	
05:16	GOOD! FT by GIBBS, JALEN	69-52	H 17	
05:03		71-52	H 19	GOOD! LAYUP by BUIE, DESURE
04:39	GOOD! 3PTR by OPOKU, NANA	71-55	H 16	
03:54		72-55	H 17	GOOD! FT by BUIE, DESURE
03:54		73-55	H 18	GOOD! FT by BUIE, DESURE
03:04		74-55	H 19	GOOD! FT by PEMBERTON, ELI
02:43	GOOD! DUNK by OPOKU, NANA	74-57	H 17	
02:05		75-57	H 18	GOOD! FT by WRIGHT-FOREMAN, JUSTIN
01:44	GOOD! FT by GIBBS, JALEN	75-58	H 17	
01:44	GOOD! FT by GIBBS, JALEN	75-59	H 16	
01:20		77-59	H 18	GOOD! JUMPER by BUIE, DESURE
01:05	GOOD! LAYUP by JEFFERSON, MALIK [PNT]	77-61	H 16	
00:26		79-61	H 18	GOOD! DUNK by TRUEHEART, STAFFORD

Mt. St. Mary's 61, Hofstra 79

Official Substitutions Log
Mt. St. Mary's vs Hofstra
Period 1

November 10, 2018 at David S. Mack Sports and Exhibition Complex - Hempstead, New York



VISITORS: Mt. St. Mary's	Time	Score	HOME: Hofstra
00 MORSE,VADO			3 WRIGHT-FOREMAN,JUSTIN
22 OPOKU,NANA			4 BUIE,DESURE
35 SCOTT,K.J.			5 PEMBERTON,ELI
42 JEFFERSON,MALIK			15 TRUEHEART,STAFFORD
1 GIBBS,JALEN			23 TAYLOR,JACQUIL
SUB OUT: 00 MORSE,VADO	17:44	2-0	
SUB IN: 15 CHONG QUI,DAMIAN	17:44		
SUB OUT: 1 GIBBS,JALEN	16:58	5-0	
SUB IN: 13 HABWE,OMAR	16:58		
	14:58	12-0	SUB OUT: WRIGHT-FOREMAN,JUSTIN
	14:58		SUB IN: RAY,JALEN
	14:58		SUB OUT: TRUEHEART,STAFFORD
	14:58		SUB IN: DWYER,DAN
	14:58		SUB OUT: TAYLOR,JACQUIL
	14:58		SUB IN: COBURN,TAREQ
SUB OUT: 22 OPOKU,NANA	14:58		
SUB IN: 1 GIBBS,JALEN	14:58		
	14:06	12-1	SUB OUT: BUIE,DESURE
	14:06		SUB IN: WRIGHT-FOREMAN,JUSTIN
	12:42	14-1	SUB OUT: PEMBERTON,ELI
	12:42		SUB IN: WORMLEY,KENNY
SUB OUT: 35 SCOTT,K.J.	12:42		
SUB IN: 22 OPOKU,NANA	12:42		
SUB OUT: 13 HABWE,OMAR	12:42		
SUB IN: 00 MORSE,VADO	12:42		
SUB OUT: 1 GIBBS,JALEN	11:26	16-3	
SUB IN: 13 HABWE,OMAR	11:26		
SUB OUT: 00 MORSE,VADO	11:01	16-4	
SUB IN: 35 SCOTT,K.J.	11:01		
SUB OUT: 42 JEFFERSON,MALIK	11:01		
SUB IN: 1 GIBBS,JALEN	11:01		
SUB OUT: 1 GIBBS,JALEN	10:45	16-4	
SUB IN: 00 MORSE,VADO	10:45		
	10:20	16-4	SUB OUT: WORMLEY,KENNY
	10:20		SUB IN: PEMBERTON,ELI
	09:25	18-6	SUB OUT: COBURN,TAREQ
	09:25		SUB IN: TRUEHEART,STAFFORD
SUB OUT: 13 HABWE,OMAR	08:38	18-8	
SUB IN: 42 JEFFERSON,MALIK	08:38		
	07:09	20-13	SUB OUT: DWYER,DAN
	07:09		SUB IN: TAYLOR,JACQUIL
	06:05	20-16	SUB OUT: RAY,JALEN
	06:05		SUB IN: BUIE,DESURE
	04:27	23-18	SUB OUT: PEMBERTON,ELI
	04:27		SUB IN: WORMLEY,KENNY
SUB OUT: 15 CHONG QUI,DAMIAN	04:27		
SUB IN: 13 HABWE,OMAR	04:27		
SUB OUT: 42 JEFFERSON,MALIK	04:27		
SUB IN: 00 MORSE,VADO	04:27		
	01:35	27-25	SUB OUT: WRIGHT-FOREMAN,JUSTIN
	01:35		SUB IN: RAY,JALEN
SUB OUT: 00 MORSE,VADO	01:35		
SUB IN: 15 CHONG QUI,DAMIAN	01:35		
	01:09	27-25	SUB OUT: WORMLEY,KENNY
	01:09		SUB IN: WRIGHT-FOREMAN,JUSTIN

Mt. St. Mary's 28, Hofstra 31

Official Substitutions Log
Mt. St. Mary's vs Hofstra
Period 2

November 10, 2018 at David S. Mack Sports and Exhibition Complex - Hempstead, New York



VISITORS: Mt. St. Mary's	Time	Score	HOME: Hofstra
00 MORSE,VADO			3 WRIGHT-FOREMAN,JUSTIN
22 OPOKU,NANA			4 BUIE,DESURE
35 SCOTT,K.J.			5 PEMBERTON,ELI
42 JEFFERSON,MALIK			15 TRUEHEART,STAFFORD
1 GIBBS,JALEN			23 TAYLOR,JACQUIL
	17:50	31-35	SUB OUT: TAYLOR,JACQUIL
	17:50		SUB IN: DWYER,DAN
SUB OUT: 00 MORSE,VADO	17:01	33-38	
SUB IN: 15 CHONG QUI,DAMIAN	17:01		
SUB OUT: 35 SCOTT,K.J.	15:56	35-42	
SUB IN: 13 HABWE,OMAR	15:56		
SUB OUT: 42 JEFFERSON,MALIK	15:56		
SUB IN: 10 POULSEN,MARTIN	15:56		
	15:35	35-43	SUB OUT: BUIE,DESURE
	15:35		SUB IN: RAY,JALEN
	14:41	35-46	SUB OUT: TRUEHEART,STAFFORD
	14:41		SUB IN: COBURN,TAREQ
	14:41		SUB OUT: PEMBERTON,ELI
	14:41		SUB IN: WORMLEY,KENNY
	13:11	42-46	SUB OUT: COBURN,TAREQ
	13:11		SUB IN: TAYLOR,JACQUIL
	13:11		SUB OUT: WORMLEY,KENNY
	13:11		SUB IN: BUIE,DESURE
	13:11		SUB OUT: DWYER,DAN
	13:11		SUB IN: PEMBERTON,ELI
SUB OUT: 10 POULSEN,MARTIN	13:11		
SUB IN: 35 SCOTT,K.J.	13:11		
SUB OUT: 15 CHONG QUI,DAMIAN	13:11		
SUB IN: 00 MORSE,VADO	13:11		
SUB OUT: 1 GIBBS,JALEN	09:28	48-59	
SUB IN: 15 CHONG QUI,DAMIAN	09:28		
SUB OUT: 22 OPOKU,NANA	09:10	48-61	
SUB IN: 42 JEFFERSON,MALIK	09:10		
SUB OUT: 42 JEFFERSON,MALIK	09:03	48-61	
SUB IN: 22 OPOKU,NANA	09:03		
SUB OUT: 35 SCOTT,K.J.	08:13	48-67	
SUB IN: 1 GIBBS,JALEN	08:13		
SUB OUT: 13 HABWE,OMAR	07:41	48-67	
SUB IN: 10 POULSEN,MARTIN	07:41		
	06:48	49-69	SUB OUT: TAYLOR,JACQUIL
	06:48		SUB IN: DWYER,DAN
SUB OUT: 00 MORSE,VADO	05:34	51-69	
SUB IN: 35 SCOTT,K.J.	05:34		
SUB OUT: 10 POULSEN,MARTIN	05:16	52-69	
SUB IN: 13 HABWE,OMAR	05:16		
SUB OUT: 15 CHONG QUI,DAMIAN	03:54	55-71	
SUB IN: 00 MORSE,VADO	03:54		
SUB OUT: 00 MORSE,VADO	03:04	55-73	
SUB IN: 15 CHONG QUI,DAMIAN	03:04		
	02:05	57-75	SUB OUT: RAY,JALEN
	02:05		SUB IN: WORMLEY,KENNY
SUB OUT: 13 HABWE,OMAR	02:05		
SUB IN: 42 JEFFERSON,MALIK	02:05		
	01:44	58-75	SUB OUT: PEMBERTON,ELI
	01:44		SUB IN: TRUEHEART,STAFFORD
	01:44		SUB OUT: WRIGHT-FOREMAN,JUSTIN
	01:44		SUB IN: COBURN,TAREQ
	00:50	61-77	SUB OUT: DWYER,DAN
	00:50		SUB IN: SCHUTTE,KEVIN
	00:42	61-77	SUB OUT: BUIE,DESURE
	00:42		SUB IN: KLEMENTOWICZ,CONNOR
SUB OUT: 42 JEFFERSON,MALIK	00:26	61-79	
SUB IN: 10 POULSEN,MARTIN	00:26		

Mt. St. Mary's 61, Hofstra 79

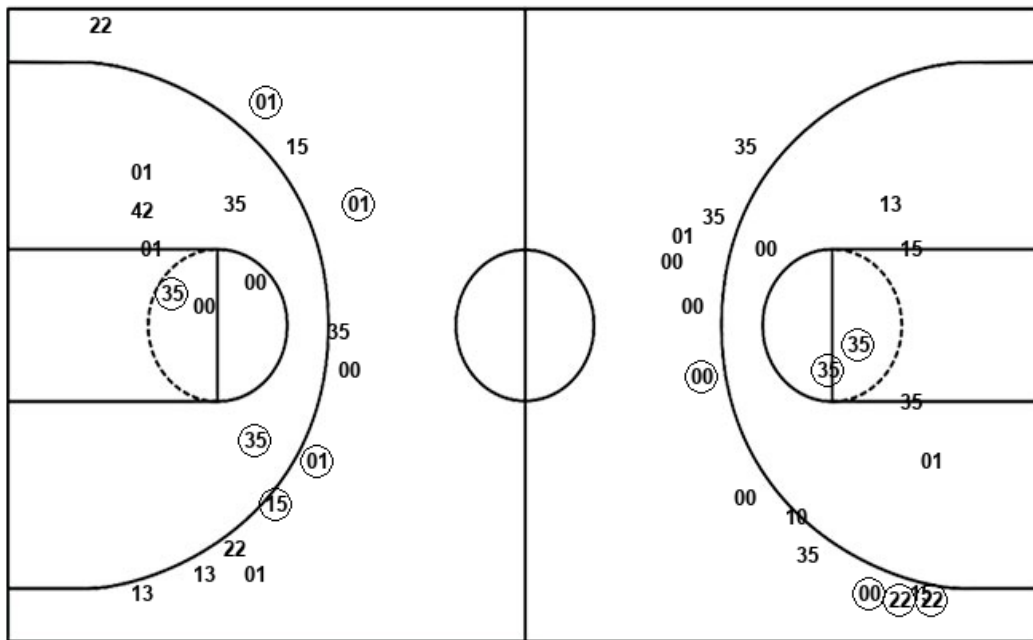
Official Shot Chart
Mt. St. Mary's vs Hofstra
Mt. St. Mary's Team Shots

November 10, 2018 at David S. Mack Sports and Exhibition Complex - Hempstead, New York



Layups

Dunks



Layups

Dunks

MSM : Period 1	Made	Att	Pct
Layups	5	8	62.5
Dunks	0	0	0
2PT Field Goals	7	16	43.8
3PT Field Goals	4	12	33.3
Total Field Goals	11	28	39.3

MSM : Period 2	Made	Att	Pct
Layups	5	7	71.4
Dunks	1	1	100.0
2PT Field Goals	8	16	50.0
3PT Field Goals	4	12	33.3
Total Field Goals	12	28	42.9

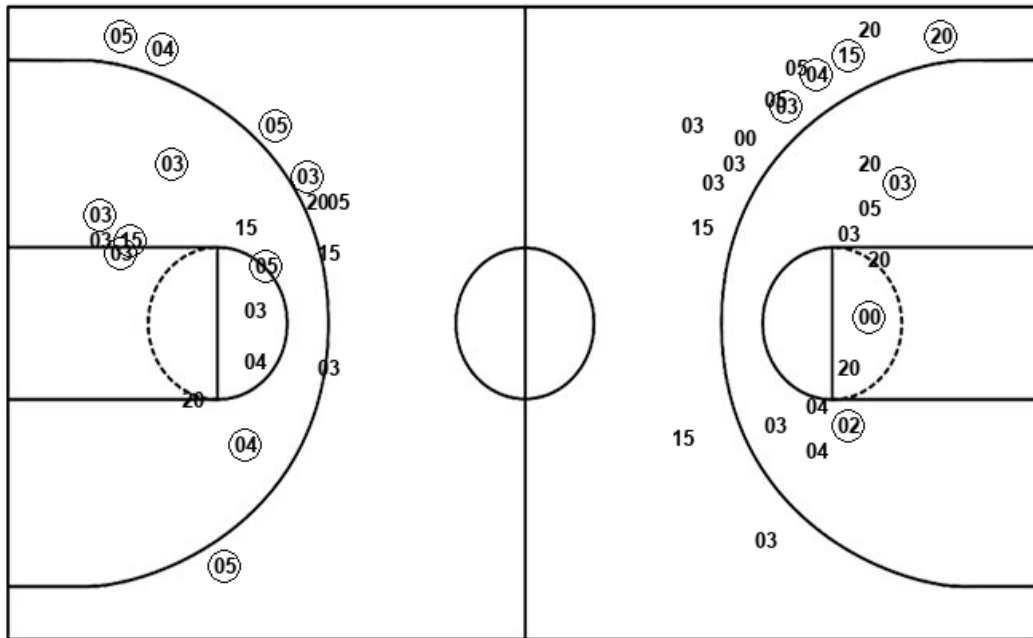
Official Shot Chart
Mt. St. Mary's vs Hofstra
Hofstra Team Shots

November 10, 2018 at David S. Mack Sports and Exhibition Complex - Hempstead, New York



Layups

Dunks



Layups

Dunks

HOF : Period 1	Made	Att	Pct
Layups	4	5	80.0
Dunks	0	0	0
2PT Field Goals	7	16	43.8
3PT Field Goals	4	14	28.6
Total Field Goals	11	30	36.7

HOF : Period 2	Made	Att	Pct
Layups	4	10	40.0
Dunks	3	4	75.0
2PT Field Goals	13	25	52.0
3PT Field Goals	5	9	55.6
Total Field Goals	18	34	52.9