

## FINAL SCORE



**Arkansas St.**

**77**



**South Alabama**

**64**

**January 11, 2019 • Mitchell Center - Mobile, Ala**

## FINAL STATISTICS

**Official Box Score**  
**Arkansas St. vs South Alabama**  
**Game Totals -- Final Statistics**  
**January 11, 2019 at Mitchell Center - Mobile, Ala**



### Arkansas St. 77

No.	Player	S	Pts	FG	3FG	FT	OR	DR	TR	PF	A	TO	Blk	Stl	Min	+/-
01	WASHINGTON, JIREH		9	3-6	0-1	3-6	2	4	6	3	5	4	0	1	30	10
03	WALLACE, MORGAN		6	3-5	0-1	0-0	1	7	8	3	3	0	0	0	30	7
05	TENNISON, PAYTON		3	1-3	1-2	0-0	1	1	2	1	2	1	1	1	22	10
10	WESTBROOK, AKASHA		4	1-3	0-0	2-4	1	3	4	3	2	3	0	0	25	7
35	MARTIN, PEYTON		25	9-16	0-0	7-11	5	5	10	4	0	4	1	2	27	6
00	FORD, JADA		9	3-9	3-8	0-0	0	0	0	0	0	0	0	1	18	3
02	TAYLOR, STARR		4	2-4	0-1	0-0	0	0	0	1	1	0	0	1	10	3
11	PEEVY, LYCIA		2	0-5	0-2	2-2	0	3	3	1	1	0	0	1	15	6
23	JACKSON, TRINITEE		8	4-7	0-0	0-0	3	1	4	2	1	0	0	0	10	6
24	ELDER, JORDAN		4	0-2	0-2	4-4	0	2	2	0	1	1	0	0	10	6
50	HECKERT, MADISON		3	1-1	0-0	1-2	0	0	0	0	0	0	0	0	4	1
	TEAM						2	3	5	0		2				
<b>TOTALS</b>			<b>77</b>	<b>27-61</b>	<b>4-17</b>	<b>19-29</b>	<b>15</b>	<b>29</b>	<b>44</b>	<b>18</b>	<b>16</b>	<b>15</b>	<b>2</b>	<b>7</b>	<b>200</b>	

#### Shooting By Period

Period	FG	FG%	3FG	3FG%	FT	FT%
1st Qtr	9-21	43%	3-8	38%	2-3	67%
2nd Qtr	7-15	47%	1-6	17%	3-6	50%
3rd Qtr	7-17	41%	0-2	00%	8-12	67%
4th Qtr	4-8	50%	0-1	00%	6-8	75%
1st Half	16-36	44%	4-14	29%	5-9	56%
2nd Half	11-25	44%	0-3	00%	14-20	70%
<b>Game</b>	<b>27-61</b>	<b>44.3%</b>	<b>4-17</b>	<b>23.5%</b>	<b>19-29</b>	<b>65.5%</b>

Last FG: 4th-00:48  
Biggest Run: 12-0  
Largest lead: By 21 at 2-07:08  
Technical Fouls: None.

### South Alabama 64

No.	Player	S	Pts	FG	3FG	FT	OR	DR	TR	PF	A	TO	Blk	Stl	Min	+/-
02	KINES, SHAFORIA		8	2-7	1-5	3-4	0	3	3	2	2	3	0	0	36	-4
04	CARTER, CHRISTEN		14	7-15	0-0	0-0	2	4	6	1	1	2	0	1	32	-6
12	TELEMAQUE, DAMAYA		6	2-6	0-1	2-2	1	2	3	4	3	4	0	0	33	-6
14	JONES, SAVANNAH		6	2-9	1-4	1-1	3	1	4	3	3	2	1	1	30	1
35	LEWIS, ANTOINETTE		21	9-13	0-0	3-4	5	4	9	5	0	2	3	1	18	-5
03	MORROW, JAYLA		2	1-4	0-2	0-0	0	2	2	2	2	1	0	1	17	-26
05	HART, EMERALD		0	0-1	0-0	0-0	0	0	0	1	0	0	0	0	2	-3
15	SYKES, ALEXIS		0	0-2	0-2	0-0	0	1	1	0	0	0	0	0	6	-6
23	BUSTER, JALA		0	0-3	0-1	0-0	0	1	1	0	0	0	0	0	3	-6
25	CENTERS, KENNEDI		7	3-6	0-0	1-4	2	5	7	5	3	1	0	0	20	4
44	HALL, INDIA		0	0-2	0-0	0-0	1	1	2	0	0	1	1	0	3	-8
	TEAM						1	1	2	0		0				
<b>TOTALS</b>			<b>64</b>	<b>26-68</b>	<b>2-15</b>	<b>10-15</b>	<b>15</b>	<b>25</b>	<b>40</b>	<b>23</b>	<b>14</b>	<b>16</b>	<b>5</b>	<b>4</b>	<b>200</b>	

#### Shooting By Period

Period	FG	FG%	3FG	3FG%	FT	FT%
1st Qtr	4-19	21%	0-1	00%	3-4	75%
2nd Qtr	7-17	41%	1-5	20%	4-5	80%
3rd Qtr	6-14	43%	0-2	00%	3-4	75%
4th Qtr	9-18	50%	1-7	14%	0-2	00%
1st Half	11-36	31%	1-6	17%	7-9	78%
2nd Half	15-32	47%	1-9	11%	3-6	50%
<b>Game</b>	<b>26-68</b>	<b>38.2%</b>	<b>2-15</b>	<b>13.3%</b>	<b>10-15</b>	<b>66.7%</b>

Last FG: 4th-00:17  
Biggest Run: 6-0  
Largest lead: By 5 at 1-07:45  
Technical Fouls: None.

#### Game Notes:

Officials: Troy Winders, Erica Bradley, Darren McClure  
Attendance: 474

Start Time: 2019-01-11 01:02:23

End Time: 2019-01-11 03:09:27

Game Duration: 127

Conference Game;

Score	1st	2nd	3rd	4th	TOT
ASU	23	18	22	14	<b>77</b>
USA	11	19	15	19	<b>64</b>

ASU led for 35:45. USA led for 3:23.

Game was tied for 0:53.

Times tied: 2 Lead Changes: 1

Points from	ASU	USA
In the Paint	38	46
Off Turns	20	14
2nd Chance	13	10
Fast Break	22	14
Bench	30	9

**Official Box Score**  
**Arkansas St. vs South Alabama**  
**First Half Statistics Only**  
**January 11, 2019 at Mitchell Center - Mobile, Ala**



### Arkansas St. 41

No.	Player	S	Pts	FG	3FG	FT	OR	DR	TR	PF	A	TO	Blk	Stl	Min	+/-
00	FORD, JADA		9	3-6	3-6	0-0	0	0	0	0	0	0	0	0	11	3
01	WASHINGTON, JIREH		6	3-5	0-1	0-2	2	3	5	0	1	1	0	0	14	8
02	TAYLOR, STARR		4	2-3	0-1	0-0	0	0	0	0	1	0	0	1	6	3
03	WALLACE, MORGAN		2	1-2	0-1	0-0	0	2	2	1	2	0	0	0	14	7
05	TENNISON, PAYTON		3	1-2	1-2	0-0	0	1	1	0	2	0	0	1	9	8
10	WESTBROOK, AKASHA		0	0-1	0-0	0-0	1	2	3	2	1	1	0	0	8	4
11	PEEVY, LYCIA		2	0-3	0-2	2-2	0	3	3	1	1	0	0	1	12	7
23	JACKSON, TRINITEE		6	3-6	0-0	0-0	2	1	3	1	0	0	0	0	7	2
24	ELDER, JORDAN		0	0-1	0-1	0-0	0	1	1	0	1	0	0	0	6	4
35	MARTIN, PEYTON		9	3-7	0-0	3-5	3	1	4	2	0	2	1	1	13	7
50	HECKERT, MADISON		0	0-0	0-0	0-0	0	0	0	0	0	0	0	0	1	2
	TEAM		0	0-0	0-0	0-0	0	2	2	0	0	2	0	0	0	
<b>TOTALS</b>			<b>41</b>	<b>16-36</b>	<b>4-14</b>	<b>5-9</b>	<b>8</b>	<b>16</b>	<b>24</b>	<b>7</b>	<b>9</b>	<b>6</b>	<b>1</b>	<b>4</b>	<b>100</b>	

#### Shooting By Period

Period	FG	FG%	3FG	3FG%	FT	FT%
1st Qtr	9-21	43%	3-8	38%	2-3	67%
2nd Qtr	7-15	47%	1-6	17%	3-6	50%
1st Half	16-36	44%	4-14	29%	5-9	56%
Game	27-61	44.3%	4-17	23.5%	19-29	65.5%

Last FG Half: ASU 2nd-00:14

### South Alabama 30

No.	Player	S	Pts	FG	3FG	FT	OR	DR	TR	PF	A	TO	Blk	Stl	Min	+/-
02	KINES, SHAFORIA		3	0-3	0-2	3-4	0	2	2	1	0	0	0	0	17	-3
03	MORROW, JAYLA		0	0-2	0-1	0-0	0	1	1	1	0	0	0	0	6	-16
04	CARTER, CHRISTEN		6	3-7	0-0	0-0	1	1	2	1	1	2	0	1	17	-5
05	HART, EMERALD		0	0-0	0-0	0-0	0	0	0	0	0	0	0	0	0	0
12	TELEMAQUE, DAMAYA		4	1-3	0-0	2-2	0	2	2	1	2	3	0	0	16	-3
14	JONES, SAVANNAH		3	1-6	1-2	0-0	2	1	3	1	1	2	0	0	17	-4
15	SYKES, ALEXIS		0	0-0	0-0	0-0	0	1	1	0	0	0	0	0	3	-7
23	BUSTER, JALA		0	0-3	0-1	0-0	0	1	1	0	0	0	0	0	3	-6
25	CENTERS, KENNEDI		2	1-1	0-0	0-0	0	3	3	2	1	1	0	0	6	1
35	LEWIS, ANTOINETTE		12	5-9	0-0	2-3	5	2	7	2	0	0	2	1	10	-4
44	HALL, INDIA		0	0-2	0-0	0-0	1	1	2	0	0	1	1	0	3	-8
	TEAM		0	0-0	0-0	0-0	1	0	1	0	0	0	0	0	0	
<b>TOTALS</b>			<b>30</b>	<b>11-36</b>	<b>1-6</b>	<b>7-9</b>	<b>10</b>	<b>15</b>	<b>25</b>	<b>9</b>	<b>5</b>	<b>9</b>	<b>3</b>	<b>2</b>	<b>100</b>	

#### Shooting By Period

Period	FG	FG%	3FG	3FG%	FT	FT%
1st Qtr	4-19	21%	0-1	00%	3-4	75%
2nd Qtr	7-17	41%	1-5	20%	4-5	80%
1st Half	11-36	31%	1-6	17%	7-9	78%
Game	26-68	38.2%	2-15	13.3%	10-15	66.7%

Last FG Half: USA 2nd-01:04

#### Game Notes:

Officials: **Troy Winders, Erica Bradley, Darren McClure**  
Attendance: **474**

Start Time: **2019-01-11 01:02:23**  
End Time: **2019-01-11 03:09:27**  
Game Duration: **127**  
Conference Game;

Score	1st	2nd	3rd	4th	TOT
ASU	23	18	22	14	<b>77</b>
USA	11	19	15	19	<b>64</b>

Points from (This Period)	ASU	USA
In the Paint	22	18
Off Turns	10	5
2nd Chance	5	6
Fast Break	16	7
Bench	21	2

**Official Box Score**  
**Arkansas St. vs South Alabama**  
**First Quarter Statistics Only**  
**January 11, 2019 at Mitchell Center - Mobile, Ala**



### Arkansas St. 23

No.	Player	S	Pts	FG	3FG	FT	OR	DR	TR	PF	A	TO	Blk	Stl	Min	+/-
01	WASHINGTON, JIREH		2	1-3	0-1	0-0	0	1	1	0	1	0	0	0	6	5
03	WALLACE, MORGAN		0	0-1	0-1	0-0	0	1	1	1	0	0	0	0	7	3
05	TENNISON, PAYTON		0	0-1	0-1	0-0	0	0	0	0	1	0	0	0	4	0
10	WESTBROOK, AKASHA		0	0-1	0-0	0-0	0	2	2	2	1	1	0	0	7	5
35	MARTIN, PEYTON		6	2-5	0-0	2-3	2	1	3	0	0	1	1	1	8	5
00	FORD, JADA		9	3-3	3-3	0-0	0	0	0	0	0	0	0	0	6	12
02	TAYLOR, STARR		2	1-2	0-1	0-0	0	0	0	0	1	0	0	1	4	7
11	PEEVY, LYCIA		0	0-1	0-1	0-0	0	1	1	0	0	0	0	1	3	7
23	JACKSON, TRINITEE		4	2-4	0-0	0-0	2	1	3	0	0	0	0	0	3	7
24	ELDER, JORDAN		0	0-0	0-0	0-0	0	1	1	0	1	0	0	0	3	9
50	HECKERT, MADISON		0	0-0	0-0	0-0	0	0	0	0	0	0	0	0	0	0
	TEAM						0	2	2	0		1				
<b>TOTALS</b>			<b>23</b>	<b>9-21</b>	<b>3-8</b>	<b>2-3</b>	<b>4</b>	<b>10</b>	<b>14</b>	<b>3</b>	<b>5</b>	<b>3</b>	<b>1</b>	<b>3</b>	<b>50</b>	

#### Shooting By Period

Period	FG	FG%	3FG	3FG%	FT	FT%
1st Qtr	9-21	43%	3-8	38%	2-3	67%
2nd Qtr	7-15	47%	1-6	17%	3-6	50%
1st Half	9-21	43%	3-8	38%	2-3	67%
1st Half	16-36	44%	4-14	29%	5-9	56%
Game	27-61	44.3%	4-17	23.5%	19-29	65.5%

### South Alabama 11

No.	Player	S	Pts	FG	3FG	FT	OR	DR	TR	PF	A	TO	Blk	Stl	Min	+/-
02	KINES, SHAFORIA		1	0-1	0-1	1-2	0	2	2	0	0	0	0	0	7	-4
04	CARTER, CHRISTEN		2	1-5	0-0	0-0	0	1	1	0	1	1	0	1	9	-12
12	TELEMAQUE, DAMAYA		2	1-2	0-0	0-0	0	1	1	0	1	1	0	0	8	-10
14	JONES, SAVANNAH		0	0-1	0-0	0-0	0	0	0	0	0	1	0	0	7	-5
35	LEWIS, ANTOINETTE		6	2-6	0-0	2-2	3	1	4	1	0	0	1	1	5	1
03	MORROW, JAYLA		0	0-1	0-0	0-0	0	1	1	0	0	0	0	0	4	-10
05	HART, EMERALD		0	0-0	0-0	0-0	0	0	0	0	0	0	0	0	0	0
15	SYKES, ALEXIS		0	0-0	0-0	0-0	0	1	1	0	0	0	0	0	3	-7
23	BUSTER, JALA		0	0-1	0-0	0-0	0	1	1	0	0	0	0	0	1	0
25	CENTERS, KENNEDI		0	0-0	0-0	0-0	0	0	0	2	0	1	0	0	1	-5
44	HALL, INDIA		0	0-2	0-0	0-0	1	1	2	0	0	1	1	0	3	-8
	TEAM						1	0	1	0		0				
<b>TOTALS</b>			<b>11</b>	<b>4-19</b>	<b>0-1</b>	<b>3-4</b>	<b>5</b>	<b>9</b>	<b>14</b>	<b>3</b>	<b>2</b>	<b>5</b>	<b>2</b>	<b>2</b>	<b>50</b>	

#### Shooting By Period

Period	FG	FG%	3FG	3FG%	FT	FT%
1st Qtr	4-19	21%	0-1	00%	3-4	75%
2nd Qtr	7-17	41%	1-5	20%	4-5	80%
1st Half	4-19	21%	0-1	00%	3-4	75%
1st Half	11-36	31%	1-6	17%	7-9	78%
Game	26-68	38.2%	2-15	13.3%	10-15	66.7%

#### Game Notes:

Officials: Troy Winders, Erica Bradley, Darren McClure  
Attendance: 474

Start Time: 2019-01-11 01:02:23  
End Time: 2019-01-11 03:09:27  
Game Duration: 127  
Conference Game;

Score	1st	2nd	3rd	4th	TOT
ASU	23	18	22	14	<b>77</b>
USA	11	19	15	19	<b>64</b>

Points from (This Period)	ASU	USA
In the Paint	12	6
Off Turns	4	3
2nd Chance	4	0
Fast Break	10	3
Bench	15	0

**Official Play-By-Play**  
**Arkansas St. vs South Alabama**  
**First Quarter**  
**January 11, 2019 at Mitchell Center - Mobile, Ala**



**Period 1**

**Starters:**

**Arkansas St.:** 1 WASHINGTON, JIREH; 3 WALLACE, MORGAN; 5 TENNISON, PAYTON; 10 WESTBROOK, AKASHA; 35 MARTIN, PEYTON;

**South Alabama:** 2 KINES, SHAFORIA; 4 CARTER, CHRISTEN; 12 TEHEMAQUE, DAMAYA; 14 JONES, SAVANNAH; 35 LEWIS, ANTOINETTE;

Time	VISITORS: Arkansas St.	Score	Margin	HOME: South Alabama
09:47		2-0	H 2	GOOD! JUMPER by TEHEMAQUE, DAMAYA
09:26	MISSED 3PTR by TENNISON, PAYTON			
09:21				REBOUND (DEF) by KINES, SHAFORIA
09:16				MISSED LAYUP by LEWIS, ANTOINETTE
09:11	REBOUND (DEF) by WESTBROOK, AKASHA			
09:08	TURNOVER (BADPASS) by WESTBROOK, AKASHA			
09:08				STEAL by LEWIS, ANTOINETTE
08:58		4-0	H 4	GOOD! LAYUP by LEWIS, ANTOINETTE
08:58				FOUL (PERSONAL) by LEWIS, ANTOINETTE
08:58	GOOD! FT by MARTIN, PEYTON	4-1	H 3	
08:58	MISSED FT by MARTIN, PEYTON			
08:56				REBOUND (DEF) by CARTER, CHRISTEN
08:45				TURNOVER (BADPASS) by TEHEMAQUE, DAMAYA
08:34	MISSED 3PTR by WASHINGTON, JIREH			
08:28				REBOUND (DEF) by KINES, SHAFORIA
08:24				MISSED JUMPER by CARTER, CHRISTEN
08:24				REBOUND (OFF) by LEWIS, ANTOINETTE
08:24	FOUL (PERSONAL) by WESTBROOK, AKASHA			
08:20				MISSED JUMPER by JONES, SAVANNAH
08:13				REBOUND (OFF) by LEWIS, ANTOINETTE
08:13				MISSED LAYUP by LEWIS, ANTOINETTE
08:13	REBOUND (DEF) by MARTIN, PEYTON			
08:03	MISSED LAYUP by WASHINGTON, JIREH			
07:58				REBOUND (DEF) by LEWIS, ANTOINETTE
07:45		6-1	H 5	GOOD! LAYUP by LEWIS, ANTOINETTE
07:45				ASSIST by CARTER, CHRISTEN
07:28	GOOD! LAYUP by WASHINGTON, JIREH	6-3	H 3	
07:16				TURNOVER (BADPASS) by JONES, SAVANNAH
07:16	STEAL by MARTIN, PEYTON			
07:08	GOOD! LAYUP by MARTIN, PEYTON [FB]	6-5	H 1	
07:08	ASSIST by TENNISON, PAYTON			
06:53	FOUL (PERSONAL) by WALLACE, MORGAN			
06:53		7-5	H 2	GOOD! FT by LEWIS, ANTOINETTE
06:53		8-5	H 3	GOOD! FT by LEWIS, ANTOINETTE
06:53				SUB OUT: LEWIS, ANTOINETTE
06:53				SUB IN: CENTERS, KENNEDI
06:42	MISSED JUMPER by MARTIN, PEYTON			
06:41	REBOUND (OFF) by MARTIN, PEYTON			
06:24	GOOD! LAYUP by MARTIN, PEYTON	8-7	H 1	
06:24	ASSIST by WASHINGTON, JIREH			
06:24				FOUL (PERSONAL) by CENTERS, KENNEDI
06:24	GOOD! FT by MARTIN, PEYTON	8-8	T	
06:24	SUB OUT: TENNISON, PAYTON			
06:24	SUB IN: FORD, JADA			
06:24	SUB OUT: MARTIN, PEYTON			
06:24	SUB IN: JACKSON, TRINITEE			
06:12				MISSED 3PTR by KINES, SHAFORIA
06:07	REBOUND (DEF) by WALLACE, MORGAN			
05:58	MISSED JUMPER by WESTBROOK, AKASHA			
05:50	REBOUND (OFF) by JACKSON, TRINITEE			
05:50	GOOD! LAYUP by JACKSON, TRINITEE	8-10	V 2	
05:46				FOUL (OFF) by CENTERS, KENNEDI
05:46				TURNOVER (OFFENSIVE) by CENTERS, KENNEDI
05:39				SUB OUT: CENTERS, KENNEDI
05:39				SUB IN: HALL, INDIA
05:36	MISSED LAYUP by JACKSON, TRINITEE			
05:32				REBOUND (DEF) by TEHEMAQUE, DAMAYA
05:27				MISSED JUMPER by CARTER, CHRISTEN
05:24	REBOUND (DEF) by WESTBROOK, AKASHA			
05:21	GOOD! 3PTR by FORD, JADA [FB]	8-13	V 5	
05:21	ASSIST by WESTBROOK, AKASHA			
05:06				MISSED JUMPER by HALL, INDIA
05:04	REBOUND (DEF) by TEAM			
05:04	SUB OUT: JACKSON, TRINITEE			
05:04	SUB IN: MARTIN, PEYTON			
05:04	SUB OUT: WASHINGTON, JIREH			
05:04	SUB IN: TAYLOR, STARR			
04:45	MISSED LAYUP by MARTIN, PEYTON			
04:45				BLOCK by HALL, INDIA
04:36				REBOUND (DEF) by HALL, INDIA

Time	VISITORS: Arkansas St.	Score	Margin	HOME: South Alabama
04:34		10-13	V 3	GOOD! LAYUP by CARTER, CHRISTEN [FB]
04:34				ASSIST by TEHEMAQUE, DAMAYA
04:25	MISSED 3PTR by WALLACE, MORGAN			
04:18	REBOUND (OFF) by MARTIN, PEYTON			
04:17	TURNOVER (BADPASS) by MARTIN, PEYTON			
04:17				STEAL by CARTER, CHRISTEN
04:14	FOUL (PERSONAL) by WESTBROOK, AKASHA			
04:14				
04:14				SUB OUT: JONES, SAVANNAH
04:14				SUB IN: SYKES, ALEXIS
04:14	SUB OUT: WALLACE, MORGAN			
04:14	SUB IN: ELDER, JORDAN			
04:14				MISSED FT by KINES, SHAFORIA
04:14				REBOUND (OFF) by TEAM
04:14		11-13	V 2	GOOD! FT by KINES, SHAFORIA [FB]
04:14				SUB OUT: KINES, SHAFORIA
04:14				SUB IN: MORROW, JAYLA
03:47	MISSED 3PTR by TAYLOR, STARR			
03:42				REBOUND (DEF) by SYKES, ALEXIS
03:36				MISSED LAYUP by TEHEMAQUE, DAMAYA
03:32	REBOUND (DEF) by ELDER, JORDAN			
03:29	GOOD! 3PTR by FORD, JADA [FB]	11-16	V 5	
03:29	ASSIST by ELDER, JORDAN			
03:29	SUB OUT: WESTBROOK, AKASHA			
03:29	SUB IN: PEEVY, LYCIA			
03:13				TURNOVER (BADPASS) by HALL, INDIA
03:13	STEAL by PEEVY, LYCIA			
03:05	MISSED 3PTR by PEEVY, LYCIA			
03:01				REBOUND (DEF) by MORROW, JAYLA
02:48				TURNOVER (BADPASS) by CARTER, CHRISTEN
02:48	STEAL by TAYLOR, STARR			
02:43	GOOD! LAYUP by TAYLOR, STARR [FB]	11-18	V 7	
02:23				MISSED JUMPER by CARTER, CHRISTEN
02:17				REBOUND (OFF) by HALL, INDIA
02:17				MISSED LAYUP by HALL, INDIA
02:15	REBOUND (DEF) by PEEVY, LYCIA			
02:11	GOOD! 3PTR by FORD, JADA	11-21	V 10	
02:11	ASSIST by TAYLOR, STARR			
02:11				SUB OUT: HALL, INDIA
02:11				SUB IN: LEWIS, ANTOINETTE
02:11				TIMEOUT 30SEC
01:50				MISSED LAYUP by MORROW, JAYLA
01:50	BLOCK by MARTIN, PEYTON			
01:50				REBOUND (OFF) by TEAM
01:39				MISSED JUMPER by CARTER, CHRISTEN
01:38	REBOUND (DEF) by TEAM			
01:37				SUB OUT: SYKES, ALEXIS
01:37				SUB IN: KINES, SHAFORIA
01:37				SUB OUT: TEHEMAQUE, DAMAYA
01:37				SUB IN: JONES, SAVANNAH
01:37	SUB OUT: MARTIN, PEYTON			
01:37	SUB IN: JACKSON, TRINITEE			
01:26	GOOD! LAYUP by JACKSON, TRINITEE	11-23	V 12	
01:11				MISSED LAYUP by LEWIS, ANTOINETTE
01:08	REBOUND (DEF) by JACKSON, TRINITEE			
00:58	MISSED JUMPER by JACKSON, TRINITEE			
00:58				BLOCK by LEWIS, ANTOINETTE
00:57	REBOUND (OFF) by JACKSON, TRINITEE			
00:57				SUB OUT: CARTER, CHRISTEN
00:57				SUB IN: BUSTER, JALA
00:57	SUB OUT: ELDER, JORDAN			
00:57	SUB IN: MARTIN, PEYTON			
00:57	SUB OUT: TAYLOR, STARR			
00:57	SUB IN: WALLACE, MORGAN			
00:57	SUB OUT: FORD, JADA			
00:57	SUB IN: WASHINGTON, JIREH			
00:54	MISSED JUMPER by MARTIN, PEYTON			
00:50				REBOUND (DEF) by BUSTER, JALA
00:32				MISSED JUMPER by BUSTER, JALA
00:27				REBOUND (OFF) by LEWIS, ANTOINETTE
00:27				MISSED LAYUP by LEWIS, ANTOINETTE
00:25	REBOUND (DEF) by WASHINGTON, JIREH			
00:11	SUB OUT: JACKSON, TRINITEE			
00:11	SUB IN: FORD, JADA			
00:00	TURNOVER (SHOTCLOCK) by			

Arkansas St. 23, South Alabama 11

Points from (This Period)	ASU	USA
In the Paint	12	6
Off Turns	4	3
2nd Chance	4	0
Fast Break	10	3
Bench	15	0

**Official Box Score**  
**Arkansas St. vs South Alabama**  
**Second Quarter Statistics Only**  
**January 11, 2019 at Mitchell Center - Mobile, Ala**



### Arkansas St. 18

No.	Player	S	Pts	FG	3FG	FT	OR	DR	TR	PF	A	TO	Blk	Stl	Min	+/-
01	WASHINGTON, JIREH		4	2-2	0-0	0-2	2	2	4	0	0	1	0	0	8	3
03	WALLACE, MORGAN		2	1-1	0-0	0-0	0	1	1	0	2	0	0	0	7	4
05	TENNISON, PAYTON		3	1-1	1-1	0-0	0	1	1	0	1	0	0	1	5	8
10	WESTBROOK, AKASHA		0	0-0	0-0	0-0	1	0	1	0	0	0	0	0	1	-1
35	MARTIN, PEYTON		3	1-2	0-0	1-2	1	0	1	2	0	1	0	0	5	2
00	FORD, JADA		0	0-3	0-3	0-0	0	0	0	0	0	0	0	0	5	-9
02	TAYLOR, STARR		2	1-1	0-0	0-0	0	0	0	0	0	0	0	0	2	-4
11	PEEVY, LYCIA		2	0-2	0-1	2-2	0	2	2	1	1	0	0	0	9	0
23	JACKSON, TRINITEE		2	1-2	0-0	0-0	0	0	0	1	0	0	0	0	4	-5
24	ELDER, JORDAN		0	0-1	0-1	0-0	0	0	0	0	0	0	0	0	3	-5
50	HECKERT, MADISON		0	0-0	0-0	0-0	0	0	0	0	0	0	0	0	1	2
	TEAM						0	0	0	0		1				
<b>TOTALS</b>			<b>18</b>	<b>7-15</b>	<b>1-6</b>	<b>3-6</b>	<b>4</b>	<b>6</b>	<b>10</b>	<b>4</b>	<b>4</b>	<b>3</b>	<b>0</b>	<b>1</b>	<b>50</b>	

*Shooting By Period*

Period	FG	FG%	3FG	3FG%	FT	FT%
3rd Qtr	7-17	41%	0-2	00%	8-12	67%
4th Qtr	4-8	50%	0-1	00%	6-8	75%
2nd Half	7-15	47%	1-6	17%	3-6	50%
2nd Half	11-25	44%	0-3	00%	14-20	70%
Game	27-61	44.3%	4-17	23.5%	19-29	65.5%

### South Alabama 19

No.	Player	S	Pts	FG	3FG	FT	OR	DR	TR	PF	A	TO	Blk	Stl	Min	+/-
02	KINES, SHAFORIA		2	0-2	0-1	2-2	0	0	0	1	0	0	0	0	10	1
04	CARTER, CHRISTEN		4	2-2	0-0	0-0	1	0	1	1	0	1	0	0	8	7
12	TELEMAQUE, DAMAYA		2	0-1	0-0	2-2	0	1	1	1	1	2	0	0	8	7
14	JONES, SAVANNAH		3	1-5	1-2	0-0	2	1	3	1	1	1	0	0	10	1
35	LEWIS, ANTOINETTE		6	3-3	0-0	0-1	2	1	3	1	0	0	1	0	5	-5
03	MORROW, JAYLA		0	0-1	0-1	0-0	0	0	0	1	0	0	0	0	2	-6
05	HART, EMERALD		0	0-0	0-0	0-0	0	0	0	0	0	0	0	0	0	0
15	SYKES, ALEXIS		0	0-0	0-0	0-0	0	0	0	0	0	0	0	0	0	0
23	BUSTER, JALA		0	0-2	0-1	0-0	0	0	0	0	0	0	0	0	2	-6
25	CENTERS, KENNEDI		2	1-1	0-0	0-0	0	3	3	0	1	0	0	0	5	6
44	HALL, INDIA		0	0-0	0-0	0-0	0	0	0	0	0	0	0	0	0	0
	TEAM						0	0	0	0		0				
<b>TOTALS</b>			<b>19</b>	<b>7-17</b>	<b>1-5</b>	<b>4-5</b>	<b>5</b>	<b>6</b>	<b>11</b>	<b>6</b>	<b>3</b>	<b>4</b>	<b>1</b>	<b>0</b>	<b>50</b>	

*Shooting By Period*

Period	FG	FG%	3FG	3FG%	FT	FT%
3rd Qtr	6-14	43%	0-2	00%	3-4	75%
4th Qtr	9-18	50%	1-7	14%	0-2	00%
2nd Half	7-17	41%	1-5	20%	4-5	80%
2nd Half	15-32	47%	1-9	11%	3-6	50%
Game	26-68	38.2%	2-15	13.3%	10-15	66.7%

*Game Notes:*

Officials: Troy Winders, Erica Bradley, Darren McClure  
Attendance: 474

Start Time: 2019-01-11 01:02:23  
End Time: 2019-01-11 03:09:27  
Game Duration: 127  
Conference Game;

Score	1st	2nd	3rd	4th	TOT
ASU	23	18	22	14	<b>77</b>
USA	11	19	15	19	<b>64</b>

Points from (This Period)	ASU	USA
In the Paint	10	12
Off Turns	6	2
2nd Chance	1	6
Fast Break	6	4
Bench	6	2



**Official Play-By-Play**  
**Arkansas St. vs South Alabama**  
**Second Quarter**  
**January 11, 2019 at Mitchell Center - Mobile, Ala**



**Period 2**

**Starters:**

**Arkansas St.:** 1 WASHINGTON, JIREH; 3 WALLACE, MORGAN; 5 TENNISON, PAYTON; 10 WESTBROOK, AKASHA; 35 MARTIN, PEYTON;

**South Alabama:** 2 KINES, SHAFORIA; 4 CARTER, CHRISTEN; 12 TELEMAQUE, DAMAYA; 14 JONES, SAVANNAH; 35 LEWIS, ANTOINETTE;

Time	VISITORS: Arkansas St.	Score	Margin	HOME: South Alabama
09:44				MISSED JUMPER by BUSTER, JALA
09:41				REBOUND (OFF) by JONES, SAVANNAH
09:35				MISSED 3PTR by MORROW, JAYLA
09:27				REBOUND (OFF) by LEWIS, ANTOINETTE
09:27		13-23	V 10	GOOD! LAYUP by LEWIS, ANTOINETTE
09:01	GOOD! JUMPER by MARTIN, PEYTON [PNT]	13-25	V 12	
09:01	ASSIST by WALLACE, MORGAN			
08:44				MISSED 3PTR by JONES, SAVANNAH
08:40	REBOUND (DEF) by WASHINGTON, JIREH			
08:37	GOOD! LAYUP by WASHINGTON, JIREH [FB]	13-27	V 14	
08:17				MISSED 3PTR by KINES, SHAFORIA
08:12	REBOUND (DEF) by WASHINGTON, JIREH			
08:06	GOOD! 3PTR by TENNISON, PAYTON	13-30	V 17	
08:06	ASSIST by WALLACE, MORGAN			
07:37				MISSED 3PTR by BUSTER, JALA
07:33	REBOUND (DEF) by TENNISON, PAYTON			
07:31				FOUL (PERSONAL) by MORROW, JAYLA
07:31	GOOD! FT by PEEVY, LYCIA [FB]	13-31	V 18	
07:31				SUB OUT: BUSTER, JALA
07:31				SUB IN: CARTER, CHRISTEN
07:31				SUB OUT: MORROW, JAYLA
07:31				SUB IN: TELEMAQUE, DAMAYA
07:31	SUB OUT: MARTIN, PEYTON			
07:31	SUB IN: JACKSON, TRINITEE			
07:31	GOOD! FT by PEEVY, LYCIA [FB]	13-32	V 19	
07:16				TURNOVER (BADPASS) by TELEMAQUE, DAMAYA
07:16	STEAL by TENNISON, PAYTON			
07:08	GOOD! LAYUP by WALLACE, MORGAN [FB]	13-34	V 21	
07:08	ASSIST by TENNISON, PAYTON			
07:08				TIMEOUT 30SEC
06:57		16-34	V 18	GOOD! 3PTR by JONES, SAVANNAH
06:57				ASSIST by TELEMAQUE, DAMAYA
06:44	TURNOVER (BADPASS) by WASHINGTON, JIREH			
06:34				TURNOVER (BADPASS) by CARTER, CHRISTEN
06:15	MISSED 3PTR by PEEVY, LYCIA			
06:12	REBOUND (OFF) by WASHINGTON, JIREH			
05:59	MISSED JUMPER by JACKSON, TRINITEE			
05:53				REBOUND (DEF) by LEWIS, ANTOINETTE
05:51				TURNOVER (BADPASS) by TELEMAQUE, DAMAYA
05:51	SUB OUT: JACKSON, TRINITEE			
05:51	SUB IN: MARTIN, PEYTON			
05:51	SUB OUT: WASHINGTON, JIREH			
05:51	SUB IN: TAYLOR, STARR			
05:51	SUB OUT: TENNISON, PAYTON			
05:51	SUB IN: FORD, JADA			
05:51	SUB OUT: PEEVY, LYCIA			
05:51	SUB IN: WESTBROOK, AKASHA			
05:40	GOOD! LAYUP by TAYLOR, STARR	16-36	V 20	
05:23		18-36	V 18	GOOD! LAYUP by LEWIS, ANTOINETTE
05:23				ASSIST by JONES, SAVANNAH
05:23	FOUL (PERSONAL) by MARTIN, PEYTON			
05:23				MISSED FT by LEWIS, ANTOINETTE
05:23				REBOUND (OFF) by JONES, SAVANNAH
05:20				MISSED JUMPER by JONES, SAVANNAH
05:14				REBOUND (OFF) by LEWIS, ANTOINETTE
05:14		20-36	V 16	GOOD! LAYUP by LEWIS, ANTOINETTE
05:10	MISSED 3PTR by FORD, JADA			
05:10				BLOCK by LEWIS, ANTOINETTE
05:03	REBOUND (OFF) by MARTIN, PEYTON			
04:57				FOUL (PERSONAL) by LEWIS, ANTOINETTE
04:57	GOOD! FT by MARTIN, PEYTON	20-37	V 17	
04:57				SUB OUT: LEWIS, ANTOINETTE
04:57				SUB IN: CENTERS, KENNEDI
04:55	MISSED FT by MARTIN, PEYTON			
04:44	REBOUND (OFF) by WESTBROOK, AKASHA			
04:44				FOUL (PERSONAL) by CARTER, CHRISTEN
04:44	SUB OUT: WESTBROOK, AKASHA			
04:44	SUB IN: PEEVY, LYCIA			
04:40	FOUL (OFF) by MARTIN, PEYTON			
04:40	TURNOVER (OFFENSIVE) by MARTIN, PEYTON			

Time	VISITORS: Arkansas St.	Score	Margin	HOME: South Alabama
04:19				MISSED JUMPER by JONES, SAVANNAH
04:16	REBOUND (DEF) by WALLACE, MORGAN			
04:13	MISSED 3PTR by FORD, JADA			
04:09				REBOUND (DEF) by CENTERS, KENNEDI
04:05		22-37	V 15	GOOD! LAYUP by CARTER, CHRISTEN [FB]
04:05				ASSIST by CENTERS, KENNEDI
03:45	MISSED JUMPER by MARTIN, PEYTON			
03:41				REBOUND (DEF) by TEHEMAQUE, DAMAYA
03:38	FOUL (PERSONAL) by PEEVY, LYCIA			
03:38		23-37	V 14	GOOD! FT by TEHEMAQUE, DAMAYA [FB]
03:38	SUB OUT: TAYLOR, STARR			
03:38	SUB IN: ELDER, JORDAN			
03:38	SUB OUT: WALLACE, MORGAN			
03:38	SUB IN: JACKSON, TRINITEE			
03:38	SUB OUT: MARTIN, PEYTON			
03:38	SUB IN: WASHINGTON, JIREH			
03:38		24-37	V 13	GOOD! FT by TEHEMAQUE, DAMAYA [FB]
03:15	GOOD! JUMPER by JACKSON, TRINITEE	24-39	V 15	
03:15	ASSIST by PEEVY, LYCIA			
03:06	FOUL (PERSONAL) by JACKSON, TRINITEE			
03:06		25-39	V 14	GOOD! FT by KINES, SHAFORIA
03:06		26-39	V 13	GOOD! FT by KINES, SHAFORIA
02:58	TIMEOUT 30SEC			
02:38	MISSED JUMPER by PEEVY, LYCIA			
02:34	REBOUND (OFF) by WASHINGTON, JIREH			
02:31	TURNOVER (SHOTCLOCK) by			
02:11		28-39	V 11	GOOD! LAYUP by CENTERS, KENNEDI
01:59				FOUL (PERSONAL) by TEHEMAQUE, DAMAYA
01:37	MISSED 3PTR by ELDER, JORDAN			
01:33				REBOUND (DEF) by CENTERS, KENNEDI
01:29				MISSED LAYUP by KINES, SHAFORIA
01:26	REBOUND (DEF) by PEEVY, LYCIA			
01:16	MISSED 3PTR by FORD, JADA			
01:12				REBOUND (DEF) by JONES, SAVANNAH
01:08				MISSED LAYUP by JONES, SAVANNAH
01:04				REBOUND (OFF) by CARTER, CHRISTEN
01:04		30-39	V 9	GOOD! LAYUP by CARTER, CHRISTEN
00:48				FOUL (PERSONAL) by KINES, SHAFORIA
00:48	MISSED FT by WASHINGTON, JIREH			
00:48	REBOUND (OFF) by TEAM			
00:48	SUB OUT: JACKSON, TRINITEE			
00:48	SUB IN: HECKERT, MADISON			
00:48	SUB OUT: ELDER, JORDAN			
00:48	SUB IN: WALLACE, MORGAN			
00:48	SUB OUT: FORD, JADA			
00:48	SUB IN: TENNISON, PAYTON			
00:48	MISSED FT by WASHINGTON, JIREH			
00:48				REBOUND (DEF) by CENTERS, KENNEDI
00:43				FOUL (OFF) by JONES, SAVANNAH
00:43				TURNOVER (OFFENSIVE) by JONES, SAVANNAH
00:14	GOOD! LAYUP by WASHINGTON, JIREH [PNT]	30-41	V 11	
00:04				MISSED JUMPER by TEHEMAQUE, DAMAYA
00:02	REBOUND (DEF) by PEEVY, LYCIA			

Arkansas St. 41, South Alabama 30

Points from (This Period)	ASU	USA
In the Paint	10	12
Off Turns	6	2
2nd Chance	1	6
Fast Break	6	4
Bench	6	2

**Official Box Score**  
**Arkansas St. vs South Alabama**  
**Second Half Statistics Only**  
**January 11, 2019 at Mitchell Center - Mobile, Ala**



### Arkansas St. 36

No.	Player	S	Pts	FG	3FG	FT	OR	DR	TR	PF	A	TO	Blk	Stl	Min	+/-
00	FORD, JADA		0	0-3	0-2	0-0	0	0	0	0	0	0	0	1	7	0
01	WASHINGTON, JIREH		3	0-1	0-0	3-4	0	1	1	3	4	3	0	1	16	2
02	TAYLOR, STARR		0	0-1	0-0	0-0	0	0	0	1	0	0	0	0	4	0
03	WALLACE, MORGAN		4	2-3	0-0	0-0	1	5	6	2	1	0	0	0	16	0
05	TENNISON, PAYTON		0	0-1	0-0	0-0	1	0	1	1	0	1	1	0	13	2
10	WESTBROOK, AKASHA		4	1-2	0-0	2-4	0	1	1	1	1	2	0	0	17	3
11	PEEVY, LYCIA		0	0-2	0-0	0-0	0	0	0	0	0	0	0	0	3	-1
23	JACKSON, TRINITEE		2	1-1	0-0	0-0	1	0	1	1	1	0	0	0	2	4
24	ELDER, JORDAN		4	0-1	0-1	4-4	0	1	1	0	0	1	0	0	4	2
35	MARTIN, PEYTON		16	6-9	0-0	4-6	2	4	6	2	0	2	0	1	15	-1
50	HECKERT, MADISON		3	1-1	0-0	1-2	0	0	0	0	0	0	0	0	3	-1
	TEAM		0	0-0	0-0	0-0	2	1	3	0	0	0	0	0	0	
<b>TOTALS</b>			<b>36</b>	<b>11-25</b>	<b>0-3</b>	<b>14-20</b>	<b>7</b>	<b>13</b>	<b>20</b>	<b>11</b>	<b>7</b>	<b>9</b>	<b>1</b>	<b>3</b>	<b>100</b>	

#### Shooting By Period

Period	FG	FG%	3FG	3FG%	FT	FT%
3rd Qtr	7-17	41%	0-2	00%	8-12	67%
4th Qtr	4-8	50%	0-1	00%	6-8	75%
2nd Half	11-25	44%	0-3	00%	14-20	70%
Game	27-61	44.3%	4-17	23.5%	19-29	65.5%

Last FG Half: ASU 4th-00:48

### South Alabama 34

No.	Player	S	Pts	FG	3FG	FT	OR	DR	TR	PF	A	TO	Blk	Stl	Min	+/-
02	KINES, SHAFORIA		5	2-4	1-3	0-0	0	1	1	1	2	3	0	0	19	-1
03	MORROW, JAYLA		2	1-2	0-1	0-0	0	1	1	1	2	1	0	1	10	-10
04	CARTER, CHRISTEN		8	4-8	0-0	0-0	1	3	4	0	0	0	0	0	15	-1
05	HART, EMERALD		0	0-1	0-0	0-0	0	0	0	1	0	0	0	0	2	-3
12	TELEMAQUE, DAMAYA		2	1-3	0-1	0-0	1	0	1	3	1	1	0	0	17	-3
14	JONES, SAVANNAH		3	1-3	0-2	1-1	1	0	1	2	2	0	1	1	13	5
15	SYKES, ALEXIS		0	0-2	0-2	0-0	0	0	0	0	0	0	0	0	3	1
23	BUSTER, JALA		0	0-0	0-0	0-0	0	0	0	0	0	0	0	0	0	0
25	CENTERS, KENNEDI		5	2-5	0-0	1-4	2	2	4	3	2	0	0	0	15	3
35	LEWIS, ANTOINETTE		9	4-4	0-0	1-1	0	2	2	3	0	2	1	0	8	-1
44	HALL, INDIA		0	0-0	0-0	0-0	0	0	0	0	0	0	0	0	0	0
	TEAM		0	0-0	0-0	0-0	0	1	1	0	0	0	0	0	0	
<b>TOTALS</b>			<b>34</b>	<b>15-32</b>	<b>1-9</b>	<b>3-6</b>	<b>5</b>	<b>10</b>	<b>15</b>	<b>14</b>	<b>9</b>	<b>7</b>	<b>2</b>	<b>2</b>	<b>100</b>	

#### Shooting By Period

Period	FG	FG%	3FG	3FG%	FT	FT%
3rd Qtr	6-14	43%	0-2	00%	3-4	75%
4th Qtr	9-18	50%	1-7	14%	0-2	00%
2nd Half	15-32	47%	1-9	11%	3-6	50%
Game	26-68	38.2%	2-15	13.3%	10-15	66.7%

Last FG Half: USA 4th-00:17

#### Game Notes:

Officials: Troy Winders, Erica Bradley, Darren McClure  
Attendance: 474

Start Time: 2019-01-11 01:02:23  
End Time: 2019-01-11 03:09:27  
Game Duration: 127  
Conference Game;

Score	1st	2nd	3rd	4th	TOT
ASU	23	18	22	14	77
USA	11	19	15	19	64

Points from (This Period)	ASU	USA
In the Paint	16	28
Off Turns	10	9
2nd Chance	8	4
Fast Break	6	7
Bench	9	7

**Official Box Score**  
**Arkansas St. vs South Alabama**  
**Third Quarter Statistics Only**  
**January 11, 2019 at Mitchell Center - Mobile, Ala**



### Arkansas St. 36

No.	Player	S	Pts	FG	3FG	FT	OR	DR	TR	PF	A	TO	Blk	Stl	Min	+/-
01	WASHINGTON, JIREH		2	0-1	0-0	2-2	0	0	0	0	2	1	0	1	6	7
03	WALLACE, MORGAN		4	2-2	0-0	0-0	1	2	3	1	0	0	0	0	6	7
05	TENNISON, PAYTON		0	0-1	0-0	0-0	1	0	1	1	0	0	0	0	6	7
10	WESTBROOK, AKASHA		2	0-1	0-0	2-4	0	1	1	1	1	0	0	0	9	6
35	MARTIN, PEYTON		10	4-7	0-0	2-4	2	1	3	0	0	0	0	1	7	3
00	FORD, JADA		0	0-1	0-1	0-0	0	0	0	0	0	0	0	0	4	0
02	TAYLOR, STARR		0	0-1	0-0	0-0	0	0	0	1	0	0	0	0	4	0
11	PEEVY, LYCIA		0	0-1	0-0	0-0	0	0	0	0	0	0	0	0	1	1
23	JACKSON, TRINITEE		2	1-1	0-0	0-0	1	0	1	1	1	0	0	0	2	4
24	ELDER, JORDAN		2	0-1	0-1	2-2	0	1	1	0	0	1	0	0	4	0
50	HECKERT, MADISON		0	0-0	0-0	0-0	0	0	0	0	0	0	0	0	1	0
	TEAM						1	1	2	0		0				
<b>TOTALS</b>			<b>22</b>	<b>7-17</b>	<b>0-2</b>	<b>8-12</b>	<b>6</b>	<b>6</b>	<b>12</b>	<b>5</b>	<b>4</b>	<b>2</b>	<b>0</b>	<b>2</b>	<b>50</b>	

*Shooting By Period*

Period	FG	FG%	3FG	3FG%	FT	FT%
2nd Half	0-0	0%	0-0	0%	0-0	0%
Game	27-61	44.3%	4-17	23.5%	19-29	65.5%

### South Alabama 34

No.	Player	S	Pts	FG	3FG	FT	OR	DR	TR	PF	A	TO	Blk	Stl	Min	+/-
02	KINES, SHAFORIA		0	0-1	0-1	0-0	0	0	0	0	0	2	0	0	9	-6
04	CARTER, CHRISTEN		2	1-2	0-0	0-0	1	2	3	0	0	0	0	0	7	-4
12	TELEMAQUE, DAMAYA		0	0-1	0-0	0-0	0	0	0	1	0	1	0	0	7	-8
14	JONES, SAVANNAH		3	1-1	0-0	1-1	0	0	0	2	1	0	1	1	6	3
35	LEWIS, ANTOINETTE		7	3-3	0-0	1-1	0	2	2	1	0	2	1	0	6	-3
03	MORROW, JAYLA		2	1-1	0-0	0-0	0	1	1	1	1	1	0	1	8	-10
05	HART, EMERALD		0	0-1	0-0	0-0	0	0	0	1	0	0	0	0	2	-3
15	SYKES, ALEXIS		0	0-1	0-1	0-0	0	0	0	0	0	0	0	0	1	0
23	BUSTER, JALA		0	0-0	0-0	0-0	0	0	0	0	0	0	0	0	0	0
25	CENTERS, KENNEDI		1	0-3	0-0	1-2	1	0	1	1	0	0	0	0	5	-4
44	HALL, INDIA		0	0-0	0-0	0-0	0	0	0	0	0	0	0	0	0	0
	TEAM						0	1	1	0		0				
<b>TOTALS</b>			<b>15</b>	<b>6-14</b>	<b>0-2</b>	<b>3-4</b>	<b>2</b>	<b>6</b>	<b>8</b>	<b>7</b>	<b>2</b>	<b>6</b>	<b>2</b>	<b>2</b>	<b>50</b>	

*Shooting By Period*

Period	FG	FG%	3FG	3FG%	FT	FT%
2nd Half	0-0	0%	0-0	0%	0-0	0%
Game	26-68	38.2%	2-15	13.3%	10-15	66.7%

Game Notes:

Officials: **Troy Winders, Erica Bradley, Darren McClure**  
Attendance: **474**

Start Time: **2019-01-11 01:02:23**  
End Time: **2019-01-11 03:09:27**  
Game Duration: **127**  
Conference Game;

Score	1st	2nd	3rd	4th	TOT
ASU	23	18	22	14	<b>77</b>
USA	11	19	15	19	<b>64</b>

Points from (This Period)	ASU	USA
In the Paint	12	12
Off Turns	10	0
2nd Chance	8	2
Fast Break	4	5
Bench	4	3

**Official Play-By-Play**  
**Arkansas St. vs South Alabama**  
**Third Quarter**  
**January 11, 2019 at Mitchell Center - Mobile, Ala**



**Period 3**

**Starters:**

**Arkansas St.:** 1 WASHINGTON, JIREH; 3 WALLACE, MORGAN; 5 TENNISON, PAYTON; 10 WESTBROOK, AKASHA; 35 MARTIN, PEYTON;

**South Alabama:** 2 KINES, SHAFORIA; 4 CARTER, CHRISTEN; 12 TEHEMAQUE, DAMAYA; 14 JONES, SAVANNAH; 35 LEWIS, ANTOINETTE;

Time	VISITORS: Arkansas St.	Score	Margin	HOME: South Alabama
09:49				FOUL (PERSONAL) by JONES, SAVANNAH
09:49	SUB OUT: HECKERT, MADISON			
09:49	SUB IN: MARTIN, PEYTON			
09:49	MISSED FT by MARTIN, PEYTON			
09:49	REBOUND (OFF) by TEAM			
09:49	SUB OUT: PEEVY, LYCIA			
09:49	SUB IN: WESTBROOK, AKASHA			
09:49	MISSED FT by MARTIN, PEYTON			
09:49				REBOUND (DEF) by CARTER, CHRISTEN
09:31		32-41	V 9	GOOD! LAYUP by LEWIS, ANTOINETTE
09:31				ASSIST by JONES, SAVANNAH
09:20	MISSED LAYUP by WASHINGTON, JIREH			
09:20	REBOUND (OFF) by TEAM			
09:16	MISSED JUMPER by MARTIN, PEYTON			
09:12				REBOUND (DEF) by LEWIS, ANTOINETTE
09:08				SUB OUT: CENTERS, KENNEDI
09:08				SUB IN: LEWIS, ANTOINETTE
09:05		34-41	V 7	GOOD! LAYUP by LEWIS, ANTOINETTE
09:05	FOUL (PERSONAL) by WESTBROOK, AKASHA			
09:05		35-41	V 6	GOOD! FT by LEWIS, ANTOINETTE
08:50	GOOD! LAYUP by WALLACE, MORGAN	35-43	V 8	
08:50	ASSIST by WESTBROOK, AKASHA			
08:32				MISSED JUMPER by TEHEMAQUE, DAMAYA
08:28	REBOUND (DEF) by MARTIN, PEYTON			
08:17				FOUL (PERSONAL) by JONES, SAVANNAH
08:17				SUB OUT: JONES, SAVANNAH
08:17				SUB IN: MORROW, JAYLA
08:06	GOOD! LAYUP by MARTIN, PEYTON	35-45	V 10	
08:06	ASSIST by WASHINGTON, JIREH			
07:42				TURNOVER (LOSTBALL) by TEHEMAQUE, DAMAYA
07:37				FOUL (PERSONAL) by LEWIS, ANTOINETTE
07:37	GOOD! FT by MARTIN, PEYTON [FB]	35-46	V 11	
07:37				SUB OUT: LEWIS, ANTOINETTE
07:37				SUB IN: CENTERS, KENNEDI
07:37	GOOD! FT by MARTIN, PEYTON [FB]	35-47	V 12	
07:21				TURNOVER (BADPASS) by MORROW, JAYLA
07:21	FOUL (PERSONAL) by WALLACE, MORGAN			
07:12				MISSED JUMPER by CARTER, CHRISTEN
07:07	REBOUND (DEF) by TEAM			
07:00				FOUL (PERSONAL) by CENTERS, KENNEDI
07:00	GOOD! FT by WASHINGTON, JIREH [FB]	35-48	V 13	
07:00	GOOD! FT by WASHINGTON, JIREH [FB]	35-49	V 14	
06:58	SUB OUT: MARTIN, PEYTON			
06:58	SUB IN: JACKSON, TRINITEE			
06:46				MISSED LAYUP by CENTERS, KENNEDI
06:42	REBOUND (DEF) by WESTBROOK, AKASHA			
06:33	TURNOVER (LOSTBALL) by WASHINGTON, JIREH			
06:33				STEAL by MORROW, JAYLA
06:29				TURNOVER (LOSTBALL) by KINES, SHAFORIA
06:29	STEAL by WASHINGTON, JIREH			
06:29				FOUL (PERSONAL) by TEHEMAQUE, DAMAYA
06:29	GOOD! FT by WESTBROOK, AKASHA	35-50	V 15	
06:29	SUB OUT: WASHINGTON, JIREH			
06:29	SUB IN: TAYLOR, STARR			
06:29	SUB OUT: TENNISON, PAYTON			
06:29	SUB IN: FORD, JADA			
06:29	GOOD! FT by WESTBROOK, AKASHA	35-51	V 16	
06:17	FOUL (PERSONAL) by TAYLOR, STARR			
06:13				MISSED 3PTR by KINES, SHAFORIA
06:08				REBOUND (OFF) by CENTERS, KENNEDI
06:08				MISSED LAYUP by CENTERS, KENNEDI
06:07	REBOUND (DEF) by WALLACE, MORGAN			
05:56	MISSED JUMPER by WESTBROOK, AKASHA			
05:51	REBOUND (OFF) by JACKSON, TRINITEE			
05:51	GOOD! LAYUP by JACKSON, TRINITEE	35-53	V 18	
05:37				MISSED JUMPER by CENTERS, KENNEDI
05:33				REBOUND (OFF) by CARTER, CHRISTEN
05:33		37-53	V 16	GOOD! LAYUP by CARTER, CHRISTEN
05:18	MISSED LAYUP by TAYLOR, STARR			
05:15	REBOUND (OFF) by WALLACE, MORGAN			

Time	VISITORS: Arkansas St.	Score	Margin	HOME: South Alabama
04:49	GOOD! LAYUP by WALLACE, MORGAN [PNT]	37-55	V 18	
04:49	ASSIST by JACKSON, TRINITEE			
04:31	FOUL (PERSONAL) by JACKSON, TRINITEE			
04:31				
04:31				SUB OUT: TELEMAQUE, DAMAYA
04:31				SUB IN: JONES, SAVANNAH
04:31	SUB OUT: JACKSON, TRINITEE			
04:31	SUB IN: MARTIN, PEYTON			
04:31	SUB OUT: WALLACE, MORGAN			
04:31	SUB IN: ELDER, JORDAN			
04:31				MISSED FT by CENTERS, KENNEDI
04:31				REBOUND (OFF) by TEAM
04:31		38-55	V 17	GOOD! FT by CENTERS, KENNEDI
04:31				SUB OUT: CENTERS, KENNEDI
04:31				SUB IN: LEWIS, ANTOINETTE
04:22				FOUL (PERSONAL) by MORROW, JAYLA
04:22	MISSED FT by WESTBROOK, AKASHA			
04:22	REBOUND (OFF) by TEAM			
04:20	MISSED FT by WESTBROOK, AKASHA			
04:19	REBOUND (OFF) by MARTIN, PEYTON			
04:07	GOOD! JUMPER by MARTIN, PEYTON	38-57	V 19	
03:35		40-57	V 17	GOOD! LAYUP by LEWIS, ANTOINETTE
03:35				ASSIST by MORROW, JAYLA
03:07	MISSED 3PTR by FORD, JADA			
03:02				REBOUND (DEF) by CARTER, CHRISTEN
02:58		42-57	V 15	GOOD! LAYUP by MORROW, JAYLA [FB]
02:40	MISSED JUMPER by MARTIN, PEYTON			
02:40				BLOCK by LEWIS, ANTOINETTE
02:38				REBOUND (DEF) by TEAM
02:38				SUB OUT: CARTER, CHRISTEN
02:38				SUB IN: HART, EMERALD
02:21				TURNOVER (LOSTBALL) by LEWIS, ANTOINETTE
02:21	SUB OUT: TAYLOR, STARR			
02:21	SUB IN: WASHINGTON, JIREH			
02:21	SUB OUT: FORD, JADA			
02:21	SUB IN: TENNISON, PAYTON			
02:10	GOOD! LAYUP by MARTIN, PEYTON	42-59	V 17	
02:10	ASSIST by WASHINGTON, JIREH			
01:56				TURNOVER (LOSTBALL) by KINES, SHAFORIA
01:47	MISSED JUMPER by TENNISON, PAYTON			
01:47				BLOCK by JONES, SAVANNAH
01:41	REBOUND (OFF) by TENNISON, PAYTON			
01:39	MISSED JUMPER by MARTIN, PEYTON			
01:36	REBOUND (OFF) by MARTIN, PEYTON			
01:33	GOOD! JUMPER by MARTIN, PEYTON [PNT]	42-61	V 19	
01:26		44-61	V 17	GOOD! LAYUP by JONES, SAVANNAH [FB]
01:26	FOUL (PERSONAL) by TENNISON, PAYTON			
01:26				SUB OUT: KINES, SHAFORIA
01:26				SUB IN: TELEMAQUE, DAMAYA
01:26		45-61	V 16	GOOD! FT by JONES, SAVANNAH [FB]
01:06	MISSED 3PTR by ELDER, JORDAN			
01:02				REBOUND (DEF) by LEWIS, ANTOINETTE
00:54				MISSED JUMPER by HART, EMERALD
00:51	REBOUND (DEF) by ELDER, JORDAN			
00:48	TURNOVER (BADPASS) by ELDER, JORDAN			
00:48				STEAL by JONES, SAVANNAH
00:40				TURNOVER (BADPASS) by LEWIS, ANTOINETTE
00:40	STEAL by MARTIN, PEYTON			
00:40				FOUL (PERSONAL) by HART, EMERALD
00:40	GOOD! FT by ELDER, JORDAN	45-62	V 17	
00:40	SUB OUT: WESTBROOK, AKASHA			
00:40	SUB IN: PEEVY, LYCIA			
00:40	GOOD! FT by ELDER, JORDAN	45-63	V 18	
00:40				SUB OUT: HART, EMERALD
00:40				SUB IN: CENTERS, KENNEDI
00:40				SUB OUT: JONES, SAVANNAH
00:40				SUB IN: SYKES, ALEXIS
00:40	SUB OUT: ELDER, JORDAN			
00:40	SUB IN: WALLACE, MORGAN			
00:40	SUB OUT: MARTIN, PEYTON			
00:40	SUB IN: HECKERT, MADISON			
00:27				MISSED 3PTR by SYKES, ALEXIS
00:23	REBOUND (DEF) by WALLACE, MORGAN			
00:01	MISSED JUMPER by PEEVY, LYCIA			
00:00				REBOUND (DEF) by MORROW, JAYLA

Arkansas St. 63, South Alabama 45

Points from (This Period)	ASU	USA
In the Paint	12	12
Off Turns	10	0
2nd Chance	8	2
Fast Break	4	5
Bench	4	3

**Official Box Score**  
**Arkansas St. vs South Alabama**  
**Fourth Quarter Statistics Only**  
**January 11, 2019 at Mitchell Center - Mobile, Ala**



### Arkansas St. 14

No.	Player	S	Pts	FG	3FG	FT	OR	DR	TR	PF	A	TO	Blk	Stl	Min	+/-
01	WASHINGTON, JIREH		1	0-0	0-0	1-2	0	1	1	3	2	2	0	0	10	-5
03	WALLACE, MORGAN		0	0-1	0-0	0-0	0	3	3	1	1	0	0	0	10	-7
05	TENNISON, PAYTON		0	0-0	0-0	0-0	0	0	0	0	0	1	1	0	7	-5
10	WESTBROOK, AKASHA		2	1-1	0-0	0-0	0	0	0	0	0	2	0	0	8	-3
35	MARTIN, PEYTON		6	2-2	0-0	2-2	0	3	3	2	0	2	0	0	8	-4
00	FORD, JADA		0	0-2	0-1	0-0	0	0	0	0	0	0	0	1	3	0
02	TAYLOR, STARR		0	0-0	0-0	0-0	0	0	0	0	0	0	0	0	0	0
11	PEEVY, LYCIA		0	0-1	0-0	0-0	0	0	0	0	0	0	0	0	2	-2
23	JACKSON, TRINITEE		0	0-0	0-0	0-0	0	0	0	0	0	0	0	0	0	0
24	ELDER, JORDAN		2	0-0	0-0	2-2	0	0	0	0	0	0	0	0	0	2
50	HECKERT, MADISON		3	1-1	0-0	1-2	0	0	0	0	0	0	0	0	2	-1
	TEAM						1	0	1	0		0				
<b>TOTALS</b>			<b>14</b>	<b>4-8</b>	<b>0-1</b>	<b>6-8</b>	<b>1</b>	<b>7</b>	<b>8</b>	<b>6</b>	<b>3</b>	<b>7</b>	<b>1</b>	<b>1</b>	<b>50</b>	

*Shooting By Period*

Period	FG	FG%	3FG	3FG%	FT	FT%
Game	27-61	44.3%	4-17	23.5%	19-29	65.5%

### South Alabama 19

No.	Player	S	Pts	FG	3FG	FT	OR	DR	TR	PF	A	TO	Blk	Stl	Min	+/-
02	KINES, SHAFORIA		5	2-3	1-2	0-0	0	1	1	1	2	1	0	0	10	5
04	CARTER, CHRISTEN		6	3-6	0-0	0-0	0	1	1	0	0	0	0	0	8	3
12	TELEMAQUE, DAMAYA		2	1-2	0-1	0-0	1	0	1	2	1	0	0	0	10	5
14	JONES, SAVANNAH		0	0-2	0-2	0-0	1	0	1	0	1	0	0	0	7	2
35	LEWIS, ANTOINETTE		2	1-1	0-0	0-0	0	0	0	2	0	0	0	0	2	2
03	MORROW, JAYLA		0	0-1	0-1	0-0	0	0	0	0	1	0	0	0	2	0
05	HART, EMERALD		0	0-0	0-0	0-0	0	0	0	0	0	0	0	0	0	0
15	SYKES, ALEXIS		0	0-1	0-1	0-0	0	0	0	0	0	0	0	0	2	1
23	BUSTER, JALA		0	0-0	0-0	0-0	0	0	0	0	0	0	0	0	0	0
25	CENTERS, KENNEDI		4	2-2	0-0	0-2	1	2	3	2	2	0	0	0	10	7
44	HALL, INDIA		0	0-0	0-0	0-0	0	0	0	0	0	0	0	0	0	0
	TEAM						0	0	0	0		0				
<b>TOTALS</b>			<b>19</b>	<b>9-18</b>	<b>1-7</b>	<b>0-2</b>	<b>3</b>	<b>4</b>	<b>7</b>	<b>7</b>	<b>7</b>	<b>1</b>	<b>0</b>	<b>0</b>	<b>50</b>	

*Shooting By Period*

Period	FG	FG%	3FG	3FG%	FT	FT%
Game	26-68	38.2%	2-15	13.3%	10-15	66.7%

Game Notes:

Officials: **Troy Winders, Erica Bradley, Darren McClure**  
Attendance: **474**

Start Time: **2019-01-11 01:02:23**

End Time: **2019-01-11 03:09:27**

Game Duration: **127**

Conference Game;

Score	1st	2nd	3rd	4th	TOT
ASU	23	18	22	14	<b>77</b>
USA	11	19	15	19	<b>64</b>

Points from (This Period)	ASU	USA
In the Paint	4	16
Off Turns	0	9
2nd Chance	0	2
Fast Break	2	2
Bench	5	4



**Official Play-By-Play**  
**Arkansas St. vs South Alabama**  
**Fourth Quarter**  
**January 11, 2019 at Mitchell Center - Mobile, Ala**



**Period 4**

**Starters:**

**Arkansas St.:** 1 WASHINGTON, JIREH; 3 WALLACE, MORGAN; 5 TENNISON, PAYTON; 10 WESTBROOK, AKASHA; 35 MARTIN, PEYTON;

**South Alabama:** 2 KINES, SHAFORIA; 4 CARTER, CHRISTEN; 12 TEHEMAQUE, DAMAYA; 14 JONES, SAVANNAH; 35 LEWIS, ANTOINETTE;

Time	VISITORS: Arkansas St.	Score	Margin	HOME: South Alabama
09:38	MISSED LAYUP by WALLACE, MORGAN			
09:37				REBOUND (DEF) by CENTERS, KENNEDI
09:37	FOUL (PERSONAL) by WALLACE, MORGAN			
09:37				SUB OUT: MORROW, JAYLA
09:37				SUB IN: KINES, SHAFORIA
09:21				MISSED 3PTR by SYKES, ALEXIS
09:17	REBOUND (DEF) by WALLACE, MORGAN			
09:08	MISSED JUMPER by PEEVY, LYCIA			
09:03				REBOUND (DEF) by KINES, SHAFORIA
08:54		47-63	V 16	GOOD! LAYUP by LEWIS, ANTOINETTE
08:54				ASSIST by CENTERS, KENNEDI
08:25				FOUL (PERSONAL) by LEWIS, ANTOINETTE
08:25	MISSED FT by HECKERT, MADISON			
08:25	REBOUND (OFF) by TEAM			
08:25				SUB OUT: LEWIS, ANTOINETTE
08:25				SUB IN: CARTER, CHRISTEN
08:25	SUB OUT: PEEVY, LYCIA			
08:25	SUB IN: WESTBROOK, AKASHA			
08:25	GOOD! FT by HECKERT, MADISON	47-64	V 17	
08:10		49-64	V 15	GOOD! LAYUP by TEHEMAQUE, DAMAYA [PNT]
07:58	GOOD! JUMPER by HECKERT, MADISON	49-66	V 17	
07:58	ASSIST by WASHINGTON, JIREH			
07:35	FOUL (PERSONAL) by WASHINGTON, JIREH			
07:35				SUB OUT: SYKES, ALEXIS
07:35				SUB IN: JONES, SAVANNAH
07:35	SUB OUT: TENNISON, PAYTON			
07:35	SUB IN: FORD, JADA			
07:35	SUB OUT: HECKERT, MADISON			
07:35	SUB IN: MARTIN, PEYTON			
07:21				MISSED JUMPER by CARTER, CHRISTEN
07:18	REBOUND (DEF) by MARTIN, PEYTON			
07:01	MISSED 3PTR by FORD, JADA			
06:58				REBOUND (DEF) by CARTER, CHRISTEN
06:53				TURNOVER (BADPASS) by KINES, SHAFORIA
06:53	STEAL by FORD, JADA			
06:33	MISSED JUMPER by FORD, JADA			
06:29	REBOUND (OFF) by TEAM			
06:28	FOUL (OFF) by WASHINGTON, JIREH			
06:28	TURNOVER (OFFENSIVE) by WASHINGTON, JIREH			
06:06		51-66	V 15	GOOD! LAYUP by CARTER, CHRISTEN
06:06				ASSIST by TEHEMAQUE, DAMAYA
05:48	GOOD! JUMPER by WESTBROOK, AKASHA	51-68	V 17	
05:48	ASSIST by WALLACE, MORGAN			
05:34	FOUL (PERSONAL) by WASHINGTON, JIREH			
05:34				SUB OUT: CENTERS, KENNEDI
05:34				SUB IN: LEWIS, ANTOINETTE
05:20				MISSED JUMPER by CARTER, CHRISTEN
05:20	REBOUND (DEF) by WALLACE, MORGAN			
05:20				FOUL (PERSONAL) by LEWIS, ANTOINETTE
05:20				SUB OUT: LEWIS, ANTOINETTE
05:20				SUB IN: CENTERS, KENNEDI
05:04	FOUL (OFF) by MARTIN, PEYTON			
05:04	TURNOVER (OFFENSIVE) by MARTIN, PEYTON			
04:54				MISSED 3PTR by JONES, SAVANNAH
04:51	REBOUND (DEF) by WALLACE, MORGAN			
04:44	TURNOVER (TRAVEL) by WESTBROOK, AKASHA			
04:44				
04:44	SUB OUT: FORD, JADA			
04:44	SUB IN: TENNISON, PAYTON			
04:28		53-68	V 15	GOOD! LAYUP by CENTERS, KENNEDI
04:28				ASSIST by KINES, SHAFORIA
04:03				FOUL (PERSONAL) by TEHEMAQUE, DAMAYA
03:52				FOUL (PERSONAL) by KINES, SHAFORIA
03:36	TURNOVER (LOSTBALL) by WESTBROOK, AKASHA			
03:20				MISSED 3PTR by TEHEMAQUE, DAMAYA
03:17				REBOUND (OFF) by TEHEMAQUE, DAMAYA
03:08				MISSED 3PTR by KINES, SHAFORIA
03:06				REBOUND (OFF) by CENTERS, KENNEDI
03:06	FOUL (PERSONAL) by MARTIN, PEYTON			
03:06				MISSED FT by CENTERS, KENNEDI

Time	VISITORS: Arkansas St.	Score	Margin	HOME: South Alabama
03:06				REBOUND (OFF) by TEAM
03:06				MISSED FT by CENTERS, KENNEDI
03:06				REBOUND (OFF) by JONES, SAVANNAH
02:57		55-68	V 13	GOOD! LAYUP by CENTERS, KENNEDI [PNT]
02:57				ASSIST by JONES, SAVANNAH
02:38	GOOD! LAYUP by MARTIN, PEYTON [PNT]	55-70	V 15	
02:38	ASSIST by WASHINGTON, JIREH			
02:23		57-70	V 13	GOOD! LAYUP by CARTER, CHRISTEN [PNT]
02:23				ASSIST by CENTERS, KENNEDI
02:23				TIMEOUT 30SEC
02:23				SUB OUT: JONES, SAVANNAH
02:23				SUB IN: MORROW, JAYLA
02:17	TURNOVER (BADPASS) by WASHINGTON, JIREH			
01:57		60-70	V 10	GOOD! 3PTR by KINES, SHAFORIA
01:57				ASSIST by MORROW, JAYLA
01:31	TURNOVER (BADPASS) by TENNISON, PAYTON			
01:31				SUB OUT: MORROW, JAYLA
01:31				SUB IN: JONES, SAVANNAH
01:21				MISSED 3PTR by JONES, SAVANNAH
01:21	BLOCK by TENNISON, PAYTON			
01:18	REBOUND (DEF) by WASHINGTON, JIREH			
01:18				FOUL (PERSONAL) by CENTERS, KENNEDI
01:18	GOOD! FT by WASHINGTON, JIREH	60-71	V 11	
01:18	MISSED FT by WASHINGTON, JIREH			
01:17				REBOUND (DEF) by CENTERS, KENNEDI
01:11				MISSED LAYUP by CARTER, CHRISTEN
01:07	REBOUND (DEF) by MARTIN, PEYTON			
00:48	GOOD! LAYUP by MARTIN, PEYTON	60-73	V 13	
00:26		62-73	V 11	GOOD! LAYUP by CARTER, CHRISTEN [PNT]
00:26				ASSIST by KINES, SHAFORIA
00:25				TIMEOUT TEAM
00:25				SUB OUT: JONES, SAVANNAH
00:25				SUB IN: MORROW, JAYLA
00:25	SUB OUT: WALLACE, MORGAN			
00:25	SUB IN: ELDER, JORDAN			
00:19				FOUL (PERSONAL) by TELEMAQUE, DAMAYA
00:19	GOOD! FT by ELDER, JORDAN	62-74	V 12	
00:19				SUB OUT: MORROW, JAYLA
00:19				SUB IN: JONES, SAVANNAH
00:19	GOOD! FT by ELDER, JORDAN	62-75	V 13	
00:19	SUB OUT: ELDER, JORDAN			
00:19	SUB IN: WALLACE, MORGAN			
00:17		64-75	V 11	GOOD! LAYUP by KINES, SHAFORIA [FB/PNT]
00:16	TIMEOUT 30SEC			
00:16				SUB OUT: JONES, SAVANNAH
00:16				SUB IN: MORROW, JAYLA
00:16	SUB OUT: WALLACE, MORGAN			
00:16	SUB IN: ELDER, JORDAN			
00:16				FOUL (PERSONAL) by CENTERS, KENNEDI
00:16				SUB OUT: CENTERS, KENNEDI
00:16				SUB IN: JONES, SAVANNAH
00:16	SUB OUT: ELDER, JORDAN			
00:16	SUB IN: WALLACE, MORGAN			
00:16	GOOD! FT by MARTIN, PEYTON [FB]	64-76	V 12	
00:16	GOOD! FT by MARTIN, PEYTON [FB]	64-77	V 13	
00:12				MISSED 3PTR by MORROW, JAYLA
00:08	REBOUND (DEF) by MARTIN, PEYTON			
00:05	TURNOVER (LOSTBALL) by MARTIN, PEYTON			

Arkansas St. 77, South Alabama 64

Points from (This Period)	ASU	USA
In the Paint	4	16
Off Turns	0	9
2nd Chance	0	2
Fast Break	2	2
Bench	5	4

**Official Scoring/Possession Reference Chart**  
**Arkansas St. vs South Alabama**  
**Period 1**  
**January 11, 2019 at Mitchell Center - Mobile, Ala**



**Period 1**

**Starters:**

**Arkansas St.:** 1 WASHINGTON, JIREH; 3 WALLACE, MORGAN; 5 TENNISON, PAYTON; 10 WESTBROOK, AKASHA; 35 MARTIN, PEYTON;

**South Alabama:** 2 KINES, SHAFORIA; 4 CARTER, CHRISTEN; 12 TELEMAQUE, DAMAYA; 14 JONES, SAVANNAH; 35 LEWIS, ANTOINETTE;

Time	VISITORS: Arkansas St.	Score	Margin	HOME: South Alabama
09:47		2-0	H 2	GOOD! JUMPER by TELEMAQUE, DAMAYA
08:58		4-0	H 4	GOOD! LAYUP by LEWIS, ANTOINETTE
08:58	GOOD! FT by MARTIN, PEYTON	4-1	H 3	
07:45		6-1	H 5	GOOD! LAYUP by LEWIS, ANTOINETTE
07:28	GOOD! LAYUP by WASHINGTON, JIREH	6-3	H 3	
07:08	GOOD! LAYUP by MARTIN, PEYTON [FB]	6-5	H 1	
06:53		7-5	H 2	GOOD! FT by LEWIS, ANTOINETTE
06:53		8-5	H 3	GOOD! FT by LEWIS, ANTOINETTE
06:24	GOOD! LAYUP by MARTIN, PEYTON	8-7	H 1	
06:24	GOOD! FT by MARTIN, PEYTON	8-8	T	
05:50	GOOD! LAYUP by JACKSON, TRINITEE	8-10	V 2	
05:21	GOOD! 3PTR by FORD, JADA [FB]	8-13	V 5	
04:34		10-13	V 3	GOOD! LAYUP by CARTER, CHRISTEN [FB]
04:14		11-13	V 2	GOOD! FT by KINES, SHAFORIA [FB]
03:29	GOOD! 3PTR by FORD, JADA [FB]	11-16	V 5	
02:43	GOOD! LAYUP by TAYLOR, STARR [FB]	11-18	V 7	
02:11	GOOD! 3PTR by FORD, JADA	11-21	V 10	
01:26	GOOD! LAYUP by JACKSON, TRINITEE	11-23	V 12	

**Arkansas St. 23, South Alabama 11**

**Official Scoring/Possession Reference Chart**  
**Arkansas St. vs South Alabama**  
**Period 2**  
**January 11, 2019 at Mitchell Center - Mobile, Ala**



**Period 2**

**Starters:**

**Arkansas St.:** 1 WASHINGTON, JIREH; 3 WALLACE, MORGAN; 5 TENNISON, PAYTON; 10 WESTBROOK, AKASHA; 35 MARTIN, PEYTON;

**South Alabama:** 2 KINES, SHAFORIA; 4 CARTER, CHRISTEN; 12 TELEMAQUE, DAMAYA; 14 JONES, SAVANNAH; 35 LEWIS, ANTOINETTE;

Time	VISITORS: Arkansas St.	Score	Margin	HOME: South Alabama
09:27		13-23	V 10	GOOD! LAYUP by LEWIS, ANTOINETTE
09:01	GOOD! JUMPER by MARTIN, PEYTON [PNT]	13-25	V 12	
08:37	GOOD! LAYUP by WASHINGTON, JIREH [FB]	13-27	V 14	
08:06	GOOD! 3PTR by TENNISON, PAYTON	13-30	V 17	
07:31	GOOD! FT by PEEVY, LYCIA [FB]	13-31	V 18	
07:31	GOOD! FT by PEEVY, LYCIA [FB]	13-32	V 19	
07:08	GOOD! LAYUP by WALLACE, MORGAN [FB]	13-34	V 21	
06:57		16-34	V 18	GOOD! 3PTR by JONES, SAVANNAH
05:40	GOOD! LAYUP by TAYLOR, STARR	16-36	V 20	
05:23		18-36	V 18	GOOD! LAYUP by LEWIS, ANTOINETTE
05:14		20-36	V 16	GOOD! LAYUP by LEWIS, ANTOINETTE
04:57	GOOD! FT by MARTIN, PEYTON	20-37	V 17	
04:05		22-37	V 15	GOOD! LAYUP by CARTER, CHRISTEN [FB]
03:38		23-37	V 14	GOOD! FT by TELEMAQUE, DAMAYA [FB]
03:38		24-37	V 13	GOOD! FT by TELEMAQUE, DAMAYA [FB]
03:15	GOOD! JUMPER by JACKSON, TRINITEE	24-39	V 15	
03:06		25-39	V 14	GOOD! FT by KINES, SHAFORIA
03:06		26-39	V 13	GOOD! FT by KINES, SHAFORIA
02:11		28-39	V 11	GOOD! LAYUP by CENTERS, KENNED
01:04		30-39	V 9	GOOD! LAYUP by CARTER, CHRISTEN
00:14	GOOD! LAYUP by WASHINGTON, JIREH [PNT]	30-41	V 11	

**Arkansas St. 41, South Alabama 30**

**Official Scoring/Possession Reference Chart**  
**Arkansas St. vs South Alabama**  
**Period 3**  
**January 11, 2019 at Mitchell Center - Mobile, Ala**



**Period 3**

**Starters:**

**Arkansas St.:** 1 WASHINGTON, JIREH; 3 WALLACE, MORGAN; 5 TENNISON, PAYTON; 10 WESTBROOK, AKASHA; 35 MARTIN, PEYTON;

**South Alabama:** 2 KINES, SHAFORIA; 4 CARTER, CHRISTEN; 12 TELEMAQUE, DAMAYA; 14 JONES, SAVANNAH; 35 LEWIS, ANTOINETTE;

Time	VISITORS: Arkansas St.	Score	Margin	HOME: South Alabama
09:31		32-41	V 9	GOOD! LAYUP by LEWIS, ANTOINETTE
09:05		34-41	V 7	GOOD! LAYUP by LEWIS, ANTOINETTE
09:05		35-41	V 6	GOOD! FT by LEWIS, ANTOINETTE
08:50	GOOD! LAYUP by WALLACE, MORGAN	35-43	V 8	
08:06	GOOD! LAYUP by MARTIN, PEYTON	35-45	V 10	
07:37	GOOD! FT by MARTIN, PEYTON [FB]	35-46	V 11	
07:37	GOOD! FT by MARTIN, PEYTON [FB]	35-47	V 12	
07:00	GOOD! FT by WASHINGTON, JIREH [FB]	35-48	V 13	
07:00	GOOD! FT by WASHINGTON, JIREH [FB]	35-49	V 14	
06:29	GOOD! FT by WESTBROOK, AKASHA	35-50	V 15	
06:29	GOOD! FT by WESTBROOK, AKASHA	35-51	V 16	
05:51	GOOD! LAYUP by JACKSON, TRINITEE	35-53	V 18	
05:33		37-53	V 16	GOOD! LAYUP by CARTER, CHRISTEN
04:49	GOOD! LAYUP by WALLACE, MORGAN [PNT]	37-55	V 18	
04:31		38-55	V 17	GOOD! FT by CENTERS, KENNEDY
04:07	GOOD! JUMPER by MARTIN, PEYTON	38-57	V 19	
03:35		40-57	V 17	GOOD! LAYUP by LEWIS, ANTOINETTE
02:58		42-57	V 15	GOOD! LAYUP by MORROW, JAYLA [FB]
02:10	GOOD! LAYUP by MARTIN, PEYTON	42-59	V 17	
01:33	GOOD! JUMPER by MARTIN, PEYTON [PNT]	42-61	V 19	
01:26		44-61	V 17	GOOD! LAYUP by JONES, SAVANNAH [FB]
01:26		45-61	V 16	GOOD! FT by JONES, SAVANNAH [FB]
00:40	GOOD! FT by ELDER, JORDAN	45-62	V 17	
00:40	GOOD! FT by ELDER, JORDAN	45-63	V 18	

**Arkansas St. 63, South Alabama 45**

**Official Scoring/Possession Reference Chart**  
**Arkansas St. vs South Alabama**  
**Period 4**  
**January 11, 2019 at Mitchell Center - Mobile, Ala**



**Period 4**

**Starters:**

**Arkansas St.:** 1 WASHINGTON, JIREH; 3 WALLACE, MORGAN; 5 TENNISON, PAYTON; 10 WESTBROOK, AKASHA; 35 MARTIN, PEYTON;

**South Alabama:** 2 KINES, SHAFORIA; 4 CARTER, CHRISTEN; 12 TELEMAQUE, DAMAYA; 14 JONES, SAVANNAH; 35 LEWIS, ANTOINETTE;

Time	VISITORS: Arkansas St.	Score	Margin	HOME: South Alabama
08:54		47-63	V 16	GOOD! LAYUP by LEWIS, ANTOINETTE
08:25	GOOD! FT by HECKERT, MADISON	47-64	V 17	
08:10		49-64	V 15	GOOD! LAYUP by TELEMAQUE, DAMAYA [PNT]
07:58	GOOD! JUMPER by HECKERT, MADISON	49-66	V 17	
06:06		51-66	V 15	GOOD! LAYUP by CARTER, CHRISTEN
05:48	GOOD! JUMPER by WESTBROOK, AKASHA	51-68	V 17	
04:28		53-68	V 15	GOOD! LAYUP by CENTERS, KENNED
02:57		55-68	V 13	GOOD! LAYUP by CENTERS, KENNED [PNT]
02:38	GOOD! LAYUP by MARTIN, PEYTON [PNT]	55-70	V 15	
02:23		57-70	V 13	GOOD! LAYUP by CARTER, CHRISTEN [PNT]
01:57		60-70	V 10	GOOD! 3PTR by KINES, SHAFORIA
01:18	GOOD! FT by WASHINGTON, JIREH	60-71	V 11	
00:48	GOOD! LAYUP by MARTIN, PEYTON	60-73	V 13	
00:26		62-73	V 11	GOOD! LAYUP by CARTER, CHRISTEN [PNT]
00:19	GOOD! FT by ELDER, JORDAN	62-74	V 12	
00:19	GOOD! FT by ELDER, JORDAN	62-75	V 13	
00:17		64-75	V 11	GOOD! LAYUP by KINES, SHAFORIA [FB/PNT]
00:16	GOOD! FT by MARTIN, PEYTON [FB]	64-76	V 12	
00:16	GOOD! FT by MARTIN, PEYTON [FB]	64-77	V 13	

**Arkansas St. 77, South Alabama 64**

**Official Substitutions Log**  
**Arkansas St. vs South Alabama**  
**Period 1**  
**January 11, 2019 at Mitchell Center - Mobile, Ala**



VISITORS: Arkansas St.	Time	Score	HOME: South Alabama
1 WASHINGTON, JIREH			2 KINES, SHAFORIA
3 WALLACE, MORGAN			4 CARTER, CHRISTEN
5 TENNISON, PAYTON			12 TELEMAQUE, DAMAYA
10 WESTBROOK, AKASHA			14 JONES, SAVANNAH
35 MARTIN, PEYTON			35 LEWIS, ANTOINETTE
	06:53	5-8	SUB OUT: LEWIS, ANTOINETTE
	06:53		SUB IN: CENTERS, KENNEDI
SUB OUT: 5 TENNISON, PAYTON	06:24	8-8	
SUB IN: 0 FORD, JADA	06:24		
SUB OUT: 35 MARTIN, PEYTON	06:24		
SUB IN: 23 JACKSON, TRINITEE	06:24		
	05:39	10-8	SUB OUT: CENTERS, KENNEDI
	05:39		SUB IN: HALL, INDIA
SUB OUT: 23 JACKSON, TRINITEE	05:04	13-8	
SUB IN: 35 MARTIN, PEYTON	05:04		
SUB OUT: 1 WASHINGTON, JIREH	05:04		
SUB IN: 2 TAYLOR, STARR	05:04		
	04:14	13-10	SUB OUT: JONES, SAVANNAH
	04:14		SUB IN: SYKES, ALEXIS
SUB OUT: 3 WALLACE, MORGAN	04:14		
SUB IN: 24 ELDER, JORDAN	04:14		
	04:14		SUB OUT: KINES, SHAFORIA
	04:14		SUB IN: MORROW, JAYLA
SUB OUT: 10 WESTBROOK, AKASHA	03:29	16-11	
SUB IN: 11 PEEVY, LYCIA	03:29		
	02:11	21-11	SUB OUT: HALL, INDIA
	02:11		SUB IN: LEWIS, ANTOINETTE
	01:37	21-11	SUB OUT: SYKES, ALEXIS
	01:37		SUB IN: KINES, SHAFORIA
	01:37		SUB OUT: TELEMAQUE, DAMAYA
	01:37		SUB IN: JONES, SAVANNAH
SUB OUT: 35 MARTIN, PEYTON	01:37		
SUB IN: 23 JACKSON, TRINITEE	01:37		
	00:57	23-11	SUB OUT: CARTER, CHRISTEN
	00:57		SUB IN: BUSTER, JALA
SUB OUT: 24 ELDER, JORDAN	00:57		
SUB IN: 35 MARTIN, PEYTON	00:57		
SUB OUT: 2 TAYLOR, STARR	00:57		
SUB IN: 3 WALLACE, MORGAN	00:57		
SUB OUT: 0 FORD, JADA	00:57		
SUB IN: 1 WASHINGTON, JIREH	00:57		
SUB OUT: 23 JACKSON, TRINITEE	00:11	23-11	
SUB IN: 0 FORD, JADA	00:11		

**Arkansas St. 23, South Alabama 11**

**Official Substitutions Log**  
**Arkansas St. vs South Alabama**  
**Period 2**  
**January 11, 2019 at Mitchell Center - Mobile, Ala**



VISITORS: Arkansas St.	Time	Score	HOME: South Alabama
1 WASHINGTON, JIREH			2 KINES, SHAFORIA
3 WALLACE, MORGAN			4 CARTER, CHRISTEN
5 TENNISON, PAYTON			12 TELEMAQUE, DAMAYA
10 WESTBROOK, AKASHA			14 JONES, SAVANNAH
35 MARTIN, PEYTON			35 LEWIS, ANTOINETTE
	07:31	31-13	SUB OUT: BUSTER, JALA
	07:31		SUB IN: CARTER, CHRISTEN
	07:31		SUB OUT: MORROW, JAYLA
	07:31		SUB IN: TELEMAQUE, DAMAYA
SUB OUT: 35 MARTIN, PEYTON	07:31		
SUB IN: 23 JACKSON, TRINITEE	07:31		
SUB OUT: 23 JACKSON, TRINITEE	05:51	34-16	
SUB IN: 35 MARTIN, PEYTON	05:51		
SUB OUT: 1 WASHINGTON, JIREH	05:51		
SUB IN: 2 TAYLOR, STARR	05:51		
SUB OUT: 5 TENNISON, PAYTON	05:51		
SUB IN: 0 FORD, JADA	05:51		
SUB OUT: 11 PEEVY, LYCIA	05:51		
SUB IN: 10 WESTBROOK, AKASHA	05:51		
	04:57	37-20	SUB OUT: LEWIS, ANTOINETTE
	04:57		SUB IN: CENTERS, KENNEDI
SUB OUT: 10 WESTBROOK, AKASHA	04:44	37-20	
SUB IN: 11 PEEVY, LYCIA	04:44		
SUB OUT: 2 TAYLOR, STARR	03:38	37-23	
SUB IN: 24 ELDER, JORDAN	03:38		
SUB OUT: 3 WALLACE, MORGAN	03:38		
SUB IN: 23 JACKSON, TRINITEE	03:38		
SUB OUT: 35 MARTIN, PEYTON	03:38		
SUB IN: 1 WASHINGTON, JIREH	03:38		
SUB OUT: 23 JACKSON, TRINITEE	00:48	39-30	
SUB IN: 50 HECKERT, MADISON	00:48		
SUB OUT: 24 ELDER, JORDAN	00:48		
SUB IN: 3 WALLACE, MORGAN	00:48		
SUB OUT: 0 FORD, JADA	00:48		
SUB IN: 5 TENNISON, PAYTON	00:48		

**Arkansas St. 41, South Alabama 30**



**Official Substitutions Log**  
**Arkansas St. vs South Alabama**  
**Period 3**  
**January 11, 2019 at Mitchell Center - Mobile, Ala**



VISITORS: Arkansas St.	Time	Score	HOME: South Alabama
1 WASHINGTON, JIREH			2 KINES, SHAFORIA
3 WALLACE, MORGAN			4 CARTER, CHRISTEN
5 TENNISON, PAYTON			12 TELEMAQUE, DAMAYA
10 WESTBROOK, AKASHA			14 JONES, SAVANNAH
35 MARTIN, PEYTON			35 LEWIS, ANTOINETTE
SUB OUT: 50 HECKERT, MADISON	09:49	-	
SUB IN: 35 MARTIN, PEYTON	09:49		
SUB OUT: 11 PEEVY, LYCIA	09:49		
SUB IN: 10 WESTBROOK, AKASHA	09:49		
	09:08	41-32	SUB OUT: CENTERS, KENNEDI
	09:08		SUB IN: LEWIS, ANTOINETTE
	08:17	43-35	SUB OUT: JONES, SAVANNAH
	08:17		SUB IN: MORROW, JAYLA
	07:37	46-35	SUB OUT: LEWIS, ANTOINETTE
	07:37		SUB IN: CENTERS, KENNEDI
SUB OUT: 35 MARTIN, PEYTON	06:58	49-35	
SUB IN: 23 JACKSON, TRINITEE	06:58		
SUB OUT: 1 WASHINGTON, JIREH	06:29	50-35	
SUB IN: 2 TAYLOR, STARR	06:29		
SUB OUT: 5 TENNISON, PAYTON	06:29		
SUB IN: 0 FORD, JADA	06:29		
	04:31	55-37	SUB OUT: TELEMAQUE, DAMAYA
	04:31		SUB IN: JONES, SAVANNAH
SUB OUT: 23 JACKSON, TRINITEE	04:31		
SUB IN: 35 MARTIN, PEYTON	04:31		
SUB OUT: 3 WALLACE, MORGAN	04:31		
SUB IN: 24 ELDER, JORDAN	04:31		
	04:31		SUB OUT: CENTERS, KENNEDI
	04:31		SUB IN: LEWIS, ANTOINETTE
	02:38	57-42	SUB OUT: CARTER, CHRISTEN
	02:38		SUB IN: HART, EMERALD
SUB OUT: 2 TAYLOR, STARR	02:21	57-42	
SUB IN: 1 WASHINGTON, JIREH	02:21		
SUB OUT: 0 FORD, JADA	02:21		
SUB IN: 5 TENNISON, PAYTON	02:21		
	01:26	61-44	SUB OUT: KINES, SHAFORIA
	01:26		SUB IN: TELEMAQUE, DAMAYA
SUB OUT: 10 WESTBROOK, AKASHA	00:40	62-45	
SUB IN: 11 PEEVY, LYCIA	00:40		
	00:40		SUB OUT: HART, EMERALD
	00:40		SUB IN: CENTERS, KENNEDI
	00:40		SUB OUT: JONES, SAVANNAH
	00:40		SUB IN: SYKES, ALEXIS
SUB OUT: 24 ELDER, JORDAN	00:40		
SUB IN: 3 WALLACE, MORGAN	00:40		
SUB OUT: 35 MARTIN, PEYTON	00:40		
SUB IN: 50 HECKERT, MADISON	00:40		

**Arkansas St. 63, South Alabama 45**

**Official Substitutions Log**  
**Arkansas St. vs South Alabama**  
**Period 4**  
**January 11, 2019 at Mitchell Center - Mobile, Ala**



VISITORS: Arkansas St.		Time	Score	HOME: South Alabama
1 WASHINGTON, JIREH				2 KINES, SHAFORIA
3 WALLACE, MORGAN				4 CARTER, CHRISTEN
5 TENNISON, PAYTON				12 TEHEMAQUE, DAMAYA
10 WESTBROOK, AKASHA				14 JONES, SAVANNAH
35 MARTIN, PEYTON				35 LEWIS, ANTOINETTE
		09:37	-	SUB OUT: MORROW, JAYLA
		09:37		SUB IN: KINES, SHAFORIA
		08:25	63-47	SUB OUT: LEWIS, ANTOINETTE
		08:25		SUB IN: CARTER, CHRISTEN
SUB OUT: 11 PEEVY, LYCIA		08:25		
SUB IN: 10 WESTBROOK, AKASHA		08:25		
		07:35	66-49	SUB OUT: SYKES, ALEXIS
		07:35		SUB IN: JONES, SAVANNAH
SUB OUT: 5 TENNISON, PAYTON		07:35		
SUB IN: 0 FORD, JADA		07:35		
SUB OUT: 50 HECKERT, MADISON		07:35		
SUB IN: 35 MARTIN, PEYTON		07:35		
		05:34	68-51	SUB OUT: CENTERS, KENNEDI
		05:34		SUB IN: LEWIS, ANTOINETTE
		05:20	68-51	SUB OUT: LEWIS, ANTOINETTE
		05:20		SUB IN: CENTERS, KENNEDI
SUB OUT: 0 FORD, JADA		04:44	68-51	
SUB IN: 5 TENNISON, PAYTON		04:44		
		02:23	70-57	SUB OUT: JONES, SAVANNAH
		02:23		SUB IN: MORROW, JAYLA
		01:31	70-60	SUB OUT: MORROW, JAYLA
		01:31		SUB IN: JONES, SAVANNAH
		00:25	73-62	SUB OUT: JONES, SAVANNAH
		00:25		SUB IN: MORROW, JAYLA
SUB OUT: 3 WALLACE, MORGAN		00:25		
SUB IN: 24 ELDER, JORDAN		00:25		
		00:19	74-62	SUB OUT: MORROW, JAYLA
		00:19		SUB IN: JONES, SAVANNAH
SUB OUT: 24 ELDER, JORDAN		00:19		
SUB IN: 3 WALLACE, MORGAN		00:19		
		00:16	75-64	SUB OUT: JONES, SAVANNAH
		00:16		SUB IN: MORROW, JAYLA
SUB OUT: 3 WALLACE, MORGAN		00:16		
SUB IN: 24 ELDER, JORDAN		00:16		
		00:16		SUB OUT: CENTERS, KENNEDI
		00:16		SUB IN: JONES, SAVANNAH
SUB OUT: 24 ELDER, JORDAN		00:16		
SUB IN: 3 WALLACE, MORGAN		00:16		

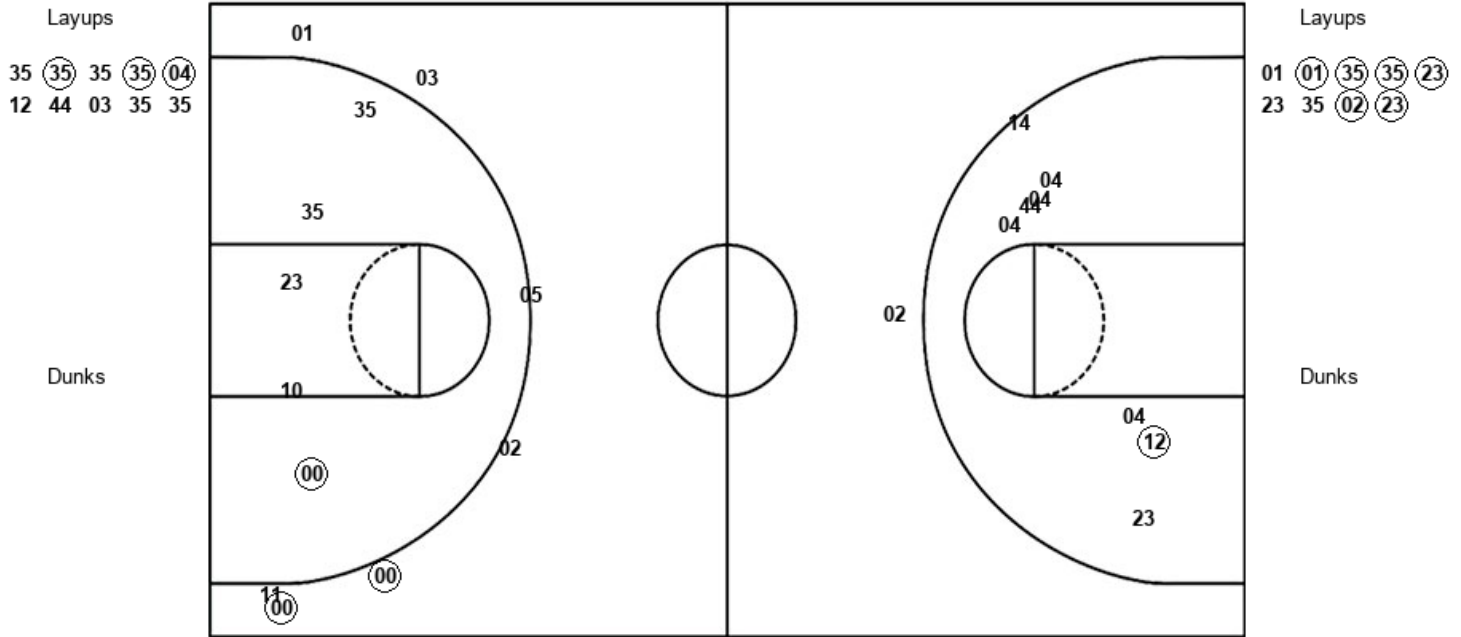
**Arkansas St. 77, South Alabama 64**

Official Shot Chart  
**Arkansas St. vs South Alabama**  
 PERIOD 1 Shots  
 January 11, 2019 at Mitchell Center - Mobile, Ala



**South Alabama**

**Arkansas St.**



USA : Period 1	Made	Att	Pct
Layups	3	10	30.0
Dunks	0	0	0
2PT Field Goals	4	18	22.2
3PT Field Goals	0	1	00.0
<b>Total Field Goals</b>	<b>4</b>	<b>19</b>	<b>21.1</b>

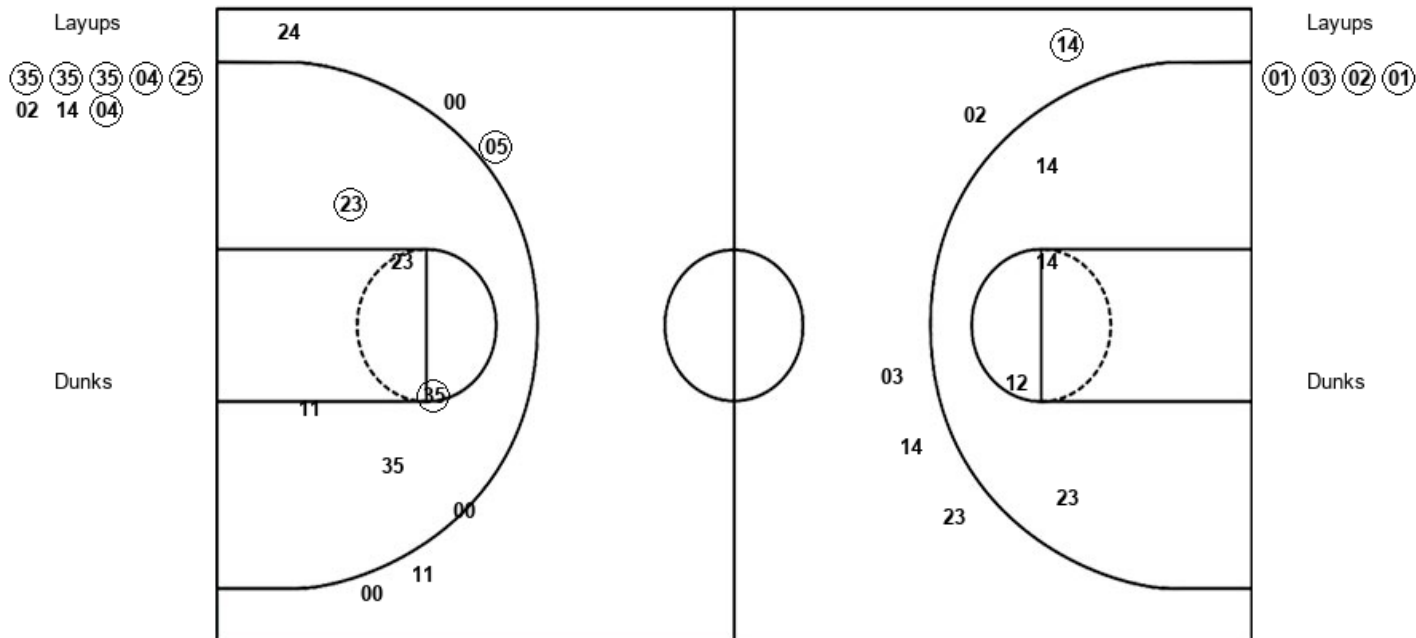
ASU : Period 1	Made	Att	Pct
Layups	6	9	66.7
Dunks	0	0	0
2PT Field Goals	6	13	46.2
3PT Field Goals	3	8	37.5
<b>Total Field Goals</b>	<b>9</b>	<b>21</b>	<b>42.9</b>

Official Shot Chart  
**Arkansas St. vs South Alabama**  
 PERIOD 2 Shots  
 January 11, 2019 at Mitchell Center - Mobile, Ala



**South Alabama**

**Arkansas St.**



USA : Period 2	Made	Att	Pct
Layups	6	8	75.0
Dunks	0	0	0
2PT Field Goals	6	12	50.0
3PT Field Goals	1	5	20.0
<b>Total Field Goals</b>	<b>7</b>	<b>17</b>	<b>41.2</b>

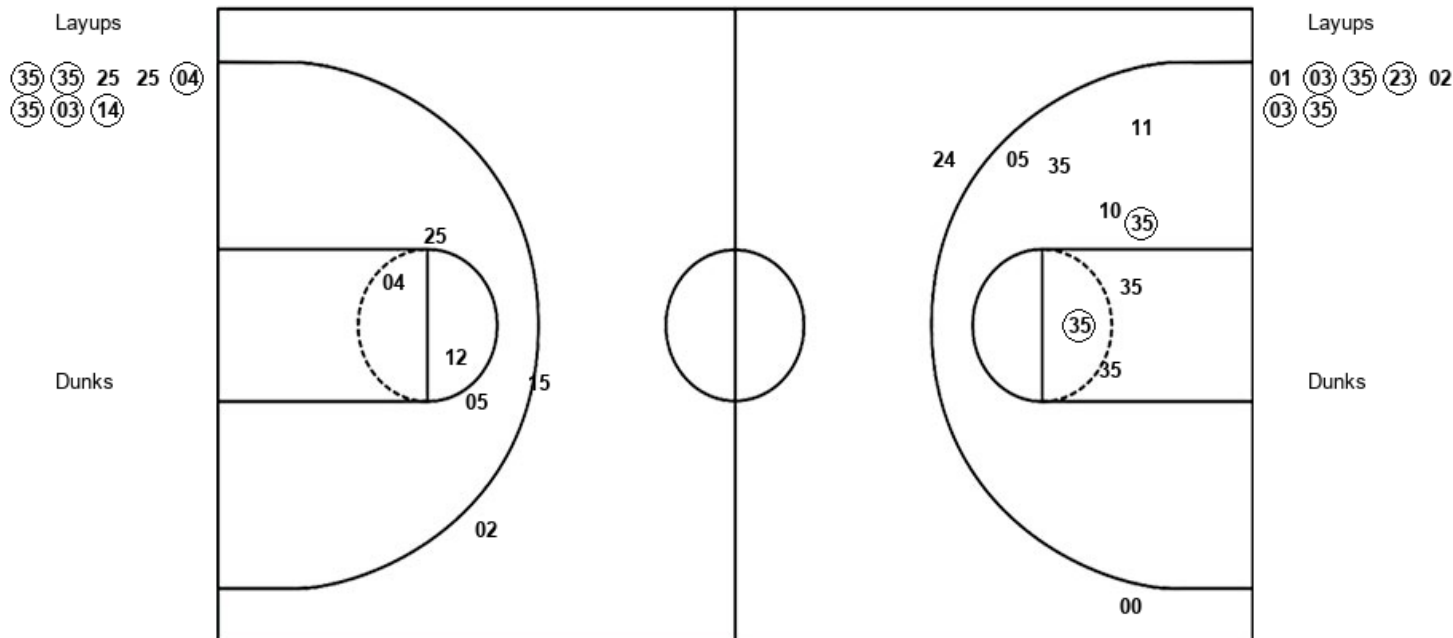
ASU : Period 2	Made	Att	Pct
Layups	4	4	100.0
Dunks	0	0	0
2PT Field Goals	6	9	66.7
3PT Field Goals	1	6	16.7
<b>Total Field Goals</b>	<b>7</b>	<b>15</b>	<b>46.7</b>

Official Shot Chart  
**Arkansas St. vs South Alabama**  
 PERIOD 3 Shots  
 January 11, 2019 at Mitchell Center - Mobile, Ala



**South Alabama**

**Arkansas St.**



USA : Period 3	Made	Att	Pct
Layups	6	8	75.0
Dunks	0	0	0
2PT Field Goals	6	12	50.0
3PT Field Goals	0	2	00.0
<b>Total Field Goals</b>	<b>6</b>	<b>14</b>	<b>42.9</b>

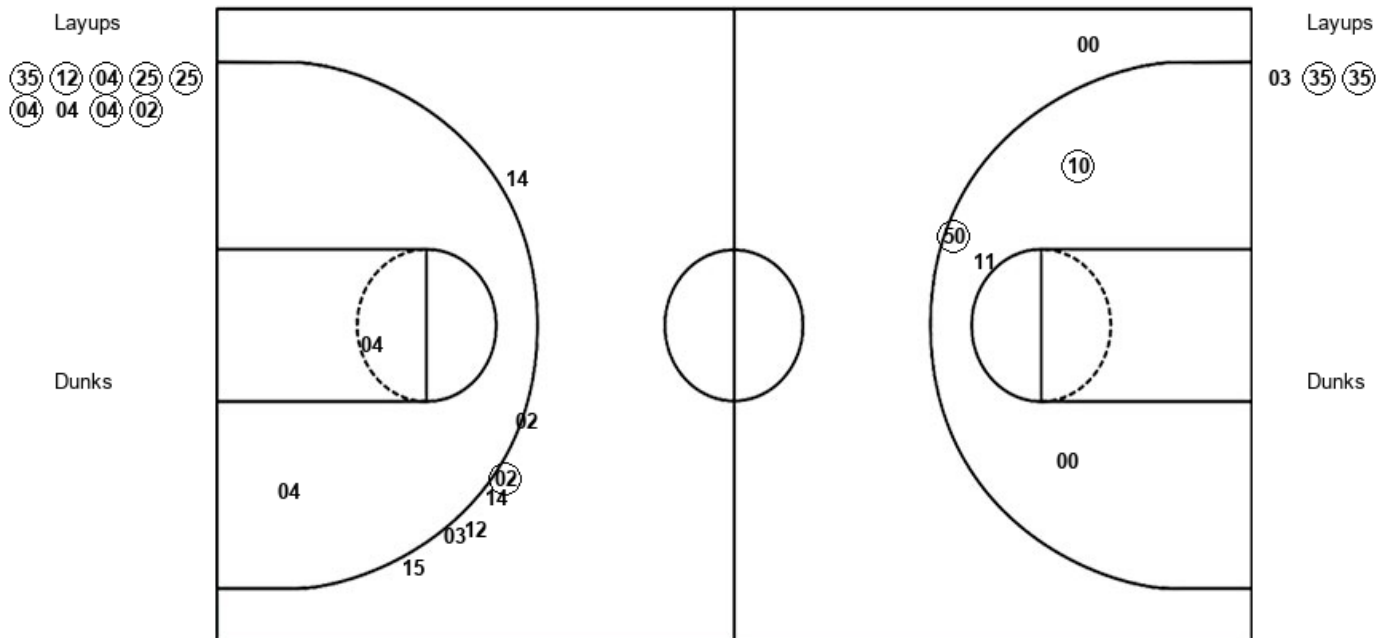
ASU : Period 3	Made	Att	Pct
Layups	5	7	71.4
Dunks	0	0	0
2PT Field Goals	7	15	46.7
3PT Field Goals	0	2	00.0
<b>Total Field Goals</b>	<b>7</b>	<b>17</b>	<b>41.2</b>

Official Shot Chart  
**Arkansas St. vs South Alabama**  
 PERIOD 4 Shots  
 January 11, 2019 at Mitchell Center - Mobile, Ala



**South Alabama**

**Arkansas St.**



USA : Period 4	Made	Att	Pct
Layups	8	9	88.9
Dunks	0	0	0
2PT Field Goals	8	11	72.7
3PT Field Goals	1	7	14.3
<b>Total Field Goals</b>	<b>9</b>	<b>18</b>	<b>50.0</b>

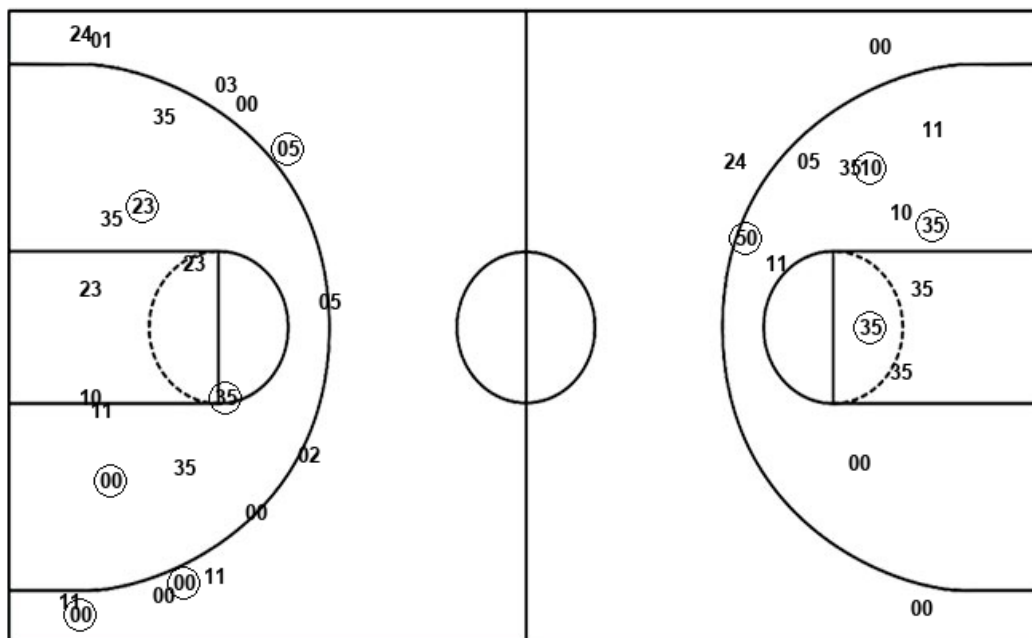
ASU : Period 4	Made	Att	Pct
Layups	2	3	66.7
Dunks	0	0	0
2PT Field Goals	4	7	57.1
3PT Field Goals	0	1	00.0
<b>Total Field Goals</b>	<b>4</b>	<b>8</b>	<b>50.0</b>

Official Shot Chart  
**Arkansas St. vs South Alabama**  
Arkansas St. Team Shots  
January 11, 2019 at Mitchell Center - Mobile, Ala



Layups

Dunks



Layups

Dunks

01 (01) (35) (35) (23)  
23 35 (02) (23) (01)  
(03) (02) (01) (01) (03)  
(35) (23) (02) (03) (35)  
03 (35) (35)

ASU : Period 1	Made	Att	Pct
Layups	6	9	66.7
Dunks	0	0	0
2PT Field Goals	6	13	46.2
3PT Field Goals	3	8	37.5
<b>Total Field Goals</b>	<b>9</b>	<b>21</b>	<b>42.9</b>

ASU : Period 3	Made	Att	Pct
Layups	5	7	71.4
Dunks	0	0	0
2PT Field Goals	7	15	46.7
3PT Field Goals	0	2	00.0
<b>Total Field Goals</b>	<b>7</b>	<b>17</b>	<b>41.2</b>

ASU : Period 2	Made	Att	Pct
Layups	4	4	100.0
Dunks	0	0	0
2PT Field Goals	6	9	66.7
3PT Field Goals	1	6	16.7
<b>Total Field Goals</b>	<b>7</b>	<b>15</b>	<b>46.7</b>

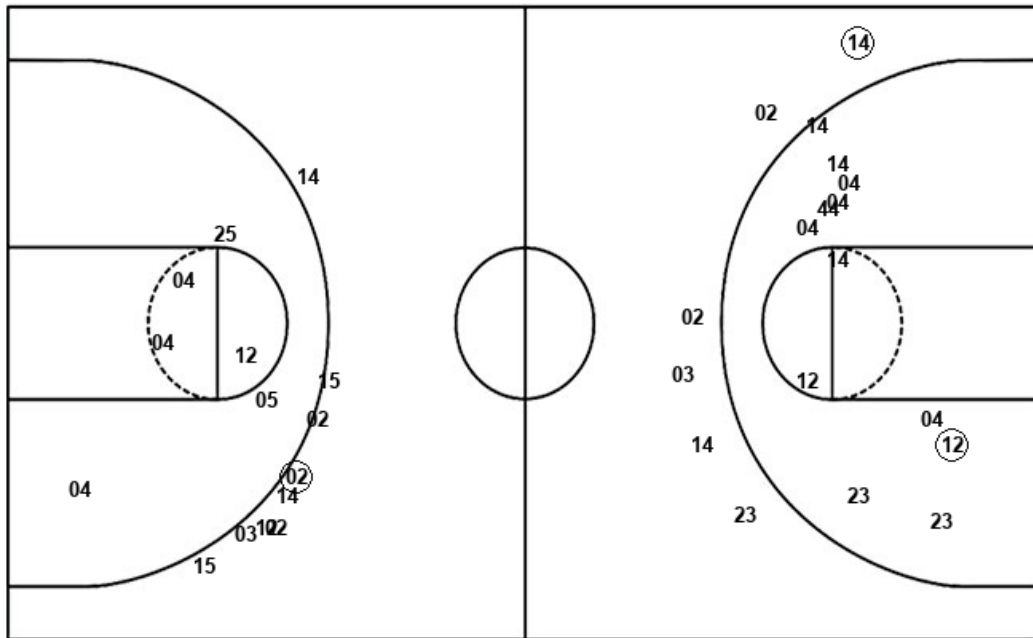
ASU : Period 4	Made	Att	Pct
Layups	2	3	66.7
Dunks	0	0	0
2PT Field Goals	4	7	57.1
3PT Field Goals	0	1	00.0
<b>Total Field Goals</b>	<b>4</b>	<b>8</b>	<b>50.0</b>

Official Shot Chart  
**Arkansas St. vs South Alabama**  
 South Alabama Team Shots  
 January 11, 2019 at Mitchell Center - Mobile, Ala



Layups

Dunks



Layups

Dunks

35 (35) 35 (35) (04)  
 12 44 03 35 35  
 (35) (35) (35) (04) (25)  
 02 14 (04) (35) (35)  
 25 25 (04) (35) (03)  
 (14) (35) (12) (04) (25)  
 (25) (04) 04 (04) (02)

USA : Period 1	Made	Att	Pct
Layups	3	10	30.0
Dunks	0	0	0
2PT Field Goals	4	18	22.2
3PT Field Goals	0	1	00.0
<b>Total Field Goals</b>	<b>4</b>	<b>19</b>	<b>21.1</b>

USA : Period 3	Made	Att	Pct
Layups	6	8	75.0
Dunks	0	0	0
2PT Field Goals	6	12	50.0
3PT Field Goals	0	2	00.0
<b>Total Field Goals</b>	<b>6</b>	<b>14</b>	<b>42.9</b>

USA : Period 2	Made	Att	Pct
Layups	6	8	75.0
Dunks	0	0	0
2PT Field Goals	6	12	50.0
3PT Field Goals	1	5	20.0
<b>Total Field Goals</b>	<b>7</b>	<b>17</b>	<b>41.2</b>

USA : Period 4	Made	Att	Pct
Layups	8	9	88.9
Dunks	0	0	0
2PT Field Goals	8	11	72.7
3PT Field Goals	1	7	14.3
<b>Total Field Goals</b>	<b>9</b>	<b>18</b>	<b>50.0</b>