

FINAL SCORE

Southern Miss.

60



Wichita St.

63



December 15, 2018 • INTRUST Bank Arena - Wichita, Kan.

FINAL STATISTICS

Official Box Score
Southern Miss. vs Wichita St.
Game Totals -- Final Statistics
December 15, 2018 at INTRUST Bank Arena - Wichita, Kan.

Southern Miss. 60

No.	Player	S	Pts	FG	3FG	FT	OR	DR	TR	PF	A	TO	Blk	Stl	Min	+/-
0	Magee, Dominic		10	4-10	2-5	0-0	0	4	4	3	0	3	0	0	27	-5
1	Edwards, Cortez		15	6-13	0-0	3-4	1	6	7	3	0	1	1	2	36	1
20	Holland, Kevin		0	0-1	0-0	0-0	0	1	1	1	0	0	0	1	14	-11
32	Harper-Baker, Leonard		5	2-6	0-1	1-7	1	1	2	2	0	3	2	3	34	-4
55	Griffin, Tyree		12	2-11	2-7	6-8	0	5	5	2	8	1	0	1	37	3
3	Watson, Gabe		3	0-2	0-1	3-5	0	3	3	1	2	1	0	0	18	2
11	Draine, Ladavius		9	3-6	3-5	0-0	0	3	3	1	0	0	0	0	21	9
12	Rowe, Tim		6	2-3	1-1	1-2	1	1	2	5	0	1	0	0	14	-10
	Team						1	3	4	0		0				
TOTALS			60	19-52	8-20	14-26	4	27	31	18	10	10	3	7	200	

Shooting By Period

Period	FG	FG%	3FG	3FG%	FT	FT%
1st Half	9-29	31%	3-11	27%	4-8	50%
2nd Half	10-23	43%	5-9	56%	10-18	56%
Game	19-52	36.5%	8-20	40.0%	14-26	53.8%

Deadball Rebounds:

Last FG: 2nd-00:53

Biggest Run: 14-0

Largest lead: By 2 at 1-19:38

Technical Fouls: None.

Wichita St. 63

No.	Player	S	Pts	FG	3FG	FT	OR	DR	TR	PF	A	TO	Blk	Stl	Min	+/-
1	McDuffie, Markis		17	5-16	2-6	5-7	2	6	8	1	1	0	0	1	34	5
3	Torres, Ricky		4	2-3	0-0	0-0	0	3	3	0	6	6	0	2	26	10
4	Haynes-Jones, Samajae		11	4-14	2-6	1-3	0	0	0	3	3	1	0	0	38	3
10	Stevenson, Erik		5	1-9	1-6	2-2	1	7	8	2	0	3	0	1	32	-2
21	Echenique, Jaime		17	8-12	0-0	1-2	3	8	11	4	0	3	2	0	22	13
0	Dennis, Dexter		1	0-0	0-0	1-4	1	1	2	2	0	0	0	0	6	-4
2	Burton, Jamarius		0	0-0	0-0	0-0	2	4	6	2	2	1	0	1	17	3
5	Brown, Rod		4	2-2	0-0	0-0	2	0	2	0	0	0	0	0	6	-2
12	Udeze, Morris		4	1-4	0-0	2-5	2	2	4	2	2	1	2	0	17	-6
33	Midtgaard, Asbjorn		0	0-0	0-0	0-0	0	0	0	0	0	0	0	0	1	-5
	Team						2	2	4	0		0				
TOTALS			63	23-60	5-18	12-23	15	33	48	16	14	15	4	5	200	

Shooting By Period

Period	FG	FG%	3FG	3FG%	FT	FT%
1st Half	14-32	44%	3-6	50%	2-7	29%
2nd Half	9-28	32%	2-12	17%	10-16	63%
Game	23-60	38.3%	5-18	27.8%	12-23	52.2%

Deadball Rebounds:

Last FG: 2nd-00:36

Biggest Run: 8-0

Largest lead: By 17 at 2-13:56

Technical Fouls: None.

Game Notes:	
Officials: Anthony Jordan, Jose Carrion, Robert Felder	
Attendance: 9356	
Start Time: 2018-12-15 22:35:34	End Time: 2018-12-16 00:54:46
Game Duration: 139	

Score by Period	1st	2nd	TOT
USM	25	35	60
WSU	33	30	63

USM led for 3:34. WSU led for 34:42.
Game was tied for 1:45.
Times tied: 6 Lead Changes: 7

Points from	USM	WSU
In the Paint	14	34
Off Turns	18	14
2nd Chance	3	19
Fast Break	7	8
Bench	18	9

Official Box Score
Southern Miss. vs Wichita St.
First Half Statistics Only
December 15, 2018 at INTRUST Bank Arena - Wichita, Kan.

Southern Miss. 60

No.	Player	S	Pts	FG	3FG	FT	OR	DR	TR	PF	A	TO	Blk	Stl	Min	+/-
0	Magee, Dominic		5	2-6	1-4	0-0	0	3	3	0	0	2	0	0	15	-4
1	Edwards, Cortez		4	2-6	0-0	0-0	1	4	5	1	0	0	1	1	16	-4
20	Holland, Kevin		0	0-1	0-0	0-0	0	1	1	0	0	0	0	0	10	-6
32	Harper-Baker, Leonard		5	2-4	0-1	1-4	0	1	1	0	0	1	0	2	17	-8
55	Griffin, Tyree		2	0-6	0-3	2-2	0	1	1	2	3	0	0	0	17	-2
3	Watson, Gabe		1	0-1	0-0	1-2	0	2	2	1	2	1	0	0	9	-4
11	Draine, Ladavius		6	2-4	2-3	0-0	0	1	1	0	0	0	0	0	7	-6
12	Rowe, Tim		2	1-1	0-0	0-0	0	0	0	2	0	0	0	0	9	-6
	Team						0	1	1	0		0				
TOTALS			25	9-29	3-11	4-8	0	0	15	6	5	4	1	3	100	

Shooting By Period

Period	FG	FG%	3FG	3FG%	FT	FT%
1st Half	9-29	31%	3-11	27%	4-8	50%
2nd Half	10-23	43%	5-9	56%	10-18	56%
Game	19-52	36.5%	8-20	40.0%	14-26	53.8%

Deadball Rebounds:
Last FG: 2nd-00:53
Biggest Run: 14-0
Largest lead: By 2 at 1-19:38
Technical Fouls: None.

Wichita St. 63

No.	Player	S	Pts	FG	3FG	FT	OR	DR	TR	PF	A	TO	Blk	Stl	Min	+/-
1	Mcduffie, Markis		7	3-9	1-2	0-0	1	2	3	0	1	0	0	1	16	7
3	Torres, Ricky		4	2-2	0-0	0-0	0	3	3	0	1	2	0	1	14	8
4	Haynes-Jones, Samajae		10	4-6	2-2	0-1	0	0	0	0	3	1	0	0	18	8
10	Stevenson, Erik		0	0-5	0-2	0-0	0	5	5	1	0	0	0	1	16	12
21	Echenique, Jaime		8	4-7	0-0	0-0	1	7	8	1	0	3	0	0	13	11
0	Dennis, Dexter		1	0-0	0-0	1-4	1	1	2	2	0	0	0	0	5	-4
2	Burton, Jamarius		0	0-0	0-0	0-0	1	2	3	0	1	1	0	0	6	0
5	Brown, Rod		2	1-1	0-0	0-0	1	0	1	0	0	0	0	0	4	1
12	Udeze, Morris		1	0-2	0-0	1-2	1	0	1	0	1	1	1	0	7	-3
33	Midtgaard, Asbjorn		0	0-0	0-0	0-0	0	0	0	0	0	0	0	0	0	0
	Team						0	1	1	0		0				
TOTALS			33	14-32	3-6	2-7	0	0	27	4	7	8	1	3	100	

Shooting By Period

Period	FG	FG%	3FG	3FG%	FT	FT%
1st Half	14-32	44%	3-6	50%	2-7	29%
2nd Half	9-28	32%	2-12	17%	10-16	63%
Game	23-60	38.3%	5-18	27.8%	12-23	52.2%

Deadball Rebounds:
Last FG: 2nd-00:36
Biggest Run: 8-0
Largest lead: By 17 at 2-13:56
Technical Fouls: None.

Game Notes:	
Officials: Anthony Jordan, Jose Carrion, Robert Felder	
Attendance: 9356	
Start Time: 2018-12-15 22:35:34	End Time: 2018-12-16 00:54:46
Game Duration: 139	

Score by Period	1st	2nd	TOT
USM	25	35	60
WSU	33	30	63

This period only: USM led for 3:34. WSU led for 3:42.
Game was tied for 0:45.

Points from (This Period)	USM	WSU
In the Paint	4	20
Off Turns	9	6
2nd Chance	0	8
Fast Break	1	5
Bench	9	4

**Official Play-By-Play
Southern Miss. vs Wichita St.
First Half**

December 15, 2018 at INTRUST Bank Arena - Wichita, Kan.

Starters:

Southern Miss.: 0 MAGEE, DOMINIC; 1 EDWARDS, CORTEZ; 20 HOLLAND, KEVIN; 32 HARPER-BAKER, LEONARD; 55 GRIFFIN, TYREE;

Wichita St.: 1 MCDUFFIE, MARKIS; 3 TORRES, RICKY; 4 HAYNES-JONES, SAMAJAE; 10 STEVENSON, ERIK; 21 ECHENIQUE, JAIME;

Period 1

Time	VISITORS: Southern Miss.	Score	Margin	HOME: Wichita St.
19:38	GOOD! JUMPER by EDWARDS, CORTEZ	0-2	V 2	
19:24				MISSED JUMPER by ECHENIQUE, JAIME
19:16	REBOUND (DEF) by HARPER-BAKER, LEONARD			
18:57	MISSED 3PTR by MAGEE, DOMINIC			
18:53				REBOUND (DEF) by ECHENIQUE, JAIME
18:47		2-2	T	GOOD! LAYUP by TORRES, RICKY
18:23	MISSED LAYUP by MAGEE, DOMINIC			
18:22				REBOUND (DEF) by TEAM
18:11		4-2	H 2	GOOD! DUNK by ECHENIQUE, JAIME
18:11				ASSIST by HAYNES-JONES, SAMAJAE
17:39	MISSED JUMPER by EDWARDS, CORTEZ			
17:35				REBOUND (DEF) by ECHENIQUE, JAIME
17:29		7-2	H 5	GOOD! 3PTR by MCDUFFIE, MARKIS
17:29				ASSIST by HAYNES-JONES, SAMAJAE
17:03	MISSED 3PTR by GRIFFIN, TYREE			
16:59				REBOUND (DEF) by ECHENIQUE, JAIME
16:44				TURNOVER (LOSTBALL) by ECHENIQUE, JAIME
16:33	GOOD! JUMPER by HARPER-BAKER, LEONARD	7-4	H 3	
16:33	ASSIST by GRIFFIN, TYREE			
16:21				MISSED JUMPER by STEVENSON, ERIK
16:17	REBOUND (DEF) by EDWARDS, CORTEZ			
16:02	MISSED JUMPER by GRIFFIN, TYREE			
15:58				REBOUND (DEF) by ECHENIQUE, JAIME
15:48				MISSED LAYUP by ECHENIQUE, JAIME
15:42	REBOUND (DEF) by EDWARDS, CORTEZ			
15:27	MISSED JUMPER by HOLLAND, KEVIN			
15:22				REBOUND (DEF) by STEVENSON, ERIK
15:08				MISSED 3PTR by MCDUFFIE, MARKIS
15:03	REBOUND (DEF) by MAGEE, DOMINIC			
15:01	TURNOVER (LOSTBALL) by MAGEE, DOMINIC			
15:01				STEAL by MCDUFFIE, MARKIS
14:52				MISSED LAYUP by MCDUFFIE, MARKIS
14:48	REBOUND (DEF) by MAGEE, DOMINIC			
14:48	TIMEOUT 30SEC			
14:48				SUB OUT: ECHENIQUE, JAIME
14:48				SUB IN: UDEZE, MORRIS
14:48				SUB OUT: STEVENSON, ERIK
14:48				SUB IN: DENNIS, DEXTER
14:48	SUB OUT: HOLLAND, KEVIN			
14:48	SUB IN: WATSON, GABE			
14:41	MISSED LAYUP by HARPER-BAKER, LEONARD			
14:41				BLOCK by UDEZE, MORRIS
14:39				REBOUND (DEF) by DENNIS, DEXTER
14:24				TURNOVER (TRAVEL) by HAYNES-JONES, SAMAJAE
14:08	GOOD! JUMPER by HARPER-BAKER, LEONARD	7-6	H 1	
14:08	ASSIST by GRIFFIN, TYREE			
13:39	FOUL (PERSONAL) by WATSON, GABE			
13:39		8-6	H 2	GOOD! FT by UDEZE, MORRIS
13:39				MISSED FT by UDEZE, MORRIS
13:39				REBOUND (OFF) by DENNIS, DEXTER
13:31	FOUL (PERSONAL) by GRIFFIN, TYREE			
13:31				MISSED FT by DENNIS, DEXTER
13:31				REBOUND (OFF) by TEAM
13:31				SUB OUT: TORRES, RICKY
13:31				SUB IN: BURTON, JAMARIUS
13:31				MISSED FT by DENNIS, DEXTER
13:29	REBOUND (DEF) by EDWARDS, CORTEZ			
13:06	GOOD! 3PTR by MAGEE, DOMINIC	8-9	V 1	
12:56				TURNOVER (LOSTBALL) by UDEZE, MORRIS
12:56	STEAL by HARPER-BAKER, LEONARD			
12:56				SUB OUT: MCDUFFIE, MARKIS
12:56				SUB IN: BROWN, ROD
12:56				SUB OUT: UDEZE, MORRIS
12:56				SUB IN: ECHENIQUE, JAIME
12:56	SUB OUT: HARPER-BAKER, LEONARD			
12:56	SUB IN: ROWE, TIM			
12:38	MISSED JUMPER by EDWARDS, CORTEZ			
12:32				REBOUND (DEF) by BURTON, JAMARIUS
12:30				TURNOVER (TRAVEL) by BURTON, JAMARIUS
12:07	TURNOVER (TRAVEL) by MAGEE, DOMINIC			
12:07				SUB OUT: HAYNES-JONES, SAMAJAE
12:07				SUB IN: STEVENSON, ERIK
11:58		10-9	H 1	GOOD! DUNK by ECHENIQUE, JAIME
11:58				ASSIST by BURTON, JAMARIUS
11:40	GOOD! JUMPER by EDWARDS, CORTEZ	10-11	V 1	
11:13				MISSED JUMPER by STEVENSON, ERIK

Time	VISITORS: Southern Miss.	Score	Margin	HOME: Wichita St.
11:13	REBOUND (DEF) by TEAM			
11:13				
11:13				SUB OUT: BROWN,ROD
11:13				SUB IN: MCDUFFIE,MARKIS
11:13	SUB OUT: MAGEE,DOMINIC			
11:13	SUB IN: DRAINE,LADAVIUS			
10:49	MISSED JUMPER by GRIFFIN,TYREE			
10:46				REBOUND (DEF) by BURTON,JAMARIUS
10:43	FOUL (PERSONAL) by EDWARDS,CORTEZ			
10:43		11-11	T	GOOD! FT by DENNIS,DEXTER [FB]
10:43				SUB OUT: BURTON,JAMARIUS
10:43				SUB IN: TORRES,RICKY
10:43				MISSED FT by DENNIS,DEXTER
10:41	REBOUND (DEF) by EDWARDS,CORTEZ			
10:17				FOUL (PERSONAL) by DENNIS,DEXTER
10:17	GOOD! FT by WATSON,GABE	11-12	V 1	
10:17				SUB OUT: DENNIS,DEXTER
10:17				SUB IN: HAYNES-JONES,SAMAJAE
10:17	SUB OUT: EDWARDS,CORTEZ			
10:17	SUB IN: HARPER-BAKER,LEONARD			
10:17	MISSED FT by WATSON,GABE			
10:15				REBOUND (DEF) by ECHENIQUE,JAIME
10:04				MISSED JUMPER by MCDUFFIE,MARKIS
09:56				REBOUND (OFF) by ECHENIQUE,JAIME
09:56		13-12	H 1	GOOD! LAYUP by ECHENIQUE,JAIME
09:44	MISSED LAYUP by WATSON,GABE			
09:41				REBOUND (DEF) by STEVENSON,ERIK
09:34		16-12	H 4	GOOD! 3PTR by HAYNES-JONES,SAMAJAE
09:19	MISSED JUMPER by GRIFFIN,TYREE			
09:14				REBOUND (DEF) by TORRES,RICKY
09:14				TURNOVER (LOSTBALL) by TORRES,RICKY
09:14				SUB OUT: ECHENIQUE,JAIME
09:14				SUB IN: UDEZE,MORRIS
08:48	GOOD! 3PTR by DRAINE,LADAVIUS	16-15	H 1	
08:48	ASSIST by WATSON,GABE			
08:33				MISSED JUMPER by HAYNES-JONES,SAMAJAE
08:27	REBOUND (DEF) by DRAINE,LADAVIUS			
08:22	MISSED 3PTR by DRAINE,LADAVIUS			
08:18				REBOUND (DEF) by MCDUFFIE,MARKIS
08:14				MISSED LAYUP by MCDUFFIE,MARKIS
08:10	REBOUND (DEF) by WATSON,GABE			
08:08				FOUL (PERSONAL) by STEVENSON,ERIK
08:08	MISSED FT by HARPER-BAKER,LEONARD			
08:08	REBOUND (OFF) by TEAM			
08:08				SUB OUT: TORRES,RICKY
08:08				SUB IN: BURTON,JAMARIUS
08:08	SUB OUT: GRIFFIN,TYREE			
08:08	SUB IN: HOLLAND,KEVIN			
08:08	GOOD! FT by HARPER-BAKER,LEONARD [FB]	16-16	T	
07:50		18-16	H 2	GOOD! JUMPER by MCDUFFIE,MARKIS
07:50				ASSIST by HAYNES-JONES,SAMAJAE
07:32	TURNOVER (BADPASS) by HARPER-BAKER,LEONARD			
07:32				STEAL by STEVENSON,ERIK
07:25				MISSED 3PTR by STEVENSON,ERIK
07:14				REBOUND (OFF) by MCDUFFIE,MARKIS
07:14				MISSED LAYUP by MCDUFFIE,MARKIS
07:13				REBOUND (OFF) by BURTON,JAMARIUS
07:10		20-16	H 4	GOOD! LAYUP by HAYNES-JONES,SAMAJAE
06:53	GOOD! 3PTR by DRAINE,LADAVIUS	20-19	H 1	
06:53	ASSIST by WATSON,GABE			
06:44				MISSED JUMPER by MCDUFFIE,MARKIS
06:40	REBOUND (DEF) by WATSON,GABE			
06:15	MISSED JUMPER by DRAINE,LADAVIUS			
06:10				REBOUND (DEF) by STEVENSON,ERIK
06:07		22-19	H 3	GOOD! LAYUP by HAYNES-JONES,SAMAJAE [FB]
06:07	FOUL (PERSONAL) by ROWE,TIM			
06:07				
06:07				SUB OUT: STEVENSON,ERIK
06:07				SUB IN: DENNIS,DEXTER
06:07				SUB OUT: UDEZE,MORRIS
06:07				SUB IN: ECHENIQUE,JAIME
06:07	SUB OUT: WATSON,GABE			
06:07	SUB IN: GRIFFIN,TYREE			
06:07	SUB OUT: ROWE,TIM			
06:07	SUB IN: EDWARDS,CORTEZ			
06:07	SUB OUT: HOLLAND,KEVIN			
06:07	SUB IN: MAGEE,DOMINIC			
06:07				MISSED FT by HAYNES-JONES,SAMAJAE
06:05	REBOUND (DEF) by GRIFFIN,TYREE			
05:44	MISSED 3PTR by MAGEE,DOMINIC			
05:39				REBOUND (DEF) by ECHENIQUE,JAIME
05:33				TURNOVER (LOSTBALL) by ECHENIQUE,JAIME
05:15				FOUL (PERSONAL) by DENNIS,DEXTER
05:15	MISSED FT by HARPER-BAKER,LEONARD			
05:15	REBOUND (OFF) by TEAM			
05:15				SUB OUT: DENNIS,DEXTER
05:15				SUB IN: STEVENSON,ERIK

Time	VISITORS: Southern Miss.	Score	Margin	HOME: Wichita St.
05:15				SUB OUT: BURTON,JAMARIUS
05:15				SUB IN: TORRES,RICKY
05:15	MISSED FT by HARPER-BAKER,LEONARD			
05:15				REBOUND (DEF) by STEVENSON,ERIK
05:06	FOUL (PERSONAL) by GRIFFIN,TYREE			
04:53		24-19	H 5	GOOD! LAYUP by ECHENIQUE,JAIME
04:53				ASSIST by MCDUFFIE,MARKIS
04:34	MISSED 3PTR by HARPER-BAKER,LEONARD			
04:29				REBOUND (DEF) by STEVENSON,ERIK
04:24				TURNOVER (BADPASS) by TORRES,RICKY
04:24	STEAL by EDWARDS,CORTEZ			
04:17	MISSED LAYUP by EDWARDS,CORTEZ			
04:14				REBOUND (DEF) by MCDUFFIE,MARKIS
04:13				SUB OUT: MCDUFFIE,MARKIS
04:13				SUB IN: BROWN,ROD
04:13	SUB OUT: DRAINE,LADAVIUS			
04:13	SUB IN: HOLLAND,KEVIN			
04:04				MISSED JUMPER by HAYNES-JONES,SAMAJAE
04:00	REBOUND (DEF) by HOLLAND,KEVIN			
03:53	MISSED 3PTR by GRIFFIN,TYREE			
03:49	REBOUND (OFF) by EDWARDS,CORTEZ			
03:45	MISSED JUMPER by EDWARDS,CORTEZ			
03:40				REBOUND (DEF) by TORRES,RICKY
03:31				TURNOVER (LOSTBALL) by ECHENIQUE,JAIME
03:31	STEAL by HARPER-BAKER,LEONARD			
03:06	GOOD! LAYUP by MAGEE,DOMINIC	24-21	H 3	
02:53				MISSED LAYUP by ECHENIQUE,JAIME
02:46				REBOUND (OFF) by BROWN,ROD
02:46		26-21	H 5	GOOD! LAYUP by BROWN,ROD
02:27	MISSED 3PTR by GRIFFIN,TYREE			
02:22				REBOUND (DEF) by ECHENIQUE,JAIME
02:14		29-21	H 8	GOOD! 3PTR by HAYNES-JONES,SAMAJAE
01:50				FOUL (PERSONAL) by ECHENIQUE,JAIME
01:50				
01:50	GOOD! FT by GRIFFIN,TYREE	29-22	H 7	
01:50	GOOD! FT by GRIFFIN,TYREE	29-23	H 6	
01:50				SUB OUT: ECHENIQUE,JAIME
01:50				SUB IN: UDEZE,MORRIS
01:50				SUB OUT: BROWN,ROD
01:50				SUB IN: MCDUFFIE,MARKIS
01:50	SUB OUT: GRIFFIN,TYREE			
01:50	SUB IN: WATSON,GABE			
01:50	SUB OUT: HOLLAND,KEVIN			
01:50	SUB IN: ROWE,TIM			
01:41				MISSED 3PTR by STEVENSON,ERIK
01:37				REBOUND (OFF) by TEAM
01:32				MISSED JUMPER by STEVENSON,ERIK
01:32	BLOCK by EDWARDS,CORTEZ			
01:25				REBOUND (OFF) by UDEZE,MORRIS
01:23		31-23	H 8	GOOD! LAYUP by TORRES,RICKY
01:23				ASSIST by UDEZE,MORRIS
01:14	TURNOVER (LOSTBALL) by WATSON,GABE			
01:14				STEAL by TORRES,RICKY
01:09		33-23	H 10	GOOD! DUNK by MCDUFFIE,MARKIS [FB]
01:09				ASSIST by TORRES,RICKY
01:09	TIMEOUT 30SEC			
01:09	SUB OUT: WATSON,GABE			
01:09	SUB IN: GRIFFIN,TYREE			
00:51	GOOD! JUMPER by ROWE,TIM [PNT]	33-25	H 8	
00:51	ASSIST by GRIFFIN,TYREE			
00:38				MISSED JUMPER by UDEZE,MORRIS
00:35	REBOUND (DEF) by TEAM			
00:12	MISSED 3PTR by MAGEE,DOMINIC			
00:10				REBOUND (DEF) by TORRES,RICKY
00:10	FOUL (PERSONAL) by ROWE,TIM			
00:10	SUB OUT: GRIFFIN,TYREE			
00:10	SUB IN: HOLLAND,KEVIN			
00:00				MISSED LAYUP by UDEZE,MORRIS
00:00	REBOUND (DEF) by MAGEE,DOMINIC			

Southern Miss. 25, Wichita St. 33

Points from (This Period)	USM	WSU
In the Paint	4	20
Off Turns	9	6
2nd Chance	0	8
Fast Break	1	5
Bench	9	4

This period only:USM led for 3:34. WSU led for 3:42.
Game was tied for 0:45.

Official Box Score
Southern Miss. vs Wichita St.
Second Half Statistics Only
December 15, 2018 at INTRUST Bank Arena - Wichita, Kan.

Southern Miss. 60

No.	Player	S	Pts	FG	3FG	FT	OR	DR	TR	PF	A	TO	Blk	Stl	Min	+/-
0	Magee, Dominic		5	2-4	1-1	0-0	0	1	1	3	0	1	0	0	12	-1
1	Edwards, Cortez		11	4-7	0-0	3-4	0	2	2	2	0	1	0	1	20	5
20	Holland, Kevin		0	0-0	0-0	0-0	0	0	0	1	0	0	0	1	4	-5
32	Harper-Baker, Leonard		0	0-2	0-0	0-3	1	0	1	2	0	2	2	1	17	4
55	Griffin, Tyree		10	2-5	2-4	4-6	0	4	4	0	5	1	0	1	20	5
3	Watson, Gabe		2	0-1	0-1	2-3	0	1	1	0	0	0	0	0	8	6
11	Draine, Ladavius		3	1-2	1-2	0-0	0	2	2	1	0	0	0	0	14	15
12	Rowe, Tim		4	1-2	1-1	1-2	1	1	2	3	0	1	0	0	5	-4
	Team						1	2	3	0		0				
TOTALS			35	10-23	5-9	10-18	0	0	16	12	5	6	2	4	100	

Shooting By Period

Period	FG	FG%	3FG	3FG%	FT	FT%
1st Half	9-29	31%	3-11	27%	4-8	50%
2nd Half	10-23	43%	5-9	56%	10-18	56%
Game	19-52	36.5%	8-20	40.0%	14-26	53.8%

Deadball Rebounds:

Last FG: 2nd-00:53
Biggest Run: 14-0
Largest lead: By 2 at 1-19:38
Technical Fouls: None.

Wichita St. 63

No.	Player	S	Pts	FG	3FG	FT	OR	DR	TR	PF	A	TO	Blk	Stl	Min	+/-
1	Mcduffie, Markis		10	2-7	1-4	5-7	1	4	5	1	0	0	0	0	18	-2
3	Torres, Ricky		0	0-1	0-0	0-0	0	0	0	0	5	4	0	1	12	2
4	Haynes-Jones, Samajae		1	0-8	0-4	1-2	0	0	0	3	0	0	0	0	20	-5
10	Stevenson, Erik		5	1-4	1-4	2-2	1	2	3	1	0	3	0	0	16	-14
21	Echenique, Jaime		9	4-5	0-0	1-2	2	1	3	3	0	0	2	0	9	2
0	Dennis, Dexter		0	0-0	0-0	0-0	0	0	0	0	0	0	0	0	1	0
2	Burton, Jamarius		0	0-0	0-0	0-0	1	2	3	2	1	0	0	1	11	3
5	Brown, Rod		2	1-1	0-0	0-0	1	0	1	0	0	0	0	0	2	-3
12	Udeze, Morris		3	1-2	0-0	1-3	1	2	3	2	1	0	1	0	10	-3
33	Midtgaard, Asbjorn		0	0-0	0-0	0-0	0	0	0	0	0	0	0	0	1	-5
	Team						2	1	3	0		0				
TOTALS			30	9-28	2-12	10-16	0	0	21	12	7	7	3	2	100	

Shooting By Period

Period	FG	FG%	3FG	3FG%	FT	FT%
1st Half	14-32	44%	3-6	50%	2-7	29%
2nd Half	9-28	32%	2-12	17%	10-16	63%
Game	23-60	38.3%	5-18	27.8%	12-23	52.2%

Deadball Rebounds:

Last FG: 2nd-00:36
Biggest Run: 8-0
Largest lead: By 17 at 2-13:56
Technical Fouls: None.

Game Notes:	
Officials: Anthony Jordan, Jose Carrion, Robert Felder	
Attendance: 9356	
Start Time: 2018-12-15 22:35:34	End Time: 2018-12-16 00:54:46
Game Duration: 139	

Score by Period	1st	2nd	TOT
USM	25	35	60
WSU	33	30	63

This period only: USM led for 3:34. WSU led for 3:42.
Game was tied for 0:45.

Points from (This Period)	USM	WSU
In the Paint	10	14
Off Turns	9	8
2nd Chance	3	11
Fast Break	6	3
Bench	9	5

Official Play-By-Play
Southern Miss. vs Wichita St.
Second Half
December 15, 2018 at INTRUST Bank Arena - Wichita, Kan.

Starters:

Southern Miss.: 0 MAGEE,DOMINIC; 1 EDWARDS,CORTEZ; 20 HOLLAND,KEVIN; 32 HARPER-BAKER,LEONARD; 55 GRIFFIN,TYREE;
Wichita St.: 1 MCDUFFIE,MARKIS; 3 TORRES,RICKY; 4 HAYNES-JONES,SAMAJAE; 10 STEVENSON,ERIK; 21 ECHENIQUE,JAIME;

Period 2

Time	VISITORS: Southern Miss.	Score	Margin	HOME: Wichita St.
19:48	MISSED LAY UP by HARPER-BAKER,LEONARD			
19:48				BLOCK by ECHENIQUE,JAIME
19:41				REBOUND (DEF) by ECHENIQUE,JAIME
19:39				TURNOVER (BADPASS) by STEVENSON,ERIK
19:39	STEAL by EDWARDS,CORTEZ			
19:35				FOUL (PERSONAL) by STEVENSON,ERIK
19:35	GOOD! FT by EDWARDS,CORTEZ [FB]	33-26	H 7	
19:35	GOOD! FT by EDWARDS,CORTEZ [FB]	33-27	H 6	
19:05				MISSED 3PTR by MCDUFFIE,MARKIS
19:01	REBOUND (DEF) by MAGEE,DOMINIC			
18:48	MISSED JUMPER by EDWARDS,CORTEZ			
18:44				REBOUND (DEF) by MCDUFFIE,MARKIS
18:28				MISSED JUMPER by HAYNES-JONES,SAMAJAE
18:20				REBOUND (OFF) by ECHENIQUE,JAIME
18:20				MISSED LAYUP by ECHENIQUE,JAIME
18:19	REBOUND (DEF) by GRIFFIN,TYREE			
18:06	MISSED JUMPER by MAGEE,DOMINIC			
18:06				BLOCK by ECHENIQUE,JAIME
17:59				REBOUND (DEF) by MCDUFFIE,MARKIS
17:47				TURNOVER (LOSTBALL) by STEVENSON,ERIK
17:47	STEAL by HOLLAND,KEVIN			
17:47				SUB OUT: STEVENSON,ERIK
17:23	FOUL (OFF) by HARPER-BAKER,LEONARD			SUB IN: DENNIS,DEXTER
17:23	TURNOVER (OFFENSIVE) by HARPER-BAKER,LEONARD			
17:09				MISSED JUMPER by TORRES,RICKY
17:09				REBOUND (OFF) by TEAM
17:09	FOUL (PERSONAL) by HOLLAND,KEVIN			
17:09				SUB OUT: DENNIS,DEXTER
17:09				SUB IN: BURTON,JAMARIUS
17:09				MISSED FT by HAYNES-JONES,SAMAJAE
17:09				REBOUND (OFF) by TEAM
17:09		34-27	H 7	GOOD! FT by HAYNES-JONES,SAMAJAE
17:03				MISSED LAYUP by HAYNES-JONES,SAMAJAE
17:02				REBOUND (OFF) by TEAM
16:58		36-27	H 9	GOOD! JUMPER by ECHENIQUE,JAIME [PNT]
16:58				ASSIST by TORRES,RICKY
16:40	MISSED LAYUP by EDWARDS,CORTEZ			
16:36				REBOUND (DEF) by BURTON,JAMARIUS
16:26		38-27	H 11	GOOD! LAYUP by ECHENIQUE,JAIME
16:26				ASSIST by TORRES,RICKY
16:10	MISSED JUMPER by GRIFFIN,TYREE			
16:10	REBOUND (OFF) by TEAM			
16:10				SUB OUT: ECHENIQUE,JAIME
16:10				SUB IN: UDEZE,MORRIS
16:10	SUB OUT: HOLLAND,KEVIN			
16:10	SUB IN: ROWE,TIM			
16:03	TURNOVER (LOSTBALL) by GRIFFIN,TYREE			
16:03				STEAL by TORRES,RICKY
16:03	FOUL (PERSONAL) by ROWE,TIM			
16:03				MISSED FT by MCDUFFIE,MARKIS
16:03				REBOUND (OFF) by TEAM
16:03		39-27	H 12	GOOD! FT by MCDUFFIE,MARKIS
16:02				FOUL (PERSONAL) by HAYNES-JONES,SAMAJAE
15:43				FOUL (PERSONAL) by BURTON,JAMARIUS
15:43				
15:28	TURNOVER (LOSTBALL) by HARPER-BAKER,LEONARD			
15:28				STEAL by BURTON,JAMARIUS
15:20		41-27	H 14	GOOD! LAYUP by UDEZE,MORRIS [FB]
15:20				ASSIST by TORRES,RICKY
15:08				FOUL (PERSONAL) by HAYNES-JONES,SAMAJAE
14:58	GOOD! JUMPER by EDWARDS,CORTEZ [PNT]	41-29	H 12	
14:45				MISSED JUMPER by MCDUFFIE,MARKIS
14:45	BLOCK by HARPER-BAKER,LEONARD			
14:45				REBOUND (OFF) by UDEZE,MORRIS
14:45	FOUL (PERSONAL) by MAGEE,DOMINIC			
14:45	SUB OUT: MAGEE,DOMINIC			
14:45	SUB IN: WATSON,GABE			
14:38		44-29	H 15	GOOD! 3PTR by MCDUFFIE,MARKIS
14:38				ASSIST by TORRES,RICKY
14:11	TURNOVER (LOSTBALL) by ROWE,TIM			
13:56	FOUL (PERSONAL) by EDWARDS,CORTEZ			
13:56		45-29	H 16	GOOD! FT by MCDUFFIE,MARKIS
13:56				SUB OUT: TORRES,RICKY
13:56				SUB IN: STEVENSON,ERIK
13:56	SUB OUT: HARPER-BAKER,LEONARD			

Time	VISITORS: Southern Miss.	Score	Margin	HOME: Wichita St.
13:56	SUB IN: DRAINE,LADAVIUS			
13:56		46-29	H 17	GOOD! FT by MCDUFFIE,MARKIS
13:43	MISSED 3PTR by GRIFFIN,TYREE			
13:40				REBOUND (DEF) by BURTON,JAMARIUS
13:12				MISSED 3PTR by MCDUFFIE,MARKIS
13:09	REBOUND (DEF) by WATSON,GABE			
13:05				FOUL (PERSONAL) by MCDUFFIE,MARKIS
13:05				SUB OUT: MCDUFFIE,MARKIS
13:05				SUB IN: BROWN,ROD
13:01	MISSED JUMPER by EDWARDS,CORTEZ			
13:00	REBOUND (OFF) by ROWE,TIM			
13:00				FOUL (PERSONAL) by UDEZE,MORRIS
13:00	MISSED FT by ROWE,TIM			
13:00	REBOUND (OFF) by TEAM			
13:00				SUB OUT: UDEZE,MORRIS
13:00				SUB IN: ECHENIQUE,JAIME
13:00	GOOD! FT by ROWE,TIM	46-30	H 16	
12:40				MISSED 3PTR by HAYNES-JONES,SAMAJAE
12:36	REBOUND (DEF) by ROWE,TIM			
12:18				FOUL (PERSONAL) by BURTON,JAMARIUS
12:18	MISSED FT by WATSON,GABE			
12:18	REBOUND (OFF) by TEAM			
12:18	GOOD! FT by WATSON,GABE	46-31	H 15	
12:18				SUB OUT: BURTON,JAMARIUS
12:18				SUB IN: TORRES,RICKY
12:18	GOOD! FT by WATSON,GABE	46-32	H 14	
12:05	FOUL (PERSONAL) by ROWE,TIM			
12:05		47-32	H 15	GOOD! FT by ECHENIQUE,JAIME
12:05				MISSED FT by ECHENIQUE,JAIME
12:05	REBOUND (DEF) by TEAM			
11:45	GOOD! 3PTR by ROWE,TIM	47-35	H 12	
11:45	ASSIST by GRIFFIN,TYREE			
11:26				MISSED JUMPER by HAYNES-JONES,SAMAJAE
11:19				REBOUND (OFF) by BROWN,ROD
11:19		49-35	H 14	GOOD! LAYUP by BROWN,ROD
11:12				FOUL (PERSONAL) by ECHENIQUE,JAIME
11:12				
11:12				SUB OUT: BROWN,ROD
11:12				SUB IN: MCDUFFIE,MARKIS
11:12	MISSED FT by GRIFFIN,TYREE			
11:12	REBOUND (OFF) by TEAM			
11:12	GOOD! FT by GRIFFIN,TYREE [FB]	49-36	H 13	
11:11				TURNOVER (BADPASS) by TORRES,RICKY
10:58	MISSED LAYUP by ROWE,TIM			
10:55				REBOUND (DEF) by MCDUFFIE,MARKIS
10:46		51-36	H 15	GOOD! LAYUP by MCDUFFIE,MARKIS
10:46	FOUL (PERSONAL) by ROWE,TIM			
10:46	SUB OUT: ROWE,TIM			
10:46	SUB IN: HARPER-BAKER,LEONARD			
10:46		52-36	H 16	GOOD! FT by MCDUFFIE,MARKIS
10:39	MISSED 3PTR by WATSON,GABE			
10:37				REBOUND (DEF) by TEAM
10:10				MISSED JUMPER by MCDUFFIE,MARKIS
10:07	REBOUND (DEF) by EDWARDS,CORTEZ			
10:05				FOUL (PERSONAL) by ECHENIQUE,JAIME
10:05	GOOD! FT by GRIFFIN,TYREE [FB]	52-37	H 15	
10:05				SUB OUT: ECHENIQUE,JAIME
10:05				SUB IN: MIDTGAARD,ASBJORN
10:05	MISSED FT by GRIFFIN,TYREE			
10:03				REBOUND (DEF) by MCDUFFIE,MARKIS
09:37				TURNOVER (BADPASS) by TORRES,RICKY
09:37	STEAL by HARPER-BAKER,LEONARD			
09:29	GOOD! 3PTR by DRAINE,LADAVIUS	52-40	H 12	
09:29	ASSIST by GRIFFIN,TYREE			
09:14				MISSED 3PTR by MCDUFFIE,MARKIS
09:11	REBOUND (DEF) by GRIFFIN,TYREE			
09:07	GOOD! DUNK by EDWARDS,CORTEZ	52-42	H 10	
09:07	ASSIST by GRIFFIN,TYREE			
09:01				TIMEOUT 30SEC
09:01				SUB OUT: MIDTGAARD,ASBJORN
09:01				SUB IN: ECHENIQUE,JAIME
08:32				MISSED JUMPER by HAYNES-JONES,SAMAJAE
08:28	REBOUND (DEF) by EDWARDS,CORTEZ			
08:28				FOUL (PERSONAL) by ECHENIQUE,JAIME
08:28	GOOD! FT by EDWARDS,CORTEZ	52-43	H 9	
08:28				SUB OUT: ECHENIQUE,JAIME
08:28				SUB IN: UDEZE,MORRIS
08:28				SUB OUT: TORRES,RICKY
08:28				SUB IN: BURTON,JAMARIUS
08:28	MISSED FT by EDWARDS,CORTEZ			
08:26				REBOUND (DEF) by STEVENSON,ERIK
08:03				MISSED 3PTR by STEVENSON,ERIK
07:52	REBOUND (DEF) by DRAINE,LADAVIUS			
07:35	GOOD! 3PTR by GRIFFIN,TYREE	52-46	H 6	
07:12				MISSED 3PTR by HAYNES-JONES,SAMAJAE
07:08	REBOUND (DEF) by GRIFFIN,TYREE			
06:40	MISSED 3PTR by GRIFFIN,TYREE			

Time	VISITORS: Southern Miss.	Score	Margin	HOME: Wichita St.
06:36				REBOUND (DEF) by STEVENSON,ERIK
06:36				TURNOVER (BADPASS) by STEVENSON,ERIK
06:36				
06:36	SUB OUT: WATSON,GABE			
06:36	SUB IN: MAGEE,DOMINIC			
06:22	TURNOVER (TRAVEL) by EDWARDS,CORTEZ			
05:57				MISSED 3PTR by STEVENSON,ERIK
05:52	REBOUND (DEF) by DRAINE,LADAVIUS			
05:48	MISSED LAYUP by HARPER-BAKER,LEONARD			
05:48				BLOCK by UDEZE,MORRIS
05:47				REBOUND (DEF) by UDEZE,MORRIS
05:47	FOUL (PERSONAL) by EDWARDS,CORTEZ			
05:47				SUB OUT: STEVENSON,ERIK
05:47				SUB IN: TORRES,RICKY
05:47				MISSED FT by UDEZE,MORRIS
05:47				REBOUND (OFF) by BURTON,JAMARIUS
05:43				TURNOVER (BADPASS) by TORRES,RICKY
05:43	STEAL by GRIFFIN,TYREE			
05:36				FOUL (PERSONAL) by UDEZE,MORRIS
05:36	GOOD! FT by GRIFFIN,TYREE [FB]	52-47	H 5	
05:36				SUB OUT: BURTON,JAMARIUS
05:36				SUB IN: STEVENSON,ERIK
05:36	GOOD! FT by GRIFFIN,TYREE [FB]	52-48	H 4	
05:13				TURNOVER (BADPASS) by TORRES,RICKY
04:57	GOOD! DUNK by EDWARDS,CORTEZ	52-50	H 2	
04:57	ASSIST by GRIFFIN,TYREE			
04:37		55-50	H 5	GOOD! 3PTR by STEVENSON,ERIK
04:37				ASSIST by UDEZE,MORRIS
04:26	GOOD! 3PTR by MAGEE,DOMINIC	55-53	H 2	
04:26	ASSIST by GRIFFIN,TYREE			
04:24	TIMEOUT 30SEC			
04:24				SUB OUT: TORRES,RICKY
04:24				SUB IN: BURTON,JAMARIUS
03:56				MISSED 3PTR by HAYNES-JONES,SAMAJAE
03:55	REBOUND (DEF) by TEAM			
03:25	FOUL (OFF) by MAGEE,DOMINIC			
03:25	TURNOVER (OFFENSIVE) by MAGEE,DOMINIC			
03:25				SUB OUT: UDEZE,MORRIS
03:25				SUB IN: ECHENIQUE,JAIME
03:04				MISSED 3PTR by HAYNES-JONES,SAMAJAE
02:59				REBOUND (OFF) by ECHENIQUE,JAIME
02:52		57-53	H 4	GOOD! LAYUP by ECHENIQUE,JAIME
02:52				ASSIST by BURTON,JAMARIUS
02:43	GOOD! 3PTR by GRIFFIN,TYREE	57-56	H 1	
02:21	FOUL (PERSONAL) by HARPER-BAKER,LEONARD			
02:21		58-56	H 2	GOOD! FT by STEVENSON,ERIK
02:21				SUB OUT: ECHENIQUE,JAIME
02:21				SUB IN: UDEZE,MORRIS
02:21		59-56	H 3	GOOD! FT by STEVENSON,ERIK
02:06	MISSED 3PTR by DRAINE,LADAVIUS			
02:01	REBOUND (OFF) by HARPER-BAKER,LEONARD			
01:56	GOOD! LAYUP by EDWARDS,CORTEZ	59-58	H 1	
01:32				MISSED 3PTR by STEVENSON,ERIK
01:29				REBOUND (OFF) by MCDUFFIE,MARKIS
01:12				MISSED DUNK by UDEZE,MORRIS
01:12	BLOCK by HARPER-BAKER,LEONARD			
01:04	REBOUND (DEF) by GRIFFIN,TYREE			
00:53	GOOD! LAYUP by MAGEE,DOMINIC	59-60	V 1	
00:53				TIMEOUT TEAM
00:53				SUB OUT: BURTON,JAMARIUS
00:53				SUB IN: TORRES,RICKY
00:53				SUB OUT: UDEZE,MORRIS
00:53				SUB IN: ECHENIQUE,JAIME
00:53	SUB OUT: DRAINE,LADAVIUS			
00:53	SUB IN: HOLLAND,KEVIN			
00:36		61-60	H 1	GOOD! DUNK by ECHENIQUE,JAIME
00:36				ASSIST by TORRES,RICKY
00:34				SUB OUT: ECHENIQUE,JAIME
00:34				SUB IN: UDEZE,MORRIS
00:34	SUB OUT: HOLLAND,KEVIN			
00:34	SUB IN: DRAINE,LADAVIUS			
00:20	MISSED JUMPER by MAGEE,DOMINIC			
00:18				REBOUND (DEF) by UDEZE,MORRIS
00:18	FOUL (PERSONAL) by DRAINE,LADAVIUS			
00:18		62-60	H 2	GOOD! FT by UDEZE,MORRIS
00:18				MISSED FT by UDEZE,MORRIS
00:18				REBOUND (OFF) by STEVENSON,ERIK
00:14	FOUL (PERSONAL) by MAGEE,DOMINIC			
00:14				MISSED FT by MCDUFFIE,MARKIS
00:14				REBOUND (OFF) by TEAM
00:14				SUB OUT: UDEZE,MORRIS
00:14				SUB IN: BURTON,JAMARIUS
00:14	TIMEOUT TEAM			
00:14		63-60	H 3	GOOD! FT by MCDUFFIE,MARKIS [FB]
00:02				FOUL (PERSONAL) by HAYNES-JONES,SAMAJAE
00:02				SUB OUT: BURTON,JAMARIUS
00:02				SUB IN: ECHENIQUE,JAIME

Time	VISITORS: Southern Miss.	Score	Margin	HOME: Wichita St.
00:02	SUB OUT: GRIFFIN,TYREE			
00:02	SUB IN: WATSON,GABE			
00:02	MISSED FT by HARPER-BAKER,LEONARD			
00:02	REBOUND (OFF) by TEAM			
00:02	MISSED FT by HARPER-BAKER,LEONARD			
00:02	REBOUND (OFF) by TEAM			
00:02				SUB OUT: TORRES,RICKY
00:02				SUB IN: MIDTGAARD,ASBJORN
00:02				SUB OUT: HAYNES-JONES,SAMAJAE
00:02				SUB IN: BURTON,JAMARIUS
00:02	MISSED FT by HARPER-BAKER,LEONARD			
00:02				REBOUND (DEF) by TEAM
00:02				SUB OUT: MIDTGAARD,ASBJORN
00:02				SUB IN: TORRES,RICKY
00:02				SUB OUT: BURTON,JAMARIUS
00:02				SUB IN: HAYNES-JONES,SAMAJAE

Southern Miss. 60, Wichita St. 63

Points from (This Period)	USM	WSU
In the Paint	10	14
Off Turns	9	8
2nd Chance	3	11
Fast Break	6	3
Bench	9	5

This period only:USM led for 3:34. WSU led for 3:42.
Game was tied for 0:45.

**Official Scoring/Possession Reference Chart
Southern Miss. vs Wichita St.**

Period 1

December 15, 2018 at INTRUST Bank Arena - Wichita, Kan.

Starters:

Southern Miss.: 0 MAGEE, DOMINIC; 1 EDWARDS, CORTEZ; 20 HOLLAND, KEVIN; 32 HARPER-BAKER, LEONARD; 55 GRIFFIN, TYREE;

Wichita St.: 1 MCDUFFIE, MARKIS; 3 TORRES, RICKY; 4 HAYNES-JONES, SAMAJAE; 10 STEVENSON, ERIK; 21 ECHENIQUE, JAIME;

Period 1

Time	VISITORS: Southern Miss.	Score	Margin	HOME: Wichita St.
19:38	GOOD! JUMPER by EDWARDS, CORTEZ	0-2	V 2	
18:47		2-2	T	GOOD! LAYUP by TORRES, RICKY
18:11		4-2	H 2	GOOD! DUNK by ECHENIQUE, JAIME
17:29		7-2	H 5	GOOD! 3PTR by MCDUFFIE, MARKIS
16:33	GOOD! JUMPER by HARPER-BAKER, LEONARD	7-4	H 3	
14:08	GOOD! JUMPER by HARPER-BAKER, LEONARD	7-6	H 1	
13:39		8-6	H 2	GOOD! FT by UDEZE, MORRIS
13:06	GOOD! 3PTR by MAGEE, DOMINIC	8-9	V 1	
11:58		10-9	H 1	GOOD! DUNK by ECHENIQUE, JAIME
11:40	GOOD! JUMPER by EDWARDS, CORTEZ	10-11	V 1	
10:43		11-11	T	GOOD! FT by DENNIS, DEXTER [FB]
10:17	GOOD! FT by WATSON, GABE	11-12	V 1	
09:56		13-12	H 1	GOOD! LAYUP by ECHENIQUE, JAIME
09:34		16-12	H 4	GOOD! 3PTR by HAYNES-JONES, SAMAJAE
08:48	GOOD! 3PTR by DRAINE, LADAVIUS	16-15	H 1	
08:08	GOOD! FT by HARPER-BAKER, LEONARD [FB]	16-16	T	
07:50		18-16	H 2	GOOD! JUMPER by MCDUFFIE, MARKIS
07:10		20-16	H 4	GOOD! LAYUP by HAYNES-JONES, SAMAJAE
06:53	GOOD! 3PTR by DRAINE, LADAVIUS	20-19	H 1	
06:07		22-19	H 3	GOOD! LAYUP by HAYNES-JONES, SAMAJAE [FB]
04:53		24-19	H 5	GOOD! LAYUP by ECHENIQUE, JAIME
03:06	GOOD! LAYUP by MAGEE, DOMINIC	24-21	H 3	
02:46		26-21	H 5	GOOD! LAYUP by BROWN, ROD
02:14		29-21	H 8	GOOD! 3PTR by HAYNES-JONES, SAMAJAE
01:50	GOOD! FT by GRIFFIN, TYREE	29-22	H 7	
01:50	GOOD! FT by GRIFFIN, TYREE	29-23	H 6	
01:23		31-23	H 8	GOOD! LAYUP by TORRES, RICKY
01:09		33-23	H 10	GOOD! DUNK by MCDUFFIE, MARKIS [FB]
00:51	GOOD! JUMPER by ROWE, TIM [PNT]	33-25	H 8	

Southern Miss. 25, Wichita St. 33

**Official Scoring/Possession Reference Chart
Southern Miss. vs Wichita St.**

Period 2

December 15, 2018 at INTRUST Bank Arena - Wichita, Kan.

Starters:

Southern Miss.: 0 MAGEE, DOMINIC; 1 EDWARDS, CORTEZ; 20 HOLLAND, KEVIN; 32 HARPER-BAKER, LEONARD; 55 GRIFFIN, TYREE;

Wichita St.: 1 MCDUFFIE, MARKIS; 3 TORRES, RICKY; 4 HAYNES-JONES, SAMAJAE; 10 STEVENSON, ERIK; 21 ECHENIQUE, JAIME;

Period 2

Time	VISITORS: Southern Miss.	Score	Margin	HOME: Wichita St.
19:35	GOOD! FT by EDWARDS, CORTEZ [FB]	33-26	H 7	
19:35	GOOD! FT by EDWARDS, CORTEZ [FB]	33-27	H 6	
17:09		34-27	H 7	GOOD! FT by HAYNES-JONES, SAMAJAE
16:58		36-27	H 9	GOOD! JUMPER by ECHENIQUE, JAIME [PNT]
16:26		38-27	H 11	GOOD! LAYUP by ECHENIQUE, JAIME
16:03		39-27	H 12	GOOD! FT by MCDUFFIE, MARKIS
15:20		41-27	H 14	GOOD! LAYUP by UDEZE, MORRIS [FB]
14:58	GOOD! JUMPER by EDWARDS, CORTEZ [PNT]	41-29	H 12	
14:38		44-29	H 15	GOOD! 3PTR by MCDUFFIE, MARKIS
13:56		45-29	H 16	GOOD! FT by MCDUFFIE, MARKIS
13:56		46-29	H 17	GOOD! FT by MCDUFFIE, MARKIS

Time	VISITORS: Southern Miss.	Score	Margin	HOME: Wichita St.
13:00	GOOD! FT by ROWE,TIM	46-30	H 16	
12:18	GOOD! FT by WATSON,GABE	46-31	H 15	
12:18	GOOD! FT by WATSON,GABE	46-32	H 14	
12:05		47-32	H 15	GOOD! FT by ECHENIQUE,JAIME
11:45	GOOD! 3PTR by ROWE,TIM	47-35	H 12	
11:19		49-35	H 14	GOOD! LAYUP by BROWN,ROD
11:12	GOOD! FT by GRIFFIN,TYREE [FB]	49-36	H 13	
10:46		51-36	H 15	GOOD! LAYUP by MCDUFFIE,MARKIS
10:46		52-36	H 16	GOOD! FT by MCDUFFIE,MARKIS
10:05	GOOD! FT by GRIFFIN,TYREE [FB]	52-37	H 15	
09:29	GOOD! 3PTR by DRAINE,LADAVIUS	52-40	H 12	
09:07	GOOD! DUNK by EDWARDS,CORTEZ	52-42	H 10	
08:28	GOOD! FT by EDWARDS,CORTEZ	52-43	H 9	
07:35	GOOD! 3PTR by GRIFFIN,TYREE	52-46	H 6	
05:36	GOOD! FT by GRIFFIN,TYREE [FB]	52-47	H 5	
05:36	GOOD! FT by GRIFFIN,TYREE [FB]	52-48	H 4	
04:57	GOOD! DUNK by EDWARDS,CORTEZ	52-50	H 2	
04:37		55-50	H 5	GOOD! 3PTR by STEVENSON,ERIK
04:26	GOOD! 3PTR by MAGEE,DOMINIC	55-53	H 2	
02:52		57-53	H 4	GOOD! LAYUP by ECHENIQUE,JAIME
02:43	GOOD! 3PTR by GRIFFIN,TYREE	57-56	H 1	
02:21		58-56	H 2	GOOD! FT by STEVENSON,ERIK
02:21		59-56	H 3	GOOD! FT by STEVENSON,ERIK
01:56	GOOD! LAYUP by EDWARDS,CORTEZ	59-58	H 1	
00:53	GOOD! LAYUP by MAGEE,DOMINIC	59-60	V 1	
00:36		61-60	H 1	GOOD! DUNK by ECHENIQUE,JAIME
00:18		62-60	H 2	GOOD! FT by UDEZE,MORRIS
00:14		63-60	H 3	GOOD! FT by MCDUFFIE,MARKIS [FB]

Southern Miss. 60, Wichita St. 63

Official Substitutions Log
Southern Miss. vs Wichita St.
Period 1

December 15, 2018 at INTRUST Bank Arena - Wichita, Kan.

VISITORS: Southern Miss.	Time	Score	HOME: Wichita St.
0 MAGEE,DOMINIC			1 MCDUFFIE,MARKIS
1 EDWARDS,CORTEZ			3 TORRES,RICKY
20 HOLLAND,KEVIN			4 HAYNES-JONES,SAMAJAE
32 HARPER-BAKER,LEONARD			10 STEVENSON,ERIK
55 GRIFFIN,TYREE			21 ECHENIQUE,JAIME
	14:48	4-7	SUB OUT: ECHENIQUE,JAIME
	14:48		SUB IN: UDEZE,MORRIS
	14:48		SUB OUT: STEVENSON,ERIK
	14:48		SUB IN: DENNIS,DEXTER
SUB OUT: 20 HOLLAND,KEVIN	14:48		
SUB IN: 3 WATSON,GABE	14:48		
	13:31	6-8	SUB OUT: TORRES,RICKY
	13:31		SUB IN: BURTON,JAMARIUS
	12:56	9-8	SUB OUT: MCDUFFIE,MARKIS
	12:56		SUB IN: BROWN,ROD
	12:56		SUB OUT: UDEZE,MORRIS
	12:56		SUB IN: ECHENIQUE,JAIME
SUB OUT: 32 HARPER-BAKER,LEONARD	12:56		
SUB IN: 12 ROWE,TIM	12:56		
	12:07	9-8	SUB OUT: HAYNES-JONES,SAMAJAE
	12:07		SUB IN: STEVENSON,ERIK
	11:13	11-10	SUB OUT: BROWN,ROD
	11:13		SUB IN: MCDUFFIE,MARKIS
SUB OUT: 0 MAGEE,DOMINIC	11:13		
SUB IN: 11 DRAINE,LADAVIUS	11:13		
	10:43	11-11	SUB OUT: BURTON,JAMARIUS
	10:43		SUB IN: TORRES,RICKY
	10:17	12-11	SUB OUT: DENNIS,DEXTER
	10:17		SUB IN: HAYNES-JONES,SAMAJAE
SUB OUT: 1 EDWARDS,CORTEZ	10:17		
SUB IN: 32 HARPER-BAKER,LEONARD	10:17		
	09:14	12-16	SUB OUT: ECHENIQUE,JAIME
	09:14		SUB IN: UDEZE,MORRIS

VISITORS: Southern Miss.	Time	Score	HOME: Wichita St.
	08:08	15-16	SUB OUT: TORRES,RICKY
	08:08		SUB IN: BURTON,JAMARIUS
SUB OUT: 55 GRIFFIN,TYREE	08:08		
SUB IN: 20 HOLLAND,KEVIN	08:08		
	06:07	19-22	SUB OUT: STEVENSON,ERIK
	06:07		SUB IN: DENNIS,DEXTER
	06:07		SUB OUT: UDEZE,MORRIS
	06:07		SUB IN: ECHENIQUE,JAIME
SUB OUT: 3 WATSON,GABE	06:07		
SUB IN: 55 GRIFFIN,TYREE	06:07		
SUB OUT: 12 ROWE,TIM	06:07		
SUB IN: 1 EDWARDS,CORTEZ	06:07		
SUB OUT: 20 HOLLAND,KEVIN	06:07		
SUB IN: 0 MAGEE,DOMINIC	06:07		
	05:15	19-22	SUB OUT: DENNIS,DEXTER
	05:15		SUB IN: STEVENSON,ERIK
	05:15		SUB OUT: BURTON,JAMARIUS
	05:15		SUB IN: TORRES,RICKY
	04:13	19-24	SUB OUT: MCDUFFIE,MARKIS
	04:13		SUB IN: BROWN,ROD
SUB OUT: 11 DRAINE,LADAVIUS	04:13		
SUB IN: 20 HOLLAND,KEVIN	04:13		
	01:50	23-29	SUB OUT: ECHENIQUE,JAIME
	01:50		SUB IN: UDEZE,MORRIS
	01:50		SUB OUT: BROWN,ROD
	01:50		SUB IN: MCDUFFIE,MARKIS
SUB OUT: 55 GRIFFIN,TYREE	01:50		
SUB IN: 3 WATSON,GABE	01:50		
SUB OUT: 20 HOLLAND,KEVIN	01:50		
SUB IN: 12 ROWE,TIM	01:50		
SUB OUT: 3 WATSON,GABE	01:09	23-33	
SUB IN: 55 GRIFFIN,TYREE	01:09		
SUB OUT: 55 GRIFFIN,TYREE	00:10	25-33	
SUB IN: 20 HOLLAND,KEVIN	00:10		

Southern Miss. 25, Wichita St. 33

Official Substitutions Log Southern Miss. vs Wichita St.

Period 2

December 15, 2018 at INTRUST Bank Arena - Wichita, Kan.

VISITORS: Southern Miss.	Time	Score	HOME: Wichita St.
0 MAGEE,DOMINIC			1 MCDUFFIE,MARKIS
1 EDWARDS,CORTEZ			3 TORRES,RICKY
20 HOLLAND,KEVIN			4 HAYNES-JONES,SAMAJAE
32 HARPER-BAKER,LEONARD			10 STEVENSON,ERIK
55 GRIFFIN,TYREE			21 ECHENIQUE,JAIME
	17:47	27-33	SUB OUT: STEVENSON,ERIK
	17:47		SUB IN: DENNIS,DEXTER
	17:09	27-33	SUB OUT: DENNIS,DEXTER
	17:09		SUB IN: BURTON,JAMARIUS
	16:10	27-38	SUB OUT: ECHENIQUE,JAIME
	16:10		SUB IN: UDEZE,MORRIS
SUB OUT: 20 HOLLAND,KEVIN	16:10		
SUB IN: 12 ROWE,TIM	16:10		
SUB OUT: 0 MAGEE,DOMINIC	14:45	29-41	
SUB IN: 3 WATSON,GABE	14:45		
	13:56	29-45	SUB OUT: TORRES,RICKY
	13:56		SUB IN: STEVENSON,ERIK
SUB OUT: 32 HARPER-BAKER,LEONARD	13:56		
SUB IN: 11 DRAINE,LADAVIUS	13:56		
	13:05	29-46	SUB OUT: MCDUFFIE,MARKIS
	13:05		SUB IN: BROWN,ROD
	13:00	29-46	SUB OUT: UDEZE,MORRIS
	13:00		SUB IN: ECHENIQUE,JAIME
	12:18	31-46	SUB OUT: BURTON,JAMARIUS
	12:18		SUB IN: TORRES,RICKY
	11:12	35-49	SUB OUT: BROWN,ROD
	11:12		SUB IN: MCDUFFIE,MARKIS
SUB OUT: 12 ROWE,TIM	10:46	36-51	
SUB IN: 32 HARPER-BAKER,LEONARD	10:46		
	10:05	37-52	SUB OUT: ECHENIQUE,JAIME
	10:05		SUB IN: MIDTGAARD,ASBJORN
	09:01	42-52	SUB OUT: MIDTGAARD,ASBJORN
	09:01		SUB IN: ECHENIQUE,JAIME
	08:28	43-52	SUB OUT: ECHENIQUE,JAIME
	08:28		SUB IN: UDEZE,MORRIS
	08:28		SUB OUT: TORRES,RICKY
	08:28		SUB IN: BURTON,JAMARIUS
SUB OUT: 3 WATSON,GABE	06:36	46-52	
SUB IN: 0 MAGEE,DOMINIC	06:36		
	05:47	46-52	SUB OUT: STEVENSON,ERIK
	05:47		SUB IN: TORRES,RICKY
	05:36	47-52	SUB OUT: BURTON,JAMARIUS

VISITORS: Southern Miss.	Time	Score	HOME: Wichita St.
	05:36		SUB IN: STEVENSON, ERIK
	04:24	53-55	SUB OUT: TORRES, RICKY
	04:24		SUB IN: BURTON, JAMARIUS
	03:25	53-55	SUB OUT: UDEZE, MORRIS
	03:25		SUB IN: ECHENIQUE, JAIME
	02:21	56-58	SUB OUT: ECHENIQUE, JAIME
	02:21		SUB IN: UDEZE, MORRIS
	00:53	60-59	SUB OUT: BURTON, JAMARIUS
	00:53		SUB IN: TORRES, RICKY
	00:53		SUB OUT: UDEZE, MORRIS
	00:53		SUB IN: ECHENIQUE, JAIME
SUB OUT: 11 DRAINE, LADAVIUS	00:53		
SUB IN: 20 HOLLAND, KEVIN	00:53		
	00:34	60-61	SUB OUT: ECHENIQUE, JAIME
	00:34		SUB IN: UDEZE, MORRIS
SUB OUT: 20 HOLLAND, KEVIN	00:34		
SUB IN: 11 DRAINE, LADAVIUS	00:34		
	00:14	60-62	SUB OUT: UDEZE, MORRIS
	00:14		SUB IN: BURTON, JAMARIUS
	00:02	60-63	SUB OUT: BURTON, JAMARIUS
	00:02		SUB IN: ECHENIQUE, JAIME
SUB OUT: 55 GRIFFIN, TYREE	00:02		
SUB IN: 3 WATSON, GABE	00:02		
	00:02		SUB OUT: TORRES, RICKY
	00:02		SUB IN: MIDTGAARD, ASBJORN
	00:02		SUB OUT: HAYNES-JONES, SAMAJAE
	00:02		SUB IN: BURTON, JAMARIUS
	00:02		SUB OUT: MIDTGAARD, ASBJORN
	00:02		SUB IN: TORRES, RICKY
	00:02		SUB OUT: BURTON, JAMARIUS
	00:02		SUB IN: HAYNES-JONES, SAMAJAE

Southern Miss. 60, Wichita St. 63

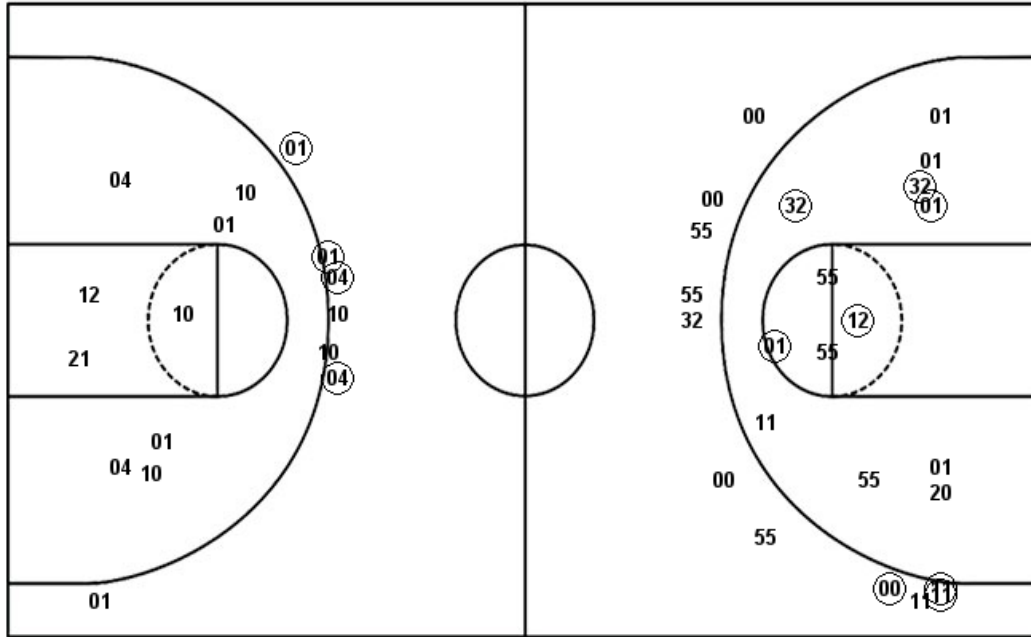
Official Shot Chart
Southern Miss. vs Wichita St.
 PERIOD 1 Shots
 December 15, 2018 at INTRUST Bank Arena - Wichita, Kan.

Wichita St.

Southern Miss.

Layups
 03 21 01 21 01
 01 04 04 21 21
 05 03 12

Dunks
 21 21 01



Layups
 00 32 03 01 00

Dunks

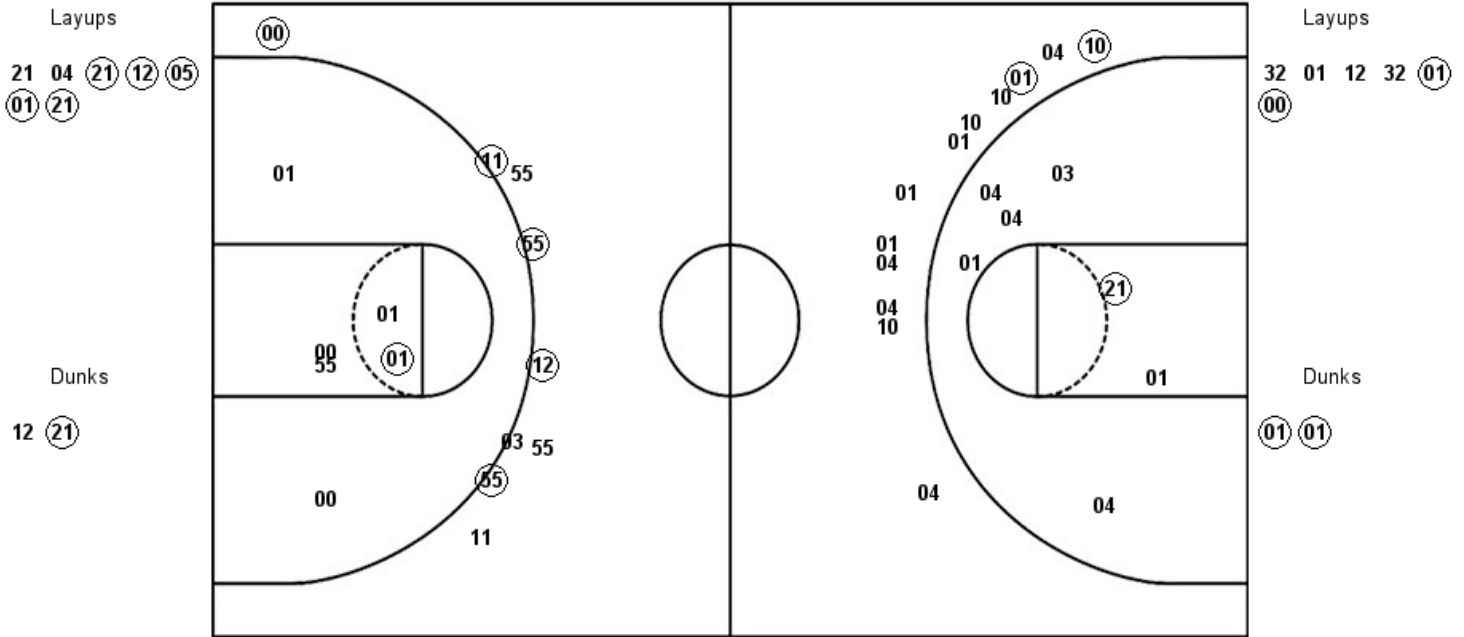
WSU : Period 1	Made	Att	Pct
Layups	7	13	53.8
Dunks	3	3	100.0
2PT Field Goals	11	26	42.3
3PT Field Goals	3	6	50.0
Total Field Goals	14	32	43.8

USM : Period 1	Made	Att	Pct
Layups	1	5	20.0
Dunks	0	0	0
2PT Field Goals	6	18	33.3
3PT Field Goals	3	11	27.3
Total Field Goals	9	29	31.0

Official Shot Chart
Southern Miss. vs Wichita St.
 PERIOD 2 Shots
 December 15, 2018 at INTRUST Bank Arena - Wichita, Kan.

Wichita St.

Southern Miss.



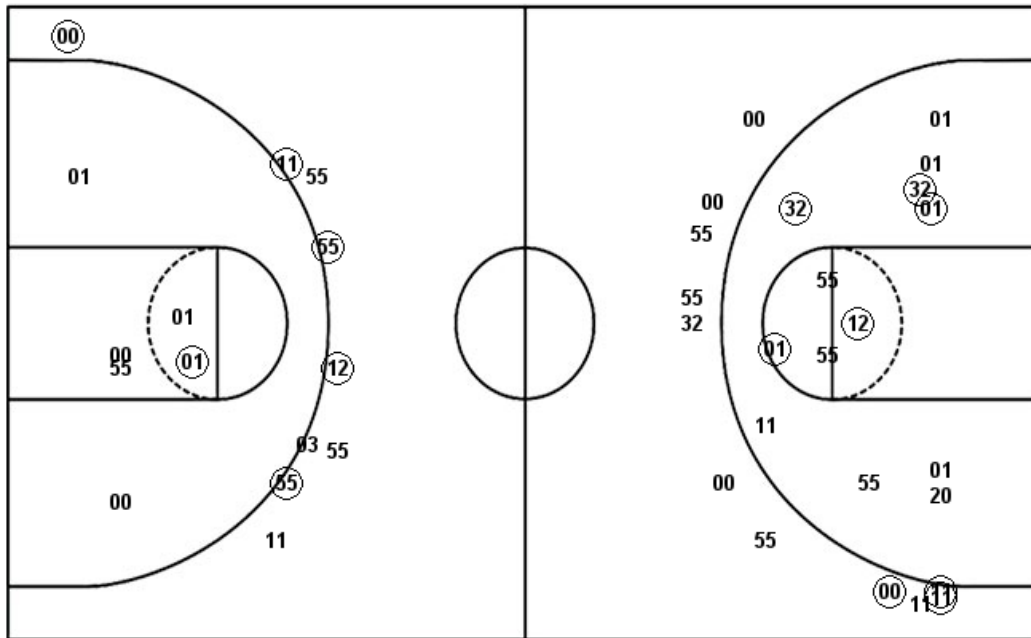
WSU : Period 2	Made	Att	Pct
Layups	5	7	71.4
Dunks	1	2	50.0
2PT Field Goals	7	16	43.8
3PT Field Goals	2	12	16.7
Total Field Goals	9	28	32.1

USM : Period 2	Made	Att	Pct
Layups	2	6	33.3
Dunks	2	2	100.0
2PT Field Goals	5	14	35.7
3PT Field Goals	5	9	55.6
Total Field Goals	10	23	43.5

Official Shot Chart
Southern Miss. vs Wichita St.
Southern Miss. Team Shots
December 15, 2018 at INTRUST Bank Arena - Wichita, Kan.

Layups

Dunks



Layups

Dunks

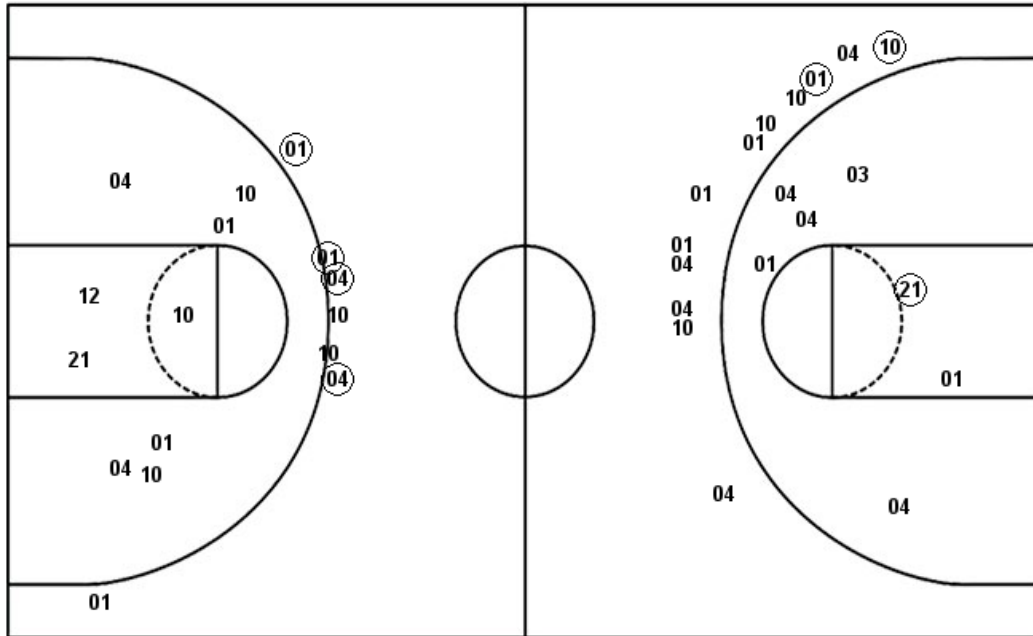
USM : Period 1	Made	Att	Pct
Layups	1	5	20.0
Dunks	0	0	0
2PT Field Goals	6	18	33.3
3PT Field Goals	3	11	27.3
Total Field Goals	9	29	31.0

USM : Period 2	Made	Att	Pct
Layups	2	6	33.3
Dunks	2	2	100.0
2PT Field Goals	5	14	35.7
3PT Field Goals	5	9	55.6
Total Field Goals	10	23	43.5

Official Shot Chart
Southern Miss. vs Wichita St.
Wichita St. Team Shots
December 15, 2018 at INTRUST Bank Arena - Wichita, Kan.

Layups

Dunks



Layups

03 21 01 21 01
 01 04 04 21 21
 05 03 12 21 04
 21 12 05 01 21

Dunks

21 21 01 12 21

WSU : Period 1	Made	Att	Pct
Layups	7	13	53.8
Dunks	3	3	100.0
2PT Field Goals	11	26	42.3
3PT Field Goals	3	6	50.0
Total Field Goals	14	32	43.8

WSU : Period 2	Made	Att	Pct
Layups	5	7	71.4
Dunks	1	2	50.0
2PT Field Goals	7	16	43.8
3PT Field Goals	2	12	16.7
Total Field Goals	9	28	32.1