

FINAL SCORE



Eastern Ky.

82



SIUE

88

February 03, 2019 • Vadalabene Center - Edwardsville, Ill.

FINAL STATISTICS

Official Box Score
Eastern Ky. vs SIUE
Game Totals -- Final Statistics
February 03, 2019 at Vadalabene Center - Edwardsville, Ill.

Eastern Ky. 82

No.	Player	S	Pts	FG	3FG	FT	OR	DR	TR	PF	A	TO	Blk	Stl	Min	+/-
00	Weaver, Dujuanta		5	1-6	1-6	2-2	0	2	2	3	0	0	0	0	28	-2
10	Mayo, Nick		33	12-31	1-8	8-10	1	10	11	5	2	6	1	0	45	-3
12	King, Tre		0	0-1	0-0	0-2	0	1	1	5	0	0	0	1	20	-12
14	King, Houston		7	3-10	1-6	0-2	2	3	5	5	2	0	0	2	34	0
22	Robinson, Kelvin		18	7-12	2-3	2-4	1	5	6	5	0	2	0	0	37	-4
02	Oakley, Jordan		4	1-2	0-0	2-2	2	0	2	3	0	0	0	0	18	-3
03	Broughton, Peyton		2	1-3	0-1	0-0	1	1	2	0	0	0	0	0	13	3
11	Brown, Jomaru		13	5-10	0-1	3-6	0	4	4	3	6	4	0	6	35	6
21	Anderson, Lachlan		0	0-0	0-0	0-0	0	0	0	0	0	0	0	0	1	-4
23	Carmical, Cameron		0	0-0	0-0	0-0	0	1	1	0	1	0	0	1	18	-10
32	Bradshaw, Pedro		0	0-0	0-0	0-0	0	0	0	0	0	1	0	1	1	-1
	Team						2	7	9	0		0				
TOTALS			82	30-75	5-25	17-28	9	34	43	29	11	13	1	11	250	

Shooting By Period

Period	FG	FG%	3FG	3FG%	FT	FT%
1st Half	9-28	32%	2-8	25%	2-8	25%
2nd Half	16-33	48%	3-13	23%	12-15	80%
3rd Half	4-7	57%	0-0	0%	1-1	100%
4th Half	1-7	14%	0-4	00%	2-4	50%
Game	30-75	40.0%	5-25	20.0%	17-28	60.7%

Last FG: 4th-02:33
 Biggest Run: 7-0
 Largest lead: By 4 at 1-02:29
 Technical Fouls: None.

SIUE 88

No.	Player	S	Pts	FG	3FG	FT	OR	DR	TR	PF	A	TO	Blk	Stl	Min	+/-
05	Williford, Tyresse		27	8-20	1-9	10-14	0	4	4	2	4	5	0	1	41	12
15	Mcfarland, David		17	5-8	2-4	5-6	0	4	4	3	0	1	1	1	39	9
24	Williams, Cameron		11	3-10	1-5	4-7	1	3	4	5	2	3	0	0	31	-4
30	Uzuegbunem, Anselm		2	0-0	0-0	2-2	5	8	13	5	0	2	0	0	21	0
32	Jackson, Brandon		25	10-16	0-2	5-6	3	6	9	2	0	1	1	0	41	5
00	Martin, Treavon		0	0-1	0-0	0-0	1	1	2	4	0	0	0	0	17	2
13	Ellis, Christian		6	2-8	0-0	2-7	2	9	11	3	6	3	0	2	33	-6
23	Eze, Elochukwu		0	0-1	0-0	0-0	2	2	4	1	1	1	3	1	15	9
25	Mccoy, Jaylen		0	0-3	0-2	0-2	0	2	2	0	0	2	0	0	12	3
	Team						1	3	4	0		0				
TOTALS			88	28-67	4-22	28-44	15	42	57	25	13	18	5	5	250	

Shooting By Period

Period	FG	FG%	3FG	3FG%	FT	FT%
1st Half	15-33	45%	2-13	15%	5-9	56%
2nd Half	10-25	40%	2-7	29%	10-15	67%
3rd Half	0-4	00%	0-1	00%	9-10	90%
4th Half	3-5	60%	0-1	00%	4-10	40%
Game	28-67	41.8%	4-22	18.2%	28-44	63.6%

Last FG: 4th-00:32
 Biggest Run: 9-0
 Largest lead: By 16 at 1-02:08
 Technical Fouls: None.

Game Notes:

Officials: Tim Fitzgerald, Boyd Copeland, Andy Ezzelle
 Attendance: 1060

Start Time: 2019-02-03 01:02:21
 End Time: 2019-02-03 03:43:55
 Game Duration: 161
 Conference Game;

Score	1st	2nd	3rd	4th	TOT
EKU	22	47	9	4	82
SIUE	37	32	9	10	88

EKU led for 4:41. SIUE led for 43:05.
 Game was tied for 2:15.
 Times tied: 5 Lead Changes: 8

Points from	EKU	SIUE
In the Paint	44	42
Off Turns	17	15
2nd Chance	6	12
Fast Break	8	20
Bench	19	6

Official Box Score
Eastern Ky. vs SIUE
First Half Statistics Only
February 03, 2019 at Vadalabene Center - Edwardsville, Ill.

Eastern Ky. 22

No.	Player	S	Pts	FG	3FG	FT	OR	DR	TR	PF	A	TO	Blk	Stl	Min	+/-
00	Weaver, Dujuanta		0	0-2	0-2	0-0	0	1	1	2	0	0	0	0	7	-9
10	Mayo, Nick		7	3-10	1-3	0-2	1	4	5	1	1	4	0	0	18	-15
12	King, Tre		0	0-0	0-0	0-0	0	0	0	3	0	0	0	0	8	-8
14	King, Houston		5	2-5	1-2	0-2	1	1	2	0	1	0	0	1	13	-15
22	Robinson, Kelvin		4	2-4	0-0	0-0	0	2	2	1	0	2	0	0	16	-18
02	Oakley, Jordan		0	0-1	0-0	0-0	1	0	1	0	0	0	0	0	9	-5
03	Broughton, Peyton		2	1-3	0-1	0-0	1	1	2	0	0	0	0	0	9	2
11	Brown, Jomaru		4	1-3	0-0	2-4	0	2	2	1	2	3	0	2	11	-1
21	Anderson, Lachlan		0	0-0	0-0	0-0	0	0	0	0	0	0	0	0	0	0
23	Carmical, Cameron		0	0-0	0-0	0-0	0	0	0	0	0	0	0	0	8	-5
32	Bradshaw, Pedro		0	0-0	0-0	0-0	0	0	0	0	0	1	0	1	1	-1
	Team						1	3	4	0		0				
TOTALS			22	9-28	2-8	2-8	5	14	19	8	4	10	0	4	100	

Shooting By Period

Period	FG	FG%	3FG	3FG%	FT	FT%
1st Half	9-28	32%	2-8	25%	2-8	25%
Game	30-75	40.0%	5-25	20.0%	17-28	60.7%

Last FG Half: EKU 2nd-00:52

SIUE 37

No.	Player	S	Pts	FG	3FG	FT	OR	DR	TR	PF	A	TO	Blk	Stl	Min	+/-
05	Williford, Tyresse		9	4-11	1-6	0-2	0	3	3	1	3	2	0	1	16	13
15	Mcfarland, David		7	3-4	0-1	1-2	0	1	1	1	0	0	1	1	14	12
24	Williams, Cameron		9	3-6	1-3	2-3	1	1	2	1	1	2	0	0	16	12
30	Uzuegbunem, Anselm		2	0-0	0-0	2-2	4	4	8	1	0	1	0	0	12	7
32	Jackson, Brandon		8	4-7	0-1	0-0	0	2	2	1	0	0	0	0	13	9
00	Martin, Treavon		0	0-0	0-0	0-0	0	1	1	1	0	0	0	0	7	7
13	Ellis, Christian		2	1-2	0-0	0-0	0	3	3	1	4	1	0	1	11	6
23	Eze, Elochukwu		0	0-1	0-0	0-0	2	1	3	0	1	0	2	1	8	7
25	Mccoy, Jaylen		0	0-2	0-2	0-0	0	0	0	0	0	0	0	0	4	2
	Team						0	1	1	0		0				
TOTALS			37	15-33	2-13	5-9	7	17	24	7	9	6	3	4	100	

Shooting By Period

Period	FG	FG%	3FG	3FG%	FT	FT%
1st Half	15-33	45%	2-13	15%	5-9	56%
Game	28-67	41.8%	4-22	18.2%	28-44	63.6%

Last FG Half: SIE 2nd-00:08

Game Notes:

Officials: **Tim Fitzgerald, Boyd Copeland, Andy Ezzelle**
Attendance: **1060**

Start Time: **2019-02-03 01:02:21**
End Time: **2019-02-03 03:43:55**
Game Duration: **161**
Conference Game:

Score	1st	2nd	3rd	4th	TOT
EKU	22	47	9	4	82
SIE	37	32	9	10	88

Points from (This Period)	EKU	SIE
In the Paint	12	24
Off Turns	3	13
2nd Chance	2	3
Fast Break	2	8
Bench	6	2

Official Play-By-Play
Eastern Ky. vs SIUE
First Half
February 03, 2019 at Vadalabene Center - Edwardsville, Ill.

Period 1

Starters:

Eastern Ky.: 00 WEAVER,DUJUANTA; 10 MAYO,NICK; 12 KING,TRE; 14 KING,HOUSTON ; 22 ROBINSON,KELVIN;
SIUE: 15 MCFARLAND,DAVID; 24 WILLIAMS,CAMERON; 30 UZUEGBUNEM,ANSELM; 32 JACKSON,BRANDON; 5 WILLIFORD,TYRESSE;

Time	VISITORS: Eastern Ky.	Score	Margin	HOME: SIUE
19:43	MISSED JUMPER by MAYO,NICK			
19:40				REBOUND (DEF) by WILLIAMS,CAMERON
19:22		3-0	H 3	GOOD! 3PTR by WILLIFORD,TYRESSE
19:22				ASSIST by WILLIAMS,CAMERON
18:56	MISSED 3PTR by WEAVER,DUJUANTA			
18:53				REBOUND (DEF) by WILLIFORD,TYRESSE
18:47	FOUL (PERSONAL) by KING,TRE			
18:47		4-0	H 4	GOOD! FT by UZUEGBUNEM,ANSELM [FB]
18:47		5-0	H 5	GOOD! FT by UZUEGBUNEM,ANSELM [FB]
18:36	TURNOVER (TRAVEL) by MAYO,NICK			
18:23	FOUL (PERSONAL) by WEAVER,DUJUANTA			
18:08				MISSED LAYUP by JACKSON,BRANDON
18:03				REBOUND (OFF) by UZUEGBUNEM,ANSELM
18:01				TURNOVER (LOSTBALL) by UZUEGBUNEM,ANSELM
18:01	STEAL by KING,HOUSTON			
17:45	MISSED JUMPER by KING,HOUSTON			
17:41	REBOUND (OFF) by MAYO,NICK			
17:36	MISSED JUMPER by ROBINSON,KELVIN			
17:33				REBOUND (DEF) by TEAM
17:13				MISSED 3PTR by WILLIAMS,CAMERON
17:12	REBOUND (DEF) by TEAM			
16:50	MISSED JUMPER by MAYO,NICK			
16:49	REBOUND (OFF) by KING,HOUSTON			
16:49				FOUL (PERSONAL) by UZUEGBUNEM,ANSELM
16:49	MISSED FT by KING,HOUSTON			
16:49	REBOUND (OFF) by TEAM			
16:48	MISSED FT by KING,HOUSTON			
16:48				TURNOVER (OTHER) by WILLIFORD,TYRESSE
16:48	SUB OUT: WEAVER,DUJUANTA			
16:48	SUB IN: OAKLEY,JORDAN			
16:48	SUB OUT: KING,TRE			
16:48	SUB IN: CARMICAL,CAMERON			
16:48	SUB OUT: KING,HOUSTON			
16:48	SUB IN: BROWN,JOMARU			
16:48	SUB OUT: ROBINSON,KELVIN			
16:48	SUB IN: BROUGHTON,PEYTON			
16:46				REBOUND (DEF) by UZUEGBUNEM,ANSELM
16:42				FOUL (PERSONAL) by MCFARLAND,DAVID
16:42	MISSED FT by BROWN,JOMARU			
16:42	MISSED FT by BROWN,JOMARU			
16:40				REBOUND (DEF) by UZUEGBUNEM,ANSELM
16:36				MISSED 3PTR by MCFARLAND,DAVID
16:35				REBOUND (OFF) by WILLIAMS,CAMERON
16:27	REBOUND (OFF) by TEAM			
16:18				MISSED JUMPER by WILLIFORD,TYRESSE
16:18	REBOUND (DEF) by MAYO,NICK			
15:40	GOOD! JUMPER by BROUGHTON,PEYTON [FB/PNT]	5-2	H 3	
15:33				MISSED JUMPER by WILLIAMS,CAMERON
15:32	REBOUND (DEF) by BROUGHTON,PEYTON			
15:18	MISSED 3PTR by MAYO,NICK			
15:18	REBOUND (OFF) by OAKLEY,JORDAN			
15:11	GOOD! JUMPER by BROWN,JOMARU	5-4	H 1	
15:06				SUB OUT: MCFARLAND,DAVID
15:06				SUB IN: ELLIS,CHRISTIAN
15:06				SUB OUT: UZUEGBUNEM,ANSELM
15:06				SUB IN: EZE,ELOCHUKWU
14:49				MISSED LAYUP by ELLIS,CHRISTIAN
14:46	REBOUND (DEF) by MAYO,NICK			
14:41	MISSED JUMPER by BROUGHTON,PEYTON			
14:41				BLOCK by EZE,ELOCHUKWU
14:37				REBOUND (DEF) by EZE,ELOCHUKWU
14:37				FOUL (OFF) by WILLIAMS,CAMERON
14:37				TURNOVER (OFFENSIVE) by WILLIAMS,CAMERON
14:28	GOOD! 3PTR by MAYO,NICK	5-7	V 2	
14:28	ASSIST by BROWN,JOMARU			
14:12		7-7	T	GOOD! DUNK by WILLIAMS,CAMERON
14:12				ASSIST by WILLIFORD,TYRESSE
13:52	TURNOVER (TRAVEL) by MAYO,NICK			
13:52		9-7	H 2	GOOD! LAYUP by JACKSON,BRANDON [FB/PNT]
13:52				ASSIST by ELLIS,CHRISTIAN
13:52	MISSED 3PTR by BROUGHTON,PEYTON			
13:52				REBOUND (DEF) by ELLIS,CHRISTIAN
13:30				MISSED 3PTR by WILLIFORD,TYRESSE
13:28	REBOUND (DEF) by TEAM			
13:16				SUB OUT: JACKSON,BRANDON
13:16				SUB IN: UZUEGBUNEM,ANSELM

Time	VISITORS: Eastern Ky.	Score	Margin	HOME: SIUE
13:16	SUB OUT: OAKLEY,JORDAN			
13:16	SUB IN: KING,TRE			
13:16	SUB OUT: BROUGHTON,PEYTON			
13:16	SUB IN: WEAVER,DUJUANTA			
13:16	SUB OUT: MAYO,NICK			
13:16	SUB IN: KING,HOUSTON			
13:16	SUB OUT: CARMICAL,CAMERON			
13:16	SUB IN: ROBINSON,KELVIN			
13:00	TURNOVER (LOSTBALL) by ROBINSON,KELVIN			
13:00				STEAL by ELLIS,CHRISTIAN
12:55		11-7	H 4	GOOD! LAYUP by WILLIFORD,TYRESSE [FB]
12:55				ASSIST by EZE,ELOCHUKWU
12:43	MISSED 3PTR by WEAVER,DUJUANTA			
12:39				REBOUND (DEF) by ELLIS,CHRISTIAN
12:35				TURNOVER (LOSTBALL) by ELLIS,CHRISTIAN
12:35	STEAL by BROWN,JOMARU			
12:31	TURNOVER (LOSTBALL) by BROWN,JOMARU			
12:31				STEAL by EZE,ELOCHUKWU
12:29	FOUL (PERSONAL) by ROBINSON,KELVIN			
12:14	FOUL (PERSONAL) by WEAVER,DUJUANTA			
12:14				MISSED FT by WILLIFORD,TYRESSE
12:14				REBOUND (OFF) by TEAM
12:14	SUB OUT: WEAVER,DUJUANTA			
12:14	SUB IN: BROUGHTON,PEYTON			
12:14				MISSED FT by WILLIFORD,TYRESSE
12:14	REBOUND (DEF) by KING,HOUSTON			
11:54	GOOD! JUMPER by ROBINSON,KELVIN [PNT]	11-9	H 2	
11:44				MISSED 3PTR by WILLIFORD,TYRESSE
11:44				REBOUND (OFF) by UZUEGBUNEM,ANSELM
11:27				MISSED 3PTR by WILLIFORD,TYRESSE
11:24	REBOUND (DEF) by ROBINSON,KELVIN			
11:22	MISSED 3PTR by KING,HOUSTON			
11:22				REBOUND (DEF) by ELLIS,CHRISTIAN
11:21	FOUL (PERSONAL) by KING,TRE			
11:21				
11:21				SUB OUT: WILLIFORD,TYRESSE
11:21				SUB IN: MCCOY,JAYLEN
11:21				SUB OUT: EZE,ELOCHUKWU
11:21				SUB IN: JACKSON,BRANDON
11:21				SUB OUT: WILLIAMS,CAMERON
11:21				SUB IN: MARTIN,TREAVON
11:21				SUB OUT: UZUEGBUNEM,ANSELM
11:21				SUB IN: MCFARLAND,DAVID
11:21	SUB OUT: KING,TRE			
11:21	SUB IN: MAYO,NICK			
11:08		13-9	H 4	GOOD! LAYUP by MCFARLAND,DAVID [PNT]
10:44	GOOD! LAYUP by KING,HOUSTON [PNT]	13-11	H 2	
10:22				MISSED 3PTR by MCCOY,JAYLEN
10:22	REBOUND (DEF) by TEAM			
10:08	MISSED JUMPER by BROWN,JOMARU			
10:04	REBOUND (OFF) by BROUGHTON,PEYTON			
09:51	TURNOVER (TRAVEL) by MAYO,NICK			
09:51	SUB OUT: BROWN,JOMARU			
09:51	SUB IN: CARMICAL,CAMERON			
09:40		15-11	H 4	GOOD! LAYUP by JACKSON,BRANDON
09:40				ASSIST by ELLIS,CHRISTIAN
09:24	TURNOVER (LOSTBALL) by MAYO,NICK			
09:24				STEAL by MCFARLAND,DAVID
09:14				MISSED LAYUP by JACKSON,BRANDON
09:11	REBOUND (DEF) by MAYO,NICK			
09:01	GOOD! LAYUP by MAYO,NICK	15-13	H 2	
09:01	ASSIST by KING,HOUSTON			
08:45		17-13	H 4	GOOD! LAYUP by MCFARLAND,DAVID
08:45				ASSIST by ELLIS,CHRISTIAN
08:30				FOUL (PERSONAL) by JACKSON,BRANDON
08:30	SUB OUT: BROUGHTON,PEYTON			
08:30	SUB IN: OAKLEY,JORDAN			
08:15	MISSED JUMPER by MAYO,NICK			
08:14	REBOUND (OFF) by TEAM			
08:14				SUB OUT: MCCOY,JAYLEN
08:14				SUB IN: WILLIAMS,CAMERON
08:14				SUB OUT: ELLIS,CHRISTIAN
08:14				SUB IN: WILLIFORD,TYRESSE
08:08	MISSED LAYUP by KING,HOUSTON			
08:03				REBOUND (DEF) by JACKSON,BRANDON
08:00				MISSED 3PTR by WILLIAMS,CAMERON
07:57	REBOUND (DEF) by MAYO,NICK			
07:54	TURNOVER (TRAVEL) by ROBINSON,KELVIN			
07:54				
07:33		19-13	H 6	GOOD! LAYUP by WILLIAMS,CAMERON [PNT]
07:33	FOUL (PERSONAL) by MAYO,NICK			
07:33		20-13	H 7	GOOD! FT by WILLIAMS,CAMERON
07:23	MISSED LAYUP by MAYO,NICK			
07:23				BLOCK by MCFARLAND,DAVID
07:18				REBOUND (DEF) by MARTIN,TREAVON
07:16		22-13	H 9	GOOD! DUNK by JACKSON,BRANDON [FB]
07:16				ASSIST by WILLIFORD,TYRESSE

Time	VISITORS: Eastern Ky.	Score	Margin	HOME: SIUE
06:45	GOOD! 3PTR by KING,HOUSTON	22-16	H 6	
06:36		24-16	H 8	GOOD! LAYUP by WILLIFORD,TYRESSE
06:21	MISSED JUMPER by MAYO,NICK			
06:18				REBOUND (DEF) by WILLIFORD,TYRESSE
05:54		26-16	H 10	GOOD! LAYUP by JACKSON,BRANDON
05:54				ASSIST by WILLIFORD,TYRESSE
05:33				FOUL (PERSONAL) by MARTIN,TREAVON
05:33	MISSED FT by MAYO,NICK			
05:33	REBOUND (OFF) by TEAM			
05:33				SUB OUT: MARTIN,TREAVON
05:33				SUB IN: EZE,ELOCHUKWU
05:33				SUB OUT: JACKSON,BRANDON
05:33				SUB IN: UZUEGBUNEM,ANSELM
05:33	SUB OUT: CARMICAL,CAMERON			
05:33	SUB IN: BROWN,JOMARU			
05:33	MISSED FT by MAYO,NICK			
05:31				REBOUND (DEF) by UZUEGBUNEM,ANSELM
05:12				MISSED 3PTR by WILLIFORD,TYRESSE
05:07				REBOUND (OFF) by EZE,ELOCHUKWU
04:58				MISSED LAYUP by EZE,ELOCHUKWU
04:57	REBOUND (DEF) by BROWN,JOMARU			
04:52				FOUL (PERSONAL) by WILLIFORD,TYRESSE
04:48	TURNOVER (TRAVEL) by BROWN,JOMARU			
04:17		28-16	H 12	GOOD! JUMPER by MCFARLAND,DAVID
04:02	MISSED 3PTR by MAYO,NICK			
03:58				REBOUND (DEF) by MCFARLAND,DAVID
03:53				TURNOVER (BADPASS) by WILLIAMS,CAMERON
03:53	STEAL by BROWN,JOMARU			
03:43	MISSED LAYUP by OAKLEY,JORDAN			
03:43				BLOCK by EZE,ELOCHUKWU
03:43				REBOUND (DEF) by WILLIFORD,TYRESSE
03:40	FOUL (PERSONAL) by BROWN,JOMARU			
03:40				
03:40				SUB OUT: MCFARLAND,DAVID
03:40				SUB IN: ELLIS,CHRISTIAN
03:40	SUB OUT: OAKLEY,JORDAN			
03:40	SUB IN: WEAVER,DUJUANTA			
03:40	SUB OUT: KING,HOUSTON			
03:40	SUB IN: KING,TRE			
03:40		29-16	H 13	GOOD! FT by WILLIAMS,CAMERON
03:40				MISSED FT by WILLIAMS,CAMERON
03:40	REBOUND (DEF) by ROBINSON,KELVIN			
03:25	TURNOVER (BADPASS) by BROWN,JOMARU			
03:11		31-16	H 15	GOOD! LAYUP by WILLIFORD,TYRESSE
02:52	GOOD! JUMPER by ROBINSON,KELVIN [PNT]	31-18	H 13	
02:52	ASSIST by MAYO,NICK			
02:38		33-18	H 15	GOOD! LAYUP by ELLIS,CHRISTIAN
02:21	GOOD! LAYUP by MAYO,NICK	33-20	H 13	
02:21	ASSIST by BROWN,JOMARU			
02:13				MISSED LAYUP by WILLIFORD,TYRESSE
02:10				REBOUND (OFF) by EZE,ELOCHUKWU
02:08		36-20	H 16	GOOD! 3PTR by WILLIAMS,CAMERON
02:08				ASSIST by ELLIS,CHRISTIAN
01:47	MISSED JUMPER by BROWN,JOMARU			
01:44				REBOUND (DEF) by UZUEGBUNEM,ANSELM
01:21				MISSED 3PTR by WILLIFORD,TYRESSE
01:20	REBOUND (DEF) by BROWN,JOMARU			
01:20				FOUL (PERSONAL) by ELLIS,CHRISTIAN
01:20				SUB OUT: EZE,ELOCHUKWU
01:20				SUB IN: MARTIN,TREAVON
01:20				SUB OUT: UZUEGBUNEM,ANSELM
01:20				SUB IN: JACKSON,BRANDON
01:20	GOOD! FT by BROWN,JOMARU	36-21	H 15	
01:20	GOOD! FT by BROWN,JOMARU	36-22	H 14	
01:20	SUB OUT: BROWN,JOMARU			
01:20	SUB IN: BROUGHTON,PEYTON			
01:20				SUB OUT: WILLIAMS,CAMERON
01:20				SUB IN: MCFARLAND,DAVID
00:59				MISSED 3PTR by JACKSON,BRANDON
00:55	REBOUND (DEF) by WEAVER,DUJUANTA			
00:51	MISSED JUMPER by ROBINSON,KELVIN			
00:48				REBOUND (DEF) by JACKSON,BRANDON
00:48	SUB OUT: WEAVER,DUJUANTA			
00:48	SUB IN: BRADSHAW,PEDRO			
00:36	FOUL (PERSONAL) by KING,TRE			
00:36		37-22	H 15	GOOD! FT by MCFARLAND,DAVID
00:36				SUB OUT: JACKSON,BRANDON
00:36				SUB IN: UZUEGBUNEM,ANSELM
00:36				SUB OUT: WILLIFORD,TYRESSE
00:36				SUB IN: MCCOY,JAYLEN
00:36	SUB OUT: KING,TRE			
00:36	SUB IN: OAKLEY,JORDAN			
00:36				MISSED FT by MCFARLAND,DAVID
00:36				REBOUND (OFF) by UZUEGBUNEM,ANSELM
00:16				MISSED 3PTR by MCCOY,JAYLEN
00:13				REBOUND (OFF) by UZUEGBUNEM,ANSELM
00:05				TIMEOUT 30SEC

Time	VISITORS: Eastern Ky.	Score	Margin	HOME: SIUE
00:05				SUB OUT: MARTIN, TREAVON
00:05				SUB IN: WILLIFORD, TYRESSE
00:05				SUB OUT: MCCOY, JAYLEN
00:05				SUB IN: JACKSON, BRANDON
00:02				TURNOVER (BADPASS) by WILLIFORD, TYRESSE
00:02	STEAL by BRADSHAW, PEDRO			
00:00	TURNOVER (BADPASS) by BRADSHAW, PEDRO			
00:00				STEAL by WILLIFORD, TYRESSE

Eastern Ky. 22, SIUE 37

Points from (This Period)	EKU	SIE
In the Paint	12	24
Off Turns	3	13
2nd Chance	2	3
Fast Break	2	8
Bench	6	2

Official Box Score
Eastern Ky. vs SIUE
Second Half Statistics Only
February 03, 2019 at Vadalabene Center - Edwardsville, Ill.

Eastern Ky. 47

No.	Player	S	Pts	FG	3FG	FT	OR	DR	TR	PF	A	TO	Blk	Stl	Min	+/-
00	Weaver, Dujuanta		5	1-2	1-2	2-2	0	1	1	0	0	0	0	0	11	13
10	Mayo, Nick		15	5-14	0-4	5-5	0	5	5	2	1	1	0	0	20	15
12	King, Tre		0	0-0	0-0	0-0	0	0	0	0	0	0	0	1	6	2
14	King, Houston		2	1-5	0-4	0-0	1	1	2	3	1	0	0	1	16	12
22	Robinson, Kelvin		14	5-8	2-3	2-4	1	3	4	2	0	0	0	0	16	12
02	Oakley, Jordan		4	1-1	0-0	2-2	1	0	1	3	0	0	0	0	9	2
03	Broughton, Peyton		0	0-0	0-0	0-0	0	0	0	0	0	0	0	0	4	3
11	Brown, Jomaru		7	3-3	0-0	1-2	0	1	1	1	4	0	0	3	14	13
21	Anderson, Lachlan		0	0-0	0-0	0-0	0	0	0	0	0	0	0	0	0	0
23	Carmical, Cameron		0	0-0	0-0	0-0	0	0	0	0	1	0	0	0	4	3
32	Bradshaw, Pedro		0	0-0	0-0	0-0	0	0	0	0	0	0	0	0	0	0
	Team						1	3	4	0		0				
TOTALS			47	16-33	3-13	12-15	4	14	18	11	7	1	0	5	100	

Shooting By Period

Period	FG	FG%	3FG	3FG%	FT	FT%
2nd Half	16-33	48%	3-13	23%	12-15	80%
Game	30-75	40.0%	5-25	20.0%	17-28	60.7%

Last FG Half: EKU 4th-02:33

SIUE 32

No.	Player	S	Pts	FG	3FG	FT	OR	DR	TR	PF	A	TO	Blk	Stl	Min	+/-
05	Williford, Tyresse		11	3-5	0-1	5-6	0	1	1	0	1	1	0	0	15	-7
15	Mcfarland, David		6	2-3	2-3	0-0	0	1	1	2	0	1	0	0	15	-9
24	Williams, Cameron		1	0-4	0-2	1-2	0	2	2	3	1	1	0	0	13	-13
30	Uzuegbunem, Anselm		0	0-0	0-0	0-0	1	4	5	4	0	1	0	0	9	-7
32	Jackson, Brandon		13	5-7	0-1	3-4	2	3	5	1	0	1	1	0	17	-10
00	Martin, Treavon		0	0-1	0-0	0-0	1	0	1	3	0	0	0	0	10	-5
13	Ellis, Christian		1	0-4	0-0	1-3	1	3	4	1	2	2	0	0	12	-18
23	Eze, Elochukwu		0	0-0	0-0	0-0	0	0	0	0	0	0	0	0	2	-4
25	Mccoy, Jaylen		0	0-1	0-0	0-0	0	1	1	0	0	1	0	0	6	-2
	Team						0	0	0	0		0				
TOTALS			32	10-25	2-7	10-15	5	15	20	14	4	8	1	0	100	

Shooting By Period

Period	FG	FG%	3FG	3FG%	FT	FT%
2nd Half	10-25	40%	2-7	29%	10-15	67%
Game	28-67	41.8%	4-22	18.2%	28-44	63.6%

Last FG Half: SIE 4th-00:32

Game Notes:

Officials: **Tim Fitzgerald, Boyd Copeland, Andy Ezzelle**
Attendance: **1060**

Start Time: **2019-02-03 01:02:21**
End Time: **2019-02-03 03:43:55**
Game Duration: **161**
Conference Game;

Score	1st	2nd	3rd	4th	TOT
EKU	22	47	9	4	82
SIE	37	32	9	10	88

Points from (This Period)	EKU	SIE
In the Paint	24	12
Off Turns	12	0
2nd Chance	4	7
Fast Break	6	8
Bench	11	1

Official Play-By-Play
Eastern Ky. vs SIUE
Second Half
February 03, 2019 at Vadalabene Center - Edwardsville, Ill.

Period 2

Starters:

Eastern Ky.: 00 WEAVER,DUJUANTA; 10 MAYO,NICK; 12 KING,TRE; 14 KING,HOUSTON ; 22 ROBINSON,KELVIN;
SIUE: 15 MCFARLAND,DAVID; 24 WILLIAMS,CAMERON; 30 UZUEGBUNEM,ANSELM; 32 JACKSON,BRANDON; 5 WILLIFORD,TYRESSE;

Time	VISITORS: Eastern Ky.	Score	Margin	HOME: SIUE
19:47	GOOD! JUMPER by ROBINSON,KELVIN [PNT]	37-24	H 13	
19:36	FOUL (PERSONAL) by KING,HOUSTON			
19:36		38-24	H 14	GOOD! FT by WILLIAMS,CAMERON
19:36				MISSED FT by WILLIAMS,CAMERON
19:36	REBOUND (DEF) by MAYO,NICK			
19:16	GOOD! LAYUP by ROBINSON,KELVIN	38-26	H 12	
19:16	ASSIST by MAYO,NICK			
18:53				MISSED LAYUP by JACKSON,BRANDON
18:49				REBOUND (OFF) by JACKSON,BRANDON
18:49		40-26	H 14	GOOD! LAYUP by JACKSON,BRANDON
18:41	MISSED 3PTR by WEAVER,DUJUANTA			
18:38				REBOUND (DEF) by UZUEGBUNEM,ANSELM
18:25				FOUL (OFF) by JACKSON,BRANDON
18:25				TURNOVER (OFFENSIVE) by JACKSON,BRANDON
18:03	MISSED JUMPER by MAYO,NICK			
18:01				REBOUND (DEF) by WILLIAMS,CAMERON
18:01	FOUL (PERSONAL) by ROBINSON,KELVIN			
18:01				SUB OUT: WILLIAMS,CAMERON
18:01				SUB IN: MCCOY,JAYLEN
17:43				TURNOVER (LOSTBALL) by MCCOY,JAYLEN
17:43	STEAL by KING,TRE			
17:29	MISSED 3PTR by KING,HOUSTON			
17:25	REBOUND (OFF) by ROBINSON,KELVIN			
17:22	MISSED 3PTR by MAYO,NICK			
17:21	REBOUND (OFF) by TEAM			
17:16	MISSED 3PTR by ROBINSON,KELVIN			
17:12	REBOUND (OFF) by KING,HOUSTON			
17:10	GOOD! JUMPER by KING,HOUSTON	40-28	H 12	
16:46		42-28	H 14	GOOD! LAYUP by WILLIFORD,TYRESSE
16:33	MISSED 3PTR by KING,HOUSTON			
16:29				REBOUND (DEF) by UZUEGBUNEM,ANSELM
16:08				TURNOVER (LOSTBALL) by WILLIFORD,TYRESSE
16:08				SUB OUT: WILLIFORD,TYRESSE
16:08				SUB IN: ELLIS,CHRISTIAN
16:08	SUB OUT: ROBINSON,KELVIN			
16:08	SUB IN: CARMICAL,CAMERON			
15:51	GOOD! LAYUP by MAYO,NICK	42-30	H 12	
15:51				FOUL (PERSONAL) by UZUEGBUNEM,ANSELM
15:51	GOOD! FT by MAYO,NICK	42-31	H 11	
15:24				MISSED LAYUP by ELLIS,CHRISTIAN
15:17				REBOUND (OFF) by JACKSON,BRANDON
15:17		44-31	H 13	GOOD! DUNK by JACKSON,BRANDON
15:10	GOOD! JUMPER by MAYO,NICK [PNT]	44-33	H 11	
15:10	ASSIST by CARMICAL,CAMERON			
14:57				MISSED LAYUP by MCCOY,JAYLEN
14:54	REBOUND (DEF) by WEAVER,DUJUANTA			
14:50	MISSED 3PTR by MAYO,NICK			
14:46				REBOUND (DEF) by MCCOY,JAYLEN
14:22		46-33	H 13	GOOD! JUMPER by JACKSON,BRANDON
14:11				FOUL (PERSONAL) by UZUEGBUNEM,ANSELM
14:11				SUB OUT: MCFARLAND,DAVID
14:11				SUB IN: WILLIAMS,CAMERON
14:11				SUB OUT: UZUEGBUNEM,ANSELM
14:11				SUB IN: MARTIN,TREAVON
14:11				SUB OUT: JACKSON,BRANDON
14:11				SUB IN: EZE,ELOCHUKWU
14:11	SUB OUT: WEAVER,DUJUANTA			
14:11	SUB IN: OAKLEY,JORDAN			
14:11	SUB OUT: KING,TRE			
14:11	SUB IN: BROWN,JOMARU			
14:01	MISSED LAYUP by MAYO,NICK			
13:56	REBOUND (OFF) by OAKLEY,JORDAN			
13:56	GOOD! LAYUP by OAKLEY,JORDAN	46-35	H 11	
13:33				MISSED 3PTR by WILLIAMS,CAMERON
13:32	REBOUND (DEF) by TEAM			
13:32				FOUL (PERSONAL) by ELLIS,CHRISTIAN
13:32				SUB OUT: MCCOY,JAYLEN
13:32				SUB IN: WILLIFORD,TYRESSE
13:16	GOOD! LAYUP by MAYO,NICK	46-37	H 9	
12:50	FOUL (PERSONAL) by OAKLEY,JORDAN			
12:50		47-37	H 10	GOOD! FT by WILLIFORD,TYRESSE
12:50		48-37	H 11	GOOD! FT by WILLIFORD,TYRESSE
12:31	GOOD! LAYUP by MAYO,NICK	48-39	H 9	
12:23	FOUL (PERSONAL) by OAKLEY,JORDAN			
12:23				SUB OUT: EZE,ELOCHUKWU

Time	VISITORS: Eastern Ky.	Score	Margin	HOME: SIUE
12:23				SUB IN: JACKSON,BRANDON
12:07		50-39	H 11	GOOD! JUMPER by WILLIFORD,TYRESSE
11:48				FOUL (PERSONAL) by MARTIN,TREAVON
11:48				
11:48	SUB OUT: CARMICAL,CAMERON			
11:48	SUB IN: ROBINSON,KELVIN			
11:48				FOUL (PERSONAL) by MARTIN,TREAVON
11:34	MISSED LAYUP by ROBINSON,KELVIN			
11:31				REBOUND (DEF) by JACKSON,BRANDON
11:25				MISSED JUMPER by WILLIAMS,CAMERON
11:23	REBOUND (DEF) by TEAM			
11:23	SUB OUT: KING,HOUSTON			
11:23	SUB IN: BROUGHTON,PEYTON			
11:05	GOOD! DUNK by BROWN,JOMARU	50-41	H 9	
10:53				MISSED LAYUP by ELLIS,CHRISTIAN
10:49				REBOUND (OFF) by ELLIS,CHRISTIAN
10:47		52-41	H 11	GOOD! DUNK by JACKSON,BRANDON
10:47				ASSIST by ELLIS,CHRISTIAN
10:28	GOOD! 3PTR by ROBINSON,KELVIN	52-44	H 8	
10:28	ASSIST by BROWN,JOMARU			
10:21	FOUL (PERSONAL) by OAKLEY,JORDAN			
10:21		53-44	H 9	GOOD! FT by JACKSON,BRANDON [FB]
10:21				SUB OUT: WILLIAMS,CAMERON
10:21				SUB IN: MCFARLAND,DAVID
10:21		54-44	H 10	GOOD! FT by JACKSON,BRANDON [FB]
10:08	MISSED LAYUP by ROBINSON,KELVIN			
10:08				BLOCK by JACKSON,BRANDON
10:03				REBOUND (DEF) by ELLIS,CHRISTIAN
10:02		56-44	H 12	GOOD! LAYUP by WILLIFORD,TYRESSE [FB]
10:02				ASSIST by ELLIS,CHRISTIAN
09:51	GOOD! 3PTR by ROBINSON,KELVIN	56-47	H 9	
09:51	ASSIST by BROWN,JOMARU			
09:50	TIMEOUT TEAM			
09:50				SUB OUT: JACKSON,BRANDON
09:50				SUB IN: UZUEGBUNEM,ANSELM
09:18				MISSED 3PTR by WILLIFORD,TYRESSE
09:15	REBOUND (DEF) by ROBINSON,KELVIN			
09:06				FOUL (PERSONAL) by UZUEGBUNEM,ANSELM
09:06	GOOD! FT by OAKLEY,JORDAN	56-48	H 8	
09:06				SUB OUT: UZUEGBUNEM,ANSELM
09:06				SUB IN: JACKSON,BRANDON
09:06	GOOD! FT by OAKLEY,JORDAN	56-49	H 7	
08:38		59-49	H 10	GOOD! 3PTR by MCFARLAND,DAVID
08:17	TURNOVER (LOSTBALL) by MAYO,NICK			
08:01				TURNOVER (BADPASS) by ELLIS,CHRISTIAN
08:01	STEAL by BROWN,JOMARU			
07:56	GOOD! LAYUP by ROBINSON,KELVIN [FB]	59-51	H 8	
07:56	ASSIST by BROWN,JOMARU			
07:35				MISSED 3PTR by JACKSON,BRANDON
07:32	REBOUND (DEF) by BROWN,JOMARU			
07:24	MISSED LAYUP by MAYO,NICK			
07:23				REBOUND (DEF) by JACKSON,BRANDON
07:23				
07:23				SUB OUT: ELLIS,CHRISTIAN
07:23				SUB IN: WILLIAMS,CAMERON
07:23	SUB OUT: BROUGHTON,PEYTON			
07:23	SUB IN: KING,HOUSTON			
07:01				MISSED JUMPER by MARTIN,TREAVON
06:57	REBOUND (DEF) by ROBINSON,KELVIN			
06:51	MISSED LAYUP by MAYO,NICK			
06:47				REBOUND (DEF) by WILLIAMS,CAMERON
06:45		61-51	H 10	GOOD! LAYUP by JACKSON,BRANDON [FB]
06:45				ASSIST by WILLIAMS,CAMERON
06:17				FOUL (PERSONAL) by WILLIAMS,CAMERON
06:17	MISSED FT by ROBINSON,KELVIN			
06:17	REBOUND (OFF) by TEAM			
06:17	GOOD! FT by ROBINSON,KELVIN	61-52	H 9	
06:17	FOUL (PERSONAL) by KING,HOUSTON			
06:01				MISSED LAYUP by WILLIFORD,TYRESSE
05:58	REBOUND (DEF) by MAYO,NICK			
05:34	MISSED 3PTR by MAYO,NICK			
05:31				REBOUND (DEF) by WILLIFORD,TYRESSE
05:26	FOUL (PERSONAL) by MAYO,NICK			
05:26		62-52	H 10	GOOD! FT by WILLIFORD,TYRESSE [FB]
05:26		63-52	H 11	GOOD! FT by WILLIFORD,TYRESSE [FB]
05:26				SUB OUT: WILLIFORD,TYRESSE
05:26				SUB IN: ELLIS,CHRISTIAN
05:26	SUB OUT: OAKLEY,JORDAN			
05:26	SUB IN: WEAVER,DUJUANTA			
05:11	MISSED 3PTR by KING,HOUSTON			
05:08				REBOUND (DEF) by JACKSON,BRANDON
04:55				MISSED LAYUP by ELLIS,CHRISTIAN
04:52				REBOUND (OFF) by MARTIN,TREAVON
04:50				MISSED 3PTR by WILLIAMS,CAMERON
04:46	REBOUND (DEF) by ROBINSON,KELVIN			
04:43	GOOD! JUMPER by BROWN,JOMARU	63-54	H 9	
04:43	TIMEOUT 30SEC			

Time	VISITORS: Eastern Ky.	Score	Margin	HOME: SIUE
04:19	FOUL (PERSONAL) by BROWN,JOMARU			
04:17				MISSED FT by ELLIS,CHRISTIAN
04:16	REBOUND (DEF) by MAYO,NICK			
04:07				FOUL (PERSONAL) by MARTIN,TREAVON
04:07	GOOD! FT by MAYO,NICK	63-55	H 8	
04:07				SUB OUT: MARTIN,TREAVON
04:07				SUB IN: UZUEGBUNEM,ANSELM
04:07				SUB OUT: MCFARLAND,DAVID
04:07				SUB IN: MCCOY,JAYLEN
04:07	GOOD! FT by MAYO,NICK	63-56	H 7	
04:00				TURNOVER (BADPASS) by UZUEGBUNEM,ANSELM
04:00	STEAL by BROWN,JOMARU			
03:53	MISSED 3PTR by KING,HOUSTON			
03:47				REBOUND (DEF) by UZUEGBUNEM,ANSELM
03:47	FOUL (PERSONAL) by ROBINSON,KELVIN			
03:47				
03:47				MISSED FT by ELLIS,CHRISTIAN
03:47				REBOUND (OFF) by TEAM
03:47		64-56	H 8	GOOD! FT by ELLIS,CHRISTIAN
03:35	MISSED 3PTR by MAYO,NICK			
03:31				REBOUND (DEF) by ELLIS,CHRISTIAN
03:30				TURNOVER (LOSTBALL) by ELLIS,CHRISTIAN
03:30	STEAL by KING,HOUSTON			
03:24	GOOD! LAYUP by BROWN,JOMARU [FB]	64-58	H 6	
03:24	ASSIST by KING,HOUSTON			
02:57				MISSED JUMPER by WILLIAMS,CAMERON
02:53				REBOUND (OFF) by UZUEGBUNEM,ANSELM
02:52				TIMEOUT 30SEC
02:52				SUB OUT: ELLIS,CHRISTIAN
02:52				SUB IN: WILLIFORD,TYRESSE
02:52				SUB OUT: MCCOY,JAYLEN
02:52				SUB IN: MCFARLAND,DAVID
02:37	FOUL (PERSONAL) by MAYO,NICK			
02:37		65-58	H 7	GOOD! FT by JACKSON,BRANDON
02:35				MISSED FT by JACKSON,BRANDON
02:35	REBOUND (DEF) by TEAM			
02:35				FOUL (PERSONAL) by WILLIAMS,CAMERON
02:35	GOOD! FT by ROBINSON,KELVIN	65-59	H 6	
02:35	MISSED FT by ROBINSON,KELVIN			
02:34				REBOUND (DEF) by UZUEGBUNEM,ANSELM
02:10				MISSED 3PTR by MCFARLAND,DAVID
02:07	REBOUND (DEF) by KING,HOUSTON			
01:46	GOOD! JUMPER by MAYO,NICK [PNT]	65-61	H 4	
01:41				TIMEOUT 30SEC
01:35				FOUL (OFF) by MCFARLAND,DAVID
01:35				TURNOVER (OFFENSIVE) by MCFARLAND,DAVID
01:20				FOUL (PERSONAL) by UZUEGBUNEM,ANSELM
01:20				SUB OUT: UZUEGBUNEM,ANSELM
01:20				SUB IN: ELLIS,CHRISTIAN
01:20	GOOD! FT by MAYO,NICK	65-62	H 3	
01:20	GOOD! FT by MAYO,NICK	65-63	H 2	
01:05	FOUL (PERSONAL) by KING,HOUSTON			
01:05		66-63	H 3	GOOD! FT by WILLIFORD,TYRESSE
01:05				MISSED FT by WILLIFORD,TYRESSE
01:03	REBOUND (DEF) by MAYO,NICK			
00:52	GOOD! 3PTR by WEAVER,DUJUANTA	66-66	T	
00:52	ASSIST by BROWN,JOMARU			
00:52				TURNOVER (LOSTBALL) by WILLIAMS,CAMERON
00:52	STEAL by BROWN,JOMARU			
00:40				FOUL (PERSONAL) by WILLIAMS,CAMERON
00:40	GOOD! FT by BROWN,JOMARU	66-67	V 1	
00:39	MISSED FT by BROWN,JOMARU			
00:38				REBOUND (DEF) by ELLIS,CHRISTIAN
00:31				MISSED LAYUP by ELLIS,CHRISTIAN
00:28	REBOUND (DEF) by MAYO,NICK			
00:27				FOUL (PERSONAL) by MCFARLAND,DAVID
00:27	GOOD! FT by WEAVER,DUJUANTA [FB]	66-68	V 2	
00:27	GOOD! FT by WEAVER,DUJUANTA [FB]	66-69	V 3	
00:27	TIMEOUT TEAM			
00:12				TIMEOUT TEAM
00:12				SUB OUT: ELLIS,CHRISTIAN
00:12				SUB IN: MCCOY,JAYLEN
00:08		69-69	T	GOOD! 3PTR by MCFARLAND,DAVID
00:08				ASSIST by WILLIFORD,TYRESSE
00:02	MISSED JUMPER by MAYO,NICK			
00:00				REBOUND (DEF) by MCFARLAND,DAVID

Eastern Ky. 69, SIUE 69

Points from (This Period)	EKU	SIE
In the Paint	24	12
Off Turns	12	0
2nd Chance	4	7
Fast Break	6	8
Bench	11	1

**Official Play-By-Play
Eastern Ky. vs SIUE
Overtime**

February 03, 2019 at Vadalabene Center - Edwardsville, Ill.

Period 3

Starters:

Eastern Ky.: 00 WEAVER,DUJUANTA; 10 MAYO,NICK; 12 KING,TRE; 14 KING,HOUSTON ; 22 ROBINSON,KELVIN;

SIUE: 15 MCFARLAND,DAVID; 24 WILLIAMS,CAMERON; 30 UZUEGBUNEM,ANSELM; 32 JACKSON,BRANDON; 5 WILLIFORD,TYRESSE;

Time	VISITORS: Eastern Ky.	Score	Margin	HOME: SIUE
04:56	FOUL (PERSONAL) by KING,HOUSTON			
04:56				MISSED FT by WILLIAMS,CAMERON
04:56				REBOUND (OFF) by TEAM
04:56		70-69	H 1	GOOD! FT by WILLIAMS,CAMERON
04:42	GOOD! LAYUP by MAYO,NICK [PNT]	70-71	V 1	
04:36	FOUL (PERSONAL) by WEAVER,DUJUANTA			
04:36		71-71	T	GOOD! FT by WILLIFORD,TYRESSE [FB]
04:36		72-71	H 1	GOOD! FT by WILLIFORD,TYRESSE [FB]
04:17	GOOD! JUMPER by MAYO,NICK	72-73	V 1	
03:46				MISSED LAYUP by JACKSON,BRANDON
03:46	BLOCK by MAYO,NICK			
03:45				REBOUND (OFF) by TEAM
03:39				MISSED JUMPER by MCFARLAND,DAVID
03:35	REBOUND (DEF) by MAYO,NICK			
03:17	GOOD! JUMPER by MAYO,NICK [PNT]	72-75	V 3	
02:54	FOUL (PERSONAL) by ROBINSON,KELVIN			
02:54		73-75	V 2	GOOD! FT by JACKSON,BRANDON
02:54		74-75	V 1	GOOD! FT by JACKSON,BRANDON
02:29	GOOD! LAYUP by MAYO,NICK	74-77	V 3	
02:29				FOUL (PERSONAL) by WILLIAMS,CAMERON
02:29				SUB OUT: WILLIAMS,CAMERON
02:29				SUB IN: EZE,ELOCHUKWU
02:29	GOOD! FT by MAYO,NICK	74-78	V 4	
02:29	SUB OUT: KING,HOUSTON			
02:29	SUB IN: KING,TRE			
02:16	FOUL (PERSONAL) by MAYO,NICK			
02:16		75-78	V 3	GOOD! FT by WILLIFORD,TYRESSE
02:16		76-78	V 2	GOOD! FT by WILLIFORD,TYRESSE
01:50	MISSED JUMPER by MAYO,NICK			
01:50				REBOUND (DEF) by ELLIS,CHRISTIAN
01:50				BLOCK by EZE,ELOCHUKWU
01:26				MISSED 3PTR by WILLIFORD,TYRESSE
01:26	REBOUND (DEF) by TEAM			
00:55	MISSED JUMPER by MAYO,NICK			
00:54				REBOUND (DEF) by EZE,ELOCHUKWU
00:54				TURNOVER (LOSTBALL) by EZE,ELOCHUKWU
00:54	STEAL by BROWN,JOMARU			
00:31	MISSED DUNK by KING,TRE			
00:31	FOUL (PERSONAL) by ROBINSON,KELVIN			
00:30				REBOUND (DEF) by MCFARLAND,DAVID
00:30	SUB OUT: ROBINSON,KELVIN			
00:30	SUB IN: CARMICAL,CAMERON			
00:30		77-78	V 1	GOOD! FT by MCFARLAND,DAVID
00:30		78-78	T	GOOD! FT by MCFARLAND,DAVID
00:18	TIMEOUT 30SEC			
00:06	TURNOVER (LOSTBALL) by MAYO,NICK			
00:06				STEAL by ELLIS,CHRISTIAN
00:00				MISSED LAYUP by ELLIS,CHRISTIAN
00:00	REBOUND (DEF) by TEAM			

Eastern Ky. 78, SIUE 78

Points from (This Period)	EKU	SIE
In the Paint	6	0
Off Turns	0	0
2nd Chance	0	0
Fast Break	0	2
Bench	0	0

Period 4

Starters:

Eastern Ky.: 00 WEAVER,DUJUANTA; 10 MAYO,NICK; 12 KING,TRE; 14 KING,HOUSTON ; 22 ROBINSON,KELVIN;
SIUE: 15 MCFARLAND,DAVID; 24 WILLIAMS,CAMERON; 30 UZUEGBUNEM,ANSELM; 32 JACKSON,BRANDON; 5 WILLIFORD,TYRESSE;

Time	VISITORS: Eastern Ky.	Score	Margin	HOME: SIUE
04:42		80-78	H 2	GOOD! LAYUP by WILLIFORD,TYRESSE [PNT]
04:31	MISSED 3PTR by MAYO,NICK			
04:28				REBOUND (DEF) by MCFARLAND,DAVID
04:24				TURNOVER (TRAVEL) by WILLIFORD,TYRESSE
04:09	MISSED JUMPER by BROWN,JOMARU			
04:06				REBOUND (DEF) by ELLIS,CHRISTIAN
03:51				MISSED LAYUP by WILLIFORD,TYRESSE
03:48				REBOUND (OFF) by JACKSON,BRANDON
03:48		82-78	H 4	GOOD! DUNK by JACKSON,BRANDON
03:28	MISSED 3PTR by WEAVER,DUJUANTA			
03:24				REBOUND (DEF) by ELLIS,CHRISTIAN
03:20				FOUL (OFF) by WILLIFORD,TYRESSE
03:20				TURNOVER (OFFENSIVE) by WILLIFORD,TYRESSE
03:08				FOUL (PERSONAL) by EZE,ELOCHUKWU
03:08	GOOD! FT by MAYO,NICK	82-79	H 3	
03:08	GOOD! FT by MAYO,NICK	82-80	H 2	
02:43	FOUL (PERSONAL) by KING,TRE			
02:43		83-80	H 3	GOOD! FT by WILLIFORD,TYRESSE
02:43				MISSED FT by WILLIFORD,TYRESSE
02:43				REBOUND (OFF) by ELLIS,CHRISTIAN
02:43	FOUL (PERSONAL) by MAYO,NICK			
02:42	SUB OUT: MAYO,NICK			
02:42	SUB IN: KING,HOUSTON			
02:42				SUB OUT: EZE,ELOCHUKWU
02:42				SUB IN: MCCOY,JAYLEN
02:42				MISSED FT by ELLIS,CHRISTIAN
02:42				REBOUND (OFF) by TEAM
02:42				MISSED FT by ELLIS,CHRISTIAN
02:42	REBOUND (DEF) by KING,TRE			
02:33	GOOD! LAYUP by BROWN,JOMARU	83-82	H 1	
02:30	FOUL (PERSONAL) by BROWN,JOMARU			
02:30		84-82	H 2	GOOD! FT by ELLIS,CHRISTIAN
02:30				MISSED FT by ELLIS,CHRISTIAN
02:30	REBOUND (DEF) by CARMICAL,CAMERON			
02:14				FOUL (PERSONAL) by ELLIS,CHRISTIAN
02:14	MISSED FT by KING,TRE			
02:14	REBOUND (OFF) by TEAM			
02:14	MISSED FT by KING,TRE			
02:14				REBOUND (DEF) by JACKSON,BRANDON
01:44				MISSED 3PTR by WILLIFORD,TYRESSE
01:41	REBOUND (DEF) by KING,HOUSTON			
01:29	MISSED LAYUP by BROWN,JOMARU			
01:29				REBOUND (DEF) by TEAM
01:29	FOUL (PERSONAL) by KING,TRE			
01:29	SUB OUT: KING,TRE			
01:29	SUB IN: ANDERSON,LACHLAN			
01:29				MISSED FT by MCCOY,JAYLEN
01:29				REBOUND (OFF) by TEAM
01:29				MISSED FT by MCCOY,JAYLEN
01:29	REBOUND (DEF) by BROWN,JOMARU			
01:02	TURNOVER (LOSTBALL) by BROWN,JOMARU			
00:53				TIMEOUT 30SEC
00:32		86-82	H 4	GOOD! LAYUP by ELLIS,CHRISTIAN [PNT]
00:23	MISSED 3PTR by WEAVER,DUJUANTA			
00:20				REBOUND (DEF) by TEAM
00:17	FOUL (PERSONAL) by KING,HOUSTON			
00:17	SUB OUT: KING,HOUSTON			
00:17	SUB IN: BROUGHTON,PEYTON			
00:17		87-82	H 5	GOOD! FT by MCFARLAND,DAVID [FB]
00:17		88-82	H 6	GOOD! FT by MCFARLAND,DAVID [FB]
00:09	MISSED 3PTR by BROWN,JOMARU			
00:06				REBOUND (DEF) by MCCOY,JAYLEN
00:04				TURNOVER (LOSTBALL) by MCCOY,JAYLEN
00:04	STEAL by CARMICAL,CAMERON			

Eastern Ky. 82, SIUE 88

Points from (This Period)	EKU	SIE
In the Paint	2	6
Off Turns	2	2
2nd Chance	0	2
Fast Break	0	2
Bench	2	3

Official Scoring/Possession Reference Chart
Eastern Ky. vs SIUE
Period 1
February 03, 2019 at Vadalabene Center - Edwardsville, Ill.

Period 1

Starters:

Eastern Ky.: 00 WEAVER, DUJUANTA; 10 MAYO, NICK; 12 KING, TRE; 14 KING, HOUSTON ; 22 ROBINSON, KELVIN;
SIUE: 15 MCFARLAND, DAVID; 24 WILLIAMS, CAMERON; 30 UZUEGBUNEM, ANSELM; 32 JACKSON, BRANDON; 5 WILLIFORD, TYRESSE;

Time	VISITORS: Eastern Ky.	Score	Margin	HOME: SIUE
19:22		3-0	H 3	GOOD! 3PTR by WILLIFORD, TYRESSE
18:47		4-0	H 4	GOOD! FT by UZUEGBUNEM, ANSELM [FB]
18:47		5-0	H 5	GOOD! FT by UZUEGBUNEM, ANSELM [FB]
15:40	GOOD! JUMPER by BROUGHTON, PEYTON [FB/PNT]	5-2	H 3	
15:11	GOOD! JUMPER by BROWN, JOMARU	5-4	H 1	
14:28	GOOD! 3PTR by MAYO, NICK	5-7	V 2	
14:12		7-7	T	GOOD! DUNK by WILLIAMS, CAMERON
13:52		9-7	H 2	GOOD! LAYUP by JACKSON, BRANDON [FB/PNT]
12:55		11-7	H 4	GOOD! LAYUP by WILLIFORD, TYRESSE [FB]
11:54	GOOD! JUMPER by ROBINSON, KELVIN [PNT]	11-9	H 2	
11:08		13-9	H 4	GOOD! LAYUP by MCFARLAND, DAVID [PNT]
10:44	GOOD! LAYUP by KING, HOUSTON [PNT]	13-11	H 2	
09:40		15-11	H 4	GOOD! LAYUP by JACKSON, BRANDON
09:01	GOOD! LAYUP by MAYO, NICK	15-13	H 2	
08:45		17-13	H 4	GOOD! LAYUP by MCFARLAND, DAVID
07:33		19-13	H 6	GOOD! LAYUP by WILLIAMS, CAMERON [PNT]
07:33		20-13	H 7	GOOD! FT by WILLIAMS, CAMERON
07:16		22-13	H 9	GOOD! DUNK by JACKSON, BRANDON [FB]
06:45	GOOD! 3PTR by KING, HOUSTON	22-16	H 6	
06:36		24-16	H 8	GOOD! LAYUP by WILLIFORD, TYRESSE
05:54		26-16	H 10	GOOD! LAYUP by JACKSON, BRANDON
04:17		28-16	H 12	GOOD! JUMPER by MCFARLAND, DAVID
03:40		29-16	H 13	GOOD! FT by WILLIAMS, CAMERON
03:11		31-16	H 15	GOOD! LAYUP by WILLIFORD, TYRESSE
02:52	GOOD! JUMPER by ROBINSON, KELVIN [PNT]	31-18	H 13	
02:38		33-18	H 15	GOOD! LAYUP by ELLIS, CHRISTIAN
02:21	GOOD! LAYUP by MAYO, NICK	33-20	H 13	
02:08		36-20	H 16	GOOD! 3PTR by WILLIAMS, CAMERON
01:20	GOOD! FT by BROWN, JOMARU	36-21	H 15	
01:20	GOOD! FT by BROWN, JOMARU	36-22	H 14	
00:36		37-22	H 15	GOOD! FT by MCFARLAND, DAVID

Eastern Ky. 22, SIUE 37

Official Scoring/Possession Reference Chart
Eastern Ky. vs SIUE
Period 2
February 03, 2019 at Vadalabene Center - Edwardsville, Ill.

Period 2

Starters:

Eastern Ky.: 00 WEAVER,DUJUANTA; 10 MAYO,NICK; 12 KING,TRE; 14 KING,HOUSTON ; 22 ROBINSON,KELVIN;
 SIUE: 15 MCFARLAND,DAVID; 24 WILLIAMS,CAMERON; 30 UZUEGBUNEM,ANSELM; 32 JACKSON,BRANDON; 5 WILLIFORD, TYRESSE;

Time	VISITORS: Eastern Ky.	Score	Margin	HOME: SIUE
19:47	GOOD! JUMPER by ROBINSON,KELVIN [PNT]	37-24	H 13	
19:36		38-24	H 14	GOOD! FT by WILLIAMS,CAMERON
19:16	GOOD! LAYUP by ROBINSON,KELVIN	38-26	H 12	
18:49		40-26	H 14	GOOD! LAYUP by JACKSON,BRANDON
17:10	GOOD! JUMPER by KING,HOUSTON	40-28	H 12	
16:46		42-28	H 14	GOOD! LAYUP by WILLIFORD, TYRESSE
15:51	GOOD! LAYUP by MAYO,NICK	42-30	H 12	
15:51	GOOD! FT by MAYO,NICK	42-31	H 11	
15:17		44-31	H 13	GOOD! DUNK by JACKSON,BRANDON
15:10	GOOD! JUMPER by MAYO,NICK [PNT]	44-33	H 11	
14:22		46-33	H 13	GOOD! JUMPER by JACKSON,BRANDON
13:56	GOOD! LAYUP by OAKLEY,JORDAN	46-35	H 11	
13:16	GOOD! LAYUP by MAYO,NICK	46-37	H 9	
12:50		47-37	H 10	GOOD! FT by WILLIFORD, TYRESSE
12:50		48-37	H 11	GOOD! FT by WILLIFORD, TYRESSE
12:31	GOOD! LAYUP by MAYO,NICK	48-39	H 9	
12:07		50-39	H 11	GOOD! JUMPER by WILLIFORD, TYRESSE
11:05	GOOD! DUNK by BROWN,JOMARU	50-41	H 9	
10:47		52-41	H 11	GOOD! DUNK by JACKSON,BRANDON
10:28	GOOD! 3PTR by ROBINSON,KELVIN	52-44	H 8	
10:21		53-44	H 9	GOOD! FT by JACKSON,BRANDON [FB]
10:21		54-44	H 10	GOOD! FT by JACKSON,BRANDON [FB]
10:02		56-44	H 12	GOOD! LAYUP by WILLIFORD, TYRESSE [FB]
09:51	GOOD! 3PTR by ROBINSON,KELVIN	56-47	H 9	
09:06	GOOD! FT by OAKLEY,JORDAN	56-48	H 8	
09:06	GOOD! FT by OAKLEY,JORDAN	56-49	H 7	
08:38		59-49	H 10	GOOD! 3PTR by MCFARLAND,DAVID
07:56	GOOD! LAYUP by ROBINSON,KELVIN [FB]	59-51	H 8	
06:45		61-51	H 10	GOOD! LAYUP by JACKSON,BRANDON [FB]
06:17	GOOD! FT by ROBINSON,KELVIN	61-52	H 9	
05:26		62-52	H 10	GOOD! FT by WILLIFORD, TYRESSE [FB]
05:26		63-52	H 11	GOOD! FT by WILLIFORD, TYRESSE [FB]
04:43	GOOD! JUMPER by BROWN,JOMARU	63-54	H 9	
04:07	GOOD! FT by MAYO,NICK	63-55	H 8	
04:07	GOOD! FT by MAYO,NICK	63-56	H 7	
03:47		64-56	H 8	GOOD! FT by ELLIS,CHRISTIAN
03:24	GOOD! LAYUP by BROWN,JOMARU [FB]	64-58	H 6	
02:37		65-58	H 7	GOOD! FT by JACKSON,BRANDON
02:35	GOOD! FT by ROBINSON,KELVIN	65-59	H 6	
01:46	GOOD! JUMPER by MAYO,NICK [PNT]	65-61	H 4	
01:20	GOOD! FT by MAYO,NICK	65-62	H 3	
01:20	GOOD! FT by MAYO,NICK	65-63	H 2	
01:05		66-63	H 3	GOOD! FT by WILLIFORD, TYRESSE
00:52	GOOD! 3PTR by WEAVER,DUJUANTA	66-66	T	
00:40	GOOD! FT by BROWN,JOMARU	66-67	V 1	
00:27	GOOD! FT by WEAVER,DUJUANTA [FB]	66-68	V 2	
00:27	GOOD! FT by WEAVER,DUJUANTA [FB]	66-69	V 3	
00:08		69-69	T	GOOD! 3PTR by MCFARLAND,DAVID

Eastern Ky. 69, SIUE 69

Official Scoring/Possession Reference Chart
Eastern Ky. vs SIUE
Period 3
February 03, 2019 at Vadalabene Center - Edwardsville, Ill.

Period 3

Starters:

Eastern Ky.: 00 WEAVER, DUJUANTA; 10 MAYO, NICK; 12 KING, TRE; 14 KING, HOUSTON ; 22 ROBINSON, KELVIN;
SIUE: 15 MCFARLAND, DAVID; 24 WILLIAMS, CAMERON; 30 UZUEGBUNEM, ANSELM; 32 JACKSON, BRANDON; 5 WILLIFORD, TYRESSE;

Time	VISITORS: Eastern Ky.	Score	Margin	HOME: SIUE
04:56		70-69	H 1	GOOD! FT by WILLIAMS, CAMERON
04:42	GOOD! LAYUP by MAYO, NICK [PNT]	70-71	V 1	
04:36		71-71	T	GOOD! FT by WILLIFORD, TYRESSE [FB]
04:36		72-71	H 1	GOOD! FT by WILLIFORD, TYRESSE [FB]
04:17	GOOD! JUMPER by MAYO, NICK	72-73	V 1	
03:17	GOOD! JUMPER by MAYO, NICK [PNT]	72-75	V 3	
02:54		73-75	V 2	GOOD! FT by JACKSON, BRANDON
02:54		74-75	V 1	GOOD! FT by JACKSON, BRANDON
02:29	GOOD! LAYUP by MAYO, NICK	74-77	V 3	
02:29	GOOD! FT by MAYO, NICK	74-78	V 4	
02:16		75-78	V 3	GOOD! FT by WILLIFORD, TYRESSE
02:16		76-78	V 2	GOOD! FT by WILLIFORD, TYRESSE
00:30		77-78	V 1	GOOD! FT by MCFARLAND, DAVID
00:30		78-78	T	GOOD! FT by MCFARLAND, DAVID

Eastern Ky. 78, SIUE 78

Official Scoring/Possession Reference Chart
Eastern Ky. vs SIUE
Period 4
February 03, 2019 at Vadalabene Center - Edwardsville, Ill.

Period 4

Starters:

Eastern Ky.: 00 WEAVER, DUJUANTA; 10 MAYO, NICK; 12 KING, TRE; 14 KING, HOUSTON ; 22 ROBINSON, KELVIN;

SIUE: 15 MCFARLAND, DAVID; 24 WILLIAMS, CAMERON; 30 UZUEGBUNEM, ANSELM; 32 JACKSON, BRANDON; 5 WILLIFORD, TYRESSE;

Time	VISITORS: Eastern Ky.	Score	Margin	HOME: SIUE
04:42		80-78	H 2	GOOD! LAYUP by WILLIFORD, TYRESSE [PNT]
03:48		82-78	H 4	GOOD! DUNK by JACKSON, BRANDON
03:08	GOOD! FT by MAYO, NICK	82-79	H 3	
03:08	GOOD! FT by MAYO, NICK	82-80	H 2	
02:43		83-80	H 3	GOOD! FT by WILLIFORD, TYRESSE
02:33	GOOD! LAYUP by BROWN, JOMARU	83-82	H 1	
02:30		84-82	H 2	GOOD! FT by ELLIS, CHRISTIAN
00:32		86-82	H 4	GOOD! LAYUP by ELLIS, CHRISTIAN [PNT]
00:17		87-82	H 5	GOOD! FT by MCFARLAND, DAVID [FB]
00:17		88-82	H 6	GOOD! FT by MCFARLAND, DAVID [FB]

Eastern Ky. 82, SIUE 88

Official Substitutions Log
Eastern Ky. vs SIUE
Period 1
February 03, 2019 at Vadalabene Center - Edwardsville, Ill.

VISITORS: Eastern Ky.	Time	Score	HOME: SIUE
00 WEAVER,DUJUANTA			15 MCFARLAND,DAVID
10 MAYO,NICK			24 WILLIAMS,CAMERON
12 KING,TRE			30 UZUEGBUNEM,ANSELM
14 KING,HOUSTON			32 JACKSON,BRANDON
22 ROBINSON,KELVIN			5 WILLIFORD,TYRESSE
SUB OUT: 00 WEAVER,DUJUANTA	16:48	0-5	
SUB IN: 2 OAKLEY,JORDAN	16:48		
SUB OUT: 12 KING,TRE	16:48		
SUB IN: 23 CARMICAL,CAMERON	16:48		
SUB OUT: 14 KING,HOUSTON	16:48		
SUB IN: 11 BROWN,JOMARU	16:48		
SUB OUT: 22 ROBINSON,KELVIN	16:48		
SUB IN: 3 BROUGHTON,PEYTON	16:48		
	15:06	4-5	SUB OUT: MCFARLAND,DAVID
	15:06		SUB IN: ELLIS,CHRISTIAN
	15:06		SUB OUT: UZUEGBUNEM,ANSELM
	15:06		SUB IN: EZE,ELOCHUKWU
	13:16	7-9	SUB OUT: JACKSON,BRANDON
	13:16		SUB IN: UZUEGBUNEM,ANSELM
SUB OUT: 2 OAKLEY,JORDAN	13:16		
SUB IN: 12 KING,TRE	13:16		
SUB OUT: 3 BROUGHTON,PEYTON	13:16		
SUB IN: 00 WEAVER,DUJUANTA	13:16		
SUB OUT: 10 MAYO,NICK	13:16		
SUB IN: 14 KING,HOUSTON	13:16		
SUB OUT: 23 CARMICAL,CAMERON	13:16		
SUB IN: 22 ROBINSON,KELVIN	13:16		
SUB OUT: 00 WEAVER,DUJUANTA	12:14	7-11	
SUB IN: 3 BROUGHTON,PEYTON	12:14		
	11:21	9-11	SUB OUT: WILLIFORD,TYRESSE
	11:21		SUB IN: MCCOY,JAYLEN
	11:21		SUB OUT: EZE,ELOCHUKWU
	11:21		SUB IN: JACKSON,BRANDON
	11:21		SUB OUT: WILLIAMS,CAMERON
	11:21		SUB IN: MARTIN,TREAVON
	11:21		SUB OUT: UZUEGBUNEM,ANSELM
	11:21		SUB IN: MCFARLAND,DAVID
SUB OUT: 12 KING,TRE	11:21		
SUB IN: 10 MAYO,NICK	11:21		
SUB OUT: 11 BROWN,JOMARU	09:51	11-13	
SUB IN: 23 CARMICAL,CAMERON	09:51		
SUB OUT: 3 BROUGHTON,PEYTON	08:30	13-17	
SUB IN: 2 OAKLEY,JORDAN	08:30		
	08:14	13-17	SUB OUT: MCCOY,JAYLEN
	08:14		SUB IN: WILLIAMS,CAMERON
	08:14		SUB OUT: ELLIS,CHRISTIAN
	08:14		SUB IN: WILLIFORD,TYRESSE
	05:33	16-26	SUB OUT: MARTIN,TREAVON
	05:33		SUB IN: EZE,ELOCHUKWU
	05:33		SUB OUT: JACKSON,BRANDON
	05:33		SUB IN: UZUEGBUNEM,ANSELM
SUB OUT: 23 CARMICAL,CAMERON	05:33		
SUB IN: 11 BROWN,JOMARU	05:33		
	03:40	16-28	SUB OUT: MCFARLAND,DAVID
	03:40		SUB IN: ELLIS,CHRISTIAN
SUB OUT: 2 OAKLEY,JORDAN	03:40		
SUB IN: 00 WEAVER,DUJUANTA	03:40		
SUB OUT: 14 KING,HOUSTON	03:40		
SUB IN: 12 KING,TRE	03:40		
	01:20	20-36	SUB OUT: EZE,ELOCHUKWU
	01:20		SUB IN: MARTIN,TREAVON
	01:20		SUB OUT: UZUEGBUNEM,ANSELM
	01:20		SUB IN: JACKSON,BRANDON
SUB OUT: 11 BROWN,JOMARU	01:20		
SUB IN: 3 BROUGHTON,PEYTON	01:20		
	01:20		SUB OUT: WILLIAMS,CAMERON
	01:20		SUB IN: MCFARLAND,DAVID
SUB OUT: 00 WEAVER,DUJUANTA	00:48	22-36	
SUB IN: 32 BRADSHAW,PEDRO	00:48		
	00:36	22-37	SUB OUT: JACKSON,BRANDON
	00:36		SUB IN: UZUEGBUNEM,ANSELM
	00:36		SUB OUT: WILLIFORD,TYRESSE
	00:36		SUB IN: MCCOY,JAYLEN
SUB OUT: 12 KING,TRE	00:36		
SUB IN: 2 OAKLEY,JORDAN	00:36		
	00:05	22-37	SUB OUT: MARTIN,TREAVON
	00:05		SUB IN: WILLIFORD,TYRESSE
	00:05		SUB OUT: MCCOY,JAYLEN
	00:05		SUB IN: JACKSON,BRANDON

Official Substitutions Log
Eastern Ky. vs SIUE
Period 2
February 03, 2019 at Vadalabene Center - Edwardsville, Ill.

VISITORS: Eastern Ky.	Time	Score	HOME: SIUE
00 WEAVER, DUJUANTA			15 MCFARLAND, DAVID
10 MAYO, NICK			24 WILLIAMS, CAMERON
12 KING, TRE			30 UZUEGBUNEM, ANSELM
14 KING, HOUSTON			32 JACKSON, BRANDON
22 ROBINSON, KELVIN			5 WILLIFORD, TYRESSE
	18:01	26-40	SUB OUT: WILLIAMS, CAMERON
	18:01		SUB IN: MCCOY, JAYLEN
	16:08	28-42	SUB OUT: WILLIFORD, TYRESSE
	16:08		SUB IN: ELLIS, CHRISTIAN
SUB OUT: 22 ROBINSON, KELVIN	16:08		
SUB IN: 23 CARMICAL, CAMERON	16:08		
	14:11	33-46	SUB OUT: MCFARLAND, DAVID
	14:11		SUB IN: WILLIAMS, CAMERON
	14:11		SUB OUT: UZUEGBUNEM, ANSELM
	14:11		SUB IN: MARTIN, TREVON
	14:11		SUB OUT: JACKSON, BRANDON
	14:11		SUB IN: EZE, ELOCHUKWU
SUB OUT: 00 WEAVER, DUJUANTA	14:11		
SUB IN: 2 OAKLEY, JORDAN	14:11		
SUB OUT: 12 KING, TRE	14:11		
SUB IN: 11 BROWN, JOMARU	14:11		
	13:32	35-46	SUB OUT: MCCOY, JAYLEN
	13:32		SUB IN: WILLIFORD, TYRESSE
	12:23	39-48	SUB OUT: EZE, ELOCHUKWU
	12:23		SUB IN: JACKSON, BRANDON
SUB OUT: 23 CARMICAL, CAMERON	11:48	39-50	
SUB IN: 22 ROBINSON, KELVIN	11:48		
SUB OUT: 14 KING, HOUSTON	11:23	39-50	
SUB IN: 3 BROUGHTON, PEYTON	11:23		
	10:21	44-53	SUB OUT: WILLIAMS, CAMERON
	10:21		SUB IN: MCFARLAND, DAVID
	09:50	47-56	SUB OUT: JACKSON, BRANDON
	09:50		SUB IN: UZUEGBUNEM, ANSELM
	09:06	48-56	SUB OUT: UZUEGBUNEM, ANSELM
	09:06		SUB IN: JACKSON, BRANDON
	07:23	51-59	SUB OUT: ELLIS, CHRISTIAN
	07:23		SUB IN: WILLIAMS, CAMERON
SUB OUT: 3 BROUGHTON, PEYTON	07:23		
SUB IN: 14 KING, HOUSTON	07:23		
	05:26	52-63	SUB OUT: WILLIFORD, TYRESSE
	05:26		SUB IN: ELLIS, CHRISTIAN
SUB OUT: 2 OAKLEY, JORDAN	05:26		
SUB IN: 00 WEAVER, DUJUANTA	05:26		
	04:07	55-63	SUB OUT: MARTIN, TREVON
	04:07		SUB IN: UZUEGBUNEM, ANSELM
	04:07		SUB OUT: MCFARLAND, DAVID
	04:07		SUB IN: MCCOY, JAYLEN
	02:52	58-64	SUB OUT: ELLIS, CHRISTIAN
	02:52		SUB IN: WILLIFORD, TYRESSE
	02:52		SUB OUT: MCCOY, JAYLEN
	02:52		SUB IN: MCFARLAND, DAVID
	01:20	61-65	SUB OUT: UZUEGBUNEM, ANSELM
	01:20		SUB IN: ELLIS, CHRISTIAN
	00:12	69-66	SUB OUT: ELLIS, CHRISTIAN
	00:12		SUB IN: MCCOY, JAYLEN

Eastern Ky. 69, SIUE 69

Official Substitutions Log
Eastern Ky. vs SIUE
Period 3
February 03, 2019 at Vadalabene Center - Edwardsville, Ill.

VISITORS: Eastern Ky.	Time	Score	HOME: SIUE
00 WEAVER, DUJUANTA			15 MCFARLAND, DAVID
10 MAYO, NICK			24 WILLIAMS, CAMERON
12 KING, TRE			30 UZUEGBUNEM, ANSELM
14 KING, HOUSTON			32 JACKSON, BRANDON
22 ROBINSON, KELVIN			5 WILLIFORD, TYRESSE
	02:29	77-74	SUB OUT: WILLIAMS, CAMERON
	02:29		SUB IN: EZE, ELOCHUKWU
SUB OUT: 14 KING, HOUSTON	02:29		
SUB IN: 12 KING, TRE	02:29		
SUB OUT: 22 ROBINSON, KELVIN	00:30	78-76	
SUB IN: 23 CARMICAL, CAMERON	00:30		

Eastern Ky. 78, SIUE 78

Official Substitutions Log
Eastern Ky. vs SIUE
Period 4
February 03, 2019 at Vadalabene Center - Edwardsville, Ill.

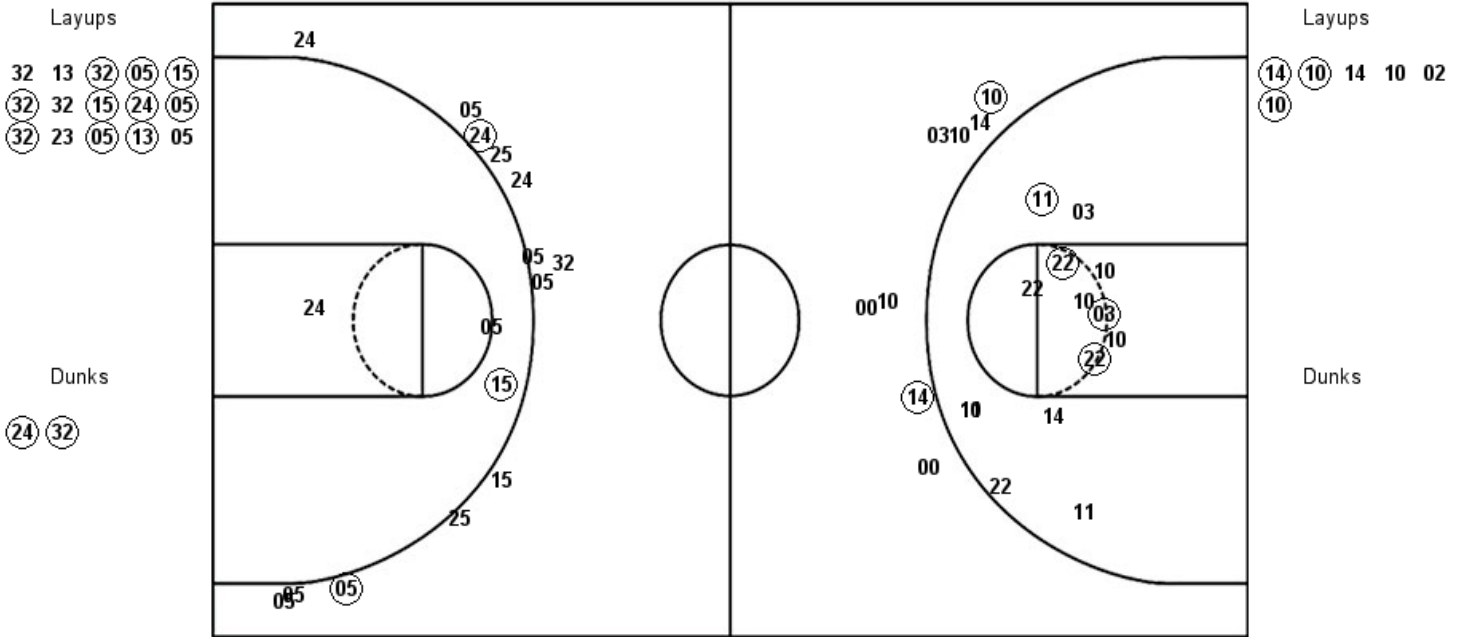
VISITORS: Eastern Ky.	Time	Score	HOME: SIUE
00 WEAVER, DUJUANTA			15 MCFARLAND, DAVID
10 MAYO, NICK			24 WILLIAMS, CAMERON
12 KING, TRE			30 UZUEGBUNEM, ANSELM
14 KING, HOUSTON			32 JACKSON, BRANDON
22 ROBINSON, KELVIN			5 WILLIFORD, TYRESSE
SUB OUT: 10 MAYO, NICK	02:42	80-83	
SUB IN: 14 KING, HOUSTON	02:42		
	02:42		SUB OUT: EZE, ELOCHUKWU
	02:42		SUB IN: MCCOY, JAYLEN
SUB OUT: 12 KING, TRE	01:29	82-84	
SUB IN: 21 ANDERSON, LACHLAN	01:29		
SUB OUT: 14 KING, HOUSTON	00:17	82-86	
SUB IN: 3 BROUGHTON, PEYTON	00:17		

Eastern Ky. 82, SIUE 88

Official Shot Chart
Eastern Ky. vs SIUE
PERIOD 1 Shots
 February 03, 2019 at Vadalabene Center - Edwardsville, Ill.

SIUE

Eastern Ky.



SIUE : Period 1	Made	Att	Pct
Layups	10	15	66.7
Dunks	2	2	100.0
2PT Field Goals	13	20	65.0
3PT Field Goals	2	13	15.4
Total Field Goals	15	33	45.5

EKU : Period 1	Made	Att	Pct
Layups	3	6	50.0
Dunks	0	0	0
2PT Field Goals	7	20	35.0
3PT Field Goals	2	8	25.0
Total Field Goals	9	28	32.1

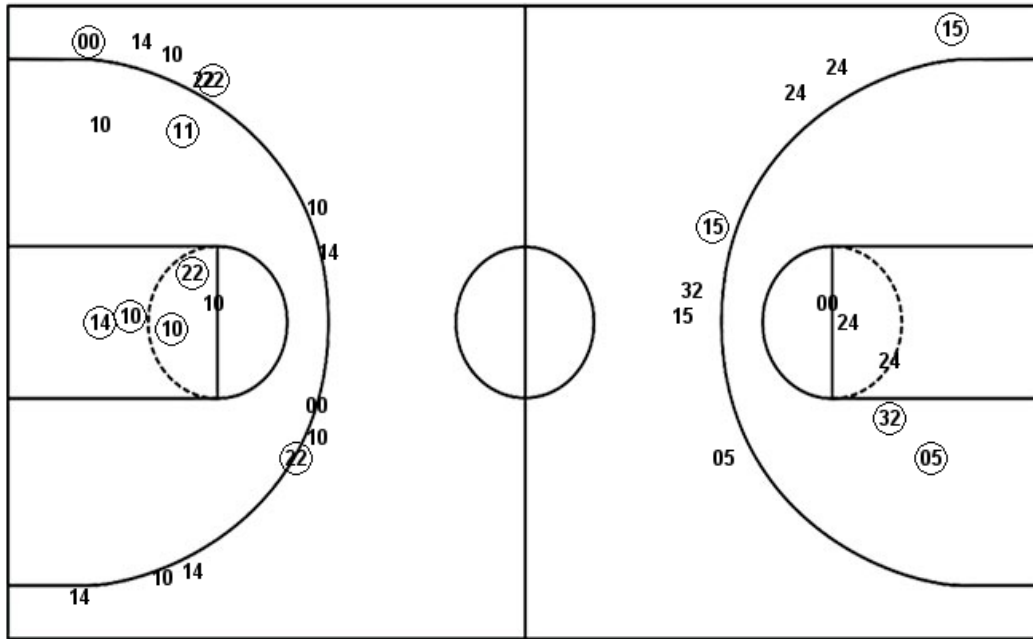
Official Shot Chart
Eastern Ky. vs SIUE
PERIOD 2 Shots
 February 03, 2019 at Vadalabene Center - Edwardsville, Ill.

SIUE

Eastern Ky.

Layups
 32 (32) (05) 13 25
 13 (05) (32) 05 13
 13

Dunks
 (32) (32)



Layups
 (22) (10) 10 (02) (10)
 (10) 22 22 (22) 10
 10 (11)

Dunks
 (11)

SIUE : Period 2	Made	Att	Pct
Layups	4	11	36.4
Dunks	2	2	100.0
2PT Field Goals	8	18	44.4
3PT Field Goals	2	7	28.6
Total Field Goals	10	25	40.0

EKU : Period 2	Made	Att	Pct
Layups	7	12	58.3
Dunks	1	1	100.0
2PT Field Goals	13	20	65.0
3PT Field Goals	3	13	23.1
Total Field Goals	16	33	48.5

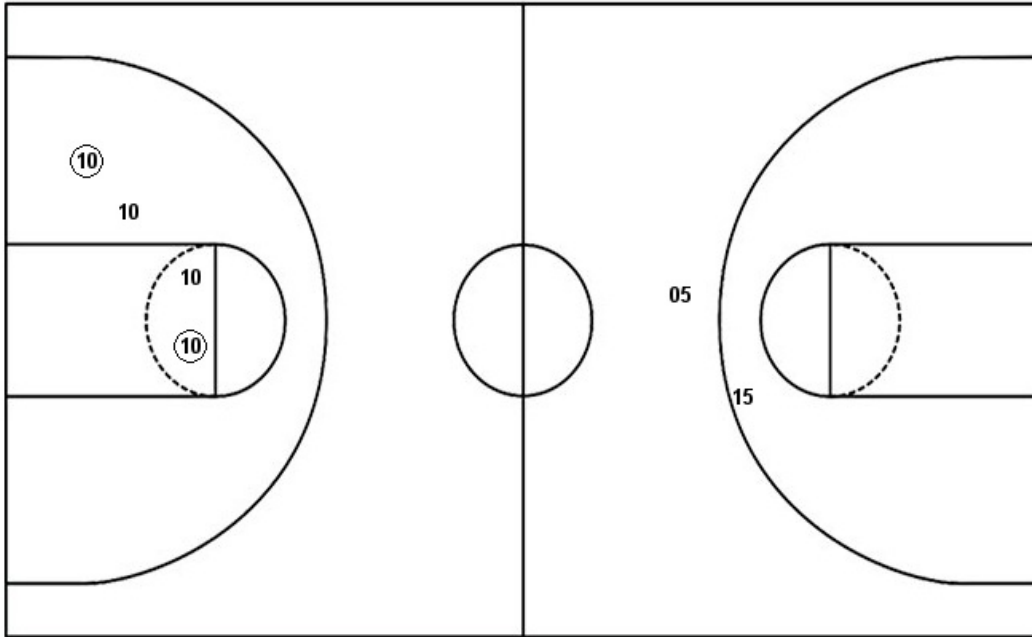
Official Shot Chart
Eastern Ky. vs SIUE
PERIOD 3 Shots
February 03, 2019 at Vadalabene Center - Edwardsville, Ill.

SIUE

Eastern Ky.

Layups
32 13

Layups



(10) (10)

Dunks

12

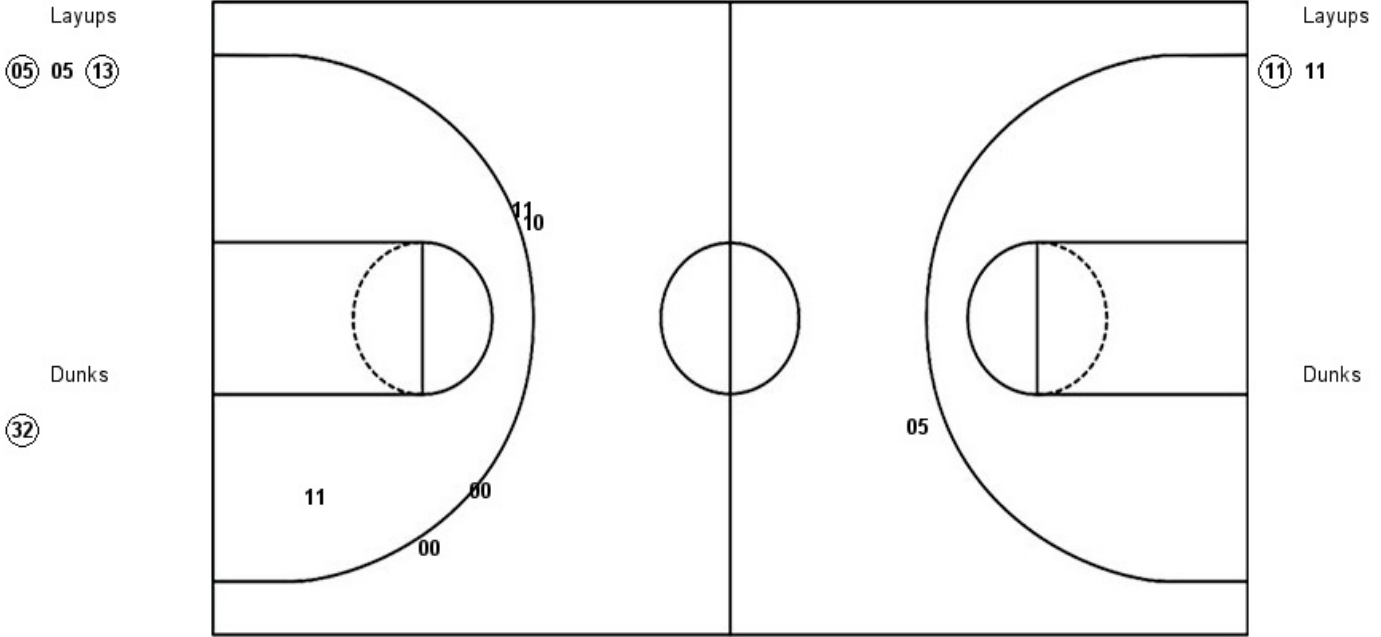
SIUE : Period 3	Made	Att	Pct
Layups	0	2	00.0
Dunks	0	0	0
2PT Field Goals	0	3	00.0
3PT Field Goals	0	1	00.0
Total Field Goals	0	4	00.0

EKU : Period 3	Made	Att	Pct
Layups	2	2	100.0
Dunks	0	1	00.0
2PT Field Goals	4	7	57.1
3PT Field Goals	0	0	0
Total Field Goals	4	7	57.1

Official Shot Chart
Eastern Ky. vs SIUE
PERIOD 4 Shots
 February 03, 2019 at Vadalabene Center - Edwardsville, Ill.

SIUE

Eastern Ky.



SIUE : Period 4	Made	Att	Pct
Layups	2	3	66.7
Dunks	1	1	100.0
2PT Field Goals	3	4	75.0
3PT Field Goals	0	1	00.0
Total Field Goals	3	5	60.0

EKU : Period 4	Made	Att	Pct
Layups	1	2	50.0
Dunks	0	0	0
2PT Field Goals	1	3	33.3
3PT Field Goals	0	4	00.0
Total Field Goals	1	7	14.3

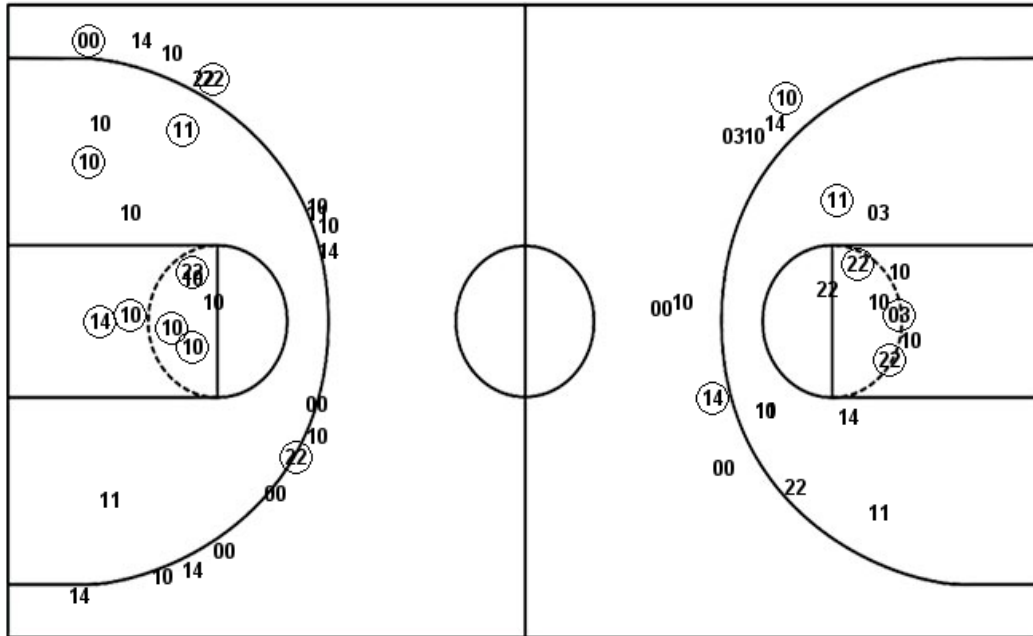
**Official Shot Chart
 Eastern Ky. vs SIUE
 Eastern Ky. Team Shots
 February 03, 2019 at Vadalabene Center - Edwardsville, Ill.**

Layups

Layups

Dunks

Dunks



EKU : Period 1	Made	Att	Pct
Layups	3	6	50.0
Dunks	0	0	0
2PT Field Goals	7	20	35.0
3PT Field Goals	2	8	25.0
Total Field Goals	9	28	32.1

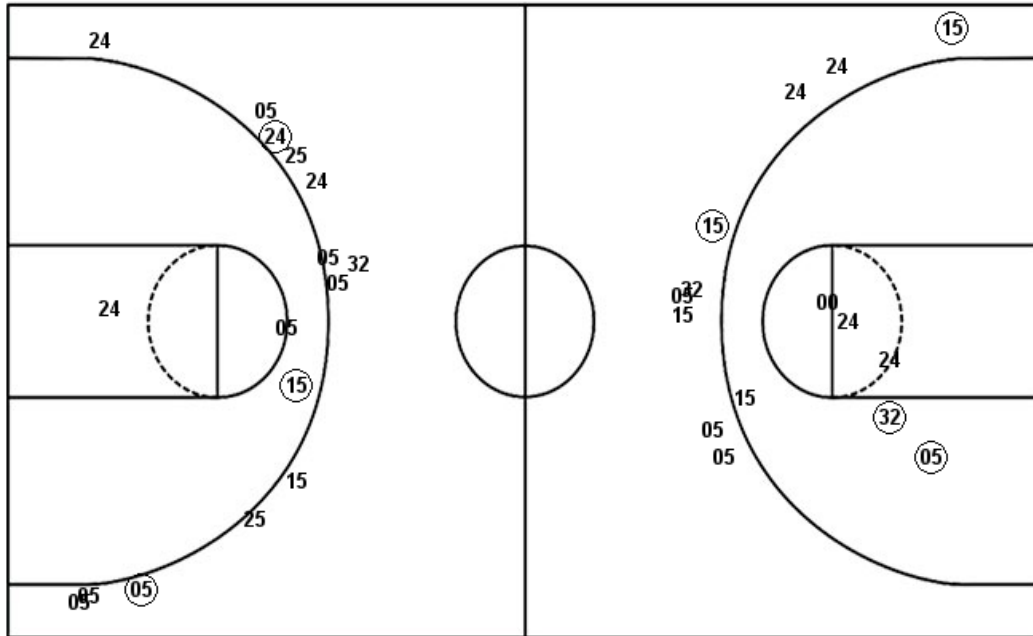
EKU : Period 3	Made	Att	Pct
Layups	2	2	100.0
Dunks	0	1	00.0
2PT Field Goals	4	7	57.1
3PT Field Goals	0	0	0
Total Field Goals	4	7	57.1

EKU : Period 2	Made	Att	Pct
Layups	7	12	58.3
Dunks	1	1	100.0
2PT Field Goals	13	20	65.0
3PT Field Goals	3	13	23.1
Total Field Goals	16	33	48.5

EKU : Period 4	Made	Att	Pct
Layups	1	2	50.0
Dunks	0	0	0
2PT Field Goals	1	3	33.3
3PT Field Goals	0	4	00.0
Total Field Goals	1	7	14.3

Official Shot Chart
Eastern Ky. vs SIUE
SIUE Team Shots
February 03, 2019 at Vadalabene Center - Edwardsville, Ill.

Layups



Layups

32 13 (32) (05) (15)
(32) 32 (15) (24) (05)
(32) 23 (05) (13) 05
32 (32) (05) 13 25
13 (05) (32) 05 13
13 32 13 (05) 05
(13)

Dunks

Dunks

(24) (32) (32) (32) (32)

SIUE: Period 1	Made	Att	Pct
Layups	10	15	66.7
Dunks	2	2	100.0
2PT Field Goals	13	20	65.0
3PT Field Goals	2	13	15.4
Total Field Goals	15	33	45.5

SIUE: Period 3	Made	Att	Pct
Layups	0	2	00.0
Dunks	0	0	0
2PT Field Goals	0	3	00.0
3PT Field Goals	0	1	00.0
Total Field Goals	0	4	00.0

SIUE: Period 2	Made	Att	Pct
Layups	4	11	36.4
Dunks	2	2	100.0
2PT Field Goals	8	18	44.4
3PT Field Goals	2	7	28.6
Total Field Goals	10	25	40.0

SIUE: Period 4	Made	Att	Pct
Layups	2	3	66.7
Dunks	1	1	100.0
2PT Field Goals	3	4	75.0
3PT Field Goals	0	1	00.0
Total Field Goals	3	5	60.0