

FINAL SCORE

Southeast Mo. St.

88



SIUE

94



January 04, 2019 •

FINAL STATISTICS

Official Box Score
Southeast Mo. St. vs SIUE
Game Totals -- Final Statistics
January 04, 2019

Southeast Mo. St. 88

No.	Player	S	Pts	FG	3FG	FT	OR	DR	TR	PF	A	TO	Blk	Stl	Min	+/-
03	Hogan, Skyler		18	7-14	4-7	0-0	0	2	2	2	1	2	0	1	29	-7
05	Dalton, Jonathan		10	2-6	1-3	5-5	1	2	3	1	8	0	0	0	33	-7
11	Russell, Nygal		11	4-6	3-5	0-0	2	2	4	4	2	1	1	0	18	-8
13	Gable, Isaiah		17	5-11	3-7	4-4	1	5	6	2	0	1	0	1	29	5
23	Tolbert, Sage		3	1-4	0-0	1-2	2	3	5	2	0	3	1	1	23	-7
00	Caldwell, Alex		4	1-3	0-1	2-2	0	1	1	2	4	1	0	1	21	2
04	Kao, Oscar		5	2-2	1-1	0-0	0	0	0	0	0	0	0	0	4	-3
15	Lewis, Donnie		2	1-1	0-0	0-1	0	0	0	0	4	0	0	0	15	6
30	Mcglathan, Gabe		4	2-5	0-1	0-0	3	1	4	3	1	4	0	1	11	-5
42	Laros, Mark		14	5-6	1-1	3-4	1	1	2	3	0	3	0	0	16	-6
	Team						0	0	0	0		0				
TOTALS			88	30-58	13-26	15-18	10	17	27	19	20	15	2	5	200	

Shooting By Period

Period	FG	FG%	3FG	3FG%	FT	FT%
1st Half	12-29	41%	5-11	45%	1-2	50%
2nd Half	18-29	62%	8-15	53%	14-16	88%
Game	30-58	51.7%	13-26	50.0%	15-18	83.3%

Last FG: 2nd-00:08
Biggest Run: 8-0
Largest lead: By 3 at 1-18:29
Technical Fouls: None.

SIUE 94

No.	Player	S	Pts	FG	3FG	FT	OR	DR	TR	PF	A	TO	Blk	Stl	Min	+/-
05	Williford, Tyrese		7	2-10	0-3	3-4	1	2	3	4	6	2	0	0	28	12
15	Mcfarland, David		22	7-12	3-7	5-5	0	2	2	1	4	0	1	0	32	3
24	Williams, Cameron		27	10-12	4-6	3-3	0	1	1	1	1	1	0	2	30	3
30	Uzuegbunem, Anselm		2	1-2	0-0	0-0	0	3	3	3	0	2	1	0	23	11
32	Jackson, Brandon		17	7-10	2-2	1-2	3	5	8	0	1	2	0	0	31	6
00	Martin, Treavon		6	3-3	0-0	0-0	1	2	3	2	1	1	0	0	13	-2
01	Jackson, D.J.		0	0-1	0-0	0-0	0	1	1	1	0	0	0	0	4	-6
03	Kinchen, Daniel		0	0-3	0-2	0-0	0	1	1	2	2	0	0	1	14	-3
13	Ellis, Christian		13	5-7	1-2	2-2	4	1	5	2	4	4	0	1	25	6
	Team						1	0	1	0		1				
TOTALS			94	35-60	10-22	14-16	10	18	28	16	19	13	2	4	200	

Shooting By Period

Period	FG	FG%	3FG	3FG%	FT	FT%
1st Half	18-32	56%	5-11	45%	4-5	80%
2nd Half	17-28	61%	5-11	45%	10-11	91%
Game	35-60	58.3%	10-22	45.5%	14-16	87.5%

Last FG: 2nd-00:58
Biggest Run: 11-0
Largest lead: By 20 at 1-00:54
Technical Fouls: None.

Game Notes:

Officials: Kevin Driver, Tommy Short, Kyle Bottoms
Attendance: 1046

Start Time: 2019-01-04 02:21:29
End Time: 2019-01-04 04:13:44
Game Duration: 112
Conference Game:

Score	1st	2nd	TOT
SEM	30	58	88
SIE	45	49	94

SEM led for 2:11. SIE led for 36:09.
Game was tied for 1:40.
Times tied: 2 Lead Changes: 3

Points from	SEM	SIE
In the Paint	26	36
Off Turns	16	17
2nd Chance	12	10
Fast Break	6	11
Bench	29	19

Official Box Score
Southeast Mo. St. vs SIUE
First Half Statistics Only
January 04, 2019

Southeast Mo. St. 30

No.	Player	S	Pts	FG	3FG	FT	OR	DR	TR	PF	A	TO	Blk	Stl	Min	+/-
03	Hogan, Skyler		7	3-7	1-3	0-0	0	1	1	0	0	1	0	0	12	-7
05	Dalton, Jonathan		0	0-2	0-1	0-0	1	1	2	0	4	0	0	0	16	-11
11	Russell, Nygal		6	2-2	2-2	0-0	0	1	1	0	0	1	1	0	10	-10
13	Gable, Isaiah		2	1-4	0-1	0-0	1	1	2	1	0	0	0	1	9	-3
23	Tolbert, Sage		2	1-3	0-0	0-0	2	3	5	1	0	2	1	0	15	-8
00	Caldwell, Alex		0	0-2	0-1	0-0	0	0	0	2	1	0	0	0	8	-6
04	Kao, Oscar		5	2-2	1-1	0-0	0	0	0	0	0	0	0	0	4	-3
15	Lewis, Donnie		0	0-0	0-0	0-0	0	0	0	0	2	0	0	0	9	-8
30	McGlothan, Gabe		0	0-3	0-1	0-0	1	1	2	2	1	3	0	0	6	-9
42	Laros, Mark		8	3-4	1-1	1-2	1	0	1	1	0	1	0	0	9	-10
	Team						0	0	0	0		0				
TOTALS			30	12-29	5-11	1-2	6	8	14	7	8	8	2	1	100	

Shooting By Period

Period	FG	FG%	3FG	3FG%	FT	FT%
1st Half	12-29	41%	5-11	45%	1-2	50%
Game	30-58	51.7%	13-26	50.0%	15-18	83.3%

Last FG Half: SEM 2nd-00:08

SIUE 45

No.	Player	S	Pts	FG	3FG	FT	OR	DR	TR	PF	A	TO	Blk	Stl	Min	+/-
05	Williford, Tyrese		0	0-5	0-2	0-0	1	1	2	1	3	0	0	0	12	10
15	Mcfarland, David		13	5-8	2-4	1-1	0	1	1	0	2	0	0	0	14	10
24	Williams, Cameron		14	5-6	2-3	2-2	0	1	1	1	1	1	0	2	14	6
30	Uzuegbunem, Anselm		0	0-1	0-0	0-0	0	3	3	0	0	0	1	0	16	15
32	Jackson, Brandon		8	3-4	1-1	1-2	2	3	5	0	0	0	0	0	13	12
00	Martin, Treavon		6	3-3	0-0	0-0	1	2	3	1	1	1	0	0	11	3
01	Jackson, D.J.		0	0-0	0-0	0-0	0	0	0	0	0	0	0	0	0	0
03	Kinchen, Daniel		0	0-2	0-1	0-0	0	0	0	0	1	0	0	1	8	3
13	Ellis, Christian		4	2-3	0-0	0-0	2	0	2	1	2	1	0	0	12	16
	Team						1	0	1	0		1				
TOTALS			45	18-32	5-11	4-5	7	11	18	4	10	4	1	3	100	

Shooting By Period

Period	FG	FG%	3FG	3FG%	FT	FT%
1st Half	18-32	56%	5-11	45%	4-5	80%
Game	35-60	58.3%	10-22	45.5%	14-16	87.5%

Last FG Half: SIE 2nd-00:58

Game Notes:

Officials: Kevin Driver, Tommy Short, Kyle Bottoms
Attendance: 1046

Start Time: 2019-01-04 02:21:29
End Time: 2019-01-04 04:13:44
Game Duration: 112
Conference Game:

Score	1st	2nd	TOT
SEM	30	58	88
SIE	45	49	94

Points from (This Period)	SEM	SIE
In the Paint	12	18
Off Turns	2	10
2nd Chance	3	4
Fast Break	0	5
Bench	13	10

Official Play-By-Play
Southeast Mo. St. vs SIUE
First Half
January 04, 2019

Period 1

Starters:

Southeast Mo. St.: 3 HOGAN,SKYLER; 5 DALTON,JONATHAN; 11 RUSSELL,NYGAL; 13 GABLE,ISIAIAH; 23 TOLBERT,SAGE;
SIUE: 5 WILLIFORD,TYRESE; 15 MCFARLAND,DAVID; 24 WILLIAMS,CAMERON; 30 UZUEGBUNEM,ANSELM; 32 JACKSON,BRANDON;

Time	VISITORS: Southeast Mo. St.	Score	Margin	HOME: SIUE
19:34	MISSED 3PTR by GABLE,ISIAIAH			
19:30	REBOUND (OFF) by DALTON,JONATHAN			
19:19				FOUL (PERSONAL) by WILLIFORD,TYRESE
19:10	GOOD! 3PTR by RUSSELL,NYGAL	0-3	V 3	
19:10	ASSIST by DALTON,JONATHAN			
18:48		2-3	V 1	GOOD! JUMPER by MCFARLAND,DAVID
18:29	GOOD! LAYUP by HOGAN,SKYLER	2-5	V 3	
18:20		5-5	T	GOOD! 3PTR by MCFARLAND,DAVID
18:10	FOUL (OFF) by TOLBERT,SAGE			
18:10	TURNOVER (OFFENSIVE) by TOLBERT,SAGE			
17:55				MISSED JUMPER by JACKSON,BRANDON
17:51				REBOUND (OFF) by JACKSON,BRANDON
17:44				TURNOVER (LOSTBALL) by WILLIAMS,CAMERON
17:44	STEAL by GABLE,ISIAIAH			
17:38	MISSED LAYUP by HOGAN,SKYLER			
17:34				REBOUND (DEF) by JACKSON,BRANDON
17:30		7-5	H 2	GOOD! LAYUP by MCFARLAND,DAVID
17:30				ASSIST by WILLIFORD,TYRESE
17:08	MISSED LAYUP by HOGAN,SKYLER			
17:04	REBOUND (OFF) by TOLBERT,SAGE			
17:03	MISSED LAYUP by TOLBERT,SAGE			
16:59				REBOUND (DEF) by JACKSON,BRANDON
16:38				MISSED LAYUP by MCFARLAND,DAVID
16:34	REBOUND (DEF) by TOLBERT,SAGE			
16:30				SUB OUT: JACKSON,BRANDON
16:30				SUB IN: MARTIN,TREAVON
16:30	SUB OUT: RUSSELL,NYGAL			
16:30	SUB IN: CALDWELL,ALEX			
16:20	MISSED LAYUP by DALTON,JONATHAN			
16:17				REBOUND (DEF) by MARTIN,TREAVON
16:06				MISSED 3PTR by WILLIAMS,CAMERON
16:01	REBOUND (DEF) by GABLE,ISIAIAH			
15:45	GOOD! 3PTR by HOGAN,SKYLER	7-8	V 1	
15:45	ASSIST by DALTON,JONATHAN			
15:17				MISSED LAYUP by WILLIFORD,TYRESE
15:14				REBOUND (OFF) by MARTIN,TREAVON
15:00	FOUL (PERSONAL) by GABLE,ISIAIAH			
15:00				
15:00	SUB OUT: GABLE,ISIAIAH			
15:00	SUB IN: MCGLOTHAN,GABE			
14:47				MISSED 3PTR by WILLIFORD,TYRESE
14:43	REBOUND (DEF) by MCGLOTHAN,GABE			
14:36	MISSED 3PTR by CALDWELL,ALEX			
14:32				REBOUND (DEF) by MARTIN,TREAVON
14:24		9-8	H 1	GOOD! LAYUP by MARTIN,TREAVON
14:24				ASSIST by WILLIFORD,TYRESE
14:07	MISSED JUMPER by MCGLOTHAN,GABE			
14:03	REBOUND (OFF) by TOLBERT,SAGE			
13:53	MISSED 3PTR by MCGLOTHAN,GABE			
13:49				REBOUND (DEF) by WILLIFORD,TYRESE
13:46				MISSED JUMPER by WILLIFORD,TYRESE
13:46	BLOCK by TOLBERT,SAGE			
13:46				REBOUND (OFF) by TEAM
13:46				SUB OUT: MCFARLAND,DAVID
13:46				SUB IN: KINCHEN,DANIEL
13:46				SUB OUT: WILLIAMS,CAMERON
13:46				SUB IN: JACKSON,BRANDON
13:46				SUB OUT: UZUEGBUNEM,ANSELM
13:46				SUB IN: ELLIS,CHRISTIAN
13:46	SUB OUT: DALTON,JONATHAN			
13:46	SUB IN: LAROS,MARK			
13:46	SUB OUT: TOLBERT,SAGE			
13:46	SUB IN: LEWIS,DONNIE			
13:25				MISSED 3PTR by KINCHEN,DANIEL
13:20		11-8	H 3	REBOUND (OFF) by ELLIS,CHRISTIAN
13:20				GOOD! LAYUP by ELLIS,CHRISTIAN
12:54	GOOD! LAYUP by LAROS,MARK [PNT]	11-10	H 1	
12:54	ASSIST by CALDWELL,ALEX			
12:30		13-10	H 3	GOOD! LAYUP by JACKSON,BRANDON
12:15	TURNOVER (BADPASS) by MCGLOTHAN,GABE			
12:15				STEAL by KINCHEN,DANIEL
12:09				MISSED LAYUP by KINCHEN,DANIEL
12:09				REBOUND (OFF) by ELLIS,CHRISTIAN
12:09				TURNOVER (TRAVEL) by ELLIS,CHRISTIAN
12:09				SUB OUT: WILLIFORD,TYRESE
12:09				SUB IN: MCFARLAND,DAVID

Time	VISITORS: Southeast Mo. St.	Score	Margin	HOME: SIUE
12:09	SUB OUT: HOGAN,SKYLER			
12:09	SUB IN: RUSSELL,NYGAL			
11:50	FOUL (OFF) by MCGLOTHAN,GABE			
11:50	TURNOVER (OFFENSIVE) by MCGLOTHAN,GABE			
11:50				
11:23		15-10	H 5	GOOD! JUMPER by MARTIN,TREAVON
11:23				ASSIST by MCFARLAND,DAVID
11:03				FOUL (PERSONAL) by MARTIN,TREAVON
11:03	MISSED FT by LAROS,MARK			
11:03	REBOUND (OFF) by TEAM			
11:03	GOOD! FT by LAROS,MARK	15-11	H 4	
10:42				MISSED 3PTR by MCFARLAND,DAVID
10:39	REBOUND (DEF) by RUSSELL,NYGAL			
10:27	MISSED JUMPER by CALDWELL,ALEX			
10:24	REBOUND (OFF) by MCGLOTHAN,GABE			
10:22	GOOD! 3PTR by RUSSELL,NYGAL	15-14	H 1	
10:22	ASSIST by MCGLOTHAN,GABE			
10:00	FOUL (PERSONAL) by LAROS,MARK			
10:00				SUB OUT: MARTIN,TREAVON
10:00				SUB IN: WILLIFORD,TYRESE
10:00				SUB OUT: KINCHEN,DANIEL
10:00				SUB IN: UZUEGBUNEM,ANSELM
09:53				MISSED LAYUP by ELLIS,CHRISTIAN
09:46				REBOUND (OFF) by JACKSON,BRANDON
09:46		17-14	H 3	GOOD! LAYUP by JACKSON,BRANDON
09:37	MISSED LAYUP by MCGLOTHAN,GABE			
09:31	REBOUND (OFF) by LAROS,MARK			
09:31	MISSED LAYUP by LAROS,MARK			
09:31				REBOUND (DEF) by UZUEGBUNEM,ANSELM
09:31		19-14	H 5	GOOD! LAYUP by MCFARLAND,DAVID [FB]
09:31	FOUL (PERSONAL) by CALDWELL,ALEX			
09:31	SUB OUT: CALDWELL,ALEX			
09:31	SUB IN: GABLE,ISAIAH			
09:31	SUB OUT: LEWIS,DONNIE			
09:31	SUB IN: DALTON,JONATHAN			
09:31	SUB OUT: MCGLOTHAN,GABE			
09:31	SUB IN: TOLBERT,SAGE			
09:31	SUB OUT: LAROS,MARK			
09:31	SUB IN: HOGAN,SKYLER			
09:31		20-14	H 6	GOOD! FT by MCFARLAND,DAVID [FB]
09:21				FOUL (PERSONAL) by ELLIS,CHRISTIAN
09:02	MISSED 3PTR by HOGAN,SKYLER			
08:58				REBOUND (DEF) by UZUEGBUNEM,ANSELM
08:52		23-14	H 9	GOOD! 3PTR by MCFARLAND,DAVID
08:52				ASSIST by WILLIFORD,TYRESE
08:34	MISSED LAYUP by TOLBERT,SAGE			
08:31				REBOUND (DEF) by JACKSON,BRANDON
08:25		26-14	H 12	GOOD! 3PTR by JACKSON,BRANDON
08:25				ASSIST by MCFARLAND,DAVID
08:13	MISSED 3PTR by HOGAN,SKYLER			
08:09				REBOUND (DEF) by MCFARLAND,DAVID
08:07				MISSED 3PTR by MCFARLAND,DAVID
08:02	REBOUND (DEF) by TOLBERT,SAGE			
08:01	TIMEOUT 30SEC			
08:01				
08:01				SUB OUT: ELLIS,CHRISTIAN
08:01				SUB IN: WILLIAMS,CAMERON
07:50	TURNOVER (LOSTBALL) by RUSSELL,NYGAL			
07:50				STEAL by WILLIAMS,CAMERON
07:25				MISSED JUMPER by UZUEGBUNEM,ANSELM
07:21	REBOUND (DEF) by HOGAN,SKYLER			
07:16	GOOD! DUNK by TOLBERT,SAGE	26-16	H 10	
07:16	ASSIST by DALTON,JONATHAN			
06:56				MISSED JUMPER by WILLIFORD,TYRESE
06:52	REBOUND (DEF) by TOLBERT,SAGE			
06:48	GOOD! LAYUP by GABLE,ISAIAH [PNT]	26-18	H 8	
06:48	ASSIST by DALTON,JONATHAN			
06:17				MISSED 3PTR by WILLIFORD,TYRESE
06:17	BLOCK by RUSSELL,NYGAL			
06:13				REBOUND (OFF) by WILLIFORD,TYRESE
06:13				TURNOVER (SHOTLOCK) by
06:13	SUB OUT: RUSSELL,NYGAL			
06:13	SUB IN: CALDWELL,ALEX			
05:57	TURNOVER (BADPASS) by HOGAN,SKYLER			
05:57				STEAL by WILLIAMS,CAMERON
05:52		28-18	H 10	GOOD! DUNK by WILLIAMS,CAMERON [FB]
05:47				SUB OUT: WILLIFORD,TYRESE
05:47				SUB IN: ELLIS,CHRISTIAN
05:27				FOUL (PERSONAL) by WILLIAMS,CAMERON
05:15	MISSED LAYUP by GABLE,ISAIAH			
05:09	REBOUND (OFF) by GABLE,ISAIAH			
05:09	MISSED LAYUP by GABLE,ISAIAH			
05:09				BLOCK by UZUEGBUNEM,ANSELM
05:08				REBOUND (DEF) by WILLIAMS,CAMERON
05:08	FOUL (PERSONAL) by CALDWELL,ALEX			
05:08		29-18	H 11	GOOD! FT by JACKSON,BRANDON
05:08	SUB OUT: CALDWELL,ALEX			

Time	VISITORS: Southeast Mo. St.	Score	Margin	HOME: SIUE
05:08	SUB IN: LEWIS,DONNIE			
05:08	SUB OUT: HOGAN,SKYLER			
05:08	SUB IN: MCGLOTHAN,GABE			
05:08	SUB OUT: GABLE,ISAIAH			
05:08	SUB IN: LAROS,MARK			
05:08	SUB OUT: TOLBERT,SAGE			
05:08	SUB IN: RUSSELL,NYGAL			
05:04				MISSED FT by JACKSON,BRANDON
05:01	REBOUND (DEF) by DALTON,JONATHAN			
04:52	TURNOVER (DRIBBLING) by MCGLOTHAN,GABE			
04:35		31-18	H 13	GOOD! JUMPER by ELLIS,CHRISTIAN
04:19	TURNOVER (BADPASS) by LAROS,MARK			
04:19				SUB OUT: JACKSON,BRANDON
04:19				SUB IN: MARTIN,TREAVON
04:09	FOUL (PERSONAL) by MCGLOTHAN,GABE			
04:09		32-18	H 14	GOOD! FT by WILLIAMS,CAMERON
04:09				SUB OUT: MCFARLAND,DAVID
04:09				SUB IN: KINCHEN,DANIEL
04:09	SUB OUT: MCGLOTHAN,GABE			
04:09	SUB IN: TOLBERT,SAGE			
04:09	SUB OUT: RUSSELL,NYGAL			
04:09	SUB IN: KAO,OSCAR			
04:09		33-18	H 15	GOOD! FT by WILLIAMS,CAMERON
03:54	TURNOVER (TRAVEL) by TOLBERT,SAGE			
03:54				
03:44		35-18	H 17	GOOD! JUMPER by MARTIN,TREAVON
03:44				ASSIST by WILLIAMS,CAMERON
03:20	GOOD! LAYUP by LAROS,MARK [PNT]	35-20	H 15	
03:01		37-20	H 17	GOOD! LAYUP by WILLIAMS,CAMERON
03:01				ASSIST by KINCHEN,DANIEL
02:42	GOOD! 3PTR by KAO,OSCAR	37-23	H 14	
02:42	ASSIST by LEWIS,DONNIE			
02:29		40-23	H 17	GOOD! 3PTR by WILLIAMS,CAMERON
02:29				ASSIST by ELLIS,CHRISTIAN
02:09	MISSED 3PTR by DALTON,JONATHAN			
02:04				REBOUND (DEF) by UZUEGBUNEM,ANSELM
01:52		42-23	H 19	GOOD! LAYUP by WILLIAMS,CAMERON
01:52				ASSIST by MARTIN,TREAVON
01:25	GOOD! JUMPER by KAO,OSCAR	42-25	H 17	
00:54		45-25	H 20	GOOD! 3PTR by WILLIAMS,CAMERON
00:54				ASSIST by ELLIS,CHRISTIAN
00:37	GOOD! 3PTR by LAROS,MARK	45-28	H 17	
00:37	ASSIST by LEWIS,DONNIE			
00:05				TURNOVER (TRAVEL) by MARTIN,TREAVON
00:05				SUB OUT: MARTIN,TREAVON
00:05				SUB IN: MCFARLAND,DAVID
00:05				SUB OUT: KINCHEN,DANIEL
00:05				SUB IN: WILLIFORD,TYRESE
00:05				SUB OUT: WILLIAMS,CAMERON
00:05				SUB IN: JACKSON,BRANDON
00:05	SUB OUT: KAO,OSCAR			
00:05	SUB IN: GABLE,ISAIAH			
00:05	SUB OUT: LAROS,MARK			
00:05	SUB IN: HOGAN,SKYLER			
00:01	GOOD! LAYUP by HOGAN,SKYLER [PNT]	45-30	H 15	

Southeast Mo. St. 30, SIUE 45

Points from (This Period)	SEM	SIE
In the Paint	12	18
Off Turns	2	10
2nd Chance	3	4
Fast Break	0	5
Bench	13	10

Official Box Score
Southeast Mo. St. vs SIUE
Second Half Statistics Only
January 04, 2019

Southeast Mo. St. 58

No.	Player	S	Pts	FG	3FG	FT	OR	DR	TR	PF	A	TO	Blk	Stl	Min	+/-
03	Hogan, Skyler		11	4-7	3-4	0-0	0	1	1	2	1	1	0	1	17	0
05	Dalton, Jonathan		10	2-4	1-2	5-5	0	1	1	1	4	0	0	0	18	4
11	Russell, Nygal		5	2-4	1-3	0-0	2	1	3	4	2	0	0	0	8	2
13	Gable, Isaiah		15	4-7	3-6	4-4	0	4	4	1	0	1	0	0	19	8
23	Tolbert, Sage		1	0-1	0-0	1-2	0	0	0	1	0	1	0	1	8	1
00	Caldwell, Alex		4	1-1	0-0	2-2	0	1	1	0	3	1	0	1	13	8
04	Kao, Oscar		0	0-0	0-0	0-0	0	0	0	0	0	0	0	0	0	0
15	Lewis, Donnie		2	1-1	0-0	0-1	0	0	0	0	2	0	0	0	6	14
30	Mcglathan, Gabe		4	2-2	0-0	0-0	2	0	2	1	0	1	0	1	5	4
42	Laros, Mark		6	2-2	0-0	2-2	0	1	1	2	0	2	0	0	7	4
	Team						0	0	0	0		0				
TOTALS			58	18-29	8-15	14-16	4	9	13	12	12	7	0	4	100	

Shooting By Period

Period	FG	FG%	3FG	3FG%	FT	FT%
2nd Half	18-29	62%	8-15	53%	14-16	88%
Game	30-58	51.7%	13-26	50.0%	15-18	83.3%

Last FG Half: SEM -

SIUE 49

No.	Player	S	Pts	FG	3FG	FT	OR	DR	TR	PF	A	TO	Blk	Stl	Min	+/-
05	Williford, Tyrese		7	2-5	0-1	3-4	0	1	1	3	3	2	0	0	16	2
15	Mcfarland, David		9	2-4	1-3	4-4	0	1	1	1	2	0	1	0	18	-7
24	Williams, Cameron		13	5-6	2-3	1-1	0	0	0	0	0	0	0	0	16	-3
30	Uzuegbunem, Anselm		2	1-1	0-0	0-0	0	0	0	3	0	2	0	0	7	-4
32	Jackson, Brandon		9	4-6	1-1	0-0	1	2	3	0	1	2	0	0	18	-6
00	Martin, Treavon		0	0-0	0-0	0-0	0	0	0	1	0	0	0	0	2	-5
01	Jackson, D.J.		0	0-1	0-0	0-0	0	1	1	1	0	0	0	0	4	-6
03	Kinchen, Daniel		0	0-1	0-1	0-0	0	1	1	2	1	0	0	0	6	-6
13	Ellis, Christian		9	3-4	1-2	2-2	2	1	3	1	2	3	0	1	14	-10
	Team						0	0	0	0		0				
TOTALS			49	17-28	5-11	10-11	3	7	10	12	9	9	1	1	100	

Shooting By Period

Period	FG	FG%	3FG	3FG%	FT	FT%
2nd Half	17-28	61%	5-11	45%	10-11	91%
Game	35-60	58.3%	10-22	45.5%	14-16	87.5%

Last FG Half: SIE -

Game Notes:

Officials: Kevin Driver, Tommy Short, Kyle Bottoms
 Attendance: 1046

Start Time: 2019-01-04 02:21:29
 End Time: 2019-01-04 04:13:44
 Game Duration: 112
 Conference Game;

Score	1st	2nd	TOT
SEM	30	58	88
SIE	45	49	94

Points from (This Period)	SEM	SIE
In the Paint	14	18
Off Turns	14	7
2nd Chance	9	6
Fast Break	6	6
Bench	16	9

Official Play-By-Play
Southeast Mo. St. vs SIUE
Second Half
January 04, 2019

Period 2

Starters:

Southeast Mo. St.: 3 HOGAN,SKYLER; 5 DALTON,JONATHAN; 11 RUSSELL,NYGAL; 13 GABLE,ISIAIAH; 23 TOLBERT,SAGE;
SIUE: 5 WILLIFORD,TYRESE; 15 MCFARLAND,DAVID; 24 WILLIAMS,CAMERON; 30 UZUEGBUNEM,ANSELM; 32 JACKSON,BRANDON;

Time	VISITORS: Southeast Mo. St.	Score	Margin	HOME: SIUE
19:45				TURNOVER (BADPASS) by WILLIFORD,TYRESE
19:45	STEAL by TOLBERT,SAGE			
19:26	GOOD! 3PTR by RUSSELL,NYGAL	45-33	H 12	
19:26	ASSIST by DALTON,JONATHAN			
19:06				MISSED LAYUP by JACKSON,BRANDON
19:00				REBOUND (OFF) by JACKSON,BRANDON
19:00		47-33	H 14	GOOD! LAYUP by JACKSON,BRANDON
18:39	MISSED JUMPER by TOLBERT,SAGE			
18:33				REBOUND (DEF) by JACKSON,BRANDON
18:15				MISSED 3PTR by MCFARLAND,DAVID
18:12	REBOUND (DEF) by DALTON,JONATHAN			
18:09				FOUL (PERSONAL) by UZUEGBUNEM,ANSELM
18:09	GOOD! FT by DALTON,JONATHAN	47-34	H 13	
18:09	GOOD! FT by DALTON,JONATHAN	47-35	H 12	
18:01		50-35	H 15	GOOD! 3PTR by WILLIAMS,CAMERON
18:01				ASSIST by WILLIFORD,TYRESE
17:42	MISSED 3PTR by RUSSELL,NYGAL			
17:38				REBOUND (DEF) by JACKSON,BRANDON
17:31		53-35	H 18	GOOD! 3PTR by JACKSON,BRANDON
17:31				ASSIST by MCFARLAND,DAVID
17:12	GOOD! 3PTR by HOGAN,SKYLER	53-38	H 15	
17:12	ASSIST by RUSSELL,NYGAL			
17:04		55-38	H 17	GOOD! LAYUP by JACKSON,BRANDON [FB]
17:04				ASSIST by WILLIFORD,TYRESE
16:44	MISSED 3PTR by HOGAN,SKYLER			
16:40				REBOUND (DEF) by MCFARLAND,DAVID
16:31				TURNOVER (BADPASS) by UZUEGBUNEM,ANSELM
16:31	STEAL by HOGAN,SKYLER			
16:25	MISSED LAYUP by HOGAN,SKYLER			
16:25				BLOCK by MCFARLAND,DAVID
16:18	REBOUND (OFF) by RUSSELL,NYGAL			
16:18	GOOD! LAYUP by RUSSELL,NYGAL	55-40	H 15	
16:17	FOUL (PERSONAL) by RUSSELL,NYGAL			
16:17				SUB OUT: UZUEGBUNEM,ANSELM
16:17				SUB IN: MARTIN,TREAVON
16:17	SUB OUT: TOLBERT,SAGE			
16:17	SUB IN: LAROS,MARK			
16:17	SUB OUT: RUSSELL,NYGAL			
16:17	SUB IN: CALDWELL,ALEX			
16:08		58-40	H 18	GOOD! 3PTR by WILLIAMS,CAMERON
16:08				ASSIST by JACKSON,BRANDON
16:06	SUB OUT: HOGAN,SKYLER			
16:06	SUB IN: LEWIS,DONNIE			
15:53	GOOD! 3PTR by GABLE,ISIAIAH	58-43	H 15	
15:53	ASSIST by CALDWELL,ALEX			
15:45				MISSED LAYUP by WILLIFORD,TYRESE
15:45	REBOUND (DEF) by CALDWELL,ALEX			
15:44				FOUL (PERSONAL) by WILLIFORD,TYRESE
15:44				SUB OUT: WILLIFORD,TYRESE
15:44				SUB IN: ELLIS,CHRISTIAN
15:33				FOUL (PERSONAL) by MARTIN,TREAVON
15:33	GOOD! FT by LAROS,MARK [FB]	58-44	H 14	
15:33	GOOD! FT by LAROS,MARK [FB]	58-45	H 13	
15:16				MISSED JUMPER by JACKSON,BRANDON
15:12	REBOUND (DEF) by GABLE,ISIAIAH			
14:55	GOOD! LAYUP by LAROS,MARK	58-47	H 11	
14:55	ASSIST by CALDWELL,ALEX			
14:38		60-47	H 13	GOOD! LAYUP by MCFARLAND,DAVID
14:30	GOOD! 3PTR by GABLE,ISIAIAH	60-50	H 10	
14:30	ASSIST by LEWIS,DONNIE			
14:15	FOUL (PERSONAL) by DALTON,JONATHAN			
14:15				SUB OUT: MARTIN,TREAVON
14:15				SUB IN: JACKSON,D.J.
14:15				SUB OUT: JACKSON,BRANDON
14:15				SUB IN: UZUEGBUNEM,ANSELM
14:04		62-50	H 12	GOOD! JUMPER by UZUEGBUNEM,ANSELM [PNT]
13:49	GOOD! 3PTR by GABLE,ISIAIAH	62-53	H 9	
13:49	ASSIST by DALTON,JONATHAN			
13:30				TURNOVER (BADPASS) by UZUEGBUNEM,ANSELM
13:30				SUB OUT: MCFARLAND,DAVID
13:30				SUB IN: KINCHEN,DANIEL
13:30				SUB OUT: WILLIAMS,CAMERON
13:30				SUB IN: WILLIFORD,TYRESE
13:24	FOUL (OFF) by LAROS,MARK			
13:24	TURNOVER (OFFENSIVE) by LAROS,MARK			

Time	VISITORS: Southeast Mo. St.	Score	Margin	HOME: SIUE
13:14				MISSED JUMPER by JACKSON,D.J.
13:11	REBOUND (DEF) by LAROS,MARK			
13:09	MISSED 3PTR by GABLE,ISAIAH			
13:03				REBOUND (DEF) by KINCHEM,DANIEL
12:49				TURNOVER (TRAVEL) by ELLIS,CHRISTIAN
12:49	SUB OUT: LAROS,MARK			
12:49	SUB IN: TOLBERT,SAGE			
12:42	SUB OUT: DALTON,JONATHAN			
12:42	SUB IN: HOGAN,SKYLER			
12:30				FOUL (PERSONAL) by UZUEGBUNEM,ANSELM
12:22	GOOD! JUMPER by CALDWELL,ALEX	62-55	H 7	
12:10				MISSED 3PTR by KINCHEM,DANIEL
12:06	REBOUND (DEF) by GABLE,ISAIAH			
11:56				FOUL (PERSONAL) by WILLIFORD,TYRESE
11:56				SUB OUT: WILLIFORD,TYRESE
11:56				SUB IN: MCFARLAND,DAVID
11:56				SUB OUT: UZUEGBUNEM,ANSELM
11:56				SUB IN: JACKSON,BRANDON
11:49	GOOD! LAYUP by LEWIS,DONNIE	62-57	H 5	
11:49				FOUL (PERSONAL) by KINCHEM,DANIEL
11:48	MISSED FT by LEWIS,DONNIE			
11:46				REBOUND (DEF) by JACKSON,D.J.
11:30		64-57	H 7	GOOD! JUMPER by ELLIS,CHRISTIAN
11:23				FOUL (PERSONAL) by JACKSON,D.J.
11:23	GOOD! FT by GABLE,ISAIAH [FB]	64-58	H 6	
11:23	GOOD! FT by GABLE,ISAIAH [FB]	64-59	H 5	
11:03		66-59	H 7	GOOD! LAYUP by ELLIS,CHRISTIAN [PNT]
10:45	GOOD! 3PTR by HOGAN,SKYLER	66-62	H 4	
10:45	ASSIST by LEWIS,DONNIE			
10:23				MISSED 3PTR by MCFARLAND,DAVID
10:20	REBOUND (DEF) by GABLE,ISAIAH			
10:20				SUB OUT: KINCHEM,DANIEL
10:20				SUB IN: WILLIFORD,TYRESE
10:20				SUB OUT: JACKSON,D.J.
10:20				SUB IN: WILLIAMS,CAMERON
10:20	SUB OUT: LEWIS,DONNIE			
10:20	SUB IN: DALTON,JONATHAN			
10:04	MISSED 3PTR by GABLE,ISAIAH			
09:59				REBOUND (DEF) by ELLIS,CHRISTIAN
09:57		68-62	H 6	GOOD! DUNK by WILLIAMS,CAMERON [FB]
09:57				ASSIST by ELLIS,CHRISTIAN
09:37				FOUL (PERSONAL) by ELLIS,CHRISTIAN
09:37	MISSED FT by TOLBERT,SAGE			
09:37	REBOUND (OFF) by TEAM			
09:37	GOOD! FT by TOLBERT,SAGE	68-63	H 5	
09:18				MISSED 3PTR by WILLIAMS,CAMERON
09:14	REBOUND (DEF) by HOGAN,SKYLER			
09:05	TURNOVER (TRAVEL) by GABLE,ISAIAH			
08:49		71-63	H 8	GOOD! 3PTR by ELLIS,CHRISTIAN
08:49				ASSIST by WILLIFORD,TYRESE
08:29	FOUL (OFF) by TOLBERT,SAGE			
08:29	TURNOVER (OFFENSIVE) by TOLBERT,SAGE			
08:29	SUB OUT: TOLBERT,SAGE			
08:29	SUB IN: LAROS,MARK			
08:29				TIMEOUT TEAM
08:15				TURNOVER (BADPASS) by WILLIFORD,TYRESE
07:52	TURNOVER (LOSTBALL) by HOGAN,SKYLER			
07:52				STEAL by ELLIS,CHRISTIAN
07:51	FOUL (PERSONAL) by HOGAN,SKYLER			
07:51				
07:34				MISSED LAYUP by WILLIFORD,TYRESE
07:34				REBOUND (OFF) by ELLIS,CHRISTIAN
07:34	FOUL (PERSONAL) by LAROS,MARK			
07:34		72-63	H 9	GOOD! FT by ELLIS,CHRISTIAN
07:34		73-63	H 10	GOOD! FT by ELLIS,CHRISTIAN
07:24	GOOD! LAYUP by HOGAN,SKYLER [PNT]	73-65	H 8	
07:24	ASSIST by CALDWELL,ALEX			
07:03				TURNOVER (BADPASS) by JACKSON,BRANDON
07:03	STEAL by CALDWELL,ALEX			
07:00				FOUL (PERSONAL) by MCFARLAND,DAVID
07:00	GOOD! FT by CALDWELL,ALEX [FB]	73-66	H 7	
07:00	GOOD! FT by CALDWELL,ALEX [FB]	73-67	H 6	
06:51				MISSED 3PTR by ELLIS,CHRISTIAN
06:48				REBOUND (OFF) by ELLIS,CHRISTIAN
06:45		75-67	H 8	GOOD! DUNK by WILLIAMS,CAMERON [PNT]
06:23	TURNOVER (TRAVEL) by CALDWELL,ALEX			
06:08		77-67	H 10	GOOD! JUMPER by JACKSON,BRANDON
06:08				ASSIST by MCFARLAND,DAVID
05:45	GOOD! JUMPER by LAROS,MARK	77-69	H 8	
05:45	ASSIST by HOGAN,SKYLER			
05:22		79-69	H 10	GOOD! LAYUP by WILLIFORD,TYRESE [PNT]
05:10	TURNOVER (LOSTBALL) by LAROS,MARK			
05:10				SUB OUT: MCFARLAND,DAVID
05:10				SUB IN: UZUEGBUNEM,ANSELM
05:10				SUB OUT: WILLIAMS,CAMERON
05:10				SUB IN: KINCHEM,DANIEL

Time	VISITORS: Southeast Mo. St.	Score	Margin	HOME: SIUE
04:55				TURNOVER (TRAVEL) by JACKSON,BRANDON
04:55	SUB OUT: LAROS,MARK			
04:55	SUB IN: MCGLOTHAN,GABE			
04:55	SUB OUT: CALDWELL,ALEX			
04:55	SUB IN: RUSSELL,NYGAL			
04:40	TIMEOUT 30SEC			
04:40				SUB OUT: ELLIS,CHRISTIAN
04:40				SUB IN: MCFARLAND,DAVID
04:40				FOUL (PERSONAL) by UZUEGBUNEM,ANSELM
04:40	GOOD! FT by GABLE,ISIAIAH	79-70	H 9	
04:40	GOOD! FT by GABLE,ISIAIAH	79-71	H 8	
04:22	FOUL (PERSONAL) by RUSSELL,NYGAL			
04:22		80-71	H 9	GOOD! FT by WILLIFORD,TYRESE
04:22				SUB OUT: UZUEGBUNEM,ANSELM
04:22				SUB IN: WILLIAMS,CAMERON
04:22				MISSED FT by WILLIFORD,TYRESE
04:22	REBOUND (DEF) by RUSSELL,NYGAL			
03:59	MISSED 3PTR by GABLE,ISIAIAH			
03:55				REBOUND (DEF) by WILLIFORD,TYRESE
03:29				MISSED 3PTR by WILLIFORD,TYRESE
03:25	REBOUND (DEF) by GABLE,ISIAIAH			
03:21	GOOD! LAYUP by GABLE,ISIAIAH	80-73	H 7	
03:21	ASSIST by DALTON,JONATHAN			
03:01		82-73	H 9	GOOD! JUMPER by WILLIAMS,CAMERON
03:01				ASSIST by KINCHEN,DANIEL
03:01	FOUL (PERSONAL) by GABLE,ISIAIAH			
03:01				SUB OUT: KINCHEN,DANIEL
03:01				SUB IN: ELLIS,CHRISTIAN
03:01		83-73	H 10	GOOD! FT by WILLIAMS,CAMERON
02:43	MISSED LAYUP by DALTON,JONATHAN			
02:35	REBOUND (OFF) by MCGLOTHAN,GABE			
02:35	GOOD! DUNK by MCGLOTHAN,GABE	83-75	H 8	
02:19		86-75	H 11	GOOD! 3PTR by MCFARLAND,DAVID
02:19				ASSIST by ELLIS,CHRISTIAN
02:06				FOUL (PERSONAL) by WILLIFORD,TYRESE
02:06	GOOD! FT by DALTON,JONATHAN	86-76	H 10	
02:06	GOOD! FT by DALTON,JONATHAN	86-77	H 9	
01:43				TURNOVER (TRAVEL) by ELLIS,CHRISTIAN
01:43				SUB OUT: WILLIFORD,TYRESE
01:43				SUB IN: KINCHEN,DANIEL
01:43	SUB OUT: RUSSELL,NYGAL			
01:43	SUB IN: CALDWELL,ALEX			
01:39	FOUL (OFF) by MCGLOTHAN,GABE			
01:39	TURNOVER (OFFENSIVE) by MCGLOTHAN,GABE			
01:39				SUB OUT: KINCHEN,DANIEL
01:39				SUB IN: WILLIFORD,TYRESE
01:30				TURNOVER (BADPASS) by ELLIS,CHRISTIAN
01:30	STEAL by MCGLOTHAN,GABE			
01:20	GOOD! 3PTR by HOGAN,SKYLER	86-80	H 6	
01:20	ASSIST by DALTON,JONATHAN			
00:58		88-80	H 8	GOOD! LAYUP by WILLIFORD,TYRESE [PNT]
00:58				SUB OUT: WILLIFORD,TYRESE
00:58				SUB IN: KINCHEN,DANIEL
00:51	GOOD! JUMPER by DALTON,JONATHAN	88-82	H 6	
00:51				FOUL (PERSONAL) by KINCHEN,DANIEL
00:51				SUB OUT: ELLIS,CHRISTIAN
00:51				SUB IN: WILLIFORD,TYRESE
00:51	SUB OUT: GABLE,ISIAIAH			
00:51	SUB IN: RUSSELL,NYGAL			
00:51	GOOD! FT by DALTON,JONATHAN	88-83	H 5	
00:37	FOUL (PERSONAL) by HOGAN,SKYLER			
00:37		89-83	H 6	GOOD! FT by WILLIFORD,TYRESE
00:37				SUB OUT: KINCHEN,DANIEL
00:37				SUB IN: ELLIS,CHRISTIAN
00:37		90-83	H 7	GOOD! FT by WILLIFORD,TYRESE
00:23	MISSED LAYUP by HOGAN,SKYLER			
00:23	REBOUND (OFF) by MCGLOTHAN,GABE			
00:23	GOOD! LAYUP by MCGLOTHAN,GABE	90-85	H 5	
00:22	TIMEOUT TEAM			
00:22				SUB OUT: ELLIS,CHRISTIAN
00:22				SUB IN: KINCHEN,DANIEL
00:22	FOUL (PERSONAL) by RUSSELL,NYGAL			
00:22		91-85	H 6	GOOD! FT by MCFARLAND,DAVID
00:22		92-85	H 7	GOOD! FT by MCFARLAND,DAVID
00:22				SUB OUT: KINCHEN,DANIEL
00:22				SUB IN: ELLIS,CHRISTIAN
00:14	MISSED 3PTR by RUSSELL,NYGAL			
00:10	REBOUND (OFF) by RUSSELL,NYGAL			
00:08	GOOD! 3PTR by DALTON,JONATHAN	92-88	H 4	
00:08	ASSIST by RUSSELL,NYGAL			
00:08	TIMEOUT 30SEC			
00:06	FOUL (PERSONAL) by RUSSELL,NYGAL			
00:06		93-88	H 5	GOOD! FT by MCFARLAND,DAVID [FB]
00:06	SUB OUT: RUSSELL,NYGAL			
00:06	SUB IN: GABLE,ISIAIAH			
00:06		94-88	H 6	GOOD! FT by MCFARLAND,DAVID [FB]

Time	VISITORS: Southeast Mo. St.	Score	Margin	HOME: SIUE
00:00	MISSED 3PTR by DALTON,JONATHAN			
00:00				REBOUND (DEF) by TEAM

Southeast Mo. St. 88, SIUE 94

Points from (This Period)	SEM	SIE
In the Paint	14	18
Off Turns	14	7
2nd Chance	9	6
Fast Break	6	6
Bench	16	9

Official Scoring/Possession Reference Chart
Southeast Mo. St. vs SIUE
Period 1
January 04, 2019

Period 1

Starters:

Southeast Mo. St.: 3 HOGAN,SKYLER; 5 DALTON,JONATHAN; 11 RUSSELL,NYGAL; 13 GABLE,ISAIAH; 23 TOLBERT,SAGE;
SIUE: 5 WILLIFORD,TYRESE; 15 MCFARLAND,DAVID; 24 WILLIAMS,CAMERON; 30 UZUEGBUNEM,ANSELM; 32 JACKSON,BRANDON;

Time	VISITORS: Southeast Mo. St.	Score	Margin	HOME: SIUE
19:10	GOOD! 3PTR by RUSSELL,NYGAL	0-3	V 3	
18:48		2-3	V 1	GOOD! JUMPER by MCFARLAND,DAVID
18:29	GOOD! LAYUP by HOGAN,SKYLER	2-5	V 3	
18:20		5-5	T	GOOD! 3PTR by MCFARLAND,DAVID
17:30		7-5	H 2	GOOD! LAYUP by MCFARLAND,DAVID
15:45	GOOD! 3PTR by HOGAN,SKYLER	7-8	V 1	
14:24		9-8	H 1	GOOD! LAYUP by MARTIN,TREAVON
13:20		11-8	H 3	GOOD! LAYUP by ELLIS,CHRISTIAN
12:54	GOOD! LAYUP by LAROS,MARK [PNT]	11-10	H 1	
12:30		13-10	H 3	GOOD! LAYUP by JACKSON,BRANDON
11:23		15-10	H 5	GOOD! JUMPER by MARTIN,TREAVON
11:03	GOOD! FT by LAROS,MARK	15-11	H 4	
10:22	GOOD! 3PTR by RUSSELL,NYGAL	15-14	H 1	
09:46		17-14	H 3	GOOD! LAYUP by JACKSON,BRANDON
09:31		19-14	H 5	GOOD! LAYUP by MCFARLAND,DAVID [FB]
09:31		20-14	H 6	GOOD! FT by MCFARLAND,DAVID [FB]
08:52		23-14	H 9	GOOD! 3PTR by MCFARLAND,DAVID
08:25		26-14	H 12	GOOD! 3PTR by JACKSON,BRANDON
07:16	GOOD! DUNK by TOLBERT,SAGE	26-16	H 10	
06:48	GOOD! LAYUP by GABLE,ISAIAH [PNT]	26-18	H 8	
05:52		28-18	H 10	GOOD! DUNK by WILLIAMS,CAMERON [FB]
05:08		29-18	H 11	GOOD! FT by JACKSON,BRANDON
04:35		31-18	H 13	GOOD! JUMPER by ELLIS,CHRISTIAN
04:09		32-18	H 14	GOOD! FT by WILLIAMS,CAMERON
04:09		33-18	H 15	GOOD! FT by WILLIAMS,CAMERON
03:44		35-18	H 17	GOOD! JUMPER by MARTIN,TREAVON
03:20	GOOD! LAYUP by LAROS,MARK [PNT]	35-20	H 15	
03:01		37-20	H 17	GOOD! LAYUP by WILLIAMS,CAMERON
02:42	GOOD! 3PTR by KAO,OSCAR	37-23	H 14	
02:29		40-23	H 17	GOOD! 3PTR by WILLIAMS,CAMERON
01:52		42-23	H 19	GOOD! LAYUP by WILLIAMS,CAMERON
01:25	GOOD! JUMPER by KAO,OSCAR	42-25	H 17	
00:54		45-25	H 20	GOOD! 3PTR by WILLIAMS,CAMERON
00:37	GOOD! 3PTR by LAROS,MARK	45-28	H 17	
00:01	GOOD! LAYUP by HOGAN,SKYLER [PNT]	45-30	H 15	

Southeast Mo. St. 30, SIUE 45

Official Scoring/Possession Reference Chart
Southeast Mo. St. vs SIUE
Period 2
January 04, 2019

Period 2

Starters:

Southeast Mo. St.: 3 HOGAN,SKYLER; 5 DALTON,JONATHAN; 11 RUSSELL,NYGAL; 13 GABLE,ISIAIAH; 23 TOLBERT,SAGE;

SIUE: 5 WILLIFORD,TYRESE; 15 MCFARLAND,DAVID; 24 WILLIAMS,CAMERON; 30 UZUEGBUNEM,ANSELM; 32 JACKSON,BRANDON;

Time	VISITORS: Southeast Mo. St.	Score	Margin	HOME: SIUE
19:26	GOOD! 3PTR by RUSSELL,NYGAL	45-33	H 12	
19:00		47-33	H 14	GOOD! LAYUP by JACKSON,BRANDON
18:09	GOOD! FT by DALTON,JONATHAN	47-34	H 13	
18:09	GOOD! FT by DALTON,JONATHAN	47-35	H 12	
18:01		50-35	H 15	GOOD! 3PTR by WILLIAMS,CAMERON
17:31		53-35	H 18	GOOD! 3PTR by JACKSON,BRANDON
17:12	GOOD! 3PTR by HOGAN,SKYLER	53-38	H 15	
17:04		55-38	H 17	GOOD! LAYUP by JACKSON,BRANDON [FB]
16:18	GOOD! LAYUP by RUSSELL,NYGAL	55-40	H 15	
16:08		58-40	H 18	GOOD! 3PTR by WILLIAMS,CAMERON
15:53	GOOD! 3PTR by GABLE,ISIAIAH	58-43	H 15	
15:33	GOOD! FT by LAROS,MARK [FB]	58-44	H 14	
15:33	GOOD! FT by LAROS,MARK [FB]	58-45	H 13	
14:55	GOOD! LAYUP by LAROS,MARK	58-47	H 11	
14:38		60-47	H 13	GOOD! LAYUP by MCFARLAND,DAVID
14:30	GOOD! 3PTR by GABLE,ISIAIAH	60-50	H 10	
14:04		62-50	H 12	GOOD! JUMPER by UZUEGBUNEM,ANSELM [PNT]
13:49	GOOD! 3PTR by GABLE,ISIAIAH	62-53	H 9	
12:22	GOOD! JUMPER by CALDWELL,ALEX	62-55	H 7	
11:49	GOOD! LAYUP by LEWIS,DONNIE	62-57	H 5	
11:30		64-57	H 7	GOOD! JUMPER by ELLIS,CHRISTIAN
11:23	GOOD! FT by GABLE,ISIAIAH [FB]	64-58	H 6	
11:23	GOOD! FT by GABLE,ISIAIAH [FB]	64-59	H 5	
11:03		66-59	H 7	GOOD! LAYUP by ELLIS,CHRISTIAN [PNT]
10:45	GOOD! 3PTR by HOGAN,SKYLER	66-62	H 4	
09:57		68-62	H 6	GOOD! DUNK by WILLIAMS,CAMERON [FB]
09:37	GOOD! FT by TOLBERT,SAGE	68-63	H 5	
08:49		71-63	H 8	GOOD! 3PTR by ELLIS,CHRISTIAN
07:34		72-63	H 9	GOOD! FT by ELLIS,CHRISTIAN
07:34		73-63	H 10	GOOD! FT by ELLIS,CHRISTIAN
07:24	GOOD! LAYUP by HOGAN,SKYLER [PNT]	73-65	H 8	
07:00	GOOD! FT by CALDWELL,ALEX [FB]	73-66	H 7	
07:00	GOOD! FT by CALDWELL,ALEX [FB]	73-67	H 6	
06:45		75-67	H 8	GOOD! DUNK by WILLIAMS,CAMERON [PNT]
06:08		77-67	H 10	GOOD! JUMPER by JACKSON,BRANDON
05:45	GOOD! JUMPER by LAROS,MARK	77-69	H 8	
05:22		79-69	H 10	GOOD! LAYUP by WILLIFORD,TYRESE [PNT]
04:40	GOOD! FT by GABLE,ISIAIAH	79-70	H 9	
04:40	GOOD! FT by GABLE,ISIAIAH	79-71	H 8	
04:22		80-71	H 9	GOOD! FT by WILLIFORD,TYRESE
03:21	GOOD! LAYUP by GABLE,ISIAIAH	80-73	H 7	
03:01		82-73	H 9	GOOD! JUMPER by WILLIAMS,CAMERON
03:01		83-73	H 10	GOOD! FT by WILLIAMS,CAMERON
02:35	GOOD! DUNK by MCGLOTHAN,GABE	83-75	H 8	
02:19		86-75	H 11	GOOD! 3PTR by MCFARLAND,DAVID
02:06	GOOD! FT by DALTON,JONATHAN	86-76	H 10	
02:06	GOOD! FT by DALTON,JONATHAN	86-77	H 9	
01:20	GOOD! 3PTR by HOGAN,SKYLER	86-80	H 6	
00:58		88-80	H 8	GOOD! LAYUP by WILLIFORD,TYRESE [PNT]
00:51	GOOD! JUMPER by DALTON,JONATHAN	88-82	H 6	
00:51	GOOD! FT by DALTON,JONATHAN	88-83	H 5	
00:37		89-83	H 6	GOOD! FT by WILLIFORD,TYRESE

Time	VISITORS: Southeast Mo. St.	Score	Margin	HOME: SIUE
00:37		90-83	H 7	GOOD! FT by WILLIFORD, TYRESE
00:23	GOOD! LAYUP by MCGLOTHAN, GABE	90-85	H 5	
00:22		91-85	H 6	GOOD! FT by MCFARLAND, DAVID
00:22		92-85	H 7	GOOD! FT by MCFARLAND, DAVID
00:08	GOOD! 3PTR by DALTON, JONATHAN	92-88	H 4	
00:06		93-88	H 5	GOOD! FT by MCFARLAND, DAVID [FB]
00:06		94-88	H 6	GOOD! FT by MCFARLAND, DAVID [FB]

Southeast Mo. St. 88, SIUE 94

Official Substitutions Log
Southeast Mo. St. vs SIUE
Period 1
January 04, 2019

VISITORS: Southeast Mo. St.	Time	Score	HOME: SIUE
3 HOGAN,SKYLER			5 WILLIFORD,TYRESE
5 DALTON,JONATHAN			15 MCFARLAND,DAVID
11 RUSSELL,NYGAL			24 WILLIAMS,CAMERON
13 GABLE,ISIAIAH			30 UZUEGBUNEM,ANSELM
23 TOLBERT,SAGE			32 JACKSON,BRANDON
	16:30	5-7	SUB OUT: JACKSON,BRANDON
	16:30		SUB IN: MARTIN,TREAVON
SUB OUT: 11 RUSSELL,NYGAL	16:30		
SUB IN: 0 CALDWELL,ALEX	16:30		
SUB OUT: 13 GABLE,ISIAIAH	15:00	8-7	
SUB IN: 30 MCGLOTHAN,GABE	15:00		
	13:46	8-9	SUB OUT: MCFARLAND,DAVID
	13:46		SUB IN: KINCHEN,DANIEL
	13:46		SUB OUT: WILLIAMS,CAMERON
	13:46		SUB IN: JACKSON,BRANDON
	13:46		SUB OUT: UZUEGBUNEM,ANSELM
	13:46		SUB IN: ELLIS,CHRISTIAN
SUB OUT: 5 DALTON,JONATHAN	13:46		
SUB IN: 42 LAROS,MARK	13:46		
SUB OUT: 23 TOLBERT,SAGE	13:46		
SUB IN: 15 LEWIS,DONNIE	13:46		
	12:09	10-13	SUB OUT: WILLIFORD,TYRESE
	12:09		SUB IN: MCFARLAND,DAVID
SUB OUT: 3 HOGAN,SKYLER	12:09		
SUB IN: 11 RUSSELL,NYGAL	12:09		
	10:00	14-15	SUB OUT: MARTIN,TREAVON
	10:00		SUB IN: WILLIFORD,TYRESE
	10:00		SUB OUT: KINCHEN,DANIEL
	10:00		SUB IN: UZUEGBUNEM,ANSELM
SUB OUT: 0 CALDWELL,ALEX	09:31	14-19	
SUB IN: 13 GABLE,ISIAIAH	09:31		
SUB OUT: 15 LEWIS,DONNIE	09:31		
SUB IN: 5 DALTON,JONATHAN	09:31		
SUB OUT: 30 MCGLOTHAN,GABE	09:31		
SUB IN: 23 TOLBERT,SAGE	09:31		
SUB OUT: 42 LAROS,MARK	09:31		
SUB IN: 3 HOGAN,SKYLER	09:31		
	08:01	14-26	SUB OUT: ELLIS,CHRISTIAN
	08:01		SUB IN: WILLIAMS,CAMERON
SUB OUT: 11 RUSSELL,NYGAL	06:13	18-26	
SUB IN: 0 CALDWELL,ALEX	06:13		
	05:47	18-28	SUB OUT: WILLIFORD,TYRESE
	05:47		SUB IN: ELLIS,CHRISTIAN
SUB OUT: 0 CALDWELL,ALEX	05:08	18-29	
SUB IN: 15 LEWIS,DONNIE	05:08		
SUB OUT: 3 HOGAN,SKYLER	05:08		
SUB IN: 30 MCGLOTHAN,GABE	05:08		
SUB OUT: 13 GABLE,ISIAIAH	05:08		
SUB IN: 42 LAROS,MARK	05:08		
SUB OUT: 23 TOLBERT,SAGE	05:08		
SUB IN: 11 RUSSELL,NYGAL	05:08		
	04:19	18-31	SUB OUT: JACKSON,BRANDON
	04:19		SUB IN: MARTIN,TREAVON
	04:09	18-32	SUB OUT: MCFARLAND,DAVID
	04:09		SUB IN: KINCHEN,DANIEL
SUB OUT: 30 MCGLOTHAN,GABE	04:09		
SUB IN: 23 TOLBERT,SAGE	04:09		
SUB OUT: 11 RUSSELL,NYGAL	04:09		
SUB IN: 4 KAO,OSCAR	04:09		
	00:05	28-45	SUB OUT: MARTIN,TREAVON
	00:05		SUB IN: MCFARLAND,DAVID
	00:05		SUB OUT: KINCHEN,DANIEL
	00:05		SUB IN: WILLIFORD,TYRESE
	00:05		SUB OUT: WILLIAMS,CAMERON
	00:05		SUB IN: JACKSON,BRANDON
SUB OUT: 4 KAO,OSCAR	00:05		
SUB IN: 13 GABLE,ISIAIAH	00:05		
SUB OUT: 42 LAROS,MARK	00:05		
SUB IN: 3 HOGAN,SKYLER	00:05		

Southeast Mo. St. 30, SIUE 45

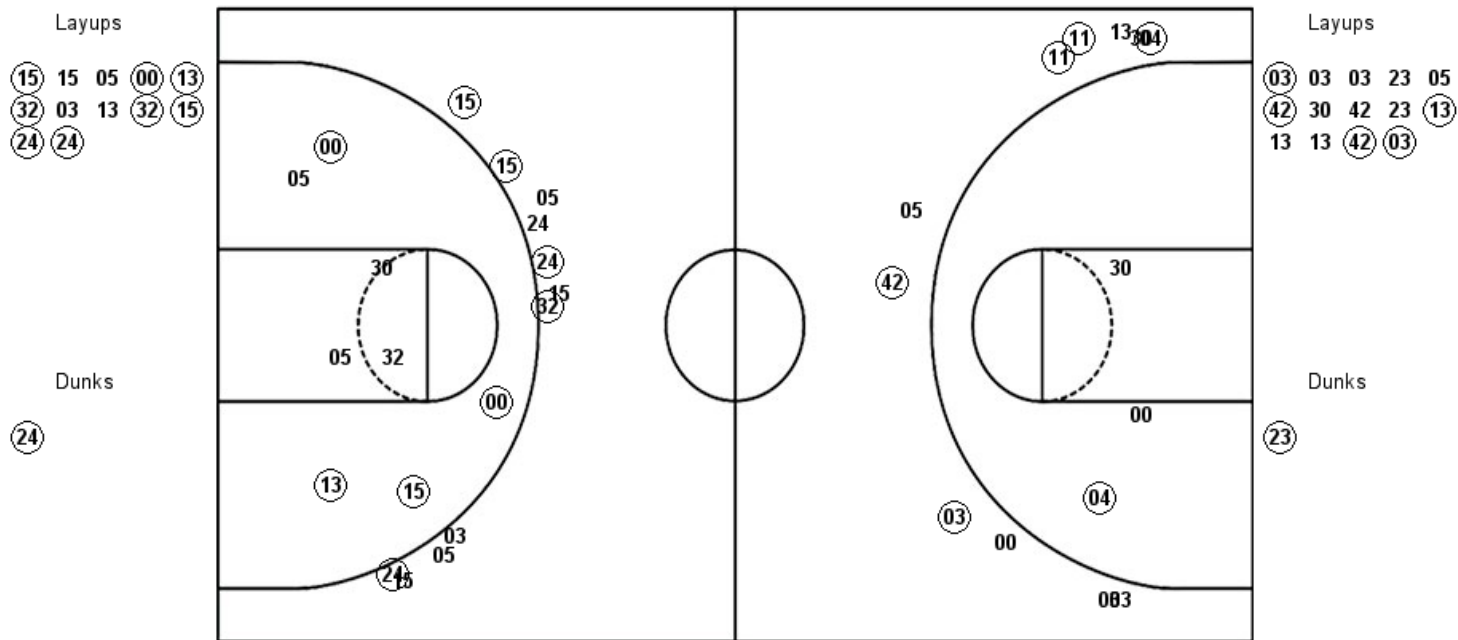
Official Substitutions Log
Southeast Mo. St. vs SIUE
Period 2
January 04, 2019

VISITORS: Southeast Mo. St.	Time	Score	HOME: SIUE
3 HOGAN,SKYLER			5 WILLIFORD,TYRESE
5 DALTON,JONATHAN			15 MCFARLAND,DAVID
11 RUSSELL,NYGAL			24 WILLIAMS,CAMERON
13 GABLE,ISAIAH			30 UZUEGBUNEM,ANSELM
23 TOLBERT,SAGE			32 JACKSON,BRANDON
	16:17	40-55	SUB OUT: UZUEGBUNEM,ANSELM
	16:17		SUB IN: MARTIN,TREAVON
SUB OUT: 23 TOLBERT,SAGE	16:17		
SUB IN: 42 LAROS,MARK	16:17		
SUB OUT: 11 RUSSELL,NYGAL	16:17		
SUB IN: 0 CALDWELL,ALEX	16:17		
SUB OUT: 3 HOGAN,SKYLER	16:06	40-58	
SUB IN: 15 LEWIS,DONNIE	16:06		
	15:44	43-58	SUB OUT: WILLIFORD,TYRESE
	15:44		SUB IN: ELLIS,CHRISTIAN
	14:15	50-60	SUB OUT: MARTIN,TREAVON
	14:15		SUB IN: JACKSON,D.J.
	14:15		SUB OUT: JACKSON,BRANDON
	14:15		SUB IN: UZUEGBUNEM,ANSELM
	13:30	53-62	SUB OUT: MCFARLAND,DAVID
	13:30		SUB IN: KINCHEN,DANIEL
	13:30		SUB OUT: WILLIAMS,CAMERON
	13:30		SUB IN: WILLIFORD,TYRESE
SUB OUT: 42 LAROS,MARK	12:49	53-62	
SUB IN: 23 TOLBERT,SAGE	12:49		
SUB OUT: 5 DALTON,JONATHAN	12:42	53-62	
SUB IN: 3 HOGAN,SKYLER	12:42		
	11:56	55-62	SUB OUT: WILLIFORD,TYRESE
	11:56		SUB IN: MCFARLAND,DAVID
	11:56		SUB OUT: UZUEGBUNEM,ANSELM
	11:56		SUB IN: JACKSON,BRANDON
	10:20	62-66	SUB OUT: KINCHEN,DANIEL
	10:20		SUB IN: WILLIFORD,TYRESE
	10:20		SUB OUT: JACKSON,D.J.
	10:20		SUB IN: WILLIAMS,CAMERON
SUB OUT: 15 LEWIS,DONNIE	10:20		
SUB IN: 5 DALTON,JONATHAN	10:20		
SUB OUT: 23 TOLBERT,SAGE	08:29	63-71	
SUB IN: 42 LAROS,MARK	08:29		
	05:10	69-79	SUB OUT: MCFARLAND,DAVID
	05:10		SUB IN: UZUEGBUNEM,ANSELM
	05:10		SUB OUT: WILLIAMS,CAMERON
	05:10		SUB IN: KINCHEN,DANIEL
SUB OUT: 42 LAROS,MARK	04:55	69-79	
SUB IN: 30 MCGLOTHAN,GABE	04:55		
SUB OUT: 0 CALDWELL,ALEX	04:55		
SUB IN: 11 RUSSELL,NYGAL	04:55		
	04:40	69-79	SUB OUT: ELLIS,CHRISTIAN
	04:40		SUB IN: MCFARLAND,DAVID
	04:22	71-80	SUB OUT: UZUEGBUNEM,ANSELM
	04:22		SUB IN: WILLIAMS,CAMERON
	03:01	73-82	SUB OUT: KINCHEN,DANIEL
	03:01		SUB IN: ELLIS,CHRISTIAN
	01:43	77-86	SUB OUT: WILLIFORD,TYRESE
	01:43		SUB IN: KINCHEN,DANIEL
SUB OUT: 11 RUSSELL,NYGAL	01:43		
SUB IN: 0 CALDWELL,ALEX	01:43		
	01:39	77-86	SUB OUT: KINCHEN,DANIEL
	01:39		SUB IN: WILLIFORD,TYRESE
	00:58	80-88	SUB OUT: WILLIFORD,TYRESE
	00:58		SUB IN: KINCHEN,DANIEL
	00:51	82-88	SUB OUT: ELLIS,CHRISTIAN
	00:51		SUB IN: WILLIFORD,TYRESE
SUB OUT: 13 GABLE,ISAIAH	00:51		
SUB IN: 11 RUSSELL,NYGAL	00:51		
	00:37	83-89	SUB OUT: KINCHEN,DANIEL
	00:37		SUB IN: ELLIS,CHRISTIAN
	00:22	85-90	SUB OUT: ELLIS,CHRISTIAN
	00:22		SUB IN: KINCHEN,DANIEL
	00:22		SUB OUT: KINCHEN,DANIEL
	00:22		SUB IN: ELLIS,CHRISTIAN
SUB OUT: 11 RUSSELL,NYGAL	00:06	88-93	
SUB IN: 13 GABLE,ISAIAH	00:06		

Official Shot Chart
Southeast Mo. St. vs SIUE
PERIOD 1 Shots
January 04, 2019

SIUE

Southeast Mo. St.



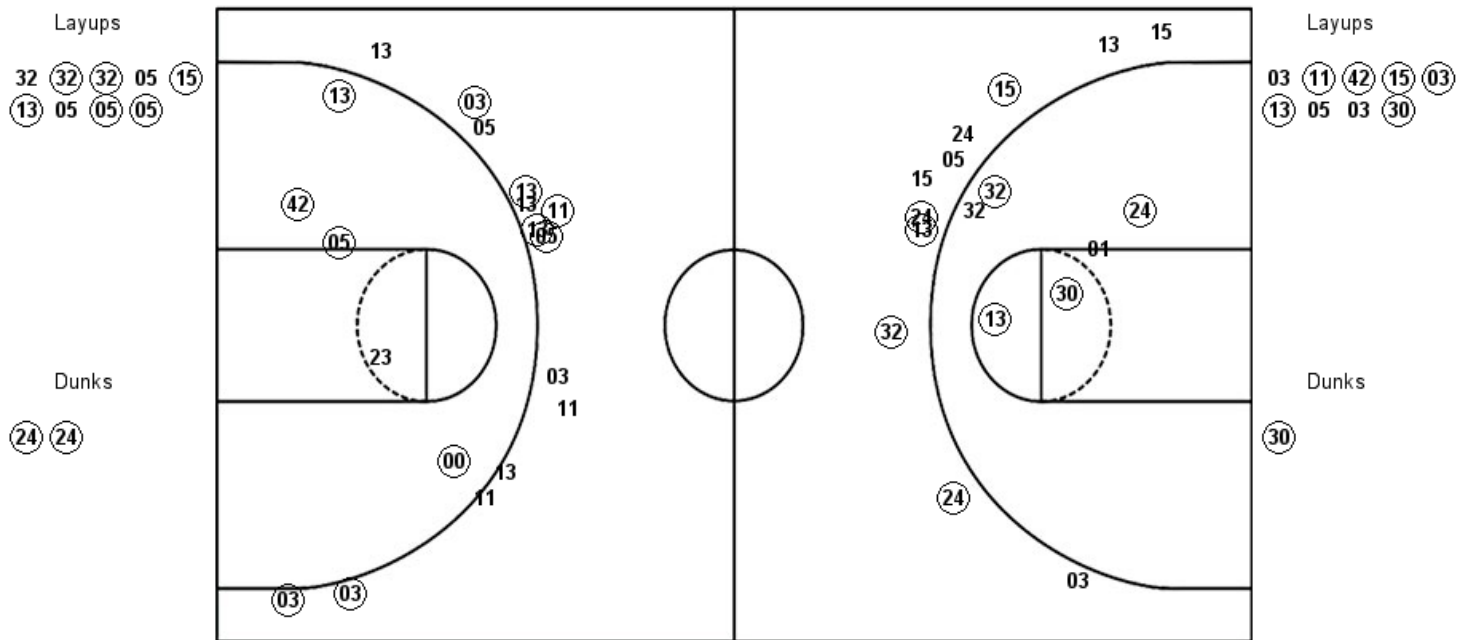
SIUE : Period 1	Made	Att	Pct
Layups	8	12	66.7
Dunks	1	1	100.0
2PT Field Goals	13	21	61.9
3PT Field Goals	5	11	45.5
Total Field Goals	18	32	56.3

SEM : Period 1	Made	Att	Pct
Layups	5	14	35.7
Dunks	1	1	100.0
2PT Field Goals	7	18	38.9
3PT Field Goals	5	11	45.5
Total Field Goals	12	29	41.4

Official Shot Chart
Southeast Mo. St. vs SIUE
PERIOD 2 Shots
January 04, 2019

SIUE

Southeast Mo. St.

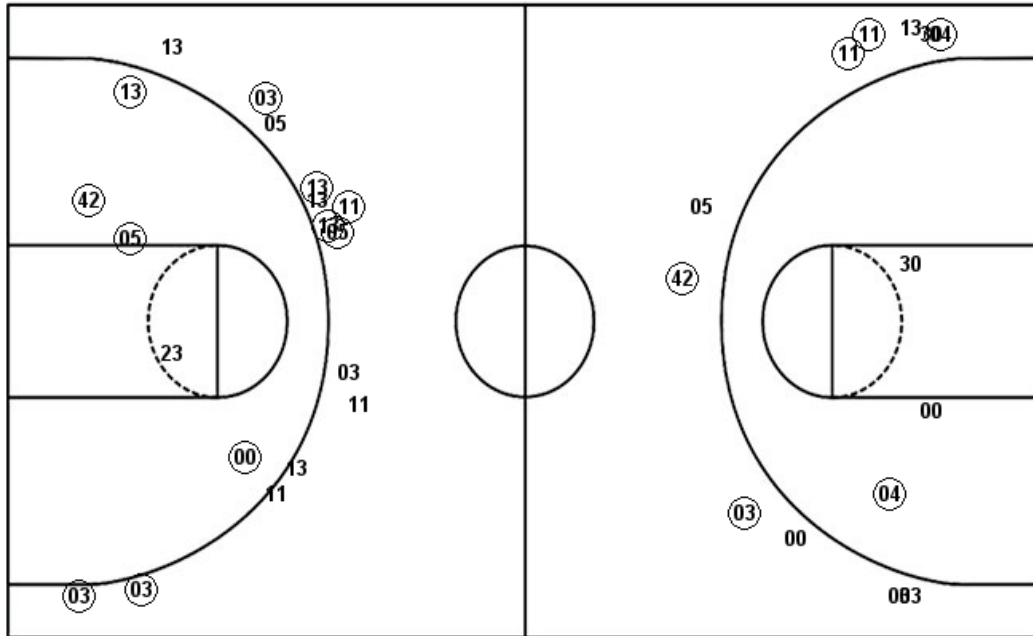


SIUE : Period 2	Made	Att	Pct
Layups	6	9	66.7
Dunks	2	2	100.0
2PT Field Goals	12	17	70.6
3PT Field Goals	5	11	45.5
Total Field Goals	17	28	60.7

SEM : Period 2	Made	Att	Pct
Layups	6	9	66.7
Dunks	1	1	100.0
2PT Field Goals	10	14	71.4
3PT Field Goals	8	15	53.3
Total Field Goals	18	29	62.1

Official Shot Chart
Southeast Mo. St. vs SIUE
Southeast Mo. St. Team Shots
January 04, 2019

Layups



Layups

03 03 03 23 05
 42 30 42 23 13
 13 13 42 03 03
 11 42 15 03 13
 05 03 30

Dunks

Dunks

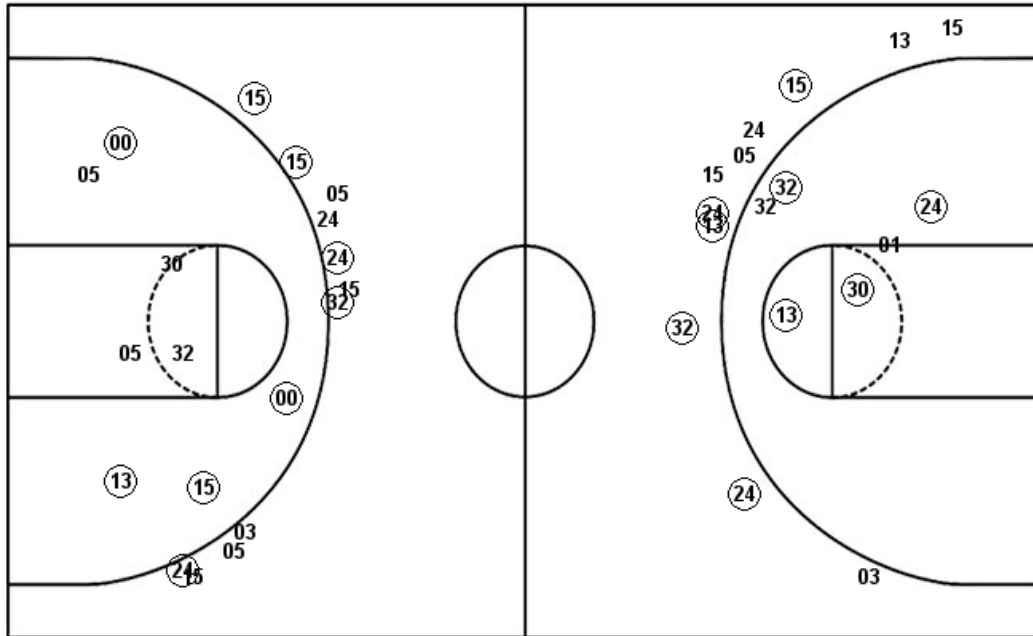
23 30

SEM : Period 1	Made	Att	Pct
Layups	5	14	35.7
Dunks	1	1	100.0
2PT Field Goals	7	18	38.9
3PT Field Goals	5	11	45.5
Total Field Goals	12	29	41.4

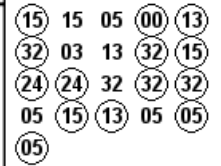
SEM : Period 2	Made	Att	Pct
Layups	6	9	66.7
Dunks	1	1	100.0
2PT Field Goals	10	14	71.4
3PT Field Goals	8	15	53.3
Total Field Goals	18	29	62.1

Official Shot Chart
Southeast Mo. St. vs SIUE
SIUE Team Shots
January 04, 2019

Layups



Layups



Dunks

Dunks



SIE : Period 1	Made	Att	Pct
Layups	8	12	66.7
Dunks	1	1	100.0
2PT Field Goals	13	21	61.9
3PT Field Goals	5	11	45.5
Total Field Goals	18	32	56.3

SIE : Period 2	Made	Att	Pct
Layups	6	9	66.7
Dunks	2	2	100.0
2PT Field Goals	12	17	70.6
3PT Field Goals	5	11	45.5
Total Field Goals	17	28	60.7