

**FINAL SCORE**

**Missouri S&T**

**66**



**SIUE**

**79**



**December 30, 2018 • Vadalabene Center - Edwardsville, Ill.**

**FINAL STATISTICS**

**Official Box Score**  
**Missouri S&T vs SIUE**  
**Game Totals -- Final Statistics**  
**December 30, 2018 at Vadalabene Center - Edwardsville, Ill.**

**Missouri S&T 66**

No.	Player	S	Pts	FG	3FG	FT	OR	DR	TR	PF	A	TO	Blk	Stl	Min	+/-
2	Hedgepeth, Cj		8	3-13	0-5	2-3	1	3	4	4	3	2	0	2	36	-13
5	Scott, Dulan		14	7-13	0-1	0-0	0	4	4	3	0	4	0	3	25	-6
15	Muhammad, Yahmir		14	5-7	1-2	3-3	1	2	3	2	1	3	0	0	18	-1
24	Louiserre, Romain		2	0-5	0-0	2-2	2	2	4	2	0	1	0	0	17	-9
30	Myers, Jalen		12	4-13	4-8	0-0	0	2	2	3	0	1	0	1	29	-15
13	Elmer, Nathan		0	0-0	0-0	0-0	0	0	0	0	0	0	0	0	4	3
22	Gerrity, Brooks		3	1-3	1-3	0-0	0	0	0	0	0	0	0	0	3	3
23	Andric, Nikola		4	2-5	0-1	0-0	4	4	8	1	2	3	0	1	20	-12
25	Miller, Juwan		4	1-4	0-0	2-2	1	3	4	2	1	4	0	3	21	-12
32	Fairless, Mitch		5	2-3	0-0	1-2	0	2	2	2	0	2	0	1	22	-11
44	Bushman, Kyle		0	0-1	0-0	0-0	0	0	0	1	0	0	0	1	2	8
	Team						2	1	3	0		1				
<b>TOTALS</b>			<b>66</b>	<b>25-67</b>	<b>6-20</b>	<b>10-12</b>	<b>11</b>	<b>23</b>	<b>34</b>	<b>20</b>	<b>7</b>	<b>21</b>	<b>0</b>	<b>12</b>	<b>199</b>	

*Shooting By Period*

Period	FG	FG%	3FG	3FG%	FT	FT%
1st Half	11-35	31%	2-11	18%	3-3	100%
2nd Half	14-32	44%	4-9	44%	7-9	78%
<b>Game</b>	<b>25-67</b>	<b>37.3%</b>	<b>6-20</b>	<b>30.0%</b>	<b>10-12</b>	<b>83.3%</b>

Last FG: 2nd-00:34  
 Biggest Run: 7-0  
 Largest lead: By 7 at 1-17:43  
 Technical Fouls: None.

**SIUE 79**

No.	Player	S	Pts	FG	3FG	FT	OR	DR	TR	PF	A	TO	Blk	Stl	Min	+/-
5	Williford, Tyrese		13	5-10	1-2	2-2	1	5	6	2	6	3	1	1	27	5
15	Mcfarland, David		4	1-6	0-3	2-2	0	2	2	2	4	2	2	3	26	10
24	Williams, Cameron		16	6-12	1-3	3-4	0	4	4	0	1	2	0	3	31	5
30	Uzuegbunem, Anselm		4	2-2	0-0	0-1	2	4	6	2	1	3	2	0	27	14
32	Jackson, Brandon		13	5-8	1-1	2-2	2	4	6	2	1	1	2	0	21	4
0	Martin, Treavon		6	2-3	0-0	2-4	0	2	2	4	1	2	0	0	15	16
1	Jackson, D.J.		1	0-0	0-0	1-2	0	0	0	0	0	2	0	0	2	-8
2	Applewhite, D'quan		0	0-0	0-0	0-0	0	0	0	0	0	0	0	0	1	-5
3	Kinchen, Daniel		9	3-8	2-5	1-1	0	4	4	1	2	1	0	0	19	18
10	Awet, Bill		2	1-1	0-0	0-0	0	0	0	0	0	2	0	0	4	1
13	Ellis, Christian		11	5-6	0-0	1-1	0	5	5	0	0	4	0	0	21	23
21	Lindenmeyer, Blake		0	0-0	0-0	0-0	0	0	0	1	0	0	0	0	1	-5
25	Mccoy, Jaylen		0	0-0	0-0	0-0	0	0	0	0	0	0	0	0	3	-7
31	Best, Jackson		0	0-0	0-0	0-0	0	0	0	0	0	1	0	0	1	-6
	Team						1	1	2	0		0				
<b>TOTALS</b>			<b>79</b>	<b>30-56</b>	<b>5-14</b>	<b>14-19</b>	<b>6</b>	<b>31</b>	<b>37</b>	<b>14</b>	<b>16</b>	<b>23</b>	<b>7</b>	<b>7</b>	<b>199</b>	

*Shooting By Period*

Period	FG	FG%	3FG	3FG%	FT	FT%
1st Half	17-32	53%	3-9	33%	4-6	67%
2nd Half	13-24	54%	2-5	40%	10-13	77%
<b>Game</b>	<b>30-56</b>	<b>53.6%</b>	<b>5-14</b>	<b>35.7%</b>	<b>14-19</b>	<b>73.7%</b>

Last FG: 2nd-02:48  
 Biggest Run: 22-0  
 Largest lead: By 22 at 2-02:48  
 Technical Fouls: None.

*Game Notes:*

Officials: Ed Crenshaw, Aaron Denton, Kevin Raher  
 Attendance: 1137

Start Time: 2018-12-30 23:02:43  
 End Time: 2018-12-31 00:53:49  
 Game Duration: 111

Score	1st	2nd	TOT
MST	27	39	<b>66</b>
SIE	41	38	<b>79</b>

MST led for 6:35. SIE led for 30:43.  
 Game was tied for 2:24.  
 Times tied: 2      Lead Changes: 1

Points from	MST	SIE
In the Paint	30	46
Off Turns	19	17
2nd Chance	10	8
Fast Break	12	27
Bench	16	29

**Official Box Score**  
**Missouri S&T vs SIUE**  
**First Half Statistics Only**  
**December 30, 2018 at Vadalabene Center - Edwardsville, Ill.**

**Missouri S&T 66**

No.	Player	S	Pts	FG	3FG	FT	OR	DR	TR	PF	A	TO	Blk	Stl	Min	+/-
2	Hedgepeth, Cj		3	1-8	0-4	1-1	0	3	3	2	2	0	0	1	18	-9
5	Scott, Dulan		10	5-7	0-1	0-0	0	1	1	2	0	3	0	3	14	0
15	Muhammad, Yahmir		3	1-2	1-1	0-0	0	0	0	1	0	2	0	0	9	-2
24	Louiserre, Romain		0	0-3	0-0	0-0	1	2	3	0	0	1	0	0	10	-6
30	Myers, Jalen		3	1-7	1-3	0-0	0	2	2	0	0	1	0	1	14	-11
13	Elmer, Nathan		0	0-0	0-0	0-0	0	0	0	0	0	0	0	0	2	-5
22	Gerrity, Brooks		0	0-2	0-2	0-0	0	0	0	0	0	0	0	0	2	-2
23	Andric, Nikola		2	1-2	0-0	0-0	3	4	7	1	0	1	0	1	10	-8
25	Miller, Juwan		4	1-3	0-0	2-2	1	1	2	1	1	2	0	1	11	-12
32	Fairless, Mitch		2	1-1	0-0	0-0	0	0	0	1	0	2	0	0	10	-15
44	Bushman, Kyle		0	0-0	0-0	0-0	0	0	0	0	0	0	0	0	0	0
	Team						0	1	1	0		0				
<b>TOTALS</b>			<b>27</b>	<b>11-35</b>	<b>2-11</b>	<b>3-3</b>	<b>5</b>	<b>14</b>	<b>19</b>	<b>8</b>	<b>3</b>	<b>12</b>	<b>0</b>	<b>7</b>	<b>100</b>	

*Shooting By Period*

Period	FG	FG%	3FG	3FG%	FT	FT%
1st Half	11-35	31%	2-11	18%	3-3	100%
2nd Half	14-32	44%	4-9	44%	7-9	78%
<b>Game</b>	<b>25-67</b>	<b>37.3%</b>	<b>6-20</b>	<b>30.0%</b>	<b>10-12</b>	<b>83.3%</b>

Last FG: 2nd-00:34  
 Biggest Run: 7-0  
 Largest lead: By 7 at 1-17:43  
 Technical Fouls: None.

**SIUE 79**

No.	Player	S	Pts	FG	3FG	FT	OR	DR	TR	PF	A	TO	Blk	Stl	Min	+/-
5	Williford, Tyrese		2	1-4	0-1	0-0	0	3	3	2	3	2	1	0	15	2
15	Mcfarland, David		2	1-5	0-3	0-0	0	2	2	1	2	2	1	1	15	9
24	Williams, Cameron		10	4-7	1-2	1-2	0	3	3	0	1	2	0	2	15	4
30	Uzuegbunem, Anselm		4	2-2	0-0	0-1	2	3	5	0	0	0	1	0	15	14
32	Jackson, Brandon		5	2-3	1-1	0-0	0	0	0	2	1	1	1	0	7	0
0	Martin, Treavon		6	2-3	0-0	2-2	0	0	0	0	1	1	0	0	7	9
1	Jackson, D.J.		0	0-0	0-0	0-0	0	0	0	0	0	0	0	0	0	0
2	Applewhite, D'quan		0	0-0	0-0	0-0	0	0	0	0	0	0	0	0	0	0
3	Kinchen, Daniel		3	1-4	1-2	0-0	0	3	3	1	2	1	0	0	13	13
10	Awet, Bill		0	0-0	0-0	0-0	0	0	0	0	0	2	0	0	1	0
13	Ellis, Christian		9	4-4	0-0	1-1	0	3	3	0	0	0	0	0	10	19
21	Lindenmeyer, Blake		0	0-0	0-0	0-0	0	0	0	0	0	0	0	0	0	0
25	Mccoy, Jaylen		0	0-0	0-0	0-0	0	0	0	0	0	0	0	0	0	0
31	Best, Jackson		0	0-0	0-0	0-0	0	0	0	0	0	0	0	0	0	0
	Team						1	1	2	0		0				
<b>TOTALS</b>			<b>41</b>	<b>17-32</b>	<b>3-9</b>	<b>4-6</b>	<b>3</b>	<b>18</b>	<b>21</b>	<b>6</b>	<b>10</b>	<b>11</b>	<b>4</b>	<b>3</b>	<b>100</b>	

*Shooting By Period*

Period	FG	FG%	3FG	3FG%	FT	FT%
1st Half	17-32	53%	3-9	33%	4-6	67%
2nd Half	13-24	54%	2-5	40%	10-13	77%
<b>Game</b>	<b>30-56</b>	<b>53.6%</b>	<b>5-14</b>	<b>35.7%</b>	<b>14-19</b>	<b>73.7%</b>

Last FG: 2nd-02:48  
 Biggest Run: 22-0  
 Largest lead: By 22 at 2-02:48  
 Technical Fouls: None.

*Game Notes:*

Officials: Ed Crenshaw, Aaron Denton, Kevin Raheer  
 Attendance: 1137

Start Time: 2018-12-30 23:02:43  
 End Time: 2018-12-31 00:53:49  
 Game Duration: 111

Score	1st	2nd	TOT
MST	27	39	<b>66</b>
SIE	41	38	<b>79</b>

Points from (This Period)	MST	SIE
In the Paint	10	26
Off Turns	6	6
2nd Chance	4	4
Fast Break	7	10
Bench	8	18

**Official Play-By-Play**  
**Missouri S&T vs SIUE**  
**First Half**  
**December 30, 2018 at Vadalabene Center - Edwardsville, Ill.**

**Starters:**

**Missouri S&T:** 2 HEDGEPEETH,CJ; 5 SCOTT,DULAN; 15 MUHAMMAD,YAHMIR; 24 LOUISERRE,ROMAIN; 30 MYERS,JALEN;  
**SIUE:** 5 WILLIFORD,TYRESE; 15 MCFARLAND,DAVID; 24 WILLIAMS,CAMERON; 30 UZUEGBUNEM,ANSELM; 32 JACKSON,BRANDON;

**Period 1**

Time	VISITORS: Missouri S&T	Score	Margin	HOME: SIUE
19:45	GOOD! JUMPER by SCOTT,DULAN	0-2	V 2	
19:31	FOUL (PERSONAL) by HEDGEPEETH,CJ			
19:28				TURNOVER (BADPASS) by WILLIAMS,CAMERON
19:28	STEAL by SCOTT,DULAN			
19:22	GOOD! LAYUP by SCOTT,DULAN [FB]	0-4	V 4	
19:14				MISSED LAYUP by WILLIAMS,CAMERON
19:10	REBOUND (DEF) by SCOTT,DULAN			
19:04	MISSED 3PTR by SCOTT,DULAN			
19:00	REBOUND (OFF) by LOUISERRE,ROMAIN			
19:00	FOUL (OFF) by SCOTT,DULAN			
19:00	TURNOVER (OFFENSIVE) by SCOTT,DULAN			
18:43				MISSED 3PTR by WILLIFORD,TYRESE
18:39	REBOUND (DEF) by MYERS,JALEN			
18:30	TURNOVER (LOSTBALL) by LOUISERRE,ROMAIN			
18:30				STEAL by MCFARLAND,DAVID
18:23				TURNOVER (BADPASS) by MCFARLAND,DAVID
18:23	STEAL by SCOTT,DULAN			
18:18	GOOD! LAYUP by SCOTT,DULAN [FB]	0-6	V 6	
18:00				MISSED 3PTR by MCFARLAND,DAVID
17:53				REBOUND (OFF) by UZUEGBUNEM,ANSELM
17:53		2-6	V 4	GOOD! LAYUP by UZUEGBUNEM,ANSELM
17:43	GOOD! 3PTR by MYERS,JALEN	2-9	V 7	
17:43	ASSIST by HEDGEPEETH,CJ			
17:19				MISSED 3PTR by MCFARLAND,DAVID
17:18	REBOUND (DEF) by TEAM			
17:12	FOUL (OFF) by MUHAMMAD,YAHMIR			
17:12	TURNOVER (OFFENSIVE) by MUHAMMAD,YAHMIR			
16:54				MISSED JUMPER by MCFARLAND,DAVID
16:50				REBOUND (OFF) by UZUEGBUNEM,ANSELM
16:48				TURNOVER (BADPASS) by MCFARLAND,DAVID
16:48	STEAL by HEDGEPEETH,CJ			
16:42	MISSED JUMPER by HEDGEPEETH,CJ			
16:42				BLOCK by MCFARLAND,DAVID
16:36				REBOUND (DEF) by WILLIFORD,TYRESE
16:35		4-9	V 5	GOOD! LAYUP by JACKSON,BRANDON [FB]
16:35				ASSIST by WILLIFORD,TYRESE
16:23				FOUL (PERSONAL) by JACKSON,BRANDON
16:23				SUB OUT: MCFARLAND,DAVID
16:23				SUB IN: KINCHEN,DANIEL
16:23	SUB OUT: LOUISERRE,ROMAIN			
16:23	SUB IN: ANDRIC,NIKOLA			
16:18	MISSED 3PTR by MYERS,JALEN			
16:14				REBOUND (DEF) by UZUEGBUNEM,ANSELM
15:56		7-9	V 2	GOOD! 3PTR by JACKSON,BRANDON
15:56				ASSIST by KINCHEN,DANIEL
15:40	GOOD! 3PTR by MUHAMMAD,YAHMIR	7-12	V 5	
15:31				MISSED LAYUP by JACKSON,BRANDON
15:27	REBOUND (DEF) by MYERS,JALEN			
15:23	MISSED LAYUP by MYERS,JALEN			
15:23				BLOCK by JACKSON,BRANDON
15:17				REBOUND (DEF) by WILLIFORD,TYRESE
15:15				MISSED DUNK by KINCHEN,DANIEL
15:11	REBOUND (DEF) by ANDRIC,NIKOLA			
15:07	TURNOVER (BADPASS) by ANDRIC,NIKOLA			
15:05				
15:05				SUB OUT: JACKSON,BRANDON
15:05				SUB IN: AWET,BILL
15:05	SUB OUT: SCOTT,DULAN			
15:05	SUB IN: ELMER,NATHAN			
15:05	SUB OUT: MYERS,JALEN			
15:05	SUB IN: FAIRLESS,MITCH			
14:50				TURNOVER (DRIBBLING) by AWET,BILL
14:29	TURNOVER (TRAVEL) by MUHAMMAD,YAHMIR			
14:04				TURNOVER (BADPASS) by AWET,BILL
14:04	STEAL by ANDRIC,NIKOLA			
13:58	MISSED 3PTR by HEDGEPEETH,CJ			
13:54				REBOUND (DEF) by UZUEGBUNEM,ANSELM
13:50				MISSED JUMPER by KINCHEN,DANIEL
13:50				REBOUND (OFF) by TEAM
13:50	FOUL (PERSONAL) by FAIRLESS,MITCH			
13:50				SUB OUT: AWET,BILL
13:50				SUB IN: MARTIN,TREAVON
13:50				SUB OUT: UZUEGBUNEM,ANSELM
13:50				SUB IN: JACKSON,BRANDON
13:50	SUB OUT: HEDGEPEETH,CJ			
13:50	SUB IN: MYERS,JALEN			

Time	VISITORS: Missouri S&T	Score	Margin	HOME: SIUE
13:44		9-12	V 3	GOOD! LAYUP by WILLIAMS,CAMERON
13:44				ASSIST by WILLIFORD,TYRESE
13:24	MISSED JUMPER by MUHAMMAD,YAHMIR			
13:21				REBOUND (DEF) by KINCHEN,DANIEL
13:10		12-12	T	GOOD! 3PTR by WILLIAMS,CAMERON
13:10				ASSIST by JACKSON,BRANDON
12:58	TURNOVER (LOSTBALL) by FAIRLESS,MITCH			
12:58				SUB OUT: WILLIAMS,CAMERON
12:58				SUB IN: ELLIS,CHRISTIAN
12:58	SUB OUT: ELMER,NATHAN			
12:58	SUB IN: GERRITY,BROOKS			
12:37				FOUL (OFF) by JACKSON,BRANDON
12:37				TURNOVER (OFFENSIVE) by JACKSON,BRANDON
12:10	MISSED JUMPER by MYERS,JALEN			
12:05	REBOUND (OFF) by ANDRIC,NIKOLA			
12:01	MISSED 3PTR by GERRITY,BROOKS			
11:56				REBOUND (DEF) by ELLIS,CHRISTIAN
11:52				MISSED JUMPER by WILLIFORD,TYRESE
11:48	REBOUND (DEF) by ANDRIC,NIKOLA			
11:44	TURNOVER (TRAVEL) by FAIRLESS,MITCH			
11:44				SUB OUT: WILLIFORD,TYRESE
11:44				SUB IN: UZUEGBUNEM,ANSELM
11:44				SUB OUT: JACKSON,BRANDON
11:44				SUB IN: MCFARLAND,DAVID
11:44	SUB OUT: GERRITY,BROOKS			
11:44	SUB IN: HEDGEPEETH,CJ			
11:44				
11:17		14-12	H 2	GOOD! LAYUP by ELLIS,CHRISTIAN
11:01	MISSED JUMPER by HEDGEPEETH,CJ			
11:00				REBOUND (DEF) by TEAM
11:00	SUB OUT: MUHAMMAD,YAHMIR			
11:00	SUB IN: LOUISERRE,ROMAIN			
11:00	SUB OUT: ANDRIC,NIKOLA			
11:00	SUB IN: MILLER,JUWAN			
10:39		16-12	H 4	GOOD! JUMPER by MARTIN,TREAVON [PNT]
10:39				ASSIST by MCFARLAND,DAVID
10:30	MISSED 3PTR by MYERS,JALEN			
10:26				REBOUND (DEF) by MCFARLAND,DAVID
10:18		19-12	H 7	GOOD! 3PTR by KINCHEN,DANIEL
10:18				ASSIST by MARTIN,TREAVON
09:56	MISSED JUMPER by LOUISERRE,ROMAIN			
09:52				REBOUND (DEF) by ELLIS,CHRISTIAN
09:33		21-12	H 9	GOOD! LAYUP by ELLIS,CHRISTIAN [PNT]
09:22	MISSED JUMPER by MYERS,JALEN			
09:18				REBOUND (DEF) by KINCHEN,DANIEL
09:18				TURNOVER (LOSTBALL) by KINCHEN,DANIEL
09:18				SUB OUT: MARTIN,TREAVON
09:18				SUB IN: WILLIFORD,TYRESE
09:18				SUB OUT: KINCHEN,DANIEL
09:18				SUB IN: WILLIAMS,CAMERON
09:18	SUB OUT: FAIRLESS,MITCH			
09:18	SUB IN: SCOTT,DULAN			
09:08	MISSED JUMPER by LOUISERRE,ROMAIN			
09:03				REBOUND (DEF) by WILLIAMS,CAMERON
09:01				TURNOVER (LOSTBALL) by WILLIAMS,CAMERON
09:01	STEAL by MYERS,JALEN			
08:56	MISSED LAYUP by MYERS,JALEN			
08:56				BLOCK by WILLIFORD,TYRESE
08:52				REBOUND (DEF) by WILLIAMS,CAMERON
08:52	FOUL (PERSONAL) by MILLER,JUWAN			
08:52		22-12	H 10	GOOD! FT by WILLIAMS,CAMERON
08:52	SUB OUT: MYERS,JALEN			
08:52	SUB IN: GERRITY,BROOKS			
08:52				MISSED FT by WILLIAMS,CAMERON
08:52	REBOUND (DEF) by LOUISERRE,ROMAIN			
08:41	TURNOVER (BADPASS) by SCOTT,DULAN			
08:17				MISSED JUMPER by WILLIAMS,CAMERON
08:14	REBOUND (DEF) by HEDGEPEETH,CJ			
08:10	MISSED 3PTR by GERRITY,BROOKS			
08:05				REBOUND (DEF) by ELLIS,CHRISTIAN
08:02		24-12	H 12	GOOD! LAYUP by WILLIAMS,CAMERON [FB]
08:02				ASSIST by MCFARLAND,DAVID
08:01	TIMEOUT TEAM			
08:01	SUB OUT: GERRITY,BROOKS			
08:01	SUB IN: FAIRLESS,MITCH			
07:40	MISSED JUMPER by LOUISERRE,ROMAIN			
07:37				REBOUND (DEF) by UZUEGBUNEM,ANSELM
07:33		26-12	H 14	GOOD! LAYUP by ELLIS,CHRISTIAN [PNT]
07:33	FOUL (PERSONAL) by SCOTT,DULAN			
07:33		27-12	H 15	GOOD! FT by ELLIS,CHRISTIAN
07:20	TURNOVER (OTHER) by SCOTT,DULAN			
07:03				MISSED 3PTR by WILLIAMS,CAMERON
06:59	REBOUND (DEF) by LOUISERRE,ROMAIN			
06:49	MISSED JUMPER by SCOTT,DULAN			
06:45				REBOUND (DEF) by MCFARLAND,DAVID
06:35				TURNOVER (LOSTBALL) by WILLIFORD,TYRESE
06:35	STEAL by MILLER,JUWAN			

Time	VISITORS: Missouri S&T	Score	Margin	HOME: SIUE
06:29	TURNOVER (LOSTBALL) by MILLER,JUWAN			
06:29				STEAL by WILLIAMS,CAMERON
06:24		29-12	H 17	GOOD! DUNK by MCFARLAND,DAVID [FB]
06:24				ASSIST by WILLIAMS,CAMERON
06:06	GOOD! LAYUP by FAIRLESS,MITCH [PNT]	29-14	H 15	
06:06	ASSIST by HEDGEPEETH,CJ			
05:58				MISSED LAYUP by WILLIFORD,TYRESE
05:57	REBOUND (DEF) by HEDGEPEETH,CJ			
05:57				FOUL (PERSONAL) by WILLIFORD,TYRESE
05:57				SUB OUT: ELLIS,CHRISTIAN
05:57				SUB IN: MARTIN,TREAVON
05:57				SUB OUT: UZUEGBUNEM,ANSELM
05:57				SUB IN: KINCHEN,DANIEL
05:46	MISSED 3PTR by HEDGEPEETH,CJ			
05:43				REBOUND (DEF) by WILLIFORD,TYRESE
05:40	FOUL (PERSONAL) by HEDGEPEETH,CJ			
05:40		30-14	H 16	GOOD! FT by MARTIN,TREAVON [FB]
05:40		31-14	H 17	GOOD! FT by MARTIN,TREAVON [FB]
05:35				FOUL (PERSONAL) by MCFARLAND,DAVID
05:22	GOOD! JUMPER by SCOTT,DULAN	31-16	H 15	
05:22	ASSIST by MILLER,JUWAN			
05:02		33-16	H 17	GOOD! JUMPER by MARTIN,TREAVON
05:02				ASSIST by WILLIFORD,TYRESE
04:37	GOOD! JUMPER by SCOTT,DULAN	33-18	H 15	
04:19				MISSED JUMPER by MARTIN,TREAVON
04:16	REBOUND (DEF) by HEDGEPEETH,CJ			
04:15	GOOD! LAYUP by HEDGEPEETH,CJ [FB]	33-20	H 13	
04:15				FOUL (PERSONAL) by KINCHEN,DANIEL
04:15	SUB OUT: LOUISERRE,ROMAIN			
04:15	SUB IN: ANDRIC,NIKOLA			
04:15	SUB OUT: FAIRLESS,MITCH			
04:15	SUB IN: MYERS,JALEN			
04:15	GOOD! FT by HEDGEPEETH,CJ [FB]	33-21	H 12	
03:58				MISSED 3PTR by MCFARLAND,DAVID
03:54	REBOUND (DEF) by ANDRIC,NIKOLA			
03:46	TURNOVER (LOSTBALL) by MILLER,JUWAN			
03:46				STEAL by WILLIAMS,CAMERON
03:46				
03:33				TURNOVER (BADPASS) by WILLIFORD,TYRESE
03:33	STEAL by SCOTT,DULAN			
03:23	MISSED 3PTR by HEDGEPEETH,CJ			
03:19	REBOUND (OFF) by ANDRIC,NIKOLA			
03:14	GOOD! JUMPER by MILLER,JUWAN	33-23	H 10	
03:10				TURNOVER (TRAVEL) by MARTIN,TREAVON
03:10				SUB OUT: MARTIN,TREAVON
03:10				SUB IN: ELLIS,CHRISTIAN
03:10				SUB OUT: WILLIAMS,CAMERON
03:10				SUB IN: UZUEGBUNEM,ANSELM
02:49	MISSED JUMPER by MILLER,JUWAN			
02:44	REBOUND (OFF) by ANDRIC,NIKOLA			
02:43	MISSED LAYUP by ANDRIC,NIKOLA			
02:43				BLOCK by UZUEGBUNEM,ANSELM
02:37				REBOUND (DEF) by KINCHEN,DANIEL
02:32		35-23	H 12	GOOD! LAYUP by WILLIFORD,TYRESE
02:14	MISSED 3PTR by HEDGEPEETH,CJ			
02:11	REBOUND (OFF) by MILLER,JUWAN			
02:11				FOUL (PERSONAL) by WILLIFORD,TYRESE
02:11	GOOD! FT by MILLER,JUWAN	35-24	H 11	
02:11				SUB OUT: WILLIFORD,TYRESE
02:11				SUB IN: WILLIAMS,CAMERON
02:11	GOOD! FT by MILLER,JUWAN	35-25	H 10	
01:56				MISSED 3PTR by KINCHEN,DANIEL
01:52	REBOUND (DEF) by ANDRIC,NIKOLA			
01:40	TURNOVER (LOSTBALL) by MYERS,JALEN			
01:23		37-25	H 12	GOOD! LAYUP by ELLIS,CHRISTIAN
01:03	GOOD! JUMPER by ANDRIC,NIKOLA [PNT]	37-27	H 10	
00:43		39-27	H 12	GOOD! JUMPER by UZUEGBUNEM,ANSELM [PNT]
00:43				ASSIST by KINCHEN,DANIEL
00:43	FOUL (PERSONAL) by ANDRIC,NIKOLA			
00:43				MISSED FT by UZUEGBUNEM,ANSELM
00:43	REBOUND (DEF) by MILLER,JUWAN			
00:27	MISSED JUMPER by MILLER,JUWAN			
00:26				REBOUND (DEF) by WILLIAMS,CAMERON
00:07		41-27	H 14	GOOD! LAYUP by WILLIAMS,CAMERON [FB]
00:01	MISSED JUMPER by HEDGEPEETH,CJ			
00:00				REBOUND (DEF) by TEAM

### Missouri S&T 27, SIUE 41

Points from (This Period)	MST	SIE
In the Paint	10	26
Off Turns	6	6
2nd Chance	4	4
Fast Break	7	10
Bench	8	18



**Official Box Score**  
**Missouri S&T vs SIUE**  
**Second Half Statistics Only**  
**December 30, 2018 at Vadalabene Center - Edwardsville, Ill.**

**Missouri S&T 66**

No.	Player	S	Pts	FG	3FG	FT	OR	DR	TR	PF	A	TO	Blk	Stl	Min	+/-
2	Hedgepeth, Cj		5	2-5	0-1	1-2	1	0	1	2	1	2	0	1	19	-4
5	Scott, Dulan		4	2-6	0-0	0-0	0	3	3	1	0	1	0	0	10	-6
15	Muhammad, Yahmir		11	4-5	0-1	3-3	1	2	3	1	1	1	0	0	9	1
24	Louiserre, Romain		2	0-2	0-0	2-2	1	0	1	2	0	0	0	0	7	-3
30	Myers, Jalen		9	3-6	3-5	0-0	0	0	0	3	0	0	0	0	15	-4
13	Elmer, Nathan		0	0-0	0-0	0-0	0	0	0	0	0	0	0	0	2	8
22	Gerrity, Brooks		3	1-1	1-1	0-0	0	0	0	0	0	0	0	0	1	5
23	Andric, Nikola		2	1-3	0-1	0-0	1	0	1	0	2	2	0	0	10	-4
25	Miller, Juwan		0	0-1	0-0	0-0	0	2	2	1	0	2	0	2	10	0
32	Fairless, Mitch		3	1-2	0-0	1-2	0	2	2	1	0	0	0	1	12	4
44	Bushman, Kyle		0	0-1	0-0	0-0	0	0	0	1	0	0	0	1	2	8
	Team						2	0	2	0		1				
<b>TOTALS</b>			<b>39</b>	<b>14-32</b>	<b>4-9</b>	<b>7-9</b>	<b>6</b>	<b>9</b>	<b>15</b>	<b>12</b>	<b>4</b>	<b>9</b>	<b>0</b>	<b>5</b>	<b>99</b>	

*Shooting By Period*

Period	FG	FG%	3FG	3FG%	FT	FT%
1st Half	11-35	31%	2-11	18%	3-3	100%
2nd Half	14-32	44%	4-9	44%	7-9	78%
<b>Game</b>	<b>25-67</b>	<b>37.3%</b>	<b>6-20</b>	<b>30.0%</b>	<b>10-12</b>	<b>83.3%</b>

Last FG: 2nd-00:34  
 Biggest Run: 7-0  
 Largest lead: By 7 at 1-17:43  
 Technical Fouls: None.

**SIUE 79**

No.	Player	S	Pts	FG	3FG	FT	OR	DR	TR	PF	A	TO	Blk	Stl	Min	+/-
5	Williford, Tyrese		11	4-6	1-1	2-2	1	2	3	0	3	1	0	1	11	3
15	Mcfarland, David		2	0-1	0-0	2-2	0	0	0	1	2	0	1	2	11	1
24	Williams, Cameron		6	2-5	0-1	2-2	0	1	1	0	0	0	0	1	15	1
30	Uzuegbunem, Anselm		0	0-0	0-0	0-0	0	1	1	2	1	3	1	0	12	0
32	Jackson, Brandon		8	3-5	0-0	2-2	2	4	6	0	0	0	1	0	14	4
0	Martin, Treavon		0	0-0	0-0	0-2	0	2	2	4	0	1	0	0	7	7
1	Jackson, D.J.		1	0-0	0-0	1-2	0	0	0	0	0	2	0	0	2	-8
2	Applewhite, D'quan		0	0-0	0-0	0-0	0	0	0	0	0	0	0	0	1	-5
3	Kinchen, Daniel		6	2-4	1-3	1-1	0	1	1	0	0	0	0	0	6	5
10	Awet, Bill		2	1-1	0-0	0-0	0	0	0	0	0	0	0	0	3	1
13	Ellis, Christian		2	1-2	0-0	0-0	0	2	2	0	0	4	0	0	10	4
21	Lindenmeyer, Blake		0	0-0	0-0	0-0	0	0	0	1	0	0	0	0	1	-5
25	Mccoy, Jaylen		0	0-0	0-0	0-0	0	0	0	0	0	0	0	0	3	-7
31	Best, Jackson		0	0-0	0-0	0-0	0	0	0	0	0	1	0	0	1	-6
	Team						0	0	0	0		0				
<b>TOTALS</b>			<b>38</b>	<b>13-24</b>	<b>2-5</b>	<b>10-13</b>	<b>3</b>	<b>13</b>	<b>16</b>	<b>8</b>	<b>6</b>	<b>12</b>	<b>3</b>	<b>4</b>	<b>99</b>	

*Shooting By Period*

Period	FG	FG%	3FG	3FG%	FT	FT%
1st Half	17-32	53%	3-9	33%	4-6	67%
2nd Half	13-24	54%	2-5	40%	10-13	77%
<b>Game</b>	<b>30-56</b>	<b>53.6%</b>	<b>5-14</b>	<b>35.7%</b>	<b>14-19</b>	<b>73.7%</b>

Last FG: 2nd-02:48  
 Biggest Run: 22-0  
 Largest lead: By 22 at 2-02:48  
 Technical Fouls: None.

Game Notes:

Officials: Ed Crenshaw, Aaron Denton, Kevin Raheer  
 Attendance: 1137

Start Time: 2018-12-30 23:02:43  
 End Time: 2018-12-31 00:53:49  
 Game Duration: 111

Score	1st	2nd	TOT
MST	27	39	<b>66</b>
SIE	41	38	<b>79</b>

Points from (This Period)	MST	SIE
In the Paint	20	20
Off Turns	13	11
2nd Chance	6	4
Fast Break	5	17
Bench	8	11



**Official Play-By-Play**  
**Missouri S&T vs SIUE**  
**Second Half**  
**December 30, 2018 at Vadalabene Center - Edwardsville, Ill.**

**Starters:**

**Missouri S&T:** 2 HEDGEPEETH,CJ; 5 SCOTT,DULAN; 15 MUHAMMAD,YAHMIR; 24 LOUISERRE,ROMAIN; 30 MYERS,JALEN;  
**SIUE:** 5 WILLIFORD,TYRESE; 15 MCFARLAND,DAVID; 24 WILLIAMS,CAMERON; 30 UZUEGBUNEM,ANSELM; 32 JACKSON,BRANDON;

**Period 2**

Time	VISITORS: Missouri S&T	Score	Margin	HOME: SIUE
19:38		43-27	H 16	GOOD! LAYUP by JACKSON,BRANDON
19:38				ASSIST by WILLIFORD,TYRESE
19:11	MISSED JUMPER by MYERS,JALEN			
19:11				BLOCK by MCFARLAND,DAVID
19:09	REBOUND (OFF) by TEAM			
19:05	TURNOVER (SHOTCLOCK) by			
18:40				MISSED 3PTR by WILLIAMS,CAMERON
18:37	REBOUND (DEF) by MUHAMMAD,YAHMIR			
18:27	GOOD! LAYUP by HEDGEPEETH,CJ	43-29	H 14	
18:05	FOUL (PERSONAL) by MUHAMMAD,YAHMIR			
18:04	FOUL (PERSONAL) by MYERS,JALEN			
18:01				TURNOVER (TRAVEL) by UZUEGBUNEM,ANSELM
17:47	MISSED 3PTR by MUHAMMAD,YAHMIR			
17:44				REBOUND (DEF) by JACKSON,BRANDON
17:39		46-29	H 17	GOOD! 3PTR by WILLIFORD,TYRESE [FB]
17:39				ASSIST by MCFARLAND,DAVID
17:19	GOOD! LAYUP by MUHAMMAD,YAHMIR [PNT]	46-31	H 15	
17:09	FOUL (PERSONAL) by MYERS,JALEN			
17:06				FOUL (OFF) by UZUEGBUNEM,ANSELM
17:06				TURNOVER (OFFENSIVE) by UZUEGBUNEM,ANSELM
16:54	MISSED JUMPER by SCOTT,DULAN			
16:49	REBOUND (OFF) by LOUISERRE,ROMAIN			
16:48	MISSED LAYUP by LOUISERRE,ROMAIN			
16:42	REBOUND (OFF) by HEDGEPEETH,CJ			
16:42	GOOD! LAYUP by HEDGEPEETH,CJ	46-33	H 13	
16:34				MISSED LAYUP by WILLIFORD,TYRESE
16:29				REBOUND (OFF) by WILLIFORD,TYRESE
16:29		48-33	H 15	GOOD! LAYUP by WILLIFORD,TYRESE
16:16	MISSED JUMPER by SCOTT,DULAN			
16:16				BLOCK by UZUEGBUNEM,ANSELM
16:06				REBOUND (DEF) by JACKSON,BRANDON
16:06	FOUL (PERSONAL) by LOUISERRE,ROMAIN			
16:06	SUB OUT: SCOTT,DULAN			
16:06	SUB IN: FAIRLESS,MITCH			
16:06	SUB OUT: MUHAMMAD,YAHMIR			
16:06	SUB IN: MILLER,JUWAN			
16:06	SUB OUT: LOUISERRE,ROMAIN			
16:06	SUB IN: ANDRIC,NIKOLA			
15:52				MISSED JUMPER by WILLIFORD,TYRESE
15:45				REBOUND (OFF) by JACKSON,BRANDON
15:45		50-33	H 17	GOOD! LAYUP by JACKSON,BRANDON
15:42	GOOD! 3PTR by MYERS,JALEN [FB]	50-36	H 14	
15:42	ASSIST by ANDRIC,NIKOLA			
15:33				TURNOVER (BADPASS) by UZUEGBUNEM,ANSELM
15:33	STEAL by MILLER,JUWAN			
15:22	MISSED JUMPER by HEDGEPEETH,CJ			
15:18	REBOUND (OFF) by ANDRIC,NIKOLA			
15:10	GOOD! LAYUP by FAIRLESS,MITCH [PNT]	50-38	H 12	
15:09				TIMEOUT TEAM
15:09				SUB OUT: WILLIFORD,TYRESE
15:09				SUB IN: ELLIS,CHRISTIAN
14:51				TURNOVER (BADPASS) by ELLIS,CHRISTIAN
14:51				
14:31	MISSED 3PTR by MYERS,JALEN			
14:28	REBOUND (OFF) by TEAM			
14:12	TURNOVER (TRAVEL) by ANDRIC,NIKOLA			
13:53				MISSED LAYUP by ELLIS,CHRISTIAN
13:47				REBOUND (OFF) by JACKSON,BRANDON
13:47				MISSED LAYUP by JACKSON,BRANDON
13:44	REBOUND (DEF) by MILLER,JUWAN			
13:42	TURNOVER (BADPASS) by MILLER,JUWAN			
13:42				STEAL by WILLIAMS,CAMERON
13:33		52-38	H 14	GOOD! DUNK by WILLIAMS,CAMERON
13:24	GOOD! 3PTR by MYERS,JALEN	52-41	H 11	
13:16				MISSED JUMPER by WILLIAMS,CAMERON
13:12	REBOUND (DEF) by FAIRLESS,MITCH			
13:04	MISSED 3PTR by MYERS,JALEN			
12:59				REBOUND (DEF) by ELLIS,CHRISTIAN
12:55		54-41	H 13	GOOD! LAYUP by ELLIS,CHRISTIAN [PNT]
12:36	GOOD! LAYUP by ANDRIC,NIKOLA [PNT]	54-43	H 11	
12:21				TURNOVER (BADPASS) by ELLIS,CHRISTIAN
12:21	STEAL by HEDGEPEETH,CJ			
12:18				FOUL (PERSONAL) by MCFARLAND,DAVID
12:18	GOOD! FT by HEDGEPEETH,CJ [FB]	54-44	H 10	
12:18				SUB OUT: MCFARLAND,DAVID
12:18				SUB IN: WILLIFORD,TYRESE

Time	VISITORS: Missouri S&T	Score	Margin	HOME: SIUE
12:18				SUB OUT: WILLIAMS,CAMERON
12:18				SUB IN: KINCHEN,DANIEL
12:18				SUB OUT: UZUEGBUNEM,ANSELM
12:18				SUB IN: MARTIN,TREAVON
12:18	SUB OUT: ANDRIC,NIKOLA			
12:18	SUB IN: LOUISERRE,ROMAIN			
12:18	SUB OUT: MYERS,JALEN			
12:18	SUB IN: SCOTT,DULAN			
12:18	MISSED FT by HEDGEPEETH,CJ			
12:18				REBOUND (DEF) by MARTIN,TREAVON
12:02				MISSED 3PTR by KINCHEN,DANIEL
11:57	REBOUND (DEF) by SCOTT,DULAN			
11:53	MISSED JUMPER by SCOTT,DULAN			
11:50				REBOUND (DEF) by ELLIS,CHRISTIAN
11:42				FOUL (OFF) by MARTIN,TREAVON
11:42				TURNOVER (OFFENSIVE) by MARTIN,TREAVON
11:42				
11:28	MISSED JUMPER by HEDGEPEETH,CJ			
11:24				REBOUND (DEF) by KINCHEN,DANIEL
11:20	FOUL (PERSONAL) by LOUISERRE,ROMAIN			
11:20				MISSED FT by MARTIN,TREAVON
11:20				REBOUND (OFF) by TEAM
11:18				MISSED FT by MARTIN,TREAVON
11:17	REBOUND (DEF) by SCOTT,DULAN			
11:05	MISSED LAYUP by LOUISERRE,ROMAIN			
11:05				BLOCK by JACKSON,BRANDON
10:59				REBOUND (DEF) by WILLIFORD,TYRESE
10:57		57-44	H 13	GOOD! 3PTR by KINCHEN,DANIEL [FB]
10:57				ASSIST by WILLIFORD,TYRESE
10:31	MISSED JUMPER by MILLER,JUWAN			
10:27				REBOUND (DEF) by WILLIFORD,TYRESE
10:22				TURNOVER (LOSTBALL) by ELLIS,CHRISTIAN
10:03				FOUL (PERSONAL) by MARTIN,TREAVON
10:03	GOOD! FT by LOUISERRE,ROMAIN	57-45	H 12	
10:03	GOOD! FT by LOUISERRE,ROMAIN	57-46	H 11	
09:44				MISSED 3PTR by KINCHEN,DANIEL
09:40	REBOUND (DEF) by MILLER,JUWAN			
09:34	TURNOVER (LOSTBALL) by MILLER,JUWAN			
09:34				STEAL by WILLIFORD,TYRESE
09:31		59-46	H 13	GOOD! LAYUP by KINCHEN,DANIEL [FB]
09:31				ASSIST by WILLIFORD,TYRESE
09:31	FOUL (PERSONAL) by MILLER,JUWAN			
09:31				SUB OUT: JACKSON,BRANDON
09:31				SUB IN: UZUEGBUNEM,ANSELM
09:31	SUB OUT: FAIRLESS,MITCH			
09:31	SUB IN: MYERS,JALEN			
09:31		60-46	H 14	GOOD! FT by KINCHEN,DANIEL [FB]
09:09	GOOD! LAYUP by SCOTT,DULAN	60-48	H 12	
09:09	ASSIST by HEDGEPEETH,CJ			
09:06	FOUL (PERSONAL) by SCOTT,DULAN			
09:06	SUB OUT: LOUISERRE,ROMAIN			
09:06	SUB IN: ANDRIC,NIKOLA			
09:06		61-48	H 13	GOOD! FT by WILLIFORD,TYRESE [FB]
09:06				SUB OUT: ELLIS,CHRISTIAN
09:06				SUB IN: WILLIAMS,CAMERON
09:06		62-48	H 14	GOOD! FT by WILLIFORD,TYRESE [FB]
08:47	MISSED 3PTR by HEDGEPEETH,CJ			
08:43				REBOUND (DEF) by MARTIN,TREAVON
08:39	FOUL (PERSONAL) by MYERS,JALEN			
08:39		63-48	H 15	GOOD! FT by WILLIAMS,CAMERON [FB]
08:39		64-48	H 16	GOOD! FT by WILLIAMS,CAMERON [FB]
08:29	GOOD! LAYUP by SCOTT,DULAN [PNT]	64-50	H 14	
08:15		66-50	H 16	GOOD! LAYUP by WILLIFORD,TYRESE
07:46	GOOD! 3PTR by MYERS,JALEN	66-53	H 13	
07:46	ASSIST by ANDRIC,NIKOLA			
07:45	TIMEOUT TEAM			
07:45				SUB OUT: UZUEGBUNEM,ANSELM
07:45				SUB IN: JACKSON,BRANDON
07:23		68-53	H 15	GOOD! JUMPER by WILLIFORD,TYRESE
07:02	MISSED JUMPER by ANDRIC,NIKOLA			
06:58				REBOUND (DEF) by JACKSON,BRANDON
06:40				MISSED JUMPER by WILLIAMS,CAMERON
06:34	REBOUND (DEF) by SCOTT,DULAN			
06:32	MISSED JUMPER by SCOTT,DULAN			
06:28				REBOUND (DEF) by JACKSON,BRANDON
06:17				TURNOVER (LOSTBALL) by WILLIFORD,TYRESE
06:17	STEAL by MILLER,JUWAN			
06:17				FOUL (PERSONAL) by MARTIN,TREAVON
06:17				SUB OUT: KINCHEN,DANIEL
06:17				SUB IN: MCFARLAND,DAVID
05:49	TURNOVER (TRAVEL) by SCOTT,DULAN			
05:49				SUB OUT: WILLIFORD,TYRESE
05:49				SUB IN: ELLIS,CHRISTIAN
05:49	SUB OUT: MILLER,JUWAN			
05:49	SUB IN: MUHAMMAD,YAHMIR			
05:49	SUB OUT: SCOTT,DULAN			
05:49	SUB IN: FAIRLESS,MITCH			

Time	VISITORS: Missouri S&T	Score	Margin	HOME: SIUE
05:33		70-53	H 17	GOOD! JUMPER by JACKSON,BRANDON [PNT]
05:16	TURNOVER (LOSTBALL) by MUHAMMAD,YAHMIR			
05:16				STEAL by MCFARLAND,DAVID
05:11		72-53	H 19	GOOD! DUNK by WILLIAMS,CAMERON [FB]
05:11				ASSIST by MCFARLAND,DAVID
04:49	GOOD! JUMPER by MUHAMMAD,YAHMIR [PNT]	72-55	H 17	
04:49				FOUL (PERSONAL) by MARTIN,TREAVON
04:49				SUB OUT: MARTIN,TREAVON
04:49				SUB IN: UZUEGBUNEM,ANSELM
04:49	GOOD! FT by MUHAMMAD,YAHMIR	72-56	H 16	
04:29				MISSED JUMPER by JACKSON,BRANDON
04:25	REBOUND (DEF) by MUHAMMAD,YAHMIR			
04:15	MISSED LAYUP by FAIRLESS,MITCH			
04:12				REBOUND (DEF) by UZUEGBUNEM,ANSELM
04:01	FOUL (PERSONAL) by FAIRLESS,MITCH			
04:01		73-56	H 17	GOOD! FT by JACKSON,BRANDON
04:01		74-56	H 18	GOOD! FT by JACKSON,BRANDON
04:01				SUB OUT: JACKSON,BRANDON
04:01				SUB IN: AWET,BILL
03:50	TURNOVER (TRAVEL) by ANDRIC,NIKOLA			
03:50				
03:29				MISSED JUMPER by MCFARLAND,DAVID
03:24	REBOUND (DEF) by FAIRLESS,MITCH			
03:17	TURNOVER (BADPASS) by HEDGEPEETH,CJ			
03:17				STEAL by MCFARLAND,DAVID
03:12	FOUL (PERSONAL) by HEDGEPEETH,CJ			
03:12		75-56	H 19	GOOD! FT by MCFARLAND,DAVID [FB]
03:12		76-56	H 20	GOOD! FT by MCFARLAND,DAVID [FB]
03:12				SUB OUT: MCFARLAND,DAVID
03:12				SUB IN: MCCOY,JAYLEN
03:01	MISSED 3PTR by ANDRIC,NIKOLA			
02:57				REBOUND (DEF) by WILLIAMS,CAMERON
02:48		78-56	H 22	GOOD! LAYUP by AWET,BILL
02:48				ASSIST by UZUEGBUNEM,ANSELM
02:35				FOUL (PERSONAL) by UZUEGBUNEM,ANSELM
02:35	GOOD! FT by MUHAMMAD,YAHMIR	78-57	H 21	
02:35				SUB OUT: UZUEGBUNEM,ANSELM
02:35				SUB IN: JACKSON,D.J.
02:35	SUB OUT: ANDRIC,NIKOLA			
02:35	SUB IN: BUSHMAN,KYLE			
02:35	SUB OUT: MYERS,JALEN			
02:35	SUB IN: ELMER,NATHAN			
02:35	GOOD! FT by MUHAMMAD,YAHMIR	78-58	H 20	
02:30				TURNOVER (BADPASS) by ELLIS,CHRISTIAN
02:30	STEAL by BUSHMAN,KYLE			
02:26	FOUL (OFF) by HEDGEPEETH,CJ			
02:26	TURNOVER (OFFENSIVE) by HEDGEPEETH,CJ			
02:19				TURNOVER (TRAVEL) by JACKSON,D.J.
01:59	MISSED JUMPER by BUSHMAN,KYLE			
01:54	REBOUND (OFF) by MUHAMMAD,YAHMIR			
01:47	GOOD! JUMPER by MUHAMMAD,YAHMIR [PNT]	78-60	H 18	
01:25	FOUL (PERSONAL) by BUSHMAN,KYLE			
01:25				MISSED FT by JACKSON,D.J.
01:25				REBOUND (OFF) by TEAM
01:25				SUB OUT: ELLIS,CHRISTIAN
01:25				SUB IN: LINDENMEYER,BLAKE
01:25				SUB OUT: WILLIAMS,CAMERON
01:25				SUB IN: APPLEWHITE,D'QUAN
01:25	SUB OUT: HEDGEPEETH,CJ			
01:25	SUB IN: GERRITY,BROOKS			
01:25		79-60	H 19	GOOD! FT by JACKSON,D.J.
01:25				SUB OUT: AWET,BILL
01:25				SUB IN: BEST,JACKSON
01:16	GOOD! LAYUP by MUHAMMAD,YAHMIR	79-62	H 17	
01:08				TURNOVER (LOSTBALL) by JACKSON,D.J.
01:08	STEAL by FAIRLESS,MITCH			
01:05				FOUL (PERSONAL) by LINDENMEYER,BLAKE
01:05	MISSED FT by FAIRLESS,MITCH			
01:05	REBOUND (OFF) by TEAM			
01:05	GOOD! FT by FAIRLESS,MITCH [FB]	79-63	H 16	
00:53				TURNOVER (LOSTBALL) by BEST,JACKSON
00:34	GOOD! 3PTR by GERRITY,BROOKS	79-66	H 13	
00:34	ASSIST by MUHAMMAD,YAHMIR			

### Missouri S&T 66, SIUE 79

Points from (This Period)	MST	SIE
In the Paint	20	20
Off Turns	13	11
2nd Chance	6	4
Fast Break	5	17
Bench	8	11

**Official Scoring/Possession Reference Chart**  
**Missouri S&T vs SIUE**  
**Period 1**  
**December 30, 2018 at Vadalabene Center - Edwardsville, Ill.**

**Starters:**

**Missouri S&T:** 2 HEDGE PETH, CJ; 5 SCOTT, DULAN; 15 MUHAMMAD, YA HMIR; 24 LOUISERRE, ROMAIN; 30 MYERS, JALEN;

**SIUE:** 5 WILLIFORD, TY RESE; 15 MCFARLAND, DAVID; 24 WILLIAMS, CAMERON; 30 UZUEGBUNEM, ANSELM; 32 JACKSON, BRANDON;

**Period 1**

Time	VISITORS: Missouri S&T	Score	Margin	HOME: SIUE
19:45	GOOD! JUMPER by SCOTT, DULAN	0-2	V 2	
19:22	GOOD! LAYUP by SCOTT, DULAN [FB]	0-4	V 4	
18:18	GOOD! LAYUP by SCOTT, DULAN [FB]	0-6	V 6	
17:53		2-6	V 4	GOOD! LAYUP by UZUEGBUNEM, ANSELM
17:43	GOOD! 3PTR by MYERS, JALEN	2-9	V 7	
16:35		4-9	V 5	GOOD! LAYUP by JACKSON, BRANDON [FB]
15:56		7-9	V 2	GOOD! 3PTR by JACKSON, BRANDON
15:40	GOOD! 3PTR by MUHAMMAD, YA HMIR	7-12	V 5	
13:44		9-12	V 3	GOOD! LAYUP by WILLIAMS, CAMERON
13:10		12-12	T	GOOD! 3PTR by WILLIAMS, CAMERON
11:17		14-12	H 2	GOOD! LAYUP by ELLIS, CHRISTIAN
10:39		16-12	H 4	GOOD! JUMPER by MARTIN, TREA VON [PNT]
10:18		19-12	H 7	GOOD! 3PTR by KINCHEN, DANIEL
09:33		21-12	H 9	GOOD! LAYUP by ELLIS, CHRISTIAN [PNT]
08:52		22-12	H 10	GOOD! FT by WILLIAMS, CAMERON
08:02		24-12	H 12	GOOD! LAYUP by WILLIAMS, CAMERON [FB]
07:33		26-12	H 14	GOOD! LAYUP by ELLIS, CHRISTIAN [PNT]
07:33		27-12	H 15	GOOD! FT by ELLIS, CHRISTIAN
06:24		29-12	H 17	GOOD! DUNK by MCFARLAND, DAVID [FB]
06:06	GOOD! LAYUP by FAIRLESS, MITCH [PNT]	29-14	H 15	
05:40		30-14	H 16	GOOD! FT by MARTIN, TREA VON [FB]
05:40		31-14	H 17	GOOD! FT by MARTIN, TREA VON [FB]
05:22	GOOD! JUMPER by SCOTT, DULAN	31-16	H 15	
05:02		33-16	H 17	GOOD! JUMPER by MARTIN, TREA VON
04:37	GOOD! JUMPER by SCOTT, DULAN	33-18	H 15	
04:15	GOOD! LAYUP by HEDGE PETH, CJ [FB]	33-20	H 13	
04:15	GOOD! FT by HEDGE PETH, CJ [FB]	33-21	H 12	
03:14	GOOD! JUMPER by MILLER, JUWAN	33-23	H 10	
02:32		35-23	H 12	GOOD! LAYUP by WILLIFORD, TY RESE
02:11	GOOD! FT by MILLER, JUWAN	35-24	H 11	
02:11	GOOD! FT by MILLER, JUWAN	35-25	H 10	
01:23		37-25	H 12	GOOD! LAYUP by ELLIS, CHRISTIAN
01:03	GOOD! JUMPER by ANDRIC, NIKOLA [PNT]	37-27	H 10	
00:43		39-27	H 12	GOOD! JUMPER by UZUEGBUNEM, ANSELM [PNT]
00:07		41-27	H 14	GOOD! LAYUP by WILLIAMS, CAMERON [FB]

**Missouri S&T 27, SIUE 41**

**Official Scoring/Possession Reference Chart**  
**Missouri S&T vs SIUE**  
**Period 2**  
**December 30, 2018 at Vadalabene Center - Edwardsville, Ill.**

**Starters:**

**Missouri S&T:** 2 HEDGE PETH, CJ; 5 SCOTT, DULAN; 15 MUHAMMAD, YA HMIR; 24 LOUISERRE, ROMAIN; 30 MYERS, JALEN;  
**SIUE:** 5 WILLIFORD, TY RESE; 15 MCFARLAND, DAVID; 24 WILLIAMS, CAMERON; 30 UZUEGBUNEM, ANSELM; 32 JACKSON, BRANDON;

**Period 2**

Time	VISITORS: Missouri S&T	Score	Margin	HOME: SIUE
19:38		43-27	H 16	GOOD! LAY UP by JACKSON, BRANDON
18:27	GOOD! LAY UP by HEDGE PETH, CJ	43-29	H 14	
17:39		46-29	H 17	GOOD! 3PTR by WILLIFORD, TY RESE [FB]
17:19	GOOD! LAY UP by MUHAMMAD, YA HMIR [PNT]	46-31	H 15	
16:42	GOOD! LAY UP by HEDGE PETH, CJ	46-33	H 13	
16:29		48-33	H 15	GOOD! LAY UP by WILLIFORD, TY RESE
15:45		50-33	H 17	GOOD! LAY UP by JACKSON, BRANDON
15:42	GOOD! 3PTR by MYERS, JALEN [FB]	50-36	H 14	
15:10	GOOD! LAY UP by FAIRLESS, MITCH [PNT]	50-38	H 12	
13:33		52-38	H 14	GOOD! DUNK by WILLIAMS, CAMERON
13:24	GOOD! 3PTR by MYERS, JALEN	52-41	H 11	
12:55		54-41	H 13	GOOD! LAY UP by ELLIS, CHRISTIAN [PNT]
12:36	GOOD! LAY UP by ANDRIC, NIKOLA [PNT]	54-43	H 11	
12:18	GOOD! FT by HEDGE PETH, CJ [FB]	54-44	H 10	
10:57		57-44	H 13	GOOD! 3PTR by KINCHEN, DANIEL [FB]
10:03	GOOD! FT by LOUISERRE, ROMAIN	57-45	H 12	
10:03	GOOD! FT by LOUISERRE, ROMAIN	57-46	H 11	
09:31		59-46	H 13	GOOD! LAY UP by KINCHEN, DANIEL [FB]
09:31		60-46	H 14	GOOD! FT by KINCHEN, DANIEL [FB]
09:09	GOOD! LAY UP by SCOTT, DULAN	60-48	H 12	
09:06		61-48	H 13	GOOD! FT by WILLIFORD, TY RESE [FB]
09:06		62-48	H 14	GOOD! FT by WILLIFORD, TY RESE [FB]
08:39		63-48	H 15	GOOD! FT by WILLIAMS, CAMERON [FB]
08:39		64-48	H 16	GOOD! FT by WILLIAMS, CAMERON [FB]
08:29	GOOD! LAY UP by SCOTT, DULAN [PNT]	64-50	H 14	
08:15		66-50	H 16	GOOD! LAY UP by WILLIFORD, TY RESE
07:46	GOOD! 3PTR by MYERS, JALEN	66-53	H 13	
07:23		68-53	H 15	GOOD! JUMPER by WILLIFORD, TY RESE
05:33		70-53	H 17	GOOD! JUMPER by JACKSON, BRANDON [PNT]
05:11		72-53	H 19	GOOD! DUNK by WILLIAMS, CAMERON [FB]
04:49	GOOD! JUMPER by MUHAMMAD, YA HMIR [PNT]	72-55	H 17	
04:49	GOOD! FT by MUHAMMAD, YA HMIR	72-56	H 16	
04:01		73-56	H 17	GOOD! FT by JACKSON, BRANDON
04:01		74-56	H 18	GOOD! FT by JACKSON, BRANDON
03:12		75-56	H 19	GOOD! FT by MCFARLAND, DAVID [FB]
03:12		76-56	H 20	GOOD! FT by MCFARLAND, DAVID [FB]
02:48		78-56	H 22	GOOD! LAY UP by AWET, BILL
02:35	GOOD! FT by MUHAMMAD, YA HMIR	78-57	H 21	
02:35	GOOD! FT by MUHAMMAD, YA HMIR	78-58	H 20	
01:47	GOOD! JUMPER by MUHAMMAD, YA HMIR [PNT]	78-60	H 18	
01:25		79-60	H 19	GOOD! FT by JACKSON, D.J.
01:16	GOOD! LAY UP by MUHAMMAD, YA HMIR	79-62	H 17	
01:05	GOOD! FT by FAIRLESS, MITCH [FB]	79-63	H 16	
00:34	GOOD! 3PTR by GERRITY, BROOKS	79-66	H 13	

**Missouri S&T 66, SIUE 79**

**Official Substitutions Log**  
**Missouri S&T vs SIUE**  
**Period 1**  
**December 30, 2018 at Vadalabene Center - Edwardsville, Ill.**

VISITORS: Missouri S&T	Time	Score	HOME: SIUE
2 HEDGEPEETH,CJ			5 WILLIFORD, TYRESE
5 SCOTT,DULAN			15 MCFARLAND,DAVID
15 MUHAMMAD,YAHMIR			24 WILLIAMS,CAMERON
24 LOUISERRE,ROMAIN			30 UZUEGBUNEM,ANSELM
30 MYERS,JALEN			32 JACKSON,BRANDON
	16:23	9-4	SUB OUT: MCFARLAND,DAVID
	16:23		SUB IN: KINCHEN,DANIEL
SUB OUT: 24 LOUISERRE,ROMAIN	16:23		
SUB IN: 23 ANDRIC,NIKOLA	16:23		
	15:05	12-7	SUB OUT: JACKSON,BRANDON
	15:05		SUB IN: AWET,BILL
SUB OUT: 5 SCOTT,DULAN	15:05		
SUB IN: 13 ELMER,NATHAN	15:05		
SUB OUT: 30 MYERS,JALEN	15:05		
SUB IN: 32 FAIRLESS,MITCH	15:05		
	13:50	12-7	SUB OUT: AWET,BILL
	13:50		SUB IN: MARTIN,TREAVON
	13:50		SUB OUT: UZUEGBUNEM,ANSELM
	13:50		SUB IN: JACKSON,BRANDON
SUB OUT: 2 HEDGEPEETH,CJ	13:50		
SUB IN: 30 MYERS,JALEN	13:50		
	12:58	12-12	SUB OUT: WILLIAMS,CAMERON
	12:58		SUB IN: ELLIS,CHRISTIAN
SUB OUT: 13 ELMER,NATHAN	12:58		
SUB IN: 22 GERRITY,BROOKS	12:58		
	11:44	12-12	SUB OUT: WILLIFORD, TYRESE
	11:44		SUB IN: UZUEGBUNEM,ANSELM
	11:44		SUB OUT: JACKSON, BRANDON
	11:44		SUB IN: MCFARLAND, DAVID
SUB OUT: 22 GERRITY, BROOKS	11:44		
SUB IN: 2 HEDGEPEETH, CJ	11:44		
SUB OUT: 15 MUHAMMAD, YAHMIR	11:00	12-14	
SUB IN: 24 LOUISERRE, ROMAIN	11:00		
SUB OUT: 23 ANDRIC, NIKOLA	11:00		
SUB IN: 25 MILLER, JUWAN	11:00		
	09:18	12-21	SUB OUT: MARTIN, TREAVON
	09:18		SUB IN: WILLIFORD, TYRESE
	09:18		SUB OUT: KINCHEN, DANIEL
	09:18		SUB IN: WILLIAMS, CAMERON
SUB OUT: 32 FAIRLESS, MITCH	09:18		
SUB IN: 5 SCOTT, DULAN	09:18		
SUB OUT: 30 MYERS, JALEN	08:52	12-22	
SUB IN: 22 GERRITY, BROOKS	08:52		
SUB OUT: 22 GERRITY, BROOKS	08:01	12-24	
SUB IN: 32 FAIRLESS, MITCH	08:01		
	05:57	14-29	SUB OUT: ELLIS, CHRISTIAN
	05:57		SUB IN: MARTIN, TREAVON
	05:57		SUB OUT: UZUEGBUNEM, ANSELM
	05:57		SUB IN: KINCHEN, DANIEL
SUB OUT: 24 LOUISERRE, ROMAIN	04:15	20-33	
SUB IN: 23 ANDRIC, NIKOLA	04:15		
SUB OUT: 32 FAIRLESS, MITCH	04:15		
SUB IN: 30 MYERS, JALEN	04:15		
	03:10	23-33	SUB OUT: MARTIN, TREAVON
	03:10		SUB IN: ELLIS, CHRISTIAN
	03:10		SUB OUT: WILLIAMS, CAMERON
	03:10		SUB IN: UZUEGBUNEM, ANSELM
	02:11	24-35	SUB OUT: WILLIFORD, TYRESE
	02:11		SUB IN: WILLIAMS, CAMERON

**Missouri S&T 27, SIUE 41**

**Official Substitutions Log**  
**Missouri S&T vs SIUE**  
**Period 2**  
**December 30, 2018 at Vadalabene Center - Edwardsville, Ill.**

VISITORS: Missouri S&T	Time	Score	HOME: SIUE
2 HEDGEPEETH,CJ			5 WILLIFORD,TYRESE
5 SCOTT,DULAN			15 MCFARLAND,DAVID
15 MUHAMMAD,YAHMIR			24 WILLIAMS,CAMERON
24 LOUISERRE,ROMAIN			30 UZUEGBUNEM,ANSELM
30 MYERS,JALEN			32 JACKSON,BRANDON
SUB OUT: 5 SCOTT,DULAN	16:06	33-48	
SUB IN: 32 FAIRLESS,MITCH	16:06		
SUB OUT: 15 MUHAMMAD,YAHMIR	16:06		
SUB IN: 25 MILLER,JUWAN	16:06		
SUB OUT: 24 LOUISERRE,ROMAIN	16:06		
SUB IN: 23 ANDRIC,NIKOLA	16:06		
	15:09	38-50	SUB OUT: WILLIFORD,TYRESE
	15:09		SUB IN: ELLIS,CHRISTIAN
	12:18	44-54	SUB OUT: MCFARLAND,DAVID
	12:18		SUB IN: WILLIFORD,TYRESE
	12:18		SUB OUT: WILLIAMS,CAMERON
	12:18		SUB IN: KINCHEN,DANIEL
	12:18		SUB OUT: UZUEGBUNEM,ANSELM
	12:18		SUB IN: MARTIN,TREAVON
SUB OUT: 23 ANDRIC,NIKOLA	12:18		
SUB IN: 24 LOUISERRE,ROMAIN	12:18		
SUB OUT: 30 MYERS,JALEN	12:18		
SUB IN: 5 SCOTT,DULAN	12:18		
	09:31	46-59	SUB OUT: JACKSON,BRANDON
	09:31		SUB IN: UZUEGBUNEM,ANSELM
SUB OUT: 32 FAIRLESS,MITCH	09:31		
SUB IN: 30 MYERS,JALEN	09:31		
SUB OUT: 24 LOUISERRE,ROMAIN	09:06	48-60	
SUB IN: 23 ANDRIC,NIKOLA	09:06		
	09:06		SUB OUT: ELLIS,CHRISTIAN
	09:06		SUB IN: WILLIAMS,CAMERON
	07:45	53-66	SUB OUT: UZUEGBUNEM,ANSELM
	07:45		SUB IN: JACKSON,BRANDON
	06:17	53-68	SUB OUT: KINCHEN,DANIEL
	06:17		SUB IN: MCFARLAND,DAVID
	05:49	53-68	SUB OUT: WILLIFORD,TYRESE
	05:49		SUB IN: ELLIS,CHRISTIAN
SUB OUT: 25 MILLER,JUWAN	05:49		
SUB IN: 15 MUHAMMAD,YAHMIR	05:49		
SUB OUT: 5 SCOTT,DULAN	05:49		
SUB IN: 32 FAIRLESS,MITCH	05:49		
	04:49	55-72	SUB OUT: MARTIN,TREAVON
	04:49		SUB IN: UZUEGBUNEM,ANSELM
	04:01	56-74	SUB OUT: JACKSON,BRANDON
	04:01		SUB IN: AWET,BILL
	03:12	56-76	SUB OUT: MCFARLAND,DAVID
	03:12		SUB IN: MCCOY,JAYLEN
	02:35	57-78	SUB OUT: UZUEGBUNEM,ANSELM
	02:35		SUB IN: JACKSON,D.J.
SUB OUT: 23 ANDRIC,NIKOLA	02:35		
SUB IN: 44 BUSHMAN,KYLE	02:35		
SUB OUT: 30 MYERS,JALEN	02:35		
SUB IN: 13 ELMER,NATHAN	02:35		
	01:25	60-78	SUB OUT: ELLIS,CHRISTIAN
	01:25		SUB IN: LINDENMEYER,BLAKE
	01:25		SUB OUT: WILLIAMS,CAMERON
	01:25		SUB IN: APPLEWHITE,D'QUAN
SUB OUT: 2 HEDGEPEETH,CJ	01:25		
SUB IN: 22 GERRITY,BROOKS	01:25		
	01:25		SUB OUT: AWET,BILL
	01:25		SUB IN: BEST,JACKSON

**Missouri S&T 66, SIUE 79**

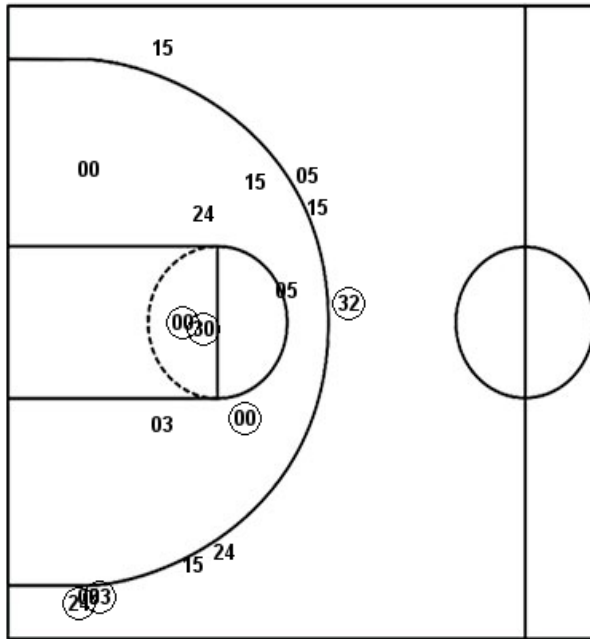
**Official Shot Chart**  
**Missouri S&T vs SIUE**  
**PERIOD 1 Shots**  
 December 30, 2018 at Vadalabene Center - Edwardsville, Ill.

**SIUE**

**Missouri S&T**

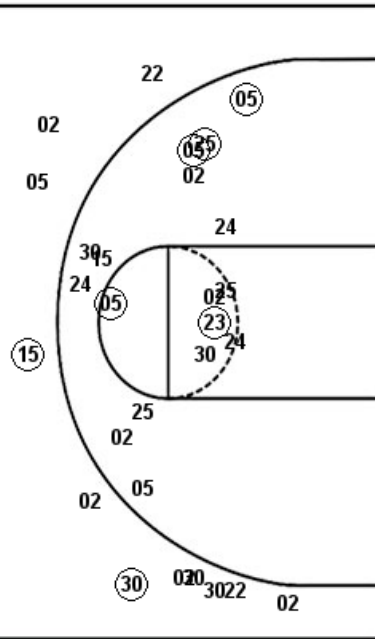
Layups  
 24 (30) (32) 32 (24)  
 (13) (13) (24) (13) 05  
 (05) (13) (24)

Dunks  
 03 (15)



Layups  
 (05) (05) 30 30 (32)  
 (02) 23

Dunks



SIUE: Period 1	Made	Att	Pct
Layups	10	13	76.9
Dunks	1	2	50.0
2PT Field Goals	14	23	60.9
3PT Field Goals	3	9	33.3
<b>Total Field Goals</b>	<b>17</b>	<b>32</b>	<b>53.1</b>

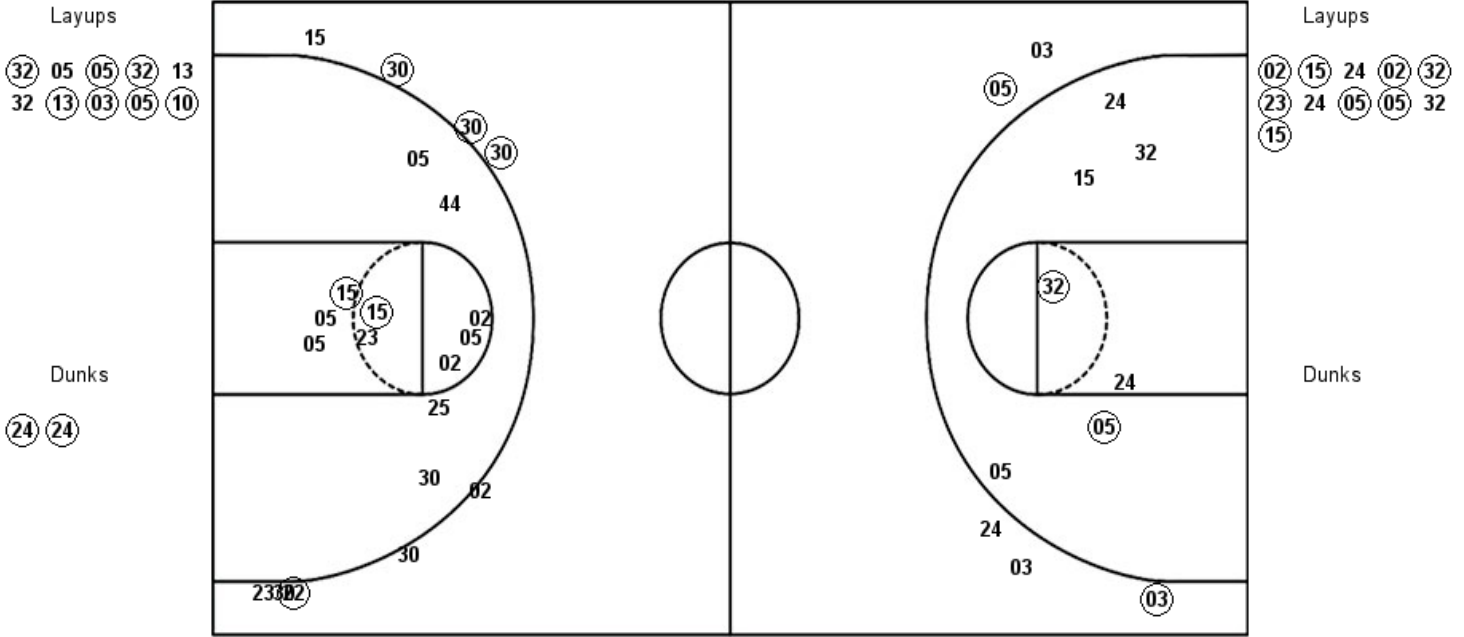
MST: Period 1	Made	Att	Pct
Layups	4	7	57.1
Dunks	0	0	0
2PT Field Goals	9	24	37.5
3PT Field Goals	2	11	18.2
<b>Total Field Goals</b>	<b>11</b>	<b>35</b>	<b>31.4</b>



**Official Shot Chart**  
**Missouri S&T vs SIUE**  
**PERIOD 2 Shots**  
 December 30, 2018 at Vadalabene Center - Edwardsville, Ill.

**SIUE**

**Missouri S&T**

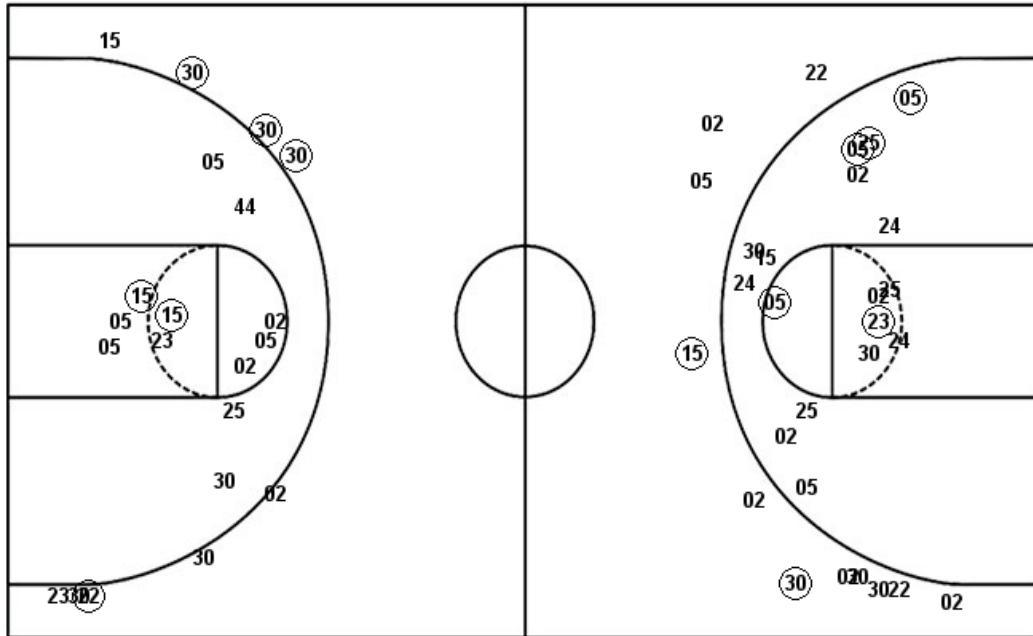


<b>SIUE : Period 2</b>	<b>Made</b>	<b>Att</b>	<b>Pct</b>
Layups	7	10	70.0
Dunks	2	2	100.0
2PT Field Goals	11	19	57.9
3PT Field Goals	2	5	40.0
<b>Total Field Goals</b>	<b>13</b>	<b>24</b>	<b>54.2</b>

<b>MST : Period 2</b>	<b>Made</b>	<b>Att</b>	<b>Pct</b>
Layups	8	11	72.7
Dunks	0	0	0
2PT Field Goals	10	23	43.5
3PT Field Goals	4	9	44.4
<b>Total Field Goals</b>	<b>14</b>	<b>32</b>	<b>43.8</b>

**Official Shot Chart**  
**Missouri S&T vs SIUE**  
**Missouri S&T Team Shots**  
**December 30, 2018 at Vadalabene Center - Edwardsville, Ill.**

Layups



Layups



Dunks

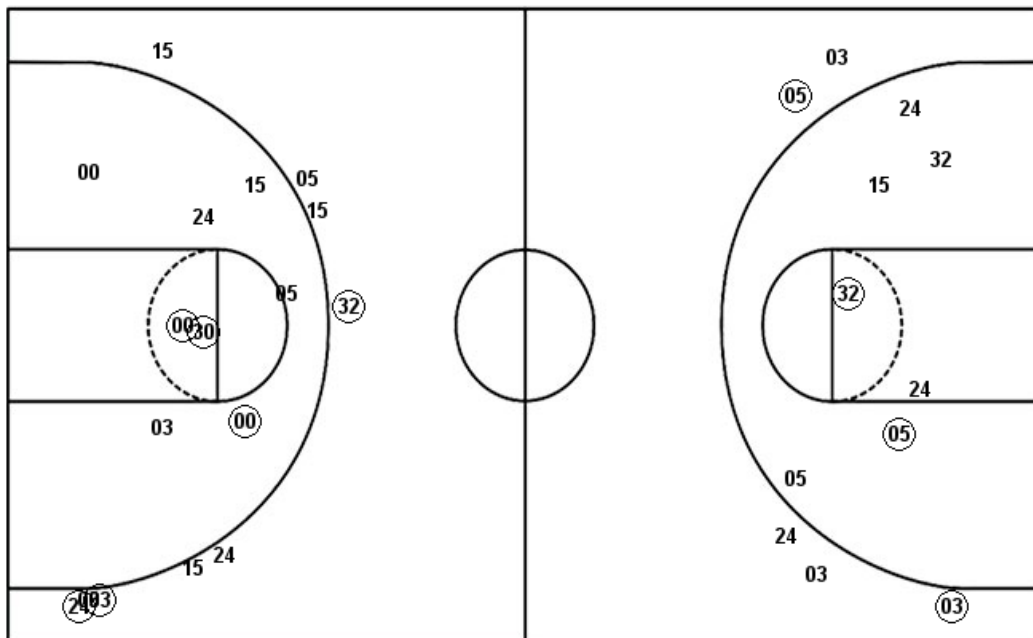
Dunks

MST : Period 1	Made	Att	Pct
Layups	4	7	57.1
Dunks	0	0	0
2PT Field Goals	9	24	37.5
3PT Field Goals	2	11	18.2
<b>Total Field Goals</b>	<b>11</b>	<b>35</b>	<b>31.4</b>

MST : Period 2	Made	Att	Pct
Layups	8	11	72.7
Dunks	0	0	0
2PT Field Goals	10	23	43.5
3PT Field Goals	4	9	44.4
<b>Total Field Goals</b>	<b>14</b>	<b>32</b>	<b>43.8</b>

**Official Shot Chart**  
**Missouri S&T vs SIUE**  
**SIUE Team Shots**  
 December 30, 2018 at Vadalabene Center - Edwardsville, Ill.

Layups

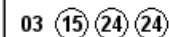


Layups



Dunks

Dunks



SIE : Period 1	Made	Att	Pct
Layups	10	13	76.9
Dunks	1	2	50.0
2PT Field Goals	14	23	60.9
3PT Field Goals	3	9	33.3
<b>Total Field Goals</b>	<b>17</b>	<b>32</b>	<b>53.1</b>

SIE : Period 2	Made	Att	Pct
Layups	7	10	70.0
Dunks	2	2	100.0
2PT Field Goals	11	19	57.9
3PT Field Goals	2	5	40.0
<b>Total Field Goals</b>	<b>13</b>	<b>24</b>	<b>54.2</b>