

FINAL SCORE

Harris-Stowe

87

SIUE

92



December 08, 2018 • Vadalabene Center - Edwardsville, Ill.

FINAL STATISTICS

Official Box Score
Harris-Stowe vs SIUE
Game Totals -- Final Statistics
December 08, 2018 at Vadalabene Center - Edwardsville, Ill.

Harris-Stowe 87

| No. | Player | S | Pts | FG | 3FG | FT | OR | DR | TR | PF | A | TO | Blk | Stl | Min | +/- |
|---------------|--------------------|---|-----------|--------------|-------------|--------------|----------|-----------|-----------|-----------|-----------|-----------|----------|-----------|------------|-----|
| 2 | Clarkson, Bear | | 4 | 2-2 | 0-0 | 0-0 | 0 | 0 | 0 | 4 | 2 | 4 | 0 | 2 | 21 | 11 |
| 3 | Clark, Deandre | | 15 | 6-13 | 2-9 | 1-2 | 1 | 7 | 8 | 3 | 2 | 0 | 0 | 2 | 40 | -5 |
| 5 | Wimbley, Christian | | 14 | 6-11 | 0-1 | 2-2 | 5 | 4 | 9 | 4 | 2 | 4 | 1 | 1 | 34 | -1 |
| 12 | Rigmaiden, Nate | | 28 | 10-17 | 5-11 | 3-4 | 0 | 3 | 3 | 5 | 1 | 2 | 0 | 2 | 27 | 8 |
| 13 | Clark, Duane | | 11 | 3-6 | 0-0 | 5-6 | 1 | 4 | 5 | 4 | 1 | 3 | 2 | 2 | 27 | 3 |
| 0 | Barnes, Riley | | 4 | 2-4 | 0-1 | 0-0 | 1 | 1 | 2 | 4 | 1 | 1 | 0 | 0 | 19 | -12 |
| 15 | Wells Jr, Corey | | 0 | 0-1 | 0-1 | 0-0 | 0 | 0 | 0 | 1 | 0 | 0 | 0 | 0 | 5 | -10 |
| 24 | Bouie, Romero | | 11 | 4-10 | 1-5 | 2-3 | 1 | 4 | 5 | 4 | 2 | 2 | 0 | 1 | 29 | -19 |
| | Team | | | | | | 0 | 1 | 1 | 0 | | 0 | | | | |
| TOTALS | | | 87 | 33-64 | 8-28 | 13-17 | 9 | 24 | 33 | 29 | 11 | 16 | 3 | 10 | 200 | |

Shooting By Period

| Period | FG | FG% | 3FG | 3FG% | FT | FT% |
|-------------|--------------|--------------|-------------|--------------|--------------|--------------|
| 1st Half | 15-34 | 44% | 3-17 | 18% | 0-1 | 00% |
| 2nd Half | 18-30 | 60% | 5-11 | 45% | 13-16 | 81% |
| Game | 33-64 | 51.6% | 8-28 | 28.6% | 13-17 | 76.5% |

Deadball Rebounds:

Last FG: 2nd-00:06
 Biggest Run: 7-0
 Largest lead: By 10 at 1-07:40
 Technical Fouls: #5 WIMBLEY (Class A) @ 1st - 02:56; #12 RIGMAIDEN (Double) @ 2nd - 00:19;

SIUE 92

| No. | Player | S | Pts | FG | 3FG | FT | OR | DR | TR | PF | A | TO | Blk | Stl | Min | +/- |
|---------------|-------------------|---|-----------|--------------|-------------|--------------|-----------|-----------|-----------|-----------|-----------|-----------|----------|----------|------------|-----|
| 5 | Williford, Tyrese | | 25 | 5-14 | 1-4 | 14-16 | 2 | 7 | 9 | 4 | 4 | 3 | 0 | 1 | 32 | 0 |
| 13 | Ellis, Christian | | 4 | 2-4 | 0-1 | 0-0 | 2 | 2 | 4 | 4 | 1 | 0 | 0 | 3 | 34 | 10 |
| 15 | Mcfarland, David | | 4 | 0-7 | 0-6 | 4-6 | 0 | 4 | 4 | 4 | 0 | 2 | 0 | 3 | 27 | 8 |
| 24 | Williams, Cameron | | 9 | 2-7 | 1-4 | 4-4 | 0 | 0 | 0 | 2 | 2 | 2 | 0 | 0 | 25 | 1 |
| 32 | Jackson, Brandon | | 28 | 10-18 | 0-0 | 8-9 | 4 | 7 | 11 | 3 | 1 | 4 | 0 | 0 | 33 | 11 |
| 1 | Jackson, D.J. | | 7 | 3-5 | 0-0 | 1-2 | 4 | 4 | 8 | 1 | 0 | 2 | 0 | 0 | 13 | -5 |
| 3 | Kinchen, Daniel | | 12 | 3-4 | 1-1 | 5-5 | 0 | 0 | 0 | 1 | 2 | 0 | 0 | 0 | 27 | 1 |
| 25 | Mccoy, Jaylen | | 3 | 1-2 | 1-2 | 0-0 | 0 | 0 | 0 | 1 | 1 | 1 | 0 | 0 | 10 | -1 |
| | Team | | | | | | 3 | 2 | 5 | 0 | | 0 | | | | |
| TOTALS | | | 92 | 26-61 | 4-18 | 36-42 | 15 | 26 | 41 | 20 | 11 | 14 | 0 | 7 | 200 | |

Shooting By Period

| Period | FG | FG% | 3FG | 3FG% | FT | FT% |
|-------------|--------------|--------------|-------------|--------------|--------------|--------------|
| 1st Half | 13-31 | 42% | 2-12 | 17% | 13-15 | 87% |
| 2nd Half | 13-30 | 43% | 2-6 | 33% | 23-27 | 85% |
| Game | 26-61 | 42.6% | 4-18 | 22.2% | 36-42 | 85.7% |

Deadball Rebounds:

Last FG: 2nd-01:04
 Biggest Run: 11-0
 Largest lead: By 10 at 2-18:30
 Technical Fouls: #5 WILLIFORD (Double) @ 2nd - 00:19;

| | |
|---|-------------------------------|
| Game Notes: | |
| Officials: Rick O'Neill, Tariq Lucas, Chris Koopman | |
| Attendance: 856 | |
| Start Time: 2018-12-08 20:01:42 | End Time: 2018-12-08 22:11:27 |
| Game Duration: 129 | |

| Score by Period | 1st | 2nd | TOT |
|-----------------|-----|-----|-----------|
| HSU | 33 | 54 | 87 |
| SIE | 41 | 51 | 92 |

HSU led for 15:41. SIE led for 19:47.
 Game was tied for 4:31.
 Times tied: 14 Lead Changes: 9

| Points from | HSU | SIE |
|--------------|-----|-----|
| In the Paint | 46 | 36 |
| Off Turns | 24 | 23 |
| 2nd Chance | 12 | 11 |
| Fast Break | 22 | 23 |
| Bench | 15 | 22 |

Official Box Score
Harris-Stowe vs SIUE
First Half Statistics Only
December 08, 2018 at Vadalabene Center - Edwardsville, Ill.

Harris-Stowe 87

| No. | Player | S | Pts | FG | 3FG | FT | OR | DR | TR | PF | A | TO | Blk | Stl | Min | +/- |
|---------------|--------------------|---|-----------|--------------|-------------|------------|----------|----------|-----------|-----------|----------|-----------|----------|----------|------------|-----|
| 2 | Clarkson, Bear | | 2 | 1-1 | 0-0 | 0-0 | 0 | 0 | 0 | 2 | 1 | 3 | 0 | 2 | 14 | 6 |
| 3 | Clark, Deandre | | 14 | 6-11 | 2-7 | 0-0 | 1 | 7 | 8 | 1 | 1 | 0 | 0 | 2 | 20 | -8 |
| 5 | Wimbley, Christian | | 4 | 2-4 | 0-1 | 0-0 | 3 | 1 | 4 | 2 | 1 | 3 | 0 | 0 | 16 | -7 |
| 12 | Rigmaiden, Nate | | 4 | 2-5 | 0-3 | 0-1 | 0 | 2 | 2 | 2 | 1 | 0 | 0 | 1 | 7 | 4 |
| 13 | Clark, Duane | | 2 | 1-3 | 0-0 | 0-0 | 1 | 1 | 2 | 1 | 0 | 3 | 2 | 1 | 15 | -3 |
| 0 | Barnes, Riley | | 2 | 1-3 | 0-1 | 0-0 | 0 | 1 | 1 | 1 | 0 | 1 | 0 | 0 | 10 | -5 |
| 15 | Wells Jr, Corey | | 0 | 0-1 | 0-1 | 0-0 | 0 | 0 | 0 | 1 | 0 | 0 | 0 | 0 | 5 | -9 |
| 24 | Bouie, Romero | | 5 | 2-6 | 1-4 | 0-0 | 0 | 2 | 2 | 2 | 0 | 1 | 0 | 0 | 14 | -18 |
| | Team | | | | | | 0 | 1 | 1 | 0 | | 0 | | | | |
| TOTALS | | | 33 | 15-34 | 3-17 | 0-1 | 0 | 0 | 20 | 12 | 4 | 11 | 2 | 6 | 100 | |

Shooting By Period

| Period | FG | FG% | 3FG | 3FG% | FT | FT% |
|-------------|--------------|--------------|-------------|--------------|--------------|--------------|
| 1st Half | 15-34 | 44% | 3-17 | 18% | 0-1 | 00% |
| 2nd Half | 18-30 | 60% | 5-11 | 45% | 13-16 | 81% |
| Game | 33-64 | 51.6% | 8-28 | 28.6% | 13-17 | 76.5% |

Deadball Rebounds:

Last FG: 2nd-00:06

Biggest Run: 7-0

Largest lead: By 10 at 1-07:40

Technical Fouls: #5 WIMBLEY (Class A) @ 1st - 02:56; #12 RIGMAIDEN (Double) @ 2nd - 00:19;

SIUE 92

| No. | Player | S | Pts | FG | 3FG | FT | OR | DR | TR | PF | A | TO | Blk | Stl | Min | +/- |
|---------------|-------------------|---|-----------|--------------|-------------|--------------|----------|----------|-----------|----------|----------|----------|----------|----------|------------|-----|
| 5 | Williford, Tyrese | | 9 | 3-8 | 0-2 | 3-4 | 1 | 6 | 7 | 1 | 3 | 3 | 0 | 0 | 15 | 4 |
| 13 | Ellis, Christian | | 2 | 1-3 | 0-1 | 0-0 | 1 | 1 | 2 | 0 | 0 | 0 | 0 | 3 | 17 | 8 |
| 15 | Mcfarland, David | | 2 | 0-5 | 0-4 | 2-2 | 0 | 3 | 3 | 1 | 0 | 1 | 0 | 1 | 18 | 8 |
| 24 | Williams, Cameron | | 7 | 2-4 | 1-3 | 2-2 | 0 | 0 | 0 | 2 | 0 | 0 | 0 | 0 | 10 | 8 |
| 32 | Jackson, Brandon | | 13 | 5-7 | 0-0 | 3-4 | 0 | 3 | 3 | 1 | 1 | 1 | 0 | 0 | 19 | 7 |
| 1 | Jackson, D.J. | | 0 | 0-0 | 0-0 | 0-0 | 1 | 1 | 2 | 0 | 0 | 2 | 0 | 0 | 4 | 1 |
| 3 | Kinchen, Daniel | | 8 | 2-3 | 1-1 | 3-3 | 0 | 0 | 0 | 0 | 0 | 0 | 0 | 0 | 10 | 0 |
| 25 | Mccooy, Jaylen | | 0 | 0-1 | 0-1 | 0-0 | 0 | 0 | 0 | 0 | 1 | 1 | 0 | 0 | 7 | 4 |
| | Team | | | | | | 1 | 1 | 2 | 0 | | 0 | | | | |
| TOTALS | | | 41 | 13-31 | 2-12 | 13-15 | 0 | 0 | 19 | 5 | 5 | 8 | 0 | 4 | 100 | |

Shooting By Period

| Period | FG | FG% | 3FG | 3FG% | FT | FT% |
|-------------|--------------|--------------|-------------|--------------|--------------|--------------|
| 1st Half | 13-31 | 42% | 2-12 | 17% | 13-15 | 87% |
| 2nd Half | 13-30 | 43% | 2-6 | 33% | 23-27 | 85% |
| Game | 26-61 | 42.6% | 4-18 | 22.2% | 36-42 | 85.7% |

Deadball Rebounds:

Last FG: 2nd-01:04

Biggest Run: 11-0

Largest lead: By 10 at 2-18:30

Technical Fouls: #5 WILLIFORD (Double) @ 2nd - 00:19;

| | |
|---|-------------------------------|
| Game Notes: | |
| Officials: Rick O'Neill, Tariq Lucas, Chris Koopman | |
| Attendance: 856 | |
| Start Time: 2018-12-08 20:01:42 | End Time: 2018-12-08 22:11:27 |
| Game Duration: 129 | |

| Score by Period | 1st | 2nd | TOT |
|-----------------|-----|-----|-----------|
| HSU | 33 | 54 | 87 |
| SIE | 41 | 51 | 92 |

This period only: HSU led for 15:40. SIE led for 15:47.
Game was tied for 0:31.

| Points from (This Period) | HSU | SIE |
|---------------------------|-----|-----|
| In the Paint | 20 | 16 |
| Off Turns | 11 | 14 |
| 2nd Chance | 7 | 1 |
| Fast Break | 10 | 8 |
| Bench | 7 | 8 |

**Official Play-By-Play
Harris-Stowe vs SIUE
First Half**

December 08, 2018 at Vadalabene Center - Edwardsville, Ill.

Starters:

Harris-Stowe: 12 RIGMAIDEN,NATE; 13 CLARK,DUANE; 2 CLARKSON,BEAR; 3 CLARK,DEANDRE; 5 WIMBLEY,CHRISTIAN;
SIUE: 5 WILLIFORD,TYRESE; 13 ELLIS,CHRISTIAN; 15 MCFARLAND,DAVID; 24 WILLIAMS,CAMERON; 32 JACKSON,BRANDON;

Period 1

| Time | VISITORS: Harris-Stowe | Score | Margin | HOME: SIUE |
|-------|--------------------------------------|-------|--------|--|
| 19:47 | | | | MISSED 3PTR by MCFARLAND,DAVID |
| 19:43 | | | | REBOUND (OFF) by ELLIS,CHRISTIAN |
| 19:35 | | | | MISSED 3PTR by WILLIAMS,CAMERON |
| 19:30 | REBOUND (DEF) by RIGMAIDEN,NATE | | | |
| 19:10 | MISSED 3PTR by CLARK,DEANDRE | | | |
| 19:05 | | | | REBOUND (DEF) by MCFARLAND,DAVID |
| 18:56 | | | | TURNOVER (LOSTBALL) by JACKSON,BRANDON |
| 18:56 | STEAL by CLARK,DUANE | | | |
| 18:43 | MISSED 3PTR by RIGMAIDEN,NATE | | | |
| 18:40 | | | | REBOUND (DEF) by JACKSON,BRANDON |
| 18:26 | | | | TURNOVER (BADPASS) by WILLIFORD,TYRESE |
| 18:08 | MISSED JUMPER by CLARK,DUANE | | | |
| 18:03 | REBOUND (OFF) by WIMBLEY,CHRISTIAN | | | |
| 17:59 | GOOD! 3PTR by CLARK,DEANDRE | 0-3 | V 3 | |
| 17:59 | ASSIST by RIGMAIDEN,NATE | | | |
| 17:28 | | 2-3 | V 1 | GOOD! JUMPER by WILLIFORD,TYRESE |
| 17:20 | MISSED JUMPER by CLARK,DUANE | | | |
| 17:16 | | | | REBOUND (DEF) by WILLIFORD,TYRESE |
| 17:10 | | | | TURNOVER (LOSTBALL) by MCFARLAND,DAVID |
| 17:10 | STEAL by RIGMAIDEN,NATE | | | |
| 17:02 | GOOD! LAYUP by RIGMAIDEN,NATE [FB] | 2-5 | V 3 | |
| 17:01 | | | | TIMEOUT 30SEC |
| 16:40 | | | | MISSED JUMPER by WILLIFORD,TYRESE |
| 16:40 | BLOCK by CLARK,DUANE | | | |
| 16:40 | REBOUND (DEF) by CLARK,DUANE | | | |
| 16:40 | | | | FOUL (PERSONAL) by WILLIFORD,TYRESE |
| 16:32 | TURNOVER (TRAVEL) by CLARK,DUANE | | | |
| 16:10 | | | | MISSED JUMPER by JACKSON,BRANDON |
| 16:06 | REBOUND (DEF) by RIGMAIDEN,NATE | | | |
| 16:04 | MISSED 3PTR by CLARK,DEANDRE | | | |
| 16:02 | | | | REBOUND (DEF) by MCFARLAND,DAVID |
| 16:02 | FOUL (PERSONAL) by WIMBLEY,CHRISTIAN | | | |
| 15:47 | | | | MISSED 3PTR by MCFARLAND,DAVID |
| 15:43 | REBOUND (DEF) by CLARK,DEANDRE | | | |
| 15:40 | GOOD! LAYUP by RIGMAIDEN,NATE [FB] | 2-7 | V 5 | |
| 15:40 | ASSIST by CLARK,DEANDRE | | | |
| 15:40 | | | | FOUL (PERSONAL) by WILLIAMS,CAMERON |
| 15:40 | | | | SUB OUT: WILLIFORD,TYRESE |
| 15:40 | | | | SUB IN: JACKSON,D.J. |
| 15:40 | | | | SUB OUT: ELLIS,CHRISTIAN |
| 15:40 | | | | SUB IN: MCCOY,JAYLEN |
| 15:40 | SUB OUT: CLARK,DUANE | | | |
| 15:40 | SUB IN: BOUIE,ROMERO | | | |
| 15:38 | MISSED FT by RIGMAIDEN,NATE | | | |
| 15:35 | | | | REBOUND (DEF) by JACKSON,BRANDON |
| 15:21 | | 5-7 | V 2 | GOOD! 3PTR by WILLIAMS,CAMERON |
| 15:21 | | | | ASSIST by JACKSON,BRANDON |
| 15:07 | | | | FOUL (PERSONAL) by MCFARLAND,DAVID |
| 15:02 | MISSED 3PTR by CLARK,DEANDRE | | | |
| 14:58 | | | | REBOUND (DEF) by JACKSON,D.J. |
| 14:53 | | | | MISSED 3PTR by MCCOY,JAYLEN |
| 14:48 | | | | REBOUND (OFF) by JACKSON,D.J. |
| 14:48 | | | | TURNOVER (LOSTBALL) by JACKSON,D.J. |
| 14:48 | SUB OUT: WIMBLEY,CHRISTIAN | | | |
| 14:48 | SUB IN: CLARK,DUANE | | | |
| 14:30 | MISSED 3PTR by RIGMAIDEN,NATE | | | |
| 14:27 | | | | REBOUND (DEF) by TEAM |
| 14:02 | | | | TURNOVER (LOSTBALL) by MCCOY,JAYLEN |
| 14:02 | STEAL by CLARKSON,BEAR | | | |
| 13:57 | GOOD! LAYUP by CLARKSON,BEAR [FB] | 5-9 | V 4 | |
| 13:48 | | | | MISSED 3PTR by WILLIAMS,CAMERON |
| 13:44 | REBOUND (DEF) by BOUIE,ROMERO | | | |
| 13:38 | MISSED 3PTR by RIGMAIDEN,NATE | | | |
| 13:34 | | | | REBOUND (DEF) by JACKSON,BRANDON |
| 13:33 | FOUL (PERSONAL) by RIGMAIDEN,NATE | | | |
| 13:33 | | | | SUB OUT: WILLIAMS,CAMERON |
| 13:33 | | | | SUB IN: KINCHEN,DANIEL |
| 13:33 | SUB OUT: RIGMAIDEN,NATE | | | |
| 13:33 | SUB IN: WIMBLEY,CHRISTIAN | | | |
| 13:08 | | | | MISSED 3PTR by MCFARLAND,DAVID |
| 13:04 | REBOUND (DEF) by CLARK,DEANDRE | | | |
| 12:55 | GOOD! 3PTR by BOUIE,ROMERO | 5-12 | V 7 | |
| 12:55 | ASSIST by WIMBLEY,CHRISTIAN | | | |
| 12:41 | | 7-12 | V 5 | GOOD! LAYUP by KINCHEN,DANIEL [PNT] |
| 12:41 | FOUL (PERSONAL) by BOUIE,ROMERO | | | |

| Time | VISITORS: Harris-Stowe | Score | Margin | HOME: SIUE |
|-------|--|-------|--------|--|
| 12:41 | | | | SUB OUT: JACKSON,BRANDON |
| 12:41 | | | | SUB IN: ELLIS,CHRISTIAN |
| 12:41 | | 8-12 | V 4 | GOOD! FT by KINCHEN,DANIEL |
| 12:27 | MISSED 3PTR by BOUIE,ROMERO | | | |
| 12:22 | REBOUND (OFF) by CLARK,DUANE | | | |
| 12:18 | TURNOVER (LOSTBALL) by CLARK,DUANE | | | |
| 12:18 | | | | STEAL by ELLIS,CHRISTIAN |
| 12:12 | | 10-12 | V 2 | GOOD! LAYUP by ELLIS,CHRISTIAN [FB] |
| 11:53 | GOOD! LAYUP by CLARK,DUANE [PNT] | 10-14 | V 4 | |
| 11:35 | | | | TURNOVER (LOSTBALL) by JACKSON,D.J. |
| 11:35 | STEAL by CLARK,DEANDRE | | | |
| 11:31 | TURNOVER (TRAVEL) by CLARKSON,BEAR | | | |
| 11:31 | | | | SUB OUT: MCFARLAND,DAVID |
| 11:31 | | | | SUB IN: WILLIFORD,TYRESE |
| 11:31 | SUB OUT: CLARKSON,BEAR | | | |
| 11:31 | SUB IN: BARNES,RILEY | | | |
| 11:31 | SUB OUT: CLARK,DUANE | | | |
| 11:31 | SUB IN: RIGMAIDEN,NATE | | | |
| 11:19 | SUB OUT: CLARK,DEANDRE | | | |
| 11:19 | SUB IN: CLARKSON,BEAR | | | |
| 11:19 | FOUL (PERSONAL) by CLARKSON,BEAR | | | |
| 11:15 | | | | SUB OUT: JACKSON,D.J. |
| 11:15 | | | | SUB IN: JACKSON,BRANDON |
| 11:15 | FOUL (PERSONAL) by RIGMAIDEN,NATE | | | |
| 11:10 | SUB OUT: RIGMAIDEN,NATE | | | |
| 11:10 | SUB IN: CLARK,DEANDRE | | | |
| 11:05 | | | | TURNOVER (BADPASS) by WILLIFORD,TYRESE |
| 11:05 | STEAL by CLARK,DEANDRE | | | |
| 11:00 | GOOD! LAYUP by CLARK,DEANDRE [FB] | 10-16 | V 6 | |
| 10:52 | | 12-16 | V 4 | GOOD! LAYUP by JACKSON,BRANDON |
| 10:24 | GOOD! LAYUP by CLARK,DEANDRE [PNT] | 12-18 | V 6 | |
| 10:07 | | 14-18 | V 4 | GOOD! LAYUP by JACKSON,BRANDON |
| 09:52 | TURNOVER (TRAVEL) by WIMBLEY,CHRISTIAN | | | |
| 09:52 | | | | SUB OUT: MCCOY,JAYLEN |
| 09:52 | | | | SUB IN: MCFARLAND,DAVID |
| 09:52 | SUB OUT: BARNES,RILEY | | | |
| 09:52 | SUB IN: CLARK,DUANE | | | |
| 09:44 | | | | MISSED JUMPER by KINCHEN,DANIEL |
| 09:39 | REBOUND (DEF) by CLARK,DEANDRE | | | |
| 09:34 | MISSED 3PTR by BOUIE,ROMERO | | | |
| 09:31 | | | | REBOUND (DEF) by WILLIFORD,TYRESE |
| 09:29 | FOUL (PERSONAL) by CLARK,DEANDRE | | | |
| 09:29 | | 15-18 | V 3 | GOOD! FT by MCFARLAND,DAVID [FB] |
| 09:29 | SUB OUT: BOUIE,ROMERO | | | |
| 09:29 | SUB IN: BARNES,RILEY | | | |
| 09:29 | | 16-18 | V 2 | GOOD! FT by MCFARLAND,DAVID [FB] |
| 09:11 | GOOD! LAYUP by BARNES,RILEY [PNT] | 16-20 | V 4 | |
| 09:03 | | | | TURNOVER (BADPASS) by WILLIFORD,TYRESE |
| 09:03 | STEAL by CLARKSON,BEAR | | | |
| 08:56 | GOOD! LAYUP by CLARK,DEANDRE [FB] | 16-22 | V 6 | |
| 08:56 | ASSIST by CLARKSON,BEAR | | | |
| 08:39 | | | | MISSED JUMPER by WILLIFORD,TYRESE |
| 08:39 | BLOCK by CLARK,DUANE | | | |
| 08:39 | | | | REBOUND (OFF) by TEAM |
| 08:25 | | | | MISSED JUMPER by ELLIS,CHRISTIAN |
| 08:21 | REBOUND (DEF) by BARNES,RILEY | | | |
| 08:06 | MISSED LAYUP by WIMBLEY,CHRISTIAN | | | |
| 08:00 | REBOUND (OFF) by WIMBLEY,CHRISTIAN | | | |
| 08:00 | GOOD! LAYUP by WIMBLEY,CHRISTIAN | 16-24 | V 8 | |
| 07:58 | FOUL (PERSONAL) by CLARK,DUANE | | | |
| 07:58 | | | | |
| 07:58 | SUB OUT: CLARK,DUANE | | | |
| 07:58 | SUB IN: BOUIE,ROMERO | | | |
| 07:58 | | 17-24 | V 7 | GOOD! FT by JACKSON,BRANDON [FB] |
| 07:56 | | | | MISSED FT by JACKSON,BRANDON |
| 07:55 | REBOUND (DEF) by CLARK,DEANDRE | | | |
| 07:40 | GOOD! 3PTR by CLARK,DEANDRE | 17-27 | V 10 | |
| 07:16 | | | | MISSED 3PTR by WILLIFORD,TYRESE |
| 07:11 | REBOUND (DEF) by WIMBLEY,CHRISTIAN | | | |
| 07:07 | TURNOVER (TRAVEL) by CLARKSON,BEAR | | | |
| 07:07 | | | | SUB OUT: KINCHEN,DANIEL |
| 07:07 | | | | SUB IN: WILLIAMS,CAMERON |
| 06:57 | FOUL (PERSONAL) by BARNES,RILEY | | | |
| 06:57 | | 18-27 | V 9 | GOOD! FT by WILLIAMS,CAMERON |
| 06:57 | | 19-27 | V 8 | GOOD! FT by WILLIAMS,CAMERON |
| 06:49 | MISSED 3PTR by BOUIE,ROMERO | | | |
| 06:46 | | | | REBOUND (DEF) by ELLIS,CHRISTIAN |
| 06:33 | | 21-27 | V 6 | GOOD! LAYUP by JACKSON,BRANDON [PNT] |
| 06:33 | | | | ASSIST by WILLIFORD,TYRESE |
| 06:16 | TURNOVER (LOSTBALL) by WIMBLEY,CHRISTIAN | | | |
| 06:16 | | | | STEAL by ELLIS,CHRISTIAN |
| 06:03 | | | | MISSED LAYUP by WILLIFORD,TYRESE |
| 05:58 | REBOUND (DEF) by CLARK,DEANDRE | | | |
| 05:56 | SUB OUT: WIMBLEY,CHRISTIAN | | | |
| 05:56 | SUB IN: CLARK,DUANE | | | |
| 05:49 | TURNOVER (OTHER) by CLARKSON,BEAR | | | |

| Time | VISITORS: Harris-Stowe | Score | Margin | HOME: SIUE |
|-------|--|-------|--------|---------------------------------------|
| 05:49 | FOUL (PERSONAL) by CLARKSON,BEAR | | | |
| 05:49 | SUB OUT: CLARKSON,BEAR | | | |
| 05:49 | SUB IN: WIMBLEY,CHRISTIAN | | | |
| 05:49 | | 22-27 | V 5 | GOOD! FT by WILLIFORD,TYRESE |
| 05:49 | | 23-27 | V 4 | GOOD! FT by WILLIFORD,TYRESE |
| 05:39 | MISSED 3PTR by BARNES,RILEY | | | |
| 05:33 | REBOUND (OFF) by WIMBLEY,CHRISTIAN | | | |
| 05:33 | GOOD! LAYUP by WIMBLEY,CHRISTIAN | 23-29 | V 6 | |
| 05:21 | | 25-29 | V 4 | GOOD! DUNK by JACKSON,BRANDON |
| 05:21 | | | | ASSIST by WILLIFORD,TYRESE |
| 05:11 | TURNOVER (OTHER) by BARNES,RILEY | | | |
| 04:59 | | 27-29 | V 2 | GOOD! LAYUP by WILLIFORD,TYRESE [PNT] |
| 04:59 | TIMEOUT 30SEC | | | |
| 04:45 | MISSED JUMPER by BARNES,RILEY | | | |
| 04:45 | REBOUND (OFF) by CLARK,DEANDRE | | | |
| 04:45 | | | | FOUL (PERSONAL) by JACKSON,BRANDON |
| 04:35 | TURNOVER (LOSTBALL) by CLARK,DUANE | | | |
| 04:35 | | | | STEAL by ELLIS,CHRISTIAN |
| 04:32 | FOUL (PERSONAL) by BOUIE,ROMERO | | | |
| 04:32 | | 28-29 | V 1 | GOOD! FT by JACKSON,BRANDON [FB] |
| 04:32 | SUB OUT: BARNES,RILEY | | | |
| 04:32 | SUB IN: WELLS JR,COREY | | | |
| 04:32 | | 29-29 | T | GOOD! FT by JACKSON,BRANDON [FB] |
| 04:22 | TURNOVER (LOSTBALL) by BOUIE,ROMERO | | | |
| 04:22 | | | | STEAL by MCFARLAND,DAVID |
| 04:13 | | 31-29 | H 2 | GOOD! LAYUP by WILLIAMS,CAMERON |
| 03:59 | | | | FOUL (PERSONAL) by WILLIAMS,CAMERON |
| 03:59 | | | | |
| 03:59 | | | | SUB OUT: WILLIAMS,CAMERON |
| 03:59 | | | | SUB IN: KINCHEN,DANIEL |
| 03:52 | MISSED 3PTR by WIMBLEY,CHRISTIAN | | | |
| 03:47 | | | | REBOUND (DEF) by WILLIFORD,TYRESE |
| 03:45 | | | | MISSED 3PTR by ELLIS,CHRISTIAN |
| 03:45 | | | | REBOUND (OFF) by WILLIFORD,TYRESE |
| 03:45 | FOUL (PERSONAL) by WELLS JR,COREY | | | |
| 03:45 | | | | MISSED FT by WILLIFORD,TYRESE |
| 03:45 | | | | REBOUND (OFF) by TEAM |
| 03:45 | | 32-29 | H 3 | GOOD! FT by WILLIFORD,TYRESE [FB] |
| 03:22 | MISSED 3PTR by CLARK,DEANDRE | | | |
| 03:18 | | | | REBOUND (DEF) by WILLIFORD,TYRESE |
| 03:14 | | | | MISSED 3PTR by MCFARLAND,DAVID |
| 03:09 | REBOUND (DEF) by CLARK,DEANDRE | | | |
| 02:56 | TURNOVER (TRAVEL) by WIMBLEY,CHRISTIAN | | | |
| 02:56 | FOUL (TECH) by WIMBLEY,CHRISTIAN | | | |
| 02:56 | | 33-29 | H 4 | GOOD! FT by KINCHEN,DANIEL |
| 02:56 | | 34-29 | H 5 | GOOD! FT by KINCHEN,DANIEL |
| 02:56 | SUB OUT: WIMBLEY,CHRISTIAN | | | |
| 02:56 | SUB IN: BARNES,RILEY | | | |
| 02:40 | | | | MISSED 3PTR by WILLIFORD,TYRESE |
| 02:36 | REBOUND (DEF) by CLARK,DEANDRE | | | |
| 02:31 | GOOD! JUMPER by CLARK,DEANDRE | 34-31 | H 3 | |
| 02:19 | | 36-31 | H 5 | GOOD! JUMPER by JACKSON,BRANDON |
| 02:19 | | | | ASSIST by WILLIFORD,TYRESE |
| 01:58 | GOOD! JUMPER by BOUIE,ROMERO | 36-33 | H 3 | |
| 01:35 | | 38-33 | H 5 | GOOD! JUMPER by WILLIFORD,TYRESE |
| 01:18 | MISSED 3PTR by CLARK,DEANDRE | | | |
| 01:14 | | | | REBOUND (DEF) by WILLIFORD,TYRESE |
| 01:11 | | | | MISSED LAYUP by JACKSON,BRANDON |
| 01:07 | REBOUND (DEF) by BOUIE,ROMERO | | | |
| 01:05 | MISSED JUMPER by BOUIE,ROMERO | | | |
| 00:59 | | | | REBOUND (DEF) by WILLIFORD,TYRESE |
| 00:57 | | | | MISSED DUNK by MCFARLAND,DAVID |
| 00:57 | REBOUND (DEF) by TEAM | | | |
| 00:56 | | | | SUB OUT: WILLIFORD,TYRESE |
| 00:56 | | | | SUB IN: MCCOY,JAYLEN |
| 00:32 | MISSED 3PTR by WELLS JR,COREY | | | |
| 00:28 | | | | REBOUND (DEF) by MCFARLAND,DAVID |
| 00:03 | | 41-33 | H 8 | GOOD! 3PTR by KINCHEN,DANIEL |
| 00:03 | | | | ASSIST by MCCOY,JAYLEN |

Harris-Stowe 33, SIUE 41

| Points from (This Period) | HSU | SIE |
|---------------------------|-----|-----|
| In the Paint | 20 | 16 |
| Off Turns | 11 | 14 |
| 2nd Chance | 7 | 1 |
| Fast Break | 10 | 8 |
| Bench | 7 | 8 |

**This period only:HSU led for 15:40. SIE led for 15:47.
Game was tied for 0:31.**

Official Box Score
Harris-Stowe vs SIUE
Second Half Statistics Only
December 08, 2018 at Vadalabene Center - Edwardsville, Ill.

Harris-Stowe 87

| No. | Player | S | Pts | FG | 3FG | FT | OR | DR | TR | PF | A | TO | Blk | Stl | Min | +/- |
|---------------|--------------------|---|-----------|--------------|-------------|--------------|----------|----------|-----------|-----------|----------|----------|----------|----------|------------|-----|
| 2 | Clarkson, Bear | | 2 | 1-1 | 0-0 | 0-0 | 0 | 0 | 0 | 2 | 1 | 1 | 0 | 0 | 7 | 5 |
| 3 | Clark, Deandre | | 1 | 0-2 | 0-2 | 1-2 | 0 | 0 | 0 | 2 | 1 | 0 | 0 | 0 | 20 | 3 |
| 5 | Wimbley, Christian | | 10 | 4-7 | 0-0 | 2-2 | 2 | 3 | 5 | 2 | 1 | 1 | 1 | 1 | 18 | 6 |
| 12 | Rigmaiden, Nate | | 24 | 8-12 | 5-8 | 3-3 | 0 | 1 | 1 | 3 | 0 | 2 | 0 | 1 | 20 | 4 |
| 13 | Clark, Duane | | 9 | 2-3 | 0-0 | 5-6 | 0 | 3 | 3 | 3 | 1 | 0 | 0 | 1 | 11 | 6 |
| 0 | Barnes, Riley | | 2 | 1-1 | 0-0 | 0-0 | 1 | 0 | 1 | 3 | 1 | 0 | 0 | 0 | 9 | -7 |
| 15 | Wells Jr, Corey | | 0 | 0-0 | 0-0 | 0-0 | 0 | 0 | 0 | 0 | 0 | 0 | 0 | 0 | 0 | -1 |
| 24 | Bouie, Romero | | 6 | 2-4 | 0-1 | 2-3 | 1 | 2 | 3 | 2 | 2 | 1 | 0 | 1 | 15 | -1 |
| | Team | | | | | | 0 | 0 | 0 | 0 | | 0 | | | | |
| TOTALS | | | 54 | 18-30 | 5-11 | 13-16 | 0 | 0 | 13 | 17 | 7 | 5 | 1 | 4 | 100 | |

Shooting By Period

| Period | FG | FG% | 3FG | 3FG% | FT | FT% |
|-------------|--------------|--------------|-------------|--------------|--------------|--------------|
| 1st Half | 15-34 | 44% | 3-17 | 18% | 0-1 | 00% |
| 2nd Half | 18-30 | 60% | 5-11 | 45% | 13-16 | 81% |
| Game | 33-64 | 51.6% | 8-28 | 28.6% | 13-17 | 76.5% |

Deadball Rebounds:

Last FG: 2nd-00:06
 Biggest Run: 7-0
 Largest lead: By 10 at 1-07:40
 Technical Fouls: #5 WIMBLEY (Class A) @ 1st - 02:56; #12 RIGMAIDEN (Double) @ 2nd - 00:19;

SIUE 92

| No. | Player | S | Pts | FG | 3FG | FT | OR | DR | TR | PF | A | TO | Blk | Stl | Min | +/- |
|---------------|-------------------|---|-----------|--------------|------------|--------------|----------|----------|-----------|-----------|----------|----------|----------|----------|------------|-----|
| 5 | Williford, Tyrese | | 16 | 2-6 | 1-2 | 11-12 | 1 | 1 | 2 | 3 | 1 | 0 | 0 | 1 | 17 | -4 |
| 13 | Ellis, Christian | | 2 | 1-1 | 0-0 | 0-0 | 1 | 1 | 2 | 4 | 1 | 0 | 0 | 0 | 17 | 2 |
| 15 | Mcfarland, David | | 2 | 0-2 | 0-2 | 2-4 | 0 | 1 | 1 | 3 | 0 | 1 | 0 | 2 | 8 | 0 |
| 24 | Williams, Cameron | | 2 | 0-3 | 0-1 | 2-2 | 0 | 0 | 0 | 0 | 2 | 2 | 0 | 0 | 15 | -7 |
| 32 | Jackson, Brandon | | 15 | 5-11 | 0-0 | 5-5 | 4 | 4 | 8 | 2 | 0 | 3 | 0 | 0 | 14 | 4 |
| 1 | Jackson, D.J. | | 7 | 3-5 | 0-0 | 1-2 | 3 | 3 | 6 | 1 | 0 | 0 | 0 | 0 | 9 | -6 |
| 3 | Kinchen, Daniel | | 4 | 1-1 | 0-0 | 2-2 | 0 | 0 | 0 | 1 | 2 | 0 | 0 | 0 | 17 | 1 |
| 25 | Mccooy, Jaylen | | 3 | 1-1 | 1-1 | 0-0 | 0 | 0 | 0 | 1 | 0 | 0 | 0 | 0 | 3 | -5 |
| | Team | | | | | | 2 | 1 | 3 | 0 | | 0 | | | | |
| TOTALS | | | 51 | 13-30 | 2-6 | 23-27 | 0 | 0 | 22 | 15 | 6 | 6 | 0 | 3 | 100 | |

Shooting By Period

| Period | FG | FG% | 3FG | 3FG% | FT | FT% |
|-------------|--------------|--------------|-------------|--------------|--------------|--------------|
| 1st Half | 13-31 | 42% | 2-12 | 17% | 13-15 | 87% |
| 2nd Half | 13-30 | 43% | 2-6 | 33% | 23-27 | 85% |
| Game | 26-61 | 42.6% | 4-18 | 22.2% | 36-42 | 85.7% |

Deadball Rebounds:

Last FG: 2nd-01:04
 Biggest Run: 11-0
 Largest lead: By 10 at 2-18:30
 Technical Fouls: #5 WILLIFORD (Double) @ 2nd - 00:19;

| | |
|---|-------------------------------|
| Game Notes: | |
| Officials: Rick O'Neill, Tariq Lucas, Chris Koopman | |
| Attendance: 856 | |
| Start Time: 2018-12-08 20:01:42 | End Time: 2018-12-08 22:11:27 |
| Game Duration: 129 | |

| Score by Period | 1st | 2nd | TOT |
|-----------------|-----|-----|-----|
| HSU | 33 | 54 | 87 |
| SIE | 41 | 51 | 92 |

This period only: HSU led for 15:40. SIE led for 15:47.
 Game was tied for 0:31.

| Points from (This Period) | HSU | SIE |
|---------------------------|-----|-----|
| In the Paint | 26 | 20 |
| Off Turns | 13 | 9 |
| 2nd Chance | 5 | 10 |
| Fast Break | 12 | 15 |
| Bench | 8 | 14 |

Official Play-By-Play
Harris-Stowe vs SIUE
Second Half
December 08, 2018 at Vadalabene Center - Edwardsville, Ill.

Starters:

Harris-Stowe: 12 RIGMAIDEN,NATE; 13 CLARK,DUANE; 2 CLARKSON,BEAR; 3 CLARK,DEANDRE; 5 WIMBLEY,CHRISTIAN;
SIUE: 5 WILLIFORD,TYRESE; 13 ELLIS,CHRISTIAN; 15 MCFARLAND,DAVID; 24 WILLIAMS,CAMERON; 32 JACKSON,BRANDON;

Period 2

| Time | VISITORS: Harris-Stowe | Score | Margin | HOME: SIUE |
|-------|-------------------------------------|-------|--------|--|
| 19:39 | | | | FOUL (PERSONAL) by ELLIS,CHRISTIAN |
| 19:30 | | | | FOUL (PERSONAL) by JACKSON,BRANDON |
| 19:30 | GOOD! FT by CLARK,DUANE | 41-34 | H 7 | |
| 19:30 | MISSED FT by CLARK,DUANE | | | |
| 19:28 | | | | REBOUND (DEF) by JACKSON,BRANDON |
| 19:21 | | | | MISSED JUMPER by JACKSON,BRANDON |
| 19:14 | | | | REBOUND (OFF) by ELLIS,CHRISTIAN |
| 19:14 | | 43-34 | H 9 | GOOD! LAYUP by ELLIS,CHRISTIAN |
| 19:00 | MISSED 3PTR by CLARK,DEANDRE | | | |
| 18:54 | REBOUND (OFF) by WIMBLEY,CHRISTIAN | | | |
| 18:54 | GOOD! LAYUP by WIMBLEY,CHRISTIAN | 43-36 | H 7 | |
| 18:50 | FOUL (PERSONAL) by CLARKSON,BEAR | | | |
| 18:50 | | | | MISSED FT by WILLIFORD,TYRESE |
| 18:50 | | | | REBOUND (OFF) by TEAM |
| 18:50 | | 44-36 | H 8 | GOOD! FT by WILLIFORD,TYRESE [FB] |
| 18:36 | TURNOVER (BADPASS) by CLARKSON,BEAR | | | |
| 18:36 | | | | STEAL by MCFARLAND,DAVID |
| 18:30 | | | | MISSED LAYUP by WILLIAMS,CAMERON |
| 18:30 | | | | REBOUND (OFF) by JACKSON,BRANDON |
| 18:30 | FOUL (PERSONAL) by CLARK,DUANE | | | |
| 18:30 | | 45-36 | H 9 | GOOD! FT by JACKSON,BRANDON [FB] |
| 18:30 | | 46-36 | H 10 | GOOD! FT by JACKSON,BRANDON [FB] |
| 18:13 | MISSED JUMPER by WIMBLEY,CHRISTIAN | | | |
| 18:09 | | | | REBOUND (DEF) by MCFARLAND,DAVID |
| 18:02 | | | | TURNOVER (BADPASS) by WILLIAMS,CAMERON |
| 18:02 | STEAL by WIMBLEY,CHRISTIAN | | | |
| 17:37 | | | | FOUL (PERSONAL) by ELLIS,CHRISTIAN |
| 17:34 | GOOD! 3PTR by RIGMAIDEN,NATE | 46-39 | H 7 | |
| 17:34 | ASSIST by WIMBLEY,CHRISTIAN | | | |
| 17:18 | | | | MISSED 3PTR by MCFARLAND,DAVID |
| 17:13 | REBOUND (DEF) by CLARK,DUANE | | | |
| 17:02 | GOOD! DUNK by CLARK,DUANE | 46-41 | H 5 | |
| 17:02 | ASSIST by CLARKSON,BEAR | | | |
| 16:39 | | | | TURNOVER (BADPASS) by MCFARLAND,DAVID |
| 16:39 | STEAL by CLARK,DUANE | | | |
| 16:36 | | | | FOUL (PERSONAL) by WILLIFORD,TYRESE |
| 16:36 | GOOD! FT by CLARK,DUANE [FB] | 46-42 | H 4 | |
| 16:36 | | | | SUB OUT: MCFARLAND,DAVID |
| 16:36 | | | | SUB IN: KINCHEN,DANIEL |
| 16:36 | | | | SUB OUT: JACKSON,BRANDON |
| 16:36 | | | | SUB IN: JACKSON,D.J. |
| 16:36 | GOOD! FT by CLARK,DUANE [FB] | 46-43 | H 3 | |
| 16:36 | SUB OUT: CLARK,DUANE | | | |
| 16:36 | SUB IN: BOUIE,ROMERO | | | |
| 16:25 | | | | MISSED JUMPER by WILLIFORD,TYRESE |
| 16:24 | | | | REBOUND (OFF) by TEAM |
| 16:24 | FOUL (PERSONAL) by BOUIE,ROMERO | | | |
| 16:14 | | 48-43 | H 5 | GOOD! LAYUP by JACKSON,D.J. [PNT] |
| 16:14 | | | | ASSIST by KINCHEN,DANIEL |
| 15:58 | | | | FOUL (PERSONAL) by ELLIS,CHRISTIAN |
| 15:58 | | | | SUB OUT: ELLIS,CHRISTIAN |
| 15:58 | | | | SUB IN: MCCOY,JAYLEN |
| 15:52 | GOOD! 3PTR by RIGMAIDEN,NATE | 48-46 | H 2 | |
| 15:52 | ASSIST by CLARK,DEANDRE | | | |
| 15:31 | | 51-46 | H 5 | GOOD! 3PTR by MCCOY,JAYLEN |
| 15:31 | | | | ASSIST by WILLIAMS,CAMERON |
| 15:23 | GOOD! LAYUP by WIMBLEY,CHRISTIAN | 51-48 | H 3 | |
| 15:13 | | 53-48 | H 5 | GOOD! LAYUP by WILLIFORD,TYRESE [PNT] |
| 14:54 | GOOD! 3PTR by RIGMAIDEN,NATE | 53-51 | H 2 | |
| 14:48 | FOUL (PERSONAL) by CLARKSON,BEAR | | | |
| 14:48 | | | | SUB OUT: WILLIAMS,CAMERON |
| 14:48 | | | | SUB IN: MCFARLAND,DAVID |
| 14:48 | SUB OUT: CLARKSON,BEAR | | | |
| 14:48 | SUB IN: CLARK,DUANE | | | |
| 14:35 | | | | MISSED JUMPER by JACKSON,D.J. |
| 14:31 | REBOUND (DEF) by WIMBLEY,CHRISTIAN | | | |
| 14:30 | | | | FOUL (PERSONAL) by MCFARLAND,DAVID |
| 14:28 | | | | FOUL (PERSONAL) by JACKSON,D.J. |
| 14:28 | GOOD! FT by CLARK,DUANE [FB] | 53-52 | H 1 | |
| 14:28 | GOOD! FT by CLARK,DUANE [FB] | 53-53 | T | |
| 14:03 | FOUL (PERSONAL) by CLARK,DUANE | | | |
| 14:03 | | 54-53 | H 1 | GOOD! FT by JACKSON,D.J. |
| 14:03 | | | | MISSED FT by JACKSON,D.J. |
| 14:02 | REBOUND (DEF) by CLARK,DUANE | | | |
| 13:53 | | | | FOUL (PERSONAL) by MCFARLAND,DAVID |

| Time | VISITORS: Harris-Stowe | Score | Margin | HOME: SIUE |
|-------|------------------------------------|-------|--------|---|
| 13:53 | | | | SUB OUT: MCFARLAND,DAVID |
| 13:53 | | | | SUB IN: WILLIAMS,CAMERON |
| 13:53 | GOOD! FT by WIMBLEY,CHRISTIAN | 54-54 | T | |
| 13:53 | GOOD! FT by WIMBLEY,CHRISTIAN | 54-55 | V 1 | |
| 13:28 | | | | MISSED LAYUP by WILLIFORD,TYRESE |
| 13:22 | | | | REBOUND (OFF) by JACKSON,D.J. |
| 13:22 | | | | MISSED LAYUP by JACKSON,D.J. |
| 13:19 | | 56-55 | H 1 | GOOD! LAYUP by JACKSON,D.J. |
| 13:19 | | | | REBOUND (OFF) by JACKSON,D.J. |
| 13:02 | MISSED 3PTR by RIGMAIDEN,NATE | | | |
| 13:00 | REBOUND (OFF) by BOUIE,ROMERO | | | |
| 13:00 | GOOD! LAYUP by BOUIE,ROMERO | 56-57 | V 1 | |
| 13:00 | | | | FOUL (PERSONAL) by MCCOY,JAYLEN |
| 13:00 | | | | SUB OUT: MCCOY,JAYLEN |
| 13:00 | | | | SUB IN: ELLIS,CHRISTIAN |
| 13:00 | GOOD! FT by BOUIE,ROMERO | 56-58 | V 2 | |
| 12:34 | | | | MISSED 3PTR by WILLIFORD,TYRESE |
| 12:29 | REBOUND (DEF) by BOUIE,ROMERO | | | |
| 12:25 | GOOD! 3PTR by RIGMAIDEN,NATE [FB] | 56-61 | V 5 | |
| 12:25 | ASSIST by BOUIE,ROMERO | | | |
| 12:15 | FOUL (PERSONAL) by RIGMAIDEN,NATE | | | |
| 12:15 | | 57-61 | V 4 | GOOD! FT by WILLIFORD,TYRESE |
| 12:15 | | | | SUB OUT: JACKSON,D.J. |
| 12:15 | | | | SUB IN: JACKSON,BRANDON |
| 12:15 | SUB OUT: WIMBLEY,CHRISTIAN | | | |
| 12:15 | SUB IN: BARNES,RILEY | | | |
| 12:15 | | 58-61 | V 3 | GOOD! FT by WILLIFORD,TYRESE |
| 12:04 | TURNOVER (OTHER) by BOUIE,ROMERO | | | |
| 11:55 | | 61-61 | T | GOOD! 3PTR by WILLIFORD,TYRESE |
| 11:32 | MISSED JUMPER by RIGMAIDEN,NATE | | | |
| 11:28 | | | | REBOUND (DEF) by WILLIFORD,TYRESE |
| 11:25 | | 63-61 | H 2 | GOOD! LAYUP by KINCHEN,DANIEL [FB] |
| 11:25 | | | | ASSIST by WILLIFORD,TYRESE |
| 11:00 | GOOD! JUMPER by CLARK,DUANE [PNT] | 63-63 | T | |
| 10:45 | | | | FOUL (OFF) by JACKSON,BRANDON |
| 10:45 | | | | TURNOVER (OFFENSIVE) by JACKSON,BRANDON |
| 10:45 | | | | |
| 10:45 | | | | SUB OUT: JACKSON,BRANDON |
| 10:45 | | | | SUB IN: JACKSON,D.J. |
| 10:26 | MISSED LAYUP by BOUIE,ROMERO | | | |
| 10:20 | GOOD! LAYUP by BARNES,RILEY | 63-65 | V 2 | |
| 10:20 | REBOUND (OFF) by BARNES,RILEY | | | |
| 10:13 | FOUL (PERSONAL) by CLARK,DUANE | | | |
| 10:13 | | 64-65 | V 1 | GOOD! FT by WILLIFORD,TYRESE [FB] |
| 10:13 | SUB OUT: CLARK,DUANE | | | |
| 10:13 | SUB IN: WIMBLEY,CHRISTIAN | | | |
| 10:13 | | 65-65 | T | GOOD! FT by WILLIFORD,TYRESE [FB] |
| 09:52 | MISSED LAYUP by WIMBLEY,CHRISTIAN | | | |
| 09:49 | | | | REBOUND (DEF) by ELLIS,CHRISTIAN |
| 09:49 | FOUL (PERSONAL) by BARNES,RILEY | | | |
| 09:49 | | 66-65 | H 1 | GOOD! FT by KINCHEN,DANIEL |
| 09:49 | | 67-65 | H 2 | GOOD! FT by KINCHEN,DANIEL |
| 09:38 | | | | FOUL (PERSONAL) by WILLIFORD,TYRESE |
| 09:38 | GOOD! FT by BOUIE,ROMERO | 67-66 | H 1 | |
| 09:38 | | | | SUB OUT: WILLIFORD,TYRESE |
| 09:38 | | | | SUB IN: JACKSON,BRANDON |
| 09:37 | MISSED FT by BOUIE,ROMERO | | | |
| 09:34 | | | | REBOUND (DEF) by JACKSON,D.J. |
| 09:15 | | 69-66 | H 3 | GOOD! JUMPER by JACKSON,BRANDON [PNT] |
| 09:15 | FOUL (PERSONAL) by BOUIE,ROMERO | | | |
| 09:15 | | 70-66 | H 4 | GOOD! FT by JACKSON,BRANDON |
| 09:01 | MISSED 3PTR by RIGMAIDEN,NATE | | | |
| 08:56 | REBOUND (OFF) by WIMBLEY,CHRISTIAN | | | |
| 08:54 | MISSED LAYUP by WIMBLEY,CHRISTIAN | | | |
| 08:50 | | | | REBOUND (DEF) by JACKSON,BRANDON |
| 08:47 | | | | MISSED 3PTR by WILLIAMS,CAMERON |
| 08:42 | REBOUND (DEF) by RIGMAIDEN,NATE | | | |
| 08:39 | MISSED 3PTR by BOUIE,ROMERO | | | |
| 08:35 | | | | REBOUND (DEF) by JACKSON,D.J. |
| 08:17 | | | | TURNOVER (TRAVEL) by JACKSON,BRANDON |
| 08:00 | | | | |
| 07:55 | GOOD! LAYUP by WIMBLEY,CHRISTIAN | 70-68 | H 2 | |
| 07:55 | ASSIST by BOUIE,ROMERO | | | |
| 07:42 | | | | MISSED JUMPER by JACKSON,BRANDON |
| 07:38 | REBOUND (DEF) by BOUIE,ROMERO | | | |
| 07:18 | GOOD! 3PTR by RIGMAIDEN,NATE | 70-71 | V 1 | |
| 07:18 | ASSIST by BARNES,RILEY | | | |
| 07:01 | | | | MISSED JUMPER by WILLIAMS,CAMERON |
| 06:53 | | | | MISSED LAYUP by JACKSON,BRANDON |
| 06:53 | | | | REBOUND (OFF) by JACKSON,BRANDON |
| 06:51 | | | | REBOUND (OFF) by JACKSON,D.J. |
| 06:51 | | 72-71 | H 1 | GOOD! LAYUP by JACKSON,D.J. |
| 06:40 | MISSED 3PTR by CLARK,DEANDRE | | | |
| 06:36 | | | | REBOUND (DEF) by JACKSON,D.J. |
| 06:30 | FOUL (PERSONAL) by BARNES,RILEY | | | |
| 06:30 | | 73-71 | H 2 | GOOD! FT by JACKSON,BRANDON [FB] |
| 06:30 | | | | SUB OUT: JACKSON,D.J. |

| Time | VISITORS: Harris-Stowe | Score | Margin | HOME: SIUE |
|-------|--|-------|--------|--|
| 06:30 | | | | SUB IN: MCFARLAND,DAVID |
| 06:30 | | | | SUB OUT: WILLIAMS,CAMERON |
| 06:30 | | | | SUB IN: WILLIFORD,TYRESE |
| 06:30 | | 74-71 | H 3 | GOOD! FT by JACKSON,BRANDON [FB] |
| 06:07 | TURNOVER (LOSTBALL) by RIGMAIDEN,NATE | | | |
| 06:07 | | | | STEAL by WILLIFORD,TYRESE |
| 06:03 | FOUL (PERSONAL) by WIMBLEY,CHRISTIAN | | | |
| 06:03 | | 75-71 | H 4 | GOOD! FT by WILLIFORD,TYRESE [FB] |
| 06:03 | | 76-71 | H 5 | GOOD! FT by WILLIFORD,TYRESE [FB] |
| 05:45 | | | | FOUL (PERSONAL) by MCFARLAND,DAVID |
| 05:45 | GOOD! FT by RIGMAIDEN,NATE | 76-72 | H 4 | |
| 05:45 | | | | SUB OUT: MCFARLAND,DAVID |
| 05:45 | | | | SUB IN: WILLIAMS,CAMERON |
| 05:45 | GOOD! FT by RIGMAIDEN,NATE | 76-73 | H 3 | |
| 05:24 | | 78-73 | H 5 | GOOD! LAYUP by JACKSON,BRANDON [PNT] |
| 05:24 | | | | ASSIST by ELLIS,CHRISTIAN |
| 05:04 | GOOD! LAYUP by WIMBLEY,CHRISTIAN [PNT] | 78-75 | H 3 | |
| 04:39 | | | | MISSED JUMPER by JACKSON,BRANDON |
| 04:34 | | | | REBOUND (OFF) by JACKSON,BRANDON |
| 04:32 | | | | TURNOVER (BADPASS) by JACKSON,BRANDON |
| 04:32 | STEAL by RIGMAIDEN,NATE | | | |
| 04:26 | GOOD! LAYUP by RIGMAIDEN,NATE [FB] | 78-77 | H 1 | |
| 04:10 | | | | MISSED JUMPER by JACKSON,BRANDON |
| 04:10 | BLOCK by WIMBLEY,CHRISTIAN | | | |
| 04:10 | | | | REBOUND (OFF) by TEAM |
| 04:10 | FOUL (PERSONAL) by BARNES,RILEY | | | |
| 04:10 | | 79-77 | H 2 | GOOD! FT by WILLIAMS,CAMERON |
| 04:10 | | 80-77 | H 3 | GOOD! FT by WILLIAMS,CAMERON |
| 04:06 | | | | FOUL (PERSONAL) by KINCHEN,DANIEL |
| 04:06 | GOOD! FT by CLARK,DEANDRE [FB] | 80-78 | H 2 | |
| 04:04 | MISSED FT by CLARK,DEANDRE | | | |
| 04:02 | | | | REBOUND (DEF) by JACKSON,BRANDON |
| 03:49 | | | | TURNOVER (BADPASS) by WILLIAMS,CAMERON |
| 03:49 | STEAL by BOUIE,ROMERO | | | |
| 03:43 | GOOD! LAYUP by BOUIE,ROMERO [FB] | 80-80 | T | |
| 03:33 | | 82-80 | H 2 | GOOD! JUMPER by JACKSON,BRANDON |
| 03:33 | | | | ASSIST by WILLIAMS,CAMERON |
| 03:12 | TURNOVER (TRAVEL) by WIMBLEY,CHRISTIAN | | | |
| 03:12 | | | | SUB OUT: WILLIAMS,CAMERON |
| 03:12 | | | | SUB IN: MCFARLAND,DAVID |
| 03:12 | SUB OUT: BARNES,RILEY | | | |
| 03:12 | SUB IN: CLARK,DUANE | | | |
| 02:44 | | | | MISSED 3PTR by MCFARLAND,DAVID |
| 02:40 | | | | REBOUND (OFF) by WILLIFORD,TYRESE |
| 02:38 | | | | MISSED LAYUP by WILLIFORD,TYRESE |
| 02:35 | REBOUND (DEF) by WIMBLEY,CHRISTIAN | | | |
| 02:19 | MISSED JUMPER by CLARK,DUANE | | | |
| 02:10 | | | | REBOUND (DEF) by JACKSON,BRANDON |
| 01:57 | | | | MISSED LAYUP by JACKSON,BRANDON |
| 01:51 | | 84-80 | H 4 | GOOD! LAYUP by JACKSON,BRANDON |
| 01:51 | | | | REBOUND (OFF) by JACKSON,BRANDON |
| 01:37 | MISSED 3PTR by RIGMAIDEN,NATE | | | |
| 01:35 | | | | REBOUND (DEF) by TEAM |
| 01:35 | SUB OUT: BOUIE,ROMERO | | | |
| 01:35 | SUB IN: CLARKSON,BEAR | | | |
| 01:04 | | 86-80 | H 6 | GOOD! JUMPER by JACKSON,BRANDON [PNT] |
| 01:04 | | | | ASSIST by KINCHEN,DANIEL |
| 00:59 | TIMEOUT TEAM | | | |
| 00:48 | GOOD! LAYUP by RIGMAIDEN,NATE [PNT] | 86-82 | H 4 | |
| 00:48 | ASSIST by CLARK,DUANE | | | |
| 00:48 | | | | FOUL (PERSONAL) by ELLIS,CHRISTIAN |
| 00:48 | | | | SUB OUT: ELLIS,CHRISTIAN |
| 00:48 | | | | SUB IN: MCCOY,JAYLEN |
| 00:48 | GOOD! FT by RIGMAIDEN,NATE | 86-83 | H 3 | |
| 00:46 | | | | TIMEOUT 30SEC |
| 00:42 | FOUL (PERSONAL) by WIMBLEY,CHRISTIAN | | | |
| 00:42 | | 87-83 | H 4 | GOOD! FT by MCFARLAND,DAVID [FB] |
| 00:42 | | | | SUB OUT: MCCOY,JAYLEN |
| 00:42 | | | | SUB IN: ELLIS,CHRISTIAN |
| 00:41 | | | | MISSED FT by MCFARLAND,DAVID |
| 00:39 | REBOUND (DEF) by WIMBLEY,CHRISTIAN | | | |
| 00:27 | TURNOVER (LOSTBALL) by RIGMAIDEN,NATE | | | |
| 00:27 | | | | STEAL by MCFARLAND,DAVID |
| 00:19 | FOUL (PERSONAL) by CLARK,DEANDRE | | | |
| 00:19 | FOUL (TECH) by RIGMAIDEN,NATE | | | |
| 00:19 | | | | FOUL (TECH) by WILLIFORD,TYRESE |
| 00:19 | TIMEOUT 30SEC | | | |
| 00:19 | | 88-83 | H 5 | GOOD! FT by WILLIFORD,TYRESE |
| 00:19 | | 89-83 | H 6 | GOOD! FT by WILLIFORD,TYRESE |
| 00:11 | GOOD! LAYUP by RIGMAIDEN,NATE | 89-85 | H 4 | |
| 00:09 | FOUL (PERSONAL) by RIGMAIDEN,NATE | | | |
| 00:09 | SUB OUT: RIGMAIDEN,NATE | | | |
| 00:09 | SUB IN: BOUIE,ROMERO | | | |
| 00:09 | | 90-85 | H 5 | GOOD! FT by WILLIFORD,TYRESE [FB] |
| 00:09 | | 91-85 | H 6 | GOOD! FT by WILLIFORD,TYRESE [FB] |
| 00:06 | GOOD! LAYUP by CLARKSON,BEAR [PNT] | 91-87 | H 4 | |

| Time | VISITORS: Harris-Stowe | Score | Margin | HOME: SIUE |
|-------|----------------------------------|-------|--------|----------------------------------|
| 00:06 | TIMEOUT TEAM | | | |
| 00:06 | | | | SUB OUT: ELLIS,CHRISTIAN |
| 00:06 | | | | SUB IN: MCCOY,JAYLEN |
| 00:06 | SUB OUT: CLARK,DUANE | | | |
| 00:06 | SUB IN: BARNES,RILEY | | | |
| 00:06 | SUB OUT: BOUIE,ROMERO | | | |
| 00:06 | SUB IN: WELLS JR,COREY | | | |
| 00:05 | FOUL (PERSONAL) by CLARK,DEANDRE | | | |
| 00:05 | | 92-87 | H 5 | GOOD! FT by MCFARLAND,DAVID [FB] |
| 00:05 | | | | SUB OUT: JACKSON,BRANDON |
| 00:05 | | | | SUB IN: ELLIS,CHRISTIAN |
| 00:05 | SUB OUT: BARNES,RILEY | | | |
| 00:05 | SUB IN: CLARK,DUANE | | | |
| 00:05 | SUB OUT: WELLS JR,COREY | | | |
| 00:05 | SUB IN: BOUIE,ROMERO | | | |
| 00:04 | | | | MISSED FT by MCFARLAND,DAVID |
| 00:02 | REBOUND (DEF) by CLARK,DUANE | | | |

Harris-Stowe 87, SIUE 92

| Points from (This Period) | HSU | SIE |
|---------------------------|-----|-----|
| In the Paint | 26 | 20 |
| Off Turns | 13 | 9 |
| 2nd Chance | 5 | 10 |
| Fast Break | 12 | 15 |
| Bench | 8 | 14 |

**This period only:HSU led for 15:40. SIE led for 15:47.
Game was tied for 0:31.**

Official Scoring/Possession Reference Chart
Harris-Stowe vs SIUE
Period 1
December 08, 2018 at Vadalabene Center - Edwardsville, Ill.

Starters:

Harris-Stowe: 12 RIGMAIDEN,NATE; 13 CLARK,DUANE; 2 CLARKSON,BEAR; 3 CLARK,DEANDRE; 5 WIMBLEY,CHRISTIAN;
SIUE: 5 WILLIFORD,TYRESE; 13 ELLIS,CHRISTIAN; 15 MCFARLAND,DAVID; 24 WILLIAMS,CAMERON; 32 JACKSON,BRANDON;

Period 1

| Time | VISITORS: Harris-Stowe | Score | Margin | HOME: SIUE |
|-------|------------------------------------|-------|--------|---------------------------------------|
| 17:59 | GOOD! 3PTR by CLARK,DEANDRE | 0-3 | V 3 | |
| 17:28 | | 2-3 | V 1 | GOOD! JUMPER by WILLIFORD,TYRESE |
| 17:02 | GOOD! LAYUP by RIGMAIDEN,NATE [FB] | 2-5 | V 3 | |
| 15:40 | GOOD! LAYUP by RIGMAIDEN,NATE [FB] | 2-7 | V 5 | |
| 15:21 | | 5-7 | V 2 | GOOD! 3PTR by WILLIAMS,CAMERON |
| 13:57 | GOOD! LAYUP by CLARKSON,BEAR [FB] | 5-9 | V 4 | |
| 12:55 | GOOD! 3PTR by BOUIE,ROMERO | 5-12 | V 7 | |
| 12:41 | | 7-12 | V 5 | GOOD! LAYUP by KINCHEN,DANIEL [PNT] |
| 12:41 | | 8-12 | V 4 | GOOD! FT by KINCHEN,DANIEL |
| 12:12 | | 10-12 | V 2 | GOOD! LAYUP by ELLIS,CHRISTIAN [FB] |
| 11:53 | GOOD! LAYUP by CLARK,DUANE [PNT] | 10-14 | V 4 | |
| 11:00 | GOOD! LAYUP by CLARK,DEANDRE [FB] | 10-16 | V 6 | |
| 10:52 | | 12-16 | V 4 | GOOD! LAYUP by JACKSON,BRANDON |
| 10:24 | GOOD! LAYUP by CLARK,DEANDRE [PNT] | 12-18 | V 6 | |
| 10:07 | | 14-18 | V 4 | GOOD! LAYUP by JACKSON,BRANDON |
| 09:29 | | 15-18 | V 3 | GOOD! FT by MCFARLAND,DAVID [FB] |
| 09:29 | | 16-18 | V 2 | GOOD! FT by MCFARLAND,DAVID [FB] |
| 09:11 | GOOD! LAYUP by BARNES,RILEY [PNT] | 16-20 | V 4 | |
| 08:56 | GOOD! LAYUP by CLARK,DEANDRE [FB] | 16-22 | V 6 | |
| 08:00 | GOOD! LAYUP by WIMBLEY,CHRISTIAN | 16-24 | V 8 | |
| 07:58 | | 17-24 | V 7 | GOOD! FT by JACKSON,BRANDON [FB] |
| 07:40 | GOOD! 3PTR by CLARK,DEANDRE | 17-27 | V 10 | |
| 06:57 | | 18-27 | V 9 | GOOD! FT by WILLIAMS,CAMERON |
| 06:57 | | 19-27 | V 8 | GOOD! FT by WILLIAMS,CAMERON |
| 06:33 | | 21-27 | V 6 | GOOD! LAYUP by JACKSON,BRANDON [PNT] |
| 05:49 | | 22-27 | V 5 | GOOD! FT by WILLIFORD,TYRESE |
| 05:49 | | 23-27 | V 4 | GOOD! FT by WILLIFORD,TYRESE |
| 05:33 | GOOD! LAYUP by WIMBLEY,CHRISTIAN | 23-29 | V 6 | |
| 05:21 | | 25-29 | V 4 | GOOD! DUNK by JACKSON,BRANDON |
| 04:59 | | 27-29 | V 2 | GOOD! LAYUP by WILLIFORD,TYRESE [PNT] |
| 04:32 | | 28-29 | V 1 | GOOD! FT by JACKSON,BRANDON [FB] |
| 04:32 | | 29-29 | T | GOOD! FT by JACKSON,BRANDON [FB] |
| 04:13 | | 31-29 | H 2 | GOOD! LAYUP by WILLIAMS,CAMERON |
| 03:45 | | 32-29 | H 3 | GOOD! FT by WILLIFORD,TYRESE [FB] |
| 02:56 | | 33-29 | H 4 | GOOD! FT by KINCHEN,DANIEL |
| 02:56 | | 34-29 | H 5 | GOOD! FT by KINCHEN,DANIEL |
| 02:31 | GOOD! JUMPER by CLARK,DEANDRE | 34-31 | H 3 | |
| 02:19 | | 36-31 | H 5 | GOOD! JUMPER by JACKSON,BRANDON |
| 01:58 | GOOD! JUMPER by BOUIE,ROMERO | 36-33 | H 3 | |
| 01:35 | | 38-33 | H 5 | GOOD! JUMPER by WILLIFORD,TYRESE |
| 00:03 | | 41-33 | H 8 | GOOD! 3PTR by KINCHEN,DANIEL |

Harris-Stowe 33, SIUE 41

Official Scoring/Possession Reference Chart
Harris-Stowe vs SIUE
Period 2
December 08, 2018 at Vadalabene Center - Edwardsville, Ill.

Starters:

Harris-Stowe: 12 RIGMAIDEN,NATE; 13 CLARK,DUANE; 2 CLARKSON,BEAR; 3 CLARK,DEANDRE; 5 WIMBLEY,CHRISTIAN;
SIUE: 5 WILLIFORD,TYRESE; 13 ELLIS,CHRISTIAN; 15 MCFARLAND,DAVID; 24 WILLIAMS,CAMERON; 32 JACKSON,BRANDON;

Period 2

| Time | VISITORS: Harris-Stowe | Score | Margin | HOME SIDE |
|-------|--|-------|--------|---------------------------------------|
| 19:30 | GOOD! FT by CLARK,DUANE | 41-34 | H 7 | |
| 19:14 | | 43-34 | H 9 | GOOD! LAY UP by ELLIS,CHRISTIAN |
| 18:54 | GOOD! LAY UP by WIMBLEY ,CHRISTIAN | 43-36 | H 7 | |
| 18:50 | | 44-36 | H 8 | GOOD! FT by WILLIFORD,TYRESE [FB] |
| 18:30 | | 45-36 | H 9 | GOOD! FT by JACKSON,BRANDON [FB] |
| 18:30 | | 46-36 | H 10 | GOOD! FT by JACKSON,BRANDON [FB] |
| 17:34 | GOOD! 3PTR by RIGMAIDEN,NATE | 46-39 | H 7 | |
| 17:02 | GOOD! DUNK by CLARK,DUANE | 46-41 | H 5 | |
| 16:36 | GOOD! FT by CLARK,DUANE [FB] | 46-42 | H 4 | |
| 16:36 | GOOD! FT by CLARK,DUANE [FB] | 46-43 | H 3 | |
| 16:14 | | 48-43 | H 5 | GOOD! LAYUP by JACKSON,D.J. [PNT] |
| 15:52 | GOOD! 3PTR by RIGMAIDEN,NATE | 48-46 | H 2 | |
| 15:31 | | 51-46 | H 5 | GOOD! 3PTR by MCCOY ,JAYLEN |
| 15:23 | GOOD! LAY UP by WIMBLEY ,CHRISTIAN | 51-48 | H 3 | |
| 15:13 | | 53-48 | H 5 | GOOD! LAYUP by WILLIFORD,TYRESE [PNT] |
| 14:54 | GOOD! 3PTR by RIGMAIDEN,NATE | 53-51 | H 2 | |
| 14:28 | GOOD! FT by CLARK,DUANE [FB] | 53-52 | H 1 | |
| 14:28 | GOOD! FT by CLARK,DUANE [FB] | 53-53 | T | |
| 14:03 | | 54-53 | H 1 | GOOD! FT by JACKSON,D.J. |
| 13:53 | GOOD! FT by WIMBLEY ,CHRISTIAN | 54-54 | T | |
| 13:53 | GOOD! FT by WIMBLEY ,CHRISTIAN | 54-55 | V 1 | |
| 13:19 | | 56-55 | H 1 | GOOD! LAYUP by JACKSON,D.J. |
| 13:00 | GOOD! LAY UP by BOUIE,ROMERO | 56-57 | V 1 | |
| 13:00 | GOOD! FT by BOUIE,ROMERO | 56-58 | V 2 | |
| 12:25 | GOOD! 3PTR by RIGMAIDEN,NATE [FB] | 56-61 | V 5 | |
| 12:15 | | 57-61 | V 4 | GOOD! FT by WILLIFORD,TYRESE |
| 12:15 | | 58-61 | V 3 | GOOD! FT by WILLIFORD,TYRESE |
| 11:55 | | 61-61 | T | GOOD! 3PTR by WILLIFORD,TYRESE |
| 11:25 | | 63-61 | H 2 | GOOD! LAY UP by KINCHEN,DANIEL [FB] |
| 11:00 | GOOD! JUMPER by CLARK,DUANE [PNT] | 63-63 | T | |
| 10:20 | GOOD! LAY UP by BARNES,RILEY | 63-65 | V 2 | |
| 10:13 | | 64-65 | V 1 | GOOD! FT by WILLIFORD,TYRESE [FB] |
| 10:13 | | 65-65 | T | GOOD! FT by WILLIFORD,TYRESE [FB] |
| 09:49 | | 66-65 | H 1 | GOOD! FT by KINCHEN,DANIEL |
| 09:49 | | 67-65 | H 2 | GOOD! FT by KINCHEN,DANIEL |
| 09:38 | GOOD! FT by BOUIE,ROMERO | 67-66 | H 1 | |
| 09:15 | | 69-66 | H 3 | GOOD! JUMPER by JACKSON,BRANDON [PNT] |
| 09:15 | | 70-66 | H 4 | GOOD! FT by JACKSON,BRANDON |
| 07:55 | GOOD! LAY UP by WIMBLEY ,CHRISTIAN | 70-68 | H 2 | |
| 07:18 | GOOD! 3PTR by RIGMAIDEN,NATE | 70-71 | V 1 | |
| 06:51 | | 72-71 | H 1 | GOOD! LAYUP by JACKSON,D.J. |
| 06:30 | | 73-71 | H 2 | GOOD! FT by JACKSON,BRANDON [FB] |
| 06:30 | | 74-71 | H 3 | GOOD! FT by JACKSON,BRANDON [FB] |
| 06:03 | | 75-71 | H 4 | GOOD! FT by WILLIFORD,TYRESE [FB] |
| 06:03 | | 76-71 | H 5 | GOOD! FT by WILLIFORD,TYRESE [FB] |
| 05:45 | GOOD! FT by RIGMAIDEN,NATE | 76-72 | H 4 | |
| 05:45 | GOOD! FT by RIGMAIDEN,NATE | 76-73 | H 3 | |
| 05:24 | | 78-73 | H 5 | GOOD! LAY UP by JACKSON,BRANDON [PNT] |
| 05:04 | GOOD! LAY UP by WIMBLEY ,CHRISTIAN [PNT] | 78-75 | H 3 | |
| 04:26 | GOOD! LAY UP by RIGMAIDEN,NATE [FB] | 78-77 | H 1 | |
| 04:10 | | 79-77 | H 2 | GOOD! FT by WILLIAMS,CAMERON |
| 04:10 | | 80-77 | H 3 | GOOD! FT by WILLIAMS,CAMERON |
| 04:06 | GOOD! FT by CLARK,DEANDRE [FB] | 80-78 | H 2 | |
| 03:43 | GOOD! LAY UP by BOUIE,ROMERO [FB] | 80-80 | T | |
| 03:33 | | 82-80 | H 2 | GOOD! JUMPER by JACKSON,BRANDON |
| 01:51 | | 84-80 | H 4 | GOOD! LAY UP by JACKSON,BRANDON |
| 01:04 | | 86-80 | H 6 | GOOD! JUMPER by JACKSON,BRANDON [PNT] |
| 00:48 | GOOD! LAY UP by RIGMAIDEN,NATE [PNT] | 86-82 | H 4 | |
| 00:48 | GOOD! FT by RIGMAIDEN,NATE | 86-83 | H 3 | |

| Time | VISITORS: Harris-Stowe | Score | Margin | HOME: SIUE |
|-------|------------------------------------|-------|--------|-----------------------------------|
| 00:42 | | 87-83 | H 4 | GOOD! FT by MCFARLAND,DAVID [FB] |
| 00:19 | | 88-83 | H 5 | GOOD! FT by WILLIFORD,TYRESE |
| 00:19 | | 89-83 | H 6 | GOOD! FT by WILLIFORD,TYRESE |
| 00:11 | GOOD! LAYUP by RIGMAIDEN,NATE | 89-85 | H 4 | |
| 00:09 | | 90-85 | H 5 | GOOD! FT by WILLIFORD,TYRESE [FB] |
| 00:09 | | 91-85 | H 6 | GOOD! FT by WILLIFORD,TYRESE [FB] |
| 00:06 | GOOD! LAYUP by CLARKSON,BEAR [PNT] | 91-87 | H 4 | |
| 00:05 | | 92-87 | H 5 | GOOD! FT by MCFARLAND,DAVID [FB] |

Harris-Stowe 87, SIUE 92

**Official Substitutions Log
Harris-Stowe vs SIUE
Period 1
December 08, 2018 at Vadalabene Center - Edwardsville, Ill.**

| VISITORS: Harris-Stowe | Time | Score | HOME: SIUE |
|------------------------------|-------|-------|---------------------------|
| 12 RIGMAIDEN,NATE | | | 5 WILLIFORD,TYRESE |
| 13 CLARK,DUANE | | | 13 ELLIS,CHRISTIAN |
| 2 CLARKSON,BEAR | | | 15 MCFARLAND,DAVID |
| 3 CLARK,DEANDRE | | | 24 WILLIAMS,CAMERON |
| 5 WIMBLEY,CHRISTIAN | | | 32 JACKSON,BRANDON |
| | 15:40 | 7-2 | SUB OUT: WILLIFORD,TYRESE |
| | 15:40 | | SUB IN: JACKSON,D.J. |
| | 15:40 | | SUB OUT: ELLIS,CHRISTIAN |
| | 15:40 | | SUB IN: MCCOY,JAYLEN |
| SUB OUT: 13 CLARK,DUANE | 15:40 | | |
| SUB IN: 24 BOUIE,ROMERO | 15:40 | | |
| SUB OUT: 5 WIMBLEY,CHRISTIAN | 14:48 | 7-5 | |
| SUB IN: 13 CLARK,DUANE | 14:48 | | |
| | 13:33 | 9-5 | SUB OUT: WILLIAMS,CAMERON |
| | 13:33 | | SUB IN: KINCHEN,DANIEL |
| SUB OUT: 12 RIGMAIDEN,NATE | 13:33 | | |
| SUB IN: 5 WIMBLEY,CHRISTIAN | 13:33 | | |
| | 12:41 | 12-7 | SUB OUT: JACKSON,BRANDON |
| | 12:41 | | SUB IN: ELLIS,CHRISTIAN |
| | 11:31 | 14-10 | SUB OUT: MCFARLAND,DAVID |
| | 11:31 | | SUB IN: WILLIFORD,TYRESE |
| SUB OUT: 2 CLARKSON,BEAR | 11:31 | | |
| SUB IN: 0 BARNES,RILEY | 11:31 | | |
| SUB OUT: 13 CLARK,DUANE | 11:31 | | |
| SUB IN: 12 RIGMAIDEN,NATE | 11:31 | | |
| SUB OUT: 3 CLARK,DEANDRE | 11:19 | 14-10 | |
| SUB IN: 2 CLARKSON,BEAR | 11:19 | | |
| | 11:15 | 14-10 | SUB OUT: JACKSON,D.J. |
| | 11:15 | | SUB IN: JACKSON,BRANDON |
| SUB OUT: 12 RIGMAIDEN,NATE | 11:10 | 14-10 | |
| SUB IN: 3 CLARK,DEANDRE | 11:10 | | |
| | 09:52 | 18-14 | SUB OUT: MCCOY,JAYLEN |
| | 09:52 | | SUB IN: MCFARLAND,DAVID |
| SUB OUT: 0 BARNES,RILEY | 09:52 | | |
| SUB IN: 13 CLARK,DUANE | 09:52 | | |
| SUB OUT: 24 BOUIE,ROMERO | 09:29 | 18-15 | |
| SUB IN: 0 BARNES,RILEY | 09:29 | | |
| SUB OUT: 13 CLARK,DUANE | 07:58 | 24-16 | |
| SUB IN: 24 BOUIE,ROMERO | 07:58 | | |
| | 07:07 | 27-17 | SUB OUT: KINCHEN,DANIEL |
| | 07:07 | | SUB IN: WILLIAMS,CAMERON |
| SUB OUT: 5 WIMBLEY,CHRISTIAN | 05:56 | 27-21 | |
| SUB IN: 13 CLARK,DUANE | 05:56 | | |
| SUB OUT: 2 CLARKSON,BEAR | 05:49 | 27-21 | |
| SUB IN: 5 WIMBLEY,CHRISTIAN | 05:49 | | |
| SUB OUT: 0 BARNES,RILEY | 04:32 | 29-28 | |
| SUB IN: 15 WELLS JR,COREY | 04:32 | | |
| | 03:59 | 29-31 | SUB OUT: WILLIAMS,CAMERON |
| | 03:59 | | SUB IN: KINCHEN,DANIEL |
| SUB OUT: 5 WIMBLEY,CHRISTIAN | 02:56 | 29-34 | |
| SUB IN: 0 BARNES,RILEY | 02:56 | | |
| | 00:56 | 33-38 | SUB OUT: WILLIFORD,TYRESE |
| | 00:56 | | SUB IN: MCCOY,JAYLEN |

Harris-Stowe 33, SIUE 41

**Official Substitutions Log
Harris-Stowe vs SIUE
Period 2**

December 08, 2018 at Vadalabene Center - Edwardsville, Ill.

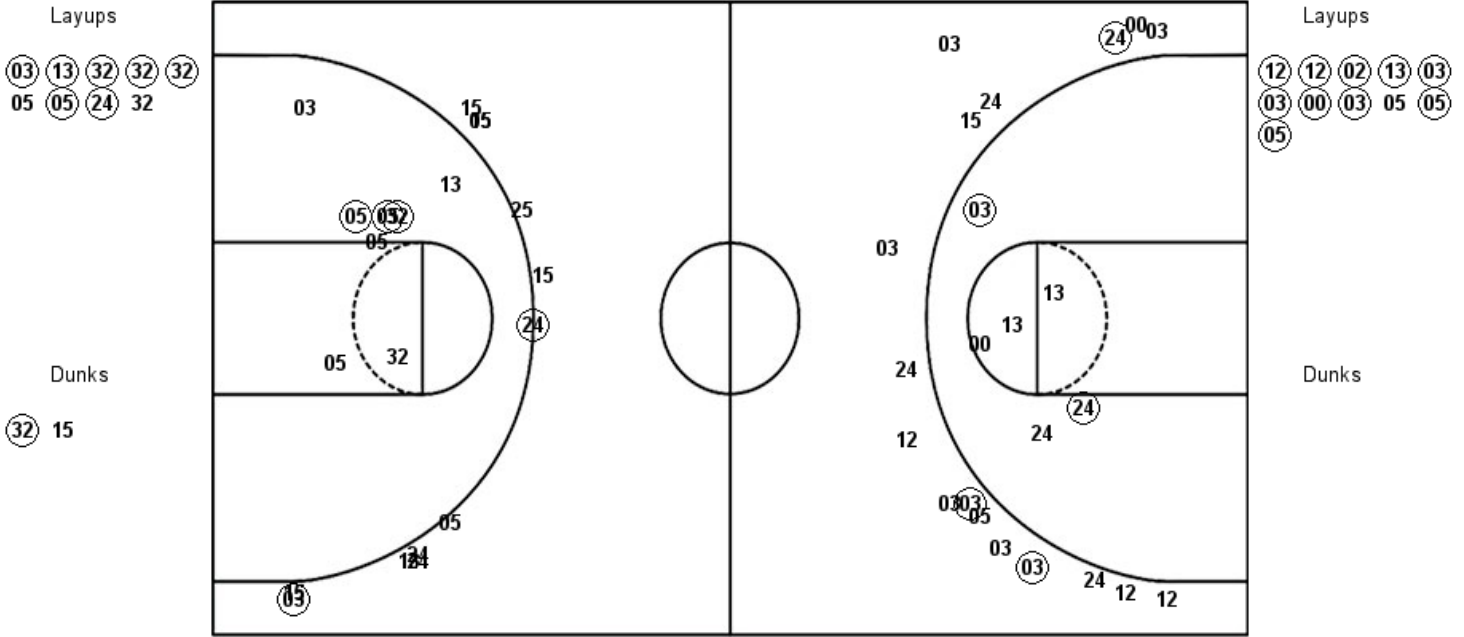
| VISITORS: Harris-Stowe | Time | Score | HOME: SIUE |
|------------------------------|-------|-------|---------------------------|
| 12 RIGMAIDEN,NATE | | | 5 WILLIFORD,TYRESE |
| 13 CLARK,DUANE | | | 13 ELLIS,CHRISTIAN |
| 2 CLARKSON,BEAR | | | 15 MCFARLAND,DAVID |
| 3 CLARK,DEANDRE | | | 24 WILLIAMS,CAMERON |
| 5 WIMBLEY,CHRISTIAN | | | 32 JACKSON,BRANDON |
| | 16:36 | 42-46 | SUB OUT: MCFARLAND,DAVID |
| | 16:36 | | SUB IN: KINCHEN,DANIEL |
| | 16:36 | | SUB OUT: JACKSON,BRANDON |
| | 16:36 | | SUB IN: JACKSON,D.J. |
| SUB OUT: 13 CLARK,DUANE | 16:36 | | |
| SUB IN: 24 BOUIE,ROMERO | 16:36 | | |
| | 15:58 | 43-48 | SUB OUT: ELLIS,CHRISTIAN |
| | 15:58 | | SUB IN: MCCOY,JAYLEN |
| | 14:48 | 51-53 | SUB OUT: WILLIAMS,CAMERON |
| | 14:48 | | SUB IN: MCFARLAND,DAVID |
| SUB OUT: 2 CLARKSON,BEAR | 14:48 | | |
| SUB IN: 13 CLARK,DUANE | 14:48 | | |
| | 13:53 | 53-54 | SUB OUT: MCFARLAND,DAVID |
| | 13:53 | | SUB IN: WILLIAMS,CAMERON |
| | 13:00 | 57-56 | SUB OUT: MCCOY,JAYLEN |
| | 13:00 | | SUB IN: ELLIS,CHRISTIAN |
| | 12:15 | 61-57 | SUB OUT: JACKSON,D.J. |
| | 12:15 | | SUB IN: JACKSON,BRANDON |
| SUB OUT: 5 WIMBLEY,CHRISTIAN | 12:15 | | |
| SUB IN: 0 BARNES,RILEY | 12:15 | | |
| | 10:45 | 63-63 | SUB OUT: JACKSON,BRANDON |
| | 10:45 | | SUB IN: JACKSON,D.J. |
| SUB OUT: 13 CLARK,DUANE | 10:13 | 65-64 | |
| SUB IN: 5 WIMBLEY,CHRISTIAN | 10:13 | | |
| | 09:38 | 66-67 | SUB OUT: WILLIFORD,TYRESE |
| | 09:38 | | SUB IN: JACKSON,BRANDON |
| | 06:30 | 71-73 | SUB OUT: JACKSON,D.J. |
| | 06:30 | | SUB IN: MCFARLAND,DAVID |
| | 06:30 | | SUB OUT: WILLIAMS,CAMERON |
| | 06:30 | | SUB IN: WILLIFORD,TYRESE |
| | 05:45 | 72-76 | SUB OUT: MCFARLAND,DAVID |
| | 05:45 | | SUB IN: WILLIAMS,CAMERON |
| | 03:12 | 80-82 | SUB OUT: WILLIAMS,CAMERON |
| | 03:12 | | SUB IN: MCFARLAND,DAVID |
| SUB OUT: 0 BARNES,RILEY | 03:12 | | |
| SUB IN: 13 CLARK,DUANE | 03:12 | | |
| SUB OUT: 24 BOUIE,ROMERO | 01:35 | 80-84 | |
| SUB IN: 2 CLARKSON,BEAR | 01:35 | | |
| | 00:48 | 82-86 | SUB OUT: ELLIS,CHRISTIAN |
| | 00:48 | | SUB IN: MCCOY,JAYLEN |
| | 00:42 | 83-87 | SUB OUT: MCCOY,JAYLEN |
| | 00:42 | | SUB IN: ELLIS,CHRISTIAN |
| SUB OUT: 12 RIGMAIDEN,NATE | 00:09 | 85-89 | |
| SUB IN: 24 BOUIE,ROMERO | 00:09 | | |
| | 00:06 | 87-91 | SUB OUT: ELLIS,CHRISTIAN |
| | 00:06 | | SUB IN: MCCOY,JAYLEN |
| SUB OUT: 13 CLARK,DUANE | 00:06 | | |
| SUB IN: 0 BARNES,RILEY | 00:06 | | |
| SUB OUT: 24 BOUIE,ROMERO | 00:06 | | |
| SUB IN: 15 WELLS JR,COREY | 00:06 | | |
| | 00:05 | 87-92 | SUB OUT: JACKSON,BRANDON |
| | 00:05 | | SUB IN: ELLIS,CHRISTIAN |
| SUB OUT: 0 BARNES,RILEY | 00:05 | | |
| SUB IN: 13 CLARK,DUANE | 00:05 | | |
| SUB OUT: 15 WELLS JR,COREY | 00:05 | | |
| SUB IN: 24 BOUIE,ROMERO | 00:05 | | |

Harris-Stowe 87, SIUE 92

Official Shot Chart
Harris-Stowe vs SIUE
PERIOD 1 Shots
 December 08, 2018 at Vadalabene Center - Edwardsville, Ill.

SIUE

Harris-Stowe

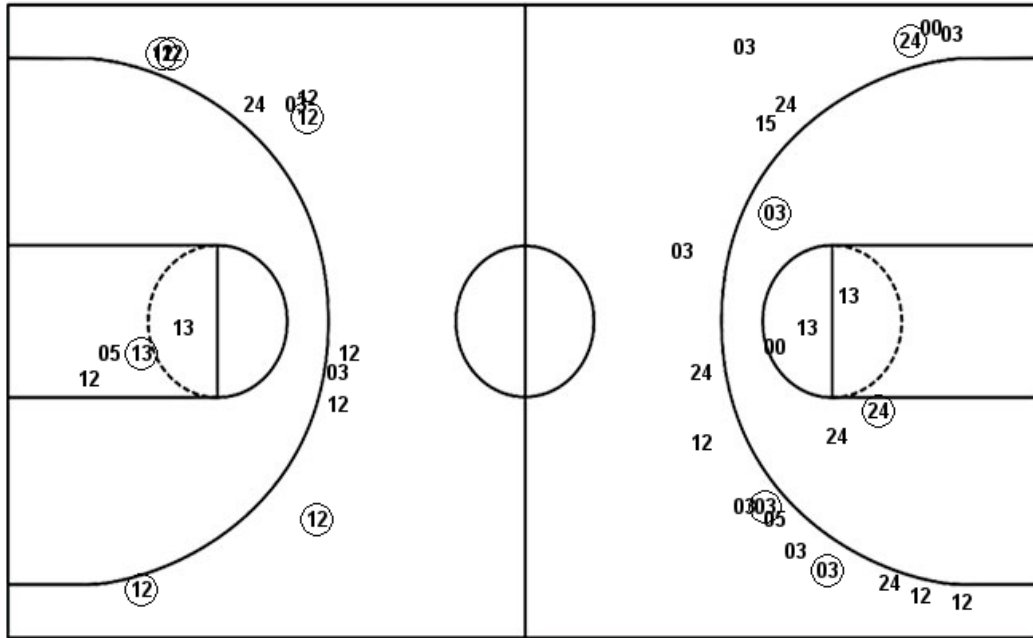


| SIUE : Period 1 | Made | Att | Pct |
|--------------------------|-----------|-----------|-------------|
| Layups | 7 | 9 | 77.8 |
| Dunks | 1 | 2 | 50.0 |
| 2PT Field Goals | 11 | 19 | 57.9 |
| 3PT Field Goals | 2 | 12 | 16.7 |
| Total Field Goals | 13 | 31 | 41.9 |

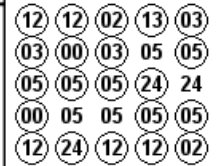
| HSU : Period 1 | Made | Att | Pct |
|--------------------------|-----------|-----------|-------------|
| Layups | 10 | 11 | 90.9 |
| Dunks | 0 | 0 | 0 |
| 2PT Field Goals | 12 | 17 | 70.6 |
| 3PT Field Goals | 3 | 17 | 17.6 |
| Total Field Goals | 15 | 34 | 44.1 |

Official Shot Chart
Harris-Stowe vs SIUE
Harris-Stowe Team Shots
 December 08, 2018 at Vadalabene Center - Edwardsville, Ill.

Layups



Layups



Dunks

Dunks

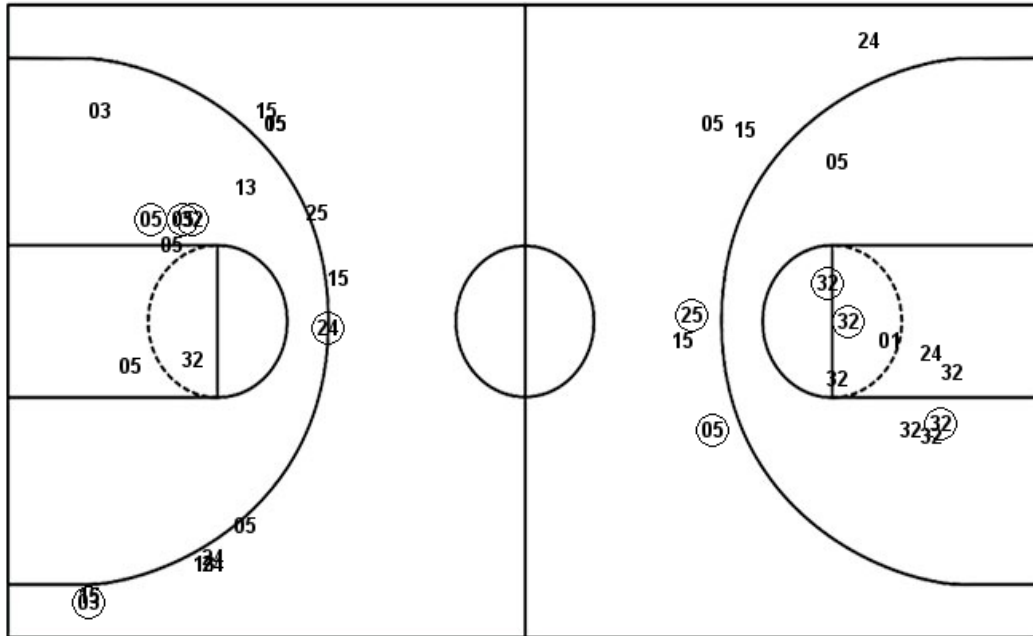


| HSU : Period 1 | Made | Att | Pct |
|--------------------------|-----------|-----------|-------------|
| Layups | 10 | 11 | 90.9 |
| Dunks | 0 | 0 | 0 |
| 2PT Field Goals | 12 | 17 | 70.6 |
| 3PT Field Goals | 3 | 17 | 17.6 |
| Total Field Goals | 15 | 34 | 44.1 |

| HSU : Period 2 | Made | Att | Pct |
|--------------------------|-----------|-----------|-------------|
| Layups | 11 | 14 | 78.6 |
| Dunks | 1 | 1 | 100.0 |
| 2PT Field Goals | 13 | 19 | 68.4 |
| 3PT Field Goals | 5 | 11 | 45.5 |
| Total Field Goals | 18 | 30 | 60.0 |

Official Shot Chart
Harris-Stowe vs SIUE
SIUE Team Shots
 December 08, 2018 at Vadalabene Center - Edwardsville, Ill.

Layups



Layups

03 13 32 32 32
 05 05 24 32 13
 24 01 05 05 01
 01 03 32 01 32
 05 32 32

Dunks

32 15

| SIE : Period 1 | Made | Att | Pct |
|--------------------------|-----------|-----------|-------------|
| Layups | 7 | 9 | 77.8 |
| Dunks | 1 | 2 | 50.0 |
| 2PT Field Goals | 11 | 19 | 57.9 |
| 3PT Field Goals | 2 | 12 | 16.7 |
| Total Field Goals | 13 | 31 | 41.9 |

| SIE : Period 2 | Made | Att | Pct |
|--------------------------|-----------|-----------|-------------|
| Layups | 8 | 14 | 57.1 |
| Dunks | 0 | 0 | 0 |
| 2PT Field Goals | 11 | 24 | 45.8 |
| 3PT Field Goals | 2 | 6 | 33.3 |
| Total Field Goals | 13 | 30 | 43.3 |