

FINAL SCORE



Incarnate Word

68



SIUE

80

November 25, 2018 • Vadalabene Center - Edwardsville, Ill.

FINAL STATISTICS

Official Box Score
Incarnate Word vs SIUE
Game Totals -- Final Statistics
November 25, 2018 at Vadalabene Center - Edwardsville, Ill.

Incarnate Word 68

No.	Player	S	Pts	FG	3FG	FT	OR	DR	TR	PF	A	TO	Blk	Stl	Min	+/-
0	Murray Jr., Dwight		0	0-0	0-0	0-0	0	4	4	1	4	1	0	0	25	-6
4	Peevy, Christian		32	9-15	0-1	14-15	2	3	5	3	1	1	0	1	36	-10
10	Graham, Cody		2	1-5	0-0	0-0	0	4	4	1	0	1	0	0	25	-2
12	Ene, Augustine		10	3-7	0-1	4-5	1	5	6	2	0	1	0	4	31	-6
20	Taylor, Morgan		11	4-11	0-2	3-3	1	0	1	3	3	3	0	0	37	-15
1	Smith Jr., Antoine		11	4-8	1-3	2-2	0	3	3	2	1	2	0	0	23	-11
2	Caruso, Jordan		0	0-0	0-0	0-0	0	2	2	2	0	2	0	0	13	-7
13	Brown lii, Charles		2	1-2	0-0	0-0	0	0	0	0	0	0	0	0	7	-7
23	Kite, Jordan		0	0-0	0-0	0-0	0	0	0	1	0	0	0	0	1	1
24	Davis, Bryce		0	0-0	0-0	0-0	0	0	0	0	0	0	1	0	3	3
	Team						1	0	1	0		0				
TOTALS			68	22-48	1-7	23-25	5	21	26	15	9	11	1	5	200	

Shooting By Period

Period	FG	FG%	3FG	3FG%	FT	FT%
1st Half	10-24	42%	0-4	00%	7-8	88%
2nd Half	12-24	50%	1-3	33%	16-17	94%
Game	22-48	45.8%	1-7	14.3%	23-25	92.0%

Deadball Rebounds:

Last FG: 2nd-00:15
Biggest Run: 8-0
Largest lead: By 8 at 1-11:54
Technical Fouls: None.

SIUE 80

No.	Player	S	Pts	FG	3FG	FT	OR	DR	TR	PF	A	TO	Blk	Stl	Min	+/-
5	Williford, Tyrese		20	8-15	3-6	1-1	1	5	6	0	6	3	0	1	34	15
15	Mcfarland, David		12	4-7	2-4	2-2	0	1	1	0	2	0	0	3	29	18
24	Williams, Cameron		4	2-6	0-1	0-0	0	3	3	4	0	1	0	1	23	-5
30	Uzuegbunem, Anselm		12	3-3	0-0	6-8	1	2	3	4	2	0	1	1	35	14
32	Jackson, Brandon		10	4-9	0-1	2-2	2	1	3	1	0	1	0	0	26	3
0	Martin, Treavon		5	1-1	0-0	3-4	1	2	3	3	0	2	0	0	11	8
2	Applewhite, D'quan		0	0-1	0-1	0-0	0	0	0	0	0	0	0	0	1	-6
3	Kinchen, Daniel		5	2-8	1-5	0-0	2	2	4	2	2	0	0	0	15	-1
13	Ellis, Christian		2	1-2	0-1	0-0	2	3	5	3	2	0	0	0	16	16
25	Mccoy, Jaylen		10	4-7	2-2	0-0	1	0	1	1	0	1	0	1	11	-2
	Team						1	2	3	0		0				
TOTALS			80	29-59	8-21	14-17	11	21	32	18	14	8	1	7	200	

Shooting By Period

Period	FG	FG%	3FG	3FG%	FT	FT%
1st Half	10-29	34%	3-14	21%	3-4	75%
2nd Half	19-30	63%	5-7	71%	11-13	85%
Game	29-59	49.2%	8-21	38.1%	14-17	82.4%

Deadball Rebounds:

Last FG: 2nd-01:54
Biggest Run: 9-0
Largest lead: By 18 at 2-01:09
Technical Fouls: None.

Game Notes:	
Officials: Steve Honacki, Bobby Daw, Ryan Odneal	
Attendance: 1011	
Start Time: 2018-11-25 20:01:52	End Time: 2018-11-25 21:52:19
Game Duration: 110	

Score by Period	1st	2nd	TOT
IWU	27	41	68
SIE	26	54	80

IWU led for 16:15. SIE led for 21:30.
Game was tied for 2:13.
 Times tied: **6** Lead Changes: **7**

Points from	IWU	SIE
In the Paint	40	30
Off Turns	13	11
2nd Chance	8	9
Fast Break	6	15
Bench	13	22

Official Box Score
Incarnate Word vs SIUE
First Half Statistics Only
November 25, 2018 at Vadalabene Center - Edwardsville, Ill.

Incarnate Word 68

No.	Player	S	Pts	FG	3FG	FT	OR	DR	TR	PF	A	TO	Blk	Stl	Min	+/-
0	Murray Jr., Dwight		0	0-0	0-0	0-0	0	4	4	1	4	1	0	0	18	2
4	Peewy, Christian		12	5-9	0-1	2-3	1	2	3	2	0	0	0	1	16	3
10	Graham, Cody		0	0-2	0-0	0-0	0	4	4	0	0	0	0	0	17	6
12	Ene, Augustine		5	1-2	0-1	3-3	1	3	4	0	0	1	0	2	12	8
20	Taylor, Morgan		2	1-6	0-2	0-0	0	0	0	1	2	1	0	0	17	-2
1	Smith Jr., Antoine		6	2-3	0-0	2-2	0	3	3	1	1	2	0	0	9	1
2	Caruso, Jordan		0	0-0	0-0	0-0	0	0	0	1	0	0	0	0	4	-6
13	Brown Iii, Charles		2	1-2	0-0	0-0	0	0	0	0	0	0	0	0	7	-7
23	Kite, Jordan		0	0-0	0-0	0-0	0	0	0	0	0	0	0	0	0	0
24	Davis, Bryce		0	0-0	0-0	0-0	0	0	0	0	0	0	0	0	0	0
	Team						0	0	0	0		0				
TOTALS			27	10-24	0-4	7-8	0	0	18	6	7	5	0	3	100	

Shooting By Period

Period	FG	FG%	3FG	3FG%	FT	FT%
1st Half	10-24	42%	0-4	00%	7-8	88%
2nd Half	12-24	50%	1-3	33%	16-17	94%
Game	22-48	45.8%	1-7	14.3%	23-25	92.0%

Deadball Rebounds:
Last FG: 2nd-00:15
Biggest Run: 8-0
Largest lead: By 8 at 1-11:54
Technical Fouls: None.

SIUE 80

No.	Player	S	Pts	FG	3FG	FT	OR	DR	TR	PF	A	TO	Blk	Stl	Min	+/-
5	Williford, Tyrese		5	2-6	1-4	0-0	1	2	3	0	2	0	0	0	17	-2
15	Mcfarland, David		7	3-6	1-3	0-0	0	1	1	0	1	0	0	2	14	2
24	Williams, Cameron		0	0-3	0-1	0-0	0	1	1	1	0	1	0	0	11	-9
30	Uzuegbunem, Anselm		4	1-1	0-0	2-2	0	2	2	0	1	0	1	0	15	0
32	Jackson, Brandon		2	1-5	0-1	0-0	1	0	1	0	0	0	0	0	14	-3
0	Martin, Treavon		3	1-1	0-0	1-2	0	2	2	2	0	2	0	0	9	4
2	Applewhite, D'quan		0	0-0	0-0	0-0	0	0	0	0	0	0	0	0	0	0
3	Kinchen, Daniel		2	1-4	0-3	0-0	1	2	3	1	1	0	0	0	7	-4
13	Ellis, Christian		0	0-1	0-1	0-0	1	1	2	2	1	0	0	0	9	8
25	Mccoy, Jaylen		3	1-2	1-1	0-0	0	0	0	1	0	0	0	1	5	-1
	Team						0	1	1	0		0				
TOTALS			26	10-29	3-14	3-4	0	0	16	7	6	3	1	3	100	

Shooting By Period

Period	FG	FG%	3FG	3FG%	FT	FT%
1st Half	10-29	34%	3-14	21%	3-4	75%
2nd Half	19-30	63%	5-7	71%	11-13	85%
Game	29-59	49.2%	8-21	38.1%	14-17	82.4%

Deadball Rebounds:
Last FG: 2nd-01:54
Biggest Run: 9-0
Largest lead: By 18 at 2-01:09
Technical Fouls: None.

Game Notes:
 Officials: **Steve Honacki, Bobby Daw, Ryan Odneal**
 Attendance: **1011**
 Start Time: **2018-11-25 20:01:52** End Time: **2018-11-25 21:52:19**
 Game Duration: **110**

Score by Period	1st	2nd	TOT
IWU	27	41	68
SIE	26	54	80

This period only: IWU led for 16:15. SIE led for 16:29.
Game was tied for 0:13.

Points from (This Period)	IWU	SIE
In the Paint	18	10
Off Turns	5	4
2nd Chance	2	2
Fast Break	0	5
Bench	8	8

**Official Play-By-Play
Incarnate Word vs SIUE
First Half
November 25, 2018 at Vadalabene Center - Edwardsville, Ill.**

Starters:

Incarnate Word: 0 MURRAY JR.,DWIGHT; 4 PEEVY,CHRISTIAN; 10 GRAHAM,CODY; 12 ENE,AUGUSTINE; 20 TAYLOR,MORGAN;
SIUE: 5 WILLIFORD,TYRESE; 15 MCFARLAND,DAVID; 24 WILLIAMS,CAMERON; 30 UZUEGBUNEM,ANSELM; 32 JACKSON,BRANDON;

Period 1

Time	VISITORS: Incarnate Word	Score	Margin	HOME: SIUE
19:26	TURNOVER (LOSTBALL) by ENE,AUGUSTINE			
19:26				STEAL by MCFARLAND,DAVID
19:15				TURNOVER (BADPASS) by WILLIAMS,CAMERON
19:15	STEAL by PEEVY,CHRISTIAN			
18:46	GOOD! LAYUP by PEEVY,CHRISTIAN	0-2	V 2	
18:46	ASSIST by MURRAY JR.,DWIGHT			
18:20				MISSED 3PTR by WILLIAMS,CAMERON
18:16	REBOUND (DEF) by ENE,AUGUSTINE			
17:50	MISSED 3PTR by PEEVY,CHRISTIAN			
17:45				REBOUND (DEF) by WILLIAMS,CAMERON
17:32				MISSED LAYUP by MCFARLAND,DAVID
17:28	REBOUND (DEF) by GRAHAM,CODY			
17:22	MISSED JUMPER by GRAHAM,CODY			
17:18				REBOUND (DEF) by WILLIFORD,TYRESE
17:12				MISSED LAYUP by WILLIFORD,TYRESE
17:08	REBOUND (DEF) by GRAHAM,CODY			
16:52	GOOD! LAYUP by TAYLOR,MORGAN	0-4	V 4	
16:52	ASSIST by MURRAY JR.,DWIGHT			
16:32				MISSED JUMPER by WILLIAMS,CAMERON
16:28	REBOUND (DEF) by ENE,AUGUSTINE			
16:07	MISSED LAYUP by PEEVY,CHRISTIAN			
16:03				REBOUND (DEF) by UZUEGBUNEM,ANSELM
15:56				SUB OUT: MCFARLAND,DAVID
15:56				SUB IN: MARTIN,TREAVON
15:56				SUB OUT: JACKSON,BRANDON
15:56				SUB IN: KINCHEN,DANIEL
15:39				MISSED 3PTR by WILLIFORD,TYRESE
15:35	REBOUND (DEF) by ENE,AUGUSTINE			
15:21				FOUL (PERSONAL) by KINCHEN,DANIEL
15:21	GOOD! FT by ENE,AUGUSTINE	0-5	V 5	
15:21	GOOD! FT by ENE,AUGUSTINE	0-6	V 6	
15:09				MISSED 3PTR by KINCHEN,DANIEL
15:04	REBOUND (DEF) by MURRAY JR.,DWIGHT			
14:37	MISSED LAYUP by TAYLOR,MORGAN			
14:33				REBOUND (DEF) by UZUEGBUNEM,ANSELM
14:25				MISSED 3PTR by KINCHEN,DANIEL
14:21	REBOUND (DEF) by GRAHAM,CODY			
13:56	GOOD! JUMPER by PEEVY,CHRISTIAN	0-8	V 8	
13:56	ASSIST by MURRAY JR.,DWIGHT			
13:38		2-8	V 6	GOOD! JUMPER by UZUEGBUNEM,ANSELM [PNT]
13:15	MISSED 3PTR by ENE,AUGUSTINE			
13:14				REBOUND (DEF) by MARTIN,TREAVON
13:14	FOUL (PERSONAL) by PEEVY,CHRISTIAN			
13:14				SUB OUT: WILLIAMS,CAMERON
13:14				SUB IN: JACKSON,BRANDON
13:14				SUB OUT: UZUEGBUNEM,ANSELM
13:14				SUB IN: ELLIS,CHRISTIAN
13:14	SUB OUT: ENE,AUGUSTINE			
13:14	SUB IN: SMITH JR.,ANTOINE			
12:43				MISSED JUMPER by JACKSON,BRANDON
12:39	REBOUND (DEF) by MURRAY JR.,DWIGHT			
12:19	MISSED JUMPER by TAYLOR,MORGAN			
12:15				REBOUND (DEF) by KINCHEN,DANIEL
12:12				MISSED 3PTR by ELLIS,CHRISTIAN
12:09	REBOUND (DEF) by SMITH JR.,ANTOINE			
11:54	GOOD! JUMPER by SMITH JR.,ANTOINE [PNT]	2-10	V 8	
11:54	ASSIST by TAYLOR,MORGAN			
11:38		5-10	V 5	GOOD! 3PTR by WILLIFORD,TYRESE
11:38				ASSIST by KINCHEN,DANIEL
11:05	MISSED JUMPER by SMITH JR.,ANTOINE			
11:01				REBOUND (DEF) by KINCHEN,DANIEL
10:59	FOUL (PERSONAL) by SMITH JR.,ANTOINE			
10:59				SUB OUT: KINCHEN,DANIEL
10:59				SUB IN: MCFARLAND,DAVID
10:59				SUB OUT: WILLIFORD,TYRESE
10:59				SUB IN: MCCOY,JAYLEN
10:59	SUB OUT: PEEVY,CHRISTIAN			
10:59	SUB IN: ENE,AUGUSTINE			
10:59		6-10	V 4	GOOD! FT by MARTIN,TREAVON [FB]
10:59				MISSED FT by MARTIN,TREAVON
10:59				REBOUND (OFF) by ELLIS,CHRISTIAN
10:59		8-10	V 2	GOOD! JUMPER by MARTIN,TREAVON
10:59	MISSED 3PTR by TAYLOR,MORGAN			
10:59				REBOUND (DEF) by MARTIN,TREAVON

Time	VISITORS: Incarnate Word	Score	Margin	HOME: SIUE
10:59				TURNOVER (LOSTBALL) by MARTIN,TREAVON
10:59	STEAL by ENE,AUGUSTINE			
10:41	GOOD! JUMPER by ENE,AUGUSTINE	8-12	V 4	
10:29				FOUL (PERSONAL) by MARTIN,TREAVON
10:21	GOOD! FT by ENE,AUGUSTINE	8-13	V 5	
10:12	SUB OUT: ENE,AUGUSTINE			
10:12	SUB IN: BROWN III,CHARLES			
10:00				SUB OUT: MARTIN,TREAVON
10:00				SUB IN: UZUEGBUNEM,ANSELM
09:52				MISSED 3PTR by MCFARLAND,DAVID
09:48	REBOUND (DEF) by SMITH JR.,ANTOINE			
09:35				FOUL (PERSONAL) by ELLIS,CHRISTIAN
09:26	TURNOVER (LOSTBALL) by SMITH JR.,ANTOINE			
09:26				STEAL by MCCOY,JAYLEN
09:20				MISSED LAYUP by MCCOY,JAYLEN
09:14		10-13	V 3	GOOD! LAYUP by JACKSON,BRANDON
09:14				REBOUND (OFF) by JACKSON,BRANDON
09:07	TIMEOUT 30SEC			
09:07				SUB OUT: ELLIS,CHRISTIAN
09:07				SUB IN: WILLIAMS,CAMERON
08:55	GOOD! LAYUP by BROWN III,CHARLES	10-15	V 5	
08:55	ASSIST by SMITH JR.,ANTOINE			
08:37		13-15	V 2	GOOD! 3PTR by MCCOY,JAYLEN
08:37				ASSIST by MCFARLAND,DAVID
08:10	GOOD! LAYUP by SMITH JR.,ANTOINE [PNT]	13-17	V 4	
08:10	ASSIST by TAYLOR,MORGAN			
07:48				MISSED JUMPER by JACKSON,BRANDON
07:43	REBOUND (DEF) by MURRAY JR.,DWIGHT			
07:38				FOUL (PERSONAL) by MCCOY,JAYLEN
07:38				SUB OUT: MCCOY,JAYLEN
07:38				SUB IN: WILLIFORD,TYRESE
07:38	SUB OUT: SMITH JR.,ANTOINE			
07:38	SUB IN: CARUSO,JORDAN			
07:38	SUB OUT: TAYLOR,MORGAN			
07:38	SUB IN: ENE,AUGUSTINE			
07:33	MISSED LAYUP by BROWN III,CHARLES			
07:33				BLOCK by UZUEGBUNEM,ANSELM
07:27				REBOUND (DEF) by MCFARLAND,DAVID
07:16	FOUL (PERSONAL) by CARUSO,JORDAN			
07:16		14-17	V 3	GOOD! FT by UZUEGBUNEM,ANSELM
07:16	SUB OUT: ENE,AUGUSTINE			
07:16	SUB IN: PEEVY,CHRISTIAN			
07:16		15-17	V 2	GOOD! FT by UZUEGBUNEM,ANSELM
07:02	MISSED LAYUP by PEEVY,CHRISTIAN			
06:56	REBOUND (OFF) by PEEVY,CHRISTIAN			
06:56	GOOD! LAYUP by PEEVY,CHRISTIAN	15-19	V 4	
06:50				MISSED 3PTR by JACKSON,BRANDON
06:46	REBOUND (DEF) by MURRAY JR.,DWIGHT			
06:34	TURNOVER (DRIBBLING) by MURRAY JR.,DWIGHT			
06:34	SUB OUT: MURRAY JR.,DWIGHT			
06:34	SUB IN: TAYLOR,MORGAN			
06:13				MISSED JUMPER by WILLIAMS,CAMERON
06:09	REBOUND (DEF) by PEEVY,CHRISTIAN			
05:50				FOUL (PERSONAL) by WILLIAMS,CAMERON
05:50	MISSED FT by PEEVY,CHRISTIAN			
05:50	REBOUND (OFF) by TEAM			
05:50				SUB OUT: WILLIAMS,CAMERON
05:50				SUB IN: ELLIS,CHRISTIAN
05:50	GOOD! FT by PEEVY,CHRISTIAN	15-20	V 5	
05:41				MISSED 3PTR by WILLIFORD,TYRESE
05:37	REBOUND (DEF) by GRAHAM,CODY			
05:33	MISSED LAYUP by GRAHAM,CODY			
05:28				REBOUND (DEF) by ELLIS,CHRISTIAN
05:25		17-20	V 3	GOOD! LAYUP by WILLIFORD,TYRESE [FB]
05:25				ASSIST by ELLIS,CHRISTIAN
04:59	MISSED JUMPER by TAYLOR,MORGAN			
04:58				REBOUND (DEF) by TEAM
04:58	FOUL (PERSONAL) by TAYLOR,MORGAN			
04:58				SUB OUT: JACKSON,BRANDON
04:58				SUB IN: MARTIN,TREAVON
04:58	SUB OUT: GRAHAM,CODY			
04:58	SUB IN: MURRAY JR.,DWIGHT			
04:47		20-20	T	GOOD! 3PTR by MCFARLAND,DAVID
04:47				ASSIST by UZUEGBUNEM,ANSELM
04:29	MISSED JUMPER by PEEVY,CHRISTIAN			
04:25				REBOUND (DEF) by WILLIFORD,TYRESE
04:19		22-20	H 2	GOOD! LAYUP by MCFARLAND,DAVID
04:19				ASSIST by WILLIFORD,TYRESE
03:41				
03:41	SUB OUT: CARUSO,JORDAN			
03:41	SUB IN: SMITH JR.,ANTOINE			
03:41	SUB OUT: BROWN III,CHARLES			
03:41	SUB IN: ENE,AUGUSTINE			
03:30	MISSED 3PTR by TAYLOR,MORGAN			
03:28	REBOUND (OFF) by ENE,AUGUSTINE			
03:03	TURNOVER (TRAVEL) by SMITH JR.,ANTOINE			

Time	VISITORS: Incarnate Word	Score	Margin	HOME: SIUE
02:38				TURNOVER (BADPASS) by MARTIN,TREAVON
02:38	STEAL by ENE,AUGUSTINE			
02:30	TURNOVER (BADPASS) by TAYLOR,MORGAN			
02:30				STEAL by MCFARLAND,DAVID
02:22		24-20	H 4	GOOD! LAYUP by MCFARLAND,DAVID [FB]
02:03	GOOD! JUMPER by PEEVY,CHRISTIAN [PNT]	24-22	H 2	
02:03				FOUL (PERSONAL) by MARTIN,TREAVON
02:03				SUB OUT: MARTIN,TREAVON
02:03				SUB IN: KINCHEN,DANIEL
02:03	SUB OUT: TAYLOR,MORGAN			
02:03	SUB IN: GRAHAM,CODY			
02:03	GOOD! FT by PEEVY,CHRISTIAN	24-23	H 1	
01:33				MISSED 3PTR by MCFARLAND,DAVID
01:32				REBOUND (OFF) by WILLIFORD,TYRESE
01:32	FOUL (PERSONAL) by MURRAY JR.,DWIGHT			
01:19				MISSED 3PTR by WILLIFORD,TYRESE
01:19				SUB OUT: UZUEGBUNEM,ANSELM
01:19				SUB IN: JACKSON,BRANDON
01:15				REBOUND (OFF) by KINCHEN,DANIEL
01:12				MISSED JUMPER by JACKSON,BRANDON
01:11	REBOUND (DEF) by PEEVY,CHRISTIAN			
01:11				FOUL (PERSONAL) by ELLIS,CHRISTIAN
01:11				SUB OUT: ELLIS,CHRISTIAN
01:11				SUB IN: WILLIAMS,CAMERON
01:11				SUB OUT: MCFARLAND,DAVID
01:11				SUB IN: MCCOY,JAYLEN
01:11	GOOD! FT by SMITH JR.,ANTOINE	24-24	T	
01:11	GOOD! FT by SMITH JR.,ANTOINE	24-25	V 1	
00:58				MISSED 3PTR by KINCHEN,DANIEL
00:53	REBOUND (DEF) by SMITH JR.,ANTOINE			
00:30	GOOD! JUMPER by PEEVY,CHRISTIAN [PNT]	24-27	V 3	
00:30	ASSIST by MURRAY JR.,DWIGHT			
00:04	FOUL (PERSONAL) by PEEVY,CHRISTIAN			
00:00		26-27	V 1	GOOD! JUMPER by KINCHEN,DANIEL
00:00				ASSIST by WILLIFORD,TYRESE

Incarnate Word 27, SIUE 26

Points from (This Period)	IWU	SIE
In the Paint	18	10
Off Turns	5	4
2nd Chance	2	2
Fast Break	0	5
Bench	8	8

**This period only: IWU led for 16:15. SIE led for 16:29.
Game was tied for 0:13.**

Official Box Score
Incarnate Word vs SIUE
Second Half Statistics Only
November 25, 2018 at Vadalabene Center - Edwardsville, Ill.

Incarnate Word 68

No.	Player	S	Pts	FG	3FG	FT	OR	DR	TR	PF	A	TO	Blk	Stl	Min	+/-
0	Murray Jr., Dwight		0	0-0	0-0	0-0	0	0	0	0	0	0	0	0	6	-8
4	Peevy, Christian		20	4-6	0-0	12-12	1	1	2	1	1	1	0	0	20	-13
10	Graham, Cody		2	1-3	0-0	0-0	0	0	0	1	0	1	0	0	8	-8
12	Ene, Augustine		5	2-5	0-0	1-2	0	2	2	2	0	0	0	2	19	-14
20	Taylor, Morgan		9	3-5	0-0	3-3	1	0	1	2	1	2	0	0	20	-13
1	Smith Jr., Antoine		5	2-5	1-3	0-0	0	0	0	1	0	0	0	0	13	-12
2	Caruso, Jordan		0	0-0	0-0	0-0	0	2	2	1	0	2	0	0	9	-1
13	Brown Iii, Charles		0	0-0	0-0	0-0	0	0	0	0	0	0	0	0	0	0
23	Kite, Jordan		0	0-0	0-0	0-0	0	0	0	1	0	0	0	0	1	1
24	Davis, Bryce		0	0-0	0-0	0-0	0	0	0	0	0	0	1	0	3	3
	Team						1	0	1	0		0				
TOTALS			41	12-24	1-3	16-17	0	0	8	9	2	6	1	2	100	

Shooting By Period

Period	FG	FG%	3FG	3FG%	FT	FT%
1st Half	10-24	42%	0-4	00%	7-8	88%
2nd Half	12-24	50%	1-3	33%	16-17	94%
Game	22-48	45.8%	1-7	14.3%	23-25	92.0%

Deadball Rebounds:
Last FG: 2nd-00:15
Biggest Run: 8-0
Largest lead: By 8 at 1-11:54
Technical Fouls: None.

SIUE 80

No.	Player	S	Pts	FG	3FG	FT	OR	DR	TR	PF	A	TO	Blk	Stl	Min	+/-
5	Williford, Tyrese		15	6-9	2-2	1-1	0	3	3	0	4	3	0	1	17	17
15	Mcfarland, David		5	1-1	1-1	2-2	0	0	0	0	1	0	0	1	15	16
24	Williams, Cameron		4	2-3	0-0	0-0	0	2	2	3	0	0	0	1	11	4
30	Uzuegbunem, Anselm		8	2-2	0-0	4-6	1	0	1	4	1	0	0	1	19	14
32	Jackson, Brandon		8	3-4	0-0	2-2	1	1	2	1	0	1	0	0	12	6
0	Martin, Treavon		2	0-0	0-0	2-2	1	0	1	1	0	0	0	0	2	4
2	Applewhite, D'quan		0	0-1	0-1	0-0	0	0	0	0	0	0	0	0	1	-6
3	Kinchen, Daniel		3	1-4	1-2	0-0	1	0	1	1	1	0	0	0	8	3
13	Ellis, Christian		2	1-1	0-0	0-0	1	2	3	1	1	0	0	0	7	8
25	Mccoy, Jaylen		7	3-5	1-1	0-0	1	0	1	0	0	1	0	0	7	-1
	Team						1	1	2	0		0				
TOTALS			54	19-30	5-7	11-13	0	0	16	11	8	5	0	4	100	

Shooting By Period

Period	FG	FG%	3FG	3FG%	FT	FT%
1st Half	10-29	34%	3-14	21%	3-4	75%
2nd Half	19-30	63%	5-7	71%	11-13	85%
Game	29-59	49.2%	8-21	38.1%	14-17	82.4%

Deadball Rebounds:
Last FG: 2nd-01:54
Biggest Run: 9-0
Largest lead: By 18 at 2-01:09
Technical Fouls: None.

Game Notes:
 Officials: Steve Honacki, Bobby Daw, Ryan Odneal
 Attendance: 1011
 Start Time: 2018-11-25 20:01:52 End Time: 2018-11-25 21:52:19
 Game Duration: 110

Score by Period	1st	2nd	TOT
IWU	27	41	68
SIE	26	54	80

This period only: IWU led for 16:15. SIE led for 16:29.
Game was tied for 0:13.

Points from (This Period)	IWU	SIE
In the Paint	22	20
Off Turns	8	7
2nd Chance	6	7
Fast Break	6	10
Bench	5	14

**Official Play-By-Play
Incarnate Word vs SIUE
Second Half
November 25, 2018 at Vadalabene Center - Edwardsville, Ill.**

Starters:

Incarnate Word: 0 MURRAY JR., DWIGHT; 4 PEEVY, CHRISTIAN; 10 GRAHAM, CODY; 12 ENE, AUGUSTINE; 20 TAYLOR, MORGAN;
SIUE: 5 WILLIFORD, TYRESE; 15 MCFARLAND, DAVID; 24 WILLIAMS, CAMERON; 30 UZUEGBUNEM, ANSELM; 32 JACKSON, BRANDON;

Period 2

Time	VISITORS: Incarnate Word	Score	Margin	HOME: SIUE
19:53				TURNOVER (OTHER) by WILLIFORD, TYRESE
19:25	MISSED LAYUP by ENE, AUGUSTINE			
19:21				REBOUND (DEF) by JACKSON, BRANDON
19:18		28-27	H 1	GOOD! JUMPER by WILLIAMS, CAMERON [PNT]
18:58	MISSED LAYUP by TAYLOR, MORGAN			
18:54				REBOUND (DEF) by WILLIFORD, TYRESE
18:52				TURNOVER (LOSTBALL) by WILLIFORD, TYRESE
18:52	STEAL by ENE, AUGUSTINE			
18:47	MISSED LAYUP by GRAHAM, CODY			
18:47	REBOUND (OFF) by TEAM			
18:38	GOOD! LAYUP by ENE, AUGUSTINE	28-29	V 1	
18:24		30-29	H 1	GOOD! JUMPER by WILLIFORD, TYRESE
17:52	GOOD! LAYUP by TAYLOR, MORGAN	30-31	V 1	
17:52	ASSIST by PEEVY, CHRISTIAN			
17:43		33-31	H 2	GOOD! 3PTR by WILLIFORD, TYRESE
17:08	MISSED JUMPER by PEEVY, CHRISTIAN			
17:04	REBOUND (OFF) by PEEVY, CHRISTIAN			
17:04				FOUL (PERSONAL) by UZUEGBUNEM, ANSELM
17:04	GOOD! FT by PEEVY, CHRISTIAN	33-32	H 1	
17:04				SUB OUT: JACKSON, BRANDON
17:04				SUB IN: MARTIN, TREAVERN
17:04	SUB OUT: MURRAY JR., DWIGHT			
17:04	SUB IN: SMITH JR., ANTOINE			
17:04	GOOD! FT by PEEVY, CHRISTIAN	33-33	T	
16:46		36-33	H 3	GOOD! 3PTR by MCFARLAND, DAVID
16:46				ASSIST by UZUEGBUNEM, ANSELM
16:16	TURNOVER (BADPASS) by TAYLOR, MORGAN			
16:16				STEAL by UZUEGBUNEM, ANSELM
16:02				MISSED JUMPER by WILLIFORD, TYRESE
16:02				REBOUND (OFF) by MARTIN, TREAVERN
16:02	FOUL (PERSONAL) by TAYLOR, MORGAN			
16:02		37-33	H 4	GOOD! FT by MARTIN, TREAVERN
16:02		38-33	H 5	GOOD! FT by MARTIN, TREAVERN
15:30	TURNOVER (BADPASS) by GRAHAM, CODY			
15:30				STEAL by WILLIFORD, TYRESE
15:30	SUB OUT: SMITH JR., ANTOINE			
15:30	SUB IN: MURRAY JR., DWIGHT			
15:25		40-33	H 7	GOOD! LAYUP by WILLIAMS, CAMERON [FB]
15:25				ASSIST by WILLIFORD, TYRESE
15:07				FOUL (PERSONAL) by WILLIAMS, CAMERON
15:07	SUB OUT: MURRAY JR., DWIGHT			
15:07	SUB IN: SMITH JR., ANTOINE			
15:07	TURNOVER (OTHER) by TAYLOR, MORGAN			
14:51				TURNOVER (DRIBBLING) by WILLIFORD, TYRESE
14:40	GOOD! LAYUP by PEEVY, CHRISTIAN [PNT]	40-35	H 5	
14:40				FOUL (PERSONAL) by MARTIN, TREAVERN
14:40				SUB OUT: MARTIN, TREAVERN
14:40				SUB IN: JACKSON, BRANDON
14:40	GOOD! FT by PEEVY, CHRISTIAN	40-36	H 4	
14:29	FOUL (PERSONAL) by GRAHAM, CODY			
14:29		41-36	H 5	GOOD! FT by MCFARLAND, DAVID
14:29		42-36	H 6	GOOD! FT by MCFARLAND, DAVID
14:01	GOOD! 3PTR by SMITH JR., ANTOINE	42-39	H 3	
14:01	ASSIST by TAYLOR, MORGAN			
13:40				MISSED JUMPER by WILLIFORD, TYRESE
13:33				REBOUND (OFF) by JACKSON, BRANDON
13:33		44-39	H 5	GOOD! LAYUP by JACKSON, BRANDON
13:06	MISSED JUMPER by GRAHAM, CODY			
13:02				REBOUND (DEF) by WILLIAMS, CAMERON
12:56		46-39	H 7	GOOD! JUMPER by JACKSON, BRANDON [PNT]
12:34	GOOD! JUMPER by GRAHAM, CODY [PNT]	46-41	H 5	
12:17		48-41	H 7	GOOD! JUMPER by UZUEGBUNEM, ANSELM
11:45	GOOD! LAYUP by TAYLOR, MORGAN	48-43	H 5	
11:39		50-43	H 7	GOOD! LAYUP by WILLIFORD, TYRESE [FB]
11:39	FOUL (PERSONAL) by ENE, AUGUSTINE			
11:39				SUB OUT: WILLIAMS, CAMERON
11:39				SUB IN: KINCHEN, DANIEL
11:39				SUB OUT: JACKSON, BRANDON
11:39				SUB IN: ELLIS, CHRISTIAN
11:39	SUB OUT: GRAHAM, CODY			
11:39	SUB IN: CARUSO, JORDAN			
11:39		51-43	H 8	GOOD! FT by WILLIFORD, TYRESE [FB]
11:39				SUB OUT: WILLIFORD, TYRESE
11:39				SUB IN: MCCOY, JAYLEN
11:32	MISSED 3PTR by SMITH JR., ANTOINE			

Time	VISITORS: Incarnate Word	Score	Margin	HOME: SIUE
11:28				REBOUND (DEF) by ELLIS,CHRISTIAN
11:21		53-43	H 10	GOOD! JUMPER by MCCOY,JAYLEN
11:21				ASSIST by ELLIS,CHRISTIAN
10:55				FOUL (PERSONAL) by UZUEGBUNEM,ANSELM
10:55	GOOD! FT by TAYLOR,MORGAN	53-44	H 9	
10:55	GOOD! FT by TAYLOR,MORGAN	53-45	H 8	
10:37				MISSED JUMPER by MCCOY,JAYLEN
10:31				REBOUND (OFF) by MCCOY,JAYLEN
10:31				MISSED LAYUP by MCCOY,JAYLEN
10:28	REBOUND (DEF) by CARUSO,JORDAN			
10:25	TURNOVER (BADPASS) by CARUSO,JORDAN			
10:25				STEAL by MCFARLAND,DAVID
10:20		55-45	H 10	GOOD! LAYUP by MCCOY,JAYLEN [FB]
10:20				ASSIST by MCFARLAND,DAVID
09:51	MISSED JUMPER by SMITH JR.,ANTOINE			
09:47				REBOUND (DEF) by ELLIS,CHRISTIAN
09:47	FOUL (PERSONAL) by TAYLOR,MORGAN			
09:47				SUB OUT: MCFARLAND,DAVID
09:47				SUB IN: WILLIFORD,TYRESE
09:47	SUB OUT: CARUSO,JORDAN			
09:47	SUB IN: MURRAY JR.,DWIGHT			
09:38		58-45	H 13	GOOD! 3PTR by MCCOY,JAYLEN
09:38				ASSIST by KINCHEN,DANIEL
09:10	MISSED LAYUP by TAYLOR,MORGAN			
09:03	REBOUND (OFF) by TAYLOR,MORGAN			
09:03	GOOD! LAYUP by SMITH JR.,ANTOINE	58-47	H 11	
09:01		61-47	H 14	GOOD! 3PTR by KINCHEN,DANIEL [FB]
09:01				ASSIST by WILLIFORD,TYRESE
08:37				FOUL (PERSONAL) by KINCHEN,DANIEL
08:37	GOOD! FT by PEEVY,CHRISTIAN	61-48	H 13	
08:37				SUB OUT: UZUEGBUNEM,ANSELM
08:37				SUB IN: JACKSON,BRANDON
08:37	SUB OUT: ENE,AUGUSTINE			
08:37	SUB IN: KITE,JORDEN			
08:37	GOOD! FT by PEEVY,CHRISTIAN	61-49	H 12	
08:30				MISSED 3PTR by KINCHEN,DANIEL
08:26				REBOUND (OFF) by ELLIS,CHRISTIAN
08:26	FOUL (PERSONAL) by KITE,JORDEN			
08:26		62-49	H 13	GOOD! FT by JACKSON,BRANDON
08:26		63-49	H 14	GOOD! FT by JACKSON,BRANDON
07:59	GOOD! LAYUP by PEEVY,CHRISTIAN [PNT]	63-51	H 12	
07:59				FOUL (PERSONAL) by ELLIS,CHRISTIAN
07:59				SUB OUT: ELLIS,CHRISTIAN
07:59				SUB IN: UZUEGBUNEM,ANSELM
07:59	SUB OUT: KITE,JORDEN			
07:59	SUB IN: ENE,AUGUSTINE			
07:59	GOOD! FT by PEEVY,CHRISTIAN	63-52	H 11	
07:45		65-52	H 13	GOOD! LAYUP by UZUEGBUNEM,ANSELM
07:45				ASSIST by WILLIFORD,TYRESE
07:26	FOUL (OFF) by PEEVY,CHRISTIAN			
07:26	TURNOVER (OFFENSIVE) by PEEVY,CHRISTIAN			
07:11		67-52	H 15	GOOD! LAYUP by JACKSON,BRANDON [PNT]
07:11				ASSIST by WILLIFORD,TYRESE
06:45				FOUL (PERSONAL) by JACKSON,BRANDON
06:45	GOOD! FT by PEEVY,CHRISTIAN	67-53	H 14	
06:45	SUB OUT: MURRAY JR.,DWIGHT			
06:45	SUB IN: CARUSO,JORDAN			
06:45	GOOD! FT by PEEVY,CHRISTIAN	67-54	H 13	
06:15	FOUL (PERSONAL) by SMITH JR.,ANTOINE			
06:15				MISSED FT by UZUEGBUNEM,ANSELM
06:15				REBOUND (OFF) by TEAM
06:15				SUB OUT: MCCOY,JAYLEN
06:15				SUB IN: MCFARLAND,DAVID
06:15				SUB OUT: KINCHEN,DANIEL
06:15				SUB IN: WILLIAMS,CAMERON
06:15		68-54	H 14	GOOD! FT by UZUEGBUNEM,ANSELM
05:56	MISSED 3PTR by SMITH JR.,ANTOINE			
05:52				REBOUND (DEF) by WILLIAMS,CAMERON
05:45				TURNOVER (TRAVEL) by JACKSON,BRANDON
05:45	TIMEOUT TEAM			
05:24				FOUL (PERSONAL) by WILLIAMS,CAMERON
05:24	MISSED FT by ENE,AUGUSTINE			
05:24	REBOUND (OFF) by TEAM			
05:24	GOOD! FT by ENE,AUGUSTINE	68-55	H 13	
05:16		70-55	H 15	GOOD! LAYUP by WILLIFORD,TYRESE [PNT]
05:02	MISSED LAYUP by ENE,AUGUSTINE			
04:59				REBOUND (DEF) by WILLIFORD,TYRESE
04:51	FOUL (PERSONAL) by ENE,AUGUSTINE			
04:51		71-55	H 16	GOOD! FT by UZUEGBUNEM,ANSELM
04:51		72-55	H 17	GOOD! FT by UZUEGBUNEM,ANSELM
04:23				FOUL (PERSONAL) by WILLIAMS,CAMERON
04:23	GOOD! FT by PEEVY,CHRISTIAN	72-56	H 16	
04:23				SUB OUT: WILLIAMS,CAMERON
04:23				SUB IN: ELLIS,CHRISTIAN
04:23	GOOD! FT by PEEVY,CHRISTIAN	72-57	H 15	
04:12		74-57	H 17	GOOD! JUMPER by WILLIFORD,TYRESE

Time	VISITORS: Incarnate Word	Score	Margin	HOME: SIUE
03:52				FOUL (PERSONAL) by UZUEGBUNEM,ANSELM
03:45				
03:45	GOOD! FT by PEEVY,CHRISTIAN [FB]	74-58	H 16	
03:45	GOOD! FT by PEEVY,CHRISTIAN [FB]	74-59	H 15	
03:28				MISSED LAYUP by JACKSON,BRANDON
03:28				REBOUND (OFF) by TEAM
03:28	SUB OUT: SMITH JR.,ANTOINE			
03:28	SUB IN: DAVIS,BRYCE			
03:08				MISSED JUMPER by WILLIFORD,TYRESE
03:08	BLOCK by DAVIS,BRYCE			
03:02	REBOUND (DEF) by ENE,AUGUSTINE			
03:00	MISSED LAYUP by PEEVY,CHRISTIAN			
03:00				REBOUND (DEF) by TEAM
02:32		77-59	H 18	GOOD! 3PTR by WILLIFORD,TYRESE
02:12	GOOD! LAYUP by TAYLOR,MORGAN [PNT]	77-61	H 16	
02:12				FOUL (PERSONAL) by UZUEGBUNEM,ANSELM
02:12	GOOD! FT by TAYLOR,MORGAN	77-62	H 15	
02:12				SUB OUT: JACKSON,BRANDON
02:12				SUB IN: KINCHEN,DANIEL
01:54		79-62	H 17	GOOD! LAYUP by ELLIS,CHRISTIAN
01:39	MISSED JUMPER by ENE,AUGUSTINE			
01:35				REBOUND (DEF) by WILLIFORD,TYRESE
01:10				MISSED JUMPER by KINCHEN,DANIEL
01:09				REBOUND (OFF) by UZUEGBUNEM,ANSELM
01:09	FOUL (PERSONAL) by CARUSO,JORDAN			
01:09		80-62	H 18	GOOD! FT by UZUEGBUNEM,ANSELM
01:09				SUB OUT: WILLIFORD,TYRESE
01:09				SUB IN: MCCOY,JAYLEN
01:09				SUB OUT: ELLIS,CHRISTIAN
01:09				SUB IN: APPLEWHITE,D'QUAN
01:09				SUB OUT: MCFARLAND,DAVID
01:09				SUB IN: WILLIAMS,CAMERON
01:09				MISSED FT by UZUEGBUNEM,ANSELM
01:08	REBOUND (DEF) by PEEVY,CHRISTIAN			
01:04	TURNOVER (BADPASS) by CARUSO,JORDAN			
01:04				STEAL by WILLIAMS,CAMERON
00:57				MISSED LAYUP by WILLIAMS,CAMERON
00:50				REBOUND (OFF) by KINCHEN,DANIEL
00:50				MISSED LAYUP by KINCHEN,DANIEL
00:48	REBOUND (DEF) by ENE,AUGUSTINE			
00:44	GOOD! LAYUP by PEEVY,CHRISTIAN [FB/PNT]	80-64	H 16	
00:36				TURNOVER (LOSTBALL) by MCCOY,JAYLEN
00:36	STEAL by ENE,AUGUSTINE			
00:30	GOOD! LAYUP by ENE,AUGUSTINE [FB]	80-66	H 14	
00:22				MISSED 3PTR by APPLEWHITE,D'QUAN
00:18	REBOUND (DEF) by CARUSO,JORDAN			
00:15	GOOD! LAYUP by PEEVY,CHRISTIAN [PNT]	80-68	H 12	

Incarnate Word 68, SIUE 80

Points from (This Period)	IWU	SIE
In the Paint	22	20
Off Turns	8	7
2nd Chance	6	7
Fast Break	6	10
Bench	5	14

**This period only: IWU led for 16:15. SIE led for 16:29.
Game was tied for 0:13.**

**Official Scoring/Possession Reference Chart
Incarnate Word vs SIUE
Period 1
November 25, 2018 at Vadalabene Center - Edwardsville, Ill.**

Starters:

Incarnate Word: 0 MURRAY JR., DWIGHT; 4 PEEVY, CHRISTIAN; 10 GRAHAM, CODY; 12 ENE, AUGUSTINE; 20 TAYLOR, MORGAN;
SIUE: 5 WILLIFORD, TYRESE; 15 MCFARLAND, DAVID; 24 WILLIAMS, CAMERON; 30 UZUEGBUNEM, ANSELM; 32 JACKSON, BRANDON;

Period 1

Time	VISITORS: Incarnate Word	Score	Margin	HOME: SIUE
18:46	GOOD! LAYUP by PEEVY, CHRISTIAN	0-2	V 2	
16:52	GOOD! LAYUP by TAYLOR, MORGAN	0-4	V 4	
15:21	GOOD! FT by ENE, AUGUSTINE	0-5	V 5	
15:21	GOOD! FT by ENE, AUGUSTINE	0-6	V 6	
13:56	GOOD! JUMPER by PEEVY, CHRISTIAN	0-8	V 8	
13:38		2-8	V 6	GOOD! JUMPER by UZUEGBUNEM, ANSELM [PNT]
11:54	GOOD! JUMPER by SMITH JR., ANTOINE [PNT]	2-10	V 8	
11:38		5-10	V 5	GOOD! 3PTR by WILLIFORD, TYRESE
10:59		6-10	V 4	GOOD! FT by MARTIN, TREVON [FB]
10:59		8-10	V 2	GOOD! JUMPER by MARTIN, TREVON
10:41	GOOD! JUMPER by ENE, AUGUSTINE	8-12	V 4	
10:21	GOOD! FT by ENE, AUGUSTINE	8-13	V 5	
09:14		10-13	V 3	GOOD! LAYUP by JACKSON, BRANDON
08:55	GOOD! LAYUP by BROWN III, CHARLES	10-15	V 5	
08:37		13-15	V 2	GOOD! 3PTR by MCCOY, JAYLEN
08:10	GOOD! LAYUP by SMITH JR., ANTOINE [PNT]	13-17	V 4	
07:16		14-17	V 3	GOOD! FT by UZUEGBUNEM, ANSELM
07:16		15-17	V 2	GOOD! FT by UZUEGBUNEM, ANSELM
06:56	GOOD! LAYUP by PEEVY, CHRISTIAN	15-19	V 4	
05:50	GOOD! FT by PEEVY, CHRISTIAN	15-20	V 5	
05:25		17-20	V 3	GOOD! LAYUP by WILLIFORD, TYRESE [FB]
04:47		20-20	T	GOOD! 3PTR by MCFARLAND, DAVID
04:19		22-20	H 2	GOOD! LAYUP by MCFARLAND, DAVID
02:22		24-20	H 4	GOOD! LAYUP by MCFARLAND, DAVID [FB]
02:03	GOOD! JUMPER by PEEVY, CHRISTIAN [PNT]	24-22	H 2	
02:03	GOOD! FT by PEEVY, CHRISTIAN	24-23	H 1	
01:11	GOOD! FT by SMITH JR., ANTOINE	24-24	T	
01:11	GOOD! FT by SMITH JR., ANTOINE	24-25	V 1	
00:30	GOOD! JUMPER by PEEVY, CHRISTIAN [PNT]	24-27	V 3	
00:00		26-27	V 1	GOOD! JUMPER by KINCHEN, DANIEL

Incarnate Word 27, SIUE 26

**Official Scoring/Possession Reference Chart
Incarnate Word vs SIUE
Period 2
November 25, 2018 at Vadalabene Center - Edwardsville, Ill.**

Starters:

Incarnate Word: 0 MURRAY JR., DWIGHT; 4 PEEVY, CHRISTIAN; 10 GRAHAM, CODY; 12 ENE, AUGUSTINE; 20 TAYLOR, MORGAN;
SIUE: 5 WILLIFORD, TYRESE; 15 MCFARLAND, DAVID; 24 WILLIAMS, CAMERON; 30 UZUEGBUNEM, ANSELM; 32 JACKSON, BRANDON;

Period 2

Time	VISITORS: Incarnate Word	Score	Margin	HOME: SIUE
19:18		28-27	H 1	GOOD! JUMPER by WILLIAMS, CAMERON [PNT]
18:38	GOOD! LAYUP by ENE, AUGUSTINE	28-29	V 1	
18:24		30-29	H 1	GOOD! JUMPER by WILLIFORD, TYRESE
17:52	GOOD! LAYUP by TAYLOR, MORGAN	30-31	V 1	
17:43		33-31	H 2	GOOD! 3PTR by WILLIFORD, TYRESE
17:04	GOOD! FT by PEEVY, CHRISTIAN	33-32	H 1	
17:04	GOOD! FT by PEEVY, CHRISTIAN	33-33	T	
16:46		36-33	H 3	GOOD! 3PTR by MCFARLAND, DAVID

16:02		37-33	H 4	GOOD! FT by MARTIN, TREVON
-------	--	-------	-----	----------------------------

Time	VISITORS: Incarnate Word	Score	Margin	HOME: SIUE
16:02		38-33	H 5	GOOD! FT by MARTIN,TREAVON
15:25		40-33	H 7	GOOD! LAYUP by WILLIAMS,CAMERON [FB]
14:40	GOOD! LAYUP by PEEVY,CHRISTIAN [PNT]	40-35	H 5	
14:40	GOOD! FT by PEEVY,CHRISTIAN	40-36	H 4	
14:29		41-36	H 5	GOOD! FT by MCFARLAND,DAVID
14:29		42-36	H 6	GOOD! FT by MCFARLAND,DAVID
14:01	GOOD! 3PTR by SMITH JR.,ANTOINE	42-39	H 3	
13:33		44-39	H 5	GOOD! LAYUP by JACKSON,BRANDON
12:56		46-39	H 7	GOOD! JUMPER by JACKSON,BRANDON [PNT]
12:34	GOOD! JUMPER by GRAHAM,CODY [PNT]	46-41	H 5	
12:17		48-41	H 7	GOOD! JUMPER by UZUEGBUNEM,ANSELM
11:45	GOOD! LAYUP by TAYLOR,MORGAN	48-43	H 5	
11:39		50-43	H 7	GOOD! LAYUP by WILLIFORD,TYRESE [FB]
11:39		51-43	H 8	GOOD! FT by WILLIFORD,TYRESE [FB]
11:21		53-43	H 10	GOOD! JUMPER by MCCOY,JAYLEN
10:55	GOOD! FT by TAYLOR,MORGAN	53-44	H 9	
10:55	GOOD! FT by TAYLOR,MORGAN	53-45	H 8	
10:20		55-45	H 10	GOOD! LAYUP by MCCOY,JAYLEN [FB]
09:38		58-45	H 13	GOOD! 3PTR by MCCOY,JAYLEN
09:03	GOOD! LAYUP by SMITH JR.,ANTOINE	58-47	H 11	
09:01		61-47	H 14	GOOD! 3PTR by KINCHEN,DANIEL [FB]
08:37	GOOD! FT by PEEVY,CHRISTIAN	61-48	H 13	
08:37	GOOD! FT by PEEVY,CHRISTIAN	61-49	H 12	
08:26		62-49	H 13	GOOD! FT by JACKSON,BRANDON
08:26		63-49	H 14	GOOD! FT by JACKSON,BRANDON
07:59	GOOD! LAYUP by PEEVY,CHRISTIAN [PNT]	63-51	H 12	
07:59	GOOD! FT by PEEVY,CHRISTIAN	63-52	H 11	
07:45		65-52	H 13	GOOD! LAYUP by UZUEGBUNEM,ANSELM
07:11		67-52	H 15	GOOD! LAYUP by JACKSON,BRANDON [PNT]
06:45	GOOD! FT by PEEVY,CHRISTIAN	67-53	H 14	
06:45	GOOD! FT by PEEVY,CHRISTIAN	67-54	H 13	
06:15		68-54	H 14	GOOD! FT by UZUEGBUNEM,ANSELM
05:24	GOOD! FT by ENE,AUGUSTINE	68-55	H 13	
05:16		70-55	H 15	GOOD! LAYUP by WILLIFORD,TYRESE [PNT]
04:51		71-55	H 16	GOOD! FT by UZUEGBUNEM,ANSELM
04:51		72-55	H 17	GOOD! FT by UZUEGBUNEM,ANSELM
04:23	GOOD! FT by PEEVY,CHRISTIAN	72-56	H 16	
04:23	GOOD! FT by PEEVY,CHRISTIAN	72-57	H 15	
04:12		74-57	H 17	GOOD! JUMPER by WILLIFORD,TYRESE
03:45	GOOD! FT by PEEVY,CHRISTIAN [FB]	74-58	H 16	
03:45	GOOD! FT by PEEVY,CHRISTIAN [FB]	74-59	H 15	
02:32		77-59	H 18	GOOD! 3PTR by WILLIFORD,TYRESE
02:12	GOOD! LAYUP by TAYLOR,MORGAN [PNT]	77-61	H 16	
02:12	GOOD! FT by TAYLOR,MORGAN	77-62	H 15	
01:54		79-62	H 17	GOOD! LAYUP by ELLIS,CHRISTIAN
01:09		80-62	H 18	GOOD! FT by UZUEGBUNEM,ANSELM
00:44	GOOD! LAYUP by PEEVY,CHRISTIAN [FB/PNT]	80-64	H 16	
00:30	GOOD! LAYUP by ENE,AUGUSTINE [FB]	80-66	H 14	
00:15	GOOD! LAYUP by PEEVY,CHRISTIAN [PNT]	80-68	H 12	

Incarnate Word 68, SIUE 80

**Official Substitutions Log
Incarnate Word vs SIUE
Period 1**

November 25, 2018 at Vadababene Center - Edwardsville, Ill.

VISITORS: Incarnate Word	Time	Score	HOME: SIUE
0 MURRAY JR.,DWIGHT			5 WILLIFORD,TYRESE
4 PEEVY,CHRISTIAN			15 MCFARLAND,DAVID
10 GRAHAM,CODY			24 WILLIAMS,CAMERON

VISITORS: Incarnate Word	Time	Score	HOME: SIUE
12 ENE,AUGUSTINE			30 UZUEGBUNEM,ANSELM
20 TAYLOR,MORGAN			32 JACKSON,BRANDON
	15:56	4-0	SUB OUT: MCFARLAND,DAVID
	15:56		SUB IN: MARTIN,TREAVON
	15:56		SUB OUT: JACKSON,BRANDON
	15:56		SUB IN: KINCHEN,DANIEL
	13:14	8-2	SUB OUT: WILLIAMS,CAMERON
	13:14		SUB IN: JACKSON,BRANDON
	13:14		SUB OUT: UZUEGBUNEM,ANSELM
	13:14		SUB IN: ELLIS,CHRISTIAN
SUB OUT: 12 ENE,AUGUSTINE	13:14		
SUB IN: 1 SMITH JR.,ANTOINE	13:14		
	10:59	10-5	SUB OUT: KINCHEN,DANIEL
	10:59		SUB IN: MCFARLAND,DAVID
	10:59		SUB OUT: WILLIFORD,TYRESE
	10:59		SUB IN: MCCOY,JAYLEN
SUB OUT: 4 PEEVY,CHRISTIAN	10:59		
SUB IN: 12 ENE,AUGUSTINE	10:59		
SUB OUT: 12 ENE,AUGUSTINE	10:12	13-8	
SUB IN: 13 BROWN III,CHARLES	10:12		
	10:00	13-8	SUB OUT: MARTIN,TREAVON
	10:00		SUB IN: UZUEGBUNEM,ANSELM
	09:07	13-10	SUB OUT: ELLIS,CHRISTIAN
	09:07		SUB IN: WILLIAMS,CAMERON
	07:38	17-13	SUB OUT: MCCOY,JAYLEN
	07:38		SUB IN: WILLIFORD,TYRESE
SUB OUT: 1 SMITH JR.,ANTOINE	07:38		
SUB IN: 2 CARUSO,JORDAN	07:38		
SUB OUT: 20 TAYLOR,MORGAN	07:38		
SUB IN: 12 ENE,AUGUSTINE	07:38		
SUB OUT: 12 ENE,AUGUSTINE	07:16	17-14	
SUB IN: 4 PEEVY,CHRISTIAN	07:16		
SUB OUT: 0 MURRAY JR.,DWIGHT	06:34	19-15	
SUB IN: 20 TAYLOR,MORGAN	06:34		
	05:50	19-15	SUB OUT: WILLIAMS,CAMERON
	05:50		SUB IN: ELLIS,CHRISTIAN
	04:58	20-17	SUB OUT: JACKSON,BRANDON
	04:58		SUB IN: MARTIN,TREAVON
SUB OUT: 10 GRAHAM,CODY	04:58		
SUB IN: 0 MURRAY JR.,DWIGHT	04:58		
SUB OUT: 2 CARUSO,JORDAN	03:41	20-22	
SUB IN: 1 SMITH JR.,ANTOINE	03:41		
SUB OUT: 13 BROWN III,CHARLES	03:41		
SUB IN: 12 ENE,AUGUSTINE	03:41		
	02:03	22-24	SUB OUT: MARTIN,TREAVON
	02:03		SUB IN: KINCHEN,DANIEL
SUB OUT: 20 TAYLOR,MORGAN	02:03		
SUB IN: 10 GRAHAM,CODY	02:03		
	01:19	23-24	SUB OUT: UZUEGBUNEM,ANSELM
	01:19		SUB IN: JACKSON,BRANDON
	01:11	23-24	SUB OUT: ELLIS,CHRISTIAN
	01:11		SUB IN: WILLIAMS,CAMERON
	01:11		SUB OUT: MCFARLAND,DAVID
	01:11		SUB IN: MCCOY,JAYLEN

Incarnate Word 27, SIUE 26

Official Substitutions Log Incarnate Word vs SIUE

Period 2

November 25, 2018 at Vadalabene Center - Edwardsville, Ill.

VISITORS: Incarnate Word	Time	Score	HOME: SIUE
0 MURRAY JR.,DWIGHT			5 WILLIFORD,TYRESE
4 PEEVY,CHRISTIAN			15 MCFARLAND,DAVID
10 GRAHAM,CODY			24 WILLIAMS,CAMERON
12 ENE,AUGUSTINE			30 UZUEGBUNEM,ANSELM
20 TAYLOR,MORGAN			32 JACKSON,BRANDON
	17:04	32-33	SUB OUT: JACKSON,BRANDON
	17:04		SUB IN: MARTIN,TREAVON
SUB OUT: 0 MURRAY JR.,DWIGHT	17:04		
SUB IN: 1 SMITH JR.,ANTOINE	17:04		
SUB OUT: 1 SMITH JR.,ANTOINE	15:30	33-38	
SUB IN: 0 MURRAY JR.,DWIGHT	15:30		
SUB OUT: 0 MURRAY JR.,DWIGHT	15:07	33-40	
SUB IN: 1 SMITH JR.,ANTOINE	15:07		
	14:40	35-40	SUB OUT: MARTIN,TREAVON
	14:40		SUB IN: JACKSON,BRANDON
	11:39	43-50	SUB OUT: WILLIAMS,CAMERON
	11:39		SUB IN: KINCHEN,DANIEL
	11:39		SUB OUT: JACKSON,BRANDON
	11:39		SUB IN: ELLIS,CHRISTIAN
SUB OUT: 10 GRAHAM,CODY	11:39		
SUB IN: 2 CARUSO,JORDAN	11:39		
	11:39		SUB OUT: WILLIFORD,TYRESE

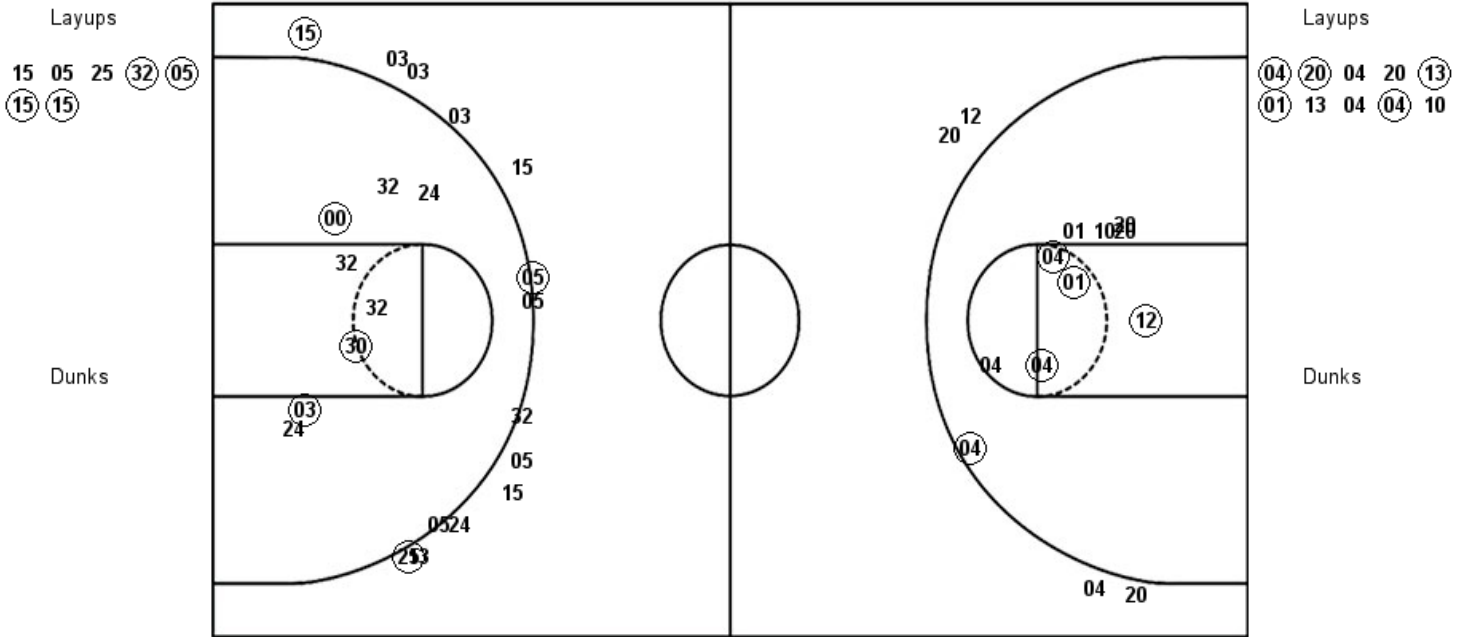
VISITORS: Incarnate Word	Time	Score	HOME: SIUE
	11:39		SUB IN: MCCOY, JAYLEN
	09:47	45-55	SUB OUT: MCFARLAND, DAVID
	09:47		SUB IN: WILLIFORD, TYRESE
SUB OUT: 2 CARUSO, JORDAN	09:47		
SUB IN: 0 MURRAY JR., DWIGHT	09:47		
	08:37	48-61	SUB OUT: UZUEGBUNEM, ANSELM
	08:37		SUB IN: JACKSON, BRANDON
SUB OUT: 12 ENE, AUGUSTINE	08:37		
SUB IN: 23 KITE, JORDEN	08:37		
	07:59	51-63	SUB OUT: ELLIS, CHRISTIAN
	07:59		SUB IN: UZUEGBUNEM, ANSELM
SUB OUT: 23 KITE, JORDEN	07:59		
SUB IN: 12 ENE, AUGUSTINE	07:59		
SUB OUT: 0 MURRAY JR., DWIGHT	06:45	53-67	
SUB IN: 2 CARUSO, JORDAN	06:45		
	06:15	54-67	SUB OUT: MCCOY, JAYLEN
	06:15		SUB IN: MCFARLAND, DAVID
	06:15		SUB OUT: KINCHEN, DANIEL
	06:15		SUB IN: WILLIAMS, CAMERON
	04:23	56-72	SUB OUT: WILLIAMS, CAMERON
	04:23		SUB IN: ELLIS, CHRISTIAN
SUB OUT: 1 SMITH JR., ANTOINE	03:28	59-74	
SUB IN: 24 DAVIS, BRYCE	03:28		
	02:12	62-77	SUB OUT: JACKSON, BRANDON
	02:12		SUB IN: KINCHEN, DANIEL
	01:09	62-80	SUB OUT: WILLIFORD, TYRESE
	01:09		SUB IN: MCCOY, JAYLEN
	01:09		SUB OUT: ELLIS, CHRISTIAN
	01:09		SUB IN: APPLEWHITE, D'QUAN
	01:09		SUB OUT: MCFARLAND, DAVID
	01:09		SUB IN: WILLIAMS, CAMERON

Incarnate Word 68, SIUE 80

Official Shot Chart
Incarinate Word vs SIUE
PERIOD 1 Shots
November 25, 2018 at Vadalabene Center - Edwardsville, Ill.

SIUE

Incarinate Word



SIUE : Period 1	Made	Att	Pct
Layups	4	7	57.1
Dunks	0	0	0
2PT Field Goals	7	15	46.7
3PT Field Goals	3	14	21.4
Total Field Goals	10	29	34.5

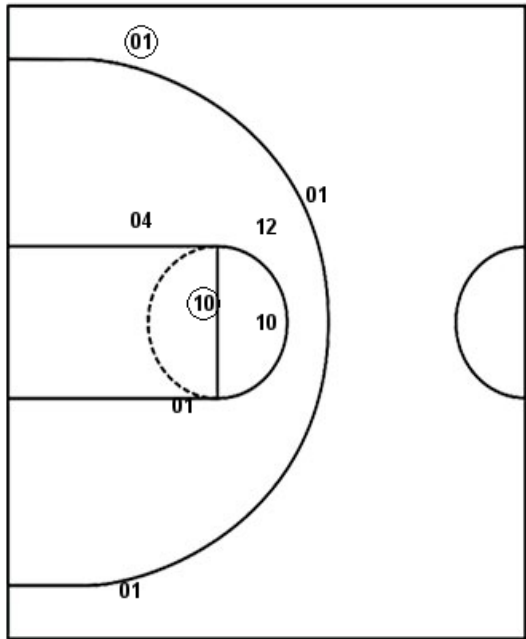
IWU : Period 1	Made	Att	Pct
Layups	5	10	50.0
Dunks	0	0	0
2PT Field Goals	10	20	50.0
3PT Field Goals	0	4	00.0
Total Field Goals	10	24	41.7

Official Shot Chart
Incarnate Word vs SIUE
PERIOD 2 Shots
 November 25, 2018 at Vadalabene Center - Edwardsville, Ill.

SIUE

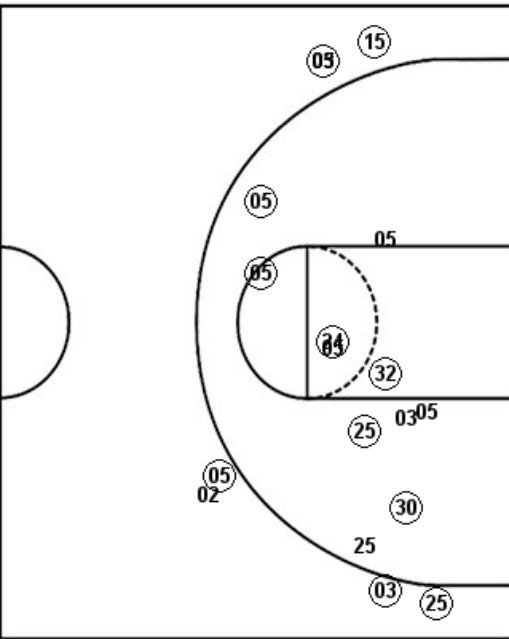
Incarnate Word

Layups
 (24) (32) (05) 25 (25)
 (30) (32) (05) 32 (13)
 24 03



Dunks

Layups
 12 20 10 (12) (20)
 (04) (20) 20 (01) (04)
 12 04 (20) (04) (12)
 (04)



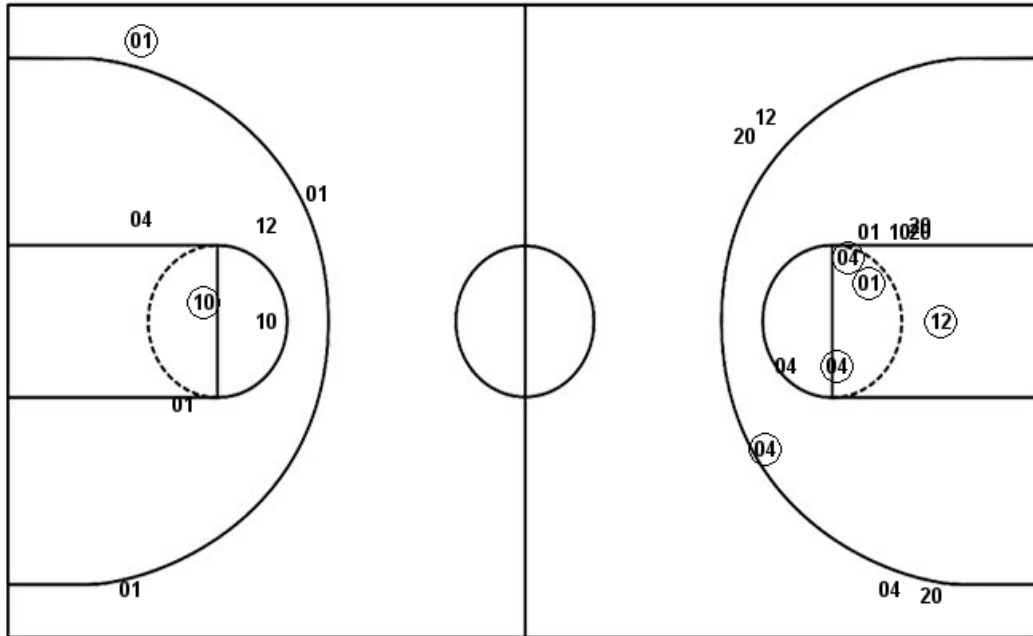
Dunks

SIUE : Period 2	Made	Att	Pct
Layups	8	12	66.7
Dunks	0	0	0
2PT Field Goals	14	23	60.9
3PT Field Goals	5	7	71.4
Total Field Goals	19	30	63.3

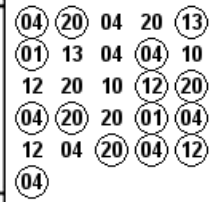
IWU : Period 2	Made	Att	Pct
Layups	10	16	62.5
Dunks	0	0	0
2PT Field Goals	11	21	52.4
3PT Field Goals	1	3	33.3
Total Field Goals	12	24	50.0

Official Shot Chart
Incarnate Word vs SIUE
Incarnate Word Team Shots
November 25, 2018 at Vadalabene Center - Edwardsville, Ill.

Layups



Layups



Dunks

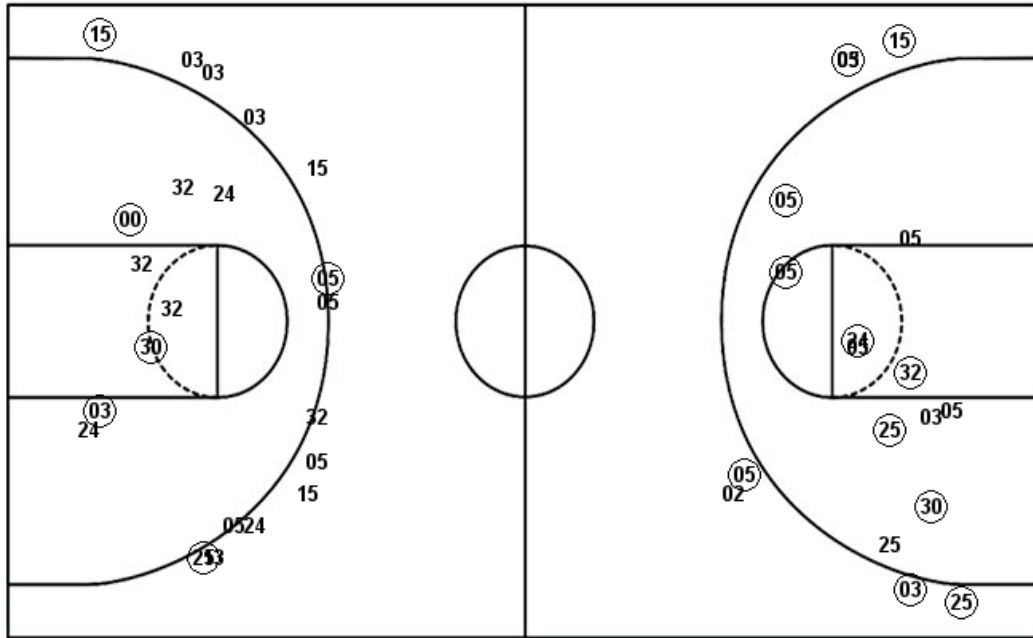
Dunks

IWU : Period 1	Made	Att	Pct
Layups	5	10	50.0
Dunks	0	0	0
2PT Field Goals	10	20	50.0
3PT Field Goals	0	4	00.0
Total Field Goals	10	24	41.7

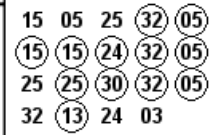
IWU : Period 2	Made	Att	Pct
Layups	10	16	62.5
Dunks	0	0	0
2PT Field Goals	11	21	52.4
3PT Field Goals	1	3	33.3
Total Field Goals	12	24	50.0

Official Shot Chart
Incarnate Word vs SIUE
SIUE Team Shots
November 25, 2018 at Vadalabene Center - Edwardsville, Ill.

Layups



Layups



Dunks

Dunks

SIE : Period 1	Made	Att	Pct
Layups	4	7	57.1
Dunks	0	0	0
2PT Field Goals	7	15	46.7
3PT Field Goals	3	14	21.4
Total Field Goals	10	29	34.5

SIE : Period 2	Made	Att	Pct
Layups	8	12	66.7
Dunks	0	0	0
2PT Field Goals	14	23	60.9
3PT Field Goals	5	7	71.4
Total Field Goals	19	30	63.3