

FINAL SCORE



Eastern Ill.

62



SIUE

78

February 15, 2019 • Vadalabene Center - Edwardsville, Ill.

FINAL STATISTICS

Official Box Score
Eastern Ill. vs SIUE
Game Totals -- Final Statistics
February 15, 2019 at Vadalabene Center - Edwardsville, Ill.

Eastern Ill. 62

No.	Player	S	Pts	FG	3FG	FT	OR	DR	TR	PF	A	TO	Blk	Stl	Min	+/-
05	Lennox, Grace	2	1-6	0-2	0-0	1	4	5	3	6	3	0	3	39	-14	
11	Pace, Karle	9	3-10	0-1	3-5	0	4	4	2	3	4	0	3	33	-11	
14	Mcrae, Grace	6	3-10	0-1	0-0	2	1	3	2	0	4	0	2	22	-10	
15	Steele, Taylor	12	5-10	2-4	0-0	0	2	2	5	3	0	0	0	34	-13	
41	Wahl, Abby	16	6-9	0-0	4-5	2	2	4	4	0	2	0	1	26	-8	
02	Hughes, Jordyn	8	3-3	2-2	0-0	0	1	1	1	0	2	0	0	7	6	
12	Tellez, Carmen	3	1-5	1-4	0-0	0	1	1	4	4	2	0	2	20	-8	
21	Stull, Halle	0	0-0	0-0	0-0	0	0	0	0	1	0	0	0	1	-2	
22	Miller, Damonique	0	0-0	0-0	0-0	0	0	0	0	0	0	0	0	1	-2	
31	Smith, Jalisha	6	3-5	0-0	0-0	1	4	5	2	0	3	0	0	17	-16	
44	Tellez, Camino	0	0-0	0-0	0-0	0	0	0	0	0	0	0	0	1	-2	
Team						2	1	3	0		1					
TOTALS			62	25-58	5-14	7-10	8	20	28	23	17	21	0	11	200	

Shooting By Period

Period	FG	FG%	3FG	3FG%	FT	FT%
1st Qtr	3-14	21%	0-2	00%	2-2	100%
2nd Qtr	7-12	58%	0-1	00%	3-5	60%
3rd Qtr	8-19	42%	3-8	38%	1-2	50%
4th Qtr	7-13	54%	2-3	67%	1-1	100%
1st Half	10-26	38%	0-3	00%	5-7	71%
2nd Half	15-32	47%	5-11	45%	2-3	67%
Game	25-58	43.1%	5-14	35.7%	7-10	70.0%

Last FG: 4th-00:15
 Biggest Run: 8-0
 Largest lead: By 0 at 1-08:55
 Technical Fouls: None.

SIUE 78

No.	Player	S	Pts	FG	3FG	FT	OR	DR	TR	PF	A	TO	Blk	Stl	Min	+/-
01	King, Christen	13	4-9	0-0	5-7	0	3	3	4	4	2	0	0	25	1	
05	Alston, Jaynee	9	3-4	3-4	0-0	0	1	1	0	0	0	0	1	18	10	
14	Jones, Micah	9	4-6	0-0	1-2	3	4	7	0	4	1	0	0	19	14	
23	Troeckler, Allie	6	2-8	0-0	2-2	3	3	6	3	4	4	0	1	23	18	
34	Bauman, Sydney	22	11-15	0-0	0-0	4	7	11	1	0	0	3	0	31	19	
11	Keith, Mikia	4	1-5	0-2	2-5	0	0	0	2	1	2	0	5	29	5	
12	Koehler, Kai	5	1-5	1-5	2-6	0	0	0	4	2	2	0	2	21	14	
21	Akuen, Alek	2	0-2	0-0	2-2	1	1	2	2	0	0	0	0	6	-8	
35	Hall, Mikala	1	0-1	0-1	1-2	0	1	1	0	0	3	0	2	12	-4	
44	Everidge, Riana	6	1-1	0-0	4-4	2	2	4	1	1	2	0	2	14	10	
50	Williams, Kelsie	1	0-0	0-0	1-2	0	0	0	1	0	0	0	0	3	1	
Team						1	3	4	0		0					
TOTALS			78	27-56	4-12	20-32	14	25	39	18	16	16	3	13	200	

Shooting By Period

Period	FG	FG%	3FG	3FG%	FT	FT%
1st Qtr	7-14	50%	3-3	100%	4-9	44%
2nd Qtr	8-18	44%	0-5	00%	1-1	100%
3rd Qtr	7-12	58%	1-2	50%	2-4	50%
4th Qtr	5-12	42%	0-2	00%	13-18	72%
1st Half	15-32	47%	3-8	38%	5-10	50%
2nd Half	12-24	50%	1-4	25%	15-22	68%
Game	27-56	48.2%	4-12	33.3%	20-32	62.5%

Last FG: 4th-01:21
 Biggest Run: 8-0
 Largest lead: By 19 at 4-03:39
 Technical Fouls: None.

Game Notes:

Officials: **Doug Klenc, Kayla Maxey, Ty Bills**
 Attendance: **1012**

Start Time: **2019-02-15 02:04:27**
 End Time: **2019-02-15 03:56:59**
 Game Duration: **112**
 Conference Game:

Score	1st	2nd	3rd	4th	TOT
EU	8	17	20	17	62
SIE	21	17	17	23	78

EIU led for 0:00. SIE led for 39:01.
 Game was tied for 0:58.
 Times tied: 1 Lead Changes: 0

Points from	EU	SIE
In the Paint	32	42
Off Turns	14	21
2nd Chance	7	20
Fast Break	15	9
Bench	17	19

Official Box Score
Eastern Ill. vs SIUE
First Half Statistics Only
February 15, 2019 at Vadalabene Center - Edwardsville, Ill.

Eastern Ill. 25

No.	Player	S	Pts	FG	3FG	FT	OR	DR	TR	PF	A	TO	Blk	Stl	Min	+/-
11	Pace, Karle		5	2-6	0-0	1-2	0	3	3	2	1	4	0	1	17	-5
12	Tellez, Carmen		0	0-3	0-2	0-0	0	1	1	2	1	1	0	0	10	-13
14	Mcrae, Grace		4	2-4	0-0	0-0	0	0	1	1	0	4	0	1	12	-4
15	Steele, Taylor		2	1-3	0-0	0-0	0	1	1	2	2	0	0	0	15	-14
21	Stull, Halle		0	0-0	0-0	0-0	0	0	0	0	0	0	0	0	0	0
22	Miller, Damonique		0	0-0	0-0	0-0	0	0	0	0	0	0	0	0	0	0
31	Smith, Jalisha		4	2-3	0-0	0-0	1	2	3	0	0	2	0	0	9	-11
41	Wahl, Abby		8	2-2	0-0	4-5	2	1	3	2	0	0	0	0	14	-5
44	Tellez, Camino		0	0-0	0-0	0-0	0	0	0	0	0	0	0	0	0	0
02	Hughes, Jordyn		0	0-0	0-0	0-0	0	0	0	0	0	0	0	0	2	0
05	Lennox, Grace		2	1-5	0-1	0-0	1	3	4	1	2	1	0	3	20	-13
	Team		0	0-0	0-0	0-0	2	1	3	0	0	1	0	0	0	0
TOTALS			25	10-26	0-3	5-7	6	12	18	10	6	13	0	5	100	

Shooting By Period

Period	FG	FG%	3FG	3FG%	FT	FT%
1st Qtr	3-14	21%	0-2	00%	2-2	100%
2nd Qtr	7-12	58%	0-1	00%	3-5	60%
1st Half	10-26	38%	0-3	00%	5-7	71%
Game	25-58	43.1%	5-14	35.7%	7-10	70.0%

Last FG Half: EIU 2nd-00:37

SIUE 38

No.	Player	S	Pts	FG	3FG	FT	OR	DR	TR	PF	A	TO	Blk	Stl	Min	+/-
01	King, Christen		6	2-3	0-0	2-3	0	1	1	2	1	1	0	0	12	5
05	Alston, Jaynee		6	2-2	2-2	0-0	0	1	1	0	0	0	0	0	7	6
11	Keith, Mikia		2	1-5	0-2	0-1	0	0	0	1	1	1	0	5	13	7
12	Koehler, Kai		5	1-3	1-3	2-4	0	0	0	2	1	0	0	1	12	8
14	Jones, Micah		9	4-6	0-0	1-2	3	4	7	0	4	1	0	0	19	14
21	Akuen, Alek		0	0-1	0-0	0-0	0	0	0	0	0	0	0	0	1	-2
23	Troeckler, Allie		0	0-4	0-0	0-0	1	1	2	2	1	2	0	0	10	13
34	Bauman, Sydney		10	5-7	0-0	0-0	3	2	5	1	0	0	2	0	15	12
35	Hall, Mikala		0	0-1	0-1	0-0	0	0	0	0	0	2	0	1	7	0
44	Everidge, Riana		0	0-0	0-0	0-0	0	0	0	1	0	0	0	2	5	2
50	Williams, Kelsie		0	0-0	0-0	0-0	0	0	0	0	0	0	0	0	0	0
	Team		0	0-0	0-0	0-0	1	1	2	0	0	0	0	0	0	0
TOTALS			38	15-32	3-8	5-10	8	10	18	9	8	7	2	9	100	

Shooting By Period

Period	FG	FG%	3FG	3FG%	FT	FT%
1st Qtr	7-14	50%	3-3	100%	4-9	44%
2nd Qtr	8-18	44%	0-5	00%	1-1	100%
1st Half	15-32	47%	3-8	38%	5-10	50%
Game	27-56	48.2%	4-12	33.3%	20-32	62.5%

Last FG Half: SIE 2nd-01:22

Game Notes:

Officials: Doug Klenc, Kayla Maxey, Ty Bills
Attendance: 1012

Start Time: 2019-02-15 02:04:27
End Time: 2019-02-15 03:56:59
Game Duration: 112
Conference Game;

Score	1st	2nd	3rd	4th	TOT
EIU	8	17	20	17	62
SIE	21	17	17	23	78

Points from (This Period)	EIU	SIE
In the Paint	14	24
Off Turns	5	14
2nd Chance	5	10
Fast Break	2	4
Bench	4	7

Official Box Score
Eastern Ill. vs SIUE
First Quarter Statistics Only
February 15, 2019 at Vadalabene Center - Edwardsville, Ill.

Eastern Ill. 8

No.	Player	S	Pts	FG	3FG	FT	OR	DR	TR	PF	A	TO	Blk	Stl	Min	+/-
05	Lennox, Grace		2	1-4	0-1	0-0	1	2	3	1	1	1	0	2	10	-13
11	Pace, Karle		0	0-2	0-0	0-0	0	2	2	2	0	1	0	0	10	-10
14	Mcrae, Grace		2	1-2	0-0	0-0	0	0	0	1	0	2	0	0	6	-5
15	Steele, Taylor		0	0-2	0-0	0-0	0	0	0	1	0	0	0	0	8	-14
41	Wahl, Abby		2	0-0	0-0	2-2	1	1	2	0	0	0	0	0	6	-5
02	Hughes, Jordyn		0	0-0	0-0	0-0	0	0	0	0	0	0	0	0	0	0
12	Tellez, Carmen		0	0-2	0-1	0-0	0	0	0	1	0	1	0	0	6	-10
21	Stull, Halle		0	0-0	0-0	0-0	0	0	0	0	0	0	0	0	0	0
22	Miller, Damonique		0	0-0	0-0	0-0	0	0	0	0	0	0	0	0	0	0
31	Smith, Jalisha		2	1-2	0-0	0-0	1	2	3	0	0	1	0	0	4	-8
44	Tellez, Camino		0	0-0	0-0	0-0	0	0	0	0	0	0	0	0	0	0
	Team						1	0	1	0		1				
TOTALS			8	3-14	0-2	2-2	4	7	11	6	1	7	0	2	50	

Shooting By Period

Period	FG	FG%	3FG	3FG%	FT	FT%
1st Qtr	3-14	21%	0-2	00%	2-2	100%
2nd Qtr	7-12	58%	0-1	00%	3-5	60%
1st Half	3-14	21%	0-2	00%	2-2	100%
1st Half	10-26	38%	0-3	00%	5-7	71%
Game	25-58	43.1%	5-14	35.7%	7-10	70.0%

SIUE 21

No.	Player	S	Pts	FG	3FG	FT	OR	DR	TR	PF	A	TO	Blk	Stl	Min	+/-
01	King, Christen		1	0-1	0-0	1-2	0	1	1	0	0	1	0	0	8	3
05	Alston, Jaynee		6	2-2	2-2	0-0	0	1	1	0	0	0	0	0	7	6
14	Jones, Micah		3	1-3	0-0	1-2	1	2	3	0	2	0	0	0	9	14
23	Troeckler, Allie		0	0-3	0-0	0-0	1	1	2	1	1	1	0	0	7	13
34	Bauman, Sydney		4	2-3	0-0	0-0	1	1	2	1	0	0	1	0	9	10
11	Keith, Mikia		2	1-1	0-0	0-1	0	0	0	1	1	0	0	3	3	7
12	Koehler, Kai		5	1-1	1-1	2-4	0	0	0	1	0	0	0	1	6	10
21	Akuen, Alek		0	0-0	0-0	0-0	0	0	0	0	0	0	0	0	0	0
35	Hall, Mikala		0	0-0	0-0	0-0	0	0	0	0	0	0	0	0	0	0
44	Everidge, Riana		0	0-0	0-0	0-0	0	0	0	0	0	0	0	2	2	2
50	Williams, Kelsie		0	0-0	0-0	0-0	0	0	0	0	0	0	0	0	0	0
	Team						0	1	1	0		0				
TOTALS			21	7-14	3-3	4-9	3	7	10	4	4	2	1	6	50	

Shooting By Period

Period	FG	FG%	3FG	3FG%	FT	FT%
1st Qtr	7-14	50%	3-3	100%	4-9	44%
2nd Qtr	8-18	44%	0-5	00%	1-1	100%
1st Half	7-14	50%	3-3	100%	4-9	44%
1st Half	15-32	47%	3-8	38%	5-10	50%
Game	27-56	48.2%	4-12	33.3%	20-32	62.5%

Game Notes:

Officials: Doug Klenc, Kayla Maxey, Ty Bills
Attendance: 1012

Start Time: 2019-02-15 02:04:27
End Time: 2019-02-15 03:56:59
Game Duration: 112
Conference Game:

Score	1st	2nd	3rd	4th	TOT
EU	8	17	20	17	62
SIE	21	17	17	23	78

Points from (This Period)	EU	SIE
In the Paint	4	8
Off Turns	2	9
2nd Chance	4	4
Fast Break	0	1
Bench	2	7

Official Play-By-Play
Eastern Ill. vs SIUE
First Quarter
February 15, 2019 at Vadalabene Center - Edwardsville, Ill.

Period 1

Starters:

Eastern Ill.: 11 PACE,KARLE; 14 MCRAE,GRACE; 15 STEELE,TAYLOR; 41 WAHL,ABBY; 5 LENNOX,GRACE;
SIUE: 1 KING,CHRISTEN; 5 ALSTON,JAY'NEE; 14 JONES,MICAH; 23 TROECKLER,ALLIE; 34 BAUMAN,SYDNEY;

Time	VISITORS: Eastern Ill.	Score	Margin	HOME: SIUE
09:43	MISSED JUMPER by PACE,KARLE			
09:39				REBOUND (DEF) by JONES,MICAH
09:29		2-0	H 2	GOOD! LAYUP by BAUMAN,SYDNEY
09:29				ASSIST by JONES,MICAH
09:01	MISSED JUMPER by STEELE,TAYLOR			
08:57	REBOUND (OFF) by WAHL,ABBY			
08:55				FOUL (PERSONAL) by BAUMAN,SYDNEY
08:55	GOOD! FT by WAHL,ABBY	2-1	H 1	
08:55	GOOD! FT by WAHL,ABBY	2-2	T	
08:51				TURNOVER (BADPASS) by TROECKLER,ALLIE
08:51	STEAL by LENNOX,GRACE			
08:44	MISSED JUMPER by MCRAE,GRACE			
08:44				REBOUND (DEF) by TROECKLER,ALLIE
08:28		5-2	H 3	GOOD! 3PTR by ALSTON,JAY'NEE
08:06	MISSED LAYUP by LENNOX,GRACE			
08:03				REBOUND (DEF) by ALSTON,JAY'NEE
07:46				MISSED JUMPER by JONES,MICAH
07:43	REBOUND (DEF) by LENNOX,GRACE			
07:24	MISSED JUMPER by PACE,KARLE			
07:21				REBOUND (DEF) by KING,CHRISTEN
06:54				MISSED JUMPER by JONES,MICAH
06:50				REBOUND (OFF) by TROECKLER,ALLIE
06:33				MISSED JUMPER by TROECKLER,ALLIE
06:29	REBOUND (DEF) by WAHL,ABBY			
06:02	TURNOVER (SHOTCLOCK) by			
05:49				SUB OUT: BAUMAN,SYDNEY
05:49				SUB IN: EVERIDGE,RIANA
05:49	SUB OUT: MCRAE,GRACE			
05:49	SUB IN: SMITH,JALISHA			
05:49	SUB OUT: PACE,KARLE			
05:49	SUB IN: TELLEZ,CARMEN			
05:43				MISSED JUMPER by TROECKLER,ALLIE
05:39	REBOUND (DEF) by SMITH,JALISHA			
05:30				FOUL (PERSONAL) by TROECKLER,ALLIE
05:30				SUB OUT: KING,CHRISTEN
05:30				SUB IN: KOEHLER,KAI
05:28	TURNOVER (BADPASS) by TELLEZ,CARMEN			
05:28				STEAL by EVERIDGE,RIANA
05:19		8-2	H 6	GOOD! 3PTR by ALSTON,JAY'NEE
05:19				ASSIST by TROECKLER,ALLIE
05:19				SUB OUT: ALSTON,JAY'NEE
05:19				SUB IN: KEITH,MIKIA
05:19	SUB OUT: STEELE,TAYLOR			
05:19	SUB IN: PACE,KARLE			
05:10				FOUL (PERSONAL) by KEITH,MIKIA
04:52	TURNOVER (LOSTBALL) by SMITH,JALISHA			
04:52				STEAL by KOEHLER,KAI
04:50	FOUL (PERSONAL) by TELLEZ,CARMEN			
04:50				SUB OUT: JONES,MICAH
04:50				SUB IN: BAUMAN,SYDNEY
04:50				SUB OUT: TROECKLER,ALLIE
04:50				SUB IN: KING,CHRISTEN
04:50	SUB OUT: SMITH,JALISHA			
04:50	SUB IN: MCRAE,GRACE			
04:50				MISSED FT by KOEHLER,KAI
04:50				REBOUND (OFF) by TEAM
04:50				MISSED FT by KOEHLER,KAI
04:47	REBOUND (DEF) by PACE,KARLE			
04:45	TURNOVER (LOSTBALL) by PACE,KARLE			
04:45				STEAL by EVERIDGE,RIANA
04:42	FOUL (PERSONAL) by PACE,KARLE			
04:42		9-2	H 7	GOOD! FT by KING,CHRISTEN [FB]
04:42				MISSED FT by KING,CHRISTEN
04:41	REBOUND (DEF) by PACE,KARLE			
04:26	TURNOVER (BADPASS) by MCRAE,GRACE			
04:26				STEAL by KEITH,MIKIA
04:20				MISSED LAYUP by KING,CHRISTEN
04:16	REBOUND (DEF) by LENNOX,GRACE			
03:58	GOOD! JUMPER by MCRAE,GRACE	9-4	H 5	
03:43				SUB OUT: EVERIDGE,RIANA
03:43				SUB IN: TROECKLER,ALLIE
03:43				SUB OUT: KING,CHRISTEN
03:43				SUB IN: JONES,MICAH
03:43	SUB OUT: WAHL,ABBY			
03:43	SUB IN: STEELE,TAYLOR			

Time	VISITORS: Eastern III.	Score	Margin	HOME: SIUE
03:40	FOUL (PERSONAL) by MCRAE,GRACE			
03:40				MISSED FT by JONES,MICAH
03:40				REBOUND (OFF) by TEAM
03:40		10-4	H 6	GOOD! FT by JONES,MICAH
03:35	TURNOVER (BADPASS) by MCRAE,GRACE			
03:35				STEAL by KEITH,MIKIA
03:27				MISSED JUMPER by TROECKLER,ALLIE
03:24				REBOUND (OFF) by BAUMAN,SYDNEY
03:24	FOUL (PERSONAL) by LENNOX,GRACE			
03:14		12-4	H 8	GOOD! LAYUP by KEITH,MIKIA
03:14	FOUL (PERSONAL) by PACE,KARLE			
03:14	SUB OUT: MCRAE,GRACE			
03:14	SUB IN: SMITH,JALISHA			
03:14				MISSED FT by KEITH,MIKIA
03:12	REBOUND (DEF) by SMITH,JALISHA			
03:06				FOUL (PERSONAL) by KOEHLER,KAI
02:56	TURNOVER (LOSTBALL) by LENNOX,GRACE			
02:56				STEAL by KEITH,MIKIA
02:49		15-4	H 11	GOOD! 3PTR by KOEHLER,KAI
02:49				ASSIST by KEITH,MIKIA
02:28	MISSED JUMPER by STEELE,TAYLOR			
02:24	REBOUND (OFF) by SMITH,JALISHA			
02:24	MISSED LAYUP by SMITH,JALISHA			
02:24				BLOCK by BAUMAN,SYDNEY
02:24	REBOUND (OFF) by TEAM			
02:20	MISSED 3PTR by TELLEZ,CARMEN			
02:18				REBOUND (DEF) by JONES,MICAH
02:10	FOUL (PERSONAL) by STEELE,TAYLOR			
02:10		16-4	H 12	GOOD! FT by KOEHLER,KAI
02:10				SUB OUT: TROECKLER,ALLIE
02:10				SUB IN: KING,CHRISTEN
02:10		17-4	H 13	GOOD! FT by KOEHLER,KAI
02:10				SUB OUT: KEITH,MIKIA
02:10				SUB IN: ALSTON,JAY'NEE
01:57	GOOD! JUMPER by LENNOX,GRACE [PNT]	17-6	H 11	
01:38				TURNOVER (BADPASS) by KING,CHRISTEN
01:38	STEAL by LENNOX,GRACE			
01:33	MISSED LAYUP by TELLEZ,CARMEN			
01:28	REBOUND (OFF) by LENNOX,GRACE			
01:27	GOOD! LAYUP by SMITH,JALISHA	17-8	H 9	
01:27	ASSIST by LENNOX,GRACE			
01:08				MISSED JUMPER by BAUMAN,SYDNEY
01:04				REBOUND (OFF) by JONES,MICAH
01:04		19-8	H 11	GOOD! LAYUP by JONES,MICAH
00:50	MISSED JUMPER by LENNOX,GRACE			
00:46				REBOUND (DEF) by BAUMAN,SYDNEY
00:28		21-8	H 13	GOOD! LAYUP by BAUMAN,SYDNEY
00:28				ASSIST by JONES,MICAH
00:00	MISSED 3PTR by LENNOX,GRACE			
00:00				REBOUND (DEF) by TEAM

Eastern III. 8, SIUE 21

Points from (This Period)	EIU	SIE
In the Paint	4	8
Off Turns	2	9
2nd Chance	4	4
Fast Break	0	1
Bench	2	7

Official Box Score
Eastern Ill. vs SIUE
Second Quarter Statistics Only
February 15, 2019 at Vadalabene Center - Edwardsville, Ill.

Eastern Ill. 17

No.	Player	S	Pts	FG	3FG	FT	OR	DR	TR	PF	A	TO	Blk	Stl	Min	+/-
05	Lennox, Grace		0	0-1	0-0	0-0	0	1	1	0	1	0	0	1	10	0
11	Pace, Karle		5	2-4	0-0	1-2	0	1	1	0	1	3	0	1	7	5
14	Mcrae, Grace		2	1-2	0-0	0-0	0	0	0	0	0	2	0	1	6	1
15	Steele, Taylor		2	1-1	0-0	0-0	0	1	1	1	2	0	0	0	7	0
41	Wahl, Abby		6	2-2	0-0	2-3	1	0	1	2	0	0	0	0	8	0
02	Hughes, Jordyn		0	0-0	0-0	0-0	0	0	0	0	0	0	0	0	2	0
12	Tellez, Carmen		0	0-1	0-1	0-0	0	1	1	1	1	0	0	0	4	-3
21	Stull, Halle		0	0-0	0-0	0-0	0	0	0	0	0	0	0	0	0	0
22	Miller, Damonique		0	0-0	0-0	0-0	0	0	0	0	0	0	0	0	0	0
31	Smith, Jalisha		2	1-1	0-0	0-0	0	0	0	0	0	1	0	0	5	-3
44	Tellez, Camino		0	0-0	0-0	0-0	0	0	0	0	0	0	0	0	0	0
	Team						1	1	2	0		0				
TOTALS			17	7-12	0-1	3-5	2	5	7	4	5	6	0	3	50	

Shooting By Period

Period	FG	FG%	3FG	3FG%	FT	FT%
3rd Qtr	8-19	42%	3-8	38%	1-2	50%
4th Qtr	7-13	54%	2-3	67%	1-1	100%
2nd Half	7-12	58%	0-1	00%	3-5	60%
2nd Half	15-32	47%	5-11	45%	2-3	67%
Game	25-58	43.1%	5-14	35.7%	7-10	70.0%

SIUE 17

No.	Player	S	Pts	FG	3FG	FT	OR	DR	TR	PF	A	TO	Blk	Stl	Min	+/-
01	King, Christen		5	2-2	0-0	1-1	0	0	0	2	1	0	0	0	4	2
05	Alston, Jaynee		0	0-0	0-0	0-0	0	0	0	0	0	0	0	0	0	0
14	Jones, Micah		6	3-3	0-0	0-0	2	2	4	0	2	1	0	0	10	0
23	Troeckler, Allie		0	0-1	0-0	0-0	0	0	0	1	0	1	0	0	3	0
34	Bauman, Sydney		6	3-4	0-0	0-0	2	1	3	0	0	0	1	0	6	2
11	Keith, Mikia		0	0-4	0-2	0-0	0	0	0	0	0	1	0	2	10	0
12	Koehler, Kai		0	0-2	0-2	0-0	0	0	0	1	1	0	0	0	6	-2
21	Akuen, Alek		0	0-1	0-0	0-0	0	0	0	0	0	0	0	0	1	-2
35	Hall, Mikala		0	0-1	0-1	0-0	0	0	0	0	0	2	0	1	7	0
44	Everidge, Riana		0	0-0	0-0	0-0	0	0	0	1	0	0	0	0	3	0
50	Williams, Kelsie		0	0-0	0-0	0-0	0	0	0	0	0	0	0	0	0	0
	Team						1	0	1	0		0				
TOTALS			17	8-18	0-5	1-1	5	3	8	5	4	5	1	3	50	

Shooting By Period

Period	FG	FG%	3FG	3FG%	FT	FT%
3rd Qtr	7-12	58%	1-2	50%	2-4	50%
4th Qtr	5-12	42%	0-2	00%	13-18	72%
2nd Half	8-18	44%	0-5	00%	1-1	100%
2nd Half	12-24	50%	1-4	25%	15-22	68%
Game	27-56	48.2%	4-12	33.3%	20-32	62.5%

Game Notes:

Officials: **Doug Klenc, Kayla Maxey, Ty Bills**
Attendance: **1012**

Start Time: **2019-02-15 02:04:27**
End Time: **2019-02-15 03:56:59**
Game Duration: **112**
Conference Game:

Score	1st	2nd	3rd	4th	TOT
EU	8	17	20	17	62
SIE	21	17	17	23	78

Points from (This Period)	EU	SIE
In the Paint	10	16
Off Turns	3	5
2nd Chance	1	6
Fast Break	2	3
Bench	2	0

Official Play-By-Play
Eastern Ill. vs SIUE
Second Quarter
February 15, 2019 at Vadalabene Center - Edwardsville, Ill.

Period 2

Starters:

Eastern Ill.: 11 PACE,KARLE; 14 MCRAE,GRACE; 15 STEELE,TAYLOR; 41 WAHL,ABBY; 5 LENNOX,GRACE;
SIUE: 1 KING,CHRISTEN; 5 ALSTON,JAY'NEE; 14 JONES,MICAH; 23 TROECKLER,ALLIE; 34 BAUMAN,SYDNEY;

Time	VISITORS: Eastern Ill.	Score	Margin	HOME: SIUE
09:36	GOOD! LAYUP by WAHL,ABBY	21-10	H 11	
09:36	ASSIST by LENNOX,GRACE			
09:36				FOUL (PERSONAL) by KOEHLER,KAI
09:36	GOOD! FT by WAHL,ABBY	21-11	H 10	
09:36				SUB OUT: KOEHLER,KAI
09:36				SUB IN: KING,CHRISTEN
09:22				TURNOVER (BADPASS) by TROECKLER,ALLIE
09:18				FOUL (PERSONAL) by TROECKLER,ALLIE
09:18				SUB OUT: TROECKLER,ALLIE
09:18				SUB IN: HALL,MIKALA
09:10	TURNOVER (BADPASS) by MCRAE,GRACE			
09:10				STEAL by KEITH,MIKIA
09:04		23-11	H 12	GOOD! LAYUP by KING,CHRISTEN [FB]
09:04	FOUL (PERSONAL) by STEELE,TAYLOR			
09:04	SUB OUT: STEELE,TAYLOR			
09:04	SUB IN: TELLEZ,CARMEN			
09:04		24-11	H 13	GOOD! FT by KING,CHRISTEN [FB]
08:58	TURNOVER (LOSTBALL) by PACE,KARLE			
08:26				MISSED JUMPER by KEITH,MIKIA
08:22	REBOUND (DEF) by LENNOX,GRACE			
08:18	GOOD! LAYUP by WAHL,ABBY [FB]	24-13	H 11	
08:18	ASSIST by PACE,KARLE			
07:57		26-13	H 13	GOOD! LAYUP by JONES,MICAH
07:57				ASSIST by KING,CHRISTEN
07:37	TURNOVER (BADPASS) by PACE,KARLE			
07:32				TURNOVER (BADPASS) by HALL,MIKALA
07:32	STEAL by LENNOX,GRACE			
07:31				FOUL (PERSONAL) by KING,CHRISTEN
07:19				FOUL (PERSONAL) by EVERIDGE,RIANA
07:19	MISSED FT by PACE,KARLE			
07:19	REBOUND (OFF) by TEAM			
07:19				SUB OUT: EVERIDGE,RIANA
07:19				SUB IN: BAUMAN,SYDNEY
07:19	GOOD! FT by PACE,KARLE	26-14	H 12	
07:00		28-14	H 14	GOOD! LAYUP by KING,CHRISTEN [PNT]
07:00				ASSIST by JONES,MICAH
06:47	MISSED LAYUP by MCRAE,GRACE			
06:44				REBOUND (DEF) by JONES,MICAH
06:39				TURNOVER (BADPASS) by HALL,MIKALA
06:39	STEAL by MCRAE,GRACE			
06:34	TURNOVER (BADPASS) by PACE,KARLE			
06:34				STEAL by KEITH,MIKIA
06:26				MISSED LAYUP by KEITH,MIKIA
06:22				REBOUND (OFF) by BAUMAN,SYDNEY
06:13				MISSED 3PTR by HALL,MIKALA
06:09	REBOUND (DEF) by TELLEZ,CARMEN			
06:05	GOOD! JUMPER by PACE,KARLE	28-16	H 12	
06:05	ASSIST by TELLEZ,CARMEN			
06:00	FOUL (PERSONAL) by TELLEZ,CARMEN			
06:00				SUB OUT: HALL,MIKALA
06:00				SUB IN: TROECKLER,ALLIE
06:00	SUB OUT: MCRAE,GRACE			
06:00	SUB IN: SMITH,JALISHA			
06:00	SUB OUT: PACE,KARLE			
06:00	SUB IN: STEELE,TAYLOR			
05:47				MISSED 3PTR by KEITH,MIKIA
05:44	REBOUND (DEF) by TEAM			
05:31	MISSED JUMPER by LENNOX,GRACE			
05:29	REBOUND (OFF) by WAHL,ABBY			
05:26				FOUL (PERSONAL) by KING,CHRISTEN
05:26	MISSED FT by WAHL,ABBY			
05:26	REBOUND (OFF) by TEAM			
05:26				SUB OUT: KING,CHRISTEN
05:26				SUB IN: KOEHLER,KAI
05:26	GOOD! FT by WAHL,ABBY	28-17	H 11	
05:18	FOUL (PERSONAL) by WAHL,ABBY			
05:13		30-17	H 13	GOOD! LAYUP by BAUMAN,SYDNEY [PNT]
05:13				ASSIST by JONES,MICAH
05:03	MISSED 3PTR by TELLEZ,CARMEN			
04:59				REBOUND (DEF) by BAUMAN,SYDNEY
04:43		32-17	H 15	GOOD! LAYUP by JONES,MICAH
04:42	SUB OUT: TELLEZ,CARMEN			
04:42	SUB IN: PACE,KARLE			
04:26	TURNOVER (3SEC) by SMITH,JALISHA			
04:12				MISSED JUMPER by TROECKLER,ALLIE
04:12				REBOUND (OFF) by JONES,MICAH

Time	VISITORS: Eastern III.	Score	Margin	HOME: SIUE
04:08		34-17	H 17	GOOD! LAYUP by BAUMAN, SYDNEY [PNT]
04:08				ASSIST by KOEHLER, KAI
03:52	GOOD! JUMPER by PACE, KARLE	34-19	H 15	
03:39				MISSED 3PTR by KOEHLER, KAI
03:36	REBOUND (DEF) by PACE, KARLE			
03:30	MISSED LAYUP by PACE, KARLE			
03:30				BLOCK by BAUMAN, SYDNEY
03:29	REBOUND (OFF) by TEAM			
03:29				SUB OUT: TROECKLER, ALLIE
03:29				SUB IN: HALL, MIKALA
03:19	MISSED JUMPER by PACE, KARLE			
03:16				REBOUND (DEF) by JONES, MICAH
02:56				MISSED 3PTR by KOEHLER, KAI
02:53	REBOUND (DEF) by STEELE, TAYLOR			
02:37	GOOD! LAYUP by SMITH, JALISHA	34-21	H 13	
02:37	ASSIST by STEELE, TAYLOR			
02:33	SUB OUT: PACE, KARLE			
02:33	SUB IN: HUGHES, JORDYN			
02:21	FOUL (PERSONAL) by WAHL, ABBY			
02:21	SUB OUT: WAHL, ABBY			
02:21	SUB IN: MCRAE, GRACE			
02:14				MISSED JUMPER by BAUMAN, SYDNEY
02:07				REBOUND (OFF) by JONES, MICAH
02:07		36-21	H 15	GOOD! LAYUP by JONES, MICAH
01:55	GOOD! LAYUP by STEELE, TAYLOR [PNT]	36-23	H 13	
01:26				MISSED 3PTR by KEITH, MIKIA
01:22				REBOUND (OFF) by BAUMAN, SYDNEY
01:22		38-23	H 15	GOOD! LAYUP by BAUMAN, SYDNEY
01:09	TURNOVER (LOSTBALL) by MCRAE, GRACE			
01:09				STEAL by HALL, MIKALA
01:09				SUB OUT: BAUMAN, SYDNEY
01:09				SUB IN: AKUEN, ALEK
01:09	SUB OUT: SMITH, JALISHA			
01:09	SUB IN: PACE, KARLE			
00:49				TURNOVER (LOSTBALL) by KEITH, MIKIA
00:49	STEAL by PACE, KARLE			
00:37	GOOD! LAYUP by MCRAE, GRACE	38-25	H 13	
00:37	ASSIST by STEELE, TAYLOR			
00:05				MISSED JUMPER by AKUEN, ALEK
00:05				REBOUND (OFF) by TEAM
00:05				SUB OUT: KOEHLER, KAI
00:05				SUB IN: KING, CHRISTEN
00:05	SUB OUT: HUGHES, JORDYN			
00:05	SUB IN: WAHL, ABBY			
00:00				TURNOVER (LOSTBALL) by JONES, MICAH

Eastern III. 25, SIUE 38

Points from (This Period)	EIU	SIE
In the Paint	10	16
Off Turns	3	5
2nd Chance	1	6
Fast Break	2	3
Bench	2	0

Official Box Score
Eastern Ill. vs SIUE
Second Half Statistics Only
February 15, 2019 at Vadalabene Center - Edwardsville, Ill.

Eastern Ill. 37

No.	Player	S	Pts	FG	3FG	FT	OR	DR	TR	PF	A	TO	Blk	Stl	Min	+/-
11	Pace, Karle		4	1-4	0-1	2-3	0	1	1	0	2	0	0	2	17	-6
12	Tellez, Carmen		3	1-2	1-2	0-0	0	0	0	2	3	1	0	2	9	5
14	Mcrae, Grace		2	1-6	0-1	0-0	2	1	3	1	0	0	0	1	10	-6
15	Steele, Taylor		10	4-7	2-4	0-0	0	1	1	3	1	0	0	0	18	1
21	Stull, Halle		0	0-0	0-0	0-0	0	0	0	0	1	0	0	0	1	-2
22	Miller, Damonique		0	0-0	0-0	0-0	0	0	0	0	0	0	0	0	1	-2
31	Smith, Jalisha		2	1-2	0-0	0-0	0	2	2	2	0	1	0	0	7	-5
41	Wahl, Abby		8	4-7	0-0	0-0	0	1	1	2	0	2	0	1	12	-3
44	Tellez, Camino		0	0-0	0-0	0-0	0	0	0	0	0	0	0	0	1	-2
02	Hughes, Jordyn		8	3-3	2-2	0-0	0	1	1	1	0	2	0	0	4	6
05	Lennox, Grace		0	0-1	0-1	0-0	0	1	1	2	4	2	0	0	19	-1
	Team		0	0-0	0-0	0-0	0	0	0	0	0	0	0	0	0	
TOTALS			37	15-32	5-11	2-3	2	8	10	13	11	8	0	6	100	

Shooting By Period

Period	FG	FG%	3FG	3FG%	FT	FT%
3rd Qtr	8-19	42%	3-8	38%	1-2	50%
4th Qtr	7-13	54%	2-3	67%	1-1	100%
2nd Half	15-32	47%	5-11	45%	2-3	67%
Game	25-58	43.1%	5-14	35.7%	7-10	70.0%

Last FG Half: EIU 4th-00:15

SIUE 40

No.	Player	S	Pts	FG	3FG	FT	OR	DR	TR	PF	A	TO	Blk	Stl	Min	+/-
01	King, Christen		7	2-6	0-0	3-4	0	2	2	2	3	1	0	0	13	-4
05	Alston, Jaynee		3	1-2	1-2	0-0	0	0	0	0	0	0	0	1	11	4
11	Keith, Mikia		2	0-0	0-0	2-4	0	0	0	1	0	1	0	0	15	-2
12	Koehler, Kai		0	0-2	0-2	0-2	0	0	0	2	1	2	0	1	9	6
14	Jones, Micah		0	0-0	0-0	0-0	0	0	0	0	0	0	0	0	0	0
21	Akuen, Alek		2	0-1	0-0	2-2	1	1	2	2	0	0	0	0	4	-6
23	Troeckler, Allie		6	2-4	0-0	2-2	2	2	4	1	3	2	0	1	14	5
34	Bauman, Sydney		12	6-8	0-0	0-0	1	5	6	0	0	0	1	0	16	7
35	Hall, Mikala		1	0-0	0-0	1-2	0	1	1	0	0	1	0	1	5	-4
44	Everidge, Riana		6	1-1	0-0	4-4	2	2	4	0	1	2	0	0	9	8
50	Williams, Kelsie		1	0-0	0-0	1-2	0	0	0	1	0	0	0	0	3	1
	Team		0	0-0	0-0	0-0	0	2	2	0	0	0	0	0	0	
TOTALS			40	12-24	1-4	15-22	6	15	21	9	8	9	1	4	100	

Shooting By Period

Period	FG	FG%	3FG	3FG%	FT	FT%
3rd Qtr	7-12	58%	1-2	50%	2-4	50%
4th Qtr	5-12	42%	0-2	00%	13-18	72%
2nd Half	12-24	50%	1-4	25%	15-22	68%
Game	27-56	48.2%	4-12	33.3%	20-32	62.5%

Last FG Half: SIE 4th-01:21

Game Notes:

Officials: **Doug Klenc, Kayla Maxey, Ty Bills**
Attendance: **1012**

Start Time: **2019-02-15 02:04:27**
End Time: **2019-02-15 03:56:59**
Game Duration: **112**
Conference Game;

Score	1st	2nd	3rd	4th	TOT
EIU	8	17	20	17	62
SIE	21	17	17	23	78

Points from (This Period)	EIU	SIE
In the Paint	18	18
Off Turns	9	7
2nd Chance	2	10
Fast Break	13	5
Bench	13	12

Official Box Score
Eastern Ill. vs SIUE
Third Quarter Statistics Only
February 15, 2019 at Vadalabene Center - Edwardsville, Ill.

Eastern Ill. 37

No.	Player	S	Pts	FG	3FG	FT	OR	DR	TR	PF	A	TO	Blk	Stl	Min	+/-
05	Lennox, Grace		0	0-1	0-1	0-0	0	1	1	1	3	1	0	0	10	3
11	Pace, Karle		1	0-2	0-1	1-2	0	0	0	0	2	0	0	1	9	0
14	Mcrae, Grace		2	1-4	0-1	0-0	2	1	3	0	0	0	0	1	6	-2
15	Steele, Taylor		6	2-4	2-3	0-0	0	0	0	1	0	0	0	0	10	3
41	Wahl, Abby		6	3-4	0-0	0-0	0	0	0	0	0	2	0	1	7	-3
02	Hughes, Jordyn		0	0-0	0-0	0-0	0	0	0	0	0	0	0	0	0	0
12	Tellez, Carmen		3	1-2	1-2	0-0	0	0	0	0	2	0	0	2	5	8
21	Stull, Halle		0	0-0	0-0	0-0	0	0	0	0	0	0	0	0	0	0
22	Miller, Damonique		0	0-0	0-0	0-0	0	0	0	0	0	0	0	0	0	0
31	Smith, Jalisha		2	1-2	0-0	0-0	0	2	2	0	0	0	0	0	3	6
44	Tellez, Camino		0	0-0	0-0	0-0	0	0	0	0	0	0	0	0	0	0
	Team						0	0	0	0		0				
TOTALS			20	8-19	3-8	1-2	2	4	6	2	7	3	0	5	50	

Shooting By Period

Period	FG	FG%	3FG	3FG%	FT	FT%
2nd Half	0-0	0%	0-0	0%	0-0	0%
Game	25-58	43.1%	5-14	35.7%	7-10	70.0%

SIUE 40

No.	Player	S	Pts	FG	3FG	FT	OR	DR	TR	PF	A	TO	Blk	Stl	Min	+/-
01	King, Christen		4	2-4	0-0	0-0	0	2	2	2	3	1	0	0	8	-1
05	Alston, Jaynee		3	1-2	1-2	0-0	0	0	0	0	0	0	0	1	9	0
14	Jones, Micah		0	0-0	0-0	0-0	0	0	0	0	0	0	0	0	0	0
23	Troeckler, Allie		2	1-2	0-0	0-0	0	1	1	1	2	2	0	0	8	-2
34	Bauman, Sydney		4	2-3	0-0	0-0	0	2	2	0	0	0	1	0	7	3
11	Keith, Mikia		1	0-0	0-0	1-2	0	0	0	0	0	0	0	0	5	-8
12	Koehler, Kai		0	0-0	0-0	0-0	0	0	0	0	0	1	0	1	4	-3
21	Akuen, Alek		0	0-0	0-0	0-0	0	1	1	1	0	0	0	0	1	-5
35	Hall, Mikala		0	0-0	0-0	0-0	0	0	0	0	0	1	0	1	1	-3
44	Everidge, Riana		2	1-1	0-0	0-0	1	2	3	0	0	2	0	0	5	5
50	Williams, Kelsie		1	0-0	0-0	1-2	0	0	0	1	0	0	0	0	2	-1
	Team						0	1	1	0		0				
TOTALS			17	7-12	1-2	2-4	1	9	10	5	5	7	1	3	50	

Shooting By Period

Period	FG	FG%	3FG	3FG%	FT	FT%
2nd Half	0-0	0%	0-0	0%	0-0	0%
Game	27-56	48.2%	4-12	33.3%	20-32	62.5%

Game Notes:

Officials: Doug Klenc, Kayla Maxey, Ty Bills
Attendance: 1012

Start Time: 2019-02-15 02:04:27
End Time: 2019-02-15 03:56:59
Game Duration: 112
Conference Game;

Score	1st	2nd	3rd	4th	TOT
EU	8	17	20	17	62
SIE	21	17	17	23	78

Points from (This Period)	EU	SIE
In the Paint	10	12
Off Turns	6	1
2nd Chance	2	2
Fast Break	5	3
Bench	5	4

Official Play-By-Play
Eastern Ill. vs SIUE
Third Quarter
February 15, 2019 at Vadalabene Center - Edwardsville, Ill.

Period 3

Starters:

Eastern Ill.: 11 PACE,KARLE; 14 MCRAE,GRACE; 15 STEELE,TAYLOR; 41 WAHL,ABBY; 5 LENNOX,GRACE;
SIUE: 1 KING,CHRISTEN; 5 ALSTON,JAY'NEE; 14 JONES,MICAH; 23 TROECKLER,ALLIE; 34 BAUMAN,SYDNEY;

Time	VISITORS: Eastern Ill.	Score	Margin	HOME: SIUE
09:43	MISSED JUMPER by WAHL,ABBY			
09:37	REBOUND (OFF) by MCRAE,GRACE			
09:37	GOOD! LAYUP by MCRAE,GRACE	38-27	H 11	
09:21				FOUL (OFF) by TROECKLER,ALLIE
09:21				TURNOVER (OFFENSIVE) by TROECKLER,ALLIE
08:56	MISSED 3PTR by LENNOX,GRACE			
08:53	REBOUND (OFF) by MCRAE,GRACE			
08:50	MISSED LAYUP by MCRAE,GRACE			
08:46				REBOUND (DEF) by BAUMAN,SYDNEY
08:30				MISSED JUMPER by KING,CHRISTEN
08:27				REBOUND (OFF) by EVERIDGE,RIANA
08:25		40-27	H 13	GOOD! LAYUP by EVERIDGE,RIANA [PNT]
08:11	MISSED 3PTR by STEELE,TAYLOR			
08:08				REBOUND (DEF) by EVERIDGE,RIANA
08:01				TURNOVER (LOSTBALL) by EVERIDGE,RIANA
08:01	STEAL by MCRAE,GRACE			
07:46	TURNOVER (LOSTBALL) by WAHL,ABBY			
07:46				STEAL by ALSTON,JAY'NEE
07:35				MISSED LAYUP by KING,CHRISTEN
07:32	REBOUND (DEF) by MCRAE,GRACE			
07:28	GOOD! LAYUP by WAHL,ABBY [FB/PNT]	40-29	H 11	
07:28	ASSIST by LENNOX,GRACE			
07:16		42-29	H 13	GOOD! LAYUP by BAUMAN,SYDNEY
07:16				ASSIST by KING,CHRISTEN
06:56	MISSED 3PTR by MCRAE,GRACE			
06:52				REBOUND (DEF) by BAUMAN,SYDNEY
06:43		44-29	H 15	GOOD! LAYUP by KING,CHRISTEN
06:43				ASSIST by TROECKLER,ALLIE
06:27	GOOD! LAYUP by WAHL,ABBY [PNT]	44-31	H 13	
06:27	ASSIST by LENNOX,GRACE			
06:07		47-31	H 16	GOOD! 3PTR by ALSTON,JAY'NEE
06:07				ASSIST by KING,CHRISTEN
05:49	MISSED JUMPER by STEELE,TAYLOR			
05:46				REBOUND (DEF) by EVERIDGE,RIANA
05:45				TURNOVER (BADPASS) by EVERIDGE,RIANA
05:45	STEAL by PACE,KARLE			
05:35	MISSED LAYUP by MCRAE,GRACE			
05:35				BLOCK by BAUMAN,SYDNEY
05:30				REBOUND (DEF) by KING,CHRISTEN
05:27		49-31	H 18	GOOD! LAYUP by TROECKLER,ALLIE [FB]
05:27				ASSIST by KING,CHRISTEN
05:26	TIMEOUT TEAM			
05:26				SUB OUT: BAUMAN,SYDNEY
05:26				SUB IN: KEITH,MIKIA
05:26				SUB OUT: EVERIDGE,RIANA
05:26				SUB IN: AKUEN,ALEK
05:26	SUB OUT: MCRAE,GRACE			
05:26	SUB IN: TELLEZ,CARMEN			
05:26	SUB OUT: WAHL,ABBY			
05:26	SUB IN: SMITH,JALISHA			
05:11				FOUL (PERSONAL) by AKUEN,ALEK
05:01	GOOD! LAYUP by SMITH,JALISHA [PNT]	49-33	H 16	
05:01	ASSIST by PACE,KARLE			
04:46				MISSED JUMPER by TROECKLER,ALLIE
04:43	REBOUND (DEF) by SMITH,JALISHA			
04:31	MISSED JUMPER by PACE,KARLE			
04:28				REBOUND (DEF) by AKUEN,ALEK
04:20				TURNOVER (BADPASS) by TROECKLER,ALLIE
04:20	STEAL by TELLEZ,CARMEN			
04:13	GOOD! 3PTR by STEELE,TAYLOR [FB]	49-36	H 13	
04:13	ASSIST by TELLEZ,CARMEN			
04:12				TIMEOUT TEAM
04:12				SUB OUT: KING,CHRISTEN
04:12				SUB IN: KOEHLER,KAI
04:12				SUB OUT: AKUEN,ALEK
04:12				SUB IN: BAUMAN,SYDNEY
03:51				MISSED 3PTR by ALSTON,JAY'NEE
03:47	REBOUND (DEF) by LENNOX,GRACE			
03:25	GOOD! 3PTR by TELLEZ,CARMEN	49-39	H 10	
03:25	ASSIST by PACE,KARLE			
02:50				MISSED JUMPER by BAUMAN,SYDNEY
02:47	REBOUND (DEF) by SMITH,JALISHA			
02:41	MISSED LAYUP by SMITH,JALISHA			
02:37				REBOUND (DEF) by TROECKLER,ALLIE
02:31		51-39	H 12	GOOD! LAYUP by BAUMAN,SYDNEY
02:31				ASSIST by TROECKLER,ALLIE

Time	VISITORS: Eastern III.	Score	Margin	HOME: SIUE
02:18	TURNOVER (BADPASS) by LENNOX,GRACE			
02:18				STEAL by KOEHLER,KAI
02:15				SUB OUT: TROECKLER,ALLIE
02:15				SUB IN: KING,CHRISTEN
02:15				SUB OUT: BAUMAN,SYDNEY
02:15				SUB IN: WILLIAMS,KELSIE
02:15	SUB OUT: SMITH,JALISHA			
02:15	SUB IN: WAHL,ABBY			
02:12	FOUL (PERSONAL) by LENNOX,GRACE			
02:12				MISSED FT by KEITH,MIKIA
02:12				REBOUND (OFF) by TEAM
02:12		52-39	H 13	GOOD! FT by KEITH,MIKIA [FB]
02:02				FOUL (PERSONAL) by WILLIAMS,KELSIE
01:58	GOOD! JUMPER by WAHL,ABBY [PNT]	52-41	H 11	
01:58	ASSIST by TELLEZ,CARMEN			
01:32		54-41	H 13	GOOD! JUMPER by KING,CHRISTEN [PNT]
01:25	MISSED 3PTR by PACE,KARLE			
01:22				REBOUND (DEF) by KING,CHRISTEN
01:18				FOUL (OFF) by KING,CHRISTEN
01:18				TURNOVER (OFFENSIVE) by KING,CHRISTEN
01:18				SUB OUT: ALSTON,JAY'NEE
01:18				SUB IN: HALL,MIKALA
01:18	SUB OUT: PACE,KARLE			
01:18	SUB IN: MCRAE,GRACE			
01:02	TURNOVER (BADPASS) by WAHL,ABBY			
01:02				STEAL by HALL,MIKALA
00:56				TURNOVER (BADPASS) by HALL,MIKALA
00:56	STEAL by TELLEZ,CARMEN			
00:49	MISSED 3PTR by TELLEZ,CARMEN			
00:47				REBOUND (DEF) by TEAM
00:36				TURNOVER (BADPASS) by KOEHLER,KAI
00:36	STEAL by WAHL,ABBY			
00:29	GOOD! 3PTR by STEELE,TAYLOR	54-44	H 10	
00:29	ASSIST by LENNOX,GRACE			
00:11	FOUL (PERSONAL) by STEELE,TAYLOR			
00:11				MISSED FT by WILLIAMS,KELSIE
00:11				REBOUND (OFF) by TEAM
00:11	SUB OUT: WAHL,ABBY			
00:11	SUB IN: PACE,KARLE			
00:11		55-44	H 11	GOOD! FT by WILLIAMS,KELSIE
00:02				FOUL (PERSONAL) by KING,CHRISTEN
00:02	MISSED FT by PACE,KARLE			
00:02	REBOUND (OFF) by TEAM			
00:02				SUB OUT: KING,CHRISTEN
00:02				SUB IN: BAUMAN,SYDNEY
00:02				SUB OUT: WILLIAMS,KELSIE
00:02				SUB IN: TROECKLER,ALLIE
00:02	GOOD! FT by PACE,KARLE	55-45	H 10	

Eastern III. 45, SIUE 55

Points from (This Period)	EIU	SIE
In the Paint	10	12
Off Turns	6	1
2nd Chance	2	2
Fast Break	5	3
Bench	5	4

Official Box Score
Eastern Ill. vs SIUE
Fourth Quarter Statistics Only
February 15, 2019 at Vadalabene Center - Edwardsville, Ill.

Eastern Ill. 17

No.	Player	S	Pts	FG	3FG	FT	OR	DR	TR	PF	A	TO	Blk	Stl	Min	+/-
05	Lennox, Grace		0	0-0	0-0	0-0	0	0	0	1	1	1	0	0	9	-4
11	Pace, Karle		3	1-2	0-0	1-1	0	1	1	0	0	0	0	1	8	-6
14	Mcrae, Grace		0	0-2	0-0	0-0	0	0	0	1	0	0	0	0	4	-4
15	Steele, Taylor		4	2-3	0-1	0-0	0	1	1	2	1	0	0	0	8	-2
41	Wahl, Abby		2	1-3	0-0	0-0	0	1	1	2	0	0	0	0	5	0
02	Hughes, Jordyn		8	3-3	2-2	0-0	0	1	1	1	0	2	0	0	4	6
12	Tellez, Carmen		0	0-0	0-0	0-0	0	0	0	2	1	1	0	0	4	-3
21	Stull, Halle		0	0-0	0-0	0-0	0	0	0	0	1	0	0	0	1	-2
22	Miller, Damonique		0	0-0	0-0	0-0	0	0	0	0	0	0	0	0	1	-2
31	Smith, Jalisha		0	0-0	0-0	0-0	0	0	0	2	0	1	0	0	4	-11
44	Tellez, Camino		0	0-0	0-0	0-0	0	0	0	0	0	0	0	0	1	-2
	Team						0	0	0	0	0	0				
TOTALS			17	7-13	2-3	1-1	0	4	4	11	4	5	0	1	50	

Shooting By Period

Period	FG	FG%	3FG	3FG%	FT	FT%
Game	25-58	43.1%	5-14	35.7%	7-10	70.0%

SIUE 23

No.	Player	S	Pts	FG	3FG	FT	OR	DR	TR	PF	A	TO	Blk	Stl	Min	+/-
01	King, Christen		3	0-2	0-0	3-4	0	0	0	0	0	0	0	0	5	-3
05	Alston, Jaynee		0	0-0	0-0	0-0	0	0	0	0	0	0	0	0	2	4
14	Jones, Micah		0	0-0	0-0	0-0	0	0	0	0	0	0	0	0	0	0
23	Troeckler, Allie		4	1-2	0-0	2-2	2	1	3	0	1	0	0	1	6	7
34	Bauman, Sydney		8	4-5	0-0	0-0	1	3	4	0	0	0	0	0	9	4
11	Keith, Mikia		1	0-0	0-0	1-2	0	0	0	1	0	1	0	0	10	6
12	Koehler, Kai		0	0-2	0-2	0-2	0	0	0	2	1	1	0	0	5	9
21	Akuen, Alek		2	0-1	0-0	2-2	1	0	1	1	0	0	0	0	3	-1
35	Hall, Mikala		1	0-0	0-0	1-2	0	1	1	0	0	0	0	0	4	-1
44	Everidge, Riana		4	0-0	0-0	4-4	1	0	1	0	1	0	0	0	4	3
50	Williams, Kelsie		0	0-0	0-0	0-0	0	0	0	0	0	0	0	0	1	2
	Team						0	1	1	0	0	0				
TOTALS			23	5-12	0-2	13-18	5	6	11	4	3	2	0	1	50	

Shooting By Period

Period	FG	FG%	3FG	3FG%	FT	FT%
Game	27-56	48.2%	4-12	33.3%	20-32	62.5%

Game Notes:

Officials: **Doug Klenc, Kayla Maxey, Ty Bills**
Attendance: **1012**

Start Time: **2019-02-15 02:04:27**
End Time: **2019-02-15 03:56:59**
Game Duration: **112**
Conference Game;

Score	1st	2nd	3rd	4th	TOT
EU	8	17	20	17	62
SIE	21	17	17	23	78

Points from (This Period)	EU	SIE
In the Paint	8	6
Off Turns	3	6
2nd Chance	0	8
Fast Break	8	2
Bench	8	8

Official Play-By-Play
Eastern Ill. vs SIUE
Fourth Quarter
February 15, 2019 at Vadalabene Center - Edwardsville, Ill.

Period 4

Starters:

Eastern Ill.: 11 PACE,KARLE; 14 MCRAE,GRACE; 15 STEELE,TAYLOR; 41 WAHL,ABBY; 5 LENNOX,GRACE;
SIUE: 1 KING,CHRISTEN; 5 ALSTON,JAY'NEE; 14 JONES,MICAH; 23 TROECKLER,ALLIE; 34 BAUMAN,SYDNEY;

Time	VISITORS: Eastern Ill.	Score	Margin	HOME: SIUE
09:43		57-45	H 12	GOOD! JUMPER by BAUMAN,SYDNEY
09:43				ASSIST by TROECKLER,ALLIE
09:26	TURNOVER (LOSTBALL) by SMITH,JALISHA			
09:26				STEAL by TROECKLER,ALLIE
09:19				FOUL (OFF) by KOEHLER,KAI
09:19				TURNOVER (OFFENSIVE) by KOEHLER,KAI
09:06	MISSED LAYUP by MCRAE,GRACE			
09:01				REBOUND (DEF) by BAUMAN,SYDNEY
08:49	FOUL (PERSONAL) by LENNOX,GRACE			
08:49				MISSED FT by KEITH,MIKIA
08:49				REBOUND (OFF) by TEAM
08:49	SUB OUT: MCRAE,GRACE			
08:49	SUB IN: WAHL,ABBY			
08:49		58-45	H 13	GOOD! FT by KEITH,MIKIA
08:30	MISSED JUMPER by WAHL,ABBY			
08:28				REBOUND (DEF) by TEAM
08:15				MISSED 3PTR by KOEHLER,KAI
08:12	REBOUND (DEF) by PACE,KARLE			
08:05	MISSED 3PTR by STEELE,TAYLOR			
08:05				REBOUND (DEF) by TROECKLER,ALLIE
08:05	FOUL (PERSONAL) by SMITH,JALISHA			
08:05	SUB OUT: SMITH,JALISHA			
08:05	SUB IN: TELLEZ,CARMEN			
07:45				MISSED JUMPER by BAUMAN,SYDNEY
07:41				REBOUND (OFF) by TROECKLER,ALLIE
07:34	FOUL (PERSONAL) by WAHL,ABBY			
07:34		59-45	H 14	GOOD! FT by TROECKLER,ALLIE
07:34				SUB OUT: ALSTON,JAY'NEE
07:34				SUB IN: EVERIDGE,RIANA
07:34		60-45	H 15	GOOD! FT by TROECKLER,ALLIE
07:23	MISSED JUMPER by PACE,KARLE			
07:19				REBOUND (DEF) by BAUMAN,SYDNEY
07:00				MISSED 3PTR by KOEHLER,KAI
06:54				REBOUND (OFF) by BAUMAN,SYDNEY
06:54		62-45	H 17	GOOD! LAYUP by BAUMAN,SYDNEY
06:35	GOOD! LAYUP by WAHL,ABBY	62-47	H 15	
06:35	ASSIST by TELLEZ,CARMEN			
06:26	FOUL (PERSONAL) by TELLEZ,CARMEN			
06:26	SUB OUT: TELLEZ,CARMEN			
06:26	SUB IN: SMITH,JALISHA			
06:13	FOUL (PERSONAL) by STEELE,TAYLOR			
06:13				MISSED FT by KOEHLER,KAI
06:13				REBOUND (OFF) by TEAM
06:13				MISSED FT by KOEHLER,KAI
06:12				REBOUND (OFF) by EVERIDGE,RIANA
06:12	FOUL (PERSONAL) by WAHL,ABBY			
06:12		63-47	H 16	GOOD! FT by EVERIDGE,RIANA
06:12				SUB OUT: TROECKLER,ALLIE
06:12				SUB IN: HALL,MIKALA
06:12	SUB OUT: WAHL,ABBY			
06:12	SUB IN: MCRAE,GRACE			
06:12		64-47	H 17	GOOD! FT by EVERIDGE,RIANA
05:49	GOOD! JUMPER by STEELE,TAYLOR [PNT]	64-49	H 15	
05:23		66-49	H 17	GOOD! JUMPER by BAUMAN,SYDNEY
05:23				ASSIST by KOEHLER,KAI
05:10	TURNOVER (LOSTBALL) by LENNOX,GRACE			
05:10	SUB OUT: STEELE,TAYLOR			
05:10	SUB IN: TELLEZ,CARMEN			
04:53		68-49	H 19	GOOD! LAYUP by BAUMAN,SYDNEY
04:53				ASSIST by EVERIDGE,RIANA
04:39				FOUL (PERSONAL) by KOEHLER,KAI
04:39				
04:39				SUB OUT: KOEHLER,KAI
04:39				SUB IN: KING,CHRISTEN
04:39	SUB OUT: PACE,KARLE			
04:39	SUB IN: STEELE,TAYLOR			
04:39	SUB OUT: SMITH,JALISHA			
04:39	SUB IN: HUGHES,JORDYN			
04:27	MISSED JUMPER by MCRAE,GRACE			
04:19				REBOUND (DEF) by HALL,MIKALA
03:56				MISSED JUMPER by KING,CHRISTEN
03:53	REBOUND (DEF) by HUGHES,JORDYN			
03:50	GOOD! LAYUP by STEELE,TAYLOR [FB/PNT]	68-51	H 17	
03:50	ASSIST by LENNOX,GRACE			
03:39	FOUL (PERSONAL) by MCRAE,GRACE			
03:39		69-51	H 18	GOOD! FT by EVERIDGE,RIANA

Time	VISITORS: Eastern III.	Score	Margin	HOME: SIUE
03:39	SUB OUT: MCRAE, GRACE			
03:39	SUB IN: WAHL, ABBY			
03:39		70-51	H 19	GOOD! FT by EVERIDGE, RIANA
03:24	GOOD! JUMPER by HUGHES, JORDYN	70-53	H 17	
03:20	FOUL (PERSONAL) by HUGHES, JORDYN			
03:20	TIMEOUT TEAM			
03:20				SUB OUT: EVERIDGE, RIANA
03:20				SUB IN: AKUEN, ALEK
03:20	SUB OUT: TELLEZ, CARMEN			
03:20	SUB IN: PACE, KARLE			
03:20		71-53	H 18	GOOD! FT by HALL, MIKALA [FB]
03:20				MISSED FT by HALL, MIKALA
03:17	REBOUND (DEF) by STEELE, TAYLOR			
03:10	GOOD! 3PTR by HUGHES, JORDYN [FB]	71-56	H 15	
03:10	ASSIST by STEELE, TAYLOR			
02:42				MISSED JUMPER by KING, CHRISTEN
02:42	REBOUND (DEF) by WAHL, ABBY			
02:42				FOUL (PERSONAL) by AKUEN, ALEK
02:42				SUB OUT: HALL, MIKALA
02:42				SUB IN: TROECKLER, ALLIE
02:28	MISSED JUMPER by WAHL, ABBY			
02:25				REBOUND (DEF) by BAUMAN, SYDNEY
02:03				TURNOVER (BADPASS) by KEITH, MIKIA
02:03	STEAL by PACE, KARLE			
01:58	GOOD! LAYUP by PACE, KARLE [FB/PNT]	71-58	H 13	
01:58				FOUL (PERSONAL) by KEITH, MIKIA
01:58	GOOD! FT by PACE, KARLE [FB]	71-59	H 12	
01:32				MISSED LAYUP by TROECKLER, ALLIE
01:29				REBOUND (OFF) by AKUEN, ALEK
01:27				MISSED LAYUP by AKUEN, ALEK
01:21				REBOUND (OFF) by TROECKLER, ALLIE
01:21		73-59	H 14	GOOD! LAYUP by TROECKLER, ALLIE
01:15	TURNOVER (LOSTBALL) by HUGHES, JORDYN			
01:03	FOUL (PERSONAL) by STEELE, TAYLOR			
01:03				SUB OUT: BAUMAN, SYDNEY
01:03				SUB IN: WILLIAMS, KELSIE
01:03	SUB OUT: HUGHES, JORDYN			
01:03	SUB IN: TELLEZ, CARMEN			
01:03	SUB OUT: LENNOX, GRACE			
01:03	SUB IN: TELLEZ, CAMINO			
01:03	SUB OUT: PACE, KARLE			
01:03	SUB IN: STULL, HALLE			
01:03	SUB OUT: STEELE, TAYLOR			
01:03	SUB IN: SMITH, JALISHA			
01:03	SUB OUT: WAHL, ABBY			
01:03	SUB IN: MILLER, DAMONIQUE			
01:03		74-59	H 15	GOOD! FT by AKUEN, ALEK
01:03		75-59	H 16	GOOD! FT by AKUEN, ALEK
00:54	TURNOVER (TRAVEL) by TELLEZ, CARMEN			
00:54				SUB OUT: TROECKLER, ALLIE
00:54				SUB IN: HALL, MIKALA
00:36	FOUL (PERSONAL) by SMITH, JALISHA			
00:36		76-59	H 17	GOOD! FT by KING, CHRISTEN
00:36	SUB OUT: TELLEZ, CARMEN			
00:36	SUB IN: HUGHES, JORDYN			
00:36	SUB OUT: SMITH, JALISHA			
00:36	SUB IN: TELLEZ, CARMEN			
00:36		77-59	H 18	GOOD! FT by KING, CHRISTEN
00:15	GOOD! 3PTR by HUGHES, JORDYN	77-62	H 15	
00:15	ASSIST by STULL, HALLE			
00:12	FOUL (PERSONAL) by TELLEZ, CARMEN			
00:12	SUB OUT: TELLEZ, CARMEN			
00:12	SUB IN: SMITH, JALISHA			
00:12				MISSED FT by KING, CHRISTEN
00:12				REBOUND (OFF) by TEAM
00:12		78-62	H 16	GOOD! FT by KING, CHRISTEN [FB]
00:01	TURNOVER (DRIBBLING) by HUGHES, JORDYN			

Eastern III. 62, SIUE 78

Points from (This Period)	EU	SIE
In the Paint	8	6
Off Turns	3	6
2nd Chance	0	8
Fast Break	8	2
Bench	8	8

Official Scoring/Possession Reference Chart
Eastern Ill. vs SIUE
Period 1
February 15, 2019 at Vadalabene Center - Edwardsville, Ill.

Period 1

Starters:

Eastern Ill.: 11 PACE,KARLE; 14 MCRAE,GRACE; 15 STEELE,TAYLOR; 41 WAHL,ABBY; 5 LENNOX,GRACE;
 SIUE: 1 KING,CHRISTEN; 5 ALSTON,JAY'NEE; 14 JONES,MICAH; 23 TROECKLER,ALLIE; 34 BAUMAN,SYDNEY;

Time	VISITORS: Eastern Ill.	Score	Margin	HOME: SIUE
09:29		2-0	H 2	GOOD! LAYUP by BAUMAN,SYDNEY
08:55	GOOD! FT by WAHL,ABBY	2-1	H 1	
08:55	GOOD! FT by WAHL,ABBY	2-2	T	
08:28		5-2	H 3	GOOD! 3PTR by ALSTON,JAY'NEE
05:19		8-2	H 6	GOOD! 3PTR by ALSTON,JAY'NEE
04:42		9-2	H 7	GOOD! FT by KING,CHRISTEN [FB]
03:58	GOOD! JUMPER by MCRAE,GRACE	9-4	H 5	
03:40		10-4	H 6	GOOD! FT by JONES,MICAH
03:14		12-4	H 8	GOOD! LAYUP by KEITH,MIKIA
02:49		15-4	H 11	GOOD! 3PTR by KOEHLER,KAI
02:10		16-4	H 12	GOOD! FT by KOEHLER,KAI
02:10		17-4	H 13	GOOD! FT by KOEHLER,KAI
01:57	GOOD! JUMPER by LENNOX,GRACE [PNT]	17-6	H 11	
01:27	GOOD! LAYUP by SMITH,JALISHA	17-8	H 9	
01:04		19-8	H 11	GOOD! LAYUP by JONES,MICAH
00:28		21-8	H 13	GOOD! LAYUP by BAUMAN,SYDNEY

Eastern Ill. 8, SIUE 21

Official Scoring/Possession Reference Chart
Eastern Ill. vs SIUE
Period 2
February 15, 2019 at Vadalabene Center - Edwardsville, Ill.

Period 2

Starters:

Eastern Ill.: 11 PACE,KARLE; 14 MCRAE,GRACE; 15 STEELE,TAYLOR; 41 WAHL,ABBY; 5 LENNOX,GRACE;
 SIUE: 1 KING,CHRISTEN; 5 ALSTON,JAY'NEE; 14 JONES,MICAH; 23 TROECKLER,ALLIE; 34 BAUMAN,SYDNEY;

Time	VISITORS: Eastern Ill.	Score	Margin	HOME: SIUE
09:36	GOOD! LAYUP by WAHL,ABBY	21-10	H 11	
09:36	GOOD! FT by WAHL,ABBY	21-11	H 10	
09:04		23-11	H 12	GOOD! LAYUP by KING,CHRISTEN [FB]
09:04		24-11	H 13	GOOD! FT by KING,CHRISTEN [FB]
08:18	GOOD! LAYUP by WAHL,ABBY [FB]	24-13	H 11	
07:57		26-13	H 13	GOOD! LAYUP by JONES,MICAH
07:19	GOOD! FT by PACE,KARLE	26-14	H 12	
07:00		28-14	H 14	GOOD! LAYUP by KING,CHRISTEN [PNT]
06:05	GOOD! JUMPER by PACE,KARLE	28-16	H 12	
05:26	GOOD! FT by WAHL,ABBY	28-17	H 11	
05:13		30-17	H 13	GOOD! LAYUP by BAUMAN,SYDNEY [PNT]
04:43		32-17	H 15	GOOD! LAYUP by JONES,MICAH
04:08		34-17	H 17	GOOD! LAYUP by BAUMAN,SYDNEY [PNT]
03:52	GOOD! JUMPER by PACE,KARLE	34-19	H 15	
02:37	GOOD! LAYUP by SMITH,JALISHA	34-21	H 13	
02:07		36-21	H 15	GOOD! LAYUP by JONES,MICAH
01:55	GOOD! LAYUP by STEELE,TAYLOR [PNT]	36-23	H 13	
01:22		38-23	H 15	GOOD! LAYUP by BAUMAN,SYDNEY
00:37	GOOD! LAYUP by MCRAE,GRACE	38-25	H 13	

Eastern Ill. 25, SIUE 38

Official Scoring/Possession Reference Chart
Eastern Ill. vs SIUE
Period 3
February 15, 2019 at Vadalabene Center - Edwardsville, Ill.

Period 3

Starters:

Eastern Ill.: 11 PACE,KARLE; 14 MCRAE,GRACE; 15 STEELE,TAYLOR; 41 WAHL,ABBY; 5 LENNOX,GRACE;
 SIUE: 1 KING,CHRISTEN; 5 ALSTON,JAY'NEE; 14 JONES,MICAH; 23 TROECKLER,ALLIE; 34 BAUMAN,SYDNEY;

Time	VISITORS: Eastern Ill.	Score	Margin	HOME: SIUE
09:37	GOOD! LAYUP by MCRAE,GRACE	38-27	H 11	
08:25		40-27	H 13	GOOD! LAYUP by EVERIDGE,RIANA [PNT]
07:28	GOOD! LAYUP by WAHL,ABBY [FB/PNT]	40-29	H 11	
07:16		42-29	H 13	GOOD! LAYUP by BAUMAN,SYDNEY
06:43		44-29	H 15	GOOD! LAYUP by KING,CHRISTEN
06:27	GOOD! LAYUP by WAHL,ABBY [PNT]	44-31	H 13	
06:07		47-31	H 16	GOOD! 3PTR by ALSTON,JAY'NEE
05:27		49-31	H 18	GOOD! LAYUP by TROECKLER,ALLIE [FB]
05:01	GOOD! LAYUP by SMITH,JALISHA [PNT]	49-33	H 16	
04:13	GOOD! 3PTR by STEELE,TAYLOR [FB]	49-36	H 13	
03:25	GOOD! 3PTR by TELLEZ,CARMEN	49-39	H 10	
02:31		51-39	H 12	GOOD! LAYUP by BAUMAN,SYDNEY
02:12		52-39	H 13	GOOD! FT by KEITH,MKIA [FB]
01:58	GOOD! JUMPER by WAHL,ABBY [PNT]	52-41	H 11	
01:32		54-41	H 13	GOOD! JUMPER by KING,CHRISTEN [PNT]
00:29	GOOD! 3PTR by STEELE,TAYLOR	54-44	H 10	
00:11		55-44	H 11	GOOD! FT by WILLIAMS,KELSIE
00:02	GOOD! FT by PACE,KARLE	55-45	H 10	

Eastern Ill. 45, SIUE 55

Official Scoring/Possession Reference Chart
Eastern Ill. vs SIUE
Period 4
February 15, 2019 at Vadalabene Center - Edwardsville, Ill.

Period 4

Starters:

Eastern Ill.: 11 PACE,KARLE; 14 MCRAE,GRACE; 15 STEELE,TAYLOR; 41 WAHL,ABBY; 5 LENNOX,GRACE;
 SIUE: 1 KING,CHRISTEN; 5 ALSTON,JAY'NEE; 14 JONES,MICAH; 23 TROECKLER,ALLIE; 34 BAUMAN,SYDNEY;

Time	VISITORS: Eastern Ill.	Score	Margin	HOME: SIUE
09:43		57-45	H 12	GOOD! JUMPER by BAUMAN,SYDNEY
08:49		58-45	H 13	GOOD! FT by KEITH,MIKIA
07:34		59-45	H 14	GOOD! FT by TROECKLER,ALLIE
07:34		60-45	H 15	GOOD! FT by TROECKLER,ALLIE
06:54		62-45	H 17	GOOD! LAYUP by BAUMAN,SYDNEY
06:35	GOOD! LAYUP by WAHL,ABBY	62-47	H 15	
06:12		63-47	H 16	GOOD! FT by EVERIDGE,RIANA
06:12		64-47	H 17	GOOD! FT by EVERIDGE,RIANA
05:49	GOOD! JUMPER by STEELE,TAYLOR [PNT]	64-49	H 15	
05:23		66-49	H 17	GOOD! JUMPER by BAUMAN,SYDNEY
04:53		68-49	H 19	GOOD! LAYUP by BAUMAN,SYDNEY
03:50	GOOD! LAYUP by STEELE,TAYLOR [FB/PNT]	68-51	H 17	
03:39		69-51	H 18	GOOD! FT by EVERIDGE,RIANA
03:39		70-51	H 19	GOOD! FT by EVERIDGE,RIANA
03:24	GOOD! JUMPER by HUGHES,JORDYN	70-53	H 17	
03:20		71-53	H 18	GOOD! FT by HALL,MIKALA [FB]
03:10	GOOD! 3PTR by HUGHES,JORDYN [FB]	71-56	H 15	
01:58	GOOD! LAYUP by PACE,KARLE [FB/PNT]	71-58	H 13	
01:58	GOOD! FT by PACE,KARLE [FB]	71-59	H 12	
01:21		73-59	H 14	GOOD! LAYUP by TROECKLER,ALLIE
01:03		74-59	H 15	GOOD! FT by AKUEN,ALEK
01:03		75-59	H 16	GOOD! FT by AKUEN,ALEK
00:36		76-59	H 17	GOOD! FT by KING,CHRISTEN
00:36		77-59	H 18	GOOD! FT by KING,CHRISTEN
00:15	GOOD! 3PTR by HUGHES,JORDYN	77-62	H 15	
00:12		78-62	H 16	GOOD! FT by KING,CHRISTEN [FB]

Eastern Ill. 62, SIUE 78

Official Substitutions Log
Eastern Ill. vs SIUE
Period 1
February 15, 2019 at Vadalabene Center - Edwardsville, Ill.

VISITORS: Eastern Ill.	Time	Score	HOME: SIUE
11 PACE, KARLE			1 KING, CHRISTEN
14 MCRAE, GRACE			5 ALSTON, JAY'NEE
15 STEELE, TAYLOR			14 JONES, MICAH
41 WAHL, ABBY			23 TROECKLER, ALLIE
5 LENNOX, GRACE			34 BAUMAN, SYDNEY
	05:49	2-5	SUB OUT: BAUMAN, SYDNEY
	05:49		SUB IN: EVERIDGE, RIANA
SUB OUT: 14 MCRAE, GRACE	05:49		
SUB IN: 31 SMITH, JALISHA	05:49		
SUB OUT: 11 PACE, KARLE	05:49		
SUB IN: 12 TELLEZ, CARMEN	05:49		
	05:30	2-5	SUB OUT: KING, CHRISTEN
	05:30		SUB IN: KOEHLER, KAI
	05:19	2-8	SUB OUT: ALSTON, JAY'NEE
	05:19		SUB IN: KEITH, MIKIA
SUB OUT: 15 STEELE, TAYLOR	05:19		
SUB IN: 11 PACE, KARLE	05:19		
	04:50	2-8	SUB OUT: JONES, MICAH
	04:50		SUB IN: BAUMAN, SYDNEY
	04:50		SUB OUT: TROECKLER, ALLIE
	04:50		SUB IN: KING, CHRISTEN
SUB OUT: 31 SMITH, JALISHA	04:50		
SUB IN: 14 MCRAE, GRACE	04:50		
	03:43	4-9	SUB OUT: EVERIDGE, RIANA
	03:43		SUB IN: TROECKLER, ALLIE
	03:43		SUB OUT: KING, CHRISTEN
	03:43		SUB IN: JONES, MICAH
SUB OUT: 41 WAHL, ABBY	03:43		
SUB IN: 15 STEELE, TAYLOR	03:43		
SUB OUT: 14 MCRAE, GRACE	03:14	4-12	
SUB IN: 31 SMITH, JALISHA	03:14		
	02:10	4-16	SUB OUT: TROECKLER, ALLIE
	02:10		SUB IN: KING, CHRISTEN
	02:10		SUB OUT: KEITH, MIKIA
	02:10		SUB IN: ALSTON, JAY'NEE

Eastern Ill. 8, SIUE 21

Official Substitutions Log
Eastern III. vs SIUE
Period 2
February 15, 2019 at Vadalabene Center - Edwardsville, Ill.

VISITORS: Eastern III.	Time	Score	HOME: SIUE
11 PACE,KARLE			1 KING,CHRISTEN
14 MCRAE,GRACE			5 ALSTON,JAY'NEE
15 STEELE,TAYLOR			14 JONES,MICAH
41 WAHL,ABBY			23 TROECKLER,ALLIE
5 LENNOX,GRACE			34 BAUMAN,SYDNEY
	09:36	11-21	SUB OUT: KOEHLER,KAI
	09:36		SUB IN: KING,CHRISTEN
	09:18	11-21	SUB OUT: TROECKLER,ALLIE
	09:18		SUB IN: HALL,MIKALA
SUB OUT: 15 STEELE,TAYLOR	09:04	11-23	
SUB IN: 12 TELLEZ,CARMEN	09:04		
	07:19	13-26	SUB OUT: EVERIDGE,RIANA
	07:19		SUB IN: BAUMAN,SYDNEY
	06:00	16-28	SUB OUT: HALL,MIKALA
	06:00		SUB IN: TROECKLER,ALLIE
SUB OUT: 14 MCRAE,GRACE	06:00		
SUB IN: 31 SMITH,JALISHA	06:00		
SUB OUT: 11 PACE,KARLE	06:00		
SUB IN: 15 STEELE,TAYLOR	06:00		
	05:26	16-28	SUB OUT: KING,CHRISTEN
	05:26		SUB IN: KOEHLER,KAI
SUB OUT: 12 TELLEZ,CARMEN	04:42	17-32	
SUB IN: 11 PACE,KARLE	04:42		
	03:29	19-34	SUB OUT: TROECKLER,ALLIE
	03:29		SUB IN: HALL,MIKALA
SUB OUT: 11 PACE,KARLE	02:33	21-34	
SUB IN: 2 HUGHES,JORDYN	02:33		
SUB OUT: 41 WAHL,ABBY	02:21	21-34	
SUB IN: 14 MCRAE,GRACE	02:21		
	01:09	23-38	SUB OUT: BAUMAN,SYDNEY
	01:09		SUB IN: AKUEN,ALEK
SUB OUT: 31 SMITH,JALISHA	01:09		
SUB IN: 11 PACE,KARLE	01:09		
	00:05	25-38	SUB OUT: KOEHLER,KAI
	00:05		SUB IN: KING,CHRISTEN
SUB OUT: 2 HUGHES,JORDYN	00:05		
SUB IN: 41 WAHL,ABBY	00:05		

Eastern III. 25, SIUE 38

Official Substitutions Log
Eastern Ill. vs SIUE
Period 3
February 15, 2019 at Vadalabene Center - Edwardsville, Ill.

VISITORS: Eastern Ill.	Time	Score	HOME: SIUE
11 PACE,KARLE			1 KING,CHRISTEN
14 MCRAE,GRACE			5 ALSTON,JAY'NEE
15 STEELE,TAYLOR			14 JONES,MICAH
41 WAHL,ABBY			23 TROECKLER,ALLIE
5 LENNOX,GRACE			34 BAUMAN,SYDNEY
	05:26	31-49	SUB OUT: BAUMAN,SYDNEY
	05:26		SUB IN: KEITH,MIKIA
	05:26		SUB OUT: EVERIDGE,RIANA
	05:26		SUB IN: AKUEN,ALEK
SUB OUT: 14 MCRAE,GRACE	05:26		
SUB IN: 12 TELLEZ,CARMEN	05:26		
SUB OUT: 41 WAHL,ABBY	05:26		
SUB IN: 31 SMITH,JALISHA	05:26		
	04:12	36-49	SUB OUT: KING,CHRISTEN
	04:12		SUB IN: KOEHLER,KAI
	04:12		SUB OUT: AKUEN,ALEK
	04:12		SUB IN: BAUMAN,SYDNEY
	02:15	39-51	SUB OUT: TROECKLER,ALLIE
	02:15		SUB IN: KING,CHRISTEN
	02:15		SUB OUT: BAUMAN,SYDNEY
	02:15		SUB IN: WILLIAMS,KELSIE
SUB OUT: 31 SMITH,JALISHA	02:15		
SUB IN: 41 WAHL,ABBY	02:15		
	01:18	41-54	SUB OUT: ALSTON,JAY'NEE
	01:18		SUB IN: HALL,MIKALA
SUB OUT: 11 PACE,KARLE	01:18		
SUB IN: 14 MCRAE,GRACE	01:18		
SUB OUT: 41 WAHL,ABBY	00:11	44-54	
SUB IN: 11 PACE,KARLE	00:11		
	00:02	44-55	SUB OUT: KING,CHRISTEN
	00:02		SUB IN: BAUMAN,SYDNEY
	00:02		SUB OUT: WILLIAMS,KELSIE
	00:02		SUB IN: TROECKLER,ALLIE

Eastern Ill. 45, SIUE 55

Official Substitutions Log
Eastern Ill. vs SIUE
Period 4
February 15, 2019 at Vadalabene Center - Edwardsville, Ill.

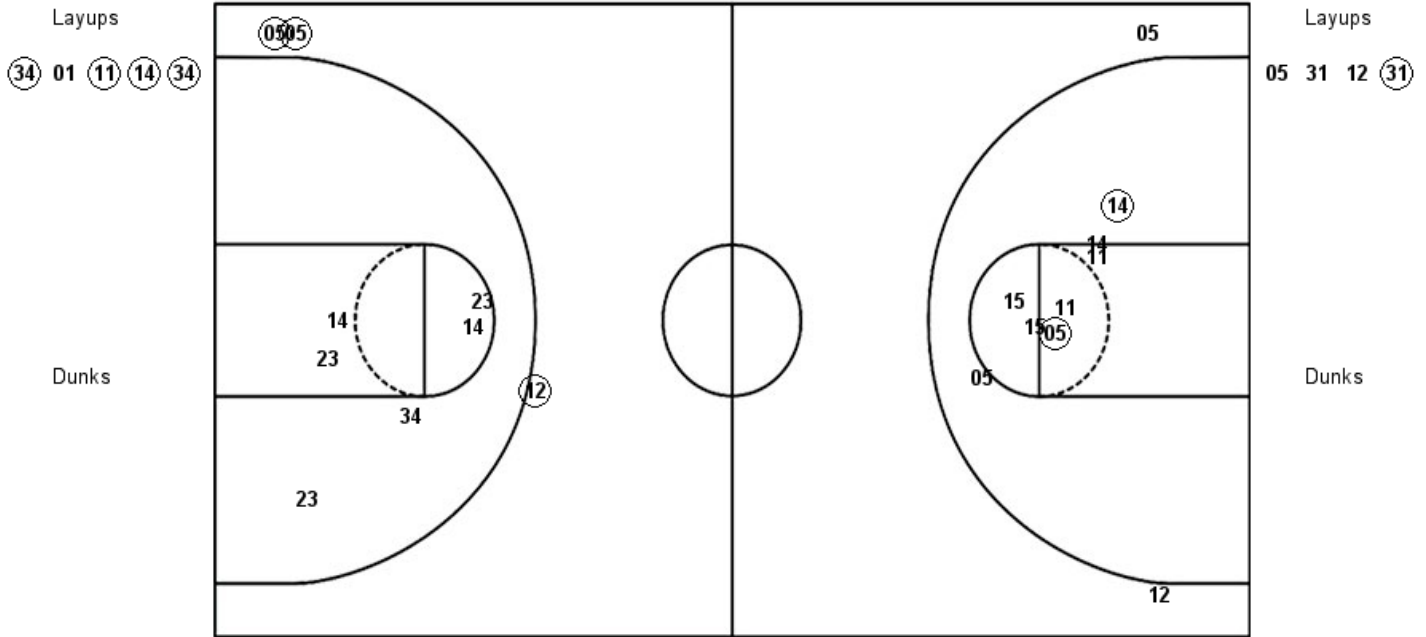
VISITORS: Eastern Ill.	Time	Score	HOME: SIUE
11 PACE, KARLE			1 KING, CHRISTEN
14 MCRAE, GRACE			5 ALSTON, JAY'NEE
15 STEELE, TAYLOR			14 JONES, MICAH
41 WAHL, ABBY			23 TROECKLER, ALLIE
5 LENNOX, GRACE			34 BAUMAN, SYDNEY
SUB OUT: 14 MCRAE, GRACE	08:49	45-57	
SUB IN: 41 WAHL, ABBY	08:49		
SUB OUT: 31 SMITH, JALISHA	08:05	45-58	
SUB IN: 12 TELLEZ, CARMEN	08:05		
	07:34	45-59	
	07:34		SUB OUT: ALSTON, JAY'NEE
			SUB IN: EVERIDGE, RIANA
SUB OUT: 12 TELLEZ, CARMEN	06:26	47-62	
SUB IN: 31 SMITH, JALISHA	06:26		
	06:12	47-63	
	06:12		SUB OUT: TROECKLER, ALLIE
			SUB IN: HALL, MIKALA
SUB OUT: 41 WAHL, ABBY	06:12		
SUB IN: 14 MCRAE, GRACE	06:12		
SUB OUT: 15 STEELE, TAYLOR	05:10	49-66	
SUB IN: 12 TELLEZ, CARMEN	05:10		
	04:39	49-68	
	04:39		SUB OUT: KOEHLER, KAI
	04:39		SUB IN: KING, CHRISTEN
SUB OUT: 11 PACE, KARLE	04:39		
SUB IN: 15 STEELE, TAYLOR	04:39		
SUB OUT: 31 SMITH, JALISHA	04:39		
SUB IN: 2 HUGHES, JORDYN	04:39		
SUB OUT: 14 MCRAE, GRACE	03:39	51-69	
SUB IN: 41 WAHL, ABBY	03:39		
	03:20	53-70	
	03:20		SUB OUT: EVERIDGE, RIANA
			SUB IN: AKUEN, ALEK
SUB OUT: 12 TELLEZ, CARMEN	03:20		
SUB IN: 11 PACE, KARLE	03:20		
	02:42	56-71	
	02:42		SUB OUT: HALL, MIKALA
			SUB IN: TROECKLER, ALLIE
	01:03	59-73	
	01:03		SUB OUT: BAUMAN, SYDNEY
			SUB IN: WILLIAMS, KELSIE
SUB OUT: 2 HUGHES, JORDYN	01:03		
SUB IN: 12 TELLEZ, CARMEN	01:03		
SUB OUT: 5 LENNOX, GRACE	01:03		
SUB IN: 44 TELLEZ, CAMINO	01:03		
SUB OUT: 11 PACE, KARLE	01:03		
SUB IN: 21 STULL, HALLE	01:03		
SUB OUT: 15 STEELE, TAYLOR	01:03		
SUB IN: 31 SMITH, JALISHA	01:03		
SUB OUT: 41 WAHL, ABBY	01:03		
SUB IN: 22 MILLER, DAMONIQUE	01:03		
	00:54	59-75	
	00:54		SUB OUT: TROECKLER, ALLIE
			SUB IN: HALL, MIKALA
SUB OUT: 12 TELLEZ, CARMEN	00:36	59-76	
SUB IN: 2 HUGHES, JORDYN	00:36		
SUB OUT: 31 SMITH, JALISHA	00:36		
SUB IN: 12 TELLEZ, CARMEN	00:36		
SUB OUT: 12 TELLEZ, CARMEN	00:12	62-77	
SUB IN: 31 SMITH, JALISHA	00:12		

Eastern Ill. 62, SIUE 78

Official Shot Chart
Eastern Ill. vs SIUE
PERIOD 1 Shots
 February 15, 2019 at Vadalabene Center - Edwardsville, Ill.

SIUE

Eastern Ill.



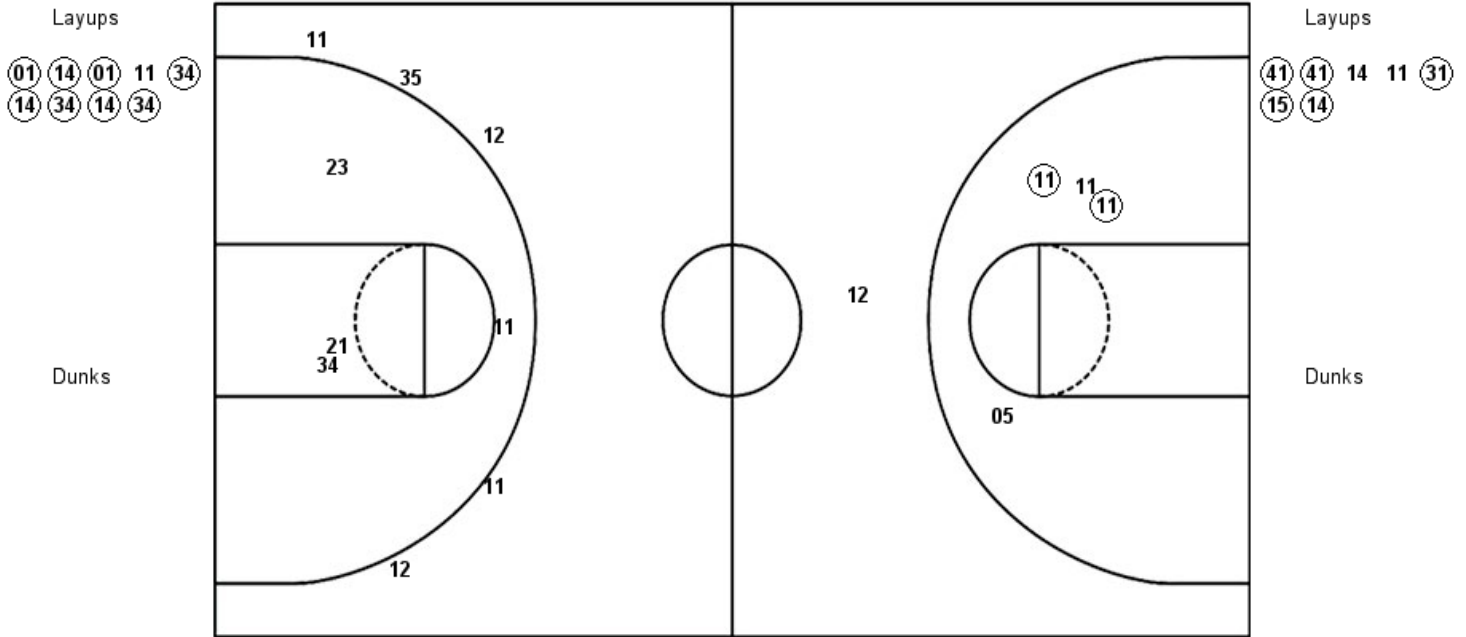
SIUE: Period 1	Made	Att	Pct
Layups	4	5	80.0
Dunks	0	0	0
2PT Field Goals	4	11	36.4
3PT Field Goals	3	3	100.0
Total Field Goals	7	14	50.0

EU: Period 1	Made	Att	Pct
Layups	1	4	25.0
Dunks	0	0	0
2PT Field Goals	3	12	25.0
3PT Field Goals	0	2	00.0
Total Field Goals	3	14	21.4

Official Shot Chart
Eastern Ill. vs SIUE
PERIOD 2 Shots
 February 15, 2019 at Vadalabene Center - Edwardsville, Ill.

SIUE

Eastern Ill.



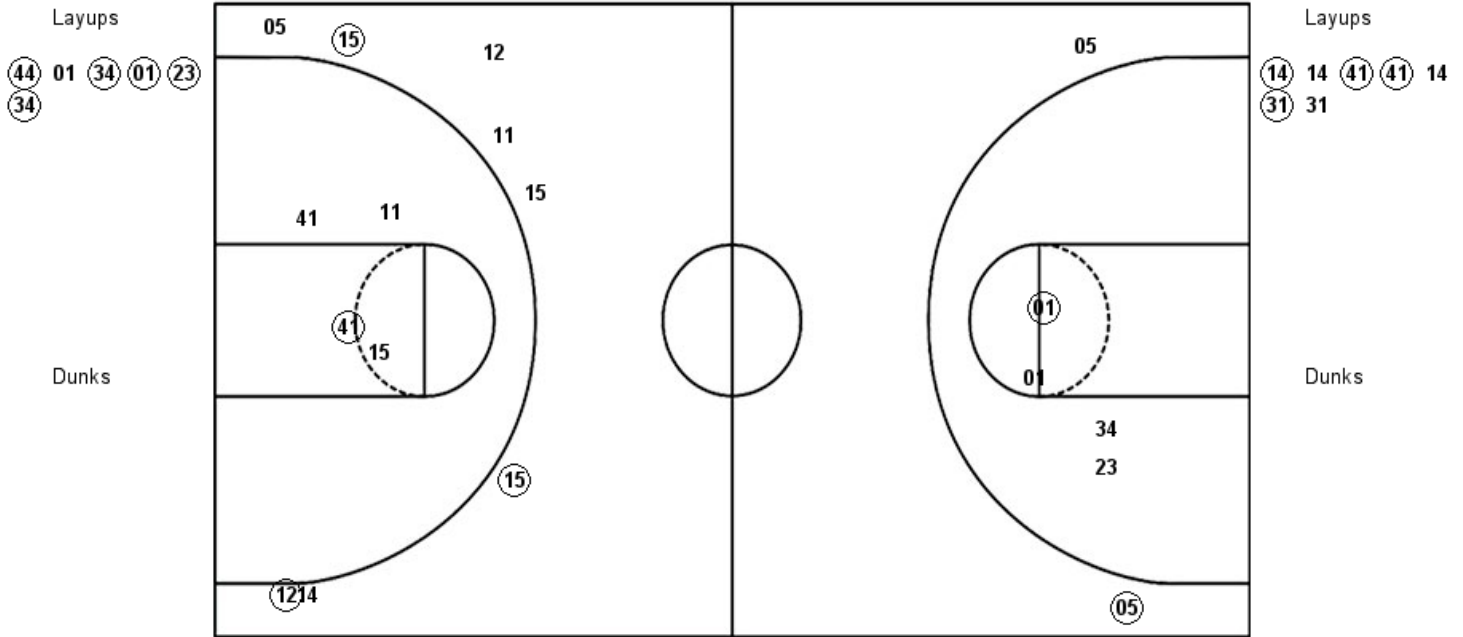
SIUE: Period 2	Made	Att	Pct
Layups	8	9	88.9
Dunks	0	0	0
2PT Field Goals	8	13	61.5
3PT Field Goals	0	5	00.0
Total Field Goals	8	18	44.4

EU: Period 2	Made	Att	Pct
Layups	5	7	71.4
Dunks	0	0	0
2PT Field Goals	7	11	63.6
3PT Field Goals	0	1	00.0
Total Field Goals	7	12	58.3

Official Shot Chart
Eastern Ill. vs SIUE
PERIOD 3 Shots
 February 15, 2019 at Vadalabene Center - Edwardsville, Ill.

SIUE

Eastern Ill.



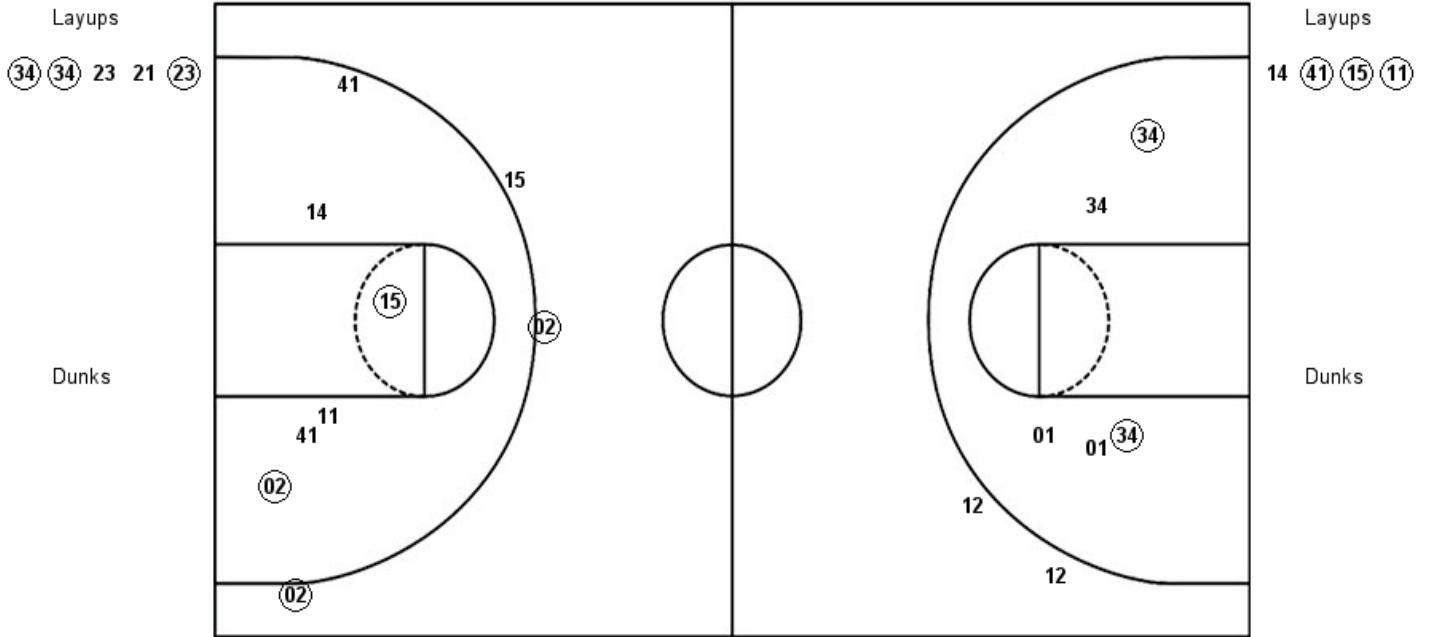
SIUE: Period 3	Made	Att	Pct
Layups	5	6	83.3
Dunks	0	0	0
2PT Field Goals	6	10	60.0
3PT Field Goals	1	2	50.0
Total Field Goals	7	12	58.3

EU: Period 3	Made	Att	Pct
Layups	4	7	57.1
Dunks	0	0	0
2PT Field Goals	5	11	45.5
3PT Field Goals	3	8	37.5
Total Field Goals	8	19	42.1

Official Shot Chart
Eastern Ill. vs SIUE
PERIOD 4 Shots
 February 15, 2019 at Vadalabene Center - Edwardsville, Ill.

SIUE

Eastern Ill.

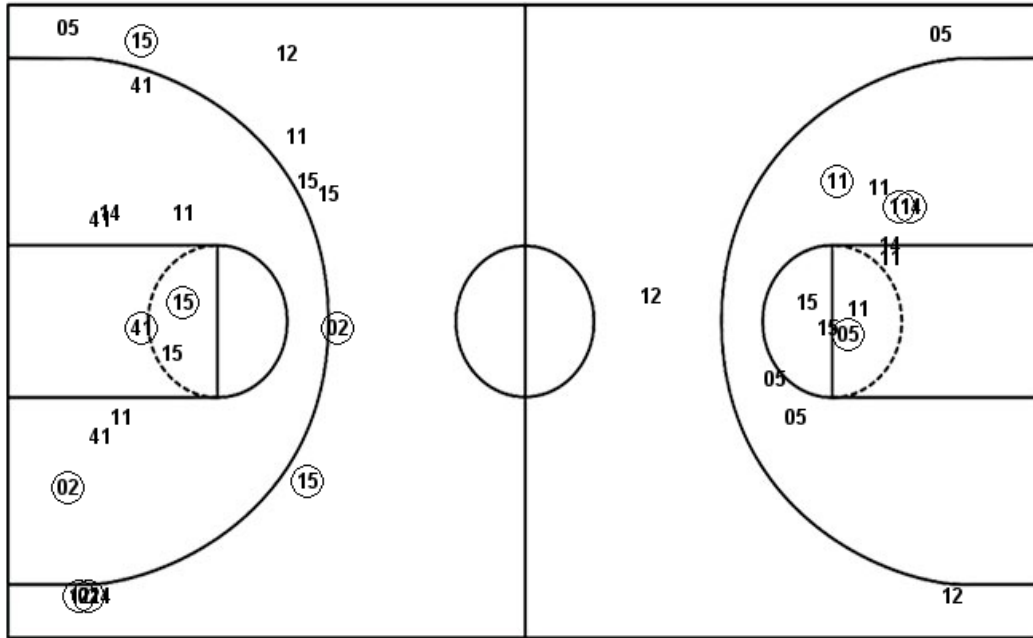


SIUE: Period 4	Made	Att	Pct
Layups	3	5	60.0
Dunks	0	0	0
2PT Field Goals	5	10	50.0
3PT Field Goals	0	2	00.0
Total Field Goals	5	12	41.7

EU: Period 4	Made	Att	Pct
Layups	3	4	75.0
Dunks	0	0	0
2PT Field Goals	5	10	50.0
3PT Field Goals	2	3	66.7
Total Field Goals	7	13	53.8

**Official Shot Chart
Eastern Ill. vs SIUE
Eastern Ill. Team Shots
February 15, 2019 at Vadalabene Center - Edwardsville, Ill.**

Layups



Layups

Dunks

Dunks

EU : Period 1	Made	Att	Pct
Layups	1	4	25.0
Dunks	0	0	0
2PT Field Goals	3	12	25.0
3PT Field Goals	0	2	00.0
Total Field Goals	3	14	21.4

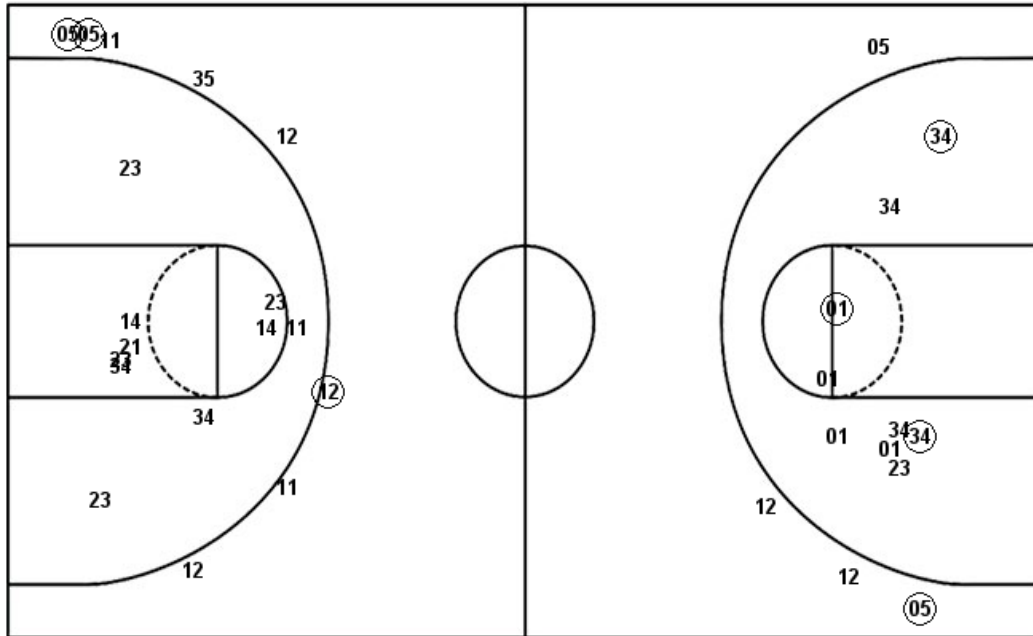
EU : Period 3	Made	Att	Pct
Layups	4	7	57.1
Dunks	0	0	0
2PT Field Goals	5	11	45.5
3PT Field Goals	3	8	37.5
Total Field Goals	8	19	42.1

EU : Period 2	Made	Att	Pct
Layups	5	7	71.4
Dunks	0	0	0
2PT Field Goals	7	11	63.6
3PT Field Goals	0	1	00.0
Total Field Goals	7	12	58.3

EU : Period 4	Made	Att	Pct
Layups	3	4	75.0
Dunks	0	0	0
2PT Field Goals	5	10	50.0
3PT Field Goals	2	3	66.7
Total Field Goals	7	13	53.8

Official Shot Chart
Eastern Ill. vs SIUE
SIUE Team Shots
 February 15, 2019 at Vadalabene Center - Edwardsville, Ill.

Layups



Layups

Dunks

Dunks

SIE: Period 1	Made	Att	Pct
Layups	4	5	80.0
Dunks	0	0	0
2PT Field Goals	4	11	36.4
3PT Field Goals	3	3	100.0
Total Field Goals	7	14	50.0

SIE: Period 3	Made	Att	Pct
Layups	5	6	83.3
Dunks	0	0	0
2PT Field Goals	6	10	60.0
3PT Field Goals	1	2	50.0
Total Field Goals	7	12	58.3

SIE: Period 2	Made	Att	Pct
Layups	8	9	88.9
Dunks	0	0	0
2PT Field Goals	8	13	61.5
3PT Field Goals	0	5	00.0
Total Field Goals	8	18	44.4

SIE: Period 4	Made	Att	Pct
Layups	3	5	60.0
Dunks	0	0	0
2PT Field Goals	5	10	50.0
3PT Field Goals	0	2	00.0
Total Field Goals	5	12	41.7