

## FINAL SCORE



**Eastern Kentucky**

**55**



**SIUE**

**74**

February 02, 2019 • Vadalabene Center - Edwardsville, Ill.

## FINAL STATISTICS

**Official Box Score**  
**Eastern Kentucky vs SIUE**  
**Game Totals -- Final Statistics**  
**February 02, 2019 at Vadalabene Center - Edwardsville, Ill.**

**Eastern Kentucky 55**

No.	Player	S	Pts	FG	3FG	FT	OR	DR	TR	PF	A	TO	Blk	Stl	Min	+/-
03	Cecil, Mashayla	3	1-6	1-5	0-0	0	3	3	0	3	2	0	2	20	-12	
14	Solomon, Shay	2	1-5	0-1	0-0	0	2	2	4	4	2	1	0	23	-15	
15	Bass, Bria	9	2-9	2-6	3-4	0	5	5	2	2	1	0	2	28	-7	
25	Murphy, Paige	7	3-5	1-2	0-0	0	1	1	0	0	0	0	1	30	-14	
30	Kaifes, Catie	18	7-14	4-10	0-0	3	1	4	3	4	2	0	5	38	-20	
01	Clark, Valerie	0	0-0	0-0	0-0	0	0	0	1	0	0	0	0	7	-7	
02	Goodlett, Teri	11	5-14	1-8	0-0	1	1	2	0	3	2	0	1	32	-22	
31	Mccoy, Hailey	0	0-1	0-0	0-0	0	1	1	0	0	1	0	0	5	-3	
33	Berry, Aasiya	5	2-3	0-0	1-1	0	1	1	0	0	0	0	0	7	3	
42	Grice, Brittany	0	0-2	0-0	0-0	1	0	1	4	0	1	0	0	10	2	
Team							1	3	4	0						
<b>TOTALS</b>		<b>55</b>	<b>21-59</b>	<b>9-32</b>	<b>4-5</b>	<b>6</b>	<b>18</b>	<b>24</b>	<b>14</b>	<b>16</b>	<b>11</b>	<b>1</b>	<b>11</b>	<b>199</b>		

*Shooting By Period*

Period	FG	FG%	3FG	3FG%	FT	FT%
1st Qtr	8-15	53%	3-6	50%	2-2	100%
2nd Qtr	4-13	31%	3-9	33%	0-0	0%
3rd Qtr	5-14	36%	2-6	33%	1-2	50%
4th Qtr	4-17	24%	1-11	09%	1-1	100%
1st Half	12-28	43%	6-15	40%	2-2	100%
2nd Half	9-31	29%	3-17	18%	2-3	67%
<b>Game</b>	<b>21-59</b>	<b>35.6%</b>	<b>9-32</b>	<b>28.1%</b>	<b>4-5</b>	<b>80.0%</b>

*Last FG: 4th-02:09*  
*Biggest Run: 8-0*  
*Largest lead: By 12 at 2-02:57*  
*Technical Fouls: None.*

**SIUE 74**

No.	Player	S	Pts	FG	3FG	FT	OR	DR	TR	PF	A	TO	Blk	Stl	Min	+/-
02	Bell, Nakiah	7	2-5	2-5	1-3	0	2	2	0	7	1	0	2	24	23	
11	Keith, Mikia	7	3-5	1-3	0-0	0	2	2	1	1	1	0	0	22	3	
21	Akuen, Alek	2	1-3	0-0	0-0	2	0	2	1	0	2	0	0	4	-6	
23	Troeckler, Allie	4	2-6	0-0	0-0	3	3	6	0	5	1	0	1	25	8	
34	Bauman, Sydney	5	1-4	0-0	3-4	1	5	6	1	3	1	1	0	14	10	
01	King, Christen	4	2-4	0-0	0-0	1	2	3	0	5	1	0	0	21	9	
12	Koehler, Kai	0	0-2	0-2	0-0	0	1	1	1	2	0	0	0	12	18	
14	Jones, Micah	22	10-13	0-0	2-6	1	5	6	2	2	2	0	1	27	13	
24	Boone, Lyric	6	3-3	0-0	0-0	0	2	2	0	0	2	0	1	5	2	
25	Whitlock, Zaria	8	4-5	0-0	0-2	0	4	4	1	0	2	0	1	23	17	
35	Hall, Mikala	9	4-6	1-2	0-0	0	3	3	1	1	2	0	1	18	3	
44	Everidge, Riana	0	0-2	0-1	0-0	0	1	1	0	0	0	0	0	3	-8	
50	Williams, Kelsie	0	0-0	0-0	0-0	0	0	0	1	0	0	0	0	2	3	
Team							3	1	4	0						
<b>TOTALS</b>		<b>74</b>	<b>32-58</b>	<b>4-13</b>	<b>6-15</b>	<b>11</b>	<b>31</b>	<b>42</b>	<b>9</b>	<b>26</b>	<b>15</b>	<b>1</b>	<b>7</b>	<b>199</b>		

*Shooting By Period*

Period	FG	FG%	3FG	3FG%	FT	FT%
1st Qtr	8-14	57%	0-0	0%	1-2	50%
2nd Qtr	5-15	33%	2-8	25%	1-5	20%
3rd Qtr	9-15	60%	1-2	50%	2-6	33%
4th Qtr	10-14	71%	1-3	33%	2-2	100%
1st Half	13-29	45%	2-8	25%	2-7	29%
2nd Half	19-29	66%	2-5	40%	4-8	50%
<b>Game</b>	<b>32-58</b>	<b>55.2%</b>	<b>4-13</b>	<b>30.8%</b>	<b>6-15</b>	<b>40.0%</b>

*Last FG: 4th-00:43*  
*Biggest Run: 14-0*  
*Largest lead: By 19 at 4-00:43*  
*Technical Fouls: None.*

*Game Notes:*

Officials: **Stacey Lee,Ryan Durham,Doug Klenc**  
Attendance: **704**

Start Time: **2019-02-02 20:02:21**  
End Time: **2019-02-02 21:46:02**  
Game Duration: **103**  
Conference Game;

Score	1st	2nd	3rd	4th	TOT
EKU	21	11	13	10	<b>55</b>
SIUE	17	13	21	23	<b>74</b>

**EKU led for 18:31. SIUE led for 18:16.**  
**Game was tied for 3:07.**  
Times tied: 3      Lead Changes: 2

Points from	EKU	SIUE
In the Paint	18	54
Off Turns	5	19
2nd Chance	9	14
Fast Break	7	4
Bench	16	49

**Official Box Score**  
**Eastern Kentucky vs SIUE**  
**First Half Statistics Only**  
**February 02, 2019 at Vadalabene Center - Edwardsville, Ill.**

**Eastern Kentucky 32**

No.	Player	S	Pts	FG	3FG	FT	OR	DR	TR	PF	A	TO	Blk	Stl	Min	+/-
14	Solomon, Shay		2	1-4	0-1	0-0	0	2	2	2	4	1	0	0	9	5
15	Bass, Bria		5	1-2	1-2	2-2	0	4	4	2	0	0	0	1	10	11
25	Murphy, Paige		3	1-1	1-1	0-0	0	1	1	0	0	0	0	0	15	5
30	Kaifes, Catie		8	3-6	2-5	0-0	0	1	1	0	3	0	0	3	19	-1
31	Mccoy, Hailey		0	0-1	0-0	0-0	0	1	1	0	0	1	0	0	5	-3
33	Berry, Aasiya		2	1-2	0-0	0-0	0	1	1	0	0	0	0	0	4	1
42	Grice, Brittany		0	0-1	0-0	0-0	0	0	0	2	0	0	0	0	6	7
01	Clark, Valerie		0	0-0	0-0	0-0	0	0	0	1	0	0	0	0	7	-7
02	Goodlett, Teri		9	4-9	1-4	0-0	1	0	1	0	1	1	0	0	14	-5
03	Cecil, Mashayla		3	1-2	1-2	0-0	0	2	2	0	2	2	0	1	11	-3
	Team		0	0-0	0-0	0-0	1	2	3	0	0	0	0	0	0	
<b>TOTALS</b>			<b>32</b>	<b>12-28</b>	<b>6-15</b>	<b>2-2</b>	<b>2</b>	<b>14</b>	<b>16</b>	<b>7</b>	<b>10</b>	<b>5</b>	<b>0</b>	<b>5</b>	<b>100</b>	

*Shooting By Period*

Period	FG	FG%	3FG	3FG%	FT	FT%
1st Qtr	8-15	53%	3-6	50%	2-2	100%
2nd Qtr	4-13	31%	3-9	33%	0-0	0%
1st Half	12-28	43%	6-15	40%	2-2	100%
Game	21-59	35.6%	9-32	28.1%	4-5	80.0%

Last FG Half: EKU 2nd-02:57

**SIUE 30**

No.	Player	S	Pts	FG	3FG	FT	OR	DR	TR	PF	A	TO	Blk	Stl	Min	+/-
01	King, Christen		2	1-3	0-0	0-0	1	1	2	0	2	1	0	0	10	3
02	Bell, Nakiah		6	2-4	2-4	0-0	0	1	1	0	1	0	0	1	10	4
11	Keith, Mikia		0	0-1	0-1	0-0	0	2	2	0	1	0	0	0	13	-5
12	Koehler, Kai		0	0-2	0-2	0-0	0	1	1	0	0	0	0	0	6	10
14	Jones, Micah		13	6-8	0-0	1-3	0	2	2	0	1	1	0	0	12	1
21	Akuen, Alek		2	1-2	0-0	0-0	0	0	0	0	0	0	0	0	3	-3
23	Troeckler, Allie		0	0-2	0-0	0-0	2	1	3	0	3	1	0	0	14	-5
24	Boone, Lyric		0	0-0	0-0	0-0	0	0	0	0	0	0	0	0	0	0
25	Whitlock, Zaria		4	2-3	0-0	0-2	0	3	3	1	0	1	0	1	12	2
34	Bauman, Sydney		1	0-1	0-0	1-2	0	1	1	1	1	1	1	0	8	-3
35	Hall, Mikala		2	1-1	0-0	0-0	0	1	1	0	1	2	0	0	10	-6
44	Everidge, Riana		0	0-2	0-1	0-0	0	1	1	0	0	0	0	0	3	-8
50	Williams, Kelsie		0	0-0	0-0	0-0	0	0	0	0	0	0	0	0	0	0
	Team		0	0-0	0-0	0-0	1	0	1	0	0	0	0	0	0	
<b>TOTALS</b>			<b>30</b>	<b>13-29</b>	<b>2-8</b>	<b>2-7</b>	<b>4</b>	<b>14</b>	<b>18</b>	<b>2</b>	<b>10</b>	<b>7</b>	<b>1</b>	<b>2</b>	<b>100</b>	

*Shooting By Period*

Period	FG	FG%	3FG	3FG%	FT	FT%
1st Qtr	8-14	57%	0-0	0%	1-2	50%
2nd Qtr	5-15	33%	2-8	25%	1-5	20%
1st Half	13-29	45%	2-8	25%	2-7	29%
Game	32-58	55.2%	4-13	30.8%	6-15	40.0%

Last FG Half: SIE 2nd-00:41

Game Notes:

Officials: **Stacey Lee, Ryan Durham, Doug Klenc**  
Attendance: **704**

Start Time: **2019-02-02 20:02:21**  
End Time: **2019-02-02 21:46:02**  
Game Duration: **103**  
Conference Game:

Score	1st	2nd	3rd	4th	TOT
EKU	21	11	13	10	<b>55</b>
SIE	17	13	21	23	<b>74</b>

Points from (This Period)	EKU	SIE
In the Paint	8	22
Off Turns	2	8
2nd Chance	3	5
Fast Break	5	0
Bench	11	21

**Official Box Score**  
**Eastern Kentucky vs SIUE**  
**First Quarter Statistics Only**  
**February 02, 2019 at Vadalabene Center - Edwardsville, Ill.**

**Eastern Kentucky 21**

No.	Player	S	Pts	FG	3FG	FT	OR	DR	TR	PF	A	TO	Blk	Stl	Min	+/-
03	Cecil, Mashayla		0	0-0	0-0	0-0	0	1	1	0	1	2	0	1	4	4
14	Solomon, Shay		2	1-4	0-1	0-0	0	0	0	0	4	1	0	0	9	5
15	Bass, Bria		2	0-1	0-1	2-2	0	3	3	0	0	0	0	1	6	3
25	Murphy, Paige		3	1-1	1-1	0-0	0	1	1	0	0	0	0	0	10	4
30	Kaifes, Catie		5	2-3	1-2	0-0	0	0	0	0	1	0	0	1	10	4
01	Clark, Valerie		0	0-0	0-0	0-0	0	0	0	0	0	0	0	0	0	0
02	Goodlett, Teri		7	3-3	1-1	0-0	1	0	1	0	0	0	0	0	6	0
31	Mccoy, Hailey		0	0-0	0-0	0-0	0	0	0	0	0	0	0	0	0	0
33	Berry, Aasiya		2	1-2	0-0	0-0	0	1	1	0	0	0	0	0	4	1
42	Grice, Brittany		0	0-1	0-0	0-0	0	0	0	1	0	0	0	0	1	-1
	Team						1	1	2	0		0				
<b>TOTALS</b>			<b>21</b>	<b>8-15</b>	<b>3-6</b>	<b>2-2</b>	<b>2</b>	<b>7</b>	<b>9</b>	<b>1</b>	<b>6</b>	<b>3</b>	<b>0</b>	<b>3</b>	<b>50</b>	

*Shooting By Period*

Period	FG	FG%	3FG	3FG%	FT	FT%
1st Qtr	8-15	53%	3-6	50%	2-2	100%
2nd Qtr	4-13	31%	3-9	33%	0-0	0%
1st Half	8-15	53%	3-6	50%	2-2	100%
1st Half	12-28	43%	6-15	40%	2-2	100%
Game	21-59	35.6%	9-32	28.1%	4-5	80.0%

**SIUE 17**

No.	Player	S	Pts	FG	3FG	FT	OR	DR	TR	PF	A	TO	Blk	Stl	Min	+/-
02	Bell, Nakiah		0	0-0	0-0	0-0	0	0	0	0	0	0	0	0	3	-3
11	Keith, Mikia		0	0-0	0-0	0-0	0	1	1	0	0	0	0	0	4	-3
21	Akuen, Alek		2	1-2	0-0	0-0	0	0	0	0	0	0	0	0	3	-3
23	Troeckler, Allie		0	0-1	0-0	0-0	0	1	1	0	3	1	0	0	9	-4
34	Bauman, Sydney		0	0-1	0-0	0-0	0	0	0	0	1	0	0	0	3	-3
01	King, Christen		0	0-2	0-0	0-0	0	1	1	0	1	0	0	0	7	-1
12	Koehler, Kai		0	0-0	0-0	0-0	0	0	0	0	0	0	0	0	0	0
14	Jones, Micah		11	5-5	0-0	1-2	0	1	1	0	0	1	0	0	7	-1
24	Boone, Lyric		0	0-0	0-0	0-0	0	0	0	0	0	0	0	0	0	0
25	Whitlock, Zaria		2	1-2	0-0	0-0	0	1	1	1	0	0	0	1	7	-1
35	Hall, Mikala		2	1-1	0-0	0-0	0	0	0	0	1	1	0	0	7	-1
44	Everidge, Riana		0	0-0	0-0	0-0	0	0	0	0	0	0	0	0	0	0
50	Williams, Kelsie		0	0-0	0-0	0-0	0	0	0	0	0	0	0	0	0	0
	Team						0	0	0	0	0	0	0	0	0	0
<b>TOTALS</b>			<b>17</b>	<b>8-14</b>	<b>0-0</b>	<b>1-2</b>	<b>0</b>	<b>5</b>	<b>5</b>	<b>1</b>	<b>6</b>	<b>3</b>	<b>0</b>	<b>1</b>	<b>50</b>	

*Shooting By Period*

Period	FG	FG%	3FG	3FG%	FT	FT%
1st Qtr	8-14	57%	0-0	0%	1-2	50%
2nd Qtr	5-15	33%	2-8	25%	1-5	20%
1st Half	8-14	57%	0-0	0%	1-2	50%
1st Half	13-29	45%	2-8	25%	2-7	29%
Game	32-58	55.2%	4-13	30.8%	6-15	40.0%

*Game Notes:*

Officials: Stacey Lee, Ryan Durham, Doug Klenc  
 Attendance: 704

Start Time: 2019-02-02 20:02:21  
 End Time: 2019-02-02 21:46:02  
 Game Duration: 103  
 Conference Game:

Score	1st	2nd	3rd	4th	TOT
EKU	21	11	13	10	<b>55</b>
SIUE	17	13	21	23	<b>74</b>

Points from (This Period)	EKU	SIUE
In the Paint	6	16
Off Turns	0	4
2nd Chance	3	0
Fast Break	3	0
Bench	9	15

**Official Play-By-Play**  
**Eastern Kentucky vs SIUE**  
**First Quarter**  
**February 02, 2019 at Vadalabene Center - Edwardsville, Ill.**

**Period 1**

**Starters:**

**Eastern Kentucky:** 14 SOLOMON, SHAY; 15 BASS, BRIA; 25 MURPHY, PAIGE; 30 KAIFES, CATIE; 3 CECIL, MASHAYLA;  
**SIUE:** 2 BELL, NAKIAH; 11 KEITH, MIKIA; 21 AKUEN, ALEK; 23 TROECKLER, ALLIE; 34 BAUMAN, SYDNEY;

Time	VISITORS: Eastern Kentucky	Score	Margin	HOME: SIUE
09:43				MISSED LAYUP by TROECKLER, ALLIE
09:40	REBOUND (DEF) by BASS, BRIA			
09:38	TURNOVER (LOSTBALL) by CECIL, MASHAYLA			
09:23				TURNOVER (BADPASS) by TROECKLER, ALLIE
09:23	STEAL by KAIFES, CATIE			
09:17	TURNOVER (LOSTBALL) by SOLOMON, SHAY			
08:55		2-0	H 2	GOOD! LAYUP by AKUEN, ALEK
08:55				ASSIST by BAUMAN, SYDNEY
08:35	GOOD! JUMPER by KAIFES, CATIE [PNT]	2-2	T	
08:35	ASSIST by SOLOMON, SHAY			
08:12				MISSED JUMPER by AKUEN, ALEK
08:12	REBOUND (DEF) by TEAM			
07:48	GOOD! 3PTR by MURPHY, PAIGE	2-5	V 3	
07:48	ASSIST by CECIL, MASHAYLA			
07:21				MISSED JUMPER by BAUMAN, SYDNEY
07:18	REBOUND (DEF) by CECIL, MASHAYLA			
07:18				SUB OUT: BELL, NAKIAH
07:18				SUB IN: JONES, MICAH
07:18				SUB OUT: KEITH, MIKIA
07:18				SUB IN: KING, CHRISTEN
07:18				SUB OUT: AKUEN, ALEK
07:18				SUB IN: WHITLOCK, ZARIA
07:18				SUB OUT: BAUMAN, SYDNEY
07:18				SUB IN: HALL, MIKALA
07:12	MISSED JUMPER by SOLOMON, SHAY			
07:10	REBOUND (OFF) by TEAM			
07:03	GOOD! 3PTR by KAIFES, CATIE	2-8	V 6	
07:03	ASSIST by SOLOMON, SHAY			
06:50				TURNOVER (LOSTBALL) by HALL, MIKALA
06:50	STEAL by CECIL, MASHAYLA			
06:45	TURNOVER (LOSTBALL) by CECIL, MASHAYLA			
06:45				STEAL by WHITLOCK, ZARIA
06:22		4-8	V 4	GOOD! LAYUP by JONES, MICAH [PNT]
06:22				ASSIST by KING, CHRISTEN
06:01	MISSED JUMPER by SOLOMON, SHAY			
05:58				REBOUND (DEF) by KING, CHRISTEN
05:50	SUB OUT: CECIL, MASHAYLA			
05:50	SUB IN: GOODLETT, TERI			
05:38		6-8	V 2	GOOD! LAYUP by JONES, MICAH [PNT]
05:26				FOUL (PERSONAL) by WHITLOCK, ZARIA
05:26	GOOD! FT by BASS, BRIA	6-9	V 3	
05:26	GOOD! FT by BASS, BRIA	6-10	V 4	
05:13				TURNOVER (BADPASS) by JONES, MICAH
05:13	STEAL by BASS, BRIA			
05:08	SUB OUT: BASS, BRIA			
05:08	SUB IN: BERRY, AASIYA			
05:02	MISSED JUMPER by BERRY, AASIYA			
04:58				REBOUND (DEF) by JONES, MICAH
04:55				MISSED JUMPER by KING, CHRISTEN
04:51	REBOUND (DEF) by BERRY, AASIYA			
04:48	GOOD! 3PTR by GOODLETT, TERI [FB]	6-13	V 7	
04:48	ASSIST by SOLOMON, SHAY			
04:25		8-13	V 5	GOOD! JUMPER by JONES, MICAH [PNT]
04:25				ASSIST by HALL, MIKALA
04:11				
03:53	MISSED 3PTR by SOLOMON, SHAY			
03:50				REBOUND (DEF) by TROECKLER, ALLIE
03:38		10-13	V 3	GOOD! LAYUP by JONES, MICAH
03:06	GOOD! LAYUP by BERRY, AASIYA	10-15	V 5	
03:06	ASSIST by KAIFES, CATIE			
02:53		12-15	V 3	GOOD! JUMPER by JONES, MICAH
02:53				ASSIST by TROECKLER, ALLIE
02:33	GOOD! JUMPER by SOLOMON, SHAY	12-17	V 5	
02:21		14-17	V 3	GOOD! LAYUP by WHITLOCK, ZARIA
02:21				ASSIST by TROECKLER, ALLIE
02:03	GOOD! JUMPER by GOODLETT, TERI	14-19	V 5	
02:03	ASSIST by SOLOMON, SHAY			
01:50		16-19	V 3	GOOD! LAYUP by HALL, MIKALA [PNT]
01:50				ASSIST by TROECKLER, ALLIE
01:31	GOOD! LAYUP by GOODLETT, TERI	16-21	V 5	
01:30	TIMEOUT 30SEC			
01:30	SUB OUT: SOLOMON, SHAY			
01:30	SUB IN: BASS, BRIA			
01:29	SUB OUT: BERRY, AASIYA			
01:29	SUB IN: GRICE, BRITTANY			
01:26				MISSED LAYUP by WHITLOCK, ZARIA

Time	VISITORS: Eastern Kentucky	Score	Margin	HOME: SIUE
01:22	REBOUND (DEF) by BASS,BRIA			
01:16	MISSED 3PTR by KAIFES,CATIE			
01:13	REBOUND (OFF) by GOODLETT,TERI			
01:10	MISSED LAYUP by GRICE,BRITTANY			
01:07				REBOUND (DEF) by WHITLOCK,ZARIA
00:53	FOUL (PERSONAL) by GRICE,BRITTANY			
00:53		17-21	V 4	GOOD! FT by JONES,MICAH
00:53				SUB OUT: TROECKLER,ALLIE
00:53				SUB IN: KEITH,MIKIA
00:53				MISSED FT by JONES,MICAH
00:51	REBOUND (DEF) by MURPHY,PAIGE			
00:35	MISSED 3PTR by BASS,BRIA			
00:32				REBOUND (DEF) by KEITH,MIKIA
00:03				MISSED JUMPER by KING,CHRISTEN
00:00	REBOUND (DEF) by BASS,BRIA			

### Eastern Kentucky 21, SIUE 17

Points from (This Period)	EKU	SIE
In the Paint	6	16
Off Turns	0	4
2nd Chance	3	0
Fast Break	3	0
Bench	9	15

**Official Box Score**  
**Eastern Kentucky vs SIUE**  
**Second Quarter Statistics Only**  
**February 02, 2019 at Vadalabene Center - Edwardsville, Ill.**

**Eastern Kentucky 11**

No.	Player	S	Pts	FG	3FG	FT	OR	DR	TR	PF	A	TO	Blk	Stl	Min	+/-
03	Cecil, Mashayla		3	1-2	1-2	0-0	0	1	1	0	1	0	0	0	7	-7
14	Solomon, Shay		0	0-0	0-0	0-0	0	2	2	2	0	0	0	0	0	0
15	Bass, Bria		3	1-1	1-1	0-0	0	1	1	2	0	0	0	0	4	8
25	Murphy, Paige		0	0-0	0-0	0-0	0	0	0	0	0	0	0	0	5	1
30	Kaifes, Catie		3	1-3	1-3	0-0	0	1	1	0	2	0	0	2	9	-5
01	Clark, Valerie		0	0-0	0-0	0-0	0	0	0	1	0	0	0	0	7	-7
02	Goodlett, Teri		2	1-6	0-3	0-0	0	0	0	0	1	1	0	0	8	-5
31	Mccoy, Hailey		0	0-1	0-0	0-0	0	1	1	0	0	1	0	0	5	-3
33	Berry, Aasiya		0	0-0	0-0	0-0	0	0	0	0	0	0	0	0	0	0
42	Grice, Brittany		0	0-0	0-0	0-0	0	0	0	1	0	0	0	0	5	8
	Team						0	1	1	0		0				
<b>TOTALS</b>			<b>11</b>	<b>4-13</b>	<b>3-9</b>	<b>0-0</b>	<b>0</b>	<b>7</b>	<b>7</b>	<b>6</b>	<b>4</b>	<b>2</b>	<b>0</b>	<b>2</b>	<b>50</b>	

*Shooting By Period*

Period	FG	FG%	3FG	3FG%	FT	FT%
3rd Qtr	5-14	36%	2-6	33%	1-2	50%
4th Qtr	4-17	24%	1-11	09%	1-1	100%
2nd Half	4-13	31%	3-9	33%	0-0	0%
2nd Half	9-31	29%	3-17	18%	2-3	67%
Game	21-59	35.6%	9-32	28.1%	4-5	80.0%

**SIUE 13**

No.	Player	S	Pts	FG	3FG	FT	OR	DR	TR	PF	A	TO	Blk	Stl	Min	+/-
02	Bell, Nakiah		6	2-4	2-4	0-0	0	1	1	0	1	0	0	1	7	7
11	Keith, Mikia		0	0-1	0-1	0-0	0	1	1	0	1	0	0	0	9	-2
21	Akuen, Alek		0	0-0	0-0	0-0	0	0	0	0	0	0	0	0	0	0
23	Troeckler, Allie		0	0-1	0-0	0-0	2	0	2	0	0	0	0	0	5	-1
34	Bauman, Sydney		1	0-0	0-0	1-2	0	1	1	1	0	1	1	0	5	0
01	King, Christen		2	1-1	0-0	0-0	1	0	1	0	1	1	0	0	3	4
12	Koehler, Kai		0	0-2	0-2	0-0	0	1	1	0	0	0	0	0	6	10
14	Jones, Micah		2	1-3	0-0	0-1	0	1	1	0	1	0	0	0	5	2
24	Boone, Lyric		0	0-0	0-0	0-0	0	0	0	0	0	0	0	0	0	0
25	Whitlock, Zaria		2	1-1	0-0	0-2	0	2	2	0	0	1	0	0	5	3
35	Hall, Mikala		0	0-0	0-0	0-0	0	1	1	0	0	1	0	0	3	-5
44	Everidge, Riana		0	0-2	0-1	0-0	0	1	1	0	0	0	0	0	3	-8
50	Williams, Kelsie		0	0-0	0-0	0-0	0	0	0	0	0	0	0	0	0	0
	Team						1	0	1	0		0				
<b>TOTALS</b>			<b>13</b>	<b>5-15</b>	<b>2-8</b>	<b>1-5</b>	<b>4</b>	<b>9</b>	<b>13</b>	<b>1</b>	<b>4</b>	<b>4</b>	<b>1</b>	<b>1</b>	<b>50</b>	

*Shooting By Period*

Period	FG	FG%	3FG	3FG%	FT	FT%
3rd Qtr	9-15	60%	1-2	50%	2-6	33%
4th Qtr	10-14	71%	1-3	33%	2-2	100%
2nd Half	5-15	33%	2-8	25%	1-5	20%
2nd Half	19-29	66%	2-5	40%	4-8	50%
Game	32-58	55.2%	4-13	30.8%	6-15	40.0%

*Game Notes:*

Officials: Stacey Lee, Ryan Durham, Doug Klenc  
 Attendance: 704

Start Time: 2019-02-02 20:02:21  
 End Time: 2019-02-02 21:46:02  
 Game Duration: 103  
 Conference Game:

Score	1st	2nd	3rd	4th	TOT
EKU	21	11	13	10	<b>55</b>
SIUE	17	13	21	23	<b>74</b>

Points from (This Period)	EKU	SIUE
In the Paint	2	6
Off Turns	2	4
2nd Chance	0	5
Fast Break	2	0
Bench	2	6

**Official Play-By-Play**  
**Eastern Kentucky vs SIUE**  
**Second Quarter**  
**February 02, 2019 at Vadlabene Center - Edwardsville, Ill.**

**Period 2**

**Starters:**

**Eastern Kentucky:** 14 SOLOMON,SHAY; 15 BASS,BRIA; 25 MURPHY,PAIGE; 30 KAIFES,CATIE; 3 CECIL,MASHAYLA;  
**SIUE:** 2 BELL,NAKIAH; 11 KEITH,MIKIA; 21 AKUEN,ALEK; 23 TROECKLER,ALLIE; 34 BAUMAN,SYDNEY;

Time	VISITORS: Eastern Kentucky	Score	Margin	HOME: SIUE
09:30				TURNOVER (LOSTBALL) by KING,CHRISTEN
09:30	STEAL by KAIFES,CATIE			
09:30	SUB OUT: GRICE,BRITTANY			
09:30	SUB IN: BERRY,AASIYA			
09:12	SUB OUT: BERRY,AASIYA			
09:12	SUB IN: GRICE,BRITTANY			
09:12	FOUL (PERSONAL) by GRICE,BRITTANY			
08:49				TURNOVER (3SEC) by WHITLOCK,ZARIA
08:49				SUB OUT: KING,CHRISTEN
08:49				SUB IN: TROECKLER,ALLIE
08:49				SUB OUT: WHITLOCK,ZARIA
08:49				SUB IN: EVERIDGE,RIANA
08:29	MISSED JUMPER by GOODLETT,TERI			
08:26				REBOUND (DEF) by EVERIDGE,RIANA
08:20				MISSED 3PTR by EVERIDGE,RIANA
08:19	REBOUND (DEF) by TEAM			
07:51	MISSED 3PTR by GOODLETT,TERI			
07:48				REBOUND (DEF) by HALL,MIKALA
07:44				TURNOVER (BADPASS) by HALL,MIKALA
07:44	STEAL by KAIFES,CATIE			
07:40	GOOD! LAYUP by GOODLETT,TERI [FB]	17-23	V 6	
07:40	ASSIST by KAIFES,CATIE			
07:27				MISSED LAYUP by EVERIDGE,RIANA
07:24	REBOUND (DEF) by BASS,BRIA			
07:16	GOOD! 3PTR by KAIFES,CATIE	17-26	V 9	
07:16	ASSIST by GOODLETT,TERI			
06:58				MISSED JUMPER by TROECKLER,ALLIE
06:55	REBOUND (DEF) by SOLOMON,SHAY			
06:51	MISSED 3PTR by GOODLETT,TERI			
06:48				REBOUND (DEF) by JONES,MICAH
06:43				SUB OUT: JONES,MICAH
06:43				SUB IN: BAUMAN,SYDNEY
06:43				SUB OUT: HALL,MIKALA
06:43				SUB IN: BELL,NAKIAH
06:43	SUB OUT: GOODLETT,TERI			
06:43	SUB IN: CECIL,MASHAYLA			
06:43	SUB OUT: MURPHY,PAIGE			
06:43	SUB IN: MCCOY,HAILEY			
06:43	SUB OUT: KAIFES,CATIE			
06:43	SUB IN: CLARK,VALERIE			
06:34				MISSED 3PTR by BELL,NAKIAH
06:30	REBOUND (DEF) by MCCOY,HAILEY			
06:09	GOOD! 3PTR by BASS,BRIA	17-29	V 12	
06:09	ASSIST by CECIL,MASHAYLA			
05:57	FOUL (PERSONAL) by BASS,BRIA			
05:57				SUB OUT: EVERIDGE,RIANA
05:57				SUB IN: WHITLOCK,ZARIA
05:52	FOUL (PERSONAL) by BASS,BRIA			
05:52	SUB OUT: BASS,BRIA			
05:52	SUB IN: KAIFES,CATIE			
05:47	FOUL (PERSONAL) by SOLOMON,SHAY			
05:47				MISSED FT by WHITLOCK,ZARIA
05:47				REBOUND (OFF) by TEAM
05:47				MISSED FT by WHITLOCK,ZARIA
05:47	REBOUND (DEF) by SOLOMON,SHAY			
05:47	MISSED 3PTR by CECIL,MASHAYLA			
05:47				REBOUND (DEF) by BELL,NAKIAH
05:44				TURNOVER (TRAVEL) by BAUMAN,SYDNEY
05:32				SUB OUT: TROECKLER,ALLIE
05:32				SUB IN: KOEHLER,KAI
05:13	MISSED 3PTR by KAIFES,CATIE			
05:09				REBOUND (DEF) by KEITH,MIKIA
04:53	FOUL (PERSONAL) by SOLOMON,SHAY			
04:53				
04:53	SUB OUT: GRICE,BRITTANY			
04:53	SUB IN: GOODLETT,TERI			
04:53				MISSED FT by BAUMAN,SYDNEY
04:53				REBOUND (OFF) by TEAM
04:53		18-29	V 11	GOOD! FT by BAUMAN,SYDNEY
04:46	TURNOVER (LOSTBALL) by GOODLETT,TERI			
04:46				STEAL by BELL,NAKIAH
04:36		20-29	V 9	GOOD! LAYUP by WHITLOCK,ZARIA
04:36				ASSIST by BELL,NAKIAH
04:09	MISSED 3PTR by GOODLETT,TERI			
04:06				REBOUND (DEF) by BAUMAN,SYDNEY
04:00				MISSED 3PTR by KOEHLER,KAI



Time	VISITORS: Eastern Kentucky	Score	Margin	HOME: SIUE
03:59	REBOUND (DEF) by CECIL,MASHAYLA			
03:59				FOUL (PERSONAL) by BAUMAN,SYDNEY
03:45	MISSED LAYUP by MCCOY,HAILEY			
03:45				BLOCK by BAUMAN,SYDNEY
03:41				REBOUND (DEF) by WHITLOCK,ZARIA
03:25				MISSED 3PTR by KEITH,MIKIA
03:20	REBOUND (DEF) by KAIFES,CATIE			
02:57	GOOD! 3PTR by CECIL,MASHAYLA	20-32	V 12	
02:57	ASSIST by KAIFES,CATIE			
02:45		23-32	V 9	
02:24	MISSED JUMPER by GOODLETT,TERI			GOOD! 3PTR by BELL,NAKIAH
02:22				REBOUND (DEF) by WHITLOCK,ZARIA
02:11				MISSED 3PTR by KOEHLER,KAI
02:11				REBOUND (OFF) by TEAM
02:11				SUB OUT: BAUMAN,SYDNEY
02:11				SUB IN: JONES,MICAH
02:11				SUB OUT: WHITLOCK,ZARIA
02:11				SUB IN: TROECKLER,ALLIE
01:55		26-32	V 6	
01:55				GOOD! 3PTR by BELL,NAKIAH
01:30	TURNOVER (TRAVEL) by MCCOY,HAILEY			ASSIST by KEITH,MIKIA
01:30	SUB OUT: MCCOY,HAILEY			
01:30	SUB IN: MURPHY,PAIGE			
01:30				SUB OUT: KEITH,MIKIA
01:30				SUB IN: KING,CHRISTEN
01:18		28-32	V 4	
01:18				GOOD! LAYUP by JONES,MICAH
01:18				ASSIST by KING,CHRISTEN
01:18	FOUL (PERSONAL) by CLARK,VALERIE			
01:18				MISSED FT by JONES,MICAH
01:18				REBOUND (OFF) by TROECKLER,ALLIE
00:55				MISSED LAYUP by JONES,MICAH
00:54				REBOUND (OFF) by TROECKLER,ALLIE
00:41		30-32	V 2	
00:41				GOOD! JUMPER by KING,CHRISTEN [PNT]
00:41				ASSIST by JONES,MICAH
00:37	MISSED 3PTR by KAIFES,CATIE			
00:35				REBOUND (DEF) by KOEHLER,KAI
00:24				MISSED 3PTR by BELL,NAKIAH
00:24				REBOUND (OFF) by KING,CHRISTEN
00:01				MISSED JUMPER by JONES,MICAH
00:01	REBOUND (DEF) by TEAM			

### Eastern Kentucky 32, SIUE 30

Points from (This Period)	EKU	SIUE
In the Paint	2	6
Off Turns	2	4
2nd Chance	0	5
Fast Break	2	0
Bench	2	6

**Official Box Score**  
**Eastern Kentucky vs SIUE**  
**Second Half Statistics Only**  
**February 02, 2019 at Vadalabene Center - Edwardsville, Ill.**

**Eastern Kentucky 23**

No.	Player	S	Pts	FG	3FG	FT	OR	DR	TR	PF	A	TO	Blk	Stl	Min	+/-
14	Solomon, Shay		0	0-1	0-0	0-0	0	0	0	2	0	1	1	0	15	-20
15	Bass, Bria		4	1-7	1-4	1-2	0	1	1	0	2	1	0	1	18	-18
25	Murphy, Paige		4	2-4	0-1	0-0	0	0	0	0	0	0	0	1	15	-19
30	Kaifes, Catie		10	4-8	2-5	0-0	3	0	3	3	1	2	0	2	19	-19
31	Mccooy, Hailey		0	0-0	0-0	0-0	0	0	0	0	0	0	0	0	0	0
33	Berry, Aasiya		3	1-1	0-0	1-1	0	0	0	0	0	0	0	0	3	2
42	Grice, Brittany		0	0-1	0-0	0-0	1	0	1	2	0	1	0	0	3	-5
01	Clark, Valerie		0	0-0	0-0	0-0	0	0	0	0	0	0	0	0	0	0
02	Goodlett, Teri		2	1-5	0-4	0-0	0	1	1	0	2	1	0	1	18	-17
03	Cecil, Mashayla		0	0-4	0-3	0-0	0	1	1	0	1	0	0	1	9	-9
	Team		0	0-0	0-0	0-0	0	1	1	0	0	0	0	0	0	0
<b>TOTALS</b>			<b>23</b>	<b>9-31</b>	<b>3-17</b>	<b>2-3</b>	<b>4</b>	<b>4</b>	<b>8</b>	<b>7</b>	<b>6</b>	<b>6</b>	<b>1</b>	<b>6</b>	<b>99</b>	

*Shooting By Period*

Period	FG	FG%	3FG	3FG%	FT	FT%
3rd Qtr	5-14	36%	2-6	33%	1-2	50%
4th Qtr	4-17	24%	1-11	09%	1-1	100%
2nd Half	9-31	29%	3-17	18%	2-3	67%
Game	21-59	35.6%	9-32	28.1%	4-5	80.0%

*Last FG Half: EKU 4th-02:09*

**SIUE 44**

No.	Player	S	Pts	FG	3FG	FT	OR	DR	TR	PF	A	TO	Blk	Stl	Min	+/-
01	King, Christen		2	1-1	0-0	0-0	0	1	1	0	3	0	0	0	11	6
02	Bell, Nakiah		1	0-1	0-1	1-3	0	1	1	0	6	1	0	1	15	19
11	Keith, Mikia		7	3-4	1-2	0-0	0	0	0	1	0	1	0	0	10	8
12	Koehler, Kai		0	0-0	0-0	0-0	0	0	0	1	2	0	0	0	6	8
14	Jones, Micah		9	4-5	0-0	1-3	1	3	4	2	1	1	0	1	14	12
21	Akuen, Alek		0	0-1	0-0	0-0	2	0	2	1	0	2	0	0	2	-3
23	Troeckler, Allie		4	2-4	0-0	0-0	1	2	3	0	2	0	0	1	10	13
24	Boone, Lyrice		6	3-3	0-0	0-0	0	2	2	0	0	2	0	1	5	2
25	Whitlock, Zaria		4	2-2	0-0	0-0	0	1	1	0	0	1	0	0	10	15
34	Bauman, Sydney		4	1-3	0-0	2-2	1	4	5	0	2	0	0	0	7	13
35	Hall, Mikala		7	3-5	1-2	0-0	0	2	2	1	0	0	0	1	8	9
44	Everidge, Riana		0	0-0	0-0	0-0	0	0	0	0	0	0	0	0	0	0
50	Williams, Kelsie		0	0-0	0-0	0-0	0	0	0	1	0	0	0	0	2	3
	Team		0	0-0	0-0	0-0	2	1	3	0	0	0	0	0	0	0
<b>TOTALS</b>			<b>44</b>	<b>19-29</b>	<b>2-5</b>	<b>4-8</b>	<b>7</b>	<b>17</b>	<b>24</b>	<b>7</b>	<b>16</b>	<b>8</b>	<b>0</b>	<b>5</b>	<b>99</b>	

*Shooting By Period*

Period	FG	FG%	3FG	3FG%	FT	FT%
3rd Qtr	9-15	60%	1-2	50%	2-6	33%
4th Qtr	10-14	71%	1-3	33%	2-2	100%
2nd Half	19-29	66%	2-5	40%	4-8	50%
Game	32-58	55.2%	4-13	30.8%	6-15	40.0%

*Last FG Half: SIE 4th-00:43*

*Game Notes:*

Officials: Stacey Lee,Ryan Durham,Doug Klenc  
Attendance: 704

Start Time: 2019-02-02 20:02:21  
End Time: 2019-02-02 21:46:02  
Game Duration: 103  
Conference Game;

Score	1st	2nd	3rd	4th	TOT
EKU	21	11	13	10	<b>55</b>
SIE	17	13	21	23	<b>74</b>

Points from (This Period)	EKU	SIE
In the Paint	10	32
Off Turns	3	11
2nd Chance	6	9
Fast Break	2	4
Bench	5	28

**Official Box Score**  
**Eastern Kentucky vs SIUE**  
**Third Quarter Statistics Only**  
**February 02, 2019 at Vadalabene Center - Edwardsville, Ill.**

**Eastern Kentucky 23**

No.	Player	S	Pts	FG	3FG	FT	OR	DR	TR	PF	A	TO	Blk	Stl	Min	+/-
03	Cecil, Mashayla		0	0-1	0-1	0-0	0	0	0	0	0	0	0	0	2	-4
14	Solomon, Shay		0	0-1	0-0	0-0	0	0	0	1	0	0	1	0	10	-8
15	Bass, Bria		1	0-3	0-1	1-2	0	0	0	0	2	0	0	1	10	-8
25	Murphy, Paige		2	1-3	0-1	0-0	0	0	0	0	0	0	0	1	10	-8
30	Kaifes, Catie		8	3-4	2-2	0-0	0	0	0	2	1	1	0	1	10	-8
01	Clark, Valerie		0	0-0	0-0	0-0	0	0	0	0	0	0	0	0	0	0
02	Goodlett, Teri		2	1-2	0-1	0-0	0	1	1	0	0	1	0	1	8	-4
31	Mccoy, Hailey		0	0-0	0-0	0-0	0	0	0	0	0	0	0	0	0	0
33	Berry, Aasiya		0	0-0	0-0	0-0	0	0	0	0	0	0	0	0	0	0
42	Grice, Brittany		0	0-0	0-0	0-0	0	0	0	0	0	0	0	0	0	0
	Team						0	0	0	0		0				
<b>TOTALS</b>			<b>13</b>	<b>5-14</b>	<b>2-6</b>	<b>1-2</b>	<b>0</b>	<b>1</b>	<b>1</b>	<b>3</b>	<b>3</b>	<b>2</b>	<b>1</b>	<b>4</b>	<b>50</b>	

*Shooting By Period*

Period	FG	FG%	3FG	3FG%	FT	FT%
2nd Half	0-0	0%	0-0	0%	0-0	0%
Game	21-59	35.6%	9-32	28.1%	4-5	80.0%

**SIUE 44**

No.	Player	S	Pts	FG	3FG	FT	OR	DR	TR	PF	A	TO	Blk	Stl	Min	+/-
02	Bell, Nakiah		1	0-1	0-1	1-3	0	1	1	0	4	1	0	1	10	8
11	Keith, Mikia		5	2-2	1-1	0-0	0	0	0	0	0	1	0	0	5	6
21	Akuen, Alek		0	0-1	0-0	0-0	2	0	2	1	0	2	0	0	2	-3
23	Troeckler, Allie		4	2-4	0-0	0-0	1	2	3	0	1	0	0	1	8	9
34	Bauman, Sydney		0	0-1	0-0	0-0	0	3	3	0	0	0	0	0	4	4
01	King, Christen		0	0-0	0-0	0-0	0	0	0	0	1	0	0	0	3	-4
12	Koehler, Kai		0	0-0	0-0	0-0	0	0	0	1	1	0	0	0	4	5
14	Jones, Micah		9	4-5	0-0	1-3	1	2	3	1	0	0	0	0	9	11
24	Boone, Lyric		0	0-0	0-0	0-0	0	0	0	0	0	0	0	0	0	0
25	Whitlock, Zaria		2	1-1	0-0	0-0	0	1	1	0	0	1	0	0	5	4
35	Hall, Mikala		0	0-0	0-0	0-0	0	0	0	0	0	0	0	0	0	0
44	Everidge, Riana		0	0-0	0-0	0-0	0	0	0	0	0	0	0	0	0	0
50	Williams, Kelsie		0	0-0	0-0	0-0	0	0	0	0	0	0	0	0	0	0
	Team						2	0	2	0		0				
<b>TOTALS</b>			<b>21</b>	<b>9-15</b>	<b>1-2</b>	<b>2-6</b>	<b>6</b>	<b>9</b>	<b>15</b>	<b>3</b>	<b>7</b>	<b>5</b>	<b>0</b>	<b>2</b>	<b>50</b>	

*Shooting By Period*

Period	FG	FG%	3FG	3FG%	FT	FT%
2nd Half	0-0	0%	0-0	0%	0-0	0%
Game	32-58	55.2%	4-13	30.8%	6-15	40.0%

*Game Notes:*

Officials: **Stacey Lee,Ryan Durham,Doug Klenc**  
Attendance: **704**

Start Time: **2019-02-02 20:02:21**  
End Time: **2019-02-02 21:46:02**  
Game Duration: **103**  
Conference Game;

Score	1st	2nd	3rd	4th	TOT
EKU	21	11	13	10	<b>55</b>
SIUE	17	13	21	23	<b>74</b>

Points from (This Period)	EKU	SIUE
In the Paint	6	16
Off Turns	3	5
2nd Chance	0	7
Fast Break	2	0
Bench	2	11

**Official Play-By-Play**  
**Eastern Kentucky vs SIUE**  
**Third Quarter**  
**February 02, 2019 at Vadalabene Center - Edwardsville, Ill.**

**Period 3**

**Starters:**

**Eastern Kentucky:** 14 SOLOMON, SHAY; 15 BASS, BRIA; 25 MURPHY, PAIGE; 30 KAIFES, CATIE; 3 CECIL, MASHAYLA;  
**SIUE:** 2 BELL, NAKIAH; 11 KEITH, MIKIA; 21 AKUEN, ALEK; 23 TROECKLER, ALLIE; 34 BAUMAN, SYDNEY;

Time	VISITORS: Eastern Kentucky	Score	Margin	HOME: SIUE
09:46	MISSED 3PTR by CECIL, MASHAYLA			
09:43				REBOUND (DEF) by TROECKLER, ALLIE
09:17		32-32	T	GOOD! LAYUP by KEITH, MIKIA
09:17				ASSIST by BELL, NAKIAH
09:05	MISSED 3PTR by MURPHY, PAIGE			
09:01				REBOUND (DEF) by TROECKLER, ALLIE
08:57				TURNOVER (BADPASS) by BELL, NAKIAH
08:47	MISSED 3PTR by BASS, BRIA			
08:44				REBOUND (DEF) by JONES, MICAH
08:32		34-32	H 2	GOOD! LAYUP by WHITLOCK, ZARIA [PNT]
08:32				ASSIST by TROECKLER, ALLIE
08:06	GOOD! LAYUP by KAIFES, CATIE [PNT]	34-34	T	
07:48				MISSED 3PTR by BELL, NAKIAH
07:44				REBOUND (OFF) by TROECKLER, ALLIE
07:40		36-34	H 2	GOOD! LAYUP by JONES, MICAH [PNT]
07:40	FOUL (PERSONAL) by KAIFES, CATIE			
07:40	SUB OUT: CECIL, MASHAYLA			
07:40	SUB IN: GOODLETT, TERI			
07:40				MISSED FT by JONES, MICAH
07:40	REBOUND (DEF) by GOODLETT, TERI			
07:34	TURNOVER (BADPASS) by GOODLETT, TERI			
07:34				STEAL by BELL, NAKIAH
07:25		39-34	H 5	GOOD! 3PTR by KEITH, MIKIA
07:25				ASSIST by BELL, NAKIAH
07:10	MISSED JUMPER by SOLOMON, SHAY			
07:10				REBOUND (DEF) by JONES, MICAH
07:10				SUB OUT: TROECKLER, ALLIE
07:10				SUB IN: KING, CHRISTEN
07:10	TIMEOUT TEAM			
06:54		41-34	H 7	GOOD! LAYUP by JONES, MICAH
06:54				ASSIST by KING, CHRISTEN
06:27	GOOD! LAYUP by MURPHY, PAIGE [PNT]	41-36	H 5	
06:27	ASSIST by KAIFES, CATIE			
06:12				TURNOVER (LOSTBALL) by WHITLOCK, ZARIA
06:12	STEAL by KAIFES, CATIE			
06:07	MISSED LAYUP by MURPHY, PAIGE			
06:04				REBOUND (DEF) by WHITLOCK, ZARIA
05:39				TURNOVER (BADPASS) by KEITH, MIKIA
05:39	STEAL by BASS, BRIA			
05:23				FOUL (PERSONAL) by JONES, MICAH
05:23	MISSED FT by BASS, BRIA			
05:23	REBOUND (OFF) by TEAM			
05:23				SUB OUT: WHITLOCK, ZARIA
05:23				SUB IN: AKUEN, ALEK
05:23	GOOD! FT by BASS, BRIA	41-37	H 4	
05:00				TURNOVER (LOSTBALL) by AKUEN, ALEK
05:00	STEAL by GOODLETT, TERI			
05:00				SUB OUT: KING, CHRISTEN
05:00				SUB IN: KOEHLER, KAI
05:00				SUB OUT: KEITH, MIKIA
05:00				SUB IN: TROECKLER, ALLIE
04:45				FOUL (PERSONAL) by AKUEN, ALEK
04:28	MISSED LAYUP by BASS, BRIA			
04:24				REBOUND (DEF) by BELL, NAKIAH
04:09				MISSED LAYUP by TROECKLER, ALLIE
04:05				REBOUND (OFF) by AKUEN, ALEK
04:05				MISSED LAYUP by AKUEN, ALEK
03:59				REBOUND (OFF) by AKUEN, ALEK
03:58				TURNOVER (BADPASS) by AKUEN, ALEK
03:58	STEAL by MURPHY, PAIGE			
03:53	GOOD! LAYUP by GOODLETT, TERI [FB]	41-39	H 2	
03:48				SUB OUT: AKUEN, ALEK
03:48				SUB IN: BAUMAN, SYDNEY
03:33		43-39	H 4	GOOD! LAYUP by TROECKLER, ALLIE
03:33				ASSIST by KOEHLER, KAI
03:26				FOUL (PERSONAL) by KOEHLER, KAI
03:10	MISSED JUMPER by KAIFES, CATIE			
03:07				REBOUND (DEF) by BAUMAN, SYDNEY
02:58				TIMEOUT 30SEC
02:51				MISSED LAYUP by BAUMAN, SYDNEY
02:51				REBOUND (OFF) by TEAM
02:51	FOUL (PERSONAL) by KAIFES, CATIE			
02:51				MISSED FT by JONES, MICAH
02:51				REBOUND (OFF) by TEAM
02:51		44-39	H 5	GOOD! FT by JONES, MICAH

Time	VISITORS: Eastern Kentucky	Score	Margin	HOME: SIUE
02:38	GOOD! 3PTR by KAIFES,CATIE	44-42	H 2	
02:38	ASSIST by BASS,BRIA			
02:23	FOUL (PERSONAL) by SOLOMON,SHAY			
02:23				MISSED FT by BELL,NAKIAH
02:23				REBOUND (OFF) by TEAM
02:23				MISSED FT by BELL,NAKIAH
02:23				REBOUND (OFF) by TEAM
02:23		45-42	H 3	GOOD! FT by BELL,NAKIAH
02:10	TURNOVER (LOSTBALL) by KAIFES,CATIE			
02:10				STEAL by TROECKLER,ALLIE
02:07				MISSED LAYUP by TROECKLER,ALLIE
02:07	BLOCK by SOLOMON,SHAY			
02:07				REBOUND (OFF) by TEAM
02:05		47-42	H 5	GOOD! LAYUP by JONES,MICAH
02:05				ASSIST by BELL,NAKIAH
01:46	MISSED 3PTR by GOODLETT,TERI			
01:42				REBOUND (DEF) by BAUMAN,SYDNEY
01:28				MISSED LAYUP by JONES,MICAH
01:23				REBOUND (OFF) by JONES,MICAH
01:23		49-42	H 7	GOOD! LAYUP by JONES,MICAH
01:05	MISSED LAYUP by BASS,BRIA			
01:03				REBOUND (DEF) by BAUMAN,SYDNEY
00:42		51-42	H 9	GOOD! LAYUP by TROECKLER,ALLIE
00:42				ASSIST by BELL,NAKIAH
00:33				SUB OUT: KOEHLER,KAI
00:33				SUB IN: KING,CHRISTEN
00:33				SUB OUT: JONES,MICAH
00:33				SUB IN: WHITLOCK,ZARIA
00:13	GOOD! 3PTR by KAIFES,CATIE	51-45	H 6	
00:13	ASSIST by BASS,BRIA			

### Eastern Kentucky 45, SIUE 51

Points from (This Period)	EKU	SIE
In the Paint	6	16
Off Turns	3	5
2nd Chance	0	7
Fast Break	2	0
Bench	2	11

**Official Box Score**  
**Eastern Kentucky vs SIUE**  
**Fourth Quarter Statistics Only**  
**February 02, 2019 at Vadalabene Center - Edwardsville, Ill.**

**Eastern Kentucky 10**

No.	Player	S	Pts	FG	3FG	FT	OR	DR	TR	PF	A	TO	Blk	Stl	Min	+/-
03	Cecil, Mashayla		0	0-3	0-2	0-0	0	1	1	0	1	0	0	1	7	-5
14	Solomon, Shay		0	0-0	0-0	0-0	0	0	0	1	0	1	0	0	5	-12
15	Bass, Bria		3	1-4	1-3	0-0	0	1	1	0	0	1	0	0	8	-10
25	Murphy, Paige		2	1-1	0-0	0-0	0	0	0	0	0	0	0	0	5	-11
30	Kaifes, Catie		2	1-4	0-3	0-0	3	0	3	1	0	1	0	1	9	-11
01	Clark, Valerie		0	0-0	0-0	0-0	0	0	0	0	0	0	0	0	0	0
02	Goodlett, Teri		0	0-3	0-3	0-0	0	0	0	0	2	0	0	0	10	-13
31	Mccoy, Hailey		0	0-0	0-0	0-0	0	0	0	0	0	0	0	0	0	0
33	Berry, Aasiya		3	1-1	0-0	1-1	0	0	0	0	0	0	0	0	3	2
42	Grice, Brittany		0	0-1	0-0	0-0	1	0	1	2	0	1	0	0	3	-5
	Team						0	1	1	0		0				
<b>TOTALS</b>			<b>10</b>	<b>4-17</b>	<b>1-11</b>	<b>1-1</b>	<b>4</b>	<b>3</b>	<b>7</b>	<b>4</b>	<b>3</b>	<b>4</b>	<b>0</b>	<b>2</b>	<b>49</b>	

*Shooting By Period*

Period	FG	FG%	3FG	3FG%	FT	FT%
Game	21-59	35.6%	9-32	28.1%	4-5	80.0%

**SIUE 23**

No.	Player	S	Pts	FG	3FG	FT	OR	DR	TR	PF	A	TO	Blk	Stl	Min	+/-
02	Bell, Nakiah		0	0-0	0-0	0-0	0	0	0	0	2	0	0	0	5	11
11	Keith, Mikia		2	1-2	0-1	0-0	0	0	0	1	0	0	0	0	5	2
21	Akuen, Alek		0	0-0	0-0	0-0	0	0	0	0	0	0	0	0	0	0
23	Troeckler, Allie		0	0-0	0-0	0-0	0	0	0	0	1	0	0	0	2	4
34	Bauman, Sydney		4	1-2	0-0	2-2	1	1	2	0	2	0	0	0	3	9
01	King, Christen		2	1-1	0-0	0-0	0	1	1	0	2	0	0	0	8	10
12	Koehler, Kai		0	0-0	0-0	0-0	0	0	0	0	1	0	0	0	2	3
14	Jones, Micah		0	0-0	0-0	0-0	0	1	1	1	1	1	0	1	5	1
24	Boone, Lyric		6	3-3	0-0	0-0	0	2	2	0	0	2	0	1	5	2
25	Whitlock, Zaria		2	1-1	0-0	0-0	0	0	0	0	0	0	0	0	5	11
35	Hall, Mikala		7	3-5	1-2	0-0	0	2	2	1	0	0	0	1	8	9
44	Everidge, Riana		0	0-0	0-0	0-0	0	0	0	0	0	0	0	0	0	0
50	Williams, Kelsie		0	0-0	0-0	0-0	0	0	0	1	0	0	0	0	2	3
	Team						0	1	1	0		0				
<b>TOTALS</b>			<b>23</b>	<b>10-14</b>	<b>1-3</b>	<b>2-2</b>	<b>1</b>	<b>8</b>	<b>9</b>	<b>4</b>	<b>9</b>	<b>3</b>	<b>0</b>	<b>3</b>	<b>49</b>	

*Shooting By Period*

Period	FG	FG%	3FG	3FG%	FT	FT%
Game	32-58	55.2%	4-13	30.8%	6-15	40.0%

Game Notes:

Officials: **Stacey Lee,Ryan Durham,Doug Klenc**  
Attendance: **704**

Start Time: **2019-02-02 20:02:21**  
End Time: **2019-02-02 21:46:02**  
Game Duration: **103**  
Conference Game;

Score	1st	2nd	3rd	4th	TOT
EKU	21	11	13	10	<b>55</b>
SIUE	17	13	21	23	<b>74</b>

Points from (This Period)	EKU	SIUE
In the Paint	4	16
Off Turns	0	6
2nd Chance	6	2
Fast Break	0	4
Bench	3	17

**Official Play-By-Play**  
**Eastern Kentucky vs SIUE**  
**Fourth Quarter**  
**February 02, 2019 at Vadalabene Center - Edwardsville, Ill.**

**Period 4**

**Starters:**

**Eastern Kentucky:** 14 SOLOMON, SHAY; 15 BASS, BRIA; 25 MURPHY, PAIGE; 30 KAIFES, CATIE; 3 CECIL, MASHAYLA;  
**SIUE:** 2 BELL, NAKIAH; 11 KEITH, MIKIA; 21 AKUEN, ALEK; 23 TROECKLER, ALLIE; 34 BAUMAN, SYDNEY;

Time	VISITORS: Eastern Kentucky	Score	Margin	HOME: SIUE
09:40	FOUL (PERSONAL) by KAIFES, CATIE			
09:37		53-45	H 8	GOOD! LAYUP by BAUMAN, SYDNEY
09:37				ASSIST by BELL, NAKIAH
09:20	MISSED JUMPER by BASS, BRIA			
09:17				REBOUND (DEF) by BAUMAN, SYDNEY
09:10		55-45	H 10	GOOD! LAYUP by WHITLOCK, ZARIA
09:10				ASSIST by BAUMAN, SYDNEY
08:50	MISSED 3PTR by KAIFES, CATIE			
08:47				REBOUND (DEF) by KING, CHRISTEN
08:34		57-45	H 12	GOOD! JUMPER by KING, CHRISTEN
08:34				ASSIST by TROECKLER, ALLIE
08:23	TIMEOUT 30SEC			
08:23	SUB OUT: KAIFES, CATIE			
08:23	SUB IN: GRICE, BRITTANY			
08:01	GOOD! JUMPER by MURPHY, PAIGE	57-47	H 10	
07:53	FOUL (PERSONAL) by GRICE, BRITTANY			
07:53				SUB OUT: TROECKLER, ALLIE
07:53				SUB IN: HALL, MIKALA
07:45		60-47	H 13	GOOD! 3PTR by HALL, MIKALA
07:45				ASSIST by BAUMAN, SYDNEY
07:29	FOUL (OFF) by GRICE, BRITTANY			
07:29	TURNOVER (OFFENSIVE) by GRICE, BRITTANY			
07:08				MISSED LAYUP by BAUMAN, SYDNEY
07:08				REBOUND (OFF) by BAUMAN, SYDNEY
07:08	FOUL (PERSONAL) by SOLOMON, SHAY			
07:08		61-47	H 14	GOOD! FT by BAUMAN, SYDNEY
07:08	SUB OUT: BASS, BRIA			
07:08	SUB IN: KAIFES, CATIE			
07:08	SUB OUT: SOLOMON, SHAY			
07:08	SUB IN: CECIL, MASHAYLA			
07:08		62-47	H 15	GOOD! FT by BAUMAN, SYDNEY
07:08				SUB OUT: BAUMAN, SYDNEY
07:08				SUB IN: JONES, MICAH
06:50	MISSED 3PTR by CECIL, MASHAYLA			
06:49				REBOUND (DEF) by TEAM
06:35		64-47	H 17	GOOD! LAYUP by HALL, MIKALA
06:35				ASSIST by BELL, NAKIAH
06:00	MISSED 3PTR by CECIL, MASHAYLA			
05:59				REBOUND (DEF) by TEAM
05:44				TURNOVER (LOSTBALL) by JONES, MICAH
05:44	STEAL by KAIFES, CATIE			
05:37	MISSED 3PTR by GOODLETT, TERI			
05:32	REBOUND (OFF) by GRICE, BRITTANY			
05:32	MISSED LAYUP by GRICE, BRITTANY			
05:30				REBOUND (DEF) by JONES, MICAH
05:11				MISSED 3PTR by HALL, MIKALA
05:08	REBOUND (DEF) by TEAM			
05:08				SUB OUT: BELL, NAKIAH
05:08				SUB IN: KEITH, MIKIA
05:08	SUB OUT: GRICE, BRITTANY			
05:08	SUB IN: BERRY, AASIYA			
05:08	SUB OUT: MURPHY, PAIGE			
05:08	SUB IN: BASS, BRIA			
04:50	MISSED 3PTR by KAIFES, CATIE			
04:48	REBOUND (OFF) by KAIFES, CATIE			
04:48				FOUL (PERSONAL) by JONES, MICAH
04:48				SUB OUT: WHITLOCK, ZARIA
04:48				SUB IN: BOONE, LYRIC
04:45	GOOD! 3PTR by BASS, BRIA	64-50	H 14	
04:45	ASSIST by GOODLETT, TERI			
04:27				MISSED 3PTR by KEITH, MIKIA
04:23	REBOUND (DEF) by CECIL, MASHAYLA			
04:20	GOOD! LAYUP by KAIFES, CATIE	64-52	H 12	
04:20	ASSIST by GOODLETT, TERI			
04:20				TIMEOUT 30SEC
04:07		66-52	H 14	GOOD! LAYUP by BOONE, LYRIC [PNT]
04:07				ASSIST by KING, CHRISTEN
03:50	MISSED 3PTR by BASS, BRIA			
03:46				REBOUND (DEF) by BOONE, LYRIC
03:31				MISSED LAYUP by HALL, MIKALA
03:26	REBOUND (DEF) by BASS, BRIA			
03:23	MISSED 3PTR by KAIFES, CATIE			
03:20				REBOUND (DEF) by BOONE, LYRIC
03:07		68-52	H 16	GOOD! JUMPER by BOONE, LYRIC [PNT]
03:07				ASSIST by KING, CHRISTEN
02:43	TURNOVER (LOSTBALL) by BASS, BRIA			

Time	VISITORS: Eastern Kentucky	Score	Margin	HOME: SIUE
02:43				STEAL by JONES,MICAH
02:37		70-52	H 18	GOOD! LAYUP by KEITH,MIKIA [FB]
02:37				ASSIST by JONES,MICAH
02:15	MISSED 3PTR by BASS,BRIA			
02:11	REBOUND (OFF) by KAIFES,CATIE			
02:09	GOOD! LAYUP by BERRY,AASIYA	70-54	H 16	
02:09	ASSIST by CECIL,MASHAYLA			
02:09				FOUL (PERSONAL) by HALL,MIKALA
02:09				SUB OUT: KING,CHRISTEN
02:09				SUB IN: KOEHLER,KAI
02:09				SUB OUT: JONES,MICAH
02:09				SUB IN: WILLIAMS,KELSIE
02:09	GOOD! FT by BERRY,AASIYA	70-55	H 15	
02:09	SUB OUT: BERRY,AASIYA			
02:09	SUB IN: SOLOMON,SHAY			
01:49				TURNOVER (BADPASS) by BOONE,LYRIC
01:49	STEAL by CECIL,MASHAYLA			
01:44				FOUL (PERSONAL) by KEITH,MIKIA
01:41	MISSED 3PTR by GOODLETT,TERI			
01:37	REBOUND (OFF) by KAIFES,CATIE			
01:32	MISSED JUMPER by CECIL,MASHAYLA			
01:28				REBOUND (DEF) by HALL,MIKALA
01:07		72-55	H 17	GOOD! JUMPER by BOONE,LYRIC [PNT]
01:07				ASSIST by KOEHLER,KAI
00:48	TURNOVER (LOSTBALL) by KAIFES,CATIE			
00:48				STEAL by HALL,MIKALA
00:43		74-55	H 19	GOOD! LAYUP by HALL,MIKALA [FB]
00:34				FOUL (PERSONAL) by WILLIAMS,KELSIE
00:25	TURNOVER (LOSTBALL) by SOLOMON,SHAY			
00:25				STEAL by BOONE,LYRIC
00:20				TURNOVER (BADPASS) by BOONE,LYRIC
00:10	MISSED 3PTR by GOODLETT,TERI			
00:06				REBOUND (DEF) by HALL,MIKALA

### Eastern Kentucky 55, SIUE 74

Points from (This Period)	EKU	SIUE
In the Paint	4	16
Off Turns	0	6
2nd Chance	6	2
Fast Break	0	4
Bench	3	17



**Official Scoring/Possession Reference Chart**  
**Eastern Kentucky vs SIUE**  
**Period 1**  
**February 02, 2019 at Vadalabene Center - Edwardsville, Ill.**

**Period 1**

**Starters:**

**Eastern Kentucky:** 14 SOLOMON, SHAY; 15 BASS, BRIA; 25 MURPHY, PAIGE; 30 KAIFES, CATIE; 3 CECIL, MASHAYLA;  
**SIUE:** 2 BELL, NAKIAH; 11 KEITH, MIKIA; 21 AKUEN, ALEK; 23 TROECKLER, ALLIE; 34 BAUMAN, SYDNEY;

Time	VISITORS: Eastern Kentucky	Score	Margin	HOME: SIUE
08:55		2-0	H 2	GOOD! LAYUP by AKUEN, ALEK
08:35	GOOD! JUMPER by KAIFES, CATIE [PNT]	2-2	T	
07:48	GOOD! 3PTR by MURPHY, PAIGE	2-5	V 3	
07:03	GOOD! 3PTR by KAIFES, CATIE	2-8	V 6	
06:22		4-8	V 4	GOOD! LAYUP by JONES, MICAH [PNT]
05:38		6-8	V 2	GOOD! LAYUP by JONES, MICAH [PNT]
05:26	GOOD! FT by BASS, BRIA	6-9	V 3	
05:26	GOOD! FT by BASS, BRIA	6-10	V 4	
04:48	GOOD! 3PTR by GOODLETT, TERI [FB]	6-13	V 7	
04:25		8-13	V 5	GOOD! JUMPER by JONES, MICAH [PNT]
03:38		10-13	V 3	GOOD! LAYUP by JONES, MICAH
03:06	GOOD! LAYUP by BERRY, AASIYA	10-15	V 5	
02:53		12-15	V 3	GOOD! JUMPER by JONES, MICAH
02:33	GOOD! JUMPER by SOLOMON, SHAY	12-17	V 5	
02:21		14-17	V 3	GOOD! LAYUP by WHITLOCK, ZARIA
02:03	GOOD! JUMPER by GOODLETT, TERI	14-19	V 5	
01:50		16-19	V 3	GOOD! LAYUP by HALL, MIKALA [PNT]
01:31	GOOD! LAYUP by GOODLETT, TERI	16-21	V 5	
00:53		17-21	V 4	GOOD! FT by JONES, MICAH

**Eastern Kentucky 21, SIUE 17**

**Official Scoring/Possession Reference Chart**  
**Eastern Kentucky vs SIUE**  
**Period 2**  
**February 02, 2019 at Vadalabene Center - Edwardsville, Ill.**

**Period 2**

**Starters:**

**Eastern Kentucky:** 14 SOLOMON, SHAY; 15 BASS, BRIA; 25 MURPHY, PAIGE; 30 KAIFES, CATIE; 3 CECIL, MASHAYLA;  
**SIUE:** 2 BELL, NAKIAH; 11 KEITH, MIKIA; 21 AKUEN, ALEK; 23 TROECKLER, ALLIE; 34 BAUMAN, SYDNEY;

Time	VISITORS: Eastern Kentucky	Score	Margin	HOME: SIUE
07:40	GOOD! LAYUP by GOODLETT, TERI [FB]	17-23	V 6	
07:16	GOOD! 3PTR by KAIFES, CATIE	17-26	V 9	
06:09	GOOD! 3PTR by BASS, BRIA	17-29	V 12	
04:53		18-29	V 11	GOOD! FT by BAUMAN, SYDNEY
04:36		20-29	V 9	GOOD! LAYUP by WHITLOCK, ZARIA
02:57	GOOD! 3PTR by CECIL, MASHAYLA	20-32	V 12	
02:45		23-32	V 9	GOOD! 3PTR by BELL, NAKIAH
01:55		26-32	V 6	GOOD! 3PTR by BELL, NAKIAH
01:18		28-32	V 4	GOOD! LAYUP by JONES, MICAH
00:41		30-32	V 2	GOOD! JUMPER by KING, CHRISTEN [PNT]

**Eastern Kentucky 32, SIUE 30**

**Official Scoring/Possession Reference Chart**  
**Eastern Kentucky vs SIUE**  
**Period 3**  
**February 02, 2019 at Vadalabene Center - Edwardsville, Ill.**

**Period 3**

**Starters:**

**Eastern Kentucky:** 14 SOLOMON, SHAY; 15 BASS, BRIA; 25 MURPHY, PAIGE; 30 KAIFES, CATIE; 3 CECIL, MASHAYLA;  
**SIUE:** 2 BELL, NAKIAH; 11 KEITH, MIKIA; 21 AKUEN, ALEK; 23 TROECKLER, ALLIE; 34 BAUMAN, SYDNEY;

Time	VISITORS: Eastern Kentucky	Score	Margin	HOME: SIUE
09:17		32-32	T	GOOD! LAYUP by KEITH, MIKIA
08:32		34-32	H 2	GOOD! LAYUP by WHITLOCK, ZARIA [PNT]
08:06	GOOD! LAYUP by KAIFES, CATIE [PNT]	34-34	T	
07:40		36-34	H 2	GOOD! LAYUP by JONES, MICAH [PNT]
07:25		39-34	H 5	GOOD! 3PTR by KEITH, MIKIA
06:54		41-34	H 7	GOOD! LAYUP by JONES, MICAH
06:27	GOOD! LAYUP by MURPHY, PAIGE [PNT]	41-36	H 5	
05:23	GOOD! FT by BASS, BRIA	41-37	H 4	
03:53	GOOD! LAYUP by GOODLETT, TERI [FB]	41-39	H 2	
03:33		43-39	H 4	GOOD! LAYUP by TROECKLER, ALLIE
02:51		44-39	H 5	GOOD! FT by JONES, MICAH
02:38	GOOD! 3PTR by KAIFES, CATIE	44-42	H 2	
02:23		45-42	H 3	GOOD! FT by BELL, NAKIAH
02:05		47-42	H 5	GOOD! LAYUP by JONES, MICAH
01:23		49-42	H 7	GOOD! LAYUP by JONES, MICAH
00:42		51-42	H 9	GOOD! LAYUP by TROECKLER, ALLIE
00:13	GOOD! 3PTR by KAIFES, CATIE	51-45	H 6	

**Eastern Kentucky 45, SIUE 51**

**Official Scoring/Possession Reference Chart**  
**Eastern Kentucky vs SIUE**  
**Period 4**  
**February 02, 2019 at Vadalabene Center - Edwardsville, Ill.**

**Period 4**

**Starters:**

**Eastern Kentucky:** 14 SOLOMON, SHAY; 15 BASS, BRIA; 25 MURPHY, PAIGE; 30 KAIFES, CATIE; 3 CECIL, MASHAYLA;  
**SIUE:** 2 BELL, NAKIAH; 11 KEITH, MIKIA; 21 AKUEN, ALEK; 23 TROECKLER, ALLIE; 34 BAUMAN, SYDNEY;

Time	VISITORS: Eastern Kentucky	Score	Margin	HOME: SIUE
09:37		53-45	H 8	GOOD! LAYUP by BAUMAN, SYDNEY
09:10		55-45	H 10	GOOD! LAYUP by WHITLOCK, ZARIA
08:34		57-45	H 12	GOOD! JUMPER by KING, CHRISTEN
08:01	GOOD! JUMPER by MURPHY, PAIGE	57-47	H 10	
07:45		60-47	H 13	GOOD! 3PTR by HALL, MIKALA
07:08		61-47	H 14	GOOD! FT by BAUMAN, SYDNEY
07:08		62-47	H 15	GOOD! FT by BAUMAN, SYDNEY
06:35		64-47	H 17	GOOD! LAYUP by HALL, MIKALA
04:45	GOOD! 3PTR by BASS, BRIA	64-50	H 14	
04:20	GOOD! LAYUP by KAIFES, CATIE	64-52	H 12	
04:07		66-52	H 14	GOOD! LAYUP by BOONE, LYRIC [PNT]
03:07		68-52	H 16	GOOD! JUMPER by BOONE, LYRIC [PNT]
02:37		70-52	H 18	GOOD! LAYUP by KEITH, MIKIA [FB]
02:09	GOOD! LAYUP by BERRY, AASIYA	70-54	H 16	
02:09	GOOD! FT by BERRY, AASIYA	70-55	H 15	
01:07		72-55	H 17	GOOD! JUMPER by BOONE, LYRIC [PNT]
00:43		74-55	H 19	GOOD! LAYUP by HALL, MIKALA [FB]

**Eastern Kentucky 55, SIUE 74**

**Official Substitutions Log**  
**Eastern Kentucky vs SIUE**  
**Period 1**  
**February 02, 2019 at Vadalabene Center - Edwardsville, Ill.**

VISITORS: Eastern Kentucky	Time	Score	HOME: SIUE
14 SOLOMON, SHAY			2 BELL, NAKIAH
15 BASS, BRIA			11 KEITH, MIKIA
25 MURPHY, PAIGE			21 AKUEN, ALEK
30 KAIFES, CATIE			23 TROECKLER, ALLIE
3 CECIL, MASHAYLA			34 BAUMAN, SYDNEY
	07:18	5-2	SUB OUT: BELL, NAKIAH
	07:18		SUB IN: JONES, MICAH
	07:18		SUB OUT: KEITH, MIKIA
	07:18		SUB IN: KING, CHRISTEN
	07:18		SUB OUT: AKUEN, ALEK
	07:18		SUB IN: WHITLOCK, ZARIA
	07:18		SUB OUT: BAUMAN, SYDNEY
	07:18		SUB IN: HALL, MIKALA
SUB OUT: 3 CECIL, MASHAYLA	05:50	8-4	
SUB IN: 2 GOODLETT, TERI	05:50		
SUB OUT: 15 BASS, BRIA	05:08	10-6	
SUB IN: 33 BERRY, AASIYA	05:08		
SUB OUT: 14 SOLOMON, SHAY	01:30	21-16	
SUB IN: 15 BASS, BRIA	01:30		
SUB OUT: 33 BERRY, AASIYA	01:29	21-16	
SUB IN: 42 GRICE, BRITTANY	01:29		
	00:53	21-17	SUB OUT: TROECKLER, ALLIE
	00:53		SUB IN: KEITH, MIKIA

**Eastern Kentucky 21, SIUE 17**

**Official Substitutions Log**  
**Eastern Kentucky vs SIUE**  
**Period 2**  
**February 02, 2019 at Vadalabene Center - Edwardsville, Ill.**

VISITORS: Eastern Kentucky	Time	Score	HOME: SIUE
14 SOLOMON, SHAY			2 BELL, NAKIAH
15 BASS, BRIA			11 KEITH, MIKIA
25 MURPHY, PAIGE			21 AKUEN, ALEK
30 KAIFES, CATIE			23 TROECKLER, ALLIE
3 CECIL, MASHAYLA			34 BAUMAN, SYDNEY
SUB OUT: 42 GRICE, BRITTANY	09:30	-	
SUB IN: 33 BERRY, AASIYA	09:30		
SUB OUT: 33 BERRY, AASIYA	09:12	-	
SUB IN: 42 GRICE, BRITTANY	09:12		
	08:49	-	SUB OUT: KING, CHRISTEN
	08:49		SUB IN: TROECKLER, ALLIE
	08:49		SUB OUT: WHITLOCK, ZARIA
	08:49		SUB IN: EVERIDGE, RIANA
	06:43	26-17	SUB OUT: JONES, MICAH
	06:43		SUB IN: BAUMAN, SYDNEY
	06:43		SUB OUT: HALL, MIKALA
	06:43		SUB IN: BELL, NAKIAH
SUB OUT: 2 GOODLETT, TERI	06:43		
SUB IN: 3 CECIL, MASHAYLA	06:43		
SUB OUT: 25 MURPHY, PAIGE	06:43		
SUB IN: 31 MCCOY, HAILEY	06:43		
SUB OUT: 30 KAIFES, CATIE	06:43		
SUB IN: 1 CLARK, VALERIE	06:43		
	05:57	29-17	SUB OUT: EVERIDGE, RIANA
	05:57		SUB IN: WHITLOCK, ZARIA
SUB OUT: 15 BASS, BRIA	05:52	29-17	
SUB IN: 30 KAIFES, CATIE	05:52		
	05:32	29-17	SUB OUT: TROECKLER, ALLIE
	05:32		SUB IN: KOEHLER, KAI
SUB OUT: 42 GRICE, BRITTANY	04:53	29-17	
SUB IN: 2 GOODLETT, TERI	04:53		
	02:11	32-23	SUB OUT: BAUMAN, SYDNEY
	02:11		SUB IN: JONES, MICAH
	02:11		SUB OUT: WHITLOCK, ZARIA
	02:11		SUB IN: TROECKLER, ALLIE
SUB OUT: 31 MCCOY, HAILEY	01:30	32-26	
SUB IN: 25 MURPHY, PAIGE	01:30		
	01:30		SUB OUT: KEITH, MIKIA
	01:30		SUB IN: KING, CHRISTEN

**Eastern Kentucky 32, SIUE 30**

**Official Substitutions Log  
Eastern Kentucky vs SIUE  
Period 3  
February 02, 2019 at Vadalabene Center - Edwardsville, Ill.**

<b>VISITORS: Eastern Kentucky</b>	<b>Time</b>	<b>Score</b>	<b>HOME: SIUE</b>
14 SOLOMON, SHAY			2 BELL, NAKIAH
15 BASS, BRIA			11 KEITH, MIKIA
25 MURPHY, PAIGE			21 AKUEN, ALEK
30 KAIFES, CATIE			23 TROECKLER, ALLIE
3 CECIL, MASHAYLA			34 BAUMAN, SYDNEY
SUB OUT: 3 CECIL, MASHAYLA	07:40	34-36	
SUB IN: 2 GOODLETT, TERI	07:40		
	07:10	34-39	SUB OUT: TROECKLER, ALLIE
	07:10		SUB IN: KING, CHRISTEN
	05:23	36-41	SUB OUT: WHITLOCK, ZARIA
	05:23		SUB IN: AKUEN, ALEK
	05:00	37-41	SUB OUT: KING, CHRISTEN
	05:00		SUB IN: KOEHLER, KAI
	05:00		SUB OUT: KEITH, MIKIA
	05:00		SUB IN: TROECKLER, ALLIE
	03:48	39-41	SUB OUT: AKUEN, ALEK
	03:48		SUB IN: BAUMAN, SYDNEY
	00:33	42-51	SUB OUT: KOEHLER, KAI
	00:33		SUB IN: KING, CHRISTEN
	00:33		SUB OUT: JONES, MICAH
	00:33		SUB IN: WHITLOCK, ZARIA

**Eastern Kentucky 45, SIUE 51**

**Official Substitutions Log  
Eastern Kentucky vs SIUE  
Period 4  
February 02, 2019 at Vadalabene Center - Edwardsville, Ill.**

VISITORS: Eastern Kentucky	Time	Score	HOME: SIUE
14 SOLOMON, SHAY			2 BELL, NAKIAH
15 BASS, BRIA			11 KEITH, MIKIA
25 MURPHY, PAIGE			21 AKUEN, ALEK
30 KAIFES, CATIE			23 TROECKLER, ALLIE
3 CECIL, MASHAYLA			34 BAUMAN, SYDNEY
SUB OUT: 30 KAIFES, CATIE	08:23	45-57	
SUB IN: 42 GRICE, BRITTANY	08:23		
	07:53	47-57	SUB OUT: TROECKLER, ALLIE
	07:53		SUB IN: HALL, MIKALA
SUB OUT: 15 BASS, BRIA	07:08	47-61	
SUB IN: 30 KAIFES, CATIE	07:08		
SUB OUT: 14 SOLOMON, SHAY	07:08		
SUB IN: 3 CECIL, MASHAYLA	07:08		
	07:08		SUB OUT: BAUMAN, SYDNEY
	07:08		SUB IN: JONES, MICAH
	05:08	47-64	SUB OUT: BELL, NAKIAH
	05:08		SUB IN: KEITH, MIKIA
SUB OUT: 42 GRICE, BRITTANY	05:08		
SUB IN: 33 BERRY, AASIYA	05:08		
SUB OUT: 25 MURPHY, PAIGE	05:08		
SUB IN: 15 BASS, BRIA	05:08		
	04:48	47-64	SUB OUT: WHITLOCK, ZARIA
	04:48		SUB IN: BOONE, LYRIC
	02:09	54-70	SUB OUT: KING, CHRISTEN
	02:09		SUB IN: KOEHLER, KAI
	02:09		SUB OUT: JONES, MICAH
	02:09		SUB IN: WILLIAMS, KELSIE
SUB OUT: 33 BERRY, AASIYA	02:09		
SUB IN: 14 SOLOMON, SHAY	02:09		

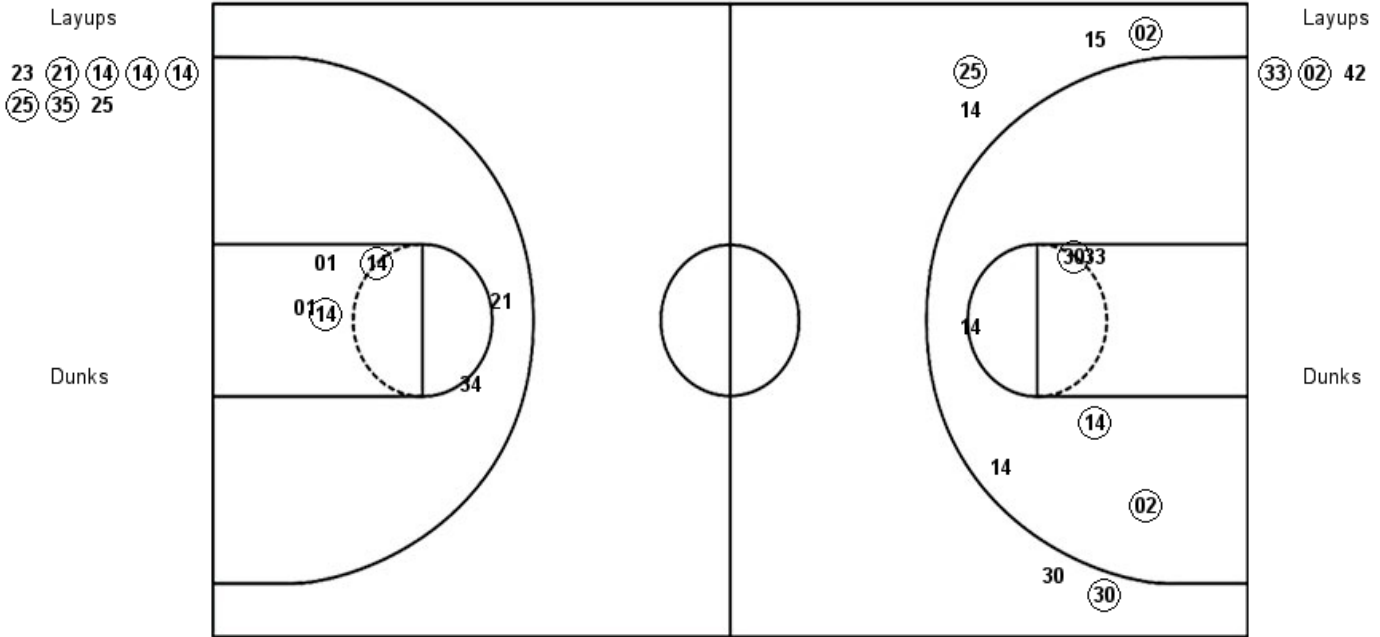
**Eastern Kentucky 55, SIUE 74**



**Official Shot Chart**  
**Eastern Kentucky vs SIUE**  
**PERIOD 1 Shots**  
 February 02, 2019 at Vadalabene Center - Edwardsville, Ill.

**SIUE**

**Eastern Kentucky**



<b>SIUE: Period 1</b>	<b>Made</b>	<b>Att</b>	<b>Pct</b>
Layups	6	8	75.0
Dunks	0	0	0
2PT Field Goals	8	14	57.1
3PT Field Goals	0	0	0
<b>Total Field Goals</b>	<b>8</b>	<b>14</b>	<b>57.1</b>

<b>EKU: Period 1</b>	<b>Made</b>	<b>Att</b>	<b>Pct</b>
Layups	2	3	66.7
Dunks	0	0	0
2PT Field Goals	5	9	55.6
3PT Field Goals	3	6	50.0
<b>Total Field Goals</b>	<b>8</b>	<b>15</b>	<b>53.3</b>

**Official Shot Chart**  
**Eastern Kentucky vs SIUE**  
**PERIOD 2 Shots**  
 February 02, 2019 at Vadalabene Center - Edwardsville, Ill.

**SIUE**

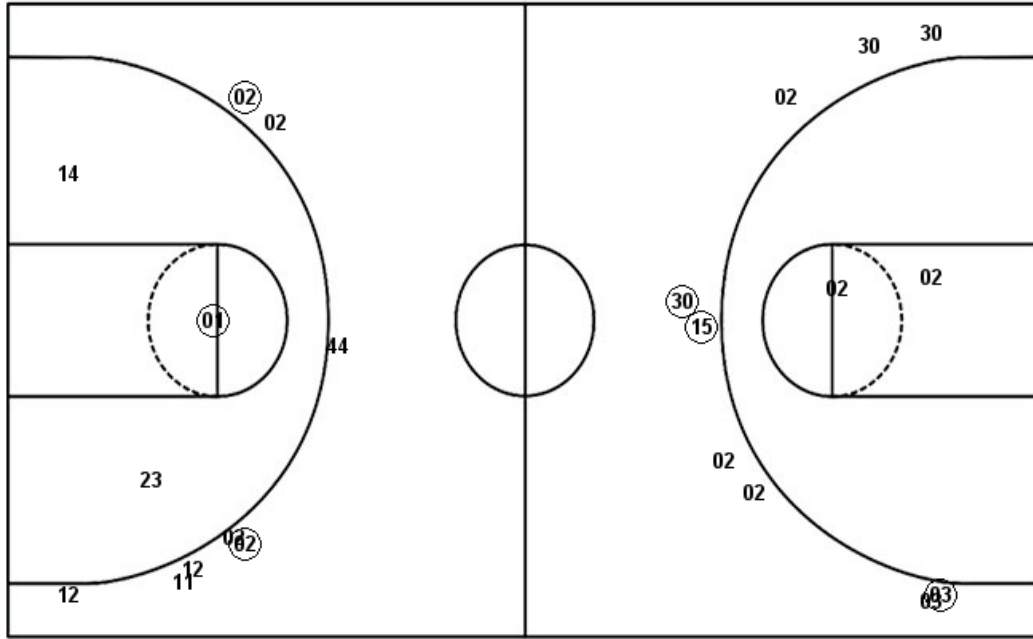
**Eastern Kentucky**

Layups  
 44 (25) (14) 14

Layups  
 (02) 31

Dunks

Dunks



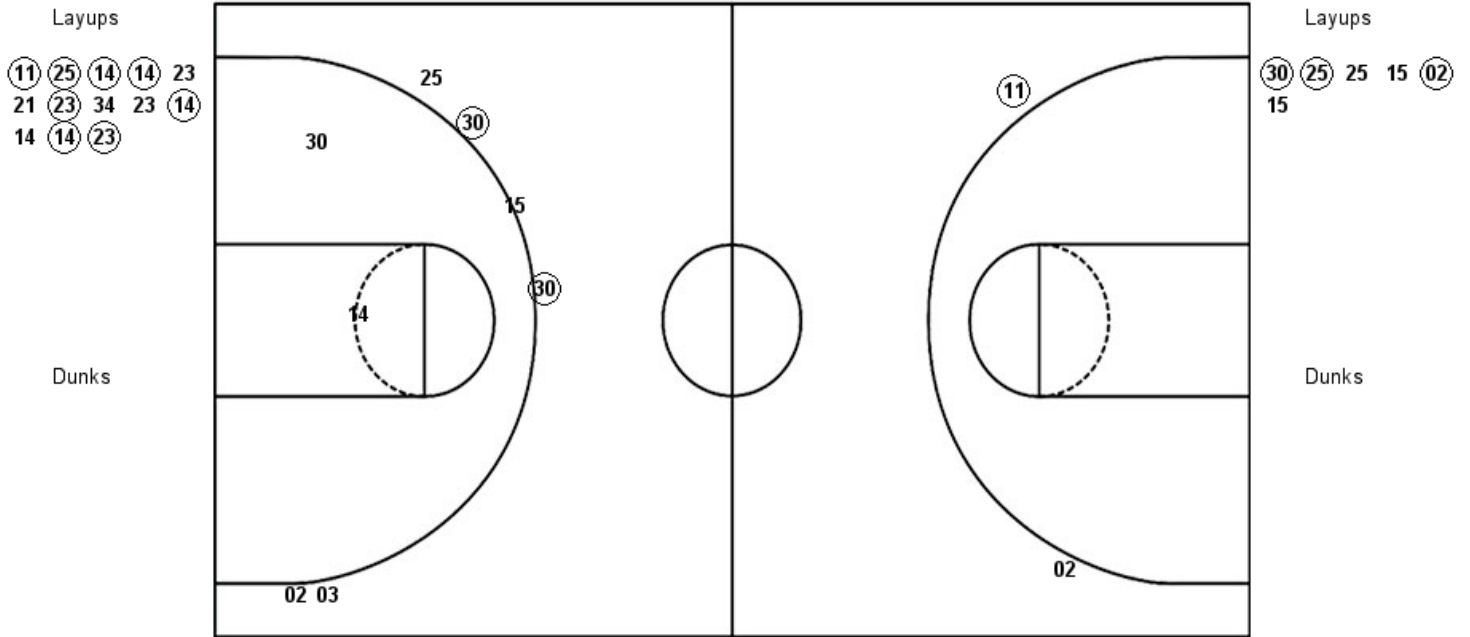
<b>SIUE : Period 2</b>	<b>Made</b>	<b>Att</b>	<b>Pct</b>
Layups	2	4	50.0
Dunks	0	0	0
2PT Field Goals	3	7	42.9
3PT Field Goals	2	8	25.0
<b>Total Field Goals</b>	<b>5</b>	<b>15</b>	<b>33.3</b>

<b>EKU : Period 2</b>	<b>Made</b>	<b>Att</b>	<b>Pct</b>
Layups	1	2	50.0
Dunks	0	0	0
2PT Field Goals	1	4	25.0
3PT Field Goals	3	9	33.3
<b>Total Field Goals</b>	<b>4</b>	<b>13</b>	<b>30.8</b>

**Official Shot Chart**  
**Eastern Kentucky vs SIUE**  
**PERIOD 3 Shots**  
 February 02, 2019 at Vadalabene Center - Edwardsville, Ill.

**SIUE**

**Eastern Kentucky**



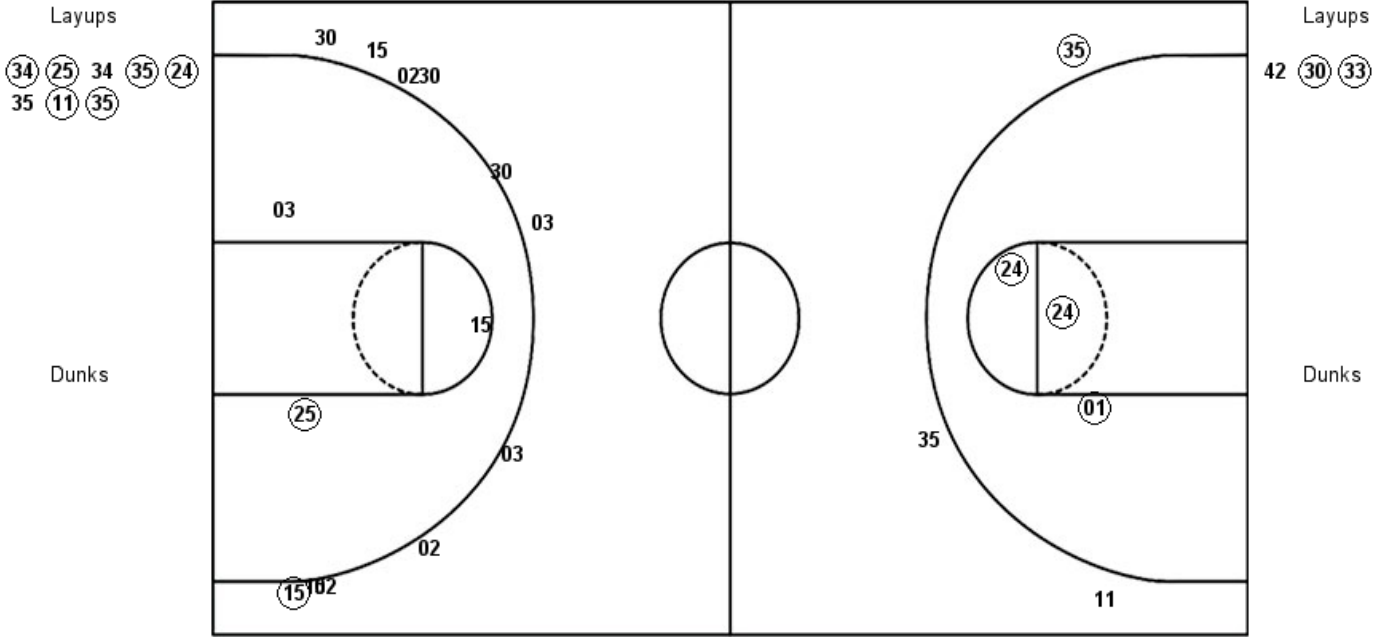
<b>SIUE : Period 3</b>	<b>Made</b>	<b>Att</b>	<b>Pct</b>
Layups	8	13	61.5
Dunks	0	0	0
2PT Field Goals	8	13	61.5
3PT Field Goals	1	2	50.0
<b>Total Field Goals</b>	<b>9</b>	<b>15</b>	<b>60.0</b>

<b>EKU : Period 3</b>	<b>Made</b>	<b>Att</b>	<b>Pct</b>
Layups	3	6	50.0
Dunks	0	0	0
2PT Field Goals	3	8	37.5
3PT Field Goals	2	6	33.3
<b>Total Field Goals</b>	<b>5</b>	<b>14</b>	<b>35.7</b>

**Official Shot Chart**  
**Eastern Kentucky vs SIUE**  
**PERIOD 4 Shots**  
 February 02, 2019 at Vadalabene Center - Edwardsville, Ill.

**SIUE**

**Eastern Kentucky**

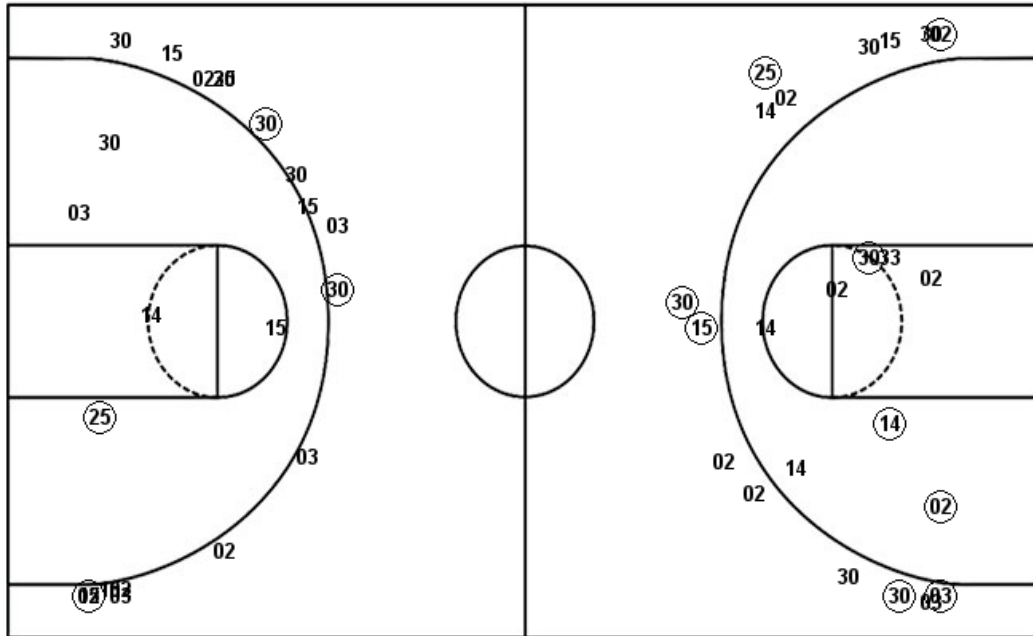


<b>SIUE : Period 4</b>	<b>Made</b>	<b>Att</b>	<b>Pct</b>
Layups	6	8	75.0
Dunks	0	0	0
2PT Field Goals	9	11	81.8
3PT Field Goals	1	3	33.3
<b>Total Field Goals</b>	<b>10</b>	<b>14</b>	<b>71.4</b>

<b>EKU : Period 4</b>	<b>Made</b>	<b>Att</b>	<b>Pct</b>
Layups	2	3	66.7
Dunks	0	0	0
2PT Field Goals	3	6	50.0
3PT Field Goals	1	11	09.1
<b>Total Field Goals</b>	<b>4</b>	<b>17</b>	<b>23.5</b>

**Official Shot Chart**  
**Eastern Kentucky vs SIUE**  
**Eastern Kentucky Team Shots**  
**February 02, 2019 at Vadalabene Center - Edwardsville, Ill.**

Layups



Layups

Dunks

Dunks

<b>EKU : Period 1</b>	<b>Made</b>	<b>Att</b>	<b>Pct</b>
Layups	2	3	66.7
Dunks	0	0	0
2PT Field Goals	5	9	55.6
3PT Field Goals	3	6	50.0
<b>Total Field Goals</b>	<b>8</b>	<b>15</b>	<b>53.3</b>

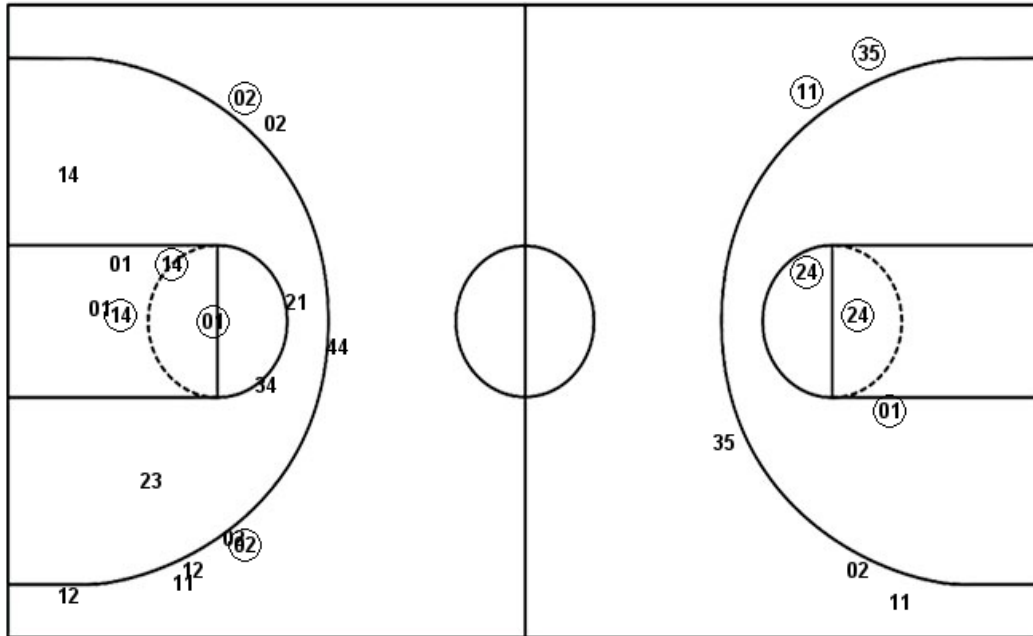
<b>EKU : Period 2</b>	<b>Made</b>	<b>Att</b>	<b>Pct</b>
Layups	1	2	50.0
Dunks	0	0	0
2PT Field Goals	1	4	25.0
3PT Field Goals	3	9	33.3
<b>Total Field Goals</b>	<b>4</b>	<b>13</b>	<b>30.8</b>

<b>EKU : Period 3</b>	<b>Made</b>	<b>Att</b>	<b>Pct</b>
Layups	3	6	50.0
Dunks	0	0	0
2PT Field Goals	3	8	37.5
3PT Field Goals	2	6	33.3
<b>Total Field Goals</b>	<b>5</b>	<b>14</b>	<b>35.7</b>

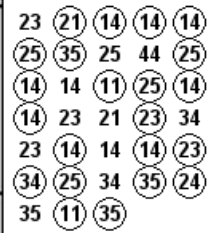
<b>EKU : Period 4</b>	<b>Made</b>	<b>Att</b>	<b>Pct</b>
Layups	2	3	66.7
Dunks	0	0	0
2PT Field Goals	3	6	50.0
3PT Field Goals	1	11	09.1
<b>Total Field Goals</b>	<b>4</b>	<b>17</b>	<b>23.5</b>

**Official Shot Chart**  
**Eastern Kentucky vs SIUE**  
**SIUE Team Shots**  
**February 02, 2019 at Vadalabene Center - Edwardsville, Ill.**

Layups



Layups



Dunks

Dunks

SIE: Period 1	Made	Att	Pct
Layups	6	8	75.0
Dunks	0	0	0
2PT Field Goals	8	14	57.1
3PT Field Goals	0	0	0
<b>Total Field Goals</b>	<b>8</b>	<b>14</b>	<b>57.1</b>

SIE: Period 3	Made	Att	Pct
Layups	8	13	61.5
Dunks	0	0	0
2PT Field Goals	8	13	61.5
3PT Field Goals	1	2	50.0
<b>Total Field Goals</b>	<b>9</b>	<b>15</b>	<b>60.0</b>

SIE: Period 2	Made	Att	Pct
Layups	2	4	50.0
Dunks	0	0	0
2PT Field Goals	3	7	42.9
3PT Field Goals	2	8	25.0
<b>Total Field Goals</b>	<b>5</b>	<b>15</b>	<b>33.3</b>

SIE: Period 4	Made	Att	Pct
Layups	6	8	75.0
Dunks	0	0	0
2PT Field Goals	9	11	81.8
3PT Field Goals	1	3	33.3
<b>Total Field Goals</b>	<b>10</b>	<b>14</b>	<b>71.4</b>