

FINAL SCORE



Morehead St.

73



SIUE

67

January 31, 2019 • Vadalabene Center - Edwardsville, Ill.

FINAL STATISTICS

Official Box Score
Morehead St. vs SIUE
Game Totals -- Final Statistics
January 31, 2019 at Vadalabene Center - Edwardsville, Ill.

Morehead St. 73

No.	Player	S	Pts	FG	3FG	FT	OR	DR	TR	PF	A	TO	Blk	Stl	Min	+/-
04	Seward, Darianne		1	0-5	0-1	1-2	1	1	2	3	2	2	0	2	34	8
11	Crockett, Miranda		24	10-16	0-0	4-7	6	2	8	3	1	2	1	2	31	6
12	Calvert, Mckenzie		10	2-8	1-3	5-6	1	4	5	3	0	4	0	3	27	13
13	Simmons-Cozar, Crystal		5	2-7	0-2	1-3	1	2	3	1	5	3	1	6	28	-1
22	Mcgowan, Tierra		14	5-9	0-0	4-4	4	7	11	4	1	0	0	0	38	6
00	Jeune, Aliyah		19	7-21	2-11	3-3	0	3	3	2	2	5	0	1	35	2
01	Jackson, Breuna		0	0-0	0-0	0-0	0	0	0	0	0	0	0	0	2	-2
10	Avery, Jaleesa		0	0-1	0-0	0-0	0	1	1	1	0	0	0	0	3	-4
14	Moore, Ashley		0	0-0	0-0	0-0	0	0	0	0	0	0	0	0	0	-1
23	Humphries, Orlandra		0	0-0	0-0	0-0	0	0	0	3	0	0	0	1	2	3
	Team						4	2	6	0		0				
TOTALS			73	26-67	3-17	18-25	17	22	39	20	11	16	2	15	200	

Shooting By Period

Period	FG	FG%	3FG	3FG%	FT	FT%
1st Qtr	3-15	20%	0-3	00%	0-0	0%
2nd Qtr	8-17	47%	1-4	25%	3-5	60%
3rd Qtr	9-21	43%	2-7	29%	5-5	100%
4th Qtr	6-14	43%	0-3	00%	10-15	67%
1st Half	11-32	34%	1-7	14%	3-5	60%
2nd Half	15-35	43%	2-10	20%	15-20	75%
Game	26-67	38.8%	3-17	17.6%	18-25	72.0%

Last FG: 4th-01:23
Biggest Run: 13-0
Largest lead: By 8 at 4-01:23
Technical Fouls: None.

SIUE 67

No.	Player	S	Pts	FG	3FG	FT	OR	DR	TR	PF	A	TO	Blk	Stl	Min	+/-
02	Bell, Nakiah		5	1-9	1-6	2-2	0	1	1	2	5	4	0	0	39	-6
05	Alston, Jaynee		12	5-8	2-3	0-0	1	5	6	3	2	2	0	0	25	-1
23	Troeckler, Allie		14	6-9	0-0	2-4	2	2	4	2	2	4	0	2	33	-5
25	Whitlock, Zaria		2	0-2	0-0	2-4	1	3	4	5	1	1	0	0	14	8
34	Bauman, Sydney		6	3-6	0-0	0-0	1	4	5	1	2	1	3	2	26	8
01	King, Christen		5	2-7	0-0	1-2	1	3	4	2	1	0	0	0	14	-7
11	Keith, Mikia		5	1-2	1-2	2-4	0	3	3	2	0	1	0	3	15	-5
12	Koehler, Kai		0	0-1	0-1	0-0	0	0	0	0	1	0	0	0	1	1
14	Jones, Micah		0	0-1	0-0	0-0	0	1	1	0	2	2	0	0	9	-2
21	Akuen, Alek		11	3-3	0-0	5-7	2	3	5	4	0	1	0	2	14	-14
35	Hall, Mikala		0	0-0	0-0	0-0	0	0	0	0	0	0	0	0	1	0
44	Everidge, Riana		7	2-4	1-2	2-2	1	1	2	3	1	5	0	1	9	-7
	Team						1	1	2	0		1				
TOTALS			67	23-52	5-14	16-25	10	27	37	24	17	22	3	10	200	

Shooting By Period

Period	FG	FG%	3FG	3FG%	FT	FT%
1st Qtr	4-13	31%	1-4	25%	6-8	75%
2nd Qtr	7-9	78%	2-2	100%	4-6	67%
3rd Qtr	8-15	53%	2-4	50%	1-2	50%
4th Qtr	4-15	27%	0-4	00%	5-9	56%
1st Half	11-22	50%	3-6	50%	10-14	71%
2nd Half	12-30	40%	2-8	25%	6-11	55%
Game	23-52	44.2%	5-14	35.7%	16-25	64.0%

Last FG: 4th-00:32
Biggest Run: 5-0
Largest lead: By 16 at 3-06:49
Technical Fouls: None.

Game Notes:

Officials: **Missy Brooks, Xiomara Cruz, Shane Bennett**
 Attendance: 1776

Start Time: 2019-01-31 17:06:34
 End Time: 2019-01-31 19:09:38
 Game Duration: 123
 Conference Game;

Score	1st	2nd	3rd	4th	TOT
MSU	6	20	25	22	73
SIE	15	20	19	13	67

MSU led for 8:58. SIE led for 27:34.
 Game was tied for 3:28.
 Times tied: 2 Lead Changes: 1

Points from	MSU	SIE
In the Paint	38	30
Off Turns	27	9
2nd Chance	15	3
Fast Break	16	12
Bench	19	28

Official Box Score
Morehead St. vs SIUE
First Half Statistics Only
January 31, 2019 at Vadalabene Center - Edwardsville, Ill.

Morehead St. 26

No.	Player	S	Pts	FG	3FG	FT	OR	DR	TR	PF	A	TO	Blk	Stl	Min	+/-
00	Jeune, Aliyah		4	2-9	0-4	0-0	0	1	1	0	1	3	0	1	17	-9
10	Avery, Jaleesa		0	0-1	0-0	0-0	0	1	1	1	0	0	0	0	3	-3
11	Crockett, Miranda		10	5-7	0-0	0-0	2	1	3	2	1	2	0	0	14	-6
12	Calvert, Mckenzie		4	1-5	1-2	1-2	0	2	2	3	0	2	0	1	14	-4
13	Simmons-Cozar, Crystal		4	2-4	0-0	0-1	1	1	2	1	1	1	0	2	14	-10
14	Moore, Ashley		0	0-0	0-0	0-0	0	0	0	0	0	0	0	0	0	0
22	Mcgowan, Tierra		4	1-2	0-0	2-2	0	2	2	1	1	0	0	0	19	-9
23	Humphries, Orlandra		0	0-0	0-0	0-0	0	0	0	2	0	0	0	1	2	2
01	Jackson, Breuna		0	0-0	0-0	0-0	0	0	0	0	0	0	0	0	2	-2
04	Seward, Darianne		0	0-4	0-1	0-0	1	0	1	1	1	1	0	1	16	-4
	Team		0	0-0	0-0	0-0	2	1	3	0	0	0	0	0	0	0
TOTALS			26	11-32	1-7	3-5	6	9	15	11	5	9	0	6	100	

Shooting By Period

Period	FG	FG%	3FG	3FG%	FT	FT%
1st Qtr	3-15	20%	0-3	00%	0-0	0%
2nd Qtr	8-17	47%	1-4	25%	3-5	60%
1st Half	11-32	34%	1-7	14%	3-5	60%
Game	26-67	38.8%	3-17	17.6%	18-25	72.0%

Last FG Half: MSU 2nd-00:41

SIUE 35

No.	Player	S	Pts	FG	3FG	FT	OR	DR	TR	PF	A	TO	Blk	Stl	Min	+/-
01	King, Christen		0	0-2	0-0	0-0	1	0	1	0	0	0	0	0	6	2
02	Bell, Nakiah		2	0-2	0-2	2-2	0	1	1	0	4	2	0	0	19	9
05	Alston, Jaynee		7	3-6	1-2	0-0	1	2	3	2	0	0	0	0	13	11
11	Keith, Mikia		3	1-1	1-1	0-0	0	2	2	0	0	1	0	2	7	-2
12	Koehler, Kai		0	0-0	0-0	0-0	0	0	0	0	0	0	0	0	0	0
14	Jones, Micah		0	0-1	0-0	0-0	0	1	1	0	2	2	0	0	5	0
21	Akuen, Alek		4	1-1	0-0	2-2	1	1	2	2	0	0	0	1	5	0
23	Troeckler, Allie		8	3-3	0-0	2-4	0	2	2	1	1	2	0	1	16	6
25	Whitlock, Zaria		2	0-1	0-0	2-4	0	3	3	2	0	1	0	0	10	5
34	Bauman, Sydney		4	2-4	0-0	0-0	1	2	3	0	0	1	1	1	15	10
35	Hall, Mikala		0	0-0	0-0	0-0	0	0	0	0	0	0	0	0	1	0
44	Everidge, Riana		5	1-1	1-1	2-2	0	0	0	2	1	1	0	0	3	4
	Team		0	0-0	0-0	0-0	0	1	1	0	0	0	0	0	0	0
TOTALS			35	11-22	3-6	10-14	4	15	19	9	8	10	1	5	100	

Shooting By Period

Period	FG	FG%	3FG	3FG%	FT	FT%
1st Qtr	4-13	31%	1-4	25%	6-8	75%
2nd Qtr	7-9	78%	2-2	100%	4-6	67%
1st Half	11-22	50%	3-6	50%	10-14	71%
Game	23-52	44.2%	5-14	35.7%	16-25	64.0%

Last FG Half: SIE 2nd-01:43

Game Notes:

Officials: Missy Brooks, Xiomara Cruz, Shane Bennett
Attendance: 1776

Start Time: 2019-01-31 17:06:34
End Time: 2019-01-31 19:09:38
Game Duration: 123
Conference Game;

Score	1st	2nd	3rd	4th	TOT
MSU	6	20	25	22	73
SIE	15	20	19	13	67

Points from (This Period)	MSU	SIE
In the Paint	18	12
Off Turns	13	4
2nd Chance	5	0
Fast Break	2	4
Bench	4	12

Official Box Score
Morehead St. vs SIUE
First Quarter Statistics Only
January 31, 2019 at Vadalabene Center - Edwardsville, Ill.

Morehead St. 6

No.	Player	S	Pts	FG	3FG	FT	OR	DR	TR	PF	A	TO	Blk	Stl	Min	+/-
04	Seward, Darianne		0	0-2	0-1	0-0	0	0	0	1	1	0	0	0	8	-6
11	Crockett, Miranda		6	3-5	0-0	0-0	0	1	1	2	0	2	0	0	8	-3
12	Calvert, Mckenzie		0	0-2	0-1	0-0	0	2	2	1	0	1	0	1	8	-6
13	Simmons-Cozar, Crystal		0	0-2	0-0	0-0	0	1	1	1	1	0	0	0	8	-9
22	Mcgowan, Tierra		0	0-0	0-0	0-0	0	2	2	0	0	0	0	0	9	-9
00	Jeune, Aliyah		0	0-3	0-1	0-0	0	0	0	0	0	1	0	0	7	-9
01	Jackson, Breuna		0	0-0	0-0	0-0	0	0	0	0	0	0	0	0	0	0
10	Avery, Jaleesa		0	0-1	0-0	0-0	0	1	1	1	0	0	0	0	3	-3
14	Moore, Ashley		0	0-0	0-0	0-0	0	0	0	0	0	0	0	0	0	0
23	Humphries, Orlandra		0	0-0	0-0	0-0	0	0	0	0	0	0	0	0	0	0
	Team						2	0	2	0		0				
TOTALS			6	3-15	0-3	0-0	2	7	9	6	2	4	0	1	50	

Shooting By Period

Period	FG	FG%	3FG	3FG%	FT	FT%
1st Qtr	3-15	20%	0-3	00%	0-0	0%
2nd Qtr	8-17	47%	1-4	25%	3-5	60%
1st Half	3-15	20%	0-3	00%	0-0	0%
1st Half	11-32	34%	1-7	14%	3-5	60%
Game	26-67	38.8%	3-17	17.6%	18-25	72.0%

SIUE 15

No.	Player	S	Pts	FG	3FG	FT	OR	DR	TR	PF	A	TO	Blk	Stl	Min	+/-
02	Bell, Nakiah		2	0-2	0-2	2-2	0	0	0	0	2	0	0	0	9	9
05	Alston, Jaynee		7	3-6	1-2	0-0	1	2	3	1	0	0	0	0	9	6
23	Troeckler, Allie		2	1-1	0-0	0-0	0	1	1	1	0	1	0	0	6	6
25	Whitlock, Zaria		2	0-0	0-0	2-4	0	2	2	0	0	0	0	0	7	5
34	Bauman, Sydney		0	0-2	0-0	0-0	0	1	1	0	0	0	1	0	7	6
01	King, Christen		0	0-1	0-0	0-0	1	0	1	0	0	0	0	0	4	3
11	Keith, Mikia		0	0-0	0-0	0-0	0	1	1	0	0	0	0	0	1	3
12	Koehler, Kai		0	0-0	0-0	0-0	0	0	0	0	0	0	0	0	0	0
14	Jones, Micah		0	0-1	0-0	0-0	0	1	1	0	1	1	0	0	3	3
21	Akuen, Alek		2	0-0	0-0	2-2	1	1	2	1	0	0	0	1	3	4
35	Hall, Mikala		0	0-0	0-0	0-0	0	0	0	0	0	0	0	0	1	0
44	Everidge, Riana		0	0-0	0-0	0-0	0	0	0	0	0	0	0	0	0	0
	Team						0	1	1	0		0				
TOTALS			15	4-13	1-4	6-8	3	10	13	3	3	2	1	1	50	

Shooting By Period

Period	FG	FG%	3FG	3FG%	FT	FT%
1st Qtr	4-13	31%	1-4	25%	6-8	75%
2nd Qtr	7-9	78%	2-2	100%	4-6	67%
1st Half	4-13	31%	1-4	25%	6-8	75%
1st Half	11-22	50%	3-6	50%	10-14	71%
Game	23-52	44.2%	5-14	35.7%	16-25	64.0%

Game Notes:

Officials: **Missy Brooks, Xiomara Cruz, Shane Bennett**
Attendance: 1776

Start Time: 2019-01-31 17:06:34
End Time: 2019-01-31 19:09:38
Game Duration: 123
Conference Game;

Score	1st	2nd	3rd	4th	TOT
MSU	6	20	25	22	73
SIE	15	20	19	13	67

Points from (This Period)	MSU	SIE
In the Paint	4	6
Off Turns	0	2
2nd Chance	0	0
Fast Break	0	0
Bench	0	2

Official Play-By-Play
Morehead St. vs SIUE
First Quarter
January 31, 2019 at Vadalabene Center - Edwardsville, Ill.

Period 1

Starters:

Morehead St.: 11 CROCKETT,MIRANDA; 12 CALVERT,MCKENZIE; 13 SIMMONS-COZAR,CRYSTAL; 22 MCGOWAN, TIERRA; 4 SEWARD,DARIANNE;
SIUE: 2 BELL,NAKIAH; 5 ALSTON,JAY'NEE; 23 TROECKLER,ALLIE; 25 WHITLOCK,ZARIA; 34 BAUMAN,SYDNEY;

Time	VISITORS: Morehead St.	Score	Margin	HOME: SIUE
09:35	TURNOVER (LOSTBALL) by CROCKETT,MIRANDA			
09:05		2-0	H 2	GOOD! LAYUP by TROECKLER,ALLIE
09:05				ASSIST by BELL,NAKIAH
08:46	GOOD! JUMPER by CROCKETT,MIRANDA	2-2	T	
08:46	ASSIST by SIMMONS-COZAR,CRYSTAL			
08:36				MISSED JUMPER by BAUMAN,SYDNEY
08:33	REBOUND (DEF) by CALVERT,MCKENZIE			
08:26	MISSED JUMPER by CROCKETT,MIRANDA			
08:25				REBOUND (DEF) by TEAM
08:06				MISSED JUMPER by ALSTON,JAY'NEE
08:03	REBOUND (DEF) by CALVERT,MCKENZIE			
07:58	MISSED JUMPER by CALVERT,MCKENZIE			
07:55				REBOUND (DEF) by ALSTON,JAY'NEE
07:51				TURNOVER (LOSTBALL) by TROECKLER,ALLIE
07:23	MISSED JUMPER by SIMMONS-COZAR,CRYSTAL			
07:22	REBOUND (OFF) by TEAM			
07:22	SUB OUT: SIMMONS-COZAR,CRYSTAL			
07:22	SUB IN: JEUNE,ALIYAH			
07:22	MISSED JUMPER by JEUNE,ALIYAH			
07:22				REBOUND (DEF) by WHITLOCK,ZARIA
07:04				MISSED 3PTR by BELL,NAKIAH
07:00	REBOUND (DEF) by MCGOWAN, TIERRA			
06:54	MISSED 3PTR by CALVERT,MCKENZIE			
06:48				REBOUND (DEF) by TROECKLER,ALLIE
06:29	FOUL (PERSONAL) by CALVERT,MCKENZIE			
06:29	SUB OUT: CALVERT,MCKENZIE			
06:29	SUB IN: SIMMONS-COZAR,CRYSTAL			
06:18		5-2	H 3	GOOD! 3PTR by ALSTON,JAY'NEE
06:18				ASSIST by BELL,NAKIAH
06:04				FOUL (PERSONAL) by ALSTON,JAY'NEE
06:04				SUB OUT: BAUMAN,SYDNEY
06:04				SUB IN: AKUEN,ALEK
06:04				SUB OUT: WHITLOCK,ZARIA
06:04				SUB IN: JONES,MICAH
06:00	MISSED JUMPER by CROCKETT,MIRANDA			
05:57				REBOUND (DEF) by AKUEN,ALEK
05:39		7-2	H 5	GOOD! LAYUP by ALSTON,JAY'NEE
05:23	GOOD! JUMPER by CROCKETT,MIRANDA	7-4	H 3	
05:23	ASSIST by SEWARD,DARIANNE			
05:02				MISSED LAYUP by JONES,MICAH
05:00	REBOUND (DEF) by CROCKETT,MIRANDA			
04:56				FOUL (PERSONAL) by TROECKLER,ALLIE
04:56				
04:56				SUB OUT: TROECKLER,ALLIE
04:56				SUB IN: KING,CHRISTEN
04:56	SUB OUT: SEWARD,DARIANNE			
04:56	SUB IN: CALVERT,MCKENZIE			
04:53	TURNOVER (TRAVEL) by CROCKETT,MIRANDA			
04:40				MISSED 3PTR by ALSTON,JAY'NEE
04:33				REBOUND (OFF) by KING,CHRISTEN
04:33				MISSED LAYUP by KING,CHRISTEN
04:30				REBOUND (OFF) by AKUEN,ALEK
04:30				MISSED 3PTR by BELL,NAKIAH
04:30	REBOUND (DEF) by MCGOWAN, TIERRA			
04:30				FOUL (PERSONAL) by AKUEN,ALEK
04:16	TURNOVER (LOSTBALL) by JEUNE,ALIYAH			
04:16				STEAL by AKUEN,ALEK
03:54				TURNOVER (BADPASS) by JONES,MICAH
03:54	STEAL by CALVERT,MCKENZIE			
03:49	MISSED LAYUP by JEUNE,ALIYAH			
03:47				REBOUND (DEF) by JONES,MICAH
03:47	FOUL (PERSONAL) by CROCKETT,MIRANDA			
03:47	SUB OUT: CROCKETT,MIRANDA			
03:47	SUB IN: AVERY,JALEESA			
03:15		9-4	H 5	GOOD! LAYUP by ALSTON,JAY'NEE [PNT]
03:15				ASSIST by JONES,MICAH
02:57	MISSED LAYUP by AVERY,JALEESA			
02:54				REBOUND (DEF) by ALSTON,JAY'NEE
02:39	FOUL (PERSONAL) by AVERY,JALEESA			
02:39		10-4	H 6	GOOD! FT by AKUEN,ALEK
02:39				SUB OUT: JONES,MICAH
02:39				SUB IN: BAUMAN,SYDNEY
02:39	SUB OUT: SIMMONS-COZAR,CRYSTAL			
02:39	SUB IN: SEWARD,DARIANNE			
02:39	SUB OUT: MCGOWAN, TIERRA			
02:39	SUB IN: CROCKETT,MIRANDA			

Time	VISITORS: Morehead St.	Score	Margin	HOME: SIUE
02:39		11-4	H 7	GOOD! FT by AKUEN,ALEK
02:39				SUB OUT: AKUEN,ALEK
02:39				SUB IN: WHITLOCK,ZARIA
02:30	TURNOVER (DRIBBLING) by CALVERT,MCKENZIE			
02:10				MISSED JUMPER by ALSTON,JAY'NEE
02:07				REBOUND (OFF) by ALSTON,JAY'NEE
02:02				MISSED LAYUP by BAUMAN,SYDNEY
01:59	REBOUND (DEF) by AVERY,JALEESA			
01:46	GOOD! JUMPER by CROCKETT,MIRANDA [PNT]	11-6	H 5	
01:13	FOUL (PERSONAL) by CROCKETT,MIRANDA			
01:13		12-6	H 6	GOOD! FT by WHITLOCK,ZARIA
01:13				SUB OUT: ALSTON,JAY'NEE
01:13				SUB IN: KEITH,MIKIA
01:13				SUB OUT: KING,CHRISTEN
01:13				SUB IN: TROECKLER,ALLIE
01:13	SUB OUT: CROCKETT,MIRANDA			
01:13	SUB IN: SIMMONS-COZAR,CRYSTAL			
01:13	SUB OUT: AVERY,JALEESA			
01:13	SUB IN: MCGOWAN,TIERRA			
01:13		13-6	H 7	GOOD! FT by WHITLOCK,ZARIA
00:59	MISSED 3PTR by SEWARD,DARIANNE			
00:56				REBOUND (DEF) by KEITH,MIKIA
00:33	FOUL (PERSONAL) by SEWARD,DARIANNE			
00:33		14-6	H 8	GOOD! FT by BELL,NAKIAH
00:33		15-6	H 9	GOOD! FT by BELL,NAKIAH
00:33				SUB OUT: BELL,NAKIAH
00:33				SUB IN: HALL,MIKALA
00:25	MISSED JUMPER by SIMMONS-COZAR,CRYSTAL			
00:23				REBOUND (DEF) by WHITLOCK,ZARIA
00:23	FOUL (PERSONAL) by SIMMONS-COZAR,CRYSTAL			
00:23				MISSED FT by WHITLOCK,ZARIA
00:23				REBOUND (OFF) by TEAM
00:23				MISSED FT by WHITLOCK,ZARIA
00:23	REBOUND (DEF) by SIMMONS-COZAR,CRYSTAL			
00:05	MISSED LAYUP by SEWARD,DARIANNE			
00:05				BLOCK by BAUMAN,SYDNEY
00:05	REBOUND (OFF) by TEAM			
00:02	MISSED 3PTR by JEUNE,ALIYAH			
00:00				REBOUND (DEF) by BAUMAN,SYDNEY

Morehead St. 6, SIUE 15

Points from (This Period)	MSU	SIUE
In the Paint	4	6
Off Turns	0	2
2nd Chance	0	0
Fast Break	0	0
Bench	0	2

Official Box Score
Morehead St. vs SIUE
Second Quarter Statistics Only
January 31, 2019 at Vadalabene Center - Edwardsville, Ill.

Morehead St. 20

No.	Player	S	Pts	FG	3FG	FT	OR	DR	TR	PF	A	TO	Blk	Stl	Min	+/-
04	Seward, Darianne		0	0-2	0-0	0-0	1	0	1	0	0	1	0	1	8	2
11	Crockett, Miranda		4	2-2	0-0	0-0	2	0	2	0	1	0	0	0	6	-3
12	Calvert, Mckenzie		4	1-3	1-1	1-2	0	0	0	2	0	1	0	0	6	2
13	Simmons-Cozar, Crystal		4	2-2	0-0	0-1	1	0	1	0	0	1	0	2	6	-1
22	Mcgowan, Tierra		4	1-2	0-0	2-2	0	0	0	1	1	0	0	0	10	0
00	Jeune, Aliyah		4	2-6	0-3	0-0	0	1	1	0	1	2	0	1	10	0
01	Jackson, Breuna		0	0-0	0-0	0-0	0	0	0	0	0	0	0	0	2	-2
10	Avery, Jaleesa		0	0-0	0-0	0-0	0	0	0	0	0	0	0	0	0	0
14	Moore, Ashley		0	0-0	0-0	0-0	0	0	0	0	0	0	0	0	0	0
23	Humphries, Orlandra		0	0-0	0-0	0-0	0	0	0	2	0	0	0	1	2	2
	Team						0	1	1	0		0				
TOTALS			20	8-17	1-4	3-5	4	2	6	5	3	5	0	5	50	

Shooting By Period

Period	FG	FG%	3FG	3FG%	FT	FT%
3rd Qtr	9-21	43%	2-7	29%	5-5	100%
4th Qtr	6-14	43%	0-3	00%	10-15	67%
2nd Half	8-17	47%	1-4	25%	3-5	60%
2nd Half	15-35	43%	2-10	20%	15-20	75%
Game	26-67	38.8%	3-17	17.6%	18-25	72.0%

SIUE 20

No.	Player	S	Pts	FG	3FG	FT	OR	DR	TR	PF	A	TO	Blk	Stl	Min	+/-
02	Bell, Nakiah		0	0-0	0-0	0-0	0	1	1	0	2	2	0	0	10	0
05	Alston, Jaynee		0	0-0	0-0	0-0	0	0	0	1	0	0	0	0	4	5
23	Troeckler, Allie		6	2-2	0-0	2-4	0	1	1	0	1	1	0	1	10	0
25	Whitlock, Zaria		0	0-1	0-0	0-0	0	1	1	2	0	1	0	0	3	0
34	Bauman, Sydney		4	2-2	0-0	0-0	1	1	2	0	0	1	0	1	8	4
01	King, Christen		0	0-1	0-0	0-0	0	0	0	0	0	0	0	0	2	-1
11	Keith, Mikia		3	1-1	1-1	0-0	0	1	1	0	0	1	0	2	6	-5
12	Koehler, Kai		0	0-0	0-0	0-0	0	0	0	0	0	0	0	0	0	0
14	Jones, Micah		0	0-0	0-0	0-0	0	0	0	0	1	1	0	0	2	-3
21	Akuen, Alek		2	1-1	0-0	0-0	0	0	0	1	0	0	0	0	2	-4
35	Hall, Mikala		0	0-0	0-0	0-0	0	0	0	0	0	0	0	0	0	0
44	Everidge, Riana		5	1-1	1-1	2-2	0	0	0	2	1	1	0	0	3	4
	Team						0	0	0	0		0				
TOTALS			20	7-9	2-2	4-6	1	5	6	6	5	8	0	4	50	

Shooting By Period

Period	FG	FG%	3FG	3FG%	FT	FT%
3rd Qtr	8-15	53%	2-4	50%	1-2	50%
4th Qtr	4-15	27%	0-4	00%	5-9	56%
2nd Half	7-9	78%	2-2	100%	4-6	67%
2nd Half	12-30	40%	2-8	25%	6-11	55%
Game	23-52	44.2%	5-14	35.7%	16-25	64.0%

Game Notes:

Officials: **Missy Brooks, Xiomara Cruz, Shane Bennett**
Attendance: 1776

Start Time: 2019-01-31 17:06:34
End Time: 2019-01-31 19:09:38
Game Duration: 123
Conference Game;

Score	1st	2nd	3rd	4th	TOT
MSU	6	20	25	22	73
SIE	15	20	19	13	67

Points from (This Period)	MSU	SIE
In the Paint	14	6
Off Turns	13	2
2nd Chance	5	0
Fast Break	2	4
Bench	4	10

Official Play-By-Play
Morehead St. vs SIUE
Second Quarter
January 31, 2019 at Vadalabene Center - Edwardsville, Ill.

Period 2

Starters:

Morehead St.: 11 CROCKETT,MIRANDA; 12 CALVERT,MCKENZIE; 13 SIMMONS-COZAR,CRYSTAL; 22 MCGOWAN, TIERRA; 4 SEWARD,DARIANNE;
SIUE: 2 BELL,NAKIAH; 5 ALSTON,JAY'NEE; 23 TROECKLER,ALLIE; 25 WHITLOCK,ZARIA; 34 BAUMAN,SYDNEY;

Time	VISITORS: Morehead St.	Score	Margin	HOME: SIUE
09:44				FOUL (PERSONAL) by WHITLOCK,ZARIA
09:44	MISSED FT by CALVERT,MCKENZIE			
09:44	REBOUND (OFF) by TEAM			
09:44	SUB OUT: CROCKETT,MIRANDA			
09:44	SUB IN: JEUNE,ALIYAH			
09:44	GOOD! FT by CALVERT,MCKENZIE	15-7	H 8	
09:14				TURNOVER (LOSTBALL) by TROECKLER,ALLIE
09:14	STEAL by JEUNE,ALIYAH			
09:10	GOOD! LAYUP by SIMMONS-COZAR,CRYSTAL	15-9	H 6	
09:10	ASSIST by MCGOWAN, TIERRA			
09:10				FOUL (PERSONAL) by ALSTON,JAY'NEE
09:10	MISSED FT by SIMMONS-COZAR,CRYSTAL			
09:08				REBOUND (DEF) by WHITLOCK,ZARIA
08:44		17-9	H 8	GOOD! JUMPER by TROECKLER,ALLIE
08:28	MISSED LAYUP by CALVERT,MCKENZIE			
08:25	REBOUND (OFF) by SIMMONS-COZAR,CRYSTAL			
08:22	MISSED 3PTR by JEUNE,ALIYAH			
08:18				REBOUND (DEF) by BELL,NAKIAH
08:11				TURNOVER (LOSTBALL) by BAUMAN,SYDNEY
08:11	STEAL by SIMMONS-COZAR,CRYSTAL			
08:06	MISSED LAYUP by SEWARD,DARIANNE			
08:03				REBOUND (DEF) by BAUMAN,SYDNEY
07:47	FOUL (PERSONAL) by MCGOWAN, TIERRA			
07:47				MISSED FT by TROECKLER,ALLIE
07:47				REBOUND (OFF) by TEAM
07:47				SUB OUT: ALSTON,JAY'NEE
07:47				SUB IN: KEITH,MIKIA
07:47	SUB OUT: SEWARD,DARIANNE			
07:47	SUB IN: JACKSON,BREUNA			
07:47	SUB OUT: SIMMONS-COZAR,CRYSTAL			
07:47	SUB IN: CROCKETT,MIRANDA			
07:47		18-9	H 9	GOOD! FT by TROECKLER,ALLIE
07:40	TURNOVER (LOSTBALL) by CALVERT,MCKENZIE			
07:40				STEAL by KEITH,MIKIA
07:32				MISSED LAYUP by WHITLOCK,ZARIA
07:29				REBOUND (OFF) by BAUMAN,SYDNEY
07:21				FOUL (OFF) by WHITLOCK,ZARIA
07:21				TURNOVER (OFFENSIVE) by WHITLOCK,ZARIA
07:21				SUB OUT: WHITLOCK,ZARIA
07:21				SUB IN: JONES,MICAH
07:05	MISSED JUMPER by JEUNE,ALIYAH			
07:01	REBOUND (OFF) by CROCKETT,MIRANDA			
07:01	GOOD! LAYUP by CROCKETT,MIRANDA	18-11	H 7	
06:43		20-11	H 9	GOOD! JUMPER by TROECKLER,ALLIE
06:43				ASSIST by JONES,MICAH
06:32	GOOD! LAYUP by CROCKETT,MIRANDA	20-13	H 7	
06:16		23-13	H 10	GOOD! 3PTR by KEITH,MIKIA
06:16				ASSIST by BELL,NAKIAH
06:04	TURNOVER (LOSTBALL) by JEUNE,ALIYAH			
06:04				STEAL by KEITH,MIKIA
06:04	FOUL (PERSONAL) by CALVERT,MCKENZIE			
06:04	SUB OUT: JACKSON,BREUNA			
06:04	SUB IN: SIMMONS-COZAR,CRYSTAL			
06:04	SUB OUT: CALVERT,MCKENZIE			
06:04	SUB IN: SEWARD,DARIANNE			
05:56	SUB OUT: CROCKETT,MIRANDA			
05:56	SUB IN: HUMPHRIES,ORLANDRA			
05:52				TURNOVER (LOSTBALL) by KEITH,MIKIA
05:52	STEAL by SEWARD,DARIANNE			
05:37	GOOD! LAYUP by SIMMONS-COZAR,CRYSTAL [PNT]	23-15	H 8	
05:22				SUB OUT: BAUMAN,SYDNEY
05:22				SUB IN: AKUEN,ALEK
05:18				TURNOVER (BADPASS) by JONES,MICAH
05:18	STEAL by HUMPHRIES,ORLANDRA			
05:09	GOOD! LAYUP by JEUNE,ALIYAH	23-17	H 6	
04:53	FOUL (PERSONAL) by HUMPHRIES,ORLANDRA			
04:53				SUB OUT: JONES,MICAH
04:53				SUB IN: EVERIDGE,RIANA
04:50				TURNOVER (BADPASS) by BELL,NAKIAH
04:47	SUB OUT: HUMPHRIES,ORLANDRA			
04:47	SUB IN: CROCKETT,MIRANDA			
04:47	SUB OUT: SIMMONS-COZAR,CRYSTAL			
04:47	SUB IN: CALVERT,MCKENZIE			
04:34	MISSED LAYUP by MCGOWAN, TIERRA			
04:34	REBOUND (OFF) by CROCKETT,MIRANDA			

Time	VISITORS: Morehead St.	Score	Margin	HOME: SIUE
04:34				FOUL (PERSONAL) by EVERIDGE,RIANA
04:25	GOOD! 3PTR by CALVERT,MCKENZIE	23-20	H 3	
04:25	ASSIST by CROCKETT,MIRANDA			
03:54		25-20	H 5	GOOD! LAYUP by AKUEN,ALEK [PNT]
03:54				ASSIST by BELL,NAKIAH
03:48				FOUL (PERSONAL) by AKUEN,ALEK
03:48	GOOD! FT by MCGOWAN, TIERRA [FB]	25-21	H 4	
03:48				SUB OUT: AKUEN,ALEK
03:48				SUB IN: BAUMAN,SYDNEY
03:48				SUB OUT: KEITH,MIKIA
03:48				SUB IN: ALSTON,JAY'NEE
03:48	SUB OUT: CALVERT,MCKENZIE			
03:48	SUB IN: SIMMONS-COZAR,CRYSTAL			
03:48	SUB OUT: CROCKETT,MIRANDA			
03:48	SUB IN: HUMPHRIES,ORLANDRA			
03:48	GOOD! FT by MCGOWAN, TIERRA [FB]	25-22	H 3	
03:33		27-22	H 5	GOOD! LAYUP by BAUMAN,SYDNEY
03:33				ASSIST by EVERIDGE,RIANA
03:25	TURNOVER (TRAVEL) by JEUNE,ALIYAH			
03:19	FOUL (PERSONAL) by HUMPHRIES,ORLANDRA			
03:19		28-22	H 6	GOOD! FT by EVERIDGE,RIANA [FB]
03:19	SUB OUT: HUMPHRIES,ORLANDRA			
03:19	SUB IN: CROCKETT,MIRANDA			
03:19		29-22	H 7	GOOD! FT by EVERIDGE,RIANA [FB]
03:01	TURNOVER (LOSTBALL) by SEWARD,DARIANNE			
03:01				STEAL by TROECKLER,ALLIE
02:38				TURNOVER (LOSTBALL) by BELL,NAKIAH
02:38	STEAL by SIMMONS-COZAR,CRYSTAL			
02:34	TURNOVER (LOSTBALL) by SIMMONS-COZAR,CRYSTAL			
02:34				STEAL by BAUMAN,SYDNEY
02:34	SUB OUT: CROCKETT,MIRANDA			
02:34	SUB IN: HUMPHRIES,ORLANDRA			
02:34				FOUL (OFF) by EVERIDGE,RIANA
02:34				TURNOVER (OFFENSIVE) by EVERIDGE,RIANA
02:34	SUB OUT: HUMPHRIES,ORLANDRA			
02:34	SUB IN: CROCKETT,MIRANDA			
02:26	GOOD! LAYUP by JEUNE,ALIYAH [PNT]	29-24	H 5	
02:07		32-24	H 8	GOOD! 3PTR by EVERIDGE,RIANA
01:51	MISSED 3PTR by JEUNE,ALIYAH			
01:47				REBOUND (DEF) by TROECKLER,ALLIE
01:43		34-24	H 10	GOOD! LAYUP by BAUMAN,SYDNEY [FB]
01:43				ASSIST by TROECKLER,ALLIE
01:34				SUB OUT: ALSTON,JAY'NEE
01:34				SUB IN: KEITH,MIKIA
01:34				SUB OUT: EVERIDGE,RIANA
01:34				SUB IN: KING,CHRISTEN
01:34	SUB OUT: SIMMONS-COZAR,CRYSTAL			
01:34	SUB IN: CALVERT,MCKENZIE			
01:24	MISSED LAYUP by CALVERT,MCKENZIE			
01:21				REBOUND (DEF) by KEITH,MIKIA
00:57				MISSED JUMPER by KING,CHRISTEN
00:57	REBOUND (DEF) by TEAM			
00:41	GOOD! LAYUP by MCGOWAN, TIERRA [PNT]	34-26	H 8	
00:41	ASSIST by JEUNE,ALIYAH			
00:24	FOUL (PERSONAL) by CALVERT,MCKENZIE			
00:24		35-26	H 9	GOOD! FT by TROECKLER,ALLIE
00:24	SUB OUT: CALVERT,MCKENZIE			
00:24	SUB IN: SIMMONS-COZAR,CRYSTAL			
00:24				MISSED FT by TROECKLER,ALLIE
00:22	REBOUND (DEF) by JEUNE,ALIYAH			
00:06	MISSED 3PTR by JEUNE,ALIYAH			
00:06	REBOUND (OFF) by SEWARD,DARIANNE			
00:01	MISSED LAYUP by SEWARD,DARIANNE			
00:00				REBOUND (DEF) by TEAM

Morehead St. 26, SIUE 35

Points from (This Period)	MSU	SIE
In the Paint	14	6
Off Turns	13	2
2nd Chance	5	0
Fast Break	2	4
Bench	4	10

Official Box Score
Morehead St. vs SIUE
Second Half Statistics Only
January 31, 2019 at Vadalabene Center - Edwardsville, Ill.

Morehead St. 47

No.	Player	S	Pts	FG	3FG	FT	OR	DR	TR	PF	A	TO	Blk	Stl	Min	+/-
00	Jeune, Aliyah		15	5-12	2-7	3-3	0	2	2	2	1	2	0	0	18	11
10	Avery, Jaleesa		0	0-0	0-0	0-0	0	0	0	0	0	0	0	0	0	-1
11	Crockett, Miranda		14	5-9	0-0	4-7	4	1	5	1	0	0	1	2	18	12
12	Calvert, Mckenzie		6	1-3	0-1	4-4	1	2	3	0	0	2	0	2	13	17
13	Simmons-Cozar, Crystal		1	0-3	0-2	1-2	0	1	1	0	4	2	1	4	14	9
14	Moore, Ashley		0	0-0	0-0	0-0	0	0	0	0	0	0	0	0	0	-1
22	Mcgowan, Tierra		10	4-7	0-0	2-2	4	5	9	3	0	0	0	0	19	15
23	Humphries, Orlandra		0	0-0	0-0	0-0	0	0	0	1	0	0	0	0	1	1
01	Jackson, Breuna		0	0-0	0-0	0-0	0	0	0	0	0	0	0	0	0	0
04	Seward, Darianne		1	0-1	0-0	1-2	0	1	1	2	1	1	0	1	17	12
	Team		0	0-0	0-0	0-0	2	1	3	0	0	0	0	0	0	0
TOTALS			47	15-35	2-10	15-20	11	13	24	9	6	7	2	9	100	

Shooting By Period

Period	FG	FG%	3FG	3FG%	FT	FT%
3rd Qtr	9-21	43%	2-7	29%	5-5	100%
4th Qtr	6-14	43%	0-3	00%	10-15	67%
2nd Half	15-35	43%	2-10	20%	15-20	75%
Game	26-67	38.8%	3-17	17.6%	18-25	72.0%

Last FG Half: MSU 4th-01:23

SIUE 32

No.	Player	S	Pts	FG	3FG	FT	OR	DR	TR	PF	A	TO	Blk	Stl	Min	+/-
01	King, Christen		5	2-5	0-0	1-2	0	3	3	2	1	0	0	0	9	-9
02	Bell, Nakiah		3	1-7	1-4	0-0	0	0	0	2	1	2	0	0	20	-15
05	Alston, Jaynee		5	2-2	1-1	0-0	0	3	3	1	2	2	0	0	12	-12
11	Keith, Mikia		2	0-1	0-1	2-4	0	1	1	2	0	0	0	1	8	-3
12	Koehler, Kai		0	0-1	0-1	0-0	0	0	0	0	1	0	0	0	1	1
14	Jones, Micah		0	0-0	0-0	0-0	0	0	0	0	0	0	0	0	3	-2
21	Akuen, Alek		7	2-2	0-0	3-5	1	2	3	2	0	1	0	1	9	-14
23	Troeckler, Allie		6	3-6	0-0	0-0	2	0	2	1	1	2	0	1	17	-11
25	Whitlock, Zaria		0	0-1	0-0	0-0	1	0	1	3	1	0	0	0	4	3
34	Bauman, Sydney		2	1-2	0-0	0-0	0	2	2	1	2	0	2	1	10	-2
35	Hall, Mikala		0	0-0	0-0	0-0	0	0	0	0	0	0	0	0	0	0
44	Everidge, Riana		2	1-3	0-1	0-0	1	1	2	1	0	4	0	1	6	-11
	Team		0	0-0	0-0	0-0	1	0	1	0	0	1	0	0	0	0
TOTALS			32	12-30	2-8	6-11	6	12	18	15	9	12	2	5	100	

Shooting By Period

Period	FG	FG%	3FG	3FG%	FT	FT%
3rd Qtr	8-15	53%	2-4	50%	1-2	50%
4th Qtr	4-15	27%	0-4	00%	5-9	56%
2nd Half	12-30	40%	2-8	25%	6-11	55%
Game	23-52	44.2%	5-14	35.7%	16-25	64.0%

Last FG Half: SIE 4th-00:32

Game Notes:

Officials: Missy Brooks, Xiomara Cruz, Shane Bennett
 Attendance: 1776

Start Time: 2019-01-31 17:06:34
 End Time: 2019-01-31 19:09:38
 Game Duration: 123
 Conference Game:

Score	1st	2nd	3rd	4th	TOT
MSU	6	20	25	22	73
SIE	15	20	19	13	67

Points from (This Period)	MSU	SIE
In the Paint	20	18
Off Turns	14	5
2nd Chance	10	3
Fast Break	14	8
Bench	15	16

Official Box Score
Morehead St. vs SIUE
Third Quarter Statistics Only
January 31, 2019 at Vadalabene Center - Edwardsville, Ill.

Morehead St. 47

No.	Player	S	Pts	FG	3FG	FT	OR	DR	TR	PF	A	TO	Blk	Stl	Min	+/-
04	Seward, Darianne		0	0-0	0-0	0-0	0	0	0	1	1	0	0	0	8	1
11	Crockett, Miranda		8	4-7	0-0	0-0	1	1	2	1	0	0	0	1	9	5
12	Calvert, Mckenzie		6	1-2	0-1	4-4	1	0	1	0	0	0	0	1	7	11
13	Simmons-Cozar, Crystal		0	0-2	0-2	0-0	0	0	0	0	2	1	1	1	7	3
22	Mcgowan, Tierra		2	1-3	0-0	0-0	2	1	3	0	0	0	0	0	9	5
00	Jeune, Aliyah		9	3-7	2-4	1-1	0	1	1	0	1	0	0	0	9	4
01	Jackson, Breuna		0	0-0	0-0	0-0	0	0	0	0	0	0	0	0	0	0
10	Avery, Jaleesa		0	0-0	0-0	0-0	0	0	0	0	0	0	0	0	0	0
14	Moore, Ashley		0	0-0	0-0	0-0	0	0	0	0	0	0	0	0	0	0
23	Humphries, Orlandra		0	0-0	0-0	0-0	0	0	0	1	0	0	0	0	1	1
	Team						2	1	3	0		0				
TOTALS			25	9-21	2-7	5-5	6	4	10	3	4	1	1	3	50	

Shooting By Period

Period	FG	FG%	3FG	3FG%	FT	FT%
2nd Half	0-0	0%	0-0	0%	0-0	0%
Game	26-67	38.8%	3-17	17.6%	18-25	72.0%

SIUE 32

No.	Player	S	Pts	FG	3FG	FT	OR	DR	TR	PF	A	TO	Blk	Stl	Min	+/-
02	Bell, Nakiah		3	1-2	1-2	0-0	0	0	0	0	0	1	0	0	10	-6
05	Alston, Jaynee		5	2-2	1-1	0-0	0	3	3	0	2	0	0	0	10	-6
23	Troeckler, Allie		4	2-4	0-0	0-0	1	0	1	0	1	1	0	0	7	-2
25	Whitlock, Zaria		0	0-1	0-0	0-0	1	0	1	2	1	0	0	0	4	3
34	Bauman, Sydney		0	0-0	0-0	0-0	0	2	2	1	0	0	1	0	6	-1
01	King, Christen		3	1-2	0-0	1-2	0	1	1	2	1	0	0	0	4	-5
11	Keith, Mikia		0	0-0	0-0	0-0	0	0	0	0	0	0	0	0	0	0
12	Koehler, Kai		0	0-0	0-0	0-0	0	0	0	0	0	0	0	0	0	0
14	Jones, Micah		0	0-0	0-0	0-0	0	0	0	0	0	0	0	0	0	0
21	Akuen, Alek		2	1-1	0-0	0-0	0	0	0	1	0	1	0	0	4	-5
35	Hall, Mikala		0	0-0	0-0	0-0	0	0	0	0	0	0	0	0	0	0
44	Everidge, Riana		2	1-3	0-1	0-0	1	0	1	0	0	2	0	1	5	-8
	Team						0	0	0	0		0				
TOTALS			19	8-15	2-4	1-2	3	6	9	6	5	5	1	1	50	

Shooting By Period

Period	FG	FG%	3FG	3FG%	FT	FT%
2nd Half	0-0	0%	0-0	0%	0-0	0%
Game	23-52	44.2%	5-14	35.7%	16-25	64.0%

Game Notes:

Officials: Missy Brooks, Xiomara Cruz, Shane Bennett
Attendance: 1776

Start Time: 2019-01-31 17:06:34
End Time: 2019-01-31 19:09:38
Game Duration: 123
Conference Game:

Score	1st	2nd	3rd	4th	TOT
MSU	6	20	25	22	73
SIUE	15	20	19	13	67

Points from (This Period)	MSU	SIUE
In the Paint	12	10
Off Turns	8	0
2nd Chance	6	3
Fast Break	4	4
Bench	9	7

Official Play-By-Play
Morehead St. vs SIUE
Third Quarter
January 31, 2019 at Vadalabene Center - Edwardsville, Ill.

Period 3

Starters:

Morehead St.: 11 CROCKETT,MIRANDA; 12 CALVERT,MCKENZIE; 13 SIMMONS-COZAR,CRYSTAL; 22 MCGOWAN, TIERRA; 4 SEWARD,DARIANNE;
SIUE: 2 BELL,NAKIAH; 5 ALSTON,JAY'NEE; 23 TROECKLER,ALLIE; 25 WHITLOCK,ZARIA; 34 BAUMAN,SYDNEY;

Time	VISITORS: Morehead St.	Score	Margin	HOME: SIUE
09:44		37-26	H 11	GOOD! LAYUP by TROECKLER,ALLIE
09:44				ASSIST by ALSTON,JAY'NEE
09:23	MISSED 3PTR by SIMMONS-COZAR,CRYSTAL			
09:19	REBOUND (OFF) by MCGOWAN,TIERRA			
09:14	MISSED 3PTR by SIMMONS-COZAR,CRYSTAL			
09:11				REBOUND (DEF) by ALSTON,JAY'NEE
09:04		39-26	H 13	GOOD! LAYUP by ALSTON,JAY'NEE [FB]
08:40	GOOD! JUMPER by CROCKETT,MIRANDA [PNT]	39-28	H 11	
08:40	ASSIST by SEWARD,DARIANNE			
08:14				MISSED 3PTR by BELL,NAKIAH
08:11				REBOUND (OFF) by WHITLOCK,ZARIA
08:08		42-28	H 14	GOOD! 3PTR by ALSTON,JAY'NEE
08:08				ASSIST by WHITLOCK,ZARIA
07:48	MISSED JUMPER by JEUNE,ALIYAH			
07:43	REBOUND (OFF) by MCGOWAN,TIERRA			
07:43	MISSED LAYUP by MCGOWAN,TIERRA			
07:42				REBOUND (DEF) by BAUMAN,SYDNEY
07:14				MISSED JUMPER by WHITLOCK,ZARIA
07:14	REBOUND (DEF) by TEAM			
07:14	SUB OUT: SIMMONS-COZAR,CRYSTAL			
07:14	SUB IN: CALVERT,MCKENZIE			
06:57	MISSED 3PTR by JEUNE,ALIYAH			
06:53				REBOUND (DEF) by ALSTON,JAY'NEE
06:49		44-28	H 16	GOOD! LAYUP by TROECKLER,ALLIE [FB]
06:49				ASSIST by ALSTON,JAY'NEE
06:47	TIMEOUT 30SEC			
06:47				
06:36	GOOD! JUMPER by CROCKETT,MIRANDA [PNT]	44-30	H 14	
06:23				MISSED JUMPER by TROECKLER,ALLIE
06:19				REBOUND (OFF) by TROECKLER,ALLIE
06:18				TURNOVER (LOSTBALL) by TROECKLER,ALLIE
06:18	STEAL by CROCKETT,MIRANDA			
06:14	GOOD! LAYUP by CROCKETT,MIRANDA [FB]	44-32	H 12	
06:03				TURNOVER (LOSTBALL) by BELL,NAKIAH
06:03	STEAL by CALVERT,MCKENZIE			
05:47	MISSED 3PTR by CALVERT,MCKENZIE			
05:45	REBOUND (OFF) by CALVERT,MCKENZIE			
05:45				FOUL (PERSONAL) by WHITLOCK,ZARIA
05:43	MISSED JUMPER by CROCKETT,MIRANDA			
05:43	REBOUND (OFF) by TEAM			
05:43				FOUL (PERSONAL) by WHITLOCK,ZARIA
05:41				SUB OUT: WHITLOCK,ZARIA
05:41				SUB IN: EVERIDGE,RIANA
05:41				FOUL (PERSONAL) by BAUMAN,SYDNEY
05:41	GOOD! FT by CALVERT,MCKENZIE	44-33	H 11	
05:41	GOOD! FT by CALVERT,MCKENZIE	44-34	H 10	
05:41	SUB OUT: JEUNE,ALIYAH			
05:41	SUB IN: SIMMONS-COZAR,CRYSTAL			
05:22				MISSED 3PTR by EVERIDGE,RIANA
05:18	REBOUND (DEF) by MCGOWAN,TIERRA			
05:15	GOOD! JUMPER by CALVERT,MCKENZIE [FB]	44-36	H 8	
05:15	ASSIST by SIMMONS-COZAR,CRYSTAL			
05:14				TIMEOUT TEAM
05:05				MISSED LAYUP by TROECKLER,ALLIE
05:05	BLOCK by SIMMONS-COZAR,CRYSTAL			
05:05	REBOUND (DEF) by TEAM			
04:50	MISSED LAYUP by CROCKETT,MIRANDA			
04:47				REBOUND (DEF) by BAUMAN,SYDNEY
04:31				TURNOVER (BADPASS) by EVERIDGE,RIANA
04:31	SUB OUT: CROCKETT,MIRANDA			
04:31	SUB IN: JEUNE,ALIYAH			
04:15	GOOD! LAYUP by MCGOWAN,TIERRA	44-38	H 6	
04:15	ASSIST by JEUNE,ALIYAH			
03:45		46-38	H 8	GOOD! JUMPER by EVERIDGE,RIANA
03:45				ASSIST by TROECKLER,ALLIE
03:34	MISSED LAYUP by MCGOWAN,TIERRA			
03:34				BLOCK by BAUMAN,SYDNEY
03:34	REBOUND (OFF) by TEAM			
03:34				SUB OUT: TROECKLER,ALLIE
03:34				SUB IN: AKUEN,ALEK
03:34				SUB OUT: BAUMAN,SYDNEY
03:34				SUB IN: KING,CHRISTEN
03:34	SUB OUT: SIMMONS-COZAR,CRYSTAL			
03:34	SUB IN: CROCKETT,MIRANDA			
03:31				FOUL (PERSONAL) by KING,CHRISTEN
03:31	GOOD! FT by CALVERT,MCKENZIE	46-39	H 7	

Time	VISITORS: Morehead St.	Score	Margin	HOME: SIUE
03:31	GOOD! FT by CALVERT,MCKENZIE	46-40	H 6	
03:31	SUB OUT: MCGOWAN, TIERRA			
03:31	SUB IN: HUMPHRIES, ORLANDRA			
03:20	FOUL (PERSONAL) by HUMPHRIES, ORLANDRA			
03:20	SUB OUT: HUMPHRIES, ORLANDRA			
03:20	SUB IN: MCGOWAN, TIERRA			
03:18		48-40	H 8	GOOD! LAYUP by AKUEN,ALEK
03:02	GOOD! 3PTR by JEUNE, ALIYAH	48-43	H 5	
02:56				MISSED JUMPER by KING,CHRISTEN
02:52	REBOUND (DEF) by JEUNE, ALIYAH			
02:47	MISSED 3PTR by JEUNE, ALIYAH			
02:44				REBOUND (DEF) by KING,CHRISTEN
02:38		51-43	H 8	GOOD! 3PTR by BELL,NAKIAH
02:38				ASSIST by KING,CHRISTEN
02:12	MISSED LAYUP by CROCKETT,MIRANDA			
02:10				REBOUND (DEF) by ALSTON,JAY'NEE
02:03	FOUL (PERSONAL) by SEWARD,DARIANNE			
02:03		52-43	H 9	GOOD! FT by KING,CHRISTEN
02:03	SUB OUT: SEWARD,DARIANNE			
02:03	SUB IN: SIMMONS-COZAR,CRYSTAL			
02:03				MISSED FT by KING,CHRISTEN
02:02				REBOUND (OFF) by EVERIDGE,RIANA
02:02	FOUL (PERSONAL) by CROCKETT,MIRANDA			
02:02				FOUL (OFF) by AKUEN,ALEK
02:02				TURNOVER (OFFENSIVE) by AKUEN,ALEK
01:46	MISSED LAYUP by JEUNE, ALIYAH			
01:43	REBOUND (OFF) by CROCKETT,MIRANDA			
01:30	GOOD! JUMPER by CROCKETT,MIRANDA [PNT]	52-45	H 7	
01:30	ASSIST by SIMMONS-COZAR,CRYSTAL			
01:16				TURNOVER (BADPASS) by EVERIDGE,RIANA
01:16	STEAL by SIMMONS-COZAR,CRYSTAL			
01:08	TURNOVER (BADPASS) by SIMMONS-COZAR,CRYSTAL			
01:08				STEAL by EVERIDGE,RIANA
00:48				MISSED JUMPER by EVERIDGE,RIANA
00:44	REBOUND (DEF) by CROCKETT,MIRANDA			
00:32	GOOD! LAYUP by JEUNE, ALIYAH [PNT]	52-47	H 5	
00:32				FOUL (PERSONAL) by KING,CHRISTEN
00:32	GOOD! FT by JEUNE, ALIYAH	52-48	H 4	
00:32				SUB OUT: EVERIDGE,RIANA
00:32				SUB IN: TROECKLER,ALLIE
00:32	SUB OUT: CROCKETT,MIRANDA			
00:32	SUB IN: SEWARD,DARIANNE			
00:32	SUB OUT: MCGOWAN, TIERRA			
00:32	SUB IN: HUMPHRIES, ORLANDRA			
00:22		54-48	H 6	GOOD! LAYUP by KING,CHRISTEN [PNT]
00:01	GOOD! 3PTR by JEUNE, ALIYAH	54-51	H 3	

Morehead St. 51, SIUE 54

Points from (This Period)	MSU	SIUE
In the Paint	12	10
Off Turns	8	0
2nd Chance	6	3
Fast Break	4	4
Bench	9	7

Official Box Score
Morehead St. vs SIUE
Fourth Quarter Statistics Only
January 31, 2019 at Vadalabene Center - Edwardsville, Ill.

Morehead St. 22

No.	Player	S	Pts	FG	3FG	FT	OR	DR	TR	PF	A	TO	Blk	Stl	Min	+/-
04	Seward, Darianne		1	0-1	0-0	1-2	0	1	1	1	0	1	0	1	9	11
11	Crockett, Miranda		6	1-2	0-0	4-7	3	0	3	0	0	0	1	1	9	7
12	Calvert, Mckenzie		0	0-1	0-0	0-0	0	2	2	0	0	2	0	1	6	6
13	Simmons-Cozar, Crystal		1	0-1	0-0	1-2	0	1	1	0	2	1	0	3	7	6
22	Mcgowan, Tierra		8	3-4	0-0	2-2	2	4	6	3	0	0	0	0	10	10
00	Jeune, Aliyah		6	2-5	0-3	2-2	0	1	1	2	0	2	0	0	9	7
01	Jackson, Breuna		0	0-0	0-0	0-0	0	0	0	0	0	0	0	0	0	0
10	Avery, Jaleesa		0	0-0	0-0	0-0	0	0	0	0	0	0	0	0	0	-1
14	Moore, Ashley		0	0-0	0-0	0-0	0	0	0	0	0	0	0	0	0	-1
23	Humphries, Orlandra		0	0-0	0-0	0-0	0	0	0	0	0	0	0	0	0	0
	Team						0	0	0	0		0				
TOTALS			22	6-14	0-3	10-15	5	9	14	6	2	6	1	6	50	

Shooting By Period

Period	FG	FG%	3FG	3FG%	FT	FT%
Game	26-67	38.8%	3-17	17.6%	18-25	72.0%

SIUE 13

No.	Player	S	Pts	FG	3FG	FT	OR	DR	TR	PF	A	TO	Blk	Stl	Min	+/-
02	Bell, Nakiah		0	0-5	0-2	0-0	0	0	0	2	1	1	0	0	10	-9
05	Alston, Jaynee		0	0-0	0-0	0-0	0	0	0	1	0	2	0	0	2	-6
23	Troeckler, Allie		2	1-2	0-0	0-0	1	0	1	1	0	1	0	1	10	-9
25	Whitlock, Zaria		0	0-0	0-0	0-0	0	0	0	1	0	0	0	0	0	0
34	Bauman, Sydney		2	1-2	0-0	0-0	0	0	0	0	2	0	1	1	4	-1
01	King, Christen		2	1-3	0-0	0-0	0	2	2	0	0	0	0	0	5	-4
11	Keith, Mikia		2	0-1	0-1	2-4	0	1	1	2	0	0	0	1	8	-3
12	Koehler, Kai		0	0-1	0-1	0-0	0	0	0	0	1	0	0	0	1	1
14	Jones, Micah		0	0-0	0-0	0-0	0	0	0	0	0	0	0	0	3	-2
21	Akuen, Alek		5	1-1	0-0	3-5	1	2	3	1	0	0	0	1	5	-9
35	Hall, Mikala		0	0-0	0-0	0-0	0	0	0	0	0	0	0	0	0	0
44	Everidge, Riana		0	0-0	0-0	0-0	0	1	1	1	0	2	0	0	1	-3
	Team						1	0	1	0		1				
TOTALS			13	4-15	0-4	5-9	3	6	9	9	4	7	1	4	50	

Shooting By Period

Period	FG	FG%	3FG	3FG%	FT	FT%
Game	23-52	44.2%	5-14	35.7%	16-25	64.0%

Game Notes:

Officials: Missy Brooks, Xiomara Cruz, Shane Bennett
Attendance: 1776

Start Time: 2019-01-31 17:06:34
End Time: 2019-01-31 19:09:38
Game Duration: 123
Conference Game:

Score	1st	2nd	3rd	4th	TOT
MSU	6	20	25	22	73
SIE	15	20	19	13	67

Points from (This Period)	MSU	SIE
In the Paint	8	8
Off Turns	6	5
2nd Chance	4	0
Fast Break	10	4
Bench	6	9

Official Play-By-Play
Morehead St. vs SIUE
Fourth Quarter
January 31, 2019 at Vadalabene Center - Edwardsville, Ill.

Period 4

Starters:

Morehead St.: 11 CROCKETT,MIRANDA; 12 CALVERT,MCKENZIE; 13 SIMMONS-COZAR,CRYSTAL; 22 MCGOWAN, TIERRA; 4 SEWARD,DARIANNE;
SIUE: 2 BELL,NAKIAH; 5 ALSTON,JAY'NEE; 23 TROECKLER,ALLIE; 25 WHITLOCK,ZARIA; 34 BAUMAN,SYDNEY;

Time	VISITORS: Morehead St.	Score	Margin	HOME: SIUE
10:00	SUB OUT: HUMPHRIES,ORLANDRA			
10:00	SUB IN: MCGOWAN, TIERRA			
09:47				TURNOVER (BADPASS) by ALSTON,JAY'NEE
09:47	STEAL by SIMMONS-COZAR,CRYSTAL			
09:42	MISSED LAYUP by CALVERT,MCKENZIE			
09:39				REBOUND (DEF) by KING,CHRISTEN
09:35				MISSED LAYUP by KING,CHRISTEN
09:32	REBOUND (DEF) by CALVERT,MCKENZIE			
09:27	GOOD! LAYUP by MCGOWAN, TIERRA [FB]	54-53	H 1	
09:27	ASSIST by SIMMONS-COZAR,CRYSTAL			
09:13				TURNOVER (10SEC) by
09:13				SUB OUT: KING,CHRISTEN
09:13				SUB IN: EVERIDGE,RIANA
09:13	SUB OUT: CALVERT,MCKENZIE			
09:13	SUB IN: CROCKETT,MIRANDA			
09:03				FOUL (PERSONAL) by ALSTON,JAY'NEE
09:03	GOOD! FT by MCGOWAN, TIERRA	54-54	T	
09:03	GOOD! FT by MCGOWAN, TIERRA	54-55	V 1	
09:03	SUB OUT: JEUNE,ALIYAH			
09:03	SUB IN: CALVERT,MCKENZIE			
08:57				TURNOVER (LOSTBALL) by EVERIDGE,RIANA
08:57	STEAL by CROCKETT,MIRANDA			
08:56	GOOD! LAYUP by CROCKETT,MIRANDA	54-57	V 3	
08:56				FOUL (PERSONAL) by EVERIDGE,RIANA
08:56				SUB OUT: EVERIDGE,RIANA
08:56				SUB IN: JONES,MICAH
08:55	MISSED FT by CROCKETT,MIRANDA			
08:54				REBOUND (DEF) by AKUEN,ALEK
08:34				MISSED JUMPER by BELL,NAKIAH
08:29				REBOUND (OFF) by TROECKLER,ALLIE
08:29				MISSED LAYUP by TROECKLER,ALLIE
08:26	REBOUND (DEF) by MCGOWAN, TIERRA			
08:09	TURNOVER (LOSTBALL) by CALVERT,MCKENZIE			
08:09				STEAL by AKUEN,ALEK
07:52				TURNOVER (LOSTBALL) by ALSTON,JAY'NEE
07:52	STEAL by CALVERT,MCKENZIE			
07:49				FOUL (PERSONAL) by AKUEN,ALEK
07:49				SUB OUT: ALSTON,JAY'NEE
07:49				SUB IN: KEITH,MIKIA
07:49	SUB OUT: SIMMONS-COZAR,CRYSTAL			
07:49	SUB IN: JEUNE,ALIYAH			
07:49	TURNOVER (LANEVIOLATION) by CALVERT,MCKENZIE			
07:49				SUB OUT: AKUEN,ALEK
07:49				SUB IN: BAUMAN,SYDNEY
07:38				MISSED JUMPER by BELL,NAKIAH
07:35	REBOUND (DEF) by JEUNE,ALIYAH			
07:13	GOOD! JUMPER by JEUNE,ALIYAH	54-59	V 5	
06:41				MISSED 3PTR by BELL,NAKIAH
06:38	REBOUND (DEF) by MCGOWAN, TIERRA			
06:16	GOOD! JUMPER by JEUNE,ALIYAH	54-61	V 7	
05:55		56-61	V 5	GOOD! JUMPER by BAUMAN,SYDNEY [PNT]
05:55				ASSIST by BELL,NAKIAH
05:54				TIMEOUT 30SEC
05:54				
05:54				SUB OUT: JONES,MICAH
05:54				SUB IN: KING,CHRISTEN
05:54	SUB OUT: CALVERT,MCKENZIE			
05:54	SUB IN: SIMMONS-COZAR,CRYSTAL			
05:33	MISSED LAYUP by CROCKETT,MIRANDA			
05:33				BLOCK by BAUMAN,SYDNEY
05:29	REBOUND (OFF) by CROCKETT,MIRANDA			
05:29	MISSED 3PTR by JEUNE,ALIYAH			
05:29	REBOUND (OFF) by CROCKETT,MIRANDA			
05:29				FOUL (PERSONAL) by KEITH,MIKIA
05:29	MISSED FT by CROCKETT,MIRANDA			
05:29	REBOUND (OFF) by TEAM			
05:29	MISSED FT by CROCKETT,MIRANDA			
05:29				REBOUND (DEF) by KING,CHRISTEN
05:11		58-61	V 3	GOOD! LAYUP by TROECKLER,ALLIE
05:11				ASSIST by BAUMAN,SYDNEY
04:52	MISSED 3PTR by JEUNE,ALIYAH			
04:49	REBOUND (OFF) by MCGOWAN, TIERRA			
04:42	TURNOVER (BADPASS) by SEWARD,DARIANNE			
04:42				STEAL by TROECKLER,ALLIE
04:37				TURNOVER (LOSTBALL) by TROECKLER,ALLIE
04:37	STEAL by SIMMONS-COZAR,CRYSTAL			

Time	VISITORS: Morehead St.	Score	Margin	HOME: SIUE
04:32	GOOD! LAYUP by MCGOWAN, TIERRA [FB]	58-63	V 5	
04:32	ASSIST by SIMMONS-COZAR, CRYSTAL			
04:10				MISSED JUMPER by BAUMAN, SYDNEY
04:07				REBOUND (OFF) by TEAM
04:04				TURNOVER (BADPASS) by BELL, NAKIAH
04:04	STEAL by SEWARD, DARIANNE			
03:57	TURNOVER (BADPASS) by JEUNE, ALIYAH			
03:57				STEAL by BAUMAN, SYDNEY
03:51		60-63	V 3	GOOD! LAYUP by KING, CHRISTEN [FB]
03:51				ASSIST by BAUMAN, SYDNEY
03:29				FOUL (PERSONAL) by KEITH, MIKIA
03:29	GOOD! FT by JEUNE, ALIYAH	60-64	V 4	
03:29				SUB OUT: BAUMAN, SYDNEY
03:29				SUB IN: AKUEN, ALEK
03:29	GOOD! FT by JEUNE, ALIYAH	60-65	V 5	
03:29	SUB OUT: SEWARD, DARIANNE			
03:29	SUB IN: CALVERT, MCKENZIE			
03:24	FOUL (PERSONAL) by JEUNE, ALIYAH			
03:24				MISSED FT by KEITH, MIKIA
03:24				REBOUND (OFF) by TEAM
03:24	SUB OUT: SIMMONS-COZAR, CRYSTAL			
03:24	SUB IN: SEWARD, DARIANNE			
03:24		61-65	V 4	GOOD! FT by KEITH, MIKIA [FB]
02:54	MISSED 3PTR by JEUNE, ALIYAH			
02:51				REBOUND (DEF) by AKUEN, ALEK
02:44				MISSED LAYUP by KING, CHRISTEN
02:41	REBOUND (DEF) by CALVERT, MCKENZIE			
02:37	MISSED LAYUP by MCGOWAN, TIERRA			
02:34	REBOUND (OFF) by CROCKETT, MIRANDA			
02:34				FOUL (PERSONAL) by TROECKLER, ALLIE
02:34	GOOD! FT by CROCKETT, MIRANDA [FB]	61-66	V 5	
02:34	GOOD! FT by CROCKETT, MIRANDA [FB]	61-67	V 6	
02:34	SUB OUT: CALVERT, MCKENZIE			
02:34	SUB IN: SIMMONS-COZAR, CRYSTAL			
02:03				MISSED JUMPER by BELL, NAKIAH
01:59				REBOUND (OFF) by AKUEN, ALEK
01:57				MISSED 3PTR by BELL, NAKIAH
01:53	REBOUND (DEF) by SEWARD, DARIANNE			
01:28	MISSED JUMPER by SEWARD, DARIANNE			
01:23	REBOUND (OFF) by MCGOWAN, TIERRA			
01:23	GOOD! LAYUP by MCGOWAN, TIERRA	61-69	V 8	
01:15	FOUL (PERSONAL) by MCGOWAN, TIERRA			
01:15		62-69	V 7	GOOD! FT by AKUEN, ALEK
01:15				SUB OUT: KING, CHRISTEN
01:15				SUB IN: KOEHLER, KAI
01:15		63-69	V 6	GOOD! FT by AKUEN, ALEK
00:49	TURNOVER (BADPASS) by JEUNE, ALIYAH			
00:49				STEAL by KEITH, MIKIA
00:45	FOUL (PERSONAL) by SEWARD, DARIANNE			
00:45	SUB OUT: SEWARD, DARIANNE			
00:45	SUB IN: CALVERT, MCKENZIE			
00:38				MISSED 3PTR by KEITH, MIKIA
00:35	REBOUND (DEF) by SIMMONS-COZAR, CRYSTAL			
00:34	TURNOVER (TRAVEL) by SIMMONS-COZAR, CRYSTAL			
00:32		65-69	V 4	GOOD! LAYUP by AKUEN, ALEK [PNT]
00:32				ASSIST by KOEHLER, KAI
00:32	FOUL (PERSONAL) by MCGOWAN, TIERRA			
00:32		66-69	V 3	GOOD! FT by AKUEN, ALEK
00:32	TIMEOUT TEAM			
00:32				SUB OUT: KOEHLER, KAI
00:32				SUB IN: WHITLOCK, ZARIA
00:32	SUB OUT: CALVERT, MCKENZIE			
00:32	SUB IN: SEWARD, DARIANNE			
00:29				FOUL (PERSONAL) by BELL, NAKIAH
00:29	MISSED FT by SEWARD, DARIANNE			
00:29	REBOUND (OFF) by TEAM			
00:29				SUB OUT: WHITLOCK, ZARIA
00:29				SUB IN: KOEHLER, KAI
00:29	GOOD! FT by SEWARD, DARIANNE [FB]	66-70	V 4	
00:29				TIMEOUT 30SEC
00:29	SUB OUT: SEWARD, DARIANNE			
00:29	SUB IN: CALVERT, MCKENZIE			
00:28	FOUL (PERSONAL) by MCGOWAN, TIERRA			
00:28				MISSED FT by AKUEN, ALEK
00:28				REBOUND (OFF) by TEAM
00:28				SUB OUT: KOEHLER, KAI
00:28				SUB IN: WHITLOCK, ZARIA
00:27				MISSED FT by AKUEN, ALEK
00:27	REBOUND (DEF) by MCGOWAN, TIERRA			
00:27	TIMEOUT 30SEC			
00:26				FOUL (PERSONAL) by WHITLOCK, ZARIA
00:26				SUB OUT: WHITLOCK, ZARIA
00:26				SUB IN: KOEHLER, KAI
00:26	GOOD! FT by CROCKETT, MIRANDA [FB]	66-71	V 5	
00:26	GOOD! FT by CROCKETT, MIRANDA [FB]	66-72	V 6	
00:20				MISSED 3PTR by KOEHLER, KAI
00:20	BLOCK by CROCKETT, MIRANDA			

Time	VISITORS: Morehead St.	Score	Margin	HOME: SIUE
00:20	REBOUND (DEF) by MCGOWAN, TIERRA			
00:20	SUB OUT: CROCKETT, MIRANDA			
00:20	SUB IN: SEWARD, DARIANNE			
00:16				FOUL (PERSONAL) by BELL, NAKIAH
00:16	GOOD! FT by SIMMONS-COZAR, CRYSTAL [FB]	66-73	V 7	
00:16	SUB OUT: MCGOWAN, TIERRA			
00:16	SUB IN: AVERY, JALEESA			
00:16				SUB OUT: AKUEN, ALEK
00:16				SUB IN: EVERIDGE, RIANA
00:16	SUB OUT: SEWARD, DARIANNE			
00:16	SUB IN: MOORE, ASHLEY			
00:16	MISSED FT by SIMMONS-COZAR, CRYSTAL			
00:16				REBOUND (DEF) by EVERIDGE, RIANA
00:08				TURNOVER (LOSTBALL) by EVERIDGE, RIANA
00:08	STEAL by SIMMONS-COZAR, CRYSTAL			
00:05	MISSED LAYUP by SIMMONS-COZAR, CRYSTAL			
00:05				REBOUND (DEF) by KEITH, MIKIA
00:05	FOUL (PERSONAL) by JEUNE, ALIYAH			
00:05				MISSED FT by KEITH, MIKIA
00:05		67-73	V 6	GOOD! FT by KEITH, MIKIA [FB]
00:04				REBOUND (OFF) by TEAM

Morehead St. 73, SIUE 67

Points from (This Period)	MSU	SIE
In the Paint	8	8
Off Turns	6	5
2nd Chance	4	0
Fast Break	10	4
Bench	6	9

Official Scoring/Possession Reference Chart
Morehead St. vs SIUE
Period 1
January 31, 2019 at Vadalabene Center - Edwardsville, Ill.

Period 1

Starters:

Morehead St.: 11 CROCKETT,MIRANDA; 12 CALVERT,MCKENZIE; 13 SIMMONS-COZAR,CRYSTAL; 22 MCGOWAN, TIERRA; 4 SEWARD,DARIANNE;
SIUE: 2 BELL,NAKIAH; 5 ALSTON,JAY'NEE; 23 TROECKLER,ALLIE; 25 WHITLOCK,ZARIA; 34 BAUMAN,SYDNEY;

Time	VISITORS: Morehead St.	Score	Margin	HOME: SIUE
09:05		2-0	H 2	GOOD! LAYUP by TROECKLER,ALLIE
08:46	GOOD! JUMPER by CROCKETT,MIRANDA	2-2	T	
06:18		5-2	H 3	GOOD! 3PTR by ALSTON,JAY'NEE
05:39		7-2	H 5	GOOD! LAYUP by ALSTON,JAY'NEE
05:23	GOOD! JUMPER by CROCKETT,MIRANDA	7-4	H 3	
03:15		9-4	H 5	GOOD! LAYUP by ALSTON,JAY'NEE [PNT]
02:39		10-4	H 6	GOOD! FT by AKUEN,ALEK
02:39		11-4	H 7	GOOD! FT by AKUEN,ALEK
01:46	GOOD! JUMPER by CROCKETT,MIRANDA [PNT]	11-6	H 5	
01:13		12-6	H 6	GOOD! FT by WHITLOCK,ZARIA
01:13		13-6	H 7	GOOD! FT by WHITLOCK,ZARIA
00:33		14-6	H 8	GOOD! FT by BELL,NAKIAH
00:33		15-6	H 9	GOOD! FT by BELL,NAKIAH

Morehead St. 6, SIUE 15

Official Scoring/Possession Reference Chart
Morehead St. vs SIUE
Period 2
January 31, 2019 at Vadalabene Center - Edwardsville, Ill.

Period 2

Starters:

Morehead St.: 11 CROCKETT,MIRANDA; 12 CALVERT,MCKENZIE; 13 SIMMONS-COZAR,CRYSTAL; 22 MCGOWAN, TIERRA; 4 SEWARD,DARIANNE;
SIUE: 2 BELL,NAKIAH; 5 ALSTON,JAY'NEE; 23 TROECKLER,ALLIE; 25 WHITLOCK,ZARIA; 34 BAUMAN,SYDNEY;

Time	VISITORS: Morehead St.	Score	Margin	HOME: SIUE
09:44	GOOD! FT by CALVERT,MCKENZIE	15-7	H 8	
09:10	GOOD! LAYUP by SIMMONS-COZAR,CRYSTAL	15-9	H 6	
08:44		17-9	H 8	GOOD! JUMPER by TROECKLER,ALLIE
07:47		18-9	H 9	GOOD! FT by TROECKLER,ALLIE
07:01	GOOD! LAYUP by CROCKETT,MIRANDA	18-11	H 7	
06:43		20-11	H 9	GOOD! JUMPER by TROECKLER,ALLIE
06:32	GOOD! LAYUP by CROCKETT,MIRANDA	20-13	H 7	
06:16		23-13	H 10	GOOD! 3PTR by KEITH,MIKIA
05:37	GOOD! LAYUP by SIMMONS-COZAR,CRYSTAL [PNT]	23-15	H 8	
05:09	GOOD! LAYUP by JEUNE,ALIYAH	23-17	H 6	
04:25	GOOD! 3PTR by CALVERT,MCKENZIE	23-20	H 3	
03:54		25-20	H 5	GOOD! LAYUP by AKUEN,ALEK [PNT]
03:48	GOOD! FT by MCGOWAN, TIERRA [FB]	25-21	H 4	
03:48	GOOD! FT by MCGOWAN, TIERRA [FB]	25-22	H 3	
03:33		27-22	H 5	GOOD! LAYUP by BAUMAN,SYDNEY
03:19		28-22	H 6	GOOD! FT by EVERIDGE,RIANA [FB]
03:19		29-22	H 7	GOOD! FT by EVERIDGE,RIANA [FB]
02:26	GOOD! LAYUP by JEUNE,ALIYAH [PNT]	29-24	H 5	
02:07		32-24	H 8	GOOD! 3PTR by EVERIDGE,RIANA
01:43		34-24	H 10	GOOD! LAYUP by BAUMAN,SYDNEY [FB]
00:41	GOOD! LAYUP by MCGOWAN, TIERRA [PNT]	34-26	H 8	
00:24		35-26	H 9	GOOD! FT by TROECKLER,ALLIE

Morehead St. 26, SIUE 35

Official Scoring/Possession Reference Chart
Morehead St. vs SIUE
Period 3
January 31, 2019 at Vadalabene Center - Edwardsville, Ill.

Period 3

Starters:

Morehead St.: 11 CROCKETT,MIRANDA; 12 CALVERT,MCKENZIE; 13 SIMMONS-COZAR,CRYSTAL; 22 MCGOWAN, TIERRA; 4 SEWARD,DARIANNE;
SIUE: 2 BELL,NAKIAH; 5 ALSTON,JAY'NEE; 23 TROECKLER,ALLIE; 25 WHITLOCK,ZARIA; 34 BAUMAN,SYDNEY;

Time	VISITORS: Morehead St.	Score	Margin	HOME: SIUE
09:44		37-26	H 11	GOOD! LAYUP by TROECKLER,ALLIE
09:04		39-26	H 13	GOOD! LAYUP by ALSTON,JAY'NEE [FB]
08:40	GOOD! JUMPER by CROCKETT,MIRANDA [PNT]	39-28	H 11	
08:08		42-28	H 14	GOOD! 3PTR by ALSTON,JAY'NEE
06:49		44-28	H 16	GOOD! LAYUP by TROECKLER,ALLIE [FB]
06:36	GOOD! JUMPER by CROCKETT,MIRANDA [PNT]	44-30	H 14	
06:14	GOOD! LAYUP by CROCKETT,MIRANDA [FB]	44-32	H 12	
05:41	GOOD! FT by CALVERT,MCKENZIE	44-33	H 11	
05:41	GOOD! FT by CALVERT,MCKENZIE	44-34	H 10	
05:15	GOOD! JUMPER by CALVERT,MCKENZIE [FB]	44-36	H 8	
04:15	GOOD! LAYUP by MCGOWAN, TIERRA	44-38	H 6	
03:45		46-38	H 8	GOOD! JUMPER by EVERIDGE,RIANA
03:31	GOOD! FT by CALVERT,MCKENZIE	46-39	H 7	
03:31	GOOD! FT by CALVERT,MCKENZIE	46-40	H 6	
03:18		48-40	H 8	GOOD! LAYUP by AKUEN,ALEK
03:02	GOOD! 3PTR by JEUNE,ALIYAH	48-43	H 5	
02:38		51-43	H 8	GOOD! 3PTR by BELL,NAKIAH
02:03		52-43	H 9	GOOD! FT by KING,CHRISTEN
01:30	GOOD! JUMPER by CROCKETT,MIRANDA [PNT]	52-45	H 7	
00:32	GOOD! LAYUP by JEUNE,ALIYAH [PNT]	52-47	H 5	
00:32	GOOD! FT by JEUNE,ALIYAH	52-48	H 4	
00:22		54-48	H 6	GOOD! LAYUP by KING,CHRISTEN [PNT]
00:01	GOOD! 3PTR by JEUNE,ALIYAH	54-51	H 3	

Morehead St. 51, SIUE 54

Official Scoring/Possession Reference Chart
Morehead St. vs SIUE
Period 4
January 31, 2019 at Vadalabene Center - Edwardsville, Ill.

Period 4

Starters:

Morehead St.: 11 CROCKETT,MIRANDA; 12 CALVERT,MCKENZIE; 13 SIMMONS-COZAR,CRYSTAL; 22 MCGOWAN, TIERRA; 4 SEWARD,DARIANNE;
SIUE: 2 BELL,NAKIAH; 5 ALSTON,JAY'NEE; 23 TROECKLER,ALLIE; 25 WHITLOCK,ZARIA; 34 BAUMAN,SYDNEY;

Time	VISITORS: Morehead St.	Score	Margin	HOME: SIUE
09:27	GOOD! LAYUP by MCGOWAN, TIERRA [FB]	54-53	H 1	
09:03	GOOD! FT by MCGOWAN, TIERRA	54-54	T	
09:03	GOOD! FT by MCGOWAN, TIERRA	54-55	V 1	
08:56	GOOD! LAYUP by CROCKETT, MIRANDA	54-57	V 3	
07:13	GOOD! JUMPER by JEUNE, ALIYAH	54-59	V 5	
06:16	GOOD! JUMPER by JEUNE, ALIYAH	54-61	V 7	
05:55		56-61	V 5	GOOD! JUMPER by BAUMAN, SYDNEY [PNT]
05:11		58-61	V 3	GOOD! LAYUP by TROECKLER, ALLIE
04:32	GOOD! LAYUP by MCGOWAN, TIERRA [FB]	58-63	V 5	
03:51		60-63	V 3	GOOD! LAYUP by KING, CHRISTEN [FB]
03:29	GOOD! FT by JEUNE, ALIYAH	60-64	V 4	
03:29	GOOD! FT by JEUNE, ALIYAH	60-65	V 5	
03:24		61-65	V 4	GOOD! FT by KEITH, MKIA [FB]
02:34	GOOD! FT by CROCKETT, MIRANDA [FB]	61-66	V 5	
02:34	GOOD! FT by CROCKETT, MIRANDA [FB]	61-67	V 6	
01:23	GOOD! LAYUP by MCGOWAN, TIERRA	61-69	V 8	
01:15		62-69	V 7	GOOD! FT by AKUEN, ALEK
01:15		63-69	V 6	GOOD! FT by AKUEN, ALEK
00:32		65-69	V 4	GOOD! LAYUP by AKUEN, ALEK [PNT]
00:32		66-69	V 3	GOOD! FT by AKUEN, ALEK
00:29	GOOD! FT by SEWARD, DARIANNE [FB]	66-70	V 4	
00:26	GOOD! FT by CROCKETT, MIRANDA [FB]	66-71	V 5	
00:26	GOOD! FT by CROCKETT, MIRANDA [FB]	66-72	V 6	
00:16	GOOD! FT by SIMMONS-COZAR, CRYSTAL [FB]	66-73	V 7	
00:05		67-73	V 6	GOOD! FT by KEITH, MKIA [FB]

Morehead St. 73, SIUE 67

Official Substitutions Log
Morehead St. vs SIUE
Period 1
January 31, 2019 at Vadalabene Center - Edwardsville, Ill.

VISITORS: Morehead St.	Time	Score	HOME: SIUE
11 CROCKETT, MIRANDA			2 BELL, NAKIAH
12 CALVERT, MCKENZIE			5 ALSTON, JAY'NEE
13 SIMMONS-COZAR, CRYSTAL			23 TROECKLER, ALLIE
22 MCGOWAN, TIERRA			25 WHITLOCK, ZARIA
4 SEWARD, DARIANNE			34 BAUMAN, SYDNEY
SUB OUT: 13 SIMMONS-COZAR, CRYSTAL	07:22	2-2	
SUB IN: 00 JEUNE, ALIYAH	07:22		
SUB OUT: 12 CALVERT, MCKENZIE	06:29	2-2	
SUB IN: 13 SIMMONS-COZAR, CRYSTAL	06:29		
	06:04	2-5	SUB OUT: BAUMAN, SYDNEY
	06:04		SUB IN: AKUEN, ALEK
	06:04		SUB OUT: WHITLOCK, ZARIA
	06:04		SUB IN: JONES, MICAH
	04:56	4-7	SUB OUT: TROECKLER, ALLIE
	04:56		SUB IN: KING, CHRISTEN
SUB OUT: 4 SEWARD, DARIANNE	04:56		
SUB IN: 12 CALVERT, MCKENZIE	04:56		
SUB OUT: 11 CROCKETT, MIRANDA	03:47	4-7	
SUB IN: 10 AVERY, JALEESA	03:47		
	02:39	4-10	SUB OUT: JONES, MICAH
	02:39		SUB IN: BAUMAN, SYDNEY
SUB OUT: 13 SIMMONS-COZAR, CRYSTAL	02:39		
SUB IN: 4 SEWARD, DARIANNE	02:39		
SUB OUT: 22 MCGOWAN, TIERRA	02:39		
SUB IN: 11 CROCKETT, MIRANDA	02:39		
	02:39		SUB OUT: AKUEN, ALEK
	02:39		SUB IN: WHITLOCK, ZARIA
	01:13	6-12	SUB OUT: ALSTON, JAY'NEE
	01:13		SUB IN: KEITH, MIKIA
	01:13		SUB OUT: KING, CHRISTEN
	01:13		SUB IN: TROECKLER, ALLIE
SUB OUT: 11 CROCKETT, MIRANDA	01:13		
SUB IN: 13 SIMMONS-COZAR, CRYSTAL	01:13		
SUB OUT: 10 AVERY, JALEESA	01:13		
SUB IN: 22 MCGOWAN, TIERRA	01:13		
	00:33	6-15	SUB OUT: BELL, NAKIAH
	00:33		SUB IN: HALL, MIKALA

Morehead St. 6, SIUE 15

Official Substitutions Log
Morehead St. vs SIUE
Period 2
January 31, 2019 at Vadalabene Center - Edwardsville, Ill.

VISITORS: Morehead St.	Time	Score	HOME: SIUE
11 CROCKETT, MIRANDA			2 BELL, NAKIAH
12 CALVERT, MCKENZIE			5 ALSTON, JAY'NEE
13 SIMMONS-COZAR, CRYSTAL			23 TROECKLER, ALLIE
22 MCGOWAN, TIERRA			25 WHITLOCK, ZARIA
4 SEWARD, DARIANNE			34 BAUMAN, SYDNEY
SUB OUT: 11 CROCKETT, MIRANDA	09:44	-	
SUB IN: 00 JEUNE, ALIYAH	09:44		
	07:47	9-17	SUB OUT: ALSTON, JAY'NEE
	07:47		SUB IN: KEITH, MIKIA
SUB OUT: 4 SEWARD, DARIANNE	07:47		
SUB IN: 1 JACKSON, BREUNA	07:47		
SUB OUT: 13 SIMMONS-COZAR, CRYSTAL	07:47		
SUB IN: 11 CROCKETT, MIRANDA	07:47		
	07:21	9-18	SUB OUT: WHITLOCK, ZARIA
	07:21		SUB IN: JONES, MICAH
SUB OUT: 1 JACKSON, BREUNA	06:04	13-23	
SUB IN: 13 SIMMONS-COZAR, CRYSTAL	06:04		
SUB OUT: 12 CALVERT, MCKENZIE	06:04		
SUB IN: 4 SEWARD, DARIANNE	06:04		
SUB OUT: 11 CROCKETT, MIRANDA	05:56	13-23	
SUB IN: 23 HUMPHRIES, ORLANDRA	05:56		
	05:22	15-23	SUB OUT: BAUMAN, SYDNEY
	05:22		SUB IN: AKUEN, ALEK
	04:53	17-23	SUB OUT: JONES, MICAH
	04:53		SUB IN: EVERIDGE, RIANA
SUB OUT: 23 HUMPHRIES, ORLANDRA	04:47	17-23	
SUB IN: 11 CROCKETT, MIRANDA	04:47		
SUB OUT: 13 SIMMONS-COZAR, CRYSTAL	04:47		
SUB IN: 12 CALVERT, MCKENZIE	04:47		
	03:48	21-25	SUB OUT: AKUEN, ALEK
	03:48		SUB IN: BAUMAN, SYDNEY
	03:48		SUB OUT: KEITH, MIKIA
	03:48		SUB IN: ALSTON, JAY'NEE
SUB OUT: 12 CALVERT, MCKENZIE	03:48		
SUB IN: 13 SIMMONS-COZAR, CRYSTAL	03:48		
SUB OUT: 11 CROCKETT, MIRANDA	03:48		
SUB IN: 23 HUMPHRIES, ORLANDRA	03:48		
SUB OUT: 23 HUMPHRIES, ORLANDRA	03:19	22-28	
SUB IN: 11 CROCKETT, MIRANDA	03:19		
SUB OUT: 11 CROCKETT, MIRANDA	02:34	22-29	
SUB IN: 23 HUMPHRIES, ORLANDRA	02:34		
SUB OUT: 23 HUMPHRIES, ORLANDRA	02:34		
SUB IN: 11 CROCKETT, MIRANDA	02:34		
	01:34	24-34	SUB OUT: ALSTON, JAY'NEE
	01:34		SUB IN: KEITH, MIKIA
	01:34		SUB OUT: EVERIDGE, RIANA
	01:34		SUB IN: KING, CHRISTEN
SUB OUT: 13 SIMMONS-COZAR, CRYSTAL	01:34		
SUB IN: 12 CALVERT, MCKENZIE	01:34		
SUB OUT: 12 CALVERT, MCKENZIE	00:24	26-35	
SUB IN: 13 SIMMONS-COZAR, CRYSTAL	00:24		

Morehead St. 26, SIUE 35

Official Substitutions Log
Morehead St. vs SIUE
Period 3
January 31, 2019 at Vadalabene Center - Edwardsville, Ill.

VISITORS: Morehead St.	Time	Score	HOME: SIUE
11 CROCKETT, MIRANDA			2 BELL, NAKIAH
12 CALVERT, MCKENZIE			5 ALSTON, JAY'NEE
13 SIMMONS-COZAR, CRYSTAL			23 TROECKLER, ALLIE
22 MCGOWAN, TIERRA			25 WHITLOCK, ZARIA
4 SEWARD, DARIANNE			34 BAUMAN, SYDNEY
SUB OUT: 13 SIMMONS-COZAR, CRYSTAL	07:14	28-42	
SUB IN: 12 CALVERT, MCKENZIE	07:14		
	05:41	32-44	SUB OUT: WHITLOCK, ZARIA
	05:41		SUB IN: EVERIDGE, RIANA
SUB OUT: 00 JEUNE, ALIYAH	05:41		
SUB IN: 13 SIMMONS-COZAR, CRYSTAL	05:41		
SUB OUT: 11 CROCKETT, MIRANDA	04:31	36-44	
SUB IN: 00 JEUNE, ALIYAH	04:31		
	03:34	38-46	SUB OUT: TROECKLER, ALLIE
	03:34		SUB IN: AKUEN, ALEK
	03:34		SUB OUT: BAUMAN, SYDNEY
	03:34		SUB IN: KING, CHRISTEN
SUB OUT: 13 SIMMONS-COZAR, CRYSTAL	03:34		
SUB IN: 11 CROCKETT, MIRANDA	03:34		
SUB OUT: 22 MCGOWAN, TIERRA	03:31	40-46	
SUB IN: 23 HUMPHRIES, ORLANDRA	03:31		
SUB OUT: 23 HUMPHRIES, ORLANDRA	03:20	40-46	
SUB IN: 22 MCGOWAN, TIERRA	03:20		
SUB OUT: 4 SEWARD, DARIANNE	02:03	43-52	
SUB IN: 13 SIMMONS-COZAR, CRYSTAL	02:03		
	00:32	48-52	SUB OUT: EVERIDGE, RIANA
	00:32		SUB IN: TROECKLER, ALLIE
SUB OUT: 11 CROCKETT, MIRANDA	00:32		
SUB IN: 4 SEWARD, DARIANNE	00:32		
SUB OUT: 22 MCGOWAN, TIERRA	00:32		
SUB IN: 23 HUMPHRIES, ORLANDRA	00:32		

Morehead St. 51, SIUE 54

Official Substitutions Log
Morehead St. vs SIUE
Period 4
January 31, 2019 at Vadalabene Center - Edwardsville, Ill.

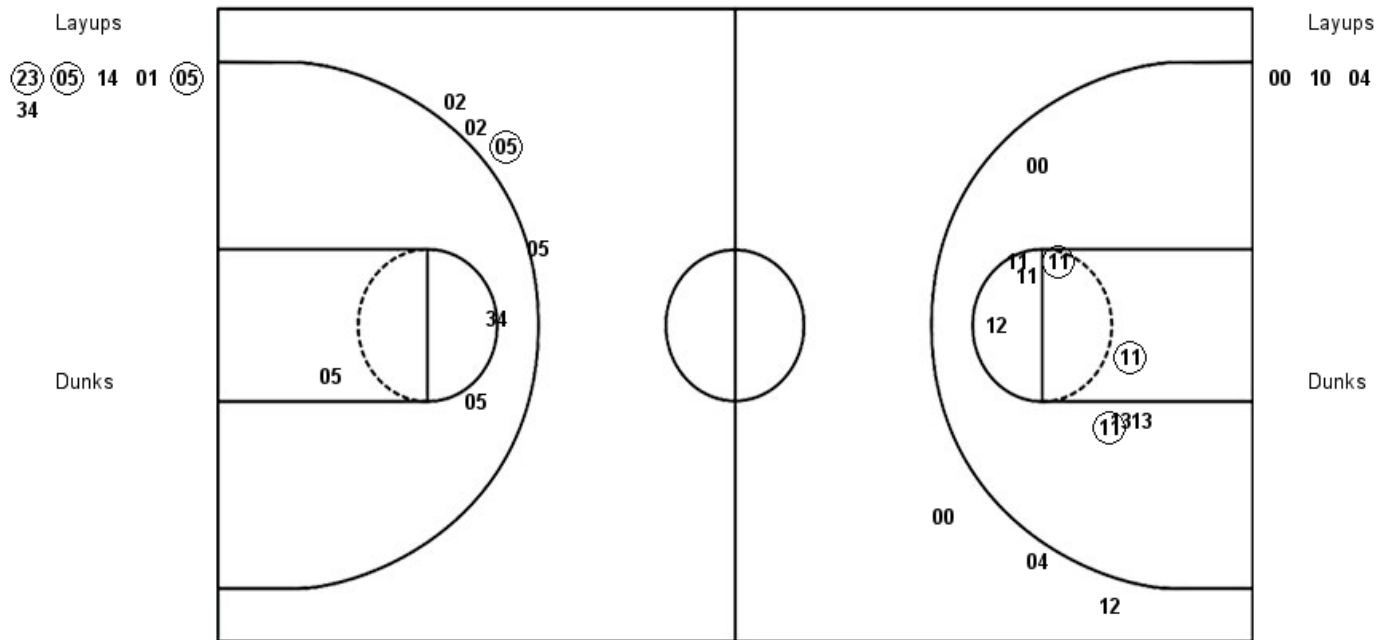
VISITORS: Morehead St.	Time	Score	HOME: SIUE
11 CROCKETT, MIRANDA			2 BELL, NAKIAH
12 CALVERT, MCKENZIE			5 ALSTON, JAY'NEE
13 SIMMONS-COZAR, CRYSTAL			23 TROECKLER, ALLIE
22 MCGOWAN, TIERRA			25 WHITLOCK, ZARIA
4 SEWARD, DARIANNE			34 BAUMAN, SYDNEY
SUB OUT: 23 HUMPHRIES, ORLANDRA	10:00	-	
SUB IN: 22 MCGOWAN, TIERRA	10:00		
	09:13	53-54	SUB OUT: KING, CHRISTEN
	09:13		SUB IN: EVERIDGE, RIANA
SUB OUT: 12 CALVERT, MCKENZIE	09:13		
SUB IN: 11 CROCKETT, MIRANDA	09:13		
SUB OUT: 00 JEUNE, ALIYAH	09:03	55-54	
SUB IN: 12 CALVERT, MCKENZIE	09:03		
	08:56	57-54	SUB OUT: EVERIDGE, RIANA
	08:56		SUB IN: JONES, MICAH
	07:49	57-54	SUB OUT: ALSTON, JAY'NEE
	07:49		SUB IN: KEITH, MIKIA
SUB OUT: 13 SIMMONS-COZAR, CRYSTAL	07:49		
SUB IN: 00 JEUNE, ALIYAH	07:49		
	07:49		SUB OUT: AKUEN, ALEK
	07:49		SUB IN: BAUMAN, SYDNEY
	05:54	61-56	SUB OUT: JONES, MICAH
	05:54		SUB IN: KING, CHRISTEN
SUB OUT: 12 CALVERT, MCKENZIE	05:54		
SUB IN: 13 SIMMONS-COZAR, CRYSTAL	05:54		
	03:29	64-60	SUB OUT: BAUMAN, SYDNEY
	03:29		SUB IN: AKUEN, ALEK
SUB OUT: 4 SEWARD, DARIANNE	03:29		
SUB IN: 12 CALVERT, MCKENZIE	03:29		
SUB OUT: 13 SIMMONS-COZAR, CRYSTAL	03:24	65-60	
SUB IN: 4 SEWARD, DARIANNE	03:24		
SUB OUT: 12 CALVERT, MCKENZIE	02:34	67-61	
SUB IN: 13 SIMMONS-COZAR, CRYSTAL	02:34		
	01:15	69-62	SUB OUT: KING, CHRISTEN
	01:15		SUB IN: KOEHLER, KAI
SUB OUT: 4 SEWARD, DARIANNE	00:45	69-63	
SUB IN: 12 CALVERT, MCKENZIE	00:45		
	00:32	69-66	SUB OUT: KOEHLER, KAI
	00:32		SUB IN: WHITLOCK, ZARIA
SUB OUT: 12 CALVERT, MCKENZIE	00:32		
SUB IN: 4 SEWARD, DARIANNE	00:32		
	00:29	69-66	SUB OUT: WHITLOCK, ZARIA
	00:29		SUB IN: KOEHLER, KAI
SUB OUT: 4 SEWARD, DARIANNE	00:29		
SUB IN: 12 CALVERT, MCKENZIE	00:29		
	00:28	70-66	SUB OUT: KOEHLER, KAI
	00:28		SUB IN: WHITLOCK, ZARIA
	00:26	70-66	SUB OUT: WHITLOCK, ZARIA
	00:26		SUB IN: KOEHLER, KAI
SUB OUT: 11 CROCKETT, MIRANDA	00:20	72-66	
SUB IN: 4 SEWARD, DARIANNE	00:20		
SUB OUT: 22 MCGOWAN, TIERRA	00:16	73-66	
SUB IN: 10 AVERY, JALEESA	00:16		
	00:16		SUB OUT: AKUEN, ALEK
	00:16		SUB IN: EVERIDGE, RIANA
SUB OUT: 4 SEWARD, DARIANNE	00:16		
SUB IN: 14 MOORE, ASHLEY	00:16		

Morehead St. 73, SIUE 67

Official Shot Chart
Morehead St. vs SIUE
PERIOD 1 Shots
 January 31, 2019 at Vadalabene Center - Edwardsville, Ill.

SIUE

Morehead St.



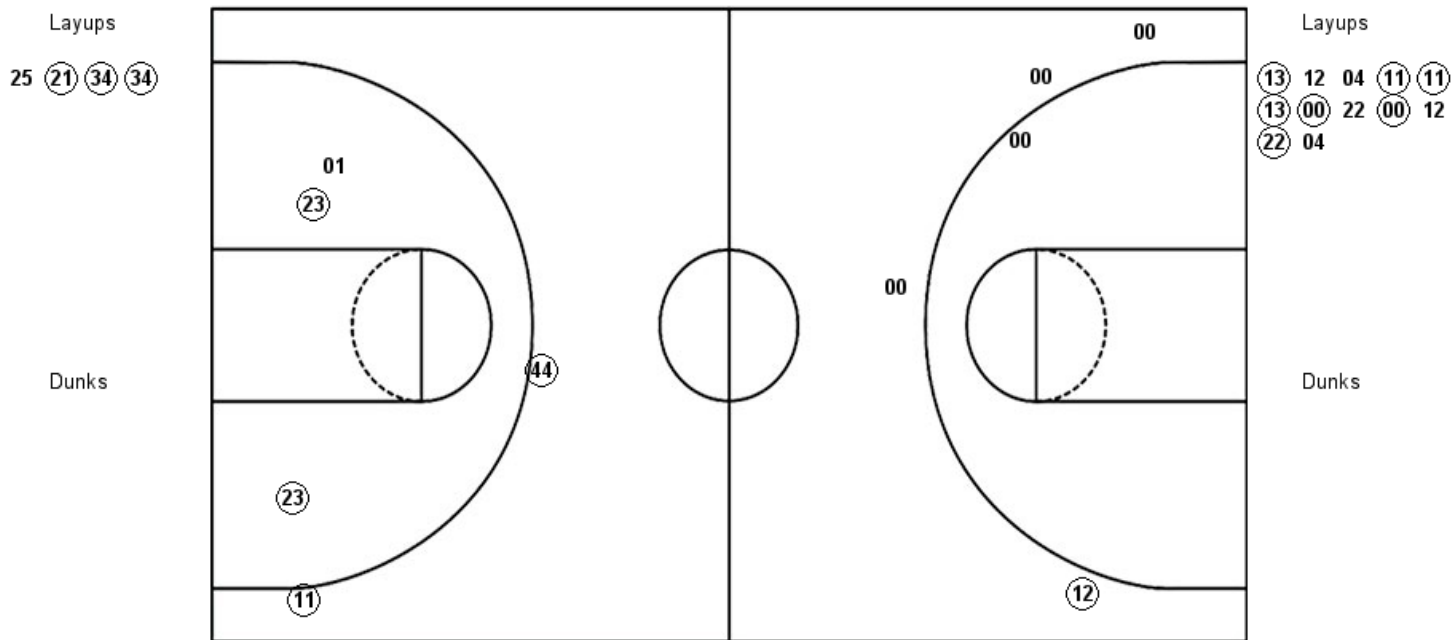
SIUE: Period 1	Made	Att	Pct
Layups	3	6	50.0
Dunks	0	0	0
2PT Field Goals	3	9	33.3
3PT Field Goals	1	4	25.0
Total Field Goals	4	13	30.8

MSU: Period 1	Made	Att	Pct
Layups	0	3	00.0
Dunks	0	0	0
2PT Field Goals	3	12	25.0
3PT Field Goals	0	3	00.0
Total Field Goals	3	15	20.0

Official Shot Chart
Morehead St. vs SIUE
PERIOD 2 Shots
 January 31, 2019 at Vadalabene Center - Edwardsville, Ill.

SIUE

Morehead St.



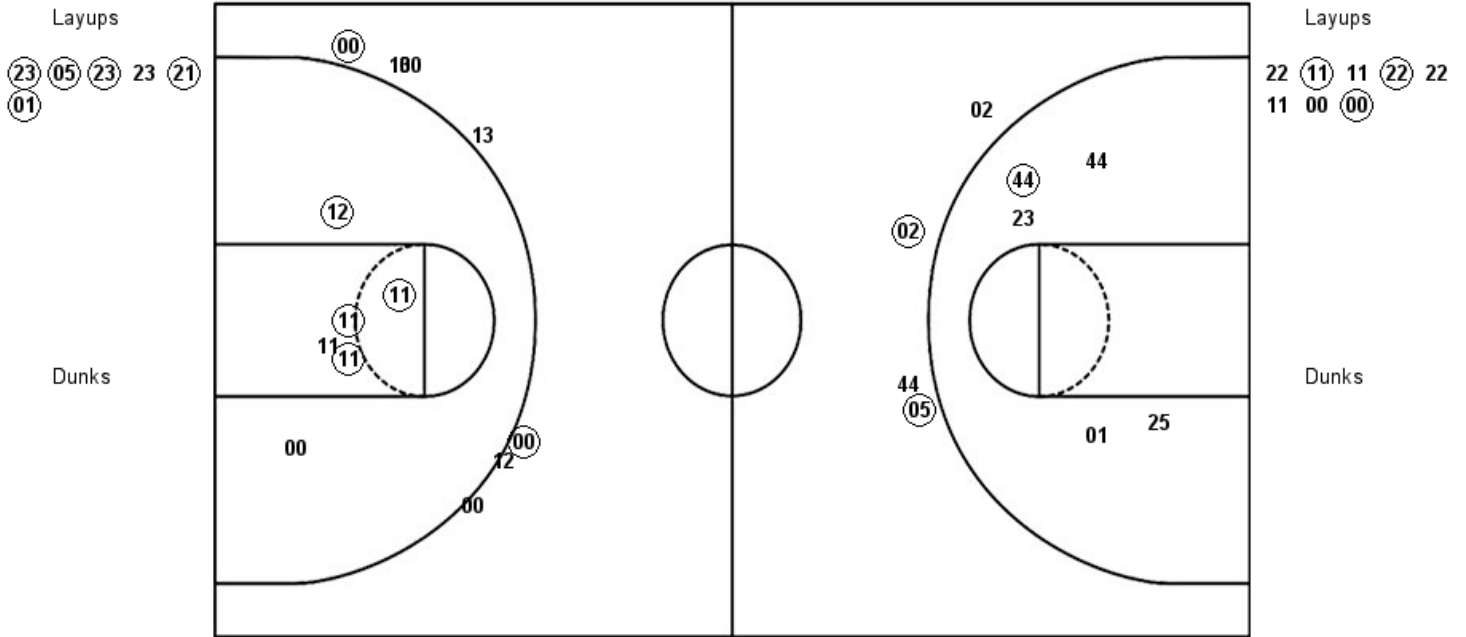
SIUE : Period 2	Made	Att	Pct
Layups	3	4	75.0
Dunks	0	0	0
2PT Field Goals	5	7	71.4
3PT Field Goals	2	2	100.0
Total Field Goals	7	9	77.8

MSU : Period 2	Made	Att	Pct
Layups	7	12	58.3
Dunks	0	0	0
2PT Field Goals	7	13	53.8
3PT Field Goals	1	4	25.0
Total Field Goals	8	17	47.1

Official Shot Chart
Morehead St. vs SIUE
PERIOD 3 Shots
 January 31, 2019 at Vadalabene Center - Edwardsville, Ill.

SIUE

Morehead St.



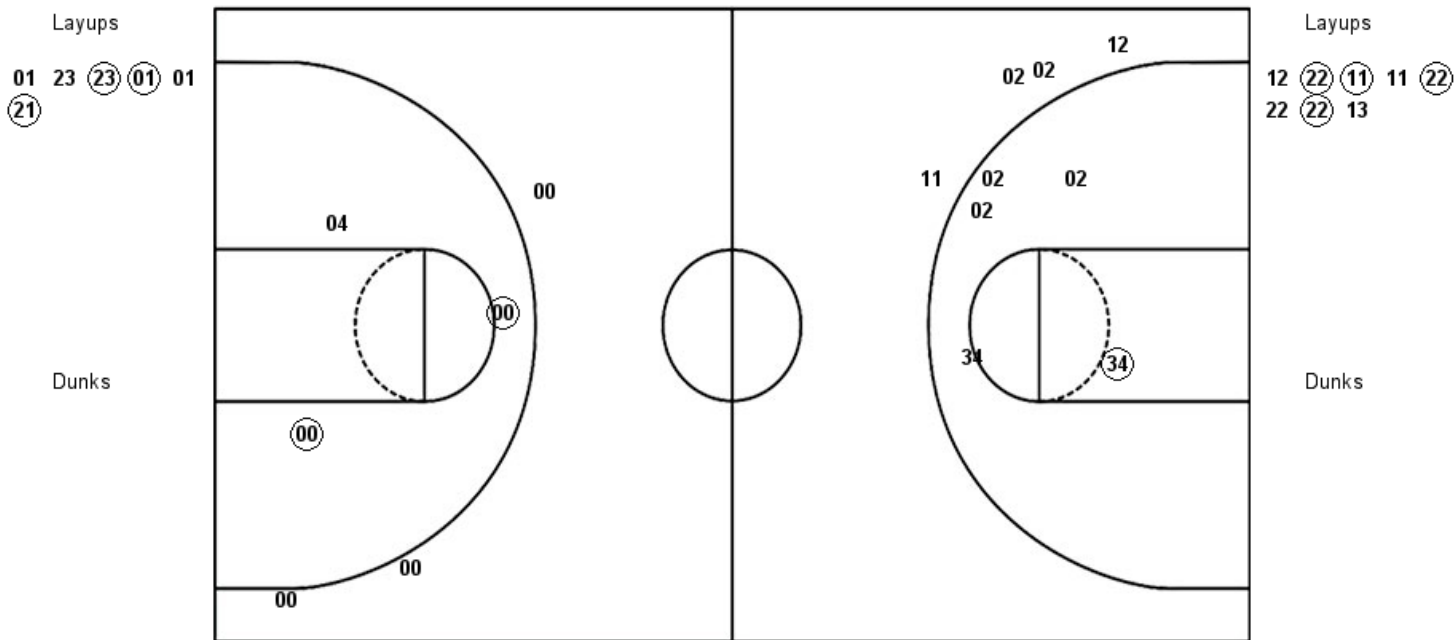
SIUE : Period 3	Made	Att	Pct
Layups	5	6	83.3
Dunks	0	0	0
2PT Field Goals	6	11	54.5
3PT Field Goals	2	4	50.0
Total Field Goals	8	15	53.3

MSU : Period 3	Made	Att	Pct
Layups	3	8	37.5
Dunks	0	0	0
2PT Field Goals	7	14	50.0
3PT Field Goals	2	7	28.6
Total Field Goals	9	21	42.9

Official Shot Chart
Morehead St. vs SIUE
PERIOD 4 Shots
 January 31, 2019 at Vadalabene Center - Edwardsville, Ill.

SIUE

Morehead St.

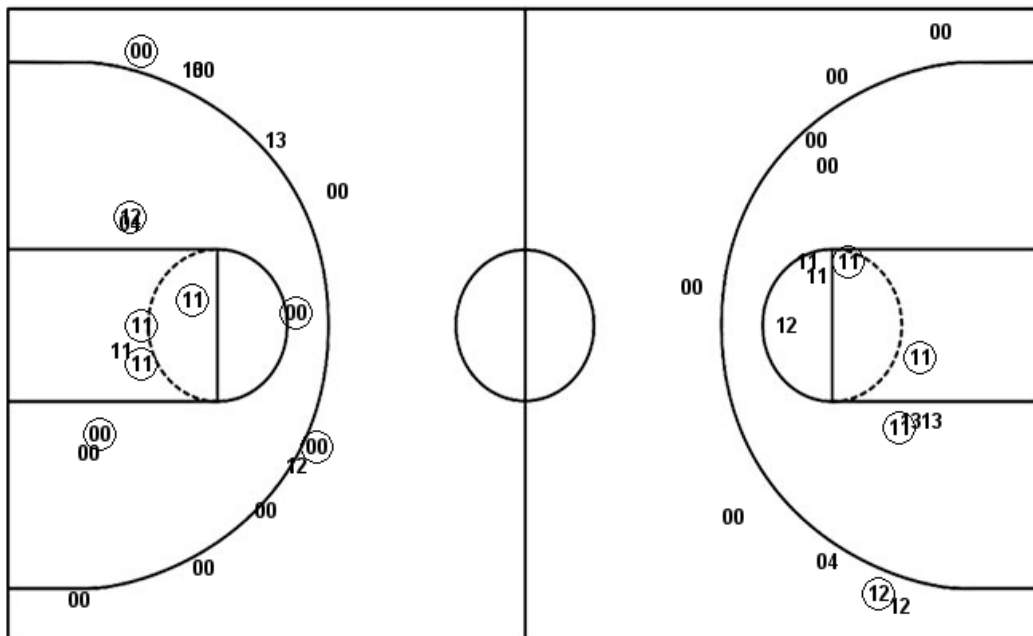


SIUE : Period 4	Made	Att	Pct
Layups	3	6	50.0
Dunks	0	0	0
2PT Field Goals	4	11	36.4
3PT Field Goals	0	4	00.0
Total Field Goals	4	15	26.7

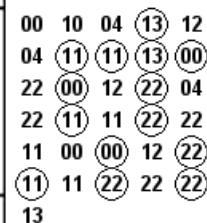
MSU : Period 4	Made	Att	Pct
Layups	4	8	50.0
Dunks	0	0	0
2PT Field Goals	6	11	54.5
3PT Field Goals	0	3	00.0
Total Field Goals	6	14	42.9

Official Shot Chart
Morehead St. vs SIUE
Morehead St. Team Shots
January 31, 2019 at Vadalabene Center - Edwardsville, Ill.

Layups



Layups



Dunks

Dunks

MSU : Period 1	Made	Att	Pct
Layups	0	3	00.0
Dunks	0	0	0
2PT Field Goals	3	12	25.0
3PT Field Goals	0	3	00.0
Total Field Goals	3	15	20.0

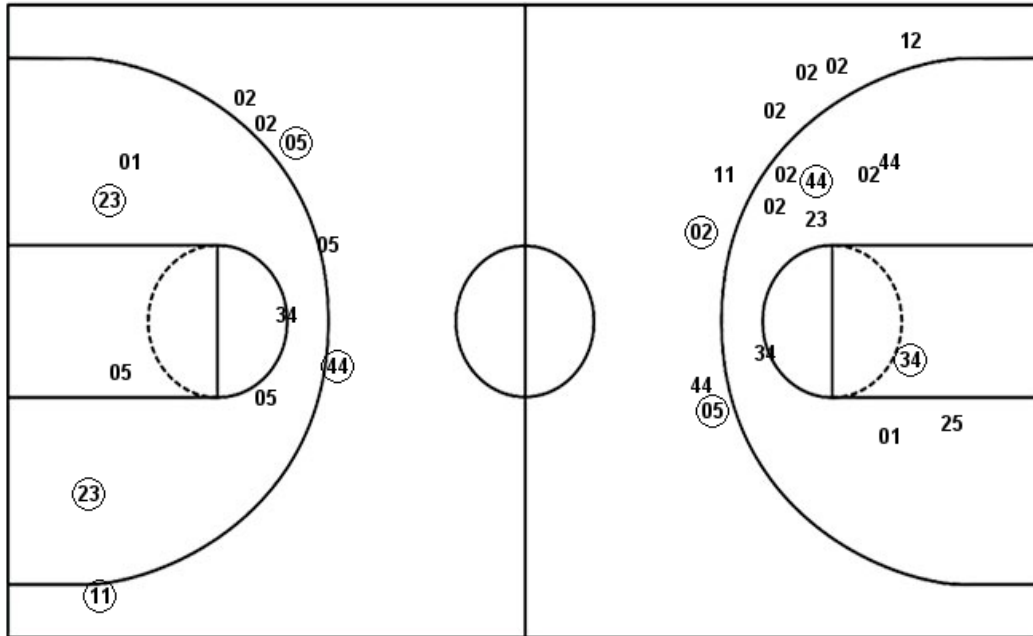
MSU : Period 2	Made	Att	Pct
Layups	7	12	58.3
Dunks	0	0	0
2PT Field Goals	7	13	53.8
3PT Field Goals	1	4	25.0
Total Field Goals	8	17	47.1

MSU : Period 3	Made	Att	Pct
Layups	3	8	37.5
Dunks	0	0	0
2PT Field Goals	7	14	50.0
3PT Field Goals	2	7	28.6
Total Field Goals	9	21	42.9

MSU : Period 4	Made	Att	Pct
Layups	4	8	50.0
Dunks	0	0	0
2PT Field Goals	6	11	54.5
3PT Field Goals	0	3	00.0
Total Field Goals	6	14	42.9

Official Shot Chart
Morehead St. vs SIUE
SIUE Team Shots
 January 31, 2019 at Vadalabene Center - Edwardsville, Ill.

Layups



Layups



Dunks

Dunks

SIUE: Period 1	Made	Att	Pct
Layups	3	6	50.0
Dunks	0	0	0
2PT Field Goals	3	9	33.3
3PT Field Goals	1	4	25.0
Total Field Goals	4	13	30.8

SIUE: Period 3	Made	Att	Pct
Layups	5	6	83.3
Dunks	0	0	0
2PT Field Goals	6	11	54.5
3PT Field Goals	2	4	50.0
Total Field Goals	8	15	53.3

SIUE: Period 2	Made	Att	Pct
Layups	3	4	75.0
Dunks	0	0	0
2PT Field Goals	5	7	71.4
3PT Field Goals	2	2	100.0
Total Field Goals	7	9	77.8

SIUE: Period 4	Made	Att	Pct
Layups	3	6	50.0
Dunks	0	0	0
2PT Field Goals	4	11	36.4
3PT Field Goals	0	4	00.0
Total Field Goals	4	15	26.7