

## FINAL SCORE

**Southeast Mo. St.**

**62**



**SIUE**

**52**



January 03, 2019 • Vadalabene Center - Edwardsville, Ill.

## FINAL STATISTICS

**Official Box Score**  
**Southeast Mo. St. vs SIUE**  
**Game Totals -- Final Statistics**  
**January 03, 2019 at Vadalabene Center - Edwardsville, Ill.**



**Southeast Mo. St. 62**

No.	Player	S	Pts	FG	3FG	FT	OR	DR	TR	PF	A	TO	Blk	Stl	Min	+/-
02	SHEPHARD, CARRIE		6	2-7	2-6	0-2	0	1	1	0	2	2	0	1	21	9
03	MURPHY, ADRIANNA		7	2-7	0-2	3-4	0	2	2	0	2	2	0	4	36	10
04	BALOGUN, DOLAPO		0	0-3	0-0	0-0	1	1	2	1	1	2	0	1	13	1
23	TAYLOR, JOCELYN		5	2-5	0-1	1-2	1	5	6	2	1	1	1	3	22	4
24	THOMPSON, TESIA		22	7-13	0-1	8-13	1	5	6	2	1	1	0	1	30	3
01	ALLEN, KENNEDI		4	1-2	0-0	2-2	0	0	0	4	0	2	0	0	11	11
05	COLYER, TIONNE		0	0-0	0-0	0-0	0	0	0	0	0	0	0	0	1	0
10	PRUITT, TAELOUR		9	4-6	1-2	0-0	0	1	1	0	3	2	1	3	24	4
13	HARSHBERGER, JESSIE		2	1-1	0-0	0-0	1	0	1	1	0	0	0	0	6	6
21	MCCURDY, IYANNA		2	1-1	0-0	0-0	0	0	0	1	0	3	0	1	9	3
32	LUTAYA, LOSMIE		2	1-1	0-0	0-2	2	2	4	4	0	1	0	0	19	2
40	SAINE, LATRESE		3	0-1	0-0	3-4	2	0	2	3	0	0	1	1	8	-3
TEAM							1	3	4	0		1				
<b>TOTALS</b>			<b>62</b>	<b>21-47</b>	<b>3-12</b>	<b>17-29</b>	<b>9</b>	<b>20</b>	<b>29</b>	<b>18</b>	<b>10</b>	<b>17</b>	<b>3</b>	<b>15</b>	<b>200</b>	

*Shooting By Period*

Period	FG	FG%	3FG	3FG%	FT	FT%
1st Qtr	6-12	50%	0-3	00%	0-0	0%
2nd Qtr	3-17	18%	0-4	00%	6-8	75%
3rd Qtr	7-8	88%	1-2	50%	2-6	33%
4th Qtr	5-10	50%	2-3	67%	9-15	60%
1st Half	9-29	31%	0-7	00%	6-8	75%
2nd Half	12-18	67%	3-5	60%	11-21	52%
<b>Game</b>	<b>21-47</b>	<b>44.7%</b>	<b>3-12</b>	<b>25.0%</b>	<b>17-29</b>	<b>58.6%</b>

*Last FG: 4th-01:10*

*Biggest Run: 12-0*

*Largest lead: By 11 at 4-00:10*

*Technical Fouls: #32 LUTAYA @ 3rd - 03:27; #40 SAINE @ 3rd - 01:51;*

**SIUE 52**

No.	Player	S	Pts	FG	3FG	FT	OR	DR	TR	PF	A	TO	Blk	Stl	Min	+/-
01	KING, CHRISTEN		9	4-12	0-2	1-1	3	3	6	2	3	3	0	3	27	4
05	ALSTON, JAY'NEE		4	1-6	1-5	1-2	0	2	2	1	0	2	0	0	28	-17
23	TROECKLER, ALLIE		11	3-5	0-0	5-7	3	4	7	3	1	1	0	1	28	-15
25	WHITLOCK, ZARIA		0	0-1	0-0	0-0	1	0	1	1	0	0	0	0	5	-9
34	BAUMAN, SYDNEY		8	3-8	0-0	2-2	4	0	4	0	2	3	0	0	19	2
02	BELL, NAKIAH		14	6-14	2-9	0-0	1	1	2	1	1	5	0	1	34	-5
11	KEITH, MIKIA		0	0-2	0-1	0-0	0	0	0	2	0	3	0	1	8	-2
12	KOEHLER, KAI		1	0-3	0-2	1-2	0	2	2	2	0	0	1	1	8	1
14	JONES, MICAH		4	2-6	0-0	0-0	3	4	7	5	5	4	1	2	25	1
21	AKUEN, ALEK		0	0-1	0-0	0-0	0	1	1	2	0	1	0	0	5	-7
35	HALL, MIKALA		0	0-0	0-0	0-0	0	0	0	0	0	0	0	0	0	-2
44	EVERIDGE, RIANA		1	0-4	0-0	1-2	1	2	3	0	1	2	0	2	12	-1
TEAM							8	3	11	0		2				
<b>TOTALS</b>			<b>52</b>	<b>19-62</b>	<b>3-19</b>	<b>11-16</b>	<b>24</b>	<b>22</b>	<b>46</b>	<b>19</b>	<b>13</b>	<b>26</b>	<b>2</b>	<b>11</b>	<b>200</b>	

*Shooting By Period*

Period	FG	FG%	3FG	3FG%	FT	FT%
1st Qtr	2-16	13%	0-5	00%	1-1	100%
2nd Qtr	6-13	46%	0-5	00%	2-2	100%
3rd Qtr	6-20	30%	2-5	40%	6-9	67%
4th Qtr	5-13	38%	1-4	25%	2-4	50%
1st Half	8-29	28%	0-10	00%	3-3	100%
2nd Half	11-33	33%	3-9	33%	8-13	62%
<b>Game</b>	<b>19-62</b>	<b>30.6%</b>	<b>3-19</b>	<b>15.8%</b>	<b>11-16</b>	<b>68.8%</b>

*Last FG: 4th-00:39*

*Biggest Run: 7-0*

*Largest lead: By 2 at 4-08:34*

*Technical Fouls: None.*

*Game Notes:*

Officials: **Missy Brooks, Jeff Cross, Jonathan Patterson**  
Attendance: **587**

Start Time: **2019-01-03 23:32:49**

End Time: **2019-01-04 01:48:17**

Game Duration: **135**

Conference Game;

Score	1st	2nd	3rd	4th	TOT
SEM	12	12	17	21	<b>62</b>
SIE	5	14	20	13	<b>52</b>

**SEM led for 32:19. SIE led for 1:40.**

**Game was tied for 6:01.**

Times tied: **12**      Lead Changes: **5**

Points from	SEM	SIE
In the Paint	30	24
Off Turns	27	12
2nd Chance	4	14
Fast Break	22	7
Bench	22	20

**Official Box Score**  
**Southeast Mo. St. vs SIUE**  
**First Half Statistics Only**  
**January 03, 2019 at Vadalabene Center - Edwardsville, Ill.**



### Southeast Mo. St. 24

No.	Player	S	Pts	FG	3FG	FT	OR	DR	TR	PF	A	TO	Blk	Stl	Min	+/-
01	ALLEN, KENNEDI		2	1-2	0-0	0-0	0	0	0	1	0	2	0	0	7	9
02	SHEPHARD, CARRIE		0	0-4	0-4	0-0	0	0	0	0	1	1	0	0	11	-1
03	MURPHY, ADRIANNA		5	2-6	0-2	1-2	0	1	1	0	0	1	0	1	18	1
04	BALOGUN, DOLAPO		0	0-3	0-0	0-0	1	0	1	0	1	0	0	1	8	-3
05	COLYER, TIONNE		0	0-0	0-0	0-0	0	0	0	0	0	0	0	0	1	0
10	PRUITT, TAELOUR		2	1-2	0-0	0-0	0	1	1	0	1	0	0	1	11	10
13	HARSHBERGER, JESSIE		0	0-0	0-0	0-0	1	0	1	0	0	0	0	0	5	4
21	MCCURDY, IYANNA		2	1-1	0-0	0-0	0	0	0	1	0	2	0	1	6	2
23	TAYLOR, JOCELYN		2	1-3	0-0	0-0	1	2	3	1	1	1	1	2	8	-8
24	THOMPSON, TESIA		9	3-7	0-1	3-4	1	2	3	1	0	0	0	1	13	3
32	LUTAYA, LOSMIE		0	0-0	0-0	0-0	1	0	1	0	0	0	0	0	6	7
40	SAINE, LATRESE		2	0-1	0-0	2-2	2	0	2	1	0	0	1	1	6	1
	TEAM		0	0-0	0-0	0-0	1	2	3	0	0	1	0	0	0	
<b>TOTALS</b>			<b>24</b>	<b>9-29</b>	<b>0-7</b>	<b>6-8</b>	<b>8</b>	<b>8</b>	<b>16</b>	<b>5</b>	<b>4</b>	<b>8</b>	<b>2</b>	<b>8</b>	<b>100</b>	

#### Shooting By Period

Period	FG	FG%	3FG	3FG%	FT	FT%
1st Qtr	6-12	50%	0-3	00%	0-0	0%
2nd Qtr	3-17	18%	0-4	00%	6-8	75%
1st Half	9-29	31%	0-7	00%	6-8	75%
Game	21-47	44.7%	3-12	25.0%	17-29	58.6%

Last FG Half: SEM 2nd-00:06

### SIUE 19

No.	Player	S	Pts	FG	3FG	FT	OR	DR	TR	PF	A	TO	Blk	Stl	Min	+/-
01	KING, CHRISTEN		7	3-7	0-2	1-1	1	1	2	2	1	2	0	2	15	5
02	BELL, NAKIAH		2	1-6	0-4	0-0	1	1	2	0	0	2	0	1	16	-1
05	ALSTON, JAY'NEE		0	0-3	0-3	0-0	0	2	2	0	0	2	0	0	16	-9
11	KEITH, MIKIA		0	0-1	0-1	0-0	0	0	0	1	0	2	0	1	4	4
12	KOEHLER, KAI		0	0-0	0-0	0-0	0	0	0	0	0	0	0	0	0	0
14	JONES, MICAH		2	1-2	0-0	0-0	1	1	2	1	4	1	1	0	12	5
21	AKUEN, ALEK		0	0-1	0-0	0-0	0	1	1	2	0	1	0	0	5	-7
23	TROECKLER, ALLIE		2	1-2	0-0	0-0	3	2	5	1	0	1	0	0	9	-12
25	WHITLOCK, ZARIA		0	0-1	0-0	0-0	1	0	1	0	0	0	0	0	4	-4
34	BAUMAN, SYDNEY		6	2-4	0-0	2-2	1	0	1	0	0	1	0	0	12	-3
35	HALL, MIKALA		0	0-0	0-0	0-0	0	0	0	0	0	0	0	0	0	-2
44	EVERIDGE, RIANA		0	0-2	0-0	0-0	0	2	2	0	1	2	0	1	8	-1
	TEAM		0	0-0	0-0	0-0	5	2	7	0	0	2	0	0	0	
<b>TOTALS</b>			<b>19</b>	<b>8-29</b>	<b>0-10</b>	<b>3-3</b>	<b>13</b>	<b>12</b>	<b>25</b>	<b>7</b>	<b>6</b>	<b>16</b>	<b>1</b>	<b>5</b>	<b>100</b>	

#### Shooting By Period

Period	FG	FG%	3FG	3FG%	FT	FT%
1st Qtr	2-16	13%	0-5	00%	1-1	100%
2nd Qtr	6-13	46%	0-5	00%	2-2	100%
1st Half	8-29	28%	0-10	00%	3-3	100%
Game	19-62	30.6%	3-19	15.8%	11-16	68.8%

Last FG Half: SIE 2nd-00:27

#### Game Notes:

Officials: Missy Brooks, Jeff Cross, Jonathan Patterson  
Attendance: 587

Start Time: 2019-01-03 23:32:49

End Time: 2019-01-04 01:48:17

Game Duration: 135

Conference Game;

Score	1st	2nd	3rd	4th	TOT
SEM	12	12	17	21	<b>62</b>
SIE	5	14	20	13	<b>52</b>

Points from (This Period)	SEM	SIE
In the Paint	14	14
Off Turns	13	4
2nd Chance	4	7
Fast Break	7	6
Bench	8	4

**Official Box Score**  
**Southeast Mo. St. vs SIUE**  
**First Quarter Statistics Only**  
**January 03, 2019 at Vadalabene Center - Edwardsville, Ill.**



### Southeast Mo. St. 12

No.	Player	S	Pts	FG	3FG	FT	OR	DR	TR	PF	A	TO	Blk	Stl	Min	+/-
02	SHEPHARD, CARRIE		0	0-1	0-1	0-0	0	0	0	0	0	1	0	0	6	1
03	MURPHY, ADRIANNA		0	0-3	0-2	0-0	0	0	0	0	0	0	0	0	8	3
04	BALOGUN, DOLAPO		0	0-1	0-0	0-0	0	0	0	0	1	0	0	1	4	2
23	TAYLOR, JOCELYN		2	1-1	0-0	0-0	0	2	2	1	0	1	1	2	4	-3
24	THOMPSON, TESIA		4	2-3	0-0	0-0	1	1	2	0	0	0	0	1	6	1
01	ALLEN, KENNEDI		2	1-1	0-0	0-0	0	0	0	0	0	2	0	0	4	6
05	COLYER, TIONNE		0	0-0	0-0	0-0	0	0	0	0	0	0	0	0	0	0
10	PRUITT, TAELOUR		2	1-1	0-0	0-0	0	1	1	0	1	0	0	0	6	10
13	HARSHBERGER, JESSIE		0	0-0	0-0	0-0	0	0	0	0	0	0	0	0	2	4
21	MCCURDY, IYANNA		2	1-1	0-0	0-0	0	0	0	0	0	0	0	1	4	6
32	LUTAYA, LOSMIE		0	0-0	0-0	0-0	1	0	1	0	0	0	0	0	3	4
40	SAINE, LATRESE		0	0-0	0-0	0-0	1	0	1	1	0	0	1	1	3	1
	TEAM						0	0	0	0		1				
<b>TOTALS</b>			<b>12</b>	<b>6-12</b>	<b>0-3</b>	<b>0-0</b>	<b>3</b>	<b>4</b>	<b>7</b>	<b>2</b>	<b>2</b>	<b>5</b>	<b>2</b>	<b>6</b>	<b>50</b>	

#### Shooting By Period

Period	FG	FG%	3FG	3FG%	FT	FT%
1st Qtr	6-12	50%	0-3	00%	0-0	0%
2nd Qtr	3-17	18%	0-4	00%	6-8	75%
1st Half	6-12	50%	0-3	00%	0-0	0%
1st Half	9-29	31%	0-7	00%	6-8	75%
Game	21-47	44.7%	3-12	25.0%	17-29	58.6%

### SIUE 5

No.	Player	S	Pts	FG	3FG	FT	OR	DR	TR	PF	A	TO	Blk	Stl	Min	+/-
01	KING, CHRISTEN		3	1-2	0-0	1-1	1	0	1	0	1	1	0	0	5	1
05	ALSTON, JAY'NEE		0	0-2	0-2	0-0	0	0	0	0	0	1	0	0	9	-10
23	TROECKLER, ALLIE		2	1-2	0-0	0-0	3	2	5	1	0	1	0	0	9	-10
25	WHITLOCK, ZARIA		0	0-1	0-0	0-0	1	0	1	0	0	0	0	0	4	-2
34	BAUMAN, SYDNEY		0	0-1	0-0	0-0	0	0	0	0	0	1	0	0	6	-4
02	BELL, NAKIAH		0	0-4	0-3	0-0	0	0	0	0	0	1	0	1	6	-5
11	KEITH, MIKIA		0	0-0	0-0	0-0	0	0	0	0	0	1	0	1	1	3
12	KOEHLER, KAI		0	0-0	0-0	0-0	0	0	0	0	0	0	0	0	0	0
14	JONES, MICAH		0	0-1	0-0	0-0	0	0	0	0	1	0	0	0	2	1
21	AKUEN, ALEK		0	0-1	0-0	0-0	0	1	1	0	0	1	0	0	3	-4
35	HALL, MIKALA		0	0-0	0-0	0-0	0	0	0	0	0	0	0	0	0	0
44	EVERIDGE, RIANA		0	0-2	0-0	0-0	0	0	0	0	0	0	0	0	6	-5
	TEAM						5	0	5	0		2				
<b>TOTALS</b>			<b>5</b>	<b>2-16</b>	<b>0-5</b>	<b>1-1</b>	<b>10</b>	<b>3</b>	<b>13</b>	<b>1</b>	<b>2</b>	<b>9</b>	<b>0</b>	<b>2</b>	<b>50</b>	

#### Shooting By Period

Period	FG	FG%	3FG	3FG%	FT	FT%
1st Qtr	2-16	13%	0-5	00%	1-1	100%
2nd Qtr	6-13	46%	0-5	00%	2-2	100%
1st Half	2-16	13%	0-5	00%	1-1	100%
1st Half	8-29	28%	0-10	00%	3-3	100%
Game	19-62	30.6%	3-19	15.8%	11-16	68.8%

#### Game Notes:

Officials: Missy Brooks, Jeff Cross, Jonathan Patterson  
Attendance: 587

Start Time: 2019-01-03 23:32:49  
End Time: 2019-01-04 01:48:17  
Game Duration: 135  
Conference Game;

Score	1st	2nd	3rd	4th	TOT
SEM	12	12	17	21	<b>62</b>
SIE	5	14	20	13	<b>52</b>

Points from (This Period)	SEM	SIE
In the Paint	10	2
Off Turns	8	2
2nd Chance	2	3
Fast Break	4	0
Bench	6	0

**Official Play-By-Play**  
**Southeast Mo. St. vs SIUE**  
**First Quarter**

**January 03, 2019 at Vadalabene Center - Edwardsville, Ill.**



**Period 1**

**Starters:**

**Southeast Mo. St.:** 2 SHEPHARD, CARRIE; 3 MURPHY, ADRIANNA; 4 BALOGUN, DOLAPO; 23 TAYLOR, JOCELYN; 24 THOMPSON, TESIA;

**SIUE:** 1 KING, CHRISTEN; 5 ALSTON, JAY'NEE; 23 TROECKLER, ALLIE; 25 WHITLOCK, ZARIA; 34 BAUMAN, SYDNEY;

Time	VISITORS: Southeast Mo. St.	Score	Margin	HOME: SIUE
09:29				MISSED JUMPER by BAUMAN, SYDNEY
09:27				REBOUND (OFF) by WHITLOCK, ZARIA
09:27	FOUL (PERSONAL) by TAYLOR, JOCELYN			
09:07				MISSED 3PTR by ALSTON, JAY'NEE
09:07	BLOCK by TAYLOR, JOCELYN			
09:07				REBOUND (OFF) by TEAM
08:57				TURNOVER (LOSTBALL) by KING, CHRISTEN
08:57	STEAL by BALOGUN, DOLAPO			
08:28	MISSED 3PTR by SHEPHARD, CARRIE			
08:26	REBOUND (OFF) by THOMPSON, TESIA			
08:26	TURNOVER (SHOTCLOCK) by			
08:08		2-0	H 2	GOOD! JUMPER by TROECKLER, ALLIE
08:08				ASSIST by KING, CHRISTEN
07:45	MISSED LAYUP by MURPHY, ADRIANNA			
07:41				REBOUND (DEF) by TROECKLER, ALLIE
07:35				TURNOVER (BADPASS) by ALSTON, JAY'NEE
07:35	STEAL by TAYLOR, JOCELYN			
07:29	GOOD! LAYUP by TAYLOR, JOCELYN [FB]	2-2	T	
07:17				MISSED LAYUP by KING, CHRISTEN
07:12				REBOUND (OFF) by KING, CHRISTEN
07:09				MISSED LAYUP by WHITLOCK, ZARIA
07:05	REBOUND (DEF) by TAYLOR, JOCELYN			
07:02	MISSED LAYUP by BALOGUN, DOLAPO			
06:59				REBOUND (DEF) by TROECKLER, ALLIE
06:51				TURNOVER (LOSTBALL) by TROECKLER, ALLIE
06:51	STEAL by THOMPSON, TESIA			
06:51	SUB OUT: SHEPHARD, CARRIE			
06:51	SUB IN: PRUITT, TAELOUR			
06:51	SUB OUT: TAYLOR, JOCELYN			
06:51	SUB IN: ALLEN, KENNEDI			
06:51	SUB OUT: THOMPSON, TESIA			
06:51	SUB IN: MCCURDY, IYANNA			
06:32	GOOD! LAYUP by PRUITT, TAELOUR	2-4	V 2	
06:32	ASSIST by BALOGUN, DOLAPO			
06:10				MISSED 3PTR by ALSTON, JAY'NEE
06:08				REBOUND (OFF) by TROECKLER, ALLIE
06:08				SUB OUT: KING, CHRISTEN
06:08				SUB IN: BELL, NAKIAH
06:08	SUB OUT: BALOGUN, DOLAPO			
06:08	SUB IN: LUTAYA, LOSMIE			
06:02				MISSED 3PTR by BELL, NAKIAH
06:01				REBOUND (OFF) by TEAM
05:57				MISSED 3PTR by BELL, NAKIAH
05:57				REBOUND (OFF) by TEAM
05:57				SUB OUT: WHITLOCK, ZARIA
05:57				SUB IN: EVERIDGE, RIANA
05:57				TURNOVER (SHOTCLOCK) by
05:29	TURNOVER (LOSTBALL) by ALLEN, KENNEDI			
05:18				TURNOVER (BADPASS) by BAUMAN, SYDNEY
05:18	STEAL by MCCURDY, IYANNA			
05:12	GOOD! LAYUP by MCCURDY, IYANNA [FB]	2-6	V 4	
04:42				
04:42				TURNOVER (OTHER) by
04:24				SUB OUT: BAUMAN, SYDNEY
04:24				SUB IN: AKUEN, ALEK
04:23	GOOD! JUMPER by ALLEN, KENNEDI	2-8	V 6	
04:23	MISSED 3PTR by MURPHY, ADRIANNA			
04:23	REBOUND (OFF) by LUTAYA, LOSMIE			
04:01				MISSED JUMPER by TROECKLER, ALLIE
04:01				REBOUND (OFF) by TROECKLER, ALLIE
03:43				MISSED 3PTR by BELL, NAKIAH
03:23	REBOUND (DEF) by PRUITT, TAELOUR			
03:18	TURNOVER (BADPASS) by ALLEN, KENNEDI			
03:18				STEAL by BELL, NAKIAH
03:04				MISSED JUMPER by EVERIDGE, RIANA
03:04				REBOUND (OFF) by TEAM
03:04	SUB OUT: ALLEN, KENNEDI			
03:04	SUB IN: SHEPHARD, CARRIE			
03:04	SUB OUT: MURPHY, ADRIANNA			
03:04	SUB IN: THOMPSON, TESIA			

Time	VISITORS: Southeast Mo. St.	Score	Margin	HOME: SIUE
03:04	SUB OUT: MCCURDY, IYANNA			
03:04	SUB IN: HARSHBERGER, JESSIE			
03:04	SUB OUT: LUTAYA, LOSMIE			
03:04	SUB IN: SAINÉ, LATRESE			
02:48				TURNOVER (LOSTBALL) by AKUEN, ALEK
02:42				FOUL (PERSONAL) by TROECKLER, ALLIE
02:39	MISSED JUMPER by THOMPSON, TESIA			
02:34				REBOUND (DEF) by AKUEN, ALEK
02:09				MISSED JUMPER by BELL, NAKIAH
02:05				REBOUND (OFF) by TROECKLER, ALLIE
01:50				MISSED LAYUP by AKUEN, ALEK
01:47	REBOUND (DEF) by THOMPSON, TESIA			
01:39	GOOD! LAYUP by THOMPSON, TESIA [PNT]	2-10	V 8	
01:39	ASSIST by PRUITT, TAELOUR			
01:38				TIMEOUT 30SEC
01:38				SUB OUT: AKUEN, ALEK
01:38				SUB IN: JONES, MICAH
01:26				TURNOVER (BADPASS) by BELL, NAKIAH
01:26	STEAL by SAINÉ, LATRESE			
01:06	GOOD! LAYUP by THOMPSON, TESIA	2-12	V 10	
00:54				MISSED LAYUP by JONES, MICAH
00:54	BLOCK by SAINÉ, LATRESE			
00:54				REBOUND (OFF) by TEAM
00:54				SUB OUT: ALSTON, JAY'NEE
00:54				SUB IN: KING, CHRISTEN
00:54				SUB OUT: TROECKLER, ALLIE
00:54				SUB IN: KEITH, MIKIA
00:54	SUB OUT: PRUITT, TAELOUR			
00:54	SUB IN: MURPHY, ADRIANNA			
00:54	SUB OUT: HARSHBERGER, JESSIE			
00:54	SUB IN: TAYLOR, JOCELYN			
00:44		4-12	V 8	GOOD! LAYUP by KING, CHRISTEN
00:44				ASSIST by JONES, MICAH
00:44	FOUL (PERSONAL) by SAINÉ, LATRESE			
00:44		5-12	V 7	GOOD! FT by KING, CHRISTEN
00:36	TURNOVER (LOSTBALL) by TAYLOR, JOCELYN			
00:36	SUB OUT: THOMPSON, TESIA			
00:36	SUB IN: MCCURDY, IYANNA			
00:26				MISSED JUMPER by EVERIDGE, RIANA
00:22	REBOUND (DEF) by TAYLOR, JOCELYN			
00:18	TURNOVER (BADPASS) by SHEPHARD, CARRIE			
00:18				STEAL by KEITH, MIKIA
00:12				TURNOVER (LOSTBALL) by KEITH, MIKIA
00:12	STEAL by TAYLOR, JOCELYN			
00:00	MISSED 3PTR by MURPHY, ADRIANNA			
00:00	REBOUND (OFF) by SAINÉ, LATRESE			

Southeast Mo. St. 12, SIUE 5

Points from (This Period)	SEM	SIE
In the Paint	10	2
Off Turns	8	2
2nd Chance	2	3
Fast Break	4	0
Bench	6	0

**Official Box Score**  
**Southeast Mo. St. vs SIUE**  
**Second Quarter Statistics Only**  
**January 03, 2019 at Vadalabene Center - Edwardsville, Ill.**



### Southeast Mo. St. 12

No.	Player	S	Pts	FG	3FG	FT	OR	DR	TR	PF	A	TO	Blk	Stl	Min	+/-
02	SHEPARD, CARRIE		0	0-3	0-3	0-0	0	0	0	0	1	0	0	0	5	-2
03	MURPHY, ADRIANNA		5	2-3	0-0	1-2	0	1	1	0	0	1	0	1	10	-2
04	BALOGUN, DOLAPO		0	0-2	0-0	0-0	1	0	1	0	0	0	0	0	4	-5
23	TAYLOR, JOCELYN		0	0-2	0-0	0-0	1	0	1	0	1	0	0	0	4	-5
24	THOMPSON, TESIA		5	1-4	0-1	3-4	0	1	1	1	0	0	0	0	7	2
01	ALLEN, KENNEDI		0	0-1	0-0	0-0	0	0	0	1	0	0	0	0	3	3
05	COLYER, TIONNE		0	0-0	0-0	0-0	0	0	0	0	0	0	0	0	1	0
10	PRUITT, TAELOUR		0	0-1	0-0	0-0	0	0	0	0	0	0	0	1	5	0
13	HARSHBERGER, JESSIE		0	0-0	0-0	0-0	1	0	1	0	0	0	0	0	3	0
21	MCCURDY, IYANNA		0	0-0	0-0	0-0	0	0	0	1	0	2	0	0	2	-4
32	LUTAYA, LOSMIE		0	0-0	0-0	0-0	0	0	0	0	0	0	0	0	3	3
40	SAINE, LATRESE		2	0-1	0-0	2-2	1	0	1	0	0	0	0	0	3	0
	TEAM						1	2	3	0		0				
<b>TOTALS</b>			<b>12</b>	<b>3-17</b>	<b>0-4</b>	<b>6-8</b>	<b>5</b>	<b>4</b>	<b>9</b>	<b>3</b>	<b>2</b>	<b>3</b>	<b>0</b>	<b>2</b>	<b>50</b>	

#### Shooting By Period

Period	FG	FG%	3FG	3FG%	FT	FT%
3rd Qtr	7-8	88%	1-2	50%	2-6	33%
4th Qtr	5-10	50%	2-3	67%	9-15	60%
2nd Half	3-17	18%	0-4	00%	6-8	75%
2nd Half	12-18	67%	3-5	60%	11-21	52%
Game	21-47	44.7%	3-12	25.0%	17-29	58.6%

### SIUE 14

No.	Player	S	Pts	FG	3FG	FT	OR	DR	TR	PF	A	TO	Blk	Stl	Min	+/-
01	KING, CHRISTEN		4	2-5	0-2	0-0	0	1	1	2	0	1	0	2	10	4
05	ALSTON, JAY'NEE		0	0-1	0-1	0-0	0	2	2	0	0	1	0	0	7	1
23	TROECKLER, ALLIE		0	0-0	0-0	0-0	0	0	0	0	0	0	0	0	0	-2
25	WHITLOCK, ZARIA		0	0-0	0-0	0-0	0	0	0	0	0	0	0	0	0	-2
34	BAUMAN, SYDNEY		6	2-3	0-0	2-2	1	0	1	0	0	0	0	0	6	1
02	BELL, NAKIAH		2	1-2	0-1	0-0	1	1	2	0	0	1	0	0	10	4
11	KEITH, MIKIA		0	0-1	0-1	0-0	0	0	0	1	0	1	0	0	3	1
12	KOEHLER, KAI		0	0-0	0-0	0-0	0	0	0	0	0	0	0	0	0	0
14	JONES, MICAH		2	1-1	0-0	0-0	1	1	2	1	3	1	1	0	10	4
21	AKUEN, ALEK		0	0-0	0-0	0-0	0	0	0	2	0	0	0	0	2	-3
35	HALL, MIKALA		0	0-0	0-0	0-0	0	0	0	0	0	0	0	0	0	-2
44	EVERIDGE, RIANA		0	0-0	0-0	0-0	0	2	2	0	1	2	0	1	2	4
	TEAM						0	2	2	0		0				
<b>TOTALS</b>			<b>14</b>	<b>6-13</b>	<b>0-5</b>	<b>2-2</b>	<b>3</b>	<b>9</b>	<b>12</b>	<b>6</b>	<b>4</b>	<b>7</b>	<b>1</b>	<b>3</b>	<b>50</b>	

#### Shooting By Period

Period	FG	FG%	3FG	3FG%	FT	FT%
3rd Qtr	6-20	30%	2-5	40%	6-9	67%
4th Qtr	5-13	38%	1-4	25%	2-4	50%
2nd Half	6-13	46%	0-5	00%	2-2	100%
2nd Half	11-33	33%	3-9	33%	8-13	62%
Game	19-62	30.6%	3-19	15.8%	11-16	68.8%

#### Game Notes:

Officials: Missy Brooks, Jeff Cross, Jonathan Patterson  
Attendance: 587

Start Time: 2019-01-03 23:32:49  
End Time: 2019-01-04 01:48:17  
Game Duration: 135  
Conference Game;

Score	1st	2nd	3rd	4th	TOT
SEM	12	12	17	21	<b>62</b>
SIE	5	14	20	13	<b>52</b>

Points from (This Period)	SEM	SIE
In the Paint	4	12
Off Turns	5	2
2nd Chance	2	4
Fast Break	3	6
Bench	2	4

**Official Play-By-Play**  
**Southeast Mo. St. vs SIUE**  
**Second Quarter**  
**January 03, 2019 at Vadalabene Center - Edwardsville, Ill.**



**Period 2**

**Starters:**

**Southeast Mo. St.:** 2 SHEPHARD, CARRIE; 3 MURPHY, ADRIANNA; 4 BALOGUN, DOLAPO; 23 TAYLOR, JOCELYN; 24 THOMPSON, TESIA;

**SIUE:** 1 KING, CHRISTEN; 5 ALSTON, JAY'NEE; 23 TROECKLER, ALLIE; 25 WHITLOCK, ZARIA; 34 BAUMAN, SYDNEY;

Time	VISITORS: Southeast Mo. St.	Score	Margin	HOME: SIUE
10:00	SUB OUT: SAINÉ, LATRESE			
10:00	SUB IN: BALOGUN, DOLAPO			
09:33	MISSED JUMPER by BALOGUN, DOLAPO			
09:33				REBOUND (DEF) by EVERIDGE, RIANA
09:30				TURNOVER (TRAVEL) by EVERIDGE, RIANA
09:26	TURNOVER (LOSTBALL) by MCCURDY, IYANNA			
09:26				STEAL by EVERIDGE, RIANA
09:17				TURNOVER (TRAVEL) by EVERIDGE, RIANA
09:06	MISSED LAYUP by TAYLOR, JOCELYN			
09:02	REBOUND (OFF) by TAYLOR, JOCELYN			
09:00	MISSED LAYUP by TAYLOR, JOCELYN			
08:51				REBOUND (DEF) by EVERIDGE, RIANA
08:48		7-12	V 5	GOOD! LAYUP by JONES, MICAH [FB]
08:48				ASSIST by EVERIDGE, RIANA
08:35	MISSED 3PTR by SHEPHARD, CARRIE			
08:35	REBOUND (OFF) by TEAM			
08:35	SUB OUT: BALOGUN, DOLAPO			
08:35	SUB IN: ALLEN, KENNEDI			
08:35	SUB OUT: TAYLOR, JOCELYN			
08:35	SUB IN: LUTAYA, LOSMIE			
08:35	TURNOVER (LOSTBALL) by MURPHY, ADRIANNA			
08:35				STEAL by KING, CHRISTEN
08:35		9-12	V 3	GOOD! LAYUP by KING, CHRISTEN [FB]
07:53	TURNOVER (LOSTBALL) by MCCURDY, IYANNA			
07:53				STEAL by KING, CHRISTEN
07:53	FOUL (PERSONAL) by MCCURDY, IYANNA			
07:53				SUB OUT: EVERIDGE, RIANA
07:53				SUB IN: AKUEN, ALEK
07:53	SUB OUT: SHEPHARD, CARRIE			
07:53	SUB IN: PRUITT, TAELOUR			
07:53	SUB OUT: MCCURDY, IYANNA			
07:53	SUB IN: THOMPSON, TESIA			
07:35				TURNOVER (BADPASS) by BELL, NAKIAH
07:22				FOUL (PERSONAL) by AKUEN, ALEK
07:22	GOOD! FT by THOMPSON, TESIA	9-13	V 4	
07:22	GOOD! FT by THOMPSON, TESIA	9-14	V 5	
07:13				MISSED JUMPER by KING, CHRISTEN
07:10				REBOUND (OFF) by BELL, NAKIAH
06:59				TURNOVER (BADPASS) by KEITH, MIKIA
06:59	STEAL by PRUITT, TAELOUR			
06:52	MISSED 3PTR by THOMPSON, TESIA			
06:50				REBOUND (DEF) by TEAM
06:36				MISSED 3PTR by KEITH, MIKIA
06:34	REBOUND (DEF) by THOMPSON, TESIA			
06:33				FOUL (PERSONAL) by KEITH, MIKIA
06:33	MISSED FT by THOMPSON, TESIA			
06:33	REBOUND (OFF) by TEAM			
06:33	GOOD! FT by THOMPSON, TESIA	9-15	V 6	
06:33				SUB OUT: KEITH, MIKIA
06:33				SUB IN: ALSTON, JAY'NEE
06:15				MISSED 3PTR by BELL, NAKIAH
06:13	REBOUND (DEF) by TEAM			
06:13				FOUL (PERSONAL) by KING, CHRISTEN
06:04				FOUL (PERSONAL) by AKUEN, ALEK
06:01	MISSED JUMPER by ALLEN, KENNEDI			
06:01				REBOUND (DEF) by JONES, MICAH
06:01	FOUL (PERSONAL) by ALLEN, KENNEDI			
06:01				SUB OUT: AKUEN, ALEK
06:01				SUB IN: BAUMAN, SYDNEY
06:01	SUB OUT: ALLEN, KENNEDI			
06:01	SUB IN: HARSHBERGER, JESSIE			
06:01	SUB OUT: LUTAYA, LOSMIE			
06:01	SUB IN: SAINÉ, LATRESE			
06:01	SUB OUT: PRUITT, TAELOUR			
06:01	SUB IN: SHEPHARD, CARRIE			
05:44				MISSED 3PTR by KING, CHRISTEN
05:42	REBOUND (DEF) by TEAM			
05:42	SUB OUT: THOMPSON, TESIA			
05:42	SUB IN: COLYER, TIONNE			
05:24	MISSED 3PTR by SHEPHARD, CARRIE			



Time	VISITORS: Southeast Mo. St.	Score	Margin	HOME: SIUE
05:20	REBOUND (OFF) by HARSHBERGER, JESSIE			
05:12	MISSED LAYUP by SAINÉ, LATRESE			
05:12				REBOUND (DEF) by TEAM
04:57				TURNOVER (BADPASS) by JONES, MICAH
04:57				
04:57	SUB OUT: COLYER, TIONNE			
04:57	SUB IN: THOMPSON, TESIA			
04:45	MISSED 3PTR by SHEPHARD, CARRIE			
04:45	REBOUND (OFF) by SAINÉ, LATRESE			
04:45				FOUL (PERSONAL) by JONES, MICAH
04:45	GOOD! FT by SAINÉ, LATRESE	9-16	V 7	
04:45	GOOD! FT by SAINÉ, LATRESE	9-17	V 8	
04:22		11-17	V 6	GOOD! LAYUP by KING, CHRISTEN [PNT]
04:22				ASSIST by JONES, MICAH
03:55	MISSED LAYUP by THOMPSON, TESIA			
03:53				REBOUND (DEF) by ALSTON, JAY'NEE
03:53				TURNOVER (LOSTBALL) by ALSTON, JAY'NEE
03:34	MISSED JUMPER by MURPHY, ADRIANNA			
03:31				REBOUND (DEF) by KING, CHRISTEN
03:28				TURNOVER (LOSTBALL) by KING, CHRISTEN
03:28	STEAL by MURPHY, ADRIANNA			
03:25				FOUL (PERSONAL) by KING, CHRISTEN
03:25	MISSED FT by MURPHY, ADRIANNA			
03:25	REBOUND (OFF) by TEAM			
03:25	SUB OUT: SHEPHARD, CARRIE			
03:25	SUB IN: TAYLOR, JOCELYN			
03:25	SUB OUT: HARSHBERGER, JESSIE			
03:25	SUB IN: BALOGUN, DOLAPO			
03:25	SUB OUT: SAINÉ, LATRESE			
03:25	SUB IN: PRUITT, TAELOUR			
03:25	GOOD! FT by MURPHY, ADRIANNA [FB]	11-18	V 7	
03:06				MISSED LAYUP by BAUMAN, SYDNEY
03:06				REBOUND (OFF) by BAUMAN, SYDNEY
03:06	FOUL (PERSONAL) by THOMPSON, TESIA			
03:06		12-18	V 6	GOOD! FT by BAUMAN, SYDNEY
03:06		13-18	V 5	GOOD! FT by BAUMAN, SYDNEY
03:02	TIMEOUT 30SEC			
02:34	GOOD! LAYUP by THOMPSON, TESIA	13-20	V 7	
02:34	ASSIST by TAYLOR, JOCELYN			
02:12		15-20	V 5	GOOD! LAYUP by BAUMAN, SYDNEY
02:12				ASSIST by JONES, MICAH
01:44	MISSED JUMPER by PRUITT, TAELOUR			
01:40				REBOUND (DEF) by ALSTON, JAY'NEE
01:31				MISSED 3PTR by KING, CHRISTEN
01:27	REBOUND (DEF) by MURPHY, ADRIANNA			
01:21	GOOD! LAYUP by MURPHY, ADRIANNA [FB/PNT]	15-22	V 7	
01:08				MISSED 3PTR by ALSTON, JAY'NEE
01:00				REBOUND (OFF) by JONES, MICAH
00:59		17-22	V 5	GOOD! LAYUP by BAUMAN, SYDNEY
00:59				ASSIST by JONES, MICAH
00:42	MISSED LAYUP by THOMPSON, TESIA			
00:38	REBOUND (OFF) by BALOGUN, DOLAPO			
00:37	MISSED JUMPER by BALOGUN, DOLAPO			
00:37				BLOCK by JONES, MICAH
00:28				REBOUND (DEF) by BELL, NAKIAH
00:27		19-22	V 3	GOOD! LAYUP by BELL, NAKIAH [FB]
00:26				SUB OUT: KING, CHRISTEN
00:26				SUB IN: TROECKLER, ALLIE
00:26				SUB OUT: BELL, NAKIAH
00:26				SUB IN: WHITLOCK, ZARIA
00:26				SUB OUT: JONES, MICAH
00:26				SUB IN: HALL, MIKALA
00:26	SUB OUT: BALOGUN, DOLAPO			
00:26	SUB IN: LUTAYA, LOSMIE			
00:26	SUB OUT: PRUITT, TAELOUR			
00:26	SUB IN: ALLEN, KENNEDI			
00:26	SUB OUT: TAYLOR, JOCELYN			
00:26	SUB IN: SHEPHARD, CARRIE			
00:06	GOOD! JUMPER by MURPHY, ADRIANNA	19-24	V 5	
00:06	ASSIST by SHEPHARD, CARRIE			

### Southeast Mo. St. 24, SIUE 19

Points from (This Period)	SEM	SIE
In the Paint	4	12
Off Turns	5	2
2nd Chance	2	4
Fast Break	3	6
Bench	2	4



**Official Box Score**  
**Southeast Mo. St. vs SIUE**  
**Second Half Statistics Only**  
**January 03, 2019 at Vadalabene Center - Edwardsville, Ill.**



### Southeast Mo. St. 38

No.	Player	S	Pts	FG	3FG	FT	OR	DR	TR	PF	A	TO	Blk	Stl	Min	+/-
01	ALLEN, KENNEDI		2	0-0	0-0	2-2	0	0	0	3	0	0	0	0	4	2
02	SHEPHARD, CARRIE		6	2-3	2-2	0-2	0	1	1	0	1	1	0	1	9	10
03	MURPHY, ADRIANNA		2	0-1	0-0	2-2	0	1	1	0	2	1	0	3	18	9
04	BALOGUN, DOLAPO		0	0-0	0-0	0-0	0	1	1	1	0	2	0	0	4	4
05	COLYER, TIONNE		0	0-0	0-0	0-0	0	0	0	0	0	0	0	0	0	0
10	PRUITT, TAELOUR		7	3-4	1-2	0-0	0	0	0	0	2	2	1	2	14	-6
13	HARSHBERGER, JESSIE		2	1-1	0-0	0-0	0	0	0	1	0	0	0	0	2	2
21	MCCURDY, IYANNA		0	0-0	0-0	0-0	0	0	0	0	0	1	0	0	2	1
23	TAYLOR, JOCELYN		3	1-2	0-1	1-2	0	3	3	1	0	0	0	1	14	12
24	THOMPSON, TESIA		13	4-6	0-0	5-9	0	3	3	1	1	1	0	0	17	0
32	LUTAYA, LOSMIE		2	1-1	0-0	0-2	1	2	3	4	0	1	0	0	14	-5
40	SAINE, LATRESE		1	0-0	0-0	1-2	0	0	0	2	0	0	0	0	3	-4
	TEAM		0	0-0	0-0	0-0	0	1	1	0	0	0	0	0	0	
<b>TOTALS</b>			<b>38</b>	<b>12-18</b>	<b>3-5</b>	<b>11-21</b>	<b>1</b>	<b>12</b>	<b>13</b>	<b>13</b>	<b>6</b>	<b>9</b>	<b>1</b>	<b>7</b>	<b>100</b>	

#### Shooting By Period

Period	FG	FG%	3FG	3FG%	FT	FT%
3rd Qtr	7-8	88%	1-2	50%	2-6	33%
4th Qtr	5-10	50%	2-3	67%	9-15	60%
2nd Half	12-18	67%	3-5	60%	11-21	52%
Game	21-47	44.7%	3-12	25.0%	17-29	58.6%

Last FG Half: SEM 4th-01:10

### SIUE 33

No.	Player	S	Pts	FG	3FG	FT	OR	DR	TR	PF	A	TO	Blk	Stl	Min	+/-
01	KING, CHRISTEN		2	1-5	0-0	0-0	2	2	4	0	2	1	0	1	13	-1
02	BELL, NAKIAH		12	5-8	2-5	0-0	0	0	0	1	1	3	0	0	18	-4
05	ALSTON, JAY'NEE		4	1-3	1-2	1-2	0	0	0	1	0	0	0	0	12	-8
11	KEITH, MIKIA		0	0-1	0-0	0-0	0	0	0	1	0	1	0	0	4	-6
12	KOEHLER, KAI		1	0-3	0-2	1-2	0	2	2	2	0	0	1	1	8	1
14	JONES, MICAH		2	1-4	0-0	0-0	2	3	5	4	1	3	0	2	13	-4
21	AKUEN, ALEK		0	0-0	0-0	0-0	0	0	0	0	0	0	0	0	0	0
23	TROECKLER, ALLIE		9	2-3	0-0	5-7	0	2	2	2	1	0	0	1	19	-3
25	WHITLOCK, ZARIA		0	0-0	0-0	0-0	0	0	0	1	0	0	0	0	1	-5
34	BAUMAN, SYDNEY		2	1-4	0-0	0-0	3	0	3	0	2	2	0	0	7	5
35	HALL, MIKALA		0	0-0	0-0	0-0	0	0	0	0	0	0	0	0	0	0
44	EVERIDGE, RIANA		1	0-2	0-0	1-2	1	0	1	0	0	0	0	1	4	0
	TEAM		0	0-0	0-0	0-0	3	1	4	0	0	0	0	0	0	
<b>TOTALS</b>			<b>33</b>	<b>11-33</b>	<b>3-9</b>	<b>8-13</b>	<b>11</b>	<b>10</b>	<b>21</b>	<b>12</b>	<b>7</b>	<b>10</b>	<b>1</b>	<b>6</b>	<b>100</b>	

#### Shooting By Period

Period	FG	FG%	3FG	3FG%	FT	FT%
3rd Qtr	6-20	30%	2-5	40%	6-9	67%
4th Qtr	5-13	38%	1-4	25%	2-4	50%
2nd Half	11-33	33%	3-9	33%	8-13	62%
Game	19-62	30.6%	3-19	15.8%	11-16	68.8%

Last FG Half: SIE 4th-00:39

#### Game Notes:

Officials: **Missy Brooks, Jeff Cross, Jonathan Patterson**  
Attendance: **587**

Start Time: **2019-01-03 23:32:49**

End Time: **2019-01-04 01:48:17**

Game Duration: **135**

Conference Game;

Score	1st	2nd	3rd	4th	TOT
SEM	12	12	17	21	<b>62</b>
SIE	5	14	20	13	<b>52</b>

Points from (This Period)	SEM	SIE
In the Paint	16	10
Off Turns	14	8
2nd Chance	0	7
Fast Break	15	1
Bench	14	16

**Official Box Score**  
**Southeast Mo. St. vs SIUE**  
**Third Quarter Statistics Only**  
**January 03, 2019 at Vadalabene Center - Edwardsville, Ill.**



**Southeast Mo. St. 38**

No.	Player	S	Pts	FG	3FG	FT	OR	DR	TR	PF	A	TO	Blk	Stl	Min	+/-
02	SHEPHARD, CARRIE		0	0-0	0-0	0-0	0	1	1	0	1	0	0	0	2	1
03	MURPHY, ADRIANNA		0	0-0	0-0	0-0	0	0	0	0	2	1	0	3	10	-3
04	BALOGUN, DOLAPO		0	0-0	0-0	0-0	0	0	0	0	0	1	0	0	2	1
23	TAYLOR, JOCELYN		0	0-1	0-1	0-0	0	0	0	1	0	0	0	0	4	3
24	THOMPSON, TESIA		7	3-3	0-0	1-2	0	0	0	1	0	1	0	0	8	-4
01	ALLEN, KENNEDI		0	0-0	0-0	0-0	0	0	0	1	0	0	0	0	2	-4
05	COLYER, TIONNE		0	0-0	0-0	0-0	0	0	0	0	0	0	0	0	0	0
10	PRUITT, TAELOUR		5	2-2	1-1	0-0	0	0	0	0	1	1	0	1	8	-4
13	HARSHBERGER, JESSIE		2	1-1	0-0	0-0	0	0	0	1	0	0	0	0	2	2
21	MCCURDY, IYANNA		0	0-0	0-0	0-0	0	0	0	0	0	1	0	0	2	1
32	LUTAYA, LOSMIE		2	1-1	0-0	0-2	1	2	3	2	0	1	0	0	8	-4
40	SAINE, LATRESE		1	0-0	0-0	1-2	0	0	0	2	0	0	0	0	3	-4
	TEAM						0	1	1	0		0				
<b>TOTALS</b>			<b>17</b>	<b>7-8</b>	<b>1-2</b>	<b>2-6</b>	<b>1</b>	<b>4</b>	<b>5</b>	<b>8</b>	<b>4</b>	<b>6</b>	<b>0</b>	<b>4</b>	<b>50</b>	

*Shooting By Period*

Period	FG	FG%	3FG	3FG%	FT	FT%
2nd Half	0-0	0%	0-0	0%	0-0	0%
Game	21-47	44.7%	3-12	25.0%	17-29	58.6%

**SIUE 33**

No.	Player	S	Pts	FG	3FG	FT	OR	DR	TR	PF	A	TO	Blk	Stl	Min	+/-
01	KING, CHRISTEN		0	0-3	0-0	0-0	2	1	3	0	2	1	0	1	7	1
05	ALSTON, JAY'NEE		0	0-0	0-0	0-0	0	0	0	0	0	0	0	0	5	1
23	TROECKLER, ALLIE		9	2-3	0-0	5-7	0	0	0	0	0	0	0	1	9	5
25	WHITLOCK, ZARIA		0	0-0	0-0	0-0	0	0	0	1	0	0	0	0	0	-1
34	BAUMAN, SYDNEY		2	1-4	0-0	0-0	3	0	3	0	2	1	0	0	6	9
02	BELL, NAKIAH		8	3-4	2-3	0-0	0	0	0	1	0	2	0	0	8	4
11	KEITH, MIKIA		0	0-0	0-0	0-0	0	0	0	0	0	0	0	0	2	-1
12	KOEHLER, KAI		0	0-2	0-2	0-0	0	1	1	0	0	0	0	0	3	3
14	JONES, MICAH		0	0-2	0-0	0-0	2	0	2	1	1	1	0	2	6	-6
21	AKUEN, ALEK		0	0-0	0-0	0-0	0	0	0	0	0	0	0	0	0	0
35	HALL, MIKALA		0	0-0	0-0	0-0	0	0	0	0	0	0	0	0	0	0
44	EVERIDGE, RIANA		1	0-2	0-0	1-2	1	0	1	0	0	0	0	1	4	0
	TEAM						3	0	3	0		0				
<b>TOTALS</b>			<b>20</b>	<b>6-20</b>	<b>2-5</b>	<b>6-9</b>	<b>11</b>	<b>2</b>	<b>13</b>	<b>3</b>	<b>5</b>	<b>5</b>	<b>0</b>	<b>5</b>	<b>50</b>	

*Shooting By Period*

Period	FG	FG%	3FG	3FG%	FT	FT%
2nd Half	0-0	0%	0-0	0%	0-0	0%
Game	19-62	30.6%	3-19	15.8%	11-16	68.8%

Game Notes:

Officials: Missy Brooks, Jeff Cross, Jonathan Patterson  
Attendance: 587

Start Time: 2019-01-03 23:32:49  
End Time: 2019-01-04 01:48:17  
Game Duration: 135  
Conference Game;

Score	1st	2nd	3rd	4th	TOT
SEM	12	12	17	21	<b>62</b>
SIE	5	14	20	13	<b>52</b>

Points from (This Period)	SEM	SIE
In the Paint	10	6
Off Turns	5	8
2nd Chance	0	7
Fast Break	7	0
Bench	10	9

**Official Play-By-Play**  
**Southeast Mo. St. vs SIUE**  
**Third Quarter**  
**January 03, 2019 at Vadalabene Center - Edwardsville, Ill.**



**Period 3**

**Starters:**

**Southeast Mo. St.:** 2 SHEPHARD, CARRIE; 3 MURPHY, ADRIANNA; 4 BALOGUN, DOLAPO; 23 TAYLOR, JOCELYN; 24 THOMPSON, TESIA;

**SIUE:** 1 KING, CHRISTEN; 5 ALSTON, JAY'NEE; 23 TROECKLER, ALLIE; 25 WHITLOCK, ZARIA; 34 BAUMAN, SYDNEY;

Time	VISITORS: Southeast Mo. St.	Score	Margin	HOME: SIUE
10:00				SUB OUT: ALSTON, JAY'NEE
10:00				SUB IN: KING, CHRISTEN
10:00				SUB OUT: WHITLOCK, ZARIA
10:00				SUB IN: BELL, NAKIAH
10:00				SUB OUT: HALL, MIKALA
10:00				SUB IN: JONES, MICAH
10:00	SUB OUT: ALLEN, KENNEDI			
10:00	SUB IN: TAYLOR, JOCELYN			
10:00	SUB OUT: LUTAYA, LOSMIE			
10:00	SUB IN: BALOGUN, DOLAPO			
09:52				TURNOVER (BADPASS) by KING, CHRISTEN
09:52	STEAL by MURPHY, ADRIANNA			
09:47				FOUL (PERSONAL) by JONES, MICAH
09:13	MISSED FT by THOMPSON, TESIA			
09:13	REBOUND (OFF) by TEAM			
09:12	GOOD! FT by THOMPSON, TESIA	19-25	V 6	
08:48	FOUL (PERSONAL) by TAYLOR, JOCELYN			
08:42		21-25	V 4	GOOD! LAYUP by TROECKLER, ALLIE
08:42				ASSIST by BAUMAN, SYDNEY
08:30	GOOD! LAYUP by THOMPSON, TESIA	21-27	V 6	
08:30	ASSIST by SHEPHARD, CARRIE			
08:17				MISSED LAYUP by BAUMAN, SYDNEY
08:17				REBOUND (OFF) by BAUMAN, SYDNEY
08:04				MISSED JUMPER by KING, CHRISTEN
08:04	REBOUND (DEF) by SHEPHARD, CARRIE			
07:51	TURNOVER (BADPASS) by BALOGUN, DOLAPO			
07:51				STEAL by JONES, MICAH
07:51				SUB OUT: KING, CHRISTEN
07:51				SUB IN: ALSTON, JAY'NEE
07:51	SUB OUT: SHEPHARD, CARRIE			
07:51	SUB IN: ALLEN, KENNEDI			
07:51	SUB OUT: BALOGUN, DOLAPO			
07:51	SUB IN: PRUITT, TAELOUR			
07:51	SUB OUT: TAYLOR, JOCELYN			
07:51	SUB IN: LUTAYA, LOSMIE			
07:39				MISSED 3PTR by BELL, NAKIAH
07:38				REBOUND (OFF) by BAUMAN, SYDNEY
07:29				MISSED JUMPER by TROECKLER, ALLIE
07:24				REBOUND (OFF) by JONES, MICAH
07:15				MISSED JUMPER by BAUMAN, SYDNEY
07:15				REBOUND (OFF) by TEAM
07:15	FOUL (PERSONAL) by ALLEN, KENNEDI			
07:15				SUB OUT: JONES, MICAH
07:15				SUB IN: EVERIDGE, RIANA
06:58		23-27	V 4	GOOD! LAYUP by TROECKLER, ALLIE [PNT]
06:58				ASSIST by BAUMAN, SYDNEY
06:58	FOUL (PERSONAL) by THOMPSON, TESIA			
06:58				MISSED FT by TROECKLER, ALLIE
06:58				REBOUND (OFF) by BAUMAN, SYDNEY
06:57		25-27	V 2	GOOD! LAYUP by BAUMAN, SYDNEY
06:44	TURNOVER (LOSTBALL) by THOMPSON, TESIA			
06:44				STEAL by EVERIDGE, RIANA
06:32				TURNOVER (TRAVEL) by BELL, NAKIAH
06:12				SUB OUT: BAUMAN, SYDNEY
06:12				SUB IN: JONES, MICAH
06:12	SUB OUT: ALLEN, KENNEDI			
06:12	SUB IN: HARSHBERGER, JESSIE			
06:12	SUB OUT: THOMPSON, TESIA			
06:12	SUB IN: MCCURDY, IYANNA			
05:57	TURNOVER (BADPASS) by PRUITT, TAELOUR			
05:57				STEAL by JONES, MICAH
05:45		27-27	T	GOOD! JUMPER by BELL, NAKIAH
05:45				ASSIST by JONES, MICAH
05:42	TIMEOUT TEAM			
05:24	GOOD! JUMPER by HARSHBERGER, JESSIE	27-29	V 2	
05:24	ASSIST by MURPHY, ADRIANNA			
05:10	FOUL (PERSONAL) by LUTAYA, LOSMIE			
05:08				MISSED JUMPER by JONES, MICAH
05:02				REBOUND (OFF) by EVERIDGE, RIANA
05:02				MISSED LAYUP by EVERIDGE, RIANA

Time	VISITORS: Southeast Mo. St.	Score	Margin	HOME: SIUE
04:57				REBOUND (OFF) by JONES, MICAH
04:56				MISSED LAYUP by JONES, MICAH
04:53	REBOUND (DEF) by LUTAYA, LOSMIE			
04:49	GOOD! LAYUP by PRUITT, TAELOUR [FB]	27-31	V 4	
04:36	FOUL (PERSONAL) by HARSHBERGER, JESSIE			
04:36				
04:36				SUB OUT: BELL, NAKIAH
04:36				SUB IN: KING, CHRISTEN
04:36				SUB OUT: TROECKLER, ALLIE
04:36				SUB IN: KEITH, MIKIA
04:36				MISSED FT by EVERIDGE, RIANA
04:36				REBOUND (OFF) by TEAM
04:36	SUB OUT: HARSHBERGER, JESSIE			
04:36	SUB IN: SAINÉ, LATRESE			
04:36		28-31	V 3	GOOD! FT by EVERIDGE, RIANA
04:18	TURNOVER (BADPASS) by MCCURDY, IYANNA			
04:18				STEAL by KING, CHRISTEN
04:14	SUB OUT: MCCURDY, IYANNA			
04:14	SUB IN: THOMPSON, TESIA			
04:07				TURNOVER (LOSTBALL) by JONES, MICAH
04:07	STEAL by PRUITT, TAELOUR			
04:00	GOOD! LAYUP by LUTAYA, LOSMIE [FB]	28-33	V 5	
04:00	ASSIST by PRUITT, TAELOUR			
03:45				MISSED JUMPER by EVERIDGE, RIANA
03:43	REBOUND (DEF) by TEAM			
03:43				SUB OUT: JONES, MICAH
03:43				SUB IN: WHITLOCK, ZARIA
03:31				FOUL (PERSONAL) by WHITLOCK, ZARIA
03:31	GOOD! FT by SAINÉ, LATRESE	28-34	V 6	
03:31				SUB OUT: EVERIDGE, RIANA
03:31				SUB IN: JONES, MICAH
03:31	MISSED FT by SAINÉ, LATRESE			
03:30				REBOUND (DEF) by KING, CHRISTEN
03:27				SUB OUT: WHITLOCK, ZARIA
03:27				SUB IN: TROECKLER, ALLIE
03:27				SUB OUT: JONES, MICAH
03:27				SUB IN: BAUMAN, SYDNEY
03:27	FOUL (TECH) by LUTAYA, LOSMIE			
03:27		29-34	V 5	GOOD! FT by TROECKLER, ALLIE
03:27		30-34	V 4	GOOD! FT by TROECKLER, ALLIE
03:19				TURNOVER (LOSTBALL) by BAUMAN, SYDNEY
03:19	STEAL by MURPHY, ADRIANNA			
02:59	GOOD! JUMPER by THOMPSON, TESIA [PNT]	30-36	V 6	
02:59	ASSIST by MURPHY, ADRIANNA			
02:40	FOUL (PERSONAL) by SAINÉ, LATRESE			
02:40		31-36	V 5	GOOD! FT by TROECKLER, ALLIE
02:40				SUB OUT: ALSTON, JAY'NEE
02:40				SUB IN: BELL, NAKIAH
02:40				SUB OUT: KEITH, MIKIA
02:40				SUB IN: KOEHLER, KAI
02:40		32-36	V 4	GOOD! FT by TROECKLER, ALLIE
02:29	TURNOVER (BADPASS) by MURPHY, ADRIANNA			
02:29				STEAL by TROECKLER, ALLIE
02:23				MISSED 3PTR by KOEHLER, KAI
02:18				REBOUND (OFF) by KING, CHRISTEN
02:17				MISSED JUMPER by KING, CHRISTEN
02:13				REBOUND (OFF) by KING, CHRISTEN
02:11				MISSED 3PTR by KOEHLER, KAI
02:11				REBOUND (OFF) by TEAM
02:05		35-36	V 1	GOOD! 3PTR by BELL, NAKIAH
02:05				ASSIST by KING, CHRISTEN
01:51	TURNOVER (LOSTBALL) by LUTAYA, LOSMIE			
01:51	FOUL (TECH) by SAINÉ, LATRESE			
01:51				MISSED FT by TROECKLER, ALLIE
01:51				REBOUND (OFF) by TEAM
01:51		36-36	T	GOOD! FT by TROECKLER, ALLIE
01:51	SUB OUT: SAINÉ, LATRESE			
01:51	SUB IN: TAYLOR, JOCELYN			
01:33				MISSED LAYUP by BAUMAN, SYDNEY
01:33				REBOUND (OFF) by TEAM
01:28				TURNOVER (LOSTBALL) by BELL, NAKIAH
01:28	STEAL by MURPHY, ADRIANNA			
01:11	MISSED 3PTR by TAYLOR, JOCELYN			
01:08	REBOUND (OFF) by LUTAYA, LOSMIE			
01:08				FOUL (PERSONAL) by BELL, NAKIAH
01:08	MISSED FT by LUTAYA, LOSMIE			
01:08	REBOUND (OFF) by TEAM			
01:08	MISSED FT by LUTAYA, LOSMIE			
01:07				REBOUND (DEF) by KOEHLER, KAI
01:07				SUB OUT: BAUMAN, SYDNEY

Time	VISITORS: Southeast Mo. St.	Score	Margin	HOME: SIUE
01:07				SUB IN: JONES, MICAH
00:51				MISSED JUMPER by KING, CHRISTEN
00:48	REBOUND (DEF) by LUTAYA, LOSMIE			
00:27	GOOD! LAYUP by THOMPSON, TESIA [PNT]	36-38	V 2	
00:15	SUB OUT: THOMPSON, TESIA			
00:15	SUB IN: MCCURDY, IYANNA			
00:07		39-38	H 1	GOOD! 3PTR by BELL, NAKIAH
00:07				ASSIST by KING, CHRISTEN
00:00	GOOD! 3PTR by PRUITT, TAELOUR [FB]	39-41	V 2	

Southeast Mo. St. 41, SIUE 39

Points from (This Period)	SEM	SIE
In the Paint	10	6
Off Turns	5	8
2nd Chance	0	7
Fast Break	7	0
Bench	10	9

**Official Box Score**  
**Southeast Mo. St. vs SIUE**  
**Fourth Quarter Statistics Only**  
**January 03, 2019 at Vadalabene Center - Edwardsville, Ill.**



**Southeast Mo. St. 21**

No.	Player	S	Pts	FG	3FG	FT	OR	DR	TR	PF	A	TO	Blk	Stl	Min	+/-
02	SHEPHARD, CARRIE		6	2-3	2-2	0-2	0	0	0	0	0	1	0	1	7	9
03	MURPHY, ADRIANNA		2	0-1	0-0	2-2	0	1	1	0	0	0	0	0	8	12
04	BALOGUN, DOLAPO		0	0-0	0-0	0-0	0	1	1	1	0	1	0	0	2	3
23	TAYLOR, JOCELYN		3	1-1	0-0	1-2	0	3	3	0	0	0	0	1	10	9
24	THOMPSON, TESIA		6	1-3	0-0	4-7	0	3	3	0	1	0	0	0	9	4
01	ALLEN, KENNEDI		2	0-0	0-0	2-2	0	0	0	2	0	0	0	0	2	6
05	COLYER, TIONNE		0	0-0	0-0	0-0	0	0	0	0	0	0	0	0	0	0
10	PRUITT, TAELOUR		2	1-2	0-1	0-0	0	0	0	0	1	1	1	1	6	-2
13	HARSHBERGER, JESSIE		0	0-0	0-0	0-0	0	0	0	0	0	0	0	0	0	0
21	MCCURDY, IYANNA		0	0-0	0-0	0-0	0	0	0	0	0	0	0	0	0	0
32	LUTAYA, LOSMIE		0	0-0	0-0	0-0	0	0	0	2	0	0	0	0	6	-1
40	SAINE, LATRESE		0	0-0	0-0	0-0	0	0	0	0	0	0	0	0	0	0
	TEAM						0	0	0	0		0				
<b>TOTALS</b>			<b>21</b>	<b>5-10</b>	<b>2-3</b>	<b>9-15</b>	<b>0</b>	<b>8</b>	<b>8</b>	<b>5</b>	<b>2</b>	<b>3</b>	<b>1</b>	<b>3</b>	<b>50</b>	

*Shooting By Period*

Period	FG	FG%	3FG	3FG%	FT	FT%
Game	21-47	44.7%	3-12	25.0%	17-29	58.6%

**SIUE 13**

No.	Player	S	Pts	FG	3FG	FT	OR	DR	TR	PF	A	TO	Blk	Stl	Min	+/-
01	KING, CHRISTEN		2	1-2	0-0	0-0	0	1	1	0	0	0	0	0	6	-2
05	ALSTON, JAY'NEE		4	1-3	1-2	1-2	0	0	0	1	0	0	0	0	7	-9
23	TROECKLER, ALLIE		0	0-0	0-0	0-0	0	2	2	2	1	0	0	0	10	-8
25	WHITLOCK, ZARIA		0	0-0	0-0	0-0	0	0	0	0	0	0	0	0	1	-4
34	BAUMAN, SYDNEY		0	0-0	0-0	0-0	0	0	0	0	0	1	0	0	1	-4
02	BELL, NAKIAH		4	2-4	0-2	0-0	0	0	0	0	1	1	0	0	10	-8
11	KEITH, MIKIA		0	0-1	0-0	0-0	0	0	0	1	0	1	0	0	2	-5
12	KOEHLER, KAI		1	0-1	0-0	1-2	0	1	1	2	0	0	1	1	5	-2
14	JONES, MICAH		2	1-2	0-0	0-0	0	3	3	3	0	2	0	0	7	2
21	AKUEN, ALEK		0	0-0	0-0	0-0	0	0	0	0	0	0	0	0	0	0
35	HALL, MIKALA		0	0-0	0-0	0-0	0	0	0	0	0	0	0	0	0	0
44	EVERIDGE, RIANA		0	0-0	0-0	0-0	0	0	0	0	0	0	0	0	0	0
	TEAM						0	1	1	0		0				
<b>TOTALS</b>			<b>13</b>	<b>5-13</b>	<b>1-4</b>	<b>2-4</b>	<b>0</b>	<b>8</b>	<b>8</b>	<b>9</b>	<b>2</b>	<b>5</b>	<b>1</b>	<b>1</b>	<b>50</b>	

*Shooting By Period*

Period	FG	FG%	3FG	3FG%	FT	FT%
Game	19-62	30.6%	3-19	15.8%	11-16	68.8%

Game Notes:

Officials: Missy Brooks, Jeff Cross, Jonathan Patterson  
Attendance: 587

Start Time: 2019-01-03 23:32:49

End Time: 2019-01-04 01:48:17

Game Duration: 135

Conference Game;

Score	1st	2nd	3rd	4th	TOT
SEM	12	12	17	21	<b>62</b>
SIE	5	14	20	13	<b>52</b>

Points from (This Period)	SEM	SIE
In the Paint	6	4
Off Turns	9	0
2nd Chance	0	0
Fast Break	8	1
Bench	4	7



**Official Play-By-Play**  
**Southeast Mo. St. vs SIUE**  
**Fourth Quarter**  
**January 03, 2019 at Vadalabene Center - Edwardsville, Ill.**



**Period 4**

**Starters:**

**Southeast Mo. St.:** 2 SHEPHARD, CARRIE; 3 MURPHY, ADRIANNA; 4 BALOGUN, DOLAPO; 23 TAYLOR, JOCELYN; 24 THOMPSON, TESIA;

**SIUE:** 1 KING, CHRISTEN; 5 ALSTON, JAY'NEE; 23 TROECKLER, ALLIE; 25 WHITLOCK, ZARIA; 34 BAUMAN, SYDNEY;

Time	VISITORS: Southeast Mo. St.	Score	Margin	HOME: SIUE
09:47				FOUL (PERSONAL) by JONES, MICAH
09:47	MISSED FT by THOMPSON, TESIA			
09:47	REBOUND (OFF) by TEAM			
09:47	MISSED FT by THOMPSON, TESIA			
09:45				REBOUND (DEF) by KING, CHRISTEN
09:28		41-41	T	GOOD! LAYUP by JONES, MICAH
08:58	MISSED JUMPER by THOMPSON, TESIA			
08:55				REBOUND (DEF) by KOEHLER, KAI
08:34		43-41	H 2	GOOD! JUMPER by KING, CHRISTEN
08:34				ASSIST by TROECKLER, ALLIE
08:12	TURNOVER (BADPASS) by PRUITT, TAELOUR			
08:12				SUB OUT: KOEHLER, KAI
08:12				SUB IN: ALSTON, JAY'NEE
08:12	SUB OUT: LUTAYA, LOSMIE			
08:12	SUB IN: BALOGUN, DOLAPO			
08:12	SUB OUT: PRUITT, TAELOUR			
08:12	SUB IN: SHEPHARD, CARRIE			
07:51				TURNOVER (TRAVEL) by JONES, MICAH
07:40	GOOD! LAYUP by THOMPSON, TESIA	43-43	T	
07:40				FOUL (PERSONAL) by TROECKLER, ALLIE
07:40	GOOD! FT by THOMPSON, TESIA	43-44	V 1	
07:13				MISSED LAYUP by JONES, MICAH
07:09	REBOUND (DEF) by TAYLOR, JOCELYN			
07:05				FOUL (PERSONAL) by TROECKLER, ALLIE
07:05				SUB OUT: KING, CHRISTEN
07:05				SUB IN: KOEHLER, KAI
07:00	TURNOVER (LOSTBALL) by BALOGUN, DOLAPO			
07:00				STEAL by KOEHLER, KAI
06:44				MISSED LAYUP by KOEHLER, KAI
06:40	REBOUND (DEF) by TAYLOR, JOCELYN			
06:25	MISSED LAYUP by MURPHY, ADRIANNA			
06:21				REBOUND (DEF) by JONES, MICAH
06:15				MISSED LAYUP by ALSTON, JAY'NEE
06:12	REBOUND (DEF) by BALOGUN, DOLAPO			
05:53	MISSED LAYUP by THOMPSON, TESIA			
05:53				BLOCK by KOEHLER, KAI
05:47				REBOUND (DEF) by JONES, MICAH
05:47	FOUL (PERSONAL) by BALOGUN, DOLAPO			
05:47				MISSED FT by ALSTON, JAY'NEE
05:47				REBOUND (OFF) by TEAM
05:47				SUB OUT: JONES, MICAH
05:47				SUB IN: BAUMAN, SYDNEY
05:47	SUB OUT: BALOGUN, DOLAPO			
05:47	SUB IN: PRUITT, TAELOUR			
05:47	SUB OUT: THOMPSON, TESIA			
05:47	SUB IN: LUTAYA, LOSMIE			
05:47		44-44	T	GOOD! FT by ALSTON, JAY'NEE
05:19	GOOD! LAYUP by PRUITT, TAELOUR	44-46	V 2	
04:57				TURNOVER (BADPASS) by BAUMAN, SYDNEY
04:57	STEAL by PRUITT, TAELOUR			
04:51	GOOD! 3PTR by SHEPHARD, CARRIE [FB]	44-49	V 5	
04:51	ASSIST by PRUITT, TAELOUR			
04:51				TIMEOUT TEAM
04:51				SUB OUT: KOEHLER, KAI
04:51				SUB IN: JONES, MICAH
04:51				SUB OUT: BAUMAN, SYDNEY
04:51				SUB IN: KING, CHRISTEN
04:51	SUB OUT: MURPHY, ADRIANNA			
04:51	SUB IN: THOMPSON, TESIA			
04:33		46-49	V 3	GOOD! JUMPER by BELL, NAKIAH
04:15				FOUL (PERSONAL) by JONES, MICAH
04:15	GOOD! FT by TAYLOR, JOCELYN	46-50	V 4	
04:15	MISSED FT by TAYLOR, JOCELYN			
04:15				REBOUND (DEF) by JONES, MICAH
03:44				MISSED JUMPER by KING, CHRISTEN
03:41	REBOUND (DEF) by TAYLOR, JOCELYN			
03:36	MISSED 3PTR by PRUITT, TAELOUR			
03:32				REBOUND (DEF) by TROECKLER, ALLIE
03:23		49-50	V 1	GOOD! 3PTR by ALSTON, JAY'NEE
03:23				ASSIST by BELL, NAKIAH

Time	VISITORS: Southeast Mo. St.	Score	Margin	HOME: SIUE
03:02	MISSED JUMPER by SHEPHARD, CARRIE			
03:02				REBOUND (DEF) by TROECKLER, ALLIE
03:02	FOUL (PERSONAL) by LUTAYA, LOSMIE			
03:02				SUB OUT: ALSTON, JAY'NEE
03:02				SUB IN: KEITH, MIKIA
03:02	SUB OUT: PRUITT, TAELOUR			
03:02	SUB IN: MURPHY, ADRIANNA			
02:47				MISSED 3PTR by BELL, NAKIAH
02:42	REBOUND (DEF) by THOMPSON, TESIA			
02:26	GOOD! 3PTR by SHEPHARD, CARRIE	49-53	V 4	
02:26	ASSIST by THOMPSON, TESIA			
02:16				SUB OUT: KING, CHRISTEN
02:16				SUB IN: ALSTON, JAY'NEE
02:06	FOUL (PERSONAL) by LUTAYA, LOSMIE			
02:05	SUB OUT: LUTAYA, LOSMIE			
02:05	SUB IN: ALLEN, KENNEDI			
01:55	FOUL (PERSONAL) by ALLEN, KENNEDI			
01:53				TURNOVER (LOSTBALL) by JONES, MICAH
01:53	STEAL by SHEPHARD, CARRIE			
01:53	TURNOVER (TRAVEL) by SHEPHARD, CARRIE			
01:53				SUB OUT: KEITH, MIKIA
01:53				SUB IN: KING, CHRISTEN
01:42				MISSED 3PTR by ALSTON, JAY'NEE
01:41	REBOUND (DEF) by THOMPSON, TESIA			
01:41				FOUL (PERSONAL) by JONES, MICAH
01:41				SUB OUT: JONES, MICAH
01:41				SUB IN: WHITLOCK, ZARIA
01:41	GOOD! FT by ALLEN, KENNEDI	49-54	V 5	
01:41	GOOD! FT by ALLEN, KENNEDI	49-55	V 6	
01:35				TIMEOUT 30SEC
01:16				TURNOVER (BADPASS) by BELL, NAKIAH
01:16	STEAL by TAYLOR, JOCELYN			
01:10	GOOD! LAYUP by TAYLOR, JOCELYN [FB]	49-57	V 8	
00:59				SUB OUT: KING, CHRISTEN
00:59				SUB IN: KEITH, MIKIA
00:59				SUB OUT: WHITLOCK, ZARIA
00:59				SUB IN: KOEHLER, KAI
00:58				TURNOVER (OTHER) by KEITH, MIKIA
00:58	TIMEOUT 30SEC			
00:58	SUB OUT: TAYLOR, JOCELYN			
00:58	SUB IN: PRUITT, TAELOUR			
00:56				FOUL (PERSONAL) by KOEHLER, KAI
00:56	MISSED FT by THOMPSON, TESIA			
00:56	SUB OUT: SHEPHARD, CARRIE			
00:56	SUB IN: TAYLOR, JOCELYN			
00:56	REBOUND (OFF) by TEAM			
00:56	GOOD! FT by THOMPSON, TESIA [FB]	49-58	V 9	
00:49				MISSED JUMPER by KEITH, MIKIA
00:49	REBOUND (DEF) by THOMPSON, TESIA			
00:49	BLOCK by PRUITT, TAELOUR			
00:46				FOUL (PERSONAL) by ALSTON, JAY'NEE
00:46	GOOD! FT by THOMPSON, TESIA [FB]	49-59	V 10	
00:46	GOOD! FT by THOMPSON, TESIA [FB]	49-60	V 11	
00:39		51-60	V 9	GOOD! LAYUP by BELL, NAKIAH
00:39				TIMEOUT TEAM
00:39	SUB OUT: TAYLOR, JOCELYN			
00:39	SUB IN: SHEPHARD, CARRIE			
00:31				FOUL (PERSONAL) by KOEHLER, KAI
00:31	MISSED FT by SHEPHARD, CARRIE			
00:31	REBOUND (OFF) by TEAM			
00:31	MISSED FT by SHEPHARD, CARRIE			
00:31				REBOUND (DEF) by TEAM
00:30	SUB OUT: SHEPHARD, CARRIE			
00:30	SUB IN: TAYLOR, JOCELYN			
00:24				MISSED 3PTR by BELL, NAKIAH
00:20	REBOUND (DEF) by MURPHY, ADRIANNA			
00:10				FOUL (PERSONAL) by KEITH, MIKIA
00:10	GOOD! FT by MURPHY, ADRIANNA	51-61	V 10	
00:10	GOOD! FT by MURPHY, ADRIANNA	51-62	V 11	
00:05	FOUL (PERSONAL) by ALLEN, KENNEDI			
00:05				MISSED FT by KOEHLER, KAI
00:05				REBOUND (OFF) by TEAM
00:05	SUB OUT: TAYLOR, JOCELYN			
00:05	SUB IN: SHEPHARD, CARRIE			
00:05		52-62	V 10	GOOD! FT by KOEHLER, KAI [FB]

Southeast Mo. St. 62, SIUE 52

Points from (This Period)	SEM	SIE
In the Paint	6	4
Off Turns	9	0
2nd Chance	0	0
Fast Break	8	1
Bench	4	7

**Official Scoring/Possession Reference Chart**  
**Southeast Mo. St. vs SIUE**  
**Period 1**  
**January 03, 2019 at Vadalabene Center - Edwardsville, Ill.**



**Period 1**

**Starters:**

**Southeast Mo. St.:** 2 SHEPHARD, CARRIE; 3 MURPHY, ADRIANNA; 4 BALOGUN, DOLAPO; 23 TAYLOR, JOCELYN; 24 THOMPSON, TESIA;  
**SIUE:** 1 KING, CHRISTEN; 5 ALSTON, JAY'NEE; 23 TROECKLER, ALLIE; 25 WHITLOCK, ZARIA; 34 BAUMAN, SYDNEY;

Time	VISITORS: Southeast Mo. St.	Score	Margin	HOME: SIUE
08:08		2-0	H 2	GOOD! JUMPER by TROECKLER, ALLIE
07:29	GOOD! LAYUP by TAYLOR, JOCELYN [FB]	2-2	T	
06:32	GOOD! LAYUP by PRUITT, TAELOUR	2-4	V 2	
05:12	GOOD! LAYUP by MCCURDY, IYANNA [FB]	2-6	V 4	
04:23	GOOD! JUMPER by ALLEN, KENNEDI	2-8	V 6	
01:39	GOOD! LAYUP by THOMPSON, TESIA [PNT]	2-10	V 8	
01:06	GOOD! LAYUP by THOMPSON, TESIA	2-12	V 10	
00:44		4-12	V 8	GOOD! LAYUP by KING, CHRISTEN
00:44		5-12	V 7	GOOD! FT by KING, CHRISTEN

**Southeast Mo. St. 12, SIUE 5**

**Official Scoring/Possession Reference Chart**  
**Southeast Mo. St. vs SIUE**  
**Period 2**  
**January 03, 2019 at Vadalabene Center - Edwardsville, Ill.**



**Period 2**

**Starters:**

**Southeast Mo. St.:** 2 SHEPHARD, CARRIE; 3 MURPHY, ADRIANNA; 4 BALOGUN, DOLAPO; 23 TAYLOR, JOCELYN; 24 THOMPSON, TESIA;  
**SIUE:** 1 KING, CHRISTEN; 5 ALSTON, JAY'NEE; 23 TROECKLER, ALLIE; 25 WHITLOCK, ZARIA; 34 BAUMAN, SYDNEY;

Time	VISITORS: Southeast Mo. St.	Score	Margin	HOME: SIUE
08:48		7-12	V 5	GOOD! LAYUP by JONES, MICAH [FB]
08:35		9-12	V 3	GOOD! LAYUP by KING, CHRISTEN [FB]
07:22	GOOD! FT by THOMPSON, TESIA	9-13	V 4	
07:22	GOOD! FT by THOMPSON, TESIA	9-14	V 5	
06:33	GOOD! FT by THOMPSON, TESIA	9-15	V 6	
04:45	GOOD! FT by SAINÉ, LATRESE	9-16	V 7	
04:45	GOOD! FT by SAINÉ, LATRESE	9-17	V 8	
04:22		11-17	V 6	GOOD! LAYUP by KING, CHRISTEN [PNT]
03:25	GOOD! FT by MURPHY, ADRIANNA [FB]	11-18	V 7	
03:06		12-18	V 6	GOOD! FT by BAUMAN, SYDNEY
03:06		13-18	V 5	GOOD! FT by BAUMAN, SYDNEY
02:34	GOOD! LAYUP by THOMPSON, TESIA	13-20	V 7	
02:12		15-20	V 5	GOOD! LAYUP by BAUMAN, SYDNEY
01:21	GOOD! LAYUP by MURPHY, ADRIANNA [FB/PNT]	15-22	V 7	
00:59		17-22	V 5	GOOD! LAYUP by BAUMAN, SYDNEY
00:27		19-22	V 3	GOOD! LAYUP by BELL, NAKIAH [FB]
00:06	GOOD! JUMPER by MURPHY, ADRIANNA	19-24	V 5	

**Southeast Mo. St. 24, SIUE 19**

**Official Scoring/Possession Reference Chart**  
**Southeast Mo. St. vs SIUE**  
**Period 3**  
**January 03, 2019 at Vadalabene Center - Edwardsville, Ill.**



**Period 3**

**Starters:**

**Southeast Mo. St.:** 2 SHEPHARD, CARRIE; 3 MURPHY, ADRIANNA; 4 BALOGUN, DOLAPO; 23 TAYLOR, JOCELYN; 24 THOMPSON, TESIA;  
**SIUE:** 1 KING, CHRISTEN; 5 ALSTON, JAY'NEE; 23 TROECKLER, ALLIE; 25 WHITLOCK, ZARIA; 34 BAUMAN, SYDNEY;

Time	VISITORS: Southeast Mo. St.	Score	Margin	HOME: SIUE
09:12	GOOD! FT by THOMPSON, TESIA	19-25	V 6	
08:42		21-25	V 4	GOOD! LAYUP by TROECKLER, ALLIE
08:30	GOOD! LAYUP by THOMPSON, TESIA	21-27	V 6	
06:58		23-27	V 4	GOOD! LAYUP by TROECKLER, ALLIE [PNT]
06:57		25-27	V 2	GOOD! LAYUP by BAUMAN, SYDNEY
05:45		27-27	T	GOOD! JUMPER by BELL, NAKIAH
05:24	GOOD! JUMPER by HARSHBERGER, JESSIE	27-29	V 2	
04:49	GOOD! LAYUP by PRUITT, TAELOUR [FB]	27-31	V 4	
04:36		28-31	V 3	GOOD! FT by EVERIDGE, RIANA
04:00	GOOD! LAYUP by LUTAYA, LOSMIE [FB]	28-33	V 5	
03:31	GOOD! FT by SAINÉ, LATRESE	28-34	V 6	
03:27		29-34	V 5	GOOD! FT by TROECKLER, ALLIE
03:27		30-34	V 4	GOOD! FT by TROECKLER, ALLIE
02:59	GOOD! JUMPER by THOMPSON, TESIA [PNT]	30-36	V 6	
02:40		31-36	V 5	GOOD! FT by TROECKLER, ALLIE
02:40		32-36	V 4	GOOD! FT by TROECKLER, ALLIE
02:05		35-36	V 1	GOOD! 3PTR by BELL, NAKIAH
01:51		36-36	T	GOOD! FT by TROECKLER, ALLIE
00:27	GOOD! LAYUP by THOMPSON, TESIA [PNT]	36-38	V 2	
00:07		39-38	H 1	GOOD! 3PTR by BELL, NAKIAH
00:00	GOOD! 3PTR by PRUITT, TAELOUR [FB]	39-41	V 2	

**Southeast Mo. St. 41, SIUE 39**

**Official Scoring/Possession Reference Chart**  
**Southeast Mo. St. vs SIUE**  
**Period 4**  
**January 03, 2019 at Vadalabene Center - Edwardsville, Ill.**



**Period 4**

**Starters:**

**Southeast Mo. St.:** 2 SHEPHARD, CARRIE; 3 MURPHY, ADRIANNA; 4 BALOGUN, DOLAPO; 23 TAYLOR, JOCELYN; 24 THOMPSON, TESIA;  
**SIUE:** 1 KING, CHRISTEN; 5 ALSTON, JAY'NEE; 23 TROECKLER, ALLIE; 25 WHITLOCK, ZARIA; 34 BAUMAN, SYDNEY;

Time	VISITORS: Southeast Mo. St.	Score	Margin	HOME: SIUE
09:28		41-41	T	GOOD! LAYUP by JONES, MICAH
08:34		43-41	H 2	GOOD! JUMPER by KING, CHRISTEN
07:40	GOOD! LAYUP by THOMPSON, TESIA	43-43	T	
07:40	GOOD! FT by THOMPSON, TESIA	43-44	V 1	
05:47		44-44	T	GOOD! FT by ALSTON, JAY'NEE
05:19	GOOD! LAYUP by PRUITT, TAELOUR	44-46	V 2	
04:51	GOOD! 3PTR by SHEPHARD, CARRIE [FB]	44-49	V 5	
04:33		46-49	V 3	GOOD! JUMPER by BELL, NAKIAH
04:15	GOOD! FT by TAYLOR, JOCELYN	46-50	V 4	
03:23		49-50	V 1	GOOD! 3PTR by ALSTON, JAY'NEE
02:26	GOOD! 3PTR by SHEPHARD, CARRIE	49-53	V 4	
01:41	GOOD! FT by ALLEN, KENNEDI	49-54	V 5	
01:41	GOOD! FT by ALLEN, KENNEDI	49-55	V 6	
01:10	GOOD! LAYUP by TAYLOR, JOCELYN [FB]	49-57	V 8	
00:56	GOOD! FT by THOMPSON, TESIA [FB]	49-58	V 9	
00:46	GOOD! FT by THOMPSON, TESIA [FB]	49-59	V 10	
00:46	GOOD! FT by THOMPSON, TESIA [FB]	49-60	V 11	
00:39		51-60	V 9	GOOD! LAYUP by BELL, NAKIAH
00:10	GOOD! FT by MURPHY, ADRIANNA	51-61	V 10	
00:10	GOOD! FT by MURPHY, ADRIANNA	51-62	V 11	
00:05		52-62	V 10	GOOD! FT by KOEHLER, KAI [FB]

**Southeast Mo. St. 62, SIUE 52**

**Official Substitutions Log**  
**Southeast Mo. St. vs SIUE**  
**Period 1**

**January 03, 2019 at Vadalabene Center - Edwardsville, Ill.**



VISITORS: Southeast Mo. St.	Time	Score	HOME: SIUE
2 SHEPHARD, CARRIE			1 KING, CHRISTEN
3 MURPHY, ADRIANNA			5 ALSTON, JAY'NEE
4 BALOGUN, DOLAPO			23 TROECKLER, ALLIE
23 TAYLOR, JOCELYN			25 WHITLOCK, ZARIA
24 THOMPSON, TESIA			34 BAUMAN, SYDNEY
SUB OUT: 2 SHEPHARD, CARRIE	06:51	2-2	
SUB IN: 10 PRUITT, TAELOUR	06:51		
SUB OUT: 23 TAYLOR, JOCELYN	06:51		
SUB IN: 1 ALLEN, KENNEDI	06:51		
SUB OUT: 24 THOMPSON, TESIA	06:51		
SUB IN: 21 MCCURDY, IYANNA	06:51		
	06:08	4-2	SUB OUT: KING, CHRISTEN
	06:08		SUB IN: BELL, NAKIAH
SUB OUT: 4 BALOGUN, DOLAPO	06:08		
SUB IN: 32 LUTAYA, LOSMIE	06:08		
	05:57	4-2	SUB OUT: WHITLOCK, ZARIA
	05:57		SUB IN: EVERIDGE, RIANA
	04:24	6-2	SUB OUT: BAUMAN, SYDNEY
	04:24		SUB IN: AKUEN, ALEK
SUB OUT: 1 ALLEN, KENNEDI	03:04	8-2	
SUB IN: 2 SHEPHARD, CARRIE	03:04		
SUB OUT: 3 MURPHY, ADRIANNA	03:04		
SUB IN: 24 THOMPSON, TESIA	03:04		
SUB OUT: 21 MCCURDY, IYANNA	03:04		
SUB IN: 13 HARSHBERGER, JESSIE	03:04		
SUB OUT: 32 LUTAYA, LOSMIE	03:04		
SUB IN: 40 SAINÉ, LATRESE	03:04		
	01:38	10-2	SUB OUT: AKUEN, ALEK
	01:38		SUB IN: JONES, MICAH
	00:54	12-2	SUB OUT: ALSTON, JAY'NEE
	00:54		SUB IN: KING, CHRISTEN
	00:54		SUB OUT: TROECKLER, ALLIE
	00:54		SUB IN: KEITH, MIKIA
SUB OUT: 10 PRUITT, TAELOUR	00:54		
SUB IN: 3 MURPHY, ADRIANNA	00:54		
SUB OUT: 13 HARSHBERGER, JESSIE	00:54		
SUB IN: 23 TAYLOR, JOCELYN	00:54		
SUB OUT: 24 THOMPSON, TESIA	00:36	12-5	
SUB IN: 21 MCCURDY, IYANNA	00:36		

**Southeast Mo. St. 12, SIUE 5**



**Official Substitutions Log**  
**Southeast Mo. St. vs SIUE**  
**Period 2**  
**January 03, 2019 at Vadalabene Center - Edwardsville, Ill.**



VISITORS: Southeast Mo. St.	Time	Score	HOME: SIUE
2 SHEPHARD, CARRIE			1 KING, CHRISTEN
3 MURPHY, ADRIANNA			5 ALSTON, JAY'NEE
4 BALOGUN, DOLAPO			23 TROECKLER, ALLIE
23 TAYLOR, JOCELYN			25 WHITLOCK, ZARIA
24 THOMPSON, TESIA			34 BAUMAN, SYDNEY
SUB OUT: 40 SAINÉ, LATRESE	10:00	-	
SUB IN: 4 BALOGUN, DOLAPO	10:00		
SUB OUT: 4 BALOGUN, DOLAPO	08:35	12-7	
SUB IN: 1 ALLEN, KENNEDI	08:35		
SUB OUT: 23 TAYLOR, JOCELYN	08:35		
SUB IN: 32 LUTAYA, LOSMIE	08:35		
	07:53	12-9	SUB OUT: EVERIDGE, RIANA
	07:53		SUB IN: AKUEN, ALEK
SUB OUT: 2 SHEPHARD, CARRIE	07:53		
SUB IN: 10 PRUITT, TAELOUR	07:53		
SUB OUT: 21 MCCURDY, IYANNA	07:53		
SUB IN: 24 THOMPSON, TESIA	07:53		
	06:33	15-9	SUB OUT: KEITH, MIKIA
	06:33		SUB IN: ALSTON, JAY'NEE
	06:01	15-9	SUB OUT: AKUEN, ALEK
	06:01		SUB IN: BAUMAN, SYDNEY
SUB OUT: 1 ALLEN, KENNEDI	06:01		
SUB IN: 13 HARSHBERGER, JESSIE	06:01		
SUB OUT: 32 LUTAYA, LOSMIE	06:01		
SUB IN: 40 SAINÉ, LATRESE	06:01		
SUB OUT: 10 PRUITT, TAELOUR	06:01		
SUB IN: 2 SHEPHARD, CARRIE	06:01		
SUB OUT: 24 THOMPSON, TESIA	05:42	15-9	
SUB IN: 5 COLYER, TIONNE	05:42		
SUB OUT: 5 COLYER, TIONNE	04:57	15-9	
SUB IN: 24 THOMPSON, TESIA	04:57		
SUB OUT: 2 SHEPHARD, CARRIE	03:25	17-11	
SUB IN: 23 TAYLOR, JOCELYN	03:25		
SUB OUT: 13 HARSHBERGER, JESSIE	03:25		
SUB IN: 4 BALOGUN, DOLAPO	03:25		
SUB OUT: 40 SAINÉ, LATRESE	03:25		
SUB IN: 10 PRUITT, TAELOUR	03:25		
	00:26	22-19	SUB OUT: KING, CHRISTEN
	00:26		SUB IN: TROECKLER, ALLIE
	00:26		SUB OUT: BELL, NAKIAH
	00:26		SUB IN: WHITLOCK, ZARIA
	00:26		SUB OUT: JONES, MICAH
	00:26		SUB IN: HALL, MIKALA
SUB OUT: 4 BALOGUN, DOLAPO	00:26		
SUB IN: 32 LUTAYA, LOSMIE	00:26		
SUB OUT: 10 PRUITT, TAELOUR	00:26		
SUB IN: 1 ALLEN, KENNEDI	00:26		
SUB OUT: 23 TAYLOR, JOCELYN	00:26		
SUB IN: 2 SHEPHARD, CARRIE	00:26		

**Southeast Mo. St. 24, SIUE 19**

**Official Substitutions Log**  
**Southeast Mo. St. vs SIUE**  
**Period 3**  
**January 03, 2019 at Vadalabene Center - Edwardsville, Ill.**



VISITORS: Southeast Mo. St.	Time	Score	HOME: SIUE
2 SHEPHARD, CARRIE			1 KING, CHRISTEN
3 MURPHY, ADRIANNA			5 ALSTON, JAY'NEE
4 BALOGUN, DOLAPO			23 TROECKLER, ALLIE
23 TAYLOR, JOCELYN			25 WHITLOCK, ZARIA
24 THOMPSON, TESIA			34 BAUMAN, SYDNEY
	10:00	-	SUB OUT: ALSTON, JAY'NEE
	10:00		SUB IN: KING, CHRISTEN
	10:00		SUB OUT: WHITLOCK, ZARIA
	10:00		SUB IN: BELL, NAKIAH
	10:00		SUB OUT: HALL, MIKALA
	10:00		SUB IN: JONES, MICAH
SUB OUT: 1 ALLEN, KENNEDI	10:00		
SUB IN: 23 TAYLOR, JOCELYN	10:00		
SUB OUT: 32 LUTAYA, LOSMIE	10:00		
SUB IN: 4 BALOGUN, DOLAPO	10:00		
	07:51	27-21	SUB OUT: KING, CHRISTEN
	07:51		SUB IN: ALSTON, JAY'NEE
SUB OUT: 2 SHEPHARD, CARRIE	07:51		
SUB IN: 1 ALLEN, KENNEDI	07:51		
SUB OUT: 4 BALOGUN, DOLAPO	07:51		
SUB IN: 10 PRUITT, TAELOUR	07:51		
SUB OUT: 23 TAYLOR, JOCELYN	07:51		
SUB IN: 32 LUTAYA, LOSMIE	07:51		
	07:15	27-21	SUB OUT: JONES, MICAH
	07:15		SUB IN: EVERIDGE, RIANA
	06:12	27-25	SUB OUT: BAUMAN, SYDNEY
	06:12		SUB IN: JONES, MICAH
SUB OUT: 1 ALLEN, KENNEDI	06:12		
SUB IN: 13 HARSHBERGER, JESSIE	06:12		
SUB OUT: 24 THOMPSON, TESIA	06:12		
SUB IN: 21 MCCURDY, IYANNA	06:12		
	04:36	31-27	SUB OUT: BELL, NAKIAH
	04:36		SUB IN: KING, CHRISTEN
	04:36		SUB OUT: TROECKLER, ALLIE
	04:36		SUB IN: KEITH, MIKIA
SUB OUT: 13 HARSHBERGER, JESSIE	04:36		
SUB IN: 40 SAINÉ, LATRESE	04:36		
SUB OUT: 21 MCCURDY, IYANNA	04:14	31-28	
SUB IN: 24 THOMPSON, TESIA	04:14		
	03:43	33-28	SUB OUT: JONES, MICAH
	03:43		SUB IN: WHITLOCK, ZARIA
	03:31	34-28	SUB OUT: EVERIDGE, RIANA
	03:31		SUB IN: JONES, MICAH
	03:27	34-28	SUB OUT: WHITLOCK, ZARIA
	03:27		SUB IN: TROECKLER, ALLIE
	03:27		SUB OUT: JONES, MICAH
	03:27		SUB IN: BAUMAN, SYDNEY
	02:40	36-31	SUB OUT: ALSTON, JAY'NEE
	02:40		SUB IN: BELL, NAKIAH
	02:40		SUB OUT: KEITH, MIKIA
	02:40		SUB IN: KOEHLER, KAI
SUB OUT: 40 SAINÉ, LATRESE	01:51	36-36	
SUB IN: 23 TAYLOR, JOCELYN	01:51		
	01:07	36-36	SUB OUT: BAUMAN, SYDNEY
	01:07		SUB IN: JONES, MICAH
SUB OUT: 24 THOMPSON, TESIA	00:15	38-36	
SUB IN: 21 MCCURDY, IYANNA	00:15		

**Southeast Mo. St. 41, SIUE 39**

**Official Substitutions Log**  
**Southeast Mo. St. vs SIUE**  
**Period 4**  
**January 03, 2019 at Vadalabene Center - Edwardsville, Ill.**



VISITORS: Southeast Mo. St.	Time	Score	HOME: SIUE
2 SHEPHARD, CARRIE			1 KING, CHRISTEN
3 MURPHY, ADRIANNA			5 ALSTON, JAY'NEE
4 BALOGUN, DOLAPO			23 TROECKLER, ALLIE
23 TAYLOR, JOCELYN			25 WHITLOCK, ZARIA
24 THOMPSON, TESIA			34 BAUMAN, SYDNEY
	08:12	41-43	SUB OUT: KOEHLER, KAI
	08:12		SUB IN: ALSTON, JAY'NEE
SUB OUT: 32 LUTAYA, LOSMIE	08:12		
SUB IN: 4 BALOGUN, DOLAPO	08:12		
SUB OUT: 10 PRUITT, TAELOUR	08:12		
SUB IN: 2 SHEPHARD, CARRIE	08:12		
	07:05	44-43	SUB OUT: KING, CHRISTEN
	07:05		SUB IN: KOEHLER, KAI
	05:47	44-43	SUB OUT: JONES, MICAH
	05:47		SUB IN: BAUMAN, SYDNEY
SUB OUT: 4 BALOGUN, DOLAPO	05:47		
SUB IN: 10 PRUITT, TAELOUR	05:47		
SUB OUT: 24 THOMPSON, TESIA	05:47		
SUB IN: 32 LUTAYA, LOSMIE	05:47		
	04:51	49-44	SUB OUT: KOEHLER, KAI
	04:51		SUB IN: JONES, MICAH
	04:51		SUB OUT: BAUMAN, SYDNEY
	04:51		SUB IN: KING, CHRISTEN
SUB OUT: 3 MURPHY, ADRIANNA	04:51		
SUB IN: 24 THOMPSON, TESIA	04:51		
	03:02	50-49	SUB OUT: ALSTON, JAY'NEE
	03:02		SUB IN: KEITH, MIKIA
SUB OUT: 10 PRUITT, TAELOUR	03:02		
SUB IN: 3 MURPHY, ADRIANNA	03:02		
	02:16	53-49	SUB OUT: KING, CHRISTEN
	02:16		SUB IN: ALSTON, JAY'NEE
SUB OUT: 32 LUTAYA, LOSMIE	02:05	53-49	
SUB IN: 1 ALLEN, KENNEDI	02:05		
	01:53	53-49	SUB OUT: KEITH, MIKIA
	01:53		SUB IN: KING, CHRISTEN
	01:41	53-49	SUB OUT: JONES, MICAH
	01:41		SUB IN: WHITLOCK, ZARIA
	00:59	57-49	SUB OUT: KING, CHRISTEN
	00:59		SUB IN: KEITH, MIKIA
	00:59		SUB OUT: WHITLOCK, ZARIA
	00:59		SUB IN: KOEHLER, KAI
SUB OUT: 23 TAYLOR, JOCELYN	00:58	57-49	
SUB IN: 10 PRUITT, TAELOUR	00:58		
SUB OUT: 2 SHEPHARD, CARRIE	00:56	57-49	
SUB IN: 23 TAYLOR, JOCELYN	00:56		
SUB OUT: 23 TAYLOR, JOCELYN	00:39	60-51	
SUB IN: 2 SHEPHARD, CARRIE	00:39		
SUB OUT: 2 SHEPHARD, CARRIE	00:30	60-51	
SUB IN: 23 TAYLOR, JOCELYN	00:30		
SUB OUT: 23 TAYLOR, JOCELYN	00:05	62-51	
SUB IN: 2 SHEPHARD, CARRIE	00:05		

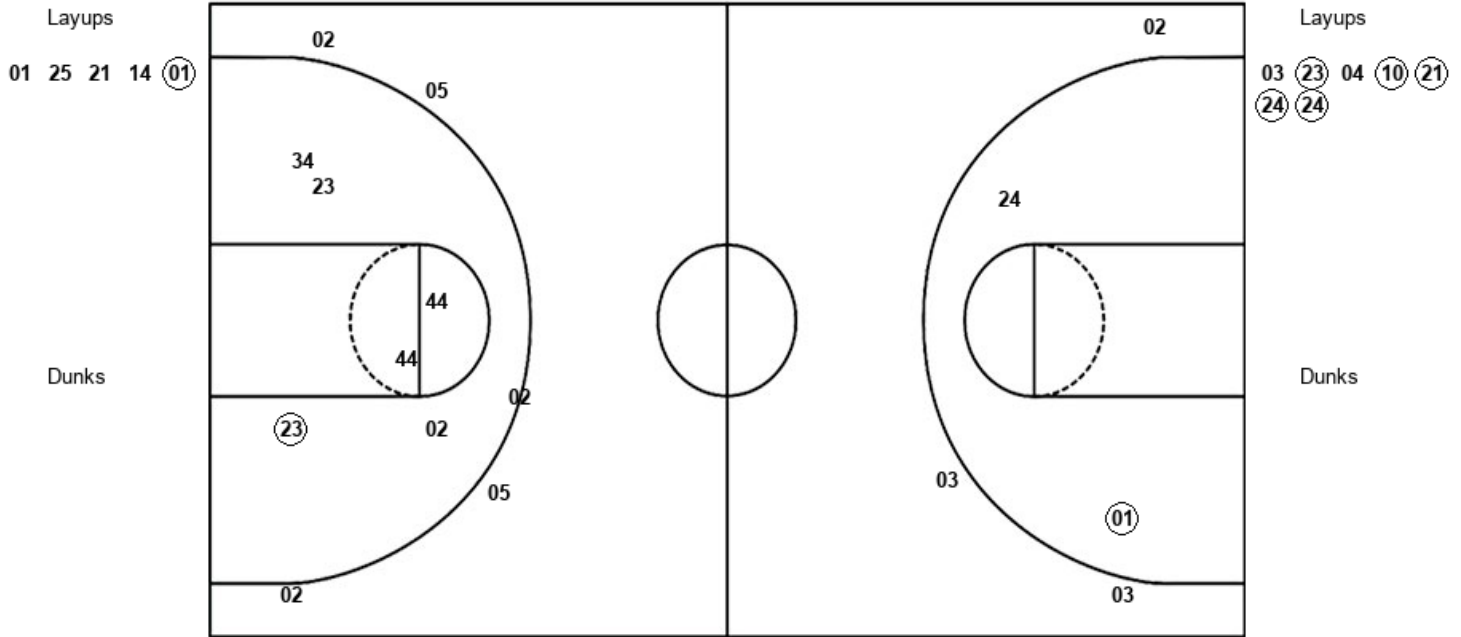
**Southeast Mo. St. 62, SIUE 52**

Official Shot Chart  
**Southeast Mo. St. vs SIUE**  
 PERIOD 1 Shots  
 January 03, 2019 at Vadalabene Center - Edwardsville, Ill.



**SIUE**

**Southeast Mo. St.**



<b>SIUE : Period 1</b>	<b>Made</b>	<b>Att</b>	<b>Pct</b>
Layups	1	5	20.0
Dunks	0	0	0
2PT Field Goals	2	11	18.2
3PT Field Goals	0	5	00.0
<b>Total Field Goals</b>	<b>2</b>	<b>16</b>	<b>12.5</b>

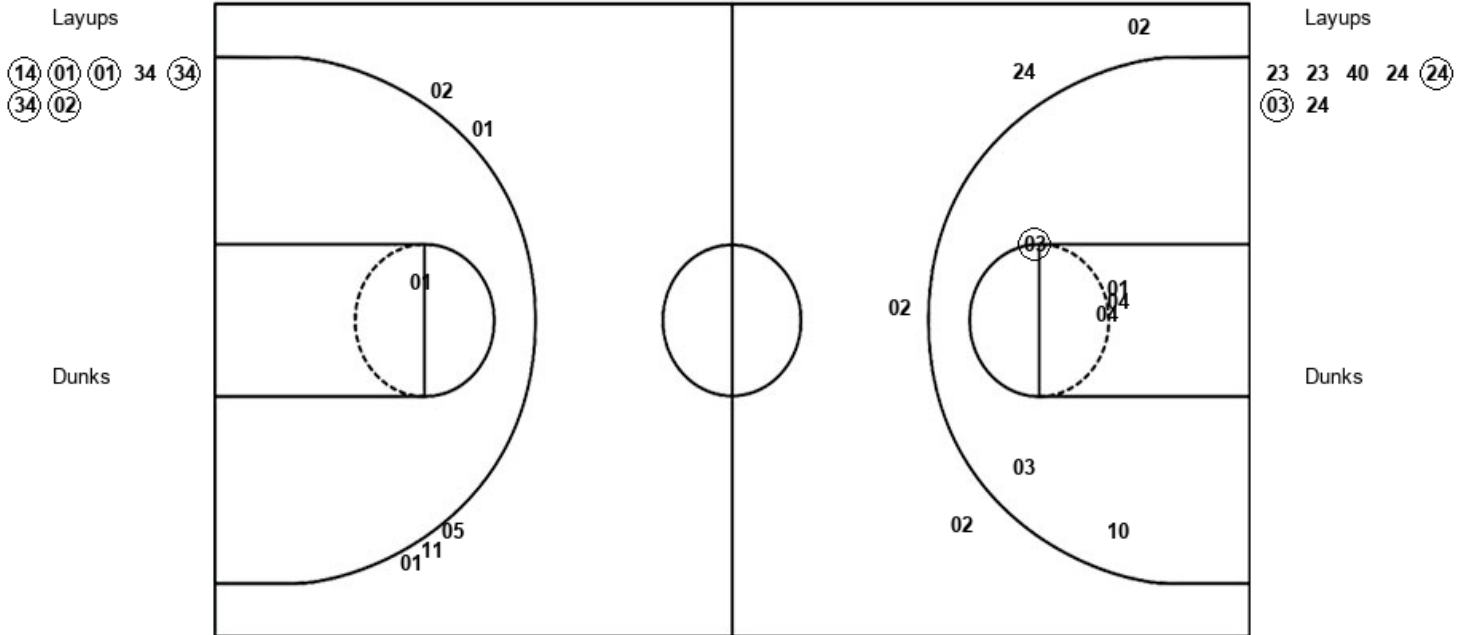
<b>SEM : Period 1</b>	<b>Made</b>	<b>Att</b>	<b>Pct</b>
Layups	5	7	71.4
Dunks	0	0	0
2PT Field Goals	6	9	66.7
3PT Field Goals	0	3	00.0
<b>Total Field Goals</b>	<b>6</b>	<b>12</b>	<b>50.0</b>

Official Shot Chart  
**Southeast Mo. St. vs SIUE**  
 PERIOD 2 Shots  
 January 03, 2019 at Vadalabene Center - Edwardsville, Ill.



**SIUE**

**Southeast Mo. St.**



SIUE : Period 2	Made	Att	Pct
Layups	6	7	85.7
Dunks	0	0	0
2PT Field Goals	6	8	75.0
3PT Field Goals	0	5	00.0
<b>Total Field Goals</b>	<b>6</b>	<b>13</b>	<b>46.2</b>

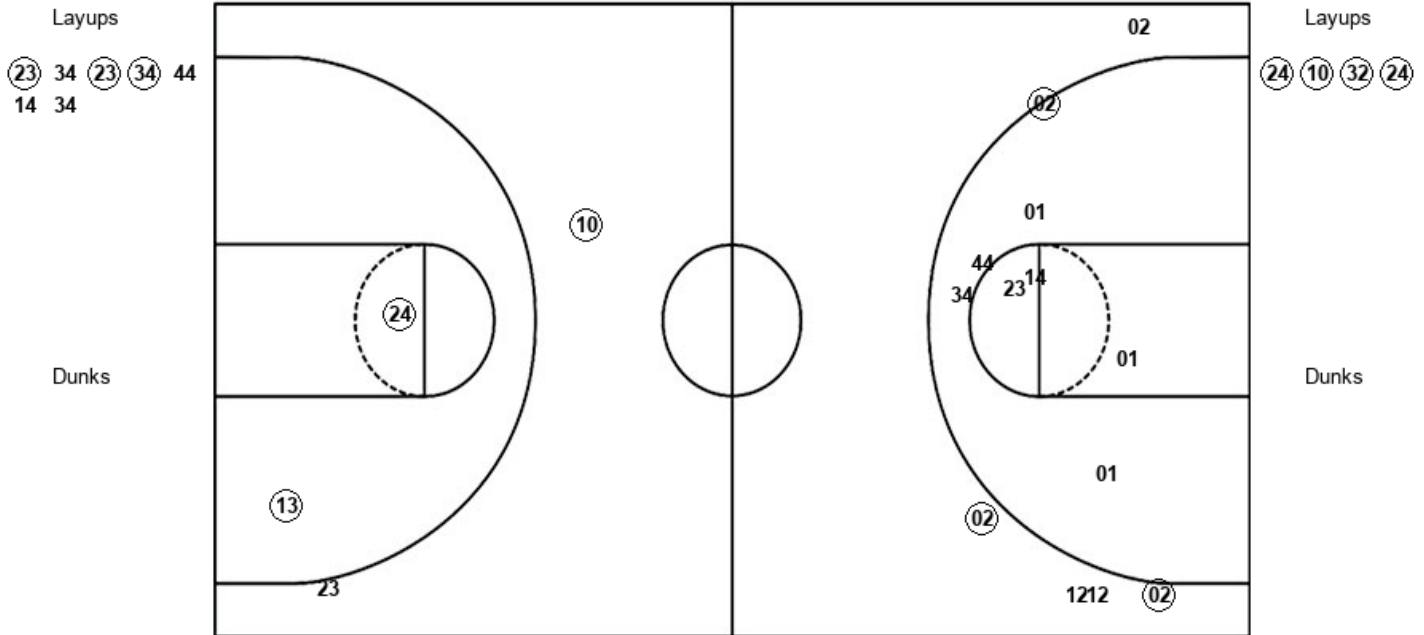
SEM : Period 2	Made	Att	Pct
Layups	2	7	28.6
Dunks	0	0	0
2PT Field Goals	3	13	23.1
3PT Field Goals	0	4	00.0
<b>Total Field Goals</b>	<b>3</b>	<b>17</b>	<b>17.6</b>

Official Shot Chart  
**Southeast Mo. St. vs SIUE**  
 PERIOD 3 Shots  
 January 03, 2019 at Vadalabene Center - Edwardsville, Ill.



**SIUE**

**Southeast Mo. St.**



<b>SIUE : Period 3</b>	<b>Made</b>	<b>Att</b>	<b>Pct</b>
Layups	3	7	42.9
Dunks	0	0	0
2PT Field Goals	4	15	26.7
3PT Field Goals	2	5	40.0
<b>Total Field Goals</b>	<b>6</b>	<b>20</b>	<b>30.0</b>

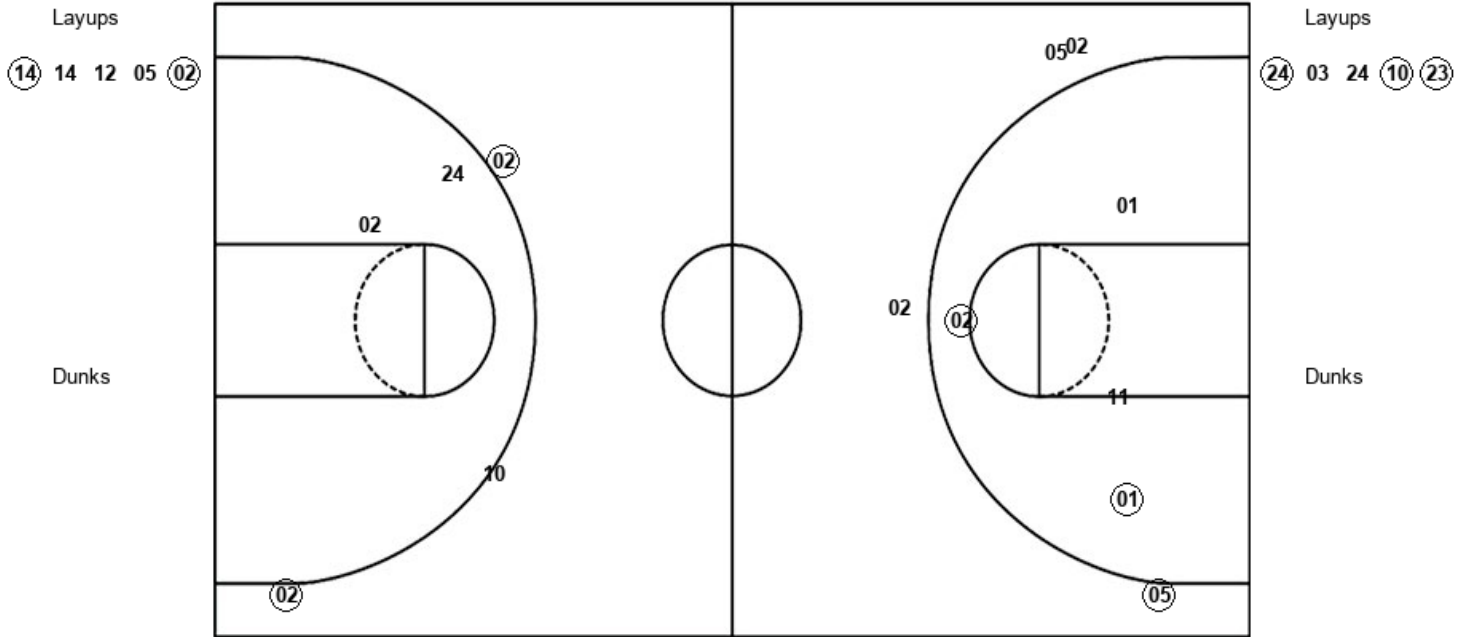
<b>SEM : Period 3</b>	<b>Made</b>	<b>Att</b>	<b>Pct</b>
Layups	4	4	100.0
Dunks	0	0	0
2PT Field Goals	6	6	100.0
3PT Field Goals	1	2	50.0
<b>Total Field Goals</b>	<b>7</b>	<b>8</b>	<b>87.5</b>

Official Shot Chart  
**Southeast Mo. St. vs SIUE**  
 PERIOD 4 Shots  
 January 03, 2019 at Vadalabene Center - Edwardsville, Ill.



**SIUE**

**Southeast Mo. St.**



SIUE : Period 4	Made	Att	Pct
Layups	2	5	40.0
Dunks	0	0	0
2PT Field Goals	4	9	44.4
3PT Field Goals	1	4	25.0
<b>Total Field Goals</b>	<b>5</b>	<b>13</b>	<b>38.5</b>

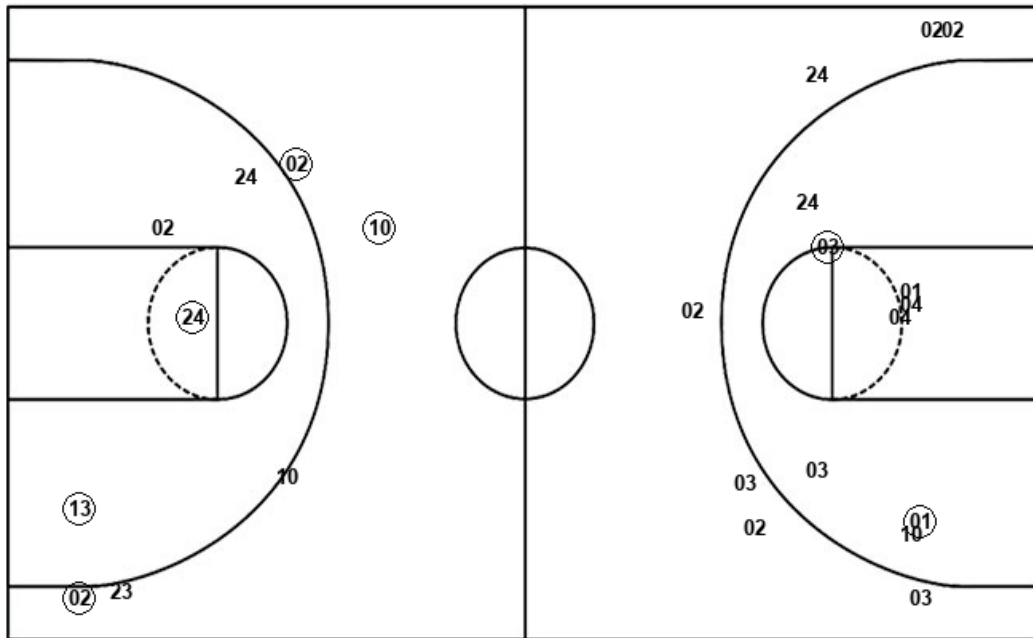
SEM : Period 4	Made	Att	Pct
Layups	3	5	60.0
Dunks	0	0	0
2PT Field Goals	3	7	42.9
3PT Field Goals	2	3	66.7
<b>Total Field Goals</b>	<b>5</b>	<b>10</b>	<b>50.0</b>

Official Shot Chart  
**Southeast Mo. St. vs SIUE**  
 Southeast Mo. St. Team Shots  
 January 03, 2019 at Vadalabene Center - Edwardsville, Ill.



Layups

Dunks



Layups

Dunks

03 (23) 04 (10) (21)  
 (24) (24) 23 23 40  
 24 (24) (03) 24 (24)  
 (10) (32) (24) (24) 03  
 24 (10) (23)

SEM : Period 1	Made	Att	Pct
Layups	5	7	71.4
Dunks	0	0	0
2PT Field Goals	6	9	66.7
3PT Field Goals	0	3	00.0
<b>Total Field Goals</b>	<b>6</b>	<b>12</b>	<b>50.0</b>

SEM : Period 3	Made	Att	Pct
Layups	4	4	100.0
Dunks	0	0	0
2PT Field Goals	6	6	100.0
3PT Field Goals	1	2	50.0
<b>Total Field Goals</b>	<b>7</b>	<b>8</b>	<b>87.5</b>

SEM : Period 2	Made	Att	Pct
Layups	2	7	28.6
Dunks	0	0	0
2PT Field Goals	3	13	23.1
3PT Field Goals	0	4	00.0
<b>Total Field Goals</b>	<b>3</b>	<b>17</b>	<b>17.6</b>

SEM : Period 4	Made	Att	Pct
Layups	3	5	60.0
Dunks	0	0	0
2PT Field Goals	3	7	42.9
3PT Field Goals	2	3	66.7
<b>Total Field Goals</b>	<b>5</b>	<b>10</b>	<b>50.0</b>

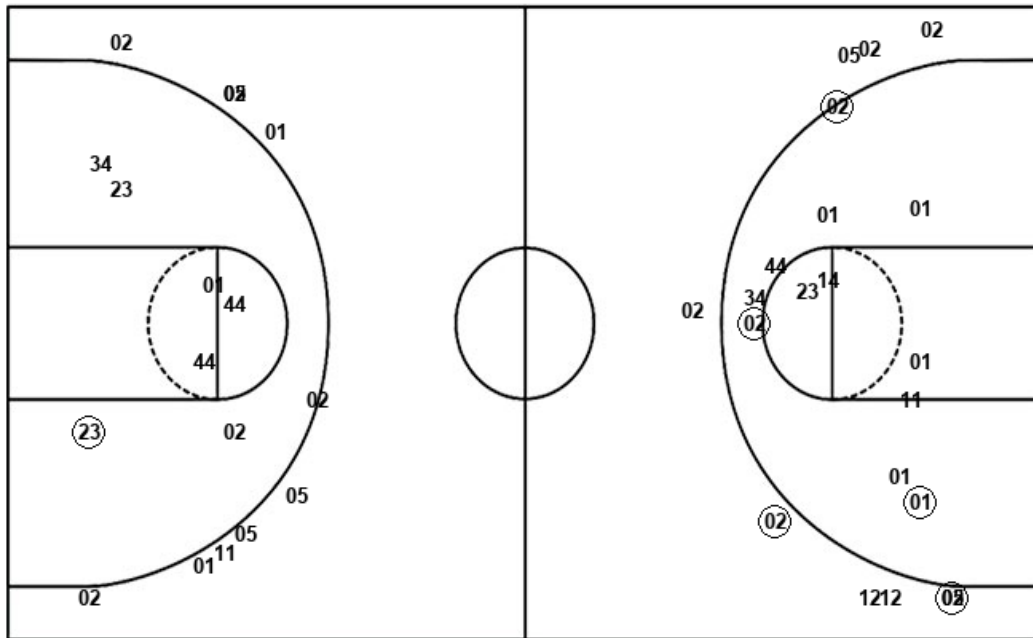


**Official Shot Chart**  
**Southeast Mo. St. vs SIUE**  
**SIUE Team Shots**  
**January 03, 2019 at Vadalabene Center - Edwardsville, Ill.**



Layups

Dunks



Layups

Dunks

01 25 21 14 (01)  
 (14) (01) (01) 34 (34)  
 (34) (02) (23) 34 (23)  
 (34) 44 14 34 (14)  
 14 12 05 (02)

SIE : Period 1	Made	Att	Pct
Layups	1	5	20.0
Dunks	0	0	0
2PT Field Goals	2	11	18.2
3PT Field Goals	0	5	00.0
<b>Total Field Goals</b>	<b>2</b>	<b>16</b>	<b>12.5</b>

SIE : Period 3	Made	Att	Pct
Layups	3	7	42.9
Dunks	0	0	0
2PT Field Goals	4	15	26.7
3PT Field Goals	2	5	40.0
<b>Total Field Goals</b>	<b>6</b>	<b>20</b>	<b>30.0</b>

SIE : Period 2	Made	Att	Pct
Layups	6	7	85.7
Dunks	0	0	0
2PT Field Goals	6	8	75.0
3PT Field Goals	0	5	00.0
<b>Total Field Goals</b>	<b>6</b>	<b>13</b>	<b>46.2</b>

SIE : Period 4	Made	Att	Pct
Layups	2	5	40.0
Dunks	0	0	0
2PT Field Goals	4	9	44.4
3PT Field Goals	1	4	25.0
<b>Total Field Goals</b>	<b>5</b>	<b>13</b>	<b>38.5</b>