

FINAL SCORE

McKendree

63



SIUE

64



December 30, 2018 •

FINAL STATISTICS

Official Box Score
McKendree vs SIUE
Game Totals -- Final Statistics
December 30, 2018

McKendree 63

No.	Player	S	Pts	FG	3FG	FT	OR	DR	TR	PF	A	TO	Blk	Stl	Min	+/-
10	Pohlman, Callie		5	2-3	1-1	0-0	0	1	1	1	5	5	0	0	31	-3
15	Diekhoff, Sydney		21	7-16	2-5	5-5	1	3	4	2	2	2	0	1	36	3
24	Heberg, Jordan		15	5-18	2-9	3-4	2	3	5	2	3	3	0	0	35	-5
31	Jensen, Megan		6	2-4	0-0	2-3	0	3	3	3	1	2	0	1	27	-14
44	Morton, Jordan		7	3-3	0-0	1-2	1	3	4	4	0	0	0	0	18	10
1	Zylka, Haley		1	0-0	0-0	1-2	1	0	1	2	0	0	0	1	9	1
20	Krause, Jenna		5	0-1	0-1	5-7	0	1	1	2	2	0	0	1	9	2
33	Hopkins, Giovanni		0	0-1	0-0	0-0	0	0	0	0	0	0	0	0	2	-3
34	Johnson, Brianna		0	0-1	0-0	0-0	0	0	0	0	0	0	0	0	6	-5
42	Stroberg, Erin		0	0-0	0-0	0-0	0	1	1	1	0	1	0	0	3	5
55	Florine, Shayli		3	1-4	0-0	1-2	0	4	4	2	2	2	2	0	24	4
	Team						2	4	6	0		0				
TOTALS			63	20-51	5-16	18-25	7	23	30	19	15	15	2	4	200	

Shooting By Period

Period	FG	FG%	3FG	3FG%	FT	FT%
1st Qtr	5-13	38%	1-5	20%	6-10	60%
2nd Qtr	6-10	60%	1-1	100%	4-6	67%
3rd Qtr	4-13	31%	1-3	33%	2-2	100%
4th Qtr	5-15	33%	2-7	29%	6-7	86%
1st Half	11-23	48%	2-6	33%	10-16	63%
2nd Half	9-28	32%	3-10	30%	8-9	89%
Game	20-51	39.2%	5-16	31.3%	18-25	72.0%

Last FG: 4th-00:52
 Biggest Run: 16-0
 Largest lead: By 4 at 1-03:14
 Technical Fouls: None.

SIUE 64

No.	Player	S	Pts	FG	3FG	FT	OR	DR	TR	PF	A	TO	Blk	Stl	Min	+/-
1	King, Christen		16	5-9	0-0	6-10	3	10	13	2	2	5	0	2	31	2
5	Alston, Jaynee		2	1-6	0-3	0-0	0	2	2	1	2	0	0	0	28	-16
14	Jones, Micah		1	0-2	0-0	1-2	1	0	1	3	0	1	0	0	8	6
23	Troeckler, Allie		13	4-13	0-0	5-6	5	3	8	2	0	2	0	3	29	-12
34	Bauman, Sydney		4	2-10	0-0	0-0	3	3	6	0	0	1	0	1	16	-17
2	Bell, Nakiah		3	1-7	1-4	0-0	0	2	2	0	3	1	0	0	28	-10
11	Keith, Mikia		5	2-3	1-1	0-0	0	0	0	4	3	1	0	1	14	16
12	Koehler, Kai		3	1-1	1-1	0-0	0	0	0	1	0	0	0	0	8	12
21	Akuen, Alek		9	4-7	0-0	1-1	3	1	4	4	0	0	2	1	17	24
24	Boone, Lyric		2	1-1	0-0	0-0	0	0	0	1	1	0	0	1	4	4
25	Whitlock, Zaria		2	1-1	0-0	0-0	1	0	1	5	0	2	0	0	6	-1
35	Hall, Mikala		2	1-1	0-0	0-0	0	0	0	0	0	0	0	0	3	-3
44	Everidge, Riana		2	1-3	0-1	0-0	1	3	4	3	1	2	0	0	8	0
	Team						2	1	3	0		0				
TOTALS			64	24-64	3-10	13-19	19	25	44	26	12	15	2	9	200	

Shooting By Period

Period	FG	FG%	3FG	3FG%	FT	FT%
1st Qtr	8-17	47%	0-2	00%	6-8	75%
2nd Qtr	7-16	44%	1-1	100%	1-2	50%
3rd Qtr	5-13	38%	1-4	25%	1-1	100%
4th Qtr	4-18	22%	1-3	33%	5-8	63%
1st Half	15-33	45%	1-3	33%	7-10	70%
2nd Half	9-31	29%	2-7	29%	6-9	67%
Game	24-64	37.5%	3-10	30.0%	13-19	68.4%

Last FG: 4th-05:53
 Biggest Run: 12-0
 Largest lead: By 16 at 4-05:15
 Technical Fouls: None.

Game Notes:

Officials: **Doug Klenc, Kaley Davidson, Jason Schmitz**
 Attendance: **789**

Start Time: **2018-12-30 20:01:46**
 End Time: **2018-12-30 21:59:47**
 Game Duration: **118**

Score	1st	2nd	3rd	4th	TOT
McK	17	17	11	18	63
SIE	22	16	12	14	64

McK led for 6:16. SIE led for 29:33.
 Game was tied for 4:12.
 Times tied: 10 Lead Changes: 3

Points from	McK	SIE
In the Paint	22	34
Off Turns	12	22
2nd Chance	6	12
Fast Break	3	21
Bench	9	28

**Official Box Score
McKendree vs SIUE
First Half Statistics Only
December 30, 2018**

McKendree 63

No.	Player	S	Pts	FG	3FG	FT	OR	DR	TR	PF	A	TO	Blk	Stl	Min	+/-
1	Zylka, Haley		1	0-0	0-0	1-2	1	0	1	1	0	0	0	0	4	
10	Pohlman, Callie		5	2-2	1-1	0-0	0	0	0	0	3	4	0	0	16	
15	Diekhoff, Sydney		11	4-8	1-2	2-2	0	2	2	0	1	1	0	1	18	
20	Krause, Jenna		3	0-1	0-1	3-5	0	0	0	2	1	0	0	0	4	
24	Heberg, Jordan		3	1-6	0-2	1-2	1	1	2	1	2	1	0	0	18	
31	Jensen, Megan		5	2-3	0-0	1-1	0	2	2	3	1	1	0	1	16	
33	Hopkins, Giovanni		0	0-1	0-0	0-0	0	0	0	0	0	0	0	0	2	
34	Johnson, Brianna		0	0-0	0-0	0-0	0	0	0	0	0	0	0	0	2	
42	Stroberg, Erin		0	0-0	0-0	0-0	0	1	1	1	0	1	0	0	3	
44	Morton, Jordan		5	2-2	0-0	1-2	0	0	0	2	0	0	0	0	6	
55	Florine, Shayli		1	0-0	0-0	1-2	0	2	2	1	0	1	0	0	10	
	Team		0	0-0	0-0	0-0	1	1	2	0	0	0	0	0	0	
TOTALS			34	11-23	2-6	10-16	3	9	12	11	8	9	0	2	100	

Shooting By Period

Period	FG	FG%	3FG	3FG%	FT	FT%
1st Qtr	5-13	38%	1-5	20%	6-10	60%
2nd Qtr	6-10	60%	1-1	100%	4-6	67%
3rd Qtr	4-13	31%	1-3	33%	2-2	100%
4th Qtr	5-15	33%	2-7	29%	6-7	86%
1st Half	11-23	48%	2-6	33%	10-16	63%
2nd Half	9-28	32%	3-10	30%	8-9	89%
Game	20-51	39.2%	5-16	31.3%	18-25	72.0%

Last FG: 4th-00:52
 Biggest Run: 16-0
 Largest lead: By 4 at 1-03:14
 Technical Fouls: None.

SIUE 64

No.	Player	S	Pts	FG	3FG	FT	OR	DR	TR	PF	A	TO	Blk	Stl	Min	+/-
1	King, Christen		9	3-6	0-0	3-4	1	5	6	1	2	1	0	2	13	
2	Bell, Nakiah		0	0-2	0-0	0-0	0	1	1	0	1	1	0	0	9	
5	Alston, Jaynee		2	1-4	0-1	0-0	0	0	0	0	1	0	0	0	15	
11	Keith, Mikia		2	1-1	0-0	0-0	0	0	0	2	1	1	0	0	5	
12	Koehler, Kai		3	1-1	1-1	0-0	0	0	0	1	0	0	0	0	8	
14	Jones, Micah		1	0-2	0-0	1-2	1	0	1	3	0	1	0	0	8	
21	Akuen, Alek		5	2-2	0-0	1-1	0	0	0	2	0	0	0	1	4	
23	Troeckler, Allie		6	2-5	0-0	2-3	3	0	3	1	0	0	0	1	12	
24	Boone, Lyric		2	1-1	0-0	0-0	0	0	0	1	1	0	0	1	4	
25	Whitlock, Zaria		2	1-1	0-0	0-0	1	0	1	3	0	2	0	0	5	
34	Bauman, Sydney		4	2-5	0-0	0-0	1	2	3	0	0	1	0	0	10	
35	Hall, Mikala		2	1-1	0-0	0-0	0	0	0	0	0	0	0	0	3	
44	Everidge, Riana		0	0-2	0-1	0-0	0	1	1	2	0	1	0	0	3	
	Team		0	0-0	0-0	0-0	2	1	3	0	0	0	0	0	0	
TOTALS			38	15-33	1-3	7-10	9	10	19	16	6	8	0	5	100	

Shooting By Period

Period	FG	FG%	3FG	3FG%	FT	FT%
1st Qtr	8-17	47%	0-2	00%	6-8	75%
2nd Qtr	7-16	44%	1-1	100%	1-2	50%
3rd Qtr	5-13	38%	1-4	25%	1-1	100%
4th Qtr	4-18	22%	1-3	33%	5-8	63%
1st Half	15-33	45%	1-3	33%	7-10	70%
2nd Half	9-31	29%	2-7	29%	6-9	67%
Game	24-64	37.5%	3-10	30.0%	13-19	68.4%

Last FG: 4th-05:53
 Biggest Run: 12-0
 Largest lead: By 16 at 4-05:15
 Technical Fouls: None.

Game Notes:

Officials: Doug Klenc, Kalee Davidson, Jason Schmitz
 Attendance: 789

Start Time: 2018-12-30 20:01:46
 End Time: 2018-12-30 21:59:47
 Game Duration: 118

Score	1st	2nd	3rd	4th	TOT
McK	17	17	11	18	63
SIUE	22	16	12	14	64

Points from (This Period)	McK	SIUE
In the Paint	6	12
Off Turns	3	11
2nd Chance	1	3
Fast Break	2	12
Bench	3	5

**Official Play-By-Play
McKendree vs SIUE
First Quarter
December 30, 2018**

Starters:

McKendree: 10 POHLMAN,CALLIE; 15 DIEKHOFF,SYDNEY; 24 HEBERG,JORDAN; 31 JENSEN,MEGAN; 44 MORTON,JORDAN;

SIUE: 1 KING,CHRISTEN; 5 ALSTON,JAY'NEE; 14 JONES,MICAH; 23 TROECKLER,ALLIE; 34 BAUMAN,SYDNEY;

Period 1

Time	VISITORS: McKendree	Score	Margin	HOME: SIUE
09:42	GOOD! LAYUP by MORTON,JORDAN [PNT]	0-2	V 2	
09:42	ASSIST by DIEKHOFF,SYDNEY			
09:33				TURNOVER (BADPASS) by BAUMAN,SYDNEY
09:03	MISSED 3PTR by HEBERG,JORDAN			
08:59				REBOUND (DEF) by KING,CHRISTEN
08:53		2-2	T	GOOD! JUMPER by KING,CHRISTEN [FB]
08:23	GOOD! JUMPER by MORTON,JORDAN	2-4	V 2	
08:23	ASSIST by HEBERG,JORDAN			
08:07				MISSED JUMPER by BAUMAN,SYDNEY
08:03				REBOUND (OFF) by JONES,MICAH
07:52	FOUL (PERSONAL) by MORTON,JORDAN			
07:52				MISSED FT by JONES,MICAH
07:52				REBOUND (OFF) by TEAM
07:52		3-4	V 1	GOOD! FT by JONES,MICAH
07:47	TURNOVER (TRAVEL) by POHLMAN,CALLIE			
07:34				MISSED LAYUP by TROECKLER,ALLIE
07:28				REBOUND (OFF) by TROECKLER,ALLIE
07:28		5-4	H 1	GOOD! LAYUP by TROECKLER,ALLIE
07:21	GOOD! 3PTR by POHLMAN,CALLIE	5-7	V 2	
07:21	ASSIST by HEBERG,JORDAN			
07:04				MISSED LAYUP by JONES,MICAH
07:00	REBOUND (DEF) by JENSEN,MEGAN			
06:53				FOUL (PERSONAL) by JONES,MICAH
06:53				SUB OUT: JONES,MICAH
06:53				SUB IN: EVERIDGE,RIANA
06:53				SUB OUT: KING,CHRISTEN
06:53				SUB IN: BELL,NAKIAH
06:48	MISSED JUMPER by DIEKHOFF,SYDNEY			
06:45				REBOUND (DEF) by BELL,NAKIAH
06:41				MISSED 3PTR by ALSTON,JAY'NEE
06:39	REBOUND (DEF) by TEAM			
06:12	MISSED JUMPER by HEBERG,JORDAN			
06:09				REBOUND (DEF) by BAUMAN,SYDNEY
06:02				MISSED JUMPER by ALSTON,JAY'NEE
06:02				REBOUND (OFF) by TEAM
06:02	FOUL (PERSONAL) by JENSEN,MEGAN			
06:02	SUB OUT: MORTON,JORDAN			
06:02	SUB IN: FLORINE,SHAYLI			
05:47				MISSED JUMPER by ALSTON,JAY'NEE
05:43	REBOUND (DEF) by FLORINE,SHAYLI			
05:38	MISSED JUMPER by DIEKHOFF,SYDNEY			
05:35				REBOUND (DEF) by EVERIDGE,RIANA
05:33				FOUL (OFF) by EVERIDGE,RIANA
05:33				TURNOVER (OFFENSIVE) by EVERIDGE,RIANA
05:33	SUB OUT: POHLMAN,CALLIE			
05:33	SUB IN: ZYLKA,HALEY			
05:06				FOUL (PERSONAL) by TROECKLER,ALLIE
05:06	GOOD! FT by HEBERG,JORDAN	5-8	V 3	
05:06				SUB OUT: BAUMAN,SYDNEY
05:06				SUB IN: WHITLOCK,ZARIA
05:06	SUB OUT: JENSEN,MEGAN			
05:06	SUB IN: JOHNSON,BRIANNA			
05:06	SUB OUT: DIEKHOFF,SYDNEY			
05:06	SUB IN: HOPKINS,GIOVANNI			
05:06	MISSED FT by HEBERG,JORDAN			
05:04				REBOUND (DEF) by TEAM
04:57				MISSED JUMPER by EVERIDGE,RIANA
04:51				REBOUND (OFF) by TROECKLER,ALLIE
04:46	FOUL (PERSONAL) by ZYLKA,HALEY			
04:46				
04:46	SUB OUT: ZYLKA,HALEY			
04:46	SUB IN: POHLMAN,CALLIE			
04:46	SUB OUT: HOPKINS,GIOVANNI			
04:46	SUB IN: JENSEN,MEGAN			
04:46	SUB OUT: JOHNSON,BRIANNA			
04:46	SUB IN: MORTON,JORDAN			
04:46	SUB OUT: FLORINE,SHAYLI			
04:46	SUB IN: DIEKHOFF,SYDNEY			
04:23				MISSED 3PTR by EVERIDGE,RIANA
04:20	REBOUND (DEF) by DIEKHOFF,SYDNEY			
04:20				FOUL (PERSONAL) by EVERIDGE,RIANA
04:20				SUB OUT: EVERIDGE,RIANA
04:20				SUB IN: BAUMAN,SYDNEY
04:08	TURNOVER (BADPASS) by POHLMAN,CALLIE			
03:49		7-8	V 1	GOOD! JUMPER by BAUMAN,SYDNEY
03:32				FOUL (PERSONAL) by WHITLOCK,ZARIA

Time	VISITORS: McKendree	Score	Margin	HOME: SIUE
03:32	MISSED FT by MORTON,JORDAN			
03:32	REBOUND (OFF) by TEAM			
03:32	GOOD! FT by MORTON,JORDAN	7-9	V 2	
03:21				TURNOVER (BADPASS) by BELL,NAKIAH
03:21	STEAL by JENSEN,MEGAN			
03:14	GOOD! LAYUP by JENSEN,MEGAN [FB]	7-11	V 4	
03:14	ASSIST by POHLMAN,CALLIE			
03:08		9-11	V 2	GOOD! LAYUP by TROECKLER,ALLIE [FB]
03:08				ASSIST by ALSTON,JAY'NEE
03:08	FOUL (PERSONAL) by HEBERG,JORDAN			
03:08				SUB OUT: BELL,NAKIAH
03:08				SUB IN: KING,CHRISTEN
03:08				SUB OUT: ALSTON,JAY'NEE
03:08				SUB IN: AKUEN,ALEK
03:08				SUB OUT: WHITLOCK,ZARIA
03:08				SUB IN: JONES,MICAH
03:08				SUB OUT: BAUMAN,SYDNEY
03:08				SUB IN: KEITH,MIKIA
03:08		10-11	V 1	GOOD! FT by TROECKLER,ALLIE [FB]
03:08				SUB OUT: TROECKLER,ALLIE
03:08				SUB IN: KOEHLER,KAI
02:52	MISSED 3PTR by DIEKHOFF,SYDNEY			
02:49				REBOUND (DEF) by KING,CHRISTEN
02:49	FOUL (PERSONAL) by MORTON,JORDAN			
02:49		11-11	T	GOOD! FT by KING,CHRISTEN
02:49	SUB OUT: MORTON,JORDAN			
02:49	SUB IN: FLORINE,SHAYLI			
02:49		12-11	H 1	GOOD! FT by KING,CHRISTEN
02:29	MISSED JUMPER by DIEKHOFF,SYDNEY			
02:24				REBOUND (DEF) by KING,CHRISTEN
02:21		14-11	H 3	GOOD! LAYUP by KING,CHRISTEN [FB]
02:10	TURNOVER (TRAVEL) by POHLMAN,CALLIE			
02:10	SUB OUT: DIEKHOFF,SYDNEY			
02:10	SUB IN: KRAUSE,JENNA			
02:10	SUB OUT: POHLMAN,CALLIE			
02:10	SUB IN: ZYLKA,HALEY			
01:54		16-11	H 5	GOOD! LAYUP by KEITH,MIKIA [PNT]
01:39	TURNOVER (LOSTBALL) by JENSEN,MEGAN			
01:39				STEAL by AKUEN,ALEK
01:35		18-11	H 7	GOOD! LAYUP by AKUEN,ALEK [FB]
01:35	FOUL (PERSONAL) by KRAUSE,JENNA			
01:35	TIMEOUT 30SEC			
01:35		19-11	H 8	GOOD! FT by AKUEN,ALEK [FB]
01:14	GOOD! LAYUP by JENSEN,MEGAN [PNT]	19-13	H 6	
01:14	ASSIST by KRAUSE,JENNA			
01:14				FOUL (PERSONAL) by AKUEN,ALEK
01:14	GOOD! FT by JENSEN,MEGAN	19-14	H 5	
00:56				MISSED JUMPER by KING,CHRISTEN
00:53	REBOUND (DEF) by FLORINE,SHAYLI			
00:46	MISSED 3PTR by HEBERG,JORDAN			
00:44	REBOUND (OFF) by TEAM			
00:44	SUB OUT: HEBERG,JORDAN			
00:44	SUB IN: DIEKHOFF,SYDNEY			
00:42	TURNOVER (LOSTBALL) by DIEKHOFF,SYDNEY			
00:42				STEAL by KING,CHRISTEN
00:36		21-14	H 7	GOOD! LAYUP by KING,CHRISTEN [FB]
00:17	MISSED 3PTR by KRAUSE,JENNA			
00:13	REBOUND (OFF) by ZYLKA,HALEY			
00:13				FOUL (PERSONAL) by KEITH,MIKIA
00:13	MISSED FT by ZYLKA,HALEY			
00:13	REBOUND (OFF) by TEAM			
00:13				SUB OUT: JONES,MICAH
00:13				SUB IN: WHITLOCK,ZARIA
00:13	GOOD! FT by ZYLKA,HALEY	21-15	H 6	
00:13	SUB OUT: JENSEN,MEGAN			
00:13	SUB IN: JOHNSON,BRIANNA			
00:05	FOUL (PERSONAL) by KRAUSE,JENNA			
00:05				MISSED FT by KING,CHRISTEN
00:05				REBOUND (OFF) by TEAM
00:05		22-15	H 7	GOOD! FT by KING,CHRISTEN
00:00				FOUL (PERSONAL) by KOEHLER,KAI
00:00	MISSED FT by KRAUSE,JENNA			
00:00	REBOUND (OFF) by TEAM			
00:00	GOOD! FT by KRAUSE,JENNA	22-16	H 6	
00:00	GOOD! FT by KRAUSE,JENNA	22-17	H 5	

McKendree 17, SIUE 22

Points from (This Period)	McK	SIE
In the Paint	6	12
Off Turns	3	11
2nd Chance	1	3
Fast Break	2	12
Bench	3	5

Official Play-By-Play
McKendree vs SIUE
Second Quarter
December 30, 2018

Starters:

McKendree: 10 POHLMAN, CALLIE; 15 DIEKHOFF, SYDNEY; 24 HEBERG, JORDAN; 31 JENSEN, MEGAN; 44 MORTON, JORDAN;
SIUE: 1 KING, CHRISTEN; 5 ALSTON, JAY'NEE; 14 JONES, MICAH; 23 TROECKLER, ALLIE; 34 BAUMAN, SYDNEY;

Period 2

Time	VISITORS: McKendree	Score	Margin	HOME: SIUE
09:36		24-17	H 7	GOOD! LAYUP by AKUEN,ALEK [PNT]
09:36				ASSIST by KING,CHRISTEN
09:15				FOUL (PERSONAL) by AKUEN,ALEK
09:15				SUB OUT: AKUEN,ALEK
09:15				SUB IN: BOONE,LYRIC
09:05	TURNOVER (LOSTBALL) by FLORINE,SHAYLI			
09:05				STEAL by KING,CHRISTEN
09:01				FOUL (OFF) by KING,CHRISTEN
09:01				TURNOVER (OFFENSIVE) by KING,CHRISTEN
08:39	TURNOVER (BADPASS) by HEBERG,JORDAN			
08:39				STEAL by BOONE,LYRIC
08:30		26-17	H 9	GOOD! LAYUP by BOONE,LYRIC
08:21	GOOD! LAYUP by DIEKHOFF,SYDNEY	26-19	H 7	
08:21	ASSIST by JENSEN,MEGAN			
08:06		28-19	H 9	GOOD! LAYUP by WHITLOCK,ZARIA
08:06				ASSIST by KEITH,MIKIA
07:47	MISSED JUMPER by JENSEN,MEGAN			
07:43				REBOUND (DEF) by KING,CHRISTEN
07:43				FOUL (OFF) by KEITH,MIKIA
07:43				TURNOVER (OFFENSIVE) by KEITH,MIKIA
07:43				SUB OUT: KEITH,MIKIA
07:43				SUB IN: ALSTON,JAY'NEE
07:43	SUB OUT: FLORINE,SHAYLI			
07:43	SUB IN: HOPKINS,GIOVANNI			
07:18				FOUL (PERSONAL) by WHITLOCK,ZARIA
07:18	TURNOVER (OTHER) by POHLMAN,CALLIE			
07:18				SUB OUT: WHITLOCK,ZARIA
07:18				SUB IN: BAUMAN,SYDNEY
07:04				MISSED LAYUP by BAUMAN,SYDNEY
07:00	REBOUND (DEF) by JENSEN,MEGAN			
06:47	GOOD! LAYUP by POHLMAN,CALLIE	28-21	H 7	
06:32		31-21	H 10	GOOD! 3PTR by KOEHLER,KAI
06:32				ASSIST by BOONE,LYRIC
06:13	MISSED JUMPER by HOPKINS,GIOVANNI			
06:09				REBOUND (DEF) by BAUMAN,SYDNEY
06:06		33-21	H 12	GOOD! LAYUP by ALSTON,JAY'NEE [FB]
06:05	TIMEOUT TEAM			
06:05	SUB OUT: JENSEN,MEGAN			
06:05	SUB IN: KRAUSE,JENNA			
06:05	SUB OUT: HOPKINS,GIOVANNI			
06:05	SUB IN: FLORINE,SHAYLI			
05:52	GOOD! 3PTR by DIEKHOFF,SYDNEY	33-24	H 9	
05:52	ASSIST by POHLMAN,CALLIE			
05:40				MISSED JUMPER by BAUMAN,SYDNEY
05:37				REBOUND (OFF) by KING,CHRISTEN
05:28		35-24	H 11	GOOD! JUMPER by BAUMAN,SYDNEY [PNT]
05:28				ASSIST by KING,CHRISTEN
05:16				FOUL (PERSONAL) by BOONE,LYRIC
05:16	MISSED FT by KRAUSE,JENNA			
05:16	REBOUND (OFF) by TEAM			
05:16				SUB OUT: KOEHLER,KAI
05:16				SUB IN: BELL,NAKIAH
05:16				SUB OUT: BOONE,LYRIC
05:16				SUB IN: TROECKLER,ALLIE
05:16	GOOD! FT by KRAUSE,JENNA	35-25	H 10	
05:16	SUB OUT: KRAUSE,JENNA			
05:16	SUB IN: JENSEN,MEGAN			
04:52				MISSED JUMPER by TROECKLER,ALLIE
04:47	REBOUND (DEF) by DIEKHOFF,SYDNEY			
04:44	MISSED JUMPER by HEBERG,JORDAN			
04:39	REBOUND (OFF) by HEBERG,JORDAN			
04:37	MISSED JUMPER by HEBERG,JORDAN			
04:32				REBOUND (DEF) by KING,CHRISTEN
04:27				MISSED JUMPER by KING,CHRISTEN
04:23	REBOUND (DEF) by HEBERG,JORDAN			
04:01	GOOD! LAYUP by DIEKHOFF,SYDNEY [PNT]	35-27	H 8	
03:44				MISSED JUMPER by KING,CHRISTEN
03:41				REBOUND (OFF) by BAUMAN,SYDNEY
03:31				MISSED LAYUP by TROECKLER,ALLIE
03:30				REBOUND (OFF) by TROECKLER,ALLIE
03:30	FOUL (PERSONAL) by FLORINE,SHAYLI			
03:30		36-27	H 9	GOOD! FT by TROECKLER,ALLIE
03:30				SUB OUT: BAUMAN,SYDNEY
03:30				SUB IN: WHITLOCK,ZARIA
03:30	SUB OUT: FLORINE,SHAYLI			
03:30	SUB IN: JOHNSON,BRIANNA			

Time	VISITORS: McKendree	Score	Margin	HOME: SIUE
03:28				MISSED FT by TROECKLER,ALLIE
03:26				REBOUND (OFF) by WHITLOCK,ZARIA
03:06				TURNOVER (TRAVEL) by WHITLOCK,ZARIA
03:06	SUB OUT: JOHNSON,BRIANNA			
03:06	SUB IN: STROBERG,ERIN			
02:55	GOOD! JUMPER by DIEKHOFF,SYDNEY	36-29	H 7	
02:43				FOUL (OFF) by WHITLOCK,ZARIA
02:43				TURNOVER (OFFENSIVE) by WHITLOCK,ZARIA
02:43				SUB OUT: KING,CHRISTEN
02:43				SUB IN: HALL,MIKALA
02:43				SUB OUT: WHITLOCK,ZARIA
02:43				SUB IN: JONES,MICAH
02:20	GOOD! LAYUP by HEBERG,JORDAN [PNT]	36-31	H 5	
02:20	ASSIST by POHLMAN,CALLIE			
02:00				MISSED JUMPER by BELL,NAKIAH
02:00				REBOUND (OFF) by TEAM
02:00	FOUL (PERSONAL) by JENSEN,MEGAN			
01:48	FOUL (PERSONAL) by JENSEN,MEGAN			
01:48	SUB OUT: JENSEN,MEGAN			
01:48	SUB IN: FLORINE,SHAYLI			
01:35				MISSED LAYUP by JONES,MICAH
01:31	REBOUND (DEF) by STROBERG,ERIN			
01:15	TURNOVER (LOSTBALL) by STROBERG,ERIN			
01:15				STEAL by TROECKLER,ALLIE
01:06		38-31	H 7	GOOD! JUMPER by HALL,MIKALA [PNT]
01:06				ASSIST by BELL,NAKIAH
01:01				FOUL (PERSONAL) by JONES,MICAH
01:01	MISSED FT by FLORINE,SHAYLI			
01:01	REBOUND (OFF) by TEAM			
01:01	SUB OUT: POHLMAN,CALLIE			
01:01	SUB IN: ZYLKA,HALEY			
01:01	GOOD! FT by FLORINE,SHAYLI [FB]	38-32	H 6	
01:01	SUB OUT: HEBERG,JORDAN			
01:01	SUB IN: KRAUSE,JENNA			
00:34				TURNOVER (LOSTBALL) by JONES,MICAH
00:34	STEAL by DIEKHOFF,SYDNEY			
00:34				FOUL (PERSONAL) by JONES,MICAH
00:34				SUB OUT: JONES,MICAH
00:34				SUB IN: BAUMAN,SYDNEY
00:34	GOOD! FT by DIEKHOFF,SYDNEY	38-33	H 5	
00:34	GOOD! FT by DIEKHOFF,SYDNEY	38-34	H 4	
00:34	SUB OUT: FLORINE,SHAYLI			
00:34	SUB IN: JOHNSON,BRIANNA			
00:18	FOUL (PERSONAL) by STROBERG,ERIN			
00:00				MISSED JUMPER by BELL,NAKIAH
00:00	REBOUND (DEF) by TEAM			

McKendree 34, SIUE 38

Points from (This Period)	McK	SIUE
In the Paint	8	12
Off Turns	6	4
2nd Chance	0	3
Fast Break	1	2
Bench	2	11

Official Box Score
McKendree vs SIUE
Second Half Statistics Only
December 30, 2018

McKendree 63

No.	Player	S	Pts	FG	3FG	FT	OR	DR	TR	PF	A	TO	Blk	Stl	Min	+/-
1	Zylka, Haley		0	0-0	0-0	0-0	0	0	0	1	0	0	0	1	5	
10	Pohlman, Callie		0	0-1	0-0	0-0	0	1	1	1	2	1	0	0	15	
15	Diekhoff, Sydney		10	3-8	1-3	3-3	1	1	2	2	1	1	0	0	18	
20	Krause, Jenna		2	0-0	0-0	2-2	0	1	1	0	1	0	0	1	5	
24	Heberg, Jordan		12	4-12	2-7	2-2	1	2	3	1	1	2	0	0	17	
31	Jensen, Megan		1	0-1	0-0	1-2	0	1	1	0	0	1	0	0	11	
33	Hopkins, Giovanni		0	0-0	0-0	0-0	0	0	0	0	0	0	0	0	0	
34	Johnson, Brianna		0	0-1	0-0	0-0	0	0	0	0	0	0	0	0	4	
42	Stroberg, Erin		0	0-0	0-0	0-0	0	0	0	0	0	0	0	0	0	
44	Morton, Jordan		2	1-1	0-0	0-0	1	3	4	2	0	0	0	0	11	
55	Florine, Shayli		2	1-4	0-0	0-0	0	2	2	1	2	1	2	0	13	
	Team		0	0-0	0-0	0-0	1	3	4	0	0	0	0	0	0	
TOTALS			29	9-28	3-10	8-9	4	14	18	8	7	6	2	2	100	

Shooting By Period

Period	FG	FG%	3FG	3FG%	FT	FT%
1st Qtr	5-13	38%	1-5	20%	6-10	60%
2nd Qtr	6-10	60%	1-1	100%	4-6	67%
3rd Qtr	4-13	31%	1-3	33%	2-2	100%
4th Qtr	5-15	33%	2-7	29%	6-7	86%
1st Half	11-23	48%	2-6	33%	10-16	63%
2nd Half	9-28	32%	3-10	30%	8-9	89%
Game	20-51	39.2%	5-16	31.3%	18-25	72.0%

Last FG: 4th-00:52
 Biggest Run: 16-0
 Largest lead: By 4 at 1-03:14
 Technical Fouls: None.

SIUE 64

No.	Player	S	Pts	FG	3FG	FT	OR	DR	TR	PF	A	TO	Blk	Stl	Min	+/-
1	King, Christen		7	2-3	0-0	3-6	2	5	7	1	0	4	0	0	17	
2	Bell, Nakiah		3	1-5	1-4	0-0	0	1	1	0	2	0	0	0	19	
5	Alston, Jaynee		0	0-2	0-2	0-0	0	2	2	1	1	0	0	0	14	
11	Keith, Mikia		3	1-2	1-1	0-0	0	0	0	2	2	0	0	1	8	
12	Koehler, Kai		0	0-0	0-0	0-0	0	0	0	0	0	0	0	0	0	
14	Jones, Micah		0	0-0	0-0	0-0	0	0	0	0	0	0	0	0	0	
21	Akuen, Alek		4	2-5	0-0	0-0	3	1	4	2	0	0	2	0	13	
23	Troeckler, Allie		7	2-8	0-0	3-3	2	3	5	1	0	2	0	2	17	
24	Boone, Lyric		0	0-0	0-0	0-0	0	0	0	0	0	0	0	0	0	
25	Whitlock, Zaria		0	0-0	0-0	0-0	0	0	0	2	0	0	0	0	1	
34	Bauman, Sydney		0	0-5	0-0	0-0	2	1	3	0	0	0	0	1	6	
35	Hall, Mikala		0	0-0	0-0	0-0	0	0	0	0	0	0	0	0	0	
44	Everidge, Riana		2	1-1	0-0	0-0	1	2	3	1	1	1	0	0	5	
	Team		0	0-0	0-0	0-0	0	0	0	0	0	0	0	0	0	
TOTALS			26	9-31	2-7	6-9	10	15	25	10	6	7	2	4	100	

Shooting By Period

Period	FG	FG%	3FG	3FG%	FT	FT%
1st Qtr	8-17	47%	0-2	00%	6-8	75%
2nd Qtr	7-16	44%	1-1	100%	1-2	50%
3rd Qtr	5-13	38%	1-4	25%	1-1	100%
4th Qtr	4-18	22%	1-3	33%	5-8	63%
1st Half	15-33	45%	1-3	33%	7-10	70%
2nd Half	9-31	29%	2-7	29%	6-9	67%
Game	24-64	37.5%	3-10	30.0%	13-19	68.4%

Last FG: 4th-05:53
 Biggest Run: 12-0
 Largest lead: By 16 at 4-05:15
 Technical Fouls: None.

Game Notes:

Officials: Doug Klenc, Kallee Davidson, Jason Schmitz
 Attendance: 789

Start Time: 2018-12-30 20:01:46
 End Time: 2018-12-30 21:59:47
 Game Duration: 118

Score	1st	2nd	3rd	4th	TOT
McK	17	17	11	18	63
SIUE	22	16	12	14	64

Points from (This Period)	McK	SIUE
In the Paint	8	12
Off Turns	6	4
2nd Chance	0	3
Fast Break	1	2
Bench	2	11

**Official Play-By-Play
McKendree vs SIUE
Third Quarter
December 30, 2018**

Starters:

McKendree: 10 POHLMAN,CALLIE; 15 DIEKHOFF,SYDNEY; 24 HEBERG,JORDAN; 31 JENSEN,MEGAN; 44 MORTON,JORDAN;

SIUE: 1 KING,CHRISTEN; 5 ALSTON,JAY'NEE; 14 JONES,MICAH; 23 TROECKLER,ALLIE; 34 BAUMAN,SYDNEY;

Period 3

Time	VISITORS: McKendree	Score	Margin	HOME: SIUE
09:41	GOOD! JUMPER by HEBERG,JORDAN	38-36	H 2	
09:41	ASSIST by FLORINE,SHAYLI			
09:12				TURNOVER (TRAVEL) by KING,CHRISTEN
08:53	MISSED JUMPER by FLORINE,SHAYLI			
08:50				REBOUND (DEF) by KING,CHRISTEN
08:45				FOUL (OFF) by TROECKLER,ALLIE
08:45				TURNOVER (OFFENSIVE) by TROECKLER,ALLIE
08:35	TURNOVER (LOSTBALL) by FLORINE,SHAYLI			
08:35				STEAL by BAUMAN,SYDNEY
08:29				MISSED JUMPER by TROECKLER,ALLIE
08:29	REBOUND (DEF) by TEAM			
08:08	GOOD! JUMPER by HEBERG,JORDAN	38-38	T	
08:08	ASSIST by FLORINE,SHAYLI			
07:56				MISSED JUMPER by BAUMAN,SYDNEY
07:56	BLOCK by FLORINE,SHAYLI			
07:50	REBOUND (DEF) by MORTON,JORDAN			
07:38	MISSED 3PTR by DIEKHOFF,SYDNEY			
07:35				REBOUND (DEF) by BAUMAN,SYDNEY
07:35				SUB OUT: BAUMAN,SYDNEY
07:35				SUB IN: AKUEN,ALEK
07:01				MISSED 3PTR by BELL,NAKIAH
06:56				REBOUND (OFF) by TROECKLER,ALLIE
06:34				MISSED JUMPER by TROECKLER,ALLIE
06:31	REBOUND (DEF) by MORTON,JORDAN			
06:26	TURNOVER (BADPASS) by HEBERG,JORDAN			
06:26	SUB OUT: FLORINE,SHAYLI			
06:26	SUB IN: JENSEN,MEGAN			
06:08		40-38	H 2	GOOD! LAYUP by TROECKLER,ALLIE [PNT]
06:08				ASSIST by ALSTON,JAY'NEE
06:08	FOUL (PERSONAL) by MORTON,JORDAN			
06:08	SUB OUT: MORTON,JORDAN			
06:08	SUB IN: FLORINE,SHAYLI			
06:08		41-38	H 3	GOOD! FT by TROECKLER,ALLIE
05:47	MISSED 3PTR by HEBERG,JORDAN			
05:43				REBOUND (DEF) by KING,CHRISTEN
05:27				TURNOVER (OTHER) by KING,CHRISTEN
05:08	MISSED JUMPER by POHLMAN,CALLIE			
05:04				REBOUND (DEF) by TROECKLER,ALLIE
05:01		43-38	H 5	GOOD! LAYUP by KING,CHRISTEN [FB/PNT]
04:49	TURNOVER (BADPASS) by HEBERG,JORDAN			
04:49				STEAL by TROECKLER,ALLIE
04:43				MISSED 3PTR by BELL,NAKIAH
04:41	REBOUND (DEF) by TEAM			
04:40				SUB OUT: KING,CHRISTEN
04:40				SUB IN: EVERIDGE,RIANA
04:40	SUB OUT: POHLMAN,CALLIE			
04:40	SUB IN: ZYLKA,HALEY			
04:40	SUB OUT: HEBERG,JORDAN			
04:40	SUB IN: KRAUSE,JENNA			
04:20	MISSED LAYUP by JENSEN,MEGAN			
04:17				REBOUND (DEF) by AKUEN,ALEK
04:10				MISSED 3PTR by ALSTON,JAY'NEE
04:05	REBOUND (DEF) by KRAUSE,JENNA			
03:41	MISSED JUMPER by FLORINE,SHAYLI			
03:37				REBOUND (DEF) by EVERIDGE,RIANA
03:29				MISSED LAYUP by TROECKLER,ALLIE
03:25	REBOUND (DEF) by FLORINE,SHAYLI			
03:16	GOOD! LAYUP by FLORINE,SHAYLI [PNT]	43-40	H 3	
03:16	ASSIST by DIEKHOFF,SYDNEY			
02:46				TURNOVER (BADPASS) by TROECKLER,ALLIE
02:46	STEAL by KRAUSE,JENNA			
02:38	MISSED JUMPER by DIEKHOFF,SYDNEY			
02:32				REBOUND (DEF) by ALSTON,JAY'NEE
02:25				MISSED LAYUP by AKUEN,ALEK
02:23				REBOUND (OFF) by EVERIDGE,RIANA
02:23		45-40	H 5	GOOD! LAYUP by EVERIDGE,RIANA
02:22				TIMEOUT TEAM
02:22				SUB OUT: ALSTON,JAY'NEE
02:22				SUB IN: KEITH,MIKIA
02:22				SUB OUT: TROECKLER,ALLIE
02:22				SUB IN: KING,CHRISTEN
02:22				SUB OUT: EVERIDGE,RIANA
02:22				SUB IN: WHITLOCK,ZARIA
02:22	SUB OUT: JENSEN,MEGAN			
02:22	SUB IN: MORTON,JORDAN			

Time	VISITORS: McKendree	Score	Margin	HOME: SIUE
02:22	SUB OUT: FLORINE,SHAYLI			
02:22	SUB IN: JOHNSON,BRIANNA			
02:12				FOUL (PERSONAL) by WHITLOCK,ZARIA
02:12	GOOD! FT by KRAUSE,JENNA	45-41	H 4	
02:12	GOOD! FT by KRAUSE,JENNA	45-42	H 3	
01:50	FOUL (PERSONAL) by MORTON,JORDAN			
01:50	SUB OUT: DIEKHOFF,SYDNEY			
01:50	SUB IN: JENSEN,MEGAN			
01:50	SUB OUT: MORTON,JORDAN			
01:50	SUB IN: HEBERG,JORDAN			
01:50				FOUL (PERSONAL) by WHITLOCK,ZARIA
01:50				SUB OUT: WHITLOCK,ZARIA
01:50				SUB IN: EVERIDGE,RIANA
01:30	GOOD! 3PTR by HEBERG,JORDAN	45-45	T	
01:30	ASSIST by KRAUSE,JENNA			
00:58		47-45	H 2	GOOD! LAYUP by KING,CHRISTEN [PNT]
00:58				ASSIST by EVERIDGE,RIANA
00:45	MISSED JUMPER by JOHNSON,BRIANNA			
00:41				REBOUND (DEF) by EVERIDGE,RIANA
00:23				TURNOVER (BADPASS) by KING,CHRISTEN
00:23	STEAL by ZYLKA,HALEY			
00:04	MISSED JUMPER by HEBERG,JORDAN			
00:04				BLOCK by AKUEN,ALEK
00:03				REBOUND (DEF) by BELL,NAKIAH
00:00		50-45	H 5	GOOD! 3PTR by BELL,NAKIAH [FB]
00:00				ASSIST by KEITH,MIKIA

McKendree 45, SIUE 50

Points from (This Period)	McK	SIE
In the Paint	2	8
Off Turns	0	3
2nd Chance	0	2
Fast Break	0	5
Bench	4	5

**Official Play-By-Play
McKendree vs SIUE
Fourth Quarter
December 30, 2018**

Starters:

McKendree: 10 POHLMAN,CALLIE; 15 DIEKHOFF,SYDNEY; 24 HEBERG,JORDAN; 31 JENSEN,MEGAN; 44 MORTON,JORDAN;

SIUE: 1 KING,CHRISTEN; 5 ALSTON,JAY'NEE; 14 JONES,MICAH; 23 TROECKLER,ALLIE; 34 BAUMAN,SYDNEY;

Period 4

Time	VISITORS: McKendree	Score	Margin	HOME: SIUE
09:34	MISSED JUMPER by FLORINE,SHAYLI			
09:31				REBOUND (DEF) by KING,CHRISTEN
09:29	FOUL (PERSONAL) by POHLMAN,CALLIE			
09:29				MISSED FT by KING,CHRISTEN
09:29				REBOUND (OFF) by TEAM
09:29		51-45	H 6	GOOD! FT by KING,CHRISTEN
09:17				FOUL (PERSONAL) by EVERIDGE,RIANA
09:17				SUB OUT: EVERIDGE,RIANA
09:17				SUB IN: TROECKLER,ALLIE
09:12				FOUL (PERSONAL) by KING,CHRISTEN
09:08	MISSED LAYUP by HEBERG,JORDAN			
09:03	REBOUND (OFF) by HEBERG,JORDAN			
09:03	GOOD! LAYUP by DIEKHOFF,SYDNEY	51-47	H 4	
09:02				TIMEOUT 30SEC
08:48				MISSED JUMPER by KING,CHRISTEN
08:43				REBOUND (OFF) by AKUEN,ALEK
08:41				MISSED JUMPER by KEITH,MIKIA
08:39				REBOUND (OFF) by KING,CHRISTEN
08:39	FOUL (PERSONAL) by FLORINE,SHAYLI			
08:39		52-47	H 5	GOOD! FT by KING,CHRISTEN
08:38				MISSED FT by KING,CHRISTEN
08:36				REBOUND (OFF) by AKUEN,ALEK
08:32		55-47	H 8	GOOD! 3PTR by KEITH,MIKIA
08:32				ASSIST by BELL,NAKIAH
08:17	FOUL (OFF) by DIEKHOFF,SYDNEY			
08:17	TURNOVER (OFFENSIVE) by DIEKHOFF,SYDNEY			
07:59				MISSED JUMPER by AKUEN,ALEK
07:53				REBOUND (OFF) by AKUEN,ALEK
07:52				MISSED JUMPER by AKUEN,ALEK
07:48	REBOUND (DEF) by JENSEN,MEGAN			
07:34	TURNOVER (LOSTBALL) by JENSEN,MEGAN			
07:34				STEAL by KEITH,MIKIA
07:28	SUB OUT: FLORINE,SHAYLI			
07:28	SUB IN: JOHNSON,BRIANNA			
07:28	SUB OUT: JENSEN,MEGAN			
07:28	SUB IN: MORTON,JORDAN			
07:12		57-47	H 10	GOOD! JUMPER by AKUEN,ALEK
07:12				ASSIST by KEITH,MIKIA
07:02	MISSED 3PTR by HEBERG,JORDAN			
06:58				REBOUND (DEF) by KING,CHRISTEN
06:50	FOUL (PERSONAL) by DIEKHOFF,SYDNEY			
06:27		59-47	H 12	GOOD! JUMPER by AKUEN,ALEK
06:27				ASSIST by BELL,NAKIAH
06:20				SUB OUT: KING,CHRISTEN
06:20				SUB IN: ALSTON,JAY'NEE
06:17	TURNOVER (BADPASS) by POHLMAN,CALLIE			
06:17				STEAL by TROECKLER,ALLIE
05:53		61-47	H 14	GOOD! LAYUP by TROECKLER,ALLIE [PNT]
05:49				SUB OUT: BELL,NAKIAH
05:49				SUB IN: KING,CHRISTEN
05:49	SUB OUT: JOHNSON,BRIANNA			
05:49	SUB IN: JENSEN,MEGAN			
05:24				FOUL (PERSONAL) by KEITH,MIKIA
05:21	MISSED 3PTR by HEBERG,JORDAN			
05:17				REBOUND (DEF) by ALSTON,JAY'NEE
05:15	FOUL (PERSONAL) by HEBERG,JORDAN			
05:15		62-47	H 15	GOOD! FT by TROECKLER,ALLIE [FB]
05:15		63-47	H 16	GOOD! FT by TROECKLER,ALLIE [FB]
04:59	MISSED LAYUP by DIEKHOFF,SYDNEY			
04:57	REBOUND (OFF) by MORTON,JORDAN			
04:57				FOUL (PERSONAL) by AKUEN,ALEK
04:57	GOOD! FT by JENSEN,MEGAN	63-48	H 15	
04:57	MISSED FT by JENSEN,MEGAN			
04:56	REBOUND (OFF) by TEAM			
04:56	SUB OUT: JENSEN,MEGAN			
04:56	SUB IN: FLORINE,SHAYLI			
04:53	MISSED JUMPER by DIEKHOFF,SYDNEY			
04:52	REBOUND (OFF) by DIEKHOFF,SYDNEY			
04:52				FOUL (PERSONAL) by AKUEN,ALEK
04:52	GOOD! FT by DIEKHOFF,SYDNEY	63-49	H 14	
04:52				SUB OUT: AKUEN,ALEK
04:52				SUB IN: BAUMAN,SYDNEY
04:52				SUB OUT: KEITH,MIKIA
04:52				SUB IN: BELL,NAKIAH
04:52	GOOD! FT by DIEKHOFF,SYDNEY	63-50	H 13	
04:47				TURNOVER (BADPASS) by KING,CHRISTEN

Time	VISITORS: McKendree	Score	Margin	HOME: SIUE
04:18	MISSED 3PTR by DIEKHOFF,SYDNEY			
04:14				REBOUND (DEF) by KING,CHRISTEN
03:51				MISSED LAYUP by TROECKLER,ALLIE
03:47				REBOUND (OFF) by BAUMAN,SYDNEY
03:45				MISSED LAYUP by BAUMAN,SYDNEY
03:39	REBOUND (DEF) by MORTON,JORDAN			
03:36	GOOD! 3PTR by HEBERG,JORDAN	63-53	H 10	
03:36	ASSIST by POHLMAN,CALLIE			
03:12				MISSED JUMPER by BAUMAN,SYDNEY
03:08	REBOUND (DEF) by HEBERG,JORDAN			
03:01	GOOD! LAYUP by MORTON,JORDAN [PNT]	63-55	H 8	
03:01	ASSIST by HEBERG,JORDAN			
02:37				MISSED LAYUP by BAUMAN,SYDNEY
02:33				REBOUND (OFF) by BAUMAN,SYDNEY
02:30				MISSED JUMPER by BELL,NAKIAH
02:26				REBOUND (OFF) by KING,CHRISTEN
02:15				MISSED JUMPER by BAUMAN,SYDNEY
02:11	REBOUND (DEF) by POHLMAN,CALLIE			
02:08	MISSED 3PTR by HEBERG,JORDAN			
02:02				REBOUND (DEF) by TROECKLER,ALLIE
01:43				MISSED JUMPER by TROECKLER,ALLIE
01:43	BLOCK by FLORINE,SHAYLI			
01:34	REBOUND (DEF) by FLORINE,SHAYLI			
01:27	GOOD! 3PTR by DIEKHOFF,SYDNEY	63-58	H 5	
01:27	ASSIST by POHLMAN,CALLIE			
01:16				TIMEOUT 30SEC
01:16				SUB OUT: ALSTON,JAY'NEE
01:16				SUB IN: EVERIDGE,RIANA
01:16				SUB OUT: BAUMAN,SYDNEY
01:16				SUB IN: KEITH,MIKIA
01:16	SUB OUT: FLORINE,SHAYLI			
01:16	SUB IN: JENSEN,MEGAN			
01:08				MISSED JUMPER by TROECKLER,ALLIE
01:07	REBOUND (DEF) by HEBERG,JORDAN			
01:07				FOUL (PERSONAL) by KEITH,MIKIA
01:07	GOOD! FT by HEBERG,JORDAN	63-59	H 4	
01:07	GOOD! FT by HEBERG,JORDAN	63-60	H 3	
01:04				TURNOVER (BADPASS) by EVERIDGE,RIANA
01:04				SUB OUT: EVERIDGE,RIANA
01:04				SUB IN: ALSTON,JAY'NEE
00:52	GOOD! LAYUP by DIEKHOFF,SYDNEY [PNT]	63-62	H 1	
00:52				FOUL (PERSONAL) by ALSTON,JAY'NEE
00:52	GOOD! FT by DIEKHOFF,SYDNEY	63-63	T	
00:24				MISSED 3PTR by BELL,NAKIAH
00:19				REBOUND (OFF) by TROECKLER,ALLIE
00:17				MISSED 3PTR by ALSTON,JAY'NEE
00:17	REBOUND (DEF) by TEAM			
00:17	TIMEOUT TEAM			
00:11	MISSED LAYUP by HEBERG,JORDAN			
00:11				BLOCK by AKUEN,ALEK
00:11				SUB OUT: ALSTON,JAY'NEE
00:11				SUB IN: AKUEN,ALEK
00:11				REBOUND (DEF) by TROECKLER,ALLIE
00:11				TIMEOUT TEAM
00:11	SUB OUT: JENSEN,MEGAN			
00:11	SUB IN: ZYLKA,HALEY			
00:01	FOUL (PERSONAL) by ZYLKA,HALEY			
00:01		64-63	H 1	GOOD! FT by KING,CHRISTEN
00:01				MISSED FT by KING,CHRISTEN
00:01	REBOUND (DEF) by DIEKHOFF,SYDNEY			
00:01	TIMEOUT 30SEC			
00:00	MISSED 3PTR by HEBERG,JORDAN			
00:00				REBOUND (DEF) by TEAM

McKendree 63, SIUE 64

Points from (This Period)	McK	SIE
In the Paint	6	2
Off Turns	3	4
2nd Chance	5	4
Fast Break	0	2
Bench	0	7

Official Scoring/Possession Reference Chart
McKendree vs SIUE
Period 1
December 30, 2018

Starters:

McKendree: 10 POHLMAN,CALLIE; 15 DIEKHOFF,SYDNEY; 24 HEBERG,JORDAN; 31 JENSEN,MEGAN; 44 MORTON,JORDAN;
SIUE: 1 KING,CHRISTEN; 5 ALSTON,JAY'NEE; 14 JONES,MICAH; 23 TROECKLER,ALLIE; 34 BAUMAN,SYDNEY;

Period 1

Time	VISITORS: McKendree	Score	Margin	HOME: SIUE
09:42	GOOD! LAYUP by MORTON,JORDAN [PNT]	0-2	V 2	
08:53		2-2	T	GOOD! JUMPER by KING,CHRISTEN [FB]
08:23	GOOD! JUMPER by MORTON,JORDAN	2-4	V 2	
07:52		3-4	V 1	GOOD! FT by JONES,MICAH
07:28		5-4	H 1	GOOD! LAYUP by TROECKLER,ALLIE
07:21	GOOD! 3PTR by POHLMAN,CALLIE	5-7	V 2	
05:06	GOOD! FT by HEBERG,JORDAN	5-8	V 3	
03:49		7-8	V 1	GOOD! JUMPER by BAUMAN,SYDNEY
03:32	GOOD! FT by MORTON,JORDAN	7-9	V 2	
03:14	GOOD! LAYUP by JENSEN,MEGAN [FB]	7-11	V 4	
03:08		9-11	V 2	GOOD! LAYUP by TROECKLER,ALLIE [FB]
03:08		10-11	V 1	GOOD! FT by TROECKLER,ALLIE [FB]
02:49		11-11	T	GOOD! FT by KING,CHRISTEN
02:49		12-11	H 1	GOOD! FT by KING,CHRISTEN
02:21		14-11	H 3	GOOD! LAYUP by KING,CHRISTEN [FB]
01:54		16-11	H 5	GOOD! LAYUP by KEITH,MIKIA [PNT]
01:35		18-11	H 7	GOOD! LAYUP by AKUEN,ALEK [FB]
01:35		19-11	H 8	GOOD! FT by AKUEN,ALEK [FB]
01:14	GOOD! LAYUP by JENSEN,MEGAN [PNT]	19-13	H 6	
01:14	GOOD! FT by JENSEN,MEGAN	19-14	H 5	
00:36		21-14	H 7	GOOD! LAYUP by KING,CHRISTEN [FB]
00:13	GOOD! FT by ZYLKA,HALEY	21-15	H 6	
00:05		22-15	H 7	GOOD! FT by KING,CHRISTEN
00:00	GOOD! FT by KRAUSE,JENNA	22-16	H 6	
00:00	GOOD! FT by KRAUSE,JENNA	22-17	H 5	

McKendree 17, SIUE 22

Official Scoring/Possession Reference Chart
McKendree vs SIUE
Period 2
December 30, 2018

Starters:

McKendree: 10 POHLMAN,CALLIE; 15 DIEKHOFF,SYDNEY; 24 HEBERG,JORDAN; 31 JENSEN,MEGAN; 44 MORTON,JORDAN;
SIUE: 1 KING,CHRISTEN; 5 ALSTON,JAY'NEE; 14 JONES,MICAH; 23 TROECKLER,ALLIE; 34 BAUMAN,SYDNEY;

Period 2

Time	VISITORS: McKendree	Score	Margin	HOME: SIUE
09:36		24-17	H 7	GOOD! LAYUP by AKUEN,ALEK [PNT]
08:30		26-17	H 9	GOOD! LAYUP by BOONE,LYRIC
08:21	GOOD! LAYUP by DIEKHOFF,SYDNEY	26-19	H 7	
08:06		28-19	H 9	GOOD! LAYUP by WHITLOCK,ZARIA
06:47	GOOD! LAYUP by POHLMAN,CALLIE	28-21	H 7	
06:32		31-21	H 10	GOOD! 3PTR by KOEHLER,KAJ
06:06		33-21	H 12	GOOD! LAYUP by ALSTON,JAY'NEE [FB]
05:52	GOOD! 3PTR by DIEKHOFF,SYDNEY	33-24	H 9	
05:28		35-24	H 11	GOOD! JUMPER by BAUMAN,SYDNEY [PNT]
05:16	GOOD! FT by KRAUSE,JENNA	35-25	H 10	
04:01	GOOD! LAYUP by DIEKHOFF,SYDNEY [PNT]	35-27	H 8	
03:30		36-27	H 9	GOOD! FT by TROECKLER,ALLIE
02:55	GOOD! JUMPER by DIEKHOFF,SYDNEY	36-29	H 7	
02:20	GOOD! LAYUP by HEBERG,JORDAN [PNT]	36-31	H 5	
01:06		38-31	H 7	GOOD! JUMPER by HALL,MIKALA [PNT]
01:01	GOOD! FT by FLORINE,SHAYLI [FB]	38-32	H 6	
00:34	GOOD! FT by DIEKHOFF,SYDNEY	38-33	H 5	
00:34	GOOD! FT by DIEKHOFF,SYDNEY	38-34	H 4	

McKendree 34, SIUE 38

Official Scoring/Possession Reference Chart
McKendree vs SIUE
Period 3
December 30, 2018

Starters:

McKendree: 10 POHLMAN,CALLIE; 15 DIEKHOFF,SYDNEY; 24 HEBERG,JORDAN; 31 JENSEN,MEGAN; 44 MORTON,JORDAN;
SIUE: 1 KING,CHRISTEN; 5 ALSTON,JAY'NEE; 14 JONES,MICAH; 23 TROECKLER,ALLIE; 34 BAUMAN,SYDNEY;

Period 3

Time	VISITORS: McKendree	Score	Margin	HOME: SIUE
09:41	GOOD! JUMPER by HEBERG,JORDAN	38-36	H 2	
08:08	GOOD! JUMPER by HEBERG,JORDAN	38-38	T	
06:08		40-38	H 2	GOOD! LAYUP by TROECKLER,ALLIE [PNT]
06:08		41-38	H 3	GOOD! FT by TROECKLER,ALLIE
05:01		43-38	H 5	GOOD! LAYUP by KING,CHRISTEN [FB/PNT]
03:16	GOOD! LAYUP by FLORINE,SHAYLI [PNT]	43-40	H 3	
02:23		45-40	H 5	GOOD! LAYUP by EVERIDGE,RIANA
02:12	GOOD! FT by KRAUSE,JENNA	45-41	H 4	
02:12	GOOD! FT by KRAUSE,JENNA	45-42	H 3	
01:30	GOOD! 3PTR by HEBERG,JORDAN	45-45	T	
00:58		47-45	H 2	GOOD! LAYUP by KING,CHRISTEN [PNT]
00:00		50-45	H 5	GOOD! 3PTR by BELL,NAKIAH [FB]

McKendree 45, SIUE 50

Official Scoring/Possession Reference Chart
McKendree vs SIUE
Period 4
December 30, 2018

Starters:

McKendree: 10 POHLMAN,CALLIE; 15 DIEKHOFF,SYDNEY; 24 HEBERG,JORDAN; 31 JENSEN,MEGAN; 44 MORTON,JORDAN;
SIUE: 1 KING,CHRISTEN; 5 ALSTON,JAY'NEE; 14 JONES,MICAH; 23 TROECKLER,ALLIE; 34 BAUMAN,SYDNEY;

Period 4

Time	VISITORS: McKendree	Score	Margin	HOME: SIUE
09:29		51-45	H 6	GOOD! FT by KING,CHRISTEN
09:03	GOOD! LAYUP by DIEKHOFF,SYDNEY	51-47	H 4	
08:39		52-47	H 5	GOOD! FT by KING,CHRISTEN
08:32		55-47	H 8	GOOD! 3PTR by KEITH,MIKIA
07:12		57-47	H 10	GOOD! JUMPER by AKUEN,ALEK
06:27		59-47	H 12	GOOD! JUMPER by AKUEN,ALEK
05:53		61-47	H 14	GOOD! LAYUP by TROECKLER,ALLIE [PNT]
05:15		62-47	H 15	GOOD! FT by TROECKLER,ALLIE [FB]
05:15		63-47	H 16	GOOD! FT by TROECKLER,ALLIE [FB]
04:57	GOOD! FT by JENSEN,MEGAN	63-48	H 15	
04:52	GOOD! FT by DIEKHOFF,SYDNEY	63-49	H 14	
04:52	GOOD! FT by DIEKHOFF,SYDNEY	63-50	H 13	
03:36	GOOD! 3PTR by HEBERG,JORDAN	63-53	H 10	
03:01	GOOD! LAYUP by MORTON,JORDAN [PNT]	63-55	H 8	
01:27	GOOD! 3PTR by DIEKHOFF,SYDNEY	63-58	H 5	
01:07	GOOD! FT by HEBERG,JORDAN	63-59	H 4	
01:07	GOOD! FT by HEBERG,JORDAN	63-60	H 3	
00:52	GOOD! LAYUP by DIEKHOFF,SYDNEY [PNT]	63-62	H 1	
00:52	GOOD! FT by DIEKHOFF,SYDNEY	63-63	T	
00:01		64-63	H 1	GOOD! FT by KING,CHRISTEN

McKendree 63, SIUE 64

**Official Substitutions Log
McKendree vs SIUE
Period 1
December 30, 2018**

VISITORS: McKendree	Time	Score	HOME: SIUE
10 POHLMAN, CALLIE			1 KING, CHRISTEN
15 DIEKHOFF, SYDNEY			5 ALSTON, JAY'NEE
24 HEBERG, JORDAN			14 JONES, MICAH
31 JENSEN, MEGAN			23 TROECKLER, ALLIE
44 MORTON, JORDAN			34 BAUMAN, SYDNEY
	06:53	7-5	SUB OUT: JONES, MICAH
	06:53		SUB IN: EVERIDGE, RIANA
	06:53		SUB OUT: KING, CHRISTEN
	06:53		SUB IN: BELL, NAKIAH
SUB OUT: 44 MORTON, JORDAN	06:02	7-5	
SUB IN: 55 FLORINE, SHAYLI	06:02		
SUB OUT: 10 POHLMAN, CALLIE	05:33	7-5	
SUB IN: 1 ZYLKA, HALEY	05:33		
	05:06	8-5	SUB OUT: BAUMAN, SYDNEY
	05:06		SUB IN: WHITLOCK, ZARIA
SUB OUT: 31 JENSEN, MEGAN	05:06		
SUB IN: 34 JOHNSON, BRIANNA	05:06		
SUB OUT: 15 DIEKHOFF, SYDNEY	05:06		
SUB IN: 33 HOPKINS, GIOVANNI	05:06		
SUB OUT: 1 ZYLKA, HALEY	04:46	8-5	
SUB IN: 10 POHLMAN, CALLIE	04:46		
SUB OUT: 33 HOPKINS, GIOVANNI	04:46		
SUB IN: 31 JENSEN, MEGAN	04:46		
SUB OUT: 34 JOHNSON, BRIANNA	04:46		
SUB IN: 44 MORTON, JORDAN	04:46		
SUB OUT: 55 FLORINE, SHAYLI	04:46		
SUB IN: 15 DIEKHOFF, SYDNEY	04:46		
	04:20	8-5	SUB OUT: EVERIDGE, RIANA
	04:20		SUB IN: BAUMAN, SYDNEY
	03:08	11-9	SUB OUT: BELL, NAKIAH
	03:08		SUB IN: KING, CHRISTEN
	03:08		SUB OUT: ALSTON, JAY'NEE
	03:08		SUB IN: AKUEN, ALEK
	03:08		SUB OUT: WHITLOCK, ZARIA
	03:08		SUB IN: JONES, MICAH
	03:08		SUB OUT: BAUMAN, SYDNEY
	03:08		SUB IN: KEITH, MIKIA
	03:08		SUB OUT: TROECKLER, ALLIE
	03:08		SUB IN: KOEHLER, KAI
SUB OUT: 44 MORTON, JORDAN	02:49	11-11	
SUB IN: 55 FLORINE, SHAYLI	02:49		
SUB OUT: 15 DIEKHOFF, SYDNEY	02:10	11-14	
SUB IN: 20 KRAUSE, JENNA	02:10		
SUB OUT: 10 POHLMAN, CALLIE	02:10		
SUB IN: 1 ZYLKA, HALEY	02:10		
SUB OUT: 24 HEBERG, JORDAN	00:44	14-19	
SUB IN: 15 DIEKHOFF, SYDNEY	00:44		
	00:13	14-21	SUB OUT: JONES, MICAH
	00:13		SUB IN: WHITLOCK, ZARIA
SUB OUT: 31 JENSEN, MEGAN	00:13		
SUB IN: 34 JOHNSON, BRIANNA	00:13		

McKendree 17, SIUE 22

**Official Substitutions Log
McKendree vs SIUE
Period 2
December 30, 2018**

VISITORS: McKendree	Time	Score	HOME: SIUE
10 POHLMAN, CALLIE			1 KING, CHRISTEN
15 DIEKHOFF, SYDNEY			5 ALSTON, JAY'NEE
24 HEBERG, JORDAN			14 JONES, MICAH
31 JENSEN, MEGAN			23 TROECKLER, ALLIE
44 MORTON, JORDAN			34 BAUMAN, SYDNEY
	09:15	17-24	SUB OUT: AKUEN, ALEK
	09:15		SUB IN: BOONE, LYRIC
	07:43	19-28	SUB OUT: KEITH, MIKIA
	07:43		SUB IN: ALSTON, JAY'NEE
SUB OUT: 55 FLORINE, SHAYLI	07:43		
SUB IN: 33 HOPKINS, GIOVANNI	07:43		
	07:18	19-28	SUB OUT: WHITLOCK, ZARIA
	07:18		SUB IN: BAUMAN, SYDNEY
SUB OUT: 31 JENSEN, MEGAN	06:05	21-33	
SUB IN: 20 KRAUSE, JENNA	06:05		
SUB OUT: 33 HOPKINS, GIOVANNI	06:05		
SUB IN: 55 FLORINE, SHAYLI	06:05		
	05:16	24-35	SUB OUT: KOEHLER, KAI
	05:16		SUB IN: BELL, NAKIAH
	05:16		SUB OUT: BOONE, LYRIC
	05:16		SUB IN: TROECKLER, ALLIE
SUB OUT: 20 KRAUSE, JENNA	05:16		
SUB IN: 31 JENSEN, MEGAN	05:16		
	03:30	27-36	SUB OUT: BAUMAN, SYDNEY
	03:30		SUB IN: WHITLOCK, ZARIA
SUB OUT: 55 FLORINE, SHAYLI	03:30		
SUB IN: 34 JOHNSON, BRIANNA	03:30		
SUB OUT: 34 JOHNSON, BRIANNA	03:06	27-36	
SUB IN: 42 STROBERG, ERIN	03:06		
	02:43	29-36	SUB OUT: KING, CHRISTEN
	02:43		SUB IN: HALL, MIKALA
	02:43		SUB OUT: WHITLOCK, ZARIA
	02:43		SUB IN: JONES, MICAH
SUB OUT: 31 JENSEN, MEGAN	01:48	31-36	
SUB IN: 55 FLORINE, SHAYLI	01:48		
SUB OUT: 10 POHLMAN, CALLIE	01:01	31-38	
SUB IN: 1 ZYLKA, HALEY	01:01		
SUB OUT: 24 HEBERG, JORDAN	01:01		
SUB IN: 20 KRAUSE, JENNA	01:01		
	00:34	32-38	SUB OUT: JONES, MICAH
	00:34		SUB IN: BAUMAN, SYDNEY
SUB OUT: 55 FLORINE, SHAYLI	00:34		
SUB IN: 34 JOHNSON, BRIANNA	00:34		

McKendree 34, SIUE 38

**Official Substitutions Log
McKendree vs SIUE
Period 3
December 30, 2018**

VISITORS: McKendree	Time	Score	HOME: SIUE
10 POHLMAN, CALLIE			1 KING, CHRISTEN
15 DIEKHOFF, SYDNEY			5 ALSTON, JAY'NEE
24 HEBERG, JORDAN			14 JONES, MICAH
31 JENSEN, MEGAN			23 TROECKLER, ALLIE
44 MORTON, JORDAN			34 BAUMAN, SYDNEY
	07:35	38-38	SUB OUT: BAUMAN, SYDNEY
	07:35		SUB IN: AKUEN, ALEK
SUB OUT: 55 FLORINE, SHAYLI	06:26	38-38	
SUB IN: 31 JENSEN, MEGAN	06:26		
SUB OUT: 44 MORTON, JORDAN	06:08	38-40	
SUB IN: 55 FLORINE, SHAYLI	06:08		
	04:40	38-43	SUB OUT: KING, CHRISTEN
	04:40		SUB IN: EVERIDGE, RIANA
SUB OUT: 10 POHLMAN, CALLIE	04:40		
SUB IN: 1 ZYLKA, HALEY	04:40		
SUB OUT: 24 HEBERG, JORDAN	04:40		
SUB IN: 20 KRAUSE, JENNA	04:40		
	02:22	40-45	SUB OUT: ALSTON, JAY'NEE
	02:22		SUB IN: KEITH, MIKIA
	02:22		SUB OUT: TROECKLER, ALLIE
	02:22		SUB IN: KING, CHRISTEN
	02:22		SUB OUT: EVERIDGE, RIANA
	02:22		SUB IN: WHITLOCK, ZARIA
SUB OUT: 31 JENSEN, MEGAN	02:22		
SUB IN: 44 MORTON, JORDAN	02:22		
SUB OUT: 55 FLORINE, SHAYLI	02:22		
SUB IN: 34 JOHNSON, BRIANNA	02:22		
SUB OUT: 15 DIEKHOFF, SYDNEY	01:50	42-45	
SUB IN: 31 JENSEN, MEGAN	01:50		
SUB OUT: 44 MORTON, JORDAN	01:50		
SUB IN: 24 HEBERG, JORDAN	01:50		
	01:50		SUB OUT: WHITLOCK, ZARIA
	01:50		SUB IN: EVERIDGE, RIANA

McKendree 45, SIUE 50

**Official Substitutions Log
McKendree vs SIUE
Period 4
December 30, 2018**

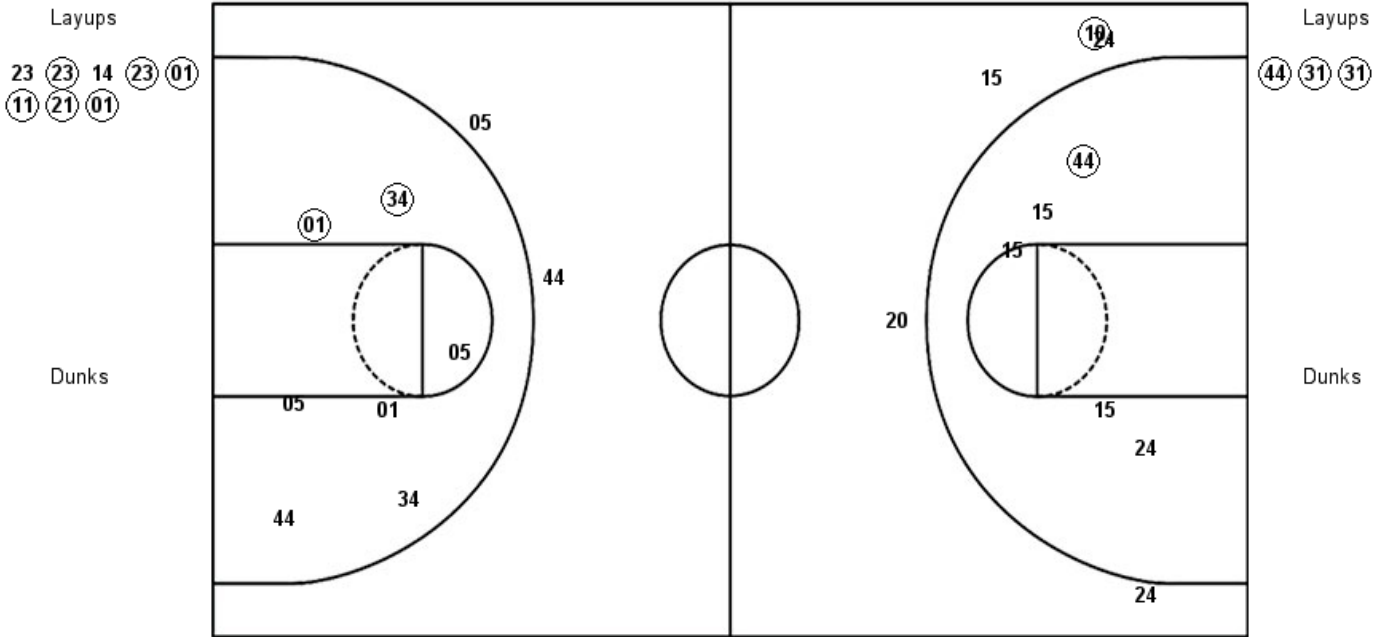
VISITORS: McKendree	Time	Score	HOME: SIUE
10 POHLMAN, CALLIE			1 KING, CHRISTEN
15 DIEKHOFF, SYDNEY			5 ALSTON, JAY'NEE
24 HEBERG, JORDAN			14 JONES, MICAH
31 JENSEN, MEGAN			23 TROECKLER, ALLIE
44 MORTON, JORDAN			34 BAUMAN, SYDNEY
	09:17	45-51	SUB OUT: EVERIDGE, RIANA
	09:17		SUB IN: TROECKLER, ALLIE
SUB OUT: 55 FLORINE, SHAYLI	07:28	47-55	
SUB IN: 34 JOHNSON, BRIANNA	07:28		
SUB OUT: 31 JENSEN, MEGAN	07:28		
SUB IN: 44 MORTON, JORDAN	07:28		
	06:20	47-59	SUB OUT: KING, CHRISTEN
	06:20		SUB IN: ALSTON, JAY'NEE
	05:49	47-61	SUB OUT: BELL, NAKIAH
	05:49		SUB IN: KING, CHRISTEN
SUB OUT: 34 JOHNSON, BRIANNA	05:49		
SUB IN: 31 JENSEN, MEGAN	05:49		
SUB OUT: 31 JENSEN, MEGAN	04:56	48-63	
SUB IN: 55 FLORINE, SHAYLI	04:56		
	04:52	49-63	SUB OUT: AKUEN, ALEK
	04:52		SUB IN: BAUMAN, SYDNEY
	04:52		SUB OUT: KEITH, MIKIA
	04:52		SUB IN: BELL, NAKIAH
	01:16	58-63	SUB OUT: ALSTON, JAY'NEE
	01:16		SUB IN: EVERIDGE, RIANA
	01:16		SUB OUT: BAUMAN, SYDNEY
	01:16		SUB IN: KEITH, MIKIA
SUB OUT: 55 FLORINE, SHAYLI	01:16		
SUB IN: 31 JENSEN, MEGAN	01:16		
	01:04	60-63	SUB OUT: EVERIDGE, RIANA
	01:04		SUB IN: ALSTON, JAY'NEE
	00:11	63-63	SUB OUT: ALSTON, JAY'NEE
	00:11		SUB IN: AKUEN, ALEK
SUB OUT: 31 JENSEN, MEGAN	00:11		
SUB IN: 1 ZYLKA, HALEY	00:11		

McKendree 63, SIUE 64

Official Shot Chart
 McKendree vs SIUE
 PERIOD 1 Shots
 December 30, 2018

SIUE

McKendree



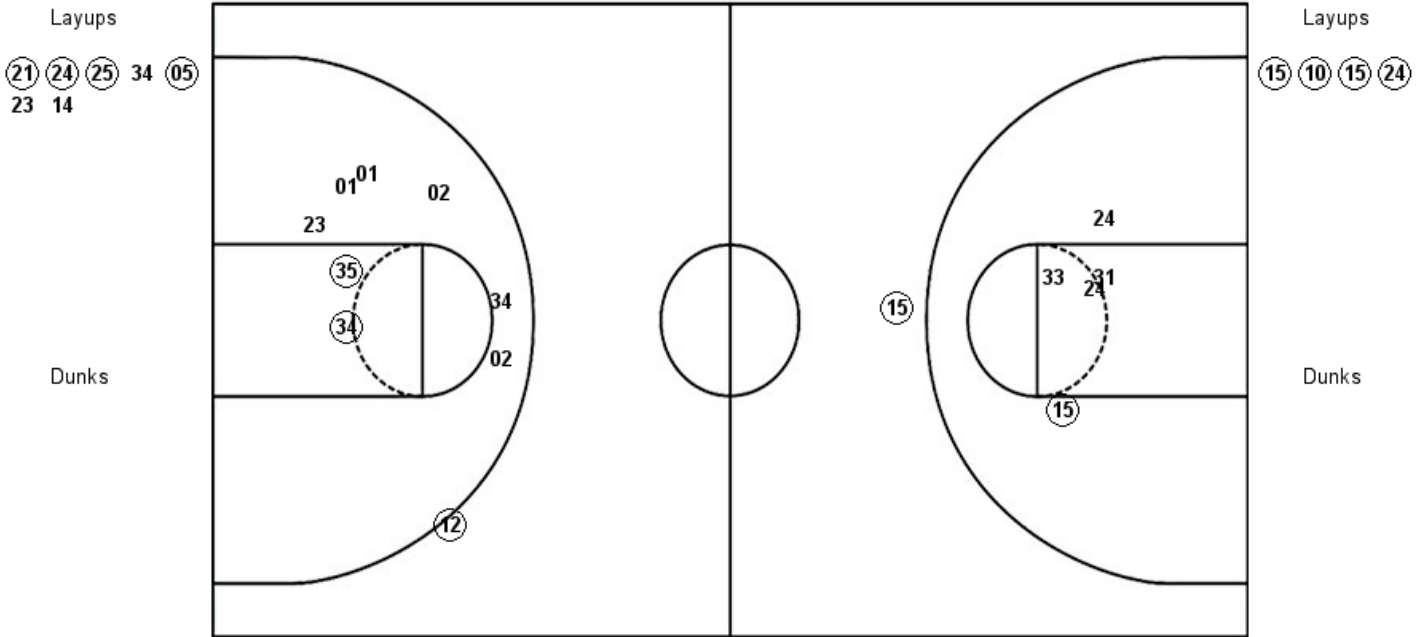
SIUE: Period 1	Made	Att	Pct
Layups	6	8	75.0
Dunks	0	0	0
2PT Field Goals	8	15	53.3
3PT Field Goals	0	2	00.0
Total Field Goals	8	17	47.1

McK: Period 1	Made	Att	Pct
Layups	3	3	100.0
Dunks	0	0	0
2PT Field Goals	4	8	50.0
3PT Field Goals	1	5	20.0
Total Field Goals	5	13	38.5

Official Shot Chart
 McKendree vs SIUE
 PERIOD 2 Shots
 December 30, 2018

SIUE

McKendree



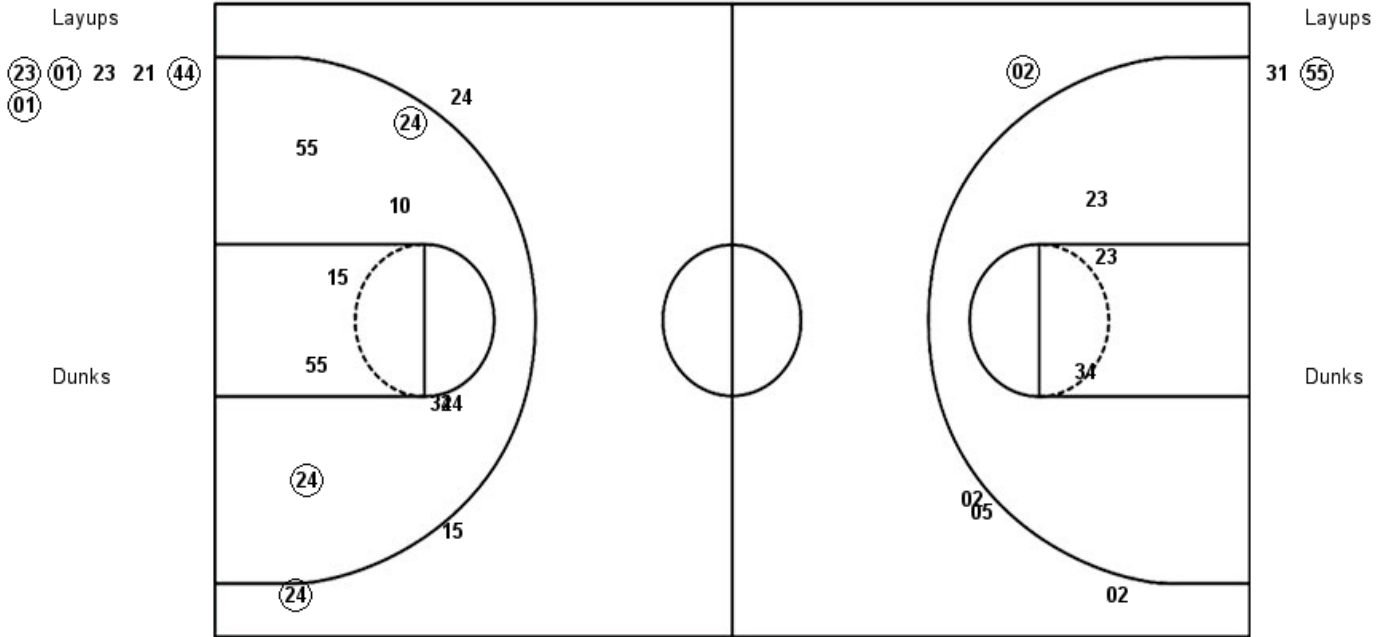
SIUE: Period 2	Made	Att	Pct
Layups	4	7	57.1
Dunks	0	0	0
2PT Field Goals	6	15	40.0
3PT Field Goals	1	1	100.0
Total Field Goals	7	16	43.8

McK: Period 2	Made	Att	Pct
Layups	4	4	100.0
Dunks	0	0	0
2PT Field Goals	5	9	55.6
3PT Field Goals	1	1	100.0
Total Field Goals	6	10	60.0

Official Shot Chart
 McKendree vs SIUE
 PERIOD 3 Shots
 December 30, 2018

SIUE

McKendree



SIUE: Period 3	Made	Att	Pct
Layups	4	6	66.7
Dunks	0	0	0
2PT Field Goals	4	9	44.4
3PT Field Goals	1	4	25.0
Total Field Goals	5	13	38.5

McK: Period 3	Made	Att	Pct
Layups	1	2	50.0
Dunks	0	0	0
2PT Field Goals	3	10	30.0
3PT Field Goals	1	3	33.3
Total Field Goals	4	13	30.8

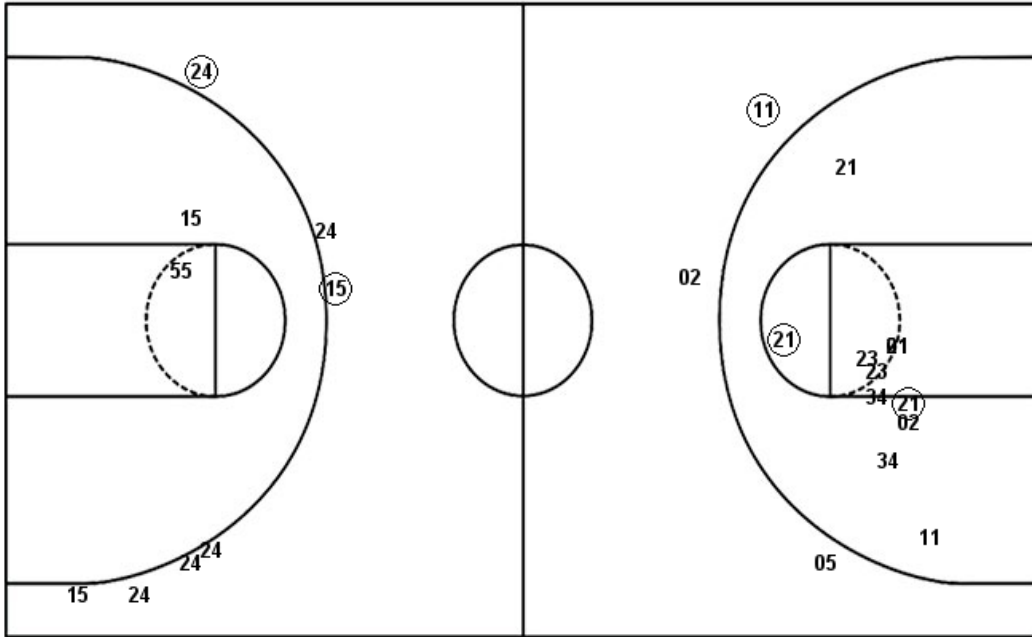
Official Shot Chart
 McKendree vs SIUE
 PERIOD 4 Shots
 December 30, 2018

SIUE

McKendree

Layups
 (23) 23 34 34

Layups
 24 (15) 15 (44) (15)
 24



Dunks

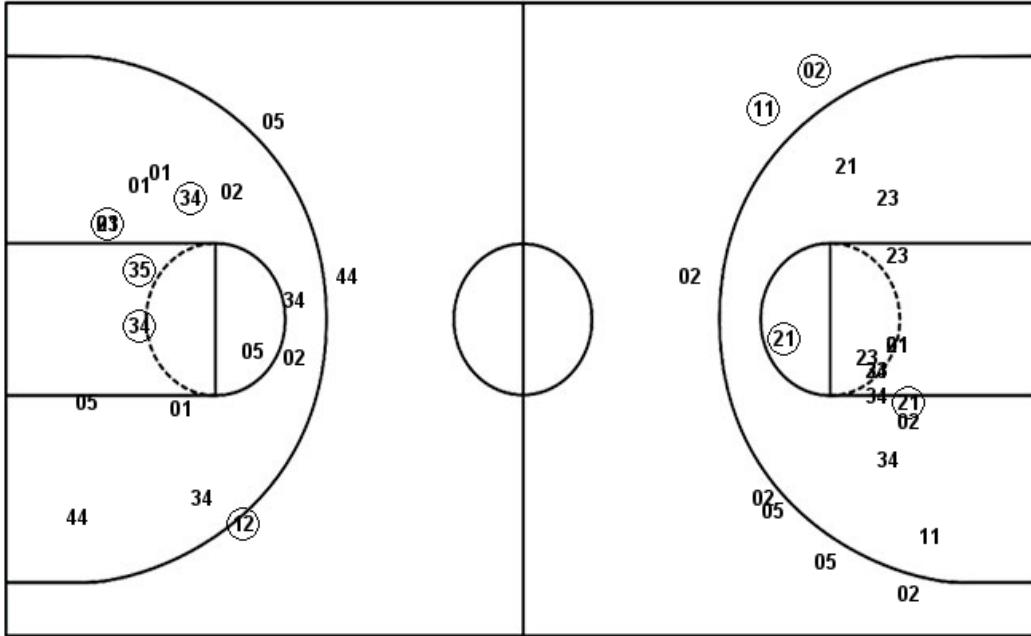
Dunks

SIUE: Period 4	Made	Att	Pct
Layups	1	4	25.0
Dunks	0	0	0
2PT Field Goals	3	15	20.0
3PT Field Goals	1	3	33.3
Total Field Goals	4	18	22.2

McK: Period 4	Made	Att	Pct
Layups	3	6	50.0
Dunks	0	0	0
2PT Field Goals	3	8	37.5
3PT Field Goals	2	7	28.6
Total Field Goals	5	15	33.3

**Official Shot Chart
McKendree vs SIUE
SIUE Team Shots
December 30, 2018**

Layups



Layups

23 23 14 23 01
 11 21 01 21 24
 25 34 05 23 14
 23 01 23 21 44
 01 23 23 34 34

Dunks

Dunks

SIE : Period 1	Made	Att	Pct
Layups	6	8	75.0
Dunks	0	0	0
2PT Field Goals	8	15	53.3
3PT Field Goals	0	2	00.0
Total Field Goals	8	17	47.1

SIE : Period 2	Made	Att	Pct
Layups	4	7	57.1
Dunks	0	0	0
2PT Field Goals	6	15	40.0
3PT Field Goals	1	1	100.0
Total Field Goals	7	16	43.8

SIE : Period 3	Made	Att	Pct
Layups	4	6	66.7
Dunks	0	0	0
2PT Field Goals	4	9	44.4
3PT Field Goals	1	4	25.0
Total Field Goals	5	13	38.5

SIE : Period 4	Made	Att	Pct
Layups	1	4	25.0
Dunks	0	0	0
2PT Field Goals	3	15	20.0
3PT Field Goals	1	3	33.3
Total Field Goals	4	18	22.2