

## FINAL SCORE

**Ill. Wesleyan**

**71**

**SIUE**

**81**



November 06, 2018 • Vadalabene Center - Edwardsville, Ill.

## FINAL STATISTICS

**Official Box Score**  
**III. Wesleyan vs SIUE**  
**Game Totals -- Final Statistics**  
**November 06, 2018 at Vadalabene Center - Edwardsville, Ill.**



**III. Wesleyan 71**

No.	Player	S	Pts	FG	3FG	FT	OR	DR	TR	PF	A	TO	Blk	Stl	Min	+/-
12	SHANKS, SYDNEY		10	4-11	1-3	1-2	2	3	5	0	0	2	0	0	29	-10
14	MUNROE, SAMANTHA		0	0-4	0-2	0-0	1	1	2	2	3	0	0	0	14	-5
22	ANDERSON, NINA		3	1-5	1-2	0-0	0	1	1	0	3	0	0	0	15	-10
23	MERRITT, MADDIE		16	3-9	1-2	9-9	1	0	1	3	1	1	0	1	24	3
40	SCHNEIDER, ASHLEY		10	4-10	1-4	1-2	2	4	6	3	7	1	0	1	30	-13
05	BROVELLI, RILEY		0	0-1	0-0	0-0	1	4	5	3	1	0	0	0	15	-5
11	ECK, CATIE		10	4-4	2-2	0-0	0	0	0	0	1	1	0	0	11	-3
13	LOWIS, ANNA		0	0-0	0-0	0-0	0	0	0	0	0	0	0	0	1	2
15	LANSFORD, BROOKE		0	0-2	0-1	0-0	0	0	0	0	1	2	0	1	17	-8
20	BOWEN, KAIA		0	0-1	0-0	0-2	0	1	1	0	0	0	0	0	4	-5
21	HUGHES, RAVEN		6	2-4	0-1	2-4	2	4	6	0	1	1	0	0	24	2
24	SOSA, KENDALL		16	6-9	4-5	0-0	0	5	5	0	0	2	0	0	16	2
<b>TEAM</b>							2	2	4	0		0				
<b>TOTALS</b>			<b>71</b>	<b>24-60</b>	<b>10-22</b>	<b>13-19</b>	<b>9</b>	<b>23</b>	<b>36</b>	<b>11</b>	<b>17</b>	<b>13</b>	<b>0</b>	<b>3</b>	<b>0</b>	

*Shooting By Period*

Period	FG	FG%	3FG	3FG%	FT	FT%
1st Qtr	7-20	35%	4-10	40%	2-2	100%
2nd Qtr	6-16	38%	3-4	75%	3-6	50%
3rd Qtr	8-14	57%	2-5	40%	4-4	100%
4th Qtr	3-10	30%	1-3	33%	4-7	57%
1st Half	13-36	36%	7-14	50%	5-8	63%
2nd Half	11-24	46%	3-8	38%	8-11	73%
<b>Game</b>	<b>24-60</b>	<b>40.0%</b>	<b>10-22</b>	<b>45.5%</b>	<b>13-19</b>	<b>68.4%</b>

*Last FG: 4th-01:16*  
*Biggest Run: 6-0*  
*Largest lead: By 8 at 2-07:39*  
*Technical Fouls: None.*

**SIUE 81**

No.	Player	S	Pts	FG	3FG	FT	OR	DR	TR	PF	A	TO	Blk	Stl	Min	+/-
01	KING, CHRISTEN		12	4-10	0-2	4-4	1	0	1	1	3	0	1	2	22	2
05	ALSTON, JAY'NEE		26	9-14	4-9	4-5	0	0	0	3	2	2	0	2	31	18
12	KOEHLER, KAI		8	2-10	2-10	2-2	1	1	2	1	2	0	0	1	19	13
14	JONES, MICAH		2	0-3	0-0	2-2	2	1	3	4	2	1	0	0	10	-1
34	BAUMAN, SYDNEY		15	6-8	0-1	3-4	2	13	15	3	4	1	2	1	30	15
02	BELL, NAKIAH		11	4-10	3-9	0-0	1	1	2	1	5	1	0	0	29	2
11	KEITH, MIKIA		0	0-2	0-2	0-0	1	0	1	2	0	0	0	1	7	-9
15	CHURCHILL, CLOE		0	0-6	0-3	0-0	1	2	3	1	0	1	0	0	11	-3
21	AKUEN, ALEK		2	1-1	0-0	0-0	1	0	1	0	0	1	0	0	5	-2
24	BOONE, LYRIC		1	0-1	0-0	1-2	2	2	4	0	0	2	0	0	8	2
25	WHITLOCK, ZARIA		0	0-1	0-0	0-0	2	4	6	2	1	0	0	1	20	6
35	HALL, MIKALA		4	2-4	0-2	0-0	1	0	1	1	1	2	0	0	8	7
<b>TEAM</b>							4	3	7	0		0				
<b>TOTALS</b>			<b>81</b>	<b>28-70</b>	<b>9-38</b>	<b>16-19</b>	<b>15</b>	<b>24</b>	<b>46</b>	<b>19</b>	<b>20</b>	<b>11</b>	<b>3</b>	<b>8</b>	<b>0</b>	

*Shooting By Period*

Period	FG	FG%	3FG	3FG%	FT	FT%
1st Qtr	7-18	39%	1-8	13%	3-4	75%
2nd Qtr	8-17	47%	4-12	33%	2-2	100%
3rd Qtr	5-18	28%	2-8	25%	9-10	90%
4th Qtr	8-17	47%	2-10	20%	2-3	67%
1st Half	15-35	43%	5-20	25%	5-6	83%
2nd Half	13-35	37%	4-18	22%	11-13	85%
<b>Game</b>	<b>28-70</b>	<b>40.0%</b>	<b>9-38</b>	<b>23.7%</b>	<b>16-19</b>	<b>84.2%</b>

*Last FG: 4th-00:03*  
*Biggest Run: 8-0*  
*Largest lead: By 10 at 4-00:03*  
*Technical Fouls: None.*

*Game Notes:*

*Officials: Missy Brooks, Kalee Davidson, Jonathan Patterson*  
*Attendance: 545*

*Start Time: 2018-11-06 01:01:51*  
*End Time: 2018-11-06 03:12:05*  
*Game Duration: 130*

Score	1st	2nd	3rd	4th	TOT
IWU	20	18	22	11	<b>71</b>
SIE	18	22	21	20	<b>81</b>

*IWU led for 0:00. SIE led for 0:00.*  
*Game was tied for 2:29.*  
*Times tied: 10      Lead Changes: 10*

Points from	IWU	SIE
In the Paint	22	32
Off Turns	12	14
2nd Chance	0	0
Fast Break	2	13
Bench	32	18

**Official Box Score**  
**III. Wesleyan vs SIUE**  
**First Half Statistics Only**  
**November 06, 2018 at Vadalabene Center - Edwardsville, Ill.**



**III. Wesleyan 38**

No.	Player	S	Pts	FG	3FG	FT	OR	DR	TR	PF	A	TO	Blk	Stl	Min	+/-
05	BROVELLI, RILEY		0	0-1	0-0	0-0	1	2	3	1	0	0	0	0	5	2
11	ECK, CATIE		10	4-4	2-2	0-0	0	0	0	0	0	0	0	0	8	-4
12	SHANKS, SYDNEY		5	2-6	1-1	0-0	1	0	1	0	0	1	0	0	11	0
13	LOWIS, ANNA		0	0-0	0-0	0-0	0	0	0	0	0	0	0	0	1	2
14	MUNROE, SAMANTHA		0	0-2	0-1	0-0	1	0	1	1	2	2	0	0	6	0
15	LANSFORD, BROOKE		0	0-2	0-1	0-0	0	0	0	0	1	2	0	0	11	-8
20	BOWEN, KAIA		0	0-1	0-0	0-2	0	1	1	0	0	0	0	0	4	-5
21	HUGHES, RAVEN		2	1-2	0-1	0-0	2	1	3	0	1	0	0	0	11	1
22	ANDERSON, NINA		3	1-4	1-2	0-0	0	1	1	0	2	0	0	0	9	-2
23	MERRITT, MADDIE		4	0-3	0-1	4-4	1	0	1	1	1	0	0	1	11	0
24	SOSA, KENDALL		9	3-5	3-3	0-0	0	4	4	0	0	0	0	0	9	3
40	SCHNEIDER, ASHLEY		5	2-6	0-2	1-2	1	1	2	0	4	1	0	0	14	1
	TEAM		0	0-0	0-0	0-0	2	2	4	0	0	0	0	0	0	0
<b>TOTALS</b>			<b>38</b>	<b>13-36</b>	<b>7-14</b>	<b>5-8</b>	<b>7</b>	<b>10</b>	<b>21</b>	<b>3</b>	<b>11</b>	<b>6</b>	<b>0</b>	<b>1</b>	<b>100</b>	

*Shooting By Period*

Period	FG	FG%	3FG	3FG%	FT	FT%
1st Qtr	7-20	35%	4-10	40%	2-2	100%
2nd Qtr	6-16	38%	3-4	75%	3-6	50%
1st Half	13-36	36%	7-14	50%	5-8	63%
Game	24-60	40.0%	10-22	45.5%	13-19	68.4%

*Last FG Half: IWU 2nd-01:55*

**SIUE 40**

No.	Player	S	Pts	FG	3FG	FT	OR	DR	TR	PF	A	TO	Blk	Stl	Min	+/-
01	KING, CHRISTEN		8	3-6	0-1	2-2	1	0	1	1	1	0	1	2	11	2
02	BELL, NAKIAH		3	1-3	1-3	0-0	0	1	1	0	3	1	0	0	14	2
05	ALSTON, JAY'NEE		13	5-9	3-7	0-0	0	0	0	1	0	2	0	0	17	5
11	KEITH, MIKIA		0	0-2	0-2	0-0	0	0	0	0	0	0	0	0	3	-3
12	KOEHLER, KAI		5	1-6	1-6	2-2	1	0	1	1	1	0	0	0	11	-1
14	JONES, MICAH		0	0-1	0-0	0-0	1	1	2	2	2	1	0	0	6	3
15	CHURCHILL, CLOE		0	0-1	0-1	0-0	1	2	3	0	0	1	0	0	5	1
21	AKUEN, ALEK		2	1-1	0-0	0-0	1	0	1	0	0	1	0	0	5	-2
24	BOONE, LYRIC		0	0-0	0-0	0-0	1	2	3	0	0	2	0	0	5	5
25	WHITLOCK, ZARIA		0	0-1	0-0	0-0	0	0	0	2	0	0	0	1	7	-5
34	BAUMAN, SYDNEY		9	4-5	0-0	1-2	1	7	8	1	3	0	1	0	16	3
35	HALL, MIKALA		0	0-0	0-0	0-0	0	0	0	0	0	0	0	0	0	0
	TEAM		0	0-0	0-0	0-0	2	2	4	0	0	0	0	0	0	0
<b>TOTALS</b>			<b>40</b>	<b>15-35</b>	<b>5-20</b>	<b>5-6</b>	<b>7</b>	<b>13</b>	<b>24</b>	<b>8</b>	<b>10</b>	<b>8</b>	<b>2</b>	<b>3</b>	<b>100</b>	

*Shooting By Period*

Period	FG	FG%	3FG	3FG%	FT	FT%
1st Qtr	7-18	39%	1-8	13%	3-4	75%
2nd Qtr	8-17	47%	4-12	33%	2-2	100%
1st Half	15-35	43%	5-20	25%	5-6	83%
Game	28-70	40.0%	9-38	23.7%	16-19	84.2%

*Last FG Half: SIE 2nd-00:47*

Game Notes:

Officials: Missy Brooks, Kalee Davidson, Jonathan Patterson  
 Attendance: 545

Start Time: 2018-11-06 01:01:51  
 End Time: 2018-11-06 03:12:05  
 Game Duration: 130

Score	1st	2nd	3rd	4th	TOT
IWU	20	18	22	11	<b>71</b>
SIE	18	22	21	20	<b>81</b>

Points from (This Period)	IWU	SIE
In the Paint	10	16
Off Turns	9	4
2nd Chance	0	0
Fast Break	0	9
Bench	21	5

**Official Box Score**  
**III. Wesleyan vs SIUE**  
**First Quarter Statistics Only**  
**November 06, 2018 at Vadalabene Center - Edwardsville, Ill.**



### III. Wesleyan 20

No.	Player	S	Pts	FG	3FG	FT	OR	DR	TR	PF	A	TO	Blk	Stl	Min	+/-
12	SHANKS, SYDNEY		5	2-4	1-1	0-0	1	0	1	0	0	1	0	0	7	1
14	MUNROE, SAMANTHA		0	0-2	0-1	0-0	1	0	1	1	2	2	0	0	6	0
22	ANDERSON, NINA		3	1-3	1-2	0-0	0	1	1	0	1	0	0	0	6	-1
23	MERRITT, MADDIE		2	0-3	0-1	2-2	1	0	1	1	0	0	0	1	5	3
40	SCHNEIDER, ASHLEY		2	1-3	0-2	0-0	1	0	1	0	3	0	0	0	8	5
05	BROVELLI, RILEY		0	0-1	0-0	0-0	0	1	1	0	0	0	0	0	2	-3
11	ECK, CATIE		3	1-1	1-1	0-0	0	0	0	0	0	0	0	0	3	2
13	LOWIS, ANNA		0	0-0	0-0	0-0	0	0	0	0	0	0	0	0	0	1
15	LANSFORD, BROOKE		0	0-0	0-0	0-0	0	0	0	0	0	2	0	0	4	1
20	BOWEN, KAIA		0	0-0	0-0	0-0	0	0	0	0	0	0	0	0	0	1
21	HUGHES, RAVEN		2	1-2	0-1	0-0	1	1	2	0	0	0	0	0	5	-1
24	SOSA, KENDALL		3	1-1	1-1	0-0	0	4	4	0	0	0	0	0	4	1
	TEAM						1	1	2	0		0				
<b>TOTALS</b>			<b>20</b>	<b>7-20</b>	<b>4-10</b>	<b>2-2</b>	<b>5</b>	<b>7</b>	<b>14</b>	<b>2</b>	<b>6</b>	<b>5</b>	<b>0</b>	<b>1</b>	<b>50</b>	

*Shooting By Period*

Period	FG	FG%	3FG	3FG%	FT	FT%
1st Qtr	7-20	35%	4-10	40%	2-2	100%
2nd Qtr	6-16	38%	3-4	75%	3-6	50%
1st Half	7-20	35%	4-10	40%	2-2	100%
1st Half	13-36	36%	7-14	50%	5-8	63%
Game	24-60	40.0%	10-22	45.5%	13-19	68.4%

### SIUE 18

No.	Player	S	Pts	FG	3FG	FT	OR	DR	TR	PF	A	TO	Blk	Stl	Min	+/-
01	KING, CHRISTEN		6	2-4	0-0	2-2	1	0	1	0	1	0	1	2	7	1
05	ALSTON, JAY'NEE		4	2-4	0-2	0-0	0	0	0	0	0	1	0	0	7	1
12	KOEHLER, KAI		0	0-1	0-1	0-0	0	0	0	0	0	0	0	0	4	-4
14	JONES, MICAH		0	0-0	0-0	0-0	0	1	1	2	1	1	0	0	4	-1
34	BAUMAN, SYDNEY		5	2-3	0-0	1-2	1	3	4	1	1	0	0	0	8	-4
02	BELL, NAKIAH		3	1-2	1-2	0-0	0	1	1	0	1	1	0	0	6	2
11	KEITH, MIKIA		0	0-2	0-2	0-0	0	0	0	0	0	0	0	0	3	-3
15	CHURCHILL, CLOE		0	0-1	0-1	0-0	1	0	1	0	0	1	0	0	3	-3
21	AKUEN, ALEK		0	0-0	0-0	0-0	0	0	0	0	0	0	0	0	2	3
24	BOONE, LYRIC		0	0-0	0-0	0-0	0	0	0	0	0	0	0	0	0	0
25	WHITLOCK, ZARIA		0	0-1	0-0	0-0	0	0	0	0	0	0	0	1	5	-2
35	HALL, MIKALA		0	0-0	0-0	0-0	0	0	0	0	0	0	0	0	0	0
	TEAM						1	2	3	0		0				
<b>TOTALS</b>			<b>18</b>	<b>7-18</b>	<b>1-8</b>	<b>3-4</b>	<b>3</b>	<b>5</b>	<b>11</b>	<b>3</b>	<b>4</b>	<b>4</b>	<b>1</b>	<b>3</b>	<b>50</b>	

*Shooting By Period*

Period	FG	FG%	3FG	3FG%	FT	FT%
1st Qtr	7-18	39%	1-8	13%	3-4	75%
2nd Qtr	8-17	47%	4-12	33%	2-2	100%
1st Half	7-18	39%	1-8	13%	3-4	75%
1st Half	15-35	43%	5-20	25%	5-6	83%
Game	28-70	40.0%	9-38	23.7%	16-19	84.2%

*Game Notes:*

Officials: Missy Brooks, Kalee Davidson, Jonathan Patterson  
Attendance: 545

Start Time: 2018-11-06 01:01:51  
End Time: 2018-11-06 03:12:05  
Game Duration: 130

Score	1st	2nd	3rd	4th	TOT
IWU	20	18	22	11	<b>71</b>
SIUE	18	22	21	20	<b>81</b>

Points from (This Period)	IWU	SIUE
In the Paint	4	10
Off Turns	3	4
2nd Chance	0	0
Fast Break	0	9
Bench	8	3

**Official Play-By-Play**  
**III. Wesleyan vs SIUE**  
**First Quarter**  
**November 06, 2018 at Vadalabene Center - Edwardsville, Ill.**



**Period 1**

**Starters:**

**III. Wesleyan:** 12 SHANKS, SYDNEY; 14 MUNROE, SAMANTHA; 22 ANDERSON, NINA; 23 MERRITT, MADDIE; 40 SCHNEIDER, ASHLEY;  
**SIUE:** 1 KING, CHRISTEN; 5 ALSTON, JAY'NEE; 12 KOEHLER, KAI; 14 JONES, MICAH; 34 BAUMAN, SYDNEY;

Time	VISITORS: III. Wesleyan	Score	Margin	HOME: SIUE
09:32	MISSED JUMPER by SHANKS, SYDNEY			
09:27				REBOUND (DEF) by BAUMAN, SYDNEY
09:24		2-0	H 2	GOOD! LAYUP by ALSTON, JAY'NEE [FB]
08:56	MISSED 3PTR by MERRITT, MADDIE			
08:52				REBOUND (DEF) by JONES, MICAH
08:42				MISSED 3PTR by KOEHLER, KAI
08:38	REBOUND (DEF) by ANDERSON, NINA			
08:32	GOOD! 3PTR by SHANKS, SYDNEY	2-3	V 1	
08:32	ASSIST by ANDERSON, NINA			
08:19				MISSED 3PTR by ALSTON, JAY'NEE
08:17				REBOUND (OFF) by TEAM
08:10				TURNOVER (LOSTBALL) by JONES, MICAH
08:10	STEAL by MERRITT, MADDIE			
08:02	MISSED 3PTR by SCHNEIDER, ASHLEY			
07:59	REBOUND (OFF) by MUNROE, SAMANTHA			
07:59				FOUL (PERSONAL) by JONES, MICAH
07:53	MISSED JUMPER by MERRITT, MADDIE			
07:53				BLOCK by KING, CHRISTEN
07:53	REBOUND (OFF) by TEAM			
07:44	GOOD! 3PTR by ANDERSON, NINA	2-6	V 4	
07:44	ASSIST by MUNROE, SAMANTHA			
07:26				TURNOVER (BADPASS) by ALSTON, JAY'NEE
07:26				SUB OUT: JONES, MICAH
07:26				SUB IN: WHITLOCK, ZARIA
07:17	TURNOVER (BADPASS) by MUNROE, SAMANTHA			
07:17				STEAL by KING, CHRISTEN
07:11		4-6	V 2	GOOD! LAYUP by KING, CHRISTEN [FB]
06:58	GOOD! JUMPER by SHANKS, SYDNEY	4-8	V 4	
06:58	ASSIST by MUNROE, SAMANTHA			
06:44		6-8	V 2	GOOD! LAYUP by ALSTON, JAY'NEE
06:44				ASSIST by BAUMAN, SYDNEY
06:27	MISSED JUMPER by MERRITT, MADDIE			
06:18	REBOUND (OFF) by SCHNEIDER, ASHLEY			
06:18	GOOD! LAYUP by SCHNEIDER, ASHLEY	6-10	V 4	
06:18				SUB OUT: KOEHLER, KAI
06:18				SUB IN: BELL, NAKIAH
06:00				MISSED 3PTR by ALSTON, JAY'NEE
05:58	REBOUND (DEF) by TEAM			
05:58	SUB OUT: MERRITT, MADDIE			
05:58	SUB IN: HUGHES, RAVEN			
05:41	MISSED JUMPER by ANDERSON, NINA			
05:37				REBOUND (DEF) by BAUMAN, SYDNEY
05:34		8-10	V 2	GOOD! LAYUP by KING, CHRISTEN [FB/PNT]
05:24	MISSED 3PTR by MUNROE, SAMANTHA			
05:20	REBOUND (OFF) by SHANKS, SYDNEY			
05:16	MISSED JUMPER by MUNROE, SAMANTHA			
05:10	REBOUND (OFF) by HUGHES, RAVEN			
05:03	MISSED 3PTR by HUGHES, RAVEN			
05:00				REBOUND (DEF) by TEAM
05:00				SUB OUT: KING, CHRISTEN
05:00				SUB IN: JONES, MICAH
05:00				SUB OUT: ALSTON, JAY'NEE
05:00				SUB IN: CHURCHILL, CLOE
05:00				SUB OUT: BAUMAN, SYDNEY
05:00				SUB IN: KEITH, MIKIA
05:00	SUB OUT: MUNROE, SAMANTHA			
05:00	SUB IN: LANSFORD, BROOKE			
05:00	SUB OUT: ANDERSON, NINA			
05:00	SUB IN: SOSA, KENDALL			
04:52				MISSED 3PTR by KEITH, MIKIA
04:47	REBOUND (DEF) by SOSA, KENDALL			
04:41	MISSED 3PTR by SCHNEIDER, ASHLEY			
04:36				REBOUND (DEF) by BELL, NAKIAH
04:31				
04:22		11-10	H 1	GOOD! 3PTR by BELL, NAKIAH
04:22				ASSIST by JONES, MICAH
04:08	TURNOVER (BADPASS) by LANSFORD, BROOKE			
04:08				STEAL by WHITLOCK, ZARIA
04:01				MISSED JUMPER by WHITLOCK, ZARIA
03:58				REBOUND (OFF) by CHURCHILL, CLOE

Time	VISITORS: III. Wesleyan	Score	Margin	HOME: SIUE
03:58				TURNOVER (BADPASS) by CHURCHILL, CLOE
03:58	TURNOVER (OTHER) by SHANKS, SYDNEY			
03:46				MISSED 3PTR by CHURCHILL, CLOE
03:41	REBOUND (DEF) by SOSA, KENDALL			
03:30				FOUL (PERSONAL) by JONES, MICAH
03:30				SUB OUT: JONES, MICAH
03:30				SUB IN: BAUMAN, SYDNEY
03:30	SUB OUT: SHANKS, SYDNEY			
03:30	SUB IN: ECK, CATIE			
03:24	GOOD! 3PTR by SOSA, KENDALL	11-13	V 2	
03:24	ASSIST by SCHNEIDER, ASHLEY			
03:16		13-13	T	GOOD! LAYUP by BAUMAN, SYDNEY [FB]
03:16				ASSIST by BELL, NAKIAH
03:01	GOOD! LAYUP by HUGHES, RAVEN	13-15	V 2	
03:01	ASSIST by SCHNEIDER, ASHLEY			
02:47				MISSED 3PTR by KEITH, MIKIA
02:43	REBOUND (DEF) by SOSA, KENDALL			
02:19	GOOD! 3PTR by ECK, CATIE	13-18	V 5	
02:19	ASSIST by SCHNEIDER, ASHLEY			
02:17	TIMEOUT 30SEC			
02:17				SUB OUT: KEITH, MIKIA
02:17				SUB IN: ALSTON, JAY'NEE
02:17				SUB OUT: CHURCHILL, CLOE
02:17				SUB IN: AKUEN, ALEK
02:17				SUB OUT: WHITLOCK, ZARIA
02:17				SUB IN: KING, CHRISTEN
02:17	SUB OUT: SCHNEIDER, ASHLEY			
02:17	SUB IN: BROVELLI, RILEY			
02:03				MISSED JUMPER by BAUMAN, SYDNEY
01:57	REBOUND (DEF) by SOSA, KENDALL			
01:46	MISSED JUMPER by BROVELLI, RILEY			
01:42				REBOUND (DEF) by BAUMAN, SYDNEY
01:33		15-18	V 3	GOOD! JUMPER by BAUMAN, SYDNEY
01:33				ASSIST by KING, CHRISTEN
01:19	TURNOVER (BADPASS) by LANSFORD, BROOKE			
01:19	SUB OUT: HUGHES, RAVEN			
01:19	SUB IN: MUNROE, SAMANTHA			
01:19	SUB OUT: SOSA, KENDALL			
01:19	SUB IN: ANDERSON, NINA			
01:19	SUB OUT: LANSFORD, BROOKE			
01:19	SUB IN: MERRITT, MADDIE			
01:12				MISSED 3PTR by BELL, NAKIAH
01:09				REBOUND (OFF) by KING, CHRISTEN
01:09	FOUL (PERSONAL) by MERRITT, MADDIE			
01:09		16-18	V 2	GOOD! FT by KING, CHRISTEN
01:09		17-18	V 1	GOOD! FT by KING, CHRISTEN
00:52	MISSED 3PTR by ANDERSON, NINA			
00:50				REBOUND (DEF) by TEAM
00:32				TURNOVER (BADPASS) by BELL, NAKIAH
00:22	TURNOVER (BADPASS) by MUNROE, SAMANTHA			
00:22				STEAL by KING, CHRISTEN
00:17				MISSED LAYUP by KING, CHRISTEN
00:17				REBOUND (OFF) by BAUMAN, SYDNEY
00:17	FOUL (PERSONAL) by MUNROE, SAMANTHA			
00:17		18-18	T	GOOD! FT by BAUMAN, SYDNEY [FB]
00:17	SUB OUT: ANDERSON, NINA			
00:17	SUB IN: SHANKS, SYDNEY			
00:17				MISSED FT by BAUMAN, SYDNEY
00:17	REBOUND (DEF) by BROVELLI, RILEY			
00:08	MISSED JUMPER by SHANKS, SYDNEY			
00:07	REBOUND (OFF) by MERRITT, MADDIE			
00:07				FOUL (PERSONAL) by BAUMAN, SYDNEY
00:07	GOOD! FT by MERRITT, MADDIE	18-19	V 1	
00:07				SUB OUT: BAUMAN, SYDNEY
00:07				SUB IN: WHITLOCK, ZARIA
00:07	SUB OUT: ECK, CATIE			
00:07	SUB IN: LOWIS, ANNA			
00:07	SUB OUT: MUNROE, SAMANTHA			
00:07	SUB IN: BOWEN, KAIA			
00:07	GOOD! FT by MERRITT, MADDIE	18-20	V 2	
00:07	SUB OUT: MERRITT, MADDIE			
00:07	SUB IN: HUGHES, RAVEN			
00:00				MISSED LAYUP by KING, CHRISTEN
00:00	REBOUND (DEF) by HUGHES, RAVEN			

### III. Wesleyan 20, SIUE 18

<b>Points from (This Period)</b>	<b>IWU</b>	<b>SIE</b>
In the Paint	4	10
Off Turns	3	4
2nd Chance	0	0
Fast Break	0	9
Bench	8	3

**Official Box Score**  
**III. Wesleyan vs SIUE**  
**Second Quarter Statistics Only**  
**November 06, 2018 at Vadalabene Center - Edwardsville, Ill.**



**III. Wesleyan 18**

No.	Player	S	Pts	FG	3FG	FT	OR	DR	TR	PF	A	TO	Blk	Stl	Min	+/-
12	SHANKS, SYDNEY		0	0-2	0-0	0-0	0	0	0	0	0	0	0	0	4	-1
14	MUNROE, SAMANTHA		0	0-0	0-0	0-0	0	0	0	0	0	0	0	0	0	0
22	ANDERSON, NINA		0	0-1	0-0	0-0	0	0	0	0	1	0	0	0	3	-1
23	MERRITT, MADDIE		2	0-0	0-0	2-2	0	0	0	0	1	0	0	0	6	-3
40	SCHNEIDER, ASHLEY		3	1-3	0-0	1-2	0	1	1	0	1	1	0	0	6	-4
05	BROVELLI, RILEY		0	0-0	0-0	0-0	1	1	2	1	0	0	0	0	3	5
11	ECK, CATIE		7	3-3	1-1	0-0	0	0	0	0	0	0	0	0	5	-6
13	LOWIS, ANNA		0	0-0	0-0	0-0	0	0	0	0	0	0	0	0	1	1
15	LANSFORD, BROOKE		0	0-2	0-1	0-0	0	0	0	0	1	0	0	0	7	-9
20	BOWEN, KAIA		0	0-1	0-0	0-2	0	1	1	0	0	0	0	0	4	-6
21	HUGHES, RAVEN		0	0-0	0-0	0-0	1	0	1	0	1	0	0	0	6	2
24	SOSA, KENDALL		6	2-4	2-2	0-0	0	0	0	0	0	0	0	0	5	2
	TEAM						1	1	2	0		0				
<b>TOTALS</b>			<b>18</b>	<b>6-16</b>	<b>3-4</b>	<b>3-6</b>	<b>2</b>	<b>3</b>	<b>7</b>	<b>1</b>	<b>5</b>	<b>1</b>	<b>0</b>	<b>0</b>	<b>50</b>	

*Shooting By Period*

Period	FG	FG%	3FG	3FG%	FT	FT%
3rd Qtr	8-14	57%	2-5	40%	4-4	100%
4th Qtr	3-10	30%	1-3	33%	4-7	57%
2nd Half	6-16	38%	3-4	75%	3-6	50%
2nd Half	11-24	46%	3-8	38%	8-11	73%
Game	24-60	40.0%	10-22	45.5%	13-19	68.4%

**SIUE 22**

No.	Player	S	Pts	FG	3FG	FT	OR	DR	TR	PF	A	TO	Blk	Stl	Min	+/-
01	KING, CHRISTEN		2	1-2	0-1	0-0	0	0	0	1	0	0	0	0	4	1
05	ALSTON, JAY'NEE		9	3-5	3-5	0-0	0	0	0	1	0	1	0	0	10	4
12	KOEHLER, KAI		5	1-5	1-5	2-2	1	0	1	1	1	0	0	0	7	3
14	JONES, MICAH		0	0-1	0-0	0-0	1	0	1	0	1	0	0	0	2	4
34	BAUMAN, SYDNEY		4	2-2	0-0	0-0	0	4	4	0	2	0	1	0	8	7
02	BELL, NAKIAH		0	0-1	0-1	0-0	0	0	0	0	2	0	0	0	8	0
11	KEITH, MIKIA		0	0-0	0-0	0-0	0	0	0	0	0	0	0	0	0	0
15	CHURCHILL, CLOE		0	0-0	0-0	0-0	0	2	2	0	0	0	0	0	2	4
21	AKUEN, ALEK		2	1-1	0-0	0-0	1	0	1	0	0	1	0	0	3	-5
24	BOONE, LYRIC		0	0-0	0-0	0-0	1	2	3	0	0	2	0	0	5	5
25	WHITLOCK, ZARIA		0	0-0	0-0	0-0	0	0	0	2	0	0	0	0	2	-3
35	HALL, MIKALA		0	0-0	0-0	0-0	0	0	0	0	0	0	0	0	0	0
	TEAM						1	0	1	0		0				
<b>TOTALS</b>			<b>22</b>	<b>8-17</b>	<b>4-12</b>	<b>2-2</b>	<b>4</b>	<b>8</b>	<b>13</b>	<b>5</b>	<b>6</b>	<b>4</b>	<b>1</b>	<b>0</b>	<b>50</b>	

*Shooting By Period*

Period	FG	FG%	3FG	3FG%	FT	FT%
3rd Qtr	5-18	28%	2-8	25%	9-10	90%
4th Qtr	8-17	47%	2-10	20%	2-3	67%
2nd Half	8-17	47%	4-12	33%	2-2	100%
2nd Half	13-35	37%	4-18	22%	11-13	85%
Game	28-70	40.0%	9-38	23.7%	16-19	84.2%

*Game Notes:*

Officials: Missy Brooks, Kalee Davidson, Jonathan Patterson  
Attendance: 545

Start Time: 2018-11-06 01:01:51  
End Time: 2018-11-06 03:12:05  
Game Duration: 130

Score	1st	2nd	3rd	4th	TOT
IWU	20	18	22	11	<b>71</b>
SIUE	18	22	21	20	<b>81</b>

Points from (This Period)	IWU	SIUE
In the Paint	6	6
Off Turns	6	0
2nd Chance	0	0
Fast Break	0	0
Bench	13	2



**Official Play-By-Play**  
**III. Wesleyan vs SIUE**  
**Second Quarter**  
**November 06, 2018 at Vadalabene Center - Edwardsville, Ill.**



**Period 2**

**Starters:**

**III. Wesleyan:** 12 SHANKS, SYDNEY; 14 MUNROE, SAMANTHA; 22 ANDERSON, NINA; 23 MERRITT, MADDIE; 40 SCHNEIDER, ASHLEY;  
**SIUE:** 1 KING, CHRISTEN; 5 ALSTON, JAY'NEE; 12 KOEHLER, KAI; 14 JONES, MICAH; 34 BAUMAN, SYDNEY;

Time	VISITORS: III. Wesleyan	Score	Margin	HOME: SIUE
09:39				TURNOVER (3SEC) by AKUEN, ALEK
09:28	GOOD! 3PTR by SOSA, KENDALL	18-23	V 5	
09:28	ASSIST by HUGHES, RAVEN			
09:09				MISSED 3PTR by KING, CHRISTEN
09:02				REBOUND (OFF) by AKUEN, ALEK
09:02		20-23	V 3	GOOD! LAYUP by AKUEN, ALEK
08:52	SUB OUT: LOWIS, ANNA			
08:52	SUB IN: SCHNEIDER, ASHLEY			
08:45	MISSED JUMPER by SHANKS, SYDNEY			
08:43	REBOUND (OFF) by HUGHES, RAVEN			
08:43				FOUL (PERSONAL) by WHITLOCK, ZARIA
08:32	GOOD! LAYUP by SCHNEIDER, ASHLEY	20-25	V 5	
08:10				MISSED 3PTR by BELL, NAKIAH
08:06	REBOUND (DEF) by SCHNEIDER, ASHLEY			
08:06				FOUL (PERSONAL) by WHITLOCK, ZARIA
08:06				SUB OUT: WHITLOCK, ZARIA
08:06				SUB IN: BAUMAN, SYDNEY
08:06				SUB OUT: KING, CHRISTEN
08:06				SUB IN: KOEHLER, KAI
07:47	MISSED JUMPER by SHANKS, SYDNEY			
07:42	REBOUND (OFF) by BROVELLI, RILEY			
07:39	GOOD! 3PTR by SOSA, KENDALL	20-28	V 8	
07:39	ASSIST by SCHNEIDER, ASHLEY			
07:21				MISSED 3PTR by KOEHLER, KAI
07:17	REBOUND (DEF) by BROVELLI, RILEY			
07:12	MISSED JUMPER by SCHNEIDER, ASHLEY			
07:08				REBOUND (DEF) by BAUMAN, SYDNEY
07:01				MISSED 3PTR by ALSTON, JAY'NEE
06:57				REBOUND (OFF) by KOEHLER, KAI
06:57	FOUL (PERSONAL) by BROVELLI, RILEY			
06:57		21-28	V 7	GOOD! FT by KOEHLER, KAI
06:57				SUB OUT: AKUEN, ALEK
06:57				SUB IN: BOONE, LYRIC
06:57	SUB OUT: SHANKS, SYDNEY			
06:57	SUB IN: LANSFORD, BROOKE			
06:57	SUB OUT: BROVELLI, RILEY			
06:57	SUB IN: MERRITT, MADDIE			
06:57		22-28	V 6	GOOD! FT by KOEHLER, KAI
06:36	MISSED JUMPER by SOSA, KENDALL			
06:32				REBOUND (DEF) by BOONE, LYRIC
06:32				TURNOVER (BADPASS) by BOONE, LYRIC
06:20				FOUL (PERSONAL) by KOEHLER, KAI
06:20	MISSED FT by SCHNEIDER, ASHLEY			
06:20	REBOUND (OFF) by TEAM			
06:20	GOOD! FT by SCHNEIDER, ASHLEY	22-29	V 7	
06:04		25-29	V 4	GOOD! 3PTR by ALSTON, JAY'NEE
06:04				ASSIST by BAUMAN, SYDNEY
05:48	MISSED JUMPER by SCHNEIDER, ASHLEY			
05:48				BLOCK by BAUMAN, SYDNEY
05:48	REBOUND (OFF) by TEAM			
05:41	MISSED JUMPER by SOSA, KENDALL			
05:37				REBOUND (DEF) by BAUMAN, SYDNEY
05:23				TURNOVER (LOSTBALL) by BOONE, LYRIC
05:23	SUB OUT: SOSA, KENDALL			
05:23	SUB IN: ECK, CATIE			
05:13	GOOD! LAYUP by ECK, CATIE [PNT]	25-31	V 6	
05:13	ASSIST by LANSFORD, BROOKE			
04:49		28-31	V 3	GOOD! 3PTR by KOEHLER, KAI
04:49				ASSIST by BAUMAN, SYDNEY
04:27				FOUL (PERSONAL) by ALSTON, JAY'NEE
04:27	GOOD! FT by MERRITT, MADDIE	28-32	V 4	
04:27	SUB OUT: HUGHES, RAVEN			
04:27	SUB IN: BOWEN, KAIA			
04:27	GOOD! FT by MERRITT, MADDIE	28-33	V 5	
04:27	SUB OUT: MERRITT, MADDIE			
04:27	SUB IN: SHANKS, SYDNEY			
04:13				MISSED 3PTR by KOEHLER, KAI
04:08				REBOUND (OFF) by BOONE, LYRIC
04:05		31-33	V 2	GOOD! 3PTR by ALSTON, JAY'NEE

Time	VISITORS: III. Wesleyan	Score	Margin	HOME: SIUE
04:05				ASSIST by BELL, NAKIAH
03:44	MISSED JUMPER by BOWEN, KAIA			
03:40				REBOUND (DEF) by BOONE, LYRIC
03:31		34-33	H 1	GOOD! 3PTR by ALSTON, JAY'NEE
03:31				ASSIST by KOEHLER, KAI
03:02	TURNOVER (TRAVEL) by SCHNEIDER, ASHLEY			
03:02	SUB OUT: SHANKS, SYDNEY			
03:02	SUB IN: ANDERSON, NINA			
03:02	SUB OUT: SCHNEIDER, ASHLEY			
03:02	SUB IN: MERRITT, MADDIE			
02:51				MISSED 3PTR by KOEHLER, KAI
02:49	REBOUND (DEF) by TEAM			
02:30	GOOD! LAYUP by ECK, CATIE	34-35	V 1	
02:30	ASSIST by MERRITT, MADDIE			
02:09		36-35	H 1	GOOD! JUMPER by BAUMAN, SYDNEY
02:09				ASSIST by BELL, NAKIAH
01:55	GOOD! 3PTR by ECK, CATIE	36-38	V 2	
01:55	ASSIST by ANDERSON, NINA			
01:53				TIMEOUT 30SEC
01:53				SUB OUT: BOONE, LYRIC
01:53				SUB IN: JONES, MICAH
01:37				MISSED 3PTR by KOEHLER, KAI
01:36	REBOUND (DEF) by BOWEN, KAIA			
01:36				FOUL (PERSONAL) by KING, CHRISTEN
01:36	MISSED FT by BOWEN, KAIA			
01:36	REBOUND (OFF) by TEAM			
01:36	MISSED FT by BOWEN, KAIA			
01:36				SUB OUT: KOEHLER, KAI
01:36				SUB IN: CHURCHILL, CLOE
01:36				SUB OUT: BELL, NAKIAH
01:36				SUB IN: KING, CHRISTEN
01:31				REBOUND (DEF) by CHURCHILL, CLOE
01:20		38-38	T	GOOD! LAYUP by BAUMAN, SYDNEY [PNT]
01:20				ASSIST by JONES, MICAH
00:58	MISSED LAYUP by ANDERSON, NINA			
00:53				REBOUND (DEF) by BAUMAN, SYDNEY
00:47		40-38	H 2	GOOD! JUMPER by KING, CHRISTEN [PNT]
00:28	SUB OUT: BOWEN, KAIA			
00:28	SUB IN: HUGHES, RAVEN			
00:27	MISSED 3PTR by LANSFORD, BROOKE			
00:22				REBOUND (DEF) by CHURCHILL, CLOE
00:13				MISSED 3PTR by ALSTON, JAY'NEE
00:08				REBOUND (OFF) by JONES, MICAH
00:07				MISSED LAYUP by JONES, MICAH
00:07				REBOUND (OFF) by TEAM
00:07				TURNOVER (OTHER) by ALSTON, JAY'NEE
00:07	SUB OUT: HUGHES, RAVEN			
00:07	SUB IN: SCHNEIDER, ASHLEY			
00:00	MISSED JUMPER by LANSFORD, BROOKE			
00:00				REBOUND (DEF) by BAUMAN, SYDNEY

### III. Wesleyan 38, SIUE 40

Points from (This Period)	IWU	SIE
In the Paint	6	6
Off Turns	6	0
2nd Chance	0	0
Fast Break	0	0
Bench	13	2

**Official Box Score**  
**III. Wesleyan vs SIUE**  
**Second Half Statistics Only**  
**November 06, 2018 at Vadalabene Center - Edwardsville, Ill.**



**III. Wesleyan 33**

No.	Player	S	Pts	FG	3FG	FT	OR	DR	TR	PF	A	TO	Blk	Stl	Min	+/-
05	BROVELLI, RILEY		0	0-0	0-0	0-0	0	2	2	2	1	0	0	0	10	-7
11	ECK, CATIE		0	0-0	0-0	0-0	0	0	0	0	1	1	0	0	2	1
12	SHANKS, SYDNEY		5	2-5	0-2	1-2	1	3	4	0	0	1	0	0	17	-10
13	LOWIS, ANNA		0	0-0	0-0	0-0	0	0	0	0	0	0	0	0	0	0
14	MUNROE, SAMANTHA		0	0-2	0-1	0-0	0	1	1	1	0	1	0	0	7	-5
15	LANSFORD, BROOKE		0	0-0	0-0	0-0	0	0	0	0	0	0	0	1	7	0
20	BOWEN, KAIA		0	0-0	0-0	0-0	0	0	0	0	0	0	0	0	0	0
21	HUGHES, RAVEN		4	1-2	0-0	2-4	0	3	3	0	0	1	0	0	13	1
22	ANDERSON, NINA		0	0-1	0-0	0-0	0	0	0	0	1	0	0	0	6	-8
23	MERRITT, MADDIE		12	3-6	1-1	5-5	0	0	0	2	0	1	0	0	12	3
24	SOSA, KENDALL		7	3-4	1-2	0-0	0	1	1	0	0	2	0	0	8	-1
40	SCHNEIDER, ASHLEY		5	2-4	1-2	0-0	1	3	4	3	3	0	0	1	16	-14
	TEAM		0	0-0	0-0	0-0	0	0	0	0	0	0	0	0	0	0
<b>TOTALS</b>			<b>33</b>	<b>11-24</b>	<b>3-8</b>	<b>8-11</b>	<b>2</b>	<b>13</b>	<b>15</b>	<b>8</b>	<b>6</b>	<b>7</b>	<b>0</b>	<b>2</b>	<b>100</b>	

*Shooting By Period*

Period	FG	FG%	3FG	3FG%	FT	FT%
3rd Qtr	8-14	57%	2-5	40%	4-4	100%
4th Qtr	3-10	30%	1-3	33%	4-7	57%
2nd Half	11-24	46%	3-8	38%	8-11	73%
Game	24-60	40.0%	10-22	45.5%	13-19	68.4%

*Last FG Half: IWU 4th-01:16*

**SIUE 41**

No.	Player	S	Pts	FG	3FG	FT	OR	DR	TR	PF	A	TO	Blk	Stl	Min	+/-
01	KING, CHRISTEN		4	1-4	0-1	2-2	0	0	0	0	2	0	0	0	11	0
02	BELL, NAKIAH		8	3-7	2-6	0-0	1	0	1	1	2	0	0	0	14	0
05	ALSTON, JAY'NEE		13	4-5	1-2	4-5	0	0	0	2	2	0	0	2	14	13
11	KEITH, MIKIA		0	0-0	0-0	0-0	1	0	1	2	0	0	0	1	4	-6
12	KOEHLER, KAI		3	1-4	1-4	0-0	0	1	1	0	1	0	0	1	9	14
14	JONES, MICAH		2	0-2	0-0	2-2	1	0	1	2	0	0	0	0	4	-4
15	CHURCHILL, CLOE		0	0-5	0-2	0-0	0	0	0	1	0	0	0	0	7	-4
21	AKUEN, ALEK		0	0-0	0-0	0-0	0	0	0	0	0	0	0	0	0	0
24	BOONE, LYRIC		1	0-1	0-0	1-2	1	0	1	0	0	0	0	0	3	-3
25	WHITLOCK, ZARIA		0	0-0	0-0	0-0	2	4	6	0	1	0	0	0	12	11
34	BAUMAN, SYDNEY		6	2-3	0-1	2-2	1	6	7	2	1	1	1	1	14	12
35	HALL, MIKALA		4	2-4	0-2	0-0	1	0	1	1	1	2	0	0	8	7
	TEAM		0	0-0	0-0	0-0	2	1	3	0	0	0	0	0	0	0
<b>TOTALS</b>			<b>41</b>	<b>13-35</b>	<b>4-18</b>	<b>11-13</b>	<b>8</b>	<b>11</b>	<b>22</b>	<b>11</b>	<b>10</b>	<b>3</b>	<b>1</b>	<b>5</b>	<b>100</b>	

*Shooting By Period*

Period	FG	FG%	3FG	3FG%	FT	FT%
3rd Qtr	5-18	28%	2-8	25%	9-10	90%
4th Qtr	8-17	47%	2-10	20%	2-3	67%
2nd Half	13-35	37%	4-18	22%	11-13	85%
Game	28-70	40.0%	9-38	23.7%	16-19	84.2%

*Last FG Half: SIE 4th-00:03*

*Game Notes:*

Officials: Missy Brooks, Kalee Davidson, Jonathan Patterson  
 Attendance: 545

Start Time: 2018-11-06 01:01:51  
 End Time: 2018-11-06 03:12:05  
 Game Duration: 130

Score	1st	2nd	3rd	4th	TOT
IWU	20	18	22	11	<b>71</b>
SIE	18	22	21	20	<b>81</b>

Points from (This Period)	IWU	SIE
In the Paint	12	16
Off Turns	3	10
2nd Chance	0	0
Fast Break	2	4
Bench	11	13

**Official Box Score**  
**III. Wesleyan vs SIUE**  
**Third Quarter Statistics Only**  
**November 06, 2018 at Vadalabene Center - Edwardsville, Ill.**



**III. Wesleyan 33**

No.	Player	S	Pts	FG	3FG	FT	OR	DR	TR	PF	A	TO	Blk	Stl	Min	+/-
12	SHANKS, SYDNEY		4	2-3	0-1	0-0	0	1	1	0	0	0	0	0	7	-1
14	MUNROE, SAMANTHA		0	0-1	0-1	0-0	0	0	0	0	0	0	0	0	5	-1
22	ANDERSON, NINA		0	0-1	0-0	0-0	0	0	0	0	1	0	0	0	4	-2
23	MERRITT, MADDIE		4	1-3	0-0	2-2	0	0	0	2	0	0	0	0	6	2
40	SCHNEIDER, ASHLEY		5	2-3	1-2	0-0	1	3	4	2	3	0	0	0	8	-3
05	BROVELLI, RILEY		0	0-0	0-0	0-0	0	2	2	2	1	0	0	0	5	3
11	ECK, CATIE		0	0-0	0-0	0-0	0	0	0	0	0	0	0	0	0	0
13	LOWIS, ANNA		0	0-0	0-0	0-0	0	0	0	0	0	0	0	0	0	0
15	LANSFORD, BROOKE		0	0-0	0-0	0-0	0	0	0	0	0	0	0	0	3	2
20	BOWEN, KAIA		0	0-0	0-0	0-0	0	0	0	0	0	0	0	0	0	0
21	HUGHES, RAVEN		4	1-1	0-0	2-2	0	0	0	0	0	0	0	0	6	3
24	SOSA, KENDALL		5	2-2	1-1	0-0	0	0	0	0	0	1	0	0	4	2
	TEAM						0	0	0	0		0				
<b>TOTALS</b>			<b>22</b>	<b>8-14</b>	<b>2-5</b>	<b>4-4</b>	<b>1</b>	<b>6</b>	<b>7</b>	<b>6</b>	<b>5</b>	<b>1</b>	<b>0</b>	<b>0</b>	<b>50</b>	

*Shooting By Period*

Period	FG	FG%	3FG	3FG%	FT	FT%
2nd Half	0-0	0%	0-0	0%	0-0	0%
Game	24-60	40.0%	10-22	45.5%	13-19	68.4%

**SIUE 41**

No.	Player	S	Pts	FG	3FG	FT	OR	DR	TR	PF	A	TO	Blk	Stl	Min	+/-
01	KING, CHRISTEN		4	1-2	0-0	2-2	0	0	0	0	1	0	0	0	6	3
05	ALSTON, JAY'NEE		2	0-0	0-0	2-2	0	0	0	0	1	0	0	0	6	5
12	KOEHLER, KAI		0	0-1	0-1	0-0	0	0	0	0	0	0	0	0	3	2
14	JONES, MICAH		2	0-2	0-0	2-2	1	0	1	1	0	0	0	0	3	-3
34	BAUMAN, SYDNEY		6	2-3	0-1	2-2	1	2	3	0	1	0	0	0	7	2
02	BELL, NAKIAH		6	2-4	2-4	0-0	1	0	1	0	0	0	0	0	7	-3
11	KEITH, MIKIA		0	0-0	0-0	0-0	1	0	1	2	0	0	0	1	4	-6
15	CHURCHILL, CLOE		0	0-5	0-2	0-0	0	0	0	1	0	0	0	0	7	-4
21	AKUEN, ALEK		0	0-0	0-0	0-0	0	0	0	0	0	0	0	0	0	0
24	BOONE, LYRIC		1	0-1	0-0	1-2	1	0	1	0	0	0	0	0	3	-3
25	WHITLOCK, ZARIA		0	0-0	0-0	0-0	1	2	3	0	1	0	0	0	3	2
35	HALL, MIKALA		0	0-0	0-0	0-0	0	0	0	0	0	0	0	0	0	0
	TEAM						1	1	2	0		0				
<b>TOTALS</b>			<b>21</b>	<b>5-18</b>	<b>2-8</b>	<b>9-10</b>	<b>6</b>	<b>4</b>	<b>12</b>	<b>4</b>	<b>4</b>	<b>0</b>	<b>0</b>	<b>1</b>	<b>50</b>	

*Shooting By Period*

Period	FG	FG%	3FG	3FG%	FT	FT%
2nd Half	0-0	0%	0-0	0%	0-0	0%
Game	28-70	40.0%	9-38	23.7%	16-19	84.2%

*Game Notes:*

Officials: Missy Brooks, Kalee Davidson, Jonathan Patterson  
Attendance: 545

Start Time: 2018-11-06 01:01:51  
End Time: 2018-11-06 03:12:05  
Game Duration: 130

Score	1st	2nd	3rd	4th	TOT
IWU	20	18	22	11	71
SIE	18	22	21	20	81

Points from (This Period)	IWU	SIE
In the Paint	10	6
Off Turns	0	0
2nd Chance	0	0
Fast Break	0	0
Bench	9	7

**Official Play-By-Play**  
**III. Wesleyan vs SIUE**  
**Third Quarter**  
**November 06, 2018 at Vadalabene Center - Edwardsville, Ill.**



**Period 3**

**Starters:**

**III. Wesleyan:** 12 SHANKS, SYDNEY; 14 MUNROE, SAMANTHA; 22 ANDERSON, NINA; 23 MERRITT, MADDIE; 40 SCHNEIDER, ASHLEY;  
**SIUE:** 1 KING, CHRISTEN; 5 ALSTON, JAY'NEE; 12 KOEHLER, KAI; 14 JONES, MICAH; 34 BAUMAN, SYDNEY;

Time	VISITORS: III. Wesleyan	Score	Margin	HOME: SIUE
09:45	MISSED 3PTR by MUNROE, SAMANTHA			
09:41				REBOUND (DEF) by WHITLOCK, ZARIA
09:35				MISSED JUMPER by KING, CHRISTEN
09:26				REBOUND (OFF) by BAUMAN, SYDNEY
09:26		42-38	H 4	GOOD! LAYUP by BAUMAN, SYDNEY
09:16	MISSED JUMPER by MERRITT, MADDIE			
09:12				REBOUND (DEF) by WHITLOCK, ZARIA
08:58	FOUL (PERSONAL) by SCHNEIDER, ASHLEY			
08:58		43-38	H 5	GOOD! FT by ALSTON, JAY'NEE
08:58	SUB OUT: ANDERSON, NINA			
08:58	SUB IN: HUGHES, RAVEN			
08:58	GOOD! LAYUP by MERRITT, MADDIE [PNT]	43-40	H 3	
08:58	ASSIST by SCHNEIDER, ASHLEY			
08:58		44-40	H 4	GOOD! FT by ALSTON, JAY'NEE
08:49		46-40	H 6	GOOD! LAYUP by KING, CHRISTEN [PNT]
08:49				ASSIST by BAUMAN, SYDNEY
08:32	MISSED 3PTR by SHANKS, SYDNEY			
08:28				REBOUND (DEF) by BAUMAN, SYDNEY
08:19				MISSED 3PTR by KOEHLER, KAI
08:14				REBOUND (OFF) by WHITLOCK, ZARIA
08:10		48-40	H 8	GOOD! JUMPER by BAUMAN, SYDNEY [PNT]
08:10				ASSIST by WHITLOCK, ZARIA
07:54	MISSED LAYUP by MERRITT, MADDIE			
07:47	GOOD! LAYUP by SCHNEIDER, ASHLEY	48-42	H 6	
07:47	REBOUND (OFF) by SCHNEIDER, ASHLEY			
07:42				MISSED 3PTR by BAUMAN, SYDNEY
07:38	REBOUND (DEF) by SHANKS, SYDNEY			
07:27	GOOD! 3PTR by SCHNEIDER, ASHLEY	48-45	H 3	
06:57	FOUL (PERSONAL) by MERRITT, MADDIE			
06:57		49-45	H 4	GOOD! FT by KING, CHRISTEN
06:57				SUB OUT: KOEHLER, KAI
06:57				SUB IN: BOONE, LYRIC
06:57				SUB OUT: WHITLOCK, ZARIA
06:57				SUB IN: JONES, MICAH
06:57				SUB OUT: BAUMAN, SYDNEY
06:57				SUB IN: BELL, NAKIAH
06:57		50-45	H 5	GOOD! FT by KING, CHRISTEN
06:57				SUB OUT: KING, CHRISTEN
06:57				SUB IN: CHURCHILL, CLOE
06:22	GOOD! LAYUP by SHANKS, SYDNEY [PNT]	50-47	H 3	
06:22	ASSIST by SCHNEIDER, ASHLEY			
06:01				MISSED 3PTR by CHURCHILL, CLOE
05:56				REBOUND (OFF) by BELL, NAKIAH
05:44				MISSED LAYUP by BOONE, LYRIC
05:39	REBOUND (DEF) by SCHNEIDER, ASHLEY			
05:35	MISSED 3PTR by SCHNEIDER, ASHLEY			
05:31				REBOUND (DEF) by TEAM
05:21	FOUL (PERSONAL) by MERRITT, MADDIE			
05:16				MISSED LAYUP by JONES, MICAH
05:14				REBOUND (OFF) by JONES, MICAH
05:14	FOUL (PERSONAL) by SCHNEIDER, ASHLEY			
05:14		51-47	H 4	GOOD! FT by JONES, MICAH
05:14	SUB OUT: MERRITT, MADDIE			
05:14	SUB IN: BROVELLI, RILEY			
05:14		52-47	H 5	GOOD! FT by JONES, MICAH
05:14				SUB OUT: ALSTON, JAY'NEE
05:14				SUB IN: KEITH, MIKIA
04:58				FOUL (PERSONAL) by KEITH, MIKIA
04:58				
04:52	GOOD! LAYUP by SHANKS, SYDNEY [PNT]	52-49	H 3	
04:40	SUB OUT: MUNROE, SAMANTHA			
04:40	SUB IN: SOSA, KENDALL			
04:34				MISSED 3PTR by BELL, NAKIAH
04:30				REBOUND (OFF) by BOONE, LYRIC
04:30	FOUL (PERSONAL) by BROVELLI, RILEY			
04:30		53-49	H 4	GOOD! FT by BOONE, LYRIC
04:30				MISSED FT by BOONE, LYRIC
04:30	REBOUND (DEF) by SCHNEIDER, ASHLEY			
04:30	GOOD! JUMPER by HUGHES, RAVEN	53-51	H 2	
04:30	ASSIST by BROVELLI, RILEY			

Time	VISITORS: III. Wesleyan	Score	Margin	HOME: SIUE
04:30				MISSED JUMPER by JONES, MICAH
04:30	REBOUND (DEF) by SCHNEIDER, ASHLEY			
03:37				FOUL (PERSONAL) by JONES, MICAH
03:37	GOOD! FT by HUGHES, RAVEN	53-52	H 1	
03:37				SUB OUT: JONES, MICAH
03:37				SUB IN: BAUMAN, SYDNEY
03:37				SUB OUT: BOONE, LYRIC
03:37				SUB IN: KING, CHRISTEN
03:37	GOOD! FT by HUGHES, RAVEN	53-53	T	
03:23				MISSED 3PTR by CHURCHILL, CLOE
03:19				REBOUND (OFF) by KEITH, MIKIA
03:14		56-53	H 3	GOOD! 3PTR by BELL, NAKIAH
03:14				ASSIST by KING, CHRISTEN
02:51	TURNOVER (LOSTBALL) by SOSA, KENDALL			
02:51				STEAL by KEITH, MIKIA
02:47				
02:47	SUB OUT: SHANKS, SYDNEY			
02:47	SUB IN: LANSFORD, BROOKE			
02:47	SUB OUT: HUGHES, RAVEN			
02:47	SUB IN: ANDERSON, NINA			
02:47	SUB OUT: SCHNEIDER, ASHLEY			
02:47	SUB IN: MERRITT, MADDIE			
02:29				MISSED JUMPER by CHURCHILL, CLOE
02:25	REBOUND (DEF) by BROVELLI, RILEY			
02:11				FOUL (PERSONAL) by KEITH, MIKIA
02:11	GOOD! FT by MERRITT, MADDIE	56-54	H 2	
02:11	GOOD! FT by MERRITT, MADDIE	56-55	H 1	
01:56				MISSED JUMPER by CHURCHILL, CLOE
01:51	REBOUND (DEF) by BROVELLI, RILEY			
01:37	GOOD! 3PTR by SOSA, KENDALL	56-58	V 2	
01:37	ASSIST by ANDERSON, NINA			
01:06	FOUL (PERSONAL) by BROVELLI, RILEY			
01:06		57-58	V 1	GOOD! FT by BAUMAN, SYDNEY
01:06				SUB OUT: KEITH, MIKIA
01:06				SUB IN: ALSTON, JAY'NEE
01:06	SUB OUT: MERRITT, MADDIE			
01:06	SUB IN: SCHNEIDER, ASHLEY			
01:06		58-58	T	GOOD! FT by BAUMAN, SYDNEY
00:49	MISSED JUMPER by ANDERSON, NINA			
00:45				REBOUND (DEF) by BAUMAN, SYDNEY
00:37		61-58	H 3	GOOD! 3PTR by BELL, NAKIAH
00:37				ASSIST by ALSTON, JAY'NEE
00:22				FOUL (PERSONAL) by CHURCHILL, CLOE
00:19	GOOD! LAYUP by SOSA, KENDALL [PNT]	61-60	H 1	
00:19	ASSIST by SCHNEIDER, ASHLEY			
00:11				MISSED JUMPER by CHURCHILL, CLOE
00:11				REBOUND (OFF) by TEAM
00:11				SUB OUT: KING, CHRISTEN
00:11				SUB IN: HALL, MIKALA
00:11				SUB OUT: CHURCHILL, CLOE
00:11				SUB IN: WHITLOCK, ZARIA
00:11	SUB OUT: SOSA, KENDALL			
00:11	SUB IN: SHANKS, SYDNEY			
00:11	SUB OUT: LANSFORD, BROOKE			
00:11	SUB IN: HUGHES, RAVEN			
00:11	SUB OUT: ANDERSON, NINA			
00:11	SUB IN: BOWEN, KAIA			
00:03				MISSED 3PTR by BELL, NAKIAH
00:00				REBOUND (OFF) by TEAM

### III. Wesleyan 60, SIUE 61

Points from (This Period)	IWU	SIE
In the Paint	10	6
Off Turns	0	0
2nd Chance	0	0
Fast Break	0	0
Bench	9	7

**Official Box Score**  
**III. Wesleyan vs SIUE**  
**Fourth Quarter Statistics Only**  
**November 06, 2018 at Vadalabene Center - Edwardsville, Ill.**



### III. Wesleyan 11

No.	Player	S	Pts	FG	3FG	FT	OR	DR	TR	PF	A	TO	Blk	Stl	Min	+/-
12	SHANKS, SYDNEY		1	0-2	0-1	1-2	1	2	3	0	0	1	0	0	10	-9
14	MUNROE, SAMANTHA		0	0-1	0-0	0-0	0	1	1	1	0	1	0	0	2	-4
22	ANDERSON, NINA		0	0-0	0-0	0-0	0	0	0	0	0	0	0	0	2	-6
23	MERRITT, MADDIE		8	2-3	1-1	3-3	0	0	0	0	0	1	0	0	6	1
40	SCHNEIDER, ASHLEY		0	0-1	0-0	0-0	0	0	0	1	0	0	0	1	8	-11
05	BROVELLI, RILEY		0	0-0	0-0	0-0	0	0	0	0	0	0	0	0	5	-10
11	ECK, CATIE		0	0-0	0-0	0-0	0	0	0	0	1	1	0	0	2	1
13	LOWIS, ANNA		0	0-0	0-0	0-0	0	0	0	0	0	0	0	0	0	0
15	LANSFORD, BROOKE		0	0-0	0-0	0-0	0	0	0	0	0	0	0	1	4	-2
20	BOWEN, KAIA		0	0-0	0-0	0-0	0	0	0	0	0	0	0	0	0	0
21	HUGHES, RAVEN		0	0-1	0-0	0-2	0	3	3	0	0	1	0	0	7	-2
24	SOSA, KENDALL		2	1-2	0-1	0-0	0	1	1	0	0	1	0	0	4	-3
	TEAM						0	0	0	0		0				
	<b>TOTALS</b>		<b>11</b>	<b>3-10</b>	<b>1-3</b>	<b>4-7</b>	<b>1</b>	<b>7</b>	<b>8</b>	<b>2</b>	<b>1</b>	<b>6</b>	<b>0</b>	<b>2</b>	<b>50</b>	

*Shooting By Period*

Period	FG	FG%	3FG	3FG%	FT	FT%
Game	24-60	40.0%	10-22	45.5%	13-19	68.4%

### SIUE 20

No.	Player	S	Pts	FG	3FG	FT	OR	DR	TR	PF	A	TO	Blk	Stl	Min	+/-
01	KING, CHRISTEN		0	0-2	0-1	0-0	0	0	0	0	1	0	0	0	5	-3
05	ALSTON, JAY'NEE		11	4-5	1-2	2-3	0	0	0	2	1	0	0	2	8	8
12	KOEHLER, KAI		3	1-3	1-3	0-0	0	1	1	0	1	0	0	1	6	12
14	JONES, MICAH		0	0-0	0-0	0-0	0	0	0	1	0	0	0	0	1	-1
34	BAUMAN, SYDNEY		0	0-0	0-0	0-0	0	4	4	2	0	1	1	1	7	10
02	BELL, NAKIAH		2	1-3	0-2	0-0	0	0	0	1	2	0	0	0	7	3
11	KEITH, MIKIA		0	0-0	0-0	0-0	0	0	0	0	0	0	0	0	0	0
15	CHURCHILL, CLOE		0	0-0	0-0	0-0	0	0	0	0	0	0	0	0	0	0
21	AKUEN, ALEK		0	0-0	0-0	0-0	0	0	0	0	0	0	0	0	0	0
24	BOONE, LYRIC		0	0-0	0-0	0-0	0	0	0	0	0	0	0	0	0	0
25	WHITLOCK, ZARIA		0	0-0	0-0	0-0	1	2	3	0	0	0	0	0	9	9
35	HALL, MIKALA		4	2-4	0-2	0-0	1	0	1	1	1	2	0	0	8	7
	TEAM						1	0	1	0		0				
	<b>TOTALS</b>		<b>20</b>	<b>8-17</b>	<b>2-10</b>	<b>2-3</b>	<b>2</b>	<b>7</b>	<b>10</b>	<b>7</b>	<b>6</b>	<b>3</b>	<b>1</b>	<b>4</b>	<b>50</b>	

*Shooting By Period*

Period	FG	FG%	3FG	3FG%	FT	FT%
Game	28-70	40.0%	9-38	23.7%	16-19	84.2%

Game Notes:

Officials: Missy Brooks, Kalee Davidson, Jonathan Patterson  
Attendance: 545

Start Time: 2018-11-06 01:01:51  
End Time: 2018-11-06 03:12:05  
Game Duration: 130

Score	1st	2nd	3rd	4th	TOT
IWU	20	18	22	11	<b>71</b>
SIE	18	22	21	20	<b>81</b>

Points from (This Period)	IWU	SIE
In the Paint	2	10
Off Turns	3	10
2nd Chance	0	0
Fast Break	2	4
Bench	2	6

**Official By-By-Play**  
**III. Wesleyan vs SIUE**  
**Fourth Quarter**  
**November 06, 2018 at Vadalabene Center - Edwardsville, Ill.**



**Period 4**

**Starters:**

**III. Wesleyan:** 12 SHANKS, SYDNEY; 14 MUNROE, SAMANTHA; 22 ANDERSON, NINA; 23 MERRITT, MADDIE; 40 SCHNEIDER, ASHLEY;  
**SIUE:** 1 KING, CHRISTEN; 5 ALSTON, JAY'NEE; 12 KOEHLER, KAI; 14 JONES, MICAH; 34 BAUMAN, SYDNEY;

Time	VISITORS: III. Wesleyan	Score	Margin	HOME: SIUE
09:44	MISSED JUMPER by MUNROE, SAMANTHA			
09:43				REBOUND (DEF) by BAUMAN, SYDNEY
09:20				MISSED 3PTR by ALSTON, JAY'NEE
09:15				REBOUND (OFF) by WHITLOCK, ZARIA
09:12				MISSED 3PTR by KOEHLER, KAI
09:06		63-60	H 3	GOOD! LAYUP by HALL, MIKALA
09:06				REBOUND (OFF) by HALL, MIKALA
08:56	TURNOVER (LOSTBALL) by HUGHES, RAVEN			
08:56				STEAL by ALSTON, JAY'NEE
08:50		65-60	H 5	GOOD! LAYUP by ALSTON, JAY'NEE [FB]
08:35	TURNOVER (BADPASS) by SHANKS, SYDNEY			
08:35				STEAL by KOEHLER, KAI
08:27				TURNOVER (BADPASS) by HALL, MIKALA
08:27	SUB OUT: MUNROE, SAMANTHA			
08:27	SUB IN: LANSFORD, BROOKE			
08:27	SUB OUT: BROVELLI, RILEY			
08:27	SUB IN: MERRITT, MADDIE			
08:27	SUB OUT: HUGHES, RAVEN			
08:27	SUB IN: ECK, CATIE			
08:18				FOUL (PERSONAL) by HALL, MIKALA
08:04	MISSED LAYUP by MERRITT, MADDIE			
08:02				REBOUND (DEF) by BAUMAN, SYDNEY
08:02				TURNOVER (LOSTBALL) by BAUMAN, SYDNEY
08:02	STEAL by SCHNEIDER, ASHLEY			
07:41				FOUL (PERSONAL) by ALSTON, JAY'NEE
07:37	TURNOVER (BADPASS) by ECK, CATIE			
07:19	FOUL (PERSONAL) by SCHNEIDER, ASHLEY			
07:19		66-60	H 6	GOOD! FT by ALSTON, JAY'NEE
07:19	SUB OUT: SCHNEIDER, ASHLEY			
07:19	SUB IN: HUGHES, RAVEN			
07:19		67-60	H 7	GOOD! FT by ALSTON, JAY'NEE
07:08	MISSED LAYUP by SHANKS, SYDNEY			
07:04				REBOUND (DEF) by BAUMAN, SYDNEY
06:58				TURNOVER (LOSTBALL) by HALL, MIKALA
06:58	STEAL by LANSFORD, BROOKE			
06:55				SUB OUT: KOEHLER, KAI
06:55				SUB IN: BELL, NAKIAH
06:55				SUB OUT: HALL, MIKALA
06:55				SUB IN: KING, CHRISTEN
06:41				FOUL (PERSONAL) by BAUMAN, SYDNEY
06:41	SUB OUT: LANSFORD, BROOKE			
06:41	SUB IN: SOSA, KENDALL			
06:17	GOOD! LAYUP by MERRITT, MADDIE [PNT]	67-62	H 5	
06:17	ASSIST by ECK, CATIE			
06:17				FOUL (PERSONAL) by BAUMAN, SYDNEY
06:17				SUB OUT: BAUMAN, SYDNEY
06:17				SUB IN: JONES, MICAH
06:17	GOOD! FT by MERRITT, MADDIE	67-63	H 4	
06:17	SUB OUT: ECK, CATIE			
06:17	SUB IN: BROVELLI, RILEY			
06:09		69-63	H 6	GOOD! LAYUP by ALSTON, JAY'NEE [PNT]
06:09				ASSIST by KING, CHRISTEN
05:55				FOUL (PERSONAL) by ALSTON, JAY'NEE
05:55	MISSED FT by SHANKS, SYDNEY			
05:55	REBOUND (OFF) by TEAM			
05:55	GOOD! FT by SHANKS, SYDNEY	69-64	H 5	
05:38				MISSED 3PTR by KING, CHRISTEN
05:33	REBOUND (DEF) by SHANKS, SYDNEY			
05:25	MISSED 3PTR by SOSA, KENDALL			
05:21				REBOUND (DEF) by WHITLOCK, ZARIA
05:13				MISSED LAYUP by KING, CHRISTEN
05:10	REBOUND (DEF) by SOSA, KENDALL			
05:07				FOUL (PERSONAL) by JONES, MICAH
05:07	GOOD! FT by MERRITT, MADDIE [FB]	69-65	H 4	
05:07				SUB OUT: JONES, MICAH
05:07				SUB IN: HALL, MIKALA
05:07				SUB OUT: WHITLOCK, ZARIA
05:07				SUB IN: KOEHLER, KAI
05:07	SUB OUT: BROVELLI, RILEY			
05:07	SUB IN: SCHNEIDER, ASHLEY			



Time	VISITORS: III. Wesleyan	Score	Margin	HOME: SIUE
05:07	SUB OUT: SOSA, KENDALL			
05:07	SUB IN: MUNROE, SAMANTHA			
05:07	GOOD! FT by MERRITT, MADDIE [FB]	69-66	H 3	
04:43				MISSED 3PTR by BELL, NAKIAH
04:39	REBOUND (DEF) by HUGHES, RAVEN			
04:31				FOUL (PERSONAL) by BELL, NAKIAH
04:31				
04:31	MISSED FT by HUGHES, RAVEN			
04:31	REBOUND (OFF) by TEAM			
04:31	MISSED FT by HUGHES, RAVEN			
04:31				REBOUND (DEF) by KOEHLER, KAI
04:31		71-66	H 5	GOOD! LAYUP by HALL, MIKALA [PNT]
04:31	MISSED JUMPER by HUGHES, RAVEN			
04:31	REBOUND (OFF) by SHANKS, SYDNEY			
04:31	GOOD! 3PTR by MERRITT, MADDIE	71-69	H 2	
04:31				MISSED 3PTR by KOEHLER, KAI
04:31	REBOUND (DEF) by MUNROE, SAMANTHA			
04:31	TURNOVER (BADPASS) by MUNROE, SAMANTHA			
04:31				STEAL by ALSTON, JAY'NEE
04:31				ASSIST by KOEHLER, KAI
04:28		73-69	H 4	GOOD! LAYUP by ALSTON, JAY'NEE [FB]
04:28				ASSIST by HALL, MIKALA
04:13	FOUL (PERSONAL) by MUNROE, SAMANTHA			
04:13				MISSED FT by ALSTON, JAY'NEE
04:13				REBOUND (OFF) by TEAM
04:13				SUB OUT: KOEHLER, KAI
04:13				SUB IN: WHITLOCK, ZARIA
04:13	SUB OUT: MUNROE, SAMANTHA			
04:13	SUB IN: LANSFORD, BROOKE			
04:13				MISSED 3PTR by HALL, MIKALA
04:13	REBOUND (DEF) by HUGHES, RAVEN			
03:27	MISSED 3PTR by SHANKS, SYDNEY			
03:25				REBOUND (DEF) by WHITLOCK, ZARIA
03:13				MISSED 3PTR by HALL, MIKALA
03:13	REBOUND (DEF) by SHANKS, SYDNEY			
03:00				SUB OUT: ALSTON, JAY'NEE
03:00				SUB IN: BAUMAN, SYDNEY
02:50	MISSED LAYUP by SCHNEIDER, ASHLEY			
02:50				BLOCK by BAUMAN, SYDNEY
02:48				REBOUND (DEF) by BAUMAN, SYDNEY
02:28				MISSED 3PTR by BELL, NAKIAH
02:13	REBOUND (DEF) by HUGHES, RAVEN			
02:07	TURNOVER (LOSTBALL) by MERRITT, MADDIE			
02:07				SUB OUT: KING, CHRISTEN
02:07				SUB IN: KOEHLER, KAI
02:07	SUB OUT: LANSFORD, BROOKE			
02:07	SUB IN: SOSA, KENDALL			
02:07	SUB OUT: HUGHES, RAVEN			
02:07	SUB IN: ANDERSON, NINA			
02:07	SUB OUT: MERRITT, MADDIE			
02:07	SUB IN: BROVELLI, RILEY			
02:02				TIMEOUT 30SEC
01:37		76-69	H 7	GOOD! 3PTR by KOEHLER, KAI
01:37				ASSIST by BELL, NAKIAH
01:16	GOOD! JUMPER by SOSA, KENDALL	76-71	H 5	
00:41		79-71	H 8	GOOD! 3PTR by ALSTON, JAY'NEE
00:41				ASSIST by BELL, NAKIAH
00:41				SUB OUT: HALL, MIKALA
00:41				SUB IN: ALSTON, JAY'NEE
00:23	TURNOVER (LOSTBALL) by SOSA, KENDALL			
00:23				STEAL by BAUMAN, SYDNEY
00:03		81-71	H 10	GOOD! JUMPER by BELL, NAKIAH
00:03				ASSIST by ALSTON, JAY'NEE

### III. Wesleyan 71, SIUE 81

Points from (This Period)	IWU	SIE
In the Paint	2	10
Off Turns	3	10
2nd Chance	0	0
Fast Break	2	4
Bench	2	6

**Official Scoring/Possession Reference Chart**  
**III. Wesleyan vs SIUE**  
**Period 1**  
**November 06, 2018 at Vadalabene Center - Edwardsville, Ill.**



**Period 1**

**Starters:**

**III. Wesleyan:** 12 SHANKS, SYDNEY; 14 MUNROE, SAMANTHA; 22 ANDERSON, NINA; 23 MERRITT, MADDIE; 40 SCHNEIDER, ASHLEY;  
**SIUE:** 1 KING, CHRISTEN; 5 ALSTON, JAY'NEE; 12 KOEHLER, KAI; 14 JONES, MICAH; 34 BAUMAN, SYDNEY;

Time	VISITORS: III. Wesleyan	Score	Margin	HOME: SIUE
09:24		2-0	H 2	GOOD! LAYUP by ALSTON, JAY'NEE [FB]
08:32	GOOD! 3PTR by SHANKS, SYDNEY	2-3	V 1	
07:44	GOOD! 3PTR by ANDERSON, NINA	2-6	V 4	
07:11		4-6	V 2	GOOD! LAYUP by KING, CHRISTEN [FB]
06:58	GOOD! JUMPER by SHANKS, SYDNEY	4-8	V 4	
06:44		6-8	V 2	GOOD! LAYUP by ALSTON, JAY'NEE
06:18	GOOD! LAYUP by SCHNEIDER, ASHLEY	6-10	V 4	
05:34		8-10	V 2	GOOD! LAYUP by KING, CHRISTEN [FB/PNT]
04:22		11-10	H 1	GOOD! 3PTR by BELL, NAKIAH
03:24	GOOD! 3PTR by SOSA, KENDALL	11-13	V 2	
03:16		13-13	T	GOOD! LAYUP by BAUMAN, SYDNEY [FB]
03:01	GOOD! LAYUP by HUGHES, RAVEN	13-15	V 2	
02:19	GOOD! 3PTR by ECK, CATIE	13-18	V 5	
01:33		15-18	V 3	GOOD! JUMPER by BAUMAN, SYDNEY
01:09		16-18	V 2	GOOD! FT by KING, CHRISTEN
01:09		17-18	V 1	GOOD! FT by KING, CHRISTEN
00:17		18-18	T	GOOD! FT by BAUMAN, SYDNEY [FB]
00:07	GOOD! FT by MERRITT, MADDIE	18-19	V 1	
00:07	GOOD! FT by MERRITT, MADDIE	18-20	V 2	

**III. Wesleyan 20, SIUE 18**

**Official Scoring/Possession Reference Chart**  
**III. Wesleyan vs SIUE**  
**Period 2**  
**November 06, 2018 at Vadalabene Center - Edwardsville, Ill.**



**Period 2**

**Starters:**

**III. Wesleyan:** 12 SHANKS, SYDNEY; 14 MUNROE, SAMANTHA; 22 ANDERSON, NINA; 23 MERRITT, MADDIE; 40 SCHNEIDER, ASHLEY;  
**SIUE:** 1 KING, CHRISTEN; 5 ALSTON, JAY'NEE; 12 KOEHLER, KAI; 14 JONES, MICAH; 34 BAUMAN, SYDNEY;

Time	VISITORS: III. Wesleyan	Score	Margin	HOME: SIUE
09:28	GOOD! 3PTR by SOSA, KENDALL	18-23	V 5	
09:02		20-23	V 3	GOOD! LAYUP by AKUEN, ALEK
08:32	GOOD! LAYUP by SCHNEIDER, ASHLEY	20-25	V 5	
07:39	GOOD! 3PTR by SOSA, KENDALL	20-28	V 8	
06:57		21-28	V 7	GOOD! FT by KOEHLER, KAI
06:57		22-28	V 6	GOOD! FT by KOEHLER, KAI
06:20	GOOD! FT by SCHNEIDER, ASHLEY	22-29	V 7	
06:04		25-29	V 4	GOOD! 3PTR by ALSTON, JAY'NEE
05:13	GOOD! LAYUP by ECK, CATIE [PNT]	25-31	V 6	
04:49		28-31	V 3	GOOD! 3PTR by KOEHLER, KAI
04:27	GOOD! FT by MERRITT, MADDIE	28-32	V 4	
04:27	GOOD! FT by MERRITT, MADDIE	28-33	V 5	
04:05		31-33	V 2	GOOD! 3PTR by ALSTON, JAY'NEE
03:31		34-33	H 1	GOOD! 3PTR by ALSTON, JAY'NEE
02:30	GOOD! LAYUP by ECK, CATIE	34-35	V 1	
02:09		36-35	H 1	GOOD! JUMPER by BAUMAN, SYDNEY
01:55	GOOD! 3PTR by ECK, CATIE	36-38	V 2	
01:20		38-38	T	GOOD! LAYUP by BAUMAN, SYDNEY [PNT]
00:47		40-38	H 2	GOOD! JUMPER by KING, CHRISTEN [PNT]

**III. Wesleyan 38, SIUE 40**

**Official Scoring/Possession Reference Chart**  
**III. Wesleyan vs SIUE**  
**Period 3**  
**November 06, 2018 at Vadalabene Center - Edwardsville, Ill.**



**Period 3**

**Starters:**

**III. Wesleyan:** 12 SHANKS, SYDNEY; 14 MUNROE, SAMANTHA; 22 ANDERSON, NINA; 23 MERRITT, MADDIE; 40 SCHNEIDER, ASHLEY;  
**SIUE:** 1 KING, CHRISTEN; 5 ALSTON, JAY'NEE; 12 KOEHLER, KAI; 14 JONES, MICAH; 34 BAUMAN, SYDNEY;

Time	VISITORS: III. Wesleyan	Score	Margin	HOME: SIUE
09:26		42-38	H 4	GOOD! LAYUP by BAUMAN, SYDNEY
08:58		43-38	H 5	GOOD! FT by ALSTON, JAY'NEE
08:58	GOOD! LAYUP by MERRITT, MADDIE [PNT]	43-40	H 3	
08:58		44-40	H 4	GOOD! FT by ALSTON, JAY'NEE
08:49		46-40	H 6	GOOD! LAYUP by KING, CHRISTEN [PNT]
08:10		48-40	H 8	GOOD! JUMPER by BAUMAN, SYDNEY [PNT]
07:47	GOOD! LAYUP by SCHNEIDER, ASHLEY	48-42	H 6	
07:27	GOOD! 3PTR by SCHNEIDER, ASHLEY	48-45	H 3	
06:57		49-45	H 4	GOOD! FT by KING, CHRISTEN
06:57		50-45	H 5	GOOD! FT by KING, CHRISTEN
06:22	GOOD! LAYUP by SHANKS, SYDNEY [PNT]	50-47	H 3	
05:14		51-47	H 4	GOOD! FT by JONES, MICAH
05:14		52-47	H 5	GOOD! FT by JONES, MICAH
04:52	GOOD! LAYUP by SHANKS, SYDNEY [PNT]	52-49	H 3	
04:30		53-49	H 4	GOOD! FT by BOONE, LYRIC
04:30	GOOD! JUMPER by HUGHES, RAVEN	53-51	H 2	
03:37	GOOD! FT by HUGHES, RAVEN	53-52	H 1	
03:37	GOOD! FT by HUGHES, RAVEN	53-53	T	
03:14		56-53	H 3	GOOD! 3PTR by BELL, NAKIAH
02:11	GOOD! FT by MERRITT, MADDIE	56-54	H 2	
02:11	GOOD! FT by MERRITT, MADDIE	56-55	H 1	
01:37	GOOD! 3PTR by SOSA, KENDALL	56-58	V 2	
01:06		57-58	V 1	GOOD! FT by BAUMAN, SYDNEY
01:06		58-58	T	GOOD! FT by BAUMAN, SYDNEY
00:37		61-58	H 3	GOOD! 3PTR by BELL, NAKIAH
00:19	GOOD! LAYUP by SOSA, KENDALL [PNT]	61-60	H 1	

**III. Wesleyan 60, SIUE 61**

**Official Scoring/Possession Reference Chart**  
**III. Wesleyan vs SIUE**  
**Period 4**  
**November 06, 2018 at Vadalabene Center - Edwardsville, Ill.**



**Period 4**

**Starters:**

**III. Wesleyan:** 12 SHANKS, SYDNEY; 14 MUNROE, SAMANTHA; 22 ANDERSON, NINA; 23 MERRITT, MADDIE; 40 SCHNEIDER, ASHLEY;  
**SIUE:** 1 KING, CHRISTEN; 5 ALSTON, JAY'NEE; 12 KOEHLER, KAI; 14 JONES, MICAH; 34 BAUMAN, SYDNEY;

Time	VISITORS: III. Wesleyan	Score	Margin	HOME: SIUE
09:06		63-60	H 3	GOOD! LAYUP by HALL, MIKALA
08:50		65-60	H 5	GOOD! LAYUP by ALSTON, JAY'NEE [FB]
07:19		66-60	H 6	GOOD! FT by ALSTON, JAY'NEE
07:19		67-60	H 7	GOOD! FT by ALSTON, JAY'NEE
06:17	GOOD! LAYUP by MERRITT, MADDIE [PNT]	67-62	H 5	
06:17	GOOD! FT by MERRITT, MADDIE	67-63	H 4	
06:09		69-63	H 6	GOOD! LAYUP by ALSTON, JAY'NEE [PNT]
05:55	GOOD! FT by SHANKS, SYDNEY	69-64	H 5	
05:07	GOOD! FT by MERRITT, MADDIE [FB]	69-65	H 4	
05:07	GOOD! FT by MERRITT, MADDIE [FB]	69-66	H 3	
04:31		71-66	H 5	GOOD! LAYUP by HALL, MIKALA [PNT]
04:31	GOOD! 3PTR by MERRITT, MADDIE	71-69	H 2	
04:28		73-69	H 4	GOOD! LAYUP by ALSTON, JAY'NEE [FB]
01:37		76-69	H 7	GOOD! 3PTR by KOEHLER, KAI
01:16	GOOD! JUMPER by SOSA, KENDALL	76-71	H 5	
00:41		79-71	H 8	GOOD! 3PTR by ALSTON, JAY'NEE
00:03		81-71	H 10	GOOD! JUMPER by BELL, NAKIAH

**III. Wesleyan 71, SIUE 81**

**Official Substitutions Log**  
**III. Wesleyan vs SIUE**  
**Period 1**  
**November 06, 2018 at Vadalabene Center - Edwardsville, Ill.**



VISITORS: III. Wesleyan	Time	Score	HOME: SIUE
12 SHANKS, SYDNEY			1 KING, CHRISTEN
14 MUNROE, SAMANTHA			5 ALSTON, JAY'NEE
22 ANDERSON, NINA			12 KOEHLER, KAI
23 MERRITT, MADDIE			14 JONES, MICAH
40 SCHNEIDER, ASHLEY			34 BAUMAN, SYDNEY
	07:26	6-2	SUB OUT: JONES, MICAH
	07:26		SUB IN: WHITLOCK, ZARIA
	06:18	10-6	SUB OUT: KOEHLER, KAI
	06:18		SUB IN: BELL, NAKIAH
SUB OUT: 23 MERRITT, MADDIE		10-6	
SUB IN: 21 HUGHES, RAVEN			
	05:00	10-8	SUB OUT: KING, CHRISTEN
	05:00		SUB IN: JONES, MICAH
	05:00		SUB OUT: ALSTON, JAY'NEE
	05:00		SUB IN: CHURCHILL, CLOE
	05:00		SUB OUT: BAUMAN, SYDNEY
	05:00		SUB IN: KEITH, MIKIA
SUB OUT: 14 MUNROE, SAMANTHA			
SUB IN: 15 LANSFORD, BROOKE			
SUB OUT: 22 ANDERSON, NINA			
SUB IN: 24 SOSA, KENDALL			
	03:30	10-11	SUB OUT: JONES, MICAH
	03:30		SUB IN: BAUMAN, SYDNEY
SUB OUT: 12 SHANKS, SYDNEY			
SUB IN: 11 ECK, CATIE			
	02:17	18-13	SUB OUT: KEITH, MIKIA
	02:17		SUB IN: ALSTON, JAY'NEE
	02:17		SUB OUT: CHURCHILL, CLOE
	02:17		SUB IN: AKUEN, ALEK
	02:17		SUB OUT: WHITLOCK, ZARIA
	02:17		SUB IN: KING, CHRISTEN
SUB OUT: 40 SCHNEIDER, ASHLEY			
SUB IN: 5 BROVELLI, RILEY			
SUB OUT: 21 HUGHES, RAVEN		18-15	
SUB IN: 14 MUNROE, SAMANTHA			
SUB OUT: 24 SOSA, KENDALL			
SUB IN: 22 ANDERSON, NINA			
SUB OUT: 15 LANSFORD, BROOKE			
SUB IN: 23 MERRITT, MADDIE			
SUB OUT: 22 ANDERSON, NINA		18-18	
SUB IN: 12 SHANKS, SYDNEY			
	00:07	19-18	SUB OUT: BAUMAN, SYDNEY
	00:07		SUB IN: WHITLOCK, ZARIA
SUB OUT: 11 ECK, CATIE			
SUB IN: 13 LOWIS, ANNA			
SUB OUT: 14 MUNROE, SAMANTHA			
SUB IN: 20 BOWEN, KAIA			
SUB OUT: 23 MERRITT, MADDIE			
SUB IN: 21 HUGHES, RAVEN			

**III. Wesleyan 20, SIUE 18**

**Official Substitutions Log**  
**III. Wesleyan vs SIUE**  
**Period 2**  
**November 06, 2018 at Vadalabene Center - Edwardsville, Ill.**



VISITORS: III. Wesleyan	Time	Score	HOME: SIUE
12 SHANKS, SYDNEY			1 KING, CHRISTEN
14 MUNROE, SAMANTHA			5 ALSTON, JAY'NEE
22 ANDERSON, NINA			12 KOEHLER, KAI
23 MERRITT, MADDIE			14 JONES, MICAH
40 SCHNEIDER, ASHLEY			34 BAUMAN, SYDNEY
SUB OUT: 13 LOWIS, ANNA	08:52	23-20	
SUB IN: 40 SCHNEIDER, ASHLEY	08:52		
	08:06	25-20	SUB OUT: WHITLOCK, ZARIA
	08:06		SUB IN: BAUMAN, SYDNEY
	08:06		SUB OUT: KING, CHRISTEN
	08:06		SUB IN: KOEHLER, KAI
	06:57	28-21	SUB OUT: AKUEN, ALEK
	06:57		SUB IN: BOONE, LYRIC
SUB OUT: 12 SHANKS, SYDNEY	06:57		
SUB IN: 15 LANSFORD, BROOKE	06:57		
SUB OUT: 5 BROVELLI, RILEY	06:57		
SUB IN: 23 MERRITT, MADDIE	06:57		
SUB OUT: 24 SOSA, KENDALL	05:23	29-25	
SUB IN: 11 ECK, CATIE	05:23		
SUB OUT: 21 HUGHES, RAVEN	04:27	32-28	
SUB IN: 20 BOWEN, KAIA	04:27		
SUB OUT: 23 MERRITT, MADDIE	04:27		
SUB IN: 12 SHANKS, SYDNEY	04:27		
SUB OUT: 12 SHANKS, SYDNEY	03:02	33-34	
SUB IN: 22 ANDERSON, NINA	03:02		
SUB OUT: 40 SCHNEIDER, ASHLEY	03:02		
SUB IN: 23 MERRITT, MADDIE	03:02		
	01:53	38-36	SUB OUT: BOONE, LYRIC
	01:53		SUB IN: JONES, MICAH
	01:36	38-36	SUB OUT: KOEHLER, KAI
	01:36		SUB IN: CHURCHILL, CLOE
	01:36		SUB OUT: BELL, NAKIAH
	01:36		SUB IN: KING, CHRISTEN
SUB OUT: 20 BOWEN, KAIA	00:28	38-40	
SUB IN: 21 HUGHES, RAVEN	00:28		
SUB OUT: 21 HUGHES, RAVEN	00:07	38-40	
SUB IN: 40 SCHNEIDER, ASHLEY	00:07		

**III. Wesleyan 38, SIUE 40**

**Official Substitutions Log**  
**III. Wesleyan vs SIUE**  
**Period 3**  
**November 06, 2018 at Vadalabene Center - Edwardsville, Ill.**



VISITORS: III. Wesleyan	Time	Score	HOME: SIUE
12 SHANKS, SYDNEY			1 KING, CHRISTEN
14 MUNROE, SAMANTHA			5 ALSTON, JAY'NEE
22 ANDERSON, NINA			12 KOEHLER, KAI
23 MERRITT, MADDIE			14 JONES, MICAH
40 SCHNEIDER, ASHLEY			34 BAUMAN, SYDNEY
SUB OUT: 22 ANDERSON, NINA	08:58	38-43	
SUB IN: 21 HUGHES, RAVEN	08:58		
	06:57	45-49	SUB OUT: KOEHLER, KAI
	06:57		SUB IN: BOONE, LYRIC
	06:57		SUB OUT: WHITLOCK, ZARIA
	06:57		SUB IN: JONES, MICAH
	06:57		SUB OUT: BAUMAN, SYDNEY
	06:57		SUB IN: BELL, NAKIAH
	06:57		SUB OUT: KING, CHRISTEN
	06:57		SUB IN: CHURCHILL, CLOE
SUB OUT: 23 MERRITT, MADDIE	05:14	47-51	
SUB IN: 5 BROVELLI, RILEY	05:14		
	05:14		SUB OUT: ALSTON, JAY'NEE
	05:14		SUB IN: KEITH, MIKIA
SUB OUT: 14 MUNROE, SAMANTHA	04:40	49-52	
SUB IN: 24 SOSA, KENDALL	04:40		
	03:37	52-53	SUB OUT: JONES, MICAH
	03:37		SUB IN: BAUMAN, SYDNEY
	03:37		SUB OUT: BOONE, LYRIC
	03:37		SUB IN: KING, CHRISTEN
SUB OUT: 12 SHANKS, SYDNEY	02:47	53-56	
SUB IN: 15 LANSFORD, BROOKE	02:47		
SUB OUT: 21 HUGHES, RAVEN	02:47		
SUB IN: 22 ANDERSON, NINA	02:47		
SUB OUT: 40 SCHNEIDER, ASHLEY	02:47		
SUB IN: 23 MERRITT, MADDIE	02:47		
	01:06	58-57	SUB OUT: KEITH, MIKIA
	01:06		SUB IN: ALSTON, JAY'NEE
SUB OUT: 23 MERRITT, MADDIE	01:06		
SUB IN: 40 SCHNEIDER, ASHLEY	01:06		
	00:11	60-61	SUB OUT: KING, CHRISTEN
	00:11		SUB IN: HALL, MIKALA
	00:11		SUB OUT: CHURCHILL, CLOE
	00:11		SUB IN: WHITLOCK, ZARIA
SUB OUT: 24 SOSA, KENDALL	00:11		
SUB IN: 12 SHANKS, SYDNEY	00:11		
SUB OUT: 15 LANSFORD, BROOKE	00:11		
SUB IN: 21 HUGHES, RAVEN	00:11		
SUB OUT: 22 ANDERSON, NINA	00:11		
SUB IN: 20 BOWEN, KAIA	00:11		

**III. Wesleyan 60, SIUE 61**



**Official Substitutions Log**  
**III. Wesleyan vs SIUE**  
**Period 4**  
**November 06, 2018 at Vadalabene Center - Edwardsville, Ill.**



VISITORS: III. Wesleyan	Time	Score	HOME: SIUE
12 SHANKS, SYDNEY			1 KING, CHRISTEN
14 MUNROE, SAMANTHA			5 ALSTON, JAY'NEE
22 ANDERSON, NINA			12 KOEHLER, KAI
23 MERRITT, MADDIE			14 JONES, MICAH
40 SCHNEIDER, ASHLEY			34 BAUMAN, SYDNEY
SUB OUT: 14 MUNROE, SAMANTHA	08:27	60-65	
SUB IN: 15 LANSFORD, BROOKE	08:27		
SUB OUT: 5 BROVELLI, RILEY	08:27		
SUB IN: 23 MERRITT, MADDIE	08:27		
SUB OUT: 21 HUGHES, RAVEN	08:27		
SUB IN: 11 ECK, CATIE	08:27		
SUB OUT: 40 SCHNEIDER, ASHLEY	07:19	60-66	
SUB IN: 21 HUGHES, RAVEN	07:19		
	06:55	60-67	SUB OUT: KOEHLER, KAI
	06:55		SUB IN: BELL, NAKIAH
	06:55		SUB OUT: HALL, MIKALA
	06:55		SUB IN: KING, CHRISTEN
SUB OUT: 15 LANSFORD, BROOKE	06:41	60-67	
SUB IN: 24 SOSA, KENDALL	06:41		
	06:17	62-67	SUB OUT: BAUMAN, SYDNEY
	06:17		SUB IN: JONES, MICAH
SUB OUT: 11 ECK, CATIE	06:17		
SUB IN: 5 BROVELLI, RILEY	06:17		
	05:07	65-69	SUB OUT: JONES, MICAH
	05:07		SUB IN: HALL, MIKALA
	05:07		SUB OUT: WHITLOCK, ZARIA
	05:07		SUB IN: KOEHLER, KAI
SUB OUT: 5 BROVELLI, RILEY	05:07		
SUB IN: 40 SCHNEIDER, ASHLEY	05:07		
SUB OUT: 24 SOSA, KENDALL	05:07		
SUB IN: 14 MUNROE, SAMANTHA	05:07		
	04:13	69-73	SUB OUT: KOEHLER, KAI
	04:13		SUB IN: WHITLOCK, ZARIA
SUB OUT: 14 MUNROE, SAMANTHA	04:13		
SUB IN: 15 LANSFORD, BROOKE	04:13		
	03:00	69-73	SUB OUT: ALSTON, JAY'NEE
	03:00		SUB IN: BAUMAN, SYDNEY
	02:07	69-73	SUB OUT: KING, CHRISTEN
	02:07		SUB IN: KOEHLER, KAI
SUB OUT: 15 LANSFORD, BROOKE	02:07		
SUB IN: 24 SOSA, KENDALL	02:07		
SUB OUT: 21 HUGHES, RAVEN	02:07		
SUB IN: 22 ANDERSON, NINA	02:07		
SUB OUT: 23 MERRITT, MADDIE	02:07		
SUB IN: 5 BROVELLI, RILEY	02:07		
	00:41	71-79	SUB OUT: HALL, MIKALA
	00:41		SUB IN: ALSTON, JAY'NEE

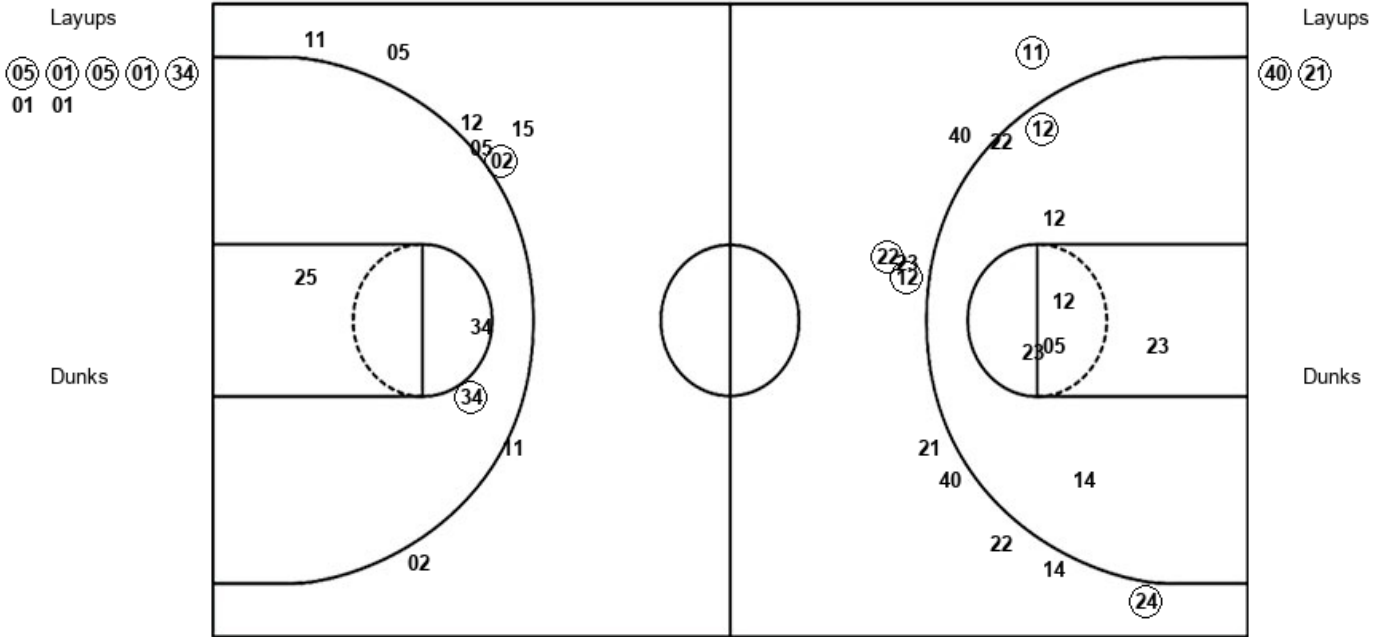
**III. Wesleyan 71, SIUE 81**

**Official Shot Chart**  
**III. Wesleyan vs SIUE**  
**PERIOD 1 Shots**  
**November 06, 2018 at Vadalabene Center - Edwardsville, Ill.**



**SIUE**

**III. Wesleyan**



<b>SIUE : Period 1</b>	<b>Made</b>	<b>Att</b>	<b>Pct</b>
Layups	5	7	71.4
Dunks	0	0	0
2PT Field Goals	6	10	60.0
3PT Field Goals	1	8	12.5
<b>Total Field Goals</b>	<b>7</b>	<b>18</b>	<b>38.9</b>

<b>IWU : Period 1</b>	<b>Made</b>	<b>Att</b>	<b>Pct</b>
Layups	2	2	100.0
Dunks	0	0	0
2PT Field Goals	3	10	30.0
3PT Field Goals	4	10	40.0
<b>Total Field Goals</b>	<b>7</b>	<b>20</b>	<b>35.0</b>

**Official Shot Chart**  
**III. Wesleyan vs SIUE**  
**PERIOD 2 Shots**  
 November 06, 2018 at Vadalabene Center - Edwardsville, Ill.



**SIUE**

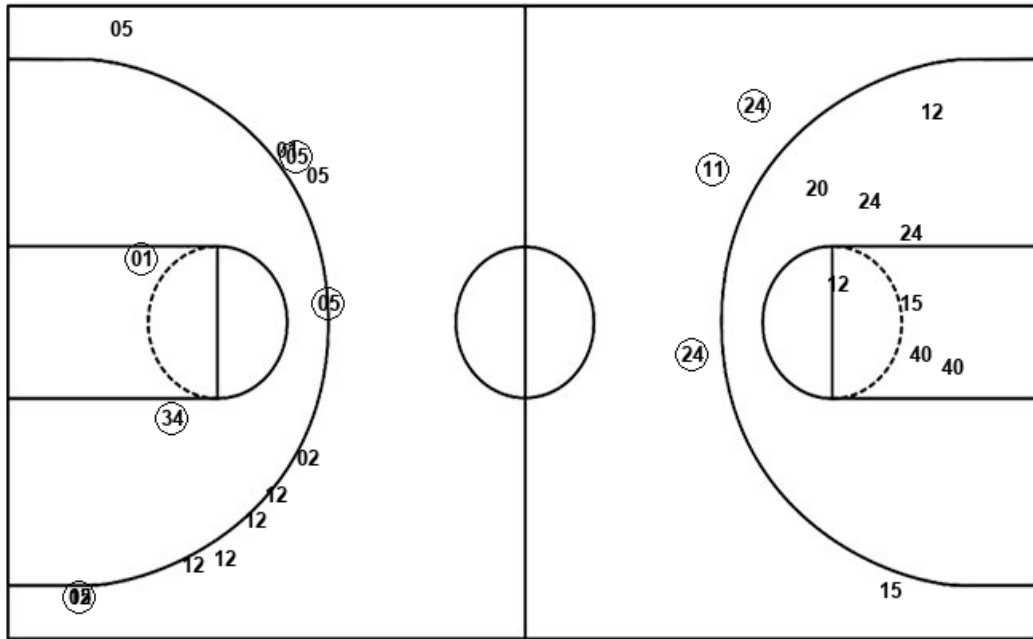
**III. Wesleyan**

Layups  
 (21) (34) 14

Layups  
 (40) (11) (11) 22

Dunks

Dunks



SIUE : Period 2	Made	Att	Pct
Layups	2	3	66.7
Dunks	0	0	0
2PT Field Goals	4	5	80.0
3PT Field Goals	4	12	33.3
<b>Total Field Goals</b>	<b>8</b>	<b>17</b>	<b>47.1</b>

WU : Period 2	Made	Att	Pct
Layups	3	4	75.0
Dunks	0	0	0
2PT Field Goals	3	12	25.0
3PT Field Goals	3	4	75.0
<b>Total Field Goals</b>	<b>6</b>	<b>16</b>	<b>37.5</b>

**Official Shot Chart**  
**III. Wesleyan vs SIUE**  
**PERIOD 3 Shots**  
**November 06, 2018 at Vadalabene Center - Edwardsville, Ill.**



**SIUE**

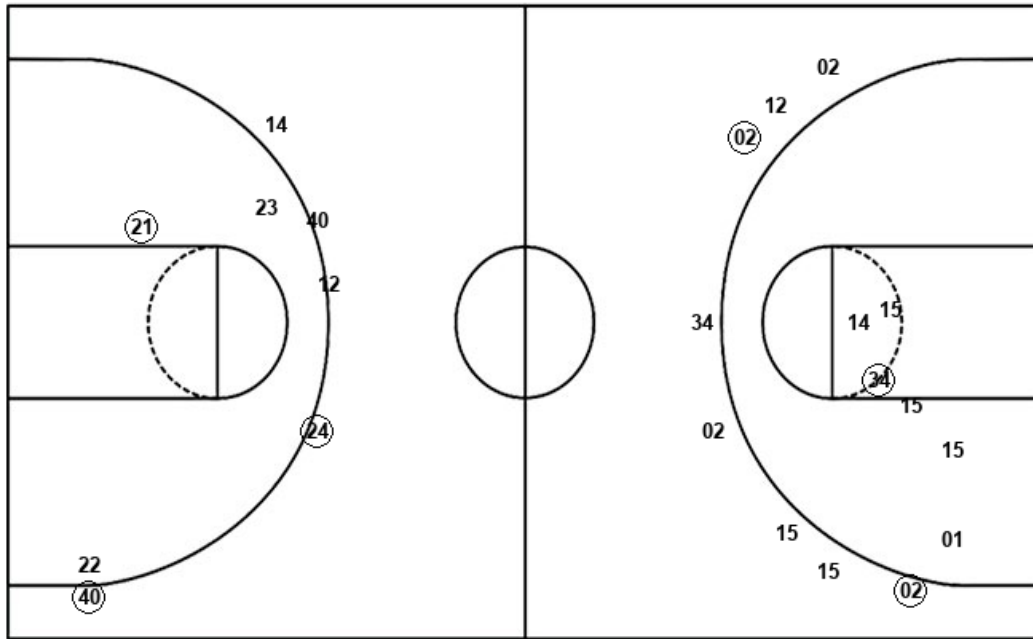
**III. Wesleyan**

Layups  
 (34) (01) 24 14

Layups  
 (23) 23 (40) (12) (12)  
 (24)

Dunks

Dunks



<b>SIUE : Period 3</b>	<b>Made</b>	<b>Att</b>	<b>Pct</b>
Layups	2	4	50.0
Dunks	0	0	0
2PT Field Goals	3	10	30.0
3PT Field Goals	2	8	25.0
<b>Total Field Goals</b>	<b>5</b>	<b>18</b>	<b>27.8</b>

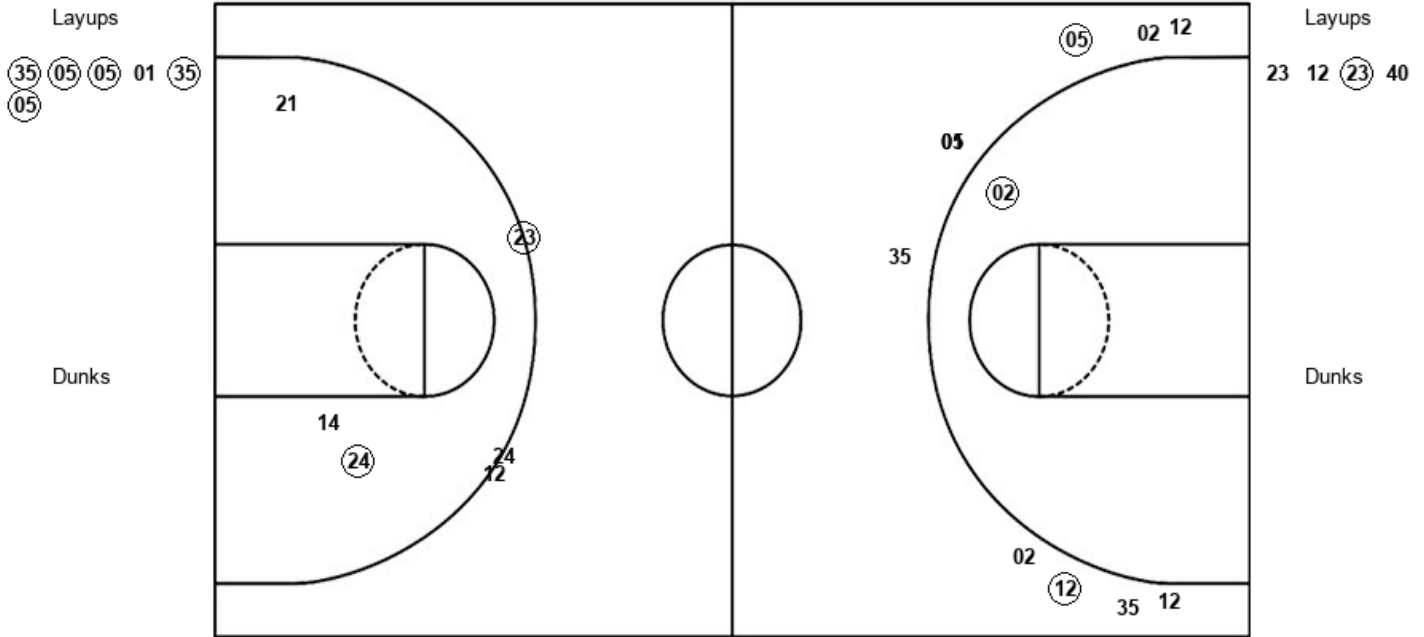
<b>IWU : Period 3</b>	<b>Made</b>	<b>Att</b>	<b>Pct</b>
Layups	5	6	83.3
Dunks	0	0	0
2PT Field Goals	6	9	66.7
3PT Field Goals	2	5	40.0
<b>Total Field Goals</b>	<b>8</b>	<b>14</b>	<b>57.1</b>

**Official Shot Chart**  
**III. Wesleyan vs SIUE**  
**PERIOD 4 Shots**  
**November 06, 2018 at Vadalabene Center - Edwardsville, Ill.**



**SIUE**

**III. Wesleyan**



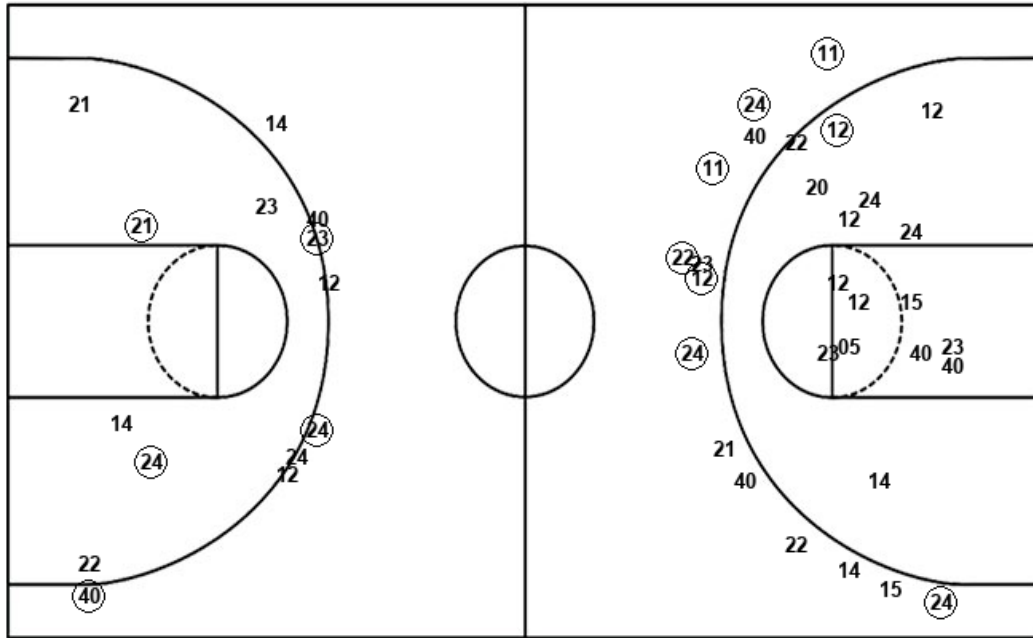
<b>SIUE : Period 4</b>	<b>Made</b>	<b>Att</b>	<b>Pct</b>
Layups	5	6	83.3
Dunks	0	0	0
2PT Field Goals	6	7	85.7
3PT Field Goals	2	10	20.0
<b>Total Field Goals</b>	<b>8</b>	<b>17</b>	<b>47.1</b>

<b>IWU : Period 4</b>	<b>Made</b>	<b>Att</b>	<b>Pct</b>
Layups	1	4	25.0
Dunks	0	0	0
2PT Field Goals	2	7	28.6
3PT Field Goals	1	3	33.3
<b>Total Field Goals</b>	<b>3</b>	<b>10</b>	<b>30.0</b>

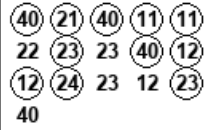
**Official Shot Chart**  
**III. Wesleyan vs SIUE**  
**III. Wesleyan Team Shots**  
**November 06, 2018 at Vadalabene Center - Edwardsville, Ill.**



Layups



Layups



Dunks

Dunks

IWU : Period 1	Made	Att	Pct
Layups	2	2	100.0
Dunks	0	0	0
2PT Field Goals	3	10	30.0
3PT Field Goals	4	10	40.0
<b>Total Field Goals</b>	<b>7</b>	<b>20</b>	<b>35.0</b>

IWU : Period 3	Made	Att	Pct
Layups	5	6	83.3
Dunks	0	0	0
2PT Field Goals	6	9	66.7
3PT Field Goals	2	5	40.0
<b>Total Field Goals</b>	<b>8</b>	<b>14</b>	<b>57.1</b>

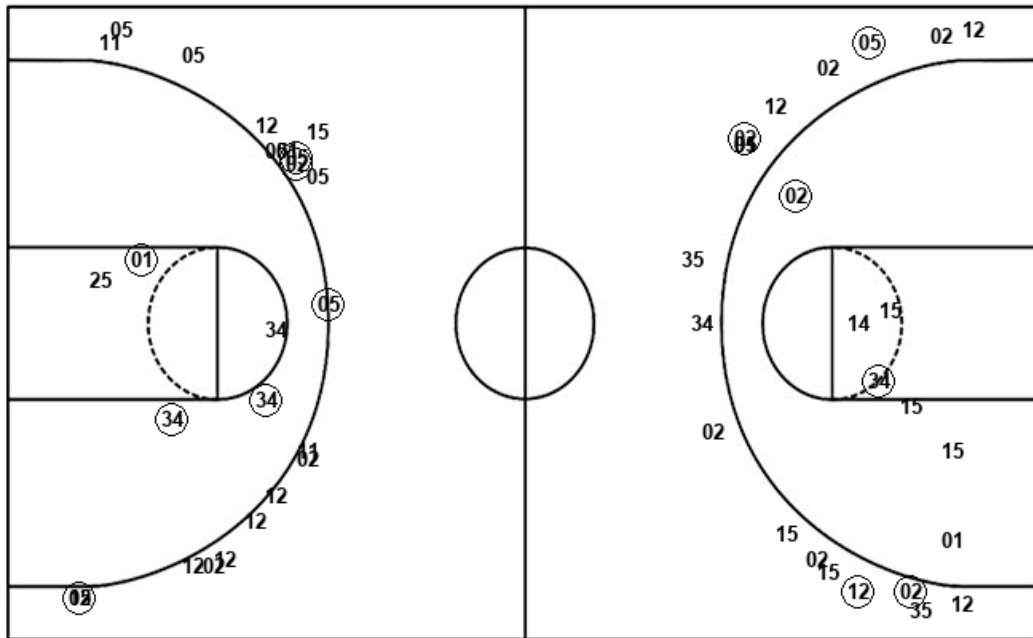
IWU : Period 2	Made	Att	Pct
Layups	3	4	75.0
Dunks	0	0	0
2PT Field Goals	3	12	25.0
3PT Field Goals	3	4	75.0
<b>Total Field Goals</b>	<b>6</b>	<b>16</b>	<b>37.5</b>

IWU : Period 4	Made	Att	Pct
Layups	1	4	25.0
Dunks	0	0	0
2PT Field Goals	2	7	28.6
3PT Field Goals	1	3	33.3
<b>Total Field Goals</b>	<b>3</b>	<b>10</b>	<b>30.0</b>

**Official Shot Chart**  
**III. Wesleyan vs SIUE**  
**SIUE Team Shots**  
**November 06, 2018 at Vadalabene Center - Edwardsville, Ill.**



Layups



Layups



Dunks

Dunks

SIE : Period 1	Made	Att	Pct
Layups	5	7	71.4
Dunks	0	0	0
2PT Field Goals	6	10	60.0
3PT Field Goals	1	8	12.5
<b>Total Field Goals</b>	<b>7</b>	<b>18</b>	<b>38.9</b>

SIE : Period 3	Made	Att	Pct
Layups	2	4	50.0
Dunks	0	0	0
2PT Field Goals	3	10	30.0
3PT Field Goals	2	8	25.0
<b>Total Field Goals</b>	<b>5</b>	<b>18</b>	<b>27.8</b>

SIE : Period 2	Made	Att	Pct
Layups	2	3	66.7
Dunks	0	0	0
2PT Field Goals	4	5	80.0
3PT Field Goals	4	12	33.3
<b>Total Field Goals</b>	<b>8</b>	<b>17</b>	<b>47.1</b>

SIE : Period 4	Made	Att	Pct
Layups	5	6	83.3
Dunks	0	0	0
2PT Field Goals	6	7	85.7
3PT Field Goals	2	10	20.0
<b>Total Field Goals</b>	<b>8</b>	<b>17</b>	<b>47.1</b>