

FINAL SCORE



Florida St.

70



Notre Dame

97

February 10, 2019 • Joyce Center (Purcell Pavilion) - Notre Dame, IN

FINAL STATISTICS

Official Box Score
Florida St. vs Notre Dame
Game Totals -- Final Statistics
February 10, 2019 at Joyce Center (Purcell Pavilion) - Notre Dame, IN



Florida St. 70

| No. | Player | S | Pts | FG | 3FG | FT | OR | DR | TR | PF | A | TO | Blk | Stl | Min | +/- |
|---------------|---------------------|---|-----------|--------------|-------------|--------------|-----------|-----------|-----------|-----------|-----------|-----------|----------|----------|------------|-----|
| 10 | WEBER, KOURTNEY | | 0 | 0-1 | 0-1 | 0-0 | 0 | 0 | 0 | 0 | 1 | 1 | 0 | 0 | 7 | -8 |
| 12 | EKHOMU, NICKI | | 26 | 6-14 | 3-4 | 11-11 | 0 | 3 | 3 | 2 | 6 | 1 | 0 | 1 | 40 | -27 |
| 13 | WOOLFOLK, NAUSIA | | 15 | 6-13 | 3-6 | 0-0 | 0 | 2 | 2 | 5 | 1 | 0 | 0 | 1 | 27 | -19 |
| 15 | GILLESPIE, KIAH | | 17 | 7-22 | 3-8 | 0-0 | 2 | 9 | 11 | 3 | 4 | 1 | 0 | 1 | 38 | -26 |
| 32 | MYERS, VALENCIA | | 6 | 2-8 | 0-1 | 2-2 | 4 | 1 | 5 | 5 | 0 | 3 | 1 | 2 | 20 | -16 |
| 03 | LASSITER, SAYAWNI | | 0 | 0-2 | 0-2 | 0-0 | 0 | 2 | 2 | 1 | 1 | 2 | 0 | 1 | 17 | -14 |
| 24 | JONES, MO. | | 6 | 3-7 | 0-0 | 0-0 | 3 | 4 | 7 | 0 | 0 | 3 | 0 | 2 | 30 | -11 |
| 31 | WILKINSON, SAVANNAH | | 0 | 0-3 | 0-0 | 0-0 | 0 | 2 | 2 | 0 | 0 | 3 | 0 | 0 | 22 | -14 |
| | TEAM | | | | | | 3 | 1 | 4 | 0 | | 0 | | | | |
| TOTALS | | | 70 | 24-70 | 9-22 | 13-13 | 12 | 24 | 36 | 16 | 13 | 14 | 1 | 8 | 200 | |

Shooting By Period

| Period | FG | FG% | 3FG | 3FG% | FT | FT% |
|-------------|--------------|--------------|-------------|--------------|--------------|---------------|
| 1st Qtr | 8-16 | 50% | 4-8 | 50% | 2-2 | 100% |
| 2nd Qtr | 5-15 | 33% | 1-3 | 33% | 5-5 | 100% |
| 3rd Qtr | 4-20 | 20% | 2-8 | 25% | 2-2 | 100% |
| 4th Qtr | 7-19 | 37% | 2-3 | 67% | 4-4 | 100% |
| 1st Half | 13-31 | 42% | 5-11 | 45% | 7-7 | 100% |
| 2nd Half | 11-39 | 28% | 4-11 | 36% | 6-6 | 100% |
| Game | 24-70 | 34.3% | 9-22 | 40.9% | 13-13 | 100.0% |

Last FG: 4th-01:00
Biggest Run: 6-0
Largest lead: By 0 at 1-09:33
Technical Fouls: None.

Notre Dame 97

| No. | Player | S | Pts | FG | 3FG | FT | OR | DR | TR | PF | A | TO | Blk | Stl | Min | +/- |
|---------------|---------------------|---|-----------|--------------|-------------|--------------|----------|-----------|-----------|-----------|-----------|-----------|----------|----------|------------|-----|
| 03 | MABREY, MARINA | | 9 | 4-6 | 1-3 | 0-0 | 0 | 2 | 2 | 1 | 6 | 0 | 0 | 1 | 32 | 25 |
| 05 | YOUNG, JACKIE | | 10 | 4-6 | 0-0 | 2-2 | 1 | 3 | 4 | 2 | 5 | 1 | 0 | 2 | 31 | 18 |
| 11 | TURNER, BRIANNA | | 13 | 4-6 | 0-0 | 5-6 | 0 | 6 | 6 | 1 | 4 | 1 | 5 | 0 | 28 | 25 |
| 24 | OGUNBOWALE, ARIKE | | 27 | 9-16 | 5-7 | 4-4 | 1 | 8 | 9 | 1 | 5 | 0 | 0 | 2 | 33 | 26 |
| 32 | SHEPARD, JESSICA | | 26 | 12-22 | 0-0 | 2-2 | 3 | 5 | 8 | 2 | 2 | 2 | 0 | 1 | 34 | 26 |
| 00 | NIXON, JORDAN | | 3 | 0-1 | 0-0 | 3-4 | 0 | 1 | 1 | 3 | 0 | 2 | 0 | 0 | 9 | 6 |
| 12 | PROHASKA, ABBY | | 6 | 3-4 | 0-0 | 0-0 | 1 | 4 | 5 | 1 | 2 | 2 | 0 | 2 | 23 | 5 |
| 22 | COSGROVE, DANIELLE | | 0 | 0-1 | 0-1 | 0-0 | 0 | 1 | 1 | 0 | 0 | 0 | 0 | 0 | 3 | 3 |
| 30 | VAUGHN, MIKAYLA | | 0 | 0-3 | 0-0 | 0-0 | 1 | 0 | 1 | 0 | 0 | 0 | 0 | 0 | 1 | 0 |
| 33 | PATTERSON, DANIELLE | | 3 | 0-3 | 0-0 | 3-4 | 1 | 2 | 3 | 0 | 0 | 2 | 0 | 0 | 6 | 1 |
| 40 | BUTLER, MAUREEN | | 0 | 0-0 | 0-0 | 0-0 | 0 | 0 | 0 | 0 | 1 | 0 | 0 | 0 | 2 | 0 |
| | TEAM | | | | | | 1 | 2 | 3 | 0 | | 0 | | | | |
| TOTALS | | | 97 | 36-68 | 6-11 | 19-22 | 9 | 34 | 43 | 11 | 25 | 10 | 5 | 8 | 200 | |

Shooting By Period

| Period | FG | FG% | 3FG | 3FG% | FT | FT% |
|-------------|--------------|--------------|-------------|--------------|--------------|--------------|
| 1st Qtr | 12-21 | 57% | 2-3 | 67% | 2-2 | 100% |
| 2nd Qtr | 8-16 | 50% | 2-2 | 100% | 6-8 | 75% |
| 3rd Qtr | 8-18 | 44% | 2-4 | 50% | 4-4 | 100% |
| 4th Qtr | 8-13 | 62% | 0-2 | 00% | 7-8 | 88% |
| 1st Half | 20-37 | 54% | 4-5 | 80% | 8-10 | 80% |
| 2nd Half | 16-31 | 52% | 2-6 | 33% | 11-12 | 92% |
| Game | 36-68 | 52.9% | 6-11 | 54.5% | 19-22 | 86.4% |

Last FG: 4th-01:15
Biggest Run: 15-0
Largest lead: By 27 at 4-00:23
Technical Fouls: None.

Game Notes:

Officials: , ,
Attendance: 8950

Start Time: 2019-02-10 17:02:19
End Time: 2019-02-10 18:50:35
Game Duration: 108
Conference Game;

| Score | 1st | 2nd | 3rd | 4th | TOT |
|-------|-----|-----|-----|-----|-----------|
| FSU | 22 | 16 | 12 | 20 | 70 |
| UND | 28 | 24 | 22 | 23 | 97 |

FSU led for 0:00. UND led for 39:08.
Game was tied for 0:52.
Times tied: 1 Lead Changes: 0

| Points from | FSU | UND |
|--------------|-----|-----|
| In the Paint | 20 | 42 |
| Off Turns | 13 | 14 |
| 2nd Chance | 6 | 11 |
| Fast Break | 13 | 10 |
| Bench | 6 | 12 |

Official Box Score
Florida St. vs Notre Dame
First Half Statistics Only
February 10, 2019 at Joyce Center (Purcell Pavilion) - Notre Dame, IN



Florida St. 38

| No. | Player | S | Pts | FG | 3FG | FT | OR | DR | TR | PF | A | TO | Blk | Stl | Min | +/- |
|---------------|---------------------|---|-----------|--------------|-------------|------------|----------|-----------|-----------|----------|----------|-----------|----------|----------|------------|-----|
| 10 | WEBER, KOURTNEY | | 0 | 0-1 | 0-1 | 0-0 | 0 | 0 | 0 | 0 | 1 | 1 | 0 | 0 | 5 | -6 |
| 12 | EKHOMU, NICKI | | 17 | 4-6 | 2-2 | 7-7 | 0 | 3 | 3 | 1 | 4 | 1 | 0 | 1 | 20 | -14 |
| 13 | WOOLFOLK, NAUSIA | | 10 | 4-7 | 2-3 | 0-0 | 0 | 1 | 1 | 2 | 1 | 0 | 0 | 0 | 18 | -17 |
| 15 | GILLESPIE, KIAH | | 9 | 4-11 | 1-4 | 0-0 | 1 | 6 | 7 | 1 | 1 | 1 | 0 | 1 | 19 | -12 |
| 24 | JONES, MO. | | 0 | 0-2 | 0-0 | 0-0 | 0 | 1 | 1 | 0 | 0 | 1 | 0 | 2 | 12 | 0 |
| 31 | WILKINSON, SAVANNAH | | 0 | 0-2 | 0-0 | 0-0 | 0 | 1 | 1 | 0 | 0 | 3 | 0 | 0 | 15 | -5 |
| 32 | MYERS, VALENCIA | | 2 | 1-1 | 0-0 | 0-0 | 2 | 0 | 2 | 2 | 0 | 2 | 0 | 0 | 6 | -13 |
| 03 | LASSITER, SAYAWNI | | 0 | 0-1 | 0-1 | 0-0 | 0 | 1 | 1 | 1 | 1 | 1 | 0 | 0 | 6 | -3 |
| | TEAM | | 0 | 0-0 | 0-0 | 0-0 | 1 | 0 | 1 | 0 | 0 | 0 | 0 | 0 | 0 | |
| TOTALS | | | 38 | 13-31 | 5-11 | 7-7 | 4 | 13 | 17 | 7 | 8 | 10 | 0 | 4 | 100 | |

Shooting By Period

| Period | FG | FG% | 3FG | 3FG% | FT | FT% |
|----------|-------|-------|------|-------|-------|--------|
| 1st Qtr | 8-16 | 50% | 4-8 | 50% | 2-2 | 100% |
| 2nd Qtr | 5-15 | 33% | 1-3 | 33% | 5-5 | 100% |
| 1st Half | 13-31 | 42% | 5-11 | 45% | 7-7 | 100% |
| Game | 24-70 | 34.3% | 9-22 | 40.9% | 13-13 | 100.0% |

Last FG Half: FSU 2nd-02:19

Notre Dame 52

| No. | Player | S | Pts | FG | 3FG | FT | OR | DR | TR | PF | A | TO | Blk | Stl | Min | +/- |
|---------------|---------------------|---|-----------|--------------|------------|-------------|----------|-----------|-----------|----------|-----------|----------|----------|----------|------------|-----|
| 00 | NIXON, JORDAN | | 1 | 0-1 | 0-0 | 1-2 | 0 | 1 | 1 | 2 | 0 | 1 | 0 | 0 | 5 | 3 |
| 11 | TURNER, BRIANNA | | 5 | 1-2 | 0-0 | 3-4 | 0 | 3 | 3 | 0 | 2 | 0 | 2 | 0 | 13 | 14 |
| 12 | PROHASKA, ABBY | | 2 | 1-2 | 0-0 | 0-0 | 1 | 2 | 3 | 0 | 2 | 1 | 0 | 1 | 11 | 6 |
| 22 | COSGROVE, DANIELLE | | 0 | 0-0 | 0-0 | 0-0 | 0 | 0 | 0 | 0 | 0 | 0 | 0 | 0 | 0 | 0 |
| 24 | OGUNBOWALE, ARIKE | | 19 | 6-11 | 3-3 | 4-4 | 0 | 3 | 3 | 1 | 3 | 0 | 0 | 2 | 20 | 14 |
| 30 | VAUGHN, MIKAYLA | | 0 | 0-3 | 0-0 | 0-0 | 1 | 0 | 1 | 0 | 0 | 0 | 0 | 0 | 1 | 0 |
| 32 | SHEPARD, JESSICA | | 16 | 8-12 | 0-0 | 0-0 | 2 | 1 | 3 | 0 | 1 | 1 | 0 | 1 | 18 | 14 |
| 33 | PATTERSON, DANIELLE | | 0 | 0-0 | 0-0 | 0-0 | 0 | 0 | 0 | 0 | 0 | 0 | 0 | 0 | 0 | 0 |
| 40 | BUTLER, MAUREEN | | 0 | 0-0 | 0-0 | 0-0 | 0 | 0 | 0 | 0 | 0 | 0 | 0 | 0 | 0 | 0 |
| 03 | MABREY, MARINA | | 7 | 3-4 | 1-2 | 0-0 | 0 | 1 | 1 | 1 | 3 | 0 | 0 | 1 | 18 | 14 |
| 05 | YOUNG, JACKIE | | 2 | 1-2 | 0-0 | 0-0 | 0 | 3 | 3 | 2 | 2 | 1 | 0 | 2 | 13 | 5 |
| | TEAM | | 0 | 0-0 | 0-0 | 0-0 | 0 | 0 | 0 | 0 | 0 | 0 | 0 | 0 | 0 | |
| TOTALS | | | 52 | 20-37 | 4-5 | 8-10 | 4 | 14 | 18 | 6 | 13 | 4 | 2 | 7 | 100 | |

Shooting By Period

| Period | FG | FG% | 3FG | 3FG% | FT | FT% |
|----------|-------|-------|------|-------|-------|-------|
| 1st Qtr | 12-21 | 57% | 2-3 | 67% | 2-2 | 100% |
| 2nd Qtr | 8-16 | 50% | 2-2 | 100% | 6-8 | 75% |
| 1st Half | 20-37 | 54% | 4-5 | 80% | 8-10 | 80% |
| Game | 36-68 | 52.9% | 6-11 | 54.5% | 19-22 | 86.4% |

Last FG Half: UND 2nd-01:56

Game Notes:

Officials: , ,
Attendance: 8950

Start Time: 2019-02-10 17:02:19
End Time: 2019-02-10 18:50:35
Game Duration: 108
Conference Game;

| Score | 1st | 2nd | 3rd | 4th | TOT |
|-------|-----|-----|-----|-----|-----------|
| FSU | 22 | 16 | 12 | 20 | 70 |
| UND | 28 | 24 | 22 | 23 | 97 |

| Points from (This Period) | FSU | UND |
|---------------------------|-----|-----|
| In the Paint | 10 | 22 |
| Off Turns | 7 | 12 |
| 2nd Chance | 2 | 5 |
| Fast Break | 5 | 6 |
| Bench | 0 | 3 |

Official Box Score
Florida St. vs Notre Dame
First Quarter Statistics Only
February 10, 2019 at Joyce Center (Purcell Pavilion) - Notre Dame, IN



Florida St. 22

| No. | Player | S | Pts | FG | 3FG | FT | OR | DR | TR | PF | A | TO | Blk | Stl | Min | +/- |
|---------------|---------------------|---|-----------|-------------|------------|------------|----------|----------|----------|----------|----------|----------|----------|----------|-----------|-----|
| 10 | WEBER, KOURTNEY | | 0 | 0-1 | 0-1 | 0-0 | 0 | 0 | 0 | 0 | 1 | 0 | 0 | 0 | 4 | -6 |
| 12 | EKHOMU, NICKI | | 8 | 2-2 | 2-2 | 2-2 | 0 | 2 | 2 | 0 | 3 | 0 | 0 | 0 | 10 | -6 |
| 13 | WOOLFOLK, NAUSIA | | 3 | 1-3 | 1-2 | 0-0 | 0 | 0 | 0 | 0 | 1 | 0 | 0 | 0 | 9 | -7 |
| 15 | GILLESPIE, KIAH | | 9 | 4-7 | 1-3 | 0-0 | 1 | 4 | 5 | 0 | 1 | 0 | 0 | 0 | 10 | -6 |
| 32 | MYERS, VALENCIA | | 2 | 1-1 | 0-0 | 0-0 | 0 | 0 | 0 | 2 | 0 | 1 | 0 | 0 | 4 | -6 |
| 03 | LASSITER, SAYAWNI | | 0 | 0-0 | 0-0 | 0-0 | 0 | 0 | 0 | 0 | 1 | 0 | 0 | 0 | 1 | 1 |
| 24 | JONES, MO. | | 0 | 0-1 | 0-0 | 0-0 | 0 | 1 | 1 | 0 | 0 | 1 | 0 | 0 | 6 | 0 |
| 31 | WILKINSON, SAVANNAH | | 0 | 0-1 | 0-0 | 0-0 | 0 | 1 | 1 | 0 | 0 | 2 | 0 | 0 | 6 | 0 |
| | TEAM | | | | | | 0 | 0 | 0 | 0 | | 0 | | | | |
| TOTALS | | | 22 | 8-16 | 4-8 | 2-2 | 1 | 8 | 9 | 2 | 7 | 4 | 0 | 0 | 50 | |

Shooting By Period

| Period | FG | FG% | 3FG | 3FG% | FT | FT% |
|----------|-------|-------|------|-------|-------|--------|
| 1st Qtr | 8-16 | 50% | 4-8 | 50% | 2-2 | 100% |
| 2nd Qtr | 5-15 | 33% | 1-3 | 33% | 5-5 | 100% |
| 1st Half | 8-16 | 50% | 4-8 | 50% | 2-2 | 100% |
| 1st Half | 13-31 | 42% | 5-11 | 45% | 7-7 | 100% |
| Game | 24-70 | 34.3% | 9-22 | 40.9% | 13-13 | 100.0% |

Notre Dame 28

| No. | Player | S | Pts | FG | 3FG | FT | OR | DR | TR | PF | A | TO | Blk | Stl | Min | +/- |
|---------------|---------------------|---|-----------|--------------|------------|------------|----------|----------|----------|----------|----------|----------|----------|----------|-----------|-----|
| 03 | MABREY, MARINA | | 5 | 2-3 | 1-2 | 0-0 | 0 | 1 | 1 | 1 | 0 | 0 | 0 | 0 | 10 | 6 |
| 05 | YOUNG, JACKIE | | 2 | 1-2 | 0-0 | 0-0 | 0 | 3 | 3 | 1 | 2 | 0 | 0 | 1 | 10 | 6 |
| 11 | TURNER, BRIANNA | | 2 | 0-1 | 0-0 | 2-2 | 0 | 0 | 0 | 0 | 2 | 0 | 0 | 0 | 4 | 6 |
| 24 | OGUNBOWALE, ARIKE | | 9 | 4-7 | 1-1 | 0-0 | 0 | 1 | 1 | 0 | 1 | 0 | 0 | 0 | 10 | 6 |
| 32 | SHEPARD, JESSICA | | 10 | 5-8 | 0-0 | 0-0 | 1 | 1 | 2 | 0 | 0 | 0 | 0 | 1 | 10 | 6 |
| 00 | NIXON, JORDAN | | 0 | 0-0 | 0-0 | 0-0 | 0 | 0 | 0 | 0 | 0 | 0 | 0 | 0 | 0 | 0 |
| 12 | PROHASKA, ABBY | | 0 | 0-0 | 0-0 | 0-0 | 0 | 1 | 1 | 0 | 1 | 0 | 0 | 0 | 6 | 0 |
| 22 | COSGROVE, DANIELLE | | 0 | 0-0 | 0-0 | 0-0 | 0 | 0 | 0 | 0 | 0 | 0 | 0 | 0 | 0 | 0 |
| 30 | VAUGHN, MIKAYLA | | 0 | 0-0 | 0-0 | 0-0 | 0 | 0 | 0 | 0 | 0 | 0 | 0 | 0 | 0 | 0 |
| 33 | PATTERSON, DANIELLE | | 0 | 0-0 | 0-0 | 0-0 | 0 | 0 | 0 | 0 | 0 | 0 | 0 | 0 | 0 | 0 |
| 40 | BUTLER, MAUREEN | | 0 | 0-0 | 0-0 | 0-0 | 0 | 0 | 0 | 0 | 0 | 0 | 0 | 0 | 0 | 0 |
| | TEAM | | | | | | 0 | 0 | 0 | 0 | | 0 | | | | |
| TOTALS | | | 28 | 12-21 | 2-3 | 2-2 | 1 | 7 | 8 | 2 | 6 | 0 | 0 | 2 | 50 | |

Shooting By Period

| Period | FG | FG% | 3FG | 3FG% | FT | FT% |
|----------|-------|-------|------|-------|-------|-------|
| 1st Qtr | 12-21 | 57% | 2-3 | 67% | 2-2 | 100% |
| 2nd Qtr | 8-16 | 50% | 2-2 | 100% | 6-8 | 75% |
| 1st Half | 12-21 | 57% | 2-3 | 67% | 2-2 | 100% |
| 1st Half | 20-37 | 54% | 4-5 | 80% | 8-10 | 80% |
| Game | 36-68 | 52.9% | 6-11 | 54.5% | 19-22 | 86.4% |

Game Notes:

Officials: , ,

Attendance: 8950

Start Time: 2019-02-10 17:02:19

End Time: 2019-02-10 18:50:35

Game Duration: 108

Conference Game;

| Score | 1st | 2nd | 3rd | 4th | TOT |
|-------|-----|-----|-----|-----|-----------|
| FSU | 22 | 16 | 12 | 20 | 70 |
| UND | 28 | 24 | 22 | 23 | 97 |

| Points from (This Period) | FSU | UND |
|---------------------------|-----|-----|
| In the Paint | 6 | 10 |
| Off Turns | 0 | 4 |
| 2nd Chance | 2 | 0 |
| Fast Break | 0 | 0 |
| Bench | 0 | 0 |

**Official Play-By-Play
Florida St. vs Notre Dame
First Quarter**

February 10, 2019 at Joyce Center (Purcell Pavilion) - Notre Dame, IN



Period 1

Starters:

Florida St.: 10 WEBER,KOURTNEY; 12 EKHOMU,NICKI; 13 WOOLFOLK,NAUSIA; 15 GILLESPIE,KIAH; 32 MYERS,VALENCIA;
Notre Dame: 11 TURNER,BRIANNA; 24 OGUNBOWALE,ARIKE; 32 SHEPARD,JESSICA; 3 MABREY,MARINA; 5 YOUNG,JACKIE;

| Time | VISITORS: Florida St. | Score | Margin | HOME: Notre Dame |
|-------|---|-------|--------|------------------------------------|
| 09:55 | | 2-0 | H 2 | GOOD! LAYUP by SHEPARD, JESSICA |
| 09:55 | | | | ASSIST by TURNER, BRIANNA |
| 09:33 | GOOD! LAYUP by MYERS, VALENCIA | 2-2 | T | |
| 09:33 | ASSIST by WEBER, KOURTNEY | | | |
| 09:14 | | | | MISSED JUMPER by TURNER, BRIANNA |
| 09:09 | | | | REBOUND (OFF) by SHEPARD, JESSICA |
| 09:07 | | | | MISSED JUMPER by SHEPARD, JESSICA |
| 09:03 | REBOUND (DEF) by GILLESPIE, KIAH | | | |
| 09:01 | FOUL (OFF) by MYERS, VALENCIA | | | |
| 09:01 | TURNOVER (OFFENSIVE) by MYERS, VALENCIA | | | |
| 08:46 | | 4-2 | H 2 | GOOD! JUMPER by OGUNBOWALE, ARIKE |
| 08:29 | MISSED 3PTR by WEBER, KOURTNEY | | | |
| 08:26 | | | | REBOUND (DEF) by YOUNG, JACKIE |
| 08:21 | | 7-2 | H 5 | GOOD! 3PTR by MABREY, MARINA |
| 07:59 | GOOD! 3PTR by EKHOMU, NICKI | 7-5 | H 2 | |
| 07:59 | ASSIST by GILLESPIE, KIAH | | | |
| 07:49 | | 9-5 | H 4 | GOOD! JUMPER by OGUNBOWALE, ARIKE |
| 07:32 | MISSED 3PTR by GILLESPIE, KIAH | | | |
| 07:29 | | | | REBOUND (DEF) by MABREY, MARINA |
| 07:23 | | 11-5 | H 6 | GOOD! JUMPER by SHEPARD, JESSICA |
| 07:23 | | | | ASSIST by TURNER, BRIANNA |
| 07:03 | MISSED JUMPER by GILLESPIE, KIAH | | | |
| 07:00 | | | | REBOUND (DEF) by OGUNBOWALE, ARIKE |
| 06:57 | | 13-5 | H 8 | GOOD! LAYUP by SHEPARD, JESSICA |
| 06:57 | | | | ASSIST by OGUNBOWALE, ARIKE |
| 06:38 | GOOD! 3PTR by EKHOMU, NICKI | 13-8 | H 5 | |
| 06:38 | ASSIST by WOOLFOLK, NAUSIA | | | |
| 06:24 | FOUL (PERSONAL) by MYERS, VALENCIA | | | |
| 06:24 | | 14-8 | H 6 | GOOD! FT by TURNER, BRIANNA |
| 06:24 | SUB OUT: WEBER, KOURTNEY | | | |
| 06:24 | SUB IN: JONES, MO. | | | |
| 06:24 | SUB OUT: WOOLFOLK, NAUSIA | | | |
| 06:24 | SUB IN: LASSITER, SAYAWNI | | | |
| 06:24 | SUB OUT: MYERS, VALENCIA | | | |
| 06:24 | SUB IN: WILKINSON, SAVANNAH | | | |
| 06:24 | | 15-8 | H 7 | GOOD! FT by TURNER, BRIANNA |
| 06:15 | | | | FOUL (PERSONAL) by YOUNG, JACKIE |
| 06:15 | GOOD! FT by EKHOMU, NICKI | 15-9 | H 6 | |
| 06:15 | | | | SUB OUT: TURNER, BRIANNA |
| 06:15 | | | | SUB IN: PROHASKA, ABBY |
| 06:15 | GOOD! FT by EKHOMU, NICKI | 15-10 | H 5 | |
| 05:58 | | | | MISSED JUMPER by SHEPARD, JESSICA |
| 05:55 | REBOUND (DEF) by GILLESPIE, KIAH | | | |
| 05:38 | GOOD! JUMPER by GILLESPIE, KIAH | 15-12 | H 3 | |
| 05:38 | ASSIST by LASSITER, SAYAWNI | | | |
| 05:20 | | 17-12 | H 5 | GOOD! JUMPER by MABREY, MARINA |
| 05:20 | | | | ASSIST by YOUNG, JACKIE |
| 05:14 | | | | FOUL (PERSONAL) by MABREY, MARINA |
| 05:14 | SUB OUT: LASSITER, SAYAWNI | | | |
| 05:14 | SUB IN: WOOLFOLK, NAUSIA | | | |
| 05:03 | TURNOVER (TRAVEL) by WILKINSON, SAVANNAH | | | |
| 04:42 | | 19-12 | H 7 | GOOD! JUMPER by OGUNBOWALE, ARIKE |
| 04:30 | MISSED JUMPER by WOOLFOLK, NAUSIA | | | |
| 04:26 | | | | REBOUND (DEF) by YOUNG, JACKIE |
| 04:23 | | | | MISSED LAYUP by SHEPARD, JESSICA |
| 04:20 | REBOUND (DEF) by GILLESPIE, KIAH | | | |
| 04:15 | MISSED LAYUP by WILKINSON, SAVANNAH | | | |
| 04:12 | | | | REBOUND (DEF) by YOUNG, JACKIE |
| 04:02 | | 22-12 | H 10 | GOOD! 3PTR by OGUNBOWALE, ARIKE |
| 04:02 | | | | ASSIST by YOUNG, JACKIE |
| 03:37 | GOOD! 3PTR by GILLESPIE, KIAH | 22-15 | H 7 | |
| 03:37 | ASSIST by EKHOMU, NICKI | | | |
| 03:16 | | | | MISSED LAYUP by OGUNBOWALE, ARIKE |
| 03:11 | REBOUND (DEF) by WILKINSON, SAVANNAH | | | |
| 03:00 | MISSED 3PTR by WOOLFOLK, NAUSIA | | | |
| 02:55 | | | | REBOUND (DEF) by PROHASKA, ABBY |
| 02:51 | | 24-15 | H 9 | GOOD! LAYUP by YOUNG, JACKIE |
| 02:40 | TURNOVER (BADPASS) by WILKINSON, SAVANNAH | | | |
| 02:40 | | | | STEAL by YOUNG, JACKIE |
| 02:35 | | | | MISSED LAYUP by YOUNG, JACKIE |

| Time | VISITORS: Florida St. | Score | Margin | HOME: Notre Dame |
|-------|---------------------------------------|-------|--------|------------------------------------|
| 02:32 | REBOUND (DEF) by EKHOMU, NICKI | | | |
| 02:14 | TURNOVER (LOSTBALL) by JONES, MO. | | | |
| 02:14 | | | | STEAL by SHEPARD, JESSICA |
| 02:09 | | | | MISSED 3PTR by MABREY, MARINA |
| 02:06 | REBOUND (DEF) by JONES, MO. | | | |
| 01:52 | GOOD! 3PTR by WOOLFOLK, NAUSIA | 24-18 | H 6 | |
| 01:52 | ASSIST by EKHOMU, NICKI | | | |
| 01:25 | | 26-18 | H 8 | GOOD! LAYUP by SHEPARD, JESSICA |
| 01:25 | | | | ASSIST by PROHASKA, ABBY |
| 01:16 | MISSED 3PTR by GILLESPIE, KIAH | | | |
| 01:12 | | | | REBOUND (DEF) by SHEPARD, JESSICA |
| 01:06 | | | | MISSED JUMPER by OGUNBOWALE, ARIKE |
| 01:03 | REBOUND (DEF) by GILLESPIE, KIAH | | | |
| 00:50 | GOOD! JUMPER by GILLESPIE, KIAH [PNT] | 26-20 | H 6 | |
| 00:50 | ASSIST by EKHOMU, NICKI | | | |
| 00:28 | | | | MISSED JUMPER by OGUNBOWALE, ARIKE |
| 00:24 | REBOUND (DEF) by EKHOMU, NICKI | | | |
| 00:22 | MISSED LAYUP by JONES, MO. | | | |
| 00:16 | REBOUND (OFF) by GILLESPIE, KIAH | | | |
| 00:16 | GOOD! LAYUP by GILLESPIE, KIAH | 26-22 | H 4 | |
| 00:01 | | 28-22 | H 6 | GOOD! JUMPER by SHEPARD, JESSICA |

Florida St. 22, Notre Dame 28

| Points from (This Period) | FSU | UND |
|---------------------------|-----|-----|
| In the Paint | 6 | 10 |
| Off Turns | 0 | 4 |
| 2nd Chance | 2 | 0 |
| Fast Break | 0 | 0 |
| Bench | 0 | 0 |

Official Box Score
Florida St. vs Notre Dame
Second Quarter Statistics Only
February 10, 2019 at Joyce Center (Purcell Pavilion) - Notre Dame, IN



Florida St. 16

| No. | Player | S | Pts | FG | 3FG | FT | OR | DR | TR | PF | A | TO | Blk | Stl | Min | +/- |
|---------------|---------------------|---|-----------|-------------|------------|------------|----------|----------|----------|----------|----------|----------|----------|----------|-----------|-----|
| 10 | WEBER, KOURTNEY | | 0 | 0-0 | 0-0 | 0-0 | 0 | 0 | 0 | 0 | 0 | 1 | 0 | 0 | 1 | 0 |
| 12 | EKHOMU, NICKI | | 9 | 2-4 | 0-0 | 5-5 | 0 | 1 | 1 | 1 | 1 | 1 | 0 | 1 | 10 | -8 |
| 13 | WOOLFOLK, NAUSIA | | 7 | 3-4 | 1-1 | 0-0 | 0 | 1 | 1 | 2 | 0 | 0 | 0 | 0 | 9 | -10 |
| 15 | GILLESPIE, KIAH | | 0 | 0-4 | 0-1 | 0-0 | 0 | 2 | 2 | 1 | 0 | 1 | 0 | 1 | 9 | -6 |
| 32 | MYERS, VALENCIA | | 0 | 0-0 | 0-0 | 0-0 | 2 | 0 | 2 | 0 | 0 | 1 | 0 | 0 | 2 | -7 |
| 03 | LASSITER, SAYAWNI | | 0 | 0-1 | 0-1 | 0-0 | 0 | 1 | 1 | 1 | 0 | 1 | 0 | 0 | 5 | -4 |
| 24 | JONES, MO. | | 0 | 0-1 | 0-0 | 0-0 | 0 | 0 | 0 | 0 | 0 | 0 | 0 | 2 | 6 | 0 |
| 31 | WILKINSON, SAVANNAH | | 0 | 0-1 | 0-0 | 0-0 | 0 | 0 | 0 | 0 | 0 | 1 | 0 | 0 | 9 | -5 |
| | TEAM | | | | | | 1 | 0 | 1 | 0 | | 0 | | | | |
| TOTALS | | | 16 | 5-15 | 1-3 | 5-5 | 3 | 5 | 8 | 5 | 1 | 6 | 0 | 4 | 50 | |

Shooting By Period

| Period | FG | FG% | 3FG | 3FG% | FT | FT% |
|----------|-------|-------|------|-------|-------|--------|
| 3rd Qtr | 4-20 | 20% | 2-8 | 25% | 2-2 | 100% |
| 4th Qtr | 7-19 | 37% | 2-3 | 67% | 4-4 | 100% |
| 2nd Half | 5-15 | 33% | 1-3 | 33% | 5-5 | 100% |
| 2nd Half | 11-39 | 28% | 4-11 | 36% | 6-6 | 100% |
| Game | 24-70 | 34.3% | 9-22 | 40.9% | 13-13 | 100.0% |

Notre Dame 24

| No. | Player | S | Pts | FG | 3FG | FT | OR | DR | TR | PF | A | TO | Blk | Stl | Min | +/- |
|---------------|---------------------|---|-----------|-------------|------------|------------|----------|----------|-----------|----------|----------|----------|----------|----------|-----------|-----|
| 03 | MABREY, MARINA | | 2 | 1-1 | 0-0 | 0-0 | 0 | 0 | 0 | 0 | 3 | 0 | 0 | 1 | 8 | 8 |
| 05 | YOUNG, JACKIE | | 0 | 0-0 | 0-0 | 0-0 | 0 | 0 | 0 | 1 | 0 | 1 | 0 | 1 | 3 | -1 |
| 11 | TURNER, BRIANNA | | 3 | 1-1 | 0-0 | 1-2 | 0 | 3 | 3 | 0 | 0 | 0 | 2 | 0 | 9 | 8 |
| 24 | OGUNBOWALE, ARIKE | | 10 | 2-4 | 2-2 | 4-4 | 0 | 2 | 2 | 1 | 2 | 0 | 0 | 2 | 10 | 8 |
| 32 | SHEPARD, JESSICA | | 6 | 3-4 | 0-0 | 0-0 | 1 | 0 | 1 | 0 | 1 | 1 | 0 | 0 | 8 | 8 |
| 00 | NIXON, JORDAN | | 1 | 0-1 | 0-0 | 1-2 | 0 | 1 | 1 | 2 | 0 | 1 | 0 | 0 | 5 | 3 |
| 12 | PROHASKA, ABBY | | 2 | 1-2 | 0-0 | 0-0 | 1 | 1 | 2 | 0 | 1 | 1 | 0 | 1 | 5 | 6 |
| 22 | COSGROVE, DANIELLE | | 0 | 0-0 | 0-0 | 0-0 | 0 | 0 | 0 | 0 | 0 | 0 | 0 | 0 | 0 | 0 |
| 30 | VAUGHN, MIKAYLA | | 0 | 0-3 | 0-0 | 0-0 | 1 | 0 | 1 | 0 | 0 | 0 | 0 | 0 | 1 | 0 |
| 33 | PATTERSON, DANIELLE | | 0 | 0-0 | 0-0 | 0-0 | 0 | 0 | 0 | 0 | 0 | 0 | 0 | 0 | 0 | 0 |
| 40 | BUTLER, MAUREEN | | 0 | 0-0 | 0-0 | 0-0 | 0 | 0 | 0 | 0 | 0 | 0 | 0 | 0 | 0 | 0 |
| | TEAM | | | | | | 0 | 0 | 0 | 0 | | 0 | | | | |
| TOTALS | | | 24 | 8-16 | 2-2 | 6-8 | 3 | 7 | 10 | 4 | 7 | 4 | 2 | 5 | 50 | |

Shooting By Period

| Period | FG | FG% | 3FG | 3FG% | FT | FT% |
|----------|-------|-------|------|-------|-------|-------|
| 3rd Qtr | 8-18 | 44% | 2-4 | 50% | 4-4 | 100% |
| 4th Qtr | 8-13 | 62% | 0-2 | 00% | 7-8 | 88% |
| 2nd Half | 8-16 | 50% | 2-2 | 100% | 6-8 | 75% |
| 2nd Half | 16-31 | 52% | 2-6 | 33% | 11-12 | 92% |
| Game | 36-68 | 52.9% | 6-11 | 54.5% | 19-22 | 86.4% |

Game Notes:

Officials: , ,

Attendance: 8950

Start Time: 2019-02-10 17:02:19

End Time: 2019-02-10 18:50:35

Game Duration: 108

Conference Game;

| Score | 1st | 2nd | 3rd | 4th | TOT |
|-------|-----|-----|-----|-----|-----------|
| FSU | 22 | 16 | 12 | 20 | 70 |
| UND | 28 | 24 | 22 | 23 | 97 |

| Points from (This Period) | FSU | UND |
|---------------------------|-----|-----|
| In the Paint | 4 | 12 |
| Off Turns | 7 | 8 |
| 2nd Chance | 0 | 5 |
| Fast Break | 5 | 6 |
| Bench | 0 | 3 |

**Official Play-By-Play
Florida St. vs Notre Dame
Second Quarter**

February 10, 2019 at Joyce Center (Purcell Pavilion) - Notre Dame, IN



Period 2

Starters:

Florida St.: 10 WEBER,KOURTNEY; 12 EKHOMU,NICKI; 13 WOOLFOLK,NAUSIA; 15 GILLESPIE,KIAH; 32 MYERS,VALENCIA;

Notre Dame: 11 TURNER,BRIANNA; 24 OGUNBOWALE,ARIKE; 32 SHEPARD,JESSICA; 3 MABREY,MARINA; 5 YOUNG,JACKIE;

| Time | VISITORS: Florida St. | Score | Margin | HOME: Notre Dame |
|-------|--|-------|--------|---------------------------------------|
| 09:52 | MISSED JUMPER by WILKINSON, SAVANNAH | | | |
| 09:50 | REBOUND (OFF) by MYERS, VALENCIA | | | |
| 09:50 | TURNOVER (LOSTBALL) by MYERS, VALENCIA | | | |
| 09:50 | | | | STEAL by PROHASKA, ABBY |
| 09:34 | | 30-22 | H 8 | GOOD! JUMPER by TURNER, BRIANNA |
| 09:34 | | | | ASSIST by PROHASKA, ABBY |
| 09:10 | MISSED JUMPER by WOOLFOLK, NAUSIA | | | |
| 09:06 | REBOUND (OFF) by MYERS, VALENCIA | | | |
| 09:06 | SUB OUT: MYERS, VALENCIA | | | |
| 09:06 | SUB IN: GILLESPIE, KIAH | | | |
| 09:03 | MISSED JUMPER by GILLESPIE, KIAH | | | |
| 08:59 | | | | REBOUND (DEF) by PROHASKA, ABBY |
| 08:58 | | | | TURNOVER (BADPASS) by PROHASKA, ABBY |
| 08:58 | STEAL by GILLESPIE, KIAH | | | |
| 08:53 | | | | FOUL (PERSONAL) by NIXON, JORDAN |
| 08:53 | GOOD! FT by EKHOMU, NICKI [FB] | 30-23 | H 7 | |
| 08:53 | GOOD! FT by EKHOMU, NICKI [FB] | 30-24 | H 6 | |
| 08:36 | | | | MISSED JUMPER by PROHASKA, ABBY |
| 08:33 | REBOUND (DEF) by GILLESPIE, KIAH | | | |
| 08:13 | MISSED JUMPER by JONES, MO. | | | |
| 08:13 | | | | BLOCK by TURNER, BRIANNA |
| 08:13 | REBOUND (OFF) by TEAM | | | |
| 08:13 | | | | SUB OUT: YOUNG, JACKIE |
| 08:13 | | | | SUB IN: MABREY, MARINA |
| 08:13 | | | | SUB OUT: PROHASKA, ABBY |
| 08:13 | | | | SUB IN: SHEPARD, JESSICA |
| 08:13 | SUB OUT: JONES, MO. | | | |
| 08:13 | SUB IN: WEBER, KOURTNEY | | | |
| 08:09 | MISSED 3PTR by GILLESPIE, KIAH | | | |
| 08:07 | | | | REBOUND (DEF) by NIXON, JORDAN |
| 08:03 | | | | MISSED JUMPER by NIXON, JORDAN |
| 08:01 | REBOUND (DEF) by WOOLFOLK, NAUSIA | | | |
| 07:48 | MISSED JUMPER by EKHOMU, NICKI | | | |
| 07:45 | | | | REBOUND (DEF) by TURNER, BRIANNA |
| 07:42 | | 32-24 | H 8 | GOOD! LAYUP by MABREY, MARINA [FB] |
| 07:42 | | | | ASSIST by OGUNBOWALE, ARIKE |
| 07:41 | TIMEOUT 30SEC | | | |
| 07:33 | TURNOVER (LOSTBALL) by WEBER, KOURTNEY | | | |
| 07:33 | | | | STEAL by MABREY, MARINA |
| 07:30 | FOUL (PERSONAL) by EKHOMU, NICKI | | | |
| 07:30 | | | | MISSED FT by NIXON, JORDAN |
| 07:30 | | | | REBOUND (OFF) by TEAM |
| 07:30 | SUB OUT: WEBER, KOURTNEY | | | |
| 07:30 | SUB IN: LASSITER, SAYAWNI | | | |
| 07:30 | | 33-24 | H 9 | GOOD! FT by NIXON, JORDAN [FB] |
| 07:21 | GOOD! JUMPER by WOOLFOLK, NAUSIA [PNT] | 33-26 | H 7 | |
| 06:56 | FOUL (PERSONAL) by WOOLFOLK, NAUSIA | | | |
| 06:53 | | 35-26 | H 9 | GOOD! LAYUP by SHEPARD, JESSICA [PNT] |
| 06:53 | | | | ASSIST by MABREY, MARINA |
| 06:29 | GOOD! JUMPER by WOOLFOLK, NAUSIA | 35-28 | H 7 | |
| 06:15 | FOUL (PERSONAL) by LASSITER, SAYAWNI | | | |
| 06:15 | | 36-28 | H 8 | GOOD! FT by OGUNBOWALE, ARIKE |
| 06:15 | | | | SUB OUT: NIXON, JORDAN |
| 06:15 | | | | SUB IN: YOUNG, JACKIE |
| 06:15 | | 37-28 | H 9 | GOOD! FT by OGUNBOWALE, ARIKE |
| 05:47 | GOOD! JUMPER by EKHOMU, NICKI | 37-30 | H 7 | |
| 05:32 | | 39-30 | H 9 | GOOD! LAYUP by SHEPARD, JESSICA |
| 05:32 | | | | ASSIST by MABREY, MARINA |
| 05:11 | TURNOVER (LOSTBALL) by EKHOMU, NICKI | | | |
| 05:11 | | | | STEAL by YOUNG, JACKIE |
| 05:11 | SUB OUT: WILKINSON, SAVANNAH | | | |
| 05:11 | SUB IN: MYERS, VALENCIA | | | |
| 04:57 | | | | TURNOVER (BADPASS) by YOUNG, JACKIE |
| 04:57 | STEAL by EKHOMU, NICKI | | | |
| 04:54 | GOOD! LAYUP by EKHOMU, NICKI [FB/PNT] | 39-32 | H 7 | |
| 04:54 | | | | FOUL (PERSONAL) by YOUNG, JACKIE |
| 04:54 | | | | SUB OUT: YOUNG, JACKIE |
| 04:54 | | | | SUB IN: PROHASKA, ABBY |
| 04:54 | GOOD! FT by EKHOMU, NICKI [FB] | 39-33 | H 6 | |
| 04:46 | | 42-33 | H 9 | GOOD! 3PTR by OGUNBOWALE, ARIKE |

| Time | VISITORS: Florida St. | Score | Margin | HOME: Notre Dame |
|-------|---|-------|--------|--|
| 04:46 | | | | ASSIST by MABREY, MARINA |
| 04:27 | TURNOVER (BADPASS) by GILLESPIE, KIAH | | | |
| 04:27 | | | | STEAL by OGUNBOWALE, ARIKE |
| 04:21 | | | | MISSED LAYUP by SHEPARD, JESSICA |
| 04:18 | | | | REBOUND (OFF) by SHEPARD, JESSICA |
| 04:15 | | 45-33 | H 12 | GOOD! 3PTR by OGUNBOWALE, ARIKE |
| 04:15 | | | | ASSIST by SHEPARD, JESSICA |
| 03:56 | TURNOVER (LOSTBALL) by LASSITER, SAYAWNI | | | |
| 03:56 | | | | STEAL by OGUNBOWALE, ARIKE |
| 03:55 | FOUL (UNSPORTSMANLIKE) by GILLESPIE, KIAH | | | |
| 03:55 | | 46-33 | H 13 | GOOD! FT by OGUNBOWALE, ARIKE [FB] |
| 03:55 | | 47-33 | H 14 | GOOD! FT by OGUNBOWALE, ARIKE [FB] |
| 03:55 | | | | SUB OUT: TURNER, BRIANNA |
| 03:55 | | | | SUB IN: VAUGHN, MIKAYLA |
| 03:55 | SUB OUT: WOOLFOLK, NAUSIA | | | |
| 03:55 | SUB IN: JONES, MO. | | | |
| 03:55 | SUB OUT: MYERS, VALENCIA | | | |
| 03:55 | SUB IN: WILKINSON, SAVANNAH | | | |
| 03:43 | | | | MISSED JUMPER by VAUGHN, MIKAYLA |
| 03:40 | REBOUND (DEF) by LASSITER, SAYAWNI | | | |
| 03:16 | MISSED 3PTR by LASSITER, SAYAWNI | | | |
| 03:13 | | | | REBOUND (DEF) by OGUNBOWALE, ARIKE |
| 03:07 | | | | MISSED LAYUP by VAUGHN, MIKAYLA |
| 03:02 | | | | REBOUND (OFF) by VAUGHN, MIKAYLA |
| 03:02 | | | | MISSED JUMPER by VAUGHN, MIKAYLA |
| 02:59 | REBOUND (DEF) by GILLESPIE, KIAH | | | |
| 02:57 | | | | FOUL (PERSONAL) by OGUNBOWALE, ARIKE |
| 02:57 | | | | SUB OUT: VAUGHN, MIKAYLA |
| 02:57 | | | | SUB IN: TURNER, BRIANNA |
| 02:57 | SUB OUT: LASSITER, SAYAWNI | | | |
| 02:57 | SUB IN: WOOLFOLK, NAUSIA | | | |
| 02:54 | MISSED JUMPER by GILLESPIE, KIAH | | | |
| 02:51 | | | | REBOUND (DEF) by OGUNBOWALE, ARIKE |
| 02:41 | | | | MISSED JUMPER by OGUNBOWALE, ARIKE |
| 02:38 | | | | REBOUND (OFF) by PROHASKA, ABBY |
| 02:36 | | 49-33 | H 16 | GOOD! LAYUP by PROHASKA, ABBY |
| 02:19 | GOOD! 3PTR by WOOLFOLK, NAUSIA | 49-36 | H 13 | |
| 02:19 | ASSIST by EKHOMU, NICKI | | | |
| 01:56 | | 51-36 | H 15 | GOOD! LAYUP by SHEPARD, JESSICA |
| 01:56 | | | | ASSIST by OGUNBOWALE, ARIKE |
| 01:45 | TURNOVER (BADPASS) by WILKINSON, SAVANNAH | | | |
| 01:45 | | | | SUB OUT: PROHASKA, ABBY |
| 01:45 | | | | SUB IN: NIXON, JORDAN |
| 01:29 | | | | TURNOVER (LOSTBALL) by NIXON, JORDAN |
| 01:29 | STEAL by JONES, MO. | | | |
| 01:23 | MISSED LAYUP by GILLESPIE, KIAH | | | |
| 01:23 | | | | BLOCK by TURNER, BRIANNA |
| 01:20 | | | | REBOUND (DEF) by TURNER, BRIANNA |
| 01:16 | FOUL (PERSONAL) by WOOLFOLK, NAUSIA | | | |
| 01:16 | | | | MISSED FT by TURNER, BRIANNA |
| 01:16 | | | | REBOUND (OFF) by TEAM |
| 01:16 | | 52-36 | H 16 | GOOD! FT by TURNER, BRIANNA [FB] |
| 00:50 | MISSED JUMPER by EKHOMU, NICKI | | | |
| 00:47 | | | | REBOUND (DEF) by TURNER, BRIANNA |
| 00:36 | | | | TURNOVER (BADPASS) by SHEPARD, JESSICA |
| 00:36 | STEAL by JONES, MO. | | | |
| 00:10 | | | | FOUL (PERSONAL) by NIXON, JORDAN |
| 00:10 | | | | SUB OUT: NIXON, JORDAN |
| 00:10 | | | | SUB IN: PROHASKA, ABBY |
| 00:10 | SUB OUT: WILKINSON, SAVANNAH | | | |
| 00:10 | SUB IN: WEBER, KOURTNEY | | | |
| 00:10 | SUB OUT: WOOLFOLK, NAUSIA | | | |
| 00:10 | SUB IN: LASSITER, SAYAWNI | | | |
| 00:10 | GOOD! FT by EKHOMU, NICKI | 52-37 | H 15 | |
| 00:10 | GOOD! FT by EKHOMU, NICKI | 52-38 | H 14 | |
| 00:01 | | | | MISSED JUMPER by OGUNBOWALE, ARIKE |
| 00:00 | REBOUND (DEF) by EKHOMU, NICKI | | | |

Florida St. 38, Notre Dame 52

| Points from (This Period) | FSU | UND |
|---------------------------|-----|-----|
| In the Paint | 4 | 12 |
| Off Turns | 7 | 8 |
| 2nd Chance | 0 | 5 |
| Fast Break | 5 | 6 |
| Bench | 0 | 3 |

Official Box Score
Florida St. vs Notre Dame
Second Half Statistics Only
February 10, 2019 at Joyce Center (Purcell Pavilion) - Notre Dame, IN



Florida St. 32

| No. | Player | S | Pts | FG | 3FG | FT | OR | DR | TR | PF | A | TO | Blk | Stl | Min | +/- |
|---------------|---------------------|---|-----------|--------------|-------------|------------|----------|-----------|-----------|----------|----------|----------|----------|----------|------------|-----|
| 10 | WEBER, KOURTNEY | | 0 | 0-0 | 0-0 | 0-0 | 0 | 0 | 0 | 0 | 0 | 0 | 0 | 0 | 2 | -2 |
| 12 | EKHOMU, NICKI | | 9 | 2-8 | 1-2 | 4-4 | 0 | 0 | 0 | 1 | 2 | 0 | 0 | 0 | 20 | -13 |
| 13 | WOOLFOLK, NAUSIA | | 5 | 2-6 | 1-3 | 0-0 | 0 | 1 | 1 | 3 | 0 | 0 | 0 | 1 | 9 | -2 |
| 15 | GILLESPIE, KIAH | | 8 | 3-11 | 2-4 | 0-0 | 1 | 3 | 4 | 2 | 3 | 0 | 0 | 0 | 19 | -14 |
| 24 | JONES, MO. | | 6 | 3-5 | 0-0 | 0-0 | 3 | 3 | 6 | 0 | 0 | 2 | 0 | 0 | 18 | -11 |
| 31 | WILKINSON, SAVANNAH | | 0 | 0-1 | 0-0 | 0-0 | 0 | 1 | 1 | 0 | 0 | 0 | 0 | 0 | 7 | -9 |
| 32 | MYERS, VALENCIA | | 4 | 1-7 | 0-1 | 2-2 | 2 | 1 | 3 | 3 | 0 | 1 | 1 | 2 | 14 | -3 |
| 03 | LASSITER, SAYAWNI | | 0 | 0-1 | 0-1 | 0-0 | 0 | 1 | 1 | 0 | 0 | 1 | 0 | 1 | 12 | -11 |
| | TEAM | | 0 | 0-0 | 0-0 | 0-0 | 2 | 1 | 3 | 0 | 0 | 0 | 0 | 0 | 0 | |
| TOTALS | | | 32 | 11-39 | 4-11 | 6-6 | 8 | 11 | 19 | 9 | 5 | 4 | 1 | 4 | 100 | |

Shooting By Period

| Period | FG | FG% | 3FG | 3FG% | FT | FT% |
|----------|-------|-------|------|-------|-------|--------|
| 3rd Qtr | 4-20 | 20% | 2-8 | 25% | 2-2 | 100% |
| 4th Qtr | 7-19 | 37% | 2-3 | 67% | 4-4 | 100% |
| 2nd Half | 11-39 | 28% | 4-11 | 36% | 6-6 | 100% |
| Game | 24-70 | 34.3% | 9-22 | 40.9% | 13-13 | 100.0% |

Last FG Half: FSU 4th-01:00

Notre Dame 45

| No. | Player | S | Pts | FG | 3FG | FT | OR | DR | TR | PF | A | TO | Blk | Stl | Min | +/- |
|---------------|---------------------|---|-----------|--------------|------------|--------------|----------|-----------|-----------|----------|-----------|----------|----------|----------|------------|-----|
| 00 | NIXON, JORDAN | | 2 | 0-0 | 0-0 | 2-2 | 0 | 0 | 0 | 1 | 0 | 1 | 0 | 0 | 4 | 3 |
| 11 | TURNER, BRIANNA | | 8 | 3-4 | 0-0 | 2-2 | 0 | 3 | 3 | 1 | 2 | 1 | 3 | 0 | 15 | 11 |
| 12 | PROHASKA, ABBY | | 4 | 2-2 | 0-0 | 0-0 | 0 | 2 | 2 | 1 | 0 | 1 | 0 | 1 | 12 | -1 |
| 22 | COSGROVE, DANIELLE | | 0 | 0-1 | 0-1 | 0-0 | 0 | 1 | 1 | 0 | 0 | 0 | 0 | 0 | 3 | 3 |
| 24 | OGUNBOWALE, ARIKE | | 8 | 3-5 | 2-4 | 0-0 | 1 | 5 | 6 | 0 | 2 | 0 | 0 | 0 | 13 | 12 |
| 30 | VAUGHN, MIKAYLA | | 0 | 0-0 | 0-0 | 0-0 | 0 | 0 | 0 | 0 | 0 | 0 | 0 | 0 | 0 | 0 |
| 32 | SHEPARD, JESSICA | | 10 | 4-10 | 0-0 | 2-2 | 1 | 4 | 5 | 2 | 1 | 1 | 0 | 0 | 15 | 12 |
| 33 | PATTERSON, DANIELLE | | 3 | 0-3 | 0-0 | 3-4 | 1 | 2 | 3 | 0 | 0 | 2 | 0 | 0 | 6 | 1 |
| 40 | BUTLER, MAUREEN | | 0 | 0-0 | 0-0 | 0-0 | 0 | 0 | 0 | 0 | 1 | 0 | 0 | 0 | 2 | 0 |
| 03 | MABREY, MARINA | | 2 | 1-2 | 0-1 | 0-0 | 0 | 1 | 1 | 0 | 3 | 0 | 0 | 0 | 14 | 11 |
| 05 | YOUNG, JACKIE | | 8 | 3-4 | 0-0 | 2-2 | 1 | 0 | 1 | 0 | 3 | 0 | 0 | 0 | 18 | 13 |
| | TEAM | | 0 | 0-0 | 0-0 | 0-0 | 1 | 2 | 3 | 0 | 0 | 0 | 0 | 0 | 0 | |
| TOTALS | | | 45 | 16-31 | 2-6 | 11-12 | 5 | 20 | 25 | 5 | 12 | 6 | 3 | 1 | 100 | |

Shooting By Period

| Period | FG | FG% | 3FG | 3FG% | FT | FT% |
|----------|-------|-------|------|-------|-------|-------|
| 3rd Qtr | 8-18 | 44% | 2-4 | 50% | 4-4 | 100% |
| 4th Qtr | 8-13 | 62% | 0-2 | 00% | 7-8 | 88% |
| 2nd Half | 16-31 | 52% | 2-6 | 33% | 11-12 | 92% |
| Game | 36-68 | 52.9% | 6-11 | 54.5% | 19-22 | 86.4% |

Last FG Half: UND 4th-01:15

Game Notes:

Officials: , ,
Attendance: 8950

Start Time: 2019-02-10 17:02:19
End Time: 2019-02-10 18:50:35
Game Duration: 108
Conference Game;

| Score | 1st | 2nd | 3rd | 4th | TOT |
|-------|-----|-----|-----|-----|-----------|
| FSU | 22 | 16 | 12 | 20 | 70 |
| UND | 28 | 24 | 22 | 23 | 97 |

| Points from (This Period) | FSU | UND |
|---------------------------|-----|-----|
| In the Paint | 10 | 20 |
| Off Turns | 6 | 2 |
| 2nd Chance | 4 | 6 |
| Fast Break | 8 | 4 |
| Bench | 6 | 9 |

Official Box Score
Florida St. vs Notre Dame
Third Quarter Statistics Only
February 10, 2019 at Joyce Center (Purcell Pavilion) - Notre Dame, IN



Florida St. 32

| No. | Player | S | Pts | FG | 3FG | FT | OR | DR | TR | PF | A | TO | Blk | Stl | Min | +/- |
|---------------|---------------------|---|-----------|-------------|------------|------------|----------|----------|----------|----------|----------|----------|----------|----------|-----------|-----|
| 10 | WEBER, KOURTNEY | | 0 | 0-0 | 0-0 | 0-0 | 0 | 0 | 0 | 0 | 0 | 0 | 0 | 0 | 2 | -2 |
| 12 | EKHOMU, NICKI | | 0 | 0-0 | 0-0 | 0-0 | 0 | 0 | 0 | 1 | 1 | 0 | 0 | 0 | 10 | -10 |
| 13 | WOOLFOLK, NAUSIA | | 5 | 2-6 | 1-3 | 0-0 | 0 | 1 | 1 | 1 | 0 | 0 | 0 | 1 | 7 | -4 |
| 15 | GILLESPIE, KIAH | | 3 | 1-7 | 1-3 | 0-0 | 0 | 1 | 1 | 0 | 2 | 0 | 0 | 0 | 9 | -11 |
| 32 | MYERS, VALENCIA | | 4 | 1-5 | 0-1 | 2-2 | 1 | 1 | 2 | 1 | 0 | 1 | 1 | 1 | 7 | -4 |
| 03 | LASSITER, SAYAWNI | | 0 | 0-1 | 0-1 | 0-0 | 0 | 0 | 0 | 0 | 0 | 0 | 0 | 0 | 3 | -6 |
| 24 | JONES, MO. | | 0 | 0-0 | 0-0 | 0-0 | 1 | 0 | 1 | 0 | 0 | 1 | 0 | 0 | 8 | -8 |
| 31 | WILKINSON, SAVANNAH | | 0 | 0-1 | 0-0 | 0-0 | 0 | 1 | 1 | 0 | 0 | 0 | 0 | 0 | 4 | -5 |
| | TEAM | | | | | | 2 | 1 | 3 | 0 | | 0 | | | | |
| TOTALS | | | 12 | 4-20 | 2-8 | 2-2 | 4 | 5 | 9 | 3 | 3 | 2 | 1 | 2 | 50 | |

Shooting By Period

| Period | FG | FG% | 3FG | 3FG% | FT | FT% |
|----------|-------|-------|------|-------|-------|--------|
| 2nd Half | 0-0 | 0% | 0-0 | 0% | 0-0 | 0% |
| Game | 24-70 | 34.3% | 9-22 | 40.9% | 13-13 | 100.0% |

Notre Dame 45

| No. | Player | S | Pts | FG | 3FG | FT | OR | DR | TR | PF | A | TO | Blk | Stl | Min | +/- |
|---------------|---------------------|---|-----------|-------------|------------|------------|----------|-----------|-----------|----------|----------|----------|----------|----------|-----------|-----|
| 03 | MABREY, MARINA | | 2 | 1-2 | 0-1 | 0-0 | 0 | 1 | 1 | 0 | 2 | 0 | 0 | 0 | 10 | 10 |
| 05 | YOUNG, JACKIE | | 4 | 1-1 | 0-0 | 2-2 | 1 | 0 | 1 | 0 | 2 | 0 | 0 | 0 | 10 | 10 |
| 11 | TURNER, BRIANNA | | 2 | 1-1 | 0-0 | 0-0 | 0 | 2 | 2 | 1 | 0 | 1 | 3 | 0 | 9 | 11 |
| 24 | OGUNBOWALE, ARIKE | | 8 | 3-4 | 2-3 | 0-0 | 1 | 5 | 6 | 0 | 2 | 0 | 0 | 0 | 9 | 14 |
| 32 | SHEPARD, JESSICA | | 4 | 2-7 | 0-0 | 0-0 | 1 | 2 | 3 | 2 | 0 | 1 | 0 | 0 | 8 | 12 |
| 00 | NIXON, JORDAN | | 0 | 0-0 | 0-0 | 0-0 | 0 | 0 | 0 | 0 | 0 | 0 | 0 | 0 | 0 | 0 |
| 12 | PROHASKA, ABBY | | 0 | 0-0 | 0-0 | 0-0 | 0 | 0 | 0 | 0 | 0 | 1 | 0 | 0 | 3 | -5 |
| 22 | COSGROVE, DANIELLE | | 0 | 0-0 | 0-0 | 0-0 | 0 | 0 | 0 | 0 | 0 | 0 | 0 | 0 | 0 | 0 |
| 30 | VAUGHN, MIKAYLA | | 0 | 0-0 | 0-0 | 0-0 | 0 | 0 | 0 | 0 | 0 | 0 | 0 | 0 | 0 | 0 |
| 33 | PATTERSON, DANIELLE | | 2 | 0-3 | 0-0 | 2-2 | 1 | 0 | 1 | 0 | 0 | 1 | 0 | 0 | 2 | -2 |
| 40 | BUTLER, MAUREEN | | 0 | 0-0 | 0-0 | 0-0 | 0 | 0 | 0 | 0 | 0 | 0 | 0 | 0 | 0 | 0 |
| | TEAM | | | | | | 1 | 2 | 3 | 0 | | 0 | | | | |
| TOTALS | | | 22 | 8-18 | 2-4 | 4-4 | 5 | 12 | 17 | 3 | 6 | 4 | 3 | 0 | 50 | |

Shooting By Period

| Period | FG | FG% | 3FG | 3FG% | FT | FT% |
|----------|-------|-------|------|-------|-------|-------|
| 2nd Half | 0-0 | 0% | 0-0 | 0% | 0-0 | 0% |
| Game | 36-68 | 52.9% | 6-11 | 54.5% | 19-22 | 86.4% |

Game Notes:

Officials: , ,

Attendance: 8950

Start Time: 2019-02-10 17:02:19

End Time: 2019-02-10 18:50:35

Game Duration: 108

Conference Game;

| Score | 1st | 2nd | 3rd | 4th | TOT |
|-------|-----|-----|-----|-----|-----------|
| FSU | 22 | 16 | 12 | 20 | 70 |
| UND | 28 | 24 | 22 | 23 | 97 |

| Points from (This Period) | FSU | UND |
|---------------------------|-----|-----|
| In the Paint | 4 | 10 |
| Off Turns | 4 | 0 |
| 2nd Chance | 0 | 6 |
| Fast Break | 2 | 4 |
| Bench | 0 | 2 |

Official Play-By-Play
Florida St. vs Notre Dame
Third Quarter

February 10, 2019 at Joyce Center (Purcell Pavilion) - Notre Dame, IN



Period 3

Starters:

Florida St.: 10 WEBER,KOURTNEY; 12 EKHOMU,NICKI; 13 WOOLFOLK,NAUSIA; 15 GILLESPIE,KIAH; 32 MYERS,VALENCIA;

Notre Dame: 11 TURNER,BRIANNA; 24 OGUNBOWALE,ARIKE; 32 SHEPARD,JESSICA; 3 MABREY,MARINA; 5 YOUNG,JACKIE;

| Time | VISITORS: Florida St. | Score | Margin | HOME: Notre Dame |
|-------|---------------------------------------|-------|--------|---|
| 09:45 | MISSED LAYUP by MYERS, VALENCIA | | | |
| 09:45 | | | | BLOCK by TURNER, BRIANNA |
| 09:41 | | | | REBOUND (DEF) by MABREY, MARINA |
| 09:39 | | | | FOUL (OFF) by TURNER, BRIANNA |
| 09:39 | | | | TURNOVER (OFFENSIVE) by TURNER, BRIANNA |
| 09:15 | GOOD! JUMPER by MYERS, VALENCIA [PNT] | 52-40 | H 12 | |
| 09:15 | ASSIST by GILLESPIE, KIAH | | | |
| 09:02 | FOUL (PERSONAL) by EKHOMU, NICKI | | | |
| 09:02 | | 53-40 | H 13 | GOOD! FT by YOUNG, JACKIE |
| 09:02 | | 54-40 | H 14 | GOOD! FT by YOUNG, JACKIE |
| 08:47 | MISSED JUMPER by WOOLFOLK, NAUSIA | | | |
| 08:44 | | | | REBOUND (DEF) by SHEPARD, JESSICA |
| 08:40 | | 56-40 | H 16 | GOOD! LAYUP by YOUNG, JACKIE [FB] |
| 08:40 | | | | ASSIST by OGUNBOWALE, ARIKE |
| 08:22 | MISSED JUMPER by GILLESPIE, KIAH | | | |
| 08:21 | | | | REBOUND (DEF) by TEAM |
| 07:59 | | | | TURNOVER (LOSTBALL) by SHEPARD, JESSICA |
| 07:59 | STEAL by MYERS, VALENCIA | | | |
| 07:52 | MISSED JUMPER by WOOLFOLK, NAUSIA | | | |
| 07:52 | REBOUND (OFF) by TEAM | | | |
| 07:52 | SUB OUT: WEBER, KOURTNEY | | | |
| 07:52 | SUB IN: JONES, MO. | | | |
| 07:34 | MISSED 3PTR by WOOLFOLK, NAUSIA | | | |
| 07:31 | | | | REBOUND (DEF) by SHEPARD, JESSICA |
| 07:28 | | | | MISSED 3PTR by MABREY, MARINA |
| 07:26 | REBOUND (DEF) by TEAM | | | |
| 07:04 | MISSED LAYUP by MYERS, VALENCIA | | | |
| 07:04 | | | | BLOCK by TURNER, BRIANNA |
| 07:00 | | | | REBOUND (DEF) by OGUNBOWALE, ARIKE |
| 06:57 | | 58-40 | H 18 | GOOD! LAYUP by SHEPARD, JESSICA |
| 06:57 | | | | ASSIST by YOUNG, JACKIE |
| 06:35 | MISSED 3PTR by WOOLFOLK, NAUSIA | | | |
| 06:32 | | | | REBOUND (DEF) by OGUNBOWALE, ARIKE |
| 06:27 | | | | MISSED LAYUP by SHEPARD, JESSICA |
| 06:24 | | | | REBOUND (OFF) by YOUNG, JACKIE |
| 06:21 | | 61-40 | H 21 | GOOD! 3PTR by OGUNBOWALE, ARIKE |
| 06:21 | | | | ASSIST by YOUNG, JACKIE |
| 06:21 | TIMEOUT 30SEC | | | |
| 06:21 | SUB OUT: MYERS, VALENCIA | | | |
| 06:21 | SUB IN: WILKINSON, SAVANNAH | | | |
| 06:21 | SUB OUT: WOOLFOLK, NAUSIA | | | |
| 06:21 | SUB IN: LASSITER, SAYAWNI | | | |
| 06:00 | MISSED 3PTR by GILLESPIE, KIAH | | | |
| 05:57 | | | | REBOUND (DEF) by TURNER, BRIANNA |
| 05:49 | | 63-40 | H 23 | GOOD! JUMPER by TURNER, BRIANNA [PNT] |
| 05:49 | | | | ASSIST by MABREY, MARINA |
| 05:24 | MISSED 3PTR by LASSITER, SAYAWNI | | | |
| 05:21 | REBOUND (OFF) by JONES, MO. | | | |
| 05:06 | MISSED JUMPER by GILLESPIE, KIAH | | | |
| 05:03 | | | | REBOUND (DEF) by OGUNBOWALE, ARIKE |
| 04:55 | | 65-40 | H 25 | GOOD! JUMPER by SHEPARD, JESSICA |
| 04:55 | | | | ASSIST by MABREY, MARINA |
| 04:36 | MISSED JUMPER by GILLESPIE, KIAH | | | |
| 04:33 | | | | REBOUND (DEF) by OGUNBOWALE, ARIKE |
| 04:28 | | 67-40 | H 27 | GOOD! JUMPER by OGUNBOWALE, ARIKE |
| 04:07 | MISSED LAYUP by WILKINSON, SAVANNAH | | | |
| 04:04 | | | | REBOUND (DEF) by TURNER, BRIANNA |
| 03:58 | | | | MISSED LAYUP by SHEPARD, JESSICA |
| 03:55 | | | | REBOUND (OFF) by SHEPARD, JESSICA |
| 03:54 | | | | MISSED JUMPER by SHEPARD, JESSICA |
| 03:51 | REBOUND (DEF) by GILLESPIE, KIAH | | | |
| 03:36 | MISSED JUMPER by GILLESPIE, KIAH | | | |
| 03:34 | | | | REBOUND (DEF) by TEAM |
| 03:34 | | | | |
| 03:34 | | | | SUB OUT: TURNER, BRIANNA |
| 03:34 | | | | SUB IN: PROHASKA, ABBY |
| 03:34 | SUB OUT: LASSITER, SAYAWNI | | | |
| 03:34 | SUB IN: WOOLFOLK, NAUSIA | | | |
| 03:34 | SUB OUT: GILLESPIE, KIAH | | | |
| 03:34 | SUB IN: MYERS, VALENCIA | | | |

| Time | VISITORS: Florida St. | Score | Margin | HOME: Notre Dame |
|-------|---|-------|--------|--|
| 03:19 | | | | TURNOVER (LOSTBALL) by PROHASKA, ABBY |
| 03:19 | STEAL by WOOLFOLK, NAUSIA | | | |
| 03:14 | GOOD! LAYUP by WOOLFOLK, NAUSIA [FB] | 67-42 | H 25 | |
| 03:02 | | | | MISSED JUMPER by SHEPARD, JESSICA |
| 02:59 | REBOUND (DEF) by WILKINSON, SAVANNAH | | | |
| 02:51 | | | | FOUL (PERSONAL) by SHEPARD, JESSICA |
| 02:51 | GOOD! FT by MYERS, VALENCIA | 67-43 | H 24 | |
| 02:51 | | | | SUB OUT: PROHASKA, ABBY |
| 02:51 | | | | SUB IN: PATTERSON, DANIELLE |
| 02:51 | GOOD! FT by MYERS, VALENCIA | 67-44 | H 23 | |
| 02:43 | | | | MISSED JUMPER by PATTERSON, DANIELLE |
| 02:41 | | | | REBOUND (OFF) by OGUNBOWALE, ARIKE |
| 02:38 | | 70-44 | H 26 | GOOD! 3PTR by OGUNBOWALE, ARIKE |
| 02:27 | TURNOVER (BADPASS) by JONES, MO. | | | |
| 02:15 | | | | MISSED 3PTR by OGUNBOWALE, ARIKE |
| 02:12 | | | | REBOUND (OFF) by TEAM |
| 02:12 | | | | SUB OUT: OGUNBOWALE, ARIKE |
| 02:12 | | | | SUB IN: PROHASKA, ABBY |
| 02:08 | | | | MISSED LAYUP by SHEPARD, JESSICA |
| 02:08 | BLOCK by MYERS, VALENCIA | | | |
| 02:07 | | | | REBOUND (OFF) by PATTERSON, DANIELLE |
| 02:06 | | | | MISSED JUMPER by PATTERSON, DANIELLE |
| 02:06 | REBOUND (DEF) by MYERS, VALENCIA | | | |
| 02:06 | | | | FOUL (PERSONAL) by SHEPARD, JESSICA |
| 02:06 | SUB OUT: WILKINSON, SAVANNAH | | | |
| 02:06 | SUB IN: GILLESPIE, KIAH | | | |
| 02:06 | | | | SUB OUT: SHEPARD, JESSICA |
| 02:06 | | | | SUB IN: TURNER, BRIANNA |
| 01:54 | GOOD! 3PTR by WOOLFOLK, NAUSIA | 70-47 | H 23 | |
| 01:54 | ASSIST by GILLESPIE, KIAH | | | |
| 01:43 | | | | TURNOVER (LOSTBALL) by PATTERSON, DANIELLE |
| 01:36 | FOUL (OFF) by MYERS, VALENCIA | | | |
| 01:36 | TURNOVER (OFFENSIVE) by MYERS, VALENCIA | | | |
| 01:30 | | | | MISSED JUMPER by PATTERSON, DANIELLE |
| 01:28 | REBOUND (DEF) by WOOLFOLK, NAUSIA | | | |
| 01:13 | GOOD! 3PTR by GILLESPIE, KIAH | 70-50 | H 20 | |
| 01:13 | ASSIST by EKHOMU, NICKI | | | |
| 00:56 | FOUL (PERSONAL) by WOOLFOLK, NAUSIA | | | |
| 00:56 | | 71-50 | H 21 | GOOD! FT by PATTERSON, DANIELLE |
| 00:56 | | 72-50 | H 22 | GOOD! FT by PATTERSON, DANIELLE |
| 00:56 | | | | SUB OUT: PATTERSON, DANIELLE |
| 00:56 | | | | SUB IN: OGUNBOWALE, ARIKE |
| 00:30 | MISSED 3PTR by MYERS, VALENCIA | | | |
| 00:26 | | | | REBOUND (DEF) by OGUNBOWALE, ARIKE |
| 00:22 | | 74-50 | H 24 | GOOD! LAYUP by MABREY, MARINA [FB/PNT] |
| 00:22 | | | | ASSIST by OGUNBOWALE, ARIKE |
| 00:12 | MISSED 3PTR by GILLESPIE, KIAH | | | |
| 00:09 | REBOUND (OFF) by MYERS, VALENCIA | | | |
| 00:04 | MISSED LAYUP by MYERS, VALENCIA | | | |
| 00:04 | | | | BLOCK by TURNER, BRIANNA |
| 00:04 | REBOUND (OFF) by TEAM | | | |

Florida St. 50, Notre Dame 74

| Points from (This Period) | FSU | UND |
|---------------------------|-----|-----|
| In the Paint | 4 | 10 |
| Off Turns | 4 | 0 |
| 2nd Chance | 0 | 6 |
| Fast Break | 2 | 4 |
| Bench | 0 | 2 |

Official Box Score
Florida St. vs Notre Dame
Fourth Quarter Statistics Only
February 10, 2019 at Joyce Center (Purcell Pavilion) - Notre Dame, IN



Florida St. 20

| No. | Player | S | Pts | FG | 3FG | FT | OR | DR | TR | PF | A | TO | Blk | Stl | Min | +/- |
|---------------|---------------------|---|-----------|-------------|------------|------------|----------|----------|-----------|----------|----------|----------|----------|----------|-----------|-----|
| 10 | WEBER, KOURTNEY | | 0 | 0-0 | 0-0 | 0-0 | 0 | 0 | 0 | 0 | 0 | 0 | 0 | 0 | 0 | 0 |
| 12 | EKHOMU, NICKI | | 9 | 2-8 | 1-2 | 4-4 | 0 | 0 | 0 | 0 | 1 | 0 | 0 | 0 | 10 | -3 |
| 13 | WOOLFOLK, NAUSIA | | 0 | 0-0 | 0-0 | 0-0 | 0 | 0 | 0 | 2 | 0 | 0 | 0 | 0 | 2 | 2 |
| 15 | GILLESPIE, KIAH | | 5 | 2-4 | 1-1 | 0-0 | 1 | 2 | 3 | 2 | 1 | 0 | 0 | 0 | 10 | -3 |
| 32 | MYERS, VALENCIA | | 0 | 0-2 | 0-0 | 0-0 | 1 | 0 | 1 | 2 | 0 | 0 | 0 | 1 | 7 | 1 |
| 03 | LASSITER, SAYAWNI | | 0 | 0-0 | 0-0 | 0-0 | 0 | 1 | 1 | 0 | 0 | 1 | 0 | 1 | 9 | -5 |
| 24 | JONES, MO. | | 6 | 3-5 | 0-0 | 0-0 | 2 | 3 | 5 | 0 | 0 | 1 | 0 | 0 | 10 | -3 |
| 31 | WILKINSON, SAVANNAH | | 0 | 0-0 | 0-0 | 0-0 | 0 | 0 | 0 | 0 | 0 | 0 | 0 | 0 | 3 | -4 |
| | TEAM | | | | | | 0 | 0 | 0 | 0 | | 0 | | | | |
| TOTALS | | | 20 | 7-19 | 2-3 | 4-4 | 4 | 6 | 10 | 6 | 2 | 2 | 0 | 2 | 50 | |

Shooting By Period

| Period | FG | FG% | 3FG | 3FG% | FT | FT% |
|--------|-------|-------|------|-------|-------|--------|
| Game | 24-70 | 34.3% | 9-22 | 40.9% | 13-13 | 100.0% |

Notre Dame 23

| No. | Player | S | Pts | FG | 3FG | FT | OR | DR | TR | PF | A | TO | Blk | Stl | Min | +/- |
|---------------|---------------------|---|-----------|-------------|------------|------------|----------|----------|----------|----------|----------|----------|----------|----------|-----------|-----|
| 03 | MABREY, MARINA | | 0 | 0-0 | 0-0 | 0-0 | 0 | 0 | 0 | 0 | 1 | 0 | 0 | 0 | 4 | 1 |
| 05 | YOUNG, JACKIE | | 4 | 2-3 | 0-0 | 0-0 | 0 | 0 | 0 | 0 | 1 | 0 | 0 | 0 | 8 | 3 |
| 11 | TURNER, BRIANNA | | 6 | 2-3 | 0-0 | 2-2 | 0 | 1 | 1 | 0 | 2 | 0 | 0 | 0 | 6 | 0 |
| 24 | OGUNBOWALE, ARIKE | | 0 | 0-1 | 0-1 | 0-0 | 0 | 0 | 0 | 0 | 0 | 0 | 0 | 0 | 4 | -2 |
| 32 | SHEPARD, JESSICA | | 6 | 2-3 | 0-0 | 2-2 | 0 | 2 | 2 | 0 | 1 | 0 | 0 | 0 | 7 | 0 |
| 00 | NIXON, JORDAN | | 2 | 0-0 | 0-0 | 2-2 | 0 | 0 | 0 | 1 | 0 | 1 | 0 | 0 | 4 | 3 |
| 12 | PROHASKA, ABBY | | 4 | 2-2 | 0-0 | 0-0 | 0 | 2 | 2 | 1 | 0 | 0 | 0 | 1 | 9 | 4 |
| 22 | COSGROVE, DANIELLE | | 0 | 0-1 | 0-1 | 0-0 | 0 | 1 | 1 | 0 | 0 | 0 | 0 | 0 | 3 | 3 |
| 30 | VAUGHN, MIKAYLA | | 0 | 0-0 | 0-0 | 0-0 | 0 | 0 | 0 | 0 | 0 | 0 | 0 | 0 | 0 | 0 |
| 33 | PATTERSON, DANIELLE | | 1 | 0-0 | 0-0 | 1-2 | 0 | 2 | 2 | 0 | 0 | 1 | 0 | 0 | 4 | 3 |
| 40 | BUTLER, MAUREEN | | 0 | 0-0 | 0-0 | 0-0 | 0 | 0 | 0 | 0 | 1 | 0 | 0 | 0 | 2 | 0 |
| | TEAM | | | | | | 0 | 0 | 0 | 0 | | 0 | | | | |
| TOTALS | | | 23 | 8-13 | 0-2 | 7-8 | 0 | 8 | 8 | 2 | 6 | 2 | 0 | 1 | 50 | |

Shooting By Period

| Period | FG | FG% | 3FG | 3FG% | FT | FT% |
|--------|-------|-------|------|-------|-------|-------|
| Game | 36-68 | 52.9% | 6-11 | 54.5% | 19-22 | 86.4% |

Game Notes:

Officials: , ,
Attendance: 8950

Start Time: 2019-02-10 17:02:19
End Time: 2019-02-10 18:50:35
Game Duration: 108
Conference Game;

| Score | 1st | 2nd | 3rd | 4th | TOT |
|-------|-----|-----|-----|-----|-----------|
| FSU | 22 | 16 | 12 | 20 | 70 |
| UND | 28 | 24 | 22 | 23 | 97 |

| Points from (This Period) | FSU | UND |
|---------------------------|-----|-----|
| In the Paint | 6 | 10 |
| Off Turns | 2 | 2 |
| 2nd Chance | 4 | 0 |
| Fast Break | 6 | 0 |
| Bench | 6 | 7 |

Official Play-By-Play
Florida St. vs Notre Dame
Fourth Quarter

February 10, 2019 at Joyce Center (Purcell Pavilion) - Notre Dame, IN



Period 4

Starters:

Florida St.: 10 WEBER,KOURTNEY; 12 EKHOMU,NICKI; 13 WOOLFOLK,NAUSIA; 15 GILLESPIE,KIAH; 32 MYERS,VALENCIA;

Notre Dame: 11 TURNER,BRIANNA; 24 OGUNBOWALE,ARIKE; 32 SHEPARD,JESSICA; 3 MABREY,MARINA; 5 YOUNG,JACKIE;

| Time | VISITORS: Florida St. | Score | Margin | HOME: Notre Dame |
|-------|--|-------|--------|--------------------------------------|
| 09:41 | | | | MISSED LAYUP by SHEPARD, JESSICA |
| 09:38 | REBOUND (DEF) by JONES, MO. | | | |
| 09:35 | GOOD! LAYUP by JONES, MO. [FB] | 74-52 | H 22 | |
| 09:16 | | 76-52 | H 24 | GOOD! JUMPER by PROHASKA, ABBY |
| 09:16 | | | | ASSIST by SHEPARD, JESSICA |
| 08:49 | GOOD! JUMPER by EKHOMU, NICKI | 76-54 | H 22 | |
| 08:35 | FOUL (PERSONAL) by WOOLFOLK, NAUSIA | | | |
| 08:35 | SUB OUT: WOOLFOLK, NAUSIA | | | |
| 08:35 | SUB IN: LASSITER, SAYAWNI | | | |
| 08:26 | | | | MISSED JUMPER by TURNER, BRIANNA |
| 08:23 | REBOUND (DEF) by JONES, MO. | | | |
| 08:12 | MISSED LAYUP by MYERS, VALENCIA | | | |
| 08:10 | | | | REBOUND (DEF) by PROHASKA, ABBY |
| 08:02 | FOUL (PERSONAL) by GILLESPIE, KIAH | | | |
| 08:02 | | 77-54 | H 23 | GOOD! FT by SHEPARD, JESSICA |
| 08:02 | | 78-54 | H 24 | GOOD! FT by SHEPARD, JESSICA |
| 07:35 | MISSED JUMPER by MYERS, VALENCIA | | | |
| 07:32 | REBOUND (OFF) by JONES, MO. | | | |
| 07:28 | | | | FOUL (PERSONAL) by PROHASKA, ABBY |
| 07:28 | GOOD! FT by EKHOMU, NICKI | 78-55 | H 23 | |
| 07:28 | | | | SUB OUT: PROHASKA, ABBY |
| 07:28 | | | | SUB IN: MABREY, MARINA |
| 07:28 | GOOD! FT by EKHOMU, NICKI | 78-56 | H 22 | |
| 07:18 | | | | MISSED 3PTR by OGUNBOWALE, ARIKE |
| 07:15 | REBOUND (DEF) by GILLESPIE, KIAH | | | |
| 06:50 | MISSED JUMPER by EKHOMU, NICKI | | | |
| 06:47 | REBOUND (OFF) by MYERS, VALENCIA | | | |
| 06:45 | MISSED JUMPER by JONES, MO. | | | |
| 06:41 | REBOUND (OFF) by GILLESPIE, KIAH | | | |
| 06:39 | GOOD! JUMPER by GILLESPIE, KIAH | 78-58 | H 20 | |
| 06:29 | | 80-58 | H 22 | GOOD! LAYUP by SHEPARD, JESSICA |
| 06:29 | | | | ASSIST by TURNER, BRIANNA |
| 06:09 | | | | SUB OUT: OGUNBOWALE, ARIKE |
| 06:09 | | | | SUB IN: PROHASKA, ABBY |
| 06:09 | SUB OUT: JONES, MO. | | | |
| 06:09 | SUB IN: WOOLFOLK, NAUSIA | | | |
| 06:09 | SUB OUT: MYERS, VALENCIA | | | |
| 06:09 | SUB IN: WILKINSON, SAVANNAH | | | |
| 06:05 | MISSED JUMPER by EKHOMU, NICKI | | | |
| 06:02 | | | | REBOUND (DEF) by TURNER, BRIANNA |
| 05:58 | FOUL (PERSONAL) by WOOLFOLK, NAUSIA | | | |
| 05:58 | SUB OUT: WOOLFOLK, NAUSIA | | | |
| 05:58 | SUB IN: JONES, MO. | | | |
| 05:52 | | 82-58 | H 24 | GOOD! JUMPER by TURNER, BRIANNA |
| 05:52 | | | | ASSIST by YOUNG, JACKIE |
| 05:38 | GOOD! 3PTR by GILLESPIE, KIAH | 82-61 | H 21 | |
| 05:38 | ASSIST by EKHOMU, NICKI | | | |
| 05:21 | FOUL (PERSONAL) by GILLESPIE, KIAH | | | |
| 05:21 | | 83-61 | H 22 | GOOD! FT by TURNER, BRIANNA |
| 05:21 | | 84-61 | H 23 | GOOD! FT by TURNER, BRIANNA |
| 05:01 | MISSED LAYUP by EKHOMU, NICKI | | | |
| 04:58 | | | | REBOUND (DEF) by SHEPARD, JESSICA |
| 04:55 | | 86-61 | H 25 | GOOD! JUMPER by TURNER, BRIANNA |
| 04:55 | | | | ASSIST by MABREY, MARINA |
| 04:22 | GOOD! 3PTR by EKHOMU, NICKI | 86-64 | H 22 | |
| 04:09 | | 88-64 | H 24 | GOOD! JUMPER by SHEPARD, JESSICA |
| 04:09 | | | | ASSIST by TURNER, BRIANNA |
| 03:52 | MISSED JUMPER by GILLESPIE, KIAH | | | |
| 03:48 | REBOUND (OFF) by JONES, MO. | | | |
| 03:47 | TURNOVER (TRAVEL) by LASSITER, SAYAWNI | | | |
| 03:47 | | | | |
| 03:47 | | | | SUB OUT: TURNER, BRIANNA |
| 03:47 | | | | SUB IN: PATTERSON, DANIELLE |
| 03:47 | | | | SUB OUT: MABREY, MARINA |
| 03:47 | | | | SUB IN: NIXON, JORDAN |
| 03:47 | SUB OUT: WILKINSON, SAVANNAH | | | |
| 03:47 | SUB IN: MYERS, VALENCIA | | | |
| 03:37 | | | | TURNOVER (LOSTBALL) by NIXON, JORDAN |
| 03:37 | STEAL by LASSITER, SAYAWNI | | | |
| 03:33 | GOOD! LAYUP by JONES, MO. [FB] | 88-66 | H 22 | |

| Time | VISITORS: Florida St. | Score | Margin | HOME: Notre Dame |
|-------|-------------------------------------|-------|--------|--|
| 03:19 | | 90-66 | H 24 | GOOD! JUMPER by YOUNG, JACKIE |
| 03:09 | MISSED JUMPER by EKHOMU, NICKI | | | |
| 03:07 | | | | REBOUND (DEF) by PATTERSON, DANIELLE |
| 02:51 | | | | MISSED JUMPER by YOUNG, JACKIE |
| 02:49 | REBOUND (DEF) by GILLESPIE, KIAH | | | |
| 02:43 | MISSED JUMPER by JONES, MO. | | | |
| 02:39 | | | | REBOUND (DEF) by SHEPARD, JESSICA |
| 02:33 | | | | SUB OUT: SHEPARD, JESSICA |
| 02:33 | | | | SUB IN: COSGROVE, DANIELLE |
| 02:33 | | | | TIMEOUT 30SEC |
| 02:21 | | 92-66 | H 26 | GOOD! JUMPER by YOUNG, JACKIE |
| 02:06 | MISSED JUMPER by GILLESPIE, KIAH | | | |
| 02:04 | | | | REBOUND (DEF) by PROHASKA, ABBY |
| 02:04 | FOUL (PERSONAL) by MYERS, VALENCIA | | | |
| 02:04 | | 93-66 | H 27 | GOOD! FT by PATTERSON, DANIELLE |
| 02:04 | | | | SUB OUT: YOUNG, JACKIE |
| 02:04 | | | | SUB IN: BUTLER, MAUREEN |
| 02:04 | | | | MISSED FT by PATTERSON, DANIELLE |
| 02:01 | REBOUND (DEF) by JONES, MO. | | | |
| 01:58 | | | | FOUL (PERSONAL) by NIXON, JORDAN |
| 01:58 | GOOD! FT by EKHOMU, NICKI [FB] | 93-67 | H 26 | |
| 01:58 | GOOD! FT by EKHOMU, NICKI [FB] | 93-68 | H 25 | |
| 01:47 | | | | MISSED 3PTR by COSGROVE, DANIELLE |
| 01:44 | REBOUND (DEF) by LASSITER, SAYAWNII | | | |
| 01:22 | TURNOVER (BADPASS) by JONES, MO. | | | |
| 01:22 | | | | STEAL by PROHASKA, ABBY |
| 01:15 | | 95-68 | H 27 | GOOD! JUMPER by PROHASKA, ABBY [PNT] |
| 01:15 | | | | ASSIST by BUTLER, MAUREEN |
| 01:00 | GOOD! LAYUP by JONES, MO. | 95-70 | H 25 | |
| 01:00 | ASSIST by GILLESPIE, KIAH | | | |
| 00:43 | | | | TURNOVER (LOSTBALL) by PATTERSON, DANIELLE |
| 00:43 | STEAL by MYERS, VALENCIA | | | |
| 00:35 | MISSED LAYUP by EKHOMU, NICKI | | | |
| 00:32 | | | | REBOUND (DEF) by COSGROVE, DANIELLE |
| 00:23 | FOUL (PERSONAL) by MYERS, VALENCIA | | | |
| 00:23 | SUB OUT: MYERS, VALENCIA | | | |
| 00:23 | SUB IN: WILKINSON, SAVANNAH | | | |
| 00:23 | | 96-70 | H 26 | GOOD! FT by NIXON, JORDAN |
| 00:23 | | 97-70 | H 27 | GOOD! FT by NIXON, JORDAN |
| 00:00 | MISSED 3PTR by EKHOMU, NICKI | | | |
| 00:00 | | | | REBOUND (DEF) by PATTERSON, DANIELLE |

Florida St. 70, Notre Dame 97

| Points from (This Period) | FSU | UND |
|---------------------------|-----|-----|
| In the Paint | 6 | 10 |
| Off Turns | 2 | 2 |
| 2nd Chance | 4 | 0 |
| Fast Break | 6 | 0 |
| Bench | 6 | 7 |

Official Scoring/Possession Reference Chart

Florida St. vs Notre Dame

Period 1

February 10, 2019 at Joyce Center (Purcell Pavilion) - Notre Dame, IN



Period 1

Starters:

Florida St.: 10 WEBER,KOURTNEY; 12 EKHOMU,NICKI; 13 WOOLFOLK,NAUSIA; 15 GILLESPIE,KIAH; 32 MYERS,VALENCIA;

Notre Dame: 11 TURNER,BRIANNA; 24 OGUNBOWALE,ARIKE; 32 SHEPARD,JESSICA; 3 MABREY,MARINA; 5 YOUNG,JACKIE;

| Time | VISITORS: Florida St. | Score | Margin | HOME: Notre Dame |
|-------|---------------------------------------|-------|--------|-----------------------------------|
| 09:55 | | 2-0 | H 2 | GOOD! LAYUP by SHEPARD, JESSICA |
| 09:33 | GOOD! LAYUP by MYERS, VALENCIA | 2-2 | T | |
| 08:46 | | 4-2 | H 2 | GOOD! JUMPER by OGUNBOWALE, ARIKE |
| 08:21 | | 7-2 | H 5 | GOOD! 3PTR by MABREY, MARINA |
| 07:59 | GOOD! 3PTR by EKHOMU, NICKI | 7-5 | H 2 | |
| 07:49 | | 9-5 | H 4 | GOOD! JUMPER by OGUNBOWALE, ARIKE |
| 07:23 | | 11-5 | H 6 | GOOD! JUMPER by SHEPARD, JESSICA |
| 06:57 | | 13-5 | H 8 | GOOD! LAYUP by SHEPARD, JESSICA |
| 06:38 | GOOD! 3PTR by EKHOMU, NICKI | 13-8 | H 5 | |
| 06:24 | | 14-8 | H 6 | GOOD! FT by TURNER, BRIANNA |
| 06:24 | | 15-8 | H 7 | GOOD! FT by TURNER, BRIANNA |
| 06:15 | GOOD! FT by EKHOMU, NICKI | 15-9 | H 6 | |
| 06:15 | GOOD! FT by EKHOMU, NICKI | 15-10 | H 5 | |
| 05:38 | GOOD! JUMPER by GILLESPIE, KIAH | 15-12 | H 3 | |
| 05:20 | | 17-12 | H 5 | GOOD! JUMPER by MABREY, MARINA |
| 04:42 | | 19-12 | H 7 | GOOD! JUMPER by OGUNBOWALE, ARIKE |
| 04:02 | | 22-12 | H 10 | GOOD! 3PTR by OGUNBOWALE, ARIKE |
| 03:37 | GOOD! 3PTR by GILLESPIE, KIAH | 22-15 | H 7 | |
| 02:51 | | 24-15 | H 9 | GOOD! LAYUP by YOUNG, JACKIE |
| 01:52 | GOOD! 3PTR by WOOLFOLK, NAUSIA | 24-18 | H 6 | |
| 01:25 | | 26-18 | H 8 | GOOD! LAYUP by SHEPARD, JESSICA |
| 00:50 | GOOD! JUMPER by GILLESPIE, KIAH [PNT] | 26-20 | H 6 | |
| 00:16 | GOOD! LAYUP by GILLESPIE, KIAH | 26-22 | H 4 | |
| 00:01 | | 28-22 | H 6 | GOOD! JUMPER by SHEPARD, JESSICA |

Florida St. 22, Notre Dame 28

Official Scoring/Possession Reference Chart
Florida St. vs Notre Dame
Period 2

February 10, 2019 at Joyce Center (Purcell Pavilion) - Notre Dame, IN



Period 2

Starters:

Florida St.: 10 WEBER,KOURTNEY; 12 EKHOMU,NICKI; 13 WOOLFOLK,NAUSIA; 15 GILLESPIE,KIAH; 32 MYERS,VALENCIA;

Notre Dame: 11 TURNER,BRIANNA; 24 OGUNBOWALE,ARIKE; 32 SHEPARD,JESSICA; 3 MABREY,MARINA; 5 YOUNG,JACKIE;

| Time | VISITORS: Florida St. | Score | Margin | HOME: Notre Dame |
|-------|--|-------|--------|---------------------------------------|
| 09:34 | | 30-22 | H 8 | GOOD! JUMPER by TURNER, BRIANNA |
| 08:53 | GOOD! FT by EKHOMU, NICKI [FB] | 30-23 | H 7 | |
| 08:53 | GOOD! FT by EKHOMU, NICKI [FB] | 30-24 | H 6 | |
| 07:42 | | 32-24 | H 8 | GOOD! LAYUP by MABREY, MARINA [FB] |
| 07:30 | | 33-24 | H 9 | GOOD! FT by NIXON, JORDAN [FB] |
| 07:21 | GOOD! JUMPER by WOOLFOLK, NAUSIA [PNT] | 33-26 | H 7 | |
| 06:53 | | 35-26 | H 9 | GOOD! LAYUP by SHEPARD, JESSICA [PNT] |
| 06:29 | GOOD! JUMPER by WOOLFOLK, NAUSIA | 35-28 | H 7 | |
| 06:15 | | 36-28 | H 8 | GOOD! FT by OGUNBOWALE, ARIKE |
| 06:15 | | 37-28 | H 9 | GOOD! FT by OGUNBOWALE, ARIKE |
| 05:47 | GOOD! JUMPER by EKHOMU, NICKI | 37-30 | H 7 | |
| 05:32 | | 39-30 | H 9 | GOOD! LAYUP by SHEPARD, JESSICA |
| 04:54 | GOOD! LAYUP by EKHOMU, NICKI [FB/PNT] | 39-32 | H 7 | |
| 04:54 | GOOD! FT by EKHOMU, NICKI [FB] | 39-33 | H 6 | |
| 04:46 | | 42-33 | H 9 | GOOD! 3PTR by OGUNBOWALE, ARIKE |
| 04:15 | | 45-33 | H 12 | GOOD! 3PTR by OGUNBOWALE, ARIKE |
| 03:55 | | 46-33 | H 13 | GOOD! FT by OGUNBOWALE, ARIKE [FB] |
| 03:55 | | 47-33 | H 14 | GOOD! FT by OGUNBOWALE, ARIKE [FB] |
| 02:36 | | 49-33 | H 16 | GOOD! LAYUP by PROHASKA, ABBY |
| 02:19 | GOOD! 3PTR by WOOLFOLK, NAUSIA | 49-36 | H 13 | |
| 01:56 | | 51-36 | H 15 | GOOD! LAYUP by SHEPARD, JESSICA |
| 01:16 | | 52-36 | H 16 | GOOD! FT by TURNER, BRIANNA [FB] |
| 00:10 | GOOD! FT by EKHOMU, NICKI | 52-37 | H 15 | |
| 00:10 | GOOD! FT by EKHOMU, NICKI | 52-38 | H 14 | |

Florida St. 38, Notre Dame 52

Official Scoring/Possession Reference Chart
Florida St. vs Notre Dame
Period 3

February 10, 2019 at Joyce Center (Purcell Pavilion) - Notre Dame, IN



Period 3

Starters:

Florida St.: 10 WEBER,KOURTNEY; 12 EKHOMU,NICKI; 13 WOOLFOLK,NAUSIA; 15 GILLESPIE,KIAH; 32 MYERS,VALENCIA;

Notre Dame: 11 TURNER,BRIANNA; 24 OGUNBOWALE,ARIKE; 32 SHEPARD,JESSICA; 3 MABREY,MARINA; 5 YOUNG,JACKIE;

| Time | VISITORS: Florida St. | Score | Margin | HOME: Notre Dame |
|-------|---------------------------------------|-------|--------|--|
| 09:15 | GOOD! JUMPER by MYERS, VALENCIA [PNT] | 52-40 | H 12 | |
| 09:02 | | 53-40 | H 13 | GOOD! FT by YOUNG, JACKIE |
| 09:02 | | 54-40 | H 14 | GOOD! FT by YOUNG, JACKIE |
| 08:40 | | 56-40 | H 16 | GOOD! LAYUP by YOUNG, JACKIE [FB] |
| 06:57 | | 58-40 | H 18 | GOOD! LAYUP by SHEPARD, JESSICA |
| 06:21 | | 61-40 | H 21 | GOOD! 3PTR by OGUNBOWALE, ARIKE |
| 05:49 | | 63-40 | H 23 | GOOD! JUMPER by TURNER, BRIANNA [PNT] |
| 04:55 | | 65-40 | H 25 | GOOD! JUMPER by SHEPARD, JESSICA |
| 04:28 | | 67-40 | H 27 | GOOD! JUMPER by OGUNBOWALE, ARIKE |
| 03:14 | GOOD! LAYUP by WOOLFOLK, NAUSIA [FB] | 67-42 | H 25 | |
| 02:51 | GOOD! FT by MYERS, VALENCIA | 67-43 | H 24 | |
| 02:51 | GOOD! FT by MYERS, VALENCIA | 67-44 | H 23 | |
| 02:38 | | 70-44 | H 26 | GOOD! 3PTR by OGUNBOWALE, ARIKE |
| 01:54 | GOOD! 3PTR by WOOLFOLK, NAUSIA | 70-47 | H 23 | |
| 01:13 | GOOD! 3PTR by GILLESPIE, KIAH | 70-50 | H 20 | |
| 00:56 | | 71-50 | H 21 | GOOD! FT by PATTERSON, DANIELLE |
| 00:56 | | 72-50 | H 22 | GOOD! FT by PATTERSON, DANIELLE |
| 00:22 | | 74-50 | H 24 | GOOD! LAYUP by MABREY, MARINA [FB/PNT] |

Florida St. 50, Notre Dame 74

Official Scoring/Possession Reference Chart
Florida St. vs Notre Dame
Period 4

February 10, 2019 at Joyce Center (Purcell Pavilion) - Notre Dame, IN



Period 4

Starters:

Florida St.: 10 WEBER,KOURTNEY; 12 EKHOMU,NICKI; 13 WOOLFOLK,NAUSIA; 15 GILLESPIE,KIAH; 32 MYERS,VALENCIA;

Notre Dame: 11 TURNER,BRIANNA; 24 OGUNBOWALE,ARIKE; 32 SHEPARD,JESSICA; 3 MABREY,MARINA; 5 YOUNG,JACKIE;

| Time | VISITORS: Florida St. | Score | Margin | HOME: Notre Dame |
|-------|---------------------------------|-------|--------|--------------------------------------|
| 09:35 | GOOD! LAYUP by JONES, MO. [FB] | 74-52 | H 22 | |
| 09:16 | | 76-52 | H 24 | GOOD! JUMPER by PROHASKA, ABBY |
| 08:49 | GOOD! JUMPER by EKHOMU, NICKI | 76-54 | H 22 | |
| 08:02 | | 77-54 | H 23 | GOOD! FT by SHEPARD, JESSICA |
| 08:02 | | 78-54 | H 24 | GOOD! FT by SHEPARD, JESSICA |
| 07:28 | GOOD! FT by EKHOMU, NICKI | 78-55 | H 23 | |
| 07:28 | GOOD! FT by EKHOMU, NICKI | 78-56 | H 22 | |
| 06:39 | GOOD! JUMPER by GILLESPIE, KIAH | 78-58 | H 20 | |
| 06:29 | | 80-58 | H 22 | GOOD! LAYUP by SHEPARD, JESSICA |
| 05:52 | | 82-58 | H 24 | GOOD! JUMPER by TURNER, BRIANNA |
| 05:38 | GOOD! 3PTR by GILLESPIE, KIAH | 82-61 | H 21 | |
| 05:21 | | 83-61 | H 22 | GOOD! FT by TURNER, BRIANNA |
| 05:21 | | 84-61 | H 23 | GOOD! FT by TURNER, BRIANNA |
| 04:55 | | 86-61 | H 25 | GOOD! JUMPER by TURNER, BRIANNA |
| 04:22 | GOOD! 3PTR by EKHOMU, NICKI | 86-64 | H 22 | |
| 04:09 | | 88-64 | H 24 | GOOD! JUMPER by SHEPARD, JESSICA |
| 03:33 | GOOD! LAYUP by JONES, MO. [FB] | 88-66 | H 22 | |
| 03:19 | | 90-66 | H 24 | GOOD! JUMPER by YOUNG, JACKIE |
| 02:21 | | 92-66 | H 26 | GOOD! JUMPER by YOUNG, JACKIE |
| 02:04 | | 93-66 | H 27 | GOOD! FT by PATTERSON, DANIELLE |
| 01:58 | GOOD! FT by EKHOMU, NICKI [FB] | 93-67 | H 26 | |
| 01:58 | GOOD! FT by EKHOMU, NICKI [FB] | 93-68 | H 25 | |
| 01:15 | | 95-68 | H 27 | GOOD! JUMPER by PROHASKA, ABBY [PNT] |
| 01:00 | GOOD! LAYUP by JONES, MO. | 95-70 | H 25 | |
| 00:23 | | 96-70 | H 26 | GOOD! FT by NIXON, JORDAN |
| 00:23 | | 97-70 | H 27 | GOOD! FT by NIXON, JORDAN |

Florida St. 70, Notre Dame 97

Official Substitutions Log
Florida St. vs Notre Dame
Period 1

February 10, 2019 at Joyce Center (Purcell Pavilion) - Notre Dame, IN



| VISITORS: Florida St. | Time | Score | HOME: Notre Dame |
|-------------------------------|-------------|--------------|-------------------------|
| 10 WEBER,KOURTNEY | | | 11 TURNER,BRIANNA |
| 12 EKHOMU,NICKI | | | 24 OGUNBOWALE,ARIKE |
| 13 WOOLFOLK,NAUSIA | | | 32 SHEPARD,JESSICA |
| 15 GILLESPIE,KIAH | | | 3 MABREY,MARINA |
| 32 MYERS,VALENCIA | | | 5 YOUNG,JACKIE |
| SUB OUT: 10 WEBER,KOURTNEY | 06:24 | 8-14 | |
| SUB IN: 24 JONES,MO. | 06:24 | | |
| SUB OUT: 13 WOOLFOLK,NAUSIA | 06:24 | | |
| SUB IN: 3 LASSITER,SAYAWNI | 06:24 | | |
| SUB OUT: 32 MYERS,VALENCIA | 06:24 | | |
| SUB IN: 31 WILKINSON,SAVANNAH | 06:24 | | |
| | 06:15 | 9-15 | SUB OUT: TURNER,BRIANNA |
| | 06:15 | | SUB IN: PROHASKA,ABBY |
| SUB OUT: 3 LASSITER,SAYAWNI | 05:14 | 12-17 | |
| SUB IN: 13 WOOLFOLK,NAUSIA | 05:14 | | |

Florida St. 22, Notre Dame 28

**Official Substitutions Log
Florida St. vs Notre Dame
Period 2**

February 10, 2019 at Joyce Center (Purcell Pavilion) - Notre Dame, IN



| VISITORS: Florida St. | Time | Score | HOME: Notre Dame |
|--------------------------------|-------------|--------------|-------------------------|
| 10 WEBER,KOURTNEY | | | 11 TURNER,BRIANNA |
| 12 EKHOMU,NICKI | | | 24 OGUNBOWALE,ARIKE |
| 13 WOOLFOLK,NAUSIA | | | 32 SHEPARD,JESSICA |
| 15 GILLESPIE,KIAH | | | 3 MABREY,MARINA |
| 32 MYERS,VALENCIA | | | 5 YOUNG,JACKIE |
| SUB OUT: 32 MYERS,VALENCIA | 09:06 | 22-30 | |
| SUB IN: 15 GILLESPIE,KIAH | 09:06 | | |
| | 08:13 | 24-30 | SUB OUT: YOUNG,JACKIE |
| | 08:13 | | SUB IN: MABREY,MARINA |
| | 08:13 | | SUB OUT: PROHASKA,ABBY |
| | 08:13 | | SUB IN: SHEPARD,JESSICA |
| SUB OUT: 24 JONES,MO. | 08:13 | | |
| SUB IN: 10 WEBER,KOURTNEY | 08:13 | | |
| SUB OUT: 10 WEBER,KOURTNEY | 07:30 | 24-32 | |
| SUB IN: 3 LASSITER,SAYAWNI | 07:30 | | |
| | 06:15 | 28-36 | SUB OUT: NIXON,JORDAN |
| | 06:15 | | SUB IN: YOUNG,JACKIE |
| SUB OUT: 31 WILKINSON,SAVANNAH | 05:11 | 30-39 | |
| SUB IN: 32 MYERS,VALENCIA | 05:11 | | |
| | 04:54 | 32-39 | SUB OUT: YOUNG,JACKIE |
| | 04:54 | | SUB IN: PROHASKA,ABBY |
| | 03:55 | 33-47 | SUB OUT: TURNER,BRIANNA |
| | 03:55 | | SUB IN: VAUGHN,MIKAYLA |
| SUB OUT: 13 WOOLFOLK,NAUSIA | 03:55 | | |
| SUB IN: 24 JONES,MO. | 03:55 | | |
| SUB OUT: 32 MYERS,VALENCIA | 03:55 | | |
| SUB IN: 31 WILKINSON,SAVANNAH | 03:55 | | |
| | 02:57 | 33-47 | SUB OUT: VAUGHN,MIKAYLA |
| | 02:57 | | SUB IN: TURNER,BRIANNA |
| SUB OUT: 3 LASSITER,SAYAWNI | 02:57 | | |
| SUB IN: 13 WOOLFOLK,NAUSIA | 02:57 | | |
| | 01:45 | 36-51 | SUB OUT: PROHASKA,ABBY |
| | 01:45 | | SUB IN: NIXON,JORDAN |
| | 00:10 | 36-52 | SUB OUT: NIXON,JORDAN |
| | 00:10 | | SUB IN: PROHASKA,ABBY |
| SUB OUT: 31 WILKINSON,SAVANNAH | 00:10 | | |
| SUB IN: 10 WEBER,KOURTNEY | 00:10 | | |
| SUB OUT: 13 WOOLFOLK,NAUSIA | 00:10 | | |
| SUB IN: 3 LASSITER,SAYAWNI | 00:10 | | |

Florida St. 38, Notre Dame 52

**Official Substitutions Log
Florida St. vs Notre Dame
Period 3**

February 10, 2019 at Joyce Center (Purcell Pavilion) - Notre Dame, IN



| VISITORS: Florida St. | Time | Score | HOME: Notre Dame |
|---------------------------------|-------------|--------------|------------------------------|
| 10 WEBER, KOURTNEY | | | 11 TURNER, BRIANNA |
| 12 EKHOMU, NICKI | | | 24 OGUNBOWALE, ARIKE |
| 13 WOOLFOLK, NAUSIA | | | 32 SHEPARD, JESSICA |
| 15 GILLESPIE, KIAH | | | 3 MABREY, MARINA |
| 32 MYERS, VALENCIA | | | 5 YOUNG, JACKIE |
| SUB OUT: 10 WEBER, KOURTNEY | 07:52 | 40-56 | |
| SUB IN: 24 JONES, MO. | 07:52 | | |
| SUB OUT: 32 MYERS, VALENCIA | 06:21 | 40-61 | |
| SUB IN: 31 WILKINSON, SAVANNAH | 06:21 | | |
| SUB OUT: 13 WOOLFOLK, NAUSIA | 06:21 | | |
| SUB IN: 3 LASSITER, SAYAWNI | 06:21 | | |
| | 03:34 | 40-67 | SUB OUT: TURNER, BRIANNA |
| | 03:34 | | SUB IN: PROHASKA, ABBY |
| SUB OUT: 3 LASSITER, SAYAWNI | 03:34 | | |
| SUB IN: 13 WOOLFOLK, NAUSIA | 03:34 | | |
| SUB OUT: 15 GILLESPIE, KIAH | 03:34 | | |
| SUB IN: 32 MYERS, VALENCIA | 03:34 | | |
| | 02:51 | 43-67 | SUB OUT: PROHASKA, ABBY |
| | 02:51 | | SUB IN: PATTERSON, DANIELLE |
| | 02:12 | 44-70 | SUB OUT: OGUNBOWALE, ARIKE |
| | 02:12 | | SUB IN: PROHASKA, ABBY |
| SUB OUT: 31 WILKINSON, SAVANNAH | 02:06 | 44-70 | |
| SUB IN: 15 GILLESPIE, KIAH | 02:06 | | |
| | 02:06 | | SUB OUT: SHEPARD, JESSICA |
| | 02:06 | | SUB IN: TURNER, BRIANNA |
| | 00:56 | 50-72 | SUB OUT: PATTERSON, DANIELLE |
| | 00:56 | | SUB IN: OGUNBOWALE, ARIKE |

Florida St. 50, Notre Dame 74

**Official Substitutions Log
Florida St. vs Notre Dame
Period 4**

February 10, 2019 at Joyce Center (Purcell Pavilion) - Notre Dame, IN



| VISITORS: Florida St. | Time | Score | HOME: Notre Dame |
|--------------------------------|-------------|--------------|----------------------------|
| 10 WEBER,KOURTNEY | | | 11 TURNER,BRIANNA |
| 12 EKHOMU,NICKI | | | 24 OGUNBOWALE,ARIKE |
| 13 WOOLFOLK,NAUSIA | | | 32 SHEPARD,JESSICA |
| 15 GILLESPIE,KIAH | | | 3 MABREY,MARINA |
| 32 MYERS,VALENCIA | | | 5 YOUNG,JACKIE |
| SUB OUT: 13 WOOLFOLK,NAUSIA | 08:35 | 54-76 | |
| SUB IN: 3 LASSITER,SAYAWNI | 08:35 | | |
| | 07:28 | 55-78 | SUB OUT: PROHASKA,ABBY |
| | 07:28 | | SUB IN: MABREY,MARINA |
| | 06:09 | 58-80 | SUB OUT: OGUNBOWALE,ARIKE |
| | 06:09 | | SUB IN: PROHASKA,ABBY |
| SUB OUT: 24 JONES,MO. | 06:09 | | |
| SUB IN: 13 WOOLFOLK,NAUSIA | 06:09 | | |
| SUB OUT: 32 MYERS,VALENCIA | 06:09 | | |
| SUB IN: 31 WILKINSON,SAVANNAH | 06:09 | | |
| SUB OUT: 13 WOOLFOLK,NAUSIA | 05:58 | 58-80 | |
| SUB IN: 24 JONES,MO. | 05:58 | | |
| | 03:47 | 64-88 | SUB OUT: TURNER,BRIANNA |
| | 03:47 | | SUB IN: PATTERSON,DANIELLE |
| | 03:47 | | SUB OUT: MABREY,MARINA |
| | 03:47 | | SUB IN: NIXON,JORDAN |
| SUB OUT: 31 WILKINSON,SAVANNAH | 03:47 | | |
| SUB IN: 32 MYERS,VALENCIA | 03:47 | | |
| | 02:33 | 66-90 | SUB OUT: SHEPARD,JESSICA |
| | 02:33 | | SUB IN: COSGROVE,DANIELLE |
| | 02:04 | 66-93 | SUB OUT: YOUNG,JACKIE |
| | 02:04 | | SUB IN: BUTLER,MAUREEN |
| SUB OUT: 32 MYERS,VALENCIA | 00:23 | 70-95 | |
| SUB IN: 31 WILKINSON,SAVANNAH | 00:23 | | |

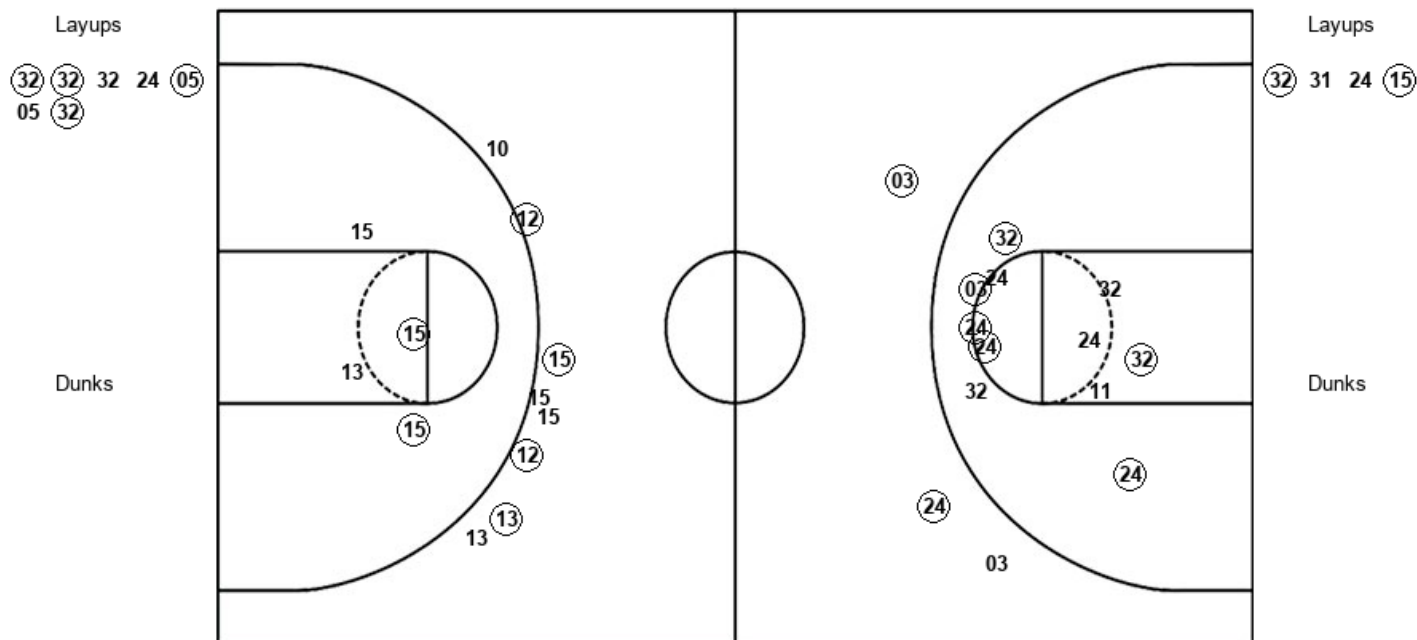
Florida St. 70, Notre Dame 97

Official Shot Chart
Florida St. vs Notre Dame
 PERIOD 1 Shots
 February 10, 2019 at Joyce Center (Purcell Pavilion) - Notre Dame, IN



Notre Dame

Florida St.



| UND : Period 1 | Made | Att | Pct |
|--------------------------|-----------|-----------|-------------|
| Layups | 4 | 7 | 57.1 |
| Dunks | 0 | 0 | 0 |
| 2PT Field Goals | 10 | 18 | 55.6 |
| 3PT Field Goals | 2 | 3 | 66.7 |
| Total Field Goals | 12 | 21 | 57.1 |

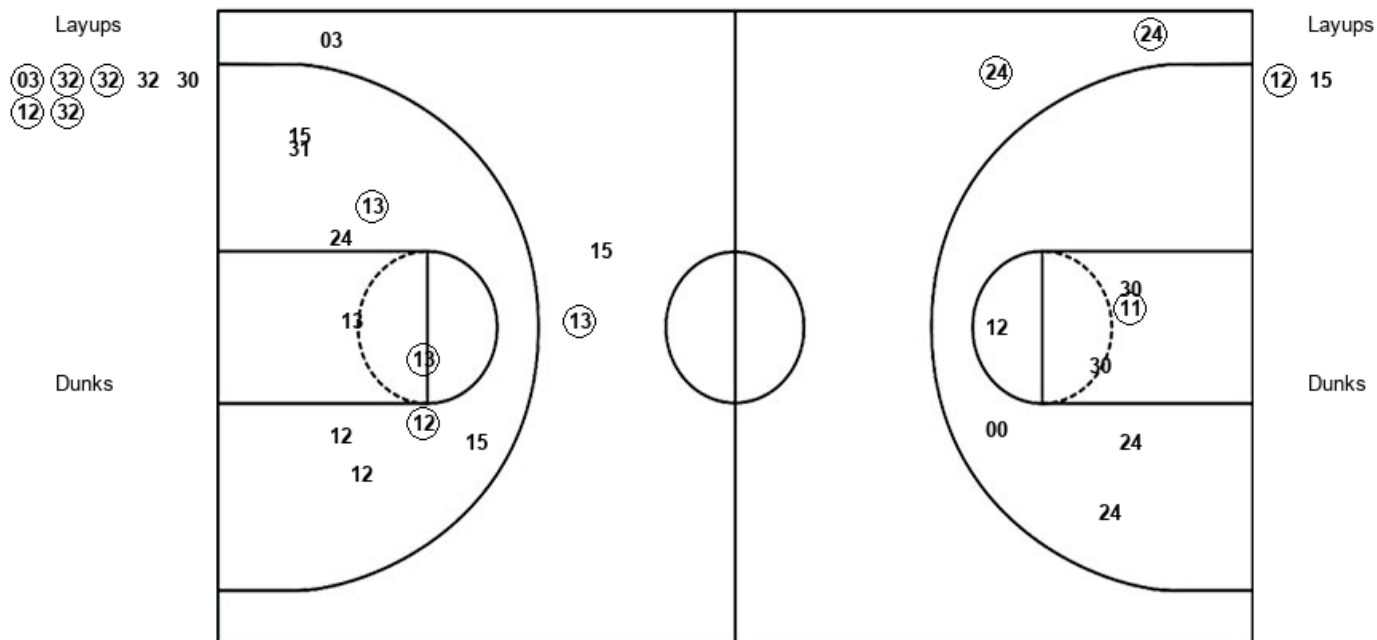
| FSU : Period 1 | Made | Att | Pct |
|--------------------------|----------|-----------|-------------|
| Layups | 2 | 4 | 50.0 |
| Dunks | 0 | 0 | 0 |
| 2PT Field Goals | 4 | 8 | 50.0 |
| 3PT Field Goals | 4 | 8 | 50.0 |
| Total Field Goals | 8 | 16 | 50.0 |

Official Shot Chart
Florida St. vs Notre Dame
 PERIOD 2 Shots
 February 10, 2019 at Joyce Center (Purcell Pavilion) - Notre Dame, IN



Notre Dame

Florida St.



| UND : Period 2 | Made | Att | Pct |
|--------------------------|----------|-----------|-------------|
| Layups | 5 | 7 | 71.4 |
| Dunks | 0 | 0 | 0 |
| 2PT Field Goals | 6 | 14 | 42.9 |
| 3PT Field Goals | 2 | 2 | 100.0 |
| Total Field Goals | 8 | 16 | 50.0 |

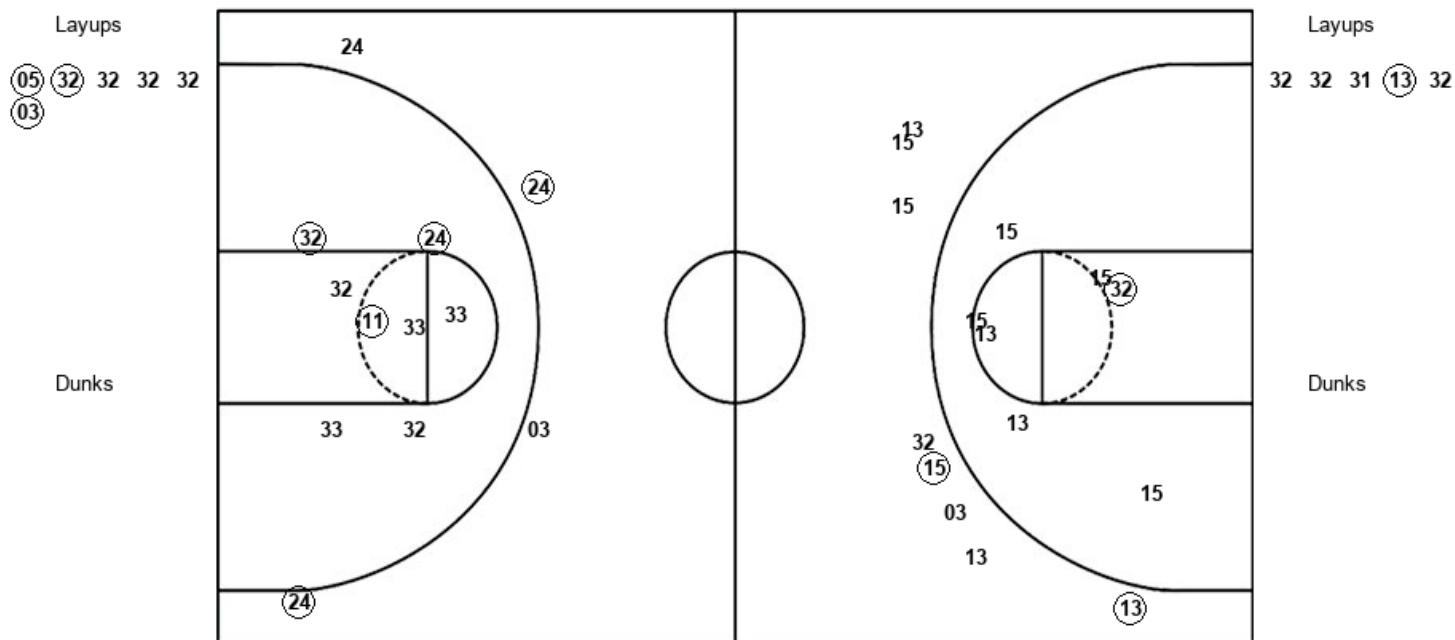
| FSU : Period 2 | Made | Att | Pct |
|--------------------------|----------|-----------|-------------|
| Layups | 1 | 2 | 50.0 |
| Dunks | 0 | 0 | 0 |
| 2PT Field Goals | 4 | 12 | 33.3 |
| 3PT Field Goals | 1 | 3 | 33.3 |
| Total Field Goals | 5 | 15 | 33.3 |

Official Shot Chart
Florida St. vs Notre Dame
 PERIOD 3 Shots
 February 10, 2019 at Joyce Center (Purcell Pavilion) - Notre Dame, IN



Notre Dame

Florida St.



| UND : Period 3 | Made | Att | Pct |
|--------------------------|----------|-----------|-------------|
| Layups | 3 | 6 | 50.0 |
| Dunks | 0 | 0 | 0 |
| 2PT Field Goals | 6 | 14 | 42.9 |
| 3PT Field Goals | 2 | 4 | 50.0 |
| Total Field Goals | 8 | 18 | 44.4 |

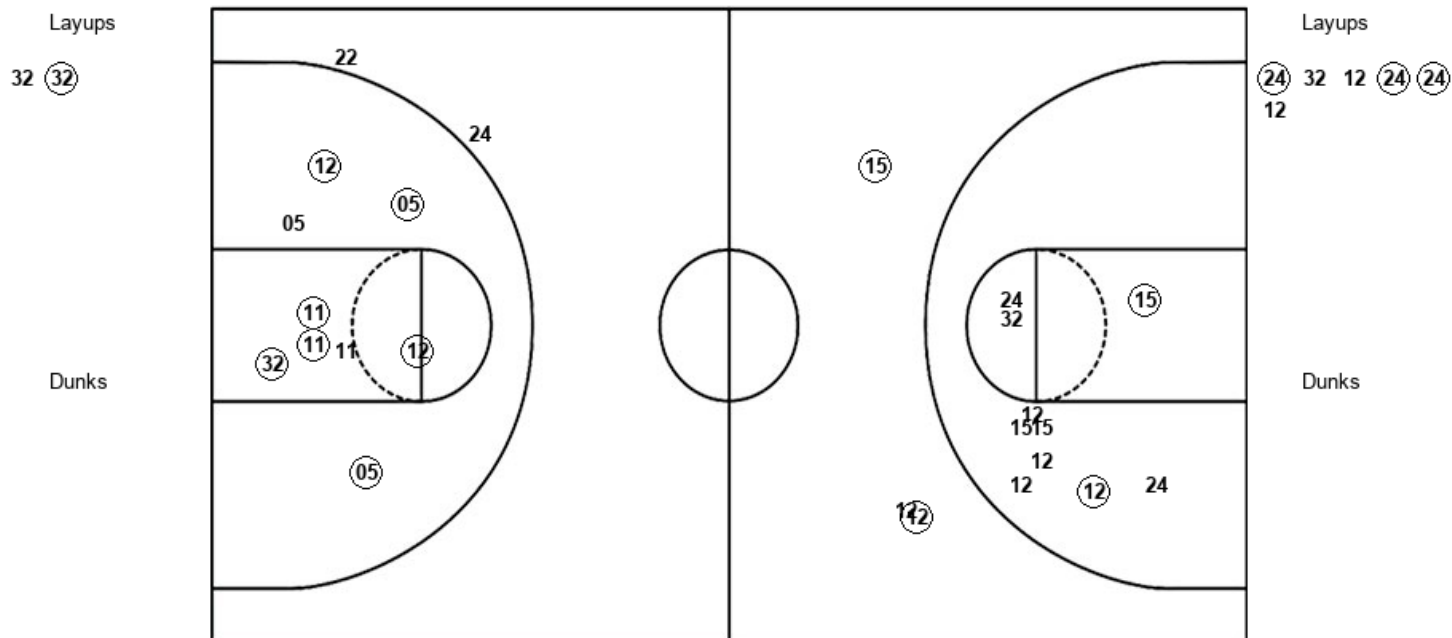
| FSU : Period 3 | Made | Att | Pct |
|--------------------------|----------|-----------|-------------|
| Layups | 1 | 5 | 20.0 |
| Dunks | 0 | 0 | 0 |
| 2PT Field Goals | 2 | 12 | 16.7 |
| 3PT Field Goals | 2 | 8 | 25.0 |
| Total Field Goals | 4 | 20 | 20.0 |

Official Shot Chart
Florida St. vs Notre Dame
 PERIOD 4 Shots
 February 10, 2019 at Joyce Center (Purcell Pavilion) - Notre Dame, IN



Notre Dame

Florida St.



| UND : Period 4 | Made | Att | Pct |
|--------------------------|----------|-----------|-------------|
| Layups | 1 | 2 | 50.0 |
| Dunks | 0 | 0 | 0 |
| 2PT Field Goals | 8 | 11 | 72.7 |
| 3PT Field Goals | 0 | 2 | 00.0 |
| Total Field Goals | 8 | 13 | 61.5 |

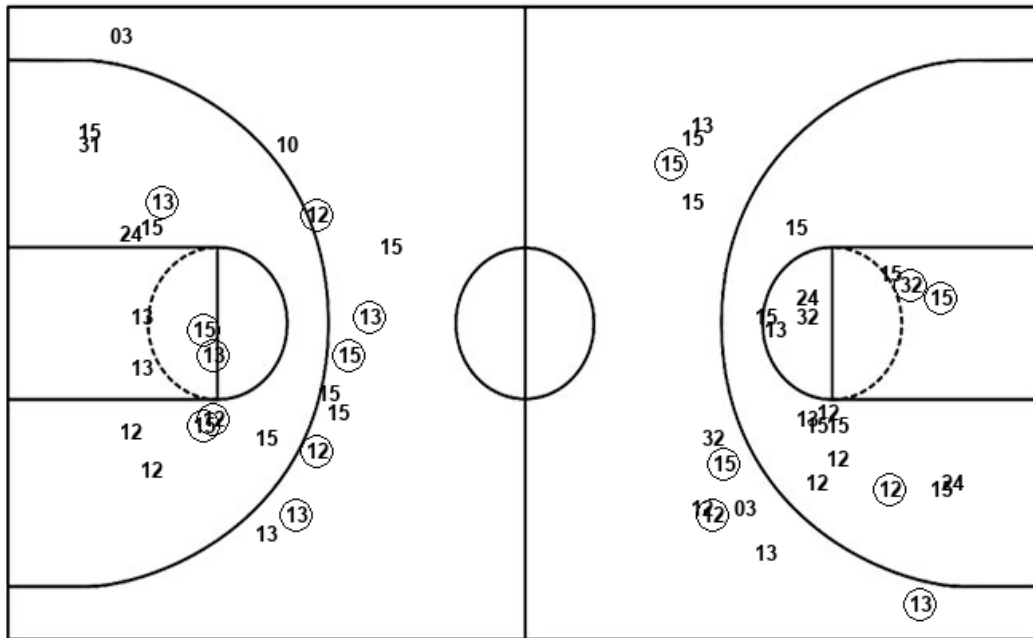
| FSU : Period 4 | Made | Att | Pct |
|--------------------------|----------|-----------|-------------|
| Layups | 3 | 6 | 50.0 |
| Dunks | 0 | 0 | 0 |
| 2PT Field Goals | 5 | 16 | 31.3 |
| 3PT Field Goals | 2 | 3 | 66.7 |
| Total Field Goals | 7 | 19 | 36.8 |

Official Shot Chart
Florida St. vs Notre Dame
 Florida St. Team Shots
 February 10, 2019 at Joyce Center (Purcell Pavilion) - Notre Dame, IN



Layups

Dunks



Layups

Dunks

| FSU : Period 1 | Made | Att | Pct |
|--------------------------|----------|-----------|-------------|
| Layups | 2 | 4 | 50.0 |
| Dunks | 0 | 0 | 0 |
| 2PT Field Goals | 4 | 8 | 50.0 |
| 3PT Field Goals | 4 | 8 | 50.0 |
| Total Field Goals | 8 | 16 | 50.0 |

| FSU : Period 3 | Made | Att | Pct |
|--------------------------|----------|-----------|-------------|
| Layups | 1 | 5 | 20.0 |
| Dunks | 0 | 0 | 0 |
| 2PT Field Goals | 2 | 12 | 16.7 |
| 3PT Field Goals | 2 | 8 | 25.0 |
| Total Field Goals | 4 | 20 | 20.0 |

| FSU : Period 2 | Made | Att | Pct |
|--------------------------|----------|-----------|-------------|
| Layups | 1 | 2 | 50.0 |
| Dunks | 0 | 0 | 0 |
| 2PT Field Goals | 4 | 12 | 33.3 |
| 3PT Field Goals | 1 | 3 | 33.3 |
| Total Field Goals | 5 | 15 | 33.3 |

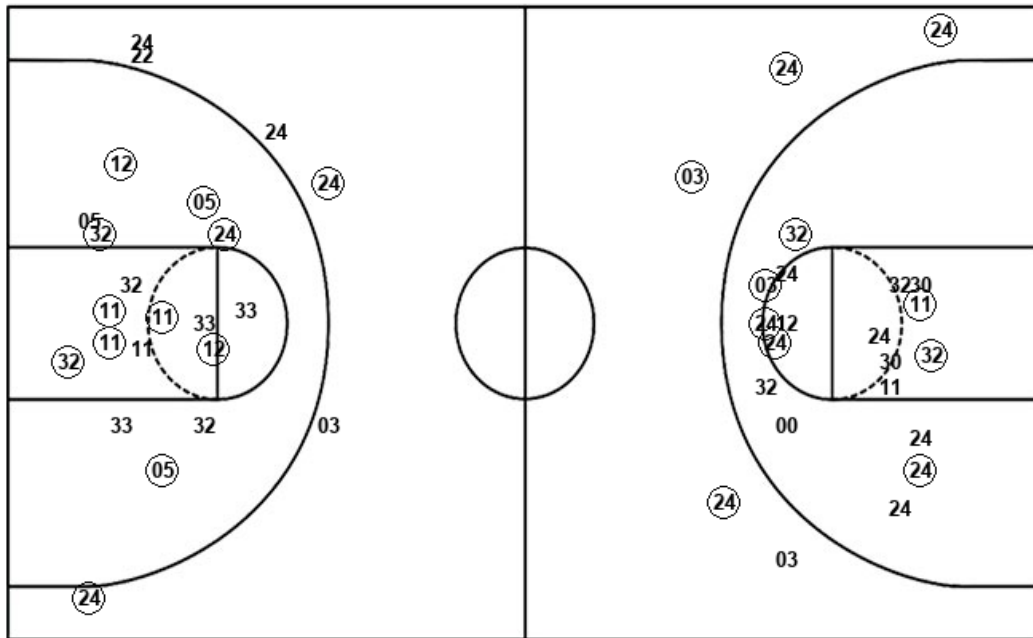
| FSU : Period 4 | Made | Att | Pct |
|--------------------------|----------|-----------|-------------|
| Layups | 3 | 6 | 50.0 |
| Dunks | 0 | 0 | 0 |
| 2PT Field Goals | 5 | 16 | 31.3 |
| 3PT Field Goals | 2 | 3 | 66.7 |
| Total Field Goals | 7 | 19 | 36.8 |

Official Shot Chart
Florida St. vs Notre Dame
 Notre Dame Team Shots
 February 10, 2019 at Joyce Center (Purcell Pavilion) - Notre Dame, IN



Layups

Dunks



Layups

Dunks

32 32 32 24 05
 05 32 03 32 32
 32 30 12 32 05
 32 32 32 32 03
 32 32

| UND : Period 1 | Made | Att | Pct |
|--------------------------|-----------|-----------|-------------|
| Layups | 4 | 7 | 57.1 |
| Dunks | 0 | 0 | 0 |
| 2PT Field Goals | 10 | 18 | 55.6 |
| 3PT Field Goals | 2 | 3 | 66.7 |
| Total Field Goals | 12 | 21 | 57.1 |

| UND : Period 3 | Made | Att | Pct |
|--------------------------|----------|-----------|-------------|
| Layups | 3 | 6 | 50.0 |
| Dunks | 0 | 0 | 0 |
| 2PT Field Goals | 6 | 14 | 42.9 |
| 3PT Field Goals | 2 | 4 | 50.0 |
| Total Field Goals | 8 | 18 | 44.4 |

| UND : Period 2 | Made | Att | Pct |
|--------------------------|----------|-----------|-------------|
| Layups | 5 | 7 | 71.4 |
| Dunks | 0 | 0 | 0 |
| 2PT Field Goals | 6 | 14 | 42.9 |
| 3PT Field Goals | 2 | 2 | 100.0 |
| Total Field Goals | 8 | 16 | 50.0 |

| UND : Period 4 | Made | Att | Pct |
|--------------------------|----------|-----------|-------------|
| Layups | 1 | 2 | 50.0 |
| Dunks | 0 | 0 | 0 |
| 2PT Field Goals | 8 | 11 | 72.7 |
| 3PT Field Goals | 0 | 2 | 00.0 |
| Total Field Goals | 8 | 13 | 61.5 |