

**FINAL SCORE**



**Boston College**

**63**



**Notre Dame**

**92**

**January 20, 2019 • Joyce Center (Purcell Pavilion) - Notre Dame,  
IN**

**FINAL STATISTICS**

**Official Box Score**  
**Boston College vs Notre Dame**  
**Game Totals -- Final Statistics**  
**January 20, 2019 at Joyce Center (Purcell Pavilion) - Notre Dame, IN**

**Boston College 63**

No.	Player	S	Pts	FG	3FG	FT	OR	DR	TR	PF	A	TO	Blk	Stl	Min	+/-
04	Ortlepp, Taylor		3	1-5	1-4	0-0	0	2	2	2	1	4	0	2	24	-17
05	Pineau, Georgia		8	4-11	0-0	0-0	1	1	2	4	1	2	0	3	30	-14
10	Dickens, Makayla		12	4-13	3-5	1-1	1	4	5	3	5	3	0	0	29	-19
11	Guy, Emma		8	4-6	0-0	0-0	0	1	1	5	0	3	1	1	19	-21
14	Garraud, Marnelle		4	2-4	0-2	0-0	1	1	2	1	3	5	0	2	18	-15
00	Bishop, Jenasae		0	0-0	0-0	0-0	0	0	0	0	0	1	0	0	2	-2
13	Soule, Taylor		18	5-6	0-0	8-10	3	2	5	4	3	4	0	0	28	-13
22	Hollingsworth, Lana		0	0-2	0-1	0-0	0	0	0	0	0	0	0	0	1	-3
23	Bolden-Morris, Milan		2	1-3	0-2	0-0	1	1	2	0	1	0	0	0	17	-4
24	Klimkiewicz, Kate		0	0-0	0-0	0-0	1	0	1	1	0	0	0	0	1	-3
31	Lowery, Sydney		8	3-8	0-2	2-3	0	3	3	1	0	2	1	1	26	-32
32	Ford, Clara		0	0-2	0-0	0-0	0	0	0	0	0	0	0	0	2	-2
	Team						5	3	8	0		0				
<b>TOTALS</b>			<b>63</b>	<b>24-60</b>	<b>4-16</b>	<b>11-14</b>	<b>13</b>	<b>18</b>	<b>31</b>	<b>21</b>	<b>14</b>	<b>24</b>	<b>2</b>	<b>9</b>	<b>200</b>	

*Shooting By Period*

Period	FG	FG%	3FG	3FG%	FT	FT%
1st Qtr	7-14	50%	4-7	57%	1-2	50%
2nd Qtr	7-16	44%	0-2	00%	1-1	100%
3rd Qtr	6-16	38%	0-4	00%	4-5	80%
4th Qtr	4-14	29%	0-3	00%	5-6	83%
1st Half	14-30	47%	4-9	44%	2-3	67%
2nd Half	10-30	33%	0-7	00%	9-11	82%
<b>Game</b>	<b>24-60</b>	<b>40.0%</b>	<b>4-16</b>	<b>25.0%</b>	<b>11-14</b>	<b>78.6%</b>

Last FG: 4th-02:39  
 Biggest Run: 6-0  
 Largest lead: By 3 at 1-08:58  
 Technical Fouls: None.

**Notre Dame 92**

No.	Player	S	Pts	FG	3FG	FT	OR	DR	TR	PF	A	TO	Blk	Stl	Min	+/-
03	Mabrey, Marina		14	5-8	3-6	1-2	1	3	4	2	5	5	0	1	27	21
05	Young, Jackie		18	7-13	0-0	4-5	6	7	13	1	4	6	1	3	34	27
11	Turner, Brianna		16	7-10	0-0	2-3	3	5	8	3	2	0	2	1	29	22
24	Ogunbowale, Arike		24	9-18	3-7	3-4	0	0	0	2	1	4	0	5	30	18
32	Shepard, Jessica		11	4-9	0-0	3-3	4	6	10	2	6	3	2	0	28	30
00	Nixon, Jordan		4	1-2	0-0	2-2	0	1	1	1	1	0	0	2	13	8
12	Prohaska, Abby		2	1-2	0-0	0-0	1	0	1	3	1	0	0	1	19	14
20	Benz, Nicole		0	0-0	0-0	0-0	0	0	0	0	0	0	0	0	2	2
22	Cosgrove, Danielle		0	0-0	0-0	0-0	0	0	0	0	0	0	0	0	5	1
30	Vaughn, Mikayla		1	0-1	0-0	1-2	0	0	0	1	1	0	1	1	6	3
33	Patterson, Danielle		2	1-1	0-0	0-0	0	0	0	0	0	0	0	0	6	-3
40	Butler, Maureen		0	0-0	0-0	0-0	0	0	0	0	0	0	0	0	2	2
	Team						0	3	3	0		0				
<b>TOTALS</b>			<b>92</b>	<b>35-64</b>	<b>6-13</b>	<b>16-21</b>	<b>15</b>	<b>25</b>	<b>40</b>	<b>15</b>	<b>21</b>	<b>18</b>	<b>6</b>	<b>14</b>	<b>200</b>	

*Shooting By Period*

Period	FG	FG%	3FG	3FG%	FT	FT%
1st Qtr	12-16	75%	4-5	80%	4-6	67%
2nd Qtr	6-12	50%	2-3	67%	3-4	75%
3rd Qtr	7-18	39%	0-3	00%	4-4	100%
4th Qtr	10-18	56%	0-2	00%	5-7	71%
1st Half	18-28	64%	6-8	75%	7-10	70%
2nd Half	17-36	47%	0-5	00%	9-11	82%
<b>Game</b>	<b>35-64</b>	<b>54.7%</b>	<b>6-13</b>	<b>46.2%</b>	<b>16-21</b>	<b>76.2%</b>

Last FG: 4th-03:07  
 Biggest Run: 9-0  
 Largest lead: By 30 at 4-03:07  
 Technical Fouls: None.

Game Notes:

Officials: Luis Gonzalez, Jules Gallien, Maggie Tieman  
 Attendance: 8714

Start Time: 2019-01-20 18:01:55  
 End Time: 2019-01-20 19:55:03  
 Game Duration: 113  
 Conference Game:

Score	1st	2nd	3rd	4th	TOT
BCE	19	15	16	13	<b>63</b>
UND	32	17	18	25	<b>92</b>

BCE led for 1:38. UND led for 36:51.  
 Game was tied for 1:32.  
 Times tied: 4      Lead Changes: 6

Points from	BCE	UND
In the Paint	28	42
Off Turns	18	34
2nd Chance	8	25
Fast Break	4	10
Bench	28	9

**Official Box Score**  
**Boston College vs Notre Dame**  
**First Half Statistics Only**  
**January 20, 2019 at Joyce Center (Purcell Pavilion) - Notre Dame, IN**

**Boston College 34**

No.	Player	S	Pts	FG	3FG	FT	OR	DR	TR	PF	A	TO	Blk	Stl	Min	+/-
00	Bishop, Jenasae		0	0-0	0-0	0-0	0	0	0	0	0	0	0	0	0	0
10	Dickens, Makayla		12	4-8	3-3	1-1	0	3	3	2	3	1	0	0	16	-8
11	Guy, Emma		2	1-2	0-0	0-0	0	0	0	3	0	2	0	1	9	-13
13	Soule, Taylor		9	4-4	0-0	1-2	2	1	3	1	2	3	0	0	15	-8
14	Garraud, Marnelle		2	1-3	0-2	0-0	1	0	1	0	3	5	0	2	10	-12
22	Hollingsworth, Lana		0	0-0	0-0	0-0	0	0	0	0	0	0	0	0	0	0
23	Bolden-Morris, Milan		0	0-1	0-1	0-0	0	0	0	0	0	0	0	0	7	0
24	Klimkiewicz, Kate		0	0-0	0-0	0-0	0	0	0	0	0	0	0	0	0	0
31	Lowery, Sydney		0	0-2	0-0	0-0	0	2	2	0	0	1	1	1	10	-18
32	Ford, Clara		0	0-0	0-0	0-0	0	0	0	0	0	0	0	0	0	0
04	Ortlepp, Taylor		3	1-4	1-3	0-0	0	0	0	2	0	2	0	2	15	-8
05	Pineau, Georgia		6	3-6	0-0	0-0	0	1	1	2	1	1	0	2	17	-8
	Team		0	0-0	0-0	0-0	2	3	5	0	0	0	0	0	0	0
	<b>TOTALS</b>		<b>34</b>	<b>14-30</b>	<b>4-9</b>	<b>2-3</b>	<b>5</b>	<b>10</b>	<b>15</b>	<b>10</b>	<b>9</b>	<b>15</b>	<b>1</b>	<b>8</b>	<b>100</b>	

*Shooting By Period*

Period	FG	FG%	3FG	3FG%	FT	FT%
1st Qtr	7-14	50%	4-7	57%	1-2	50%
2nd Qtr	7-16	44%	0-2	00%	1-1	100%
1st Half	14-30	47%	4-9	44%	2-3	67%
Game	24-60	40.0%	4-16	25.0%	11-14	78.6%

*Last FG Half: BCE 2nd-00:07*

**Notre Dame 49**

No.	Player	S	Pts	FG	3FG	FT	OR	DR	TR	PF	A	TO	Blk	Stl	Min	+/-
00	Nixon, Jordan		0	0-1	0-0	0-0	0	0	0	0	1	0	0	2	5	7
11	Turner, Brianna		8	3-3	0-0	2-3	1	4	5	1	2	0	2	0	19	13
12	Prohaska, Abby		2	1-1	0-0	0-0	0	0	0	1	0	0	0	1	7	5
20	Benz, Nicole		0	0-0	0-0	0-0	0	0	0	0	0	0	0	0	0	0
22	Cosgrove, Danielle		0	0-0	0-0	0-0	0	0	0	0	0	0	0	0	0	0
24	Ogunbowale, Arike		15	5-11	3-4	2-2	0	0	0	0	0	2	0	3	17	9
30	Vaughn, Mikayla		0	0-0	0-0	0-0	0	0	0	0	0	0	0	0	0	0
32	Shepard, Jessica		5	2-4	0-0	1-1	0	3	3	1	5	2	1	0	15	20
33	Patterson, Danielle		2	1-1	0-0	0-0	0	0	0	0	0	0	0	0	6	-3
40	Butler, Maureen		0	0-0	0-0	0-0	0	0	0	0	0	0	0	0	0	0
03	Mabrey, Marina		12	4-5	3-4	1-2	0	3	3	2	3	4	0	1	16	9
05	Young, Jackie		5	2-2	0-0	1-2	2	1	3	1	1	3	0	1	16	15
	Team		0	0-0	0-0	0-0	0	1	1	0	0	0	0	0	0	0
	<b>TOTALS</b>		<b>49</b>	<b>18-28</b>	<b>6-8</b>	<b>7-10</b>	<b>3</b>	<b>12</b>	<b>15</b>	<b>6</b>	<b>12</b>	<b>11</b>	<b>3</b>	<b>8</b>	<b>100</b>	

*Shooting By Period*

Period	FG	FG%	3FG	3FG%	FT	FT%
1st Qtr	12-16	75%	4-5	80%	4-6	67%
2nd Qtr	6-12	50%	2-3	67%	3-4	75%
1st Half	18-28	64%	6-8	75%	7-10	70%
Game	35-64	54.7%	6-13	46.2%	16-21	76.2%

*Last FG Half: UND 2nd-00:39*

*Game Notes:*

Officials: Luis Gonzalez, Jules Gallien, Maggie Tieman  
Attendance: 8714

Start Time: 2019-01-20 18:01:55  
End Time: 2019-01-20 19:55:03  
Game Duration: 113  
Conference Game;

Score	1st	2nd	3rd	4th	TOT
BCE	19	15	16	13	<b>63</b>
UND	32	17	18	25	<b>92</b>

Points from (This Period)	BCE	UND
In the Paint	18	16
Off Turns	12	21
2nd Chance	4	8
Fast Break	4	3
Bench	9	4

**Official Box Score**  
**Boston College vs Notre Dame**  
**First Quarter Statistics Only**  
**January 20, 2019 at Joyce Center (Purcell Pavilion) - Notre Dame, IN**

**Boston College 19**

No.	Player	S	Pts	FG	3FG	FT	OR	DR	TR	PF	A	TO	Blk	Stl	Min	+/-
04	Ortlepp, Taylor		3	1-4	1-3	0-0	0	0	0	1	0	1	0	0	8	-12
05	Pineau, Georgia		2	1-2	0-0	0-0	0	1	1	1	1	0	0	1	7	-6
10	Dickens, Makayla		9	3-5	3-3	0-0	0	0	0	2	0	1	0	0	6	-6
11	Guy, Emma		2	1-1	0-0	0-0	0	0	0	2	0	1	0	1	8	-13
14	Garraud, Marnelle		2	1-2	0-1	0-0	1	0	1	0	3	4	0	2	8	-9
00	Bishop, Jenasae		0	0-0	0-0	0-0	0	0	0	0	0	0	0	0	0	0
13	Soule, Taylor		1	0-0	0-0	1-2	1	0	1	0	1	2	0	0	6	-6
22	Hollingsworth, Lana		0	0-0	0-0	0-0	0	0	0	0	0	0	0	0	0	0
23	Bolden-Morris, Milan		0	0-0	0-0	0-0	0	0	0	0	0	0	0	0	1	-2
24	Klimkiewicz, Kate		0	0-0	0-0	0-0	0	0	0	0	0	0	0	0	0	0
31	Lowery, Sydney		0	0-0	0-0	0-0	0	0	0	0	0	0	0	0	5	-11
32	Ford, Clara		0	0-0	0-0	0-0	0	0	0	0	0	0	0	0	0	0
	Team						0	2	2	0		0				
<b>TOTALS</b>			<b>19</b>	<b>7-14</b>	<b>4-7</b>	<b>1-2</b>	<b>2</b>	<b>3</b>	<b>5</b>	<b>6</b>	<b>5</b>	<b>9</b>	<b>0</b>	<b>4</b>	<b>50</b>	

*Shooting By Period*

Period	FG	FG%	3FG	3FG%	FT	FT%
1st Qtr	7-14	50%	4-7	57%	1-2	50%
2nd Qtr	7-16	44%	0-2	00%	1-1	100%
1st Half	7-14	50%	4-7	57%	1-2	50%
1st Half	14-30	47%	4-9	44%	2-3	67%
Game	24-60	40.0%	4-16	25.0%	11-14	78.6%

**Notre Dame 32**

No.	Player	S	Pts	FG	3FG	FT	OR	DR	TR	PF	A	TO	Blk	Stl	Min	+/-
03	Mabrey, Marina		3	1-2	1-2	0-0	0	1	1	0	2	2	0	1	7	4
05	Young, Jackie		5	2-2	0-0	1-2	2	1	3	1	1	2	0	1	10	13
11	Turner, Brianna		4	2-2	0-0	0-1	1	1	2	1	1	0	1	0	9	11
24	Ogunbowale, Arike		13	4-7	3-3	2-2	0	0	0	0	0	1	0	3	10	13
32	Shepard, Jessica		5	2-2	0-0	1-1	0	2	2	0	4	2	0	0	10	13
00	Nixon, Jordan		0	0-0	0-0	0-0	0	0	0	0	0	0	0	0	0	0
12	Prohaska, Abby		2	1-1	0-0	0-0	0	0	0	1	0	0	0	1	3	9
20	Benz, Nicole		0	0-0	0-0	0-0	0	0	0	0	0	0	0	0	0	0
22	Cosgrove, Danielle		0	0-0	0-0	0-0	0	0	0	0	0	0	0	0	0	0
30	Vaughn, Mikayla		0	0-0	0-0	0-0	0	0	0	0	0	0	0	0	0	0
33	Patterson, Danielle		0	0-0	0-0	0-0	0	0	0	0	0	0	0	0	1	2
40	Butler, Maureen		0	0-0	0-0	0-0	0	0	0	0	0	0	0	0	0	0
	Team						0	1	1	0		0				
<b>TOTALS</b>			<b>32</b>	<b>12-16</b>	<b>4-5</b>	<b>4-6</b>	<b>3</b>	<b>6</b>	<b>9</b>	<b>3</b>	<b>8</b>	<b>7</b>	<b>1</b>	<b>6</b>	<b>50</b>	

*Shooting By Period*

Period	FG	FG%	3FG	3FG%	FT	FT%
1st Qtr	12-16	75%	4-5	80%	4-6	67%
2nd Qtr	6-12	50%	2-3	67%	3-4	75%
1st Half	12-16	75%	4-5	80%	4-6	67%
1st Half	18-28	64%	6-8	75%	7-10	70%
Game	35-64	54.7%	6-13	46.2%	16-21	76.2%

*Game Notes:*

Officials: Luis Gonzalez, Jules Gallien, Maggie Tieman  
Attendance: 8714

Start Time: 2019-01-20 18:01:55  
End Time: 2019-01-20 19:55:03  
Game Duration: 113  
Conference Game;

Score	1st	2nd	3rd	4th	TOT
BCE	19	15	16	13	<b>63</b>
UND	32	17	18	25	<b>92</b>

Points from (This Period)	BCE	UND
In the Paint	6	12
Off Turns	7	13
2nd Chance	2	8
Fast Break	0	3
Bench	1	2

**Official Play-By-Play**  
**Boston College vs Notre Dame**  
**First Quarter**  
**January 20, 2019 at Joyce Center (Purcell Pavilion) - Notre Dame, IN**

**Period 1**

**Starters:**

**Boston College:** 10 DICKENS, MAKAYLA; 11 GUY, EMMA; 14 GARRAUD, MARNELLE; 4 ORTLEPP, TAYLOR; 5 PINEAU, GEORGIA;

**Notre Dame:** 11 TURNER, BRIANNA; 24 OGUNBOWALE, ARIKE; 32 SHEPARD, JESSICA; 3 MABREY, MARINA; 5 YOUNG, JACKIE;

Time	VISITORS: Boston College	Score	Margin	HOME: Notre Dame
09:56		2-0	H 2	GOOD! LAYUP by SHEPARD, JESSICA
09:56				ASSIST by TURNER, BRIANNA
09:32	MISSED 3PTR by ORTLEPP, TAYLOR			
09:27				REBOUND (DEF) by MABREY, MARINA
09:21				TURNOVER (BADPASS) by SHEPARD, JESSICA
09:21	STEAL by GARRAUD, MARNELLE			
09:16	MISSED LAYUP by ORTLEPP, TAYLOR			
09:13	REBOUND (OFF) by GARRAUD, MARNELLE			
09:12	GOOD! LAYUP by GARRAUD, MARNELLE	2-2	T	
09:06				MISSED JUMPER by OGUNBOWALE, ARIKE
09:03	REBOUND (DEF) by PINEAU, GEORGIA			
08:58	GOOD! 3PTR by DICKENS, MAKAYLA	2-5	V 3	
08:38				TURNOVER (BADPASS) by MABREY, MARINA
08:27	TURNOVER (LOSTBALL) by DICKENS, MAKAYLA			
08:27				STEAL by MABREY, MARINA
08:16		4-5	V 1	GOOD! LAYUP by TURNER, BRIANNA
08:16				ASSIST by SHEPARD, JESSICA
07:57	TURNOVER (BADPASS) by GUY, EMMA			
07:57				STEAL by OGUNBOWALE, ARIKE
07:52		6-5	H 1	GOOD! LAYUP by OGUNBOWALE, ARIKE
07:38	GOOD! JUMPER by GUY, EMMA [PNT]	6-7	V 1	
07:38	ASSIST by GARRAUD, MARNELLE			
07:29		8-7	H 1	GOOD! DUNK by TURNER, BRIANNA
07:29				ASSIST by SHEPARD, JESSICA
07:29	FOUL (PERSONAL) by ORTLEPP, TAYLOR			
07:29	SUB OUT: ORTLEPP, TAYLOR			
07:29	SUB IN: SOULE, TAYLOR			
07:28				MISSED FT by TURNER, BRIANNA
07:27				REBOUND (OFF) by YOUNG, JACKIE
07:27	FOUL (PERSONAL) by PINEAU, GEORGIA			
07:27		11-7	H 4	GOOD! 3PTR by MABREY, MARINA
07:27				ASSIST by YOUNG, JACKIE
07:09				FOUL (PERSONAL) by TURNER, BRIANNA
07:09	GOOD! FT by SOULE, TAYLOR	11-8	H 3	
07:07	MISSED FT by SOULE, TAYLOR			
07:06				REBOUND (DEF) by SHEPARD, JESSICA
07:02				TURNOVER (BADPASS) by MABREY, MARINA
07:02	STEAL by PINEAU, GEORGIA			
06:55	GOOD! 3PTR by DICKENS, MAKAYLA	11-11	T	
06:55	ASSIST by PINEAU, GEORGIA			
06:44				TURNOVER (BADPASS) by YOUNG, JACKIE
06:19	MISSED JUMPER by PINEAU, GEORGIA			
06:19				BLOCK by TURNER, BRIANNA
06:15	REBOUND (OFF) by SOULE, TAYLOR			
06:13	TURNOVER (TRAVEL) by GARRAUD, MARNELLE			
06:13	SUB OUT: PINEAU, GEORGIA			
06:13	SUB IN: LOWERY, SYDNEY			
06:00		13-11	H 2	GOOD! LAYUP by SHEPARD, JESSICA
06:00				ASSIST by MABREY, MARINA
05:41	MISSED 3PTR by GARRAUD, MARNELLE			
05:41				REBOUND (DEF) by TURNER, BRIANNA
05:41	FOUL (PERSONAL) by GUY, EMMA			
05:41	SUB OUT: GARRAUD, MARNELLE			
05:41	SUB IN: ORTLEPP, TAYLOR			
05:41	SUB OUT: GUY, EMMA			
05:41	SUB IN: PINEAU, GEORGIA			
05:26				MISSED JUMPER by OGUNBOWALE, ARIKE
05:24	REBOUND (DEF) by TEAM			
05:09	GOOD! 3PTR by DICKENS, MAKAYLA	13-14	V 1	
05:09	ASSIST by SOULE, TAYLOR			
04:52				MISSED 3PTR by MABREY, MARINA
04:47				REBOUND (OFF) by YOUNG, JACKIE
04:46		15-14	H 1	GOOD! LAYUP by YOUNG, JACKIE
04:35	TURNOVER (BADPASS) by SOULE, TAYLOR			
04:35				STEAL by YOUNG, JACKIE
04:32	FOUL (PERSONAL) by DICKENS, MAKAYLA			
04:32				
04:32	SUB OUT: SOULE, TAYLOR			
04:32	SUB IN: GUY, EMMA			
04:32		16-14	H 2	GOOD! FT by YOUNG, JACKIE [FB]
04:30				MISSED FT by YOUNG, JACKIE
04:28				REBOUND (OFF) by TURNER, BRIANNA
04:20		19-14	H 5	GOOD! 3PTR by OGUNBOWALE, ARIKE
04:20				ASSIST by MABREY, MARINA
03:58	MISSED JUMPER by DICKENS, MAKAYLA			
03:55				REBOUND (DEF) by SHEPARD, JESSICA

Time	VISITORS: Boston College	Score	Margin	HOME: Notre Dame
03:53	FOUL (PERSONAL) by DICKENS,MAKAYLA			
03:53		20-14	H 6	GOOD! FT by OGUNBOWALE,ARIKE [FB]
03:53	SUB OUT: PINEAU,GEORGIA			
03:53	SUB IN: SOULE,TAYLOR			
03:53	SUB OUT: DICKENS,MAKAYLA			
03:53	SUB IN: GARRAUD,MARNELLE			
03:53		21-14	H 7	GOOD! FT by OGUNBOWALE,ARIKE [FB]
03:40				FOUL (PERSONAL) by YOUNG,JACKIE
03:32	GOOD! 3PTR by ORTLEPP,TAYLOR	21-17	H 4	
03:32	ASSIST by GARRAUD,MARNELLE			
03:17				TURNOVER (BADPASS) by YOUNG,JACKIE
03:17	STEAL by GUY,EMMA			
03:14	TURNOVER (DRIBBLING) by GARRAUD,MARNELLE			
03:14				SUB OUT: MABREY,MARINA
03:14				SUB IN: PROHASKA,ABBY
03:02		24-17	H 7	GOOD! 3PTR by OGUNBOWALE,ARIKE
03:02				ASSIST by SHEPARD,JESSICA
02:50	TURNOVER (BADPASS) by GARRAUD,MARNELLE			
02:50				STEAL by PROHASKA,ABBY
02:44		26-17	H 9	GOOD! JUMPER by YOUNG,JACKIE
02:24	TURNOVER (BADPASS) by ORTLEPP,TAYLOR			
02:24				STEAL by OGUNBOWALE,ARIKE
02:17				MISSED LAYUP by OGUNBOWALE,ARIKE
02:16	REBOUND (DEF) by TEAM			
02:16	SUB OUT: LOWERY,SYDNEY			
02:16	SUB IN: BOLDEN-MORRIS,MILAN			
02:04	TURNOVER (BADPASS) by GARRAUD,MARNELLE			
02:04				STEAL by OGUNBOWALE,ARIKE
01:59				TURNOVER (LOSTBALL) by OGUNBOWALE,ARIKE
01:59	STEAL by GARRAUD,MARNELLE			
01:53	MISSED 3PTR by ORTLEPP,TAYLOR			
01:50				REBOUND (DEF) by YOUNG,JACKIE
01:40		28-17	H 11	GOOD! JUMPER by PROHASKA,ABBY
01:24	TURNOVER (BADPASS) by SOULE,TAYLOR			
01:24				SUB OUT: TURNER,BRIANNA
01:24				SUB IN: PATTERSON,DANIELLE
01:24	SUB OUT: SOULE,TAYLOR			
01:24	SUB IN: PINEAU,GEORGIA			
01:24	SUB OUT: BOLDEN-MORRIS,MILAN			
01:24	SUB IN: LOWERY,SYDNEY			
00:56	FOUL (PERSONAL) by GUY,EMMA			
00:56		29-17	H 12	GOOD! FT by SHEPARD,JESSICA
00:56	SUB OUT: GUY,EMMA			
00:56	SUB IN: SOULE,TAYLOR			
00:56				TURNOVER (LANEVIOLATION) by SHEPARD,JESSICA
00:50	GOOD! JUMPER by PINEAU,GEORGIA [PNT]	29-19	H 10	
00:50	ASSIST by GARRAUD,MARNELLE			
00:37		32-19	H 13	GOOD! 3PTR by OGUNBOWALE,ARIKE
00:37				ASSIST by SHEPARD,JESSICA
00:14				FOUL (PERSONAL) by PROHASKA,ABBY
00:14	SUB OUT: SOULE,TAYLOR			
00:14	SUB IN: DICKENS,MAKAYLA			
00:14	SUB OUT: GARRAUD,MARNELLE			
00:14	SUB IN: GUY,EMMA			
00:04	MISSED JUMPER by DICKENS,MAKAYLA			
00:03				REBOUND (DEF) by TEAM
00:03	SUB OUT: DICKENS,MAKAYLA			
00:03	SUB IN: GARRAUD,MARNELLE			

### Boston College 19, Notre Dame 32

Points from (This Period)	BCE	UND
In the Paint	6	12
Off Turns	7	13
2nd Chance	2	8
Fast Break	0	3
Bench	1	2

**Official Box Score**  
**Boston College vs Notre Dame**  
**Second Quarter Statistics Only**  
**January 20, 2019 at Joyce Center (Purcell Pavilion) - Notre Dame, IN**

**Boston College 15**

No.	Player	S	Pts	FG	3FG	FT	OR	DR	TR	PF	A	TO	Blk	Stl	Min	+/-
04	Ortlepp, Taylor		0	0-0	0-0	0-0	0	0	0	1	0	1	0	2	7	4
05	Pineau, Georgia		4	2-4	0-0	0-0	0	0	0	1	0	1	0	1	10	-2
10	Dickens, Makayla		3	1-3	0-0	1-1	0	3	3	0	3	0	0	0	10	-2
11	Guy, Emma		0	0-1	0-0	0-0	0	0	0	1	0	1	0	0	1	0
14	Garraud, Marnelle		0	0-1	0-1	0-0	0	0	0	0	0	1	0	0	2	-3
00	Bishop, Jenasae		0	0-0	0-0	0-0	0	0	0	0	0	0	0	0	0	0
13	Soule, Taylor		8	4-4	0-0	0-0	1	1	2	1	1	1	0	0	9	-2
22	Hollingsworth, Lana		0	0-0	0-0	0-0	0	0	0	0	0	0	0	0	0	0
23	Bolden-Morris, Milan		0	0-1	0-1	0-0	0	0	0	0	0	0	0	0	6	2
24	Klimkiewicz, Kate		0	0-0	0-0	0-0	0	0	0	0	0	0	0	0	0	0
31	Lowery, Sydney		0	0-2	0-0	0-0	0	2	2	0	0	1	1	1	5	-7
32	Ford, Clara		0	0-0	0-0	0-0	0	0	0	0	0	0	0	0	0	0
	Team						2	1	3	0		0				
<b>TOTALS</b>			<b>15</b>	<b>7-16</b>	<b>0-2</b>	<b>1-1</b>	<b>3</b>	<b>7</b>	<b>10</b>	<b>4</b>	<b>4</b>	<b>6</b>	<b>1</b>	<b>4</b>	<b>50</b>	

*Shooting By Period*

Period	FG	FG%	3FG	3FG%	FT	FT%
3rd Qtr	6-16	38%	0-4	00%	4-5	80%
4th Qtr	4-14	29%	0-3	00%	5-6	83%
2nd Half	7-16	44%	0-2	00%	1-1	100%
2nd Half	10-30	33%	0-7	00%	9-11	82%
Game	24-60	40.0%	4-16	25.0%	11-14	78.6%

**Notre Dame 17**

No.	Player	S	Pts	FG	3FG	FT	OR	DR	TR	PF	A	TO	Blk	Stl	Min	+/-
03	Mabrey, Marina		9	3-3	2-2	1-2	0	2	2	2	1	2	0	0	9	5
05	Young, Jackie		0	0-0	0-0	0-0	0	0	0	0	0	1	0	0	6	2
11	Turner, Brianna		4	1-1	0-0	2-2	0	3	3	0	1	0	1	0	10	2
24	Ogunbowale, Arike		2	1-4	0-1	0-0	0	0	0	0	0	1	0	0	7	-4
32	Shepard, Jessica		0	0-2	0-0	0-0	0	1	1	1	1	0	1	0	5	7
00	Nixon, Jordan		0	0-1	0-0	0-0	0	0	0	0	1	0	0	2	5	7
12	Prohaska, Abby		0	0-0	0-0	0-0	0	0	0	0	0	0	0	0	4	-4
20	Benz, Nicole		0	0-0	0-0	0-0	0	0	0	0	0	0	0	0	0	0
22	Cosgrove, Danielle		0	0-0	0-0	0-0	0	0	0	0	0	0	0	0	0	0
30	Vaughn, Mikayla		0	0-0	0-0	0-0	0	0	0	0	0	0	0	0	0	0
33	Patterson, Danielle		2	1-1	0-0	0-0	0	0	0	0	0	0	0	0	5	-5
40	Butler, Maureen		0	0-0	0-0	0-0	0	0	0	0	0	0	0	0	0	0
	Team						0	0	0	0		0				
<b>TOTALS</b>			<b>17</b>	<b>6-12</b>	<b>2-3</b>	<b>3-4</b>	<b>0</b>	<b>6</b>	<b>6</b>	<b>3</b>	<b>4</b>	<b>4</b>	<b>2</b>	<b>2</b>	<b>50</b>	

*Shooting By Period*

Period	FG	FG%	3FG	3FG%	FT	FT%
3rd Qtr	7-18	39%	0-3	00%	4-4	100%
4th Qtr	10-18	56%	0-2	00%	5-7	71%
2nd Half	6-12	50%	2-3	67%	3-4	75%
2nd Half	17-36	47%	0-5	00%	9-11	82%
Game	35-64	54.7%	6-13	46.2%	16-21	76.2%

*Game Notes:*

Officials: Luis Gonzalez, Jules Gallien, Maggie Tieman  
Attendance: 8714

Start Time: 2019-01-20 18:01:55  
End Time: 2019-01-20 19:55:03  
Game Duration: 113  
Conference Game;

Score	1st	2nd	3rd	4th	TOT
BCE	19	15	16	13	<b>63</b>
UND	32	17	18	25	<b>92</b>

Points from (This Period)	BCE	UND
In the Paint	12	4
Off Turns	5	8
2nd Chance	2	0
Fast Break	4	0
Bench	8	2

**Official Play-By-Play**  
**Boston College vs Notre Dame**  
**Second Quarter**  
**January 20, 2019 at Joyce Center (Purcell Pavilion) - Notre Dame, IN**

**Period 2**

**Starters:**

**Boston College:** 10 DICKENS, MAKAYLA; 11 GUY, EMMA; 14 GARRAUD, MARNELLE; 4 ORTLEPP, TAYLOR; 5 PINEAU, GEORGIA;

**Notre Dame:** 11 TURNER, BRIANNA; 24 OGUNBOWALE, ARIKE; 32 SHEPARD, JESSICA; 3 MABREY, MARINA; 5 YOUNG, JACKIE;

Time	VISITORS: Boston College	Score	Margin	HOME: Notre Dame
09:37	GOOD! JUMPER by SOULE, TAYLOR	32-21	H 11	
09:22		34-21	H 13	GOOD! JUMPER by PATTERSON, DANIELLE
09:22				ASSIST by TURNER, BRIANNA
08:58	MISSED LAYUP by PINEAU, GEORGIA			
08:54				REBOUND (DEF) by MABREY, MARINA
08:48				TURNOVER (BADPASS) by OGUNBOWALE, ARIKE
08:48	STEAL by ORTLEPP, TAYLOR			
08:43	GOOD! LAYUP by SOULE, TAYLOR [FB]	34-23	H 11	
08:43	ASSIST by DICKENS, MAKAYLA			
08:12				MISSED LAYUP by OGUNBOWALE, ARIKE
08:07	REBOUND (DEF) by DICKENS, MAKAYLA			
08:04	MISSED LAYUP by DICKENS, MAKAYLA			
08:01				REBOUND (DEF) by TURNER, BRIANNA
07:54		36-23	H 13	GOOD! LAYUP by TURNER, BRIANNA
07:54				ASSIST by MABREY, MARINA
07:47	GOOD! LAYUP by SOULE, TAYLOR [FB]	36-25	H 11	
07:47	ASSIST by DICKENS, MAKAYLA			
07:27	FOUL (PERSONAL) by ORTLEPP, TAYLOR			
07:27		37-25	H 12	GOOD! FT by MABREY, MARINA
07:27				SUB OUT: PROHASKA, ABBY
07:27				SUB IN: NIXON, JORDAN
07:27				SUB OUT: OGUNBOWALE, ARIKE
07:27				SUB IN: YOUNG, JACKIE
07:27				SUB OUT: PATTERSON, DANIELLE
07:27				SUB IN: SHEPARD, JESSICA
07:27	SUB OUT: ORTLEPP, TAYLOR			
07:27	SUB IN: GUY, EMMA			
07:27	SUB OUT: SOULE, TAYLOR			
07:27	SUB IN: LOWERY, SYDNEY			
07:26				MISSED FT by MABREY, MARINA
07:25	REBOUND (DEF) by LOWERY, SYDNEY			
07:08	MISSED JUMPER by GUY, EMMA			
07:08				BLOCK by SHEPARD, JESSICA
07:08	REBOUND (OFF) by TEAM			
06:59				FOUL (PERSONAL) by MABREY, MARINA
06:49	MISSED LAYUP by LOWERY, SYDNEY			
06:49				BLOCK by TURNER, BRIANNA
06:49	REBOUND (OFF) by TEAM			
06:49	TURNOVER (BADPASS) by GUY, EMMA			
06:36	FOUL (PERSONAL) by GUY, EMMA			
06:36	SUB OUT: GUY, EMMA			
06:36	SUB IN: SOULE, TAYLOR			
06:32		40-25	H 15	GOOD! 3PTR by MABREY, MARINA
06:32				ASSIST by NIXON, JORDAN
06:22	TURNOVER (TRAVEL) by SOULE, TAYLOR			
06:22	SUB OUT: BOLDEN-MORRIS, MILAN			
06:22	SUB IN: GARRAUD, MARNELLE			
06:13		43-25	H 18	GOOD! 3PTR by MABREY, MARINA
06:13				ASSIST by SHEPARD, JESSICA
06:04	MISSED JUMPER by DICKENS, MAKAYLA			
06:00				REBOUND (DEF) by SHEPARD, JESSICA
05:54				TURNOVER (BADPASS) by MABREY, MARINA
05:54	STEAL by LOWERY, SYDNEY			
05:38	FOUL (OFF) by PINEAU, GEORGIA			
05:38	TURNOVER (OFFENSIVE) by PINEAU, GEORGIA			
05:21				MISSED LAYUP by SHEPARD, JESSICA
05:21	BLOCK by LOWERY, SYDNEY			
05:21	REBOUND (DEF) by TEAM			
04:55	MISSED 3PTR by GARRAUD, MARNELLE			
04:51				REBOUND (DEF) by MABREY, MARINA
04:48				MISSED LAYUP by SHEPARD, JESSICA
04:45	REBOUND (DEF) by SOULE, TAYLOR			
04:22	MISSED JUMPER by LOWERY, SYDNEY			
04:19				REBOUND (DEF) by TURNER, BRIANNA
04:13				TURNOVER (BADPASS) by YOUNG, JACKIE
04:13	STEAL by PINEAU, GEORGIA			
04:05	TURNOVER (LOSTBALL) by GARRAUD, MARNELLE			
04:05				STEAL by NIXON, JORDAN
04:04				
04:04				SUB OUT: YOUNG, JACKIE
04:04				SUB IN: OGUNBOWALE, ARIKE
04:04	SUB OUT: GARRAUD, MARNELLE			
04:04	SUB IN: ORTLEPP, TAYLOR			
03:36				MISSED 3PTR by OGUNBOWALE, ARIKE
03:32	REBOUND (DEF) by LOWERY, SYDNEY			
03:10	TURNOVER (LOSTBALL) by LOWERY, SYDNEY			



Time	VISITORS: Boston College	Score	Margin	HOME: Notre Dame
03:10				STEAL by NIXON,JORDAN
03:04		45-25	H 20	GOOD! LAYUP by MABREY,MARINA
02:52				FOUL (PERSONAL) by SHEPARD,JESSICA
02:41	MISSED JUMPER by PINEAU,GEORGIA			
02:39				REBOUND (DEF) by TURNER,BRIANNA
02:35				MISSED JUMPER by NIXON,JORDAN
02:32	REBOUND (DEF) by DICKENS,MAKAYLA			
02:29	GOOD! LAYUP by PINEAU,GEORGIA	45-27	H 18	
02:29	ASSIST by SOULE,TAYLOR			
02:14	FOUL (PERSONAL) by SOULE,TAYLOR			
02:14		46-27	H 19	GOOD! FT by TURNER,BRIANNA
02:14				SUB OUT: NIXON,JORDAN
02:14				SUB IN: YOUNG,JACKIE
02:14				SUB OUT: SHEPARD,JESSICA
02:14				SUB IN: PATTERSON,DANIELLE
02:14	SUB OUT: LOWERY,SYDNEY			
02:14	SUB IN: BOLDEN-MORRIS,MILAN			
02:14		47-27	H 20	GOOD! FT by TURNER,BRIANNA
01:56	TURNOVER (BADPASS) by ORTLEPP,TAYLOR			
01:34				TURNOVER (BADPASS) by MABREY,MARINA
01:34	STEAL by ORTLEPP,TAYLOR			
01:30	GOOD! LAYUP by DICKENS,MAKAYLA	47-29	H 18	
01:30				FOUL (PERSONAL) by MABREY,MARINA
01:30				SUB OUT: MABREY,MARINA
01:30				SUB IN: PROHASKA,ABBY
01:30	GOOD! FT by DICKENS,MAKAYLA	47-30	H 17	
01:15				MISSED JUMPER by OGUNBOWALE,ARIKE
01:12	REBOUND (DEF) by DICKENS,MAKAYLA			
00:57	GOOD! LAYUP by PINEAU,GEORGIA [PNT]	47-32	H 15	
00:57	ASSIST by DICKENS,MAKAYLA			
00:39		49-32	H 17	GOOD! JUMPER by OGUNBOWALE,ARIKE
00:11	MISSED 3PTR by BOLDEN-MORRIS,MILAN			
00:08	REBOUND (OFF) by SOULE,TAYLOR			
00:07	GOOD! LAYUP by SOULE,TAYLOR	49-34	H 15	

### Boston College 34, Notre Dame 49

Points from (This Period)	BCE	UND
In the Paint	12	4
Off Turns	5	8
2nd Chance	2	0
Fast Break	4	0
Bench	8	2

**Official Box Score**  
**Boston College vs Notre Dame**  
**Second Half Statistics Only**  
**January 20, 2019 at Joyce Center (Purcell Pavilion) - Notre Dame, IN**

**Boston College 29**

No.	Player	S	Pts	FG	3FG	FT	OR	DR	TR	PF	A	TO	Blk	Stl	Min	+/-
00	Bishop, Jenasae		0	0-0	0-0	0-0	0	0	0	0	0	1	0	0	2	-2
10	Dickens, Makayla		0	0-5	0-2	0-0	1	1	2	1	2	2	0	0	13	-11
11	Guy, Emma		6	3-4	0-0	0-0	0	1	1	2	0	1	1	0	10	-8
13	Soule, Taylor		9	1-2	0-0	7-8	1	1	2	3	1	1	0	0	13	-5
14	Garraud, Marnelle		2	1-1	0-0	0-0	0	1	1	1	0	0	0	0	8	-3
22	Hollingsworth, Lana		0	0-2	0-1	0-0	0	0	0	0	0	0	0	0	1	-3
23	Bolden-Morris, Milan		2	1-2	0-1	0-0	1	1	2	0	1	0	0	0	11	-4
24	Klimkiewicz, Kate		0	0-0	0-0	0-0	1	0	1	1	0	0	0	0	1	-3
31	Lowery, Sydney		8	3-6	0-2	2-3	0	1	1	1	0	1	0	0	16	-14
32	Ford, Clara		0	0-2	0-0	0-0	0	0	0	0	0	0	0	0	2	-2
04	Ortlepp, Taylor		0	0-1	0-1	0-0	0	2	2	0	1	2	0	0	10	-9
05	Pineau, Georgia		2	1-5	0-0	0-0	1	0	1	2	0	1	0	1	13	-6
	Team		0	0-0	0-0	0-0	3	0	3	0	0	0	0	0	0	0
<b>TOTALS</b>			<b>29</b>	<b>10-30</b>	<b>0-7</b>	<b>9-11</b>	<b>8</b>	<b>8</b>	<b>16</b>	<b>11</b>	<b>5</b>	<b>9</b>	<b>1</b>	<b>1</b>	<b>100</b>	

*Shooting By Period*

Period	FG	FG%	3FG	3FG%	FT	FT%
3rd Qtr	6-16	38%	0-4	00%	4-5	80%
4th Qtr	4-14	29%	0-3	00%	5-6	83%
2nd Half	10-30	33%	0-7	00%	9-11	82%
Game	24-60	40.0%	4-16	25.0%	11-14	78.6%

*Last FG Half: BCE 4th-02:39*

**Notre Dame 43**

No.	Player	S	Pts	FG	3FG	FT	OR	DR	TR	PF	A	TO	Blk	Stl	Min	+/-
00	Nixon, Jordan		4	1-1	0-0	2-2	0	1	1	1	0	0	0	0	8	1
11	Turner, Brianna		8	4-7	0-0	0-0	2	1	3	2	0	0	0	1	10	9
12	Prohaska, Abby		0	0-1	0-0	0-0	1	0	1	2	1	0	0	0	12	9
20	Benz, Nicole		0	0-0	0-0	0-0	0	0	0	0	0	0	0	0	2	2
22	Cosgrove, Danielle		0	0-0	0-0	0-0	0	0	0	0	0	0	0	0	5	1
24	Ogunbowale, Arike		9	4-7	0-3	1-2	0	0	0	2	1	2	0	2	14	9
30	Vaughn, Mikayla		1	0-1	0-0	1-2	0	0	0	1	1	0	1	1	6	3
32	Shepard, Jessica		6	2-5	0-0	2-2	4	3	7	1	1	1	1	0	13	10
33	Patterson, Danielle		0	0-0	0-0	0-0	0	0	0	0	0	0	0	0	0	0
40	Butler, Maureen		0	0-0	0-0	0-0	0	0	0	0	0	0	0	0	2	2
03	Mabrey, Marina		2	1-3	0-2	0-0	1	0	1	0	2	1	0	0	11	12
05	Young, Jackie		13	5-11	0-0	3-3	4	6	10	0	3	3	1	2	18	12
	Team		0	0-0	0-0	0-0	0	2	2	0	0	0	0	0	0	0
<b>TOTALS</b>			<b>43</b>	<b>17-36</b>	<b>0-5</b>	<b>9-11</b>	<b>12</b>	<b>13</b>	<b>25</b>	<b>9</b>	<b>9</b>	<b>7</b>	<b>3</b>	<b>6</b>	<b>100</b>	

*Shooting By Period*

Period	FG	FG%	3FG	3FG%	FT	FT%
3rd Qtr	7-18	39%	0-3	00%	4-4	100%
4th Qtr	10-18	56%	0-2	00%	5-7	71%
2nd Half	17-36	47%	0-5	00%	9-11	82%
Game	35-64	54.7%	6-13	46.2%	16-21	76.2%

*Last FG Half: UND 4th-03:07*

Game Notes:

Officials: Luis Gonzalez, Jules Gallien, Maggie Tieman  
 Attendance: 8714

Start Time: 2019-01-20 18:01:55  
 End Time: 2019-01-20 19:55:03  
 Game Duration: 113  
 Conference Game;

Score	1st	2nd	3rd	4th	TOT
BCE	19	15	16	13	<b>63</b>
UND	32	17	18	25	<b>92</b>

Points from (This Period)	BCE	UND
In the Paint	10	26
Off Turns	6	13
2nd Chance	4	17
Fast Break	0	7
Bench	19	5

**Official Box Score**  
**Boston College vs Notre Dame**  
**Third Quarter Statistics Only**  
**January 20, 2019 at Joyce Center (Purcell Pavilion) - Notre Dame, IN**

**Boston College 29**

No.	Player	S	Pts	FG	3FG	FT	OR	DR	TR	PF	A	TO	Blk	Stl	Min	+/-
04	Ortlepp, Taylor		0	0-1	0-1	0-0	0	1	1	0	1	0	0	0	7	0
05	Pineau, Georgia		2	1-5	0-0	0-0	1	0	1	1	0	1	0	1	10	-3
10	Dickens, Makayla		0	0-3	0-2	0-0	1	1	2	1	2	2	0	0	9	-1
11	Guy, Emma		4	2-2	0-0	0-0	0	0	0	1	0	1	0	0	3	1
14	Garraud, Marnelle		2	1-1	0-0	0-0	0	1	1	1	0	0	0	0	5	-3
00	Bishop, Jenasae		0	0-0	0-0	0-0	0	0	0	0	0	0	0	0	0	0
13	Soule, Taylor		4	1-2	0-0	2-2	1	0	1	2	1	1	0	0	7	-3
22	Hollingsworth, Lana		0	0-0	0-0	0-0	0	0	0	0	0	0	0	0	0	0
23	Bolden-Morris, Milan		0	0-0	0-0	0-0	0	1	1	0	0	0	0	0	3	3
24	Klimkiewicz, Kate		0	0-0	0-0	0-0	0	0	0	0	0	0	0	0	0	0
31	Lowery, Sydney		4	1-2	0-1	2-3	0	1	1	0	0	0	0	0	8	-4
32	Ford, Clara		0	0-0	0-0	0-0	0	0	0	0	0	0	0	0	0	0
	Team						2	0	2	0		0				
<b>TOTALS</b>			<b>16</b>	<b>6-16</b>	<b>0-4</b>	<b>4-5</b>	<b>5</b>	<b>5</b>	<b>10</b>	<b>6</b>	<b>4</b>	<b>5</b>	<b>0</b>	<b>1</b>	<b>50</b>	

*Shooting By Period*

Period	FG	FG%	3FG	3FG%	FT	FT%
2nd Half	0-0	0%	0-0	0%	0-0	0%
Game	24-60	40.0%	4-16	25.0%	11-14	78.6%

**Notre Dame 43**

No.	Player	S	Pts	FG	3FG	FT	OR	DR	TR	PF	A	TO	Blk	Stl	Min	+/-
03	Mabrey, Marina		0	0-0	0-0	0-0	0	0	0	0	1	1	0	0	7	2
05	Young, Jackie		4	1-3	0-0	2-2	1	1	2	0	1	0	0	0	10	2
11	Turner, Brianna		2	1-3	0-0	0-0	1	1	2	2	0	0	0	1	5	-2
24	Ogunbowale, Arike		6	3-6	0-3	0-0	0	0	0	1	1	2	0	2	10	2
32	Shepard, Jessica		6	2-5	0-0	2-2	3	2	5	1	0	1	1	0	10	2
00	Nixon, Jordan		0	0-0	0-0	0-0	0	0	0	0	0	0	0	0	2	-1
12	Prohaska, Abby		0	0-1	0-0	0-0	1	0	1	2	1	0	0	0	6	5
20	Benz, Nicole		0	0-0	0-0	0-0	0	0	0	0	0	0	0	0	0	0
22	Cosgrove, Danielle		0	0-0	0-0	0-0	0	0	0	0	0	0	0	0	0	0
30	Vaughn, Mikayla		0	0-0	0-0	0-0	0	0	0	0	0	0	0	0	0	0
33	Patterson, Danielle		0	0-0	0-0	0-0	0	0	0	0	0	0	0	0	0	0
40	Butler, Maureen		0	0-0	0-0	0-0	0	0	0	0	0	0	0	0	0	0
	Team						0	1	1	0		0				
<b>TOTALS</b>			<b>18</b>	<b>7-18</b>	<b>0-3</b>	<b>4-4</b>	<b>6</b>	<b>5</b>	<b>11</b>	<b>6</b>	<b>4</b>	<b>4</b>	<b>1</b>	<b>3</b>	<b>50</b>	

*Shooting By Period*

Period	FG	FG%	3FG	3FG%	FT	FT%
2nd Half	0-0	0%	0-0	0%	0-0	0%
Game	35-64	54.7%	6-13	46.2%	16-21	76.2%

Game Notes:

Officials: Luis Gonzalez, Jules Gallien, Maggie Tieman  
Attendance: 8714

Start Time: 2019-01-20 18:01:55

End Time: 2019-01-20 19:55:03

Game Duration: 113

Conference Game:

Score	1st	2nd	3rd	4th	TOT
BCE	19	15	16	13	<b>63</b>
UND	32	17	18	25	<b>92</b>

Points from (This Period)	BCE	UND
In the Paint	8	12
Off Turns	5	6
2nd Chance	4	8
Fast Break	0	2
Bench	8	0

**Official Play-By-Play**  
**Boston College vs Notre Dame**  
**Third Quarter**  
**January 20, 2019 at Joyce Center (Purcell Pavilion) - Notre Dame, IN**

**Period 3**

**Starters:**

**Boston College:** 10 DICKENS, MAKAYLA; 11 GUY, EMMA; 14 GARRAUD, MARNELLE; 4 ORTLEPP, TAYLOR; 5 PINEAU, GEORGIA;

**Notre Dame:** 11 TURNER, BRIANNA; 24 OGUNBOWALE, ARIKE; 32 SHEPARD, JESSICA; 3 MABREY, MARINA; 5 YOUNG, JACKIE;

Time	VISITORS: Boston College	Score	Margin	HOME: Notre Dame
09:48	GOOD! LAYUP by GUY, EMMA	49-36	H 13	
09:48	ASSIST by DICKENS, MAKAYLA			
09:28				TURNOVER (BADPASS) by OGUNBOWALE, ARIKE
09:11	MISSED JUMPER by PINEAU, GEORGIA			
09:08				REBOUND (DEF) by YOUNG, JACKIE
09:02				MISSED JUMPER by YOUNG, JACKIE
08:59	REBOUND (DEF) by DICKENS, MAKAYLA			
08:51	MISSED 3PTR by DICKENS, MAKAYLA			
08:49	REBOUND (OFF) by SOULE, TAYLOR			
08:49				FOUL (PERSONAL) by TURNER, BRIANNA
08:49	GOOD! FT by SOULE, TAYLOR	49-37	H 12	
08:49	GOOD! FT by SOULE, TAYLOR	49-38	H 11	
08:38	FOUL (PERSONAL) by DICKENS, MAKAYLA			
08:34		51-38	H 13	GOOD! JUMPER by OGUNBOWALE, ARIKE
08:34				ASSIST by YOUNG, JACKIE
08:26	TURNOVER (BADPASS) by GUY, EMMA			
08:26				STEAL by OGUNBOWALE, ARIKE
08:21		53-38	H 15	GOOD! LAYUP by OGUNBOWALE, ARIKE [FB]
08:04	GOOD! LAYUP by SOULE, TAYLOR	53-40	H 13	
08:04	ASSIST by ORTLEPP, TAYLOR			
08:00				TURNOVER (BADPASS) by MABREY, MARINA
08:00				SUB OUT: MABREY, MARINA
08:00				SUB IN: PROHASKA, ABBY
07:44				FOUL (PERSONAL) by OGUNBOWALE, ARIKE
07:42	TURNOVER (TRAVEL) by DICKENS, MAKAYLA			
07:42	SUB OUT: GUY, EMMA			
07:42	SUB IN: LOWERY, SYDNEY			
07:29				MISSED LAYUP by TURNER, BRIANNA
07:29				REBOUND (OFF) by TURNER, BRIANNA
07:29	FOUL (PERSONAL) by SOULE, TAYLOR			
07:26				MISSED 3PTR by OGUNBOWALE, ARIKE
07:23				REBOUND (OFF) by SHEPARD, JESSICA
07:21				MISSED JUMPER by SHEPARD, JESSICA
07:17	REBOUND (DEF) by ORTLEPP, TAYLOR			
06:57	MISSED LAYUP by SOULE, TAYLOR			
06:57				BLOCK by SHEPARD, JESSICA
06:57	REBOUND (OFF) by TEAM			
06:57	SUB OUT: SOULE, TAYLOR			
06:57	SUB IN: GUY, EMMA			
06:55	TURNOVER (BADPASS) by DICKENS, MAKAYLA			
06:55				STEAL by OGUNBOWALE, ARIKE
06:34		55-40	H 15	GOOD! JUMPER by TURNER, BRIANNA
06:34				ASSIST by OGUNBOWALE, ARIKE
06:11	MISSED JUMPER by PINEAU, GEORGIA			
06:08	REBOUND (OFF) by DICKENS, MAKAYLA			
06:07	SUB OUT: ORTLEPP, TAYLOR			
06:07	SUB IN: GARRAUD, MARNELLE			
06:07	TURNOVER (BADPASS) by PINEAU, GEORGIA			
06:07				STEAL by TURNER, BRIANNA
06:07	FOUL (PERSONAL) by GUY, EMMA			
06:07	SUB OUT: GUY, EMMA			
06:07	SUB IN: SOULE, TAYLOR			
05:52				MISSED 3PTR by OGUNBOWALE, ARIKE
05:49	REBOUND (DEF) by GARRAUD, MARNELLE			
05:38	GOOD! JUMPER by GARRAUD, MARNELLE	55-42	H 13	
05:38	ASSIST by SOULE, TAYLOR			
05:18				MISSED LAYUP by TURNER, BRIANNA
05:17	REBOUND (DEF) by LOWERY, SYDNEY			
05:17				FOUL (PERSONAL) by TURNER, BRIANNA
04:53	MISSED JUMPER by PINEAU, GEORGIA			
04:50				REBOUND (DEF) by TURNER, BRIANNA
04:47				
04:47				SUB OUT: TURNER, BRIANNA
04:47				SUB IN: MABREY, MARINA
04:39				MISSED JUMPER by PROHASKA, ABBY
04:34				REBOUND (OFF) by PROHASKA, ABBY
04:33		57-42	H 15	GOOD! LAYUP by SHEPARD, JESSICA
04:33				ASSIST by PROHASKA, ABBY
04:11				FOUL (PERSONAL) by PROHASKA, ABBY
04:01	TURNOVER (LOSTBALL) by SOULE, TAYLOR			
03:41				MISSED 3PTR by OGUNBOWALE, ARIKE
03:37				REBOUND (OFF) by SHEPARD, JESSICA
03:36		59-42	H 17	GOOD! LAYUP by SHEPARD, JESSICA
03:25	MISSED LAYUP by DICKENS, MAKAYLA			
03:23				REBOUND (DEF) by SHEPARD, JESSICA
03:17	FOUL (PERSONAL) by SOULE, TAYLOR			

Time	VISITORS: Boston College	Score	Margin	HOME: Notre Dame
03:17	SUB OUT: SOULE,TAYLOR			
03:17	SUB IN: BOLDEN-MORRIS,MILAN			
03:14				MISSED LAYUP by SHEPARD,JESSICA
03:10	REBOUND (DEF) by BOLDEN-MORRIS,MILAN			
03:06	MISSED 3PTR by LOWERY,SYDNEY			
03:05				REBOUND (DEF) by TEAM
03:05	SUB OUT: DICKENS,MAKAYLA			
03:05	SUB IN: ORTLEPP,TAYLOR			
02:51				TURNOVER (3SEC) by SHEPARD,JESSICA
02:33	GOOD! JUMPER by LOWERY,SYDNEY	59-44	H 15	
02:33				FOUL (PERSONAL) by PROHASKA,ABBY
02:33				SUB OUT: PROHASKA,ABBY
02:33				SUB IN: NIXON,JORDAN
02:33	GOOD! FT by LOWERY,SYDNEY	59-45	H 14	
02:18				MISSED JUMPER by SHEPARD,JESSICA
02:17				REBOUND (OFF) by YOUNG,JACKIE
02:17	FOUL (PERSONAL) by GARRAUD,MARNELLE			
02:17		60-45	H 15	GOOD! FT by YOUNG,JACKIE
02:17	SUB OUT: GARRAUD,MARNELLE			
02:17	SUB IN: DICKENS,MAKAYLA			
02:17		61-45	H 16	GOOD! FT by YOUNG,JACKIE
01:46	MISSED 3PTR by ORTLEPP,TAYLOR			
01:43				REBOUND (DEF) by SHEPARD,JESSICA
01:40				TURNOVER (BADPASS) by OGUNBOWALE,ARIKE
01:40	STEAL by PINEAU,GEORGIA			
01:28	MISSED LAYUP by PINEAU,GEORGIA			
01:25	REBOUND (OFF) by PINEAU,GEORGIA			
01:22	MISSED 3PTR by DICKENS,MAKAYLA			
01:20	REBOUND (OFF) by TEAM			
01:07	GOOD! JUMPER by PINEAU,GEORGIA	61-47	H 14	
00:49				MISSED LAYUP by YOUNG,JACKIE
00:49				REBOUND (OFF) by SHEPARD,JESSICA
00:49	FOUL (PERSONAL) by PINEAU,GEORGIA			
00:49		62-47	H 15	GOOD! FT by SHEPARD,JESSICA
00:49	SUB OUT: PINEAU,GEORGIA			
00:49	SUB IN: GUY,EMMA			
00:49		63-47	H 16	GOOD! FT by SHEPARD,JESSICA
00:39	GOOD! LAYUP by GUY,EMMA	63-49	H 14	
00:39	ASSIST by DICKENS,MAKAYLA			
00:39	TIMEOUT 30SEC			
00:39				SUB OUT: NIXON,JORDAN
00:39				SUB IN: PROHASKA,ABBY
00:39	SUB OUT: DICKENS,MAKAYLA			
00:39	SUB IN: PINEAU,GEORGIA			
00:39	SUB OUT: GUY,EMMA			
00:39	SUB IN: SOULE,TAYLOR			
00:39	SUB OUT: BOLDEN-MORRIS,MILAN			
00:39	SUB IN: GARRAUD,MARNELLE			
00:17		65-49	H 16	GOOD! LAYUP by YOUNG,JACKIE
00:17				ASSIST by MABREY,MARINA
00:04				FOUL (PERSONAL) by SHEPARD,JESSICA
00:04	MISSED FT by LOWERY,SYDNEY			
00:04	REBOUND (OFF) by TEAM			
00:04	GOOD! FT by LOWERY,SYDNEY	65-50	H 15	
00:00		67-50	H 17	GOOD! LAYUP by OGUNBOWALE,ARIKE

### Boston College 50, Notre Dame 67

Points from (This Period)	BCE	UND
In the Paint	8	12
Off Turns	5	6
2nd Chance	4	8
Fast Break	0	2
Bench	8	0

**Official Box Score**  
**Boston College vs Notre Dame**  
**Fourth Quarter Statistics Only**  
**January 20, 2019 at Joyce Center (Purcell Pavilion) - Notre Dame, IN**

**Boston College 13**

No.	Player	S	Pts	FG	3FG	FT	OR	DR	TR	PF	A	TO	Blk	Stl	Min	+/-
04	Ortlepp, Taylor		0	0-0	0-0	0-0	0	1	1	0	0	2	0	0	3	-9
05	Pineau, Georgia		0	0-0	0-0	0-0	0	0	0	1	0	0	0	0	3	-3
10	Dickens, Makayla		0	0-2	0-0	0-0	0	0	0	0	0	0	0	0	4	-10
11	Guy, Emma		2	1-2	0-0	0-0	0	1	1	1	0	0	1	0	7	-9
14	Garraud, Marnelle		0	0-0	0-0	0-0	0	0	0	0	0	0	0	0	3	0
00	Bishop, Jenasae		0	0-0	0-0	0-0	0	0	0	0	0	1	0	0	2	-2
13	Soule, Taylor		5	0-0	0-0	5-6	0	1	1	1	0	0	0	0	6	-2
22	Hollingsworth, Lana		0	0-2	0-1	0-0	0	0	0	0	0	0	0	0	1	-3
23	Bolden-Morris, Milan		2	1-2	0-1	0-0	1	0	1	0	1	0	0	0	8	-7
24	Klimkiewicz, Kate		0	0-0	0-0	0-0	1	0	1	1	0	0	0	0	1	-3
31	Lowery, Sydney		4	2-4	0-1	0-0	0	0	0	1	0	1	0	0	8	-10
32	Ford, Clara		0	0-2	0-0	0-0	0	0	0	0	0	0	0	0	2	-2
	Team						1	0	1	0		0				
<b>TOTALS</b>			<b>13</b>	<b>4-14</b>	<b>0-3</b>	<b>5-6</b>	<b>3</b>	<b>3</b>	<b>6</b>	<b>5</b>	<b>1</b>	<b>4</b>	<b>1</b>	<b>0</b>	<b>50</b>	

*Shooting By Period*

Period	FG	FG%	3FG	3FG%	FT	FT%
Game	24-60	40.0%	4-16	25.0%	11-14	78.6%

**Notre Dame 25**

No.	Player	S	Pts	FG	3FG	FT	OR	DR	TR	PF	A	TO	Blk	Stl	Min	+/-
03	Mabrey, Marina		2	1-3	0-2	0-0	1	0	1	0	1	0	0	0	4	10
05	Young, Jackie		9	4-8	0-0	1-1	3	5	8	0	2	3	1	2	8	10
11	Turner, Brianna		6	3-4	0-0	0-0	1	0	1	0	0	0	0	0	5	11
24	Ogunbowale, Arike		3	1-1	0-0	1-2	0	0	0	1	0	0	0	0	4	7
32	Shepard, Jessica		0	0-0	0-0	0-0	1	1	2	0	1	0	0	0	3	8
00	Nixon, Jordan		4	1-1	0-0	2-2	0	1	1	1	0	0	0	0	6	2
12	Prohaska, Abby		0	0-0	0-0	0-0	0	0	0	0	0	0	0	0	6	4
20	Benz, Nicole		0	0-0	0-0	0-0	0	0	0	0	0	0	0	0	2	2
22	Cosgrove, Danielle		0	0-0	0-0	0-0	0	0	0	0	0	0	0	0	5	1
30	Vaughn, Mikayla		1	0-1	0-0	1-2	0	0	0	1	1	0	1	1	6	3
33	Patterson, Danielle		0	0-0	0-0	0-0	0	0	0	0	0	0	0	0	0	0
40	Butler, Maureen		0	0-0	0-0	0-0	0	0	0	0	0	0	0	0	2	2
	Team						0	1	1	0		0				
<b>TOTALS</b>			<b>25</b>	<b>10-18</b>	<b>0-2</b>	<b>5-7</b>	<b>6</b>	<b>8</b>	<b>14</b>	<b>3</b>	<b>5</b>	<b>3</b>	<b>2</b>	<b>3</b>	<b>50</b>	

*Shooting By Period*

Period	FG	FG%	3FG	3FG%	FT	FT%
Game	35-64	54.7%	6-13	46.2%	16-21	76.2%

Game Notes:

Officials: Luis Gonzalez, Jules Gallien, Maggie Tieman  
Attendance: 8714

Start Time: 2019-01-20 18:01:55  
End Time: 2019-01-20 19:55:03  
Game Duration: 113  
Conference Game;

Score	1st	2nd	3rd	4th	TOT
BCE	19	15	16	13	63
UND	32	17	18	25	92

Points from (This Period)	BCE	UND
In the Paint	2	14
Off Turns	1	7
2nd Chance	0	9
Fast Break	0	5
Bench	11	5

**Official Play-By-Play**  
**Boston College vs Notre Dame**  
**Fourth Quarter**  
**January 20, 2019 at Joyce Center (Purcell Pavilion) - Notre Dame, IN**

**Period 4**

**Starters:**

**Boston College:** 10 DICKENS, MAKAYLA; 11 GUY, EMMA; 14 GARRAUD, MARNELLE; 4 ORTLEPP, TAYLOR; 5 PINEAU, GEORGIA;

**Notre Dame:** 11 TURNER, BRIANNA; 24 OGUNBOWALE, ARIKE; 32 SHEPARD, JESSICA; 3 MABREY, MARINA; 5 YOUNG, JACKIE;

Time	VISITORS: Boston College	Score	Margin	HOME: Notre Dame
09:53				TURNOVER (BADPASS) by YOUNG, JACKIE
09:30	GOOD! FT by SOULE, TAYLOR	67-51	H 16	FOUL (PERSONAL) by OGUNBOWALE, ARIKE
09:29	MISSED FT by SOULE, TAYLOR			
09:28				REBOUND (DEF) by YOUNG, JACKIE
09:03		69-51	H 18	GOOD! LAYUP by TURNER, BRIANNA
09:03				ASSIST by YOUNG, JACKIE
08:40				SUB OUT: PROHASKA, ABBY
08:40				SUB IN: SHEPARD, JESSICA
08:35	GOOD! JUMPER by LOWERY, SYDNEY	69-53	H 16	
08:28	FOUL (PERSONAL) by SOULE, TAYLOR			
08:28		70-53	H 17	GOOD! FT by OGUNBOWALE, ARIKE [FB]
08:28	SUB OUT: SOULE, TAYLOR			
08:28	SUB IN: GUY, EMMA			
08:28	SUB OUT: PINEAU, GEORGIA			
08:28	SUB IN: ORTLEPP, TAYLOR			
08:26				MISSED FT by OGUNBOWALE, ARIKE
08:25				REBOUND (OFF) by TURNER, BRIANNA
08:19				MISSED JUMPER by YOUNG, JACKIE
08:16				REBOUND (OFF) by YOUNG, JACKIE
08:15		72-53	H 19	GOOD! LAYUP by YOUNG, JACKIE
08:05	MISSED LAYUP by GUY, EMMA			
08:05				BLOCK by YOUNG, JACKIE
08:01				REBOUND (DEF) by YOUNG, JACKIE
07:58		74-53	H 21	GOOD! JUMPER by MABREY, MARINA
07:58	TIMEOUT 30SEC			
07:58	SUB OUT: BOLDEN-MORRIS, MILAN			
07:58	SUB IN: PINEAU, GEORGIA			
07:48	TURNOVER (BADPASS) by ORTLEPP, TAYLOR			
07:48				STEAL by YOUNG, JACKIE
07:44				MISSED LAYUP by YOUNG, JACKIE
07:44				REBOUND (OFF) by YOUNG, JACKIE
07:44	FOUL (PERSONAL) by PINEAU, GEORGIA			
07:39		76-53	H 23	GOOD! JUMPER by YOUNG, JACKIE
07:39				ASSIST by MABREY, MARINA
07:39	FOUL (PERSONAL) by LOWERY, SYDNEY			
07:39		77-53	H 24	GOOD! FT by YOUNG, JACKIE [FB]
07:37	GOOD! JUMPER by LOWERY, SYDNEY	77-55	H 22	
06:56				MISSED JUMPER by TURNER, BRIANNA
06:53				REBOUND (OFF) by MABREY, MARINA
06:52				MISSED 3PTR by MABREY, MARINA
06:48				REBOUND (OFF) by SHEPARD, JESSICA
06:46		79-55	H 24	GOOD! LAYUP by OGUNBOWALE, ARIKE
06:46				ASSIST by SHEPARD, JESSICA
06:39	MISSED JUMPER by DICKENS, MAKAYLA			
06:35				REBOUND (DEF) by SHEPARD, JESSICA
06:25				MISSED 3PTR by MABREY, MARINA
06:24	REBOUND (DEF) by ORTLEPP, TAYLOR			
06:23				SUB OUT: OGUNBOWALE, ARIKE
06:23				SUB IN: PROHASKA, ABBY
06:23	SUB OUT: PINEAU, GEORGIA			
06:23	SUB IN: SOULE, TAYLOR			
06:08	TURNOVER (LOSTBALL) by ORTLEPP, TAYLOR			
06:08				STEAL by YOUNG, JACKIE
06:03		81-55	H 26	GOOD! LAYUP by YOUNG, JACKIE [PNT]
05:58				SUB OUT: SHEPARD, JESSICA
05:58				SUB IN: VAUGHN, MIKAYLA
05:58	SUB OUT: ORTLEPP, TAYLOR			
05:58	SUB IN: BOLDEN-MORRIS, MILAN			
05:50	MISSED JUMPER by DICKENS, MAKAYLA			
05:48				REBOUND (DEF) by YOUNG, JACKIE
05:41		83-55	H 28	GOOD! LAYUP by TURNER, BRIANNA
05:41				ASSIST by YOUNG, JACKIE
05:32				FOUL (PERSONAL) by VAUGHN, MIKAYLA
05:32	GOOD! FT by SOULE, TAYLOR	83-56	H 27	
05:32				SUB OUT: MABREY, MARINA
05:32				SUB IN: NIXON, JORDAN
05:32	SUB OUT: DICKENS, MAKAYLA			
05:32	SUB IN: GARRAUD, MARNELLE			
05:32	GOOD! FT by SOULE, TAYLOR	83-57	H 26	
05:18		85-57	H 28	GOOD! LAYUP by TURNER, BRIANNA
05:18				ASSIST by VAUGHN, MIKAYLA
04:58	MISSED JUMPER by LOWERY, SYDNEY			
04:55				REBOUND (DEF) by YOUNG, JACKIE
04:52				TURNOVER (BADPASS) by YOUNG, JACKIE
04:52				SUB OUT: TURNER, BRIANNA

Time	VISITORS: Boston College	Score	Margin	HOME: Notre Dame
04:52				SUB IN: COSGROVE,DANIELLE
04:35	TURNOVER (TRAVEL) by LOWERY,SYDNEY			
04:18				TURNOVER (BADPASS) by YOUNG,JACKIE
03:59	MISSED 3PTR by LOWERY,SYDNEY			
03:55				REBOUND (DEF) by YOUNG,JACKIE
03:49				MISSED LAYUP by YOUNG,JACKIE
03:47				REBOUND (OFF) by YOUNG,JACKIE
03:46		87-57	H 30	GOOD! LAYUP by YOUNG,JACKIE
03:31	GOOD! JUMPER by GUY,EMMA	87-59	H 28	
03:31	ASSIST by BOLDEN-MORRIS,MILAN			
03:07		89-59	H 30	GOOD! JUMPER by NIXON,JORDAN
02:39	GOOD! LAYUP by BOLDEN-MORRIS,MILAN	89-61	H 28	
02:16				MISSED JUMPER by YOUNG,JACKIE
02:13	REBOUND (DEF) by SOULE,TAYLOR			
02:03				FOUL (PERSONAL) by NIXON,JORDAN
02:03	GOOD! FT by SOULE,TAYLOR	89-62	H 27	
02:03				SUB OUT: YOUNG,JACKIE
02:03				SUB IN: BENZ,NICOLE
02:03				SUB OUT: PROHASKA,ABBY
02:03				SUB IN: BUTLER,MAUREEN
02:03	SUB OUT: GARRAUD,MARNELLE			
02:03	SUB IN: BISHOP,JENASAE			
02:03	SUB OUT: LOWERY,SYDNEY			
02:03	SUB IN: FORD,CLARA			
02:03	GOOD! FT by SOULE,TAYLOR	89-63	H 26	
01:50				MISSED LAYUP by VAUGHN,MIKAYLA
01:50	BLOCK by GUY,EMMA			
01:45	REBOUND (DEF) by GUY,EMMA			
01:34	TURNOVER (BADPASS) by BISHOP,JENASAE			
01:34				STEAL by VAUGHN,MIKAYLA
01:29	FOUL (PERSONAL) by GUY,EMMA			
01:29	SUB OUT: GUY,EMMA			
01:29	SUB IN: HOLLINGSWORTH,LANA			
01:29	SUB OUT: SOULE,TAYLOR			
01:29	SUB IN: KLIMKIEWICZ,KATE			
01:29		90-63	H 27	GOOD! FT by NIXON,JORDAN [FB]
01:29		91-63	H 28	GOOD! FT by NIXON,JORDAN [FB]
01:06	MISSED JUMPER by HOLLINGSWORTH,LANA			
01:06				BLOCK by VAUGHN,MIKAYLA
01:06	REBOUND (OFF) by TEAM			
01:02	MISSED 3PTR by HOLLINGSWORTH,LANA			
00:57				REBOUND (DEF) by NIXON,JORDAN
00:54	FOUL (PERSONAL) by KLIMKIEWICZ,KATE			
00:54				MISSED FT by VAUGHN,MIKAYLA
00:54				REBOUND (OFF) by TEAM
00:54		92-63	H 29	GOOD! FT by VAUGHN,MIKAYLA [FB]
00:34	MISSED JUMPER by FORD,CLARA			
00:31	REBOUND (OFF) by BOLDEN-MORRIS,MILAN			
00:23	MISSED JUMPER by FORD,CLARA			
00:18	REBOUND (OFF) by KLIMKIEWICZ,KATE			
00:18	MISSED 3PTR by BOLDEN-MORRIS,MILAN			
00:18				REBOUND (DEF) by TEAM

### Boston College 63, Notre Dame 92

Points from (This Period)	BCE	UND
In the Paint	2	14
Off Turns	1	7
2nd Chance	0	9
Fast Break	0	5
Bench	11	5



**Official Scoring/Possession Reference Chart**  
**Boston College vs Notre Dame**  
**Period 1**  
**January 20, 2019 at Joyce Center (Purcell Pavilion) - Notre Dame, IN**

**Period 1**

**Starters:**

**Boston College:** 10 DICKENS, MAKAYLA; 11 GUY, EMMA; 14 GARRAUD, MARNELLE; 4 ORTLEPP, TAYLOR; 5 PINEAU, GEORGIA;

**Notre Dame:** 11 TURNER, BRIANNA; 24 OGUNBOWALE, ARIKE; 32 SHEPARD, JESSICA; 3 MABREY, MARINA; 5 YOUNG, JACKIE;

Time	VISITORS: Boston College	Score	Margin	HOME: Notre Dame
09:56		2-0	H 2	GOOD! LAYUP by SHEPARD, JESSICA
09:12	GOOD! LAYUP by GARRAUD, MARNELLE	2-2	T	
08:58	GOOD! 3PTR by DICKENS, MAKAYLA	2-5	V 3	
08:16		4-5	V 1	GOOD! LAYUP by TURNER, BRIANNA
07:52		6-5	H 1	GOOD! LAYUP by OGUNBOWALE, ARIKE
07:38	GOOD! JUMPER by GUY, EMMA [PNT]	6-7	V 1	
07:29		8-7	H 1	GOOD! DUNK by TURNER, BRIANNA
07:27		11-7	H 4	GOOD! 3PTR by MABREY, MARINA
07:09	GOOD! FT by SOULE, TAYLOR	11-8	H 3	
06:55	GOOD! 3PTR by DICKENS, MAKAYLA	11-11	T	
06:00		13-11	H 2	GOOD! LAYUP by SHEPARD, JESSICA
05:09	GOOD! 3PTR by DICKENS, MAKAYLA	13-14	V 1	
04:46		15-14	H 1	GOOD! LAYUP by YOUNG, JACKIE
04:32		16-14	H 2	GOOD! FT by YOUNG, JACKIE [FB]
04:20		19-14	H 5	GOOD! 3PTR by OGUNBOWALE, ARIKE
03:53		20-14	H 6	GOOD! FT by OGUNBOWALE, ARIKE [FB]
03:53		21-14	H 7	GOOD! FT by OGUNBOWALE, ARIKE [FB]
03:32	GOOD! 3PTR by ORTLEPP, TAYLOR	21-17	H 4	
03:02		24-17	H 7	GOOD! 3PTR by OGUNBOWALE, ARIKE
02:44		26-17	H 9	GOOD! JUMPER by YOUNG, JACKIE
01:40		28-17	H 11	GOOD! JUMPER by PROHASKA, ABBY
00:56		29-17	H 12	GOOD! FT by SHEPARD, JESSICA
00:50	GOOD! JUMPER by PINEAU, GEORGIA [PNT]	29-19	H 10	
00:37		32-19	H 13	GOOD! 3PTR by OGUNBOWALE, ARIKE

**Boston College 19, Notre Dame 32**

**Official Scoring/Possession Reference Chart**  
**Boston College vs Notre Dame**  
**Period 2**  
**January 20, 2019 at Joyce Center (Purcell Pavilion) - Notre Dame, IN**

**Period 2**

**Starters:**

**Boston College:** 10 DICKENS, MAKAYLA; 11 GUY, EMMA; 14 GARRAUD, MARNELLE; 4 ORTLEPP, TAYLOR; 5 PINEAU, GEORGIA;

**Notre Dame:** 11 TURNER, BRIANNA; 24 OGUNBOWALE, ARIKE; 32 SHEPARD, JESSICA; 3 MABREY, MARINA; 5 YOUNG, JACKIE;

Time	VISITORS: Boston College	Score	Margin	HOME: Notre Dame
09:37	GOOD! JUMPER by SOULE, TAYLOR	32-21	H 11	
09:22		34-21	H 13	GOOD! JUMPER by PATTERSON, DANIELLE
08:43	GOOD! LAYUP by SOULE, TAYLOR [FB]	34-23	H 11	
07:54		36-23	H 13	GOOD! LAYUP by TURNER, BRIANNA
07:47	GOOD! LAYUP by SOULE, TAYLOR [FB]	36-25	H 11	
07:27		37-25	H 12	GOOD! FT by MABREY, MARINA
06:32		40-25	H 15	GOOD! 3PTR by MABREY, MARINA
06:13		43-25	H 18	GOOD! 3PTR by MABREY, MARINA
03:04		45-25	H 20	GOOD! LAYUP by MABREY, MARINA
02:29	GOOD! LAYUP by PINEAU, GEORGIA	45-27	H 18	
02:14		46-27	H 19	GOOD! FT by TURNER, BRIANNA
02:14		47-27	H 20	GOOD! FT by TURNER, BRIANNA
01:30	GOOD! LAYUP by DICKENS, MAKAYLA	47-29	H 18	
01:30	GOOD! FT by DICKENS, MAKAYLA	47-30	H 17	
00:57	GOOD! LAYUP by PINEAU, GEORGIA [PNT]	47-32	H 15	
00:39		49-32	H 17	GOOD! JUMPER by OGUNBOWALE, ARIKE
00:07	GOOD! LAYUP by SOULE, TAYLOR	49-34	H 15	

**Boston College 34, Notre Dame 49**

**Official Scoring/Possession Reference Chart**  
**Boston College vs Notre Dame**  
**Period 3**  
**January 20, 2019 at Joyce Center (Purcell Pavilion) - Notre Dame, IN**

**Period 3**

**Starters:**

**Boston College:** 10 DICKENS, MAKAYLA; 11 GUY, EMMA; 14 GARRAUD, MARNELLE; 4 ORTLEPP, TAYLOR; 5 PINEAU, GEORGIA;

**Notre Dame:** 11 TURNER, BRIANNA; 24 OGUNBOWALE, ARIKE; 32 SHEPARD, JESSICA; 3 MABREY, MARINA; 5 YOUNG, JACKIE;

Time	VISITORS: Boston College	Score	Margin	HOME: Notre Dame
09:48	GOOD! LAYUP by GUY, EMMA	49-36	H 13	
08:49	GOOD! FT by SOULE, TAYLOR	49-37	H 12	
08:49	GOOD! FT by SOULE, TAYLOR	49-38	H 11	
08:34		51-38	H 13	GOOD! JUMPER by OGUNBOWALE, ARIKE
08:21		53-38	H 15	GOOD! LAYUP by OGUNBOWALE, ARIKE [FB]
08:04	GOOD! LAYUP by SOULE, TAYLOR	53-40	H 13	
06:34		55-40	H 15	GOOD! JUMPER by TURNER, BRIANNA
05:38	GOOD! JUMPER by GARRAUD, MARNELLE	55-42	H 13	
04:33		57-42	H 15	GOOD! LAYUP by SHEPARD, JESSICA
03:36		59-42	H 17	GOOD! LAYUP by SHEPARD, JESSICA
02:33	GOOD! JUMPER by LOWERY, SYDNEY	59-44	H 15	
02:33	GOOD! FT by LOWERY, SYDNEY	59-45	H 14	
02:17		60-45	H 15	GOOD! FT by YOUNG, JACKIE
02:17		61-45	H 16	GOOD! FT by YOUNG, JACKIE
01:07	GOOD! JUMPER by PINEAU, GEORGIA	61-47	H 14	
00:49		62-47	H 15	GOOD! FT by SHEPARD, JESSICA
00:49		63-47	H 16	GOOD! FT by SHEPARD, JESSICA
00:39	GOOD! LAYUP by GUY, EMMA	63-49	H 14	
00:17		65-49	H 16	GOOD! LAYUP by YOUNG, JACKIE
00:04	GOOD! FT by LOWERY, SYDNEY	65-50	H 15	
00:00		67-50	H 17	GOOD! LAYUP by OGUNBOWALE, ARIKE

**Boston College 50, Notre Dame 67**

**Official Scoring/Possession Reference Chart**  
**Boston College vs Notre Dame**  
**Period 4**  
**January 20, 2019 at Joyce Center (Purcell Pavilion) - Notre Dame, IN**

**Period 4**

**Starters:**

**Boston College:** 10 DICKENS, MAKAYLA; 11 GUY, EMMA; 14 GARRAUD, MARNELLE; 4 ORTLEPP, TAYLOR; 5 PINEAU, GEORGIA;

**Notre Dame:** 11 TURNER, BRIANNA; 24 OGUNBOWALE, ARIKE; 32 SHEPARD, JESSICA; 3 MABREY, MARINA; 5 YOUNG, JACKIE;

Time	VISITORS: Boston College	Score	Margin	HOME: Notre Dame
09:30	GOOD! FT by SOULE, TAYLOR	67-51	H 16	
09:03		69-51	H 18	GOOD! LAYUP by TURNER, BRIANNA
08:35	GOOD! JUMPER by LOWERY, SYDNEY	69-53	H 16	
08:28		70-53	H 17	GOOD! FT by OGUNBOWALE, ARIKE [FB]
08:15		72-53	H 19	GOOD! LAYUP by YOUNG, JACKIE
07:58		74-53	H 21	GOOD! JUMPER by MABREY, MARINA
07:39		76-53	H 23	GOOD! JUMPER by YOUNG, JACKIE
07:39		77-53	H 24	GOOD! FT by YOUNG, JACKIE [FB]
07:37	GOOD! JUMPER by LOWERY, SYDNEY	77-55	H 22	
06:46		79-55	H 24	GOOD! LAYUP by OGUNBOWALE, ARIKE
06:03		81-55	H 26	GOOD! LAYUP by YOUNG, JACKIE [PNT]
05:41		83-55	H 28	GOOD! LAYUP by TURNER, BRIANNA
05:32	GOOD! FT by SOULE, TAYLOR	83-56	H 27	
05:32	GOOD! FT by SOULE, TAYLOR	83-57	H 26	
05:18		85-57	H 28	GOOD! LAYUP by TURNER, BRIANNA
03:46		87-57	H 30	GOOD! LAYUP by YOUNG, JACKIE
03:31	GOOD! JUMPER by GUY, EMMA	87-59	H 28	
03:07		89-59	H 30	GOOD! JUMPER by NIXON, JORDAN
02:39	GOOD! LAYUP by BOLDEN-MORRIS, MILAN	89-61	H 28	
02:03	GOOD! FT by SOULE, TAYLOR	89-62	H 27	
02:03	GOOD! FT by SOULE, TAYLOR	89-63	H 26	
01:29		90-63	H 27	GOOD! FT by NIXON, JORDAN [FB]
01:29		91-63	H 28	GOOD! FT by NIXON, JORDAN [FB]
00:54		92-63	H 29	GOOD! FT by VAUGHN, MIKAYLA [FB]

**Boston College 63, Notre Dame 92**

**Official Substitutions Log**  
**Boston College vs Notre Dame**  
**Period 1**  
**January 20, 2019 at Joyce Center (Purcell Pavilion) - Notre Dame, IN**

<b>VISITORS: Boston College</b>	<b>Time</b>	<b>Score</b>	<b>HOME: Notre Dame</b>
10 DICKENS, MAKAYLA			11 TURNER, BRIANNA
11 GUY, EMMA			24 OGUNBOWALE, ARIKE
14 GARRAUD, MARNELLE			32 SHEPARD, JESSICA
4 ORTLEPP, TAYLOR			3 MABREY, MARINA
5 PINEAU, GEORGIA			5 YOUNG, JACKIE
SUB OUT: 4 ORTLEPP, TAYLOR	07:29	7-8	
SUB IN: 13 SOULE, TAYLOR	07:29		
SUB OUT: 5 PINEAU, GEORGIA	06:13	11-11	
SUB IN: 31 LOWERY, SYDNEY	06:13		
SUB OUT: 14 GARRAUD, MARNELLE	05:41	11-13	
SUB IN: 4 ORTLEPP, TAYLOR	05:41		
SUB OUT: 11 GUY, EMMA	05:41		
SUB IN: 5 PINEAU, GEORGIA	05:41		
SUB OUT: 13 SOULE, TAYLOR	04:32	14-15	
SUB IN: 11 GUY, EMMA	04:32		
SUB OUT: 5 PINEAU, GEORGIA	03:53	14-20	
SUB IN: 13 SOULE, TAYLOR	03:53		
SUB OUT: 10 DICKENS, MAKAYLA	03:53		
SUB IN: 14 GARRAUD, MARNELLE	03:53		
	03:14	17-21	SUB OUT: MABREY, MARINA
	03:14		SUB IN: PROHASKA, ABBY
SUB OUT: 31 LOWERY, SYDNEY	02:16	17-26	
SUB IN: 23 BOLDEN-MORRIS, MILAN	02:16		
	01:24	17-28	SUB OUT: TURNER, BRIANNA
	01:24		SUB IN: PATTERSON, DANIELLE
SUB OUT: 13 SOULE, TAYLOR	01:24		
SUB IN: 5 PINEAU, GEORGIA	01:24		
SUB OUT: 23 BOLDEN-MORRIS, MILAN	01:24		
SUB IN: 31 LOWERY, SYDNEY	01:24		
SUB OUT: 11 GUY, EMMA	00:56	17-29	
SUB IN: 13 SOULE, TAYLOR	00:56		
SUB OUT: 13 SOULE, TAYLOR	00:14	19-32	
SUB IN: 10 DICKENS, MAKAYLA	00:14		
SUB OUT: 14 GARRAUD, MARNELLE	00:14		
SUB IN: 11 GUY, EMMA	00:14		
SUB OUT: 10 DICKENS, MAKAYLA	00:03	19-32	
SUB IN: 14 GARRAUD, MARNELLE	00:03		

**Boston College 19, Notre Dame 32**

**Official Substitutions Log**  
**Boston College vs Notre Dame**  
**Period 2**  
**January 20, 2019 at Joyce Center (Purcell Pavilion) - Notre Dame, IN**

VISITORS: Boston College	Time	Score	HOME: Notre Dame
10 DICKENS, MAKAYLA			11 TURNER, BRIANNA
11 GUY, EMMA			24 OGUNBOWALE, ARIKE
14 GARRAUD, MARNELLE			32 SHEPARD, JESSICA
4 ORTLEPP, TAYLOR			3 MABREY, MARINA
5 PINEAU, GEORGIA			5 YOUNG, JACKIE
	07:27	25-37	SUB OUT: PROHASKA, ABBY
	07:27		SUB IN: NIXON, JORDAN
	07:27		SUB OUT: OGUNBOWALE, ARIKE
	07:27		SUB IN: YOUNG, JACKIE
	07:27		SUB OUT: PATTERSON, DANIELLE
	07:27		SUB IN: SHEPARD, JESSICA
SUB OUT: 4 ORTLEPP, TAYLOR	07:27		
SUB IN: 11 GUY, EMMA	07:27		
SUB OUT: 13 SOULE, TAYLOR	07:27		
SUB IN: 31 LOWERY, SYDNEY	07:27		
SUB OUT: 11 GUY, EMMA	06:36	25-37	
SUB IN: 13 SOULE, TAYLOR	06:36		
SUB OUT: 23 BOLDEN-MORRIS, MILAN	06:22	25-40	
SUB IN: 14 GARRAUD, MARNELLE	06:22		
	04:04	25-43	SUB OUT: YOUNG, JACKIE
	04:04		SUB IN: OGUNBOWALE, ARIKE
SUB OUT: 14 GARRAUD, MARNELLE	04:04		
SUB IN: 4 ORTLEPP, TAYLOR	04:04		
	02:14	27-46	SUB OUT: NIXON, JORDAN
	02:14		SUB IN: YOUNG, JACKIE
	02:14		SUB OUT: SHEPARD, JESSICA
	02:14		SUB IN: PATTERSON, DANIELLE
SUB OUT: 31 LOWERY, SYDNEY	02:14		
SUB IN: 23 BOLDEN-MORRIS, MILAN	02:14		
	01:30	29-47	SUB OUT: MABREY, MARINA
	01:30		SUB IN: PROHASKA, ABBY

**Boston College 34, Notre Dame 49**

**Official Substitutions Log**  
**Boston College vs Notre Dame**  
**Period 3**  
**January 20, 2019 at Joyce Center (Purcell Pavilion) - Notre Dame, IN**

<b>VISITORS: Boston College</b>	<b>Time</b>	<b>Score</b>	<b>HOME: Notre Dame</b>
10 DICKENS, MAKAYLA			11 TURNER, BRIANNA
11 GUY, EMMA			24 OGUNBOWALE, ARIKE
14 GARRAUD, MARNELLE			32 SHEPARD, JESSICA
4 ORTLEPP, TAYLOR			3 MABREY, MARINA
5 PINEAU, GEORGIA			5 YOUNG, JACKIE
	08:00	40-53	SUB OUT: MABREY, MARINA
	08:00		SUB IN: PROHASKA, ABBY
SUB OUT: 11 GUY, EMMA	07:42	40-53	
SUB IN: 31 LOWERY, SYDNEY	07:42		
SUB OUT: 13 SOULE, TAYLOR	06:57	40-53	
SUB IN: 11 GUY, EMMA	06:57		
SUB OUT: 4 ORTLEPP, TAYLOR	06:07	40-55	
SUB IN: 14 GARRAUD, MARNELLE	06:07		
SUB OUT: 11 GUY, EMMA	06:07		
SUB IN: 13 SOULE, TAYLOR	06:07		
	04:47	42-55	SUB OUT: TURNER, BRIANNA
	04:47		SUB IN: MABREY, MARINA
SUB OUT: 13 SOULE, TAYLOR	03:17	42-59	
SUB IN: 23 BOLDEN-MORRIS, MILAN	03:17		
SUB OUT: 10 DICKENS, MAKAYLA	03:05	42-59	
SUB IN: 4 ORTLEPP, TAYLOR	03:05		
	02:33	44-59	SUB OUT: PROHASKA, ABBY
	02:33		SUB IN: NIXON, JORDAN
SUB OUT: 14 GARRAUD, MARNELLE	02:17	45-60	
SUB IN: 10 DICKENS, MAKAYLA	02:17		
SUB OUT: 5 PINEAU, GEORGIA	00:49	47-62	
SUB IN: 11 GUY, EMMA	00:49		
	00:39	49-63	SUB OUT: NIXON, JORDAN
	00:39		SUB IN: PROHASKA, ABBY
SUB OUT: 10 DICKENS, MAKAYLA	00:39		
SUB IN: 5 PINEAU, GEORGIA	00:39		
SUB OUT: 11 GUY, EMMA	00:39		
SUB IN: 13 SOULE, TAYLOR	00:39		
SUB OUT: 23 BOLDEN-MORRIS, MILAN	00:39		
SUB IN: 14 GARRAUD, MARNELLE	00:39		

**Boston College 50, Notre Dame 67**

**Official Substitutions Log**  
**Boston College vs Notre Dame**  
**Period 4**  
**January 20, 2019 at Joyce Center (Purcell Pavilion) - Notre Dame, IN**

<b>VISITORS: Boston College</b>	<b>Time</b>	<b>Score</b>	<b>HOME: Notre Dame</b>
10 DICKENS, MAKAYLA			11 TURNER, BRIANNA
11 GUY, EMMA			24 OGUNBOWALE, ARIKE
14 GARRAUD, MARNELLE			32 SHEPARD, JESSICA
4 ORTLEPP, TAYLOR			3 MABREY, MARINA
5 PINEAU, GEORGIA			5 YOUNG, JACKIE
	08:40	51-69	SUB OUT: PROHASKA, ABBY
	08:40		SUB IN: SHEPARD, JESSICA
SUB OUT: 13 SOULE, TAYLOR	08:28	53-70	
SUB IN: 11 GUY, EMMA	08:28		
SUB OUT: 5 PINEAU, GEORGIA	08:28		
SUB IN: 4 ORTLEPP, TAYLOR	08:28		
SUB OUT: 23 BOLDEN-MORRIS, MILAN	07:58	53-74	
SUB IN: 5 PINEAU, GEORGIA	07:58		
	06:23	55-79	SUB OUT: OGUNBOWALE, ARIKE
	06:23		SUB IN: PROHASKA, ABBY
SUB OUT: 5 PINEAU, GEORGIA	06:23		
SUB IN: 13 SOULE, TAYLOR	06:23		
	05:58	55-81	SUB OUT: SHEPARD, JESSICA
	05:58		SUB IN: VAUGHN, MIKAYLA
SUB OUT: 4 ORTLEPP, TAYLOR	05:58		
SUB IN: 23 BOLDEN-MORRIS, MILAN	05:58		
	05:32	56-83	SUB OUT: MABREY, MARINA
	05:32		SUB IN: NIXON, JORDAN
SUB OUT: 10 DICKENS, MAKAYLA	05:32		
SUB IN: 14 GARRAUD, MARNELLE	05:32		
	04:52	57-85	SUB OUT: TURNER, BRIANNA
	04:52		SUB IN: COSGROVE, DANIELLE
	02:03	62-89	SUB OUT: YOUNG, JACKIE
	02:03		SUB IN: BENZ, NICOLE
	02:03		SUB OUT: PROHASKA, ABBY
	02:03		SUB IN: BUTLER, MAUREEN
SUB OUT: 14 GARRAUD, MARNELLE	02:03		
SUB IN: 0 BISHOP, JENASAE	02:03		
SUB OUT: 31 LOWERY, SYDNEY	02:03		
SUB IN: 32 FORD, CLARA	02:03		
SUB OUT: 11 GUY, EMMA	01:29	63-89	
SUB IN: 22 HOLLINGSWORTH, LANA	01:29		
SUB OUT: 13 SOULE, TAYLOR	01:29		
SUB IN: 24 KLIMKIEWICZ, KATE	01:29		

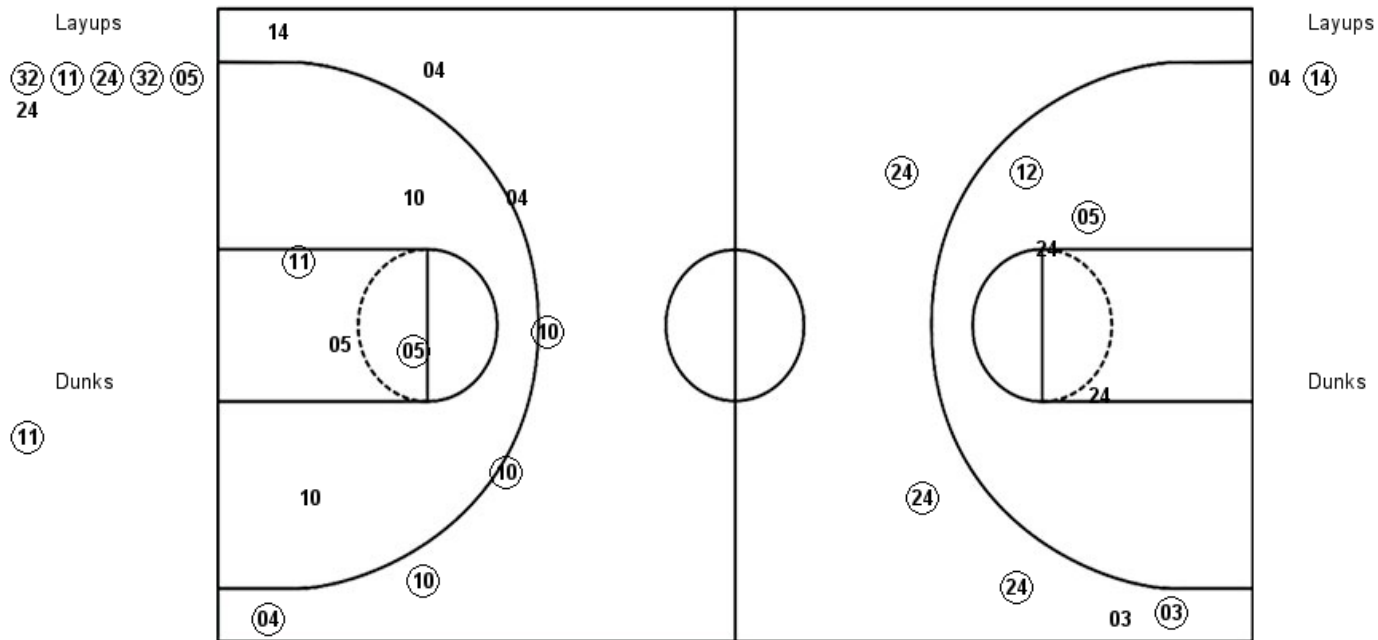
**Boston College 63, Notre Dame 92**



**Official Shot Chart**  
**Boston College vs Notre Dame**  
**PERIOD 1 Shots**  
**January 20, 2019 at Joyce Center (Purcell Pavilion) - Notre Dame, IN**

**Notre Dame**

**Boston College**



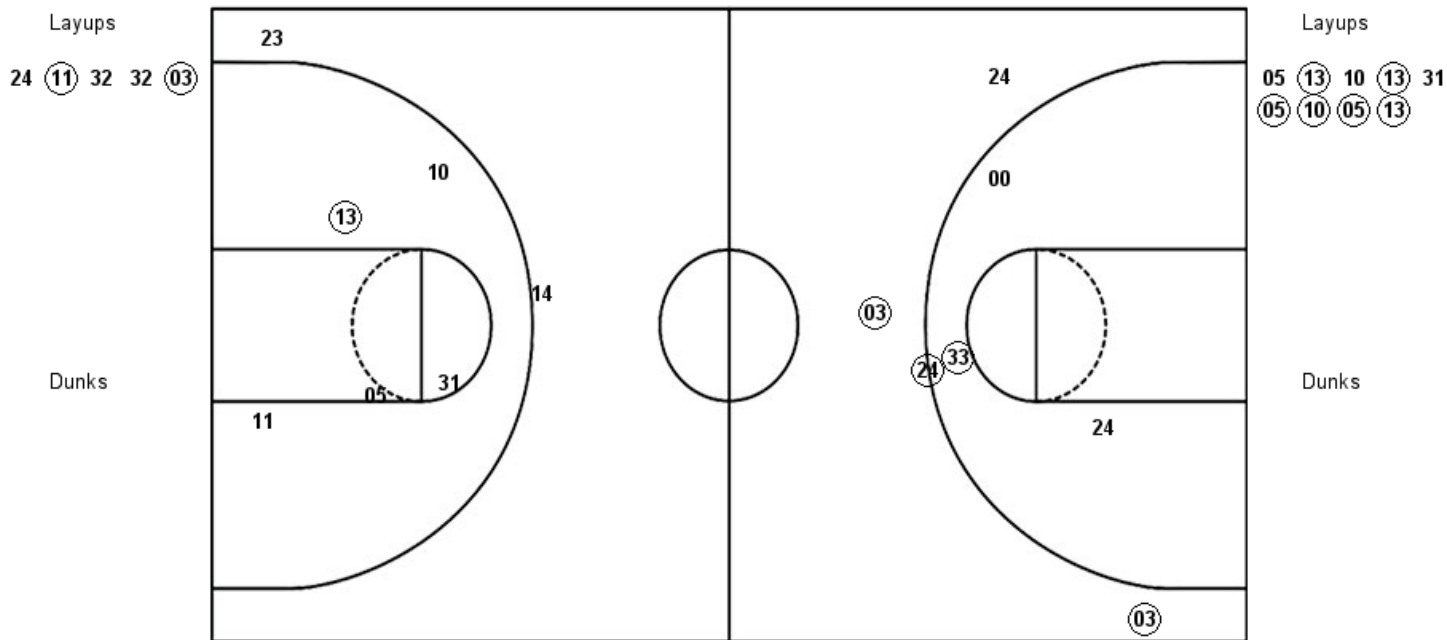
<b>UND : Period 1</b>	<b>Made</b>	<b>Att</b>	<b>Pct</b>
Layups	5	6	83.3
Dunks	1	1	100.0
2PT Field Goals	8	11	72.7
3PT Field Goals	4	5	80.0
<b>Total Field Goals</b>	<b>12</b>	<b>16</b>	<b>75.0</b>

<b>BCE : Period 1</b>	<b>Made</b>	<b>Att</b>	<b>Pct</b>
Layups	1	2	50.0
Dunks	0	0	0
2PT Field Goals	3	7	42.9
3PT Field Goals	4	7	57.1
<b>Total Field Goals</b>	<b>7</b>	<b>14</b>	<b>50.0</b>

**Official Shot Chart**  
**Boston College vs Notre Dame**  
**PERIOD 2 Shots**  
 January 20, 2019 at Joyce Center (Purcell Pavilion) - Notre Dame, IN

**Notre Dame**

**Boston College**



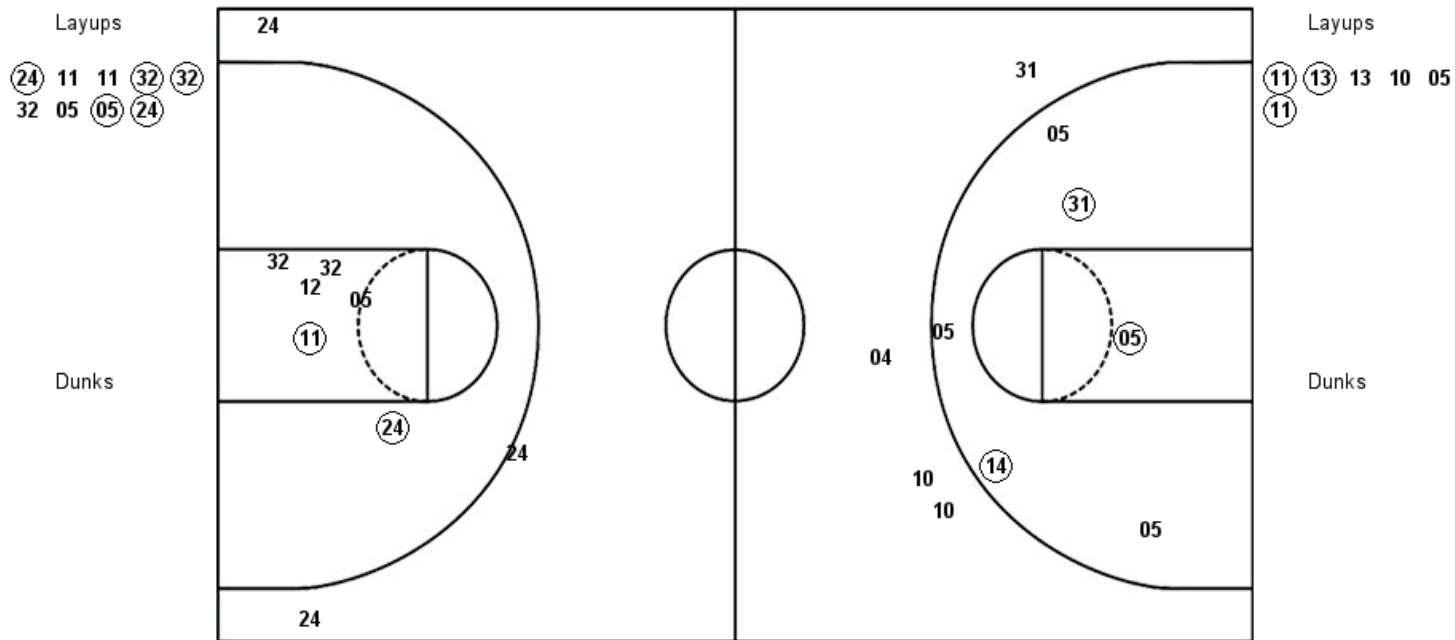
UND : Period 2	Made	Att	Pct
Layups	2	5	40.0
Dunks	0	0	0
2PT Field Goals	4	9	44.4
3PT Field Goals	2	3	66.7
<b>Total Field Goals</b>	<b>6</b>	<b>12</b>	<b>50.0</b>

BCE : Period 2	Made	Att	Pct
Layups	6	9	66.7
Dunks	0	0	0
2PT Field Goals	7	14	50.0
3PT Field Goals	0	2	00.0
<b>Total Field Goals</b>	<b>7</b>	<b>16</b>	<b>43.8</b>

**Official Shot Chart**  
**Boston College vs Notre Dame**  
**PERIOD 3 Shots**  
 January 20, 2019 at Joyce Center (Purcell Pavilion) - Notre Dame, IN

**Notre Dame**

**Boston College**



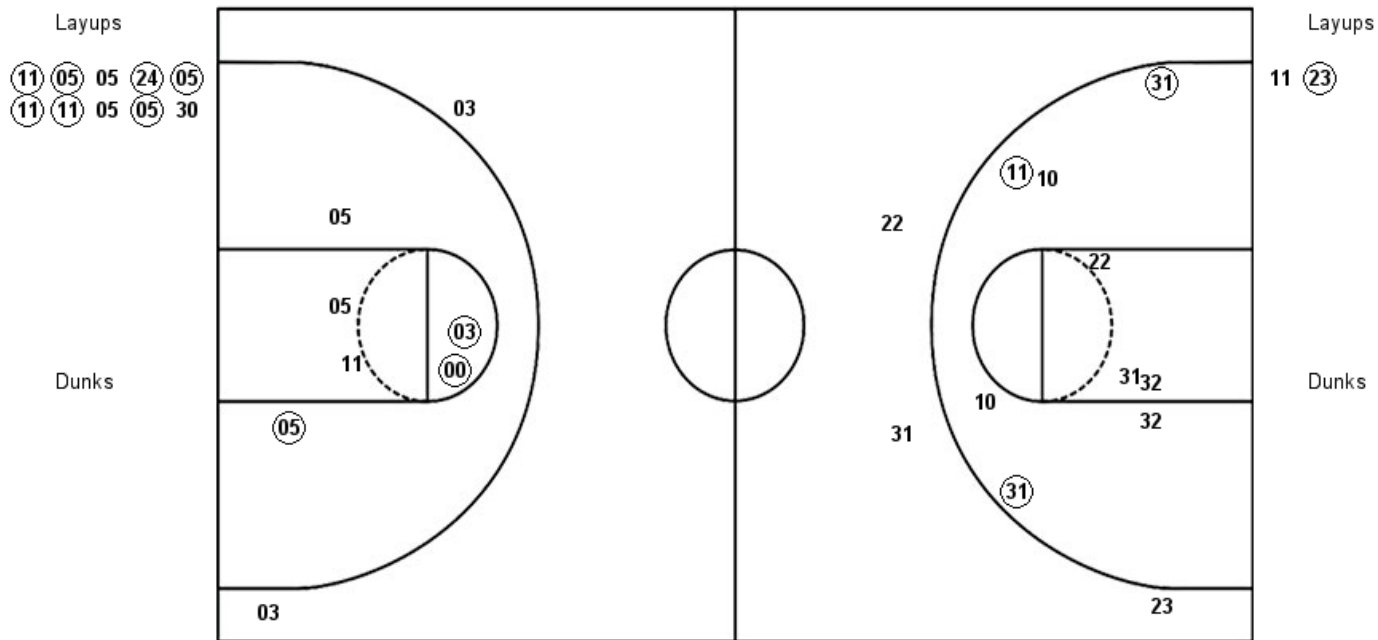
UND : Period 3	Made	Att	Pct
Layups	5	9	55.6
Dunks	0	0	0
2PT Field Goals	7	15	46.7
3PT Field Goals	0	3	00.0
<b>Total Field Goals</b>	<b>7</b>	<b>18</b>	<b>38.9</b>

BCE : Period 3	Made	Att	Pct
Layups	3	6	50.0
Dunks	0	0	0
2PT Field Goals	6	12	50.0
3PT Field Goals	0	4	00.0
<b>Total Field Goals</b>	<b>6</b>	<b>16</b>	<b>37.5</b>

**Official Shot Chart**  
**Boston College vs Notre Dame**  
**PERIOD 4 Shots**  
 January 20, 2019 at Joyce Center (Purcell Pavilion) - Notre Dame, IN

**Notre Dame**

**Boston College**

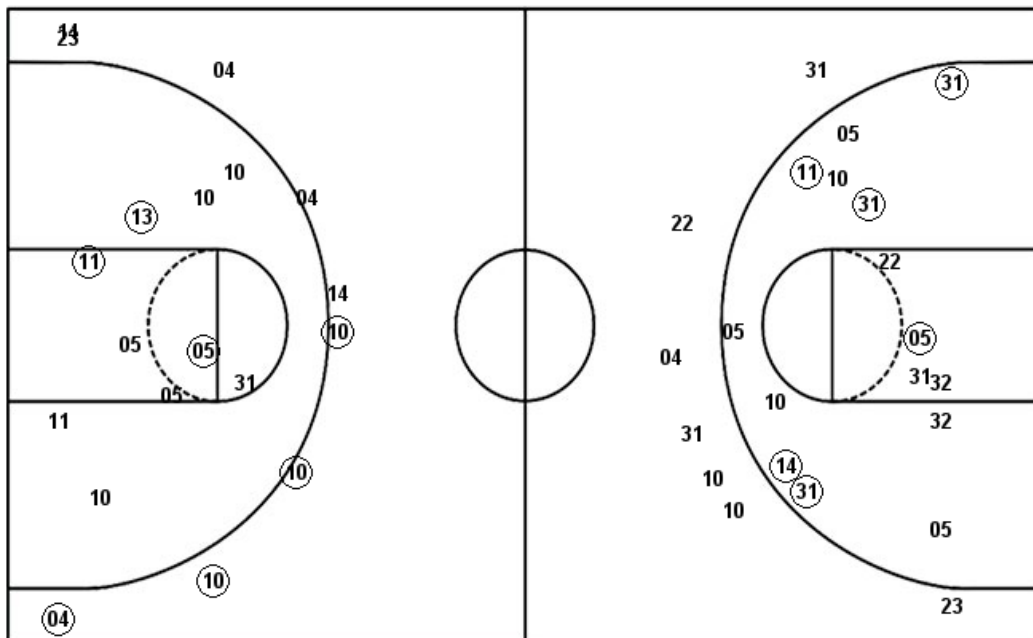


UND : Period 4	Made	Att	Pct
Layups	7	10	70.0
Dunks	0	0	0
2PT Field Goals	10	16	62.5
3PT Field Goals	0	2	00.0
<b>Total Field Goals</b>	<b>10</b>	<b>18</b>	<b>55.6</b>

BCE : Period 4	Made	Att	Pct
Layups	1	2	50.0
Dunks	0	0	0
2PT Field Goals	4	11	36.4
3PT Field Goals	0	3	00.0
<b>Total Field Goals</b>	<b>4</b>	<b>14</b>	<b>28.6</b>

**Official Shot Chart**  
**Boston College vs Notre Dame**  
**Boston College Team Shots**  
**January 20, 2019 at Joyce Center (Purcell Pavilion) - Notre Dame, IN**

Layups



Layups

Dunks

Dunks

BCE : Period 1	Made	Att	Pct
Layups	1	2	50.0
Dunks	0	0	0
2PT Field Goals	3	7	42.9
3PT Field Goals	4	7	57.1
<b>Total Field Goals</b>	<b>7</b>	<b>14</b>	<b>50.0</b>

BCE : Period 2	Made	Att	Pct
Layups	6	9	66.7
Dunks	0	0	0
2PT Field Goals	7	14	50.0
3PT Field Goals	0	2	00.0
<b>Total Field Goals</b>	<b>7</b>	<b>16</b>	<b>43.8</b>

BCE : Period 3	Made	Att	Pct
Layups	3	6	50.0
Dunks	0	0	0
2PT Field Goals	6	12	50.0
3PT Field Goals	0	4	00.0
<b>Total Field Goals</b>	<b>6</b>	<b>16</b>	<b>37.5</b>

BCE : Period 4	Made	Att	Pct
Layups	1	2	50.0
Dunks	0	0	0
2PT Field Goals	4	11	36.4
3PT Field Goals	0	3	00.0
<b>Total Field Goals</b>	<b>4</b>	<b>14</b>	<b>28.6</b>

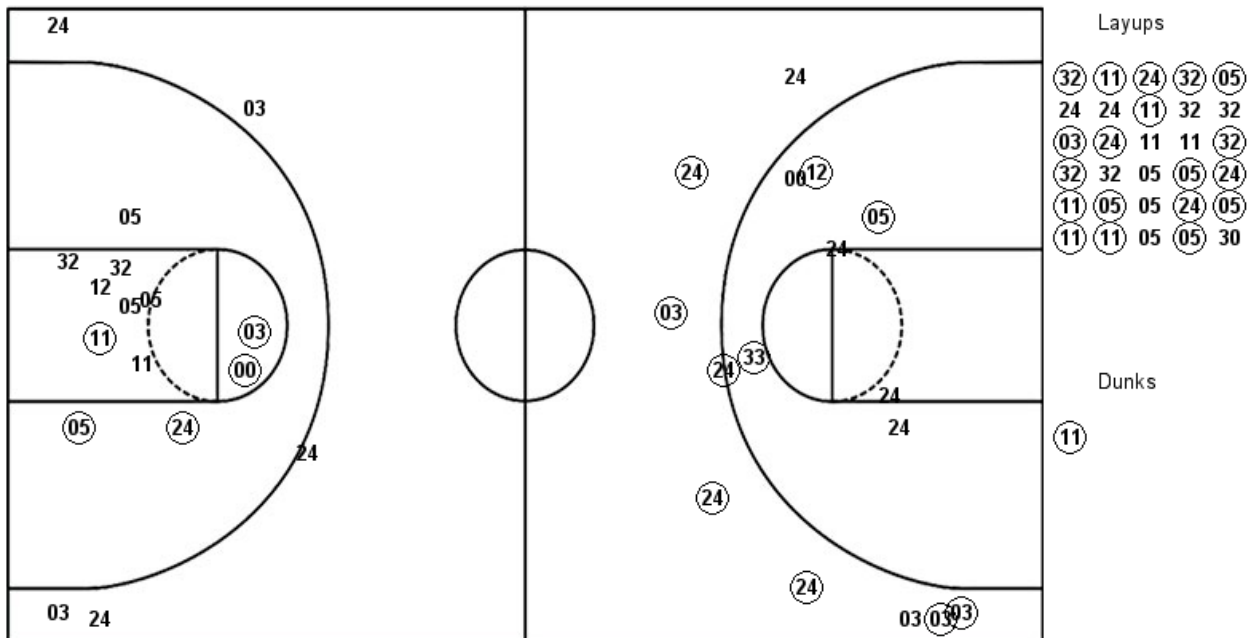
**Official Shot Chart**  
**Boston College vs Notre Dame**  
**Notre Dame Team Shots**  
**January 20, 2019 at Joyce Center (Purcell Pavilion) - Notre Dame, IN**

Layups

Layups

Dunks

Dunks



UND : Period 1	Made	Att	Pct
Layups	5	6	83.3
Dunks	1	1	100.0
2PT Field Goals	8	11	72.7
3PT Field Goals	4	5	80.0
<b>Total Field Goals</b>	<b>12</b>	<b>16</b>	<b>75.0</b>

UND : Period 2	Made	Att	Pct
Layups	2	5	40.0
Dunks	0	0	0
2PT Field Goals	4	9	44.4
3PT Field Goals	2	3	66.7
<b>Total Field Goals</b>	<b>6</b>	<b>12</b>	<b>50.0</b>

UND : Period 3	Made	Att	Pct
Layups	5	9	55.6
Dunks	0	0	0
2PT Field Goals	7	15	46.7
3PT Field Goals	0	3	00.0
<b>Total Field Goals</b>	<b>7</b>	<b>18</b>	<b>38.9</b>

UND : Period 4	Made	Att	Pct
Layups	7	10	70.0
Dunks	0	0	0
2PT Field Goals	10	16	62.5
3PT Field Goals	0	2	00.0
<b>Total Field Goals</b>	<b>10</b>	<b>18</b>	<b>55.6</b>