

## FINAL SCORE



**Wake Forest**

**48**



**Notre Dame**

**78**

January 13, 2019 • Joyce Center (Purcell Pavilion) - Notre Dame, IN

## FINAL STATISTICS

**Official Box Score**  
**Wake Forest vs Notre Dame**  
**Game Totals -- Final Statistics**  
**January 13, 2019 at Joyce Center (Purcell Pavilion) - Notre Dame, IN**



**Wake Forest 48**

No.	Player	S	Pts	FG	3FG	FT	OR	DR	TR	PF	A	TO	Blk	Stl	Min	+/-
05	CONTI, GINA		6	2-9	0-1	2-3	1	0	1	1	6	2	0	0	28	-26
11	RACA, IVANA		12	4-11	2-4	2-2	0	2	2	1	1	0	1	3	31	-28
12	DICKSON, KAYLEN		6	2-9	2-7	0-0	0	1	1	4	1	4	1	1	28	-24
41	PENNA, ELISA		5	1-12	0-5	3-4	0	4	4	1	3	1	0	1	31	-32
44	UDOH, ONA		2	1-4	0-0	0-0	3	1	4	1	0	1	0	1	12	-22
00	BANKS, MAYA		0	0-1	0-0	0-0	1	2	3	2	0	0	0	0	7	-14
10	HAHNE, ELLEN		0	0-0	0-0	0-0	0	1	1	0	1	5	0	2	11	-3
21	BRANCH, RAEGYN		2	1-6	0-2	0-0	0	3	3	1	0	0	0	1	18	-15
23	MORRA, CHRISTINA		13	6-10	0-0	1-1	3	6	9	0	0	1	3	1	20	11
50	JAROSINSKI, LINDSEY		2	1-1	0-0	0-1	0	1	1	0	1	0	0	1	13	3
<b>TEAM</b>							2	2	4	0	3					
<b>TOTALS</b>		<b>48</b>	<b>18-63</b>	<b>4-19</b>	<b>8-11</b>	<b>10</b>	<b>23</b>	<b>33</b>	<b>11</b>	<b>13</b>	<b>17</b>	<b>5</b>	<b>11</b>	<b>200</b>		

*Shooting By Period*

Period	FG	FG%	3FG	3FG%	FT	FT%
1st Qtr	2-14	14%	1-7	14%	1-1	100%
2nd Qtr	4-16	25%	1-5	20%	0-0	0%
3rd Qtr	5-16	31%	1-3	33%	2-2	100%
4th Qtr	7-17	41%	1-4	25%	5-8	63%
1st Half	6-30	20%	2-12	17%	1-1	100%
2nd Half	12-33	36%	2-7	29%	7-10	70%
<b>Game</b>	<b>18-63</b>	<b>28.6%</b>	<b>4-19</b>	<b>21.1%</b>	<b>8-11</b>	<b>72.7%</b>

*Last FG: 4th-01:25*  
*Biggest Run: 8-0*  
*Largest lead: By 0 at -*  
*Technical Fouls: None.*

**Notre Dame 78**

No.	Player	S	Pts	FG	3FG	FT	OR	DR	TR	PF	A	TO	Blk	Stl	Min	+/-
03	MABREY, MARINA		18	7-11	4-7	0-0	2	5	7	1	4	2	1	1	27	35
05	YOUNG, JACKIE		4	2-5	0-0	0-3	3	2	5	1	5	0	1	1	24	28
11	TURNER, BRIANNA		14	6-9	0-0	2-3	4	8	12	0	2	1	0	2	22	38
24	OGUNBOWALE, ARIKE		4	1-11	0-3	2-2	0	2	2	0	5	4	0	1	29	33
32	SHEPARD, JESSICA		16	7-9	0-0	2-3	2	4	6	1	5	2	1	4	18	32
00	NIXON, JORDAN		2	1-4	0-1	0-0	0	1	1	1	0	4	0	1	20	1
12	PROHASKA, ABBY		0	0-1	0-0	0-0	2	1	3	1	2	2	0	0	17	-7
20	BENZ, NICOLE		0	0-1	0-0	0-0	0	1	1	0	0	0	0	0	3	0
22	COSGROVE, DANIELLE		5	2-3	1-2	0-0	0	2	2	0	0	0	0	0	5	-2
30	VAUGHN, MIKAYLA		9	3-5	0-0	3-4	1	2	3	3	0	2	4	1	18	-2
33	PATTERSON, DANIELLE		6	3-10	0-0	0-0	3	2	5	2	0	1	1	0	14	-6
40	BUTLER, MAUREEN		0	0-0	0-0	0-0	0	1	1	0	0	0	0	0	3	0
<b>TEAM</b>							2	5	7	0	0					
<b>TOTALS</b>		<b>78</b>	<b>32-69</b>	<b>5-13</b>	<b>9-15</b>	<b>19</b>	<b>36</b>	<b>55</b>	<b>10</b>	<b>23</b>	<b>18</b>	<b>8</b>	<b>11</b>	<b>200</b>		

*Shooting By Period*

Period	FG	FG%	3FG	3FG%	FT	FT%
1st Qtr	8-16	50%	0-1	00%	6-8	75%
2nd Qtr	6-18	33%	1-2	50%	2-2	100%
3rd Qtr	11-19	58%	2-5	40%	1-3	33%
4th Qtr	7-16	44%	2-5	40%	0-2	00%
1st Half	14-34	41%	1-3	33%	8-10	80%
2nd Half	18-35	51%	4-10	40%	1-5	20%
<b>Game</b>	<b>32-69</b>	<b>46.4%</b>	<b>5-13</b>	<b>38.5%</b>	<b>9-15</b>	<b>60.0%</b>

*Last FG: 4th-01:09*  
*Biggest Run: 18-0*  
*Largest lead: By 40 at 3-02:57*  
*Technical Fouls: None.*

Game Notes:

Officials: Edward Sidlasky, Pualani Spurlock, Nic Cappel  
Attendance: 8392

Start Time: 2019-01-13 18:01:58  
End Time: 2019-01-13 19:45:46  
Game Duration: 103  
Conference Game;

Score	1st	2nd	3rd	4th	TOT
WFU	6	9	13	20	<b>48</b>
UND	22	15	25	16	<b>78</b>

WFU led for 0:00. UND led for 38:57.  
Game was tied for 1:03.  
Times tied: 0      Lead Changes: 0

Points from	WFU	UND
In the Paint	22	52
Off Turns	13	18
2nd Chance	10	19
Fast Break	4	12
Bench	17	22

**Official Box Score**  
**Wake Forest vs Notre Dame**  
**First Half Statistics Only**  
**January 13, 2019 at Joyce Center (Purcell Pavilion) - Notre Dame, IN**



**Wake Forest 15**

No.	Player	S	Pts	FG	3FG	FT	OR	DR	TR	PF	A	TO	Blk	Stl	Min	+/-
00	BANKS, MAYA		0	0-1	0-0	0-0	1	1	2	1	0	0	0	0	4	-3
05	CONTI, GINA		3	1-7	0-1	1-1	0	0	0	1	2	2	0	0	14	-18
10	HAHNE, ELLEN		0	0-0	0-0	0-0	0	0	0	0	0	3	0	2	5	-3
11	RACA, IVANA		7	3-4	1-1	0-0	0	2	2	0	0	0	0	1	13	-17
12	DICKSON, KAYLEN		3	1-4	1-4	0-0	0	0	0	2	0	3	1	1	15	-18
21	BRANCH, RAEGYN		0	0-2	0-2	0-0	0	3	3	1	0	0	0	0	10	-13
23	MORRA, CHRISTINA		2	1-3	0-0	0-0	0	2	2	0	0	1	3	1	7	1
41	PENNA, ELISA		0	0-8	0-4	0-0	0	2	2	1	3	1	0	0	18	-20
44	UDOH, ONA		0	0-1	0-0	0-0	1	1	2	1	0	1	0	1	9	-15
50	JAROSINSKI, LINDSEY		0	0-0	0-0	0-0	0	0	0	0	0	0	0	1	4	-4
	TEAM		0	0-0	0-0	0-0	1	2	3	0	0	2	0	0	0	
<b>TOTALS</b>			<b>15</b>	<b>6-30</b>	<b>2-12</b>	<b>1-1</b>	<b>3</b>	<b>13</b>	<b>16</b>	<b>7</b>	<b>5</b>	<b>13</b>	<b>4</b>	<b>7</b>	<b>100</b>	

*Shooting By Period*

Period	FG	FG%	3FG	3FG%	FT	FT%
1st Qtr	2-14	14%	1-7	14%	1-1	100%
2nd Qtr	4-16	25%	1-5	20%	0-0	0%
1st Half	6-30	20%	2-12	17%	1-1	100%
Game	18-63	28.6%	4-19	21.1%	8-11	72.7%

*Last FG Half: WFU 2nd-02:07*

**Notre Dame 37**

No.	Player	S	Pts	FG	3FG	FT	OR	DR	TR	PF	A	TO	Blk	Stl	Min	+/-
00	NIXON, JORDAN		0	0-0	0-0	0-0	0	1	1	1	0	1	0	0	8	4
03	MABREY, MARINA		9	4-6	1-2	0-0	1	1	2	0	1	0	0	1	15	19
05	YOUNG, JACKIE		2	1-3	0-0	0-1	1	1	2	0	3	0	1	1	16	18
11	TURNER, BRIANNA		6	2-5	0-0	2-2	3	6	9	0	2	1	0	2	16	21
12	PROHASKA, ABBY		0	0-0	0-0	0-0	0	0	0	0	0	1	0	0	5	4
20	BENZ, NICOLE		0	0-0	0-0	0-0	0	0	0	0	0	0	0	0	0	0
22	COSGROVE, DANIELLE		0	0-0	0-0	0-0	0	0	0	0	0	0	0	0	0	0
24	OGUNBOWALE, ARIKE		2	0-7	0-1	2-2	0	2	2	0	1	4	0	1	17	21
30	VAUGHN, MIKAYLA		6	2-3	0-0	2-2	0	1	1	1	0	1	1	0	6	5
32	SHEPARD, JESSICA		10	4-6	0-0	2-3	2	4	6	0	3	2	1	4	12	17
33	PATTERSON, DANIELLE		2	1-4	0-0	0-0	1	1	2	0	0	0	1	0	6	1
40	BUTLER, MAUREEN		0	0-0	0-0	0-0	0	0	0	0	0	0	0	0	0	0
	TEAM		0	0-0	0-0	0-0	1	4	5	0	0	0	0	0	0	
<b>TOTALS</b>			<b>37</b>	<b>14-34</b>	<b>1-3</b>	<b>8-10</b>	<b>9</b>	<b>21</b>	<b>30</b>	<b>2</b>	<b>10</b>	<b>10</b>	<b>4</b>	<b>9</b>	<b>100</b>	

*Shooting By Period*

Period	FG	FG%	3FG	3FG%	FT	FT%
1st Qtr	8-16	50%	0-1	00%	6-8	75%
2nd Qtr	6-18	33%	1-2	50%	2-2	100%
1st Half	14-34	41%	1-3	33%	8-10	80%
Game	32-69	46.4%	5-13	38.5%	9-15	60.0%

*Last FG Half: UND 2nd-03:08*

*Game Notes:*

Officials: Edward Sidlasky, Pualani Spurlock, Nic Cappel  
 Attendance: 8392

Start Time: 2019-01-13 18:01:58  
 End Time: 2019-01-13 19:45:46  
 Game Duration: 103  
 Conference Game;

Score	1st	2nd	3rd	4th	TOT
WFU	6	9	13	20	<b>48</b>
UND	22	15	25	16	<b>78</b>

Points from (This Period)	WFU	UND
In the Paint	4	26
Off Turns	5	12
2nd Chance	2	12
Fast Break	0	10
Bench	2	8

**Official Box Score**  
**Wake Forest vs Notre Dame**  
**First Quarter Statistics Only**  
**January 13, 2019 at Joyce Center (Purcell Pavilion) - Notre Dame, IN**



**Wake Forest 6**

No.	Player	S	Pts	FG	3FG	FT	OR	DR	TR	PF	A	TO	Blk	Stl	Min	+/-
05	CONTI, GINA		3	1-4	0-0	1-1	0	0	0	1	0	2	0	0	8	-13
11	RACA, IVANA		3	1-1	1-1	0-0	0	0	0	0	0	0	0	0	6	-13
12	DICKSON, KAYLEN		0	0-2	0-2	0-0	0	0	0	1	0	3	1	1	6	-13
41	PENNA, ELISA		0	0-5	0-3	0-0	0	0	0	1	1	0	0	0	10	-16
44	UDOH, ONA		0	0-0	0-0	0-0	1	1	2	1	0	1	0	1	6	-13
00	BANKS, MAYA		0	0-1	0-0	0-0	1	1	2	1	0	0	0	0	4	-3
10	HAHNE, ELLEN		0	0-0	0-0	0-0	0	0	0	0	0	2	0	1	4	-3
21	BRANCH, RAEGYN		0	0-1	0-1	0-0	0	2	2	0	0	0	0	0	4	-9
23	MORRA, CHRISTINA		0	0-0	0-0	0-0	0	1	1	0	0	0	0	1	1	3
50	JAROSINSKI, LINDSEY		0	0-0	0-0	0-0	0	0	0	0	0	0	0	0	0	0
TEAM							0	0	0	0		1				
<b>TOTALS</b>			<b>6</b>	<b>2-14</b>	<b>1-7</b>	<b>1-1</b>	<b>2</b>	<b>5</b>	<b>7</b>	<b>5</b>	<b>1</b>	<b>9</b>	<b>1</b>	<b>4</b>	<b>50</b>	

*Shooting By Period*

Period	FG	FG%	3FG	3FG%	FT	FT%
1st Qtr	2-14	14%	1-7	14%	1-1	100%
2nd Qtr	4-16	25%	1-5	20%	0-0	0%
1st Half	2-14	14%	1-7	14%	1-1	100%
1st Half	6-30	20%	2-12	17%	1-1	100%
Game	18-63	28.6%	4-19	21.1%	8-11	72.7%

**Notre Dame 22**

No.	Player	S	Pts	FG	3FG	FT	OR	DR	TR	PF	A	TO	Blk	Stl	Min	+/-
03	MABREY, MARINA		4	2-4	0-1	0-0	1	1	2	0	1	0	0	1	9	15
05	YOUNG, JACKIE		2	1-3	0-0	0-1	1	1	2	0	2	0	1	0	8	14
11	TURNER, BRIANNA		4	1-1	0-0	2-2	1	5	6	0	2	1	0	2	9	17
24	OGUNBOWALE, ARIKE		0	0-3	0-0	0-0	0	1	1	0	0	2	0	0	9	17
32	SHEPARD, JESSICA		8	3-4	0-0	2-3	1	1	2	0	1	2	0	4	7	13
00	NIXON, JORDAN		0	0-0	0-0	0-0	0	0	0	1	0	0	0	0	4	2
12	PROHASKA, ABBY		0	0-0	0-0	0-0	0	0	0	0	0	0	0	0	0	0
20	BENZ, NICOLE		0	0-0	0-0	0-0	0	0	0	0	0	0	0	0	0	0
22	COSGROVE, DANIELLE		0	0-0	0-0	0-0	0	0	0	0	0	0	0	0	0	0
30	VAUGHN, MIKAYLA		4	1-1	0-0	2-2	0	0	0	0	0	1	1	0	3	5
33	PATTERSON, DANIELLE		0	0-0	0-0	0-0	0	0	0	0	0	0	0	0	1	-3
40	BUTLER, MAUREEN		0	0-0	0-0	0-0	0	0	0	0	0	0	0	0	0	0
TEAM							1	1	2	0		0				
<b>TOTALS</b>			<b>22</b>	<b>8-16</b>	<b>0-1</b>	<b>6-8</b>	<b>5</b>	<b>10</b>	<b>15</b>	<b>1</b>	<b>6</b>	<b>6</b>	<b>2</b>	<b>7</b>	<b>50</b>	

*Shooting By Period*

Period	FG	FG%	3FG	3FG%	FT	FT%
1st Qtr	8-16	50%	0-1	00%	6-8	75%
2nd Qtr	6-18	33%	1-2	50%	2-2	100%
1st Half	8-16	50%	0-1	00%	6-8	75%
1st Half	14-34	41%	1-3	33%	8-10	80%
Game	32-69	46.4%	5-13	38.5%	9-15	60.0%

Game Notes:

Officials: Edward Sidlasky, Pualani Spurlock, Nic Cappel  
Attendance: 8392

Start Time: 2019-01-13 18:01:58  
End Time: 2019-01-13 19:45:46  
Game Duration: 103  
Conference Game;

Score	1st	2nd	3rd	4th	TOT
WFU	6	9	13	20	<b>48</b>
UND	22	15	25	16	<b>78</b>

Points from (This Period)	WFU	UND
In the Paint	2	16
Off Turns	3	8
2nd Chance	0	8
Fast Break	0	4
Bench	0	4

**Official Play-By-Play**  
**Wake Forest vs Notre Dame**  
**First Quarter**  
**January 13, 2019 at Joyce Center (Purcell Pavilion) - Notre Dame, IN**



**Period 1**

**Starters:**

**Wake Forest:** 5 CONTI,GINA; 11 RACA,IVANA; 12 DICKSON,KAYLEN; 41 PENNA,ELISA; 44 UDOH,ONA;

**Notre Dame:** 3 MABREY,MARINA; 5 YOUNG,JACKIE; 11 TURNER,BRIANNA; 24 OGUNBOWALE,ARIKE; 32 SHEPARD,JESSICA;

Time	VISITORS: Wake Forest	Score	Margin	HOME: Notre Dame
09:32	MISSED 3PTR by DICKSON, KAYLEN			
09:28				REBOUND (DEF) by OGUNBOWALE, ARIKE
09:28				TURNOVER (LOSTBALL) by OGUNBOWALE, ARIKE
09:10	MISSED 3PTR by DICKSON, KAYLEN			
09:08				REBOUND (DEF) by TEAM
08:58		2-0	H 2	GOOD! LAYUP by SHEPARD, JESSICA [PNT]
08:58				ASSIST by MABREY, MARINA
08:30	MISSED JUMPER by CONTI, GINA			
08:27	REBOUND (OFF) by UDOH, ONA			
08:25	TURNOVER (BADPASS) by UDOH, ONA			
08:25				STEAL by TURNER, BRIANNA
08:21				MISSED LAYUP by MABREY, MARINA
08:21	BLOCK by DICKSON, KAYLEN			
08:21				REBOUND (OFF) by TEAM
08:19	FOUL (PERSONAL) by CONTI, GINA			
08:19		3-0	H 3	GOOD! FT by SHEPARD, JESSICA
08:19		4-0	H 4	GOOD! FT by SHEPARD, JESSICA
08:09	TURNOVER (LOSTBALL) by CONTI, GINA			
08:09				STEAL by MABREY, MARINA
08:04		6-0	H 6	GOOD! LAYUP by MABREY, MARINA [PNT]
08:04				ASSIST by SHEPARD, JESSICA
07:49	TURNOVER (BADPASS) by DICKSON, KAYLEN			
07:49				STEAL by SHEPARD, JESSICA
07:43				TURNOVER (BADPASS) by SHEPARD, JESSICA
07:43	STEAL by DICKSON, KAYLEN			
07:40	MISSED JUMPER by PENNA, ELISA			
07:37				MISSED JUMPER by OGUNBOWALE, ARIKE
07:36				REBOUND (OFF) by SHEPARD, JESSICA
07:35				REBOUND (DEF) by YOUNG, JACKIE
07:35		8-0	H 8	GOOD! LAYUP by SHEPARD, JESSICA
07:35	TIMEOUT 30SEC			
07:35	SUB OUT: RACA, IVANA			
07:35	SUB IN: BRANCH, RAEGYN			
07:29	MISSED 3PTR by PENNA, ELISA			
07:26				REBOUND (DEF) by SHEPARD, JESSICA
07:22				MISSED JUMPER by OGUNBOWALE, ARIKE
07:18				REBOUND (OFF) by MABREY, MARINA
07:13				MISSED 3PTR by MABREY, MARINA
07:09	REBOUND (DEF) by UDOH, ONA			
06:52	TURNOVER (LOSTBALL) by DICKSON, KAYLEN			
06:52				STEAL by SHEPARD, JESSICA
06:45		10-0	H 10	GOOD! LAYUP by TURNER, BRIANNA [FB]
06:45				ASSIST by YOUNG, JACKIE
06:35	TURNOVER (BADPASS) by CONTI, GINA			
06:35				STEAL by SHEPARD, JESSICA
06:31				TURNOVER (BADPASS) by SHEPARD, JESSICA
06:31	STEAL by UDOH, ONA			
06:06	TURNOVER (BADPASS) by DICKSON, KAYLEN			
06:06				STEAL by SHEPARD, JESSICA
06:01				MISSED LAYUP by YOUNG, JACKIE
05:58	REBOUND (DEF) by BRANCH, RAEGYN			
05:51	MISSED JUMPER by CONTI, GINA			
05:48				REBOUND (DEF) by TURNER, BRIANNA
05:42		12-0	H 12	GOOD! LAYUP by MABREY, MARINA
05:42				ASSIST by YOUNG, JACKIE
05:08	MISSED JUMPER by CONTI, GINA			
05:08				BLOCK by YOUNG, JACKIE
05:05				REBOUND (DEF) by TURNER, BRIANNA
05:03		14-0	H 14	GOOD! LAYUP by SHEPARD, JESSICA [FB]
05:03				ASSIST by TURNER, BRIANNA
05:03	FOUL (PERSONAL) by DICKSON, KAYLEN			
05:03				SUB OUT: MABREY, MARINA
05:03				SUB IN: NIXON, JORDAN
05:03	SUB OUT: CONTI, GINA			
05:03	SUB IN: RACA, IVANA			
05:03	SUB OUT: DICKSON, KAYLEN			
05:03	SUB IN: HAHNE, ELLEN			
05:03	SUB OUT: UDOH, ONA			
05:03	SUB IN: BANKS, MAYA			
05:02				MISSED FT by SHEPARD, JESSICA

Time	VISITORS: Wake Forest	Score	Margin	HOME: Notre Dame
05:01	REBOUND (DEF) by BANKS, MAYA			
04:37				SUB OUT: SHEPARD, JESSICA
04:37				SUB IN: VAUGHN, MIKAYLA
04:33	TURNOVER (TRAVEL) by HAHNE, ELLEN			
04:20				MISSED JUMPER by YOUNG, JACKIE
04:17	REBOUND (DEF) by BRANCH, RAEGYN			
03:58	MISSED JUMPER by PENNA, ELISA			
03:56	REBOUND (OFF) by BANKS, MAYA			
03:55	MISSED LAYUP by BANKS, MAYA			
03:55				BLOCK by VAUGHN, MIKAYLA
03:51				REBOUND (DEF) by TURNER, BRIANNA
03:50				MISSED LAYUP by OGUNBOWALE, ARIKE
03:50				REBOUND (OFF) by TURNER, BRIANNA
03:50	FOUL (PERSONAL) by PENNA, ELISA			
03:50		15-0	H 15	GOOD! FT by TURNER, BRIANNA
03:50				SUB OUT: YOUNG, JACKIE
03:50				SUB IN: MABREY, MARINA
03:50		16-0	H 16	GOOD! FT by TURNER, BRIANNA
03:30	MISSED 3PTR by BRANCH, RAEGYN			
03:27				REBOUND (DEF) by TURNER, BRIANNA
03:20	FOUL (PERSONAL) by BANKS, MAYA			
03:20		17-0	H 17	GOOD! FT by VAUGHN, MIKAYLA
03:20	SUB OUT: BRANCH, RAEGYN			
03:20	SUB IN: CONTI, GINA			
03:20		18-0	H 18	GOOD! FT by VAUGHN, MIKAYLA
02:56	MISSED 3PTR by PENNA, ELISA			
02:53				REBOUND (DEF) by TURNER, BRIANNA
02:43				TURNOVER (LOSTBALL) by VAUGHN, MIKAYLA
02:35	TURNOVER (BADPASS) by HAHNE, ELLEN			
02:35				STEAL by TURNER, BRIANNA
02:31				TURNOVER (BADPASS) by TURNER, BRIANNA
02:31	STEAL by HAHNE, ELLEN			
02:13	GOOD! 3PTR by RACA, IVANA	18-3	H 15	
02:13	ASSIST by PENNA, ELISA			
01:56		20-3	H 17	GOOD! LAYUP by VAUGHN, MIKAYLA
01:56				ASSIST by TURNER, BRIANNA
01:24				SUB OUT: TURNER, BRIANNA
01:24				SUB IN: YOUNG, JACKIE
01:24				SUB OUT: OGUNBOWALE, ARIKE
01:24				SUB IN: SHEPARD, JESSICA
01:24	SUB OUT: BANKS, MAYA			
01:24	SUB IN: UDOH, ONA			
01:24	SUB OUT: HAHNE, ELLEN			
01:24	SUB IN: DICKSON, KAYLEN			
01:22	TURNOVER (SHOTCLOCK) by			
01:10				MISSED LAYUP by SHEPARD, JESSICA
01:09				REBOUND (OFF) by YOUNG, JACKIE
01:09		22-3	H 19	GOOD! LAYUP by YOUNG, JACKIE
01:09	FOUL (PERSONAL) by UDOH, ONA			
01:09				SUB OUT: VAUGHN, MIKAYLA
01:09				SUB IN: PATTERSON, DANIELLE
01:09	SUB OUT: RACA, IVANA			
01:09	SUB IN: MORRA, CHRISTINA			
01:09				MISSED FT by YOUNG, JACKIE
01:06	REBOUND (DEF) by MORRA, CHRISTINA			
00:47	GOOD! LAYUP by CONTI, GINA	22-5	H 17	
00:47				FOUL (PERSONAL) by NIXON, JORDAN
00:47	GOOD! FT by CONTI, GINA	22-6	H 16	
00:44				SUB OUT: NIXON, JORDAN
00:44				SUB IN: OGUNBOWALE, ARIKE
00:23				TURNOVER (BADPASS) by OGUNBOWALE, ARIKE
00:23	STEAL by MORRA, CHRISTINA			
00:03	MISSED 3PTR by PENNA, ELISA			
00:00				REBOUND (DEF) by MABREY, MARINA

### Wake Forest 6, Notre Dame 22

Points from (This Period)	WFU	UND
In the Paint	2	16
Off Turns	3	8
2nd Chance	0	8
Fast Break	0	4
Bench	0	4

**Official Box Score**  
**Wake Forest vs Notre Dame**  
**Second Quarter Statistics Only**  
**January 13, 2019 at Joyce Center (Purcell Pavilion) - Notre Dame, IN**



**Wake Forest 9**

No.	Player	S	Pts	FG	3FG	FT	OR	DR	TR	PF	A	TO	Blk	Stl	Min	+/-
05	CONTI, GINA		0	0-3	0-1	0-0	0	0	0	0	2	0	0	0	6	-5
11	RACA, IVANA		4	2-3	0-0	0-0	0	2	2	0	0	0	0	1	7	-4
12	DICKSON, KAYLEN		3	1-2	1-2	0-0	0	0	0	1	0	0	0	0	9	-5
41	PENNA, ELISA		0	0-3	0-1	0-0	0	2	2	0	2	1	0	0	8	-4
44	UDOH, ONA		0	0-1	0-0	0-0	0	0	0	0	0	0	0	0	3	-2
00	BANKS, MAYA		0	0-0	0-0	0-0	0	0	0	0	0	0	0	0	0	0
10	HAHNE, ELLEN		0	0-0	0-0	0-0	0	0	0	0	0	1	0	1	1	0
21	BRANCH, RAEGYN		0	0-1	0-1	0-0	0	1	1	1	0	0	0	0	6	-4
23	MORRA, CHRISTINA		2	1-3	0-0	0-0	0	1	1	0	0	1	3	0	6	-2
50	JAROSINSKI, LINDSEY		0	0-0	0-0	0-0	0	0	0	0	0	0	0	1	4	-4
	TEAM						1	2	3	0		1				
<b>TOTALS</b>			<b>9</b>	<b>4-16</b>	<b>1-5</b>	<b>0-0</b>	<b>1</b>	<b>8</b>	<b>9</b>	<b>2</b>	<b>4</b>	<b>4</b>	<b>3</b>	<b>3</b>	<b>50</b>	

*Shooting By Period*

Period	FG	FG%	3FG	3FG%	FT	FT%
3rd Qtr	5-16	31%	1-3	33%	2-2	100%
4th Qtr	7-17	41%	1-4	25%	5-8	63%
2nd Half	4-16	25%	1-5	20%	0-0	0%
2nd Half	12-33	36%	2-7	29%	7-10	70%
Game	18-63	28.6%	4-19	21.1%	8-11	72.7%

**Notre Dame 15**

No.	Player	S	Pts	FG	3FG	FT	OR	DR	TR	PF	A	TO	Blk	Stl	Min	+/-
03	MABREY, MARINA		5	2-2	1-1	0-0	0	0	0	0	0	0	0	0	6	4
05	YOUNG, JACKIE		0	0-0	0-0	0-0	0	0	0	0	1	0	0	1	8	4
11	TURNER, BRIANNA		2	1-4	0-0	0-0	2	1	3	0	0	0	0	0	7	4
24	OGUNBOWALE, ARIKE		2	0-4	0-1	2-2	0	1	1	0	1	2	0	1	8	4
32	SHEPARD, JESSICA		2	1-2	0-0	0-0	1	3	4	0	2	0	1	0	5	4
00	NIXON, JORDAN		0	0-0	0-0	0-0	0	1	1	0	0	1	0	0	4	2
12	PROHASKA, ABBY		0	0-0	0-0	0-0	0	0	0	0	0	1	0	0	5	4
20	BENZ, NICOLE		0	0-0	0-0	0-0	0	0	0	0	0	0	0	0	0	0
22	COSGROVE, DANIELLE		0	0-0	0-0	0-0	0	0	0	0	0	0	0	0	0	0
30	VAUGHN, MIKAYLA		2	1-2	0-0	0-0	0	1	1	1	0	0	0	0	3	0
33	PATTERSON, DANIELLE		2	1-4	0-0	0-0	1	1	2	0	0	0	1	0	5	4
40	BUTLER, MAUREEN		0	0-0	0-0	0-0	0	0	0	0	0	0	0	0	0	0
	TEAM						0	3	3	0		0				
<b>TOTALS</b>			<b>15</b>	<b>6-18</b>	<b>1-2</b>	<b>2-2</b>	<b>4</b>	<b>11</b>	<b>15</b>	<b>1</b>	<b>4</b>	<b>4</b>	<b>2</b>	<b>2</b>	<b>50</b>	

*Shooting By Period*

Period	FG	FG%	3FG	3FG%	FT	FT%
3rd Qtr	11-19	58%	2-5	40%	1-3	33%
4th Qtr	7-16	44%	2-5	40%	0-2	00%
2nd Half	6-18	33%	1-2	50%	2-2	100%
2nd Half	18-35	51%	4-10	40%	1-5	20%
Game	32-69	46.4%	5-13	38.5%	9-15	60.0%

Game Notes:

Officials: Edward Sidlasky, Pualani Spurlock, Nic Cappel  
Attendance: 8392

Start Time: 2019-01-13 18:01:58  
End Time: 2019-01-13 19:45:46  
Game Duration: 103  
Conference Game;

Score	1st	2nd	3rd	4th	TOT
WFU	6	9	13	20	<b>48</b>
UND	22	15	25	16	<b>78</b>

Points from (This Period)	WFU	UND
In the Paint	2	10
Off Turns	2	4
2nd Chance	2	4
Fast Break	0	6
Bench	2	4

**Official Play-By-Play**  
**Wake Forest vs Notre Dame**  
**Second Quarter**  
**January 13, 2019 at Joyce Center (Purcell Pavilion) - Notre Dame, IN**



**Period 2**

**Starters:**

**Wake Forest:** 5 CONTI,GINA; 11 RACA,IVANA; 12 DICKSON,KAYLEN; 41 PENNA,ELISA; 44 UDOH,ONA;

**Notre Dame:** 3 MABREY,MARINA; 5 YOUNG,JACKIE; 11 TURNER,BRIANNA; 24 OGUNBOWALE,ARIKE; 32 SHEPARD,JESSICA;

Time	VISITORS: Wake Forest	Score	Margin	HOME: Notre Dame
09:47				MISSED 3PTR by OGUNBOWALE, ARIKE
09:45	REBOUND (DEF) by TEAM			
09:39	GOOD! 3PTR by DICKSON, KAYLEN	22-9	H 13	
09:39	ASSIST by CONTI, GINA			
09:22				MISSED JUMPER by PATTERSON, DANIELLE
09:20	REBOUND (DEF) by PENNA, ELISA			
09:11	MISSED JUMPER by CONTI, GINA			
09:08				REBOUND (DEF) by SHEPARD, JESSICA
08:57		24-9	H 15	GOOD! LAYUP by PATTERSON, DANIELLE
08:57				ASSIST by SHEPARD, JESSICA
08:43	MISSED JUMPER by MORRA, CHRISTINA			
08:40				REBOUND (DEF) by SHEPARD, JESSICA
08:32				MISSED JUMPER by PATTERSON, DANIELLE
08:30				REBOUND (OFF) by PATTERSON, DANIELLE
08:30				MISSED JUMPER by PATTERSON, DANIELLE
08:27				REBOUND (OFF) by SHEPARD, JESSICA
08:27		26-9	H 17	GOOD! LAYUP by SHEPARD, JESSICA
07:56	GOOD! LAYUP by MORRA, CHRISTINA	26-11	H 15	
07:56	ASSIST by PENNA, ELISA			
07:38		29-11	H 18	GOOD! 3PTR by MABREY, MARINA
07:38				ASSIST by YOUNG, JACKIE
07:16	MISSED JUMPER by UDOH, ONA			
07:16				BLOCK by PATTERSON, DANIELLE
07:16	REBOUND (OFF) by TEAM			
07:16				SUB OUT: PATTERSON, DANIELLE
07:16				SUB IN: TURNER, BRIANNA
07:16				SUB OUT: OGUNBOWALE, ARIKE
07:16				SUB IN: PROHASKA, ABBY
07:16	SUB OUT: UDOH, ONA			
07:16	SUB IN: RACA, IVANA			
07:11	GOOD! JUMPER by RACA, IVANA	29-13	H 16	
07:11	ASSIST by CONTI, GINA			
07:03				TURNOVER (LOSTBALL) by PROHASKA, ABBY
07:03	STEAL by RACA, IVANA			
06:48	TURNOVER (LOSTBALL) by PENNA, ELISA			
06:42				MISSED LAYUP by TURNER, BRIANNA
06:42	BLOCK by MORRA, CHRISTINA			
06:39				REBOUND (OFF) by TURNER, BRIANNA
06:38		31-13	H 18	GOOD! LAYUP by TURNER, BRIANNA
06:20	MISSED LAYUP by MORRA, CHRISTINA			
06:20				BLOCK by SHEPARD, JESSICA
06:19				REBOUND (DEF) by TEAM
06:19	SUB OUT: MORRA, CHRISTINA			
06:19	SUB IN: BRANCH, RAEGYN			
06:19	SUB OUT: PENNA, ELISA			
06:19	SUB IN: JAROSINSKI, LINDSEY			
06:07				MISSED JUMPER by SHEPARD, JESSICA
06:05	REBOUND (DEF) by RACA, IVANA			
05:40	MISSED 3PTR by CONTI, GINA			
05:37				REBOUND (DEF) by SHEPARD, JESSICA
05:33		33-13	H 20	GOOD! LAYUP by MABREY, MARINA [FB]
05:33				ASSIST by SHEPARD, JESSICA
04:55	TURNOVER (SHOTCLOCK) by			
04:54				SUB OUT: SHEPARD, JESSICA
04:54				SUB IN: VAUGHN, MIKAYLA
04:54				SUB OUT: YOUNG, JACKIE
04:54				SUB IN: OGUNBOWALE, ARIKE
04:54	SUB OUT: CONTI, GINA			
04:54	SUB IN: HAHNE, ELLEN			
04:45				TURNOVER (TRAVEL) by OGUNBOWALE, ARIKE
04:20	MISSED 3PTR by DICKSON, KAYLEN			
04:17				REBOUND (DEF) by OGUNBOWALE, ARIKE
04:12				MISSED JUMPER by OGUNBOWALE, ARIKE
04:09	REBOUND (DEF) by BRANCH, RAEGYN			
04:00	TURNOVER (LOSTBALL) by HAHNE, ELLEN			
04:00				STEAL by OGUNBOWALE, ARIKE
03:57				TURNOVER (BADPASS) by OGUNBOWALE, ARIKE
03:57	STEAL by HAHNE, ELLEN			
03:57	MISSED 3PTR by BRANCH, RAEGYN			



Time	VISITORS: Wake Forest	Score	Margin	HOME: Notre Dame
03:57				REBOUND (DEF) by TEAM
03:57				SUB OUT: MABREY, MARINA
03:57				SUB IN: NIXON, JORDAN
03:57	SUB OUT: HAHNE, ELLEN			
03:57	SUB IN: PENNA, ELISA			
03:36				MISSED JUMPER by OGUNBOWALE, ARIKE
03:33				REBOUND (OFF) by TURNER, BRIANNA
03:32				MISSED LAYUP by TURNER, BRIANNA
03:29	REBOUND (DEF) by PENNA, ELISA			
03:16	MISSED JUMPER by RACA, IVANA			
03:13				REBOUND (DEF) by TURNER, BRIANNA
03:08		35-13	H 22	GOOD! LAYUP by VAUGHN, MIKAYLA [FB/PNT]
03:08				ASSIST by OGUNBOWALE, ARIKE
02:52	MISSED JUMPER by PENNA, ELISA			
02:48				REBOUND (DEF) by VAUGHN, MIKAYLA
02:37				TURNOVER (BADPASS) by NIXON, JORDAN
02:37	STEAL by JAROSINSKI, LINDSEY			
02:36				FOUL (PERSONAL) by VAUGHN, MIKAYLA
02:36				SUB OUT: PROHASKA, ABBY
02:36				SUB IN: YOUNG, JACKIE
02:10	SUB OUT: JAROSINSKI, LINDSEY			
02:10	SUB IN: MORRA, CHRISTINA			
02:07	GOOD! JUMPER by RACA, IVANA	35-15	H 20	
02:07	ASSIST by PENNA, ELISA			
01:52				MISSED LAYUP by VAUGHN, MIKAYLA
01:52	REBOUND (DEF) by TEAM			
01:52	BLOCK by MORRA, CHRISTINA			
01:50				SUB OUT: VAUGHN, MIKAYLA
01:50				SUB IN: PATTERSON, DANIELLE
01:25	MISSED 3PTR by PENNA, ELISA			
01:21				REBOUND (DEF) by PATTERSON, DANIELLE
01:12				MISSED LAYUP by TURNER, BRIANNA
01:12	BLOCK by MORRA, CHRISTINA			
01:07	REBOUND (DEF) by RACA, IVANA			
01:00	TURNOVER (LOSTBALL) by MORRA, CHRISTINA			
01:00				STEAL by YOUNG, JACKIE
00:55	FOUL (PERSONAL) by DICKSON, KAYLEN			
00:54		36-15	H 21	GOOD! FT by OGUNBOWALE, ARIKE [FB]
00:54	SUB OUT: DICKSON, KAYLEN			
00:54	SUB IN: CONTI, GINA			
00:54		37-15	H 22	GOOD! FT by OGUNBOWALE, ARIKE [FB]
00:44	MISSED JUMPER by PENNA, ELISA			
00:43				REBOUND (DEF) by NIXON, JORDAN
00:43	FOUL (PERSONAL) by BRANCH, RAEGYN			
00:20				MISSED JUMPER by OGUNBOWALE, ARIKE
00:18	REBOUND (DEF) by MORRA, CHRISTINA			
00:00	MISSED JUMPER by CONTI, GINA			
00:00				REBOUND (DEF) by TEAM

### Wake Forest 15, Notre Dame 37

Points from (This Period)	WFU	UND
In the Paint	2	10
Off Turns	2	4
2nd Chance	2	4
Fast Break	0	6
Bench	2	4

**Official Box Score**  
**Wake Forest vs Notre Dame**  
**Second Half Statistics Only**  
**January 13, 2019 at Joyce Center (Purcell Pavilion) - Notre Dame, IN**



**Wake Forest 33**

No.	Player	S	Pts	FG	3FG	FT	OR	DR	TR	PF	A	TO	Blk	Stl	Min	+/-
00	BANKS, MAYA		0	0-0	0-0	0-0	0	1	1	1	0	0	0	0	4	-11
05	CONTI, GINA		3	1-2	0-0	1-2	1	0	1	0	4	0	0	0	13	-8
10	HAHNE, ELLEN		0	0-0	0-0	0-0	0	1	1	0	1	2	0	0	7	0
11	RACA, IVANA		5	1-7	1-3	2-2	0	0	0	1	1	0	1	2	17	-11
12	DICKSON, KAYLEN		3	1-5	1-3	0-0	0	1	1	2	1	1	0	0	13	-6
21	BRANCH, RAEGYN		2	1-4	0-0	0-0	0	0	0	0	0	0	0	1	8	-2
23	MORRA, CHRISTINA		11	5-7	0-0	1-1	3	4	7	0	0	0	0	0	13	10
41	PENNA, ELISA		5	1-4	0-1	3-4	0	2	2	0	0	0	0	1	14	-12
44	UDOH, ONA		2	1-3	0-0	0-0	2	0	2	0	0	0	0	0	3	-7
50	JAROSINSKI, LINDSEY		2	1-1	0-0	0-1	0	1	1	0	1	0	0	0	9	7
	TEAM		0	0-0	0-0	0-0	1	0	1	0	0	1	0	0	0	
	<b>TOTALS</b>		<b>33</b>	<b>12-33</b>	<b>2-7</b>	<b>7-10</b>	<b>7</b>	<b>10</b>	<b>17</b>	<b>4</b>	<b>8</b>	<b>4</b>	<b>1</b>	<b>4</b>	<b>100</b>	

*Shooting By Period*

Period	FG	FG%	3FG	3FG%	FT	FT%
3rd Qtr	5-16	31%	1-3	33%	2-2	100%
4th Qtr	7-17	41%	1-4	25%	5-8	63%
2nd Half	12-33	36%	2-7	29%	7-10	70%
Game	18-63	28.6%	4-19	21.1%	8-11	72.7%

Last FG Half: WFU 4th-01:25

**Notre Dame 41**

No.	Player	S	Pts	FG	3FG	FT	OR	DR	TR	PF	A	TO	Blk	Stl	Min	+/-
00	NIXON, JORDAN		2	1-4	0-1	0-0	0	0	0	0	0	3	0	1	12	-3
03	MABREY, MARINA		9	3-5	3-5	0-0	1	4	5	1	3	2	1	0	12	16
05	YOUNG, JACKIE		2	1-2	0-0	0-2	2	1	3	1	2	0	0	0	8	10
11	TURNER, BRIANNA		8	4-4	0-0	0-1	1	2	3	0	0	0	0	0	7	17
12	PROHASKA, ABBY		0	0-1	0-0	0-0	2	1	3	1	2	1	0	0	12	-11
20	BENZ, NICOLE		0	0-1	0-0	0-0	0	1	1	0	0	0	0	0	3	0
22	COSGROVE, DANIELLE		5	2-3	1-2	0-0	0	2	2	0	0	0	0	0	5	-2
24	OGUNBOWALE, ARIKE		2	1-4	0-2	0-0	0	0	0	0	4	0	0	0	12	12
30	VAUGHN, MIKAYLA		3	1-2	0-0	1-2	1	1	2	2	0	1	3	1	11	-7
32	SHEPARD, JESSICA		6	3-3	0-0	0-0	0	0	0	1	2	0	0	0	6	15
33	PATTERSON, DANIELLE		4	2-6	0-0	0-0	2	1	3	2	0	1	0	0	8	-7
40	BUTLER, MAUREEN		0	0-0	0-0	0-0	0	1	1	0	0	0	0	0	3	0
	TEAM		0	0-0	0-0	0-0	1	1	2	0	0	0	0	0	0	
	<b>TOTALS</b>		<b>41</b>	<b>18-35</b>	<b>4-10</b>	<b>1-5</b>	<b>10</b>	<b>15</b>	<b>25</b>	<b>8</b>	<b>13</b>	<b>8</b>	<b>4</b>	<b>2</b>	<b>100</b>	

*Shooting By Period*

Period	FG	FG%	3FG	3FG%	FT	FT%
3rd Qtr	11-19	58%	2-5	40%	1-3	33%
4th Qtr	7-16	44%	2-5	40%	0-2	00%
2nd Half	18-35	51%	4-10	40%	1-5	20%
Game	32-69	46.4%	5-13	38.5%	9-15	60.0%

Last FG Half: UND 4th-01:09

Game Notes:

Officials: Edward Sidlasky, Pualani Spurlock, Nic Cappel  
 Attendance: 8392

Start Time: 2019-01-13 18:01:58  
 End Time: 2019-01-13 19:45:46  
 Game Duration: 103  
 Conference Game;

Score	1st	2nd	3rd	4th	TOT
WFU	6	9	13	20	<b>48</b>
UND	22	15	25	16	<b>78</b>

Points from (This Period)	WFU	UND
In the Paint	18	26
Off Turns	8	6
2nd Chance	8	7
Fast Break	4	2
Bench	15	14

**Official Box Score**  
**Wake Forest vs Notre Dame**  
**Third Quarter Statistics Only**  
**January 13, 2019 at Joyce Center (Purcell Pavilion) - Notre Dame, IN**



**Wake Forest 33**

No.	Player	S	Pts	FG	3FG	FT	OR	DR	TR	PF	A	TO	Blk	Stl	Min	+/-
05	CONTI, GINA		0	0-1	0-0	0-0	0	0	0	0	1	0	0	0	5	-12
11	RACA, IVANA		2	0-4	0-1	2-2	0	0	0	0	1	0	0	2	10	-12
12	DICKSON, KAYLEN		3	1-2	1-1	0-0	0	0	0	2	0	1	0	0	4	-11
41	PENNA, ELISA		2	1-3	0-1	0-0	0	1	1	0	0	0	0	1	10	-12
44	UDOH, ONA		2	1-3	0-0	0-0	2	0	2	0	0	0	0	0	3	-7
00	BANKS, MAYA		0	0-0	0-0	0-0	0	1	1	1	0	0	0	0	4	-11
10	HAHNE, ELLEN		0	0-0	0-0	0-0	0	1	1	0	1	2	0	0	5	0
21	BRANCH, RAEGYN		2	1-2	0-0	0-0	0	0	0	0	0	0	0	1	6	-1
23	MORRA, CHRISTINA		2	1-1	0-0	0-0	0	0	0	0	0	0	0	0	3	6
50	JAROSINSKI, LINDSEY		0	0-0	0-0	0-0	0	0	0	0	0	0	0	0	0	0
<b>TEAM</b>							1	0	1	0		1				
<b>TOTALS</b>		<b>13</b>	<b>5-16</b>	<b>1-3</b>	<b>2-2</b>	<b>3</b>	<b>3</b>	<b>6</b>	<b>3</b>	<b>3</b>	<b>4</b>	<b>0</b>	<b>4</b>	<b>50</b>		

*Shooting By Period*

Period	FG	FG%	3FG	3FG%	FT	FT%
2nd Half	0-0	0%	0-0	0%	0-0	0%
Game	18-63	28.6%	4-19	21.1%	8-11	72.7%

**Notre Dame 41**

No.	Player	S	Pts	FG	3FG	FT	OR	DR	TR	PF	A	TO	Blk	Stl	Min	+/-
03	MABREY, MARINA		6	2-3	2-3	0-0	1	2	3	0	3	1	1	0	8	17
05	YOUNG, JACKIE		2	1-2	0-0	0-0	1	1	2	0	1	0	0	0	4	11
11	TURNER, BRIANNA		8	4-4	0-0	0-1	1	2	3	0	0	0	0	0	7	17
24	OGUNBOWALE, ARIKE		0	0-1	0-1	0-0	0	0	0	0	2	0	0	0	8	12
32	SHEPARD, JESSICA		6	3-3	0-0	0-0	0	0	0	1	2	0	0	0	6	15
00	NIXON, JORDAN		0	0-1	0-1	0-0	0	0	0	0	0	3	0	1	6	1
12	PROHASKA, ABBY		0	0-1	0-0	0-0	1	1	2	1	0	0	0	0	3	-5
20	BENZ, NICOLE		0	0-0	0-0	0-0	0	0	0	0	0	0	0	0	0	0
22	COSGROVE, DANIELLE		0	0-0	0-0	0-0	0	0	0	0	0	0	0	0	0	0
30	VAUGHN, MIKAYLA		1	0-1	0-0	1-2	1	0	1	1	0	1	1	1	4	-3
33	PATTERSON, DANIELLE		2	1-3	0-0	0-0	2	0	2	0	0	0	0	0	3	-5
40	BUTLER, MAUREEN		0	0-0	0-0	0-0	0	0	0	0	0	0	0	0	0	0
<b>TEAM</b>							0	1	1	0		0				
<b>TOTALS</b>		<b>25</b>	<b>11-19</b>	<b>2-5</b>	<b>1-3</b>	<b>7</b>	<b>7</b>	<b>14</b>	<b>3</b>	<b>8</b>	<b>5</b>	<b>2</b>	<b>2</b>	<b>50</b>		

*Shooting By Period*

Period	FG	FG%	3FG	3FG%	FT	FT%
2nd Half	0-0	0%	0-0	0%	0-0	0%
Game	32-69	46.4%	5-13	38.5%	9-15	60.0%

Game Notes:

Officials: Edward Sidlasky, Pualani Spurlock, Nic Cappel  
 Attendance: 8392

Start Time: 2019-01-13 18:01:58  
 End Time: 2019-01-13 19:45:46  
 Game Duration: 103  
 Conference Game;

Score	1st	2nd	3rd	4th	TOT
WFU	6	9	13	20	<b>48</b>
UND	22	15	25	16	<b>78</b>

Points from (This Period)	WFU	UND
In the Paint	8	18
Off Turns	4	6
2nd Chance	2	7
Fast Break	2	2
Bench	4	3

**Official By-By-Play**  
**Wake Forest vs Notre Dame**  
**Third Quarter**  
**January 13, 2019 at Joyce Center (Purcell Pavilion) - Notre Dame, IN**



**Period 3**

**Starters:**

**Wake Forest:** 5 CONTI,GINA; 11 RACA,IVANA; 12 DICKSON,KAYLEN; 41 PENNA,ELISA; 44 UDOH,ONA;

**Notre Dame:** 3 MABREY,MARINA; 5 YOUNG,JACKIE; 11 TURNER,BRIANNA; 24 OGUNBOWALE,ARIKE; 32 SHEPARD,JESSICA;

Time	VISITORS: Wake Forest	Score	Margin	HOME: Notre Dame
09:40		39-15	H 24	GOOD! LAYUP by SHEPARD, JESSICA
09:40				ASSIST by MABREY, MARINA
09:15	TURNOVER (TRAVEL) by DICKSON, KAYLEN			
08:56		42-15	H 27	GOOD! 3PTR by MABREY, MARINA
08:56				ASSIST by SHEPARD, JESSICA
08:38	MISSED JUMPER by DICKSON, KAYLEN			
08:35				REBOUND (DEF) by YOUNG, JACKIE
08:28				MISSED 3PTR by MABREY, MARINA
08:25				REBOUND (OFF) by MABREY, MARINA
08:24				TURNOVER (TRAVEL) by MABREY, MARINA
08:07	MISSED LAYUP by UDOH, ONA			
08:04				REBOUND (DEF) by TURNER, BRIANNA
08:00		44-15	H 29	GOOD! JUMPER by YOUNG, JACKIE [PNT]
07:28	MISSED JUMPER by RACA, IVANA			
07:26	REBOUND (OFF) by UDOH, ONA			
07:25	GOOD! JUMPER by UDOH, ONA [PNT]	44-17	H 27	
07:14		46-17	H 29	GOOD! LAYUP by SHEPARD, JESSICA
07:14				ASSIST by OGUNBOWALE, ARIKE
06:57	MISSED JUMPER by RACA, IVANA			
06:54	REBOUND (OFF) by UDOH, ONA			
06:54	MISSED LAYUP by UDOH, ONA			
06:52				REBOUND (DEF) by TURNER, BRIANNA
06:47				MISSED LAYUP by YOUNG, JACKIE
06:45				REBOUND (OFF) by YOUNG, JACKIE
06:45	FOUL (PERSONAL) by DICKSON, KAYLEN			
06:45	SUB OUT: UDOH, ONA			
06:45	SUB IN: BANKS, MAYA			
06:36		49-17	H 32	GOOD! 3PTR by MABREY, MARINA
06:36				ASSIST by YOUNG, JACKIE
06:09	GOOD! 3PTR by DICKSON, KAYLEN	49-20	H 29	
06:09	ASSIST by CONTI, GINA			
05:57		51-20	H 31	GOOD! JUMPER by SHEPARD, JESSICA [PNT]
05:57				ASSIST by MABREY, MARINA
05:41	MISSED JUMPER by CONTI, GINA			
05:41				BLOCK by MABREY, MARINA
05:37				REBOUND (DEF) by MABREY, MARINA
05:35		53-20	H 33	GOOD! DUNK by TURNER, BRIANNA [FB/PNT]
05:35				ASSIST by OGUNBOWALE, ARIKE
05:35	FOUL (PERSONAL) by DICKSON, KAYLEN			
05:35				SUB OUT: YOUNG, JACKIE
05:35				SUB IN: NIXON, JORDAN
05:35	SUB OUT: DICKSON, KAYLEN			
05:35	SUB IN: HAHNE, ELLEN			
05:35	SUB OUT: CONTI, GINA			
05:35	SUB IN: BRANCH, RAEGYN			
05:34				MISSED FT by TURNER, BRIANNA
05:33	REBOUND (DEF) by BANKS, MAYA			
05:18	MISSED 3PTR by RACA, IVANA			
05:17				REBOUND (DEF) by TEAM
05:11		55-20	H 35	GOOD! LAYUP by TURNER, BRIANNA [PNT]
05:11				ASSIST by SHEPARD, JESSICA
04:49	MISSED JUMPER by PENNA, ELISA			
04:46				REBOUND (DEF) by MABREY, MARINA
04:42		57-20	H 37	GOOD! LAYUP by TURNER, BRIANNA [PNT]
04:42				ASSIST by MABREY, MARINA
04:16				FOUL (PERSONAL) by SHEPARD, JESSICA
04:16				
04:16				SUB OUT: SHEPARD, JESSICA
04:16				SUB IN: VAUGHN, MIKAYLA
04:16	TURNOVER (5SEC) by			
03:58				MISSED 3PTR by NIXON, JORDAN
03:53				REBOUND (OFF) by TURNER, BRIANNA
03:53		59-20	H 39	GOOD! LAYUP by TURNER, BRIANNA
03:28	MISSED LAYUP by BRANCH, RAEGYN			
03:28				BLOCK by VAUGHN, MIKAYLA
03:28	REBOUND (OFF) by TEAM			
03:28				SUB OUT: TURNER, BRIANNA
03:28				SUB IN: PATTERSON, DANIELLE
03:28				SUB OUT: MABREY, MARINA
03:28				SUB IN: PROHASKA, ABBY

Time	VISITORS: Wake Forest	Score	Margin	HOME: Notre Dame
03:25	TURNOVER (BADPASS) by HAHNE, ELLEN			
03:25				STEAL by VAUGHN, MIKAYLA
02:57	FOUL (PERSONAL) by BANKS, MAYA			
02:57		60-20	H 40	GOOD! FT by VAUGHN, MIKAYLA
02:57	SUB OUT: BANKS, MAYA			
02:57	SUB IN: MORRA, CHRISTINA			
02:57				MISSED FT by VAUGHN, MIKAYLA
02:56	REBOUND (DEF) by PENNA, ELISA			
02:32	GOOD! LAYUP by BRANCH, RAEGYN [PNT]	60-22	H 38	
02:32	ASSIST by RACA, IVANA			
02:24				TURNOVER (LOSTBALL) by NIXON, JORDAN
02:24	STEAL by RACA, IVANA			
02:20	GOOD! LAYUP by PENNA, ELISA [FB/PNT]	60-24	H 36	
02:02				MISSED 3PTR by OGUNBOWALE, ARIKE
01:57	REBOUND (DEF) by HAHNE, ELLEN			
01:51				FOUL (PERSONAL) by VAUGHN, MIKAYLA
01:49	GOOD! LAYUP by MORRA, CHRISTINA	60-26	H 34	
01:49	ASSIST by HAHNE, ELLEN			
01:31				TURNOVER (LOSTBALL) by VAUGHN, MIKAYLA
01:31	STEAL by PENNA, ELISA			
01:31				SUB OUT: OGUNBOWALE, ARIKE
01:31				SUB IN: MABREY, MARINA
01:21	TURNOVER (LOSTBALL) by HAHNE, ELLEN			
01:21				STEAL by NIXON, JORDAN
01:16				TURNOVER (BADPASS) by NIXON, JORDAN
01:16	STEAL by RACA, IVANA			
01:07	MISSED 3PTR by PENNA, ELISA			
01:03				REBOUND (DEF) by PROHASKA, ABBY
00:56				TURNOVER (BADPASS) by NIXON, JORDAN
00:56	STEAL by BRANCH, RAEGYN			
00:37				FOUL (PERSONAL) by PROHASKA, ABBY
00:37	GOOD! FT by RACA, IVANA	60-27	H 33	
00:37	SUB OUT: HAHNE, ELLEN			
00:37	SUB IN: CONTI, GINA			
00:37	GOOD! FT by RACA, IVANA	60-28	H 32	
00:27				MISSED JUMPER by PATTERSON, DANIELLE
00:25				REBOUND (OFF) by PROHASKA, ABBY
00:23				MISSED LAYUP by PROHASKA, ABBY
00:21				REBOUND (OFF) by VAUGHN, MIKAYLA
00:20				MISSED LAYUP by VAUGHN, MIKAYLA
00:18				REBOUND (OFF) by PATTERSON, DANIELLE
00:17				MISSED LAYUP by PATTERSON, DANIELLE
00:15				REBOUND (OFF) by PATTERSON, DANIELLE
00:14		62-28	H 34	GOOD! LAYUP by PATTERSON, DANIELLE
00:00	MISSED JUMPER by RACA, IVANA			
00:00	REBOUND (OFF) by TEAM			

### Wake Forest 28, Notre Dame 62

Points from (This Period)	WFU	UND
In the Paint	8	18
Off Turns	4	6
2nd Chance	2	7
Fast Break	2	2
Bench	4	3

**Official Box Score**  
**Wake Forest vs Notre Dame**  
**Fourth Quarter Statistics Only**  
**January 13, 2019 at Joyce Center (Purcell Pavilion) - Notre Dame, IN**



**Wake Forest 20**

No.	Player	S	Pts	FG	3FG	FT	OR	DR	TR	PF	A	TO	Blk	Stl	Min	+/-
05	CONTI, GINA		3	1-1	0-0	1-2	1	0	1	0	3	0	0	0	8	4
11	RACA, IVANA		3	1-3	1-2	0-0	0	0	0	1	0	0	1	0	7	1
12	DICKSON, KAYLEN		0	0-3	0-2	0-0	0	1	1	0	1	0	0	0	9	5
41	PENNA, ELISA		3	0-1	0-0	3-4	0	1	1	0	0	0	0	0	4	0
44	UDOH, ONA		0	0-0	0-0	0-0	0	0	0	0	0	0	0	0	0	0
00	BANKS, MAYA		0	0-0	0-0	0-0	0	0	0	0	0	0	0	0	0	0
10	HAHNE, ELLEN		0	0-0	0-0	0-0	0	0	0	0	0	0	0	0	2	0
21	BRANCH, RAEGYN		0	0-2	0-0	0-0	0	0	0	0	0	0	0	0	2	-1
23	MORRA, CHRISTINA		9	4-6	0-0	1-1	3	4	7	0	0	0	0	0	10	4
50	JAROSINSKI, LINDSEY		2	1-1	0-0	0-1	0	1	1	0	1	0	0	0	9	7
	TEAM						0	0	0	0		0				
<b>TOTALS</b>			<b>20</b>	<b>7-17</b>	<b>1-4</b>	<b>5-8</b>	<b>4</b>	<b>7</b>	<b>11</b>	<b>1</b>	<b>5</b>	<b>0</b>	<b>1</b>	<b>0</b>	<b>50</b>	

*Shooting By Period*

Period	FG	FG%	3FG	3FG%	FT	FT%
Game	18-63	28.6%	4-19	21.1%	8-11	72.7%

**Notre Dame 16**

No.	Player	S	Pts	FG	3FG	FT	OR	DR	TR	PF	A	TO	Blk	Stl	Min	+/-
03	MABREY, MARINA		3	1-2	1-2	0-0	0	2	2	1	0	1	0	0	4	-1
05	YOUNG, JACKIE		0	0-0	0-0	0-2	1	0	1	1	1	0	0	0	4	-1
11	TURNER, BRIANNA		0	0-0	0-0	0-0	0	0	0	0	0	0	0	0	0	0
24	OGUNBOWALE, ARIKE		2	1-3	0-1	0-0	0	0	0	0	2	0	0	0	4	0
32	SHEPARD, JESSICA		0	0-0	0-0	0-0	0	0	0	0	0	0	0	0	0	0
00	NIXON, JORDAN		2	1-3	0-0	0-0	0	0	0	0	0	0	0	0	6	-4
12	PROHASKA, ABBY		0	0-0	0-0	0-0	1	0	1	0	2	1	0	0	9	-6
20	BENZ, NICOLE		0	0-1	0-0	0-0	0	1	1	0	0	0	0	0	3	0
22	COSGROVE, DANIELLE		5	2-3	1-2	0-0	0	2	2	0	0	0	0	0	5	-2
30	VAUGHN, MIKAYLA		2	1-1	0-0	0-0	0	1	1	1	0	0	2	0	7	-4
33	PATTERSON, DANIELLE		2	1-3	0-0	0-0	0	1	1	2	0	1	0	0	5	-2
40	BUTLER, MAUREEN		0	0-0	0-0	0-0	0	1	1	0	0	0	0	0	3	0
	TEAM						1	0	1	0		0				
<b>TOTALS</b>			<b>16</b>	<b>7-16</b>	<b>2-5</b>	<b>0-2</b>	<b>3</b>	<b>8</b>	<b>11</b>	<b>5</b>	<b>5</b>	<b>3</b>	<b>2</b>	<b>0</b>	<b>50</b>	

*Shooting By Period*

Period	FG	FG%	3FG	3FG%	FT	FT%
Game	32-69	46.4%	5-13	38.5%	9-15	60.0%

Game Notes:

Officials: Edward Sidlasky, Pualani Spurlock, Nic Cappel  
 Attendance: 8392

Start Time: 2019-01-13 18:01:58  
 End Time: 2019-01-13 19:45:46  
 Game Duration: 103  
 Conference Game;

Score	1st	2nd	3rd	4th	TOT
WFU	6	9	13	20	<b>48</b>
UND	22	15	25	16	<b>78</b>

Points from (This Period)	WFU	UND
In the Paint	10	8
Off Turns	4	0
2nd Chance	6	0
Fast Break	2	0
Bench	11	11

**Official Play-By-Play**  
**Wake Forest vs Notre Dame**  
**Fourth Quarter**  
**January 13, 2019 at Joyce Center (Purcell Pavilion) - Notre Dame, IN**



**Period 4**

**Starters:**

**Wake Forest:** 5 CONTI,GINA; 11 RACA,IVANA; 12 DICKSON,KAYLEN; 41 PENNA,ELISA; 44 UDOH,ONA;

**Notre Dame:** 3 MABREY,MARINA; 5 YOUNG,JACKIE; 11 TURNER,BRIANNA; 24 OGUNBOWALE,ARIKE; 32 SHEPARD,JESSICA;

Time	VISITORS: Wake Forest	Score	Margin	HOME: Notre Dame
09:51		65-28	H 37	GOOD! 3PTR by MABREY, MARINA
09:51				ASSIST by OGUNBOWALE, ARIKE
09:28	MISSED JUMPER by BRANCH, RAEGYN			
09:28				BLOCK by VAUGHN, MIKAYLA
09:25				REBOUND (DEF) by MABREY, MARINA
09:22				MISSED LAYUP by OGUNBOWALE, ARIKE
09:22	BLOCK by RACA, IVANA			
09:22				REBOUND (OFF) by TEAM
09:05				MISSED JUMPER by PATTERSON, DANIELLE
09:02				REBOUND (OFF) by YOUNG, JACKIE
09:02	FOUL (PERSONAL) by RACA, IVANA			
09:02				MISSED FT by YOUNG, JACKIE
09:02				REBOUND (OFF) by TEAM
09:02	SUB OUT: RACA, IVANA			
09:02	SUB IN: JAROSINSKI, LINDSEY			
09:02				MISSED FT by YOUNG, JACKIE
08:59	REBOUND (DEF) by MORRA, CHRISTINA			
08:55				FOUL (PERSONAL) by MABREY, MARINA
08:55	GOOD! FT by PENNA, ELISA [FB]	65-29	H 36	
08:55				SUB OUT: YOUNG, JACKIE
08:55				SUB IN: PROHASKA, ABBY
08:55	GOOD! FT by PENNA, ELISA [FB]	65-30	H 35	
08:49				TURNOVER (BADPASS) by MABREY, MARINA
08:34				FOUL (PERSONAL) by PATTERSON, DANIELLE
08:34	MISSED FT by PENNA, ELISA			
08:34	REBOUND (OFF) by TEAM			
08:34	SUB OUT: BRANCH, RAEGYN			
08:34	SUB IN: DICKSON, KAYLEN			
08:34	GOOD! FT by PENNA, ELISA	65-31	H 34	
08:09				MISSED 3PTR by MABREY, MARINA
08:06	REBOUND (DEF) by PENNA, ELISA			
07:53	MISSED 3PTR by DICKSON, KAYLEN			
07:49				REBOUND (DEF) by MABREY, MARINA
07:44				MISSED 3PTR by OGUNBOWALE, ARIKE
07:40	REBOUND (DEF) by JAROSINSKI, LINDSEY			
07:29	GOOD! LAYUP by MORRA, CHRISTINA	65-33	H 32	
07:29	ASSIST by CONTI, GINA			
07:12		67-33	H 34	GOOD! JUMPER by OGUNBOWALE, ARIKE
06:45	MISSED JUMPER by PENNA, ELISA			
06:42				REBOUND (DEF) by VAUGHN, MIKAYLA
06:35		69-33	H 36	GOOD! JUMPER by PATTERSON, DANIELLE [PNT]
06:35				ASSIST by OGUNBOWALE, ARIKE
06:26	GOOD! LAYUP by MORRA, CHRISTINA	69-35	H 34	
06:26	ASSIST by CONTI, GINA			
06:26				FOUL (PERSONAL) by PATTERSON, DANIELLE
06:26				SUB OUT: OGUNBOWALE, ARIKE
06:26				SUB IN: NIXON, JORDAN
06:26	SUB OUT: PENNA, ELISA			
06:26	SUB IN: RACA, IVANA			
06:26	GOOD! FT by MORRA, CHRISTINA	69-36	H 33	
06:05				MISSED JUMPER by PATTERSON, DANIELLE
06:03	REBOUND (DEF) by DICKSON, KAYLEN			
05:46	MISSED 3PTR by DICKSON, KAYLEN			
05:44				REBOUND (DEF) by PATTERSON, DANIELLE
05:42				TURNOVER (LOSTBALL) by PATTERSON, DANIELLE
05:42				SUB OUT: MABREY, MARINA
05:42				SUB IN: YOUNG, JACKIE
05:32	MISSED JUMPER by DICKSON, KAYLEN			
05:29	REBOUND (OFF) by MORRA, CHRISTINA			
05:28	MISSED LAYUP by MORRA, CHRISTINA			
05:28				BLOCK by VAUGHN, MIKAYLA
05:26	REBOUND (OFF) by CONTI, GINA			
05:26				FOUL (PERSONAL) by YOUNG, JACKIE
05:26	GOOD! FT by CONTI, GINA	69-37	H 32	
05:26				SUB OUT: PATTERSON, DANIELLE
05:26				SUB IN: COSGROVE, DANIELLE
05:26	MISSED FT by CONTI, GINA			
05:24	REBOUND (OFF) by MORRA, CHRISTINA			
05:07	GOOD! 3PTR by RACA, IVANA	69-40	H 29	
05:07	ASSIST by JAROSINSKI, LINDSEY			

Time	VISITORS: Wake Forest	Score	Margin	HOME: Notre Dame
04:34		71-40	H 31	GOOD! JUMPER by COSGROVE, DANIELLE [PNT]
04:34				ASSIST by PROHASKA, ABBY
04:12	GOOD! JUMPER by MORRA, CHRISTINA [PNT]	71-42	H 29	
04:12	ASSIST by CONTI, GINA			
03:49		73-42	H 31	GOOD! LAYUP by VAUGHN, MIKAYLA
03:49				ASSIST by YOUNG, JACKIE
03:21	GOOD! JUMPER by CONTI, GINA	73-44	H 29	
03:07		76-44	H 32	GOOD! 3PTR by COSGROVE, DANIELLE
03:07				ASSIST by PROHASKA, ABBY
02:46	GOOD! LAYUP by JAROSINSKI, LINDSEY [PNT]	76-46	H 30	
02:46	ASSIST by DICKSON, KAYLEN			
02:46				FOUL (PERSONAL) by VAUGHN, MIKAYLA
02:46				
02:46				SUB OUT: YOUNG, JACKIE
02:46				SUB IN: BENZ, NICOLE
02:46				SUB OUT: VAUGHN, MIKAYLA
02:46				SUB IN: BUTLER, MAUREEN
02:46	MISSED FT by JAROSINSKI, LINDSEY			
02:43				REBOUND (DEF) by BUTLER, MAUREEN
02:34				MISSED LAYUP by NIXON, JORDAN
02:32	REBOUND (DEF) by MORRA, CHRISTINA			
02:12	MISSED 3PTR by RACA, IVANA			
02:09				REBOUND (DEF) by BENZ, NICOLE
01:58				MISSED JUMPER by NIXON, JORDAN
01:56				REBOUND (OFF) by PROHASKA, ABBY
01:56				TURNOVER (TRAVEL) by PROHASKA, ABBY
01:38	SUB OUT: CONTI, GINA			
01:38	SUB IN: HAHNE, ELLEN			
01:28	MISSED JUMPER by MORRA, CHRISTINA			
01:26	REBOUND (OFF) by MORRA, CHRISTINA			
01:25	GOOD! LAYUP by MORRA, CHRISTINA	76-48	H 28	
01:09		78-48	H 30	GOOD! LAYUP by NIXON, JORDAN
00:46	MISSED JUMPER by RACA, IVANA			
00:44				REBOUND (DEF) by COSGROVE, DANIELLE
00:29				MISSED 3PTR by COSGROVE, DANIELLE
00:26	REBOUND (DEF) by MORRA, CHRISTINA			
00:22	TIMEOUT 30SEC			
00:22	SUB OUT: RACA, IVANA			
00:22	SUB IN: BRANCH, RAEGYN			
00:10	MISSED JUMPER by BRANCH, RAEGYN			
00:07				REBOUND (DEF) by COSGROVE, DANIELLE
00:01				MISSED JUMPER by BENZ, NICOLE
00:00	REBOUND (DEF) by MORRA, CHRISTINA			

### Wake Forest 48, Notre Dame 78

Points from (This Period)	WFU	UND
In the Paint	10	8
Off Turns	4	0
2nd Chance	6	0
Fast Break	2	0
Bench	11	11



**Official Scoring/Possession Reference Chart**  
**Wake Forest vs Notre Dame**  
**Period 1**  
**January 13, 2019 at Joyce Center (Purcell Pavilion) - Notre Dame, IN**



**Period 1**

**Starters:**

**Wake Forest:** 5 CONTI,GINA; 11 RACA,IVANA; 12 DICKSON,KAYLEN; 41 PENNA,ELISA; 44 UDOH,ONA;

**Notre Dame:** 3 MABREY,MARINA; 5 YOUNG,JACKIE; 11 TURNER,BRIANNA; 24 OGUNBOWALE,ARIKE; 32 SHEPARD,JESSICA;

Time	VISITORS: Wake Forest	Score	Margin	HOME: Notre Dame
08:58		2-0	H 2	GOOD! LAYUP by SHEPARD, JESSICA [PNT]
08:19		3-0	H 3	GOOD! FT by SHEPARD, JESSICA
08:19		4-0	H 4	GOOD! FT by SHEPARD, JESSICA
08:04		6-0	H 6	GOOD! LAYUP by MABREY, MARINA [PNT]
07:35		8-0	H 8	GOOD! LAYUP by SHEPARD, JESSICA
06:45		10-0	H 10	GOOD! LAYUP by TURNER, BRIANNA [FB]
05:42		12-0	H 12	GOOD! LAYUP by MABREY, MARINA
05:03		14-0	H 14	GOOD! LAYUP by SHEPARD, JESSICA [FB]
03:50		15-0	H 15	GOOD! FT by TURNER, BRIANNA
03:50		16-0	H 16	GOOD! FT by TURNER, BRIANNA
03:20		17-0	H 17	GOOD! FT by VAUGHN, MIKAYLA
03:20		18-0	H 18	GOOD! FT by VAUGHN, MIKAYLA
02:13	GOOD! 3PTR by RACA, IVANA	18-3	H 15	
01:56		20-3	H 17	GOOD! LAYUP by VAUGHN, MIKAYLA
01:09		22-3	H 19	GOOD! LAYUP by YOUNG, JACKIE
00:47	GOOD! LAYUP by CONTI, GINA	22-5	H 17	
00:47	GOOD! FT by CONTI, GINA	22-6	H 16	

**Wake Forest 6, Notre Dame 22**

**Official Scoring/Possession Reference Chart**  
**Wake Forest vs Notre Dame**  
**Period 2**  
**January 13, 2019 at Joyce Center (Purcell Pavilion) - Notre Dame, IN**



**Period 2**

**Starters:**

**Wake Forest:** 5 CONTI,GINA; 11 RACA,IVANA; 12 DICKSON,KAYLEN; 41 PENNA,ELISA; 44 UDOH,ONA;

**Notre Dame:** 3 MABREY,MARINA; 5 YOUNG,JACKIE; 11 TURNER,BRIANNA; 24 OGUNBOWALE,ARIKE; 32 SHEPARD,JESSICA;

Time	VISITORS: Wake Forest	Score	Margin	HOME: Notre Dame
09:39	GOOD! 3PTR by DICKSON, KAYLEN	22-9	H 13	
08:57		24-9	H 15	GOOD! LAYUP by PATTERSON, DANIELLE
08:27		26-9	H 17	GOOD! LAYUP by SHEPARD, JESSICA
07:56	GOOD! LAYUP by MORRA, CHRISTINA	26-11	H 15	
07:38		29-11	H 18	GOOD! 3PTR by MABREY, MARINA
07:11	GOOD! JUMPER by RACA, IVANA	29-13	H 16	
06:38		31-13	H 18	GOOD! LAYUP by TURNER, BRIANNA
05:33		33-13	H 20	GOOD! LAYUP by MABREY, MARINA [FB]
03:08		35-13	H 22	GOOD! LAYUP by VAUGHN, MIKAYLA [FB/PNT]
02:07	GOOD! JUMPER by RACA, IVANA	35-15	H 20	
00:54		36-15	H 21	GOOD! FT by OGUNBOWALE, ARIKE [FB]
00:54		37-15	H 22	GOOD! FT by OGUNBOWALE, ARIKE [FB]

**Wake Forest 15, Notre Dame 37**

**Official Scoring/Possession Reference Chart**  
**Wake Forest vs Notre Dame**  
**Period 3**  
**January 13, 2019 at Joyce Center (Purcell Pavilion) - Notre Dame, IN**



**Period 3**

**Starters:**

**Wake Forest:** 5 CONTI,GINA; 11 RACA,IVANA; 12 DICKSON,KAYLEN; 41 PENNA,ELISA; 44 UDOH,ONA;

**Notre Dame:** 3 MABREY,MARINA; 5 YOUNG,JACKIE; 11 TURNER,BRIANNA; 24 OGUNBOWALE,ARIKE; 32 SHEPARD,JESSICA;

Time	VISITORS: Wake Forest	Score	Margin	HOME: Notre Dame
09:40		39-15	H 24	GOOD! LAYUP by SHEPARD, JESSICA
08:56		42-15	H 27	GOOD! 3PTR by MABREY, MARINA
08:00		44-15	H 29	GOOD! JUMPER by YOUNG, JACKIE [PNT]
07:25	GOOD! JUMPER by UDOH, ONA [PNT]	44-17	H 27	
07:14		46-17	H 29	GOOD! LAYUP by SHEPARD, JESSICA
06:36		49-17	H 32	GOOD! 3PTR by MABREY, MARINA
06:09	GOOD! 3PTR by DICKSON, KAYLEN	49-20	H 29	
05:57		51-20	H 31	GOOD! JUMPER by SHEPARD, JESSICA [PNT]
05:35		53-20	H 33	GOOD! DUNK by TURNER, BRIANNA [FB/PNT]
05:11		55-20	H 35	GOOD! LAYUP by TURNER, BRIANNA [PNT]
04:42		57-20	H 37	GOOD! LAYUP by TURNER, BRIANNA [PNT]
03:53		59-20	H 39	GOOD! LAYUP by TURNER, BRIANNA
02:57		60-20	H 40	GOOD! FT by VAUGHN, MIKAYLA
02:32	GOOD! LAYUP by BRANCH, RAEGYN [PNT]	60-22	H 38	
02:20	GOOD! LAYUP by PENNA, ELISA [FB/PNT]	60-24	H 36	
01:49	GOOD! LAYUP by MORRA, CHRISTINA	60-26	H 34	
00:37	GOOD! FT by RACA, IVANA	60-27	H 33	
00:37	GOOD! FT by RACA, IVANA	60-28	H 32	
00:14		62-28	H 34	GOOD! LAYUP by PATTERSON, DANIELLE

**Wake Forest 28, Notre Dame 62**

**Official Scoring/Possession Reference Chart**  
**Wake Forest vs Notre Dame**  
**Period 4**  
**January 13, 2019 at Joyce Center (Purcell Pavilion) - Notre Dame, IN**



**Period 4**

**Starters:**

**Wake Forest:** 5 CONTI,GINA; 11 RACA,IVANA; 12 DICKSON,KAYLEN; 41 PENNA,ELISA; 44 UDOH,ONA;

**Notre Dame:** 3 MABREY,MARINA; 5 YOUNG,JACKIE; 11 TURNER,BRIANNA; 24 OGUNBOWALE,ARIKE; 32 SHEPARD,JESSICA;

Time	VISITORS: Wake Forest	Score	Margin	HOME: Notre Dame
09:51		65-28	H 37	GOOD! 3PTR by MABREY, MARINA
08:55	GOOD! FT by PENNA, ELISA [FB]	65-29	H 36	
08:55	GOOD! FT by PENNA, ELISA [FB]	65-30	H 35	
08:34	GOOD! FT by PENNA, ELISA	65-31	H 34	
07:29	GOOD! LAYUP by MORRA, CHRISTINA	65-33	H 32	
07:12		67-33	H 34	GOOD! JUMPER by OGUNBOWALE, ARIKE
06:35		69-33	H 36	GOOD! JUMPER by PATTERSON, DANIELLE [PNT]
06:26	GOOD! LAYUP by MORRA, CHRISTINA	69-35	H 34	
06:26	GOOD! FT by MORRA, CHRISTINA	69-36	H 33	
05:26	GOOD! FT by CONTI, GINA	69-37	H 32	
05:07	GOOD! 3PTR by RACA, IVANA	69-40	H 29	
04:34		71-40	H 31	GOOD! JUMPER by COSGROVE, DANIELLE [PNT]
04:12	GOOD! JUMPER by MORRA, CHRISTINA [PNT]	71-42	H 29	
03:49		73-42	H 31	GOOD! LAYUP by VAUGHN, MIKAYLA
03:21	GOOD! JUMPER by CONTI, GINA	73-44	H 29	
03:07		76-44	H 32	GOOD! 3PTR by COSGROVE, DANIELLE
02:46	GOOD! LAYUP by JAROSINSKI, LINDSEY [PNT]	76-46	H 30	
01:25	GOOD! LAYUP by MORRA, CHRISTINA	76-48	H 28	
01:09		78-48	H 30	GOOD! LAYUP by NIXON, JORDAN

**Wake Forest 48, Notre Dame 78**

**Official Substitutions Log**  
**Wake Forest vs Notre Dame**  
**Period 1**  
**January 13, 2019 at Joyce Center (Purcell Pavilion) - Notre Dame, IN**



VISITORS: Wake Forest	Time	Score	HOME: Notre Dame
5 CONTI,GINA			3 MABREY,MARINA
11 RACA,IVANA			5 YOUNG,JACKIE
12 DICKSON,KAYLEN			11 TURNER,BRIANNA
41 PENNA,ELISA			24 OGUNBOWALE,ARIKE
44 UDOH,ONA			32 SHEPARD,JESSICA
SUB OUT: 11 RACA,IVANA	07:35	0-8	
SUB IN: 21 BRANCH,RAEGYN	07:35		
	05:03	0-14	SUB OUT: MABREY,MARINA
	05:03		SUB IN: NIXON,JORDAN
SUB OUT: 5 CONTI,GINA	05:03		
SUB IN: 11 RACA,IVANA	05:03		
SUB OUT: 12 DICKSON,KAYLEN	05:03		
SUB IN: 10 HAHNE,ELLEN	05:03		
SUB OUT: 44 UDOH,ONA	05:03		
SUB IN: 0 BANKS,MAYA	05:03		
	04:37	0-14	SUB OUT: SHEPARD,JESSICA
	04:37		SUB IN: VAUGHN,MIKAYLA
	03:50	0-15	SUB OUT: YOUNG,JACKIE
	03:50		SUB IN: MABREY,MARINA
SUB OUT: 21 BRANCH,RAEGYN	03:20	0-17	
SUB IN: 5 CONTI,GINA	03:20		
	01:24	3-20	SUB OUT: TURNER,BRIANNA
	01:24		SUB IN: YOUNG,JACKIE
	01:24		SUB OUT: OGUNBOWALE,ARIKE
	01:24		SUB IN: SHEPARD,JESSICA
SUB OUT: 0 BANKS,MAYA	01:24		
SUB IN: 44 UDOH,ONA	01:24		
SUB OUT: 10 HAHNE,ELLEN	01:24		
SUB IN: 12 DICKSON,KAYLEN	01:24		
	01:09	3-22	SUB OUT: VAUGHN,MIKAYLA
	01:09		SUB IN: PATTERSON,DANIELLE
SUB OUT: 11 RACA,IVANA	01:09		
SUB IN: 23 MORRA,CHRISTINA	01:09		
	00:44	6-22	SUB OUT: NIXON,JORDAN
	00:44		SUB IN: OGUNBOWALE,ARIKE

**Wake Forest 6, Notre Dame 22**

**Official Substitutions Log**  
**Wake Forest vs Notre Dame**  
**Period 2**  
**January 13, 2019 at Joyce Center (Purcell Pavilion) - Notre Dame, IN**



VISITORS: Wake Forest	Time	Score	HOME: Notre Dame
5 CONTI,GINA			3 MABREY,MARINA
11 RACA,IVANA			5 YOUNG,JACKIE
12 DICKSON,KAYLEN			11 TURNER,BRIANNA
41 PENNA,ELISA			24 OGUNBOWALE,ARIKE
44 UDOH,ONA			32 SHEPARD,JESSICA
	07:16	11-29	SUB OUT: PATTERSON,DANIELLE
	07:16		SUB IN: TURNER,BRIANNA
	07:16		SUB OUT: OGUNBOWALE,ARIKE
	07:16		SUB IN: PROHASKA,ABBY
SUB OUT: 44 UDOH,ONA	07:16		
SUB IN: 11 RACA,IVANA	07:16		
SUB OUT: 23 MORRA,CHRISTINA	06:19	13-31	
SUB IN: 21 BRANCH,RAEGYN	06:19		
SUB OUT: 41 PENNA,ELISA	06:19		
SUB IN: 50 JAROSINSKI,LINDSEY	06:19		
	04:54	13-33	SUB OUT: SHEPARD,JESSICA
	04:54		SUB IN: VAUGHN,MIKAYLA
	04:54		SUB OUT: YOUNG,JACKIE
	04:54		SUB IN: OGUNBOWALE,ARIKE
SUB OUT: 5 CONTI,GINA	04:54		
SUB IN: 10 HAHNE,ELLEN	04:54		
	03:57	13-33	SUB OUT: MABREY,MARINA
	03:57		SUB IN: NIXON,JORDAN
SUB OUT: 10 HAHNE,ELLEN	03:57		
SUB IN: 41 PENNA,ELISA	03:57		
	02:36	13-35	SUB OUT: PROHASKA,ABBY
	02:36		SUB IN: YOUNG,JACKIE
SUB OUT: 50 JAROSINSKI,LINDSEY	02:10	13-35	
SUB IN: 23 MORRA,CHRISTINA	02:10		
	01:50	15-35	SUB OUT: VAUGHN,MIKAYLA
	01:50		SUB IN: PATTERSON,DANIELLE
SUB OUT: 12 DICKSON,KAYLEN	00:54	15-36	
SUB IN: 5 CONTI,GINA	00:54		

**Wake Forest 15, Notre Dame 37**

**Official Substitutions Log**  
**Wake Forest vs Notre Dame**  
**Period 3**  
**January 13, 2019 at Joyce Center (Purcell Pavilion) - Notre Dame, IN**



VISITORS: Wake Forest	Time	Score	HOME: Notre Dame
5 CONTI,GINA			3 MABREY,MARINA
11 RACA,IVANA			5 YOUNG,JACKIE
12 DICKSON,KAYLEN			11 TURNER,BRIANNA
41 PENNA,ELISA			24 OGUNBOWALE,ARIKE
44 UDOH,ONA			32 SHEPARD,JESSICA
SUB OUT: 44 UDOH,ONA	06:45	17-46	
SUB IN: 0 BANKS,MAYA	06:45		
	05:35	20-53	SUB OUT: YOUNG,JACKIE
	05:35		SUB IN: NIXON,JORDAN
SUB OUT: 12 DICKSON,KAYLEN	05:35		
SUB IN: 10 HAHNE,ELLEN	05:35		
SUB OUT: 5 CONTI,GINA	05:35		
SUB IN: 21 BRANCH,RAEGYN	05:35		
	04:16	20-57	SUB OUT: SHEPARD,JESSICA
	04:16		SUB IN: VAUGHN,MIKAYLA
	03:28	20-59	SUB OUT: TURNER,BRIANNA
	03:28		SUB IN: PATTERSON,DANIELLE
	03:28		SUB OUT: MABREY,MARINA
	03:28		SUB IN: PROHASKA,ABBY
SUB OUT: 0 BANKS,MAYA	02:57	20-60	
SUB IN: 23 MORRA,CHRISTINA	02:57		
	01:31	26-60	SUB OUT: OGUNBOWALE,ARIKE
	01:31		SUB IN: MABREY,MARINA
SUB OUT: 10 HAHNE,ELLEN	00:37	27-60	
SUB IN: 5 CONTI,GINA	00:37		

**Wake Forest 28, Notre Dame 62**

**Official Substitutions Log**  
**Wake Forest vs Notre Dame**  
**Period 4**  
**January 13, 2019 at Joyce Center (Purcell Pavilion) - Notre Dame, IN**



VISITORS: Wake Forest	Time	Score	HOME: Notre Dame
5 CONTI,GINA			3 MABREY,MARINA
11 RACA,IVANA			5 YOUNG,JACKIE
12 DICKSON,KAYLEN			11 TURNER,BRIANNA
41 PENNA,ELISA			24 OGUNBOWALE,ARIKE
44 UDOH,ONA			32 SHEPARD,JESSICA
SUB OUT: 11 RACA,IVANA	09:02	28-65	
SUB IN: 50 JAROSINSKI,LINDSEY	09:02		
	08:55	29-65	SUB OUT: YOUNG,JACKIE
	08:55		SUB IN: PROHASKA,ABBY
SUB OUT: 21 BRANCH,RAEGYN	08:34	30-65	
SUB IN: 12 DICKSON,KAYLEN	08:34		
	06:26	35-69	SUB OUT: OGUNBOWALE,ARIKE
	06:26		SUB IN: NIXON,JORDAN
SUB OUT: 41 PENNA,ELISA	06:26		
SUB IN: 11 RACA,IVANA	06:26		
	05:42	36-69	SUB OUT: MABREY,MARINA
	05:42		SUB IN: YOUNG,JACKIE
	05:26	37-69	SUB OUT: PATTERSON,DANIELLE
	05:26		SUB IN: COSGROVE,DANIELLE
	02:46	46-76	SUB OUT: YOUNG,JACKIE
	02:46		SUB IN: BENZ,NICOLE
	02:46		SUB OUT: VAUGHN,MIKAYLA
	02:46		SUB IN: BUTLER,MAUREEN
SUB OUT: 5 CONTI,GINA	01:38	46-76	
SUB IN: 10 HAHNE,ELLEN	01:38		
SUB OUT: 11 RACA,IVANA	00:22	48-78	
SUB IN: 21 BRANCH,RAEGYN	00:22		

**Wake Forest 48, Notre Dame 78**

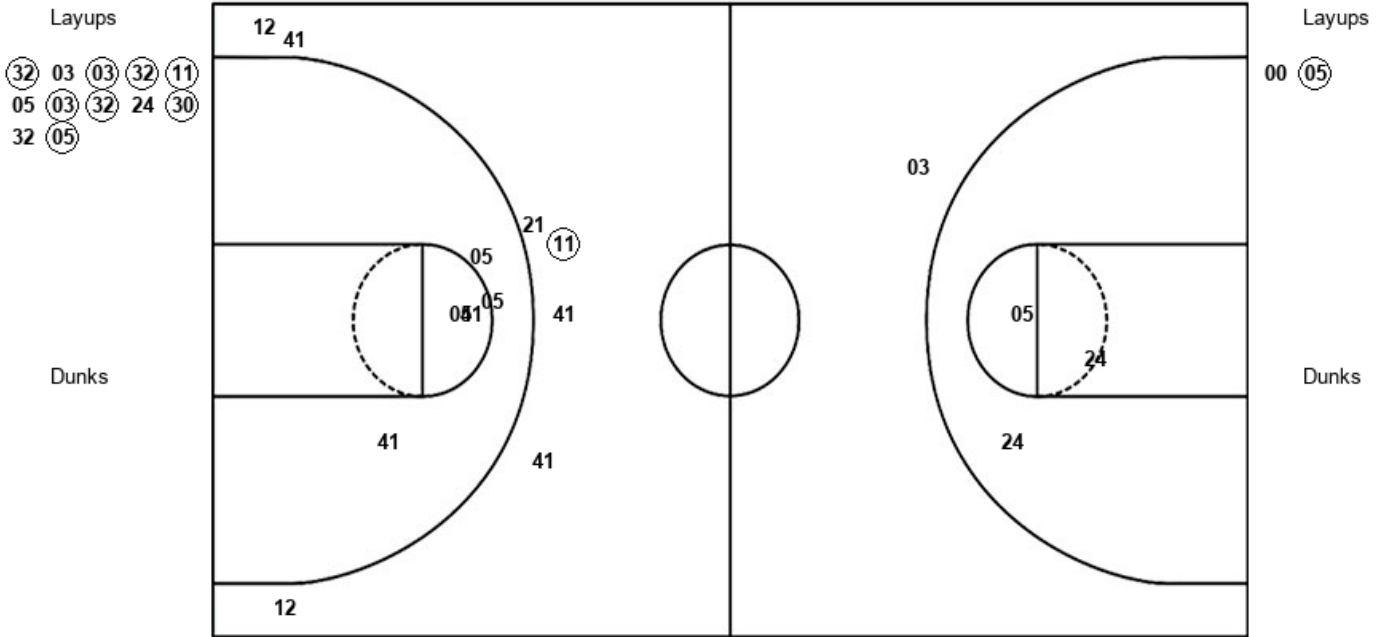


**Official Shot Chart**  
**Wake Forest vs Notre Dame**  
**PERIOD 1 Shots**  
 January 13, 2019 at Joyce Center (Purcell Pavilion) - Notre Dame, IN



**Notre Dame**

**Wake Forest**



UND : Period 1	Made	Att	Pct
Layups	8	12	66.7
Dunks	0	0	0
2PT Field Goals	8	15	53.3
3PT Field Goals	0	1	00.0
<b>Total Field Goals</b>	<b>8</b>	<b>16</b>	<b>50.0</b>

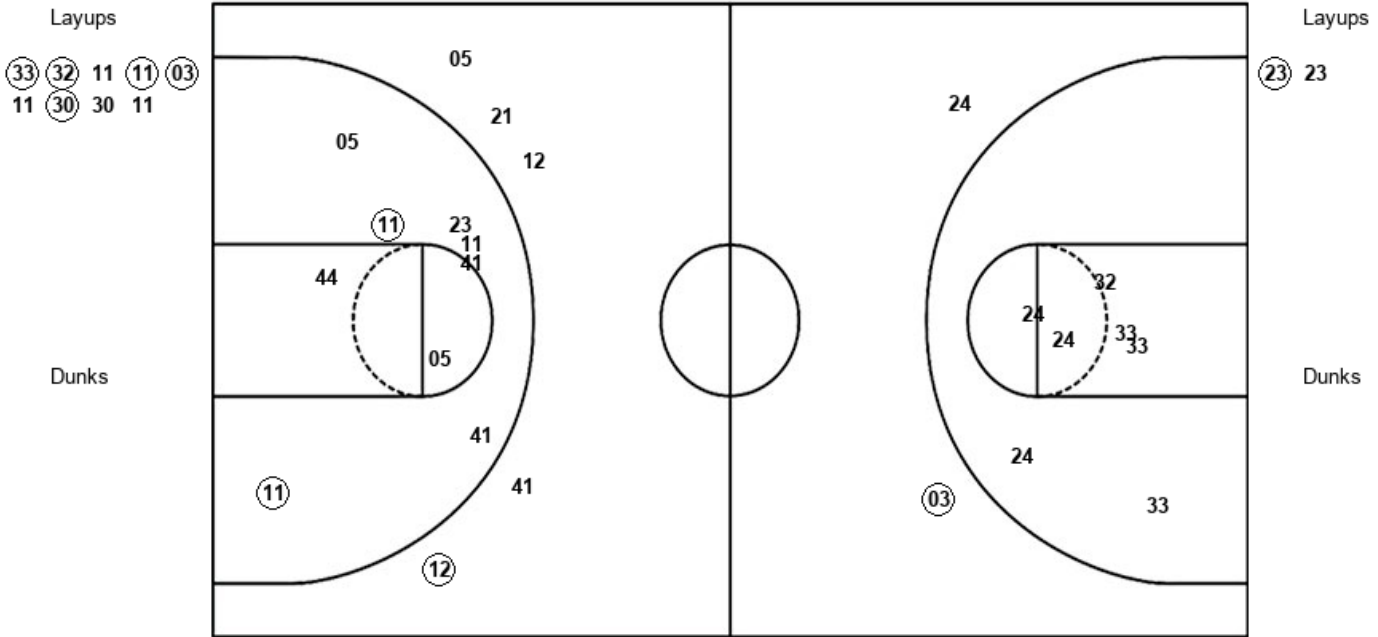
WFU : Period 1	Made	Att	Pct
Layups	1	2	50.0
Dunks	0	0	0
2PT Field Goals	1	7	14.3
3PT Field Goals	1	7	14.3
<b>Total Field Goals</b>	<b>2</b>	<b>14</b>	<b>14.3</b>

Official Shot Chart  
**Wake Forest vs Notre Dame**  
 PERIOD 2 Shots  
 January 13, 2019 at Joyce Center (Purcell Pavilion) - Notre Dame, IN



**Notre Dame**

**Wake Forest**



UND : Period 2	Made	Att	Pct
Layups	5	9	55.6
Dunks	0	0	0
2PT Field Goals	5	16	31.3
3PT Field Goals	1	2	50.0
<b>Total Field Goals</b>	<b>6</b>	<b>18</b>	<b>33.3</b>

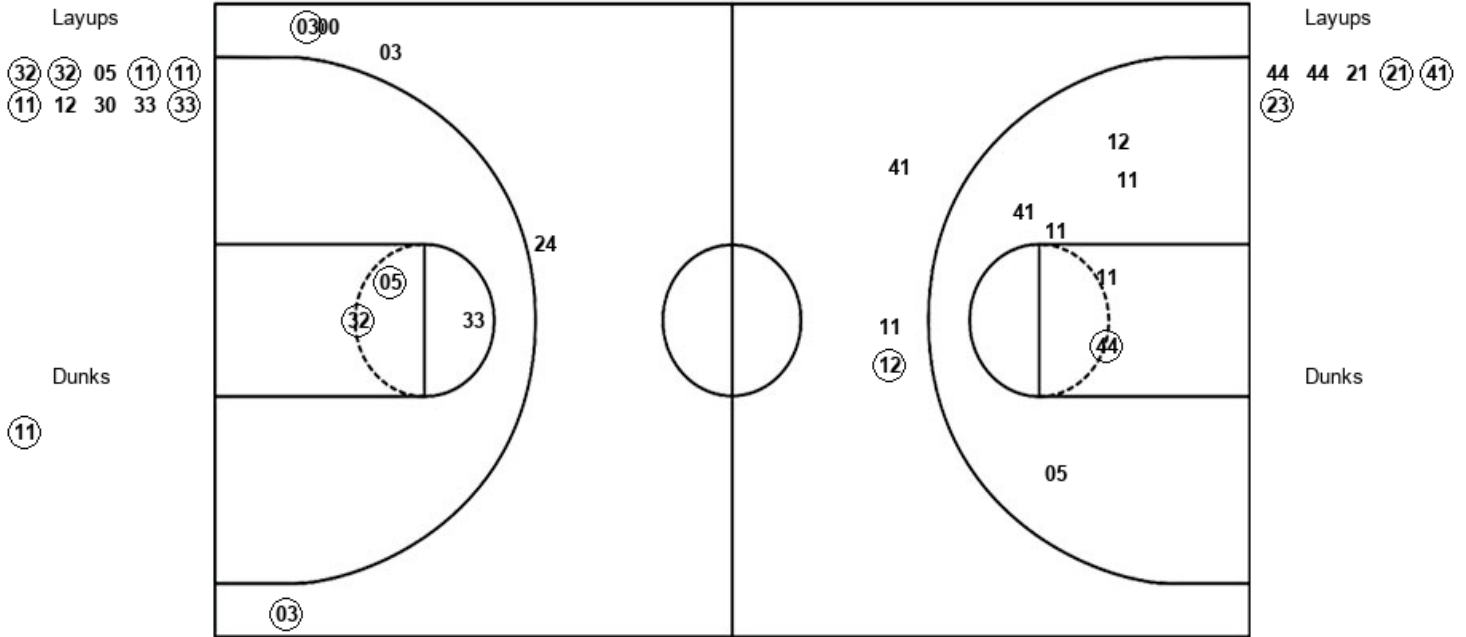
WFU : Period 2	Made	Att	Pct
Layups	1	2	50.0
Dunks	0	0	0
2PT Field Goals	3	11	27.3
3PT Field Goals	1	5	20.0
<b>Total Field Goals</b>	<b>4</b>	<b>16</b>	<b>25.0</b>

**Official Shot Chart**  
**Wake Forest vs Notre Dame**  
**PERIOD 3 Shots**  
 January 13, 2019 at Joyce Center (Purcell Pavilion) - Notre Dame, IN



**Notre Dame**

**Wake Forest**



UND : Period 3	Made	Att	Pct
Layups	6	10	60.0
Dunks	1	1	100.0
2PT Field Goals	9	14	64.3
3PT Field Goals	2	5	40.0
<b>Total Field Goals</b>	<b>11</b>	<b>19</b>	<b>57.9</b>

WFU : Period 3	Made	Att	Pct
Layups	3	6	50.0
Dunks	0	0	0
2PT Field Goals	4	13	30.8
3PT Field Goals	1	3	33.3
<b>Total Field Goals</b>	<b>5</b>	<b>16</b>	<b>31.3</b>

**Official Shot Chart**  
**Wake Forest vs Notre Dame**  
**PERIOD 4 Shots**  
 January 13, 2019 at Joyce Center (Purcell Pavilion) - Notre Dame, IN



**Notre Dame**

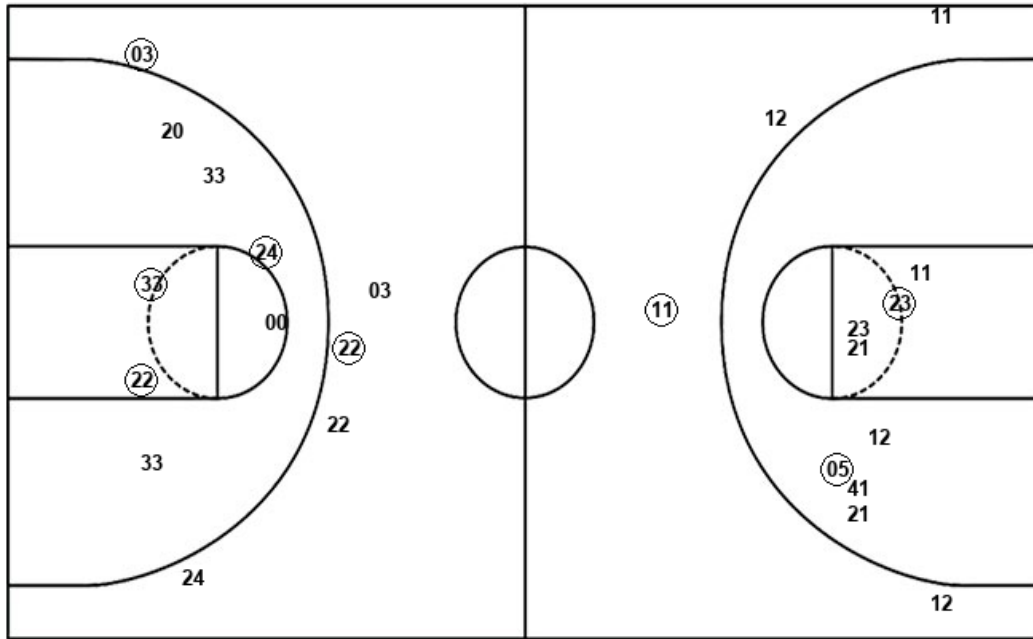
**Wake Forest**

Layups  
 24 (30) 00 (00)

Layups  
 (23) (23) 23 (50) (23)

Dunks

Dunks



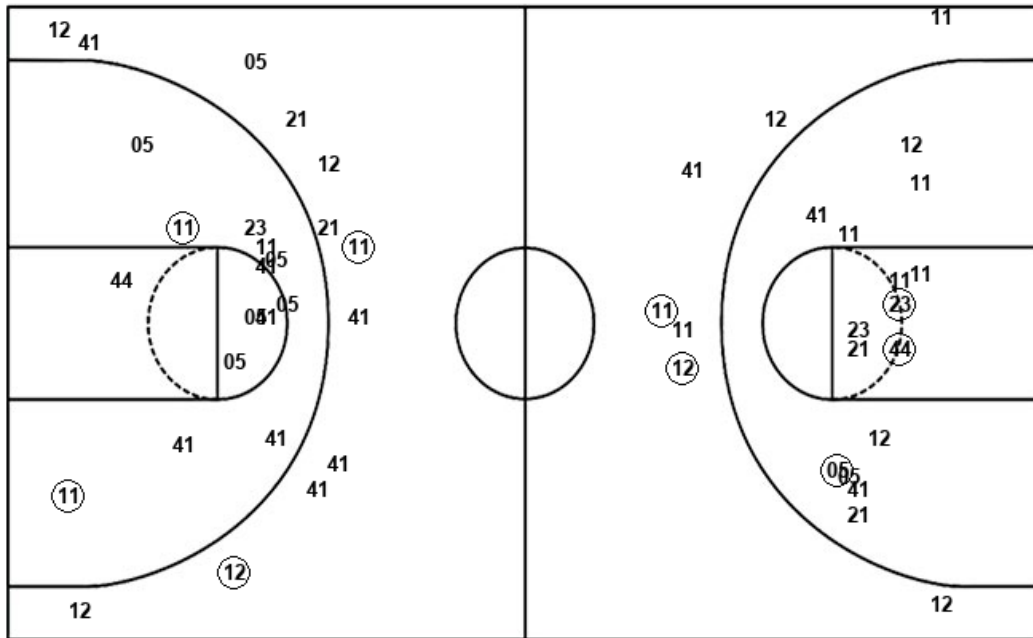
UND : Period 4	Made	Att	Pct
Layups	2	4	50.0
Dunks	0	0	0
2PT Field Goals	5	11	45.5
3PT Field Goals	2	5	40.0
<b>Total Field Goals</b>	<b>7</b>	<b>16</b>	<b>43.8</b>

WFU : Period 4	Made	Att	Pct
Layups	4	5	80.0
Dunks	0	0	0
2PT Field Goals	6	13	46.2
3PT Field Goals	1	4	25.0
<b>Total Field Goals</b>	<b>7</b>	<b>17</b>	<b>41.2</b>

**Official Shot Chart**  
**Wake Forest vs Notre Dame**  
**Wake Forest Team Shots**  
 January 13, 2019 at Joyce Center (Purcell Pavilion) - Notre Dame, IN



Layups



Layups

00 (05) (23) 23 44  
 44 21 (21) (41) (23)  
 (23) (23) 23 (50) (23)

Dunks

Dunks

WFU : Period 1	Made	Att	Pct
Layups	1	2	50.0
Dunks	0	0	0
2PT Field Goals	1	7	14.3
3PT Field Goals	1	7	14.3
<b>Total Field Goals</b>	<b>2</b>	<b>14</b>	<b>14.3</b>

WFU : Period 2	Made	Att	Pct
Layups	1	2	50.0
Dunks	0	0	0
2PT Field Goals	3	11	27.3
3PT Field Goals	1	5	20.0
<b>Total Field Goals</b>	<b>4</b>	<b>16</b>	<b>25.0</b>

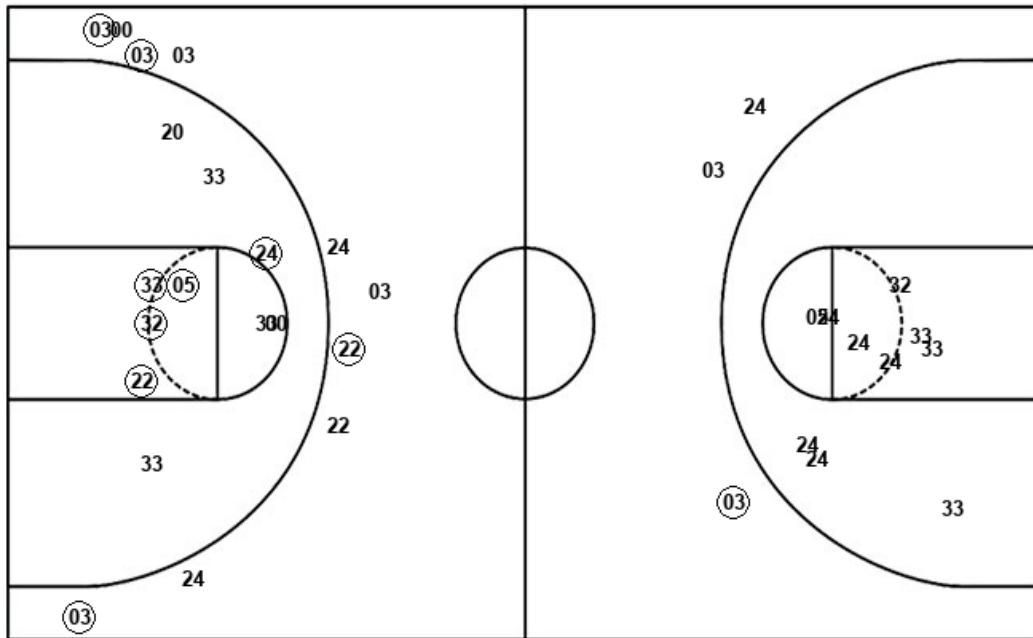
WFU : Period 3	Made	Att	Pct
Layups	3	6	50.0
Dunks	0	0	0
2PT Field Goals	4	13	30.8
3PT Field Goals	1	3	33.3
<b>Total Field Goals</b>	<b>5</b>	<b>16</b>	<b>31.3</b>

WFU : Period 4	Made	Att	Pct
Layups	4	5	80.0
Dunks	0	0	0
2PT Field Goals	6	13	46.2
3PT Field Goals	1	4	25.0
<b>Total Field Goals</b>	<b>7</b>	<b>17</b>	<b>41.2</b>

**Official Shot Chart**  
**Wake Forest vs Notre Dame**  
**Notre Dame Team Shots**  
 January 13, 2019 at Joyce Center (Purcell Pavilion) - Notre Dame, IN



Layups



Layups

- (32) 03 (03) (32) (11)
- 05 (03) (32) 24 (30)
- 32 (05) (33) (32) 11
- (11) (03) 11 (30) 30
- 11 (32) (32) 05 (11)
- (11) (11) 12 30 33
- (33) 24 (30) 00 (00)

Dunks

Dunks

- (11)

UND : Period 1	Made	Att	Pct
Layups	8	12	66.7
Dunks	0	0	0
2PT Field Goals	8	15	53.3
3PT Field Goals	0	1	00.0
<b>Total Field Goals</b>	<b>8</b>	<b>16</b>	<b>50.0</b>

UND : Period 3	Made	Att	Pct
Layups	6	10	60.0
Dunks	1	1	100.0
2PT Field Goals	9	14	64.3
3PT Field Goals	2	5	40.0
<b>Total Field Goals</b>	<b>11</b>	<b>19</b>	<b>57.9</b>

UND : Period 2	Made	Att	Pct
Layups	5	9	55.6
Dunks	0	0	0
2PT Field Goals	5	16	31.3
3PT Field Goals	1	2	50.0
<b>Total Field Goals</b>	<b>6</b>	<b>18</b>	<b>33.3</b>

UND : Period 4	Made	Att	Pct
Layups	2	4	50.0
Dunks	0	0	0
2PT Field Goals	5	11	45.5
3PT Field Goals	2	5	40.0
<b>Total Field Goals</b>	<b>7</b>	<b>16</b>	<b>43.8</b>