

FINAL SCORE

Pittsburgh

44



Notre Dame

100



January 04, 2019 • Joyce Center (Purcell Pavilion) - Notre Dame, IN

FINAL STATISTICS

Official Box Score
Pittsburgh vs Notre Dame
Game Totals -- Final Statistics
January 04, 2019 at Joyce Center (Purcell Pavilion) - Notre Dame, IN



Pittsburgh 44

No.	Player	S	Pts	FG	3FG	FT	OR	DR	TR	PF	A	TO	Blk	Stl	Min	+/-
01	GARVEN, DANIELLE		7	3-10	0-0	1-1	3	1	4	3	2	5	0	0	25	-28
03	WHITNEY, JASMINE		9	3-15	1-6	2-3	0	1	1	3	4	2	0	2	29	-41
04	WALSH, CASSIDY		6	2-14	2-8	0-0	1	2	3	3	1	1	0	2	31	-47
11	JUDKINS, CARA		0	0-3	0-0	0-2	3	1	4	3	0	2	0	1	17	-24
14	BRADLEY, KAUAI		8	3-8	2-3	0-0	0	2	2	3	1	1	0	0	20	-30
00	KNIGHT, JAHSYNI		2	1-1	0-0	0-0	1	0	1	2	1	3	0	1	14	-21
10	PRAPA, ISMINI		0	0-1	0-0	0-0	0	0	0	1	1	1	0	0	6	-7
13	NELSON, KYLA		6	2-8	2-6	0-0	0	1	1	3	1	3	0	1	23	-29
22	HENRY, JAALA		2	1-2	0-0	0-0	2	3	5	0	0	2	0	1	16	-22
32	WALTERS, KALISTA		4	2-2	0-0	0-0	5	4	9	2	1	2	1	1	18	-31
TEAM																
TOTALS			44	17-64	7-23	3-6	19	17	36	23	12	24	1	9	199	

Shooting By Period

Period	FG	FG%	3FG	3FG%	FT	FT%
1st Qtr	4-14	29%	2-6	33%	0-0	0%
2nd Qtr	2-17	12%	0-5	00%	0-1	00%
3rd Qtr	4-18	22%	1-6	17%	1-3	33%
4th Qtr	7-15	47%	4-6	67%	2-2	100%
1st Half	6-31	19%	2-11	18%	0-1	00%
2nd Half	11-33	33%	5-12	42%	3-5	60%
Game	17-64	26.6%	7-23	30.4%	3-6	50.0%

Last FG: 4th-00:19
Biggest Run: 5-0
Largest lead: By 0 at 1-09:11
Technical Fouls: None.

Notre Dame 100

No.	Player	S	Pts	FG	3FG	FT	OR	DR	TR	PF	A	TO	Blk	Stl	Min	+/-
03	MABREY, MARINA		20	8-14	4-9	0-0	1	3	4	2	7	1	2	3	23	48
05	YOUNG, JACKIE		16	6-9	0-0	4-7	3	3	6	0	2	2	0	1	20	40
11	TURNER, BRIANNA		9	2-5	0-0	5-8	2	3	5	0	0	0	3	1	17	38
24	OGUNBOWALE, ARIKE		18	7-9	2-2	2-3	0	3	3	0	3	3	0	2	19	49
32	SHEPARD, JESSICA		6	1-8	0-0	4-4	6	5	11	1	5	1	0	0	17	37
00	NIXON, JORDAN		9	2-4	1-2	4-4	0	1	1	1	4	1	0	2	22	22
12	PROHASKA, ABBY		2	0-3	0-1	2-2	0	2	2	0	2	3	0	2	22	11
20	BENZ, NICOLE		0	0-0	0-0	0-0	0	0	0	0	0	0	0	0	3	3
22	COSGROVE, DANIELLE		5	2-4	1-3	0-0	0	2	2	0	0	1	0	0	10	-5
30	VAUGHN, MIKAYLA		9	3-4	0-0	3-4	2	2	4	1	0	1	1	1	17	14
33	PATTERSON, DANIELLE		6	3-5	0-0	0-0	1	1	2	0	0	0	1	0	23	22
40	BUTLER, MAUREEN		0	0-0	0-0	0-0	0	1	1	1	1	0	0	0	6	1
TEAM																
TOTALS			100	34-65	8-17	24-32	19	30	49	6	24	13	7	12	199	

Shooting By Period

Period	FG	FG%	3FG	3FG%	FT	FT%
1st Qtr	12-20	60%	1-3	33%	7-9	78%
2nd Qtr	9-19	47%	4-6	67%	6-8	75%
3rd Qtr	7-16	44%	2-4	50%	9-13	69%
4th Qtr	6-10	60%	1-4	25%	2-2	100%
1st Half	21-39	54%	5-9	56%	13-17	76%
2nd Half	13-26	50%	3-8	38%	11-15	73%
Game	34-65	52.3%	8-17	47.1%	24-32	75.0%

Last FG: 4th-02:38
Biggest Run: 21-0
Largest lead: By 62 at 3-02:35
Technical Fouls: None.

Game Notes:

Officials: Billy Smith, Jennifer Rezac, Norma Jones
Attendance: 8566

Start Time: 2019-01-04 00:02:06
End Time: 2019-01-04 01:51:39
Game Duration: 109
Conference Game;

Score	1st	2nd	3rd	4th	TOT
PIT	10	4	10	20	44
UND	32	28	25	15	100

PIT led for 0:00. UND led for 39:07.
Game was tied for 0:38.
Times tied: 2 Lead Changes: 0

Points from	PIT	UND
In the Paint	18	40
Off Turns	13	32
2nd Chance	8	23
Fast Break	7	25
Bench	14	31

Official Box Score
Pittsburgh vs Notre Dame
First Half Statistics Only
January 04, 2019 at Joyce Center (Purcell Pavilion) - Notre Dame, IN



Pittsburgh 14

No.	Player	S	Pts	FG	3FG	FT	OR	DR	TR	PF	A	TO	Blk	Stl	Min	+/-
00	KNIGHT, JAHSYNI		0	0-0	0-0	0-0	1	0	1	0	0	2	0	0	6	-16
01	GARVEN, DANIELLE		2	1-5	0-0	0-0	0	1	1	2	0	4	0	0	14	-29
03	WHITNEY, JASMINE		4	2-7	0-2	0-1	0	0	0	2	1	2	0	0	15	-35
04	WALSH, CASSIDY		6	2-10	2-6	0-0	0	1	1	2	1	1	0	1	19	-41
10	PRAPA, ISMINI		0	0-0	0-0	0-0	0	0	0	0	0	0	0	0	0	0
11	JUDKINS, CARA		0	0-1	0-0	0-0	0	0	0	2	0	1	0	0	7	-19
13	NELSON, KYLA		0	0-5	0-3	0-0	0	0	0	2	0	2	0	1	12	-26
14	BRADLEY, KAUI		2	1-3	0-0	0-0	0	1	1	1	1	1	0	0	12	-27
22	HENRY, JAALA		0	0-0	0-0	0-0	1	2	3	0	0	0	0	1	6	-10
32	WALTERS, KALISTA		0	0-0	0-0	0-0	3	1	4	2	0	0	0	1	10	-27
	TEAM		0	0-0	0-0	0-0	4	2	6	0	0	1	0	0	0	
TOTALS			14	6-31	2-11	0-1	9	8	17	13	3	14	0	4	100	

Shooting By Period

Period	FG	FG%	3FG	3FG%	FT	FT%
1st Qtr	4-14	29%	2-6	33%	0-0	0%
2nd Qtr	2-17	12%	0-5	00%	0-1	00%
1st Half	6-31	19%	2-11	18%	0-1	00%
Game	17-64	26.6%	7-23	30.4%	3-6	50.0%

Last FG Half: PIT 2nd-03:54

Notre Dame 60

No.	Player	S	Pts	FG	3FG	FT	OR	DR	TR	PF	A	TO	Blk	Stl	Min	+/-
00	NIXON, JORDAN		3	1-1	1-1	0-0	0	0	0	0	1	0	0	0	7	18
03	MABREY, MARINA		14	6-11	2-6	0-0	1	2	3	1	7	0	1	3	17	41
05	YOUNG, JACKIE		8	3-4	0-0	2-4	2	3	5	0	2	2	0	0	13	28
11	TURNER, BRIANNA		9	2-4	0-0	5-6	1	2	3	0	0	0	2	1	12	32
12	PROHASKA, ABBY		0	0-1	0-0	0-0	0	0	0	0	0	1	0	1	8	8
20	BENZ, NICOLE		0	0-0	0-0	0-0	0	0	0	0	0	0	0	0	0	0
22	COSGROVE, DANIELLE		0	0-0	0-0	0-0	0	0	0	0	0	0	0	0	0	0
24	OGUNBOWALE, ARIKE		17	7-9	2-2	1-1	0	1	1	0	0	1	0	1	15	43
30	VAUGHN, MIKAYLA		5	2-2	0-0	1-2	0	1	1	0	0	0	0	1	7	11
32	SHEPARD, JESSICA		4	0-7	0-0	4-4	6	4	10	1	5	1	0	0	13	31
33	PATTERSON, DANIELLE		0	0-0	0-0	0-0	1	0	1	0	0	0	1	0	8	18
40	BUTLER, MAUREEN		0	0-0	0-0	0-0	0	0	0	0	0	0	0	0	0	0
	TEAM		0	0-0	0-0	0-0	3	4	7	0	0	0	0	0	0	
TOTALS			60	21-39	5-9	13-17	14	17	31	2	15	5	4	7	100	

Shooting By Period

Period	FG	FG%	3FG	3FG%	FT	FT%
1st Qtr	12-20	60%	1-3	33%	7-9	78%
2nd Qtr	9-19	47%	4-6	67%	6-8	75%
1st Half	21-39	54%	5-9	56%	13-17	76%
Game	34-65	52.3%	8-17	47.1%	24-32	75.0%

Last FG Half: UND 2nd-01:36

Game Notes:

Officials: Billy Smith, Jennifer Rezac, Norma Jones
 Attendance: 8566

Start Time: 2019-01-04 00:02:06
 End Time: 2019-01-04 01:51:39
 Game Duration: 109
 Conference Game;

Score	1st	2nd	3rd	4th	TOT
PIT	10	4	10	20	44
UND	32	28	25	15	100

Points from (This Period)	PIT	UND
In the Paint	6	22
Off Turns	2	21
2nd Chance	0	19
Fast Break	2	17
Bench	0	8

Official Box Score
Pittsburgh vs Notre Dame
First Quarter Statistics Only
January 04, 2019 at Joyce Center (Purcell Pavilion) - Notre Dame, IN



Pittsburgh 10

No.	Player	S	Pts	FG	3FG	FT	OR	DR	TR	PF	A	TO	Blk	Stl	Min	+/-
01	GARVEN, DANIELLE		2	1-3	0-0	0-0	0	0	0	2	0	1	0	0	6	-11
03	WHITNEY, JASMINE		0	0-3	0-1	0-0	0	0	0	1	1	2	0	0	7	-21
04	WALSH, CASSIDY		6	2-5	2-4	0-0	0	0	0	0	0	0	0	0	9	-17
11	JUDKINS, CARA		0	0-1	0-0	0-0	0	0	0	2	0	1	0	0	7	-19
14	BRADLEY, KAUI		2	1-1	0-0	0-0	0	1	1	1	1	0	0	0	8	-16
00	KNIGHT, JAHSYNI		0	0-0	0-0	0-0	1	0	1	0	0	1	0	0	3	-1
10	PRAPA, ISMINI		0	0-0	0-0	0-0	0	0	0	0	0	0	0	0	0	0
13	NELSON, KYLA		0	0-1	0-1	0-0	0	0	0	0	0	0	0	0	5	-12
22	HENRY, JAALA		0	0-0	0-0	0-0	0	0	0	0	0	0	0	0	0	0
32	WALTERS, KALISTA		0	0-0	0-0	0-0	1	0	1	1	0	0	0	1	6	-13
TEAM							0	1	1	0		0				
TOTALS			10	4-14	2-6	0-0	2	2	4	7	2	5	0	1	50	

Shooting By Period

Period	FG	FG%	3FG	3FG%	FT	FT%
1st Qtr	4-14	29%	2-6	33%	0-0	0%
2nd Qtr	2-17	12%	0-5	00%	0-1	00%
1st Half	4-14	29%	2-6	33%	0-0	0%
1st Half	6-31	19%	2-11	18%	0-1	00%
Game	17-64	26.6%	7-23	30.4%	3-6	50.0%

Notre Dame 32

No.	Player	S	Pts	FG	3FG	FT	OR	DR	TR	PF	A	TO	Blk	Stl	Min	+/-
03	MABREY, MARINA		8	4-7	0-2	0-0	0	1	1	1	3	0	0	1	9	19
05	YOUNG, JACKIE		7	3-4	0-0	1-2	1	1	2	0	2	1	0	0	9	19
11	TURNER, BRIANNA		6	1-1	0-0	4-5	1	1	2	0	0	0	1	1	8	18
24	OGUNBOWALE, ARIKE		9	4-5	1-1	0-0	0	0	0	0	0	0	0	1	8	24
32	SHEPARD, JESSICA		2	0-3	0-0	2-2	3	3	6	0	4	1	0	0	8	20
00	NIXON, JORDAN		0	0-0	0-0	0-0	0	0	0	0	0	0	0	0	1	3
12	PROHASKA, ABBY		0	0-0	0-0	0-0	0	0	0	0	0	0	0	0	3	1
20	BENZ, NICOLE		0	0-0	0-0	0-0	0	0	0	0	0	0	0	0	0	0
22	COSGROVE, DANIELLE		0	0-0	0-0	0-0	0	0	0	0	0	0	0	0	0	0
30	VAUGHN, MIKAYLA		0	0-0	0-0	0-0	0	0	0	0	0	0	0	0	4	6
33	PATTERSON, DANIELLE		0	0-0	0-0	0-0	0	0	0	0	0	0	0	0	0	0
40	BUTLER, MAUREEN		0	0-0	0-0	0-0	0	0	0	0	0	0	0	0	0	0
TEAM							3	2	5	0		0				
TOTALS			32	12-20	1-3	7-9	8	8	16	1	9	2	1	3	50	

Shooting By Period

Period	FG	FG%	3FG	3FG%	FT	FT%
1st Qtr	12-20	60%	1-3	33%	7-9	78%
2nd Qtr	9-19	47%	4-6	67%	6-8	75%
1st Half	12-20	60%	1-3	33%	7-9	78%
1st Half	21-39	54%	5-9	56%	13-17	76%
Game	34-65	52.3%	8-17	47.1%	24-32	75.0%

Game Notes:

Officials: Billy Smith, Jennifer Rezac, Norma Jones
Attendance: 8566

Start Time: 2019-01-04 00:02:06
End Time: 2019-01-04 01:51:39
Game Duration: 109
Conference Game;

Score	1st	2nd	3rd	4th	TOT
PIT	10	4	10	20	44
UND	32	28	25	15	100

Points from (This Period)	PIT	UND
In the Paint	2	14
Off Turns	0	10
2nd Chance	0	13
Fast Break	0	9
Bench	0	0

Official Play-By-Play
Pittsburgh vs Notre Dame
First Quarter
January 04, 2019 at Joyce Center (Purcell Pavilion) - Notre Dame, IN



Period 1

Starters:

Pittsburgh: 1 GARVEN, DANIELLE; 3 WHITNEY, JASMINE; 4 WALSH, CASSIDY; 11 JUDKINS, CARA; 14 BRADLEY, KAUAI;

Notre Dame: 3 MABREY, MARINA; 5 YOUNG, JACKIE; 11 TURNER, BRIANNA; 24 OGUNBOWALE, ARIKE; 32 SHEPARD, JESSICA;

Time	VISITORS: Pittsburgh	Score	Margin	HOME: Notre Dame
09:43		2-0	H 2	GOOD! JUMPER by OGUNBOWALE, ARIKE
09:43				ASSIST by SHEPARD, JESSICA
09:11	GOOD! JUMPER by GARVEN, DANIELLE	2-2	T	
09:11	ASSIST by WHITNEY, JASMINE			
08:54		4-2	H 2	GOOD! JUMPER by YOUNG, JACKIE [PNT]
08:54				ASSIST by SHEPARD, JESSICA
08:33	TURNOVER (LOSTBALL) by WHITNEY, JASMINE			
08:33				STEAL by MABREY, MARINA
08:28		6-2	H 4	GOOD! LAYUP by MABREY, MARINA [FB]
08:16	MISSED JUMPER by GARVEN, DANIELLE			
08:12				REBOUND (DEF) by SHEPARD, JESSICA
08:10	FOUL (PERSONAL) by GARVEN, DANIELLE			
08:10		7-2	H 5	GOOD! FT by TURNER, BRIANNA [FB]
08:10				MISSED FT by TURNER, BRIANNA
08:08				REBOUND (OFF) by YOUNG, JACKIE
08:06	SUB OUT: BRADLEY, KAUAI			
08:06	SUB IN: NELSON, KYLA			
08:06				TURNOVER (BADPASS) by YOUNG, JACKIE
07:37	MISSED 3PTR by WALSH, CASSIDY			
07:35				REBOUND (DEF) by TEAM
07:19				MISSED JUMPER by SHEPARD, JESSICA
07:19				REBOUND (OFF) by TEAM
07:15		9-2	H 7	GOOD! JUMPER by YOUNG, JACKIE
07:15				ASSIST by MABREY, MARINA
06:57	MISSED LAYUP by JUDKINS, CARA			
06:53				REBOUND (DEF) by TURNER, BRIANNA
06:50				MISSED 3PTR by MABREY, MARINA
06:47				REBOUND (OFF) by SHEPARD, JESSICA
06:46		11-2	H 9	GOOD! LAYUP by YOUNG, JACKIE
06:46				ASSIST by MABREY, MARINA
06:24	MISSED JUMPER by WALSH, CASSIDY			
06:24				BLOCK by TURNER, BRIANNA
06:20				REBOUND (DEF) by YOUNG, JACKIE
06:19		13-2	H 11	GOOD! LAYUP by OGUNBOWALE, ARIKE [FB]
06:19				ASSIST by MABREY, MARINA
06:19	TIMEOUT 30SEC			
06:19	SUB OUT: JUDKINS, CARA			
06:19	SUB IN: WALTERS, KALISTA			
06:14	TURNOVER (BADPASS) by WHITNEY, JASMINE			
06:14				STEAL by TURNER, BRIANNA
06:11	FOUL (PERSONAL) by WHITNEY, JASMINE			
06:06				TURNOVER (BADPASS) by SHEPARD, JESSICA
06:06	STEAL by WALTERS, KALISTA			
05:45	TURNOVER (BADPASS) by GARVEN, DANIELLE			
05:45				STEAL by OGUNBOWALE, ARIKE
05:38				MISSED LAYUP by MABREY, MARINA
05:37				REBOUND (OFF) by TEAM
05:37	SUB OUT: WALSH, CASSIDY			
05:37	SUB IN: BRADLEY, KAUAI			
05:37	SUB OUT: GARVEN, DANIELLE			
05:37	SUB IN: JUDKINS, CARA			
05:34		15-2	H 13	GOOD! LAYUP by MABREY, MARINA
05:34				ASSIST by SHEPARD, JESSICA
05:09	MISSED JUMPER by WHITNEY, JASMINE			
05:06				REBOUND (DEF) by SHEPARD, JESSICA
05:03		17-2	H 15	GOOD! LAYUP by OGUNBOWALE, ARIKE [FB]
05:03				ASSIST by SHEPARD, JESSICA
04:39	MISSED 3PTR by NELSON, KYLA			
04:36	REBOUND (OFF) by WALTERS, KALISTA			
04:34	MISSED JUMPER by WHITNEY, JASMINE			
04:32				REBOUND (DEF) by TEAM
04:23	FOUL (PERSONAL) by JUDKINS, CARA			
04:23		18-2	H 16	GOOD! FT by YOUNG, JACKIE
04:23				SUB OUT: TURNER, BRIANNA
04:23				SUB IN: VAUGHN, MIKAYLA
04:23	SUB OUT: NELSON, KYLA			
04:23	SUB IN: WALSH, CASSIDY			
04:23				MISSED FT by YOUNG, JACKIE
04:21				REBOUND (OFF) by SHEPARD, JESSICA
04:20				MISSED LAYUP by SHEPARD, JESSICA

Time	VISITORS: Pittsburgh	Score	Margin	HOME: Notre Dame
04:20				REBOUND (OFF) by TEAM
04:17		20-2	H 18	GOOD! JUMPER by MABREY, MARINA
04:17				ASSIST by YOUNG, JACKIE
04:00	TURNOVER (TRAVEL) by JUDKINS, CARA			
03:43		23-2	H 21	GOOD! 3PTR by OGUNBOWALE, ARIKE
03:43				ASSIST by YOUNG, JACKIE
03:12	MISSED 3PTR by WHITNEY, JASMINE			
03:09				REBOUND (DEF) by SHEPARD, JESSICA
03:09	FOUL (PERSONAL) by BRADLEY, KAUI			
03:09				SUB OUT: OGUNBOWALE, ARIKE
03:09				SUB IN: PROHASKA, ABBY
03:09	SUB OUT: WALTERS, KALISTA			
03:09	SUB IN: GARVEN, DANIELLE			
03:09	SUB OUT: WHITNEY, JASMINE			
03:09	SUB IN: KNIGHT, JAHSYNI			
02:56				MISSED LAYUP by SHEPARD, JESSICA
02:53	REBOUND (DEF) by BRADLEY, KAUI			
02:50	GOOD! 3PTR by WALSH, CASSIDY	23-5	H 18	
02:50	ASSIST by BRADLEY, KAUI			
02:30				MISSED JUMPER by YOUNG, JACKIE
02:28				REBOUND (OFF) by SHEPARD, JESSICA
02:28	FOUL (PERSONAL) by JUDKINS, CARA			
02:28		24-5	H 19	GOOD! FT by SHEPARD, JESSICA
02:28	SUB OUT: JUDKINS, CARA			
02:28	SUB IN: WALTERS, KALISTA			
02:28		25-5	H 20	GOOD! FT by SHEPARD, JESSICA
02:28				SUB OUT: SHEPARD, JESSICA
02:28				SUB IN: TURNER, BRIANNA
02:06	MISSED JUMPER by GARVEN, DANIELLE			
02:03				REBOUND (DEF) by MABREY, MARINA
01:57		27-5	H 22	GOOD! JUMPER by MABREY, MARINA
01:30	GOOD! LAYUP by BRADLEY, KAUI	27-7	H 20	
01:23	FOUL (PERSONAL) by GARVEN, DANIELLE			
01:23		28-7	H 21	GOOD! FT by TURNER, BRIANNA [FB]
01:23	SUB OUT: GARVEN, DANIELLE			
01:23	SUB IN: NELSON, KYLA			
01:23		29-7	H 22	GOOD! FT by TURNER, BRIANNA [FB]
01:13				FOUL (PERSONAL) by MABREY, MARINA
00:49	GOOD! 3PTR by WALSH, CASSIDY	29-10	H 19	
00:42				MISSED 3PTR by MABREY, MARINA
00:40	REBOUND (DEF) by TEAM			
00:40				SUB OUT: MABREY, MARINA
00:40				SUB IN: NIXON, JORDAN
00:40				SUB OUT: YOUNG, JACKIE
00:40				SUB IN: OGUNBOWALE, ARIKE
00:13	MISSED 3PTR by WALSH, CASSIDY			
00:11	REBOUND (OFF) by KNIGHT, JAHSYNI			
00:11	TURNOVER (LOSTBALL) by KNIGHT, JAHSYNI			
00:02				MISSED JUMPER by OGUNBOWALE, ARIKE
00:01				REBOUND (OFF) by TURNER, BRIANNA
00:01		31-10	H 21	GOOD! JUMPER by TURNER, BRIANNA [PNT]
00:01	FOUL (PERSONAL) by WALTERS, KALISTA			
00:01		32-10	H 22	GOOD! FT by TURNER, BRIANNA

Pittsburgh 10, Notre Dame 32

Points from (This Period)	PIT	UND
In the Paint	2	14
Off Turns	0	10
2nd Chance	0	13
Fast Break	0	9
Bench	0	0

Official Box Score
Pittsburgh vs Notre Dame
Second Quarter Statistics Only
January 04, 2019 at Joyce Center (Purcell Pavilion) - Notre Dame, IN



Pittsburgh 4

No.	Player	S	Pts	FG	3FG	FT	OR	DR	TR	PF	A	TO	Blk	Stl	Min	+/-
01	GARVEN, DANIELLE		0	0-2	0-0	0-0	0	1	1	0	0	3	0	0	8	-18
03	WHITNEY, JASMINE		4	2-4	0-1	0-1	0	0	0	1	0	0	0	0	8	-14
04	WALSH, CASSIDY		0	0-5	0-2	0-0	0	1	1	2	1	1	0	1	10	-24
11	JUDKINS, CARA		0	0-0	0-0	0-0	0	0	0	0	0	0	0	0	0	0
14	BRADLEY, KAUI		0	0-2	0-0	0-0	0	0	0	0	0	1	0	0	4	-11
00	KNIGHT, JAHSYNI		0	0-0	0-0	0-0	0	0	0	0	0	1	0	0	3	-15
10	PRAPA, ISMINI		0	0-0	0-0	0-0	0	0	0	0	0	0	0	0	0	0
13	NELSON, KYLA		0	0-4	0-2	0-0	0	0	0	2	0	2	0	1	7	-14
22	HENRY, JAALA		0	0-0	0-0	0-0	1	2	3	0	0	0	0	1	6	-10
32	WALTERS, KALISTA		0	0-0	0-0	0-0	2	1	3	1	0	0	0	0	4	-14
	TEAM						4	1	5	0		1				
TOTALS			4	2-17	0-5	0-1	7	6	13	6	1	9	0	3	50	

Shooting By Period

Period	FG	FG%	3FG	3FG%	FT	FT%
3rd Qtr	4-18	22%	1-6	17%	1-3	33%
4th Qtr	7-15	47%	4-6	67%	2-2	100%
2nd Half	2-17	12%	0-5	00%	0-1	00%
2nd Half	11-33	33%	5-12	42%	3-5	60%
Game	17-64	26.6%	7-23	30.4%	3-6	50.0%

Notre Dame 28

No.	Player	S	Pts	FG	3FG	FT	OR	DR	TR	PF	A	TO	Blk	Stl	Min	+/-
03	MABREY, MARINA		6	2-4	2-4	0-0	1	1	2	0	4	0	1	2	8	22
05	YOUNG, JACKIE		1	0-0	0-0	1-2	1	2	3	0	0	1	0	0	4	9
11	TURNER, BRIANNA		3	1-3	0-0	1-1	0	1	1	0	0	0	1	0	4	14
24	OGUNBOWALE, ARIKE		8	3-4	1-1	1-1	0	1	1	0	0	1	0	0	7	19
32	SHEPARD, JESSICA		2	0-4	0-0	2-2	3	1	4	1	1	0	0	0	5	11
00	NIXON, JORDAN		3	1-1	1-1	0-0	0	0	0	0	1	0	0	0	6	15
12	PROHASKA, ABBY		0	0-1	0-0	0-0	0	0	0	0	0	1	0	1	5	7
20	BENZ, NICOLE		0	0-0	0-0	0-0	0	0	0	0	0	0	0	0	0	0
22	COSGROVE, DANIELLE		0	0-0	0-0	0-0	0	0	0	0	0	0	0	0	0	0
30	VAUGHN, MIKAYLA		5	2-2	0-0	1-2	0	1	1	0	0	0	0	1	3	5
33	PATTERSON, DANIELLE		0	0-0	0-0	0-0	1	0	1	0	0	0	1	0	8	18
40	BUTLER, MAUREEN		0	0-0	0-0	0-0	0	0	0	0	0	0	0	0	0	0
	TEAM						0	2	2	0		0				
TOTALS			28	9-19	4-6	6-8	6	9	15	1	6	3	3	4	50	

Shooting By Period

Period	FG	FG%	3FG	3FG%	FT	FT%
3rd Qtr	7-16	44%	2-4	50%	9-13	69%
4th Qtr	6-10	60%	1-4	25%	2-2	100%
2nd Half	9-19	47%	4-6	67%	6-8	75%
2nd Half	13-26	50%	3-8	38%	11-15	73%
Game	34-65	52.3%	8-17	47.1%	24-32	75.0%

Game Notes:

Officials: Billy Smith, Jennifer Rezac, Norma Jones
Attendance: 8566

Start Time: 2019-01-04 00:02:06
End Time: 2019-01-04 01:51:39
Game Duration: 109
Conference Game;

Score	1st	2nd	3rd	4th	TOT
PIT	10	4	10	20	44
UND	32	28	25	15	100

Points from (This Period)	PIT	UND
In the Paint	4	8
Off Turns	2	11
2nd Chance	0	6
Fast Break	2	8
Bench	0	8

Official Play-By-Play
Pittsburgh vs Notre Dame
Second Quarter
January 04, 2019 at Joyce Center (Purcell Pavilion) - Notre Dame, IN



Period 2

Starters:

Pittsburgh: 1 GARVEN, DANIELLE; 3 WHITNEY, JASMINE; 4 WALSH, CASSIDY; 11 JUDKINS, CARA; 14 BRADLEY, KAUI;

Notre Dame: 3 MABREY, MARINA; 5 YOUNG, JACKIE; 11 TURNER, BRIANNA; 24 OGUNBOWALE, ARIKE; 32 SHEPARD, JESSICA;

Time	VISITORS: Pittsburgh	Score	Margin	HOME: Notre Dame
09:39	GOOD! JUMPER by WHITNEY, JASMINE [PNT]	32-12	H 20	
09:16		35-12	H 23	GOOD! 3PTR by NIXON, JORDAN
09:16				ASSIST by MABREY, MARINA
09:01	MISSED JUMPER by NELSON, KYLA			
09:01				BLOCK by TURNER, BRIANNA
09:01	REBOUND (OFF) by TEAM			
09:01	SUB OUT: NELSON, KYLA			
09:01	SUB IN: KNIGHT, JAHSYNI			
08:57	MISSED JUMPER by BRADLEY, KAUI			
08:54	REBOUND (OFF) by WALTERS, KALISTA			
08:52	MISSED 3PTR by WALSH, CASSIDY			
08:49				REBOUND (DEF) by MABREY, MARINA
08:45		38-12	H 26	GOOD! 3PTR by MABREY, MARINA
08:15	TURNOVER (TRAVEL) by BRADLEY, KAUI			
08:04				MISSED DUNK by TURNER, BRIANNA
08:04				REBOUND (OFF) by SHEPARD, JESSICA
08:04	FOUL (PERSONAL) by WHITNEY, JASMINE			
08:03		40-12	H 28	GOOD! LAYUP by TURNER, BRIANNA
08:03				ASSIST by NIXON, JORDAN
08:03	FOUL (PERSONAL) by WALTERS, KALISTA			
08:03				SUB OUT: SHEPARD, JESSICA
08:03				SUB IN: PATTERSON, DANIELLE
08:03	SUB OUT: KNIGHT, JAHSYNI			
08:03	SUB IN: GARVEN, DANIELLE			
08:03	SUB OUT: BRADLEY, KAUI			
08:03	SUB IN: NELSON, KYLA			
08:03		41-12	H 29	GOOD! FT by TURNER, BRIANNA
07:52	MISSED JUMPER by WALSH, CASSIDY			
07:50	REBOUND (OFF) by WALTERS, KALISTA			
07:47	MISSED 3PTR by WHITNEY, JASMINE			
07:43				REBOUND (DEF) by OGUNBOWALE, ARIKE
07:36				MISSED JUMPER by OGUNBOWALE, ARIKE
07:33	REBOUND (DEF) by WALTERS, KALISTA			
07:28	MISSED 3PTR by NELSON, KYLA			
07:27	REBOUND (OFF) by TEAM			
07:27	SUB OUT: WHITNEY, JASMINE			
07:27	SUB IN: KNIGHT, JAHSYNI			
07:21	MISSED JUMPER by GARVEN, DANIELLE			
07:18				REBOUND (DEF) by TURNER, BRIANNA
07:18		43-12	H 31	GOOD! LAYUP by OGUNBOWALE, ARIKE [FB]
07:18	FOUL (PERSONAL) by WALSH, CASSIDY			
07:18				SUB OUT: NIXON, JORDAN
07:18				SUB IN: YOUNG, JACKIE
07:18		44-12	H 32	GOOD! FT by OGUNBOWALE, ARIKE [FB]
06:54	MISSED LAYUP by NELSON, KYLA			
06:51				REBOUND (DEF) by YOUNG, JACKIE
06:47		47-12	H 35	GOOD! 3PTR by MABREY, MARINA
06:31	TURNOVER (LOSTBALL) by GARVEN, DANIELLE			
06:31				STEAL by MABREY, MARINA
06:24				TURNOVER (BADPASS) by OGUNBOWALE, ARIKE
06:24	STEAL by NELSON, KYLA			
06:08	TURNOVER (BADPASS) by NELSON, KYLA			
06:08				STEAL by MABREY, MARINA
06:03				MISSED LAYUP by TURNER, BRIANNA
06:02				REBOUND (OFF) by YOUNG, JACKIE
06:02	FOUL (PERSONAL) by NELSON, KYLA			
06:02		48-12	H 36	GOOD! FT by YOUNG, JACKIE [FB]
06:02				SUB OUT: TURNER, BRIANNA
06:02				SUB IN: SHEPARD, JESSICA
06:02	SUB OUT: WALTERS, KALISTA			
06:02	SUB IN: BRADLEY, KAUI			
06:02	SUB OUT: NELSON, KYLA			
06:02	SUB IN: HENRY, JAALA			
06:01				MISSED FT by YOUNG, JACKIE
05:59	REBOUND (DEF) by HENRY, JAALA			
05:34	TURNOVER (TRAVEL) by GARVEN, DANIELLE			
05:27		51-12	H 39	GOOD! 3PTR by OGUNBOWALE, ARIKE
05:27				ASSIST by MABREY, MARINA
05:27	TIMEOUT 30SEC			
05:14	TURNOVER (BADPASS) by KNIGHT, JAHSYNI			

Time	VISITORS: Pittsburgh	Score	Margin	HOME: Notre Dame
05:14				SUB OUT: MABREY, MARINA
05:14				SUB IN: PROHASKA, ABBY
05:14	SUB OUT: KNIGHT, JAHSYNI			
05:14	SUB IN: WHITNEY, JASMINE			
05:03				TURNOVER (BADPASS) by PROHASKA, ABBY
05:03	STEAL by HENRY, JAALA			
04:55	MISSED JUMPER by WALSH, CASSIDY			
04:52				REBOUND (DEF) by SHEPARD, JESSICA
04:49		53-12	H 41	GOOD! JUMPER by OGUNBOWALE, ARIKE [FB]
04:49				ASSIST by SHEPARD, JESSICA
04:27	MISSED JUMPER by GARVEN, DANIELLE			
04:26				REBOUND (DEF) by TEAM
04:26	SUB OUT: BRADLEY, KAUI			
04:26	SUB IN: NELSON, KYLA			
04:07				MISSED LAYUP by SHEPARD, JESSICA
04:04				REBOUND (OFF) by SHEPARD, JESSICA
04:03				MISSED LAYUP by SHEPARD, JESSICA
04:01				REBOUND (OFF) by SHEPARD, JESSICA
04:00				MISSED LAYUP by SHEPARD, JESSICA
04:00				REBOUND (OFF) by PATTERSON, DANIELLE
03:57				TURNOVER (BADPASS) by YOUNG, JACKIE
03:57	STEAL by WALSH, CASSIDY			
03:54	GOOD! LAYUP by WHITNEY, JASMINE [FB]	53-14	H 39	
03:54	ASSIST by WALSH, CASSIDY			
03:54				FOUL (PERSONAL) by SHEPARD, JESSICA
03:54	MISSED FT by WHITNEY, JASMINE			
03:50				REBOUND (DEF) by YOUNG, JACKIE
03:28	FOUL (PERSONAL) by WALSH, CASSIDY			
03:28		54-14	H 40	GOOD! FT by SHEPARD, JESSICA
03:28				SUB OUT: YOUNG, JACKIE
03:28				SUB IN: NIXON, JORDAN
03:28		55-14	H 41	GOOD! FT by SHEPARD, JESSICA
03:23	TURNOVER (BADPASS) by GARVEN, DANIELLE			
03:01				MISSED LAYUP by SHEPARD, JESSICA
02:58	REBOUND (DEF) by HENRY, JAALA			
02:46	MISSED 3PTR by NELSON, KYLA			
02:45				REBOUND (DEF) by TEAM
02:45				SUB OUT: SHEPARD, JESSICA
02:45				SUB IN: VAUGHN, MIKAYLA
02:45				SUB OUT: OGUNBOWALE, ARIKE
02:45				SUB IN: MABREY, MARINA
02:28	FOUL (PERSONAL) by NELSON, KYLA			
02:28		56-14	H 42	GOOD! FT by VAUGHN, MIKAYLA
02:27				MISSED FT by VAUGHN, MIKAYLA
02:25	REBOUND (DEF) by GARVEN, DANIELLE			
02:10	TURNOVER (BADPASS) by WALSH, CASSIDY			
02:10				STEAL by PROHASKA, ABBY
02:04				MISSED LAYUP by PROHASKA, ABBY
02:02				REBOUND (OFF) by MABREY, MARINA
01:59		58-14	H 44	GOOD! LAYUP by VAUGHN, MIKAYLA
01:59				ASSIST by MABREY, MARINA
01:41	TURNOVER (LOSTBALL) by NELSON, KYLA			
01:41				STEAL by VAUGHN, MIKAYLA
01:36		60-14	H 46	GOOD! LAYUP by VAUGHN, MIKAYLA [FB/PNT]
01:36				ASSIST by MABREY, MARINA
01:19	MISSED JUMPER by WHITNEY, JASMINE			
01:15				REBOUND (DEF) by VAUGHN, MIKAYLA
01:12				MISSED 3PTR by MABREY, MARINA
01:08	REBOUND (DEF) by WALSH, CASSIDY			
00:46	MISSED 3PTR by WALSH, CASSIDY			
00:43	REBOUND (OFF) by HENRY, JAALA			
00:43	SUB OUT: NELSON, KYLA			
00:43	SUB IN: BRADLEY, KAUI			
00:42	MISSED JUMPER by WALSH, CASSIDY			
00:42				BLOCK by MABREY, MARINA
00:42	REBOUND (OFF) by TEAM			
00:42	TURNOVER (SHOTCLOCK) by			
00:14				MISSED 3PTR by MABREY, MARINA
00:13	REBOUND (DEF) by TEAM			
00:01	MISSED JUMPER by BRADLEY, KAUI			
00:01				BLOCK by PATTERSON, DANIELLE
00:01	REBOUND (OFF) by TEAM			

Pittsburgh 14, Notre Dame 60

Points from (This Period)	PIT	UND
In the Paint	4	8
Off Turns	2	11
2nd Chance	0	6
Fast Break	2	8
Bench	0	8

Official Box Score
Pittsburgh vs Notre Dame
Second Half Statistics Only
January 04, 2019 at Joyce Center (Purcell Pavilion) - Notre Dame, IN



Pittsburgh 30

No.	Player	S	Pts	FG	3FG	FT	OR	DR	TR	PF	A	TO	Blk	Stl	Min	+/-
00	KNIGHT, JAHSYNI		2	1-1	0-0	0-0	0	0	0	2	1	1	0	1	8	-5
01	GARVEN, DANIELLE		5	2-5	0-0	1-1	3	0	3	1	2	1	0	0	12	1
03	WHITNEY, JASMINE		5	1-8	1-4	2-2	0	1	1	1	3	0	0	2	14	-6
04	WALSH, CASSIDY		0	0-4	0-2	0-0	1	1	2	1	0	0	0	1	13	-6
10	PRAPA, ISMINI		0	0-1	0-0	0-0	0	0	0	1	1	1	0	0	6	-7
11	JUDKINS, CARA		0	0-2	0-0	0-2	3	1	4	1	0	1	0	1	10	-5
13	NELSON, KYLA		6	2-3	2-3	0-0	0	1	1	1	1	1	0	0	10	-3
14	BRADLEY, KAUI		6	2-5	2-3	0-0	0	1	1	2	0	0	0	0	8	-3
22	HENRY, JAALA		2	1-2	0-0	0-0	1	1	2	0	0	2	0	0	10	-12
32	WALTERS, KALISTA		4	2-2	0-0	0-0	2	3	5	0	1	2	1	0	8	-4
	TEAM		0	0-0	0-0	0-0	0	0	0	0	0	1	0	0	0	
TOTALS			30	11-33	5-12	3-5	10	9	19	10	9	10	1	5	99	

Shooting By Period

Period	FG	FG%	3FG	3FG%	FT	FT%
3rd Qtr	4-18	22%	1-6	17%	1-3	33%
4th Qtr	7-15	47%	4-6	67%	2-2	100%
2nd Half	11-33	33%	5-12	42%	3-5	60%
Game	17-64	26.6%	7-23	30.4%	3-6	50.0%

Last FG Half: PIT 4th-00:19

Notre Dame 40

No.	Player	S	Pts	FG	3FG	FT	OR	DR	TR	PF	A	TO	Blk	Stl	Min	+/-
00	NIXON, JORDAN		6	1-3	0-1	4-4	0	1	1	1	3	1	0	2	15	4
03	MABREY, MARINA		6	2-3	2-3	0-0	0	1	1	1	0	1	1	0	6	7
05	YOUNG, JACKIE		8	3-5	0-0	2-3	1	0	1	0	0	0	0	1	7	12
11	TURNER, BRIANNA		0	0-1	0-0	0-2	1	1	2	0	0	0	1	0	5	6
12	PROHASKA, ABBY		2	0-2	0-1	2-2	0	2	2	0	2	2	0	1	13	3
20	BENZ, NICOLE		0	0-0	0-0	0-0	0	0	0	0	0	0	0	0	3	3
22	COSGROVE, DANIELLE		5	2-4	1-3	0-0	0	2	2	0	0	1	0	0	10	-5
24	OGUNBOWALE, ARIKE		1	0-0	0-0	1-2	0	2	2	0	3	2	0	1	5	6
30	VAUGHN, MIKAYLA		4	1-2	0-0	2-2	2	1	3	1	0	1	1	0	9	3
32	SHEPARD, JESSICA		2	1-1	0-0	0-0	0	1	1	0	0	0	0	0	5	6
33	PATTERSON, DANIELLE		6	3-5	0-0	0-0	0	1	1	0	0	0	0	0	15	4
40	BUTLER, MAUREEN		0	0-0	0-0	0-0	0	1	1	1	1	0	0	0	6	1
	TEAM		0	0-0	0-0	0-0	1	0	1	0	0	0	0	0	0	
TOTALS			40	13-26	3-8	11-15	5	13	18	4	9	8	3	5	99	

Shooting By Period

Period	FG	FG%	3FG	3FG%	FT	FT%
3rd Qtr	7-16	44%	2-4	50%	9-13	69%
4th Qtr	6-10	60%	1-4	25%	2-2	100%
2nd Half	13-26	50%	3-8	38%	11-15	73%
Game	34-65	52.3%	8-17	47.1%	24-32	75.0%

Last FG Half: UND 4th-02:38

Game Notes:

Officials: **Billy Smith, Jennifer Rezac, Norma Jones**
 Attendance: **8566**

Start Time: **2019-01-04 00:02:06**
 End Time: **2019-01-04 01:51:39**
 Game Duration: **109**
 Conference Game;

Score	1st	2nd	3rd	4th	TOT
PIT	10	4	10	20	44
UND	32	28	25	15	100

Points from (This Period)	PIT	UND
In the Paint	12	18
Off Turns	11	11
2nd Chance	8	4
Fast Break	5	8
Bench	14	23

Official Box Score
Pittsburgh vs Notre Dame
Third Quarter Statistics Only
January 04, 2019 at Joyce Center (Purcell Pavilion) - Notre Dame, IN



Pittsburgh 30

No.	Player	S	Pts	FG	3FG	FT	OR	DR	TR	PF	A	TO	Blk	Stl	Min	+/-
01	GARVEN, DANIELLE		5	2-3	0-0	1-1	3	0	3	1	0	1	0	0	6	-4
03	WHITNEY, JASMINE		0	0-6	0-2	0-0	0	1	1	1	1	0	0	1	8	-11
04	WALSH, CASSIDY		0	0-2	0-1	0-0	1	1	2	1	0	0	0	0	7	-11
11	JUDKINS, CARA		0	0-2	0-0	0-2	3	1	4	1	0	1	0	1	6	-5
14	BRADLEY, KAUI		3	1-3	1-2	0-0	0	1	1	2	0	0	0	0	6	-5
00	KNIGHT, JAHSYNI		2	1-1	0-0	0-0	0	0	0	0	0	0	0	0	2	-4
10	PRAPA, ISMINI		0	0-0	0-0	0-0	0	0	0	1	1	0	0	0	3	-4
13	NELSON, KYLA		0	0-1	0-1	0-0	0	0	0	1	1	1	0	0	4	-10
22	HENRY, JAALA		0	0-0	0-0	0-0	0	0	0	0	0	2	0	0	4	-11
32	WALTERS, KALISTA		0	0-0	0-0	0-0	0	1	1	0	0	2	1	0	4	-10
TEAM							0	0	0	0		0				
TOTALS			10	4-18	1-6	1-3	7	5	12	8	3	7	1	2	50	

Shooting By Period

Period	FG	FG%	3FG	3FG%	FT	FT%
2nd Half	0-0	0%	0-0	0%	0-0	0%
Game	17-64	26.6%	7-23	30.4%	3-6	50.0%

Notre Dame 40

No.	Player	S	Pts	FG	3FG	FT	OR	DR	TR	PF	A	TO	Blk	Stl	Min	+/-
03	MABREY, MARINA		6	2-3	2-3	0-0	0	1	1	1	0	1	1	0	6	7
05	YOUNG, JACKIE		8	3-5	0-0	2-3	1	0	1	0	0	0	0	1	7	12
11	TURNER, BRIANNA		0	0-1	0-0	0-2	1	1	2	0	0	0	1	0	5	6
24	OGUNBOWALE, ARIKE		1	0-0	0-0	1-2	0	2	2	0	3	2	0	1	5	6
32	SHEPARD, JESSICA		2	1-1	0-0	0-0	0	1	1	0	0	0	0	0	5	6
00	NIXON, JORDAN		2	0-1	0-0	2-2	0	1	1	0	2	0	0	1	5	9
12	PROHASKA, ABBY		2	0-2	0-1	2-2	0	1	1	0	1	0	0	1	7	11
20	BENZ, NICOLE		0	0-0	0-0	0-0	0	0	0	0	0	0	0	0	0	0
22	COSGROVE, DANIELLE		0	0-0	0-0	0-0	0	0	0	0	0	0	0	0	0	0
30	VAUGHN, MIKAYLA		2	0-1	0-0	2-2	2	0	2	1	0	0	1	0	5	9
33	PATTERSON, DANIELLE		2	1-2	0-0	0-0	0	1	1	0	0	0	0	0	5	9
40	BUTLER, MAUREEN		0	0-0	0-0	0-0	0	0	0	0	0	0	0	0	0	0
TEAM							1	0	1	0		0				
TOTALS			25	7-16	2-4	9-13	5	8	13	2	6	3	3	4	50	

Shooting By Period

Period	FG	FG%	3FG	3FG%	FT	FT%
2nd Half	0-0	0%	0-0	0%	0-0	0%
Game	34-65	52.3%	8-17	47.1%	24-32	75.0%

Game Notes:

Officials: Billy Smith, Jennifer Rezac, Norma Jones
 Attendance: 8566

Start Time: 2019-01-04 00:02:06
 End Time: 2019-01-04 01:51:39
 Game Duration: 109
 Conference Game;

Score	1st	2nd	3rd	4th	TOT
PIT	10	4	10	20	44
UND	32	28	25	15	100

Points from (This Period)	PIT	UND
In the Paint	6	8
Off Turns	6	7
2nd Chance	3	4
Fast Break	3	6
Bench	2	8

Official Play-By-Play
Pittsburgh vs Notre Dame
Third Quarter
January 04, 2019 at Joyce Center (Purcell Pavilion) - Notre Dame, IN



Period 3

Starters:

Pittsburgh: 1 GARVEN, DANIELLE; 3 WHITNEY, JASMINE; 4 WALSH, CASSIDY; 11 JUDKINS, CARA; 14 BRADLEY, KAUAI;

Notre Dame: 3 MABREY, MARINA; 5 YOUNG, JACKIE; 11 TURNER, BRIANNA; 24 OGUNBOWALE, ARIKE; 32 SHEPARD, JESSICA;

Time	VISITORS: Pittsburgh	Score	Margin	HOME: Notre Dame
09:59				SUB OUT: NIXON, JORDAN
09:59				SUB IN: YOUNG, JACKIE
09:59				SUB OUT: PROHASKA, ABBY
09:59				SUB IN: TURNER, BRIANNA
09:59				SUB OUT: VAUGHN, MIKAYLA
09:59				SUB IN: OGUNBOWALE, ARIKE
09:59				SUB OUT: PATTERSON, DANIELLE
09:59				SUB IN: SHEPARD, JESSICA
09:59	SUB OUT: HENRY, JAALA			
09:59	SUB IN: JUDKINS, CARA			
09:45	FOUL (PERSONAL) by BRADLEY, KAUAI			
09:45				MISSED FT by YOUNG, JACKIE
09:45				REBOUND (OFF) by TEAM
09:45		61-14	H 47	GOOD! FT by YOUNG, JACKIE
09:27	TURNOVER (3SEC) by JUDKINS, CARA			
09:14				MISSED JUMPER by YOUNG, JACKIE
09:13				REBOUND (OFF) by TURNER, BRIANNA
09:13	FOUL (PERSONAL) by GARVEN, DANIELLE			
09:13				MISSED FT by TURNER, BRIANNA
09:13				REBOUND (OFF) by TEAM
09:12				MISSED FT by TURNER, BRIANNA
09:10	REBOUND (DEF) by JUDKINS, CARA			
08:57	TURNOVER (BADPASS) by GARVEN, DANIELLE			
08:41				TURNOVER (BADPASS) by OGUNBOWALE, ARIKE
08:41	STEAL by JUDKINS, CARA			
08:36	GOOD! JUMPER by GARVEN, DANIELLE [FB]	61-16	H 45	
08:36	ASSIST by WHITNEY, JASMINE			
08:36				FOUL (PERSONAL) by MABREY, MARINA
08:36	GOOD! FT by GARVEN, DANIELLE [FB]	61-17	H 44	
08:25				TURNOVER (LOSTBALL) by OGUNBOWALE, ARIKE
08:10	MISSED 3PTR by BRADLEY, KAUAI			
08:07				REBOUND (DEF) by OGUNBOWALE, ARIKE
07:59		64-17	H 47	GOOD! 3PTR by MABREY, MARINA
07:59				ASSIST by OGUNBOWALE, ARIKE
07:38	MISSED JUMPER by GARVEN, DANIELLE			
07:35	REBOUND (OFF) by JUDKINS, CARA			
07:34	MISSED JUMPER by JUDKINS, CARA			
07:34				BLOCK by TURNER, BRIANNA
07:30	REBOUND (OFF) by WALSH, CASSIDY			
07:29	MISSED JUMPER by WALSH, CASSIDY			
07:29	REBOUND (OFF) by GARVEN, DANIELLE			
07:29	SUB OUT: JUDKINS, CARA			
07:29	SUB IN: NELSON, KYLA			
07:25	MISSED 3PTR by WALSH, CASSIDY			
07:22	REBOUND (OFF) by GARVEN, DANIELLE			
07:19	SUB OUT: BRADLEY, KAUAI			
07:19	SUB IN: WALTERS, KALISTA			
07:13	MISSED JUMPER by WHITNEY, JASMINE			
07:10				REBOUND (DEF) by SHEPARD, JESSICA
07:08	FOUL (PERSONAL) by NELSON, KYLA			
07:08		65-17	H 48	GOOD! FT by OGUNBOWALE, ARIKE [FB]
07:08	SUB OUT: GARVEN, DANIELLE			
07:08	SUB IN: HENRY, JAALA			
07:07				MISSED FT by OGUNBOWALE, ARIKE
07:05	REBOUND (DEF) by WHITNEY, JASMINE			
06:58	TURNOVER (LOSTBALL) by WALTERS, KALISTA			
06:58				STEAL by OGUNBOWALE, ARIKE
06:53		67-17	H 50	GOOD! LAYUP by YOUNG, JACKIE [FB]
06:53				ASSIST by OGUNBOWALE, ARIKE
06:41	TURNOVER (LOSTBALL) by HENRY, JAALA			
06:41				SUB OUT: MABREY, MARINA
06:41				SUB IN: PROHASKA, ABBY
06:11				MISSED JUMPER by TURNER, BRIANNA
06:08	REBOUND (DEF) by WALSH, CASSIDY			
06:00	MISSED 3PTR by NELSON, KYLA			
05:57				REBOUND (DEF) by OGUNBOWALE, ARIKE
05:52		69-17	H 52	GOOD! LAYUP by SHEPARD, JESSICA [PNT]
05:52				ASSIST by OGUNBOWALE, ARIKE
05:32	MISSED 3PTR by WHITNEY, JASMINE			
05:28				REBOUND (DEF) by TURNER, BRIANNA

Time	VISITORS: Pittsburgh	Score	Margin	HOME: Notre Dame
05:26	FOUL (PERSONAL) by WHITNEY, JASMINE			
05:26				SUB OUT: TURNER, BRIANNA
05:26				SUB IN: NIXON, JORDAN
05:26				SUB OUT: OGUNBOWALE, ARIKE
05:26				SUB IN: VAUGHN, MIKAYLA
05:26				SUB OUT: SHEPARD, JESSICA
05:26				SUB IN: PATTERSON, DANIELLE
05:26	SUB OUT: WHITNEY, JASMINE			
05:26	SUB IN: KNIGHT, JAHSYNI			
05:20		71-17	H 54	GOOD! JUMPER by YOUNG, JACKIE
05:20				ASSIST by NIXON, JORDAN
05:01	TURNOVER (BADPASS) by NELSON, KYLA			
05:01				STEAL by YOUNG, JACKIE
04:56				MISSED LAYUP by NIXON, JORDAN
04:56	BLOCK by WALTERS, KALISTA			
04:55				REBOUND (OFF) by TEAM
04:55				
04:51				MISSED JUMPER by PROHASKA, ABBY
04:49	REBOUND (DEF) by WALTERS, KALISTA			
04:22	GOOD! LAYUP by KNIGHT, JAHSYNI	71-19	H 52	
04:22	ASSIST by NELSON, KYLA			
04:06				MISSED JUMPER by YOUNG, JACKIE
04:04				REBOUND (OFF) by VAUGHN, MIKAYLA
04:03				MISSED LAYUP by VAUGHN, MIKAYLA
03:59				REBOUND (OFF) by YOUNG, JACKIE
03:53		73-19	H 54	GOOD! JUMPER by PATTERSON, DANIELLE
03:36	TURNOVER (BADPASS) by WALTERS, KALISTA			
03:36				STEAL by PROHASKA, ABBY
03:32		75-19	H 56	GOOD! LAYUP by YOUNG, JACKIE [FB]
03:32				ASSIST by PROHASKA, ABBY
03:32	FOUL (PERSONAL) by WALSH, CASSIDY			
03:32	SUB OUT: KNIGHT, JAHSYNI			
03:32	SUB IN: WHITNEY, JASMINE			
03:32	SUB OUT: WALSH, CASSIDY			
03:32	SUB IN: PRAPA, ISMINI			
03:32	SUB OUT: NELSON, KYLA			
03:32	SUB IN: JUDKINS, CARA			
03:32	SUB OUT: WALTERS, KALISTA			
03:32	SUB IN: BRADLEY, KAUI			
03:32		76-19	H 57	GOOD! FT by YOUNG, JACKIE [FB]
03:19	TURNOVER (BADPASS) by HENRY, JAALA			
03:19				STEAL by NIXON, JORDAN
03:04	FOUL (PERSONAL) by PRAPA, ISMINI			
03:04		77-19	H 58	GOOD! FT by PROHASKA, ABBY
03:04				SUB OUT: YOUNG, JACKIE
03:04				SUB IN: MABREY, MARINA
03:04		78-19	H 59	GOOD! FT by PROHASKA, ABBY
02:48	MISSED JUMPER by WHITNEY, JASMINE			
02:48				BLOCK by MABREY, MARINA
02:46	REBOUND (OFF) by JUDKINS, CARA			
02:46				FOUL (PERSONAL) by VAUGHN, MIKAYLA
02:46	MISSED FT by JUDKINS, CARA			
02:46	REBOUND (OFF) by TEAM			
02:46	SUB OUT: HENRY, JAALA			
02:46	SUB IN: GARVEN, DANIELLE			
02:46	MISSED FT by JUDKINS, CARA			
02:44				REBOUND (DEF) by PATTERSON, DANIELLE
02:35		81-19	H 62	GOOD! 3PTR by MABREY, MARINA
02:35				ASSIST by NIXON, JORDAN
02:11	MISSED JUMPER by WHITNEY, JASMINE			
02:08				REBOUND (DEF) by MABREY, MARINA
02:07				TURNOVER (LOSTBALL) by MABREY, MARINA
02:07	STEAL by WHITNEY, JASMINE			
01:43	MISSED 3PTR by WHITNEY, JASMINE			
01:40	REBOUND (OFF) by GARVEN, DANIELLE			
01:30	GOOD! 3PTR by BRADLEY, KAUI	81-22	H 59	
01:30	ASSIST by PRAPA, ISMINI			
01:13				MISSED 3PTR by MABREY, MARINA
01:12				REBOUND (OFF) by VAUGHN, MIKAYLA
01:12	FOUL (PERSONAL) by JUDKINS, CARA			
01:12		82-22	H 60	GOOD! FT by VAUGHN, MIKAYLA
01:12		83-22	H 61	GOOD! FT by VAUGHN, MIKAYLA
00:55	GOOD! LAYUP by GARVEN, DANIELLE	83-24	H 59	
00:42				MISSED JUMPER by PATTERSON, DANIELLE
00:38	REBOUND (DEF) by BRADLEY, KAUI			
00:32	MISSED JUMPER by BRADLEY, KAUI			
00:30	REBOUND (OFF) by JUDKINS, CARA			
00:27	MISSED JUMPER by JUDKINS, CARA			
00:27				BLOCK by VAUGHN, MIKAYLA
00:23				REBOUND (DEF) by NIXON, JORDAN

Time	VISITORS: Pittsburgh	Score	Margin	HOME: Notre Dame
00:23	FOUL (PERSONAL) by BRADLEY, KAUIAI			
00:23		84-24	H 60	GOOD! FT by NIXON, JORDAN
00:23	SUB OUT: PRAPA, ISMINI			
00:23	SUB IN: WALSH, CASSIDY			
00:23	SUB OUT: BRADLEY, KAUIAI			
00:23	SUB IN: NELSON, KYLA			
00:23	SUB OUT: JUDKINS, CARA			
00:23	SUB IN: WALTERS, KALISTA			
00:23		85-24	H 61	GOOD! FT by NIXON, JORDAN
00:06	MISSED JUMPER by WHITNEY, JASMINE			
00:03				REBOUND (DEF) by PROHASKA, ABBY
00:00				MISSED 3PTR by PROHASKA, ABBY
00:00				REBOUND (OFF) by TEAM

Pittsburgh 24, Notre Dame 85

Points from (This Period)	PIT	UND
In the Paint	6	8
Off Turns	6	7
2nd Chance	3	4
Fast Break	3	6
Bench	2	8

Official Box Score
Pittsburgh vs Notre Dame
Fourth Quarter Statistics Only
January 04, 2019 at Joyce Center (Purcell Pavilion) - Notre Dame, IN



Pittsburgh 20

No.	Player	S	Pts	FG	3FG	FT	OR	DR	TR	PF	A	TO	Blk	Stl	Min	+/-
01	GARVEN, DANIELLE		0	0-2	0-0	0-0	0	0	0	0	2	0	0	0	6	5
03	WHITNEY, JASMINE		5	1-2	1-2	2-2	0	0	0	0	2	0	0	1	6	5
04	WALSH, CASSIDY		0	0-2	0-1	0-0	0	0	0	0	0	0	0	1	6	5
11	JUDKINS, CARA		0	0-0	0-0	0-0	0	0	0	0	0	0	0	0	4	0
14	BRADLEY, KAUI		3	1-2	1-1	0-0	0	0	0	0	0	0	0	0	2	2
00	KNIGHT, JAHSYNI		0	0-0	0-0	0-0	0	0	0	2	1	1	0	1	6	-1
10	PRAPA, ISMINI		0	0-1	0-0	0-0	0	0	0	0	0	1	0	0	3	-3
13	NELSON, KYLA		6	2-2	2-2	0-0	0	1	1	0	0	0	0	0	6	7
22	HENRY, JAALA		2	1-2	0-0	0-0	1	1	2	0	0	0	0	0	6	-1
32	WALTERS, KALISTA		4	2-2	0-0	0-0	2	2	4	0	1	0	0	0	4	6
	TEAM						0	0	0	0		1				
TOTALS			20	7-15	4-6	2-2	3	4	7	2	6	3	0	3	49	

Shooting By Period

Period	FG	FG%	3FG	3FG%	FT	FT%
Game	17-64	26.6%	7-23	30.4%	3-6	50.0%

Notre Dame 15

No.	Player	S	Pts	FG	3FG	FT	OR	DR	TR	PF	A	TO	Blk	Stl	Min	+/-
03	MABREY, MARINA		0	0-0	0-0	0-0	0	0	0	0	0	0	0	0	0	0
05	YOUNG, JACKIE		0	0-0	0-0	0-0	0	0	0	0	0	0	0	0	0	0
11	TURNER, BRIANNA		0	0-0	0-0	0-0	0	0	0	0	0	0	0	0	0	0
24	OGUNBOWALE, ARIKE		0	0-0	0-0	0-0	0	0	0	0	0	0	0	0	0	0
32	SHEPARD, JESSICA		0	0-0	0-0	0-0	0	0	0	0	0	0	0	0	0	0
00	NIXON, JORDAN		4	1-2	0-1	2-2	0	0	0	1	1	1	0	1	10	-5
12	PROHASKA, ABBY		0	0-0	0-0	0-0	0	1	1	0	1	2	0	0	6	-8
20	BENZ, NICOLE		0	0-0	0-0	0-0	0	0	0	0	0	0	0	0	3	3
22	COSGROVE, DANIELLE		5	2-4	1-3	0-0	0	2	2	0	0	1	0	0	10	-5
30	VAUGHN, MIKAYLA		2	1-1	0-0	0-0	0	1	1	0	0	1	0	0	4	-6
33	PATTERSON, DANIELLE		4	2-3	0-0	0-0	0	0	0	0	0	0	0	0	10	-5
40	BUTLER, MAUREEN		0	0-0	0-0	0-0	0	1	1	1	1	0	0	0	6	1
	TEAM						0	0	0	0		0				
TOTALS			15	6-10	1-4	2-2	0	5	5	2	3	5	0	1	49	

Shooting By Period

Period	FG	FG%	3FG	3FG%	FT	FT%
Game	34-65	52.3%	8-17	47.1%	24-32	75.0%

Game Notes:

Officials: **Billy Smith, Jennifer Rezac, Norma Jones**
Attendance: **8566**

Start Time: **2019-01-04 00:02:06**
End Time: **2019-01-04 01:51:39**
Game Duration: **109**
Conference Game;

Score	1st	2nd	3rd	4th	TOT
PIT	10	4	10	20	44
UND	32	28	25	15	100

Points from (This Period)	PIT	UND
In the Paint	6	10
Off Turns	5	4
2nd Chance	5	0
Fast Break	2	2
Bench	12	15

Official Play-By-Play
Pittsburgh vs Notre Dame
Fourth Quarter
January 04, 2019 at Joyce Center (Purcell Pavilion) - Notre Dame, IN



Period 4

Starters:

Pittsburgh: 1 GARVEN, DANIELLE; 3 WHITNEY, JASMINE; 4 WALSH, CASSIDY; 11 JUDKINS, CARA; 14 BRADLEY, KAUI;

Notre Dame: 3 MABREY, MARINA; 5 YOUNG, JACKIE; 11 TURNER, BRIANNA; 24 OGUNBOWALE, ARIKE; 32 SHEPARD, JESSICA;

Time	VISITORS: Pittsburgh	Score	Margin	HOME: Notre Dame
09:44				TURNOVER (LOSTBALL) by VAUGHN, MIKAYLA
09:44	STEAL by WALSH, CASSIDY			
09:40				FOUL (PERSONAL) by NIXON, JORDAN
09:40	GOOD! FT by WHITNEY, JASMINE [FB]	85-25	H 60	
09:40	GOOD! FT by WHITNEY, JASMINE [FB]	85-26	H 59	
09:23				MISSED 3PTR by COSGROVE, DANIELLE
09:17	REBOUND (DEF) by WALTERS, KALISTA			
09:15	MISSED 3PTR by WALSH, CASSIDY			
09:12	REBOUND (OFF) by WALTERS, KALISTA			
08:53	GOOD! 3PTR by WHITNEY, JASMINE	85-29	H 56	
08:53	ASSIST by WALTERS, KALISTA			
08:36		87-29	H 58	GOOD! LAYUP by PATTERSON, DANIELLE
08:07	MISSED JUMPER by GARVEN, DANIELLE			
08:05	REBOUND (OFF) by WALTERS, KALISTA			
08:04	GOOD! LAYUP by WALTERS, KALISTA [PNT]	87-31	H 56	
07:48		89-31	H 58	GOOD! LAYUP by VAUGHN, MIKAYLA
07:48				ASSIST by PROHASKA, ABBY
07:32	MISSED 3PTR by WHITNEY, JASMINE			
07:27				REBOUND (DEF) by VAUGHN, MIKAYLA
07:19				MISSED 3PTR by COSGROVE, DANIELLE
07:13	REBOUND (DEF) by NELSON, KYLA			
07:07	GOOD! JUMPER by WALTERS, KALISTA	89-33	H 56	
07:07	ASSIST by GARVEN, DANIELLE			
06:36				MISSED 3PTR by NIXON, JORDAN
06:33	REBOUND (DEF) by WALTERS, KALISTA			
06:29	GOOD! 3PTR by NELSON, KYLA	89-36	H 53	
06:29	ASSIST by WHITNEY, JASMINE			
06:00		91-36	H 55	GOOD! LAYUP by NIXON, JORDAN
05:53	MISSED JUMPER by WALSH, CASSIDY			
05:50				REBOUND (DEF) by PROHASKA, ABBY
05:47				TURNOVER (BADPASS) by PROHASKA, ABBY
05:47				SUB OUT: VAUGHN, MIKAYLA
05:47				SUB IN: BUTLER, MAUREEN
05:47	SUB OUT: NELSON, KYLA			
05:47	SUB IN: KNIGHT, JAHSYNI			
05:47	SUB OUT: WHITNEY, JASMINE			
05:47	SUB IN: HENRY, JAALA			
05:47	SUB OUT: WALTERS, KALISTA			
05:47	SUB IN: BRADLEY, KAUI			
05:34	MISSED JUMPER by GARVEN, DANIELLE			
05:31				REBOUND (DEF) by COSGROVE, DANIELLE
05:14		94-36	H 58	GOOD! 3PTR by COSGROVE, DANIELLE
05:14				ASSIST by BUTLER, MAUREEN
04:45	GOOD! JUMPER by HENRY, JAALA	94-38	H 56	
04:45	ASSIST by GARVEN, DANIELLE			
04:25				TURNOVER (TRAVEL) by PROHASKA, ABBY
04:25				
04:25	SUB OUT: GARVEN, DANIELLE			
04:25	SUB IN: WHITNEY, JASMINE			
04:25	SUB OUT: WALSH, CASSIDY			
04:25	SUB IN: JUDKINS, CARA			
04:08	GOOD! 3PTR by BRADLEY, KAUI	94-41	H 53	
04:08	ASSIST by WHITNEY, JASMINE			
03:52				TURNOVER (BADPASS) by COSGROVE, DANIELLE
03:52	STEAL by WHITNEY, JASMINE			
03:47	MISSED LAYUP by BRADLEY, KAUI			
03:44				REBOUND (DEF) by COSGROVE, DANIELLE
03:34				SUB OUT: PROHASKA, ABBY
03:34				SUB IN: BENZ, NICOLE
03:34	SUB OUT: BRADLEY, KAUI			
03:34	SUB IN: PRAPA, ISMINI			
03:32				TURNOVER (BADPASS) by NIXON, JORDAN
03:32	STEAL by KNIGHT, JAHSYNI			
03:28	TURNOVER (LOSTBALL) by KNIGHT, JAHSYNI			
03:28				STEAL by NIXON, JORDAN
03:23		96-41	H 55	GOOD! LAYUP by PATTERSON, DANIELLE [FB]
03:06	MISSED JUMPER by HENRY, JAALA			
03:03				REBOUND (DEF) by BUTLER, MAUREEN
02:38		98-41	H 57	GOOD! LAYUP by COSGROVE, DANIELLE
02:38				ASSIST by NIXON, JORDAN

Time	VISITORS: Pittsburgh	Score	Margin	HOME: Notre Dame
02:28	SUB OUT: WHITNEY, JASMINE			
02:28	SUB IN: NELSON, KYLA			
02:26	TURNOVER (TRAVEL) by PRAPA, ISMINI			
02:07				MISSED JUMPER by PATTERSON, DANIELLE
02:03	REBOUND (DEF) by HENRY, JAALA			
01:36	MISSED JUMPER by PRAPA, ISMINI			
01:36	REBOUND (OFF) by HENRY, JAALA			
01:36	TURNOVER (SHOTCLOCK) by			
01:25	FOUL (PERSONAL) by KNIGHT, JAHSYNI			
01:01	FOUL (PERSONAL) by KNIGHT, JAHSYNI			
01:01		99-41	H 58	GOOD! FT by NIXON, JORDAN
01:01		100-41	H 59	GOOD! FT by NIXON, JORDAN
00:41				FOUL (PERSONAL) by BUTLER, MAUREEN
00:19	GOOD! 3PTR by NELSON, KYLA	100-44	H 56	
00:19	ASSIST by KNIGHT, JAHSYNI			

Pittsburgh 44, Notre Dame 100

Points from (This Period)	PIT	UND
In the Paint	6	10
Off Turns	5	4
2nd Chance	5	0
Fast Break	2	2
Bench	12	15

Official Scoring/Possession Reference Chart
Pittsburgh vs Notre Dame
Period 1
January 04, 2019 at Joyce Center (Purcell Pavilion) - Notre Dame, IN



Period 1

Starters:

Pittsburgh: 1 GARVEN, DANIELLE; 3 WHITNEY, JASMINE; 4 WALSH, CASSIDY; 11 JUDKINS, CARA; 14 BRADLEY, KAUI;

Notre Dame: 3 MABREY, MARINA; 5 YOUNG, JACKIE; 11 TURNER, BRIANNA; 24 OGUNBOWALE, ARIKE; 32 SHEPARD, JESSICA;

Time	VISITORS: Pittsburgh	Score	Margin	HOME: Notre Dame
09:43		2-0	H 2	GOOD! JUMPER by OGUNBOWALE, ARIKE
09:11	GOOD! JUMPER by GARVEN, DANIELLE	2-2	T	
08:54		4-2	H 2	GOOD! JUMPER by YOUNG, JACKIE [PNT]
08:28		6-2	H 4	GOOD! LAYUP by MABREY, MARINA [FB]
08:10		7-2	H 5	GOOD! FT by TURNER, BRIANNA [FB]
07:15		9-2	H 7	GOOD! JUMPER by YOUNG, JACKIE
06:46		11-2	H 9	GOOD! LAYUP by YOUNG, JACKIE
06:19		13-2	H 11	GOOD! LAYUP by OGUNBOWALE, ARIKE [FB]
05:34		15-2	H 13	GOOD! LAYUP by MABREY, MARINA
05:03		17-2	H 15	GOOD! LAYUP by OGUNBOWALE, ARIKE [FB]
04:23		18-2	H 16	GOOD! FT by YOUNG, JACKIE
04:17		20-2	H 18	GOOD! JUMPER by MABREY, MARINA
03:43		23-2	H 21	GOOD! 3PTR by OGUNBOWALE, ARIKE
02:50	GOOD! 3PTR by WALSH, CASSIDY	23-5	H 18	
02:28		24-5	H 19	GOOD! FT by SHEPARD, JESSICA
02:28		25-5	H 20	GOOD! FT by SHEPARD, JESSICA
01:57		27-5	H 22	GOOD! JUMPER by MABREY, MARINA
01:30	GOOD! LAYUP by BRADLEY, KAUI	27-7	H 20	
01:23		28-7	H 21	GOOD! FT by TURNER, BRIANNA [FB]
01:23		29-7	H 22	GOOD! FT by TURNER, BRIANNA [FB]
00:49	GOOD! 3PTR by WALSH, CASSIDY	29-10	H 19	
00:01		31-10	H 21	GOOD! JUMPER by TURNER, BRIANNA [PNT]
00:01		32-10	H 22	GOOD! FT by TURNER, BRIANNA

Pittsburgh 10, Notre Dame 32

Official Scoring/Possession Reference Chart
Pittsburgh vs Notre Dame
Period 2
January 04, 2019 at Joyce Center (Purcell Pavilion) - Notre Dame, IN



Period 2

Starters:

Pittsburgh: 1 GARVEN,DANIELLE; 3 WHITNEY,JASMINE; 4 WALSH,CASSIDY; 11 JUDKINS,CARA; 14 BRADLEY,KAUAI;

Notre Dame: 3 MABREY,MARINA; 5 YOUNG,JACKIE; 11 TURNER,BRIANNA; 24 OGUNBOWALE,ARIKE; 32 SHEPARD,JESSICA;

Time	VISITORS: Pittsburgh	Score	Margin	HOME: Notre Dame
09:39	GOOD! JUMPER by WHITNEY, JASMINE [PNT]	32-12	H 20	
09:16		35-12	H 23	GOOD! 3PTR by NIXON, JORDAN
08:45		38-12	H 26	GOOD! 3PTR by MABREY, MARINA
08:03		40-12	H 28	GOOD! LAYUP by TURNER, BRIANNA
08:03		41-12	H 29	GOOD! FT by TURNER, BRIANNA
07:18		43-12	H 31	GOOD! LAYUP by OGUNBOWALE, ARIKE [FB]
07:18		44-12	H 32	GOOD! FT by OGUNBOWALE, ARIKE [FB]
06:47		47-12	H 35	GOOD! 3PTR by MABREY, MARINA
06:02		48-12	H 36	GOOD! FT by YOUNG, JACKIE [FB]
05:27		51-12	H 39	GOOD! 3PTR by OGUNBOWALE, ARIKE
04:49		53-12	H 41	GOOD! JUMPER by OGUNBOWALE, ARIKE [FB]
03:54	GOOD! LAYUP by WHITNEY, JASMINE [FB]	53-14	H 39	
03:28		54-14	H 40	GOOD! FT by SHEPARD, JESSICA
03:28		55-14	H 41	GOOD! FT by SHEPARD, JESSICA
02:28		56-14	H 42	GOOD! FT by VAUGHN, MIKAYLA
01:59		58-14	H 44	GOOD! LAYUP by VAUGHN, MIKAYLA
01:36		60-14	H 46	GOOD! LAYUP by VAUGHN, MIKAYLA [FB/PNT]

Pittsburgh 14, Notre Dame 60

Official Scoring/Possession Reference Chart
Pittsburgh vs Notre Dame
Period 3
January 04, 2019 at Joyce Center (Purcell Pavilion) - Notre Dame, IN



Period 3

Starters:

Pittsburgh: 1 GARVEN, DANIELLE; 3 WHITNEY, JASMINE; 4 WALSH, CASSIDY; 11 JUDKINS, CARA; 14 BRADLEY, KAUI;

Notre Dame: 3 MABREY, MARINA; 5 YOUNG, JACKIE; 11 TURNER, BRIANNA; 24 OGUNBOWALE, ARIKE; 32 SHEPARD, JESSICA;

Time	VISITORS: Pittsburgh	Score	Margin	HOME: Notre Dame
09:45		61-14	H 47	GOOD! FT by YOUNG, JACKIE
08:36	GOOD! JUMPER by GARVEN, DANIELLE [FB]	61-16	H 45	
08:36	GOOD! FT by GARVEN, DANIELLE [FB]	61-17	H 44	
07:59		64-17	H 47	GOOD! 3PTR by MABREY, MARINA
07:08		65-17	H 48	GOOD! FT by OGUNBOWALE, ARIKE [FB]
06:53		67-17	H 50	GOOD! LAYUP by YOUNG, JACKIE [FB]
05:52		69-17	H 52	GOOD! LAYUP by SHEPARD, JESSICA [PNT]
05:20		71-17	H 54	GOOD! JUMPER by YOUNG, JACKIE
04:22	GOOD! LAYUP by KNIGHT, JAHSYNI	71-19	H 52	
03:53		73-19	H 54	GOOD! JUMPER by PATTERSON, DANIELLE
03:32		75-19	H 56	GOOD! LAYUP by YOUNG, JACKIE [FB]
03:32		76-19	H 57	GOOD! FT by YOUNG, JACKIE [FB]
03:04		77-19	H 58	GOOD! FT by PROHASKA, ABBY
03:04		78-19	H 59	GOOD! FT by PROHASKA, ABBY
02:35		81-19	H 62	GOOD! 3PTR by MABREY, MARINA
01:30	GOOD! 3PTR by BRADLEY, KAUI	81-22	H 59	
01:12		82-22	H 60	GOOD! FT by VAUGHN, MIKAYLA
01:12		83-22	H 61	GOOD! FT by VAUGHN, MIKAYLA
00:55	GOOD! LAYUP by GARVEN, DANIELLE	83-24	H 59	
00:23		84-24	H 60	GOOD! FT by NIXON, JORDAN
00:23		85-24	H 61	GOOD! FT by NIXON, JORDAN

Pittsburgh 24, Notre Dame 85

Official Scoring/Possession Reference Chart
Pittsburgh vs Notre Dame
Period 4
January 04, 2019 at Joyce Center (Purcell Pavilion) - Notre Dame, IN



Period 4

Starters:

Pittsburgh: 1 GARVEN, DANIELLE; 3 WHITNEY, JASMINE; 4 WALSH, CASSIDY; 11 JUDKINS, CARA; 14 BRADLEY, KAUI;

Notre Dame: 3 MABREY, MARINA; 5 YOUNG, JACKIE; 11 TURNER, BRIANNA; 24 OGUNBOWALE, ARIKE; 32 SHEPARD, JESSICA;

Time	VISITORS: Pittsburgh	Score	Margin	HOME: Notre Dame
09:40	GOOD! FT by WHITNEY, JASMINE [FB]	85-25	H 60	
09:40	GOOD! FT by WHITNEY, JASMINE [FB]	85-26	H 59	
08:53	GOOD! 3PTR by WHITNEY, JASMINE	85-29	H 56	
08:36		87-29	H 58	GOOD! LAYUP by PATTERSON, DANIELLE
08:04	GOOD! LAYUP by WALTERS, KALISTA [PNT]	87-31	H 56	
07:48		89-31	H 58	GOOD! LAYUP by VAUGHN, MIKAYLA
07:07	GOOD! JUMPER by WALTERS, KALISTA	89-33	H 56	
06:29	GOOD! 3PTR by NELSON, KYLA	89-36	H 53	
06:00		91-36	H 55	GOOD! LAYUP by NIXON, JORDAN
05:14		94-36	H 58	GOOD! 3PTR by COSGROVE, DANIELLE
04:45	GOOD! JUMPER by HENRY, JAALA	94-38	H 56	
04:08	GOOD! 3PTR by BRADLEY, KAUI	94-41	H 53	
03:23		96-41	H 55	GOOD! LAYUP by PATTERSON, DANIELLE [FB]
02:38		98-41	H 57	GOOD! LAYUP by COSGROVE, DANIELLE
01:01		99-41	H 58	GOOD! FT by NIXON, JORDAN
01:01		100-41	H 59	GOOD! FT by NIXON, JORDAN
00:19	GOOD! 3PTR by NELSON, KYLA	100-44	H 56	

Pittsburgh 44, Notre Dame 100

**Official Substitutions Log
Pittsburgh vs Notre Dame
Period 1**

January 04, 2019 at Joyce Center (Purcell Pavilion) - Notre Dame, IN



VISITORS: Pittsburgh	Time	Score	HOME: Notre Dame
1 GARVEN,DANIELLE			3 MABREY,MARINA
3 WHITNEY,JASMINE			5 YOUNG,JACKIE
4 WALSH,CASSIDY			11 TURNER,BRIANNA
11 JUDKINS,CARA			24 OGUNBOWALE,ARIKE
14 BRADLEY,KAUAI			32 SHEPARD,JESSICA
SUB OUT: 14 BRADLEY,KAUAI	08:06	2-7	
SUB IN: 13 NELSON,KYLA	08:06		
SUB OUT: 11 JUDKINS,CARA	06:19	2-13	
SUB IN: 32 WALTERS,KALISTA	06:19		
SUB OUT: 4 WALSH,CASSIDY	05:37	2-13	
SUB IN: 14 BRADLEY,KAUAI	05:37		
SUB OUT: 1 GARVEN,DANIELLE	05:37		
SUB IN: 11 JUDKINS,CARA	05:37		
	04:23	2-18	SUB OUT: TURNER,BRIANNA
	04:23		SUB IN: VAUGHN,MIKAYLA
SUB OUT: 13 NELSON,KYLA	04:23		
SUB IN: 4 WALSH,CASSIDY	04:23		
	03:09	2-23	SUB OUT: OGUNBOWALE,ARIKE
	03:09		SUB IN: PROHASKA,ABBY
SUB OUT: 32 WALTERS,KALISTA	03:09		
SUB IN: 1 GARVEN,DANIELLE	03:09		
SUB OUT: 3 WHITNEY,JASMINE	03:09		
SUB IN: 0 KNIGHT,JAHSYNI	03:09		
SUB OUT: 11 JUDKINS,CARA	02:28	5-24	
SUB IN: 32 WALTERS,KALISTA	02:28		
	02:28		SUB OUT: SHEPARD,JESSICA
	02:28		SUB IN: TURNER,BRIANNA
SUB OUT: 1 GARVEN,DANIELLE	01:23	7-28	
SUB IN: 13 NELSON,KYLA	01:23		
	00:40	10-29	SUB OUT: MABREY,MARINA
	00:40		SUB IN: NIXON,JORDAN
	00:40		SUB OUT: YOUNG,JACKIE
	00:40		SUB IN: OGUNBOWALE,ARIKE

Pittsburgh 10, Notre Dame 32

Official Substitutions Log
Pittsburgh vs Notre Dame
Period 2
January 04, 2019 at Joyce Center (Purcell Pavilion) - Notre Dame, IN



VISITORS: Pittsburgh	Time	Score	HOME: Notre Dame
1 GARVEN,DANIELLE			3 MABREY,MARINA
3 WHITNEY,JASMINE			5 YOUNG,JACKIE
4 WALSH,CASSIDY			11 TURNER,BRIANNA
11 JUDKINS,CARA			24 OGUNBOWALE,ARIKE
14 BRADLEY,KAUAI			32 SHEPARD,JESSICA
SUB OUT: 13 NELSON,KYLA	09:01	12-35	
SUB IN: 0 KNIGHT,JAHSYNI	09:01		
	08:03	12-40	SUB OUT: SHEPARD,JESSICA
	08:03		SUB IN: PATTERSON,DANIELLE
SUB OUT: 0 KNIGHT,JAHSYNI	08:03		
SUB IN: 1 GARVEN,DANIELLE	08:03		
SUB OUT: 14 BRADLEY,KAUAI	08:03		
SUB IN: 13 NELSON,KYLA	08:03		
SUB OUT: 3 WHITNEY,JASMINE	07:27	12-41	
SUB IN: 0 KNIGHT,JAHSYNI	07:27		
	07:18	12-43	SUB OUT: NIXON,JORDAN
	07:18		SUB IN: YOUNG,JACKIE
	06:02	12-48	SUB OUT: TURNER,BRIANNA
	06:02		SUB IN: SHEPARD,JESSICA
SUB OUT: 32 WALTERS,KALISTA	06:02		
SUB IN: 14 BRADLEY,KAUAI	06:02		
SUB OUT: 13 NELSON,KYLA	06:02		
SUB IN: 22 HENRY,JAALA	06:02		
	05:14	12-51	SUB OUT: MABREY,MARINA
	05:14		SUB IN: PROHASKA,ABBY
SUB OUT: 0 KNIGHT,JAHSYNI	05:14		
SUB IN: 3 WHITNEY,JASMINE	05:14		
SUB OUT: 14 BRADLEY,KAUAI	04:26	12-53	
SUB IN: 13 NELSON,KYLA	04:26		
	03:28	14-54	SUB OUT: YOUNG,JACKIE
	03:28		SUB IN: NIXON,JORDAN
	02:45	14-55	SUB OUT: SHEPARD,JESSICA
	02:45		SUB IN: VAUGHN,MIKAYLA
	02:45		SUB OUT: OGUNBOWALE,ARIKE
	02:45		SUB IN: MABREY,MARINA
SUB OUT: 13 NELSON,KYLA	00:43	14-60	
SUB IN: 14 BRADLEY,KAUAI	00:43		

Pittsburgh 14, Notre Dame 60

**Official Substitutions Log
Pittsburgh vs Notre Dame
Period 3**

January 04, 2019 at Joyce Center (Purcell Pavilion) - Notre Dame, IN



VISITORS: Pittsburgh	Time	Score	HOME: Notre Dame
1 GARVEN,DANIELLE			3 MABREY,MARINA
3 WHITNEY,JASMINE			5 YOUNG,JACKIE
4 WALSH,CASSIDY			11 TURNER,BRIANNA
11 JUDKINS,CARA			24 OGUNBOWALE,ARIKE
14 BRADLEY,KAUAI			32 SHEPARD,JESSICA
	09:59	-	SUB OUT: NIXON,JORDAN
	09:59		SUB IN: YOUNG,JACKIE
	09:59		SUB OUT: PROHASKA,ABBY
	09:59		SUB IN: TURNER,BRIANNA
	09:59		SUB OUT: VAUGHN,MIKAYLA
	09:59		SUB IN: OGUNBOWALE,ARIKE
	09:59		SUB OUT: PATTERSON,DANIELLE
	09:59		SUB IN: SHEPARD,JESSICA
SUB OUT: 22 HENRY,JAALA	09:59		
SUB IN: 11 JUDKINS,CARA	09:59		
SUB OUT: 11 JUDKINS,CARA	07:29	17-64	
SUB IN: 13 NELSON,KYLA	07:29		
SUB OUT: 14 BRADLEY,KAUAI	07:19	17-64	
SUB IN: 32 WALTERS,KALISTA	07:19		
SUB OUT: 1 GARVEN,DANIELLE	07:08	17-65	
SUB IN: 22 HENRY,JAALA	07:08		
	06:41	17-67	SUB OUT: MABREY,MARINA
	06:41		SUB IN: PROHASKA,ABBY
	05:26	17-69	SUB OUT: TURNER,BRIANNA
	05:26		SUB IN: NIXON,JORDAN
	05:26		SUB OUT: OGUNBOWALE,ARIKE
	05:26		SUB IN: VAUGHN,MIKAYLA
	05:26		SUB OUT: SHEPARD,JESSICA
	05:26		SUB IN: PATTERSON,DANIELLE
SUB OUT: 3 WHITNEY,JASMINE	05:26		
SUB IN: 0 KNIGHT,JAHSYNI	05:26		
SUB OUT: 0 KNIGHT,JAHSYNI	03:32	19-75	
SUB IN: 3 WHITNEY,JASMINE	03:32		
SUB OUT: 4 WALSH,CASSIDY	03:32		
SUB IN: 10 PRAPA,ISMINE	03:32		
SUB OUT: 13 NELSON,KYLA	03:32		
SUB IN: 11 JUDKINS,CARA	03:32		
SUB OUT: 32 WALTERS,KALISTA	03:32		
SUB IN: 14 BRADLEY,KAUAI	03:32		
	03:04	19-77	SUB OUT: YOUNG,JACKIE
	03:04		SUB IN: MABREY,MARINA
SUB OUT: 22 HENRY,JAALA	02:46	19-78	
SUB IN: 1 GARVEN,DANIELLE	02:46		
SUB OUT: 10 PRAPA,ISMINE	00:23	24-84	
SUB IN: 4 WALSH,CASSIDY	00:23		
SUB OUT: 14 BRADLEY,KAUAI	00:23		
SUB IN: 13 NELSON,KYLA	00:23		
SUB OUT: 11 JUDKINS,CARA	00:23		
SUB IN: 32 WALTERS,KALISTA	00:23		

Pittsburgh 24, Notre Dame 85

**Official Substitutions Log
Pittsburgh vs Notre Dame
Period 4**

January 04, 2019 at Joyce Center (Purcell Pavilion) - Notre Dame, IN



VISITORS: Pittsburgh	Time	Score	HOME: Notre Dame
1 GARVEN,DANIELLE			3 MABREY,MARINA
3 WHITNEY,JASMINE			5 YOUNG,JACKIE
4 WALSH,CASSIDY			11 TURNER,BRIANNA
11 JUDKINS,CARA			24 OGUNBOWALE,ARIKE
14 BRADLEY,KAUAI			32 SHEPARD,JESSICA
	05:47	36-91	SUB OUT: VAUGHN,MIKAYLA
	05:47		SUB IN: BUTLER,MAUREEN
SUB OUT: 13 NELSON,KYLA	05:47		
SUB IN: 0 KNIGHT,JAHSYNI	05:47		
SUB OUT: 3 WHITNEY,JASMINE	05:47		
SUB IN: 22 HENRY,JAALA	05:47		
SUB OUT: 32 WALTERS,KALISTA	05:47		
SUB IN: 14 BRADLEY,KAUAI	05:47		
SUB OUT: 1 GARVEN,DANIELLE	04:25	38-94	
SUB IN: 3 WHITNEY,JASMINE	04:25		
SUB OUT: 4 WALSH,CASSIDY	04:25		
SUB IN: 11 JUDKINS,CARA	04:25		
	03:34	41-94	SUB OUT: PROHASKA,ABBY
	03:34		SUB IN: BENZ,NICOLE
SUB OUT: 14 BRADLEY,KAUAI	03:34		
SUB IN: 10 PRAPA,ISMINI	03:34		
SUB OUT: 3 WHITNEY,JASMINE	02:28	41-98	
SUB IN: 13 NELSON,KYLA	02:28		

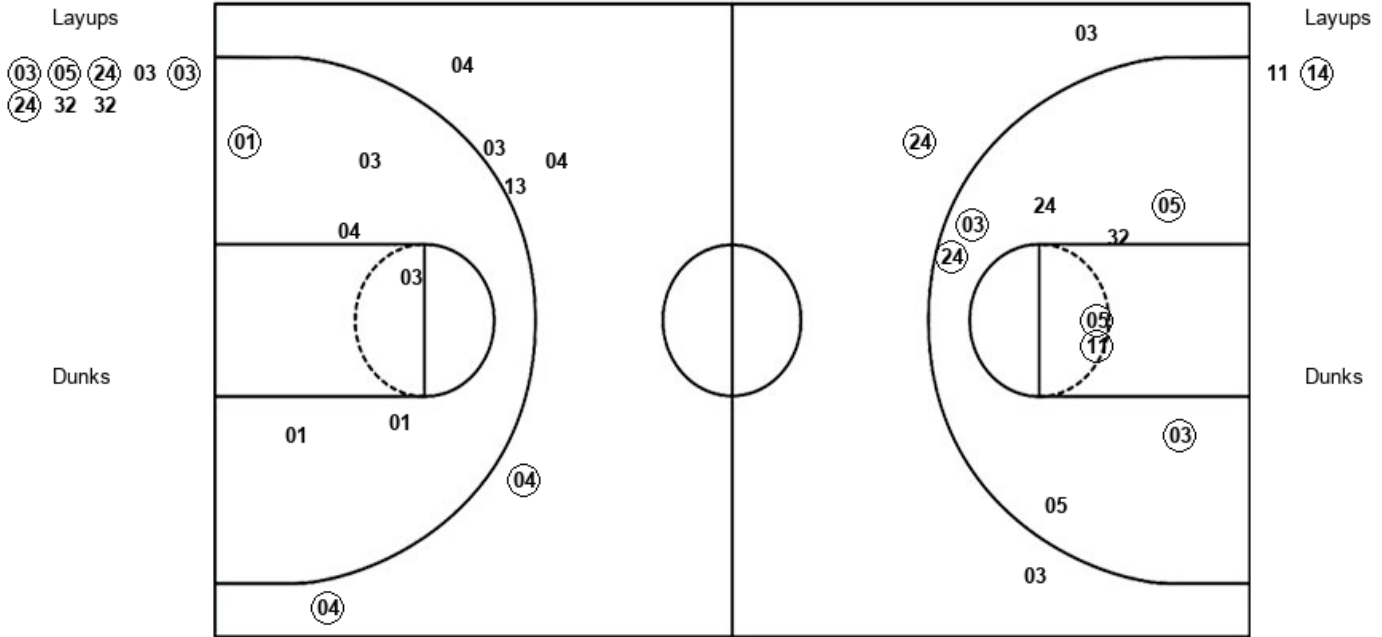
Pittsburgh 44, Notre Dame 100

Official Shot Chart
Pittsburgh vs Notre Dame
PERIOD 1 Shots
 January 04, 2019 at Joyce Center (Purcell Pavilion) - Notre Dame, IN



Notre Dame

Pittsburgh



UND : Period 1	Made	Att	Pct
Layups	5	8	62.5
Dunks	0	0	0
2PT Field Goals	11	17	64.7
3PT Field Goals	1	3	33.3
Total Field Goals	12	20	60.0

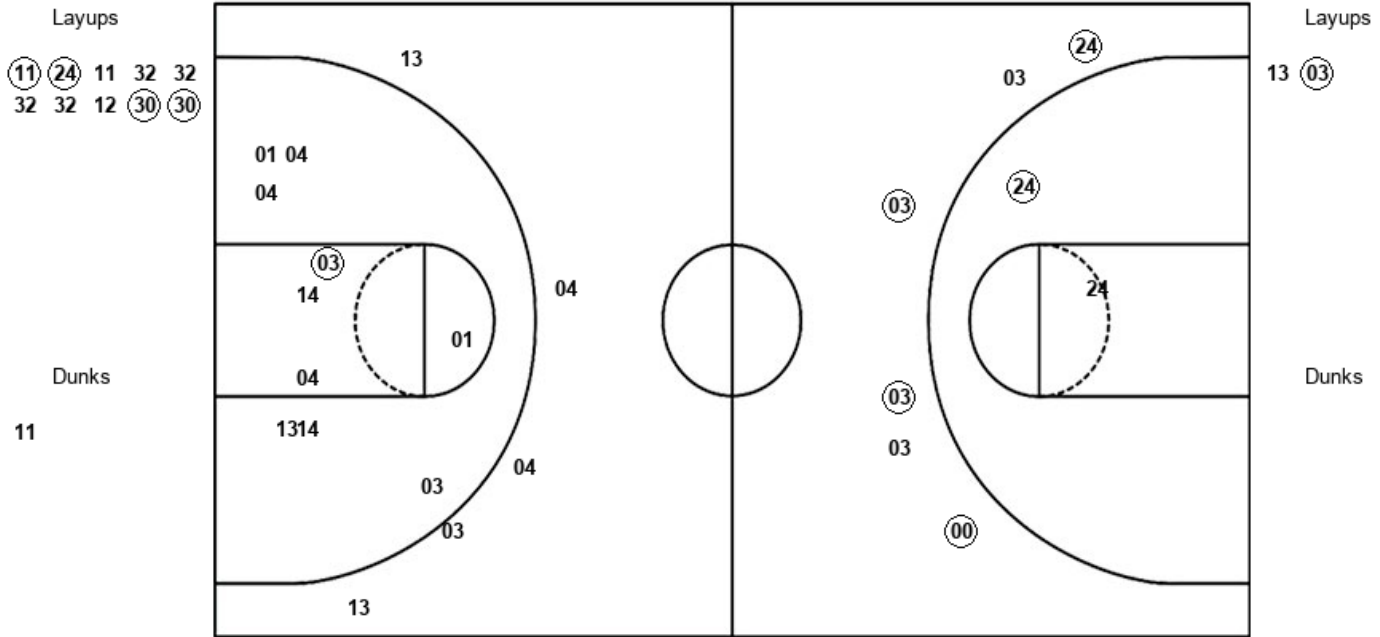
PIT : Period 1	Made	Att	Pct
Layups	1	2	50.0
Dunks	0	0	0
2PT Field Goals	2	8	25.0
3PT Field Goals	2	6	33.3
Total Field Goals	4	14	28.6

Official Shot Chart
Pittsburgh vs Notre Dame
PERIOD 2 Shots
 January 04, 2019 at Joyce Center (Purcell Pavilion) - Notre Dame, IN



Notre Dame

Pittsburgh



UND : Period 2	Made	Att	Pct
Layups	4	10	40.0
Dunks	0	1	00.0
2PT Field Goals	5	13	38.5
3PT Field Goals	4	6	66.7
Total Field Goals	9	19	47.4

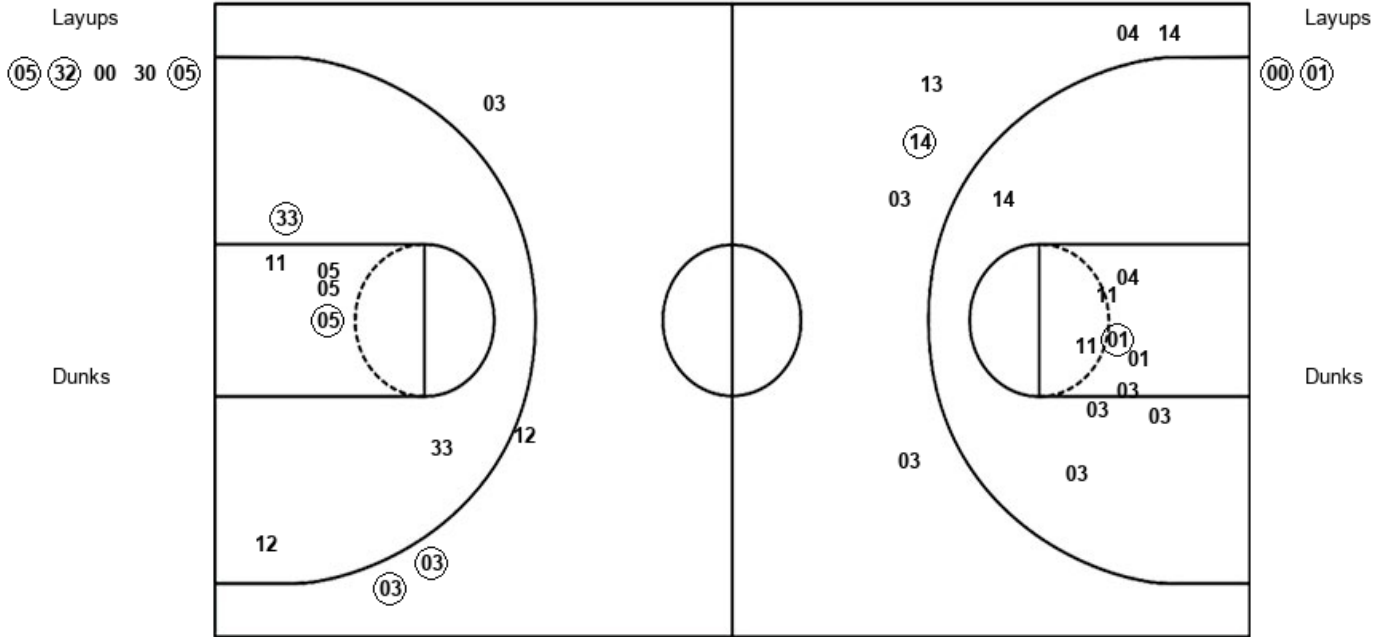
PIT : Period 2	Made	Att	Pct
Layups	1	2	50.0
Dunks	0	0	0
2PT Field Goals	2	12	16.7
3PT Field Goals	0	5	00.0
Total Field Goals	2	17	11.8

Official Shot Chart
Pittsburgh vs Notre Dame
PERIOD 3 Shots
 January 04, 2019 at Joyce Center (Purcell Pavilion) - Notre Dame, IN



Notre Dame

Pittsburgh



UND : Period 3	Made	Att	Pct
Layups	3	5	60.0
Dunks	0	0	0
2PT Field Goals	5	12	41.7
3PT Field Goals	2	4	50.0
Total Field Goals	7	16	43.8

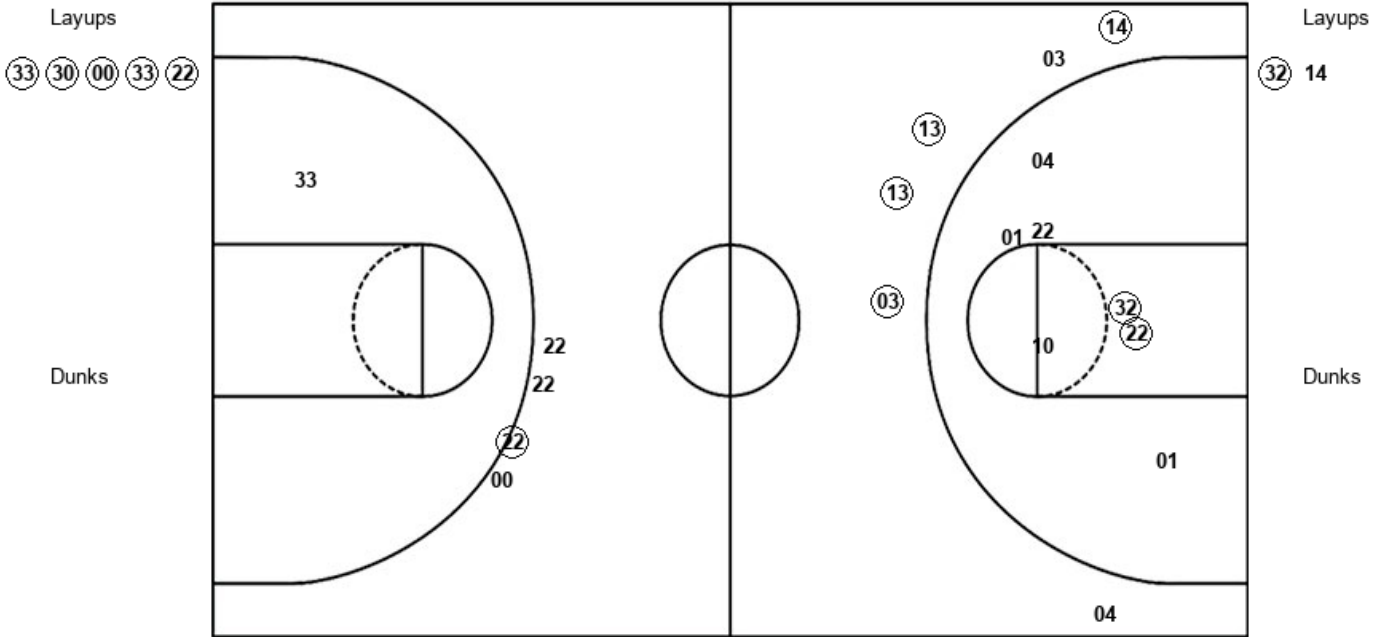
PIT : Period 3	Made	Att	Pct
Layups	2	2	100.0
Dunks	0	0	0
2PT Field Goals	3	12	25.0
3PT Field Goals	1	6	16.7
Total Field Goals	4	18	22.2

Official Shot Chart
Pittsburgh vs Notre Dame
PERIOD 4 Shots
 January 04, 2019 at Joyce Center (Purcell Pavilion) - Notre Dame, IN



Notre Dame

Pittsburgh



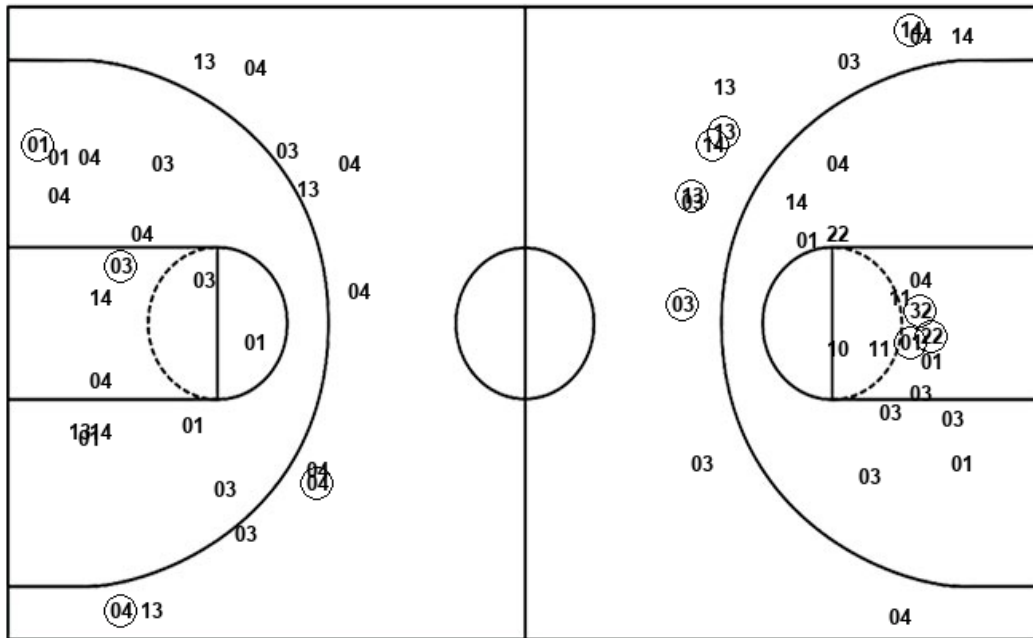
UND : Period 4	Made	Att	Pct
Layups	5	5	100.0
Dunks	0	0	0
2PT Field Goals	5	6	83.3
3PT Field Goals	1	4	25.0
Total Field Goals	6	10	60.0

PIT : Period 4	Made	Att	Pct
Layups	1	2	50.0
Dunks	0	0	0
2PT Field Goals	3	9	33.3
3PT Field Goals	4	6	66.7
Total Field Goals	7	15	46.7

Official Shot Chart
Pittsburgh vs Notre Dame
Pittsburgh Team Shots
 January 04, 2019 at Joyce Center (Purcell Pavilion) - Notre Dame, IN



Layups



Layups

11 (14) 13 (03) (00)
 (01) (32) 14

Dunks

Dunks

PIT : Period 1	Made	Att	Pct
Layups	1	2	50.0
Dunks	0	0	0
2PT Field Goals	2	8	25.0
3PT Field Goals	2	6	33.3
Total Field Goals	4	14	28.6

PIT : Period 3	Made	Att	Pct
Layups	2	2	100.0
Dunks	0	0	0
2PT Field Goals	3	12	25.0
3PT Field Goals	1	6	16.7
Total Field Goals	4	18	22.2

PIT : Period 2	Made	Att	Pct
Layups	1	2	50.0
Dunks	0	0	0
2PT Field Goals	2	12	16.7
3PT Field Goals	0	5	00.0
Total Field Goals	2	17	11.8

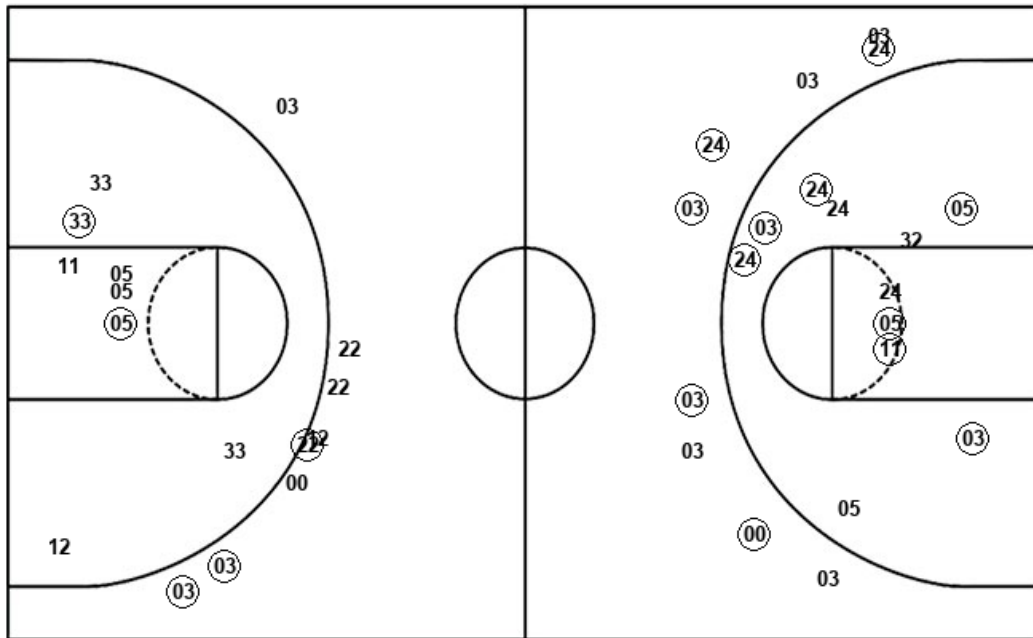
PIT : Period 4	Made	Att	Pct
Layups	1	2	50.0
Dunks	0	0	0
2PT Field Goals	3	9	33.3
3PT Field Goals	4	6	66.7
Total Field Goals	7	15	46.7

Official Shot Chart
Pittsburgh vs Notre Dame
Notre Dame Team Shots
 January 04, 2019 at Joyce Center (Purcell Pavilion) - Notre Dame, IN



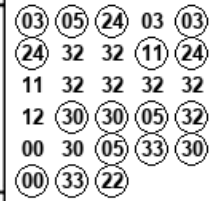
Layups

Dunks



Layups

Dunks



UND : Period 1	Made	Att	Pct
Layups	5	8	62.5
Dunks	0	0	0
2PT Field Goals	11	17	64.7
3PT Field Goals	1	3	33.3
Total Field Goals	12	20	60.0

UND : Period 3	Made	Att	Pct
Layups	3	5	60.0
Dunks	0	0	0
2PT Field Goals	5	12	41.7
3PT Field Goals	2	4	50.0
Total Field Goals	7	16	43.8

UND : Period 2	Made	Att	Pct
Layups	4	10	40.0
Dunks	0	1	00.0
2PT Field Goals	5	13	38.5
3PT Field Goals	4	6	66.7
Total Field Goals	9	19	47.4

UND : Period 4	Made	Att	Pct
Layups	5	5	100.0
Dunks	0	0	0
2PT Field Goals	5	6	83.3
3PT Field Goals	1	4	25.0
Total Field Goals	6	10	60.0