

**FINAL SCORE**



**Western Ky.**

**53**



**Notre Dame**

**94**

**December 20, 2018 • Joyce Center (Purcell Pavilion) - Notre Dame,  
IN**

**FINAL STATISTICS**

**Official Box Score**  
**Western Ky. vs Notre Dame**  
**Game Totals -- Final Statistics**  
**December 20, 2018 at Joyce Center (Purcell Pavilion) - Notre Dame, IN**

**Western Ky. 53**

No.	Player	S	Pts	FG	3FG	FT	OR	DR	TR	PF	A	TO	Blk	Stl	Min	+/-
4	Givens, Dee		10	3-16	2-6	2-2	2	0	2	2	3	2	2	5	36	-35
11	Brewer, Alexis		9	3-10	2-8	1-2	2	1	3	4	0	1	0	3	27	-36
15	Elgedawy, Raneem		10	5-17	0-1	0-3	5	2	7	2	0	6	1	0	23	-30
22	Porter, Sherry		5	2-6	1-2	0-0	0	0	0	1	1	3	0	0	15	-16
30	Abdelgawad, Meral		6	2-5	2-4	0-0	1	0	1	2	1	1	0	0	14	-8
1	Niang, Arame		5	2-6	1-2	0-0	2	2	4	2	1	2	2	3	21	-14
3	Bopp, Sidnee		0	0-1	0-1	0-0	0	0	0	0	0	2	0	0	10	-18
5	Creech, Whitney		6	3-6	0-1	0-0	0	3	3	2	3	2	0	1	32	-34
13	Allen, Jae'lisa		0	0-1	0-0	0-0	0	1	1	3	1	2	0	0	9	-14
20	Smith, Terri		0	0-0	0-0	0-0	0	0	0	0	2	0	0	1	8	-1
34	Searcy, Kallie		2	1-1	0-0	0-0	1	0	1	1	0	0	0	0	5	1
	Team						7	0	7	0		0				
<b>TOTALS</b>			<b>53</b>	<b>21-69</b>	<b>8-25</b>	<b>3-7</b>	<b>20</b>	<b>9</b>	<b>29</b>	<b>19</b>	<b>12</b>	<b>21</b>	<b>5</b>	<b>13</b>	<b>200</b>	

*Shooting By Period*

Period	FG	FG%	3FG	3FG%	FT	FT%
1st Qtr	3-17	18%	2-5	40%	0-0	0%
2nd Qtr	3-15	20%	0-5	00%	1-2	50%
3rd Qtr	7-18	39%	1-5	20%	0-3	00%
4th Qtr	8-19	42%	5-10	50%	2-2	100%
1st Half	3-17	18%	2-5	40%	0-0	0%
2nd Half	3-15	20%	0-5	00%	1-2	50%
3rd Half	7-18	39%	1-5	20%	0-3	00%
4th Half	8-19	42%	5-10	50%	2-2	100%
<b>Game</b>	<b>21-69</b>	<b>30.4%</b>	<b>8-25</b>	<b>32.0%</b>	<b>3-7</b>	<b>42.9%</b>

*Deadball Rebounds:*  
*Last FG: 4th-01:25*  
*Biggest Run: 7-0*  
*Largest lead: By 0 at -*  
*Technical Fouls: None.*

**Notre Dame 94**

No.	Player	S	Pts	FG	3FG	FT	OR	DR	TR	PF	A	TO	Blk	Stl	Min	+/-
3	Mabrey, Marina		20	7-9	4-4	2-2	0	2	2	0	3	0	1	5	25	32
5	Young, Jackie		9	3-5	0-0	3-4	0	3	3	0	3	2	1	0	23	37
11	Turner, Brianna		10	4-4	0-0	2-2	0	5	5	0	3	0	4	1	22	42
24	Ogunbowale, Arike		16	6-11	0-1	4-4	0	4	4	1	4	1	1	1	26	42
32	Shepard, Jessica		12	6-6	0-0	0-2	2	4	6	2	5	4	2	2	24	31
0	Nixon, Jordan		12	4-6	3-4	1-1	0	3	3	1	0	9	0	1	23	9
12	Prohaska, Abby		0	0-1	0-1	0-0	0	2	2	1	4	1	0	1	14	6
20	Benz, Nicole		0	0-0	0-0	0-0	0	1	1	0	1	0	0	0	6	-2
22	Cosgrove, Danielle		5	2-3	1-2	0-0	0	2	2	0	2	1	3	0	11	-1
30	Vaughn, Mikayla		2	1-1	0-0	0-0	0	1	1	3	0	1	0	1	8	4
33	Patterson, Danielle		8	4-6	0-0	0-0	1	1	2	2	0	1	0	0	15	6
40	Butler, Maureen		0	0-1	0-0	0-0	0	0	0	1	0	0	0	0	4	-1
	Team						6	1	7	0		1				
<b>TOTALS</b>			<b>94</b>	<b>37-53</b>	<b>8-12</b>	<b>12-15</b>	<b>9</b>	<b>29</b>	<b>38</b>	<b>11</b>	<b>25</b>	<b>21</b>	<b>12</b>	<b>12</b>	<b>200</b>	

*Shooting By Period*

Period	FG	FG%	3FG	3FG%	FT	FT%
1st Qtr	8-12	67%	1-1	100%	6-8	75%
2nd Qtr	13-14	93%	2-2	100%	2-2	100%
3rd Qtr	8-14	57%	2-4	50%	3-4	75%
4th Qtr	8-13	62%	3-5	60%	1-1	100%
1st Half	8-12	67%	1-1	100%	6-8	75%
2nd Half	13-14	93%	2-2	100%	2-2	100%
3rd Half	8-14	57%	2-4	50%	3-4	75%
4th Half	8-13	62%	3-5	60%	1-1	100%
<b>Game</b>	<b>37-53</b>	<b>69.8%</b>	<b>8-12</b>	<b>66.7%</b>	<b>12-15</b>	<b>80.0%</b>

*Deadball Rebounds:*  
*Last FG: 4th-00:21*  
*Biggest Run: 10-0*  
*Largest lead: By 47 at 3-00:56*  
*Technical Fouls: None.*

Game Notes:  
 Officials: Joseph Vaszily, Gina Cross, Jenna Schroeder  
 Attendance: 7502  
 Start Time: 2018-12-20 00:02:24      End Time: 2018-12-20 01:51:49  
 Game Duration: 109

Score by Period	1st	2nd	3rd	4th	TOT
WKU	8	7	15	23	53
UND	23	30	21	20	94

WKU led for 0:00. UND led for 38:27.  
 Game was tied for 1:31.  
 Times tied: 0      Lead Changes: 0

Points from	WKU	UND
In the Paint	22	56
Off Turns	10	33
2nd Chance	11	8
Fast Break	2	27
Bench	13	27

**Official Box Score**  
**Western Ky. vs Notre Dame**  
**First Half Statistics Only**  
**December 20, 2018 at Joyce Center (Purcell Pavilion) - Notre Dame, IN**

**Western Ky. 53**

No.	Player	S	Pts	FG	3FG	FT	OR	DR	TR	PF	A	TO	Blk	Stl	Min	+/-
4	Givens, Dee		3	1-3	1-1	0-0	1	0	1	1	0	1	0	2	10	-15
11	Brewer, Alexis		0	0-2	0-2	0-0	0	0	0	2	0	0	0	1	7	-12
15	Elgedawy, Raneem		2	1-6	0-0	0-0	1	1	2	1	0	2	1	0	8	-17
22	Porter, Sherry		0	0-1	0-1	0-0	0	0	0	0	0	1	0	0	5	-6
30	Abdelgawad, Meral		0	0-1	0-0	0-0	1	0	1	0	1	1	0	0	3	-2
1	Niang, Arame		3	1-2	1-1	0-0	1	1	2	0	0	1	0	1	6	-7
3	Bopp, Sidnee		0	0-0	0-0	0-0	0	0	0	0	0	1	0	0	2	0
5	Creech, Whitney		0	0-1	0-0	0-0	0	1	1	0	1	1	0	0	7	-15
13	Allen, Jae'lisa		0	0-1	0-0	0-0	0	0	0	2	1	0	0	0	1	0
20	Smith, Terri		0	0-0	0-0	0-0	0	0	0	0	0	0	0	0	0	0
34	Searcy, Kallie		0	0-0	0-0	0-0	0	0	0	0	0	0	0	0	1	-1
Team							3	0	3	0		0				
<b>TOTALS</b>			<b>8</b>	<b>3-17</b>	<b>2-5</b>	<b>0-0</b>	<b>0</b>	<b>0</b>	<b>10</b>	<b>6</b>	<b>3</b>	<b>8</b>	<b>1</b>	<b>4</b>	<b>50</b>	

*Shooting By Period*

Period	FG	FG%	3FG	3FG%	FT	FT%
1st Qtr	3-17	18%	2-5	40%	0-0	0%
2nd Qtr	3-15	20%	0-5	00%	1-2	50%
3rd Qtr	7-18	39%	1-5	20%	0-3	00%
4th Qtr	8-19	42%	5-10	50%	2-2	100%
1st Half	3-17	18%	2-5	40%	0-0	0%
2nd Half	3-15	20%	0-5	00%	1-2	50%
3rd Half	7-18	39%	1-5	20%	0-3	00%
4th Half	8-19	42%	5-10	50%	2-2	100%
<b>Game</b>	<b>21-69</b>	<b>30.4%</b>	<b>8-25</b>	<b>32.0%</b>	<b>3-7</b>	<b>42.9%</b>

*Deadball Rebounds:*

*Last FG: 4th-01:25*

*Biggest Run: 7-0*

*Largest lead: By 0 at -*

*Technical Fouls: None.*

**Notre Dame 94**

No.	Player	S	Pts	FG	3FG	FT	OR	DR	TR	PF	A	TO	Blk	Stl	Min	+/-
3	Mabrey, Marina		5	2-2	1-1	0-0	0	0	0	0	1	0	0	2	8	13
5	Young, Jackie		2	0-1	0-0	2-2	0	1	1	0	1	1	0	0	10	15
11	Turner, Brianna		4	1-1	0-0	2-2	0	2	2	0	1	0	3	0	8	16
24	Ogunbowale, Arike		4	1-3	0-0	2-2	0	1	1	1	3	1	1	0	10	15
32	Shepard, Jessica		6	3-3	0-0	0-2	1	2	3	0	0	2	0	2	9	11
0	Nixon, Jordan		0	0-1	0-0	0-0	0	1	1	0	0	1	0	0	3	2
12	Prohaska, Abby		0	0-0	0-0	0-0	0	0	0	0	0	0	0	0	0	0
20	Benz, Nicole		0	0-0	0-0	0-0	0	0	0	0	0	0	0	0	0	0
22	Cosgrove, Danielle		0	0-0	0-0	0-0	0	0	0	0	0	0	0	0	0	0
30	Vaughn, Mikayla		2	1-1	0-0	0-0	0	0	0	1	0	0	0	1	3	3
33	Patterson, Danielle		0	0-0	0-0	0-0	0	0	0	0	0	0	0	0	0	0
40	Butler, Maureen		0	0-0	0-0	0-0	0	0	0	0	0	0	0	0	0	0
Team							1	0	1	0		0				
<b>TOTALS</b>			<b>23</b>	<b>8-12</b>	<b>1-1</b>	<b>6-8</b>	<b>0</b>	<b>0</b>	<b>9</b>	<b>2</b>	<b>6</b>	<b>5</b>	<b>4</b>	<b>5</b>	<b>50</b>	

*Shooting By Period*

Period	FG	FG%	3FG	3FG%	FT	FT%
1st Qtr	8-12	67%	1-1	100%	6-8	75%
2nd Qtr	13-14	93%	2-2	100%	2-2	100%
3rd Qtr	8-14	57%	2-4	50%	3-4	75%
4th Qtr	8-13	62%	3-5	60%	1-1	100%
1st Half	8-12	67%	1-1	100%	6-8	75%
2nd Half	13-14	93%	2-2	100%	2-2	100%
3rd Half	8-14	57%	2-4	50%	3-4	75%
4th Half	8-13	62%	3-5	60%	1-1	100%
<b>Game</b>	<b>37-53</b>	<b>69.8%</b>	<b>8-12</b>	<b>66.7%</b>	<b>12-15</b>	<b>80.0%</b>

*Deadball Rebounds:*

*Last FG: 4th-00:21*

*Biggest Run: 10-0*

*Largest lead: By 47 at 3-00:56*

*Technical Fouls: None.*

<b>Game Notes:</b>	
Officials: Joseph Vaszily, Gina Cross, Jenna Schroeder	
Attendance: 7502	
Start Time: 2018-12-20 00:02:24	End Time: 2018-12-20 01:51:49
Game Duration: 109	

Score by Period	1st	2nd	3rd	4th	TOT
WKU	8	7	15	23	53
UND	23	30	21	20	94

**This period only: WKU led for 0:00. UND led for 0:27.**

**Game was tied for 0:31.**

Points from (This Period)	WKU	UND
In the Paint	2	14
Off Turns	2	10
2nd Chance	0	0
Fast Break	0	10
Bench	3	2

**Official Play-By-Play**  
**Western Ky. vs Notre Dame**  
**First Quarter**

**December 20, 2018 at Joyce Center (Purcell Pavilion) - Notre Dame, IN**

**Starters:**

**Western Ky.:** 4 GIVENS,DEE; 11 BREWER,ALEXIS; 15 ELGEDAWY,RANEEM; 22 PORTER,SHERRY; 30 ABDELGAWAD,MERAL;

**Notre Dame:** 3 MABREY,MARINA; 5 YOUNG,JACKIE; 11 TURNER,BRIANNA; 24 OGUNBOWALE,ARIKE; 32 SHEPARD,JESSICA;

**Period 1**

Time	VISITORS: Western Ky.	Score	Margin	HOME: Notre Dame
09:56				TURNOVER (BADPASS) by SHEPARD,JESSICA
09:56	STEAL by BREWER,ALEXIS			
09:29	MISSED 3PTR by BREWER,ALEXIS			
09:28	REBOUND (OFF) by ABDELGAWAD,MERAL			
09:28	TURNOVER (LOSTBALL) by ABDELGAWAD,MERAL			
09:15	FOUL (PERSONAL) by ELGEDAWY,RANEEM			
09:11				TURNOVER (BADPASS) by OGUNBOWALE,ARIKE
09:11	STEAL by GIVENS,DEE			
08:52	MISSED JUMPER by ELGEDAWY,RANEEM			
08:52				BLOCK by TURNER,BRIANNA
08:52	REBOUND (OFF) by TEAM			
08:45	MISSED JUMPER by ABDELGAWAD,MERAL			
08:45				BLOCK by TURNER,BRIANNA
08:45	REBOUND (OFF) by TEAM			
08:45	SUB OUT: ABDELGAWAD,MERAL			
08:45	SUB IN: CREECH,WHITNEY			
08:39	MISSED JUMPER by ELGEDAWY,RANEEM			
08:36				REBOUND (DEF) by SHEPARD,JESSICA
08:32		2-0	H 2	GOOD! LAYUP by SHEPARD,JESSICA
08:02	MISSED JUMPER by CREECH,WHITNEY			
07:59				REBOUND (DEF) by SHEPARD,JESSICA
07:55		4-0	H 4	GOOD! LAYUP by TURNER,BRIANNA [FB]
07:55				ASSIST by OGUNBOWALE,ARIKE
07:33	TURNOVER (LOSTBALL) by PORTER,SHERRY			
07:33				STEAL by SHEPARD,JESSICA
07:28	FOUL (PERSONAL) by GIVENS,DEE			
07:28		5-0	H 5	GOOD! FT by YOUNG,JACKIE [FB]
07:28	SUB OUT: ELGEDAWY,RANEEM			
07:28	SUB IN: NIANG,ARAME			
07:28		6-0	H 6	GOOD! FT by YOUNG,JACKIE [FB]
07:01	TURNOVER (LOSTBALL) by GIVENS,DEE			
07:01				STEAL by MABREY,MARINA
06:56		8-0	H 8	GOOD! LAYUP by MABREY,MARINA [FB/PNT]
06:56				ASSIST by YOUNG,JACKIE
06:27	GOOD! 3PTR by GIVENS,DEE	8-3	H 5	
06:27	ASSIST by CREECH,WHITNEY			
06:13				TURNOVER (LOSTBALL) by SHEPARD,JESSICA
06:13	SUB OUT: PORTER,SHERRY			
06:13	SUB IN: ELGEDAWY,RANEEM			
06:13	STEAL by NIANG,ARAME			
05:50	TURNOVER (LOSTBALL) by ELGEDAWY,RANEEM			
05:50				STEAL by SHEPARD,JESSICA
05:42		10-3	H 7	GOOD! JUMPER by SHEPARD,JESSICA
05:42				ASSIST by MABREY,MARINA
05:18	MISSED LAYUP by ELGEDAWY,RANEEM			
05:15	REBOUND (OFF) by NIANG,ARAME			
05:14	MISSED JUMPER by NIANG,ARAME			
05:14				BLOCK by OGUNBOWALE,ARIKE
05:09				REBOUND (DEF) by TURNER,BRIANNA
05:08		12-3	H 9	GOOD! JUMPER by SHEPARD,JESSICA [PNT]
05:08				ASSIST by OGUNBOWALE,ARIKE
05:08	TIMEOUT 30SEC			
05:08	SUB OUT: ELGEDAWY,RANEEM			
05:08	SUB IN: ALLEN,JAE'LISA			
04:47	MISSED JUMPER by ALLEN,JAE'LISA			
04:44				REBOUND (DEF) by YOUNG,JACKIE
04:39				MISSED JUMPER by OGUNBOWALE,ARIKE
04:39				REBOUND (OFF) by SHEPARD,JESSICA
04:39	FOUL (PERSONAL) by ALLEN,JAE'LISA			
04:38	FOUL (PERSONAL) by BREWER,ALEXIS			
04:38				MISSED FT by SHEPARD,JESSICA
04:38				REBOUND (OFF) by TEAM
04:37				MISSED FT by SHEPARD,JESSICA
04:35	REBOUND (DEF) by NIANG,ARAME			
04:21	GOOD! 3PTR by NIANG,ARAME	12-6	H 6	
04:21	ASSIST by ALLEN,JAE'LISA			
04:12	FOUL (PERSONAL) by ALLEN,JAE'LISA			
04:12		13-6	H 7	GOOD! FT by TURNER,BRIANNA
04:12	SUB OUT: ALLEN,JAE'LISA			
04:12	SUB IN: ELGEDAWY,RANEEM			
04:12		14-6	H 8	GOOD! FT by TURNER,BRIANNA
03:46	MISSED 3PTR by BREWER,ALEXIS			
03:43	REBOUND (OFF) by GIVENS,DEE			
03:42	MISSED JUMPER by GIVENS,DEE			
03:40	REBOUND (OFF) by ELGEDAWY,RANEEM			
03:39	MISSED JUMPER by ELGEDAWY,RANEEM			

Time	VISITORS: Western Ky.	Score	Margin	HOME: Notre Dame
03:35				REBOUND (DEF) by TURNER,BRIANNA
03:32		17-6	H 11	GOOD! 3PTR by MABREY,MARINA
03:32				ASSIST by OGUNBOWALE,ARIKE
03:15	TURNOVER (LOSTBALL) by NIANG,ARAME			
03:15				STEAL by MABREY,MARINA
03:12	FOUL (PERSONAL) by BREWER,ALEXIS			
03:12		18-6	H 12	GOOD! FT by OGUNBOWALE,ARIKE [FB]
03:12				SUB OUT: TURNER,BRIANNA
03:12				SUB IN: VAUGHN,MIKAYLA
03:12	SUB OUT: BREWER,ALEXIS			
03:12	SUB IN: SEARCY,KALLIE			
03:12	SUB OUT: NIANG,ARAME			
03:12	SUB IN: PORTER,SHERRY			
03:12		19-6	H 13	GOOD! FT by OGUNBOWALE,ARIKE [FB]
02:49	TURNOVER (BADPASS) by CREECH,WHITNEY			
02:30				SUB OUT: MABREY,MARINA
02:30				SUB IN: NIXON,JORDAN
02:30				MISSED JUMPER by OGUNBOWALE,ARIKE
02:30	REBOUND (DEF) by CREECH,WHITNEY			
02:30				FOUL (PERSONAL) by OGUNBOWALE,ARIKE
02:01	MISSED 3PTR by PORTER,SHERRY			
01:57				REBOUND (DEF) by OGUNBOWALE,ARIKE
01:52				MISSED LAYUP by NIXON,JORDAN
01:52	BLOCK by ELGEDAWY,RANEEM			
01:49	REBOUND (DEF) by ELGEDAWY,RANEEM			
01:46	SUB OUT: CREECH,WHITNEY			
01:46	SUB IN: BOPP,SIDNEE			
01:46	SUB OUT: PORTER,SHERRY			
01:46	SUB IN: ABDELGAWAD,MERAL			
01:46	SUB OUT: SEARCY,KALLIE			
01:46	SUB IN: NIANG,ARAME			
01:35				FOUL (PERSONAL) by VAUGHN,MIKAYLA
01:30	TURNOVER (BADPASS) by ELGEDAWY,RANEEM			
01:30				STEAL by VAUGHN,MIKAYLA
01:23				TURNOVER (BADPASS) by YOUNG,JACKIE
01:07	GOOD! LAYUP by ELGEDAWY,RANEEM [PNT]	19-8	H 11	
01:07	ASSIST by ABDELGAWAD,MERAL			
00:46				MISSED JUMPER by YOUNG,JACKIE
00:45				REBOUND (OFF) by TEAM
00:45				SUB OUT: SHEPARD,JESSICA
00:45				SUB IN: TURNER,BRIANNA
00:44				TURNOVER (BADPASS) by NIXON,JORDAN
00:44	STEAL by GIVENS,DEE			
00:40	MISSED LAYUP by GIVENS,DEE			
00:40				BLOCK by TURNER,BRIANNA
00:40	REBOUND (OFF) by TEAM			
00:28	MISSED JUMPER by ELGEDAWY,RANEEM			
00:24				REBOUND (DEF) by NIXON,JORDAN
00:22		21-8	H 13	GOOD! LAYUP by VAUGHN,MIKAYLA [FB]
00:22				ASSIST by TURNER,BRIANNA
00:17	TURNOVER (BADPASS) by BOPP,SIDNEE			
00:17	SUB OUT: NIANG,ARAME			
00:17	SUB IN: ALLEN,JAE'LISA			
00:17	SUB OUT: GIVENS,DEE			
00:17	SUB IN: CREECH,WHITNEY			
00:10	SUB OUT: BOPP,SIDNEE			
00:10	SUB IN: GIVENS,DEE			
00:02		23-8	H 15	GOOD! LAYUP by OGUNBOWALE,ARIKE

### Western Ky. 8, Notre Dame 23

Points from (This Period)	WKU	UND
In the Paint	2	14
Off Turns	2	10
2nd Chance	0	0
Fast Break	0	10
Bench	3	2

**This period only:WKU led for 0:00. UND led for 0:27.  
Game was tied for 0:31.**

**Official Play-By-Play**  
**Western Ky. vs Notre Dame**  
**Second Quarter**  
**December 20, 2018 at Joyce Center (Purcell Pavilion) - Notre Dame, IN**

**Starters:**

**Western Ky.:** 4 GIVENS,DEE; 11 BREWER,ALEXIS; 15 ELGEDAWY,RANEEM; 22 PORTER,SHERRY; 30 ABDELGAWAD,MERAL;

**Notre Dame:** 3 MABREY,MARINA; 5 YOUNG,JACKIE; 11 TURNER,BRIANNA; 24 OGUNBOWALE,ARIKE; 32 SHEPARD,JESSICA;

**Period 2**

Time	VISITORS: Western Ky.	Score	Margin	HOME: Notre Dame
09:38	MISSED 3PTR by GIVENS,DEE			
09:34				REBOUND (DEF) by TURNER,BRIANNA
09:21				TURNOVER (3SEC) by VAUGHN,MIKAYLA
09:21				SUB OUT: VAUGHN,MIKAYLA
09:21				SUB IN: SHEPARD,JESSICA
08:56	TURNOVER (BADPASS) by ALLEN,JAE'LISA			
08:49		25-8	H 17	GOOD! JUMPER by OGUNBOWALE,ARIKE [PNT]
08:33	TURNOVER (LOSTBALL) by ALLEN,JAE'LISA			
08:33				STEAL by OGUNBOWALE,ARIKE
08:28				MISSED LAYUP by OGUNBOWALE,ARIKE
08:28				REBOUND (OFF) by SHEPARD,JESSICA
08:28	FOUL (PERSONAL) by ELGEDAWY,RANEEM			
08:28	SUB OUT: CREECH,WHITNEY			
08:28	SUB IN: BREWER,ALEXIS			
08:28	SUB OUT: ELGEDAWY,RANEEM			
08:28	SUB IN: NIANG,ARAME			
08:20		28-8	H 20	GOOD! 3PTR by MABREY,MARINA
08:20				ASSIST by SHEPARD,JESSICA
07:57	GOOD! JUMPER by PORTER,SHERRY [PNT]	28-10	H 18	
07:44		31-10	H 21	GOOD! 3PTR by MABREY,MARINA
07:44				ASSIST by TURNER,BRIANNA
07:30	MISSED 3PTR by BREWER,ALEXIS			
07:25				REBOUND (DEF) by OGUNBOWALE,ARIKE
07:23	FOUL (PERSONAL) by GIVENS,DEE			
07:23				SUB OUT: OGUNBOWALE,ARIKE
07:23				SUB IN: YOUNG,JACKIE
07:23	SUB OUT: ALLEN,JAE'LISA			
07:23	SUB IN: CREECH,WHITNEY			
07:17				TURNOVER (BADPASS) by NIXON,JORDAN
07:17	STEAL by NIANG,ARAME			
07:02	MISSED JUMPER by PORTER,SHERRY			
07:02				BLOCK by YOUNG,JACKIE
06:57				REBOUND (DEF) by TURNER,BRIANNA
06:56				FOUL (OFF) by NIXON,JORDAN
06:56				TURNOVER (OFFENSIVE) by NIXON,JORDAN
06:23	MISSED 3PTR by BREWER,ALEXIS			
06:23	REBOUND (OFF) by TEAM			
06:18	MISSED LAYUP by GIVENS,DEE			
06:14				REBOUND (DEF) by SHEPARD,JESSICA
06:14	FOUL (PERSONAL) by NIANG,ARAME			
06:14		32-10	H 22	GOOD! FT by MABREY,MARINA
06:14				SUB OUT: NIXON,JORDAN
06:14				SUB IN: OGUNBOWALE,ARIKE
06:14	SUB OUT: PORTER,SHERRY			
06:14	SUB IN: BOPP,SIDNEE			
06:14		33-10	H 23	GOOD! FT by MABREY,MARINA
05:50	MISSED 3PTR by NIANG,ARAME			
05:48				REBOUND (DEF) by MABREY,MARINA
05:43		35-10	H 25	GOOD! JUMPER by OGUNBOWALE,ARIKE [FB]
05:20	MISSED 3PTR by BOPP,SIDNEE			
05:17				REBOUND (DEF) by TURNER,BRIANNA
05:14				FOUL (OFF) by SHEPARD,JESSICA
05:14				TURNOVER (OFFENSIVE) by SHEPARD,JESSICA
05:14	SUB OUT: NIANG,ARAME			
05:14	SUB IN: ALLEN,JAE'LISA			
04:43	GOOD! JUMPER by BREWER,ALEXIS [PNT]	35-12	H 23	
04:29		37-12	H 25	GOOD! JUMPER by YOUNG,JACKIE [PNT]
04:12	GOOD! LAYUP by CREECH,WHITNEY [PNT]	37-14	H 23	
03:52		39-14	H 25	GOOD! LAYUP by SHEPARD,JESSICA
03:34	MISSED JUMPER by CREECH,WHITNEY			
03:32				REBOUND (DEF) by OGUNBOWALE,ARIKE
03:28		41-14	H 27	GOOD! LAYUP by SHEPARD,JESSICA [FB]
03:28				ASSIST by OGUNBOWALE,ARIKE
03:06	TURNOVER (BADPASS) by BOPP,SIDNEE			
03:06				STEAL by TURNER,BRIANNA
03:00		43-14	H 29	GOOD! LAYUP by OGUNBOWALE,ARIKE [FB]
02:45	TURNOVER (LOSTBALL) by CREECH,WHITNEY			
02:45				STEAL by MABREY,MARINA
02:40		45-14	H 31	GOOD! LAYUP by MABREY,MARINA [FB]
02:40				ASSIST by TURNER,BRIANNA
02:39	TIMEOUT 30SEC			
02:39				SUB OUT: MABREY,MARINA
02:39				SUB IN: PATTERSON,DANIELLE
02:39				SUB OUT: TURNER,BRIANNA
02:39				SUB IN: PROHASKA,ABBY
02:39	SUB OUT: ALLEN,JAE'LISA			

Time	VISITORS: Western Ky.	Score	Margin	HOME: Notre Dame
02:39	SUB IN: ELGEDAWY,RANEEM			
02:09	MISSED LAYUP by GIVENS,DEE			
02:08	REBOUND (OFF) by BREWER,ALEXIS			
02:08				FOUL (PERSONAL) by SHEPARD,JESSICA
02:08	MISSED FT by BREWER,ALEXIS			
02:08	REBOUND (OFF) by TEAM			
02:08				SUB OUT: SHEPARD,JESSICA
02:08				SUB IN: TURNER,BRIANNA
02:08	GOOD! FT by BREWER,ALEXIS	45-15	H 30	
02:00	FOUL (PERSONAL) by CREECH,WHITNEY			
01:57		47-15	H 32	GOOD! LAYUP by PATTERSON,DANIELLE
01:57				ASSIST by YOUNG,JACKIE
01:48	TURNOVER (TRAVEL) by ELGEDAWY,RANEEM			
01:46				TURNOVER (BADPASS) by PATTERSON,DANIELLE
01:46	STEAL by GIVENS,DEE			
01:41	MISSED JUMPER by GIVENS,DEE			
01:37				REBOUND (DEF) by YOUNG,JACKIE
01:36		49-15	H 34	GOOD! JUMPER by YOUNG,JACKIE [PNT]
01:18	MISSED LAYUP by ELGEDAWY,RANEEM			
01:16				REBOUND (DEF) by PATTERSON,DANIELLE
01:16	SUB OUT: GIVENS,DEE			
01:16	SUB IN: ABDELGAWAD,MERAL			
00:58		51-15	H 36	GOOD! JUMPER by TURNER,BRIANNA [PNT]
00:44				FOUL (PERSONAL) by PATTERSON,DANIELLE
00:33	MISSED LAYUP by ELGEDAWY,RANEEM			
00:33				BLOCK by TURNER,BRIANNA
00:33	REBOUND (OFF) by TEAM			
00:33				SUB OUT: TURNER,BRIANNA
00:33				SUB IN: VAUGHN,MIKAYLA
00:28	TURNOVER (TRAVEL) by ELGEDAWY,RANEEM			
00:10		53-15	H 38	GOOD! LAYUP by OGUNBOWALE,ARIKE

### Western Ky. 15, Notre Dame 53

Points from (This Period)	WKU	UND
In the Paint	6	20
Off Turns	2	11
2nd Chance	1	3
Fast Break	0	8
Bench	2	2

This period only:WKU led for 0:00. UND led for 0:27.  
Game was tied for 0:31.

**Official Box Score**  
**Western Ky. vs Notre Dame**  
**Second Half Statistics Only**  
**December 20, 2018 at Joyce Center (Purcell Pavilion) - Notre Dame, IN**

**Western Ky. 53**

No.	Player	S	Pts	FG	3FG	FT	OR	DR	TR	PF	A	TO	Blk	Stl	Min	+/-
4	Givens, Dee		0	0-4	0-1	0-0	0	0	0	1	0	0	0	1	9	-19
11	Brewer, Alexis		3	1-3	0-2	1-2	1	0	1	0	0	0	0	0	8	-21
15	Elgedawy, Raneem		0	0-2	0-0	0-0	0	0	0	1	0	2	0	0	4	-9
22	Porter, Sherry		2	1-2	0-0	0-0	0	0	0	0	0	0	0	0	4	-7
30	Abdelgawad, Meral		0	0-0	0-0	0-0	0	0	0	0	0	0	0	0	1	-4
1	Niang, Arame		0	0-1	0-1	0-0	0	0	0	1	0	0	0	1	3	-8
3	Bopp, Sidnee		0	0-1	0-1	0-0	0	0	0	0	0	1	0	0	6	-16
5	Creech, Whitney		2	1-2	0-0	0-0	0	0	0	1	0	1	0	0	9	-19
13	Allen, Jae'lisa		0	0-0	0-0	0-0	0	0	0	0	0	2	0	0	5	-12
20	Smith, Terri		0	0-0	0-0	0-0	0	0	0	0	0	0	0	0	0	0
34	Searcy, Kallie		0	0-0	0-0	0-0	0	0	0	0	0	0	0	0	0	0
	Team						2	0	2	0		0				
<b>TOTALS</b>			<b>7</b>	<b>3-15</b>	<b>0-5</b>	<b>1-2</b>	<b>0</b>	<b>0</b>	<b>3</b>	<b>4</b>	<b>0</b>	<b>6</b>	<b>0</b>	<b>2</b>	<b>50</b>	

*Shooting By Period*

Period	FG	FG%	3FG	3FG%	FT	FT%
1st Qtr	3-17	18%	2-5	40%	0-0	0%
2nd Qtr	3-15	20%	0-5	00%	1-2	50%
3rd Qtr	7-18	39%	1-5	20%	0-3	00%
4th Qtr	8-19	42%	5-10	50%	2-2	100%
1st Half	3-17	18%	2-5	40%	0-0	0%
2nd Half	3-15	20%	0-5	00%	1-2	50%
3rd Half	7-18	39%	1-5	20%	0-3	00%
4th Half	8-19	42%	5-10	50%	2-2	100%
<b>Game</b>	<b>21-69</b>	<b>30.4%</b>	<b>8-25</b>	<b>32.0%</b>	<b>3-7</b>	<b>42.9%</b>

*Deadball Rebounds:*  
*Last FG: 4th-01:25*  
*Biggest Run: 7-0*  
*Largest lead: By 0 at -*  
*Technical Fouls: None.*

**Notre Dame 94**

No.	Player	S	Pts	FG	3FG	FT	OR	DR	TR	PF	A	TO	Blk	Stl	Min	+/-
3	Mabrey, Marina		10	3-3	2-2	2-2	0	1	1	0	0	0	0	1	7	16
5	Young, Jackie		4	2-2	0-0	0-0	0	1	1	0	1	0	1	0	7	17
11	Turner, Brianna		2	1-1	0-0	0-0	0	3	3	0	2	0	1	1	9	21
24	Ogunbowale, Arike		8	4-5	0-0	0-0	0	2	2	0	1	0	0	1	9	22
32	Shepard, Jessica		4	2-2	0-0	0-0	1	1	2	2	1	1	0	0	7	16
0	Nixon, Jordan		0	0-0	0-0	0-0	0	0	0	1	0	2	0	0	4	7
12	Prohaska, Abby		0	0-0	0-0	0-0	0	0	0	0	0	0	0	0	3	7
20	Benz, Nicole		0	0-0	0-0	0-0	0	0	0	0	0	0	0	0	0	0
22	Cosgrove, Danielle		0	0-0	0-0	0-0	0	0	0	0	0	0	0	0	0	0
30	Vaughn, Mikayla		0	0-0	0-0	0-0	0	0	0	0	0	1	0	0	1	2
33	Patterson, Danielle		2	1-1	0-0	0-0	0	1	1	1	0	1	0	0	3	7
40	Butler, Maureen		0	0-0	0-0	0-0	0	0	0	0	0	0	0	0	0	0
	Team						0	0	0	0		0				
<b>TOTALS</b>			<b>30</b>	<b>13-14</b>	<b>2-2</b>	<b>2-2</b>	<b>0</b>	<b>0</b>	<b>10</b>	<b>4</b>	<b>5</b>	<b>5</b>	<b>2</b>	<b>3</b>	<b>50</b>	

*Shooting By Period*

Period	FG	FG%	3FG	3FG%	FT	FT%
1st Qtr	8-12	67%	1-1	100%	6-8	75%
2nd Qtr	13-14	93%	2-2	100%	2-2	100%
3rd Qtr	8-14	57%	2-4	50%	3-4	75%
4th Qtr	8-13	62%	3-5	60%	1-1	100%
1st Half	8-12	67%	1-1	100%	6-8	75%
2nd Half	13-14	93%	2-2	100%	2-2	100%
3rd Half	8-14	57%	2-4	50%	3-4	75%
4th Half	8-13	62%	3-5	60%	1-1	100%
<b>Game</b>	<b>37-53</b>	<b>69.8%</b>	<b>8-12</b>	<b>66.7%</b>	<b>12-15</b>	<b>80.0%</b>

*Deadball Rebounds:*  
*Last FG: 4th-00:21*  
*Biggest Run: 10-0*  
*Largest lead: By 47 at 3-00:56*  
*Technical Fouls: None.*

**Game Notes:**  
 Officials: **Joseph Vaszily, Gina Cross, Jenna Schroeder**  
 Attendance: **7502**  
 Start Time: **2018-12-20 00:02:24**      End Time: **2018-12-20 01:51:49**  
 Game Duration: **109**

Score by Period	1st	2nd	3rd	4th	TOT
WKU	8	7	15	23	<b>53</b>
UND	23	30	21	20	<b>94</b>

**This period only: WKU led for 0:00. UND led for 0:27.**  
**Game was tied for 0:31.**

Points from (This Period)	WKU	UND
In the Paint	6	20
Off Turns	2	11
2nd Chance	1	3
Fast Break	0	8
Bench	2	2



**Official Play-By-Play  
Western Ky. vs Notre Dame  
Third Quarter**

**December 20, 2018 at Joyce Center (Purcell Pavilion) - Notre Dame, IN**

**Starters:**

**Western Ky.:** 4 GIVENS,DEE; 11 BREWER,ALEXIS; 15 ELGEDAWY,RANEEM; 22 PORTER,SHERRY; 30 ABDELGAWAD,MERAL;

**Notre Dame:** 3 MABREY,MARINA; 5 YOUNG,JACKIE; 11 TURNER,BRIANNA; 24 OGUNBOWALE,ARIKE; 32 SHEPARD,JESSICA;

**Period 3**

Time	VISITORS: Western Ky.	Score	Margin	HOME: Notre Dame
09:49	TURNOVER (LOSTBALL) by PORTER,SHERRY			
09:49				STEAL by MABREY,MARINA
09:43		55-15	H 40	GOOD! LAYUP by YOUNG,JACKIE [FB]
09:43				ASSIST by MABREY,MARINA
09:26	MISSED LAYUP by BREWER,ALEXIS			
09:21	REBOUND (OFF) by ELGEDAWY,RANEEM			
09:20	GOOD! JUMPER by ELGEDAWY,RANEEM [PNT]	55-17	H 38	
09:12				TURNOVER (BADPASS) by YOUNG,JACKIE
09:12	STEAL by BREWER,ALEXIS			
09:04	MISSED 3PTR by ABDELGAWAD,MERAL			
08:59				REBOUND (DEF) by SHEPARD,JESSICA
08:59	FOUL (PERSONAL) by PORTER,SHERRY			
08:59		56-17	H 39	GOOD! FT by OGUNBOWALE,ARIKE
08:59		57-17	H 40	GOOD! FT by OGUNBOWALE,ARIKE
08:42	MISSED JUMPER by PORTER,SHERRY			
08:42				BLOCK by SHEPARD,JESSICA
08:38				REBOUND (DEF) by MABREY,MARINA
08:36		59-17	H 42	GOOD! LAYUP by TURNER,BRIANNA [FB]
08:36				ASSIST by SHEPARD,JESSICA
08:22	MISSED JUMPER by PORTER,SHERRY			
08:19	REBOUND (OFF) by ELGEDAWY,RANEEM			
08:19	TURNOVER (TRAVEL) by ELGEDAWY,RANEEM			
08:19				SUB OUT: YOUNG,JACKIE
08:19				SUB IN: NIXON,JORDAN
08:19	SUB OUT: PORTER,SHERRY			
08:19	SUB IN: CREECH,WHITNEY			
08:04		61-17	H 44	GOOD! JUMPER by TURNER,BRIANNA
08:04				ASSIST by SHEPARD,JESSICA
07:47	GOOD! LAYUP by ELGEDAWY,RANEEM	61-19	H 42	
07:36	FOUL (PERSONAL) by ABDELGAWAD,MERAL			
07:36	SUB OUT: ELGEDAWY,RANEEM			
07:36	SUB IN: NIANG,ARAME			
07:30		63-19	H 44	GOOD! JUMPER by OGUNBOWALE,ARIKE
07:30				ASSIST by SHEPARD,JESSICA
07:07	MISSED 3PTR by ABDELGAWAD,MERAL			
07:04				REBOUND (DEF) by OGUNBOWALE,ARIKE
07:02				MISSED LAYUP by OGUNBOWALE,ARIKE
06:59	REBOUND (DEF) by CREECH,WHITNEY			
06:54	MISSED JUMPER by NIANG,ARAME			
06:54				BLOCK by SHEPARD,JESSICA
06:53	REBOUND (OFF) by TEAM			
06:53				SUB OUT: TURNER,BRIANNA
06:53				SUB IN: VAUGHN,MIKAYLA
06:53				SUB OUT: OGUNBOWALE,ARIKE
06:53				SUB IN: PROHASKA,ABBY
06:46	GOOD! JUMPER by CREECH,WHITNEY	63-21	H 42	
06:29				MISSED JUMPER by MABREY,MARINA
06:26	REBOUND (DEF) by BREWER,ALEXIS			
06:18	MISSED JUMPER by NIANG,ARAME			
06:15				REBOUND (DEF) by NIXON,JORDAN
06:13				TURNOVER (BADPASS) by NIXON,JORDAN
06:13	SUB OUT: ABDELGAWAD,MERAL			
06:13	SUB IN: SMITH,TERRI			
05:59	TURNOVER (LOSTBALL) by GIVENS,DEE			
05:59				STEAL by MABREY,MARINA
05:55				MISSED LAYUP by MABREY,MARINA
05:55	BLOCK by NIANG,ARAME			
05:55				REBOUND (OFF) by TEAM
05:53				MISSED 3PTR by PROHASKA,ABBY
05:53	BLOCK by GIVENS,DEE			
05:53				REBOUND (OFF) by TEAM
05:46				TURNOVER (BADPASS) by SHEPARD,JESSICA
05:46	STEAL by CREECH,WHITNEY			
05:39	FOUL (OFF) by BREWER,ALEXIS			
05:39	TURNOVER (OFFENSIVE) by BREWER,ALEXIS			
05:22		66-21	H 45	GOOD! 3PTR by MABREY,MARINA
05:22				ASSIST by PROHASKA,ABBY
05:11	MISSED JUMPER by GIVENS,DEE			
05:08				REBOUND (DEF) by VAUGHN,MIKAYLA
04:56				TURNOVER (BADPASS) by NIXON,JORDAN
04:56	STEAL by BREWER,ALEXIS			
04:46	GOOD! JUMPER by CREECH,WHITNEY	66-23	H 43	
04:46	ASSIST by SMITH,TERRI			
04:35				TURNOVER (BADPASS) by NIXON,JORDAN
04:35	STEAL by SMITH,TERRI			
04:26	MISSED 3PTR by BREWER,ALEXIS			

Time	VISITORS: Western Ky.	Score	Margin	HOME: Notre Dame
04:22				REBOUND (DEF) by PROHASKA,ABBY
04:16				
04:16				SUB OUT: MABREY,MARINA
04:16				SUB IN: YOUNG,JACKIE
04:16				SUB OUT: SHEPARD,JESSICA
04:16				SUB IN: PATTERSON,DANIELLE
04:16	SUB OUT: NIANG,ARAME			
04:16	SUB IN: BOPP,SIDNEE			
04:16	SUB OUT: GIVENS,DEE			
04:16	SUB IN: ALLEN,JAE'LISA			
04:16	SUB OUT: BREWER,ALEXIS			
04:16	SUB IN: ELGEDAWY,RANEEM			
04:00				MISSED 3PTR by NIXON,JORDAN
03:57				REBOUND (OFF) by PATTERSON,DANIELLE
03:55		68-23	H 45	GOOD! JUMPER by PATTERSON,DANIELLE [PNT]
03:32	MISSED JUMPER by ELGEDAWY,RANEEM			
03:28				REBOUND (DEF) by NIXON,JORDAN
03:21				MISSED JUMPER by YOUNG,JACKIE
03:21	REBOUND (DEF) by ALLEN,JAE'LISA			
03:21				FOUL (PERSONAL) by VAUGHN,MIKAYLA
03:06	GOOD! LAYUP by ELGEDAWY,RANEEM [PNT]	68-25	H 43	
03:06	ASSIST by SMITH,TERRI			
03:06				FOUL (PERSONAL) by VAUGHN,MIKAYLA
03:06				SUB OUT: VAUGHN,MIKAYLA
03:06				SUB IN: COSGROVE,DANIELLE
03:05	MISSED FT by ELGEDAWY,RANEEM			
03:04				REBOUND (DEF) by TEAM
02:51	FOUL (PERSONAL) by ALLEN,JAE'LISA			
02:51		69-25	H 44	GOOD! FT by YOUNG,JACKIE
02:50				MISSED FT by YOUNG,JACKIE
02:34	REBOUND (DEF) by CREECH,WHITNEY			
02:33	GOOD! LAYUP by ELGEDAWY,RANEEM	69-27	H 42	
02:33	ASSIST by CREECH,WHITNEY			
02:19		72-27	H 45	GOOD! 3PTR by NIXON,JORDAN
02:19				ASSIST by PROHASKA,ABBY
02:10				FOUL (PERSONAL) by PATTERSON,DANIELLE
02:10				SUB OUT: YOUNG,JACKIE
02:10				SUB IN: MABREY,MARINA
02:10	SUB OUT: BOPP,SIDNEE			
02:10	SUB IN: NIANG,ARAME			
02:10	SUB OUT: ELGEDAWY,RANEEM			
02:10	SUB IN: ABDELGAWAD,MERAL			
02:10	SUB OUT: ALLEN,JAE'LISA			
02:10	SUB IN: ELGEDAWY,RANEEM			
01:59				FOUL (PERSONAL) by PROHASKA,ABBY
01:59	MISSED FT by ELGEDAWY,RANEEM			
01:59	REBOUND (OFF) by TEAM			
01:59	MISSED FT by ELGEDAWY,RANEEM			
01:54				REBOUND (DEF) by PROHASKA,ABBY
01:51	SUB OUT: ELGEDAWY,RANEEM			
01:51	SUB IN: GIVENS,DEE			
01:42				TURNOVER (BADPASS) by PROHASKA,ABBY
01:25	TURNOVER (LOSTBALL) by NIANG,ARAME			
01:25				STEAL by PROHASKA,ABBY
00:56		74-27	H 47	GOOD! LAYUP by COSGROVE,DANIELLE
00:56				ASSIST by MABREY,MARINA
00:34	GOOD! 3PTR by GIVENS,DEE	74-30	H 44	
00:34	ASSIST by CREECH,WHITNEY			
00:17				TURNOVER (BADPASS) by COSGROVE,DANIELLE
00:00	MISSED 3PTR by CREECH,WHITNEY			
00:00				BLOCK by MABREY,MARINA
00:00	REBOUND (OFF) by TEAM			

Western Ky. 30, Notre Dame 74

Points from (This Period)	WKU	UND
In the Paint	8	12
Off Turns	2	9
2nd Chance	4	2
Fast Break	0	4
Bench	4	7

This period only:WKU led for 0:00. UND led for 0:27.  
Game was tied for 0:31.

**Official Play-By-Play  
Western Ky. vs Notre Dame  
Fourth Quarter**

**December 20, 2018 at Joyce Center (Purcell Pavilion) - Notre Dame, IN**

**Starters:**

**Western Ky.:** 4 GIVENS,DEE; 11 BREWER,ALEXIS; 15 ELGEDAWY,RANEEM; 22 PORTER,SHERRY; 30 ABDELGAWAD,MERAL;

**Notre Dame:** 3 MABREY,MARINA; 5 YOUNG,JACKIE; 11 TURNER,BRIANNA; 24 OGUNBOWALE,ARIKE; 32 SHEPARD,JESSICA;

**Period 4**

Time	VISITORS: Western Ky.	Score	Margin	HOME: Notre Dame
09:37	MISSED 3PTR by GIVENS,DEE			
09:33				REBOUND (DEF) by YOUNG,JACKIE
09:28		76-30	H 46	GOOD! LAYUP by SHEPARD,JESSICA [FB]
09:28				ASSIST by YOUNG,JACKIE
09:00	GOOD! 3PTR by ABDELGAWAD,MERAL	76-33	H 43	
09:00	ASSIST by GIVENS,DEE			
08:40		78-33	H 45	GOOD! LAYUP by MABREY,MARINA
08:40				ASSIST by SHEPARD,JESSICA
08:15	MISSED JUMPER by GIVENS,DEE			
08:12	REBOUND (OFF) by NIANG,ARAME			
08:10	GOOD! JUMPER by NIANG,ARAME [PNT]	78-35	H 43	
08:04				MISSED 3PTR by OGUNBOWALE,ARIKE
08:04	BLOCK by GIVENS,DEE			
08:04				REBOUND (OFF) by TEAM
08:04				SUB OUT: MABREY,MARINA
08:04				SUB IN: PROHASKA,ABBY
08:04				SUB OUT: YOUNG,JACKIE
08:04				SUB IN: PATTERSON,DANIELLE
08:04				SUB OUT: TURNER,BRIANNA
08:04				SUB IN: NIXON,JORDAN
08:04				SUB OUT: SHEPARD,JESSICA
08:04				SUB IN: COSGROVE,DANIELLE
08:04	SUB OUT: SMITH,TERRI			
08:04	SUB IN: PORTER,SHERRY			
07:37				TURNOVER (SHOTCLOCK) by
07:07	TURNOVER (TRAVEL) by PORTER,SHERRY			
06:53		81-35	H 46	GOOD! 3PTR by COSGROVE,DANIELLE
06:53				ASSIST by PROHASKA,ABBY
06:32	GOOD! 3PTR by ABDELGAWAD,MERAL	81-38	H 43	
06:32	ASSIST by PORTER,SHERRY			
06:07	FOUL (PERSONAL) by ABDELGAWAD,MERAL			
06:07				SUB OUT: OGUNBOWALE,ARIKE
06:07				SUB IN: BENZ,NICOLE
06:07	SUB OUT: NIANG,ARAME			
06:07	SUB IN: BREWER,ALEXIS			
06:07	SUB OUT: CREECH,WHITNEY			
06:07	SUB IN: ELGEDAWY,RANEEM			
06:07	SUB OUT: ABDELGAWAD,MERAL			
06:07	SUB IN: SEARCY,KALLIE			
06:02		83-38	H 45	GOOD! JUMPER by PATTERSON,DANIELLE [PNT]
06:02				ASSIST by PROHASKA,ABBY
05:47	MISSED JUMPER by ELGEDAWY,RANEEM			
05:47				BLOCK by COSGROVE,DANIELLE
05:45				REBOUND (DEF) by BENZ,NICOLE
05:31				MISSED 3PTR by COSGROVE,DANIELLE
05:27	REBOUND (DEF) by ELGEDAWY,RANEEM			
05:19	GOOD! 3PTR by BREWER,ALEXIS	83-41	H 42	
05:19	ASSIST by GIVENS,DEE			
05:01		86-41	H 45	GOOD! 3PTR by NIXON,JORDAN
05:01				ASSIST by COSGROVE,DANIELLE
04:43	GOOD! 3PTR by PORTER,SHERRY	86-44	H 42	
04:43	ASSIST by GIVENS,DEE			
04:35				TURNOVER (BADPASS) by NIXON,JORDAN
04:35	STEAL by GIVENS,DEE			
04:29	MISSED JUMPER by GIVENS,DEE			
04:26	REBOUND (OFF) by ELGEDAWY,RANEEM			
04:25	MISSED JUMPER by ELGEDAWY,RANEEM			
04:25				BLOCK by COSGROVE,DANIELLE
04:21	REBOUND (OFF) by ELGEDAWY,RANEEM			
04:16	MISSED 3PTR by GIVENS,DEE			
04:13				REBOUND (DEF) by COSGROVE,DANIELLE
03:59	FOUL (PERSONAL) by SEARCY,KALLIE			
03:59				
03:59				SUB OUT: PROHASKA,ABBY
03:59				SUB IN: BUTLER,MAUREEN
03:59	SUB OUT: PORTER,SHERRY			
03:59	SUB IN: CREECH,WHITNEY			
03:55				TURNOVER (BADPASS) by NIXON,JORDAN
03:55	STEAL by GIVENS,DEE			
03:36	MISSED 3PTR by GIVENS,DEE			
03:33	REBOUND (OFF) by BREWER,ALEXIS			
03:30	MISSED 3PTR by BREWER,ALEXIS			
03:29	REBOUND (OFF) by TEAM			
03:29	TIMEOUT 30SEC			
03:22	MISSED 3PTR by ELGEDAWY,RANEEM			
03:19	REBOUND (OFF) by SEARCY,KALLIE			

Time	VISITORS: Western Ky.	Score	Margin	HOME: Notre Dame
03:18	GOOD! JUMPER by SEARCY,KALLIE [PNT]	86-46	H 40	
03:01		88-46	H 42	GOOD! LAYUP by PATTERSON,DANIELLE
03:01				ASSIST by COSGROVE,DANIELLE
02:44	MISSED JUMPER by ELGEDAWY,RANEEM			
02:41	REBOUND (OFF) by GIVENS,DEE			
02:41				FOUL (PERSONAL) by BUTLER,MAUREEN
02:41	GOOD! FT by GIVENS,DEE	88-47	H 41	
02:41	SUB OUT: SEARCY,KALLIE			
02:41	SUB IN: NIANG,ARAME			
02:41	GOOD! FT by GIVENS,DEE	88-48	H 40	
02:33	FOUL (PERSONAL) by BREWER,ALEXIS			
02:16				MISSED JUMPER by PATTERSON,DANIELLE
02:16	BLOCK by NIANG,ARAME			
02:16				REBOUND (OFF) by TEAM
02:08				MISSED JUMPER by BUTLER,MAUREEN
02:05	REBOUND (DEF) by NIANG,ARAME			
01:56	GOOD! 3PTR by BREWER,ALEXIS	88-51	H 37	
01:56	ASSIST by NIANG,ARAME			
01:30				TURNOVER (LOSTBALL) by NIXON,JORDAN
01:30	STEAL by NIANG,ARAME			
01:25	GOOD! LAYUP by GIVENS,DEE [FB]	88-53	H 35	
01:04	FOUL (PERSONAL) by NIANG,ARAME			
00:57				MISSED JUMPER by PATTERSON,DANIELLE
00:56				REBOUND (OFF) by TEAM
00:53		91-53	H 38	GOOD! 3PTR by NIXON,JORDAN
00:53				ASSIST by BENZ,NICOLE
00:26	MISSED LAYUP by GIVENS,DEE			
00:26				BLOCK by COSGROVE,DANIELLE
00:22				REBOUND (DEF) by COSGROVE,DANIELLE
00:21		93-53	H 40	GOOD! JUMPER by NIXON,JORDAN [FB]
00:21	FOUL (PERSONAL) by CREECH,WHITNEY			
00:21		94-53	H 41	GOOD! FT by NIXON,JORDAN [FB]
00:05	TURNOVER (BADPASS) by ELGEDAWY,RANEEM			
00:05				STEAL by NIXON,JORDAN

### Western Ky. 53, Notre Dame 94

Points from (This Period)	WKU	UND
In the Paint	6	10
Off Turns	4	3
2nd Chance	6	3
Fast Break	2	5
Bench	4	16

**This period only:WKU led for 0:00. UND led for 0:27.  
Game was tied for 0:31.**

**Official Scoring/Possession Reference Chart  
Western Ky. vs Notre Dame**

**Period 1**

**December 20, 2018 at Joyce Center (Purcell Pavilion) - Notre Dame, IN**

**Starters:**

**Western Ky.:** 4 GIVENS,DEE; 11 BREWER,ALEXIS; 15 ELGEDAWY,RANEEM; 22 PORTER,SHERRY; 30 ABDELGAWAD,MERAL;

**Notre Dame:** 3 MABREY,MARINA; 5 YOUNG,JACKIE; 11 TURNER,BRIANNA; 24 OGUNBOWALE,ARIKE; 32 SHEPARD,JESSICA;

**Period 1**

Time	VISITORS: Western Ky.	Score	Margin	HOME: Notre Dame
08:32		2-0	H 2	GOOD! LAYUP by SHEPARD,JESSICA
07:55		4-0	H 4	GOOD! LAYUP by TURNER,BRIANNA [FB]
07:28		5-0	H 5	GOOD! FT by YOUNG,JACKIE [FB]
07:28		6-0	H 6	GOOD! FT by YOUNG,JACKIE [FB]
06:56		8-0	H 8	GOOD! LAYUP by MABREY ,MARINA [FB/PNT]
06:27	GOOD! 3PTR by GIVENS,DEE	8-3	H 5	
05:42		10-3	H 7	GOOD! JUMPER by SHEPARD,JESSICA
05:08		12-3	H 9	GOOD! JUMPER by SHEPARD,JESSICA [PNT]
04:21	GOOD! 3PTR by NIANG,ARAME	12-6	H 6	
04:12		13-6	H 7	GOOD! FT by TURNER,BRIANNA
04:12		14-6	H 8	GOOD! FT by TURNER,BRIANNA
03:32		17-6	H 11	GOOD! 3PTR by MABREY ,MARINA
03:12		18-6	H 12	GOOD! FT by OGUNBOWALE,ARIKE [FB]
03:12		19-6	H 13	GOOD! FT by OGUNBOWALE,ARIKE [FB]
01:07	GOOD! LAYUP by ELGEDAWY ,RANEEM [PNT]	19-8	H 11	
00:22		21-8	H 13	GOOD! LAYUP by VAUGHN,MIKAYLA [FB]
00:02		23-8	H 15	GOOD! LAYUP by OGUNBOWALE,ARIKE

**Western Ky. 8, Notre Dame 23**

**Official Scoring/Possession Reference Chart  
Western Ky. vs Notre Dame**

**Period 2**

**December 20, 2018 at Joyce Center (Purcell Pavilion) - Notre Dame, IN**

**Starters:**

**Western Ky.:** 4 GIVENS,DEE; 11 BREWER,ALEXIS; 15 ELGEDAWY,RANEEM; 22 PORTER,SHERRY; 30 ABDELGAWAD,MERAL;

**Notre Dame:** 3 MABREY,MARINA; 5 YOUNG,JACKIE; 11 TURNER,BRIANNA; 24 OGUNBOWALE,ARIKE; 32 SHEPARD,JESSICA;

**Period 2**

Time	VISITORS: Western Ky.	Score	Margin	HOME: Notre Dame
08:49		25-8	H 17	GOOD! JUMPER by OGUNBOWALE,ARIKE [PNT]
08:20		28-8	H 20	GOOD! 3PTR by MABREY ,MARINA
07:57	GOOD! JUMPER by PORTER,SHERRY [PNT]	28-10	H 18	
07:44		31-10	H 21	GOOD! 3PTR by MABREY ,MARINA
06:14		32-10	H 22	GOOD! FT by MABREY ,MARINA
06:14		33-10	H 23	GOOD! FT by MABREY ,MARINA
05:43		35-10	H 25	GOOD! JUMPER by OGUNBOWALE,ARIKE [FB]
04:43	GOOD! JUMPER by BREWER,ALEXIS [PNT]	35-12	H 23	
04:29		37-12	H 25	GOOD! JUMPER by YOUNG,JACKIE [PNT]
04:12	GOOD! LAYUP by CREECH,WHITNEY [PNT]	37-14	H 23	
03:52		39-14	H 25	GOOD! LAYUP by SHEPARD,JESSICA
03:28		41-14	H 27	GOOD! LAYUP by SHEPARD,JESSICA [FB]
03:00		43-14	H 29	GOOD! LAYUP by OGUNBOWALE,ARIKE [FB]
02:40		45-14	H 31	GOOD! LAYUP by MABREY ,MARINA [FB]
02:08	GOOD! FT by BREWER,ALEXIS	45-15	H 30	
01:57		47-15	H 32	GOOD! LAYUP by PATTERSON,DANIELLE
01:36		49-15	H 34	GOOD! JUMPER by YOUNG,JACKIE [PNT]
00:58		51-15	H 36	GOOD! JUMPER by TURNER,BRIANNA [PNT]
00:10		53-15	H 38	GOOD! LAYUP by OGUNBOWALE,ARIKE

**Western Ky. 15, Notre Dame 53**

**Official Scoring/Possession Reference Chart  
Western Ky. vs Notre Dame  
Period 3**

**December 20, 2018 at Joyce Center (Purcell Pavilion) - Notre Dame, IN**

**Starters:**

**Western Ky.:** 4 GIVENS,DEE; 11 BREWER,ALEXIS; 15 ELGEDAWY,RANEEM; 22 PORTER,SHERRY; 30 ABDELGAWAD,MERAL;

**Notre Dame:** 3 MABREY,MARINA; 5 YOUNG,JACKIE; 11 TURNER,BRIANNA; 24 OGUNBOWALE,ARIKE; 32 SHEPARD,JESSICA;

**Period 3**

Time	VISITORS: Western Ky.	Score	Margin	HOME: Notre Dame
09:43		55-15	H 40	GOOD! LAYUP by YOUNG,JACKIE [FB]
09:20	GOOD! JUMPER by ELGEDAWY,RANEEM [PNT]	55-17	H 38	
08:59		56-17	H 39	GOOD! FT by OGUNBOWALE,ARIKE
08:59		57-17	H 40	GOOD! FT by OGUNBOWALE,ARIKE
08:36		59-17	H 42	GOOD! LAYUP by TURNER,BRIANNA [FB]
08:04		61-17	H 44	GOOD! JUMPER by TURNER,BRIANNA
07:47	GOOD! LAYUP by ELGEDAWY,RANEEM	61-19	H 42	
07:30		63-19	H 44	GOOD! JUMPER by OGUNBOWALE,ARIKE
06:46	GOOD! JUMPER by CREECH,WHITNEY	63-21	H 42	
05:22		66-21	H 45	GOOD! 3PTR by MABREY,MARINA
04:46	GOOD! JUMPER by CREECH,WHITNEY	66-23	H 43	
03:55		68-23	H 45	GOOD! JUMPER by PATTERSON,DANIELLE [PNT]
03:06	GOOD! LAYUP by ELGEDAWY,RANEEM [PNT]	68-25	H 43	
02:51		69-25	H 44	GOOD! FT by YOUNG,JACKIE
02:33	GOOD! LAYUP by ELGEDAWY,RANEEM	69-27	H 42	
02:19		72-27	H 45	GOOD! 3PTR by NIXON,JORDAN
00:56		74-27	H 47	GOOD! LAYUP by COSGROVE,DANIELLE
00:34	GOOD! 3PTR by GIVENS,DEE	74-30	H 44	

**Western Ky. 30, Notre Dame 74**

**Official Scoring/Possession Reference Chart  
Western Ky. vs Notre Dame  
Period 4**

**December 20, 2018 at Joyce Center (Purcell Pavilion) - Notre Dame, IN**

**Starters:**

**Western Ky.:** 4 GIVENS,DEE; 11 BREWER,ALEXIS; 15 ELGEDAWY,RANEEM; 22 PORTER,SHERRY; 30 ABDELGAWAD,MERAL;

**Notre Dame:** 3 MABREY,MARINA; 5 YOUNG,JACKIE; 11 TURNER,BRIANNA; 24 OGUNBOWALE,ARIKE; 32 SHEPARD,JESSICA;

**Period 4**

Time	VISITORS: Western Ky.	Score	Margin	HOME: Notre Dame
09:28		76-30	H 46	GOOD! LAYUP by SHEPARD,JESSICA [FB]
09:00	GOOD! 3PTR by ABDELGAWAD,MERAL	76-33	H 43	
08:40		78-33	H 45	GOOD! LAYUP by MABREY,MARINA
08:10	GOOD! JUMPER by NIANG,ARAME [PNT]	78-35	H 43	
06:53		81-35	H 46	GOOD! 3PTR by COSGROVE,DANIELLE
06:32	GOOD! 3PTR by ABDELGAWAD,MERAL	81-38	H 43	
06:02		83-38	H 45	GOOD! JUMPER by PATTERSON,DANIELLE [PNT]
05:19	GOOD! 3PTR by BREWER,ALEXIS	83-41	H 42	
05:01		86-41	H 45	GOOD! 3PTR by NIXON,JORDAN
04:43	GOOD! 3PTR by PORTER,SHERRY	86-44	H 42	
03:18	GOOD! JUMPER by SEARCY,KALLIE [PNT]	86-46	H 40	
03:01		88-46	H 42	GOOD! LAYUP by PATTERSON,DANIELLE
02:41	GOOD! FT by GIVENS,DEE	88-47	H 41	
02:41	GOOD! FT by GIVENS,DEE	88-48	H 40	
01:56	GOOD! 3PTR by BREWER,ALEXIS	88-51	H 37	
01:25	GOOD! LAYUP by GIVENS,DEE [FB]	88-53	H 35	
00:53		91-53	H 38	GOOD! 3PTR by NIXON,JORDAN
00:21		93-53	H 40	GOOD! JUMPER by NIXON,JORDAN [FB]
00:21		94-53	H 41	GOOD! FT by NIXON,JORDAN [FB]

**Western Ky. 53, Notre Dame 94**

**Official Substitutions Log  
Western Ky. vs Notre Dame  
Period 1**

**December 20, 2018 at Joyce Center (Purcell Pavilion) - Notre Dame, IN**

<b>VISITORS: Western Ky.</b>	<b>Time</b>	<b>Score</b>	<b>HOME: Notre Dame</b>
4 GIVENS,DEE			3 MABREY,MARINA
11 BREWER,ALEXIS			5 YOUNG,JACKIE
15 ELGEDAWY,RANEEM			11 TURNER,BRIANNA
22 PORTER,SHERRY			24 OGUNBOWALE,ARIKE
30 ABDELGAWAD,MERAL			32 SHEPARD,JESSICA
SUB OUT: 30 ABDELGAWAD,MERAL	08:45	-	
SUB IN: 5 CREECH,WHITNEY	08:45		
SUB OUT: 15 ELGEDAWY,RANEEM	07:28	0-5	
SUB IN: 1 NIANG,ARAME	07:28		
SUB OUT: 22 PORTER,SHERRY	06:13	3-8	
SUB IN: 15 ELGEDAWY,RANEEM	06:13		
SUB OUT: 15 ELGEDAWY,RANEEM	05:08	3-12	
SUB IN: 13 ALLEN,JAELISA	05:08		
SUB OUT: 13 ALLEN,JAELISA	04:12	6-13	
SUB IN: 15 ELGEDAWY,RANEEM	04:12		
	03:12	6-18	
	03:12		SUB OUT: TURNER,BRIANNA
	03:12		SUB IN: VAUGHN,MIKAYLA
SUB OUT: 11 BREWER,ALEXIS	03:12		
SUB IN: 34 SEARCY,KALLIE	03:12		
SUB OUT: 1 NIANG,ARAME	03:12		
SUB IN: 22 PORTER,SHERRY	03:12		
	02:30	6-19	
	02:30		SUB OUT: MABREY,MARINA
			SUB IN: NIXON,JORDAN
SUB OUT: 5 CREECH,WHITNEY	01:46	6-19	
SUB IN: 3 BOPP,SIDNEE	01:46		
SUB OUT: 22 PORTER,SHERRY	01:46		
SUB IN: 30 ABDELGAWAD,MERAL	01:46		
SUB OUT: 34 SEARCY,KALLIE	01:46		
SUB IN: 1 NIANG,ARAME	01:46		
	00:45	8-19	
	00:45		SUB OUT: SHEPARD,JESSICA
			SUB IN: TURNER,BRIANNA
SUB OUT: 1 NIANG,ARAME	00:17	8-21	
SUB IN: 13 ALLEN,JAELISA	00:17		
SUB OUT: 4 GIVENS,DEE	00:17		
SUB IN: 5 CREECH,WHITNEY	00:17		
SUB OUT: 3 BOPP,SIDNEE	00:10	8-21	
SUB IN: 4 GIVENS,DEE	00:10		

**Western Ky. 8, Notre Dame 23**

**Official Substitutions Log  
Western Ky. vs Notre Dame  
Period 2**

**December 20, 2018 at Joyce Center (Purcell Pavilion) - Notre Dame, IN**

<b>VISITORS: Western Ky.</b>	<b>Time</b>	<b>Score</b>	<b>HOME: Notre Dame</b>
4 GIVENS,DEE			3 MABREY,MARINA
11 BREWER,ALEXIS			5 YOUNG,JACKIE
15 ELGEDAWY,RANEEM			11 TURNER,BRIANNA
22 PORTER,SHERRY			24 OGUNBOWALE,ARIKE
30 ABDELGAWAD,MERAL			32 SHEPARD,JESSICA
	09:21	-	SUB OUT: VAUGHN,MIKAYLA
	09:21		SUB IN: SHEPARD,JESSICA
SUB OUT: 5 CREECH,WHITNEY	08:28	8-25	
SUB IN: 11 BREWER,ALEXIS	08:28		
SUB OUT: 15 ELGEDAWY,RANEEM	08:28		
SUB IN: 1 NIANG,ARAME	08:28		
	07:23	10-31	SUB OUT: OGUNBOWALE,ARIKE
	07:23		SUB IN: YOUNG,JACKIE
SUB OUT: 13 ALLEN,JAE'LISA	07:23		
SUB IN: 5 CREECH,WHITNEY	07:23		
	06:14	10-32	SUB OUT: NIXON,JORDAN
	06:14		SUB IN: OGUNBOWALE,ARIKE
SUB OUT: 22 PORTER,SHERRY	06:14		
SUB IN: 3 BOPP,SIDNEE	06:14		
SUB OUT: 1 NIANG,ARAME	05:14	10-35	
SUB IN: 13 ALLEN,JAE'LISA	05:14		
	02:39	14-45	SUB OUT: MABREY,MARINA
	02:39		SUB IN: PATTERSON,DANIELLE
	02:39		SUB OUT: TURNER,BRIANNA
	02:39		SUB IN: PROHASKA,ABBY
SUB OUT: 13 ALLEN,JAE'LISA	02:39		
SUB IN: 15 ELGEDAWY,RANEEM	02:39		
	02:08	14-45	SUB OUT: SHEPARD,JESSICA
	02:08		SUB IN: TURNER,BRIANNA
SUB OUT: 4 GIVENS,DEE	01:16	15-49	
SUB IN: 30 ABDELGAWAD,MERAL	01:16		
	00:33	15-51	SUB OUT: TURNER,BRIANNA
	00:33		SUB IN: VAUGHN,MIKAYLA

**Western Ky. 15, Notre Dame 53**

**Official Substitutions Log  
Western Ky. vs Notre Dame  
Period 3**

**December 20, 2018 at Joyce Center (Purcell Pavilion) - Notre Dame, IN**

<b>VISITORS: Western Ky.</b>	<b>Time</b>	<b>Score</b>	<b>HOME: Notre Dame</b>
4 GIVENS,DEE			3 MABREY,MARINA
11 BREWER,ALEXIS			5 YOUNG,JACKIE
15 ELGEDAWY,RANEEM			11 TURNER,BRIANNA
22 PORTER,SHERRY			24 OGUNBOWALE,ARIKE
30 ABDELGAWAD,MERAL			32 SHEPARD,JESSICA
	08:19	17-59	SUB OUT: YOUNG,JACKIE
	08:19		SUB IN: NIXON,JORDAN
SUB OUT: 22 PORTER,SHERRY	08:19		
SUB IN: 5 CREECH,WHITNEY	08:19		
SUB OUT: 15 ELGEDAWY,RANEEM	07:36	19-61	
SUB IN: 1 NIANG,ARAME	07:36		
	06:53	19-63	SUB OUT: TURNER,BRIANNA
	06:53		SUB IN: VAUGHN,MIKAYLA
	06:53		SUB OUT: OGUNBOWALE,ARIKE
	06:53		SUB IN: PROHASKA,ABBY
SUB OUT: 30 ABDELGAWAD,MERAL	06:13	21-63	
SUB IN: 20 SMITH,TERRI	06:13		
	04:16	23-66	SUB OUT: MABREY,MARINA
	04:16		SUB IN: YOUNG,JACKIE
	04:16		SUB OUT: SHEPARD,JESSICA
	04:16		SUB IN: PATTERSON,DANIELLE
SUB OUT: 1 NIANG,ARAME	04:16		
SUB IN: 3 BOPP,SIDNEE	04:16		
SUB OUT: 4 GIVENS,DEE	04:16		
SUB IN: 13 ALLEN,JAE'LISA	04:16		
SUB OUT: 11 BREWER,ALEXIS	04:16		
SUB IN: 15 ELGEDAWY,RANEEM	04:16		
	03:06	25-68	SUB OUT: VAUGHN,MIKAYLA
	03:06		SUB IN: COSGROVE,DANIELLE
	02:10	27-72	SUB OUT: YOUNG,JACKIE
	02:10		SUB IN: MABREY,MARINA
SUB OUT: 3 BOPP,SIDNEE	02:10		
SUB IN: 1 NIANG,ARAME	02:10		
SUB OUT: 15 ELGEDAWY,RANEEM	02:10		
SUB IN: 30 ABDELGAWAD,MERAL	02:10		
SUB OUT: 13 ALLEN,JAE'LISA	02:10		
SUB IN: 15 ELGEDAWY,RANEEM	02:10		



<b>VISITORS: Western Ky.</b>	<b>Time</b>	<b>Score</b>	<b>HOME: Notre Dame</b>
SUB OUT: 15 ELGEDAWY,RANEEM	01:51	27-72	
SUB IN: 4 GIVENS,DEE	01:51		

**Western Ky. 30, Notre Dame 74**

**Official Substitutions Log  
Western Ky. vs Notre Dame  
Period 4**

**December 20, 2018 at Joyce Center (Purcell Pavilion) - Notre Dame, IN**

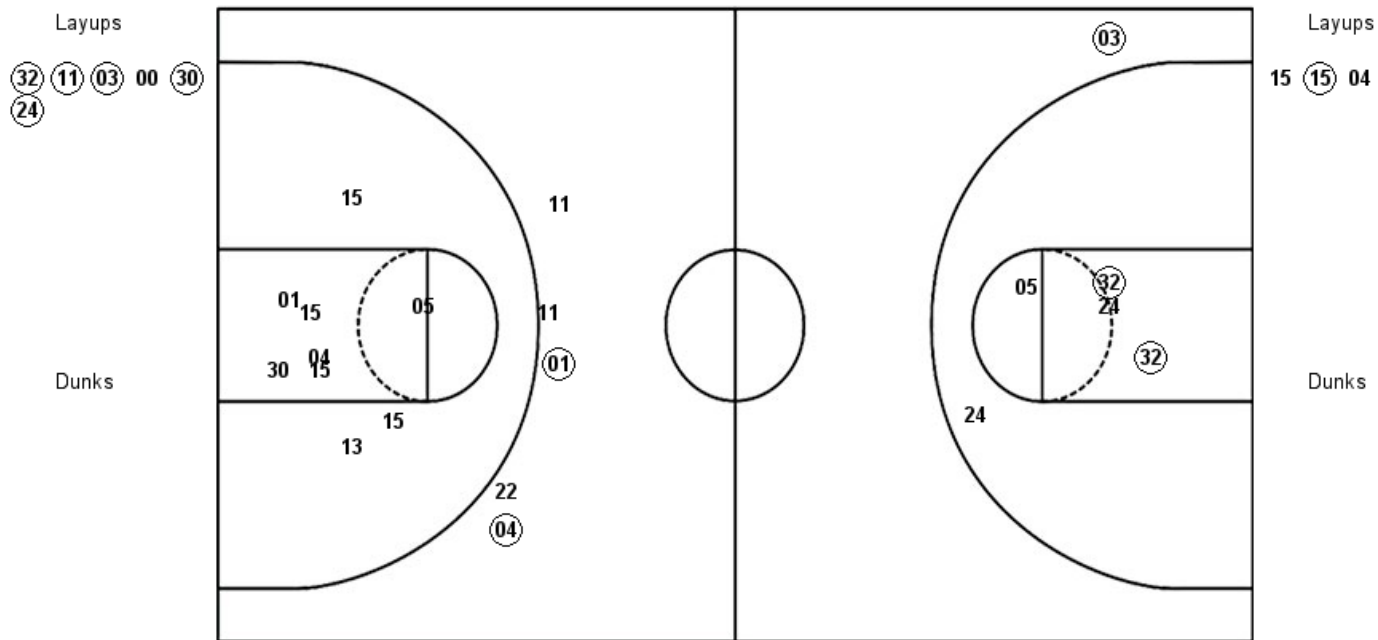
<b>VISITORS: Western Ky.</b>	<b>Time</b>	<b>Score</b>	<b>HOME: Notre Dame</b>
4 GIVENS,DEE			3 MABREY,MARINA
11 BREWER,ALEXIS			5 YOUNG,JACKIE
15 ELGEDAWY,RANEEM			11 TURNER,BRIANNA
22 PORTER,SHERRY			24 OGUNBOWALE,ARIKE
30 ABDELGAWAD,MERAL			32 SHEPARD,JESSICA
	08:04	35-78	SUB OUT: MABREY,MARINA
	08:04		SUB IN: PROHASKA,ABBY
	08:04		SUB OUT: YOUNG,JACKIE
	08:04		SUB IN: PATTERSON,DANIELLE
	08:04		SUB OUT: TURNER,BRIANNA
	08:04		SUB IN: NIXON,JORDAN
	08:04		SUB OUT: SHEPARD,JESSICA
	08:04		SUB IN: COSGROVE,DANIELLE
SUB OUT: 20 SMITH,TERRI	08:04		
SUB IN: 22 PORTER,SHERRY	08:04		
	06:07	38-81	SUB OUT: OGUNBOWALE,ARIKE
	06:07		SUB IN: BENZ,NICOLE
SUB OUT: 1 NIANG,ARAME	06:07		
SUB IN: 11 BREWER,ALEXIS	06:07		
SUB OUT: 5 CREECH,WHITNEY	06:07		
SUB IN: 15 ELGEDAWY,RANEEM	06:07		
SUB OUT: 30 ABDELGAWAD,MERAL	06:07		
SUB IN: 34 SEARCY,KALLIE	06:07		
	03:59	44-86	SUB OUT: PROHASKA,ABBY
	03:59		SUB IN: BUTLER,MAUREEN
SUB OUT: 22 PORTER,SHERRY	03:59		
SUB IN: 5 CREECH,WHITNEY	03:59		
SUB OUT: 34 SEARCY,KALLIE	02:41	47-88	
SUB IN: 1 NIANG,ARAME	02:41		

**Western Ky. 53, Notre Dame 94**

**Official Shot Chart**  
**Western Ky. vs Notre Dame**  
**PERIOD 1 Shots**  
 December 20, 2018 at Joyce Center (Purcell Pavilion) - Notre Dame, IN

**Notre Dame**

**Western Ky.**



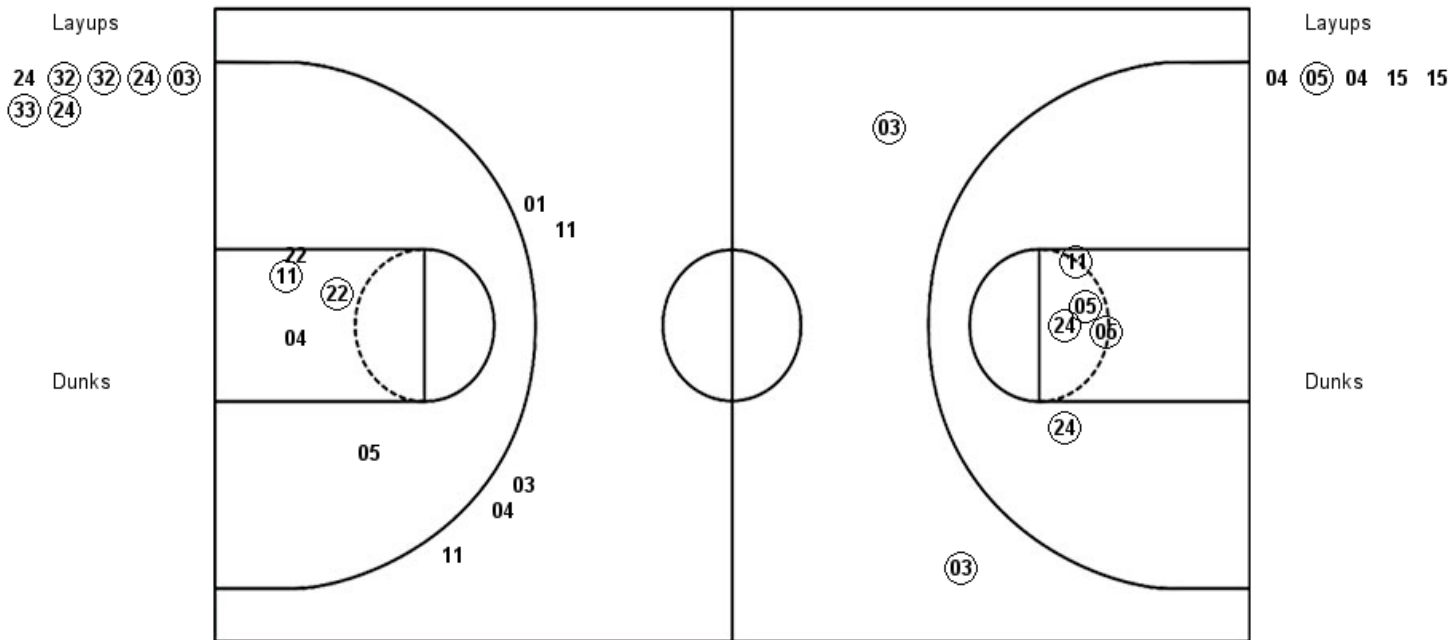
UND : Period 1	Made	Att	Pct
Layups	5	6	83.3
Dunks	0	0	0
2PT Field Goals	7	11	63.6
3PT Field Goals	1	1	100.0
<b>Total Field Goals</b>	<b>8</b>	<b>12</b>	<b>66.7</b>

WKU : Period 1	Made	Att	Pct
Layups	1	3	33.3
Dunks	0	0	0
2PT Field Goals	1	12	8.3
3PT Field Goals	2	5	40.0
<b>Total Field Goals</b>	<b>3</b>	<b>17</b>	<b>17.6</b>

**Official Shot Chart**  
**Western Ky. vs Notre Dame**  
**PERIOD 2 Shots**  
 December 20, 2018 at Joyce Center (Purcell Pavilion) - Notre Dame, IN

**Notre Dame**

**Western Ky.**



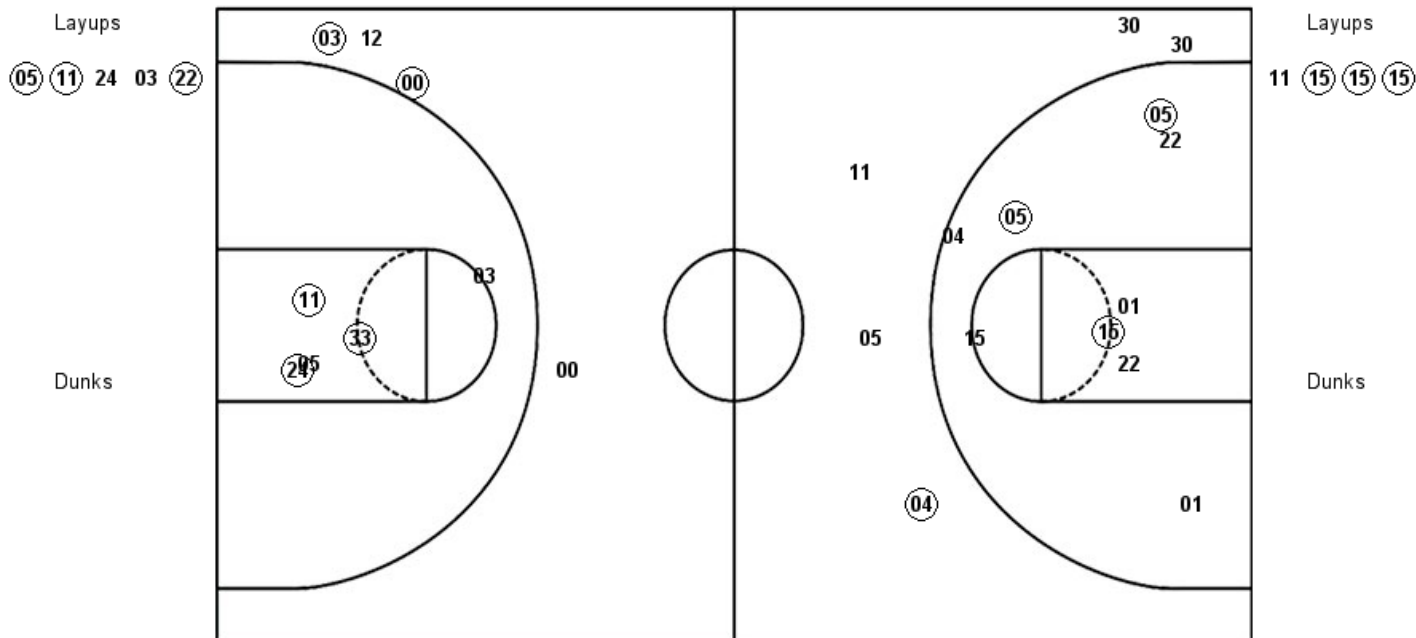
UND : Period 2	Made	Att	Pct
Layups	6	7	85.7
Dunks	0	0	0
2PT Field Goals	11	12	91.7
3PT Field Goals	2	2	100.0
<b>Total Field Goals</b>	<b>13</b>	<b>14</b>	<b>92.9</b>

WKU : Period 2	Made	Att	Pct
Layups	1	5	20.0
Dunks	0	0	0
2PT Field Goals	3	10	30.0
3PT Field Goals	0	5	00.0
<b>Total Field Goals</b>	<b>3</b>	<b>15</b>	<b>20.0</b>

**Official Shot Chart**  
**Western Ky. vs Notre Dame**  
**PERIOD 3 Shots**  
 December 20, 2018 at Joyce Center (Purcell Pavilion) - Notre Dame, IN

**Notre Dame**

**Western Ky.**



UND : Period 3	Made	Att	Pct
Layups	3	5	60.0
Dunks	0	0	0
2PT Field Goals	6	10	60.0
3PT Field Goals	2	4	50.0
<b>Total Field Goals</b>	<b>8</b>	<b>14</b>	<b>57.1</b>

WKU : Period 3	Made	Att	Pct
Layups	3	4	75.0
Dunks	0	0	0
2PT Field Goals	6	13	46.2
3PT Field Goals	1	5	20.0
<b>Total Field Goals</b>	<b>7</b>	<b>18</b>	<b>38.9</b>

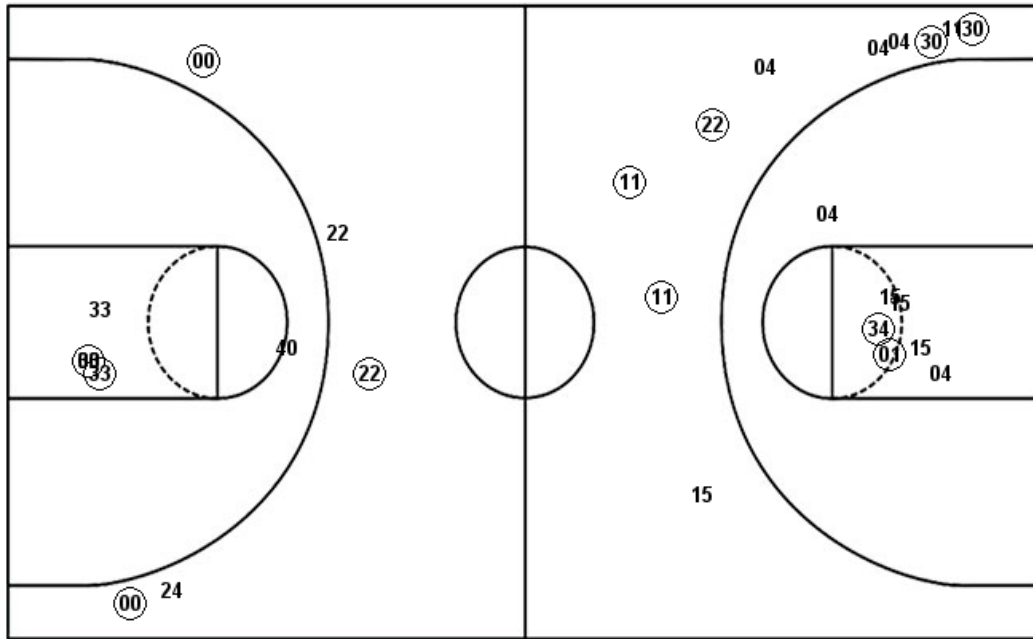
**Official Shot Chart**  
**Western Ky. vs Notre Dame**  
**PERIOD 4 Shots**  
 December 20, 2018 at Joyce Center (Purcell Pavilion) - Notre Dame, IN

**Notre Dame**

**Western Ky.**

Layups  
 (32) (03) (33)

Layups



Dunks

UND : Period 4	Made	Att	Pct
Layups	3	3	100.0
Dunks	0	0	0
2PT Field Goals	5	8	62.5
3PT Field Goals	3	5	60.0
<b>Total Field Goals</b>	<b>8</b>	<b>13</b>	<b>61.5</b>

WKU : Period 4	Made	Att	Pct
Layups	1	2	50.0
Dunks	0	0	0
2PT Field Goals	3	9	33.3
3PT Field Goals	5	10	50.0
<b>Total Field Goals</b>	<b>8</b>	<b>19</b>	<b>42.1</b>

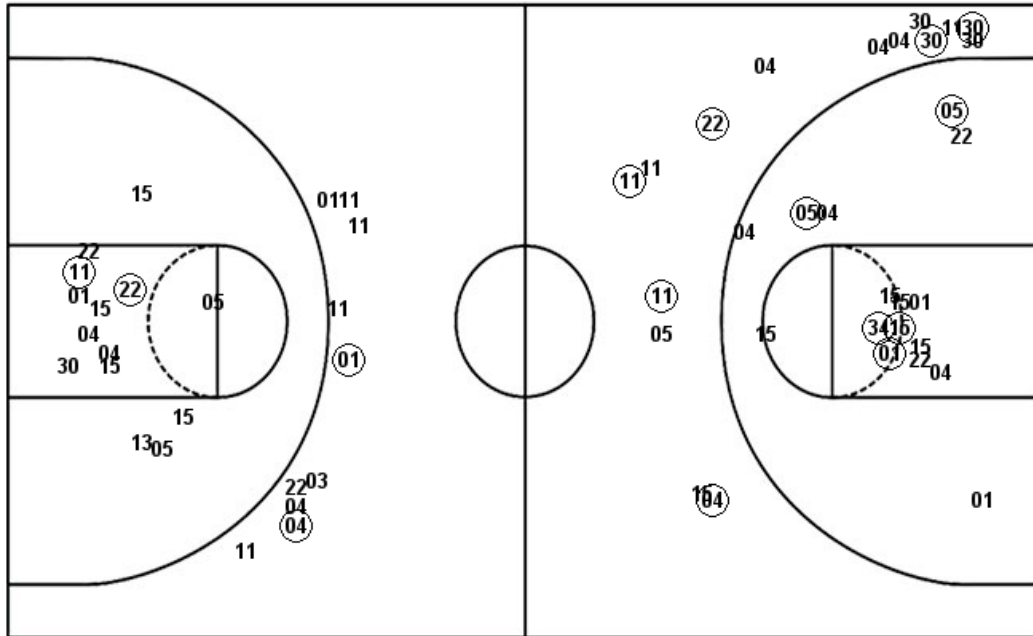
**Official Shot Chart**  
**Western Ky. vs Notre Dame**  
**Western Ky. Team Shots**  
**December 20, 2018 at Joyce Center (Purcell Pavilion) - Notre Dame, IN**

Layups

Layups

Dunks

Dunks

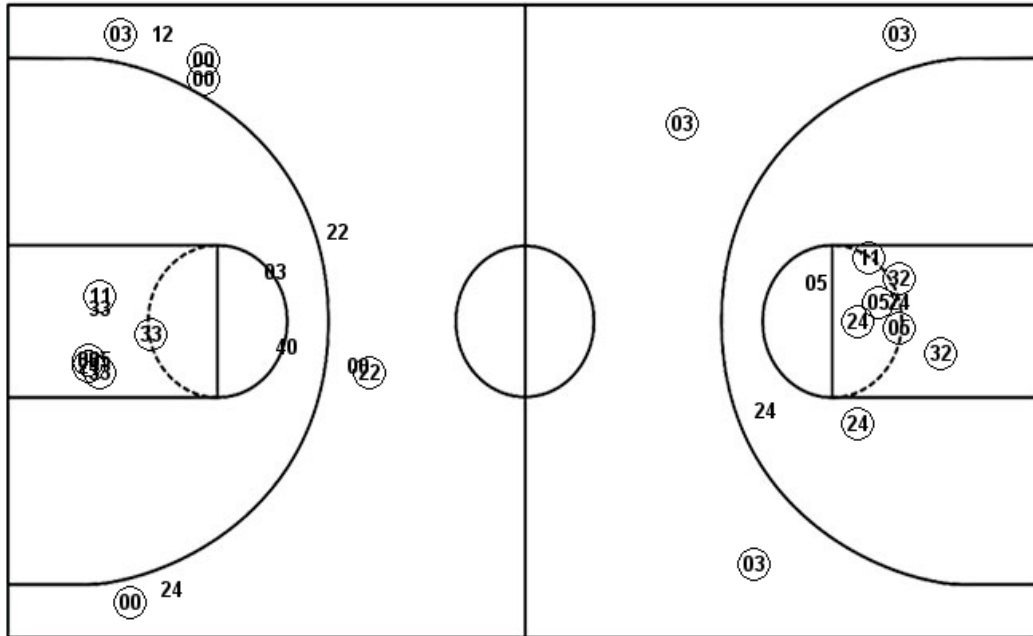


WKU : Period 1	Made	Att	Pct
Layups	1	3	33.3
Dunks	0	0	0
2PT Field Goals	1	12	08.3
3PT Field Goals	2	5	40.0
<b>Total Field Goals</b>	<b>3</b>	<b>17</b>	<b>17.6</b>
WKU : Period 3	Made	Att	Pct
Layups	3	4	75.0
Dunks	0	0	0
2PT Field Goals	6	13	46.2
3PT Field Goals	1	5	20.0
<b>Total Field Goals</b>	<b>7</b>	<b>18</b>	<b>38.9</b>

WKU : Period 2	Made	Att	Pct
Layups	1	5	20.0
Dunks	0	0	0
2PT Field Goals	3	10	30.0
3PT Field Goals	0	5	00.0
<b>Total Field Goals</b>	<b>3</b>	<b>15</b>	<b>20.0</b>
WKU : Period 4	Made	Att	Pct
Layups	1	2	50.0
Dunks	0	0	0
2PT Field Goals	3	9	33.3
3PT Field Goals	5	10	50.0
<b>Total Field Goals</b>	<b>8</b>	<b>19</b>	<b>42.1</b>

**Official Shot Chart**  
**Western Ky. vs Notre Dame**  
**Notre Dame Team Shots**  
**December 20, 2018 at Joyce Center (Purcell Pavilion) - Notre Dame, IN**

Layups



Layups

- (32)
- (11)
- (03)
- (00)
- (30)
- (24)
- (24)
- (32)
- (32)
- (24)
- (03)
- (33)
- (24)
- (05)
- (11)
- (24)
- (03)
- (22)
- (32)
- (03)
- (33)

Dunks

Dunks

UND : Period 1	Made	Att	Pct
Layups	5	6	83.3
Dunks	0	0	0
2PT Field Goals	7	11	63.6
3PT Field Goals	1	1	100.0
<b>Total Field Goals</b>	<b>8</b>	<b>12</b>	<b>66.7</b>
UND : Period 3	Made	Att	Pct
Layups	3	5	60.0
Dunks	0	0	0
2PT Field Goals	6	10	60.0
3PT Field Goals	2	4	50.0
<b>Total Field Goals</b>	<b>8</b>	<b>14</b>	<b>57.1</b>

UND : Period 2	Made	Att	Pct
Layups	6	7	85.7
Dunks	0	0	0
2PT Field Goals	11	12	91.7
3PT Field Goals	2	2	100.0
<b>Total Field Goals</b>	<b>13</b>	<b>14</b>	<b>92.9</b>
UND : Period 4	Made	Att	Pct
Layups	3	3	100.0
Dunks	0	0	0
2PT Field Goals	5	8	62.5
3PT Field Goals	3	5	60.0
<b>Total Field Goals</b>	<b>8</b>	<b>13</b>	<b>61.5</b>