

FINAL SCORE



Penn

55



Notre Dame

75

November 13, 2018 • Joyce Center (Purcell Pavilion) - Notre Dame, IN

FINAL STATISTICS

Official Box Score
Penn vs Notre Dame
Game Totals -- Final Statistics
November 13, 2018 at Joyce Center (Purcell Pavilion) - Notre Dame, IN



Penn 55

No.	Player	S	Pts	FG	3FG	FT	OR	DR	TR	PF	A	TO	Blk	Stl	Min	+/-
02	KINUM, KATIE		0	0-1	0-1	0-0	0	0	0	0	1	2	0	1	6	-12
11	GRASELA, KENDALL		10	4-6	1-1	1-1	1	2	3	2	2	6	0	0	37	-24
25	RUSSELL, ASHLEY		15	5-10	1-2	4-5	2	1	3	1	3	2	1	0	28	-23
31	PARKER, ELEAH		6	3-13	0-0	0-0	2	3	5	2	0	5	0	1	25	-23
50	AGHAYERE, PRINCESS		4	2-6	0-1	0-0	0	4	4	1	0	0	0	1	14	-17
03	JONES, MICHAEL		2	1-3	0-0	0-4	1	0	1	0	1	1	0	2	10	4
04	SUTTLE, KENNEDY		2	1-1	0-0	0-0	1	0	1	1	1	0	0	2	11	3
05	WELEDJI, SEREENA		2	1-2	0-1	0-0	0	0	0	0	0	0	0	0	2	4
14	HAIR, MEG		0	0-0	0-0	0-0	0	0	0	0	0	0	0	0	1	0
21	LAKSTIGALA, MIA		0	0-3	0-0	0-0	0	0	0	1	0	1	0	0	5	-5
23	DALEY, KRISTEN		2	1-1	0-0	0-0	0	1	1	0	0	0	0	0	2	4
24	CRAWFORD, TORI		4	0-2	0-2	4-4	1	2	3	0	0	2	0	4	15	-6
33	STERBA, PHOEBE		8	3-9	2-7	0-0	1	3	4	2	1	1	0	0	30	-8
34	DICINDIO, CHRISSEY		0	0-0	0-0	0-0	0	0	0	0	0	0	0	0	2	4
40	ANDERSON, EMILY		0	0-2	0-0	0-2	2	3	5	1	2	1	2	2	13	-1
	TEAM						2	2	4	0		0				
TOTALS			55	21-59	4-15	9-16	13	21	34	11	11	21	3	13	200	

Shooting By Period

Period	FG	FG%	3FG	3FG%	FT	FT%
1st Qtr	5-14	36%	1-4	25%	2-2	100%
2nd Qtr	6-14	43%	2-6	33%	0-2	00%
3rd Qtr	4-16	25%	0-2	00%	7-11	64%
4th Qtr	6-15	40%	1-3	33%	0-1	00%
1st Half	11-28	39%	3-10	30%	2-4	50%
2nd Half	10-31	32%	1-5	20%	7-12	58%
Game	21-59	35.6%	4-15	26.7%	9-16	56.3%

Last FG: 4th-00:00
Biggest Run: 7-0
Largest lead: By 0 at 1-08:08
Technical Fouls: None.

Notre Dame 75

No.	Player	S	Pts	FG	3FG	FT	OR	DR	TR	PF	A	TO	Blk	Stl	Min	+/-
00	NIXON, JORDAN		0	0-1	0-0	0-0	0	2	2	3	5	2	0	2	23	24
05	YOUNG, JACKIE		12	6-9	0-2	0-0	1	8	9	2	4	6	1	1	33	18
11	TURNER, BRIANNA		16	8-14	0-0	0-0	5	5	10	1	2	0	1	0	29	22
24	OGUNBOWALE, ARIKE		21	6-19	3-9	6-6	2	3	5	1	6	2	0	2	33	23
32	SHEPARD, JESSICA		17	8-13	0-0	1-3	1	7	8	3	2	3	1	2	27	21
10	GILBERT, KATLYN		2	0-0	0-0	2-2	1	1	2	2	0	1	0	1	8	-8
12	PROHASKA, ABBY		0	0-2	0-0	0-0	1	0	1	4	2	1	0	1	20	9
20	BENZ, NICOLE		0	0-1	0-1	0-0	0	1	1	0	0	1	0	0	2	-4
22	COSGROVE, DANIELLE		2	1-3	0-0	0-0	0	0	0	1	0	1	0	0	7	1
30	VAUGHN, MIKAYLA		3	1-2	0-0	1-2	2	1	3	0	0	0	0	2	15	3
33	PATTERSON, DANIELLE		0	0-1	0-0	0-0	0	0	0	0	0	0	0	0	3	-7
40	BUTLER, MAUREEN		2	1-1	0-0	0-0	1	0	1	0	0	1	0	0	1	-2
	TEAM						2	1	3	0		1				
TOTALS			75	31-66	3-12	10-13	16	29	45	17	21	19	3	11	200	

Shooting By Period

Period	FG	FG%	3FG	3FG%	FT	FT%
1st Qtr	8-21	38%	0-5	00%	0-1	00%
2nd Qtr	7-13	54%	1-3	33%	8-10	80%
3rd Qtr	9-16	56%	1-2	50%	2-2	100%
4th Qtr	7-16	44%	1-2	50%	0-0	0%
1st Half	15-34	44%	1-8	13%	8-11	73%
2nd Half	16-32	50%	2-4	50%	2-2	100%
Game	31-66	47.0%	3-12	25.0%	10-13	76.9%

Last FG: 4th-00:19
Biggest Run: 13-0
Largest lead: By 27 at 4-03:27
Technical Fouls: None.

Game Notes:

Officials: Bruce Morris, Angel Stanton, Erika Herriman-Camarota
 Attendance: 7854

Start Time: 2018-11-13 00:03:36
 End Time: 2018-11-13 01:55:22
 Game Duration: 111

Score	1st	2nd	3rd	4th	TOT
PEN	13	14	15	13	55
UND	16	23	21	15	75

PEN led for 0:00. UND led for 38:47.
 Game was tied for 1:13.
 Times tied: 2 Lead Changes: 0

Points from	PEN	UND
In the Paint	20	40
Off Turns	19	17
2nd Chance	15	14
Fast Break	0	14
Bench	20	9

Official Box Score
Penn vs Notre Dame
First Half Statistics Only
November 13, 2018 at Joyce Center (Purcell Pavilion) - Notre Dame, IN



Penn 27

No.	Player	S	Pts	FG	3FG	FT	OR	DR	TR	PF	A	TO	Blk	Stl	Min	+/-
02	KINUM, KATIE	0	0-1	0-1	0-0	0	0	0	0	1	1	0	1	4	-4	
03	JONES, MICHAEL	0	0-1	0-0	0-2	0	0	0	0	1	1	0	2	5	0	
04	SUTTLE, KENNEDY	0	0-0	0-0	0-0	1	0	1	1	1	0	0	0	8	-4	
05	WELEDJI, SEREENA	0	0-0	0-0	0-0	0	0	0	0	0	0	0	0	0	0	
11	GRASELA, KENDALL	5	2-3	1-1	0-0	1	1	2	2	1	4	0	0	19	-12	
14	HAIR, MEG	0	0-0	0-0	0-0	0	0	0	0	0	0	0	0	0	0	
21	LAKSTIGALA, MIA	0	0-1	0-0	0-0	0	0	0	0	1	0	1	0	3	-1	
23	DALEY, KRISTEN	0	0-0	0-0	0-0	0	0	0	0	0	0	0	0	0	0	
24	CRAWFORD, TORI	0	0-0	0-0	0-0	0	1	1	0	0	1	0	1	3	-4	
25	RUSSELL, ASHLEY	4	1-1	0-0	2-2	0	1	1	0	3	0	1	0	14	-11	
31	PARKER, ELEAH	6	3-7	0-0	0-0	1	1	2	2	0	3	0	1	18	-11	
33	STERBA, PHOEBE	8	3-8	2-7	0-0	0	1	1	2	1	0	0	0	16	-8	
34	DICINDIO, CHRISSEY	0	0-0	0-0	0-0	0	0	0	0	0	0	0	0	0	0	
40	ANDERSON, EMILY	0	0-0	0-0	0-0	0	1	1	1	0	0	0	1	2	-1	
50	AGHAYERE, PRINCESS	4	2-6	0-1	0-0	0	4	4	1	0	0	0	1	10	-4	
	TEAM	0	0-0	0-0	0-0	1	1	2	0	0	0	0	0	0	0	
	TOTALS	27	11-28	3-10	2-4	0	0	15	10	8	11	1	7	100		

Shooting By Period

Period	FG	FG%	3FG	3FG%	FT	FT%
1st Qtr	5-14	36%	1-4	25%	2-2	100%
2nd Qtr	6-14	43%	2-6	33%	0-2	00%
1st Half	11-28	39%	3-10	30%	2-4	50%
Game	21-59	35.6%	4-15	26.7%	9-16	56.3%

Last FG Half: PEN 2nd-00:28

Notre Dame 39

No.	Player	S	Pts	FG	3FG	FT	OR	DR	TR	PF	A	TO	Blk	Stl	Min	+/-
00	NIXON, JORDAN	0	0-0	0-0	0-0	0	0	1	1	2	3	1	0	0	10	10
05	YOUNG, JACKIE	6	3-6	0-2	0-0	1	2	3	1	2	5	0	1	20	12	
10	GILBERT, KATLYN	2	0-0	0-0	2-2	1	0	1	1	0	0	0	0	3	-3	
11	TURNER, BRIANNA	8	4-7	0-0	0-0	3	3	6	0	2	0	1	0	17	11	
12	PROHASKA, ABBY	0	0-2	0-0	0-0	0	0	0	0	0	1	1	0	8	5	
20	BENZ, NICOLE	0	0-0	0-0	0-0	0	0	0	0	0	0	0	0	0	0	
22	COSGROVE, DANIELLE	0	0-0	0-0	0-0	0	0	0	0	0	0	0	0	0	0	
24	OGUNBOWALE, ARIKE	13	4-11	1-6	4-4	1	2	3	0	2	1	0	2	20	12	
30	VAUGHN, MIKAYLA	1	0-0	0-0	1-2	1	1	2	0	0	0	0	0	6	5	
32	SHEPARD, JESSICA	9	4-8	0-0	1-3	1	4	5	1	2	1	0	1	17	8	
33	PATTERSON, DANIELLE	0	0-0	0-0	0-0	0	0	0	0	0	0	0	0	0	0	
40	BUTLER, MAUREEN	0	0-0	0-0	0-0	0	0	0	0	0	0	0	0	0	0	
	TEAM	0	0-0	0-0	0-0	2	1	3	0	0	0	0	0	0	0	
	TOTALS	39	15-34	1-8	8-11	0	0	24	5	12	9	1	4	100		

Shooting By Period

Period	FG	FG%	3FG	3FG%	FT	FT%
1st Qtr	8-21	38%	0-5	00%	0-1	00%
2nd Qtr	7-13	54%	1-3	33%	8-10	80%
1st Half	15-34	44%	1-8	13%	8-11	73%
Game	31-66	47.0%	3-12	25.0%	10-13	76.9%

Last FG Half: UND 2nd-00:03

Game Notes:

Officials: Bruce Morris, Angel Stanton, Erika Herriman-Camarota
Attendance: 7854

Start Time: 2018-11-13 00:03:36
End Time: 2018-11-13 01:55:22
Game Duration: 111

Score	1st	2nd	3rd	4th	TOT
PEN	13	14	15	13	55
UND	16	23	21	15	75

Points from (This Period)	PEN	UND
In the Paint	8	20
Off Turns	7	7
2nd Chance	8	6
Fast Break	0	5
Bench	8	3

Official Box Score
Penn vs Notre Dame
First Quarter Statistics Only
November 13, 2018 at Joyce Center (Purcell Pavilion) - Notre Dame, IN



Penn 13

No.	Player	S	Pts	FG	3FG	FT	OR	DR	TR	PF	A	TO	Blk	Stl	Min	+/-
02	KINUM, KATIE		0	0-1	0-1	0-0	0	0	0	0	1	1	0	1	4	-4
11	GRASELA, KENDALL		5	2-2	1-1	0-0	1	1	2	1	0	3	0	0	9	-3
25	RUSSELL, ASHLEY		4	1-1	0-0	2-2	0	0	0	0	2	0	1	0	10	-3
31	PARKER, ELEAH		2	1-4	0-0	0-0	0	0	0	0	0	0	0	0	10	-3
50	AGHAYERE, PRINCESS		2	1-5	0-1	0-0	0	3	3	1	0	0	0	1	5	-4
03	JONES, MICHAEL		0	0-0	0-0	0-0	0	0	0	0	0	1	0	0	1	0
04	SUTTLE, KENNEDY		0	0-0	0-0	0-0	1	0	1	1	0	0	0	0	5	1
05	WELEDJI, SEREENA		0	0-0	0-0	0-0	0	0	0	0	0	0	0	0	0	0
14	HAIR, MEG		0	0-0	0-0	0-0	0	0	0	0	0	0	0	0	0	0
21	LAKSTIGALA, MIA		0	0-0	0-0	0-0	0	0	0	0	0	0	0	0	0	0
23	DALEY, KRISTEN		0	0-0	0-0	0-0	0	0	0	0	0	0	0	0	0	0
24	CRAWFORD, TORI		0	0-0	0-0	0-0	0	1	1	0	0	1	0	1	1	0
33	STERBA, PHOEBE		0	0-1	0-1	0-0	0	0	0	0	1	0	0	0	6	1
34	DICINDIO, CHRISSY		0	0-0	0-0	0-0	0	0	0	0	0	0	0	0	0	0
40	ANDERSON, EMILY		0	0-0	0-0	0-0	0	0	0	0	0	0	0	0	0	0
	TEAM						1	1	2	0		0				
	TOTALS		13	5-14	1-4	2-2	0	0	9	3	4	6	1	3	50	

Shooting By Period

Period	FG	FG%	3FG	3FG%	FT	FT%
1st Qtr	5-14	36%	1-4	25%	2-2	100%
2nd Qtr	6-14	43%	2-6	33%	0-2	00%
1st Half	5-14	36%	1-4	25%	2-2	100%
1st Half	11-28	39%	3-10	30%	2-4	50%
Game	21-59	35.6%	4-15	26.7%	9-16	56.3%

Notre Dame 16

No.	Player	S	Pts	FG	3FG	FT	OR	DR	TR	PF	A	TO	Blk	Stl	Min	+/-
00	NIXON, JORDAN		0	0-0	0-0	0-0	0	0	0	2	1	1	0	0	7	5
05	YOUNG, JACKIE		0	0-0	0-0	0-0	1	2	3	0	2	3	0	0	10	3
11	TURNER, BRIANNA		8	4-7	0-0	0-0	3	2	5	0	1	0	1	0	10	3
24	OGUNBOWALE, ARIKE		2	1-8	0-5	0-0	1	1	2	0	1	0	0	0	10	3
32	SHEPARD, JESSICA		6	3-6	0-0	0-1	1	1	2	0	2	1	0	1	9	3
10	GILBERT, KATLYN		0	0-0	0-0	0-0	0	0	0	1	0	0	0	0	2	-3
12	PROHASKA, ABBY		0	0-0	0-0	0-0	0	0	0	0	1	0	0	0	2	1
20	BENZ, NICOLE		0	0-0	0-0	0-0	0	0	0	0	0	0	0	0	0	0
22	COSGROVE, DANIELLE		0	0-0	0-0	0-0	0	0	0	0	0	0	0	0	0	0
30	VAUGHN, MIKAYLA		0	0-0	0-0	0-0	1	0	1	0	0	0	0	0	1	0
33	PATTERSON, DANIELLE		0	0-0	0-0	0-0	0	0	0	0	0	0	0	0	0	0
40	BUTLER, MAUREEN		0	0-0	0-0	0-0	0	0	0	0	0	0	0	0	0	0
	TEAM						1	0	1	0		0				
	TOTALS		16	8-21	0-5	0-1	0	0	14	3	8	5	1	1	50	

Shooting By Period

Period	FG	FG%	3FG	3FG%	FT	FT%
1st Qtr	8-21	38%	0-5	00%	0-1	00%
2nd Qtr	7-13	54%	1-3	33%	8-10	80%
1st Half	8-21	38%	0-5	00%	0-1	00%
1st Half	15-34	44%	1-8	13%	8-11	73%
Game	31-66	47.0%	3-12	25.0%	10-13	76.9%

Game Notes:

Officials: Bruce Morris, Angel Stanton, Erika Herriman-Camarota
Attendance: 7854

Start Time: 2018-11-13 00:03:36
End Time: 2018-11-13 01:55:22
Game Duration: 111

Score	1st	2nd	3rd	4th	TOT
PEN	13	14	15	13	55
UND	16	23	21	15	75

Points from (This Period)	PEN	UND
In the Paint	4	14
Off Turns	2	2
2nd Chance	6	4
Fast Break	0	2
Bench	0	0

Official Play-By-Play
Penn vs Notre Dame
First Quarter
November 13, 2018 at Joyce Center (Purcell Pavilion) - Notre Dame, IN



Period 1

Starters:

Penn: 2 KINUM, KATIE; 11 GRASELA, KENDALL; 25 RUSSELL, ASHLEY; 31 PARKER, ELEAH; 50 AGHAYERE, PRINCESS;

Notre Dame: 0 NIXON, JORDAN; 5 YOUNG, JACKIE; 11 TURNER, BRIANNA; 24 OGUNBOWALE, ARIKE; 32 SHEPARD, JESSICA;

Time	VISITORS: Penn	Score	Margin	HOME: Notre Dame
09:39				MISSED 3PTR by OGUNBOWALE, ARIKE
09:31				REBOUND (OFF) by SHEPARD, JESSICA
09:29		2-0	H 2	GOOD! LAYUP by TURNER, BRIANNA [PNT]
09:29				ASSIST by SHEPARD, JESSICA
09:20	MISSED 3PTR by AGHAYERE, PRINCESS			
09:15				REBOUND (DEF) by YOUNG, JACKIE
09:12				TURNOVER (BADPASS) by YOUNG, JACKIE
09:12	STEAL by AGHAYERE, PRINCESS			
08:58	MISSED JUMPER by AGHAYERE, PRINCESS			
08:54				REBOUND (DEF) by OGUNBOWALE, ARIKE
08:51				MISSED LAYUP by SHEPARD, JESSICA
08:51	BLOCK by RUSSELL, ASHLEY			
08:51				REBOUND (OFF) by TEAM
08:48				TURNOVER (LOSTBALL) by YOUNG, JACKIE
08:48	STEAL by KINUM, KATIE			
08:42	TURNOVER (LOSTBALL) by KINUM, KATIE			
08:35				TURNOVER (BADPASS) by YOUNG, JACKIE
08:24	MISSED JUMPER by PARKER, ELEAH			
08:20				REBOUND (DEF) by YOUNG, JACKIE
08:15				MISSED 3PTR by OGUNBOWALE, ARIKE
08:11	REBOUND (DEF) by GRASELA, KENDALL			
08:08	GOOD! JUMPER by AGHAYERE, PRINCESS	2-2	T	
08:08	ASSIST by KINUM, KATIE			
07:54				MISSED JUMPER by TURNER, BRIANNA
07:50				REBOUND (OFF) by OGUNBOWALE, ARIKE
07:50	FOUL (PERSONAL) by GRASELA, KENDALL			
07:40				MISSED LAYUP by SHEPARD, JESSICA
07:36	REBOUND (DEF) by AGHAYERE, PRINCESS			
07:34	MISSED 3PTR by KINUM, KATIE			
07:29				REBOUND (DEF) by SHEPARD, JESSICA
07:26		4-2	H 2	GOOD! LAYUP by OGUNBOWALE, ARIKE [FB]
07:26				ASSIST by YOUNG, JACKIE
06:57	MISSED JUMPER by AGHAYERE, PRINCESS			
06:52				REBOUND (DEF) by TURNER, BRIANNA
06:47				MISSED JUMPER by OGUNBOWALE, ARIKE
06:42	REBOUND (DEF) by AGHAYERE, PRINCESS			
06:35	TURNOVER (OTHER) by GRASELA, KENDALL			
06:33		6-2	H 4	GOOD! LAYUP by SHEPARD, JESSICA
06:33				ASSIST by TURNER, BRIANNA
06:18	MISSED JUMPER by AGHAYERE, PRINCESS			
06:16				REBOUND (DEF) by TURNER, BRIANNA
06:16	FOUL (PERSONAL) by AGHAYERE, PRINCESS			
06:16	SUB OUT: KINUM, KATIE			
06:16	SUB IN: STERBA, PHOEBE			
06:16	SUB OUT: AGHAYERE, PRINCESS			
06:16	SUB IN: SUTTLE, KENNEDY			
06:04		8-2	H 6	GOOD! LAYUP by TURNER, BRIANNA
06:04				ASSIST by SHEPARD, JESSICA
05:53	TURNOVER (BADPASS) by GRASELA, KENDALL			
05:53				STEAL by SHEPARD, JESSICA
05:49				FOUL (OFF) by NIXON, JORDAN
05:49				TURNOVER (OFFENSIVE) by NIXON, JORDAN
05:41	MISSED JUMPER by PARKER, ELEAH			
05:41				BLOCK by TURNER, BRIANNA
05:34	REBOUND (OFF) by TEAM			
05:06	GOOD! JUMPER by RUSSELL, ASHLEY	8-4	H 4	
04:56		10-4	H 6	GOOD! DUNK by TURNER, BRIANNA
04:56				ASSIST by NIXON, JORDAN
04:36	GOOD! 3PTR by GRASELA, KENDALL	10-7	H 3	
04:36	ASSIST by RUSSELL, ASHLEY			
04:17		12-7	H 5	GOOD! JUMPER by SHEPARD, JESSICA
04:17				ASSIST by OGUNBOWALE, ARIKE
03:57	GOOD! LAYUP by GRASELA, KENDALL	12-9	H 3	
03:57	ASSIST by RUSSELL, ASHLEY			
03:40		14-9	H 5	GOOD! LAYUP by TURNER, BRIANNA
03:40				ASSIST by YOUNG, JACKIE
03:26				FOUL (PERSONAL) by NIXON, JORDAN
03:26				SUB OUT: NIXON, JORDAN
03:26				SUB IN: GILBERT, KATLYN

Time	VISITORS: Penn	Score	Margin	HOME: Notre Dame
03:16	MISSED JUMPER by PARKER, ELEAH			
03:12	REBOUND (OFF) by SUTTLE, KENNEDY			
03:06	GOOD! LAYUP by PARKER, ELEAH	14-11	H 3	
03:06	ASSIST by STERBA, PHOEBE			
02:39				MISSED 3PTR by OGUNBOWALE, ARIKE
02:34				REBOUND (OFF) by YOUNG, JACKIE
02:12				MISSED 3PTR by OGUNBOWALE, ARIKE
02:08	REBOUND (DEF) by TEAM			
01:55	MISSED 3PTR by STERBA, PHOEBE			
01:50	REBOUND (OFF) by GRASELA, KENDALL			
01:47				FOUL (PERSONAL) by GILBERT, KATLYN
01:47	GOOD! FT by RUSSELL, ASHLEY	14-12	H 2	
01:47				SUB OUT: GILBERT, KATLYN
01:47				SUB IN: PROHASKA, ABBY
01:47	GOOD! FT by RUSSELL, ASHLEY	14-13	H 1	
01:31				MISSED 3PTR by OGUNBOWALE, ARIKE
01:27				REBOUND (OFF) by TURNER, BRIANNA
01:27		16-13	H 3	GOOD! JUMPER by SHEPARD, JESSICA [PNT]
01:27				ASSIST by PROHASKA, ABBY
01:27	FOUL (PERSONAL) by SUTTLE, KENNEDY			
01:27	SUB OUT: SUTTLE, KENNEDY			
01:27	SUB IN: CRAWFORD, TORI			
01:27				MISSED FT by SHEPARD, JESSICA
01:24	REBOUND (DEF) by CRAWFORD, TORI			
01:16	TURNOVER (BADPASS) by GRASELA, KENDALL			
01:05				MISSED JUMPER by SHEPARD, JESSICA
01:01				REBOUND (OFF) by TURNER, BRIANNA
01:01				MISSED LAYUP by TURNER, BRIANNA
01:01				REBOUND (OFF) by TURNER, BRIANNA
01:01				TURNOVER (LOSTBALL) by SHEPARD, JESSICA
01:01	STEAL by CRAWFORD, TORI			
00:54				SUB OUT: SHEPARD, JESSICA
00:54				SUB IN: VAUGHN, MIKAYLA
00:45	TURNOVER (OTHER) by CRAWFORD, TORI			
00:45	SUB OUT: GRASELA, KENDALL			
00:45	SUB IN: JONES, MICHAEL			
00:45	SUB OUT: CRAWFORD, TORI			
00:45	SUB IN: AGHAYERE, PRINCESS			
00:17				MISSED JUMPER by OGUNBOWALE, ARIKE
00:12	REBOUND (DEF) by AGHAYERE, PRINCESS			
00:09	TURNOVER (BADPASS) by JONES, MICHAEL			
00:09	SUB OUT: JONES, MICHAEL			
00:09	SUB IN: GRASELA, KENDALL			
00:01				MISSED LAYUP by TURNER, BRIANNA
00:00				REBOUND (OFF) by VAUGHN, MIKAYLA

Penn 13, Notre Dame 16

Points from (This Period)	PEN	UND
In the Paint	4	14
Off Turns	2	2
2nd Chance	6	4
Fast Break	0	2
Bench	0	0

Official Box Score
Penn vs Notre Dame
Second Quarter Statistics Only
November 13, 2018 at Joyce Center (Purcell Pavilion) - Notre Dame, IN



Penn 14

No.	Player	S	Pts	FG	3FG	FT	OR	DR	TR	PF	A	TO	Blk	Stl	Min	+/-
02	KINUM, KATIE		0	0-0	0-0	0-0	0	0	0	0	0	0	0	0	0	0
11	GRASELA, KENDALL		0	0-1	0-0	0-0	0	0	0	1	1	1	0	0	10	-9
25	RUSSELL, ASHLEY		0	0-0	0-0	0-0	0	1	1	0	1	0	0	0	4	-8
31	PARKER, ELEAH		4	2-3	0-0	0-0	1	1	2	2	0	3	0	1	8	-8
50	AGHAYERE, PRINCESS		2	1-1	0-0	0-0	0	1	1	0	0	0	0	0	5	0
03	JONES, MICHAEL		0	0-1	0-0	0-2	0	0	0	0	1	0	0	2	4	0
04	SUTTLE, KENNEDY		0	0-0	0-0	0-0	0	0	0	0	1	0	0	0	3	-5
05	WELEDJI, SEREENA		0	0-0	0-0	0-0	0	0	0	0	0	0	0	0	0	0
14	HAIR, MEG		0	0-0	0-0	0-0	0	0	0	0	0	0	0	0	0	0
21	LAKSTIGALA, MIA		0	0-1	0-0	0-0	0	0	0	1	0	1	0	0	3	-1
23	DALEY, KRISTEN		0	0-0	0-0	0-0	0	0	0	0	0	0	0	0	0	0
24	CRAWFORD, TORI		0	0-0	0-0	0-0	0	0	0	0	0	0	0	0	2	-4
33	STERBA, PHOEBE		8	3-7	2-6	0-0	0	1	1	2	0	0	0	0	10	-9
34	DICINDIO, CHRISSY		0	0-0	0-0	0-0	0	0	0	0	0	0	0	0	0	0
40	ANDERSON, EMILY		0	0-0	0-0	0-0	0	1	1	1	0	0	0	1	2	-1
	TEAM						0	0	0	0		0				
	TOTALS		14	6-14	2-6	0-2	0	0	6	7	4	5	0	4	50	

Shooting By Period

Period	FG	FG%	3FG	3FG%	FT	FT%
3rd Qtr	4-16	25%	0-2	00%	7-11	64%
4th Qtr	6-15	40%	1-3	33%	0-1	00%
2nd Half	6-14	43%	2-6	33%	0-2	00%
2nd Half	10-31	32%	1-5	20%	7-12	58%
Game	21-59	35.6%	4-15	26.7%	9-16	56.3%

Notre Dame 23

No.	Player	S	Pts	FG	3FG	FT	OR	DR	TR	PF	A	TO	Blk	Stl	Min	+/-
00	NIXON, JORDAN		0	0-0	0-0	0-0	0	1	1	0	2	0	0	0	3	5
05	YOUNG, JACKIE		6	3-6	0-2	0-0	0	0	0	1	0	2	0	1	10	9
11	TURNER, BRIANNA		0	0-0	0-0	0-0	0	1	1	0	1	0	0	0	7	8
24	OGUNBOWALE, ARIKE		11	3-3	1-1	4-4	0	1	1	0	1	1	0	2	10	9
32	SHEPARD, JESSICA		3	1-2	0-0	1-2	0	3	3	1	0	0	0	0	8	5
10	GILBERT, KATLYN		2	0-0	0-0	2-2	1	0	1	0	0	0	0	0	1	0
12	PROHASKA, ABBY		0	0-2	0-0	0-0	0	0	0	0	0	1	0	0	6	4
20	BENZ, NICOLE		0	0-0	0-0	0-0	0	0	0	0	0	0	0	0	0	0
22	COSGROVE, DANIELLE		0	0-0	0-0	0-0	0	0	0	0	0	0	0	0	0	0
30	VAUGHN, MIKAYLA		1	0-0	0-0	1-2	0	1	1	0	0	0	0	0	5	5
33	PATTERSON, DANIELLE		0	0-0	0-0	0-0	0	0	0	0	0	0	0	0	0	0
40	BUTLER, MAUREEN		0	0-0	0-0	0-0	0	0	0	0	0	0	0	0	0	0
	TEAM						1	1	2	0		0				
	TOTALS		23	7-13	1-3	8-10	0	0	10	2	4	4	0	3	50	

Shooting By Period

Period	FG	FG%	3FG	3FG%	FT	FT%
3rd Qtr	9-16	56%	1-2	50%	2-2	100%
4th Qtr	7-16	44%	1-2	50%	0-0	0%
2nd Half	7-13	54%	1-3	33%	8-10	80%
2nd Half	16-32	50%	2-4	50%	2-2	100%
Game	31-66	47.0%	3-12	25.0%	10-13	76.9%

Game Notes:

Officials: Bruce Morris, Angel Stanton, Erika Herriman-Camarota
Attendance: 7854

Start Time: 2018-11-13 00:03:36
End Time: 2018-11-13 01:55:22
Game Duration: 111

Score	1st	2nd	3rd	4th	TOT
PEN	13	14	15	13	55
UND	16	23	21	15	75

Points from (This Period)	PEN	UND
In the Paint	4	6
Off Turns	5	5
2nd Chance	2	2
Fast Break	0	3
Bench	8	3

**Official Play-By-Play
Penn vs Notre Dame
Second Quarter**

November 13, 2018 at Joyce Center (Purcell Pavilion) - Notre Dame, IN



Period 2

Starters:

Penn: 2 KINUM, KATIE; 11 GRASELA, KENDALL; 25 RUSSELL, ASHLEY; 31 PARKER, ELEAH; 50 AGHAYERE, PRINCESS;

Notre Dame: 0 NIXON, JORDAN; 5 YOUNG, JACKIE; 11 TURNER, BRIANNA; 24 OGUNBOWALE, ARIKE; 32 SHEPARD, JESSICA;

Time	VISITORS: Penn	Score	Margin	HOME: Notre Dame
09:49				MISSED JUMPER by YOUNG, JACKIE
09:45	REBOUND (DEF) by RUSSELL, ASHLEY			
09:23	GOOD! LAYUP by STERBA, PHOEBE [PNT]	16-15	H 1	
09:23	ASSIST by RUSSELL, ASHLEY			
09:00		18-15	H 3	GOOD! JUMPER by YOUNG, JACKIE
08:35	MISSED JUMPER by PARKER, ELEAH			
08:31				REBOUND (DEF) by VAUGHN, MIKAYLA
08:12		20-15	H 5	GOOD! JUMPER by YOUNG, JACKIE
08:12				ASSIST by TURNER, BRIANNA
07:57	MISSED 3PTR by STERBA, PHOEBE			
07:52				REBOUND (DEF) by OGUNBOWALE, ARIKE
07:49		22-15	H 7	GOOD! LAYUP by OGUNBOWALE, ARIKE [FB]
07:48	TIMEOUT 30SEC			
07:48				SUB OUT: TURNER, BRIANNA
07:48				SUB IN: SHEPARD, JESSICA
07:48				SUB OUT: PROHASKA, ABBY
07:48				SUB IN: GILBERT, KATLYN
07:48	SUB OUT: CRAWFORD, TORI			
07:48	SUB IN: LAKSTIGALA, MIA			
07:48	SUB OUT: RUSSELL, ASHLEY			
07:48	SUB IN: AGHAYERE, PRINCESS			
07:18	MISSED JUMPER by LAKSTIGALA, MIA			
07:14				REBOUND (DEF) by SHEPARD, JESSICA
07:11	FOUL (PERSONAL) by STERBA, PHOEBE			
07:11				MISSED FT by VAUGHN, MIKAYLA
07:11				REBOUND (OFF) by TEAM
07:11		23-15	H 8	GOOD! FT by VAUGHN, MIKAYLA [FB]
07:02	GOOD! 3PTR by STERBA, PHOEBE	23-18	H 5	
06:39				MISSED 3PTR by YOUNG, JACKIE
06:35				REBOUND (OFF) by GILBERT, KATLYN
06:35	FOUL (PERSONAL) by STERBA, PHOEBE			
06:35		24-18	H 6	GOOD! FT by GILBERT, KATLYN
06:35		25-18	H 7	GOOD! FT by GILBERT, KATLYN
06:35				SUB OUT: GILBERT, KATLYN
06:35				SUB IN: PROHASKA, ABBY
06:19	MISSED 3PTR by STERBA, PHOEBE			
06:14				REBOUND (DEF) by SHEPARD, JESSICA
06:04				MISSED JUMPER by SHEPARD, JESSICA
06:01	REBOUND (DEF) by PARKER, ELEAH			
05:59	TURNOVER (BADPASS) by PARKER, ELEAH			
05:59				STEAL by OGUNBOWALE, ARIKE
05:54		27-18	H 9	GOOD! JUMPER by OGUNBOWALE, ARIKE
05:47	TURNOVER (BADPASS) by LAKSTIGALA, MIA			
05:47				STEAL by OGUNBOWALE, ARIKE
05:42				MISSED LAYUP by PROHASKA, ABBY
05:38	REBOUND (DEF) by AGHAYERE, PRINCESS			
05:33	GOOD! JUMPER by AGHAYERE, PRINCESS	27-20	H 7	
05:33	ASSIST by GRASELA, KENDALL			
05:06	FOUL (PERSONAL) by LAKSTIGALA, MIA			
05:06		28-20	H 8	GOOD! FT by OGUNBOWALE, ARIKE
05:06				SUB OUT: VAUGHN, MIKAYLA
05:06				SUB IN: TURNER, BRIANNA
05:06	SUB OUT: PARKER, ELEAH			
05:06	SUB IN: JONES, MICHAEL			
05:06	SUB OUT: LAKSTIGALA, MIA			
05:06	SUB IN: ANDERSON, EMILY			
05:06		29-20	H 9	GOOD! FT by OGUNBOWALE, ARIKE
04:51	FOUL (OFF) by GRASELA, KENDALL			
04:51	TURNOVER (OFFENSIVE) by GRASELA, KENDALL			
04:38				TURNOVER (BADPASS) by YOUNG, JACKIE
04:38	STEAL by ANDERSON, EMILY			
04:28	MISSED 3PTR by STERBA, PHOEBE			
04:23				REBOUND (DEF) by TURNER, BRIANNA
04:20				MISSED JUMPER by PROHASKA, ABBY
04:18				REBOUND (OFF) by TEAM
04:13				TURNOVER (BADPASS) by OGUNBOWALE, ARIKE
04:13	STEAL by JONES, MICHAEL			
04:07	GOOD! 3PTR by STERBA, PHOEBE	29-23	H 6	
04:07	ASSIST by JONES, MICHAEL			
03:47				TURNOVER (BADPASS) by PROHASKA, ABBY

Time	VISITORS: Penn	Score	Margin	HOME: Notre Dame
03:47	STEAL by JONES, MICHAEL			
03:39	MISSED JUMPER by JONES, MICHAEL			
03:38				REBOUND (DEF) by TEAM
03:38				SUB OUT: PROHASKA, ABBY
03:38				SUB IN: NIXON, JORDAN
03:24	FOUL (PERSONAL) by ANDERSON, EMILY			
03:24		30-23	H 7	GOOD! FT by SHEPARD, JESSICA
03:22				MISSED FT by SHEPARD, JESSICA
03:21	REBOUND (DEF) by ANDERSON, EMILY			
03:16	SUB OUT: ANDERSON, EMILY			
03:16	SUB IN: PARKER, ELEAH			
03:12				FOUL (PERSONAL) by YOUNG, JACKIE
03:12	MISSED FT by JONES, MICHAEL			
03:12	REBOUND (OFF) by TEAM			
03:12	SUB OUT: AGHAYERE, PRINCESS			
03:12	SUB IN: SUTTLE, KENNEDY			
03:12	MISSED FT by JONES, MICHAEL			
03:11				REBOUND (DEF) by SHEPARD, JESSICA
03:03				TURNOVER (BADPASS) by YOUNG, JACKIE
03:03	STEAL by PARKER, ELEAH			
02:48	MISSED LAYUP by GASELA, KENDALL			
02:45	REBOUND (OFF) by PARKER, ELEAH			
02:40	GOOD! JUMPER by PARKER, ELEAH	30-25	H 5	
02:15		33-25	H 8	GOOD! 3PTR by OGUNBOWALE, ARIKE
02:15				ASSIST by NIXON, JORDAN
01:57				FOUL (PERSONAL) by SHEPARD, JESSICA
01:55	MISSED 3PTR by STERBA, PHOEBE			
01:48				REBOUND (DEF) by NIXON, JORDAN
01:45				MISSED 3PTR by YOUNG, JACKIE
01:41	REBOUND (DEF) by STERBA, PHOEBE			
01:32	FOUL (OFF) by PARKER, ELEAH			
01:32	TURNOVER (OFFENSIVE) by PARKER, ELEAH			
01:32	SUB OUT: JONES, MICHAEL			
01:32	SUB IN: RUSSELL, ASHLEY			
01:22	FOUL (PERSONAL) by PARKER, ELEAH			
01:22		34-25	H 9	GOOD! FT by OGUNBOWALE, ARIKE
01:22				SUB OUT: NIXON, JORDAN
01:22				SUB IN: PROHASKA, ABBY
01:22		35-25	H 10	GOOD! FT by OGUNBOWALE, ARIKE
01:01	TURNOVER (LOSTBALL) by PARKER, ELEAH			
01:01				STEAL by YOUNG, JACKIE
00:53		37-25	H 12	GOOD! LAYUP by SHEPARD, JESSICA
00:53				ASSIST by OGUNBOWALE, ARIKE
00:28	GOOD! JUMPER by PARKER, ELEAH	37-27	H 10	
00:28	ASSIST by SUTTLE, KENNEDY			
00:14				TIMEOUT 30SEC
00:14				SUB OUT: PROHASKA, ABBY
00:14				SUB IN: NIXON, JORDAN
00:14	SUB OUT: PARKER, ELEAH			
00:14	SUB IN: ANDERSON, EMILY			
00:03		39-27	H 12	GOOD! JUMPER by YOUNG, JACKIE [PNT]
00:03				ASSIST by NIXON, JORDAN

Penn 27, Notre Dame 39

Points from (This Period)	PEN	UND
In the Paint	4	6
Off Turns	5	5
2nd Chance	2	2
Fast Break	0	3
Bench	8	3

Official Box Score
Penn vs Notre Dame
Second Half Statistics Only
November 13, 2018 at Joyce Center (Purcell Pavilion) - Notre Dame, IN



Penn 28

No.	Player	S	Pts	FG	3FG	FT	OR	DR	TR	PF	A	TO	Blk	Stl	Min	+/-
02	KINUM, KATIE		0	0-0	0-0	0-0	0	0	0	0	0	1	0	0	2	-8
03	JONES, MICHAEL		2	1-2	0-0	0-2	1	0	1	0	0	0	0	0	5	4
04	SUTTLE, KENNEDY		2	1-1	0-0	0-0	0	0	0	0	0	0	0	2	3	7
05	WELEDJI, SEREENA		2	1-2	0-1	0-0	0	0	0	0	0	0	0	0	2	4
11	GRASELA, KENDALL		5	2-3	0-0	1-1	0	1	1	0	1	2	0	0	18	-12
14	HAIR, MEG		0	0-0	0-0	0-0	0	0	0	0	0	0	0	0	1	0
21	LAKSTIGALA, MIA		0	0-2	0-0	0-0	0	0	0	0	0	0	0	0	2	-4
23	DALEY, KRISTEN		2	1-1	0-0	0-0	0	1	1	0	0	0	0	0	2	4
24	CRAWFORD, TORI		4	0-2	0-2	4-4	1	1	2	0	0	1	0	3	12	-2
25	RUSSELL, ASHLEY		11	4-9	1-2	2-3	2	0	2	1	0	2	0	0	14	-12
31	PARKER, ELEAH		0	0-6	0-0	0-0	1	2	3	0	0	2	0	0	8	-12
33	STERBA, PHOEBE		0	0-1	0-0	0-0	1	2	3	0	0	1	0	0	13	0
34	DICINDIO, CHRISSY		0	0-0	0-0	0-0	0	0	0	0	0	0	0	0	2	4
40	ANDERSON, EMILY		0	0-2	0-0	0-2	2	2	4	0	2	1	2	1	11	0
50	AGHAYERE, PRINCESS		0	0-0	0-0	0-0	0	0	0	0	0	0	0	0	5	-13
	TEAM		0	0-0	0-0	0-0	1	1	2	0	0	0	0	0	0	0
	TOTALS		28	10-31	1-5	7-12	0	0	19	1	3	10	2	6	100	

Shooting By Period

Period	FG	FG%	3FG	3FG%	FT	FT%
3rd Qtr	4-16	25%	0-2	00%	7-11	64%
4th Qtr	6-15	40%	1-3	33%	0-1	00%
2nd Half	10-31	32%	1-5	20%	7-12	58%
Game	21-59	35.6%	4-15	26.7%	9-16	56.3%

Last FG Half: PEN 4th-00:00

Notre Dame 36

No.	Player	S	Pts	FG	3FG	FT	OR	DR	TR	PF	A	TO	Blk	Stl	Min	+/-
00	NIXON, JORDAN		0	0-1	0-0	0-0	0	1	1	1	2	1	0	2	14	14
05	YOUNG, JACKIE		6	3-3	0-0	0-0	0	6	6	1	2	1	1	0	12	6
10	GILBERT, KATLYN		0	0-0	0-0	0-0	0	1	1	1	0	1	0	1	5	-5
11	TURNER, BRIANNA		8	4-7	0-0	0-0	2	2	4	1	0	0	0	0	12	11
12	PROHASKA, ABBY		0	0-0	0-0	0-0	1	0	1	4	1	0	0	1	11	4
20	BENZ, NICOLE		0	0-1	0-1	0-0	0	1	1	0	0	1	0	0	2	-4
22	COSGROVE, DANIELLE		2	1-3	0-0	0-0	0	0	0	1	0	1	0	0	7	1
24	OGUNBOWALE, ARIKE		8	2-8	2-3	2-2	1	1	2	1	4	1	0	0	13	11
30	VAUGHN, MIKAYLA		2	1-2	0-0	0-0	1	0	1	0	0	0	0	2	9	-2
32	SHEPARD, JESSICA		8	4-5	0-0	0-0	0	3	3	2	0	2	1	1	9	13
33	PATTERSON, DANIELLE		0	0-1	0-0	0-0	0	0	0	0	0	0	0	0	3	-7
40	BUTLER, MAUREEN		2	1-1	0-0	0-0	1	0	1	0	0	1	0	0	1	-2
	TEAM		0	0-0	0-0	0-0	0	0	0	0	0	1	0	0	0	0
	TOTALS		36	16-32	2-4	2-2	0	0	21	12	9	10	2	7	100	

Shooting By Period

Period	FG	FG%	3FG	3FG%	FT	FT%
3rd Qtr	9-16	56%	1-2	50%	2-2	100%
4th Qtr	7-16	44%	1-2	50%	0-0	0%
2nd Half	16-32	50%	2-4	50%	2-2	100%
Game	31-66	47.0%	3-12	25.0%	10-13	76.9%

Last FG Half: UND 4th-00:19

Game Notes:

Officials: Bruce Morris, Angel Stanton, Erika Herriman-Camarota
Attendance: 7854

Start Time: 2018-11-13 00:03:36
End Time: 2018-11-13 01:55:22
Game Duration: 111

Score	1st	2nd	3rd	4th	TOT
PEN	13	14	15	13	55
UND	16	23	21	15	75

Points from (This Period)	PEN	UND
In the Paint	12	20
Off Turns	12	10
2nd Chance	7	8
Fast Break	0	9
Bench	12	6

Official Box Score
Penn vs Notre Dame
Third Quarter Statistics Only
November 13, 2018 at Joyce Center (Purcell Pavilion) - Notre Dame, IN



Penn 28

No.	Player	S	Pts	FG	3FG	FT	OR	DR	TR	PF	A	TO	Blk	Stl	Min	+/-
02	KINUM, KATIE		0	0-0	0-0	0-0	0	0	0	0	0	1	0	0	2	-8
11	GRASELA, KENDALL		5	2-3	0-0	1-1	0	1	1	0	0	0	0	0	10	-6
25	RUSSELL, ASHLEY		4	1-3	0-0	2-2	1	0	1	1	0	2	0	0	6	-6
31	PARKER, ELEAH		0	0-5	0-0	0-0	1	2	3	0	0	2	0	0	6	-10
50	AGHAYERE, PRINCESS		0	0-0	0-0	0-0	0	0	0	0	0	0	0	0	3	-11
03	JONES, MICHAEL		2	1-2	0-0	0-2	1	0	1	0	0	0	0	0	4	0
04	SUTTLE, KENNEDY		0	0-0	0-0	0-0	0	0	0	0	0	0	0	0	0	0
05	WELEDJI, SEREENA		0	0-0	0-0	0-0	0	0	0	0	0	0	0	0	0	0
14	HAIR, MEG		0	0-0	0-0	0-0	0	0	0	0	0	0	0	0	0	0
21	LAKSTIGALA, MIA		0	0-0	0-0	0-0	0	0	0	0	0	0	0	0	0	0
23	DALEY, KRISTEN		0	0-0	0-0	0-0	0	0	0	0	0	0	0	0	0	0
24	CRAWFORD, TORI		4	0-2	0-2	4-4	1	1	2	0	0	0	0	3	7	5
33	STERBA, PHOEBE		0	0-1	0-0	0-0	1	1	2	0	0	0	0	0	8	2
34	DICINDIO, CHRISSY		0	0-0	0-0	0-0	0	0	0	0	0	0	0	0	0	0
40	ANDERSON, EMILY		0	0-0	0-0	0-2	1	0	1	0	1	0	1	1	4	4
	TEAM						0	0	0	0		0				
	TOTALS		15	4-16	0-2	7-11	0	0	11	1	1	5	1	4	50	

Shooting By Period

Period	FG	FG%	3FG	3FG%	FT	FT%
2nd Half	0-0	0%	0-0	0%	0-0	0%
Game	21-59	35.6%	4-15	26.7%	9-16	56.3%

Notre Dame 36

No.	Player	S	Pts	FG	3FG	FT	OR	DR	TR	PF	A	TO	Blk	Stl	Min	+/-
00	NIXON, JORDAN		0	0-0	0-0	0-0	0	0	0	1	2	1	0	1	5	10
05	YOUNG, JACKIE		2	1-1	0-0	0-0	0	5	5	1	1	1	0	0	8	5
11	TURNER, BRIANNA		6	3-4	0-0	0-0	1	1	2	1	0	0	0	0	8	7
24	OGUNBOWALE, ARIKE		5	1-6	1-2	2-2	0	1	1	1	2	1	0	0	10	6
32	SHEPARD, JESSICA		6	3-3	0-0	0-0	0	1	1	1	0	2	0	1	6	8
10	GILBERT, KATLYN		0	0-0	0-0	0-0	0	0	0	0	0	0	0	0	0	0
12	PROHASKA, ABBY		0	0-0	0-0	0-0	1	0	1	2	1	0	0	1	6	-3
20	BENZ, NICOLE		0	0-0	0-0	0-0	0	0	0	0	0	0	0	0	0	0
22	COSGROVE, DANIELLE		2	1-2	0-0	0-0	0	0	0	1	0	0	0	0	5	-1
30	VAUGHN, MIKAYLA		0	0-0	0-0	0-0	0	0	0	0	0	0	0	0	1	-2
33	PATTERSON, DANIELLE		0	0-0	0-0	0-0	0	0	0	0	0	0	0	0	0	0
40	BUTLER, MAUREEN		0	0-0	0-0	0-0	0	0	0	0	0	0	0	0	0	0
	TEAM						0	0	0	0		0				
	TOTALS		21	9-16	1-2	2-2	0	0	10	8	6	5	0	3	50	

Shooting By Period

Period	FG	FG%	3FG	3FG%	FT	FT%
2nd Half	0-0	0%	0-0	0%	0-0	0%
Game	31-66	47.0%	3-12	25.0%	10-13	76.9%

Game Notes:

Officials: Bruce Morris, Angel Stanton, Erika Herriman-Camarota
Attendance: 7854

Start Time: 2018-11-13 00:03:36
End Time: 2018-11-13 01:55:22
Game Duration: 111

Score	1st	2nd	3rd	4th	TOT
PEN	13	14	15	13	55
UND	16	23	21	15	75

Points from (This Period)	PEN	UND
In the Paint	4	10
Off Turns	5	3
2nd Chance	7	4
Fast Break	0	9
Bench	6	2

**Official Play-By-Play
Penn vs Notre Dame
Third Quarter**

November 13, 2018 at Joyce Center (Purcell Pavilion) - Notre Dame, IN



Period 3

Starters:

Penn: 2 KINUM, KATIE; 11 GRASELA, KENDALL; 25 RUSSELL, ASHLEY; 31 PARKER, ELEAH; 50 AGHAYERE, PRINCESS;

Notre Dame: 0 NIXON, JORDAN; 5 YOUNG, JACKIE; 11 TURNER, BRIANNA; 24 OGUNBOWALE, ARIKE; 32 SHEPARD, JESSICA;

Time	VISITORS: Penn	Score	Margin	HOME: Notre Dame
09:50	MISSED JUMPER by RUSSELL, ASHLEY			
09:45				REBOUND (DEF) by YOUNG, JACKIE
09:32		41-27	H 14	GOOD! JUMPER by YOUNG, JACKIE
09:16	MISSED JUMPER by PARKER, ELEAH			
09:13				REBOUND (DEF) by SHEPARD, JESSICA
09:09				MISSED DUNK by TURNER, BRIANNA
09:06	REBOUND (DEF) by PARKER, ELEAH			
08:53	TURNOVER (LOSTBALL) by KINUM, KATIE			
08:53				STEAL by SHEPARD, JESSICA
08:51	FOUL (PERSONAL) by RUSSELL, ASHLEY			
08:51		42-27	H 15	GOOD! FT by OGUNBOWALE, ARIKE [FB]
08:51		43-27	H 16	GOOD! FT by OGUNBOWALE, ARIKE [FB]
08:41	MISSED JUMPER by GRASELA, KENDALL			
08:37				REBOUND (DEF) by OGUNBOWALE, ARIKE
08:35		45-27	H 18	GOOD! LAYUP by TURNER, BRIANNA [FB]
08:35				ASSIST by OGUNBOWALE, ARIKE
08:17	MISSED JUMPER by PARKER, ELEAH			
08:13	REBOUND (OFF) by PARKER, ELEAH			
08:12	MISSED JUMPER by PARKER, ELEAH			
08:08				REBOUND (DEF) by YOUNG, JACKIE
08:08		47-27	H 20	GOOD! LAYUP by SHEPARD, JESSICA [FB]
08:08				ASSIST by OGUNBOWALE, ARIKE
08:08	TIMEOUT 30SEC			
08:08	SUB OUT: KINUM, KATIE			
08:08	SUB IN: STERBA, PHOEBE			
07:42	MISSED JUMPER by PARKER, ELEAH			
07:39				REBOUND (DEF) by YOUNG, JACKIE
07:36		50-27	H 23	GOOD! 3PTR by OGUNBOWALE, ARIKE [FB]
07:36				ASSIST by NIXON, JORDAN
07:12				FOUL (PERSONAL) by OGUNBOWALE, ARIKE
07:12	SUB OUT: AGHAYERE, PRINCESS			
07:12	SUB IN: CRAWFORD, TORI			
07:02	TURNOVER (BADPASS) by PARKER, ELEAH			
07:02				STEAL by NIXON, JORDAN
06:56				MISSED LAYUP by OGUNBOWALE, ARIKE
06:53	REBOUND (DEF) by CRAWFORD, TORI			
06:48	MISSED 3PTR by CRAWFORD, TORI			
06:44				REBOUND (DEF) by YOUNG, JACKIE
06:44	SUB OUT: PARKER, ELEAH			
06:44	SUB IN: ANDERSON, EMILY			
06:37				TURNOVER (BADPASS) by NIXON, JORDAN
06:37	STEAL by ANDERSON, EMILY			
06:30	MISSED JUMPER by RUSSELL, ASHLEY			
06:26	REBOUND (OFF) by CRAWFORD, TORI			
06:17	GOOD! LAYUP by GRASELA, KENDALL	50-29	H 21	
06:17				FOUL (PERSONAL) by TURNER, BRIANNA
06:17				SUB OUT: YOUNG, JACKIE
06:17				SUB IN: PROHASKA, ABBY
06:17	SUB OUT: RUSSELL, ASHLEY			
06:17	SUB IN: JONES, MICHAEL			
06:17	GOOD! FT by GRASELA, KENDALL	50-30	H 20	
06:05		52-30	H 22	GOOD! JUMPER by SHEPARD, JESSICA [PNT]
06:05				ASSIST by NIXON, JORDAN
05:53				FOUL (PERSONAL) by SHEPARD, JESSICA
05:38				FOUL (PERSONAL) by PROHASKA, ABBY
05:38	GOOD! FT by CRAWFORD, TORI	52-31	H 21	
05:38				SUB OUT: SHEPARD, JESSICA
05:38				SUB IN: COSGROVE, DANIELLE
05:38	GOOD! FT by CRAWFORD, TORI	52-32	H 20	
05:28		54-32	H 22	GOOD! LAYUP by TURNER, BRIANNA
05:28				ASSIST by PROHASKA, ABBY
05:13	MISSED 3PTR by CRAWFORD, TORI			
05:09	REBOUND (OFF) by ANDERSON, EMILY			
05:06	GOOD! JUMPER by JONES, MICHAEL	54-34	H 20	
05:06	ASSIST by ANDERSON, EMILY			
04:58				MISSED LAYUP by COSGROVE, DANIELLE
04:54				REBOUND (OFF) by TURNER, BRIANNA
04:53		56-34	H 22	GOOD! LAYUP by TURNER, BRIANNA
04:42				FOUL (PERSONAL) by NIXON, JORDAN
04:42				

Time	VISITORS: Penn	Score	Margin	HOME: Notre Dame
04:42				SUB OUT: NIXON, JORDAN
04:42				SUB IN: YOUNG, JACKIE
04:42	SUB OUT: ANDERSON, EMILY			
04:42	SUB IN: PARKER, ELEAH			
04:42	MISSED FT by JONES, MICHAEL			
04:42	REBOUND (OFF) by TEAM			
04:41	MISSED FT by JONES, MICHAEL			
04:39				REBOUND (DEF) by TURNER, BRIANNA
04:31				TURNOVER (BADPASS) by YOUNG, JACKIE
04:31	STEAL by CRAWFORD, TORI			
04:17	TURNOVER (BADPASS) by PARKER, ELEAH			
03:57				MISSED 3PTR by OGUNBOWALE, ARIKE
03:51				REBOUND (OFF) by PROHASKA, ABBY
03:49		58-34	H 24	GOOD! JUMPER by COSGROVE, DANIELLE
03:49				ASSIST by YOUNG, JACKIE
03:33	MISSED JUMPER by PARKER, ELEAH			
03:28	REBOUND (OFF) by JONES, MICHAEL			
03:25	MISSED JUMPER by JONES, MICHAEL			
03:22				REBOUND (DEF) by YOUNG, JACKIE
03:21				MISSED LAYUP by OGUNBOWALE, ARIKE
03:18	REBOUND (DEF) by STERBA, PHOEBE			
03:02	GOOD! LAYUP by GRASELA, KENDALL	58-36	H 22	
02:33				MISSED JUMPER by OGUNBOWALE, ARIKE
02:29	REBOUND (DEF) by PARKER, ELEAH			
02:19				FOUL (PERSONAL) by YOUNG, JACKIE
02:19	GOOD! FT by CRAWFORD, TORI	58-37	H 21	
02:19	SUB OUT: JONES, MICHAEL			
02:19	SUB IN: ANDERSON, EMILY			
02:19	SUB OUT: PARKER, ELEAH			
02:19	SUB IN: RUSSELL, ASHLEY			
02:19	GOOD! FT by CRAWFORD, TORI	58-38	H 20	
02:04				MISSED JUMPER by OGUNBOWALE, ARIKE
02:04	BLOCK by ANDERSON, EMILY			
01:59	REBOUND (DEF) by GRASELA, KENDALL			
01:59				FOUL (PERSONAL) by PROHASKA, ABBY
01:59	GOOD! FT by RUSSELL, ASHLEY	58-39	H 19	
01:59				SUB OUT: TURNER, BRIANNA
01:59				SUB IN: SHEPARD, JESSICA
01:59	GOOD! FT by RUSSELL, ASHLEY	58-40	H 18	
01:42		60-40	H 20	GOOD! JUMPER by SHEPARD, JESSICA
01:28	TURNOVER (BADPASS) by RUSSELL, ASHLEY			
01:11				TURNOVER (3SEC) by SHEPARD, JESSICA
01:02				FOUL (PERSONAL) by COSGROVE, DANIELLE
01:02	MISSED FT by ANDERSON, EMILY			
01:02	REBOUND (OFF) by TEAM			
00:59	MISSED FT by ANDERSON, EMILY			
00:57	REBOUND (OFF) by STERBA, PHOEBE			
00:57				SUB OUT: COSGROVE, DANIELLE
00:57				SUB IN: VAUGHN, MIKAYLA
00:52	TURNOVER (BADPASS) by RUSSELL, ASHLEY			
00:52				STEAL by PROHASKA, ABBY
00:37				TURNOVER (BADPASS) by SHEPARD, JESSICA
00:37	STEAL by CRAWFORD, TORI			
00:31	MISSED LAYUP by STERBA, PHOEBE			
00:28	REBOUND (OFF) by RUSSELL, ASHLEY			
00:24	GOOD! JUMPER by RUSSELL, ASHLEY	60-42	H 18	
00:02				TURNOVER (LOSTBALL) by OGUNBOWALE, ARIKE
00:02	STEAL by CRAWFORD, TORI			
00:02	SUB OUT: RUSSELL, ASHLEY			
00:02	SUB IN: JONES, MICHAEL			

Penn 42, Notre Dame 60

Points from (This Period)	PEN	UND
In the Paint	4	10
Off Turns	5	3
2nd Chance	7	4
Fast Break	0	9
Bench	6	2

Official Box Score
Penn vs Notre Dame
Fourth Quarter Statistics Only
November 13, 2018 at Joyce Center (Purcell Pavilion) - Notre Dame, IN



Penn 13

No.	Player	S	Pts	FG	3FG	FT	OR	DR	TR	PF	A	TO	Blk	Stl	Min	+/-
02	KINUM, KATIE		0	0-0	0-0	0-0	0	0	0	0	0	0	0	0	0	0
11	GRASELA, KENDALL		0	0-0	0-0	0-0	0	0	0	0	1	2	0	0	8	-6
25	RUSSELL, ASHLEY		7	3-6	1-2	0-1	1	0	1	0	0	0	0	0	8	-6
31	PARKER, ELEAH		0	0-1	0-0	0-0	0	0	0	0	0	0	0	0	2	-2
50	AGHAYERE, PRINCESS		0	0-0	0-0	0-0	0	0	0	0	0	0	0	0	2	-2
03	JONES, MICHAEL		0	0-0	0-0	0-0	0	0	0	0	0	0	0	0	1	4
04	SUTTLE, KENNEDY		2	1-1	0-0	0-0	0	0	0	0	0	0	0	2	3	7
05	WELEDJI, SEREENA		2	1-2	0-1	0-0	0	0	0	0	0	0	0	0	2	4
14	HAIR, MEG		0	0-0	0-0	0-0	0	0	0	0	0	0	0	0	1	0
21	LAKSTIGALA, MIA		0	0-2	0-0	0-0	0	0	0	0	0	0	0	0	2	-4
23	DALEY, KRISTEN		2	1-1	0-0	0-0	0	1	1	0	0	0	0	0	2	4
24	CRAWFORD, TORI		0	0-0	0-0	0-0	0	0	0	0	0	1	0	0	5	-7
33	STERBA, PHOEBE		0	0-0	0-0	0-0	0	1	1	0	0	1	0	0	5	-2
34	DICINDIO, CHRISSY		0	0-0	0-0	0-0	0	0	0	0	0	0	0	0	2	4
40	ANDERSON, EMILY		0	0-2	0-0	0-0	1	2	3	0	1	1	1	0	7	-4
	TEAM						1	1	2	0		0				
	TOTALS		13	6-15	1-3	0-1	0	0	8	0	2	5	1	2	50	

Shooting By Period

Period	FG	FG%	3FG	3FG%	FT	FT%
Game	21-59	35.6%	4-15	26.7%	9-16	56.3%

Notre Dame 15

No.	Player	S	Pts	FG	3FG	FT	OR	DR	TR	PF	A	TO	Blk	Stl	Min	+/-
00	NIXON, JORDAN		0	0-1	0-0	0-0	0	1	1	0	0	0	0	1	9	4
05	YOUNG, JACKIE		4	2-2	0-0	0-0	0	1	1	0	1	0	1	0	4	1
11	TURNER, BRIANNA		2	1-3	0-0	0-0	1	1	2	0	0	0	0	0	4	4
24	OGUNBOWALE, ARIKE		3	1-2	1-1	0-0	1	0	1	0	2	0	0	0	3	5
32	SHEPARD, JESSICA		2	1-2	0-0	0-0	0	2	2	1	0	0	1	0	3	5
10	GILBERT, KATLYN		0	0-0	0-0	0-0	0	1	1	1	0	1	0	1	5	-5
12	PROHASKA, ABBY		0	0-0	0-0	0-0	0	0	0	2	0	0	0	0	5	7
20	BENZ, NICOLE		0	0-1	0-1	0-0	0	1	1	0	0	1	0	0	2	-4
22	COSGROVE, DANIELLE		0	0-1	0-0	0-0	0	0	0	0	0	1	0	0	2	2
30	VAUGHN, MIKAYLA		2	1-2	0-0	0-0	1	0	1	0	0	0	0	2	8	0
33	PATTERSON, DANIELLE		0	0-1	0-0	0-0	0	0	0	0	0	0	0	0	3	-7
40	BUTLER, MAUREEN		2	1-1	0-0	0-0	1	0	1	0	0	1	0	0	1	-2
	TEAM						0	0	0	0		1				
	TOTALS		15	7-16	1-2	0-0	0	0	11	4	3	5	2	4	50	

Shooting By Period

Period	FG	FG%	3FG	3FG%	FT	FT%
Game	31-66	47.0%	3-12	25.0%	10-13	76.9%

Game Notes:

Officials: Bruce Morris, Angel Stanton, Erika Herriman-Camarota
Attendance: 7854

Start Time: 2018-11-13 00:03:36
End Time: 2018-11-13 01:55:22
Game Duration: 111

Score	1st	2nd	3rd	4th	TOT
PEN	13	14	15	13	55
UND	16	23	21	15	75

Points from (This Period)	PEN	UND
In the Paint	8	10
Off Turns	7	7
2nd Chance	0	4
Fast Break	0	0
Bench	6	4

Official Play-By-Play
Penn vs Notre Dame
Fourth Quarter
November 13, 2018 at Joyce Center (Purcell Pavilion) - Notre Dame, IN



Period 4

Starters:

Penn: 2 KINUM, KATIE; 11 GRASELA, KENDALL; 25 RUSSELL, ASHLEY; 31 PARKER, ELEAH; 50 AGHAYERE, PRINCESS;

Notre Dame: 0 NIXON, JORDAN; 5 YOUNG, JACKIE; 11 TURNER, BRIANNA; 24 OGUNBOWALE, ARIKE; 32 SHEPARD, JESSICA;

Time	VISITORS: Penn	Score	Margin	HOME: Notre Dame
09:49				MISSED LAYUP by SHEPARD, JESSICA
09:49	BLOCK by ANDERSON, EMILY			
09:43	REBOUND (DEF) by ANDERSON, EMILY			
09:34	TURNOVER (BADPASS) by GRASELA, KENDALL			
09:34				STEAL by VAUGHN, MIKAYLA
09:06		63-42	H 21	GOOD! 3PTR by OGUNBOWALE, ARIKE
08:40	TURNOVER (BADPASS) by STERBA, PHOEBE			
08:40				STEAL by NIXON, JORDAN
08:33		65-42	H 23	GOOD! LAYUP by VAUGHN, MIKAYLA
08:33				ASSIST by OGUNBOWALE, ARIKE
08:16	GOOD! LAYUP by RUSSELL, ASHLEY	65-44	H 21	
08:16	ASSIST by ANDERSON, EMILY			
07:53				MISSED JUMPER by VAUGHN, MIKAYLA
07:49				REBOUND (OFF) by OGUNBOWALE, ARIKE
07:47				MISSED JUMPER by OGUNBOWALE, ARIKE
07:47	REBOUND (DEF) by ANDERSON, EMILY			
07:47				FOUL (PERSONAL) by SHEPARD, JESSICA
07:47	SUB OUT: STERBA, PHOEBE			
07:47	SUB IN: LAKSTIGALA, MIA			
07:31	GOOD! LAYUP by RUSSELL, ASHLEY	65-46	H 19	
07:31				FOUL (PERSONAL) by PROHASKA, ABBY
07:30	MISSED FT by RUSSELL, ASHLEY			
07:28				REBOUND (DEF) by SHEPARD, JESSICA
07:21		67-46	H 21	GOOD! LAYUP by SHEPARD, JESSICA
06:51	MISSED JUMPER by LAKSTIGALA, MIA			
06:51				BLOCK by SHEPARD, JESSICA
06:46				REBOUND (DEF) by SHEPARD, JESSICA
06:42		69-46	H 23	GOOD! LAYUP by YOUNG, JACKIE
06:42				ASSIST by OGUNBOWALE, ARIKE
06:41	TIMEOUT 30SEC			
06:41				SUB OUT: OGUNBOWALE, ARIKE
06:41				SUB IN: TURNER, BRIANNA
06:41				SUB OUT: VAUGHN, MIKAYLA
06:41				SUB IN: YOUNG, JACKIE
06:41				SUB OUT: SHEPARD, JESSICA
06:41				SUB IN: COSGROVE, DANIELLE
06:22	MISSED JUMPER by ANDERSON, EMILY			
06:18	REBOUND (OFF) by ANDERSON, EMILY			
06:18	SUB OUT: ANDERSON, EMILY			
06:18	SUB IN: PARKER, ELEAH			
06:14	MISSED JUMPER by LAKSTIGALA, MIA			
06:11				REBOUND (DEF) by YOUNG, JACKIE
06:03		71-46	H 25	GOOD! JUMPER by TURNER, BRIANNA [PNT]
06:03				ASSIST by YOUNG, JACKIE
05:41	MISSED JUMPER by RUSSELL, ASHLEY			
05:38	REBOUND (OFF) by RUSSELL, ASHLEY			
05:35	MISSED LAYUP by PARKER, ELEAH			
05:32				REBOUND (DEF) by NIXON, JORDAN
05:29				TURNOVER (TRAVEL) by COSGROVE, DANIELLE
05:29	SUB OUT: LAKSTIGALA, MIA			
05:29	SUB IN: STERBA, PHOEBE			
05:17	MISSED JUMPER by RUSSELL, ASHLEY			
05:17				BLOCK by YOUNG, JACKIE
05:17	REBOUND (OFF) by TEAM			
05:11	TURNOVER (TRAVEL) by CRAWFORD, TORI			
05:01				MISSED JUMPER by COSGROVE, DANIELLE
04:59				REBOUND (OFF) by TURNER, BRIANNA
04:59				MISSED JUMPER by TURNER, BRIANNA
04:56	REBOUND (DEF) by TEAM			
04:45				FOUL (PERSONAL) by PROHASKA, ABBY
04:43				SUB OUT: PROHASKA, ABBY
04:43				SUB IN: GILBERT, KATLYN
04:43				SUB OUT: COSGROVE, DANIELLE
04:43				SUB IN: VAUGHN, MIKAYLA
04:43	SUB OUT: PARKER, ELEAH			
04:43	SUB IN: AGHAYERE, PRINCESS			
04:43	SUB OUT: CRAWFORD, TORI			
04:43	SUB IN: ANDERSON, EMILY			
04:27	MISSED 3PTR by RUSSELL, ASHLEY			
04:22				REBOUND (DEF) by TURNER, BRIANNA

Time	VISITORS: Penn	Score	Margin	HOME: Notre Dame
04:17				MISSED JUMPER by NIXON, JORDAN
04:12	REBOUND (DEF) by STERBA, PHOEBE			
03:58	TURNOVER (LOSTBALL) by GRASELA, KENDALL			
03:58				STEAL by GILBERT, KATLYN
03:53				MISSED LAYUP by TURNER, BRIANNA
03:51				REBOUND (OFF) by VAUGHN, MIKAYLA
03:27		73-46	H 27	GOOD! JUMPER by YOUNG, JACKIE
03:10	MISSED JUMPER by ANDERSON, EMILY			
03:07				REBOUND (DEF) by GILBERT, KATLYN
03:04				TURNOVER (BADPASS) by GILBERT, KATLYN
03:04				SUB OUT: TURNER, BRIANNA
03:04				SUB IN: PATTERSON, DANIELLE
03:04	SUB OUT: AGHAYERE, PRINCESS			
03:04	SUB IN: SUTTLE, KENNEDY			
02:48	GOOD! 3PTR by RUSSELL, ASHLEY	73-49	H 24	
02:48	ASSIST by GRASELA, KENDALL			
02:14				TURNOVER (SHOTCLOCK) by
02:14				SUB OUT: YOUNG, JACKIE
02:14				SUB IN: BENZ, NICOLE
02:14	SUB OUT: GRASELA, KENDALL			
02:14	SUB IN: DALEY, KRISTEN			
02:14	SUB OUT: RUSSELL, ASHLEY			
02:14	SUB IN: JONES, MICHAEL			
02:14	SUB OUT: STERBA, PHOEBE			
02:14	SUB IN: WELEDJI, SEREENA			
01:50	TURNOVER (LOSTBALL) by ANDERSON, EMILY			
01:50				STEAL by VAUGHN, MIKAYLA
01:43				MISSED JUMPER by PATTERSON, DANIELLE
01:38	REBOUND (DEF) by DALEY, KRISTEN			
01:30				FOUL (PERSONAL) by GILBERT, KATLYN
01:30	SUB OUT: ANDERSON, EMILY			
01:30	SUB IN: DICINDIO, CHRISSEY			
01:21	GOOD! JUMPER by WELEDJI, SEREENA [PNT]	73-51	H 22	
01:15				TIMEOUT 30SEC
01:15				SUB OUT: NIXON, JORDAN
01:15				SUB IN: BUTLER, MAUREEN
01:00				TURNOVER (BADPASS) by BUTLER, MAUREEN
01:00	STEAL by SUTTLE, KENNEDY			
00:49	GOOD! JUMPER by DALEY, KRISTEN	73-53	H 20	
00:49	TIMEOUT 30SEC			
00:49	SUB OUT: JONES, MICHAEL			
00:49	SUB IN: HAIR, MEG			
00:25				MISSED 3PTR by BENZ, NICOLE
00:21				REBOUND (OFF) by BUTLER, MAUREEN
00:19		75-53	H 22	GOOD! LAYUP by BUTLER, MAUREEN
00:03	MISSED 3PTR by WELEDJI, SEREENA			
00:00				TURNOVER (LOSTBALL) by BENZ, NICOLE
00:00	STEAL by SUTTLE, KENNEDY			
00:00	GOOD! LAYUP by SUTTLE, KENNEDY	75-55	H 20	
00:00				REBOUND (DEF) by BENZ, NICOLE

Penn 55, Notre Dame 75

Points from (This Period)	PEN	UND
In the Paint	8	10
Off Turns	7	7
2nd Chance	0	4
Fast Break	0	0
Bench	6	4

Official Scoring/Possession Reference Chart
Penn vs Notre Dame
Period 1
November 13, 2018 at Joyce Center (Purcell Pavilion) - Notre Dame, IN



Period 1

Starters:

Penn: 2 KINUM,KATIE; 11 GRASELA,KENDALL; 25 RUSSELL,ASHLEY; 31 PARKER,ELEAH; 50 AGHAYERE,PRINCESS;

Notre Dame: 0 NIXON,JORDAN; 5 YOUNG,JACKIE; 11 TURNER,BRIANNA; 24 OGUNBOWALE,ARIKE; 32 SHEPARD,JESSICA;

Time	VISITORS: Penn	Score	Margin	HOME: Notre Dame
09:29		2-0	H 2	GOOD! LAYUP by TURNER, BRIANNA [PNT]
08:08	GOOD! JUMPER by AGHAYERE, PRINCESS	2-2	T	
07:26		4-2	H 2	GOOD! LAYUP by OGUNBOWALE, ARIKE [FB]
06:33		6-2	H 4	GOOD! LAYUP by SHEPARD, JESSICA
06:04		8-2	H 6	GOOD! LAYUP by TURNER, BRIANNA
05:06	GOOD! JUMPER by RUSSELL, ASHLEY	8-4	H 4	
04:56		10-4	H 6	GOOD! DUNK by TURNER, BRIANNA
04:36	GOOD! 3PTR by GRASELA, KENDALL	10-7	H 3	
04:17		12-7	H 5	GOOD! JUMPER by SHEPARD, JESSICA
03:57	GOOD! LAYUP by GRASELA, KENDALL	12-9	H 3	
03:40		14-9	H 5	GOOD! LAYUP by TURNER, BRIANNA
03:06	GOOD! LAYUP by PARKER, ELEAH	14-11	H 3	
01:47	GOOD! FT by RUSSELL, ASHLEY	14-12	H 2	
01:47	GOOD! FT by RUSSELL, ASHLEY	14-13	H 1	
01:27		16-13	H 3	GOOD! JUMPER by SHEPARD, JESSICA [PNT]

Penn 13, Notre Dame 16

Official Scoring/Possession Reference Chart
Penn vs Notre Dame
Period 2
November 13, 2018 at Joyce Center (Purcell Pavilion) - Notre Dame, IN



Period 2

Starters:

Penn: 2 KINUM,KATIE; 11 GRASELA,KENDALL; 25 RUSSELL,ASHLEY; 31 PARKER,ELEAH; 50 AGHAYERE,PRINCESS;

Notre Dame: 0 NIXON,JORDAN; 5 YOUNG,JACKIE; 11 TURNER,BRIANNA; 24 OGUNBOWALE,ARIKE; 32 SHEPARD,JESSICA;

Time	VISITORS: Penn	Score	Margin	HOME: Notre Dame
09:23	GOOD! LAYUP by STERBA, PHOEBE [PNT]	16-15	H 1	
09:00		18-15	H 3	GOOD! JUMPER by YOUNG, JACKIE
08:12		20-15	H 5	GOOD! JUMPER by YOUNG, JACKIE
07:49		22-15	H 7	GOOD! LAYUP by OGUNBOWALE, ARIKE [FB]
07:11		23-15	H 8	GOOD! FT by VAUGHN, MIKAYLA [FB]
07:02	GOOD! 3PTR by STERBA, PHOEBE	23-18	H 5	
06:35		24-18	H 6	GOOD! FT by GILBERT, KATLYN
06:35		25-18	H 7	GOOD! FT by GILBERT, KATLYN
05:54		27-18	H 9	GOOD! JUMPER by OGUNBOWALE, ARIKE
05:33	GOOD! JUMPER by AGHAYERE, PRINCESS	27-20	H 7	
05:06		28-20	H 8	GOOD! FT by OGUNBOWALE, ARIKE
05:06		29-20	H 9	GOOD! FT by OGUNBOWALE, ARIKE
04:07	GOOD! 3PTR by STERBA, PHOEBE	29-23	H 6	
03:24		30-23	H 7	GOOD! FT by SHEPARD, JESSICA
02:40	GOOD! JUMPER by PARKER, ELEAH	30-25	H 5	
02:15		33-25	H 8	GOOD! 3PTR by OGUNBOWALE, ARIKE
01:22		34-25	H 9	GOOD! FT by OGUNBOWALE, ARIKE
01:22		35-25	H 10	GOOD! FT by OGUNBOWALE, ARIKE
00:53		37-25	H 12	GOOD! LAYUP by SHEPARD, JESSICA
00:28	GOOD! JUMPER by PARKER, ELEAH	37-27	H 10	
00:03		39-27	H 12	GOOD! JUMPER by YOUNG, JACKIE [PNT]

Penn 27, Notre Dame 39

Official Scoring/Possession Reference Chart
Penn vs Notre Dame
Period 3
November 13, 2018 at Joyce Center (Purcell Pavilion) - Notre Dame, IN



Period 3

Starters:

Penn: 2 KINUM, KATIE; 11 GRASELA, KENDALL; 25 RUSSELL, ASHLEY; 31 PARKER, ELEAH; 50 AGHAYERE, PRINCESS;

Notre Dame: 0 NIXON, JORDAN; 5 YOUNG, JACKIE; 11 TURNER, BRIANNA; 24 OGUNBOWALE, ARIKE; 32 SHEPARD, JESSICA;

Time	VISITORS: Penn	Score	Margin	HOME: Notre Dame
09:32		41-27	H 14	GOOD! JUMPER by YOUNG, JACKIE
08:51		42-27	H 15	GOOD! FT by OGUNBOWALE, ARIKE [FB]
08:51		43-27	H 16	GOOD! FT by OGUNBOWALE, ARIKE [FB]
08:35		45-27	H 18	GOOD! LAYUP by TURNER, BRIANNA [FB]
08:08		47-27	H 20	GOOD! LAYUP by SHEPARD, JESSICA [FB]
07:36		50-27	H 23	GOOD! 3PTR by OGUNBOWALE, ARIKE [FB]
06:17	GOOD! LAYUP by GRASELA, KENDALL	50-29	H 21	
06:17	GOOD! FT by GRASELA, KENDALL	50-30	H 20	
06:05		52-30	H 22	GOOD! JUMPER by SHEPARD, JESSICA [PNT]
05:38	GOOD! FT by CRAWFORD, TORI	52-31	H 21	
05:38	GOOD! FT by CRAWFORD, TORI	52-32	H 20	
05:28		54-32	H 22	GOOD! LAYUP by TURNER, BRIANNA
05:06	GOOD! JUMPER by JONES, MICHAEL	54-34	H 20	
04:53		56-34	H 22	GOOD! LAYUP by TURNER, BRIANNA
03:49		58-34	H 24	GOOD! JUMPER by COSGROVE, DANIELLE
03:02	GOOD! LAYUP by GRASELA, KENDALL	58-36	H 22	
02:19	GOOD! FT by CRAWFORD, TORI	58-37	H 21	
02:19	GOOD! FT by CRAWFORD, TORI	58-38	H 20	
01:59	GOOD! FT by RUSSELL, ASHLEY	58-39	H 19	
01:59	GOOD! FT by RUSSELL, ASHLEY	58-40	H 18	
01:42		60-40	H 20	GOOD! JUMPER by SHEPARD, JESSICA
00:24	GOOD! JUMPER by RUSSELL, ASHLEY	60-42	H 18	

Penn 42, Notre Dame 60

Official Scoring/Possession Reference Chart
Penn vs Notre Dame
Period 4
November 13, 2018 at Joyce Center (Purcell Pavilion) - Notre Dame, IN



Period 4

Starters:

Penn: 2 KINUM, KATIE; 11 GRASELA, KENDALL; 25 RUSSELL, ASHLEY; 31 PARKER, ELEAH; 50 AGHAYERE, PRINCESS;

Notre Dame: 0 NIXON, JORDAN; 5 YOUNG, JACKIE; 11 TURNER, BRIANNA; 24 OGUNBOWALE, ARIKE; 32 SHEPARD, JESSICA;

Time	VISITORS: Penn	Score	Margin	HOME: Notre Dame
09:06		63-42	H 21	GOOD! 3PTR by OGUNBOWALE, ARIKE
08:33		65-42	H 23	GOOD! LAYUP by VAUGHN, MIKAYLA
08:16	GOOD! LAYUP by RUSSELL, ASHLEY	65-44	H 21	
07:31	GOOD! LAYUP by RUSSELL, ASHLEY	65-46	H 19	
07:21		67-46	H 21	GOOD! LAYUP by SHEPARD, JESSICA
06:42		69-46	H 23	GOOD! LAYUP by YOUNG, JACKIE
06:03		71-46	H 25	GOOD! JUMPER by TURNER, BRIANNA [PNT]
03:27		73-46	H 27	GOOD! JUMPER by YOUNG, JACKIE
02:48	GOOD! 3PTR by RUSSELL, ASHLEY	73-49	H 24	
01:21	GOOD! JUMPER by WELEDJI, SEREENA [PNT]	73-51	H 22	
00:49	GOOD! JUMPER by DALEY, KRISTEN	73-53	H 20	
00:19		75-53	H 22	GOOD! LAYUP by BUTLER, MAUREEN
00:00	GOOD! LAYUP by SUTTLE, KENNEDY	75-55	H 20	

Penn 55, Notre Dame 75

Official Substitutions Log
Penn vs Notre Dame
Period 1
November 13, 2018 at Joyce Center (Purcell Pavilion) - Notre Dame, IN



VISITORS: Penn	Time	Score	HOME: Notre Dame
2 KINUM,KATIE			0 NIXON,JORDAN
11 GRASELA,KENDALL			5 YOUNG,JACKIE
25 RUSSELL,ASHLEY			11 TURNER,BRIANNA
31 PARKER,ELEAH			24 OGUNBOWALE,ARIKE
50 AGHAYERE,PRINCESS			32 SHEPARD,JESSICA
SUB OUT: 2 KINUM,KATIE	06:16	2-6	
SUB IN: 33 STERBA,PHOEBE	06:16		
SUB OUT: 50 AGHAYERE,PRINCESS	06:16		
SUB IN: 4 SUTTLE,KENNEDY	06:16		
	03:26	9-14	SUB OUT: NIXON,JORDAN
	03:26		SUB IN: GILBERT,KATLYN
	01:47	12-14	SUB OUT: GILBERT,KATLYN
	01:47		SUB IN: PROHASKA,ABBY
SUB OUT: 4 SUTTLE,KENNEDY	01:27	13-16	
SUB IN: 24 CRAWFORD,TORI	01:27		
	00:54	13-16	SUB OUT: SHEPARD,JESSICA
	00:54		SUB IN: VAUGHN,MIKAYLA
SUB OUT: 11 GRASELA,KENDALL	00:45	13-16	
SUB IN: 3 JONES,MICHAEL	00:45		
SUB OUT: 24 CRAWFORD,TORI	00:45		
SUB IN: 50 AGHAYERE,PRINCESS	00:45		
SUB OUT: 3 JONES,MICHAEL	00:09	13-16	
SUB IN: 11 GRASELA,KENDALL	00:09		

Penn 13, Notre Dame 16

Official Substitutions Log
Penn vs Notre Dame
Period 2
November 13, 2018 at Joyce Center (Purcell Pavilion) - Notre Dame, IN



VISITORS: Penn	Time	Score	HOME: Notre Dame
2 KINUM, KATIE			0 NIXON, JORDAN
11 GRASELA, KENDALL			5 YOUNG, JACKIE
25 RUSSELL, ASHLEY			11 TURNER, BRIANNA
31 PARKER, ELEAH			24 OGUNBOWALE, ARIKE
50 AGHAYERE, PRINCESS			32 SHEPARD, JESSICA
	07:48	15-22	SUB OUT: TURNER, BRIANNA
	07:48		SUB IN: SHEPARD, JESSICA
	07:48		SUB OUT: PROHASKA, ABBY
	07:48		SUB IN: GILBERT, KATLYN
SUB OUT: 24 CRAWFORD, TORI	07:48		
SUB IN: 21 LAKSTIGALA, MIA	07:48		
SUB OUT: 25 RUSSELL, ASHLEY	07:48		
SUB IN: 50 AGHAYERE, PRINCESS	07:48		
	06:35	18-25	SUB OUT: GILBERT, KATLYN
	06:35		SUB IN: PROHASKA, ABBY
	05:06	20-28	SUB OUT: VAUGHN, MIKAYLA
	05:06		SUB IN: TURNER, BRIANNA
SUB OUT: 31 PARKER, ELEAH	05:06		
SUB IN: 3 JONES, MICHAEL	05:06		
SUB OUT: 21 LAKSTIGALA, MIA	05:06		
SUB IN: 40 ANDERSON, EMILY	05:06		
	03:38	23-29	SUB OUT: PROHASKA, ABBY
	03:38		SUB IN: NIXON, JORDAN
SUB OUT: 40 ANDERSON, EMILY	03:16	23-30	
SUB IN: 31 PARKER, ELEAH	03:16		
SUB OUT: 50 AGHAYERE, PRINCESS	03:12	23-30	
SUB IN: 4 SUTTLE, KENNEDY	03:12		
SUB OUT: 3 JONES, MICHAEL	01:32	25-33	
SUB IN: 25 RUSSELL, ASHLEY	01:32		
	01:22	25-34	SUB OUT: NIXON, JORDAN
	01:22		SUB IN: PROHASKA, ABBY
	00:14	27-37	SUB OUT: PROHASKA, ABBY
	00:14		SUB IN: NIXON, JORDAN
SUB OUT: 31 PARKER, ELEAH	00:14		
SUB IN: 40 ANDERSON, EMILY	00:14		

Penn 27, Notre Dame 39

Official Substitutions Log
Penn vs Notre Dame
Period 3
November 13, 2018 at Joyce Center (Purcell Pavilion) - Notre Dame, IN



VISITORS: Penn	Time	Score	HOME: Notre Dame
2 KINUM,KATIE			0 NIXON,JORDAN
11 GRASELA,KENDALL			5 YOUNG,JACKIE
25 RUSSELL,ASHLEY			11 TURNER,BRIANNA
31 PARKER,ELEAH			24 OGUNBOWALE,ARIKE
50 AGHAYERE,PRINCESS			32 SHEPARD,JESSICA
SUB OUT: 2 KINUM,KATIE	08:08	27-47	
SUB IN: 33 STERBA,PHOEBE	08:08		
SUB OUT: 50 AGHAYERE,PRINCESS	07:12	27-50	
SUB IN: 24 CRAWFORD,TORI	07:12		
SUB OUT: 31 PARKER,ELEAH	06:44	27-50	
SUB IN: 40 ANDERSON,EMILY	06:44		
	06:17	29-50	SUB OUT: YOUNG,JACKIE
	06:17		SUB IN: PROHASKA,ABBY
SUB OUT: 25 RUSSELL,ASHLEY	06:17		
SUB IN: 3 JONES,MICHAEL	06:17		
	05:38	31-52	SUB OUT: SHEPARD,JESSICA
	05:38		SUB IN: COSGROVE,DANIELLE
	04:42	34-56	SUB OUT: NIXON,JORDAN
	04:42		SUB IN: YOUNG,JACKIE
SUB OUT: 40 ANDERSON,EMILY	04:42		
SUB IN: 31 PARKER,ELEAH	04:42		
SUB OUT: 3 JONES,MICHAEL	02:19	37-58	
SUB IN: 40 ANDERSON,EMILY	02:19		
SUB OUT: 31 PARKER,ELEAH	02:19		
SUB IN: 25 RUSSELL,ASHLEY	02:19		
	01:59	39-58	SUB OUT: TURNER,BRIANNA
	01:59		SUB IN: SHEPARD,JESSICA
	00:57	40-60	SUB OUT: COSGROVE,DANIELLE
	00:57		SUB IN: VAUGHN,MIKAYLA
SUB OUT: 25 RUSSELL,ASHLEY	00:02	42-60	
SUB IN: 3 JONES,MICHAEL	00:02		

Penn 42, Notre Dame 60

Official Substitutions Log
Penn vs Notre Dame
Period 4
November 13, 2018 at Joyce Center (Purcell Pavilion) - Notre Dame, IN



VISITORS: Penn	Time	Score	HOME: Notre Dame
2 KINUM,KATIE			0 NIXON,JORDAN
11 GRASELA,KENDALL			5 YOUNG,JACKIE
25 RUSSELL,ASHLEY			11 TURNER,BRIANNA
31 PARKER,ELEAH			24 OGUNBOWALE,ARIKE
50 AGHAYERE,PRINCESS			32 SHEPARD,JESSICA
SUB OUT: 33 STERBA,PHOEBE	07:47	44-65	
SUB IN: 21 LAKSTIGALA,MIA	07:47		
	06:41	46-69	SUB OUT: OGUNBOWALE,ARIKE
	06:41		SUB IN: TURNER,BRIANNA
	06:41		SUB OUT: VAUGHN,MIKAYLA
	06:41		SUB IN: YOUNG,JACKIE
	06:41		SUB OUT: SHEPARD,JESSICA
	06:41		SUB IN: COSGROVE,DANIELLE
SUB OUT: 40 ANDERSON,EMILY	06:18	46-69	
SUB IN: 31 PARKER,ELEAH	06:18		
SUB OUT: 21 LAKSTIGALA,MIA	05:29	46-71	
SUB IN: 33 STERBA,PHOEBE	05:29		
	04:43	46-71	SUB OUT: PROHASKA,ABBY
	04:43		SUB IN: GILBERT,KATLYN
	04:43		SUB OUT: COSGROVE,DANIELLE
	04:43		SUB IN: VAUGHN,MIKAYLA
SUB OUT: 31 PARKER,ELEAH	04:43		
SUB IN: 50 AGHAYERE,PRINCESS	04:43		
SUB OUT: 24 CRAWFORD,TORI	04:43		
SUB IN: 40 ANDERSON,EMILY	04:43		
	03:04	46-73	SUB OUT: TURNER,BRIANNA
	03:04		SUB IN: PATTERSON,DANIELLE
SUB OUT: 50 AGHAYERE,PRINCESS	03:04		
SUB IN: 4 SUTTLE,KENNEDY	03:04		
	02:14	49-73	SUB OUT: YOUNG,JACKIE
	02:14		SUB IN: BENZ,NICOLE
SUB OUT: 11 GRASELA,KENDALL	02:14		
SUB IN: 23 DALEY,KRISTEN	02:14		
SUB OUT: 25 RUSSELL,ASHLEY	02:14		
SUB IN: 3 JONES,MICHAEL	02:14		
SUB OUT: 33 STERBA,PHOEBE	02:14		
SUB IN: 5 WELEDJI,SEREENA	02:14		
SUB OUT: 40 ANDERSON,EMILY	01:30	49-73	
SUB IN: 34 DICINDIO,CHRISSEY	01:30		
	01:15	51-73	SUB OUT: NIXON,JORDAN
	01:15		SUB IN: BUTLER,MAUREEN
SUB OUT: 3 JONES,MICHAEL	00:49	53-73	
SUB IN: 14 HAIR,MEG	00:49		

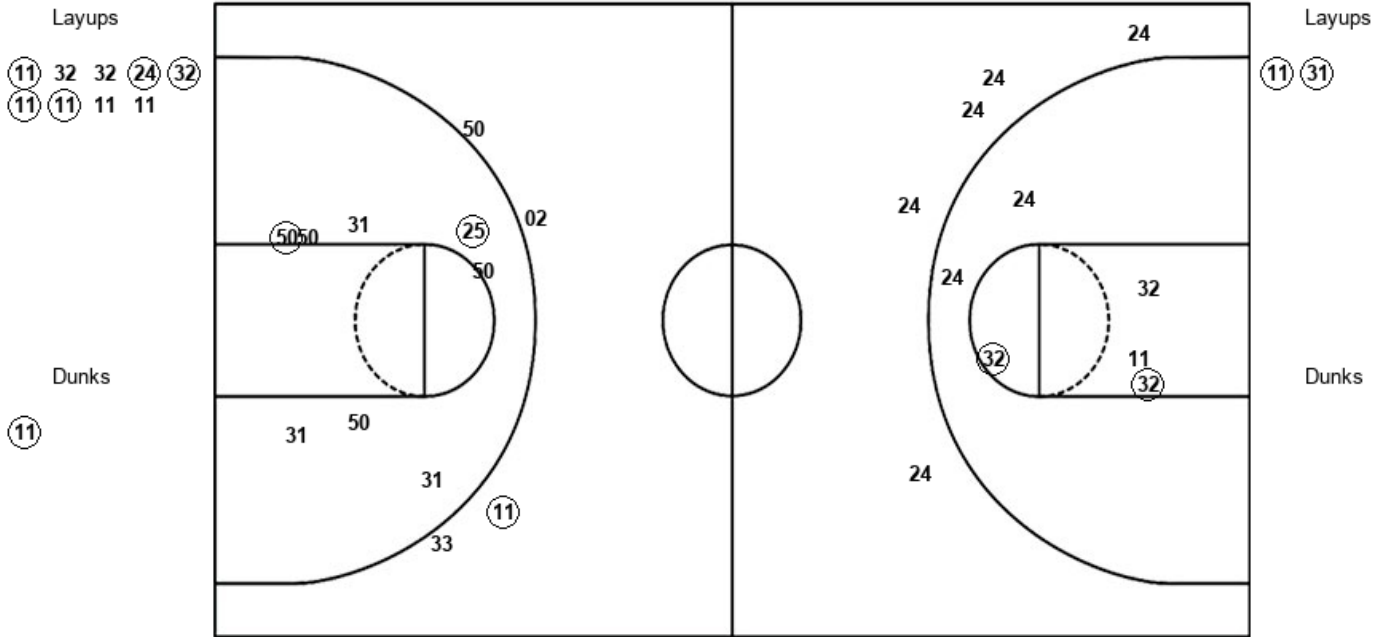
Penn 55, Notre Dame 75

Official Shot Chart
Penn vs Notre Dame
PERIOD 1 Shots
 November 13, 2018 at Joyce Center (Purcell Pavilion) - Notre Dame, IN



Notre Dame

Penn



UND : Period 1	Made	Att	Pct
Layups	5	9	55.6
Dunks	1	1	100.0
2PT Field Goals	8	16	50.0
3PT Field Goals	0	5	00.0
Total Field Goals	8	21	38.1

PEN : Period 1	Made	Att	Pct
Layups	2	2	100.0
Dunks	0	0	0
2PT Field Goals	4	10	40.0
3PT Field Goals	1	4	25.0
Total Field Goals	5	14	35.7

Official Shot Chart
Penn vs Notre Dame
PERIOD 2 Shots
November 13, 2018 at Joyce Center (Purcell Pavilion) - Notre Dame, IN



Notre Dame

Penn

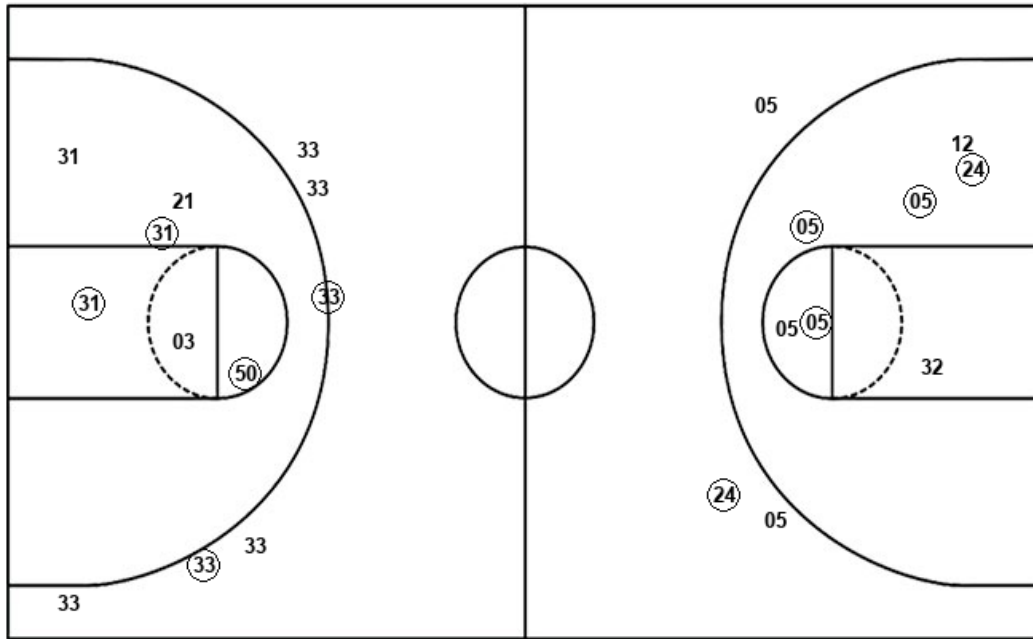
Layups
 (24) 12 (32)

Layups

(33) 11

Dunks

Dunks



UND : Period 2	Made	Att	Pct
Layups	2	3	66.7
Dunks	0	0	0
2PT Field Goals	6	10	60.0
3PT Field Goals	1	3	33.3
Total Field Goals	7	13	53.8

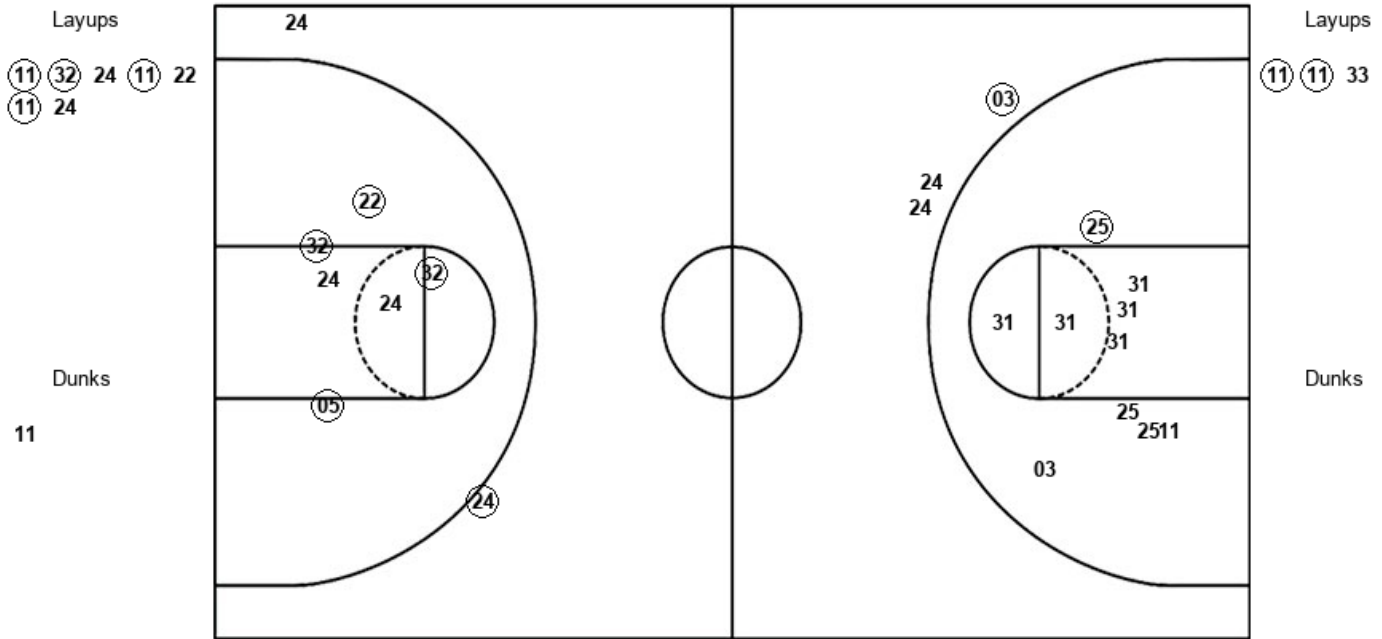
PEN : Period 2	Made	Att	Pct
Layups	1	2	50.0
Dunks	0	0	0
2PT Field Goals	4	8	50.0
3PT Field Goals	2	6	33.3
Total Field Goals	6	14	42.9

Official Shot Chart
Penn vs Notre Dame
PERIOD 3 Shots
 November 13, 2018 at Joyce Center (Purcell Pavilion) - Notre Dame, IN



Notre Dame

Penn



UND : Period 3	Made	Att	Pct
Layups	4	7	57.1
Dunks	0	1	00.0
2PT Field Goals	8	14	57.1
3PT Field Goals	1	2	50.0
Total Field Goals	9	16	56.3

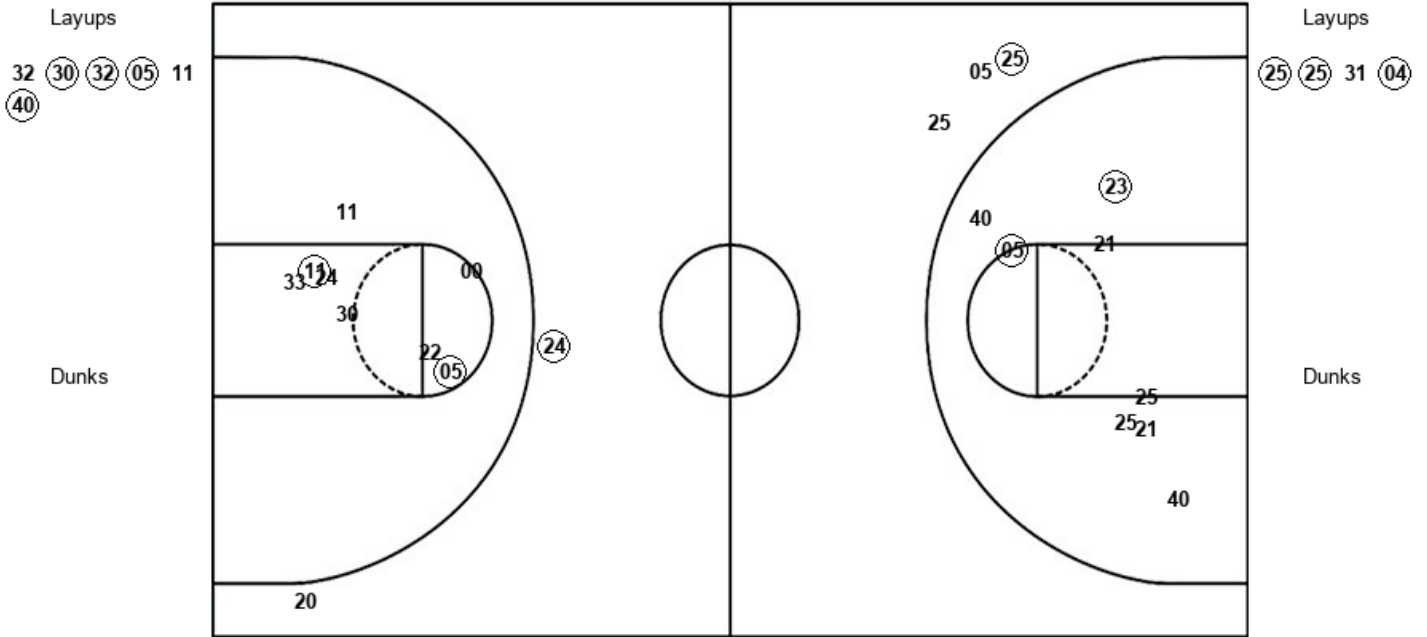
PEN : Period 3	Made	Att	Pct
Layups	2	3	66.7
Dunks	0	0	0
2PT Field Goals	4	14	28.6
3PT Field Goals	0	2	00.0
Total Field Goals	4	16	25.0

Official Shot Chart
Penn vs Notre Dame
PERIOD 4 Shots
 November 13, 2018 at Joyce Center (Purcell Pavilion) - Notre Dame, IN



Notre Dame

Penn



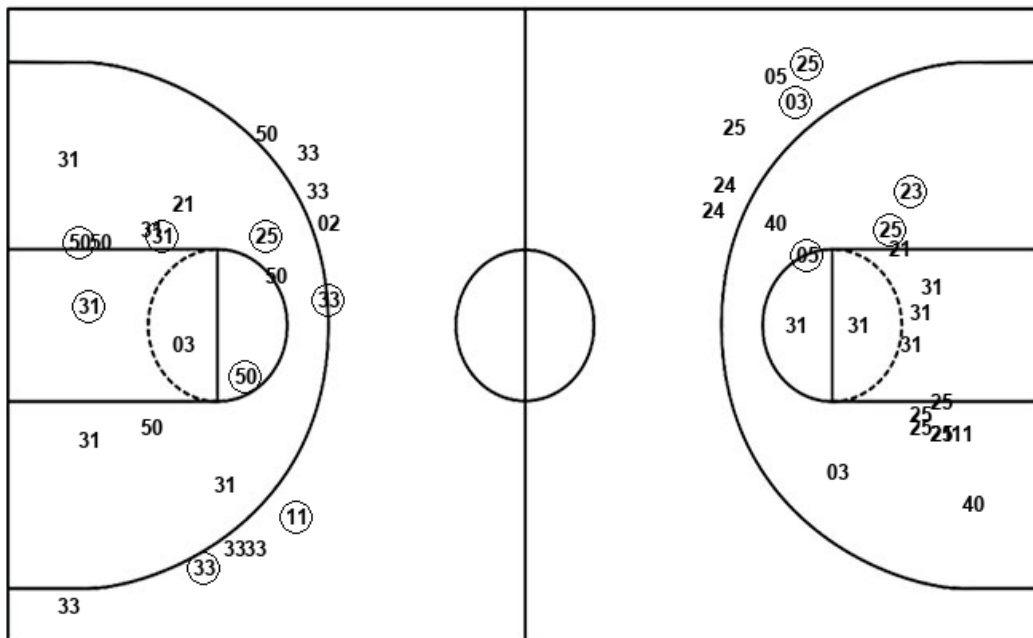
UND : Period 4	Made	Att	Pct
Layups	4	6	66.7
Dunks	0	0	0
2PT Field Goals	6	14	42.9
3PT Field Goals	1	2	50.0
Total Field Goals	7	16	43.8

PEN : Period 4	Made	Att	Pct
Layups	3	4	75.0
Dunks	0	0	0
2PT Field Goals	5	12	41.7
3PT Field Goals	1	3	33.3
Total Field Goals	6	15	40.0

Official Shot Chart
Penn vs Notre Dame
Penn Team Shots
November 13, 2018 at Joyce Center (Purcell Pavilion) - Notre Dame, IN



Layups



Layups

Dunks

Dunks

PEN : Period 1	Made	Att	Pct
Layups	2	2	100.0
Dunks	0	0	0
2PT Field Goals	4	10	40.0
3PT Field Goals	1	4	25.0
Total Field Goals	5	14	35.7

PEN : Period 2	Made	Att	Pct
Layups	1	2	50.0
Dunks	0	0	0
2PT Field Goals	4	8	50.0
3PT Field Goals	2	6	33.3
Total Field Goals	6	14	42.9

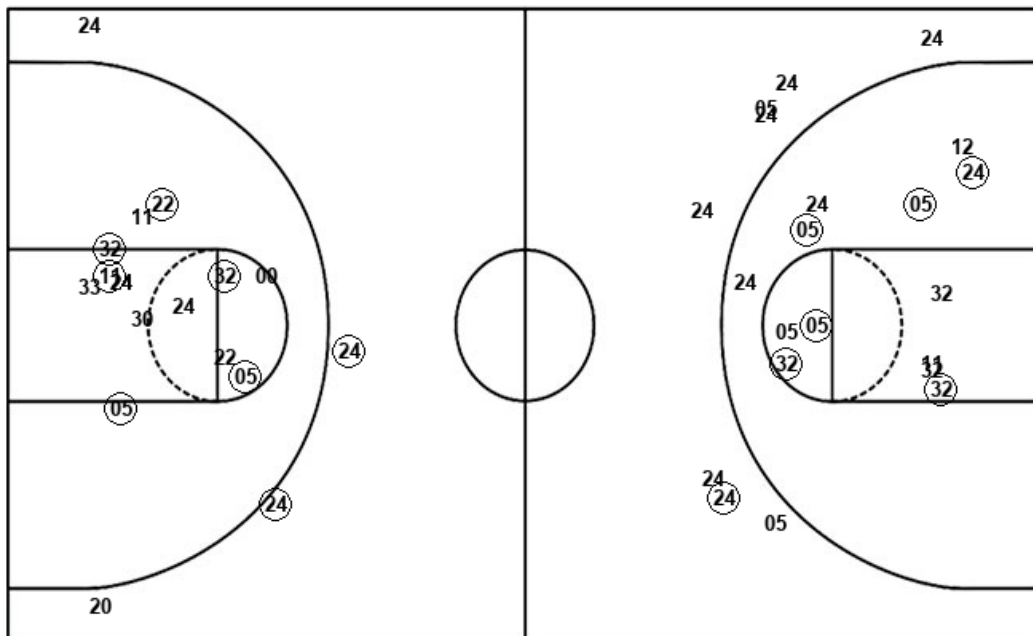
PEN : Period 3	Made	Att	Pct
Layups	2	3	66.7
Dunks	0	0	0
2PT Field Goals	4	14	28.6
3PT Field Goals	0	2	00.0
Total Field Goals	4	16	25.0

PEN : Period 4	Made	Att	Pct
Layups	3	4	75.0
Dunks	0	0	0
2PT Field Goals	5	12	41.7
3PT Field Goals	1	3	33.3
Total Field Goals	6	15	40.0

Official Shot Chart
Penn vs Notre Dame
Notre Dame Team Shots
 November 13, 2018 at Joyce Center (Purcell Pavilion) - Notre Dame, IN



Layups



Layups

- (11) 32 32 (24) (32)
- (11) (11) 11 11 (24)
- 12 (32) (11) (32) 24
- (11) 22 (11) 24 32
- (30) (32) (05) 11 (40)

Dunks

Dunks

- (11) 11

UND : Period 1	Made	Att	Pct
Layups	5	9	55.6
Dunks	1	1	100.0
2PT Field Goals	8	16	50.0
3PT Field Goals	0	5	00.0
Total Field Goals	8	21	38.1

UND : Period 2	Made	Att	Pct
Layups	2	3	66.7
Dunks	0	0	0
2PT Field Goals	6	10	60.0
3PT Field Goals	1	3	33.3
Total Field Goals	7	13	53.8

UND : Period 3	Made	Att	Pct
Layups	4	7	57.1
Dunks	0	1	00.0
2PT Field Goals	8	14	57.1
3PT Field Goals	1	2	50.0
Total Field Goals	9	16	56.3

UND : Period 4	Made	Att	Pct
Layups	4	6	66.7
Dunks	0	0	0
2PT Field Goals	6	14	42.9
3PT Field Goals	1	2	50.0
Total Field Goals	7	16	43.8