

## FINAL SCORE



**Iona**

**52**



**Monmouth**

**51**

February 16, 2019 • OceanFirst Bank Center - West Long Branch,  
NJ

## FINAL STATISTICS

**Official Box Score**  
**Iona vs Monmouth**  
**Game Totals -- Final Statistics**  
**February 16, 2019 at OceanFirst Bank Center - West Long Branch, NJ**

**Iona 52**

No.	Player	S	Pts	FG	3FG	FT	OR	DR	TR	PF	A	TO	Blk	Stl	Min	+/-
05	Mwai, Shyan		5	2-13	1-3	0-2	0	4	4	4	1	3	0	3	40	1
14	Rachu, Morgan		7	1-5	1-5	4-4	2	3	5	1	3	1	0	1	40	1
21	Joseph, Gabrielle		0	0-2	0-0	0-0	0	0	0	3	1	0	0	2	8	7
22	Camilion, Juana		11	4-10	1-2	2-2	1	4	5	4	2	4	0	4	31	10
33	Lesko, Tori		9	2-5	0-1	5-10	2	2	4	4	2	4	0	2	26	9
03	Barefield, Monica		13	5-11	3-6	0-0	0	3	3	2	2	2	0	1	33	-5
04	Martin, Ashley		0	0-0	0-0	0-0	0	0	0	0	0	0	0	0	0	0
24	Middlebrooks, Shayla		5	2-2	1-1	0-0	0	0	0	2	0	1	0	1	13	-7
44	Ramil, Jodi-Marie		2	1-2	0-0	0-0	0	0	0	3	0	1	2	0	8	-11
	Team						4	0	4	0		0				
<b>TOTALS</b>			<b>52</b>	<b>17-50</b>	<b>7-18</b>	<b>11-18</b>	<b>9</b>	<b>16</b>	<b>25</b>	<b>23</b>	<b>11</b>	<b>16</b>	<b>2</b>	<b>14</b>	<b>200</b>	

*Shooting By Period*

Period	FG	FG%	3FG	3FG%	FT	FT%
1st Qtr	5-14	36%	3-5	60%	3-4	75%
2nd Qtr	4-11	36%	3-6	50%	1-2	50%
3rd Qtr	5-12	42%	1-5	20%	3-4	75%
4th Qtr	3-13	23%	0-2	00%	4-8	50%
1st Half	9-25	36%	6-11	55%	4-6	67%
2nd Half	8-25	32%	1-7	14%	7-12	58%
<b>Game</b>	<b>17-50</b>	<b>34.0%</b>	<b>7-18</b>	<b>38.9%</b>	<b>11-18</b>	<b>61.1%</b>

Last FG: 4th-00:02  
 Biggest Run: 7-0  
 Largest lead: By 7 at 3-07:21  
 Technical Fouls: None.

**Monmouth 51**

No.	Player	S	Pts	FG	3FG	FT	OR	DR	TR	PF	A	TO	Blk	Stl	Min	+/-
02	Wallace, Alexa		2	0-0	0-0	2-2	0	2	2	2	1	2	0	0	26	0
04	Green, Sierra		8	2-10	2-8	2-2	1	1	2	0	0	5	0	1	21	11
20	Barker, Mckinzee		5	2-5	0-0	1-2	2	4	6	1	5	4	0	0	37	-3
22	Middleton, Alexa		16	4-8	0-0	8-10	5	5	10	4	0	2	2	0	29	-5
25	Thomas, Lucy		6	2-7	0-2	2-4	2	2	4	2	0	2	2	1	20	-3
01	Zelaya, Adriana		0	0-0	0-0	0-0	0	0	0	0	0	0	0	0	4	-1
03	Graham, Rosa		3	0-3	0-0	3-4	1	0	1	1	0	2	1	1	12	-8
15	Clough, Emani		4	1-4	0-0	2-4	0	1	1	4	1	5	0	0	12	-3
23	Simmons, Allure		0	0-0	0-0	0-0	1	0	1	3	1	5	0	3	12	0
24	Balman, Erica		4	2-5	0-0	0-0	0	2	2	0	0	0	1	0	6	1
32	Nason, Taylor		3	1-1	0-0	1-2	3	5	8	3	0	0	0	1	22	6
	Team						4	5	9	0		0				
<b>TOTALS</b>			<b>51</b>	<b>14-43</b>	<b>2-10</b>	<b>21-30</b>	<b>19</b>	<b>27</b>	<b>46</b>	<b>20</b>	<b>8</b>	<b>27</b>	<b>6</b>	<b>7</b>	<b>200</b>	

*Shooting By Period*

Period	FG	FG%	3FG	3FG%	FT	FT%
1st Qtr	4-10	40%	0-1	00%	5-6	83%
2nd Qtr	3-12	25%	0-3	00%	7-10	70%
3rd Qtr	5-12	42%	2-4	50%	8-10	80%
4th Qtr	2-9	22%	0-2	00%	1-4	25%
1st Half	7-22	32%	0-4	00%	12-16	75%
2nd Half	7-21	33%	2-6	33%	9-14	64%
<b>Game</b>	<b>14-43</b>	<b>32.6%</b>	<b>2-10</b>	<b>20.0%</b>	<b>21-30</b>	<b>70.0%</b>

Last FG: 4th-02:00  
 Biggest Run: 12-0  
 Largest lead: By 7 at 3-01:16  
 Technical Fouls: #15 CLOUGH @ 3rd - 02:09;

Game Notes:

Officials: Shannon Feck, Keith Miller, Anthony Reddin  
 Attendance: 355

Start Time: 2019-02-16 00:03:06  
 End Time: 2019-02-16 02:15:56  
 Game Duration: 132  
 Conference Game;

Score	1st	2nd	3rd	4th	TOT
ION	16	12	14	10	52
MON	13	13	20	5	51

ION led for 23:59. MON led for 14:42.  
 Game was tied for 1:18.  
 Times tied: 0      Lead Changes: 3

Points from	ION	MON
In the Paint	12	20
Off Turns	19	9
2nd Chance	5	16
Fast Break	2	2
Bench	20	14

**Official Box Score**  
**Iona vs Monmouth**  
**First Half Statistics Only**  
**February 16, 2019 at OceanFirst Bank Center - West Long Branch, NJ**

**Iona 28**

No.	Player	S	Pts	FG	3FG	FT	OR	DR	TR	PF	A	TO	Blk	Stl	Min	+/-
14	Rachu, Morgan		5	1-3	1-3	2-2	0	3	3	1	2	1	0	1	20	2
21	Joseph, Gabrielle		0	0-2	0-0	0-0	0	0	0	2	1	0	0	1	6	5
22	Camilion, Juana		3	1-2	1-1	0-0	0	0	0	2	1	1	0	2	15	4
24	Middlebrooks, Shayla		5	2-2	1-1	0-0	0	0	0	1	0	1	0	0	8	-2
33	Lesko, Tori		2	0-1	0-0	2-4	0	1	1	2	1	2	0	1	10	3
44	Ramil, Jodi-Marie		2	1-1	0-0	0-0	0	0	0	2	0	1	1	0	5	-4
03	Barefield, Monica		8	3-6	2-4	0-0	0	1	1	0	2	0	0	1	16	0
04	Martin, Ashley		0	0-0	0-0	0-0	0	0	0	0	0	0	0	0	0	0
05	Mwai, Shyan		3	1-8	1-2	0-0	0	3	3	1	0	1	0	1	20	2
	Team		0	0-0	0-0	0-0	3	0	3	0	0	0	0	0	0	0
<b>TOTALS</b>			<b>28</b>	<b>9-25</b>	<b>6-11</b>	<b>4-6</b>	<b>3</b>	<b>8</b>	<b>11</b>	<b>11</b>	<b>7</b>	<b>7</b>	<b>1</b>	<b>7</b>	<b>100</b>	

*Shooting By Period*

Period	FG	FG%	3FG	3FG%	FT	FT%
1st Qtr	5-14	36%	3-5	60%	3-4	75%
2nd Qtr	4-11	36%	3-6	50%	1-2	50%
1st Half	9-25	36%	6-11	55%	4-6	67%
Game	17-50	34.0%	7-18	38.9%	11-18	61.1%

*Last FG Half: ION 2nd-04:38*

**Monmouth 26**

No.	Player	S	Pts	FG	3FG	FT	OR	DR	TR	PF	A	TO	Blk	Stl	Min	+/-
01	Zelaya, Adriana		0	0-0	0-0	0-0	0	0	0	0	0	0	0	0	4	-1
02	Wallace, Alexa		2	0-0	0-0	2-2	0	2	2	1	1	1	0	0	12	-3
03	Graham, Rosa		3	0-3	0-0	3-4	1	0	1	0	0	1	1	1	8	-8
04	Green, Sierra		0	0-4	0-3	0-0	0	0	0	0	0	3	0	1	10	2
15	Clough, Emani		2	0-2	0-0	2-2	0	1	1	2	1	2	0	0	6	2
20	Barker, Mckinzee		2	1-1	0-0	0-0	1	1	2	1	2	2	0	0	19	-4
22	Middleton, Alexa		7	2-4	0-0	3-4	3	2	5	2	0	1	1	0	13	-6
23	Simmons, Allure		0	0-0	0-0	0-0	1	0	1	2	1	2	0	2	7	5
24	Balman, Erica		4	2-3	0-0	0-0	0	0	0	0	0	0	0	0	4	3
25	Thomas, Lucy		3	1-4	0-1	1-2	0	2	2	0	0	1	1	1	10	-3
32	Nason, Taylor		3	1-1	0-0	1-2	2	3	5	1	0	0	0	0	9	3
	Team		0	0-0	0-0	0-0	2	4	6	0	0	0	0	0	0	0
<b>TOTALS</b>			<b>26</b>	<b>7-22</b>	<b>0-4</b>	<b>12-16</b>	<b>10</b>	<b>15</b>	<b>25</b>	<b>9</b>	<b>5</b>	<b>13</b>	<b>3</b>	<b>5</b>	<b>100</b>	

*Shooting By Period*

Period	FG	FG%	3FG	3FG%	FT	FT%
1st Qtr	4-10	40%	0-1	00%	5-6	83%
2nd Qtr	3-12	25%	0-3	00%	7-10	70%
1st Half	7-22	32%	0-4	00%	12-16	75%
Game	14-43	32.6%	2-10	20.0%	21-30	70.0%

*Last FG Half: MON 2nd-01:41*

Game Notes:

Officials: **Shannon Feck, Keith Miller, Anthony Reddin**  
Attendance: **355**

Start Time: **2019-02-16 00:03:06**  
End Time: **2019-02-16 02:15:56**  
Game Duration: **132**  
Conference Game;

Score	1st	2nd	3rd	4th	TOT
ION	16	12	14	10	<b>52</b>
MON	13	13	20	5	<b>51</b>

Points from (This Period)	ION	MON
In the Paint	2	12
Off Turns	9	4
2nd Chance	3	6
Fast Break	0	2
Bench	15	12

**Official Box Score**  
**Iona vs Monmouth**  
**First Quarter Statistics Only**  
**February 16, 2019 at OceanFirst Bank Center - West Long Branch, NJ**

**Iona 16**

No.	Player	S	Pts	FG	3FG	FT	OR	DR	TR	PF	A	TO	Blk	Stl	Min	+/-
05	Mwai, Shyan		3	1-4	1-1	0-0	0	0	0	1	0	1	0	0	10	3
14	Rachu, Morgan		5	1-2	1-2	2-2	0	1	1	0	0	1	0	1	10	3
21	Joseph, Gabrielle		0	0-2	0-0	0-0	0	0	0	1	1	0	0	1	6	3
22	Camilion, Juana		3	1-2	1-1	0-0	0	0	0	1	0	1	0	2	10	3
33	Lesko, Tori		1	0-1	0-0	1-2	0	1	1	2	0	2	0	1	5	5
03	Barefield, Monica		2	1-2	0-1	0-0	0	1	1	0	2	0	0	0	6	1
04	Martin, Ashley		0	0-0	0-0	0-0	0	0	0	0	0	0	0	0	0	0
24	Middlebrooks, Shayla		0	0-0	0-0	0-0	0	0	0	0	0	0	0	0	0	0
44	Ramil, Jodi-Marie		2	1-1	0-0	0-0	0	0	0	0	0	0	0	0	3	-3
	Team						3	0	3	0		0				
<b>TOTALS</b>			<b>16</b>	<b>5-14</b>	<b>3-5</b>	<b>3-4</b>	<b>3</b>	<b>3</b>	<b>6</b>	<b>5</b>	<b>3</b>	<b>5</b>	<b>0</b>	<b>5</b>	<b>50</b>	

*Shooting By Period*

Period	FG	FG%	3FG	3FG%	FT	FT%
1st Qtr	5-14	36%	3-5	60%	3-4	75%
2nd Qtr	4-11	36%	3-6	50%	1-2	50%
1st Half	5-14	36%	3-5	60%	3-4	75%
1st Half	9-25	36%	6-11	55%	4-6	67%
Game	17-50	34.0%	7-18	38.9%	11-18	61.1%

**Monmouth 13**

No.	Player	S	Pts	FG	3FG	FT	OR	DR	TR	PF	A	TO	Blk	Stl	Min	+/-
02	Wallace, Alexa		2	0-0	0-0	2-2	0	0	0	1	0	0	0	0	3	-3
04	Green, Sierra		0	0-1	0-1	0-0	0	0	0	0	0	3	0	1	5	-1
20	Barker, Mckinzee		2	1-1	0-0	0-0	0	1	1	0	1	1	0	0	9	-4
22	Middleton, Alexa		2	1-1	0-0	0-0	1	1	2	1	0	0	1	0	6	-7
25	Thomas, Lucy		1	0-1	0-0	1-2	0	1	1	0	0	1	0	1	6	-3
01	Zelaya, Adriana		0	0-0	0-0	0-0	0	0	0	0	0	0	0	0	0	0
03	Graham, Rosa		0	0-2	0-0	0-0	0	0	0	0	0	1	1	1	5	-4
15	Clough, Emani		2	0-1	0-0	2-2	0	1	1	0	1	1	0	0	4	0
23	Simmons, Allure		0	0-0	0-0	0-0	1	0	1	1	1	2	0	1	5	3
24	Balman, Erica		4	2-3	0-0	0-0	0	0	0	0	0	0	0	0	3	3
32	Nason, Taylor		0	0-0	0-0	0-0	2	1	3	0	0	0	0	0	5	1
	Team						0	2	2	0		0				
<b>TOTALS</b>			<b>13</b>	<b>4-10</b>	<b>0-1</b>	<b>5-6</b>	<b>4</b>	<b>7</b>	<b>11</b>	<b>3</b>	<b>3</b>	<b>9</b>	<b>2</b>	<b>4</b>	<b>50</b>	

*Shooting By Period*

Period	FG	FG%	3FG	3FG%	FT	FT%
1st Qtr	4-10	40%	0-1	00%	5-6	83%
2nd Qtr	3-12	25%	0-3	00%	7-10	70%
1st Half	4-10	40%	0-1	00%	5-6	83%
1st Half	7-22	32%	0-4	00%	12-16	75%
Game	14-43	32.6%	2-10	20.0%	21-30	70.0%

Game Notes:

Officials: Shannon Feck, Keith Miller, Anthony Reddin  
Attendance: 355

Start Time: 2019-02-16 00:03:06  
End Time: 2019-02-16 02:15:56  
Game Duration: 132  
Conference Game:

Score	1st	2nd	3rd	4th	TOT
ION	16	12	14	10	<b>52</b>
MON	13	13	20	5	<b>51</b>

Points from (This Period)	ION	MON
In the Paint	2	6
Off Turns	9	0
2nd Chance	3	1
Fast Break	0	0
Bench	4	6

**Official Play-By-Play**  
**Iona vs Monmouth**  
**First Quarter**  
**February 16, 2019 at OceanFirst Bank Center - West Long Branch, NJ**

**Period 1**

**Starters:**

**Iona:** 14 RACHU,MORGAN; 21 JOSEPH,GABRIELLE; 22 CAMLION,JUANA; 33 LESKO,TORI; 5 MWAI,SHYAN;

**Monmouth:** 2 WALLACE,ALEXA; 4 GREEN,SIERRA; 20 BARKER,MCKINZEE; 22 MIDDLETON,ALEXA; 25 THOMAS,LUCY;

Time	VISITORS: Iona	Score	Margin	HOME: Monmouth
09:48				MISSED JUMPER by THOMAS,LUCY
09:44				REBOUND (OFF) by MIDDLETON,ALEXA
09:27				TURNOVER (BADPASS) by THOMAS,LUCY
09:27	STEAL by JOSEPH,GABRIELLE			
09:21	TURNOVER (BADPASS) by LESKO,TORI			
09:21				STEAL by THOMAS,LUCY
09:14				TURNOVER (BADPASS) by GREEN,SIERRA
09:14	STEAL by RACHU,MORGAN			
09:02	MISSED LAYUP by LESKO,TORI			
09:02				REBOUND (DEF) by TEAM
08:42	FOUL (PERSONAL) by MWAI,SHYAN			
08:42		1-0	H 1	GOOD! FT by WALLACE,ALEXA
08:42		2-0	H 2	GOOD! FT by WALLACE,ALEXA
08:19	MISSED LAYUP by JOSEPH,GABRIELLE			
08:19				BLOCK by MIDDLETON,ALEXA
08:18	REBOUND (OFF) by TEAM			
08:14	GOOD! 3PTR by RACHU,MORGAN	2-3	V 1	
08:14	ASSIST by JOSEPH,GABRIELLE			
07:55	FOUL (PERSONAL) by JOSEPH,GABRIELLE			
07:55				TURNOVER (BADPASS) by BARKER,MCKINZEE
07:55	STEAL by LESKO,TORI			
07:33				FOUL (PERSONAL) by WALLACE,ALEXA
07:33	GOOD! FT by LESKO,TORI	2-4	V 2	
07:33				SUB OUT: WALLACE,ALEXA
07:33				SUB IN: GRAHAM,ROSA
07:33	MISSED FT by LESKO,TORI			
07:30				REBOUND (DEF) by MIDDLETON,ALEXA
07:13				MISSED JUMPER by GRAHAM,ROSA
07:11	REBOUND (DEF) by LESKO,TORI			
06:53	TURNOVER (LOSTBALL) by LESKO,TORI			
06:43				TURNOVER (BADPASS) by GREEN,SIERRA
06:43	STEAL by CAMLION,JUANA			
06:39	TURNOVER (BADPASS) by MWAI,SHYAN			
06:39				STEAL by GREEN,SIERRA
06:24				TURNOVER (BADPASS) by GREEN,SIERRA
06:24				SUB OUT: GREEN,SIERRA
06:24				SUB IN: CLOUGH,EMANI
06:24	SUB OUT: JOSEPH,GABRIELLE			
06:24	SUB IN: BAREFIELD,MONICA			
06:11	GOOD! 3PTR by CAMLION,JUANA	2-7	V 5	
06:11	ASSIST by BAREFIELD,MONICA			
05:54				MISSED JUMPER by CLOUGH,EMANI
05:49	REBOUND (DEF) by RACHU,MORGAN			
05:46	MISSED LAYUP by CAMLION,JUANA			
05:41				REBOUND (DEF) by CLOUGH,EMANI
05:36				TURNOVER (LOSTBALL) by CLOUGH,EMANI
05:36				SUB OUT: CLOUGH,EMANI
05:36				SUB IN: NASON,TAYLOR
05:36				SUB OUT: BARKER,MCKINZEE
05:36				SUB IN: GREEN,SIERRA
05:36				SUB OUT: MIDDLETON,ALEXA
05:36				SUB IN: SIMMONS,ALLURE
05:13	MISSED JUMPER by MWAI,SHYAN			
05:10				REBOUND (DEF) by THOMAS,LUCY
05:07				MISSED 3PTR by GREEN,SIERRA
05:03				REBOUND (OFF) by SIMMONS,ALLURE
05:03	FOUL (PERSONAL) by LESKO,TORI			
04:59	FOUL (PERSONAL) by LESKO,TORI			
04:59				
04:59	SUB OUT: LESKO,TORI			
04:59	SUB IN: JOSEPH,GABRIELLE			
04:59		3-7	V 4	GOOD! FT by THOMAS,LUCY
04:59				MISSED FT by THOMAS,LUCY
04:57				REBOUND (OFF) by NASON,TAYLOR
04:51				MISSED LAYUP by GRAHAM,ROSA
04:48				REBOUND (OFF) by NASON,TAYLOR
04:43				FOUL (OFF) by SIMMONS,ALLURE
04:43				TURNOVER (OFFENSIVE) by SIMMONS,ALLURE
04:27	MISSED LAYUP by MWAI,SHYAN			
04:27				BLOCK by GRAHAM,ROSA
04:27	REBOUND (OFF) by TEAM			
04:16	MISSED JUMPER by JOSEPH,GABRIELLE			
04:15	REBOUND (OFF) by TEAM			
04:15				SUB OUT: GREEN,SIERRA
04:15				SUB IN: BARKER,MCKINZEE
04:15				SUB OUT: THOMAS,LUCY

Time	VISITORS: Iona	Score	Margin	HOME: Monmouth
04:15				SUB IN: MIDDLETON,ALEXA
04:12	TURNOVER (BADPASS) by CAMILION,JUANA			
04:12				STEAL by SIMMONS,ALLURE
04:12				TURNOVER (TRAVEL) by SIMMONS,ALLURE
04:03	GOOD! 3PTR by MWAI,SHYAN	3-10	V 7	
04:03	ASSIST by BAREFIELD,MONICA			
03:48		5-10	V 5	GOOD! LAYUP by MIDDLETON,ALEXA
03:48				ASSIST by BARKER,MCKINZEE
03:31	TURNOVER (LOSTBALL) by RACHU,MORGAN			
03:31				STEAL by GRAHAM,ROSA
03:10				TURNOVER (LOSTBALL) by GRAHAM,ROSA
03:10	STEAL by CAMILION,JUANA			
02:50				FOUL (PERSONAL) by MIDDLETON,ALEXA
02:50	GOOD! FT by RACHU,MORGAN	5-11	V 6	
02:50				SUB OUT: GRAHAM,ROSA
02:50				SUB IN: BALMAN,ERICA
02:50				SUB OUT: MIDDLETON,ALEXA
02:50				SUB IN: THOMAS,LUCY
02:50				SUB OUT: NASON,TAYLOR
02:50				SUB IN: CLOUGH,EMANI
02:50	SUB OUT: JOSEPH,GABRIELLE			
02:50	SUB IN: RAMIL,JODI-MARIE			
02:50	GOOD! FT by RACHU,MORGAN	5-12	V 7	
02:35		7-12	V 5	GOOD! LAYUP by BALMAN,ERICA [PNT]
02:35				ASSIST by SIMMONS,ALLURE
02:26	MISSED LAYUP by MWAI,SHYAN			
02:24				REBOUND (DEF) by TEAM
02:24				SUB OUT: THOMAS,LUCY
02:24				SUB IN: NASON,TAYLOR
02:08				MISSED JUMPER by BALMAN,ERICA
02:05	REBOUND (DEF) by BAREFIELD,MONICA			
01:56	MISSED 3PTR by BAREFIELD,MONICA			
01:50				REBOUND (DEF) by BARKER,MCKINZEE
01:43		9-12	V 3	GOOD! LAYUP by BALMAN,ERICA
01:43				ASSIST by CLOUGH,EMANI
01:18	MISSED 3PTR by RACHU,MORGAN			
01:14				REBOUND (DEF) by NASON,TAYLOR
01:00	FOUL (PERSONAL) by CAMILION,JUANA			
01:00		10-12	V 2	GOOD! FT by CLOUGH,EMANI
01:00				SUB OUT: SIMMONS,ALLURE
01:00				SUB IN: WALLACE,ALEXA
01:00		11-12	V 1	GOOD! FT by CLOUGH,EMANI
00:41	GOOD! JUMPER by BAREFIELD,MONICA	11-14	V 3	
00:22		13-14	V 1	GOOD! JUMPER by BARKER,MCKINZEE
00:00	GOOD! JUMPER by RAMIL,JODI-MARIE [PNT]	13-16	V 3	

### Iona 16, Monmouth 13

Points from (This Period)	ION	MON
In the Paint	2	6
Off Turns	9	0
2nd Chance	3	1
Fast Break	0	0
Bench	4	6

**Official Box Score**  
**Iona vs Monmouth**  
**Second Quarter Statistics Only**  
**February 16, 2019 at OceanFirst Bank Center - West Long Branch, NJ**

**Iona 12**

No.	Player	S	Pts	FG	3FG	FT	OR	DR	TR	PF	A	TO	Blk	Stl	Min	+/-
05	Mwai, Shyan		0	0-4	0-1	0-0	0	3	3	0	0	0	0	1	10	-1
14	Rachu, Morgan		0	0-1	0-1	0-0	0	2	2	1	2	0	0	0	10	-1
21	Joseph, Gabrielle		0	0-0	0-0	0-0	0	0	0	1	0	0	0	0	0	2
22	Camilion, Juana		0	0-0	0-0	0-0	0	0	0	1	1	0	0	0	5	1
33	Lesko, Tori		1	0-0	0-0	1-2	0	0	0	0	1	0	0	0	5	-2
03	Barefield, Monica		6	2-4	2-3	0-0	0	0	0	0	0	0	0	1	10	-1
04	Martin, Ashley		0	0-0	0-0	0-0	0	0	0	0	0	0	0	0	0	0
24	Middlebrooks, Shayla		5	2-2	1-1	0-0	0	0	0	1	0	1	0	0	8	-2
44	Ramil, Jodi-Marie		0	0-0	0-0	0-0	0	0	0	2	0	1	1	0	2	-1
	Team						0	0	0	0		0				
<b>TOTALS</b>			<b>12</b>	<b>4-11</b>	<b>3-6</b>	<b>1-2</b>	<b>0</b>	<b>5</b>	<b>5</b>	<b>6</b>	<b>4</b>	<b>2</b>	<b>1</b>	<b>2</b>	<b>50</b>	

*Shooting By Period*

Period	FG	FG%	3FG	3FG%	FT	FT%
3rd Qtr	5-12	42%	1-5	20%	3-4	75%
4th Qtr	3-13	23%	0-2	00%	4-8	50%
2nd Half	4-11	36%	3-6	50%	1-2	50%
2nd Half	8-25	32%	1-7	14%	7-12	58%
Game	17-50	34.0%	7-18	38.9%	11-18	61.1%

**Monmouth 13**

No.	Player	S	Pts	FG	3FG	FT	OR	DR	TR	PF	A	TO	Blk	Stl	Min	+/-
02	Wallace, Alexa		0	0-0	0-0	0-0	0	2	2	0	1	1	0	0	9	0
04	Green, Sierra		0	0-3	0-2	0-0	0	0	0	0	0	0	0	0	5	3
20	Barker, Mckinzee		0	0-0	0-0	0-0	1	0	1	1	1	1	0	0	10	0
22	Middleton, Alexa		5	1-3	0-0	3-4	2	1	3	1	0	1	0	0	7	1
25	Thomas, Lucy		2	1-3	0-1	0-0	0	1	1	0	0	0	1	0	4	0
01	Zelaya, Adriana		0	0-0	0-0	0-0	0	0	0	0	0	0	0	0	4	-1
03	Graham, Rosa		3	0-1	0-0	3-4	1	0	1	0	0	0	0	0	3	-4
15	Clough, Emani		0	0-1	0-0	0-0	0	0	0	2	0	1	0	0	2	2
23	Simmons, Allure		0	0-0	0-0	0-0	0	0	0	1	0	0	0	1	2	2
24	Balman, Erica		0	0-0	0-0	0-0	0	0	0	0	0	0	0	0	1	0
32	Nason, Taylor		3	1-1	0-0	1-2	0	2	2	1	0	0	0	0	4	2
	Team						2	2	4	0		0				
<b>TOTALS</b>			<b>13</b>	<b>3-12</b>	<b>0-3</b>	<b>7-10</b>	<b>6</b>	<b>8</b>	<b>14</b>	<b>6</b>	<b>2</b>	<b>4</b>	<b>1</b>	<b>1</b>	<b>50</b>	

*Shooting By Period*

Period	FG	FG%	3FG	3FG%	FT	FT%
3rd Qtr	5-12	42%	2-4	50%	8-10	80%
4th Qtr	2-9	22%	0-2	00%	1-4	25%
2nd Half	3-12	25%	0-3	00%	7-10	70%
2nd Half	7-21	33%	2-6	33%	9-14	64%
Game	14-43	32.6%	2-10	20.0%	21-30	70.0%

Game Notes:

Officials: Shannon Feck, Keith Miller, Anthony Reddin  
Attendance: 355

Start Time: 2019-02-16 00:03:06  
End Time: 2019-02-16 02:15:56  
Game Duration: 132  
Conference Game:

Score	1st	2nd	3rd	4th	TOT
ION	16	12	14	10	<b>52</b>
MON	13	13	20	5	<b>51</b>

Points from (This Period)	ION	MON
In the Paint	0	6
Off Turns	0	4
2nd Chance	0	5
Fast Break	0	2
Bench	11	6

**Official Play-By-Play**  
**Iona vs Monmouth**  
**Second Quarter**  
**February 16, 2019 at OceanFirst Bank Center - West Long Branch, NJ**

**Period 2**

**Starters:**

**Iona:** 14 RACHU,MORGAN; 21 JOSEPH,GABRIELLE; 22 CAMLION,JUANA; 33 LESKO,TORI; 5 MWAI,SHYAN;

**Monmouth:** 2 WALLACE,ALEXA; 4 GREEN,SIERRA; 20 BARKER,MCKINZEE; 22 MIDDLETON,ALEXA; 25 THOMAS,LUCY;

Time	VISITORS: Iona	Score	Margin	HOME: Monmouth
09:32				MISSED LAYUP by THOMAS,LUCY
09:28				REBOUND (OFF) by BARKER,MCKINZEE
09:04				TURNOVER (BADPASS) by BARKER,MCKINZEE
09:04	STEAL by MWAI,SHYAN			
08:41	FOUL (OFF) by RAMIL,JODI-MARIE			
08:41	TURNOVER (OFFENSIVE) by RAMIL,JODI-MARIE			
08:41				SUB OUT: GREEN,SIERRA
08:41				SUB IN: CLOUGH,EMANI
08:41				SUB OUT: BARKER,MCKINZEE
08:41				SUB IN: SIMMONS,ALLURE
08:16				MISSED LAYUP by MIDDLETON,ALEXA
08:16	BLOCK by RAMIL,JODI-MARIE			
08:16				REBOUND (OFF) by TEAM
08:16	FOUL (PERSONAL) by RAMIL,JODI-MARIE			
08:16		14-16	V 2	GOOD! FT by MIDDLETON,ALEXA
08:16				SUB OUT: WALLACE,ALEXA
08:16				SUB IN: BARKER,MCKINZEE
08:16	SUB OUT: RAMIL,JODI-MARIE			
08:16	SUB IN: JOSEPH,GABRIELLE			
08:16		15-16	V 1	GOOD! FT by MIDDLETON,ALEXA
08:04	GOOD! 3PTR by BAREFIELD,MONICA	15-19	V 4	
08:04	ASSIST by RACHU,MORGAN			
07:49				MISSED JUMPER by CLOUGH,EMANI
07:48				REBOUND (OFF) by MIDDLETON,ALEXA
07:47	FOUL (PERSONAL) by JOSEPH,GABRIELLE			
07:47				MISSED FT by MIDDLETON,ALEXA
07:47				REBOUND (OFF) by TEAM
07:47	SUB OUT: JOSEPH,GABRIELLE			
07:47	SUB IN: MIDDLEBROOKS,SHAYLA			
07:47		16-19	V 3	GOOD! FT by MIDDLETON,ALEXA
07:47				SUB OUT: MIDDLETON,ALEXA
07:47				SUB IN: ZELAYA,ADRIANA
07:32	TURNOVER (LOSTBALL) by MIDDLEBROOKS,SHAYLA			
07:32				STEAL by SIMMONS,ALLURE
07:23		18-19	V 1	GOOD! JUMPER by THOMAS,LUCY
07:23				ASSIST by BARKER,MCKINZEE
07:03				FOUL (PERSONAL) by SIMMONS,ALLURE
07:03				SUB OUT: SIMMONS,ALLURE
07:03				SUB IN: WALLACE,ALEXA
06:53	MISSED JUMPER by BAREFIELD,MONICA			
06:49				REBOUND (DEF) by TEAM
06:38				FOUL (OFF) by CLOUGH,EMANI
06:38				TURNOVER (OFFENSIVE) by CLOUGH,EMANI
06:32				FOUL (PERSONAL) by CLOUGH,EMANI
06:32				SUB OUT: CLOUGH,EMANI
06:32				SUB IN: GRAHAM,ROSA
06:22	MISSED JUMPER by MWAI,SHYAN			
06:22				REBOUND (DEF) by THOMAS,LUCY
06:22				BLOCK by THOMAS,LUCY
06:00				MISSED 3PTR by THOMAS,LUCY
05:55	REBOUND (DEF) by MWAI,SHYAN			
05:48	GOOD! 3PTR by MIDDLEBROOKS,SHAYLA	18-22	V 4	
05:48	ASSIST by RACHU,MORGAN			
05:33	FOUL (PERSONAL) by RACHU,MORGAN			
05:33		19-22	V 3	GOOD! FT by GRAHAM,ROSA
05:33				SUB OUT: THOMAS,LUCY
05:33				SUB IN: NASON,TAYLOR
05:33				SUB OUT: ZELAYA,ADRIANA
05:33				SUB IN: MIDDLETON,ALEXA
05:33				MISSED FT by GRAHAM,ROSA
05:30	REBOUND (DEF) by MWAI,SHYAN			
05:21	GOOD! JUMPER by MIDDLEBROOKS,SHAYLA	19-24	V 5	
05:21	ASSIST by CAMLION,JUANA			
05:04	FOUL (PERSONAL) by CAMLION,JUANA			
05:04		20-24	V 4	GOOD! FT by NASON,TAYLOR
05:04	SUB OUT: CAMLION,JUANA			
05:04	SUB IN: LESKO,TORI			
05:04				MISSED FT by NASON,TAYLOR
04:58				REBOUND (OFF) by GRAHAM,ROSA
04:54	FOUL (PERSONAL) by MIDDLEBROOKS,SHAYLA			
04:54				
04:54		21-24	V 3	GOOD! FT by GRAHAM,ROSA
04:54		22-24	V 2	GOOD! FT by GRAHAM,ROSA
04:38	GOOD! 3PTR by BAREFIELD,MONICA	22-27	V 5	
04:38	ASSIST by LESKO,TORI			
04:17				TURNOVER (BADPASS) by WALLACE,ALEXA



Time	VISITORS: Iona	Score	Margin	HOME: Monmouth
04:17	STEAL by BAREFIELD,MONICA			
04:09	MISSED JUMPER by MWAI,SHYAN			
04:05				REBOUND (DEF) by NASON,TAYLOR
03:49				MISSED LAYUP by GRAHAM,ROSA
03:45	REBOUND (DEF) by RACHU,MORGAN			
03:23	MISSED JUMPER by MWAI,SHYAN			
03:21				REBOUND (DEF) by TEAM
03:21				SUB OUT: GRAHAM,ROSA
03:21				SUB IN: GREEN,SIERRA
03:08				MISSED 3PTR by GREEN,SIERRA
03:03				REBOUND (OFF) by MIDDLETON,ALEXA
03:01				MISSED LAYUP by MIDDLETON,ALEXA
02:59				REBOUND (OFF) by TEAM
02:54				MISSED JUMPER by GREEN,SIERRA
02:50	REBOUND (DEF) by RACHU,MORGAN			
02:46	MISSED 3PTR by BAREFIELD,MONICA			
02:43				REBOUND (DEF) by WALLACE,ALEXA
02:38		24-27	V 3	GOOD! LAYUP by NASON,TAYLOR [FB]
02:38				ASSIST by WALLACE,ALEXA
02:08	MISSED 3PTR by MWAI,SHYAN			
02:04				REBOUND (DEF) by NASON,TAYLOR
01:41		26-27	V 1	GOOD! LAYUP by MIDDLETON,ALEXA [PNT]
01:26				FOUL (PERSONAL) by NASON,TAYLOR
01:26				SUB OUT: NASON,TAYLOR
01:26				SUB IN: ZELAYA,ADRIANA
01:00				FOUL (PERSONAL) by BARKER,MCKINZEE
01:00	GOOD! FT by LESKO,TORI	26-28	V 2	
01:00	MISSED FT by LESKO,TORI			
00:59				REBOUND (DEF) by MIDDLETON,ALEXA
00:37				FOUL (OFF) by MIDDLETON,ALEXA
00:37				TURNOVER (OFFENSIVE) by MIDDLETON,ALEXA
00:37				SUB OUT: MIDDLETON,ALEXA
00:37				SUB IN: BALMAN,ERICA
00:28	MISSED 3PTR by RACHU,MORGAN			
00:23				REBOUND (DEF) by WALLACE,ALEXA
00:04				MISSED 3PTR by GREEN,SIERRA
00:00	REBOUND (DEF) by MWAI,SHYAN			

### Iona 28, Monmouth 26

Points from (This Period)	ION	MON
In the Paint	0	6
Off Turns	0	4
2nd Chance	0	5
Fast Break	0	2
Bench	11	6

**Official Box Score**  
**Iona vs Monmouth**  
**Second Half Statistics Only**  
**February 16, 2019 at OceanFirst Bank Center - West Long Branch, NJ**

**Iona 24**

No.	Player	S	Pts	FG	3FG	FT	OR	DR	TR	PF	A	TO	Blk	Stl	Min	+/-
14	Rachu, Morgan		2	0-2	0-2	2-2	2	0	2	0	1	0	0	0	20	-1
21	Joseph, Gabrielle		0	0-0	0-0	0-0	0	0	0	1	0	0	0	1	2	2
22	Camilion, Juana		8	3-8	0-1	2-2	1	4	5	2	1	3	0	2	16	6
24	Middlebrooks, Shayla		0	0-0	0-0	0-0	0	0	0	1	0	0	0	1	5	-5
33	Lesko, Tori		7	2-4	0-1	3-6	2	1	3	2	1	2	0	1	16	6
44	Ramil, Jodi-Marie		0	0-1	0-0	0-0	0	0	0	1	0	0	1	0	4	-7
03	Barefield, Monica		5	2-5	1-2	0-0	0	2	2	2	0	2	0	0	17	-5
04	Martin, Ashley		0	0-0	0-0	0-0	0	0	0	0	0	0	0	0	0	0
05	Mwai, Shyan		2	1-5	0-1	0-2	0	1	1	3	1	2	0	2	20	-1
	Team		0	0-0	0-0	0-0	1	0	1	0	0	0	0	0	0	0
<b>TOTALS</b>			<b>24</b>	<b>8-25</b>	<b>1-7</b>	<b>7-12</b>	<b>6</b>	<b>8</b>	<b>14</b>	<b>12</b>	<b>4</b>	<b>9</b>	<b>1</b>	<b>7</b>	<b>100</b>	

*Shooting By Period*

Period	FG	FG%	3FG	3FG%	FT	FT%
3rd Qtr	5-12	42%	1-5	20%	3-4	75%
4th Qtr	3-13	23%	0-2	00%	4-8	50%
2nd Half	8-25	32%	1-7	14%	7-12	58%
Game	17-50	34.0%	7-18	38.9%	11-18	61.1%

*Last FG Half: ION 4th-00:02*

**Monmouth 25**

No.	Player	S	Pts	FG	3FG	FT	OR	DR	TR	PF	A	TO	Blk	Stl	Min	+/-
01	Zelaya, Adriana		0	0-0	0-0	0-0	0	0	0	0	0	0	0	0	0	0
02	Wallace, Alexa		0	0-0	0-0	0-0	0	0	0	1	0	1	0	0	13	3
03	Graham, Rosa		0	0-0	0-0	0-0	0	0	0	1	0	1	0	0	5	0
04	Green, Sierra		8	2-6	2-5	2-2	1	1	2	0	0	2	0	0	12	9
15	Clough, Emani		2	1-2	0-0	0-2	0	0	0	2	0	3	0	0	6	-5
20	Barker, Mckinzee		3	1-4	0-0	1-2	1	3	4	0	3	2	0	0	19	1
22	Middleton, Alexa		9	2-4	0-0	5-6	2	3	5	2	0	1	1	0	16	1
23	Simmons, Allure		0	0-0	0-0	0-0	0	0	0	1	0	3	0	1	6	-5
24	Balman, Erica		0	0-2	0-0	0-0	0	2	2	0	0	0	1	0	2	-2
25	Thomas, Lucy		3	1-3	0-1	1-2	2	0	2	2	0	1	1	0	10	0
32	Nason, Taylor		0	0-0	0-0	0-0	1	2	3	2	0	0	0	1	12	3
	Team		0	0-0	0-0	0-0	2	1	3	0	0	0	0	0	0	0
<b>TOTALS</b>			<b>25</b>	<b>7-21</b>	<b>2-6</b>	<b>9-14</b>	<b>9</b>	<b>12</b>	<b>21</b>	<b>11</b>	<b>3</b>	<b>14</b>	<b>3</b>	<b>2</b>	<b>100</b>	

*Shooting By Period*

Period	FG	FG%	3FG	3FG%	FT	FT%
3rd Qtr	5-12	42%	2-4	50%	8-10	80%
4th Qtr	2-9	22%	0-2	00%	1-4	25%
2nd Half	7-21	33%	2-6	33%	9-14	64%
Game	14-43	32.6%	2-10	20.0%	21-30	70.0%

*Last FG Half: MON 4th-02:00*

*Game Notes:*

Officials: Shannon Feck, Keith Miller, Anthony Reddin  
Attendance: 355

Start Time: 2019-02-16 00:03:06  
End Time: 2019-02-16 02:15:56  
Game Duration: 132  
Conference Game:

Score	1st	2nd	3rd	4th	TOT
ION	16	12	14	10	<b>52</b>
MON	13	13	20	5	<b>51</b>

Points from (This Period)	ION	MON
In the Paint	10	8
Off Turns	10	5
2nd Chance	2	10
Fast Break	2	0
Bench	5	2

**Official Box Score**  
**Iona vs Monmouth**  
**Third Quarter Statistics Only**  
**February 16, 2019 at OceanFirst Bank Center - West Long Branch, NJ**

**Iona 24**

No.	Player	S	Pts	FG	3FG	FT	OR	DR	TR	PF	A	TO	Blk	Stl	Min	+/-
05	Mwai, Shyan		2	1-2	0-0	0-0	0	0	0	1	0	2	0	2	10	-6
14	Rachu, Morgan		2	0-2	0-2	2-2	0	0	0	0	1	0	0	0	10	-6
21	Joseph, Gabrielle		0	0-0	0-0	0-0	0	0	0	1	0	0	0	0	2	2
22	Camilion, Juana		4	2-3	0-1	0-0	0	2	2	1	1	1	0	1	6	2
33	Lesko, Tori		3	1-1	0-0	1-2	0	1	1	1	1	1	0	0	6	1
03	Barefield, Monica		3	1-3	1-2	0-0	0	0	0	2	0	1	0	0	7	-10
04	Martin, Ashley		0	0-0	0-0	0-0	0	0	0	0	0	0	0	0	0	0
24	Middlebrooks, Shayla		0	0-0	0-0	0-0	0	0	0	0	0	0	0	1	5	-6
44	Ramil, Jodi-Marie		0	0-1	0-0	0-0	0	0	0	1	0	0	1	0	4	-7
	Team						1	0	1	0		0				
<b>TOTALS</b>			<b>14</b>	<b>5-12</b>	<b>1-5</b>	<b>3-4</b>	<b>1</b>	<b>3</b>	<b>4</b>	<b>7</b>	<b>3</b>	<b>5</b>	<b>1</b>	<b>4</b>	<b>50</b>	

*Shooting By Period*

Period	FG	FG%	3FG	3FG%	FT	FT%
2nd Half	0-0	0%	0-0	0%	0-0	0%
Game	17-50	34.0%	7-18	38.9%	11-18	61.1%

**Monmouth 25**

No.	Player	S	Pts	FG	3FG	FT	OR	DR	TR	PF	A	TO	Blk	Stl	Min	+/-
02	Wallace, Alexa		0	0-0	0-0	0-0	0	0	0	0	0	0	0	0	8	8
04	Green, Sierra		8	2-4	2-4	2-2	0	1	1	0	0	1	0	0	7	9
20	Barker, Mckinzee		3	1-3	0-0	1-2	1	0	1	0	2	1	0	0	10	6
22	Middleton, Alexa		7	1-3	0-0	5-6	2	3	5	0	0	1	1	0	8	4
25	Thomas, Lucy		0	0-1	0-0	0-0	1	0	1	1	0	0	0	0	5	-1
01	Zelaya, Adriana		0	0-0	0-0	0-0	0	0	0	0	0	0	0	0	0	0
03	Graham, Rosa		0	0-0	0-0	0-0	0	0	0	0	0	0	0	0	0	0
15	Clough, Emani		2	1-1	0-0	0-0	0	0	0	2	0	0	0	0	2	-2
23	Simmons, Allure		0	0-0	0-0	0-0	0	0	0	1	0	2	0	0	3	-3
24	Balman, Erica		0	0-0	0-0	0-0	0	0	0	0	0	0	0	0	0	0
32	Nason, Taylor		0	0-0	0-0	0-0	0	2	2	0	0	0	0	1	7	9
	Team						2	0	2	0		0				
<b>TOTALS</b>			<b>20</b>	<b>5-12</b>	<b>2-4</b>	<b>8-10</b>	<b>6</b>	<b>6</b>	<b>12</b>	<b>4</b>	<b>2</b>	<b>5</b>	<b>1</b>	<b>1</b>	<b>50</b>	

*Shooting By Period*

Period	FG	FG%	3FG	3FG%	FT	FT%
2nd Half	0-0	0%	0-0	0%	0-0	0%
Game	14-43	32.6%	2-10	20.0%	21-30	70.0%

Game Notes:

Officials: **Shannon Feck, Keith Miller, Anthony Reddin**  
Attendance: **355**

Start Time: **2019-02-16 00:03:06**

End Time: **2019-02-16 02:15:56**

Game Duration: **132**

Conference Game;

Score	1st	2nd	3rd	4th	TOT
ION	16	12	14	10	<b>52</b>
MON	13	13	20	5	<b>51</b>

Points from (This Period)	ION	MON
In the Paint	6	4
Off Turns	7	4
2nd Chance	0	6
Fast Break	0	0
Bench	3	2

**Official Play-By-Play**  
**Iona vs Monmouth**  
**Third Quarter**  
**February 16, 2019 at OceanFirst Bank Center - West Long Branch, NJ**

**Period 3**

**Starters:**

**Iona:** 14 RACHU,MORGAN; 21 JOSEPH,GABRIELLE; 22 CAMILION,JUANA; 33 LESKO,TORI; 5 MWAI,SHYAN;

**Monmouth:** 2 WALLACE,ALEXA; 4 GREEN,SIERRA; 20 BARKER,MCKINZEE; 22 MIDDLETON,ALEXA; 25 THOMAS,LUCY;

Time	VISITORS: Iona	Score	Margin	HOME: Monmouth
09:37	GOOD! LAYUP by CAMILION,JUANA [PNT]	26-30	V 4	
09:25				MISSED JUMPER by BARKER,MCKINZEE
09:21				REBOUND (OFF) by THOMAS,LUCY
09:19				MISSED LAYUP by THOMAS,LUCY
09:16				REBOUND (OFF) by MIDDLETON,ALEXA
09:14				TURNOVER (BADPASS) by MIDDLETON,ALEXA
09:14	STEAL by MWAI,SHYAN			
09:00	GOOD! JUMPER by MWAI,SHYAN	26-32	V 6	
08:44	FOUL (PERSONAL) by JOSEPH,GABRIELLE			
08:35		28-32	V 4	GOOD! JUMPER by CLOUGH,EMANI
08:04				FOUL (PERSONAL) by CLOUGH,EMANI
08:04	MISSED FT by LESKO,TORI			
08:04	REBOUND (OFF) by TEAM			
08:04				SUB OUT: CLOUGH,EMANI
08:04				SUB IN: WALLACE,ALEXA
08:04	SUB OUT: JOSEPH,GABRIELLE			
08:04	SUB IN: MIDDLEBROOKS,SHAYLA			
08:04	GOOD! FT by LESKO,TORI	28-33	V 5	
07:46				TURNOVER (BADPASS) by SIMMONS,ALLURE
07:46	STEAL by MIDDLEBROOKS,SHAYLA			
07:21	GOOD! LAYUP by CAMILION,JUANA	28-35	V 7	
07:21	ASSIST by LESKO,TORI			
07:05				MISSED LAYUP by MIDDLETON,ALEXA
07:04				REBOUND (OFF) by MIDDLETON,ALEXA
07:03	FOUL (PERSONAL) by CAMILION,JUANA			
07:03		29-35	V 6	GOOD! FT by MIDDLETON,ALEXA
07:03				SUB OUT: THOMAS,LUCY
07:03				SUB IN: NASON,TAYLOR
07:03	SUB OUT: CAMILION,JUANA			
07:03	SUB IN: BAREFIELD,MONICA			
07:03		30-35	V 5	GOOD! FT by MIDDLETON,ALEXA
06:52	FOUL (OFF) by LESKO,TORI			
06:52	TURNOVER (OFFENSIVE) by LESKO,TORI			
06:52	SUB OUT: LESKO,TORI			
06:52	SUB IN: RAMIL,JODI-MARIE			
06:37				FOUL (OFF) by SIMMONS,ALLURE
06:37				TURNOVER (OFFENSIVE) by SIMMONS,ALLURE
06:37				SUB OUT: SIMMONS,ALLURE
06:37				SUB IN: GREEN,SIERRA
06:33	TURNOVER (BADPASS) by MWAI,SHYAN			
06:33				STEAL by NASON,TAYLOR
06:25	FOUL (PERSONAL) by BAREFIELD,MONICA			
06:25		31-35	V 4	GOOD! FT by MIDDLETON,ALEXA
06:25		32-35	V 3	GOOD! FT by MIDDLETON,ALEXA
05:56	MISSED 3PTR by BAREFIELD,MONICA			
05:52				REBOUND (DEF) by NASON,TAYLOR
05:50				TURNOVER (BADPASS) by BARKER,MCKINZEE
05:50	STEAL by MWAI,SHYAN			
05:22	TURNOVER (TRAVEL) by MWAI,SHYAN			
05:07				MISSED JUMPER by MIDDLETON,ALEXA
05:07	BLOCK by RAMIL,JODI-MARIE			
05:05				REBOUND (OFF) by TEAM
04:59		34-35	V 1	GOOD! LAYUP by MIDDLETON,ALEXA [PNT]
04:59				ASSIST by BARKER,MCKINZEE
04:44	TIMEOUT 30SEC			
04:44				
04:25	MISSED JUMPER by RAMIL,JODI-MARIE			
04:17				REBOUND (DEF) by MIDDLETON,ALEXA
04:16		37-35	H 2	GOOD! 3PTR by GREEN,SIERRA
03:53	MISSED 3PTR by RACHU,MORGAN			
03:52	REBOUND (OFF) by TEAM			
03:52				
03:22	MISSED LAYUP by BAREFIELD,MONICA			
03:22				BLOCK by MIDDLETON,ALEXA
03:12				REBOUND (DEF) by MIDDLETON,ALEXA
03:01	FOUL (PERSONAL) by RAMIL,JODI-MARIE			
03:01				SUB OUT: NASON,TAYLOR
03:01				SUB IN: THOMAS,LUCY
03:01	SUB OUT: MIDDLEBROOKS,SHAYLA			
03:01	SUB IN: LESKO,TORI			
03:01	SUB OUT: RAMIL,JODI-MARIE			
03:01	SUB IN: CAMILION,JUANA			
03:01		38-35	H 3	GOOD! FT by MIDDLETON,ALEXA
03:01				MISSED FT by MIDDLETON,ALEXA
02:58	REBOUND (DEF) by CAMILION,JUANA			
02:58				SUB OUT: MIDDLETON,ALEXA

Time	VISITORS: Iona	Score	Margin	HOME: Monmouth
02:58				SUB IN: NASON,TAYLOR
02:58				FOUL (PERSONAL) by THOMAS,LUCY
02:45	MISSED 3PTR by CAMILION,JUANA			
02:45				REBOUND (DEF) by GREEN,SIERRA
02:45	FOUL (PERSONAL) by MWAI,SHYAN			
02:45		39-35	H 4	GOOD! FT by GREEN,SIERRA
02:45		40-35	H 5	GOOD! FT by GREEN,SIERRA
02:33	MISSED 3PTR by RACHU,MORGAN			
02:29				REBOUND (DEF) by NASON,TAYLOR
02:21				MISSED JUMPER by BARKER,MCKINZEE
02:19				REBOUND (OFF) by TEAM
02:14				MISSED 3PTR by GREEN,SIERRA
02:10	REBOUND (DEF) by CAMILION,JUANA			
02:09	TURNOVER (TRAVEL) by CAMILION,JUANA			
02:09				FOUL (TECH) by CLOUGH,EMANI
02:09	GOOD! FT by RACHU,MORGAN	40-36	H 4	
02:09	GOOD! FT by RACHU,MORGAN	40-37	H 3	
02:02		43-37	H 6	GOOD! 3PTR by GREEN,SIERRA
02:02				ASSIST by BARKER,MCKINZEE
01:39	GOOD! LAYUP by LESKO,TORI [PNT]	43-39	H 4	
01:39	ASSIST by CAMILION,JUANA			
01:19	FOUL (PERSONAL) by BAREFIELD,MONICA			
01:19		44-39	H 5	GOOD! FT by BARKER,MCKINZEE
01:19				SUB OUT: THOMAS,LUCY
01:19				SUB IN: MIDDLETON,ALEXA
01:19				MISSED FT by BARKER,MCKINZEE
01:17				REBOUND (OFF) by BARKER,MCKINZEE
01:16		46-39	H 7	GOOD! LAYUP by BARKER,MCKINZEE
00:52	TURNOVER (TRAVEL) by BAREFIELD,MONICA			
00:45				MISSED 3PTR by GREEN,SIERRA
00:40	REBOUND (DEF) by LESKO,TORI			
00:33	MISSED LAYUP by MWAI,SHYAN			
00:27				REBOUND (DEF) by MIDDLETON,ALEXA
00:11				TURNOVER (BADPASS) by GREEN,SIERRA
00:11	STEAL by CAMILION,JUANA			
00:01	GOOD! 3PTR by BAREFIELD,MONICA	46-42	H 4	
00:01	ASSIST by RACHU,MORGAN			

### Iona 42, Monmouth 46

Points from (This Period)	ION	MON
In the Paint	6	4
Off Turns	7	4
2nd Chance	0	6
Fast Break	0	0
Bench	3	2

**Official Box Score**  
**Iona vs Monmouth**  
**Fourth Quarter Statistics Only**  
**February 16, 2019 at OceanFirst Bank Center - West Long Branch, NJ**

**Iona 10**

No.	Player	S	Pts	FG	3FG	FT	OR	DR	TR	PF	A	TO	Blk	Stl	Min	+/-
05	Mwai, Shyan		0	0-3	0-1	0-2	0	1	1	2	1	0	0	0	10	5
14	Rachu, Morgan		0	0-0	0-0	0-0	2	0	2	0	0	0	0	0	10	5
21	Joseph, Gabrielle		0	0-0	0-0	0-0	0	0	0	0	0	0	0	1	0	0
22	Camilion, Juana		4	1-5	0-0	2-2	1	2	3	1	0	2	0	1	10	4
33	Lesko, Tori		4	1-3	0-1	2-4	2	0	2	1	0	1	0	1	10	5
03	Barefield, Monica		2	1-2	0-0	0-0	0	2	2	0	0	1	0	0	10	5
04	Martin, Ashley		0	0-0	0-0	0-0	0	0	0	0	0	0	0	0	0	0
24	Middlebrooks, Shayla		0	0-0	0-0	0-0	0	0	0	1	0	0	0	0	0	1
44	Ramil, Jodi-Marie		0	0-0	0-0	0-0	0	0	0	0	0	0	0	0	0	0
	Team						0	0	0	0		0				
<b>TOTALS</b>			<b>10</b>	<b>3-13</b>	<b>0-2</b>	<b>4-8</b>	<b>5</b>	<b>5</b>	<b>10</b>	<b>5</b>	<b>1</b>	<b>4</b>	<b>0</b>	<b>3</b>	<b>50</b>	

*Shooting By Period*

Period	FG	FG%	3FG	3FG%	FT	FT%
Game	17-50	34.0%	7-18	38.9%	11-18	61.1%

**Monmouth 5**

No.	Player	S	Pts	FG	3FG	FT	OR	DR	TR	PF	A	TO	Blk	Stl	Min	+/-
02	Wallace, Alexa		0	0-0	0-0	0-0	0	0	0	1	0	1	0	0	5	-5
04	Green, Sierra		0	0-2	0-1	0-0	1	0	1	0	0	1	0	0	5	0
20	Barker, Mckinzee		0	0-1	0-0	0-0	0	3	3	0	1	1	0	0	9	-5
22	Middleton, Alexa		2	1-1	0-0	0-0	0	0	0	2	0	0	0	0	8	-3
25	Thomas, Lucy		3	1-2	0-1	1-2	1	0	1	1	0	1	1	0	5	1
01	Zelaya, Adriana		0	0-0	0-0	0-0	0	0	0	0	0	0	0	0	0	0
03	Graham, Rosa		0	0-0	0-0	0-0	0	0	0	1	0	1	0	0	5	0
15	Clough, Emani		0	0-1	0-0	0-2	0	0	0	0	0	3	0	0	4	-3
23	Simmons, Allure		0	0-0	0-0	0-0	0	0	0	0	0	1	0	1	3	-2
24	Balman, Erica		0	0-2	0-0	0-0	0	2	2	0	0	0	1	0	2	-2
32	Nason, Taylor		0	0-0	0-0	0-0	1	0	1	2	0	0	0	0	5	-6
	Team						0	1	1	0		0				
<b>TOTALS</b>			<b>5</b>	<b>2-9</b>	<b>0-2</b>	<b>1-4</b>	<b>3</b>	<b>6</b>	<b>9</b>	<b>7</b>	<b>1</b>	<b>9</b>	<b>2</b>	<b>1</b>	<b>50</b>	

*Shooting By Period*

Period	FG	FG%	3FG	3FG%	FT	FT%
Game	14-43	32.6%	2-10	20.0%	21-30	70.0%

Game Notes:

Officials: Shannon Feck, Keith Miller, Anthony Reddin  
Attendance: 355

Start Time: 2019-02-16 00:03:06  
End Time: 2019-02-16 02:15:56  
Game Duration: 132  
Conference Game;

Score	1st	2nd	3rd	4th	TOT
ION	16	12	14	10	<b>52</b>
MON	13	13	20	5	<b>51</b>

Points from (This Period)	ION	MON
In the Paint	4	4
Off Turns	3	1
2nd Chance	2	4
Fast Break	2	0
Bench	2	0

**Official Play-By-Play**  
**Iona vs Monmouth**  
**Fourth Quarter**  
**February 16, 2019 at OceanFirst Bank Center - West Long Branch, NJ**

**Period 4**

**Starters:**

**Iona:** 14 RACHU,MORGAN; 21 JOSEPH,GABRIELLE; 22 CAMLION,JUANA; 33 LESKO,TORI; 5 MWAI,SHYAN;

**Monmouth:** 2 WALLACE,ALEXA; 4 GREEN,SIERRA; 20 BARKER,MCKINZEE; 22 MIDDLETON,ALEXA; 25 THOMAS,LUCY;

Time	VISITORS: Iona	Score	Margin	HOME: Monmouth
09:25				TURNOVER (LOSTBALL) by GREEN,SIERRA
09:25				SUB OUT: GREEN,SIERRA
09:25				SUB IN: WALLACE,ALEXA
09:16				FOUL (PERSONAL) by NASON,TAYLOR
08:59	MISSED JUMPER by MWAI,SHYAN			
08:55				REBOUND (DEF) by BARKER,MCKINZEE
08:50				MISSED JUMPER by BARKER,MCKINZEE
08:45	REBOUND (DEF) by BAREFIELD,MONICA			
08:33	MISSED 3PTR by LESKO,TORI			
08:29	REBOUND (OFF) by RACHU,MORGAN			
08:27	MISSED LAYUP by BAREFIELD,MONICA			
08:23	REBOUND (OFF) by RACHU,MORGAN			
08:17				FOUL (PERSONAL) by MIDDLETON,ALEXA
08:17	MISSED FT by MWAI,SHYAN			
08:17	REBOUND (OFF) by TEAM			
08:17				SUB OUT: MIDDLETON,ALEXA
08:17				SUB IN: BALMAN,ERICA
08:17				SUB OUT: SIMMONS,ALLURE
08:17				SUB IN: THOMAS,LUCY
08:17				SUB OUT: NASON,TAYLOR
08:17				SUB IN: CLOUGH,EMANI
08:14	MISSED FT by MWAI,SHYAN			
08:13				REBOUND (DEF) by BARKER,MCKINZEE
08:02				MISSED JUMPER by CLOUGH,EMANI
07:59				REBOUND (OFF) by THOMAS,LUCY
07:58		48-42	H 6	GOOD! LAYUP by THOMAS,LUCY
07:39	MISSED LAYUP by CAMLION,JUANA			
07:39				BLOCK by BALMAN,ERICA
07:34	REBOUND (OFF) by LESKO,TORI			
07:33	MISSED LAYUP by LESKO,TORI			
07:28				REBOUND (DEF) by BALMAN,ERICA
07:27				MISSED JUMPER by BALMAN,ERICA
07:24	REBOUND (DEF) by MWAI,SHYAN			
07:21	GOOD! LAYUP by BAREFIELD,MONICA [FB]	48-44	H 4	
07:21	ASSIST by MWAI,SHYAN			
07:07				FOUL (OFF) by THOMAS,LUCY
07:07				TURNOVER (OFFENSIVE) by THOMAS,LUCY
07:07				SUB OUT: THOMAS,LUCY
07:07				SUB IN: GRAHAM,ROSA
07:07				SUB OUT: BARKER,MCKINZEE
07:07				SUB IN: NASON,TAYLOR
06:51	MISSED LAYUP by CAMLION,JUANA			
06:48	REBOUND (OFF) by LESKO,TORI			
06:37	MISSED JUMPER by CAMLION,JUANA			
06:33				REBOUND (DEF) by BALMAN,ERICA
06:10				MISSED LAYUP by BALMAN,ERICA
06:05				REBOUND (OFF) by NASON,TAYLOR
06:05				SUB OUT: BALMAN,ERICA
06:05				SUB IN: MIDDLETON,ALEXA
06:00				FOUL (OFF) by GRAHAM,ROSA
06:00				TURNOVER (OFFENSIVE) by GRAHAM,ROSA
06:00				SUB OUT: GRAHAM,ROSA
06:00				SUB IN: BARKER,MCKINZEE
05:48				FOUL (PERSONAL) by NASON,TAYLOR
05:48	MISSED FT by LESKO,TORI			
05:48	REBOUND (OFF) by TEAM			
05:48	GOOD! FT by LESKO,TORI	48-45	H 3	
05:42				TURNOVER (TRAVEL) by CLOUGH,EMANI
05:29	TURNOVER (LOSTBALL) by CAMLION,JUANA			
05:07				TURNOVER (BADPASS) by CLOUGH,EMANI
05:07	STEAL by LESKO,TORI			
04:58	GOOD! JUMPER by LESKO,TORI	48-47	H 1	
04:53				TURNOVER (BADPASS) by CLOUGH,EMANI
04:53	STEAL by CAMLION,JUANA			
04:47	MISSED 3PTR by MWAI,SHYAN			
04:44				REBOUND (DEF) by BARKER,MCKINZEE
04:35				TURNOVER (LOSTBALL) by WALLACE,ALEXA
04:35				SUB OUT: CLOUGH,EMANI
04:35				SUB IN: SIMMONS,ALLURE
04:35				SUB OUT: WALLACE,ALEXA
04:35				SUB IN: GREEN,SIERRA
04:25	TURNOVER (BADPASS) by BAREFIELD,MONICA			
04:25				STEAL by SIMMONS,ALLURE
04:00				TURNOVER (BADPASS) by SIMMONS,ALLURE
04:00				SUB OUT: NASON,TAYLOR

Time	VISITORS: Iona	Score	Margin	HOME: Monmouth
04:00				SUB IN: THOMAS,LUCY
04:00				SUB OUT: SIMMONS,ALLURE
04:00				SUB IN: GRAHAM,ROSA
03:42	TURNOVER (OTHER) by CAMILION,JUANA			
03:16				MISSED 3PTR by GREEN,SIERRA
03:11	REBOUND (DEF) by BAREFIELD,MONICA			
02:55	MISSED JUMPER by MWAI,SHYAN			
02:55				REBOUND (DEF) by TEAM
02:55				BLOCK by THOMAS,LUCY
02:29				MISSED 3PTR by THOMAS,LUCY
02:25				REBOUND (OFF) by GREEN,SIERRA
02:00		50-47	H 3	GOOD! LAYUP by MIDDLETON,ALEXA
02:00				ASSIST by BARKER,MCKINZEE
01:50	TIMEOUT 30SEC			
01:50				SUB OUT: THOMAS,LUCY
01:50				SUB IN: NASON,TAYLOR
01:50				SUB OUT: GREEN,SIERRA
01:50				SUB IN: WALLACE,ALEXA
01:40				FOUL (PERSONAL) by WALLACE,ALEXA
01:40	GOOD! FT by CAMILION,JUANA	50-48	H 2	
01:40				SUB OUT: NASON,TAYLOR
01:40				SUB IN: GREEN,SIERRA
01:40				SUB OUT: WALLACE,ALEXA
01:40				SUB IN: THOMAS,LUCY
01:40	GOOD! FT by CAMILION,JUANA	50-49	H 1	
01:16	FOUL (PERSONAL) by CAMILION,JUANA			
01:08				MISSED LAYUP by GREEN,SIERRA
01:05	REBOUND (DEF) by CAMILION,JUANA			
00:43	TURNOVER (3SEC) by LESKO,TORI			
00:34				TIMEOUT TEAM
00:34				SUB OUT: GRAHAM,ROSA
00:34				SUB IN: CLOUGH,EMANI
00:31	FOUL (PERSONAL) by LESKO,TORI			
00:31				MISSED FT by THOMAS,LUCY
00:31				REBOUND (OFF) by TEAM
00:31				SUB OUT: GREEN,SIERRA
00:31				SUB IN: WALLACE,ALEXA
00:31				SUB OUT: CLOUGH,EMANI
00:31				SUB IN: SIMMONS,ALLURE
00:31		51-49	H 2	GOOD! FT by THOMAS,LUCY
00:31				SUB OUT: THOMAS,LUCY
00:31				SUB IN: NASON,TAYLOR
00:31	TIMEOUT TEAM			
00:23				FOUL (PERSONAL) by MIDDLETON,ALEXA
00:23	MISSED FT by LESKO,TORI			
00:23	REBOUND (OFF) by TEAM			
00:23				SUB OUT: NASON,TAYLOR
00:23				SUB IN: GREEN,SIERRA
00:23				SUB OUT: WALLACE,ALEXA
00:23				SUB IN: THOMAS,LUCY
00:23	SUB OUT: CAMILION,JUANA			
00:23	SUB IN: MIDDLEBROOKS,SHAYLA			
00:23	GOOD! FT by LESKO,TORI	51-50	H 1	
00:23				TIMEOUT 30SEC
00:23				SUB OUT: SIMMONS,ALLURE
00:23				SUB IN: CLOUGH,EMANI
00:23	SUB OUT: LESKO,TORI			
00:23	SUB IN: JOSEPH,GABRIELLE			
00:16	FOUL (PERSONAL) by MWAI,SHYAN			
00:12	FOUL (PERSONAL) by MWAI,SHYAN			
00:12	SUB OUT: MWAI,SHYAN			
00:12	SUB IN: MARTIN,ASHLEY			
00:12	FOUL (PERSONAL) by MIDDLEBROOKS,SHAYLA			
00:12				MISSED FT by CLOUGH,EMANI
00:12				SUB OUT: GREEN,SIERRA
00:12				SUB IN: NASON,TAYLOR
00:12				SUB OUT: MIDDLETON,ALEXA
00:12				SUB IN: WALLACE,ALEXA
00:12				SUB OUT: THOMAS,LUCY
00:12				SUB IN: BALMAN,ERICA
00:12	SUB OUT: MARTIN,ASHLEY			
00:12	SUB IN: LESKO,TORI			
00:12	SUB OUT: JOSEPH,GABRIELLE			
00:12	SUB IN: CAMILION,JUANA			
00:12	SUB OUT: MIDDLEBROOKS,SHAYLA			
00:12	SUB IN: MWAI,SHYAN			
00:12				REBOUND (OFF) by TEAM
00:12				MISSED FT by CLOUGH,EMANI
00:11	REBOUND (DEF) by CAMILION,JUANA			
00:11	TIMEOUT 30SEC			
00:11				SUB OUT: CLOUGH,EMANI
00:11				SUB IN: SIMMONS,ALLURE
00:03	MISSED JUMPER by CAMILION,JUANA			
00:03	REBOUND (OFF) by CAMILION,JUANA			
00:02	GOOD! JUMPER by CAMILION,JUANA [PNT]	51-52	V 1	
00:02				TIMEOUT 30SEC
00:02				SUB OUT: WALLACE,ALEXA



Time	VISITORS: Iona	Score	Margin	HOME: Monmouth
00:02				SUB IN: THOMAS,LUCY
00:02				SUB OUT: SIMMONS,ALLURE
00:02				SUB IN: CLOUGH,EMANI
00:02				SUB OUT: BALMAN,ERICA
00:02				SUB IN: MIDDLETON,ALEXA
00:02				SUB OUT: NASON,TAYLOR
00:02				SUB IN: GREEN,SIERRA
00:01	SUB OUT: CAMILION,JUANA			
00:01	SUB IN: JOSEPH,GABRIELLE			
00:01				TURNOVER (BADPASS) by BARKER,MCKINZEE
00:01	STEAL by JOSEPH,GABRIELLE			

Iona 52, Monmouth 51

Points from (This Period)	ION	MON
In the Paint	4	4
Off Turns	3	1
2nd Chance	2	4
Fast Break	2	0
Bench	2	0

**Official Scoring/Possession Reference Chart**  
**Iona vs Monmouth**  
**Period 1**  
**February 16, 2019 at OceanFirst Bank Center - West Long Branch, NJ**

**Period 1**

**Starters:**

**Iona:** 14 RACHU,MORGAN; 21 JOSEPH,GABRIELLE; 22 CAMLION,JUANA; 33 LESKO,TORI; 5 MWAI,SHYAN;

**Monmouth:** 2 WALLACE,ALEXA; 4 GREEN,SIERRA; 20 BARKER,MCKINZEE; 22 MIDDLETON,ALEXA; 25 THOMAS,LUCY;

Time	VISITORS: Iona	Score	Margin	HOME: Monmouth
08:42		1-0	H 1	GOOD! FT by WALLACE,ALEXA
08:42		2-0	H 2	GOOD! FT by WALLACE,ALEXA
08:14	GOOD! 3PTR by RACHU,MORGAN	2-3	V 1	
07:33	GOOD! FT by LESKO,TORI	2-4	V 2	
06:11	GOOD! 3PTR by CAMLION,JUANA	2-7	V 5	
04:59		3-7	V 4	GOOD! FT by THOMAS,LUCY
04:03	GOOD! 3PTR by MWAI,SHYAN	3-10	V 7	
03:48		5-10	V 5	GOOD! LAYUP by MIDDLETON,ALEXA
02:50	GOOD! FT by RACHU,MORGAN	5-11	V 6	
02:50	GOOD! FT by RACHU,MORGAN	5-12	V 7	
02:35		7-12	V 5	GOOD! LAYUP by BALMAN,ERICA [PNT]
01:43		9-12	V 3	GOOD! LAYUP by BALMAN,ERICA
01:00		10-12	V 2	GOOD! FT by CLOUGH,EMANI
01:00		11-12	V 1	GOOD! FT by CLOUGH,EMANI
00:41	GOOD! JUMPER by BAREFIELD,MONICA	11-14	V 3	
00:22		13-14	V 1	GOOD! JUMPER by BARKER,MCKINZEE
00:00	GOOD! JUMPER by RAMIL,JODI-MARIE [PNT]	13-16	V 3	

**Iona 16, Monmouth 13**

**Official Scoring/Possession Reference Chart**  
**Iona vs Monmouth**  
**Period 2**  
**February 16, 2019 at OceanFirst Bank Center - West Long Branch, NJ**

**Period 2**

**Starters:**

**Iona:** 14 RACHU, MORGAN; 21 JOSEPH, GABRIELLE; 22 CAMLION, JUANA; 33 LESKO, TORI; 5 MWAI, SHYAN;

**Monmouth:** 2 WALLACE, ALEXA; 4 GREEN, SIERRA; 20 BARKER, MCKINZEE; 22 MIDDLETON, ALEXA; 25 THOMAS, LUCY;

Time	VISITORS: Iona	Score	Margin	HOME: Monmouth
08:16		14-16	V 2	GOOD! FT by MIDDLETON, ALEXA
08:16		15-16	V 1	GOOD! FT by MIDDLETON, ALEXA
08:04	GOOD! 3PTR by BAREFIELD, MONICA	15-19	V 4	
07:47		16-19	V 3	GOOD! FT by MIDDLETON, ALEXA
07:23		18-19	V 1	GOOD! JUMPER by THOMAS, LUCY
05:48	GOOD! 3PTR by MIDDLEBROOKS, SHAYLA	18-22	V 4	
05:33		19-22	V 3	GOOD! FT by GRAHAM, ROSA
05:21	GOOD! JUMPER by MIDDLEBROOKS, SHAYLA	19-24	V 5	
05:04		20-24	V 4	GOOD! FT by NASON, TAYLOR
04:54		21-24	V 3	GOOD! FT by GRAHAM, ROSA
04:54		22-24	V 2	GOOD! FT by GRAHAM, ROSA
04:38	GOOD! 3PTR by BAREFIELD, MONICA	22-27	V 5	
02:38		24-27	V 3	GOOD! LAYUP by NASON, TAYLOR [FB]
01:41		26-27	V 1	GOOD! LAYUP by MIDDLETON, ALEXA [PNT]
01:00	GOOD! FT by LESKO, TORI	26-28	V 2	

**Iona 28, Monmouth 26**

**Official Scoring/Possession Reference Chart**  
**Iona vs Monmouth**  
**Period 3**  
**February 16, 2019 at OceanFirst Bank Center - West Long Branch, NJ**

**Period 3**

**Starters:**

**Iona:** 14 RACHU,MORGAN; 21 JOSEPH,GABRIELLE; 22 CAMLION,JUANA; 33 LESKO,TORI; 5 MWAI,SHYAN;

**Monmouth:** 2 WALLACE,ALEXA; 4 GREEN,SIERRA; 20 BARKER,MCKINZEE; 22 MIDDLETON,ALEXA; 25 THOMAS,LUCY;

Time	VISITORS: Iona	Score	Margin	HOME: Monmouth
09:37	GOOD! LAYUP by CAMLION,JUANA [PNT]	26-30	V 4	
09:00	GOOD! JUMPER by MWAI,SHYAN	26-32	V 6	
08:35		28-32	V 4	GOOD! JUMPER by CLOUGH,EMANI
08:04	GOOD! FT by LESKO,TORI	28-33	V 5	
07:21	GOOD! LAYUP by CAMLION,JUANA	28-35	V 7	
07:03		29-35	V 6	GOOD! FT by MIDDLETON,ALEXA
07:03		30-35	V 5	GOOD! FT by MIDDLETON,ALEXA
06:25		31-35	V 4	GOOD! FT by MIDDLETON,ALEXA
06:25		32-35	V 3	GOOD! FT by MIDDLETON,ALEXA
04:59		34-35	V 1	GOOD! LAYUP by MIDDLETON,ALEXA [PNT]
04:16		37-35	H 2	GOOD! 3PTR by GREEN,SIERRA
03:01		38-35	H 3	GOOD! FT by MIDDLETON,ALEXA
02:45		39-35	H 4	GOOD! FT by GREEN,SIERRA
02:45		40-35	H 5	GOOD! FT by GREEN,SIERRA
02:09	GOOD! FT by RACHU,MORGAN	40-36	H 4	
02:09	GOOD! FT by RACHU,MORGAN	40-37	H 3	
02:02		43-37	H 6	GOOD! 3PTR by GREEN,SIERRA
01:39	GOOD! LAYUP by LESKO,TORI [PNT]	43-39	H 4	
01:19		44-39	H 5	GOOD! FT by BARKER,MCKINZEE
01:16		46-39	H 7	GOOD! LAYUP by BARKER,MCKINZEE
00:01	GOOD! 3PTR by BAREFIELD,MONICA	46-42	H 4	

**Iona 42, Monmouth 46**

**Official Scoring/Possession Reference Chart**  
**Iona vs Monmouth**  
**Period 4**  
**February 16, 2019 at OceanFirst Bank Center - West Long Branch, NJ**

**Period 4**

**Starters:**

**Iona:** 14 RACHU, MORGAN; 21 JOSEPH, GABRIELLE; 22 CAMILION, JUANA; 33 LESKO, TORI; 5 MWAI, SHYAN;

**Monmouth:** 2 WALLACE, ALEXA; 4 GREEN, SIERRA; 20 BARKER, MCKINZEE; 22 MIDDLETON, ALEXA; 25 THOMAS, LUCY;

Time	VISITORS: Iona	Score	Margin	HOME: Monmouth
07:58		48-42	H 6	GOOD! LAYUP by THOMAS, LUCY
07:21	GOOD! LAYUP by BAREFIELD, MONICA [FB]	48-44	H 4	
05:48	GOOD! FT by LESKO, TORI	48-45	H 3	
04:58	GOOD! JUMPER by LESKO, TORI	48-47	H 1	
02:00		50-47	H 3	GOOD! LAYUP by MIDDLETON, ALEXA
01:40	GOOD! FT by CAMILION, JUANA	50-48	H 2	
01:40	GOOD! FT by CAMILION, JUANA	50-49	H 1	
00:31		51-49	H 2	GOOD! FT by THOMAS, LUCY
00:23	GOOD! FT by LESKO, TORI	51-50	H 1	
00:02	GOOD! JUMPER by CAMILION, JUANA [PNT]	51-52	V 1	

**Iona 52, Monmouth 51**

**Official Substitutions Log**  
**Iona vs Monmouth**  
**Period 1**  
**February 16, 2019 at OceanFirst Bank Center - West Long Branch, NJ**

VISITORS: Iona	Time	Score	HOME: Monmouth
14 RACHU, MORGAN			2 WALLACE, ALEXA
21 JOSEPH, GABRIELLE			4 GREEN, SIERRA
22 CAMILION, JUANA			20 BARKER, MCKINZEE
33 LESKO, TORI			22 MIDDLETON, ALEXA
5 MWAI, SHYAN			25 THOMAS, LUCY
	07:33	4-2	SUB OUT: WALLACE, ALEXA
	07:33		SUB IN: GRAHAM, ROSA
	06:24	4-2	SUB OUT: GREEN, SIERRA
	06:24		SUB IN: CLOUGH, EMANI
SUB OUT: 21 JOSEPH, GABRIELLE	06:24		
SUB IN: 3 BAREFIELD, MONICA	06:24		
	05:36	7-2	SUB OUT: CLOUGH, EMANI
	05:36		SUB IN: NASON, TAYLOR
	05:36		SUB OUT: BARKER, MCKINZEE
	05:36		SUB IN: GREEN, SIERRA
	05:36		SUB OUT: MIDDLETON, ALEXA
	05:36		SUB IN: SIMMONS, ALLURE
SUB OUT: 33 LESKO, TORI	04:59	7-2	
SUB IN: 21 JOSEPH, GABRIELLE	04:59		
	04:15	7-3	SUB OUT: GREEN, SIERRA
	04:15		SUB IN: BARKER, MCKINZEE
	04:15		SUB OUT: THOMAS, LUCY
	04:15		SUB IN: MIDDLETON, ALEXA
	02:50	11-5	SUB OUT: GRAHAM, ROSA
	02:50		SUB IN: BALMAN, ERICA
	02:50		SUB OUT: MIDDLETON, ALEXA
	02:50		SUB IN: THOMAS, LUCY
	02:50		SUB OUT: NASON, TAYLOR
	02:50		SUB IN: CLOUGH, EMANI
SUB OUT: 21 JOSEPH, GABRIELLE	02:50		
SUB IN: 44 RAMIL, JODI-MARIE	02:50		
	02:24	12-7	SUB OUT: THOMAS, LUCY
	02:24		SUB IN: NASON, TAYLOR
	01:00	12-10	SUB OUT: SIMMONS, ALLURE
	01:00		SUB IN: WALLACE, ALEXA

**Iona 16, Monmouth 13**

**Official Substitutions Log**  
**Iona vs Monmouth**  
**Period 2**  
**February 16, 2019 at OceanFirst Bank Center - West Long Branch, NJ**

VISITORS: Iona	Time	Score	HOME: Monmouth
14 RACHU, MORGAN			2 WALLACE, ALEXA
21 JOSEPH, GABRIELLE			4 GREEN, SIERRA
22 CAMILION, JUANA			20 BARKER, MCKINZEE
33 LESKO, TORI			22 MIDDLETON, ALEXA
5 MWAI, SHYAN			25 THOMAS, LUCY
	08:41	-	SUB OUT: GREEN, SIERRA
	08:41		SUB IN: CLOUGH, EMANI
	08:41		SUB OUT: BARKER, MCKINZEE
	08:41		SUB IN: SIMMONS, ALLURE
	08:16	16-14	SUB OUT: WALLACE, ALEXA
	08:16		SUB IN: BARKER, MCKINZEE
SUB OUT: 44 RAMIL, JODI-MARIE	08:16		
SUB IN: 21 JOSEPH, GABRIELLE	08:16		
SUB OUT: 21 JOSEPH, GABRIELLE	07:47	19-15	
SUB IN: 24 MIDDLEBROOKS, SHAYLA	07:47		
	07:47		SUB OUT: MIDDLETON, ALEXA
	07:47		SUB IN: ZELAYA, ADRIANA
	07:03	19-18	SUB OUT: SIMMONS, ALLURE
	07:03		SUB IN: WALLACE, ALEXA
	06:32	19-18	SUB OUT: CLOUGH, EMANI
	06:32		SUB IN: GRAHAM, ROSA
	05:33	22-19	SUB OUT: THOMAS, LUCY
	05:33		SUB IN: NASON, TAYLOR
	05:33		SUB OUT: ZELAYA, ADRIANA
	05:33		SUB IN: MIDDLETON, ALEXA
SUB OUT: 22 CAMILION, JUANA	05:04	24-20	
SUB IN: 33 LESKO, TORI	05:04		
	03:21	27-22	SUB OUT: GRAHAM, ROSA
	03:21		SUB IN: GREEN, SIERRA
	01:26	27-26	SUB OUT: NASON, TAYLOR
	01:26		SUB IN: ZELAYA, ADRIANA
	00:37	28-26	SUB OUT: MIDDLETON, ALEXA
	00:37		SUB IN: BALMAN, ERICA

**Iona 28, Monmouth 26**

**Official Substitutions Log**  
**Iona vs Monmouth**  
**Period 3**  
**February 16, 2019 at OceanFirst Bank Center - West Long Branch, NJ**

VISITORS: Iona	Time	Score	HOME: Monmouth
14 RACHU, MORGAN			2 WALLACE, ALEXA
21 JOSEPH, GABRIELLE			4 GREEN, SIERRA
22 CAMILION, JUANA			20 BARKER, MCKINZEE
33 LESKO, TORI			22 MIDDLETON, ALEXA
5 MWAI, SHYAN			25 THOMAS, LUCY
	08:04	32-28	SUB OUT: CLOUGH, EMANI
	08:04		SUB IN: WALLACE, ALEXA
SUB OUT: 21 JOSEPH, GABRIELLE	08:04		
SUB IN: 24 MIDDLEBROOKS, SHAYLA	08:04		
	07:03	35-29	SUB OUT: THOMAS, LUCY
	07:03		SUB IN: NASON, TAYLOR
SUB OUT: 22 CAMILION, JUANA	07:03		
SUB IN: 3 BAREFIELD, MONICA	07:03		
SUB OUT: 33 LESKO, TORI	06:52	35-30	
SUB IN: 44 RAMIL, JODI-MARIE	06:52		
	06:37	35-30	SUB OUT: SIMMONS, ALLURE
	06:37		SUB IN: GREEN, SIERRA
	03:01	35-37	SUB OUT: NASON, TAYLOR
	03:01		SUB IN: THOMAS, LUCY
SUB OUT: 24 MIDDLEBROOKS, SHAYLA	03:01		
SUB IN: 33 LESKO, TORI	03:01		
SUB OUT: 44 RAMIL, JODI-MARIE	03:01		
SUB IN: 22 CAMILION, JUANA	03:01		
	02:58	35-38	SUB OUT: MIDDLETON, ALEXA
	02:58		SUB IN: NASON, TAYLOR
	01:19	39-44	SUB OUT: THOMAS, LUCY
	01:19		SUB IN: MIDDLETON, ALEXA

**Iona 42, Monmouth 46**

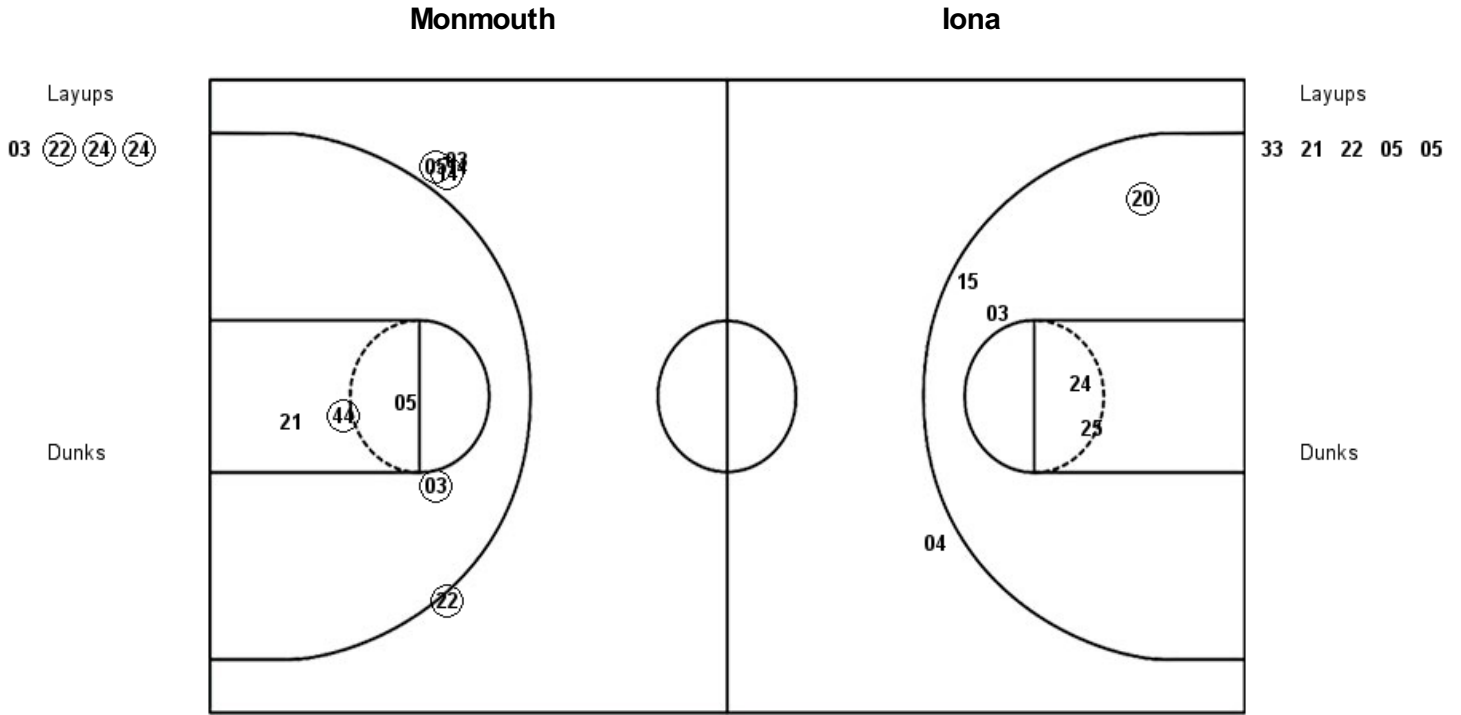


**Official Substitutions Log**  
**Iona vs Monmouth**  
**Period 4**  
**February 16, 2019 at OceanFirst Bank Center - West Long Branch, NJ**

VISITORS: Iona	Time	Score	HOME: Monmouth
14 RACHU, MORGAN			2 WALLACE, ALEXA
21 JOSEPH, GABRIELLE			4 GREEN, SIERRA
22 CAMILION, JUANA			20 BARKER, MCKINZEE
33 LESKO, TORI			22 MIDDLETON, ALEXA
5 MWAI, SHYAN			25 THOMAS, LUCY
	09:25	-	SUB OUT: GREEN, SIERRA
	09:25		SUB IN: WALLACE, ALEXA
	08:17	-	SUB OUT: MIDDLETON, ALEXA
	08:17		SUB IN: BALMAN, ERICA
	08:17		SUB OUT: SIMMONS, ALLURE
	08:17		SUB IN: THOMAS, LUCY
	08:17		SUB OUT: NASON, TAYLOR
	08:17		SUB IN: CLOUGH, EMANI
	07:07	44-48	SUB OUT: THOMAS, LUCY
	07:07		SUB IN: GRAHAM, ROSA
	07:07		SUB OUT: BARKER, MCKINZEE
	07:07		SUB IN: NASON, TAYLOR
	06:05	44-48	SUB OUT: BALMAN, ERICA
	06:05		SUB IN: MIDDLETON, ALEXA
	06:00	44-48	SUB OUT: GRAHAM, ROSA
	06:00		SUB IN: BARKER, MCKINZEE
	04:35	47-48	SUB OUT: CLOUGH, EMANI
	04:35		SUB IN: SIMMONS, ALLURE
	04:35		SUB OUT: WALLACE, ALEXA
	04:35		SUB IN: GREEN, SIERRA
	04:00	47-48	SUB OUT: NASON, TAYLOR
	04:00		SUB IN: THOMAS, LUCY
	04:00		SUB OUT: SIMMONS, ALLURE
	04:00		SUB IN: GRAHAM, ROSA
	01:50	47-50	SUB OUT: THOMAS, LUCY
	01:50		SUB IN: NASON, TAYLOR
	01:50		SUB OUT: GREEN, SIERRA
	01:50		SUB IN: WALLACE, ALEXA
	01:40	48-50	SUB OUT: NASON, TAYLOR
	01:40		SUB IN: GREEN, SIERRA
	01:40		SUB OUT: WALLACE, ALEXA
	01:40		SUB IN: THOMAS, LUCY
	00:34	49-50	SUB OUT: GRAHAM, ROSA
	00:34		SUB IN: CLOUGH, EMANI
	00:31	49-50	SUB OUT: GREEN, SIERRA
	00:31		SUB IN: WALLACE, ALEXA
	00:31		SUB OUT: CLOUGH, EMANI
	00:31		SUB IN: SIMMONS, ALLURE
	00:31		SUB OUT: THOMAS, LUCY
	00:31		SUB IN: NASON, TAYLOR
	00:23	49-51	SUB OUT: NASON, TAYLOR
	00:23		SUB IN: GREEN, SIERRA
	00:23		SUB OUT: WALLACE, ALEXA
	00:23		SUB IN: THOMAS, LUCY
SUB OUT: 22 CAMILION, JUANA	00:23		
SUB IN: 24 MIDDLEBROOKS, SHAYLA	00:23		
	00:23		SUB OUT: SIMMONS, ALLURE
	00:23		SUB IN: CLOUGH, EMANI
SUB OUT: 33 LESKO, TORI	00:23		
SUB IN: 21 JOSEPH, GABRIELLE	00:23		
SUB OUT: 5 MWAI, SHYAN	00:12	50-51	
SUB IN: 4 MARTIN, ASHLEY	00:12		
	00:12		SUB OUT: GREEN, SIERRA
	00:12		SUB IN: NASON, TAYLOR
	00:12		SUB OUT: MIDDLETON, ALEXA
	00:12		SUB IN: WALLACE, ALEXA
	00:12		SUB OUT: THOMAS, LUCY
	00:12		SUB IN: BALMAN, ERICA
SUB OUT: 4 MARTIN, ASHLEY	00:12		
SUB IN: 33 LESKO, TORI	00:12		
SUB OUT: 21 JOSEPH, GABRIELLE	00:12		
SUB IN: 22 CAMILION, JUANA	00:12		
SUB OUT: 24 MIDDLEBROOKS, SHAYLA	00:12		
SUB IN: 5 MWAI, SHYAN	00:12		
	00:11	50-51	SUB OUT: CLOUGH, EMANI
	00:11		SUB IN: SIMMONS, ALLURE
	00:02	52-51	SUB OUT: WALLACE, ALEXA
	00:02		SUB IN: THOMAS, LUCY
	00:02		SUB OUT: SIMMONS, ALLURE
	00:02		SUB IN: CLOUGH, EMANI
	00:02		SUB OUT: BALMAN, ERICA
	00:02		SUB IN: MIDDLETON, ALEXA
	00:02		SUB OUT: NASON, TAYLOR
	00:02		SUB IN: GREEN, SIERRA
SUB OUT: 22 CAMILION, JUANA	00:01	52-51	
SUB IN: 21 JOSEPH, GABRIELLE	00:01		



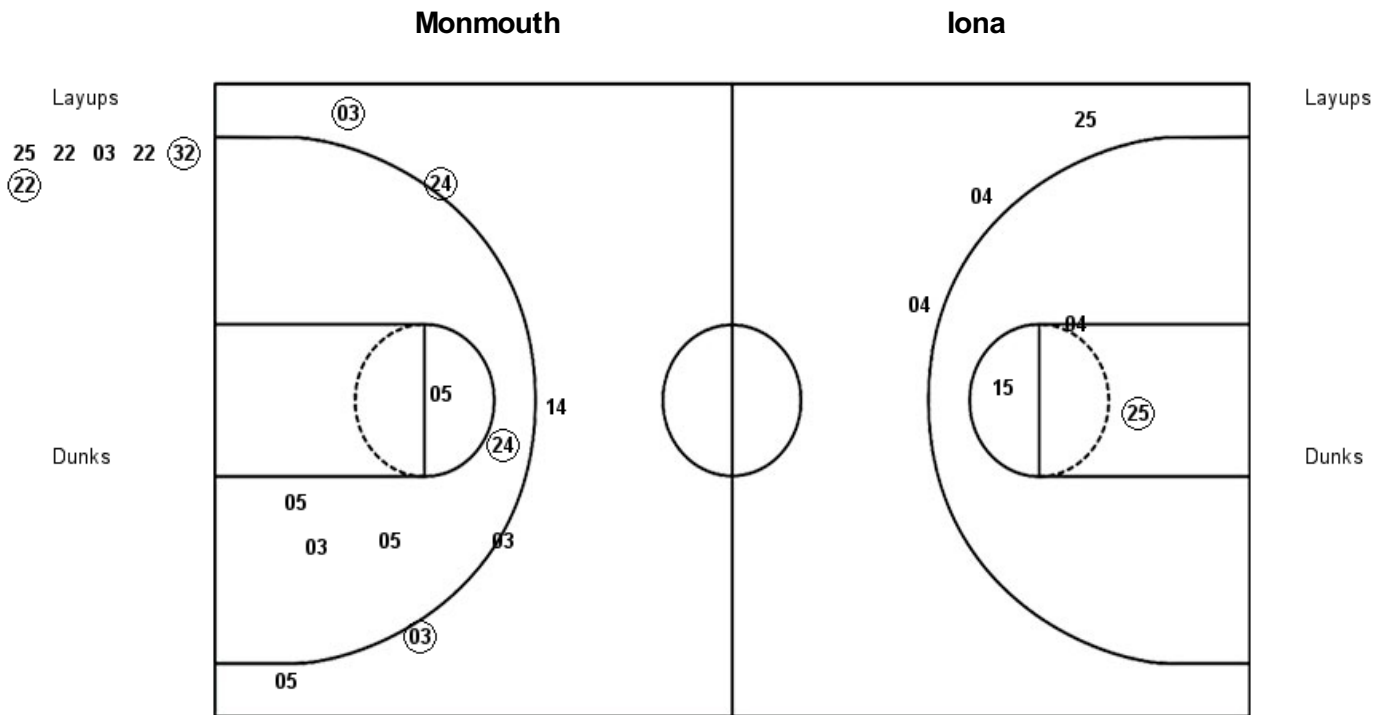
**Official Shot Chart**  
**Iona vs Monmouth**  
**PERIOD 1 Shots**  
 February 16, 2019 at OceanFirst Bank Center - West Long Branch, NJ



<b>MON : Period 1</b>	<b>Made</b>	<b>Att</b>	<b>Pct</b>
Layups	3	4	75.0
Dunks	0	0	0
2PT Field Goals	4	9	44.4
3PT Field Goals	0	1	00.0
<b>Total Field Goals</b>	<b>4</b>	<b>10</b>	<b>40.0</b>

<b>ION : Period 1</b>	<b>Made</b>	<b>Att</b>	<b>Pct</b>
Layups	0	5	00.0
Dunks	0	0	0
2PT Field Goals	2	9	22.2
3PT Field Goals	3	5	60.0
<b>Total Field Goals</b>	<b>5</b>	<b>14</b>	<b>35.7</b>

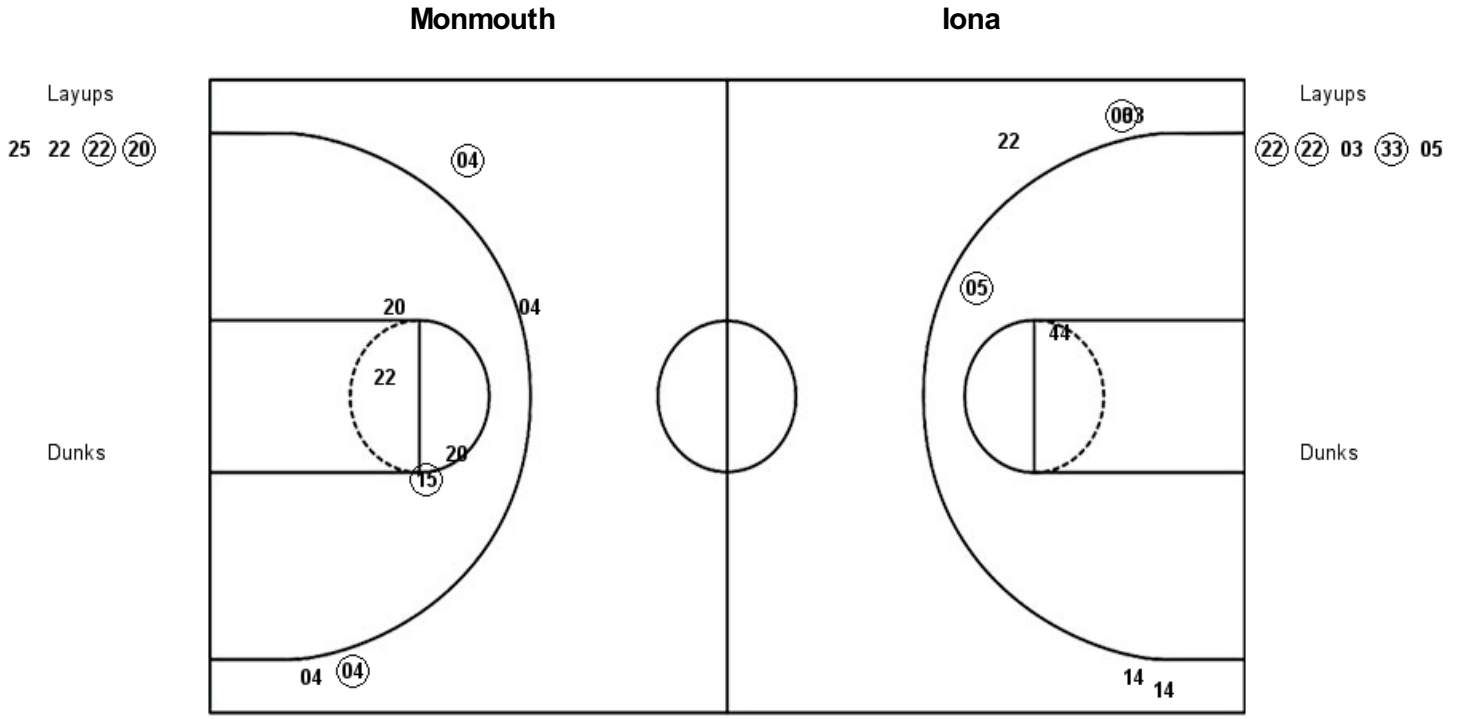
**Official Shot Chart**  
**Iona vs Monmouth**  
**PERIOD 2 Shots**  
 February 16, 2019 at OceanFirst Bank Center - West Long Branch, NJ



<b>MON : Period 2</b>	<b>Made</b>	<b>Att</b>	<b>Pct</b>
Layups	2	6	33.3
Dunks	0	0	0
2PT Field Goals	3	9	33.3
3PT Field Goals	0	3	00.0
<b>Total Field Goals</b>	<b>3</b>	<b>12</b>	<b>25.0</b>

<b>ION : Period 2</b>	<b>Made</b>	<b>Att</b>	<b>Pct</b>
Layups	0	0	0
Dunks	0	0	0
2PT Field Goals	1	5	20.0
3PT Field Goals	3	6	50.0
<b>Total Field Goals</b>	<b>4</b>	<b>11</b>	<b>36.4</b>

**Official Shot Chart**  
**Iona vs Monmouth**  
**PERIOD 3 Shots**  
 February 16, 2019 at OceanFirst Bank Center - West Long Branch, NJ



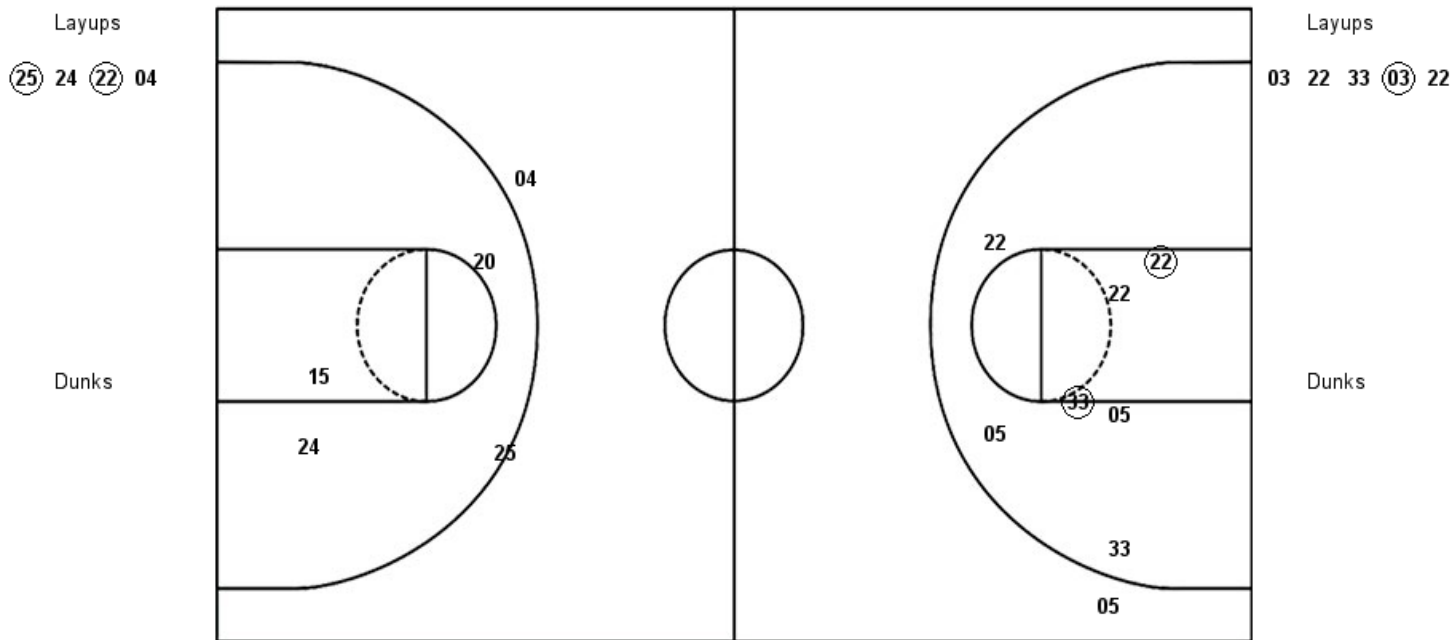
MON : Period 3	Made	Att	Pct
Layups	2	4	50.0
Dunks	0	0	0
2PT Field Goals	3	8	37.5
3PT Field Goals	2	4	50.0
<b>Total Field Goals</b>	<b>5</b>	<b>12</b>	<b>41.7</b>

ION : Period 3	Made	Att	Pct
Layups	3	5	60.0
Dunks	0	0	0
2PT Field Goals	4	7	57.1
3PT Field Goals	1	5	20.0
<b>Total Field Goals</b>	<b>5</b>	<b>12</b>	<b>41.7</b>

**Official Shot Chart**  
**Iona vs Monmouth**  
**PERIOD 4 Shots**  
 February 16, 2019 at OceanFirst Bank Center - West Long Branch, NJ

**Monmouth**

**Iona**

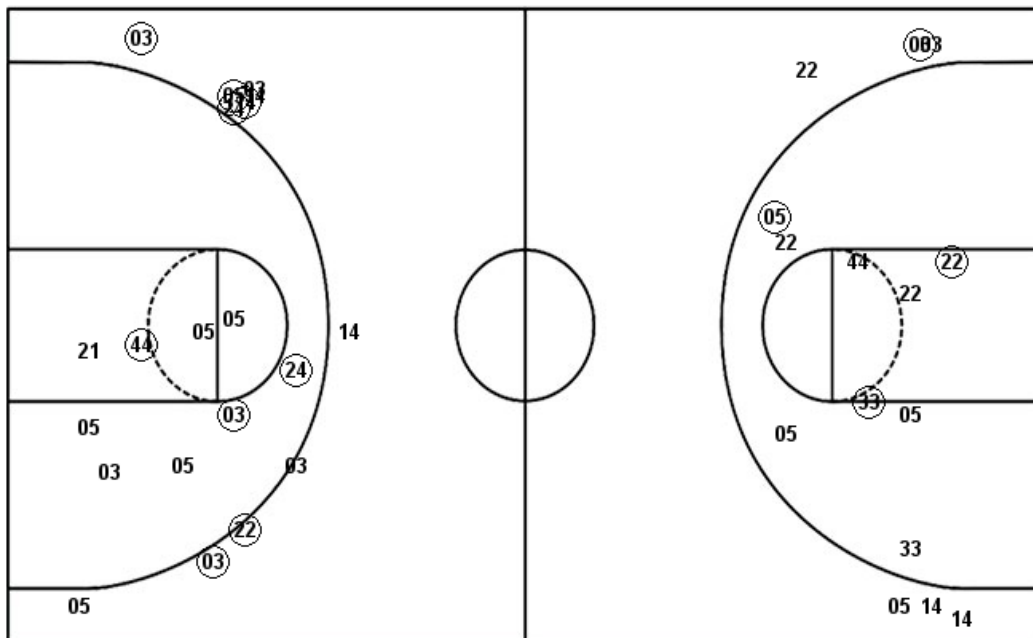


<b>MON : Period 4</b>	<b>Made</b>	<b>Att</b>	<b>Pct</b>
Layups	2	4	50.0
Dunks	0	0	0
2PT Field Goals	2	7	28.6
3PT Field Goals	0	2	00.0
<b>Total Field Goals</b>	<b>2</b>	<b>9</b>	<b>22.2</b>

<b>ION : Period 4</b>	<b>Made</b>	<b>Att</b>	<b>Pct</b>
Layups	1	5	20.0
Dunks	0	0	0
2PT Field Goals	3	11	27.3
3PT Field Goals	0	2	00.0
<b>Total Field Goals</b>	<b>3</b>	<b>13</b>	<b>23.1</b>

**Official Shot Chart**  
**Iona vs Monmouth**  
**Iona Team Shots**  
**February 16, 2019 at OceanFirst Bank Center - West Long Branch, NJ**

Layups



Layups

33 21 22 05 05  
 22 22 03 33 05  
 03 22 33 03 22

Dunks

Dunks

ION : Period 1	Made	Att	Pct
Layups	0	5	00.0
Dunks	0	0	0
2PT Field Goals	2	9	22.2
3PT Field Goals	3	5	60.0
<b>Total Field Goals</b>	<b>5</b>	<b>14</b>	<b>35.7</b>

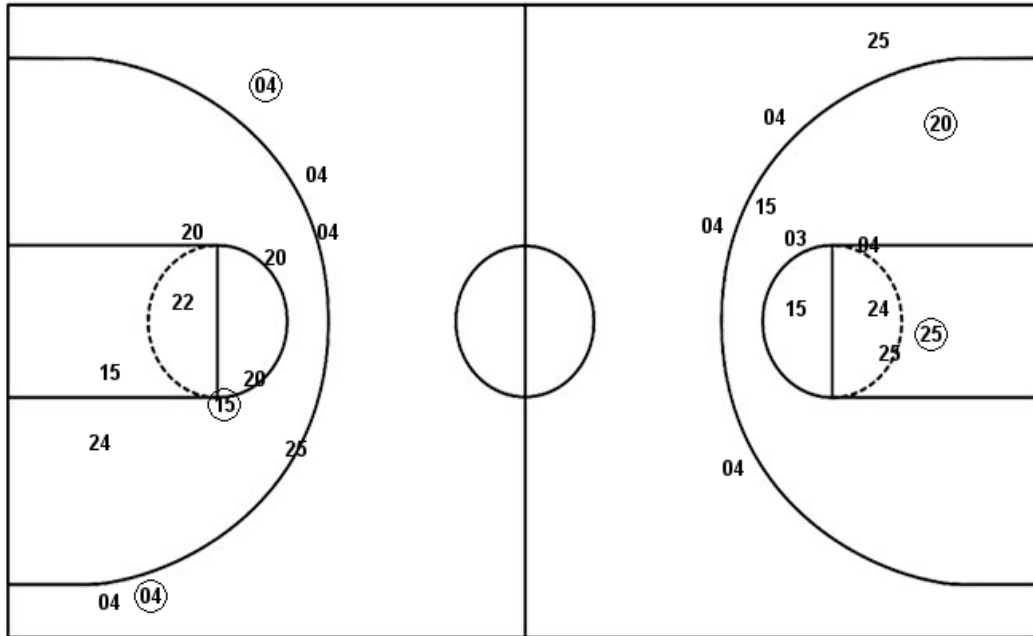
ION : Period 2	Made	Att	Pct
Layups	0	0	0
Dunks	0	0	0
2PT Field Goals	1	5	20.0
3PT Field Goals	3	6	50.0
<b>Total Field Goals</b>	<b>4</b>	<b>11</b>	<b>36.4</b>

ION : Period 3	Made	Att	Pct
Layups	3	5	60.0
Dunks	0	0	0
2PT Field Goals	4	7	57.1
3PT Field Goals	1	5	20.0
<b>Total Field Goals</b>	<b>5</b>	<b>12</b>	<b>41.7</b>

ION : Period 4	Made	Att	Pct
Layups	1	5	20.0
Dunks	0	0	0
2PT Field Goals	3	11	27.3
3PT Field Goals	0	2	00.0
<b>Total Field Goals</b>	<b>3</b>	<b>13</b>	<b>23.1</b>

**Official Shot Chart**  
**Iona vs Monmouth**  
**Monmouth Team Shots**  
 February 16, 2019 at OceanFirst Bank Center - West Long Branch, NJ

Layups



Layups

03 (22) (24) (24) 25  
 22 03 22 (32) (22)  
 25 22 (22) (20) (25)  
 24 (22) 04

Dunks

Dunks

MON : Period 1	Made	Att	Pct
Layups	3	4	75.0
Dunks	0	0	0
2PT Field Goals	4	9	44.4
3PT Field Goals	0	1	00.0
<b>Total Field Goals</b>	<b>4</b>	<b>10</b>	<b>40.0</b>

MON : Period 3	Made	Att	Pct
Layups	2	4	50.0
Dunks	0	0	0
2PT Field Goals	3	8	37.5
3PT Field Goals	2	4	50.0
<b>Total Field Goals</b>	<b>5</b>	<b>12</b>	<b>41.7</b>

MON : Period 2	Made	Att	Pct
Layups	2	6	33.3
Dunks	0	0	0
2PT Field Goals	3	9	33.3
3PT Field Goals	0	3	00.0
<b>Total Field Goals</b>	<b>3</b>	<b>12</b>	<b>25.0</b>

MON : Period 4	Made	Att	Pct
Layups	2	4	50.0
Dunks	0	0	0
2PT Field Goals	2	7	28.6
3PT Field Goals	0	2	00.0
<b>Total Field Goals</b>	<b>2</b>	<b>9</b>	<b>22.2</b>