

## FINAL SCORE



**Loyola Maryland**

**75**



**Monmouth**

**67**

**December 22, 2018 • OceanFirst Bank Center - West Long Branch,  
NJ**

## FINAL STATISTICS

**Official Box Score**  
**Loyola Maryland vs Monmouth**  
**Game Totals -- Final Statistics**  
**December 22, 2018 at OceanFirst Bank Center - West Long Branch, NJ**

**Loyola Maryland 75**

No.	Player	S	Pts	FG	3FG	FT	OR	DR	TR	PF	A	TO	Blk	Stl	Min	+/-
10	Karcz, Stephanie		12	6-8	0-0	0-0	3	9	12	4	7	5	0	10	38	8
11	Betz-White, Bri		11	4-6	0-1	3-4	1	1	2	2	2	5	0	0	29	8
20	Gray, Alexis		15	5-12	5-9	0-0	0	3	3	1	4	0	0	2	40	8
23	Connolly, Delaney		12	4-13	2-8	2-6	3	1	4	3	0	1	2	2	36	8
32	Niles, Hannah		10	4-8	1-1	1-2	2	4	6	4	2	0	0	1	22	7
4	Dixon, Taleah		12	3-10	1-3	5-8	1	2	3	1	5	1	0	0	29	2
12	Taylor, Molly		3	1-1	1-1	0-0	0	1	1	0	0	1	0	0	6	-1
	Team						3	1	4	0		0				
<b>TOTALS</b>			<b>75</b>	<b>27-58</b>	<b>10-23</b>	<b>11-20</b>	<b>13</b>	<b>22</b>	<b>35</b>	<b>15</b>	<b>20</b>	<b>13</b>	<b>2</b>	<b>15</b>	<b>200</b>	

*Shooting By Period*

Period	FG	FG%	3FG	3FG%	FT	FT%
1st Qtr	3-15	20%	0-4	00%	1-4	25%
2nd Qtr	7-15	47%	4-6	67%	1-2	50%
3rd Qtr	12-16	75%	4-8	50%	3-4	75%
4th Qtr	5-12	42%	2-5	40%	6-10	60%
1st Half	3-15	20%	0-4	00%	1-4	25%
2nd Half	7-15	47%	4-6	67%	1-2	50%
3rd Half	12-16	75%	4-8	50%	3-4	75%
4th Half	5-12	42%	2-5	40%	6-10	60%
<b>Game</b>	<b>27-58</b>	<b>46.6%</b>	<b>10-23</b>	<b>43.5%</b>	<b>11-20</b>	<b>55.0%</b>

*Deadball Rebounds:*

*Last FG: 4th-01:28*

*Biggest Run: 8-0*

*Largest lead: By 10 at 4-00:30*

*Technical Fouls: None.*

**Monmouth 67**

No.	Player	S	Pts	FG	3FG	FT	OR	DR	TR	PF	A	TO	Blk	Stl	Min	+/-
3	Graham, Rosa		9	3-4	1-1	2-2	0	0	0	3	3	4	0	2	26	-1
4	Green, Sierra		18	6-15	6-12	0-0	0	3	3	2	2	2	0	1	31	4
20	Barker, Mckinzee		2	1-2	0-1	0-1	0	0	0	2	0	0	0	1	22	-7
22	Middleton, Alexa		10	5-6	0-0	0-0	3	4	7	4	2	2	0	1	25	0
25	Thomas, Lucy		14	4-12	0-1	6-10	5	6	11	1	3	0	1	1	32	-7
1	Zelaya, Adriana		0	0-2	0-0	0-0	0	1	1	1	0	1	0	0	4	-8
2	Wallace, Alexa		1	0-2	0-0	1-2	2	2	4	1	1	3	1	0	16	1
15	Clough, Emani		9	4-12	1-5	0-0	0	2	2	1	1	5	0	2	20	-13
24	Balman, Erica		0	0-1	0-0	0-0	0	0	0	2	0	2	0	0	5	-3
32	Nason, Taylor		4	1-1	0-0	2-3	2	2	4	4	1	4	0	2	18	-6
	Team						2	2	4	0		0				
<b>TOTALS</b>			<b>67</b>	<b>24-57</b>	<b>8-20</b>	<b>11-18</b>	<b>14</b>	<b>22</b>	<b>36</b>	<b>21</b>	<b>13</b>	<b>23</b>	<b>2</b>	<b>10</b>	<b>200</b>	

*Shooting By Period*

Period	FG	FG%	3FG	3FG%	FT	FT%
1st Qtr	5-13	38%	3-5	60%	0-0	0%
2nd Qtr	8-16	50%	3-5	60%	1-2	50%
3rd Qtr	4-14	29%	0-3	00%	8-11	73%
4th Qtr	7-14	50%	2-7	29%	2-5	40%
1st Half	5-13	38%	3-5	60%	0-0	0%
2nd Half	8-16	50%	3-5	60%	1-2	50%
3rd Half	4-14	29%	0-3	00%	8-11	73%
4th Half	7-14	50%	2-7	29%	2-5	40%
<b>Game</b>	<b>24-57</b>	<b>42.1%</b>	<b>8-20</b>	<b>40.0%</b>	<b>11-18</b>	<b>61.1%</b>

*Deadball Rebounds:*

*Last FG: 4th-00:17*

*Biggest Run: 7-0*

*Largest lead: By 8 at 2-00:46*

*Technical Fouls: None.*

<b>Game Notes:</b>	
Officials: <b>Ken Kelly,Maggie Tieman,Scott Berkins</b>	
Attendance: <b>410</b>	
Start Time: <b>2018-12-22 17:03:00</b>	End Time: <b>2018-12-22 19:07:45</b>
Game Duration: <b>124</b>	

Score by Period	1st	2nd	3rd	4th	TOT
LOY	7	19	31	18	<b>75</b>
MON	13	20	16	18	<b>67</b>

LOY led for 14:59. MON led for 24:37.

Game was tied for 0:24.

Times tied: 0 Lead Changes: 3

Points from	LOY	MON
In the Paint	22	26
Off Turns	20	13
2nd Chance	7	11
Fast Break	15	6
Bench	15	14

**Official Box Score**  
**Loyola Maryland vs Monmouth**  
**First Half Statistics Only**  
**December 22, 2018 at OceanFirst Bank Center - West Long Branch, NJ**

**Loyola Maryland 75**

No.	Player	S	Pts	FG	3FG	FT	OR	DR	TR	PF	A	TO	Blk	Stl	Min	+/-
10	Karcz, Stephanie		2	1-1	0-0	0-0	3	4	7	1	0	3	0	3	10	-6
11	Betz-White, Bri		0	0-1	0-0	0-0	1	0	1	0	0	3	0	0	5	-7
20	Gray, Alexis		0	0-3	0-2	0-0	0	0	0	0	0	0	0	1	10	-6
23	Connolly, Delaney		2	1-4	0-1	0-2	1	0	1	0	0	0	2	0	10	-6
32	Niles, Hannah		0	0-2	0-0	0-0	0	1	1	0	2	0	0	1	9	-3
4	Dixon, Taleah		3	1-4	0-1	1-2	0	1	1	0	1	0	0	0	6	-2
12	Taylor, Molly		0	0-0	0-0	0-0	0	0	0	0	0	0	0	0	0	0
	Team						2	0	2	0		0				
<b>TOTALS</b>			<b>7</b>	<b>3-15</b>	<b>0-4</b>	<b>1-4</b>	<b>0</b>	<b>0</b>	<b>13</b>	<b>1</b>	<b>3</b>	<b>6</b>	<b>2</b>	<b>5</b>	<b>50</b>	

*Shooting By Period*

Period	FG	FG%	3FG	3FG%	FT	FT%
1st Qtr	3-15	20%	0-4	00%	1-4	25%
2nd Qtr	7-15	47%	4-6	67%	1-2	50%
3rd Qtr	12-16	75%	4-8	50%	3-4	75%
4th Qtr	5-12	42%	2-5	40%	6-10	60%
1st Half	3-15	20%	0-4	00%	1-4	25%
2nd Half	7-15	47%	4-6	67%	1-2	50%
3rd Half	12-16	75%	4-8	50%	3-4	75%
4th Half	5-12	42%	2-5	40%	6-10	60%
<b>Game</b>	<b>27-58</b>	<b>46.6%</b>	<b>10-23</b>	<b>43.5%</b>	<b>11-20</b>	<b>55.0%</b>

*Deadball Rebounds:*

*Last FG: 4th-01:28*

*Biggest Run: 8-0*

*Largest lead: By 10 at 4-00:30*

*Technical Fouls: None.*

**Monmouth 67**

No.	Player	S	Pts	FG	3FG	FT	OR	DR	TR	PF	A	TO	Blk	Stl	Min	+/-
3	Graham, Rosa		2	1-2	0-0	0-0	0	0	0	0	2	2	0	1	5	6
4	Green, Sierra		9	3-3	3-3	0-0	0	1	1	0	0	0	0	0	7	7
20	Barker, Mckinzee		0	0-1	0-1	0-0	0	0	0	0	0	0	0	1	5	7
22	Middleton, Alexa		2	1-1	0-0	0-0	0	1	1	1	0	0	0	0	5	4
25	Thomas, Lucy		0	0-1	0-0	0-0	0	1	1	0	1	0	1	0	6	6
1	Zelaya, Adriana		0	0-1	0-0	0-0	0	0	0	1	0	0	0	0	3	-1
2	Wallace, Alexa		0	0-0	0-0	0-0	1	0	1	0	0	0	1	0	5	-1
15	Clough, Emani		0	0-3	0-1	0-0	0	1	1	1	0	3	0	1	5	0
24	Balman, Erica		0	0-1	0-0	0-0	0	0	0	1	0	0	0	0	2	0
32	Nason, Taylor		0	0-0	0-0	0-0	1	1	2	1	1	1	0	1	8	2
	Team						0	1	1	0		0				
<b>TOTALS</b>			<b>13</b>	<b>5-13</b>	<b>3-5</b>	<b>0-0</b>	<b>0</b>	<b>0</b>	<b>8</b>	<b>5</b>	<b>4</b>	<b>6</b>	<b>2</b>	<b>4</b>	<b>50</b>	

*Shooting By Period*

Period	FG	FG%	3FG	3FG%	FT	FT%
1st Qtr	5-13	38%	3-5	60%	0-0	0%
2nd Qtr	8-16	50%	3-5	60%	1-2	50%
3rd Qtr	4-14	29%	0-3	00%	8-11	73%
4th Qtr	7-14	50%	2-7	29%	2-5	40%
1st Half	5-13	38%	3-5	60%	0-0	0%
2nd Half	8-16	50%	3-5	60%	1-2	50%
3rd Half	4-14	29%	0-3	00%	8-11	73%
4th Half	7-14	50%	2-7	29%	2-5	40%
<b>Game</b>	<b>24-57</b>	<b>42.1%</b>	<b>8-20</b>	<b>40.0%</b>	<b>11-18</b>	<b>61.1%</b>

*Deadball Rebounds:*

*Last FG: 4th-00:17*

*Biggest Run: 7-0*

*Largest lead: By 8 at 2-00:46*

*Technical Fouls: None.*

<b>Game Notes:</b>	
Officials: <b>Ken Kelly,Maggie Tieman,Scott Berkins</b>	
Attendance: <b>410</b>	
Start Time: <b>2018-12-22 17:03:00</b>	End Time: <b>2018-12-22 19:07:45</b>
Game Duration: <b>124</b>	

Score by Period	1st	2nd	3rd	4th	TOT
LOY	7	19	31	18	<b>75</b>
MON	13	20	16	18	<b>67</b>

**This period only:LOY led for 14:59. MON led for 14:37.**

**Game was tied for 0:24.**

Points from (This Period)	LOY	MON
In the Paint	4	2
Off Turns	4	6
2nd Chance	2	0
Fast Break	0	0
Bench	3	0

**Official Play-By-Play**  
**Loyola Maryland vs Monmouth**  
**First Quarter**

**December 22, 2018 at OceanFirst Bank Center - West Long Branch, NJ**

**Starters:**

**Loyola Maryland:** 10 KARCZ,STEPHANIE; 11 BETZ-WHITE,BRI; 20 GRAY,ALEXIS; 23 CONNOLLY,DELANEY; 32 NILES,HANNAH;

**Monmouth:** 3 GRAHAM,ROSA; 4 GREEN,SIERRA; 20 BARKER,MCKINZEE; 22 MIDDLETON,ALEXA; 25 THOMAS,LUCY;

**Period 1**

Time	VISITORS: Loyola Maryland	Score	Margin	HOME: Monmouth
09:43		3-0	H 3	GOOD! 3PTR by GREEN,SIERRA
09:43				ASSIST by THOMAS,LUCY
09:31	TURNOVER (LOSTBALL) by BETZ-WHITE,BRI			
09:31				STEAL by GRAHAM,ROSA
09:20		6-0	H 6	GOOD! 3PTR by GREEN,SIERRA
09:20				ASSIST by GRAHAM,ROSA
09:05	MISSED 3PTR by GRAY,ALEXIS			
09:01				REBOUND (DEF) by GREEN,SIERRA
08:38				TURNOVER (TRAVEL) by GRAHAM,ROSA
08:15	MISSED JUMPER by CONNOLLY,DELANEY			
08:12				REBOUND (DEF) by THOMAS,LUCY
08:05				TURNOVER (LOSTBALL) by GRAHAM,ROSA
08:05	STEAL by NILES,HANNAH			
07:50	GOOD! JUMPER by CONNOLLY,DELANEY	6-2	H 4	
07:50	ASSIST by NILES,HANNAH			
07:38				MISSED LAYUP by GRAHAM,ROSA
07:38	BLOCK by CONNOLLY,DELANEY			
07:38	REBOUND (DEF) by KARCZ,STEPHANIE			
07:38				SUB OUT: GRAHAM,ROSA
07:38				SUB IN: CLOUGH,EMANI
07:38				SUB OUT: THOMAS,LUCY
07:38				SUB IN: NASON,TAYLOR
07:25	MISSED JUMPER by CONNOLLY,DELANEY			
07:22				REBOUND (DEF) by MIDDLETON,ALEXA
07:08				TURNOVER (LOSTBALL) by CLOUGH,EMANI
07:08	STEAL by KARCZ,STEPHANIE			
07:07				FOUL (PERSONAL) by MIDDLETON,ALEXA
06:56	MISSED JUMPER by NILES,HANNAH			
06:52	REBOUND (OFF) by CONNOLLY,DELANEY			
06:36	TURNOVER (BADPASS) by BETZ-WHITE,BRI			
06:36				SUB OUT: MIDDLETON,ALEXA
06:36				SUB IN: BALMAN,ERICA
06:15				MISSED JUMPER by BALMAN,ERICA
06:11	REBOUND (DEF) by KARCZ,STEPHANIE			
06:00	TURNOVER (BADPASS) by KARCZ,STEPHANIE			
06:00				STEAL by CLOUGH,EMANI
05:55				MISSED LAYUP by CLOUGH,EMANI
05:52				REBOUND (OFF) by NASON,TAYLOR
05:51				TURNOVER (LOSTBALL) by NASON,TAYLOR
05:51	STEAL by GRAY,ALEXIS			
05:40				FOUL (PERSONAL) by CLOUGH,EMANI
05:40				SUB OUT: GREEN,SIERRA
05:40				SUB IN: ZELAYA,ADRIANA
05:40				SUB OUT: BARKER,MCKINZEE
05:40				SUB IN: WALLACE,ALEXA
05:40	SUB OUT: BETZ-WHITE,BRI			
05:40	SUB IN: DIXON,TALEAH			
05:26	MISSED 3PTR by GRAY,ALEXIS			
05:23	REBOUND (OFF) by TEAM			
05:23	TURNOVER (BADPASS) by KARCZ,STEPHANIE			
05:23				STEAL by NASON,TAYLOR
05:08				MISSED JUMPER by ZELAYA,ADRIANA
05:06	REBOUND (DEF) by KARCZ,STEPHANIE			
04:53				FOUL (PERSONAL) by BALMAN,ERICA
04:53				
04:53				SUB OUT: CLOUGH,EMANI
04:53				SUB IN: THOMAS,LUCY
04:53				SUB OUT: BALMAN,ERICA
04:53				SUB IN: GRAHAM,ROSA
04:53	MISSED FT by DIXON,TALEAH			
04:53	REBOUND (OFF) by TEAM			
04:53	GOOD! FT by DIXON,TALEAH	6-3	H 3	
04:34				MISSED LAYUP by THOMAS,LUCY
04:34	BLOCK by CONNOLLY,DELANEY			
04:28	REBOUND (DEF) by NILES,HANNAH			
04:10	MISSED 3PTR by CONNOLLY,DELANEY			
04:05	REBOUND (OFF) by KARCZ,STEPHANIE			
04:04	MISSED JUMPER by GRAY,ALEXIS			
04:02	REBOUND (OFF) by KARCZ,STEPHANIE			
04:02				FOUL (PERSONAL) by ZELAYA,ADRIANA
03:47	GOOD! LAYUP by KARCZ,STEPHANIE	6-5	H 1	
03:47	ASSIST by DIXON,TALEAH			
03:29		8-5	H 3	GOOD! JUMPER by GRAHAM,ROSA
03:01	MISSED JUMPER by NILES,HANNAH			
03:01				BLOCK by THOMAS,LUCY
03:00				REBOUND (DEF) by TEAM

Time	VISITORS: Loyola Maryland	Score	Margin	HOME: Monmouth
03:00				SUB OUT: ZELAYA,ADRIANA
03:00				SUB IN: GREEN,SIERRA
03:00				SUB OUT: GRAHAM,ROSA
03:00				SUB IN: CLOUGH,EMANI
02:45				MISSED JUMPER by CLOUGH,EMANI
02:41				REBOUND (OFF) by WALLACE,ALEXA
02:25				MISSED 3PTR by CLOUGH,EMANI
02:21	REBOUND (DEF) by KARCZ,STEPHANIE			
02:12				FOUL (PERSONAL) by NASON,TAYLOR
02:12	MISSED FT by CONNOLLY,DELANEY			
02:12	MISSED FT by CONNOLLY,DELANEY			
02:12				SUB OUT: THOMAS,LUCY
02:12				SUB IN: MIDDLETON,ALEXA
02:09				REBOUND (DEF) by NASON,TAYLOR
02:07	REBOUND (OFF) by TEAM			
02:02		10-5	H 5	GOOD! LAYUP by MIDDLETON,ALEXA
02:02				ASSIST by NASON,TAYLOR
01:52	MISSED LAYUP by DIXON,TALEAH			
01:51				REBOUND (DEF) by CLOUGH,EMANI
01:42				TURNOVER (BADPASS) by CLOUGH,EMANI
01:42	STEAL by KARCZ,STEPHANIE			
01:37	GOOD! LAYUP by DIXON,TALEAH [PNT]	10-7	H 3	
01:37	ASSIST by NILES,HANNAH			
01:17				TURNOVER (BADPASS) by CLOUGH,EMANI
01:17	STEAL by KARCZ,STEPHANIE			
01:08	MISSED LAYUP by DIXON,TALEAH			
01:08				BLOCK by WALLACE,ALEXA
01:05	REBOUND (OFF) by TEAM			
00:44				SUB OUT: WALLACE,ALEXA
00:44				SUB IN: THOMAS,LUCY
00:44				SUB OUT: CLOUGH,EMANI
00:44				SUB IN: BARKER,MCKINZEE
00:44				SUB OUT: MIDDLETON,ALEXA
00:44				SUB IN: GRAHAM,ROSA
00:44	SUB OUT: NILES,HANNAH			
00:44	SUB IN: BETZ-WHITE,BRI			
00:37	MISSED JUMPER by BETZ-WHITE,BRI			
00:33	REBOUND (OFF) by KARCZ,STEPHANIE			
00:32	MISSED 3PTR by DIXON,TALEAH			
00:28	REBOUND (OFF) by BETZ-WHITE,BRI			
00:27	TURNOVER (BADPASS) by BETZ-WHITE,BRI			
00:27				STEAL by BARKER,MCKINZEE
00:27	FOUL (PERSONAL) by KARCZ,STEPHANIE			
00:16				MISSED 3PTR by BARKER,MCKINZEE
00:14	REBOUND (DEF) by DIXON,TALEAH			
00:12	TURNOVER (BADPASS) by KARCZ,STEPHANIE			
00:00		13-7	H 6	GOOD! 3PTR by GREEN,SIERRA
00:00				ASSIST by GRAHAM,ROSA

### Loyola Maryland 7, Monmouth 13

Points from (This Period)	LOY	MON
In the Paint	4	2
Off Turns	4	6
2nd Chance	2	0
Fast Break	0	0
Bench	3	0

This period only:LOY led for 14:59. MON led for 14:37.  
Game was tied for 0:24.

**Official Play-By-Play  
Loyola Maryland vs Monmouth  
Second Quarter**

**December 22, 2018 at OceanFirst Bank Center - West Long Branch, NJ**

**Starters:**

**Loyola Maryland:** 10 KARCZ,STEPHANIE; 11 BETZ-WHITE,BRI; 20 GRAY,ALEXIS; 23 CONNOLLY,DELANEY; 32 NILES,HANNAH;

**Monmouth:** 3 GRAHAM,ROSA; 4 GREEN,SIERRA; 20 BARKER,MCKINZEE; 22 MIDDLETON,ALEXA; 25 THOMAS,LUCY;

**Period 2**

Time	VISITORS: Loyola Maryland	Score	Margin	HOME: Monmouth
09:44				MISSED LAYUP by GREEN,SIERRA
09:41				FOUL (OFF) by NASON,TAYLOR
09:41				SUB OUT: NASON,TAYLOR
09:41				SUB IN: THOMAS,LUCY
09:41				TURNOVER (OFFENSIVE) by NASON,TAYLOR
09:38				REBOUND (OFF) by NASON,TAYLOR
09:15	GOOD! JUMPER by CONNOLLY,DELANEY	13-9	H 4	
09:15	ASSIST by DIXON,TALEAH			
08:59		15-9	H 6	GOOD! LAYUP by GRAHAM,ROSA
08:59				ASSIST by THOMAS,LUCY
08:30	GOOD! 3PTR by GRAY,ALEXIS	15-12	H 3	
08:30	ASSIST by DIXON,TALEAH			
08:15				MISSED LAYUP by GREEN,SIERRA
08:12				REBOUND (OFF) by MIDDLETON,ALEXA
08:10		17-12	H 5	GOOD! LAYUP by MIDDLETON,ALEXA
07:58	MISSED 3PTR by CONNOLLY,DELANEY			
07:54				REBOUND (DEF) by GREEN,SIERRA
07:47				MISSED 3PTR by THOMAS,LUCY
07:46				REBOUND (OFF) by MIDDLETON,ALEXA
07:44				TURNOVER (LOSTBALL) by MIDDLETON,ALEXA
07:44				SUB OUT: BARKER,MCKINZEE
07:44				SUB IN: BALMAN,ERICA
07:44				SUB OUT: MIDDLETON,ALEXA
07:44				SUB IN: CLOUGH,EMANI
07:44				SUB OUT: GRAHAM,ROSA
07:44				SUB IN: WALLACE,ALEXA
07:21	TURNOVER (TRAVEL) by DIXON,TALEAH			
07:11				FOUL (OFF) by BALMAN,ERICA
07:11				TURNOVER (OFFENSIVE) by BALMAN,ERICA
07:11				SUB OUT: BALMAN,ERICA
07:11				SUB IN: MIDDLETON,ALEXA
06:55	MISSED 3PTR by GRAY,ALEXIS			
06:51				REBOUND (DEF) by THOMAS,LUCY
06:50				TURNOVER (BADPASS) by CLOUGH,EMANI
06:50	STEAL by KARCZ,STEPHANIE			
06:41	GOOD! LAYUP by BETZ-WHITE,BRI [FB]	17-14	H 3	
06:41	ASSIST by KARCZ,STEPHANIE			
06:20				MISSED JUMPER by CLOUGH,EMANI
06:17				REBOUND (OFF) by THOMAS,LUCY
06:16				MISSED LAYUP by THOMAS,LUCY
06:16				REBOUND (OFF) by TEAM
06:08		20-14	H 6	GOOD! 3PTR by CLOUGH,EMANI
06:08				ASSIST by MIDDLETON,ALEXA
05:46	MISSED JUMPER by KARCZ,STEPHANIE			
05:44				REBOUND (DEF) by THOMAS,LUCY
05:41				TURNOVER (TRAVEL) by WALLACE,ALEXA
05:41	SUB OUT: CONNOLLY,DELANEY			
05:41	SUB IN: NILES,HANNAH			
05:41				SUB OUT: CLOUGH,EMANI
05:41				SUB IN: GRAHAM,ROSA
05:41	SUB OUT: BETZ-WHITE,BRI			
05:41	SUB IN: TAYLOR,MOLLY			
05:13	TURNOVER (BADPASS) by TAYLOR,MOLLY			
05:13				STEAL by THOMAS,LUCY
05:08	FOUL (PERSONAL) by KARCZ,STEPHANIE			
05:08				MISSED FT by WALLACE,ALEXA
05:08				REBOUND (OFF) by TEAM
05:08				SUB OUT: GRAHAM,ROSA
05:08				SUB IN: ZELAYA,ADRIANA
05:08				SUB OUT: GREEN,SIERRA
05:08				SUB IN: CLOUGH,EMANI
05:08		21-14	H 7	GOOD! FT by WALLACE,ALEXA [FB]
05:08				SUB OUT: WALLACE,ALEXA
05:08				SUB IN: BARKER,MCKINZEE
04:38	GOOD! 3PTR by DIXON,TALEAH	21-17	H 4	
04:38	ASSIST by KARCZ,STEPHANIE			
04:20				MISSED LAYUP by MIDDLETON,ALEXA
04:17	REBOUND (DEF) by NILES,HANNAH			
04:11	MISSED JUMPER by DIXON,TALEAH			
04:04				REBOUND (DEF) by ZELAYA,ADRIANA
04:03				TURNOVER (LOSTBALL) by ZELAYA,ADRIANA
04:03	STEAL by KARCZ,STEPHANIE			
04:01	GOOD! LAYUP by NILES,HANNAH [FB]	21-19	H 2	
04:01	ASSIST by KARCZ,STEPHANIE			
03:45				MISSED JUMPER by ZELAYA,ADRIANA
03:41	REBOUND (DEF) by KARCZ,STEPHANIE			

Time	VISITORS: Loyola Maryland	Score	Margin	HOME: Monmouth
03:40				TIMEOUT 30SEC
03:40				
03:40				SUB OUT: ZELAYA,ADRIANA
03:40				SUB IN: WALLACE,ALEXA
03:40				SUB OUT: CLOUGH,EMANI
03:40				SUB IN: GREEN,SIERRA
03:40				SUB OUT: BARKER,MCKINZEE
03:40				SUB IN: GRAHAM,ROSA
03:38	GOOD! 3PTR by TAYLOR,MOLLY [FB]	21-22	V 1	
03:38	ASSIST by GRAY,ALEXIS			
03:24		24-22	H 2	GOOD! 3PTR by GREEN,SIERRA
02:50				FOUL (PERSONAL) by GREEN,SIERRA
02:37		27-22	H 5	GOOD! 3PTR by GRAHAM,ROSA
02:37				ASSIST by GREEN,SIERRA
02:37	GOOD! FT by NILES,HANNAH [FB]	27-23	H 4	
02:37	MISSED FT by NILES,HANNAH			
02:37				REBOUND (DEF) by GREEN,SIERRA
02:00	MISSED JUMPER by DIXON,TALEAH			
02:00				REBOUND (DEF) by WALLACE,ALEXA
02:00				TURNOVER (LOSTBALL) by WALLACE,ALEXA
01:54	MISSED JUMPER by GRAY,ALEXIS			
01:53				REBOUND (DEF) by WALLACE,ALEXA
01:43				MISSED 3PTR by GREEN,SIERRA
01:41	REBOUND (DEF) by TAYLOR,MOLLY			
01:36	MISSED LAYUP by NILES,HANNAH			
01:34				REBOUND (DEF) by THOMAS,LUCY
01:24		29-23	H 6	GOOD! LAYUP by MIDDLETON,ALEXA
01:24				ASSIST by GREEN,SIERRA
01:24	TIMEOUT 30SEC			
01:24				SUB OUT: WALLACE,ALEXA
01:24				SUB IN: CLOUGH,EMANI
01:24				SUB OUT: THOMAS,LUCY
01:24				SUB IN: NASON,TAYLOR
01:24	SUB OUT: NILES,HANNAH			
01:24	SUB IN: CONNOLLY,DELANEY			
01:05	MISSED JUMPER by KARCZ,STEPHANIE			
01:05	REBOUND (OFF) by DIXON,TALEAH			
01:05				SUB OUT: WALLACE,ALEXA
01:05				SUB IN: CLOUGH,EMANI
01:05				SUB OUT: THOMAS,LUCY
01:05				SUB IN: NASON,TAYLOR
00:59				FOUL (PERSONAL) by GRAHAM,ROSA
00:58	TURNOVER (BADPASS) by KARCZ,STEPHANIE			
00:58				STEAL by CLOUGH,EMANI
00:46		31-23	H 8	GOOD! LAYUP by CLOUGH,EMANI
00:18	GOOD! 3PTR by CONNOLLY,DELANEY	31-26	H 5	
00:18	ASSIST by GRAY,ALEXIS			
00:00		33-26	H 7	GOOD! JUMPER by CLOUGH,EMANI

Loyola Maryland 26, Monmouth 33

Points from (This Period)	LOY	MON
In the Paint	4	8
Off Turns	4	3
2nd Chance	0	5
Fast Break	8	1
Bench	6	8

This period only:LOY led for 14:59. MON led for 14:37.  
Game was tied for 0:24.

**Official Box Score**  
**Loyola Maryland vs Monmouth**  
**Second Half Statistics Only**  
**December 22, 2018 at OceanFirst Bank Center - West Long Branch, NJ**

**Loyola Maryland 75**

No.	Player	S	Pts	FG	3FG	FT	OR	DR	TR	PF	A	TO	Blk	Stl	Min	+/-
10	Karcz, Stephanie		0	0-2	0-0	0-0	0	1	1	1	3	1	0	2	10	-1
11	Betz-White, Bri		2	1-1	0-0	0-0	0	0	0	0	0	0	0	0	4	0
20	Gray, Alexis		3	1-3	1-2	0-0	0	0	0	0	2	0	0	0	10	-1
23	Connolly, Delaney		5	2-3	1-2	0-0	0	0	0	0	0	0	0	0	6	-1
32	Niles, Hannah		3	1-2	0-0	1-2	0	1	1	0	0	0	0	0	4	0
4	Dixon, Taleah		3	1-3	1-1	0-0	1	0	1	0	2	1	0	0	10	-1
12	Taylor, Molly		3	1-1	1-1	0-0	0	1	1	0	0	1	0	0	6	-1
	Team						0	0	0	0		0				
<b>TOTALS</b>			<b>19</b>	<b>7-15</b>	<b>4-6</b>	<b>1-2</b>	<b>0</b>	<b>0</b>	<b>4</b>	<b>1</b>	<b>7</b>	<b>3</b>	<b>0</b>	<b>2</b>	<b>50</b>	

*Shooting By Period*

Period	FG	FG%	3FG	3FG%	FT	FT%
1st Qtr	3-15	20%	0-4	00%	1-4	25%
2nd Qtr	7-16	47%	4-6	67%	1-2	50%
3rd Qtr	12-16	75%	4-8	50%	3-4	75%
4th Qtr	5-12	42%	2-5	40%	6-10	60%
1st Half	3-15	20%	0-4	00%	1-4	25%
2nd Half	7-15	47%	4-6	67%	1-2	50%
3rd Half	12-16	75%	4-8	50%	3-4	75%
4th Half	5-12	42%	2-5	40%	6-10	60%
<b>Game</b>	<b>27-58</b>	<b>46.6%</b>	<b>10-23</b>	<b>43.5%</b>	<b>11-20</b>	<b>55.0%</b>

*Deadball Rebounds:*

*Last FG: 4th-01:28*

*Biggest Run: 8-0*

*Largest lead: By 10 at 4-00:30*

*Technical Fouls: None.*

**Monmouth 67**

No.	Player	S	Pts	FG	3FG	FT	OR	DR	TR	PF	A	TO	Blk	Stl	Min	+/-
3	Graham, Rosa		5	2-2	1-1	0-0	0	0	0	1	0	0	0	0	6	7
4	Green, Sierra		3	1-4	1-2	0-0	0	2	2	1	2	0	0	0	9	8
20	Barker, Mckinzee		0	0-0	0-0	0-0	0	0	0	0	0	0	0	0	4	-9
22	Middleton, Alexa		4	2-3	0-0	0-0	2	0	2	0	1	1	0	0	9	1
25	Thomas, Lucy		0	0-2	0-1	0-0	1	3	4	0	1	0	0	1	8	0
1	Zelaya, Adriana		0	0-1	0-0	0-0	0	1	1	0	0	1	0	0	1	-7
2	Wallace, Alexa		1	0-0	0-0	1-2	0	2	2	0	0	2	0	0	5	9
15	Clough, Emani		7	3-4	1-1	0-0	0	0	0	0	0	1	0	1	5	-5
24	Balman, Erica		0	0-0	0-0	0-0	0	0	0	1	0	1	0	0	1	0
32	Nason, Taylor		0	0-0	0-0	0-0	1	0	1	1	0	1	0	0	2	1
	Team						1	0	1	0		0				
<b>TOTALS</b>			<b>20</b>	<b>8-16</b>	<b>3-5</b>	<b>1-2</b>	<b>0</b>	<b>0</b>	<b>13</b>	<b>4</b>	<b>4</b>	<b>7</b>	<b>0</b>	<b>2</b>	<b>50</b>	

*Shooting By Period*

Period	FG	FG%	3FG	3FG%	FT	FT%
1st Qtr	5-13	38%	3-5	60%	0-0	0%
2nd Qtr	8-16	50%	3-5	60%	1-2	50%
3rd Qtr	4-14	29%	0-3	00%	8-11	73%
4th Qtr	7-14	50%	2-7	29%	2-5	40%
1st Half	5-13	38%	3-5	60%	0-0	0%
2nd Half	8-16	50%	3-5	60%	1-2	50%
3rd Half	4-14	29%	0-3	00%	8-11	73%
4th Half	7-14	50%	2-7	29%	2-5	40%
<b>Game</b>	<b>24-57</b>	<b>42.1%</b>	<b>8-20</b>	<b>40.0%</b>	<b>11-18</b>	<b>61.1%</b>

*Deadball Rebounds:*

*Last FG: 4th-00:17*

*Biggest Run: 7-0*

*Largest lead: By 8 at 2-00:46*

*Technical Fouls: None.*

<b>Game Notes:</b>	
Officials: Ken Kelly,Maggie Tieman,Scott Berkins	
Attendance: 410	
Start Time: 2018-12-22 17:03:00	End Time: 2018-12-22
19:07:45	
Game Duration: 124	

Score by Period	1st	2nd	3rd	4th	TOT
LOY	7	19	31	18	75
MON	13	20	16	18	67

**This period only: LOY led for 14:59. MON led for 14:37.**  
**Game was tied for 0:24.**

Points from (This Period)	LOY	MON
In the Paint	4	8
Off Turns	4	3
2nd Chance	0	5
Fast Break	8	1
Bench	6	8



**Official Play-By-Play  
Loyola Maryland vs Monmouth  
Third Quarter**

**December 22, 2018 at OceanFirst Bank Center - West Long Branch, NJ**

**Starters:**

**Loyola Maryland:** 10 KARCZ,STEPHANIE; 11 BETZ-WHITE,BRI; 20 GRAY,ALEXIS; 23 CONNOLLY,DELANEY; 32 NILES,HANNAH;

**Monmouth:** 3 GRAHAM,ROSA; 4 GREEN,SIERRA; 20 BARKER,MCKINZEE; 22 MIDDLETON,ALEXA; 25 THOMAS,LUCY;

**Period 3**

Time	VISITORS: Loyola Maryland	Score	Margin	HOME: Monmouth
09:48	GOOD! DUNK by KARCZ,STEPHANIE	33-28	H 5	
09:48	ASSIST by GRAY,ALEXIS			
09:35				MISSED JUMPER by THOMAS,LUCY
09:32				REBOUND (OFF) by MIDDLETON,ALEXA
09:32		35-28	H 7	GOOD! LAYUP by MIDDLETON,ALEXA
09:05				FOUL (PERSONAL) by GRAHAM,ROSA
08:52				SUB OUT: THOMAS,LUCY
08:52				SUB IN: NASON,TAYLOR
08:47	MISSED 3PTR by CONNOLLY,DELANEY			
08:46	REBOUND (OFF) by TEAM			
08:39	GOOD! JUMPER by NILES,HANNAH [PNT]	35-30	H 5	
08:13				MISSED 3PTR by GREEN,SIERRA
08:13	REBOUND (DEF) by NILES,HANNAH			
08:13				FOUL (PERSONAL) by MIDDLETON,ALEXA
08:13				SUB OUT: MIDDLETON,ALEXA
08:13				SUB IN: THOMAS,LUCY
07:57	GOOD! LAYUP by BETZ-WHITE,BRI [PNT]	35-32	H 3	
07:36		37-32	H 5	GOOD! JUMPER by THOMAS,LUCY [PNT]
07:36	FOUL (PERSONAL) by CONNOLLY,DELANEY			
07:36				MISSED FT by THOMAS,LUCY
07:36				REBOUND (OFF) by TEAM
07:34	FOUL (PERSONAL) by KARCZ,STEPHANIE			
07:29	FOUL (PERSONAL) by NILES,HANNAH			
07:29				MISSED FT by THOMAS,LUCY
07:29				REBOUND (OFF) by TEAM
07:29		38-32	H 6	GOOD! FT by THOMAS,LUCY [FB]
07:16	GOOD! 3PTR by CONNOLLY,DELANEY	38-35	H 3	
07:16	ASSIST by GRAY,ALEXIS			
06:48				MISSED 3PTR by CLOUGH,EMANI
06:45				REBOUND (OFF) by THOMAS,LUCY
06:43		40-35	H 5	GOOD! LAYUP by THOMAS,LUCY
06:32	MISSED 3PTR by BETZ-WHITE,BRI			
06:28	REBOUND (OFF) by NILES,HANNAH			
06:24	GOOD! 3PTR by NILES,HANNAH	40-38	H 2	
06:24	ASSIST by BETZ-WHITE,BRI			
06:03	FOUL (PERSONAL) by NILES,HANNAH			
06:03		41-38	H 3	GOOD! FT by THOMAS,LUCY
06:03		42-38	H 4	GOOD! FT by THOMAS,LUCY
05:46	GOOD! 3PTR by GRAY,ALEXIS	42-41	H 1	
05:46	ASSIST by KARCZ,STEPHANIE			
05:46				TIMEOUT 30SEC
05:46				SUB OUT: CLOUGH,EMANI
05:46				SUB IN: WALLACE,ALEXA
05:34				MISSED LAYUP by WALLACE,ALEXA
05:30	REBOUND (DEF) by KARCZ,STEPHANIE			
05:30				FOUL (PERSONAL) by GREEN,SIERRA
05:16	TURNOVER (LOSTBALL) by KARCZ,STEPHANIE			
05:16				STEAL by GREEN,SIERRA
05:09				TURNOVER (LOSTBALL) by NASON,TAYLOR
05:09	STEAL by GRAY,ALEXIS			
04:52	GOOD! JUMPER by NILES,HANNAH	42-43	V 1	
04:31				TURNOVER (LOSTBALL) by GREEN,SIERRA
04:31	STEAL by KARCZ,STEPHANIE			
04:25	GOOD! LAYUP by KARCZ,STEPHANIE [FB]	42-45	V 3	
04:18				MISSED 3PTR by GREEN,SIERRA
04:14				REBOUND (OFF) by WALLACE,ALEXA
04:12				MISSED JUMPER by THOMAS,LUCY
04:06				REBOUND (OFF) by TEAM
04:06				SUB OUT: GREEN,SIERRA
04:06				SUB IN: MIDDLETON,ALEXA
04:06				SUB OUT: NASON,TAYLOR
04:06				SUB IN: BARKER,MCKINZEE
03:51				MISSED JUMPER by WALLACE,ALEXA
03:49				REBOUND (OFF) by TEAM
03:49	FOUL (PERSONAL) by BETZ-WHITE,BRI			
03:49		43-45	V 2	GOOD! FT by THOMAS,LUCY
03:47				MISSED FT by THOMAS,LUCY
03:45	REBOUND (DEF) by KARCZ,STEPHANIE			
03:31	GOOD! JUMPER by KARCZ,STEPHANIE	43-47	V 4	
03:18	FOUL (PERSONAL) by NILES,HANNAH			
03:18		44-47	V 3	GOOD! FT by THOMAS,LUCY
03:18	SUB OUT: NILES,HANNAH			
03:18	SUB IN: DIXON,TALEAH			
03:18		45-47	V 2	GOOD! FT by THOMAS,LUCY
02:58	GOOD! LAYUP by BETZ-WHITE,BRI [PNT]	45-49	V 4	

Time	VISITORS: Loyola Maryland	Score	Margin	HOME: Monmouth
02:58	ASSIST by KARCZ,STEPHANIE			
02:41				TURNOVER (LOSTBALL) by WALLACE,ALEXA
02:41	STEAL by KARCZ,STEPHANIE			
02:37				FOUL (PERSONAL) by WALLACE,ALEXA
02:37	GOOD! FT by DIXON,TALEAH [FB]	45-50	V 5	
02:37				SUB OUT: WALLACE,ALEXA
02:37				SUB IN: GREEN,SIERRA
02:37				SUB OUT: MIDDLETON,ALEXA
02:37				SUB IN: BALMAN,ERICA
02:34	GOOD! FT by DIXON,TALEAH [FB]	45-51	V 6	
02:28	FOUL (PERSONAL) by BETZ-WHITE,BRI			
02:28		46-51	V 5	GOOD! FT by GRAHAM,ROSA [FB]
02:28		47-51	V 4	GOOD! FT by GRAHAM,ROSA [FB]
02:00	GOOD! 3PTR by GRAY,ALEXIS	47-54	V 7	
02:00	ASSIST by BETZ-WHITE,BRI			
01:52				TURNOVER (BADPASS) by GRAHAM,ROSA
01:52	STEAL by KARCZ,STEPHANIE			
01:47	TURNOVER (BADPASS) by BETZ-WHITE,BRI			
01:47				STEAL by GRAHAM,ROSA
01:46				TURNOVER (BADPASS) by GRAHAM,ROSA
01:46	STEAL by CONNOLLY,DELANEY			
01:46				FOUL (PERSONAL) by THOMAS,LUCY
01:46	MISSED FT by CONNOLLY,DELANEY			
01:46	GOOD! FT by CONNOLLY,DELANEY	47-55	V 8	
01:46				SUB OUT: GRAHAM,ROSA
01:46				SUB IN: CLOUGH,EMANI
01:46	REBOUND (OFF) by TEAM			
01:29				MISSED JUMPER by GREEN,SIERRA
01:26	REBOUND (DEF) by KARCZ,STEPHANIE			
01:17	MISSED 3PTR by DIXON,TALEAH			
01:14	REBOUND (OFF) by CONNOLLY,DELANEY			
00:54	MISSED 3PTR by CONNOLLY,DELANEY			
00:52				REBOUND (DEF) by TEAM
00:39				TURNOVER (LOSTBALL) by BALMAN,ERICA
00:39	STEAL by CONNOLLY,DELANEY			
00:17	GOOD! JUMPER by DIXON,TALEAH	47-57	V 10	
00:06				MISSED JUMPER by CLOUGH,EMANI
00:02				REBOUND (OFF) by THOMAS,LUCY
00:02				MISSED LAYUP by THOMAS,LUCY
00:01				REBOUND (OFF) by THOMAS,LUCY
00:00		49-57	V 8	GOOD! LAYUP by THOMAS,LUCY

Loyola Maryland 57, Monmouth 49

Points from (This Period)	LOY	MON
In the Paint	10	8
Off Turns	9	0
2nd Chance	5	6
Fast Break	4	3
Bench	4	0

This period only:LOY led for 14:59. MON led for 14:37.  
Game was tied for 0:24.

**Official Play-By-Play  
Loyola Maryland vs Monmouth  
Fourth Quarter**

**December 22, 2018 at OceanFirst Bank Center - West Long Branch, NJ**

**Starters:**

**Loyola Maryland:** 10 KARCZ,STEPHANIE; 11 BETZ-WHITE,BRI; 20 GRAY,ALEXIS; 23 CONNOLLY,DELANEY; 32 NILES,HANNAH;

**Monmouth:** 3 GRAHAM,ROSA; 4 GREEN,SIERRA; 20 BARKER,MCKINZEE; 22 MIDDLETON,ALEXA; 25 THOMAS,LUCY;

**Period 4**

Time	VISITORS: Loyola Maryland	Score	Margin	HOME: Monmouth
09:51				TURNOVER (BADPASS) by CLOUGH,EMANI
09:51	STEAL by KARCZ,STEPHANIE			
09:46	TURNOVER (BADPASS) by BETZ-WHITE,BRI			
09:46				STEAL by MIDDLETON,ALEXA
09:34	FOUL (PERSONAL) by GRAY,ALEXIS			
09:31		51-57	V 6	GOOD! JUMPER by CLOUGH,EMANI
09:31				ASSIST by WALLACE,ALEXA
09:04	GOOD! LAYUP by BETZ-WHITE,BRI	51-59	V 8	
09:04	ASSIST by KARCZ,STEPHANIE			
08:38				TURNOVER (LOSTBALL) by GREEN,SIERRA
08:38	STEAL by KARCZ,STEPHANIE			
08:36				FOUL (PERSONAL) by NASON,TAYLOR
08:36				SUB OUT: GREEN,SIERRA
08:36				SUB IN: BARKER,MCKINZEE
08:36				SUB OUT: NASON,TAYLOR
08:36				SUB IN: THOMAS,LUCY
08:36	GOOD! FT by DIXON,TALEAH [FB]	51-60	V 9	
08:36	MISSED FT by DIXON,TALEAH			
08:35				REBOUND (DEF) by THOMAS,LUCY
08:28		53-60	V 7	GOOD! LAYUP by MIDDLETON,ALEXA [PNT]
08:28				ASSIST by CLOUGH,EMANI
08:14	MISSED 3PTR by CONNOLLY,DELANEY			
08:11				REBOUND (DEF) by MIDDLETON,ALEXA
07:56				MISSED 3PTR by CLOUGH,EMANI
07:53	REBOUND (DEF) by KARCZ,STEPHANIE			
07:46	MISSED JUMPER by CONNOLLY,DELANEY			
07:44				REBOUND (DEF) by CLOUGH,EMANI
07:23				MISSED 3PTR by CLOUGH,EMANI
07:19	REBOUND (DEF) by BETZ-WHITE,BRI			
07:01	GOOD! LAYUP by KARCZ,STEPHANIE [PNT]	53-62	V 9	
07:01	ASSIST by DIXON,TALEAH			
06:36				FOUL (OFF) by MIDDLETON,ALEXA
06:36				TURNOVER (OFFENSIVE) by MIDDLETON,ALEXA
06:36				SUB OUT: WALLACE,ALEXA
06:36				SUB IN: GRAHAM,ROSA
06:24	MISSED 3PTR by GRAY,ALEXIS			
06:20				REBOUND (DEF) by MIDDLETON,ALEXA
06:06	FOUL (PERSONAL) by KARCZ,STEPHANIE			
06:06	SUB OUT: KARCZ,STEPHANIE			
06:06	SUB IN: NILES,HANNAH			
05:54		55-62	V 7	GOOD! LAYUP by BARKER,MCKINZEE
05:54				ASSIST by MIDDLETON,ALEXA
05:54	FOUL (PERSONAL) by CONNOLLY,DELANEY			
05:51				MISSED FT by BARKER,MCKINZEE
05:49	REBOUND (DEF) by DIXON,TALEAH			
05:37	GOOD! 3PTR by GRAY,ALEXIS	55-65	V 10	
05:37	ASSIST by DIXON,TALEAH			
05:33				TIMEOUT 30SEC
05:33				
05:33				SUB OUT: CLOUGH,EMANI
05:33				SUB IN: GREEN,SIERRA
05:21				MISSED LAYUP by THOMAS,LUCY
05:20				REBOUND (OFF) by THOMAS,LUCY
05:20		57-65	V 8	GOOD! LAYUP by THOMAS,LUCY
05:19	FOUL (PERSONAL) by NILES,HANNAH			
05:19				MISSED FT by THOMAS,LUCY
05:18	REBOUND (DEF) by GRAY,ALEXIS			
04:49	MISSED LAYUP by DIXON,TALEAH			
04:46	REBOUND (OFF) by NILES,HANNAH			
04:33	MISSED LAYUP by NILES,HANNAH			
04:29				REBOUND (DEF) by MIDDLETON,ALEXA
04:10				MISSED 3PTR by GREEN,SIERRA
04:08	REBOUND (DEF) by NILES,HANNAH			
03:52				FOUL (PERSONAL) by MIDDLETON,ALEXA
03:52	GOOD! FT by CONNOLLY,DELANEY	57-66	V 9	
03:52	SUB OUT: NILES,HANNAH			
03:52	SUB IN: KARCZ,STEPHANIE			
03:50	MISSED FT by CONNOLLY,DELANEY			
03:48				REBOUND (DEF) by THOMAS,LUCY
03:43				MISSED JUMPER by THOMAS,LUCY
03:42	REBOUND (DEF) by TEAM			
03:41				SUB OUT: MIDDLETON,ALEXA
03:41				SUB IN: NASON,TAYLOR
03:21	MISSED 3PTR by CONNOLLY,DELANEY			
03:17	REBOUND (OFF) by CONNOLLY,DELANEY			
03:02	MISSED LAYUP by GRAY,ALEXIS			

Time	VISITORS: Loyola Maryland	Score	Margin	HOME: Monmouth
03:01				REBOUND (DEF) by NASON,TAYLOR
03:01	FOUL (PERSONAL) by CONNOLLY,DELANEY			
03:01		58-66	V 8	GOOD! FT by NASON,TAYLOR
03:01		59-66	V 7	GOOD! FT by NASON,TAYLOR
02:38	TURNOVER (BADPASS) by CONNOLLY,DELANEY			
02:38				STEAL by NASON,TAYLOR
02:36		61-66	V 5	GOOD! LAYUP by NASON,TAYLOR [FB]
02:36	FOUL (PERSONAL) by DIXON,TALEAH			
02:36				MISSED FT by NASON,TAYLOR
02:36	REBOUND (DEF) by CONNOLLY,DELANEY			
02:27	TIMEOUT 30SEC			
02:18	GOOD! 3PTR by GRAY,ALEXIS	61-69	V 8	
02:18	ASSIST by KARCZ,STEPHANIE			
02:00		64-69	V 5	GOOD! 3PTR by GREEN,SIERRA
02:00				ASSIST by THOMAS,LUCY
01:28	GOOD! JUMPER by KARCZ,STEPHANIE	64-71	V 7	
01:10				TURNOVER (TRAVEL) by NASON,TAYLOR
00:56				FOUL (PERSONAL) by NASON,TAYLOR
00:50	TIMEOUT 30SEC			
00:47				FOUL (PERSONAL) by GRAHAM,ROSA
00:46	GOOD! FT by BETZ-WHITE,BRI	64-72	V 8	
00:46				SUB OUT: NASON,TAYLOR
00:46				SUB IN: MIDDLETON,ALEXA
00:46	GOOD! FT by BETZ-WHITE,BRI	64-73	V 9	
00:32				MISSED 3PTR by GREEN,SIERRA
00:32	REBOUND (DEF) by GRAY,ALEXIS			
00:31				SUB OUT: MIDDLETON,ALEXA
00:31				SUB IN: NASON,TAYLOR
00:31				SUB OUT: GREEN,SIERRA
00:31				SUB IN: WALLACE,ALEXA
00:30				FOUL (PERSONAL) by BARKER,MCKINZEE
00:30	MISSED FT by BETZ-WHITE,BRI			
00:30	REBOUND (OFF) by TEAM			
00:30				SUB OUT: WALLACE,ALEXA
00:30				SUB IN: GREEN,SIERRA
00:30				SUB OUT: NASON,TAYLOR
00:30				SUB IN: MIDDLETON,ALEXA
00:30	GOOD! FT by BETZ-WHITE,BRI [FB]	64-74	V 10	
00:17		67-74	V 7	GOOD! 3PTR by GREEN,SIERRA
00:17				ASSIST by GRAHAM,ROSA
00:17				TIMEOUT TEAM
00:17				SUB OUT: GREEN,SIERRA
00:17				SUB IN: NASON,TAYLOR
00:17				SUB OUT: MIDDLETON,ALEXA
00:17				SUB IN: WALLACE,ALEXA
00:16				FOUL (PERSONAL) by BARKER,MCKINZEE
00:16	MISSED FT by DIXON,TALEAH			
00:16	REBOUND (OFF) by TEAM			
00:16				SUB OUT: NASON,TAYLOR
00:16				SUB IN: MIDDLETON,ALEXA
00:16				SUB OUT: WALLACE,ALEXA
00:16				SUB IN: GREEN,SIERRA
00:16	GOOD! FT by DIXON,TALEAH [FB]	67-75	V 8	
00:07				MISSED 3PTR by GREEN,SIERRA
00:03	REBOUND (DEF) by GRAY,ALEXIS			

Loyola Maryland 75, Monmouth 67

Points from (This Period)	LOY	MON
In the Paint	4	8
Off Turns	3	4
2nd Chance	0	0
Fast Break	3	2
Bench	2	6

This period only:LOY led for 14:59. MON led for 14:37.  
Game was tied for 0:24.

**Official Scoring/Possession Reference Chart  
Loyola Maryland vs Monmouth**

**Period 1**

**December 22, 2018 at OceanFirst Bank Center - West Long Branch, NJ**

**Starters:**

**Loyola Maryland:** 10 KARCZ,STEPHANIE; 11 BETZ-WHITE,BRI; 20 GRAY,ALEXIS; 23 CONNOLLY,DELANEY; 32 NILES,HANNAH;

**Monmouth:** 3 GRAHAM,ROSA; 4 GREEN,SIERRA; 20 BARKER,MCKINZEE; 22 MIDDLETON,ALEXA; 25 THOMAS,LUCY;

**Period 1**

Time	VISITORS: Loyola Maryland	Score	Margin	HOME: Monmouth
09:43		3-0	H 3	GOOD! 3PTR by GREEN,SIERRA
09:20		6-0	H 6	GOOD! 3PTR by GREEN,SIERRA
07:50	GOOD! JUMPER by CONNOLLY,DELANEY	6-2	H 4	
04:53	GOOD! FT by DIXON,TALEAH	6-3	H 3	
03:47	GOOD! LAYUP by KARCZ,STEPHANIE	6-5	H 1	
03:29		8-5	H 3	GOOD! JUMPER by GRAHAM,ROSA
02:02		10-5	H 5	GOOD! LAYUP by MIDDLETON,ALEXA
01:37	GOOD! LAYUP by DIXON,TALEAH [PNT]	10-7	H 3	
00:00		13-7	H 6	GOOD! 3PTR by GREEN,SIERRA

**Loyola Maryland 7, Monmouth 13**

**Official Scoring/Possession Reference Chart  
Loyola Maryland vs Monmouth**

**Period 2**

**December 22, 2018 at OceanFirst Bank Center - West Long Branch, NJ**

**Starters:**

**Loyola Maryland:** 10 KARCZ,STEPHANIE; 11 BETZ-WHITE,BRI; 20 GRAY,ALEXIS; 23 CONNOLLY,DELANEY; 32 NILES,HANNAH;

**Monmouth:** 3 GRAHAM,ROSA; 4 GREEN,SIERRA; 20 BARKER,MCKINZEE; 22 MIDDLETON,ALEXA; 25 THOMAS,LUCY;

**Period 2**

Time	VISITORS: Loyola Maryland	Score	Margin	HOME: Monmouth
09:15	GOOD! JUMPER by CONNOLLY,DELANEY	13-9	H 4	
08:59		15-9	H 6	GOOD! LAYUP by GRAHAM,ROSA
08:30	GOOD! 3PTR by GRAY,ALEXIS	15-12	H 3	
08:10		17-12	H 5	GOOD! LAYUP by MIDDLETON,ALEXA
06:41	GOOD! LAYUP by BETZ-WHITE,BRI [FB]	17-14	H 3	
06:08		20-14	H 6	GOOD! 3PTR by CLOUGH,EMANI
05:08		21-14	H 7	GOOD! FT by WALLACE,ALEXA [FB]
04:38	GOOD! 3PTR by DIXON,TALEAH	21-17	H 4	
04:01	GOOD! LAYUP by NILES,HANNAH [FB]	21-19	H 2	
03:38	GOOD! 3PTR by TAYLOR,MOLLY [FB]	21-22	V 1	
03:24		24-22	H 2	GOOD! 3PTR by GREEN,SIERRA
02:37		27-22	H 5	GOOD! 3PTR by GRAHAM,ROSA
02:37	GOOD! FT by NILES,HANNAH [FB]	27-23	H 4	
01:24		29-23	H 6	GOOD! LAYUP by MIDDLETON,ALEXA
00:46		31-23	H 8	GOOD! LAYUP by CLOUGH,EMANI
00:18	GOOD! 3PTR by CONNOLLY,DELANEY	31-26	H 5	
00:00		33-26	H 7	GOOD! JUMPER by CLOUGH,EMANI

**Loyola Maryland 26, Monmouth 33**

**Official Scoring/Possession Reference Chart  
Loyola Maryland vs Monmouth**

**Period 3**

**December 22, 2018 at OceanFirst Bank Center - West Long Branch, NJ**

**Starters:**

**Loyola Maryland:** 10 KARCZ,STEPHANIE; 11 BETZ-WHITE,BRI; 20 GRAY,ALEXIS; 23 CONNOLLY,DELANEY; 32 NILES,HANNAH;

**Monmouth:** 3 GRAHAM,ROSA; 4 GREEN,SIERRA; 20 BARKER,MCKINZEE; 22 MIDDLETON,ALEXA; 25 THOMAS,LUCY;

**Period 3**

Time	VISITORS: Loyola Maryland	Score	Margin	HOME: Monmouth
09:48	GOOD! DUNK by KARCZ,STEPHANIE	33-28	H 5	
09:32		35-28	H 7	GOOD! LAYUP by MIDDLETON,ALEXA

Time	VISITORS: Loyola Maryland	Score	Margin	HOME: Monmouth
08:39	GOOD! JUMPER by NILES,HANNAH [PNT]	35-30	H 5	
07:57	GOOD! LAYUP by BETZ-WHITE,BRI [PNT]	35-32	H 3	
07:36		37-32	H 5	GOOD! JUMPER by THOMAS,LUCY [PNT]
07:29		38-32	H 6	GOOD! FT by THOMAS,LUCY [FB]
07:16	GOOD! 3PTR by CONNOLLY,DELANEY	38-35	H 3	
06:43		40-35	H 5	GOOD! LAYUP by THOMAS,LUCY
06:24	GOOD! 3PTR by NILES,HANNAH	40-38	H 2	
06:03		41-38	H 3	GOOD! FT by THOMAS,LUCY
06:03		42-38	H 4	GOOD! FT by THOMAS,LUCY
05:46	GOOD! 3PTR by GRAY,ALEXIS	42-41	H 1	
04:52	GOOD! JUMPER by NILES,HANNAH	42-43	V 1	
04:25	GOOD! LAYUP by KARCZ,STEPHANIE [FB]	42-45	V 3	
03:49		43-45	V 2	GOOD! FT by THOMAS,LUCY
03:31	GOOD! JUMPER by KARCZ,STEPHANIE	43-47	V 4	
03:18		44-47	V 3	GOOD! FT by THOMAS,LUCY
03:18		45-47	V 2	GOOD! FT by THOMAS,LUCY
02:58	GOOD! LAYUP by BETZ-WHITE,BRI [PNT]	45-49	V 4	
02:37	GOOD! FT by DIXON,TALEAH [FB]	45-50	V 5	
02:34	GOOD! FT by DIXON,TALEAH [FB]	45-51	V 6	
02:28		46-51	V 5	GOOD! FT by GRAHAM,ROSA [FB]
02:28		47-51	V 4	GOOD! FT by GRAHAM,ROSA [FB]
02:00	GOOD! 3PTR by GRAY,ALEXIS	47-54	V 7	
01:46	GOOD! FT by CONNOLLY,DELANEY	47-55	V 8	
00:17	GOOD! JUMPER by DIXON,TALEAH	47-57	V 10	
00:00		49-57	V 8	GOOD! LAYUP by THOMAS,LUCY

**Loyola Maryland 57, Monmouth 49**

**Official Scoring/Possession Reference Chart  
Loyola Maryland vs Monmouth  
Period 4**

**December 22, 2018 at OceanFirst Bank Center - West Long Branch, NJ**

**Starters:**

**Loyola Maryland:** 10 KARCZ,STEPHANIE; 11 BETZ-WHITE,BRI; 20 GRAY,ALEXIS; 23 CONNOLLY,DELANEY; 32 NILES,HANNAH;  
**Monmouth:** 3 GRAHAM,ROSA; 4 GREEN,SIERRA; 20 BARKER,MCKINZEE; 22 MIDDLETON,ALEXA; 25 THOMAS,LUCY;

**Period 4**

Time	VISITORS: Loyola Maryland	Score	Margin	HOME: Monmouth
09:31		51-57	V 6	GOOD! JUMPER by CLOUGH,EMANI
09:04	GOOD! LAYUP by BETZ-WHITE,BRI	51-59	V 8	
08:36	GOOD! FT by DIXON,TALEAH [FB]	51-60	V 9	
08:28		53-60	V 7	GOOD! LAYUP by MIDDLETON,ALEXA [PNT]
07:01	GOOD! LAYUP by KARCZ,STEPHANIE [PNT]	53-62	V 9	
05:54		55-62	V 7	GOOD! LAYUP by BARKER,MCKINZEE
05:37	GOOD! 3PTR by GRAY,ALEXIS	55-65	V 10	
05:20		57-65	V 8	GOOD! LAYUP by THOMAS,LUCY
03:52	GOOD! FT by CONNOLLY,DELANEY	57-66	V 9	
03:01		58-66	V 8	GOOD! FT by NASON,TAYLOR
03:01		59-66	V 7	GOOD! FT by NASON,TAYLOR
02:36		61-66	V 5	GOOD! LAYUP by NASON,TAYLOR [FB]
02:18	GOOD! 3PTR by GRAY,ALEXIS	61-69	V 8	
02:00		64-69	V 5	GOOD! 3PTR by GREEN,SIERRA
01:28	GOOD! JUMPER by KARCZ,STEPHANIE	64-71	V 7	
00:46	GOOD! FT by BETZ-WHITE,BRI	64-72	V 8	
00:46	GOOD! FT by BETZ-WHITE,BRI	64-73	V 9	
00:30	GOOD! FT by BETZ-WHITE,BRI [FB]	64-74	V 10	
00:17		67-74	V 7	GOOD! 3PTR by GREEN,SIERRA
00:16	GOOD! FT by DIXON,TALEAH [FB]	67-75	V 8	

**Loyola Maryland 75, Monmouth 67**

**Official Substitutions Log**  
**Loyola Maryland vs Monmouth**  
**Period 1**

**December 22, 2018 at OceanFirst Bank Center - West Long Branch, NJ**

<b>VISITORS: Loyola Maryland</b>	<b>Time</b>	<b>Score</b>	<b>HOME: Monmouth</b>
10 KARCZ,STEPHANIE			3 GRAHAM,ROSA
11 BETZ-WHITE,BRI			4 GREEN,SIERRA
20 GRAY,ALEXIS			20 BARKER,MCKINZEE
23 CONNOLLY,DELANEY			22 MIDDLETON,ALEXA
32 NILES,HANNAH			25 THOMAS,LUCY
	07:38	2-6	SUB OUT: GRAHAM,ROSA
	07:38		SUB IN: CLOUGH,EMANI
	07:38		SUB OUT: THOMAS,LUCY
	07:38		SUB IN: NASON,TAYLOR
	06:36	2-6	SUB OUT: MIDDLETON,ALEXA
	06:36		SUB IN: BALMAN,ERICA
	05:40	2-6	SUB OUT: GREEN,SIERRA
	05:40		SUB IN: ZELAYA,ADRIANA
	05:40		SUB OUT: BARKER,MCKINZEE
	05:40		SUB IN: WALLACE,ALEXA
SUB OUT: 11 BETZ-WHITE,BRI	05:40		
SUB IN: 4 DIXON,TALEAH	05:40		
	04:53	2-6	SUB OUT: CLOUGH,EMANI
	04:53		SUB IN: THOMAS,LUCY
	04:53		SUB OUT: BALMAN,ERICA
	04:53		SUB IN: GRAHAM,ROSA
	03:00	5-8	SUB OUT: ZELAYA,ADRIANA
	03:00		SUB IN: GREEN,SIERRA
	03:00		SUB OUT: GRAHAM,ROSA
	03:00		SUB IN: CLOUGH,EMANI
	02:12	5-8	SUB OUT: THOMAS,LUCY
	02:12		SUB IN: MIDDLETON,ALEXA
	00:44	7-10	SUB OUT: WALLACE,ALEXA
	00:44		SUB IN: THOMAS,LUCY
	00:44		SUB OUT: CLOUGH,EMANI
	00:44		SUB IN: BARKER,MCKINZEE
	00:44		SUB OUT: MIDDLETON,ALEXA
	00:44		SUB IN: GRAHAM,ROSA
SUB OUT: 32 NILES,HANNAH	00:44		
SUB IN: 11 BETZ-WHITE,BRI	00:44		

**Loyola Maryland 7, Monmouth 13**

**Official Substitutions Log  
Loyola Maryland vs Monmouth  
Period 2**

**December 22, 2018 at OceanFirst Bank Center - West Long Branch, NJ**

<b>VISITORS: Loyola Maryland</b>	<b>Time</b>	<b>Score</b>	<b>HOME: Monmouth</b>
10 KARCZ,STEPHANIE			3 GRAHAM,ROSA
11 BETZ-WHITE,BRI			4 GREEN,SIERRA
20 GRAY,ALEXIS			20 BARKER,MCKINZEE
23 CONNOLLY,DELANEY			22 MIDDLETON,ALEXA
32 NILES,HANNAH			25 THOMAS,LUCY
	09:41	-	SUB OUT: NASON,TAYLOR
	09:41		SUB IN: THOMAS,LUCY
	07:44	12-17	SUB OUT: BARKER,MCKINZEE
	07:44		SUB IN: BALMAN,ERICA
	07:44		SUB OUT: MIDDLETON,ALEXA
	07:44		SUB IN: CLOUGH,EMANI
	07:44		SUB OUT: GRAHAM,ROSA
	07:44		SUB IN: WALLACE,ALEXA
	07:11	12-17	SUB OUT: BALMAN,ERICA
	07:11		SUB IN: MIDDLETON,ALEXA
SUB OUT: 23 CONNOLLY,DELANEY	05:41	14-20	
SUB IN: 32 NILES,HANNAH	05:41		
	05:41		SUB OUT: CLOUGH,EMANI
	05:41		SUB IN: GRAHAM,ROSA
SUB OUT: 11 BETZ-WHITE,BRI	05:41		
SUB IN: 12 TAYLOR,MOLLY	05:41		
	05:08	14-20	SUB OUT: GRAHAM,ROSA
	05:08		SUB IN: ZELAYA,ADRIANA
	05:08		SUB OUT: GREEN,SIERRA
	05:08		SUB IN: CLOUGH,EMANI
	05:08		SUB OUT: WALLACE,ALEXA
	05:08		SUB IN: BARKER,MCKINZEE
	03:40	19-21	SUB OUT: ZELAYA,ADRIANA
	03:40		SUB IN: WALLACE,ALEXA
	03:40		SUB OUT: CLOUGH,EMANI
	03:40		SUB IN: GREEN,SIERRA
	03:40		SUB OUT: BARKER,MCKINZEE
	03:40		SUB IN: GRAHAM,ROSA
	01:24	23-29	SUB OUT: WALLACE,ALEXA
	01:24		SUB IN: CLOUGH,EMANI
	01:24		SUB OUT: THOMAS,LUCY
	01:24		SUB IN: NASON,TAYLOR
SUB OUT: 32 NILES,HANNAH	01:24		
SUB IN: 23 CONNOLLY,DELANEY	01:24		
	01:05	23-29	SUB OUT: WALLACE,ALEXA
	01:05		SUB IN: CLOUGH,EMANI
	01:05		SUB OUT: THOMAS,LUCY
	01:05		SUB IN: NASON,TAYLOR

**Loyola Maryland 26, Monmouth 33**

**Official Substitutions Log  
Loyola Maryland vs Monmouth  
Period 3**

**December 22, 2018 at OceanFirst Bank Center - West Long Branch, NJ**

<b>VISITORS: Loyola Maryland</b>	<b>Time</b>	<b>Score</b>	<b>HOME: Monmouth</b>
10 KARCZ,STEPHANIE			3 GRAHAM,ROSA
11 BETZ-WHITE,BRI			4 GREEN,SIERRA
20 GRAY,ALEXIS			20 BARKER,MCKINZEE
23 CONNOLLY,DELANEY			22 MIDDLETON,ALEXA
32 NILES,HANNAH			25 THOMAS,LUCY
	08:52	28-35	SUB OUT: THOMAS,LUCY
	08:52		SUB IN: NASON,TAYLOR
	08:13	30-35	SUB OUT: MIDDLETON,ALEXA
	08:13		SUB IN: THOMAS,LUCY
	05:46	41-42	SUB OUT: CLOUGH,EMANI
	05:46		SUB IN: WALLACE,ALEXA
	04:06	45-42	SUB OUT: GREEN,SIERRA
	04:06		SUB IN: MIDDLETON,ALEXA
	04:06		SUB OUT: NASON,TAYLOR
	04:06		SUB IN: BARKER,MCKINZEE
SUB OUT: 32 NILES,HANNAH	03:18	47-44	
SUB IN: 4 DIXON,TALEAH	03:18		
	02:37	50-45	SUB OUT: WALLACE,ALEXA
	02:37		SUB IN: GREEN,SIERRA
	02:37		SUB OUT: MIDDLETON,ALEXA
	02:37		SUB IN: BALMAN,ERICA
	01:46	55-47	SUB OUT: GRAHAM,ROSA
	01:46		SUB IN: CLOUGH,EMANI

**Loyola Maryland 57, Monmouth 49**





**Official Substitutions Log**  
**Loyola Maryland vs Monmouth**  
**Period 4**

**December 22, 2018 at OceanFirst Bank Center - West Long Branch, NJ**

VISITORS: Loyola Maryland	Time	Score	HOME: Monmouth
10 KARCZ,STEPHANIE			3 GRAHAM,ROSA
11 BETZ-WHITE,BRI			4 GREEN,SIERRA
20 GRAY,ALEXIS			20 BARKER,MCKINZEE
23 CONNOLLY,DELANEY			22 MIDDLETON,ALEXA
32 NILES,HANNAH			25 THOMAS,LUCY
	08:36	59-51	SUB OUT: GREEN,SIERRA
	08:36		SUB IN: BARKER,MCKINZEE
	08:36		SUB OUT: NASON,TAYLOR
	08:36		SUB IN: THOMAS,LUCY
	06:36	62-53	SUB OUT: WALLACE,ALEXA
	06:36		SUB IN: GRAHAM,ROSA
SUB OUT: 10 KARCZ,STEPHANIE	06:06	62-53	
SUB IN: 32 NILES,HANNAH	06:06		
	05:33	65-55	SUB OUT: CLOUGH,EMANI
	05:33		SUB IN: GREEN,SIERRA
SUB OUT: 32 NILES,HANNAH	03:52	66-57	
SUB IN: 10 KARCZ,STEPHANIE	03:52		
	03:41	66-57	SUB OUT: MIDDLETON,ALEXA
	03:41		SUB IN: NASON,TAYLOR
	00:46	72-64	SUB OUT: NASON,TAYLOR
	00:46		SUB IN: MIDDLETON,ALEXA
	00:31	73-64	SUB OUT: MIDDLETON,ALEXA
	00:31		SUB IN: NASON,TAYLOR
	00:31		SUB OUT: GREEN,SIERRA
	00:31		SUB IN: WALLACE,ALEXA
	00:30	73-64	SUB OUT: WALLACE,ALEXA
	00:30		SUB IN: GREEN,SIERRA
	00:30		SUB OUT: NASON,TAYLOR
	00:30		SUB IN: MIDDLETON,ALEXA
	00:17	74-67	SUB OUT: GREEN,SIERRA
	00:17		SUB IN: NASON,TAYLOR
	00:17		SUB OUT: MIDDLETON,ALEXA
	00:17		SUB IN: WALLACE,ALEXA
	00:16	74-67	SUB OUT: NASON,TAYLOR
	00:16		SUB IN: MIDDLETON,ALEXA
	00:16		SUB OUT: WALLACE,ALEXA
	00:16		SUB IN: GREEN,SIERRA

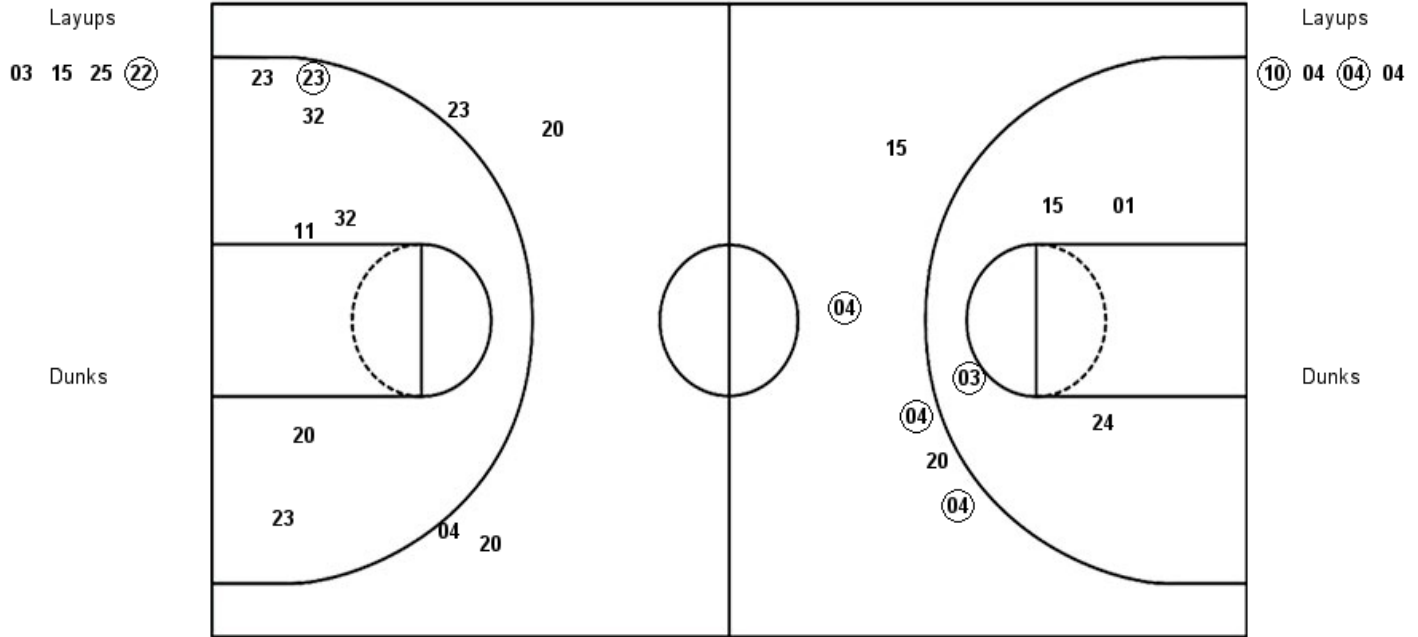
**Loyola Maryland 75, Monmouth 67**

**Official Shot Chart**  
**Loyola Maryland vs Monmouth**  
**PERIOD 1 Shots**

December 22, 2018 at OceanFirst Bank Center - West Long Branch, NJ

**Monmouth**

**Loyola Maryland**



MON : Period 1	Made	Att	Pct
Layups	1	4	25.0
Dunks	0	0	0
2PT Field Goals	2	8	25.0
3PT Field Goals	3	5	60.0
<b>Total Field Goals</b>	<b>5</b>	<b>13</b>	<b>38.5</b>

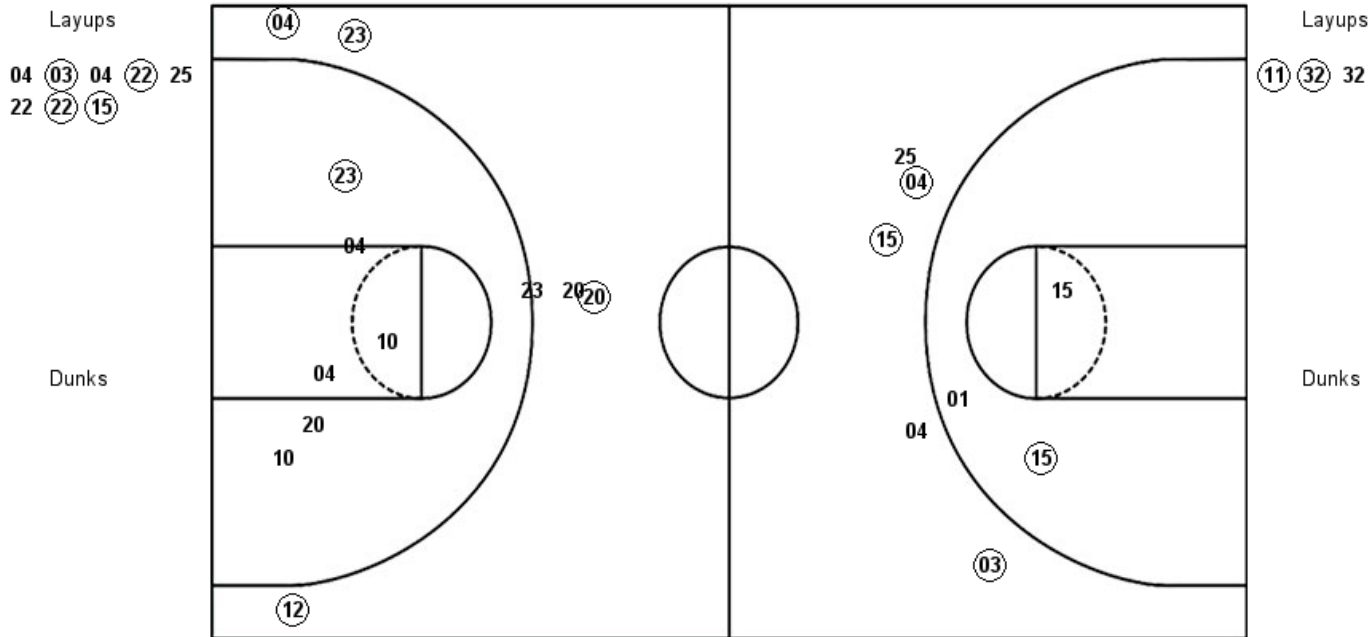
LOY : Period 1	Made	Att	Pct
Layups	2	4	50.0
Dunks	0	0	0
2PT Field Goals	3	11	27.3
3PT Field Goals	0	4	00.0
<b>Total Field Goals</b>	<b>3</b>	<b>15</b>	<b>20.0</b>

**Official Shot Chart**  
**Loyola Maryland vs Monmouth**  
**PERIOD 2 Shots**

December 22, 2018 at OceanFirst Bank Center - West Long Branch, NJ

**Monmouth**

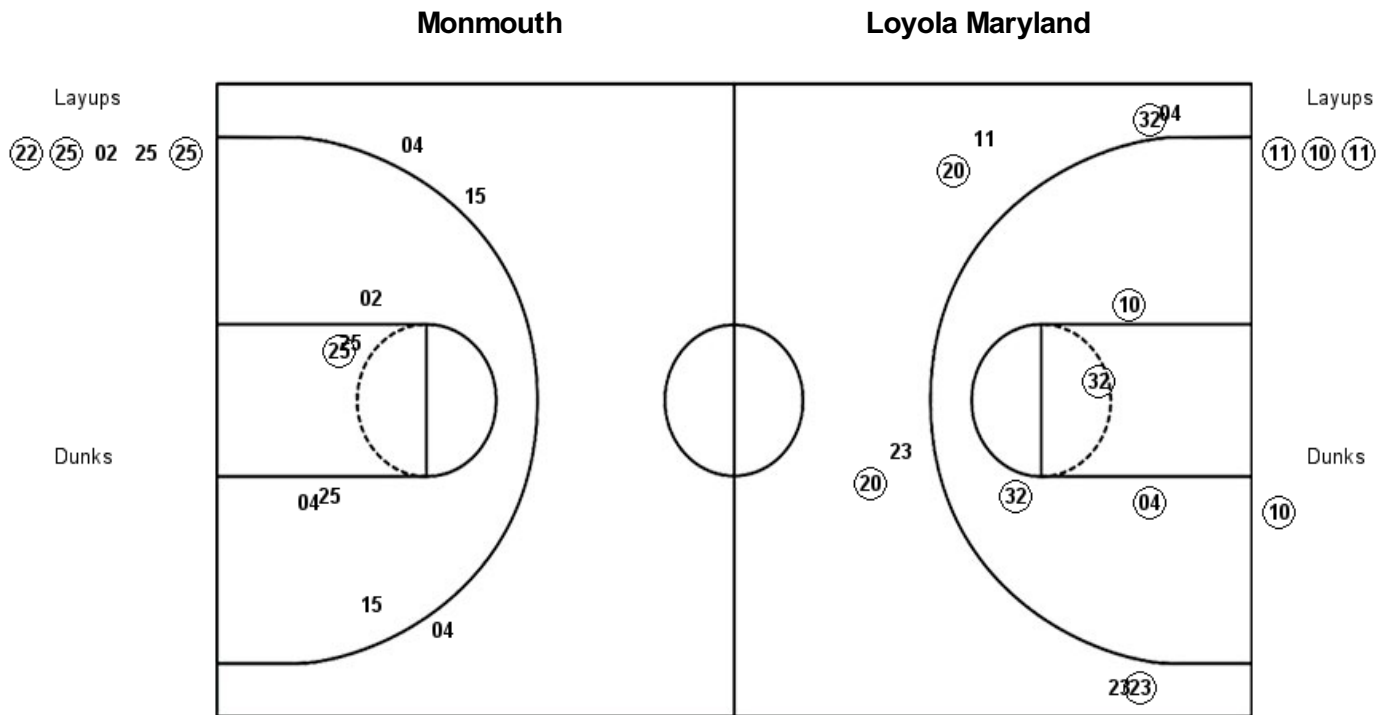
**Loyola Maryland**



MON : Period 2	Made	Att	Pct
Layups	4	8	50.0
Dunks	0	0	0
2PT Field Goals	5	11	45.5
3PT Field Goals	3	5	60.0
<b>Total Field Goals</b>	<b>8</b>	<b>16</b>	<b>50.0</b>

LOY : Period 2	Made	Att	Pct
Layups	2	3	66.7
Dunks	0	0	0
2PT Field Goals	3	9	33.3
3PT Field Goals	4	6	66.7
<b>Total Field Goals</b>	<b>7</b>	<b>15</b>	<b>46.7</b>

Official Shot Chart  
**Loyola Maryland vs Monmouth**  
 PERIOD 3 Shots  
 December 22, 2018 at OceanFirst Bank Center - West Long Branch, NJ



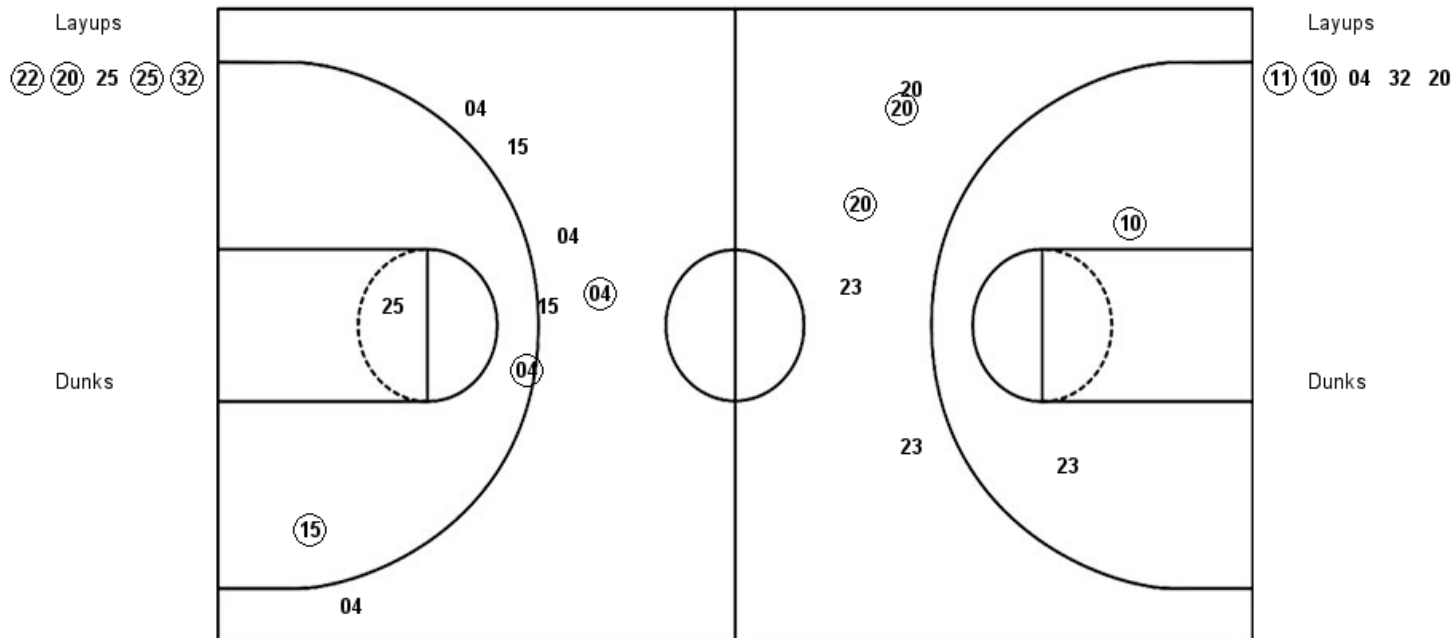
MON : Period 3	Made	Att	Pct
Layups	3	5	60.0
Dunks	0	0	0
2PT Field Goals	4	11	36.4
3PT Field Goals	0	3	00.0
<b>Total Field Goals</b>	<b>4</b>	<b>14</b>	<b>28.6</b>

LOY : Period 3	Made	Att	Pct
Layups	3	3	100.0
Dunks	1	1	100.0
2PT Field Goals	8	8	100.0
3PT Field Goals	4	8	50.0
<b>Total Field Goals</b>	<b>12</b>	<b>16</b>	<b>75.0</b>

**December 22, 2018 at OceanFirst Bank Center - West Long Branch, NJ**

**December 22, 2018 at OceanFirst Bank Center - West Long Branch, NJ**

## Loyola Maryland



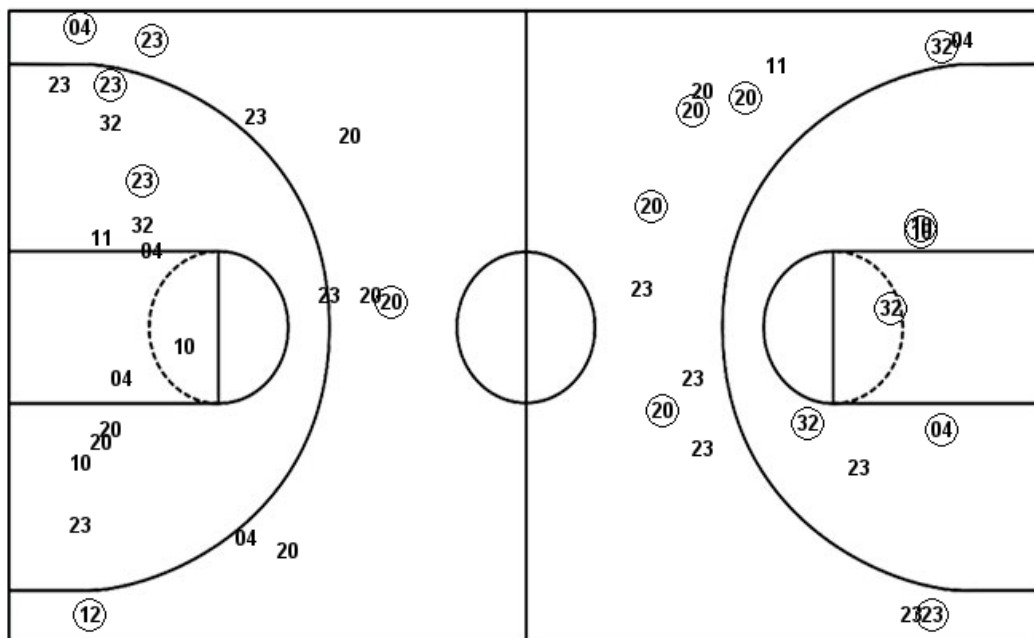
<b>MON : Period 4</b>	<b>Made</b>	<b>Att</b>	<b>Pct</b>
Layups	4	5	80.0
Dunks	0	0	0
2PT Field Goals	5	7	71.4
3PT Field Goals	2	7	28.6
<b>Total Field Goals</b>	<b>7</b>	<b>14</b>	<b>50.0</b>

LOY : Period 4	Made	Att	Pct
Layups	2	5	40.0
Dunks	0	0	0
2PT Field Goals	3	7	42.9
3PT Field Goals	2	5	40.0
<b>Total Field Goals</b>	<b>5</b>	<b>12</b>	<b>41.7</b>

**Official Shot Chart**  
**Loyola Maryland vs Monmouth**  
**Loyola Maryland Team Shots**  
**December 22, 2018 at OceanFirst Bank Center - West Long Branch, NJ**

Layups

Dunks



Layups

Dunks

LOY : Period 1	Made	Att	Pct
Layups	2	4	50.0
Dunks	0	0	0
2PT Field Goals	3	11	27.3
3PT Field Goals	0	4	00.0
<b>Total Field Goals</b>	<b>3</b>	<b>15</b>	<b>20.0</b>
LOY : Period 3	Made	Att	Pct
Layups	3	3	100.0
Dunks	1	1	100.0
2PT Field Goals	8	8	100.0
3PT Field Goals	4	8	50.0
<b>Total Field Goals</b>	<b>12</b>	<b>16</b>	<b>75.0</b>

LOY : Period 2	Made	Att	Pct
Layups	2	3	66.7
Dunks	0	0	0
2PT Field Goals	3	9	33.3
3PT Field Goals	4	6	66.7
<b>Total Field Goals</b>	<b>7</b>	<b>15</b>	<b>46.7</b>
LOY : Period 4	Made	Att	Pct
Layups	2	5	40.0
Dunks	0	0	0
2PT Field Goals	3	7	42.9
3PT Field Goals	2	5	40.0
<b>Total Field Goals</b>	<b>5</b>	<b>12</b>	<b>41.7</b>

## Layups