

FINAL SCORE



Navy

67



Monmouth

68

December 20, 2018 • OceanFirst Bank Center - West Long Branch, NJ

FINAL STATISTICS

Official Box Score
Navy vs Monmouth
Game Totals -- Final Statistics
December 20, 2018 at OceanFirst Bank Center - West Long Branch, NJ



Navy 67

No.	Player	S	Pts	FG	3FG	FT	OR	DR	TR	PF	A	TO	Blk	Stl	Min	+/-
00	TAYLOR, MORGAN		11	4-12	1-4	2-2	7	5	12	3	1	4	0	1	34	5
02	COLEMAN, JENNIFER		16	5-18	1-3	5-6	4	3	7	1	3	3	1	2	34	-1
10	JAUNICH, LAUREL		7	3-7	0-0	1-2	1	2	3	0	2	2	0	1	33	5
13	GATZOUNAS, SOPHIE		22	7-10	3-5	5-5	4	2	6	3	0	0	0	0	37	1
15	ROACH, BIANCA		6	2-11	0-4	2-2	2	0	2	1	7	0	0	2	28	2
01	GREEN, KOLBI		5	2-6	1-5	0-0	1	0	1	2	2	2	0	1	16	-5
03	HANNIBAL, CAYLA		0	0-0	0-0	0-0	0	0	0	0	0	0	0	0	2	-1
21	BISHOP, JASMINE		0	0-2	0-0	0-0	0	0	0	1	0	2	0	2	11	-3
55	ULASEWICZ, MARY KATE		0	0-0	0-0	0-0	0	0	0	1	0	2	0	0	5	-8
	TEAM						2	2	4	0		1				
TOTALS			67	23-66	6-21	15-17	21	14	35	12	15	16	1	9	200	

Shooting By Period

Period	FG	FG%	3FG	3FG%	FT	FT%
1st Qtr	7-18	39%	2-5	40%	0-0	0%
2nd Qtr	6-17	35%	1-6	17%	7-8	88%
3rd Qtr	3-14	21%	1-5	20%	5-6	83%
4th Qtr	7-17	41%	2-5	40%	3-3	100%
1st Half	13-35	37%	3-11	27%	7-8	88%
2nd Half	10-31	32%	3-10	30%	8-9	89%
Game	23-66	34.8%	6-21	28.6%	15-17	88.2%

Last FG: 4th-00:16
Biggest Run: 10-0
Largest lead: By 14 at 3-09:04
Technical Fouls: None.

Monmouth 68

No.	Player	S	Pts	FG	3FG	FT	OR	DR	TR	PF	A	TO	Blk	Stl	Min	+/-
02	WALLACE, ALEXA		2	1-5	0-0	0-0	0	1	1	2	0	1	0	0	21	9
04	GREEN, SIERRA		26	8-12	8-12	2-2	1	3	4	2	2	2	0	2	30	2
15	CLOUGH, EMANI		0	0-4	0-0	0-0	0	3	3	2	3	5	0	1	13	-8
24	BALMAN, ERICA		0	0-2	0-0	0-0	1	1	2	0	0	1	1	0	10	-5
25	THOMAS, LUCY		15	5-11	0-2	5-6	6	4	10	2	1	4	0	0	26	12
01	ZELAYA, ADRIANA		0	0-0	0-0	0-0	0	1	1	0	0	0	0	0	3	-3
03	GRAHAM, ROSA		9	3-5	2-3	1-2	0	3	3	2	6	4	0	1	34	2
14	ARFINENGO, CAROL		0	0-0	0-0	0-0	0	0	0	2	0	0	0	0	2	0
20	BARKER, MCKINZEE		4	2-4	0-0	0-0	1	0	1	2	2	2	0	0	11	-1
22	MIDDLETON, ALEXA		10	4-8	0-0	2-2	3	3	6	2	1	3	0	3	29	5
23	SIMMONS, ALLURE		2	1-2	0-1	0-0	1	0	1	3	0	0	0	1	8	2
32	NASON, TAYLOR		0	0-0	0-0	0-0	1	1	2	0	0	2	0	1	13	-10
	TEAM						0	3	3	0		0				
TOTALS			68	24-53	10-18	10-12	14	23	37	19	15	24	1	9	200	

Shooting By Period

Period	FG	FG%	3FG	3FG%	FT	FT%
1st Qtr	6-13	46%	3-4	75%	2-2	100%
2nd Qtr	2-13	15%	1-4	25%	2-2	100%
3rd Qtr	7-15	47%	3-6	50%	5-6	83%
4th Qtr	9-12	75%	3-4	75%	1-2	50%
1st Half	8-26	31%	4-8	50%	4-4	100%
2nd Half	16-27	59%	6-10	60%	6-8	75%
Game	24-53	45.3%	10-18	55.6%	10-12	83.3%

Last FG: 4th-00:30
Biggest Run: 9-0
Largest lead: By 4 at 4-04:30
Technical Fouls: None.

Game Notes:

Officials: Pastor Torres, Michael Motta, Cara Seggie
Attendance: 253

Start Time: 2018-12-20 00:03:12
End Time: 2018-12-20 02:00:24
Game Duration: 117

Score	1st	2nd	3rd	4th	TOT
NAV	16	20	12	19	67
MON	17	7	22	22	68

NAV led for 29:38. MON led for 6:45.
Game was tied for 3:38.
Times tied: 14 Lead Changes: 12

Points from	NAV	MON
In the Paint	26	22
Off Turns	16	17
2nd Chance	25	13
Fast Break	10	6
Bench	5	25

Official Box Score
Navy vs Monmouth
First Half Statistics Only
 December 20, 2018 at OceanFirst Bank Center - West Long Branch, NJ



Navy 36

No.	Player	S	Pts	FG	3FG	FT	OR	DR	TR	PF	A	TO	Blk	Stl	Min	+/-
00	TAYLOR, MORGAN		4	2-5	0-1	0-0	3	4	7	1	0	2	0	1	16	10
01	GREEN, KOLBI		3	1-4	1-4	0-0	0	0	0	1	1	1	0	1	10	4
02	COLEMAN, JENNIFER		11	3-9	1-1	4-4	3	1	4	1	2	0	1	2	18	11
03	HANNIBAL, CAYLA		0	0-0	0-0	0-0	0	0	0	0	0	0	0	0	0	0
10	JAUNICH, LAUREL		5	2-4	0-0	1-2	1	1	2	0	2	0	0	1	17	15
13	GATZOUNAS, SOPHIE		9	3-5	1-3	2-2	1	2	3	1	0	0	0	0	17	8
15	ROACH, BIANCA		4	2-7	0-2	0-0	1	0	1	1	4	0	0	1	12	6
21	BISHOP, JASMINE		0	0-1	0-0	0-0	0	0	0	0	0	0	0	0	7	6
55	ULASEWICZ, MARY KATE		0	0-0	0-0	0-0	0	0	0	0	0	1	0	0	2	0
	TEAM		0	0-0	0-0	0-0	1	1	2	0	0	1	0	0	0	0
TOTALS			36	13-35	3-11	7-8	0	0	19	5	9	5	1	6	100	

Shooting By Period

Period	FG	FG%	3FG	3FG%	FT	FT%
1st Qtr	7-18	39%	2-5	40%	0-0	0%
2nd Qtr	6-17	35%	1-6	17%	7-8	88%
1st Half	13-35	37%	3-11	27%	7-8	88%
Game	23-66	34.8%	6-21	28.6%	15-17	88.2%

Last FG Half: NAV 2nd-00:01

Monmouth 24

No.	Player	S	Pts	FG	3FG	FT	OR	DR	TR	PF	A	TO	Blk	Stl	Min	+/-
01	ZELAYA, ADRIANA		0	0-0	0-0	0-0	0	1	1	0	0	0	0	0	3	-3
02	WALLACE, ALEXA		0	0-2	0-0	0-0	0	0	0	1	0	0	0	0	10	-2
03	GRAHAM, ROSA		3	1-2	1-2	0-0	0	2	2	1	0	3	0	0	15	-11
04	GREEN, SIERRA		9	3-5	3-5	0-0	0	1	1	1	1	1	0	0	13	-9
14	ARFINENGO, CAROL		0	0-0	0-0	0-0	0	0	0	2	0	0	0	0	2	0
15	CLOUGH, EMANI		0	0-4	0-0	0-0	0	3	3	1	3	5	0	1	12	-8
20	BARKER, MCKINZEE		2	1-3	0-0	0-0	1	0	1	1	0	1	0	0	6	-3
22	MIDDLETON, ALEXA		2	0-2	0-0	2-2	2	1	3	1	0	1	0	0	10	-7
23	SIMMONS, ALLURE		0	0-0	0-0	0-0	0	0	0	0	0	0	0	0	0	0
24	BALMAN, ERICA		0	0-2	0-0	0-0	1	1	2	0	0	1	1	0	10	-5
25	THOMAS, LUCY		8	3-6	0-1	2-2	3	1	4	1	1	1	0	0	12	-9
32	NASON, TAYLOR		0	0-0	0-0	0-0	1	0	1	0	0	1	0	1	6	-3
	TEAM		0	0-0	0-0	0-0	0	2	2	0	0	0	0	0	0	0
TOTALS			24	8-26	4-8	4-4	0	0	20	9	5	14	1	2	100	

Shooting By Period

Period	FG	FG%	3FG	3FG%	FT	FT%
1st Qtr	6-13	46%	3-4	75%	2-2	100%
2nd Qtr	2-13	15%	1-4	25%	2-2	100%
1st Half	8-26	31%	4-8	50%	4-4	100%
Game	24-53	45.3%	10-18	55.6%	10-12	83.3%

Last FG Half: MON 2nd-01:41

Game Notes:

Officials: Pastor Torres, Michael Motta, Cara Seggie
 Attendance: 253

Start Time: 2018-12-20 00:03:12
 End Time: 2018-12-20 02:00:24
 Game Duration: 117

Score	1st	2nd	3rd	4th	TOT
NAV	16	20	12	19	67
MON	17	7	22	22	68

Points from (This Period)	NAV	MON
In the Paint	16	6
Off Turns	13	3
2nd Chance	11	6
Fast Break	8	0
Bench	3	7

Official Box Score
Navy vs Monmouth
First Quarter Statistics Only
December 20, 2018 at OceanFirst Bank Center - West Long Branch, NJ



Navy 16

No.	Player	S	Pts	FG	3FG	FT	OR	DR	TR	PF	A	TO	Blk	Stl	Min	+/-
00	TAYLOR, MORGAN		4	2-4	0-1	0-0	1	0	1	1	0	1	0	0	7	2
02	COLEMAN, JENNIFER		0	0-4	0-0	0-0	0	0	0	1	2	0	1	1	8	-2
10	JAUNICH, LAUREL		2	1-2	0-0	0-0	0	0	0	0	2	0	0	1	8	2
13	GATZOUNAS, SOPHIE		3	1-1	1-1	0-0	1	1	2	0	0	0	0	0	10	-1
15	ROACH, BIANCA		4	2-4	0-1	0-0	1	0	1	1	2	0	0	1	8	2
01	GREEN, KOLBI		3	1-2	1-2	0-0	0	0	0	1	0	1	0	1	6	-5
03	HANNIBAL, CAYLA		0	0-0	0-0	0-0	0	0	0	0	0	0	0	0	0	0
21	BISHOP, JASMINE		0	0-1	0-0	0-0	0	0	0	0	0	0	0	0	2	-3
55	ULASEWICZ, MARY KATE		0	0-0	0-0	0-0	0	0	0	0	0	0	0	0	0	0
	TEAM						0	1	1	0		1				
TOTALS			16	7-18	2-5	0-0	0	0	5	4	6	3	1	4	50	

Shooting By Period

Period	FG	FG%	3FG	3FG%	FT	FT%
1st Qtr	7-18	39%	2-5	40%	0-0	0%
2nd Qtr	6-17	35%	1-6	17%	7-8	88%
1st Half	7-18	39%	2-5	40%	0-0	0%
1st Half	13-35	37%	3-11	27%	7-8	88%
Game	23-66	34.8%	6-21	28.6%	15-17	88.2%

Monmouth 17

No.	Player	S	Pts	FG	3FG	FT	OR	DR	TR	PF	A	TO	Blk	Stl	Min	+/-
02	WALLACE, ALEXA		0	0-0	0-0	0-0	0	0	0	0	0	0	0	0	7	-1
04	GREEN, SIERRA		6	2-3	2-3	0-0	0	1	1	1	1	0	0	0	6	1
15	CLOUGH, EMANI		0	0-2	0-0	0-0	0	2	2	0	2	4	0	1	7	1
24	BALMAN, ERICA		0	0-1	0-0	0-0	0	1	1	0	0	0	0	0	5	-5
25	THOMAS, LUCY		4	2-3	0-0	0-0	2	1	3	0	1	1	0	0	6	0
01	ZELAYA, ADRIANA		0	0-0	0-0	0-0	0	0	0	0	0	0	0	0	0	0
03	GRAHAM, ROSA		3	1-1	1-1	0-0	0	0	0	1	0	2	0	0	6	2
14	ARFINENGO, CAROL		0	0-0	0-0	0-0	0	0	0	0	0	0	0	0	0	0
20	BARKER, MCKINZEE		2	1-2	0-0	0-0	1	0	1	0	0	1	0	0	3	0
22	MIDDLETON, ALEXA		2	0-1	0-0	2-2	1	1	2	0	0	0	0	0	5	6
23	SIMMONS, ALLURE		0	0-0	0-0	0-0	0	0	0	0	0	0	0	0	0	0
32	NASON, TAYLOR		0	0-0	0-0	0-0	0	0	0	0	0	0	0	0	4	1
	TEAM						0	2	2	0		0				
TOTALS			17	6-13	3-4	2-2	0	0	12	2	4	8	0	1	50	

Shooting By Period

Period	FG	FG%	3FG	3FG%	FT	FT%
1st Qtr	6-13	46%	3-4	75%	2-2	100%
2nd Qtr	2-13	15%	1-4	25%	2-2	100%
1st Half	6-13	46%	3-4	75%	2-2	100%
1st Half	8-26	31%	4-8	50%	4-4	100%
Game	24-53	45.3%	10-18	55.6%	10-12	83.3%

Game Notes:

Officials: Pastor Torres, Michael Motta, Cara Seggie
Attendance: 253

Start Time: 2018-12-20 00:03:12
End Time: 2018-12-20 02:00:24
Game Duration: 117

Score	1st	2nd	3rd	4th	TOT
NAV	16	20	12	19	67
MON	17	7	22	22	68

Points from (This Period)	NAV	MON
In the Paint	8	6
Off Turns	6	3
2nd Chance	2	4
Fast Break	6	0
Bench	3	7

**Official Play-By-Play
Navy vs Monmouth
First Quarter**

December 20, 2018 at OceanFirst Bank Center - West Long Branch, NJ



Period 1

Starters:

Navy: 0 TAYLOR,MORGAN; 2 COLEMAN,JENNIFER; 10 JAUNICH,LAUREL; 13 GATZOUNAS,SOPHIE; 15 ROACH,BIANCA;

Monmouth: 2 WALLACE,ALEXA; 4 GREEN,SIERRA; 15 CLOUGH,EMANI; 24 BALMAN,ERICA; 25 THOMAS,LUCY;

Time	VISITORS: Navy	Score	Margin	HOME: Monmouth
09:42	MISSED JUMPER by JAUNICH, LAUREL			
09:36	REBOUND (OFF) by TAYLOR, MORGAN			
09:26	MISSED JUMPER by COLEMAN, JENNIFER			
09:23				REBOUND (DEF) by TEAM
09:07		2-0	H 2	GOOD! LAYUP by THOMAS, LUCY
09:07				ASSIST by CLOUGH, EMANI
08:47	MISSED JUMPER by COLEMAN, JENNIFER			
08:44				REBOUND (DEF) by GREEN, SIERRA
08:40				MISSED JUMPER by CLOUGH, EMANI
08:34	REBOUND (DEF) by GATZOUNAS, SOPHIE			
08:29	GOOD! JUMPER by ROACH, BIANCA [FB]	2-2	T	
08:29	ASSIST by COLEMAN, JENNIFER			
08:16				TURNOVER (BADPASS) by CLOUGH, EMANI
08:10	MISSED JUMPER by TAYLOR, MORGAN			
08:07				REBOUND (DEF) by BALMAN, ERICA
07:58				MISSED JUMPER by CLOUGH, EMANI
07:54				REBOUND (OFF) by THOMAS, LUCY
07:53		4-2	H 2	GOOD! LAYUP by THOMAS, LUCY
07:44	GOOD! 3PTR by GATZOUNAS, SOPHIE	4-5	V 1	
07:44	ASSIST by ROACH, BIANCA			
07:23		7-5	H 2	GOOD! 3PTR by GREEN, SIERRA
07:23				ASSIST by THOMAS, LUCY
07:13	GOOD! LAYUP by TAYLOR, MORGAN [FB/PNT]	7-7	T	
07:13	ASSIST by JAUNICH, LAUREL			
06:56				TURNOVER (BADPASS) by CLOUGH, EMANI
06:56	STEAL by JAUNICH, LAUREL			
06:42	GOOD! LAYUP by TAYLOR, MORGAN	7-9	V 2	
06:42	ASSIST by JAUNICH, LAUREL			
06:27				TURNOVER (BADPASS) by THOMAS, LUCY
06:27	STEAL by ROACH, BIANCA			
06:21	GOOD! LAYUP by JAUNICH, LAUREL [FB/PNT]	7-11	V 4	
06:21	ASSIST by COLEMAN, JENNIFER			
06:21				TIMEOUT 30SEC
06:21				SUB OUT: GREEN, SIERRA
06:21				SUB IN: GRAHAM, ROSA
06:21				SUB OUT: CLOUGH, EMANI
06:21				SUB IN: NASON, TAYLOR
06:21				SUB OUT: THOMAS, LUCY
06:21				SUB IN: BARKER, MCKINZEE
06:21	SUB OUT: COLEMAN, JENNIFER			
06:21	SUB IN: GREEN, KOLBI			
06:06				MISSED JUMPER by BARKER, MCKINZEE
06:05	REBOUND (DEF) by TEAM			
05:35	GOOD! 3PTR by GREEN, KOLBI	7-14	V 7	
05:35	ASSIST by ROACH, BIANCA			
05:21				MISSED JUMPER by BALMAN, ERICA
05:17				REBOUND (OFF) by BARKER, MCKINZEE
05:16		9-14	V 5	GOOD! JUMPER by BARKER, MCKINZEE [PNT]
04:49	MISSED 3PTR by ROACH, BIANCA			
04:45	REBOUND (OFF) by GATZOUNAS, SOPHIE			
04:45	TURNOVER (TRAVEL) by GREEN, KOLBI			
04:45				SUB OUT: BALMAN, ERICA
04:45				SUB IN: MIDDLETON, ALEXA
04:28				SUB OUT: BARKER, MCKINZEE
04:28				SUB IN: GREEN, SIERRA
04:28	SUB OUT: TAYLOR, MORGAN			
04:28	SUB IN: COLEMAN, JENNIFER			
04:27				TURNOVER (OTHER) by GRAHAM, ROSA
04:06	MISSED 3PTR by GREEN, KOLBI			
04:03				REBOUND (DEF) by MIDDLETON, ALEXA
04:02				TURNOVER (BADPASS) by GRAHAM, ROSA
04:02	STEAL by COLEMAN, JENNIFER			
03:53	MISSED LAYUP by COLEMAN, JENNIFER			
03:49	REBOUND (OFF) by ROACH, BIANCA			
03:47	GOOD! JUMPER by ROACH, BIANCA	9-16	V 7	
03:40		12-16	V 4	GOOD! 3PTR by GRAHAM, ROSA
03:40				ASSIST by GREEN, SIERRA
03:29				FOUL (PERSONAL) by GREEN, SIERRA
03:29				SUB OUT: WALLACE, ALEXA

Time	VISITORS: Navy	Score	Margin	HOME: Monmouth
03:29				SUB IN: CLOUGH, EMANI
03:05				FOUL (PERSONAL) by GRAHAM, ROSA
02:51	MISSED LAYUP by ROACH, BIANCA			
02:47				REBOUND (DEF) by CLOUGH, EMANI
02:24	FOUL (PERSONAL) by ROACH, BIANCA			
02:24		13-16	V 3	GOOD! FT by MIDDLETON, ALEXA
02:24				SUB OUT: NASON, TAYLOR
02:24				SUB IN: THOMAS, LUCY
02:24				SUB OUT: GREEN, SIERRA
02:24				SUB IN: BARKER, MCKINZEE
02:24		14-16	V 2	GOOD! FT by MIDDLETON, ALEXA
01:53	TURNOVER (SHOTCLOCK) by			
01:53	SUB OUT: ROACH, BIANCA			
01:53	SUB IN: TAYLOR, MORGAN			
01:53	SUB OUT: JAUNICH, LAUREL			
01:53	SUB IN: BISHOP, JASMINE			
01:39				TURNOVER (BADPASS) by CLOUGH, EMANI
01:22	MISSED JUMPER by BISHOP, JASMINE			
01:19				REBOUND (DEF) by THOMAS, LUCY
01:16				MISSED LAYUP by MIDDLETON, ALEXA
01:16	BLOCK by COLEMAN, JENNIFER			
01:14				REBOUND (OFF) by MIDDLETON, ALEXA
01:13	FOUL (PERSONAL) by GREEN, KOLBI			
01:03				TURNOVER (BADPASS) by BARKER, MCKINZEE
01:03	STEAL by GREEN, KOLBI			
00:57	TURNOVER (LOSTBALL) by TAYLOR, MORGAN			
00:57	FOUL (PERSONAL) by TAYLOR, MORGAN			
00:57				SUB OUT: BARKER, MCKINZEE
00:57				SUB IN: WALLACE, ALEXA
00:57				STEAL by CLOUGH, EMANI
00:45	FOUL (PERSONAL) by COLEMAN, JENNIFER			
00:45				SUB OUT: GRAHAM, ROSA
00:45				SUB IN: GREEN, SIERRA
00:40		17-16	H 1	GOOD! 3PTR by GREEN, SIERRA
00:40				ASSIST by CLOUGH, EMANI
00:30	MISSED LAYUP by COLEMAN, JENNIFER			
00:26				REBOUND (DEF) by CLOUGH, EMANI
00:24				TURNOVER (BADPASS) by CLOUGH, EMANI
00:24				SUB OUT: CLOUGH, EMANI
00:24				SUB IN: SIMMONS, ALLURE
00:24				SUB OUT: GREEN, SIERRA
00:24				SUB IN: GRAHAM, ROSA
00:12	MISSED 3PTR by TAYLOR, MORGAN			
00:10				REBOUND (DEF) by TEAM
00:10				SUB OUT: GRAHAM, ROSA
00:10				SUB IN: GREEN, SIERRA
00:10				SUB OUT: SIMMONS, ALLURE
00:10				SUB IN: CLOUGH, EMANI
00:01				MISSED 3PTR by GREEN, SIERRA
00:00				REBOUND (OFF) by THOMAS, LUCY
00:00				MISSED JUMPER by THOMAS, LUCY
00:00				REBOUND (OFF) by TEAM

Navy 16, Monmouth 17

Points from (This Period)	NAV	MON
In the Paint	8	6
Off Turns	6	3
2nd Chance	2	4
Fast Break	6	0
Bench	3	7

Official Box Score
Navy vs Monmouth
Second Quarter Statistics Only
December 20, 2018 at OceanFirst Bank Center - West Long Branch, NJ



Navy 20

No.	Player	S	Pts	FG	3FG	FT	OR	DR	TR	PF	A	TO	Blk	Stl	Min	+/-
00	TAYLOR, MORGAN		0	0-1	0-0	0-0	2	4	6	0	0	1	0	1	9	8
02	COLEMAN, JENNIFER		11	3-5	1-1	4-4	3	1	4	0	0	0	0	1	10	13
10	JAUNICH, LAUREL		3	1-2	0-0	1-2	1	1	2	0	0	0	0	0	9	13
13	GATZOUNAS, SOPHIE		6	2-4	0-2	2-2	0	1	1	1	0	0	0	0	7	9
15	ROACH, BIANCA		0	0-3	0-1	0-0	0	0	0	0	2	0	0	0	4	4
01	GREEN, KOLBI		0	0-2	0-2	0-0	0	0	0	0	1	0	0	0	4	9
03	HANNIBAL, CAYLA		0	0-0	0-0	0-0	0	0	0	0	0	0	0	0	0	0
21	BISHOP, JASMINE		0	0-0	0-0	0-0	0	0	0	0	0	0	0	0	5	9
55	ULASEWICZ, MARY KATE		0	0-0	0-0	0-0	0	0	0	0	0	1	0	0	2	0
	TEAM						1	0	1	0		0				
TOTALS			20	6-17	1-6	7-8	0	0	14	1	3	2	0	2	50	

Shooting By Period

Period	FG	FG%	3FG	3FG%	FT	FT%
3rd Qtr	3-14	21%	1-5	20%	5-6	83%
4th Qtr	7-17	41%	2-5	40%	3-3	100%
2nd Half	6-17	35%	1-6	17%	7-8	88%
2nd Half	10-31	32%	3-10	30%	8-9	89%
Game	23-66	34.8%	6-21	28.6%	15-17	88.2%

Monmouth 7

No.	Player	S	Pts	FG	3FG	FT	OR	DR	TR	PF	A	TO	Blk	Stl	Min	+/-
02	WALLACE, ALEXA		0	0-2	0-0	0-0	0	0	0	1	0	0	0	0	3	-1
04	GREEN, SIERRA		3	1-2	1-2	0-0	0	0	0	0	0	1	0	0	7	-10
15	CLOUGH, EMANI		0	0-2	0-0	0-0	0	1	1	1	1	1	0	0	5	-9
24	BALMAN, ERICA		0	0-1	0-0	0-0	1	0	1	0	0	1	1	0	5	0
25	THOMAS, LUCY		4	1-3	0-1	2-2	1	0	1	1	0	0	0	0	6	-9
01	ZELAYA, ADRIANA		0	0-0	0-0	0-0	0	1	1	0	0	0	0	0	3	-3
03	GRAHAM, ROSA		0	0-1	0-1	0-0	0	2	2	0	0	1	0	0	9	-13
14	ARFINENGO, CAROL		0	0-0	0-0	0-0	0	0	0	2	0	0	0	0	2	0
20	BARKER, MCKINZEE		0	0-1	0-0	0-0	0	0	0	1	0	0	0	0	3	-3
22	MIDDLETON, ALEXA		0	0-1	0-0	0-0	1	0	1	1	0	1	0	0	5	-13
23	SIMMONS, ALLURE		0	0-0	0-0	0-0	0	0	0	0	0	0	0	0	0	0
32	NASON, TAYLOR		0	0-0	0-0	0-0	1	0	1	0	0	1	0	1	2	-4
	TEAM						0	0	0	0		0				
TOTALS			7	2-13	1-4	2-2	0	0	8	7	1	6	1	1	50	

Shooting By Period

Period	FG	FG%	3FG	3FG%	FT	FT%
3rd Qtr	7-15	47%	3-6	50%	5-6	83%
4th Qtr	9-12	75%	3-4	75%	1-2	50%
2nd Half	2-13	15%	1-4	25%	2-2	100%
2nd Half	16-27	59%	6-10	60%	6-8	75%
Game	24-53	45.3%	10-18	55.6%	10-12	83.3%

Game Notes:

Officials: Pastor Torres, Michael Motta, Cara Seggie
Attendance: 253

Start Time: 2018-12-20 00:03:12
End Time: 2018-12-20 02:00:24
Game Duration: 117

Score	1st	2nd	3rd	4th	TOT
NAV	16	20	12	19	67
MON	17	7	22	22	68

Points from (This Period)	NAV	MON
In the Paint	8	0
Off Turns	7	0
2nd Chance	9	2
Fast Break	2	0
Bench	0	0

**Official Play-By-Play
Navy vs Monmouth
Second Quarter**

December 20, 2018 at OceanFirst Bank Center - West Long Branch, NJ



Period 2

Starters:

Navy: 0 TAYLOR, MORGAN; 2 COLEMAN, JENNIFER; 10 JAUNICH, LAUREL; 13 GATZOUNAS, SOPHIE; 15 ROACH, BIANCA;

Monmouth: 2 WALLACE, ALEXA; 4 GREEN, SIERRA; 15 CLOUGH, EMANI; 24 BALMAN, ERICA; 25 THOMAS, LUCY;

Time	VISITORS: Navy	Score	Margin	HOME: Monmouth
09:29				MISSED JUMPER by CLOUGH, EMANI
09:28				REBOUND (OFF) by THOMAS, LUCY
09:24				TURNOVER (TRAVEL) by BALMAN, ERICA
09:24				SUB OUT: CLOUGH, EMANI
09:24				SUB IN: GRAHAM, ROSA
09:17	MISSED 3PTR by GREEN, KOLBI			
09:13				REBOUND (DEF) by GRAHAM, ROSA
09:11				MISSED LAYUP by WALLACE, ALEXA
09:06	REBOUND (DEF) by TAYLOR, MORGAN			
08:56	MISSED JUMPER by JAUNICH, LAUREL			
08:54	REBOUND (OFF) by TEAM			
08:54				SUB OUT: BALMAN, ERICA
08:54				SUB IN: MIDDLETON, ALEXA
08:54				SUB OUT: THOMAS, LUCY
08:54				SUB IN: NASON, TAYLOR
08:49				FOUL (PERSONAL) by MIDDLETON, ALEXA
08:49	GOOD! FT by COLEMAN, JENNIFER	17-17	T	
08:49				SUB OUT: WALLACE, ALEXA
08:49				SUB IN: BARKER, MCKINZEE
08:49	GOOD! FT by COLEMAN, JENNIFER	17-18	V 1	
08:32				TURNOVER (LOSTBALL) by NASON, TAYLOR
08:32	STEAL by TAYLOR, MORGAN			
08:27	TURNOVER (LOSTBALL) by TAYLOR, MORGAN			
08:27				STEAL by NASON, TAYLOR
08:23				TURNOVER (TRAVEL) by MIDDLETON, ALEXA
08:10	MISSED 3PTR by GREEN, KOLBI			
08:06	REBOUND (OFF) by JAUNICH, LAUREL			
07:55	GOOD! JUMPER by COLEMAN, JENNIFER [PNT]	17-20	V 3	
07:34				MISSED JUMPER by BARKER, MCKINZEE
07:31				REBOUND (OFF) by MIDDLETON, ALEXA
07:30				MISSED LAYUP by MIDDLETON, ALEXA
07:27				REBOUND (OFF) by NASON, TAYLOR
07:25				SUB OUT: MIDDLETON, ALEXA
07:25				SUB IN: BALMAN, ERICA
07:25	SUB OUT: GREEN, KOLBI			
07:25	SUB IN: ULASEWICZ, MARY KATE			
07:25	SUB OUT: JAUNICH, LAUREL			
07:25	SUB IN: GATZOUNAS, SOPHIE			
07:20				MISSED 3PTR by GREEN, SIERRA
07:18	REBOUND (DEF) by COLEMAN, JENNIFER			
07:17				FOUL (PERSONAL) by BARKER, MCKINZEE
07:02	TURNOVER (BADPASS) by ULASEWICZ, MARY KATE			
06:46				TURNOVER (TRAVEL) by GREEN, SIERRA
06:46				SUB OUT: NASON, TAYLOR
06:46				SUB IN: ARFINENGO, CAROL
06:23	MISSED LAYUP by COLEMAN, JENNIFER			
06:20	REBOUND (OFF) by COLEMAN, JENNIFER			
06:17	MISSED 3PTR by GATZOUNAS, SOPHIE			
06:14	REBOUND (OFF) by TAYLOR, MORGAN			
06:14	SUB OUT: BISHOP, JASMINE			
06:14	SUB IN: JAUNICH, LAUREL			
06:03				FOUL (PERSONAL) by ARFINENGO, CAROL
06:03				SUB OUT: BARKER, MCKINZEE
06:03				SUB IN: WALLACE, ALEXA
05:45	MISSED JUMPER by COLEMAN, JENNIFER			
05:39				REBOUND (DEF) by GRAHAM, ROSA
05:17				MISSED JUMPER by WALLACE, ALEXA
05:16	REBOUND (DEF) by TAYLOR, MORGAN			
05:16				FOUL (PERSONAL) by ARFINENGO, CAROL
05:16				SUB OUT: ARFINENGO, CAROL
05:16				SUB IN: THOMAS, LUCY
05:16	SUB OUT: ULASEWICZ, MARY KATE			
05:16	SUB IN: ROACH, BIANCA			
05:14	GOOD! LAYUP by COLEMAN, JENNIFER	17-22	V 5	
04:50		19-22	V 3	GOOD! JUMPER by THOMAS, LUCY
04:25				FOUL (PERSONAL) by WALLACE, ALEXA
04:25				
04:25				SUB OUT: WALLACE, ALEXA
04:25				SUB IN: CLOUGH, EMANI
04:25	GOOD! FT by COLEMAN, JENNIFER	19-23	V 4	

Time	VISITORS: Navy	Score	Margin	HOME: Monmouth
04:25	GOOD! FT by COLEMAN, JENNIFER	19-24	V 5	
04:25				SUB OUT: GREEN, SIERRA
04:25				SUB IN: ZELAYA, ADRIANA
04:04				MISSED LAYUP by THOMAS, LUCY
04:03				REBOUND (OFF) by BALMAN, ERICA
04:03	FOUL (PERSONAL) by GATZOUNAS, SOPHIE			
04:03		20-24	V 4	GOOD! FT by THOMAS, LUCY
04:03		21-24	V 3	GOOD! FT by THOMAS, LUCY
03:50	MISSED LAYUP by ROACH, BIANCA			
03:50				BLOCK by BALMAN, ERICA
03:43				REBOUND (DEF) by CLOUGH, EMANI
03:38				MISSED LAYUP by BALMAN, ERICA
03:38	REBOUND (DEF) by JAUNICH, LAUREL			
03:38				FOUL (PERSONAL) by THOMAS, LUCY
03:38	MISSED FT by JAUNICH, LAUREL			
03:38				SUB OUT: BALMAN, ERICA
03:38				SUB IN: MIDDLETON, ALEXA
03:38	GOOD! FT by JAUNICH, LAUREL	21-25	V 4	
03:36	REBOUND (OFF) by TEAM			
03:08				MISSED 3PTR by GRAHAM, ROSA
03:04	REBOUND (DEF) by TAYLOR, MORGAN			
02:57	MISSED LAYUP by ROACH, BIANCA			
02:53				REBOUND (DEF) by ZELAYA, ADRIANA
02:45				TURNOVER (TRAVEL) by GRAHAM, ROSA
02:25	MISSED 3PTR by ROACH, BIANCA			
02:21	REBOUND (OFF) by COLEMAN, JENNIFER			
02:17	MISSED 3PTR by GATZOUNAS, SOPHIE			
02:13	REBOUND (OFF) by TAYLOR, MORGAN			
02:02	GOOD! 3PTR by COLEMAN, JENNIFER	21-28	V 7	
02:02	ASSIST by ROACH, BIANCA			
01:45				SUB OUT: ZELAYA, ADRIANA
01:45				SUB IN: GREEN, SIERRA
01:41		24-28	V 4	GOOD! 3PTR by GREEN, SIERRA
01:41				ASSIST by CLOUGH, EMANI
01:23	GOOD! JUMPER by GATZOUNAS, SOPHIE	24-30	V 6	
01:23	ASSIST by ROACH, BIANCA			
01:13				MISSED 3PTR by THOMAS, LUCY
01:09	REBOUND (DEF) by TAYLOR, MORGAN			
01:06	MISSED JUMPER by TAYLOR, MORGAN			
01:04	REBOUND (OFF) by COLEMAN, JENNIFER			
01:01				FOUL (PERSONAL) by CLOUGH, EMANI
01:01	GOOD! FT by GATZOUNAS, SOPHIE	24-31	V 7	
01:01	SUB OUT: ROACH, BIANCA			
01:01	SUB IN: GREEN, KOLBI			
01:01	SUB OUT: TAYLOR, MORGAN			
01:01	SUB IN: BISHOP, JASMINE			
01:01	GOOD! FT by GATZOUNAS, SOPHIE	24-32	V 8	
00:47				MISSED JUMPER by CLOUGH, EMANI
00:44	REBOUND (DEF) by GATZOUNAS, SOPHIE			
00:19	GOOD! JUMPER by GATZOUNAS, SOPHIE	24-34	V 10	
00:06				TURNOVER (BADPASS) by CLOUGH, EMANI
00:06	STEAL by COLEMAN, JENNIFER			
00:01	GOOD! LAYUP by JAUNICH, LAUREL [FB]	24-36	V 12	
00:01	ASSIST by GREEN, KOLBI			

Navy 36, Monmouth 24

Points from (This Period)	NAV	MON
In the Paint	8	0
Off Turns	7	0
2nd Chance	9	2
Fast Break	2	0
Bench	0	0

Official Box Score
Navy vs Monmouth
Second Half Statistics Only
December 20, 2018 at OceanFirst Bank Center - West Long Branch, NJ



Navy 31

No.	Player	S	Pts	FG	3FG	FT	OR	DR	TR	PF	A	TO	Blk	Stl	Min	+/-
00	TAYLOR, MORGAN		7	2-7	1-3	2-2	4	1	5	2	1	2	0	0	18	-5
01	GREEN, KOLBI		2	1-2	0-1	0-0	1	0	1	1	1	1	0	0	6	-9
02	COLEMAN, JENNIFER		5	2-9	0-2	1-2	1	2	3	0	1	3	0	0	16	-12
03	HANNIBAL, CAYLA		0	0-0	0-0	0-0	0	0	0	0	0	0	0	0	2	-1
10	JAUNICH, LAUREL		2	1-3	0-0	0-0	0	1	1	0	0	2	0	0	16	-10
13	GATZOUNAS, SOPHIE		13	4-5	2-2	3-3	3	0	3	2	0	0	0	0	19	-7
15	ROACH, BIANCA		2	0-4	0-2	2-2	1	0	1	0	3	0	0	1	15	-4
21	BISHOP, JASMINE		0	0-1	0-0	0-0	0	0	0	1	0	2	0	2	5	-9
55	ULASEWICZ, MARY KATE		0	0-0	0-0	0-0	0	0	0	1	0	1	0	0	2	-8
	TEAM		0	0-0	0-0	0-0	1	1	2	0	0	0	0	0	0	0
TOTALS			31	10-31	3-10	8-9	0	0	16	7	6	11	0	3	100	

Shooting By Period

Period	FG	FG%	3FG	3FG%	FT	FT%
3rd Qtr	3-14	21%	1-5	20%	5-6	83%
4th Qtr	7-17	41%	2-5	40%	3-3	100%
2nd Half	10-31	32%	3-10	30%	8-9	89%
Game	23-66	34.8%	6-21	28.6%	15-17	88.2%

Last FG Half: NAV 4th-00:16

Monmouth 44

No.	Player	S	Pts	FG	3FG	FT	OR	DR	TR	PF	A	TO	Blk	Stl	Min	+/-
01	ZELAYA, ADRIANA		0	0-0	0-0	0-0	0	0	0	0	0	0	0	0	0	0
02	WALLACE, ALEXA		2	1-3	0-0	0-0	0	1	1	1	0	1	0	0	11	11
03	GRAHAM, ROSA		6	2-3	1-1	1-2	0	1	1	1	6	1	0	1	19	13
04	GREEN, SIERRA		17	5-7	5-7	2-2	1	2	3	1	1	1	0	2	17	11
14	ARFINENGO, CAROL		0	0-0	0-0	0-0	0	0	0	0	0	0	0	0	0	0
15	CLOUGH, EMANI		0	0-0	0-0	0-0	0	0	0	1	0	0	0	0	1	0
20	BARKER, MCKINZEE		2	1-1	0-0	0-0	0	0	0	1	2	1	0	0	4	2
22	MIDDLETON, ALEXA		8	4-6	0-0	0-0	1	2	3	1	1	2	0	3	19	12
23	SIMMONS, ALLURE		2	1-2	0-1	0-0	1	0	1	3	0	0	0	1	8	2
24	BALMAN, ERICA		0	0-0	0-0	0-0	0	0	0	0	0	0	0	0	0	0
25	THOMAS, LUCY		7	2-5	0-1	3-4	3	3	6	1	0	3	0	0	14	21
32	NASON, TAYLOR		0	0-0	0-0	0-0	0	1	1	0	0	1	0	0	6	-7
	TEAM		0	0-0	0-0	0-0	0	1	1	0	0	0	0	0	0	0
TOTALS			44	16-27	6-10	6-8	0	0	17	10	10	10	0	7	100	

Shooting By Period

Period	FG	FG%	3FG	3FG%	FT	FT%
3rd Qtr	7-15	47%	3-6	50%	5-6	83%
4th Qtr	9-12	75%	3-4	75%	1-2	50%
2nd Half	16-27	59%	6-10	60%	6-8	75%
Game	24-53	45.3%	10-18	55.6%	10-12	83.3%

Last FG Half: MON 4th-00:30

Game Notes:

Officials: Pastor Torres, Michael Motta, Cara Seggie
Attendance: 253

Start Time: 2018-12-20 00:03:12
End Time: 2018-12-20 02:00:24
Game Duration: 117

Score	1st	2nd	3rd	4th	TOT
NAV	16	20	12	19	67
MON	17	7	22	22	68

Points from (This Period)	NAV	MON
In the Paint	10	16
Off Turns	3	14
2nd Chance	14	7
Fast Break	2	6
Bench	2	18

Official Box Score
Navy vs Monmouth
Third Quarter Statistics Only
December 20, 2018 at OceanFirst Bank Center - West Long Branch, NJ



Navy 31

No.	Player	S	Pts	FG	3FG	FT	OR	DR	TR	PF	A	TO	Blk	Stl	Min	+/-
00	TAYLOR, MORGAN		3	1-3	1-2	0-0	1	0	1	1	0	1	0	0	8	-2
02	COLEMAN, JENNIFER		3	1-4	0-1	1-2	0	2	2	0	0	2	0	0	8	-8
10	JAUNICH, LAUREL		0	0-0	0-0	0-0	0	1	1	0	0	2	0	0	8	-8
13	GATZOUNAS, SOPHIE		2	0-1	0-0	2-2	1	0	1	1	0	0	0	0	9	-4
15	ROACH, BIANCA		2	0-3	0-1	2-2	1	0	1	0	1	0	0	1	7	-2
01	GREEN, KOLBI		2	1-2	0-1	0-0	1	0	1	0	0	1	0	0	4	-10
03	HANNIBAL, CAYLA		0	0-0	0-0	0-0	0	0	0	0	0	0	0	0	0	0
21	BISHOP, JASMINE		0	0-1	0-0	0-0	0	0	0	0	0	1	0	2	3	-8
55	ULASEWICZ, MARY KATE		0	0-0	0-0	0-0	0	0	0	1	0	1	0	0	2	-8
	TEAM						1	1	2	0		0				
TOTALS			12	3-14	1-5	5-6	0	0	9	3	1	8	0	3	50	

Shooting By Period

Period	FG	FG%	3FG	3FG%	FT	FT%
2nd Half	0-0	0%	0-0	0%	0-0	0%
Game	23-66	34.8%	6-21	28.6%	15-17	88.2%

Monmouth 44

No.	Player	S	Pts	FG	3FG	FT	OR	DR	TR	PF	A	TO	Blk	Stl	Min	+/-
02	WALLACE, ALEXA		2	1-3	0-0	0-0	0	1	1	1	0	1	0	0	5	4
04	GREEN, SIERRA		11	3-4	3-4	2-2	1	1	2	0	0	1	0	2	9	12
15	CLOUGH, EMANI		0	0-0	0-0	0-0	0	0	0	1	0	0	0	0	1	1
24	BALMAN, ERICA		0	0-0	0-0	0-0	0	0	0	0	0	0	0	0	0	0
25	THOMAS, LUCY		2	0-2	0-1	2-2	2	2	4	0	0	1	0	0	6	17
01	ZELAYA, ADRIANA		0	0-0	0-0	0-0	0	0	0	0	0	0	0	0	0	0
03	GRAHAM, ROSA		3	1-2	0-0	1-2	0	1	1	1	3	1	0	1	9	9
14	ARFINENGO, CAROL		0	0-0	0-0	0-0	0	0	0	0	0	0	0	0	0	0
20	BARKER, MCKINZEE		0	0-0	0-0	0-0	0	0	0	1	0	1	0	0	1	-2
22	MIDDLETON, ALEXA		2	1-2	0-0	0-0	1	1	2	0	0	1	0	1	9	9
23	SIMMONS, ALLURE		2	1-2	0-1	0-0	0	0	0	3	0	0	0	1	5	6
32	NASON, TAYLOR		0	0-0	0-0	0-0	0	0	0	0	0	1	0	0	4	-6
	TEAM						0	1	1	0		0				
TOTALS			22	7-15	3-6	5-6	0	0	11	7	3	7	0	5	50	

Shooting By Period

Period	FG	FG%	3FG	3FG%	FT	FT%
2nd Half	0-0	0%	0-0	0%	0-0	0%
Game	24-53	45.3%	10-18	55.6%	10-12	83.3%

Game Notes:

Officials: **Pastor Torres, Michael Motta, Cara Seggie**
Attendance: **253**

Start Time: **2018-12-20 00:03:12**
End Time: **2018-12-20 02:00:24**
Game Duration: **117**

Score	1st	2nd	3rd	4th	TOT
NAV	16	20	12	19	67
MON	17	7	22	22	68

Points from (This Period)	NAV	MON
In the Paint	2	6
Off Turns	3	9
2nd Chance	6	5
Fast Break	0	5
Bench	2	7

Official Play-By-Play
Navy vs Monmouth
Third Quarter
December 20, 2018 at OceanFirst Bank Center - West Long Branch, NJ



Period 3

Starters:

Navy: 0 TAYLOR, MORGAN; 2 COLEMAN, JENNIFER; 10 JAUNICH, LAUREL; 13 GATZOUNAS, SOPHIE; 15 ROACH, BIANCA;

Monmouth: 2 WALLACE, ALEXA; 4 GREEN, SIERRA; 15 CLOUGH, EMANI; 24 BALMAN, ERICA; 25 THOMAS, LUCY;

Time	VISITORS: Navy	Score	Margin	HOME: Monmouth
09:39	TURNOVER (LOSTBALL) by JAUNICH, LAUREL			
09:23				MISSED 3PTR by GREEN, SIERRA
09:21	REBOUND (DEF) by TEAM			
09:04	GOOD! JUMPER by COLEMAN, JENNIFER	24-38	V 14	
08:38				TURNOVER (BADPASS) by GREEN, SIERRA
08:25	TURNOVER (BADPASS) by COLEMAN, JENNIFER			
08:25				STEAL by GREEN, SIERRA
08:17				FOUL (OFF) by WALLACE, ALEXA
08:17				TURNOVER (OFFENSIVE) by WALLACE, ALEXA
07:57	MISSED JUMPER by GATZOUNAS, SOPHIE			
07:52	REBOUND (OFF) by TAYLOR, MORGAN			
07:42	MISSED 3PTR by COLEMAN, JENNIFER			
07:38				REBOUND (DEF) by GREEN, SIERRA
07:24				MISSED LAYUP by WALLACE, ALEXA
07:20				REBOUND (OFF) by MIDDLETON, ALEXA
07:03				TURNOVER (BADPASS) by GRAHAM, ROSA
07:03	STEAL by ROACH, BIANCA			
06:57	MISSED LAYUP by COLEMAN, JENNIFER			
06:55				REBOUND (DEF) by WALLACE, ALEXA
06:55				SUB OUT: WALLACE, ALEXA
06:55				SUB IN: THOMAS, LUCY
06:55				SUB OUT: NASON, TAYLOR
06:55				SUB IN: SIMMONS, ALLURE
06:55	SUB OUT: JAUNICH, LAUREL			
06:55	SUB IN: BISHOP, JASMINE			
06:55	SUB OUT: COLEMAN, JENNIFER			
06:55	SUB IN: GREEN, KOLBI			
06:43				TURNOVER (BADPASS) by THOMAS, LUCY
06:38				FOUL (PERSONAL) by SIMMONS, ALLURE
06:38	SUB OUT: ROACH, BIANCA			
06:38	SUB IN: ULASEWICZ, MARY KATE			
06:32	MISSED JUMPER by TAYLOR, MORGAN			
06:28				REBOUND (DEF) by THOMAS, LUCY
06:22		26-38	V 12	GOOD! LAYUP by MIDDLETON, ALEXA [PNT]
06:10				FOUL (PERSONAL) by GRAHAM, ROSA
06:08	TURNOVER (BADPASS) by ULASEWICZ, MARY KATE			
06:08				STEAL by GREEN, SIERRA
06:04	FOUL (PERSONAL) by ULASEWICZ, MARY KATE			
06:04		27-38	V 11	GOOD! FT by GREEN, SIERRA
06:04		28-38	V 10	GOOD! FT by GREEN, SIERRA
06:04				SUB OUT: GREEN, SIERRA
06:04				SUB IN: BARKER, MCKINZEE
05:48	MISSED JUMPER by BISHOP, JASMINE			
05:43	REBOUND (OFF) by GREEN, KOLBI			
05:42	GOOD! JUMPER by GREEN, KOLBI [PNT]	28-40	V 12	
05:32				TURNOVER (BADPASS) by MIDDLETON, ALEXA
05:32	STEAL by BISHOP, JASMINE			
05:19				FOUL (PERSONAL) by BARKER, MCKINZEE
05:02	TURNOVER (BADPASS) by TAYLOR, MORGAN			
05:02	SUB OUT: TAYLOR, MORGAN			
05:02	SUB IN: COLEMAN, JENNIFER			
05:02	SUB OUT: GATZOUNAS, SOPHIE			
05:02	SUB IN: JAUNICH, LAUREL			
04:45				TURNOVER (LOSTBALL) by BARKER, MCKINZEE
04:45	STEAL by BISHOP, JASMINE			
04:45	TURNOVER (TRAVEL) by BISHOP, JASMINE			
04:45				SUB OUT: BARKER, MCKINZEE
04:45				SUB IN: GREEN, SIERRA
04:42		31-40	V 9	GOOD! 3PTR by GREEN, SIERRA
04:42				ASSIST by GRAHAM, ROSA
04:24	TURNOVER (BADPASS) by COLEMAN, JENNIFER			
04:24				STEAL by SIMMONS, ALLURE
04:15		34-40	V 6	GOOD! 3PTR by GREEN, SIERRA
04:15				ASSIST by GRAHAM, ROSA
04:15	TIMEOUT 30SEC			
04:15	SUB OUT: BISHOP, JASMINE			
04:15	SUB IN: GATZOUNAS, SOPHIE			
04:15	SUB OUT: ULASEWICZ, MARY KATE			
04:15	SUB IN: ROACH, BIANCA			

Time	VISITORS: Navy	Score	Margin	HOME: Monmouth
04:12	TURNOVER (BADPASS) by JAUNICH, LAUREL			
04:12				STEAL by MIDDLETON, ALEXA
04:06				MISSED LAYUP by MIDDLETON, ALEXA
04:04	REBOUND (DEF) by JAUNICH, LAUREL			
04:00	TURNOVER (BADPASS) by GREEN, KOLBI			
04:00				STEAL by GRAHAM, ROSA
03:57	FOUL (PERSONAL) by GATZOUNAS, SOPHIE			
03:57		35-40	V 5	GOOD! FT by GRAHAM, ROSA [FB]
03:57				MISSED FT by GRAHAM, ROSA
03:57	REBOUND (DEF) by COLEMAN, JENNIFER			
03:48	MISSED LAYUP by COLEMAN, JENNIFER			
03:48				REBOUND (DEF) by TEAM
03:38				SUB OUT: GRAHAM, ROSA
03:38				SUB IN: NASON, TAYLOR
03:38				SUB OUT: MIDDLETON, ALEXA
03:38				SUB IN: CLOUGH, EMANI
03:34		37-40	V 3	GOOD! JUMPER by SIMMONS, ALLURE
03:12	MISSED 3PTR by GREEN, KOLBI			
03:07	REBOUND (OFF) by GATZOUNAS, SOPHIE			
03:04				FOUL (PERSONAL) by CLOUGH, EMANI
03:04	GOOD! FT by ROACH, BIANCA	37-41	V 4	
03:04				SUB OUT: CLOUGH, EMANI
03:04				SUB IN: GRAHAM, ROSA
03:04				SUB OUT: THOMAS, LUCY
03:04				SUB IN: MIDDLETON, ALEXA
03:04	SUB OUT: GREEN, KOLBI			
03:04	SUB IN: TAYLOR, MORGAN			
03:04	GOOD! FT by ROACH, BIANCA	37-42	V 5	
02:56				TURNOVER (TRAVEL) by NASON, TAYLOR
02:32	GOOD! 3PTR by TAYLOR, MORGAN	37-45	V 8	
02:32	ASSIST by ROACH, BIANCA			
02:17				MISSED 3PTR by SIMMONS, ALLURE
02:14	REBOUND (DEF) by COLEMAN, JENNIFER			
02:14				FOUL (PERSONAL) by SIMMONS, ALLURE
02:14	GOOD! FT by COLEMAN, JENNIFER	37-46	V 9	
02:14				SUB OUT: NASON, TAYLOR
02:14				SUB IN: THOMAS, LUCY
02:14	MISSED FT by COLEMAN, JENNIFER			
02:11				REBOUND (DEF) by MIDDLETON, ALEXA
02:06		39-46	V 7	GOOD! LAYUP by GRAHAM, ROSA [PNT]
01:50	MISSED 3PTR by ROACH, BIANCA			
01:47	REBOUND (OFF) by TEAM			
01:45				FOUL (PERSONAL) by SIMMONS, ALLURE
01:45	GOOD! FT by GATZOUNAS, SOPHIE	39-47	V 8	
01:45				SUB OUT: SIMMONS, ALLURE
01:45				SUB IN: WALLACE, ALEXA
01:45	GOOD! FT by GATZOUNAS, SOPHIE	39-48	V 9	
01:33				MISSED 3PTR by THOMAS, LUCY
01:28				REBOUND (OFF) by GREEN, SIERRA
01:20		42-48	V 6	GOOD! 3PTR by GREEN, SIERRA
01:00	MISSED 3PTR by TAYLOR, MORGAN			
00:56				REBOUND (DEF) by GRAHAM, ROSA
00:55		44-48	V 4	GOOD! LAYUP by WALLACE, ALEXA [FB]
00:55				ASSIST by GRAHAM, ROSA
00:31	MISSED JUMPER by ROACH, BIANCA			
00:27	REBOUND (OFF) by ROACH, BIANCA			
00:26	MISSED LAYUP by ROACH, BIANCA			
00:22				REBOUND (DEF) by THOMAS, LUCY
00:20				MISSED JUMPER by WALLACE, ALEXA
00:20				REBOUND (OFF) by THOMAS, LUCY
00:19	FOUL (PERSONAL) by TAYLOR, MORGAN			
00:19		45-48	V 3	GOOD! FT by THOMAS, LUCY [FB]
00:19		46-48	V 2	GOOD! FT by THOMAS, LUCY [FB]
00:19	SUB OUT: JAUNICH, LAUREL			
00:19	SUB IN: HANNIBAL, CAYLA			
00:19	SUB OUT: ROACH, BIANCA			
00:19	SUB IN: BISHOP, JASMINE			
00:04				MISSED JUMPER by GRAHAM, ROSA
00:01				REBOUND (OFF) by THOMAS, LUCY
00:00				MISSED LAYUP by THOMAS, LUCY
00:00				REBOUND (OFF) by TEAM

Navy 48, Monmouth 46

Points from (This Period)	NAV	MON
In the Paint	2	6
Off Turns	3	9
2nd Chance	6	5
Fast Break	0	5
Bench	2	7

Official Box Score
Navy vs Monmouth
Fourth Quarter Statistics Only
December 20, 2018 at OceanFirst Bank Center - West Long Branch, NJ



Navy 19

No.	Player	S	Pts	FG	3FG	FT	OR	DR	TR	PF	A	TO	Blk	Stl	Min	+/-
00	TAYLOR, MORGAN		4	1-4	0-1	2-2	3	1	4	1	1	1	0	0	10	-3
02	COLEMAN, JENNIFER		2	1-5	0-1	0-0	1	0	1	0	1	1	0	0	8	-4
10	JAUNICH, LAUREL		2	1-3	0-0	0-0	0	0	0	0	0	0	0	0	8	-2
13	GATZOUNAS, SOPHIE		11	4-4	2-2	1-1	2	0	2	1	0	0	0	0	10	-3
15	ROACH, BIANCA		0	0-1	0-1	0-0	0	0	0	0	2	0	0	0	8	-2
01	GREEN, KOLBI		0	0-0	0-0	0-0	0	0	0	1	1	0	0	0	2	1
03	HANNIBAL, CAYLA		0	0-0	0-0	0-0	0	0	0	0	0	0	0	0	2	-1
21	BISHOP, JASMINE		0	0-0	0-0	0-0	0	0	0	1	0	1	0	0	2	-1
55	ULASEWICZ, MARY KATE		0	0-0	0-0	0-0	0	0	0	0	0	0	0	0	0	0
	TEAM						0	0	0	0		0				
TOTALS			19	7-17	2-5	3-3	0	0	7	4	5	3	0	0	50	

Shooting By Period

Period	FG	FG%	3FG	3FG%	FT	FT%
Game	23-66	34.8%	6-21	28.6%	15-17	88.2%

Monmouth 22

No.	Player	S	Pts	FG	3FG	FT	OR	DR	TR	PF	A	TO	Blk	Stl	Min	+/-
02	WALLACE, ALEXA		0	0-0	0-0	0-0	0	0	0	0	0	0	0	0	6	7
04	GREEN, SIERRA		6	2-3	2-3	0-0	0	1	1	1	1	0	0	0	8	-1
15	CLOUGH, EMANI		0	0-0	0-0	0-0	0	0	0	0	0	0	0	0	0	-1
24	BALMAN, ERICA		0	0-0	0-0	0-0	0	0	0	0	0	0	0	0	0	0
25	THOMAS, LUCY		5	2-3	0-0	1-2	1	1	2	1	0	2	0	0	8	4
01	ZELAYA, ADRIANA		0	0-0	0-0	0-0	0	0	0	0	0	0	0	0	0	0
03	GRAHAM, ROSA		3	1-1	1-1	0-0	0	0	0	0	3	0	0	0	10	4
14	ARFINENGO, CAROL		0	0-0	0-0	0-0	0	0	0	0	0	0	0	0	0	0
20	BARKER, MCKINZEE		2	1-1	0-0	0-0	0	0	0	0	2	0	0	0	3	4
22	MIDDLETON, ALEXA		6	3-4	0-0	0-0	0	1	1	1	1	1	0	2	10	3
23	SIMMONS, ALLURE		0	0-0	0-0	0-0	1	0	1	0	0	0	0	0	3	-4
32	NASON, TAYLOR		0	0-0	0-0	0-0	0	1	1	0	0	0	0	0	2	-1
	TEAM						0	0	0	0		0				
TOTALS			22	9-12	3-4	1-2	0	0	6	3	7	3	0	2	50	

Shooting By Period

Period	FG	FG%	3FG	3FG%	FT	FT%
Game	24-53	45.3%	10-18	55.6%	10-12	83.3%

Game Notes:

Officials: Pastor Torres, Michael Motta, Cara Seggie
 Attendance: 253

Start Time: 2018-12-20 00:03:12
 End Time: 2018-12-20 02:00:24
 Game Duration: 117

Score	1st	2nd	3rd	4th	TOT
NAV	16	20	12	19	67
MON	17	7	22	22	68

Points from (This Period)	NAV	MON
In the Paint	8	10
Off Turns	0	5
2nd Chance	8	2
Fast Break	2	1
Bench	0	11

**Official Play-By-Play
Navy vs Monmouth
Fourth Quarter**

December 20, 2018 at OceanFirst Bank Center - West Long Branch, NJ



Period 4

Starters:

Navy: 0 TAYLOR,MORGAN; 2 COLEMAN,JENNIFER; 10 JAUNICH,LAUREL; 13 GATZOUNAS,SOPHIE; 15 ROACH,BIANCA;

Monmouth: 2 WALLACE,ALEXA; 4 GREEN,SIERRA; 15 CLOUGH,EMANI; 24 BALMAN,ERICA; 25 THOMAS,LUCY;

Time	VISITORS: Navy	Score	Margin	HOME: Monmouth
09:42	GOOD! JUMPER by GATZOUNAS, SOPHIE	46-50	V 4	
09:42	ASSIST by COLEMAN, JENNIFER			
09:36				TIMEOUT 30SEC
09:22				MISSED JUMPER by MIDDLETON, ALEXA
09:18	REBOUND (DEF) by TAYLOR, MORGAN			
08:55	MISSED JUMPER by TAYLOR, MORGAN			
08:54				REBOUND (DEF) by GREEN, SIERRA
08:54	FOUL (PERSONAL) by TAYLOR, MORGAN			
08:36		49-50	V 1	GOOD! 3PTR by GREEN, SIERRA
08:15	TURNOVER (BADPASS) by BISHOP, JASMINE			
08:15	SUB OUT: BISHOP, JASMINE			
08:15	SUB IN: JAUNICH, LAUREL			
07:56				TURNOVER (TRAVEL) by THOMAS, LUCY
07:56	SUB OUT: HANNIBAL, CAYLA			
07:56	SUB IN: ROACH, BIANCA			
07:31	MISSED JUMPER by COLEMAN, JENNIFER			
07:26	REBOUND (OFF) by TAYLOR, MORGAN			
07:03	MISSED JUMPER by COLEMAN, JENNIFER			
06:59				REBOUND (DEF) by MIDDLETON, ALEXA
06:33		51-50	H 1	GOOD! LAYUP by MIDDLETON, ALEXA
06:33				ASSIST by GRAHAM, ROSA
06:11	MISSED 3PTR by COLEMAN, JENNIFER			
06:07	REBOUND (OFF) by GATZOUNAS, SOPHIE			
06:06	GOOD! LAYUP by GATZOUNAS, SOPHIE	51-52	V 1	
05:54				MISSED JUMPER by THOMAS, LUCY
05:48				REBOUND (OFF) by THOMAS, LUCY
05:46		53-52	H 1	GOOD! LAYUP by THOMAS, LUCY [PNT]
05:35	MISSED JUMPER by JAUNICH, LAUREL			
05:31	REBOUND (OFF) by TAYLOR, MORGAN			
05:28	MISSED JUMPER by COLEMAN, JENNIFER			
05:26	REBOUND (OFF) by COLEMAN, JENNIFER			
05:24	TURNOVER (LOSTBALL) by COLEMAN, JENNIFER			
05:24				STEAL by MIDDLETON, ALEXA
05:24				SUB OUT: GREEN, SIERRA
05:24				SUB IN: NASON, TAYLOR
05:24				SUB OUT: THOMAS, LUCY
05:24				SUB IN: BARKER, MCKINZEE
05:24	SUB OUT: COLEMAN, JENNIFER			
05:24	SUB IN: GREEN, KOLBI			
05:15		56-52	H 4	GOOD! 3PTR by GRAHAM, ROSA
05:15				ASSIST by BARKER, MCKINZEE
04:48	GOOD! JUMPER by TAYLOR, MORGAN [PNT]	56-54	H 2	
04:30		58-54	H 4	GOOD! LAYUP by MIDDLETON, ALEXA
04:30				ASSIST by GRAHAM, ROSA
04:13				SUB OUT: WALLACE, ALEXA
04:13				SUB IN: SIMMONS, ALLURE
04:13				SUB OUT: BARKER, MCKINZEE
04:13				SUB IN: GREEN, SIERRA
03:58	MISSED 3PTR by ROACH, BIANCA			
03:54	REBOUND (OFF) by TAYLOR, MORGAN			
03:45	GOOD! 3PTR by GATZOUNAS, SOPHIE	58-57	H 1	
03:45	ASSIST by GREEN, KOLBI			
03:45				FOUL (PERSONAL) by GREEN, SIERRA
03:45				SUB OUT: GRAHAM, ROSA
03:45				SUB IN: CLOUGH, EMANI
03:45	GOOD! FT by GATZOUNAS, SOPHIE	58-58	T	
03:37	FOUL (PERSONAL) by GREEN, KOLBI			
03:28				MISSED 3PTR by GREEN, SIERRA
03:27				REBOUND (OFF) by SIMMONS, ALLURE
03:25				TURNOVER (3SEC) by MIDDLETON, ALEXA
03:24				SUB OUT: GREEN, SIERRA
03:24				SUB IN: GRAHAM, ROSA
03:24				SUB OUT: CLOUGH, EMANI
03:24				SUB IN: BARKER, MCKINZEE
03:24				SUB OUT: NASON, TAYLOR
03:24				SUB IN: THOMAS, LUCY
03:24	SUB OUT: GREEN, KOLBI			
03:24	SUB IN: COLEMAN, JENNIFER			
03:02	MISSED JUMPER by JAUNICH, LAUREL			
02:59				REBOUND (DEF) by THOMAS, LUCY

Time	VISITORS: Navy	Score	Margin	HOME: Monmouth
02:58	FOUL (PERSONAL) by GATZOUNAS, SOPHIE			
02:58				SUB OUT: BARKER, MCKINZEE
02:58				SUB IN: GREEN, SIERRA
02:57				FOUL (OFF) by THOMAS, LUCY
02:57				TURNOVER (OFFENSIVE) by THOMAS, LUCY
02:49	TURNOVER (BADPASS) by TAYLOR, MORGAN			
02:49				STEAL by MIDDLETON, ALEXA
02:30		60-58	H 2	GOOD! LAYUP by THOMAS, LUCY [PNT]
02:30				ASSIST by GREEN, SIERRA
02:19	GOOD! 3PTR by GATZOUNAS, SOPHIE	60-61	V 1	
02:19	ASSIST by ROACH, BIANCA			
02:03		62-61	H 1	GOOD! LAYUP by MIDDLETON, ALEXA [PNT]
02:03				ASSIST by GRAHAM, ROSA
01:43				FOUL (PERSONAL) by MIDDLETON, ALEXA
01:43	GOOD! FT by TAYLOR, MORGAN [FB]	62-62	T	
01:43	GOOD! FT by TAYLOR, MORGAN [FB]	62-63	V 1	
01:43				SUB OUT: SIMMONS, ALLURE
01:43				SUB IN: BARKER, MCKINZEE
01:20		65-63	H 2	GOOD! 3PTR by GREEN, SIERRA
01:20				ASSIST by BARKER, MCKINZEE
01:01	MISSED 3PTR by TAYLOR, MORGAN			
00:55	REBOUND (OFF) by GATZOUNAS, SOPHIE			
00:49	GOOD! LAYUP by COLEMAN, JENNIFER [PNT]	65-65	T	
00:49	ASSIST by TAYLOR, MORGAN			
00:30		67-65	H 2	GOOD! JUMPER by BARKER, MCKINZEE
00:30				ASSIST by MIDDLETON, ALEXA
00:17				TIMEOUT TEAM
00:17	SUB OUT: JAUNICH, LAUREL			
00:17	SUB IN: BISHOP, JASMINE			
00:16	GOOD! LAYUP by JAUNICH, LAUREL [PNT]	67-67	T	
00:16	ASSIST by ROACH, BIANCA			
00:12	FOUL (PERSONAL) by BISHOP, JASMINE			
00:12				MISSED FT by THOMAS, LUCY
00:12				REBOUND (OFF) by TEAM
00:12				SUB OUT: GREEN, SIERRA
00:12				SUB IN: WALLACE, ALEXA
00:12				SUB OUT: BARKER, MCKINZEE
00:12				SUB IN: SIMMONS, ALLURE
00:12	SUB OUT: BISHOP, JASMINE			
00:12	SUB IN: JAUNICH, LAUREL			
00:12		68-67	H 1	GOOD! FT by THOMAS, LUCY [FB]
00:12				SUB OUT: THOMAS, LUCY
00:12				SUB IN: NASON, TAYLOR
00:01	MISSED JUMPER by TAYLOR, MORGAN			
00:00				REBOUND (DEF) by NASON, TAYLOR

Navy 67, Monmouth 68

Points from (This Period)	NAV	MON
In the Paint	8	10
Off Turns	0	5
2nd Chance	8	2
Fast Break	2	1
Bench	0	11

**Official Scoring/Possession Reference Chart
Navy vs Monmouth
Period 1**

December 20, 2018 at OceanFirst Bank Center - West Long Branch, NJ



Period 1

Starters:

Navy: 0 TAYLOR, MORGAN; 2 COLEMAN, JENNIFER; 10 JAUNICH, LAUREL; 13 GATZOUNAS, SOPHIE; 15 ROACH, BIANCA;

Monmouth: 2 WALLACE, ALEXA; 4 GREEN, SIERRA; 15 CLOUGH, EMANI; 24 BALMAN, ERICA; 25 THOMAS, LUCY;

Time	VISITORS: Navy	Score	Margin	HOME: Monmouth
09:07		2-0	H 2	GOOD! LAYUP by THOMAS, LUCY
08:29	GOOD! JUMPER by ROACH, BIANCA [FB]	2-2	T	
07:53		4-2	H 2	GOOD! LAYUP by THOMAS, LUCY
07:44	GOOD! 3PTR by GATZOUNAS, SOPHIE	4-5	V 1	
07:23		7-5	H 2	GOOD! 3PTR by GREEN, SIERRA
07:13	GOOD! LAYUP by TAYLOR, MORGAN [FB/PNT]	7-7	T	
06:42	GOOD! LAYUP by TAYLOR, MORGAN	7-9	V 2	
06:21	GOOD! LAYUP by JAUNICH, LAUREL [FB/PNT]	7-11	V 4	
05:35	GOOD! 3PTR by GREEN, KOLBI	7-14	V 7	
05:16		9-14	V 5	GOOD! JUMPER by BARKER, MCKINZEE [PNT]
03:47	GOOD! JUMPER by ROACH, BIANCA	9-16	V 7	
03:40		12-16	V 4	GOOD! 3PTR by GRAHAM, ROSA
02:24		13-16	V 3	GOOD! FT by MIDDLETON, ALEXA
02:24		14-16	V 2	GOOD! FT by MIDDLETON, ALEXA
00:40		17-16	H 1	GOOD! 3PTR by GREEN, SIERRA

Navy 16, Monmouth 17

**Official Scoring/Possession Reference Chart
Navy vs Monmouth
Period 2**

December 20, 2018 at OceanFirst Bank Center - West Long Branch, NJ



Period 2

Starters:

Navy: 0 TAYLOR,MORGAN; 2 COLEMAN,JENNIFER; 10 JAUNICH,LAUREL; 13 GATZOUNAS,SOPHIE; 15 ROACH,BIANCA;

Monmouth: 2 WALLACE,ALEXA; 4 GREEN,SIERRA; 15 CLOUGH,EMANI; 24 BALMAN,ERICA; 25 THOMAS,LUCY;

Time	VISITORS: Navy	Score	Margin	HOME: Monmouth
08:49	GOOD! FT by COLEMAN, JENNIFER	17-17	T	
08:49	GOOD! FT by COLEMAN, JENNIFER	17-18	V 1	
07:55	GOOD! JUMPER by COLEMAN, JENNIFER [PNT]	17-20	V 3	
05:14	GOOD! LAYUP by COLEMAN, JENNIFER	17-22	V 5	
04:50		19-22	V 3	GOOD! JUMPER by THOMAS, LUCY
04:25	GOOD! FT by COLEMAN, JENNIFER	19-23	V 4	
04:25	GOOD! FT by COLEMAN, JENNIFER	19-24	V 5	
04:03		20-24	V 4	GOOD! FT by THOMAS, LUCY
04:03		21-24	V 3	GOOD! FT by THOMAS, LUCY
03:38	GOOD! FT by JAUNICH, LAUREL	21-25	V 4	
02:02	GOOD! 3PTR by COLEMAN, JENNIFER	21-28	V 7	
01:41		24-28	V 4	GOOD! 3PTR by GREEN, SIERRA
01:23	GOOD! JUMPER by GATZOUNAS, SOPHIE	24-30	V 6	
01:01	GOOD! FT by GATZOUNAS, SOPHIE	24-31	V 7	
01:01	GOOD! FT by GATZOUNAS, SOPHIE	24-32	V 8	
00:19	GOOD! JUMPER by GATZOUNAS, SOPHIE	24-34	V 10	
00:01	GOOD! LAYUP by JAUNICH, LAUREL [FB]	24-36	V 12	

Navy 36, Monmouth 24

**Official Scoring/Possession Reference Chart
Navy vs Monmouth
Period 3**

December 20, 2018 at OceanFirst Bank Center - West Long Branch, NJ



Period 3

Starters:

Navy: 0 TAYLOR,MORGAN; 2 COLEMAN,JENNIFER; 10 JAUNICH,LAUREL; 13 GATZOUNAS,SOPHIE; 15 ROACH,BIANCA;
Monmouth: 2 WALLACE,ALEXA; 4 GREEN,SIERRA; 15 CLOUGH,EMANI; 24 BALMAN,ERICA; 25 THOMAS,LUCY;

Time	VISITORS: Navy	Score	Margin	HOME: Monmouth
09:04	GOOD! JUMPER by COLEMAN, JENNIFER	24-38	V 14	
06:22		26-38	V 12	GOOD! LAYUP by MIDDLETON, ALEXA [PNT]
06:04		27-38	V 11	GOOD! FT by GREEN, SIERRA
06:04		28-38	V 10	GOOD! FT by GREEN, SIERRA
05:42	GOOD! JUMPER by GREEN, KOLBI [PNT]	28-40	V 12	
04:42		31-40	V 9	GOOD! 3PTR by GREEN, SIERRA
04:15		34-40	V 6	GOOD! 3PTR by GREEN, SIERRA
03:57		35-40	V 5	GOOD! FT by GRAHAM, ROSA [FB]
03:34		37-40	V 3	GOOD! JUMPER by SIMMONS, ALLURE
03:04	GOOD! FT by ROACH, BIANCA	37-41	V 4	
03:04	GOOD! FT by ROACH, BIANCA	37-42	V 5	
02:32	GOOD! 3PTR by TAYLOR, MORGAN	37-45	V 8	
02:14	GOOD! FT by COLEMAN, JENNIFER	37-46	V 9	
02:06		39-46	V 7	GOOD! LAYUP by GRAHAM, ROSA [PNT]
01:45	GOOD! FT by GATZOUNAS, SOPHIE	39-47	V 8	
01:45	GOOD! FT by GATZOUNAS, SOPHIE	39-48	V 9	
01:20		42-48	V 6	GOOD! 3PTR by GREEN, SIERRA
00:55		44-48	V 4	GOOD! LAYUP by WALLACE, ALEXA [FB]
00:19		45-48	V 3	GOOD! FT by THOMAS, LUCY [FB]
00:19		46-48	V 2	GOOD! FT by THOMAS, LUCY [FB]

Navy 48, Monmouth 46

**Official Scoring/Possession Reference Chart
Navy vs Monmouth**

Period 4

December 20, 2018 at OceanFirst Bank Center - West Long Branch, NJ



Period 4

Starters:

Navy: 0 TAYLOR,MORGAN; 2 COLEMAN,JENNIFER; 10 JAUNICH,LAUREL; 13 GATZOUNAS,SOPHIE; 15 ROACH,BIANCA;
Monmouth: 2 WALLACE,ALEXA; 4 GREEN,SIERRA; 15 CLOUGH,EMANI; 24 BALMAN,ERICA; 25 THOMAS,LUCY;

Time	VISITORS: Navy	Score	Margin	HOME: Monmouth
09:42	GOOD! JUMPER by GATZOUNAS, SOPHIE	46-50	V 4	
08:36		49-50	V 1	GOOD! 3PTR by GREEN, SIERRA
06:33		51-50	H 1	GOOD! LAYUP by MIDDLETON, ALEXA
06:06	GOOD! LAYUP by GATZOUNAS, SOPHIE	51-52	V 1	
05:46		53-52	H 1	GOOD! LAYUP by THOMAS, LUCY [PNT]
05:15		56-52	H 4	GOOD! 3PTR by GRAHAM, ROSA
04:48	GOOD! JUMPER by TAYLOR, MORGAN [PNT]	56-54	H 2	
04:30		58-54	H 4	GOOD! LAYUP by MIDDLETON, ALEXA
03:45	GOOD! 3PTR by GATZOUNAS, SOPHIE	58-57	H 1	
03:45	GOOD! FT by GATZOUNAS, SOPHIE	58-58	T	
02:30		60-58	H 2	GOOD! LAYUP by THOMAS, LUCY [PNT]
02:19	GOOD! 3PTR by GATZOUNAS, SOPHIE	60-61	V 1	
02:03		62-61	H 1	GOOD! LAYUP by MIDDLETON, ALEXA [PNT]
01:43	GOOD! FT by TAYLOR, MORGAN [FB]	62-62	T	
01:43	GOOD! FT by TAYLOR, MORGAN [FB]	62-63	V 1	
01:20		65-63	H 2	GOOD! 3PTR by GREEN, SIERRA
00:49	GOOD! LAYUP by COLEMAN, JENNIFER [PNT]	65-65	T	
00:30		67-65	H 2	GOOD! JUMPER by BARKER, MCKINZEE
00:16	GOOD! LAYUP by JAUNICH, LAUREL [PNT]	67-67	T	
00:12		68-67	H 1	GOOD! FT by THOMAS, LUCY [FB]

Navy 67, Monmouth 68

**Official Substitutions Log
Navy vs Monmouth
Period 1**

December 20, 2018 at OceanFirst Bank Center - West Long Branch, NJ



VISITORS: Navy	Time	Score	HOME: Monmouth
0 TAYLOR,MORGAN			2 WALLACE,ALEXA
2 COLEMAN,JENNIFER			4 GREEN,SIERRA
10 JAUNICH,LAUREL			15 CLOUGH,EMANI
13 GATZOUNAS,SOPHIE			24 BALMAN,ERICA
15 ROACH,BIANCA			25 THOMAS,LUCY
	06:21	11-7	SUB OUT: GREEN,SIERRA
	06:21		SUB IN: GRAHAM,ROSA
	06:21		SUB OUT: CLOUGH,EMANI
	06:21		SUB IN: NASON,TAYLOR
	06:21		SUB OUT: THOMAS,LUCY
	06:21		SUB IN: BARKER,MCKINZEE
SUB OUT: 2 COLEMAN,JENNIFER	06:21		
SUB IN: 1 GREEN,KOLBI	06:21		
	04:45	14-9	SUB OUT: BALMAN,ERICA
	04:45		SUB IN: MIDDLETON,ALEXA
	04:28	14-9	SUB OUT: BARKER,MCKINZEE
	04:28		SUB IN: GREEN,SIERRA
SUB OUT: 0 TAYLOR,MORGAN	04:28		
SUB IN: 2 COLEMAN,JENNIFER	04:28		
	03:29	16-12	SUB OUT: WALLACE,ALEXA
	03:29		SUB IN: CLOUGH,EMANI
	02:24	16-13	SUB OUT: NASON,TAYLOR
	02:24		SUB IN: THOMAS,LUCY
	02:24		SUB OUT: GREEN,SIERRA
	02:24		SUB IN: BARKER,MCKINZEE
SUB OUT: 15 ROACH,BIANCA	01:53	16-14	
SUB IN: 0 TAYLOR,MORGAN	01:53		
SUB OUT: 10 JAUNICH,LAUREL	01:53		
SUB IN: 21 BISHOP,JASMINE	01:53		
	00:57	16-14	SUB OUT: BARKER,MCKINZEE
	00:57		SUB IN: WALLACE,ALEXA
	00:45	16-14	SUB OUT: GRAHAM,ROSA
	00:45		SUB IN: GREEN,SIERRA
	00:24	16-17	SUB OUT: CLOUGH,EMANI
	00:24		SUB IN: SIMMONS,ALLURE
	00:24		SUB OUT: GREEN,SIERRA
	00:24		SUB IN: GRAHAM,ROSA
	00:10	16-17	SUB OUT: GRAHAM,ROSA
	00:10		SUB IN: GREEN,SIERRA
	00:10		SUB OUT: SIMMONS,ALLURE
	00:10		SUB IN: CLOUGH,EMANI

Navy 16, Monmouth 17

Official Substitutions Log
Navy vs Monmouth
Period 2
December 20, 2018 at OceanFirst Bank Center - West Long Branch, NJ



VISITORS: Navy	Time	Score	HOME: Monmouth
0 TAYLOR,MORGAN			2 WALLACE,ALEXA
2 COLEMAN,JENNIFER			4 GREEN,SIERRA
10 JAUNICH,LAUREL			15 CLOUGH,EMANI
13 GATZOUNAS,SOPHIE			24 BALMAN,ERICA
15 ROACH,BIANCA			25 THOMAS,LUCY
	09:24	-	SUB OUT: CLOUGH,EMANI
	09:24		SUB IN: GRAHAM,ROSA
	08:54	-	SUB OUT: BALMAN,ERICA
	08:54		SUB IN: MIDDLETON,ALEXA
	08:54		SUB OUT: THOMAS,LUCY
	08:54		SUB IN: NASON,TAYLOR
	08:49	17-17	SUB OUT: WALLACE,ALEXA
	08:49		SUB IN: BARKER,MCKINZEE
	07:25	20-17	SUB OUT: MIDDLETON,ALEXA
	07:25		SUB IN: BALMAN,ERICA
SUB OUT: 1 GREEN,KOLBI	07:25		
SUB IN: 55 ULASEWICZ,MARY KATE	07:25		
SUB OUT: 10 JAUNICH,LAUREL	07:25		
SUB IN: 13 GATZOUNAS,SOPHIE	07:25		
	06:46	20-17	SUB OUT: NASON,TAYLOR
	06:46		SUB IN: ARFINENGO,CAROL
SUB OUT: 21 BISHOP,JASMINE	06:14	20-17	
SUB IN: 10 JAUNICH,LAUREL	06:14		
	06:03	20-17	SUB OUT: BARKER,MCKINZEE
	06:03		SUB IN: WALLACE,ALEXA
	05:16	20-17	SUB OUT: ARFINENGO,CAROL
	05:16		SUB IN: THOMAS,LUCY
SUB OUT: 55 ULASEWICZ,MARY KATE	05:16		
SUB IN: 15 ROACH,BIANCA	05:16		
	04:25	22-19	SUB OUT: WALLACE,ALEXA
	04:25		SUB IN: CLOUGH,EMANI
	04:25		SUB OUT: GREEN,SIERRA
	04:25		SUB IN: ZELAYA,ADRIANA
	03:38	24-21	SUB OUT: BALMAN,ERICA
	03:38		SUB IN: MIDDLETON,ALEXA
	01:45	28-21	SUB OUT: ZELAYA,ADRIANA
	01:45		SUB IN: GREEN,SIERRA
SUB OUT: 15 ROACH,BIANCA	01:01	31-24	
SUB IN: 1 GREEN,KOLBI	01:01		
SUB OUT: 0 TAYLOR,MORGAN	01:01		
SUB IN: 21 BISHOP,JASMINE	01:01		

Navy 36, Monmouth 24

**Official Substitutions Log
Navy vs Monmouth
Period 3**

December 20, 2018 at OceanFirst Bank Center - West Long Branch, NJ



VISITORS: Navy	Time	Score	HOME: Monmouth
0 TAYLOR,MORGAN			2 WALLACE,ALEXA
2 COLEMAN,JENNIFER			4 GREEN,SIERRA
10 JAUNICH,LAUREL			15 CLOUGH,EMANI
13 GATZOUNAS,SOPHIE			24 BALMAN,ERICA
15 ROACH,BIANCA			25 THOMAS,LUCY
	06:55	38-24	SUB OUT: WALLACE,ALEXA
	06:55		SUB IN: THOMAS,LUCY
	06:55		SUB OUT: NASON,TAYLOR
	06:55		SUB IN: SIMMONS,ALLURE
SUB OUT: 10 JAUNICH,LAUREL	06:55		
SUB IN: 21 BISHOP,JASMINE	06:55		
SUB OUT: 2 COLEMAN,JENNIFER	06:55		
SUB IN: 1 GREEN,KOLBI	06:55		
SUB OUT: 15 ROACH,BIANCA	06:38	38-24	
SUB IN: 55 ULASEWICZ,MARY KATE	06:38		
	06:04	38-28	SUB OUT: GREEN,SIERRA
	06:04		SUB IN: BARKER,MCKINZEE
SUB OUT: 0 TAYLOR,MORGAN	05:02	40-28	
SUB IN: 2 COLEMAN,JENNIFER	05:02		
SUB OUT: 13 GATZOUNAS,SOPHIE	05:02		
SUB IN: 10 JAUNICH,LAUREL	05:02		
	04:45	40-28	SUB OUT: BARKER,MCKINZEE
	04:45		SUB IN: GREEN,SIERRA
SUB OUT: 21 BISHOP,JASMINE	04:15	40-34	
SUB IN: 13 GATZOUNAS,SOPHIE	04:15		
SUB OUT: 55 ULASEWICZ,MARY KATE	04:15		
SUB IN: 15 ROACH,BIANCA	04:15		
	03:38	40-35	SUB OUT: GRAHAM,ROSA
	03:38		SUB IN: NASON,TAYLOR
	03:38		SUB OUT: MIDDLETON,ALEXA
	03:38		SUB IN: CLOUGH,EMANI
	03:04	41-37	SUB OUT: CLOUGH,EMANI
	03:04		SUB IN: GRAHAM,ROSA
	03:04		SUB OUT: THOMAS,LUCY
	03:04		SUB IN: MIDDLETON,ALEXA
SUB OUT: 1 GREEN,KOLBI	03:04		
SUB IN: 0 TAYLOR,MORGAN	03:04		
	02:14	46-37	SUB OUT: NASON,TAYLOR
	02:14		SUB IN: THOMAS,LUCY
	01:45	47-39	SUB OUT: SIMMONS,ALLURE
	01:45		SUB IN: WALLACE,ALEXA
SUB OUT: 10 JAUNICH,LAUREL	00:19	48-46	
SUB IN: 3 HANNIBAL,CAYLA	00:19		
SUB OUT: 15 ROACH,BIANCA	00:19		
SUB IN: 21 BISHOP,JASMINE	00:19		

Navy 48, Monmouth 46

**Official Substitutions Log
Navy vs Monmouth
Period 4**

December 20, 2018 at OceanFirst Bank Center - West Long Branch, NJ



VISITORS: Navy	Time	Score	HOME: Monmouth
0 TAYLOR,MORGAN			2 WALLACE,ALEXA
2 COLEMAN,JENNIFER			4 GREEN,SIERRA
10 JAUNICH,LAUREL			15 CLOUGH,EMANI
13 GATZOUNAS,SOPHIE			24 BALMAN,ERICA
15 ROACH,BIANCA			25 THOMAS,LUCY
SUB OUT: 21 BISHOP,JASMINE	08:15	50-49	
SUB IN: 10 JAUNICH,LAUREL	08:15		
SUB OUT: 3 HANNIBAL,CAYLA	07:56	50-49	
SUB IN: 15 ROACH,BIANCA	07:56		
	05:24	52-53	SUB OUT: GREEN,SIERRA
	05:24		SUB IN: NASON,TAYLOR
	05:24		SUB OUT: THOMAS,LUCY
	05:24		SUB IN: BARKER,MCKINZEE
SUB OUT: 2 COLEMAN,JENNIFER	05:24		
SUB IN: 1 GREEN,KOLBI	05:24		
	04:13	54-58	SUB OUT: WALLACE,ALEXA
	04:13		SUB IN: SIMMONS,ALLURE
	04:13		SUB OUT: BARKER,MCKINZEE
	04:13		SUB IN: GREEN,SIERRA
	03:45	57-58	SUB OUT: GRAHAM,ROSA
	03:45		SUB IN: CLOUGH,EMANI
	03:24	58-58	SUB OUT: GREEN,SIERRA
	03:24		SUB IN: GRAHAM,ROSA
	03:24		SUB OUT: CLOUGH,EMANI
	03:24		SUB IN: BARKER,MCKINZEE
	03:24		SUB OUT: NASON,TAYLOR
	03:24		SUB IN: THOMAS,LUCY
SUB OUT: 1 GREEN,KOLBI	03:24		
SUB IN: 2 COLEMAN,JENNIFER	03:24		
	02:58	58-58	SUB OUT: BARKER,MCKINZEE
	02:58		SUB IN: GREEN,SIERRA
	01:43	63-62	SUB OUT: SIMMONS,ALLURE
	01:43		SUB IN: BARKER,MCKINZEE
SUB OUT: 10 JAUNICH,LAUREL	00:17	65-67	
SUB IN: 21 BISHOP,JASMINE	00:17		
	00:12	67-67	SUB OUT: GREEN,SIERRA
	00:12		SUB IN: WALLACE,ALEXA
	00:12		SUB OUT: BARKER,MCKINZEE
	00:12		SUB IN: SIMMONS,ALLURE
SUB OUT: 21 BISHOP,JASMINE	00:12		
SUB IN: 10 JAUNICH,LAUREL	00:12		
	00:12		SUB OUT: THOMAS,LUCY
	00:12		SUB IN: NASON,TAYLOR

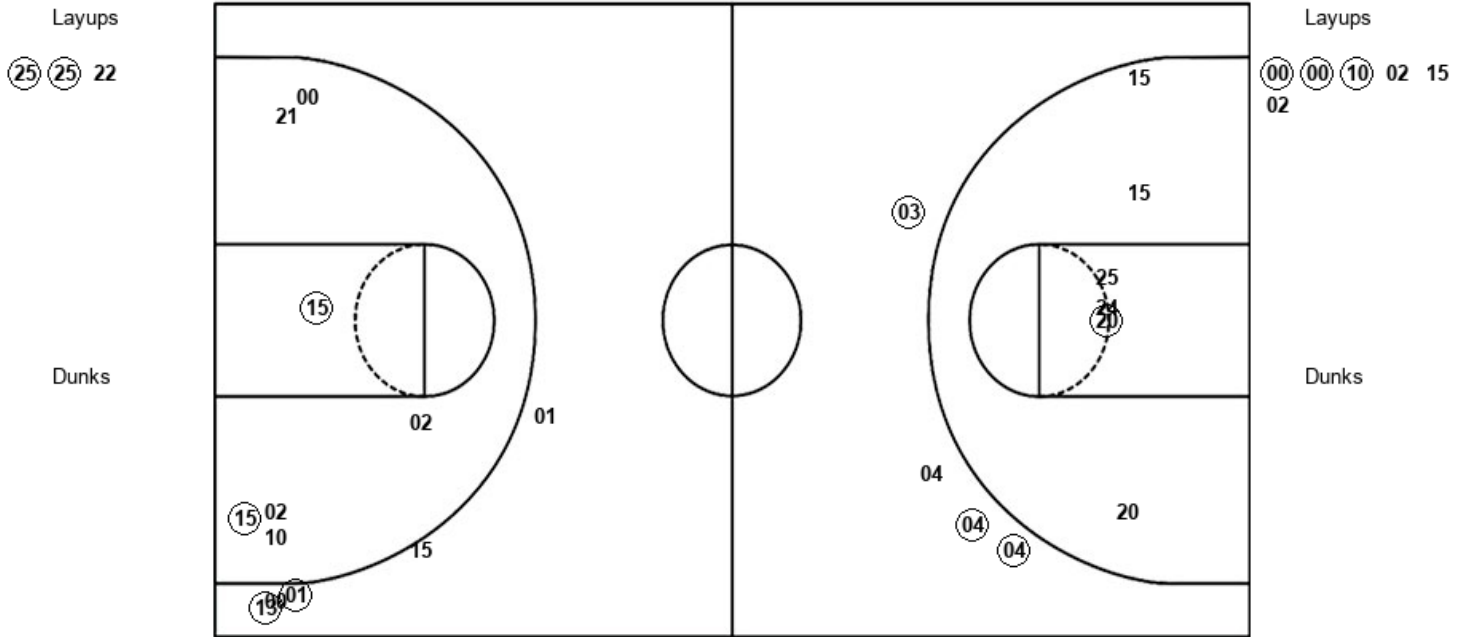
Navy 67, Monmouth 68

Official Shot Chart
Navy vs Monmouth
PERIOD 1 Shots
 December 20, 2018 at OceanFirst Bank Center - West Long Branch, NJ



Monmouth

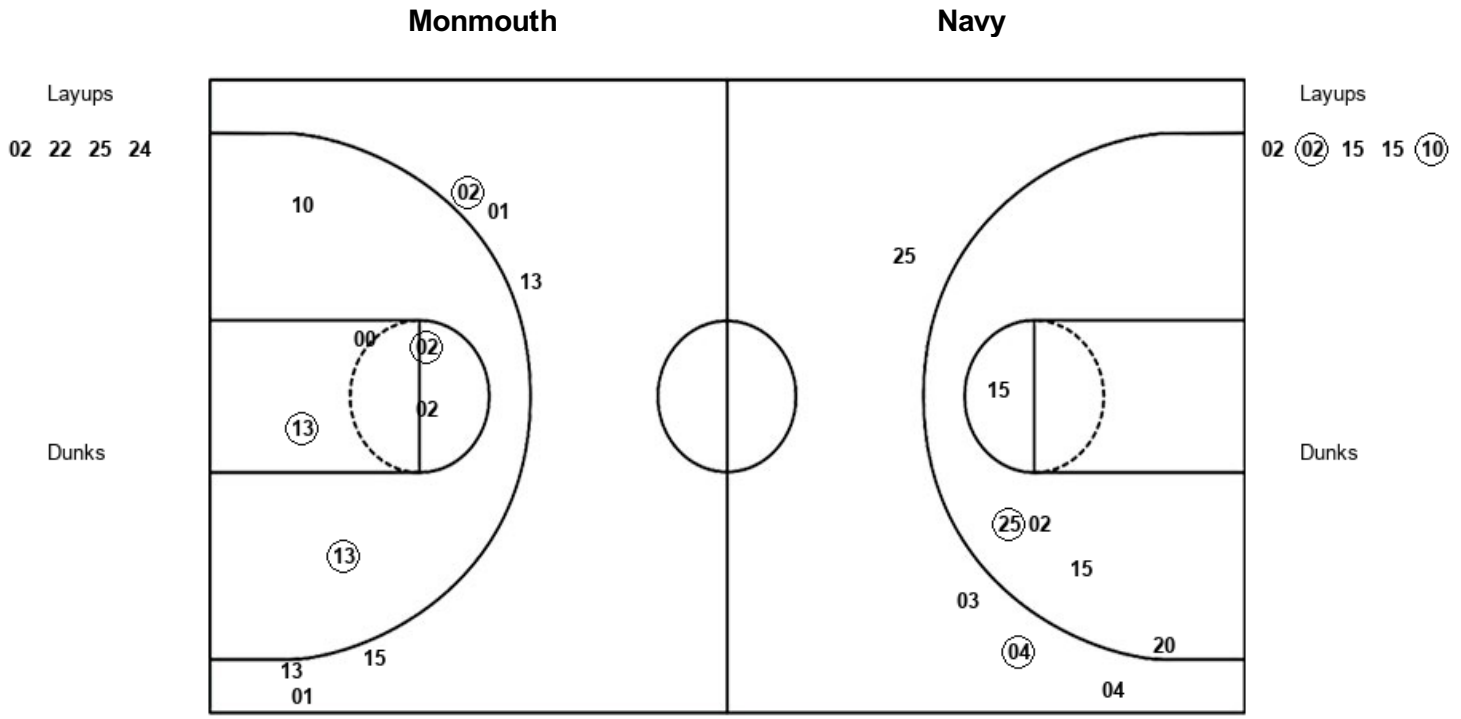
Navy



MON : Period 1	Made	Att	Pct
Layups	2	3	66.7
Dunks	0	0	0
2PT Field Goals	3	9	33.3
3PT Field Goals	3	4	75.0
Total Field Goals	6	13	46.2

NAV : Period 1	Made	Att	Pct
Layups	3	6	50.0
Dunks	0	0	0
2PT Field Goals	5	13	38.5
3PT Field Goals	2	5	40.0
Total Field Goals	7	18	38.9

Official Shot Chart
Navy vs Monmouth
PERIOD 2 Shots
 December 20, 2018 at OceanFirst Bank Center - West Long Branch, NJ



MON : Period 2	Made	Att	Pct
Layups	0	4	00.0
Dunks	0	0	0
2PT Field Goals	1	9	11.1
3PT Field Goals	1	4	25.0
Total Field Goals	2	13	15.4

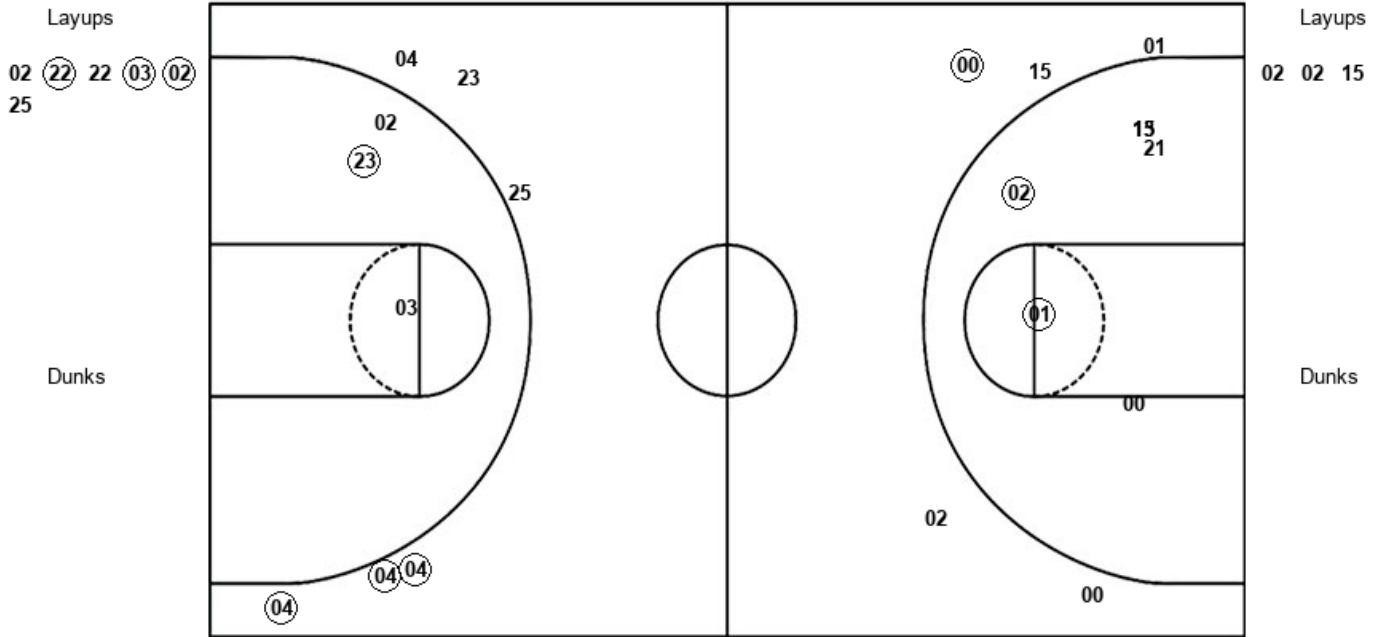
NAV : Period 2	Made	Att	Pct
Layups	2	5	40.0
Dunks	0	0	0
2PT Field Goals	5	11	45.5
3PT Field Goals	1	6	16.7
Total Field Goals	6	17	35.3

Official Shot Chart
Navy vs Monmouth
PERIOD 3 Shots
 December 20, 2018 at OceanFirst Bank Center - West Long Branch, NJ



Monmouth

Navy



MON : Period 3	Made	Att	Pct
Layups	3	6	50.0
Dunks	0	0	0
2PT Field Goals	4	9	44.4
3PT Field Goals	3	6	50.0
Total Field Goals	7	15	46.7

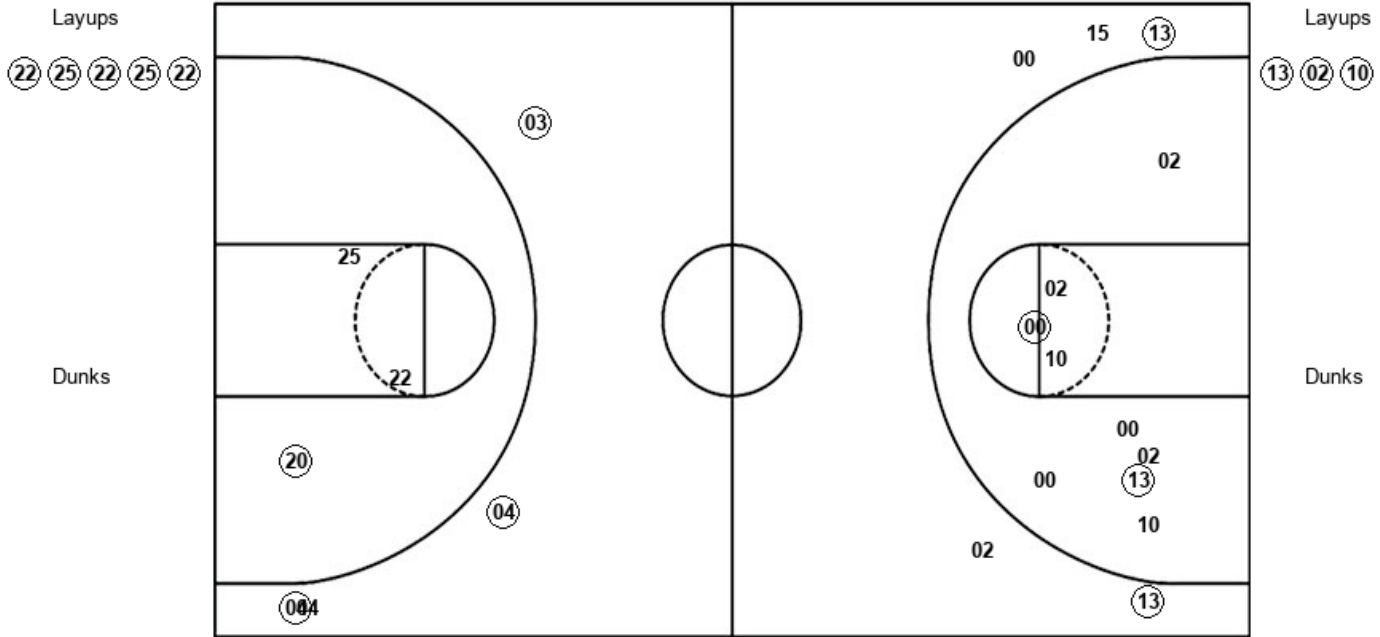
NAV : Period 3	Made	Att	Pct
Layups	0	3	00.0
Dunks	0	0	0
2PT Field Goals	2	9	22.2
3PT Field Goals	1	5	20.0
Total Field Goals	3	14	21.4

Official Shot Chart
Navy vs Monmouth
PERIOD 4 Shots
 December 20, 2018 at OceanFirst Bank Center - West Long Branch, NJ



Monmouth

Navy



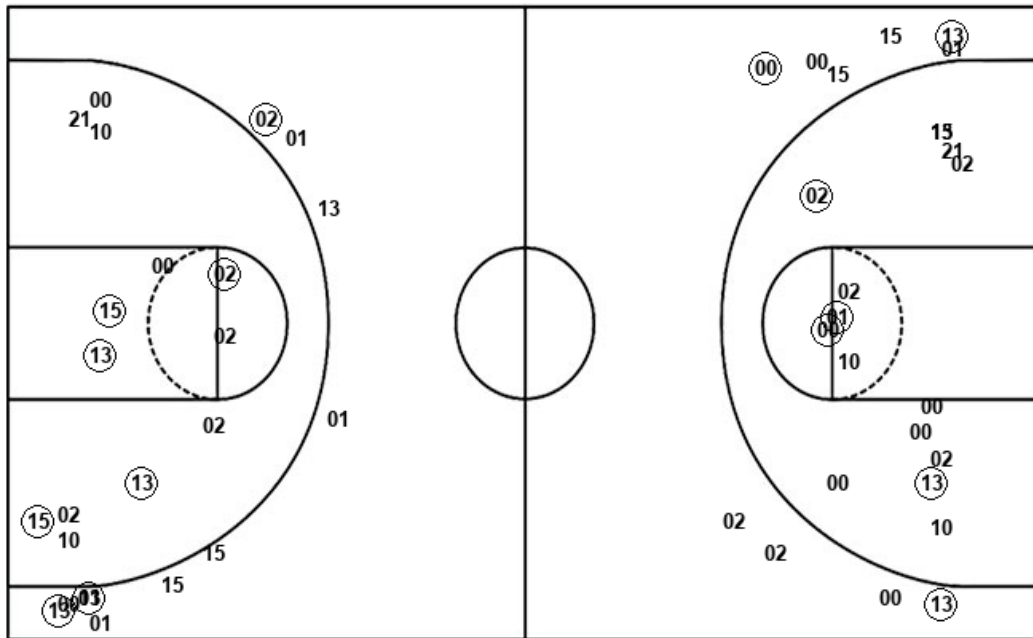
MON : Period 4	Made	Att	Pct
Layups	5	5	100.0
Dunks	0	0	0
2PT Field Goals	6	8	75.0
3PT Field Goals	3	4	75.0
Total Field Goals	9	12	75.0

NAV : Period 4	Made	Att	Pct
Layups	3	3	100.0
Dunks	0	0	0
2PT Field Goals	5	12	41.7
3PT Field Goals	2	5	40.0
Total Field Goals	7	17	41.2

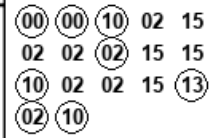
Official Shot Chart
Navy vs Monmouth
Navy Team Shots
 December 20, 2018 at OceanFirst Bank Center - West Long Branch, NJ



Layups



Layups



Dunks

Dunks

NAV : Period 1	Made	Att	Pct
Layups	3	6	50.0
Dunks	0	0	0
2PT Field Goals	5	13	38.5
3PT Field Goals	2	5	40.0
Total Field Goals	7	18	38.9

NAV : Period 3	Made	Att	Pct
Layups	0	3	00.0
Dunks	0	0	0
2PT Field Goals	2	9	22.2
3PT Field Goals	1	5	20.0
Total Field Goals	3	14	21.4

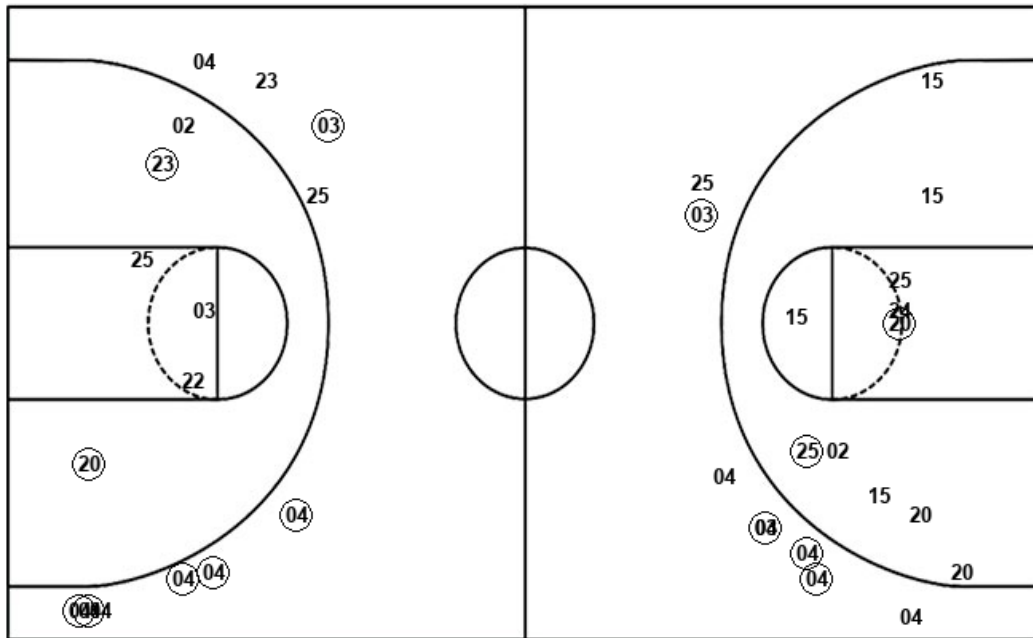
NAV : Period 2	Made	Att	Pct
Layups	2	5	40.0
Dunks	0	0	0
2PT Field Goals	5	11	45.5
3PT Field Goals	1	6	16.7
Total Field Goals	6	17	35.3

NAV : Period 4	Made	Att	Pct
Layups	3	3	100.0
Dunks	0	0	0
2PT Field Goals	5	12	41.7
3PT Field Goals	2	5	40.0
Total Field Goals	7	17	41.2

Official Shot Chart
Navy vs Monmouth
Monmouth Team Shots
 December 20, 2018 at OceanFirst Bank Center - West Long Branch, NJ



Layups



Layups

- (25) (25) 22 02 22
- 25 24 02 (22) 22
- (03) (02) 25 (22) (25)
- (22) (25) (22)

Dunks

Dunks

MON : Period 1	Made	Att	Pct
Layups	2	3	66.7
Dunks	0	0	0
2PT Field Goals	3	9	33.3
3PT Field Goals	3	4	75.0
Total Field Goals	6	13	46.2

MON : Period 3	Made	Att	Pct
Layups	3	6	50.0
Dunks	0	0	0
2PT Field Goals	4	9	44.4
3PT Field Goals	3	6	50.0
Total Field Goals	7	15	46.7

MON : Period 2	Made	Att	Pct
Layups	0	4	00.0
Dunks	0	0	0
2PT Field Goals	1	9	11.1
3PT Field Goals	1	4	25.0
Total Field Goals	2	13	15.4

MON : Period 4	Made	Att	Pct
Layups	5	5	100.0
Dunks	0	0	0
2PT Field Goals	6	8	75.0
3PT Field Goals	3	4	75.0
Total Field Goals	9	12	75.0