

FINAL SCORE



Marquette

76



Northwestern

57

December 09, 2018 • Welsh-Ryan Arena - Evanston, IL

FINAL STATISTICS

Official Box Score
Marquette vs Northwestern
Game Totals -- Final Statistics
December 09, 2018 at Welsh-Ryan Arena - Evanston, IL

Marquette 76

No.	Player	S	Pts	FG	3FG	FT	OR	DR	TR	PF	A	TO	Blk	Stl	Min	+/-
1	King, Danielle		8	3-5	0-1	2-2	1	1	2	0	1	1	0	1	11	9
5	Hiedeman, Natisha		17	7-21	0-5	3-4	5	10	15	5	6	4	1	2	36	13
11	Blockton, Allazia		21	10-20	1-4	0-1	1	4	5	1	3	2	0	1	34	10
15	Wilborn, Amani		10	3-8	1-3	3-4	1	3	4	5	3	0	0	1	22	14
24	Lott, Selena		2	0-0	0-0	2-2	2	2	4	3	1	1	0	1	29	9
12	Davenport, Erika		6	3-4	0-0	0-0	1	4	5	4	1	2	1	3	20	19
20	Anderson, Altia		0	0-0	0-0	0-0	0	1	1	0	0	0	0	0	4	-5
30	Spingola, Isabelle		5	2-6	1-5	0-0	2	2	4	1	0	1	0	2	24	14
42	Van Kleunen, Lauren		7	2-6	1-1	2-2	1	1	2	2	0	3	0	0	19	10
52	Marotta, Chloe		0	0-0	0-0	0-0	0	0	0	0	0	0	0	0	1	2
	Team						4	2	6	0		1				
TOTALS			76	30-70	4-19	12-15	18	30	48	21	15	15	2	11	199	

Shooting By Period

Period	FG	FG%	3FG	3FG%	FT	FT%
1st Qtr	11-17	65%	0-3	00%	3-4	75%
2nd Qtr	3-17	18%	1-4	25%	0-0	0%
3rd Qtr	9-21	43%	3-8	38%	4-5	80%
4th Qtr	7-15	47%	0-4	00%	5-6	83%
1st Half	11-17	65%	0-3	00%	3-4	75%
2nd Half	3-17	18%	1-4	25%	0-0	0%
3rd Half	9-21	43%	3-8	38%	4-5	80%
4th Half	7-15	47%	0-4	00%	5-6	83%
Game	30-70	42.9%	4-19	21.1%	12-15	80.0%

Deadball Rebounds:
Last FG: 4th-00:36
Biggest Run: 14-0
Largest lead: By 19 at 4-00:36
Technical Fouls: None.

Northwestern 57

No.	Player	S	Pts	FG	3FG	FT	OR	DR	TR	PF	A	TO	Blk	Stl	Min	+/-
10	Pulliam, Lindsey		15	5-19	0-2	5-6	1	1	2	1	4	2	0	0	36	-11
12	Burton, Veronica		3	1-1	1-1	0-0	0	1	1	4	0	1	0	0	20	-12
14	Kunaiyi-Akpanah, Pallas		14	4-9	0-0	6-8	8	7	15	2	1	3	1	1	31	-17
24	Hamilton, Jordan		11	4-12	2-3	1-2	0	2	2	2	3	1	0	1	33	-8
44	Scheid, Abi		9	3-9	1-4	2-2	0	5	5	1	4	5	1	2	38	-18
0	Sancataldo, Jess		0	0-1	0-1	0-0	0	0	0	0	0	0	0	1	6	2
3	Wood, Sydney		1	0-4	0-1	1-2	0	1	1	1	0	0	1	2	16	-5
4	Hopkins, Bryana		0	0-0	0-0	0-0	0	0	0	0	0	0	0	0	2	-1
21	Wolf, Abbie		4	2-2	0-0	0-0	0	1	1	0	0	1	0	0	9	-2
22	Galemnik, Byrdy		0	0-3	0-2	0-0	0	0	0	0	0	2	0	0	9	-23
	Team						2	2	4	0		1				
TOTALS			57	19-60	4-14	15-20	11	20	31	11	12	16	3	7	199	

Shooting By Period

Period	FG	FG%	3FG	3FG%	FT	FT%
1st Qtr	4-16	25%	0-2	00%	1-2	50%
2nd Qtr	7-15	47%	2-5	40%	3-5	60%
3rd Qtr	7-17	41%	2-3	67%	3-3	100%
4th Qtr	1-12	08%	0-4	00%	8-10	80%
1st Half	4-16	25%	0-2	00%	1-2	50%
2nd Half	7-15	47%	2-5	40%	3-5	60%
3rd Half	7-17	41%	2-3	67%	3-3	100%
4th Half	1-12	08%	0-4	00%	8-10	80%
Game	19-60	31.7%	4-14	28.6%	15-20	75.0%

Deadball Rebounds:
Last FG: 4th-07:13
Biggest Run: 9-0
Largest lead: By 0 at 3-08:01
Technical Fouls: None.

Game Notes:
 Officials: Felicia Grinter, Jeff Cross, Maggie Tieman
 Attendance: 1467
 Start Time: 2018-12-09 19:01:19 End Time: 2018-12-09 20:53:36
 Game Duration: 112

Score by Period	1st	2nd	3rd	4th	TOT
MU	25	7	25	19	76
NU	9	19	19	10	57

MU led for 38:50. NU led for 0:00.
 Game was tied for 0:58.
 Times tied: 4 Lead Changes: 0

Points from	MU	NU
In the Paint	48	20
Off Turns	13	10
2nd Chance	16	14
Fast Break	21	6
Bench	18	5

Official Box Score
Marquette vs Northwestern
First Half Statistics Only
December 09, 2018 at Welsh-Ryan Arena - Evanston, IL

Marquette 76

No.	Player	S	Pts	FG	3FG	FT	OR	DR	TR	PF	A	TO	Blk	Stl	Min	+/-
1	King, Danielle		8	3-5	0-1	2-2	1	1	2	0	1	1	0	1	9	12
5	Hiedeman, Natisha		6	3-6	0-2	0-0	0	3	3	0	1	0	0	0	10	16
11	Blockton, Allazia		6	3-3	0-0	0-0	0	2	2	0	2	1	0	1	9	14
15	Wilborn, Amani		3	1-1	0-0	1-2	1	0	1	2	0	0	0	0	6	8
24	Lott, Selena		0	0-0	0-0	0-0	0	0	0	0	0	0	0	0	4	2
12	Davenport, Erika		0	0-1	0-0	0-0	0	4	4	0	1	0	0	0	6	14
20	Anderson, Altia		0	0-0	0-0	0-0	0	0	0	0	0	0	0	0	0	0
30	Spingola, Isabelle		0	0-0	0-0	0-0	0	0	0	0	0	0	0	0	3	9
42	Van Kleunen, Lauren		2	1-1	0-0	0-0	0	0	0	0	0	0	0	0	2	5
52	Marotta, Chloe		0	0-0	0-0	0-0	0	0	0	0	0	0	0	0	0	0
	Team						1	1	2	0		0				
TOTALS			25	11-17	0-3	3-4	0	0	14	2	5	2	0	2	50	

Shooting By Period

Period	FG	FG%	3FG	3FG%	FT	FT%
1st Qtr	1-17	65%	0-3	00%	3-4	75%
2nd Qtr	3-17	18%	1-4	25%	0-0	0%
3rd Qtr	9-21	43%	3-8	38%	4-5	80%
4th Qtr	7-15	47%	0-4	00%	5-6	83%
1st Half	11-17	65%	0-3	00%	3-4	75%
2nd Half	3-17	18%	1-4	25%	0-0	0%
3rd Half	9-21	43%	3-8	38%	4-5	80%
4th Half	7-15	47%	0-4	00%	5-6	83%
Game	30-70	42.9%	4-19	21.1%	12-15	80.0%

Deadball Rebounds:
Last FG: 4th-00:36
Biggest Run: 14-0
Largest lead: By 19 at 4-00:36
Technical Fouls: None.

Northwestern 57

No.	Player	S	Pts	FG	3FG	FT	OR	DR	TR	PF	A	TO	Blk	Stl	Min	+/-
10	Pulliam, Lindsey		2	1-6	0-1	0-0	0	0	0	0	1	1	0	0	8	-11
12	Burton, Veronica		0	0-0	0-0	0-0	0	0	0	1	0	0	0	0	8	-9
14	Kunaiyi-Akpanah, Pallas		2	1-2	0-0	0-0	2	1	3	0	1	1	0	0	10	-16
24	Hamilton, Jordan		1	0-1	0-0	1-2	0	0	0	1	0	0	0	1	8	-11
44	Scheid, Abi		4	2-4	0-0	0-0	0	1	1	0	1	0	0	0	10	-16
0	Sancataldo, Jess		0	0-0	0-0	0-0	0	0	0	0	0	0	0	0	0	0
3	Wood, Sydney		0	0-1	0-0	0-0	0	0	0	0	0	0	0	1	2	-5
4	Hopkins, Bryana		0	0-0	0-0	0-0	0	0	0	0	0	0	0	0	0	0
21	Wolf, Abbie		0	0-0	0-0	0-0	0	0	0	0	0	0	0	0	0	0
22	Galemnik, Byrddy		0	0-2	0-1	0-0	0	0	0	0	0	1	0	0	5	-12
	Team						0	0	0	0		0				
TOTALS			9	4-16	0-2	1-2	0	0	4	2	3	3	0	2	50	

Shooting By Period

Period	FG	FG%	3FG	3FG%	FT	FT%
1st Qtr	4-16	25%	0-2	00%	1-2	50%
2nd Qtr	7-15	47%	2-5	40%	3-5	60%
3rd Qtr	7-17	41%	2-3	67%	3-3	100%
4th Qtr	1-12	08%	0-4	00%	8-10	80%
1st Half	4-16	25%	0-2	00%	1-2	50%
2nd Half	7-15	47%	2-5	40%	3-5	60%
3rd Half	7-17	41%	2-3	67%	3-3	100%
4th Half	1-12	08%	0-4	00%	8-10	80%
Game	19-60	31.7%	4-14	28.6%	15-20	75.0%

Deadball Rebounds:
Last FG: 4th-07:13
Biggest Run: 9-0
Largest lead: By 0 at 3-08:01
Technical Fouls: None.

Game Notes:
Officials: Felicia Grinter, Jeff Cross, Maggie Tieman
Attendance: 1467
Start Time: 2018-12-09 19:01:19 **End Time: 2018-12-09 20:53:36**
Game Duration: 112

Score by Period	1st	2nd	3rd	4th	TOT
MU	25	7	25	19	76
NU	9	19	19	10	57

This period only: MU led for 38:49. NU led for 38:00.
Game was tied for 0:58.

Points from (This Period)	MU	NU
In the Paint	20	6
Off Turns	2	0
2nd Chance	6	2
Fast Break	6	0
Bench	2	0

Official Play-By-Play
Marquette vs Northwestern
First Quarter
December 09, 2018 at Welsh-Ryan Arena - Evanston, IL

Starters:

Marquette: 1 KING,DANIELLE; 11 BLOCKTON,ALLAZIA; 15 WILBORN,AMANI; 24 LOTT,SELENA; 5 HIEDEMAN,NATISHA;

Northwestern: 10 PULLIAM,LINDSEY; 12 BURTON,VERONICA; 14 KUNAIYI-AKPANAH,PALLAS; 24 HAMILTON,JORDAN; 44 SCHEID,ABI;

Period 1

Time	VISITORS: Marquette	Score	Margin	HOME: Northwestern
09:43				TURNOVER (BADPASS) by PULLIAM,LINDSEY
09:43	STEAL by BLOCKTON,ALLAZIA			
09:38	GOOD! LAYUP by WILBORN,AMANI [FB]	0-2	V 2	
09:38	ASSIST by BLOCKTON,ALLAZIA			
09:18				MISSED JUMPER by PULLIAM,LINDSEY
09:16	REBOUND (DEF) by TEAM			
09:04	MISSED 3PTR by HIEDEMAN,NATISHA			
09:01				REBOUND (DEF) by SCHEID,ABI
08:48		2-2	T	GOOD! LAYUP by KUNAIYI-AKPANAH,PALLAS
08:35				FOUL (PERSONAL) by BURTON,VERONICA
08:35	MISSED FT by WILBORN,AMANI			
08:35	REBOUND (OFF) by TEAM			
08:35	GOOD! FT by WILBORN,AMANI	2-3	V 1	
08:27				MISSED JUMPER by PULLIAM,LINDSEY
08:23	REBOUND (DEF) by KING,DANIELLE			
08:05	GOOD! JUMPER by KING,DANIELLE [PNT]	2-5	V 3	
07:44		4-5	V 1	GOOD! LAYUP by SCHEID,ABI
07:44				ASSIST by KUNAIYI-AKPANAH,PALLAS
07:19	MISSED 3PTR by KING,DANIELLE			
07:16	REBOUND (OFF) by WILBORN,AMANI			
07:12	GOOD! JUMPER by HIEDEMAN,NATISHA	4-7	V 3	
06:51				MISSED JUMPER by KUNAIYI-AKPANAH,PALLAS
06:49				REBOUND (OFF) by KUNAIYI-AKPANAH,PALLAS
06:30		6-7	V 1	GOOD! JUMPER by SCHEID,ABI
06:30				ASSIST by PULLIAM,LINDSEY
06:20	GOOD! LAYUP by HIEDEMAN,NATISHA	6-9	V 3	
06:04		8-9	V 1	GOOD! JUMPER by PULLIAM,LINDSEY [PNT]
06:04				ASSIST by SCHEID,ABI
05:47	GOOD! LAYUP by BLOCKTON,ALLAZIA	8-11	V 3	
05:47	ASSIST by KING,DANIELLE			
05:37	FOUL (PERSONAL) by WILBORN,AMANI			
05:37		9-11	V 2	GOOD! FT by HAMILTON,JORDAN
05:37	SUB OUT: LOTT,SELENA			
05:37	SUB IN: SPINGOLA,ISABELLE			
05:37	SUB OUT: BLOCKTON,ALLAZIA			
05:37	SUB IN: DAVENPORT,ERIKA			
05:36				MISSED FT by HAMILTON,JORDAN
05:34	REBOUND (DEF) by DAVENPORT,ERIKA			
05:18	MISSED JUMPER by HIEDEMAN,NATISHA			
05:14				REBOUND (DEF) by KUNAIYI-AKPANAH,PALLAS
04:52				MISSED LAYUP by PULLIAM,LINDSEY
04:48	REBOUND (DEF) by HIEDEMAN,NATISHA			
04:46	GOOD! LAYUP by KING,DANIELLE [FB]	9-13	V 4	
04:46	ASSIST by HIEDEMAN,NATISHA			
04:31				TURNOVER (BADPASS) by KUNAIYI-AKPANAH,PALLAS
04:31				
04:31				SUB OUT: BURTON,VERONICA
04:31				SUB IN: GALERNIK,BYRDY
04:31	SUB OUT: WILBORN,AMANI			
04:31	SUB IN: BLOCKTON,ALLAZIA			
04:03	TURNOVER (BADPASS) by KING,DANIELLE			
04:03				STEAL by HAMILTON,JORDAN
03:39				MISSED JUMPER by PULLIAM,LINDSEY
03:36	REBOUND (DEF) by BLOCKTON,ALLAZIA			
03:33	MISSED LAYUP by DAVENPORT,ERIKA			
03:33	REBOUND (OFF) by TEAM			
03:33	SUB OUT: KING,DANIELLE			
03:33	SUB IN: WILBORN,AMANI			
03:26	GOOD! JUMPER by BLOCKTON,ALLAZIA [PNT]	9-15	V 6	
03:14				MISSED 3PTR by GALERNIK,BYRDY
03:10	REBOUND (DEF) by DAVENPORT,ERIKA			
03:04	GOOD! LAYUP by BLOCKTON,ALLAZIA	9-17	V 8	
03:04	ASSIST by DAVENPORT,ERIKA			
03:03				TIMEOUT 30SEC
02:57	FOUL (PERSONAL) by WILBORN,AMANI			
02:57	SUB OUT: WILBORN,AMANI			
02:57	SUB IN: KING,DANIELLE			
02:49				MISSED 3PTR by PULLIAM,LINDSEY
02:45	REBOUND (DEF) by DAVENPORT,ERIKA			
02:40	GOOD! LAYUP by HIEDEMAN,NATISHA [FB]	9-19	V 10	
02:22				MISSED JUMPER by HAMILTON,JORDAN
02:19	REBOUND (DEF) by HIEDEMAN,NATISHA			
02:09				FOUL (PERSONAL) by HAMILTON,JORDAN
02:09	GOOD! FT by KING,DANIELLE	9-20	V 11	
02:09				SUB OUT: PULLIAM,LINDSEY
02:09				SUB IN: WOOD,SYDNEY

Time	VISITORS: Marquette	Score	Margin	HOME: Northwestern
02:09				SUB OUT: HAMILTON, JORDAN
02:09				SUB IN: BURTON, VERONICA
02:09	SUB OUT: SPINGOLA, ISABELLE			
02:09	SUB IN: VAN KLEUNEN, LAUREN			
02:09	GOOD! FT by KING, DANIELLE	9-21	V 12	
01:41				MISSED JUMPER by SCHEID, ABI
01:37	REBOUND (DEF) by BLOCKTON, ALLAZIA			
01:36	TURNOVER (BADPASS) by BLOCKTON, ALLAZIA			
01:36				STEAL by WOOD, SYDNEY
01:30				MISSED LAYUP by GALERNIK, BYRDY
01:27				REBOUND (OFF) by KUNAIYI-AKPANAH, PALLAS
01:06				MISSED LAYUP by WOOD, SYDNEY
01:03	REBOUND (DEF) by DAVENPORT, ERIKA			
00:58	MISSED 3PTR by HIEDEMAN, NATISHA			
00:49	REBOUND (OFF) by KING, DANIELLE			
00:49	GOOD! LAYUP by KING, DANIELLE	9-23	V 14	
00:35				MISSED JUMPER by SCHEID, ABI
00:31	REBOUND (DEF) by HIEDEMAN, NATISHA			
00:26	GOOD! JUMPER by VAN KLEUNEN, LAUREN	9-25	V 16	
00:26	ASSIST by BLOCKTON, ALLAZIA			
00:04				TURNOVER (BADPASS) by GALERNIK, BYRDY
00:04	STEAL by KING, DANIELLE			
00:00	MISSED JUMPER by KING, DANIELLE			
00:00	REBOUND (OFF) by TEAM			

Marquette 25, Northwestern 9

Points from (This Period)	MU	NU
In the Paint	20	6
Off Turns	2	0
2nd Chance	6	2
Fast Break	6	0
Bench	2	0

This period only: MU led for 38:49. NU led for 38:00.
Game was tied for 0:58.

Official Play-By-Play
Marquette vs Northwestern
Second Quarter
December 09, 2018 at Welsh-Ryan Arena - Evanston, IL

Starters:

Marquette: 1 KING,DANIELLE; 11 BLOCKTON,ALLAZIA; 15 WILBORN,AMANI; 24 LOTT,SELENA; 5 HIEDEMAN,NATISHA;

Northwestern: 10 PULLIAM,LINDSEY; 12 BURTON,VERONICA; 14 KUNAIYI-AKPANAH,PALLAS; 24 HAMILTON,JORDAN; 44 SCHEID,ABI;

Period 2

Time	VISITORS: Marquette	Score	Margin	HOME: Northwestern
09:40	TURNOVER (TRAVEL) by BLOCKTON,ALLAZIA			
09:16				MISSED LAYUP by HAMILTON,JORDAN
09:12	REBOUND (DEF) by HIEDEMAN,NATISHA			
09:04	MISSED JUMPER by BLOCKTON,ALLAZIA			
09:01	REBOUND (OFF) by LOTT,SELENA			
08:59	MISSED 3PTR by HIEDEMAN,NATISHA			
08:56				REBOUND (DEF) by PULLIAM,LINDSEY
08:48		12-25	V 13	GOOD! 3PTR by BURTON,VERONICA [FB]
08:48				ASSIST by HAMILTON,JORDAN
08:27	MISSED 3PTR by BLOCKTON,ALLAZIA			
08:24	REBOUND (OFF) by TEAM			
08:24				FOUL (PERSONAL) by BURTON,VERONICA
08:24				SUB OUT: BURTON,VERONICA
08:24				SUB IN: SANCATALDO,JESS
08:24	SUB OUT: KING,DANIELLE			
08:24	SUB IN: WILBORN,AMANI			
08:24	SUB OUT: BLOCKTON,ALLAZIA			
08:24	SUB IN: SPINGOLA,ISABELLE			
08:17	MISSED JUMPER by VAN KLEUNEN,LAUREN			
08:17				REBOUND (DEF) by TEAM
08:04				TURNOVER (BADPASS) by PULLIAM,LINDSEY
08:04	STEAL by SPINGOLA,ISABELLE			
07:52	GOOD! LAYUP by HIEDEMAN,NATISHA [FB]	12-27	V 15	
07:36		14-27	V 13	GOOD! JUMPER by WOLF,ABBIE
07:36				ASSIST by HAMILTON,JORDAN
07:24	MISSED JUMPER by VAN KLEUNEN,LAUREN			
07:20				REBOUND (DEF) by WOLF,ABBIE
07:19				TURNOVER (LOSTBALL) by WOLF,ABBIE
07:19	STEAL by SPINGOLA,ISABELLE			
07:10	FOUL (OFF) by LOTT,SELENA			
07:10	TURNOVER (OFFENSIVE) by LOTT,SELENA			
07:10	SUB OUT: VAN KLEUNEN,LAUREN			
07:10	SUB IN: DAVENPORT,ERIKA			
06:56	FOUL (PERSONAL) by WILBORN,AMANI			
06:56				MISSED FT by PULLIAM,LINDSEY
06:56				REBOUND (OFF) by TEAM
06:56	SUB OUT: WILBORN,AMANI			
06:56	SUB IN: BLOCKTON,ALLAZIA			
06:56		15-27	V 12	GOOD! FT by PULLIAM,LINDSEY
06:41	TURNOVER (BADPASS) by SPINGOLA,ISABELLE			
06:41				STEAL by SANCATALDO,JESS
06:24		17-27	V 10	GOOD! JUMPER by PULLIAM,LINDSEY
06:07	MISSED 3PTR by SPINGOLA,ISABELLE			
06:04				REBOUND (DEF) by HAMILTON,JORDAN
05:45		19-27	V 8	GOOD! LAYUP by HAMILTON,JORDAN
05:32	MISSED JUMPER by BLOCKTON,ALLAZIA			
05:31				REBOUND (DEF) by TEAM
05:31				SUB OUT: WOLF,ABBIE
05:31				SUB IN: KUNAIYI-AKPANAH,PALLAS
05:15				MISSED 3PTR by SANCATALDO,JESS
05:12				REBOUND (OFF) by KUNAIYI-AKPANAH,PALLAS
05:03				MISSED 3PTR by SCHEID,ABI
05:02				REBOUND (OFF) by KUNAIYI-AKPANAH,PALLAS
05:02	FOUL (PERSONAL) by DAVENPORT,ERIKA			
04:43				MISSED LAYUP by PULLIAM,LINDSEY
04:40				REBOUND (OFF) by KUNAIYI-AKPANAH,PALLAS
04:39				
04:39				SUB OUT: PULLIAM,LINDSEY
04:39				SUB IN: WOOD,SYDNEY
04:29		21-27	V 6	GOOD! JUMPER by KUNAIYI-AKPANAH,PALLAS
04:29				ASSIST by SCHEID,ABI
04:29	FOUL (PERSONAL) by DAVENPORT,ERIKA			
04:29	SUB OUT: DAVENPORT,ERIKA			
04:29	SUB IN: VAN KLEUNEN,LAUREN			
04:28				MISSED FT by KUNAIYI-AKPANAH,PALLAS
04:27	REBOUND (DEF) by SPINGOLA,ISABELLE			
04:11	MISSED JUMPER by BLOCKTON,ALLAZIA			
04:08	REBOUND (OFF) by BLOCKTON,ALLAZIA			
04:02	GOOD! 3PTR by VAN KLEUNEN,LAUREN	21-30	V 9	
04:02	ASSIST by BLOCKTON,ALLAZIA			
03:30				MISSED LAYUP by WOOD,SYDNEY
03:30				REBOUND (OFF) by TEAM
03:30				SUB OUT: SANCATALDO,JESS
03:30				SUB IN: PULLIAM,LINDSEY
03:30	SUB OUT: SPINGOLA,ISABELLE			
03:30	SUB IN: ANDERSON,ALTIA			

Time	VISITORS: Marquette	Score	Margin	HOME: Northwestern
03:27				TURNOVER (SHOTCLOCK) by
03:08	MISSED JUMPER by VAN KLEUNEN,LAUREN			
03:07	REBOUND (OFF) by HIEDEMAN,NATISHA			
03:07	TURNOVER (OTHER) by HIEDEMAN,NATISHA			
02:47		23-30	V 7	GOOD! JUMPER by KUNAIYI-AKPANAH,PALLAS
02:31	MISSED JUMPER by BLOCKTON,ALLAZIA			
02:28				REBOUND (DEF) by KUNAIYI-AKPANAH,PALLAS
02:16				MISSED JUMPER by SCHEID,ABI
02:13				REBOUND (OFF) by KUNAIYI-AKPANAH,PALLAS
02:04				MISSED 3PTR by SCHEID,ABI
02:01	REBOUND (DEF) by HIEDEMAN,NATISHA			
01:53	MISSED JUMPER by HIEDEMAN,NATISHA			
01:50				REBOUND (DEF) by KUNAIYI-AKPANAH,PALLAS
01:31		26-30	V 4	GOOD! 3PTR by HAMILTON,JORDAN
01:31				ASSIST by SCHEID,ABI
01:19	GOOD! LAYUP by HIEDEMAN,NATISHA	26-32	V 6	
00:54	FOUL (PERSONAL) by LOTT,SELENA			
00:54		27-32	V 5	GOOD! FT by KUNAIYI-AKPANAH,PALLAS
00:54				SUB OUT: SCHEID,ABI
00:54				SUB IN: HOPKINS,BRYANA
00:54	SUB OUT: LOTT,SELENA			
00:54	SUB IN: SPINGOLA,ISABELLE			
00:54		28-32	V 4	GOOD! FT by KUNAIYI-AKPANAH,PALLAS
00:41	MISSED JUMPER by HIEDEMAN,NATISHA			
00:35	REBOUND (OFF) by VAN KLEUNEN,LAUREN			
00:34	MISSED JUMPER by VAN KLEUNEN,LAUREN			
00:34				BLOCK by KUNAIYI-AKPANAH,PALLAS
00:26	REBOUND (OFF) by HIEDEMAN,NATISHA			
00:25	MISSED LAYUP by HIEDEMAN,NATISHA			
00:22				REBOUND (DEF) by KUNAIYI-AKPANAH,PALLAS
00:02				MISSED LAYUP by WOOD,SYDNEY
00:00	REBOUND (DEF) by ANDERSON,ALTIA			

Marquette 32, Northwestern 28

Points from (This Period)	MU	NU
In the Paint	4	8
Off Turns	2	5
2nd Chance	3	2
Fast Break	2	3
Bench	3	2

This period only: MU led for 38:49. NU led for 38:00.
Game was tied for 0:58.

Official Box Score
Marquette vs Northwestern
Second Half Statistics Only
December 09, 2018 at Welsh-Ryan Arena - Evanston, IL

Marquette 76

No.	Player	S	Pts	FG	3FG	FT	OR	DR	TR	PF	A	TO	Blk	Stl	Min	+/-
1	King, Danielle		0	0-0	0-0	0-0	0	0	0	0	0	0	0	0	2	-3
5	Hiedeman, Natisha		4	2-6	0-1	0-0	2	2	4	0	0	1	0	0	10	-12
11	Blockton, Allazia		0	0-5	0-1	0-0	1	0	1	0	1	1	0	0	9	-12
15	Wilborn, Amani		0	0-0	0-0	0-0	0	0	0	1	0	0	0	0	1	0
24	Lott, Selena		0	0-0	0-0	0-0	1	0	1	2	0	1	0	0	9	-11
12	Davenport, Erika		0	0-0	0-0	0-0	0	0	0	2	0	0	0	0	3	-7
20	Anderson, Altia		0	0-0	0-0	0-0	0	1	1	0	0	0	0	0	4	-5
30	Spingola, Isabelle		0	0-1	0-1	0-0	0	1	1	0	0	1	0	2	6	-5
42	Van Kleunen, Lauren		3	1-5	1-1	0-0	1	0	1	0	0	0	0	0	7	-5
52	Marotta, Chloe		0	0-0	0-0	0-0	0	0	0	0	0	0	0	0	0	0
	Team						0	0	0	0		0				
TOTALS			7	3-17	1-4	0-0	0	0	9	5	1	4	0	2	50	

Shooting By Period

Period	FG	FG%	3FG	3FG%	FT	FT%
1st Qtr	11-17	65%	0-3	00%	3-4	75%
2nd Qtr	3-17	18%	1-4	25%	0-0	0%
3rd Qtr	9-21	43%	3-8	38%	4-5	80%
4th Qtr	7-15	47%	0-4	00%	5-6	83%
1st Half	11-17	65%	0-3	00%	3-4	75%
2nd Half	3-17	18%	1-4	25%	0-0	0%
3rd Half	9-21	43%	3-8	38%	4-5	80%
4th Half	7-15	47%	0-4	00%	5-6	83%
Game	30-70	42.9%	4-19	21.1%	12-15	80.0%

Deadball Rebounds:
Last FG: 4th-00:36
Biggest Run: 14-0
Largest lead: By 19 at 4-00:36
Technical Fouls: None.

Northwestern 57

No.	Player	S	Pts	FG	3FG	FT	OR	DR	TR	PF	A	TO	Blk	Stl	Min	+/-
10	Pulliam, Lindsey		3	1-2	0-0	1-2	0	1	1	0	0	1	0	0	9	13
12	Burton, Veronica		3	1-1	1-1	0-0	0	0	0	1	0	0	0	0	2	3
14	Kunaiyi-Akpanah, Pallas		6	2-2	0-0	2-3	4	3	7	0	0	0	1	0	6	4
24	Hamilton, Jordan		5	2-3	1-1	0-0	0	1	1	0	2	0	0	0	10	12
44	Scheid, Abi		0	0-3	0-2	0-0	0	0	0	0	2	0	0	0	9	11
0	Sancataldo, Jess		0	0-1	0-1	0-0	0	0	0	0	0	0	0	1	5	4
3	Wood, Sydney		0	0-2	0-0	0-0	0	0	0	0	0	0	0	0	5	4
4	Hopkins, Bryana		0	0-0	0-0	0-0	0	0	0	0	0	0	0	0	1	1
21	Wolf, Abbie		2	1-1	0-0	0-0	0	1	1	0	0	1	0	0	4	8
22	Galemik, Byrddy		0	0-0	0-0	0-0	0	0	0	0	0	0	0	0	0	0
	Team						1	2	3	0		1				
TOTALS			19	7-15	2-5	3-5	0	0	13	1	4	3	1	1	50	

Shooting By Period

Period	FG	FG%	3FG	3FG%	FT	FT%
1st Qtr	4-16	25%	0-2	00%	1-2	50%
2nd Qtr	7-15	47%	2-5	40%	3-5	60%
3rd Qtr	7-17	41%	2-3	67%	3-3	100%
4th Qtr	1-12	08%	0-4	00%	8-10	80%
1st Half	4-16	25%	0-2	00%	1-2	50%
2nd Half	7-15	47%	2-5	40%	3-5	60%
3rd Half	7-17	41%	2-3	67%	3-3	100%
4th Half	1-12	08%	0-4	00%	8-10	80%
Game	19-60	31.7%	4-14	28.6%	15-20	75.0%

Deadball Rebounds:
Last FG: 4th-07:13
Biggest Run: 9-0
Largest lead: By 0 at 3-08:01
Technical Fouls: None.

Game Notes:
 Officials: Felicia Grinter, Jeff Cross, Maggie Tieman
 Attendance: 1467
 Start Time: 2018-12-09 19:01:19 End Time: 2018-12-09 20:53:36
 Game Duration: 112

Score by Period	1st	2nd	3rd	4th	TOT
MU	25	7	25	19	76
NU	9	19	19	10	57

This period only: MU led for 38:49. NU led for 38:00.
Game was tied for 0:58.

Points from (This Period)	MU	NU
In the Paint	4	8
Off Turns	2	5
2nd Chance	3	2
Fast Break	2	3
Bench	3	2

Official Play-By-Play
Marquette vs Northwestern
Third Quarter
December 09, 2018 at Welsh-Ryan Arena - Evanston, IL

Starters:

Marquette: 1 KING,DANIELLE; 11 BLOCKTON,ALLAZIA; 15 WILBORN,AMANI; 24 LOTT,SELENA; 5 HIEDEMAN,NATISHA;

Northwestern: 10 PULLIAM,LINDSEY; 12 BURTON,VERONICA; 14 KUNAIYI-AKPANAH,PALLAS; 24 HAMILTON,JORDAN; 44 SCHEID,ABI;

Period 3

Time	VISITORS: Marquette	Score	Margin	HOME: Northwestern
09:47	GOOD! LAYUP by BLOCKTON,ALLAZIA	28-34	V 6	
09:47	ASSIST by HIEDEMAN,NATISHA			
09:28				TURNOVER (BADPASS) by SCHEID,ABI
09:28	STEAL by WILBORN,AMANI			
09:22	MISSED LAYUP by WILBORN,AMANI			
09:18	REBOUND (OFF) by DAVENPORT,ERIKA			
09:15	TURNOVER (LOSTBALL) by HIEDEMAN,NATISHA			
09:15				STEAL by SCHEID,ABI
09:06		30-34	V 4	GOOD! JUMPER by PULLIAM,LINDSEY
08:52	MISSED LAYUP by HIEDEMAN,NATISHA			
08:45				REBOUND (DEF) by HAMILTON,JORDAN
08:42	FOUL (PERSONAL) by HIEDEMAN,NATISHA			
08:42		31-34	V 3	GOOD! FT by PULLIAM,LINDSEY
08:42		32-34	V 2	GOOD! FT by PULLIAM,LINDSEY
08:28	MISSED JUMPER by BLOCKTON,ALLAZIA			
08:25				REBOUND (DEF) by KUNAIYI-AKPANAH,PALLAS
08:01		34-34	T	GOOD! JUMPER by HAMILTON,JORDAN
07:44	GOOD! 3PTR by WILBORN,AMANI	34-37	V 3	
07:44	ASSIST by HIEDEMAN,NATISHA			
07:26				MISSED LAYUP by HAMILTON,JORDAN
07:20	REBOUND (DEF) by LOTT,SELENA			
07:18	MISSED LAYUP by HIEDEMAN,NATISHA			
07:14	REBOUND (OFF) by HIEDEMAN,NATISHA			
07:12	GOOD! 3PTR by BLOCKTON,ALLAZIA	34-40	V 6	
07:12	ASSIST by WILBORN,AMANI			
06:50				MISSED JUMPER by PULLIAM,LINDSEY
06:38	REBOUND (DEF) by BLOCKTON,ALLAZIA			
06:34				FOUL (PERSONAL) by BURTON,VERONICA
06:34	GOOD! FT by WILBORN,AMANI	34-41	V 7	
06:34				SUB OUT: KUNAIYI-AKPANAH,PALLAS
06:34				SUB IN: WOLF,ABBIE
06:34	SUB OUT: DAVENPORT,ERIKA			
06:34	SUB IN: VAN KLEUNEN,LAUREN			
06:34	GOOD! FT by WILBORN,AMANI	34-42	V 8	
06:11				MISSED JUMPER by PULLIAM,LINDSEY
06:05	REBOUND (DEF) by HIEDEMAN,NATISHA			
06:02	MISSED 3PTR by WILBORN,AMANI			
06:01				REBOUND (DEF) by SCHEID,ABI
06:01	FOUL (PERSONAL) by HIEDEMAN,NATISHA			
06:01	SUB OUT: BLOCKTON,ALLAZIA			
06:01	SUB IN: SPINGOLA,ISABELLE			
06:01				TURNOVER (BADPASS) by SCHEID,ABI
05:58	MISSED 3PTR by SPINGOLA,ISABELLE			
05:52	REBOUND (OFF) by HIEDEMAN,NATISHA			
05:45	MISSED LAYUP by HIEDEMAN,NATISHA			
05:45				BLOCK by SCHEID,ABI
05:38				REBOUND (DEF) by SCHEID,ABI
05:37				MISSED LAYUP by HAMILTON,JORDAN
05:36	REBOUND (DEF) by VAN KLEUNEN,LAUREN			
05:34				FOUL (PERSONAL) by SCHEID,ABI
05:34	GOOD! FT by VAN KLEUNEN,LAUREN [FB]	34-43	V 9	
05:34				SUB OUT: BURTON,VERONICA
05:34				SUB IN: GALERNIK,BYRDY
05:34	GOOD! FT by VAN KLEUNEN,LAUREN [FB]	34-44	V 10	
05:22		36-44	V 8	GOOD! JUMPER by PULLIAM,LINDSEY
05:22				ASSIST by SCHEID,ABI
05:05	TURNOVER (BADPASS) by VAN KLEUNEN,LAUREN			
05:05				STEAL by SCHEID,ABI
04:59				TURNOVER (BADPASS) by SCHEID,ABI
04:59	STEAL by HIEDEMAN,NATISHA			
04:43	GOOD! 3PTR by SPINGOLA,ISABELLE	36-47	V 11	
04:43	ASSIST by HIEDEMAN,NATISHA			
04:28				MISSED JUMPER by PULLIAM,LINDSEY
04:27				REBOUND (OFF) by TEAM
04:27	FOUL (PERSONAL) by LOTT,SELENA			
04:27				
04:27	SUB OUT: VAN KLEUNEN,LAUREN			
04:27	SUB IN: DAVENPORT,ERIKA			
04:06		38-47	V 9	GOOD! LAYUP by WOLF,ABBIE
04:06				ASSIST by PULLIAM,LINDSEY
03:47	GOOD! JUMPER by DAVENPORT,ERIKA [PNT]	38-49	V 11	
03:47	ASSIST by HIEDEMAN,NATISHA			
03:27				MISSED 3PTR by PULLIAM,LINDSEY
03:22	REBOUND (DEF) by HIEDEMAN,NATISHA			
03:13	GOOD! LAYUP by WILBORN,AMANI	38-51	V 13	
02:43				MISSED JUMPER by HAMILTON,JORDAN

Time	VISITORS: Marquette	Score	Margin	HOME: Northwestern
02:39	REBOUND (DEF) by WILBORN,AMANI			
02:34	GOOD! LAYUP by HIEDEMAN,NATISHA	38-53	V 15	
02:34				FOUL (PERSONAL) by PULLIAM,LINDSEY
02:34				SUB OUT: WOLF,ABBIE
02:34				SUB IN: KUNAIYI-AKPANAH,PALLAS
02:34				SUB OUT: GALERNIK,BYRDY
02:34				SUB IN: WOOD,SYDNEY
02:34	SUB OUT: LOTT,SELENA			
02:34	SUB IN: BLOCKTON,ALLAZIA			
02:34	MISSED FT by HIEDEMAN,NATISHA			
02:32	REBOUND (OFF) by SPINGOLA,ISABELLE			
02:29	MISSED 3PTR by HIEDEMAN,NATISHA			
02:26				REBOUND (DEF) by WOOD,SYDNEY
02:23				MISSED LAYUP by HAMILTON,JORDAN
02:22				REBOUND (OFF) by KUNAIYI-AKPANAH,PALLAS
02:22		40-53	V 13	GOOD! LAYUP by KUNAIYI-AKPANAH,PALLAS
02:22	FOUL (PERSONAL) by DAVENPORT,ERIKA			
02:22		41-53	V 12	GOOD! FT by KUNAIYI-AKPANAH,PALLAS
02:22	SUB OUT: DAVENPORT,ERIKA			
02:22	SUB IN: VAN KLEUNEN,LAUREN			
02:05	MISSED JUMPER by WILBORN,AMANI			
02:03				REBOUND (DEF) by SCHEID,ABI
01:55				MISSED JUMPER by PULLIAM,LINDSEY
01:52				REBOUND (OFF) by KUNAIYI-AKPANAH,PALLAS
01:50				MISSED LAYUP by KUNAIYI-AKPANAH,PALLAS
01:47				REBOUND (OFF) by PULLIAM,LINDSEY
01:45		44-53	V 9	GOOD! 3PTR by HAMILTON,JORDAN
01:45				ASSIST by PULLIAM,LINDSEY
01:32	MISSED 3PTR by WILBORN,AMANI			
01:27	REBOUND (OFF) by SPINGOLA,ISABELLE			
01:09	GOOD! JUMPER by BLOCKTON,ALLAZIA	44-55	V 11	
00:54				TURNOVER (LOSTBALL) by HAMILTON,JORDAN
00:54	STEAL by HIEDEMAN,NATISHA			
00:49	GOOD! LAYUP by SPINGOLA,ISABELLE [FB]	44-57	V 13	
00:49	ASSIST by WILBORN,AMANI			
00:32		47-57	V 10	GOOD! 3PTR by SCHEID,ABI
00:32				ASSIST by PULLIAM,LINDSEY
00:32				TIMEOUT 30SEC
00:32	SUB OUT: VAN KLEUNEN,LAUREN			
00:32	SUB IN: ANDERSON,ALTIA			
00:05	MISSED LAYUP by HIEDEMAN,NATISHA			
00:05				BLOCK by WOOD,SYDNEY
00:05	REBOUND (OFF) by TEAM			
00:01	MISSED 3PTR by HIEDEMAN,NATISHA			
00:01	REBOUND (OFF) by HIEDEMAN,NATISHA			
00:01	TURNOVER (SHOTCLOCK) by			

Marquette 57, Northwestern 47

Points from (This Period)	MU	NU
In the Paint	10	4
Off Turns	5	2
2nd Chance	5	8
Fast Break	4	0
Bench	9	2

This period only: MU led for 38:49. NU led for 38:00.
Game was tied for 0:58.

Official Play-By-Play
Marquette vs Northwestern
Fourth Quarter
December 09, 2018 at Welsh-Ryan Arena - Evanston, IL

Starters:

Marquette: 1 KING,DANIELLE; 11 BLOCKTON,ALLAZIA; 15 WILBORN,AMANI; 24 LOTT,SELENA; 5 HIEDEMAN,NATISHA;

Northwestern: 10 PULLIAM,LINDSEY; 12 BURTON,VERONICA; 14 KUNAIYI-AKPANAH,PALLAS; 24 HAMILTON,JORDAN; 44 SCHEID,ABI;

Period 4

Time	VISITORS: Marquette	Score	Margin	HOME: Northwestern
09:50	FOUL (PERSONAL) by HIEDEMAN,NATISHA			
09:43				MISSED JUMPER by PULLIAM,LINDSEY
09:40	REBOUND (DEF) by WILBORN,AMANI			
09:37	FOUL (OFF) by DAVENPORT,ERIKA			
09:37	TURNOVER (OFFENSIVE) by DAVENPORT,ERIKA			
09:34	SUB OUT: DAVENPORT,ERIKA			
09:34	SUB IN: VAN KLEUNEN,LAUREN			
09:13				MISSED LAYUP by KUNAIYI-AKPANAH,PALLAS
09:10	REBOUND (DEF) by BLOCKTON,ALLAZIA			
09:05	MISSED LAYUP by WILBORN,AMANI			
09:02				REBOUND (DEF) by BURTON,VERONICA
09:02	FOUL (PERSONAL) by SPINGOLA,ISABELLE			
08:41				MISSED JUMPER by PULLIAM,LINDSEY
08:38	REBOUND (DEF) by WILBORN,AMANI			
08:38				FOUL (PERSONAL) by HAMILTON,JORDAN
08:38	GOOD! FT by HIEDEMAN,NATISHA [FB]	47-58	V 11	
08:38	GOOD! FT by HIEDEMAN,NATISHA [FB]	47-59	V 12	
08:38	SUB OUT: HIEDEMAN,NATISHA			
08:38	SUB IN: LOTT,SELENA			
08:18				FOUL (OFF) by KUNAIYI-AKPANAH,PALLAS
08:18				TURNOVER (OFFENSIVE) by KUNAIYI-AKPANAH,PALLAS
07:58	MISSED 3PTR by SPINGOLA,ISABELLE			
07:56	REBOUND (OFF) by TEAM			
07:55	FOUL (OFF) by VAN KLEUNEN,LAUREN			
07:55	TURNOVER (OFFENSIVE) by VAN KLEUNEN,LAUREN			
07:37				MISSED 3PTR by HAMILTON,JORDAN
07:36	REBOUND (DEF) by TEAM			
07:36	SUB OUT: VAN KLEUNEN,LAUREN			
07:36	SUB IN: HIEDEMAN,NATISHA			
07:19	MISSED LAYUP by HIEDEMAN,NATISHA			
07:16				REBOUND (DEF) by KUNAIYI-AKPANAH,PALLAS
07:13		49-59	V 10	GOOD! LAYUP by PULLIAM,LINDSEY [FB]
07:13				ASSIST by HAMILTON,JORDAN
06:42	MISSED JUMPER by BLOCKTON,ALLAZIA			
06:42				REBOUND (DEF) by TEAM
06:42	FOUL (PERSONAL) by WILBORN,AMANI			
06:42				MISSED FT by KUNAIYI-AKPANAH,PALLAS
06:42				REBOUND (OFF) by TEAM
06:42				SUB OUT: HAMILTON,JORDAN
06:42				SUB IN: WOOD,SYDNEY
06:42		50-59	V 9	GOOD! FT by KUNAIYI-AKPANAH,PALLAS
06:42	SUB OUT: WILBORN,AMANI			
06:42	SUB IN: VAN KLEUNEN,LAUREN			
06:24	MISSED JUMPER by BLOCKTON,ALLAZIA			
06:23	REBOUND (OFF) by TEAM			
06:16	MISSED 3PTR by BLOCKTON,ALLAZIA			
06:11				REBOUND (DEF) by SCHEID,ABI
05:59				MISSED JUMPER by KUNAIYI-AKPANAH,PALLAS
05:54	REBOUND (DEF) by HIEDEMAN,NATISHA			
05:54	GOOD! LAYUP by HIEDEMAN,NATISHA [FB]	50-61	V 11	
05:54				FOUL (PERSONAL) by BURTON,VERONICA
05:54				SUB OUT: BURTON,VERONICA
05:54				SUB IN: HAMILTON,JORDAN
05:54	GOOD! FT by HIEDEMAN,NATISHA [FB]	50-62	V 12	
05:35				MISSED 3PTR by SCHEID,ABI
05:34				REBOUND (OFF) by TEAM
05:34	FOUL (PERSONAL) by VAN KLEUNEN,LAUREN			
05:34		51-62	V 11	GOOD! FT by KUNAIYI-AKPANAH,PALLAS
05:34	SUB OUT: VAN KLEUNEN,LAUREN			
05:34	SUB IN: DAVENPORT,ERIKA			
05:34		52-62	V 10	GOOD! FT by KUNAIYI-AKPANAH,PALLAS
05:22	MISSED 3PTR by SPINGOLA,ISABELLE			
05:17	REBOUND (OFF) by LOTT,SELENA			
05:17	GOOD! LAYUP by BLOCKTON,ALLAZIA	52-64	V 12	
05:17	ASSIST by LOTT,SELENA			
05:17				FOUL (PERSONAL) by KUNAIYI-AKPANAH,PALLAS
05:17	MISSED FT by BLOCKTON,ALLAZIA			
05:16				REBOUND (DEF) by KUNAIYI-AKPANAH,PALLAS
04:54				TURNOVER (BADPASS) by SCHEID,ABI
04:54	STEAL by DAVENPORT,ERIKA			
04:49	TURNOVER (BADPASS) by DAVENPORT,ERIKA			
04:49				STEAL by KUNAIYI-AKPANAH,PALLAS
04:48				MISSED LAYUP by KUNAIYI-AKPANAH,PALLAS
04:48	BLOCK by DAVENPORT,ERIKA			
04:48				REBOUND (OFF) by TEAM
04:48				

Time	VISITORS: Marquette	Score	Margin	HOME: Northwestern
04:24				MISSED JUMPER by HAMILTON,JORDAN
04:24	BLOCK by HIEDEMAN,NATISHA			
04:18	REBOUND (DEF) by HIEDEMAN,NATISHA			
04:18	GOOD! LAYUP by BLOCKTON,ALLAZIA [FB]	52-66	V 14	
04:18	ASSIST by HIEDEMAN,NATISHA			
04:18				SUB OUT: HAMILTON,JORDAN
04:18				SUB IN: BURTON,VERONICA
04:18	SUB OUT: SPINGOLA,ISABELLE			
04:18	SUB IN: WILBORN,AMANI			
04:07				MISSED JUMPER by PULLIAM,LINDSEY
04:03	REBOUND (DEF) by HIEDEMAN,NATISHA			
03:59	TURNOVER (BADPASS) by HIEDEMAN,NATISHA			
03:59				STEAL by WOOD,SYDNEY
03:57	FOUL (PERSONAL) by HIEDEMAN,NATISHA			
03:57				MISSED FT by WOOD,SYDNEY
03:57				REBOUND (OFF) by TEAM
03:57		53-66	V 13	GOOD! FT by WOOD,SYDNEY [FB]
03:35	GOOD! LAYUP by DAVENPORT,ERIKA	53-68	V 15	
03:35	ASSIST by WILBORN,AMANI			
03:23	FOUL (PERSONAL) by WILBORN,AMANI			
03:23	SUB OUT: WILBORN,AMANI			
03:23	SUB IN: SPINGOLA,ISABELLE			
03:23		54-68	V 14	GOOD! FT by SCHEID,ABI
03:23		55-68	V 13	GOOD! FT by SCHEID,ABI
03:18	FOUL (OFF) by HIEDEMAN,NATISHA			
03:18	TURNOVER (OFFENSIVE) by HIEDEMAN,NATISHA			
03:18	SUB OUT: HIEDEMAN,NATISHA			
03:18	SUB IN: VAN KLEUNEN,LAUREN			
03:04	FOUL (PERSONAL) by BLOCKTON,ALLAZIA			
03:04		56-68	V 12	GOOD! FT by PULLIAM,LINDSEY
03:04		57-68	V 11	GOOD! FT by PULLIAM,LINDSEY
02:39	GOOD! JUMPER by BLOCKTON,ALLAZIA [PNT]	57-70	V 13	
02:35				TURNOVER (TRAVEL) by BURTON,VERONICA
02:05	MISSED 3PTR by BLOCKTON,ALLAZIA			
02:04				REBOUND (DEF) by TEAM
02:04				TURNOVER (BADPASS) by SCHEID,ABI
02:04	STEAL by LOTT,SELENA			
02:04				FOUL (PERSONAL) by WOOD,SYDNEY
02:04	GOOD! FT by LOTT,SELENA	57-71	V 14	
02:04				SUB OUT: BURTON,VERONICA
02:04				SUB IN: GALERNIK,BYRDY
02:04	GOOD! FT by LOTT,SELENA	57-72	V 15	
01:51				TURNOVER (BADPASS) by KUNAIYI-AKPANAH,PALLAS
01:51	STEAL by DAVENPORT,ERIKA			
01:46	GOOD! LAYUP by DAVENPORT,ERIKA [FB]	57-74	V 17	
01:29				MISSED 3PTR by WOOD,SYDNEY
01:24	REBOUND (DEF) by LOTT,SELENA			
01:06	TURNOVER (BADPASS) by VAN KLEUNEN,LAUREN			
00:58				SUB OUT: PULLIAM,LINDSEY
00:58				SUB IN: SANCATALDO,JESS
00:58				SUB OUT: KUNAIYI-AKPANAH,PALLAS
00:58				SUB IN: HOPKINS,BRYANA
00:58				SUB OUT: SCHEID,ABI
00:58				SUB IN: WOLF,ABBIE
00:58	SUB OUT: VAN KLEUNEN,LAUREN			
00:58	SUB IN: MAROTTA,CHLOE			
00:44				MISSED 3PTR by GALERNIK,BYRDY
00:40	REBOUND (DEF) by SPINGOLA,ISABELLE			
00:36	GOOD! LAYUP by BLOCKTON,ALLAZIA	57-76	V 19	
00:18				TURNOVER (BADPASS) by GALERNIK,BYRDY
00:18	STEAL by DAVENPORT,ERIKA			

Marquette 76, Northwestern 57

Points from (This Period)	MU	NU
In the Paint	14	2
Off Turns	4	3
2nd Chance	2	2
Fast Break	9	3
Bench	4	1

**This period only: MU led for 38:49. NU led for 38:00.
Game was tied for 0:58.**

**Official Scoring/Possession Reference Chart
Marquette vs Northwestern
Period 1
December 09, 2018 at Welsh-Ryan Arena - Evanston, IL**

Starters:

Marquette: 1 KING,DANIELLE; 11 BLOCKTON,ALLAZIA; 15 WILBORN,AMANI; 24 LOTT,SELENA; 5 HIEDEMAN,NATISHA;

Northwestern: 10 PULLIAM,LINDSEY; 12 BURTON,VERONICA; 14 KUNAIYI-AKPANAH,PALLAS; 24 HAMILTON,JORDAN; 44 SCHEID,ABI;

Period 1

Time	VISITORS: Marquette	Score	Margin	HOME: Northwestern
09:38	GOOD! LAYUP by WILBORN,AMANI [FB]	0-2	V 2	
08:48		2-2	T	GOOD! LAYUP by KUNAIYI-AKPANAH,PALLAS
08:35	GOOD! FT by WILBORN,AMANI	2-3	V 1	
08:05	GOOD! JUMPER by KING,DANIELLE [PNT]	2-5	V 3	
07:44		4-5	V 1	GOOD! LAYUP by SCHEID,ABI
07:12	GOOD! JUMPER by HIEDEMAN,NATISHA	4-7	V 3	
06:30		6-7	V 1	GOOD! JUMPER by SCHEID,ABI
06:20	GOOD! LAYUP by HIEDEMAN,NATISHA	6-9	V 3	
06:04		8-9	V 1	GOOD! JUMPER by PULLIAM,LINDSEY [PNT]
05:47	GOOD! LAYUP by BLOCKTON,ALLAZIA	8-11	V 3	
05:37		9-11	V 2	GOOD! FT by HAMILTON,JORDAN
04:46	GOOD! LAYUP by KING,DANIELLE [FB]	9-13	V 4	
03:26	GOOD! JUMPER by BLOCKTON,ALLAZIA [PNT]	9-15	V 6	
03:04	GOOD! LAYUP by BLOCKTON,ALLAZIA	9-17	V 8	
02:40	GOOD! LAYUP by HIEDEMAN,NATISHA [FB]	9-19	V 10	
02:09	GOOD! FT by KING,DANIELLE	9-20	V 11	
02:09	GOOD! FT by KING,DANIELLE	9-21	V 12	
00:49	GOOD! LAYUP by KING,DANIELLE	9-23	V 14	
00:26	GOOD! JUMPER by VAN KLEUNEN,LAUREN	9-25	V 16	

Marquette 25, Northwestern 9

**Official Scoring/Possession Reference Chart
Marquette vs Northwestern
Period 2
December 09, 2018 at Welsh-Ryan Arena - Evanston, IL**

Starters:

Marquette: 1 KING,DANIELLE; 11 BLOCKTON,ALLAZIA; 15 WILBORN,AMANI; 24 LOTT,SELENA; 5 HIEDEMAN,NATISHA;

Northwestern: 10 PULLIAM,LINDSEY; 12 BURTON,VERONICA; 14 KUNAIYI-AKPANAH,PALLAS; 24 HAMILTON,JORDAN; 44 SCHEID,ABI;

Period 2

Time	VISITORS: Marquette	Score	Margin	HOME: Northwestern
08:48		12-25	V 13	GOOD! 3PTR by BURTON,VERONICA [FB]
07:52	GOOD! LAYUP by HIEDEMAN,NATISHA [FB]	12-27	V 15	
07:36		14-27	V 13	GOOD! JUMPER by WOLF,ABBIE
06:56		15-27	V 12	GOOD! FT by PULLIAM,LINDSEY
06:24		17-27	V 10	GOOD! JUMPER by PULLIAM,LINDSEY
05:45		19-27	V 8	GOOD! LAYUP by HAMILTON,JORDAN
04:29		21-27	V 6	GOOD! JUMPER by KUNAIYI-AKPANAH,PALLAS
04:02	GOOD! 3PTR by VAN KLEUNEN,LAUREN	21-30	V 9	
02:47		23-30	V 7	GOOD! JUMPER by KUNAIYI-AKPANAH,PALLAS
01:31		26-30	V 4	GOOD! 3PTR by HAMILTON,JORDAN
01:19	GOOD! LAYUP by HIEDEMAN,NATISHA	26-32	V 6	
00:54		27-32	V 5	GOOD! FT by KUNAIYI-AKPANAH,PALLAS
00:54		28-32	V 4	GOOD! FT by KUNAIYI-AKPANAH,PALLAS

Marquette 32, Northwestern 28

**Official Scoring/Possession Reference Chart
Marquette vs Northwestern
Period 3
December 09, 2018 at Welsh-Ryan Arena - Evanston, IL**

Starters:

Marquette: 1 KING,DANIELLE; 11 BLOCKTON,ALLAZIA; 15 WILBORN,AMANI; 24 LOTT,SELENA; 5 HIEDEMAN,NATISHA;

Northwestern: 10 PULLIAM,LINDSEY; 12 BURTON,VERONICA; 14 KUNAIYI-AKPANAH,PALLAS; 24 HAMILTON,JORDAN; 44 SCHEID,ABI;

Period 3

Time	VISITORS: Marquette	Score	Margin	HOME: Northwestern
09:47	GOOD! LAYUP by BLOCKTON,ALLAZIA	28-34	V 6	
09:06		30-34	V 4	GOOD! JUMPER by PULLIAM,LINDSEY
08:42		31-34	V 3	GOOD! FT by PULLIAM,LINDSEY
08:42		32-34	V 2	GOOD! FT by PULLIAM,LINDSEY
08:01		34-34	T	GOOD! JUMPER by HAMILTON,JORDAN
07:44	GOOD! 3PTR by WILBORN,AMANI	34-37	V 3	
07:12	GOOD! 3PTR by BLOCKTON,ALLAZIA	34-40	V 6	
06:34	GOOD! FT by WILBORN,AMANI	34-41	V 7	
06:34	GOOD! FT by WILBORN,AMANI	34-42	V 8	
05:34	GOOD! FT by VAN KLEUNEN,LAUREN [FB]	34-43	V 9	
05:34	GOOD! FT by VAN KLEUNEN,LAUREN [FB]	34-44	V 10	
05:22		36-44	V 8	GOOD! JUMPER by PULLIAM,LINDSEY
04:43	GOOD! 3PTR by SPINGOLA,ISABELLE	36-47	V 11	
04:06		38-47	V 9	GOOD! LAYUP by WOLF,ABBIE
03:47	GOOD! JUMPER by DAVENPORT,ERIK A [PNT]	38-49	V 11	
03:13	GOOD! LAYUP by WILBORN,AMANI	38-51	V 13	
02:34	GOOD! LAYUP by HIEDEMAN,NATISHA	38-53	V 15	
02:22		40-53	V 13	GOOD! LAYUP by KUNAIYI-AKPANAH,PALLAS
02:22		41-53	V 12	GOOD! FT by KUNAIYI-AKPANAH,PALLAS
01:45		44-53	V 9	GOOD! 3PTR by HAMILTON,JORDAN
01:09	GOOD! JUMPER by BLOCKTON,ALLAZIA	44-55	V 11	
00:49	GOOD! LAYUP by SPINGOLA,ISABELLE [FB]	44-57	V 13	
00:32		47-57	V 10	GOOD! 3PTR by SCHEID,ABI

Marquette 57, Northwestern 47**Official Scoring/Possession Reference Chart
Marquette vs Northwestern****Period 4****December 09, 2018 at Welsh-Ryan Arena - Evanston, IL****Starters:**

Marquette: 1 KING,DANIELLE; 11 BLOCKTON,ALLAZIA; 15 WILBORN,AMANI; 24 LOTT,SELENA; 5 HIEDEMAN,NATISHA;

Northwestern: 10 PULLIAM,LINDSEY; 12 BURTON,VERONICA; 14 KUNAIYI-AKPANAH,PALLAS; 24 HAMILTON,JORDAN; 44 SCHEID,ABI;

Period 4

Time	VISITORS: Marquette	Score	Margin	HOME: Northwestern
08:38	GOOD! FT by HIEDEMAN,NATISHA [FB]	47-58	V 11	
08:38	GOOD! FT by HIEDEMAN,NATISHA [FB]	47-59	V 12	
07:13		49-59	V 10	GOOD! LAYUP by PULLIAM,LINDSEY [FB]
06:42		50-59	V 9	GOOD! FT by KUNAIYI-AKPANAH,PALLAS
05:54	GOOD! LAYUP by HIEDEMAN,NATISHA [FB]	50-61	V 11	
05:54	GOOD! FT by HIEDEMAN,NATISHA [FB]	50-62	V 12	
05:34		51-62	V 11	GOOD! FT by KUNAIYI-AKPANAH,PALLAS
05:34		52-62	V 10	GOOD! FT by KUNAIYI-AKPANAH,PALLAS
05:17	GOOD! LAYUP by BLOCKTON,ALLAZIA	52-64	V 12	
04:18	GOOD! LAYUP by BLOCKTON,ALLAZIA [FB]	52-66	V 14	
03:57		53-66	V 13	GOOD! FT by WOOD,SYDNEY [FB]
03:35	GOOD! LAYUP by DAVENPORT,ERIK A	53-68	V 15	
03:23		54-68	V 14	GOOD! FT by SCHEID,ABI
03:23		55-68	V 13	GOOD! FT by SCHEID,ABI
03:04		56-68	V 12	GOOD! FT by PULLIAM,LINDSEY
03:04		57-68	V 11	GOOD! FT by PULLIAM,LINDSEY
02:39	GOOD! JUMPER by BLOCKTON,ALLAZIA [PNT]	57-70	V 13	
02:04	GOOD! FT by LOTT,SELENA	57-71	V 14	
02:04	GOOD! FT by LOTT,SELENA	57-72	V 15	
01:46	GOOD! LAYUP by DAVENPORT,ERIK A [FB]	57-74	V 17	

00:38	VISITORS: Marquette	Score	Margin	HOME: Northwestern
-------	---------------------	-------	--------	--------------------

Marquette 76, Northwestern 57

**Official Substitutions Log
Marquette vs Northwestern
Period 1**

December 09, 2018 at Welsh-Ryan Arena - Evanston, IL

VISITORS: Marquette	Time	Score	HOME: Northwestern
1 KING,DANIELLE			10 PULLIAM,LINDSEY
11 BLOCKTON,ALLAZIA			12 BURTON,VERONICA
15 WILBORN,AMANI			14 KUNAIYI-AKPANAH,PALLAS
24 LOTT,SELENA			24 HAMILTON,JORDAN
5 HIEDEMAN,NATISHA			44 SCHEID,ABI
SUB OUT: 24 LOTT,SELENA	05:37	11-9	
SUB IN: 30 SPINGOLA,ISABELLE	05:37		
SUB OUT: 11 BLOCKTON,ALLAZIA	05:37		
SUB IN: 12 DAVENPORT,ERIKA	05:37		
	04:31	13-9	SUB OUT: BURTON,VERONICA
	04:31		SUB IN: GALERNIK,BYRDY
SUB OUT: 15 WILBORN,AMANI	04:31		
SUB IN: 11 BLOCKTON,ALLAZIA	04:31		
SUB OUT: 1 KING,DANIELLE	03:33	13-9	
SUB IN: 15 WILBORN,AMANI	03:33		
SUB OUT: 15 WILBORN,AMANI	02:57	17-9	
SUB IN: 1 KING,DANIELLE	02:57		
	02:09	20-9	SUB OUT: PULLIAM,LINDSEY
	02:09		SUB IN: WOOD,SYDNEY
	02:09		SUB OUT: HAMILTON,JORDAN
	02:09		SUB IN: BURTON,VERONICA
SUB OUT: 30 SPINGOLA,ISABELLE	02:09		
SUB IN: 42 VAN KLEUNEN,LAUREN	02:09		

Marquette 25, Northwestern 9

**Official Substitutions Log
Marquette vs Northwestern
Period 2
December 09, 2018 at Welsh-Ryan Arena - Evanston, IL**

VISITORS: Marquette	Time	Score	HOME: Northwestern
1 KING,DANIELLE			10 PULLIAM,LINDSEY
11 BLOCKTON,ALLAZIA			12 BURTON,VERONICA
15 WILBORN,AMANI			14 KUNAIYI-AKPANAH,PALLAS
24 LOTT,SELENA			24 HAMILTON,JORDAN
5 HIEDEMAN,NATISHA			44 SCHEID,ABI
	08:24	25-12	SUB OUT: BURTON,VERONICA
	08:24		SUB IN: SANCATALDO,JESS
SUB OUT: 1 KING,DANIELLE	08:24		
SUB IN: 15 WILBORN,AMANI	08:24		
SUB OUT: 11 BLOCKTON,ALLAZIA	08:24		
SUB IN: 30 SPINGOLA,ISABELLE	08:24		
SUB OUT: 42 VAN KLEUNEN,LAUREN	07:10	27-14	
SUB IN: 12 DAVENPORT,ERIKA	07:10		
SUB OUT: 15 WILBORN,AMANI	06:56	27-14	
SUB IN: 11 BLOCKTON,ALLAZIA	06:56		
	05:31	27-19	SUB OUT: WOLF,ABBIE
	05:31		SUB IN: KUNAIYI-AKPANAH,PALLAS
	04:39	27-19	SUB OUT: PULLIAM,LINDSEY
	04:39		SUB IN: WOOD,SYDNEY
SUB OUT: 12 DAVENPORT,ERIKA	04:29	27-21	
SUB IN: 42 VAN KLEUNEN,LAUREN	04:29		
	03:30	30-21	SUB OUT: SANCATALDO,JESS
	03:30		SUB IN: PULLIAM,LINDSEY
SUB OUT: 30 SPINGOLA,ISABELLE	03:30		
SUB IN: 20 ANDERSON,ALTIA	03:30		
	00:54	32-27	SUB OUT: SCHEID,ABI
	00:54		SUB IN: HOPKINS,BRYANA
SUB OUT: 24 LOTT,SELENA	00:54		
SUB IN: 30 SPINGOLA,ISABELLE	00:54		

Marquette 32, Northwestern 28

**Official Substitutions Log
Marquette vs Northwestern
Period 3
December 09, 2018 at Welsh-Ryan Arena - Evanston, IL**

VISITORS: Marquette	Time	Score	HOME: Northwestern
1 KING,DANIELLE			10 PULLIAM,LINDSEY
11 BLOCKTON,ALLAZIA			12 BURTON,VERONICA
15 WILBORN,AMANI			14 KUNAIYI-AKPANAH,PALLAS
24 LOTT,SELENA			24 HAMILTON,JORDAN
5 HIEDEMAN,NATISHA			44 SCHEID,ABI
	06:34	41-34	SUB OUT: KUNAIYI-AKPANAH,PALLAS
	06:34		SUB IN: WOLF,ABBIE
SUB OUT: 12 DAVENPORT,ERIKA	06:34		
SUB IN: 42 VAN KLEUNEN,LAUREN	06:34		
SUB OUT: 11 BLOCKTON,ALLAZIA	06:01	42-34	
SUB IN: 30 SPINGOLA,ISABELLE	06:01		
	05:34	43-34	SUB OUT: BURTON,VERONICA
	05:34		SUB IN: GALERNIK,BYRDY
SUB OUT: 42 VAN KLEUNEN,LAUREN	04:27	47-36	
SUB IN: 12 DAVENPORT,ERIKA	04:27		
	02:34	53-38	SUB OUT: WOLF,ABBIE
	02:34		SUB IN: KUNAIYI-AKPANAH,PALLAS
	02:34		SUB OUT: GALERNIK,BYRDY
	02:34		SUB IN: WOOD,SYDNEY
SUB OUT: 24 LOTT,SELENA	02:34		
SUB IN: 11 BLOCKTON,ALLAZIA	02:34		
SUB OUT: 12 DAVENPORT,ERIKA	02:22	53-41	
SUB IN: 42 VAN KLEUNEN,LAUREN	02:22		
SUB OUT: 42 VAN KLEUNEN,LAUREN	00:32	57-47	
SUB IN: 20 ANDERSON,ALTIA	00:32		

Marquette 57, Northwestern 47

Official Substitutions Log
Marquette vs Northwestern
Period 4
December 09, 2018 at Welsh-Ryan Arena - Evanston, IL

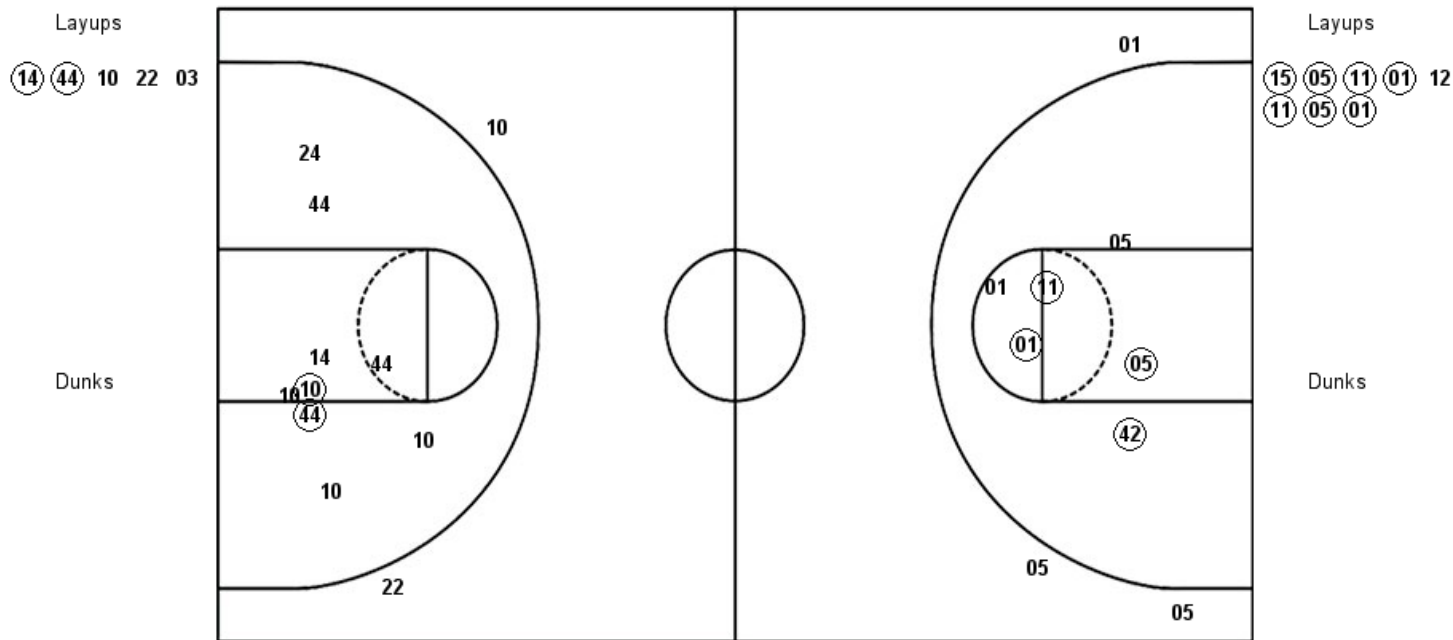
VISITORS: Marquette	Time	Score	HOME: Northwestern
1 KING,DANIELLE			10 PULLIAM,LINDSEY
11 BLOCKTON,ALLAZIA			12 BURTON,VERONICA
15 WILBORN,AMANI			14 KUNAIYI-AKPANAH,PALLAS
24 LOTT,SELENA			24 HAMILTON,JORDAN
5 HIEDEMAN,NATISHA			44 SCHEID,ABI
SUB OUT: 12 DAVENPORT,ERIKA	09:34	-	
SUB IN: 42 VAN KLEUNEN,LAUREN	09:34		
SUB OUT: 5 HIEDEMAN,NATISHA	08:38	59-47	
SUB IN: 24 LOTT,SELENA	08:38		
SUB OUT: 42 VAN KLEUNEN,LAUREN	07:36	59-47	
SUB IN: 5 HIEDEMAN,NATISHA	07:36		
	06:42	59-49	SUB OUT: HAMILTON,JORDAN
	06:42		SUB IN: WOOD,SYDNEY
SUB OUT: 15 WILBORN,AMANI	06:42		
SUB IN: 42 VAN KLEUNEN,LAUREN	06:42		
	05:54	61-50	SUB OUT: BURTON,VERONICA
	05:54		SUB IN: HAMILTON,JORDAN
SUB OUT: 42 VAN KLEUNEN,LAUREN	05:34	62-51	
SUB IN: 12 DAVENPORT,ERIKA	05:34		
	04:18	66-52	SUB OUT: HAMILTON,JORDAN
	04:18		SUB IN: BURTON,VERONICA
SUB OUT: 30 SPINGOLA,ISABELLE	04:18		
SUB IN: 15 WILBORN,AMANI	04:18		
SUB OUT: 15 WILBORN,AMANI	03:23	68-53	
SUB IN: 30 SPINGOLA,ISABELLE	03:23		
SUB OUT: 5 HIEDEMAN,NATISHA	03:18	68-55	
SUB IN: 42 VAN KLEUNEN,LAUREN	03:18		
	02:04	71-57	SUB OUT: BURTON,VERONICA
	02:04		SUB IN: GALERNIK,BYRDY
	00:58	74-57	SUB OUT: PULLIAM,LINDSEY
	00:58		SUB IN: SANCATALDO,JESS
	00:58		SUB OUT: KUNAIYI-AKPANAH,PALLAS
	00:58		SUB IN: HOPKINS,BRYANA
	00:58		SUB OUT: SCHEID,ABI
	00:58		SUB IN: WOLF,ABBIE
SUB OUT: 42 VAN KLEUNEN,LAUREN	00:58		
SUB IN: 52 MAROTTA,CHLOE	00:58		

Marquette 76, Northwestern 57

Official Shot Chart
Marquette vs Northwestern
PERIOD 1 Shots
 December 09, 2018 at Welsh-Ryan Arena - Evanston, IL

Northwestern

Marquette



NU : Period 1	Made	Att	Pct
Layups	2	5	40.0
Dunks	0	0	0
2PT Field Goals	4	14	28.6
3PT Field Goals	0	2	00.0
Total Field Goals	4	16	25.0

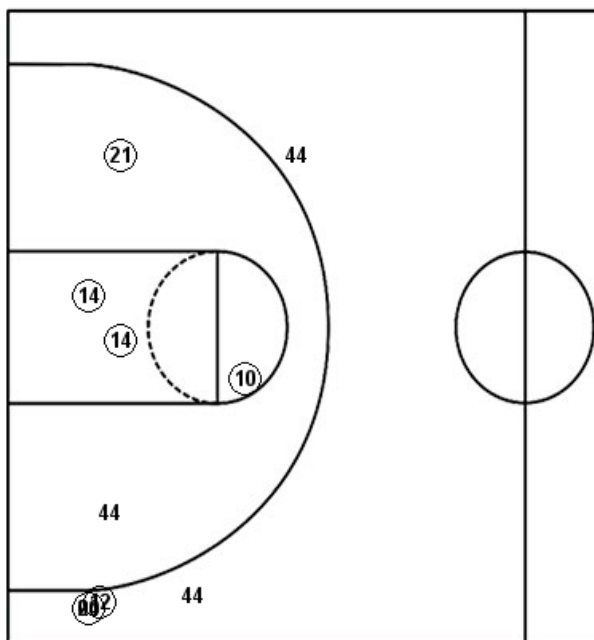
MU : Period 1	Made	Att	Pct
Layups	7	8	87.5
Dunks	0	0	0
2PT Field Goals	11	14	78.6
3PT Field Goals	0	3	00.0
Total Field Goals	11	17	64.7

Official Shot Chart
Marquette vs Northwestern
PERIOD 2 Shots
 December 09, 2018 at Welsh-Ryan Arena - Evanston, IL

Northwestern

Layups
 24 (24) 10 03 03

Dunks

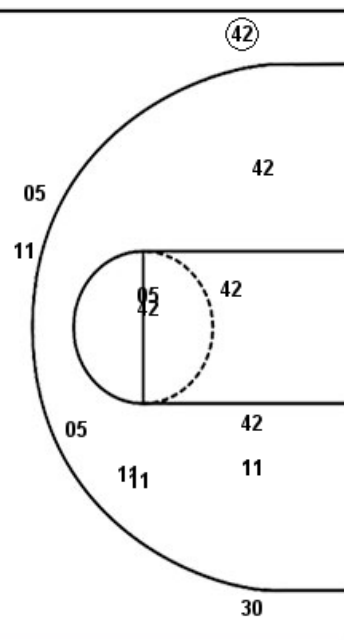


NU : Period 2	Made	Att	Pct
Layups	1	5	20.0
Dunks	0	0	0
2PT Field Goals	5	10	50.0
3PT Field Goals	2	5	40.0
Total Field Goals	7	15	46.7

Marquette

Layups
 (05) (05) 05

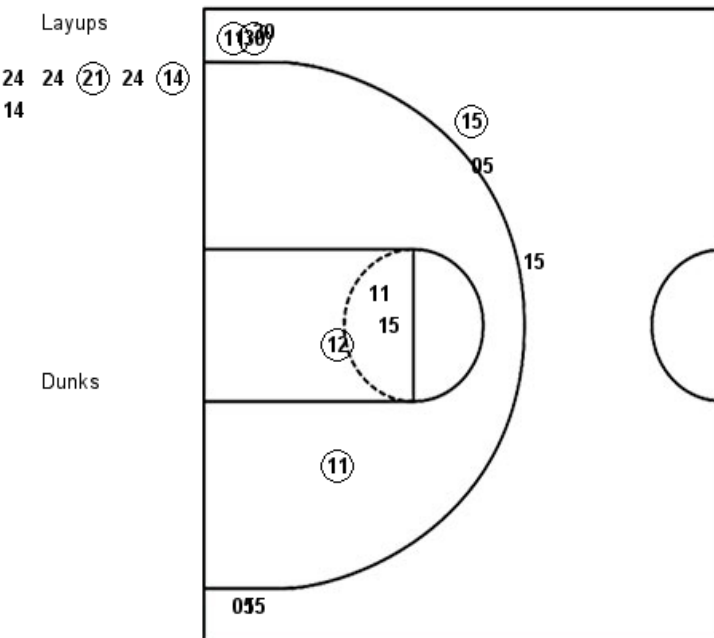
Dunks



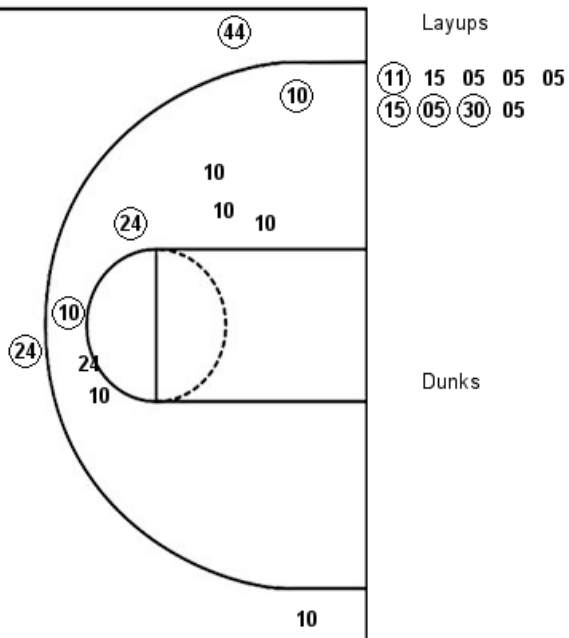
MU : Period 2	Made	Att	Pct
Layups	2	3	66.7
Dunks	0	0	0
2PT Field Goals	2	13	15.4
3PT Field Goals	1	4	25.0
Total Field Goals	3	17	17.6

Official Shot Chart
Marquette vs Northwestern
PERIOD 3 Shots
 December 09, 2018 at Welsh-Ryan Arena - Evanston, IL

Northwestern



Marquette



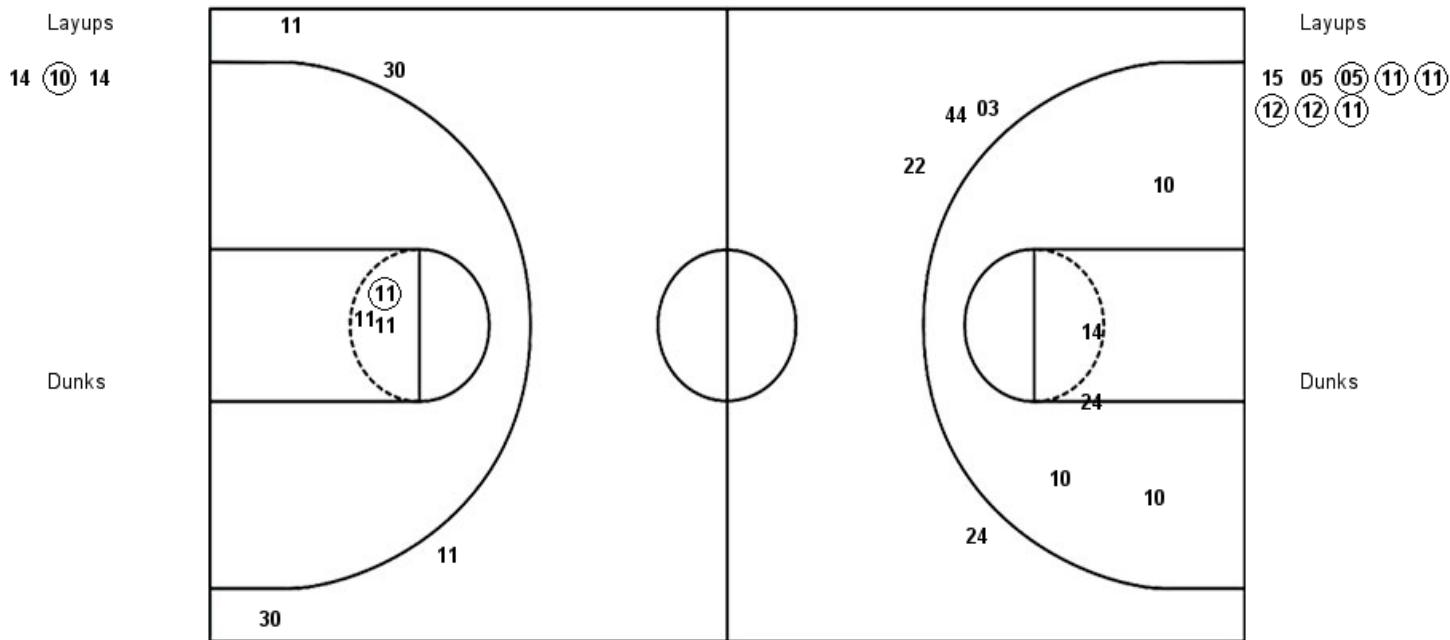
NU : Period 3	Made	Att	Pct
Layups	2	6	33.3
Dunks	0	0	0
2PT Field Goals	5	14	35.7
3PT Field Goals	2	3	66.7
Total Field Goals	7	17	41.2

MU : Period 3	Made	Att	Pct
Layups	4	9	44.4
Dunks	0	0	0
2PT Field Goals	6	13	46.2
3PT Field Goals	3	8	37.5
Total Field Goals	9	21	42.9

Official Shot Chart
Marquette vs Northwestern
PERIOD 4 Shots
 December 09, 2018 at Welsh-Ryan Arena - Evanston, IL

Northwestern

Marquette

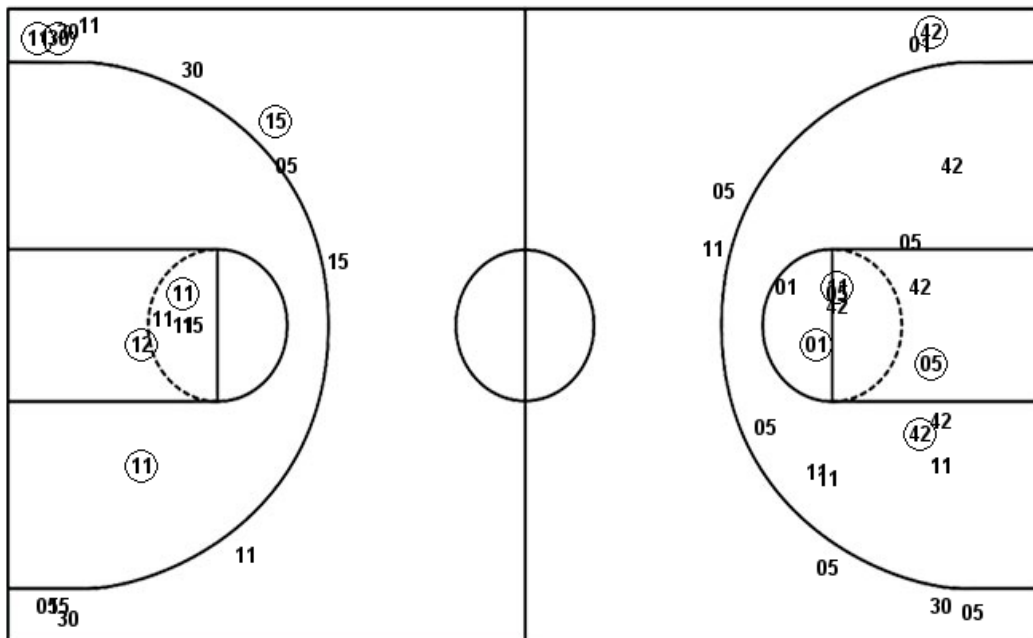


NU : Period 4	Made	Att	Pct
Layups	1	3	33.3
Dunks	0	0	0
2PT Field Goals	1	8	12.5
3PT Field Goals	0	4	00.0
Total Field Goals	1	12	08.3

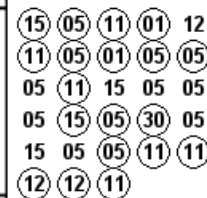
MU : Period 4	Made	Att	Pct
Layups	6	8	75.0
Dunks	0	0	0
2PT Field Goals	7	11	63.6
3PT Field Goals	0	4	00.0
Total Field Goals	7	15	46.7

Official Shot Chart
Marquette vs Northwestern
Marquette Team Shots
December 09, 2018 at Welsh-Ryan Arena - Evanston, IL

Layups



Layups



Dunks

Dunks

MU : Period 1	Made	Att	Pct
Layups	7	8	87.5
Dunks	0	0	0
2PT Field Goals	11	14	78.6
3PT Field Goals	0	3	00.0
Total Field Goals	11	17	64.7
MU : Period 3	Made	Att	Pct
Layups	4	9	44.4
Dunks	0	0	0
2PT Field Goals	6	13	46.2
3PT Field Goals	3	8	37.5
Total Field Goals	9	21	42.9

MU : Period 2	Made	Att	Pct
Layups	2	3	66.7
Dunks	0	0	0
2PT Field Goals	2	13	15.4
3PT Field Goals	1	4	25.0
Total Field Goals	3	17	17.6
MU : Period 4	Made	Att	Pct
Layups	6	8	75.0
Dunks	0	0	0
2PT Field Goals	7	11	63.6
3PT Field Goals	0	4	00.0
Total Field Goals	7	15	46.7

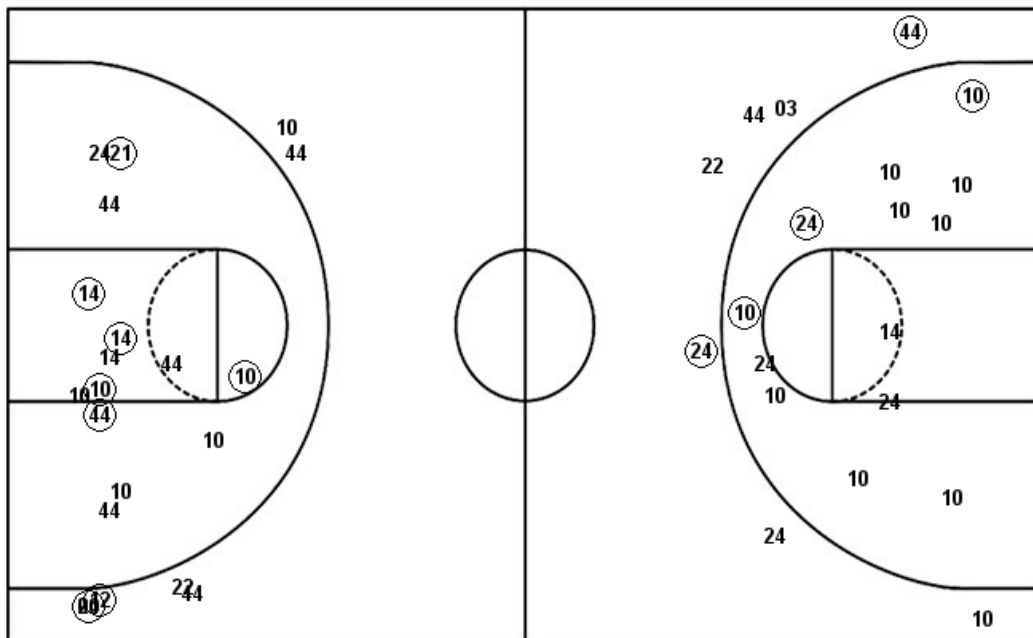
Official Shot Chart
Marquette vs Northwestern
Northwestern Team Shots
December 09, 2018 at Welsh-Ryan Arena - Evanston, IL

Layups

Layups

Dunks

Dunks



(14) (44) 10 22 03
 24 (24) 10 03 03
 24 24 (21) 24 (14)
 14 14 (10) 14

NU : Period 1	Made	Att	Pct
Layups	2	5	40.0
Dunks	0	0	0
2PT Field Goals	4	14	28.6
3PT Field Goals	0	2	00.0
Total Field Goals	4	16	25.0
NU : Period 3	Made	Att	Pct
Layups	2	6	33.3
Dunks	0	0	0
2PT Field Goals	5	14	35.7
3PT Field Goals	2	3	66.7
Total Field Goals	7	17	41.2

NU : Period 2	Made	Att	Pct
Layups	1	5	20.0
Dunks	0	0	0
2PT Field Goals	5	10	50.0
3PT Field Goals	2	5	40.0
Total Field Goals	7	15	46.7
NU : Period 4	Made	Att	Pct
Layups	1	3	33.3
Dunks	0	0	0
2PT Field Goals	1	8	12.5
3PT Field Goals	0	4	00.0
Total Field Goals	1	12	08.3